



WEST VIRGINIA VS. TEMPLE - WNIT SEMIFINAL ROUND

4/1/2015

WVU Coliseum, Morgantown, W.Va.

FINAL STATS

West Virginia

(23-14)

66

Temple

(20-17)

58

Start Time: 7:00 p.m.

Officials: Bryan Enterline, Eric Brewton, Fatou Cissoko-Stephans

Attendance: 3025

Game start: 7:05 End Time: 9:12

Covile (TEM) fouled out with 1:00 remaining in overtime.

Official Basketball Box Score -- Game Totals -- Final Statistics

Temple vs West Virginia

4/1/2015 7:00 p.m. at WVU Coliseum, Morgantown, W.Va.

Temple 58 - 20-17

##	Player	S	Total			Rebounds			PF	TP	A	TO	Blk	Stl	Min
			FG-FGA	3PT FG-FGA	FT-FTA	Off Reb	Def Reb	Tot Reb							
00	BUTTS,ALLIYA	g	3-14	2-7	0-0	1	2	3	3	8	3	1	0	1	28
01	COVILE,ERICA	g	4-11	1-1	0-0	2	4	6	5	9	0	1	1	1	36
22	ATKINSON,TANAYA	g	4-12	0-1	2-6	6	5	11	2	10	0	1	0	2	35
23	WILLIAMS,TYONNA	g	5-13	3-7	2-4	0	2	2	2	15	3	1	0	0	40
35	MARTIN,SAFIYA	c	0-5	0-0	2-4	7	4	11	4	2	0	2	3	0	38
02	FITZGERALD,FEYONDA		2-12	0-1	1-4	0	4	4	3	5	2	2	0	2	23
21	BERGER,KHADIJAH		3-4	3-4	0-0	1	1	2	0	9	1	1	0	0	18
42	ROBINSON,TAYLOR		0-0	0-0	0-0	0	2	2	0	0	0	0	0	0	7
TEAM						4	2	6	0		0				
Totals			21-71	9-21	7-18	21	26	47	19	58	9	9	4	6	225

FG %	1st Half: 11-32	34.4%	2nd Half: 9-33	27.3%	OT: 1-6	16.7%	Game: 21-71	29.6%	Deadball
3FG %	1st Half: 5-12	41.7%	2nd Half: 3-7	42.9%	OT: 1-2	50.0%	Game: 9-21	42.9%	Rebounds
FT %	1st Half: 4-6	66.7%	2nd Half: 1-7	14.3%	OT: 2-5	40.0%	Game: 7-18	38.9%	3,0

West Virginia 66 - 23-14

##	Player	S	Total			Rebounds			PF	TP	A	TO	Blk	Stl	Min
			FG-FGA	3PT FG-FGA	FT-FTA	Off Reb	Def Reb	Tot Reb							
05	FIELDS,AVEREE	f	7-11	0-0	6-7	3	5	8	2	20	3	1	0	0	40
15	MONTGOMERY,LANAY	c	1-5	0-0	2-4	8	16	24	1	4	0	2	8	1	42
20	MCDONALD,BRE	f	2-11	0-1	2-2	1	4	5	3	6	3	1	0	0	32
22	STEPNEY,LINDA	g	2-3	0-0	5-6	2	2	4	4	9	1	0	2	1	41
23	HOLMES,BRIA	g	9-27	0-2	4-6	3	0	3	1	22	0	2	4	1	43
04	MONTGOMERY,KAYLA		0-0	0-0	0-0	0	0	0	0	0	0	0	0	0	1
11	MULDROW,TEANA		1-5	1-2	0-0	1	3	4	2	3	1	2	0	0	13
21	MORTON,JESSICA		0-2	0-0	0-0	0	1	1	1	0	0	3	0	0	7
32	LEARY,CRYSTAL		0-0	0-0	2-2	0	2	2	0	2	0	0	0	1	6
TEAM						3	4	7	0		0				
Totals			22-64	1-5	21-27	21	37	58	14	66	8	11	14	4	225

FG %	1st Half: 11-34	32.4%	2nd Half: 8-22	36.4%	OT: 3-8	37.5%	Game: 22-64	34.4%	Deadball
3FG %	1st Half: 1-4	25.0%	2nd Half: 0-0	0%	OT: 0-1	00.0%	Game: 1-5	20.0%	Rebounds
FT %	1st Half: 3-5	60.0%	2nd Half: 11-15	73.3%	OT: 7-7	100.0%	Game: 21-27	77.8%	1,0

Officials: Bryan Enterline, Eric Brewton, Fatou Cissoko-Stephans

Technical Fouls: Temple- None. West Virginia- None.

Attendance: 3025

Game start: 7:05 End Time: 9:12

Covile (TEM) fouled out with 1:00 remaining in overtime.

Score by periods	1st	2nd	3rd	Total
Temple	31	22	5	58
West Virginia	26	27	13	66

	In	Off	2nd	Fast	
Points	Paint	Off T/O	2nd Chance	Fast Break	Bench
Temple	18	10	7	4	14
West Virginia	26	8	7	6	5

Largest lead - Temple by 8 2nd-19:18;

West Virginia by 8 OT-00:17

Score tied - 7 times

Lead changed - 16 times

Official Basketball Box Score -- Game Totals -- First Half Statistics

Temple vs West Virginia

4/1/2015 7:00 p.m. at WVU Coliseum, Morgantown, W.Va.

Temple 31 • 20-17

##	Player	S	Total	3-Ptr	FT-FTA	Rebounds			PF	TP	A	TO	Blk	Stl	Min
			FG-FGA	3PT FG-FGA		Off Reb	Def Reb	Tot Reb							
00	BUTTS,ALLIYA	g	1-6	1-3	0-0	1	1	2	0	3	2	0	0	0	13
01	COVILE,ERICA	g	3-6	0-0	0-0	1	1	2	1	6	0	1	0	0	16
22	ATKINSON,TANAYA	g	2-5	0-1	1-2	2	3	5	1	5	0	1	0	1	16
23	WILLIAMS,TYONNA	g	2-6	1-3	2-2	0	2	2	1	7	1	1	0	0	18
35	MARTIN,SAFIYA	c	0-1	0-0	1-2	3	3	6	1	1	0	1	0	0	17
02	FITZGERALD,FEYONDA		0-4	0-1	0-0	0	2	2	1	0	2	1	0	1	9
21	BERGER,KHADIJAH		3-4	3-4	0-0	0	1	1	0	9	1	0	0	0	8
42	ROBINSON,TAYLOR		0-0	0-0	0-0	0	0	0	0	0	0	0	0	0	3
TEAM						0	1	1	0		0				
Totals			11-32	5-12	4-6	7	14	21	5	31	6	5	0	2	100

FG %	Half:	11-32	34.4%
3FG %	Half:	5-12	41.7%
FT %	Half:	4-6	66.7%

West Virginia 26 • 23-14

##	Player	S	Total	3-Ptr	FT-FTA	Rebounds			PF	TP	A	TO	Blk	Stl	Min
			FG-FGA	3PT FG-FGA		Off Reb	Def Reb	Tot Reb							
05	FIELDS,AVEREE	f	4-5	0-0	0-0	1	2	3	2	8	2	0	0	0	15
15	MONTGOMERY,LANAY	c	1-4	0-0	1-2	5	9	14	0	3	0	2	3	1	19
20	MCDONALD,BRE	f	0-4	0-0	0-0	1	2	3	1	0	2	1	0	0	12
22	STEPNEY,LINDA	g	0-0	0-0	0-0	1	2	3	1	0	1	0	0	0	19
23	HOLMES,BRIA	g	5-16	0-2	2-3	2	0	2	1	12	0	0	2	1	18
04	MONTGOMERY,KAYLA		0-0	0-0	0-0	0	0	0	0	0	0	0	0	0	1
11	MULDROW,TEANA		1-4	1-2	0-0	0	0	0	0	3	0	0	0	0	8
21	MORTON,JESSICA		0-1	0-0	0-0	0	0	0	0	0	0	3	0	0	4
32	LEARY,CRYSTAL		0-0	0-0	0-0	0	0	0	0	0	0	0	0	0	4
TEAM						1	1	2	0		0				
Totals			11-34	1-4	3-5	11	16	27	5	26	5	6	5	2	100

FG %	Half:	11-34	32.4%
3FG %	Half:	1-4	25.0%
FT %	Half:	3-5	60.0%

Officials: Bryan Enterline, Eric Brewton, Fatou Cissoko-Stephans

Technical Fouls: Temple- None. West Virginia- None.

Game start: 7:05 End Time: 9:12

Covile (TEM) fouled out with 1:00 remaining in overtime.

	In	Off	2nd	Fast	
Points	Paint	Off T/O	2nd Chance	Fast Break	Bench
Temple	8	3	3	2	9
West Virginia	18	4	7	6	3

Score tied - 4 times

Lead changed - 11 times

Temple vs West Virginia

4/1/2015; 7:00 p.m. at WVU Coliseum, Morgantown, W.Va.

Period 1 Play-By-Play

VISITORS: Temple	Time	Score	Margin	HOME: West Virginia
	19:33	2-0	H 2	GOOD! LAYUP by MONTGOMERY,LANAY
	19:33			ASSIST by MCDONALD,BRE
	19:09			FOUL by FIELDS,AVEREE
GOOD! FT by MARTIN,SAFIYA	19:09	2-1	H 1	
MISSED FT by MARTIN,SAFIYA	19:09			
	19:09			REBOUND (DEF) by MONTGOMERY,LANAY
	18:48			TURNOVER by MONTGOMERY,LANAY
MISSED LAYUP by BUTTS,ALLIYA	18:25			
	18:25			BLOCK by MONTGOMERY,LANAY
	18:23			REBOUND (DEF) by MONTGOMERY,LANAY
	18:18			MISSED LAYUP by MCDONALD,BRE
	18:18			REBOUND (OFF) by MONTGOMERY,LANAY
FOUL by MARTIN,SAFIYA	18:15			
	18:15	3-1	H 2	GOOD! FT by MONTGOMERY,LANAY
	18:15			MISSED FT by MONTGOMERY,LANAY
REBOUND (DEF) by WILLIAMS,TYONNA	18:15			
MISSED JUMPER by WILLIAMS,TYONNA	17:54			
REBOUND (OFF) by MARTIN,SAFIYA	17:54			
MISSED LAYUP by MARTIN,SAFIYA	17:48			
	17:48			BLOCK by MONTGOMERY,LANAY
REBOUND (OFF) by MARTIN,SAFIYA	17:47			
TURNOVER by MARTIN,SAFIYA	17:43			
	17:42			STEAL by MONTGOMERY,LANAY
	17:40	5-1	H 4	GOOD! LAYUP by FIELDS,AVEREE
	17:40			ASSIST by STEPNEY,LINDA
MISSED 3PTR by WILLIAMS,TYONNA	17:22			
	17:22			REBOUND (DEF) by FIELDS,AVEREE
	17:14			MISSED LAYUP by HOLMES,BRIA
REBOUND (DEF) by MARTIN,SAFIYA	17:14			
GOOD! LAYUP by ATKINSON,TANAYA	16:48	5-3	H 2	
	16:46			FOUL by MCDONALD,BRE
GOOD! FT by ATKINSON,TANAYA	16:46	5-4	H 1	
	16:46			SUB IN: MULDRON,TEANA
	16:46			SUB OUT: MCDONALD,BRE
	16:31			MISSED LAYUP by MONTGOMERY,LANAY
REBOUND (DEF) by WILLIAMS,TYONNA	16:31			
	16:19			FOUL by HOLMES,BRIA
	16:03			FOUL by STEPNEY,LINDA
GOOD! FT by WILLIAMS,TYONNA	16:03	5-5	T	
GOOD! FT by WILLIAMS,TYONNA	16:03	5-6	V 1	
FOUL by ATKINSON,TANAYA	15:51			
	15:51			TIMEOUT MEDIA
	15:35			MISSED LAYUP by HOLMES,BRIA
	15:35			REBOUND (OFF) by MONTGOMERY,LANAY
	15:30			MISSED LAYUP by HOLMES,BRIA
	15:30			REBOUND (OFF) by MONTGOMERY,LANAY
	15:29			TURNOVER by MONTGOMERY,LANAY
MISSED 3PTR by BUTTS,ALLIYA	15:10			
	15:10			REBOUND (DEF) by MONTGOMERY,LANAY
	14:55	8-6	H 2	GOOD! 3PTR by MULDRON,TEANA
	14:55			ASSIST by FIELDS,AVEREE
MISSED LAYUP by COVILE,ERICA	14:36			
REBOUND (OFF) by COVILE,ERICA	14:36			
SUB IN: FITZGERALD,FEYONDA	14:31			
SUB OUT: BUTTS,ALLIYA	14:31			
MISSED JUMPER by ATKINSON,TANAYA	14:28			
	14:28			REBOUND (DEF) by MONTGOMERY,LANAY
	14:00	10-6	H 4	GOOD! JUMPER by FIELDS,AVEREE
MISSED 3PTR by ATKINSON,TANAYA	13:44			
	13:44			REBOUND (DEF) by MONTGOMERY,LANAY
	13:34			MISSED JUMPER by FIELDS,AVEREE
REBOUND (DEF) by COVILE,ERICA	13:34			
GOOD! 3PTR by WILLIAMS,TYONNA	13:24	10-9	H 1	
ASSIST by FITZGERALD,FEYONDA	13:24			
FOUL by COVILE,ERICA	13:16			
	13:16	11-9	H 2	GOOD! FT by HOLMES,BRIA
	13:16	12-9	H 3	GOOD! FT by HOLMES,BRIA
	13:16			SUB IN: MONTGOMERY,KAYLA
	13:16			SUB IN: LEARY,CRYSTAL
	13:16			SUB OUT: FIELDS,AVEREE
	13:16			SUB OUT: MONTGOMERY,LANAY
GOOD! JUMPER by COVILE,ERICA	13:01	12-11	H 1	
	12:37			MISSED JUMPER by MULDRON,TEANA
REBOUND (DEF) by ATKINSON,TANAYA	12:37			

GOOD! LAYUP by COVILE,ERICA	12:26	12-13	V 1	
	12:25			TIMEOUT 30SEC
	12:25			SUB IN: FIELDS, AVEREE
	12:25			SUB IN: MONTGOMERY, LANAY
	12:25			SUB IN: MCDONALD, BRE
	12:25			SUB OUT: MONTGOMERY, KAYLA
	12:25			SUB OUT: LEARY, CRYSTAL
	12:25			SUB OUT: MULDROW, TEANA
	12:01			MISSED JUMPER by HOLMES, BRIA
	12:01			REBOUND (OFF) by FIELDS, AVEREE
	11:57	14-13	H 1	GOOD! LAYUP by FIELDS, AVEREE
MISSED 3PTR by FITZGERALD, FEYONDA	11:33			
	11:33			REBOUND (DEF) by MCDONALD, BRE
	11:29			TURNOVER by MCDONALD, BRE
	11:29			SUB IN: MORTON, JESSICA
	11:29			SUB OUT: HOLMES, BRIA
TURNOVER by FITZGERALD, FEYONDA	11:19			
	10:57			TURNOVER by MORTON, JESSICA
SUB IN: ROBINSON, TAYLOR	10:57			
SUB OUT: MARTIN, SAFIYA	10:57			
MISSED JUMPER by COVILE, ERICA	10:27			
	10:27			BLOCK by MONTGOMERY, LANAY
	10:23			REBOUND (DEF) by MONTGOMERY, LANAY
	10:20			MISSED LAYUP by MCDONALD, BRE
REBOUND (DEF) by FITZGERALD, FEYONDA	10:20			
GOOD! LAYUP by COVILE, ERICA	10:12	14-15	V 1	
	09:55	16-15	H 1	GOOD! JUMPER by FIELDS, AVEREE
	09:55			ASSIST by MCDONALD, BRE
MISSED LAYUP by FITZGERALD, FEYONDA	09:38			
	09:38			REBOUND (DEF) by MONTGOMERY, LANAY
	09:21			TURNOVER by MORTON, JESSICA
STEAL by ATKINSON, TANAYA	09:21			
SUB IN: BERGER, KHADIJAH	09:21			
SUB OUT: ATKINSON, TANAYA	09:21			
	09:21			SUB IN: HOLMES, BRIA
	09:21			SUB OUT: STEPNEY, LINDA
GOOD! 3PTR by BERGER, KHADIJAH	08:55	16-18	V 2	
ASSIST by FITZGERALD, FEYONDA	08:55			
	08:38			MISSED JUMPER by MCDONALD, BRE
	08:38			REBOUND (OFF) by MONTGOMERY, LANAY
	08:20			TURNOVER by MORTON, JESSICA
STEAL by FITZGERALD, FEYONDA	08:19			
MISSED LAYUP by FITZGERALD, FEYONDA	08:16			
	08:16			REBOUND (DEF) by MCDONALD, BRE
	08:03			MISSED JUMPER by MORTON, JESSICA
	08:03			REBOUND (OFF) by MONTGOMERY, LANAY
FOUL by FITZGERALD, FEYONDA	07:51			
	07:51			TIMEOUT MEDIA
SUB IN: BUTTS, ALLIYA	07:51			
SUB IN: MARTIN, SAFIYA	07:51			
SUB OUT: WILLIAMS, TYONNA	07:51			
SUB OUT: ROBINSON, TAYLOR	07:51			
	07:51			SUB IN: STEPNEY, LINDA
	07:51			SUB OUT: MORTON, JESSICA
	07:39			MISSED JUMPER by HOLMES, BRIA
	07:39			REBOUND (OFF) by HOLMES, BRIA
	07:35	18-18	T	GOOD! JUMPER by HOLMES, BRIA
TURNOVER by COVILE, ERICA	07:20			
	07:19			STEAL by HOLMES, BRIA
	07:15	20-18	H 2	GOOD! LAYUP by HOLMES, BRIA
MISSED LAYUP by COVILE, ERICA	06:57			
REBOUND (OFF) by MARTIN, SAFIYA	06:57			
GOOD! 3PTR by BERGER, KHADIJAH	06:49	20-21	V 1	
ASSIST by BUTTS, ALLIYA	06:49			
	06:32	22-21	H 1	GOOD! LAYUP by HOLMES, BRIA
GOOD! 3PTR by BUTTS, ALLIYA	06:20	22-24	V 2	
	06:02			MISSED 3PTR by HOLMES, BRIA
	06:02			REBOUND (OFF) by TEAM
	05:55			MISSED LAYUP by HOLMES, BRIA
REBOUND (DEF) by TEAM	05:55			
SUB IN: WILLIAMS, TYONNA	05:54			
SUB IN: ATKINSON, TANAYA	05:54			
SUB OUT: FITZGERALD, FEYONDA	05:54			
SUB OUT: COVILE, ERICA	05:54			
MISSED 3PTR by BUTTS, ALLIYA	05:37			
	05:37			BLOCK by HOLMES, BRIA
	05:35			REBOUND (DEF) by FIELDS, AVEREE
	05:29	24-24	T	GOOD! LAYUP by HOLMES, BRIA
	05:29			ASSIST by FIELDS, AVEREE
MISSED 3PTR by BERGER, KHADIJAH	05:11			
	05:11			REBOUND (DEF) by TEAM
	04:49			MISSED LAYUP by MONTGOMERY, LANAY
REBOUND (DEF) by BERGER, KHADIJAH	04:49			

MISSED LAYUP by WILLIAMS, TYONNA	04:43					
	04:43					REBOUND (DEF) by STEPNEY, LINDA
FOUL by WILLIAMS, TYONNA	04:37					
	04:37					MISSED FT by HOLMES, BRIA
	04:37					REBOUND (OFF) by MCDONALD, BRE
	04:14					MISSED LAYUP by MCDONALD, BRE
REBOUND (DEF) by MARTIN, SAFIYA	04:14					
MISSED JUMPER by BUTTS, ALLIYA	03:58					
	03:58					REBOUND (DEF) by MONTGOMERY, LANAY
	03:29					MISSED JUMPER by MONTGOMERY, LANAY
REBOUND (DEF) by BUTTS, ALLIYA	03:29					
GOOD! LAYUP by ATKINSON, TANAYA	03:24	24-26		V 2		
ASSIST by BUTTS, ALLIYA	03:24					
	03:24					FOUL by FIELDS, AVEREE
TIMEOUT MEDIA	03:24					
MISSED FT by ATKINSON, TANAYA	03:24					
	03:24					REBOUND (DEF) by MONTGOMERY, LANAY
	03:24					SUB IN: LEARY, CRYSTAL
	03:24					SUB IN: MULDROW, TEANA
	03:24					SUB OUT: FIELDS, AVEREE
	03:24					SUB OUT: MCDONALD, BRE
	03:03					MISSED LAYUP by HOLMES, BRIA
	03:03					REBOUND (OFF) by HOLMES, BRIA
	02:57	26-26		T		GOOD! LAYUP by HOLMES, BRIA
GOOD! JUMPER by WILLIAMS, TYONNA	02:35	26-28		V 2		
ASSIST by BERGER, KHADIJAH	02:35					
	02:25					MISSED 3PTR by MULDROW, TEANA
REBOUND (DEF) by ATKINSON, TANAYA	02:25					
GOOD! 3PTR by BERGER, KHADIJAH	02:04	26-31		V 5		
ASSIST by WILLIAMS, TYONNA	02:04					
	01:47					MISSED 3PTR by HOLMES, BRIA
REBOUND (DEF) by ATKINSON, TANAYA	01:47					
MISSED 3PTR by WILLIAMS, TYONNA	01:28					
REBOUND (OFF) by ATKINSON, TANAYA	01:28					
TURNOVER by ATKINSON, TANAYA	01:23					
SUB IN: COVILE, ERICA	01:23					
SUB OUT: BERGER, KHADIJAH	01:23					
	00:59					MISSED JUMPER by HOLMES, BRIA
	00:59					REBOUND (OFF) by STEPNEY, LINDA
	00:56					MISSED JUMPER by MULDROW, TEANA
REBOUND (DEF) by MARTIN, SAFIYA	00:56					
SUB IN: BERGER, KHADIJAH	00:56					
SUB OUT: ATKINSON, TANAYA	00:56					
MISSED JUMPER by BUTTS, ALLIYA	00:48					
	00:48					BLOCK by HOLMES, BRIA
REBOUND (OFF) by BUTTS, ALLIYA	00:46					
TURNOVER by WILLIAMS, TYONNA	00:34					
SUB IN: ATKINSON, TANAYA	00:34					
SUB IN: FITZGERALD, FEYONDA	00:34					
SUB OUT: BERGER, KHADIJAH	00:34					
SUB OUT: BUTTS, ALLIYA	00:34					
	00:09					MISSED JUMPER by HOLMES, BRIA
REBOUND (DEF) by FITZGERALD, FEYONDA	00:09					
MISSED LAYUP by FITZGERALD, FEYONDA	00:02					
REBOUND (OFF) by ATKINSON, TANAYA	00:02					
MISSED JUMPER by ATKINSON, TANAYA	00:00					
	00:00					REBOUND (DEF) by STEPNEY, LINDA

Temple 31, West Virginia 26

Period 1-only	In Paint	Off T/O	2nd Chance	Fast Break	Bench	
Temple	8	3	3	2	9	Score tied - 2 times
West Virginia	18	4	7	6	3	Lead changed - 12 times

Official Basketball Box Score -- Game Totals -- Second Half Statistics

Temple vs West Virginia

4/1/2015 7:00 p.m. at WVU Coliseum, Morgantown, W.Va.

Temple 22 • 20-17

##	Player	S	Total	3-Ptr	FT-FTA	Rebounds			PF	TP	A	TO	Blk	Stl	Min
			FG-FGA	3PT FG-FGA		Off Reb	Def Reb	Tot Reb							
00	BUTTS,ALLIYA	g	2-7	1-4	0-0	0	1	1	2	5	1	1	0	1	12
01	COVILE,ERICA	g	1-4	1-1	0-0	1	3	4	3	3	0	0	1	1	16
22	ATKINSON,TANAYA	g	2-7	0-0	0-1	4	1	5	1	4	0	0	0	1	15
23	WILLIAMS,TYONNA	g	2-5	1-2	0-2	0	0	0	1	5	2	0	0	0	17
35	MARTIN,SAFIYA	c	0-3	0-0	0-0	3	1	4	3	0	0	1	2	0	16
02	FITZGERALD,FEYONDA		2-7	0-0	1-4	0	2	2	0	5	0	0	0	1	11
21	BERGER,KHADIJAH		0-0	0-0	0-0	1	0	1	0	0	0	1	0	0	9
42	ROBINSON,TAYLOR		0-0	0-0	0-0	0	2	2	0	0	0	0	0	0	4
TEAM						3	1	4	0			0			
Totals			9-33	3-7	1-7	12	11	23	10	22	3	3	3	4	100

FG %	Half:	9-33	27.3%
3FG %	Half:	3-7	41.7%
FT %	Half:	1-7	14.3%

West Virginia 27 • 23-14

##	Player	S	Total	3-Ptr	FT-FTA	Rebounds			PF	TP	A	TO	Blk	Stl	Min
			FG-FGA	3PT FG-FGA		Off Reb	Def Reb	Tot Reb							
05	FIELDS,AVEREE	f	1-3	0-0	5-6	1	2	3	0	7	1	1	0	0	20
15	MONTGOMERY,LANAY	c	0-1	0-0	1-2	2	6	8	1	1	0	0	4	0	18
20	MCDONALD,BRE	f	2-4	0-0	2-2	0	1	1	0	6	1	0	0	0	15
22	STEPNEY,LINDA	g	2-3	0-0	1-2	0	0	0	2	5	0	0	1	1	17
23	HOLMES,BRIA	g	3-9	0-0	2-3	1	0	1	0	8	0	2	1	0	20
04	MONTGOMERY,KAYLA		0-0	0-0	0-0	0	0	0	0	0	0	0	0	0	0
11	MULDROW,TEANA		0-1	0-0	0-0	1	3	4	2	0	1	2	0	0	5
21	MORTON,JESSICA		0-1	0-0	0-0	0	1	1	1	0	0	0	0	0	3
32	LEARY,CRYSTAL		0-0	0-0	0-0	0	1	1	0	0	0	0	0	1	2
TEAM						1	2	3	0			0			
Totals			8-22	0-0	11-15	6	16	22	6	27	3	5	6	2	100

FG %	Half:	8-22	36.4%
3FG %	Half:	0-0	25.0%
FT %	Half:	11-15	73.3%

Officials: Bryan Enterline, Eric Brewton, Fatou Cissoko-Stephans

Technical Fouls: Temple- None. West Virginia- None.

Game start: 7:05 End Time: 9:12

Covile (TEM) fouled out with 1:00 remaining in overtime.

	In	Off	2nd	Fast	
Points	Paint	Off T/O	2nd Chance	Fast Break	Bench
Temple	10	7	3	2	5
West Virginia	6	4	4	0	0

Score tied - 3 times

Lead changed - 4 times

Temple vs West Virginia

4/1/2015; 7:00 p.m. at WVU Coliseum, Morgantown, W.Va.

Period 2 Play-By-Play

VISITORS: Temple	Time	Score	Margin	HOME: West Virginia
	19:50			MISSED JUMPER by FIELDS,AVEREE
	19:50			REBOUND (OFF) by FIELDS,AVEREE
	19:38			TURNOVER by FIELDS,AVEREE
STEAL by COVILE,ERICA	19:38			
GOOD! 3PTR by COVILE,ERICA	19:18	26-34	V 8	
ASSIST by WILLIAMS,TYONNA	19:18			
	18:49			MISSED JUMPER by HOLMES,BRIA
	18:49			REBOUND (OFF) by HOLMES,BRIA
	18:47	28-34	V 6	GOOD! LAYUP by HOLMES,BRIA
MISSED JUMPER by BUTTS,ALLIYA	18:24			
REBOUND (OFF) by COVILE,ERICA	18:24			
MISSED 3PTR by BUTTS,ALLIYA	18:20			
REBOUND (OFF) by ATKINSON,TANAYA	18:20			
MISSED 3PTR by WILLIAMS,TYONNA	17:53			
REBOUND (OFF) by ATKINSON,TANAYA	17:53			
TIMEOUT 30SEC	17:33			
	17:33			SUB IN: MULDRON,TEANA
	17:33			SUB OUT: MCDONALD,BRE
	17:24			FOUL by MONTGOMERY,LANAY
MISSED FT by WILLIAMS,TYONNA	17:24			
REBOUND (DEADB) by TEAM	17:24			
MISSED FT by WILLIAMS,TYONNA	17:24			
	17:24			REBOUND (DEF) by MONTGOMERY,LANAY
	17:14	30-34	V 4	GOOD! JUMPER by STEPNEY,LINDA
MISSED JUMPER by ATKINSON,TANAYA	16:50			
	16:50			REBOUND (DEF) by MULDRON,TEANA
	16:45			TURNOVER by MULDRON,TEANA
STEAL by BUTTS,ALLIYA	16:44			
GOOD! LAYUP by BUTTS,ALLIYA	16:42	30-36	V 6	
	16:29			TURNOVER by HOLMES,BRIA
STEAL by ATKINSON,TANAYA	16:27			
GOOD! LAYUP by ATKINSON,TANAYA	16:26	30-38	V 8	
	16:04			MISSED LAYUP by HOLMES,BRIA
	16:04			REBOUND (OFF) by MULDRON,TEANA
	16:04			TURNOVER by MULDRON,TEANA
	16:02			SUB IN: MCDONALD,BRE
	16:02			SUB OUT: MULDRON,TEANA
MISSED JUMPER by WILLIAMS,TYONNA	15:36			
	15:36			REBOUND (DEF) by FIELDS,AVEREE
	15:21	32-38	V 6	GOOD! JUMPER by HOLMES,BRIA
	15:21			ASSIST by FIELDS,AVEREE
MISSED JUMPER by ATKINSON,TANAYA	14:49			
	14:49			REBOUND (DEF) by MONTGOMERY,LANAY
FOUL by MARTIN,SAFIYA	14:48			
	14:48			TIMEOUT MEDIA
SUB IN: FITZGERALD,FEYONDA	14:48			
SUB OUT: WILLIAMS,TYONNA	14:48			
FOUL by ATKINSON,TANAYA	14:23			
	14:23	33-38	V 5	GOOD! FT by MCDONALD,BRE
	14:23	34-38	V 4	GOOD! FT by MCDONALD,BRE
SUB IN: BERGER,KHADIJAH	14:23			
SUB OUT: ATKINSON,TANAYA	14:23			
MISSED JUMPER by FITZGERALD,FEYONDA	14:07			
	14:07			BLOCK by HOLMES,BRIA
	14:06			REBOUND (DEF) by MONTGOMERY,LANAY
	13:58			TURNOVER by HOLMES,BRIA
STEAL by FITZGERALD,FEYONDA	13:57			
TURNOVER by BERGER,KHADIJAH	13:49			
	13:45			STEAL by STEPNEY,LINDA
FOUL by COVILE,ERICA	13:30			
	13:30	35-38	V 3	GOOD! FT by FIELDS,AVEREE
	13:30	36-38	V 2	GOOD! FT by FIELDS,AVEREE
MISSED LAYUP by FITZGERALD,FEYONDA	13:17			
REBOUND (OFF) by MARTIN,SAFIYA	13:17			
TURNOVER by MARTIN,SAFIYA	13:15			
FOUL by MARTIN,SAFIYA	13:15			
TIMEOUT 30SEC	13:15			
	12:57			MISSED JUMPER by HOLMES,BRIA
REBOUND (DEF) by COVILE,ERICA	12:57			
GOOD! LAYUP by FITZGERALD,FEYONDA	12:41	36-40	V 4	
	12:10	38-40	V 2	GOOD! JUMPER by STEPNEY,LINDA
MISSED JUMPER by MARTIN,SAFIYA	11:46			
REBOUND (OFF) by BERGER,KHADIJAH	11:46			
MISSED LAYUP by COVILE,ERICA	11:25			

	11:25			BLOCK by MONTGOMERY,LANAY
	11:22			REBOUND (DEF) by MCDONALD,BRE
	11:20	40-40	T	GOOD! LAYUP by HOLMES,BRIA
	11:20			ASSIST by MCDONALD,BRE
FOUL by BUTTS,ALLIYA	11:20			
	11:20			TIMEOUT media
	11:20			MISSED FT by HOLMES,BRIA
REBOUND (DEF) by COVILE,ERICA	11:20			
SUB IN: ROBINSON,TAYLOR	11:20			
SUB IN: WILLIAMS,TYONNA	11:20			
SUB OUT: BUTTS,ALLIYA	11:20			
SUB OUT: MARTIN,SAFIYA	11:20			
	11:20			SUB IN: LEARY,CRYSTAL
	11:20			SUB OUT: MONTGOMERY,LANAY
GOOD! JUMPER by FITZGERALD,FEYONDA	10:51	40-42	V 2	
	10:28			MISSED JUMPER by HOLMES,BRIA
REBOUND (DEF) by TEAM	10:28			
MISSED JUMPER by FITZGERALD,FEYONDA	10:05			
	10:05			REBOUND (DEF) by LEARY,CRYSTAL
	09:43	42-42	T	GOOD! JUMPER by MCDONALD,BRE
	09:28			FOUL by STEPNEY,LINDA
SUB IN: MARTIN,SAFIYA	09:28			
SUB IN: ATKINSON,TANAYA	09:28			
SUB OUT: COVILE,ERICA	09:28			
SUB OUT: ROBINSON,TAYLOR	09:28			
	09:13			FOUL by STEPNEY,LINDA
MISSED FT by FITZGERALD,FEYONDA	09:13			
REBOUND (DEADB) by TEAM	09:13			
MISSED FT by FITZGERALD,FEYONDA	09:13			
REBOUND (OFF) by MARTIN,SAFIYA	09:13			
	09:13			SUB IN: MONTGOMERY,LANAY
	09:13			SUB IN: MORTON,JESSICA
	09:13			SUB OUT: STEPNEY,LINDA
	09:13			SUB OUT: LEARY,CRYSTAL
MISSED JUMPER by FITZGERALD,FEYONDA	08:48			
	08:48			REBOUND (DEF) by MORTON,JESSICA
	08:36			MISSED JUMPER by MCDONALD,BRE
REBOUND (DEF) by FITZGERALD,FEYONDA	08:36			
	08:17			FOUL by MORTON,JESSICA
GOOD! FT by FITZGERALD,FEYONDA	08:17	42-43	V 1	
MISSED FT by FITZGERALD,FEYONDA	08:17			
	08:17			REBOUND (DEF) by MULDRON,TEANA
	08:17			SUB IN: MULDRON,TEANA
	08:17			SUB OUT: MCDONALD,BRE
	08:05			MISSED LAYUP by HOLMES,BRIA
REBOUND (DEF) by MARTIN,SAFIYA	08:05			
MISSED JUMPER by ATKINSON,TANAYA	07:43			
REBOUND (OFF) by MARTIN,SAFIYA	07:43			
MISSED JUMPER by MARTIN,SAFIYA	07:40			
	07:40			BLOCK by MONTGOMERY,LANAY
	07:38			REBOUND (DEF) by MONTGOMERY,LANAY
	07:20	44-43	H 1	GOOD! JUMPER by FIELDS,AVEREE
	07:20			ASSIST by MULDRON,TEANA
MISSED JUMPER by WILLIAMS,TYONNA	06:48			
	06:48			REBOUND (DEF) by MULDRON,TEANA
	06:26			MISSED JUMPER by MORTON,JESSICA
REBOUND (DEF) by FITZGERALD,FEYONDA	06:26			
MISSED JUMPER by FITZGERALD,FEYONDA	06:00			
	06:00			REBOUND (DEF) by TEAM
	05:59			TIMEOUT MEDIA
SUB IN: COVILE,ERICA	05:59			
SUB OUT: BERGER,KHADJAH	05:59			
	05:59			SUB IN: STEPNEY,LINDA
	05:59			SUB OUT: MORTON,JESSICA
	05:41			MISSED JUMPER by MULDRON,TEANA
BLOCK by MARTIN,SAFIYA	05:41			
	05:39			REBOUND (OFF) by MONTGOMERY,LANAY
	05:39			MISSED JUMPER by MONTGOMERY,LANAY
	05:39			REBOUND (OFF) by MONTGOMERY,LANAY
	05:33			MISSED JUMPER by STEPNEY,LINDA
BLOCK by MARTIN,SAFIYA	05:33			
	05:33			REBOUND (OFF) by TEAM
FOUL by MARTIN,SAFIYA	05:25			
	05:25	45-43	H 2	GOOD! FT by FIELDS,AVEREE
	05:25	46-43	H 3	GOOD! FT by FIELDS,AVEREE
SUB IN: ROBINSON,TAYLOR	05:25			
SUB OUT: MARTIN,SAFIYA	05:25			
GOOD! LAYUP by ATKINSON,TANAYA	05:11	46-45	H 1	
	05:11			FOUL by MULDRON,TEANA
MISSED FT by ATKINSON,TANAYA	05:11			
	05:11			REBOUND (DEF) by FIELDS,AVEREE
	05:11			SUB IN: MCDONALD,BRE
	05:11			SUB OUT: MULDRON,TEANA

	04:46			MISSED LAYUP by HOLMES,BRIA
BLOCK by COVILE,ERICA	04:46			
REBOUND (DEF) by ROBINSON,TAYLOR	04:40			
MISSED LAYUP by COVILE,ERICA	04:20			
	04:20			BLOCK by MONTGOMERY,LANAY
	04:17			REBOUND (DEF) by MONTGOMERY,LANAY
FOUL by COVILE,ERICA	04:17			
	04:17	47-45	H 2	GOOD! FT by MONTGOMERY,LANAY
	04:17			MISSED FT by MONTGOMERY,LANAY
REBOUND (DEF) by ROBINSON,TAYLOR	04:17			
SUB IN: BUTTS,ALLIYA	04:17			
SUB OUT: FITZGERALD,FEYONDA	04:17			
GOOD! 3PTR by BUTTS,ALLIYA	04:06	47-48	V 1	
ASSIST by WILLIAMS,TYONNA	04:06			
	03:30	49-48	H 1	GOOD! LAYUP by MCDONALD,BRE
MISSED 3PTR by BUTTS,ALLIYA	03:05			
	03:05			REBOUND (DEF) by TEAM
	02:58			TIMEOUT MEDIA
SUB IN: MARTIN,SAFIYA	02:58			
SUB OUT: ROBINSON,TAYLOR	02:58			
	02:38			MISSED JUMPER by MCDONALD,BRE
REBOUND (DEF) by BUTTS,ALLIYA	02:38			
MISSED JUMPER by BUTTS,ALLIYA	02:15			
	02:15			BLOCK by MONTGOMERY,LANAY
REBOUND (OFF) by TEAM	02:14			
GOOD! 3PTR by WILLIAMS,TYONNA	02:08	49-51	V 2	
ASSIST by BUTTS,ALLIYA	02:08			
FOUL by COVILE,ERICA	01:48			
	01:48			MISSED FT by FIELDS,AVEREE
	01:48			REBOUND (DEADB) by TEAM
	01:48	50-51	V 1	GOOD! FT by FIELDS,AVEREE
GOOD! JUMPER by WILLIAMS,TYONNA	01:26	50-53	V 3	
FOUL by BUTTS,ALLIYA	01:09			
	01:09	51-53	V 2	GOOD! FT by STEPNEY,LINDA
	01:09			MISSED FT by STEPNEY,LINDA
REBOUND (DEF) by ATKINSON,TANAYA	01:09			
MISSED JUMPER by MARTIN,SAFIYA	00:44			
REBOUND (OFF) by ATKINSON,TANAYA	00:44			
MISSED JUMPER by ATKINSON,TANAYA	00:41			
	00:41			REBOUND (DEF) by MONTGOMERY,LANAY
	00:36			TIMEOUT 30SEC
SUB IN: FITZGERALD,FEYONDA	00:36			
SUB OUT: BUTTS,ALLIYA	00:36			
	00:36			SUB IN: MULDRON,TEANA
	00:36			SUB OUT: MCDONALD,BRE
	00:25			MISSED JUMPER by FIELDS,AVEREE
REBOUND (DEF) by COVILE,ERICA	00:25			
	00:22			FOUL by MULDRON,TEANA
SUB IN: BERGER,KHADIJAH	00:22			
SUB IN: BUTTS,ALLIYA	00:22			
SUB OUT: ATKINSON,TANAYA	00:22			
SUB OUT: MARTIN,SAFIYA	00:22			
	00:22			SUB IN: LEARY,CRYSTAL
	00:22			SUB IN: MCDONALD,BRE
	00:22			SUB OUT: MONTGOMERY,LANAY
	00:22			SUB OUT: MULDRON,TEANA
TIMEOUT 30SEC	00:19			
TURNOVER by BUTTS,ALLIYA	00:17			
	00:17			STEAL by LEARY,CRYSTAL
FOUL by WILLIAMS,TYONNA	00:12			
	00:12	52-53	V 1	GOOD! FT by HOLMES,BRIA
	00:12	53-53	T	GOOD! FT by HOLMES,BRIA
SUB IN: ATKINSON,TANAYA	00:12			
SUB IN: MARTIN,SAFIYA	00:12			
SUB OUT: FITZGERALD,FEYONDA	00:12			
SUB OUT: BERGER,KHADIJAH	00:12			
	00:12			SUB IN: MONTGOMERY,LANAY
	00:12			SUB OUT: LEARY,CRYSTAL
MISSED 3PTR by BUTTS,ALLIYA	00:05			
REBOUND (OFF) by ATKINSON,TANAYA	00:05			
MISSED JUMPER by ATKINSON,TANAYA	00:01			
REBOUND (OFF) by TEAM	00:01			
TIMEOUT TEAM	00:01			
MISSED JUMPER by COVILE,ERICA	00:01			
	00:01			BLOCK by STEPNEY,LINDA
REBOUND (OFF) by TEAM	00:01			
	00:01			SUB IN: LEARY,CRYSTAL
	00:01			SUB OUT: MONTGOMERY,LANAY

Period 2-only	In Paint	Off T/O	2nd Chance	Fast Break	Bench	
Temple	10	7	3	2	5	Score tied - 0 times
West Virginia	6	4	4	0	0	Lead changed - 4 times

Temple vs West Virginia

4/1/2015; 7:00 p.m. at WVU Coliseum, Morgantown, W.Va.

Period 3 Play-By-Play

VISITORS: Temple	Time	Score	Margin	HOME: West Virginia
MISSED JUMPER by BUTTS,ALLIYA	04:56			
	04:56			BLOCK by STEPNEY,LINDA
REBOUND (OFF) by TEAM	04:56			
MISSED JUMPER by MARTIN,SAFIYA	04:52			
	04:52			REBOUND (DEF) by MCDONALD,BRE
	04:34	55-53	H 2	GOOD! JUMPER by HOLMES,BRIA
	04:16			FOUL by STEPNEY,LINDA
GOOD! FT by ATKINSON,TANAYA	04:16	55-54	H 1	
MISSED FT by ATKINSON,TANAYA	04:16			
	04:16			REBOUND (DEF) by FIELDS,AVEREE
SUB IN: FITZGERALD,FEYONDA	04:16			
SUB OUT: BUTTS,ALLIYA	04:16			
	03:56	57-54	H 3	GOOD! JUMPER by FIELDS,AVEREE
MISSED LAYUP by FITZGERALD,FEYONDA	03:40			
REBOUND (OFF) by MARTIN,SAFIYA	03:40			
	03:37			FOUL by MCDONALD,BRE
MISSED FT by MARTIN,SAFIYA	03:37			
REBOUND (DEADB) by TEAM	03:37			
GOOD! FT by MARTIN,SAFIYA	03:37	57-55	H 2	
	03:08			MISSED 3PTR by MCDONALD,BRE
	03:08			REBOUND (OFF) by FIELDS,AVEREE
	03:03			TIMEOUT 30SEC
SUB IN: BUTTS,ALLIYA	03:03			
SUB OUT: FITZGERALD,FEYONDA	03:03			
	02:49			MISSED JUMPER by FIELDS,AVEREE
REBOUND (DEF) by ATKINSON,TANAYA	02:49			
MISSED LAYUP by COVILE,ERICA	02:19			
	02:19			BLOCK by MONTGOMERY,LANAY
	02:16			REBOUND (DEF) by TEAM
	01:51			MISSED JUMPER by MCDONALD,BRE
	01:51			REBOUND (OFF) by STEPNEY,LINDA
	01:25			MISSED JUMPER by MCDONALD,BRE
	01:25			REBOUND (OFF) by MONTGOMERY,LANAY
	01:21			TIMEOUT 30SEC
SUB IN: FITZGERALD,FEYONDA	01:21			
SUB OUT: BUTTS,ALLIYA	01:21			
	01:11			MISSED JUMPER by HOLMES,BRIA
BLOCK by MARTIN,SAFIYA	01:11			
	01:11			REBOUND (OFF) by TEAM
	01:00	59-55	H 4	GOOD! JUMPER by FIELDS,AVEREE
FOUL by COVILE,ERICA	01:00			
	01:00	60-55	H 5	GOOD! FT by FIELDS,AVEREE
SUB IN: BUTTS,ALLIYA	01:00			
SUB OUT: COVILE,ERICA	01:00			
	00:52			FOUL by MCDONALD,BRE
MISSED FT by ATKINSON,TANAYA	00:52			
	00:52			REBOUND (DEF) by MONTGOMERY,LANAY
SUB IN: BERGER,KHADIJAH	00:52			
SUB OUT: BUTTS,ALLIYA	00:52			
FOUL by FITZGERALD,FEYONDA	00:45			
	00:45	61-55	H 6	GOOD! FT by STEPNEY,LINDA
	00:45	62-55	H 7	GOOD! FT by STEPNEY,LINDA
SUB IN: BUTTS,ALLIYA	00:45			
SUB OUT: ATKINSON,TANAYA	00:45			
GOOD! 3PTR by WILLIAMS,TYONNA	00:35	62-58	H 4	
TIMEOUT 30SEC	00:34			
SUB IN: ATKINSON,TANAYA	00:34			
SUB OUT: BUTTS,ALLIYA	00:34			
FOUL by FITZGERALD,FEYONDA	00:27			
	00:27	63-58	H 5	GOOD! FT by STEPNEY,LINDA
	00:27	64-58	H 6	GOOD! FT by STEPNEY,LINDA
SUB IN: BUTTS,ALLIYA	00:27			
SUB OUT: ATKINSON,TANAYA	00:27			
	00:27			SUB IN: LEARY,CRYSTAL
	00:27			SUB OUT: MONTGOMERY,LANAY
MISSED 3PTR by WILLIAMS,TYONNA	00:18			
	00:18			BLOCK by HOLMES,BRIA
	00:16			REBOUND (DEF) by LEARY,CRYSTAL
FOUL by BUTTS,ALLIYA	00:17			
	00:17	65-58	H 7	GOOD! FT by LEARY,CRYSTAL
	00:17	66-58	H 8	GOOD! FT by LEARY,CRYSTAL
TURNOVER by FITZGERALD,FEYONDA	00:12			

Temple 58, West Virginia 66

Period 3-only	In Paint	Off T/O	2nd Chance	Fast Break	Bench	
Temple	0	0	1	0	0	Score tied - 0 times
West Virginia	2	0	3	0	2	Lead changed - 0 times

Temple vs West Virginia

4/1/2015; 7:00 p.m. at WVU Coliseum, Morgantown, W.Va.

Scoring/Runs Reference

Period 1			Period 2			
Temple	Score	West Virginia	Temple	Score	West Virginia	
	0-2 2	MONTGOMERY LAYUP - 19:33		X	FIELDS JUMPER - 19:50	
19:09 - MARTIN FT	1-2 1				TO FIELDS TURN - 19:38	
19:09 - MARTIN FT	X		19:18 - COVILLE 3PTR	3-26 -8		
		MONTGOMERY TURN - 18:48		X	HOLMES JUMPER - 18:49	
18:25 - BUTTS LAYUP	X			34-28 -6	2P HOLMES LAYUP - 18:47	
		MCDONALD LAYUP - 18:18	18:24 - BUTTS JUMPER	X		
	1-3 2	MONTGOMERY FT - 18:15	18:20 - BUTTS 3PTR	X		
		MONTGOMERY FT - 18:15	17:53 - WILLIAMS 3PTR	X		
17:54 - WILLIAMS JUMPER	X		17:24 - WILLIAMS FT	X		
17:48 - MARTIN LAYUP	X		17:24 - WILLIAMS FT	X		
17:43 - MARTIN TURN	TO			34-30 -4	2 STEPNEY JUMPER - 17:14	
	1-5 4	FIELDS LAYUP - 17:40	16:50 - ATKINSON JUMPER	X		
17:22 - WILLIAMS 3PTR	X				TO MULDROW TURN - 16:45	
		HOLMES LAYUP - 17:14	16:42 - BUTTS LAYUP	2P 36-30 -6		
16:48 - ATKINSON LAYUP	2P 3-5 2				TO HOLMES TURN - 16:29	
16:46 - ATKINSON FT	1-4 1		16:26 - ATKINSON LAYUP	2PF 38-30 -8		
		MONTGOMERY LAYUP - 16:31			X HOLMES LAYUP - 16:04	
16:03 - WILLIAMS FT	1-5 0				TO MULDROW TURN - 16:04	
16:03 - WILLIAMS FT	1-6 -1		15:36 - WILLIAMS JUMPER	X		
		HOLMES LAYUP - 15:35		38-32 -6	2 HOLMES JUMPER - 15:21	
		HOLMES LAYUP - 15:30	14:49 - ATKINSON JUMPER	X		
		MONTGOMERY TURN - 15:29			38-33 -5	1 MCDONALD FT - 14:23
15:10 - BUTTS 3PTR	X			38-34 -4	1 MCDONALD FT - 14:23	
	6-8 2	MULDROW 3PTR - 14:55	14:07 - FITZGERALD JUMPER	X		
14:36 - COVILLE LAYUP	X				TO HOLMES TURN - 13:58	
14:28 - ATKINSON JUMPER	X		13:49 - BERGER TURN	TO		
	6-10 4	FIELDS JUMPER - 14:00		38-35 -3	1 FIELDS FT - 13:30	
13:44 - ATKINSON 3PTR	X			38-36 -2	1 FIELDS FT - 13:30	
		FIELDS JUMPER - 13:34	13:17 - FITZGERALD LAYUP	X		
13:24 - WILLIAMS 3PTR	3-9 1		13:15 - MARTIN TURN	TO		
	9-11 2	HOLMES FT - 13:16			X HOLMES JUMPER - 12:57	
	9-12 3	HOLMES FT - 13:16	12:41 - FITZGERALD LAYUP	2P 40-36 -4		
13:01 - COVILLE JUMPER	2-11 1			40-38 -2	2 STEPNEY JUMPER - 12:10	
		MULDROW JUMPER - 12:37	11:46 - MARTIN JUMPER	X		
12:26 - COVILLE LAYUP	2P 13-12 -1		11:25 - COVILLE LAYUP	X		
		HOLMES JUMPER - 12:01		40-40 0	2P HOLMES LAYUP - 11:20	
	13-14 1	FIELDS LAYUP - 11:57			X HOLMES FT - 11:20	
11:33 - FITZGERALD 3PTR	X		10:51 - FITZGERALD JUMPER	2P 42-40 -2		
		MCDONALD TURN - 11:29			X HOLMES JUMPER - 10:28	
11:19 - FITZGERALD TURN	TO		10:05 - FITZGERALD JUMPER	X		
		MORTON TURN - 10:57		42-42 0	2 MCDONALD JUMPER - 09:43	
10:27 - COVILLE JUMPER	X		09:13 - FITZGERALD FT	X		
		MCDONALD LAYUP - 10:20	09:13 - FITZGERALD FT	X		
10:12 - COVILLE LAYUP	2P 15-14 -1		08:48 - FITZGERALD JUMPER	X		
	15-16 1	FIELDS JUMPER - 09:55			X MCDONALD JUMPER - 08:36	
09:38 - FITZGERALD LAYUP	X		08:17 - FITZGERALD FT	1-43 -1		
		MORTON TURN - 09:21	08:17 - FITZGERALD FT	X		

08:55 - BERGER 3PTR	3	18-16 -2	X	MCDONALD JUMPER - 08:38 TO MORTON TURN - 08:20
08:16 - FITZGERALD LAYUP	X			
			X	MORTON JUMPER - 08:03
			X	HOLMES JUMPER - 07:39
		18-18 0	2 ^P	HOLMES JUMPER - 07:35
07:20 - COVILE TURN	TO			
		18-20 2	2 ^{PF}	HOLMES LAYUP - 07:15
06:57 - COVILE LAYUP	X			
06:49 - BERGER 3PTR	3	21-20 -1		
		21-22 1	2 ^P	HOLMES LAYUP - 06:32
06:20 - BUTTS 3PTR	3	24-22 -2		
			X	HOLMES 3PTR - 06:02
			X	HOLMES LAYUP - 05:55
05:37 - BUTTS 3PTR	X			
		24-24 0	2 ^{PF}	HOLMES LAYUP - 05:29
05:11 - BERGER 3PTR	X			
			X	MONTGOMERY LAYUP - 04:49
04:43 - WILLIAMS LAYUP	X			
			X	HOLMES FT - 04:37
			X	MCDONALD LAYUP - 04:14
03:58 - BUTTS JUMPER	X			
			X	MONTGOMERY JUMPER - 03:29
03:24 - ATKINSON LAYUP	2 ^{PF}	26-24 -2		
03:24 - ATKINSON FT	X			
			X	HOLMES LAYUP - 03:03
		26-26 0	2 ^P	HOLMES LAYUP - 02:57
02:35 - WILLIAMS JUMPER	2	28-26 -2		
			X	MULDROW 3PTR - 02:25
02:04 - BERGER 3PTR	3	31-26 -5		
			X	HOLMES 3PTR - 01:47
01:28 - WILLIAMS 3PTR	X			
01:23 - ATKINSON TURN	TO			
			X	HOLMES JUMPER - 00:59
			X	MULDROW JUMPER - 00:56
00:48 - BUTTS JUMPER	X			
00:34 - WILLIAMS TURN	TO			
			X	HOLMES JUMPER - 00:09
00:02 - FITZGERALD LAYUP	X			
00:00 - ATKINSON JUMPER	X			

Period 3

Temple	Score	West Virginia
04:56 - BUTTS JUMPER	X	
04:52 - MARTIN JUMPER	X	
		53-55 2
		2 ^P
04:16 - ATKINSON FT	1	54-55 1
04:16 - ATKINSON FT	X	
		54-57 3
		2
03:40 - FITZGERALD LAYUP	X	
03:37 - MARTIN FT	X	
03:37 - MARTIN FT	1	55-57 2
		X
		X
		MCDONALD 3PTR - 03:08
		X
		FIELDS JUMPER - 02:49
02:19 - COVILE LAYUP	X	
		X
		MCDONALD JUMPER - 01:51

07:43 - ATKINSON JUMPER	X			
07:40 - MARTIN JUMPER	X			
		43-44 1	2	FIELDS JUMPER - 07:20
06:48 - WILLIAMS JUMPER	X			
			X	MORTON JUMPER - 06:26
06:00 - FITZGERALD JUMPER	X			
			X	MULDROW JUMPER - 05:41
			X	MONTGOMERY JUMPER - 05:39
			X	STEPNEY JUMPER - 05:33
		43-45 2	1	FIELDS FT - 05:25
		43-46 3	1	FIELDS FT - 05:25
05:11 - ATKINSON LAYUP	2 ^P	45-46 1		
05:11 - ATKINSON FT	X			
			X	HOLMES LAYUP - 04:46
04:20 - COVILE LAYUP	X			
		45-47 2	1	MONTGOMERY FT - 04:17
			X	MONTGOMERY FT - 04:17
04:06 - BUTTS 3PTR	3	48-47 -1		
		48-49 1	2 ^P	MCDONALD LAYUP - 03:30
03:05 - BUTTS 3PTR	X			
			X	MCDONALD JUMPER - 02:38
02:15 - BUTTS JUMPER	X			
02:08 - WILLIAMS 3PTR	3	51-49 2		
			X	FIELDS FT - 01:48
		51-50 -1	1	FIELDS FT - 01:48
01:26 - WILLIAMS JUMPER	2	53-50 -3		
		53-51 -2	1	STEPNEY FT - 01:09
			X	STEPNEY FT - 01:09
00:44 - MARTIN JUMPER	X			
00:41 - ATKINSON JUMPER	X			
			X	FIELDS JUMPER - 00:25
00:17 - BUTTS TURN	TO			
		53-52 -1	1	HOLMES FT - 00:12
		53-53 0	1	HOLMES FT - 00:12
00:05 - BUTTS 3PTR	X			
00:01 - ATKINSON JUMPER	X			
00:01 - COVILE JUMPER	X			

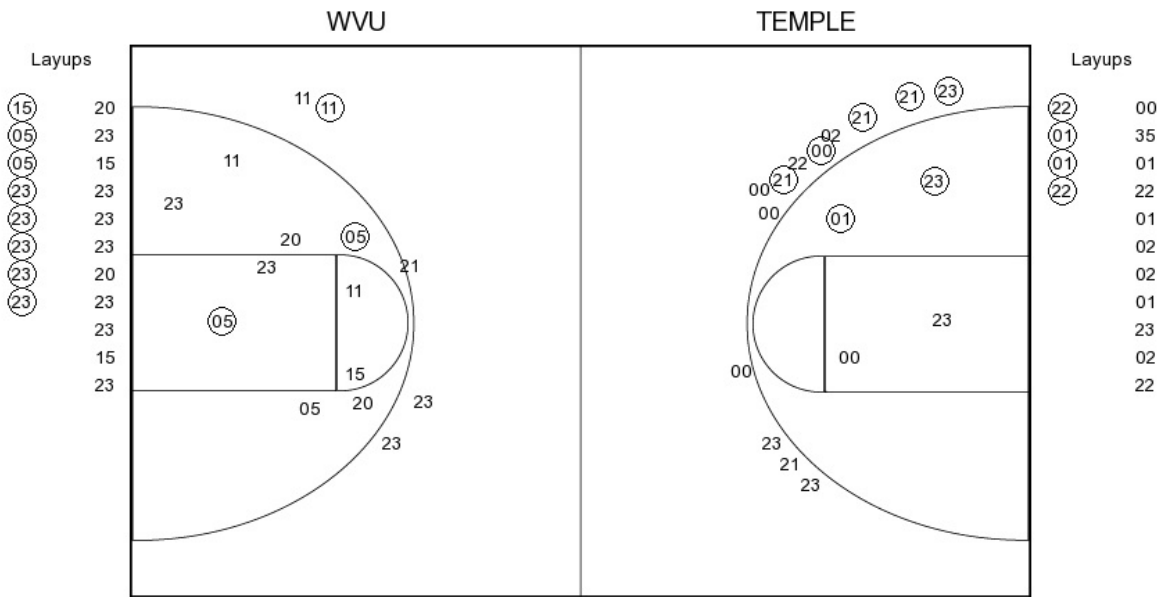
		X	MCDONALD JUMPER -
			01:25
		X	HOLMES JUMPER - 01:11
	55-59 4	2	FIELDS JUMPER - 01:00
	55-60 5	1	FIELDS FT - 01:00
00:52 - ATKINSON FT	X		
	55-61 6	1	STEPNEY FT - 00:45
	55-62 7	1	STEPNEY FT - 00:45
00:35 - WILLIAMS 3PTR	3	58-62 4	
	58-63 5	1	STEPNEY FT - 00:27
	58-64 6	1	STEPNEY FT - 00:27
00:18 - WILLIAMS 3PTR	X		
	58-65 7	1	LEARY FT - 00:17
	58-66 8	1	LEARY FT - 00:17
00:12 - FITZGERALD TURN	TO		

Temple vs West Virginia

OFFICIAL SHOT CHART

4/1/2015 at WVU Coliseum, Morgantown, W.Va.

PERIOD 1



TEMPLE PERIOD 1

FG Made	11
FG Attempted	32
3PFG Made	5
3PFG Attempted	12

WVU PERIOD 1

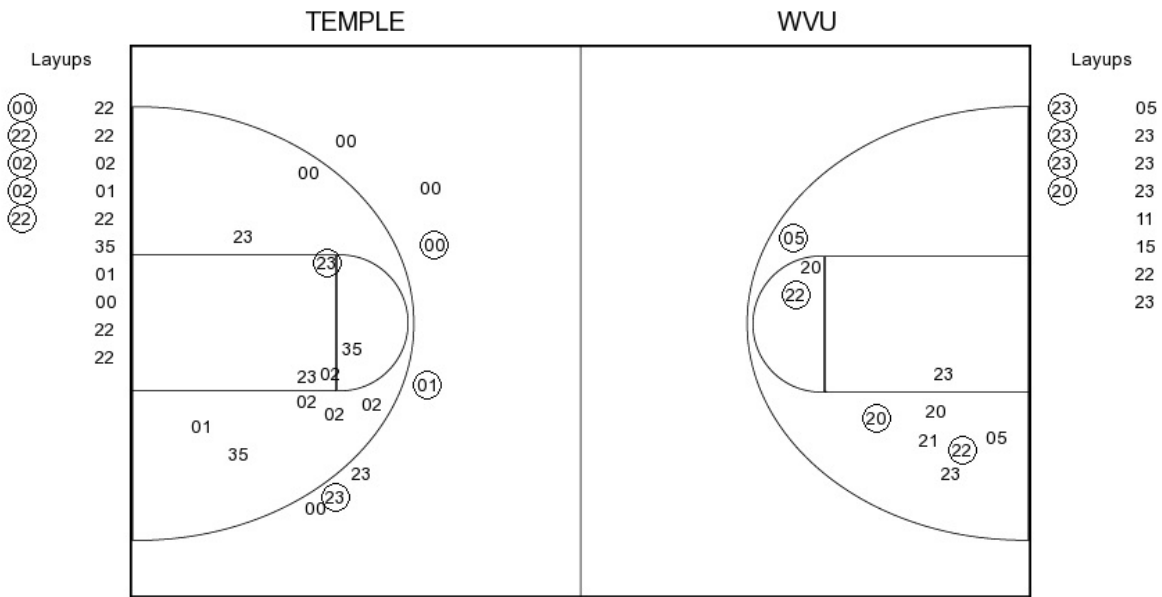
FG Made	11
FG Attempted	34
3PFG Made	1
3PFG Attempted	4

Temple vs West Virginia

OFFICIAL SHOT CHART

4/1/2015 at WVU Coliseum, Morgantown, W.Va.

PERIOD 2



TEMPLE PERIOD 2

FG Made	9
FG Attempted	33
3PFG Made	3
3PFG Attempted	7

WVU PERIOD 2

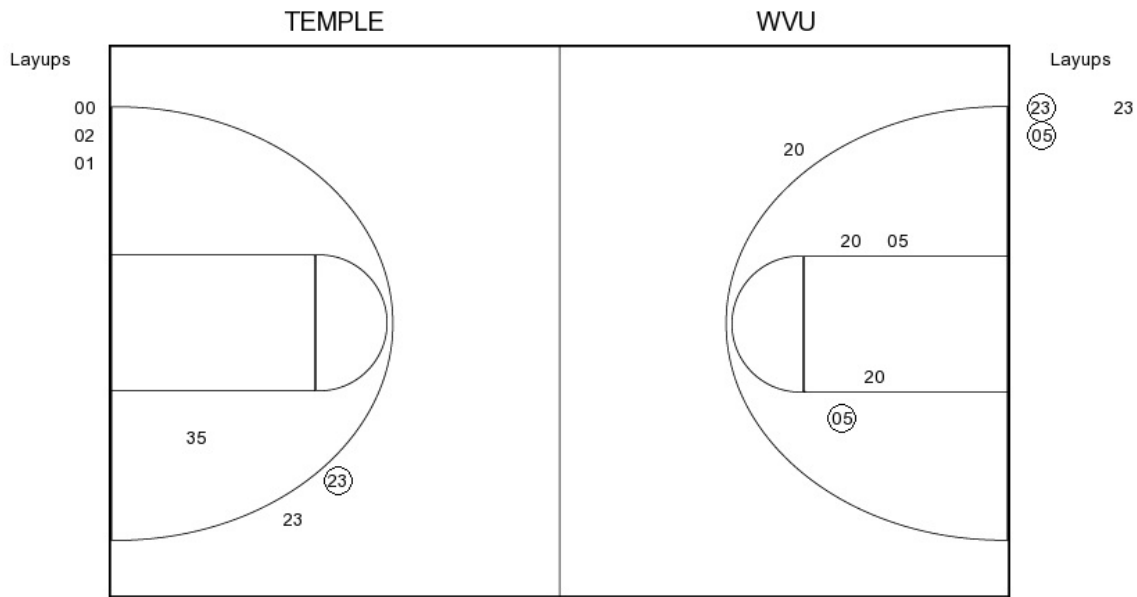
FG Made	8
FG Attempted	22
3PFG Made	0
3PFG Attempted	0

Temple vs West Virginia

OFFICIAL SHOT CHART

4/1/2015 at WVU Coliseum, Morgantown, W.Va.

PERIOD 3



TEMPLE PERIOD 3

- FG Made
- FG Attempted
- 3PFG Made
- 3PFG Attempted

WVU PERIOD 3

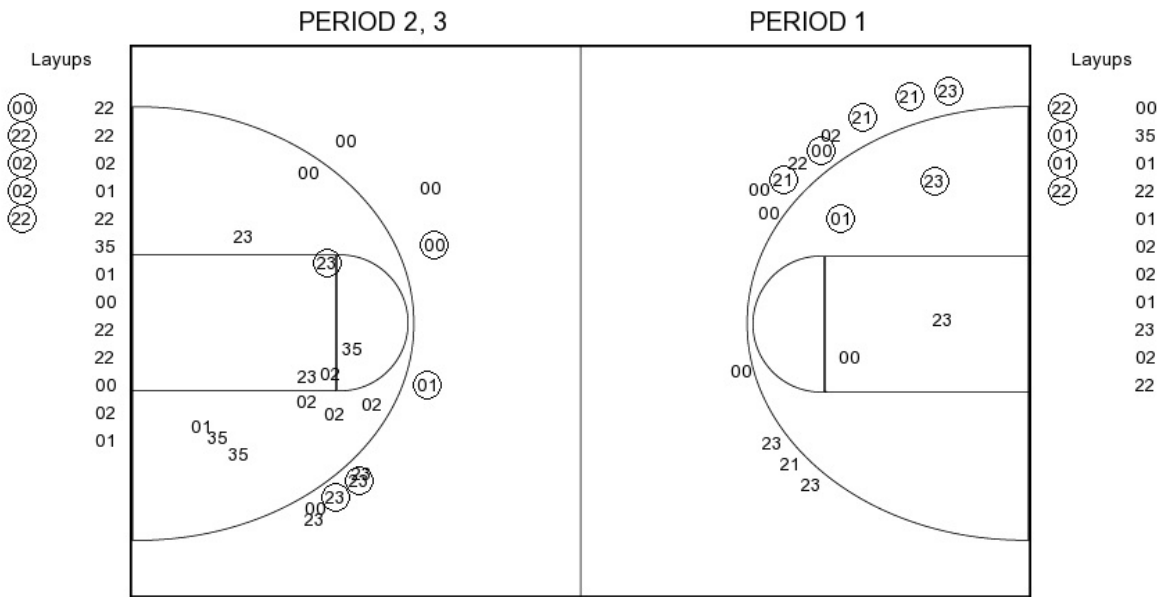
- FG Made
- FG Attempted
- 3PFG Made
- 3PFG Attempted

Temple vs West Virginia

OFFICIAL SHOT CHART

4/1/2015 at WVU Coliseum, Morgantown, W.Va.

Temple



TEMPLE PERIOD 1

FG Made	11
FG Attempted	32
3PFG Made	5
3PFG Attempted	12

TEMPLE PERIOD 2

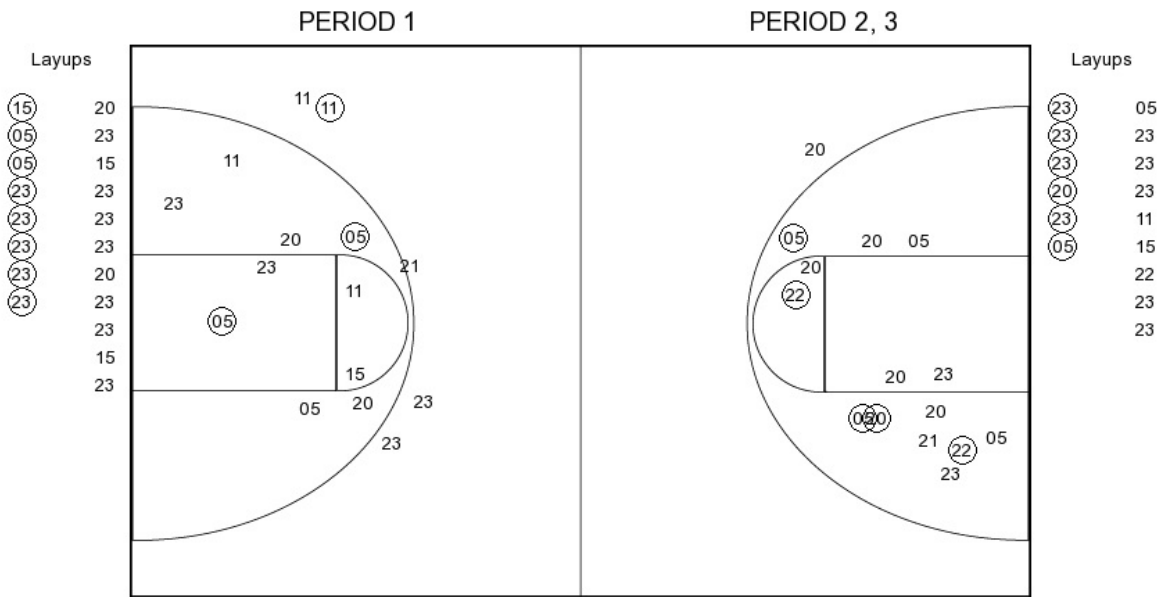
FG Made	9
FG Attempted	33
3PFG Made	3
3PFG Attempted	7

Temple vs West Virginia

OFFICIAL SHOT CHART

4/1/2015 at WVU Coliseum, Morgantown, W.Va.

West Virginia



WVU PERIOD 1

FG Made	11
FG Attempted	34
3PFG Made	1
3PFG Attempted	4

WVU PERIOD 2

FG Made	8
FG Attempted	22
3PFG Made	0
3PFG Attempted	0