



WEST VIRGINIA VS. VILLANOVA - WNIT QUARTERFINAL ROUND

3/29/2015

WVU Coliseum, Morgantown, W.Va.

FINAL STATS

West Virginia

75

Villanova

70

Start Time: 2:00 p.m.

Officials: Sue Blauch, Kevin Pethel, Bruce Morris

Attendance: 2509

Game Start: 2:04

Official Basketball Box Score -- Game Totals -- Final Statistics

Villanova vs West Virginia

3/29/2015 2:00 p.m. at WVU Coliseum, Morgantown, W.Va.

Villanova 70 -

##	Player	S	Total		3-Ptr		Rebounds			PF	TP	A	TO	Blk	Stl	Min
			FG-FGA	3PT FG-FGA	FT-FTA	Off Reb	Def Reb	Tot Reb								
05	COYER,CAROLINE	g	5-17	0-4	0-3	1	3	4	4	10	6	2	0	2	42	
10	COYER,KATHERINE	g	1-2	0-1	4-4	0	0	0	2	6	2	0	0	1	25	
21	BURFORD,LAUREN	f	3-6	3-6	0-1	0	3	3	3	9	5	0	0	0	40	
35	EDWARDS,KAVUNAA	f	0-2	0-1	0-0	2	0	2	2	0	1	2	0	0	11	
55	LEER,EMILY	c	11-19	6-10	1-2	1	2	3	3	29	1	3	0	1	40	
01	HOLEMAN,TAYLOR		4-8	0-0	0-0	3	7	10	1	8	0	1	0	4	26	
02	LOUIN,ALEX		2-8	0-5	4-4	1	8	9	4	8	1	3	0	1	26	
11	DILLARD,JORDAN		0-0	0-0	0-0	0	0	0	0	0	0	0	0	1	8	
25	TEAGUE,BRANDI		0-0	0-0	0-0	0	0	0	1	0	0	1	0	0	3	
32	WILKES,SAMANTHA		0-1	0-1	0-0	0	0	0	1	0	0	0	0	0	4	
TEAM						2	1	3	0		1					
Totals			26-63	9-28	9-14	10	24	34	21	70	16	13	0	10	225	

FG %	1st Half: 12-25	48.0%	2nd Half: 12-30	40.0%	OT: 2-8	25.0%	Game: 26-63	41.3%	Deadball
3FG %	1st Half: 3-12	25.0%	2nd Half: 5-13	38.5%	OT: 1-3	33.3%	Game: 9-28	32.1%	Rebounds
FT %	1st Half: 0-0	0%	2nd Half: 6-9	66.7%	OT: 3-5	60.0%	Game: 9-14	64.3%	1,0

West Virginia 75 -

##	Player	S	Total		3-Ptr		Rebounds			PF	TP	A	TO	Blk	Stl	Min
			FG-FGA	3PT FG-FGA	FT-FTA	Off Reb	Def Reb	Tot Reb								
05	FIELDS,AVEREE	f	9-17	0-0	4-6	3	9	12	4	22	1	3	0	2	44	
15	MONTGOMERY,LANAY	c	3-3	0-0	0-0	3	1	4	2	6	0	1	0	0	9	
20	MCDONALD,BRE	f	1-7	0-1	5-8	2	7	9	2	7	1	1	0	1	34	
22	STEPNEY,LINDA	g	3-8	1-2	4-4	0	4	4	3	11	4	2	0	4	43	
23	HOLMES,BRIA	g	6-22	0-7	5-11	0	5	5	3	17	5	5	2	1	43	
11	MULDROW,TEANA		0-0	0-0	0-0	0	0	0	0	0	0	1	0	0	1	
21	MORTON,JESSICA		2-2	0-0	0-0	0	0	0	0	4	0	0	0	1	14	
32	LEARY,CRYSTAL		2-2	0-0	4-4	8	3	11	1	8	0	1	0	0	37	
TEAM						0	2	2	0		0					
Totals			26-61	1-10	22-33	16	31	47	15	75	11	14	2	9	225	

FG %	1st Half: 12-30	40.0%	2nd Half: 12-27	44.4%	OT: 2-4	50.0%	Game: 26-61	42.6%	Deadball
3FG %	1st Half: 0-5	00.0%	2nd Half: 1-5	20.0%	OT: 0-0	0%	Game: 1-10	10.0%	Rebounds
FT %	1st Half: 6-12	50.0%	2nd Half: 7-10	70.0%	OT: 9-11	81.8%	Game: 22-33	66.7%	6,0

Officials: Sue Blauch, Kevin Pethtel, Bruce Morris

Technical Fouls: Villanova- None. West Virginia- None.

Attendance: 2509

Game Start: 2:04

Score by periods	1st	2nd	3rd	Total
Villanova	27	35	8	70
West Virginia	30	32	13	75

	In	Off	2nd	Fast	
Points	Paint	Off T/O	2nd Chance	Fast Break	Bench
Villanova	28	14	9	0	16
West Virginia	38	18	9	4	12

Largest lead - Villanova by 6 2nd-02:52;

West Virginia by 7 OT-00:07

Score tied - 4 times

Lead changed - 14 times

Official Basketball Box Score -- Game Totals -- First Half Statistics

Villanova vs West Virginia

3/29/2015 2:00 p.m. at WVU Coliseum, Morgantown, W.Va.

Villanova 27 •

##	Player	S	Total			Rebounds			PF	TP	A	TO	Blk	Stl	Min
			FG-FGA	3PT FG-FGA	FT-FTA	Off Reb	Def Reb	Tot Reb							
05	COYER,CAROLINE	g	3-8	0-2	0-0	0	2	2	0	6	4	0	0	0	20
10	COYER,KATHERINE	g	1-2	0-1	0-0	0	0	0	2	2	0	0	0	1	10
21	BURFORD,LAUREN	f	2-5	2-5	0-0	0	1	1	1	6	3	0	0	0	18
35	EDWARDS,KAVUNAA	f	0-0	0-0	0-0	0	0	0	1	0	0	2	0	0	4
55	LEER,EMILY	c	4-6	1-3	0-0	0	2	2	1	9	0	0	0	1	17
01	HOLEMAN,TAYLOR		1-2	0-0	0-0	1	4	5	0	2	0	1	0	1	9
02	LOUIN,ALEX		1-2	0-1	0-0	0	3	3	1	2	0	2	0	0	12
11	DILLARD,JORDAN		0-0	0-0	0-0	0	0	0	0	0	0	0	0	0	5
25	TEAGUE,BRANDI		0-0	0-0	0-0	0	0	0	1	0	0	1	0	0	3
32	WILKES,SAMANTHA		0-0	0-0	0-0	0	0	0	1	0	0	0	0	0	2
	TEAM					0	0	0	0		1				
Totals			12-25	3-12	0-0	1	12	13	8	27	7	7	0	3	100

FG %	Half:	12-25	48.0%
3FG %	Half:	3-12	25.0%
FT %	Half:	0-0	0%

West Virginia 30 •

##	Player	S	Total			Rebounds			PF	TP	A	TO	Blk	Stl	Min
			FG-FGA	3PT FG-FGA	FT-FTA	Off Reb	Def Reb	Tot Reb							
05	FIELDS,AVEREE	f	3-8	0-0	1-2	2	4	6	1	7	0	0	0	0	19
15	MONTGOMERY,LANAY	c	2-2	0-0	0-0	2	1	3	2	4	0	1	0	0	7
20	MCDONALD,BRE	f	1-5	0-1	2-4	1	2	3	0	4	1	1	0	1	14
22	STEPNEY,LINDA	g	1-4	0-1	0-0	0	0	0	0	2	0	1	0	1	18
23	HOLMES,BRIA	g	3-9	0-3	2-5	0	3	3	1	8	3	2	0	1	19
11	MULDROW,TEANA		0-0	0-0	0-0	0	0	0	0	0	0	1	0	0	1
21	MORTON,JESSICA		1-1	0-0	0-0	0	0	0	0	2	0	0	0	1	8
32	LEARY,CRYSTAL		1-1	0-0	1-1	4	2	6	0	3	0	0	0	0	14
	TEAM					0	0	0	0		0				
Totals			12-30	0-5	6-12	9	12	21	4	30	4	6	0	4	100

FG %	Half:	12-30	40.0%
3FG %	Half:	0-5	00.0%
FT %	Half:	6-12	50.0%

Officials: Sue Blauch, Kevin Pethtel, Bruce Morris

Technical Fouls: Villanova- None. West Virginia- None.

Game Start: 2:04

	In	Off	2nd	Fast	
Points	Paint	Off T/O	2nd Chance	Fast Break	Bench
Villanova	16	8	0	0	4
West Virginia	20	12	8	2	5

Score tied - 2 times

Lead changed - 10 times

Villanova vs West Virginia

3/29/2015; 2:00 p.m. at WVU Coliseum, Morgantown, W.Va.

Period 1 Play-By-Play

VISITORS: Villanova	Time	Score	Margin	HOME: West Virginia
	19:49	2-0	H 2	GOOD! JUMPER by MCDONALD,BRE
MISSED 3PTR by BURFORD,LAUREN	19:18			
	19:18			REBOUND (DEF) by MONTGOMERY,LANAY
	19:04			MISSED JUMPER by FIELDS,AVEREE
	19:04			REBOUND (OFF) by MONTGOMERY,LANAY
GOOD! 3PTR by LEER,EMILY	19:01	4-0	H 4	GOOD! LAYUP by MONTGOMERY,LANAY
ASSIST by COYER,CAROLINE	18:48	4-3	H 1	
	18:48			
	18:23			TURNOVER by HOLMES,BRIA
STEAL by LEER,EMILY	18:21			
GOOD! LAYUP by COYER,KATHERINE	17:59	4-5	V 1	
ASSIST by BURFORD,LAUREN	17:59			
	17:44			TURNOVER by MCDONALD,BRE
TURNOVER by EDWARDS,KAVUNAA	17:35			
	17:34			STEAL by MCDONALD,BRE
	17:27	6-5	H 1	GOOD! JUMPER by FIELDS,AVEREE
	17:27			ASSIST by HOLMES,BRIA
TURNOVER by EDWARDS,KAVUNAA	17:01			
	16:46	8-5	H 3	GOOD! LAYUP by MONTGOMERY,LANAY
MISSED 3PTR by LEER,EMILY	16:34			
	16:34			REBOUND (DEF) by FIELDS,AVEREE
FOUL by EDWARDS,KAVUNAA	16:19			
	16:19			MISSED FT by FIELDS,AVEREE
	16:19			REBOUND (DEADB) by TEAM
	16:19	9-5	H 4	GOOD! FT by FIELDS,AVEREE
SUB IN: HOLEMAN,TAYLOR	16:19			
SUB OUT: EDWARDS,KAVUNAA	16:19			
GOOD! 3PTR by BURFORD,LAUREN	16:07	9-8	H 1	
ASSIST by COYER,CAROLINE	16:07			
	15:46			MISSED LAYUP by MCDONALD,BRE
	15:46			REBOUND (OFF) by FIELDS,AVEREE
	15:34			TURNOVER by STEPNEY,LINDA
TIMEOUT MEDIA	15:34			
	15:34			SUB IN: MULDROW,TEANA
	15:34			SUB IN: LEARY,CRYSTAL
	15:34			SUB OUT: MONTGOMERY,LANAY
	15:34			SUB OUT: MCDONALD,BRE
GOOD! LAYUP by HOLEMAN,TAYLOR	15:15	9-10	V 1	
ASSIST by COYER,CAROLINE	15:15			
	14:54			MISSED LAYUP by HOLMES,BRIA
	14:54			REBOUND (OFF) by FIELDS,AVEREE
	14:40			TURNOVER by MULDROW,TEANA
STEAL by COYER,KATHERINE	14:39			
GOOD! LAYUP by COYER,CAROLINE	14:24	9-12	V 3	
ASSIST by BURFORD,LAUREN	14:24			
	14:24			TIMEOUT 30SEC
	14:24			SUB IN: MCDONALD,BRE
	14:24			SUB OUT: MULDROW,TEANA
	14:10			MISSED JUMPER by FIELDS,AVEREE
REBOUND (DEF) by HOLEMAN,TAYLOR	14:10			
TURNOVER by HOLEMAN,TAYLOR	13:59			
	13:56			STEAL by HOLMES,BRIA
	13:55	11-12	V 1	GOOD! LAYUP by HOLMES,BRIA
MISSED 3PTR by COYER,CAROLINE	13:29			
	13:29			REBOUND (DEF) by FIELDS,AVEREE
	13:12			MISSED JUMPER by FIELDS,AVEREE
REBOUND (DEF) by HOLEMAN,TAYLOR	13:12			
MISSED 3PTR by LEER,EMILY	12:52			
REBOUND (OFF) by HOLEMAN,TAYLOR	12:52			
SUB IN: LOUIN,ALEX	12:50			
SUB IN: TEAGUE,BRANDI	12:50			
SUB OUT: COYER,KATHERINE	12:50			
SUB OUT: LEER,EMILY	12:50			
MISSED JUMPER by COYER,CAROLINE	12:44			
	12:44			REBOUND (DEF) by MCDONALD,BRE
	12:21	13-12	H 1	GOOD! LAYUP by STEPNEY,LINDA
GOOD! LAYUP by COYER,CAROLINE	11:55	13-14	V 1	
	11:33			MISSED 3PTR by HOLMES,BRIA
REBOUND (DEF) by HOLEMAN,TAYLOR	11:33			
	11:16			FOUL by HOLMES,BRIA
TIMEOUT MEDIA	11:16			
	11:16			SUB IN: MONTGOMERY,LANAY
	11:16			SUB IN: MORTON,JESSICA
	11:16			SUB OUT: HOLMES,BRIA

	11:16				SUB OUT: LEARY,CRYSTAL
GOOD! 3PTR by BURFORD,LAUREN	11:00	13-17	V 4		
ASSIST by COYER,CAROLINE	11:00				
	10:42				MISSED JUMPER by FIELDS,AVEREE
REBOUND (DEF) by LOUIN,ALEX	10:42				
TURNOVER by TEAGUE,BRANDI	10:20				
	10:19				STEAL by STEPNEY,LINDA
	10:17				MISSED LAYUP by STEPNEY,LINDA
	10:17				REBOUND (OFF) by MONTGOMERY,LANAY
FOUL by TEAGUE,BRANDI	09:58				
	09:58	14-17	V 3		GOOD! FT by MCDONALD,BRE
	09:58	15-17	V 2		GOOD! FT by MCDONALD,BRE
SUB IN: LEER,EMILY	09:58				
SUB IN: WILKES,SAMANTHA	09:58				
SUB OUT: HOLEMAN,TAYLOR	09:58				
SUB OUT: TEAGUE,BRANDI	09:58				
	09:58				SUB IN: HOLMES,BRIA
	09:58				SUB IN: LEARY,CRYSTAL
	09:58				SUB OUT: FIELDS,AVEREE
	09:58				SUB OUT: STEPNEY,LINDA
MISSED 3PTR by BURFORD,LAUREN	09:45				
	09:45				REBOUND (DEF) by HOLMES,BRIA
	09:30	17-17	T		GOOD! LAYUP by LEARY,CRYSTAL
	09:30				ASSIST by HOLMES,BRIA
FOUL by LEER,EMILY	09:30				
	09:30	18-17	H 1		GOOD! FT by LEARY,CRYSTAL
SUB IN: COYER,KATHERINE	09:30				
SUB OUT: BURFORD,LAUREN	09:30				
MISSED 3PTR by COYER,KATHERINE	09:10				
	09:10				REBOUND (DEF) by HOLMES,BRIA
	09:04				TURNOVER by MONTGOMERY,LANAY
	09:04				FOUL by MONTGOMERY,LANAY
GOOD! JUMPER by LEER,EMILY	08:46	18-19	V 1		
	08:31	20-19	H 1		GOOD! LAYUP by HOLMES,BRIA
	08:31				ASSIST by MCDONALD,BRE
	08:17				FOUL by MONTGOMERY,LANAY
TURNOVER by LOUIN,ALEX	08:17				
	08:17				STEAL by MORTON,JESSICA
	08:17				SUB IN: FIELDS,AVEREE
	08:17				SUB OUT: MONTGOMERY,LANAY
FOUL by COYER,KATHERINE	08:11				
	08:11				MISSED FT by MCDONALD,BRE
	08:11				REBOUND (DEADB) by TEAM
	08:11				MISSED FT by MCDONALD,BRE
	08:11				REBOUND (OFF) by LEARY,CRYSTAL
	08:11				SUB IN: STEPNEY,LINDA
	08:11				SUB OUT: MORTON,JESSICA
	08:08				MISSED JUMPER by MCDONALD,BRE
	08:08				REBOUND (OFF) by MCDONALD,BRE
	08:02				MISSED JUMPER by MCDONALD,BRE
	08:02				REBOUND (OFF) by LEARY,CRYSTAL
	07:52	22-19	H 3		GOOD! LAYUP by HOLMES,BRIA
FOUL by WILKES,SAMANTHA	07:52				
	07:52				TIMEOUT MEDIA
	07:52				MISSED FT by HOLMES,BRIA
	07:52				REBOUND (OFF) by LEARY,CRYSTAL
SUB IN: HOLEMAN,TAYLOR	07:52				
SUB OUT: WILKES,SAMANTHA	07:52				
	07:40				MISSED JUMPER by FIELDS,AVEREE
REBOUND (DEF) by LEER,EMILY	07:40				
GOOD! LAYUP by LOUIN,ALEX	07:24	22-21	H 1		
FOUL by COYER,KATHERINE	07:05				
	07:05	23-21	H 2		GOOD! FT by HOLMES,BRIA
	07:05				MISSED FT by HOLMES,BRIA
REBOUND (DEF) by HOLEMAN,TAYLOR	07:05				
SUB IN: BURFORD,LAUREN	07:05				
SUB OUT: COYER,KATHERINE	07:05				
MISSED 3PTR by BURFORD,LAUREN	06:50				
	06:50				REBOUND (DEF) by MCDONALD,BRE
	06:34				MISSED 3PTR by HOLMES,BRIA
REBOUND (DEF) by COYER,CAROLINE	06:34				
MISSED 3PTR by LOUIN,ALEX	06:23				
	06:23				REBOUND (DEF) by HOLMES,BRIA
	06:16				TURNOVER by HOLMES,BRIA
STEAL by HOLEMAN,TAYLOR	06:15				
MISSED JUMPER by HOLEMAN,TAYLOR	06:10				
	06:10				REBOUND (DEF) by LEARY,CRYSTAL
	05:57	25-21	H 4		GOOD! JUMPER by FIELDS,AVEREE
	05:57				ASSIST by HOLMES,BRIA
GOOD! JUMPER by LEER,EMILY	05:37	25-23	H 2		
ASSIST by BURFORD,LAUREN	05:37				
	05:12				MISSED 3PTR by MCDONALD,BRE
REBOUND (DEF) by COYER,CAROLINE	05:12				

	04:59				FOUL by FIELDS, AVEREE
SUB IN: DILLARD, JORDAN	04:59				
SUB OUT: HOLEMAN, TAYLOR	04:59				
	04:59				SUB IN: MORTON, JESSICA
	04:59				SUB OUT: MCDONALD, BRE
GOOD! JUMPER by LEER, EMILY	04:32	25-25	T		
FOUL by BURFORD, LAUREN	04:24				
	04:24				MISSED FT by HOLMES, BRIA
	04:24				REBOUND (DEADB) by TEAM
	04:24	26-25	H 1		GOOD! FT by HOLMES, BRIA
MISSED JUMPER by COYER, CAROLINE	04:11				
	04:11				REBOUND (DEF) by FIELDS, AVEREE
	03:55				MISSED 3PTR by HOLMES, BRIA
REBOUND (DEF) by LOUIN, ALEX	03:55				
GOOD! JUMPER by COYER, CAROLINE	03:33	26-27	V 1		
	03:08	28-27	H 1		GOOD! JUMPER by MORTON, JESSICA
MISSED 3PTR by COYER, CAROLINE	02:44				
	02:44				REBOUND (DEF) by FIELDS, AVEREE
	02:13				MISSED JUMPER by STEPNEY, LINDA
REBOUND (DEF) by LOUIN, ALEX	02:13				
TURNOVER by LOUIN, ALEX	01:48				
FOUL by LOUIN, ALEX	01:48				
	01:48				TIMEOUT MEDIA
	01:36				MISSED JUMPER by HOLMES, BRIA
	01:36				REBOUND (OFF) by LEARY, CRYSTAL
	01:19	30-27	H 3		GOOD! JUMPER by FIELDS, AVEREE
MISSED LAYUP by COYER, CAROLINE	00:49				
	00:49				REBOUND (DEF) by LEARY, CRYSTAL
	00:43				MISSED JUMPER by HOLMES, BRIA
REBOUND (DEF) by LEER, EMILY	00:43				
TURNOVER by TEAM	00:10				
	00:04				MISSED 3PTR by STEPNEY, LINDA
REBOUND (DEF) by BURFORD, LAUREN	00:04				

Villanova 27, West Virginia 30

Period 1-only	In Paint	Off T/O	2nd Chance	Fast Break	Bench	
Villanova	16	8	0	0	4	Score tied - 2 times
West Virginia	20	12	8	2	5	Lead changed - 10 times

Official Basketball Box Score -- Game Totals -- Second Half Statistics

Villanova vs West Virginia

3/29/2015 2:00 p.m. at WVU Coliseum, Morgantown, W.Va.

Villanova 35 •

##	Player	S	Total	3-Ptr	FT-FTA	Rebounds			PF	TP	A	TO	Blk	Stl	Min
			FG-FGA	3PT FG-FGA		Off Reb	Def Reb	Tot Reb							
05	COYER,CAROLINE	g	2-6	0-1	0-3	1	1	2	1	4	2	2	0	1	17
10	COYER,KATHERINE	g	0-0	0-0	2-2	0	0	0	0	2	1	0	0	0	10
21	BURFORD,LAUREN	f	1-1	1-1	0-0	0	1	1	2	3	2	0	0	0	17
35	EDWARDS,KAVUNAA	f	0-2	0-1	0-0	2	0	2	1	0	1	0	0	0	7
55	LEER,EMILY	c	6-11	4-6	0-0	0	0	0	0	16	1	2	0	0	18
01	HOLEMAN,TAYLOR		3-5	0-0	0-0	2	3	5	1	6	0	0	0	2	13
02	LOUIN,ALEX		0-4	0-3	4-4	1	5	6	2	4	1	1	0	1	13
11	DILLARD,JORDAN		0-0	0-0	0-0	0	0	0	0	0	0	0	0	1	3
25	TEAGUE,BRANDI		0-0	0-0	0-0	0	0	0	0	0	0	0	0	0	0
32	WILKES,SAMANTHA		0-1	0-1	0-0	0	0	0	0	0	0	0	0	0	2
	TEAM					2	1	3	0		0				
Totals			12-30	5-13	6-9	8	11	19	7	35	8	5	0	5	100

FG %	Half:	12-30	40.0%
3FG %	Half:	5-13	25.0%
FT %	Half:	6-9	66.7%

West Virginia 32 •

##	Player	S	Total	3-Ptr	FT-FTA	Rebounds			PF	TP	A	TO	Blk	Stl	Min
			FG-FGA	3PT FG-FGA		Off Reb	Def Reb	Tot Reb							
05	FIELDS,AVEREE	f	4-7	0-0	1-1	0	3	3	2	9	1	1	0	1	20
15	MONTGOMERY,LANAY	c	1-1	0-0	0-0	1	0	1	0	2	0	0	0	0	2
20	MCDONALD,BRE	f	0-1	0-0	1-2	0	2	2	2	1	0	0	0	0	15
22	STEPNEY,LINDA	g	2-3	1-1	0-0	0	3	3	2	5	4	1	0	3	20
23	HOLMES,BRIA	g	3-13	0-4	2-4	0	1	1	2	8	2	2	2	0	19
11	MULDROW,TEANA		0-0	0-0	0-0	0	0	0	0	0	0	0	0	0	0
21	MORTON,JESSICA		1-1	0-0	0-0	0	0	0	0	2	0	0	0	0	6
32	LEARY,CRYSTAL		1-1	0-0	3-3	3	1	4	0	5	0	1	0	0	18
	TEAM					0	2	2	0		0				
Totals			12-27	1-5	7-10	4	12	16	8	32	7	5	2	4	100

FG %	Half:	12-27	44.4%
3FG %	Half:	1-5	00.0%
FT %	Half:	7-10	70.0%

Officials: Sue Blauch, Kevin Pethtel, Bruce Morris

Technical Fouls: Villanova- None. West Virginia- None.

Game Start: 2:04

	In	Off	2nd	Fast	
Points	Paint	Off T/O	2nd Chance	Fast Break	Bench
Villanova	10	4	9	0	10
West Virginia	14	6	4	2	7

Score tied - 2 times

Lead changed - 3 times

Villanova vs West Virginia

3/29/2015; 2:00 p.m. at WVU Coliseum, Morgantown, W.Va.

Period 2 Play-By-Play

VISITORS: Villanova	Time	Score	Margin	HOME: West Virginia
MISSED 3PTR by LEER,EMILY	19:52			
	19:52			REBOUND (DEF) by FIELDS,AVEREE
	19:29			MISSED JUMPER by FIELDS,AVEREE
	19:29			REBOUND (OFF) by MONTGOMERY,LANAY
	19:10	32-27	H 5	GOOD! LAYUP by HOLMES,BRIA
GOOD! JUMPER by LEER,EMILY	18:50	32-29	H 3	
ASSIST by EDWARDS,KAVUNAA	18:50			
	18:35	34-29	H 5	GOOD! LAYUP by MONTGOMERY,LANAY
	18:35			ASSIST by HOLMES,BRIA
MISSED 3PTR by LEER,EMILY	18:23			
	18:23			REBOUND (DEF) by MCDONALD,BRE
	18:15			MISSED LAYUP by MCDONALD,BRE
REBOUND (DEF) by COYER,CAROLINE	18:15			
GOOD! 3PTR by LEER,EMILY	18:04	34-32	H 2	
ASSIST by COYER,KATHERINE	18:04			
	17:37			MISSED JUMPER by HOLMES,BRIA
REBOUND (DEF) by TEAM	17:37			
	17:34			SUB IN: MORTON,JESSICA
	17:34			SUB IN: LEARY,CRYSTAL
	17:34			SUB OUT: MONTGOMERY,LANAY
	17:34			SUB OUT: MCDONALD,BRE
GOOD! 3PTR by LEER,EMILY	17:07	34-35	V 1	
ASSIST by BURFORD,LAUREN	17:07			
	16:41	36-35	H 1	GOOD! JUMPER by FIELDS,AVEREE
	16:41			ASSIST by STEPNEY,LINDA
MISSED 3PTR by EDWARDS,KAVUNAA	16:15			
	16:15			REBOUND (DEF) by TEAM
	15:58	38-35	H 3	GOOD! LAYUP by LEARY,CRYSTAL
	15:58			ASSIST by STEPNEY,LINDA
FOUL by EDWARDS,KAVUNAA	15:57			
	15:57			TIMEOUT MEDIA
	15:57	39-35	H 4	GOOD! FT by LEARY,CRYSTAL
MISSED LAYUP by COYER,CAROLINE	15:37			
REBOUND (OFF) by EDWARDS,KAVUNAA	15:37			
MISSED JUMPER by LEER,EMILY	15:28			
	15:28			REBOUND (DEF) by FIELDS,AVEREE
	15:19			TURNOVER by HOLMES,BRIA
STEAL by COYER,CAROLINE	15:18			
TURNOVER by LEER,EMILY	15:01			
	15:01			SUB IN: MCDONALD,BRE
	15:01			SUB OUT: MORTON,JESSICA
	14:40			MISSED JUMPER by FIELDS,AVEREE
REBOUND (DEF) by BURFORD,LAUREN	14:40			
TURNOVER by COYER,CAROLINE	14:25			
	14:23			STEAL by STEPNEY,LINDA
FOUL by BURFORD,LAUREN	14:20			
	14:20			MISSED FT by MCDONALD,BRE
	14:20			REBOUND (DEADB) by TEAM
	14:20	40-35	H 5	GOOD! FT by MCDONALD,BRE
SUB IN: DILLARD,JORDAN	14:20			
SUB IN: LOUIN,ALEX	14:20			
SUB OUT: COYER,CAROLINE	14:20			
SUB OUT: COYER,KATHERINE	14:20			
MISSED JUMPER by LEER,EMILY	13:53			
	13:53			REBOUND (DEF) by MCDONALD,BRE
	13:49			TURNOVER by STEPNEY,LINDA
STEAL by DILLARD,JORDAN	13:47			
MISSED 3PTR by LOUIN,ALEX	13:26			
REBOUND (OFF) by EDWARDS,KAVUNAA	13:26			
MISSED JUMPER by EDWARDS,KAVUNAA	13:20			
	13:20			REBOUND (DEF) by STEPNEY,LINDA
FOUL by LOUIN,ALEX	13:15			
SUB IN: COYER,KATHERINE	13:15			
SUB IN: HOLEMAN,TAYLOR	13:15			
SUB IN: WILKES,SAMANTHA	13:15			
SUB OUT: BURFORD,LAUREN	13:15			
SUB OUT: EDWARDS,KAVUNAA	13:15			
SUB OUT: LEER,EMILY	13:15			
	12:59			MISSED JUMPER by HOLMES,BRIA
REBOUND (DEF) by LOUIN,ALEX	12:59			
MISSED 3PTR by LOUIN,ALEX	12:50			
REBOUND (OFF) by TEAM	12:50			
GOOD! LAYUP by HOLEMAN,TAYLOR	12:28	40-37	H 3	
ASSIST by LOUIN,ALEX	12:28			

	12:03				MISSED 3PTR by HOLMES,BRIA
REBOUND (DEF) by LOUIN,ALEX	12:03				
MISSED JUMPER by HOLEMAN,TAYLOR	11:48				
REBOUND (OFF) by HOLEMAN,TAYLOR	11:48				
MISSED 3PTR by WILKES,SAMANTHA	11:43				
	11:43				
	11:41				REBOUND (DEF) by TEAM
	11:41				TIMEOUT MEDIA
SUB IN: LEER,EMILY	11:41				
SUB IN: COYER,CAROLINE	11:41				
SUB OUT: DILLARD,JORDAN	11:41				
SUB OUT: WILKES,SAMANTHA	11:41				
	11:41				SUB IN: MORTON,JESSICA
	11:41				SUB OUT: MCDONALD,BRE
	11:25	42-37	H 5		GOOD! JUMPER by MORTON,JESSICA
	11:25				ASSIST by HOLMES,BRIA
MISSED JUMPER by LEER,EMILY	10:59				
	10:59				REBOUND (DEF) by STEPNEY,LINDA
	10:50				MISSED JUMPER by HOLMES,BRIA
REBOUND (DEF) by LOUIN,ALEX	10:50				
	10:38				FOUL by FIELDS,AVEREE
GOOD! FT by LOUIN,ALEX	10:38	42-38	H 4		
GOOD! FT by LOUIN,ALEX	10:38	42-39	H 3		
	10:38				SUB IN: MCDONALD,BRE
	10:38				SUB OUT: HOLMES,BRIA
	10:22				MISSED JUMPER by FIELDS,AVEREE
REBOUND (DEF) by HOLEMAN,TAYLOR	10:22				
MISSED JUMPER by LOUIN,ALEX	09:59				
REBOUND (OFF) by LOUIN,ALEX	09:59				
	09:54				FOUL by MCDONALD,BRE
GOOD! FT by LOUIN,ALEX	09:54	42-40	H 2		
GOOD! FT by LOUIN,ALEX	09:54	42-41	H 1		
SUB IN: BURFORD,LAUREN	09:54				
SUB OUT: COYER,KATHERINE	09:54				
	09:54				SUB IN: HOLMES,BRIA
	09:54				SUB OUT: MORTON,JESSICA
	09:29				MISSED JUMPER by STEPNEY,LINDA
REBOUND (DEF) by LOUIN,ALEX	09:29				
TURNOVER by LOUIN,ALEX	09:17				
	09:16				STEAL by STEPNEY,LINDA
	09:15	44-41	H 3		GOOD! LAYUP by FIELDS,AVEREE
	09:15				ASSIST by STEPNEY,LINDA
FOUL by COYER,CAROLINE	09:14				
	09:14	45-41	H 4		GOOD! FT by FIELDS,AVEREE
MISSED LAYUP by HOLEMAN,TAYLOR	08:59				
	08:59				BLOCK by HOLMES,BRIA
	08:57				REBOUND (DEF) by HOLMES,BRIA
FOUL by BURFORD,LAUREN	08:54				
	08:54				MISSED FT by HOLMES,BRIA
	08:54				REBOUND (DEADB) by TEAM
	08:54	46-41	H 5		GOOD! FT by HOLMES,BRIA
GOOD! JUMPER by LEER,EMILY	08:38	46-43	H 3		
	08:29				MISSED LAYUP by HOLMES,BRIA
	08:29				REBOUND (OFF) by LEARY,CRYSTAL
	08:24				MISSED JUMPER by HOLMES,BRIA
	08:24				REBOUND (OFF) by LEARY,CRYSTAL
	08:21				TURNOVER by LEARY,CRYSTAL
STEAL by HOLEMAN,TAYLOR	08:20				
MISSED 3PTR by LOUIN,ALEX	08:15				
	08:15				REBOUND (DEF) by STEPNEY,LINDA
	07:47				MISSED 3PTR by HOLMES,BRIA
REBOUND (DEF) by LOUIN,ALEX	07:47				
GOOD! 3PTR by BURFORD,LAUREN	07:31	46-46	T		
ASSIST by LEER,EMILY	07:31				
	06:55	48-46	H 2		GOOD! JUMPER by FIELDS,AVEREE
GOOD! 3PTR by LEER,EMILY	06:38	48-49	V 1		
ASSIST by COYER,CAROLINE	06:38				
	06:06				MISSED 3PTR by HOLMES,BRIA
REBOUND (DEF) by HOLEMAN,TAYLOR	06:06				
TIMEOUT 30SEC	05:50				
TURNOVER by LEER,EMILY	05:39				
	05:31				STEAL by FIELDS,AVEREE
	05:29				TURNOVER by FIELDS,AVEREE
STEAL by HOLEMAN,TAYLOR	05:21				
MISSED 3PTR by COYER,CAROLINE	05:15				
REBOUND (OFF) by HOLEMAN,TAYLOR	05:15				
GOOD! LAYUP by HOLEMAN,TAYLOR	05:11	48-51	V 3		
	04:53	50-51	V 1		GOOD! JUMPER by FIELDS,AVEREE
GOOD! LAYUP by HOLEMAN,TAYLOR	04:23	50-53	V 3		
ASSIST by COYER,CAROLINE	04:23				
	04:18				TIMEOUT 30SEC
	04:18				SUB IN: MORTON,JESSICA
	04:18				SUB OUT: MCDONALD,BRE
	04:06				TURNOVER by HOLMES,BRIA

STEAL by LOUIN,ALEX	04:05				
GOOD! LAYUP by COYER,CAROLINE	03:43	50-55	V 5		
FOUL by HOLEMAN,TAYLOR	03:18				
	03:18				TIMEOUT MEDIA
	03:18				MISSED FT by HOLMES,BRIA
	03:18				REBOUND (DEADB) by TEAM
	03:18	51-55	V 4		GOOD! FT by HOLMES,BRIA
GOOD! LAYUP by COYER,CAROLINE	02:52	51-57	V 6		
	02:25				MISSED JUMPER by HOLMES,BRIA
	02:25				REBOUND (OFF) by LEARY,CRYSTAL
FOUL by LOUIN,ALEX	02:24				
	02:24	52-57	V 5		GOOD! FT by LEARY,CRYSTAL
	02:24	53-57	V 4		GOOD! FT by LEARY,CRYSTAL
	02:24				SUB IN: MCDONALD,BRE
	02:24				SUB OUT: MORTON,JESSICA
TIMEOUT 30SEC	02:15				
	01:57				FOUL by STEPNEY,LINDA
MISSED FT by COYER,CAROLINE	01:57				
REBOUND (DEADB) by TEAM	01:57				
MISSED FT by COYER,CAROLINE	01:57				
	01:57				REBOUND (DEF) by FIELDS,AVEREE
	01:40	56-57	V 1		GOOD! 3PTR by STEPNEY,LINDA
	01:40				ASSIST by FIELDS,AVEREE
	01:39				TIMEOUT 30SEC
MISSED LAYUP by COYER,CAROLINE	01:15				
	01:15				BLOCK by HOLMES,BRIA
REBOUND (OFF) by TEAM	01:15				
TIMEOUT 30SEC	01:14				
GOOD! 3PTR by LEER,EMILY	01:13	56-60	V 4		
ASSIST by BURFORD,LAUREN	01:13				
	01:05				TIMEOUT 30SEC
SUB IN: COYER,KATHERINE	01:05				
SUB OUT: LOUIN,ALEX	01:05				
	00:58				MISSED 3PTR by HOLMES,BRIA
REBOUND (DEF) by HOLEMAN,TAYLOR	00:58				
	00:57				FOUL by FIELDS,AVEREE
	00:48				FOUL by HOLMES,BRIA
	00:46				FOUL by STEPNEY,LINDA
	00:43				FOUL by HOLMES,BRIA
MISSED FT by COYER,CAROLINE	00:43				
	00:43				REBOUND (DEF) by LEARY,CRYSTAL
	00:33	58-60	V 2		GOOD! LAYUP by HOLMES,BRIA
	00:33				ASSIST by STEPNEY,LINDA
	00:32				TIMEOUT TEAM
TIMEOUT TEAM	00:32				
SUB IN: LOUIN,ALEX	00:32				
SUB OUT: HOLEMAN,TAYLOR	00:32				
	00:30				FOUL by MCDONALD,BRE
GOOD! FT by COYER,KATHERINE	00:30	58-61	V 3		
GOOD! FT by COYER,KATHERINE	00:30	58-62	V 4		
	00:23	60-62	V 2		GOOD! LAYUP by STEPNEY,LINDA
TURNOVER by COYER,CAROLINE	00:20				
	00:20				STEAL by STEPNEY,LINDA
SUB IN: HOLEMAN,TAYLOR	00:20				
SUB OUT: LOUIN,ALEX	00:20				
	00:13	62-62	T		GOOD! LAYUP by HOLMES,BRIA
MISSED JUMPER by COYER,CAROLINE	00:00				
REBOUND (OFF) by COYER,CAROLINE	00:00				

Villanova 62, West Virginia 62

Period 2-only	In Paint	Off T/O	2nd Chance	Fast Break	Bench	
Villanova	10	4	9	0	10	Score tied - 2 times
West Virginia	14	6	4	2	7	Lead changed - 4 times

Villanova vs West Virginia

3/29/2015; 2:00 p.m. at WVU Coliseum, Morgantown, W.Va.

Period 3 Play-By-Play

VISITORS: Villanova	Time	Score	Margin	HOME: West Virginia
SUB OUT: EDWARDS,KAVUNAA	05:00			
	05:00			SUB OUT: MONTGOMERY,LANAY
MISSED JUMPER by COYER,CAROLINE	04:35			
	04:35			REBOUND (DEF) by STEPNEY,LINDA
	04:18			TURNOVER by HOLMES,BRIA
STEAL by HOLEMAN,TAYLOR	04:17			
MISSED JUMPER by HOLEMAN,TAYLOR	04:00			
	04:00			REBOUND (DEF) by MCDONALD,BRE
	03:41	64-62	H 2	GOOD! LAYUP by FIELDS,AVEREE
MISSED JUMPER by LEER,EMILY	03:11			
	03:11			REBOUND (DEF) by FIELDS,AVEREE
	02:51			MISSED LAYUP by MCDONALD,BRE
	02:51			REBOUND (OFF) by FIELDS,AVEREE
FOUL by LEER,EMILY	02:26			
	02:26	65-62	H 3	GOOD! FT by FIELDS,AVEREE
	02:26	66-62	H 4	GOOD! FT by FIELDS,AVEREE
MISSED LAYUP by COYER,CAROLINE	02:06			
	02:06			REBOUND (DEF) by MCDONALD,BRE
	01:43			MISSED JUMPER by STEPNEY,LINDA
	01:43			REBOUND (OFF) by LEARY,CRYSTAL
	01:16	68-62	H 6	GOOD! JUMPER by FIELDS,AVEREE
TIMEOUT 30SEC	01:09			
SUB IN: LOUIN,ALEX	01:09			
	01:01			FOUL by FIELDS,AVEREE
MISSED FT by BURFORD,LAUREN	01:01			
	01:01			REBOUND (DEF) by FIELDS,AVEREE
	00:59			TURNOVER by FIELDS,AVEREE
	00:54			FOUL by STEPNEY,LINDA
GOOD! FT by COYER,KATHERINE	00:54	68-63	H 5	
GOOD! FT by COYER,KATHERINE	00:54	68-64	H 4	
FOUL by COYER,CAROLINE	00:50			
	00:50			MISSED FT by FIELDS,AVEREE
	00:50			REBOUND (OFF) by MCDONALD,BRE
FOUL by COYER,CAROLINE	00:41			
	00:41	69-64	H 5	GOOD! FT by STEPNEY,LINDA
	00:41	70-64	H 6	GOOD! FT by STEPNEY,LINDA
GOOD! 3PTR by LEER,EMILY	00:31	70-67	H 3	
ASSIST by COYER,KATHERINE	00:31			
FOUL by COYER,CAROLINE	00:29			
	00:29	71-67	H 4	GOOD! FT by STEPNEY,LINDA
	00:29	72-67	H 5	GOOD! FT by STEPNEY,LINDA
MISSED 3PTR by COYER,CAROLINE	00:23			
REBOUND (OFF) by LEER,EMILY	00:23			
TURNOVER by LEER,EMILY	00:22			
	00:22			STEAL by FIELDS,AVEREE
	00:22			TURNOVER by FIELDS,AVEREE
STEAL by COYER,CAROLINE	00:21			
MISSED 3PTR by LOUIN,ALEX	00:18			
	00:18			REBOUND (DEF) by HOLMES,BRIA
FOUL by LEER,EMILY	00:13			
	00:13	73-67	H 6	GOOD! FT by HOLMES,BRIA
	00:13			MISSED FT by HOLMES,BRIA
REBOUND (DEF) by BURFORD,LAUREN	00:13			
	00:08			FOUL by LEARY,CRYSTAL
GOOD! FT by LEER,EMILY	00:08	73-68	H 5	
MISSED FT by LEER,EMILY	00:08			
	00:08			REBOUND (DEF) by MCDONALD,BRE
FOUL by LOUIN,ALEX	00:07			
	00:07	74-68	H 6	GOOD! FT by MCDONALD,BRE
	00:07	75-68	H 7	GOOD! FT by MCDONALD,BRE
GOOD! LAYUP by LOUIN,ALEX	00:02	75-70	H 5	

Villanova 70, West Virginia 75

Period 3-only	In Paint	Off T/O	2nd Chance	Fast Break	Bench	
Villanova	2	2	0	0	2	Score tied - 0 times
West Virginia	4	0	6	0	0	Lead changed - 0 times

Villanova vs West Virginia

3/29/2015; 2:00 p.m. at WVU Coliseum, Morgantown, W.Va.

Scoring/Runs Reference

Period 1			Period 2		
Villanova	Score	West Virginia	Villanova	Score	West Virginia
	0-2 2	MCDONALD JUMPER - 19:49	19:52 - LEER 3PTR	X	
19:18 - BURFORD 3PTR	X				FIELDS JUMPER - 19:29
		FIELDS JUMPER - 19:04			HOLMES LAYUP - 19:10
		MONTGOMERY LAYUP - 19:01	18:50 - LEER JUMPER	2	
18:48 - LEER 3PTR	3				MONTGOMERY LAYUP - 18:35
		HOLMES TURN - 18:23	18:23 - LEER 3PTR	X	
17:59 - COYER LAYUP	2 ^P				MCDONALD LAYUP - 18:15
		MCDONALD TURN - 17:44	18:04 - LEER 3PTR	3	
17:35 - EDWARDS TURN	TO				HOLMES JUMPER - 17:37
		FIELDS JUMPER - 17:27	17:07 - LEER 3PTR	3	
17:01 - EDWARDS TURN	TO				FIELDS JUMPER - 16:41
		MONTGOMERY LAYUP - 16:46	16:15 - EDWARDS 3PTR	X	
16:34 - LEER 3PTR	X				LEARY LAYUP - 15:58
		FIELDS FT - 16:19			LEARY FT - 15:57
		FIELDS FT - 16:19	15:37 - COYER LAYUP	X	
16:07 - BURFORD 3PTR	3		15:28 - LEER JUMPER	X	
		MCDONALD LAYUP - 15:46			HOLMES TURN - 15:19
		STEPNEY TURN - 15:34	15:01 - LEER TURN	TO	
15:15 - HOLEMAN LAYUP	2 ^P				FIELDS JUMPER - 14:40
		HOLMES LAYUP - 14:54	14:25 - COYER TURN	TO	
		MULDROW TURN - 14:40			MCDONALD FT - 14:20
14:24 - COYER LAYUP	2 ^P				MCDONALD FT - 14:20
		FIELDS JUMPER - 14:10	13:53 - LEER JUMPER	X	
		HOLMES LAYUP - 13:55			STEPNEY TURN - 13:49
13:59 - HOLEMAN TURN	TO		13:26 - LOUIN 3PTR	X	
		FIELDS JUMPER - 13:12	13:20 - EDWARDS JUMPER	X	
13:29 - COYER 3PTR	X				HOLMES JUMPER - 12:59
		STEPNEY LAYUP - 12:21	12:50 - LOUIN 3PTR	X	
12:52 - LEER 3PTR	X		12:28 - HOLEMAN LAYUP	2 ^P	
12:44 - COYER JUMPER	X				HOLMES 3PTR - 12:03
		HOLMES 3PTR - 11:33	11:48 - HOLEMAN JUMPER	X	
11:55 - COYER LAYUP	2 ^P		11:43 - WILKES 3PTR	X	
		FIELDS JUMPER - 10:42			MORTON JUMPER - 11:25
11:00 - BURFORD 3PTR	3				HOLMES JUMPER - 10:50
		STEPNEY LAYUP - 10:17	10:38 - LOUIN FT	1	
10:20 - TEAGUE TURN	TO				FIELDS JUMPER - 10:22
		MCDONALD FT - 09:58	10:38 - LOUIN FT	1	
		MCDONALD FT - 09:58			
09:45 - BURFORD 3PTR	X		09:59 - LOUIN JUMPER	X	
		LEARY LAYUP - 09:30	09:54 - LOUIN FT	1	
		LEARY FT - 09:30	09:54 - LOUIN FT	1	
09:10 - COYER 3PTR	X				STEPNEY JUMPER - 09:29
		MONTGOMERY TURN - 09:04	09:17 - LOUIN TURN	TO	
08:46 - LEER JUMPER	2 ^P				FIELDS LAYUP - 09:15
		HOLMES LAYUP - 08:31			FIELDS FT - 09:14
08:17 - LOUIN TURN	TO		08:59 - HOLEMAN LAYUP	X	
		MCDONALD FT - 08:11			HOLMES FT - 08:54
		MCDONALD FT - 08:11			HOLMES FT - 08:54
		MCDONALD JUMPER - 08:08	08:38 - LEER JUMPER	2	
		MCDONALD JUMPER - 08:02			HOLMES LAYUP - 08:29
					HOLMES JUMPER - 08:24

	19-22 3	2 ^P	HOLMES LAYUP - 07:52
		X	HOLMES FT - 07:52
		X	FIELDS JUMPER - 07:40
07:24 - LOUIN LAYUP	2 ^P	21-22 1	
	21-23 2	1	HOLMES FT - 07:05
		X	HOLMES FT - 07:05
06:50 - BURFORD 3PTR	X		
		X	HOLMES 3PTR - 06:34
06:23 - LOUIN 3PTR	X		
		TO	HOLMES TURN - 06:16
06:10 - HOLEMAN JUMPER	X		
	21-25 4	2	FIELDS JUMPER - 05:57
05:37 - LEER JUMPER	2 ^P	23-25 2	
		X	MCDONALD 3PTR - 05:12
04:32 - LEER JUMPER	2 ^P	25-25 0	
		X	HOLMES FT - 04:24
	25-26 1	1	HOLMES FT - 04:24
04:11 - COYER JUMPER	X		
		X	HOLMES 3PTR - 03:55
03:33 - COYER JUMPER	2	27-26 -1	
	27-28 1	2	MORTON JUMPER - 03:08
02:44 - COYER 3PTR	X		
		X	STEPNEY JUMPER - 02:13
01:48 - LOUIN TURN	TO		
		X	HOLMES JUMPER - 01:36
	27-30 3	2 ^P	FIELDS JUMPER - 01:19
00:49 - COYER LAYUP	X		
		X	HOLMES JUMPER - 00:43
00:10 - TURN	TO		
		X	STEPNEY 3PTR - 00:04

			TO	LEARY TURN - 08:21
08:15 - LOUIN 3PTR	X			
			X	HOLMES 3PTR - 07:47
07:31 - BURFORD 3PTR	3	46-46 0		
		46-48 2	2	FIELDS JUMPER - 06:55
06:38 - LEER 3PTR	3	49-48 -1		
			X	HOLMES 3PTR - 06:06
05:39 - LEER TURN	TO			
			TO	FIELDS TURN - 05:29
05:15 - COYER 3PTR	X			
05:11 - HOLEMAN LAYUP	2 ^P	51-48 -3		
		51-50 -1	2	FIELDS JUMPER - 04:53
04:23 - HOLEMAN LAYUP	2 ^P	53-50 -3		
			TO	HOLMES TURN - 04:06
03:43 - COYER LAYUP	2 ^P	55-50 -5		
			X	HOLMES FT - 03:18
		55-51 -4	1	HOLMES FT - 03:18
02:52 - COYER LAYUP	2 ^P	57-51 -6		
			X	HOLMES JUMPER - 02:25
		57-52 -5	1	LEARY FT - 02:24
		57-53 -4	1	LEARY FT - 02:24
01:57 - COYER FT	X			
01:57 - COYER FT	X			
		57-56 -1	3	STEPNEY 3PTR - 01:40
01:15 - COYER LAYUP	X			
01:13 - LEER 3PTR	3	60-56 -4		
			X	HOLMES 3PTR - 00:58
00:43 - COYER FT	X			
		60-58 -2	2 ^P	HOLMES LAYUP - 00:33
00:30 - COYER FT	1	61-58 -3		
00:30 - COYER FT	1	62-58 -4		
		62-60 -2	2 ^P	STEPNEY LAYUP - 00:23
00:20 - COYER TURN	TO			
		62-62 0	2 ^P	HOLMES LAYUP - 00:13
00:00 - COYER JUMPER	X			

	Period 3		
Villanova	Score		West Virginia
04:35 - COYER JUMPER	X		
		TO	HOLMES TURN - 04:18
04:00 - HOLEMAN JUMPER	X		
	62-64 2	2 ^P	FIELDS LAYUP - 03:41
03:11 - LEER JUMPER	X		
		X	MCDONALD LAYUP - 02:51
	62-65 3	1	FIELDS FT - 02:26
	62-66 4	1	FIELDS FT - 02:26
02:06 - COYER LAYUP	X		
		X	STEPNEY JUMPER - 01:43
	62-68 6	2 ^P	FIELDS JUMPER - 01:16
01:01 - BURFORD FT	X		
		TO	FIELDS TURN - 00:59
00:54 - COYER FT	1	63-68 5	
00:54 - COYER FT	1	64-68 4	
		X	FIELDS FT - 00:50
	64-69 5	1	STEPNEY FT - 00:41
	64-70 6	1	STEPNEY FT - 00:41
00:31 - LEER 3PTR	3	67-70 3	
	67-71 4	1	STEPNEY FT - 00:29
	67-72 5	1	STEPNEY FT - 00:29
00:23 - COYER 3PTR	X		

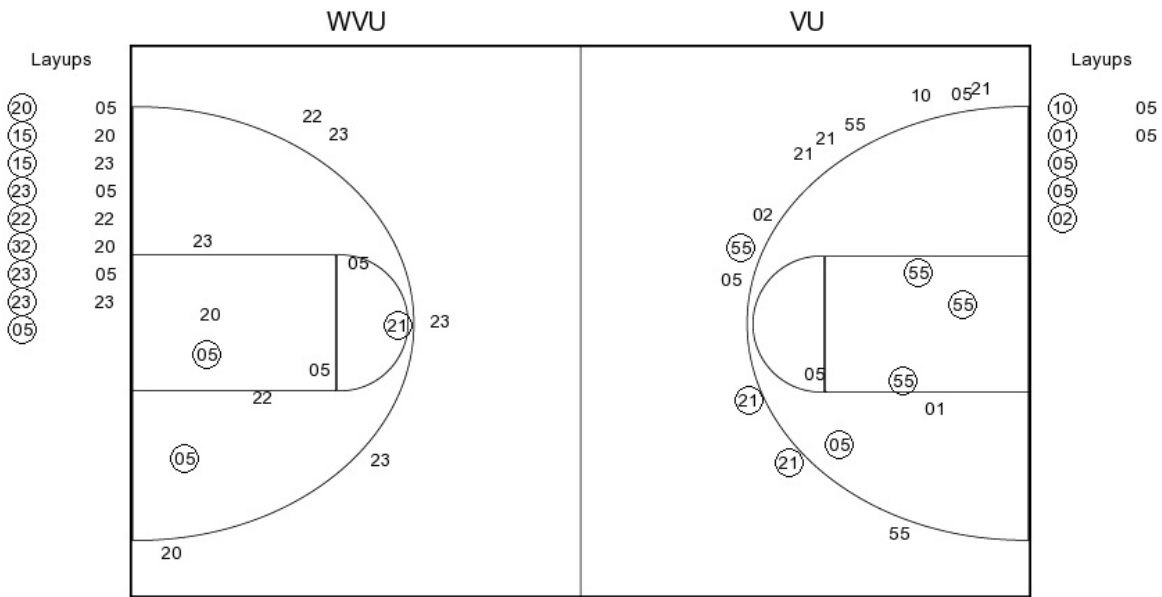
00:22 - LEER TURN	TO				
		TO			FIELDS TURN - 00:22
00:18 - LOUIN 3PTR	X				
		67-73 6	1		HOLMES FT - 00:13
			X		HOLMES FT - 00:13
00:08 - LEER FT	1	68-73 5			
00:08 - LEER FT	X				
		68-74 6	1		MCDONALD FT - 00:07
		68-75 7	1		MCDONALD FT - 00:07
00:02 - LOUIN LAYUP	2 ^P	70-75 5			

Villanova vs West Virginia

OFFICIAL SHOT CHART

3/29/2015 at WVU Coliseum, Morgantown, W.Va.

PERIOD 1



VU PERIOD 1

FG Made	12
FG Attempted	25
3PFG Made	3
3PFG Attempted	12

WVU PERIOD 1

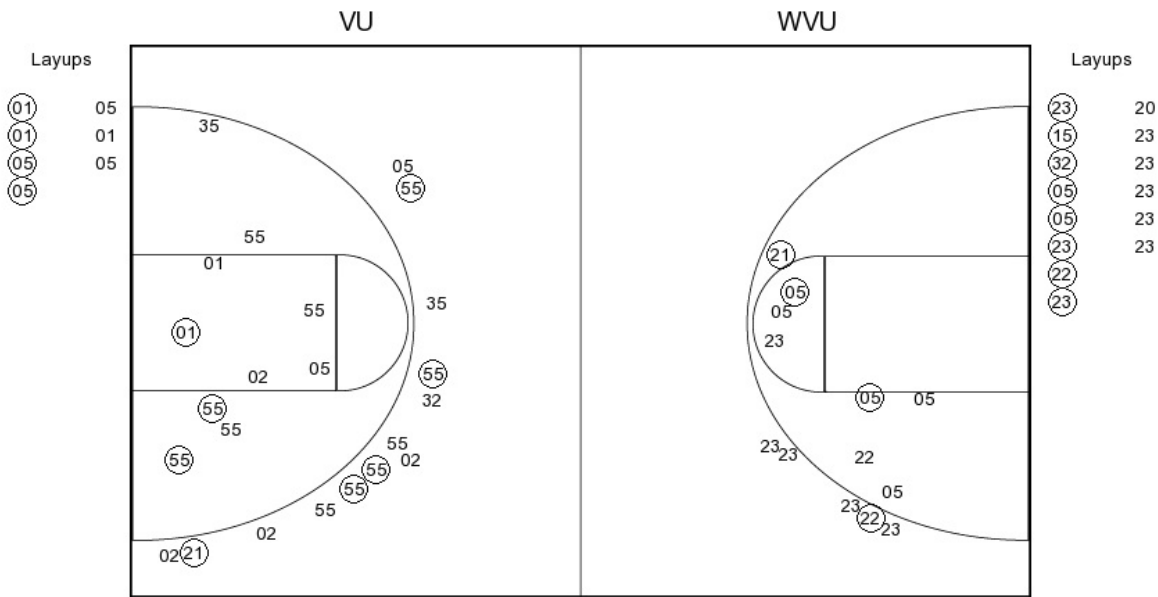
FG Made	12
FG Attempted	30
3PFG Made	0
3PFG Attempted	5

Villanova vs West Virginia

OFFICIAL SHOT CHART

3/29/2015 at WVU Coliseum, Morgantown, W.Va.

PERIOD 2



VU PERIOD 2

FG Made	12
FG Attempted	30
3PFG Made	5
3PFG Attempted	13

WVU PERIOD 2

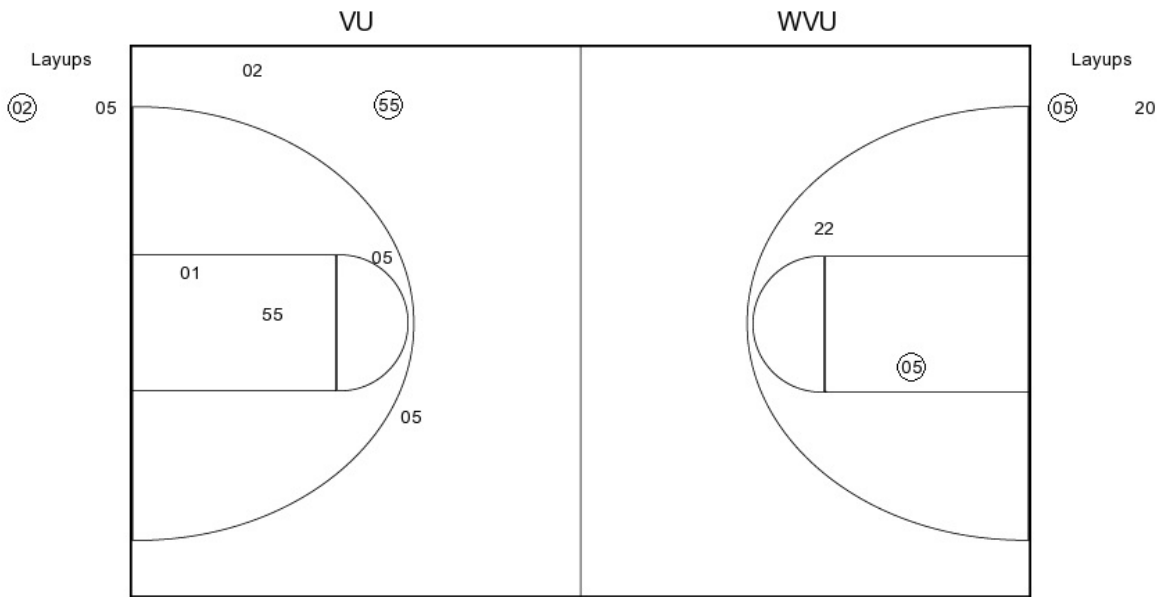
FG Made	12
FG Attempted	27
3PFG Made	1
3PFG Attempted	5

Villanova vs West Virginia

OFFICIAL SHOT CHART

3/29/2015 at WVU Coliseum, Morgantown, W.Va.

PERIOD 3



VU PERIOD 3

FG Made
FG Attempted
3PFG Made
3PFG Attempted

WVU PERIOD 3

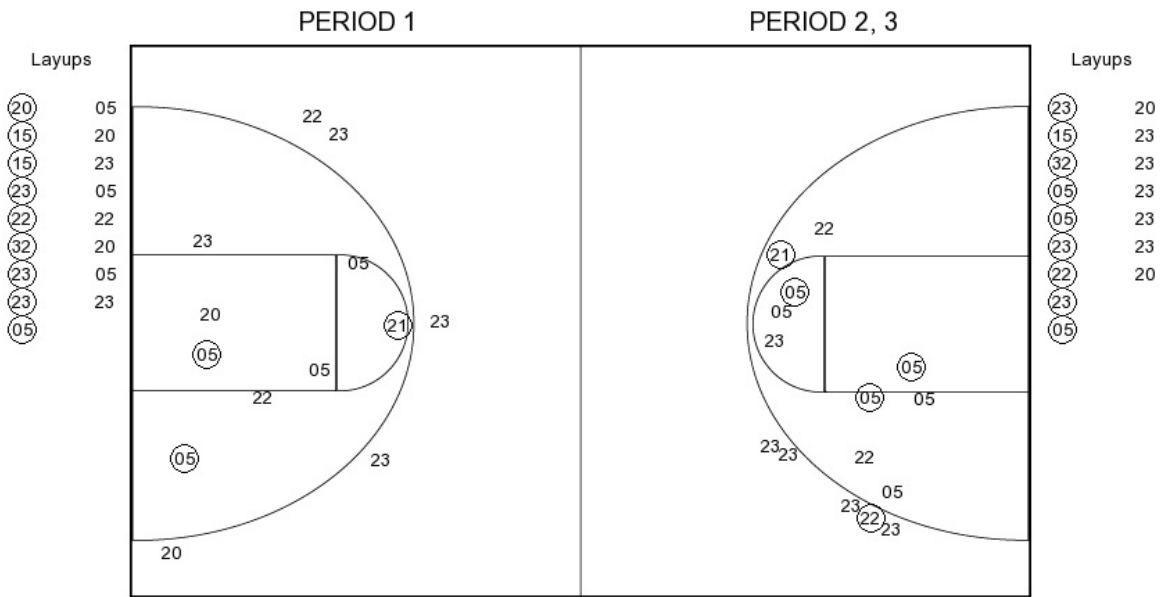
FG Made
FG Attempted
3PFG Made
3PFG Attempted

Villanova vs West Virginia

OFFICIAL SHOT CHART

3/29/2015 at WVU Coliseum, Morgantown, W.Va.

West Virginia



WVU PERIOD 1

FG Made	12
FG Attempted	30
3PFG Made	0
3PFG Attempted	5

WVU PERIOD 2

FG Made	12
FG Attempted	27
3PFG Made	1
3PFG Attempted	5