

LA TECH VS. OLD DOMINION
LA TECH VS. OLD DOMINION



2/22/2015

Ruston, La. (Thomas Assembly Center)

FINAL STATS

Old Dominion

(14-10, 7-6 C-USA)

72

Louisiana Tech

(14-11, 9-5 C-USA)

71

Start Time: 2:30 PM

Officials: Brian Garland; Chancey Muench; Kim Thebo

Attendance: 2722

Official Basketball Box Score -- Game Totals -- Final Statistics

Old Dominion vs Louisiana Tech

2/22/2015 2:30 PM at Ruston, La. (Thomas Assembly Center)

Old Dominion 72 - 14-10, 7-6 C-USA

##	Player	S	Total			3-Ptr			Rebounds			PF	TP	A	TO	Blk	Stl	Min
			FG-FGA	3PT	FG-FGA	FT-FTA	Off Reb	Def Reb	Tot Reb									
11	BETZ-WHITE,ASHLEY	g	2-3	0-0	0-0	2	5	7	3	4	4	3	0	1	31			
23	AJEMBA,IJE	c	0-1	0-0	0-0	0	1	1	1	0	0	1	0	1	11			
25	SIMMS,JENNIE	f	6-19	1-4	1-4	2	4	6	4	14	3	4	0	4	36			
32	MINOR,TIFFANY	f	4-9	3-7	0-0	0	3	3	2	11	6	5	0	0	37			
40	YOUNG,DESTINEE	f	6-15	0-0	1-1	4	6	10	2	13	0	1	3	1	33			
14	HOLOPAINEN,ANNIKA		10-15	6-9	0-0	2	3	5	2	26	3	0	0	2	27			
24	YOUNGER,LAQUANDA		0-1	0-0	0-0	0	0	0	2	0	0	1	0	0	7			
30	JACKSON,ASHLEY		1-2	0-0	0-0	0	1	1	0	2	1	1	0	1	10			
34	OIGBOKIE,ODEGUA		1-2	0-0	0-0	2	2	4	1	2	0	2	1	0	9			
TEAM						1	1	2	0		0							
Totals			30-67	10-20	2-5	13	26	39	17	72	17	18	4	10	201			

FG %	1st Half: 17-34	50.0%	2nd Half: 13-33	39.4%	Game: 30-67	44.8%	Deadball
3FG %	1st Half: 6-11	54.5%	2nd Half: 4-9	44.4%	Game: 10-20	50.0%	Rebounds
FT %	1st Half: 2-5	40.0%	2nd Half: 0-0	0%	Game: 2-5	40.0%	1,0

Louisiana Tech 71 - 14-11, 9-5 C-USA

##	Player	S	Total			3-Ptr			Rebounds			PF	TP	A	TO	Blk	Stl	Min
			FG-FGA	3PT	FG-FGA	FT-FTA	Off Reb	Def Reb	Tot Reb									
01	SHELTON,KELIA	g	5-14	2-7	3-4	5	4	9	4	15	2	0	0	2	26			
02	FRAZIER,WHITNEY	f	5-12	0-1	5-7	3	7	10	0	15	1	3	0	1	38			
10	WALTER,CHRISSTASIA	g	5-11	0-3	2-2	1	4	5	2	12	7	6	1	4	37			
21	ANDREWS,KANEDRIA	g	1-4	1-4	0-0	0	1	1	2	3	0	4	0	1	27			
33	LANGSTON,SAVANNA	f	0-1	0-0	0-0	0	1	1	0	0	0	0	0	0	3			
00	JACKSON,JAQUAN		0-2	0-1	0-0	1	1	2	0	0	0	1	0	0	7			
03	RICHIE,RUBY		0-2	0-2	0-0	0	0	0	2	0	1	0	0	0	13			
24	DAVENPORT,TIARA		1-2	1-2	0-0	0	1	1	0	3	0	0	0	1	8			
25	WINGATE,BRANDI		8-11	0-0	5-6	1	5	6	2	21	2	1	2	1	33			
32	MOTEN,KEVIONE		0-1	0-0	2-2	0	0	0	0	2	0	1	2	0	7			
TEAM						2	2	4	0		0							
Totals			25-60	4-20	17-21	13	26	39	12	71	13	16	5	10	199			

FG %	1st Half: 15-32	46.9%	2nd Half: 10-28	35.7%	Game: 25-60	41.7%	Deadball
3FG %	1st Half: 3-13	23.1%	2nd Half: 1-7	14.3%	Game: 4-20	20.0%	Rebounds
FT %	1st Half: 5-6	83.3%	2nd Half: 12-15	80.0%	Game: 17-21	81.0%	0,0

Officials: Brian Garland; Chancey Muench; Kim Thebo

Technical Fouls: Old Dominion- None. Louisiana Tech- None.

Attendance: 2722

Score by periods	1st	2nd	Total
Old Dominion	42	30	72
Louisiana Tech	38	33	71

	In	Off	2nd	Fast	
Points	Paint	Off T/O	2nd Chance	Fast Break	Bench
Old Dominion	30	17	17	6	30
Louisiana Tech	28	20	17	6	26

Largest lead - Old Dominion by 7 2nd-05:35;
Louisiana Tech by 12 1st-11:09

Score tied - 6 times
Lead changed - 12 times

Official Basketball Box Score -- Game Totals -- First Half Statistics

Old Dominion vs Louisiana Tech

2/22/2015 2:30 PM at Ruston, La. (Thomas Assembly Center)

Old Dominion 42 • 14-10, 7-6 C-USA

##	Player	S	Total			Rebounds			PF	TP	A	TO	Blk	Stl	Min
			FG-FGA	3PT FG-FGA	FT-FTA	Off Reb	Def Reb	Tot Reb							
11	BETZ-WHITE,ASHLEY	g	2-3	0-0	0-0	2	5	7	3	4	4	3	0	1	31
23	AJEMBA,IJE	c	0-1	0-0	0-0	0	1	1	1	0	0	1	0	1	11
25	SIMMS,JENNIE	f	6-19	1-4	1-4	2	4	6	4	14	3	4	0	4	36
32	MINOR, TIFFANY	f	4-9	3-7	0-0	0	3	3	2	11	6	5	0	0	37
40	YOUNG,DESTINEE	f	6-15	0-0	1-1	4	6	10	2	13	0	1	3	1	33
14	HOLOPAINEN,ANNIKA		10-15	6-9	0-0	2	3	5	2	26	3	0	0	2	27
24	YOUNGER,LAQUANDA		0-1	0-0	0-0	0	0	0	2	0	0	1	0	0	7
30	JACKSON,ASHLEY		1-2	0-0	0-0	0	1	1	0	2	1	1	0	1	10
34	OIGBOKIE,ODEGUA		1-2	0-0	0-0	2	2	4	1	2	0	2	1	0	9
TEAM						1	1	2	0		0				
Totals			17-34	6-11	2-5	8	13	21	5		9	11	1	5	

FG %	Half:	17-34	50.0%
3FG %	Half:	6-11	54.5%
FT %	Half:	2-5	40.0%

Louisiana Tech 38 • 14-11, 9-5 C-USA

##	Player	S	Total			Rebounds			PF	TP	A	TO	Blk	Stl	Min
			FG-FGA	3PT FG-FGA	FT-FTA	Off Reb	Def Reb	Tot Reb							
01	SHELTON,KELIA	g	5-14	2-7	3-4	5	4	9	4	15	2	0	0	2	26
02	FRAZIER,WHITNEY	f	5-12	0-1	5-7	3	7	10	0	15	1	3	0	1	38
10	WALTER,CHRISSTASIA	g	5-11	0-3	2-2	1	4	5	2	12	7	6	1	4	37
21	ANDREWS,KANEDRIA	g	1-4	1-4	0-0	0	1	1	2	3	0	4	0	1	27
33	LANGSTON,SAVANNA	f	0-1	0-0	0-0	0	1	1	0	0	0	0	0	0	3
00	JACKSON,JAQUAN		0-2	0-1	0-0	1	1	2	0	0	0	1	0	0	7
03	RICHIE,RUBY		0-2	0-2	0-0	0	0	0	2	0	1	0	0	0	13
24	DAVENPORT, TIARA		1-2	1-2	0-0	0	1	1	0	3	0	0	0	1	8
25	WINGATE,BRANDI		8-11	0-0	5-6	1	5	6	2	21	2	1	2	1	33
32	MOTEN,KEVIONE		0-1	0-0	2-2	0	0	0	0	2	0	1	2	0	7
TEAM						1	1	2	0		0				
Totals			15-32	3-13	5-6	5	11	16	6		8	9	2	6	

FG %	Half:	15-32	46.9%
3FG %	Half:	3-13	23.1%
FT %	Half:	5-6	83.3%

Officials: Brian Garland; Chancey Muench; Kim Thebo

Technical Fouls: Old Dominion- None. Louisiana Tech- None.

	In	Off	2nd	Fast	
Points	Paint	Off T/O	2nd Chance	Fast Break	Bench
Old Dominion	16	10	10	4	22
Louisiana Tech	16	13	4	6	13

Score tied - 3 times

Lead changed - 6 times

Old Dominion vs Louisiana Tech

2/22/2015; 2:30 PM at Ruston, La. (Thomas Assembly Center)

Period 1 Play-By-Play

VISITORS: Old Dominion	Time	Score	Margin	HOME: Louisiana Tech
GOOD! JUMPER by YOUNG,DESTINEE	19:46	0-2	V 2	
ASSIST by SIMMS,JENNIE	19:46			
	19:36	2-2	T	GOOD! JUMPER by SHELTON,KELIA
MISSED JUMPER by SIMMS,JENNIE	19:06			
REBOUND (OFF) by SIMMS,JENNIE	19:06			
MISSED JUMPER by SIMMS,JENNIE	19:03			
	19:03			REBOUND (DEF) by LANGSTON,SAVANNA
	18:55			MISSED 3PTR by SHELTON,KELIA
REBOUND (DEF) by YOUNG,DESTINEE	18:55			
MISSED 3PTR by MINOR,TIFFANY	18:44			
REBOUND (OFF) by TEAM	18:44			
	18:41			SUB IN: WINGATE,BRANDI
	18:41			SUB OUT: LANGSTON,SAVANNA
TURNOVER by MINOR,TIFFANY	18:40			
	18:34			TURNOVER by ANDREWS,KANEDRIA
MISSED JUMPER by SIMMS,JENNIE	18:27			
	18:27			REBOUND (DEF) by FRAZIER,WHITNEY
	18:27			MISSED JUMPER by FRAZIER,WHITNEY
REBOUND (DEF) by BETZ-WHITE,ASHLEY	18:27			
	18:27			STEAL by SHELTON,KELIA
	17:45			MISSED 3PTR by WALTER,CHRISSTASIA
REBOUND (DEF) by BETZ-WHITE,ASHLEY	17:45			
	17:43			FOUL by SHELTON,KELIA
	17:24			FOUL by WINGATE,BRANDI
GOOD! FT by SIMMS,JENNIE	17:24	2-3	V 1	
MISSED FT by SIMMS,JENNIE	17:24			
	17:24			REBOUND (DEF) by FRAZIER,WHITNEY
	17:17	4-3	H 1	GOOD! JUMPER by WINGATE,BRANDI
	17:17			ASSIST by WALTER,CHRISSTASIA
MISSED JUMPER by AJEMBA,IJE	16:57			
	16:57			REBOUND (DEF) by WALTER,CHRISSTASIA
	16:49			TURNOVER by WALTER,CHRISSTASIA
STEAL by SIMMS,JENNIE	16:47			
TURNOVER by YOUNG,DESTINEE	16:45			
	16:44			STEAL by WINGATE,BRANDI
	16:42	6-3	H 3	GOOD! JUMPER by WINGATE,BRANDI
MISSED JUMPER by YOUNG,DESTINEE	16:19			
	16:19			REBOUND (DEF) by WINGATE,BRANDI
	16:12	8-3	H 5	GOOD! JUMPER by SHELTON,KELIA
	16:12			ASSIST by WALTER,CHRISSTASIA
TIMEOUT 30SEC	16:10			
SUB IN: YOUNGER,LAQUANDA	16:10			
SUB IN: OIGBOKIE,ODEGUA	16:10			
SUB OUT: AJEMBA,IJE	16:10			
SUB OUT: MINOR,TIFFANY	16:10			
TURNOVER by YOUNGER,LAQUANDA	16:04			
	16:04			STEAL by WALTER,CHRISSTASIA
	16:02			MISSED JUMPER by WALTER,CHRISSTASIA
	16:02			REBOUND (OFF) by SHELTON,KELIA
	15:36			MISSED JUMPER by FRAZIER,WHITNEY
BLOCK by YOUNG,DESTINEE	15:36			
	15:33			REBOUND (OFF) by TEAM
	15:32			MISSED 3PTR by SHELTON,KELIA
REBOUND (DEF) by BETZ-WHITE,ASHLEY	15:32			
	15:28			FOUL by SHELTON,KELIA
	15:28			SUB IN: RICHIE,RUBY
	15:28			SUB OUT: SHELTON,KELIA
MISSED JUMPER by SIMMS,JENNIE	15:06			
	15:06			REBOUND (DEF) by WINGATE,BRANDI
	14:48			MISSED JUMPER by WINGATE,BRANDI
REBOUND (DEF) by BETZ-WHITE,ASHLEY	14:48			
MISSED LAYUP by OIGBOKIE,ODEGUA	14:34			
REBOUND (OFF) by YOUNG,DESTINEE	14:34			
GOOD! LAYUP by YOUNG,DESTINEE	14:30	8-5	H 3	
	14:30			FOUL by RICHIE,RUBY
GOOD! FT by YOUNG,DESTINEE	14:30	8-6	H 2	
SUB IN: MINOR,TIFFANY	14:30			
SUB OUT: BETZ-WHITE,ASHLEY	14:30			
	14:30			SUB IN: MOTEN,KEVIONE
	14:30			SUB OUT: RICHIE,RUBY
FOUL by OIGBOKIE,ODEGUA	14:20			
	14:20	9-6	H 3	GOOD! FT by WALTER,CHRISSTASIA
	14:20	10-6	H 4	GOOD! FT by WALTER,CHRISSTASIA
MISSED LAYUP by YOUNG,DESTINEE	14:10			

	14:10			BLOCK by MOTEN,KEVIONE
REBOUND (OFF) by OIGBOKIE,ODEGUA	14:08			
TURNOVER by OIGBOKIE,ODEGUA	14:05			
	14:04			STEAL by WALTER,CHRISSTASIA
	13:59			TURNOVER by ANDREWS,KANEDRIA
MISSED JUMPER by SIMMS,JENNIE	13:45			
REBOUND (OFF) by YOUNG,DESTINEE	13:45			
MISSED JUMPER by YOUNG,DESTINEE	13:43			
	13:43			BLOCK by MOTEN,KEVIONE
	13:42			REBOUND (DEF) by TEAM
	13:42			SUB IN: RICHIE,RUBY
	13:42			SUB OUT: ANDREWS,KANEDRIA
	13:30			TURNOVER by WALTER,CHRISSTASIA
MISSED JUMPER by YOUNGER,LAQUANDA	13:14			
	13:14			REBOUND (DEF) by WINGATE,BRANDI
	13:08	12-6	H 6	GOOD! JUMPER by WINGATE,BRANDI
TURNOVER by MINOR,TIFFANY	12:57			
SUB IN: BETZ-WHITE,ASHLEY	12:57			
SUB OUT: SIMMS,JENNIE	12:57			
	12:43	14-6	H 8	GOOD! JUMPER by FRAZIER,WHITNEY
	12:43			ASSIST by WALTER,CHRISSTASIA
MISSED 3PTR by MINOR,TIFFANY	12:34			
	12:34			REBOUND (DEF) by WALTER,CHRISSTASIA
	12:06			MISSED 3PTR by RICHIE,RUBY
	12:06			REBOUND (OFF) by FRAZIER,WHITNEY
	12:02	16-6	H 10	GOOD! LAYUP by FRAZIER,WHITNEY
GOOD! LAYUP by OIGBOKIE,ODEGUA	11:45	16-8	H 8	
FOUL by YOUNG,DESTINEE	11:31			
	11:31			TIMEOUT MEDIA
	11:29	17-8	H 9	GOOD! FT by MOTEN,KEVIONE
	11:29	18-8	H 10	GOOD! FT by MOTEN,KEVIONE
SUB IN: AJEMBA,IJE	11:29			
SUB IN: SIMMS,JENNIE	11:29			
SUB IN: HOLOPAINEN,ANNIKA	11:29			
SUB OUT: YOUNGER,LAQUANDA	11:29			
SUB OUT: OIGBOKIE,ODEGUA	11:29			
SUB OUT: YOUNG,DESTINEE	11:29			
	11:29			SUB IN: DAVENPORT,TIARA
	11:29			SUB IN: ANDREWS,KANEDRIA
	11:29			SUB OUT: RICHIE,RUBY
	11:29			SUB OUT: MOTEN,KEVIONE
TURNOVER by SIMMS,JENNIE	11:21			
	11:09	20-8	H 12	GOOD! LAYUP by WALTER,CHRISSTASIA
	11:09			ASSIST by WINGATE,BRANDI
TURNOVER by MINOR,TIFFANY	10:44			
	10:43			STEAL by ANDREWS,KANEDRIA
	10:37			MISSED 3PTR by ANDREWS,KANEDRIA
REBOUND (DEF) by MINOR,TIFFANY	10:37			
	10:29			FOUL by ANDREWS,KANEDRIA
MISSED FT by SIMMS,JENNIE	10:29			
REBOUND (DEADB) by TEAM	10:29			
MISSED FT by SIMMS,JENNIE	10:29			
	10:29			REBOUND (DEF) by FRAZIER,WHITNEY
	10:14			MISSED 3PTR by FRAZIER,WHITNEY
REBOUND (DEF) by HOLOPAINEN,ANNIKA	10:14			
GOOD! 3PTR by SIMMS,JENNIE	09:59	20-11	H 9	
ASSIST by MINOR,TIFFANY	09:59			
	09:30	22-11	H 11	GOOD! JUMPER by WALTER,CHRISSTASIA
GOOD! JUMPER by MINOR,TIFFANY	09:14	22-13	H 9	
	09:04			MISSED 3PTR by ANDREWS,KANEDRIA
REBOUND (DEF) by SIMMS,JENNIE	09:04			
GOOD! JUMPER by BETZ-WHITE,ASHLEY	08:48	22-15	H 7	
	08:18			TURNOVER by ANDREWS,KANEDRIA
STEAL by AJEMBA,IJE	08:17			
GOOD! LAYUP by HOLOPAINEN,ANNIKA	08:12	22-17	H 5	
ASSIST by MINOR,TIFFANY	08:12			
	08:09			TIMEOUT 30SEC
SUB IN: YOUNG,DESTINEE	08:09			
SUB OUT: AJEMBA,IJE	08:09			
	08:09			SUB IN: RICHIE,RUBY
	08:09			SUB IN: JACKSON,JAQUAN
	08:09			SUB OUT: WALTER,CHRISSTASIA
	08:09			SUB OUT: ANDREWS,KANEDRIA
	07:57			MISSED 3PTR by JACKSON,JAQUAN
	07:57			REBOUND (OFF) by FRAZIER,WHITNEY
	07:37			TURNOVER by JACKSON,JAQUAN
STEAL by HOLOPAINEN,ANNIKA	07:36			
GOOD! 3PTR by MINOR,TIFFANY	07:28	22-20	H 2	
ASSIST by HOLOPAINEN,ANNIKA	07:28			
	07:06	25-20	H 5	GOOD! 3PTR by DAVENPORT,TIARA
	07:06			ASSIST by RICHIE,RUBY
GOOD! LAYUP by HOLOPAINEN,ANNIKA	06:58	25-22	H 3	
ASSIST by MINOR,TIFFANY	06:58			

	06:41				MISSED LAYUP by FRAZIER,WHITNEY
REBOUND (DEF) by SIMMS,JENNIE	06:41				
MISSED 3PTR by MINOR,TIFFANY	06:31				
	06:31				REBOUND (DEF) by DAVENPORT,TIARA
	06:21	27-22	H 5		GOOD! JUMPER by WINGATE,BRANDI
GOOD! 3PTR by HOLOPAINEN,ANNIKA	06:01	27-25	H 2		
ASSIST by BETZ-WHITE,ASHLEY	06:01				
	05:39				MISSED 3PTR by DAVENPORT,TIARA
REBOUND (DEF) by HOLOPAINEN,ANNIKA	05:39				
	05:31				FOUL by RICHIE,RUBY
	05:31				SUB IN: ANDREWS,KANEDRIA
	05:31				SUB IN: MOTEN,KEVIONE
	05:31				SUB IN: WALTER,CHRISSTASIA
	05:31				SUB OUT: DAVENPORT,TIARA
	05:31				SUB OUT: RICHIE,RUBY
	05:31				SUB OUT: WINGATE,BRANDI
MISSED 3PTR by HOLOPAINEN,ANNIKA	05:28				
REBOUND (OFF) by HOLOPAINEN,ANNIKA	05:27				
GOOD! TIPIN by HOLOPAINEN,ANNIKA	05:24	27-27	T		
	05:17				TURNOVER by WALTER,CHRISSTASIA
MISSED JUMPER by YOUNG,DESTINEE	05:02				
REBOUND (OFF) by SIMMS,JENNIE	05:02				
GOOD! 3PTR by HOLOPAINEN,ANNIKA	04:54	27-30	V 3		
ASSIST by SIMMS,JENNIE	04:54				
	04:47				TIMEOUT 30SEC
	04:47				SUB IN: SHELTON,KELIA
	04:47				SUB OUT: JACKSON,JAQUAN
	04:30				MISSED 3PTR by WALTER,CHRISSTASIA
REBOUND (DEF) by TEAM	04:30				
GOOD! 3PTR by HOLOPAINEN,ANNIKA	04:15	27-33	V 6		
ASSIST by BETZ-WHITE,ASHLEY	04:15				
	03:54				TURNOVER by WALTER,CHRISSTASIA
STEAL by SIMMS,JENNIE	03:53				
TURNOVER by SIMMS,JENNIE	03:49				
	03:48				STEAL by FRAZIER,WHITNEY
	03:45	29-33	V 4		GOOD! JUMPER by WALTER,CHRISSTASIA
TIMEOUT 30SEC	03:36				
SUB IN: OIGBOKIE,ODEGUA	03:36				
SUB OUT: HOLOPAINEN,ANNIKA	03:36				
	03:36				SUB IN: RICHIE,RUBY
	03:36				SUB IN: WINGATE,BRANDI
	03:36				SUB OUT: ANDREWS,KANEDRIA
	03:36				SUB OUT: MOTEN,KEVIONE
TURNOVER by BETZ-WHITE,ASHLEY	03:28				
	02:56				MISSED JUMPER by WINGATE,BRANDI
REBOUND (DEF) by YOUNG,DESTINEE	02:56				
TURNOVER by BETZ-WHITE,ASHLEY	02:52				
SUB IN: HOLOPAINEN,ANNIKA	02:52				
SUB OUT: OIGBOKIE,ODEGUA	02:52				
FOUL by BETZ-WHITE,ASHLEY	02:51				
	02:49	32-33	V 1		GOOD! 3PTR by SHELTON,KELIA
	02:49				ASSIST by WALTER,CHRISSTASIA
FOUL by SIMMS,JENNIE	02:33				
TURNOVER by SIMMS,JENNIE	02:33				
	02:19				MISSED JUMPER by SHELTON,KELIA
	02:19				REBOUND (OFF) by SHELTON,KELIA
	01:58	34-33	H 1		GOOD! JUMPER by FRAZIER,WHITNEY
	01:58				ASSIST by WALTER,CHRISSTASIA
MISSED 3PTR by SIMMS,JENNIE	01:48				
REBOUND (OFF) by HOLOPAINEN,ANNIKA	01:48				
GOOD! LAYUP by HOLOPAINEN,ANNIKA	01:45	34-35	V 1		
	01:17	37-35	H 2		GOOD! 3PTR by SHELTON,KELIA
	01:17				ASSIST by WALTER,CHRISSTASIA
GOOD! JUMPER by SIMMS,JENNIE	01:00	37-37	T		
FOUL by MINOR,TIFFANY	00:55				
	00:55	38-37	H 1		GOOD! FT by FRAZIER,WHITNEY
	00:55				MISSED FT by FRAZIER,WHITNEY
REBOUND (DEF) by OIGBOKIE,ODEGUA	00:55				
SUB IN: OIGBOKIE,ODEGUA	00:55				
SUB OUT: YOUNG,DESTINEE	00:55				
	00:55				SUB IN: JACKSON,JAQUAN
	00:55				SUB IN: ANDREWS,KANEDRIA
	00:55				SUB OUT: RICHIE,RUBY
	00:55				SUB OUT: SHELTON,KELIA
GOOD! 3PTR by HOLOPAINEN,ANNIKA	00:40	38-40	V 2		
ASSIST by SIMMS,JENNIE	00:40				
	00:22				TURNOVER by FRAZIER,WHITNEY
STEAL by SIMMS,JENNIE	00:22				
GOOD! LAYUP by SIMMS,JENNIE	00:04	38-42	V 4		

Period 1-only	In Paint	Off T/O	2nd Chance	Fast Break	Bench	
Old Dominion	16	10	10	4	22	Score tied - 4 times
Louisiana Tech	16	13	4	6	13	Lead changed - 6 times

Official Basketball Box Score -- Game Totals -- Second Half Statistics

Old Dominion vs Louisiana Tech

2/22/2015 2:30 PM at Ruston, La. (Thomas Assembly Center)

Old Dominion 30 • 14-10, 7-6 C-USA

##	Player	S	Total			Rebounds			PF	TP	A	TO	Blk	Stl	Min
			FG-FGA	3PT FG-FGA	FT-FTA	Off Reb	Def Reb	Tot Reb							
11	BETZ-WHITE,ASHLEY	g	2-3	0-0	0-0	2	5	7	3	4	4	3	0	1	31
23	AJEMBA,IJE	c	0-1	0-0	0-0	0	1	1	1	0	0	1	0	1	11
25	SIMMS,JENNIE	f	6-19	1-4	1-4	2	4	6	4	14	3	4	0	4	36
32	MINOR, TIFFANY	f	4-9	3-7	0-0	0	3	3	2	11	6	5	0	0	37
40	YOUNG, DESTINEE	f	6-15	0-0	1-1	4	6	10	2	13	0	1	3	1	33
14	HOLOPAINEN,ANNIKA		10-15	6-9	0-0	2	3	5	2	26	3	0	0	2	27
24	YOUNGER,LAQUANDA		0-1	0-0	0-0	0	0	0	2	0	0	1	0	0	7
30	JACKSON,ASHLEY		1-2	0-0	0-0	0	1	1	0	2	1	1	0	1	10
34	OIGBOKIE,ODEGUA		1-2	0-0	0-0	2	2	4	1	2	0	2	1	0	9
TEAM						0	0	0	0		0				
Totals			13-33	4-9	0-0	5	13	18	12		8	7	3	5	

FG %	Half:	13-33	39.4%
3FG %	Half:	4-9	54.5%
FT %	Half:	0-0	0%

Louisiana Tech 33 • 14-11, 9-5 C-USA

##	Player	S	Total			Rebounds			PF	TP	A	TO	Blk	Stl	Min
			FG-FGA	3PT FG-FGA	FT-FTA	Off Reb	Def Reb	Tot Reb							
01	SHELTON,KELIA	g	5-14	2-7	3-4	5	4	9	4	15	2	0	0	2	26
02	FRAZIER,WHITNEY	f	5-12	0-1	5-7	3	7	10	0	15	1	3	0	1	38
10	WALTER,CHRISSTASIA	g	5-11	0-3	2-2	1	4	5	2	12	7	6	1	4	37
21	ANDREWS,KANEDRIA	g	1-4	1-4	0-0	0	1	1	2	3	0	4	0	1	27
33	LANGSTON,SAVANNA	f	0-1	0-0	0-0	0	1	1	0	0	0	0	0	0	3
00	JACKSON,JAQUAN		0-2	0-1	0-0	1	1	2	0	0	0	1	0	0	7
03	RICHIE,RUBY		0-2	0-2	0-0	0	0	0	2	0	1	0	0	0	13
24	DAVENPORT, TIARA		1-2	1-2	0-0	0	1	1	0	3	0	0	0	1	8
25	WINGATE,BRANDI		8-11	0-0	5-6	1	5	6	2	21	2	1	2	1	33
32	MOTEN,KEVIONE		0-1	0-0	2-2	0	0	0	0	2	0	1	2	0	7
TEAM						1	1	2	0		0				
Totals			10-28	1-7	12-15	8	15	23	6		5	7	3	4	

FG %	Half:	10-28	35.7%
3FG %	Half:	1-7	23.1%
FT %	Half:	12-15	80.0%

Officials: Brian Garland; Chancey Muench; Kim Thebo

Technical Fouls: Old Dominion- None. Louisiana Tech- None.

	In	Off	2nd	Fast	
Points	Paint	Off T/O	2nd Chance	Fast Break	Bench
Old Dominion	14	7	7	2	8
Louisiana Tech	12	7	6	0	13

Score tied - 3 times

Lead changed - 6 times

Old Dominion vs Louisiana Tech

2/22/2015; 2:30 PM at Ruston, La. (Thomas Assembly Center)

Period 2 Play-By-Play

VISITORS: Old Dominion	Time	Score	Margin	HOME: Louisiana Tech
TURNOVER by MINOR, TIFFANY	19:45			
	19:27			MISSED JUMPER by LANGSTON, SAVANNA
REBOUND (DEF) by AJEMBA, IJE	19:27			
MISSED JUMPER by MINOR, TIFFANY	19:08			
	19:08			REBOUND (DEF) by TEAM
	18:53	40-42	V 2	GOOD! JUMPER by FRAZIER, WHITNEY
	18:53			ASSIST by SHELTON, KELIA
MISSED JUMPER by SIMMS, JENNIE	18:36			
	18:36			REBOUND (DEF) by SHELTON, KELIA
	18:29	43-42	H 1	GOOD! 3PTR by ANDREWS, KANEDRIA
	18:29			ASSIST by SHELTON, KELIA
GOOD! JUMPER by YOUNG, DESTINEE	18:05	43-44	V 1	
ASSIST by BETZ-WHITE, ASHLEY	18:05			
FOUL by SIMMS, JENNIE	17:53			
	17:53			SUB IN: WINGATE, BRANDI
	17:53			SUB OUT: LANGSTON, SAVANNA
	17:51	45-44	H 1	GOOD! JUMPER by WALTER, CHRISSTASIA
	17:51			ASSIST by WINGATE, BRANDI
TURNOVER by AJEMBA, IJE	17:36			
	17:15	47-44	H 3	GOOD! JUMPER by FRAZIER, WHITNEY
MISSED LAYUP by YOUNG, DESTINEE	17:01			
REBOUND (OFF) by YOUNG, DESTINEE	17:01			
GOOD! LAYUP by YOUNG, DESTINEE	16:58	47-46	H 1	
	16:51			MISSED JUMPER by SHELTON, KELIA
REBOUND (DEF) by YOUNG, DESTINEE	16:51			
MISSED 3PTR by SIMMS, JENNIE	16:39			
	16:39			REBOUND (DEF) by SHELTON, KELIA
FOUL by AJEMBA, IJE	16:25			
	16:25	48-46	H 2	GOOD! FT by WINGATE, BRANDI
	16:25	49-46	H 3	GOOD! FT by WINGATE, BRANDI
SUB IN: HOLOPAINEN, ANNIKA	16:25			
SUB OUT: AJEMBA, IJE	16:25			
	16:25			SUB IN: MOTEN, KEVIONE
	16:25			SUB OUT: WINGATE, BRANDI
	16:06			FOUL by WALTER, CHRISSTASIA
MISSED JUMPER by SIMMS, JENNIE	16:01			
	16:01			REBOUND (DEF) by FRAZIER, WHITNEY
	15:54			MISSED LAYUP by SHELTON, KELIA
	15:54			REBOUND (OFF) by SHELTON, KELIA
	15:49			TIMEOUT TEAM
SUB IN: JACKSON, ASHLEY	15:49			
SUB OUT: BETZ-WHITE, ASHLEY	15:49			
	15:37			TURNOVER by MOTEN, KEVIONE
TIMEOUT MEDIA	15:37			
GOOD! 3PTR by HOLOPAINEN, ANNIKA	15:24	49-49	T	
ASSIST by MINOR, TIFFANY	15:24			
	15:06			MISSED JUMPER by MOTEN, KEVIONE
REBOUND (DEF) by SIMMS, JENNIE	15:06			
GOOD! 3PTR by MINOR, TIFFANY	14:46	49-52	V 3	
ASSIST by HOLOPAINEN, ANNIKA	14:46			
	14:37			MISSED 3PTR by SHELTON, KELIA
REBOUND (DEF) by YOUNG, DESTINEE	14:37			
	14:26			FOUL by ANDREWS, KANEDRIA
	14:26			SUB IN: WINGATE, BRANDI
	14:26			SUB IN: RICHIE, RUBY
	14:26			SUB OUT: ANDREWS, KANEDRIA
	14:26			SUB OUT: MOTEN, KEVIONE
GOOD! JUMPER by SIMMS, JENNIE	14:04	49-54	V 5	
ASSIST by MINOR, TIFFANY	14:04			
	13:35			MISSED 3PTR by SHELTON, KELIA
REBOUND (DEF) by SIMMS, JENNIE	13:35			
MISSED JUMPER by SIMMS, JENNIE	13:24			
REBOUND (OFF) by YOUNG, DESTINEE	13:24			
MISSED JUMPER by YOUNG, DESTINEE	13:22			
	13:22			REBOUND (DEF) by SHELTON, KELIA
FOUL by SIMMS, JENNIE	13:21			
SUB IN: YOUNGER, LAQUANDA	13:21			
SUB OUT: SIMMS, JENNIE	13:21			
	13:00			MISSED 3PTR by RICHIE, RUBY
BLOCK by YOUNG, DESTINEE	13:00			
REBOUND (DEF) by MINOR, TIFFANY	12:55			
TURNOVER by JACKSON, ASHLEY	12:47			
	12:46			STEAL by WALTER, CHRISSTASIA
	12:44			MISSED LAYUP by FRAZIER, WHITNEY

REBOUND (DEF) by JACKSON,ASHLEY	12:44				
MISSED JUMPER by JACKSON,ASHLEY	12:27				
	12:27				REBOUND (DEF) by FRAZIER,WHITNEY
	12:20				MISSED JUMPER by WINGATE,BRANDI
	12:20				REBOUND (OFF) by SHELTON,KELIA
FOUL by YOUNGER,LAQUANDA	12:17				
SUB IN: OIGBOKIE,ODEGUA	12:17				
SUB OUT: YOUNG,DESTINEE	12:17				
	12:14				MISSED JUMPER by FRAZIER,WHITNEY
BLOCK by OIGBOKIE,ODEGUA	12:14				
	12:14				REBOUND (OFF) by TEAM
	12:01	51-54	V 3		GOOD! JUMPER by WINGATE,BRANDI
MISSED 3PTR by HOLOPAINEN,ANNIKA	11:47				
	11:47				BLOCK by WINGATE,BRANDI
REBOUND (OFF) by OIGBOKIE,ODEGUA	11:45				
TURNOVER by OIGBOKIE,ODEGUA	11:42				
	11:41				STEAL by WALTER,CHRISSTASIA
FOUL by YOUNGER,LAQUANDA	11:37				
	11:37				TIMEOUT MEDIA
	11:37	52-54	V 2		GOOD! FT by SHELTON,KELIA
	11:37				MISSED FT by SHELTON,KELIA
REBOUND (DEF) by HOLOPAINEN,ANNIKA	11:37				
SUB IN: SIMMS,JENNIE	11:37				
SUB OUT: YOUNGER,LAQUANDA	11:37				
	11:37				SUB IN: JACKSON,JAQUAN
	11:37				SUB IN: DAVENPORT,TIARA
	11:37				SUB OUT: FRAZIER,WHITNEY
	11:37				SUB OUT: RICHIE,RUBY
TURNOVER by MINOR,TIFFANY	11:25				
	11:25				STEAL by DAVENPORT,TIARA
	11:25				SUB IN: ANDREWS,KANEDRIA
	11:25				SUB OUT: SHELTON,KELIA
	11:12				TURNOVER by ANDREWS,KANEDRIA
STEAL by JACKSON,ASHLEY	11:10				
GOOD! JUMPER by JACKSON,ASHLEY	11:06	52-56	V 4		
	10:39				MISSED 3PTR by ANDREWS,KANEDRIA
	10:39				REBOUND (OFF) by JACKSON,JAQUAN
	10:36				MISSED LAYUP by JACKSON,JAQUAN
REBOUND (DEF) by OIGBOKIE,ODEGUA	10:36				
MISSED JUMPER by SIMMS,JENNIE	10:06				
	10:06				REBOUND (DEF) by JACKSON,JAQUAN
	09:55	54-56	V 2		GOOD! JUMPER by WINGATE,BRANDI
	09:38				FOUL by WINGATE,BRANDI
SUB IN: YOUNG,DESTINEE	09:38				
SUB OUT: OIGBOKIE,ODEGUA	09:38				
	09:38				SUB IN: FRAZIER,WHITNEY
	09:38				SUB IN: SHELTON,KELIA
	09:38				SUB OUT: JACKSON,JAQUAN
	09:38				SUB OUT: DAVENPORT,TIARA
GOOD! JUMPER by YOUNG,DESTINEE	09:32	54-58	V 4		
	09:13				MISSED JUMPER by WALTER,CHRISSTASIA
REBOUND (DEF) by MINOR,TIFFANY	09:13				
MISSED JUMPER by YOUNG,DESTINEE	09:03				
	09:03				REBOUND (DEF) by FRAZIER,WHITNEY
FOUL by YOUNG,DESTINEE	09:00				
	08:33				TURNOVER by WALTER,CHRISSTASIA
STEAL by YOUNG,DESTINEE	08:32				
SUB IN: BETZ-WHITE,ASHLEY	08:28				
SUB OUT: MINOR,TIFFANY	08:28				
	08:27				FOUL by SHELTON,KELIA
GOOD! JUMPER by YOUNG,DESTINEE	08:16	54-60	V 6		
ASSIST by JACKSON,ASHLEY	08:16				
	07:47				MISSED LAYUP by FRAZIER,WHITNEY
BLOCK by YOUNG,DESTINEE	07:47				
REBOUND (DEF) by YOUNG,DESTINEE	07:46				
MISSED 3PTR by HOLOPAINEN,ANNIKA	07:33				
	07:33				REBOUND (DEF) by SHELTON,KELIA
FOUL by BETZ-WHITE,ASHLEY	07:23				
	07:23				TIMEOUT MEDIA
	07:23	55-60	V 5		GOOD! FT by WINGATE,BRANDI
	07:23	56-60	V 4		GOOD! FT by WINGATE,BRANDI
SUB IN: MINOR,TIFFANY	07:23				
SUB OUT: JACKSON,ASHLEY	07:23				
	07:23				SUB IN: RICHIE,RUBY
	07:23				SUB OUT: ANDREWS,KANEDRIA
GOOD! JUMPER by SIMMS,JENNIE	07:01	56-62	V 6		
	06:39				ASSIST by FRAZIER,WHITNEY
	06:39	58-62	V 4		GOOD! LAYUP by WALTER,CHRISSTASIA
MISSED JUMPER by HOLOPAINEN,ANNIKA	06:14				
	06:14				REBOUND (DEF) by FRAZIER,WHITNEY
FOUL by HOLOPAINEN,ANNIKA	05:52				
	05:52				MISSED FT by FRAZIER,WHITNEY
REBOUND (DEF) by BETZ-WHITE,ASHLEY	05:52				

	05:52				SUB IN: ANDREWS,KANEDRIA
	05:52				SUB OUT: RICHIE,RUBY
GOOD! 3PTR by MINOR, TIFFANY	05:35	58-65	V 7		
ASSIST by HOLOPAINEN, ANNIKA	05:35				
	05:08				MISSED 3PTR by WALTER, CHRISSTASIA
	05:08				REBOUND (OFF) by WINGATE, BRANDI
	05:05	60-65	V 5		GOOD! JUMPER by WINGATE, BRANDI
MISSED LAYUP by SIMMS, JENNIE	04:36				
	04:36				REBOUND (DEF) by WINGATE, BRANDI
FOUL by SIMMS, JENNIE	04:34				
	04:34	61-65	V 4		GOOD! FT by WINGATE, BRANDI
	04:34				MISSED FT by WINGATE, BRANDI
	04:34				REBOUND (OFF) by WALTER, CHRISSTASIA
SUB IN: JACKSON, ASHLEY	04:34				
SUB OUT: SIMMS, JENNIE	04:34				
	04:32				TURNOVER by WALTER, CHRISSTASIA
STEAL by HOLOPAINEN, ANNIKA	04:31				
TURNOVER by BETZ-WHITE, ASHLEY	04:17				
	04:17				STEAL by SHELTON, KELIA
FOUL by HOLOPAINEN, ANNIKA	04:13				
	04:12	62-65	V 3		GOOD! FT by SHELTON, KELIA
	04:12	63-65	V 2		GOOD! FT by SHELTON, KELIA
	04:00				FOUL by WALTER, CHRISSTASIA
MISSED JUMPER by YOUNG, DESTINEE	03:50				
	03:50				REBOUND (DEF) by WALTER, CHRISSTASIA
	03:42				TURNOVER by FRAZIER, WHITNEY
TIMEOUT media	03:42				
MISSED JUMPER by YOUNG, DESTINEE	03:25				
	03:25				BLOCK by WINGATE, BRANDI
	03:23				REBOUND (DEF) by WINGATE, BRANDI
	03:11				MISSED JUMPER by WALTER, CHRISSTASIA
REBOUND (DEF) by YOUNG, DESTINEE	03:11				
TIMEOUT 30SEC	02:59				
SUB IN: SIMMS, JENNIE	02:59				
SUB OUT: JACKSON, ASHLEY	02:59				
MISSED 3PTR by MINOR, TIFFANY	02:43				
REBOUND (OFF) by BETZ-WHITE, ASHLEY	02:43				
	02:38				FOUL by SHELTON, KELIA
GOOD! LAYUP by BETZ-WHITE, ASHLEY	02:33	63-67	V 4		
	02:16				TURNOVER by WINGATE, BRANDI
STEAL by BETZ-WHITE, ASHLEY	02:15				
TURNOVER by SIMMS, JENNIE	02:11				
	02:00				MISSED 3PTR by SHELTON, KELIA
	02:00				REBOUND (OFF) by SHELTON, KELIA
	01:56				MISSED LAYUP by SHELTON, KELIA
	01:56				REBOUND (OFF) by FRAZIER, WHITNEY
FOUL by BETZ-WHITE, ASHLEY	01:54				
	01:54	64-67	V 3		GOOD! FT by FRAZIER, WHITNEY
	01:54	65-67	V 2		GOOD! FT by FRAZIER, WHITNEY
MISSED LAYUP by HOLOPAINEN, ANNIKA	01:43				
	01:43				REBOUND (DEF) by ANDREWS, KANEDRIA
	01:33	67-67	T		GOOD! JUMPER by WINGATE, BRANDI
	01:33				ASSIST by WALTER, CHRISSTASIA
TIMEOUT 30SEC	01:21				
MISSED 3PTR by SIMMS, JENNIE	01:16				
	01:16				REBOUND (DEF) by WALTER, CHRISSTASIA
FOUL by MINOR, TIFFANY	01:07				
	01:07	68-67	H 1		GOOD! FT by FRAZIER, WHITNEY
	01:07	69-67	H 2		GOOD! FT by FRAZIER, WHITNEY
GOOD! LAYUP by SIMMS, JENNIE	00:52	69-69	T		
ASSIST by BETZ-WHITE, ASHLEY	00:52				
	00:37				TIMEOUT 30SEC
SUB IN: AJEMBA, IJE	00:37				
SUB OUT: HOLOPAINEN, ANNIKA	00:37				
	00:20	71-69	H 2		GOOD! JUMPER by SHELTON, KELIA
MISSED LAYUP by BETZ-WHITE, ASHLEY	00:12				
	00:12				BLOCK by WALTER, CHRISSTASIA
REBOUND (OFF) by BETZ-WHITE, ASHLEY	00:12				
SUB IN: HOLOPAINEN, ANNIKA	00:04				
SUB OUT: AJEMBA, IJE	00:04				
	00:04				SUB IN: DAVENPORT, TIARA
	00:04				SUB OUT: ANDREWS, KANEDRIA
GOOD! 3PTR by HOLOPAINEN, ANNIKA	00:03	71-72	V 1		
ASSIST by MINOR, TIFFANY	00:03				
	00:01				TURNOVER by FRAZIER, WHITNEY
STEAL by SIMMS, JENNIE	00:01				

Period 2-only	in Paint	OTT T/O	znd Chance	rast Break	Bench	
Old Dominion	14	7	7	2	8	Score tied - 4 times
Louisiana Tech	12	7	6	0	13	Lead changed - 6 times

Old Dominion vs Louisiana Tech

2/22/2015; 2:30 PM at Ruston, La. (Thomas Assembly Center)

Scoring/Runs Reference

Period 1			Period 2		
Old Dominion	Score	Louisiana Tech	Old Dominion	Score	Louisiana Tech
19:46 - YOUNG JUMPER	2	2-0 -2	19:45 - MINOR TURN	TO	
					X
					LANGSTON JUMPER - 19:27
19:06 - SIMMS JUMPER	X		19:08 - MINOR JUMPER	X	
19:03 - SIMMS JUMPER	X				42-40 -2
					2
					FRAZIER JUMPER - 18:53
			18:36 - SIMMS JUMPER	X	
					42-43 1
					3
					ANDREWS 3PTR - 18:29
18:44 - MINOR 3PTR	X		18:05 - YOUNG JUMPER	2	
18:40 - MINOR TURN	TO				44-43 -1
					2
					WALTER JUMPER - 17:51
18:27 - SIMMS JUMPER	X		17:36 - AJEMBA TURN	TO	
					44-47 3
					2P
					FRAZIER JUMPER - 17:15
			17:01 - YOUNG LAYUP	X	
			16:58 - YOUNG LAYUP	2P	
					46-47 1
					X
					SHELTON JUMPER - 16:51
17:24 - SIMMS FT	1	3-2 -1	16:39 - SIMMS 3PTR	X	
17:24 - SIMMS FT	X				46-48 2
					1
					WINGATE FT - 16:25
					46-49 3
					1
					WINGATE FT - 16:25
16:57 - AJEMBA JUMPER	X		16:01 - SIMMS JUMPER	X	
					X
					SHELTON LAYUP - 15:54
16:45 - YOUNG TURN	TO				TO
					MOTEN TURN - 15:37
					3
					49-49 0
					X
					MOTEN JUMPER - 15:06
16:19 - YOUNG JUMPER	X		15:24 - HOLOPAINEN 3PTR	3	
					X
					SHELTON 3PTR - 14:37
					3
					52-49 -3
					X
					SHELTON 3PTR - 14:04
					2P
					54-49 -5
					X
					SHELTON 3PTR - 13:35
					X
					SHELTON 3PTR - 13:24
					X
					SHELTON 3PTR - 13:22
					X
					SHELTON 3PTR - 13:00
					X
					WALTER TURN - 12:47
					TO
					X
					FRAZIER LAYUP - 12:44
					X
					WINGATE JUMPER - 12:27
					X
					FRAZIER JUMPER - 12:20
					X
					FRAZIER JUMPER - 12:14
					54-51 -3
					2P
					WINGATE JUMPER - 12:01
					X
					WINGATE JUMPER - 11:47
					TO
					54-52 -2
					1
					SHELTON FT - 11:37
					X
					SHELTON FT - 11:37
					TO
					ANDREWS TURN - 11:25
					TO
					ANDREWS TURN - 11:12
					2PF
					56-52 -4
					X
					ANDREWS 3PTR - 10:39
					X
					JACKSON LAYUP - 10:36
					X
					WINGATE JUMPER - 10:06
					56-54 -2
					2
					WINGATE JUMPER - 09:55
					2P
					58-54 -4
					X
					WALTER JUMPER - 09:32
					X
					WALTER JUMPER - 09:13
					X
					WALTER TURN - 09:03
					TO
					WALTER TURN - 08:33
					2P
					60-54 -6
					X
					FRAZIER LAYUP - 08:16
					X
					FRAZIER LAYUP - 07:33
					X
					HOLOPAINEN 3PTR - 07:33
					60-55

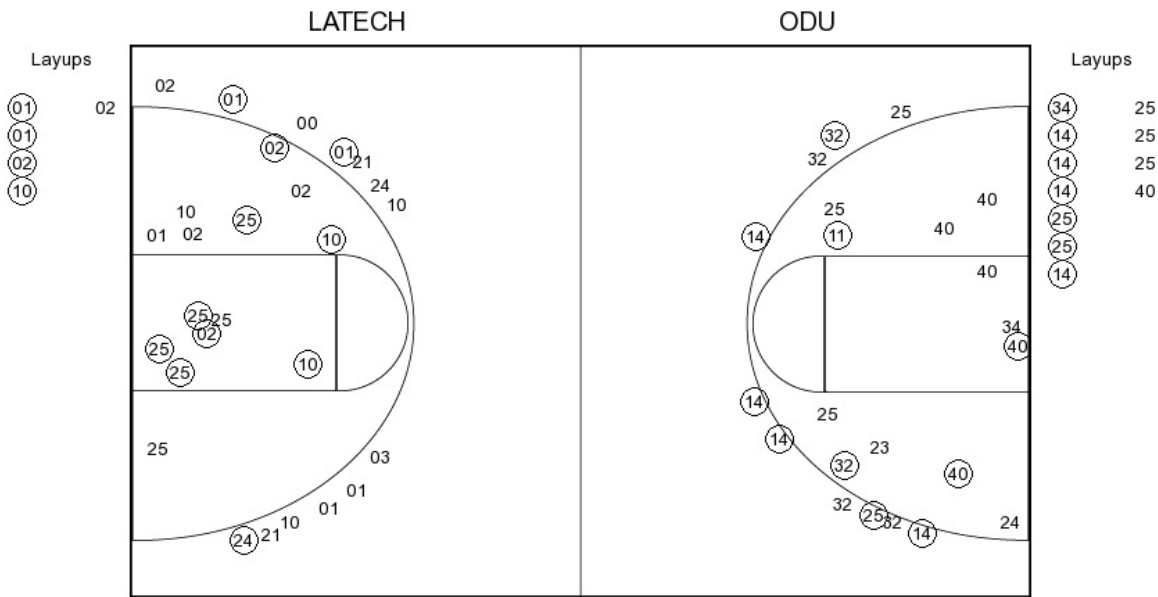
		8-20 12	2 ^P	WALTER LAYUP - 11:09		55-55	1	WINGATE FT - 07:23
10:44 - MINOR TURN	TO					60-56 4	1	WINGATE FT - 07:23
			X	ANDREWS 3PTR - 10:37	07:01 - SIMMS JUMPER	2	62-56 6	
10:29 - SIMMS FT		X					62-58 4	2 ^P WALTER LAYUP - 06:39
10:29 - SIMMS FT		X			06:14 - HOLOPAINEN JUMPER	X		
			X	FRAZIER 3PTR - 10:14				X
09:59 - SIMMS 3PTR		3	11-20 9					FRAZIER FT - 05:52
				WALTER JUMPER - 09:30	05:35 - MINOR 3PTR	3	65-58 7	
09:14 - MINOR JUMPER		2	13-22 9					X
			X	ANDREWS 3PTR - 09:04				WALTER 3PTR - 05:08
08:48 - BETZ-WHITE JUMPER		2	15-22 7		04:36 - SIMMS LAYUP	X		
	TO			ANDREWS TURN - 08:18				65-60 5
08:12 - HOLOPAINEN LAYUP		2 ^{PF}	17-22 5					2 ^P WINGATE JUMPER - 05:05
			X	JACKSON 3PTR - 07:57				65-61 4
	TO			JACKSON TURN - 07:37				X
07:28 - MINOR 3PTR		3	20-22 2		04:17 - BETZ-WHITE TURN	TO		65-62 3
				DAVENPORT 3PTR - 07:06				1
06:58 - HOLOPAINEN LAYUP		2 ^{PF}	22-25 3					65-63 2
			X	FRAZIER LAYUP - 06:41	03:50 - YOUNG JUMPER	X		1
06:31 - MINOR 3PTR		X						TO
				WINGATE JUMPER - 06:21				X
06:01 - HOLOPAINEN 3PTR		3	25-27 2		03:25 - YOUNG JUMPER	X		
			X	DAVENPORT 3PTR - 05:39				X
05:28 - HOLOPAINEN 3PTR		X			02:43 - MINOR 3PTR	X		
05:24 - HOLOPAINEN TIPIN		2 ^P	27-27 0		02:33 - BETZ-WHITE LAYUP	2 ^P	67-63 4	
	TO			WALTER TURN - 05:17				TO
05:02 - YOUNG JUMPER		X			02:11 - SIMMS TURN	TO		X
04:54 - HOLOPAINEN 3PTR		3	30-27 3					X
			X	WALTER 3PTR - 04:30				X
04:15 - HOLOPAINEN 3PTR		3	33-27 6					67-64 3
	TO			WALTER TURN - 03:54	01:43 - HOLOPAINEN LAYUP	X		1
03:49 - SIMMS TURN	TO			WALTER JUMPER - 03:45				67-65 2
								1
03:28 - BETZ-WHITE TURN	TO			WINGATE JUMPER - 02:56				67-67 0
			X		01:16 - SIMMS 3PTR	X		2 ^P WINGATE JUMPER - 01:33
02:52 - BETZ-WHITE TURN	TO			SHELTON 3PTR - 02:49				67-68 1
								1
02:33 - SIMMS TURN	TO			SHELTON JUMPER - 02:19				67-69 2
				FRAZIER JUMPER - 01:58				2 ^P 69-69 0
01:48 - SIMMS 3PTR		X						69-71 2
01:45 - HOLOPAINEN LAYUP		2 ^P	35-34 1		00:52 - SIMMS LAYUP	2 ^P		2 ^P SHELTON JUMPER - 00:20
								X
01:00 - SIMMS JUMPER		2 ^P	35-37 2		00:12 - BETZ-WHITE LAYUP	X		
				SHELTON 3PTR - 01:17				3
					00:03 - HOLOPAINEN 3PTR	3	72-71 1	
01:00 - SIMMS JUMPER		2 ^P	37-37 0					TO
				FRAZIER FT - 00:55				FRAZIER TURN - 00:01
				FRAZIER FT - 00:55				
00:40 - HOLOPAINEN 3PTR		3	40-38 2					
	TO			FRAZIER TURN - 00:22				
00:04 - SIMMS LAYUP		2 ^P	42-38 4					

Old Dominion vs Louisiana Tech

OFFICIAL SHOT CHART

2/22/2015 at Ruston, La. (Thomas Assembly Center)

PERIOD 1



ODU PERIOD 1

FG Made	17
FG Attempted	34
3PFG Made	6
3PFG Attempted	11

LATECH PERIOD 1

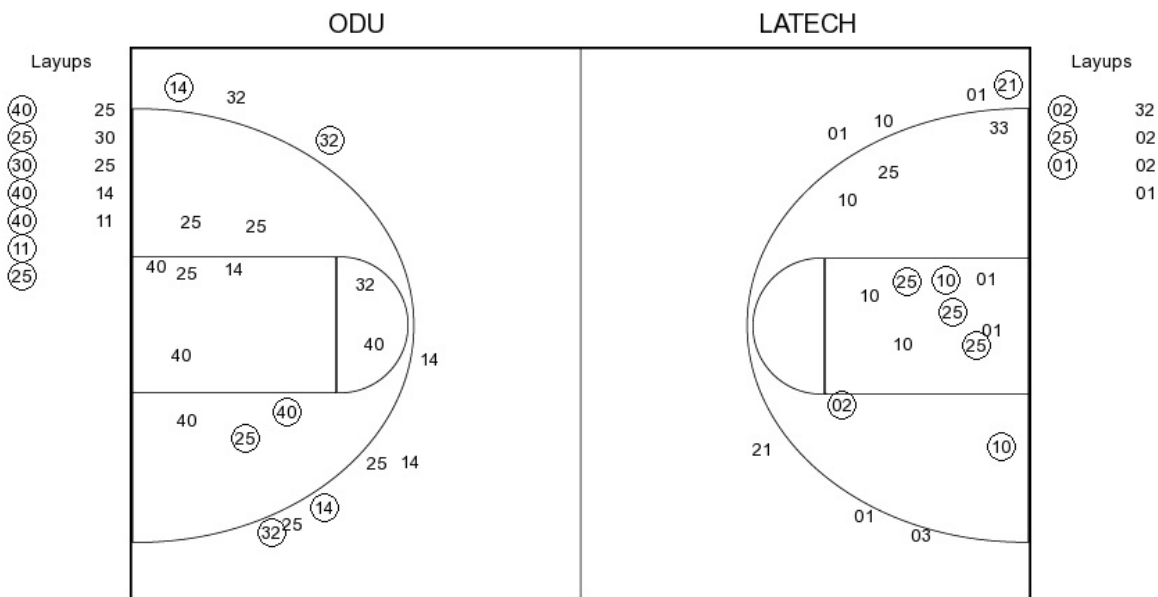
FG Made	15
FG Attempted	32
3PFG Made	3
3PFG Attempted	13

Old Dominion vs Louisiana Tech

OFFICIAL SHOT CHART

2/22/2015 at Ruston, La. (Thomas Assembly Center)

PERIOD 2



ODU PERIOD 2

FG Made	13
FG Attempted	33
3PFG Made	4
3PFG Attempted	9

LATECH PERIOD 2

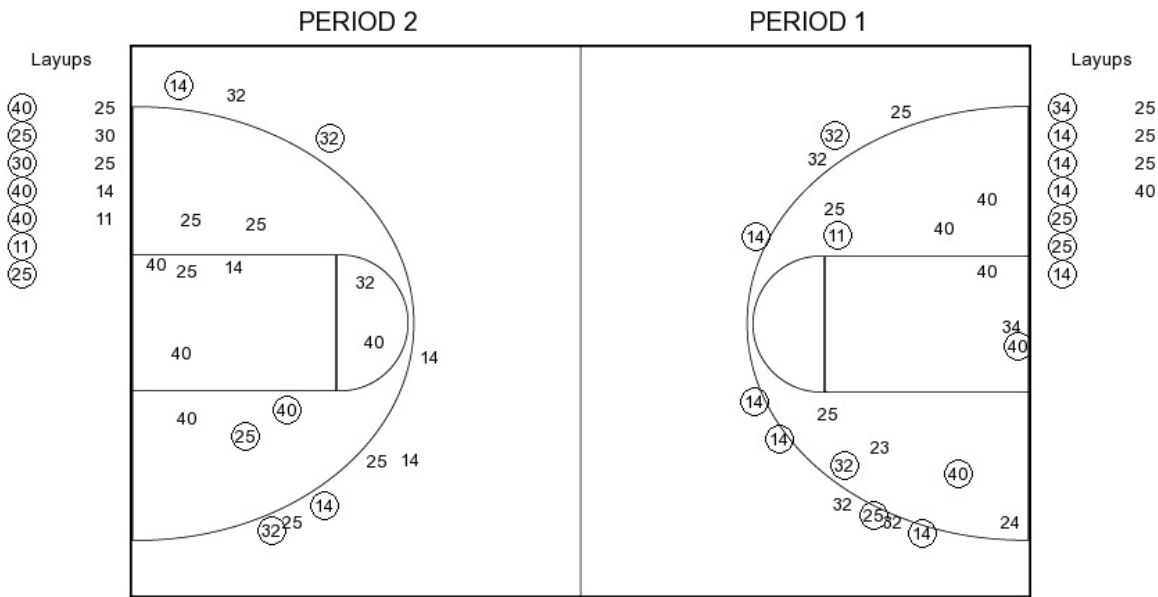
FG Made	10
FG Attempted	28
3PFG Made	1
3PFG Attempted	7

Old Dominion vs Louisiana Tech

OFFICIAL SHOT CHART

2/22/2015 at Ruston, La. (Thomas Assembly Center)

Old Dominion



ODU PERIOD 1

FG Made	17
FG Attempted	34
3PFG Made	6
3PFG Attempted	11

ODU PERIOD 2

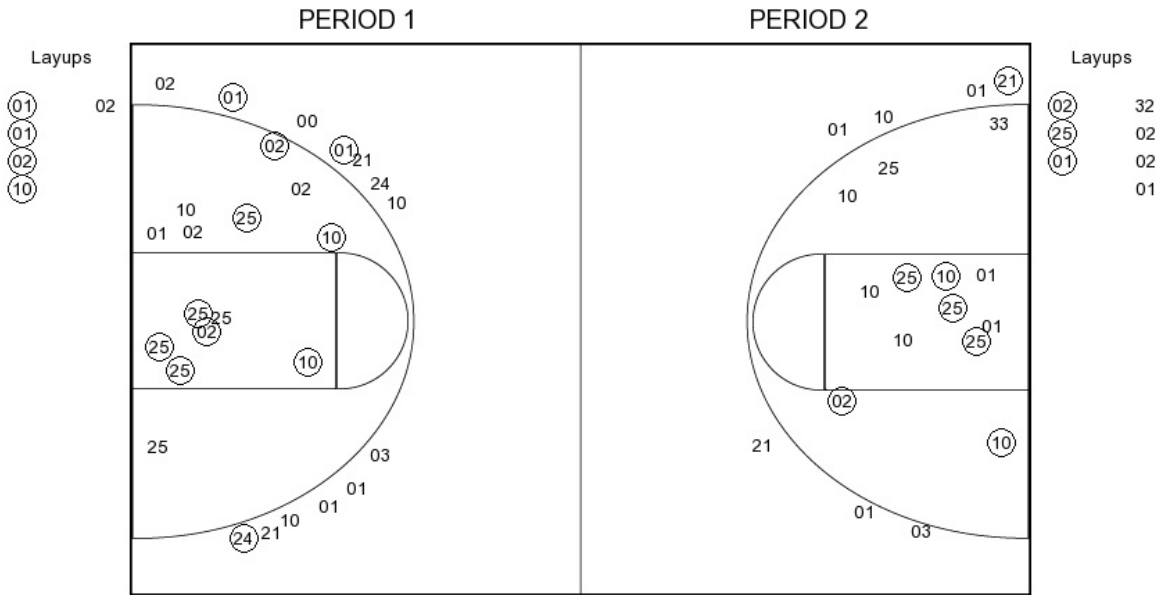
FG Made	13
FG Attempted	33
3PFG Made	4
3PFG Attempted	9

Old Dominion vs Louisiana Tech

OFFICIAL SHOT CHART

2/22/2015 at Ruston, La. (Thomas Assembly Center)

Louisiana Tech



LATECH PERIOD 1

FG Made	15
FG Attempted	32
3PFG Made	3
3PFG Attempted	13

LATECH PERIOD 2

FG Made	10
FG Attempted	28
3PFG Made	1
3PFG Attempted	7