

PITTSBURGH @ WAKE FOREST



3/1/2015

Winston-Salem, N.C. - LJVM Coliseum

FINAL STATS

Wake Forest

(12-16, 4-11 ACC)

69

Pittsburgh

(19-10, 8-7 ACC)

66

Start Time: 6:30 p.m.

Officials: Bryan Kersey, Roger Ayers, Joe Lindsay

Attendance: 10109

Official Basketball Box Score -- Game Totals -- Final Statistics

Pittsburgh vs Wake Forest

3/1/2015 6:30 p.m. at Winston-Salem, N.C. - LJVM Coliseum

Pittsburgh 66 - 19-10, 8-7 ACC

##	Player	S	Total			Rebounds			PF	TP	A	TO	Blk	Stl	Min
			FG-FGA	3PT FG-FGA	FT-FTA	Off Reb	Def Reb	Tot Reb							
00	ROBINSON,JAMES	g	1-6	0-3	4-4	0	4	4	3	6	4	0	0	1	37
01	ARTIS,JAMEL	f	7-16	4-5	1-2	6	3	9	2	19	1	4	0	1	37
02	YOUNG,MICHAEL	f	7-13	2-2	6-8	2	6	8	2	22	1	0	1	1	32
03	WRIGHT,CAMERON	g	5-12	0-0	1-4	2	3	5	4	11	6	2	0	1	36
21	JETER,SHELDON	f	0-3	0-0	0-0	4	5	9	2	0	2	1	0	1	27
11	RANDALL,DERRICK		2-2	0-0	0-1	1	0	1	2	4	0	0	0	0	8
12	JONES,CHRIS		2-5	0-1	0-0	1	3	4	4	4	1	1	0	0	18
13	NEWKIRK,JOSH		0-1	0-0	0-0	0	0	0	1	0	0	3	0	0	6
TEAM						1	2	3	0		0				
Totals			24-58	6-11	12-19	17	26	43	20	66	15	11	1	5	201

FG %	1st Half: 14-29	48.3%	2nd Half: 10-29	34.5%	Game: 24-58	41.4%	Deadball
3FG %	1st Half: 4-6	66.7%	2nd Half: 2-5	40.0%	Game: 6-11	54.5%	Rebounds
FT %	1st Half: 3-6	50.0%	2nd Half: 9-13	69.2%	Game: 12-19	63.2%	1,0

Wake Forest 69 - 12-16, 4-11 ACC

##	Player	S	Total			Rebounds			PF	TP	A	TO	Blk	Stl	Min
			FG-FGA	3PT FG-FGA	FT-FTA	Off Reb	Def Reb	Tot Reb							
00	MILLER-MCINTYRE.CODI	g	3-8	0-3	7-13	0	7	7	2	13	5	2	0	1	31
02	THOMAS,DEVIN	f	3-6	0-0	0-2	1	5	6	3	6	1	2	0	1	27
10	WILBEKIN,MITCHELL	g	5-5	4-4	0-0	0	1	1	3	14	1	0	0	1	28
13	LEONARD,DARIUS	f	2-8	2-6	1-2	2	3	5	0	7	0	0	1	0	25
25	HUDSON,CORNELIUS	f	3-6	1-3	4-4	1	3	4	4	11	1	2	0	1	24
01	JONES,MADISON		1-3	0-0	1-2	0	1	1	3	3	3	0	0	2	20
04	GREEN,DANIEL		0-0	0-0	0-0	0	0	0	0	0	0	0	0	0	1
11	MCCLINTON,GREG		3-4	0-0	0-1	1	2	3	0	6	2	0	0	1	15
33	ROUNTREE,AARON		0-0	0-0	1-2	0	0	0	0	1	0	0	0	0	6
44	MITOGLOU,DINOS		2-6	2-4	2-2	0	1	1	0	8	0	0	1	0	21
52	NIEDRICH,DOUG		0-1	0-0	0-0	0	0	0	0	0	0	0	0	0	1
TEAM						0	0	0	0		0				
Totals			22-47	9-20	16-28	5	23	28	15	69	13	6	2	7	199

FG %	1st Half: 13-27	48.1%	2nd Half: 9-20	45.0%	Game: 22-47	46.8%	Deadball
3FG %	1st Half: 7-12	58.3%	2nd Half: 2-8	25.0%	Game: 9-20	45.0%	Rebounds
FT %	1st Half: 4-9	44.4%	2nd Half: 12-19	63.2%	Game: 16-28	57.1%	6,0

Officials: Bryan Kersey, Roger Ayers, Joe Lindsay

Technical Fouls: Pittsburgh- None. Wake Forest- None.

Attendance: 10109

Score by periods	1st	2nd	Total
Pittsburgh	35	31	66
Wake Forest	37	32	69

	In	Off	2nd	Fast	
Points	Paint	Off T/O	2nd Chance	Fast Break	Bench
Pittsburgh	26	6	18	2	8
Wake Forest	20	14	18	6	18

Largest lead - Pittsburgh by 9 2nd-12:55;

Wake Forest by 9 1st-08:24

Score tied - 3 times

Lead changed - 2 times

Official Basketball Box Score -- Game Totals -- First Half Statistics

Pittsburgh vs Wake Forest

3/1/2015 6:30 p.m. at Winston-Salem, N.C. - LJVM Coliseum

Pittsburgh 35 • 19-10, 8-7 ACC

##	Player	S	Total	3-Ptr	FT-FTA	Rebounds			PF	TP	A	TO	Blk	Stl	Min
			FG-FGA	3PT FG-FGA		Off Reb	Def Reb	Tot Reb							
00	ROBINSON,JAMES	g	1-6	0-3	4-4	0	4	4	3	6	4	0	0	1	37
01	ARTIS,JAMEL	f	7-16	4-5	1-2	6	3	9	2	19	1	4	0	1	37
02	YOUNG,MICHAEL	f	7-13	2-2	6-8	2	6	8	2	22	1	0	1	1	32
03	WRIGHT,CAMERON	g	5-12	0-0	1-4	2	3	5	4	11	6	2	0	1	36
21	JETER,SHELDON	f	0-3	0-0	0-0	4	5	9	2	0	2	1	0	1	27
11	RANDALL,DERRICK		2-2	0-0	0-1	1	0	1	2	4	0	0	0	0	8
12	JONES,CHRIS		2-5	0-1	0-0	1	3	4	4	4	1	1	0	0	18
13	NEWKIRK,JOSH		0-1	0-0	0-0	0	0	0	1	0	0	3	0	0	6
TEAM						0	2	2	0		0				
Totals			14-29	4-6	3-6	6	13	19	9		7	4	0	2	

FG %	Half:	14-29	48.3%
3FG %	Half:	4-6	66.7%
FT %	Half:	3-6	50.0%

Wake Forest 37 • 12-16, 4-11 ACC

##	Player	S	Total	3-Ptr	FT-FTA	Rebounds			PF	TP	A	TO	Blk	Stl	Min
			FG-FGA	3PT FG-FGA		Off Reb	Def Reb	Tot Reb							
00	MILLER-MCINTYRE,CODI	g	3-8	0-3	7-13	0	7	7	2	13	5	2	0	1	31
02	THOMAS,DEVIN	f	3-6	0-0	0-2	1	5	6	3	6	1	2	0	1	27
10	WILBEKIN,MITCHELL	g	5-5	4-4	0-0	0	1	1	3	14	1	0	0	1	28
13	LEONARD,DARIUS	f	2-8	2-6	1-2	2	3	5	0	7	0	0	1	0	25
25	HUDSON,CORNELIUS	f	3-6	1-3	4-4	1	3	4	4	11	1	2	0	1	24
01	JONES,MADISON		1-3	0-0	1-2	0	1	1	3	3	3	0	0	2	20
04	GREEN,DANIEL		0-0	0-0	0-0	0	0	0	0	0	0	0	0	0	1
11	MCCLINTON,GREG		3-4	0-0	0-1	1	2	3	0	6	2	0	0	1	15
33	ROUNTREE,AARON		0-0	0-0	1-2	0	0	0	0	1	0	0	0	0	6
44	MITOGLOU,DINOS		2-6	2-4	2-2	0	1	1	0	8	0	0	1	0	21
52	NIEDRICH,DOUG		0-1	0-0	0-0	0	0	0	0	0	0	0	0	0	1
TEAM						0	0	0	0		0				
Totals			13-27	7-12	4-9	4	12	16	6		10	3	1	4	

FG %	Half:	13-27	48.1%
3FG %	Half:	7-12	58.3%
FT %	Half:	4-9	44.4%

Officials: Bryan Kersey, Roger Ayers, Joe Lindsay

Technical Fouls: Pittsburgh- None. Wake Forest- None.

	In	Off	2nd	Fast	
Points	Paint	Off T/O	2nd Chance	Fast Break	Bench
Pittsburgh	16	2	9	0	4
Wake Forest	10	4	8	2	14

Score tied - 0 times

Lead changed - 0 times

Pittsburgh vs Wake Forest

3/1/2015; 6:30 p.m. at Winston-Salem, N.C. - LJVM Coliseum

Period 1 Play-By-Play

VISITORS: Pittsburgh	Time	Score	Margin	HOME: Wake Forest
	19:48	3-0	H 3	GOOD! 3PTR by LEONARD,DARIUS
	19:48			ASSIST by MILLER-MCINTYRE,CODI
TURNOVER by ARTIS,JAMEL	19:22			
	19:21			STEAL by THOMAS,DEVIN
	19:12			TURNOVER by MILLER-MCINTYRE,CODI
STEAL by ROBINSON,JAMES	19:11			
GOOD! JUMPER by WRIGHT,CAMERON	19:05	3-2	H 1	
	18:43	6-2	H 4	GOOD! 3PTR by HUDSON,CORNELIUS
	18:43			ASSIST by WILBEKIN,MITCHELL
	18:27			FOUL by MILLER-MCINTYRE,CODI
GOOD! 3PTR by ARTIS,JAMEL	18:05	6-5	H 1	
ASSIST by YOUNG,MICHAEL	18:05			
	17:36			TURNOVER by HUDSON,CORNELIUS
STEAL by JETER,SHELDON	17:35			
MISSED JUMPER by ARTIS,JAMEL	17:32			
	17:32			REBOUND (DEF) by HUDSON,CORNELIUS
	17:17			FOUL by HUDSON,CORNELIUS
	17:17			TURNOVER by HUDSON,CORNELIUS
MISSED JUMPER by YOUNG,MICHAEL	16:51			
	16:51			REBOUND (DEF) by THOMAS,DEVIN
	16:42	8-5	H 3	GOOD! LAYUP by HUDSON,CORNELIUS
	16:42			ASSIST by MILLER-MCINTYRE,CODI
MISSED LAYUP by YOUNG,MICHAEL	16:25			
	16:25			REBOUND (DEF) by THOMAS,DEVIN
	16:05	10-5	H 5	GOOD! JUMPER by THOMAS,DEVIN
MISSED JUMPER by WRIGHT,CAMERON	15:39			
REBOUND (OFF) by ARTIS,JAMEL	15:39			
MISSED LAYUP by ARTIS,JAMEL	15:34			
	15:34			REBOUND (DEF) by WILBEKIN,MITCHELL
	15:23	13-5	H 8	GOOD! 3PTR by WILBEKIN,MITCHELL
	15:23			ASSIST by MILLER-MCINTYRE,CODI
TIMEOUT 30SEC	15:17			
SUB IN: JONES,CHRIS	15:17			
SUB OUT: JETER,SHELDON	15:17			
	15:17			SUB IN: JONES,MADISON
	15:17			SUB IN: MITOGLOU,DINOS
	15:17			SUB OUT: LEONARD,DARIUS
	15:17			SUB OUT: HUDSON,CORNELIUS
GOOD! LAYUP by ROBINSON,JAMES	15:04	13-7	H 6	
ASSIST by WRIGHT,CAMERON	15:01			
	14:58			MISSED LAYUP by JONES,MADISON
REBOUND (DEF) by JONES,CHRIS	14:58			
	14:30			FOUL by WILBEKIN,MITCHELL
TIMEOUT MEDIA	14:30			
GOOD! FT by WRIGHT,CAMERON	14:30	13-8	H 5	
MISSED FT by WRIGHT,CAMERON	14:30			
REBOUND (OFF) by WRIGHT,CAMERON	14:30			
SUB IN: RANDALL,DERRICK	14:30			
SUB OUT: YOUNG,MICHAEL	14:30			
	14:30			SUB IN: ROUNTREE,AARON
	14:30			SUB OUT: THOMAS,DEVIN
GOOD! 3PTR by ARTIS,JAMEL	14:06	13-11	H 2	
ASSIST by WRIGHT,CAMERON	14:06			
	13:43			MISSED 3PTR by MILLER-MCINTYRE,CODI
REBOUND (DEF) by WRIGHT,CAMERON	13:43			
TURNOVER by ARTIS,JAMEL	13:26			
	13:25			STEAL by JONES,MADISON
FOUL by ROBINSON,JAMES	13:21			
	13:21			MISSED FT by JONES,MADISON
	13:21			REBOUND (DEADB) by TEAM
	13:21	14-11	H 3	GOOD! FT by JONES,MADISON
SUB IN: NEWKIRK,JOSH	13:21			
SUB IN: YOUNG,MICHAEL	13:21			
SUB IN: JETER,SHELDON	13:21			
SUB OUT: ROBINSON,JAMES	13:21			
SUB OUT: ARTIS,JAMEL	13:21			
SUB OUT: RANDALL,DERRICK	13:21			
	13:21			SUB IN: HUDSON,CORNELIUS
	13:21			SUB OUT: MILLER-MCINTYRE,CODI
GOOD! JUMPER by YOUNG,MICHAEL	13:07	14-13	H 1	
	12:47			TIMEOUT 30SEC
	12:47			SUB IN: GREEN,DANIEL
	12:47			SUB OUT: ROUNTREE,AARON
	12:32	17-13	H 4	GOOD! 3PTR by WILBEKIN,MITCHELL

TURNOVER by NEWKIRK,JOSH	12:11			
	12:10			STEAL by WILBEKIN,MITCHELL
	12:06			SUB IN: THOMAS,DEVIN
	12:06			SUB OUT: GREEN,DANIEL
FOUL by NEWKIRK,JOSH	11:56			
	11:56			TIMEOUT media
	11:56			SUB IN: MCCLINTON,GREG
	11:56			SUB IN: MILLER-MCINTYRE,CODI
	11:56			SUB OUT: HUDSON,CORNELIUS
	11:56			SUB OUT: WILBEKIN,MITCHELL
	11:55	19-13	H 6	GOOD! LAYUP by MCCLINTON,GREG
	11:55			ASSIST by JONES,MADISON
GOOD! JUMPER by YOUNG,MICHAEL	11:42	19-15	H 4	
ASSIST by JONES,CHRIS	11:42			
	11:22			MISSED LAYUP by THOMAS,DEVIN
REBOUND (DEF) by JETER,SHELDON	11:22			
MISSED JUMPER by WRIGHT,CAMERON	11:09			
	11:09			REBOUND (DEF) by MITOGLU,DINOS
FOUL by JONES,CHRIS	11:08			
SUB IN: ROBINSON,JAMES	11:08			
SUB IN: ARTIS,JAMEL	11:08			
SUB OUT: JETER,SHELDON	11:08			
SUB OUT: WRIGHT,CAMERON	11:08			
	11:08			SUB IN: WILBEKIN,MITCHELL
	11:08			SUB OUT: JONES,MADISON
	11:01			MISSED JUMPER by MITOGLU,DINOS
REBOUND (DEF) by JONES,CHRIS	11:01			
MISSED JUMPER by JONES,CHRIS	10:48			
	10:48			REBOUND (DEF) by MILLER-MCINTYRE,CODI
	10:38			MISSED 3PTR by MITOGLU,DINOS
	10:38			REBOUND (OFF) by MCCLINTON,GREG
	10:35	21-15	H 6	GOOD! LAYUP by MCCLINTON,GREG
FOUL by ARTIS,JAMEL	10:34			
	10:34			MISSED FT by MCCLINTON,GREG
REBOUND (DEF) by YOUNG,MICHAEL	10:34			
	10:34			SUB IN: LEONARD,DARIUS
	10:34			SUB OUT: MITOGLU,DINOS
MISSED JUMPER by NEWKIRK,JOSH	10:00			
	10:00			REBOUND (DEF) by THOMAS,DEVIN
	09:38			MISSED JUMPER by MCCLINTON,GREG
REBOUND (DEF) by TEAM	09:38			
SUB IN: WRIGHT,CAMERON	09:33			
SUB OUT: NEWKIRK,JOSH	09:33			
MISSED 3PTR by ARTIS,JAMEL	09:06			
	09:06			REBOUND (DEF) by MILLER-MCINTYRE,CODI
	08:39			MISSED 3PTR by LEONARD,DARIUS
	08:39			REBOUND (OFF) by THOMAS,DEVIN
FOUL by YOUNG,MICHAEL	08:36			
SUB IN: RANDALL,DERRICK	08:35			
SUB IN: JETER,SHELDON	08:35			
SUB OUT: YOUNG,MICHAEL	08:35			
SUB OUT: JONES,CHRIS	08:35			
	08:35			SUB IN: HUDSON,CORNELIUS
	08:35			SUB OUT: MCCLINTON,GREG
	08:24	24-15	H 9	GOOD! 3PTR by WILBEKIN,MITCHELL
	08:24			ASSIST by HUDSON,CORNELIUS
MISSED JUMPER by ARTIS,JAMEL	07:53			
REBOUND (OFF) by RANDALL,DERRICK	07:53			
GOOD! LAYUP by RANDALL,DERRICK	07:51	24-17	H 7	
	07:24			MISSED 3PTR by HUDSON,CORNELIUS
REBOUND (DEF) by ROBINSON,JAMES	07:24			
MISSED JUMPER by WRIGHT,CAMERON	06:59			
REBOUND (OFF) by JETER,SHELDON	06:59			
MISSED 3PTR by ROBINSON,JAMES	06:51			
REBOUND (OFF) by ARTIS,JAMEL	06:51			
GOOD! LAYUP by RANDALL,DERRICK	06:47	24-19	H 5	
ASSIST by ARTIS,JAMEL	06:47			
	06:46			FOUL by WILBEKIN,MITCHELL
TIMEOUT media	06:46			
MISSED FT by RANDALL,DERRICK	06:46			
	06:46			REBOUND (DEF) by THOMAS,DEVIN
	06:26			MISSED LAYUP by THOMAS,DEVIN
	06:26			REBOUND (OFF) by LEONARD,DARIUS
	06:25			MISSED LAYUP by LEONARD,DARIUS
REBOUND (DEF) by JETER,SHELDON	06:25			
GOOD! JUMPER by ARTIS,JAMEL	06:01	24-21	H 3	
	05:36			SUB IN: MITOGLU,DINOS
	05:36			SUB OUT: THOMAS,DEVIN
	05:28			MISSED JUMPER by MITOGLU,DINOS
	05:28			REBOUND (OFF) by HUDSON,CORNELIUS
FOUL by RANDALL,DERRICK	05:24			
	05:23	27-21	H 6	GOOD! 3PTR by WILBEKIN,MITCHELL
	05:23			ASSIST by MILLER-MCINTYRE,CODI

GOOD! JUMPER by WRIGHT,CAMERON	04:52	27-23	H 4	
	04:52			FOUL by HUDSON,CORNELIUS
MISSED FT by WRIGHT,CAMERON	04:52			
REBOUND (OFF) by WRIGHT,CAMERON	04:52			
	04:52			SUB IN: JONES,MADISON
	04:52			SUB OUT: HUDSON,CORNELIUS
GOOD! LAYUP by WRIGHT,CAMERON	04:49	27-25	H 2	
	04:21	30-25	H 5	GOOD! 3PTR by MITOGLU,DINOS
	04:21			ASSIST by JONES,MADISON
GOOD! 3PTR by ARTIS,JAMEL	03:51	30-28	H 2	
ASSIST by WRIGHT,CAMERON	03:51			
FOUL by RANDALL,DERRICK	03:40			
	03:40			TIMEOUT MEDIA
	03:40			MISSED FT by MILLER-MCINTYRE,CODI
	03:40			REBOUND (DEADB) by TEAM
	03:40			MISSED FT by MILLER-MCINTYRE,CODI
REBOUND (DEF) by TEAM	03:40			
SUB IN: YOUNG,MICHAEL	03:40			
SUB IN: JONES,CHRIS	03:40			
SUB OUT: RANDALL,DERRICK	03:40			
SUB OUT: JETER,SHELDON	03:40			
	03:40			SUB IN: MCCLINTON,GREG
	03:40			SUB OUT: WILBEKIN,MITCHELL
MISSED JUMPER by WRIGHT,CAMERON	03:11			
	03:11			REBOUND (DEF) by LEONARD,DARIUS
	03:03			MISSED LAYUP by JONES,MADISON
REBOUND (DEF) by YOUNG,MICHAEL	03:03			
MISSED LAYUP by WRIGHT,CAMERON	02:55			
	02:55			BLOCK by LEONARD,DARIUS
	02:53			REBOUND (DEF) by MCCLINTON,GREG
	02:48			MISSED 3PTR by LEONARD,DARIUS
REBOUND (DEF) by ARTIS,JAMEL	02:48			
MISSED JUMPER by YOUNG,MICHAEL	02:31			
	02:31			REBOUND (DEF) by MILLER-MCINTYRE,CODI
	02:13	32-28	H 4	GOOD! LAYUP by JONES,MADISON
	02:13			ASSIST by MCCLINTON,GREG
	01:50			FOUL by JONES,MADISON
GOOD! FT by YOUNG,MICHAEL	01:50	32-29	H 3	
GOOD! FT by YOUNG,MICHAEL	01:50	32-30	H 2	
	01:50			SUB IN: THOMAS,DEVIN
	01:50			SUB OUT: LEONARD,DARIUS
	01:39	34-30	H 4	GOOD! LAYUP by MCCLINTON,GREG
	01:39			ASSIST by THOMAS,DEVIN
GOOD! JUMPER by YOUNG,MICHAEL	01:17	34-32	H 2	
FOUL by JONES,CHRIS	01:05			
	01:05	35-32	H 3	GOOD! FT by MITOGLU,DINOS
	01:05	36-32	H 4	GOOD! FT by MITOGLU,DINOS
TURNOVER by JONES,CHRIS	00:56			
	00:54			STEAL by MCCLINTON,GREG
FOUL by JONES,CHRIS	00:51			
	00:51	37-32	H 5	GOOD! FT by MILLER-MCINTYRE,CODI
	00:51			MISSED FT by MILLER-MCINTYRE,CODI
REBOUND (DEF) by YOUNG,MICHAEL	00:51			
SUB IN: JETER,SHELDON	00:51			
SUB OUT: JONES,CHRIS	00:51			
	00:51			SUB IN: NIEDRICH,DOUG
	00:51			SUB OUT: MITOGLU,DINOS
GOOD! 3PTR by YOUNG,MICHAEL	00:34	37-35	H 2	
ASSIST by WRIGHT,CAMERON	00:34			
	00:07			MISSED JUMPER by NIEDRICH,DOUG
REBOUND (DEF) by JETER,SHELDON	00:07			

Pittsburgh 35, Wake Forest 37

Period 1-only	In Paint	Off T/O	2nd Chance	Fast Break	Bench	
Pittsburgh	16	2	9	0	4	Score tied - 0 times
Wake Forest	10	4	8	2	14	Lead changed - 0 times

Official Basketball Box Score -- Game Totals -- Second Half Statistics

Pittsburgh vs Wake Forest

3/1/2015 6:30 p.m. at Winston-Salem, N.C. - LJV Coliseum

Pittsburgh 31 • 19-10, 8-7 ACC

##	Player	S	Total	3-Ptr	FT-FTA	Rebounds			PF	TP	A	TO	Blk	Stl	Min
			FG-FGA	3PT FG-FGA		Off Reb	Def Reb	Tot Reb							
00	ROBINSON,JAMES	g	1-6	0-3	4-4	0	4	4	3	6	4	0	0	1	37
01	ARTIS,JAMEL	f	7-16	4-5	1-2	6	3	9	2	19	1	4	0	1	37
02	YOUNG,MICHAEL	f	7-13	2-2	6-8	2	6	8	2	22	1	0	1	1	32
03	WRIGHT,CAMERON	g	5-12	0-0	1-4	2	3	5	4	11	6	2	0	1	36
21	JETER,SHELDON	f	0-3	0-0	0-0	4	5	9	2	0	2	1	0	1	27
11	RANDALL,DERRICK		2-2	0-0	0-1	1	0	1	2	4	0	0	0	0	8
12	JONES,CHRIS		2-5	0-1	0-0	1	3	4	4	4	1	1	0	0	18
13	NEWKIRK,JOSH		0-1	0-0	0-0	0	0	0	1	0	0	3	0	0	6
TEAM						1	0	1	0		0				
Totals			10-29	2-5	9-13	11	13	24	11		8	7	1	3	

FG %	Half:	10-29	34.5%
3FG %	Half:	2-5	66.7%
FT %	Half:	9-13	69.2%

Wake Forest 32 • 12-16, 4-11 ACC

##	Player	S	Total	3-Ptr	FT-FTA	Rebounds			PF	TP	A	TO	Blk	Stl	Min
			FG-FGA	3PT FG-FGA		Off Reb	Def Reb	Tot Reb							
00	MILLER-MCINTYRE,CODI	g	3-8	0-3	7-13	0	7	7	2	13	5	2	0	1	31
02	THOMAS,DEVIN	f	3-6	0-0	0-2	1	5	6	3	6	1	2	0	1	27
10	WILBEKIN,MITCHELL	g	5-5	4-4	0-0	0	1	1	3	14	1	0	0	1	28
13	LEONARD,DARIUS	f	2-8	2-6	1-2	2	3	5	0	7	0	0	1	0	25
25	HUDSON,CORNELIUS	f	3-6	1-3	4-4	1	3	4	4	11	1	2	0	1	24
01	JONES,MADISON		1-3	0-0	1-2	0	1	1	3	3	3	0	0	2	20
04	GREEN,DANIEL		0-0	0-0	0-0	0	0	0	0	0	0	0	0	0	1
11	MCCLINTON,GREG		3-4	0-0	0-1	1	2	3	0	6	2	0	0	1	15
33	ROUNTREE,AARON		0-0	0-0	1-2	0	0	0	0	1	0	0	0	0	6
44	MITOGLOU,DINOS		2-6	2-4	2-2	0	1	1	0	8	0	0	1	0	21
52	NIEDRICH,DOUG		0-1	0-0	0-0	0	0	0	0	0	0	0	0	0	1
TEAM						0	0	0	0		0				
Totals			9-20	2-8	12-19	1	11	12	9		3	3	1	3	

FG %	Half:	9-20	45.0%
3FG %	Half:	2-8	58.3%
FT %	Half:	12-19	63.2%

Officials: Bryan Kersey, Roger Ayers, Joe Lindsay

Technical Fouls: Pittsburgh- None. Wake Forest- None.

	In	Off	2nd	Fast	
Points	Paint	Off T/O	2nd Chance	Fast Break	Bench
Pittsburgh	10	4	9	2	4
Wake Forest	10	10	0	4	4

Score tied - 3 times

Lead changed - 2 times

Pittsburgh vs Wake Forest

3/1/2015; 6:30 p.m. at Winston-Salem, N.C. - LJVM Coliseum

Period 2 Play-By-Play

VISITORS: Pittsburgh	Time	Score	Margin	HOME: Wake Forest
MISSED JUMPER by YOUNG,MICHAEL	19:49			
	19:49			REBOUND (DEF) by THOMAS,DEVIN
	19:27			TURNOVER by THOMAS,DEVIN
STEAL by WRIGHT,CAMERON	19:26			
GOOD! LAYUP by WRIGHT,CAMERON	19:23	37-37	T	
	18:58			MISSED LAYUP by THOMAS,DEVIN
REBOUND (DEF) by JETER,SHELDON	18:58			
MISSED JUMPER by ROBINSON,JAMES	18:50			
	18:50			REBOUND (DEF) by MILLER-MCINTYRE,CODI
	18:28			MISSED 3PTR by MILLER-MCINTYRE,CODI
REBOUND (DEF) by ROBINSON,JAMES	18:28			
MISSED LAYUP by ARTIS,JAMEL	18:21			
REBOUND (OFF) by ARTIS,JAMEL	18:21			
MISSED LAYUP by ARTIS,JAMEL	18:18			
	18:18			REBOUND (DEF) by HUDSON,CORNELIUS
	17:59			MISSED LAYUP by MILLER-MCINTYRE,CODI
REBOUND (DEF) by YOUNG,MICHAEL	17:59			
	17:52			FOUL by THOMAS,DEVIN
GOOD! FT by ROBINSON,JAMES	17:52	37-38	V 1	
GOOD! FT by ROBINSON,JAMES	17:52	37-39	V 2	
	17:22	39-39	T	
GOOD! DUNK by YOUNG,MICHAEL	17:02	39-41	V 2	GOOD! JUMPER by WILBEKIN,MITCHELL
ASSIST by ROBINSON,JAMES	17:02			
	16:44			MISSED 3PTR by LEONARD,DARIUS
REBOUND (DEF) by YOUNG,MICHAEL	16:44			
GOOD! 3PTR by YOUNG,MICHAEL	16:36	39-44	V 5	
ASSIST by JETER,SHELDON	16:36			
FOUL by WRIGHT,CAMERON	16:20			
	16:20	40-44	V 4	GOOD! FT by LEONARD,DARIUS
	16:20			MISSED FT by LEONARD,DARIUS
REBOUND (DEF) by WRIGHT,CAMERON	16:20			
	16:20			SUB IN: JONES,MADISON
	16:20			SUB IN: MITOGLOU,DINOS
	16:20			SUB OUT: MILLER-MCINTYRE,CODI
	16:20			SUB OUT: THOMAS,DEVIN
MISSED JUMPER by ARTIS,JAMEL	15:58			
REBOUND (OFF) by YOUNG,MICHAEL	15:58			
MISSED JUMPER by ROBINSON,JAMES	15:52			
REBOUND (OFF) by JETER,SHELDON	15:52			
GOOD! JUMPER by WRIGHT,CAMERON	15:49	40-46	V 6	
ASSIST by JETER,SHELDON	15:49			
	15:24	42-46	V 4	GOOD! JUMPER by HUDSON,CORNELIUS
MISSED JUMPER by WRIGHT,CAMERON	15:09			
REBOUND (OFF) by ARTIS,JAMEL	15:09			
	15:01			FOUL by JONES,MADISON
TIMEOUT MEDIA	15:01			
GOOD! FT by YOUNG,MICHAEL	15:01	42-47	V 5	
GOOD! FT by YOUNG,MICHAEL	15:01	42-48	V 6	
	15:01			SUB IN: ROUNTREE,AARON
	15:01			SUB OUT: LEONARD,DARIUS
	14:31			MISSED 3PTR by HUDSON,CORNELIUS
REBOUND (DEF) by ROBINSON,JAMES	14:31			
GOOD! LAYUP by YOUNG,MICHAEL	14:08	42-50	V 8	
ASSIST by WRIGHT,CAMERON	14:08			
	13:50			MISSED LAYUP by HUDSON,CORNELIUS
BLOCK by YOUNG,MICHAEL	13:50			
REBOUND (DEF) by WRIGHT,CAMERON	13:48			
TURNOVER by WRIGHT,CAMERON	13:41			
	13:40			STEAL by JONES,MADISON
FOUL by JETER,SHELDON	13:15			
	13:15			MISSED FT by ROUNTREE,AARON
	13:15			REBOUND (DEADB) by TEAM
	13:15	43-50	V 7	GOOD! FT by ROUNTREE,AARON
SUB IN: NEWKIRK,JOSH	13:15			
SUB OUT: JETER,SHELDON	13:15			
	13:15			SUB IN: MCCLINTON,GREG
	13:15			SUB IN: LEONARD,DARIUS
	13:15			SUB IN: THOMAS,DEVIN
	13:15			SUB OUT: MITOGLOU,DINOS
	13:15			SUB OUT: ROUNTREE,AARON
	13:15			SUB OUT: HUDSON,CORNELIUS
GOOD! JUMPER by ARTIS,JAMEL	12:55	43-52	V 9	
ASSIST by WRIGHT,CAMERON	12:55			
FOUL by WRIGHT,CAMERON	12:34			

	12:34			SUB IN: MILLER-MCINTYRE,CODI
	12:34			SUB OUT: WILBEKIN,MITCHELL
	12:31			TURNOVER by MILLER-MCINTYRE,CODI
STEAL by YOUNG,MICHAEL	12:31			
	12:31			FOUL by MILLER-MCINTYRE,CODI
MISSED LAYUP by YOUNG,MICHAEL	12:17			
	12:17			REBOUND (DEF) by LEONARD,DARIUS
	12:05	46-52	V 6	GOOD! 3PTR by LEONARD,DARIUS
	12:05			ASSIST by JONES,MADISON
TURNOVER by NEWKIRK,JOSH	11:46			
	11:45			TIMEOUT MEDIA
SUB IN: RANDALL,DERRICK	11:45			
SUB IN: JONES,CHRIS	11:45			
SUB OUT: YOUNG,MICHAEL	11:45			
SUB OUT: NEWKIRK,JOSH	11:45			
FOUL by ARTIS,JAMEL	11:37			
	11:37	47-52	V 5	GOOD! FT by MILLER-MCINTYRE,CODI
	11:37	48-52	V 4	GOOD! FT by MILLER-MCINTYRE,CODI
TURNOVER by WRIGHT,CAMERON	11:23			
	10:57			TURNOVER by THOMAS,DEVIN
STEAL by ARTIS,JAMEL	10:57			
GOOD! DUNK by JONES,CHRIS	10:51	48-54	V 6	
ASSIST by ROBINSON,JAMES	10:51			
	10:43			TIMEOUT 30SEC
	10:43			SUB IN: WILBEKIN,MITCHELL
	10:43			SUB OUT: JONES,MADISON
	10:34	50-54	V 4	GOOD! LAYUP by THOMAS,DEVIN
	10:34			ASSIST by MCCLINTON,GREG
	10:13			FOUL by THOMAS,DEVIN
MISSED FT by ARTIS,JAMEL	10:13			
REBOUND (DEADB) by TEAM	10:13			
GOOD! FT by ARTIS,JAMEL	10:13	50-55	V 5	
SUB IN: YOUNG,MICHAEL	10:13			
SUB OUT: RANDALL,DERRICK	10:13			
	10:13			SUB IN: MITOGLU,DINOS
	10:13			SUB OUT: LEONARD,DARIUS
	09:51			MISSED 3PTR by MITOGLU,DINOS
REBOUND (DEF) by ARTIS,JAMEL	09:51			
MISSED 3PTR by JONES,CHRIS	09:43			
	09:43			REBOUND (DEF) by MCCLINTON,GREG
	09:36			MISSED JUMPER by MILLER-MCINTYRE,CODI
REBOUND (DEF) by JONES,CHRIS	09:36			
	09:32			FOUL by WILBEKIN,MITCHELL
SUB IN: JETER,SHELDON	09:32			
SUB OUT: ARTIS,JAMEL	09:32			
	09:32			SUB IN: HUDSON,CORNELIUS
	09:32			SUB OUT: WILBEKIN,MITCHELL
MISSED LAYUP by YOUNG,MICHAEL	09:07			
REBOUND (OFF) by JETER,SHELDON	09:07			
MISSED LAYUP by JETER,SHELDON	09:04			
	09:04			BLOCK by MITOGLU,DINOS
	09:03			REBOUND (DEF) by HUDSON,CORNELIUS
FOUL by YOUNG,MICHAEL	08:42			
	08:42			MISSED FT by MILLER-MCINTYRE,CODI
	08:42			REBOUND (DEADB) by TEAM
	08:42	51-55	V 4	GOOD! FT by MILLER-MCINTYRE,CODI
	08:42			SUB IN: JONES,MADISON
	08:42			SUB OUT: MILLER-MCINTYRE,CODI
MISSED JUMPER by JETER,SHELDON	08:12			
REBOUND (OFF) by YOUNG,MICHAEL	08:12			
TIMEOUT 30SEC	08:02			
SUB IN: ARTIS,JAMEL	08:02			
SUB OUT: WRIGHT,CAMERON	08:02			
MISSED 3PTR by ROBINSON,JAMES	07:36			
REBOUND (OFF) by ARTIS,JAMEL	07:36			
MISSED JUMPER by ARTIS,JAMEL	07:03			
REBOUND (OFF) by JONES,CHRIS	07:03			
GOOD! LAYUP by JONES,CHRIS	07:00	51-57	V 6	
	06:37	53-57	V 4	GOOD! LAYUP by THOMAS,DEVIN
GOOD! JUMPER by ARTIS,JAMEL	06:06	53-59	V 6	
ASSIST by ROBINSON,JAMES	06:06			
FOUL by JONES,CHRIS	05:45			
	05:45			TIMEOUT MEDIA
	05:45			MISSED FT by THOMAS,DEVIN
	05:45			REBOUND (DEADB) by TEAM
	05:45			MISSED FT by THOMAS,DEVIN
REBOUND (DEF) by YOUNG,MICHAEL	05:45			
SUB IN: WRIGHT,CAMERON	05:45			
SUB OUT: JONES,CHRIS	05:45			
	05:45			SUB IN: MILLER-MCINTYRE,CODI
	05:45			SUB OUT: JONES,MADISON
	05:23			FOUL by THOMAS,DEVIN
GOOD! FT by YOUNG,MICHAEL	05:23	53-60	V 7	

MISSED FT by YOUNG,MICHAEL	05:23				
	05:23				REBOUND (DEF) by MILLER-MCINTYRE,CODI
	05:23				SUB IN: WILBEKIN,MITCHELL
	05:23				SUB OUT: MCCLINTON,GREG
FOUL by ROBINSON,JAMES	05:13				
	05:13	54-60	V 6		GOOD! FT by MILLER-MCINTYRE,CODI
	05:13	55-60	V 5		GOOD! FT by MILLER-MCINTYRE,CODI
MISSED JUMPER by ARTIS,JAMEL	04:46				
	04:46				REBOUND (DEF) by MILLER-MCINTYRE,CODI
	04:38	57-60	V 3		GOOD! LAYUP by MILLER-MCINTYRE,CODI
TIMEOUT 30SEC	04:28				
	04:28				SUB IN: ROUNTREE,AARON
	04:28				SUB IN: JONES,MADISON
	04:28				SUB OUT: WILBEKIN,MITCHELL
	04:28				SUB OUT: MITOGLLOU,DINOS
	04:11				FOUL by HUDSON,CORNELIUS
GOOD! FT by YOUNG,MICHAEL	04:11	57-61	V 4		
MISSED FT by YOUNG,MICHAEL	04:11				
REBOUND (OFF) by JETER,SHELDON	04:11				
	04:11				SUB IN: WILBEKIN,MITCHELL
	04:11				SUB IN: MITOGLLOU,DINOS
	04:11				SUB OUT: ROUNTREE,AARON
	04:11				SUB OUT: JONES,MADISON
	03:55				FOUL by HUDSON,CORNELIUS
TIMEOUT MEDIA	03:55				
MISSED FT by WRIGHT,CAMERON	03:55				
	03:55				REBOUND (DEF) by MILLER-MCINTYRE,CODI
	03:55				SUB IN: LEONARD,DARIUS
	03:55				SUB OUT: THOMAS,DEVIN
	03:43	59-61	V 2		GOOD! LAYUP by MILLER-MCINTYRE,CODI
FOUL by WRIGHT,CAMERON	03:43				
	03:43				MISSED FT by MILLER-MCINTYRE,CODI
	03:43				REBOUND (OFF) by LEONARD,DARIUS
	03:43				SUB IN: JONES,MADISON
	03:43				SUB IN: ROUNTREE,AARON
	03:43				SUB OUT: HUDSON,CORNELIUS
	03:43				SUB OUT: WILBEKIN,MITCHELL
	03:22				MISSED LAYUP by LEONARD,DARIUS
REBOUND (DEF) by JETER,SHELDON	03:22				
TURNOVER by JETER,SHELDON	03:18				
	03:17				STEAL by MILLER-MCINTYRE,CODI
	03:16	61-61	T		GOOD! JUMPER by MILLER-MCINTYRE,CODI
MISSED JUMPER by JETER,SHELDON	02:50				
	02:50				REBOUND (DEF) by LEONARD,DARIUS
	02:42	64-61	H 3		GOOD! 3PTR by MITOGLLOU,DINOS
	02:42				ASSIST by MILLER-MCINTYRE,CODI
TIMEOUT 30SEC	02:38				
SUB IN: JONES,CHRIS	02:38				
SUB OUT: JETER,SHELDON	02:38				
	02:21				FOUL by JONES,MADISON
GOOD! FT by ROBINSON,JAMES	02:21	64-62	H 2		
GOOD! FT by ROBINSON,JAMES	02:21	64-63	H 1		
	02:21				SUB IN: WILBEKIN,MITCHELL
	02:21				SUB IN: HUDSON,CORNELIUS
	02:21				SUB OUT: JONES,MADISON
	02:21				SUB OUT: ROUNTREE,AARON
	01:59				TIMEOUT 30SEC
	01:52				MISSED 3PTR by MILLER-MCINTYRE,CODI
REBOUND (DEF) by ROBINSON,JAMES	01:52				
MISSED JUMPER by JONES,CHRIS	01:44				
REBOUND (OFF) by ARTIS,JAMEL	01:44				
TIMEOUT TEAM	01:37				
	01:37				SUB IN: JONES,MADISON
	01:37				SUB IN: ROUNTREE,AARON
	01:37				SUB OUT: MITOGLLOU,DINOS
	01:37				SUB OUT: HUDSON,CORNELIUS
MISSED JUMPER by WRIGHT,CAMERON	01:24				
	01:24				REBOUND (DEF) by JONES,MADISON
	01:12				TIMEOUT 30SEC
	01:12				SUB IN: MITOGLLOU,DINOS
	01:12				SUB IN: HUDSON,CORNELIUS
	01:12				SUB OUT: JONES,MADISON
	01:12				SUB OUT: ROUNTREE,AARON
	01:04				MISSED 3PTR by LEONARD,DARIUS
REBOUND (DEF) by ARTIS,JAMEL	01:04				
TURNOVER by ARTIS,JAMEL	00:34				
	00:33				STEAL by HUDSON,CORNELIUS
FOUL by ROBINSON,JAMES	00:33				
	00:33	65-63	H 2		GOOD! FT by HUDSON,CORNELIUS
	00:33	66-63	H 3		GOOD! FT by HUDSON,CORNELIUS
	00:33				SUB IN: ROUNTREE,AARON
	00:33				SUB IN: JONES,MADISON
	00:33				SUB IN: MCCLINTON,GREG

	00:33					SUB OUT: WILBEKIN,MITCHELL
	00:33					SUB OUT: MITOGLOU,DINOS
	00:33					SUB OUT: HUDSON,CORNELIUS
TURNOVER by ARTIS,JAMEL	00:28					
SUB IN: JETER,SHELDON	00:28					
SUB OUT: JONES,CHRIS	00:28					
	00:28					SUB IN: HUDSON,CORNELIUS
	00:28					SUB IN: MITOGLOU,DINOS
	00:28					SUB IN: WILBEKIN,MITCHELL
	00:28					SUB OUT: ROUNTREE,AARON
	00:28					SUB OUT: JONES,MADISON
	00:28					SUB OUT: MCCLINTON,GREG
	00:25					TIMEOUT TEAM
FOUL by WRIGHT,CAMERON	00:24					
	00:24					MISSED FT by MILLER-MCINTYRE,CODI
	00:24					REBOUND (DEADB) by TEAM
	00:24	67-63		H 4		GOOD! FT by MILLER-MCINTYRE,CODI
SUB IN: NEWKIRK,JOSH	00:24					
SUB IN: JONES,CHRIS	00:24					
SUB OUT: JETER,SHELDON	00:24					
SUB OUT: WRIGHT,CAMERON	00:24					
	00:24					SUB IN: MCCLINTON,GREG
	00:24					SUB IN: THOMAS,DEVIN
	00:24					SUB IN: ROUNTREE,AARON
	00:24					SUB IN: JONES,MADISON
	00:24					SUB OUT: HUDSON,CORNELIUS
	00:24					SUB OUT: LEONARD,DARIUS
	00:24					SUB OUT: MITOGLOU,DINOS
	00:24					SUB OUT: WILBEKIN,MITCHELL
TURNOVER by NEWKIRK,JOSH	00:18					
SUB IN: WRIGHT,CAMERON	00:18					
SUB IN: JETER,SHELDON	00:18					
SUB OUT: NEWKIRK,JOSH	00:18					
SUB OUT: JONES,CHRIS	00:18					
	00:18					SUB IN: WILBEKIN,MITCHELL
	00:18					SUB IN: VANHORN,TRENT
	00:18					SUB IN: HUDSON,CORNELIUS
	00:18					SUB IN: MITOGLOU,DINOS
	00:18					SUB IN: LEONARD,DARIUS
	00:18					SUB OUT: MCCLINTON,GREG
	00:18					SUB OUT: THOMAS,DEVIN
	00:18					SUB OUT: ROUNTREE,AARON
	00:18					SUB OUT: JONES,MADISON
FOUL by JETER,SHELDON	00:10					
	00:10	68-63		H 5		GOOD! FT by HUDSON,CORNELIUS
	00:10	69-63		H 6		GOOD! FT by HUDSON,CORNELIUS
	00:10					SUB IN: ROUNTREE,AARON
	00:10					SUB IN: JONES,MADISON
	00:10					SUB IN: MCCLINTON,GREG
	00:10					SUB IN: THOMAS,DEVIN
	00:10					SUB OUT: WILBEKIN,MITCHELL
	00:10					SUB OUT: HUDSON,CORNELIUS
	00:10					SUB OUT: MITOGLOU,DINOS
	00:10					SUB OUT: LEONARD,DARIUS
MISSED 3PTR by ROBINSON,JAMES	00:06					
REBOUND (OFF) by TEAM	00:06					
	00:02					SUB IN: NIEDRICH,DOUG
	00:02					SUB IN: GREEN,DANIEL
	00:02					SUB OUT: ROUNTREE,AARON
	00:02					SUB OUT: THOMAS,DEVIN
GOOD! 3PTR by ARTIS,JAMEL	00:01	69-66		H 3		
ASSIST by ROBINSON,JAMES	00:01					

Pittsburgh 66, Wake Forest 69

Period 2-only	In Paint	Off T/O	2nd Chance	Fast Break	Bench	
Pittsburgh	10	4	9	2	4	Score tied - 2 times
Wake Forest	10	10	0	4	4	Lead changed - 2 times

Pittsburgh vs Wake Forest

3/1/2015; 6:30 p.m. at Winston-Salem, N.C. - LJVM Coliseum

Scoring/Runs Reference

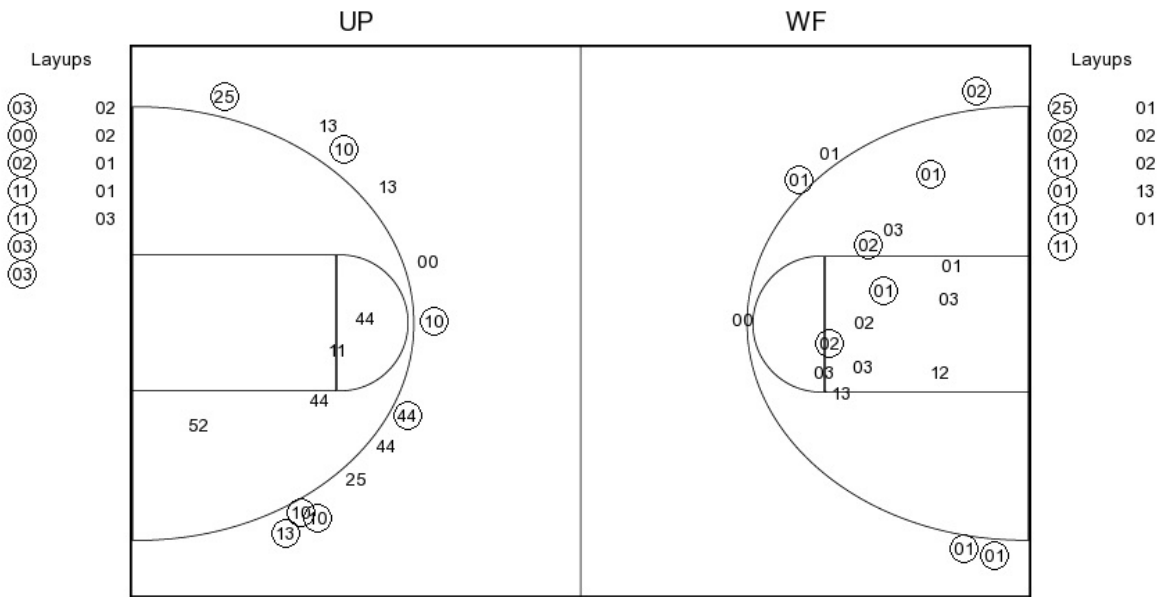
Period 1			Period 2		
Pittsburgh	Score	Wake Forest	Pittsburgh	Score	Wake Forest
	0-3 3	3	19:49 - YOUNG JUMPER	X	
19:22 - ARTIS TURN	TO	LEONARD 3PTR - 19:48			TO THOMAS TURN - 19:27
			19:23 - WRIGHT LAYUP	2PF 37-37 0	
	TO	MILLER-MCINTYRE TURN - 19:12			X THOMAS LAYUP - 18:58
19:05 - WRIGHT JUMPER	2P 2-3 1		18:50 - ROBINSON JUMPER	X	
	2-6 4	3			X MILLER-MCINTYRE 3PTR - 18:28
18:05 - ARTIS 3PTR	3 5-6 1	HUDSON 3PTR - 18:43	18:21 - ARTIS LAYUP	X	
			18:18 - ARTIS LAYUP	X	
17:32 - ARTIS JUMPER	X	HUDSON TURN - 17:36			X MILLER-MCINTYRE LAYUP - 17:59
			17:52 - ROBINSON FT	1 38-37 -1	
16:51 - YOUNG JUMPER	X	HUDSON TURN - 17:17	17:52 - ROBINSON FT	1 39-37 -2	
	5-8 3	2PF HUDSON LAYUP - 16:42			2 WILBEKIN JUMPER - 17:22
16:25 - YOUNG LAYUP	X		17:02 - YOUNG DUNK	2P 39-39 0	
	5-10 5	2 THOMAS JUMPER - 16:05			X LEONARD 3PTR - 16:44
15:39 - WRIGHT JUMPER	X		16:36 - YOUNG 3PTR	3 44-39 -5	
15:34 - ARTIS LAYUP	X				1 LEONARD FT - 16:20
	5-13 8	3 WILBEKIN 3PTR - 15:23			X LEONARD FT - 16:20
15:04 - ROBINSON LAYUP	2P 7-13 6		15:58 - ARTIS JUMPER	X	
		X JONES LAYUP - 14:58	15:52 - ROBINSON JUMPER	X	
14:30 - WRIGHT FT	1 8-13 5		15:49 - WRIGHT JUMPER	2 46-40 -6	
14:30 - WRIGHT FT	X				2 HUDSON JUMPER - 15:24
14:06 - ARTIS 3PTR	3 11-13 2		15:09 - WRIGHT JUMPER	X	
		X MILLER-MCINTYRE 3PTR - 13:43	15:01 - YOUNG FT	1 47-42 -5	
13:26 - ARTIS TURN	TO	JONES FT - 13:21	15:01 - YOUNG FT	1 48-42 -6	
		X JONES FT - 13:21			X HUDSON 3PTR - 14:31
13:07 - YOUNG JUMPER	2P 11-14 3	1	14:08 - YOUNG LAYUP	2P 50-42 -8	
	13-14 1				X HUDSON LAYUP - 13:50
	13-17 4	3 WILBEKIN 3PTR - 12:32	13:41 - WRIGHT TURN	TO	X ROUNTREE FT - 13:15
12:11 - NEWKIRK TURN	TO	MCCLINTON LAYUP - 11:55			1 ROUNTREE FT - 13:15
	13-19 6	2P	12:55 - ARTIS JUMPER	2 52-43 -9	
11:42 - YOUNG JUMPER	2 15-19 4				TO MILLER-MCINTYRE TURN - 12:31
		X THOMAS LAYUP - 11:22	12:17 - YOUNG LAYUP	X	
11:09 - WRIGHT JUMPER	X				3 LEONARD 3PTR - 12:05
		X MITOGLOU JUMPER - 11:01	11:46 - NEWKIRK TURN	TO	
10:48 - JONES JUMPER	X				1 MILLER-MCINTYRE FT - 11:37
		X MITOGLOU 3PTR - 10:38			1 MILLER-MCINTYRE FT - 11:37
	15-21 6	2P MCCLINTON LAYUP - 10:35	11:23 - WRIGHT TURN	TO	
		X MCCLINTON FT - 10:34			TO THOMAS TURN - 10:57
10:00 - NEWKIRK JUMPER	X		10:51 - JONES DUNK	2P 54-48 -6	
		X MCCLINTON JUMPER - 09:38			2P THOMAS LAYUP - 10:34
09:06 - ARTIS 3PTR	X		10:13 - ARTIS FT	X	
		X LEONARD 3PTR - 08:39	10:13 - ARTIS FT	1 55-50 -5	
	15-24 9	3 WILBEKIN 3PTR - 08:24			X MITOGLOU 3PTR - 09:51
07:53 - ARTIS JUMPER	X		09:43 - JONES 3PTR	X	
07:51 - RANDALL LAYUP	2P 17-24 7				X MILLER-MCINTYRE JUMPER - 09:36
		X HUDSON 3PTR - 07:24	09:07 - YOUNG LAYUP	X	
06:59 -	✓		09:04 - JETER LAYUP	X	

Pittsburgh vs Wake Forest

OFFICIAL SHOT CHART

3/1/2015 at Winston-Salem, N.C. - LJVM Coliseum

PERIOD 1



UP PERIOD 1

FG Made	14
FG Attempted	29
3PFG Made	4
3PFG Attempted	6

WF PERIOD 1

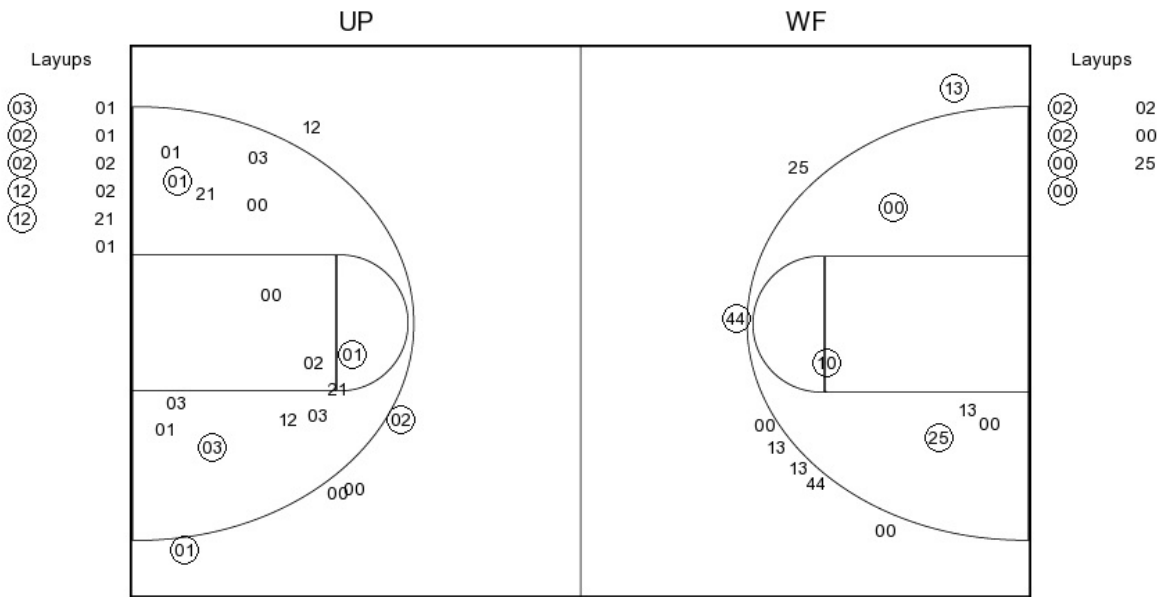
FG Made	13
FG Attempted	27
3PFG Made	7
3PFG Attempted	12

Pittsburgh vs Wake Forest

OFFICIAL SHOT CHART

3/1/2015 at Winston-Salem, N.C. - LJV Coliseum

PERIOD 2



UP PERIOD 2

FG Made	10
FG Attempted	29
3PFG Made	2
3PFG Attempted	5

WF PERIOD 2

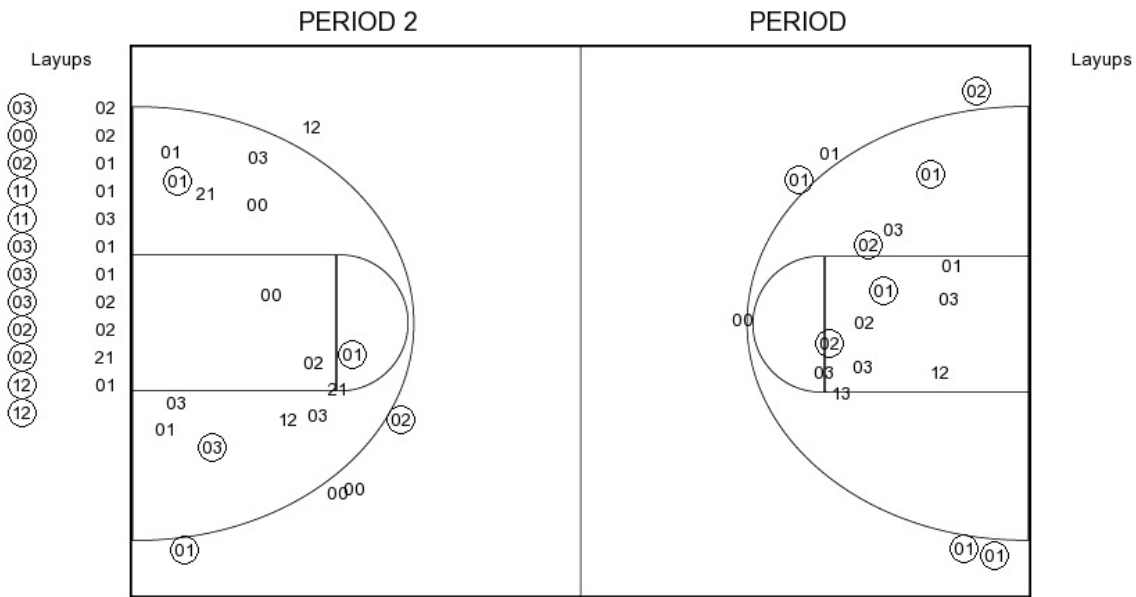
FG Made	9
FG Attempted	20
3PFG Made	2
3PFG Attempted	8

Pittsburgh vs Wake Forest

OFFICIAL SHOT CHART

3/1/2015 at Winston-Salem, N.C. - LJV Coliseum

Pittsburgh



UP PERIOD 1

FG Made	14
FG Attempted	29
3PFG Made	4
3PFG Attempted	6

UP PERIOD 2

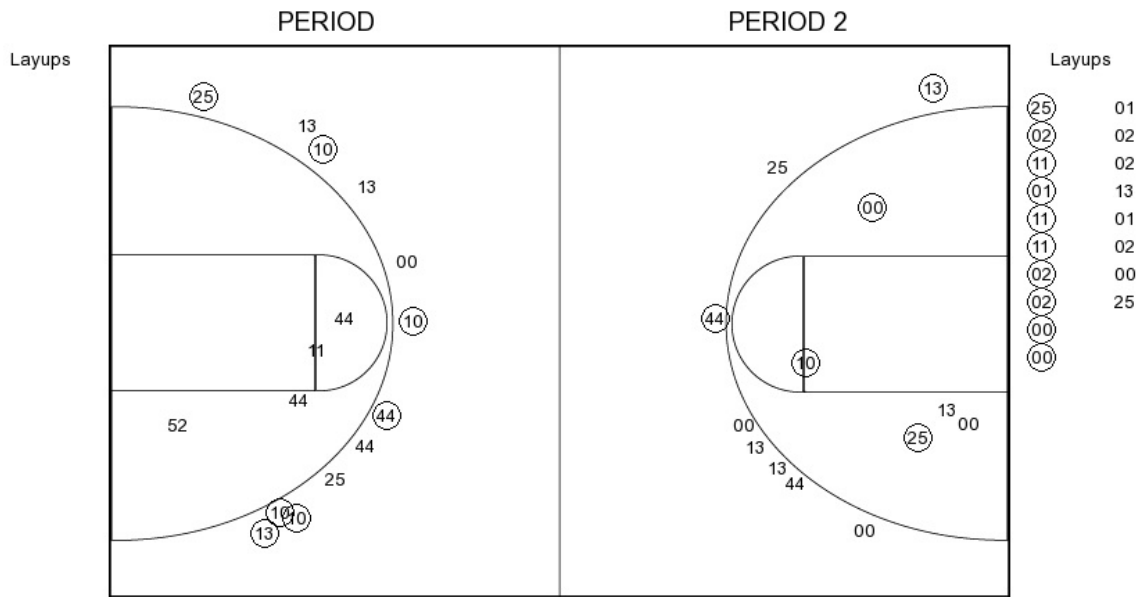
FG Made	10
FG Attempted	29
3PFG Made	2
3PFG Attempted	5

Pittsburgh vs Wake Forest

OFFICIAL SHOT CHART

3/1/2015 at Winston-Salem, N.C. - LJVM Coliseum

Wake Forest



WF PERIOD 1

FG Made	13
FG Attempted	27
3PFG Made	7
3PFG Attempted	12

WF PERIOD 2

FG Made	9
FG Attempted	20
3PFG Made	2
3PFG Attempted	8