



WEST VIRGINIA VS. TEXAS

3/1/2015

WVU Coliseum, Morgantown, W.Va.

FINAL STATS

West Virginia

(17-12/7-10)

76

Texas

(19-9/8-9)

69

Start Time: 1:00 p.m.

Officials: Tina Napier, Bill Larance, Michol Murray

Attendance: 4303

Game Start: 1:01 Game End: 3:08

L. Montgomery (WVU) fouled out with 2:45 remaining in overtime.

Atkins (UT) fouled out with 0:42.7 remaining in overtime.

Official Basketball Box Score -- Game Totals -- Final Statistics

Texas vs West Virginia

3/1/2015 1:00 p.m. at WVU Coliseum, Morgantown, W.Va.

Texas 69 - 19-9/8-9

##	Player	S	Total			3-Ptr			Rebounds			PF	TP	A	TO	Blk	Stl	Min
			FG-FGA	3PT	FG-FGA	FT-FTA	Off Reb	Def Reb	Tot Reb									
11	MCCARTY, BROOKE	g	4-9	1-4	2-2	0	1	1	3	11	0	1	0	2	31			
20	TAYLOR, BRIANNA	g	0-2	0-0	0-1	0	4	4	3	0	1	3	0	24				
24	ATKINS, ARIEL	g	4-7	1-2	6-6	0	1	1	5	15	3	6	0	2	35			
32	SANDERS, BRADY	g	1-6	1-2	0-4	0	2	2	1	3	3	0	0	25				
40	LANG, KELSEY	c	7-9	0-0	0-0	2	5	7	3	14	0	1	0	0	27			
01	DAVENPORT, EMPRESS		1-8	0-1	2-2	0	6	6	1	4	1	2	0	0	36			
02	RODRIGO, CELINA		1-1	1-1	0-0	0	0	0	2	3	2	1	0	0	9			
04	HENDERSON, KRISTLE		0-0	0-0	0-0	0	0	0	0	0	0	1	0	0	4			
22	FOMAN, TASIA		0-1	0-0	0-0	0	0	0	0	0	1	0	0	0	4			
34	MCGEE-STAFFORD, IMANI		7-14	0-0	5-6	5	7	12	3	19	0	2	3	1	30			
TEAM						4	2	6	0	0	0	0	0					
Totals			25-57	4-10	15-21	11	28	39	21	69	11	17	3	5	225			

FG % 1st Half:	12-24	50.0%	2nd Half:	11-25	44.0%	Game:	25-57	43.9%	Deadball
3FG % 1st Half:	1-5	20.0%	2nd Half:	2-3	66.7%	Game:	4-10	40.0%	Rebounds
FT % 1st Half:	8-8	100.0%	2nd Half:	4-9	44.4%	Game:	15-21	71.4%	3,0

West Virginia 76 - 17-12/7-10

##	Player	S	Total			3-Ptr			Rebounds			PF	TP	A	TO	Blk	Stl	Min
			FG-FGA	3PT	FG-FGA	FT-FTA	Off Reb	Def Reb	Tot Reb									
05	FIELDS, AVEREE	f	7-16	1-1	4-4	1	5	6	1	19	2	1	1	2	45			
20	MCDONALD, BRE	g	4-12	0-1	5-5	3	5	8	2	13	3	1	0	1	35			
22	STEPNEY, LINDA	g	3-6	1-4	4-4	0	2	2	1	11	7	2	0	2	43			
23	HOLMES, BRIA	g	6-19	1-4	6-9	2	6	8	2	19	1	3	0	1	45			
32	LEARY, CRYSTAL	f	2-2	0-0	2-2	1	2	3	4	6	0	1	0	1	23			
04	MONTGOMERY, KAYLA		0-0	0-0	0-0	0	0	0	1	0	0	1	0	0	2			
11	MULDROW, TEANA		2-6	2-6	0-0	1	2	3	2	6	1	1	0	0	11			
15	MONTGOMERY, LANAY		1-1	0-0	0-0	1	1	2	5	2	0	0	1	1	17			
21	MORTON, JESSICA		0-2	0-0	0-0	0	0	0	0	0	0	1	0	0	4			
TEAM						3	1	4	1	0	0	0	0					
Totals			25-64	5-16	21-24	12	24	36	19	76	14	11	2	8	225			

FG % 1st Half:	8-25	32.0%	2nd Half:	14-33	42.4%	Game:	25-64	39.1%	Deadball
3FG % 1st Half:	3-9	33.3%	2nd Half:	0-5	00.0%	Game:	5-16	31.3%	Rebounds
FT % 1st Half:	6-8	75.0%	2nd Half:	8-8	100.0%	Game:	21-24	87.5%	2,0

Officials: Tina Napier, Bill Larence, Michol Murray

Technical Fouls: Texas- None. West Virginia- TEAM;

Attendance: 4303

Game Start: 1:01 Game End: 3:08

L. Montgomery (WVU) fouled out with 2:45 remaining in overtime.

Atkins (UT) fouled out with 0:42.7 remaining in overtime.

Score by periods	1st	2nd	3rd	Total
Texas	33	28	8	69
West Virginia	25	36	15	76

	In	Off	2nd	Fast	
Points	Paint	Off T/O	2nd Chance	Fast Break	Bench
Texas	26	8	16	2	26
West Virginia	32	20	16	10	8

Largest lead - Texas by 14 2nd-08:57;

West Virginia by 8 OT-00:08

Score tied - 3 times

Lead changed - 3 times

Official Basketball Box Score -- Game Totals -- First Half Statistics

Texas vs West Virginia

3/1/2015 1:00 p.m. at WVU Coliseum, Morgantown, W.Va.

Texas 33 • 19-9/8-9

##	Player	S	Total			Rebounds			PF	TP	A	TO	Blk	Stl	Min
			FG-FGA	3PT FG-FGA	FT-FTA	Off Reb	Def Reb	Tot Reb							
11	MCCARTY,BROOKE	g	4-9	1-4	2-2	0	1	1	3	11	0	1	0	2	31
20	TAYLOR,BRIANNA	g	0-2	0-0	0-1	0	4	4	3	0	1	3	0	0	24
24	ATKINS,ARIEL	g	4-7	1-2	6-6	0	1	1	5	15	3	6	0	2	35
32	SANDERS,BRADY	g	1-6	1-2	0-4	0	2	2	1	3	3	0	0	0	25
40	LANG,KELSEY	c	7-9	0-0	0-0	2	5	7	3	14	0	1	0	0	27
01	DAVENPORT,EMPRESS		1-8	0-1	2-2	0	6	6	1	4	1	2	0	0	36
02	RODRIGO,CELINA		1-1	1-1	0-0	0	0	0	2	3	2	1	0	0	9
04	HENDERSON,KRYSTLE		0-0	0-0	0-0	0	0	0	0	0	0	1	0	0	4
22	FOMAN,TASIA		0-1	0-0	0-0	0	0	0	0	0	1	0	0	0	4
34	MCGEE-STAFFORD,IMANI		7-14	0-0	5-6	5	7	12	3	19	0	2	3	1	30
TEAM						3	2	5	0		0				
Totals			12-24	1-5	8-8	6	12	18	7		7	11	1	4	

FG %	Half:	12-24	50.0%
3FG %	Half:	1-5	20.0%
FT %	Half:	8-8	100.0%

West Virginia 25 • 17-12/7-10

##	Player	S	Total			Rebounds			PF	TP	A	TO	Blk	Stl	Min
			FG-FGA	3PT FG-FGA	FT-FTA	Off Reb	Def Reb	Tot Reb							
05	FIELDS,AVEREE	f	7-16	1-1	4-4	1	5	6	1	19	2	1	1	2	45
20	MCDONALD,BRE	g	4-12	0-1	5-5	3	5	8	2	13	3	1	0	1	35
22	STEPNEY,LINDA	g	3-6	1-4	4-4	0	2	2	1	11	7	2	0	2	43
23	HOLMES,BRIA	g	6-19	1-4	6-9	2	6	8	2	19	1	3	0	1	45
32	LEARY,CRYSTAL	f	2-2	0-0	2-2	1	2	3	4	6	0	1	0	1	23
04	MONTGOMERY,KAYLA		0-0	0-0	0-0	0	0	0	1	0	0	1	0	0	2
11	MULDROW,TEANA		2-6	2-6	0-0	1	2	3	2	6	1	1	0	0	11
15	MONTGOMERY,LANAY		1-1	0-0	0-0	1	1	2	5	2	0	0	1	1	17
21	MORTON,JESSICA		0-2	0-0	0-0	0	0	0	0	0	0	1	0	0	4
TEAM						2	1	3	0		0				
Totals			8-25	3-9	6-8	6	6	12	9		3	10	2	5	

FG %	Half:	8-25	32.0%
3FG %	Half:	3-9	33.3%
FT %	Half:	6-8	75.0%

Officials: Tina Napier, Bill Larence, Michol Murray

Technical Fouls: Texas- None. West Virginia- None.

Game Start: 1:01 Game End: 3:08

L. Montgomery (WVU) fouled out with 2:45 remaining in overtime.

Atkins (UT) fouled out with 0:42.7 remaining in overtime.

	In	Off	2nd	Fast	
Points	Paint	Off T/O	2nd Chance	Fast Break	Bench
Texas	16	6	8	2	14
West Virginia	8	10	4	2	8

Score tied - 2 times

Lead changed - 2 times

Texas vs West Virginia

3/1/2015; 1:00 p.m. at WVU Coliseum, Morgantown, W.Va.

Period 1 Play-By-Play

VISITORS: Texas	Time	Score	Margin	HOME: West Virginia
	19:34			MISSED JUMPER by FIELDS, AVEREE
REBOUND (DEF) by TEAM	19:34			
GOOD! LAYUP by LANG, KELSEY	19:02	0-2	V 2	
ASSIST by TAYLOR, BRIANNA	19:02			
	18:48			TURNOVER by MCDONALD, BRE
STEAL by ATKINS, ARIEL	18:48			
TURNOVER by ATKINS, ARIEL	18:48			
	18:41	3-2	H 1	GOOD! 3PTR by STEPNEY, LINDA
	18:16			FOUL by MCDONALD, BRE
GOOD! FT by ATKINS, ARIEL	18:16	3-3	T	
GOOD! FT by ATKINS, ARIEL	18:16	3-4	V 1	
	18:02			MISSED 3PTR by MCDONALD, BRE
	18:02			REBOUND (OFF) by HOLMES, BRIANNA
	17:46			TURNOVER by HOLMES, BRIANNA
STEAL by ATKINS, ARIEL	17:43			
TURNOVER by ATKINS, ARIEL	17:42			
	17:39			STEAL by MCDONALD, BRE
	17:27			MISSED JUMPER by MCDONALD, BRE
	17:27			REBOUND (OFF) by LEARY, CRYSTAL
FOUL by ATKINS, ARIEL	17:27			
	17:27			SUB IN: MULDRON, TEANA
	17:27			SUB OUT: MCDONALD, BRE
FOUL by TAYLOR, BRIANNA	17:04			
	16:56			MISSED JUMPER by HOLMES, BRIANNA
REBOUND (DEF) by LANG, KELSEY	16:56			
MISSED 3PTR by MCCARTY, BROOKE	16:33			
REBOUND (OFF) by LANG, KELSEY	16:33			
GOOD! LAYUP by MCCARTY, BROOKE	16:24	3-6	V 3	
	16:15	6-6	T	GOOD! 3PTR by MULDRON, TEANA
	16:15			ASSIST by STEPNEY, LINDA
	15:53			FOUL by MULDRON, TEANA
TIMEOUT MEDIA	15:53			
GOOD! FT by ATKINS, ARIEL	15:53	6-7	V 1	
GOOD! FT by ATKINS, ARIEL	15:53	6-8	V 2	
	15:53			SUB IN: MONTGOMERY, LANAY
	15:53			SUB OUT: LEARY, CRYSTAL
	15:43			MISSED 3PTR by MULDRON, TEANA
REBOUND (DEF) by TEAM	15:43			
MISSED 3PTR by ATKINS, ARIEL	15:25			
	15:25			REBOUND (DEF) by HOLMES, BRIANNA
	15:09			MISSED JUMPER by FIELDS, AVEREE
	15:09			REBOUND (OFF) by TEAM
	14:59			TURNOVER by MULDRON, TEANA
TURNOVER by ATKINS, ARIEL	14:43			
	14:41			STEAL by FIELDS, AVEREE
	14:24			MISSED 3PTR by MULDRON, TEANA
REBOUND (DEF) by LANG, KELSEY	14:24			
MISSED 3PTR by MCCARTY, BROOKE	14:06			
REBOUND (OFF) by TEAM	14:06			
	14:04			FOUL by HOLMES, BRIANNA
SUB IN: MCGEE-STAFFORD, IMANI	14:04			
SUB IN: HENDERSON, KRYSTLE	14:04			
SUB IN: DAVENPORT, EMPRESS	14:04			
SUB OUT: MCCARTY, BROOKE	14:04			
SUB OUT: ATKINS, ARIEL	14:04			
SUB OUT: LANG, KELSEY	14:04			
	14:04			SUB IN: MORTON, JESSICA
	14:04			SUB OUT: MULDRON, TEANA
MISSED LAYUP by DAVENPORT, EMPRESS	13:50			
REBOUND (OFF) by MCGEE-STAFFORD, IMANI	13:50			
GOOD! LAYUP by MCGEE-STAFFORD, IMANI	13:32	6-10	V 4	
	13:25			MISSED 3PTR by HOLMES, BRIANNA
REBOUND (DEF) by TAYLOR, BRIANNA	13:25			
TURNOVER by TAYLOR, BRIANNA	13:15			
SUB IN: ATKINS, ARIEL	13:15			
SUB OUT: TAYLOR, BRIANNA	13:15			
	12:45			MISSED JUMPER by MORTON, JESSICA
REBOUND (DEF) by MCGEE-STAFFORD, IMANI	12:45			
MISSED JUMPER by ATKINS, ARIEL	12:23			
	12:23			REBOUND (DEF) by STEPNEY, LINDA
	12:16			MISSED JUMPER by MORTON, JESSICA
REBOUND (DEF) by DAVENPORT, EMPRESS	12:16			
GOOD! JUMPER by ATKINS, ARIEL	12:05	6-12	V 6	
	12:04			TIMEOUT 30SEC
SUB IN: FOMAN, TASIA	12:04			
SUB OUT: SANDERS, BRADY	12:04			
	12:04			SUB IN: MCDONALD, BRE
	12:04			SUB OUT: MORTON, JESSICA

	11:43			TURNOVER by HOLMES,BRIA
MISSED JUMPER by MCGEE-STAFFORD,IMANI	11:26			
	11:26			BLOCK by FIELDS,AVEREE
REBOUND (OFF) by TEAM	11:24			
	11:23			FOUL by STEPNEY,LINDA
	11:23			SUB IN: LEARY,CRYSTAL
	11:23			SUB OUT: MONTGOMERY,LANAY
TURNOVER by DAVENPORT,EMPRESS	11:06			
	10:47			TURNOVER by FIELDS,AVEREE
STEAL by MCGEE-STAFFORD,IMANI	10:46			
TURNOVER by HENDERSON,KRYSTLE	10:37			
SUB IN: MCCARTY,BROOKE	10:37			
SUB OUT: HENDERSON,KRYSTLE	10:37			
	10:17			TURNOVER by HOLMES,BRIA
STEAL by MCCARTY,BROOKE	10:16			
GOOD! JUMPER by MCGEE-STAFFORD,IMANI	10:05	6-14	V 8	
ASSIST by FOMAN,TASIA	10:05			
	10:05			TIMEOUT 30SEC
	10:05			SUB IN: MULDRON,TEANA
	10:05			SUB OUT: MCDONALD,BRE
FOUL by MCGEE-STAFFORD,IMANI	09:46			
	09:46	7-14	V 7	GOOD! FT by HOLMES,BRIA
	09:46			MISSED FT by HOLMES,BRIA
REBOUND (DEF) by MCGEE-STAFFORD,IMANI	09:46			
	09:46			SUB IN: MONTGOMERY,LANAY
	09:46			SUB OUT: LEARY,CRYSTAL
MISSED JUMPER by FOMAN,TASIA	09:38			
	09:38			BLOCK by MONTGOMERY,LANAY
REBOUND (OFF) by TEAM	09:38			
SUB IN: SANDERS,BRADY	09:37			
SUB OUT: FOMAN,TASIA	09:37			
GOOD! LAYUP by MCGEE-STAFFORD,IMANI	09:28	7-16	V 9	
ASSIST by ATKINS,ARIEL	09:28			
	09:14			MISSED JUMPER by FIELDS,AVEREE
	09:14			REBOUND (OFF) by MULDRON,TEANA
	09:06	9-16	V 7	GOOD! JUMPER by MONTGOMERY,LANAY
	09:06			ASSIST by MULDRON,TEANA
TURNOVER by ATKINS,ARIEL	08:54			
	08:53			STEAL by FIELDS,AVEREE
	08:50	11-16	V 5	GOOD! LAYUP by HOLMES,BRIA
GOOD! JUMPER by ATKINS,ARIEL	08:30	11-18	V 7	
ASSIST by SANDERS,BRADY	08:30			
	08:12			MISSED JUMPER by FIELDS,AVEREE
REBOUND (DEF) by DAVENPORT,EMPRESS	08:12			
SUB IN: LANG,KELSEY	08:09			
SUB IN: TAYLOR,BRIANNA	08:09			
SUB OUT: ATKINS,ARIEL	08:09			
SUB OUT: MCGEE-STAFFORD,IMANI	08:09			
TURNOVER by DAVENPORT,EMPRESS	07:45			
	07:43			STEAL by MONTGOMERY,LANAY
	07:38			MISSED JUMPER by HOLMES,BRIA
REBOUND (DEF) by DAVENPORT,EMPRESS	07:38			
MISSED 3PTR by MCCARTY,BROOKE	07:31			
	07:31			REBOUND (DEF) by FIELDS,AVEREE
	07:11			MISSED 3PTR by STEPNEY,LINDA
	07:11			REBOUND (OFF) by FIELDS,AVEREE
	07:08	13-18	V 5	GOOD! LAYUP by FIELDS,AVEREE
MISSED LAYUP by LANG,KELSEY	07:01			
	07:01			REBOUND (DEF) by MULDRON,TEANA
	06:33	16-18	V 2	GOOD! 3PTR by MULDRON,TEANA
TIMEOUT 30SEC	06:31			
SUB IN: MCGEE-STAFFORD,IMANI	06:31			
SUB IN: ATKINS,ARIEL	06:31			
SUB OUT: SANDERS,BRADY	06:31			
SUB OUT: LANG,KELSEY	06:31			
MISSED JUMPER by TAYLOR,BRIANNA	06:07			
	06:07			REBOUND (DEF) by MULDRON,TEANA
	05:49			MISSED 3PTR by HOLMES,BRIA
REBOUND (DEF) by DAVENPORT,EMPRESS	05:49			
MISSED LAYUP by DAVENPORT,EMPRESS	05:37			
REBOUND (OFF) by MCGEE-STAFFORD,IMANI	05:37			
GOOD! JUMPER by MCGEE-STAFFORD,IMANI	05:34	16-20	V 4	
	05:00			TURNOVER by STEPNEY,LINDA
	05:00			SUB IN: MORTON,JESSICA
	05:00			SUB IN: MCDONALD,BRE
	05:00			SUB OUT: STEPNEY,LINDA
	05:00			SUB OUT: MULDRON,TEANA
	04:44			FOUL by MONTGOMERY,LANAY
GOOD! FT by MCGEE-STAFFORD,IMANI	04:44	16-21	V 5	
GOOD! FT by MCGEE-STAFFORD,IMANI	04:44	16-22	V 6	
SUB IN: HENDERSON,KRYSTLE	04:44			
SUB OUT: MCCARTY,BROOKE	04:44			
	04:30	18-22	V 4	GOOD! JUMPER by MCDONALD,BRE
TURNOVER by TAYLOR,BRIANNA	04:15			
	04:00	20-22	V 2	GOOD! JUMPER by MCDONALD,BRE
	04:00			ASSIST by FIELDS,AVEREE
	03:55			FOUL by MONTGOMERY,LANAY

SUB IN: RODRIGO,CELINA	03:55				
SUB OUT: HENDERSON,KRYSTLE	03:55				
	03:55			SUB IN: MONTGOMERY,KAYLA	
	03:55			SUB OUT: MONTGOMERY,LANAY	
MISSED JUMPER by ATKINS,ARIEL	03:51				
	03:51			REBOUND (DEF) by TEAM	
	03:29			MISSED JUMPER by HOLMES,BRIA	
BLOCK by MCGEE-STAFFORD,IMANI	03:29				
	03:29			REBOUND (OFF) by TEAM	
	03:28			TURNOVER by MORTON,JESSICA	
SUB IN: SANDERS,BRADY	03:28				
SUB OUT: ATKINS,ARIEL	03:28				
	03:28			SUB IN: STEPNEY,LINDA	
	03:28			SUB OUT: MORTON,JESSICA	
TURNOVER by TAYLOR,BRIANNA	03:14				
	03:12			STEAL by HOLMES,BRIA	
FOUL by RODRIGO,CELINA	03:10				
	03:10			MISSED FT by HOLMES,BRIA	
	03:10			REBOUND (DEADB) by TEAM	
	03:10	21-22	V 1	GOOD! FT by HOLMES,BRIA	
SUB IN: ATKINS,ARIEL	03:10				
SUB OUT: TAYLOR,BRIANNA	03:10				
GOOD! JUMPER by MCGEE-STAFFORD,IMANI	02:57	21-24	V 3		
	02:34			FOUL by MONTGOMERY,KAYLA	
	02:34			TURNOVER by MONTGOMERY,KAYLA	
	02:34			SUB IN: LEARY,CRYSTAL	
	02:34			SUB OUT: MONTGOMERY,KAYLA	
TURNOVER by MCGEE-STAFFORD,IMANI	02:21				
FOUL by DAVENPORT,EMPRESS	02:04				
FOUL by MCGEE-STAFFORD,IMANI	01:51				
	01:51	22-24	V 2	GOOD! FT by LEARY,CRYSTAL	
	01:51	23-24	V 1	GOOD! FT by LEARY,CRYSTAL	
SUB IN: LANG,KELSEY	01:51				
SUB OUT: MCGEE-STAFFORD,IMANI	01:51				
GOOD! 3PTR by SANDERS,BRADY	01:37	23-27	V 4		
ASSIST by ATKINS,ARIEL	01:37				
	01:20			MISSED JUMPER by FIELDS,AVEREE	
REBOUND (DEF) by LANG,KELSEY	01:20				
GOOD! LAYUP by LANG,KELSEY	01:11	23-29	V 6		
ASSIST by RODRIGO,CELINA	01:11				
	00:57			TURNOVER by LEARY,CRYSTAL	
	00:57			FOUL by LEARY,CRYSTAL	
	00:39			FOUL by LEARY,CRYSTAL	
GOOD! FT by DAVENPORT,EMPRESS	00:39	23-30	V 7		
GOOD! FT by DAVENPORT,EMPRESS	00:39	23-31	V 8		
FOUL by ATKINS,ARIEL	00:21				
	00:21	24-31	V 7	GOOD! FT by HOLMES,BRIA	
	00:21	25-31	V 6	GOOD! FT by HOLMES,BRIA	
SUB IN: MCCARTY,BROOKE	00:21				
SUB OUT: ATKINS,ARIEL	00:21				
GOOD! JUMPER by LANG,KELSEY	00:02	25-33	V 8		
ASSIST by SANDERS,BRADY	00:02				

Texas 33, West Virginia 25

Period 1-only	In Paint	Off T/O	2nd Chance	Fast Break	Bench	
Texas	16	6	8	2	14	Score tied - 2 times
West Virginia	8	10	4	2	8	Lead changed - 2 times

Official Basketball Box Score -- Game Totals -- Second Half Statistics

Texas vs West Virginia

3/1/2015 1:00 p.m. at WVU Coliseum, Morgantown, W.Va.

Texas 28 • 19-9/8-9

##	Player	S	Total			3-Ptr			Rebounds			PF	TP	A	TO	Blk	Stl	Min
			FG-FGA	3PT FG-FGA	FT-FTA	Off Reb	Def Reb	Tot Reb										
11	MCCARTY,BROOKE	g	4-9	1-4	2-2	0	1	1	3	11	0	1	0	2	31			
20	TAYLOR,BRIANNA	g	0-2	0-0	0-1	0	4	4	3	0	1	3	0	24				
24	ATKINS,ARIEL	g	4-7	1-2	6-6	0	1	1	5	15	3	6	0	2	35			
32	SANDERS,BRADY	g	1-6	1-2	0-4	0	2	2	1	3	3	0	0	25				
40	LANG,KELSEY	c	7-9	0-0	0-0	2	5	7	3	14	0	1	0	27				
01	DAVENPORT,EMPRESS		1-8	0-1	2-2	0	6	6	1	4	1	2	0	36				
02	RODRIGO,CELINA		1-1	1-1	0-0	0	0	0	2	3	2	1	0	9				
04	HENDERSON,KRYSTLE		0-0	0-0	0-0	0	0	0	0	0	0	1	0	4				
22	FOMAN,TASIA		0-1	0-0	0-0	0	0	0	0	0	1	0	0	4				
34	MCGEE-STAFFORD,IMANI		7-14	0-0	5-6	5	7	12	3	19	0	2	3	30				
TEAM						0	0	0	0	0	0	0	0					
Totals			11-25	2-3	4-9	4	13	17	10		4	6	1	1				

FG %	Half:	11-25	44.0%
3FG %	Half:	2-3	20.0%
FT %	Half:	4-9	44.4%

West Virginia 36 • 17-12/7-10

##	Player	S	Total			3-Ptr			Rebounds			PF	TP	A	TO	Blk	Stl	Min
			FG-FGA	3PT FG-FGA	FT-FTA	Off Reb	Def Reb	Tot Reb										
05	FIELDS,AVEREE	f	7-16	1-1	4-4	1	5	6	1	19	2	1	1	2	45			
20	MCDONALD,BRE	g	4-12	0-1	5-5	3	5	8	2	13	3	1	0	1	35			
22	STEPNEY,LINDA	g	3-6	1-4	4-4	0	2	2	1	11	7	2	0	2	43			
23	HOLMES,BRIA	g	6-19	1-4	6-9	2	6	8	2	19	1	3	0	1	45			
32	LEARY,CRYSTAL	f	2-2	0-0	2-2	1	2	3	4	6	0	1	0	1	23			
04	MONTGOMERY,KAYLA		0-0	0-0	0-0	0	0	0	1	0	0	1	0	2				
11	MULDROW,TEANA		2-6	2-6	0-0	1	2	3	2	6	1	1	0	11				
15	MONTGOMERY,LANAY		1-1	0-0	0-0	1	1	2	5	2	0	0	1	17				
21	MORTON,JESSICA		0-2	0-0	0-0	0	0	0	0	0	0	1	0	4				
TEAM						1	0	1	1	0	0	0	0					
Totals			14-33	0-5	8-8	6	12	18	8		8	1	0	3				

FG %	Half:	14-33	42.4%
3FG %	Half:	0-5	33.3%
FT %	Half:	8-8	100.0%

Officials: Tina Napier, Bill Larence, Michol Murray

Technical Fouls: Texas- None. West Virginia- TEAM;

Game Start: 1:01 Game End: 3:08

L. Montgomery (WVU) fouled out with 2:45 remaining in overtime.

Atkins (UT) fouled out with 0:42.7 remaining in overtime.

	In	Off	2nd	Fast	
Points	Paint	Off T/O	2nd Chance	Fast Break	Bench
Texas	10	2	6	0	6
West Virginia	22	10	4	8	0

Score tied - 1 times

Lead changed - 0 times

Texas vs West Virginia

3/1/2015; 1:00 p.m. at WVU Coliseum, Morgantown, W.Va.

Period 2 Play-By-Play

VISITORS: Texas	Time	Score	Margin	HOME: West Virginia
	20:00			SUB IN: MONTGOMERY, LANAY
	20:00			SUB OUT: LEARY, CRYSTAL
	19:49	27-33	V 6	GOOD! LAYUP by HOLMES, BRIA
	19:49			ASSIST by FIELDS, AVEREE
GOOD! LAYUP by MCCARTY, BROOKE	19:25	27-35	V 8	
ASSIST by ATKINS, ARIEL	19:25			
FOUL by TAYLOR, BRIANNA	19:09			
	19:05			MISSED JUMPER by HOLMES, BRIA
REBOUND (DEF) by LANG, KELSEY	19:05			
MISSED 3PTR by SANDERS, BRADY	18:55			
REBOUND (OFF) by LANG, KELSEY	18:55			
GOOD! JUMPER by LANG, KELSEY	18:47	27-37	V 10	
	18:26			MISSED 3PTR by HOLMES, BRIA
	18:26			REBOUND (OFF) by MONTGOMERY, LANAY
	18:25			SUB IN: LEARY, CRYSTAL
	18:25			SUB OUT: MONTGOMERY, LANAY
FOUL by LANG, KELSEY	18:24			
FOUL by TAYLOR, BRIANNA	18:22			
SUB IN: DAVENPORT, EMPRESS	18:22			
SUB OUT: TAYLOR, BRIANNA	18:22			
	18:08			MISSED JUMPER by MCDONALD, BRE
REBOUND (DEF) by ATKINS, ARIEL	18:08			
TURNOVER by ATKINS, ARIEL	17:46			
	17:44			STEAL by LEARY, CRYSTAL
	17:40	29-37	V 8	GOOD! LAYUP by FIELDS, AVEREE
	17:40			ASSIST by STEPNEY, LINDA
MISSED JUMPER by DAVENPORT, EMPRESS	17:22			
	17:22			REBOUND (DEF) by STEPNEY, LINDA
FOUL by ATKINS, ARIEL	17:18			
	17:18	30-37	V 7	GOOD! FT by STEPNEY, LINDA
	17:18	31-37	V 6	GOOD! FT by STEPNEY, LINDA
SUB IN: MCGEE-STAFFORD, IMANI	17:18			
SUB OUT: ATKINS, ARIEL	17:18			
	17:08			FOUL by FIELDS, AVEREE
GOOD! JUMPER by LANG, KELSEY	17:05	31-39	V 8	
ASSIST by SANDERS, BRADY	17:05			
FOUL by MCCARTY, BROOKE	16:50			
	16:39			MISSED JUMPER by HOLMES, BRIA
REBOUND (DEF) by MCGEE-STAFFORD, IMANI	16:39			
MISSED JUMPER by LANG, KELSEY	16:30			
REBOUND (OFF) by MCGEE-STAFFORD, IMANI	16:30			
MISSED JUMPER by MCGEE-STAFFORD, IMANI	16:27			
REBOUND (OFF) by MCGEE-STAFFORD, IMANI	16:27			
GOOD! LAYUP by MCGEE-STAFFORD, IMANI	16:25	31-41	V 10	
	16:23			FOUL by TEAM
	16:23			FOUL (TECH) by TEAM
MISSED FT by SANDERS, BRADY	16:23			
REBOUND (DEADB) by TEAM	16:23			
MISSED FT by SANDERS, BRADY	16:23			
REBOUND (DEADB) by TEAM	16:23			
	16:23			SUB IN: MONTGOMERY, LANAY
	16:23			SUB OUT: LEARY, CRYSTAL
	16:03			MISSED JUMPER by MCDONALD, BRE
REBOUND (DEF) by DAVENPORT, EMPRESS	16:03			
	15:59			FOUL by HOLMES, BRIA
TIMEOUT media	15:59			
MISSED FT by SANDERS, BRADY	15:59			
REBOUND (DEADB) by TEAM	15:59			
MISSED FT by SANDERS, BRADY	15:59			
	15:59			REBOUND (DEF) by MONTGOMERY, LANAY
	15:54			MISSED JUMPER by HOLMES, BRIA
	15:54			REBOUND (OFF) by HOLMES, BRIA
	15:27			MISSED JUMPER by HOLMES, BRIA
REBOUND (DEF) by SANDERS, BRADY	15:27			
MISSED LAYUP by SANDERS, BRADY	15:21			
	15:21			REBOUND (DEF) by FIELDS, AVEREE
	15:16	33-41	V 8	GOOD! LAYUP by MCDONALD, BRE
FOUL by MCCARTY, BROOKE	15:11			
	15:11	34-41	V 7	GOOD! FT by MCDONALD, BRE
SUB IN: ATKINS, ARIEL	15:11			
SUB OUT: SANDERS, BRADY	15:11			
MISSED JUMPER by DAVENPORT, EMPRESS	14:55			
	14:55			REBOUND (DEF) by HOLMES, BRIA
	14:29			MISSED 3PTR by STEPNEY, LINDA
REBOUND (DEF) by MCGEE-STAFFORD, IMANI	14:29			
	14:12			FOUL by MONTGOMERY, LANAY
MISSED LAYUP by DAVENPORT, EMPRESS	13:59			
	13:59			REBOUND (DEF) by MCDONALD, BRE

	13:51			MISSED LAYUP by HOLMES,BRIA
REBOUND (DEF) by LANG,KELSEY	13:51			
	13:50			SUB IN: LEARY,CRYSTAL
	13:50			SUB OUT: MONTGOMERY,LANAY
TURNOVER by LANG,KELSEY	13:11			
	13:10			STEAL by STEPNEY,LINDA
	13:08	36-41	V 5	GOOD! LAYUP by STEPNEY,LINDA
TIMEOUT 30SEC	12:57			
GOOD! JUMPER by ATKINS,ARIEL	12:39	36-43	V 7	
	12:17	38-43	V 5	GOOD! LAYUP by STEPNEY,LINDA
MISSED JUMPER by MCGEE-STAFFORD,IMANI	12:02			
	12:02			REBOUND (DEF) by MCDONALD,BRE
	11:34			MISSED JUMPER by FIELDS,AVEREE
REBOUND (DEF) by DAVENPORT,EMPRESS	11:34			
	11:27			FOUL by LEARY,CRYSTAL
TIMEOUT MEDIA	11:27			
SUB IN: TAYLOR,BRIANNA	11:27			
SUB OUT: MCGEE-STAFFORD,IMANI	11:27			
	11:27			SUB IN: MONTGOMERY,LANAY
	11:27			SUB OUT: LEARY,CRYSTAL
GOOD! 3PTR by ATKINS,ARIEL	11:03	38-46	V 8	
	10:45			TURNOVER by STEPNEY,LINDA
STEAL by MCCARTY,BROOKE	10:43			
TIMEOUT 30SEC	10:29			
	10:29			SUB IN: MULDROW,TEANA
	10:29			SUB OUT: MONTGOMERY,LANAY
GOOD! JUMPER by DAVENPORT,EMPRESS	10:23	38-48	V 10	
	09:50			MISSED 3PTR by MULDROW,TEANA
REBOUND (DEF) by TAYLOR,BRIANNA	09:50			
	09:26			FOUL by MULDROW,TEANA
GOOD! FT by ATKINS,ARIEL	09:26	38-49	V 11	
GOOD! FT by ATKINS,ARIEL	09:26	38-50	V 12	
SUB IN: RODRIGO,CELINA	09:26			
SUB OUT: MCCARTY,BROOKE	09:26			
	09:09			MISSED JUMPER by FIELDS,AVEREE
REBOUND (DEF) by TAYLOR,BRIANNA	09:09			
GOOD! JUMPER by LANG,KELSEY	08:57	38-52	V 14	
	08:50			TIMEOUT 30SEC
	08:28	40-52	V 12	GOOD! LAYUP by HOLMES,BRIA
GOOD! LAYUP by LANG,KELSEY	08:14	40-54	V 14	
ASSIST by RODRIGO,CELINA	08:14			
	07:53			MISSED 3PTR by MULDROW,TEANA
	07:53			REBOUND (OFF) by MCDONALD,BRE
	07:50			MISSED LAYUP by MCDONALD,BRE
	07:50			REBOUND (OFF) by MCDONALD,BRE
	07:49			TIMEOUT MEDIA
SUB IN: MCGEE-STAFFORD,IMANI	07:49			
SUB IN: FOMAN,TASIA	07:49			
SUB OUT: DAVENPORT,EMPRESS	07:49			
SUB OUT: LANG,KELSEY	07:49			
	07:49			SUB IN: LEARY,CRYSTAL
	07:49			SUB OUT: MULDROW,TEANA
	07:44			MISSED JUMPER by HOLMES,BRIA
BLOCK by MCGEE-STAFFORD,IMANI	07:44			
	07:44			REBOUND (OFF) by TEAM
	07:35	42-54	V 12	GOOD! LAYUP by LEARY,CRYSTAL
	07:35			ASSIST by MCDONALD,BRE
MISSED JUMPER by MCGEE-STAFFORD,IMANI	07:19			
REBOUND (OFF) by MCGEE-STAFFORD,IMANI	07:19			
GOOD! JUMPER by MCGEE-STAFFORD,IMANI	07:17	42-56	V 14	
	06:55	44-56	V 12	GOOD! JUMPER by FIELDS,AVEREE
	06:55			ASSIST by HOLMES,BRIA
TURNOVER by RODRIGO,CELINA	06:30			
SUB IN: DAVENPORT,EMPRESS	06:30			
SUB OUT: TAYLOR,BRIANNA	06:30			
	05:59	46-56	V 10	GOOD! JUMPER by FIELDS,AVEREE
	05:59			ASSIST by STEPNEY,LINDA
MISSED JUMPER by MCGEE-STAFFORD,IMANI	05:29			
	05:29			REBOUND (DEF) by FIELDS,AVEREE
	05:23	48-56	V 8	GOOD! LAYUP by HOLMES,BRIA
	05:23			ASSIST by MCDONALD,BRE
FOUL by ATKINS,ARIEL	05:23			
	05:23	49-56	V 7	GOOD! FT by HOLMES,BRIA
SUB IN: MCCARTY,BROOKE	05:23			
SUB IN: TAYLOR,BRIANNA	05:23			
SUB OUT: RODRIGO,CELINA	05:23			
SUB OUT: FOMAN,TASIA	05:23			
MISSED JUMPER by MCCARTY,BROOKE	04:53			
	04:53			REBOUND (DEF) by MCDONALD,BRE
FOUL by MCCARTY,BROOKE	04:46			
	04:46	50-56	V 6	GOOD! FT by MCDONALD,BRE
	04:46	51-56	V 5	GOOD! FT by MCDONALD,BRE
SUB IN: LANG,KELSEY	04:46			
SUB OUT: TAYLOR,BRIANNA	04:46			
GOOD! 3PTR by MCCARTY,BROOKE	04:27	51-59	V 8	
ASSIST by DAVENPORT,EMPRESS	04:27			
	03:58			MISSED 3PTR by STEPNEY,LINDA

REBOUND (DEF) by MCGEE-STAFFORD,IMANI	03:58					
TIMEOUT MEDIA	03:55					
TURNOVER by MCCARTY,BROOKE	03:54					
	03:54	53-59	V 6			GOOD! LAYUP by LEARY,CRYSTAL
	03:54					ASSIST by MCDONALD,BRE
TURNOVER by ATKINS,ARIEL	03:54					
	03:54					STEAL by STEPNEY,LINDA
FOUL by LANG,KELSEY	03:23					
	03:23	54-59	V 5			GOOD! FT by STEPNEY,LINDA
	03:23	55-59	V 4			GOOD! FT by STEPNEY,LINDA
SUB IN: SANDERS,BRADY	03:23					
SUB OUT: ATKINS,ARIEL	03:23					
TURNOVER by MCGEE-STAFFORD,IMANI	03:05					
FOUL by MCGEE-STAFFORD,IMANI	03:05					
	02:58					TIMEOUT 30SEC
	02:38					MISSED JUMPER by FIELDS,AVEREE
REBOUND (DEF) by MCGEE-STAFFORD,IMANI	02:38					
	02:26					FOUL by LEARY,CRYSTAL
GOOD! FT by MCCARTY,BROOKE	02:26	55-60	V 5			
GOOD! FT by MCCARTY,BROOKE	02:26	55-61	V 6			
	02:15					MISSED JUMPER by FIELDS,AVEREE
	02:15					REBOUND (OFF) by MCDONALD,BRE
	02:03	57-61	V 4			GOOD! LAYUP by MCDONALD,BRE
MISSED LAYUP by MCGEE-STAFFORD,IMANI	01:41					
	01:41					REBOUND (DEF) by LEARY,CRYSTAL
	01:20	59-61	V 2			GOOD! JUMPER by HOLMES,BRIA
MISSED JUMPER by SANDERS,BRADY	00:48					
	00:48					REBOUND (DEF) by FIELDS,AVEREE
	00:37					TIMEOUT TEAM
SUB IN: TAYLOR,BRIANNA	00:37					
SUB OUT: LANG,KELSEY	00:37					
	00:37					SUB IN: MULDROW,TEANA
	00:37					SUB OUT: LEARY,CRYSTAL
	00:26					MISSED JUMPER by MCDONALD,BRE
REBOUND (DEF) by TAYLOR,BRIANNA	00:26					
	00:24					FOUL by MCDONALD,BRE
MISSED FT by TAYLOR,BRIANNA	00:24					
	00:24					REBOUND (DEF) by HOLMES,BRIA
	00:14	61-61	T			GOOD! JUMPER by FIELDS,AVEREE
	00:14					ASSIST by STEPNEY,LINDA
TIMEOUT 30SEC	00:14					
SUB IN: LANG,KELSEY	00:14					
SUB OUT: TAYLOR,BRIANNA	00:14					
	00:14					SUB IN: LEARY,CRYSTAL
	00:14					SUB OUT: MULDROW,TEANA
TIMEOUT TEAM	00:04					
	00:04					SUB IN: MONTGOMERY,LANAY
	00:04					SUB OUT: MCDONALD,BRE
MISSED JUMPER by DAVENPORT,EMPRESS	00:03					
	00:03					REBOUND (DEF) by HOLMES,BRIA

Texas 61, West Virginia 61

Period 2-only	In Paint	Off T/O	2nd Chance	Fast Break	Bench	
Texas	10	2	6	0	6	Score tied - 0 times
West Virginia	22	10	4	8	0	Lead changed - 0 times

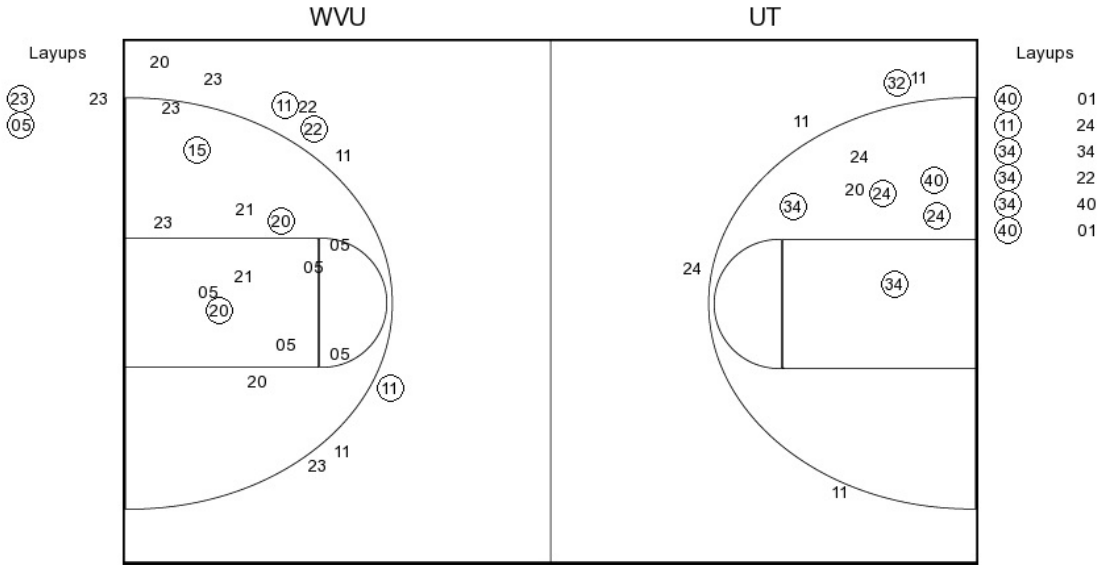
08:30 - ATKINS JUMPER 2 16-11-5 2PF HOLMES LAYUP - 08:50
 07:45 - DAVENPORT TURN TO 18-11-7 X FIELDS JUMPER - 08:12
 07:31 - MCCARTY 3PTR X X HOLMES JUMPER - 07:38
 07:01 - LANG LAYUP X 18-13-5 2P STEPNEY 3PTR - 07:11
 06:07 - TAYLOR JUMPER X 18-16-2 3 MULDROW 3PTR - 06:33
 05:37 - DAVENPORT LAYUP X X HOLMES 3PTR - 05:49
 05:34 - MCGEE-STAFFORD JUMPER 2P 20-16-4 TO STEPNEY TURN - 05:00
 04:44 - MCGEE-STAFFORD FT 1 21-16-5
 04:44 - MCGEE-STAFFORD FT 1 22-16-6
 04:15 - TAYLOR TURN TO 22-18-4 2P MCDONALD JUMPER - 04:30
 03:51 - ATKINS JUMPER X 22-20-2 2P MCDONALD JUMPER - 04:00
 03:14 - TAYLOR TURN TO X HOLMES JUMPER - 03:29
 03:14 - TAYLOR TURN TO MORTON TURN - 03:28
 02:57 - MCGEE-STAFFORD JUMPER 2 22-21-1 1 HOLMES FT - 03:10
 02:21 - MCGEE-STAFFORD TURN TO 24-21-3 1 HOLMES FT - 03:10
 02:21 - MCGEE-STAFFORD TURN TO MONTGOMERY TURN - 02:34
 01:37 - SANDERS 3PTR 3 24-22-2 1 LEARY FT - 01:51
 01:11 - LANG LAYUP 2PF 24-23-1 1 LEARY FT - 01:51
 00:39 - DAVENPORT FT 1 27-23-4 X FIELDS JUMPER - 01:20
 00:39 - DAVENPORT FT 1 29-23-6 TO LEARY TURN - 00:57
 00:02 - LANG JUMPER 2 30-23-7
 00:02 - LANG JUMPER 1 31-23-8
 00:02 - LANG JUMPER 1 31-24-7 1 HOLMES FT - 00:21
 00:02 - LANG JUMPER 1 31-25-6 1 HOLMES FT - 00:21
 00:02 - LANG JUMPER 2 33-25-8

09:26 - ATKINS FT 1 49-38-11 X 09:50
 09:26 - ATKINS FT 1 50-38-12 X FIELDS JUMPER - 09:09
 08:57 - LANG JUMPER 2 52-38-14 X HOLMES LAYUP - 08:28
 08:14 - LANG LAYUP 2P 52-40-12 2P
 08:14 - LANG LAYUP 2P 54-40-14 X MULDROW 3PTR - 07:53
 07:19 - MCGEE-STAFFORD JUMPER X X MCDONALD LAYUP - 07:50
 07:17 - MCGEE-STAFFORD JUMPER 2P 54-42-12 2P HOLMES JUMPER - 07:44
 07:17 - MCGEE-STAFFORD JUMPER 2P 56-42-14 LEARY LAYUP - 07:35
 06:30 - RODRIGO TURN TO 56-44-12 2 FIELDS JUMPER - 06:55
 05:29 - MCGEE-STAFFORD JUMPER X 56-46-10 2 FIELDS JUMPER - 05:59
 04:53 - MCCARTY JUMPER X 56-48-8 2PF HOLMES LAYUP - 05:23
 04:53 - MCCARTY JUMPER X 56-49-7 1 HOLMES FT - 05:23
 04:27 - MCCARTY 3PTR 3 56-50-6 1 MCDONALD FT - 04:46
 04:27 - MCCARTY 3PTR 3 56-51-5 1 MCDONALD FT - 04:46
 04:27 - MCCARTY 3PTR 3 59-51-8 X STEPNEY 3PTR - 03:58
 03:54 - MCCARTY TURN TO 59-53-6 2P LEARY LAYUP - 03:54
 03:54 - ATKINS TURN TO 59-54-5 1 STEPNEY FT - 03:23
 03:54 - ATKINS TURN TO 59-55-4 1 STEPNEY FT - 03:23
 03:05 - MCGEE-STAFFORD TURN TO X FIELDS JUMPER - 02:38
 02:26 - MCCARTY FT 1 60-55-5 X FIELDS JUMPER - 02:15
 02:26 - MCCARTY FT 1 61-55-6 2P MCDONALD LAYUP - 02:03
 01:41 - MCGEE-STAFFORD LAYUP X 61-57-4 2P
 00:48 - SANDERS JUMPER X 61-59-2 2P HOLMES JUMPER - 01:20
 00:24 - TAYLOR FT X X MCDONALD JUMPER - 00:26
 00:24 - TAYLOR FT X 61-61-0 2 FIELDS JUMPER - 00:14
 00:03 - DAVENPORT JUMPER X

Texas vs West Virginia
OFFICIAL SHOT CHART

3/1/2015 at WVU Coliseum, Morgantown, W.Va.

PERIOD 1



UT PERIOD 1

FG Made	12
FG Attempted	24
3PFG Made	1
3PFG Attempted	5

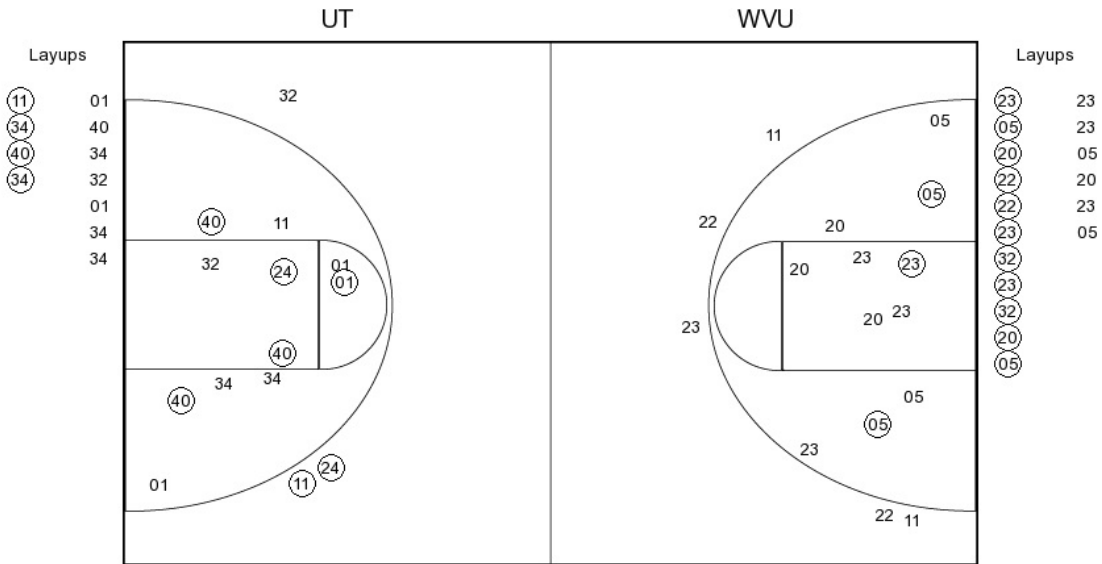
WVU PERIOD 1

FG Made	8
FG Attempted	25
3PFG Made	3
3PFG Attempted	9

Texas vs West Virginia
OFFICIAL SHOT CHART

3/1/2015 at WVU Coliseum, Morgantown, W.Va.

PERIOD 2



UT PERIOD 2

FG Made	11
FG Attempted	25
3PFG Made	2
3PFG Attempted	3

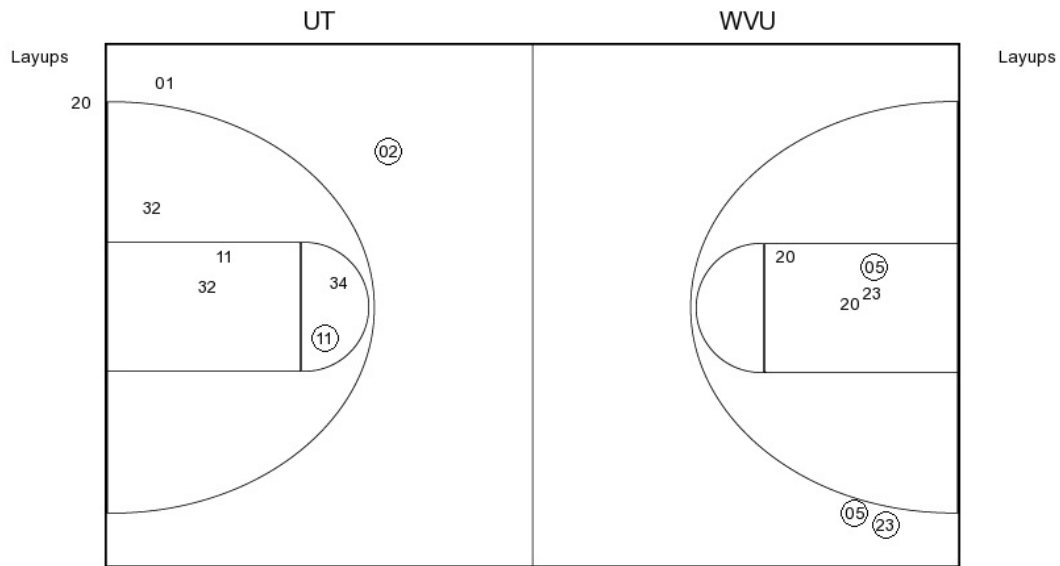
WVU PERIOD 2

FG Made	14
FG Attempted	33
3PFG Made	0
3PFG Attempted	5

Texas vs West Virginia
OFFICIAL SHOT CHART

3/1/2015 at WVU Coliseum, Morgantown, W.Va.

PERIOD 3



UT PERIOD 3

FG Made
FG Attempted
3PFG Made
3PFG Attempted

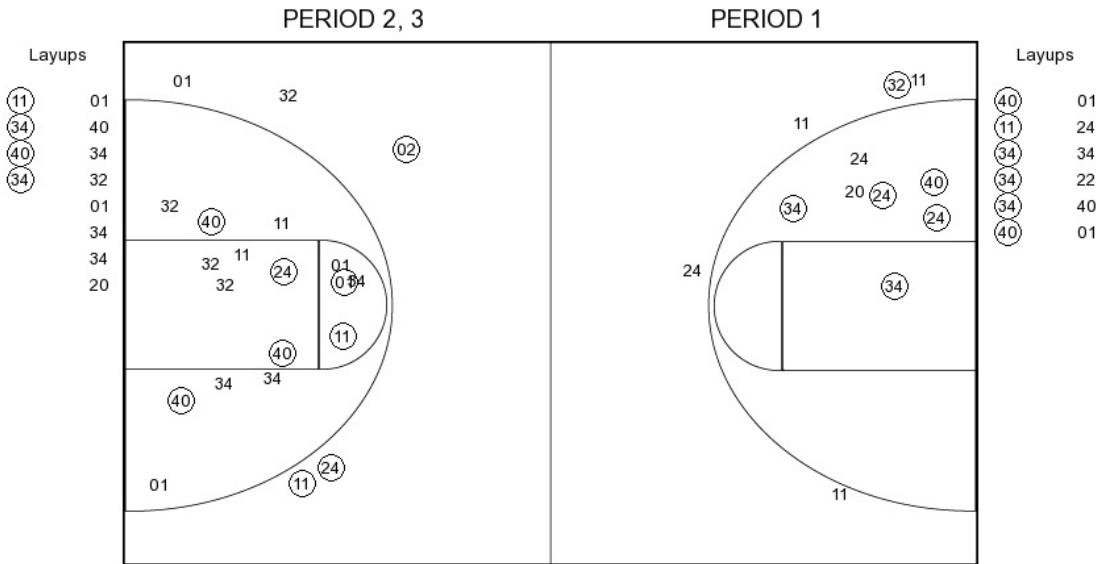
WVU PERIOD 3

FG Made
FG Attempted
3PFG Made
3PFG Attempted

Texas vs West Virginia
OFFICIAL SHOT CHART

3/1/2015 at WVU Coliseum, Morgantown, W.Va.

Texas



UT PERIOD 1

FG Made	12
FG Attempted	24
3PFG Made	1
3PFG Attempted	5

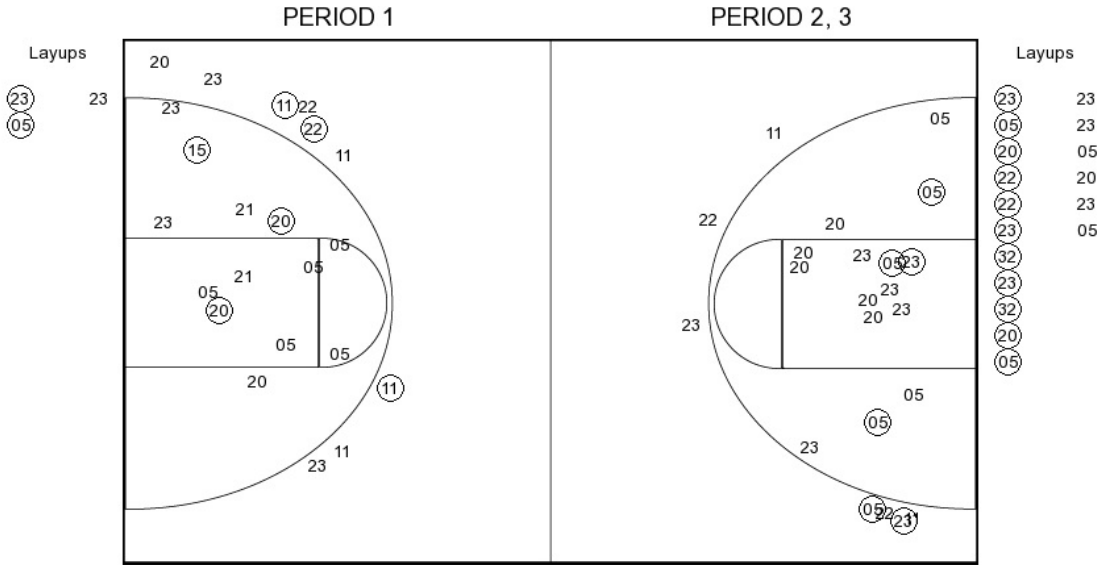
UT PERIOD 2

FG Made	11
FG Attempted	25
3PFG Made	2
3PFG Attempted	3

Texas vs West Virginia
OFFICIAL SHOT CHART

3/1/2015 at WVU Coliseum, Morgantown, W.Va.

West Virginia



WVU PERIOD 1

FG Made	8
FG Attempted	25
3PFG Made	3
3PFG Attempted	9

WVU PERIOD 2

FG Made	14
FG Attempted	33
3PFG Made	0
3PFG Attempted	5