



# WEST VIRGINIA VS. IOWA STATE

2/21/2015

WVU Coliseum, Morgantown, W.Va.

## FINAL STATS

**West Virginia**

*(16-11/6-9)*

**54**

**Iowa State**

*(16-10/7-8)*

**52**

*Start Time: 12:00 p.m.*

*Officials: Felicia Grinter, Bryan Enterline, Billy Smith*

*Attendance: 2076*

*Game Start: 12:04 Game End: 1:54*

*Ellis (ISU) fouled out with 1:19 left in the second half.*

# Official Basketball Box Score -- Game Totals -- Final Statistics

## Iowa State vs West Virginia

2/21/2015 12:00 p.m. at WVU Coliseum, Morgantown, W.Va.

### Iowa State 52 - 16-10/7-8

##	Player	S	Total		3-Ptr		Rebounds			PF	TP	A	TO	Blk	Stl	Min
			FG-FGA	3PT FG-FGA	FT-FTA	Off Reb	Def Reb	Tot Reb								
04	MOODY, NIKKI	g	4-11	1-3	6-8	0	4	4	0	15	5	5	1	1	38	
12	JOHNSON, SEANNA	g	5-11	2-3	2-2	0	8	8	2	14	2	4	2	1	37	
15	BLASKOWSKY, NICOLE	g	3-8	1-4	0-0	1	3	4	1	7	1	2	0	2	31	
22	WILLIAMSON, BRYNN	f	2-8	1-5	0-2	2	3	5	2	5	0	2	0	1	38	
44	FERNSTROM, BRYANNA	c	2-7	0-4	0-2	0	2	2	2	4	0	2	0	0	24	
02	BELL, NAKIAH		0-0	0-0	0-0	0	0	0	0	0	0	1	0	0	1	
03	DURR, EMILY		3-6	1-2	0-0	1	0	1	1	7	1	1	0	0	14	
32	ELLIS, FALLON		0-2	0-2	0-0	3	6	9	5	0	2	0	0	0	16	
34	BAIER, MADISON		0-0	0-0	0-0	0	0	0	0	0	0	0	0	0	1	
TEAM						4	3	7	0		0					
Totals			19-53	6-23	8-14	11	29	40	13	52	11	17	3	5	200	

FG %	1st Half: 14-31	45.2%	2nd Half: 5-22	22.7%	Game: 19-53	35.8%	Deadball
3FG %	1st Half: 4-13	30.8%	2nd Half: 2-10	20.0%	Game: 6-23	26.1%	Rebounds
FT %	1st Half: 4-5	80.0%	2nd Half: 4-9	44.4%	Game: 8-14	57.1%	3,0

### West Virginia 54 - 16-11/6-9

##	Player	S	Total		3-Ptr		Rebounds			PF	TP	A	TO	Blk	Stl	Min
			FG-FGA	3PT FG-FGA	FT-FTA	Off Reb	Def Reb	Tot Reb								
05	FIELDS, AVEREE	f	5-16	0-0	2-3	0	5	5	0	12	3	1	3	4	38	
15	MONTGOMERY, LANAY	c	1-4	0-0	0-0	3	2	5	2	2	0	1	0	0	18	
20	MCDONALD, BRE	f	0-7	0-2	3-4	1	2	3	1	3	0	1	0	1	18	
22	STEPNEY, LINDA	g	4-9	3-5	3-4	2	2	4	4	14	6	0	1	2	32	
23	HOLMES, BRIA	g	5-12	0-1	1-2	0	4	4	1	11	0	1	1	3	38	
00	SIMPSON, DOMINIQUE		0-1	0-1	0-0	0	0	0	0	0	0	0	0	0	1	
04	MONTGOMERY, KAYLA		0-0	0-0	0-0	1	0	1	1	0	0	0	1	0	6	
11	MULDROW, TEANA		3-10	2-7	2-3	2	4	6	1	10	2	3	1	0	24	
21	MORTON, JESSICA		0-2	0-0	0-0	0	0	0	1	0	0	3	0	0	7	
32	LEARY, CRYSTAL		0-1	0-0	2-2	1	3	4	2	2	0	0	1	3	18	
TEAM						6	4	10	0		2					
Totals			18-62	5-16	13-18	16	26	42	13	54	11	12	8	13	200	

FG %	1st Half: 8-29	27.6%	2nd Half: 10-33	30.3%	Game: 18-62	29.0%	Deadball
3FG %	1st Half: 2-7	28.6%	2nd Half: 3-9	33.3%	Game: 5-16	31.3%	Rebounds
FT %	1st Half: 8-11	72.7%	2nd Half: 5-7	71.4%	Game: 13-18	72.2%	4,0

Officials: Felicia Grinter, Bryan Enterline, Billy Smith  
 Technical Fouls: Iowa State- None. West Virginia- None.  
 Attendance: 2076  
 Game Start: 12:04 Game End: 1:54  
 Ellis (ISU) fouled out with 1:19 left in the second half.

Score by periods	1st	2nd	Total
Iowa State	36	16	52
West Virginia	26	28	54

	In	Off	2nd	Fast	
Points	Paint	Off T/O	2nd Chance	Fast Break	Bench
Iowa State	20	6	11	6	7
West Virginia	16	15	11	8	12

Largest lead - Iowa State by 17 1st-02:31;  
 West Virginia by 3 1st-18:15

Score tied - 6 times  
 Lead changed - 10 times

# Official Basketball Box Score -- Game Totals -- First Half Statistics

## Iowa State vs West Virginia

2/21/2015 12:00 p.m. at WVU Coliseum, Morgantown, W.Va.

### Iowa State 36 • 16-10/7-8

##	Player	S	Total	3-Ptr	FT-FTA	Rebounds			PF	TP	A	TO	Blk	Stl	Min
			FG-FGA	3PT FG-FGA		Off Reb	Def Reb	Tot Reb							
04	MOODY,NIKKI	g	4-11	1-3	6-8	0	4	4	0	15	5	5	1	1	38
12	JOHNSON,SEANNA	g	5-11	2-3	2-2	0	8	8	2	14	2	4	2	1	37
15	BLASKOWSKY,NICOLE	g	3-8	1-4	0-0	1	3	4	1	7	1	2	0	2	31
22	WILLIAMSON,BRYNN	f	2-8	1-5	0-2	2	3	5	2	5	0	2	0	1	38
44	FERNSTROM,BRYANNA	c	2-7	0-4	0-2	0	2	2	2	4	0	2	0	0	24
02	BELL,NAKIAH		0-0	0-0	0-0	0	0	0	0	0	0	1	0	0	1
03	DURR,EMILY		3-6	1-2	0-0	1	0	1	1	7	1	1	0	0	14
32	ELLIS,FALLON		0-2	0-2	0-0	3	6	9	5	0	2	0	0	0	16
34	BAIER,MADISON		0-0	0-0	0-0	0	0	0	0	0	0	0	0	0	1
TEAM						0	1	1	0		0				
Totals			14-31	4-13	4-5	7	15	22	8		7	9	2	4	

FG %	Half:	14-31	45.2%
3FG %	Half:	4-13	30.8%
FT %	Half:	4-5	80.0%

### West Virginia 26 • 16-11/6-9

##	Player	S	Total	3-Ptr	FT-FTA	Rebounds			PF	TP	A	TO	Blk	Stl	Min
			FG-FGA	3PT FG-FGA		Off Reb	Def Reb	Tot Reb							
05	FIELDS,AVEREE	f	5-16	0-0	2-3	0	5	5	0	12	3	1	3	4	38
15	MONTGOMERY,LANAY	c	1-4	0-0	0-0	3	2	5	2	2	0	1	0	0	18
20	MCDONALD,BRE	f	0-7	0-2	3-4	1	2	3	1	3	0	1	0	1	18
22	STEPNEY,LINDA	g	4-9	3-5	3-4	2	2	4	4	14	6	0	1	2	32
23	HOLMES,BRIA	g	5-12	0-1	1-2	0	4	4	1	11	0	1	1	3	38
00	SIMPSON,DOMINIQUE		0-1	0-1	0-0	0	0	0	0	0	0	0	0	0	1
04	MONTGOMERY,KAYLA		0-0	0-0	0-0	1	0	1	1	0	0	0	1	0	6
11	MULDROW,TEANA		3-10	2-7	2-3	2	4	6	1	10	2	3	1	0	24
21	MORTON,JESSICA		0-2	0-0	0-0	0	0	0	1	0	0	3	0	0	7
32	LEARY,CRYSTAL		0-1	0-0	2-2	1	3	4	2	2	0	0	1	3	18
TEAM						3	2	5	0		1				
Totals			8-29	2-7	8-11	7	11	18	5		4	8	4	6	

FG %	Half:	8-29	27.6%
3FG %	Half:	2-7	28.6%
FT %	Half:	8-11	72.7%

Officials: Felicia Grinter, Bryan Enterline, Billy Smith

Technical Fouls: Iowa State- None. West Virginia- None.

Game Start: 12:04 Game End: 1:54

Ellis (ISU) fouled out with 1:19 left in the second half.

	In	Off	2nd	Fast	
Points	Paint	Off T/O	2nd Chance	Fast Break	Bench
Iowa State	14	6	11	6	4
West Virginia	8	7	4	2	2

Score tied - 5 times

Lead changed - 5 times

# Iowa State vs West Virginia

2/21/2015; 12:00 p.m. at WVU Coliseum, Morgantown, W.Va.

## Period 1 Play-By-Play

VISITORS: Iowa State	Time	Score	Margin	HOME: West Virginia
	19:41			MISSED 3PTR by MCDONALD,BRE
REBOUND (DEF) by JOHNSON,SEANNA	19:41			
TURNOVER by JOHNSON,SEANNA	19:36			
	19:35			STEAL by HOLMES,BRIA
FOUL by JOHNSON,SEANNA	19:30			
	19:30			MISSED FT by HOLMES,BRIA
	19:30	1-0	H 1	REBOUND (DEADB) by TEAM
	19:30			GOOD! FT by HOLMES,BRIA
GOOD! 3PTR by MOODY,NIKKI	19:04	1-3	V 2	
	18:50	4-3	H 1	
	18:50			GOOD! 3PTR by STEPNEY,LINDA
TURNOVER by BLASKOWSKY,NICOLE	18:19			ASSIST by FIELDS,AVEREE
	18:17			STEAL by FIELDS,AVEREE
	18:15	6-3	H 3	
GOOD! LAYUP by FERNSTROM,BRYANNA	18:05	6-5	H 1	GOOD! LAYUP by FIELDS,AVEREE
ASSIST by MOODY,NIKKI	18:05			
	18:05			FOUL by STEPNEY,LINDA
MISSED FT by FERNSTROM,BRYANNA	18:05			
	18:05			REBOUND (DEF) by MONTGOMERY,LANAY
SUB IN: DURR,EMILY	18:05			
SUB OUT: BLASKOWSKY,NICOLE	18:05			
	17:51			MISSED JUMPER by FIELDS,AVEREE
	17:51			REBOUND (OFF) by MONTGOMERY,LANAY
	17:28			MISSED LAYUP by MCDONALD,BRE
REBOUND (DEF) by FERNSTROM,BRYANNA	17:28			
SUB IN: ELLIS,FALLON	17:15			
SUB OUT: JOHNSON,SEANNA	17:15			
GOOD! 3PTR by WILLIAMSON,BRYNN	17:09	6-8	V 2	
ASSIST by ELLIS,FALLON	17:09			
	16:42	8-8	T	GOOD! JUMPER by STEPNEY,LINDA
MISSED JUMPER by DURR,EMILY	16:28			
	16:28			BLOCK by HOLMES,BRIA
REBOUND (OFF) by ELLIS,FALLON	16:22			
GOOD! JUMPER by DURR,EMILY	16:15	8-10	V 2	
	16:08			MISSED JUMPER by FIELDS,AVEREE
REBOUND (DEF) by MOODY,NIKKI	16:08			
	16:04			SUB IN: MULDROW,TEANA
	16:04			SUB IN: MONTGOMERY,KAYLA
	16:04			SUB OUT: MONTGOMERY,LANAY
	16:04			SUB OUT: MCDONALD,BRE
MISSED 3PTR by FERNSTROM,BRYANNA	16:03			
	16:03			REBOUND (DEF) by TEAM
	15:49			MISSED JUMPER by FIELDS,AVEREE
	15:49			REBOUND (OFF) by MONTGOMERY,KAYLA
FOUL by DURR,EMILY	15:45			
	15:45			TIMEOUT media
	15:26			MISSED JUMPER by HOLMES,BRIA
REBOUND (DEF) by ELLIS,FALLON	15:26			
MISSED JUMPER by MOODY,NIKKI	14:56			
	14:56			BLOCK by MONTGOMERY,KAYLA
	14:54			REBOUND (DEF) by MULDROW,TEANA
	14:47	10-10	T	GOOD! JUMPER by HOLMES,BRIA
	14:47			ASSIST by MULDROW,TEANA
TURNOVER by DURR,EMILY	14:27			
SUB IN: BLASKOWSKY,NICOLE	14:27			
SUB IN: JOHNSON,SEANNA	14:27			
SUB OUT: DURR,EMILY	14:27			
SUB OUT: FERNSTROM,BRYANNA	14:27			
	14:10			MISSED JUMPER by FIELDS,AVEREE
REBOUND (DEF) by ELLIS,FALLON	14:10			
MISSED JUMPER by MOODY,NIKKI	13:59			
REBOUND (OFF) by ELLIS,FALLON	13:59			
GOOD! LAYUP by JOHNSON,SEANNA	13:55	10-12	V 2	
ASSIST by ELLIS,FALLON	13:55			
FOUL by ELLIS,FALLON	13:35			
	13:35	11-12	V 1	GOOD! FT by FIELDS,AVEREE
	13:35	12-12	T	GOOD! FT by FIELDS,AVEREE
	13:35			SUB IN: LEARY,CRYSTAL
	13:35			SUB OUT: FIELDS,AVEREE
MISSED JUMPER by WILLIAMSON,BRYNN	13:12			
REBOUND (OFF) by ELLIS,FALLON	13:12			
MISSED 3PTR by WILLIAMSON,BRYNN	13:05			
	13:05			BLOCK by MULDROW,TEANA
	13:05			REBOUND (DEF) by MULDROW,TEANA

	13:04				SUB IN: MONTGOMERY,LANAY
	13:04				SUB OUT: MONTGOMERY,KAYLA
	12:34				TURNOVER by TEAM
SUB IN: FERNSTROM,BRYANNA	12:34				
SUB OUT: ELLIS,FALLON	12:34				
	12:34				SUB IN: MORTON,JESSICA
	12:34				SUB OUT: STEPNEY,LINDA
TURNOVER by WILLIAMSON,BRYNN	12:19				
SUB IN: DURR,EMILY	12:18				
SUB OUT: WILLIAMSON,BRYNN	12:18				
	11:58				TURNOVER by MORTON,JESSICA
STEAL by MOODY,NIKKI	11:57				
GOOD! LAYUP by MOODY,NIKKI	11:55	12-14		V 2	
	11:33				TURNOVER by MORTON,JESSICA
STEAL by BLASKOWSKY,NICOLE	11:31				
MISSED 3PTR by DURR,EMILY	11:26				
	11:26				REBOUND (DEF) by TEAM
	11:22				TIMEOUT MEDIA
	11:22				SUB IN: STEPNEY,LINDA
	11:22				SUB IN: FIELDS,AVEREE
	11:22				SUB IN: MCDONALD,BRE
	11:22				SUB OUT: LEARY,CRYSTAL
	11:22				SUB OUT: MULDROW,TEANA
	11:22				SUB OUT: MORTON,JESSICA
	11:20	14-14		T	GOOD! JUMPER by HOLMES,BRIA
TURNOVER by FERNSTROM,BRYANNA	10:57				
FOUL by FERNSTROM,BRYANNA	10:57				
SUB IN: WILLIAMSON,BRYNN	10:57				
SUB IN: ELLIS,FALLON	10:57				
SUB OUT: DURR,EMILY	10:57				
SUB OUT: FERNSTROM,BRYANNA	10:57				
	10:42				MISSED 3PTR by STEPNEY,LINDA
REBOUND (DEF) by ELLIS,FALLON	10:42				
MISSED 3PTR by WILLIAMSON,BRYNN	10:34				
	10:34				REBOUND (DEF) by HOLMES,BRIA
	10:16				MISSED JUMPER by STEPNEY,LINDA
	10:16				REBOUND (OFF) by MONTGOMERY,LANAY
	10:10				MISSED JUMPER by MONTGOMERY,LANAY
REBOUND (DEF) by JOHNSON,SEANNA	10:10				
MISSED 3PTR by ELLIS,FALLON	09:51				
	09:51				REBOUND (DEF) by STEPNEY,LINDA
FOUL by ELLIS,FALLON	09:43				
	09:43				MISSED FT by MCDONALD,BRE
	09:43				REBOUND (DEADB) by TEAM
	09:43	15-14		H 1	GOOD! FT by MCDONALD,BRE
SUB IN: FERNSTROM,BRYANNA	09:43				
SUB OUT: ELLIS,FALLON	09:43				
	09:43				SUB IN: MULDROW,TEANA
	09:43				SUB OUT: HOLMES,BRIA
	09:31				FOUL by STEPNEY,LINDA
GOOD! FT by MOODY,NIKKI	09:31	15-15		T	
GOOD! FT by MOODY,NIKKI	09:31	15-16		V 1	
	09:31				SUB IN: MORTON,JESSICA
	09:31				SUB OUT: STEPNEY,LINDA
	09:18				TURNOVER by MCDONALD,BRE
MISSED JUMPER by JOHNSON,SEANNA	09:02				
	09:02				REBOUND (DEF) by FIELDS,AVEREE
	08:49				MISSED JUMPER by MORTON,JESSICA
REBOUND (DEF) by TEAM	08:49				
TURNOVER by WILLIAMSON,BRYNN	08:29				
	08:28				STEAL by FIELDS,AVEREE
	08:20				MISSED 3PTR by MCDONALD,BRE
REBOUND (DEF) by BLASKOWSKY,NICOLE	08:20				
MISSED 3PTR by MOODY,NIKKI	08:04				
	08:04				REBOUND (DEF) by MULDROW,TEANA
	07:50				MISSED JUMPER by MCDONALD,BRE
REBOUND (DEF) by JOHNSON,SEANNA	07:50				
GOOD! LAYUP by BLASKOWSKY,NICOLE	07:33	15-18		V 3	
	07:32				TIMEOUT 30SEC
	07:32				SUB IN: SIMPSON,DOMINIQUE
	07:32				SUB IN: HOLMES,BRIA
	07:32				SUB OUT: MORTON,JESSICA
	07:32				SUB OUT: MULDROW,TEANA
	07:15				SUB IN: MONTGOMERY,KAYLA
	07:15				SUB OUT: MONTGOMERY,LANAY
	07:14				TURNOVER by MONTGOMERY,LANAY
MISSED LAYUP by FERNSTROM,BRYANNA	06:46				
REBOUND (OFF) by WILLIAMSON,BRYNN	06:46				
MISSED JUMPER by WILLIAMSON,BRYNN	06:44				
	06:44				BLOCK by FIELDS,AVEREE
REBOUND (OFF) by BLASKOWSKY,NICOLE	06:42				
	06:30				FOUL by MONTGOMERY,KAYLA
GOOD! FT by JOHNSON,SEANNA	06:30	15-19		V 4	

GOOD! FT by JOHNSON,SEANNA	06:30	15-20	V 5	
	06:10			MISSED 3PTR by SIMPSON,DOMINIQUE
REBOUND (DEF) by MOODY,NIKKI	06:10			
GOOD! JUMPER by MOODY,NIKKI	05:59	15-22	V 7	
	05:59			TIMEOUT 30SEC
	05:59			SUB IN: MORTON,JESSICA
	05:59			SUB IN: MULDROW,TEANA
	05:59			SUB OUT: SIMPSON,DOMINIQUE
	05:59			SUB OUT: MCDONALD,BRE
	05:52			MISSED 3PTR by MULDROW,TEANA
REBOUND (DEF) by MOODY,NIKKI	05:52			
GOOD! 3PTR by JOHNSON,SEANNA	05:26	15-25	V 10	
ASSIST by MOODY,NIKKI	05:26			
	05:07			MISSED JUMPER by FIELDS,AVEREE
	05:07			REBOUND (OFF) by TEAM
	04:55			TURNOVER by MULDROW,TEANA
STEAL by BLASKOWSKY,NICOLE	04:51			
GOOD! LAYUP by BLASKOWSKY,NICOLE	04:49	15-27	V 12	
	04:37			TURNOVER by MULDROW,TEANA
STEAL by JOHNSON,SEANNA	04:36			
MISSED 3PTR by BLASKOWSKY,NICOLE	04:33			
	04:33			REBOUND (DEF) by MULDROW,TEANA
	04:22	17-27	V 10	GOOD! JUMPER by FIELDS,AVEREE
	04:22			ASSIST by MULDROW,TEANA
MISSED 3PTR by FERNSTROM,BRYANNA	04:06			
REBOUND (OFF) by WILLIAMSON,BRYNN	04:06			
GOOD! 3PTR by JOHNSON,SEANNA	03:56	17-30	V 13	
ASSIST by MOODY,NIKKI	03:56			
	03:42			MISSED JUMPER by MORTON,JESSICA
REBOUND (DEF) by BLASKOWSKY,NICOLE	03:42			
GOOD! LAYUP by JOHNSON,SEANNA	03:33	17-32	V 15	
ASSIST by BLASKOWSKY,NICOLE	03:33			
	03:33			TIMEOUT 30SEC
	03:33			SUB IN: MCDONALD,BRE
	03:33			SUB IN: LEARY,CRYSTAL
	03:33			SUB IN: STEPNEY,LINDA
	03:33			SUB OUT: MORTON,JESSICA
	03:33			SUB OUT: MULDROW,TEANA
	03:33			SUB OUT: MONTGOMERY,KAYLA
	03:03			MISSED JUMPER by HOLMES,BRIA
REBOUND (DEF) by WILLIAMSON,BRYNN	03:03			
MISSED 3PTR by JOHNSON,SEANNA	02:49			
	02:49			REBOUND (DEF) by LEARY,CRYSTAL
GOOD! JUMPER by FERNSTROM,BRYANNA	02:31	17-34	V 17	
	02:31	19-34	V 15	GOOD! LAYUP by FIELDS,AVEREE
ASSIST by JOHNSON,SEANNA	02:31			
	02:31			ASSIST by STEPNEY,LINDA
FOUL by FERNSTROM,BRYANNA	02:31			
	02:31			SUB OUT: STEPNEY,LINDA
	02:20			MISSED FT by FIELDS,AVEREE
REBOUND (DEF) by JOHNSON,SEANNA	02:19			
	02:10	22-34	V 12	GOOD! 3PTR by STEPNEY,LINDA
SUB IN: DURR,EMILY	01:53			
SUB OUT: FERNSTROM,BRYANNA	01:53			
TURNOVER by MOODY,NIKKI	01:44			
	01:43			STEAL by FIELDS,AVEREE
	01:40			MISSED JUMPER by MCDONALD,BRE
BLOCK by MOODY,NIKKI	01:40			
	01:40			REBOUND (OFF) by TEAM
FOUL by WILLIAMSON,BRYNN	01:25			
	01:25	23-34	V 11	GOOD! FT by LEARY,CRYSTAL
	01:25	24-34	V 10	GOOD! FT by LEARY,CRYSTAL
TURNOVER by JOHNSON,SEANNA	01:12			
	01:11			STEAL by LEARY,CRYSTAL
	01:05			MISSED JUMPER by MCDONALD,BRE
	01:05			REBOUND (OFF) by MCDONALD,BRE
FOUL by WILLIAMSON,BRYNN	01:04			
	01:04	25-34	V 9	GOOD! FT by MCDONALD,BRE
	01:04	26-34	V 8	GOOD! FT by MCDONALD,BRE
SUB IN: BAIER,MADISON	01:04			
SUB OUT: WILLIAMSON,BRYNN	01:04			
	01:04			SUB IN: MORTON,JESSICA
	00:56			FOUL by MORTON,JESSICA
MISSED JUMPER by MOODY,NIKKI	00:37			
REBOUND (OFF) by DURR,EMILY	00:37			
GOOD! LAYUP by DURR,EMILY	00:34	26-36	V 10	
	00:09			TURNOVER by MORTON,JESSICA
SUB IN: WILLIAMSON,BRYNN	00:09			
SUB OUT: BAIER,MADISON	00:09			
	00:05			FOUL by MCDONALD,BRE
TURNOVER by MOODY,NIKKI	00:03			
	00:02			STEAL by LEARY,CRYSTAL
	00:00			MISSED JUMPER by HOLMES,BRIA

Iowa State 36, West Virginia 26

<b>Period 1-only</b>	<b>In Paint</b>	<b>Off T/O</b>	<b>2nd Chance</b>	<b>Fast Break</b>	<b>Bench</b>	
Iowa State	14	6	11	6	4	Score tied - 2 times
West Virginia	8	7	4	2	2	Lead changed - 6 times

# Official Basketball Box Score -- Game Totals -- Second Half Statistics

## Iowa State vs West Virginia

2/21/2015 12:00 p.m. at WVU Coliseum, Morgantown, W.Va.

### Iowa State 16 • 16-10/7-8

##	Player	S	Total			Rebounds			PF	TP	A	TO	Blk	Stl	Min
			FG-FGA	3PT FG-FGA	FT-FTA	Off Reb	Def Reb	Tot Reb							
04	MOODY,NIKKI	g	4-11	1-3	6-8	0	4	4	0	15	5	5	1	1	38
12	JOHNSON,SEANNA	g	5-11	2-3	2-2	0	8	8	2	14	2	4	2	1	37
15	BLASKOWSKY,NICOLE	g	3-8	1-4	0-0	1	3	4	1	7	1	2	0	2	31
22	WILLIAMSON,BRYNN	f	2-8	1-5	0-2	2	3	5	2	5	0	2	0	1	38
44	FERNSTROM,BRYANNA	c	2-7	0-4	0-2	0	2	2	2	4	0	2	0	0	24
02	BELL,NAKIAH		0-0	0-0	0-0	0	0	0	0	0	0	1	0	0	1
03	DURR,EMILY		3-6	1-2	0-0	1	0	1	1	7	1	1	0	0	14
32	ELLIS,FALLON		0-2	0-2	0-0	3	6	9	5	0	2	0	0	0	16
34	BAIER,MADISON		0-0	0-0	0-0	0	0	0	0	0	0	0	0	0	1
TEAM						4	2	6	0		0				
Totals			5-22	2-10	4-9	4	14	18	5		4	8	1	1	

FG %	Half:	5-22	22.7%
3FG %	Half:	2-10	30.8%
FT %	Half:	4-9	44.4%

### West Virginia 28 • 16-11/6-9

##	Player	S	Total			Rebounds			PF	TP	A	TO	Blk	Stl	Min
			FG-FGA	3PT FG-FGA	FT-FTA	Off Reb	Def Reb	Tot Reb							
05	FIELDS,AVEREE	f	5-16	0-0	2-3	0	5	5	0	12	3	1	3	4	38
15	MONTGOMERY,LANAY	c	1-4	0-0	0-0	3	2	5	2	2	0	1	0	0	18
20	MCDONALD,BRE	f	0-7	0-2	3-4	1	2	3	1	3	0	1	0	1	18
22	STEPNEY,LINDA	g	4-9	3-5	3-4	2	2	4	4	14	6	0	1	2	32
23	HOLMES,BRIA	g	5-12	0-1	1-2	0	4	4	1	11	0	1	1	3	38
00	SIMPSON,DOMINIQUE		0-1	0-1	0-0	0	0	0	0	0	0	0	0	0	1
04	MONTGOMERY,KAYLA		0-0	0-0	0-0	1	0	1	1	0	0	0	1	0	6
11	MULDROW,TEANA		3-10	2-7	2-3	2	4	6	1	10	2	3	1	0	24
21	MORTON,JESSICA		0-2	0-0	0-0	0	0	0	1	0	0	3	0	0	7
32	LEARY,CRYSTAL		0-1	0-0	2-2	1	3	4	2	2	0	0	1	3	18
TEAM						3	2	5	0		1				
Totals			10-33	3-9	5-7	9	15	24	8		7	4	4	7	

FG %	Half:	10-33	30.3%
3FG %	Half:	3-9	28.6%
FT %	Half:	5-7	71.4%

Officials: Felicia Grinter, Bryan Enterline, Billy Smith

Technical Fouls: Iowa State- None. West Virginia- None.

Game Start: 12:04 Game End: 1:54

Ellis (ISU) fouled out with 1:19 left in the second half.

	In	Off	2nd	Fast	
Points	Paint	Off T/O	2nd Chance	Fast Break	Bench
Iowa State	6	0	0	0	3
West Virginia	8	8	6	6	10

Score tied - 1 times

Lead changed - 5 times



# Iowa State vs West Virginia

2/21/2015; 12:00 p.m. at WVU Coliseum, Morgantown, W.Va.

## Period 2 Play-By-Play

VISITORS: Iowa State	Time	Score	Margin	HOME: West Virginia
SUB IN: BELL,NAKIAH	20:00			
SUB OUT: MOODY,NIKKI	20:00			
	19:48			MISSED JUMPER by MONTGOMERY,LANAY
REBOUND (DEF) by JOHNSON,SEANNA	19:48			
	19:21			FOUL by MONTGOMERY,LANAY
TURNOVER by BELL,NAKIAH	19:20			
	19:18			STEAL by HOLMES,BRIA
	19:14			MISSED LAYUP by FIELDS,AVEREE
REBOUND (DEF) by FERNSTROM,BRYANNA	19:14			
MISSED 3PTR by FERNSTROM,BRYANNA	18:58			
	18:58			REBOUND (DEF) by MCDONALD,BRE
	18:49			MISSED LAYUP by STEPNEY,LINDA
REBOUND (DEF) by WILLIAMSON,BRYNN	18:49			
TURNOVER by FERNSTROM,BRYANNA	18:39			
SUB IN: MOODY,NIKKI	18:38			
SUB OUT: BELL,NAKIAH	18:38			
	18:15	28-36	V 8	GOOD! JUMPER by MONTGOMERY,LANAY
	18:15			ASSIST by FIELDS,AVEREE
GOOD! 3PTR by BLASKOWSKY,NICOLE	17:59	28-39	V 11	
ASSIST by JOHNSON,SEANNA	17:59			
	17:46			TIMEOUT 30SEC
	17:46			SUB IN: MULDRROW,TEANA
	17:46			SUB OUT: MCDONALD,BRE
	17:28			MISSED 3PTR by MULDRROW,TEANA
	17:28			REBOUND (OFF) by MONTGOMERY,LANAY
	17:17			MISSED 3PTR by MULDRROW,TEANA
REBOUND (DEF) by MOODY,NIKKI	17:17			
MISSED LAYUP by MOODY,NIKKI	16:56			
	16:56			BLOCK by FIELDS,AVEREE
REBOUND (OFF) by TEAM	16:56			
SUB IN: ELLIS,FALLON	16:55			
SUB OUT: FERNSTROM,BRYANNA	16:55			
MISSED LAYUP by JOHNSON,SEANNA	16:52			
	16:52			REBOUND (DEF) by HOLMES,BRIA
	16:41			SUB IN: LEARY,CRYSTAL
	16:41			SUB OUT: MONTGOMERY,LANAY
	16:32			MISSED JUMPER by HOLMES,BRIA
REBOUND (DEF) by ELLIS,FALLON	16:32			
MISSED JUMPER by MOODY,NIKKI	16:12			
	16:12			REBOUND (DEF) by HOLMES,BRIA
FOUL by ELLIS,FALLON	15:59			
	15:59			TIMEOUT MEDIA
SUB IN: FERNSTROM,BRYANNA	15:59			
SUB OUT: ELLIS,FALLON	15:59			
	15:46	31-39	V 8	GOOD! 3PTR by STEPNEY,LINDA
	15:46			ASSIST by FIELDS,AVEREE
MISSED 3PTR by WILLIAMSON,BRYNN	15:25			
	15:25			REBOUND (DEF) by STEPNEY,LINDA
	15:17			MISSED 3PTR by HOLMES,BRIA
	15:17			REBOUND (OFF) by TEAM
	15:04			TURNOVER by MULDRROW,TEANA
STEAL by WILLIAMSON,BRYNN	15:03			
TURNOVER by MOODY,NIKKI	14:38			
	14:37			STEAL by STEPNEY,LINDA
	14:30	33-39	V 6	GOOD! LAYUP by HOLMES,BRIA
	14:30			ASSIST by STEPNEY,LINDA
TIMEOUT 30SEC	14:22			
MISSED 3PTR by BLASKOWSKY,NICOLE	14:04			
	14:04			REBOUND (DEF) by LEARY,CRYSTAL
	13:37			MISSED 3PTR by STEPNEY,LINDA
REBOUND (DEF) by JOHNSON,SEANNA	13:37			
	13:29			FOUL by LEARY,CRYSTAL
MISSED FT by MOODY,NIKKI	13:29			
REBOUND (DEADB) by TEAM	13:29			
GOOD! FT by MOODY,NIKKI	13:29	33-40	V 7	
	12:58			MISSED JUMPER by FIELDS,AVEREE
	12:58			REBOUND (OFF) by MULDRROW,TEANA
	12:54			MISSED JUMPER by MULDRROW,TEANA
	12:54			REBOUND (OFF) by TEAM
	12:51			TURNOVER by HOLMES,BRIA
	12:51			FOUL by HOLMES,BRIA
MISSED 3PTR by BLASKOWSKY,NICOLE	12:23			
	12:23			REBOUND (DEF) by TEAM
	12:09	35-40	V 5	GOOD! JUMPER by FIELDS,AVEREE

MISSED 3PTR by FERNSTROM,BRYANNA	11:48				
	11:48				REBOUND (DEF) by HOLMES,BRIA
	11:35	38-40	V 2		GOOD! 3PTR by MULDRROW,TEANA
	11:35				ASSIST by STEPNEY,LINDA
	11:17				FOUL by LEARY,CRYSTAL
TIMEOUT MEDIA	11:17				
GOOD! FT by MOODY,NIKKI	11:17	38-41	V 3		
GOOD! FT by MOODY,NIKKI	11:17	38-42	V 4		
SUB IN: ELLIS,FALLON	11:17				
SUB OUT: FERNSTROM,BRYANNA	11:17				
	10:56	41-42	V 1		GOOD! 3PTR by MULDRROW,TEANA
	10:56				ASSIST by STEPNEY,LINDA
MISSED JUMPER by JOHNSON,SEANNA	10:25				
	10:25				BLOCK by STEPNEY,LINDA
REBOUND (OFF) by TEAM	10:25				
SUB IN: DURR,EMILY	10:25				
SUB OUT: BLASKOWSKY,NICOLE	10:25				
TURNOVER by MOODY,NIKKI	10:23				
	10:21				STEAL by FIELDS,AVEREE
	10:18	43-42	H 1		GOOD! LAYUP by HOLMES,BRIA
	10:18				ASSIST by STEPNEY,LINDA
GOOD! 3PTR by DURR,EMILY	10:00	43-45	V 2		
ASSIST by MOODY,NIKKI	10:00				
	09:38				TURNOVER by FIELDS,AVEREE
	09:38				SUB IN: MONTGOMERY,LANAY
	09:38				SUB OUT: LEARY,CRYSTAL
TURNOVER by JOHNSON,SEANNA	09:23				
	09:20				STEAL by STEPNEY,LINDA
	09:16				MISSED LAYUP by HOLMES,BRIA
REBOUND (DEF) by ELLIS,FALLON	09:16				
GOOD! LAYUP by WILLIAMSON,BRYNN	09:08	43-47	V 4		
ASSIST by DURR,EMILY	09:08				
	08:44				MISSED JUMPER by MONTGOMERY,LANAY
REBOUND (DEF) by JOHNSON,SEANNA	08:44				
	08:35				FOUL by STEPNEY,LINDA
GOOD! LAYUP by JOHNSON,SEANNA	08:34	43-49	V 6		
ASSIST by MOODY,NIKKI	08:34				
	07:59				TURNOVER by TEAM
TIMEOUT MEDIA	07:59				
	07:59				SUB IN: MCDONALD,BRE
	07:59				SUB OUT: MULDRROW,TEANA
TURNOVER by MOODY,NIKKI	07:35				
	07:33				STEAL by MCDONALD,BRE
	07:15				MISSED JUMPER by FIELDS,AVEREE
REBOUND (DEF) by JOHNSON,SEANNA	07:15				
MISSED 3PTR by ELLIS,FALLON	06:44				
	06:44				REBOUND (DEF) by MCDONALD,BRE
	06:32				MISSED JUMPER by FIELDS,AVEREE
REBOUND (DEF) by ELLIS,FALLON	06:32				
MISSED 3PTR by WILLIAMSON,BRYNN	06:19				
	06:19				REBOUND (DEF) by MONTGOMERY,LANAY
	06:14	45-49	V 4		GOOD! LAYUP by HOLMES,BRIA
	05:44				FOUL by MONTGOMERY,LANAY
MISSED FT by MOODY,NIKKI	05:44				
REBOUND (DEADB) by TEAM	05:44				
GOOD! FT by MOODY,NIKKI	05:44	45-50	V 5		
SUB IN: BLASKOWSKY,NICOLE	05:44				
SUB OUT: MOODY,NIKKI	05:44				
	05:27				SUB IN: MULDRROW,TEANA
	05:27				SUB OUT: MCDONALD,BRE
	05:24				MISSED JUMPER by MCDONALD,BRE
REBOUND (DEF) by TEAM	05:24				
MISSED JUMPER by DURR,EMILY	05:15				
	05:15				REBOUND (DEF) by FIELDS,AVEREE
	04:57				MISSED 3PTR by MULDRROW,TEANA
REBOUND (DEF) by TEAM	04:57				
	04:56				SUB IN: LEARY,CRYSTAL
	04:56				SUB OUT: MONTGOMERY,LANAY
TURNOVER by JOHNSON,SEANNA	04:43				
	04:42				STEAL by LEARY,CRYSTAL
FOUL by ELLIS,FALLON	04:38				
	04:38	46-50	V 4		GOOD! FT by STEPNEY,LINDA
	04:38	47-50	V 3		GOOD! FT by STEPNEY,LINDA
SUB IN: MOODY,NIKKI	04:38				
SUB IN: FERNSTROM,BRYANNA	04:38				
SUB OUT: DURR,EMILY	04:38				
SUB OUT: ELLIS,FALLON	04:38				
MISSED LAYUP by BLASKOWSKY,NICOLE	04:14				
	04:14				REBOUND (DEF) by LEARY,CRYSTAL
	04:03				MISSED 3PTR by MULDRROW,TEANA
	04:03				REBOUND (OFF) by STEPNEY,LINDA
	04:00	49-50	V 1		GOOD! LAYUP by FIELDS,AVEREE
	04:00				ASSIST by STEPNEY,LINDA

	03:43					FOUL by MULDROW,TEANA
TIMEOUT MEDIA	03:43					
MISSED FT by FERNSTROM,BRYANNA	03:43					
	03:43					REBOUND (DEF) by FIELDS,AVEREE
FOUL by JOHNSON,SEANNA	03:19					
	03:19					MISSED FT by MULDROW,TEANA
	03:19					REBOUND (DEADB) by TEAM
	03:19	50-50		T		GOOD! FT by MULDROW,TEANA
SUB IN: ELLIS,FALLON	03:19					
SUB OUT: FERNSTROM,BRYANNA	03:19					
MISSED LAYUP by JOHNSON,SEANNA	02:57					
	02:57					BLOCK by LEARY,CRYSTAL
REBOUND (OFF) by TEAM	02:57					
MISSED 3PTR by MOODY,NIKKI	02:49					
	02:49					REBOUND (DEF) by TEAM
	02:32					MISSED LAYUP by LEARY,CRYSTAL
BLOCK by JOHNSON,SEANNA	02:32					
	02:32					REBOUND (OFF) by TEAM
	02:18					MISSED JUMPER by STEPNEY,LINDA
REBOUND (DEF) by BLASKOWSKY,NICOLE	02:18					
MISSED JUMPER by BLASKOWSKY,NICOLE	01:53					
	01:53					REBOUND (DEF) by FIELDS,AVEREE
	01:33					MISSED JUMPER by MULDROW,TEANA
	01:33					REBOUND (OFF) by LEARY,CRYSTAL
FOUL by ELLIS,FALLON	01:19					
	01:19					MISSED FT by STEPNEY,LINDA
	01:19					REBOUND (DEADB) by TEAM
	01:19	51-50		H 1		GOOD! FT by STEPNEY,LINDA
SUB IN: DURR,EMILY	01:19					
SUB OUT: ELLIS,FALLON	01:19					
TIMEOUT 30SEC	01:17					
GOOD! JUMPER by MOODY,NIKKI	01:12	51-52		V 1		
	00:52					MISSED JUMPER by FIELDS,AVEREE
REBOUND (DEF) by WILLIAMSON,BRYNN	00:52					
TIMEOUT 30SEC	00:42					
MISSED JUMPER by JOHNSON,SEANNA	00:36					
REBOUND (OFF) by TEAM	00:36					
	00:36					BLOCK by FIELDS,AVEREE
	00:25					FOUL by STEPNEY,LINDA
MISSED FT by WILLIAMSON,BRYNN	00:25					
REBOUND (DEADB) by TEAM	00:25					
MISSED FT by WILLIAMSON,BRYNN	00:25					
	00:25					REBOUND (DEF) by FIELDS,AVEREE
	00:21					TIMEOUT TEAM
	00:10					MISSED JUMPER by FIELDS,AVEREE
	00:10					REBOUND (OFF) by STEPNEY,LINDA
	00:08					MISSED JUMPER by HOLMES,BRIA
	00:08					REBOUND (OFF) by MULDROW,TEANA
	00:05	53-52		H 1		GOOD! JUMPER by MULDROW,TEANA
	00:05	54-52		H 2		GOOD! FT by MULDROW,TEANA
TIMEOUT TEAM	00:05					
FOUL by BLASKOWSKY,NICOLE	00:05					
TURNOVER by BLASKOWSKY,NICOLE	00:05					
	00:05					STEAL by HOLMES,BRIA
	00:05					SUB IN: MCDONALD,BRE
	00:05					SUB OUT: MULDROW,TEANA

Iowa State 52, West Virginia 54

Period 2-only	In Paint	Off T/O	2nd Chance	Fast Break	Bench	
Iowa State	6	0	0	0	3	Score tied - 0 times
West Virginia	8	8	6	6	10	Lead changed - 4 times

# Iowa State vs West Virginia

2/21/2015; 12:00 p.m. at WVU Coliseum, Morgantown, W.Va.

## Scoring/Runs Reference

Period 1			Period 2		
Iowa State	Score	West Virginia	Iowa State	Score	West Virginia
	X	MCDONALD 3PTR - 19:41		X	MONTGOMERY JUMPER - 19:48
19:36 - JOHNSON TURN	TO	X	19:20 - BELL TURN	TO	X
		X			X
	0-1 1	HOLMES FT - 19:30			X
	1	HOLMES FT - 19:30	18:58 - FERNSTROM 3PTR	X	X
19:04 - MOODY 3PTR	3				X
	3-1 -2		18:39 - FERNSTROM TURN	TO	
	3-4 1	STEPNEY 3PTR - 18:50			36-28 8
18:19 - BLASKOWSKY TURN	TO				2
			17:59 - BLASKOWSKY 3PTR	3	39-28 -11
	3-6 3	2PF			X
	2PF	FIELDS LAYUP - 18:15			X
18:05 - FERNSTROM LAYUP	2P	5-6 1	16:56 - MOODY LAYUP	X	MULDROW 3PTR - 17:28
18:05 - FERNSTROM FT	X		16:52 - JOHNSON LAYUP	X	MULDROW 3PTR - 17:17
		X			X
		X	16:12 - MOODY JUMPER	X	X
		X			X
17:09 - WILLIAMSON 3PTR	3	8-6 -2	16:12 - MOODY JUMPER	X	HOLMES JUMPER - 16:32
		X			X
		X	15:25 - WILLIAMSON 3PTR	X	39-31 -8
		2P			3
16:28 - DURR JUMPER	X	8-8 0	15:25 - WILLIAMSON 3PTR	X	STEPNEY 3PTR - 15:46
16:15 - DURR JUMPER	2	10-8 -2			X
		X			X
		X	14:38 - MOODY TURN	TO	TO
16:03 - FERNSTROM 3PTR	X				39-33 -6
		X			2PF
		X	14:04 - BLASKOWSKY 3PTR	X	X
		X			X
14:56 - MOODY JUMPER	X		13:29 - MOODY FT	X	X
		2P	13:29 - MOODY FT	1	40-33 -7
		2P			X
14:27 - DURR TURN	TO	X			X
		X			X
		X	12:23 - BLASKOWSKY 3PTR	X	40-35 -5
13:59 - MOODY JUMPER	X				2
13:55 - JOHNSON LAYUP	2P	12-10 -2	11:48 - FERNSTROM 3PTR	X	40-38 -2
		1			3
		1	11:17 - MOODY FT	1	41-38 -3
		1	11:17 - MOODY FT	1	42-38 -4
13:12 - WILLIAMSON JUMPER	X				42-41 -1
13:05 - WILLIAMSON 3PTR	X		10:25 - JOHNSON JUMPER	X	3
		TO	10:23 - MOODY TURN	TO	42-43 1
		TURN - 12:34			2PF
12:19 - WILLIAMSON TURN	TO		10:00 - DURR 3PTR	3	45-43 -2
		MORTON TURN - 11:58			TO
11:55 - MOODY LAYUP	2PF	14-12 -2	09:23 - JOHNSON TURN	TO	X
		TO			X
		MORTON TURN - 11:33	09:08 - WILLIAMSON LAYUP	2P	47-43 -4
11:26 - DURR 3PTR	X				X
		X			X
		X	08:34 - JOHNSON LAYUP	2P	49-43 -6
		X			TO
10:57 - FERNSTROM TURN	TO	X			TURN - 07:59
		X	07:35 - MOODY TURN	TO	X
		X			X
10:34 - WILLIAMSON 3PTR	X		06:44 - ELLIS 3PTR	X	X
		X			X
		X	06:19 - WILLIAMSON 3PTR	X	49-45 4
09:51 - ELLIS 3PTR	X				2PF
		X			X
		X			X
		X			X
09:31 - MOODY FT	1	14-15 1			X
09:31 - MOODY FT	1	15-15 0			X
		1			X
		1			X
09:02 - JOHNSON JUMPER	X				X
		TO			X
		MCDONALD TURN - 09:18			X

08:29 - WILLIAMSON TURN TO X MORTON JUMPER - 08:49

08:04 - MOODY 3PTR X MCDONALD 3PTR - 08:20

07:33 - BLASKOWSKY LAYUP 2<sup>P</sup> 18-15 -3 X MCDONALD JUMPER - 07:50

TO MONTGOMERY TURN - 07:14

06:46 - FERNSTROM LAYUP X

06:44 - WILLIAMSON JUMPER X

06:30 - JOHNSON FT 1 19-15 -4

06:30 - JOHNSON FT 1 20-15 -5 X SIMPSON 3PTR - 06:10

05:59 - MOODY JUMPER 2 22-15 -7 X MULDRROW 3PTR - 05:52

05:26 - JOHNSON 3PTR 3 25-15 -10 X FIELDS JUMPER - 05:07

TO MULDRROW TURN - 04:55

04:49 - BLASKOWSKY LAYUP 2<sup>PF</sup> 27-15 -12 TO MULDRROW TURN - 04:37

04:33 - BLASKOWSKY 3PTR X 27-17 -10 2 FIELDS JUMPER - 04:22

04:06 - FERNSTROM 3PTR X

03:56 - JOHNSON 3PTR 3 30-17 -13 X MORTON JUMPER - 03:42

03:33 - JOHNSON LAYUP 2<sup>PF</sup> 32-17 -15 X HOLMES JUMPER - 03:03

02:49 - JOHNSON 3PTR X

02:31 - FERNSTROM JUMPER 2 34-17 -17 34-19 -15 2<sup>P</sup> FIELDS LAYUP - 02:31

X FIELDS FT - 02:20

34-22 -12 3 STEPNEY 3PTR - 02:10

01:44 - MOODY TURN TO X MCDONALD JUMPER - 01:40

34-23 -11 1 LEARY FT - 01:25

34-24 -10 1 LEARY FT - 01:25

01:12 - JOHNSON TURN TO X MCDONALD JUMPER - 01:05

34-25 -9 1 MCDONALD FT - 01:04

34-26 -8 1 MCDONALD FT - 01:04

00:37 - MOODY JUMPER X

00:34 - DURR LAYUP 2<sup>P</sup> 36-26 -10 TO MORTON TURN - 00:09

00:03 - MOODY TURN TO X HOLMES JUMPER - 00:00

05:44 - MOODY FT X

05:44 - MOODY FT 1 50-45 -5 X MCDONALD JUMPER - 05:24

05:15 - DURR JUMPER X X MULDRROW 3PTR - 04:57

04:43 - JOHNSON TURN TO 50-46 -4 1 STEPNEY FT - 04:38

50-47 -3 1 STEPNEY FT - 04:38

04:14 - BLASKOWSKY LAYUP X X MULDRROW 3PTR - 04:03

50-49 -1 2<sup>P</sup> FIELDS LAYUP - 04:00

03:43 - FERNSTROM FT X X MULDRROW FT - 03:19

50-50 0 1 MULDRROW FT - 03:19

02:57 - JOHNSON LAYUP X

02:49 - MOODY 3PTR X X LEARY LAYUP - 02:32

X STEPNEY JUMPER - 02:18

01:53 - BLASKOWSKY JUMPER X X MULDRROW JUMPER - 01:33

X STEPNEY FT - 01:19

50-51 1 1 STEPNEY FT - 01:19

01:12 - MOODY JUMPER 2<sup>P</sup> 52-51 -1 X FIELDS JUMPER - 00:52

00:36 - JOHNSON JUMPER X

00:25 - WILLIAMSON FT X

00:25 - WILLIAMSON FT X X FIELDS JUMPER - 00:10

X HOLMES JUMPER - 00:08

52-53 1 2 MULDRROW JUMPER - 00:05

52-54 2 1 MULDRROW FT - 00:05

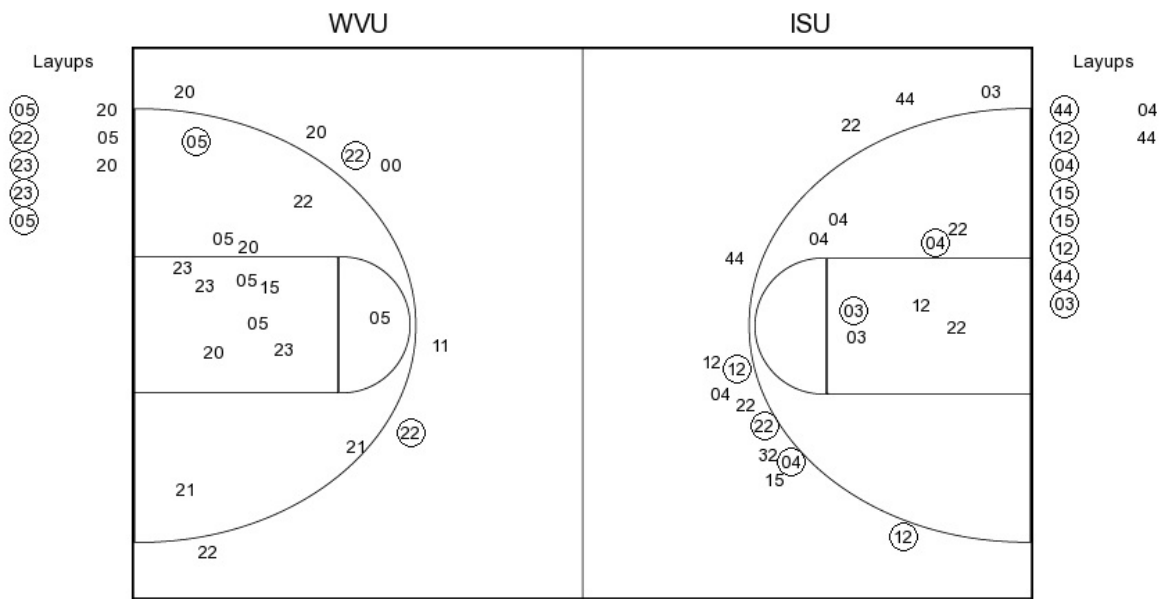
00:05 - BLASKOWSKY TURN TO

Iowa State vs West Virginia

OFFICIAL SHOT CHART

2/21/2015 at WVU Coliseum, Morgantown, W.Va.

PERIOD 1



**ISU PERIOD 1**

FG Made	14
FG Attempted	31
3PFG Made	4
3PFG Attempted	13

**WVU PERIOD 1**

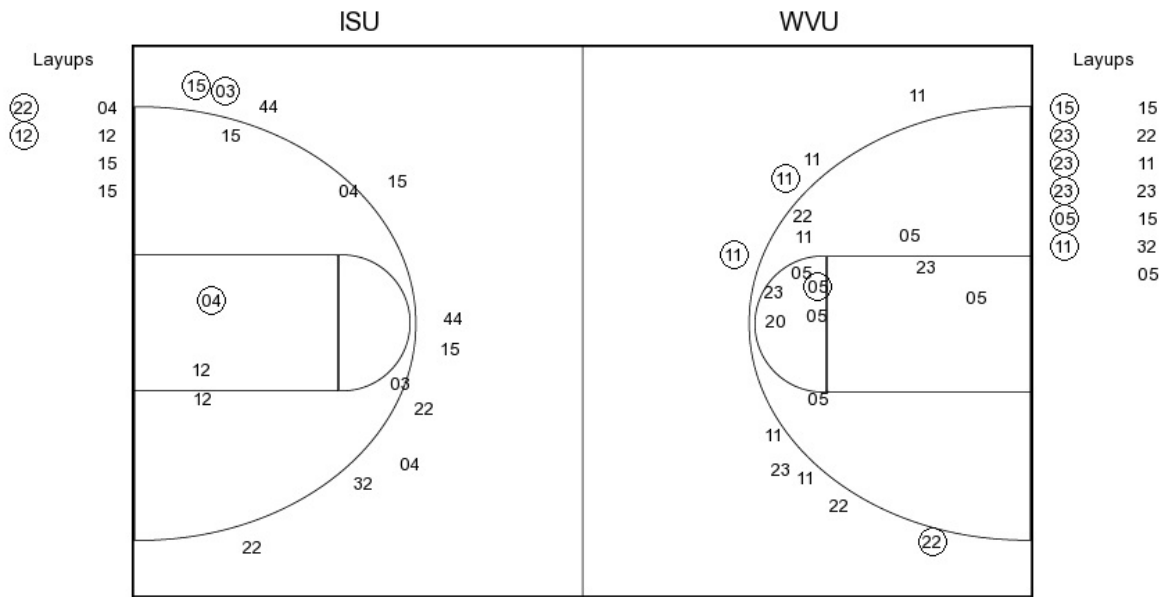
FG Made	8
FG Attempted	29
3PFG Made	2
3PFG Attempted	7

Iowa State vs West Virginia

OFFICIAL SHOT CHART

2/21/2015 at WVU Coliseum, Morgantown, W.Va.

PERIOD 2



ISU PERIOD 2

FG Made	5
FG Attempted	22
3PFG Made	2
3PFG Attempted	10

WVU PERIOD 2

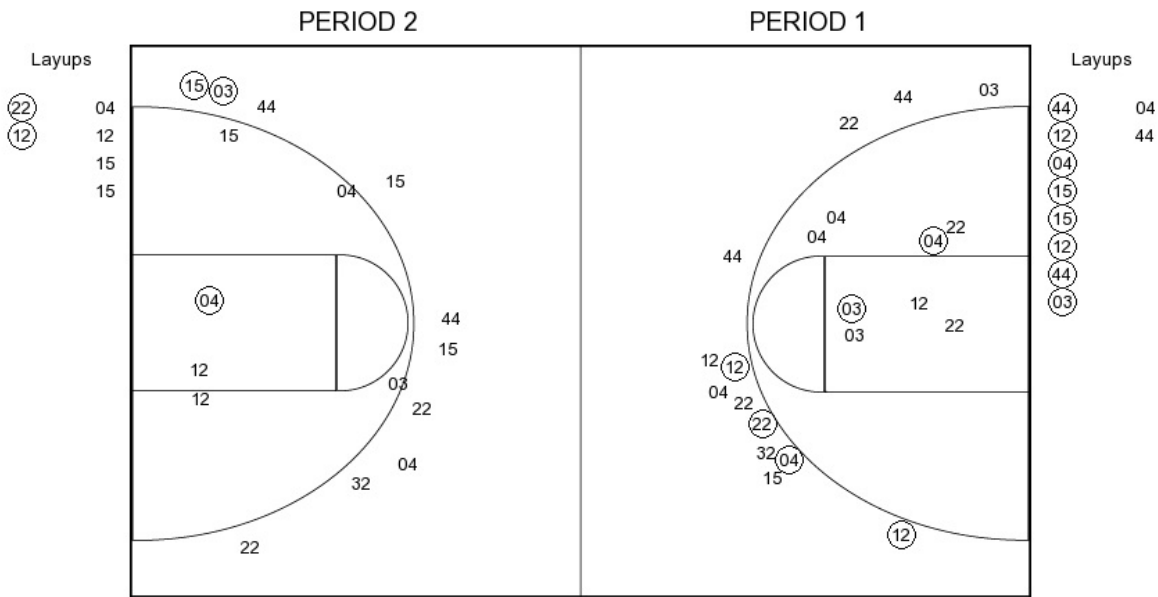
FG Made	10
FG Attempted	33
3PFG Made	3
3PFG Attempted	9

Iowa State vs West Virginia

OFFICIAL SHOT CHART

2/21/2015 at WVU Coliseum, Morgantown, W.Va.

Iowa State



**ISU PERIOD 1**

FG Made	14
FG Attempted	31
3PFG Made	4
3PFG Attempted	13

**ISU PERIOD 2**

FG Made	5
FG Attempted	22
3PFG Made	2
3PFG Attempted	10

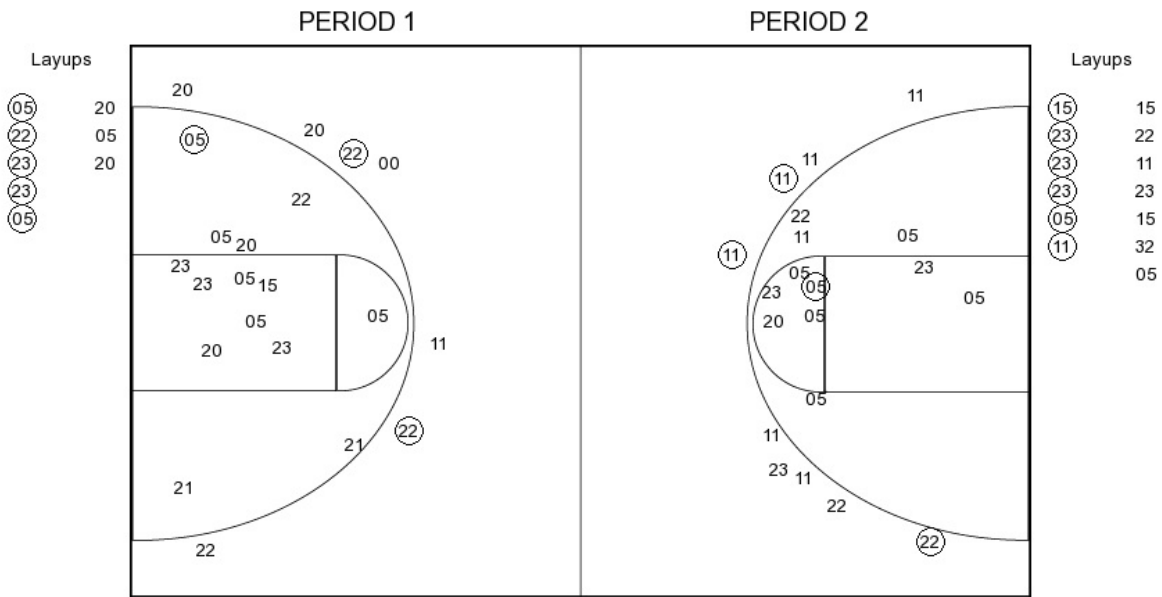


Iowa State vs West Virginia

OFFICIAL SHOT CHART

2/21/2015 at WVU Coliseum, Morgantown, W.Va.

West Virginia



**WVU PERIOD 1**

FG Made	8
FG Attempted	29
3PFG Made	2
3PFG Attempted	7

**WVU PERIOD 2**

FG Made	10
FG Attempted	33
3PFG Made	3
3PFG Attempted	9