



WEST VIRGINIA VS. OKLAHOMA STATE

2/18/2015

WVU Coliseum, Morgantown, W.Va.

FINAL STATS

Oklahoma State

(17-8/7-7)

52

West Virginia

(15-11/5-9)

46

Start Time: 7:00 p.m.

Officials: Jesse Dickerson, Lisa Jones, Eric Brewton

Attendance: 1407

Game Start: 7:05 Game End: 8:xx

Johnson (OSU) fouled out with 1:40 left in the second half.

Official Basketball Box Score -- Game Totals -- Final Statistics

Oklahoma State vs West Virginia

2/18/2015 7:00 p.m. at WVU Coliseum, Morgantown, W.Va.

Oklahoma State 52 - 17-8/7-7

##	Player	S	Total			3-Ptr			Rebounds			PF	TP	A	TO	Blk	Stl	Min
			FG-FGA	3PT	FG-FGA	FT-FTA	Off Reb	Def Reb	Tot Reb									
00	JOHNSON,ROSHUNDA	g	0-3		0-0	0-0	0	1	1	5	0	0	0	0	0	1	16	
04	DONOHUE,LIZ	f	3-10		0-2	2-3	3	2	5	1	8	2	4	1	3	38		
22	MARTIN,BRITTNEY	g	10-19		0-0	4-7	2	7	9	2	24	1	4	1	2	39		
23	PATTON,RODRICKA	g	0-3		0-0	0-0	0	5	5	4	0	14	9	0	3	40		
55	JONES,LASHAWN	c	8-11		0-0	2-4	2	9	11	4	18	0	3	1	0	32		
03	COLEMAN,MANDY		0-1		0-0	0-0	0	1	1	1	0	0	0	0	0	4		
05	OMOZEE,DIANA		1-3		0-0	0-0	0	0	0	0	2	1	0	0	0	19		
45	LOECKER,KATELYN		0-0		0-0	0-0	0	0	0	0	0	0	0	0	0	5		
54	JENSEN,KAYLEE		0-4		0-0	0-2	0	2	2	1	0	0	0	0	0	8		
TEAM							5	0	5	0			1					
Totals			22-54		0-2	8-16	12	27	39	18	52	18	21	3	9	201		

FG %	1st Half: 11-29	37.9%	2nd Half: 11-25	44.0%	Game: 22-54	40.7%	Deadball
3FG %	1st Half: 0-1	00.0%	2nd Half: 0-1	00.0%	Game: 0-2	00.0%	Rebounds
FT %	1st Half: 1-2	50.0%	2nd Half: 7-14	50.0%	Game: 8-16	50.0%	3,0

West Virginia 46 - 15-11/5-9

##	Player	S	Total			3-Ptr			Rebounds			PF	TP	A	TO	Blk	Stl	Min
			FG-FGA	3PT	FG-FGA	FT-FTA	Off Reb	Def Reb	Tot Reb									
05	FIELDS, AVEREE	f	5-12		0-0	0-0	0	2	2	4	10	0	4	0	4	38		
11	MULDROW, TEANA	f	2-6		1-5	0-0	1	3	4	0	5	0	6	0	1	12		
15	MONTGOMERY, LANAY	c	0-1		0-0	0-0	1	3	4	2	0	1	3	7	2	28		
22	STEPNEY, LINDA	g	1-3		0-0	2-2	0	6	6	1	4	1	3	0	1	40		
23	HOLMES, BRIA	g	4-10		0-2	4-6	0	0	0	2	12	2	4	0	1	23		
04	MONTGOMERY, KAYLA		1-1		0-0	1-2	1	2	3	0	3	0	0	1	0	7		
20	MCDONALD, BRE		3-8		0-2	0-2	0	4	4	4	6	0	2	0	0	19		
21	MORTON, JESSICA		1-7		1-2	2-4	1	2	3	1	5	0	0	0	0	26		
32	LEARY, CRYSTAL		0-0		0-0	1-2	1	0	1	2	1	0	0	0	0	7		
TEAM							1	3	4	0			0					
Totals			17-48		2-11	10-18	6	25	31	16	46	4	22	8	9	200		

FG %	1st Half: 6-23	26.1%	2nd Half: 11-25	44.0%	Game: 17-48	35.4%	Deadball
3FG %	1st Half: 1-8	12.5%	2nd Half: 1-3	33.3%	Game: 2-11	18.2%	Rebounds
FT %	1st Half: 0-0	0%	2nd Half: 10-18	55.6%	Game: 10-18	55.6%	6,0

Officials: Jesse Dickerson, Lisa Jones, Eric Brewton

Technical Fouls: Oklahoma State- None. West Virginia- None.

Attendance: 1407

Game Start: 7:05 Game End: 8:xx

Johnson (OSU) fouled out with 1:40 left in the second half.

Score by periods	1st	2nd	Total
Oklahoma State	23	29	52
West Virginia	13	33	46

	In	Off	2nd	Fast	
Points	Paint	Off T/O	2nd Chance	Fast Break	Bench
Oklahoma State	30	9	7	12	2
West Virginia	24	14	7	8	15

Largest lead - Oklahoma State by 11 2nd-19:17;

West Virginia by 1 1st-10:42

Score tied - 1 times

Lead changed - 2 times

Official Basketball Box Score -- Game Totals -- First Half Statistics

Oklahoma State vs West Virginia

2/18/2015 7:00 p.m. at WVU Coliseum, Morgantown, W.Va.

Oklahoma State 23 • 17-8/7-7

##	Player	S	Total	3-Ptr	FT-FTA	Rebounds			PF	TP	A	TO	Blk	Stl	Min
			FG-FGA	3PT FG-FGA		Off Reb	Def Reb	Tot Reb							
00	JOHNSON,ROSHUNDA	g	0-3	0-0	0-0	0	1	1	5	0	0	0	0	1	16
04	DONOHUE,LIZ	f	3-10	0-2	2-3	3	2	5	1	8	2	4	1	3	38
22	MARTIN,BRITTNEY	g	10-19	0-0	4-7	2	7	9	2	24	1	4	1	2	39
23	PATTON,RODDRICKA	g	0-3	0-0	0-0	0	5	5	4	0	14	9	0	3	40
55	JONES,LASHAWN	c	8-11	0-0	2-4	2	9	11	4	18	0	3	1	0	32
03	COLEMAN,MANDY		0-1	0-0	0-0	0	1	1	1	0	0	0	0	0	4
05	OMOZEE,DIANA		1-3	0-0	0-0	0	0	0	0	2	1	0	0	0	19
45	LOECKER,KATELYN		0-0	0-0	0-0	0	0	0	0	0	0	0	0	0	5
54	JENSEN,KAYLEE		0-4	0-0	0-2	0	2	2	1	0	0	0	0	0	8
TEAM						2	0	2	0		0				
Totals			11-29	0-1	1-2	4	14	18	4		8	9	1	6	

FG %	Half:	11-29	37.9%
3FG %	Half:	0-1	00.0%
FT %	Half:	1-2	50.0%

West Virginia 13 • 15-11/5-9

##	Player	S	Total	3-Ptr	FT-FTA	Rebounds			PF	TP	A	TO	Blk	Stl	Min
			FG-FGA	3PT FG-FGA		Off Reb	Def Reb	Tot Reb							
05	FIELDS,AVEREE	f	5-12	0-0	0-0	0	2	2	4	10	0	4	0	4	38
11	MULDROW,TEANA	f	2-6	1-5	0-0	1	3	4	0	5	0	6	0	1	12
15	MONTGOMERY,LANAY	c	0-1	0-0	0-0	1	3	4	2	0	1	3	7	2	28
22	STEPNEY,LINDA	g	1-3	0-0	2-2	0	6	6	1	4	1	3	0	1	40
23	HOLMES,BRIA	g	4-10	0-2	4-6	0	0	0	2	12	2	4	0	1	23
04	MONTGOMERY,KAYLA		1-1	0-0	1-2	1	2	3	0	3	0	0	1	0	7
20	MCDONALD,BRE		3-8	0-2	0-2	0	4	4	4	6	0	2	0	0	19
21	MORTON,JESSICA		1-7	1-2	2-4	1	2	3	1	5	0	0	0	0	26
32	LEARY,CRYSTAL		0-0	0-0	1-2	1	0	1	2	1	0	0	0	0	7
TEAM						1	2	3	0		0				
Totals			6-23	1-8	0-0	3	14	17	6		1	16	6	2	

FG %	Half:	6-23	26.1%
3FG %	Half:	1-8	12.5%
FT %	Half:	0-0	0%

Officials: Jesse Dickerson, Lisa Jones, Eric Brewton

Technical Fouls: Oklahoma State- None. West Virginia- None.

Game Start: 7:05 Game End: 8:xx

Johnson (OSU) fouled out with 1:40 left in the second half.

	In	Off	2nd	Fast	
Points	Paint	Off T/O	2nd Chance	Fast Break	Bench
Oklahoma State	14	8	2	8	2
West Virginia	10	6	2	4	6

Score tied - 1 times

Lead changed - 2 times

Oklahoma State vs West Virginia

2/18/2015; 7:00 p.m. at WVU Coliseum, Morgantown, W.Va.

Period 1 Play-By-Play

VISITORS: Oklahoma State	Time	Score	Margin	HOME: West Virginia
	19:47			TURNOVER by MONTGOMERY,LANAY
	19:47			FOUL by MONTGOMERY,LANAY
MISSED LAYUP by JOHNSON,ROSHUNDA	19:24			
	19:24			BLOCK by MONTGOMERY,LANAY
REBOUND (OFF) by TEAM	19:24			
MISSED JUMPER by PATTON,RODRICKA	19:13			
REBOUND (OFF) by DONOHOE,LIZ	19:13			
GOOD! JUMPER by DONOHOE,LIZ	19:10	0-2	V 2	
FOUL by JOHNSON,ROSHUNDA	18:52			
	18:47			MISSED JUMPER by FIELDS,AVEREE
	18:47			REBOUND (OFF) by MULDRROW,TEANA
	18:40			TURNOVER by MULDRROW,TEANA
STEAL by MARTIN,BRITTNEY	18:39			
TURNOVER by PATTON,RODRICKA	18:33			
	18:21			TURNOVER by MONTGOMERY,LANAY
MISSED JUMPER by MARTIN,BRITTNEY	18:09			
	18:09			REBOUND (DEF) by MULDRROW,TEANA
	17:53			TURNOVER by HOLMES,BRIA
	17:53			FOUL by HOLMES,BRIA
TURNOVER by PATTON,RODRICKA	17:41			
	17:27			TURNOVER by FIELDS,AVEREE
TURNOVER by PATTON,RODRICKA	17:17			
	16:59			TURNOVER by HOLMES,BRIA
	16:59			FOUL by HOLMES,BRIA
MISSED JUMPER by MARTIN,BRITTNEY	16:48			
REBOUND (OFF) by JONES,LASHAWN	16:48			
MISSED JUMPER by JONES,LASHAWN	16:43			
	16:43			REBOUND (DEF) by STEPNEY,LINDA
FOUL by JOHNSON,ROSHUNDA	16:32			
SUB IN: OMOZEE,DIANA	16:32			
SUB OUT: JOHNSON,ROSHUNDA	16:32			
	16:32			SUB IN: MORTON,JESSICA
	16:32			SUB OUT: HOLMES,BRIA
	16:24			MISSED 3PTR by MULDRROW,TEANA
REBOUND (DEF) by JONES,LASHAWN	16:24			
MISSED JUMPER by PATTON,RODRICKA	16:14			
	16:14			BLOCK by MONTGOMERY,LANAY
	16:11			REBOUND (DEF) by MULDRROW,TEANA
	16:05			TURNOVER by MULDRROW,TEANA
STEAL by DONOHOE,LIZ	16:03			
TURNOVER by JONES,LASHAWN	15:43			
FOUL by JONES,LASHAWN	15:43			
	15:43			TIMEOUT MEDIA
	15:43			SUB IN: MCDONALD,BRE
	15:43			SUB OUT: MULDRROW,TEANA
	15:31			TURNOVER by MCDONALD,BRE
MISSED JUMPER by DONOHOE,LIZ	15:21			
REBOUND (OFF) by TEAM	15:21			
SUB IN: JENSEN,KAYLEE	15:18			
SUB OUT: JONES,LASHAWN	15:18			
TURNOVER by PATTON,RODRICKA	15:12			
	14:51	2-2	T	GOOD! JUMPER by MCDONALD,BRE
MISSED LAYUP by MARTIN,BRITTNEY	14:25			
	14:25			REBOUND (DEF) by MCDONALD,BRE
	14:06			MISSED JUMPER by MCDONALD,BRE
	14:06			REBOUND (OFF) by MONTGOMERY,LANAY
	13:59			MISSED 3PTR by MORTON,JESSICA
REBOUND (DEF) by MARTIN,BRITTNEY	13:59			
MISSED JUMPER by DONOHOE,LIZ	13:48			
	13:48			REBOUND (DEF) by MONTGOMERY,LANAY
	13:32			MISSED JUMPER by MORTON,JESSICA
REBOUND (DEF) by JENSEN,KAYLEE	13:32			
MISSED JUMPER by JENSEN,KAYLEE	13:15			
	13:15			BLOCK by MONTGOMERY,LANAY
	13:13			REBOUND (DEF) by MCDONALD,BRE
	13:01			MISSED JUMPER by FIELDS,AVEREE
REBOUND (DEF) by MARTIN,BRITTNEY	13:01			
GOOD! JUMPER by MARTIN,BRITTNEY	12:46	2-4	V 2	
	12:27			MISSED LAYUP by MONTGOMERY,LANAY
REBOUND (DEF) by JENSEN,KAYLEE	12:27			
MISSED JUMPER by JENSEN,KAYLEE	12:12			
	12:12			BLOCK by MONTGOMERY,LANAY
	12:10			REBOUND (DEF) by STEPNEY,LINDA
	11:52			MISSED 3PTR by MCDONALD,BRE

REBOUND (DEF) by PATTON,RODRICKA	11:52			
GOOD! JUMPER by MARTIN,BRITTNEY	11:34	2-6	V 4	
	11:32			TIMEOUT 30SEC
SUB IN: COLEMAN,MANDY	11:32			
SUB IN: JONES,LASHAWN	11:32			
SUB IN: LOECKER,KATELYN	11:32			
SUB OUT: OMOZEE,DIANA	11:32			
SUB OUT: DONOHOE,LIZ	11:32			
SUB OUT: JENSEN,KAYLEE	11:32			
	11:32			SUB IN: LEARY,CRYSTAL
	11:32			SUB IN: MULDROW,TEANA
	11:32			SUB OUT: MONTGOMERY,LANAY
	11:32			SUB OUT: MCDONALD,BRE
	11:20	5-6	V 1	GOOD! 3PTR by MULDROW,TEANA
	11:20			ASSIST by STEPNEY,LINDA
MISSED JUMPER by MARTIN,BRITTNEY	11:04			
	11:04			REBOUND (DEF) by TEAM
	10:42	7-6	H 1	GOOD! LAYUP by FIELDS,AVEREE
SUB IN: DONOHOE,LIZ	10:26			
SUB OUT: LOECKER,KATELYN	10:26			
GOOD! LAYUP by MARTIN,BRITTNEY	10:24	7-8	V 1	
ASSIST by PATTON,RODRICKA	10:24			
	10:00			TURNOVER by FIELDS,AVEREE
STEAL by DONOHOE,LIZ	09:59			
	09:55			FOUL by MORTON,JESSICA
TURNOVER by PATTON,RODRICKA	09:47			
	09:47			SUB IN: MONTGOMERY,KAYLA
	09:47			SUB OUT: FIELDS,AVEREE
	09:29			MISSED JUMPER by MORTON,JESSICA
REBOUND (DEF) by MARTIN,BRITTNEY	09:29			
MISSED JUMPER by DONOHOE,LIZ	09:10			
	09:10			REBOUND (DEF) by MULDROW,TEANA
	09:01			MISSED 3PTR by MULDROW,TEANA
REBOUND (DEF) by COLEMAN,MANDY	09:01			
GOOD! LAYUP by DONOHOE,LIZ	08:54	7-10	V 3	
ASSIST by PATTON,RODRICKA	08:54			
	08:32			TURNOVER by MULDROW,TEANA
STEAL by PATTON,RODRICKA	08:32			
	08:32			FOUL by LEARY,CRYSTAL
SUB IN: OMOZEE,DIANA	08:32			
SUB OUT: MARTIN,BRITTNEY	08:32			
	08:32			SUB IN: MONTGOMERY,LANAY
	08:32			SUB IN: MCDONALD,BRE
	08:32			SUB OUT: MULDROW,TEANA
	08:32			SUB OUT: MONTGOMERY,KAYLA
	08:14			SUB IN: FIELDS,AVEREE
	08:14			SUB OUT: LEARY,CRYSTAL
TURNOVER by PATTON,RODRICKA	08:06			
	08:05			STEAL by FIELDS,AVEREE
	08:01	9-10	V 1	GOOD! LAYUP by MCDONALD,BRE
MISSED JUMPER by COLEMAN,MANDY	07:43			
	07:43			REBOUND (DEF) by TEAM
FOUL by COLEMAN,MANDY	07:41			
	07:41			TIMEOUT MEDIA
SUB IN: MARTIN,BRITTNEY	07:41			
SUB OUT: COLEMAN,MANDY	07:41			
	07:27			MISSED LAYUP by FIELDS,AVEREE
BLOCK by DONOHOE,LIZ	07:27			
REBOUND (DEF) by JONES,LASHAWN	07:25			
GOOD! LAYUP by OMOZEE,DIANA	07:21	9-12	V 3	
ASSIST by PATTON,RODRICKA	07:21			
	06:58			TURNOVER by FIELDS,AVEREE
TURNOVER by DONOHOE,LIZ	06:55			
	06:55			SUB IN: MONTGOMERY,KAYLA
	06:55			SUB OUT: MONTGOMERY,LANAY
	06:41			TURNOVER by FIELDS,AVEREE
STEAL by PATTON,RODRICKA	06:37			
GOOD! LAYUP by MARTIN,BRITTNEY	06:36	9-14	V 5	
ASSIST by PATTON,RODRICKA	06:36			
	06:35			TIMEOUT 30SEC
SUB IN: LOECKER,KATELYN	06:35			
SUB OUT: OMOZEE,DIANA	06:35			
	06:18			MISSED JUMPER by FIELDS,AVEREE
	06:18			REBOUND (OFF) by TEAM
	06:11	11-14	V 3	GOOD! LAYUP by MCDONALD,BRE
	05:54			FOUL by MCDONALD,BRE
MISSED FT by MARTIN,BRITTNEY	05:54			
REBOUND (DEADB) by TEAM	05:54			
GOOD! FT by MARTIN,BRITTNEY	05:54	11-15	V 4	
	05:54			SUB IN: MULDROW,TEANA
	05:54			SUB OUT: MORTON,JESSICA
SUB IN: JENSEN,KAYLEE	05:53			
SUB OUT: JONES,LASHAWN	05:53			

	05:53					SUB IN: MONTGOMERY,LANAY
	05:53					SUB OUT: MONTGOMERY,KAYLA
	05:23					TURNOVER by MULDROW,TEANA
MISSED JUMPER by DONOHOE,LIZ	05:10					
	05:10					REBOUND (DEF) by MONTGOMERY,LANAY
	04:40					MISSED 3PTR by MCDONALD,BRE
REBOUND (DEF) by PATTON,RODRICKA	04:40					
GOOD! LAYUP by MARTIN,BRITTNEY	04:36	11-17		V 6		
ASSIST by PATTON,RODRICKA	04:36					
	04:20					MISSED 3PTR by MULDROW,TEANA
REBOUND (DEF) by MARTIN,BRITTNEY	04:20					
MISSED LAYUP by JENSEN,KAYLEE	04:11					
	04:11					BLOCK by MONTGOMERY,LANAY
	04:09					REBOUND (DEF) by STEPNEY,LINDA
	03:51					TURNOVER by MULDROW,TEANA
TIMEOUT MEDIA	03:49					
SUB IN: OMOZEE,DIANA	03:49					
SUB IN: JONES,LASHAWN	03:49					
SUB OUT: LOECKER,KATELYN	03:49					
SUB OUT: JENSEN,KAYLEE	03:49					
	03:49					SUB IN: MORTON,JESSICA
	03:49					SUB OUT: MULDROW,TEANA
GOOD! JUMPER by DONOHOE,LIZ	03:44	11-19		V 8		
ASSIST by PATTON,RODRICKA	03:44					
	03:03					TURNOVER by MCDONALD,BRE
STEAL by DONOHOE,LIZ	03:02					
GOOD! LAYUP by JONES,LASHAWN	02:51	11-21		V 10		
ASSIST by PATTON,RODRICKA	02:51					
	02:30					MISSED JUMPER by MCDONALD,BRE
REBOUND (DEF) by PATTON,RODRICKA	02:30					
	02:13					SUB IN: MULDROW,TEANA
	02:13					SUB OUT: MCDONALD,BRE
MISSED 3PTR by DONOHOE,LIZ	02:04					
	02:04					REBOUND (DEF) by MORTON,JESSICA
	01:47					TURNOVER by MULDROW,TEANA
TURNOVER by DONOHOE,LIZ	01:26					
	01:25					STEAL by MULDROW,TEANA
	01:21	13-21		V 8		GOOD! LAYUP by MULDROW,TEANA
MISSED LAYUP by OMOZEE,DIANA	00:53					
	00:53					BLOCK by MONTGOMERY,LANAY
	00:50					REBOUND (DEF) by MORTON,JESSICA
	00:45					MISSED 3PTR by MULDROW,TEANA
REBOUND (DEF) by PATTON,RODRICKA	00:45					
GOOD! JUMPER by JONES,LASHAWN	00:15	13-23		V 10		
ASSIST by OMOZEE,DIANA	00:15					
	00:02					MISSED JUMPER by FIELDS,AVEREE
REBOUND (DEF) by MARTIN,BRITTNEY	00:02					

Oklahoma State 23, West Virginia 13

Period 1-only	In Paint	Off T/O	2nd Chance	Fast Break	Bench	
Oklahoma State	14	8	2	8	2	Score tied - 0 times
West Virginia	10	6	2	4	6	Lead changed - 2 times

Official Basketball Box Score -- Game Totals -- Second Half Statistics

Oklahoma State vs West Virginia

2/18/2015 7:00 p.m. at WVU Coliseum, Morgantown, W.Va.

Oklahoma State 29 • 17-8/7-7

##	Player	S	Total	3-Ptr	FT-FTA	Rebounds			PF	TP	A	TO	Blk	Stl	Min
			FG-FGA	3PT FG-FGA		Off Reb	Def Reb	Tot Reb							
00	JOHNSON,ROSHUNDA	g	0-3	0-0	0-0	0	1	1	5	0	0	0	0	1	16
04	DONOHUE,LIZ	f	3-10	0-2	2-3	3	2	5	1	8	2	4	1	3	38
22	MARTIN,BRITTNEY	g	10-19	0-0	4-7	2	7	9	2	24	1	4	1	2	39
23	PATTON,RODDRICKA	g	0-3	0-0	0-0	0	5	5	4	0	14	9	0	3	40
55	JONES,LASHAWN	c	8-11	0-0	2-4	2	9	11	4	18	0	3	1	0	32
03	COLEMAN,MANDY		0-1	0-0	0-0	0	1	1	1	0	0	0	0	0	4
05	OMOZEE,DIANA		1-3	0-0	0-0	0	0	0	0	2	1	0	0	0	19
45	LOECKER,KATELYN		0-0	0-0	0-0	0	0	0	0	0	0	0	0	0	5
54	JENSEN,KAYLEE		0-4	0-0	0-2	0	2	2	1	0	0	0	0	0	8
TEAM						3	0	3	0			1			
Totals			11-25	0-1	7-14	8	13	21	14		10	12	2	3	

FG %	Half:	11-25	44.0%
3FG %	Half:	0-1	00.0%
FT %	Half:	7-14	50.0%

West Virginia 33 • 15-11/5-9

##	Player	S	Total	3-Ptr	FT-FTA	Rebounds			PF	TP	A	TO	Blk	Stl	Min
			FG-FGA	3PT FG-FGA		Off Reb	Def Reb	Tot Reb							
05	FIELDS,AVEREE	f	5-12	0-0	0-0	0	2	2	4	10	0	4	0	4	38
11	MULDROW,TEANA	f	2-6	1-5	0-0	1	3	4	0	5	0	6	0	1	12
15	MONTGOMERY,LANAY	c	0-1	0-0	0-0	1	3	4	2	0	1	3	7	2	28
22	STEPNEY,LINDA	g	1-3	0-0	2-2	0	6	6	1	4	1	3	0	1	40
23	HOLMES,BRIA	g	4-10	0-2	4-6	0	0	0	2	12	2	4	0	1	23
04	MONTGOMERY,KAYLA		1-1	0-0	1-2	1	2	3	0	3	0	0	1	0	7
20	MCDONALD,BRE		3-8	0-2	0-2	0	4	4	4	6	0	2	0	0	19
21	MORTON,JESSICA		1-7	1-2	2-4	1	2	3	1	5	0	0	0	0	26
32	LEARY,CRYSTAL		0-0	0-0	1-2	1	0	1	2	1	0	0	0	0	7
TEAM						0	1	1	0			0			
Totals			11-25	1-3	10-18	3	11	14	10		3	6	2	7	

FG %	Half:	11-25	44.0%
3FG %	Half:	1-3	12.5%
FT %	Half:	10-18	55.6%

Officials: Jesse Dickerson, Lisa Jones, Eric Brewton

Technical Fouls: Oklahoma State- None. West Virginia- None.

Game Start: 7:05 Game End: 8:xx

Johnson (OSU) fouled out with 1:40 left in the second half.

	In	Off	2nd	Fast	
Points	Paint	Off T/O	2nd Chance	Fast Break	Bench
Oklahoma State	16	1	5	4	0
West Virginia	14	8	2	4	9

Score tied - 0 times

Lead changed - 0 times

Oklahoma State vs West Virginia

2/18/2015; 7:00 p.m. at WVU Coliseum, Morgantown, W.Va.

Period 2 Play-By-Play

VISITORS: Oklahoma State	Time	Score	Margin	HOME: West Virginia
	20:00			SUB IN: MCDONALD,BRE
	20:00			SUB OUT: MULDRON,TEANA
TURNOVER by MARTIN,BRITTNEY	19:34			
	19:33			STEAL by FIELDS,AVEREE
	19:21			TURNOVER by HOLMES,BRIA
STEAL by PATTON,RODRICKA	19:20			
MISSED LAYUP by MARTIN,BRITTNEY	19:17			
REBOUND (OFF) by MARTIN,BRITTNEY	19:17			
	19:17			FOUL by MCDONALD,BRE
GOOD! FT by MARTIN,BRITTNEY	19:17	13-24	V 11	
MISSED FT by MARTIN,BRITTNEY	19:17			
	19:17			REBOUND (DEF) by MONTGOMERY,LANAY
	18:56	15-24	V 9	GOOD! JUMPER by FIELDS,AVEREE
	18:56			ASSIST by MONTGOMERY,LANAY
MISSED JUMPER by DONOHOE,LIZ	18:35			
	18:35			REBOUND (DEF) by MCDONALD,BRE
	18:23			MISSED JUMPER by HOLMES,BRIA
REBOUND (DEF) by JONES,LASHAWN	18:23			
GOOD! LAYUP by MARTIN,BRITTNEY	18:14	15-26	V 11	
ASSIST by PATTON,RODRICKA	18:14			
	18:11			FOUL by MCDONALD,BRE
MISSED FT by MARTIN,BRITTNEY	18:11			
	18:11			REBOUND (DEF) by FIELDS,AVEREE
	18:11			SUB IN: MORTON,JESSICA
	18:11			SUB OUT: MCDONALD,BRE
FOUL by PATTON,RODRICKA	17:58			
	17:58	16-26	V 10	GOOD! FT by STEPNEY,LINDA
	17:58	17-26	V 9	GOOD! FT by STEPNEY,LINDA
MISSED JUMPER by JONES,LASHAWN	17:44			
	17:44			BLOCK by MONTGOMERY,LANAY
REBOUND (OFF) by TEAM	17:44			
GOOD! JUMPER by MARTIN,BRITTNEY	17:43	17-28	V 11	
ASSIST by PATTON,RODRICKA	17:43			
	17:25			MISSED JUMPER by MORTON,JESSICA
REBOUND (DEF) by JONES,LASHAWN	17:25			
TURNOVER by MARTIN,BRITTNEY	17:13			
	17:13			STEAL by HOLMES,BRIA
	17:03			TURNOVER by STEPNEY,LINDA
STEAL by JOHNSON,ROSHUNDA	17:01			
MISSED JUMPER by JOHNSON,ROSHUNDA	17:00			
	17:00			REBOUND (DEF) by TEAM
	16:43	19-28	V 9	GOOD! JUMPER by FIELDS,AVEREE
GOOD! LAYUP by JONES,LASHAWN	16:26	19-30	V 11	
ASSIST by PATTON,RODRICKA	16:26			
	16:07			MISSED 3PTR by HOLMES,BRIA
	16:07			REBOUND (OFF) by MORTON,JESSICA
FOUL by JOHNSON,ROSHUNDA	16:06			
SUB IN: OMOZEE,DIANA	16:05			
SUB OUT: JOHNSON,ROSHUNDA	16:05			
	15:59			TURNOVER by HOLMES,BRIA
TIMEOUT MEDIA	15:58			
	15:58			SUB IN: MONTGOMERY,KAYLA
	15:58			SUB OUT: MONTGOMERY,LANAY
TURNOVER by PATTON,RODRICKA	15:46			
	15:21			MISSED JUMPER by MORTON,JESSICA
	15:21			REBOUND (OFF) by MONTGOMERY,KAYLA
FOUL by PATTON,RODRICKA	15:18			
	15:18			MISSED FT by MONTGOMERY,KAYLA
	15:18			REBOUND (DEADB) by TEAM
	15:18	20-30	V 10	GOOD! FT by MONTGOMERY,KAYLA
SUB IN: JENSEN,KAYLEE	15:18			
SUB IN: JOHNSON,ROSHUNDA	15:18			
SUB OUT: JONES,LASHAWN	15:18			
SUB OUT: OMOZEE,DIANA	15:18			
	15:18			SUB IN: MCDONALD,BRE
	15:18			SUB OUT: MORTON,JESSICA
	15:06			FOUL by FIELDS,AVEREE
	14:55			FOUL by STEPNEY,LINDA
MISSED FT by JENSEN,KAYLEE	14:55			
REBOUND (DEADB) by TEAM	14:55			
MISSED FT by JENSEN,KAYLEE	14:55			
REBOUND (OFF) by TEAM	14:55			
MISSED JUMPER by MARTIN,BRITTNEY	14:42			
	14:42			REBOUND (DEF) by MONTGOMERY,KAYLA

FOUL by JENSEN,KAYLEE	14:40				
	14:31				MISSED LAYUP by STEPNEY,LINDA
REBOUND (DEF) by JOHNSON,ROSHUNDA	14:31				
MISSED JUMPER by JENSEN,KAYLEE	14:16				
	14:16				BLOCK by MONTGOMERY,KAYLA
	14:15				REBOUND (DEF) by MONTGOMERY,KAYLA
	14:06	22-30	V 8		GOOD! JUMPER by MONTGOMERY,KAYLA
	14:06				ASSIST by HOLMES,BRIA
TURNOVER by DONOHOE,LIZ	13:42				
FOUL by DONOHOE,LIZ	13:42				
SUB IN: JONES,LASHAWN	13:42				
SUB OUT: JENSEN,KAYLEE	13:42				
	13:17				MISSED JUMPER by MCDONALD,BRE
REBOUND (DEF) by MARTIN,BRITTNEY	13:17				
GOOD! JUMPER by JONES,LASHAWN	13:02	22-32	V 10		
ASSIST by MARTIN,BRITTNEY	13:02				
FOUL by MARTIN,BRITTNEY	12:40				
	12:40	23-32	V 9		GOOD! FT by HOLMES,BRIA
	12:40				MISSED FT by HOLMES,BRIA
REBOUND (DEF) by JONES,LASHAWN	12:40				
SUB IN: LOECKER,KATELYN	12:40				
SUB OUT: DONOHOE,LIZ	12:40				
	12:19				FOUL by MCDONALD,BRE
MISSED FT by JONES,LASHAWN	12:19				
REBOUND (DEADB) by TEAM	12:19				
MISSED FT by JONES,LASHAWN	12:19				
	12:19				REBOUND (DEF) by FIELDS,AVEREE
	12:19				SUB IN: MONTGOMERY,LANAY
	12:19				SUB IN: MORTON,JESSICA
	12:19				SUB OUT: MCDONALD,BRE
	12:19				SUB OUT: MONTGOMERY,KAYLA
	12:05	25-32	V 7		GOOD! LAYUP by HOLMES,BRIA
	11:42				FOUL by FIELDS,AVEREE
TIMEOUT MEDIA	11:42				
GOOD! FT by MARTIN,BRITTNEY	11:42	25-33	V 8		
GOOD! FT by MARTIN,BRITTNEY	11:42	25-34	V 9		
SUB IN: DONOHOE,LIZ	11:42				
SUB OUT: LOECKER,KATELYN	11:42				
	11:28				MISSED JUMPER by HOLMES,BRIA
BLOCK by MARTIN,BRITTNEY	11:28				
REBOUND (DEF) by JONES,LASHAWN	11:27				
TURNOVER by JONES,LASHAWN	11:18				
	11:17				STEAL by MONTGOMERY,LANAY
FOUL by MARTIN,BRITTNEY	11:02				
	11:02				MISSED FT by HOLMES,BRIA
	11:02				REBOUND (DEADB) by TEAM
	11:02	26-34	V 8		GOOD! FT by HOLMES,BRIA
GOOD! LAYUP by MARTIN,BRITTNEY	10:45	26-36	V 10		
ASSIST by PATTON,RODRICKA	10:45				
	10:30				TURNOVER by MONTGOMERY,LANAY
	10:30				FOUL by MONTGOMERY,LANAY
TURNOVER by PATTON,RODRICKA	10:20				
	10:18				STEAL by FIELDS,AVEREE
	10:15	28-36	V 8		GOOD! LAYUP by FIELDS,AVEREE
TURNOVER by MARTIN,BRITTNEY	09:58				
	09:57				STEAL by MONTGOMERY,LANAY
FOUL by JOHNSON,ROSHUNDA	09:48				
	09:48				MISSED FT by MORTON,JESSICA
	09:48				REBOUND (DEADB) by TEAM
	09:48	29-36	V 7		GOOD! FT by MORTON,JESSICA
SUB IN: OMOZEE,DIANA	09:48				
SUB OUT: JOHNSON,ROSHUNDA	09:48				
TIMEOUT 30SEC	09:43				
GOOD! LAYUP by MARTIN,BRITTNEY	09:30	29-38	V 9		
ASSIST by DONOHOE,LIZ	09:30				
	09:12				TURNOVER by STEPNEY,LINDA
STEAL by MARTIN,BRITTNEY	09:11				
TURNOVER by DONOHOE,LIZ	09:07				
	08:48	31-38	V 7		GOOD! LAYUP by STEPNEY,LINDA
GOOD! LAYUP by JONES,LASHAWN	08:38	31-40	V 9		
ASSIST by PATTON,RODRICKA	08:38				
	08:10	34-40	V 6		GOOD! 3PTR by MORTON,JESSICA
	08:10				ASSIST by HOLMES,BRIA
TIMEOUT 30SEC	07:47				
TURNOVER by PATTON,RODRICKA	07:45				
	07:44				STEAL by FIELDS,AVEREE
	07:22				MISSED 3PTR by HOLMES,BRIA
REBOUND (DEF) by DONOHOE,LIZ	07:22				
TURNOVER by JONES,LASHAWN	07:05				
FOUL by JONES,LASHAWN	07:05				
	06:47				MISSED JUMPER by FIELDS,AVEREE
REBOUND (DEF) by JONES,LASHAWN	06:47				
	06:25				SUB IN: LEARY,CRYSTAL

	06:25				SUB OUT: MONTGOMERY,LANAY
MISSED JUMPER by PATTON,RODRICKA	06:20				
	06:20				REBOUND (DEF) by STEPNEY,LINDA
	06:12				MISSED JUMPER by STEPNEY,LINDA
REBOUND (DEF) by DONOHOE,LIZ	06:12				
GOOD! LAYUP by JONES,LASHAWN	05:46	34-42		V 8	
ASSIST by DONOHOE,LIZ	05:46				
	05:20				MISSED JUMPER by HOLMES,BRIA
BLOCK by JONES,LASHAWN	05:20				
REBOUND (DEF) by MARTIN,BRITTNEY	05:19				
MISSED LAYUP by OMOZEE,DIANA	05:15				
REBOUND (OFF) by TEAM	05:15				
	05:13				SUB IN: MCDONALD,BRE
	05:13				SUB OUT: MORTON,JESSICA
	05:06				FOUL by FIELDS,AVEREE
MISSED FT by DONOHOE,LIZ	05:06				
REBOUND (OFF) by MARTIN,BRITTNEY	05:06				
MISSED JUMPER by MARTIN,BRITTNEY	04:51				
REBOUND (OFF) by JONES,LASHAWN	04:51				
	04:45				FOUL by FIELDS,AVEREE
GOOD! FT by JONES,LASHAWN	04:45	34-43		V 9	
GOOD! FT by JONES,LASHAWN	04:45	34-44		V 10	
SUB IN: JOHNSON,ROSHUNDA	04:45				
SUB OUT: OMOZEE,DIANA	04:45				
	04:45				SUB IN: MONTGOMERY,LANAY
	04:45				SUB OUT: LEARY,CRYSTAL
	04:32	36-44		V 8	GOOD! LAYUP by HOLMES,BRIA
MISSED JUMPER by MARTIN,BRITTNEY	04:13				
REBOUND (OFF) by DONOHOE,LIZ	04:13				
MISSED LAYUP by JOHNSON,ROSHUNDA	03:55				
	03:55				REBOUND (DEF) by MCDONALD,BRE
FOUL by JONES,LASHAWN	03:53				
	03:53				TIMEOUT MEDIA
	03:53				MISSED FT by MCDONALD,BRE
	03:53				REBOUND (DEADB) by TEAM
	03:53				MISSED FT by MCDONALD,BRE
REBOUND (DEF) by JONES,LASHAWN	03:53				
GOOD! JUMPER by MARTIN,BRITTNEY	03:26	36-46		V 10	
	02:58				MISSED JUMPER by FIELDS,AVEREE
REBOUND (DEF) by PATTON,RODRICKA	02:58				
MISSED 3PTR by DONOHOE,LIZ	02:29				
	02:29				REBOUND (DEF) by STEPNEY,LINDA
	02:20				TURNOVER by STEPNEY,LINDA
	02:20				TIMEOUT 30SEC
	02:20				SUB IN: MORTON,JESSICA
	02:20				SUB IN: LEARY,CRYSTAL
	02:20				SUB OUT: MCDONALD,BRE
	02:20				SUB OUT: MONTGOMERY,LANAY
MISSED JUMPER by JONES,LASHAWN	01:55				
REBOUND (OFF) by DONOHOE,LIZ	01:55				
TURNOVER by TEAM	01:49				
FOUL by JOHNSON,ROSHUNDA	01:40				
	01:40				MISSED FT by MORTON,JESSICA
	01:40				REBOUND (DEADB) by TEAM
	01:40	37-46		V 9	GOOD! FT by MORTON,JESSICA
TIMEOUT 30SEC	01:40				
SUB IN: OMOZEE,DIANA	01:40				
SUB OUT: JOHNSON,ROSHUNDA	01:40				
MISSED JUMPER by MARTIN,BRITTNEY	01:17				
	01:17				REBOUND (DEF) by STEPNEY,LINDA
	01:11	39-46		V 7	GOOD! LAYUP by HOLMES,BRIA
FOUL by PATTON,RODRICKA	01:11				
	01:11	40-46		V 6	GOOD! FT by HOLMES,BRIA
GOOD! LAYUP by JONES,LASHAWN	01:06	40-48		V 8	
ASSIST by PATTON,RODRICKA	01:06				
	00:51				MISSED JUMPER by MORTON,JESSICA
	00:51				REBOUND (OFF) by LEARY,CRYSTAL
FOUL by PATTON,RODRICKA	00:51				
	00:51				MISSED FT by LEARY,CRYSTAL
	00:51				REBOUND (DEADB) by TEAM
	00:51	41-48		V 7	GOOD! FT by LEARY,CRYSTAL
GOOD! LAYUP by JONES,LASHAWN	00:49	41-50		V 9	
ASSIST by PATTON,RODRICKA	00:49				
	00:34	43-50		V 7	GOOD! JUMPER by HOLMES,BRIA
FOUL by JONES,LASHAWN	00:34				
	00:34	44-50		V 6	GOOD! FT by HOLMES,BRIA
TURNOVER by MARTIN,BRITTNEY	00:26				
	00:25				STEAL by STEPNEY,LINDA
	00:18				MISSED LAYUP by HOLMES,BRIA
REBOUND (DEF) by JONES,LASHAWN	00:18				
	00:15				FOUL by LEARY,CRYSTAL
GOOD! FT by DONOHOE,LIZ	00:15	44-51		V 7	
GOOD! FT by DONOHOE,LIZ	00:15	44-52		V 8	

Oklahoma State 52, West Virginia 46

Period 2-only	In Paint	Off T/O	2nd Chance	Fast Break	Bench	
Oklahoma State	16	1	5	4	0	Score tied - 0 times
West Virginia	14	8	2	4	9	Lead changed - 0 times

Oklahoma State vs West Virginia

2/18/2015; 7:00 p.m. at WVU Coliseum, Morgantown, W.Va.

Scoring/Runs Reference

Period 1			Period 2		
Oklahoma State	Score	West Virginia	Oklahoma State	Score	West Virginia
		MONTGOMERY TURN - 19:47	19:34 - MARTIN TURN		HOLMES TURN - 19:21
19:24 - JOHNSON LAYUP	X		19:17 - MARTIN LAYUP	X	
19:13 - PATTON JUMPER	X		19:17 - MARTIN FT	1 24-13 -11	
19:10 - DONOHOE JUMPER	2 2-0 -2		19:17 - MARTIN FT	X	
		FIELDS JUMPER - 18:47		24-15 -9	2 FIELDS JUMPER - 18:56
18:33 - PATTON TURN	TO	MULDROW TURN - 18:40	18:35 - DONOHOE JUMPER	X	
		MONTGOMERY TURN - 18:21	18:14 - MARTIN LAYUP	2P 26-15 -11	X HOLMES JUMPER - 18:23
18:09 - MARTIN JUMPER	X		18:11 - MARTIN FT	X	
		HOLMES TURN - 17:53		26-16 -10	1 STEPNEY FT - 17:58
17:41 - PATTON TURN	TO	FIELDS TURN - 17:27		26-17 -9	1 STEPNEY FT - 17:58
17:17 - PATTON TURN	TO	HOLMES TURN - 16:59	17:44 - JONES JUMPER	X	
16:48 - MARTIN JUMPER	X		17:43 - MARTIN JUMPER	2 28-17 -11	
16:43 - JONES JUMPER	X				X MORTON JUMPER - 17:25
		MULDROW 3PTR - 16:24	17:13 - MARTIN TURN	TO	
16:14 - PATTON JUMPER	X			TO	STEPNEY TURN - 17:03
		MULDROW TURN - 16:05	17:00 - JOHNSON JUMPER	X	
15:43 - JONES TURN	TO	MCDONALD TURN - 15:31		28-19 -9	2 FIELDS JUMPER - 16:43
15:21 - DONOHOE JUMPER	X		16:26 - JONES LAYUP	2P 30-19 -11	
15:12 - PATTON TURN	TO				X HOLMES 3PTR - 16:07
		MCDONALD JUMPER - 14:51	15:46 - PATTON TURN	TO	TO HOLMES TURN - 15:59
14:25 - MARTIN LAYUP	X				X MORTON JUMPER - 15:21
		MCDONALD JUMPER - 14:06			X MONTGOMERY FT - 15:18
		MORTON 3PTR - 13:59	14:55 - JENSEN FT	X	
13:48 - DONOHOE JUMPER	X		14:55 - JENSEN FT	X	
		MORTON JUMPER - 13:32	14:42 - MARTIN JUMPER	X	
13:15 - JENSEN JUMPER	X				X STEPNEY LAYUP - 14:31
		FIELDS JUMPER - 13:01	14:16 - JENSEN JUMPER	X	
12:46 - MARTIN JUMPER	2P 4-2 -2			30-22 -8	2 MONTGOMERY JUMPER - 14:06
		MONTGOMERY LAYUP - 12:27	13:42 - DONOHOE TURN	TO	
12:12 - JENSEN JUMPER	X				X MCDONALD JUMPER - 13:17
		MCDONALD 3PTR - 11:52	13:02 - JONES JUMPER	2 32-22 -10	
11:34 - MARTIN JUMPER	2 6-2 -4			32-23 -9	1 HOLMES FT - 12:40
		MULDROW 3PTR - 11:20			X HOLMES FT - 12:40
11:04 - MARTIN JUMPER	X		12:19 - JONES FT	X	
		FIELDS LAYUP - 10:42	12:19 - JONES FT	X	
10:24 - MARTIN LAYUP	2P 6-7 -1			32-25 -7	2P HOLMES LAYUP - 12:05
		FIELDS TURN - 10:00	11:42 - MARTIN FT	1 33-25 -9	
09:47 - PATTON TURN	TO		11:42 - MARTIN FT	1 34-25 -9	
		MORTON JUMPER - 09:29			X HOLMES JUMPER - 11:28
09:10 - DONOHOE JUMPER	X		11:18 - JONES TURN	TO	
		MULDROW 3PTR - 09:01			X HOLMES FT - 11:02
08:54 - DONOHOE LAYUP	2PF 10-7 -3		10:45 - MARTIN LAYUP	2P 34-26 -9	1 HOLMES FT - 11:02
		MULDROW TURN - 08:32			
08:06 - PATTON TURN	TO			TO	MONTGOMERY TURN - 10:30
		MCDONALD LAYUP - 08:01	10:20 - PATTON TURN	TO	
07:43 - COLEMAN JUMPER	X			36-28 -8	2PF FIELDS LAYUP - 10:15
			09:58 - MARTIN TURN	TO	

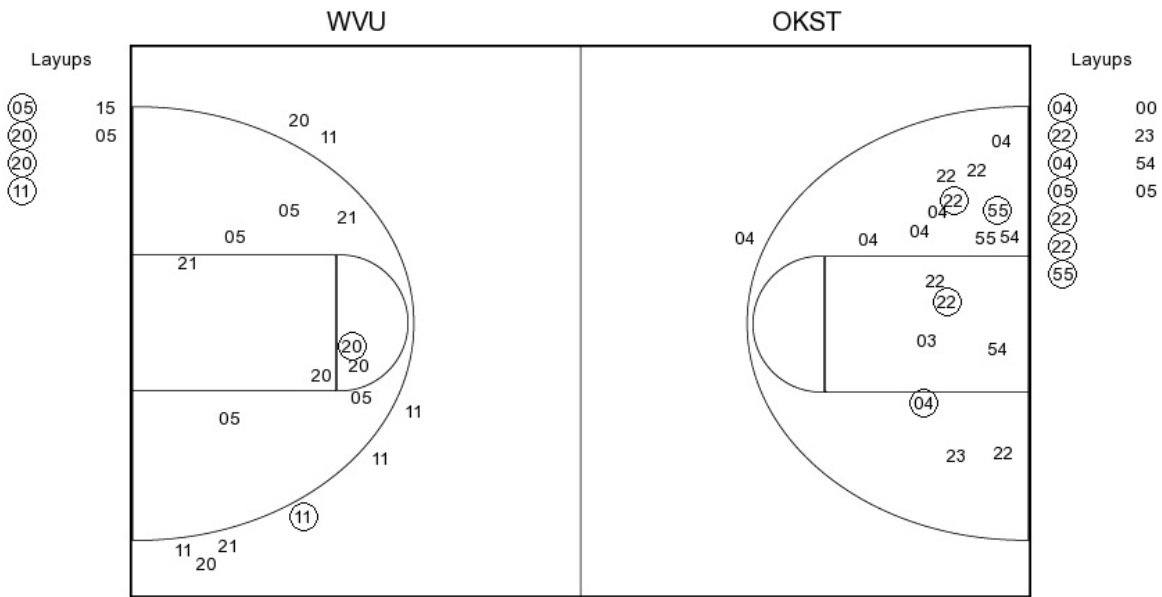
COLEMAN JUMPER	X				X		MORTON FT - 09:48		
07:21 - OMOZEE LAYUP	2 ^{PF}	12-9 -3	X	FIELDS LAYUP - 07:27		36-29 -7	1	MORTON FT - 09:48	
06:55 - DONOHOE TURN	TO			FIELDS TURN - 06:58	09:30 - MARTIN LAYUP	2 ^P	38-29 -9		
06:36 - MARTIN LAYUP	2 ^{PF}	14-9 -5		FIELDS TURN - 06:41	09:07 - DONOHOE TURN	TO		STEPNEY TURN - 09:12	
			X	FIELDS JUMPER - 06:18			38-31 -7	2 ^P	STEPNEY LAYUP - 08:48
05:54 - MARTIN FT	X			MCDONALD LAYUP - 06:11	08:38 - JONES LAYUP	2 ^P	40-31 -9		
05:54 - MARTIN FT	1	15-11 -4					40-34 -6	3	MORTON 3PTR - 08:10
				MULDROW TURN - 05:23	07:45 - PATTON TURN	TO			HOLMES 3PTR - 07:22
05:10 - DONOHOE JUMPER	X				07:05 - JONES TURN	TO			FIELDS JUMPER - 06:47
			X	MCDONALD 3PTR - 04:40	06:20 - PATTON JUMPER	X			
04:36 - MARTIN LAYUP	2 ^{PF}	17-11 -6						X	STEPNEY JUMPER - 06:12
			X	MULDROW 3PTR - 04:20	05:46 - JONES LAYUP	2 ^P	42-34 -8		
04:11 - JENSEN LAYUP	X				05:15 - OMOZEE LAYUP	X			
				MULDROW TURN - 03:51	05:06 - DONOHOE FT	X			
03:44 - DONOHOE JUMPER	2	19-11 -8			04:51 - MARTIN JUMPER	X			
				MCDONALD TURN - 03:03	04:45 - JONES FT	1	43-34 -9		
02:51 - JONES LAYUP	2 ^P	21-11 -10			04:45 - JONES FT	1	44-34 -10		
			X	MCDONALD JUMPER - 02:30			44-36 -8	2 ^P	HOLMES LAYUP - 04:32
02:04 - DONOHOE 3PTR	X				04:13 - MARTIN JUMPER	X			
				MULDROW TURN - 01:47	03:55 - JOHNSON LAYUP	X			
01:26 - DONOHOE TURN	TO							X	MCDONALD FT - 03:53
		21-13 -8	2 ^{PF}	MULDROW LAYUP - 01:21				X	MCDONALD FT - 03:53
00:53 - OMOZEE LAYUP	X				03:26 - MARTIN JUMPER	2	46-36 -10		
				MULDROW 3PTR - 00:45				X	FIELDS JUMPER - 02:58
00:15 - JONES JUMPER	2	23-13 -10			02:29 - DONOHOE 3PTR	X			
			X	FIELDS JUMPER - 00:02					STEPNEY TURN - 02:20
					01:55 - JONES JUMPER	X			
					01:49 - TURN	TO			
								X	MORTON FT - 01:40
							46-37 -9	1	MORTON FT - 01:40
					01:17 - MARTIN JUMPER	X			
							46-39 -7	2 ^{PF}	HOLMES LAYUP - 01:11
							46-40 -6	1	HOLMES FT - 01:11
					01:06 - JONES LAYUP	2 ^{PF}	48-40 -8		
								X	MORTON JUMPER - 00:51
								X	LEARY FT - 00:51
							48-41 -7	1	LEARY FT - 00:51
					00:49 - JONES LAYUP	2 ^{PF}	50-41 -9		
							50-43 -7	2 ^P	HOLMES JUMPER - 00:34
							50-44 -6	1	HOLMES FT - 00:34
					00:26 - MARTIN TURN	TO			
								X	HOLMES LAYUP - 00:18
					00:15 - DONOHOE FT	1	51-44 -7		
					00:15 - DONOHOE FT	1	52-44 -8		
							52-46 -6	2 ^P	FIELDS JUMPER - 00:04

Oklahoma State vs West Virginia

OFFICIAL SHOT CHART

2/18/2015 at WVU Coliseum, Morgantown, W.Va.

PERIOD 1



OKST PERIOD 1

FG Made	11
FG Attempted	29
3PFG Made	0
3PFG Attempted	1

WVU PERIOD 1

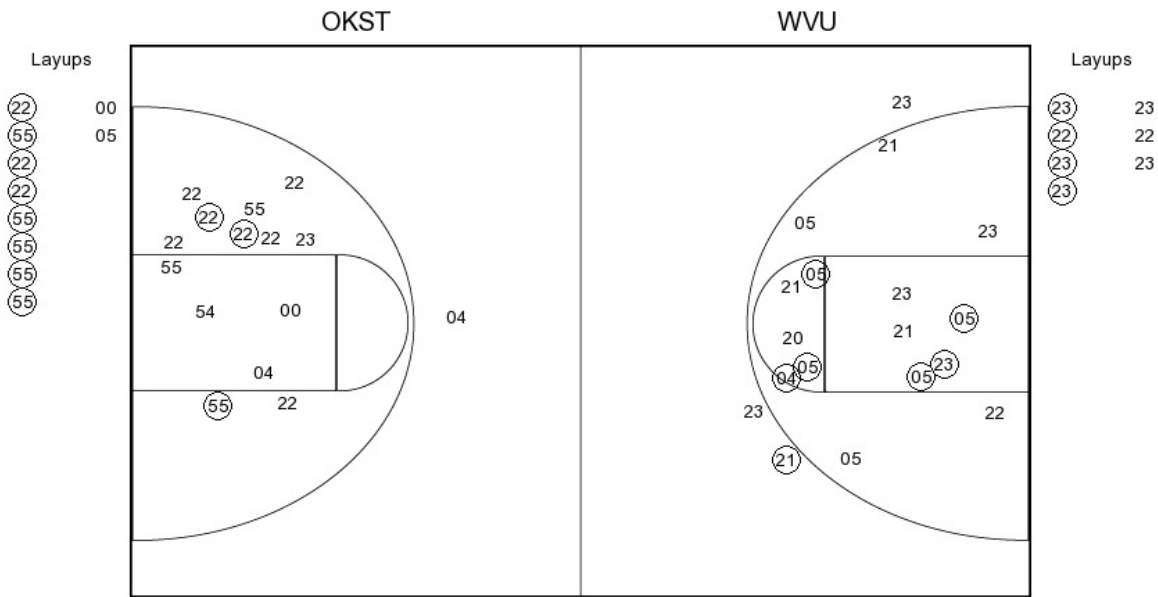
FG Made	6
FG Attempted	23
3PFG Made	1
3PFG Attempted	8

Oklahoma State vs West Virginia

OFFICIAL SHOT CHART

2/18/2015 at WVU Coliseum, Morgantown, W.Va.

PERIOD 2



OKST PERIOD 2

FG Made	11
FG Attempted	25
3PFG Made	0
3PFG Attempted	1

WVU PERIOD 2

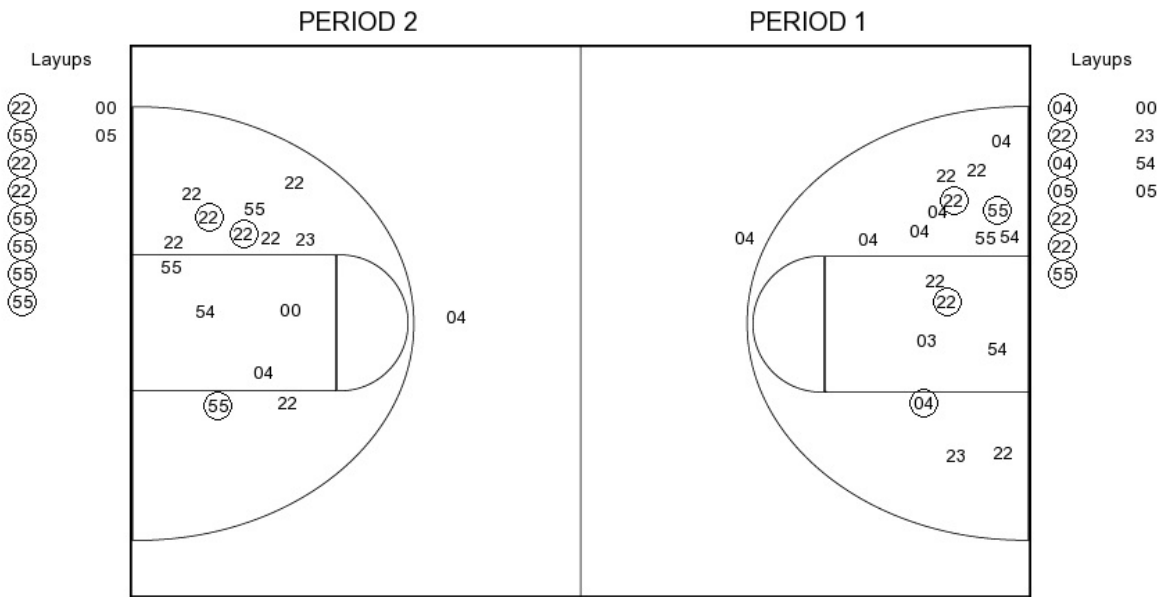
FG Made	11
FG Attempted	25
3PFG Made	1
3PFG Attempted	3

Oklahoma State vs West Virginia

OFFICIAL SHOT CHART

2/18/2015 at WVU Coliseum, Morgantown, W.Va.

Oklahoma State



OKST PERIOD 1

FG Made	11
FG Attempted	29
3PFG Made	0
3PFG Attempted	1

OKST PERIOD 2

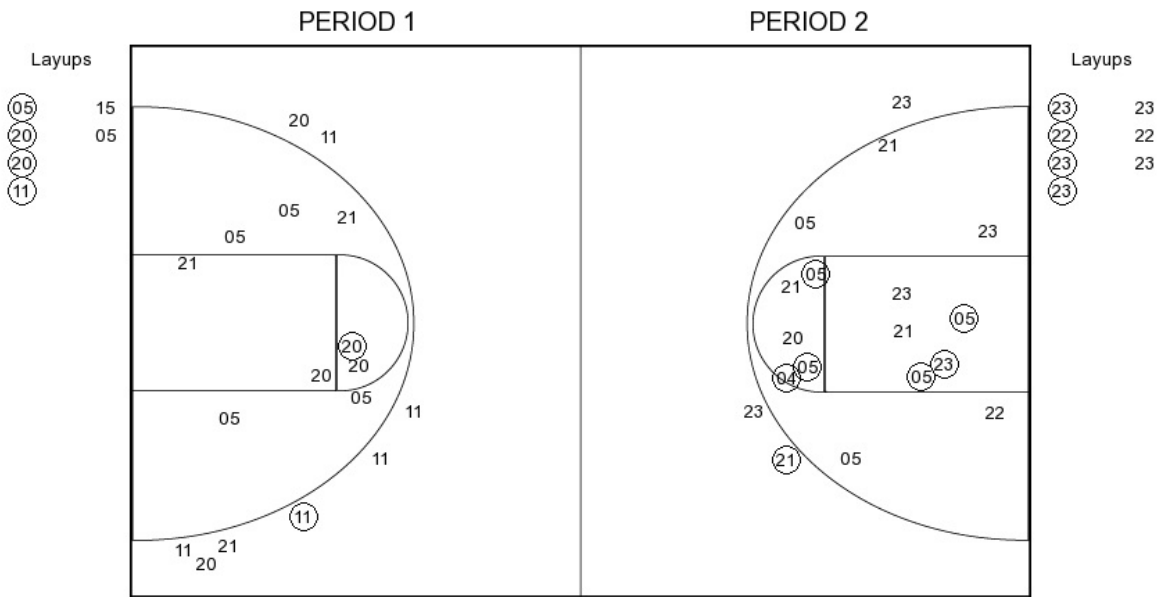
FG Made	11
FG Attempted	25
3PFG Made	0
3PFG Attempted	1

Oklahoma State vs West Virginia

OFFICIAL SHOT CHART

2/18/2015 at WVU Coliseum, Morgantown, W.Va.

West Virginia



WVU PERIOD 1

FG Made	6
FG Attempted	23
3PFG Made	1
3PFG Attempted	8

WVU PERIOD 2

FG Made	11
FG Attempted	25
3PFG Made	1
3PFG Attempted	3