

FINAL SCORE



Viborg-Hurley

71



Wall

61

2023 SDHSAA State Basketball Championships

March 11, 2023 • ,



FINAL STATISTICS

Official Box Score
Viborg-Hurley vs Wall
Game Totals -- Final Statistics
March 11, 2023 at ,



Viborg-Hurley 71

Record:

No.	Player	S	Pts	FG	3FG	FT	OR	DR	TR	PF	A	TO	Blk	Stl	Min	+/-
01	NELSON, CHARLEY		14	4-9	3-6	3-4	2	1	3	3	1	1	0	2	31	12
11	LEE, ESTELLE		8	2-11	0-3	4-4	1	2	3	4	3	2	0	0	31	12
12	MASON, CORAL		28	9-22	0-0	10-14	8	8	16	4	0	3	0	1	31	12
14	MACH, DENAE		16	5-16	1-8	5-6	1	5	6	4	1	1	0	0	28	4
30	LYONS, SHELBY		5	2-8	1-5	0-0	2	6	8	1	0	3	0	2	27	11
02	GILBERT, KENDRA	*	0	0-0	0-0	0-0	0	0	0	0	0	0	0	0	1	-2
04	NELSON, HALEY	*	0	0-0	0-0	0-0	0	0	0	0	0	0	0	0	1	-2
10	SCHWARTZ, AUBREE	*	0	0-0	0-0	0-0	1	1	2	0	1	0	0	0	9	4
15	GRAVES, JENNA	*	0	0-0	0-0	0-0	0	0	0	0	0	0	0	0	1	-2
20	VASGAARD, MADELYN	*	0	0-0	0-0	0-0	0	0	0	0	0	0	0	0	1	-2
TOTALS			71	22-66	5-22	22-28	17	26	43	16	6	10	0	8	160	

Shooting By Period

Period	FG	FG%	3FG	3FG%	FT	FT%
Game	22-66	33.3%	5-22	22.7%	22-28	78.6%

Deadball Rebounds: 3,0
Last FG: 4th-2:44
Largest lead: By at
Technical Fouls: None.

Wall 61

Record:

No.	Player	S	Pts	FG	3FG	FT	OR	DR	TR	PF	A	TO	Blk	Stl	Min	+/-
03	DINGER, NORA		13	5-15	2-5	1-3	2	2	4	4	1	1	0	0	31	-10
04	KJERSTAD, PAIGE		21	8-16	1-1	4-6	5	5	10	4	0	1	0	2	31	-9
11	TUCKERS, RHEA		8	3-10	2-2	0-1	3	5	8	4	3	2	0	1	26	0
23	SCHULZ, APRIL		4	2-5	0-1	0-0	1	2	3	4	0	1	0	1	27	-15
24	STEPHAN, ALEXIS		11	3-12	3-11	2-2	0	1	1	4	0	3	0	1	27	-9
00	OSTENSON, FALLON	*	0	0-0	0-0	0-0	0	0	0	0	0	0	0	0	1	2
01	MCDONNELL, TAYLOR	*	0	0-0	0-0	0-0	0	0	0	0	0	0	0	0	1	2
05	FORTUNE, CHLOE		0	0-2	0-1	0-0	0	0	0	2	0	0	0	0	8	-16
10	POORBEAR, MARANDA		0	0-0	0-0	0-0	0	0	0	0	0	0	0	0	1	0
15	FRINK, FAITH		0	0-0	0-0	0-0	0	0	0	0	0	0	0	0		-3
20	WAGNER, SKYLIE		2	0-1	0-0	2-2	0	0	0	0	0	0	0	0	5	2
21	TINES, LOUCASEY	*	0	0-0	0-0	0-0	0	0	0	0	0	0	0	0	1	2
25	KUSSER, JADA	*	0	0-0	0-0	0-0	0	0	0	0	0	0	0	0	1	2
34	KUSSER, KADENCE	*	2	1-1	0-0	0-0	0	0	0	0	0	0	0	0	1	2
TOTALS			61	22-62	8-21	9-14	11	20	31	22	4	11	0	10	160	

Shooting By Period

Period	FG	FG%	3FG	3FG%	FT	FT%
Game	22-62	35.5%	8-21	38.1%	9-14	64.3%

Deadball Rebounds: 2,0
Last FG: 4th-0:20
Largest lead: By at
Technical Fouls: None.

Game Notes:

Officials: , ,

Start Time: 19:45:00

Postseason Game;

Score	1st	2nd	3rd	4th	TOT
VIB	17	17	17	20	71
WAL	17	10	18	16	61

VIB led for 0:0. WAL led for 0:0.
 Game was tied for 0:0.
 Times tied: 0 Lead Changes: 0

Points	VIB	WAL
In the Paint	28	26
Off Turns	16	7
2nd Chance	18	12
Fast Break	0	0
Bench	0	4
Per Poss	1.014 33/70	0.897 27/68

Official Box Score
Viborg-Hurley vs Wall
First Half Statistics Only
March 11, 2023 at ,



Viborg-Hurley 34

Record:

No.	Player	S	Pts	FG	3FG	FT	OR	DR	TR	PF	A	TO	Blk	Stl	Min	+/-
-----	--------	---	-----	----	-----	----	----	----	----	----	---	----	-----	-----	-----	-----

Shooting By Period

Period	FG	FG%	3FG	3FG%	FT	FT%
1st Half	0-0	0%	0-0	0%	0-0	0%
Game	22-66	33.3%	5-22	22.7%	22-28	78.6%

Deadball Rebounds: 3,0
Last FG Half: VIB 2nd-1:05

Wall 27

Record:

No.	Player	S	Pts	FG	3FG	FT	OR	DR	TR	PF	A	TO	Blk	Stl	Min	+/-
-----	--------	---	-----	----	-----	----	----	----	----	----	---	----	-----	-----	-----	-----

Shooting By Period

Period	FG	FG%	3FG	3FG%	FT	FT%
1st Half	0-0	0%	0-0	0%	0-0	0%
Game	22-62	35.5%	8-21	38.1%	9-14	64.3%

Deadball Rebounds: 2,0
Last FG Half: WAL 2nd-2:50

Game Notes:

Officials: , ,

Start Time: **19:45:00**

Postseason Game;

Score	1st	2nd	3rd	4th	TOT
VIB	17	17	17	20	71
WAL	17	10	18	16	61

Points from (This Period)	VIB	WAL
In the Paint	8	6
Off Turns	5	3
2nd Chance	3	6
Fast Break	0	0
Bench	0	0

Official Play-By-Play
Viborg-Hurley vs Wall
First Quarter
March 11, 2023 at ,



Period 1

Starters:

Viborg-Hurley: 1 NELSON, CHARLEY; 11 LEE, ESTELLE; 12 MASON, CORAL; 14 MACH, DENAE; 30 LYONS, SHELBY;

Wall: 3 DINGER, NORA; 4 KJERSTAD, PAIGE; 11 TUCKERS, RHEA; 23 SCHULZ, APRIL; 24 STEPHAN, ALEXIS;

Time	VISITORS: Viborg-Hurley	Score	Margin	HOME: Wall
8:00				SUB STARTER: DINGER, NORA
8:00				SUB STARTER: KJERSTAD, PAIGE
8:00				SUB STARTER: TUCKERS, RHEA
8:00				SUB STARTER: SCHULZ, APRIL
8:00				SUB STARTER: STEPHAN, ALEXIS
8:00	SUB STARTER: NELSON, CHARLEY			
8:00	SUB STARTER: LEE, ESTELLE			
8:00	SUB STARTER: MASON, CORAL			
8:00	SUB STARTER: MACH, DENAE			
8:00	SUB STARTER: LYONS, SHELBY			
7:56	TURNOVER by LYONS, SHELBY			
7:56				STEAL by TEAM
7:49				MISSED 3PTR by STEPHAN, ALEXIS
7:49	REBOUND (DEF) by LEE, ESTELLE			
7:39	MISSED 3PTR by MACH, DENAE			
7:39	REBOUND (OFF) by MASON, CORAL			
7:36	MISSED 2PTR by MASON, CORAL			
7:36				REBOUND (DEF) by TUCKERS, RHEA
7:28				MISSED 2PTR by DINGER, NORA
7:28	REBOUND (DEF) by NELSON, CHARLEY			
7:22	MISSED 2PTR by LEE, ESTELLE			
7:22				REBOUND (DEF) by TUCKERS, RHEA
7:05				MISSED 2PTR by TUCKERS, RHEA
7:05				REBOUND (OFF) by SCHULZ, APRIL
7:02		2-0	H 2	GOOD! 2PTR by SCHULZ, APRIL [PNT]
6:44	GOOD! 3PTR by NELSON, CHARLEY	2-3	V 1	
6:28		4-3	H 1	GOOD! 2PTR by DINGER, NORA [PNT]
6:15	TURNOVER by NELSON, CHARLEY			
6:15				STEAL by TEAM
6:04		7-3	H 4	GOOD! 3PTR by STEPHAN, ALEXIS
5:46	GOOD! 2PTR by MACH, DENAE [PNT]	7-5	H 2	
5:31				MISSED 2PTR by SCHULZ, APRIL
5:31				REBOUND (OFF) by TUCKERS, RHEA
5:27		9-5	H 4	GOOD! 2PTR by KJERSTAD, PAIGE [PNT]
5:27				ASSIST by TUCKERS, RHEA
5:12	MISSED 3PTR by MACH, DENAE			
5:12				REBOUND (DEF) by KJERSTAD, PAIGE
4:52				MISSED 2PTR by DINGER, NORA
4:52				REBOUND (OFF) by KJERSTAD, PAIGE
4:49				MISSED 2PTR by KJERSTAD, PAIGE
4:49	REBOUND (DEF) by MASON, CORAL			
4:36	GOOD! 2PTR by MASON, CORAL [PNT]	9-7	H 2	
4:26				TURNOVER by KJERSTAD, PAIGE
4:26	STEAL by TEAM			
4:14	GOOD! 2PTR by MASON, CORAL [PNT]	9-9	T	
4:14	ASSIST by LEE, ESTELLE			
3:57	FOUL (PERSONAL) by LEE, ESTELLE			
3:48				TURNOVER by TUCKERS, RHEA
3:48	STEAL by LYONS, SHELBY			
3:38	MISSED 3PTR by MACH, DENAE			
3:38				REBOUND (DEF) by SCHULZ, APRIL
3:26				MISSED 2PTR by TUCKERS, RHEA
3:26	REBOUND (DEF) by LYONS, SHELBY			
3:18	MISSED 2PTR by MACH, DENAE			
3:18				FOUL (PERSONAL) by TUCKERS, RHEA
3:18	GOOD! FT by MACH, DENAE	9-10	V 1	
3:18	MISSED FT by MACH, DENAE			
3:14				REBOUND (DEF) by TUCKERS, RHEA
3:05		12-10	H 2	GOOD! 3PTR by STEPHAN, ALEXIS
3:05				ASSIST by TUCKERS, RHEA
2:39	GOOD! 2PTR by LYONS, SHELBY	12-12	T	
2:39	ASSIST by NELSON, CHARLEY			
2:27	STEAL by MASON, CORAL			
2:13	SUB OUT: LYONS, SHELBY			
2:13	SUB IN: SCHWARTZ, AUBREE			

Time	VISITORS: Viborg-Hurley	Score	Margin	HOME: Wall
2:13				TURNOVER by TEAM
2:13	MISSED 2PTR by NELSON, CHARLEY			
2:13				REBOUND (DEF) by TEAM
2:06	STEAL by NELSON, CHARLEY			
2:06				TURNOVER by DINGER, NORA
2:06				FOUL (PERSONAL) by DINGER, NORA
2:02	MISSED 3PTR by MACH, DENAE			
2:02	REBOUND (OFF) by SCHWARTZ, AUBREE			
1:59	GOOD! 3PTR by NELSON, CHARLEY	12-15	V 3	
1:59	ASSIST by SCHWARTZ, AUBREE			
1:39				MISSED 3PTR by STEPHAN, ALEXIS
1:39				REBOUND (OFF) by TUCKERS, RHEA
1:38	FOUL (PERSONAL) by MACH, DENAE			
1:37				MISSED 2PTR by KJERSTAD, PAIGE
1:37	FOUL (PERSONAL) by MASON, CORAL			
1:37		13-15	V 2	GOOD! FT by KJERSTAD, PAIGE
1:37		14-15	V 1	GOOD! FT by KJERSTAD, PAIGE
1:25	TURNOVER by LEE, ESTELLE			
1:25				STEAL by SCHULZ, APRIL
1:08				MISSED 3PTR by STEPHAN, ALEXIS
1:08	REBOUND (DEF) by SCHWARTZ, AUBREE			
0:47	GOOD! 2PTR by MASON, CORAL [PNT]	14-17	V 3	
0:47	ASSIST by MACH, DENAE			
0:24				MISSED 2PTR by DINGER, NORA
0:24	REBOUND (DEF) by MACH, DENAE			
0:15	MISSED 3PTR by NELSON, CHARLEY			
0:15				REBOUND (DEF) by KJERSTAD, PAIGE
0:00		17-17	T	GOOD! 3PTR by TUCKERS, RHEA

Viborg-Hurley 17, Wall 17

Points (This Period)	VIB	WAL
In the Paint	8	6
Off Turns	5	3
2nd Chance	3	6
Fast Break	0	0
Bench	0	0
Per Poss	0.944 8/18	0.944 7/18

Official Play-By-Play
Viborg-Hurley vs Wall
Second Quarter
March 11, 2023 at ,



Period 2

Starters:

Viborg-Hurley: 1 NELSON, CHARLEY; 11 LEE, ESTELLE; 12 MASON, CORAL; 14 MACH, DENAE; 30 LYONS, SHELBY;
Wall: 3 DINGER, NORA; 4 KJERSTAD, PAIGE; 11 TUCKERS, RHEA; 23 SCHULZ, APRIL; 24 STEPHAN, ALEXIS;

Time	VISITORS: Viborg-Hurley	Score	Margin	HOME: Wall
8:00	SUB STARTER: LYONS, SHELBY			
8:00	SUB STARTER: NELSON, CHARLEY			
8:00	SUB STARTER: LEE, ESTELLE			
8:00	SUB STARTER: MASON, CORAL			
8:00	SUB STARTER: MACH, DENAE			
8:00				SUB STARTER: DINGER, NORA
8:00				SUB STARTER: TUCKERS, RHEA
8:00				SUB STARTER: STEPHAN, ALEXIS
8:00				SUB STARTER: KJERSTAD, PAIGE
8:00				SUB STARTER: SCHULZ, APRIL
7:48	MISSED 3PTR by LEE, ESTELLE			
7:48				REBOUND (DEF) by TEAM
7:37		19-17	H 2	GOOD! 2PTR by TUCKERS, RHEA [PNT]
7:37	FOUL (PERSONAL) by MASON, CORAL			
7:37				MISSED FT by TUCKERS, RHEA
7:35				REBOUND (OFF) by KJERSTAD, PAIGE
7:33		21-17	H 4	GOOD! 2PTR by KJERSTAD, PAIGE [PNT]
7:06	TURNOVER by MACH, DENAE			
7:06				STEAL by TEAM
6:44				MISSED 2PTR by KJERSTAD, PAIGE
6:44	REBOUND (DEF) by MACH, DENAE			
6:21	MISSED 2PTR by MACH, DENAE			
6:21	REBOUND (OFF) by MASON, CORAL			
6:17	MISSED 3PTR by LEE, ESTELLE			
6:17	REBOUND (OFF) by LEE, ESTELLE			
6:11	GOOD! 3PTR by NELSON, CHARLEY	21-20	H 1	
5:53	STEAL by LYONS, SHELBY			
5:53				TURNOVER by TEAM
5:44	MISSED 3PTR by LYONS, SHELBY			
5:44				REBOUND (DEF) by TUCKERS, RHEA
5:36				TURNOVER by TUCKERS, RHEA
5:36				FOUL (PERSONAL) by TUCKERS, RHEA
5:36				SUB OUT: SCHULZ, APRIL
5:36				SUB OUT: STEPHAN, ALEXIS
5:36				SUB IN: FORTUNE, CHLOE
5:36				SUB IN: WAGNER, SKYLIE
5:22	GOOD! 3PTR by MACH, DENAE	21-23	V 2	
5:22	ASSIST by LEE, ESTELLE			
5:04				MISSED 2PTR by TUCKERS, RHEA
5:04				REBOUND (OFF) by TUCKERS, RHEA
5:02				MISSED 2PTR by TUCKERS, RHEA
5:02	REBOUND (DEF) by LYONS, SHELBY			
4:49	MISSED 3PTR by MACH, DENAE			
4:49				REBOUND (DEF) by KJERSTAD, PAIGE
4:34				MISSED 2PTR by KJERSTAD, PAIGE
4:34	REBOUND (DEF) by MACH, DENAE			
4:26	GOOD! 2PTR by MACH, DENAE [PNT]	21-25	V 4	
4:09				MISSED 2PTR by DINGER, NORA
4:09				REBOUND (OFF) by DINGER, NORA
4:04		24-25	V 1	GOOD! 3PTR by DINGER, NORA
3:48	MISSED 2PTR by LYONS, SHELBY			
3:48				REBOUND (DEF) by DINGER, NORA
3:30	FOUL (PERSONAL) by MACH, DENAE			
3:30				SUB OUT: WAGNER, SKYLIE
3:30				SUB OUT: TUCKERS, RHEA
3:30				SUB IN: STEPHAN, ALEXIS
3:30				SUB IN: SCHULZ, APRIL
3:26				MISSED 2PTR by DINGER, NORA
3:26	REBOUND (DEF) by MASON, CORAL			
3:24				FOUL (PERSONAL) by KJERSTAD, PAIGE
3:09	MISSED 2PTR by MASON, CORAL			
3:09	REBOUND (OFF) by MASON, CORAL			
3:07	MISSED 2PTR by MASON, CORAL			
3:07				FOUL (PERSONAL) by SCHULZ, APRIL
3:07	GOOD! FT by MASON, CORAL	24-26	V 2	

Time	VISITORS: Viborg-Hurley	Score	Margin	HOME: Wall
3:07	GOOD! FT by MASON, CORAL	24-27	V 3	
2:50		26-27	V 1	GOOD! 2PTR by DINGER, NORA [PNT]
2:50	FOUL (PERSONAL) by MACH, DENAE			
2:50	SUB OUT: MACH, DENAE			
2:50	SUB IN: SCHWARTZ, AUBREE			
2:50				MISSED FT by DINGER, NORA
2:49				REBOUND (OFF) by KJERSTAD, PAIGE
2:47				MISSED 2PTR by KJERSTAD, PAIGE
2:47				REBOUND (OFF) by DINGER, NORA
2:45				MISSED 2PTR by DINGER, NORA
2:45	FOUL (PERSONAL) by LEE, ESTELLE			
2:45				MISSED FT by DINGER, NORA
2:45		27-27	T	GOOD! FT by DINGER, NORA
2:34	TURNOVER by MASON, CORAL			
2:34				STEAL by KJERSTAD, PAIGE
2:32				MISSED 2PTR by KJERSTAD, PAIGE
2:32	FOUL (PERSONAL) by NELSON, CHARLEY			
2:32				MISSED FT by KJERSTAD, PAIGE
2:32				MISSED FT by KJERSTAD, PAIGE
2:30	REBOUND (DEF) by MASON, CORAL			
2:22	GOOD! 2PTR by LEE, ESTELLE [PNT]	27-29	V 2	
2:08				MISSED 3PTR by FORTUNE, CHLOE
2:08				REBOUND (OFF) by KJERSTAD, PAIGE
1:59				MISSED 2PTR by KJERSTAD, PAIGE
1:59	REBOUND (DEF) by LYONS, SHELBY			
1:43	GOOD! 3PTR by LYONS, SHELBY	27-32	V 5	
1:43	ASSIST by LEE, ESTELLE			
1:18				MISSED 2PTR by FORTUNE, CHLOE
1:18	REBOUND (DEF) by MASON, CORAL			
1:08	MISSED 2PTR by LEE, ESTELLE			
1:08	REBOUND (OFF) by MASON, CORAL			
1:05	GOOD! 2PTR by MASON, CORAL [PNT]	27-34	V 7	
0:51				MISSED 3PTR by DINGER, NORA
0:51	REBOUND (DEF) by MASON, CORAL			
0:41				FOUL (PERSONAL) by FORTUNE, CHLOE
0:41				SUB OUT: KJERSTAD, PAIGE
0:41				SUB IN: TUCKERS, RHEA
0:35	MISSED 2PTR by MASON, CORAL			
0:35	REBOUND (OFF) by LYONS, SHELBY			
0:31	TURNOVER by LYONS, SHELBY			
0:31				STEAL by TUCKERS, RHEA
0:30				SUB OUT: FORTUNE, CHLOE
0:30				SUB IN: KJERSTAD, PAIGE
0:24				MISSED 2PTR by TUCKERS, RHEA
0:24	REBOUND (DEF) by LYONS, SHELBY			
0:13	MISSED 2PTR by MASON, CORAL			
0:13				REBOUND (DEF) by TEAM
0:00				MISSED 3PTR by DINGER, NORA
0:00	REBOUND (DEF) by LYONS, SHELBY			

Viborg-Hurley 34, Wall 27

Points (This Period)	VIB	WAL
In the Paint	6	6
Off Turns	3	0
2nd Chance	7	6
Fast Break	0	0
Bench	0	0
Per Poss	1.063 7/16	0.588 5/17

Official Box Score
Viborg-Hurley vs Wall
Second Half Statistics Only
March 11, 2023 at ,



Viborg-Hurley 37

Record:

No.	Player	S	Pts	FG	3FG	FT	OR	DR	TR	PF	A	TO	Blk	Stl	Min	+/-
-----	--------	---	-----	----	-----	----	----	----	----	----	---	----	-----	-----	-----	-----

Shooting By Period

Period	FG	FG%	3FG	3FG%	FT	FT%
2nd Half	0-0	0%	0-0	0%	0-0	0%
Game	22-66	33.3%	5-22	22.7%	22-28	78.6%

Deadball Rebounds: 3,0
Last FG Half: VIB 4th-2:44

Wall 34

Record:

No.	Player	S	Pts	FG	3FG	FT	OR	DR	TR	PF	A	TO	Blk	Stl	Min	+/-
-----	--------	---	-----	----	-----	----	----	----	----	----	---	----	-----	-----	-----	-----

Shooting By Period

Period	FG	FG%	3FG	3FG%	FT	FT%
2nd Half	0-0	0%	0-0	0%	0-0	0%
Game	22-62	35.5%	8-21	38.1%	9-14	64.3%

Deadball Rebounds: 2,0
Last FG Half: WAL 4th-0:20

Game Notes:

Officials: , ,

Start Time: **19:45:00**

Postseason Game;

Score	1st	2nd	3rd	4th	TOT
VIB	17	17	17	20	71
WAL	17	10	18	16	61

Points from (This Period)	VIB	WAL
In the Paint	6	6
Off Turns	3	0
2nd Chance	7	6
Fast Break	0	0
Bench	0	0

Official Play-By-Play
Viborg-Hurley vs Wall
Third Quarter
March 11, 2023 at ,



Period 3

Starters:

Viborg-Hurley: 1 NELSON, CHARLEY; 11 LEE, ESTELLE; 12 MASON, CORAL; 14 MACH, DENAE; 30 LYONS, SHELBY;
Wall: 3 DINGER, NORA; 4 KJERSTAD, PAIGE; 11 TUCKERS, RHEA; 23 SCHULZ, APRIL; 24 STEPHAN, ALEXIS;

Time	VISITORS: Viborg-Hurley	Score	Margin	HOME: Wall
8:00				SUB STARTER: DINGER, NORA
8:00				SUB STARTER: KJERSTAD, PAIGE
8:00				SUB STARTER: TUCKERS, RHEA
8:00				SUB STARTER: SCHULZ, APRIL
8:00				SUB STARTER: STEPHAN, ALEXIS
8:00	SUB STARTER: NELSON, CHARLEY			
8:00	SUB STARTER: LEE, ESTELLE			
8:00	SUB STARTER: MASON, CORAL			
8:00	SUB STARTER: MACH, DENAE			
8:00	SUB STARTER: LYONS, SHELBY			
7:45	MISSED 2PTR by LYONS, SHELBY			
7:45	REBOUND (OFF) by NELSON, CHARLEY			
7:20	MISSED 2PTR by LEE, ESTELLE			
7:20	REBOUND (OFF) by TEAM			
7:15	TURNOVER by LYONS, SHELBY			
7:15				STEAL by KJERSTAD, PAIGE
7:06				TURNOVER by STEPHAN, ALEXIS
6:54	MISSED 3PTR by MACH, DENAE			
6:54				REBOUND (DEF) by KJERSTAD, PAIGE
6:54	FOUL (PERSONAL) by NELSON, CHARLEY			
6:30				TURNOVER by SCHULZ, APRIL
6:30	STEAL by TEAM			
6:19	MISSED 2PTR by MACH, DENAE			
6:19				FOUL (PERSONAL) by KJERSTAD, PAIGE
6:19	GOOD! FT by MACH, DENAE	27-35	V 8	
6:19	GOOD! FT by MACH, DENAE	27-36	V 9	
6:11				TURNOVER by STEPHAN, ALEXIS
6:11	STEAL by TEAM			
6:11				TIMEOUT TEAM
5:58				FOUL (PERSONAL) by DINGER, NORA
5:46	MISSED 2PTR by MASON, CORAL			
5:46				FOUL (PERSONAL) by SCHULZ, APRIL
5:46	MISSED FT by MASON, CORAL			
5:46	GOOD! FT by MASON, CORAL	27-37	V 10	
5:29		29-37	V 8	GOOD! 2PTR by SCHULZ, APRIL [PNT]
5:08	GOOD! 2PTR by MACH, DENAE [PNT]	29-39	V 10	
4:53				MISSED 3PTR by STEPHAN, ALEXIS
4:53	REBOUND (DEF) by TEAM			
4:42	MISSED 3PTR by NELSON, CHARLEY			
4:42	REBOUND (OFF) by MACH, DENAE			
4:32				FOUL (PERSONAL) by STEPHAN, ALEXIS
4:21	MISSED 3PTR by LYONS, SHELBY			
4:21	REBOUND (OFF) by MASON, CORAL			
4:20	MISSED 2PTR by MASON, CORAL			
4:20				FOUL (PERSONAL) by TUCKERS, RHEA
4:20	GOOD! FT by MASON, CORAL	29-40	V 11	
4:20				SUB OUT: TUCKERS, RHEA
4:20				SUB IN: FORTUNE, CHLOE
4:20	GOOD! FT by MASON, CORAL	29-41	V 12	
4:03				MISSED 2PTR by DINGER, NORA
4:03				REBOUND (OFF) by KJERSTAD, PAIGE
4:01	FOUL (PERSONAL) by NELSON, CHARLEY			
3:59				TURNOVER by STEPHAN, ALEXIS
3:59				FOUL (PERSONAL) by STEPHAN, ALEXIS
3:47	MISSED 3PTR by NELSON, CHARLEY			
3:47	REBOUND (OFF) by MASON, CORAL			
3:45	MISSED 2PTR by MASON, CORAL			
3:45	REBOUND (OFF) by MASON, CORAL			
3:43	MISSED 2PTR by MASON, CORAL			
3:43	REBOUND (OFF) by MASON, CORAL			
3:42	GOOD! 2PTR by MASON, CORAL [PNT]	29-43	V 14	
3:42				FOUL (PERSONAL) by KJERSTAD, PAIGE
3:42	GOOD! FT by MASON, CORAL	29-44	V 15	
3:42				SUB OUT: STEPHAN, ALEXIS
3:42				SUB IN: POORBEAR, MARANDA

Time	VISITORS: Viborg-Hurley	Score	Margin	HOME: Wall
3:33		32-44	V 12	GOOD! 3PTR by DINGER, NORA
3:14	MISSED 2PTR by MACH, DENAE			
3:14				REBOUND (DEF) by DINGER, NORA
2:57		34-44	V 10	GOOD! 2PTR by KJERSTAD, PAIGE [PNT]
2:56				TIMEOUT TEAM
2:47	GOOD! 2PTR by MACH, DENAE [PNT]	34-46	V 12	
2:35				MISSED 3PTR by STEPHAN, ALEXIS
2:35	REBOUND (DEF) by MACH, DENAE			
2:24	GOOD! 2PTR by LEE, ESTELLE [PNT]	34-48	V 14	
2:17				SUB OUT: POORBEAR, MARANDA
2:17				SUB IN: STEPHAN, ALEXIS
2:17				SUB OUT: SCHULZ, APRIL
2:17				SUB OUT: FORTUNE, CHLOE
2:17				SUB IN: WAGNER, SKYLIE
2:17				SUB IN: TUCKERS, RHEA
2:15				MISSED 2PTR by WAGNER, SKYLIE
2:15	FOUL (PERSONAL) by MASON, CORAL			
2:15		35-48	V 13	GOOD! FT by WAGNER, SKYLIE
2:15		36-48	V 12	GOOD! FT by WAGNER, SKYLIE
2:01	MISSED 2PTR by LEE, ESTELLE			
2:01				REBOUND (DEF) by TEAM
1:50	FOUL (PERSONAL) by LEE, ESTELLE			
1:50	TIMEOUT TEAM			
1:44		38-48	V 10	GOOD! 2PTR by DINGER, NORA
1:33	MISSED 2PTR by MASON, CORAL			
1:33	REBOUND (OFF) by TEAM			
1:29	MISSED 2PTR by MASON, CORAL			
1:29				FOUL (PERSONAL) by STEPHAN, ALEXIS
1:29	MISSED FT by MASON, CORAL			
1:29	GOOD! FT by MASON, CORAL	38-49	V 11	
1:10		41-49	V 8	GOOD! 3PTR by STEPHAN, ALEXIS
0:59	MISSED 2PTR by NELSON, CHARLEY			
0:59				REBOUND (DEF) by STEPHAN, ALEXIS
0:43		43-49	V 6	GOOD! 2PTR by KJERSTAD, PAIGE [PNT]
0:35	TURNOVER by LEE, ESTELLE			
0:35				STEAL by TEAM
0:35				SUB OUT: WAGNER, SKYLIE
0:35				SUB IN: SCHULZ, APRIL
0:35	SUB OUT: LYONS, SHELBY			
0:35	SUB IN: SCHWARTZ, AUBREE			
0:11		45-49	V 4	GOOD! 2PTR by KJERSTAD, PAIGE [PNT]
0:00	GOOD! 2PTR by MASON, CORAL [PNT]	45-51	V 6	

Viborg-Hurley 51, Wall 45

Points (This Period)	VIB	WAL
In the Paint	10	8
Off Turns	6	2
2nd Chance	6	0
Fast Break	0	0
Bench	0	2
Per Poss	0.895 9/19	1.200 8/15

Official Play-By-Play
Viborg-Hurley vs Wall
Fourth Quarter
March 11, 2023 at ,



Period 4

Starters:

Viborg-Hurley: 1 NELSON, CHARLEY; 11 LEE, ESTELLE; 12 MASON, CORAL; 14 MACH, DENAE; 30 LYONS, SHELBY;
Wall: 3 DINGER, NORA; 4 KJERSTAD, PAIGE; 11 TUCKERS, RHEA; 23 SCHULZ, APRIL; 24 STEPHAN, ALEXIS;

Time	VISITORS: Viborg-Hurley	Score	Margin	HOME: Wall
8:00				SUB STARTER: KJERSTAD, PAIGE
8:00				SUB STARTER: DINGER, NORA
8:00				SUB STARTER: SCHULZ, APRIL
8:00				SUB STARTER: STEPHAN, ALEXIS
8:00				SUB STARTER: TUCKERS, RHEA
8:00	SUB STARTER: LEE, ESTELLE			
8:00	SUB STARTER: MASON, CORAL			
8:00	SUB STARTER: MACH, DENAE			
8:00	SUB STARTER: NELSON, CHARLEY			
8:00	SUB STARTER: SCHWARTZ, AUBREE			
7:45	MISSED 2PTR by MASON, CORAL [PNT]			
7:33				MISSED 2PTR by TUCKERS, RHEA
7:33	REBOUND (DEF) by MACH, DENAE			
7:23				FOUL (PERSONAL) by STEPHAN, ALEXIS
7:23	GOOD! FT by NELSON, CHARLEY	45-52	V 7	
7:23				SUB OUT: STEPHAN, ALEXIS
7:23				SUB IN: FORTUNE, CHLOE
7:23	MISSED FT by NELSON, CHARLEY			
7:23				REBOUND (DEF) by KJERSTAD, PAIGE
7:02				SUB OUT: FORTUNE, CHLOE
7:02				SUB IN: STEPHAN, ALEXIS
6:52				MISSED 3PTR by STEPHAN, ALEXIS
6:52	REBOUND (DEF) by TEAM			
6:36	GOOD! 2PTR by MASON, CORAL [PNT]	45-54	V 9	
6:26	FOUL (PERSONAL) by MACH, DENAE			
6:23		47-54	V 7	GOOD! 2PTR by KJERSTAD, PAIGE [PNT]
6:11	MISSED 2PTR by MASON, CORAL			
6:11				FOUL (PERSONAL) by DINGER, NORA
6:11	MISSED FT by MASON, CORAL			
6:11	SUB OUT: MACH, DENAE			
6:11	SUB IN: LYONS, SHELBY			
6:11	MISSED FT by MASON, CORAL			
6:10				REBOUND (DEF) by SCHULZ, APRIL
5:59				MISSED 3PTR by SCHULZ, APRIL
5:59	REBOUND (DEF) by TEAM			
5:25	GOOD! 2PTR by NELSON, CHARLEY	47-56	V 9	
5:12				MISSED 2PTR by SCHULZ, APRIL
5:12	REBOUND (DEF) by MASON, CORAL			
5:06	MISSED 2PTR by LEE, ESTELLE			
5:06				SUB OUT: SCHULZ, APRIL
5:06				SUB IN: WAGNER, SKYLIE
5:06	SUB OUT: SCHWARTZ, AUBREE			
5:06	SUB IN: MACH, DENAE			
5:06	TURNOVER by MASON, CORAL			
5:06				STEAL by TEAM
4:55	STEAL by NELSON, CHARLEY			
4:55				TURNOVER by TEAM
4:52	MISSED 2PTR by LEE, ESTELLE			
4:52				FOUL (PERSONAL) by KJERSTAD, PAIGE
4:52	GOOD! FT by LEE, ESTELLE	47-57	V 10	
4:52	GOOD! FT by LEE, ESTELLE	47-58	V 11	
4:30				MISSED 3PTR by DINGER, NORA
4:30	REBOUND (DEF) by MASON, CORAL			
4:10	MISSED 3PTR by LYONS, SHELBY			
4:08				REBOUND (DEF) by TEAM
4:08	FOUL (PERSONAL) by LEE, ESTELLE			
4:01				SUB OUT: WAGNER, SKYLIE
4:01				SUB IN: SCHULZ, APRIL
3:55		49-58	V 9	GOOD! 2PTR by KJERSTAD, PAIGE [PNT]
3:39	MISSED 3PTR by LYONS, SHELBY			
3:39	REBOUND (OFF) by NELSON, CHARLEY			
3:34	MISSED 3PTR by LEE, ESTELLE			
3:34	REBOUND (OFF) by LYONS, SHELBY			
3:24	GOOD! 2PTR by MASON, CORAL	49-60	V 11	
3:07				MISSED 2PTR by TUCKERS, RHEA

Time	VISITORS: Viborg-Hurley	Score	Margin	HOME: Wall
3:07	REBOUND (DEF) by LEE, ESTELLE			
2:58	TIMEOUT TEAM			
2:58				SUB OUT: TUCKERS, RHEA
2:58				SUB IN: FORTUNE, CHLOE
2:44	GOOD! 2PTR by MASON, CORAL [PNT]	49-62	V 13	
2:44				FOUL (PERSONAL) by SCHULZ, APRIL
2:44				SUB OUT: FORTUNE, CHLOE
2:44				SUB IN: TUCKERS, RHEA
2:44	GOOD! FT by MASON, CORAL	49-63	V 14	
2:21				MISSED 2PTR by KJERSTAD, PAIGE
2:21	FOUL (PERSONAL) by LYONS, SHELBY			
2:21		50-63	V 13	GOOD! FT by KJERSTAD, PAIGE
2:21		51-63	V 12	GOOD! FT by KJERSTAD, PAIGE
2:04	MISSED 3PTR by MACH, DENAE			
2:04				REBOUND (DEF) by TUCKERS, RHEA
1:45				MISSED 3PTR by STEPHAN, ALEXIS
1:45	REBOUND (DEF) by MASON, CORAL			
1:34				STEAL by STEPHAN, ALEXIS
1:34	TURNOVER by MASON, CORAL			
1:30				MISSED 2PTR by STEPHAN, ALEXIS
1:30	FOUL (PERSONAL) by MASON, CORAL			
1:30		52-63	V 11	GOOD! FT by STEPHAN, ALEXIS
1:30		53-63	V 10	GOOD! FT by STEPHAN, ALEXIS
1:30				TIMEOUT TEAM
1:30				SUB OUT: TUCKERS, RHEA
1:30				SUB IN: FORTUNE, CHLOE
1:30				SUB OUT: STEPHAN, ALEXIS
1:30				SUB IN: FRINK, FAITH
1:30				SUB OUT: KJERSTAD, PAIGE
1:30				SUB IN: STEPHAN, ALEXIS
1:14				FOUL (PERSONAL) by DINGER, NORA
1:14	GOOD! FT by MACH, DENAE	53-64	V 11	
1:14				SUB OUT: FORTUNE, CHLOE
1:14				SUB OUT: FRINK, FAITH
1:14				SUB IN: KJERSTAD, PAIGE
1:14				SUB IN: TUCKERS, RHEA
1:14	GOOD! FT by MACH, DENAE	53-65	V 12	
1:14	TIMEOUT TEAM			
1:05		56-65	V 9	GOOD! 3PTR by TUCKERS, RHEA
1:05				ASSIST by DINGER, NORA
1:05				SUB OUT: DINGER, NORA
1:05				SUB OUT: KJERSTAD, PAIGE
1:05				SUB OUT: STEPHAN, ALEXIS
1:05				SUB IN: FORTUNE, CHLOE
1:05				SUB IN: FRINK, FAITH
1:05				SUB IN: WAGNER, SKYLIE
0:55				FOUL (PERSONAL) by SCHULZ, APRIL
0:55	GOOD! FT by LEE, ESTELLE	56-66	V 10	
0:55				SUB OUT: FORTUNE, CHLOE
0:55				SUB OUT: FRINK, FAITH
0:55				SUB OUT: WAGNER, SKYLIE
0:55				SUB IN: DINGER, NORA
0:55				SUB IN: KJERSTAD, PAIGE
0:55				SUB IN: STEPHAN, ALEXIS
0:55	GOOD! FT by LEE, ESTELLE	56-67	V 11	
0:45		59-67	V 8	GOOD! 3PTR by KJERSTAD, PAIGE
0:45				ASSIST by TUCKERS, RHEA
0:45				TIMEOUT TEAM
0:45				SUB OUT: SCHULZ, APRIL
0:45				SUB OUT: KJERSTAD, PAIGE
0:45				SUB OUT: STEPHAN, ALEXIS
0:45				SUB OUT: DINGER, NORA
0:45				SUB IN: FORTUNE, CHLOE
0:45				SUB IN: FRINK, FAITH
0:45				SUB IN: WAGNER, SKYLIE
0:45				SUB IN: POORBEAR, MARANDA
0:44				FOUL (PERSONAL) by FORTUNE, CHLOE
0:44	GOOD! FT by NELSON, CHARLEY	59-68	V 9	
0:44				SUB OUT: POORBEAR, MARANDA
0:44				SUB OUT: FRINK, FAITH
0:44				SUB OUT: FORTUNE, CHLOE
0:44				SUB OUT: WAGNER, SKYLIE
0:44				SUB IN: DINGER, NORA
0:44				SUB IN: KJERSTAD, PAIGE
0:44				SUB IN: STEPHAN, ALEXIS
0:44				SUB IN: SCHULZ, APRIL

Time	VISITORS: Viborg-Hurley	Score	Margin	HOME: Wall
0:44	GOOD! FT by NELSON, CHARLEY	59-69	V 10	
0:37				MISSED 3PTR by STEPHAN, ALEXIS
0:37	REBOUND (DEF) by LYONS, SHELBY			
0:34				FOUL (PERSONAL) by TUCKERS, RHEA
0:34	GOOD! FT by MASON, CORAL	59-70	V 11	
0:34	GOOD! FT by MASON, CORAL	59-71	V 12	
0:34				SUB OUT: TUCKERS, RHEA
0:34				SUB OUT: DINGER, NORA
0:34				SUB OUT: KJERSTAD, PAIGE
0:34				SUB OUT: STEPHAN, ALEXIS
0:34				SUB OUT: SCHULZ, APRIL
0:34				SUB IN: OSTENSON, FALLON
0:34				SUB IN: KUSSER, KADENCE
0:34				SUB IN: MCDONNELL, TAYLOR
0:34				SUB IN: TINES, LOUCASEY
0:34				SUB IN: KUSSER, JADA
0:34	SUB OUT: LEE, ESTELLE			
0:34	SUB OUT: MASON, CORAL			
0:34	SUB OUT: NELSON, CHARLEY			
0:34	SUB OUT: LYONS, SHELBY			
0:34	SUB OUT: MACH, DENAE			
0:34	SUB IN: SCHWARTZ, AUBREE			
0:34	SUB IN: GILBERT, KENDRA			
0:34	SUB IN: GRAVES, JENNA			
0:34	SUB IN: NELSON, HALEY			
0:34	SUB IN: VASGAARD, MADELYN			
0:20		61-71	V 10	GOOD! 2PTR by KUSSER, KADENCE [PNT]

Viborg-Hurley 71, Wall 61

Points (This Period)	VIB	WAL
In the Paint	4	6
Off Turns	2	2
2nd Chance	2	0
Fast Break	0	0
Bench	0	2
Per Poss	1.111 10/18	0.889 7/18

Official Scoring/Possession Reference Chart
Viborg-Hurley vs Wall
Period 1
March 11, 2023 at ,



Period 1

Starters:

Viborg-Hurley: 1 NELSON,CHARLEY; 11 LEE,ESTELLE; 12 MASON,CORAL; 14 MACH,DENAE; 30 LYONS,SHELBY;
Wall: 3 DINGER,NORA; 4 KJERSTAD,PAIGE; 11 TUCKERS,RHEA; 23 SCHULZ,APRIL; 24 STEPHAN,ALEXIS;

Time	VISITORS: Viborg-Hurley	Score	Margin	HOME: Wall
7:02		2-0	H 2	GOOD! 2PTR by SCHULZ, APRIL [PNT]
6:44	GOOD! 3PTR by NELSON, CHARLEY	2-3	V 1	
6:28		4-3	H 1	GOOD! 2PTR by DINGER, NORA [PNT]
6:04		7-3	H 4	GOOD! 3PTR by STEPHAN, ALEXIS
5:46	GOOD! 2PTR by MACH, DENAE [PNT]	7-5	H 2	
5:27		9-5	H 4	GOOD! 2PTR by KJERSTAD, PAIGE [PNT]
4:36	GOOD! 2PTR by MASON, CORAL [PNT]	9-7	H 2	
4:14	GOOD! 2PTR by MASON, CORAL [PNT]	9-9	T	
3:18	GOOD! FT by MACH, DENAE	9-10	V 1	
3:05		12-10	H 2	GOOD! 3PTR by STEPHAN, ALEXIS
2:39	GOOD! 2PTR by LYONS, SHELBY	12-12	T	
1:59	GOOD! 3PTR by NELSON, CHARLEY	12-15	V 3	
1:37		13-15	V 2	GOOD! FT by KJERSTAD, PAIGE
1:37		14-15	V 1	GOOD! FT by KJERSTAD, PAIGE
0:47	GOOD! 2PTR by MASON, CORAL [PNT]	14-17	V 3	
0:00		17-17	T	GOOD! 3PTR by TUCKERS, RHEA

Viborg-Hurley 17, Wall 17

Official Scoring/Possession Reference Chart
Viborg-Hurley vs Wall
Period 2
March 11, 2023 at ,



Period 2

Starters:

Viborg-Hurley: 1 NELSON,CHARLEY; 11 LEE,ESTELLE; 12 MASON,CORAL; 14 MACH,DENAE; 30 LYONS,SHELBY;
Wall: 3 DINGER,NORA; 4 KJERSTAD,PAIGE; 11 TUCKERS,RHEA; 23 SCHULZ,APRIL; 24 STEPHAN,ALEXIS;

Time	VISITORS: Viborg-Hurley	Score	Margin	HOME: Wall
7:37		19-17	H 2	GOOD! 2PTR by TUCKERS, RHEA [PNT]
7:33		21-17	H 4	GOOD! 2PTR by KJERSTAD, PAIGE [PNT]
6:11	GOOD! 3PTR by NELSON, CHARLEY	21-20	H 1	
5:22	GOOD! 3PTR by MACH, DENAE	21-23	V 2	
4:26	GOOD! 2PTR by MACH, DENAE [PNT]	21-25	V 4	
4:04		24-25	V 1	GOOD! 3PTR by DINGER, NORA
3:07	GOOD! FT by MASON, CORAL	24-26	V 2	
3:07	GOOD! FT by MASON, CORAL	24-27	V 3	
2:50		26-27	V 1	GOOD! 2PTR by DINGER, NORA [PNT]
2:45		27-27	T	GOOD! FT by DINGER, NORA
2:22	GOOD! 2PTR by LEE, ESTELLE [PNT]	27-29	V 2	
1:43	GOOD! 3PTR by LYONS, SHELBY	27-32	V 5	
1:05	GOOD! 2PTR by MASON, CORAL [PNT]	27-34	V 7	

Viborg-Hurley 34, Wall 27

Official Scoring/Possession Reference Chart
Viborg-Hurley vs Wall
Period 3
March 11, 2023 at ,



Period 3

Starters:

Viborg-Hurley: 1 NELSON, CHARLEY; 11 LEE, ESTELLE; 12 MASON, CORAL; 14 MACH, DENAE; 30 LYONS, SHELBY;

Wall: 3 DINGER, NORA; 4 KJERSTAD, PAIGE; 11 TUCKERS, RHEA; 23 SCHULZ, APRIL; 24 STEPHAN, ALEXIS;

Time	VISITORS: Viborg-Hurley	Score	Margin	HOME: Wall
6:19	GOOD! FT by MACH, DENAE	27-35	V 8	
6:19	GOOD! FT by MACH, DENAE	27-36	V 9	
5:46	GOOD! FT by MASON, CORAL	27-37	V 10	
5:29		29-37	V 8	GOOD! 2PTR by SCHULZ, APRIL [PNT]
5:08	GOOD! 2PTR by MACH, DENAE [PNT]	29-39	V 10	
4:20	GOOD! FT by MASON, CORAL	29-40	V 11	
4:20	GOOD! FT by MASON, CORAL	29-41	V 12	
3:42	GOOD! 2PTR by MASON, CORAL [PNT]	29-43	V 14	
3:42	GOOD! FT by MASON, CORAL	29-44	V 15	
3:33		32-44	V 12	GOOD! 3PTR by DINGER, NORA
2:57		34-44	V 10	GOOD! 2PTR by KJERSTAD, PAIGE [PNT]
2:47	GOOD! 2PTR by MACH, DENAE [PNT]	34-46	V 12	
2:24	GOOD! 2PTR by LEE, ESTELLE [PNT]	34-48	V 14	
2:15		35-48	V 13	GOOD! FT by WAGNER, SKYLIE
2:15		36-48	V 12	GOOD! FT by WAGNER, SKYLIE
1:44		38-48	V 10	GOOD! 2PTR by DINGER, NORA
1:29	GOOD! FT by MASON, CORAL	38-49	V 11	
1:10		41-49	V 8	GOOD! 3PTR by STEPHAN, ALEXIS
0:43		43-49	V 6	GOOD! 2PTR by KJERSTAD, PAIGE [PNT]
0:11		45-49	V 4	GOOD! 2PTR by KJERSTAD, PAIGE [PNT]
0:00	GOOD! 2PTR by MASON, CORAL [PNT]	45-51	V 6	

Viborg-Hurley 51, Wall 45

Official Scoring/Possession Reference Chart
Viborg-Hurley vs Wall
Period 4
March 11, 2023 at ,



Period 4

Starters:

Viborg-Hurley: 1 NELSON,CHARLEY; 11 LEE,ESTELLE; 12 MASON,CORAL; 14 MACH,DENAE; 30 LYONS,SHELBY;

Wall: 3 DINGER,NORA; 4 KJERSTAD,PAIGE; 11 TUCKERS,RHEA; 23 SCHULZ,APRIL; 24 STEPHAN,ALEXIS;

Time	VISITORS: Viborg-Hurley	Score	Margin	HOME: Wall
7:23	GOOD! FT by NELSON, CHARLEY	45-52	V 7	
6:36	GOOD! 2PTR by MASON, CORAL [PNT]	45-54	V 9	
6:23		47-54	V 7	GOOD! 2PTR by KJERSTAD, PAIGE [PNT]
5:25	GOOD! 2PTR by NELSON, CHARLEY	47-56	V 9	
4:52	GOOD! FT by LEE, ESTELLE	47-57	V 10	
4:52	GOOD! FT by LEE, ESTELLE	47-58	V 11	
3:55		49-58	V 9	GOOD! 2PTR by KJERSTAD, PAIGE [PNT]
3:24	GOOD! 2PTR by MASON, CORAL	49-60	V 11	
2:44	GOOD! 2PTR by MASON, CORAL [PNT]	49-62	V 13	
2:44	GOOD! FT by MASON, CORAL	49-63	V 14	
2:21		50-63	V 13	GOOD! FT by KJERSTAD, PAIGE
2:21		51-63	V 12	GOOD! FT by KJERSTAD, PAIGE
1:30		52-63	V 11	GOOD! FT by STEPHAN, ALEXIS
1:30		53-63	V 10	GOOD! FT by STEPHAN, ALEXIS
1:14	GOOD! FT by MACH, DENAE	53-64	V 11	
1:14	GOOD! FT by MACH, DENAE	53-65	V 12	
1:05		56-65	V 9	GOOD! 3PTR by TUCKERS, RHEA
0:55	GOOD! FT by LEE, ESTELLE	56-66	V 10	
0:55	GOOD! FT by LEE, ESTELLE	56-67	V 11	
0:45		59-67	V 8	GOOD! 3PTR by KJERSTAD, PAIGE
0:44	GOOD! FT by NELSON, CHARLEY	59-68	V 9	
0:44	GOOD! FT by NELSON, CHARLEY	59-69	V 10	
0:34	GOOD! FT by MASON, CORAL	59-70	V 11	
0:34	GOOD! FT by MASON, CORAL	59-71	V 12	
0:20		61-71	V 10	GOOD! 2PTR by KUSSER, KADENCE [PNT]

Viborg-Hurley 71, Wall 61

Official Substitutions Log
Viborg-Hurley vs Wall
Period 1
March 11, 2023 at ,



VISITORS: Viborg-Hurley	Time	Score	HOME: Wall
1 NELSON,CHARLEY			3 DINGER,NORA
11 LEE,ESTELLE			4 KJERSTAD,PAIGE
12 MASON,CORAL			11 TUCKERS,RHEA
14 MACH,DENAE			23 SCHULZ,APRIL
30 LYONS,SHELBY			24 STEPHAN,ALEXIS
	8:00	-	SUB STARTER: DINGER,NORA
	8:00		SUB STARTER: KJERSTAD,PAIGE
	8:00		SUB STARTER: TUCKERS,RHEA
	8:00		SUB STARTER: SCHULZ,APRIL
	8:00		SUB STARTER: STEPHAN,ALEXIS
SUB STARTER: 1 NELSON,CHARLEY	8:00		
SUB STARTER: 11 LEE,ESTELLE	8:00		
SUB STARTER: 12 MASON,CORAL	8:00		
SUB STARTER: 14 MACH,DENAE	8:00		
SUB STARTER: 30 LYONS,SHELBY	8:00		
SUB OUT: 30 LYONS,SHELBY	2:13	12-12	
SUB IN: 10 SCHWARTZ,AUBREE	2:13		

Viborg-Hurley 17, Wall 17

Official Substitutions Log
Viborg-Hurley vs Wall
Period 2
March 11, 2023 at ,



VISITORS: Viborg-Hurley	Time	Score	HOME: Wall
1 NELSON,CHARLEY			3 DINGER,NORA
11 LEE,ESTELLE			4 KJERSTAD,PAIGE
12 MASON,CORAL			11 TUCKERS,RHEA
14 MACH,DENAE			23 SCHULZ,APRIL
30 LYONS,SHELBY			24 STEPHAN,ALEXIS
SUB STARTER: 30 LYONS,SHELBY	8:00	-	
SUB STARTER: 1 NELSON,CHARLEY	8:00		
SUB STARTER: 11 LEE,ESTELLE	8:00		
SUB STARTER: 12 MASON,CORAL	8:00		
SUB STARTER: 14 MACH,DENAE	8:00		
	8:00		SUB STARTER: DINGER,NORA
	8:00		SUB STARTER: TUCKERS,RHEA
	8:00		SUB STARTER: STEPHAN,ALEXIS
	8:00		SUB STARTER: KJERSTAD,PAIGE
	8:00		SUB STARTER: SCHULZ,APRIL
	5:36	20-21	SUB OUT: SCHULZ,APRIL
	5:36		SUB OUT: STEPHAN,ALEXIS
	5:36		SUB IN: FORTUNE,CHLOE
	5:36		SUB IN: WAGNER,SKYLIE
	3:30	25-24	SUB OUT: WAGNER,SKYLIE
	3:30		SUB OUT: TUCKERS,RHEA
	3:30		SUB IN: STEPHAN,ALEXIS
	3:30		SUB IN: SCHULZ,APRIL
SUB OUT: 14 MACH,DENAE	2:50	27-26	
SUB IN: 10 SCHWARTZ,AUBREE	2:50		
	0:41	34-27	SUB OUT: KJERSTAD,PAIGE
	0:41		SUB IN: TUCKERS,RHEA
	0:30	34-27	SUB OUT: FORTUNE,CHLOE
	0:30		SUB IN: KJERSTAD,PAIGE

Viborg-Hurley 34, Wall 27

Official Substitutions Log
Viborg-Hurley vs Wall
 Period 3
 March 11, 2023 at ,



VISITORS: Viborg-Hurley	Time	Score	HOME: Wall
1 NELSON,CHARLEY			3 DINGER,NORA
11 LEE,ESTELLE			4 KJERSTAD,PAIGE
12 MASON,CORAL			11 TUCKERS,RHEA
14 MACH,DENAE			23 SCHULZ,APRIL
30 LYONS,SHELBY			24 STEPHAN,ALEXIS
	8:00	-	SUB STARTER: DINGER,NORA
	8:00		SUB STARTER: KJERSTAD,PAIGE
	8:00		SUB STARTER: TUCKERS,RHEA
	8:00		SUB STARTER: SCHULZ,APRIL
	8:00		SUB STARTER: STEPHAN,ALEXIS
SUB STARTER: 1 NELSON,CHARLEY	8:00		
SUB STARTER: 11 LEE,ESTELLE	8:00		
SUB STARTER: 12 MASON,CORAL	8:00		
SUB STARTER: 14 MACH,DENAE	8:00		
SUB STARTER: 30 LYONS,SHELBY	8:00		
	4:20	40-29	SUB OUT: TUCKERS,RHEA
	4:20		SUB IN: FORTUNE,CHLOE
	3:42	44-29	SUB OUT: STEPHAN,ALEXIS
	3:42		SUB IN: POORBEAR,MARANDA
	2:17	48-34	SUB OUT: POORBEAR,MARANDA
	2:17		SUB IN: STEPHAN,ALEXIS
	2:17		SUB OUT: SCHULZ,APRIL
	2:17		SUB OUT: FORTUNE,CHLOE
	2:17		SUB IN: WAGNER,SKYLIE
	2:17		SUB IN: TUCKERS,RHEA
	0:35	49-43	SUB OUT: WAGNER,SKYLIE
	0:35		SUB IN: SCHULZ,APRIL
SUB OUT: 30 LYONS,SHELBY	0:35		
SUB IN: 10 SCHWARTZ,AUBREE	0:35		

Viborg-Hurley 51, Wall 45

Official Substitutions Log
Viborg-Hurley vs Wall
Period 4
March 11, 2023 at ,



VISITORS: Viborg-Hurley	Time	Score	HOME: Wall
1 NELSON,CHARLEY			3 DINGER,NORA
11 LEE,ESTELLE			4 KJERSTAD,PAIGE
12 MASON,CORAL			11 TUCKERS,RHEA
14 MACH,DENAE			23 SCHULZ,APRIL
30 LYONS,SHELBY			24 STEPHAN,ALEXIS
	8:00	-	SUB STARTER: KJERSTAD,PAIGE
	8:00		SUB STARTER: DINGER,NORA
	8:00		SUB STARTER: SCHULZ,APRIL
	8:00		SUB STARTER: STEPHAN,ALEXIS
	8:00		SUB STARTER: TUCKERS,RHEA
SUB STARTER: 11 LEE,ESTELLE	8:00		
SUB STARTER: 12 MASON,CORAL	8:00		
SUB STARTER: 14 MACH,DENAE	8:00		
SUB STARTER: 1 NELSON,CHARLEY	8:00		
SUB STARTER: 10 SCHWARTZ,AUBREE	8:00		
	7:23	52-45	SUB OUT: STEPHAN,ALEXIS
	7:23		SUB IN: FORTUNE,CHLOE
	7:02	52-45	SUB OUT: FORTUNE,CHLOE
	7:02		SUB IN: STEPHAN,ALEXIS
SUB OUT: 14 MACH,DENAE	6:11	54-47	
SUB IN: 30 LYONS,SHELBY	6:11		
	5:06	56-47	SUB OUT: SCHULZ,APRIL
	5:06		SUB IN: WAGNER,SKYLIE
SUB OUT: 10 SCHWARTZ,AUBREE	5:06		
SUB IN: 14 MACH,DENAE	5:06		
	4:01	58-47	SUB OUT: WAGNER,SKYLIE
	4:01		SUB IN: SCHULZ,APRIL
	2:58	60-49	SUB OUT: TUCKERS,RHEA
	2:58		SUB IN: FORTUNE,CHLOE
	2:44	62-49	SUB OUT: FORTUNE,CHLOE
	2:44		SUB IN: TUCKERS,RHEA
	1:30	63-53	SUB OUT: TUCKERS,RHEA
	1:30		SUB IN: FORTUNE,CHLOE
	1:30		SUB OUT: STEPHAN,ALEXIS
	1:30		SUB IN: FRINK,FAITH
	1:30		SUB OUT: KJERSTAD,PAIGE
	1:30		SUB IN: STEPHAN,ALEXIS
	1:14	64-53	SUB OUT: FORTUNE,CHLOE
	1:14		SUB OUT: FRINK,FAITH
	1:14		SUB IN: KJERSTAD,PAIGE
	1:14		SUB IN: TUCKERS,RHEA
	1:05	65-56	SUB OUT: DINGER,NORA
	1:05		SUB OUT: KJERSTAD,PAIGE
	1:05		SUB OUT: STEPHAN,ALEXIS
	1:05		SUB IN: FORTUNE,CHLOE
	1:05		SUB IN: FRINK,FAITH
	1:05		SUB IN: WAGNER,SKYLIE
	0:55	66-56	SUB OUT: FORTUNE,CHLOE
	0:55		SUB OUT: FRINK,FAITH
	0:55		SUB OUT: WAGNER,SKYLIE
	0:55		SUB IN: DINGER,NORA
	0:55		SUB IN: KJERSTAD,PAIGE
	0:55		SUB IN: STEPHAN,ALEXIS
	0:45	67-59	SUB OUT: SCHULZ,APRIL
	0:45		SUB OUT: KJERSTAD,PAIGE
	0:45		SUB OUT: STEPHAN,ALEXIS
	0:45		SUB OUT: DINGER,NORA
	0:45		SUB IN: FORTUNE,CHLOE
	0:45		SUB IN: FRINK,FAITH
	0:45		SUB IN: WAGNER,SKYLIE
	0:45		SUB IN: POORBEAR,MARANDA
	0:44	68-59	SUB OUT: POORBEAR,MARANDA
	0:44		SUB OUT: FRINK,FAITH
	0:44		SUB OUT: FORTUNE,CHLOE
	0:44		SUB OUT: WAGNER,SKYLIE
	0:44		SUB IN: DINGER,NORA
	0:44		SUB IN: KJERSTAD,PAIGE
	0:44		SUB IN: STEPHAN,ALEXIS
	0:44		SUB IN: SCHULZ,APRIL

VISITORS: Viborg-Hurley	Time	Score	HOME: Wall
	0:34	71-59	SUB OUT: TUCKERS,RHEA
	0:34		SUB OUT: DINGER,NORA
	0:34		SUB OUT: KJERSTAD,PAIGE
	0:34		SUB OUT: STEPHAN,ALEXIS
	0:34		SUB OUT: SCHULZ,APRIL
	0:34		SUB IN: OSTENSON,FALLON
	0:34		SUB IN: KUSSER,KADENCE
	0:34		SUB IN: MCDONNELL,TAYLOR
	0:34		SUB IN: TINES,LOUCASEY
	0:34		SUB IN: KUSSER,JADA
SUB OUT: 11 LEE,ESTELLE	0:34		
SUB OUT: 12 MASON,CORAL	0:34		
SUB OUT: 1 NELSON,CHARLEY	0:34		
SUB OUT: 30 LYONS,SHELBY	0:34		
SUB OUT: 14 MACH,DENAE	0:34		
SUB IN: 10 SCHWARTZ,AUBREE	0:34		
SUB IN: 2 GILBERT,KENDRA	0:34		
SUB IN: 15 GRAVES,JENNA	0:34		
SUB IN: 4 NELSON,HALEY	0:34		
SUB IN: 20 VASGAARD,MADELYN	0:34		

Viborg-Hurley 71, Wall 61

Official Shot Chart
Viborg-Hurley vs Wall
PERIOD 1 Shots
March 11, 2023 at ,



Wall

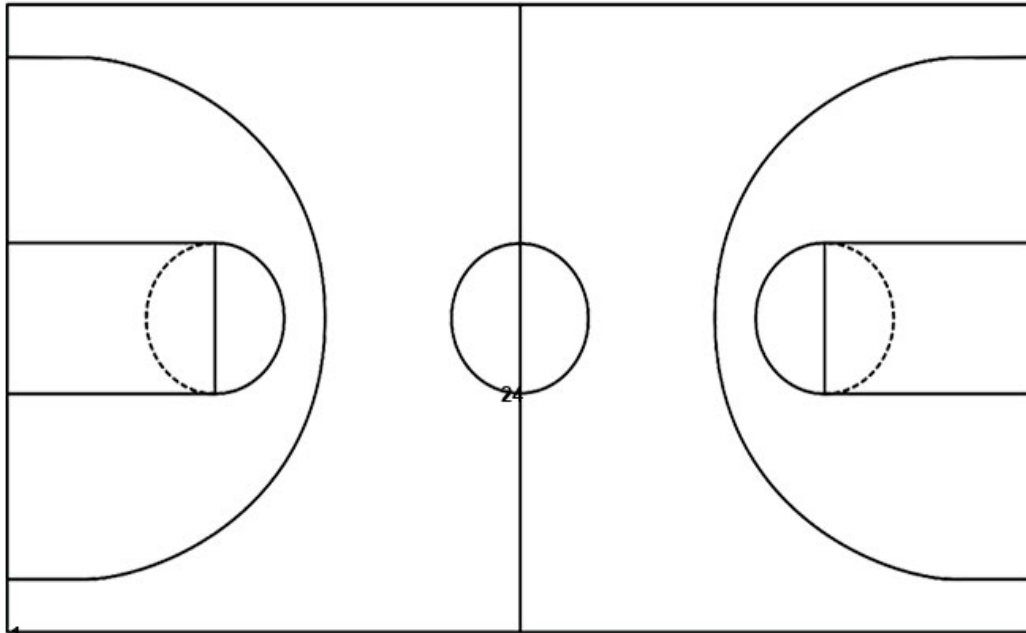
Viborg-Hurley

Layups

Layups

Dunks

Dunks



WAL : Period 1	Made	Att	Pct
Layups	0	0	0
Dunks	0	0	0
2PT Field Goals	3	11	27.3
3PT Field Goals	3	6	50.0
Total Field Goals	6	17	35.3

VIB : Period 1	Made	Att	Pct
Layups	0	0	0
Dunks	0	0	0
2PT Field Goals	5	9	55.6
3PT Field Goals	2	7	28.6
Total Field Goals	7	16	43.8

Official Shot Chart
Viborg-Hurley vs Wall
PERIOD 2 Shots
March 11, 2023 at ,



Wall

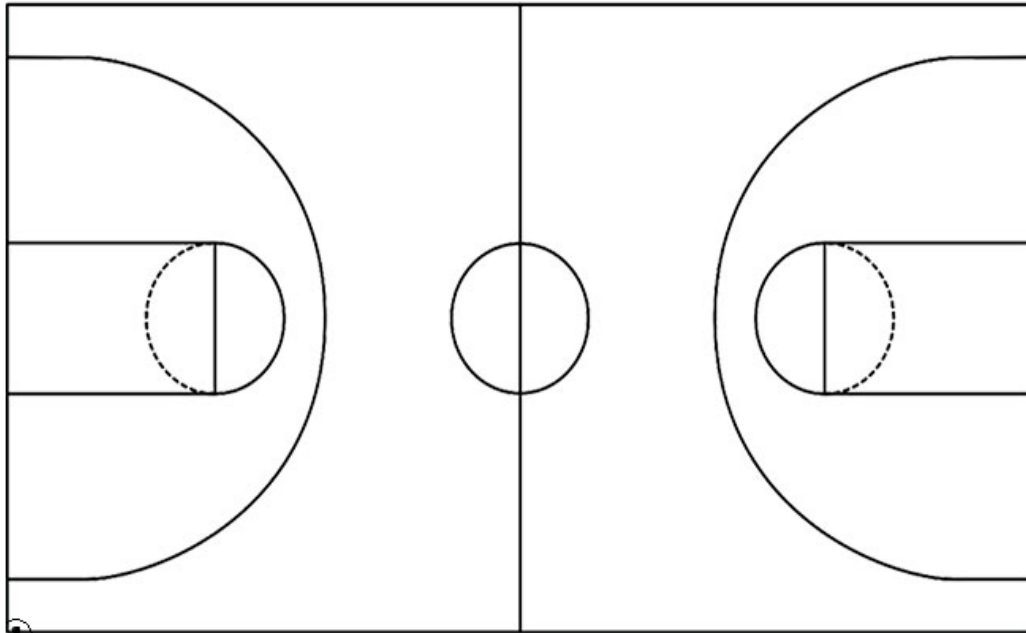
Viborg-Hurley

Layups

Layups

Dunks

Dunks



WAL : Period 2	Made	Att	Pct
Layups	0	0	0
Dunks	0	0	0
2PT Field Goals	3	15	20.0
3PT Field Goals	1	4	25.0
Total Field Goals	4	19	21.1

VIB : Period 2	Made	Att	Pct
Layups	0	0	0
Dunks	0	0	0
2PT Field Goals	3	10	30.0
3PT Field Goals	3	7	42.9
Total Field Goals	6	17	35.3

Official Shot Chart
Viborg-Hurley vs Wall
PERIOD 3 Shots
March 11, 2023 at ,



Wall

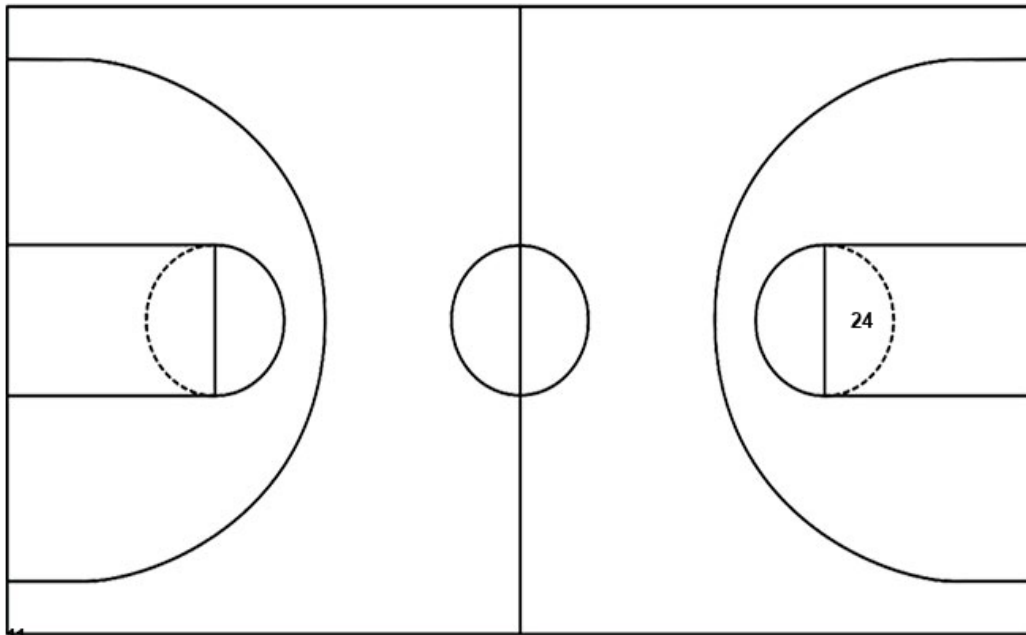
Viborg-Hurley

Layups

Layups

Dunks

Dunks



WAL : Period 3	Made	Att	Pct
Layups	0	0	0
Dunks	0	0	0
2PT Field Goals	5	7	71.4
3PT Field Goals	2	4	50.0
Total Field Goals	7	11	63.6

VIB : Period 3	Made	Att	Pct
Layups	0	0	0
Dunks	0	0	0
2PT Field Goals	5	17	29.4
3PT Field Goals	0	4	00.0
Total Field Goals	5	21	23.8

Official Shot Chart
Viborg-Hurley vs Wall
PERIOD 4 Shots
March 11, 2023 at ,



Wall

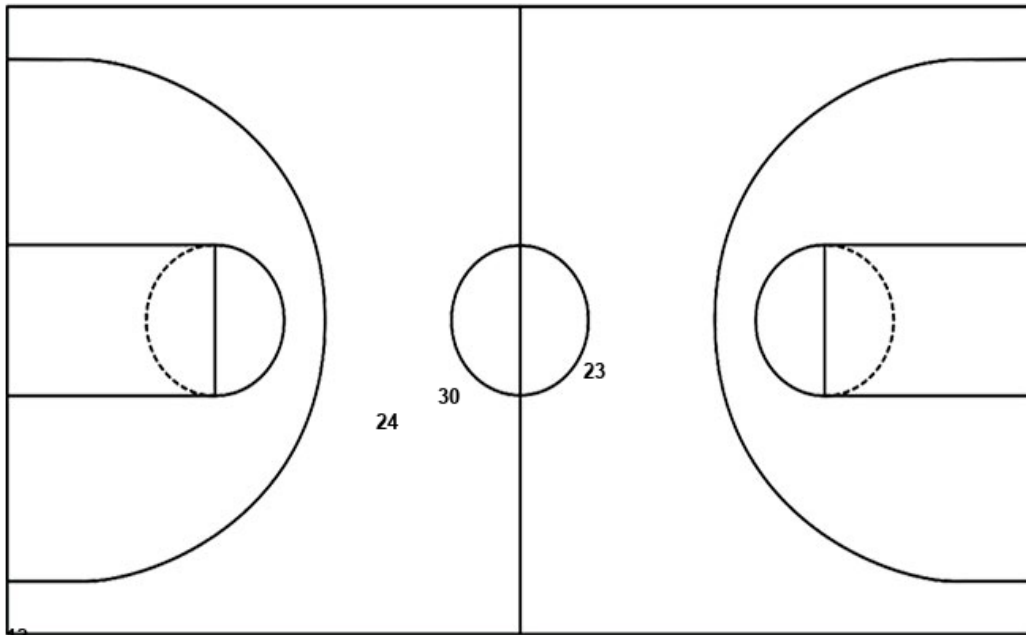
Viborg-Hurley

Layups

Layups

Dunks

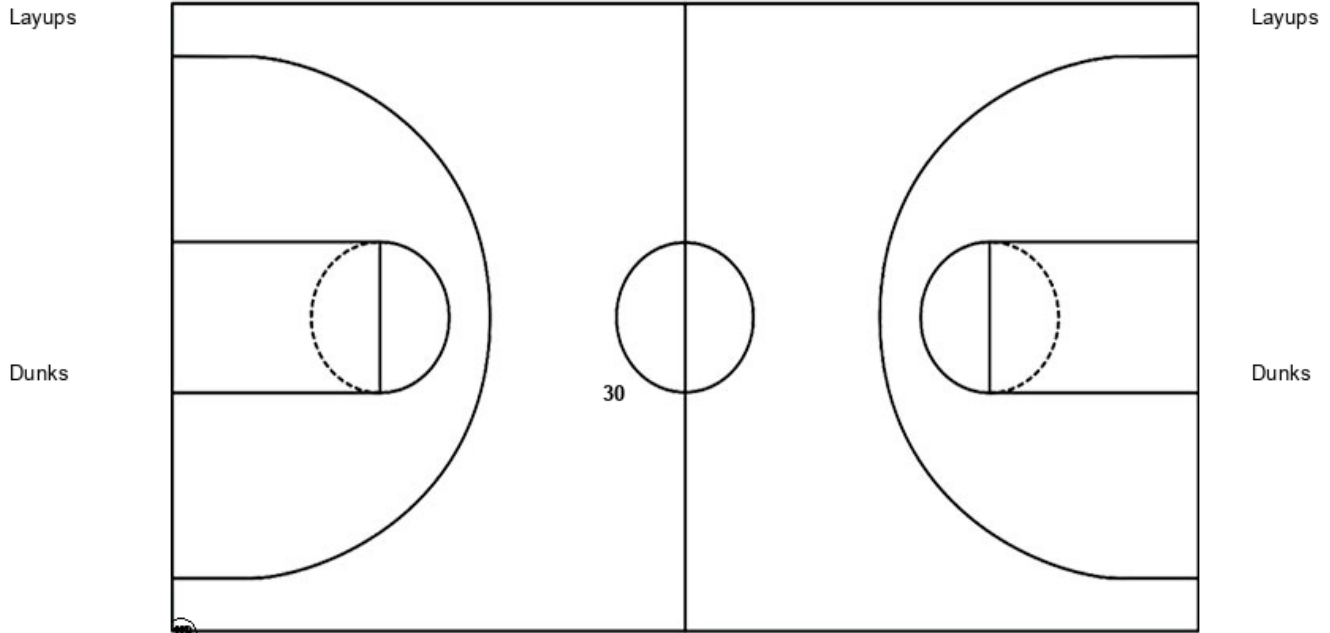
Dunks



WAL : Period 4	Made	Att	Pct
Layups	0	0	0
Dunks	0	0	0
2PT Field Goals	3	8	37.5
3PT Field Goals	2	7	28.6
Total Field Goals	5	15	33.3

VIB : Period 4	Made	Att	Pct
Layups	0	0	0
Dunks	0	0	0
2PT Field Goals	4	8	50.0
3PT Field Goals	0	4	00.0
Total Field Goals	4	12	33.3

Official Shot Chart
Viborg-Hurley vs Wall
Viborg-Hurley Team Shots
 March 11, 2023 at ,



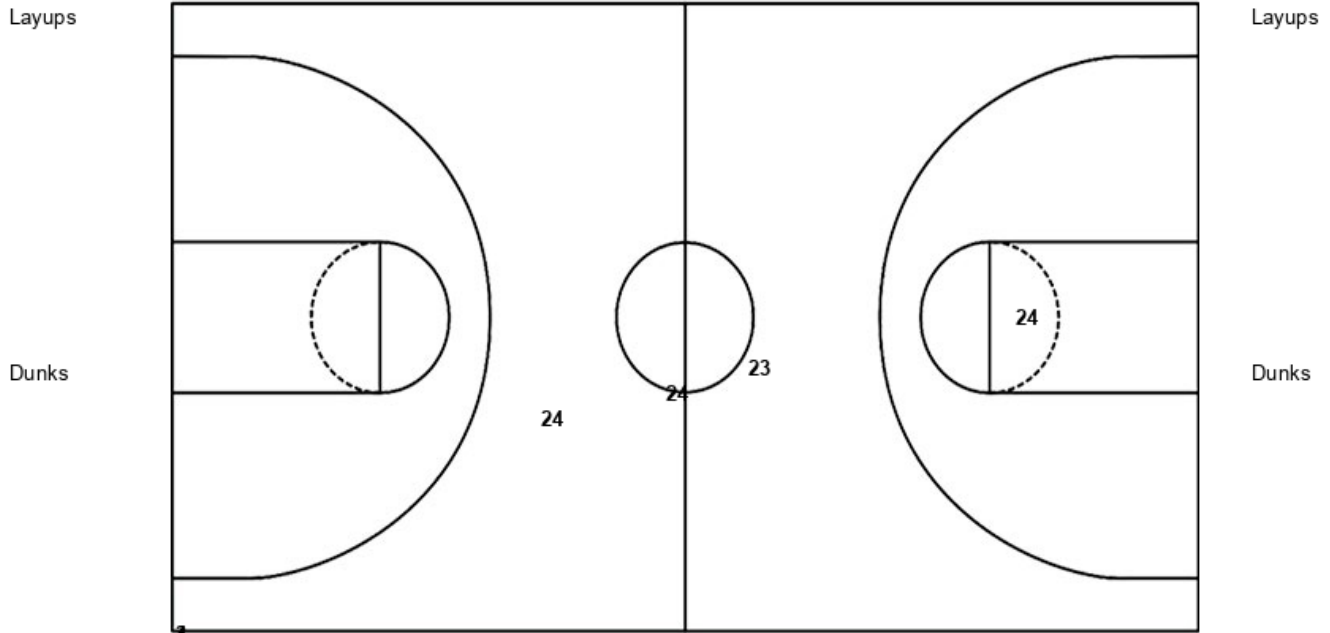
VIB : Period 1	Made	Att	Pct
Layups	0	0	0
Dunks	0	0	0
2PT Field Goals	5	9	55.6
3PT Field Goals	2	7	28.6
Total Field Goals	7	16	43.8

VIB : Period 2	Made	Att	Pct
Layups	0	0	0
Dunks	0	0	0
2PT Field Goals	3	10	30.0
3PT Field Goals	3	7	42.9
Total Field Goals	6	17	35.3

VIB : Period 3	Made	Att	Pct
Layups	0	0	0
Dunks	0	0	0
2PT Field Goals	5	17	29.4
3PT Field Goals	0	4	00.0
Total Field Goals	5	21	23.8

VIB : Period 4	Made	Att	Pct
Layups	0	0	0
Dunks	0	0	0
2PT Field Goals	4	8	50.0
3PT Field Goals	0	4	00.0
Total Field Goals	4	12	33.3

Official Shot Chart
Viborg-Hurley vs Wall
Wall Team Shots
March 11, 2023 at ,



WAL : Period 1	Made	Att	Pct
Layups	0	0	0
Dunks	0	0	0
2PT Field Goals	3	11	27.3
3PT Field Goals	3	6	50.0
Total Field Goals	6	17	35.3

WAL : Period 2	Made	Att	Pct
Layups	0	0	0
Dunks	0	0	0
2PT Field Goals	3	15	20.0
3PT Field Goals	1	4	25.0
Total Field Goals	4	19	21.1

WAL : Period 3	Made	Att	Pct
Layups	0	0	0
Dunks	0	0	0
2PT Field Goals	5	7	71.4
3PT Field Goals	2	4	50.0
Total Field Goals	7	11	63.6

WAL : Period 4	Made	Att	Pct
Layups	0	0	0
Dunks	0	0	0
2PT Field Goals	3	8	37.5
3PT Field Goals	2	7	28.6
Total Field Goals	5	15	33.3