

## FINAL SCORE



**Howard**

**54**



**Sully Buttes**

**44**

**2023 SDHSAA State Basketball Championships**

March 11, 2023 • ,



## FINAL STATISTICS

**Official Box Score**  
**Howard vs Sully Buttes**  
**Game Totals -- Final Statistics**  
**March 11, 2023 at ,**



**Howard 54**

**Record:**

No.	Player	S	Pts	FG	3FG	FT	OR	DR	TR	PF	A	TO	Blk	Stl	Min	+/-
02	PALMQUIST, TRINITY		9	3-6	1-2	2-3	1	4	5	2	2	3	0	0	24	12
03	KIDD, CANYON		0	0-5	0-3	0-1	1	2	3	4	0	1	0	1	26	17
14	ASLESEN, ABBY		19	7-15	0-1	5-6	3	7	10	2	4	2	0	0	25	19
25	RUDEBUSCH, RYLEE		2	1-3	0-2	0-0	0	3	3	2	1	1	0	1	18	14
34	CONNOR, KATE		19	9-20	0-2	1-2	2	2	4	3	0	2	0	2	31	13
05	HOYER, TANA		0	0-1	0-0	0-0	2	1	3	0	1	1	0	0	5	0
10	SPADER, DAKOTA		3	1-2	1-2	0-0	0	0	0	2	1	0	0	0	12	6
11	CALLIES, LANDREE		2	1-3	0-2	0-0	1	2	3	0	0	2	0	0	9	1
12	TERWILLIGER, CASSIDY		0	0-1	0-1	0-0	0	0	0	0	0	0	0	0	2	-6
15	ALBRECHT, ELIZABETH	*	0	0-0	0-0	0-0	0	0	0	0	0	0	0	0	2	-4
22	SCHWADER, KAYLEIGH	*	0	0-1	0-0	0-0	0	0	0	0	0	0	0	0	1	-3
24	BECKER, ELLIE	*	0	0-0	0-0	0-0	0	0	0	0	0	1	0	0	1	-3
30	BECKER, ANNA	*	0	0-0	0-0	0-0	0	1	1	0	0	0	0	0	1	-3
42	CONNOR, ANN		0	0-0	0-0	0-0	0	0	0	0	0	0	0	0	1	0
44	RUDEBUSCH, REESE	*	0	0-0	0-0	0-0	0	0	0	0	0	0	0	0	1	-3
<b>TOTALS</b>			<b>54</b>	<b>22-57</b>	<b>2-15</b>	<b>8-12</b>	<b>14</b>	<b>26</b>	<b>40</b>	<b>15</b>	<b>9</b>	<b>13</b>	<b>0</b>	<b>8</b>	<b>160</b>	

*Shooting By Period*

Period	FG	FG%	3FG	3FG%	FT	FT%
<b>Game</b>	<b>22-57</b>	<b>38.6%</b>	<b>2-15</b>	<b>13.3%</b>	<b>8-12</b>	<b>66.7%</b>

*Deadball Rebounds: 1,0*  
*Last FG: 4th-1:58*  
*Largest lead: By at*  
*Technical Fouls: None.*

**Sully Buttes 44**

**Record:**

No.	Player	S	Pts	FG	3FG	FT	OR	DR	TR	PF	A	TO	Blk	Stl	Min	+/-
12	CHICOINE, CALLEIGH		9	3-7	3-6	0-0	0	3	3	5	0	2	0	0	14	-8
14	BIRNEY, CAITLIN		2	1-1	0-0	0-0	0	2	2	0	1	1	0	0	17	-7
15	WITTLER, STEVIE	*	17	7-16	1-3	2-3	0	2	2	1	2	1	0	1	32	-14
22	WITTLER, ALLYSON	*	10	3-16	2-9	2-2	0	2	2	3	0	1	0	1	32	-10
24	HILL, LYDIA	*	5	1-9	0-0	3-4	1	3	4	3	0	3	0	0	32	-10
01	BAKKER, PAYGE	*	1	0-1	0-0	1-2	1	1	2	1	0	1	0	1	10	-1
21	CHICOINE, ADDISON	*	0	0-2	0-1	0-0	0	4	4	4	1	1	0	4	23	-12
<b>TOTALS</b>			<b>44</b>	<b>15-52</b>	<b>6-19</b>	<b>8-11</b>	<b>5</b>	<b>19</b>	<b>24</b>	<b>17</b>	<b>4</b>	<b>10</b>	<b>0</b>	<b>12</b>	<b>160</b>	

*Shooting By Period*

Period	FG	FG%	3FG	3FG%	FT	FT%
<b>Game</b>	<b>15-52</b>	<b>28.8%</b>	<b>6-19</b>	<b>31.6%</b>	<b>8-11</b>	<b>72.7%</b>

*Deadball Rebounds: 2,0*  
*Last FG: 4th-0:43*  
*Largest lead: By at*  
*Technical Fouls: None.*

Game Notes:

Officials: , ,

Start Time: **12:00:00**  
 Postseason Game;

Score	1st	2nd	3rd	4th	TOT
HOW	16	19	13	6	<b>54</b>
SUL	8	14	6	16	<b>44</b>

**HOW led for 0:0. SUL led for 0:0.**  
**Game was tied for 0:0.**  
 Times tied: 0      Lead Changes: 0

Points	HOW	SUL
In the Paint	32	12
Off Turns	9	15
2nd Chance	11	9
Fast Break	0	0
Bench	5	1
Per Poss	0.885 26/61	0.721 19/61

**Official Box Score**  
**Howard vs Sully Buttes**  
**First Half Statistics Only**  
**March 11, 2023 at ,**



**Howard 35**

**Record:**

No.	Player	S	Pts	FG	3FG	FT	OR	DR	TR	PF	A	TO	Blk	Stl	Min	+/-
-----	--------	---	-----	----	-----	----	----	----	----	----	---	----	-----	-----	-----	-----

*Shooting By Period*

Period	FG	FG%	3FG	3FG%	FT	FT%
1st Half	0-0	0%	0-0	0%	0-0	0%
Game	22-57	38.6%	2-15	13.3%	8-12	66.7%

*Deadball Rebounds: 1,0*  
*Last FG Half: HOW 2nd-0:00*

**Sully Buttes 22**

**Record:**

No.	Player	S	Pts	FG	3FG	FT	OR	DR	TR	PF	A	TO	Blk	Stl	Min	+/-
-----	--------	---	-----	----	-----	----	----	----	----	----	---	----	-----	-----	-----	-----

*Shooting By Period*

Period	FG	FG%	3FG	3FG%	FT	FT%
1st Half	0-0	0%	0-0	0%	0-0	0%
Game	15-52	28.8%	6-19	31.6%	8-11	72.7%

*Deadball Rebounds: 2,0*  
*Last FG Half: SUL 2nd-3:21*

Game Notes:

Officials: , ,

Start Time: **12:00:00**

Postseason Game;

Score	1st	2nd	3rd	4th	TOT
HOW	16	19	13	6	<b>54</b>
SUL	8	14	6	16	<b>44</b>

Points from (This Period)	HOW	SUL
In the Paint	8	2
Off Turns	2	3
2nd Chance	2	3
Fast Break	0	0
Bench	0	0

**Official Play-By-Play**  
**Howard vs Sully Buttes**  
**First Quarter**  
**March 11, 2023 at ,**



**Period 1**

**Starters:**

**Howard:** 2 PALMQUIST,TRINITY; 3 KIDD,CANYON; 14 ASLESEN,ABBY; 25 RUDEBUSCH,RYLEE; 34 CONNOR,KATE;

**Sully Buttes:** 12 CHICOINE,CALLEIGH; 14 BIRNEY,CAITLIN; 15 WITTLER,STEVIE; 22 WITTLER,ALLYSON; 24 HILL,LYDIA;

Time	VISITORS: Howard	Score	Margin	HOME: Sully Buttes
8:00				SUB STARTER: CHICOINE, CALLEIGH
8:00				SUB STARTER: BIRNEY, CAITLIN
8:00				SUB STARTER: WITTLER, STEVIE
8:00				SUB STARTER: WITTLER, ALLYSON
8:00				SUB STARTER: HILL, LYDIA
8:00	SUB STARTER: PALMQUIST, TRINITY			
8:00	SUB STARTER: KIDD, CANYON			
8:00	SUB STARTER: ASLESEN, ABBY			
8:00	SUB STARTER: RUDEBUSCH, RYLEE			
8:00	SUB STARTER: CONNOR, KATE			
7:43	MISSED 2PTR by PALMQUIST, TRINITY			
7:43	REBOUND (OFF) by PALMQUIST, TRINITY			
7:40	GOOD! 2PTR by PALMQUIST, TRINITY [PNT]	0-2	V 2	
7:25				MISSED 2PTR by WITTLER, STEVIE
7:25	REBOUND (DEF) by ASLESEN, ABBY			
7:07	MISSED 2PTR by CONNOR, KATE			
7:07				REBOUND (DEF) by WITTLER, STEVIE
6:57		2-2	T	GOOD! 2PTR by WITTLER, STEVIE [PNT]
6:47	MISSED 2PTR by CONNOR, KATE			
6:47	REBOUND (OFF) by ASLESEN, ABBY			
6:41	TURNOVER by ASLESEN, ABBY			
6:41				STEAL by TEAM
6:20		5-2	H 3	GOOD! 3PTR by CHICOINE, CALLEIGH
6:20				ASSIST by BIRNEY, CAITLIN
6:08	MISSED 2PTR by PALMQUIST, TRINITY			
6:08				FOUL (PERSONAL) by CHICOINE, CALLEIGH
6:08	GOOD! FT by PALMQUIST, TRINITY	5-3	H 2	
6:08	GOOD! FT by PALMQUIST, TRINITY	5-4	H 1	
5:58				TURNOVER by BIRNEY, CAITLIN
5:58	STEAL by TEAM			
5:45	MISSED 3PTR by KIDD, CANYON			
5:45				REBOUND (DEF) by TEAM
5:44				SUB OUT: BIRNEY, CAITLIN
5:44				SUB IN: CHICOINE, ADDISON
5:35				TURNOVER by HILL, LYDIA
5:35	STEAL by TEAM			
5:22	GOOD! 2PTR by RUDEBUSCH, RYLEE [PNT]	5-6	V 1	
5:01				TURNOVER by CHICOINE, CALLEIGH
5:01	STEAL by KIDD, CANYON			
4:57	MISSED 2PTR by KIDD, CANYON			
4:57	REBOUND (OFF) by TEAM			
4:50				FOUL (PERSONAL) by WITTLER, ALLYSON
4:45	TURNOVER by PALMQUIST, TRINITY			
4:45				STEAL by CHICOINE, ADDISON
4:39				MISSED 2PTR by WITTLER, STEVIE
4:39	REBOUND (DEF) by TEAM			
4:38				FOUL (PERSONAL) by CHICOINE, CALLEIGH
4:38				SUB OUT: CHICOINE, CALLEIGH
4:38				SUB IN: BIRNEY, CAITLIN
4:24	MISSED 2PTR by CONNOR, KATE			
4:24				REBOUND (DEF) by WITTLER, STEVIE
4:08				MISSED 2PTR by CHICOINE, ADDISON
4:08	REBOUND (DEF) by RUDEBUSCH, RYLEE			
3:58	MISSED 2PTR by CONNOR, KATE			
3:58				REBOUND (DEF) by HILL, LYDIA
3:42				TURNOVER by WITTLER, ALLYSON
3:42	STEAL by CONNOR, KATE			
3:28	MISSED 3PTR by PALMQUIST, TRINITY			
3:28				REBOUND (DEF) by WITTLER, ALLYSON
3:07				MISSED 3PTR by WITTLER, ALLYSON
3:07	REBOUND (DEF) by RUDEBUSCH, RYLEE			
2:58	GOOD! 2PTR by CONNOR, KATE [PNT]	5-8	V 3	
2:58	ASSIST by PALMQUIST, TRINITY			
2:43				MISSED 2PTR by WITTLER, ALLYSON
2:43	FOUL (PERSONAL) by PALMQUIST, TRINITY			

Time	VISITORS: Howard	Score	Margin	HOME: Sully Buttes
2:40				MISSED 2PTR by HILL, LYDIA
2:40				REBOUND (OFF) by TEAM
2:40	SUB OUT: RUDEBUSCH, RYLEE			
2:40	SUB IN: SPADER, DAKOTA			
2:30		8-8	T	GOOD! 3PTR by WITTLER, ALLYSON
2:30				ASSIST by WITTLER, STEVIE
2:11	MISSED 2PTR by ASLESEN, ABBY			
2:11				REBOUND (DEF) by HILL, LYDIA
2:00				MISSED 3PTR by WITTLER, ALLYSON
2:00	REBOUND (DEF) by ASLESEN, ABBY			
1:48	GOOD! 2PTR by ASLESEN, ABBY	8-10	V 2	
1:48				FOUL (PERSONAL) by CHICOINE, ADDISON
1:48	GOOD! FT by ASLESEN, ABBY	8-11	V 3	
1:29				MISSED 3PTR by WITTLER, ALLYSON
1:29	REBOUND (DEF) by ASLESEN, ABBY			
1:14	GOOD! 2PTR by ASLESEN, ABBY [PNT]	8-13	V 5	
0:57				MISSED 2PTR by HILL, LYDIA
0:57	REBOUND (DEF) by ASLESEN, ABBY			
0:48				FOUL (PERSONAL) by HILL, LYDIA
0:43	GOOD! 3PTR by PALMQUIST, TRINITY	8-16	V 8	
0:31	FOUL (PERSONAL) by PALMQUIST, TRINITY			
0:31	SUB OUT: PALMQUIST, TRINITY			
0:31	SUB IN: HOYER, TANA			
0:28				MISSED 2PTR by HILL, LYDIA
0:28	REBOUND (DEF) by HOYER, TANA			
0:04	MISSED 2PTR by CONNOR, KATE			
0:04				REBOUND (DEF) by TEAM

### Howard 16, Sully Buttes 8

Points (This Period)	HOW	SUL
In the Paint	8	2
Off Turns	2	3
2nd Chance	2	3
Fast Break	0	0
Bench	0	0
Per Poss	0.941 8/17	0.500 3/16

**Official Play-By-Play**  
**Howard vs Sully Buttes**  
**Second Quarter**  
**March 11, 2023 at ,**



**Period 2**

**Starters:**

**Howard:** 2 PALMQUIST,TRINITY; 3 KIDD,CANYON; 14 ASLESEN,ABBY; 25 RUDEBUSCH,RYLEE; 34 CONNOR,KATE;

**Sully Buttes:** 12 CHICOINE,CALLEIGH; 14 BIRNEY,CAITLIN; 15 WITTLER,STEVIE; 22 WITTLER,ALLYSON; 24 HILL,LYDIA;

Time	VISITORS: Howard	Score	Margin	HOME: Sully Buttes
8:00				SUB STARTER: CHICOINE, CALLEIGH
8:00				SUB STARTER: HILL, LYDIA
8:00				SUB STARTER: WITTLER, STEVIE
8:00				SUB STARTER: WITTLER, ALLYSON
8:00				SUB STARTER: CHICOINE, ADDISON
8:00	SUB STARTER: RUDEBUSCH, RYLEE			
8:00	SUB STARTER: CONNOR, KATE			
8:00	SUB STARTER: ASLESEN, ABBY			
8:00	SUB STARTER: HOYER, TANA			
8:00	SUB STARTER: SPADER, DAKOTA			
7:45				MISSED 2PTR by WITTLER, ALLYSON
7:45				REBOUND (OFF) by HILL, LYDIA
7:41				MISSED 2PTR by HILL, LYDIA
7:41	REBOUND (DEF) by ASLESEN, ABBY			
7:26	GOOD! 2PTR by CONNOR, KATE [PNT]	8-18	V 10	
7:26	ASSIST by ASLESEN, ABBY			
7:13		10-18	V 8	GOOD! 2PTR by WITTLER, STEVIE [PNT]
7:13	FOUL (PERSONAL) by RUDEBUSCH, RYLEE			
7:13		11-18	V 7	GOOD! FT by WITTLER, STEVIE
7:03	TURNOVER by RUDEBUSCH, RYLEE			
7:03				STEAL by TEAM
6:49		14-18	V 4	GOOD! 3PTR by CHICOINE, CALLEIGH
6:49				ASSIST by WITTLER, STEVIE
6:36	GOOD! 2PTR by CONNOR, KATE [PNT]	14-20	V 6	
6:21	FOUL (PERSONAL) by RUDEBUSCH, RYLEE			
6:21	SUB OUT: RUDEBUSCH, RYLEE			
6:21	SUB IN: KIDD, CANYON			
6:21				TIMEOUT TEAM
6:18	FOUL (PERSONAL) by KIDD, CANYON			
6:15				MISSED 2PTR by HILL, LYDIA
6:15	REBOUND (DEF) by ASLESEN, ABBY			
5:59	MISSED 3PTR by SPADER, DAKOTA			
5:59	REBOUND (OFF) by HOYER, TANA			
5:37	GOOD! 2PTR by ASLESEN, ABBY [PNT]	14-22	V 8	
5:37	ASSIST by HOYER, TANA			
5:18		16-22	V 6	GOOD! 2PTR by HILL, LYDIA [PNT]
5:07	MISSED 3PTR by ASLESEN, ABBY			
5:07	REBOUND (OFF) by HOYER, TANA			
4:55	MISSED 2PTR by HOYER, TANA			
4:55				REBOUND (DEF) by CHICOINE, CALLEIGH
4:36				MISSED 2PTR by CHICOINE, CALLEIGH
4:36				REBOUND (OFF) by TEAM
4:36				SUB OUT: HILL, LYDIA
4:36				SUB OUT: CHICOINE, CALLEIGH
4:36				SUB IN: BIRNEY, CAITLIN
4:36				SUB IN: BAKKER, PAYGE
4:36	SUB OUT: HOYER, TANA			
4:36	SUB IN: PALMQUIST, TRINITY			
4:35				MISSED 2PTR by BAKKER, PAYGE
4:35	FOUL (PERSONAL) by ASLESEN, ABBY			
4:35				MISSED FT by BAKKER, PAYGE
4:35		17-22	V 5	GOOD! FT by BAKKER, PAYGE
4:18	MISSED 2PTR by ASLESEN, ABBY			
4:18	REBOUND (OFF) by TEAM			
4:16	TIMEOUT TEAM			
4:13	MISSED 2PTR by KIDD, CANYON			
4:13	REBOUND (OFF) by CONNOR, KATE			
4:07	MISSED 2PTR by CONNOR, KATE			
4:07				FOUL (PERSONAL) by CHICOINE, ADDISON
4:07	GOOD! FT by CONNOR, KATE	17-23	V 6	
4:07				SUB OUT: CHICOINE, ADDISON
4:07				SUB IN: HILL, LYDIA
4:07	MISSED FT by CONNOR, KATE			
4:07				REBOUND (DEF) by BIRNEY, CAITLIN
3:50				MISSED 3PTR by WITTLER, ALLYSON

Time	VISITORS: Howard	Score	Margin	HOME: Sully Buttes
3:50	REBOUND (DEF) by TEAM			
3:48	SUB OUT: SPADER, DAKOTA			
3:48	SUB IN: RUDEBUSCH, RYLEE			
3:48				SUB OUT: BIRNEY, CAITLIN
3:48				SUB IN: CHICOINE, CALLEIGH
3:35	MISSED 2PTR by ASLESEN, ABBY			
3:35	REBOUND (OFF) by ASLESEN, ABBY			
3:34	MISSED 2PTR by ASLESEN, ABBY			
3:34				FOUL (PERSONAL) by HILL, LYDIA
3:34	MISSED FT by ASLESEN, ABBY			
3:34	GOOD! FT by ASLESEN, ABBY	17-24	V 7	
3:21		20-24	V 4	GOOD! 3PTR by CHICOINE, CALLEIGH
3:09	GOOD! 2PTR by CONNOR, KATE [PNT]	20-26	V 6	
2:47				MISSED 2PTR by WITTLER, ALLYSON
2:47	REBOUND (DEF) by PALMQUIST, TRINITY			
2:31	MISSED 3PTR by RUDEBUSCH, RYLEE			
2:31	REBOUND (OFF) by ASLESEN, ABBY			
2:29	MISSED 2PTR by ASLESEN, ABBY			
2:29				REBOUND (DEF) by CHICOINE, CALLEIGH
2:21				MISSED 3PTR by CHICOINE, CALLEIGH
2:21	REBOUND (DEF) by PALMQUIST, TRINITY			
2:09	GOOD! 2PTR by ASLESEN, ABBY [PNT]	20-28	V 8	
2:09	ASSIST by RUDEBUSCH, RYLEE			
1:56				TURNOVER by CHICOINE, CALLEIGH
1:56	STEAL by TEAM			
1:47	GOOD! 2PTR by CONNOR, KATE	20-30	V 10	
1:47	ASSIST by PALMQUIST, TRINITY			
1:29				TURNOVER by WITTLER, STEVIE
1:29				FOUL (PERSONAL) by WITTLER, STEVIE
1:29	SUB OUT: RUDEBUSCH, RYLEE			
1:29	SUB OUT: PALMQUIST, TRINITY			
1:29	SUB IN: CALLIES, LANDREE			
1:29	SUB IN: SPADER, DAKOTA			
1:13	MISSED 3PTR by CALLIES, LANDREE			
1:13				REBOUND (DEF) by BAKKER, PAYGE
1:05				MISSED 2PTR by WITTLER, STEVIE
1:05	REBOUND (DEF) by CALLIES, LANDREE			
0:40	MISSED 2PTR by ASLESEN, ABBY			
0:40				FOUL (PERSONAL) by WITTLER, ALLYSON
0:40	GOOD! FT by ASLESEN, ABBY	20-31	V 11	
0:40	GOOD! FT by ASLESEN, ABBY	20-32	V 12	
0:11				MISSED 2PTR by WITTLER, ALLYSON
0:11	FOUL (PERSONAL) by SPADER, DAKOTA			
0:11		21-32	V 11	GOOD! FT by WITTLER, ALLYSON
0:11		22-32	V 10	GOOD! FT by WITTLER, ALLYSON
0:04	MISSED 3PTR by CONNOR, KATE			
0:04	REBOUND (OFF) by TEAM			
0:00	GOOD! 3PTR by SPADER, DAKOTA	22-35	V 13	

### Howard 35, Sully Buttes 22

Points (This Period)	HOW	SUL
In the Paint	10	4
Off Turns	2	3
2nd Chance	7	1
Fast Break	0	0
Bench	3	1
Per Poss	1.188 9/16	0.875 6/16

**Official Box Score**  
**Howard vs Sully Buttes**  
**Second Half Statistics Only**  
**March 11, 2023 at ,**



**Howard 19**

**Record:**

No.	Player	S	Pts	FG	3FG	FT	OR	DR	TR	PF	A	TO	Blk	Stl	Min	+/-
-----	--------	---	-----	----	-----	----	----	----	----	----	---	----	-----	-----	-----	-----

*Shooting By Period*

Period	FG	FG%	3FG	3FG%	FT	FT%
2nd Half	0-0	0%	0-0	0%	0-0	0%
Game	22-57	38.6%	2-15	13.3%	8-12	66.7%

*Deadball Rebounds: 1,0*  
*Last FG Half: HOW 4th-1:58*

**Sully Buttes 22**

**Record:**

No.	Player	S	Pts	FG	3FG	FT	OR	DR	TR	PF	A	TO	Blk	Stl	Min	+/-
-----	--------	---	-----	----	-----	----	----	----	----	----	---	----	-----	-----	-----	-----

*Shooting By Period*

Period	FG	FG%	3FG	3FG%	FT	FT%
2nd Half	0-0	0%	0-0	0%	0-0	0%
Game	15-52	28.8%	6-19	31.6%	8-11	72.7%

*Deadball Rebounds: 2,0*  
*Last FG Half: SUL 4th-0:43*

Game Notes:

Officials: , ,

Start Time: **12:00:00**

Postseason Game;

Score	1st	2nd	3rd	4th	TOT
HOW	16	19	13	6	<b>54</b>
SUL	8	14	6	16	<b>44</b>

Points from (This Period)	HOW	SUL
In the Paint	10	4
Off Turns	2	3
2nd Chance	7	1
Fast Break	0	0
Bench	3	1



**Official Play-By-Play**  
**Howard vs Sully Buttes**  
**Third Quarter**  
**March 11, 2023 at ,**



**Period 3**

**Starters:**

**Howard:** 2 PALMQUIST,TRINITY; 3 KIDD,CANYON; 14 ASLESEN,ABBY; 25 RUDEBUSCH,RYLEE; 34 CONNOR,KATE;

**Sully Buttes:** 12 CHICOINE,CALLEIGH; 14 BIRNEY,CAITLIN; 15 WITTLER,STEVIE; 22 WITTLER,ALLYSON; 24 HILL,LYDIA;

Time	VISITORS: Howard	Score	Margin	HOME: Sully Buttes
8:00				SUB STARTER: CHICOINE, CALLEIGH
8:00				SUB STARTER: BIRNEY, CAITLIN
8:00				SUB STARTER: WITTLER, STEVIE
8:00				SUB STARTER: WITTLER, ALLYSON
8:00				SUB STARTER: HILL, LYDIA
8:00	SUB STARTER: PALMQUIST, TRINITY			
8:00	SUB STARTER: KIDD, CANYON			
8:00	SUB STARTER: ASLESEN, ABBY			
8:00	SUB STARTER: RUDEBUSCH, RYLEE			
8:00	SUB STARTER: CONNOR, KATE			
7:52				MISSED 3PTR by CHICOINE, CALLEIGH
7:52	REBOUND (DEF) by CONNOR, KATE			
7:41	MISSED 3PTR by RUDEBUSCH, RYLEE			
7:41				REBOUND (DEF) by CHICOINE, CALLEIGH
7:21				MISSED 2PTR by WITTLER, STEVIE
7:21	REBOUND (DEF) by KIDD, CANYON			
7:10	GOOD! 2PTR by ASLESEN, ABBY [PNT]	22-37	V 15	
6:51				MISSED 2PTR by WITTLER, ALLYSON
6:51	REBOUND (DEF) by TEAM			
6:39				FOUL (PERSONAL) by CHICOINE, CALLEIGH
6:39				SUB OUT: CHICOINE, CALLEIGH
6:39				SUB IN: CHICOINE, ADDISON
6:27	GOOD! 2PTR by CONNOR, KATE [PNT]	22-39	V 17	
6:27	ASSIST by ASLESEN, ABBY			
6:08				MISSED 2PTR by WITTLER, STEVIE
6:08	REBOUND (DEF) by TEAM			
5:53	MISSED 2PTR by ASLESEN, ABBY			
5:53	REBOUND (OFF) by CONNOR, KATE			
5:51	MISSED 2PTR by CONNOR, KATE			
5:51				FOUL (PERSONAL) by CHICOINE, ADDISON
5:49	MISSED 2PTR by CONNOR, KATE			
5:49				REBOUND (DEF) by HILL, LYDIA
5:33	FOUL (PERSONAL) by ASLESEN, ABBY			
5:33				SUB OUT: CHICOINE, ADDISON
5:33				SUB IN: BAKKER, PAYGE
5:17		24-39	V 15	GOOD! 2PTR by BIRNEY, CAITLIN
5:00	GOOD! 2PTR by PALMQUIST, TRINITY [PNT]	24-41	V 17	
4:45	FOUL (PERSONAL) by KIDD, CANYON			
4:42				TURNOVER by BAKKER, PAYGE
4:42	STEAL by RUDEBUSCH, RYLEE			
4:30	GOOD! 2PTR by ASLESEN, ABBY [PNT]	24-43	V 19	
4:30				FOUL (PERSONAL) by BAKKER, PAYGE
4:30				SUB OUT: BAKKER, PAYGE
4:30				SUB IN: CHICOINE, ADDISON
4:30	GOOD! FT by ASLESEN, ABBY	24-44	V 20	
4:09				MISSED 3PTR by CHICOINE, ADDISON
4:09	REBOUND (DEF) by RUDEBUSCH, RYLEE			
3:56	GOOD! 2PTR by ASLESEN, ABBY [PNT]	24-46	V 22	
3:41				TURNOVER by HILL, LYDIA
3:41	STEAL by CONNOR, KATE			
3:31	TURNOVER by ASLESEN, ABBY			
3:31				STEAL by TEAM
3:31	SUB OUT: KIDD, CANYON			
3:31	SUB OUT: RUDEBUSCH, RYLEE			
3:31	SUB IN: SPADER, DAKOTA			
3:31	SUB IN: CALLIES, LANDREE			
3:07		26-46	V 20	GOOD! 2PTR by WITTLER, STEVIE [PNT]
2:56	TURNOVER by PALMQUIST, TRINITY			
2:56				STEAL by CHICOINE, ADDISON
2:50				MISSED 2PTR by WITTLER, ALLYSON
2:50	REBOUND (DEF) by PALMQUIST, TRINITY			
2:31	MISSED 3PTR by CALLIES, LANDREE			
2:31				REBOUND (DEF) by BIRNEY, CAITLIN
2:08		28-46	V 18	GOOD! 2PTR by WITTLER, STEVIE
1:52	GOOD! 2PTR by CONNOR, KATE [PNT]	28-48	V 20	

Time	VISITORS: Howard	Score	Margin	HOME: Sully Buttes
1:52	ASSIST by SPADER, DAKOTA			
1:22	SUB OUT: PALMQUIST, TRINITY			
1:22	SUB IN: HOYER, TANA			
1:22	SUB OUT: ASLESEN, ABBY			
1:22	SUB IN: CONNOR, ANN			
1:17				TURNOVER by HILL, LYDIA
1:17	STEAL by TEAM			
0:49	TURNOVER by HOYER, TANA			
0:49				STEAL by CHICOINE, ADDISON
0:41	FOUL (PERSONAL) by SPADER, DAKOTA			
0:24				MISSED 2PTR by HILL, LYDIA
0:24	REBOUND (DEF) by CONNOR, KATE			
0:05				FOUL (PERSONAL) by HILL, LYDIA
0:03	TURNOVER by CONNOR, KATE			
0:03	FOUL (PERSONAL) by CONNOR, KATE			

### Howard 48, Sully Buttes 28

Points (This Period)	HOW	SUL
In the Paint	12	2
Off Turns	3	2
2nd Chance	0	0
Fast Break	0	0
Bench	0	0
Per Poss	0.929 7/14	0.462 3/13

**Official Play-By-Play  
Howard vs Sully Buttes  
Fourth Quarter  
March 11, 2023 at ,**



**Period 4**

**Starters:**

**Howard:** 2 PALMQUIST,TRINITY; 3 KIDD,CANYON; 14 ASLESEN,ABBY; 25 RUDEBUSCH,RYLEE; 34 CONNOR,KATE;

**Sully Buttes:** 12 CHICOINE,CALLEIGH; 14 BIRNEY,CAITLIN; 15 WITTLER,STEVIE; 22 WITTLER,ALLYSON; 24 HILL,LYDIA;

Time	VISITORS: Howard	Score	Margin	HOME: Sully Buttes
8:00	SUB STARTER: PALMQUIST, TRINITY			
8:00	SUB STARTER: KIDD, CANYON			
8:00	SUB STARTER: RUDEBUSCH, RYLEE			
8:00	SUB STARTER: CALLIES, LANDREE			
8:00	SUB STARTER: CONNOR, KATE			
8:00				SUB STARTER: CHICOINE, CALLEIGH
8:00				SUB STARTER: HILL, LYDIA
8:00				SUB STARTER: WITTLER, ALLYSON
8:00				SUB STARTER: WITTLER, STEVIE
8:00				SUB STARTER: CHICOINE, ADDISON
8:00	REBOUND (OFF) by CALLIES, LANDREE			
7:54	MISSED 3PTR by KIDD, CANYON			
7:46	TURNOVER by CALLIES, LANDREE			
7:46				STEAL by TEAM
7:28	FOUL (PERSONAL) by KIDD, CANYON			
7:25		30-48	V 18	GOOD! 2PTR by WITTLER, STEVIE [PNT]
6:59	TURNOVER by CONNOR, KATE			
6:59				STEAL by CHICOINE, ADDISON
6:51				TURNOVER by CHICOINE, ADDISON
6:51				FOUL (PERSONAL) by CHICOINE, ADDISON
6:37	GOOD! 2PTR by CALLIES, LANDREE	30-50	V 20	
6:19				MISSED 3PTR by WITTLER, ALLYSON
6:19	REBOUND (DEF) by CALLIES, LANDREE			
6:16				FOUL (PERSONAL) by CHICOINE, CALLEIGH
5:55	TURNOVER by CALLIES, LANDREE			
5:55				STEAL by WITTLER, STEVIE
5:46				MISSED 3PTR by CHICOINE, CALLEIGH
5:46	REBOUND (DEF) by PALMQUIST, TRINITY			
5:31				FOUL (PERSONAL) by CHICOINE, CALLEIGH
5:31				SUB OUT: CHICOINE, CALLEIGH
5:31				SUB IN: BIRNEY, CAITLIN
5:31	SUB OUT: RUDEBUSCH, RYLEE			
5:31	SUB IN: TERWILLIGER, CASSIDY			
5:31	MISSED FT by PALMQUIST, TRINITY			
5:29				REBOUND (DEF) by CHICOINE, ADDISON
5:14		32-50	V 18	GOOD! 2PTR by WITTLER, ALLYSON [PNT]
5:14				ASSIST by CHICOINE, ADDISON
4:49	MISSED 3PTR by CONNOR, KATE			
4:49				REBOUND (DEF) by CHICOINE, ADDISON
4:38				MISSED 3PTR by WITTLER, ALLYSON
4:38	REBOUND (DEF) by KIDD, CANYON			
4:17	MISSED 3PTR by KIDD, CANYON			
4:17				REBOUND (DEF) by CHICOINE, ADDISON
4:04				MISSED 2PTR by HILL, LYDIA
4:04	FOUL (PERSONAL) by CONNOR, KATE			
4:04				SUB OUT: WITTLER, STEVIE
4:04				SUB IN: BAKKER, PAYGE
4:04		33-50	V 17	GOOD! FT by HILL, LYDIA
4:04				MISSED FT by HILL, LYDIA
4:04				REBOUND (OFF) by BAKKER, PAYGE
3:59		36-50	V 14	GOOD! 3PTR by WITTLER, STEVIE
3:54				SUB OUT: BIRNEY, CAITLIN
3:54				SUB IN: WITTLER, STEVIE
3:45	MISSED 3PTR by TERWILLIGER, CASSIDY			
3:45				REBOUND (DEF) by WITTLER, ALLYSON
3:35				MISSED 2PTR by WITTLER, STEVIE
3:35	FOUL (PERSONAL) by KIDD, CANYON			
3:35				MISSED FT by WITTLER, STEVIE
3:35	SUB OUT: TERWILLIGER, CASSIDY			
3:35	SUB OUT: CALLIES, LANDREE			
3:35	SUB IN: ASLESEN, ABBY			
3:35	SUB IN: RUDEBUSCH, RYLEE			
3:35		37-50	V 13	GOOD! FT by WITTLER, STEVIE
3:35				TIMEOUT TEAM
3:30	TURNOVER by PALMQUIST, TRINITY			

Time	VISITORS: Howard	Score	Margin	HOME: Sully Buttes
3:30				STEAL by WITTLER, ALLYSON
3:26				MISSED 3PTR by WITTLER, STEVIE
3:26				REBOUND (OFF) by TEAM
3:18		39-50	V 11	GOOD! 2PTR by WITTLER, STEVIE
3:07	GOOD! 2PTR by CONNOR, KATE	39-52	V 13	
3:07	ASSIST by ASLESEN, ABBY			
2:58				MISSED 3PTR by WITTLER, STEVIE
2:58	REBOUND (DEF) by ASLESEN, ABBY			
2:31	MISSED 2PTR by CONNOR, KATE			
2:31	REBOUND (OFF) by TEAM			
1:58	GOOD! 2PTR by CONNOR, KATE [PNT]	39-54	V 15	
1:58	ASSIST by ASLESEN, ABBY			
1:41				MISSED 2PTR by HILL, LYDIA
1:41	FOUL (PERSONAL) by CONNOR, KATE			
1:41		40-54	V 14	GOOD! FT by HILL, LYDIA
1:41	SUB OUT: RUDEBUSCH, RYLEE			
1:41	SUB IN: ALBRECHT, ELIZABETH			
1:41		41-54	V 13	GOOD! FT by HILL, LYDIA
1:41				TIMEOUT TEAM
1:17				FOUL (PERSONAL) by WITTLER, ALLYSON
1:17	MISSED FT by KIDD, CANYON			
1:16	REBOUND (OFF) by KIDD, CANYON			
0:52	TURNOVER by KIDD, CANYON			
0:52	SUB OUT: PALMQUIST, TRINITY			
0:52	SUB OUT: CONNOR, KATE			
0:52	SUB OUT: KIDD, CANYON			
0:52	SUB OUT: ASLESEN, ABBY			
0:52	SUB IN: BECKER, ANNA			
0:52	SUB IN: BECKER, ELLIE			
0:52	SUB IN: SCHWADER, KAYLEIGH			
0:52	SUB IN: RUDEBUSCH, REESE			
0:52				STEAL by TEAM
0:43		44-54	V 10	GOOD! 3PTR by WITTLER, ALLYSON
0:27	MISSED 2PTR by SCHWADER, KAYLEIGH			
0:27				REBOUND (DEF) by CHICOINE, ADDISON
0:13				MISSED 3PTR by WITTLER, ALLYSON
0:13	REBOUND (DEF) by BECKER, ANNA			
0:04	TURNOVER by BECKER, ELLIE			
0:04				STEAL by BAKKER, PAYGE
0:00				MISSED 2PTR by WITTLER, STEVIE

### Howard 54, Sully Buttes 44

Points (This Period)	HOW	SUL
In the Paint	2	4
Off Turns	2	7
2nd Chance	2	5
Fast Break	0	0
Bench	2	0
Per Poss	0.462 3/13	1.000 7/16

**Official Scoring/Possession Reference Chart**  
**Howard vs Sully Buttes**  
**Period 1**  
**March 11, 2023 at ,**



**Period 1**

**Starters:**

**Howard:** 2 PALMQUIST,TRINITY; 3 KIDD,CANYON; 14 ASLESEN,ABBY; 25 RUDEBUSCH,RYLEE; 34 CONNOR,KATE;

**Sully Buttes:** 12 CHICOINE,CALLEIGH; 14 BIRNEY,CAITLIN; 15 WITTLER,STEVIE; 22 WITTLER,ALLYSON; 24 HILL,LYDIA;

Time	VISITORS: Howard	Score	Margin	HOME: Sully Buttes
7:40	GOOD! 2PTR by PALMQUIST, TRINITY [PNT]	0-2	V 2	
6:57		2-2	T	GOOD! 2PTR by WITTLER, STEVIE [PNT]
6:20		5-2	H 3	GOOD! 3PTR by CHICOINE, CALLEIGH
6:08	GOOD! FT by PALMQUIST, TRINITY	5-3	H 2	
6:08	GOOD! FT by PALMQUIST, TRINITY	5-4	H 1	
5:22	GOOD! 2PTR by RUDEBUSCH, RYLEE [PNT]	5-6	V 1	
2:58	GOOD! 2PTR by CONNOR, KATE [PNT]	5-8	V 3	
2:30		8-8	T	GOOD! 3PTR by WITTLER, ALLYSON
1:48	GOOD! 2PTR by ASLESEN, ABBY	8-10	V 2	
1:48	GOOD! FT by ASLESEN, ABBY	8-11	V 3	
1:14	GOOD! 2PTR by ASLESEN, ABBY [PNT]	8-13	V 5	
0:43	GOOD! 3PTR by PALMQUIST, TRINITY	8-16	V 8	

**Howard 16, Sully Buttes 8**

**Official Scoring/Possession Reference Chart**  
**Howard vs Sully Buttes**  
**Period 2**  
**March 11, 2023 at ,**



**Period 2**

**Starters:**

**Howard:** 2 PALMQUIST,TRINITY; 3 KIDD,CANYON; 14 ASLESEN,ABBY; 25 RUDEBUSCH,RYLEE; 34 CONNOR,KATE;

**Sully Buttes:** 12 CHICOINE,CALLEIGH; 14 BIRNEY,CAITLIN; 15 WITTLER,STEVIE; 22 WITTLER,ALLYSON; 24 HILL,LYDIA;

Time	VISITORS: Howard	Score	Margin	HOME: Sully Buttes
7:26	GOOD! 2PTR by CONNOR, KATE [PNT]	8-18	V 10	
7:13		10-18	V 8	GOOD! 2PTR by WITTLER, STEVIE [PNT]
7:13		11-18	V 7	GOOD! FT by WITTLER, STEVIE
6:49		14-18	V 4	GOOD! 3PTR by CHICOINE, CALLEIGH
6:36	GOOD! 2PTR by CONNOR, KATE [PNT]	14-20	V 6	
5:37	GOOD! 2PTR by ASLESEN, ABBY [PNT]	14-22	V 8	
5:18		16-22	V 6	GOOD! 2PTR by HILL, LYDIA [PNT]
4:35		17-22	V 5	GOOD! FT by BAKKER, PAYGE
4:07	GOOD! FT by CONNOR, KATE	17-23	V 6	
3:34	GOOD! FT by ASLESEN, ABBY	17-24	V 7	
3:21		20-24	V 4	GOOD! 3PTR by CHICOINE, CALLEIGH
3:09	GOOD! 2PTR by CONNOR, KATE [PNT]	20-26	V 6	
2:09	GOOD! 2PTR by ASLESEN, ABBY [PNT]	20-28	V 8	
1:47	GOOD! 2PTR by CONNOR, KATE	20-30	V 10	
0:40	GOOD! FT by ASLESEN, ABBY	20-31	V 11	
0:40	GOOD! FT by ASLESEN, ABBY	20-32	V 12	
0:11		21-32	V 11	GOOD! FT by WITTLER, ALLYSON
0:11		22-32	V 10	GOOD! FT by WITTLER, ALLYSON
0:00	GOOD! 3PTR by SPADER, DAKOTA	22-35	V 13	

**Howard 35, Sully Buttes 22**

**Official Scoring/Possession Reference Chart**  
**Howard vs Sully Buttes**  
**Period 3**  
**March 11, 2023 at ,**



**Period 3**

**Starters:**

**Howard:** 2 PALMQUIST,TRINITY; 3 KIDD,CANYON; 14 ASLESEN,ABBY; 25 RUDEBUSCH,RYLEE; 34 CONNOR,KATE;

**Sully Buttes:** 12 CHICOINE,CALLEIGH; 14 BIRNEY,CAITLIN; 15 WITTLER,STEVIE; 22 WITTLER,ALLYSON; 24 HILL,LYDIA;

Time	VISITORS: Howard	Score	Margin	HOME: Sully Buttes
7:10	GOOD! 2PTR by ASLESEN, ABBY [PNT]	22-37	V 15	
6:27	GOOD! 2PTR by CONNOR, KATE [PNT]	22-39	V 17	
5:17		24-39	V 15	GOOD! 2PTR by BIRNEY, CAITLIN
5:00	GOOD! 2PTR by PALMQUIST, TRINITY [PNT]	24-41	V 17	
4:30	GOOD! 2PTR by ASLESEN, ABBY [PNT]	24-43	V 19	
4:30	GOOD! FT by ASLESEN, ABBY	24-44	V 20	
3:56	GOOD! 2PTR by ASLESEN, ABBY [PNT]	24-46	V 22	
3:07		26-46	V 20	GOOD! 2PTR by WITTLER, STEVIE [PNT]
2:08		28-46	V 18	GOOD! 2PTR by WITTLER, STEVIE
1:52	GOOD! 2PTR by CONNOR, KATE [PNT]	28-48	V 20	

**Howard 48, Sully Buttes 28**

**Official Scoring/Possession Reference Chart**  
**Howard vs Sully Buttes**  
**Period 4**  
**March 11, 2023 at ,**



**Period 4**

**Starters:**

**Howard:** 2 PALMQUIST,TRINITY; 3 KIDD,CANYON; 14 ASLESEN,ABBY; 25 RUDEBUSCH,RYLEE; 34 CONNOR,KATE;

**Sully Buttes:** 12 CHICOINE,CALLEIGH; 14 BIRNEY,CAITLIN; 15 WITTLER,STEVIE; 22 WITTLER,ALLYSON; 24 HILL,LYDIA;

Time	VISITORS: Howard	Score	Margin	HOME: Sully Buttes
7:25		30-48	V 18	GOOD! 2PTR by WITTLER, STEVIE [PNT]
6:37	GOOD! 2PTR by CALLIES, LANDREE	30-50	V 20	
5:14		32-50	V 18	GOOD! 2PTR by WITTLER, ALLYSON [PNT]
4:04		33-50	V 17	GOOD! FT by HILL, LYDIA
3:59		36-50	V 14	GOOD! 3PTR by WITTLER, STEVIE
3:35		37-50	V 13	GOOD! FT by WITTLER, STEVIE
3:18		39-50	V 11	GOOD! 2PTR by WITTLER, STEVIE
3:07	GOOD! 2PTR by CONNOR, KATE	39-52	V 13	
1:58	GOOD! 2PTR by CONNOR, KATE [PNT]	39-54	V 15	
1:41		40-54	V 14	GOOD! FT by HILL, LYDIA
1:41		41-54	V 13	GOOD! FT by HILL, LYDIA
0:43		44-54	V 10	GOOD! 3PTR by WITTLER, ALLYSON

**Howard 54, Sully Buttes 44**



**Official Substitutions Log  
Howard vs Sully Buttes  
Period 1  
March 11, 2023 at ,**



<b>VISITORS: Howard</b>	<b>Time</b>	<b>Score</b>	<b>HOME: Sully Buttes</b>
2 PALMQUIST,TRINITY			12 CHICOINE,CALLEIGH
3 KIDD,CANYON			14 BIRNEY,CAITLIN
14 ASLESEN,ABBY			15 WITTLER,STEVIE
25 RUDEBUSCH,RYLEE			22 WITTLER,ALLYSON
34 CONNOR,KATE			24 HILL,LYDIA
	8:00	-	SUB STARTER: CHICOINE,CALLEIGH
	8:00		SUB STARTER: BIRNEY,CAITLIN
	8:00		SUB STARTER: WITTLER,STEVIE
	8:00		SUB STARTER: WITTLER,ALLYSON
	8:00		SUB STARTER: HILL,LYDIA
SUB STARTER: 2 PALMQUIST,TRINITY	8:00		
SUB STARTER: 3 KIDD,CANYON	8:00		
SUB STARTER: 14 ASLESEN,ABBY	8:00		
SUB STARTER: 25 RUDEBUSCH,RYLEE	8:00		
SUB STARTER: 34 CONNOR,KATE	8:00		
	5:44	4-5	SUB OUT: BIRNEY,CAITLIN
	5:44		SUB IN: CHICOINE,ADDISON
	4:38	6-5	SUB OUT: CHICOINE,CALLEIGH
	4:38		SUB IN: BIRNEY,CAITLIN
SUB OUT: 25 RUDEBUSCH,RYLEE	2:40	8-5	
SUB IN: 10 SPADER,DAKOTA	2:40		
SUB OUT: 2 PALMQUIST,TRINITY	0:31	16-8	
SUB IN: 5 HOYER,TANA	0:31		

**Howard 16, Sully Buttes 8**

**Official Substitutions Log**  
**Howard vs Sully Buttes**  
**Period 2**  
**March 11, 2023 at ,**



<b>VISITORS: Howard</b>	<b>Time</b>	<b>Score</b>	<b>HOME: Sully Buttes</b>
2 PALMQUIST,TRINITY			12 CHICOINE,CALLEIGH
3 KIDD,CANYON			14 BIRNEY,CAITLIN
14 ASLESEN,ABBY			15 WITTLER,STEVIE
25 RUDEBUSCH,RYLEE			22 WITTLER,ALLYSON
34 CONNOR,KATE			24 HILL,LYDIA
	8:00	-	SUB STARTER: CHICOINE,CALLEIGH
	8:00		SUB STARTER: HILL,LYDIA
	8:00		SUB STARTER: WITTLER,STEVIE
	8:00		SUB STARTER: WITTLER,ALLYSON
	8:00		SUB STARTER: CHICOINE,ADDISON
SUB STARTER: 25 RUDEBUSCH,RYLEE	8:00		
SUB STARTER: 34 CONNOR,KATE	8:00		
SUB STARTER: 14 ASLESEN,ABBY	8:00		
SUB STARTER: 5 HOYER,TANA	8:00		
SUB STARTER: 10 SPADER,DAKOTA	8:00		
SUB OUT: 25 RUDEBUSCH,RYLEE	6:21	20-14	
SUB IN: 3 KIDD,CANYON	6:21		
	4:36	22-16	SUB OUT: HILL,LYDIA
	4:36		SUB OUT: CHICOINE,CALLEIGH
	4:36		SUB IN: BIRNEY,CAITLIN
	4:36		SUB IN: BAKKER,PAYGE
SUB OUT: 5 HOYER,TANA	4:36		
SUB IN: 2 PALMQUIST,TRINITY	4:36		
	4:07	23-17	SUB OUT: CHICOINE,ADDISON
	4:07		SUB IN: HILL,LYDIA
SUB OUT: 10 SPADER,DAKOTA	3:48	23-17	
SUB IN: 25 RUDEBUSCH,RYLEE	3:48		
	3:48		SUB OUT: BIRNEY,CAITLIN
	3:48		SUB IN: CHICOINE,CALLEIGH
SUB OUT: 25 RUDEBUSCH,RYLEE	1:29	30-20	
SUB OUT: 2 PALMQUIST,TRINITY	1:29		
SUB IN: 11 CALLIES,LANDREE	1:29		
SUB IN: 10 SPADER,DAKOTA	1:29		

**Howard 35, Sully Buttes 22**

**Official Substitutions Log**  
**Howard vs Sully Buttes**  
**Period 3**  
**March 11, 2023 at ,**



<b>VISITORS: Howard</b>	<b>Time</b>	<b>Score</b>	<b>HOME: Sully Buttes</b>
2 PALMQUIST,TRINITY			12 CHICOINE,CALLEIGH
3 KIDD,CANYON			14 BIRNEY,CAITLIN
14 ASLESEN,ABBY			15 WITTLER,STEVIE
25 RUDEBUSCH,RYLEE			22 WITTLER,ALLYSON
34 CONNOR,KATE			24 HILL,LYDIA
	8:00	-	SUB STARTER: CHICOINE,CALLEIGH
	8:00		SUB STARTER: BIRNEY,CAITLIN
	8:00		SUB STARTER: WITTLER,STEVIE
	8:00		SUB STARTER: WITTLER,ALLYSON
	8:00		SUB STARTER: HILL,LYDIA
SUB STARTER: 2 PALMQUIST,TRINITY	8:00		
SUB STARTER: 3 KIDD,CANYON	8:00		
SUB STARTER: 14 ASLESEN,ABBY	8:00		
SUB STARTER: 25 RUDEBUSCH,RYLEE	8:00		
SUB STARTER: 34 CONNOR,KATE	8:00		
	6:39	37-22	SUB OUT: CHICOINE,CALLEIGH
	6:39		SUB IN: CHICOINE,ADDISON
	5:33	39-22	SUB OUT: CHICOINE,ADDISON
	5:33		SUB IN: BAKKER,PAYGE
	4:30	43-24	SUB OUT: BAKKER,PAYGE
	4:30		SUB IN: CHICOINE,ADDISON
SUB OUT: 3 KIDD,CANYON	3:31	46-24	
SUB OUT: 25 RUDEBUSCH,RYLEE	3:31		
SUB IN: 10 SPADER,DAKOTA	3:31		
SUB IN: 11 CALLIES,LANDREE	3:31		
SUB OUT: 2 PALMQUIST,TRINITY	1:22	48-28	
SUB IN: 5 HOYER,TANA	1:22		
SUB OUT: 14 ASLESEN,ABBY	1:22		
SUB IN: 42 CONNOR,ANN	1:22		

**Howard 48, Sully Buttes 28**

**Official Substitutions Log  
Howard vs Sully Buttes  
Period 4  
March 11, 2023 at ,**



<b>VISITORS: Howard</b>	<b>Time</b>	<b>Score</b>	<b>HOME: Sully Buttes</b>
2 PALMQUIST,TRINITY			12 CHICOINE,CALLEIGH
3 KIDD,CANYON			14 BIRNEY,CAITLIN
14 ASLESEN,ABBY			15 WITTLER,STEVIE
25 RUDEBUSCH,RYLEE			22 WITTLER,ALLYSON
34 CONNOR,KATE			24 HILL,LYDIA
SUB STARTER: 2 PALMQUIST,TRINITY	8:00	-	
SUB STARTER: 3 KIDD,CANYON	8:00		
SUB STARTER: 25 RUDEBUSCH,RYLEE	8:00		
SUB STARTER: 11 CALLIES,LANDREE	8:00		
SUB STARTER: 34 CONNOR,KATE	8:00		
	8:00		SUB STARTER: CHICOINE,CALLEIGH
	8:00		SUB STARTER: HILL,LYDIA
	8:00		SUB STARTER: WITTLER,ALLYSON
	8:00		SUB STARTER: WITTLER,STEVIE
	8:00		SUB STARTER: CHICOINE,ADDISON
	5:31	50-30	SUB OUT: CHICOINE,CALLEIGH
	5:31		SUB IN: BIRNEY,CAITLIN
SUB OUT: 25 RUDEBUSCH,RYLEE	5:31		
SUB IN: 12 TERWILLIGER,CASSIDY	5:31		
	4:04	50-32	SUB OUT: WITTLER,STEVIE
	4:04		SUB IN: BAKKER,PAYGE
	3:54	50-36	SUB OUT: BIRNEY,CAITLIN
	3:54		SUB IN: WITTLER,STEVIE
SUB OUT: 12 TERWILLIGER,CASSIDY	3:35	50-36	
SUB OUT: 11 CALLIES,LANDREE	3:35		
SUB IN: 14 ASLESEN,ABBY	3:35		
SUB IN: 25 RUDEBUSCH,RYLEE	3:35		
SUB OUT: 25 RUDEBUSCH,RYLEE	1:41	54-40	
SUB IN: 15 ALBRECHT,ELIZABETH	1:41		
SUB OUT: 2 PALMQUIST,TRINITY	0:52	54-41	
SUB OUT: 34 CONNOR,KATE	0:52		
SUB OUT: 3 KIDD,CANYON	0:52		
SUB OUT: 14 ASLESEN,ABBY	0:52		
SUB IN: 30 BECKER,ANNA	0:52		
SUB IN: 24 BECKER,ELLIE	0:52		
SUB IN: 22 SCHWADER,KAYLEIGH	0:52		
SUB IN: 44 RUDEBUSCH,REESE	0:52		

**Howard 54, Sully Buttes 44**

**Official Shot Chart**  
**Howard vs Sully Buttes**  
**PERIOD 1 Shots**  
**March 11, 2023 at ,**



**Sully Buttes**

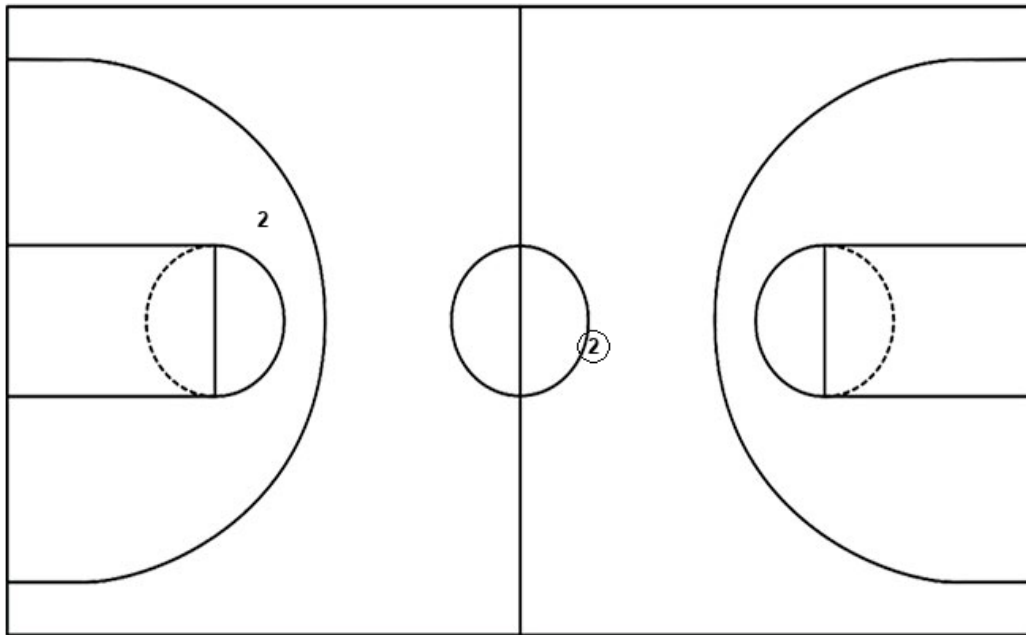
**Howard**

Layups

Layups

Dunks

Dunks



<b>SUL : Period 1</b>	<b>Made</b>	<b>Att</b>	<b>Pct</b>
Layups	0	0	0
Dunks	0	0	0
2PT Field Goals	1	8	12.5
3PT Field Goals	2	5	40.0
<b>Total Field Goals</b>	<b>3</b>	<b>13</b>	<b>23.1</b>

<b>HOW : Period 1</b>	<b>Made</b>	<b>Att</b>	<b>Pct</b>
Layups	0	0	0
Dunks	0	0	0
2PT Field Goals	5	14	35.7
3PT Field Goals	1	3	33.3
<b>Total Field Goals</b>	<b>6</b>	<b>17</b>	<b>35.3</b>

**Official Shot Chart**  
**Howard vs Sully Buttes**  
**PERIOD 2 Shots**  
**March 11, 2023 at ,**



**Sully Buttes**

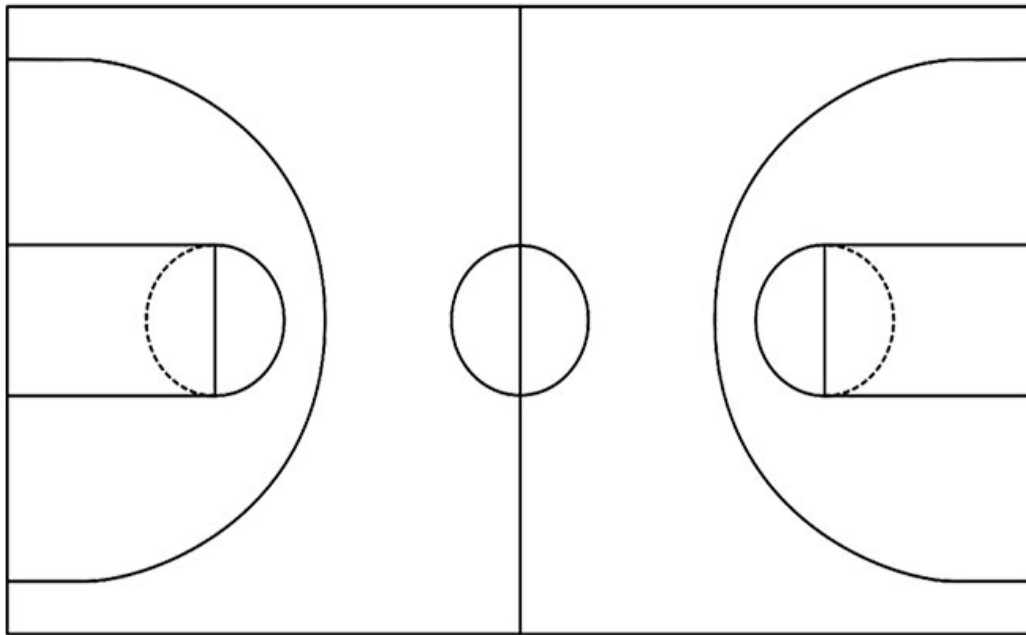
**Howard**

Layups

Layups

Dunks

Dunks



<b>SUL : Period 2</b>	<b>Made</b>	<b>Att</b>	<b>Pct</b>
Layups	0	0	0
Dunks	0	0	0
2PT Field Goals	2	10	20.0
3PT Field Goals	2	4	50.0
<b>Total Field Goals</b>	<b>4</b>	<b>14</b>	<b>28.6</b>

<b>HOW : Period 2</b>	<b>Made</b>	<b>Att</b>	<b>Pct</b>
Layups	0	0	0
Dunks	0	0	0
2PT Field Goals	6	14	42.9
3PT Field Goals	1	6	16.7
<b>Total Field Goals</b>	<b>7</b>	<b>20</b>	<b>35.0</b>

**Official Shot Chart**  
**Howard vs Sully Buttes**  
**PERIOD 3 Shots**  
**March 11, 2023 at ,**



**Sully Buttes**

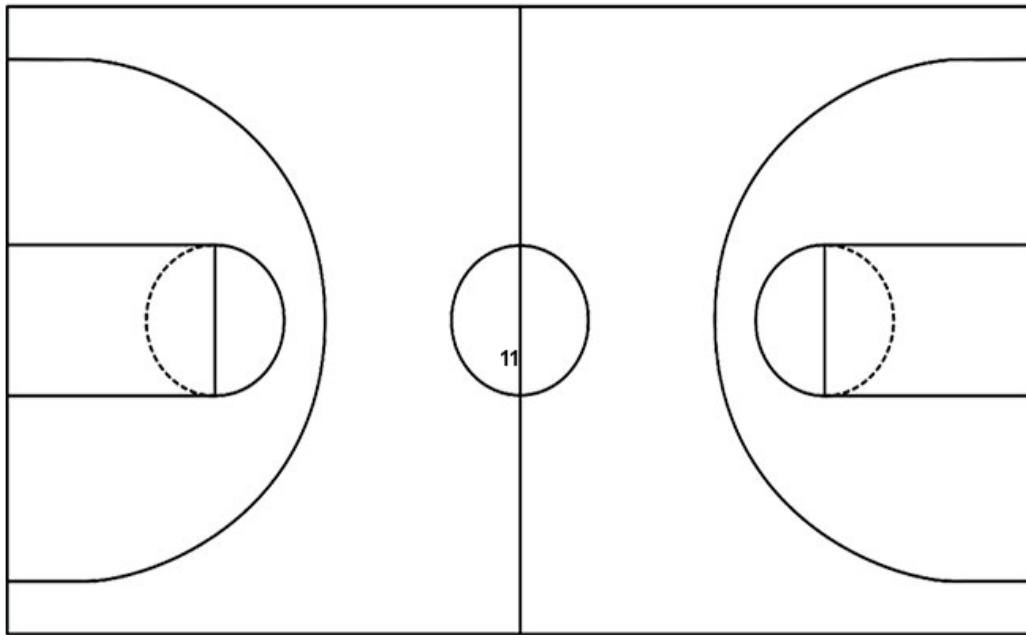
**Howard**

Layups

Layups

Dunks

Dunks



<b>SUL : Period 3</b>	<b>Made</b>	<b>Att</b>	<b>Pct</b>
Layups	0	0	0
Dunks	0	0	0
2PT Field Goals	3	8	37.5
3PT Field Goals	0	2	00.0
<b>Total Field Goals</b>	<b>3</b>	<b>10</b>	<b>30.0</b>

<b>HOW : Period 3</b>	<b>Made</b>	<b>Att</b>	<b>Pct</b>
Layups	0	0	0
Dunks	0	0	0
2PT Field Goals	6	9	66.7
3PT Field Goals	0	2	00.0
<b>Total Field Goals</b>	<b>6</b>	<b>11</b>	<b>54.5</b>

**Official Shot Chart**  
**Howard vs Sully Buttes**  
**PERIOD 4 Shots**  
**March 11, 2023 at ,**



**Sully Buttes**

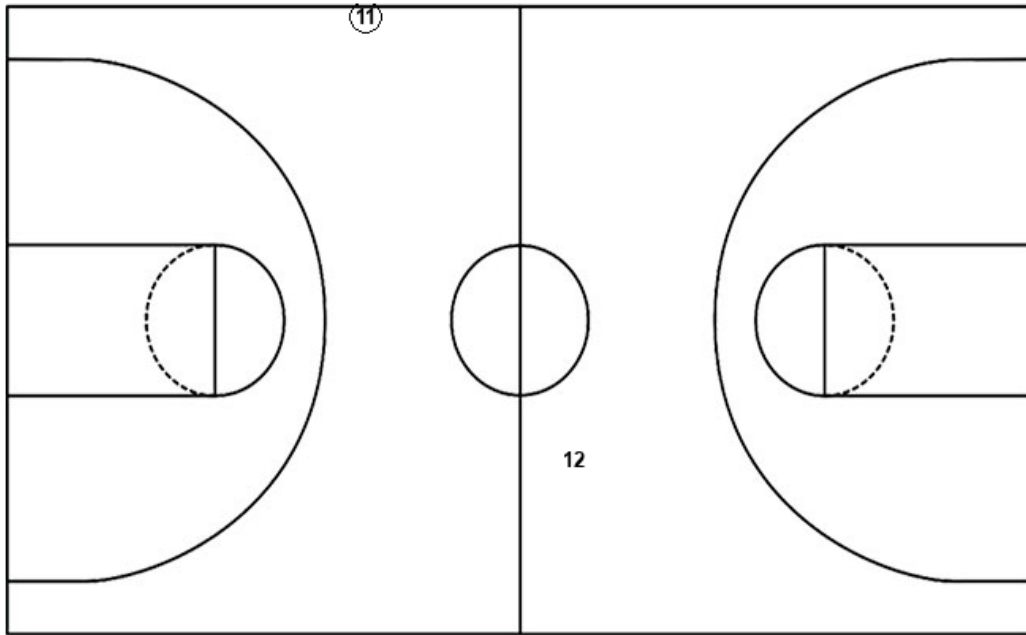
**Howard**

Layups

Layups

Dunks

Dunks

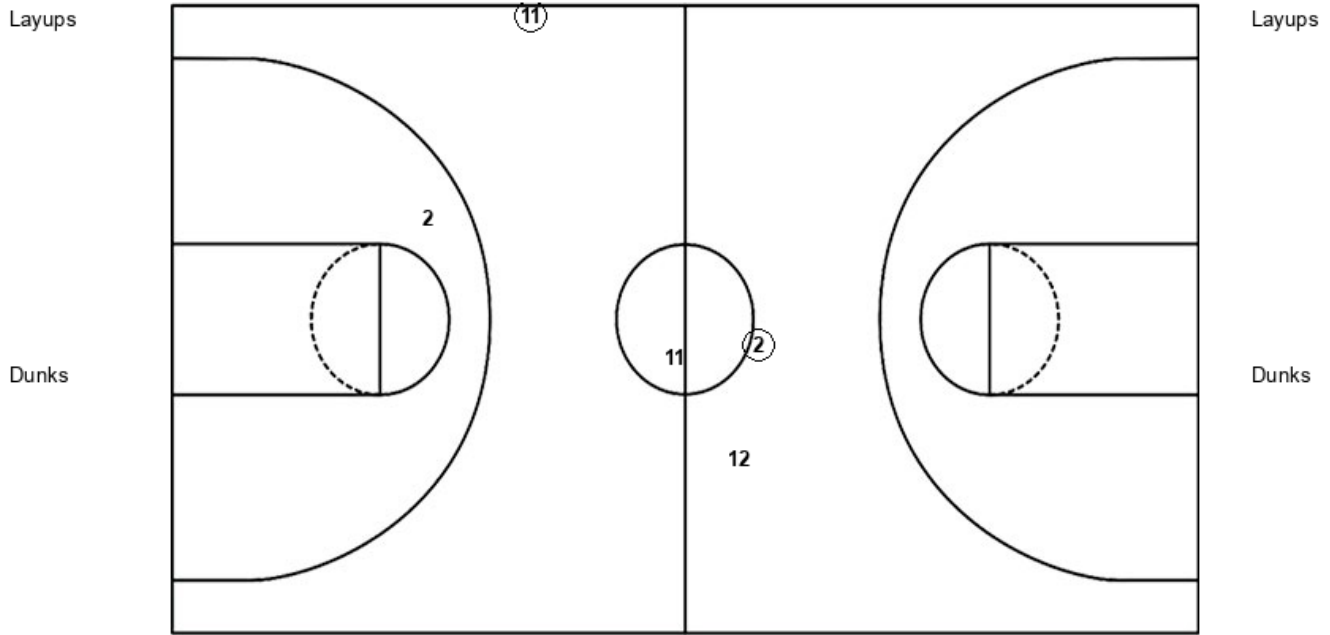


<b>SUL : Period 4</b>	<b>Made</b>	<b>Att</b>	<b>Pct</b>
Layups	0	0	0
Dunks	0	0	0
2PT Field Goals	3	7	42.9
3PT Field Goals	2	8	25.0
<b>Total Field Goals</b>	<b>5</b>	<b>15</b>	<b>33.3</b>

<b>HOW : Period 4</b>	<b>Made</b>	<b>Att</b>	<b>Pct</b>
Layups	0	0	0
Dunks	0	0	0
2PT Field Goals	3	5	60.0
3PT Field Goals	0	4	00.0
<b>Total Field Goals</b>	<b>3</b>	<b>9</b>	<b>33.3</b>



**Official Shot Chart**  
**Howard vs Sully Buttes**  
**Howard Team Shots**  
 March 11, 2023 at ,



HOW : Period 1	Made	Att	Pct
Layups	0	0	0
Dunks	0	0	0
2PT Field Goals	5	14	35.7
3PT Field Goals	1	3	33.3
<b>Total Field Goals</b>	<b>6</b>	<b>17</b>	<b>35.3</b>

HOW : Period 2	Made	Att	Pct
Layups	0	0	0
Dunks	0	0	0
2PT Field Goals	6	14	42.9
3PT Field Goals	1	6	16.7
<b>Total Field Goals</b>	<b>7</b>	<b>20</b>	<b>35.0</b>

HOW : Period 3	Made	Att	Pct
Layups	0	0	0
Dunks	0	0	0
2PT Field Goals	6	9	66.7
3PT Field Goals	0	2	00.0
<b>Total Field Goals</b>	<b>6</b>	<b>11</b>	<b>54.5</b>

HOW : Period 4	Made	Att	Pct
Layups	0	0	0
Dunks	0	0	0
2PT Field Goals	3	5	60.0
3PT Field Goals	0	4	00.0
<b>Total Field Goals</b>	<b>3</b>	<b>9</b>	<b>33.3</b>

**Official Shot Chart**  
**Howard vs Sully Buttes**  
**Sully Buttes Team Shots**  
 March 11, 2023 at ,

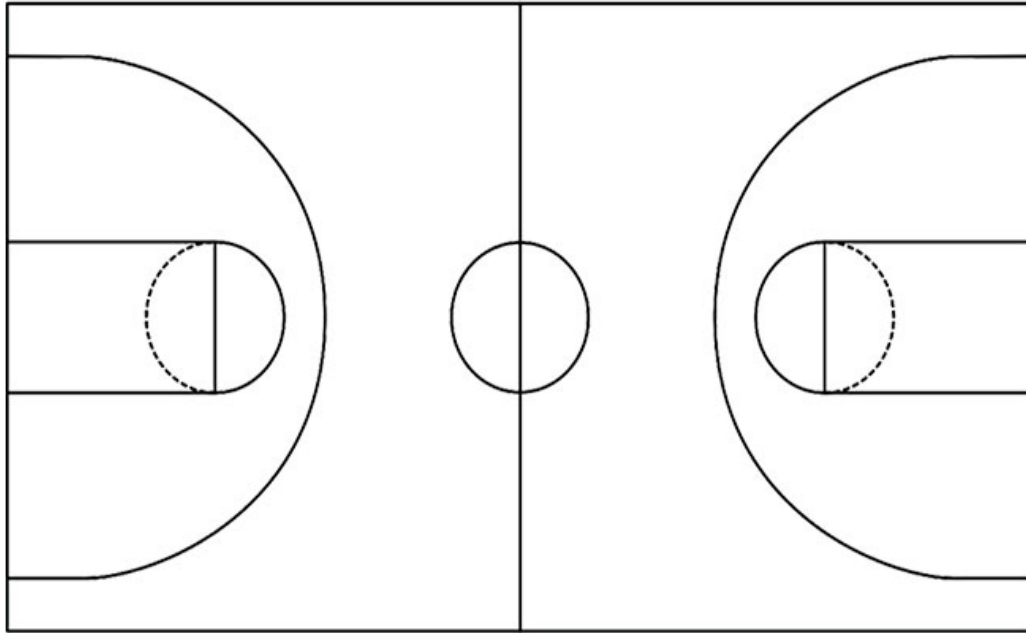


Layups

Layups

Dunks

Dunks



<b>SUL : Period 1</b>	<b>Made</b>	<b>Att</b>	<b>Pct</b>
Layups	0	0	0
Dunks	0	0	0
2PT Field Goals	1	8	12.5
3PT Field Goals	2	5	40.0
<b>Total Field Goals</b>	<b>3</b>	<b>13</b>	<b>23.1</b>

<b>SUL : Period 2</b>	<b>Made</b>	<b>Att</b>	<b>Pct</b>
Layups	0	0	0
Dunks	0	0	0
2PT Field Goals	2	10	20.0
3PT Field Goals	2	4	50.0
<b>Total Field Goals</b>	<b>4</b>	<b>14</b>	<b>28.6</b>

<b>SUL : Period 3</b>	<b>Made</b>	<b>Att</b>	<b>Pct</b>
Layups	0	0	0
Dunks	0	0	0
2PT Field Goals	3	8	37.5
3PT Field Goals	0	2	00.0
<b>Total Field Goals</b>	<b>3</b>	<b>10</b>	<b>30.0</b>

<b>SUL : Period 4</b>	<b>Made</b>	<b>Att</b>	<b>Pct</b>
Layups	0	0	0
Dunks	0	0	0
2PT Field Goals	3	7	42.9
3PT Field Goals	2	8	25.0
<b>Total Field Goals</b>	<b>5</b>	<b>15</b>	<b>33.3</b>