

## FINAL SCORE



**Howard**

**47**



**Castlewood**

**51**

**2023 SDHSAA State Basketball Championships**

March 10, 2023 • ,



## FINAL STATISTICS

**Official Box Score**  
**Howard vs Castlewood**  
**Game Totals -- Final Statistics**  
**March 10, 2023 at ,**



**Howard 47**

**Record:**

No.	Player	S	Pts	FG	3FG	FT	OR	DR	TR	PF	A	TO	Blk	Stl	Min	+/-
02	PALMQUIST, TRINITY	*	0	0-3	0-2	0-0	1	1	2	1	3	5	0	3	30	1
03	KIDD, CANYON		10	4-7	2-5	0-0	2	3	5	5	4	2	0	0	30	0
14	ASLESEN, ABBY	*	8	3-12	0-0	2-2	6	6	12	3	1	3	0	0	28	-6
25	RUDEBUSCH, RYLEE		6	1-12	1-9	3-4	1	3	4	1	1	1	0	3	22	-4
34	CONNOR, KATE	*	17	8-15	0-0	1-2	5	4	9	4	0	3	0	1	27	-3
05	HOYER, TANA	*	3	1-4	1-4	0-0	0	1	1	1	0	0	0	0	5	1
10	SPADER, DAKOTA	*	3	1-6	1-6	0-0	0	0	0	1	0	0	0	0	16	-5
<b>TOTALS</b>			<b>47</b>	<b>18-59</b>	<b>5-26</b>	<b>6-8</b>	<b>15</b>	<b>19</b>	<b>34</b>	<b>16</b>	<b>9</b>	<b>16</b>	<b>0</b>	<b>15</b>	<b>160</b>	

*Shooting By Period*

Period	FG	FG%	3FG	3FG%	FT	FT%
<b>Game</b>	<b>18-59</b>	<b>30.5%</b>	<b>5-26</b>	<b>19.2%</b>	<b>6-8</b>	<b>75.0%</b>

*Deadball Rebounds: 1,0*  
*Last FG: 4th-0:21*  
*Largest lead: By at*  
*Technical Fouls: None.*

**Castlewood 51**

**Record:**

No.	Player	S	Pts	FG	3FG	FT	OR	DR	TR	PF	A	TO	Blk	Stl	Min	+/-
03	KNECHT, PRESLEY	*	7	3-8	1-4	0-0	0	1	1	0	0	3	0	1	26	1
05	HORN, MADELINE		15	5-15	3-5	2-2	4	4	8	5	1	4	0	2	29	7
10	EVERSON, MACKENZIE	*	13	5-9	0-1	3-6	2	6	8	3	5	5	0	0	32	4
11	AKIN, OLIVIA		3	1-1	1-1	0-0	0	3	3	1	0	1	0	0	13	15
23	ARCHER, LYNDSY	*	6	2-5	2-5	0-0	0	1	1	0	2	1	0	2	26	13
14	LARSON, KAILYN	*	0	0-1	0-1	0-0	0	0	0	0	0	1	0	1	17	-10
22	HAUG, GRACIE	*	7	1-4	1-4	4-4	1	3	4	1	0	0	0	1	18	-10
<b>TOTALS</b>			<b>51</b>	<b>17-43</b>	<b>8-21</b>	<b>9-12</b>	<b>7</b>	<b>21</b>	<b>28</b>	<b>10</b>	<b>8</b>	<b>16</b>	<b>0</b>	<b>15</b>	<b>160</b>	

*Shooting By Period*

Period	FG	FG%	3FG	3FG%	FT	FT%
<b>Game</b>	<b>17-43</b>	<b>39.5%</b>	<b>8-21</b>	<b>38.1%</b>	<b>9-12</b>	<b>75.0%</b>

*Deadball Rebounds: -2,0*  
*Last FG: 4th-0:57*  
*Largest lead: By at*  
*Technical Fouls: None.*

Game Notes:

Officials: , ,

Start Time: 13:45:00

Score	1st	2nd	3rd	4th	TOT
HOW	8	17	10	12	<b>47</b>
CAS	11	13	12	15	<b>51</b>

HOW led for 0:0. CAS led for 0:0.  
 Game was tied for 0:0.  
 Times tied: 0      Lead Changes: 0

Points	HOW	CAS
In the Paint	22	16
Off Turns	11	12
2nd Chance	13	8
Fast Break	0	0
Bench	6	7
Per Poss	0.746 21/63	0.895 22/57

**Official Box Score**  
**Howard vs Castlewood**  
**First Half Statistics Only**  
**March 10, 2023 at ,**



**Howard 25**

**Record:**

No.	Player	S	Pts	FG	3FG	FT	OR	DR	TR	PF	A	TO	Blk	Stl	Min	+/-
-----	--------	---	-----	----	-----	----	----	----	----	----	---	----	-----	-----	-----	-----

*Shooting By Period*

Period	FG	FG%	3FG	3FG%	FT	FT%
1st Half	0-0	0%	0-0	0%	0-0	0%
Game	18-59	30.5%	5-26	19.2%	6-8	75.0%

*Deadball Rebounds: 1,0*  
*Last FG Half: HOW 2nd-3:10*

**Castlewood 24**

**Record:**

No.	Player	S	Pts	FG	3FG	FT	OR	DR	TR	PF	A	TO	Blk	Stl	Min	+/-
-----	--------	---	-----	----	-----	----	----	----	----	----	---	----	-----	-----	-----	-----

*Shooting By Period*

Period	FG	FG%	3FG	3FG%	FT	FT%
1st Half	0-0	0%	0-0	0%	0-0	0%
Game	17-43	39.5%	8-21	38.1%	9-12	75.0%

*Deadball Rebounds: -2,0*  
*Last FG Half: CAS 2nd-2:15*

Game Notes:

Officials: , ,

Start Time: 13:45:00

Score	1st	2nd	3rd	4th	TOT
HOW	8	17	10	12	<b>47</b>
CAS	11	13	12	15	<b>51</b>

Points from (This Period)	HOW	CAS
In the Paint	2	2
Off Turns	1	3
2nd Chance	0	2
Fast Break	0	0
Bench	0	0

**Official Play-By-Play**  
**Howard vs Castlewood**  
**First Quarter**  
**March 10, 2023 at ,**



**Period 1**

**Starters:**

**Howard:** 2 PALMQUIST,TRINITY; 3 KIDD,CANYON; 14 ASLESEN,ABBY; 25 RUDEBUSCH,RYLEE; 34 CONNOR,KATE;

**Castlewood:** 3 KNECHT,PRESLEY; 5 HORN,MADELINE; 10 EVERSON,MACKENZIE; 11 AKIN,OLIVIA; 23 ARCHER,LYNDSEY;

Time	VISITORS: Howard	Score	Margin	HOME: Castlewood
8:00	SUB STARTER: PALMQUIST, TRINITY			
8:00	SUB STARTER: KIDD, CANYON			
8:00	SUB STARTER: ASLESEN, ABBY			
8:00	SUB STARTER: RUDEBUSCH, RYLEE			
8:00	SUB STARTER: CONNOR, KATE			
8:00				SUB STARTER: KNECHT, PRESLEY
8:00				SUB STARTER: HORN, MADELINE
8:00				SUB STARTER: EVERSON, MACKENZIE
8:00				SUB STARTER: AKIN, OLIVIA
8:00				SUB STARTER: ARCHER, LYNDSEY
7:44	TURNOVER by CONNOR, KATE			
7:44				STEAL by TEAM
7:28				MISSED 3PTR by ARCHER, LYNDSEY
7:28	REBOUND (DEF) by TEAM			
7:16	MISSED 2PTR by CONNOR, KATE			
7:16				REBOUND (DEF) by AKIN, OLIVIA
7:04		3-0	H 3	GOOD! 3PTR by KNECHT, PRESLEY
7:04				ASSIST by EVERSON, MACKENZIE
6:44	GOOD! 2PTR by CONNOR, KATE [PNT]	3-2	H 1	
6:44	ASSIST by RUDEBUSCH, RYLEE			
6:23				MISSED 2PTR by HORN, MADELINE
6:23				REBOUND (OFF) by HORN, MADELINE
6:09				MISSED 2PTR by EVERSON, MACKENZIE
6:09				REBOUND (OFF) by HORN, MADELINE
5:57				MISSED 3PTR by KNECHT, PRESLEY
5:57	REBOUND (DEF) by RUDEBUSCH, RYLEE			
5:37	MISSED 3PTR by RUDEBUSCH, RYLEE			
5:37				REBOUND (DEF) by ARCHER, LYNDSEY
5:11				MISSED 3PTR by HORN, MADELINE
5:11	REBOUND (DEF) by RUDEBUSCH, RYLEE			
4:54	MISSED 3PTR by KIDD, CANYON			
4:54				REBOUND (DEF) by TEAM
4:54	FOUL (PERSONAL) by CONNOR, KATE			
4:54				SUB OUT: AKIN, OLIVIA
4:54				SUB IN: HAUG, GRACIE
4:53				SUB OUT: ARCHER, LYNDSEY
4:53				SUB IN: LARSON, KAILYN
4:33				MISSED 3PTR by EVERSON, MACKENZIE
4:33	REBOUND (DEF) by RUDEBUSCH, RYLEE			
4:20	MISSED 2PTR by ASLESEN, ABBY			
4:20				FOUL (PERSONAL) by HORN, MADELINE
4:20	GOOD! FT by ASLESEN, ABBY	3-3	T	
4:20	GOOD! FT by ASLESEN, ABBY	3-4	V 1	
4:01				MISSED 2PTR by HORN, MADELINE
4:01				REBOUND (OFF) by EVERSON, MACKENZIE
3:58		5-4	H 1	GOOD! 2PTR by EVERSON, MACKENZIE [PNT]
3:40	TURNOVER by TEAM			
3:40				STEAL by TEAM
3:21				MISSED 3PTR by HAUG, GRACIE
3:21	REBOUND (DEF) by ASLESEN, ABBY			
3:06	MISSED 2PTR by CONNOR, KATE			
3:06				REBOUND (DEF) by TEAM
2:43				MISSED 2PTR by HORN, MADELINE
2:43	REBOUND (DEF) by CONNOR, KATE			
2:23	GOOD! 3PTR by KIDD, CANYON	5-7	V 2	
2:11				TURNOVER by KNECHT, PRESLEY
2:11	STEAL by TEAM			
2:11				SUB OUT: KNECHT, PRESLEY
2:11				SUB IN: ARCHER, LYNDSEY
1:50	MISSED 3PTR by RUDEBUSCH, RYLEE			
1:50				REBOUND (DEF) by HAUG, GRACIE
1:41	STEAL by RUDEBUSCH, RYLEE			
1:41				TURNOVER by TEAM
1:37	MISSED 2PTR by RUDEBUSCH, RYLEE			
1:37				FOUL (PERSONAL) by EVERSON, MACKENZIE

Time	VISITORS: Howard	Score	Margin	HOME: Castlewood
1:37	MISSED FT by RUDEBUSCH, RYLEE			
1:37	SUB OUT: PALMQUIST, TRINITY			
1:37	SUB IN: SPADER, DAKOTA			
1:37				SUB OUT: LARSON, KAILYN
1:37				SUB IN: KNECHT, PRESLEY
1:37	GOOD! FT by RUDEBUSCH, RYLEE	5-8	V 3	
1:27				SUB OUT: HAUG, GRACIE
1:27				SUB IN: AKIN, OLIVIA
1:22				TURNOVER by HORN, MADELINE
1:22	STEAL by TEAM			
1:11	TURNOVER by KIDD, CANYON			
1:11				STEAL by TEAM
0:56				TURNOVER by HORN, MADELINE
0:56	STEAL by RUDEBUSCH, RYLEE			
0:44	TURNOVER by CONNOR, KATE			
0:44				STEAL by TEAM
0:25		8-8	T	GOOD! 3PTR by AKIN, OLIVIA
0:25				ASSIST by EVERSON, MACKENZIE
0:10	MISSED 2PTR by CONNOR, KATE			
0:10				REBOUND (DEF) by TEAM
0:00		11-8	H 3	GOOD! 3PTR by HORN, MADELINE
0:00				ASSIST by ARCHER, LYNDSEY

### Howard 8, Castlewood 11

Points (This Period)	HOW	CAS
In the Paint	2	2
Off Turns	1	3
2nd Chance	0	2
Fast Break	0	0
Bench	0	0
Per Poss	0.500 4/16	0.786 4/14

**Official Play-By-Play**  
**Howard vs Castlewood**  
**Second Quarter**  
**March 10, 2023 at ,**



**Period 2**

**Starters:**

**Howard:** 2 PALMQUIST, TRINITY; 3 KIDD, CANYON; 14 ASLESEN, ABBY; 25 RUDEBUSCH, RYLEE; 34 CONNOR, KATE;

**Castlewood:** 3 KNECHT, PRESLEY; 5 HORN, MADELINE; 10 EVERSON, MACKENZIE; 11 AKIN, OLIVIA; 23 ARCHER, LYNDSEY;

Time	VISITORS: Howard	Score	Margin	HOME: Castlewood
8:00	SUB STARTER: PALMQUIST, TRINITY			
8:00	SUB STARTER: CONNOR, KATE			
8:00	SUB STARTER: ASLESEN, ABBY			
8:00	SUB STARTER: SPADER, DAKOTA			
8:00	SUB STARTER: RUDEBUSCH, RYLEE			
8:00				SUB STARTER: ARCHER, LYNDSEY
8:00				SUB STARTER: AKIN, OLIVIA
8:00				SUB STARTER: KNECHT, PRESLEY
8:00				SUB STARTER: EVERSON, MACKENZIE
8:00				SUB STARTER: HORN, MADELINE
7:47	MISSED 2PTR by ASLESEN, ABBY			
7:47				REBOUND (DEF) by AKIN, OLIVIA
7:36		14-8	H 6	GOOD! 3PTR by HORN, MADELINE
7:36				ASSIST by EVERSON, MACKENZIE
7:19	MISSED 2PTR by CONNOR, KATE			
7:19				FOUL (PERSONAL) by HORN, MADELINE
7:19	GOOD! FT by CONNOR, KATE	14-9	H 5	
7:19				SUB OUT: ARCHER, LYNDSEY
7:19				SUB OUT: AKIN, OLIVIA
7:19				SUB IN: LARSON, KAILYN
7:19				SUB IN: HAUG, GRACIE
7:19	MISSED FT by CONNOR, KATE			
7:17				REBOUND (DEF) by HORN, MADELINE
6:51				MISSED 2PTR by EVERSON, MACKENZIE
6:51	FOUL (PERSONAL) by ASLESEN, ABBY			
6:51		15-9	H 6	GOOD! FT by EVERSON, MACKENZIE
6:51	SUB OUT: RUDEBUSCH, RYLEE			
6:51	SUB IN: KIDD, CANYON			
6:51				MISSED FT by EVERSON, MACKENZIE
6:50	REBOUND (DEF) by PALMQUIST, TRINITY			
6:41	GOOD! 2PTR by CONNOR, KATE [PNT]	15-11	H 4	
6:41	ASSIST by KIDD, CANYON			
6:18				MISSED 2PTR by HORN, MADELINE
6:18	REBOUND (DEF) by ASLESEN, ABBY			
6:06	GOOD! 2PTR by CONNOR, KATE [PNT]	15-13	H 2	
6:06	ASSIST by ASLESEN, ABBY			
5:48				TURNOVER by LARSON, KAILYN
5:48	STEAL by TEAM			
5:37	MISSED 3PTR by SPADER, DAKOTA			
5:37	REBOUND (OFF) by PALMQUIST, TRINITY			
5:29	TURNOVER by PALMQUIST, TRINITY			
5:29				STEAL by HORN, MADELINE
5:24	FOUL (PERSONAL) by PALMQUIST, TRINITY			
5:15				MISSED 2PTR by HORN, MADELINE
5:15	FOUL (PERSONAL) by ASLESEN, ABBY			
5:15		16-13	H 3	GOOD! FT by HORN, MADELINE
5:15	SUB OUT: ASLESEN, ABBY			
5:15	SUB IN: RUDEBUSCH, RYLEE			
5:15		17-13	H 4	GOOD! FT by HORN, MADELINE
5:04	GOOD! 3PTR by KIDD, CANYON	17-16	H 1	
4:50				TURNOVER by EVERSON, MACKENZIE
4:50	STEAL by TEAM			
4:48				SUB OUT: LARSON, KAILYN
4:48				SUB OUT: KNECHT, PRESLEY
4:48				SUB IN: ARCHER, LYNDSEY
4:48				SUB IN: AKIN, OLIVIA
4:39	GOOD! 3PTR by RUDEBUSCH, RYLEE	17-19	V 2	
4:39	ASSIST by KIDD, CANYON			
4:25		20-19	H 1	GOOD! 3PTR by HORN, MADELINE
4:06				STEAL by ARCHER, LYNDSEY
4:06	TURNOVER by RUDEBUSCH, RYLEE			
3:56	STEAL by PALMQUIST, TRINITY			
3:56				TURNOVER by ARCHER, LYNDSEY
3:51				FOUL (PERSONAL) by HAUG, GRACIE
3:51				SUB OUT: HAUG, GRACIE

Time	VISITORS: Howard	Score	Margin	HOME: Castlewood
3:51				SUB IN: KNECHT, PRESLEY
3:45	MISSED 2PTR by CONNOR, KATE			
3:45	REBOUND (OFF) by CONNOR, KATE			
3:42	MISSED 2PTR by CONNOR, KATE			
3:42	REBOUND (OFF) by CONNOR, KATE			
3:40	GOOD! 2PTR by CONNOR, KATE [PNT]	20-21	V 1	
3:25				MISSED 2PTR by EVERSON, MACKENZIE
3:25	FOUL (PERSONAL) by CONNOR, KATE			
3:25		21-21	T	GOOD! FT by EVERSON, MACKENZIE
3:25				SUB OUT: AKIN, OLIVIA
3:25				SUB IN: LARSON, KAILYN
3:25				MISSED FT by EVERSON, MACKENZIE
3:24	REBOUND (DEF) by KIDD, CANYON			
3:10	GOOD! 2PTR by CONNOR, KATE [PNT]	21-23	V 2	
3:10	ASSIST by KIDD, CANYON			
2:47	STEAL by RUDEBUSCH, RYLEE			
2:47				TURNOVER by EVERSON, MACKENZIE
2:36	MISSED 3PTR by RUDEBUSCH, RYLEE			
2:36				REBOUND (OFF) by EVERSON, MACKENZIE
2:34	FOUL (PERSONAL) by CONNOR, KATE			
2:22				MISSED 3PTR by LARSON, KAILYN
2:22				REBOUND (OFF) by HORN, MADELINE
2:15		23-23	T	GOOD! 2PTR by EVERSON, MACKENZIE [PNT]
2:15	FOUL (PERSONAL) by RUDEBUSCH, RYLEE			
2:15		24-23	H 1	GOOD! FT by EVERSON, MACKENZIE
2:03	MISSED 2PTR by RUDEBUSCH, RYLEE			
2:03				REBOUND (DEF) by EVERSON, MACKENZIE
1:46				MISSED 3PTR by ARCHER, LYNDSEY
1:46	REBOUND (DEF) by HOYER, TANA			
1:35	SUB OUT: SPADER, DAKOTA			
1:35	SUB OUT: CONNOR, KATE			
1:35	SUB IN: ASLESEN, ABBY			
1:35	SUB IN: HOYER, TANA			
1:35	TURNOVER by ASLESEN, ABBY			
1:35				STEAL by TEAM
1:14				MISSED 2PTR by HORN, MADELINE
1:14	REBOUND (DEF) by ASLESEN, ABBY			
0:59	MISSED 2PTR by PALMQUIST, TRINITY			
0:59	REBOUND (OFF) by RUDEBUSCH, RYLEE			
0:58	MISSED 2PTR by RUDEBUSCH, RYLEE			
0:58				FOUL (PERSONAL) by HORN, MADELINE
0:58	GOOD! FT by RUDEBUSCH, RYLEE	24-24	T	
0:58	GOOD! FT by RUDEBUSCH, RYLEE	24-25	V 1	
0:54				SUB OUT: HORN, MADELINE
0:54				SUB IN: HAUG, GRACIE
0:37				TURNOVER by KNECHT, PRESLEY
0:37	STEAL by TEAM			
0:06	TURNOVER by PALMQUIST, TRINITY			
0:06				STEAL by LARSON, KAILYN
0:00				MISSED 3PTR by HAUG, GRACIE

### Howard 25, Castlewood 24

Points (This Period)	HOW	CAS
In the Paint	8	2
Off Turns	5	2
2nd Chance	2	3
Fast Break	0	0
Bench	0	0
Per Poss	1.000 8/17	0.765 6/17

**Official Box Score**  
**Howard vs Castlewood**  
**Second Half Statistics Only**  
**March 10, 2023 at ,**



**Howard 22**

**Record:**

No.	Player	S	Pts	FG	3FG	FT	OR	DR	TR	PF	A	TO	Blk	Stl	Min	+/-
-----	--------	---	-----	----	-----	----	----	----	----	----	---	----	-----	-----	-----	-----

*Shooting By Period*

Period	FG	FG%	3FG	3FG%	FT	FT%
2nd Half	0-0	0%	0-0	0%	0-0	0%
Game	18-59	30.5%	5-26	19.2%	6-8	75.0%

*Deadball Rebounds: 1,0*  
*Last FG Half: HOW 4th-0:21*

**Castlewood 27**

**Record:**

No.	Player	S	Pts	FG	3FG	FT	OR	DR	TR	PF	A	TO	Blk	Stl	Min	+/-
-----	--------	---	-----	----	-----	----	----	----	----	----	---	----	-----	-----	-----	-----

*Shooting By Period*

Period	FG	FG%	3FG	3FG%	FT	FT%
2nd Half	0-0	0%	0-0	0%	0-0	0%
Game	17-43	39.5%	8-21	38.1%	9-12	75.0%

*Deadball Rebounds: -2,0*  
*Last FG Half: CAS 4th-0:57*

Game Notes:

Officials: , ,

Start Time: 13:45:00

Score	1st	2nd	3rd	4th	TOT	Points from (This Period)	HOW	CAS
HOW	8	17	10	12	<b>47</b>	In the Paint	8	2
CAS	11	13	12	15	<b>51</b>	Off Turns	5	2
						2nd Chance	2	3
						Fast Break	0	0
						Bench	0	0



**Official Play-By-Play**  
**Howard vs Castlewood**  
**Third Quarter**  
**March 10, 2023 at ,**



**Period 3**

**Starters:**

**Howard:** 2 PALMQUIST,TRINITY; 3 KIDD,CANYON; 14 ASLESEN,ABBY; 25 RUDEBUSCH,RYLEE; 34 CONNOR,KATE;

**Castlewood:** 3 KNECHT,PRESLEY; 5 HORN,MADELINE; 10 EVERSON,MACKENZIE; 11 AKIN,OLIVIA; 23 ARCHER,LYNDSEY;

Time	VISITORS: Howard	Score	Margin	HOME: Castlewood
8:00				SUB STARTER: KNECHT, PRESLEY
8:00				SUB STARTER: HORN, MADELINE
8:00				SUB STARTER: EVERSON, MACKENZIE
8:00				SUB STARTER: AKIN, OLIVIA
8:00				SUB STARTER: ARCHER, LYNDSEY
8:00	SUB STARTER: PALMQUIST, TRINITY			
8:00	SUB STARTER: KIDD, CANYON			
8:00	SUB STARTER: ASLESEN, ABBY			
8:00	SUB STARTER: RUDEBUSCH, RYLEE			
8:00	SUB STARTER: CONNOR, KATE			
7:49	MISSED 3PTR by RUDEBUSCH, RYLEE			
7:49	REBOUND (OFF) by CONNOR, KATE			
7:40	GOOD! 2PTR by CONNOR, KATE [PNT]	24-27	V 3	
7:40	ASSIST by PALMQUIST, TRINITY			
7:19		26-27	V 1	GOOD! 2PTR by EVERSON, MACKENZIE [PNT]
7:05	TURNOVER by ASLESEN, ABBY			
7:05				STEAL by TEAM
6:53		28-27	H 1	GOOD! 2PTR by EVERSON, MACKENZIE [PNT]
6:33	GOOD! 2PTR by CONNOR, KATE [PNT]	28-29	V 1	
6:33	ASSIST by KIDD, CANYON			
6:22	FOUL (PERSONAL) by ASLESEN, ABBY			
6:16				MISSED 2PTR by KNECHT, PRESLEY
6:16	REBOUND (DEF) by KIDD, CANYON			
6:14				FOUL (PERSONAL) by EVERSON, MACKENZIE
6:04	MISSED 2PTR by ASLESEN, ABBY			
6:04	REBOUND (OFF) by CONNOR, KATE			
6:01	GOOD! 2PTR by CONNOR, KATE [PNT]	28-31	V 3	
5:45		30-31	V 1	GOOD! 2PTR by EVERSON, MACKENZIE [PNT]
5:20	MISSED 3PTR by RUDEBUSCH, RYLEE			
5:20				REBOUND (DEF) by KNECHT, PRESLEY
5:07		32-31	H 1	GOOD! 2PTR by KNECHT, PRESLEY
4:46	MISSED 3PTR by PALMQUIST, TRINITY			
4:46				REBOUND (DEF) by EVERSON, MACKENZIE
4:33				MISSED 2PTR by KNECHT, PRESLEY
4:33				REBOUND (OFF) by HORN, MADELINE
4:30		34-31	H 3	GOOD! 2PTR by HORN, MADELINE [PNT]
4:07	MISSED 3PTR by RUDEBUSCH, RYLEE			
4:07				REBOUND (DEF) by HORN, MADELINE
3:53				TURNOVER by AKIN, OLIVIA
3:53	STEAL by CONNOR, KATE			
3:35	MISSED 3PTR by KIDD, CANYON			
3:35				REBOUND (DEF) by AKIN, OLIVIA
3:32	FOUL (PERSONAL) by KIDD, CANYON			
3:21				SUB OUT: AKIN, OLIVIA
3:21				SUB OUT: ARCHER, LYNDSEY
3:21				SUB IN: HAUG, GRACIE
3:21				SUB IN: LARSON, KAILYN
3:20				STEAL by KNECHT, PRESLEY
3:20	TURNOVER by TEAM			
3:17	GOOD! 2PTR by KIDD, CANYON [PNT]	34-33	H 1	
3:00				MISSED 3PTR by KNECHT, PRESLEY
3:00	REBOUND (DEF) by CONNOR, KATE			
2:40	MISSED 2PTR by CONNOR, KATE			
2:40	REBOUND (OFF) by ASLESEN, ABBY			
2:38	MISSED 2PTR by ASLESEN, ABBY			
2:38				REBOUND (DEF) by EVERSON, MACKENZIE
2:22	FOUL (PERSONAL) by KIDD, CANYON			
2:22				SUB OUT: LARSON, KAILYN
2:22				SUB IN: ARCHER, LYNDSEY
2:19				MISSED 3PTR by KNECHT, PRESLEY
2:19	REBOUND (DEF) by CONNOR, KATE			
1:56	MISSED 3PTR by PALMQUIST, TRINITY			
1:56	REBOUND (OFF) by KIDD, CANYON			
1:49	TURNOVER by CONNOR, KATE			
1:49	FOUL (PERSONAL) by CONNOR, KATE			

Time	VISITORS: Howard	Score	Margin	HOME: Castlewood
1:49	SUB OUT: RUDEBUSCH, RYLEE			
1:49	SUB IN: HOYER, TANA			
1:49	SUB OUT: CONNOR, KATE			
1:49	SUB IN: SPADER, DAKOTA			
1:34		36-33	H 3	GOOD! 2PTR by KNECHT, PRESLEY [PNT]
1:34				ASSIST by ARCHER, LYNDSEY
1:21	TURNOVER by PALMQUIST, TRINITY			
1:21				STEAL by HAUG, GRACIE
1:19	FOUL (PERSONAL) by KIDD, CANYON			
1:03				TURNOVER by HORN, MADELINE
1:03	STEAL by TEAM			
0:44	TURNOVER by PALMQUIST, TRINITY			
0:44				STEAL by ARCHER, LYNDSEY
0:22				MISSED 2PTR by HORN, MADELINE
0:22	REBOUND (DEF) by ASLESEN, ABBY			
0:07	MISSED 3PTR by HOYER, TANA			
0:07	REBOUND (OFF) by ASLESEN, ABBY			
0:06				FOUL (PERSONAL) by HORN, MADELINE
0:06				SUB OUT: HORN, MADELINE
0:06				SUB IN: LARSON, KAILYN
0:03	GOOD! 2PTR by ASLESEN, ABBY [PNT]	36-35	H 1	
0:03	ASSIST by PALMQUIST, TRINITY			

### Howard 35, Castlewood 36

Points (This Period)	HOW	CAS
In the Paint	10	10
Off Turns	0	4
2nd Chance	6	2
Fast Break	0	0
Bench	0	0
Per Poss	0.667 5/15	1.000 6/12

**Official Play-By-Play**  
**Howard vs Castlewood**  
**Fourth Quarter**  
**March 10, 2023 at ,**



**Period 4**

**Starters:**

**Howard:** 2 PALMQUIST,TRINITY; 3 KIDD,CANYON; 14 ASLESEN,ABBY; 25 RUDEBUSCH,RYLEE; 34 CONNOR,KATE;

**Castlewood:** 3 KNECHT,PRESLEY; 5 HORN,MADELINE; 10 EVERSON,MACKENZIE; 11 AKIN,OLIVIA; 23 ARCHER,LYNDSEY;

Time	VISITORS: Howard	Score	Margin	HOME: Castlewood
8:00				SUB STARTER: AKIN, OLIVIA
8:00				SUB STARTER: HORN, MADELINE
8:00				SUB STARTER: ARCHER, LYNDSEY
8:00				SUB STARTER: EVERSON, MACKENZIE
8:00				SUB STARTER: KNECHT, PRESLEY
8:00	SUB STARTER: HOYER, TANA			
8:00	SUB STARTER: KIDD, CANYON			
8:00	SUB STARTER: PALMQUIST, TRINITY			
8:00	SUB STARTER: SPADER, DAKOTA			
8:00	SUB STARTER: ASLESEN, ABBY			
7:47	MISSED 3PTR by KIDD, CANYON			
7:47				REBOUND (DEF) by HORN, MADELINE
7:28		39-35	H 4	GOOD! 3PTR by ARCHER, LYNDSEY
7:28				ASSIST by EVERSON, MACKENZIE
7:17	MISSED 2PTR by ASLESEN, ABBY			
7:17	REBOUND (OFF) by ASLESEN, ABBY			
7:15	MISSED 2PTR by ASLESEN, ABBY			
7:15				REBOUND (DEF) by HORN, MADELINE
7:06				TURNOVER by EVERSON, MACKENZIE
7:06	STEAL by PALMQUIST, TRINITY			
6:52	MISSED 3PTR by HOYER, TANA			
6:52	REBOUND (OFF) by ASLESEN, ABBY			
6:48	MISSED 2PTR by ASLESEN, ABBY			
6:48	REBOUND (OFF) by KIDD, CANYON			
6:46				FOUL (PERSONAL) by AKIN, OLIVIA
6:46	SUB OUT: SPADER, DAKOTA			
6:46	SUB OUT: HOYER, TANA			
6:46	SUB IN: CONNOR, KATE			
6:46	SUB IN: RUDEBUSCH, RYLEE			
6:46				SUB OUT: AKIN, OLIVIA
6:46				SUB OUT: KNECHT, PRESLEY
6:46				SUB IN: LARSON, KAILYN
6:46				SUB IN: HAUG, GRACIE
6:43	MISSED 3PTR by RUDEBUSCH, RYLEE			
6:43				REBOUND (DEF) by EVERSON, MACKENZIE
6:22				MISSED 3PTR by HORN, MADELINE
6:22	REBOUND (DEF) by KIDD, CANYON			
6:09	MISSED 3PTR by RUDEBUSCH, RYLEE			
6:09				REBOUND (DEF) by EVERSON, MACKENZIE
5:47				MISSED 3PTR by HAUG, GRACIE
5:47	REBOUND (DEF) by CONNOR, KATE			
5:25	TURNOVER by PALMQUIST, TRINITY			
5:25				STEAL by HORN, MADELINE
5:15				TURNOVER by EVERSON, MACKENZIE
5:15	SUB OUT: RUDEBUSCH, RYLEE			
5:15	SUB IN: SPADER, DAKOTA			
5:15	STEAL by TEAM			
4:58	TURNOVER by ASLESEN, ABBY			
4:58				STEAL by TEAM
4:37				MISSED 3PTR by ARCHER, LYNDSEY
4:37	REBOUND (DEF) by ASLESEN, ABBY			
4:27	TURNOVER by KIDD, CANYON			
4:27				STEAL by TEAM
4:02	FOUL (PERSONAL) by KIDD, CANYON			
3:47		42-35	H 7	GOOD! 3PTR by HAUG, GRACIE
3:47				ASSIST by HORN, MADELINE
3:20	MISSED 2PTR by ASLESEN, ABBY			
3:20	REBOUND (OFF) by ASLESEN, ABBY			
3:18	MISSED 2PTR by ASLESEN, ABBY			
3:18				REBOUND (DEF) by HAUG, GRACIE
3:06		44-35	H 9	GOOD! 2PTR by HORN, MADELINE [PNT]
2:52	GOOD! 2PTR by KIDD, CANYON	44-37	H 7	
2:51	TIMEOUT TEAM			
2:30				TURNOVER by EVERSON, MACKENZIE
2:30	STEAL by PALMQUIST, TRINITY			

Time	VISITORS: Howard	Score	Margin	HOME: Castlewood
2:28				FOUL (PERSONAL) by EVERSON, MACKENZIE
2:28				SUB OUT: LARSON, KAILYN
2:28				SUB IN: KNECHT, PRESLEY
2:25	MISSED 3PTR by SPADER, DAKOTA			
2:25	REBOUND (OFF) by ASLESEN, ABBY			
2:22	GOOD! 2PTR by ASLESEN, ABBY [PNT]	44-39	H 5	
2:21	TIMEOUT TEAM			
2:03				MISSED 2PTR by HORN, MADELINE
2:03				REBOUND (OFF) by HAUG, GRACIE
1:57				TURNOVER by HORN, MADELINE
1:57				FOUL (PERSONAL) by HORN, MADELINE
1:57				SUB OUT: HORN, MADELINE
1:57				SUB IN: LARSON, KAILYN
1:45	GOOD! 3PTR by SPADER, DAKOTA	44-42	H 2	
1:45	ASSIST by PALMQUIST, TRINITY			
1:42	TIMEOUT TEAM			
1:34				TURNOVER by KNECHT, PRESLEY
1:34	STEAL by TEAM			
1:24	MISSED 3PTR by SPADER, DAKOTA			
1:24				REBOUND (DEF) by EVERSON, MACKENZIE
1:11				TIMEOUT TEAM
0:57		47-42	H 5	GOOD! 3PTR by ARCHER, LYNDSEY
0:57				ASSIST by EVERSON, MACKENZIE
0:49	GOOD! 2PTR by ASLESEN, ABBY	47-44	H 3	
0:36	FOUL (PERSONAL) by KIDD, CANYON			
0:36	SUB OUT: KIDD, CANYON			
0:36	SUB IN: HOYER, TANA			
0:36		48-44	H 4	GOOD! FT by HAUG, GRACIE
0:36		49-44	H 5	GOOD! FT by HAUG, GRACIE
0:36				TIMEOUT TEAM
0:26	MISSED 3PTR by HOYER, TANA			
0:26	REBOUND (OFF) by CONNOR, KATE			
0:21	GOOD! 3PTR by HOYER, TANA	49-47	H 2	
0:21	TIMEOUT TEAM			
0:20	FOUL (PERSONAL) by SPADER, DAKOTA			
0:20				MISSED FT by EVERSON, MACKENZIE
0:18	REBOUND (DEF) by ASLESEN, ABBY			
0:15	TIMEOUT TEAM			
0:05	MISSED 3PTR by SPADER, DAKOTA			
0:05				REBOUND (DEF) by HAUG, GRACIE
0:04	FOUL (PERSONAL) by HOYER, TANA			
0:04		51-47	H 4	GOOD! FT by HAUG, GRACIE
0:04		52-47	H 5	GOOD! FT by HAUG, GRACIE
0:00	MISSED 3PTR by SPADER, DAKOTA			

### Howard 47, Castlewood 51

Points (This Period)	HOW	CAS
In the Paint	2	2
Off Turns	5	3
2nd Chance	5	1
Fast Break	0	0
Bench	6	7
Per Poss	0.750 5/16	1.071 6/14

**Official Scoring/Possession Reference Chart**

**Howard vs Castlewood**

**Period 1**

**March 10, 2023 at ,**



**Period 1**

**Starters:**

**Howard:** 2 PALMQUIST,TRINITY; 3 KIDD,CANYON; 14 ASLESEN,ABBY; 25 RUDEBUSCH,RYLEE; 34 CONNOR,KATE;

**Castlewood:** 3 KNECHT,PRESLEY; 5 HORN,MADELINE; 10 EVERSON,MACKENZIE; 11 AKIN,OLIVIA; 23 ARCHER,LYNDSEY;

Time	VISITORS: Howard	Score	Margin	HOME: Castlewood
7:04		3-0	H 3	GOOD! 3PTR by KNECHT, PRESLEY
6:44	GOOD! 2PTR by CONNOR, KATE [PNT]	3-2	H 1	
4:20	GOOD! FT by ASLESEN, ABBY	3-3	T	
4:20	GOOD! FT by ASLESEN, ABBY	3-4	V 1	
3:58		5-4	H 1	GOOD! 2PTR by EVERSON, MACKENZIE [PNT]
2:23	GOOD! 3PTR by KIDD, CANYON	5-7	V 2	
1:37	GOOD! FT by RUDEBUSCH, RYLEE	5-8	V 3	
0:25		8-8	T	GOOD! 3PTR by AKIN, OLIVIA
0:00		11-8	H 3	GOOD! 3PTR by HORN, MADELINE

**Howard 8, Castlewood 11**

**Official Scoring/Possession Reference Chart**  
**Howard vs Castlewood**  
**Period 2**  
**March 10, 2023 at ,**



**Period 2**

**Starters:**

**Howard:** 2 PALMQUIST,TRINITY; 3 KIDD,CANYON; 14 ASLESEN,ABBY; 25 RUDEBUSCH,RYLEE; 34 CONNOR,KATE;

**Castlewood:** 3 KNECHT,PRESLEY; 5 HORN,MADELINE; 10 EVERSON,MACKENZIE; 11 AKIN,OLIVIA; 23 ARCHER,LYNDSEY;

Time	VISITORS: Howard	Score	Margin	HOME: Castlewood
7:36		14-8	H 6	GOOD! 3PTR by HORN, MADELINE
7:19	GOOD! FT by CONNOR, KATE	14-9	H 5	
6:51		15-9	H 6	GOOD! FT by EVERSON, MACKENZIE
6:41	GOOD! 2PTR by CONNOR, KATE [PNT]	15-11	H 4	
6:06	GOOD! 2PTR by CONNOR, KATE [PNT]	15-13	H 2	
5:15		16-13	H 3	GOOD! FT by HORN, MADELINE
5:15		17-13	H 4	GOOD! FT by HORN, MADELINE
5:04	GOOD! 3PTR by KIDD, CANYON	17-16	H 1	
4:39	GOOD! 3PTR by RUDEBUSCH, RYLEE	17-19	V 2	
4:25		20-19	H 1	GOOD! 3PTR by HORN, MADELINE
3:40	GOOD! 2PTR by CONNOR, KATE [PNT]	20-21	V 1	
3:25		21-21	T	GOOD! FT by EVERSON, MACKENZIE
3:10	GOOD! 2PTR by CONNOR, KATE [PNT]	21-23	V 2	
2:15		23-23	T	GOOD! 2PTR by EVERSON, MACKENZIE [PNT]
2:15		24-23	H 1	GOOD! FT by EVERSON, MACKENZIE
0:58	GOOD! FT by RUDEBUSCH, RYLEE	24-24	T	
0:58	GOOD! FT by RUDEBUSCH, RYLEE	24-25	V 1	

**Howard 25, Castlewood 24**

**Official Scoring/Possession Reference Chart**  
**Howard vs Castlewood**  
**Period 3**  
**March 10, 2023 at ,**



**Period 3**

**Starters:**

**Howard:** 2 PALMQUIST,TRINITY; 3 KIDD,CANYON; 14 ASLESEN,ABBY; 25 RUDEBUSCH,RYLEE; 34 CONNOR,KATE;

**Castlewood:** 3 KNECHT,PRESLEY; 5 HORN,MADELINE; 10 EVERSON,MACKENZIE; 11 AKIN,OLIVIA; 23 ARCHER,LYNDSEY;

Time	VISITORS: Howard	Score	Margin	HOME: Castlewood
7:40	GOOD! 2PTR by CONNOR, KATE [PNT]	24-27	V 3	
7:19		26-27	V 1	GOOD! 2PTR by EVERSON, MACKENZIE [PNT]
6:53		28-27	H 1	GOOD! 2PTR by EVERSON, MACKENZIE [PNT]
6:33	GOOD! 2PTR by CONNOR, KATE [PNT]	28-29	V 1	
6:01	GOOD! 2PTR by CONNOR, KATE [PNT]	28-31	V 3	
5:45		30-31	V 1	GOOD! 2PTR by EVERSON, MACKENZIE [PNT]
5:07		32-31	H 1	GOOD! 2PTR by KNECHT, PRESLEY
4:30		34-31	H 3	GOOD! 2PTR by HORN, MADELINE [PNT]
3:17	GOOD! 2PTR by KIDD, CANYON [PNT]	34-33	H 1	
1:34		36-33	H 3	GOOD! 2PTR by KNECHT, PRESLEY [PNT]
0:03	GOOD! 2PTR by ASLESEN, ABBY [PNT]	36-35	H 1	

**Howard 35, Castlewood 36**

**Official Scoring/Possession Reference Chart**  
**Howard vs Castlewood**  
**Period 4**  
**March 10, 2023 at ,**



**Period 4**

**Starters:**

**Howard:** 2 PALMQUIST,TRINITY; 3 KIDD,CANYON; 14 ASLESEN,ABBY; 25 RUDEBUSCH,RYLEE; 34 CONNOR,KATE;

**Castlewood:** 3 KNECHT,PRESLEY; 5 HORN,MADELINE; 10 EVERSON,MACKENZIE; 11 AKIN,OLIVIA; 23 ARCHER,LYNDSEY;

Time	VISITORS: Howard	Score	Margin	HOME: Castlewood
7:28		39-35	H 4	GOOD! 3PTR by ARCHER, LYNDSEY
3:47		42-35	H 7	GOOD! 3PTR by HAUG, GRACIE
3:06		44-35	H 9	GOOD! 2PTR by HORN, MADELINE [PNT]
2:52	GOOD! 2PTR by KIDD, CANYON	44-37	H 7	
2:22	GOOD! 2PTR by ASLESEN, ABBY [PNT]	44-39	H 5	
1:45	GOOD! 3PTR by SPADER, DAKOTA	44-42	H 2	
0:57		47-42	H 5	GOOD! 3PTR by ARCHER, LYNDSEY
0:49	GOOD! 2PTR by ASLESEN, ABBY	47-44	H 3	
0:36		48-44	H 4	GOOD! FT by HAUG, GRACIE
0:36		49-44	H 5	GOOD! FT by HAUG, GRACIE
0:21	GOOD! 3PTR by HOYER, TANA	49-47	H 2	
0:04		51-47	H 4	GOOD! FT by HAUG, GRACIE
0:04		52-47	H 5	GOOD! FT by HAUG, GRACIE

**Howard 47, Castlewood 51**



**Official Substitutions Log**  
**Howard vs Castlewood**  
**Period 1**  
**March 10, 2023 at ,**



<b>VISITORS: Howard</b>	<b>Time</b>	<b>Score</b>	<b>HOME: Castlewood</b>
2 PALMQUIST,TRINITY			3 KNECHT,PRESLEY
3 KIDD,CANYON			5 HORN,MADELINE
14 ASLESEN,ABBY			10 EVERSON,MACKENZIE
25 RUDEBUSCH,RYLEE			11 AKIN,OLIVIA
34 CONNOR,KATE			23 ARCHER,LYNDSEY
SUB STARTER: 2 PALMQUIST,TRINITY	8:00	-	
SUB STARTER: 3 KIDD,CANYON	8:00		
SUB STARTER: 14 ASLESEN,ABBY	8:00		
SUB STARTER: 25 RUDEBUSCH,RYLEE	8:00		
SUB STARTER: 34 CONNOR,KATE	8:00		
	8:00		SUB STARTER: KNECHT,PRESLEY
	8:00		SUB STARTER: HORN,MADELINE
	8:00		SUB STARTER: EVERSON,MACKENZIE
	8:00		SUB STARTER: AKIN,OLIVIA
	8:00		SUB STARTER: ARCHER,LYNDSEY
	4:54	2-3	SUB OUT: AKIN,OLIVIA
	4:54		SUB IN: HAUG,GRACIE
	4:53	2-3	SUB OUT: ARCHER,LYNDSEY
	4:53		SUB IN: LARSON,KAILYN
	2:11	7-5	SUB OUT: KNECHT,PRESLEY
	2:11		SUB IN: ARCHER,LYNDSEY
SUB OUT: 2 PALMQUIST,TRINITY	1:37	7-5	
SUB IN: 10 SPADER,DAKOTA	1:37		
	1:37		SUB OUT: LARSON,KAILYN
	1:37		SUB IN: KNECHT,PRESLEY
	1:27	8-5	SUB OUT: HAUG,GRACIE
	1:27		SUB IN: AKIN,OLIVIA

**Howard 8, Castlewood 11**

**Official Substitutions Log**  
**Howard vs Castlewood**  
**Period 2**  
**March 10, 2023 at ,**



<b>VISITORS: Howard</b>	<b>Time</b>	<b>Score</b>	<b>HOME: Castlewood</b>
2 PALMQUIST,TRINITY			3 KNECHT,PRESLEY
3 KIDD,CANYON			5 HORN,MADELINE
14 ASLESEN,ABBY			10 EVERSON,MACKENZIE
25 RUDEBUSCH,RYLEE			11 AKIN,OLIVIA
34 CONNOR,KATE			23 ARCHER,LYNDSEY
SUB STARTER: 2 PALMQUIST,TRINITY	8:00	-	
SUB STARTER: 34 CONNOR,KATE	8:00		
SUB STARTER: 14 ASLESEN,ABBY	8:00		
SUB STARTER: 10 SPADER,DAKOTA	8:00		
SUB STARTER: 25 RUDEBUSCH,RYLEE	8:00		
	8:00		SUB STARTER: ARCHER,LYNDSEY
	8:00		SUB STARTER: AKIN,OLIVIA
	8:00		SUB STARTER: KNECHT,PRESLEY
	8:00		SUB STARTER: EVERSON,MACKENZIE
	8:00		SUB STARTER: HORN,MADELINE
	7:19	9-14	SUB OUT: ARCHER,LYNDSEY
	7:19		SUB OUT: AKIN,OLIVIA
	7:19		SUB IN: LARSON,KAILYN
	7:19		SUB IN: HAUG,GRACIE
SUB OUT: 25 RUDEBUSCH,RYLEE	6:51	9-15	
SUB IN: 3 KIDD,CANYON	6:51		
SUB OUT: 14 ASLESEN,ABBY	5:15	13-16	
SUB IN: 25 RUDEBUSCH,RYLEE	5:15		
	4:48	16-17	SUB OUT: LARSON,KAILYN
	4:48		SUB OUT: KNECHT,PRESLEY
	4:48		SUB IN: ARCHER,LYNDSEY
	4:48		SUB IN: AKIN,OLIVIA
	3:51	19-20	SUB OUT: HAUG,GRACIE
	3:51		SUB IN: KNECHT,PRESLEY
	3:25	21-21	SUB OUT: AKIN,OLIVIA
	3:25		SUB IN: LARSON,KAILYN
SUB OUT: 10 SPADER,DAKOTA	1:35	23-24	
SUB OUT: 34 CONNOR,KATE	1:35		
SUB IN: 14 ASLESEN,ABBY	1:35		
SUB IN: 5 HOYER,TANA	1:35		
	0:54	25-24	SUB OUT: HORN,MADELINE
	0:54		SUB IN: HAUG,GRACIE

**Howard 25, Castlewood 24**

**Official Substitutions Log**  
**Howard vs Castlewood**  
**Period 3**  
**March 10, 2023 at ,**



<b>VISITORS: Howard</b>	<b>Time</b>	<b>Score</b>	<b>HOME: Castlewood</b>
2 PALMQUIST,TRINITY			3 KNECHT,PRESLEY
3 KIDD,CANYON			5 HORN,MADELINE
14 ASLESEN,ABBY			10 EVERSON,MACKENZIE
25 RUDEBUSCH,RYLEE			11 AKIN,OLIVIA
34 CONNOR,KATE			23 ARCHER,LYNDSEY
	8:00	-	SUB STARTER: KNECHT,PRESLEY
	8:00		SUB STARTER: HORN,MADELINE
	8:00		SUB STARTER: EVERSON,MACKENZIE
	8:00		SUB STARTER: AKIN,OLIVIA
	8:00		SUB STARTER: ARCHER,LYNDSEY
SUB STARTER: 2 PALMQUIST,TRINITY	8:00		
SUB STARTER: 3 KIDD,CANYON	8:00		
SUB STARTER: 14 ASLESEN,ABBY	8:00		
SUB STARTER: 25 RUDEBUSCH,RYLEE	8:00		
SUB STARTER: 34 CONNOR,KATE	8:00		
	3:21	31-34	SUB OUT: AKIN,OLIVIA
	3:21		SUB OUT: ARCHER,LYNDSEY
	3:21		SUB IN: HAUG,GRACIE
	3:21		SUB IN: LARSON,KAILYN
	2:22	33-34	SUB OUT: LARSON,KAILYN
	2:22		SUB IN: ARCHER,LYNDSEY
SUB OUT: 25 RUDEBUSCH,RYLEE	1:49	33-34	
SUB IN: 5 HOYER,TANA	1:49		
SUB OUT: 34 CONNOR,KATE	1:49		
SUB IN: 10 SPADER,DAKOTA	1:49		
	0:06	33-36	SUB OUT: HORN,MADELINE
	0:06		SUB IN: LARSON,KAILYN

**Howard 35, Castlewood 36**

**Official Substitutions Log  
Howard vs Castlewood  
Period 4  
March 10, 2023 at ,**



<b>VISITORS: Howard</b>	<b>Time</b>	<b>Score</b>	<b>HOME: Castlewood</b>
2 PALMQUIST,TRINITY			3 KNECHT,PRESLEY
3 KIDD,CANYON			5 HORN,MADELINE
14 ASLESEN,ABBY			10 EVERSON,MACKENZIE
25 RUDEBUSCH,RYLEE			11 AKIN,OLIVIA
34 CONNOR,KATE			23 ARCHER,LYNDSEY
	8:00	-	SUB STARTER: AKIN,OLIVIA
	8:00		SUB STARTER: HORN,MADELINE
	8:00		SUB STARTER: ARCHER,LYNDSEY
	8:00		SUB STARTER: EVERSON,MACKENZIE
	8:00		SUB STARTER: KNECHT,PRESLEY
SUB STARTER: 5 HOYER,TANA	8:00		
SUB STARTER: 3 KIDD,CANYON	8:00		
SUB STARTER: 2 PALMQUIST,TRINITY	8:00		
SUB STARTER: 10 SPADER,DAKOTA	8:00		
SUB STARTER: 14 ASLESEN,ABBY	8:00		
SUB OUT: 10 SPADER,DAKOTA	6:46	35-39	
SUB OUT: 5 HOYER,TANA	6:46		
SUB IN: 34 CONNOR,KATE	6:46		
SUB IN: 25 RUDEBUSCH,RYLEE	6:46		
	6:46		SUB OUT: AKIN,OLIVIA
	6:46		SUB OUT: KNECHT,PRESLEY
	6:46		SUB IN: LARSON,KAILYN
	6:46		SUB IN: HAUG,GRACIE
SUB OUT: 25 RUDEBUSCH,RYLEE	5:15	35-39	
SUB IN: 10 SPADER,DAKOTA	5:15		
	2:28	37-44	SUB OUT: LARSON,KAILYN
	2:28		SUB IN: KNECHT,PRESLEY
	1:57	39-44	SUB OUT: HORN,MADELINE
	1:57		SUB IN: LARSON,KAILYN
SUB OUT: 3 KIDD,CANYON	0:36	44-47	
SUB IN: 5 HOYER,TANA	0:36		

**Howard 47, Castlewood 51**

**Official Shot Chart**  
**Howard vs Castlewood**  
**PERIOD 1 Shots**  
**March 10, 2023 at ,**



**Castlewood**

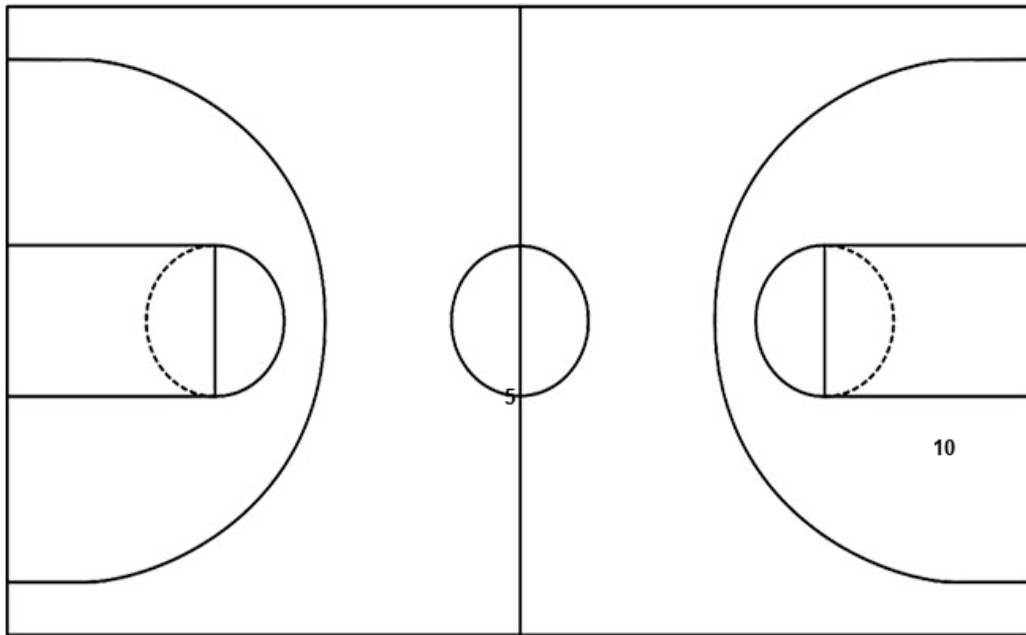
**Howard**

Layups

Layups

Dunks

Dunks



<b>CAS : Period 1</b>	<b>Made</b>	<b>Att</b>	<b>Pct</b>
Layups	0	0	0
Dunks	0	0	0
2PT Field Goals	1	5	20.0
3PT Field Goals	3	8	37.5
<b>Total Field Goals</b>	<b>4</b>	<b>13</b>	<b>30.8</b>

<b>HOW : Period 1</b>	<b>Made</b>	<b>Att</b>	<b>Pct</b>
Layups	0	0	0
Dunks	0	0	0
2PT Field Goals	1	6	16.7
3PT Field Goals	1	4	25.0
<b>Total Field Goals</b>	<b>2</b>	<b>10</b>	<b>20.0</b>

**Official Shot Chart**  
**Howard vs Castlewood**  
**PERIOD 2 Shots**  
**March 10, 2023 at ,**



**Castlewood**

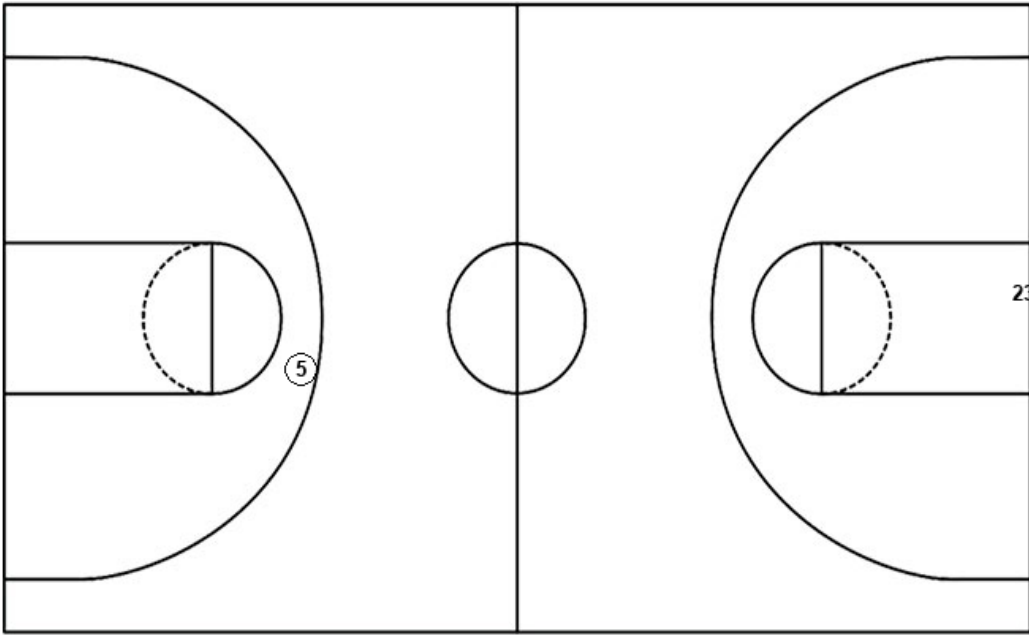
**Howard**

Layups

Layups

Dunks

Dunks



<b>CAS : Period 2</b>	<b>Made</b>	<b>Att</b>	<b>Pct</b>
Layups	0	0	0
Dunks	0	0	0
2PT Field Goals	1	6	16.7
3PT Field Goals	2	5	40.0
<b>Total Field Goals</b>	<b>3</b>	<b>11</b>	<b>27.3</b>

<b>HOW : Period 2</b>	<b>Made</b>	<b>Att</b>	<b>Pct</b>
Layups	0	0	0
Dunks	0	0	0
2PT Field Goals	4	11	36.4
3PT Field Goals	2	4	50.0
<b>Total Field Goals</b>	<b>6</b>	<b>15</b>	<b>40.0</b>

**Official Shot Chart**  
**Howard vs Castlewood**  
**PERIOD 3 Shots**  
**March 10, 2023 at ,**



**Castlewood**

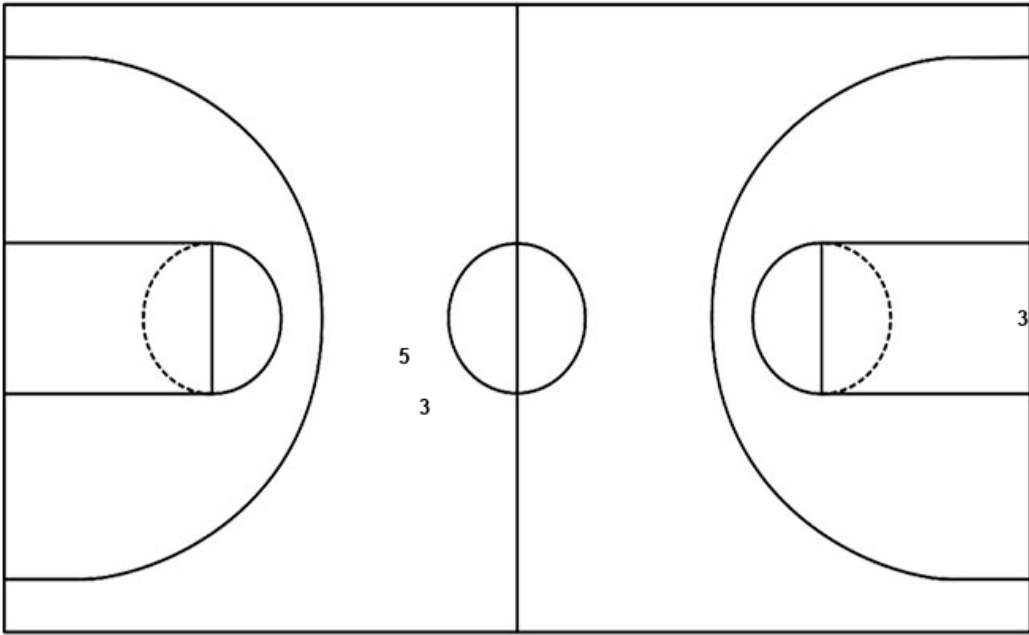
**Howard**

Layups

Layups

Dunks

Dunks



<b>CAS : Period 3</b>	<b>Made</b>	<b>Att</b>	<b>Pct</b>
Layups	0	0	0
Dunks	0	0	0
2PT Field Goals	6	9	66.7
3PT Field Goals	0	2	00.0
<b>Total Field Goals</b>	<b>6</b>	<b>11</b>	<b>54.5</b>

<b>HOW : Period 3</b>	<b>Made</b>	<b>Att</b>	<b>Pct</b>
Layups	0	0	0
Dunks	0	0	0
2PT Field Goals	5	8	62.5
3PT Field Goals	0	7	00.0
<b>Total Field Goals</b>	<b>5</b>	<b>15</b>	<b>33.3</b>

**Official Shot Chart**  
**Howard vs Castlewood**  
**PERIOD 4 Shots**  
**March 10, 2023 at ,**



**Castlewood**

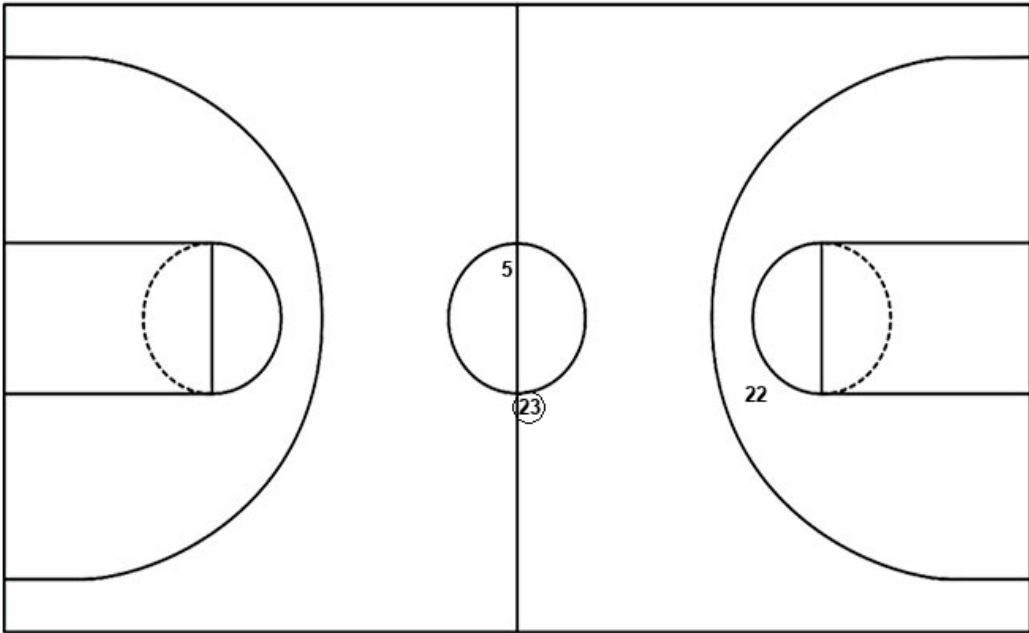
**Howard**

Layups

Layups

Dunks

Dunks

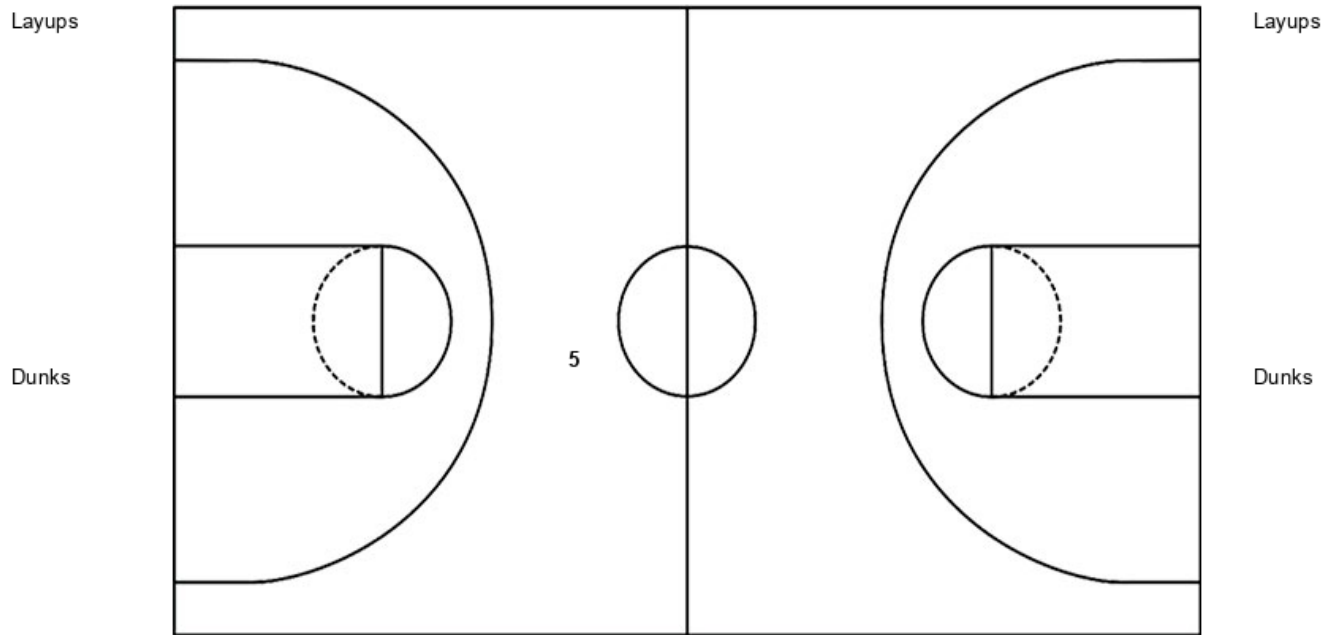


<b>CAS : Period 4</b>	<b>Made</b>	<b>Att</b>	<b>Pct</b>
Layups	0	0	0
Dunks	0	0	0
2PT Field Goals	1	2	50.0
3PT Field Goals	3	6	50.0
<b>Total Field Goals</b>	<b>4</b>	<b>8</b>	<b>50.0</b>

<b>HOW : Period 4</b>	<b>Made</b>	<b>Att</b>	<b>Pct</b>
Layups	0	0	0
Dunks	0	0	0
2PT Field Goals	3	8	37.5
3PT Field Goals	2	11	18.2
<b>Total Field Goals</b>	<b>5</b>	<b>19</b>	<b>26.3</b>



**Official Shot Chart**  
**Howard vs Castlewood**  
**Howard Team Shots**  
 March 10, 2023 at ,



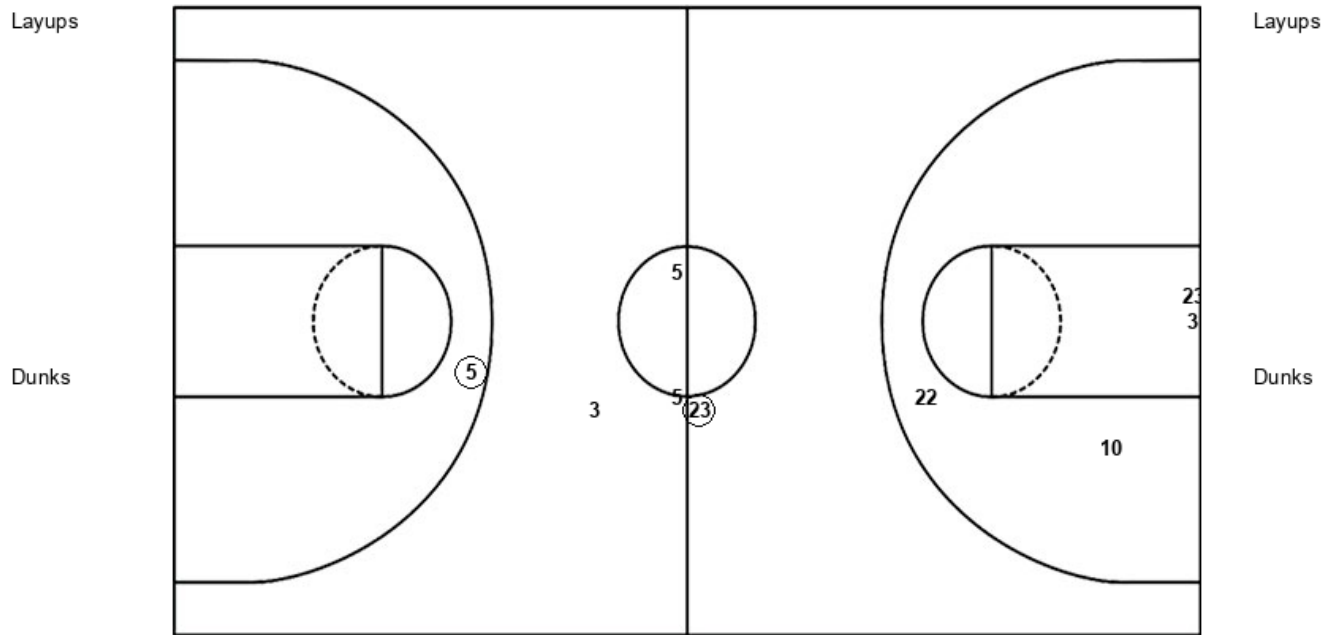
<b>HOW : Period 1</b>	<b>Made</b>	<b>Att</b>	<b>Pct</b>
Layups	0	0	0
Dunks	0	0	0
2PT Field Goals	1	6	16.7
3PT Field Goals	1	4	25.0
<b>Total Field Goals</b>	<b>2</b>	<b>10</b>	<b>20.0</b>

<b>HOW : Period 2</b>	<b>Made</b>	<b>Att</b>	<b>Pct</b>
Layups	0	0	0
Dunks	0	0	0
2PT Field Goals	4	11	36.4
3PT Field Goals	2	4	50.0
<b>Total Field Goals</b>	<b>6</b>	<b>15</b>	<b>40.0</b>

<b>HOW : Period 3</b>	<b>Made</b>	<b>Att</b>	<b>Pct</b>
Layups	0	0	0
Dunks	0	0	0
2PT Field Goals	5	8	62.5
3PT Field Goals	0	7	00.0
<b>Total Field Goals</b>	<b>5</b>	<b>15</b>	<b>33.3</b>

<b>HOW : Period 4</b>	<b>Made</b>	<b>Att</b>	<b>Pct</b>
Layups	0	0	0
Dunks	0	0	0
2PT Field Goals	3	8	37.5
3PT Field Goals	2	11	18.2
<b>Total Field Goals</b>	<b>5</b>	<b>19</b>	<b>26.3</b>

**Official Shot Chart**  
**Howard vs Castlewood**  
**Castlewood Team Shots**  
**March 10, 2023 at ,**



<b>CAS : Period 1</b>	<b>Made</b>	<b>Att</b>	<b>Pct</b>
Layups	0	0	0
Dunks	0	0	0
2PT Field Goals	1	5	20.0
3PT Field Goals	3	8	37.5
<b>Total Field Goals</b>	<b>4</b>	<b>13</b>	<b>30.8</b>

<b>CAS : Period 2</b>	<b>Made</b>	<b>Att</b>	<b>Pct</b>
Layups	0	0	0
Dunks	0	0	0
2PT Field Goals	1	6	16.7
3PT Field Goals	2	5	40.0
<b>Total Field Goals</b>	<b>3</b>	<b>11</b>	<b>27.3</b>

<b>CAS : Period 3</b>	<b>Made</b>	<b>Att</b>	<b>Pct</b>
Layups	0	0	0
Dunks	0	0	0
2PT Field Goals	6	9	66.7
3PT Field Goals	0	2	00.0
<b>Total Field Goals</b>	<b>6</b>	<b>11</b>	<b>54.5</b>

<b>CAS : Period 4</b>	<b>Made</b>	<b>Att</b>	<b>Pct</b>
Layups	0	0	0
Dunks	0	0	0
2PT Field Goals	1	2	50.0
3PT Field Goals	3	6	50.0
<b>Total Field Goals</b>	<b>4</b>	<b>8</b>	<b>50.0</b>