

## FINAL SCORE



**Castlewood**

**53**



**Ethan**

**55**

**2023 SDHSAA State Basketball Championships**

March 09, 2023 • Huron, SD



## FINAL STATISTICS

**Official Box Score**  
**Castlewood vs Ethan**  
**Game Totals -- Final Statistics**  
**March 09, 2023 at Huron, SD**



**Castlewood 53**

**Record:**

No.	Player	S	Pts	FG	3FG	FT	OR	DR	TR	PF	A	TO	Blk	Stl	Min	+/-
03	KNECHT, PRESLEY	*	8	3-7	2-5	0-0	1	3	4	1	2	3	0	0	31	-2
05	HORN, MADELINE	*	22	9-14	3-4	1-2	1	2	3	1	1	2	0	4	32	-2
10	EVERSON, MACKENZIE	*	11	5-9	1-5	0-0	0	6	6	4	1	1	0	1	32	-2
11	AKIN, OLIVIA		3	1-2	1-1	0-0	0	1	1	2	0	0	0	1	15	3
23	ARCHER, LYNDSEY	*	6	2-6	2-6	0-0	0	0	0	0	0	1	0	1	22	-9
14	LARSON, KAILYN	*	3	1-2	1-2	0-0	0	1	1	0	2	0	0	0	22	0
22	HAUG, GRACIE		0	0-1	0-1	0-0	0	0	0	1	1	0	0	0	6	2
<b>TOTALS</b>			<b>53</b>	<b>21-41</b>	<b>10-24</b>	<b>1-2</b>	<b>4</b>	<b>14</b>	<b>18</b>	<b>9</b>	<b>7</b>	<b>8</b>	<b>0</b>	<b>12</b>	<b>160</b>	

*Shooting By Period*

Period	FG	FG%	3FG	3FG%	FT	FT%
<b>Game</b>	<b>21-41</b>	<b>51.2%</b>	<b>10-24</b>	<b>41.7%</b>	<b>1-2</b>	<b>50.0%</b>

*Deadball Rebounds: 0,0*  
*Last FG: 4th-0:47*  
*Largest lead: By at*  
*Technical Fouls: None.*

**Ethan 55**

**Record:**

No.	Player	S	Pts	FG	3FG	FT	OR	DR	TR	PF	A	TO	Blk	Stl	Min	+/-
12	STORM, MARISSA	*	15	5-14	5-13	0-0	2	2	4	0	2	2	0	2	32	2
14	LINGEMANN, AVA	*	15	5-17	4-11	1-2	0	0	0	3	7	2	0	2	32	2
22	POLLREISZ, ELLA	*	0	0-4	0-0	0-0	6	4	10	0	5	3	0	2	32	2
32	BUENNING, ANNALISE		4	2-2	0-0	0-0	1	3	4	0	0	0	0	0	13	-12
42	CLAUSON, ASHLEY		0	0-0	0-0	0-0	0	0	0	0	0	0	0	0	8	0
05	KLOCK, LEAH	*	2	1-2	0-0	0-1	5	0	5	3	0	1	0	1	19	5
34	BARTSCHER, MADELINE	*	19	7-13	5-9	0-0	0	4	4	1	1	2	0	0	23	2
54	SONNE, CHEYANNE		0	0-0	0-0	0-0	1	0	1	0	0	0	0	0	1	-3
<b>TOTALS</b>			<b>55</b>	<b>20-52</b>	<b>14-33</b>	<b>1-3</b>	<b>18</b>	<b>15</b>	<b>33</b>	<b>7</b>	<b>15</b>	<b>12</b>	<b>0</b>	<b>8</b>	<b>160</b>	

*Shooting By Period*

Period	FG	FG%	3FG	3FG%	FT	FT%
<b>Game</b>	<b>20-52</b>	<b>38.5%</b>	<b>14-33</b>	<b>42.4%</b>	<b>1-3</b>	<b>33.3%</b>

*Deadball Rebounds: 0,0*  
*Last FG: 4th-0:06*  
*Largest lead: By at*  
*Technical Fouls: None.*

Game Notes:

Officials: , ,

Start Time: **18:00:00**

Postseason Game;

Score	1st	2nd	3rd	4th	TOT
CAS	14	11	7	21	<b>53</b>
ETH	11	24	9	11	<b>55</b>

CAS led for 0:0. ETH led for 0:0.  
 Game was tied for 0:0.  
 Times tied: 0      Lead Changes: 0

Points	CAS	ETH
In the Paint	22	12
Off Turns	16	12
2nd Chance	2	19
Fast Break	0	0
Bench	3	21
Per Poss	1.152 22/46	1.170 21/47

**Official Box Score**  
**Castlewood vs Ethan**  
**First Half Statistics Only**  
**March 09, 2023 at Huron, SD**



**Castlewood 25**

**Record:**

No.	Player	S	Pts	FG	3FG	FT	OR	DR	TR	PF	A	TO	Blk	Stl	Min	+/-
-----	--------	---	-----	----	-----	----	----	----	----	----	---	----	-----	-----	-----	-----

*Shooting By Period*

Period	FG	FG%	3FG	3FG%	FT	FT%
1st Half	0-0	0%	0-0	0%	0-0	0%
Game	21-41	51.2%	10-24	41.7%	1-2	50.0%

*Deadball Rebounds: 0,0*  
*Last FG Half: CAS 2nd-3:34*

**Ethan 35**

**Record:**

No.	Player	S	Pts	FG	3FG	FT	OR	DR	TR	PF	A	TO	Blk	Stl	Min	+/-
-----	--------	---	-----	----	-----	----	----	----	----	----	---	----	-----	-----	-----	-----

*Shooting By Period*

Period	FG	FG%	3FG	3FG%	FT	FT%
1st Half	0-0	0%	0-0	0%	0-0	0%
Game	20-52	38.5%	14-33	42.4%	1-3	33.3%

*Deadball Rebounds: 0,0*  
*Last FG Half: ETH 2nd-1:06*

Game Notes:

Officials: , ,

Start Time: **18:00:00**

Postseason Game;

Score	1st	2nd	3rd	4th	TOT
CAS	14	11	7	21	<b>53</b>
ETH	11	24	9	11	<b>55</b>

Points from (This Period)	CAS	ETH
In the Paint	8	2
Off Turns	2	3
2nd Chance	0	11
Fast Break	0	0
Bench	3	3

**Official Play-By-Play**  
**Castlewood vs Ethan**  
**First Quarter**  
**March 09, 2023 at Huron, SD**



**Period 1**

**Starters:**

**Castlewood:** 3 KNECHT,PRESLEY; 5 HORN,MADELINE; 10 EVERSON,MACKENZIE; 11 AKIN,OLIVIA; 23 ARCHER,LYNDSEY;

**Ethan:** 12 STORM,MARISSA; 14 LINGEMANN,AVA; 22 POLLREISZ,ELLA; 32 BUENNING,ANNALISE; 42 CLAUSON,ASHLEY;

Time	VISITORS: Castlewood	Score	Margin	HOME: Ethan
8:00	SUB STARTER: KNECHT, PRESLEY			
8:00	SUB STARTER: HORN, MADELINE			
8:00	SUB STARTER: EVERSON, MACKENZIE			
8:00	SUB STARTER: AKIN, OLIVIA			
8:00	SUB STARTER: ARCHER, LYNDSEY			
8:00				SUB STARTER: STORM, MARISSA
8:00				SUB STARTER: LINGEMANN, AVA
8:00				SUB STARTER: POLLREISZ, ELLA
8:00				SUB STARTER: BUENNING, ANNALISE
8:00				SUB STARTER: CLAUSON, ASHLEY
7:35	MISSED 3PTR by KNECHT, PRESLEY			
7:35	REBOUND (OFF) by HORN, MADELINE			
7:33	TURNOVER by HORN, MADELINE			
7:33				STEAL by LINGEMANN, AVA
7:07				MISSED 2PTR by BARTSCHER, MADELINE
7:07				REBOUND (OFF) by POLLREISZ, ELLA
6:52		3-0	H 3	GOOD! 3PTR by STORM, MARISSA
6:52				ASSIST by POLLREISZ, ELLA
6:27	GOOD! 2PTR by HORN, MADELINE [PNT]	3-2	H 1	
6:07				MISSED 3PTR by BARTSCHER, MADELINE
6:07	REBOUND (DEF) by KNECHT, PRESLEY			
5:57	GOOD! 3PTR by ARCHER, LYNDSEY	3-5	V 2	
5:49	SUB OUT: ARCHER, LYNDSEY			
5:49	SUB IN: LARSON, KAILYN			
5:40				MISSED 3PTR by STORM, MARISSA
5:40				REBOUND (OFF) by TEAM
5:39	SUB OUT: AKIN, OLIVIA			
5:39	SUB IN: ARCHER, LYNDSEY			
5:21				TURNOVER by POLLREISZ, ELLA
5:21	STEAL by TEAM			
5:08	GOOD! 2PTR by EVERSON, MACKENZIE [PNT]	3-7	V 4	
4:50				MISSED 3PTR by STORM, MARISSA
4:50				REBOUND (OFF) by BUENNING, ANNALISE
4:35				MISSED 3PTR by LINGEMANN, AVA
4:35	REBOUND (DEF) by EVERSON, MACKENZIE			
4:07	MISSED 3PTR by EVERSON, MACKENZIE			
4:07				REBOUND (DEF) by BUENNING, ANNALISE
3:57				MISSED 2PTR by STORM, MARISSA
3:57				REBOUND (OFF) by POLLREISZ, ELLA
3:54				MISSED 2PTR by POLLREISZ, ELLA
3:54	REBOUND (DEF) by EVERSON, MACKENZIE			
3:52	SUB OUT: ARCHER, LYNDSEY			
3:52	SUB IN: HAUG, GRACIE			
3:52				SUB OUT: BUENNING, ANNALISE
3:52				SUB IN: KLOCK, LEAH
3:48				MISSED 3PTR by STORM, MARISSA
3:48				REBOUND (OFF) by STORM, MARISSA
3:37		6-7	V 1	GOOD! 3PTR by BARTSCHER, MADELINE
3:37				ASSIST by STORM, MARISSA
3:08	GOOD! 2PTR by HORN, MADELINE [PNT]	6-9	V 3	
3:08	ASSIST by KNECHT, PRESLEY			
2:43	FOUL (PERSONAL) by HAUG, GRACIE			
2:39				MISSED 2PTR by KLOCK, LEAH
2:39				REBOUND (OFF) by KLOCK, LEAH
2:27		9-9	T	GOOD! 3PTR by STORM, MARISSA
2:27				ASSIST by LINGEMANN, AVA
2:02	GOOD! 3PTR by LARSON, KAILYN	9-12	V 3	
1:40				TURNOVER by LINGEMANN, AVA
1:40	STEAL by TEAM			
1:20	MISSED 3PTR by LARSON, KAILYN			
1:20				REBOUND (DEF) by BARTSCHER, MADELINE
1:02				MISSED 3PTR by BARTSCHER, MADELINE
1:02	REBOUND (DEF) by HORN, MADELINE			
1:00	SUB OUT: HAUG, GRACIE			
1:00	SUB OUT: LARSON, KAILYN			

Time	VISITORS: Castlewood	Score	Margin	HOME: Ethan
1:00	SUB IN: ARCHER, LYNDSEY			
1:00	SUB IN: AKIN, OLIVIA			
1:00				SUB OUT: BARTSCHER, MADELINE
1:00				SUB IN: BUENNING, ANNALISE
0:49	GOOD! 2PTR by EVERSON, MACKENZIE [PNT]	9-14	V 5	
0:32				MISSED 3PTR by STORM, MARISSA
0:32				REBOUND (OFF) by KLOCK, LEAH
0:17				MISSED 3PTR by LINGEMANN, AVA
0:17				REBOUND (OFF) by POLLREISZ, ELLA
0:02		11-14	V 3	GOOD! 2PTR by BUENNING, ANNALISE [PNT]
0:02				ASSIST by POLLREISZ, ELLA
0:00				SUB OUT: CLAUSON, ASHLEY
0:00				SUB IN: BARTSCHER, MADELINE

### Castlewood 14, Ethan 11

Points (This Period)	CAS	ETH
In the Paint	8	2
Off Turns	2	3
2nd Chance	0	11
Fast Break	0	0
Bench	3	3
Per Poss	1.556 6/9	1.100 4/10

**Official Play-By-Play**  
**Castlewood vs Ethan**  
**Second Quarter**  
**March 09, 2023 at Huron, SD**



**Period 2**

**Starters:**

**Castlewood:** 3 KNECHT,PRESLEY; 5 HORN,MADELINE; 10 EVERSON,MACKENZIE; 11 AKIN,OLIVIA; 23 ARCHER,LYNDSEY;

**Ethan:** 12 STORM,MARISSA; 14 LINGEMANN,AVA; 22 POLLREISZ,ELLA; 32 BUENNING,ANNALISE; 42 CLAUSON,ASHLEY;

Time	VISITORS: Castlewood	Score	Margin	HOME: Ethan
8:00	SUB STARTER: KNECHT, PRESLEY			
8:00	SUB STARTER: HORN, MADELINE			
8:00	SUB STARTER: EVERSON, MACKENZIE			
8:00	SUB STARTER: AKIN, OLIVIA			
8:00	SUB STARTER: ARCHER, LYNDSEY			
8:00				SUB STARTER: BARTSCHER, MADELINE
8:00				SUB STARTER: KLOCK, LEAH
8:00				SUB STARTER: STORM, MARISSA
8:00				SUB STARTER: POLLREISZ, ELLA
8:00				SUB STARTER: LINGEMANN, AVA
7:44				MISSED 3PTR by BARTSCHER, MADELINE
7:44				REBOUND (OFF) by KLOCK, LEAH
7:38		2-0	H 2	GOOD! 2PTR by LINGEMANN, AVA [PNT]
7:21	MISSED 3PTR by ARCHER, LYNDSEY			
7:21	REBOUND (OFF) by KNECHT, PRESLEY			
7:19	GOOD! 2PTR by KNECHT, PRESLEY [PNT]	2-2	T	
7:04				TURNOVER by POLLREISZ, ELLA
7:04	STEAL by HORN, MADELINE			
6:56	GOOD! 3PTR by HORN, MADELINE	2-5	V 3	
6:30				MISSED 3PTR by LINGEMANN, AVA
6:30				REBOUND (OFF) by KLOCK, LEAH
6:16	SUB OUT: AKIN, OLIVIA			
6:16	SUB IN: LARSON, KAILYN			
6:16				MISSED 2PTR by LINGEMANN, AVA
6:16				REBOUND (OFF) by TEAM
5:51		5-5	T	GOOD! 3PTR by LINGEMANN, AVA
5:51				ASSIST by STORM, MARISSA
5:36	MISSED 2PTR by HORN, MADELINE			
5:36				FOUL (PERSONAL) by KLOCK, LEAH
5:36	GOOD! FT by HORN, MADELINE	5-6	V 1	
5:36	MISSED FT by HORN, MADELINE			
5:35				REBOUND (DEF) by BARTSCHER, MADELINE
5:26	FOUL (PERSONAL) by KNECHT, PRESLEY			
5:20		8-6	H 2	GOOD! 3PTR by STORM, MARISSA
5:11	TURNOVER by KNECHT, PRESLEY			
5:11				STEAL by KLOCK, LEAH
4:51		11-6	H 5	GOOD! 3PTR by STORM, MARISSA
4:51				ASSIST by LINGEMANN, AVA
4:34	GOOD! 2PTR by EVERSON, MACKENZIE [PNT]	11-8	H 3	
4:04		14-8	H 6	GOOD! 3PTR by BARTSCHER, MADELINE
4:04				ASSIST by LINGEMANN, AVA
3:50				FOUL (PERSONAL) by KLOCK, LEAH
3:50				SUB OUT: KLOCK, LEAH
3:50				SUB IN: BUENNING, ANNALISE
3:34	GOOD! 3PTR by ARCHER, LYNDSEY	14-11	H 3	
3:22		16-11	H 5	GOOD! 2PTR by BUENNING, ANNALISE [PNT]
3:22				ASSIST by BARTSCHER, MADELINE
3:04	MISSED 2PTR by HORN, MADELINE			
3:04				REBOUND (DEF) by BARTSCHER, MADELINE
2:47		19-11	H 8	GOOD! 3PTR by LINGEMANN, AVA
2:47				ASSIST by POLLREISZ, ELLA
2:31	MISSED 2PTR by HORN, MADELINE			
2:31				REBOUND (DEF) by BUENNING, ANNALISE
2:10		21-11	H 10	GOOD! 2PTR by BARTSCHER, MADELINE [PNT]
1:52	MISSED 2PTR by HORN, MADELINE			
1:52				REBOUND (DEF) by STORM, MARISSA
1:27	STEAL by HORN, MADELINE			
1:27				TURNOVER by TEAM
1:23				FOUL (PERSONAL) by LINGEMANN, AVA
1:23	SUB OUT: ARCHER, LYNDSEY			
1:23	SUB IN: HAUG, GRACIE			
1:16	MISSED 3PTR by KNECHT, PRESLEY			
1:16				REBOUND (DEF) by POLLREISZ, ELLA
1:06		24-11	H 13	GOOD! 3PTR by LINGEMANN, AVA
0:46	MISSED 3PTR by HAUG, GRACIE			

Time	VISITORS: Castlewood	Score	Margin	HOME: Ethan
0:46				REBOUND (DEF) by POLLREISZ, ELLA
0:30				TURNOVER by STORM, MARISSA
0:30	STEAL by TEAM			
0:08				FOUL (PERSONAL) by LINGEMANN, AVA

**Castlewood 25, Ethan 35**

Points (This Period)	CAS	ETH
In the Paint	4	6
Off Turns	3	3
2nd Chance	2	5
Fast Break	0	0
Bench	0	5
Per Poss	0.917 5/12	2.000 9/12

**Official Box Score**  
**Castlewood vs Ethan**  
**Second Half Statistics Only**  
**March 09, 2023 at Huron, SD**



**Castlewood 28**

**Record:**

No.	Player	S	Pts	FG	3FG	FT	OR	DR	TR	PF	A	TO	Blk	Stl	Min	+/-
-----	--------	---	-----	----	-----	----	----	----	----	----	---	----	-----	-----	-----	-----

*Shooting By Period*

Period	FG	FG%	3FG	3FG%	FT	FT%
2nd Half	0-0	0%	0-0	0%	0-0	0%
Game	21-41	51.2%	10-24	41.7%	1-2	50.0%

*Deadball Rebounds: 0,0*  
*Last FG Half: CAS 4th-0:47*

**Ethan 20**

**Record:**

No.	Player	S	Pts	FG	3FG	FT	OR	DR	TR	PF	A	TO	Blk	Stl	Min	+/-
-----	--------	---	-----	----	-----	----	----	----	----	----	---	----	-----	-----	-----	-----

*Shooting By Period*

Period	FG	FG%	3FG	3FG%	FT	FT%
2nd Half	0-0	0%	0-0	0%	0-0	0%
Game	20-52	38.5%	14-33	42.4%	1-3	33.3%

*Deadball Rebounds: 0,0*  
*Last FG Half: ETH 4th-0:06*

Game Notes:

Officials: , ,

Start Time: **18:00:00**

Postseason Game;

Score	1st	2nd	3rd	4th	TOT
CAS	14	11	7	21	<b>53</b>
ETH	11	24	9	11	<b>55</b>

Points from (This Period)	CAS	ETH
In the Paint	4	6
Off Turns	3	3
2nd Chance	2	5
Fast Break	0	0
Bench	0	5



**Official Play-By-Play**  
**Castlewood vs Ethan**  
**Third Quarter**  
**March 09, 2023 at Huron, SD**



**Period 3**

**Starters:**

**Castlewood:** 3 KNECHT,PRESLEY; 5 HORN,MADELINE; 10 EVERSON,MACKENZIE; 11 AKIN,OLIVIA; 23 ARCHER,LYNDSEY;  
**Ethan:** 12 STORM,MARISSA; 14 LINGEMANN,AVA; 22 POLLREISZ,ELLA; 32 BUENNING,ANNALISE; 42 CLAUSON,ASHLEY;

Time	VISITORS: Castlewood	Score	Margin	HOME: Ethan
8:00				SUB STARTER: STORM, MARISSA
8:00				SUB STARTER: LINGEMANN, AVA
8:00				SUB STARTER: POLLREISZ, ELLA
8:00				SUB STARTER: BUENNING, ANNALISE
8:00				SUB STARTER: CLAUSON, ASHLEY
8:00	SUB STARTER: KNECHT, PRESLEY			
8:00	SUB STARTER: HORN, MADELINE			
8:00	SUB STARTER: EVERSON, MACKENZIE			
8:00	SUB STARTER: AKIN, OLIVIA			
8:00	SUB STARTER: ARCHER, LYNDSEY			
7:46	MISSED 3PTR by KNECHT, PRESLEY			
7:46				REBOUND (DEF) by BARTSCHER, MADELINE
7:34				SUB OUT: CLAUSON, ASHLEY
7:34				SUB IN: BARTSCHER, MADELINE
7:14				MISSED 3PTR by STORM, MARISSA
7:14	REBOUND (DEF) by EVERSON, MACKENZIE			
6:43	MISSED 3PTR by ARCHER, LYNDSEY			
6:43				REBOUND (DEF) by TEAM
6:17				MISSED 3PTR by LINGEMANN, AVA
6:17	REBOUND (DEF) by AKIN, OLIVIA			
5:58	GOOD! 3PTR by AKIN, OLIVIA	24-14	H 10	
5:58	ASSIST by KNECHT, PRESLEY			
5:32				TURNOVER by STORM, MARISSA
5:32	STEAL by ARCHER, LYNDSEY			
5:22	TURNOVER by EVERSON, MACKENZIE			
5:22				STEAL by POLLREISZ, ELLA
4:55				MISSED 2PTR by POLLREISZ, ELLA
4:55	REBOUND (DEF) by HORN, MADELINE			
4:50	GOOD! 2PTR by HORN, MADELINE [PNT]	24-16	H 8	
4:24				MISSED 3PTR by LINGEMANN, AVA
4:24	REBOUND (DEF) by EVERSON, MACKENZIE			
4:15	MISSED 2PTR by AKIN, OLIVIA			
4:15				REBOUND (DEF) by BUENNING, ANNALISE
3:57				MISSED 3PTR by STORM, MARISSA
3:57				REBOUND (OFF) by POLLREISZ, ELLA
3:53	FOUL (PERSONAL) by AKIN, OLIVIA			
3:53	SUB OUT: AKIN, OLIVIA			
3:53	SUB IN: LARSON, KAILYN			
3:53				SUB OUT: BUENNING, ANNALISE
3:53				SUB IN: KLOCK, LEAH
3:41				MISSED 2PTR by LINGEMANN, AVA
3:41	REBOUND (DEF) by EVERSON, MACKENZIE			
3:23	TURNOVER by KNECHT, PRESLEY			
3:23				STEAL by POLLREISZ, ELLA
2:53	STEAL by HORN, MADELINE			
2:53				TURNOVER by KLOCK, LEAH
2:33	GOOD! 2PTR by HORN, MADELINE [PNT]	24-18	H 6	
2:02		27-18	H 9	GOOD! 3PTR by STORM, MARISSA
2:02				ASSIST by LINGEMANN, AVA
1:46	MISSED 2PTR by KNECHT, PRESLEY			
1:46				REBOUND (DEF) by STORM, MARISSA
1:19		30-18	H 12	GOOD! 3PTR by BARTSCHER, MADELINE
1:19				ASSIST by LINGEMANN, AVA
0:54	TURNOVER by KNECHT, PRESLEY			
0:54				STEAL by STORM, MARISSA
0:51	FOUL (PERSONAL) by EVERSON, MACKENZIE			
0:51	SUB OUT: KNECHT, PRESLEY			
0:51	SUB IN: HAUG, GRACIE			
0:34		33-18	H 15	GOOD! 3PTR by LINGEMANN, AVA
0:34				ASSIST by POLLREISZ, ELLA
0:20				FOUL (PERSONAL) by BARTSCHER, MADELINE
0:16	MISSED 3PTR by ARCHER, LYNDSEY			
0:16				REBOUND (DEF) by POLLREISZ, ELLA
0:00				MISSED 3PTR by STORM, MARISSA

## Castlewood 32, Ethan 44

Points (This Period)	CAS	ETH
In the Paint	4	0
Off Turns	2	3
2nd Chance	0	0
Fast Break	0	0
Bench	0	3
Per Poss	0.636 3/11	0.818 3/11

**Official Play-By-Play**  
**Castlewood vs Ethan**  
**Fourth Quarter**  
**March 09, 2023 at Huron, SD**



**Period 4**

**Starters:**

**Castlewood:** 3 KNECHT,PRESLEY; 5 HORN,MADELINE; 10 EVERSON,MACKENZIE; 11 AKIN,OLIVIA; 23 ARCHER,LYNDSEY;

**Ethan:** 12 STORM,MARISSA; 14 LINGEMANN,AVA; 22 POLLREISZ,ELLA; 32 BUENNING,ANNALISE; 42 CLAUSON,ASHLEY;

Time	VISITORS: Castlewood	Score	Margin	HOME: Ethan
8:00				SUB STARTER: KLOCK, LEAH
8:00				SUB STARTER: STORM, MARISSA
8:00				SUB STARTER: LINGEMANN, AVA
8:00				SUB STARTER: POLLREISZ, ELLA
8:00				SUB STARTER: BARTSCHER, MADELINE
8:00	SUB STARTER: KNECHT, PRESLEY			
8:00	SUB STARTER: AKIN, OLIVIA			
8:00	SUB STARTER: HORN, MADELINE			
8:00	SUB STARTER: ARCHER, LYNDSEY			
8:00	SUB STARTER: EVERSON, MACKENZIE			
7:51				STEAL by STORM, MARISSA
7:51	TURNOVER by ARCHER, LYNDSEY			
7:35		36-18	H 18	GOOD! 3PTR by BARTSCHER, MADELINE
7:35				ASSIST by LINGEMANN, AVA
7:18	MISSED 3PTR by ARCHER, LYNDSEY			
7:18				REBOUND (DEF) by TEAM
7:18	TIMEOUT TEAM			
7:18	SUB OUT: AKIN, OLIVIA			
7:18	SUB OUT: ARCHER, LYNDSEY			
7:18	SUB IN: HAUG, GRACIE			
7:18	SUB IN: LARSON, KAILYN			
7:10				TURNOVER by POLLREISZ, ELLA
7:10	STEAL by TEAM			
6:51	GOOD! 3PTR by HORN, MADELINE	36-21	H 15	
6:51	ASSIST by HAUG, GRACIE			
6:22		39-21	H 18	GOOD! 3PTR by BARTSCHER, MADELINE
6:22				ASSIST by LINGEMANN, AVA
6:07	GOOD! 3PTR by HORN, MADELINE	39-24	H 15	
6:07	ASSIST by LARSON, KAILYN			
6:05	TIMEOUT TEAM			
6:05	SUB OUT: HAUG, GRACIE			
6:05	SUB IN: AKIN, OLIVIA			
5:39				TIMEOUT TEAM
5:28				MISSED 3PTR by LINGEMANN, AVA
5:28	REBOUND (DEF) by TEAM			
5:17	GOOD! 3PTR by KNECHT, PRESLEY	39-27	H 12	
5:02				MISSED 2PTR by POLLREISZ, ELLA
5:02	REBOUND (DEF) by EVERSON, MACKENZIE			
4:47	GOOD! 3PTR by EVERSON, MACKENZIE	39-30	H 9	
4:47	ASSIST by HORN, MADELINE			
4:33	FOUL (PERSONAL) by EVERSON, MACKENZIE			
4:11				MISSED 3PTR by BARTSCHER, MADELINE
4:11				REBOUND (OFF) by STORM, MARISSA
3:54				TURNOVER by BARTSCHER, MADELINE
3:54	STEAL by HORN, MADELINE			
3:36				MISSED 2PTR by POLLREISZ, ELLA
3:36				REBOUND (OFF) by POLLREISZ, ELLA
3:32	MISSED 3PTR by EVERSON, MACKENZIE			
3:32	REBOUND (OFF) by TEAM			
3:24	MISSED 3PTR by HORN, MADELINE			
3:24				REBOUND (DEF) by POLLREISZ, ELLA
3:15				MISSED 2PTR by LINGEMANN, AVA
3:15	REBOUND (DEF) by KNECHT, PRESLEY			
2:56				TURNOVER by LINGEMANN, AVA
2:56	STEAL by TEAM			
2:54	MISSED 3PTR by EVERSON, MACKENZIE			
2:54	REBOUND (OFF) by TEAM			
2:37	GOOD! 2PTR by HORN, MADELINE [PNT]	39-32	H 7	
2:37	ASSIST by LARSON, KAILYN			
2:30	TURNOVER by HORN, MADELINE			
2:30				STEAL by LINGEMANN, AVA
2:15	STEAL by AKIN, OLIVIA			
2:15				TURNOVER by TEAM
2:15				FOUL (PERSONAL) by LINGEMANN, AVA
2:15				TIMEOUT TEAM

Time	VISITORS: Castlewood	Score	Margin	HOME: Ethan
2:09	STEAL by EVERSON, MACKENZIE			
2:09				TURNOVER by BARTSCHER, MADELINE
2:05	GOOD! 2PTR by EVERSON, MACKENZIE [PNT]	39-34	H 5	
2:00	GOOD! 2PTR by HORN, MADELINE [PNT]	39-34	H 5	
2:00	ASSIST by EVERSON, MACKENZIE			
1:42	FOUL (PERSONAL) by AKIN, OLIVIA			
1:37				TIMEOUT TEAM
1:37				SUB OUT: KLOCK, LEAH
1:37				SUB IN: SONNE, CHEYANNE
1:36		41-34	H 7	GOOD! 2PTR by BARTSCHER, MADELINE [PNT]
1:36				ASSIST by POLLREISZ, ELLA
1:32	SUB OUT: AKIN, OLIVIA			
1:32	SUB IN: ARCHER, LYNDSEY			
1:17	TIMEOUT TEAM			
1:12				MISSED 3PTR by STORM, MARISSA
1:12	REBOUND (DEF) by LARSON, KAILYN			
1:00	TURNOVER by TEAM			
1:00				STEAL by TEAM
0:47	GOOD! 3PTR by KNECHT, PRESLEY	39-37	H 2	
0:36	FOUL (PERSONAL) by EVERSON, MACKENZIE			
0:36				TIMEOUT TEAM
0:19				MISSED 3PTR by LINGEMANN, AVA
0:19				REBOUND (OFF) by SONNE, CHEYANNE
0:16				TIMEOUT TEAM
0:16				SUB OUT: SONNE, CHEYANNE
0:16				SUB IN: KLOCK, LEAH
0:16	TIMEOUT TEAM			
0:16	SUB OUT: ARCHER, LYNDSEY			
0:16	SUB IN: AKIN, OLIVIA			
0:12				MISSED 2PTR by LINGEMANN, AVA
0:12				REBOUND (OFF) by KLOCK, LEAH
0:09				MISSED 2PTR by BARTSCHER, MADELINE
0:09				REBOUND (OFF) by TEAM
0:09				TIMEOUT TEAM
0:07				MISSED 2PTR by LINGEMANN, AVA
0:07	FOUL (PERSONAL) by EVERSON, MACKENZIE			
0:07		40-37	H 3	GOOD! FT by LINGEMANN, AVA
0:07				MISSED FT by LINGEMANN, AVA
0:06		42-37	H 5	GOOD! 2PTR by KLOCK, LEAH [PNT]
0:06	FOUL (PERSONAL) by HORN, MADELINE			
0:06	TIMEOUT TEAM			
0:06				MISSED FT by KLOCK, LEAH
0:05				REBOUND (OFF) by POLLREISZ, ELLA
0:05	REBOUND (DEF) by KNECHT, PRESLEY			
0:02				FOUL (PERSONAL) by KLOCK, LEAH
0:02	TIMEOUT TEAM			
0:02	SUB OUT: AKIN, OLIVIA			
0:02	SUB IN: ARCHER, LYNDSEY			
0:00	MISSED 3PTR by EVERSON, MACKENZIE			

### Castlewood 53, Ethan 55

Points (This Period)	CAS	ETH
In the Paint	6	4
Off Turns	9	3
2nd Chance	0	3
Fast Break	0	0
Bench	0	10
Per Poss	1.500 8/14	0.786 5/14

**Official Scoring/Possession Reference Chart**  
**Castlewood vs Ethan**  
**Period 1**  
**March 09, 2023 at Huron, SD**



**Period 1**

**Starters:**

**Castlewood:** 3 KNECHT,PRESLEY; 5 HORN,MADELINE; 10 EVERSON,MACKENZIE; 11 AKIN,OLIVIA; 23 ARCHER,LYNDSEY;  
**Ethan:** 12 STORM,MARISSA; 14 LINGEMANN,AVA; 22 POLLREISZ,ELLA; 32 BUENNING,ANNALISE; 42 CLAUSON,ASHLEY;

Time	VISITORS: Castlewood	Score	Margin	HOME: Ethan
6:52		3-0	H 3	GOOD! 3PTR by STORM, MARISSA
6:27	GOOD! 2PTR by HORN, MADELINE [PNT]	3-2	H 1	
5:57	GOOD! 3PTR by ARCHER, LYNDSEY	3-5	V 2	
5:08	GOOD! 2PTR by EVERSON, MACKENZIE [PNT]	3-7	V 4	
3:37		6-7	V 1	GOOD! 3PTR by BARTSCHER, MADELINE
3:08	GOOD! 2PTR by HORN, MADELINE [PNT]	6-9	V 3	
2:27		9-9	T	GOOD! 3PTR by STORM, MARISSA
2:02	GOOD! 3PTR by LARSON, KAILYN	9-12	V 3	
0:49	GOOD! 2PTR by EVERSON, MACKENZIE [PNT]	9-14	V 5	
0:02		11-14	V 3	GOOD! 2PTR by BUENNING, ANNALISE [PNT]

**Castlewood 14, Ethan 11**

**Official Scoring/Possession Reference Chart**  
**Castlewood vs Ethan**  
**Period 2**  
**March 09, 2023 at Huron, SD**



**Period 2**

**Starters:**

**Castlewood:** 3 KNECHT,PRESLEY; 5 HORN,MADELINE; 10 EVERSON,MACKENZIE; 11 AKIN,OLIVIA; 23 ARCHER,LYNDSEY;  
**Ethan:** 12 STORM,MARISSA; 14 LINGEMANN,AVA; 22 POLLREISZ,ELLA; 32 BUENNING,ANNALISE; 42 CLAUSON,ASHLEY;

Time	VISITORS: Castlewood	Score	Margin	HOME: Ethan
7:38		2-0	H 2	GOOD! 2PTR by LINGEMANN, AVA [PNT]
7:19	GOOD! 2PTR by KNECHT, PRESLEY [PNT]	2-2	T	
6:56	GOOD! 3PTR by HORN, MADELINE	2-5	V 3	
5:51		5-5	T	GOOD! 3PTR by LINGEMANN, AVA
5:36	GOOD! FT by HORN, MADELINE	5-6	V 1	
5:20		8-6	H 2	GOOD! 3PTR by STORM, MARISSA
4:51		11-6	H 5	GOOD! 3PTR by STORM, MARISSA
4:34	GOOD! 2PTR by EVERSON, MACKENZIE [PNT]	11-8	H 3	
4:04		14-8	H 6	GOOD! 3PTR by BARTSCHER, MADELINE
3:34	GOOD! 3PTR by ARCHER, LYNDSEY	14-11	H 3	
3:22		16-11	H 5	GOOD! 2PTR by BUENNING, ANNALISE [PNT]
2:47		19-11	H 8	GOOD! 3PTR by LINGEMANN, AVA
2:10		21-11	H 10	GOOD! 2PTR by BARTSCHER, MADELINE [PNT]
1:06		24-11	H 13	GOOD! 3PTR by LINGEMANN, AVA

**Castlewood 25, Ethan 35**

Official Scoring/Possession Reference Chart

Castlewood vs Ethan

Period 3

March 09, 2023 at Huron, SD



**Period 3**

**Starters:**

**Castlewood:** 3 KNECHT,PRESLEY; 5 HORN,MADELINE; 10 EVERSON,MACKENZIE; 11 AKIN,OLIVIA; 23 ARCHER,LYNDSEY;

**Ethan:** 12 STORM,MARISSA; 14 LINGEMANN,AVA; 22 POLLREISZ,ELLA; 32 BUENNING,ANNALISE; 42 CLAUSON,ASHLEY;

Time	VISITORS: Castlewood	Score	Margin	HOME: Ethan
5:58	GOOD! 3PTR by AKIN, OLIVIA	24-14	H 10	
4:50	GOOD! 2PTR by HORN, MADELINE [PNT]	24-16	H 8	
2:33	GOOD! 2PTR by HORN, MADELINE [PNT]	24-18	H 6	
2:02		27-18	H 9	GOOD! 3PTR by STORM, MARISSA
1:19		30-18	H 12	GOOD! 3PTR by BARTSCHER, MADELINE
0:34		33-18	H 15	GOOD! 3PTR by LINGEMANN, AVA

**Castlewood 32, Ethan 44**

**Official Scoring/Possession Reference Chart**  
**Castlewood vs Ethan**  
**Period 4**  
**March 09, 2023 at Huron, SD**



**Period 4**

**Starters:**

**Castlewood:** 3 KNECHT,PRESLEY; 5 HORN,MADELINE; 10 EVERSON,MACKENZIE; 11 AKIN,OLIVIA; 23 ARCHER,LYNDSEY;  
**Ethan:** 12 STORM,MARISSA; 14 LINGEMANN,AVA; 22 POLLREISZ,ELLA; 32 BUENNING,ANNALISE; 42 CLAUSON,ASHLEY;

Time	VISITORS: Castlewood	Score	Margin	HOME: Ethan
7:35		36-18	H 18	GOOD! 3PTR by BARTSCHER, MADELINE
6:51	GOOD! 3PTR by HORN, MADELINE	36-21	H 15	
6:22		39-21	H 18	GOOD! 3PTR by BARTSCHER, MADELINE
6:07	GOOD! 3PTR by HORN, MADELINE	39-24	H 15	
5:17	GOOD! 3PTR by KNECHT, PRESLEY	39-27	H 12	
4:47	GOOD! 3PTR by EVERSON, MACKENZIE	39-30	H 9	
2:37	GOOD! 2PTR by HORN, MADELINE [PNT]	39-32	H 7	
2:05	GOOD! 2PTR by EVERSON, MACKENZIE [PNT]	39-34	H 5	
2:00	GOOD! 2PTR by HORN, MADELINE [PNT]	39-34	H 5	
1:36		41-34	H 7	GOOD! 2PTR by BARTSCHER, MADELINE [PNT]
0:47	GOOD! 3PTR by KNECHT, PRESLEY	39-37	H 2	
0:07		40-37	H 3	GOOD! FT by LINGEMANN, AVA
0:06		42-37	H 5	GOOD! 2PTR by KLOCK, LEAH [PNT]

**Castlewood 53, Ethan 55**



**Official Substitutions Log  
Castlewood vs Ethan  
Period 1  
March 09, 2023 at Huron, SD**



<b>VISITORS: Castlewood</b>	<b>Time</b>	<b>Score</b>	<b>HOME: Ethan</b>
3 KNECHT,PRESLEY			12 STORM,MARISSA
5 HORN,MADELINE			14 LINGEMANN,AVA
10 EVERSON,MACKENZIE			22 POLLREISZ,ELLA
11 AKIN,OLIVIA			32 BUENNING,ANNALISE
23 ARCHER,LYNDSEY			42 CLAUSON,ASHLEY
SUB STARTER: 3 KNECHT,PRESLEY	8:00	-	
SUB STARTER: 5 HORN,MADELINE	8:00		
SUB STARTER: 10 EVERSON,MACKENZIE	8:00		
SUB STARTER: 11 AKIN,OLIVIA	8:00		
SUB STARTER: 23 ARCHER,LYNDSEY	8:00		
	8:00		SUB STARTER: STORM,MARISSA
	8:00		SUB STARTER: LINGEMANN,AVA
	8:00		SUB STARTER: POLLREISZ,ELLA
	8:00		SUB STARTER: BUENNING,ANNALISE
	8:00		SUB STARTER: CLAUSON,ASHLEY
SUB OUT: 23 ARCHER,LYNDSEY	5:49	5-3	
SUB IN: 14 LARSON,KAILYN	5:49		
SUB OUT: 11 AKIN,OLIVIA	5:39	5-3	
SUB IN: 23 ARCHER,LYNDSEY	5:39		
SUB OUT: 23 ARCHER,LYNDSEY	3:52	7-3	
SUB IN: 22 HAUG,GRACIE	3:52		
	3:52		SUB OUT: BUENNING,ANNALISE
	3:52		SUB IN: KLOCK,LEAH
SUB OUT: 22 HAUG,GRACIE	1:00	12-9	
SUB OUT: 14 LARSON,KAILYN	1:00		
SUB IN: 23 ARCHER,LYNDSEY	1:00		
SUB IN: 11 AKIN,OLIVIA	1:00		
	1:00		SUB OUT: BARTSCHER,MADELINE
	1:00		SUB IN: BUENNING,ANNALISE
	0:00	14-11	SUB OUT: CLAUSON,ASHLEY
	0:00		SUB IN: BARTSCHER,MADELINE

**Castlewood 14, Ethan 11**

**Official Substitutions Log**  
**Castlewood vs Ethan**  
**Period 2**  
**March 09, 2023 at Huron, SD**



<b>VISITORS: Castlewood</b>	<b>Time</b>	<b>Score</b>	<b>HOME: Ethan</b>
3 KNECHT,PRESLEY			12 STORM,MARISSA
5 HORN,MADELINE			14 LINGEMANN,AVA
10 EVERSON,MACKENZIE			22 POLLREISZ,ELLA
11 AKIN,OLIVIA			32 BUENNING,ANNALISE
23 ARCHER,LYNDSEY			42 CLAUSON,ASHLEY
SUB STARTER: 3 KNECHT,PRESLEY	8:00	-	
SUB STARTER: 5 HORN,MADELINE	8:00		
SUB STARTER: 10 EVERSON,MACKENZIE	8:00		
SUB STARTER: 11 AKIN,OLIVIA	8:00		
SUB STARTER: 23 ARCHER,LYNDSEY	8:00		
	8:00		SUB STARTER: BARTSCHER,MADELINE
	8:00		SUB STARTER: KLOCK,LEAH
	8:00		SUB STARTER: STORM,MARISSA
	8:00		SUB STARTER: POLLREISZ,ELLA
	8:00		SUB STARTER: LINGEMANN,AVA
SUB OUT: 11 AKIN,OLIVIA	6:16	5-2	
SUB IN: 14 LARSON,KAILYN	6:16		
	3:50	8-14	SUB OUT: KLOCK,LEAH
	3:50		SUB IN: BUENNING,ANNALISE
SUB OUT: 23 ARCHER,LYNDSEY	1:23	11-21	
SUB IN: 22 HAUG,GRACIE	1:23		

**Castlewood 25, Ethan 35**

**Official Substitutions Log**  
**Castlewood vs Ethan**  
**Period 3**  
**March 09, 2023 at Huron, SD**



VISITORS: Castlewood	Time	Score	HOME: Ethan
3 KNECHT,PRESLEY			12 STORM,MARISSA
5 HORN,MADELINE			14 LINGEMANN,AVA
10 EVERSON,MACKENZIE			22 POLLREISZ,ELLA
11 AKIN,OLIVIA			32 BUENNING,ANNALISE
23 ARCHER,LYNDSEY			42 CLAUSON,ASHLEY
	8:00	-	SUB STARTER: STORM,MARISSA
	8:00		SUB STARTER: LINGEMANN,AVA
	8:00		SUB STARTER: POLLREISZ,ELLA
	8:00		SUB STARTER: BUENNING,ANNALISE
	8:00		SUB STARTER: CLAUSON,ASHLEY
SUB STARTER: 3 KNECHT,PRESLEY	8:00		
SUB STARTER: 5 HORN,MADELINE	8:00		
SUB STARTER: 10 EVERSON,MACKENZIE	8:00		
SUB STARTER: 11 AKIN,OLIVIA	8:00		
SUB STARTER: 23 ARCHER,LYNDSEY	8:00		
	7:34	-	SUB OUT: CLAUSON,ASHLEY
	7:34		SUB IN: BARTSCHER,MADELINE
SUB OUT: 11 AKIN,OLIVIA	3:53	16-24	
SUB IN: 14 LARSON,KAILYN	3:53		
	3:53		SUB OUT: BUENNING,ANNALISE
	3:53		SUB IN: KLOCK,LEAH
SUB OUT: 3 KNECHT,PRESLEY	0:51	18-30	
SUB IN: 22 HAUG,GRACIE	0:51		

**Castlewood 32, Ethan 44**

**Official Substitutions Log  
Castlewood vs Ethan  
Period 4  
March 09, 2023 at Huron, SD**



<b>VISITORS: Castlewood</b>	<b>Time</b>	<b>Score</b>	<b>HOME: Ethan</b>
3 KNECHT,PRESLEY			12 STORM,MARISSA
5 HORN,MADELINE			14 LINGEMANN,AVA
10 EVERSON,MACKENZIE			22 POLLREISZ,ELLA
11 AKIN,OLIVIA			32 BUENNING,ANNALISE
23 ARCHER,LYNDSEY			42 CLAUSON,ASHLEY
	8:00	-	SUB STARTER: KLOCK,LEAH
	8:00		SUB STARTER: STORM,MARISSA
	8:00		SUB STARTER: LINGEMANN,AVA
	8:00		SUB STARTER: POLLREISZ,ELLA
	8:00		SUB STARTER: BARTSCHER,MADELINE
SUB STARTER: 3 KNECHT,PRESLEY	8:00		
SUB STARTER: 11 AKIN,OLIVIA	8:00		
SUB STARTER: 5 HORN,MADELINE	8:00		
SUB STARTER: 23 ARCHER,LYNDSEY	8:00		
SUB STARTER: 10 EVERSON,MACKENZIE	8:00		
SUB OUT: 11 AKIN,OLIVIA	7:18	18-36	
SUB OUT: 23 ARCHER,LYNDSEY	7:18		
SUB IN: 22 HAUG,GRACIE	7:18		
SUB IN: 14 LARSON,KAILYN	7:18		
SUB OUT: 22 HAUG,GRACIE	6:05	24-39	
SUB IN: 11 AKIN,OLIVIA	6:05		
	1:37	34-39	SUB OUT: KLOCK,LEAH
	1:37		SUB IN: SONNE,CHEYANNE
SUB OUT: 11 AKIN,OLIVIA	1:32	34-41	
SUB IN: 23 ARCHER,LYNDSEY	1:32		
	0:16	37-39	SUB OUT: SONNE,CHEYANNE
	0:16		SUB IN: KLOCK,LEAH
SUB OUT: 23 ARCHER,LYNDSEY	0:16		
SUB IN: 11 AKIN,OLIVIA	0:16		
SUB OUT: 11 AKIN,OLIVIA	0:02	37-42	
SUB IN: 23 ARCHER,LYNDSEY	0:02		

**Castlewood 53, Ethan 55**

**Official Shot Chart**  
**Castlewood vs Ethan**  
**PERIOD 1 Shots**  
**March 09, 2023 at Huron, SD**



**Ethan**

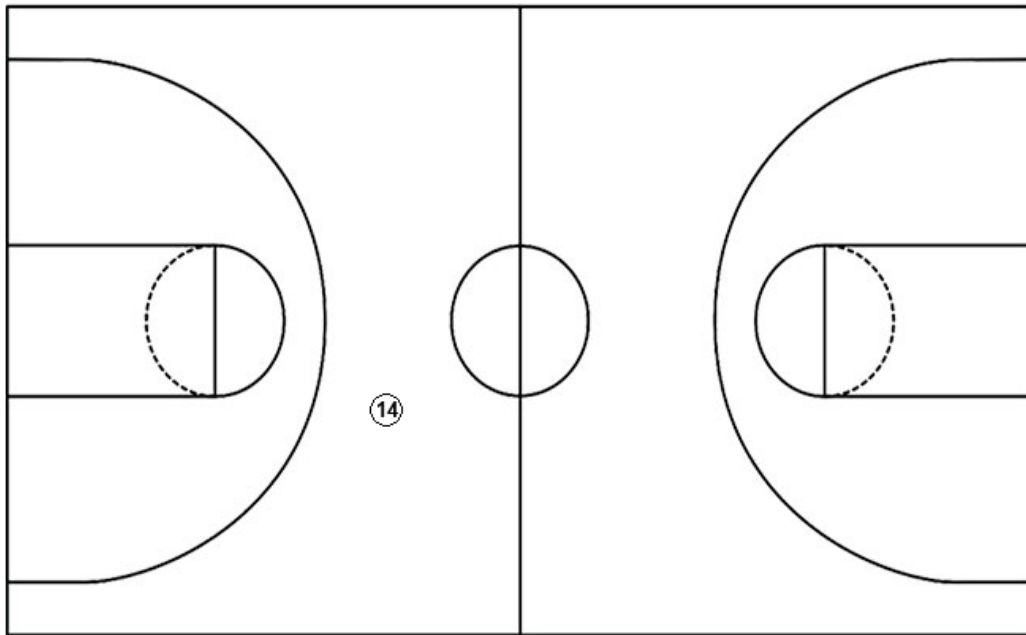
**Castlewood**

Layups

Layups

Dunks

Dunks



<b>ETH : Period 1</b>	<b>Made</b>	<b>Att</b>	<b>Pct</b>
Layups	0	0	0
Dunks	0	0	0
2PT Field Goals	1	5	20.0
3PT Field Goals	3	11	27.3
<b>Total Field Goals</b>	<b>4</b>	<b>16</b>	<b>25.0</b>

<b>CAS : Period 1</b>	<b>Made</b>	<b>Att</b>	<b>Pct</b>
Layups	0	0	0
Dunks	0	0	0
2PT Field Goals	4	4	100.0
3PT Field Goals	2	5	40.0
<b>Total Field Goals</b>	<b>6</b>	<b>9</b>	<b>66.7</b>

**Official Shot Chart**  
**Castlewood vs Ethan**  
**PERIOD 2 Shots**  
**March 09, 2023 at Huron, SD**



**Ethan**

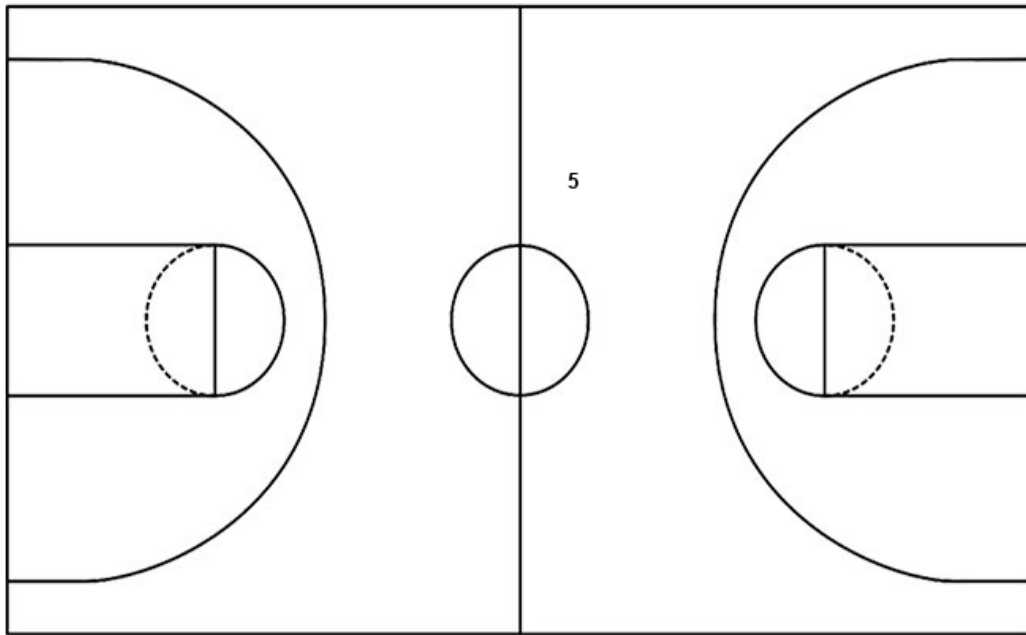
**Castlewood**

Layups

Layups

Dunks

Dunks



<b>ETH : Period 2</b>	<b>Made</b>	<b>Att</b>	<b>Pct</b>
Layups	0	0	0
Dunks	0	0	0
2PT Field Goals	3	4	75.0
3PT Field Goals	6	8	75.0
<b>Total Field Goals</b>	<b>9</b>	<b>12</b>	<b>75.0</b>

<b>CAS : Period 2</b>	<b>Made</b>	<b>Att</b>	<b>Pct</b>
Layups	0	0	0
Dunks	0	0	0
2PT Field Goals	2	6	33.3
3PT Field Goals	2	5	40.0
<b>Total Field Goals</b>	<b>4</b>	<b>11</b>	<b>36.4</b>

**Official Shot Chart**  
**Castlewood vs Ethan**  
**PERIOD 3 Shots**  
**March 09, 2023 at Huron, SD**



**Ethan**

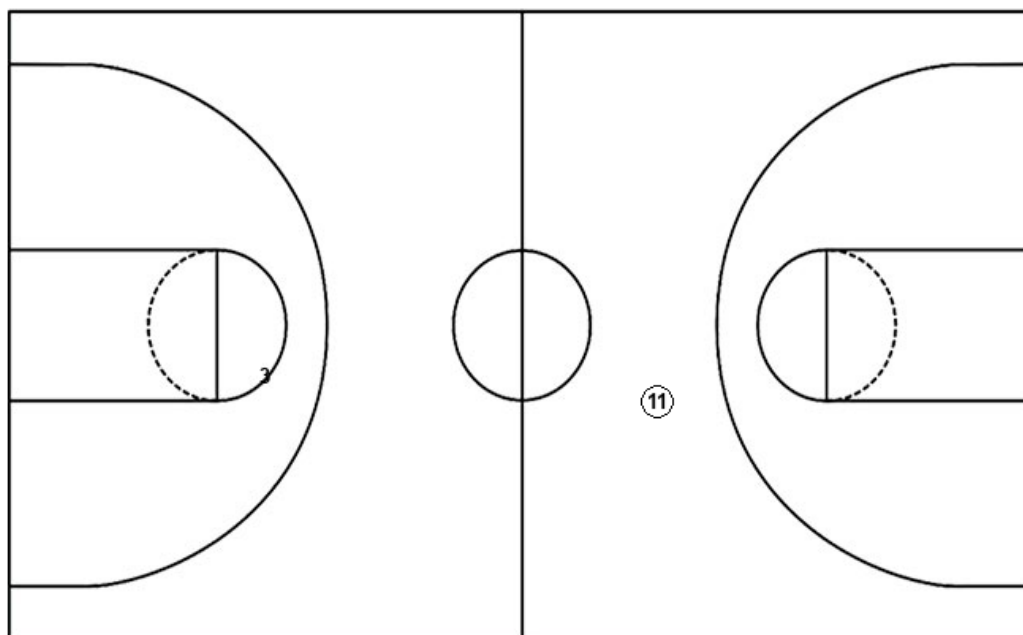
**Castlewood**

Layups

Layups

Dunks

Dunks



<b>ETH : Period 3</b>	<b>Made</b>	<b>Att</b>	<b>Pct</b>
Layups	0	0	0
Dunks	0	0	0
2PT Field Goals	0	2	00.0
3PT Field Goals	3	8	37.5
<b>Total Field Goals</b>	<b>3</b>	<b>10</b>	<b>30.0</b>

<b>CAS : Period 3</b>	<b>Made</b>	<b>Att</b>	<b>Pct</b>
Layups	0	0	0
Dunks	0	0	0
2PT Field Goals	2	4	50.0
3PT Field Goals	1	4	25.0
<b>Total Field Goals</b>	<b>3</b>	<b>8</b>	<b>37.5</b>

**Official Shot Chart**  
**Castlewood vs Ethan**  
**PERIOD 4 Shots**  
**March 09, 2023 at Huron, SD**



**Ethan**

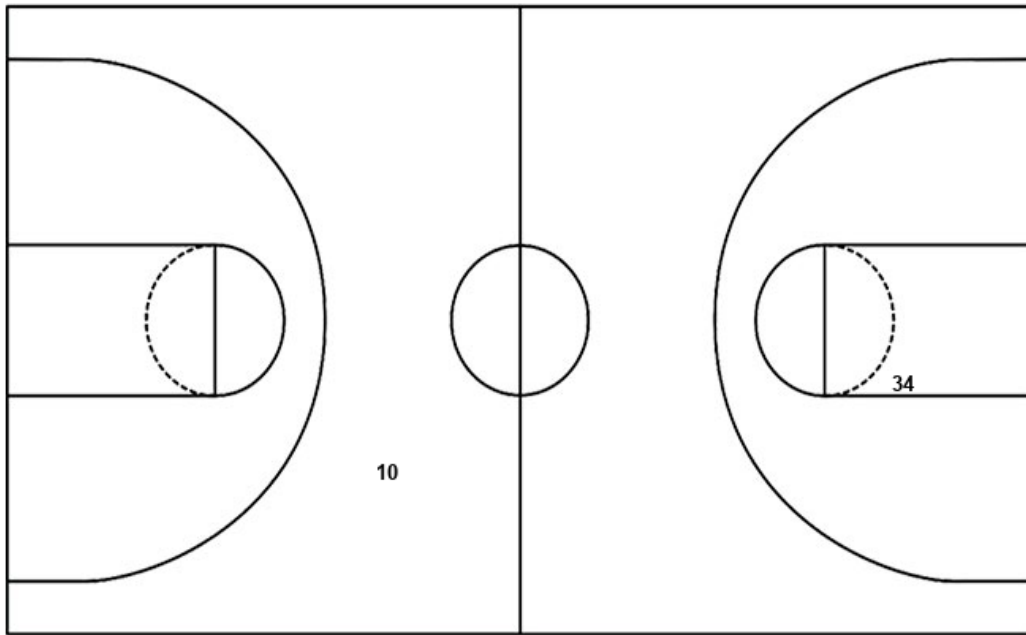
**Castlewood**

Layups

Layups

Dunks

Dunks

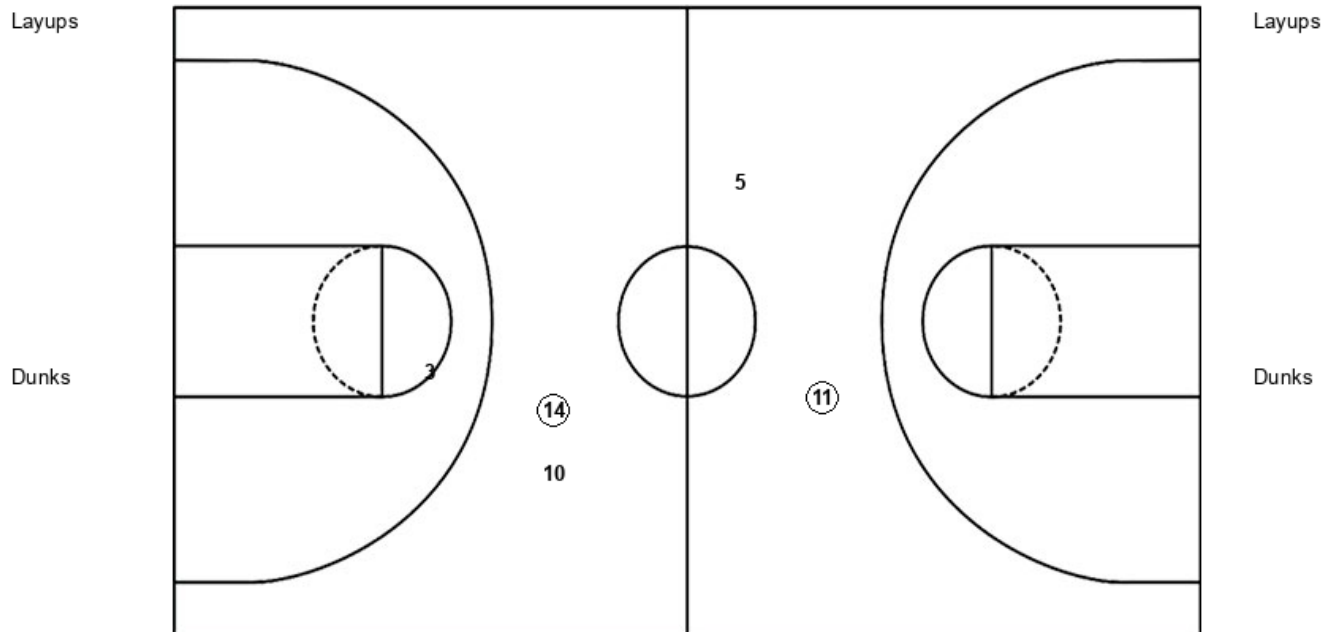


<b>ETH : Period 4</b>	<b>Made</b>	<b>Att</b>	<b>Pct</b>
Layups	0	0	0
Dunks	0	0	0
2PT Field Goals	2	8	25.0
3PT Field Goals	2	6	33.3
<b>Total Field Goals</b>	<b>4</b>	<b>14</b>	<b>28.6</b>

<b>CAS : Period 4</b>	<b>Made</b>	<b>Att</b>	<b>Pct</b>
Layups	0	0	0
Dunks	0	0	0
2PT Field Goals	3	3	100.0
3PT Field Goals	5	10	50.0
<b>Total Field Goals</b>	<b>8</b>	<b>13</b>	<b>61.5</b>



**Official Shot Chart**  
**Castlewood vs Ethan**  
**Castlewood Team Shots**  
**March 09, 2023 at Huron, SD**



CAS : Period 1	Made	Att	Pct
Layups	0	0	0
Dunks	0	0	0
2PT Field Goals	4	4	100.0
3PT Field Goals	2	5	40.0
<b>Total Field Goals</b>	<b>6</b>	<b>9</b>	<b>66.7</b>

CAS : Period 2	Made	Att	Pct
Layups	0	0	0
Dunks	0	0	0
2PT Field Goals	2	6	33.3
3PT Field Goals	2	5	40.0
<b>Total Field Goals</b>	<b>4</b>	<b>11</b>	<b>36.4</b>

CAS : Period 3	Made	Att	Pct
Layups	0	0	0
Dunks	0	0	0
2PT Field Goals	2	4	50.0
3PT Field Goals	1	4	25.0
<b>Total Field Goals</b>	<b>3</b>	<b>8</b>	<b>37.5</b>

CAS : Period 4	Made	Att	Pct
Layups	0	0	0
Dunks	0	0	0
2PT Field Goals	3	3	100.0
3PT Field Goals	5	10	50.0
<b>Total Field Goals</b>	<b>8</b>	<b>13</b>	<b>61.5</b>

**Official Shot Chart**  
**Castlewood vs Ethan**  
**Ethan Team Shots**  
**March 09, 2023 at Huron, SD**

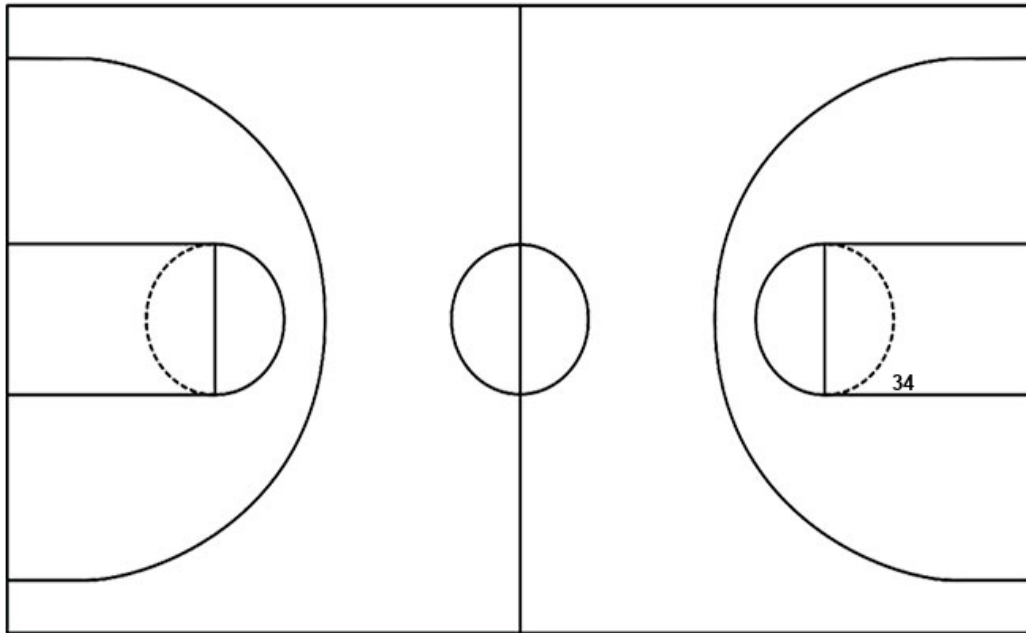


Layups

Layups

Dunks

Dunks



<b>ETH : Period 1</b>	<b>Made</b>	<b>Att</b>	<b>Pct</b>
Layups	0	0	0
Dunks	0	0	0
2PT Field Goals	1	5	20.0
3PT Field Goals	3	11	27.3
<b>Total Field Goals</b>	<b>4</b>	<b>16</b>	<b>25.0</b>

<b>ETH : Period 2</b>	<b>Made</b>	<b>Att</b>	<b>Pct</b>
Layups	0	0	0
Dunks	0	0	0
2PT Field Goals	3	4	75.0
3PT Field Goals	6	8	75.0
<b>Total Field Goals</b>	<b>9</b>	<b>12</b>	<b>75.0</b>

<b>ETH : Period 3</b>	<b>Made</b>	<b>Att</b>	<b>Pct</b>
Layups	0	0	0
Dunks	0	0	0
2PT Field Goals	0	2	00.0
3PT Field Goals	3	8	37.5
<b>Total Field Goals</b>	<b>3</b>	<b>10</b>	<b>30.0</b>

<b>ETH : Period 4</b>	<b>Made</b>	<b>Att</b>	<b>Pct</b>
Layups	0	0	0
Dunks	0	0	0
2PT Field Goals	2	8	25.0
3PT Field Goals	2	6	33.3
<b>Total Field Goals</b>	<b>4</b>	<b>14</b>	<b>28.6</b>