

FINAL SCORE



Sisseton

55



Red Cloud

47

2023 SDHSAA State Basketball Championships

March 11, 2023 • ,



FINAL STATISTICS

Official Box Score
Sisseton vs Red Cloud
Game Totals -- Final Statistics
March 11, 2023 at ,



Sisseton 55

Record:

No.	Player	S	Pts	FG	3FG	FT	OR	DR	TR	PF	A	TO	Blk	Stl	Min	+/-
10	LEVERSON, HANNAH	*	9	3-14	1-6	2-2	3	2	5	0	3	7	0	1	24	8
20	RICE, RUBY		3	1-4	1-1	0-1	2	3	5	1	1	1	0	1	16	7
22	NIELSEN, EMMALEE	*	8	3-6	0-1	2-2	0	1	1	0	3	6	0	0	24	6
44	LANGAGER, CHLOE	*	6	3-3	0-0	0-0	2	6	8	0	1	0	0	0	16	4
54	LANGAGER, KRISTA	*	27	12-20	0-0	3-5	4	8	12	3	1	2	0	0	16	4
04	HUFF, RYLIE		2	1-1	0-0	0-0	0	0	0	1	1	0	0	1	8	-1
12	HANSON, KENNEDY		0	0-0	0-0	0-0	0	0	0	0	0	0	0	0		2
34	NELSON, TARA	*	0	0-2	0-1	0-0	0	3	3	1	1	1	0	0	16	4
TOTALS			55	23-50	2-9	7-10	11	27	38	6	11	17	0	3	120	

Shooting By Period

Period	FG	FG%	3FG	3FG%	FT	FT%
Game	23-50	46.0%	2-9	22.2%	7-10	70.0%

Deadball Rebounds: 2,4
Last FG: 3rd-8:00
Largest lead: By at
Technical Fouls: None.

Red Cloud 47

Record:

No.	Player	S	Pts	FG	3FG	FT	OR	DR	TR	PF	A	TO	Blk	Stl	Min	+/-
01	BLOUND, ASHLAN	*	11	4-12	0-1	3-4	2	0	2	0	3	2	0	3	24	-4
02	CARLOW, LOLO	*	9	4-17	1-7	0-0	2	3	5	1	3	1	0	0	24	-8
04	CARLOW, MAIKOLE	*	18	6-13	5-10	1-2	0	2	2	1	2	0	0	2	24	-7
21	FRIDIA, KENNEDY		3	1-3	1-2	0-0	1	5	6	5	0	3	0	1	8	-2
24	LAMONT, ANJAH	*	4	2-6	0-1	0-0	3	2	5	3	0	0	0	0	24	3
00	LEBEAU, JEWELIA		0	0-1	0-1	0-0	0	1	1	4	0	0	0	1		-8
10	GOODBUFFALO, VICTORIA		2	1-3	0-1	0-0	0	0	0	0	0	0	0	0		-4
12	HAAS, ABIGAIL	*	0	0-0	0-0	0-0	0	0	0	0	1	0	0	0	16	1
23	BREWER, RHIONNA		0	0-4	0-2	0-0	1	3	4	1	0	0	0	2		-11
TOTALS			47	18-59	7-25	4-6	9	18	27	15	9	6	0	9	120	

Shooting By Period

Period	FG	FG%	3FG	3FG%	FT	FT%
Game	18-59	30.5%	7-25	28.0%	4-6	66.7%

Deadball Rebounds: 3,1
Last FG: 3rd-8:00
Largest lead: By at
Technical Fouls: None.

Game Notes:

Officials: , ,

Start Time: **18:00:00**
 Postseason Game;

Score	1st	2nd	3rd	TOT
SIS	19	16	20	55
RED	14	11	22	47

SIS led for 0:0. RED led for 0:0.
 Game was tied for 0:0.
 Times tied: 0 Lead Changes: 0

Points	SIS	RED
In the Paint	30	14
Off Turns	6	10
2nd Chance	11	0
Fast Break	0	0
Bench	2	2
Per Poss	0.917 27/60	0.810 20/58

Official Box Score
Sisseton vs Red Cloud
First Half Statistics Only
March 11, 2023 at ,



Sisseton 35

Record:

No.	Player	S	Pts	FG	3FG	FT	OR	DR	TR	PF	A	TO	Blk	Stl	Min	+/-
-----	--------	---	-----	----	-----	----	----	----	----	----	---	----	-----	-----	-----	-----

Shooting By Period

Period	FG	FG%	3FG	3FG%	FT	FT%
1st Half	0-0	0%	0-0	0%	0-0	0%
Game	23-50	46.0%	2-9	22.2%	7-10	70.0%

Deadball Rebounds: 2,4
Last FG Half: SIS 2nd-8:00

Red Cloud 25

Record:

No.	Player	S	Pts	FG	3FG	FT	OR	DR	TR	PF	A	TO	Blk	Stl	Min	+/-
-----	--------	---	-----	----	-----	----	----	----	----	----	---	----	-----	-----	-----	-----

Shooting By Period

Period	FG	FG%	3FG	3FG%	FT	FT%
1st Half	0-0	0%	0-0	0%	0-0	0%
Game	18-59	30.5%	7-25	28.0%	4-6	66.7%

Deadball Rebounds: 3,1
Last FG Half: RED 2nd-8:00

Game Notes:

Officials: , ,

Start Time: **18:00:00**

Postseason Game;

Score	1st	2nd	3rd	TOT
SIS	19	16	20	55
RED	14	11	22	47

Points from (This Period)	SIS	RED
In the Paint	8	2
Off Turns	4	0
2nd Chance	4	0
Fast Break	0	0
Bench	0	0

Official Play-By-Play
Sisseton vs Red Cloud
First Quarter
March 11, 2023 at ,



Period 1

Starters:

Sisseton: 10 LEVERSON, HANNAH; 20 RICE, RUBY; 22 NIELSEN, EMMALEE; 44 LANGAGER, CHLOE; 54 LANGAGER, KRISTA;
Red Cloud: 1 BLOUND, ASHLAN; 2 CARLOW, LOLO; 4 CARLOW, MAIKOLE; 21 FRIDIA, KENNEDY; 24 LAMONT, ANJAH;

Time	VISITORS: Sisseton	Score	Margin	HOME: Red Cloud
8:00	SUB STARTER: LEVERSON, HANNAH			
8:00	SUB STARTER: RICE, RUBY			
8:00	SUB STARTER: NIELSEN, EMMALEE			
8:00	SUB STARTER: LANGAGER, CHLOE			
8:00	SUB STARTER: LANGAGER, KRISTA			
8:00				SUB STARTER: BLOUND, ASHLAN
8:00				SUB STARTER: CARLOW, LOLO
8:00				SUB STARTER: CARLOW, MAIKOLE
8:00				SUB STARTER: FRIDIA, KENNEDY
8:00				SUB STARTER: LAMONT, ANJAH
0:00				MISSED 2PTR by BLOUND, ASHLAN
0:00	REBOUND (DEF) by LEVERSON, HANNAH			
0:00	MISSED 2PTR by RICE, RUBY			
0:00	REBOUND (OFF) by LANGAGER, KRISTA			
0:00	GOOD! 2PTR by LANGAGER, KRISTA [PNT]	0-2	V 2	
0:00	ASSIST by LANGAGER, KRISTA			
0:00	FOUL (PERSONAL) by LANGAGER, KRISTA			
0:00				MISSED 2PTR by CARLOW, MAIKOLE
0:00	REBOUND (DEF) by TEAM			
0:00	FOUL (PERSONAL) by RICE, RUBY			
0:00				MISSED FT by CARLOW, MAIKOLE
0:00		1-2	V 1	GOOD! FT by CARLOW, MAIKOLE
0:00	MISSED 3PTR by LEVERSON, HANNAH			
0:00				REBOUND (DEF) by CARLOW, MAIKOLE
0:00				MISSED 3PTR by BLOUND, ASHLAN
0:00	REBOUND (DEF) by LANGAGER, KRISTA			
0:00	TURNOVER by LEVERSON, HANNAH			
0:00				TURNOVER by FRIDIA, KENNEDY
0:00				FOUL (PERSONAL) by FRIDIA, KENNEDY
0:00	MISSED 2PTR by LEVERSON, HANNAH			
0:00	REBOUND (OFF) by LANGAGER, KRISTA			
0:00	GOOD! 2PTR by LANGAGER, KRISTA [PNT]	1-4	V 3	
0:00				MISSED 2PTR by BLOUND, ASHLAN
0:00	REBOUND (DEF) by TEAM			
0:00	FOUL (PERSONAL) by LANGAGER, KRISTA			
0:00				MISSED FT by BLOUND, ASHLAN
0:00	SUB OUT: LANGAGER, KRISTA			
0:00	SUB IN: NELSON, TARA			
0:00		2-4	V 2	GOOD! FT by BLOUND, ASHLAN
0:00	TURNOVER by NIELSEN, EMMALEE			
0:00				STEAL by FRIDIA, KENNEDY
0:00				TURNOVER by FRIDIA, KENNEDY
0:00	TIMEOUT TEAM			
0:00	TURNOVER by NIELSEN, EMMALEE			
0:00				STEAL by CARLOW, MAIKOLE
0:00	TURNOVER by LEVERSON, HANNAH			
0:00				STEAL by BLOUND, ASHLAN
0:00				MISSED 2PTR by BLOUND, ASHLAN
0:00	REBOUND (DEF) by TEAM			
0:00	FOUL (PERSONAL) by NELSON, TARA			
0:00		3-4	V 1	GOOD! FT by BLOUND, ASHLAN
0:00		4-4	T	GOOD! FT by BLOUND, ASHLAN
0:00				SUB OUT: CARLOW, LOLO
0:00				SUB OUT: LAMONT, ANJAH
0:00				SUB OUT: CARLOW, MAIKOLE
0:00				SUB IN: LEBEAU, JEWELIA
0:00				SUB IN: GOODBUFFALO, VICTORIA
0:00				SUB IN: BREWER, RHIONNA
0:00	GOOD! 3PTR by LEVERSON, HANNAH	4-7	V 3	
0:00		7-7	T	GOOD! 3PTR by FRIDIA, KENNEDY
0:00				FOUL (PERSONAL) by BREWER, RHIONNA
0:00	MISSED 2PTR by LEVERSON, HANNAH			
0:00	REBOUND (OFF) by LEVERSON, HANNAH			
0:00	MISSED 3PTR by LEVERSON, HANNAH			
0:00				REBOUND (DEF) by BREWER, RHIONNA

Time	VISITORS: Sisseton	Score	Margin	HOME: Red Cloud
0:00				MISSED 3PTR by GOODBUFFALO, VICTORIA
0:00				REBOUND (OFF) by CARLOW, LOLO
0:00				SUB OUT: BLOUD, ASHLAN
0:00				SUB IN: CARLOW, LOLO
0:00				MISSED 2PTR by FRIDIA, KENNEDY
0:00				SUB OUT: FRIDIA, KENNEDY
0:00				SUB IN: CARLOW, MAIKOLE
0:00	REBOUND (DEF) by TEAM			
0:00	TURNOVER by NIELSEN, EMMALEE			
0:00				STEAL by LEBEAU, JEWELIA
0:00				SUB OUT: GOODBUFFALO, VICTORIA
0:00				SUB IN: BLOUD, ASHLAN
0:00				MISSED 2PTR by CARLOW, LOLO
0:00	REBOUND (DEF) by RICE, RUBY			
0:00	GOOD! 2PTR by NIELSEN, EMMALEE [PNT]	7-9	V 2	
0:00	ASSIST by LEVERSON, HANNAH			
0:00				TURNOVER by BLOUD, ASHLAN
0:00	STEAL by RICE, RUBY			
0:00	GOOD! 2PTR by NIELSEN, EMMALEE [PNT]	7-11	V 4	
0:00		9-11	V 2	GOOD! 2PTR by BLOUD, ASHLAN [PNT]
0:00	SUB OUT: LANGAGER, CHLOE			
0:00	SUB IN: LANGAGER, KRISTA			
0:00	MISSED 2PTR by RICE, RUBY			
0:00				REBOUND (DEF) by BREWER, RHIONNA
0:00				MISSED 2PTR by CARLOW, LOLO
0:00	REBOUND (DEF) by LANGAGER, KRISTA			
0:00	GOOD! 2PTR by NIELSEN, EMMALEE	9-13	V 4	
0:00				MISSED 3PTR by CARLOW, MAIKOLE
0:00				REBOUND (OFF) by BLOUD, ASHLAN
0:00	GOOD! 2PTR by LANGAGER, KRISTA	9-15	V 6	
0:00	ASSIST by NIELSEN, EMMALEE			
0:00				FOUL (PERSONAL) by LEBEAU, JEWELIA
0:00				SUB OUT: BREWER, RHIONNA
0:00				SUB OUT: LEBEAU, JEWELIA
0:00				SUB IN: LAMONT, ANJAH
0:00				SUB IN: HAAS, ABIGAIL
0:00	SUB OUT: RICE, RUBY			
0:00	SUB IN: HUFF, RYLIE			
0:00	MISSED FT by LANGAGER, KRISTA			
0:00				REBOUND (DEF) by CARLOW, LOLO
0:00		11-15	V 4	GOOD! 2PTR by LAMONT, ANJAH
0:00				ASSIST by CARLOW, LOLO
0:00	GOOD! 2PTR by LANGAGER, KRISTA	11-17	V 6	
0:00	ASSIST by LEVERSON, HANNAH			
0:00		14-17	V 3	GOOD! 3PTR by CARLOW, MAIKOLE
0:00				ASSIST by CARLOW, LOLO
0:00	GOOD! 2PTR by LANGAGER, KRISTA	14-19	V 5	
0:00	ASSIST by HUFF, RYLIE			

Sisseton 19, Red Cloud 14

Points (This Period)	SIS	RED
In the Paint	8	2
Off Turns	4	0
2nd Chance	4	0
Fast Break	0	0
Bench	0	0
Per Poss	1.118 9/17	0.824 6/17

Official Play-By-Play
Sisseton vs Red Cloud
Second Quarter
March 11, 2023 at ,



Period 2

Starters:

Sisseton: 10 LEVERSON, HANNAH; 20 RICE, RUBY; 22 NIELSEN, EMMALEE; 44 LANGAGER, CHLOE; 54 LANGAGER, KRISTA;
Red Cloud: 1 BLOUND, ASHLAN; 2 CARLOW, LOLO; 4 CARLOW, MAIKOLE; 21 FRIDIA, KENNEDY; 24 LAMONT, ANJAH;

Time	VISITORS: Sisseton	Score	Margin	HOME: Red Cloud
8:00	GOOD! 2PTR by HUFF, RYLIE [PNT]	14-21	V 7	
8:00	ASSIST by NELSON, TARA			
8:00				SUB STARTER: BLOUND, ASHLAN
8:00				SUB STARTER: CARLOW, MAIKOLE
8:00				SUB STARTER: FRIDIA, KENNEDY
8:00				SUB STARTER: CARLOW, LOLO
8:00				SUB STARTER: LAMONT, ANJAH
8:00				MISSED 2PTR by CARLOW, LOLO
8:00				REBOUND (OFF) by FRIDIA, KENNEDY
8:00				FOUL (PERSONAL) by LAMONT, ANJAH
8:00	SUB STARTER: HUFF, RYLIE			
8:00	SUB STARTER: NELSON, TARA			
8:00	SUB STARTER: LANGAGER, CHLOE			
8:00	SUB STARTER: NIELSEN, EMMALEE			
8:00	SUB STARTER: LEVERSON, HANNAH			
8:00				FOUL (PERSONAL) by FRIDIA, KENNEDY
8:00	GOOD! 2PTR by LANGAGER, CHLOE [PNT]	14-23	V 9	
8:00	ASSIST by NIELSEN, EMMALEE			
8:00		16-23	V 7	GOOD! 2PTR by BLOUND, ASHLAN [PNT]
8:00	TURNOVER by NIELSEN, EMMALEE			
8:00				STEAL by BLOUND, ASHLAN
8:00		18-23	V 5	GOOD! 2PTR by CARLOW, LOLO
8:00	TURNOVER by NIELSEN, EMMALEE			
8:00				TURNOVER by CARLOW, LOLO
8:00	STEAL by HUFF, RYLIE			
8:00	GOOD! 2PTR by LEVERSON, HANNAH [PNT]	18-25	V 7	
8:00				MISSED 3PTR by CARLOW, MAIKOLE
8:00	REBOUND (DEF) by LANGAGER, CHLOE			
8:00	MISSED 2PTR by NELSON, TARA			
8:00	REBOUND (OFF) by LEVERSON, HANNAH			
8:00	MISSED 2PTR by NIELSEN, EMMALEE			
8:00	REBOUND (OFF) by LANGAGER, CHLOE			
8:00	GOOD! 2PTR by LANGAGER, CHLOE [PNT]	18-27	V 9	
8:00				MISSED 2PTR by BLOUND, ASHLAN
8:00				REBOUND (OFF) by LAMONT, ANJAH
8:00				MISSED 2PTR by LAMONT, ANJAH
8:00	REBOUND (DEF) by NELSON, TARA			
8:00				SUB OUT: CARLOW, LOLO
8:00				SUB OUT: CARLOW, MAIKOLE
8:00				SUB OUT: LAMONT, ANJAH
8:00				SUB IN: LEBEAU, JEWELIA
8:00				SUB IN: BREWER, RHIONNA
8:00				SUB IN: GOODBUFFALO, VICTORIA
8:00	SUB OUT: NELSON, TARA			
8:00	SUB OUT: NIELSEN, EMMALEE			
8:00	SUB IN: LANGAGER, KRISTA			
8:00	SUB IN: RICE, RUBY			
8:00				FOUL (PERSONAL) by FRIDIA, KENNEDY
8:00				SUB OUT: FRIDIA, KENNEDY
8:00				SUB IN: CARLOW, MAIKOLE
8:00	MISSED 3PTR by LEVERSON, HANNAH			
8:00	REBOUND (OFF) by RICE, RUBY			
8:00	MISSED 2PTR by RICE, RUBY			
8:00				REBOUND (DEF) by LEBEAU, JEWELIA
8:00				MISSED 3PTR by CARLOW, MAIKOLE
8:00				REBOUND (OFF) by BREWER, RHIONNA
8:00				MISSED 2PTR by BREWER, RHIONNA
8:00	REBOUND (DEF) by RICE, RUBY			
8:00	TURNOVER by LEVERSON, HANNAH			
8:00				STEAL by CARLOW, MAIKOLE
8:00		20-27	V 7	GOOD! 2PTR by BLOUND, ASHLAN [PNT]
8:00				FOUL (PERSONAL) by LEBEAU, JEWELIA
8:00				SUB OUT: BLOUND, ASHLAN
8:00				SUB IN: CARLOW, LOLO
8:00	SUB OUT: HUFF, RYLIE			

Time	VISITORS: Sisseton	Score	Margin	HOME: Red Cloud
8:00	SUB IN: HANSON, KENNEDY			
8:00	MISSED FT by RICE, RUBY			
8:00				REBOUND (DEF) by BREWER, RHIONNA
8:00				MISSED 2PTR by CARLOW, LOLO
8:00	REBOUND (DEF) by LANGAGER, KRISTA			
8:00	GOOD! 2PTR by LANGAGER, CHLOE [PNT]	20-29	V 9	
8:00	ASSIST by NIELSEN, EMMALEE			
8:00				MISSED 3PTR by LEBEAU, JEWELIA
8:00	REBOUND (DEADB) by TEAM			
8:00				SUB OUT: GOODBUFFALO, VICTORIA
8:00				SUB IN: BLOUND, ASHLAN
8:00	SUB OUT: HANSON, KENNEDY			
8:00	SUB IN: NIELSEN, EMMALEE			
8:00	TURNOVER by RICE, RUBY			
8:00				STEAL by BLOUND, ASHLAN
8:00		22-29	V 7	GOOD! 2PTR by CARLOW, MAIKOLE [PNT]
8:00				ASSIST by BLOUND, ASHLAN
8:00	MISSED 2PTR by NIELSEN, EMMALEE			
8:00	REBOUND (OFF) by LEVERSON, HANNAH			
8:00	TURNOVER by LANGAGER, KRISTA			
8:00				STEAL by BREWER, RHIONNA
8:00	TURNOVER by LEVERSON, HANNAH			
8:00				STEAL by BREWER, RHIONNA
8:00	GOOD! 3PTR by RICE, RUBY	22-32	V 10	
8:00				MISSED 3PTR by BREWER, RHIONNA
8:00				REBOUND (OFF) by BLOUND, ASHLAN
8:00				MISSED 2PTR by BLOUND, ASHLAN
8:00	REBOUND (DEF) by LANGAGER, KRISTA			
8:00				FOUL (PERSONAL) by LEBEAU, JEWELIA
8:00	SUB OUT: RICE, RUBY			
8:00	SUB IN: NELSON, TARA			
8:00				SUB OUT: LEBEAU, JEWELIA
8:00				SUB IN: HAAS, ABIGAIL
8:00	GOOD! FT by LANGAGER, KRISTA	22-33	V 11	
8:00				SUB OUT: BREWER, RHIONNA
8:00				SUB IN: LAMONT, ANJAH
8:00	MISSED FT by LANGAGER, KRISTA			
8:00				REBOUND (DEF) by LAMONT, ANJAH
8:00		25-33	V 8	GOOD! 3PTR by CARLOW, MAIKOLE
8:00				ASSIST by HAAS, ABIGAIL
8:00				MISSED 3PTR by CARLOW, LOLO
8:00				REBOUND (OFF) by LAMONT, ANJAH
8:00				ASSIST by CARLOW, MAIKOLE
8:00	GOOD! FT by NIELSEN, EMMALEE	25-34	V 9	
8:00	SUB OUT: LANGAGER, CHLOE			
8:00	SUB OUT: LANGAGER, KRISTA			
8:00	SUB IN: RICE, RUBY			
8:00	SUB IN: HUFF, RYLIE			
8:00	GOOD! FT by NIELSEN, EMMALEE	25-35	V 10	
8:00				FOUL (PERSONAL) by CARLOW, MAIKOLE
8:00				MISSED 2PTR by LAMONT, ANJAH
8:00				REBOUND (DEADB) by TEAM

Sisseton 35, Red Cloud 25

Points (This Period)	SIS	RED
In the Paint	10	6
Off Turns	2	6
2nd Chance	5	0
Fast Break	0	0
Bench	2	0
Per Poss	1.067 8/15	0.846 5/13

Official Box Score
Sisseton vs Red Cloud
Second Half Statistics Only
March 11, 2023 at ,



Sisseton 20

Record:

No.	Player	S	Pts	FG	3FG	FT	OR	DR	TR	PF	A	TO	Blk	Stl	Min	+/-
-----	--------	---	-----	----	-----	----	----	----	----	----	---	----	-----	-----	-----	-----

Shooting By Period

Period	FG	FG%	3FG	3FG%	FT	FT%
2nd Half	0-0	0%	0-0	0%	0-0	0%
Game	23-50	46.0%	2-9	22.2%	7-10	70.0%

Deadball Rebounds: 2,4
Last FG Half: SIS 3rd-8:00

Red Cloud 22

Record:

No.	Player	S	Pts	FG	3FG	FT	OR	DR	TR	PF	A	TO	Blk	Stl	Min	+/-
-----	--------	---	-----	----	-----	----	----	----	----	----	---	----	-----	-----	-----	-----

Shooting By Period

Period	FG	FG%	3FG	3FG%	FT	FT%
2nd Half	0-0	0%	0-0	0%	0-0	0%
Game	18-59	30.5%	7-25	28.0%	4-6	66.7%

Deadball Rebounds: 3,1
Last FG Half: RED 3rd-8:00

Game Notes:

Officials: , ,

Start Time: **18:00:00**

Postseason Game;

Score	1st	2nd	3rd	TOT	Points from (This Period)	SIS	RED
SIS	19	16	20	55	In the Paint	10	6
RED	14	11	22	47	Off Turns	2	6
					2nd Chance	5	0
					Fast Break	0	0
					Bench	2	0

Official Play-By-Play
Sisseton vs Red Cloud
Third Quarter
March 11, 2023 at ,



Period 3

Starters:

Sisseton: 10 LEVERSON, HANNAH; 20 RICE, RUBY; 22 NIELSEN, EMMALEE; 44 LANGAGER, CHLOE; 54 LANGAGER, KRISTA;
Red Cloud: 1 BLOUND, ASHLAN; 2 CARLOW, LOLO; 4 CARLOW, MAIKOLE; 21 FRIDIA, KENNEDY; 24 LAMONT, ANJAH;

Time	VISITORS: Sisseton	Score	Margin	HOME: Red Cloud
8:00				SUB STARTER: BLOUND, ASHLAN
8:00				SUB STARTER: CARLOW, LOLO
8:00				SUB STARTER: CARLOW, MAIKOLE
8:00				SUB STARTER: FRIDIA, KENNEDY
8:00				SUB STARTER: LAMONT, ANJAH
8:00	SUB STARTER: LANGAGER, KRISTA			
8:00	SUB STARTER: LEVERSON, HANNAH			
8:00	SUB STARTER: LANGAGER, CHLOE			
8:00	SUB STARTER: RICE, RUBY			
8:00	SUB STARTER: NIELSEN, EMMALEE			
8:00				MISSED 2PTR by BLOUND, ASHLAN
8:00	REBOUND (DEF) by RICE, RUBY			
8:00	MISSED 2PTR by LEVERSON, HANNAH			
8:00				REBOUND (DEF) by FRIDIA, KENNEDY
8:00				MISSED 2PTR by CARLOW, LOLO
8:00	REBOUND (DEF) by LANGAGER, KRISTA			
8:00	MISSED 2PTR by LANGAGER, KRISTA			
8:00				REBOUND (DEF) by FRIDIA, KENNEDY
8:00		28-35	V 7	GOOD! 3PTR by CARLOW, MAIKOLE
8:00	TURNOVER by LEVERSON, HANNAH			
8:00	SUB OUT: RICE, RUBY			
8:00	SUB IN: NELSON, TARA			
8:00				TIMEOUT TEAM
8:00		30-35	V 5	GOOD! 2PTR by CARLOW, LOLO [PNT]
8:00				FOUL (PERSONAL) by CARLOW, LOLO
8:00	GOOD! 2PTR by LANGAGER, KRISTA [PNT]	30-37	V 7	
8:00				MISSED 2PTR by CARLOW, LOLO
8:00	REBOUND (DEF) by LANGAGER, CHLOE			
8:00	TURNOVER by LANGAGER, KRISTA			
8:00	FOUL (PERSONAL) by LANGAGER, KRISTA			
8:00	SUB OUT: LANGAGER, KRISTA			
8:00	SUB IN: HUFF, RYLIE			
8:00		32-37	V 5	GOOD! 2PTR by CARLOW, LOLO
8:00				MISSED 3PTR by CARLOW, LOLO
8:00	REBOUND (DEF) by LANGAGER, CHLOE			
8:00	MISSED 3PTR by NIELSEN, EMMALEE			
8:00				REBOUND (DEF) by LAMONT, ANJAH
8:00				SUB OUT: CARLOW, LOLO
8:00				SUB OUT: LAMONT, ANJAH
8:00				SUB OUT: CARLOW, MAIKOLE
8:00				SUB IN: BREWER, RHIONNA
8:00				SUB IN: LEBEAU, JEWELIA
8:00				SUB IN: GOODBUFFALO, VICTORIA
8:00				MISSED 2PTR by GOODBUFFALO, VICTORIA
8:00	REBOUND (DEADB) by TEAM			
8:00				FOUL (PERSONAL) by LEBEAU, JEWELIA
8:00	GOOD! FT by LEVERSON, HANNAH	32-38	V 6	
8:00				SUB OUT: FRIDIA, KENNEDY
8:00				SUB OUT: LEBEAU, JEWELIA
8:00				SUB IN: LAMONT, ANJAH
8:00				SUB IN: CARLOW, MAIKOLE
8:00	GOOD! FT by LEVERSON, HANNAH	32-39	V 7	
8:00				MISSED 3PTR by LAMONT, ANJAH
8:00	REBOUND (DEF) by LANGAGER, CHLOE			
8:00	MISSED 3PTR by LEVERSON, HANNAH			
8:00				REBOUND (DEF) by FRIDIA, KENNEDY
8:00				SUB OUT: LAMONT, ANJAH
8:00				SUB IN: FRIDIA, KENNEDY
8:00				MISSED 3PTR by BREWER, RHIONNA
8:00	REBOUND (DEF) by NELSON, TARA			
8:00	MISSED 3PTR by NELSON, TARA			
8:00				SUB OUT: BLOUND, ASHLAN
8:00				SUB IN: CARLOW, LOLO
8:00	SUB OUT: NIELSEN, EMMALEE			
8:00	SUB IN: LANGAGER, KRISTA			

Time	VISITORS: Sisseton	Score	Margin	HOME: Red Cloud
8:00				REBOUND (DEF) by TEAM
8:00	FOUL (PERSONAL) by HUFF, RYLIE			
8:00		34-39	V 5	GOOD! 2PTR by GOODBUFFALO, VICTORIA
8:00				ASSIST by CARLOW, MAIKOLE
8:00	MISSED 2PTR by LANGAGER, KRISTA			
8:00	REBOUND (OFF) by LANGAGER, CHLOE			
8:00	MISSED 2PTR by LEVERSON, HANNAH			
8:00				REBOUND (DEF) by CARLOW, LOLO
8:00				MISSED 2PTR by CARLOW, MAIKOLE
8:00	REBOUND (DEF) by LANGAGER, CHLOE			
8:00	GOOD! 2PTR by LANGAGER, KRISTA	34-41	V 7	
8:00				MISSED 2PTR by BREWER, RHIONNA
8:00	REBOUND (DEF) by NELSON, TARA			
8:00	GOOD! 2PTR by LANGAGER, KRISTA	34-43	V 9	
8:00	ASSIST by LEVERSON, HANNAH			
8:00				TIMEOUT TEAM
8:00				SUB OUT: GOODBUFFALO, VICTORIA
8:00				SUB OUT: BREWER, RHIONNA
8:00				SUB IN: BLOUND, ASHLAN
8:00				SUB IN: LAMONT, ANJAH
8:00	SUB OUT: NELSON, TARA			
8:00	SUB IN: NIELSEN, EMMALEE			
8:00		36-43	V 7	GOOD! 2PTR by LAMONT, ANJAH [PNT]
8:00				ASSIST by CARLOW, LOLO
8:00	MISSED 3PTR by LEVERSON, HANNAH			
8:00				REBOUND (DEF) by CARLOW, MAIKOLE
8:00		39-43	V 4	GOOD! 3PTR by CARLOW, LOLO
8:00	GOOD! 2PTR by LANGAGER, KRISTA [PNT]	39-45	V 6	
8:00	MISSED 2PTR by LANGAGER, KRISTA			
8:00				REBOUND (DEF) by FRIDIA, KENNEDY
8:00	MISSED 2PTR by LEVERSON, HANNAH			
8:00	REBOUND (OFF) by LANGAGER, KRISTA			
8:00	MISSED 2PTR by LANGAGER, KRISTA			
8:00	REBOUND (OFF) by RICE, RUBY			
8:00	SUB OUT: HUFF, RYLIE			
8:00	SUB IN: RICE, RUBY			
8:00	TIMEOUT TEAM			
8:00	GOOD! 2PTR by LANGAGER, KRISTA [PNT]	39-47	V 8	
8:00	ASSIST by RICE, RUBY			
8:00				TURNOVER by FRIDIA, KENNEDY
8:00	MISSED 2PTR by LANGAGER, KRISTA			
8:00				REBOUND (DEF) by FRIDIA, KENNEDY
8:00		42-47	V 5	GOOD! 3PTR by CARLOW, MAIKOLE
8:00				ASSIST by BLOUND, ASHLAN
8:00	MISSED 2PTR by LEVERSON, HANNAH			
8:00				REBOUND (DEADB) by TEAM
8:00		44-47	V 3	GOOD! 2PTR by BLOUND, ASHLAN [PNT]
8:00	TURNOVER by LEVERSON, HANNAH			
8:00				MISSED 3PTR by CARLOW, MAIKOLE
8:00	REBOUND (DEF) by LEVERSON, HANNAH			
8:00				SUB OUT: FRIDIA, KENNEDY
8:00				SUB IN: BREWER, RHIONNA
8:00		47-47	T	GOOD! 3PTR by CARLOW, MAIKOLE
8:00				ASSIST by BLOUND, ASHLAN
8:00	GOOD! 2PTR by LANGAGER, KRISTA [PNT]	47-49	V 2	
8:00	ASSIST by LANGAGER, CHLOE			
8:00				MISSED 3PTR by CARLOW, MAIKOLE
8:00	REBOUND (DEF) by LANGAGER, KRISTA			
8:00	MISSED 2PTR by LANGAGER, KRISTA			
8:00	REBOUND (OFF) by LANGAGER, KRISTA			
8:00	MISSED 2PTR by LANGAGER, KRISTA			
8:00				REBOUND (DEF) by CARLOW, LOLO
8:00				MISSED 3PTR by FRIDIA, KENNEDY
8:00	REBOUND (DEF) by LANGAGER, CHLOE			
8:00				SUB OUT: BREWER, RHIONNA
8:00				SUB IN: FRIDIA, KENNEDY
8:00	GOOD! 2PTR by LANGAGER, KRISTA [PNT]	47-51	V 4	
8:00				TURNOVER by BLOUND, ASHLAN
8:00	STEAL by LEVERSON, HANNAH			
8:00	TURNOVER by LEVERSON, HANNAH			
8:00				MISSED 3PTR by CARLOW, LOLO
8:00				REBOUND (OFF) by LAMONT, ANJAH
8:00				MISSED 3PTR by CARLOW, LOLO
8:00	REBOUND (DEADB) by TEAM			
8:00	MISSED 2PTR by LANGAGER, KRISTA			
8:00				REBOUND (DEF) by TEAM

Time	VISITORS: Sisseton	Score	Margin	HOME: Red Cloud
8:00				FOUL (PERSONAL) by LAMONT, ANJAH
8:00	GOOD! FT by LANGAGER, KRISTA	47-52	V 5	
8:00	GOOD! FT by LANGAGER, KRISTA	47-53	V 6	
8:00				MISSED 2PTR by LAMONT, ANJAH
8:00	REBOUND (DEF) by LANGAGER, KRISTA			
8:00	GOOD! 2PTR by LEVERSON, HANNAH [PNT]	47-55	V 8	
8:00				MISSED 3PTR by CARLOW, LOLO
8:00				REBOUND (OFF) by CARLOW, LOLO
8:00				MISSED 3PTR by CARLOW, LOLO
8:00	REBOUND (DEADB) by TEAM			
8:00	TURNOVER by NIELSEN, EMMALEE			
8:00				TIMEOUT TEAM
8:00				MISSED 2PTR by CARLOW, LOLO
8:00	REBOUND (DEF) by NIELSEN, EMMALEE			
8:00				FOUL (PERSONAL) by FRIDIA, KENNEDY
8:00				FOUL (PERSONAL) by LAMONT, ANJAH
8:00				FOUL (PERSONAL) by FRIDIA, KENNEDY
8:00				SUB OUT: FRIDIA, KENNEDY
8:00				SUB IN: HAAS, ABIGAIL
8:00	TURNOVER by NELSON, TARA			
8:00	SUB OUT: RICE, RUBY			
8:00	SUB IN: NELSON, TARA			
8:00				MISSED 2PTR by BLOUND, ASHLAN
8:00	REBOUND (DEF) by LANGAGER, KRISTA			

Sisseton 55, Red Cloud 47

Points (This Period)	SIS	RED
In the Paint	12	6
Off Turns	0	4
2nd Chance	2	0
Fast Break	0	0
Bench	0	2
Per Poss	0.714 10/28	0.786 9/28

Official Play-By-Play
Sisseton vs Red Cloud
Fourth Quarter
March 11, 2023 at ,



Period 4

Starters:

Sisseton: 10 LEVERSON,HANNAH; 20 RICE,RUBY; 22 NIELSEN,EMMALEE; 44 LANGAGER,CHLOE; 54 LANGAGER,KRISTA;

Red Cloud: 1 BLOUND,ASHLAN; 2 CARLOW,LOLO; 4 CARLOW,MAIKOLE; 21 FRIDIA,KENNEDY; 24 LAMONT,ANJAH;

Time	VISITORS: Sisseton	Score	Margin	HOME: Red Cloud
-------------	---------------------------	--------------	---------------	------------------------

Sisseton 55, Red Cloud 47

Points (This Period)	SIS	RED
Per Poss	0 0/0	0 0/0

Official Scoring/Possession Reference Chart
Sisseton vs Red Cloud
Period 1
March 11, 2023 at ,



Period 1

Starters:

Sisseton: 10 LEVERSON, HANNAH; 20 RICE, RUBY; 22 NIELSEN, EMMALEE; 44 LANGAGER, CHLOE; 54 LANGAGER, KRISTA;
Red Cloud: 1 BLOUND, ASHLAN; 2 CARLOW, LOLO; 4 CARLOW, MAIKOLE; 21 FRIDIA, KENNEDY; 24 LAMONT, ANJAH;

Time	VISITORS: Sisseton	Score	Margin	HOME: Red Cloud
0:00	GOOD! 2PTR by LANGAGER, KRISTA [PNT]	0-2	V 2	
0:00		1-2	V 1	GOOD! FT by CARLOW, MAIKOLE
0:00	GOOD! 2PTR by LANGAGER, KRISTA [PNT]	1-4	V 3	
0:00		2-4	V 2	GOOD! FT by BLOUND, ASHLAN
0:00		3-4	V 1	GOOD! FT by BLOUND, ASHLAN
0:00		4-4	T	GOOD! FT by BLOUND, ASHLAN
0:00	GOOD! 3PTR by LEVERSON, HANNAH	4-7	V 3	
0:00		7-7	T	GOOD! 3PTR by FRIDIA, KENNEDY
0:00	GOOD! 2PTR by NIELSEN, EMMALEE [PNT]	7-9	V 2	
0:00	GOOD! 2PTR by NIELSEN, EMMALEE [PNT]	7-11	V 4	
0:00		9-11	V 2	GOOD! 2PTR by BLOUND, ASHLAN [PNT]
0:00	GOOD! 2PTR by NIELSEN, EMMALEE	9-13	V 4	
0:00	GOOD! 2PTR by LANGAGER, KRISTA	9-15	V 6	
0:00		11-15	V 4	GOOD! 2PTR by LAMONT, ANJAH
0:00	GOOD! 2PTR by LANGAGER, KRISTA	11-17	V 6	
0:00		14-17	V 3	GOOD! 3PTR by CARLOW, MAIKOLE
0:00	GOOD! 2PTR by LANGAGER, KRISTA	14-19	V 5	

Sisseton 19, Red Cloud 14

Official Scoring/Possession Reference Chart
Sisseton vs Red Cloud
Period 2
March 11, 2023 at ,



Period 2

Starters:

Sisseton: 10 LEVERSON, HANNAH; 20 RICE, RUBY; 22 NIELSEN, EMMALEE; 44 LANGAGER, CHLOE; 54 LANGAGER, KRISTA;
Red Cloud: 1 BLOUND, ASHLAN; 2 CARLOW, LOLO; 4 CARLOW, MAIKOLE; 21 FRIDIA, KENNEDY; 24 LAMONT, ANJAH;

Time	VISITORS: Sisseton	Score	Margin	HOME: Red Cloud
8:00	GOOD! 2PTR by HUFF, RYLIE [PNT]	14-21	V 7	
8:00	GOOD! 2PTR by LANGAGER, CHLOE [PNT]	14-23	V 9	
8:00		16-23	V 7	GOOD! 2PTR by BLOUND, ASHLAN [PNT]
8:00		18-23	V 5	GOOD! 2PTR by CARLOW, LOLO
8:00	GOOD! 2PTR by LEVERSON, HANNAH [PNT]	18-25	V 7	
8:00	GOOD! 2PTR by LANGAGER, CHLOE [PNT]	18-27	V 9	
8:00		20-27	V 7	GOOD! 2PTR by BLOUND, ASHLAN [PNT]
8:00	GOOD! 2PTR by LANGAGER, CHLOE [PNT]	20-29	V 9	
8:00		22-29	V 7	GOOD! 2PTR by CARLOW, MAIKOLE [PNT]
8:00	GOOD! 3PTR by RICE, RUBY	22-32	V 10	
8:00	GOOD! FT by LANGAGER, KRISTA	22-33	V 11	
8:00		25-33	V 8	GOOD! 3PTR by CARLOW, MAIKOLE
8:00	GOOD! FT by NIELSEN, EMMALEE	25-34	V 9	
8:00	GOOD! FT by NIELSEN, EMMALEE	25-35	V 10	

Sisseton 35, Red Cloud 25

Official Scoring/Possession Reference Chart
Sisseton vs Red Cloud
Period 3
March 11, 2023 at ,



Period 3

Starters:

Sisseton: 10 LEVERSON, HANNAH; 20 RICE, RUBY; 22 NIELSEN, EMMALEE; 44 LANGAGER, CHLOE; 54 LANGAGER, KRISTA;

Red Cloud: 1 BLOUND, ASHLAN; 2 CARLOW, LOLO; 4 CARLOW, MAIKOLE; 21 FRIDIA, KENNEDY; 24 LAMONT, ANJAH;

Time	VISITORS: Sisseton	Score	Margin	HOME: Red Cloud
8:00		28-35	V 7	GOOD! 3PTR by CARLOW, MAIKOLE
8:00		30-35	V 5	GOOD! 2PTR by CARLOW, LOLO [PNT]
8:00	GOOD! 2PTR by LANGAGER, KRISTA [PNT]	30-37	V 7	
8:00		32-37	V 5	GOOD! 2PTR by CARLOW, LOLO
8:00	GOOD! FT by LEVERSON, HANNAH	32-38	V 6	
8:00	GOOD! FT by LEVERSON, HANNAH	32-39	V 7	
8:00		34-39	V 5	GOOD! 2PTR by GOODBUFFALO, VICTORIA
8:00	GOOD! 2PTR by LANGAGER, KRISTA	34-41	V 7	
8:00	GOOD! 2PTR by LANGAGER, KRISTA	34-43	V 9	
8:00		36-43	V 7	GOOD! 2PTR by LAMONT, ANJAH [PNT]
8:00		39-43	V 4	GOOD! 3PTR by CARLOW, LOLO
8:00	GOOD! 2PTR by LANGAGER, KRISTA [PNT]	39-45	V 6	
8:00	GOOD! 2PTR by LANGAGER, KRISTA [PNT]	39-47	V 8	
8:00		42-47	V 5	GOOD! 3PTR by CARLOW, MAIKOLE
8:00		44-47	V 3	GOOD! 2PTR by BLOUND, ASHLAN [PNT]
8:00		47-47	T	GOOD! 3PTR by CARLOW, MAIKOLE
8:00	GOOD! 2PTR by LANGAGER, KRISTA [PNT]	47-49	V 2	
8:00	GOOD! 2PTR by LANGAGER, KRISTA [PNT]	47-51	V 4	
8:00	GOOD! FT by LANGAGER, KRISTA	47-52	V 5	
8:00	GOOD! FT by LANGAGER, KRISTA	47-53	V 6	
8:00	GOOD! 2PTR by LEVERSON, HANNAH [PNT]	47-55	V 8	

Sisseton 55, Red Cloud 47

Official Substitutions Log
Sisseton vs Red Cloud
Period 1
March 11, 2023 at ,



VISITORS: Sisseton	Time	Score	HOME: Red Cloud
10 LEVERSON,HANNAH			1 BLOUND,ASHLAN
20 RICE,RUBY			2 CARLOW,LOLO
22 NIELSEN,EMMALEE			4 CARLOW,MAIKOLE
44 LANGAGER,CHLOE			21 FRIDIA,KENNEDY
54 LANGAGER,KRISTA			24 LAMONT,ANJAH
SUB STARTER: 10 LEVERSON,HANNAH	8:00	-	
SUB STARTER: 20 RICE,RUBY	8:00		
SUB STARTER: 22 NIELSEN,EMMALEE	8:00		
SUB STARTER: 44 LANGAGER,CHLOE	8:00		
SUB STARTER: 54 LANGAGER,KRISTA	8:00		
	8:00		SUB STARTER: BLOUND,ASHLAN
	8:00		SUB STARTER: CARLOW,LOLO
	8:00		SUB STARTER: CARLOW,MAIKOLE
	8:00		SUB STARTER: FRIDIA,KENNEDY
	8:00		SUB STARTER: LAMONT,ANJAH
SUB OUT: 54 LANGAGER,KRISTA	0:00	4-1	
SUB IN: 34 NELSON,TARA	0:00		
	0:00		SUB OUT: CARLOW,LOLO
	0:00		SUB OUT: LAMONT,ANJAH
	0:00		SUB OUT: CARLOW,MAIKOLE
	0:00		SUB IN: LEBEAU,JEWELIA
	0:00		SUB IN: GOODBUFFALO,VICTORIA
	0:00		SUB IN: BREWER,RHIONNA
	0:00		SUB OUT: BLOUND,ASHLAN
	0:00		SUB IN: CARLOW,LOLO
	0:00		SUB OUT: FRIDIA,KENNEDY
	0:00		SUB IN: CARLOW,MAIKOLE
	0:00		SUB OUT: GOODBUFFALO,VICTORIA
	0:00		SUB IN: BLOUND,ASHLAN
SUB OUT: 44 LANGAGER,CHLOE	0:00		
SUB IN: 54 LANGAGER,KRISTA	0:00		
	0:00		SUB OUT: BREWER,RHIONNA
	0:00		SUB OUT: LEBEAU,JEWELIA
	0:00		SUB IN: LAMONT,ANJAH
	0:00		SUB IN: HAAS,ABIGAIL
SUB OUT: 20 RICE,RUBY	0:00		
SUB IN: 4 HUFF,RYLIE	0:00		

Sisseton 19, Red Cloud 14

Official Substitutions Log
Sisseton vs Red Cloud
Period 2
March 11, 2023 at ,



VISITORS: Sisseton	Time	Score	HOME: Red Cloud
10 LEVERSON,HANNAH			1 BOUND,ASHLAN
20 RICE,RUBY			2 CARLOW,LOLO
22 NIELSEN,EMMALEE			4 CARLOW,MAIKOLE
44 LANGAGER,CHLOE			21 FRIDIA,KENNEDY
54 LANGAGER,KRISTA			24 LAMONT,ANJAH
	8:00	21-14	SUB STARTER: BOUND,ASHLAN
	8:00		SUB STARTER: CARLOW,MAIKOLE
	8:00		SUB STARTER: FRIDIA,KENNEDY
	8:00		SUB STARTER: CARLOW,LOLO
	8:00		SUB STARTER: LAMONT,ANJAH
SUB STARTER: 4 HUFF,RYLIE	8:00		
SUB STARTER: 34 NELSON,TARA	8:00		
SUB STARTER: 44 LANGAGER,CHLOE	8:00		
SUB STARTER: 22 NIELSEN,EMMALEE	8:00		
SUB STARTER: 10 LEVERSON,HANNAH	8:00		
	8:00		SUB OUT: CARLOW,LOLO
	8:00		SUB OUT: CARLOW,MAIKOLE
	8:00		SUB OUT: LAMONT,ANJAH
	8:00		SUB IN: LEBEAU,JEWELIA
	8:00		SUB IN: BREWER,RHIONNA
	8:00		SUB IN: GOODBUFFALO,VICTORIA
SUB OUT: 34 NELSON,TARA	8:00		
SUB OUT: 22 NIELSEN,EMMALEE	8:00		
SUB IN: 54 LANGAGER,KRISTA	8:00		
SUB IN: 20 RICE,RUBY	8:00		
	8:00		SUB OUT: FRIDIA,KENNEDY
	8:00		SUB IN: CARLOW,MAIKOLE
	8:00		SUB OUT: BOUND,ASHLAN
	8:00		SUB IN: CARLOW,LOLO
SUB OUT: 4 HUFF,RYLIE	8:00		
SUB IN: 12 HANSON,KENNEDY	8:00		
	8:00		SUB OUT: GOODBUFFALO,VICTORIA
	8:00		SUB IN: BOUND,ASHLAN
SUB OUT: 12 HANSON,KENNEDY	8:00		
SUB IN: 22 NIELSEN,EMMALEE	8:00		
SUB OUT: 20 RICE,RUBY	8:00		
SUB IN: 34 NELSON,TARA	8:00		
	8:00		SUB OUT: LEBEAU,JEWELIA
	8:00		SUB IN: HAAS,ABIGAIL
	8:00		SUB OUT: BREWER,RHIONNA
	8:00		SUB IN: LAMONT,ANJAH
SUB OUT: 44 LANGAGER,CHLOE	8:00		
SUB OUT: 54 LANGAGER,KRISTA	8:00		
SUB IN: 20 RICE,RUBY	8:00		
SUB IN: 4 HUFF,RYLIE	8:00		

Sisseton 35, Red Cloud 25

Official Substitutions Log
Sisseton vs Red Cloud
Period 3
March 11, 2023 at ,



VISITORS: Sisseton	Time	Score	HOME: Red Cloud
10 LEVERSON,HANNAH			1 BLOUND,ASHLAN
20 RICE,RUBY			2 CARLOW,LOLO
22 NIELSEN,EMMALEE			4 CARLOW,MAIKOLE
44 LANGAGER,CHLOE			21 FRIDIA,KENNEDY
54 LANGAGER,KRISTA			24 LAMONT,ANJAH
	8:00	-	SUB STARTER: BLOUND,ASHLAN
	8:00		SUB STARTER: CARLOW,LOLO
	8:00		SUB STARTER: CARLOW,MAIKOLE
	8:00		SUB STARTER: FRIDIA,KENNEDY
	8:00		SUB STARTER: LAMONT,ANJAH
SUB STARTER: 54 LANGAGER,KRISTA	8:00		
SUB STARTER: 10 LEVERSON,HANNAH	8:00		
SUB STARTER: 44 LANGAGER,CHLOE	8:00		
SUB STARTER: 20 RICE,RUBY	8:00		
SUB STARTER: 22 NIELSEN,EMMALEE	8:00		
SUB OUT: 20 RICE,RUBY	8:00		
SUB IN: 34 NELSON,TARA	8:00		
SUB OUT: 54 LANGAGER,KRISTA	8:00		
SUB IN: 4 HUFF,RYLIE	8:00		
	8:00		SUB OUT: CARLOW,LOLO
	8:00		SUB OUT: LAMONT,ANJAH
	8:00		SUB OUT: CARLOW,MAIKOLE
	8:00		SUB IN: BREWER,RHIONNA
	8:00		SUB IN: LEBEAU,JEWELIA
	8:00		SUB IN: GOODBUFFALO,VICTORIA
	8:00		SUB OUT: FRIDIA,KENNEDY
	8:00		SUB OUT: LEBEAU,JEWELIA
	8:00		SUB IN: LAMONT,ANJAH
	8:00		SUB IN: CARLOW,MAIKOLE
	8:00		SUB OUT: LAMONT,ANJAH
	8:00		SUB IN: FRIDIA,KENNEDY
	8:00		SUB OUT: BLOUND,ASHLAN
	8:00		SUB IN: CARLOW,LOLO
SUB OUT: 22 NIELSEN,EMMALEE	8:00		
SUB IN: 54 LANGAGER,KRISTA	8:00		
	8:00		SUB OUT: GOODBUFFALO,VICTORIA
	8:00		SUB OUT: BREWER,RHIONNA
	8:00		SUB IN: BLOUND,ASHLAN
	8:00		SUB IN: LAMONT,ANJAH
SUB OUT: 34 NELSON,TARA	8:00		
SUB IN: 22 NIELSEN,EMMALEE	8:00		
SUB OUT: 4 HUFF,RYLIE	8:00		
SUB IN: 20 RICE,RUBY	8:00		
	8:00		SUB OUT: FRIDIA,KENNEDY
	8:00		SUB IN: BREWER,RHIONNA
	8:00		SUB OUT: BREWER,RHIONNA
	8:00		SUB IN: FRIDIA,KENNEDY
	8:00		SUB OUT: FRIDIA,KENNEDY
	8:00		SUB IN: HAAS,ABIGAIL
SUB OUT: 20 RICE,RUBY	8:00		
SUB IN: 34 NELSON,TARA	8:00		

Sisseton 55, Red Cloud 47

Official Substitutions Log
Sisseton vs Red Cloud
Period 4
March 11, 2023 at ,



VISITORS: Sisseton	Time	Score	HOME: Red Cloud
10 LEVERSON,HANNAH			1 BLOUND,ASHLAN
20 RICE,RUBY			2 CARLOW,LOLO
22 NIELSEN,EMMALEE			4 CARLOW,MAIKOLE
44 LANGAGER,CHLOE			21 FRIDIA,KENNEDY
54 LANGAGER,KRISTA			24 LAMONT,ANJAH

Sisseton 55, Red Cloud 47

Official Shot Chart
Sisseton vs Red Cloud
PERIOD 1 Shots
March 11, 2023 at ,



Red Cloud

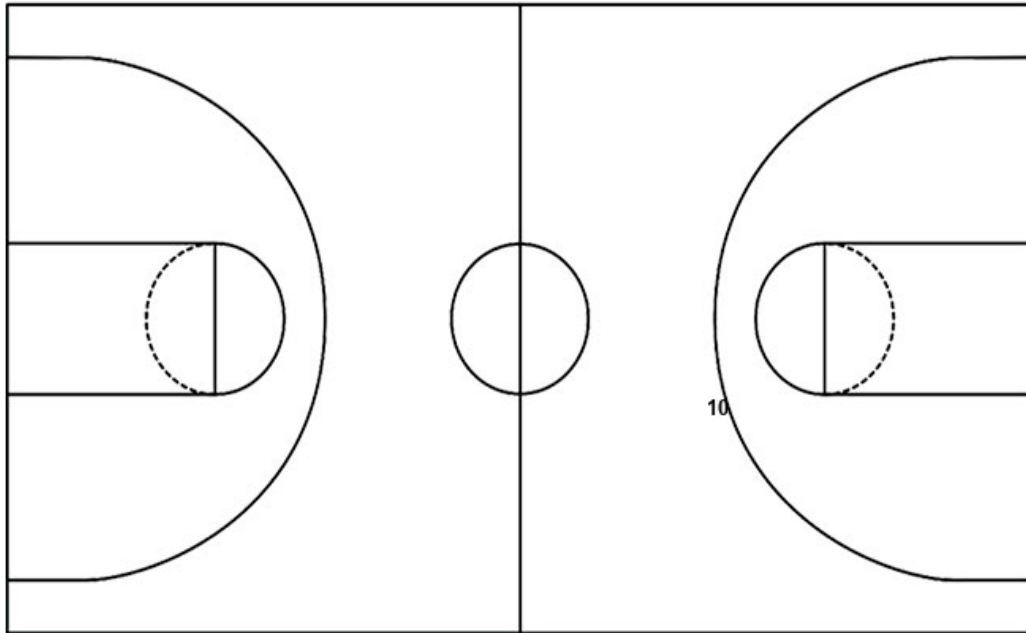
Sisseton

Layups

Layups

Dunks

Dunks



RED : Period 1	Made	Att	Pct
Layups	0	0	0
Dunks	0	0	0
2PT Field Goals	2	9	22.2
3PT Field Goals	2	5	40.0
Total Field Goals	4	14	28.6

SIS : Period 1	Made	Att	Pct
Layups	0	0	0
Dunks	0	0	0
2PT Field Goals	8	12	66.7
3PT Field Goals	1	3	33.3
Total Field Goals	9	15	60.0

Official Shot Chart
Sisseton vs Red Cloud
PERIOD 2 Shots
March 11, 2023 at ,



Red Cloud

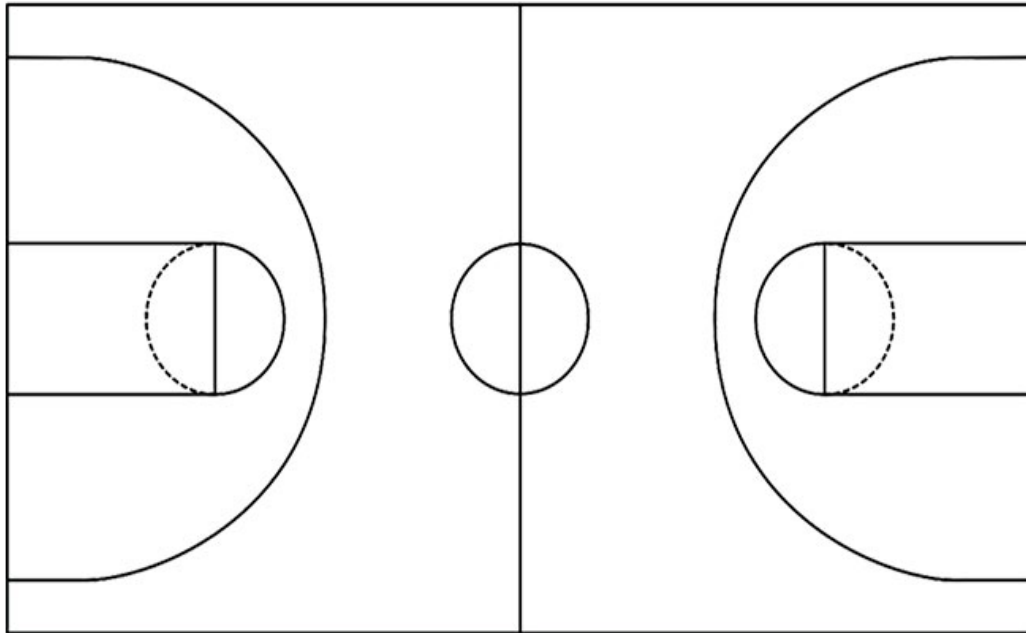
Sisseton

Layups

Layups

Dunks

Dunks



RED : Period 2	Made	Att	Pct
Layups	0	0	0
Dunks	0	0	0
2PT Field Goals	4	11	36.4
3PT Field Goals	1	6	16.7
Total Field Goals	5	17	29.4

SIS : Period 2	Made	Att	Pct
Layups	0	0	0
Dunks	0	0	0
2PT Field Goals	5	9	55.6
3PT Field Goals	1	2	50.0
Total Field Goals	6	11	54.5

Official Shot Chart
Sisseton vs Red Cloud
PERIOD 3 Shots
March 11, 2023 at ,



Red Cloud

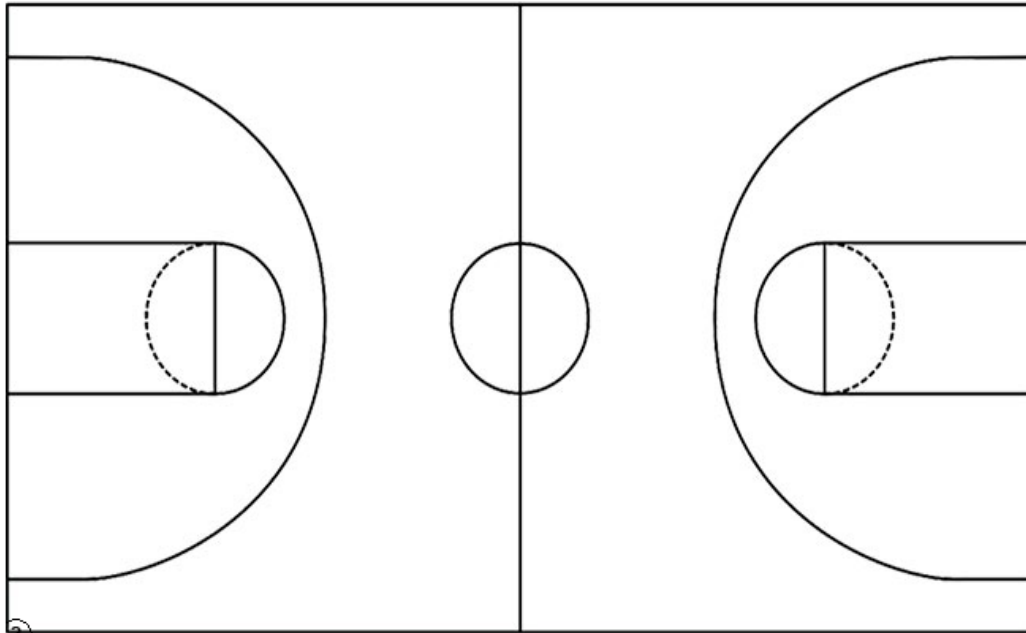
Sisseton

Layups

Layups

Dunks

Dunks



RED : Period 3	Made	Att	Pct
Layups	0	0	0
Dunks	0	0	0
2PT Field Goals	5	14	35.7
3PT Field Goals	4	14	28.6
Total Field Goals	9	28	32.1

SIS : Period 3	Made	Att	Pct
Layups	0	0	0
Dunks	0	0	0
2PT Field Goals	8	20	40.0
3PT Field Goals	0	4	00.0
Total Field Goals	8	24	33.3

Official Shot Chart
Sisseton vs Red Cloud
Sisseton Team Shots
March 11, 2023 at ,

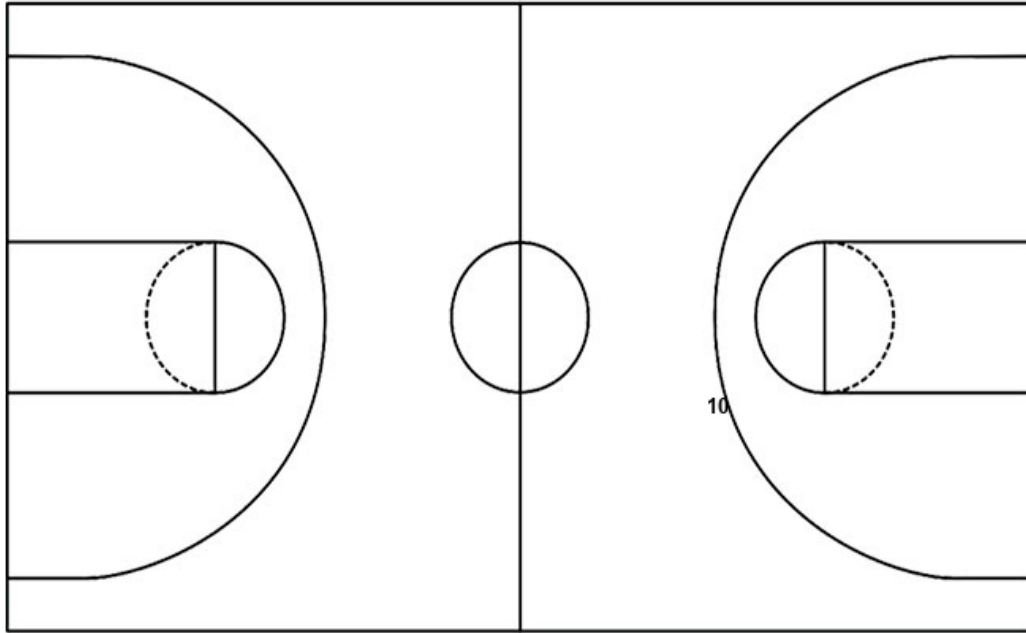


Layups

Layups

Dunks

Dunks



SIS : Period 1	Made	Att	Pct
Layups	0	0	0
Dunks	0	0	0
2PT Field Goals	8	12	66.7
3PT Field Goals	1	3	33.3
Total Field Goals	9	15	60.0

SIS : Period 2	Made	Att	Pct
Layups	0	0	0
Dunks	0	0	0
2PT Field Goals	5	9	55.6
3PT Field Goals	1	2	50.0
Total Field Goals	6	11	54.5

SIS : Period 3	Made	Att	Pct
Layups	0	0	0
Dunks	0	0	0
2PT Field Goals	8	20	40.0
3PT Field Goals	0	4	00.0
Total Field Goals	8	24	33.3

Official Shot Chart
Sisseton vs Red Cloud
Red Cloud Team Shots
March 11, 2023 at ,

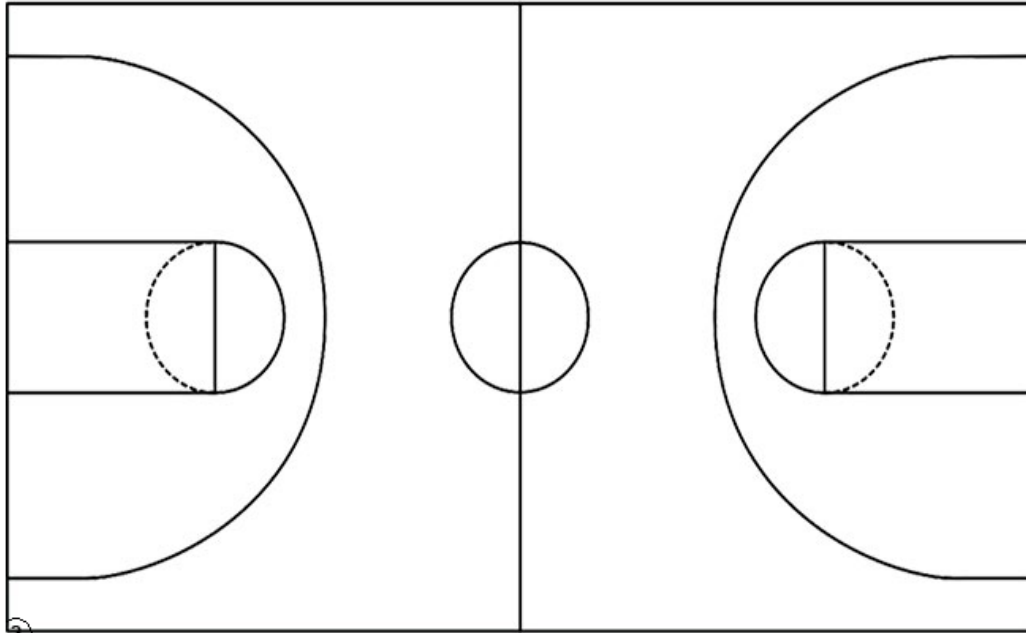


Layups

Layups

Dunks

Dunks



RED : Period 1	Made	Att	Pct
Layups	0	0	0
Dunks	0	0	0
2PT Field Goals	2	9	22.2
3PT Field Goals	2	5	40.0
Total Field Goals	4	14	28.6

RED : Period 2	Made	Att	Pct
Layups	0	0	0
Dunks	0	0	0
2PT Field Goals	4	11	36.4
3PT Field Goals	1	6	16.7
Total Field Goals	5	17	29.4

RED : Period 3	Made	Att	Pct
Layups	0	0	0
Dunks	0	0	0
2PT Field Goals	5	14	35.7
3PT Field Goals	4	14	28.6
Total Field Goals	9	28	32.1