

FINAL SCORE



Lakota Tech

41



Flandreau

55

2023 SDHSAA State Basketball Championships

March 10, 2023 • ,



FINAL STATISTICS

Official Box Score
Lakota Tech vs Flandreau
Game Totals -- Final Statistics
March 10, 2023 at ,



Lakota Tech 41

Record:

| No. | Player | S | Pts | FG | 3FG | FT | OR | DR | TR | PF | A | TO | Blk | Stl | Min | +/- |
|---------------|---------------------|---|-----------|--------------|-------------|-------------|-----------|-----------|-----------|-----------|----------|-----------|----------|----------|------------|-----|
| 03 | BYERLEY, TAYLOR | * | 3 | 1-4 | 1-3 | 0-0 | 0 | 3 | 3 | 3 | 0 | 0 | 0 | 1 | 32 | -2 |
| 10 | HUNTER, JODENE | | 3 | 1-8 | 0-1 | 1-2 | 1 | 3 | 4 | 5 | 0 | 3 | 0 | 0 | 24 | -14 |
| 32 | RICHARD, SHYLEIGH | | 6 | 2-4 | 2-2 | 0-0 | 2 | 0 | 2 | 2 | 0 | 1 | 0 | 2 | 16 | -5 |
| 33 | RODRIGUEZ, TAWNY | * | 10 | 4-12 | 0-0 | 2-4 | 2 | 4 | 6 | 3 | 1 | 1 | 0 | 0 | 32 | -10 |
| 55 | SHANGREAUX, MELINA | | 12 | 5-14 | 0-1 | 2-4 | 5 | 1 | 6 | 5 | 3 | 3 | 0 | 2 | 16 | -12 |
| 11 | RISSE, HANNAH | * | 0 | 0-0 | 0-0 | 0-0 | 0 | 0 | 0 | 0 | 0 | 1 | 0 | 0 | 16 | -3 |
| 12 | MILLS, MYA | * | 0 | 0-1 | 0-0 | 0-0 | 0 | 0 | 0 | 0 | 0 | 0 | 0 | 0 | 8 | 0 |
| 15 | FERGUSON, SHANIA | | 7 | 3-9 | 1-4 | 0-0 | 0 | 0 | 0 | 1 | 0 | 1 | 0 | 2 | | -3 |
| 22 | DREAMER, MYA | * | 0 | 0-1 | 0-0 | 0-0 | 0 | 0 | 0 | 0 | 0 | 0 | 0 | 0 | 8 | -4 |
| 30 | MORRISETTE, ASHLYNN | | 0 | 0-0 | 0-0 | 0-0 | 0 | 0 | 0 | 1 | 0 | 0 | 0 | 0 | 8 | -2 |
| TOTALS | | | 41 | 16-53 | 4-11 | 5-10 | 10 | 20 | 30 | 20 | 4 | 10 | 0 | 7 | 160 | |

Shooting By Period

| Period | FG | FG% | 3FG | 3FG% | FT | FT% |
|-------------|--------------|--------------|-------------|--------------|-------------|--------------|
| Game | 16-53 | 30.2% | 4-11 | 36.4% | 5-10 | 50.0% |

Deadball Rebounds: 7,5
Last FG: 4th-8:00
Largest lead: By at
Technical Fouls: None.

Flandreau 55

Record:

| No. | Player | S | Pts | FG | 3FG | FT | OR | DR | TR | PF | A | TO | Blk | Stl | Min | +/- |
|---------------|------------------|---|-----------|--------------|-------------|--------------|----------|-----------|-----------|----------|----------|-----------|----------|----------|------------|-----|
| 10 | KLEIN, LILY | * | 9 | 1-4 | 0-0 | 7-10 | 1 | 6 | 7 | 3 | 0 | 2 | 0 | 3 | 32 | 14 |
| 14 | KRULL, HANNAH | | 2 | 1-4 | 0-1 | 0-0 | 4 | 1 | 5 | 1 | 0 | 0 | 0 | 0 | 24 | 4 |
| 22 | IOTT, SADIE | * | 11 | 2-7 | 1-1 | 6-8 | 3 | 3 | 6 | 3 | 0 | 2 | 0 | 1 | 24 | 12 |
| 30 | PAVLIS, LIZZIE | * | 9 | 3-10 | 0-1 | 3-6 | 1 | 4 | 5 | 1 | 0 | 3 | 0 | 4 | 32 | 12 |
| 32 | SHEPPARD, CLAIRE | * | 22 | 7-18 | 4-8 | 4-4 | 0 | 3 | 3 | 1 | 1 | 4 | 0 | 1 | 32 | 14 |
| 20 | SHEPPARD, MORGAN | * | 2 | 0-1 | 0-0 | 2-2 | 0 | 0 | 0 | 0 | 0 | 0 | 0 | 0 | 16 | 12 |
| 24 | NEISES, HAYDEN | | 0 | 0-0 | 0-0 | 0-0 | 0 | 0 | 0 | 0 | 0 | 0 | 0 | 0 | | 0 |
| TOTALS | | | 55 | 14-44 | 5-11 | 22-30 | 9 | 22 | 31 | 9 | 1 | 11 | 0 | 9 | 160 | |

Shooting By Period

| Period | FG | FG% | 3FG | 3FG% | FT | FT% |
|-------------|--------------|--------------|-------------|--------------|--------------|--------------|
| Game | 14-44 | 31.8% | 5-11 | 45.5% | 22-30 | 73.3% |

Deadball Rebounds: 4,3
Last FG: 4th-8:00
Largest lead: By at
Technical Fouls: None.

Game Notes:

Officials: , ,

Start Time: **10:20:00**
 Postseason Game;

| Score | 1st | 2nd | 3rd | 4th | TOT |
|-------|-----|-----|-----|-----|-----------|
| LAK | 10 | 14 | 9 | 8 | 41 |
| FLA | 10 | 19 | 10 | 16 | 55 |

LAK led for 0:0. FLA led for 0:0.
 Game was tied for 0:0.
 Times tied: 0 Lead Changes: 0

| Points | LAK | FLA |
|--------------|----------------|----------------|
| In the Paint | 18 | 12 |
| Off Turns | 11 | 6 |
| 2nd Chance | 9 | 4 |
| Fast Break | 0 | 0 |
| Bench | 7 | 2 |
| Per Poss | 0.719 19/57 | 0.948 25/58 |

Official Box Score
Lakota Tech vs Flandreau
First Half Statistics Only
March 10, 2023 at ,



Lakota Tech 24

Record:

| No. | Player | S | Pts | FG | 3FG | FT | OR | DR | TR | PF | A | TO | Blk | Stl | Min | +/- |
|-----|--------|---|-----|----|-----|----|----|----|----|----|---|----|-----|-----|-----|-----|
|-----|--------|---|-----|----|-----|----|----|----|----|----|---|----|-----|-----|-----|-----|

Shooting By Period

| Period | FG | FG% | 3FG | 3FG% | FT | FT% |
|----------|-------|-------|------|-------|------|-------|
| 1st Half | 0-0 | 0% | 0-0 | 0% | 0-0 | 0% |
| Game | 16-53 | 30.2% | 4-11 | 36.4% | 5-10 | 50.0% |

Deadball Rebounds: 7,5
Last FG Half: LAK 2nd-8:00

Flandreau 29

Record:

| No. | Player | S | Pts | FG | 3FG | FT | OR | DR | TR | PF | A | TO | Blk | Stl | Min | +/- |
|-----|--------|---|-----|----|-----|----|----|----|----|----|---|----|-----|-----|-----|-----|
|-----|--------|---|-----|----|-----|----|----|----|----|----|---|----|-----|-----|-----|-----|

Shooting By Period

| Period | FG | FG% | 3FG | 3FG% | FT | FT% |
|----------|-------|-------|------|-------|-------|-------|
| 1st Half | 0-0 | 0% | 0-0 | 0% | 0-0 | 0% |
| Game | 14-44 | 31.8% | 5-11 | 45.5% | 22-30 | 73.3% |

Deadball Rebounds: 4,3
Last FG Half: FLA 2nd-8:00

Game Notes:

Officials: , ,

Start Time: **10:20:00**

Postseason Game;

| Score | 1st | 2nd | 3rd | 4th | TOT |
|-------|-----|-----|-----|-----|-----------|
| LAK | 10 | 14 | 9 | 8 | 41 |
| FLA | 10 | 19 | 10 | 16 | 55 |

| Points from (This Period) | LAK | FLA |
|---------------------------|-----|-----|
| In the Paint | 4 | 4 |
| Off Turns | 3 | 0 |
| 2nd Chance | 4 | 0 |
| Fast Break | 0 | 0 |
| Bench | 0 | 0 |

Official Play-By-Play
Lakota Tech vs Flandreau
First Quarter
March 10, 2023 at ,



Period 1

Starters:

Lakota Tech: 3 BYERLEY,TAYLOR; 10 HUNTER,JODENE; 32 RICHARD,SHYLEIGH; 33 RODRIGUEZ,TAWNY; 55 SHANGREAU,MELINA;
Flandreau: 10 KLEIN,LILY; 14 KRULL,HANNAH; 22 IOTT,SADIE; 30 PAVLIS,LIZZIE; 32 SHEPPARD,CLAIRE;

| Time | VISITORS: Lakota Tech | Score | Margin | HOME: Flandreau |
|------|---------------------------------------|-------|--------|------------------------------------|
| 8:00 | SUB STARTER: BYERLEY, TAYLOR | | | |
| 8:00 | SUB STARTER: HUNTER, JODENE | | | |
| 8:00 | SUB STARTER: RICHARD, SHYLEIGH | | | |
| 8:00 | SUB STARTER: RODRIGUEZ, TAWNY | | | |
| 8:00 | SUB STARTER: SHANGREAU, MELINA | | | |
| 8:00 | | | | SUB STARTER: KLEIN, LILY |
| 8:00 | | | | SUB STARTER: KRULL, HANNAH |
| 8:00 | | | | SUB STARTER: IOTT, SADIE |
| 8:00 | | | | SUB STARTER: PAVLIS, LIZZIE |
| 8:00 | | | | SUB STARTER: SHEPPARD, CLAIRE |
| 0:00 | | | | MISSED 2PTR by IOTT, SADIE |
| 0:00 | REBOUND (DEF) by RODRIGUEZ, TAWNY | | | |
| 0:00 | TURNOVER by SHANGREAU, MELINA | | | |
| 0:00 | | | | STEAL by KLEIN, LILY |
| 0:00 | | | | MISSED 3PTR by PAVLIS, LIZZIE |
| 0:00 | REBOUND (DEADB) by TEAM | | | |
| 0:00 | GOOD! 3PTR by BYERLEY, TAYLOR | 0-3 | V 3 | |
| 0:00 | ASSIST by SHANGREAU, MELINA | | | |
| 0:00 | | 2-3 | V 1 | GOOD! 2PTR by PAVLIS, LIZZIE [PNT] |
| 0:00 | | | | FOUL (PERSONAL) by IOTT, SADIE |
| 0:00 | MISSED 2PTR by RODRIGUEZ, TAWNY | | | |
| 0:00 | REBOUND (OFF) by SHANGREAU, MELINA | | | |
| 0:00 | GOOD! 2PTR by SHANGREAU, MELINA [PNT] | 2-5 | V 3 | |
| 0:00 | | | | MISSED 3PTR by SHEPPARD, CLAIRE |
| 0:00 | REBOUND (DEF) by BYERLEY, TAYLOR | | | |
| 0:00 | MISSED 2PTR by SHANGREAU, MELINA | | | |
| 0:00 | | | | REBOUND (DEF) by KLEIN, LILY |
| 0:00 | FOUL (PERSONAL) by RODRIGUEZ, TAWNY | | | |
| 0:00 | FOUL (PERSONAL) by RICHARD, SHYLEIGH | | | |
| 0:00 | | 3-5 | V 2 | GOOD! FT by IOTT, SADIE |
| 0:00 | | | | MISSED FT by IOTT, SADIE |
| 0:00 | | | | REBOUND (OFF) by PAVLIS, LIZZIE |
| 0:00 | | | | TURNOVER by KLEIN, LILY |
| 0:00 | STEAL by SHANGREAU, MELINA | | | |
| 0:00 | GOOD! 3PTR by RICHARD, SHYLEIGH | 3-8 | V 5 | |
| 0:00 | | 6-8 | V 2 | GOOD! 3PTR by SHEPPARD, CLAIRE |
| 0:00 | MISSED 2PTR by SHANGREAU, MELINA | | | |
| 0:00 | REBOUND (DEADB) by TEAM | | | |
| 0:00 | MISSED 2PTR by HUNTER, JODENE | | | |
| 0:00 | | | | REBOUND (DEF) by KRULL, HANNAH |
| 0:00 | | | | SUB OUT: IOTT, SADIE |
| 0:00 | | | | SUB IN: SHEPPARD, MORGAN |
| 0:00 | | | | SUB OUT: KRULL, HANNAH |
| 0:00 | | | | SUB IN: IOTT, SADIE |
| 0:00 | MISSED 2PTR by SHANGREAU, MELINA | | | |
| 0:00 | | | | REBOUND (DEADB) by TEAM |
| 0:00 | | | | MISSED 2PTR by PAVLIS, LIZZIE |
| 0:00 | REBOUND (DEF) by RODRIGUEZ, TAWNY | | | |
| 0:00 | SUB OUT: BYERLEY, TAYLOR | | | |
| 0:00 | SUB IN: DREAMER, MYA | | | |
| 0:00 | | 8-8 | T | GOOD! 2PTR by PAVLIS, LIZZIE [PNT] |
| 0:00 | | | | ASSIST by SHEPPARD, CLAIRE |
| 0:00 | MISSED 2PTR by DREAMER, MYA | | | |
| 0:00 | REBOUND (OFF) by RODRIGUEZ, TAWNY | | | |
| 0:00 | GOOD! 2PTR by RODRIGUEZ, TAWNY [PNT] | 8-10 | V 2 | |
| 0:00 | | | | MISSED 3PTR by SHEPPARD, CLAIRE |
| 0:00 | REBOUND (DEF) by SHANGREAU, MELINA | | | |
| 0:00 | | | | FOUL (PERSONAL) by IOTT, SADIE |
| 0:00 | SUB OUT: RICHARD, SHYLEIGH | | | |
| 0:00 | SUB IN: FERGUSON, SHANIA | | | |
| 0:00 | MISSED 2PTR by RODRIGUEZ, TAWNY | | | |
| 0:00 | | | | REBOUND (DEF) by KLEIN, LILY |
| 0:00 | | | | MISSED 2PTR by IOTT, SADIE |
| 0:00 | REBOUND (DEF) by TEAM | | | |
| 0:00 | FOUL (PERSONAL) by SHANGREAU, MELINA | | | |

| Time | VISITORS: Lakota Tech | Score | Margin | HOME: Flandreau |
|------|-----------------------------------|-------|--------|-----------------------------------|
| 0:00 | | 9-10 | V 1 | GOOD! FT by IOTT, SADIE |
| 0:00 | | 10-10 | T | GOOD! FT by IOTT, SADIE |
| 0:00 | | | | SUB OUT: IOTT, SADIE |
| 0:00 | | | | SUB IN: KRULL, HANNAH |
| 0:00 | MISSED 2PTR by HUNTER, JODENE | | | |
| 0:00 | REBOUND (DEADB) by TEAM | | | |
| 0:00 | MISSED 2PTR by RODRIGUEZ, TAWNY | | | |
| 0:00 | | | | REBOUND (DEF) by SHEPPARD, CLAIRE |
| 0:00 | | | | MISSED 2PTR by KLEIN, LILY |
| 0:00 | REBOUND (DEF) by RODRIGUEZ, TAWNY | | | |
| 0:00 | TURNOVER by RODRIGUEZ, TAWNY | | | |
| 0:00 | | | | STEAL by KLEIN, LILY |
| 0:00 | | | | SUB OUT: PAVLIS, LIZZIE |
| 0:00 | | | | SUB IN: IOTT, SADIE |
| 0:00 | | | | TURNOVER by SHEPPARD, CLAIRE |

Lakota Tech 10, Flandreau 10

| Points (This Period) | LAK | FLA |
|----------------------|---------------|---------------|
| In the Paint | 4 | 4 |
| Off Turns | 3 | 0 |
| 2nd Chance | 4 | 0 |
| Fast Break | 0 | 0 |
| Bench | 0 | 0 |
| Per Poss | 0.769 4/13 | 0.769 5/13 |

Official Play-By-Play
Lakota Tech vs Flandreau
Second Quarter
March 10, 2023 at ,



Period 2

Starters:

Lakota Tech: 3 BYERLEY,TAYLOR; 10 HUNTER,JODENE; 32 RICHARD,SHYLEIGH; 33 RODRIGUEZ,TAWNY; 55 SHANGREAU,MELINA;
Flandreau: 10 KLEIN,LILY; 14 KRULL,HANNAH; 22 IOTT,SADIE; 30 PAVLIS,LIZZIE; 32 SHEPPARD,CLAIRE;

| Time | VISITORS: Lakota Tech | Score | Margin | HOME: Flandreau |
|------|----------------------------------------|-------|--------|--------------------------------------|
| 8:00 | MISSED 2PTR by FERGUSON, SHANIA | | | |
| 8:00 | REBOUND (OFF) by SHANGREAU, MELINA | | | |
| 8:00 | GOOD! 3PTR by FERGUSON, SHANIA | 10-13 | V 3 | |
| 8:00 | | 12-13 | V 1 | GOOD! 2PTR by SHEPPARD, CLAIRE |
| 8:00 | | | | SUB STARTER: IOTT, SADIE |
| 8:00 | | | | SUB STARTER: SHEPPARD, CLAIRE |
| 8:00 | | | | SUB STARTER: SHEPPARD, MORGAN |
| 8:00 | | | | SUB STARTER: KRULL, HANNAH |
| 8:00 | | | | SUB STARTER: KLEIN, LILY |
| 8:00 | | | | FOUL (PERSONAL) by KLEIN, LILY |
| 8:00 | SUB STARTER: SHANGREAU, MELINA | | | |
| 8:00 | SUB STARTER: FERGUSON, SHANIA | | | |
| 8:00 | SUB STARTER: RODRIGUEZ, TAWNY | | | |
| 8:00 | SUB STARTER: DREAMER, MYA | | | |
| 8:00 | SUB STARTER: HUNTER, JODENE | | | |
| 8:00 | | | | MISSED 2PTR by SHEPPARD, MORGAN |
| 8:00 | REBOUND (DEF) by TEAM | | | |
| 8:00 | FOUL (PERSONAL) by RODRIGUEZ, TAWNY | | | |
| 8:00 | | 13-13 | T | GOOD! FT by SHEPPARD, MORGAN |
| 8:00 | SUB OUT: RODRIGUEZ, TAWNY | | | |
| 8:00 | SUB IN: MORRISETTE, ASHLYNN | | | |
| 8:00 | | 14-13 | H 1 | GOOD! FT by SHEPPARD, MORGAN |
| 8:00 | GOOD! 2PTR by FERGUSON, SHANIA [PNT] | 14-15 | V 1 | |
| 8:00 | | 16-15 | H 1 | GOOD! 2PTR by SHEPPARD, CLAIRE [PNT] |
| 8:00 | MISSED 2PTR by SHANGREAU, MELINA | | | |
| 8:00 | | | | REBOUND (DEF) by SHEPPARD, CLAIRE |
| 8:00 | | | | TURNOVER by KLEIN, LILY |
| 8:00 | STEAL by FERGUSON, SHANIA | | | |
| 8:00 | TURNOVER by FERGUSON, SHANIA | | | |
| 8:00 | | | | STEAL by KLEIN, LILY |
| 8:00 | | | | MISSED 2PTR by IOTT, SADIE |
| 8:00 | REBOUND (DEF) by TEAM | | | |
| 8:00 | FOUL (PERSONAL) by MORRISETTE, ASHLYNN | | | |
| 8:00 | | 17-15 | H 2 | GOOD! FT by IOTT, SADIE |
| 8:00 | SUB OUT: DREAMER, MYA | | | |
| 8:00 | SUB IN: RICHARD, SHYLEIGH | | | |
| 8:00 | | | | MISSED FT by IOTT, SADIE |
| 8:00 | REBOUND (DEADB) by TEAM | | | |
| 8:00 | TIMEOUT TEAM | | | |
| 8:00 | SUB OUT: MORRISETTE, ASHLYNN | | | |
| 8:00 | SUB IN: RODRIGUEZ, TAWNY | | | |
| 8:00 | | | | SUB OUT: SHEPPARD, MORGAN |
| 8:00 | | | | SUB IN: PAVLIS, LIZZIE |
| 8:00 | MISSED 2PTR by HUNTER, JODENE | | | |
| 8:00 | REBOUND (OFF) by SHANGREAU, MELINA | | | |
| 8:00 | | | | MISSED 2PTR by IOTT, SADIE |
| 8:00 | REBOUND (DEF) by TEAM | | | |
| 8:00 | FOUL (PERSONAL) by HUNTER, JODENE | | | |
| 8:00 | | 18-15 | H 3 | GOOD! FT by IOTT, SADIE |
| 8:00 | | 19-15 | H 4 | GOOD! FT by IOTT, SADIE |
| 8:00 | MISSED 3PTR by SHANGREAU, MELINA | | | |
| 8:00 | REBOUND (OFF) by RODRIGUEZ, TAWNY | | | |
| 8:00 | MISSED 3PTR by FERGUSON, SHANIA | | | |
| 8:00 | | | | REBOUND (DEF) by IOTT, SADIE |
| 8:00 | | | | TURNOVER by IOTT, SADIE |
| 8:00 | MISSED 2PTR by SHANGREAU, MELINA | | | |
| 8:00 | REBOUND (OFF) by RICHARD, SHYLEIGH | | | |
| 8:00 | | 21-15 | H 6 | GOOD! 2PTR by SHEPPARD, CLAIRE |
| 8:00 | MISSED 2PTR by FERGUSON, SHANIA | | | |
| 8:00 | REBOUND (OFF) by SHANGREAU, MELINA | | | |
| 8:00 | GOOD! 2PTR by SHANGREAU, MELINA [PNT] | 21-17 | H 4 | |
| 8:00 | | | | MISSED 2PTR by SHEPPARD, CLAIRE |
| 8:00 | | | | REBOUND (OFF) by KRULL, HANNAH |
| 8:00 | | | | TURNOVER by IOTT, SADIE |
| 8:00 | | | | SUB OUT: KRULL, HANNAH |

| Time | VISITORS: Lakota Tech | Score | Margin | HOME: Flandreau |
|------|---------------------------------------|-------|--------|---------------------------------|
| 8:00 | | | | SUB IN: SHEPPARD, MORGAN |
| 8:00 | GOOD! 2PTR by RODRIGUEZ, TAWNY | 21-19 | H 2 | |
| 8:00 | ASSIST by SHANGREAU, MELINA | | | |
| 8:00 | | 24-19 | H 5 | GOOD! 3PTR by SHEPPARD, CLAIRE |
| 8:00 | GOOD! 2PTR by HUNTER, JODENE [PNT] | 24-21 | H 3 | |
| 8:00 | | | | MISSED 2PTR by PAVLIS, LIZZIE |
| 8:00 | REBOUND (DEF) by BYERLEY, TAYLOR | | | |
| 8:00 | SUB OUT: RICHARD, SHYLEIGH | | | |
| 8:00 | SUB IN: BYERLEY, TAYLOR | | | |
| 8:00 | MISSED 2PTR by RODRIGUEZ, TAWNY | | | |
| 8:00 | | | | REBOUND (DEF) by TEAM |
| 8:00 | | | | FOUL (PERSONAL) by KLEIN, LILY |
| 8:00 | MISSED FT by RODRIGUEZ, TAWNY | | | |
| 8:00 | SUB OUT: FERGUSON, SHANIA | | | |
| 8:00 | SUB IN: RISSE, HANNAH | | | |
| 8:00 | | | | SUB OUT: IOTT, SADIE |
| 8:00 | | | | SUB IN: KRULL, HANNAH |
| 8:00 | GOOD! FT by RODRIGUEZ, TAWNY | 24-22 | H 2 | |
| 8:00 | | 27-22 | H 5 | GOOD! 3PTR by SHEPPARD, CLAIRE |
| 8:00 | TURNOVER by RISSE, HANNAH | | | |
| 8:00 | | | | STEAL by SHEPPARD, CLAIRE |
| 8:00 | FOUL (PERSONAL) by BYERLEY, TAYLOR | | | |
| 8:00 | SUB OUT: SHANGREAU, MELINA | | | |
| 8:00 | SUB IN: MORRISSETTE, ASHLYNN | | | |
| 8:00 | | 28-22 | H 6 | GOOD! FT by SHEPPARD, CLAIRE |
| 8:00 | | 29-22 | H 7 | GOOD! FT by SHEPPARD, CLAIRE |
| 8:00 | MISSED 3PTR by BYERLEY, TAYLOR | | | |
| 8:00 | | | | REBOUND (DEADB) by TEAM |
| 8:00 | | | | MISSED 3PTR by SHEPPARD, CLAIRE |
| 8:00 | | | | REBOUND (OFF) by KRULL, HANNAH |
| 8:00 | | | | MISSED 3PTR by KRULL, HANNAH |
| 8:00 | REBOUND (DEF) by TEAM | | | |
| 8:00 | GOOD! 2PTR by SHANGREAU, MELINA [PNT] | 29-24 | H 5 | |

Lakota Tech 24, Flandreau 29

| Points (This Period) | LAK | FLA |
|----------------------|---------------|---------------|
| In the Paint | 8 | 2 |
| Off Turns | 2 | 2 |
| 2nd Chance | 5 | 0 |
| Fast Break | 0 | 0 |
| Bench | 5 | 2 |
| Per Poss | 1.077 7/13 | 1.188 9/16 |

Official Box Score
Lakota Tech vs Flandreau
Second Half Statistics Only
March 10, 2023 at ,



Lakota Tech 17

Record:

| No. | Player | S | Pts | FG | 3FG | FT | OR | DR | TR | PF | A | TO | Blk | Stl | Min | +/- |
|-----|--------|---|-----|----|-----|----|----|----|----|----|---|----|-----|-----|-----|-----|
|-----|--------|---|-----|----|-----|----|----|----|----|----|---|----|-----|-----|-----|-----|

Shooting By Period

| Period | FG | FG% | 3FG | 3FG% | FT | FT% |
|----------|-------|-------|------|-------|------|-------|
| 2nd Half | 0-0 | 0% | 0-0 | 0% | 0-0 | 0% |
| Game | 16-53 | 30.2% | 4-11 | 36.4% | 5-10 | 50.0% |

Deadball Rebounds: 7,5
Last FG Half: LAK 4th-8:00

Flandreau 26

Record:

| No. | Player | S | Pts | FG | 3FG | FT | OR | DR | TR | PF | A | TO | Blk | Stl | Min | +/- |
|-----|--------|---|-----|----|-----|----|----|----|----|----|---|----|-----|-----|-----|-----|
|-----|--------|---|-----|----|-----|----|----|----|----|----|---|----|-----|-----|-----|-----|

Shooting By Period

| Period | FG | FG% | 3FG | 3FG% | FT | FT% |
|----------|-------|-------|------|-------|-------|-------|
| 2nd Half | 0-0 | 0% | 0-0 | 0% | 0-0 | 0% |
| Game | 14-44 | 31.8% | 5-11 | 45.5% | 22-30 | 73.3% |

Deadball Rebounds: 4,3
Last FG Half: FLA 4th-8:00

Game Notes:

Officials: , ,

Start Time: **10:20:00**

Postseason Game;

| Score | 1st | 2nd | 3rd | 4th | TOT |
|-------|-----|-----|-----|-----|-----------|
| LAK | 10 | 14 | 9 | 8 | 41 |
| FLA | 10 | 19 | 10 | 16 | 55 |

| Points from (This Period) | LAK | FLA |
|---------------------------|-----|-----|
| In the Paint | 8 | 2 |
| Off Turns | 2 | 2 |
| 2nd Chance | 5 | 0 |
| Fast Break | 0 | 0 |
| Bench | 5 | 2 |

Official Play-By-Play
Lakota Tech vs Flandreau
Third Quarter
March 10, 2023 at ,



Period 3

Starters:

Lakota Tech: 3 BYERLEY,TAYLOR; 10 HUNTER,JODENE; 32 RICHARD,SHYLEIGH; 33 RODRIGUEZ,TAWNY; 55 SHANGREAU,MELINA;
Flandreau: 10 KLEIN,LILY; 14 KRULL,HANNAH; 22 IOTT,SADIE; 30 PAVLIS,LIZZIE; 32 SHEPPARD,CLAIRE;

| Time | VISITORS: Lakota Tech | Score | Margin | HOME: Flandreau |
|------|---------------------------------------|-------|--------|------------------------------------|
| 8:00 | | | | SUB STARTER: IOTT, SADIE |
| 8:00 | | | | SUB STARTER: KRULL, HANNAH |
| 8:00 | | | | SUB STARTER: SHEPPARD, CLAIRE |
| 8:00 | | | | SUB STARTER: KLEIN, LILY |
| 8:00 | | | | SUB STARTER: PAVLIS, LIZZIE |
| 8:00 | SUB STARTER: SHANGREAU, MELINA | | | |
| 8:00 | SUB STARTER: RODRIGUEZ, TAWNY | | | |
| 8:00 | SUB STARTER: BYERLEY, TAYLOR | | | |
| 8:00 | SUB STARTER: RICHARD, SHYLEIGH | | | |
| 8:00 | SUB STARTER: HUNTER, JODENE | | | |
| 0:00 | TURNOVER by RICHARD, SHYLEIGH | | | |
| 0:00 | | | | STEAL by PAVLIS, LIZZIE |
| 0:00 | | 31-24 | H 7 | GOOD! 2PTR by PAVLIS, LIZZIE [PNT] |
| 0:00 | MISSED 3PTR by BYERLEY, TAYLOR | | | |
| 0:00 | | | | REBOUND (DEF) by KLEIN, LILY |
| 0:00 | | | | TURNOVER by PAVLIS, LIZZIE |
| 0:00 | STEAL by SHANGREAU, MELINA | | | |
| 0:00 | MISSED 2PTR by HUNTER, JODENE | | | |
| 0:00 | | | | REBOUND (DEF) by TEAM |
| 0:00 | | | | FOUL (PERSONAL) by KRULL, HANNAH |
| 0:00 | MISSED FT by HUNTER, JODENE | | | |
| 0:00 | GOOD! FT by HUNTER, JODENE | 31-25 | H 6 | |
| 0:00 | | | | TURNOVER by PAVLIS, LIZZIE |
| 0:00 | STEAL by RICHARD, SHYLEIGH | | | |
| 0:00 | MISSED 2PTR by HUNTER, JODENE | | | |
| 0:00 | | | | REBOUND (DEF) by SHEPPARD, CLAIRE |
| 0:00 | | | | MISSED 2PTR by SHEPPARD, CLAIRE |
| 0:00 | REBOUND (DEF) by HUNTER, JODENE | | | |
| 0:00 | MISSED 2PTR by HUNTER, JODENE | | | |
| 0:00 | | | | REBOUND (DEF) by KLEIN, LILY |
| 0:00 | | | | TURNOVER by PAVLIS, LIZZIE |
| 0:00 | STEAL by BYERLEY, TAYLOR | | | |
| 0:00 | TURNOVER by HUNTER, JODENE | | | |
| 0:00 | | | | STEAL by PAVLIS, LIZZIE |
| 0:00 | FOUL (PERSONAL) by HUNTER, JODENE | | | |
| 0:00 | | | | MISSED 2PTR by PAVLIS, LIZZIE |
| 0:00 | REBOUND (DEADB) by TEAM | | | |
| 0:00 | GOOD! 2PTR by SHANGREAU, MELINA [PNT] | 31-27 | H 4 | |
| 0:00 | | 34-27 | H 7 | GOOD! 3PTR by IOTT, SADIE |
| 0:00 | GOOD! 2PTR by RODRIGUEZ, TAWNY [PNT] | 34-29 | H 5 | |
| 0:00 | ASSIST by RODRIGUEZ, TAWNY | | | |
| 0:00 | FOUL (PERSONAL) by BYERLEY, TAYLOR | | | |
| 0:00 | SUB OUT: BYERLEY, TAYLOR | | | |
| 0:00 | SUB IN: FERGUSON, SHANIA | | | |
| 0:00 | | | | MISSED 2PTR by PAVLIS, LIZZIE |
| 0:00 | REBOUND (DEF) by RODRIGUEZ, TAWNY | | | |
| 0:00 | MISSED 2PTR by FERGUSON, SHANIA | | | |
| 0:00 | REBOUND (OFF) by HUNTER, JODENE | | | |
| 0:00 | TURNOVER by HUNTER, JODENE | | | |
| 0:00 | | | | STEAL by PAVLIS, LIZZIE |
| 0:00 | | | | MISSED 2PTR by KLEIN, LILY |
| 0:00 | REBOUND (DEF) by TEAM | | | |
| 0:00 | FOUL (PERSONAL) by RICHARD, SHYLEIGH | | | |
| 0:00 | | | | MISSED FT by KLEIN, LILY |
| 0:00 | | 36-29 | H 7 | GOOD! FT by KLEIN, LILY |
| 0:00 | MISSED 2PTR by SHANGREAU, MELINA | | | |
| 0:00 | | | | REBOUND (DEF) by PAVLIS, LIZZIE |
| 0:00 | FOUL (PERSONAL) by SHANGREAU, MELINA | | | |
| 0:00 | | | | MISSED FT by PAVLIS, LIZZIE |
| 0:00 | SUB OUT: RICHARD, SHYLEIGH | | | |
| 0:00 | SUB IN: RISSE, HANNAH | | | |
| 0:00 | | 37-29 | H 8 | GOOD! FT by PAVLIS, LIZZIE |
| 0:00 | GOOD! 2PTR by RODRIGUEZ, TAWNY [PNT] | 37-31 | H 6 | |
| 0:00 | ASSIST by SHANGREAU, MELINA | | | |
| 0:00 | | | | MISSED 2PTR by SHEPPARD, CLAIRE |

| Time | VISITORS: Lakota Tech | Score | Margin | HOME: Flandreau |
|------|-------------------------------------|-------|--------|---------------------------------|
| 0:00 | | | | REBOUND (OFF) by IOTT, SADIE |
| 0:00 | FOUL (PERSONAL) by RODRIGUEZ, TAWNY | | | |
| 0:00 | | | | MISSED 3PTR by SHEPPARD, CLAIRE |
| 0:00 | REBOUND (DEADB) by TEAM | | | |
| 0:00 | MISSED 3PTR by FERGUSON, SHANIA | | | |
| 0:00 | | | | REBOUND (DEF) by KLEIN, LILY |
| 0:00 | | | | MISSED 2PTR by PAVLIS, LIZZIE |
| 0:00 | | | | REBOUND (OFF) by KRULL, HANNAH |
| 0:00 | | | | MISSED 2PTR by KRULL, HANNAH |
| 0:00 | | | | REBOUND (OFF) by KLEIN, LILY |
| 0:00 | | | | MISSED 2PTR by IOTT, SADIE |
| 0:00 | | | | REBOUND (DEADB) by TEAM |
| 0:00 | SUB OUT: RODRIGUEZ, TAWNY | | | |
| 0:00 | SUB IN: MORRISETTE, ASHLYNN | | | |
| 0:00 | | | | TURNOVER by SHEPPARD, CLAIRE |
| 0:00 | STEAL by FERGUSON, SHANIA | | | |
| 0:00 | GOOD! 2PTR by FERGUSON, SHANIA | 37-33 | H 4 | |
| 0:00 | | 40-33 | H 7 | GOOD! 3PTR by SHEPPARD, CLAIRE |

Lakota Tech 33, Flandreau 39

| Points (This Period) | LAK | FLA |
|----------------------|---------------|---------------|
| In the Paint | 6 | 2 |
| Off Turns | 4 | 2 |
| 2nd Chance | 0 | 0 |
| Fast Break | 0 | 0 |
| Bench | 2 | 0 |
| Per Poss | 0.643 5/14 | 0.667 4/15 |

Official Play-By-Play
Lakota Tech vs Flandreau
Fourth Quarter
March 10, 2023 at ,



Period 4

Starters:

Lakota Tech: 3 BYERLEY,TAYLOR; 10 HUNTER,JODENE; 32 RICHARD,SHYLEIGH; 33 RODRIGUEZ,TAWNY; 55 SHANGREAU,MELINA;
Flandreau: 10 KLEIN,LILY; 14 KRULL,HANNAH; 22 IOTT,SADIE; 30 PAVLIS,LIZZIE; 32 SHEPPARD,CLAIRE;

| Time | VISITORS: Lakota Tech | Score | Margin | HOME: Flandreau |
|------|--------------------------------------|-------|--------|-------------------------------------|
| 8:00 | | | | MISSED 2PTR by KRULL, HANNAH |
| 8:00 | | | | REBOUND (OFF) by KRULL, HANNAH |
| 8:00 | | 42-33 | H 9 | GOOD! 2PTR by KRULL, HANNAH [PNT] |
| 8:00 | SUB STARTER: HUNTER, JODENE | | | |
| 8:00 | SUB STARTER: FERGUSON, SHANIA | | | |
| 8:00 | SUB STARTER: MORRISETTE, ASHLYNN | | | |
| 8:00 | SUB STARTER: SHANGREAU, MELINA | | | |
| 8:00 | SUB STARTER: RISSE, HANNAH | | | |
| 8:00 | | | | SUB STARTER: KRULL, HANNAH |
| 8:00 | | | | SUB STARTER: SHEPPARD, CLAIRE |
| 8:00 | | | | SUB STARTER: KLEIN, LILY |
| 8:00 | | | | SUB STARTER: PAVLIS, LIZZIE |
| 8:00 | | | | SUB STARTER: IOTT, SADIE |
| 8:00 | MISSED 2PTR by SHANGREAU, MELINA | | | |
| 8:00 | | | | REBOUND (DEF) by TEAM |
| 8:00 | | | | FOUL (PERSONAL) by SHEPPARD, CLAIRE |
| 8:00 | GOOD! FT by SHANGREAU, MELINA | 42-34 | H 8 | |
| 8:00 | SUB OUT: RISSE, HANNAH | | | |
| 8:00 | SUB IN: RICHARD, SHYLEIGH | | | |
| 8:00 | SUB OUT: MORRISETTE, ASHLYNN | | | |
| 8:00 | SUB IN: RODRIGUEZ, TAWNY | | | |
| 8:00 | GOOD! FT by SHANGREAU, MELINA | 42-35 | H 7 | |
| 8:00 | | | | MISSED 2PTR by SHEPPARD, CLAIRE |
| 8:00 | | | | REBOUND (OFF) by IOTT, SADIE |
| 8:00 | | | | MISSED 2PTR by SHEPPARD, CLAIRE |
| 8:00 | REBOUND (DEF) by HUNTER, JODENE | | | |
| 8:00 | TURNOVER by HUNTER, JODENE | | | |
| 8:00 | | | | STEAL by PAVLIS, LIZZIE |
| 8:00 | GOOD! 3PTR by RICHARD, SHYLEIGH | 42-38 | H 4 | |
| 8:00 | TIMEOUT TEAM | | | |
| 8:00 | | | | MISSED 2PTR by SHEPPARD, CLAIRE |
| 8:00 | REBOUND (DEF) by TEAM | | | |
| 8:00 | FOUL (PERSONAL) by SHANGREAU, MELINA | | | |
| 8:00 | | 43-38 | H 5 | GOOD! FT by SHEPPARD, CLAIRE |
| 8:00 | | | | SUB OUT: KRULL, HANNAH |
| 8:00 | | | | SUB IN: SHEPPARD, MORGAN |
| 8:00 | | 44-38 | H 6 | GOOD! FT by SHEPPARD, CLAIRE |
| 8:00 | TURNOVER by SHANGREAU, MELINA | | | |
| 8:00 | | | | STEAL by IOTT, SADIE |
| 8:00 | | | | MISSED 2PTR by SHEPPARD, CLAIRE |
| 8:00 | | | | REBOUND (OFF) by IOTT, SADIE |
| 8:00 | | 46-38 | H 8 | GOOD! 2PTR by IOTT, SADIE [PNT] |
| 8:00 | MISSED 3PTR by FERGUSON, SHANIA | | | |
| 8:00 | | | | REBOUND (DEF) by IOTT, SADIE |
| 8:00 | | | | TIMEOUT TEAM |
| 8:00 | FOUL (PERSONAL) by HUNTER, JODENE | | | |
| 8:00 | | 47-38 | H 9 | GOOD! FT by KLEIN, LILY |
| 8:00 | | 48-38 | H 10 | GOOD! FT by KLEIN, LILY |
| 8:00 | MISSED 3PTR by HUNTER, JODENE | | | |
| 8:00 | | | | REBOUND (DEF) by PAVLIS, LIZZIE |
| 8:00 | | | | TURNOVER by SHEPPARD, CLAIRE |
| 8:00 | MISSED 2PTR by RODRIGUEZ, TAWNY | | | |
| 8:00 | REBOUND (OFF) by SHANGREAU, MELINA | | | |
| 8:00 | MISSED 2PTR by SHANGREAU, MELINA | | | |
| 8:00 | | | | REBOUND (DEF) by TEAM |
| 8:00 | | | | FOUL (PERSONAL) by PAVLIS, LIZZIE |
| 8:00 | MISSED FT by SHANGREAU, MELINA | | | |
| 8:00 | MISSED FT by SHANGREAU, MELINA | | | |
| 8:00 | | | | REBOUND (DEF) by IOTT, SADIE |
| 8:00 | | | | MISSED 2PTR by KLEIN, LILY |
| 8:00 | REBOUND (DEF) by TEAM | | | |
| 8:00 | FOUL (PERSONAL) by FERGUSON, SHANIA | | | |
| 8:00 | | 49-38 | H 11 | GOOD! FT by KLEIN, LILY |
| 8:00 | | | | MISSED FT by KLEIN, LILY |
| 8:00 | REBOUND (DEADB) by TEAM | | | |

| Time | VISITORS: Lakota Tech | Score | Margin | HOME: Flandreau |
|------|---------------------------------------|-------|--------|---------------------------------|
| 8:00 | MISSED 2PTR by RODRIGUEZ, TAWNY | | | |
| 8:00 | | | | REBOUND (DEF) by TEAM |
| 8:00 | | | | FOUL (PERSONAL) by IOTT, SADIE |
| 8:00 | MISSED FT by RODRIGUEZ, TAWNY | | | |
| 8:00 | GOOD! FT by RODRIGUEZ, TAWNY | 49-39 | H 10 | |
| 8:00 | | 51-39 | H 12 | GOOD! 2PTR by KLEIN, LILY |
| 8:00 | MISSED 2PTR by RICHARD, SHYLEIGH | | | |
| 8:00 | REBOUND (OFF) by RICHARD, SHYLEIGH | | | |
| 8:00 | MISSED 2PTR by RICHARD, SHYLEIGH | | | |
| 8:00 | | | | REBOUND (DEF) by PAVLIS, LIZZIE |
| 8:00 | FOUL (PERSONAL) by HUNTER, JODENE | | | |
| 8:00 | | 52-39 | H 13 | GOOD! FT by PAVLIS, LIZZIE |
| 8:00 | | 53-39 | H 14 | GOOD! FT by PAVLIS, LIZZIE |
| 8:00 | TURNOVER by SHANGREAUX, MELINA | | | |
| 8:00 | FOUL (PERSONAL) by SHANGREAUX, MELINA | | | |
| 8:00 | | | | TURNOVER by SHEPPARD, CLAIRE |
| 8:00 | STEAL by RICHARD, SHYLEIGH | | | |
| 8:00 | | | | FOUL (PERSONAL) by KLEIN, LILY |
| 8:00 | MISSED 2PTR by RODRIGUEZ, TAWNY | | | |
| 8:00 | REBOUND (DEADB) by TEAM | | | |
| 8:00 | GOOD! 2PTR by SHANGREAUX, MELINA | 53-41 | H 12 | |
| 8:00 | SUB OUT: RICHARD, SHYLEIGH | | | |
| 8:00 | SUB IN: DREAMER, MYA | | | |
| 8:00 | | | | MISSED 2PTR by PAVLIS, LIZZIE |
| 8:00 | REBOUND (DEF) by TEAM | | | |
| 8:00 | FOUL (PERSONAL) by SHANGREAUX, MELINA | | | |
| 8:00 | SUB OUT: SHANGREAUX, MELINA | | | |
| 8:00 | SUB IN: BYERLEY, TAYLOR | | | |
| 8:00 | | | | MISSED FT by PAVLIS, LIZZIE |
| 8:00 | | | | MISSED FT by PAVLIS, LIZZIE |
| 8:00 | REBOUND (DEF) by HUNTER, JODENE | | | |
| 8:00 | MISSED 2PTR by RODRIGUEZ, TAWNY | | | |
| 8:00 | | | | REBOUND (DEF) by KLEIN, LILY |
| 8:00 | FOUL (PERSONAL) by BYERLEY, TAYLOR | | | |
| 8:00 | SUB OUT: FERGUSON, SHANIA | | | |
| 8:00 | SUB IN: RISSE, HANNAH | | | |
| 8:00 | | 54-41 | H 13 | GOOD! FT by KLEIN, LILY |
| 8:00 | | 55-41 | H 14 | GOOD! FT by KLEIN, LILY |
| 8:00 | | | | TIMEOUT TEAM |
| 8:00 | MISSED 2PTR by BYERLEY, TAYLOR | | | |
| 8:00 | | | | REBOUND (DEADB) by TEAM |
| 8:00 | FOUL (PERSONAL) by HUNTER, JODENE | | | |
| 8:00 | SUB OUT: HUNTER, JODENE | | | |
| 8:00 | SUB IN: MILLS, MYA | | | |
| 8:00 | | 56-41 | H 15 | GOOD! FT by KLEIN, LILY |
| 8:00 | | | | MISSED FT by KLEIN, LILY |
| 8:00 | REBOUND (DEF) by BYERLEY, TAYLOR | | | |
| 8:00 | MISSED 2PTR by MILLS, MYA | | | |
| 8:00 | | | | REBOUND (DEF) by PAVLIS, LIZZIE |

Lakota Tech 41, Flandreau 55

| Points (This Period) | LAK | FLA |
|----------------------|---------------|---------------|
| In the Paint | 0 | 4 |
| Off Turns | 2 | 2 |
| 2nd Chance | 0 | 4 |
| Fast Break | 0 | 0 |
| Bench | 0 | 0 |
| Per Poss | 0.471 4/17 | 1.067 8/15 |

Official Scoring/Possession Reference Chart

Lakota Tech vs Flandreau

Period 1

March 10, 2023 at ,



Period 1

Starters:

Lakota Tech: 3 BYERLEY,TAYLOR; 10 HUNTER,JODENE; 32 RICHARD,SHYLEIGH; 33 RODRIGUEZ,TAWNY; 55 SHANGREAU,MELINA;

Flandreau: 10 KLEIN,LILY; 14 KRULL,HANNAH; 22 IOTT,SADIE; 30 PAVLIS,LIZZIE; 32 SHEPPARD,CLAIRE;

| Time | VISITORS: Lakota Tech | Score | Margin | HOME: Flandreau |
|------|---------------------------------------|-------|--------|------------------------------------|
| 0:00 | GOOD! 3PTR by BYERLEY, TAYLOR | 0-3 | V 3 | |
| 0:00 | | 2-3 | V 1 | GOOD! 2PTR by PAVLIS, LIZZIE [PNT] |
| 0:00 | GOOD! 2PTR by SHANGREAU, MELINA [PNT] | 2-5 | V 3 | |
| 0:00 | | 3-5 | V 2 | GOOD! FT by IOTT, SADIE |
| 0:00 | GOOD! 3PTR by RICHARD, SHYLEIGH | 3-8 | V 5 | |
| 0:00 | | 6-8 | V 2 | GOOD! 3PTR by SHEPPARD, CLAIRE |
| 0:00 | | 8-8 | T | GOOD! 2PTR by PAVLIS, LIZZIE [PNT] |
| 0:00 | GOOD! 2PTR by RODRIGUEZ, TAWNY [PNT] | 8-10 | V 2 | |
| 0:00 | | 9-10 | V 1 | GOOD! FT by IOTT, SADIE |
| 0:00 | | 10-10 | T | GOOD! FT by IOTT, SADIE |

Lakota Tech 10, Flandreau 10

Official Scoring/Possession Reference Chart

Lakota Tech vs Flandreau

Period 2

March 10, 2023 at ,



Period 2

Starters:

Lakota Tech: 3 BYERLEY,TAYLOR; 10 HUNTER,JODENE; 32 RICHARD,SHYLEIGH; 33 RODRIGUEZ,TAWNY; 55 SHANGREAU,MELINA;

Flandreau: 10 KLEIN,LILY; 14 KRULL,HANNAH; 22 IOTT,SADIE; 30 PAVLIS,LIZZIE; 32 SHEPPARD,CLAIRE;

| Time | VISITORS: Lakota Tech | Score | Margin | HOME: Flandreau |
|------|---------------------------------------|-------|--------|--------------------------------------|
| 8:00 | GOOD! 3PTR by FERGUSON, SHANIA | 10-13 | V 3 | |
| 8:00 | | 12-13 | V 1 | GOOD! 2PTR by SHEPPARD, CLAIRE |
| 8:00 | | 13-13 | T | GOOD! FT by SHEPPARD, MORGAN |
| 8:00 | | 14-13 | H 1 | GOOD! FT by SHEPPARD, MORGAN |
| 8:00 | GOOD! 2PTR by FERGUSON, SHANIA [PNT] | 14-15 | V 1 | |
| 8:00 | | 16-15 | H 1 | GOOD! 2PTR by SHEPPARD, CLAIRE [PNT] |
| 8:00 | | 17-15 | H 2 | GOOD! FT by IOTT, SADIE |
| 8:00 | | 18-15 | H 3 | GOOD! FT by IOTT, SADIE |
| 8:00 | | 19-15 | H 4 | GOOD! FT by IOTT, SADIE |
| 8:00 | | 21-15 | H 6 | GOOD! 2PTR by SHEPPARD, CLAIRE |
| 8:00 | GOOD! 2PTR by SHANGREAU, MELINA [PNT] | 21-17 | H 4 | |
| 8:00 | GOOD! 2PTR by RODRIGUEZ, TAWNY | 21-19 | H 2 | |
| 8:00 | | 24-19 | H 5 | GOOD! 3PTR by SHEPPARD, CLAIRE |
| 8:00 | GOOD! 2PTR by HUNTER, JODENE [PNT] | 24-21 | H 3 | |
| 8:00 | GOOD! FT by RODRIGUEZ, TAWNY | 24-22 | H 2 | |
| 8:00 | | 27-22 | H 5 | GOOD! 3PTR by SHEPPARD, CLAIRE |
| 8:00 | | 28-22 | H 6 | GOOD! FT by SHEPPARD, CLAIRE |
| 8:00 | | 29-22 | H 7 | GOOD! FT by SHEPPARD, CLAIRE |
| 8:00 | GOOD! 2PTR by SHANGREAU, MELINA [PNT] | 29-24 | H 5 | |

Lakota Tech 24, Flandreau 29

Official Scoring/Possession Reference Chart

Lakota Tech vs Flandreau

Period 3

March 10, 2023 at ,



Period 3

Starters:

Lakota Tech: 3 BYERLEY,TAYLOR; 10 HUNTER,JODENE; 32 RICHARD,SHYLEIGH; 33 RODRIGUEZ,TAWNY; 55 SHANGREAU,MELINA;

Flandreau: 10 KLEIN,LILY; 14 KRULL,HANNAH; 22 IOTT,SADIE; 30 PAVLIS,LIZZIE; 32 SHEPPARD,CLAIRE;

| Time | VISITORS: Lakota Tech | Score | Margin | HOME: Flandreau |
|------|---------------------------------------|-------|--------|------------------------------------|
| 0:00 | | 31-24 | H 7 | GOOD! 2PTR by PAVLIS, LIZZIE [PNT] |
| 0:00 | GOOD! FT by HUNTER, JODENE | 31-25 | H 6 | |
| 0:00 | GOOD! 2PTR by SHANGREAU, MELINA [PNT] | 31-27 | H 4 | |
| 0:00 | | 34-27 | H 7 | GOOD! 3PTR by IOTT, SADIE |
| 0:00 | GOOD! 2PTR by RODRIGUEZ, TAWNY [PNT] | 34-29 | H 5 | |
| 0:00 | | 36-29 | H 7 | GOOD! FT by KLEIN, LILY |
| 0:00 | | 37-29 | H 8 | GOOD! FT by PAVLIS, LIZZIE |
| 0:00 | GOOD! 2PTR by RODRIGUEZ, TAWNY [PNT] | 37-31 | H 6 | |
| 0:00 | GOOD! 2PTR by FERGUSON, SHANIA | 37-33 | H 4 | |
| 0:00 | | 40-33 | H 7 | GOOD! 3PTR by SHEPPARD, CLAIRE |

Lakota Tech 33, Flandreau 39

Official Scoring/Possession Reference Chart
Lakota Tech vs Flandreau
Period 4
March 10, 2023 at ,



Period 4

Starters:

Lakota Tech: 3 BYERLEY,TAYLOR; 10 HUNTER,JODENE; 32 RICHARD,SHYLEIGH; 33 RODRIGUEZ,TAWNY; 55 SHANGREAU,MELINA;
Flandreau: 10 KLEIN,LILY; 14 KRULL,HANNAH; 22 IOTT,SADIE; 30 PAVLIS,LIZZIE; 32 SHEPPARD,CLAIRE;

| Time | VISITORS: Lakota Tech | Score | Margin | HOME: Flandreau |
|------|---------------------------------|-------|--------|-----------------------------------|
| 8:00 | | 42-33 | H 9 | GOOD! 2PTR by KRULL, HANNAH [PNT] |
| 8:00 | GOOD! FT by SHANGREAU, MELINA | 42-34 | H 8 | |
| 8:00 | GOOD! FT by SHANGREAU, MELINA | 42-35 | H 7 | |
| 8:00 | GOOD! 3PTR by RICHARD, SHYLEIGH | 42-38 | H 4 | |
| 8:00 | | 43-38 | H 5 | GOOD! FT by SHEPPARD, CLAIRE |
| 8:00 | | 44-38 | H 6 | GOOD! FT by SHEPPARD, CLAIRE |
| 8:00 | | 46-38 | H 8 | GOOD! 2PTR by IOTT, SADIE [PNT] |
| 8:00 | | 47-38 | H 9 | GOOD! FT by KLEIN, LILY |
| 8:00 | | 48-38 | H 10 | GOOD! FT by KLEIN, LILY |
| 8:00 | | 49-38 | H 11 | GOOD! FT by KLEIN, LILY |
| 8:00 | GOOD! FT by RODRIGUEZ, TAWNY | 49-39 | H 10 | |
| 8:00 | | 51-39 | H 12 | GOOD! 2PTR by KLEIN, LILY |
| 8:00 | | 52-39 | H 13 | GOOD! FT by PAVLIS, LIZZIE |
| 8:00 | | 53-39 | H 14 | GOOD! FT by PAVLIS, LIZZIE |
| 8:00 | GOOD! 2PTR by SHANGREAU, MELINA | 53-41 | H 12 | |
| 8:00 | | 54-41 | H 13 | GOOD! FT by KLEIN, LILY |
| 8:00 | | 55-41 | H 14 | GOOD! FT by KLEIN, LILY |
| 8:00 | | 56-41 | H 15 | GOOD! FT by KLEIN, LILY |

Lakota Tech 41, Flandreau 55

Official Substitutions Log
Lakota Tech vs Flandreau
Period 1
March 10, 2023 at ,



| VISITORS: Lakota Tech | Time | Score | HOME: Flandreau |
|----------------------------------|-------------|--------------|------------------------------|
| 3 BYERLEY,TAYLOR | | | 10 KLEIN,LILY |
| 10 HUNTER,JODENE | | | 14 KRULL,HANNAH |
| 32 RICHARD,SHYLEIGH | | | 22 IOTT,SADIE |
| 33 RODRIGUEZ,TAWNY | | | 30 PAVLIS,LIZZIE |
| 55 SHANGREAU,MELINA | | | 32 SHEPPARD,CLAIRE |
| SUB STARTER: 3 BYERLEY,TAYLOR | 8:00 | - | |
| SUB STARTER: 10 HUNTER,JODENE | 8:00 | | |
| SUB STARTER: 32 RICHARD,SHYLEIGH | 8:00 | | |
| SUB STARTER: 33 RODRIGUEZ,TAWNY | 8:00 | | |
| SUB STARTER: 55 SHANGREAU,MELINA | 8:00 | | |
| | 8:00 | | SUB STARTER: KLEIN,LILY |
| | 8:00 | | SUB STARTER: KRULL,HANNAH |
| | 8:00 | | SUB STARTER: IOTT,SADIE |
| | 8:00 | | SUB STARTER: PAVLIS,LIZZIE |
| | 8:00 | | SUB STARTER: SHEPPARD,CLAIRE |
| | 0:00 | 8-6 | SUB OUT: IOTT,SADIE |
| | 0:00 | | SUB IN: SHEPPARD,MORGAN |
| | 0:00 | | SUB OUT: KRULL,HANNAH |
| | 0:00 | | SUB IN: IOTT,SADIE |
| SUB OUT: 3 BYERLEY,TAYLOR | 0:00 | | |
| SUB IN: 22 DREAMER,MYA | 0:00 | | |
| SUB OUT: 32 RICHARD,SHYLEIGH | 0:00 | | |
| SUB IN: 15 FERGUSON,SHANIA | 0:00 | | |
| | 0:00 | | SUB OUT: IOTT,SADIE |
| | 0:00 | | SUB IN: KRULL,HANNAH |
| | 0:00 | | SUB OUT: PAVLIS,LIZZIE |
| | 0:00 | | SUB IN: IOTT,SADIE |

Lakota Tech 10, Flandreau 10

Official Substitutions Log
Lakota Tech vs Flandreau
Period 2
March 10, 2023 at ,



| VISITORS: Lakota Tech | Time | Score | HOME: Flandreau |
|----------------------------------|-------------|--------------|------------------------------|
| 3 BYERLEY,TAYLOR | | | 10 KLEIN,LILY |
| 10 HUNTER,JODENE | | | 14 KRULL,HANNAH |
| 32 RICHARD,SHYLEIGH | | | 22 IOTT,SADIE |
| 33 RODRIGUEZ,TAWNY | | | 30 PAVLIS,LIZZIE |
| 55 SHANGREAU,MELINA | | | 32 SHEPPARD,CLAIRE |
| | 8:00 | 13-12 | SUB STARTER: IOTT,SADIE |
| | 8:00 | | SUB STARTER: SHEPPARD,CLAIRE |
| | 8:00 | | SUB STARTER: SHEPPARD,MORGAN |
| | 8:00 | | SUB STARTER: KRULL,HANNAH |
| | 8:00 | | SUB STARTER: KLEIN,LILY |
| SUB STARTER: 55 SHANGREAU,MELINA | 8:00 | | |
| SUB STARTER: 15 FERGUSON,SHANIA | 8:00 | | |
| SUB STARTER: 33 RODRIGUEZ,TAWNY | 8:00 | | |
| SUB STARTER: 22 DREAMER,MYA | 8:00 | | |
| SUB STARTER: 10 HUNTER,JODENE | 8:00 | | |
| SUB OUT: 33 RODRIGUEZ,TAWNY | 8:00 | | |
| SUB IN: 30 MORRISETTE,ASHLYNN | 8:00 | | |
| SUB OUT: 22 DREAMER,MYA | 8:00 | | |
| SUB IN: 32 RICHARD,SHYLEIGH | 8:00 | | |
| SUB OUT: 30 MORRISETTE,ASHLYNN | 8:00 | | |
| SUB IN: 33 RODRIGUEZ,TAWNY | 8:00 | | |
| | 8:00 | | SUB OUT: SHEPPARD,MORGAN |
| | 8:00 | | SUB IN: PAVLIS,LIZZIE |
| | 8:00 | | SUB OUT: KRULL,HANNAH |
| | 8:00 | | SUB IN: SHEPPARD,MORGAN |
| SUB OUT: 32 RICHARD,SHYLEIGH | 8:00 | | |
| SUB IN: 3 BYERLEY,TAYLOR | 8:00 | | |
| SUB OUT: 15 FERGUSON,SHANIA | 8:00 | | |
| SUB IN: 11 RISSE,HANNAH | 8:00 | | |
| | 8:00 | | SUB OUT: IOTT,SADIE |
| | 8:00 | | SUB IN: KRULL,HANNAH |
| SUB OUT: 55 SHANGREAU,MELINA | 8:00 | | |
| SUB IN: 30 MORRISETTE,ASHLYNN | 8:00 | | |

Lakota Tech 24, Flandreau 29

Official Substitutions Log
Lakota Tech vs Flandreau
Period 3
March 10, 2023 at ,



| VISITORS: Lakota Tech | Time | Score | HOME: Flandreau |
|----------------------------------|-------------|--------------|------------------------------|
| 3 BYERLEY,TAYLOR | | | 10 KLEIN,LILY |
| 10 HUNTER,JODENE | | | 14 KRULL,HANNAH |
| 32 RICHARD,SHYLEIGH | | | 22 IOTT,SADIE |
| 33 RODRIGUEZ,TAWNY | | | 30 PAVLIS,LIZZIE |
| 55 SHANGREAU,MELINA | | | 32 SHEPPARD,CLAIRE |
| | 8:00 | - | SUB STARTER: IOTT,SADIE |
| | 8:00 | | SUB STARTER: KRULL,HANNAH |
| | 8:00 | | SUB STARTER: SHEPPARD,CLAIRE |
| | 8:00 | | SUB STARTER: KLEIN,LILY |
| | 8:00 | | SUB STARTER: PAVLIS,LIZZIE |
| SUB STARTER: 55 SHANGREAU,MELINA | 8:00 | | |
| SUB STARTER: 33 RODRIGUEZ,TAWNY | 8:00 | | |
| SUB STARTER: 3 BYERLEY,TAYLOR | 8:00 | | |
| SUB STARTER: 32 RICHARD,SHYLEIGH | 8:00 | | |
| SUB STARTER: 10 HUNTER,JODENE | 8:00 | | |
| SUB OUT: 3 BYERLEY,TAYLOR | 0:00 | 29-34 | |
| SUB IN: 15 FERGUSON,SHANIA | 0:00 | | |
| SUB OUT: 32 RICHARD,SHYLEIGH | 0:00 | | |
| SUB IN: 11 RISSE,HANNAH | 0:00 | | |
| SUB OUT: 33 RODRIGUEZ,TAWNY | 0:00 | | |
| SUB IN: 30 MORRISSETTE,ASHLYNN | 0:00 | | |

Lakota Tech 33, Flandreau 39

Official Substitutions Log
Lakota Tech vs Flandreau
Period 4
March 10, 2023 at ,



| VISITORS: Lakota Tech | Time | Score | HOME: Flandreau |
|-------------------------------------|-------------|--------------|------------------------------|
| 3 BYERLEY,TAYLOR | | | 10 KLEIN,LILY |
| 10 HUNTER,JODENE | | | 14 KRULL,HANNAH |
| 32 RICHARD,SHYLEIGH | | | 22 IOTT,SADIE |
| 33 RODRIGUEZ,TAWNY | | | 30 PAVLIS,LIZZIE |
| 55 SHANGREAU,MELINA | | | 32 SHEPPARD,CLAIRE |
| SUB STARTER: 10 HUNTER,JODENE | 8:00 | 33-42 | |
| SUB STARTER: 15 FERGUSON,SHANIA | 8:00 | | |
| SUB STARTER: 30 MORRISSETTE,ASHLYNN | 8:00 | | |
| SUB STARTER: 55 SHANGREAU,MELINA | 8:00 | | |
| SUB STARTER: 11 RISSE,HANNAH | 8:00 | | |
| | 8:00 | | SUB STARTER: KRULL,HANNAH |
| | 8:00 | | SUB STARTER: SHEPPARD,CLAIRE |
| | 8:00 | | SUB STARTER: KLEIN,LILY |
| | 8:00 | | SUB STARTER: PAVLIS,LIZZIE |
| | 8:00 | | SUB STARTER: IOTT,SADIE |
| SUB OUT: 11 RISSE,HANNAH | 8:00 | | |
| SUB IN: 32 RICHARD,SHYLEIGH | 8:00 | | |
| SUB OUT: 30 MORRISSETTE,ASHLYNN | 8:00 | | |
| SUB IN: 33 RODRIGUEZ,TAWNY | 8:00 | | |
| | 8:00 | | SUB OUT: KRULL,HANNAH |
| | 8:00 | | SUB IN: SHEPPARD,MORGAN |
| SUB OUT: 32 RICHARD,SHYLEIGH | 8:00 | | |
| SUB IN: 22 DREAMER,MYA | 8:00 | | |
| SUB OUT: 55 SHANGREAU,MELINA | 8:00 | | |
| SUB IN: 3 BYERLEY,TAYLOR | 8:00 | | |
| SUB OUT: 15 FERGUSON,SHANIA | 8:00 | | |
| SUB IN: 11 RISSE,HANNAH | 8:00 | | |
| SUB OUT: 10 HUNTER,JODENE | 8:00 | | |
| SUB IN: 12 MILLS,MYA | 8:00 | | |

Lakota Tech 41, Flandreau 55

Official Shot Chart
Lakota Tech vs Flandreau
PERIOD 1 Shots
March 10, 2023 at ,



Flandreau

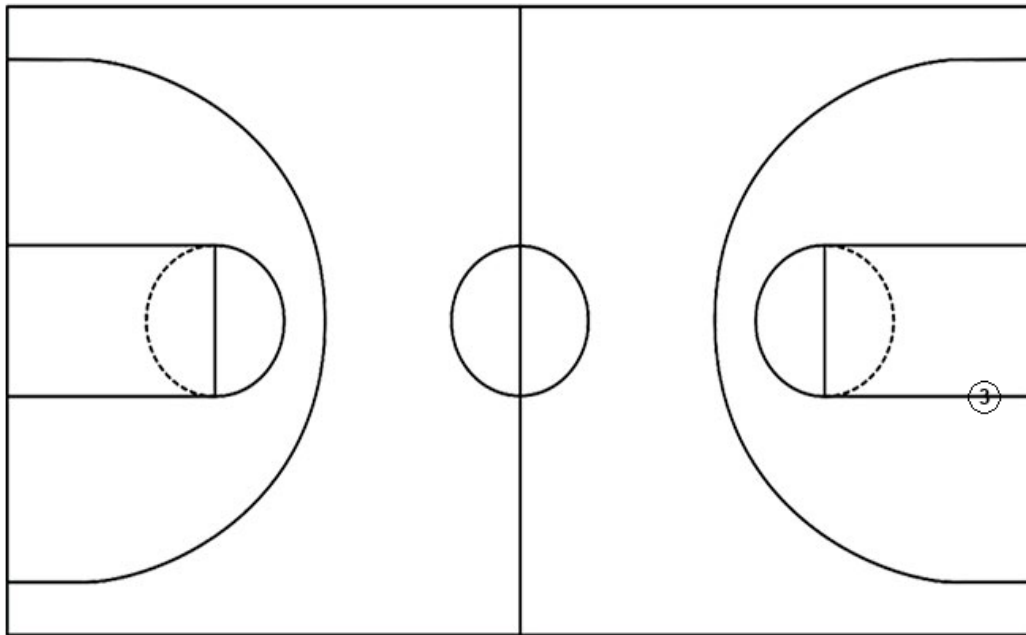
Lakota Tech

Layups

Layups

Dunks

Dunks



| FLA : Period 1 | Made | Att | Pct |
|--------------------------|-------------|------------|-------------|
| Layups | 0 | 0 | 0 |
| Dunks | 0 | 0 | 0 |
| 2PT Field Goals | 2 | 6 | 33.3 |
| 3PT Field Goals | 1 | 4 | 25.0 |
| Total Field Goals | 3 | 10 | 30.0 |

| LAK : Period 1 | Made | Att | Pct |
|--------------------------|-------------|------------|-------------|
| Layups | 0 | 0 | 0 |
| Dunks | 0 | 0 | 0 |
| 2PT Field Goals | 2 | 11 | 18.2 |
| 3PT Field Goals | 2 | 2 | 100.0 |
| Total Field Goals | 4 | 13 | 30.8 |

Official Shot Chart
Lakota Tech vs Flandreau
PERIOD 2 Shots
March 10, 2023 at ,



Flandreau

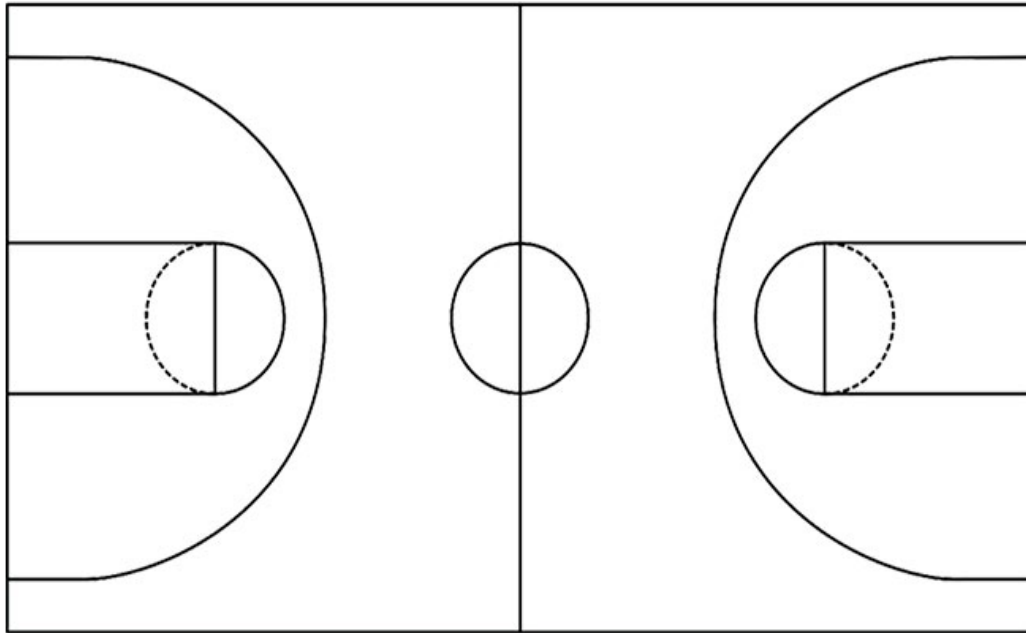
Lakota Tech

Layups

Layups

Dunks

Dunks



| FLA : Period 2 | Made | Att | Pct |
|--------------------------|-------------|------------|-------------|
| Layups | 0 | 0 | 0 |
| Dunks | 0 | 0 | 0 |
| 2PT Field Goals | 3 | 8 | 37.5 |
| 3PT Field Goals | 2 | 4 | 50.0 |
| Total Field Goals | 5 | 12 | 41.7 |

| LAK : Period 2 | Made | Att | Pct |
|--------------------------|-------------|------------|-------------|
| Layups | 0 | 0 | 0 |
| Dunks | 0 | 0 | 0 |
| 2PT Field Goals | 5 | 11 | 45.5 |
| 3PT Field Goals | 1 | 4 | 25.0 |
| Total Field Goals | 6 | 15 | 40.0 |

Official Shot Chart
Lakota Tech vs Flandreau
PERIOD 3 Shots
March 10, 2023 at ,



Flandreau

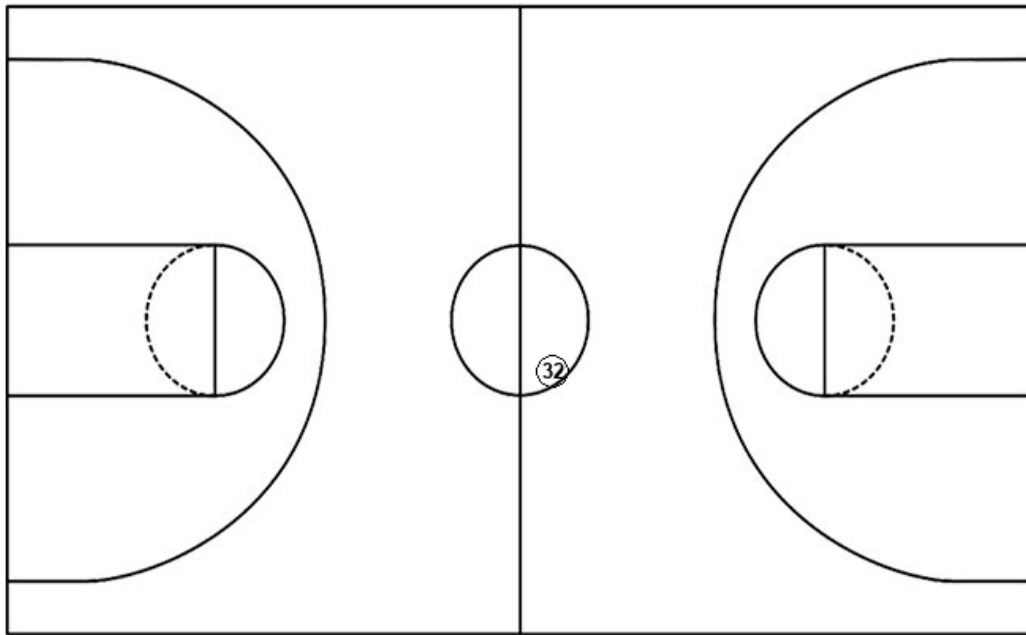
Lakota Tech

Layups

Layups

Dunks

Dunks



| FLA : Period 3 | Made | Att | Pct |
|--------------------------|-------------|------------|-------------|
| Layups | 0 | 0 | 0 |
| Dunks | 0 | 0 | 0 |
| 2PT Field Goals | 1 | 9 | 11.1 |
| 3PT Field Goals | 2 | 3 | 66.7 |
| Total Field Goals | 3 | 12 | 25.0 |

| LAK : Period 3 | Made | Att | Pct |
|--------------------------|-------------|------------|-------------|
| Layups | 0 | 0 | 0 |
| Dunks | 0 | 0 | 0 |
| 2PT Field Goals | 4 | 9 | 44.4 |
| 3PT Field Goals | 0 | 2 | 00.0 |
| Total Field Goals | 4 | 11 | 36.4 |

Official Shot Chart
Lakota Tech vs Flandreau
PERIOD 4 Shots
March 10, 2023 at ,



Flandreau

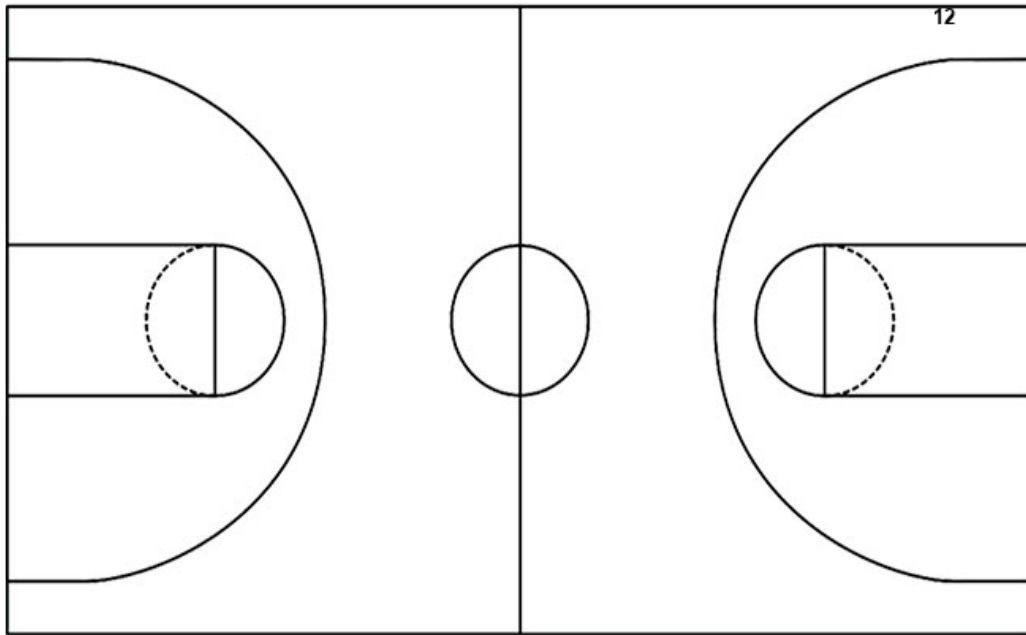
Lakota Tech

Layups

Layups

Dunks

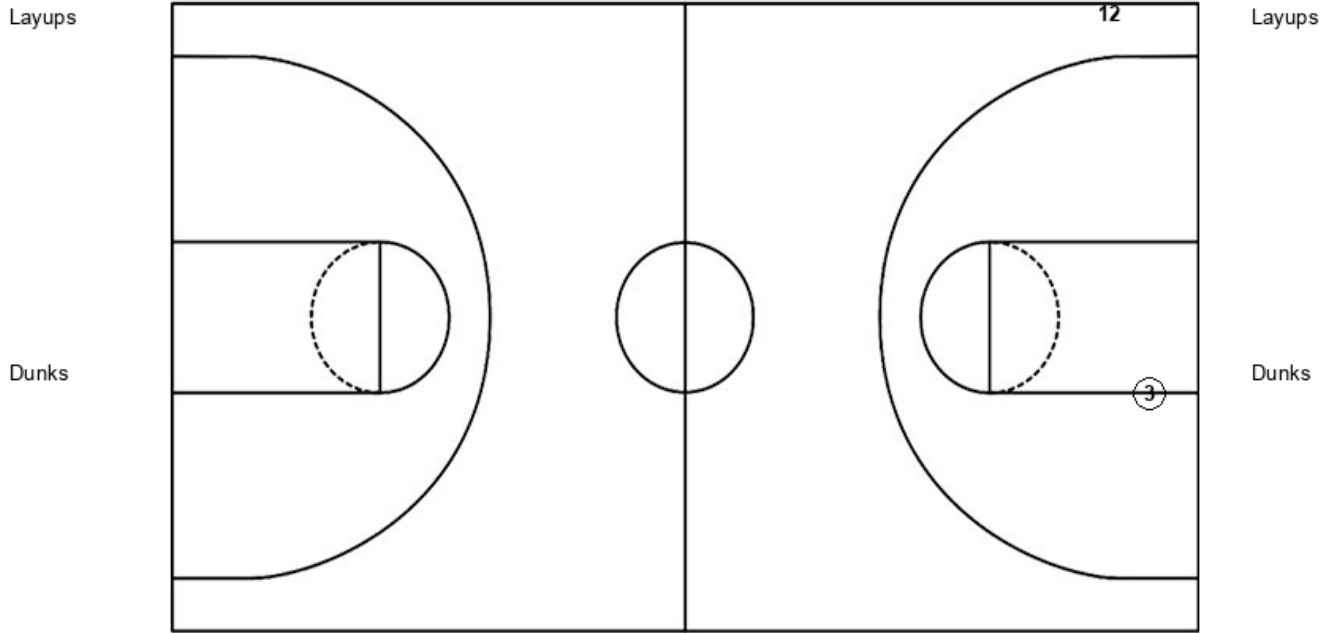
Dunks



| FLA : Period 4 | Made | Att | Pct |
|--------------------------|-------------|------------|-------------|
| Layups | 0 | 0 | 0 |
| Dunks | 0 | 0 | 0 |
| 2PT Field Goals | 3 | 10 | 30.0 |
| 3PT Field Goals | 0 | 0 | 0 |
| Total Field Goals | 3 | 10 | 30.0 |

| LAK : Period 4 | Made | Att | Pct |
|--------------------------|-------------|------------|-------------|
| Layups | 0 | 0 | 0 |
| Dunks | 0 | 0 | 0 |
| 2PT Field Goals | 1 | 11 | 09.1 |
| 3PT Field Goals | 1 | 3 | 33.3 |
| Total Field Goals | 2 | 14 | 14.3 |

Official Shot Chart
Lakota Tech vs Flandreau
Lakota Tech Team Shots
March 10, 2023 at ,



| LAK : Period 1 | Made | Att | Pct |
|--------------------------|----------|-----------|-------------|
| Layups | 0 | 0 | 0 |
| Dunks | 0 | 0 | 0 |
| 2PT Field Goals | 2 | 11 | 18.2 |
| 3PT Field Goals | 2 | 2 | 100.0 |
| Total Field Goals | 4 | 13 | 30.8 |

| LAK : Period 2 | Made | Att | Pct |
|--------------------------|----------|-----------|-------------|
| Layups | 0 | 0 | 0 |
| Dunks | 0 | 0 | 0 |
| 2PT Field Goals | 5 | 11 | 45.5 |
| 3PT Field Goals | 1 | 4 | 25.0 |
| Total Field Goals | 6 | 15 | 40.0 |

| LAK : Period 3 | Made | Att | Pct |
|--------------------------|----------|-----------|-------------|
| Layups | 0 | 0 | 0 |
| Dunks | 0 | 0 | 0 |
| 2PT Field Goals | 4 | 9 | 44.4 |
| 3PT Field Goals | 0 | 2 | 00.0 |
| Total Field Goals | 4 | 11 | 36.4 |

| LAK : Period 4 | Made | Att | Pct |
|--------------------------|----------|-----------|-------------|
| Layups | 0 | 0 | 0 |
| Dunks | 0 | 0 | 0 |
| 2PT Field Goals | 1 | 11 | 09.1 |
| 3PT Field Goals | 1 | 3 | 33.3 |
| Total Field Goals | 2 | 14 | 14.3 |

Official Shot Chart
Lakota Tech vs Flandreau
Flandreau Team Shots
March 10, 2023 at ,

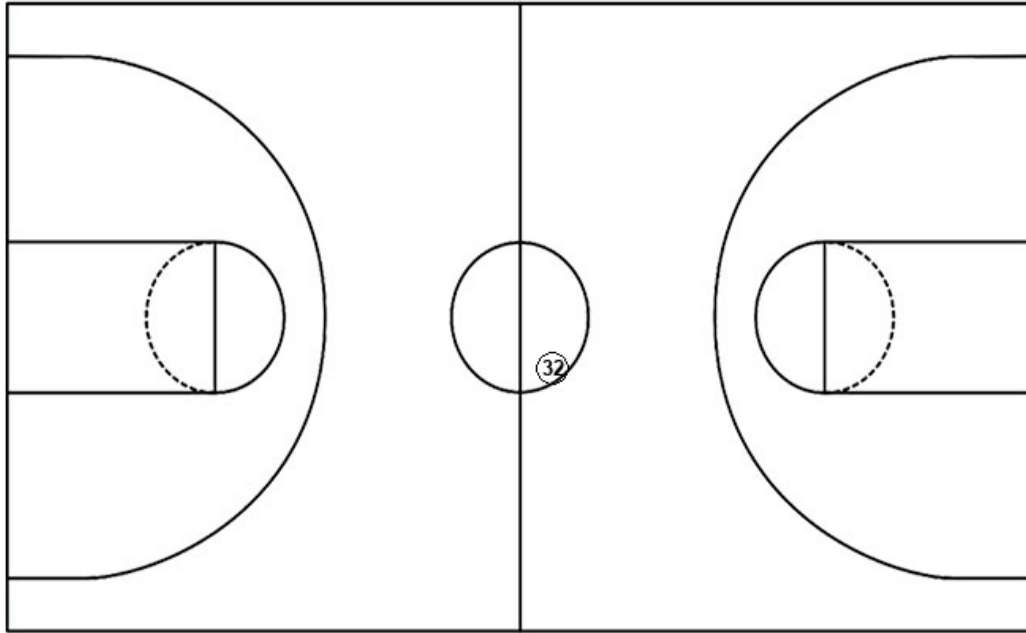


Layups

Layups

Dunks

Dunks



| FLA : Period 1 | Made | Att | Pct |
|--------------------------|-------------|------------|-------------|
| Layups | 0 | 0 | 0 |
| Dunks | 0 | 0 | 0 |
| 2PT Field Goals | 2 | 6 | 33.3 |
| 3PT Field Goals | 1 | 4 | 25.0 |
| Total Field Goals | 3 | 10 | 30.0 |

| FLA : Period 2 | Made | Att | Pct |
|--------------------------|-------------|------------|-------------|
| Layups | 0 | 0 | 0 |
| Dunks | 0 | 0 | 0 |
| 2PT Field Goals | 3 | 8 | 37.5 |
| 3PT Field Goals | 2 | 4 | 50.0 |
| Total Field Goals | 5 | 12 | 41.7 |

| FLA : Period 3 | Made | Att | Pct |
|--------------------------|-------------|------------|-------------|
| Layups | 0 | 0 | 0 |
| Dunks | 0 | 0 | 0 |
| 2PT Field Goals | 1 | 9 | 11.1 |
| 3PT Field Goals | 2 | 3 | 66.7 |
| Total Field Goals | 3 | 12 | 25.0 |

| FLA : Period 4 | Made | Att | Pct |
|--------------------------|-------------|------------|-------------|
| Layups | 0 | 0 | 0 |
| Dunks | 0 | 0 | 0 |
| 2PT Field Goals | 3 | 10 | 30.0 |
| 3PT Field Goals | 0 | 0 | 0 |
| Total Field Goals | 3 | 10 | 30.0 |