

FINAL SCORE



Mitchell

48



Watertown

37

2023 SDHSAA State Basketball Championships

March 10, 2023 • Sioux Falls, SD



FINAL STATISTICS

Official Box Score
Mitchell vs Watertown
Game Totals -- Final Statistics
March 10, 2023 at Sioux Falls, SD



Mitchell 48

Record:

No.	Player	S	Pts	FG	3FG	FT	OR	DR	TR	PF	A	TO	Blk	Stl	Min	+/-
10	HENKEL, DELANA		0	0-0	0-0	0-0	0	0	0	1	0	0	0	0	8	1
12	VANOVERSCHELDE, LAUREN	*	7	3-12	1-7	0-0	2	0	2	3	0	2	2	1	12	2
14	STOEBNER, SAWYER	*	24	8-15	0-2	8-11	4	12	16	2	6	3	4	4	15	17
23	WEICH, CARSYN	*	2	1-2	0-1	0-0	3	5	8	2	3	4	0	2	11	12
32	SIEMSEN, ADDIE	*	7	2-11	1-8	2-3	0	3	3	3	0	0	0	2	11	5
33	PETERSON, MAKENZIE		0	0-0	0-0	0-0	0	0	0	2	0	1	0	0	7	0
42	MEYERINK, ALLISON	*	8	4-4	0-0	0-0	0	1	1	2	0	3	0	0	-5	10
TOTALS			48	18-44	2-18	10-14	10	24	34	15	9	13	6	9	59	

Shooting By Period

Period	FG	FG%	3FG	3FG%	FT	FT%
Game	18-44	40.9%	2-18	11.1%	10-14	71.4%

Deadball Rebounds: 2,0
Last FG: 4th-2:13
Largest lead: By at
Technical Fouls: None.

Watertown 37

Record:

No.	Player	S	Pts	FG	3FG	FT	OR	DR	TR	PF	A	TO	Blk	Stl	Min	+/-
04	RHODE, MADDY	*	6	1-10	0-6	4-6	2	2	4	1	1	1	1	3	16	-11
05	THURY, EMERY		2	1-5	0-3	0-0	3	4	7	4	0	4	0	0	15	-13
12	YOUNG, JAIDA	*	14	4-10	1-3	5-7	1	3	4	3	3	2	0	1	15	-13
14	FALCONER, MIRANDA	*	4	2-11	0-4	0-2	1	4	5	4	2	2	0	0	11	-8
35	PAULSON, KENDALL	*	4	2-5	0-2	0-0	1	1	2	1	0	1	0	1	14	-8
22	COREY, GRACE		4	2-2	0-0	0-0	0	0	0	3	3	1	0	1	10	2
24	LUND, JADE	*	3	1-6	1-4	0-1	4	1	5	2	0	1	0	1	-2	-4
TOTALS			37	13-49	2-22	9-16	14	17	31	18	9	12	1	7	80	

Shooting By Period

Period	FG	FG%	3FG	3FG%	FT	FT%
Game	13-49	26.5%	2-22	09.1%	9-16	56.3%

Deadball Rebounds: 4,2
Last FG: 4th-4:49
Largest lead: By at
Technical Fouls: None.

Game Notes:

Officials: , ,

Start Time: 12:00:00

Postseason Game;Neutral Court;

Score	1st	2nd	3rd	4th	TOT
MIT	16	10	5	17	48
WAT	12	8	13	4	37

MIT led for 0:0. WAT led for 0:0.
 Game was tied for 0:0.
 Times tied: 0 Lead Changes: 0

Points	MIT	WAT
In the Paint	24	18
Off Turns	11	15
2nd Chance	5	10
Fast Break	2	1
Bench	8	7
Per Poss	0.906 23/53	0.698 18/53

Official Box Score
Mitchell vs Watertown
First Half Statistics Only
March 10, 2023 at Sioux Falls, SD



Mitchell 26

Record:

No.	Player	S	Pts	FG	3FG	FT	OR	DR	TR	PF	A	TO	Blk	Stl	Min	+/-
-----	--------	---	-----	----	-----	----	----	----	----	----	---	----	-----	-----	-----	-----

Shooting By Period

Period	FG	FG%	3FG	3FG%	FT	FT%
1st Half	0-0	0%	0-0	0%	0-0	0%
Game	18-44	40.9%	2-18	11.1%	10-14	71.4%

Deadball Rebounds: 2,0
Last FG Half: MIT 2nd-0:19

Watertown 20

Record:

No.	Player	S	Pts	FG	3FG	FT	OR	DR	TR	PF	A	TO	Blk	Stl	Min	+/-
-----	--------	---	-----	----	-----	----	----	----	----	----	---	----	-----	-----	-----	-----

Shooting By Period

Period	FG	FG%	3FG	3FG%	FT	FT%
1st Half	0-0	0%	0-0	0%	0-0	0%
Game	13-49	26.5%	2-22	09.1%	9-16	56.3%

Deadball Rebounds: 4,2
Last FG Half: WAT 2nd-0:32

Game Notes:

Officials: , ,

Start Time: **12:00:00**

Postseason Game;Neutral Court;

Score	1st	2nd	3rd	4th	TOT
MIT	16	10	5	17	48
WAT	12	8	13	4	37

Points from (This Period)	MIT	WAT
In the Paint	6	2
Off Turns	5	5
2nd Chance	2	2
Fast Break	0	0
Bench	4	3

Official Play-By-Play
Mitchell vs Watertown
First Quarter
March 10, 2023 at Sioux Falls, SD



Period 1

Starters:

Mitchell: 10 HENKEL, DELANA; 12 VANOVERSCHDELDE, LAUREN; 14 STOEBCNER, SAWYER; 23 WEICH, CARSYN; 32 SIEMSEN, ADDIE;

Watertown: 4 RHODE, MADDY; 5 THURY, EMERY; 12 YOUNG, JAIDA; 14 FALCONER, MIRANDA; 35 PAULSON, KENDALL;

Time	VISITORS: Mitchell	Score	Margin	HOME: Watertown
8:00				SUB STARTER: RHODE, MADDY
8:00				SUB STARTER: THURY, EMERY
8:00				SUB STARTER: YOUNG, JAIDA
8:00				SUB STARTER: FALCONER, MIRANDA
8:00				SUB STARTER: PAULSON, KENDALL
8:00	SUB STARTER: HENKEL, DELANA			
8:00	SUB STARTER: VANOVERSCHDELDE, LAUREN			
8:00	SUB STARTER: STOEBCNER, SAWYER			
8:00	SUB STARTER: WEICH, CARSYN			
8:00	SUB STARTER: SIEMSEN, ADDIE			
7:44	MISSED 3PTR by VANOVERSCHDELDE, LAUREN			
7:44	REBOUND (OFF) by WEICH, CARSYN			
7:40	TURNOVER by WEICH, CARSYN			
7:40				STEAL by RHODE, MADDY
7:23		2-0	H 2	GOOD! 2PTR by THURY, EMERY
7:23				ASSIST by FALCONER, MIRANDA
6:57	GOOD! 3PTR by VANOVERSCHDELDE, LAUREN	2-3	V 1	
6:48	FOUL (PERSONAL) by HENKEL, DELANA			
6:48		3-3	T	GOOD! FT by YOUNG, JAIDA
6:48		4-3	H 1	GOOD! FT by YOUNG, JAIDA
6:45				FOUL (PERSONAL) by YOUNG, JAIDA
6:35	GOOD! 2PTR by STOEBCNER, SAWYER [PNT]	4-5	V 1	
6:29	FOUL (PERSONAL) by VANOVERSCHDELDE, LAUREN			
6:20				TURNOVER by RHODE, MADDY
6:20	STEAL by STOEBCNER, SAWYER			
6:01	MISSED 2PTR by VANOVERSCHDELDE, LAUREN			
6:01				REBOUND (DEF) by THURY, EMERY
5:47				TURNOVER by YOUNG, JAIDA
5:47	SUB OUT: HENKEL, DELANA			
5:47	SUB IN: MEYERINK, ALLISON			
5:37	MISSED 2PTR by STOEBCNER, SAWYER			
5:37				REBOUND (DEF) by FALCONER, MIRANDA
5:32				TURNOVER by YOUNG, JAIDA
5:32	SUB OUT: VANOVERSCHDELDE, LAUREN			
5:32	SUB IN: PETERSON, MAKENZIE			
5:32				SUB OUT: FALCONER, MIRANDA
5:32				SUB IN: LUND, JADE
5:19	GOOD! 3PTR by SIEMSEN, ADDIE	4-8	V 4	
5:19	ASSIST by STOEBCNER, SAWYER			
5:00				TURNOVER by THURY, EMERY
5:00	STEAL by SIEMSEN, ADDIE			
4:40	GOOD! 2PTR by MEYERINK, ALLISON [PNT]	4-10	V 6	
4:40	ASSIST by STOEBCNER, SAWYER			
4:31				TURNOVER by THURY, EMERY
4:31	STEAL by STOEBCNER, SAWYER			
4:31				FOUL (PERSONAL) by THURY, EMERY
4:31				TIMEOUT TEAM
4:31				SUB OUT: THURY, EMERY
4:31				SUB IN: FALCONER, MIRANDA
4:31	SUB OUT: WEICH, CARSYN			
4:31	SUB IN: VANOVERSCHDELDE, LAUREN			
4:08	TURNOVER by STOEBCNER, SAWYER			
4:08				STEAL by RHODE, MADDY
3:56	FOUL (PERSONAL) by MEYERINK, ALLISON			
3:56				MISSED FT by FALCONER, MIRANDA
3:56				MISSED FT by FALCONER, MIRANDA
3:55	REBOUND (DEF) by STOEBCNER, SAWYER			
3:42	TURNOVER by PETERSON, MAKENZIE			
3:34		7-10	V 3	GOOD! 3PTR by LUND, JADE
3:34				ASSIST by RHODE, MADDY
3:13	SUB OUT: PETERSON, MAKENZIE			
3:13	SUB IN: WEICH, CARSYN			
3:00				FOUL (PERSONAL) by FALCONER, MIRANDA
2:45				SUB OUT: PAULSON, KENDALL
2:45				SUB IN: THURY, EMERY

Time	VISITORS: Mitchell	Score	Margin	HOME: Watertown
2:35	GOOD! 2PTR by MEYERINK, ALLISON	7-12	V 5	
2:35	ASSIST by STOEBNER, SAWYER			
2:17	FOUL (PERSONAL) by STOEBNER, SAWYER			
2:17				MISSED FT by YOUNG, JAIDA
2:17				SUB OUT: LUND, JADE
2:17				SUB IN: COREY, GRACE
2:17		8-12	V 4	GOOD! FT by YOUNG, JAIDA
1:59	GOOD! 2PTR by VANOVERSCHELDE, LAUREN	8-14	V 6	
1:59	ASSIST by STOEBNER, SAWYER			
1:42		10-14	V 4	GOOD! 2PTR by RHODE, MADDY [PNT]
1:42				ASSIST by COREY, GRACE
1:25	MISSED 2PTR by STOEBNER, SAWYER			
1:25				REBOUND (DEF) by YOUNG, JAIDA
1:14				MISSED 3PTR by RHODE, MADDY
1:14	REBOUND (DEF) by TEAM			
1:13	SUB OUT: SIEMSEN, ADDIE			
1:13	SUB IN: PETERSON, MAKENZIE			
0:58	MISSED 2PTR by VANOVERSCHELDE, LAUREN			
0:58	REBOUND (OFF) by STOEBNER, SAWYER			
0:55	GOOD! 2PTR by STOEBNER, SAWYER [PNT]	10-16	V 6	
0:38				MISSED 3PTR by THURY, EMERY
0:38				REBOUND (OFF) by THURY, EMERY
0:37	FOUL (PERSONAL) by PETERSON, MAKENZIE			
0:37	SUB OUT: STOEBNER, SAWYER			
0:37	SUB IN: SIEMSEN, ADDIE			
0:37				SUB OUT: FALCONER, MIRANDA
0:37				SUB OUT: YOUNG, JAIDA
0:37				SUB IN: PAULSON, KENDALL
0:37				SUB IN: LUND, JADE
0:29	FOUL (PERSONAL) by WEICH, CARSYN			
0:29		11-16	V 5	GOOD! FT by RHODE, MADDY
0:29		12-16	V 4	GOOD! FT by RHODE, MADDY
0:29	SUB OUT: PETERSON, MAKENZIE			
0:29	SUB IN: STOEBNER, SAWYER			
0:17	MISSED 3PTR by VANOVERSCHELDE, LAUREN			
0:17	REBOUND (OFF) by STOEBNER, SAWYER			
0:00	MISSED 3PTR by VANOVERSCHELDE, LAUREN			
0:00				BLOCK by RHODE, MADDY
0:00				REBOUND (DEF) by LUND, JADE

Mitchell 16, Watertown 12

Points (This Period)	MIT	WAT
In the Paint	6	2
Off Turns	5	5
2nd Chance	2	2
Fast Break	0	0
Bench	4	3
Per Poss	1.143 7/14	1.000 6/12

Official Play-By-Play
Mitchell vs Watertown
Second Quarter
March 10, 2023 at Sioux Falls, SD



Period 2

Starters:

Mitchell: 10 HENKEL, DELANA; 12 VANOVERSCHELDE, LAUREN; 14 STOEBCNER, SAWYER; 23 WEICH, CARSYN; 32 SIEMSEN, ADDIE;

Watertown: 4 RHODE, MADDY; 5 THURY, EMERY; 12 YOUNG, JAIDA; 14 FALCONER, MIRANDA; 35 PAULSON, KENDALL;

Time	VISITORS: Mitchell	Score	Margin	HOME: Watertown
8:00	SUB STARTER: STOEBCNER, SAWYER			
8:00	SUB STARTER: VANOVERSCHELDE, LAUREN			
8:00	SUB STARTER: WEICH, CARSYN			
8:00	SUB STARTER: SIEMSEN, ADDIE			
8:00	SUB STARTER: MEYERINK, ALLISON			
8:00				SUB STARTER: RHODE, MADDY
8:00				SUB STARTER: THURY, EMERY
8:00				SUB STARTER: FALCONER, MIRANDA
8:00				SUB STARTER: YOUNG, JAIDA
8:00				SUB STARTER: PAULSON, KENDALL
8:00	SUB OUT: STOEBCNER, SAWYER			
8:00	SUB OUT: VANOVERSCHELDE, LAUREN			
8:00	SUB OUT: WEICH, CARSYN			
8:00	SUB OUT: SIEMSEN, ADDIE			
8:00	SUB OUT: MEYERINK, ALLISON			
8:00	SUB IN: STOEBCNER, SAWYER			
8:00	SUB IN: VANOVERSCHELDE, LAUREN			
8:00	SUB IN: SIEMSEN, ADDIE			
8:00	SUB IN: WEICH, CARSYN			
8:00	SUB IN: MEYERINK, ALLISON			
7:42				MISSED 2PTR by FALCONER, MIRANDA
7:42				REBOUND (OFF) by FALCONER, MIRANDA
7:38				MISSED 2PTR by PAULSON, KENDALL
7:38	REBOUND (DEF) by TEAM			
7:19	GOOD! 2PTR by MEYERINK, ALLISON [PNT]	12-18	V 6	
7:19	ASSIST by STOEBCNER, SAWYER			
6:52				MISSED 3PTR by THURY, EMERY
6:52	REBOUND (DEF) by WEICH, CARSYN			
6:43	MISSED 2PTR by STOEBCNER, SAWYER			
6:43				REBOUND (DEF) by RHODE, MADDY
6:41				TIMEOUT TEAM
6:24				MISSED 2PTR by RHODE, MADDY
6:24	BLOCK by STOEBCNER, SAWYER			
6:24	REBOUND (DEF) by STOEBCNER, SAWYER			
6:06	GOOD! 2PTR by STOEBCNER, SAWYER [PNT]	12-20	V 8	
6:06				FOUL (PERSONAL) by FALCONER, MIRANDA
6:06	SUB OUT: MEYERINK, ALLISON			
6:06	SUB IN: HENKEL, DELANA			
6:06	MISSED FT by STOEBCNER, SAWYER			
6:04				REBOUND (DEF) by THURY, EMERY
5:38				MISSED 2PTR by YOUNG, JAIDA
5:38	REBOUND (DEF) by SIEMSEN, ADDIE			
5:37				FOUL (PERSONAL) by THURY, EMERY
5:26	TURNOVER by STOEBCNER, SAWYER			
5:26				STEAL by YOUNG, JAIDA
5:26				SUB OUT: THURY, EMERY
5:26				SUB IN: LUND, JADE
4:59				MISSED 2PTR by LUND, JADE
4:59	BLOCK by VANOVERSCHELDE, LAUREN			
4:59				REBOUND (OFF) by PAULSON, KENDALL
4:52				MISSED 3PTR by FALCONER, MIRANDA
4:52				REBOUND (OFF) by LUND, JADE
4:50				MISSED 2PTR by YOUNG, JAIDA
4:50	REBOUND (DEF) by STOEBCNER, SAWYER			
4:35	MISSED 3PTR by VANOVERSCHELDE, LAUREN			
4:35	REBOUND (OFF) by WEICH, CARSYN			
4:35				TIMEOUT TEAM
4:35	SUB IN: HENKEL, DELANA			
4:35	SUB IN: WEICH, CARSYN			
4:21	MISSED 3PTR by SIEMSEN, ADDIE			
4:21				REBOUND (DEF) by PAULSON, KENDALL
3:46				MISSED 3PTR by PAULSON, KENDALL
3:46				REBOUND (OFF) by LUND, JADE
3:43	FOUL (PERSONAL) by VANOVERSCHELDE, LAUREN			
3:43				SUB OUT: FALCONER, MIRANDA

Time	VISITORS: Mitchell	Score	Margin	HOME: Watertown
3:43				SUB IN: THURY, EMERY
3:43	SUB OUT: STOEBNER, SAWYER			
3:43	SUB OUT: VANOVERSCHELDE, LAUREN			
3:43	SUB OUT: HENKEL, DELANA			
3:43	SUB OUT: HENKEL, DELANA			
3:43	SUB OUT: WEICH, CARSYN			
3:43	SUB IN: PETERSON, MAKENZIE			
3:43	SUB IN: MEYERINK, ALLISON			
3:43	SUB IN: SIEMSEN, ADDIE			
3:43	SUB IN: STOEBNER, SAWYER			
3:43	SUB IN: WEICH, CARSYN			
3:37				MISSED FT by LUND, JADE
3:30				REBOUND (OFF) by LUND, JADE
3:16		14-20	V 6	GOOD! 2PTR by YOUNG, JAIDA [PNT]
3:02	GOOD! 2PTR by STOEBNER, SAWYER [PNT]	14-22	V 8	
3:02	ASSIST by WEICH, CARSYN			
2:45				MISSED 3PTR by RHODE, MADDY
2:45				REBOUND (OFF) by THURY, EMERY
2:39				TURNOVER by THURY, EMERY
2:39	STEAL by WEICH, CARSYN			
2:19				FOUL (PERSONAL) by THURY, EMERY
2:19				SUB OUT: LUND, JADE
2:19				SUB IN: FALCONER, MIRANDA
2:10	MISSED 3PTR by SIEMSEN, ADDIE			
2:10	REBOUND (OFF) by STOEBNER, SAWYER			
2:08	GOOD! 2PTR by STOEBNER, SAWYER [PNT]	14-24	V 10	
1:56				MISSED 3PTR by THURY, EMERY
1:56	REBOUND (DEF) by STOEBNER, SAWYER			
1:45	MISSED 3PTR by SIEMSEN, ADDIE			
1:43				SUB OUT: THURY, EMERY
1:43				SUB IN: LUND, JADE
1:43				REBOUND (DEF) by TEAM
1:43	SUB OUT: STOEBNER, SAWYER			
1:43	SUB IN: VANOVERSCHELDE, LAUREN			
1:30		17-24	V 7	GOOD! 3PTR by YOUNG, JAIDA
1:30				ASSIST by FALCONER, MIRANDA
1:30	FOUL (PERSONAL) by PETERSON, MAKENZIE			
1:30		18-24	V 6	GOOD! FT by YOUNG, JAIDA
1:19	TURNOVER by MEYERINK, ALLISON			
1:19	SUB OUT: PETERSON, MAKENZIE			
1:19	SUB IN: STOEBNER, SAWYER			
1:06				MISSED 3PTR by LUND, JADE
1:06	REBOUND (DEF) by WEICH, CARSYN			
0:50	TURNOVER by MEYERINK, ALLISON			
0:50	FOUL (PERSONAL) by MEYERINK, ALLISON			
0:50	SUB OUT: MEYERINK, ALLISON			
0:50	SUB IN: HENKEL, DELANA			
0:42				SUB OUT: LUND, JADE
0:42				SUB IN: COREY, GRACE
0:37				SUB OUT: COREY, GRACE
0:37				SUB IN: LUND, JADE
0:32		20-24	V 4	GOOD! 2PTR by YOUNG, JAIDA [PNT]
0:19	GOOD! 2PTR by STOEBNER, SAWYER [PNT]	20-26	V 6	
0:19	ASSIST by WEICH, CARSYN			
0:12	SUB OUT: WEICH, CARSYN			
0:12	SUB OUT: SIEMSEN, ADDIE			
0:12	SUB OUT: VANOVERSCHELDE, LAUREN			
0:12	SUB OUT: STOEBNER, SAWYER			
0:12	SUB OUT: HENKEL, DELANA			
0:12	SUB IN: WEICH, CARSYN			
0:12	SUB IN: SIEMSEN, ADDIE			
0:12	SUB IN: STOEBNER, SAWYER			
0:12	SUB IN: HENKEL, DELANA			
0:12	SUB IN: VANOVERSCHELDE, LAUREN			
0:01				SUB OUT: FALCONER, MIRANDA
0:01				SUB IN: COREY, GRACE
0:00				MISSED 2PTR by RHODE, MADDY
0:00	BLOCK by VANOVERSCHELDE, LAUREN			
0:00				REBOUND (DEADB) by TEAM

Mitchell 26, Watertown 20

Points (This Period)	MIT	WAT
In the Paint	10	4
Off Turns	2	2
2nd Chance	2	2
Fast Break	0	0
Bench	2	0
Per Poss	0.909 5/11	0.667 4/12

Official Box Score
Mitchell vs Watertown
Second Half Statistics Only
March 10, 2023 at Sioux Falls, SD



Mitchell 22

Record:

No.	Player	S	Pts	FG	3FG	FT	OR	DR	TR	PF	A	TO	Blk	Stl	Min	+/-
-----	--------	---	-----	----	-----	----	----	----	----	----	---	----	-----	-----	-----	-----

Shooting By Period

Period	FG	FG%	3FG	3FG%	FT	FT%
2nd Half	0-0	0%	0-0	0%	0-0	0%
Game	18-44	40.9%	2-18	11.1%	10-14	71.4%

Deadball Rebounds: 2,0
Last FG Half: MIT 4th-2:13

Watertown 17

Record:

No.	Player	S	Pts	FG	3FG	FT	OR	DR	TR	PF	A	TO	Blk	Stl	Min	+/-
-----	--------	---	-----	----	-----	----	----	----	----	----	---	----	-----	-----	-----	-----

Shooting By Period

Period	FG	FG%	3FG	3FG%	FT	FT%
2nd Half	0-0	0%	0-0	0%	0-0	0%
Game	13-49	26.5%	2-22	09.1%	9-16	56.3%

Deadball Rebounds: 4,2
Last FG Half: WAT 4th-4:49

Game Notes:

Officials: , ,

Start Time: **12:00:00**

Postseason Game;Neutral Court;

Score	1st	2nd	3rd	4th	TOT
MIT	16	10	5	17	48
WAT	12	8	13	4	37

Points from (This Period)	MIT	WAT
In the Paint	10	4
Off Turns	2	2
2nd Chance	2	2
Fast Break	0	0
Bench	2	0

Official Play-By-Play
Mitchell vs Watertown
Third Quarter
March 10, 2023 at Sioux Falls, SD



Period 3

Starters:

Mitchell: 10 HENKEL, DELANA; 12 VANOVERSHELDE, LAUREN; 14 STOEBNER, SAWYER; 23 WEICH, CARSYN; 32 SIEMSEN, ADDIE;

Watertown: 4 RHODE, MADDY; 5 THURY, EMERY; 12 YOUNG, JAIDA; 14 FALCONER, MIRANDA; 35 PAULSON, KENDALL;

Time	VISITORS: Mitchell	Score	Margin	HOME: Watertown
8:00				SUB STARTER: RHODE, MADDY
8:00				SUB STARTER: THURY, EMERY
8:00				SUB STARTER: YOUNG, JAIDA
8:00				SUB STARTER: FALCONER, MIRANDA
8:00				SUB STARTER: PAULSON, KENDALL
8:00	SUB STARTER: HENKEL, DELANA			
8:00	SUB STARTER: VANOVERSHELDE, LAUREN			
8:00	SUB STARTER: STOEBNER, SAWYER			
8:00	SUB STARTER: WEICH, CARSYN			
8:00	SUB STARTER: SIEMSEN, ADDIE			
7:47				TURNOVER by FALCONER, MIRANDA
7:21	MISSED 3PTR by VANOVERSHELDE, LAUREN			
7:21				REBOUND (DEF) by YOUNG, JAIDA
7:14	FOUL (PERSONAL) by SIEMSEN, ADDIE			
7:14		21-26	V 5	GOOD! FT by RHODE, MADDY [FB]
7:14				MISSED FT by RHODE, MADDY [FB]
7:12	REBOUND (DEF) by STOEBNER, SAWYER			
6:42	MISSED 2PTR by STOEBNER, SAWYER			
6:42				REBOUND (DEF) by TEAM
6:26		23-26	V 3	GOOD! 2PTR by YOUNG, JAIDA [PNT]
6:14	MISSED 3PTR by SIEMSEN, ADDIE			
6:14	REBOUND (OFF) by STOEBNER, SAWYER			
6:12				FOUL (PERSONAL) by THURY, EMERY
6:12	MISSED FT by STOEBNER, SAWYER			
6:12				SUB OUT: THURY, EMERY
6:12				SUB IN: LUND, JADE
6:12	GOOD! FT by STOEBNER, SAWYER	23-27	V 4	
6:03		25-27	V 2	GOOD! 2PTR by FALCONER, MIRANDA
6:03				ASSIST by YOUNG, JAIDA
5:38	GOOD! 2PTR by SIEMSEN, ADDIE [PNT]	25-29	V 4	
5:27				MISSED 3PTR by FALCONER, MIRANDA
5:27	REBOUND (DEF) by STOEBNER, SAWYER			
5:22	SUB OUT: HENKEL, DELANA			
5:22	SUB IN: MEYERINK, ALLISON			
5:11	MISSED 2PTR by SIEMSEN, ADDIE			
5:11				REBOUND (DEADB) by TEAM
5:11	FOUL (PERSONAL) by SIEMSEN, ADDIE			
4:57		27-29	V 2	GOOD! 2PTR by FALCONER, MIRANDA [PNT]
4:57				ASSIST by YOUNG, JAIDA
4:40	MISSED 3PTR by SIEMSEN, ADDIE			
4:40				REBOUND (DEF) by YOUNG, JAIDA
4:18				TIMEOUT TEAM
4:18	SUB OUT: VANOVERSHELDE, LAUREN			
4:18	SUB IN: PETERSON, MAKENZIE			
4:16				MISSED 2PTR by LUND, JADE
4:16				REBOUND (OFF) by TEAM
4:04				MISSED 3PTR by LUND, JADE
4:04	BLOCK by STOEBNER, SAWYER			
4:04	REBOUND (DEF) by STOEBNER, SAWYER			
3:50	MISSED 3PTR by WEICH, CARSYN			
3:50	REBOUND (OFF) by TEAM			
3:46	MISSED 3PTR by STOEBNER, SAWYER			
3:46				REBOUND (DEF) by FALCONER, MIRANDA
3:36				TURNOVER by FALCONER, MIRANDA
3:36	STEAL by SIEMSEN, ADDIE			
3:31	MISSED 2PTR by SIEMSEN, ADDIE			
3:31	REBOUND (OFF) by WEICH, CARSYN			
3:30				FOUL (PERSONAL) by PAULSON, KENDALL
3:30				SUB OUT: LUND, JADE
3:30				SUB IN: COREY, GRACE
3:27	TURNOVER by WEICH, CARSYN			
3:27	SUB OUT: WEICH, CARSYN			
3:27	SUB IN: VANOVERSHELDE, LAUREN			
3:10		29-29	T	GOOD! 2PTR by PAULSON, KENDALL [PNT]
3:10				ASSIST by COREY, GRACE

Time	VISITORS: Mitchell	Score	Margin	HOME: Watertown
3:02				FOUL (PERSONAL) by COREY, GRACE
3:02	SUB OUT: PETERSON, MAKENZIE			
3:02	SUB OUT: MEYERINK, ALLISON			
3:02	SUB IN: HENKEL, DELANA			
3:02	SUB IN: WEICH, CARSYN			
2:46	TURNOVER by WEICH, CARSYN			
2:46				STEAL by RHODE, MADDY
2:46	TIMEOUT TEAM			
2:33				MISSED 2PTR by FALCONER, MIRANDA
2:33				REBOUND (OFF) by TEAM
2:21		31-29	H 2	GOOD! 2PTR by PAULSON, KENDALL [PNT]
2:21				ASSIST by COREY, GRACE
2:10	TURNOVER by STOEBNER, SAWYER			
1:51				MISSED 3PTR by PAULSON, KENDALL
1:51	REBOUND (DEF) by STOEBNER, SAWYER			
1:25				FOUL (PERSONAL) by COREY, GRACE
1:22	TURNOVER by VANOVERSCHELDE, LAUREN			
1:00		33-29	H 4	GOOD! 2PTR by COREY, GRACE [PNT]
0:38	MISSED 3PTR by SIEMSEN, ADDIE			
0:38				REBOUND (DEF) by FALCONER, MIRANDA
0:21				TURNOVER by COREY, GRACE
0:21	STEAL by STOEBNER, SAWYER			
0:08	GOOD! 2PTR by VANOVERSCHELDE, LAUREN [PNT]	33-31	H 2	
0:00				MISSED 3PTR by FALCONER, MIRANDA
0:00				REBOUND (DEADB) by TEAM

Mitchell 31, Watertown 33

Points (This Period)	MIT	WAT
In the Paint	4	10
Off Turns	2	6
2nd Chance	1	2
Fast Break	0	1
Bench	0	2
Per Poss	0.385 3/13	0.929 7/14

Official Play-By-Play
Mitchell vs Watertown
Fourth Quarter
March 10, 2023 at Sioux Falls, SD



Period 4

Starters:

Mitchell: 10 HENKEL, DELANA; 12 VANOVERSCHELDE, LAUREN; 14 STOEBCNER, SAWYER; 23 WEICH, CARSYN; 32 SIEMSEN, ADDIE;

Watertown: 4 RHODE, MADDY; 5 THURY, EMERY; 12 YOUNG, JAIDA; 14 FALCONER, MIRANDA; 35 PAULSON, KENDALL;

Time	VISITORS: Mitchell	Score	Margin	HOME: Watertown
8:00				SUB STARTER: THURY, EMERY
8:00				SUB STARTER: YOUNG, JAIDA
8:00				SUB STARTER: RHODE, MADDY
8:00				SUB STARTER: FALCONER, MIRANDA
8:00				SUB STARTER: PAULSON, KENDALL
8:00	SUB STARTER: HENKEL, DELANA			
8:00	SUB STARTER: STOEBCNER, SAWYER			
8:00	SUB STARTER: VANOVERSCHELDE, LAUREN			
8:00	SUB STARTER: SIEMSEN, ADDIE			
8:00	SUB STARTER: WEICH, CARSYN			
7:32	MISSED 3PTR by STOEBCNER, SAWYER			
7:32				REBOUND (DEF) by THURY, EMERY
7:29				TURNOVER by THURY, EMERY
7:29	STEAL by STOEBCNER, SAWYER			
7:25	GOOD! 2PTR by STOEBCNER, SAWYER [FB/PNT]	33-33	T	
7:12				MISSED 2PTR by YOUNG, JAIDA
7:12				REBOUND (OFF) by THURY, EMERY
7:10				MISSED 2PTR by THURY, EMERY
7:10	BLOCK by STOEBCNER, SAWYER			
7:10	REBOUND (DEF) by STOEBCNER, SAWYER			
6:46	GOOD! 2PTR by WEICH, CARSYN	33-35	V 2	
6:30				MISSED 3PTR by YOUNG, JAIDA
6:30	REBOUND (DEF) by WEICH, CARSYN			
6:07	TURNOVER by WEICH, CARSYN			
6:07				STEAL by PAULSON, KENDALL
6:07				TURNOVER by PAULSON, KENDALL
6:07	STEAL by VANOVERSCHELDE, LAUREN			
6:07				FOUL (PERSONAL) by RHODE, MADDY
6:04	MISSED 3PTR by VANOVERSCHELDE, LAUREN			
6:04				REBOUND (DEF) by THURY, EMERY
5:52	FOUL (PERSONAL) by WEICH, CARSYN			
5:52	SUB OUT: HENKEL, DELANA			
5:52	SUB IN: MEYERINK, ALLISON			
5:47				MISSED 2PTR by FALCONER, MIRANDA
5:47				REBOUND (OFF) by RHODE, MADDY
5:38	FOUL (PERSONAL) by SIEMSEN, ADDIE			
5:38		34-35	V 1	GOOD! FT by RHODE, MADDY
5:38				SUB OUT: THURY, EMERY
5:38				SUB OUT: FALCONER, MIRANDA
5:38				SUB IN: COREY, GRACE
5:38				SUB IN: LUND, JADE
5:38				MISSED FT by RHODE, MADDY
5:36	REBOUND (DEF) by STOEBCNER, SAWYER			
5:12	MISSED 3PTR by SIEMSEN, ADDIE			
5:12	REBOUND (OFF) by VANOVERSCHELDE, LAUREN			
5:07	TURNOVER by VANOVERSCHELDE, LAUREN			
5:07				STEAL by LUND, JADE
4:54				MISSED 3PTR by RHODE, MADDY
4:54				REBOUND (OFF) by LUND, JADE
4:51				TIMEOUT TEAM
4:49		36-35	H 1	GOOD! 2PTR by COREY, GRACE [PNT]
4:49				ASSIST by YOUNG, JAIDA
4:18	GOOD! 2PTR by MEYERINK, ALLISON	36-37	V 1	
4:18	ASSIST by STOEBCNER, SAWYER			
4:11				TURNOVER by LUND, JADE
4:11	STEAL by WEICH, CARSYN			
3:57	TURNOVER by MEYERINK, ALLISON			
3:57				STEAL by COREY, GRACE
3:55				SUB OUT: LUND, JADE
3:55				SUB IN: FALCONER, MIRANDA
3:46				MISSED 3PTR by YOUNG, JAIDA
3:46				REBOUND (OFF) by YOUNG, JAIDA
3:41				MISSED 2PTR by YOUNG, JAIDA
3:41	REBOUND (DEF) by WEICH, CARSYN			
3:26				FOUL (PERSONAL) by YOUNG, JAIDA

Time	VISITORS: Mitchell	Score	Margin	HOME: Watertown
3:08	TIMEOUT TEAM			
2:54	MISSED 2PTR by VANOVERSCHELDE, LAUREN			
2:54	REBOUND (OFF) by VANOVERSCHELDE, LAUREN			
2:51	MISSED 2PTR by STOEBNER, SAWYER			
2:51				REBOUND (DEF) by RHODE, MADDY
2:49	FOUL (PERSONAL) by STOEBNER, SAWYER			
2:34				MISSED 2PTR by RHODE, MADDY
2:34	REBOUND (DEF) by TEAM			
2:13	GOOD! 2PTR by STOEBNER, SAWYER [PNT]	36-39	V 3	
2:13	ASSIST by WEICH, CARSYN			
1:54				MISSED 3PTR by FALCONER, MIRANDA
1:54				REBOUND (OFF) by RHODE, MADDY
1:36	FOUL (PERSONAL) by VANOVERSCHELDE, LAUREN			
1:36				MISSED FT by YOUNG, JAIDA
1:36	SUB OUT: VANOVERSCHELDE, LAUREN			
1:36	SUB IN: PETERSON, MAKENZIE			
1:36		37-39	V 2	GOOD! FT by YOUNG, JAIDA
1:33				FOUL (PERSONAL) by FALCONER, MIRANDA
1:33	SUB OUT: PETERSON, MAKENZIE			
1:33	SUB IN: VANOVERSCHELDE, LAUREN			
1:33	GOOD! FT by SIEMSEN, ADDIE	37-40	V 3	
1:33	GOOD! FT by SIEMSEN, ADDIE	37-41	V 4	
1:13				MISSED 2PTR by FALCONER, MIRANDA
1:13	REBOUND (DEF) by WEICH, CARSYN			
1:05				FOUL (PERSONAL) by COREY, GRACE
1:05	SUB OUT: VANOVERSCHELDE, LAUREN			
1:05	SUB IN: PETERSON, MAKENZIE			
1:05				TIMEOUT TEAM
1:05				SUB OUT: COREY, GRACE
1:05				SUB IN: LUND, JADE
1:05	GOOD! FT by STOEBNER, SAWYER	37-42	V 5	
1:05	GOOD! FT by STOEBNER, SAWYER	37-43	V 6	
0:53				MISSED 3PTR by LUND, JADE
0:53	REBOUND (DEF) by SIEMSEN, ADDIE			
0:52				FOUL (PERSONAL) by YOUNG, JAIDA
0:52	MISSED FT by SIEMSEN, ADDIE			
0:49				REBOUND (DEF) by FALCONER, MIRANDA
0:43				MISSED 2PTR by FALCONER, MIRANDA
0:43	REBOUND (DEF) by SIEMSEN, ADDIE			
0:41				FOUL (PERSONAL) by LUND, JADE
0:41	GOOD! FT by STOEBNER, SAWYER	37-44	V 7	
0:41	SUB OUT: PETERSON, MAKENZIE			
0:41	SUB IN: VANOVERSCHELDE, LAUREN			
0:41	GOOD! FT by STOEBNER, SAWYER	37-45	V 8	
0:37				TIMEOUT TEAM
0:32				MISSED 3PTR by RHODE, MADDY
0:32	BLOCK by STOEBNER, SAWYER			
0:32	REBOUND (DEF) by MEYERINK, ALLISON			
0:27				FOUL (PERSONAL) by FALCONER, MIRANDA
0:27	MISSED FT by STOEBNER, SAWYER			
0:27	GOOD! FT by STOEBNER, SAWYER	37-46	V 9	
0:21				MISSED 3PTR by RHODE, MADDY
0:21	REBOUND (DEF) by STOEBNER, SAWYER			
0:19				FOUL (PERSONAL) by LUND, JADE
0:19	GOOD! FT by STOEBNER, SAWYER	37-47	V 10	
0:19	GOOD! FT by STOEBNER, SAWYER	37-48	V 11	
0:16				TIMEOUT TEAM
0:11				MISSED 3PTR by RHODE, MADDY
0:11	REBOUND (DEF) by STOEBNER, SAWYER			

Mitchell 48, Watertown 37

Points (This Period)	MIT	WAT
In the Paint	4	2
Off Turns	2	2
2nd Chance	0	4
Fast Break	2	0
Bench	2	2
Per Poss	1.214 9/14	0.250 2/16

Official Scoring/Possession Reference Chart
Mitchell vs Watertown
Period 1
March 10, 2023 at Sioux Falls, SD



Period 1

Starters:

Mitchell: 10 HENKEL, DELANA; 12 VANOVERSCHELDE, LAUREN; 14 STOEBNER, SAWYER; 23 WEICH, CARSYN; 32 SIEMSEN, ADDIE;

Watertown: 4 RHODE, MADDY; 5 THURY, EMERY; 12 YOUNG, JAIDA; 14 FALCONER, MIRANDA; 35 PAULSON, KENDALL;

Time	VISITORS: Mitchell	Score	Margin	HOME: Watertown
7:23		2-0	H 2	GOOD! 2PTR by THURY, EMERY
6:57	GOOD! 3PTR by VANOVERSCHELDE, LAUREN	2-3	V 1	
6:48		3-3	T	GOOD! FT by YOUNG, JAIDA
6:48		4-3	H 1	GOOD! FT by YOUNG, JAIDA
6:35	GOOD! 2PTR by STOEBNER, SAWYER [PNT]	4-5	V 1	
5:19	GOOD! 3PTR by SIEMSEN, ADDIE	4-8	V 4	
4:40	GOOD! 2PTR by MEYERINK, ALLISON [PNT]	4-10	V 6	
3:34		7-10	V 3	GOOD! 3PTR by LUND, JADE
2:35	GOOD! 2PTR by MEYERINK, ALLISON	7-12	V 5	
2:17		8-12	V 4	GOOD! FT by YOUNG, JAIDA
1:59	GOOD! 2PTR by VANOVERSCHELDE, LAUREN	8-14	V 6	
1:42		10-14	V 4	GOOD! 2PTR by RHODE, MADDY [PNT]
0:55	GOOD! 2PTR by STOEBNER, SAWYER [PNT]	10-16	V 6	
0:29		11-16	V 5	GOOD! FT by RHODE, MADDY
0:29		12-16	V 4	GOOD! FT by RHODE, MADDY

Mitchell 16, Watertown 12

Official Scoring/Possession Reference Chart
Mitchell vs Watertown
Period 2
March 10, 2023 at Sioux Falls, SD



Period 2

Starters:

Mitchell: 10 HENKEL, DELANA; 12 VANOVERSCHELDE, LAUREN; 14 STOEBCNER, SAWYER; 23 WEICH, CARSYN; 32 SIEMSEN, ADDIE;

Watertown: 4 RHODE, MADDY; 5 THURY, EMERY; 12 YOUNG, JAIDA; 14 FALCONER, MIRANDA; 35 PAULSON, KENDALL;

Time	VISITORS: Mitchell	Score	Margin	HOME: Watertown
7:19	GOOD! 2PTR by MEYERINK, ALLISON [PNT]	12-18	V 6	
6:06	GOOD! 2PTR by STOEBCNER, SAWYER [PNT]	12-20	V 8	
3:16		14-20	V 6	GOOD! 2PTR by YOUNG, JAIDA [PNT]
3:02	GOOD! 2PTR by STOEBCNER, SAWYER [PNT]	14-22	V 8	
2:08	GOOD! 2PTR by STOEBCNER, SAWYER [PNT]	14-24	V 10	
1:30		17-24	V 7	GOOD! 3PTR by YOUNG, JAIDA
1:30		18-24	V 6	GOOD! FT by YOUNG, JAIDA
0:32		20-24	V 4	GOOD! 2PTR by YOUNG, JAIDA [PNT]
0:19	GOOD! 2PTR by STOEBCNER, SAWYER [PNT]	20-26	V 6	

Mitchell 26, Watertown 20

Official Scoring/Possession Reference Chart
Mitchell vs Watertown
Period 3
March 10, 2023 at Sioux Falls, SD



Period 3

Starters:

Mitchell: 10 HENKEL, DELANA; 12 VANOVERSCHELDE, LAUREN; 14 STOEBNER, SAWYER; 23 WEICH, CARSYN; 32 SIEMSEN, ADDIE;

Watertown: 4 RHODE, MADDY; 5 THURY, EMERY; 12 YOUNG, JAIDA; 14 FALCONER, MIRANDA; 35 PAULSON, KENDALL;

Time	VISITORS: Mitchell	Score	Margin	HOME: Watertown
7:14		21-26	V 5	GOOD! FT by RHODE, MADDY [FB]
6:26		23-26	V 3	GOOD! 2PTR by YOUNG, JAIDA [PNT]
6:12	GOOD! FT by STOEBNER, SAWYER	23-27	V 4	
6:03		25-27	V 2	GOOD! 2PTR by FALCONER, MIRANDA
5:38	GOOD! 2PTR by SIEMSEN, ADDIE [PNT]	25-29	V 4	
4:57		27-29	V 2	GOOD! 2PTR by FALCONER, MIRANDA [PNT]
3:10		29-29	T	GOOD! 2PTR by PAULSON, KENDALL [PNT]
2:21		31-29	H 2	GOOD! 2PTR by PAULSON, KENDALL [PNT]
1:00		33-29	H 4	GOOD! 2PTR by COREY, GRACE [PNT]
0:08	GOOD! 2PTR by VANOVERSCHELDE, LAUREN [PNT]	33-31	H 2	

Mitchell 31, Watertown 33

Official Scoring/Possession Reference Chart
Mitchell vs Watertown
Period 4
March 10, 2023 at Sioux Falls, SD



Period 4

Starters:

Mitchell: 10 HENKEL, DELANA; 12 VANOVERSCHELDE, LAUREN; 14 STOEBNER, SAWYER; 23 WEICH, CARSYN; 32 SIEMSEN, ADDIE;

Watertown: 4 RHODE, MADDY; 5 THURY, EMERY; 12 YOUNG, JAIDA; 14 FALCONER, MIRANDA; 35 PAULSON, KENDALL;

Time	VISITORS: Mitchell	Score	Margin	HOME: Watertown
7:25	GOOD! 2PTR by STOEBNER, SAWYER [FB/PNT]	33-33	T	
6:46	GOOD! 2PTR by WEICH, CARSYN	33-35	V 2	
5:38		34-35	V 1	GOOD! FT by RHODE, MADDY
4:49		36-35	H 1	GOOD! 2PTR by COREY, GRACE [PNT]
4:18	GOOD! 2PTR by MEYERINK, ALLISON	36-37	V 1	
2:13	GOOD! 2PTR by STOEBNER, SAWYER [PNT]	36-39	V 3	
1:36		37-39	V 2	GOOD! FT by YOUNG, JAIDA
1:33	GOOD! FT by SIEMSEN, ADDIE	37-40	V 3	
1:33	GOOD! FT by SIEMSEN, ADDIE	37-41	V 4	
1:05	GOOD! FT by STOEBNER, SAWYER	37-42	V 5	
1:05	GOOD! FT by STOEBNER, SAWYER	37-43	V 6	
0:41	GOOD! FT by STOEBNER, SAWYER	37-44	V 7	
0:41	GOOD! FT by STOEBNER, SAWYER	37-45	V 8	
0:27	GOOD! FT by STOEBNER, SAWYER	37-46	V 9	
0:19	GOOD! FT by STOEBNER, SAWYER	37-47	V 10	
0:19	GOOD! FT by STOEBNER, SAWYER	37-48	V 11	

Mitchell 48, Watertown 37

Official Substitutions Log
Mitchell vs Watertown
Period 1
March 10, 2023 at Sioux Falls, SD



VISITORS: Mitchell	Time	Score	HOME: Watertown
10 HENKEL, DELANA			4 RHODE, MADDY
12 VANOVERSCHELDE, LAUREN			5 THURY, EMERY
14 STOEBNER, SAWYER			12 YOUNG, JAIDA
23 WEICH, CARSYN			14 FALCONER, MIRANDA
32 SIEMSEN, ADDIE			35 PAULSON, KENDALL
	8:00	-	SUB STARTER: RHODE, MADDY
	8:00		SUB STARTER: THURY, EMERY
	8:00		SUB STARTER: YOUNG, JAIDA
	8:00		SUB STARTER: FALCONER, MIRANDA
	8:00		SUB STARTER: PAULSON, KENDALL
SUB STARTER: 10 HENKEL, DELANA	8:00		
SUB STARTER: 12 VANOVERSCHELDE, LAUREN	8:00		
SUB STARTER: 14 STOEBNER, SAWYER	8:00		
SUB STARTER: 23 WEICH, CARSYN	8:00		
SUB STARTER: 32 SIEMSEN, ADDIE	8:00		
SUB OUT: 10 HENKEL, DELANA	5:47	5-4	
SUB IN: 42 MEYERINK, ALLISON	5:47		
SUB OUT: 12 VANOVERSCHELDE, LAUREN	5:32	5-4	
SUB IN: 33 PETERSON, MAKENZIE	5:32		
	5:32		SUB OUT: FALCONER, MIRANDA
	5:32		SUB IN: LUND, JADE
	4:31	10-4	SUB OUT: THURY, EMERY
	4:31		SUB IN: FALCONER, MIRANDA
SUB OUT: 23 WEICH, CARSYN	4:31		
SUB IN: 12 VANOVERSCHELDE, LAUREN	4:31		
SUB OUT: 33 PETERSON, MAKENZIE	3:13	10-7	
SUB IN: 23 WEICH, CARSYN	3:13		
	2:45	10-7	SUB OUT: PAULSON, KENDALL
	2:45		SUB IN: THURY, EMERY
	2:17	12-7	SUB OUT: LUND, JADE
	2:17		SUB IN: COREY, GRACE
SUB OUT: 32 SIEMSEN, ADDIE	1:13	14-10	
SUB IN: 33 PETERSON, MAKENZIE	1:13		
SUB OUT: 14 STOEBNER, SAWYER	0:37	16-10	
SUB IN: 32 SIEMSEN, ADDIE	0:37		
	0:37		SUB OUT: FALCONER, MIRANDA
	0:37		SUB OUT: YOUNG, JAIDA
	0:37		SUB IN: PAULSON, KENDALL
	0:37		SUB IN: LUND, JADE
SUB OUT: 33 PETERSON, MAKENZIE	0:29	16-12	
SUB IN: 14 STOEBNER, SAWYER	0:29		

Mitchell 16, Watertown 12

**Official Substitutions Log
Mitchell vs Watertown
Period 2
March 10, 2023 at Sioux Falls, SD**



VISITORS: Mitchell	Time	Score	HOME: Watertown
10 HENKEL, DELANA			4 RHODE, MADDY
12 VANOVERSCHDELDE, LAUREN			5 THURY, EMERY
14 STOEBCNER, SAWYER			12 YOUNG, JAIDA
23 WEICH, CARSYN			14 FALCONER, MIRANDA
32 SIEMSEN, ADDIE			35 PAULSON, KENDALL
SUB STARTER: 14 STOEBCNER, SAWYER	8:00	-	
SUB STARTER: 12 VANOVERSCHDELDE, LAUREN	8:00		
SUB STARTER: 23 WEICH, CARSYN	8:00		
SUB STARTER: 32 SIEMSEN, ADDIE	8:00		
SUB STARTER: 42 MEYERINK, ALLISON	8:00		
	8:00		SUB STARTER: RHODE, MADDY
	8:00		SUB STARTER: THURY, EMERY
	8:00		SUB STARTER: FALCONER, MIRANDA
	8:00		SUB STARTER: YOUNG, JAIDA
	8:00		SUB STARTER: PAULSON, KENDALL
SUB OUT: 14 STOEBCNER, SAWYER	8:00		
SUB OUT: 12 VANOVERSCHDELDE, LAUREN	8:00		
SUB OUT: 23 WEICH, CARSYN	8:00		
SUB OUT: 32 SIEMSEN, ADDIE	8:00		
SUB OUT: 42 MEYERINK, ALLISON	8:00		
SUB IN: 14 STOEBCNER, SAWYER	8:00		
SUB IN: 12 VANOVERSCHDELDE, LAUREN	8:00		
SUB IN: 32 SIEMSEN, ADDIE	8:00		
SUB IN: 23 WEICH, CARSYN	8:00		
SUB IN: 42 MEYERINK, ALLISON	8:00		
SUB OUT: 42 MEYERINK, ALLISON	6:06	20-12	
SUB IN: 10 HENKEL, DELANA	6:06		
	5:26	20-12	SUB OUT: THURY, EMERY
	5:26		SUB IN: LUND, JADE
SUB IN: 10 HENKEL, DELANA	4:35	20-12	
SUB IN: 23 WEICH, CARSYN	4:35		
	3:43	20-12	SUB OUT: FALCONER, MIRANDA
	3:43		SUB IN: THURY, EMERY
SUB OUT: 14 STOEBCNER, SAWYER	3:43		
SUB OUT: 12 VANOVERSCHDELDE, LAUREN	3:43		
SUB OUT: 10 HENKEL, DELANA	3:43		
SUB OUT: 10 HENKEL, DELANA	3:43		
SUB OUT: 23 WEICH, CARSYN	3:43		
SUB IN: 33 PETERSON, MAKENZIE	3:43		
SUB IN: 42 MEYERINK, ALLISON	3:43		
SUB IN: 32 SIEMSEN, ADDIE	3:43		
SUB IN: 14 STOEBCNER, SAWYER	3:43		
SUB IN: 23 WEICH, CARSYN	3:43		
	2:19	22-14	SUB OUT: LUND, JADE
	2:19		SUB IN: FALCONER, MIRANDA
	1:43	24-14	SUB OUT: THURY, EMERY
	1:43		SUB IN: LUND, JADE
SUB OUT: 14 STOEBCNER, SAWYER	1:43		
SUB IN: 12 VANOVERSCHDELDE, LAUREN	1:43		
SUB OUT: 33 PETERSON, MAKENZIE	1:19	24-18	
SUB IN: 14 STOEBCNER, SAWYER	1:19		
SUB OUT: 42 MEYERINK, ALLISON	0:50	24-18	
SUB IN: 10 HENKEL, DELANA	0:50		
	0:42	24-18	SUB OUT: LUND, JADE
	0:42		SUB IN: COREY, GRACE
	0:37	24-18	SUB OUT: COREY, GRACE
	0:37		SUB IN: LUND, JADE
SUB OUT: 23 WEICH, CARSYN	0:12	26-20	
SUB OUT: 32 SIEMSEN, ADDIE	0:12		
SUB OUT: 12 VANOVERSCHDELDE, LAUREN	0:12		
SUB OUT: 14 STOEBCNER, SAWYER	0:12		
SUB OUT: 10 HENKEL, DELANA	0:12		
SUB IN: 23 WEICH, CARSYN	0:12		
SUB IN: 32 SIEMSEN, ADDIE	0:12		
SUB IN: 14 STOEBCNER, SAWYER	0:12		
SUB IN: 10 HENKEL, DELANA	0:12		
SUB IN: 12 VANOVERSCHDELDE, LAUREN	0:12		
	0:01	26-20	SUB OUT: FALCONER, MIRANDA
	0:01		SUB IN: COREY, GRACE

Official Substitutions Log
Mitchell vs Watertown
Period 3
March 10, 2023 at Sioux Falls, SD



VISITORS: Mitchell	Time	Score	HOME: Watertown
10 HENKEL, DELANA			4 RHODE, MADDY
12 VANOVERSCHELDE, LAUREN			5 THURY, EMERY
14 STOEARNER, SAWYER			12 YOUNG, JAIDA
23 WEICH, CARSYN			14 FALCONER, MIRANDA
32 SIEMSEN, ADDIE			35 PAULSON, KENDALL
	8:00	-	SUB STARTER: RHODE, MADDY
	8:00		SUB STARTER: THURY, EMERY
	8:00		SUB STARTER: YOUNG, JAIDA
	8:00		SUB STARTER: FALCONER, MIRANDA
	8:00		SUB STARTER: PAULSON, KENDALL
SUB STARTER: 10 HENKEL, DELANA	8:00		
SUB STARTER: 12 VANOVERSCHELDE, LAUREN	8:00		
SUB STARTER: 14 STOEARNER, SAWYER	8:00		
SUB STARTER: 23 WEICH, CARSYN	8:00		
SUB STARTER: 32 SIEMSEN, ADDIE	8:00		
	6:12	26-23	SUB OUT: THURY, EMERY
	6:12		SUB IN: LUND, JADE
SUB OUT: 10 HENKEL, DELANA	5:22	29-25	
SUB IN: 42 MEYERINK, ALLISON	5:22		
SUB OUT: 12 VANOVERSCHELDE, LAUREN	4:18	29-27	
SUB IN: 33 PETERSON, MAKENZIE	4:18		
	3:30	29-27	SUB OUT: LUND, JADE
	3:30		SUB IN: COREY, GRACE
SUB OUT: 23 WEICH, CARSYN	3:27	29-27	
SUB IN: 12 VANOVERSCHELDE, LAUREN	3:27		
SUB OUT: 33 PETERSON, MAKENZIE	3:02	29-29	
SUB OUT: 42 MEYERINK, ALLISON	3:02		
SUB IN: 10 HENKEL, DELANA	3:02		
SUB IN: 23 WEICH, CARSYN	3:02		

Mitchell 31, Watertown 33

**Official Substitutions Log
Mitchell vs Watertown
Period 4
March 10, 2023 at Sioux Falls, SD**



VISITORS: Mitchell	Time	Score	HOME: Watertown
10 HENKEL, DELANA			4 RHODE, MADDY
12 VANOVERSCHELDE, LAUREN			5 THURY, EMERY
14 STOEBCNER, SAWYER			12 YOUNG, JAIDA
23 WEICH, CARSYN			14 FALCONER, MIRANDA
32 SIEMSEN, ADDIE			35 PAULSON, KENDALL
	8:00	-	SUB STARTER: THURY, EMERY
	8:00		SUB STARTER: YOUNG, JAIDA
	8:00		SUB STARTER: RHODE, MADDY
	8:00		SUB STARTER: FALCONER, MIRANDA
	8:00		SUB STARTER: PAULSON, KENDALL
SUB STARTER: 10 HENKEL, DELANA	8:00		
SUB STARTER: 14 STOEBCNER, SAWYER	8:00		
SUB STARTER: 12 VANOVERSCHELDE, LAUREN	8:00		
SUB STARTER: 32 SIEMSEN, ADDIE	8:00		
SUB STARTER: 23 WEICH, CARSYN	8:00		
SUB OUT: 10 HENKEL, DELANA	5:52	35-33	
SUB IN: 42 MEYERINK, ALLISON	5:52		
	5:38	35-34	SUB OUT: THURY, EMERY
	5:38		SUB OUT: FALCONER, MIRANDA
	5:38		SUB IN: COREY, GRACE
	5:38		SUB IN: LUND, JADE
	3:55	37-36	SUB OUT: LUND, JADE
	3:55		SUB IN: FALCONER, MIRANDA
SUB OUT: 12 VANOVERSCHELDE, LAUREN	1:36	39-36	
SUB IN: 33 PETERSON, MAKENZIE	1:36		
SUB OUT: 33 PETERSON, MAKENZIE	1:33	39-37	
SUB IN: 12 VANOVERSCHELDE, LAUREN	1:33		
SUB OUT: 12 VANOVERSCHELDE, LAUREN	1:05	41-37	
SUB IN: 33 PETERSON, MAKENZIE	1:05		
	1:05		SUB OUT: COREY, GRACE
	1:05		SUB IN: LUND, JADE
SUB OUT: 33 PETERSON, MAKENZIE	0:41	44-37	
SUB IN: 12 VANOVERSCHELDE, LAUREN	0:41		

Mitchell 48, Watertown 37

Official Shot Chart
Mitchell vs Watertown
PERIOD 1 Shots
March 10, 2023 at Sioux Falls, SD



Watertown

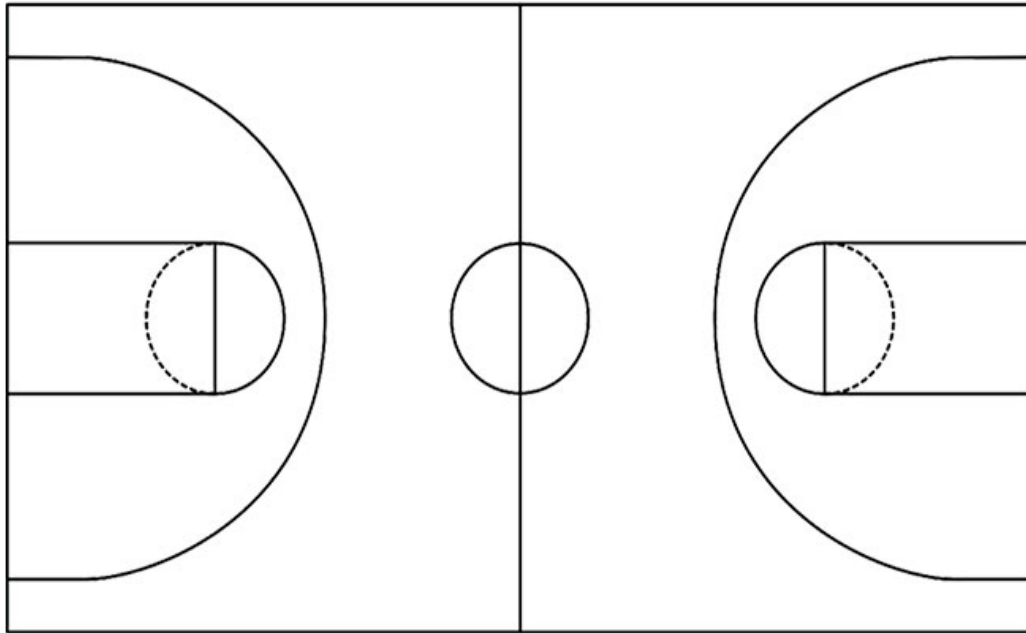
Mitchell

Layups

Layups

Dunks

Dunks



WAT : Period 1	Made	Att	Pct
Layups	0	0	0
Dunks	0	0	0
2PT Field Goals	2	2	100.0
3PT Field Goals	1	3	33.3
Total Field Goals	3	5	60.0

MIT : Period 1	Made	Att	Pct
Layups	0	0	0
Dunks	0	0	0
2PT Field Goals	5	9	55.6
3PT Field Goals	2	5	40.0
Total Field Goals	7	14	50.0

Official Shot Chart
Mitchell vs Watertown
PERIOD 2 Shots
March 10, 2023 at Sioux Falls, SD



Watertown

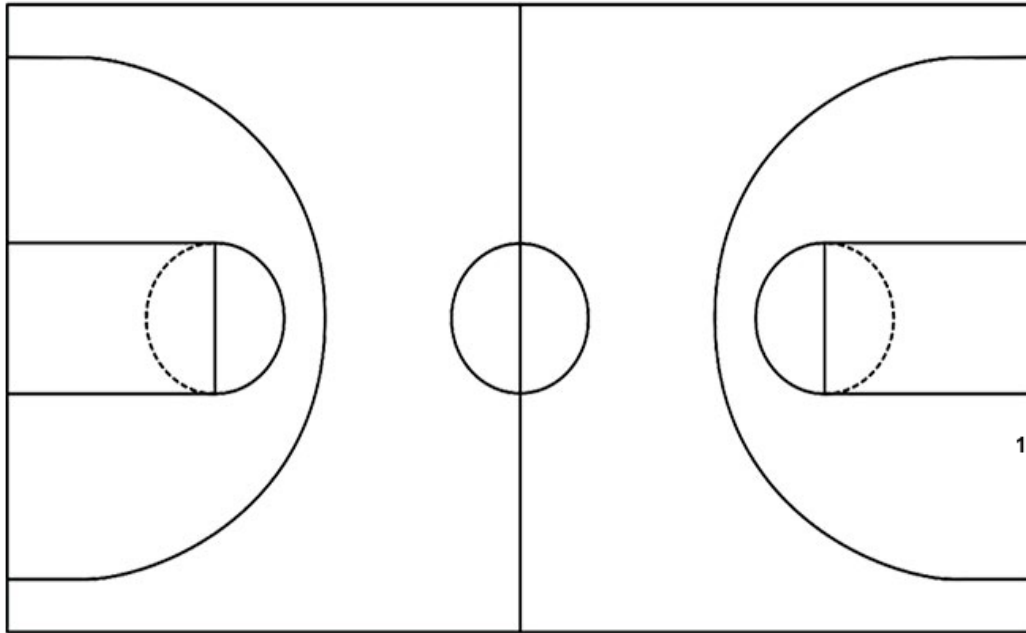
Mitchell

Layups

Layups

Dunks

Dunks



WAT : Period 2	Made	Att	Pct
Layups	0	0	0
Dunks	0	0	0
2PT Field Goals	2	9	22.2
3PT Field Goals	1	7	14.3
Total Field Goals	3	16	18.8

MIT : Period 2	Made	Att	Pct
Layups	0	0	0
Dunks	0	0	0
2PT Field Goals	5	6	83.3
3PT Field Goals	0	4	00.0
Total Field Goals	5	10	50.0

Official Shot Chart
Mitchell vs Watertown
PERIOD 3 Shots
March 10, 2023 at Sioux Falls, SD



Watertown

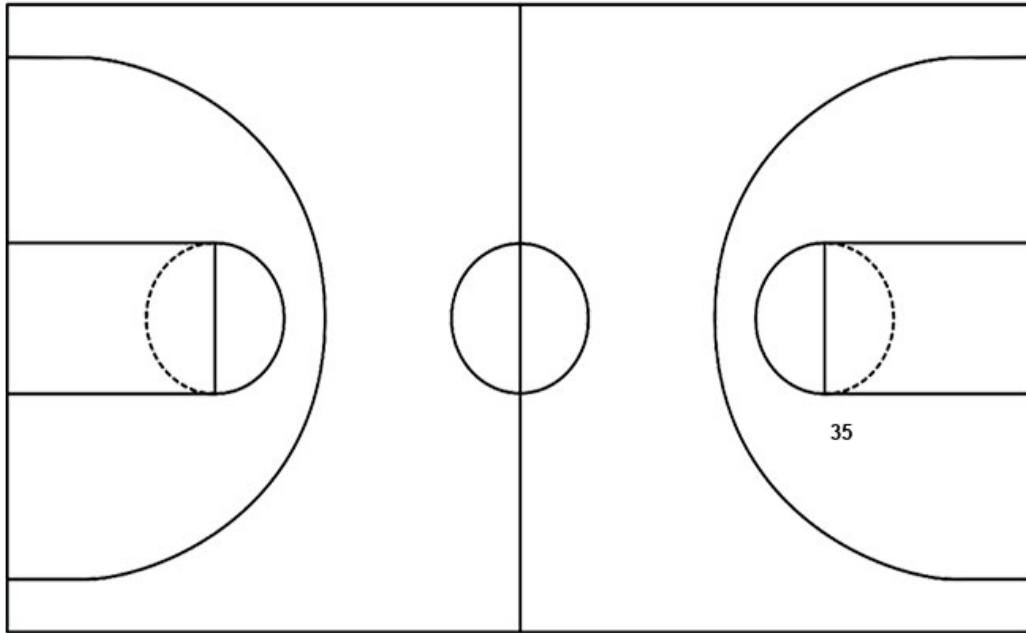
Mitchell

Layups

Layups

Dunks

Dunks



WAT : Period 3	Made	Att	Pct
Layups	0	0	0
Dunks	0	0	0
2PT Field Goals	6	8	75.0
3PT Field Goals	0	4	00.0
Total Field Goals	6	12	50.0

MIT : Period 3	Made	Att	Pct
Layups	0	0	0
Dunks	0	0	0
2PT Field Goals	2	5	40.0
3PT Field Goals	0	6	00.0
Total Field Goals	2	11	18.2

Official Shot Chart
Mitchell vs Watertown
PERIOD 4 Shots
March 10, 2023 at Sioux Falls, SD



Watertown

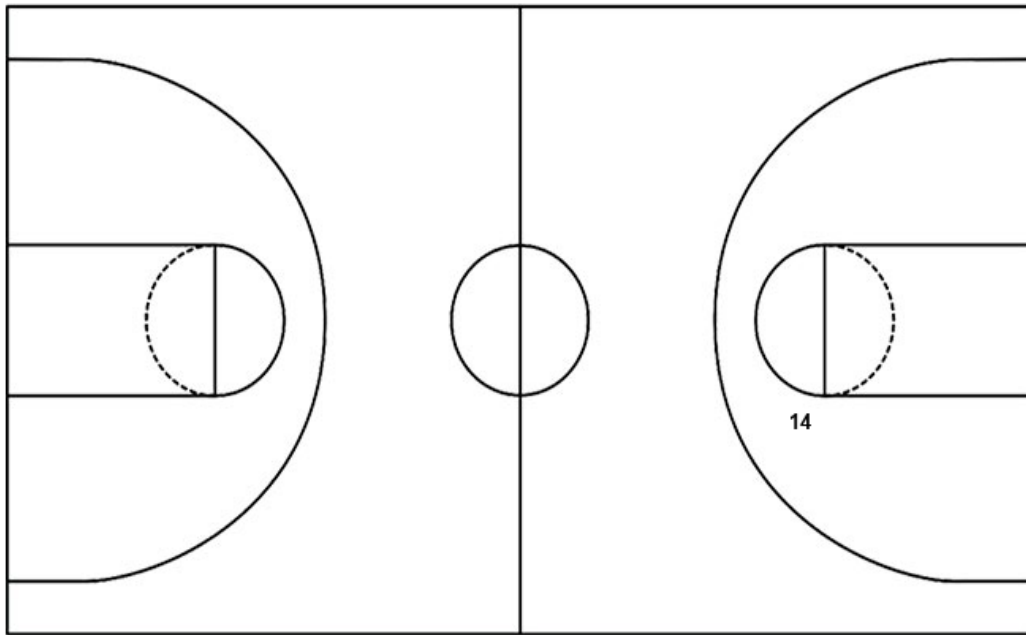
Mitchell

Layups

Layups

Dunks

Dunks



WAT : Period 4	Made	Att	Pct
Layups	0	0	0
Dunks	0	0	0
2PT Field Goals	1	8	12.5
3PT Field Goals	0	8	00.0
Total Field Goals	1	16	06.3

MIT : Period 4	Made	Att	Pct
Layups	0	0	0
Dunks	0	0	0
2PT Field Goals	4	6	66.7
3PT Field Goals	0	3	00.0
Total Field Goals	4	9	44.4

Official Shot Chart
Mitchell vs Watertown
Mitchell Team Shots
March 10, 2023 at Sioux Falls, SD

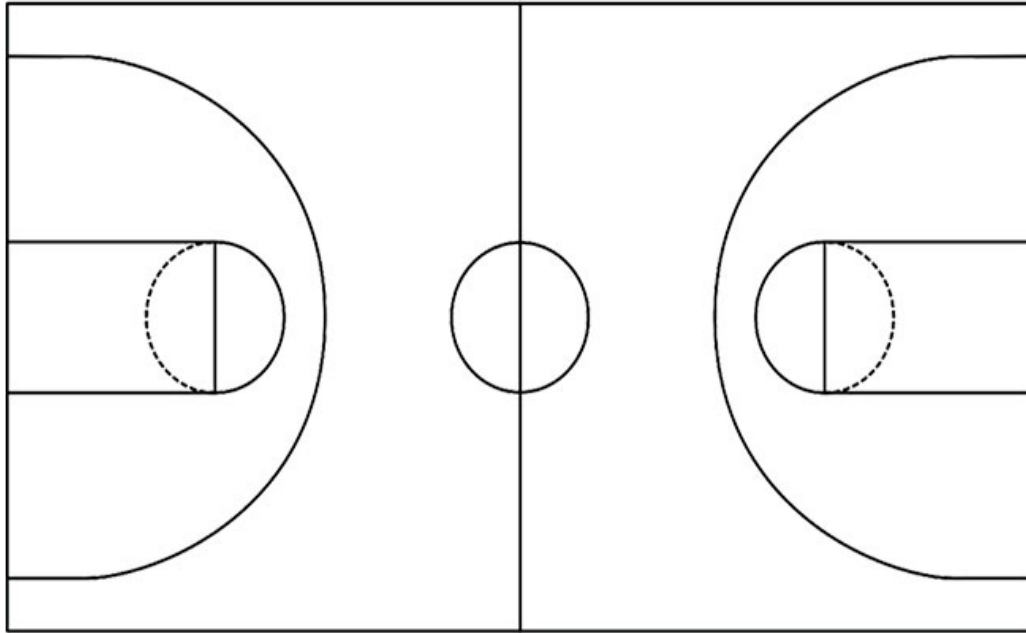


Layups

Layups

Dunks

Dunks



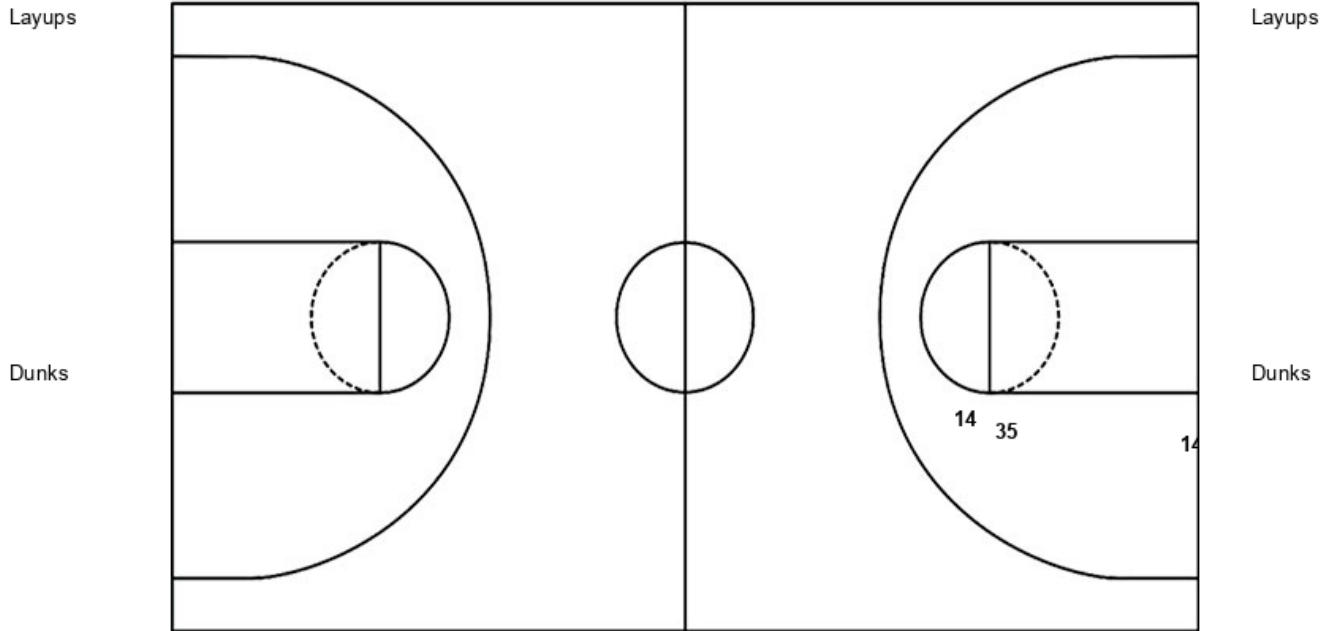
MIT : Period 1	Made	Att	Pct
Layups	0	0	0
Dunks	0	0	0
2PT Field Goals	5	9	55.6
3PT Field Goals	2	5	40.0
Total Field Goals	7	14	50.0

MIT : Period 2	Made	Att	Pct
Layups	0	0	0
Dunks	0	0	0
2PT Field Goals	5	6	83.3
3PT Field Goals	0	4	00.0
Total Field Goals	5	10	50.0

MIT : Period 3	Made	Att	Pct
Layups	0	0	0
Dunks	0	0	0
2PT Field Goals	2	5	40.0
3PT Field Goals	0	6	00.0
Total Field Goals	2	11	18.2

MIT : Period 4	Made	Att	Pct
Layups	0	0	0
Dunks	0	0	0
2PT Field Goals	4	6	66.7
3PT Field Goals	0	3	00.0
Total Field Goals	4	9	44.4

Official Shot Chart
Mitchell vs Watertown
Watertown Team Shots
March 10, 2023 at Sioux Falls, SD



WAT : Period 1	Made	Att	Pct
Layups	0	0	0
Dunks	0	0	0
2PT Field Goals	2	2	100.0
3PT Field Goals	1	3	33.3
Total Field Goals	3	5	60.0

WAT : Period 2	Made	Att	Pct
Layups	0	0	0
Dunks	0	0	0
2PT Field Goals	2	9	22.2
3PT Field Goals	1	7	14.3
Total Field Goals	3	16	18.8

WAT : Period 3	Made	Att	Pct
Layups	0	0	0
Dunks	0	0	0
2PT Field Goals	6	8	75.0
3PT Field Goals	0	4	00.0
Total Field Goals	6	12	50.0

WAT : Period 4	Made	Att	Pct
Layups	0	0	0
Dunks	0	0	0
2PT Field Goals	1	8	12.5
3PT Field Goals	0	8	00.0
Total Field Goals	1	16	06.3