

## FINAL SCORE

**Watertown** **24**

**Sioux Falls Washington** **48**

**2023 SDHSAA State Basketball Championships**

**March 09, 2023 • Sioux Falls, SD**



## FINAL STATISTICS

**Official Box Score**  
**Watertown vs Sioux Falls Washington**  
**Game Totals -- Final Statistics**  
**March 09, 2023 at Sioux Falls, SD**



**Watertown 24**

**Record:**

No.	Player	S	Pts	FG	3FG	FT	OR	DR	TR	PF	A	TO	Blk	Stl	Min	+/-
04	RHODE, MADDY		8	3-11	2-6	0-0	2	1	3	3	0	6	0	0	26	-26
05	THURY, EMERY		7	2-5	0-0	3-6	2	2	4	3	1	3	0	2	24	-15
12	YOUNG, JAIDA		0	0-9	0-3	0-2	2	5	7	2	1	5	1	3	31	-24
14	FALCONER, MIRANDA		5	2-5	1-2	0-1	1	1	2	1	1	2	0	1	25	-20
35	PAULSON, KENDALL		0	0-0	0-0	0-0	1	1	2	2	0	0	0	0	23	-24
03	JOHNSTON, ADDI	*	0	0-2	0-1	0-0	0	1	1	1	1	1	0	0	5	0
20	JOHNSON, NEELY	*	0	0-1	0-0	0-0	0	0	0	0	0	0	0	0	1	0
22	COREY, GRACE	*	2	1-2	0-0	0-0	0	0	0	0	0	0	0	1	9	-2
24	LUND, JADE	*	2	0-5	0-5	2-2	0	1	1	3	0	1	0	4	14	-9
33	MUNGER, AVERY	*	0	0-0	0-0	0-0	1	0	1	0	0	0	0	0	2	0
<b>TOTALS</b>			<b>24</b>	<b>8-40</b>	<b>3-17</b>	<b>5-11</b>	<b>11</b>	<b>15</b>	<b>26</b>	<b>15</b>	<b>4</b>	<b>18</b>	<b>1</b>	<b>11</b>	<b>160</b>	

*Shooting By Period*

Period	FG	FG%	3FG	3FG%	FT	FT%
<b>Game</b>	<b>8-40</b>	<b>20.0%</b>	<b>3-17</b>	<b>17.6%</b>	<b>5-11</b>	<b>45.5%</b>

*Deadball Rebounds: 2,0*  
*Last FG: 4th-0:39*  
*Largest lead: By at*  
*Technical Fouls: None.*

**Sioux Falls Washington 48**

**Record:**

No.	Player	S	Pts	FG	3FG	FT	OR	DR	TR	PF	A	TO	Blk	Stl	Min	+/-
23	LARSON, TARYN		2	1-3	0-0	0-0	0	3	3	2	1	1	0	2	19	16
32	PETERSON, GRACE		9	3-9	0-1	3-4	1	4	5	0	1	2	0	1	26	29
33	HARPE, HANNAH		7	2-6	1-2	2-2	0	4	4	1	7	4	0	5	28	33
34	HARPE, BROOKLYN		19	7-12	1-1	4-6	2	7	9	1	3	0	2	2	27	24
52	THOMPSON, TAYLOR		5	2-3	0-1	1-2	3	2	5	3	0	2	2	1	16	20
10	HARPE, DANA	*	0	0-0	0-0	0-0	0	0	0	0	0	0	0	0	1	-2
12	KENNETT, RYLAN	*	0	0-0	0-0	0-0	0	0	0	0	0	1	0	0	1	-2
14	WOODS, CLAIRE		0	0-1	0-0	0-0	0	0	0	1	0	1	0	0	6	4
20	CARDA, ISABEL		0	0-1	0-0	0-0	1	0	1	1	0	1	0	0	9	-8
22	HOSMAN, ANESSA		0	0-0	0-0	0-0	0	0	0	0	0	0	0	0	1	-2
24	MOTLEY, ALEXUS		4	1-8	0-1	2-2	4	3	7	2	2	2	1	3	24	11
30	SCHRAMM, TIERNEY	*	0	0-0	0-0	0-0	0	0	0	1	0	0	0	0	1	-2
42	NITUNGA, BENIGNE	*	0	0-0	0-0	0-0	0	0	0	0	0	0	0	0	1	0
50	FINK, SHAELYN	*	2	1-1	0-0	0-0	0	0	0	0	0	0	0	0	1	0
<b>TOTALS</b>			<b>48</b>	<b>17-44</b>	<b>2-6</b>	<b>12-16</b>	<b>13</b>	<b>25</b>	<b>38</b>	<b>12</b>	<b>14</b>	<b>14</b>	<b>5</b>	<b>14</b>	<b>160</b>	

*Shooting By Period*

Period	FG	FG%	3FG	3FG%	FT	FT%
<b>Game</b>	<b>17-44</b>	<b>38.6%</b>	<b>2-6</b>	<b>33.3%</b>	<b>12-16</b>	<b>75.0%</b>

*Deadball Rebounds: 4,0*  
*Last FG: 4th-1:06*  
*Largest lead: By at*  
*Technical Fouls: None.*

Game Notes:

Officials: , ,

Start Time: **11:00:00**

Postseason Game;Neutral Court;

Score	1st	2nd	3rd	4th	TOT
WAT	5	7	5	7	<b>24</b>
SFW	13	8	14	13	<b>48</b>

**WAT led for 0:0. SFW led for 0:0.**  
**Game was tied for 0:0.**  
 Times tied: **0**      Lead Changes: **0**

Points	WAT	SFW
In the Paint	6	26
Off Turns	3	16
2nd Chance	3	8
Fast Break	0	13
Bench	4	6
Per Poss	0.471 11/51	0.941 23/51

**Official Box Score**  
**Watertown vs Sioux Falls Washington**  
**First Half Statistics Only**  
**March 09, 2023 at Sioux Falls, SD**



**Watertown 12**

**Record:**

No.	Player	S	Pts	FG	3FG	FT	OR	DR	TR	PF	A	TO	Blk	Stl	Min	+/-
-----	--------	---	-----	----	-----	----	----	----	----	----	---	----	-----	-----	-----	-----

*Shooting By Period*

Period	FG	FG%	3FG	3FG%	FT	FT%
1st Half	0-0	0%	0-0	0%	0-0	0%
Game	8-40	20.0%	3-17	17.6%	5-11	45.5%

*Deadball Rebounds: 2,0*  
*Last FG Half: WAT 2nd-0:23*

**Sioux Falls Washington 21**

**Record:**

No.	Player	S	Pts	FG	3FG	FT	OR	DR	TR	PF	A	TO	Blk	Stl	Min	+/-
-----	--------	---	-----	----	-----	----	----	----	----	----	---	----	-----	-----	-----	-----

*Shooting By Period*

Period	FG	FG%	3FG	3FG%	FT	FT%
1st Half	0-0	0%	0-0	0%	0-0	0%
Game	17-44	38.6%	2-6	33.3%	12-16	75.0%

*Deadball Rebounds: 4,0*  
*Last FG Half: SFW 2nd-2:08*

Game Notes:

Officials: , ,

Start Time: **11:00:00**

Postseason Game;Neutral Court;

Score	1st	2nd	3rd	4th	TOT
WAT	5	7	5	7	<b>24</b>
SFW	13	8	14	13	<b>48</b>

Points from (This Period)	WAT	SFW
In the Paint	0	8
Off Turns	3	5
2nd Chance	1	2
Fast Break	0	2
Bench	2	0

**Official Play-By-Play**  
**Watertown vs Sioux Falls Washington**  
**First Quarter**  
**March 09, 2023 at Sioux Falls, SD**



**Period 1**

**Starters:**

**Watertown:** 4 RHODE, MADDY; 5 THURY, EMERY; 12 YOUNG, JAIDA; 14 FALCONER, MIRANDA; 35 PAULSON, KENDALL;

**Sioux Falls Washington:** 23 LARSON, TARYN; 32 PETERSON, GRACE; 33 HARPE, HANNAH; 34 HARPE, BROOKLYN; 52 THOMPSON, TAYLOR;

Time	VISITORS: Watertown	Score	Margin	HOME: Sioux Falls Washington
8:00				SUB STARTER: LARSON, TARYN
8:00				SUB STARTER: PETERSON, GRACE
8:00				SUB STARTER: HARPE, HANNAH
8:00				SUB STARTER: HARPE, BROOKLYN
8:00				SUB STARTER: THOMPSON, TAYLOR
8:00	SUB STARTER: RHODE, MADDY			
8:00	SUB STARTER: THURY, EMERY			
8:00	SUB STARTER: YOUNG, JAIDA			
8:00	SUB STARTER: FALCONER, MIRANDA			
8:00	SUB STARTER: PAULSON, KENDALL			
7:35				MISSED 2PTR by HARPE, HANNAH
7:35				REBOUND (OFF) by THOMPSON, TAYLOR
7:26	FOUL (PERSONAL) by THURY, EMERY			
7:26		1-0	H 1	GOOD! FT by HARPE, BROOKLYN
7:26		2-0	H 2	GOOD! FT by HARPE, BROOKLYN
7:00	TURNOVER by YOUNG, JAIDA			
7:00				STEAL by PETERSON, GRACE
6:55				TURNOVER by HARPE, HANNAH
6:36	TURNOVER by FALCONER, MIRANDA			
6:36				STEAL by HARPE, BROOKLYN
6:31		4-0	H 4	GOOD! 2PTR by HARPE, BROOKLYN [FB/PNT]
6:17	MISSED 2PTR by YOUNG, JAIDA			
6:17				REBOUND (DEF) by PETERSON, GRACE
6:17				BLOCK by THOMPSON, TAYLOR
5:59		6-0	H 6	GOOD! 2PTR by PETERSON, GRACE [PNT]
5:59				ASSIST by HARPE, BROOKLYN
5:54	TURNOVER by THURY, EMERY			
5:54				SUB OUT: LARSON, TARYN
5:54				SUB IN: MOTLEY, ALEXUS
5:54	TIMEOUT TEAM			
5:37	FOUL (PERSONAL) by PAULSON, KENDALL			
5:37				MISSED FT by PETERSON, GRACE
5:37	SUB OUT: THURY, EMERY			
5:37	SUB IN: LUND, JADE			
5:37		7-0	H 7	GOOD! FT by PETERSON, GRACE
5:13	MISSED 3PTR by YOUNG, JAIDA			
5:13				REBOUND (DEF) by TEAM
4:47		9-0	H 9	GOOD! 2PTR by HARPE, BROOKLYN [PNT]
4:47				ASSIST by HARPE, HANNAH
4:39				FOUL (PERSONAL) by HARPE, BROOKLYN
4:39	SUB OUT: FALCONER, MIRANDA			
4:39	SUB IN: COREY, GRACE			
4:39				TIMEOUT TEAM
4:39	GOOD! FT by LUND, JADE	9-1	H 8	
4:39	GOOD! FT by LUND, JADE	9-2	H 7	
4:32	FOUL (PERSONAL) by LUND, JADE			
4:14		11-2	H 9	GOOD! 2PTR by HARPE, BROOKLYN
4:14				ASSIST by MOTLEY, ALEXUS
3:56	TURNOVER by LUND, JADE			
3:56				STEAL by THOMPSON, TAYLOR
3:46		13-2	H 11	GOOD! 2PTR by HARPE, BROOKLYN [PNT]
3:46				ASSIST by HARPE, HANNAH
3:34	MISSED 3PTR by RHODE, MADDY			
3:34				REBOUND (DEF) by HARPE, BROOKLYN
3:20				TURNOVER by THOMPSON, TAYLOR
3:20				FOUL (PERSONAL) by THOMPSON, TAYLOR
3:20	SUB OUT: COREY, GRACE			
3:20	SUB OUT: PAULSON, KENDALL			
3:20	SUB IN: FALCONER, MIRANDA			
3:20	SUB IN: THURY, EMERY			
3:20				SUB OUT: THOMPSON, TAYLOR
3:20				SUB OUT: PETERSON, GRACE
3:20				SUB IN: LARSON, TARYN
3:20				SUB IN: CARDA, ISABEL
3:05	GOOD! 2PTR by RHODE, MADDY	13-4	H 9	

Time	VISITORS: Watertown	Score	Margin	HOME: Sioux Falls Washington
2:47				TURNOVER by HARPE, HANNAH
2:47	STEAL by LUND, JADE			
2:22	MISSED 3PTR by LUND, JADE			
2:22	REBOUND (OFF) by RHODE, MADDY			
2:16	MISSED 2PTR by RHODE, MADDY			
2:16				REBOUND (DEF) by LARSON, TARYN
1:51				MISSED 2PTR by CARDA, ISABEL
1:51				REBOUND (OFF) by MOTLEY, ALEXUS
1:46				MISSED 2PTR by MOTLEY, ALEXUS
1:46	REBOUND (DEF) by LUND, JADE			
1:28				FOUL (PERSONAL) by CARDA, ISABEL
1:28				SUB OUT: LARSON, TARYN
1:28				SUB OUT: HARPE, BROOKLYN
1:28				SUB IN: PETERSON, GRACE
1:28				SUB IN: THOMPSON, TAYLOR
1:28	SUB OUT: LUND, JADE			
1:28	SUB IN: PAULSON, KENDALL			
1:16	MISSED 3PTR by YOUNG, JAIDA			
1:16				REBOUND (DEF) by MOTLEY, ALEXUS
0:47				TURNOVER by HARPE, HANNAH
0:47	STEAL by YOUNG, JAIDA			
0:42				FOUL (PERSONAL) by HARPE, HANNAH
0:42	MISSED FT by YOUNG, JAIDA [FB]			
0:42				SUB OUT: HARPE, HANNAH
0:42				SUB IN: HARPE, BROOKLYN
0:42	MISSED FT by YOUNG, JAIDA [FB]			
0:41	REBOUND (OFF) by RHODE, MADDY			
0:30	MISSED 2PTR by RHODE, MADDY			
0:30	REBOUND (OFF) by TEAM			
0:30				SUB OUT: CARDA, ISABEL
0:30				SUB IN: WOODS, CLAIRE
0:29				FOUL (PERSONAL) by WOODS, CLAIRE
0:29	GOOD! FT by THURY, EMERY	13-5	H 8	
0:29	SUB OUT: PAULSON, KENDALL			
0:29	SUB IN: COREY, GRACE			
0:29				SUB OUT: WOODS, CLAIRE
0:29				SUB IN: HARPE, HANNAH
0:29	MISSED FT by THURY, EMERY			
0:27	REBOUND (OFF) by YOUNG, JAIDA			
0:23	TURNOVER by YOUNG, JAIDA			
0:23				STEAL by HARPE, BROOKLYN
0:20	FOUL (PERSONAL) by RHODE, MADDY			
0:20				MISSED FT by HARPE, BROOKLYN [FB]
0:20	SUB OUT: RHODE, MADDY			
0:20	SUB OUT: THURY, EMERY			
0:20	SUB IN: JOHNSTON, ADDI			
0:20	SUB IN: MUNGER, AVERY			
0:20				SUB OUT: THOMPSON, TAYLOR
0:20				SUB IN: LARSON, TARYN
0:20				MISSED FT by HARPE, BROOKLYN [FB]
0:19	REBOUND (DEF) by YOUNG, JAIDA			
0:15	MISSED 2PTR by JOHNSTON, ADDI			
0:15				BLOCK by MOTLEY, ALEXUS
0:15	REBOUND (OFF) by TEAM			
0:04	TURNOVER by YOUNG, JAIDA			
0:04				STEAL by MOTLEY, ALEXUS
0:00				MISSED 2PTR by PETERSON, GRACE
0:00				REBOUND (DEADB) by TEAM

### Watertown 5, Sioux Falls Washington 13

Points (This Period)	WAT	SFW
In the Paint	0	8
Off Turns	3	5
2nd Chance	1	2
Fast Break	0	2
Bench	2	0
Per Poss	0.417 3/12	1.000 7/13

**Official Play-By-Play**  
**Watertown vs Sioux Falls Washington**  
**Second Quarter**  
**March 09, 2023 at Sioux Falls, SD**



**Period 2**

**Starters:**

**Watertown:** 4 RHODE, MADDY; 5 THURY, EMERY; 12 YOUNG, JAIDA; 14 FALCONER, MIRANDA; 35 PAULSON, KENDALL;

**Sioux Falls Washington:** 23 LARSON, TARYN; 32 PETERSON, GRACE; 33 HARPE, HANNAH; 34 HARPE, BROOKLYN; 52 THOMPSON, TAYLOR;

Time	VISITORS: Watertown	Score	Margin	HOME: Sioux Falls Washington
8:00				SUB STARTER: HARPE, BROOKLYN
8:00				SUB STARTER: PETERSON, GRACE
8:00				SUB STARTER: HARPE, HANNAH
8:00				SUB STARTER: LARSON, TARYN
8:00				SUB STARTER: MOTLEY, ALEXUS
8:00	SUB STARTER: RHODE, MADDY			
8:00	SUB STARTER: PAULSON, KENDALL			
8:00	SUB STARTER: THURY, EMERY			
8:00	SUB STARTER: YOUNG, JAIDA			
8:00	SUB STARTER: FALCONER, MIRANDA			
7:31				MISSED 2PTR by MOTLEY, ALEXUS
7:31				REBOUND (OFF) by HARPE, BROOKLYN
7:29				MISSED 2PTR by HARPE, BROOKLYN
7:29				REBOUND (OFF) by HARPE, BROOKLYN
6:56				MISSED 2PTR by HARPE, BROOKLYN
6:56	REBOUND (DEF) by YOUNG, JAIDA			
6:47	MISSED 2PTR by FALCONER, MIRANDA			
6:47				REBOUND (DEF) by HARPE, BROOKLYN
6:32				MISSED 2PTR by LARSON, TARYN
6:32	REBOUND (DEF) by PAULSON, KENDALL			
6:08	MISSED 3PTR by RHODE, MADDY			
6:08				REBOUND (DEF) by HARPE, BROOKLYN
6:06	FOUL (PERSONAL) by PAULSON, KENDALL			
6:06				SUB OUT: LARSON, TARYN
6:06				SUB OUT: HARPE, HANNAH
6:06				SUB IN: CARDA, ISABEL
6:06				SUB IN: THOMPSON, TAYLOR
5:44				MISSED 2PTR by PETERSON, GRACE
5:44				REBOUND (OFF) by TEAM
5:41				MISSED 3PTR by THOMPSON, TAYLOR
5:41	REBOUND (DEF) by TEAM			
5:27	GOOD! 3PTR by RHODE, MADDY	13-8	H 5	
5:27	ASSIST by THURY, EMERY			
4:56				MISSED 3PTR by MOTLEY, ALEXUS
4:56				REBOUND (OFF) by THOMPSON, TAYLOR
4:55	FOUL (PERSONAL) by RHODE, MADDY			
4:55				TIMEOUT TEAM
4:55				SUB OUT: HARPE, BROOKLYN
4:55				SUB OUT: PETERSON, GRACE
4:55				SUB OUT: MOTLEY, ALEXUS
4:55				SUB OUT: CARDA, ISABEL
4:55				SUB OUT: THOMPSON, TAYLOR
4:55				SUB IN: HARPE, HANNAH
4:55				SUB IN: HARPE, BROOKLYN
4:55				SUB IN: PETERSON, GRACE
4:55				SUB IN: THOMPSON, TAYLOR
4:55				SUB IN: WOODS, CLAIRE
4:55	SUB OUT: RHODE, MADDY			
4:55	SUB OUT: PAULSON, KENDALL			
4:55	SUB OUT: THURY, EMERY			
4:55	SUB OUT: YOUNG, JAIDA			
4:55	SUB OUT: FALCONER, MIRANDA			
4:55	SUB IN: RHODE, MADDY			
4:55	SUB IN: YOUNG, JAIDA			
4:55	SUB IN: FALCONER, MIRANDA			
4:55	SUB IN: THURY, EMERY			
4:55	SUB IN: LUND, JADE			
4:50				TURNOVER by THOMPSON, TAYLOR
4:50	STEAL by LUND, JADE			
4:28	MISSED 3PTR by LUND, JADE			
4:28				REBOUND (DEF) by PETERSON, GRACE
4:12				TURNOVER by PETERSON, GRACE
4:12	STEAL by LUND, JADE			
3:54	MISSED 3PTR by RHODE, MADDY			
3:54				REBOUND (DEF) by THOMPSON, TAYLOR

Time	VISITORS: Watertown	Score	Margin	HOME: Sioux Falls Washington
3:44		15-8	H 7	GOOD! 2PTR by PETERSON, GRACE [FB/PNT]
3:44				ASSIST by HARPE, HANNAH
3:30				SUB OUT: HARPE, BROOKLYN
3:30				SUB IN: MOTLEY, ALEXUS
3:21	TURNOVER by RHODE, MADDY			
3:21				STEAL by HARPE, HANNAH
3:18		17-8	H 9	GOOD! 2PTR by HARPE, HANNAH [FB/PNT]
2:56	MISSED 2PTR by RHODE, MADDY			
2:56	REBOUND (OFF) by FALCONER, MIRANDA			
2:54	TURNOVER by FALCONER, MIRANDA			
2:54				STEAL by MOTLEY, ALEXUS
2:54	SUB OUT: LUND, JADE			
2:54	SUB IN: PAULSON, KENDALL			
2:54				SUB OUT: WOODS, CLAIRE
2:54				SUB IN: HARPE, BROOKLYN
2:29				MISSED 2PTR by MOTLEY, ALEXUS
2:29				REBOUND (OFF) by MOTLEY, ALEXUS
2:28				MISSED 2PTR by MOTLEY, ALEXUS
2:28	REBOUND (DEF) by YOUNG, JAIDA			
2:18	MISSED 2PTR by THURY, EMERY			
2:18				BLOCK by THOMPSON, TAYLOR
2:18				REBOUND (DEF) by PETERSON, GRACE
2:08		19-8	H 11	GOOD! 2PTR by THOMPSON, TAYLOR [FB/PNT]
2:08				ASSIST by HARPE, HANNAH
1:54	MISSED 2PTR by FALCONER, MIRANDA			
1:54				REBOUND (DEF) by HARPE, BROOKLYN
1:35				TURNOVER by HARPE, HANNAH
1:35	STEAL by FALCONER, MIRANDA			
1:23	MISSED 2PTR by YOUNG, JAIDA			
1:23				BLOCK by HARPE, BROOKLYN
1:23				REBOUND (DEF) by THOMPSON, TAYLOR
1:22	FOUL (PERSONAL) by YOUNG, JAIDA			
1:22	SUB OUT: RHODE, MADDY			
1:22	SUB IN: COREY, GRACE			
1:22	SUB OUT: PAULSON, KENDALL			
1:22	SUB IN: LUND, JADE			
1:22				SUB OUT: HARPE, HANNAH
1:22				SUB IN: CARDA, ISABEL
1:22				MISSED FT by THOMPSON, TAYLOR
1:19	REBOUND (DEF) by YOUNG, JAIDA			
1:16				SUB OUT: PETERSON, GRACE
1:16				SUB IN: HARPE, HANNAH
1:14				FOUL (PERSONAL) by THOMPSON, TAYLOR
1:14				SUB OUT: THOMPSON, TAYLOR
1:14				SUB IN: LARSON, TARYN
1:11	MISSED 2PTR by COREY, GRACE			
1:11				REBOUND (DEF) by HARPE, HANNAH
1:03				MISSED 2PTR by HARPE, HANNAH
1:03	REBOUND (DEF) by THURY, EMERY			
0:51	GOOD! 2PTR by FALCONER, MIRANDA [PNT]	19-10	H 9	
0:51				FOUL (PERSONAL) by MOTLEY, ALEXUS
0:51				SUB OUT: CARDA, ISABEL
0:51				SUB IN: WOODS, CLAIRE
0:51	MISSED FT by FALCONER, MIRANDA			
0:50	REBOUND (OFF) by YOUNG, JAIDA			
0:41	TURNOVER by THURY, EMERY			
0:41				STEAL by MOTLEY, ALEXUS
0:39	FOUL (PERSONAL) by LUND, JADE			
0:39	SUB OUT: LUND, JADE			
0:39	SUB IN: JOHNSTON, ADDI			
0:39		20-10	H 10	GOOD! FT by MOTLEY, ALEXUS [FB]
0:39		21-10	H 11	GOOD! FT by MOTLEY, ALEXUS [FB]
0:23	GOOD! 2PTR by THURY, EMERY [PNT]	21-12	H 9	
0:06				MISSED 2PTR by HARPE, BROOKLYN
0:06	REBOUND (DEF) by THURY, EMERY			

### Watertown 12, Sioux Falls Washington 21

<b>Points (This Period)</b>	<b>WAT</b>	<b>SFW</b>
In the Paint	4	6
Off Turns	0	4
2nd Chance	0	0
Fast Break	0	8
Bench	0	2
Per Poss	0.538 3/13	0.615 4/13



**Official Box Score**  
**Watertown vs Sioux Falls Washington**  
**Second Half Statistics Only**  
**March 09, 2023 at Sioux Falls, SD**



**Watertown 12**

**Record:**

No.	Player	S	Pts	FG	3FG	FT	OR	DR	TR	PF	A	TO	Blk	Stl	Min	+/-
-----	--------	---	-----	----	-----	----	----	----	----	----	---	----	-----	-----	-----	-----

*Shooting By Period*

Period	FG	FG%	3FG	3FG%	FT	FT%
2nd Half	0-0	0%	0-0	0%	0-0	0%
Game	8-40	20.0%	3-17	17.6%	5-11	45.5%

*Deadball Rebounds: 2,0*  
*Last FG Half: WAT 4th-0:39*

**Sioux Falls Washington 27**

**Record:**

No.	Player	S	Pts	FG	3FG	FT	OR	DR	TR	PF	A	TO	Blk	Stl	Min	+/-
-----	--------	---	-----	----	-----	----	----	----	----	----	---	----	-----	-----	-----	-----

*Shooting By Period*

Period	FG	FG%	3FG	3FG%	FT	FT%
2nd Half	0-0	0%	0-0	0%	0-0	0%
Game	17-44	38.6%	2-6	33.3%	12-16	75.0%

*Deadball Rebounds: 4,0*  
*Last FG Half: SFW 4th-1:06*

Game Notes:

Officials: , ,

Start Time: **11:00:00**

Postseason Game;Neutral Court;

Score	1st	2nd	3rd	4th	TOT	Points from (This Period)	WAT	SFW
WAT	5	7	5	7	<b>24</b>	In the Paint	4	6
SFW	13	8	14	13	<b>48</b>	Off Turns	0	4
						2nd Chance	0	0
						Fast Break	0	8
						Bench	0	2

**Official Play-By-Play**  
**Watertown vs Sioux Falls Washington**  
**Third Quarter**  
**March 09, 2023 at Sioux Falls, SD**



**Period 3**

**Starters:**

**Watertown:** 4 RHODE, MADDY; 5 THURY, EMERY; 12 YOUNG, JAIDA; 14 FALCONER, MIRANDA; 35 PAULSON, KENDALL;

**Sioux Falls Washington:** 23 LARSON, TARYN; 32 PETERSON, GRACE; 33 HARPE, HANNAH; 34 HARPE, BROOKLYN; 52 THOMPSON, TAYLOR;

Time	VISITORS: Watertown	Score	Margin	HOME: Sioux Falls Washington
8:00				SUB STARTER: LARSON, TARYN
8:00				SUB STARTER: PETERSON, GRACE
8:00				SUB STARTER: HARPE, HANNAH
8:00				SUB STARTER: HARPE, BROOKLYN
8:00				SUB STARTER: THOMPSON, TAYLOR
8:00	SUB STARTER: RHODE, MADDY			
8:00	SUB STARTER: THURY, EMERY			
8:00	SUB STARTER: YOUNG, JAIDA			
8:00	SUB STARTER: FALCONER, MIRANDA			
8:00	SUB STARTER: PAULSON, KENDALL			
7:40		24-12	H 12	GOOD! 3PTR by HARPE, BROOKLYN
7:40				ASSIST by LARSON, TARYN
7:27	TURNOVER by RHODE, MADDY			
7:09				TURNOVER by LARSON, TARYN
7:09	STEAL by THURY, EMERY			
6:52	TURNOVER by RHODE, MADDY			
6:52				STEAL by HARPE, HANNAH
6:45		27-12	H 15	GOOD! 3PTR by HARPE, HANNAH
6:45				ASSIST by HARPE, BROOKLYN
6:37	TIMEOUT TEAM			
6:17				FOUL (PERSONAL) by THOMPSON, TAYLOR
6:17				SUB OUT: THOMPSON, TAYLOR
6:17				SUB IN: MOTLEY, ALEXUS
6:00	MISSED 3PTR by FALCONER, MIRANDA			
6:00	REBOUND (OFF) by THURY, EMERY			
5:59				FOUL (PERSONAL) by LARSON, TARYN
5:59	MISSED FT by THURY, EMERY			
5:59	MISSED FT by THURY, EMERY			
5:58				REBOUND (DEF) by PETERSON, GRACE
5:42				MISSED 2PTR by PETERSON, GRACE
5:42				REBOUND (OFF) by PETERSON, GRACE
5:41	FOUL (PERSONAL) by RHODE, MADDY			
5:41		28-12	H 16	GOOD! FT by PETERSON, GRACE
5:41		29-12	H 17	GOOD! FT by PETERSON, GRACE
5:41	MISSED 2PTR by YOUNG, JAIDA			
5:41				REBOUND (DEF) by HARPE, HANNAH
5:05				MISSED 3PTR by PETERSON, GRACE
5:05				REBOUND (OFF) by MOTLEY, ALEXUS
4:59		31-12	H 19	GOOD! 2PTR by MOTLEY, ALEXUS [PNT]
4:45	MISSED 3PTR by YOUNG, JAIDA			
4:45	REBOUND (OFF) by THURY, EMERY			
4:40	MISSED 2PTR by THURY, EMERY			
4:40				REBOUND (DEF) by HARPE, BROOKLYN
4:14		33-12	H 21	GOOD! 2PTR by HARPE, BROOKLYN [PNT]
4:14				ASSIST by HARPE, HANNAH
3:49	GOOD! 3PTR by FALCONER, MIRANDA	33-15	H 18	
3:49	ASSIST by YOUNG, JAIDA			
3:30	FOUL (PERSONAL) by YOUNG, JAIDA			
3:30				TIMEOUT TEAM
3:30	SUB OUT: RHODE, MADDY			
3:30	SUB OUT: THURY, EMERY			
3:30	SUB OUT: YOUNG, JAIDA			
3:30	SUB OUT: FALCONER, MIRANDA			
3:30	SUB OUT: PAULSON, KENDALL			
3:30	SUB IN: RHODE, MADDY			
3:30	SUB IN: YOUNG, JAIDA			
3:30	SUB IN: PAULSON, KENDALL			
3:30	SUB IN: LUND, JADE			
3:30	SUB IN: COREY, GRACE			
3:30				SUB OUT: LARSON, TARYN
3:30				SUB OUT: PETERSON, GRACE
3:30				SUB OUT: HARPE, HANNAH
3:30				SUB OUT: HARPE, BROOKLYN
3:30				SUB OUT: MOTLEY, ALEXUS
3:30				SUB IN: HARPE, BROOKLYN

Time	VISITORS: Watertown	Score	Margin	HOME: Sioux Falls Washington
3:30				SUB IN: PETERSON, GRACE
3:30				SUB IN: THOMPSON, TAYLOR
3:30				SUB IN: WOODS, CLAIRE
3:30				SUB IN: MOTLEY, ALEXUS
3:12				MISSED 2PTR by WOODS, CLAIRE
3:12	REBOUND (DEF) by RHODE, MADDY			
3:03				SUB OUT: HARPE, BROOKLYN
3:03				SUB OUT: THOMPSON, TAYLOR
3:03				SUB IN: LARSON, TARYN
3:03				SUB IN: HARPE, HANNAH
2:55	TURNOVER by RHODE, MADDY			
2:55				STEAL by LARSON, TARYN
2:53				TURNOVER by MOTLEY, ALEXUS
2:53	STEAL by COREY, GRACE			
2:53				FOUL (PERSONAL) by MOTLEY, ALEXUS
2:53	SUB OUT: RHODE, MADDY			
2:53	SUB IN: JOHNSTON, ADDI			
2:34	MISSED 3PTR by LUND, JADE			
2:34				REBOUND (DEF) by LARSON, TARYN
2:20	FOUL (PERSONAL) by JOHNSTON, ADDI			
2:17				MISSED 2PTR by HARPE, HANNAH
2:17	REBOUND (DEF) by TEAM			
2:17	SUB OUT: PAULSON, KENDALL			
2:17	SUB IN: THURY, EMERY			
2:17				SUB OUT: PETERSON, GRACE
2:17				SUB IN: HARPE, BROOKLYN
2:02	TURNOVER by THURY, EMERY			
2:02				STEAL by LARSON, TARYN
1:41				MISSED 2PTR by MOTLEY, ALEXUS
1:41	REBOUND (DEF) by JOHNSTON, ADDI			
1:26	MISSED 3PTR by JOHNSTON, ADDI			
1:26				REBOUND (DEF) by MOTLEY, ALEXUS
1:16				TURNOVER by WOODS, CLAIRE
1:16	STEAL by THURY, EMERY			
1:08	TURNOVER by JOHNSTON, ADDI			
1:08				STEAL by HARPE, HANNAH
0:41		35-15	H 20	GOOD! 2PTR by HARPE, BROOKLYN [PNT]
0:41				ASSIST by HARPE, HANNAH
0:19				FOUL (PERSONAL) by LARSON, TARYN
0:19	GOOD! FT by THURY, EMERY	35-16	H 19	
0:19				SUB OUT: WOODS, CLAIRE
0:19				SUB OUT: MOTLEY, ALEXUS
0:19				SUB OUT: LARSON, TARYN
0:19				SUB OUT: HARPE, HANNAH
0:19				SUB OUT: HARPE, BROOKLYN
0:19				SUB IN: THOMPSON, TAYLOR
0:19				SUB IN: CARDA, ISABEL
0:19				SUB IN: PETERSON, GRACE
0:19				SUB IN: HARPE, BROOKLYN
0:19				SUB IN: HARPE, HANNAH
0:19	GOOD! FT by THURY, EMERY	35-17	H 18	
0:19	SUB OUT: YOUNG, JAIDA			
0:19	SUB OUT: LUND, JADE			
0:19	SUB OUT: COREY, GRACE			
0:19	SUB OUT: JOHNSTON, ADDI			
0:19	SUB OUT: THURY, EMERY			
0:19	SUB IN: RHODE, MADDY			
0:19	SUB IN: THURY, EMERY			
0:19	SUB IN: PAULSON, KENDALL			
0:19	SUB IN: FALCONER, MIRANDA			
0:19	SUB IN: YOUNG, JAIDA			
0:00				MISSED 2PTR by HARPE, BROOKLYN
0:00				REBOUND (OFF) by CARDA, ISABEL

### Watertown 17, Sioux Falls Washington 35

Points (This Period)	WAT	SFW
In the Paint	0	6
Off Turns	0	5
2nd Chance	0	4
Fast Break	0	0
Bench	0	2
Per Poss	0.417 2/12	1.167 6/12



**Official Play-By-Play**  
**Watertown vs Sioux Falls Washington**  
**Fourth Quarter**  
**March 09, 2023 at Sioux Falls, SD**



**Period 4**

**Starters:**

**Watertown:** 4 RHODE, MADDY; 5 THURY, EMERY; 12 YOUNG, JAIDA; 14 FALCONER, MIRANDA; 35 PAULSON, KENDALL;

**Sioux Falls Washington:** 23 LARSON, TARYN; 32 PETERSON, GRACE; 33 HARPE, HANNAH; 34 HARPE, BROOKLYN; 52 THOMPSON, TAYLOR;

Time	VISITORS: Watertown	Score	Margin	HOME: Sioux Falls Washington
8:00	SUB STARTER: THURY, EMERY			
8:00	SUB STARTER: FALCONER, MIRANDA			
8:00	SUB STARTER: YOUNG, JAIDA			
8:00	SUB STARTER: PAULSON, KENDALL			
8:00	SUB STARTER: RHODE, MADDY			
8:00				SUB STARTER: HARPE, BROOKLYN
8:00				SUB STARTER: CARDA, ISABEL
8:00				SUB STARTER: PETERSON, GRACE
8:00				SUB STARTER: THOMPSON, TAYLOR
8:00				SUB STARTER: HARPE, HANNAH
7:46	MISSED 3PTR by RHODE, MADDY			
7:46				REBOUND (DEF) by HARPE, BROOKLYN
7:29	FOUL (PERSONAL) by FALCONER, MIRANDA			
7:29		36-17	H 19	GOOD! FT by HARPE, BROOKLYN
7:29		37-17	H 20	GOOD! FT by HARPE, BROOKLYN
7:13	MISSED 2PTR by YOUNG, JAIDA			
7:13				REBOUND (DEF) by HARPE, HANNAH
7:12	FOUL (PERSONAL) by THURY, EMERY			
7:05		39-17	H 22	GOOD! 2PTR by THOMPSON, TAYLOR [FB/PNT]
7:05				ASSIST by PETERSON, GRACE
7:05	FOUL (PERSONAL) by THURY, EMERY			
7:05		40-17	H 23	GOOD! FT by THOMPSON, TAYLOR [FB]
6:46	MISSED 2PTR by THURY, EMERY			
6:46	REBOUND (OFF) by PAULSON, KENDALL			
6:43	TURNOVER by RHODE, MADDY			
6:43				SUB OUT: HARPE, HANNAH
6:43				SUB IN: MOTLEY, ALEXUS
6:19				MISSED 2PTR by PETERSON, GRACE
6:19				REBOUND (OFF) by TEAM
6:19	BLOCK by YOUNG, JAIDA			
6:08				MISSED 2PTR by HARPE, BROOKLYN
6:08				REBOUND (OFF) by THOMPSON, TAYLOR
5:53				MISSED 2PTR by MOTLEY, ALEXUS
5:53	REBOUND (DEF) by YOUNG, JAIDA			
5:42	GOOD! 3PTR by RHODE, MADDY	40-20	H 20	
5:29				TURNOVER by CARDA, ISABEL
5:27	TURNOVER by YOUNG, JAIDA			
5:27				SUB OUT: THOMPSON, TAYLOR
5:27				SUB OUT: HARPE, BROOKLYN
5:27				SUB IN: LARSON, TARYN
5:27				SUB IN: HARPE, HANNAH
5:15				MISSED 2PTR by PETERSON, GRACE
5:15	REBOUND (DEF) by FALCONER, MIRANDA			
5:01	GOOD! 2PTR by THURY, EMERY	40-22	H 18	
5:01	ASSIST by FALCONER, MIRANDA			
4:39		42-22	H 20	GOOD! 2PTR by PETERSON, GRACE [PNT]
4:39				ASSIST by HARPE, HANNAH
4:33	TURNOVER by YOUNG, JAIDA			
4:33				STEAL by HARPE, HANNAH
4:01				MISSED 3PTR by HARPE, HANNAH
4:01	REBOUND (DEF) by TEAM			
4:00				TIMEOUT TEAM
4:00				SUB OUT: CARDA, ISABEL
4:00				SUB IN: HARPE, BROOKLYN
4:00	SUB OUT: THURY, EMERY			
4:00	SUB IN: LUND, JADE			
3:43	MISSED 3PTR by LUND, JADE			
3:43				BLOCK by HARPE, BROOKLYN
3:43				REBOUND (DEF) by HARPE, BROOKLYN
3:25				TURNOVER by PETERSON, GRACE
3:25	STEAL by YOUNG, JAIDA			
3:20	MISSED 2PTR by YOUNG, JAIDA			
3:20				REBOUND (DEF) by HARPE, HANNAH
2:53		44-22	H 22	GOOD! 2PTR by LARSON, TARYN [PNT]
2:53				ASSIST by MOTLEY, ALEXUS

Time	VISITORS: Watertown	Score	Margin	HOME: Sioux Falls Washington
2:34	TURNOVER by RHODE, MADDY			
2:34				STEAL by HARPE, HANNAH
2:34	FOUL (PERSONAL) by LUND, JADE			
2:34	SUB OUT: FALCONER, MIRANDA			
2:34	SUB IN: COREY, GRACE			
2:34		45-22	H 23	GOOD! FT by HARPE, HANNAH
2:34		46-22	H 24	GOOD! FT by HARPE, HANNAH
2:17	MISSED 2PTR by RHODE, MADDY			
2:17				REBOUND (DEF) by LARSON, TARYN
2:02				TURNOVER by MOTLEY, ALEXUS
2:02	STEAL by YOUNG, JAIDA			
1:58	MISSED 2PTR by YOUNG, JAIDA			
1:58				REBOUND (DEF) by MOTLEY, ALEXUS
1:33				MISSED 2PTR by LARSON, TARYN
1:33				REBOUND (OFF) by MOTLEY, ALEXUS
1:26				TIMEOUT TEAM
1:26	SUB OUT: YOUNG, JAIDA			
1:26	SUB OUT: PAULSON, KENDALL			
1:26	SUB OUT: RHODE, MADDY			
1:26	SUB OUT: LUND, JADE			
1:26	SUB OUT: COREY, GRACE			
1:26	SUB IN: JOHNSTON, ADDI			
1:26	SUB IN: JOHNSON, NEELY			
1:26	SUB IN: MUNGER, AVERY			
1:26	SUB IN: COREY, GRACE			
1:26	SUB IN: LUND, JADE			
1:26				SUB OUT: PETERSON, GRACE
1:26				SUB OUT: MOTLEY, ALEXUS
1:26				SUB OUT: LARSON, TARYN
1:26				SUB OUT: HARPE, HANNAH
1:26				SUB OUT: HARPE, BROOKLYN
1:26				SUB IN: FINK, SHAELYN
1:26				SUB IN: MOTLEY, ALEXUS
1:26				SUB IN: HARPE, BROOKLYN
1:26				SUB IN: PETERSON, GRACE
1:26				SUB IN: HARPE, HANNAH
1:06		48-22	H 26	GOOD! 2PTR by FINK, SHAELYN
1:06				ASSIST by HARPE, BROOKLYN
1:06				SUB OUT: FINK, SHAELYN
1:06				SUB OUT: MOTLEY, ALEXUS
1:06				SUB OUT: HARPE, BROOKLYN
1:06				SUB OUT: PETERSON, GRACE
1:06				SUB OUT: HARPE, HANNAH
1:06				SUB IN: HARPE, DANA
1:06				SUB IN: NITUNGA, BENIGNE
1:06				SUB IN: HOSMAN, ANESSA
1:06				SUB IN: SCHRAMM, TIERNEY
1:06				SUB IN: FINK, SHAELYN
0:46	MISSED 3PTR by LUND, JADE			
0:46	REBOUND (OFF) by MUNGER, AVERY			
0:44				SUB OUT: HARPE, DANA
0:44				SUB IN: KENNETT, RYLAN
0:42				FOUL (PERSONAL) by SCHRAMM, TIERNEY
0:42				SUB OUT: NITUNGA, BENIGNE
0:42				SUB IN: HARPE, DANA
0:39	GOOD! 2PTR by COREY, GRACE [PNT]	48-24	H 24	
0:39	ASSIST by JOHNSTON, ADDI			
0:21				TURNOVER by KENNETT, RYLAN
0:21	STEAL by LUND, JADE			
0:16	MISSED 2PTR by JOHNSON, NEELY			
0:16				REBOUND (DEF) by TEAM
0:15				SUB OUT: HOSMAN, ANESSA
0:15				SUB IN: NITUNGA, BENIGNE

### Watertown 24, Sioux Falls Washington 48

Points (This Period)	WAT	SFW
In the Paint	2	6
Off Turns	0	2
2nd Chance	2	2
Fast Break	0	3
Bench	2	2
Per Poss	0.500 3/14	1.000 7/13



**Official Scoring/Possession Reference Chart  
Watertown vs Sioux Falls Washington**

**Period 1**

**March 09, 2023 at Sioux Falls, SD**



**Period 1**

**Starters:**

**Watertown:** 4 RHODE, MADDY; 5 THURY, EMERY; 12 YOUNG, JAIDA; 14 FALCONER, MIRANDA; 35 PAULSON, KENDALL;

**Sioux Falls Washington:** 23 LARSON, TARYN; 32 PETERSON, GRACE; 33 HARPE, HANNAH; 34 HARPE, BROOKLYN; 52 THOMPSON, TAYLOR;

Time	VISITORS: Watertown	Score	Margin	HOME: Sioux Falls Washington
7:26		1-0	H 1	GOOD! FT by HARPE, BROOKLYN
7:26		2-0	H 2	GOOD! FT by HARPE, BROOKLYN
6:31		4-0	H 4	GOOD! 2PTR by HARPE, BROOKLYN [FB/PNT]
5:59		6-0	H 6	GOOD! 2PTR by PETERSON, GRACE [PNT]
5:37		7-0	H 7	GOOD! FT by PETERSON, GRACE
4:47		9-0	H 9	GOOD! 2PTR by HARPE, BROOKLYN [PNT]
4:39	GOOD! FT by LUND, JADE	9-1	H 8	
4:39	GOOD! FT by LUND, JADE	9-2	H 7	
4:14		11-2	H 9	GOOD! 2PTR by HARPE, BROOKLYN
3:46		13-2	H 11	GOOD! 2PTR by HARPE, BROOKLYN [PNT]
3:05	GOOD! 2PTR by RHODE, MADDY	13-4	H 9	
0:29	GOOD! FT by THURY, EMERY	13-5	H 8	

**Watertown 5, Sioux Falls Washington 13**



**Official Scoring/Possession Reference Chart  
Watertown vs Sioux Falls Washington**

**Period 2**

**March 09, 2023 at Sioux Falls, SD**



**Period 2**

**Starters:**

**Watertown:** 4 RHODE, MADDY; 5 THURY, EMERY; 12 YOUNG, JAIDA; 14 FALCONER, MIRANDA; 35 PAULSON, KENDALL;

**Sioux Falls Washington:** 23 LARSON, TARYN; 32 PETERSON, GRACE; 33 HARPE, HANNAH; 34 HARPE, BROOKLYN; 52 THOMPSON, TAYLOR;

Time	VISITORS: Watertown	Score	Margin	HOME: Sioux Falls Washington
5:27	GOOD! 3PTR by RHODE, MADDY	13-8	H 5	
3:44		15-8	H 7	GOOD! 2PTR by PETERSON, GRACE [FB/PNT]
3:18		17-8	H 9	GOOD! 2PTR by HARPE, HANNAH [FB/PNT]
2:08		19-8	H 11	GOOD! 2PTR by THOMPSON, TAYLOR [FB/PNT]
0:51	GOOD! 2PTR by FALCONER, MIRANDA [PNT]	19-10	H 9	
0:39		20-10	H 10	GOOD! FT by MOTLEY, ALEXUS [FB]
0:39		21-10	H 11	GOOD! FT by MOTLEY, ALEXUS [FB]
0:23	GOOD! 2PTR by THURY, EMERY [PNT]	21-12	H 9	

**Watertown 12, Sioux Falls Washington 21**

**Official Scoring/Possession Reference Chart  
Watertown vs Sioux Falls Washington**

**Period 3**

**March 09, 2023 at Sioux Falls, SD**



**Period 3**

**Starters:**

**Watertown:** 4 RHODE, MADDY; 5 THURY, EMERY; 12 YOUNG, JAIDA; 14 FALCONER, MIRANDA; 35 PAULSON, KENDALL;

**Sioux Falls Washington:** 23 LARSON, TARYN; 32 PETERSON, GRACE; 33 HARPE, HANNAH; 34 HARPE, BROOKLYN; 52 THOMPSON, TAYLOR;

Time	VISITORS: Watertown	Score	Margin	HOME: Sioux Falls Washington
7:40		24-12	H 12	GOOD! 3PTR by HARPE, BROOKLYN
6:45		27-12	H 15	GOOD! 3PTR by HARPE, HANNAH
5:41		28-12	H 16	GOOD! FT by PETERSON, GRACE
5:41		29-12	H 17	GOOD! FT by PETERSON, GRACE
4:59		31-12	H 19	GOOD! 2PTR by MOTLEY, ALEXUS [PNT]
4:14		33-12	H 21	GOOD! 2PTR by HARPE, BROOKLYN [PNT]
3:49	GOOD! 3PTR by FALCONER, MIRANDA	33-15	H 18	
0:41		35-15	H 20	GOOD! 2PTR by HARPE, BROOKLYN [PNT]
0:19	GOOD! FT by THURY, EMERY	35-16	H 19	
0:19	GOOD! FT by THURY, EMERY	35-17	H 18	

**Watertown 17, Sioux Falls Washington 35**

**Official Scoring/Possession Reference Chart  
Watertown vs Sioux Falls Washington**

**Period 4**

**March 09, 2023 at Sioux Falls, SD**



**Period 4**

**Starters:**

**Watertown:** 4 RHODE, MADDY; 5 THURY, EMERY; 12 YOUNG, JAIDA; 14 FALCONER, MIRANDA; 35 PAULSON, KENDALL;

**Sioux Falls Washington:** 23 LARSON, TARYN; 32 PETERSON, GRACE; 33 HARPE, HANNAH; 34 HARPE, BROOKLYN; 52 THOMPSON, TAYLOR;

Time	VISITORS: Watertown	Score	Margin	HOME: Sioux Falls Washington
7:29		36-17	H 19	GOOD! FT by HARPE, BROOKLYN
7:29		37-17	H 20	GOOD! FT by HARPE, BROOKLYN
7:05		39-17	H 22	GOOD! 2PTR by THOMPSON, TAYLOR [FB/PNT]
7:05		40-17	H 23	GOOD! FT by THOMPSON, TAYLOR [FB]
5:42	GOOD! 3PTR by RHODE, MADDY	40-20	H 20	
5:01	GOOD! 2PTR by THURY, EMERY	40-22	H 18	
4:39		42-22	H 20	GOOD! 2PTR by PETERSON, GRACE [PNT]
2:53		44-22	H 22	GOOD! 2PTR by LARSON, TARYN [PNT]
2:34		45-22	H 23	GOOD! FT by HARPE, HANNAH
2:34		46-22	H 24	GOOD! FT by HARPE, HANNAH
1:06		48-22	H 26	GOOD! 2PTR by FINK, SHAELYN
0:39	GOOD! 2PTR by COREY, GRACE [PNT]	48-24	H 24	

**Watertown 24, Sioux Falls Washington 48**

**Official Substitutions Log**  
**Watertown vs Sioux Falls Washington**  
**Period 1**  
**March 09, 2023 at Sioux Falls, SD**



<b>VISITORS: Watertown</b>	<b>Time</b>	<b>Score</b>	<b>HOME: Sioux Falls Washington</b>
4 RHODE,MADDY			23 LARSON,TARYN
5 THURY,EMERY			32 PETERSON,GRACE
12 YOUNG,JAIDA			33 HARPE,HANNAH
14 FALCONER,MIRANDA			34 HARPE,BROOKLYN
35 PAULSON,KENDALL			52 THOMPSON,TAYLOR
	8:00	-	SUB STARTER: LARSON,TARYN
	8:00		SUB STARTER: PETERSON,GRACE
	8:00		SUB STARTER: HARPE,HANNAH
	8:00		SUB STARTER: HARPE,BROOKLYN
	8:00		SUB STARTER: THOMPSON,TAYLOR
SUB STARTER: 4 RHODE,MADDY	8:00		
SUB STARTER: 5 THURY,EMERY	8:00		
SUB STARTER: 12 YOUNG,JAIDA	8:00		
SUB STARTER: 14 FALCONER,MIRANDA	8:00		
SUB STARTER: 35 PAULSON,KENDALL	8:00		
	5:54	0-6	SUB OUT: LARSON,TARYN
	5:54		SUB IN: MOTLEY,ALEXUS
SUB OUT: 5 THURY,EMERY	5:37	0-6	
SUB IN: 24 LUND,JADE	5:37		
SUB OUT: 14 FALCONER,MIRANDA	4:39	0-9	
SUB IN: 22 COREY,GRACE	4:39		
SUB OUT: 22 COREY,GRACE	3:20	2-13	
SUB OUT: 35 PAULSON,KENDALL	3:20		
SUB IN: 14 FALCONER,MIRANDA	3:20		
SUB IN: 5 THURY,EMERY	3:20		
	3:20		SUB OUT: THOMPSON,TAYLOR
	3:20		SUB OUT: PETERSON,GRACE
	3:20		SUB IN: LARSON,TARYN
	3:20		SUB IN: CARDA,ISABEL
	1:28	4-13	SUB OUT: LARSON,TARYN
	1:28		SUB OUT: HARPE,BROOKLYN
	1:28		SUB IN: PETERSON,GRACE
	1:28		SUB IN: THOMPSON,TAYLOR
SUB OUT: 24 LUND,JADE	1:28		
SUB IN: 35 PAULSON,KENDALL	1:28		
	0:42	4-13	SUB OUT: HARPE,HANNAH
	0:42		SUB IN: HARPE,BROOKLYN
	0:30	4-13	SUB OUT: CARDA,ISABEL
	0:30		SUB IN: WOODS,CLAIRE
SUB OUT: 35 PAULSON,KENDALL	0:29	5-13	
SUB IN: 22 COREY,GRACE	0:29		
	0:29		SUB OUT: WOODS,CLAIRE
	0:29		SUB IN: HARPE,HANNAH
SUB OUT: 4 RHODE,MADDY	0:20	5-13	
SUB OUT: 5 THURY,EMERY	0:20		
SUB IN: 3 JOHNSTON,ADDI	0:20		
SUB IN: 33 MUNGER,AVERY	0:20		
	0:20		SUB OUT: THOMPSON,TAYLOR
	0:20		SUB IN: LARSON,TARYN

**Watertown 5, Sioux Falls Washington 13**

**Official Substitutions Log**  
**Watertown vs Sioux Falls Washington**  
**Period 2**  
**March 09, 2023 at Sioux Falls, SD**



VISITORS: Watertown	Time	Score	HOME: Sioux Falls Washington
4 RHODE,MADDY			23 LARSON,TARYN
5 THURY,EMERY			32 PETERSON,GRACE
12 YOUNG,JAIDA			33 HARPE,HANNAH
14 FALCONER,MIRANDA			34 HARPE,BROOKLYN
35 PAULSON,KENDALL			52 THOMPSON,TAYLOR
	8:00	-	SUB STARTER: HARPE,BROOKLYN
	8:00		SUB STARTER: PETERSON,GRACE
	8:00		SUB STARTER: HARPE,HANNAH
	8:00		SUB STARTER: LARSON,TARYN
	8:00		SUB STARTER: MOTLEY,ALEXUS
SUB STARTER: 4 RHODE,MADDY	8:00		
SUB STARTER: 35 PAULSON,KENDALL	8:00		
SUB STARTER: 5 THURY,EMERY	8:00		
SUB STARTER: 12 YOUNG,JAIDA	8:00		
SUB STARTER: 14 FALCONER,MIRANDA	8:00		
	6:06	-	SUB OUT: LARSON,TARYN
	6:06		SUB OUT: HARPE,HANNAH
	6:06		SUB IN: CARDA,ISABEL
	6:06		SUB IN: THOMPSON,TAYLOR
	4:55	8-13	SUB OUT: HARPE,BROOKLYN
	4:55		SUB OUT: PETERSON,GRACE
	4:55		SUB OUT: MOTLEY,ALEXUS
	4:55		SUB OUT: CARDA,ISABEL
	4:55		SUB OUT: THOMPSON,TAYLOR
	4:55		SUB IN: HARPE,HANNAH
	4:55		SUB IN: HARPE,BROOKLYN
	4:55		SUB IN: PETERSON,GRACE
	4:55		SUB IN: THOMPSON,TAYLOR
	4:55		SUB IN: WOODS,CLAIRE
SUB OUT: 4 RHODE,MADDY	4:55		
SUB OUT: 35 PAULSON,KENDALL	4:55		
SUB OUT: 5 THURY,EMERY	4:55		
SUB OUT: 12 YOUNG,JAIDA	4:55		
SUB OUT: 14 FALCONER,MIRANDA	4:55		
SUB IN: 4 RHODE,MADDY	4:55		
SUB IN: 12 YOUNG,JAIDA	4:55		
SUB IN: 14 FALCONER,MIRANDA	4:55		
SUB IN: 5 THURY,EMERY	4:55		
SUB IN: 24 LUND,JADE	4:55		
	3:30	8-15	SUB OUT: HARPE,BROOKLYN
	3:30		SUB IN: MOTLEY,ALEXUS
SUB OUT: 24 LUND,JADE	2:54	8-17	
SUB IN: 35 PAULSON,KENDALL	2:54		
	2:54		SUB OUT: WOODS,CLAIRE
	2:54		SUB IN: HARPE,BROOKLYN
SUB OUT: 4 RHODE,MADDY	1:22	8-19	
SUB IN: 22 COREY,GRACE	1:22		
SUB OUT: 35 PAULSON,KENDALL	1:22		
SUB IN: 24 LUND,JADE	1:22		
	1:22		SUB OUT: HARPE,HANNAH
	1:22		SUB IN: CARDA,ISABEL
	1:16	8-19	SUB OUT: PETERSON,GRACE
	1:16		SUB IN: HARPE,HANNAH
	1:14	8-19	SUB OUT: THOMPSON,TAYLOR
	1:14		SUB IN: LARSON,TARYN
	0:51	10-19	SUB OUT: CARDA,ISABEL
	0:51		SUB IN: WOODS,CLAIRE
SUB OUT: 24 LUND,JADE	0:39	10-19	
SUB IN: 3 JOHNSTON,ADDI	0:39		

**Watertown 12, Sioux Falls Washington 21**

**Official Substitutions Log**  
**Watertown vs Sioux Falls Washington**  
**Period 3**  
**March 09, 2023 at Sioux Falls, SD**



<b>VISITORS: Watertown</b>	<b>Time</b>	<b>Score</b>	<b>HOME: Sioux Falls Washington</b>
4 RHODE,MADDY			23 LARSON,TARYN
5 THURY,EMERY			32 PETERSON,GRACE
12 YOUNG,JAIDA			33 HARPE,HANNAH
14 FALCONER,MIRANDA			34 HARPE,BROOKLYN
35 PAULSON,KENDALL			52 THOMPSON,TAYLOR
	8:00	-	SUB STARTER: LARSON,TARYN
	8:00		SUB STARTER: PETERSON,GRACE
	8:00		SUB STARTER: HARPE,HANNAH
	8:00		SUB STARTER: HARPE,BROOKLYN
	8:00		SUB STARTER: THOMPSON,TAYLOR
SUB STARTER: 4 RHODE,MADDY	8:00		
SUB STARTER: 5 THURY,EMERY	8:00		
SUB STARTER: 12 YOUNG,JAIDA	8:00		
SUB STARTER: 14 FALCONER,MIRANDA	8:00		
SUB STARTER: 35 PAULSON,KENDALL	8:00		
	6:17	12-27	SUB OUT: THOMPSON,TAYLOR
	6:17		SUB IN: MOTLEY,ALEXUS
SUB OUT: 4 RHODE,MADDY	3:30	15-33	
SUB OUT: 5 THURY,EMERY	3:30		
SUB OUT: 12 YOUNG,JAIDA	3:30		
SUB OUT: 14 FALCONER,MIRANDA	3:30		
SUB OUT: 35 PAULSON,KENDALL	3:30		
SUB IN: 4 RHODE,MADDY	3:30		
SUB IN: 12 YOUNG,JAIDA	3:30		
SUB IN: 35 PAULSON,KENDALL	3:30		
SUB IN: 24 LUND,JADE	3:30		
SUB IN: 22 COREY,GRACE	3:30		
	3:30		SUB OUT: LARSON,TARYN
	3:30		SUB OUT: PETERSON,GRACE
	3:30		SUB OUT: HARPE,HANNAH
	3:30		SUB OUT: HARPE,BROOKLYN
	3:30		SUB OUT: MOTLEY,ALEXUS
	3:30		SUB IN: HARPE,BROOKLYN
	3:30		SUB IN: PETERSON,GRACE
	3:30		SUB IN: THOMPSON,TAYLOR
	3:30		SUB IN: WOODS,CLAIRE
	3:30		SUB IN: MOTLEY,ALEXUS
	3:03	15-33	SUB OUT: HARPE,BROOKLYN
	3:03		SUB OUT: THOMPSON,TAYLOR
	3:03		SUB IN: LARSON,TARYN
	3:03		SUB IN: HARPE,HANNAH
SUB OUT: 4 RHODE,MADDY	2:53	15-33	
SUB IN: 3 JOHNSTON,ADDI	2:53		
SUB OUT: 35 PAULSON,KENDALL	2:17	15-33	
SUB IN: 5 THURY,EMERY	2:17		
	2:17		SUB OUT: PETERSON,GRACE
	2:17		SUB IN: HARPE,BROOKLYN
	0:19	16-35	SUB OUT: WOODS,CLAIRE
	0:19		SUB OUT: MOTLEY,ALEXUS
	0:19		SUB OUT: LARSON,TARYN
	0:19		SUB OUT: HARPE,HANNAH
	0:19		SUB OUT: HARPE,BROOKLYN
	0:19		SUB IN: THOMPSON,TAYLOR
	0:19		SUB IN: CARDA,ISABEL
	0:19		SUB IN: PETERSON,GRACE
	0:19		SUB IN: HARPE,BROOKLYN
	0:19		SUB IN: HARPE,HANNAH
SUB OUT: 12 YOUNG,JAIDA	0:19		
SUB OUT: 24 LUND,JADE	0:19		
SUB OUT: 22 COREY,GRACE	0:19		
SUB OUT: 3 JOHNSTON,ADDI	0:19		
SUB OUT: 5 THURY,EMERY	0:19		
SUB IN: 4 RHODE,MADDY	0:19		
SUB IN: 5 THURY,EMERY	0:19		
SUB IN: 35 PAULSON,KENDALL	0:19		
SUB IN: 14 FALCONER,MIRANDA	0:19		
SUB IN: 12 YOUNG,JAIDA	0:19		

**Watertown 17, Sioux Falls Washington 35**



**Official Substitutions Log**  
**Watertown vs Sioux Falls Washington**  
**Period 4**  
**March 09, 2023 at Sioux Falls, SD**



VISITORS: Watertown	Time	Score	HOME: Sioux Falls Washington
4 RHODE,MADDY			23 LARSON,TARYN
5 THURY,EMERY			32 PETERSON,GRACE
12 YOUNG,JAIDA			33 HARPE,HANNAH
14 FALCONER,MIRANDA			34 HARPE,BROOKLYN
35 PAULSON,KENDALL			52 THOMPSON,TAYLOR
SUB STARTER: 5 THURY,EMERY	8:00	-	
SUB STARTER: 14 FALCONER,MIRANDA	8:00		
SUB STARTER: 12 YOUNG,JAIDA	8:00		
SUB STARTER: 35 PAULSON,KENDALL	8:00		
SUB STARTER: 4 RHODE,MADDY	8:00		
	8:00		SUB STARTER: HARPE,BROOKLYN
	8:00		SUB STARTER: CARDA,ISABEL
	8:00		SUB STARTER: PETERSON,GRACE
	8:00		SUB STARTER: THOMPSON,TAYLOR
	8:00		SUB STARTER: HARPE,HANNAH
	6:43	17-40	SUB OUT: HARPE,HANNAH
	6:43		SUB IN: MOTLEY,ALEXUS
	5:27	20-40	SUB OUT: THOMPSON,TAYLOR
	5:27		SUB OUT: HARPE,BROOKLYN
	5:27		SUB IN: LARSON,TARYN
	5:27		SUB IN: HARPE,HANNAH
	4:00	22-42	SUB OUT: CARDA,ISABEL
	4:00		SUB IN: HARPE,BROOKLYN
SUB OUT: 5 THURY,EMERY	4:00		
SUB IN: 24 LUND,JADE	4:00		
SUB OUT: 14 FALCONER,MIRANDA	2:34	22-44	
SUB IN: 22 COREY,GRACE	2:34		
SUB OUT: 12 YOUNG,JAIDA	1:26	22-46	
SUB OUT: 35 PAULSON,KENDALL	1:26		
SUB OUT: 4 RHODE,MADDY	1:26		
SUB OUT: 24 LUND,JADE	1:26		
SUB OUT: 22 COREY,GRACE	1:26		
SUB IN: 3 JOHNSTON,ADDI	1:26		
SUB IN: 20 JOHNSON,NEELY	1:26		
SUB IN: 33 MUNGER,AVERY	1:26		
SUB IN: 22 COREY,GRACE	1:26		
SUB IN: 24 LUND,JADE	1:26		
	1:26		SUB OUT: PETERSON,GRACE
	1:26		SUB OUT: MOTLEY,ALEXUS
	1:26		SUB OUT: LARSON,TARYN
	1:26		SUB OUT: HARPE,HANNAH
	1:26		SUB OUT: HARPE,BROOKLYN
	1:26		SUB IN: FINK,SHAELYN
	1:26		SUB IN: MOTLEY,ALEXUS
	1:26		SUB IN: HARPE,BROOKLYN
	1:26		SUB IN: PETERSON,GRACE
	1:26		SUB IN: HARPE,HANNAH
	1:06	22-48	SUB OUT: FINK,SHAELYN
	1:06		SUB OUT: MOTLEY,ALEXUS
	1:06		SUB OUT: HARPE,BROOKLYN
	1:06		SUB OUT: PETERSON,GRACE
	1:06		SUB OUT: HARPE,HANNAH
	1:06		SUB IN: HARPE,DANA
	1:06		SUB IN: NITUNGA,BENIGNE
	1:06		SUB IN: HOSMAN,ANESSA
	1:06		SUB IN: SCHRAMM,TIERNEY
	1:06		SUB IN: FINK,SHAELYN
	0:44	22-48	SUB OUT: HARPE,DANA
	0:44		SUB IN: KENNETT,RYLAN
	0:42	22-48	SUB OUT: NITUNGA,BENIGNE
	0:42		SUB IN: HARPE,DANA
	0:15	24-48	SUB OUT: HOSMAN,ANESSA
	0:15		SUB IN: NITUNGA,BENIGNE

**Watertown 24, Sioux Falls Washington 48**



**Official Shot Chart**  
**Watertown vs Sioux Falls Washington**  
**PERIOD 1 Shots**  
**March 09, 2023 at Sioux Falls, SD**



**Sioux Falls Washington**

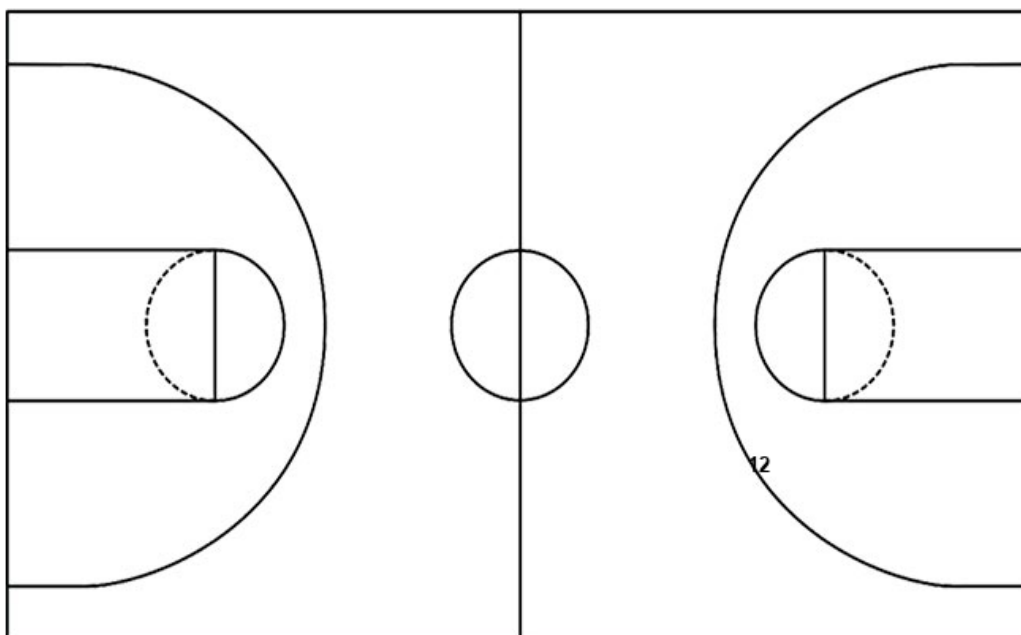
**Watertown**

Layups

Layups

Dunks

Dunks



<b>SFW : Period 1</b>	<b>Made</b>	<b>Att</b>	<b>Pct</b>
Layups	0	0	0
Dunks	0	0	0
2PT Field Goals	5	9	55.6
3PT Field Goals	0	0	0
<b>Total Field Goals</b>	<b>5</b>	<b>9</b>	<b>55.6</b>

<b>WAT : Period 1</b>	<b>Made</b>	<b>Att</b>	<b>Pct</b>
Layups	0	0	0
Dunks	0	0	0
2PT Field Goals	1	5	20.0
3PT Field Goals	0	4	00.0
<b>Total Field Goals</b>	<b>1</b>	<b>9</b>	<b>11.1</b>

**Official Shot Chart**  
**Watertown vs Sioux Falls Washington**  
**PERIOD 2 Shots**  
**March 09, 2023 at Sioux Falls, SD**



**Sioux Falls Washington**

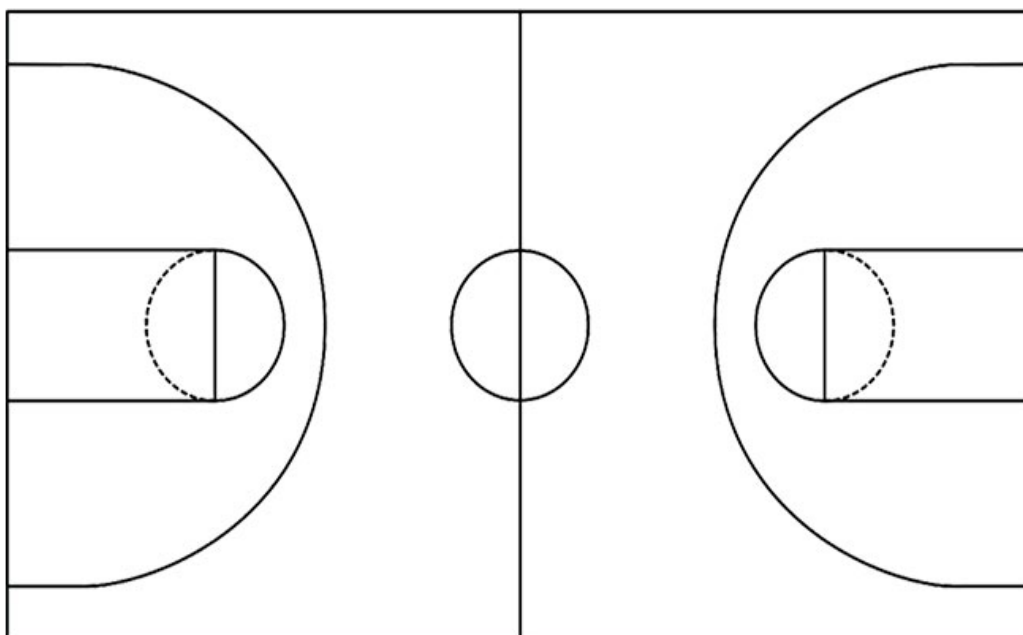
**Watertown**

Layups

Layups

Dunks

Dunks



<b>SFW : Period 2</b>	<b>Made</b>	<b>Att</b>	<b>Pct</b>
Layups	0	0	0
Dunks	0	0	0
2PT Field Goals	3	12	25.0
3PT Field Goals	0	2	00.0
<b>Total Field Goals</b>	<b>3</b>	<b>14</b>	<b>21.4</b>

<b>WAT : Period 2</b>	<b>Made</b>	<b>Att</b>	<b>Pct</b>
Layups	0	0	0
Dunks	0	0	0
2PT Field Goals	2	8	25.0
3PT Field Goals	1	4	25.0
<b>Total Field Goals</b>	<b>3</b>	<b>12</b>	<b>25.0</b>

**Official Shot Chart**  
**Watertown vs Sioux Falls Washington**  
**PERIOD 3 Shots**  
**March 09, 2023 at Sioux Falls, SD**



**Sioux Falls Washington**

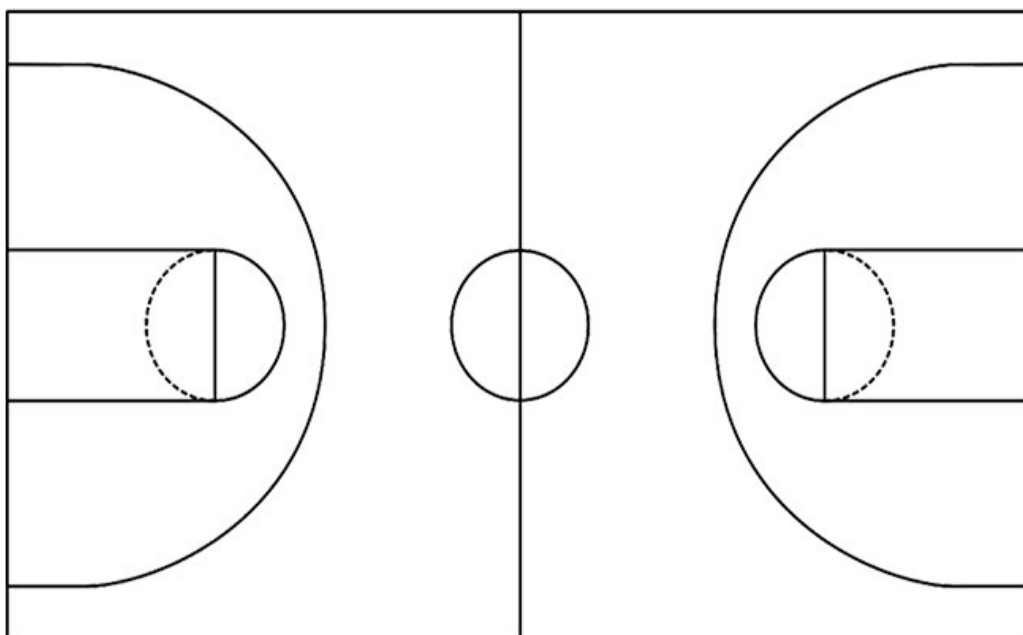
**Watertown**

Layups

Layups

Dunks

Dunks



<b>SFW : Period 3</b>	<b>Made</b>	<b>Att</b>	<b>Pct</b>
Layups	0	0	0
Dunks	0	0	0
2PT Field Goals	3	8	37.5
3PT Field Goals	2	3	66.7
<b>Total Field Goals</b>	<b>5</b>	<b>11</b>	<b>45.5</b>

<b>WAT : Period 3</b>	<b>Made</b>	<b>Att</b>	<b>Pct</b>
Layups	0	0	0
Dunks	0	0	0
2PT Field Goals	0	2	00.0
3PT Field Goals	1	5	20.0
<b>Total Field Goals</b>	<b>1</b>	<b>7</b>	<b>14.3</b>

**Official Shot Chart**  
**Watertown vs Sioux Falls Washington**  
**PERIOD 4 Shots**  
**March 09, 2023 at Sioux Falls, SD**



**Sioux Falls Washington**

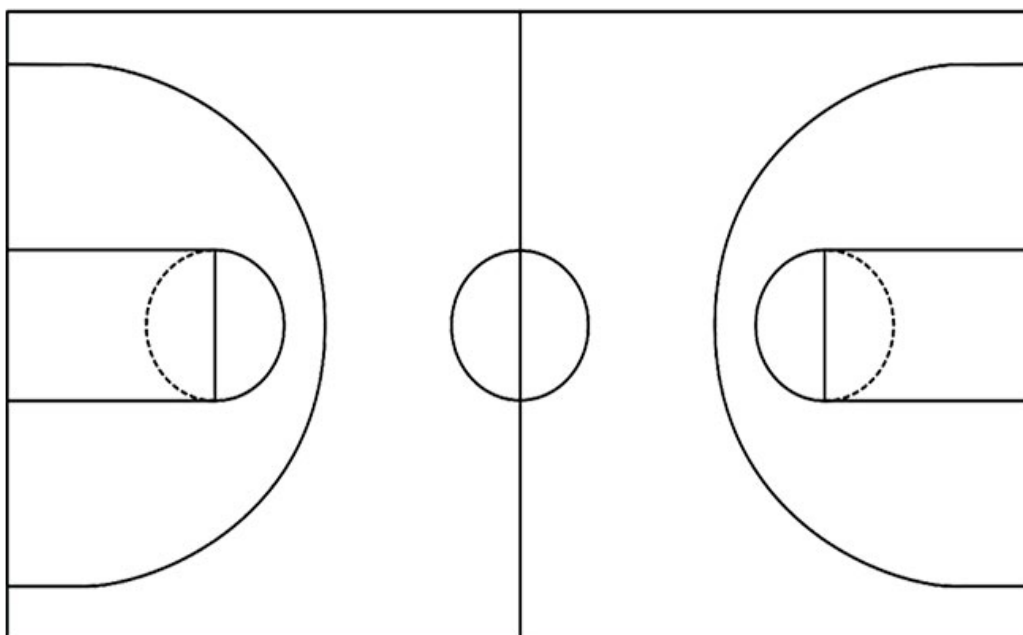
**Watertown**

Layups

Layups

Dunks

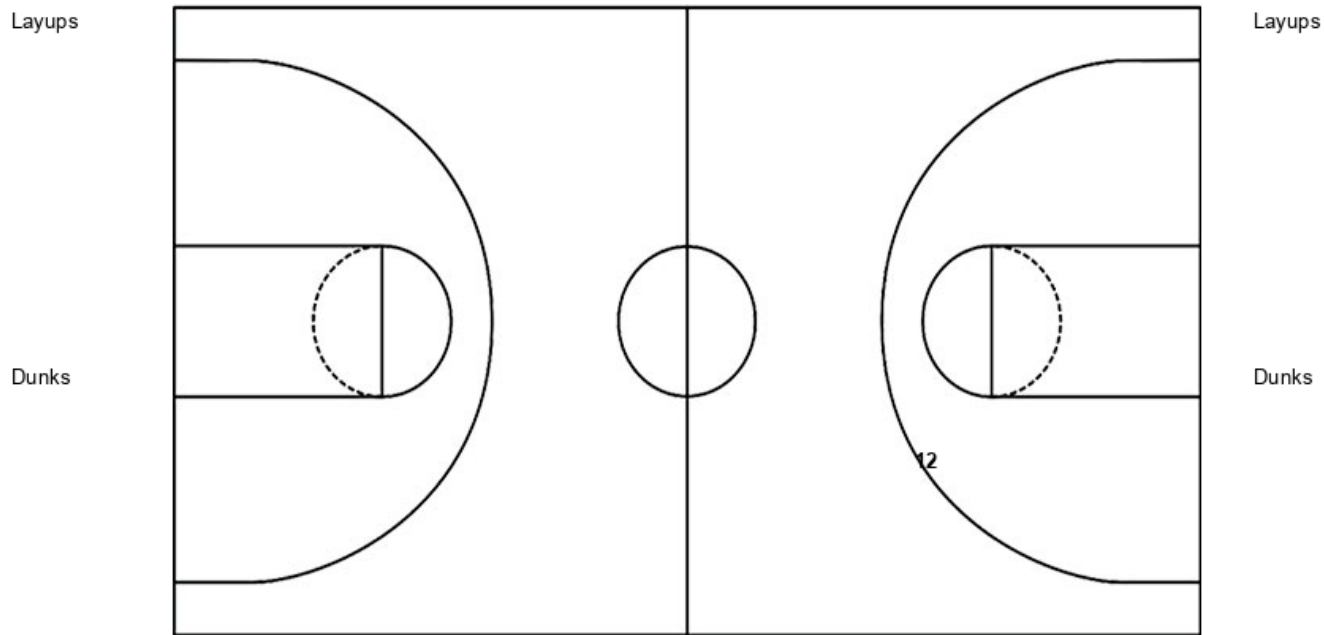
Dunks



<b>SFW : Period 4</b>	<b>Made</b>	<b>Att</b>	<b>Pct</b>
Layups	0	0	0
Dunks	0	0	0
2PT Field Goals	4	9	44.4
3PT Field Goals	0	1	00.0
<b>Total Field Goals</b>	<b>4</b>	<b>10</b>	<b>40.0</b>

<b>WAT : Period 4</b>	<b>Made</b>	<b>Att</b>	<b>Pct</b>
Layups	0	0	0
Dunks	0	0	0
2PT Field Goals	2	8	25.0
3PT Field Goals	1	4	25.0
<b>Total Field Goals</b>	<b>3</b>	<b>12</b>	<b>25.0</b>

**Official Shot Chart**  
**Watertown vs Sioux Falls Washington**  
**Watertown Team Shots**  
**March 09, 2023 at Sioux Falls, SD**



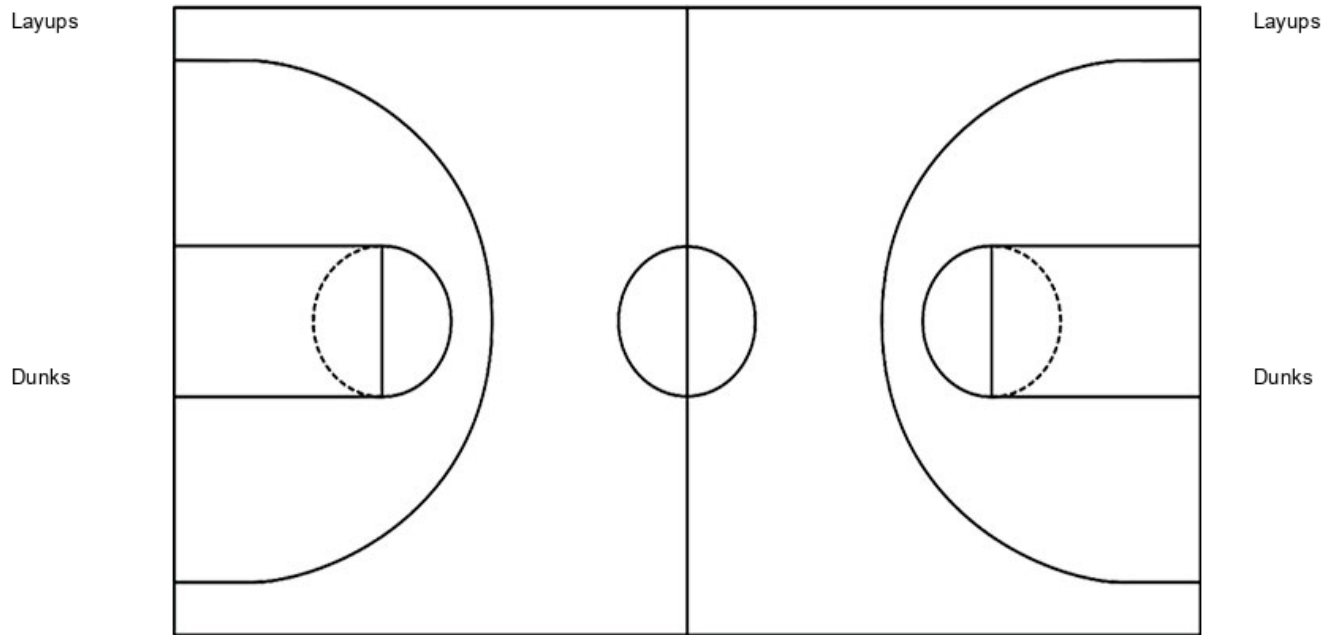
<b>WAT : Period 1</b>	<b>Made</b>	<b>Att</b>	<b>Pct</b>
Layups	0	0	0
Dunks	0	0	0
2PT Field Goals	1	5	20.0
3PT Field Goals	0	4	00.0
<b>Total Field Goals</b>	<b>1</b>	<b>9</b>	<b>11.1</b>

<b>WAT : Period 2</b>	<b>Made</b>	<b>Att</b>	<b>Pct</b>
Layups	0	0	0
Dunks	0	0	0
2PT Field Goals	2	8	25.0
3PT Field Goals	1	4	25.0
<b>Total Field Goals</b>	<b>3</b>	<b>12</b>	<b>25.0</b>

<b>WAT : Period 3</b>	<b>Made</b>	<b>Att</b>	<b>Pct</b>
Layups	0	0	0
Dunks	0	0	0
2PT Field Goals	0	2	00.0
3PT Field Goals	1	5	20.0
<b>Total Field Goals</b>	<b>1</b>	<b>7</b>	<b>14.3</b>

<b>WAT : Period 4</b>	<b>Made</b>	<b>Att</b>	<b>Pct</b>
Layups	0	0	0
Dunks	0	0	0
2PT Field Goals	2	8	25.0
3PT Field Goals	1	4	25.0
<b>Total Field Goals</b>	<b>3</b>	<b>12</b>	<b>25.0</b>

**Official Shot Chart**  
**Watertown vs Sioux Falls Washington**  
 Sioux Falls Washington Team Shots  
 March 09, 2023 at Sioux Falls, SD



SFW : Period 1	Made	Att	Pct
Layups	0	0	0
Dunks	0	0	0
2PT Field Goals	5	9	55.6
3PT Field Goals	0	0	0
<b>Total Field Goals</b>	<b>5</b>	<b>9</b>	<b>55.6</b>

SFW : Period 2	Made	Att	Pct
Layups	0	0	0
Dunks	0	0	0
2PT Field Goals	3	12	25.0
3PT Field Goals	0	2	00.0
<b>Total Field Goals</b>	<b>3</b>	<b>14</b>	<b>21.4</b>

SFW : Period 3	Made	Att	Pct
Layups	0	0	0
Dunks	0	0	0
2PT Field Goals	3	8	37.5
3PT Field Goals	2	3	66.7
<b>Total Field Goals</b>	<b>5</b>	<b>11</b>	<b>45.5</b>

SFW : Period 4	Made	Att	Pct
Layups	0	0	0
Dunks	0	0	0
2PT Field Goals	4	9	44.4
3PT Field Goals	0	1	00.0
<b>Total Field Goals</b>	<b>4</b>	<b>10</b>	<b>40.0</b>