

## FINAL SCORE

|  |                  |           |
|--|------------------|-----------|
|  | <b>Chaminade</b> | <b>53</b> |
|--|------------------|-----------|



|  |                                    |           |
|--|------------------------------------|-----------|
|  | <b>Harvard-Westlake<br/>School</b> | <b>70</b> |
|--|------------------------------------|-----------|

January 25, 2023 • Studio City, CA

## FINAL STATISTICS

**Official Box Score**  
**Chaminade vs Harvard-Westlake School**  
**Game Totals -- Final Statistics**  
**January 25, 2023 at Studio City, CA**



**Chaminade 53**

**Record:**

| No.           | Player             | S | Pts       | FG           | 3FG          | FT         | OR       | DR        | TR        | PF        | A         | TO       | Blk      | Stl      | Min        | +/- |
|---------------|--------------------|---|-----------|--------------|--------------|------------|----------|-----------|-----------|-----------|-----------|----------|----------|----------|------------|-----|
| 00            | THURMAN, JONAS     |   | 5         | 2-3          | 1-1          | 0-0        | 0        | 0         | 0         | 1         | 0         | 1        | 0        | 0        | 9          | -18 |
| 01            | JOHNSON, ETHAN     |   | 16        | 6-13         | 4-7          | 0-2        | 1        | 3         | 4         | 3         | 1         | 1        | 0        | 1        | 23         | -15 |
| 11            | CLAY, DYLAN        |   | 9         | 3-6          | 2-2          | 1-2        | 0        | 1         | 1         | 0         | 4         | 1        | 0        | 0        | 24         | -7  |
| 13            | GOLDMAN, BRYCE     |   | 5         | 2-9          | 1-2          | 0-0        | 1        | 2         | 3         | 1         | 2         | 2        | 0        | 0        | 22         | -13 |
| 22            | MARCHAND, COLTRANE |   | 9         | 4-10         | 1-4          | 0-0        | 0        | 3         | 3         | 2         | 2         | 1        | 0        | 2        | 26         | -10 |
| 03            | ADDNEWPLAYER       |   | 0         | 0-2          | 0-0          | 0-0        | 0        | 1         | 1         | 0         | 1         | 1        | 0        | 1        | 7          | -7  |
| 04            | JONES, COREY       | * | 0         | 0-0          | 0-0          | 0-0        | 0        | 0         | 0         | 0         | 0         | 0        | 0        | 0        | 1          | -2  |
| 05            | BERRY, AARON       | * | 0         | 0-0          | 0-0          | 0-0        | 0        | 0         | 0         | 0         | 0         | 0        | 0        | 0        | 1          | -2  |
| 10            | SUNDQUIST, RYDER   | * | 0         | 0-1          | 0-0          | 0-0        | 0        | 1         | 1         | 0         | 1         | 0        | 0        | 0        | 5          | -3  |
| 12            | CHOUDHARY, KRISHAL | * | 3         | 1-2          | 1-2          | 0-0        | 0        | 0         | 0         | 0         | 0         | 0        | 0        | 0        | 1          | -2  |
| 14            | KLEMZ, ALEX        | * | 0         | 0-0          | 0-0          | 0-0        | 0        | 0         | 0         | 0         | 0         | 0        | 0        | 0        | 1          | -2  |
| 23            | BURNS, ROBERTC.    |   | 4         | 1-5          | 0-2          | 2-2        | 2        | 3         | 5         | 1         | 1         | 0        | 0        | 0        | 17         | 0   |
| 33            | PLUMMER, TERY      |   | 2         | 1-2          | 0-1          | 0-0        | 0        | 0         | 0         | 3         | 1         | 0        | 0        | 0        | 13         | -9  |
| 34            | BINEPAL, ARMAAN    |   | 0         | 0-2          | 0-2          | 0-0        | 1        | 1         | 2         | 1         | 0         | 0        | 0        | 0        | 10         | -7  |
| <b>TOTALS</b> |                    |   | <b>53</b> | <b>20-55</b> | <b>10-23</b> | <b>3-6</b> | <b>7</b> | <b>20</b> | <b>27</b> | <b>12</b> | <b>20</b> | <b>7</b> | <b>0</b> | <b>8</b> | <b>160</b> |     |

*Shooting By Period*

| Period      | FG           | FG%          | 3FG          | 3FG%         | FT         | FT%          |
|-------------|--------------|--------------|--------------|--------------|------------|--------------|
| <b>Game</b> | <b>20-55</b> | <b>36.4%</b> | <b>10-23</b> | <b>43.5%</b> | <b>3-6</b> | <b>50.0%</b> |

*Deadball Rebounds: 1,0*  
*Last FG: 4th-0:00*  
*Largest lead: By at*  
*Technical Fouls: None.*

**Harvard-Westlake School 70**

**Record:**

| No.           | Player                   | S | Pts       | FG           | 3FG         | FT          | OR        | DR        | TR        | PF       | A         | TO       | Blk      | Stl      | Min        | +/- |
|---------------|--------------------------|---|-----------|--------------|-------------|-------------|-----------|-----------|-----------|----------|-----------|----------|----------|----------|------------|-----|
| 00            | PERRY, TRENT             |   | 18        | 7-15         | 1-6         | 3-4         | 2         | 8         | 10        | 0        | 10        | 3        | 1        | 1        | 30         | 16  |
| 01            | FUQUA, BRANDO            | g | 4         | 2-3          | 0-0         | 0-0         | 1         | 1         | 2         | 3        | 1         | 0        | 0        | 1        | 9          | 2   |
| 02            | HINTON, ROBERT           |   | 5         | 2-6          | 0-1         | 1-2         | 2         | 2         | 4         | 1        | 1         | 3        | 0        | 0        | 23         | 13  |
| 11            | DUNLAP, BRADY            |   | 19        | 8-15         | 3-9         | 0-0         | 1         | 6         | 7         | 0        | 1         | 1        | 0        | 0        | 23         | 11  |
| 12            | HUGGINS, JACOB           |   | 17        | 7-9          | 1-1         | 2-5         | 4         | 3         | 7         | 2        | 0         | 1        | 1        | 0        | 29         | 18  |
| 03            | JONES, AMIR              | g | 0         | 0-1          | 0-0         | 0-0         | 0         | 0         | 0         | 0        | 0         | 0        | 0        | 0        | 4          | 4   |
| 04            | KHAMENIA, NIKOLAS        |   | 4         | 1-5          | 1-4         | 1-1         | 2         | 4         | 6         | 1        | 5         | 0        | 1        | 3        | 26         | 4   |
| 13            | KAILSCHER-STORK, NICCOLI | g | 0         | 0-0          | 0-0         | 0-0         | 0         | 1         | 1         | 0        | 2         | 0        | 0        | 0        | 1          | 2   |
| 15            | HORRY, CHRISTIAN         |   | 0         | 0-4          | 0-2         | 0-0         | 1         | 0         | 1         | 1        | 0         | 0        | 0        | 0        | 12         | 5   |
| 21            | ENGELBERG, JOSH          | g | 3         | 1-1          | 1-1         | 0-0         | 0         | 0         | 0         | 0        | 0         | 0        | 0        | 0        | 1          | 2   |
| 30            | BENTHO, DOMINIQUE        | f | 0         | 0-1          | 0-0         | 0-0         | 0         | 0         | 0         | 0        | 0         | 1        | 1        | 0        | 3          | -1  |
| <b>TOTALS</b> |                          |   | <b>70</b> | <b>28-60</b> | <b>7-24</b> | <b>7-12</b> | <b>14</b> | <b>29</b> | <b>43</b> | <b>8</b> | <b>28</b> | <b>9</b> | <b>4</b> | <b>7</b> | <b>160</b> |     |

*Shooting By Period*

| Period      | FG           | FG%          | 3FG         | 3FG%         | FT          | FT%          |
|-------------|--------------|--------------|-------------|--------------|-------------|--------------|
| <b>Game</b> | <b>28-60</b> | <b>46.7%</b> | <b>7-24</b> | <b>29.2%</b> | <b>7-12</b> | <b>58.3%</b> |

*Deadball Rebounds: 3,0*  
*Last FG: 4th-0:15*  
*Largest lead: By at*  
*Technical Fouls: None.*

Game Notes:

Officials: , ,

Start Time: 19:00:00

Conference Game;

| Score | 1st | 2nd | 3rd | 4th | TOT       |
|-------|-----|-----|-----|-----|-----------|
| CCP   | 17  | 7   | 13  | 16  | <b>53</b> |
| HW    | 22  | 7   | 17  | 24  | <b>70</b> |

CCP led for 0:0. HW led for 0:0.  
 Game was tied for 0:0.  
 Times tied: 0      Lead Changes: 0

| Points       | CCP            | HW             |
|--------------|----------------|----------------|
| In the Paint | 16             | 38             |
| Off Turns    | 10             | 9              |
| 2nd Chance   | 7              | 11             |
| Fast Break   | 0              | 0              |
| Bench        | 9              | 7              |
| Per Poss     | 0.930<br>22/57 | 1.167<br>32/60 |

**Official Box Score**  
**Chaminade vs Harvard-Westlake School**  
**First Half Statistics Only**  
**January 25, 2023 at Studio City, CA**



**Chaminade 24**

**Record:**

| No. | Player | S | Pts | FG | 3FG | FT | OR | DR | TR | PF | A | TO | Blk | Stl | Min | +/- |
|-----|--------|---|-----|----|-----|----|----|----|----|----|---|----|-----|-----|-----|-----|
|-----|--------|---|-----|----|-----|----|----|----|----|----|---|----|-----|-----|-----|-----|

*Shooting By Period*

| Period   | FG    | FG%   | 3FG   | 3FG%  | FT  | FT%   |
|----------|-------|-------|-------|-------|-----|-------|
| 1st Half | 0-0   | 0%    | 0-0   | 0%    | 0-0 | 0%    |
| Game     | 20-55 | 36.4% | 10-23 | 43.5% | 3-6 | 50.0% |

*Deadball Rebounds: 1,0*  
*Last FG Half: CCP 2nd-4:04*

**Harvard-Westlake School 29**

**Record:**

| No. | Player | S | Pts | FG | 3FG | FT | OR | DR | TR | PF | A | TO | Blk | Stl | Min | +/- |
|-----|--------|---|-----|----|-----|----|----|----|----|----|---|----|-----|-----|-----|-----|
|-----|--------|---|-----|----|-----|----|----|----|----|----|---|----|-----|-----|-----|-----|

*Shooting By Period*

| Period   | FG    | FG%   | 3FG  | 3FG%  | FT   | FT%   |
|----------|-------|-------|------|-------|------|-------|
| 1st Half | 0-0   | 0%    | 0-0  | 0%    | 0-0  | 0%    |
| Game     | 28-60 | 46.7% | 7-24 | 29.2% | 7-12 | 58.3% |

*Deadball Rebounds: 3,0*  
*Last FG Half: HW 2nd-2:05*

Game Notes:

Officials: , ,

Start Time: 19:00:00

Conference Game;

| Score | 1st | 2nd | 3rd | 4th | TOT       |
|-------|-----|-----|-----|-----|-----------|
| CCP   | 17  | 7   | 13  | 16  | <b>53</b> |
| HW    | 22  | 7   | 17  | 24  | <b>70</b> |

| Points from (This Period) | CCP | HW |
|---------------------------|-----|----|
| In the Paint              | 6   | 10 |
| Off Turns                 | 6   | 4  |
| 2nd Chance                | 0   | 2  |
| Fast Break                | 0   | 0  |
| Bench                     | 2   | 0  |

**Official Play-By-Play**  
**Chaminade vs Harvard-Westlake School**  
**First Quarter**  
**January 25, 2023 at Studio City, CA**



**Period 1**

**Starters:**

**Chaminade:** 0 THURMAN, JONAS; 1 JOHNSON, ETHAN; 11 CLAY, DYLAN; 13 GOLDMAN, BRYCE; 22 MARCHAND, COLTRANE;

**Harvard-Westlake School:** 0 PERRY, TRENT; 1 FUQUA, BRANDO (g); 2 HINTON, ROBERT; 11 DUNLAP, BRADY; 12 HUGGINS, JACOB;

| Time | VISITORS: Chaminade                    | Score | Margin | HOME: Harvard-Westlake School      |
|------|--|-------|--------|------------------------------------|
| 8:00 |  |       |        | SUB STARTER: PERRY, TRENT          |
| 8:00 |  |       |        | SUB STARTER: FUQUA, BRANDO         |
| 8:00 |  |       |        | SUB STARTER: DUNLAP, BRADY         |
| 8:00 |  |       |        | SUB STARTER: HINTON, ROBERT        |
| 8:00 |  |       |        | SUB STARTER: HUGGINS, JACOB        |
| 8:00 | SUB STARTER: THURMAN, JONAS            |       |        |                                    |
| 8:00 | SUB STARTER: JOHNSON, ETHAN            |       |        |                                    |
| 8:00 | SUB STARTER: CLAY, DYLAN               |       |        |                                    |
| 8:00 | SUB STARTER: GOLDMAN, BRYCE            |       |        |                                    |
| 8:00 | SUB STARTER: MARCHAND, COLTRANE        |       |        |                                    |
| 7:43 |  | 3-0   | H 3    | GOOD! 3PTR by DUNLAP, BRADY        |
| 7:43 |  |       |        | ASSIST by PERRY, TRENT             |
| 7:28 | GOOD! 3PTR by CLAY, DYLAN              | 3-3   | T      |                                    |
| 7:28 | ASSIST by GOLDMAN, BRYCE               |       |        |                                    |
| 7:17 |  | 5-3   | H 2    | GOOD! 2PTR by HUGGINS, JACOB [PNT] |
| 7:17 |  |       |        | ASSIST by PERRY, TRENT             |
| 7:07 | GOOD! 2PTR by THURMAN, JONAS [PNT]     | 5-5   | T      |                                    |
| 7:07 | ASSIST by MARCHAND, COLTRANE           |       |        |                                    |
| 6:45 |  |       |        | MISSED 2PTR by FUQUA, BRANDO       |
| 6:45 |  |       |        | REBOUND (OFF) by FUQUA, BRANDO     |
| 6:42 |  | 7-5   | H 2    | GOOD! 2PTR by FUQUA, BRANDO [PNT]  |
| 6:42 |  |       |        | ASSIST by TEAM                     |
| 6:15 | MISSED 3PTR by GOLDMAN, BRYCE          |       |        |                                    |
| 6:15 |  |       |        | REBOUND (DEF) by PERRY, TRENT      |
| 6:02 |  | 10-5  | H 5    | GOOD! 3PTR by DUNLAP, BRADY        |
| 6:02 |  |       |        | ASSIST by PERRY, TRENT             |
| 5:49 | MISSED 2PTR by THURMAN, JONAS          |       |        |                                    |
| 5:49 |  |       |        | REBOUND (DEF) by HUGGINS, JACOB    |
| 5:37 |  | 13-5  | H 8    | GOOD! 3PTR by DUNLAP, BRADY        |
| 5:37 |  |       |        | ASSIST by FUQUA, BRANDO            |
| 5:24 | MISSED 2PTR by GOLDMAN, BRYCE          |       |        |                                    |
| 5:24 |  |       |        | BLOCK by HUGGINS, JACOB            |
| 5:24 |  |       |        | REBOUND (DEF) by DUNLAP, BRADY     |
| 5:19 |  |       |        | TURNOVER by HINTON, ROBERT         |
| 5:19 | STEAL by JOHNSON, ETHAN                |       |        |                                    |
| 5:03 | GOOD! 3PTR by JOHNSON, ETHAN           | 13-8  | H 5    |                                    |
| 5:03 | ASSIST by CLAY, DYLAN                  |       |        |                                    |
| 4:52 |  |       |        | MISSED 3PTR by DUNLAP, BRADY       |
| 4:52 | REBOUND (DEF) by GOLDMAN, BRYCE        |       |        |                                    |
| 4:34 | SUB OUT: THURMAN, JONAS                |       |        |                                    |
| 4:34 | SUB IN: BURNS, ROBERTC.                |       |        |                                    |
| 4:31 | GOOD! 2PTR by BURNS, ROBERTC. [PNT]    | 13-10 | H 3    |                                    |
| 4:31 | ASSIST by JOHNSON, ETHAN               |       |        |                                    |
| 4:22 |  |       |        | MISSED 2PTR by PERRY, TRENT        |
| 4:22 | REBOUND (DEF) by JOHNSON, ETHAN        |       |        |                                    |
| 4:15 | GOOD! 2PTR by JOHNSON, ETHAN           | 13-12 | H 1    |                                    |
| 4:15 | ASSIST by TEAM                         |       |        |                                    |
| 3:59 |  |       |        | TURNOVER by DUNLAP, BRADY          |
| 3:59 | STEAL by TEAM                          |       |        |                                    |
| 3:59 |  |       |        | SUB OUT: HINTON, ROBERT            |
| 3:59 |  |       |        | SUB IN: KHAMENIA, NIKOLAS          |
| 3:33 | TURNOVER by MARCHAND, COLTRANE         |       |        |                                    |
| 3:33 |  |       |        | STEAL by KHAMENIA, NIKOLAS         |
| 3:28 |  | 15-12 | H 3    | GOOD! 2PTR by HUGGINS, JACOB [PNT] |
| 3:28 |  |       |        | ASSIST by KHAMENIA, NIKOLAS        |
| 3:08 | GOOD! 2PTR by MARCHAND, COLTRANE [PNT] | 15-14 | H 1    |                                    |
| 3:08 | ASSIST by CLAY, DYLAN                  |       |        |                                    |
| 2:44 |  |       |        | TURNOVER by PERRY, TRENT           |
| 2:44 | STEAL by TEAM                          |       |        |                                    |
| 2:44 |  |       |        | SUB OUT: FUQUA, BRANDO             |
| 2:44 |  |       |        | SUB IN: HORRY, CHRISTIAN           |
| 2:41 | SUB OUT: JOHNSON, ETHAN                |       |        |                                    |
| 2:41 | SUB OUT: CLAY, DYLAN                   |       |        |                                    |
| 2:41 | SUB OUT: GOLDMAN, BRYCE                |       |        |                                    |
| 2:41 | SUB IN: BINEPAL, ARMAAN                |       |        |                                    |

| Time | VISITORS: Chaminade               | Score | Margin | HOME: Harvard-Westlake School      |
|------|-----------------------------------|-------|--------|------------------------------------|
| 2:41 | SUB IN: ADDNEWPLAYER              |       |        |                                    |
| 2:41 | SUB IN: THURMAN, JONAS            |       |        |                                    |
| 2:11 | GOOD! 3PTR by THURMAN, JONAS      | 15-17 | V 2    |                                    |
| 2:11 | ASSIST by ADDNEWPLAYER            |       |        |                                    |
| 1:53 |                                   | 17-17 | T      | GOOD! 2PTR by DUNLAP, BRADY [PNT]  |
| 1:53 |                                   |       |        | ASSIST by PERRY, TRENT             |
| 1:37 | MISSED 3PTR by MARCHAND, COLTRANE |       |        |                                    |
| 1:37 |                                   |       |        | REBOUND (DEF) by PERRY, TRENT      |
| 1:32 |                                   |       |        | SUB OUT: DUNLAP, BRADY             |
| 1:32 |                                   |       |        | SUB IN: HINTON, ROBERT             |
| 1:32 | SUB OUT: MARCHAND, COLTRANE       |       |        |                                    |
| 1:32 | SUB IN: JOHNSON, ETHAN            |       |        |                                    |
| 1:17 |                                   |       |        | MISSED 3PTR by HORRY, CHRISTIAN    |
| 1:17 | REBOUND (DEF) by TEAM             |       |        |                                    |
| 0:59 | MISSED 2PTR by BURNS, ROBERTC.    |       |        |                                    |
| 0:59 |                                   |       |        | REBOUND (DEF) by KHAMENIA, NIKOLAS |
| 0:50 |                                   |       |        | MISSED 3PTR by KHAMENIA, NIKOLAS   |
| 0:50 |                                   |       |        | REBOUND (OFF) by HUGGINS, JACOB    |
| 0:45 |                                   |       |        | MISSED 2PTR by HUGGINS, JACOB      |
| 0:45 | REBOUND (DEF) by BINEPAL, ARMAAN  |       |        |                                    |
| 0:32 | TURNOVER by ADDNEWPLAYER          |       |        |                                    |
| 0:32 |                                   |       |        | STEAL by KHAMENIA, NIKOLAS         |
| 0:28 |                                   | 19-17 | H 2    | GOOD! 2PTR by HUGGINS, JACOB [PNT] |
| 0:28 |                                   |       |        | ASSIST by HINTON, ROBERT           |
| 0:09 | MISSED 3PTR by BINEPAL, ARMAAN    |       |        |                                    |
| 0:09 |                                   |       |        | REBOUND (DEF) by KHAMENIA, NIKOLAS |
| 0:00 |                                   | 22-17 | H 5    | GOOD! 3PTR by HUGGINS, JACOB       |
| 0:00 |                                   |       |        | ASSIST by KHAMENIA, NIKOLAS        |

### Chaminade 17, Harvard-Westlake School 22

| Points (This Period) | CCP           | HW            |
|----------------------|---------------|---------------|
| In the Paint         | 6             | 10            |
| Off Turns            | 6             | 4             |
| 2nd Chance           | 0             | 2             |
| Fast Break           | 0             | 0             |
| Bench                | 2             | 0             |
| Per Poss             | 1.133<br>7/15 | 1.375<br>9/16 |

**Official Play-By-Play**  
**Chaminade vs Harvard-Westlake School**  
**Second Quarter**  
**January 25, 2023 at Studio City, CA**



**Period 2**

**Starters:**

**Chaminade:** 0 THURMAN, JONAS; 1 JOHNSON, ETHAN; 11 CLAY, DYLAN; 13 GOLDMAN, BRYCE; 22 MARCHAND, COLTRANE;

**Harvard-Westlake School:** 0 PERRY, TRENT; 1 FUQUA, BRANDO (g); 2 HINTON, ROBERT; 11 DUNLAP, BRADY; 12 HUGGINS, JACOB;

| Time | VISITORS: Chaminade                 | Score | Margin | HOME: Harvard-Westlake School       |
|------|-------------------------------------|-------|--------|-------------------------------------|
| 8:00 |                                     |       |        | SUB STARTER: PERRY, TRENT           |
| 8:00 |                                     |       |        | SUB STARTER: HINTON, ROBERT         |
| 8:00 |                                     |       |        | SUB STARTER: KHAMENIA, NIKOLAS      |
| 8:00 |                                     |       |        | SUB STARTER: HUGGINS, JACOB         |
| 8:00 |                                     |       |        | SUB STARTER: HORRY, CHRISTIAN       |
| 8:00 | SUB STARTER: CLAY, DYLAN            |       |        |                                     |
| 8:00 | SUB STARTER: GOLDMAN, BRYCE         |       |        |                                     |
| 8:00 | SUB STARTER: BURNS, ROBERTC.        |       |        |                                     |
| 8:00 | SUB STARTER: MARCHAND, COLTRANE     |       |        |                                     |
| 8:00 | SUB STARTER: PLUMMER, TERY          |       |        |                                     |
| 7:48 |                                     |       |        | MISSED 3PTR by PERRY, TRENT         |
| 7:48 |                                     |       |        | REBOUND (OFF) by HINTON, ROBERT     |
| 7:36 |                                     |       |        | MISSED 3PTR by PERRY, TRENT         |
| 7:36 | REBOUND (DEF) by CLAY, DYLAN        |       |        |                                     |
| 7:27 | MISSED 2PTR by MARCHAND, COLTRANE   |       |        |                                     |
| 7:27 |                                     |       |        | REBOUND (DEF) by TEAM               |
| 7:06 |                                     |       |        | MISSED 3PTR by KHAMENIA, NIKOLAS    |
| 7:06 |                                     |       |        | REBOUND (OFF) by KHAMENIA, NIKOLAS  |
| 7:00 |                                     |       |        | MISSED 3PTR by HINTON, ROBERT       |
| 7:00 |                                     |       |        | REBOUND (OFF) by HORRY, CHRISTIAN   |
| 6:57 |                                     |       |        | MISSED 2PTR by HORRY, CHRISTIAN     |
| 6:57 |                                     |       |        | REBOUND (OFF) by HINTON, ROBERT     |
| 6:54 |                                     |       |        | MISSED 2PTR by HINTON, ROBERT       |
| 6:54 | REBOUND (DEF) by MARCHAND, COLTRANE |       |        |                                     |
| 6:34 | MISSED 2PTR by CLAY, DYLAN          |       |        |                                     |
| 6:34 | REBOUND (OFF) by BURNS, ROBERTC.    |       |        |                                     |
| 6:26 | GOOD! 2PTR by GOLDMAN, BRYCE [PNT]  | 22-19 | H 3    |                                     |
| 6:26 | ASSIST by TEAM                      |       |        |                                     |
| 6:03 |                                     |       |        | MISSED 3PTR by PERRY, TRENT         |
| 6:03 | REBOUND (DEF) by BURNS, ROBERTC.    |       |        |                                     |
| 5:59 |                                     |       |        | FOUL (PERSONAL) by HORRY, CHRISTIAN |
| 5:59 | GOOD! FT by BURNS, ROBERTC.         | 22-20 | H 2    |                                     |
| 5:59 |                                     |       |        | SUB OUT: PERRY, TRENT               |
| 5:59 |                                     |       |        | SUB IN: DUNLAP, BRADY               |
| 5:59 |                                     |       |        | SUB OUT: HUGGINS, JACOB             |
| 5:59 |                                     |       |        | SUB IN: BENTHO, DOMINIQUE           |
| 5:59 | SUB OUT: CLAY, DYLAN                |       |        |                                     |
| 5:59 | SUB IN: SUNDQUIST, RYDER            |       |        |                                     |
| 5:59 | GOOD! FT by BURNS, ROBERTC.         | 22-21 | H 1    |                                     |
| 5:59 | SUB OUT: BURNS, ROBERTC.            |       |        |                                     |
| 5:59 | SUB IN: JOHNSON, ETHAN              |       |        |                                     |
| 5:40 |                                     |       |        | TURNOVER by BENTHO, DOMINIQUE       |
| 5:40 | STEAL by TEAM                       |       |        |                                     |
| 5:27 | MISSED 3PTR by JOHNSON, ETHAN       |       |        |                                     |
| 5:27 |                                     |       |        | REBOUND (DEF) by KHAMENIA, NIKOLAS  |
| 5:19 |                                     |       |        | MISSED 2PTR by DUNLAP, BRADY        |
| 5:19 | REBOUND (DEF) by MARCHAND, COLTRANE |       |        |                                     |
| 5:14 | MISSED 2PTR by GOLDMAN, BRYCE       |       |        |                                     |
| 5:14 |                                     |       |        | BLOCK by BENTHO, DOMINIQUE          |
| 5:14 | REBOUND (OFF) by TEAM               |       |        |                                     |
| 5:01 |                                     |       |        | SUB OUT: HORRY, CHRISTIAN           |
| 5:01 |                                     |       |        | SUB IN: JONES, AMIR                 |
| 5:01 |                                     |       |        | SUB OUT: HINTON, ROBERT             |
| 5:01 |                                     |       |        | SUB IN: PERRY, TRENT                |
| 4:41 | MISSED 2PTR by JOHNSON, ETHAN       |       |        |                                     |
| 4:41 |                                     |       |        | REBOUND (DEF) by DUNLAP, BRADY      |
| 4:28 |                                     |       |        | MISSED 2PTR by BENTHO, DOMINIQUE    |
| 4:28 |                                     |       |        | REBOUND (OFF) by PERRY, TRENT       |
| 4:26 | FOUL (PERSONAL) by JOHNSON, ETHAN   |       |        |                                     |
| 4:26 |                                     |       |        | MISSED FT by PERRY, TRENT           |
| 4:26 | SUB OUT: PLUMMER, TERY              |       |        |                                     |
| 4:26 | SUB OUT: GOLDMAN, BRYCE             |       |        |                                     |
| 4:26 | SUB IN: CLAY, DYLAN                 |       |        |                                     |
| 4:26 | SUB IN: BINEPAL, ARMAAN             |       |        |                                     |
| 4:26 |                                     | 23-21 | H 2    | GOOD! FT by PERRY, TRENT            |

| Time | VISITORS: Chaminade                | Score | Margin | HOME: Harvard-Westlake School        |
|------|------------------------------------|-------|--------|--------------------------------------|
| 4:04 | GOOD! 3PTR by JOHNSON, ETHAN       | 23-24 | V 1    |                                      |
| 4:04 | ASSIST by MARCHAND, COLTRANE       |       |        |                                      |
| 3:45 |                                    |       |        | MISSED 2PTR by JONES, AMIR           |
| 3:45 | REBOUND (DEF) by SUNDQUIST, RYDER  |       |        |                                      |
| 3:39 | MISSED 2PTR by MARCHAND, COLTRANE  |       |        |                                      |
| 3:39 |                                    |       |        | REBOUND (DEF) by PERRY, TRENT        |
| 3:30 |                                    |       |        | MISSED 2PTR by PERRY, TRENT          |
| 3:30 |                                    |       |        | REBOUND (OFF) by TEAM                |
| 3:30 | FOUL (PERSONAL) by JOHNSON, ETHAN  |       |        |                                      |
| 3:30 |                                    |       |        | SUB OUT: BENTHO, DOMINIQUE           |
| 3:30 |                                    |       |        | SUB IN: HUGGINS, JACOB               |
| 3:30 | SUB OUT: JOHNSON, ETHAN            |       |        |                                      |
| 3:30 | SUB IN: GOLDMAN, BRYCE             |       |        |                                      |
| 3:28 |                                    | 25-24 | H 1    | GOOD! 2PTR by DUNLAP, BRADY [PNT]    |
| 3:28 |                                    |       |        | ASSIST by PERRY, TRENT               |
| 3:07 | MISSED 2PTR by SUNDQUIST, RYDER    |       |        |                                      |
| 3:07 |                                    |       |        | REBOUND (DEF) by DUNLAP, BRADY       |
| 2:35 |                                    | 27-24 | H 3    | GOOD! 2PTR by PERRY, TRENT [PNT]     |
| 2:35 |                                    |       |        | ASSIST by TEAM                       |
| 2:22 |                                    |       |        | FOUL (PERSONAL) by KHAMENIA, NIKOLAS |
| 2:22 |                                    |       |        | SUB OUT: JONES, AMIR                 |
| 2:22 |                                    |       |        | SUB IN: HINTON, ROBERT               |
| 2:22 | SUB OUT: SUNDQUIST, RYDER          |       |        |                                      |
| 2:22 | SUB IN: ADDNEWPLAYER               |       |        |                                      |
| 2:16 | MISSED 2PTR by GOLDMAN, BRYCE      |       |        |                                      |
| 2:16 |                                    |       |        | REBOUND (DEF) by KHAMENIA, NIKOLAS   |
| 2:05 |                                    | 29-24 | H 5    | GOOD! 2PTR by DUNLAP, BRADY          |
| 2:05 |                                    |       |        | ASSIST by KHAMENIA, NIKOLAS          |
| 2:05 |                                    |       |        | TIMEOUT TEAM                         |
| 1:50 | MISSED 2PTR by GOLDMAN, BRYCE      |       |        |                                      |
| 1:50 |                                    |       |        | REBOUND (DEF) by DUNLAP, BRADY       |
| 1:21 | FOUL (PERSONAL) by GOLDMAN, BRYCE  |       |        |                                      |
| 1:21 | SUB OUT: GOLDMAN, BRYCE            |       |        |                                      |
| 1:21 | SUB IN: BURNS, ROBERTC.            |       |        |                                      |
| 1:21 |                                    |       |        | SUB OUT: DUNLAP, BRADY               |
| 1:21 |                                    |       |        | SUB IN: FUQUA, BRANDO                |
| 1:17 |                                    |       |        | MISSED 2PTR by HUGGINS, JACOB        |
| 1:17 | REBOUND (DEF) by TEAM              |       |        |                                      |
| 1:11 | MISSED 2PTR by ADDNEWPLAYER        |       |        |                                      |
| 1:11 | REBOUND (OFF) by BINEPAL, ARMAAN   |       |        |                                      |
| 1:09 |                                    |       |        | FOUL (PERSONAL) by FUQUA, BRANDO     |
| 0:49 | MISSED 3PTR by BINEPAL, ARMAAN     |       |        |                                      |
| 0:49 |                                    |       |        | REBOUND (DEF) by FUQUA, BRANDO       |
| 0:43 | FOUL (PERSONAL) by BINEPAL, ARMAAN |       |        |                                      |
| 0:38 |                                    |       |        | TURNOVER by PERRY, TRENT             |
| 0:38 | STEAL by ADDNEWPLAYER              |       |        |                                      |
| 0:29 | MISSED 2PTR by ADDNEWPLAYER        |       |        |                                      |
| 0:29 |                                    |       |        | BLOCK by KHAMENIA, NIKOLAS           |
| 0:29 | SUB OUT: ADDNEWPLAYER              |       |        |                                      |
| 0:29 | SUB OUT: BINEPAL, ARMAAN           |       |        |                                      |
| 0:29 | SUB IN: THURMAN, JONAS             |       |        |                                      |
| 0:29 | SUB IN: JOHNSON, ETHAN             |       |        |                                      |
| 0:29 | REBOUND (DEF) by TEAM              |       |        |                                      |
| 0:15 | TURNOVER by CLAY, DYLAN            |       |        |                                      |
| 0:15 |                                    |       |        | STEAL by TEAM                        |
| 0:15 |                                    |       |        | SUB OUT: FUQUA, BRANDO               |
| 0:15 |                                    |       |        | SUB IN: DUNLAP, BRADY                |
| 0:15 | SUB OUT: JOHNSON, ETHAN            |       |        |                                      |
| 0:15 | SUB OUT: THURMAN, JONAS            |       |        |                                      |
| 0:15 | SUB IN: BINEPAL, ARMAAN            |       |        |                                      |
| 0:15 | SUB IN: PLUMMER, TERY              |       |        |                                      |
| 0:00 |                                    |       |        | MISSED 3PTR by DUNLAP, BRADY         |
| 0:00 | REBOUND (DEF) by TEAM              |       |        |                                      |
| 0:00 |                                    |       |        | MISSED 2PTR by HINTON, ROBERT        |
| 0:00 | REBOUND (DEF) by TEAM              |       |        |                                      |

### Chaminade 24, Harvard-Westlake School 29

| <b>Points (This Period)</b> | <b>CCP</b>    | <b>HW</b>     |
|-----------------------------|---------------|---------------|
| In the Paint                | 2             | 4             |
| Off Turns                   | 0             | 0             |
| 2nd Chance                  | 2             | 3             |
| Fast Break                  | 0             | 0             |
| Bench                       | 2             | 0             |
| Per Poss                    | 0.538<br>3/13 | 0.500<br>4/14 |



**Official Box Score**  
**Chaminade vs Harvard-Westlake School**  
**Second Half Statistics Only**  
**January 25, 2023 at Studio City, CA**



**Chaminade 29**

**Record:**

| No. | Player | S | Pts | FG | 3FG | FT | OR | DR | TR | PF | A | TO | Blk | Stl | Min | +/- |
|-----|--------|---|-----|----|-----|----|----|----|----|----|---|----|-----|-----|-----|-----|
|-----|--------|---|-----|----|-----|----|----|----|----|----|---|----|-----|-----|-----|-----|

*Shooting By Period*

| Period   | FG    | FG%   | 3FG   | 3FG%  | FT  | FT%   |
|----------|-------|-------|-------|-------|-----|-------|
| 2nd Half | 0-0   | 0%    | 0-0   | 0%    | 0-0 | 0%    |
| Game     | 20-55 | 36.4% | 10-23 | 43.5% | 3-6 | 50.0% |

*Deadball Rebounds: 1,0*  
*Last FG Half: CCP 4th-0:00*

**Harvard-Westlake School 41**

**Record:**

| No. | Player | S | Pts | FG | 3FG | FT | OR | DR | TR | PF | A | TO | Blk | Stl | Min | +/- |
|-----|--------|---|-----|----|-----|----|----|----|----|----|---|----|-----|-----|-----|-----|
|-----|--------|---|-----|----|-----|----|----|----|----|----|---|----|-----|-----|-----|-----|

*Shooting By Period*

| Period   | FG    | FG%   | 3FG  | 3FG%  | FT   | FT%   |
|----------|-------|-------|------|-------|------|-------|
| 2nd Half | 0-0   | 0%    | 0-0  | 0%    | 0-0  | 0%    |
| Game     | 28-60 | 46.7% | 7-24 | 29.2% | 7-12 | 58.3% |

*Deadball Rebounds: 3,0*  
*Last FG Half: HW 4th-0:15*

Game Notes:

Officials: , ,

Start Time: **19:00:00**

Conference Game;

| Score | 1st | 2nd | 3rd | 4th | TOT       | Points from (This Period) | CCP | HW |
|-------|-----|-----|-----|-----|-----------|---------------------------|-----|----|
| CCP   | 17  | 7   | 13  | 16  | <b>53</b> | In the Paint              | 2   | 4  |
| HW    | 22  | 7   | 17  | 24  | <b>70</b> | Off Turns                 | 0   | 0  |
|       |     |     |     |     |           | 2nd Chance                | 2   | 3  |
|       |     |     |     |     |           | Fast Break                | 0   | 0  |
|       |     |     |     |     |           | Bench                     | 2   | 0  |

**Official Play-By-Play**  
**Chaminade vs Harvard-Westlake School**  
**Third Quarter**  
**January 25, 2023 at Studio City, CA**



**Period 3**

**Starters:**

**Chaminade:** 0 THURMAN, JONAS; 1 JOHNSON, ETHAN; 11 CLAY, DYLAN; 13 GOLDMAN, BRYCE; 22 MARCHAND, COLTRANE;

**Harvard-Westlake School:** 0 PERRY, TRENT; 1 FUQUA, BRANDO (g); 2 HINTON, ROBERT; 11 DUNLAP, BRADY; 12 HUGGINS, JACOB;

| Time | VISITORS: Chaminade                    | Score | Margin | HOME: Harvard-Westlake School      |
|------|--|-------|--------|------------------------------------|
| 8:00 |  |       |        | SUB STARTER: PERRY, TRENT          |
| 8:00 |  |       |        | SUB STARTER: HINTON, ROBERT        |
| 8:00 |  |       |        | SUB STARTER: KHAMENIA, NIKOLAS     |
| 8:00 |  |       |        | SUB STARTER: DUNLAP, BRADY         |
| 8:00 |  |       |        | SUB STARTER: HUGGINS, JACOB        |
| 8:00 | SUB STARTER: THURMAN, JONAS            |       |        |                                    |
| 8:00 | SUB STARTER: JOHNSON, ETHAN            |       |        |                                    |
| 8:00 | SUB STARTER: CLAY, DYLAN               |       |        |                                    |
| 8:00 | SUB STARTER: GOLDMAN, BRYCE            |       |        |                                    |
| 8:00 | SUB STARTER: MARCHAND, COLTRANE        |       |        |                                    |
| 7:47 | TURNOVER by THURMAN, JONAS             |       |        |                                    |
| 7:47 |  |       |        | STEAL by TEAM                      |
| 7:34 |  | 31-24 | H 7    | GOOD! 2PTR by PERRY, TRENT [PNT]   |
| 7:34 |  |       |        | ASSIST by DUNLAP, BRADY            |
| 7:16 | GOOD! 3PTR by JOHNSON, ETHAN           | 31-27 | H 4    |                                    |
| 7:16 | ASSIST by GOLDMAN, BRYCE               |       |        |                                    |
| 7:03 |  | 33-27 | H 6    | GOOD! 2PTR by HINTON, ROBERT [PNT] |
| 7:03 |  |       |        | ASSIST by KHAMENIA, NIKOLAS        |
| 6:51 | MISSED 3PTR by MARCHAND, COLTRANE      |       |        |                                    |
| 6:51 |  |       |        | REBOUND (DEF) by HINTON, ROBERT    |
| 6:46 |  |       |        | TURNOVER by HINTON, ROBERT         |
| 6:46 | STEAL by MARCHAND, COLTRANE            |       |        |                                    |
| 6:40 | GOOD! 2PTR by MARCHAND, COLTRANE [PNT] | 33-29 | H 4    |                                    |
| 6:40 | ASSIST by TEAM                         |       |        |                                    |
| 6:34 |  | 35-29 | H 6    | GOOD! 2PTR by PERRY, TRENT [PNT]   |
| 6:34 |  |       |        | ASSIST by TEAM                     |
| 6:11 | MISSED 2PTR by CLAY, DYLAN             |       |        |                                    |
| 6:11 |  |       |        | REBOUND (DEF) by DUNLAP, BRADY     |
| 6:06 | FOUL (PERSONAL) by THURMAN, JONAS      |       |        |                                    |
| 5:58 |  |       |        | MISSED 3PTR by DUNLAP, BRADY       |
| 5:58 |  |       |        | REBOUND (OFF) by HUGGINS, JACOB    |
| 5:56 |  | 37-29 | H 8    | GOOD! 2PTR by HUGGINS, JACOB [PNT] |
| 5:56 |  |       |        | ASSIST by TEAM                     |
| 5:56 | FOUL (PERSONAL) by MARCHAND, COLTRANE  |       |        |                                    |
| 5:56 |  | 38-29 | H 9    | GOOD! FT by HUGGINS, JACOB         |
| 5:26 | GOOD! 3PTR by JOHNSON, ETHAN           | 38-32 | H 6    |                                    |
| 5:21 | SUB OUT: THURMAN, JONAS                |       |        |                                    |
| 5:21 | SUB IN: PLUMMER, TERY                  |       |        |                                    |
| 5:21 | ASSIST by PLUMMER, TERY                |       |        |                                    |
| 5:04 | MISSED 3PTR by PLUMMER, TERY           |       |        |                                    |
| 5:04 |  |       |        | REBOUND (DEF) by PERRY, TRENT      |
| 4:45 |  | 40-32 | H 8    | GOOD! 2PTR by DUNLAP, BRADY [PNT]  |
| 4:45 |  |       |        | ASSIST by PERRY, TRENT             |
| 4:31 | GOOD! 2PTR by PLUMMER, TERY [PNT]      | 40-34 | H 6    |                                    |
| 4:31 | ASSIST by CLAY, DYLAN                  |       |        |                                    |
| 3:58 |  |       |        | MISSED 2PTR by KHAMENIA, NIKOLAS   |
| 3:58 | REBOUND (DEF) by JOHNSON, ETHAN        |       |        |                                    |
| 3:50 | MISSED 2PTR by JOHNSON, ETHAN          |       |        |                                    |
| 3:50 |  |       |        | REBOUND (DEF) by PERRY, TRENT      |
| 3:40 |  | 42-34 | H 8    | GOOD! 2PTR by PERRY, TRENT [PNT]   |
| 3:40 |  |       |        | ASSIST by TEAM                     |
| 3:18 | MISSED 3PTR by JOHNSON, ETHAN          |       |        |                                    |
| 3:18 | REBOUND (OFF) by GOLDMAN, BRYCE        |       |        |                                    |
| 3:13 | MISSED 2PTR by GOLDMAN, BRYCE          |       |        |                                    |
| 3:13 |  |       |        | REBOUND (DEF) by HUGGINS, JACOB    |
| 3:04 |  |       |        | MISSED 3PTR by DUNLAP, BRADY       |
| 3:04 |  |       |        | REBOUND (OFF) by KHAMENIA, NIKOLAS |
| 2:55 | FOUL (PERSONAL) by PLUMMER, TERY       |       |        |                                    |
| 2:55 |  |       |        | SUB OUT: HINTON, ROBERT            |
| 2:55 |  |       |        | SUB IN: HORRY, CHRISTIAN           |
| 2:55 | SUB OUT: GOLDMAN, BRYCE                |       |        |                                    |
| 2:55 | SUB IN: ADDNEWPLAYER                   |       |        |                                    |
| 2:51 | SUB OUT: CLAY, DYLAN                   |       |        |                                    |
| 2:51 | SUB IN: BURNS, ROBERTC.                |       |        |                                    |
| 2:45 |  |       |        | MISSED 3PTR by HORRY, CHRISTIAN    |

| Time | VISITORS: Chaminade              | Score | Margin | HOME: Harvard-Westlake School      |
|------|----------------------------------|-------|--------|------------------------------------|
| 2:45 | REBOUND (DEF) by ADDNEWPLAYER    |       |        |                                    |
| 2:15 | MISSED 3PTR by BURNS, ROBERTC.   |       |        |                                    |
| 2:15 |                                  |       |        | REBOUND (DEF) by PERRY, TRENT      |
| 2:07 |                                  | 44-34 | H 10   | GOOD! 2PTR by HUGGINS, JACOB [PNT] |
| 2:07 |                                  |       |        | ASSIST by PERRY, TRENT             |
| 1:58 | TIMEOUT TEAM                     |       |        |                                    |
| 1:58 |                                  |       |        | SUB OUT: PERRY, TRENT              |
| 1:58 |                                  |       |        | SUB IN: FUQUA, BRANDO              |
| 1:58 |                                  |       |        | SUB OUT: DUNLAP, BRADY             |
| 1:58 |                                  |       |        | SUB IN: PERRY, TRENT               |
| 1:53 |                                  |       |        | FOUL (PERSONAL) by FUQUA, BRANDO   |
| 1:41 | TURNOVER by JOHNSON, ETHAN       |       |        |                                    |
| 1:41 |                                  |       |        | STEAL by FUQUA, BRANDO             |
| 1:21 |                                  |       |        | MISSED 3PTR by PERRY, TRENT        |
| 1:21 |                                  |       |        | REBOUND (OFF) by HUGGINS, JACOB    |
| 1:19 | FOUL (PERSONAL) by PLUMMER, TERY |       |        |                                    |
| 1:19 |                                  |       |        | MISSED FT by HUGGINS, JACOB        |
| 1:19 |                                  |       |        | SUB OUT: KHAMENIA, NIKOLAS         |
| 1:19 |                                  |       |        | SUB IN: DUNLAP, BRADY              |
| 1:19 | SUB OUT: JOHNSON, ETHAN          |       |        |                                    |
| 1:19 | SUB OUT: MARCHAND, COLTRANE      |       |        |                                    |
| 1:19 | SUB IN: CLAY, DYLAN              |       |        |                                    |
| 1:19 | SUB IN: GOLDMAN, BRYCE           |       |        |                                    |
| 1:19 | SUB OUT: PLUMMER, TERY           |       |        |                                    |
| 1:19 | SUB IN: BINEPAL, ARMAAN          |       |        |                                    |
| 1:19 |                                  |       |        | MISSED FT by HUGGINS, JACOB        |
| 1:16 | REBOUND (DEF) by GOLDMAN, BRYCE  |       |        |                                    |
| 0:57 |                                  |       |        | FOUL (PERSONAL) by FUQUA, BRANDO   |
| 0:57 | GOOD! FT by CLAY, DYLAN          | 44-35 | H 9    |                                    |
| 0:57 | MISSED FT by CLAY, DYLAN         |       |        |                                    |
| 0:54 |                                  |       |        | REBOUND (DEF) by DUNLAP, BRADY     |
| 0:36 |                                  | 46-35 | H 11   | GOOD! 2PTR by HUGGINS, JACOB [PNT] |
| 0:36 |                                  |       |        | ASSIST by PERRY, TRENT             |
| 0:03 | GOOD! 2PTR by CLAY, DYLAN        | 46-37 | H 9    |                                    |
| 0:03 | ASSIST by TEAM                   |       |        |                                    |
| 0:00 |                                  |       |        | MISSED 3PTR by DUNLAP, BRADY       |

### Chaminade 37, Harvard-Westlake School 46

| Points (This Period) | CCP           | HW            |
|----------------------|---------------|---------------|
| In the Paint         | 4             | 16            |
| Off Turns            | 2             | 2             |
| 2nd Chance           | 0             | 3             |
| Fast Break           | 0             | 0             |
| Bench                | 2             | 0             |
| Per Poss             | 0.929<br>6/14 | 1.308<br>9/13 |

**Official Play-By-Play**  
**Chaminade vs Harvard-Westlake School**  
**Fourth Quarter**  
**January 25, 2023 at Studio City, CA**



**Period 4**

**Starters:**

**Chaminade:** 0 THURMAN, JONAS; 1 JOHNSON, ETHAN; 11 CLAY, DYLAN; 13 GOLDMAN, BRYCE; 22 MARCHAND, COLTRANE;

**Harvard-Westlake School:** 0 PERRY, TRENT; 1 FUQUA, BRANDO (g); 2 HINTON, ROBERT; 11 DUNLAP, BRADY; 12 HUGGINS, JACOB;

| Time | VISITORS: Chaminade                   | Score | Margin | HOME: Harvard-Westlake School     |
|------|---------------------------------------|-------|--------|-----------------------------------|
| 8:00 | SUB STARTER: GOLDMAN, BRYCE           |       |        |                                   |
| 8:00 | SUB STARTER: JOHNSON, ETHAN           |       |        |                                   |
| 8:00 | SUB STARTER: CLAY, DYLAN              |       |        |                                   |
| 8:00 | SUB STARTER: BINEPAL, ARMAAN          |       |        |                                   |
| 8:00 | SUB STARTER: BURNS, ROBERTC.          |       |        |                                   |
| 8:00 |                                       |       |        | SUB STARTER: HINTON, ROBERT       |
| 8:00 |                                       |       |        | SUB STARTER: KHAMENIA, NIKOLAS    |
| 8:00 |                                       |       |        | SUB STARTER: HORRY, CHRISTIAN     |
| 8:00 |                                       |       |        | SUB STARTER: PERRY, TRENT         |
| 8:00 |                                       |       |        | SUB STARTER: HUGGINS, JACOB       |
| 7:44 |                                       |       |        | MISSED 3PTR by KHAMENIA, NIKOLAS  |
| 7:44 | REBOUND (DEF) by BURNS, ROBERTC.      |       |        |                                   |
| 7:34 | MISSED 3PTR by JOHNSON, ETHAN         |       |        |                                   |
| 7:34 |                                       |       |        | REBOUND (DEF) by PERRY, TRENT     |
| 7:20 |                                       | 48-37 | H 11   | GOOD! 2PTR by PERRY, TRENT        |
| 7:20 |                                       |       |        | ASSIST by TEAM                    |
| 7:11 | MISSED 2PTR by CLAY, DYLAN            |       |        |                                   |
| 7:11 |                                       |       |        | REBOUND (DEF) by PERRY, TRENT     |
| 6:48 |                                       |       |        | MISSED 2PTR by PERRY, TRENT       |
| 6:48 | REBOUND (DEF) by BURNS, ROBERTC.      |       |        |                                   |
| 6:23 | MISSED 2PTR by JOHNSON, ETHAN         |       |        |                                   |
| 6:23 | REBOUND (OFF) by JOHNSON, ETHAN       |       |        |                                   |
| 6:19 | GOOD! 2PTR by JOHNSON, ETHAN [PNT]    | 48-39 | H 9    |                                   |
| 6:19 | ASSIST by TEAM                        |       |        |                                   |
| 6:11 |                                       |       |        | MISSED 2PTR by HORRY, CHRISTIAN   |
| 6:11 | REBOUND (DEF) by JOHNSON, ETHAN       |       |        |                                   |
| 5:56 | TURNOVER by GOLDMAN, BRYCE            |       |        |                                   |
| 5:56 |                                       |       |        | STEAL by KHAMENIA, NIKOLAS        |
| 5:49 |                                       |       |        | TURNOVER by HUGGINS, JACOB        |
| 5:49 |                                       |       |        | FOUL (PERSONAL) by HUGGINS, JACOB |
| 5:49 | FOUL (PERSONAL) by JOHNSON, ETHAN     |       |        |                                   |
| 5:49 |                                       | 49-39 | H 10   | GOOD! FT by HINTON, ROBERT        |
| 5:49 | SUB OUT: BINEPAL, ARMAAN              |       |        |                                   |
| 5:49 | SUB OUT: CLAY, DYLAN                  |       |        |                                   |
| 5:49 | SUB IN: MARCHAND, COLTRANE            |       |        |                                   |
| 5:49 | SUB IN: PLUMMER, TERY                 |       |        |                                   |
| 5:49 |                                       |       |        | MISSED FT by HINTON, ROBERT       |
| 5:47 | REBOUND (DEF) by MARCHAND, COLTRANE   |       |        |                                   |
| 5:38 | MISSED 2PTR by JOHNSON, ETHAN         |       |        |                                   |
| 5:38 |                                       |       |        | REBOUND (DEF) by TEAM             |
| 5:31 |                                       |       |        | MISSED 2PTR by HINTON, ROBERT     |
| 5:31 |                                       |       |        | REBOUND (OFF) by HUGGINS, JACOB   |
| 5:30 | FOUL (PERSONAL) by MARCHAND, COLTRANE |       |        |                                   |
| 5:30 |                                       |       |        | MISSED FT by HUGGINS, JACOB       |
| 5:30 |                                       | 50-39 | H 11   | GOOD! FT by HUGGINS, JACOB        |
| 5:12 | MISSED 2PTR by MARCHAND, COLTRANE     |       |        |                                   |
| 5:12 | REBOUND (OFF) by BURNS, ROBERTC.      |       |        |                                   |
| 5:09 | MISSED 2PTR by BURNS, ROBERTC.        |       |        |                                   |
| 5:09 |                                       |       |        | BLOCK by PERRY, TRENT             |
| 5:09 |                                       |       |        | REBOUND (DEF) by TEAM             |
| 5:07 | FOUL (PERSONAL) by BURNS, ROBERTC.    |       |        |                                   |
| 5:07 |                                       |       |        | SUB OUT: HORRY, CHRISTIAN         |
| 5:07 |                                       |       |        | SUB IN: DUNLAP, BRADY             |
| 5:07 |                                       | 51-39 | H 12   | GOOD! FT by PERRY, TRENT          |
| 5:07 |                                       | 52-39 | H 13   | GOOD! FT by PERRY, TRENT          |
| 4:36 | SUB OUT: GOLDMAN, BRYCE               |       |        |                                   |
| 4:36 | SUB IN: CLAY, DYLAN                   |       |        |                                   |
| 4:36 | GOOD! 3PTR by CLAY, DYLAN             | 52-42 | H 10   |                                   |
| 4:36 | ASSIST by TEAM                        |       |        |                                   |
| 4:36 |                                       | 54-42 | H 12   | GOOD! 2PTR by DUNLAP, BRADY [PNT] |
| 4:36 |                                       |       |        | ASSIST by TEAM                    |
| 4:16 | SUB OUT: BURNS, ROBERTC.              |       |        |                                   |
| 4:16 | SUB IN: GOLDMAN, BRYCE                |       |        |                                   |
| 4:16 | GOOD! 3PTR by GOLDMAN, BRYCE          | 54-45 | H 9    |                                   |
| 4:16 | ASSIST by CLAY, DYLAN                 |       |        |                                   |

| Time | VISITORS: Chaminade                    | Score | Margin | HOME: Harvard-Westlake School             |
|------|--|-------|--------|---|
| 3:54 |  | 57-45 | H 12   | GOOD! 3PTR by KHAMENIA, NIKOLAS           |
| 3:54 |  |       |        | ASSIST by PERRY, TRENT                    |
| 3:54 | FOUL (PERSONAL) by PLUMMER, TERY       |       |        |   |
| 3:54 |  | 58-45 | H 13   | GOOD! FT by KHAMENIA, NIKOLAS             |
| 3:35 | TURNOVER by GOLDMAN, BRYCE             |       |        |   |
| 3:35 |  |       |        | STEAL by PERRY, TRENT                     |
| 3:25 |  | 61-45 | H 16   | GOOD! 3PTR by PERRY, TRENT                |
| 3:25 |  |       |        | ASSIST by KHAMENIA, NIKOLAS               |
| 3:11 | MISSED 2PTR by GOLDMAN, BRYCE          |       |        |   |
| 3:11 | REBOUND (OFF) by TEAM                  |       |        |   |
| 3:10 |  |       |        | FOUL (PERSONAL) by HUGGINS, JACOB         |
| 3:10 | SUB OUT: GOLDMAN, BRYCE                |       |        |   |
| 3:10 | SUB IN: BURNS, ROBERTC.                |       |        |   |
| 3:01 | GOOD! 3PTR by MARCHAND, COLTRANE       | 61-48 | H 13   |   |
| 3:01 | ASSIST by TEAM                         |       |        |   |
| 2:50 |  |       |        | MISSED 3PTR by DUNLAP, BRADY              |
| 2:50 |  |       |        | REBOUND (OFF) by PERRY, TRENT             |
| 2:46 |  | 63-48 | H 15   | GOOD! 2PTR by PERRY, TRENT [PNT]          |
| 2:46 |  |       |        | ASSIST by TEAM                            |
| 2:39 |  |       |        | FOUL (PERSONAL) by HINTON, ROBERT         |
| 2:39 | MISSED FT by JOHNSON, ETHAN            |       |        |   |
| 2:39 | MISSED FT by JOHNSON, ETHAN            |       |        |   |
| 2:36 |  |       |        | REBOUND (DEF) by HUGGINS, JACOB           |
| 2:17 |  |       |        | TURNOVER by PERRY, TRENT                  |
| 2:17 | STEAL by MARCHAND, COLTRANE            |       |        |   |
| 2:12 | GOOD! 2PTR by MARCHAND, COLTRANE [PNT] | 63-50 | H 13   |   |
| 2:12 | ASSIST by BURNS, ROBERTC.              |       |        |   |
| 1:47 |  |       |        | MISSED 3PTR by PERRY, TRENT               |
| 1:47 |  |       |        | REBOUND (OFF) by DUNLAP, BRADY            |
| 1:39 |  |       |        | TURNOVER by HINTON, ROBERT                |
| 1:39 | STEAL by TEAM                          |       |        |   |
| 1:22 | MISSED 3PTR by BURNS, ROBERTC.         |       |        |   |
| 1:22 |  |       |        | REBOUND (DEF) by TEAM                     |
| 1:19 |  | 65-50 | H 15   | GOOD! 2PTR by HINTON, ROBERT [PNT]        |
| 1:19 |  |       |        | ASSIST by PERRY, TRENT                    |
| 1:01 | MISSED 3PTR by MARCHAND, COLTRANE      |       |        |   |
| 1:01 |  |       |        | REBOUND (DEF) by HINTON, ROBERT           |
| 0:55 |  |       |        | TIMEOUT TEAM                              |
| 0:55 |  |       |        | SUB OUT: HINTON, ROBERT                   |
| 0:55 |  |       |        | SUB OUT: PERRY, TRENT                     |
| 0:55 |  |       |        | SUB OUT: KHAMENIA, NIKOLAS                |
| 0:55 |  |       |        | SUB OUT: HUGGINS, JACOB                   |
| 0:55 |  |       |        | SUB OUT: DUNLAP, BRADY                    |
| 0:55 |  |       |        | SUB IN: BENTHO, DOMINIQUE                 |
| 0:55 |  |       |        | SUB IN: ENGELBERG, JOSH                   |
| 0:55 |  |       |        | SUB IN: JONES, AMIR                       |
| 0:55 |  |       |        | SUB IN: FUQUA, BRANDO                     |
| 0:55 |  |       |        | SUB IN: KAILSCHER-STORK, NICCOLO          |
| 0:55 | SUB OUT: CLAY, DYLAN                   |       |        |   |
| 0:55 | SUB IN: KLEMZ, ALEX                    |       |        |   |
| 0:55 | SUB OUT: MARCHAND, COLTRANE            |       |        |   |
| 0:55 | SUB IN: SUNDQUIST, RYDER               |       |        |   |
| 0:55 | SUB OUT: JOHNSON, ETHAN                |       |        |   |
| 0:55 | SUB IN: CHOUDHARY, KRISHAL             |       |        |   |
| 0:55 | SUB OUT: PLUMMER, TERY                 |       |        |   |
| 0:55 | SUB OUT: BURNS, ROBERTC.               |       |        |   |
| 0:55 | SUB IN: JONES, COREY                   |       |        |   |
| 0:55 | SUB IN: BERRY, AARON                   |       |        |   |
| 0:37 |  | 67-50 | H 17   | GOOD! 2PTR by FUQUA, BRANDO [PNT]         |
| 0:37 |  |       |        | ASSIST by KAILSCHER-STORK, NICCOLO        |
| 0:26 | MISSED 3PTR by CHOUDHARY, KRISHAL      |       |        |   |
| 0:26 |  |       |        | REBOUND (DEF) by KAILSCHER-STORK, NICCOLO |
| 0:15 |  | 70-50 | H 20   | GOOD! 3PTR by ENGELBERG, JOSH             |
| 0:15 |  |       |        | ASSIST by KAILSCHER-STORK, NICCOLO        |
| 0:00 | GOOD! 3PTR by CHOUDHARY, KRISHAL       | 70-53 | H 17   |   |
| 0:00 | ASSIST by SUNDQUIST, RYDER             |       |        |   |

**Chaminade 53, Harvard-Westlake School 70**

| <b>Points (This Period)</b> | <b>CCP</b>    | <b>HW</b>      |
|-----------------------------|---------------|----------------|
| In the Paint                | 4             | 8              |
| Off Turns                   | 2             | 3              |
| 2nd Chance                  | 5             | 3              |
| Fast Break                  | 0             | 0              |
| Bench                       | 3             | 7              |
| Per Poss                    | 1.000<br>6/16 | 1.412<br>11/17 |

**Official Scoring/Possession Reference Chart**  
**Chaminade vs Harvard-Westlake School**  
**Period 1**  
**January 25, 2023 at Studio City, CA**



**Period 1**

**Starters:**

**Chaminade:** 0 THURMAN, JONAS; 1 JOHNSON, ETHAN; 11 CLAY, DYLAN; 13 GOLDMAN, BRYCE; 22 MARCHAND, COLTRANE;

**Harvard-Westlake School:** 0 PERRY, TRENT; 1 FUQUA, BRANDO (g); 2 HINTON, ROBERT; 11 DUNLAP, BRADY; 12 HUGGINS, JACOB;

| Time | VISITORS: Chaminade                    | Score | Margin | HOME: Harvard-Westlake School      |
|------|--|-------|--------|------------------------------------|
| 7:43 |  | 3-0   | H 3    | GOOD! 3PTR by DUNLAP, BRADY        |
| 7:28 | GOOD! 3PTR by CLAY, DYLAN              | 3-3   | T      |                                    |
| 7:17 |  | 5-3   | H 2    | GOOD! 2PTR by HUGGINS, JACOB [PNT] |
| 7:07 | GOOD! 2PTR by THURMAN, JONAS [PNT]     | 5-5   | T      |                                    |
| 6:42 |  | 7-5   | H 2    | GOOD! 2PTR by FUQUA, BRANDO [PNT]  |
| 6:02 |  | 10-5  | H 5    | GOOD! 3PTR by DUNLAP, BRADY        |
| 5:37 |  | 13-5  | H 8    | GOOD! 3PTR by DUNLAP, BRADY        |
| 5:03 | GOOD! 3PTR by JOHNSON, ETHAN           | 13-8  | H 5    |                                    |
| 4:31 | GOOD! 2PTR by BURNS, ROBERTC. [PNT]    | 13-10 | H 3    |                                    |
| 4:15 | GOOD! 2PTR by JOHNSON, ETHAN           | 13-12 | H 1    |                                    |
| 3:28 |  | 15-12 | H 3    | GOOD! 2PTR by HUGGINS, JACOB [PNT] |
| 3:08 | GOOD! 2PTR by MARCHAND, COLTRANE [PNT] | 15-14 | H 1    |                                    |
| 2:11 | GOOD! 3PTR by THURMAN, JONAS           | 15-17 | V 2    |                                    |
| 1:53 |  | 17-17 | T      | GOOD! 2PTR by DUNLAP, BRADY [PNT]  |
| 0:28 |  | 19-17 | H 2    | GOOD! 2PTR by HUGGINS, JACOB [PNT] |
| 0:00 |  | 22-17 | H 5    | GOOD! 3PTR by HUGGINS, JACOB       |

**Chaminade 17, Harvard-Westlake School 22**

**Official Scoring/Possession Reference Chart**  
**Chaminade vs Harvard-Westlake School**  
**Period 2**  
**January 25, 2023 at Studio City, CA**



**Period 2**

**Starters:**

**Chaminade:** 0 THURMAN, JONAS; 1 JOHNSON, ETHAN; 11 CLAY, DYLAN; 13 GOLDMAN, BRYCE; 22 MARCHAND, COLTRANE;

**Harvard-Westlake School:** 0 PERRY, TRENT; 1 FUQUA, BRANDO (g); 2 HINTON, ROBERT; 11 DUNLAP, BRADY; 12 HUGGINS, JACOB;

| Time | VISITORS: Chaminade                | Score | Margin | HOME: Harvard-Westlake School     |
|------|------------------------------------|-------|--------|-----------------------------------|
| 6:26 | GOOD! 2PTR by GOLDMAN, BRYCE [PNT] | 22-19 | H 3    |                                   |
| 5:59 | GOOD! FT by BURNS, ROBERTC.        | 22-20 | H 2    |                                   |
| 5:59 | GOOD! FT by BURNS, ROBERTC.        | 22-21 | H 1    |                                   |
| 4:26 |                                    | 23-21 | H 2    | GOOD! FT by PERRY, TRENT          |
| 4:04 | GOOD! 3PTR by JOHNSON, ETHAN       | 23-24 | V 1    |                                   |
| 3:28 |                                    | 25-24 | H 1    | GOOD! 2PTR by DUNLAP, BRADY [PNT] |
| 2:35 |                                    | 27-24 | H 3    | GOOD! 2PTR by PERRY, TRENT [PNT]  |
| 2:05 |                                    | 29-24 | H 5    | GOOD! 2PTR by DUNLAP, BRADY       |

**Chaminade 24, Harvard-Westlake School 29**



**Official Scoring/Possession Reference Chart**  
**Chaminade vs Harvard-Westlake School**  
**Period 3**  
**January 25, 2023 at Studio City, CA**



**Period 3**

**Starters:**

**Chaminade:** 0 THURMAN, JONAS; 1 JOHNSON, ETHAN; 11 CLAY, DYLAN; 13 GOLDMAN, BRYCE; 22 MARCHAND, COLTRANE;

**Harvard-Westlake School:** 0 PERRY, TRENT; 1 FUQUA, BRANDO (g); 2 HINTON, ROBERT; 11 DUNLAP, BRADY; 12 HUGGINS, JACOB;

| Time | VISITORS: Chaminade                    | Score | Margin | HOME: Harvard-Westlake School      |
|------|--|-------|--------|------------------------------------|
| 7:34 |  | 31-24 | H 7    | GOOD! 2PTR by PERRY, TRENT [PNT]   |
| 7:16 | GOOD! 3PTR by JOHNSON, ETHAN           | 31-27 | H 4    |                                    |
| 7:03 |  | 33-27 | H 6    | GOOD! 2PTR by HINTON, ROBERT [PNT] |
| 6:40 | GOOD! 2PTR by MARCHAND, COLTRANE [PNT] | 33-29 | H 4    |                                    |
| 6:34 |  | 35-29 | H 6    | GOOD! 2PTR by PERRY, TRENT [PNT]   |
| 5:56 |  | 37-29 | H 8    | GOOD! 2PTR by HUGGINS, JACOB [PNT] |
| 5:56 |  | 38-29 | H 9    | GOOD! FT by HUGGINS, JACOB         |
| 5:26 | GOOD! 3PTR by JOHNSON, ETHAN           | 38-32 | H 6    |                                    |
| 4:45 |  | 40-32 | H 8    | GOOD! 2PTR by DUNLAP, BRADY [PNT]  |
| 4:31 | GOOD! 2PTR by PLUMMER, TERY [PNT]      | 40-34 | H 6    |                                    |
| 3:40 |  | 42-34 | H 8    | GOOD! 2PTR by PERRY, TRENT [PNT]   |
| 2:07 |  | 44-34 | H 10   | GOOD! 2PTR by HUGGINS, JACOB [PNT] |
| 0:57 | GOOD! FT by CLAY, DYLAN                | 44-35 | H 9    |                                    |
| 0:36 |  | 46-35 | H 11   | GOOD! 2PTR by HUGGINS, JACOB [PNT] |
| 0:03 | GOOD! 2PTR by CLAY, DYLAN              | 46-37 | H 9    |                                    |

**Chaminade 37, Harvard-Westlake School 46**

**Official Scoring/Possession Reference Chart**  
**Chaminade vs Harvard-Westlake School**  
**Period 4**  
**January 25, 2023 at Studio City, CA**



**Period 4**

**Starters:**

**Chaminade:** 0 THURMAN, JONAS; 1 JOHNSON, ETHAN; 11 CLAY, DYLAN; 13 GOLDMAN, BRYCE; 22 MARCHAND, COLTRANE;

**Harvard-Westlake School:** 0 PERRY, TRENT; 1 FUQUA, BRANDO (g); 2 HINTON, ROBERT; 11 DUNLAP, BRADY; 12 HUGGINS, JACOB;

| Time | VISITORS: Chaminade                    | Score | Margin | HOME: Harvard-Westlake School      |
|------|--|-------|--------|------------------------------------|
| 7:20 |  | 48-37 | H 11   | GOOD! 2PTR by PERRY, TRENT         |
| 6:19 | GOOD! 2PTR by JOHNSON, ETHAN [PNT]     | 48-39 | H 9    |                                    |
| 5:49 |  | 49-39 | H 10   | GOOD! FT by HINTON, ROBERT         |
| 5:30 |  | 50-39 | H 11   | GOOD! FT by HUGGINS, JACOB         |
| 5:07 |  | 51-39 | H 12   | GOOD! FT by PERRY, TRENT           |
| 5:07 |  | 52-39 | H 13   | GOOD! FT by PERRY, TRENT           |
| 4:36 | GOOD! 3PTR by CLAY, DYLAN              | 52-42 | H 10   |                                    |
| 4:36 |  | 54-42 | H 12   | GOOD! 2PTR by DUNLAP, BRADY [PNT]  |
| 4:16 | GOOD! 3PTR by GOLDMAN, BRYCE           | 54-45 | H 9    |                                    |
| 3:54 |  | 57-45 | H 12   | GOOD! 3PTR by KHAMENIA, NIKOLAS    |
| 3:54 |  | 58-45 | H 13   | GOOD! FT by KHAMENIA, NIKOLAS      |
| 3:25 |  | 61-45 | H 16   | GOOD! 3PTR by PERRY, TRENT         |
| 3:01 | GOOD! 3PTR by MARCHAND, COLTRANE       | 61-48 | H 13   |                                    |
| 2:46 |  | 63-48 | H 15   | GOOD! 2PTR by PERRY, TRENT [PNT]   |
| 2:12 | GOOD! 2PTR by MARCHAND, COLTRANE [PNT] | 63-50 | H 13   |                                    |
| 1:19 |  | 65-50 | H 15   | GOOD! 2PTR by HINTON, ROBERT [PNT] |
| 0:37 |  | 67-50 | H 17   | GOOD! 2PTR by FUQUA, BRANDO [PNT]  |
| 0:15 |  | 70-50 | H 20   | GOOD! 3PTR by ENGELBERG, JOSH      |
| 0:00 | GOOD! 3PTR by CHOUDHARY, KRISHAL       | 70-53 | H 17   |                                    |

**Chaminade 53, Harvard-Westlake School 70**

**Official Substitutions Log**  
**Chaminade vs Harvard-Westlake School**  
**Period 1**  
**January 25, 2023 at Studio City, CA**



| VISITORS: Chaminade               | Time | Score | HOME: Harvard-Westlake School |
|-----------------------------------|------|-------|-------------------------------|
| 0 THURMAN,JONAS                   |      |       | 0 PERRY,TRENT                 |
| 1 JOHNSON,ETHAN                   |      |       | 1 FUQUA,BRANDO                |
| 11 CLAY,DYLAN                     |      |       | 2 HINTON,ROBERT               |
| 13 GOLDMAN,BRYCE                  |      |       | 11 DUNLAP,BRADY               |
| 22 MARCHAND,COLTRANE              |      |       | 12 HUGGINS,JACOB              |
|                                   | 8:00 | -     | SUB STARTER: PERRY,TRENT      |
|                                   | 8:00 |       | SUB STARTER: FUQUA,BRANDO     |
|                                   | 8:00 |       | SUB STARTER: DUNLAP,BRADY     |
|                                   | 8:00 |       | SUB STARTER: HINTON,ROBERT    |
|                                   | 8:00 |       | SUB STARTER: HUGGINS,JACOB    |
| SUB STARTER: 0 THURMAN,JONAS      | 8:00 |       |                               |
| SUB STARTER: 1 JOHNSON,ETHAN      | 8:00 |       |                               |
| SUB STARTER: 11 CLAY,DYLAN        | 8:00 |       |                               |
| SUB STARTER: 13 GOLDMAN,BRYCE     | 8:00 |       |                               |
| SUB STARTER: 22 MARCHAND,COLTRANE | 8:00 |       |                               |
| SUB OUT: 0 THURMAN,JONAS          | 4:34 | 8-13  |                               |
| SUB IN: 23 BURNS,ROBERTC.         | 4:34 |       |                               |
|                                   | 3:59 | 12-13 | SUB OUT: HINTON,ROBERT        |
|                                   | 3:59 |       | SUB IN: KHAMENIA,NIKOLAS      |
|                                   | 2:44 | 14-15 | SUB OUT: FUQUA,BRANDO         |
|                                   | 2:44 |       | SUB IN: HORRY,CHRISTIAN       |
| SUB OUT: 1 JOHNSON,ETHAN          | 2:41 | 14-15 |                               |
| SUB OUT: 11 CLAY,DYLAN            | 2:41 |       |                               |
| SUB OUT: 13 GOLDMAN,BRYCE         | 2:41 |       |                               |
| SUB IN: 34 BINEPAL,ARMAAN         | 2:41 |       |                               |
| SUB IN: 3 ADDNEWPLAYER            | 2:41 |       |                               |
| SUB IN: 0 THURMAN,JONAS           | 2:41 |       |                               |
|                                   | 1:32 | 17-17 | SUB OUT: DUNLAP,BRADY         |
|                                   | 1:32 |       | SUB IN: HINTON,ROBERT         |
| SUB OUT: 22 MARCHAND,COLTRANE     | 1:32 |       |                               |
| SUB IN: 1 JOHNSON,ETHAN           | 1:32 |       |                               |

**Chaminade 17, Harvard-Westlake School 22**

**Official Substitutions Log**  
**Chaminade vs Harvard-Westlake School**  
**Period 2**  
**January 25, 2023 at Studio City, CA**



| VISITORS: Chaminade               | Time | Score | HOME: Harvard-Westlake School |
|-----------------------------------|------|-------|-------------------------------|
| 0 THURMAN,JONAS                   |      |       | 0 PERRY,TRENT                 |
| 1 JOHNSON,ETHAN                   |      |       | 1 FUQUA,BRANDO                |
| 11 CLAY,DYLAN                     |      |       | 2 HINTON,ROBERT               |
| 13 GOLDMAN,BRYCE                  |      |       | 11 DUNLAP,BRADY               |
| 22 MARCHAND,COLTRANE              |      |       | 12 HUGGINS,JACOB              |
|                                   | 8:00 | -     | SUB STARTER: PERRY,TRENT      |
|                                   | 8:00 |       | SUB STARTER: HINTON,ROBERT    |
|                                   | 8:00 |       | SUB STARTER: KHAMENIA,NIKOLAS |
|                                   | 8:00 |       | SUB STARTER: HUGGINS,JACOB    |
|                                   | 8:00 |       | SUB STARTER: HORRY,CHRISTIAN  |
| SUB STARTER: 11 CLAY,DYLAN        | 8:00 |       |                               |
| SUB STARTER: 13 GOLDMAN,BRYCE     | 8:00 |       |                               |
| SUB STARTER: 23 BURNS,ROBERTC.    | 8:00 |       |                               |
| SUB STARTER: 22 MARCHAND,COLTRANE | 8:00 |       |                               |
| SUB STARTER: 33 PLUMMER,TERY      | 8:00 |       |                               |
|                                   | 5:59 | 20-22 | SUB OUT: PERRY,TRENT          |
|                                   | 5:59 |       | SUB IN: DUNLAP,BRADY          |
|                                   | 5:59 |       | SUB OUT: HUGGINS,JACOB        |
|                                   | 5:59 |       | SUB IN: BENTHO,DOMINIQUE      |
| SUB OUT: 11 CLAY,DYLAN            | 5:59 |       |                               |
| SUB IN: 10 SUNDQUIST,RYDER        | 5:59 |       |                               |
| SUB OUT: 23 BURNS,ROBERTC.        | 5:59 |       |                               |
| SUB IN: 1 JOHNSON,ETHAN           | 5:59 |       |                               |
|                                   | 5:01 | 21-22 | SUB OUT: HORRY,CHRISTIAN      |
|                                   | 5:01 |       | SUB IN: JONES,AMIR            |
|                                   | 5:01 |       | SUB OUT: HINTON,ROBERT        |
|                                   | 5:01 |       | SUB IN: PERRY,TRENT           |
| SUB OUT: 33 PLUMMER,TERY          | 4:26 | 21-22 |                               |
| SUB OUT: 13 GOLDMAN,BRYCE         | 4:26 |       |                               |
| SUB IN: 11 CLAY,DYLAN             | 4:26 |       |                               |
| SUB IN: 34 BINEPAL,ARMAAN         | 4:26 |       |                               |
|                                   | 3:30 | 24-23 | SUB OUT: BENTHO,DOMINIQUE     |
|                                   | 3:30 |       | SUB IN: HUGGINS,JACOB         |
| SUB OUT: 1 JOHNSON,ETHAN          | 3:30 |       |                               |
| SUB IN: 13 GOLDMAN,BRYCE          | 3:30 |       |                               |
|                                   | 2:22 | 24-27 | SUB OUT: JONES,AMIR           |
|                                   | 2:22 |       | SUB IN: HINTON,ROBERT         |
| SUB OUT: 10 SUNDQUIST,RYDER       | 2:22 |       |                               |
| SUB IN: 3 ADDNEWPLAYER            | 2:22 |       |                               |
| SUB OUT: 13 GOLDMAN,BRYCE         | 1:21 | 24-29 |                               |
| SUB IN: 23 BURNS,ROBERTC.         | 1:21 |       |                               |
|                                   | 1:21 |       | SUB OUT: DUNLAP,BRADY         |
|                                   | 1:21 |       | SUB IN: FUQUA,BRANDO          |
| SUB OUT: 3 ADDNEWPLAYER           | 0:29 | 24-29 |                               |
| SUB OUT: 34 BINEPAL,ARMAAN        | 0:29 |       |                               |
| SUB IN: 0 THURMAN,JONAS           | 0:29 |       |                               |
| SUB IN: 1 JOHNSON,ETHAN           | 0:29 |       |                               |
|                                   | 0:15 | 24-29 | SUB OUT: FUQUA,BRANDO         |
|                                   | 0:15 |       | SUB IN: DUNLAP,BRADY          |
| SUB OUT: 1 JOHNSON,ETHAN          | 0:15 |       |                               |
| SUB OUT: 0 THURMAN,JONAS          | 0:15 |       |                               |
| SUB IN: 34 BINEPAL,ARMAAN         | 0:15 |       |                               |
| SUB IN: 33 PLUMMER,TERY           | 0:15 |       |                               |

**Chaminade 24, Harvard-Westlake School 29**

**Official Substitutions Log**  
**Chaminade vs Harvard-Westlake School**  
**Period 3**  
**January 25, 2023 at Studio City, CA**



| VISITORS: Chaminade               | Time | Score | HOME: Harvard-Westlake School |
|-----------------------------------|------|-------|-------------------------------|
| 0 THURMAN,JONAS                   |      |       | 0 PERRY,TRENT                 |
| 1 JOHNSON,ETHAN                   |      |       | 1 FUQUA,BRANDO                |
| 11 CLAY,DYLAN                     |      |       | 2 HINTON,ROBERT               |
| 13 GOLDMAN,BRYCE                  |      |       | 11 DUNLAP,BRADY               |
| 22 MARCHAND,COLTRANE              |      |       | 12 HUGGINS,JACOB              |
|                                   | 8:00 | -     | SUB STARTER: PERRY,TRENT      |
|                                   | 8:00 |       | SUB STARTER: HINTON,ROBERT    |
|                                   | 8:00 |       | SUB STARTER: KHAMENIA,NIKOLAS |
|                                   | 8:00 |       | SUB STARTER: DUNLAP,BRADY     |
|                                   | 8:00 |       | SUB STARTER: HUGGINS,JACOB    |
| SUB STARTER: 0 THURMAN,JONAS      | 8:00 |       |                               |
| SUB STARTER: 1 JOHNSON,ETHAN      | 8:00 |       |                               |
| SUB STARTER: 11 CLAY,DYLAN        | 8:00 |       |                               |
| SUB STARTER: 13 GOLDMAN,BRYCE     | 8:00 |       |                               |
| SUB STARTER: 22 MARCHAND,COLTRANE | 8:00 |       |                               |
| SUB OUT: 0 THURMAN,JONAS          | 5:21 | 32-38 |                               |
| SUB IN: 33 PLUMMER,TERY           | 5:21 |       |                               |
|                                   | 2:55 | 34-42 | SUB OUT: HINTON,ROBERT        |
|                                   | 2:55 |       | SUB IN: HORRY,CHRISTIAN       |
| SUB OUT: 13 GOLDMAN,BRYCE         | 2:55 |       |                               |
| SUB IN: 3 ADDNEWPLAYER            | 2:55 |       |                               |
| SUB OUT: 11 CLAY,DYLAN            | 2:51 | 34-42 |                               |
| SUB IN: 23 BURNS,ROBERTC.         | 2:51 |       |                               |
|                                   | 1:58 | 34-44 | SUB OUT: PERRY,TRENT          |
|                                   | 1:58 |       | SUB IN: FUQUA,BRANDO          |
|                                   | 1:58 |       | SUB OUT: DUNLAP,BRADY         |
|                                   | 1:58 |       | SUB IN: PERRY,TRENT           |
|                                   | 1:19 | 34-44 | SUB OUT: KHAMENIA,NIKOLAS     |
|                                   | 1:19 |       | SUB IN: DUNLAP,BRADY          |
| SUB OUT: 1 JOHNSON,ETHAN          | 1:19 |       |                               |
| SUB OUT: 22 MARCHAND,COLTRANE     | 1:19 |       |                               |
| SUB IN: 11 CLAY,DYLAN             | 1:19 |       |                               |
| SUB IN: 13 GOLDMAN,BRYCE          | 1:19 |       |                               |
| SUB OUT: 33 PLUMMER,TERY          | 1:19 |       |                               |
| SUB IN: 34 BINEPAL,ARMAAN         | 1:19 |       |                               |

**Chaminade 37, Harvard-Westlake School 46**

**Official Substitutions Log**  
**Chaminade vs Harvard-Westlake School**  
**Period 4**  
**January 25, 2023 at Studio City, CA**



| <b>VISITORS: Chaminade</b>     | <b>Time</b> | <b>Score</b> | <b>HOME: Harvard-Westlake School</b> |
|--------------------------------|-------------|--------------|--------------------------------------|
| 0 THURMAN,JONAS                |             |              | 0 PERRY,TRENT                        |
| 1 JOHNSON,ETHAN                |             |              | 1 FUQUA,BRANDO                       |
| 11 CLAY,DYLAN                  |             |              | 2 HINTON,ROBERT                      |
| 13 GOLDMAN,BRYCE               |             |              | 11 DUNLAP,BRADY                      |
| 22 MARCHAND,COLTRANE           |             |              | 12 HUGGINS,JACOB                     |
| SUB STARTER: 13 GOLDMAN,BRYCE  | 8:00        | -            |                                      |
| SUB STARTER: 1 JOHNSON,ETHAN   | 8:00        |              |                                      |
| SUB STARTER: 11 CLAY,DYLAN     | 8:00        |              |                                      |
| SUB STARTER: 34 BINEPAL,ARMAAN | 8:00        |              |                                      |
| SUB STARTER: 23 BURNS,ROBERTC. | 8:00        |              |                                      |
|                                | 8:00        |              | SUB STARTER: HINTON,ROBERT           |
|                                | 8:00        |              | SUB STARTER: KHAMENIA,NIKOLAS        |
|                                | 8:00        |              | SUB STARTER: HORRY,CHRISTIAN         |
|                                | 8:00        |              | SUB STARTER: PERRY,TRENT             |
|                                | 8:00        |              | SUB STARTER: HUGGINS,JACOB           |
| SUB OUT: 34 BINEPAL,ARMAAN     | 5:49        | 39-49        |                                      |
| SUB OUT: 11 CLAY,DYLAN         | 5:49        |              |                                      |
| SUB IN: 22 MARCHAND,COLTRANE   | 5:49        |              |                                      |
| SUB IN: 33 PLUMMER,TERY        | 5:49        |              |                                      |
|                                | 5:07        | 39-50        | SUB OUT: HORRY,CHRISTIAN             |
|                                | 5:07        |              | SUB IN: DUNLAP,BRADY                 |
| SUB OUT: 13 GOLDMAN,BRYCE      | 4:36        | 39-52        |                                      |
| SUB IN: 11 CLAY,DYLAN          | 4:36        |              |                                      |
| SUB OUT: 23 BURNS,ROBERTC.     | 4:16        | 42-54        |                                      |
| SUB IN: 13 GOLDMAN,BRYCE       | 4:16        |              |                                      |
| SUB OUT: 13 GOLDMAN,BRYCE      | 3:10        | 45-61        |                                      |
| SUB IN: 23 BURNS,ROBERTC.      | 3:10        |              |                                      |
|                                | 0:55        | 50-65        | SUB OUT: HINTON,ROBERT               |
|                                | 0:55        |              | SUB OUT: PERRY,TRENT                 |
|                                | 0:55        |              | SUB OUT: KHAMENIA,NIKOLAS            |
|                                | 0:55        |              | SUB OUT: HUGGINS,JACOB               |
|                                | 0:55        |              | SUB OUT: DUNLAP,BRADY                |
|                                | 0:55        |              | SUB IN: BENTHO,DOMINIQUE             |
|                                | 0:55        |              | SUB IN: ENGELBERG,JOSH               |
|                                | 0:55        |              | SUB IN: JONES,AMIR                   |
|                                | 0:55        |              | SUB IN: FUQUA,BRANDO                 |
|                                | 0:55        |              | SUB IN: KAILSCHER-STORK,NICCOLO      |
| SUB OUT: 11 CLAY,DYLAN         | 0:55        |              |                                      |
| SUB IN: 14 KLEMZ,ALEX          | 0:55        |              |                                      |
| SUB OUT: 22 MARCHAND,COLTRANE  | 0:55        |              |                                      |
| SUB IN: 10 SUNDQUIST,RYDER     | 0:55        |              |                                      |
| SUB OUT: 1 JOHNSON,ETHAN       | 0:55        |              |                                      |
| SUB IN: 12 CHOUDHARY,KRISHAL   | 0:55        |              |                                      |
| SUB OUT: 33 PLUMMER,TERY       | 0:55        |              |                                      |
| SUB OUT: 23 BURNS,ROBERTC.     | 0:55        |              |                                      |
| SUB IN: 4 JONES,COREY          | 0:55        |              |                                      |
| SUB IN: 5 BERRY,AARON          | 0:55        |              |                                      |

**Chaminade 53, Harvard-Westlake School 70**

**Official Shot Chart**  
**Chaminade vs Harvard-Westlake School**  
**PERIOD 1 Shots**  
**January 25, 2023 at Studio City, CA**



**Harvard-Westlake School**

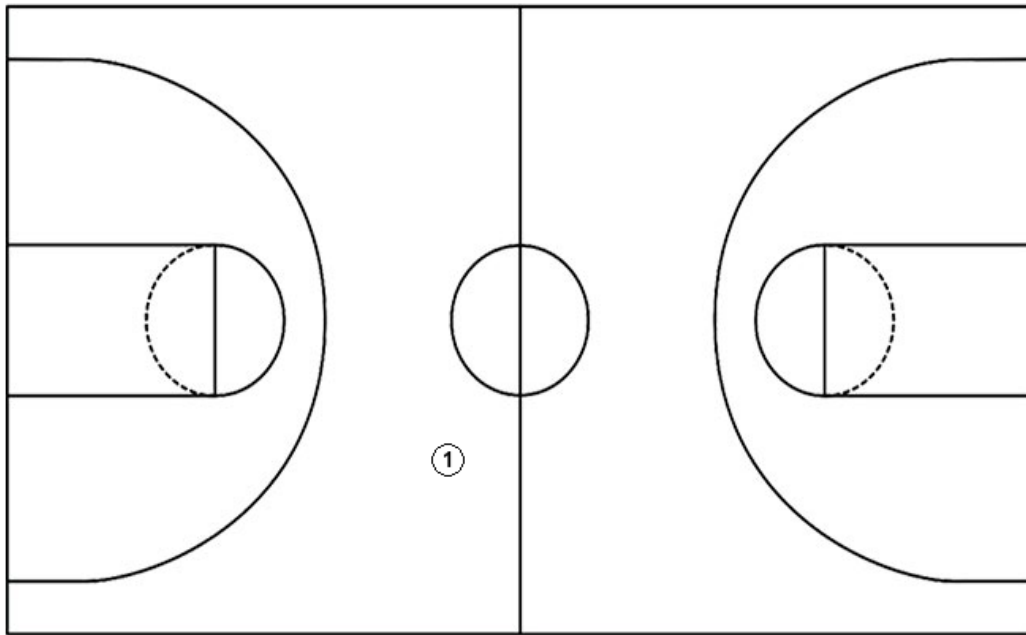
**Chaminade**

Layups

Layups

Dunks

Dunks



| <b>HW : Period 1</b>     | <b>Made</b> | <b>Att</b> | <b>Pct</b>  |
|--------------------------|-------------|------------|-------------|
| Layups                   | 0           | 0          | 0           |
| Dunks                    | 0           | 0          | 0           |
| 2PT Field Goals          | 5           | 8          | 62.5        |
| 3PT Field Goals          | 4           | 7          | 57.1        |
| <b>Total Field Goals</b> | <b>9</b>    | <b>15</b>  | <b>60.0</b> |

| <b>CCP : Period 1</b>    | <b>Made</b> | <b>Att</b> | <b>Pct</b>  |
|--------------------------|-------------|------------|-------------|
| Layups                   | 0           | 0          | 0           |
| Dunks                    | 0           | 0          | 0           |
| 2PT Field Goals          | 4           | 7          | 57.1        |
| 3PT Field Goals          | 3           | 6          | 50.0        |
| <b>Total Field Goals</b> | <b>7</b>    | <b>13</b>  | <b>53.8</b> |

**Official Shot Chart**  
**Chaminade vs Harvard-Westlake School**  
**PERIOD 2 Shots**  
 January 25, 2023 at Studio City, CA



**Harvard-Westlake School**

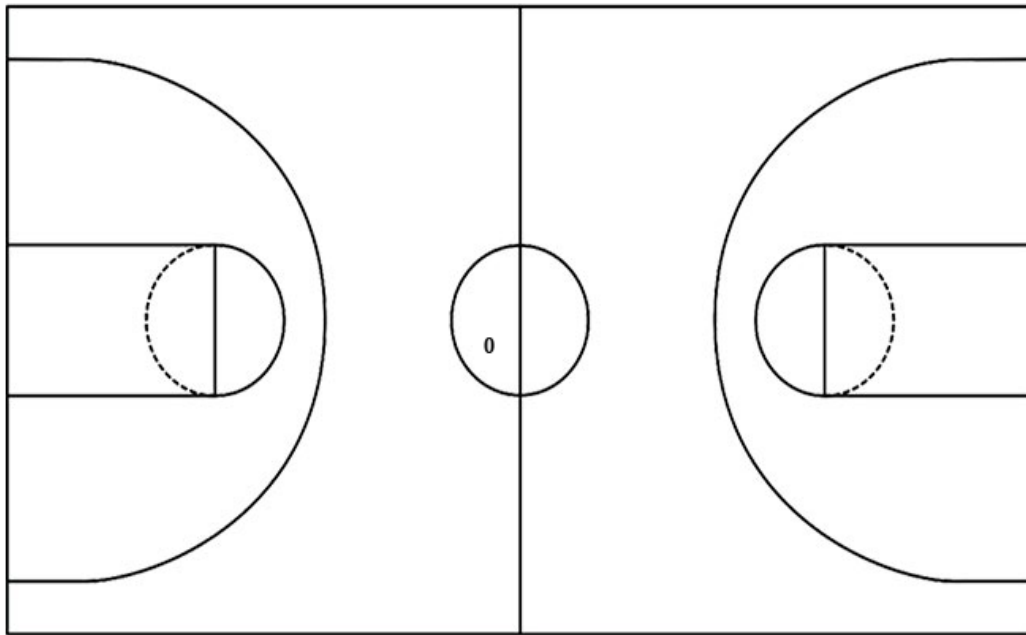
**Chaminade**

Layups

Layups

Dunks

Dunks



| <b>HW : Period 2</b>     | <b>Made</b> | <b>Att</b> | <b>Pct</b>  |
|--------------------------|-------------|------------|-------------|
| Layups                   | 0           | 0          | 0           |
| Dunks                    | 0           | 0          | 0           |
| 2PT Field Goals          | 3           | 11         | 27.3        |
| 3PT Field Goals          | 0           | 6          | 00.0        |
| <b>Total Field Goals</b> | <b>3</b>    | <b>17</b>  | <b>17.6</b> |

| <b>CCP : Period 2</b>    | <b>Made</b> | <b>Att</b> | <b>Pct</b>  |
|--------------------------|-------------|------------|-------------|
| Layups                   | 0           | 0          | 0           |
| Dunks                    | 0           | 0          | 0           |
| 2PT Field Goals          | 1           | 11         | 09.1        |
| 3PT Field Goals          | 1           | 3          | 33.3        |
| <b>Total Field Goals</b> | <b>2</b>    | <b>14</b>  | <b>14.3</b> |



**Official Shot Chart**  
**Chaminade vs Harvard-Westlake School**  
**PERIOD 3 Shots**  
 January 25, 2023 at Studio City, CA



**Harvard-Westlake School**

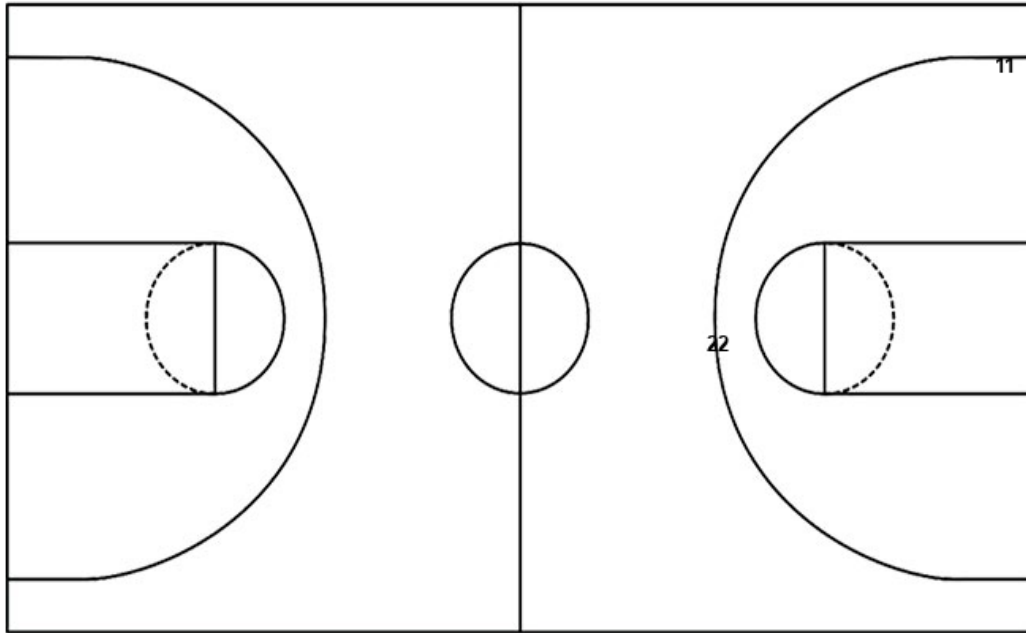
**Chaminade**

Layups

Layups

Dunks

Dunks



| <b>HW : Period 3</b>     | <b>Made</b> | <b>Att</b> | <b>Pct</b>  |
|--------------------------|-------------|------------|-------------|
| Layups                   | 0           | 0          | 0           |
| Dunks                    | 0           | 0          | 0           |
| 2PT Field Goals          | 8           | 9          | 88.9        |
| 3PT Field Goals          | 0           | 5          | 00.0        |
| <b>Total Field Goals</b> | <b>8</b>    | <b>14</b>  | <b>57.1</b> |

| <b>CCP : Period 3</b>    | <b>Made</b> | <b>Att</b> | <b>Pct</b>  |
|--------------------------|-------------|------------|-------------|
| Layups                   | 0           | 0          | 0           |
| Dunks                    | 0           | 0          | 0           |
| 2PT Field Goals          | 3           | 6          | 50.0        |
| 3PT Field Goals          | 2           | 6          | 33.3        |
| <b>Total Field Goals</b> | <b>5</b>    | <b>12</b>  | <b>41.7</b> |

Official Shot Chart  
**Chaminade vs Harvard-Westlake School**  
 PERIOD 4 Shots  
 January 25, 2023 at Studio City, CA



**Harvard-Westlake School**

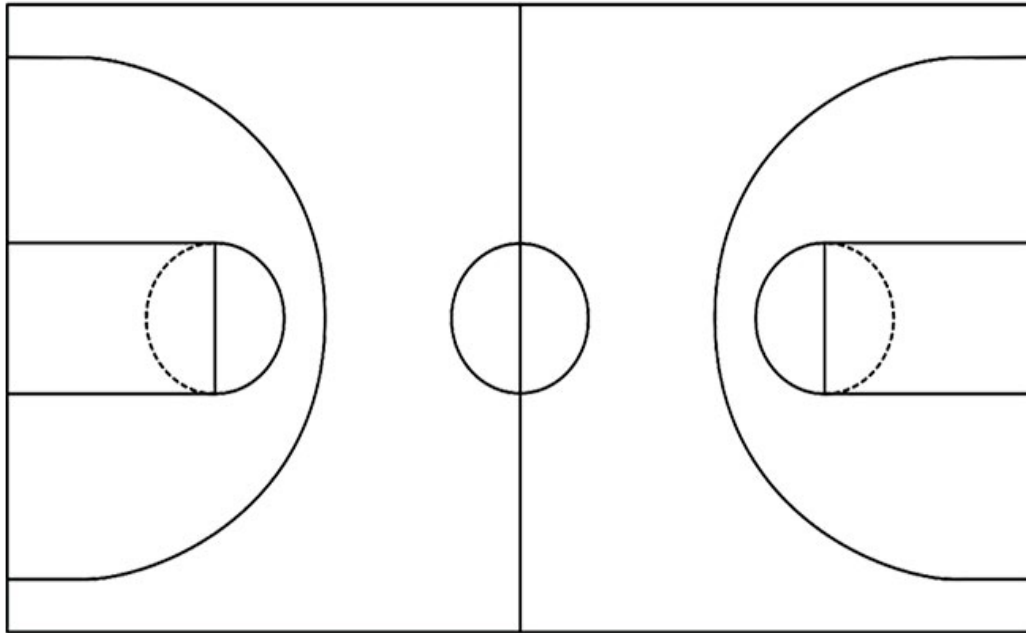
**Chaminade**

Layups

Layups

Dunks

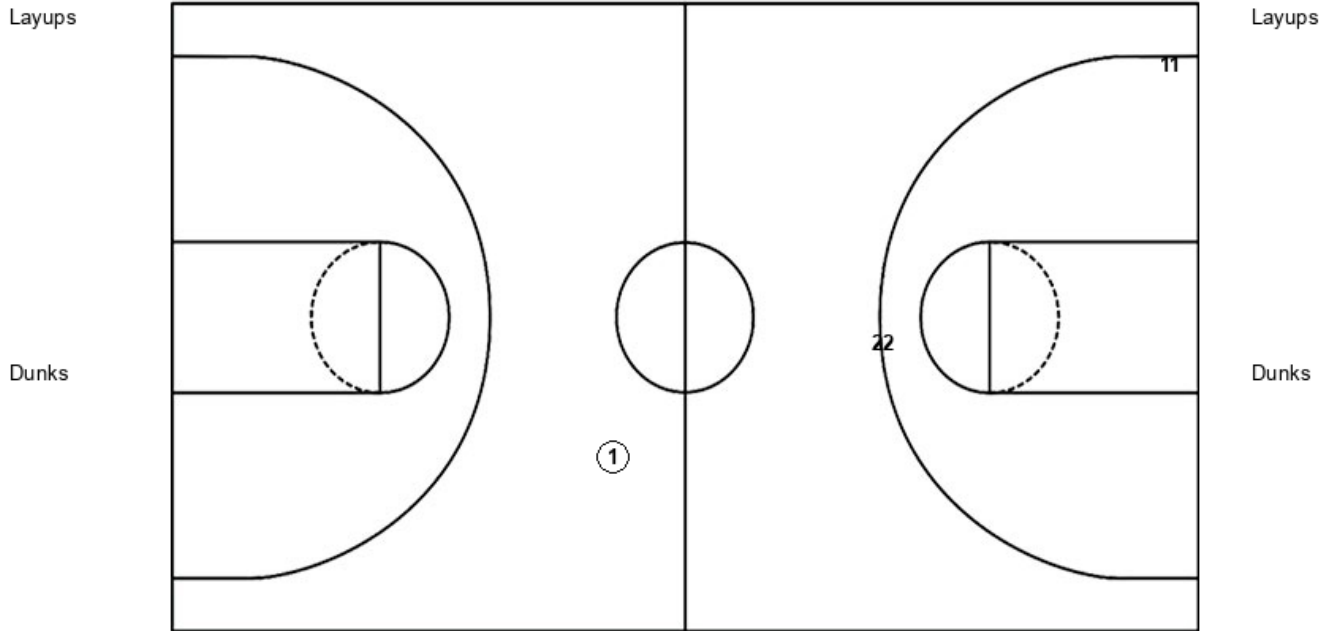
Dunks



| <b>HW : Period 4</b>     | <b>Made</b> | <b>Att</b> | <b>Pct</b>  |
|--------------------------|-------------|------------|-------------|
| Layups                   | 0           | 0          | 0           |
| Dunks                    | 0           | 0          | 0           |
| 2PT Field Goals          | 5           | 8          | 62.5        |
| 3PT Field Goals          | 3           | 6          | 50.0        |
| <b>Total Field Goals</b> | <b>8</b>    | <b>14</b>  | <b>57.1</b> |

| <b>CCP : Period 4</b>    | <b>Made</b> | <b>Att</b> | <b>Pct</b>  |
|--------------------------|-------------|------------|-------------|
| Layups                   | 0           | 0          | 0           |
| Dunks                    | 0           | 0          | 0           |
| 2PT Field Goals          | 2           | 8          | 25.0        |
| 3PT Field Goals          | 4           | 8          | 50.0        |
| <b>Total Field Goals</b> | <b>6</b>    | <b>16</b>  | <b>37.5</b> |

**Official Shot Chart**  
**Chaminade vs Harvard-Westlake School**  
 Chaminade Team Shots  
 January 25, 2023 at Studio City, CA



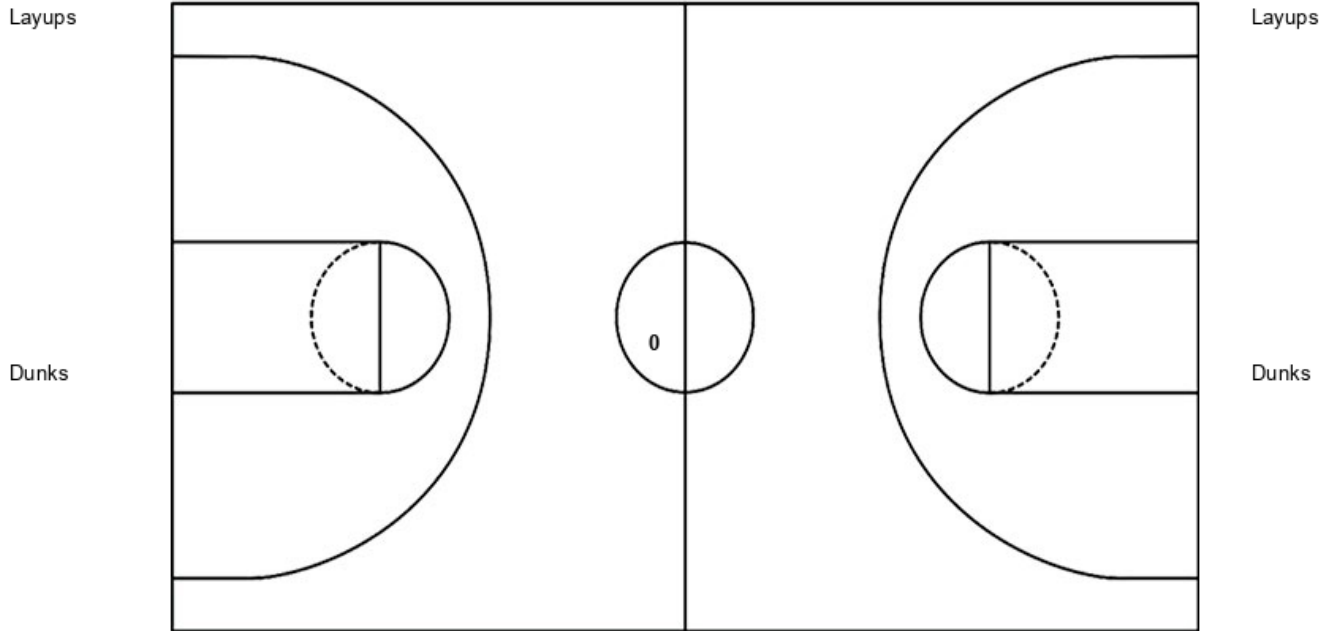
| CCP : Period 1           | Made     | Att       | Pct         |
|--------------------------|----------|-----------|-------------|
| Layups                   | 0        | 0         | 0           |
| Dunks                    | 0        | 0         | 0           |
| 2PT Field Goals          | 4        | 7         | 57.1        |
| 3PT Field Goals          | 3        | 6         | 50.0        |
| <b>Total Field Goals</b> | <b>7</b> | <b>13</b> | <b>53.8</b> |

| CCP : Period 2           | Made     | Att       | Pct         |
|--------------------------|----------|-----------|-------------|
| Layups                   | 0        | 0         | 0           |
| Dunks                    | 0        | 0         | 0           |
| 2PT Field Goals          | 1        | 11        | 09.1        |
| 3PT Field Goals          | 1        | 3         | 33.3        |
| <b>Total Field Goals</b> | <b>2</b> | <b>14</b> | <b>14.3</b> |

| CCP : Period 3           | Made     | Att       | Pct         |
|--------------------------|----------|-----------|-------------|
| Layups                   | 0        | 0         | 0           |
| Dunks                    | 0        | 0         | 0           |
| 2PT Field Goals          | 3        | 6         | 50.0        |
| 3PT Field Goals          | 2        | 6         | 33.3        |
| <b>Total Field Goals</b> | <b>5</b> | <b>12</b> | <b>41.7</b> |

| CCP : Period 4           | Made     | Att       | Pct         |
|--------------------------|----------|-----------|-------------|
| Layups                   | 0        | 0         | 0           |
| Dunks                    | 0        | 0         | 0           |
| 2PT Field Goals          | 2        | 8         | 25.0        |
| 3PT Field Goals          | 4        | 8         | 50.0        |
| <b>Total Field Goals</b> | <b>6</b> | <b>16</b> | <b>37.5</b> |

Official Shot Chart  
**Chaminade vs Harvard-Westlake School**  
 Harvard-Westlake School Team Shots  
 January 25, 2023 at Studio City, CA



| HW : Period 1            | Made     | Att       | Pct         |
|--------------------------|----------|-----------|-------------|
| Layups                   | 0        | 0         | 0           |
| Dunks                    | 0        | 0         | 0           |
| 2PT Field Goals          | 5        | 8         | 62.5        |
| 3PT Field Goals          | 4        | 7         | 57.1        |
| <b>Total Field Goals</b> | <b>9</b> | <b>15</b> | <b>60.0</b> |

| HW : Period 2            | Made     | Att       | Pct         |
|--------------------------|----------|-----------|-------------|
| Layups                   | 0        | 0         | 0           |
| Dunks                    | 0        | 0         | 0           |
| 2PT Field Goals          | 3        | 11        | 27.3        |
| 3PT Field Goals          | 0        | 6         | 00.0        |
| <b>Total Field Goals</b> | <b>3</b> | <b>17</b> | <b>17.6</b> |

| HW : Period 3            | Made     | Att       | Pct         |
|--------------------------|----------|-----------|-------------|
| Layups                   | 0        | 0         | 0           |
| Dunks                    | 0        | 0         | 0           |
| 2PT Field Goals          | 8        | 9         | 88.9        |
| 3PT Field Goals          | 0        | 5         | 00.0        |
| <b>Total Field Goals</b> | <b>8</b> | <b>14</b> | <b>57.1</b> |

| HW : Period 4            | Made     | Att       | Pct         |
|--------------------------|----------|-----------|-------------|
| Layups                   | 0        | 0         | 0           |
| Dunks                    | 0        | 0         | 0           |
| 2PT Field Goals          | 5        | 8         | 62.5        |
| 3PT Field Goals          | 3        | 6         | 50.0        |
| <b>Total Field Goals</b> | <b>8</b> | <b>14</b> | <b>57.1</b> |