

FINAL SCORE



Duke

64



Kansas

69

November 15, 2022 • Gainbridge Fieldhouse - Indianapolis, IN

FINAL STATISTICS

Official Box Score
Duke vs Kansas
Game Totals -- Final Statistics
November 15, 2022 at Gainbridge Fieldhouse - Indianapolis, IN

Duke 64

| No. | Player | S | Pts | FG | 3FG | FT | OR | DR | TR | PF | A | TO | Blk | Stl | Min | +/- |
|---------------|-------------------|---|-----------|--------------|-------------|--------------|-----------|-----------|-----------|-----------|----------|-----------|----------|----------|------------|-----|
| 03 | ROACH, JEREMY | G | 16 | 6-17 | 1-5 | 3-4 | 1 | 3 | 4 | 2 | 1 | 3 | 0 | 1 | 40 | -6 |
| 05 | PROCTOR, TYRESE | G | 9 | 3-9 | 1-5 | 2-2 | 1 | 2 | 3 | 2 | 3 | 3 | 0 | 0 | 28 | -2 |
| 15 | YOUNG, RYAN | C | 6 | 3-4 | 0-0 | 0-0 | 2 | 1 | 3 | 2 | 0 | 4 | 0 | 1 | 20 | -2 |
| 25 | MITCHELL, MARK | F | 7 | 3-7 | 0-0 | 1-2 | 2 | 3 | 5 | 3 | 0 | 3 | 0 | 0 | 30 | -6 |
| 30 | FILIPOWSKI, KYLE | C | 17 | 6-18 | 1-6 | 4-4 | 6 | 8 | 14 | 3 | 1 | 3 | 1 | 1 | 33 | -3 |
| 01 | LIVELY II, DERECK | C | 4 | 2-3 | 0-0 | 0-0 | 4 | 1 | 5 | 1 | 1 | 0 | 1 | 0 | 20 | 0 |
| 02 | BLAKES, JAYLEN | G | 5 | 1-5 | 0-2 | 3-4 | 0 | 3 | 3 | 2 | 2 | 1 | 0 | 0 | 18 | -5 |
| 13 | GRANDISON, JACOB | F | 0 | 0-4 | 0-3 | 0-0 | 0 | 1 | 1 | 1 | 0 | 1 | 0 | 0 | 10 | -1 |
| TEAM | | | | | | | 5 | 3 | 8 | 0 | 0 | | | | | |
| TOTALS | | | 64 | 24-67 | 3-21 | 13-16 | 21 | 25 | 46 | 16 | 8 | 18 | 2 | 3 | 200 | |

Shooting By Period

| Period | FG | FG% | 3FG | 3FG% | FT | FT% |
|-------------|--------------|--------------|-------------|--------------|--------------|--------------|
| 1st Half | 10-32 | 31% | 1-11 | 09% | 8-9 | 89% |
| 2nd Half | 14-35 | 40% | 2-10 | 20% | 5-7 | 71% |
| Game | 24-67 | 35.8% | 3-21 | 14.3% | 13-16 | 81.3% |

Deadball Rebounds: 1,0

Last FG: 2nd-00:15

Biggest Run: 6-0

Largest lead: By 6 at 2nd-12:00

Technical Fouls: #05 PROCTOR, T (Admin Technical)

@ 1st - 11:40;

Kansas 69

| No. | Player | S | Pts | FG | 3FG | FT | OR | DR | TR | PF | A | TO | Blk | Stl | Min | +/- |
|---------------|------------------|---|-----------|--------------|-------------|------------|-----------|-----------|-----------|-----------|-----------|-----------|-----------|----------|------------|-----|
| 03 | HARRIS, DAJUAN | G | 6 | 3-7 | 0-2 | 0-0 | 2 | 2 | 4 | 4 | 10 | 1 | 1 | 0 | 35 | 4 |
| 04 | DICK, GRADEY | G | 14 | 6-11 | 1-4 | 1-1 | 0 | 1 | 1 | 3 | 0 | 0 | 0 | 1 | 32 | 6 |
| 10 | WILSON, JALEN | F | 25 | 11-26 | 0-7 | 3-4 | 5 | 6 | 11 | 1 | 5 | 3 | 1 | 1 | 38 | 7 |
| 15 | MCCULLAR, KEVIN | G | 12 | 5-10 | 2-4 | 0-1 | 2 | 4 | 6 | 3 | 2 | 4 | 2 | 1 | 29 | 8 |
| 24 | ADAMS, JR.,KJ | F | 8 | 4-4 | 0-0 | 0-1 | 0 | 2 | 2 | 4 | 2 | 3 | 2 | 1 | 20 | 5 |
| 00 | PETTIFORD, BOBBY | G | 2 | 1-2 | 0-0 | 0-0 | 0 | 3 | 3 | 0 | 2 | 2 | 1 | 0 | 17 | 3 |
| 01 | YESUFU, JOSEPH | G | 0 | 0-4 | 0-2 | 0-0 | 1 | 0 | 1 | 0 | 0 | 0 | 0 | 1 | 5 | -1 |
| 23 | UDEH JR., ERNEST | C | 0 | 0-1 | 0-0 | 0-0 | 0 | 1 | 1 | 1 | 0 | 0 | 4 | 0 | 13 | -13 |
| 35 | EJIOFOR, ZUBY | F | 2 | 1-2 | 0-0 | 0-0 | 2 | 3 | 5 | 2 | 0 | 2 | 2 | 0 | 10 | 6 |
| TEAM | | | | | | | 0 | 1 | 1 | 0 | 0 | | | | | |
| TOTALS | | | 69 | 31-67 | 3-19 | 4-7 | 12 | 23 | 35 | 18 | 21 | 15 | 13 | 5 | 200 | |

Shooting By Period

| Period | FG | FG% | 3FG | 3FG% | FT | FT% |
|-------------|--------------|--------------|-------------|--------------|------------|--------------|
| 1st Half | 15-33 | 45% | 2-13 | 15% | 1-3 | 33% |
| 2nd Half | 16-34 | 47% | 1-6 | 17% | 3-4 | 75% |
| Game | 31-67 | 46.3% | 3-19 | 15.8% | 4-7 | 57.1% |

Deadball Rebounds: 2,1

Last FG: 2nd-00:22

Biggest Run: 12-0

Largest lead: By 11 at 1st-11:03

Technical Fouls: None.

Game Notes:

Officials: **Doug Simons, Roger Ayers, Jeffrey Anderson**
 Attendance: **15828**

Start Time: **10:24 PM ET**
 End Time: **12:21 AM ET**
 Game Duration: **1:57**
 Neutral Court;

| Score | 1st | 2nd | TOT |
|-------|-----|-----|-----------|
| DUK | 29 | 35 | 64 |
| KU | 33 | 36 | 69 |

DUK led for 15:47. KU led for 23:06.
Game was tied for 1:07.
 Times tied: **3** Lead Changes: **11**

| Points | DUK | KU |
|--------------|----------------|----------------|
| In the Paint | 42 | 48 |
| Off Turns | 12 | 19 |
| 2nd Chance | 19 | 12 |
| Fast Break | 6 | 12 |
| Bench | 9 | 4 |
| Per Poss | 0.877 30/73 | 0.986 33/70 |

Official Box Score
Duke vs Kansas
First Half Statistics Only
November 15, 2022 at Gainbridge Fieldhouse - Indianapolis, IN

Duke 29

| No. | Player | S | Pts | FG | 3FG | FT | OR | DR | TR | PF | A | TO | Blk | Stl | Min | +/- |
|---------------|-------------------|---|-----------|--------------|-------------|------------|----------|-----------|-----------|----------|----------|-----------|----------|----------|------------|-----|
| 03 | ROACH, JEREMY | G | 11 | 4-9 | 0-2 | 3-3 | 0 | 1 | 1 | 0 | 0 | 2 | 0 | 1 | 20 | -4 |
| 05 | PROCTOR, TYRESE | G | 0 | 0-2 | 0-2 | 0-0 | 0 | 1 | 1 | 2 | 0 | 3 | 0 | 0 | 9 | -5 |
| 15 | YOUNG, RYAN | C | 4 | 2-2 | 0-0 | 0-0 | 1 | 1 | 2 | 1 | 0 | 1 | 0 | 1 | 11 | -1 |
| 25 | MITCHELL, MARK | F | 0 | 0-1 | 0-0 | 0-0 | 0 | 2 | 2 | 2 | 0 | 2 | 0 | 0 | 10 | -5 |
| 30 | FILIPOWSKI, KYLE | C | 7 | 2-8 | 1-3 | 2-2 | 2 | 3 | 5 | 2 | 1 | 1 | 0 | 1 | 14 | -4 |
| 01 | LIVELY II, DERECK | C | 2 | 1-2 | 0-0 | 0-0 | 3 | 0 | 3 | 0 | 0 | 0 | 0 | 0 | 10 | -2 |
| 02 | BLAKES, JAYLEN | G | 5 | 1-4 | 0-1 | 3-4 | 0 | 2 | 2 | 1 | 1 | 1 | 0 | 0 | 15 | 2 |
| 13 | GRANDISON, JACOB | F | 0 | 0-4 | 0-3 | 0-0 | 0 | 1 | 1 | 1 | 0 | 1 | 0 | 0 | 10 | -1 |
| TEAM | | | | | | | 3 | 2 | 5 | 0 | | | | | | |
| TOTALS | | | 29 | 10-32 | 1-11 | 8-9 | 9 | 13 | 22 | 9 | 2 | 11 | 0 | 3 | 100 | |

Shooting By Period

| Period | FG | FG% | 3FG | 3FG% | FT | FT% |
|----------|-------|-------|------|-------|-------|-------|
| 1st Half | 10-32 | 31% | 1-11 | 09% | 8-9 | 89% |
| Game | 24-67 | 35.8% | 3-21 | 14.3% | 13-16 | 81.3% |

Deadball Rebounds: 1,0
Last FG Half: DUK 2nd-00:15

Kansas 33

| No. | Player | S | Pts | FG | 3FG | FT | OR | DR | TR | PF | A | TO | Blk | Stl | Min | +/- |
|---------------|------------------|---|-----------|--------------|-------------|------------|----------|-----------|-----------|----------|-----------|-----------|----------|----------|------------|-----|
| 03 | HARRIS, DAJUAN | G | 2 | 1-2 | 0-1 | 0-0 | 0 | 0 | 0 | 1 | 6 | 1 | 1 | 0 | 16 | 5 |
| 04 | DICK, GRADEY | G | 7 | 3-8 | 0-3 | 1-1 | 0 | 0 | 0 | 1 | 0 | 0 | 0 | 1 | 18 | 8 |
| 10 | WILSON, JALEN | F | 10 | 5-10 | 0-4 | 0-1 | 2 | 4 | 6 | 1 | 3 | 1 | 0 | 0 | 18 | 6 |
| 15 | MCCULLAR, KEVIN | G | 8 | 3-5 | 2-3 | 0-1 | 1 | 3 | 4 | 1 | 1 | 4 | 2 | 1 | 16 | 0 |
| 24 | ADAMS, JR.,KJ | F | 4 | 2-2 | 0-0 | 0-0 | 0 | 1 | 1 | 2 | 0 | 1 | 2 | 0 | 9 | 9 |
| 00 | PETTIFORD, BOBBY | G | 0 | 0-1 | 0-0 | 0-0 | 0 | 1 | 1 | 0 | 1 | 2 | 0 | 0 | 8 | 0 |
| 01 | YESUFU, JOSEPH | G | 0 | 0-2 | 0-2 | 0-0 | 1 | 0 | 1 | 0 | 0 | 0 | 0 | 0 | 4 | -3 |
| 23 | UDEH JR., ERNEST | C | 0 | 0-1 | 0-0 | 0-0 | 0 | 1 | 1 | 1 | 0 | 0 | 2 | 0 | 7 | -6 |
| 35 | EJIOFOR, ZUBY | F | 2 | 1-2 | 0-0 | 0-0 | 1 | 2 | 3 | 2 | 0 | 1 | 0 | 0 | 4 | 1 |
| TEAM | | | | | | | 0 | 1 | 1 | 0 | | | | | | |
| TOTALS | | | 33 | 15-33 | 2-13 | 1-3 | 5 | 13 | 18 | 9 | 11 | 10 | 7 | 2 | 100 | |

Shooting By Period

| Period | FG | FG% | 3FG | 3FG% | FT | FT% |
|----------|-------|-------|------|-------|-----|-------|
| 1st Half | 15-33 | 45% | 2-13 | 15% | 1-3 | 33% |
| Game | 31-67 | 46.3% | 3-19 | 15.8% | 4-7 | 57.1% |

Deadball Rebounds: 2,1
Last FG Half: KU 2nd-00:22

Game Notes:

Officials: **Doug Simons, Roger Ayers, Jeffrey Anderson**
Attendance: **15828**

Start Time: **10:24 PM ET**
End Time: **12:21 AM ET**
Game Duration: **1:57**
Neutral Court;

| Score | 1st | 2nd | TOT |
|-------|-----|-----|-----------|
| DUK | 29 | 35 | 64 |
| KU | 33 | 36 | 69 |

| Points (This Period) | DUK | KU |
|----------------------|----------------|----------------|
| In the Paint | 18 | 18 |
| Off Turns | 8 | 8 |
| 2nd Chance | 9 | 4 |
| Fast Break | 2 | 5 |
| Bench | 7 | 2 |
| Per Poss | 0.763 14/38 | 0.846 16/39 |

**Official Play-By-Play
Duke vs Kansas
First Half**

November 15, 2022 at Gainbridge Fieldhouse - Indianapolis, IN

Period 1

Starters:

Duke: 3 ROACH, JEREMY (G); 5 PROCTOR, TYRESE (G); 15 YOUNG, RYAN (C); 25 MITCHELL, MARK (F); 30 FILIPOWSKI, KYLE (C);

Kansas: 3 HARRIS, DAJUAN (G); 4 DICK, GRADEY (G); 10 WILSON, JALEN (F); 15 MCCULLAR, KEVIN (G); 24 ADAMS, JR., KJ (F);

| Time | VISITORS: Duke | Score | Margin | HOME: Kansas |
|-------|--|-------|--------|-------------------------------------|
| 19:35 | MISSED 3PTR by FILIPOWSKI, KYLE | | | |
| 19:32 | | | | REBOUND (DEF) by ADAMS, JR.,KJ |
| 19:19 | | | | MISSED JUMPER by MCCULLAR, KEVIN |
| 19:18 | REBOUND (DEF) by YOUNG, RYAN | | | |
| 19:09 | GOOD! LAYUP by ROACH, JEREMY | 0-2 | V 2 | |
| 18:48 | | | | MISSED 3PTR by WILSON, JALEN |
| 18:45 | REBOUND (DEF) by FILIPOWSKI, KYLE | | | |
| 18:40 | GOOD! LAYUP by FILIPOWSKI, KYLE [FB] | 0-4 | V 4 | |
| 18:20 | | 3-4 | V 1 | GOOD! 3PTR by MCCULLAR, KEVIN |
| 18:20 | | | | ASSIST by HARRIS, DAJUAN |
| 18:01 | | | | FOUL (PERSONAL) by HARRIS, DAJUAN |
| 17:47 | TURNOVER (OUTOFBOUNDS) by MITCHELL, MARK | | | |
| 17:27 | FOUL (PERSONAL) by YOUNG, RYAN | | | |
| 17:17 | | 5-4 | H 1 | GOOD! LAYUP by ADAMS, JR.,KJ |
| 17:17 | | | | ASSIST by MCCULLAR, KEVIN |
| 17:00 | MISSED LAYUP by ROACH, JEREMY | | | |
| 17:00 | | | | BLOCK by ADAMS, JR.,KJ |
| 16:56 | REBOUND (OFF) by YOUNG, RYAN | | | |
| 16:56 | GOOD! LAYUP by YOUNG, RYAN | 5-6 | V 1 | |
| 16:47 | | | | MISSED 3PTR by DICK, GRADEY |
| 16:43 | | | | REBOUND (OFF) by WILSON, JALEN |
| 16:43 | | 7-6 | H 1 | GOOD! LAYUP by WILSON, JALEN |
| 16:30 | MISSED JUMPER by ROACH, JEREMY | | | |
| 16:30 | | | | BLOCK by MCCULLAR, KEVIN |
| 16:30 | REBOUND (OFF) by TEAM | | | |
| 16:25 | MISSED 3PTR by PROCTOR, TYRESE | | | |
| 16:21 | REBOUND (OFF) by TEAM | | | |
| 16:16 | FOUL (OFF) by PROCTOR, TYRESE | | | |
| 16:16 | TURNOVER (OFFENSIVE) by PROCTOR, TYRESE | | | |
| 16:05 | | 9-6 | H 3 | GOOD! JUMPER by WILSON, JALEN |
| 15:46 | MISSED JUMPER by FILIPOWSKI, KYLE | | | |
| 15:43 | | | | REBOUND (DEF) by WILSON, JALEN |
| 15:35 | | 12-6 | H 6 | GOOD! 3PTR by MCCULLAR, KEVIN |
| 15:35 | | | | ASSIST by WILSON, JALEN |
| 15:17 | | | | |
| 15:17 | SUB OUT: PROCTOR, TYRESE | | | |
| 15:17 | SUB OUT: YOUNG, RYAN | | | |
| 15:17 | SUB OUT: FILIPOWSKI, KYLE | | | |
| 15:17 | SUB IN: LIVELY II, DERECK | | | |
| 15:17 | SUB IN: BLAKES, JAYLEN | | | |
| 15:17 | SUB IN: GRANDISON, JACOB | | | |
| 15:13 | MISSED JUMPER by MITCHELL, MARK | | | |
| 15:09 | | | | REBOUND (DEF) by WILSON, JALEN |
| 14:48 | | | | MISSED 3PTR by WILSON, JALEN |
| 14:46 | REBOUND (DEF) by TEAM | | | |
| 14:27 | MISSED LAYUP by BLAKES, JAYLEN | | | |
| 14:25 | | | | REBOUND (DEF) by WILSON, JALEN |
| 14:23 | | 14-6 | H 8 | GOOD! LAYUP by DICK, GRADEY [FB] |
| 14:23 | | | | ASSIST by WILSON, JALEN |
| 14:23 | FOUL (PERSONAL) by MITCHELL, MARK | | | |
| 14:23 | | 15-6 | H 9 | GOOD! FT by DICK, GRADEY [FB] |
| 14:05 | MISSED 3PTR by GRANDISON, JACOB | | | |
| 14:03 | | | | REBOUND (DEF) by TEAM |
| 14:03 | | | | SUB OUT: HARRIS, DAJUAN |
| 14:03 | | | | SUB IN: PETTIFORD, BOBBY |
| 13:49 | | | | TURNOVER (BADPASS) by WILSON, JALEN |
| 13:49 | STEAL by ROACH, JEREMY | | | |
| 13:44 | TURNOVER (LOSTBALL) by ROACH, JEREMY | | | |
| 13:44 | SUB OUT: MITCHELL, MARK | | | |
| 13:44 | SUB IN: FILIPOWSKI, KYLE | | | |
| 13:44 | | | | SUB OUT: ADAMS, JR.,KJ |
| 13:44 | | | | SUB IN: UDEH JR., ERNEST |
| 13:23 | | | | MISSED JUMPER by DICK, GRADEY |
| 13:20 | | | | REBOUND (OFF) by WILSON, JALEN |
| 13:20 | | 17-6 | H 11 | GOOD! LAYUP by WILSON, JALEN |

| Time | VISITORS: Duke | Score | Margin | HOME: Kansas |
|-------|---|-------|--------|--|
| 13:18 | | | | FOUL (PERSONAL) by DICK, GRADEY |
| 13:06 | MISSED 3PTR by GRANDISON, JACOB | | | |
| 13:04 | | | | REBOUND (DEF) by WILSON, JALEN |
| 12:52 | | | | TURNOVER (LOSTBALL) by MCCULLAR, KEVIN |
| 12:52 | | | | SUB OUT: DICK, GRADEY |
| 12:52 | | | | SUB IN: YESUFU, JOSEPH |
| 12:41 | GOOD! LAYUP by ROACH, JEREMY | 17-8 | H 9 | |
| 12:15 | | | | MISSED 3PTR by MCCULLAR, KEVIN |
| 12:11 | | | | REBOUND (OFF) by YESUFU, JOSEPH |
| 12:10 | | | | MISSED 3PTR by WILSON, JALEN |
| 12:08 | REBOUND (DEF) by TEAM | | | |
| 12:08 | SUB OUT: FILIPOWSKI, KYLE | | | |
| 12:08 | SUB IN: PROCTOR, TYRESE | | | |
| 11:41 | MISSED 3PTR by PROCTOR, TYRESE | | | |
| 11:41 | | | | BLOCK by UDEH JR., ERNEST |
| 11:40 | REBOUND (OFF) by TEAM | | | |
| 11:40 | FOUL (TECH) by PROCTOR, TYRESE | | | |
| 11:40 | TURNOVER (OFFENSIVE) by PROCTOR, TYRESE | | | |
| 11:40 | | | | |
| 11:40 | | | | SUB OUT: MCCULLAR, KEVIN |
| 11:40 | | | | SUB IN: DICK, GRADEY |
| 11:40 | | | | MISSED FT by WILSON, JALEN |
| 11:40 | | | | REBOUND (OFF) by TEAM |
| 11:29 | | | | TURNOVER (BADPASS) by PETTIFORD, BOBBY |
| 11:17 | MISSED 3PTR by GRANDISON, JACOB | | | |
| 11:13 | | | | REBOUND (DEF) by UDEH JR., ERNEST |
| 11:03 | | 19-8 | H 11 | GOOD! LAYUP by DICK, GRADEY |
| 11:03 | | | | ASSIST by WILSON, JALEN |
| 10:38 | | | | FOUL (PERSONAL) by WILSON, JALEN |
| 10:38 | GOOD! FT by BLAKES, JAYLEN | 19-9 | H 10 | |
| 10:38 | SUB OUT: LIVELY II, DERECK | | | |
| 10:38 | SUB OUT: GRANDISON, JACOB | | | |
| 10:38 | SUB IN: YOUNG, RYAN | | | |
| 10:38 | SUB IN: MITCHELL, MARK | | | |
| 10:38 | | | | SUB OUT: WILSON, JALEN |
| 10:38 | | | | SUB IN: MCCULLAR, KEVIN |
| 10:38 | GOOD! FT by BLAKES, JAYLEN | 19-10 | H 9 | |
| 10:29 | | | | MISSED 3PTR by YESUFU, JOSEPH |
| 10:25 | | | | REBOUND (OFF) by MCCULLAR, KEVIN |
| 10:23 | | | | MISSED 3PTR by YESUFU, JOSEPH |
| 10:20 | REBOUND (DEF) by MITCHELL, MARK | | | |
| 10:12 | | | | FOUL (PERSONAL) by MCCULLAR, KEVIN |
| 10:12 | GOOD! FT by BLAKES, JAYLEN | 19-11 | H 8 | |
| 10:12 | | | | SUB OUT: PETTIFORD, BOBBY |
| 10:12 | | | | SUB IN: HARRIS, DAJUAN |
| 10:11 | MISSED FT by BLAKES, JAYLEN | | | |
| 10:10 | | | | REBOUND (DEF) by MCCULLAR, KEVIN |
| 09:43 | | | | TURNOVER (BADPASS) by MCCULLAR, KEVIN |
| 09:43 | STEAL by YOUNG, RYAN | | | |
| 09:38 | FOUL (OFF) by BLAKES, JAYLEN | | | |
| 09:38 | TURNOVER (OFFENSIVE) by BLAKES, JAYLEN | | | |
| 09:38 | | | | SUB OUT: UDEH JR., ERNEST |
| 09:38 | | | | SUB IN: ADAMS, JR.,KJ |
| 09:08 | | | | MISSED 3PTR by DICK, GRADEY |
| 09:05 | REBOUND (DEF) by PROCTOR, TYRESE | | | |
| 09:04 | FOUL (OFF) by MITCHELL, MARK | | | |
| 09:04 | TURNOVER (OFFENSIVE) by MITCHELL, MARK | | | |
| 09:04 | SUB OUT: MITCHELL, MARK | | | |
| 09:04 | SUB IN: FILIPOWSKI, KYLE | | | |
| 09:04 | | | | SUB OUT: YESUFU, JOSEPH |
| 09:04 | | | | SUB IN: WILSON, JALEN |
| 08:54 | | | | TURNOVER (BADPASS) by ADAMS, JR.,KJ |
| 08:40 | GOOD! LAYUP by YOUNG, RYAN | 19-13 | H 6 | |
| 08:22 | | 21-13 | H 8 | GOOD! LAYUP by ADAMS, JR.,KJ |
| 08:22 | | | | ASSIST by HARRIS, DAJUAN |
| 08:14 | GOOD! JUMPER by ROACH, JEREMY [PNT] | 21-15 | H 6 | |
| 07:53 | | 23-15 | H 8 | GOOD! JUMPER by MCCULLAR, KEVIN |
| 07:53 | | | | ASSIST by HARRIS, DAJUAN |
| 07:53 | FOUL (PERSONAL) by FILIPOWSKI, KYLE | | | |
| 07:53 | | | | |
| 07:53 | | | | MISSED FT by MCCULLAR, KEVIN |
| 07:51 | REBOUND (DEF) by BLAKES, JAYLEN | | | |
| 07:32 | FOUL (OFF) by PROCTOR, TYRESE | | | |
| 07:32 | TURNOVER (OFFENSIVE) by PROCTOR, TYRESE | | | |
| 07:32 | SUB OUT: PROCTOR, TYRESE | | | |
| 07:32 | SUB IN: MITCHELL, MARK | | | |

| Time | VISITORS: Duke | Score | Margin | HOME: Kansas |
|-------|--|-------|--------|---|
| 07:16 | | | | MISSED LAYUP by WILSON, JALEN |
| 07:13 | REBOUND (DEF) by MITCHELL, MARK | | | |
| 07:10 | MISSED 3PTR by ROACH, JEREMY | | | |
| 07:07 | REBOUND (OFF) by FILIPOWSKI, KYLE | | | |
| 07:06 | MISSED JUMPER by FILIPOWSKI, KYLE | | | |
| 07:06 | | | | BLOCK by ADAMS, JR.,KJ |
| 07:05 | REBOUND (OFF) by FILIPOWSKI, KYLE | | | |
| 07:05 | | | | FOUL (PERSONAL) by ADAMS, JR.,KJ |
| 07:05 | GOOD! FT by FILIPOWSKI, KYLE | 23-16 | H 7 | |
| 07:05 | GOOD! FT by FILIPOWSKI, KYLE | 23-17 | H 6 | |
| 06:48 | | | | MISSED 3PTR by HARRIS, DAJUAN |
| 06:44 | REBOUND (DEF) by FILIPOWSKI, KYLE | | | |
| 06:40 | MISSED LAYUP by FILIPOWSKI, KYLE | | | |
| 06:40 | | | | BLOCK by MCCULLAR, KEVIN |
| 06:35 | | | | REBOUND (DEF) by MCCULLAR, KEVIN |
| 06:34 | | 25-17 | H 8 | GOOD! LAYUP by WILSON, JALEN [FB] |
| 06:34 | | | | ASSIST by HARRIS, DAJUAN |
| 06:26 | | | | FOUL (PERSONAL) by ADAMS, JR.,KJ |
| 06:26 | | | | SUB OUT: ADAMS, JR.,KJ |
| 06:26 | | | | SUB IN: UDEH JR., ERNEST |
| 06:17 | GOOD! 3PTR by FILIPOWSKI, KYLE | 25-20 | H 5 | |
| 06:17 | ASSIST by BLAKES, JAYLEN | | | |
| 06:04 | | 27-20 | H 7 | GOOD! JUMPER by DICK, GRADEY |
| 06:04 | | | | ASSIST by HARRIS, DAJUAN |
| 05:39 | TURNOVER (BADPASS) by YOUNG, RYAN | | | |
| 05:39 | | | | STEAL by DICK, GRADEY |
| 05:32 | | | | TURNOVER (TRAVEL) by MCCULLAR, KEVIN |
| 05:32 | SUB OUT: YOUNG, RYAN | | | |
| 05:32 | SUB OUT: MITCHELL, MARK | | | |
| 05:32 | SUB IN: LIVELY II, DERECK | | | |
| 05:32 | SUB IN: GRANDISON, JACOB | | | |
| 05:20 | FOUL (OFF) by GRANDISON, JACOB | | | |
| 05:20 | TURNOVER (OFFENSIVE) by GRANDISON, JACOB | | | |
| 05:03 | | | | MISSED LAYUP by UDEH JR., ERNEST |
| 05:00 | REBOUND (DEF) by GRANDISON, JACOB | | | |
| 04:57 | MISSED LAYUP by BLAKES, JAYLEN | | | |
| 04:57 | | | | BLOCK by HARRIS, DAJUAN |
| 04:54 | REBOUND (OFF) by LIVELY II, DERECK | | | |
| 04:53 | MISSED DUNK by LIVELY II, DERECK | | | |
| 04:53 | | | | BLOCK by UDEH JR., ERNEST |
| 04:51 | | | | REBOUND (DEF) by MCCULLAR, KEVIN |
| 04:45 | | | | TURNOVER (BADPASS) by HARRIS, DAJUAN |
| 04:35 | TURNOVER (BADPASS) by ROACH, JEREMY | | | |
| 04:35 | | | | STEAL by MCCULLAR, KEVIN |
| 04:29 | | | | TURNOVER (BADPASS) by MCCULLAR, KEVIN |
| 04:14 | MISSED LAYUP by FILIPOWSKI, KYLE | | | |
| 04:11 | REBOUND (OFF) by LIVELY II, DERECK | | | |
| 04:11 | GOOD! DUNK by LIVELY II, DERECK | 27-22 | H 5 | |
| 03:56 | | | | MISSED JUMPER by DICK, GRADEY |
| 03:53 | REBOUND (DEF) by FILIPOWSKI, KYLE | | | |
| 03:47 | MISSED LAYUP by ROACH, JEREMY | | | |
| 03:44 | REBOUND (OFF) by LIVELY II, DERECK | | | |
| 03:39 | GOOD! LAYUP by ROACH, JEREMY | 27-24 | H 3 | |
| 03:39 | | | | FOUL (PERSONAL) by UDEH JR., ERNEST |
| 03:39 | | | | |
| 03:39 | | | | SUB OUT: MCCULLAR, KEVIN |
| 03:39 | | | | SUB OUT: UDEH JR., ERNEST |
| 03:39 | | | | SUB IN: PETTIFORD, BOBBY |
| 03:39 | | | | SUB IN: EJIOFOR, ZUBY |
| 03:39 | GOOD! FT by ROACH, JEREMY | 27-25 | H 2 | |
| 03:22 | | | | FOUL (OFF) by EJIOFOR, ZUBY |
| 03:22 | | | | TURNOVER (OFFENSIVE) by EJIOFOR, ZUBY |
| 03:04 | MISSED 3PTR by FILIPOWSKI, KYLE | | | |
| 03:00 | | | | REBOUND (DEF) by EJIOFOR, ZUBY |
| 02:50 | | 29-25 | H 4 | GOOD! LAYUP by HARRIS, DAJUAN |
| 02:39 | FOUL (OFF) by FILIPOWSKI, KYLE | | | |
| 02:39 | TURNOVER (OFFENSIVE) by FILIPOWSKI, KYLE | | | |
| 02:31 | | 31-25 | H 6 | GOOD! JUMPER by WILSON, JALEN |
| 02:31 | | | | ASSIST by PETTIFORD, BOBBY |
| 02:12 | MISSED 3PTR by BLAKES, JAYLEN | | | |
| 02:09 | | | | REBOUND (DEF) by PETTIFORD, BOBBY |
| 02:09 | | | | TURNOVER (LOSTBALL) by PETTIFORD, BOBBY |
| 02:09 | STEAL by FILIPOWSKI, KYLE | | | |
| 02:06 | GOOD! LAYUP by BLAKES, JAYLEN | 31-27 | H 4 | |
| 02:06 | ASSIST by FILIPOWSKI, KYLE | | | |
| 01:48 | | 33-27 | H 6 | GOOD! DUNK by EJIOFOR, ZUBY |

| Time | VISITORS: Duke | Score | Margin | HOME: Kansas |
|-------|-----------------------------------|-------|--------|-----------------------------------|
| 01:48 | | | | ASSIST by HARRIS, DAJUAN |
| 01:34 | MISSED JUMPER by GRANDISON, JACOB | | | |
| 01:31 | | | | REBOUND (DEF) by EJIOFOR, ZUBY |
| 01:06 | | | | MISSED 3PTR by WILSON, JALEN |
| 01:03 | REBOUND (DEF) by BLAKES, JAYLEN | | | |
| 00:59 | MISSED 3PTR by ROACH, JEREMY | | | |
| 00:58 | | | | REBOUND (DEF) by TEAM |
| 00:58 | | | | TIMEOUT 30SEC |
| 00:58 | SUB OUT: LIVELY II, DERECK | | | |
| 00:58 | SUB OUT: FILIPOWSKI, KYLE | | | |
| 00:58 | SUB IN: YOUNG, RYAN | | | |
| 00:58 | SUB IN: MITCHELL, MARK | | | |
| 00:41 | | | | MISSED 3PTR by DICK, GRADEY |
| 00:41 | REBOUND (DEF) by ROACH, JEREMY | | | |
| 00:23 | TIMEOUT 30SEC | | | |
| 00:23 | | | | SUB OUT: DICK, GRADEY |
| 00:23 | | | | SUB IN: MCCULLAR, KEVIN |
| 00:18 | | | | FOUL (PERSONAL) by EJIOFOR, ZUBY |
| 00:18 | GOOD! FT by ROACH, JEREMY | 33-28 | H 5 | |
| 00:18 | SUB OUT: MITCHELL, MARK | | | |
| 00:18 | SUB IN: LIVELY II, DERECK | | | |
| 00:18 | GOOD! FT by ROACH, JEREMY | 33-29 | H 4 | |
| 00:00 | | | | MISSED JUMPER by PETTIFORD, BOBBY |
| 00:00 | | | | REBOUND (OFF) by EJIOFOR, ZUBY |
| 00:00 | | | | MISSED LAYUP by EJIOFOR, ZUBY |

Duke 29, Kansas 33

| Points (This Period) | DUK | KU |
|----------------------|----------------|----------------|
| In the Paint | 18 | 18 |
| Off Turns | 8 | 8 |
| 2nd Chance | 9 | 4 |
| Fast Break | 2 | 5 |
| Bench | 7 | 2 |
| Per Poss | 0.763 14/38 | 0.846 16/39 |

Official Box Score
Duke vs Kansas
Second Half Statistics Only
November 15, 2022 at Gainbridge Fieldhouse - Indianapolis, IN

Duke 35

| No. | Player | S | Pts | FG | 3FG | FT | OR | DR | TR | PF | A | TO | Blk | Stl | Min | +/- | |
|---------------|-------------------|-----------|-----|--------------|-------------|------------|-----------|-----------|-----------|----------|----------|----------|----------|----------|------------|-----|--|
| 03 | ROACH, JEREMY | G | 5 | 2-8 | 1-3 | 0-1 | 1 | 2 | 3 | 2 | 1 | 1 | 0 | 0 | 20 | -2 | |
| 05 | PROCTOR, TYRESE | G | 9 | 3-7 | 1-3 | 2-2 | 1 | 1 | 2 | 0 | 3 | 0 | 0 | 0 | 19 | 3 | |
| 15 | YOUNG, RYAN | C | 2 | 1-2 | 0-0 | 0-0 | 1 | 0 | 1 | 1 | 0 | 3 | 0 | 0 | 9 | -1 | |
| 25 | MITCHELL, MARK | F | 7 | 3-6 | 0-0 | 1-2 | 2 | 1 | 3 | 1 | 0 | 1 | 0 | 0 | 20 | -1 | |
| 30 | FILIPOWSKI, KYLE | C | 10 | 4-10 | 0-3 | 2-2 | 4 | 5 | 9 | 1 | 0 | 2 | 1 | 0 | 19 | 1 | |
| 01 | LIVELY II, DERECK | C | 2 | 1-1 | 0-0 | 0-0 | 1 | 1 | 2 | 1 | 1 | 0 | 1 | 0 | 11 | 2 | |
| 02 | BLAKES, JAYLEN | G | 0 | 0-1 | 0-1 | 0-0 | 0 | 1 | 1 | 1 | 1 | 0 | 0 | 0 | 3 | -7 | |
| 13 | GRANDISON, JACOB | F | 0 | 0-0 | 0-0 | 0-0 | 0 | 0 | 0 | 0 | 0 | 0 | 0 | 0 | 0 | 0 | |
| TEAM | | | | | | | 2 | 1 | 3 | 0 | 0 | | | | | | |
| TOTALS | | 35 | | 14-35 | 2-10 | 5-7 | 12 | 12 | 24 | 7 | 6 | 7 | 2 | 0 | 100 | | |

Shooting By Period

| Period | FG | FG% | 3FG | 3FG% | FT | FT% |
|----------|-------|-------|------|-------|-------|-------|
| 2nd Half | 14-35 | 40% | 2-10 | 20% | 5-7 | 71% |
| Game | 24-67 | 35.8% | 3-21 | 14.3% | 13-16 | 81.3% |

Deadball Rebounds: 1,0
Last FG Half: DUK -

Kansas 36

| No. | Player | S | Pts | FG | 3FG | FT | OR | DR | TR | PF | A | TO | Blk | Stl | Min | +/- | |
|---------------|------------------|-----------|-----|--------------|------------|------------|----------|-----------|-----------|----------|-----------|----------|----------|----------|------------|-----|--|
| 03 | HARRIS, DAJUAN | G | 4 | 2-5 | 0-1 | 0-0 | 2 | 2 | 4 | 3 | 4 | 0 | 0 | 0 | 19 | -1 | |
| 04 | DICK, GRADEY | G | 7 | 3-3 | 1-1 | 0-0 | 0 | 1 | 1 | 2 | 0 | 0 | 0 | 0 | 14 | -2 | |
| 10 | WILSON, JALEN | F | 15 | 6-16 | 0-3 | 3-3 | 3 | 2 | 5 | 0 | 2 | 2 | 1 | 1 | 20 | 1 | |
| 15 | MCCULLAR, KEVIN | G | 4 | 2-5 | 0-1 | 0-0 | 1 | 1 | 2 | 2 | 1 | 0 | 0 | 0 | 14 | 8 | |
| 24 | ADAMS, JR.,KJ | F | 4 | 2-2 | 0-0 | 0-1 | 0 | 1 | 1 | 2 | 2 | 2 | 0 | 1 | 10 | -4 | |
| 00 | PETTIFORD, BOBBY | G | 2 | 1-1 | 0-0 | 0-0 | 0 | 2 | 2 | 0 | 1 | 0 | 1 | 0 | 10 | 3 | |
| 01 | YESUFU, JOSEPH | G | 0 | 0-2 | 0-0 | 0-0 | 0 | 0 | 0 | 0 | 0 | 0 | 0 | 1 | 1 | 2 | |
| 23 | UDEH JR., ERNEST | C | 0 | 0-0 | 0-0 | 0-0 | 0 | 0 | 0 | 0 | 0 | 0 | 2 | 0 | 6 | -7 | |
| 35 | EJIOFOR, ZUBY | F | 0 | 0-0 | 0-0 | 0-0 | 1 | 1 | 2 | 0 | 0 | 1 | 2 | 0 | 6 | 5 | |
| TEAM | | | | | | | 0 | 0 | 0 | 0 | 0 | | | | | | |
| TOTALS | | 36 | | 16-34 | 1-6 | 3-4 | 7 | 10 | 17 | 9 | 10 | 5 | 6 | 3 | 100 | | |

Shooting By Period

| Period | FG | FG% | 3FG | 3FG% | FT | FT% |
|----------|-------|-------|------|-------|-----|-------|
| 2nd Half | 16-34 | 47% | 1-6 | 17% | 3-4 | 75% |
| Game | 31-67 | 46.3% | 3-19 | 15.8% | 4-7 | 57.1% |

Deadball Rebounds: 2,1
Last FG Half: KU -

Game Notes:

Officials: **Doug Sirmons, Roger Ayers, Jeffrey Anderson**
 Attendance: **15828**

Start Time: **10:24 PM ET**
 End Time: **12:21 AM ET**
 Game Duration: **1:57**
 Neutral Court;

| Score | 1st | 2nd | TOT |
|-------|-----|-----|-----------|
| DUK | 29 | 35 | 64 |
| KU | 33 | 36 | 69 |

| Points (This Period) | DUK | KU |
|----------------------|----------------|----------------|
| In the Paint | 24 | 30 |
| Off Turns | 4 | 11 |
| 2nd Chance | 10 | 8 |
| Fast Break | 4 | 7 |
| Bench | 2 | 2 |
| Per Poss | 1.061 17/33 | 1.059 18/34 |

Official Play-By-Play
Duke vs Kansas
Second Half
November 15, 2022 at Gainbridge Fieldhouse - Indianapolis, IN

Period 2

Starters:

Duke: 3 ROACH, JEREMY (G); 5 PROCTOR, TYRESE (G); 15 YOUNG, RYAN (C); 25 MITCHELL, MARK (F); 30 FILIPOWSKI, KYLE (C);

Kansas: 3 HARRIS, DAJUAN (G); 4 DICK, GRADEY (G); 10 WILSON, JALEN (F); 15 MCCULLAR, KEVIN (G); 24 ADAMS, JR., KJ (F);

| Time | VISITORS: Duke | Score | Margin | HOME: Kansas |
|-------|---------------------------------------|-------|--------|--|
| 00:00 | | | | REBOUND (OFF) by TEAM |
| 20:00 | SUB OUT: LIVELY II, DERECK | | | |
| 20:00 | SUB OUT: BLAKES, JAYLEN | | | |
| 20:00 | SUB OUT: GRANDISON, JACOB | | | |
| 20:00 | SUB IN: PROCTOR, TYRESE | | | |
| 20:00 | SUB IN: MITCHELL, MARK | | | |
| 20:00 | SUB IN: FILIPOWSKI, KYLE | | | |
| 20:00 | | | | SUB OUT: PETTIFORD, BOBBY |
| 20:00 | | | | SUB OUT: EJIOFOR, ZUBY |
| 20:00 | | | | SUB IN: DICK, GRADEY |
| 20:00 | | | | SUB IN: ADAMS, JR., KJ |
| 19:35 | GOOD! JUMPER by PROCTOR, TYRESE [PNT] | 33-31 | H 2 | |
| 19:16 | | | | MISSED JUMPER by WILSON, JALEN |
| 19:13 | REBOUND (DEF) by FILIPOWSKI, KYLE | | | |
| 19:09 | | | | FOUL (PERSONAL) by MCCULLAR, KEVIN |
| 19:06 | | | | FOUL (PERSONAL) by HARRIS, DAJUAN |
| 18:53 | | | | FOUL (PERSONAL) by MCCULLAR, KEVIN |
| 18:53 | GOOD! FT by MITCHELL, MARK | 33-32 | H 1 | |
| 18:53 | MISSED FT by MITCHELL, MARK | | | |
| 18:51 | | | | REBOUND (DEF) by ADAMS, JR., KJ |
| 18:33 | | 35-32 | H 3 | GOOD! LAYUP by WILSON, JALEN |
| 18:18 | TURNOVER (LOSTBALL) by YOUNG, RYAN | | | |
| 18:18 | | | | STEAL by ADAMS, JR., KJ |
| 18:15 | | 37-32 | H 5 | GOOD! LAYUP by HARRIS, DAJUAN [FB] |
| 18:15 | | | | ASSIST by ADAMS, JR., KJ |
| 17:59 | GOOD! JUMPER by PROCTOR, TYRESE [PNT] | 37-34 | H 3 | |
| 17:36 | | | | MISSED JUMPER by MCCULLAR, KEVIN |
| 17:32 | | | | REBOUND (OFF) by HARRIS, DAJUAN |
| 17:26 | | | | MISSED 3PTR by HARRIS, DAJUAN |
| 17:24 | REBOUND (DEF) by TEAM | | | |
| 17:24 | | | | SUB OUT: MCCULLAR, KEVIN |
| 17:24 | | | | SUB IN: UDEH JR., ERNEST |
| 17:06 | | | | FOUL (PERSONAL) by DICK, GRADEY |
| 17:06 | GOOD! FT by FILIPOWSKI, KYLE | 37-35 | H 2 | |
| 17:06 | SUB OUT: YOUNG, RYAN | | | |
| 17:06 | SUB IN: LIVELY II, DERECK | | | |
| 17:06 | GOOD! FT by FILIPOWSKI, KYLE | 37-36 | H 1 | |
| 16:55 | | | | MISSED 3PTR by WILSON, JALEN |
| 16:52 | REBOUND (DEF) by FILIPOWSKI, KYLE | | | |
| 16:32 | MISSED LAYUP by ROACH, JEREMY | | | |
| 16:29 | REBOUND (OFF) by LIVELY II, DERECK | | | |
| 16:29 | GOOD! DUNK by LIVELY II, DERECK | 37-38 | V 1 | |
| 16:20 | | 39-38 | H 1 | GOOD! JUMPER by ADAMS, JR., KJ [PNT] |
| 16:20 | | | | ASSIST by HARRIS, DAJUAN |
| 15:58 | GOOD! 3PTR by PROCTOR, TYRESE | 39-41 | V 2 | |
| 15:58 | ASSIST by LIVELY II, DERECK | | | |
| 15:41 | | 41-41 | T | GOOD! LAYUP by WILSON, JALEN |
| 15:25 | GOOD! JUMPER by MITCHELL, MARK [PNT] | 41-43 | V 2 | |
| 15:25 | ASSIST by PROCTOR, TYRESE | | | |
| 15:10 | | | | MISSED JUMPER by WILSON, JALEN |
| 15:07 | REBOUND (DEF) by FILIPOWSKI, KYLE | | | |
| 14:58 | TIMEOUT 30SEC | | | |
| 14:58 | | | | |
| 14:54 | GOOD! DUNK by FILIPOWSKI, KYLE [PNT] | 41-45 | V 4 | |
| 14:54 | ASSIST by ROACH, JEREMY | | | |
| 14:44 | | | | FOUL (OFF) by ADAMS, JR., KJ |
| 14:44 | | | | TURNOVER (OFFENSIVE) by ADAMS, JR., KJ |
| 14:44 | | | | |
| 14:44 | | | | SUB OUT: ADAMS, JR., KJ |
| 14:44 | | | | SUB IN: PETTIFORD, BOBBY |
| 14:28 | MISSED LAYUP by FILIPOWSKI, KYLE | | | |
| 14:26 | REBOUND (OFF) by MITCHELL, MARK | | | |
| 14:26 | MISSED LAYUP by MITCHELL, MARK | | | |
| 14:26 | | | | BLOCK by UDEH JR., ERNEST |
| 14:26 | REBOUND (OFF) by TEAM | | | |

| Time | VISITORS: Duke | Score | Margin | HOME: Kansas |
|-------|--|-------|--------|--|
| 14:24 | GOOD! JUMPER by FILIPOWSKI, KYLE [PNT] | 41-47 | V 6 | |
| 14:24 | ASSIST by PROCTOR, TYRESE | | | |
| 13:51 | | | | MISSED LAYUP by HARRIS, DAJUAN |
| 13:48 | REBOUND (DEF) by ROACH, JEREMY | | | |
| 13:28 | MISSED JUMPER by ROACH, JEREMY | | | |
| 13:28 | | | | BLOCK by UDEH JR., ERNEST |
| 13:24 | | | | REBOUND (DEF) by PETTIFORD, BOBBY |
| 13:20 | | 43-47 | V 4 | GOOD! LAYUP by WILSON, JALEN [FB] |
| 13:20 | | | | ASSIST by PETTIFORD, BOBBY |
| 13:01 | MISSED 3PTR by ROACH, JEREMY | | | |
| 12:54 | REBOUND (OFF) by MITCHELL, MARK | | | |
| 12:54 | GOOD! DUNK by MITCHELL, MARK | 43-49 | V 6 | |
| 12:37 | | | | MISSED JUMPER by WILSON, JALEN |
| 12:33 | | | | REBOUND (OFF) by HARRIS, DAJUAN |
| 12:21 | | 45-49 | V 4 | GOOD! JUMPER by PETTIFORD, BOBBY [PNT] |
| 12:21 | | | | ASSIST by WILSON, JALEN |
| 12:00 | GOOD! DUNK by MITCHELL, MARK | 45-51 | V 6 | |
| 11:47 | | 47-51 | V 4 | GOOD! LAYUP by HARRIS, DAJUAN |
| 11:34 | MISSED 3PTR by PROCTOR, TYRESE | | | |
| 11:30 | | | | REBOUND (DEF) by WILSON, JALEN |
| 11:18 | | | | MISSED LAYUP by WILSON, JALEN |
| 11:18 | BLOCK by FILIPOWSKI, KYLE | | | |
| 11:14 | | | | REBOUND (OFF) by WILSON, JALEN |
| 11:13 | | | | MISSED LAYUP by WILSON, JALEN |
| 11:13 | BLOCK by LIVELY II, DERECK | | | |
| 11:10 | REBOUND (DEF) by FILIPOWSKI, KYLE | | | |
| 11:09 | | | | FOUL (PERSONAL) by DICK, GRADEY |
| 11:09 | | | | |
| 11:09 | SUB OUT: LIVELY II, DERECK | | | |
| 11:09 | SUB OUT: FILIPOWSKI, KYLE | | | |
| 11:09 | SUB IN: BLAKES, JAYLEN | | | |
| 11:09 | SUB IN: YOUNG, RYAN | | | |
| 11:09 | | | | SUB OUT: HARRIS, DAJUAN |
| 11:09 | | | | SUB OUT: DICK, GRADEY |
| 11:09 | | | | SUB OUT: UDEH JR., ERNEST |
| 11:09 | | | | SUB IN: YESUFU, JOSEPH |
| 11:09 | | | | SUB IN: MCCULLAR, KEVIN |
| 11:09 | | | | SUB IN: EJIOFOR, ZUBY |
| 10:49 | MISSED JUMPER by PROCTOR, TYRESE | | | |
| 10:45 | | | | REBOUND (DEF) by EJIOFOR, ZUBY |
| 10:41 | | | | MISSED 3PTR by MCCULLAR, KEVIN |
| 10:37 | | | | REBOUND (OFF) by WILSON, JALEN |
| 10:35 | | 49-51 | V 2 | GOOD! LAYUP by MCCULLAR, KEVIN |
| 10:35 | | | | ASSIST by WILSON, JALEN |
| 10:29 | GOOD! LAYUP by YOUNG, RYAN [FB] | 49-53 | V 4 | |
| 10:29 | ASSIST by BLAKES, JAYLEN | | | |
| 10:09 | | | | MISSED JUMPER by YESUFU, JOSEPH |
| 10:06 | REBOUND (DEF) by BLAKES, JAYLEN | | | |
| 09:56 | TURNOVER (LOSTBALL) by YOUNG, RYAN | | | |
| 09:56 | | | | STEAL by YESUFU, JOSEPH |
| 09:52 | | | | MISSED LAYUP by YESUFU, JOSEPH |
| 09:48 | | | | REBOUND (OFF) by WILSON, JALEN |
| 09:48 | | 51-53 | V 2 | GOOD! LAYUP by WILSON, JALEN |
| 09:47 | SUB OUT: PROCTOR, TYRESE | | | |
| 09:47 | SUB IN: FILIPOWSKI, KYLE | | | |
| 09:47 | | | | SUB OUT: YESUFU, JOSEPH |
| 09:47 | | | | SUB IN: HARRIS, DAJUAN |
| 09:23 | MISSED 3PTR by BLAKES, JAYLEN | | | |
| 09:20 | | | | REBOUND (DEF) by HARRIS, DAJUAN |
| 09:12 | | 53-53 | T | GOOD! LAYUP by WILSON, JALEN |
| 09:12 | | | | ASSIST by HARRIS, DAJUAN |
| 09:12 | FOUL (PERSONAL) by YOUNG, RYAN | | | |
| 09:12 | SUB OUT: ROACH, JEREMY | | | |
| 09:12 | SUB IN: PROCTOR, TYRESE | | | |
| 09:12 | | 54-53 | H 1 | GOOD! FT by WILSON, JALEN |
| 09:02 | | | | FOUL (PERSONAL) by HARRIS, DAJUAN |
| 09:02 | SUB OUT: YOUNG, RYAN | | | |
| 09:02 | SUB IN: LIVELY II, DERECK | | | |
| 09:02 | GOOD! FT by PROCTOR, TYRESE | 54-54 | T | |
| 09:02 | GOOD! FT by PROCTOR, TYRESE | 54-55 | V 1 | |
| 08:49 | | | | TURNOVER (BADPASS) by WILSON, JALEN |
| 08:49 | SUB OUT: BLAKES, JAYLEN | | | |
| 08:49 | SUB IN: ROACH, JEREMY | | | |
| 08:38 | MISSED JUMPER by PROCTOR, TYRESE | | | |
| 08:38 | | | | BLOCK by PETTIFORD, BOBBY |
| 08:34 | REBOUND (OFF) by PROCTOR, TYRESE | | | |

| Time | VISITORS: Duke | Score | Margin | HOME: Kansas |
|-------|--|-------|--------|---------------------------------------|
| 08:27 | MISSED LAYUP by FILIPOWSKI, KYLE | | | |
| 08:25 | REBOUND (OFF) by FILIPOWSKI, KYLE | | | |
| 08:25 | FOUL (OFF) by FILIPOWSKI, KYLE | | | |
| 08:25 | TURNOVER (OFFENSIVE) by FILIPOWSKI, KYLE | | | |
| 08:05 | | | | TURNOVER (TRAVEL) by EJIOFOR, ZUBY |
| 07:52 | MISSED LAYUP by ROACH, JEREMY | | | |
| 07:52 | | | | BLOCK by EJIOFOR, ZUBY |
| 07:51 | REBOUND (OFF) by TEAM | | | |
| 07:51 | | | | |
| 07:51 | | | | SUB OUT: EJIOFOR, ZUBY |
| 07:51 | | | | SUB IN: ADAMS, JR.,KJ |
| 07:42 | MISSED 3PTR by FILIPOWSKI, KYLE | | | |
| 07:38 | | | | REBOUND (DEF) by WILSON, JALEN |
| 07:16 | | | | MISSED JUMPER by MCCULLAR, KEVIN |
| 07:13 | REBOUND (DEF) by PROCTOR, TYRESE | | | |
| 06:47 | MISSED JUMPER by MITCHELL, MARK | | | |
| 06:47 | | | | BLOCK by WILSON, JALEN |
| 06:43 | | | | REBOUND (DEF) by PETTIFORD, BOBBY |
| 06:43 | | | | FOUL (OFF) by ADAMS, JR.,KJ |
| 06:43 | | | | TURNOVER (OFFENSIVE) by ADAMS, JR.,KJ |
| 06:43 | SUB OUT: LIVELY II, DERECK | | | |
| 06:43 | SUB IN: YOUNG, RYAN | | | |
| 06:32 | MISSED JUMPER by MITCHELL, MARK | | | |
| 06:29 | | | | REBOUND (DEF) by HARRIS, DAJUAN |
| 06:12 | | | | MISSED JUMPER by HARRIS, DAJUAN |
| 06:09 | REBOUND (DEF) by FILIPOWSKI, KYLE | | | |
| 05:59 | MISSED JUMPER by FILIPOWSKI, KYLE | | | |
| 05:55 | REBOUND (OFF) by FILIPOWSKI, KYLE | | | |
| 05:55 | GOOD! LAYUP by FILIPOWSKI, KYLE | 54-57 | V 3 | |
| 05:41 | | | | MISSED 3PTR by WILSON, JALEN |
| 05:37 | REBOUND (DEF) by ROACH, JEREMY | | | |
| 05:19 | TURNOVER (TRAVEL) by YOUNG, RYAN | | | |
| 05:19 | | | | SUB OUT: PETTIFORD, BOBBY |
| 05:19 | | | | SUB OUT: ADAMS, JR.,KJ |
| 05:19 | | | | SUB IN: DICK, GRADEY |
| 05:19 | | | | SUB IN: EJIOFOR, ZUBY |
| 05:07 | | | | TURNOVER (TRAVEL) by WILSON, JALEN |
| 04:53 | MISSED LAYUP by ROACH, JEREMY | | | |
| 04:53 | | | | BLOCK by EJIOFOR, ZUBY |
| 04:49 | REBOUND (OFF) by ROACH, JEREMY | | | |
| 04:41 | MISSED LAYUP by YOUNG, RYAN | | | |
| 04:37 | REBOUND (OFF) by FILIPOWSKI, KYLE | | | |
| 04:37 | GOOD! LAYUP by FILIPOWSKI, KYLE | 54-59 | V 5 | |
| 04:27 | | | | TIMEOUT 30SEC |
| 04:27 | | | | |
| 04:08 | | 56-59 | V 3 | GOOD! JUMPER by WILSON, JALEN [PNT] |
| 03:44 | MISSED 3PTR by FILIPOWSKI, KYLE | | | |
| 03:40 | | | | REBOUND (DEF) by MCCULLAR, KEVIN |
| 03:34 | | | | MISSED LAYUP by WILSON, JALEN |
| 03:32 | | | | REBOUND (OFF) by EJIOFOR, ZUBY |
| 03:27 | | | | MISSED 3PTR by WILSON, JALEN |
| 03:23 | REBOUND (DEF) by MITCHELL, MARK | | | |
| 03:02 | MISSED 3PTR by ROACH, JEREMY | | | |
| 02:59 | REBOUND (OFF) by YOUNG, RYAN | | | |
| 02:54 | TURNOVER (BADPASS) by FILIPOWSKI, KYLE | | | |
| 02:54 | SUB OUT: YOUNG, RYAN | | | |
| 02:54 | SUB IN: LIVELY II, DERECK | | | |
| 02:45 | | | | MISSED JUMPER by WILSON, JALEN |
| 02:41 | | | | REBOUND (OFF) by MCCULLAR, KEVIN |
| 02:41 | | 58-59 | V 1 | GOOD! LAYUP by MCCULLAR, KEVIN |
| 02:37 | TIMEOUT 30SEC | | | |
| 02:37 | | | | SUB OUT: EJIOFOR, ZUBY |
| 02:37 | | | | SUB IN: ADAMS, JR.,KJ |
| 02:28 | TURNOVER (LOSTBALL) by MITCHELL, MARK | | | |
| 02:28 | | | | STEAL by WILSON, JALEN |
| 02:22 | | 61-59 | H 2 | GOOD! 3PTR by DICK, GRADEY [FB] |
| 02:22 | | | | ASSIST by MCCULLAR, KEVIN |
| 02:02 | GOOD! 3PTR by ROACH, JEREMY | 61-62 | V 1 | |
| 02:02 | ASSIST by PROCTOR, TYRESE | | | |
| 01:39 | | 63-62 | H 1 | GOOD! DUNK by DICK, GRADEY |
| 01:39 | | | | ASSIST by HARRIS, DAJUAN |
| 01:23 | FOUL (OFF) by ROACH, JEREMY | | | |
| 01:23 | TURNOVER (OFFENSIVE) by ROACH, JEREMY | | | |
| 01:23 | SUB OUT: PROCTOR, TYRESE | | | |
| 01:23 | SUB IN: BLAKES, JAYLEN | | | |
| 01:04 | | 65-62 | H 3 | GOOD! LAYUP by DICK, GRADEY |

| Time | VISITORS: Duke | Score | Margin | HOME: Kansas |
|-------|---------------------------------------|-------|--------|-----------------------------------|
| 01:04 | | | | ASSIST by ADAMS, JR.,KJ |
| 00:48 | | | | FOUL (PERSONAL) by HARRIS, DAJUAN |
| 00:48 | SUB OUT: BLAKES, JAYLEN | | | |
| 00:48 | SUB IN: PROCTOR, TYRESE | | | |
| 00:48 | MISSED FT by ROACH, JEREMY | | | |
| 00:46 | | | | REBOUND (DEF) by DICK, GRADEY |
| 00:22 | | 67-62 | H 5 | GOOD! LAYUP by ADAMS, JR.,KJ |
| 00:22 | | | | ASSIST by HARRIS, DAJUAN |
| 00:22 | FOUL (PERSONAL) by LIVELY II, DERECK | | | |
| 00:21 | | | | MISSED FT by ADAMS, JR.,KJ |
| 00:20 | REBOUND (DEF) by LIVELY II, DERECK | | | |
| 00:15 | GOOD! LAYUP by ROACH, JEREMY [FB/PNT] | 67-64 | H 3 | |
| 00:11 | FOUL (PERSONAL) by ROACH, JEREMY | | | |
| 00:11 | SUB OUT: LIVELY II, DERECK | | | |
| 00:11 | SUB IN: BLAKES, JAYLEN | | | |
| 00:11 | | | | SUB OUT: ADAMS, JR.,KJ |
| 00:11 | | | | SUB IN: PETTIFORD, BOBBY |
| 00:10 | FOUL (PERSONAL) by BLAKES, JAYLEN | | | |
| 00:09 | FOUL (PERSONAL) by MITCHELL, MARK | | | |
| 00:09 | | | | SUB OUT: DICK, GRADEY |
| 00:09 | | | | SUB IN: ADAMS, JR.,KJ |
| 00:09 | | 68-64 | H 4 | GOOD! FT by WILSON, JALEN |
| 00:09 | | 69-64 | H 5 | GOOD! FT by WILSON, JALEN |
| 00:09 | | | | TIMEOUT 30SEC |
| 00:05 | MISSED 3PTR by PROCTOR, TYRESE | | | |
| 00:01 | REBOUND (OFF) by FILIPOWSKI, KYLE | | | |
| 00:00 | MISSED 3PTR by FILIPOWSKI, KYLE | | | |
| 00:00 | REBOUND (OFF) by TEAM | | | |

Duke 64, Kansas 69

| Points (This Period) | DUK | KU |
|----------------------|----------------|----------------|
| In the Paint | 24 | 30 |
| Off Turns | 4 | 11 |
| 2nd Chance | 10 | 8 |
| Fast Break | 4 | 7 |
| Bench | 2 | 2 |
| Per Poss | 1.061 17/33 | 1.059 18/34 |

Official Scoring/Possession Reference Chart
Duke vs Kansas
Period 1
November 15, 2022 at Gainbridge Fieldhouse - Indianapolis, IN

Period 1

Starters:

Duke: 3 ROACH, JEREMY (G); 5 PROCTOR, TYRESE (G); 15 YOUNG, RYAN (C); 25 MITCHELL, MARK (F); 30 FILIPOWSKI, KYLE (C);

Kansas: 3 HARRIS, DAJUAN (G); 4 DICK, GRADEY (G); 10 WILSON, JALEN (F); 15 MCCULLAR, KEVIN (G); 24 ADAMS, JR., KJ (F);

| Time | VISITORS: Duke | Score | Margin | HOME: Kansas |
|-------|--------------------------------------|-------|--------|-----------------------------------|
| 19:09 | GOOD! LAYUP by ROACH, JEREMY | 0-2 | V 2 | |
| 18:40 | GOOD! LAYUP by FILIPOWSKI, KYLE [FB] | 0-4 | V 4 | |
| 18:20 | | 3-4 | V 1 | GOOD! 3PTR by MCCULLAR, KEVIN |
| 17:17 | | 5-4 | H 1 | GOOD! LAYUP by ADAMS, JR., KJ |
| 16:56 | GOOD! LAYUP by YOUNG, RYAN | 5-6 | V 1 | |
| 16:43 | | 7-6 | H 1 | GOOD! LAYUP by WILSON, JALEN |
| 16:05 | | 9-6 | H 3 | GOOD! JUMPER by WILSON, JALEN |
| 15:35 | | 12-6 | H 6 | GOOD! 3PTR by MCCULLAR, KEVIN |
| 14:23 | | 14-6 | H 8 | GOOD! LAYUP by DICK, GRADEY [FB] |
| 14:23 | | 15-6 | H 9 | GOOD! FT by DICK, GRADEY [FB] |
| 13:20 | | 17-6 | H 11 | GOOD! LAYUP by WILSON, JALEN |
| 12:41 | GOOD! LAYUP by ROACH, JEREMY | 17-8 | H 9 | |
| 11:03 | | 19-8 | H 11 | GOOD! LAYUP by DICK, GRADEY |
| 10:38 | GOOD! FT by BLAKES, JAYLEN | 19-9 | H 10 | |
| 10:38 | GOOD! FT by BLAKES, JAYLEN | 19-10 | H 9 | |
| 10:12 | GOOD! FT by BLAKES, JAYLEN | 19-11 | H 8 | |
| 08:40 | GOOD! LAYUP by YOUNG, RYAN | 19-13 | H 6 | |
| 08:22 | | 21-13 | H 8 | GOOD! LAYUP by ADAMS, JR., KJ |
| 08:14 | GOOD! JUMPER by ROACH, JEREMY [PNT] | 21-15 | H 6 | |
| 07:53 | | 23-15 | H 8 | GOOD! JUMPER by MCCULLAR, KEVIN |
| 07:05 | GOOD! FT by FILIPOWSKI, KYLE | 23-16 | H 7 | |
| 07:05 | GOOD! FT by FILIPOWSKI, KYLE | 23-17 | H 6 | |
| 06:34 | | 25-17 | H 8 | GOOD! LAYUP by WILSON, JALEN [FB] |
| 06:17 | GOOD! 3PTR by FILIPOWSKI, KYLE | 25-20 | H 5 | |
| 06:04 | | 27-20 | H 7 | GOOD! JUMPER by DICK, GRADEY |
| 04:11 | GOOD! DUNK by LIVELY II, DERECK | 27-22 | H 5 | |
| 03:39 | GOOD! LAYUP by ROACH, JEREMY | 27-24 | H 3 | |
| 03:39 | GOOD! FT by ROACH, JEREMY | 27-25 | H 2 | |
| 02:50 | | 29-25 | H 4 | GOOD! LAYUP by HARRIS, DAJUAN |
| 02:31 | | 31-25 | H 6 | GOOD! JUMPER by WILSON, JALEN |
| 02:06 | GOOD! LAYUP by BLAKES, JAYLEN | 31-27 | H 4 | |
| 01:48 | | 33-27 | H 6 | GOOD! DUNK by EJIOFOR, ZUBY |
| 00:18 | GOOD! FT by ROACH, JEREMY | 33-28 | H 5 | |
| 00:18 | GOOD! FT by ROACH, JEREMY | 33-29 | H 4 | |

Duke 29, Kansas 33

Official Scoring/Possession Reference Chart
Duke vs Kansas
Period 2
November 15, 2022 at Gainbridge Fieldhouse - Indianapolis, IN

Period 2

Starters:

Duke: 3 ROACH, JEREMY (G); 5 PROCTOR, TYRESE (G); 15 YOUNG, RYAN (C); 25 MITCHELL, MARK (F); 30 FILIPOWSKI, KYLE (C);
Kansas: 3 HARRIS, DAJUAN (G); 4 DICK, GRADEY (G); 10 WILSON, JALEN (F); 15 MCCULLAR, KEVIN (G); 24 ADAMS, JR., KJ (F);

| Time | VISITORS: Duke | Score | Margin | HOME: Kansas |
|-------|--|-------|--------|--|
| 19:35 | GOOD! JUMPER by PROCTOR, TYRESE [PNT] | 33-31 | H 2 | |
| 18:53 | GOOD! FT by MITCHELL, MARK | 33-32 | H 1 | |
| 18:33 | | 35-32 | H 3 | GOOD! LAYUP by WILSON, JALEN |
| 18:15 | | 37-32 | H 5 | GOOD! LAYUP by HARRIS, DAJUAN [FB] |
| 17:59 | GOOD! JUMPER by PROCTOR, TYRESE [PNT] | 37-34 | H 3 | |
| 17:06 | GOOD! FT by FILIPOWSKI, KYLE | 37-35 | H 2 | |
| 17:06 | GOOD! FT by FILIPOWSKI, KYLE | 37-36 | H 1 | |
| 16:29 | GOOD! DUNK by LIVELY II, DERECK | 37-38 | V 1 | |
| 16:20 | | 39-38 | H 1 | GOOD! JUMPER by ADAMS, JR., KJ [PNT] |
| 15:58 | GOOD! 3PTR by PROCTOR, TYRESE | 39-41 | V 2 | |
| 15:41 | | 41-41 | T | GOOD! LAYUP by WILSON, JALEN |
| 15:25 | GOOD! JUMPER by MITCHELL, MARK [PNT] | 41-43 | V 2 | |
| 14:54 | GOOD! DUNK by FILIPOWSKI, KYLE [PNT] | 41-45 | V 4 | |
| 14:24 | GOOD! JUMPER by FILIPOWSKI, KYLE [PNT] | 41-47 | V 6 | |
| 13:20 | | 43-47 | V 4 | GOOD! LAYUP by WILSON, JALEN [FB] |
| 12:54 | GOOD! DUNK by MITCHELL, MARK | 43-49 | V 6 | |
| 12:21 | | 45-49 | V 4 | GOOD! JUMPER by PETTIFORD, BOBBY [PNT] |
| 12:00 | GOOD! DUNK by MITCHELL, MARK | 45-51 | V 6 | |
| 11:47 | | 47-51 | V 4 | GOOD! LAYUP by HARRIS, DAJUAN |
| 10:35 | | 49-51 | V 2 | GOOD! LAYUP by MCCULLAR, KEVIN |
| 10:29 | GOOD! LAYUP by YOUNG, RYAN [FB] | 49-53 | V 4 | |
| 09:48 | | 51-53 | V 2 | GOOD! LAYUP by WILSON, JALEN |
| 09:12 | | 53-53 | T | GOOD! LAYUP by WILSON, JALEN |
| 09:12 | | 54-53 | H 1 | GOOD! FT by WILSON, JALEN |
| 09:02 | GOOD! FT by PROCTOR, TYRESE | 54-54 | T | |
| 09:02 | GOOD! FT by PROCTOR, TYRESE | 54-55 | V 1 | |
| 05:55 | GOOD! LAYUP by FILIPOWSKI, KYLE | 54-57 | V 3 | |
| 04:37 | GOOD! LAYUP by FILIPOWSKI, KYLE | 54-59 | V 5 | |
| 04:08 | | 56-59 | V 3 | GOOD! JUMPER by WILSON, JALEN [PNT] |
| 02:41 | | 58-59 | V 1 | GOOD! LAYUP by MCCULLAR, KEVIN |
| 02:22 | | 61-59 | H 2 | GOOD! 3PTR by DICK, GRADEY [FB] |
| 02:02 | GOOD! 3PTR by ROACH, JEREMY | 61-62 | V 1 | |
| 01:39 | | 63-62 | H 1 | GOOD! DUNK by DICK, GRADEY |
| 01:04 | | 65-62 | H 3 | GOOD! LAYUP by DICK, GRADEY |
| 00:22 | | 67-62 | H 5 | GOOD! LAYUP by ADAMS, JR., KJ |
| 00:15 | GOOD! LAYUP by ROACH, JEREMY [FB/PNT] | 67-64 | H 3 | |
| 00:09 | | 68-64 | H 4 | GOOD! FT by WILSON, JALEN |
| 00:09 | | 69-64 | H 5 | GOOD! FT by WILSON, JALEN |

Duke 64, Kansas 69

Official Substitutions Log
Duke vs Kansas
Period 1
November 15, 2022 at Gainbridge Fieldhouse - Indianapolis, IN

| VISITORS: Duke | Time | Score | HOME: Kansas |
|------------------------------|-------|-------|---------------------------|
| 3 ROACH, JEREMY | | | 3 HARRIS, DAJUAN |
| 5 PROCTOR, TYRESE | | | 4 DICK, GRADEY |
| 15 YOUNG, RYAN | | | 10 WILSON, JALEN |
| 25 MITCHELL, MARK | | | 15 MCCULLAR, KEVIN |
| 30 FILIPOWSKI, KYLE | | | 24 ADAMS, JR., KJ |
| SUB OUT: 5 PROCTOR, TYRESE | 15:17 | 6-12 | |
| SUB OUT: 15 YOUNG, RYAN | 15:17 | | |
| SUB OUT: 30 FILIPOWSKI, KYLE | 15:17 | | |
| SUB IN: 1 LIVELY II, DERECK | 15:17 | | |
| SUB IN: 2 BLAKES, JAYLEN | 15:17 | | |
| SUB IN: 13 GRANDISON, JACOB | 15:17 | | |
| | 14:03 | 6-15 | SUB OUT: HARRIS, DAJUAN |
| | 14:03 | | SUB IN: PETTIFORD, BOBBY |
| SUB OUT: 25 MITCHELL, MARK | 13:44 | 6-15 | |
| SUB IN: 30 FILIPOWSKI, KYLE | 13:44 | | |
| | 13:44 | | SUB OUT: ADAMS, JR., KJ |
| | 13:44 | | SUB IN: UDEH JR., ERNEST |
| | 12:52 | 6-17 | SUB OUT: DICK, GRADEY |
| | 12:52 | | SUB IN: YESUFU, JOSEPH |
| SUB OUT: 30 FILIPOWSKI, KYLE | 12:08 | 8-17 | |
| SUB IN: 5 PROCTOR, TYRESE | 12:08 | | |
| | 11:40 | 8-17 | SUB OUT: MCCULLAR, KEVIN |
| | 11:40 | | SUB IN: DICK, GRADEY |
| SUB OUT: 1 LIVELY II, DERECK | 10:38 | 9-19 | |
| SUB OUT: 13 GRANDISON, JACOB | 10:38 | | |
| SUB IN: 15 YOUNG, RYAN | 10:38 | | |
| SUB IN: 25 MITCHELL, MARK | 10:38 | | |
| | 10:38 | | SUB OUT: WILSON, JALEN |
| | 10:38 | | SUB IN: MCCULLAR, KEVIN |
| | 10:12 | 11-19 | SUB OUT: PETTIFORD, BOBBY |
| | 10:12 | | SUB IN: HARRIS, DAJUAN |
| | 09:38 | 11-19 | SUB OUT: UDEH JR., ERNEST |
| | 09:38 | | SUB IN: ADAMS, JR., KJ |
| SUB OUT: 25 MITCHELL, MARK | 09:04 | 11-19 | |
| SUB IN: 30 FILIPOWSKI, KYLE | 09:04 | | |
| | 09:04 | | SUB OUT: YESUFU, JOSEPH |
| | 09:04 | | SUB IN: WILSON, JALEN |
| SUB OUT: 5 PROCTOR, TYRESE | 07:32 | 15-23 | |
| SUB IN: 25 MITCHELL, MARK | 07:32 | | |
| | 06:26 | 17-25 | SUB OUT: ADAMS, JR., KJ |
| | 06:26 | | SUB IN: UDEH JR., ERNEST |
| SUB OUT: 15 YOUNG, RYAN | 05:32 | 20-27 | |
| SUB OUT: 25 MITCHELL, MARK | 05:32 | | |
| SUB IN: 1 LIVELY II, DERECK | 05:32 | | |
| SUB IN: 13 GRANDISON, JACOB | 05:32 | | |
| | 03:39 | 24-27 | SUB OUT: MCCULLAR, KEVIN |
| | 03:39 | | SUB OUT: UDEH JR., ERNEST |
| | 03:39 | | SUB IN: PETTIFORD, BOBBY |
| | 03:39 | | SUB IN: EJIOFOR, ZUBY |
| SUB OUT: 1 LIVELY II, DERECK | 00:58 | 27-33 | |
| SUB OUT: 30 FILIPOWSKI, KYLE | 00:58 | | |
| SUB IN: 15 YOUNG, RYAN | 00:58 | | |
| SUB IN: 25 MITCHELL, MARK | 00:58 | | |
| | 00:23 | 27-33 | SUB OUT: DICK, GRADEY |
| | 00:23 | | SUB IN: MCCULLAR, KEVIN |
| SUB OUT: 25 MITCHELL, MARK | 00:18 | 28-33 | |
| SUB IN: 1 LIVELY II, DERECK | 00:18 | | |

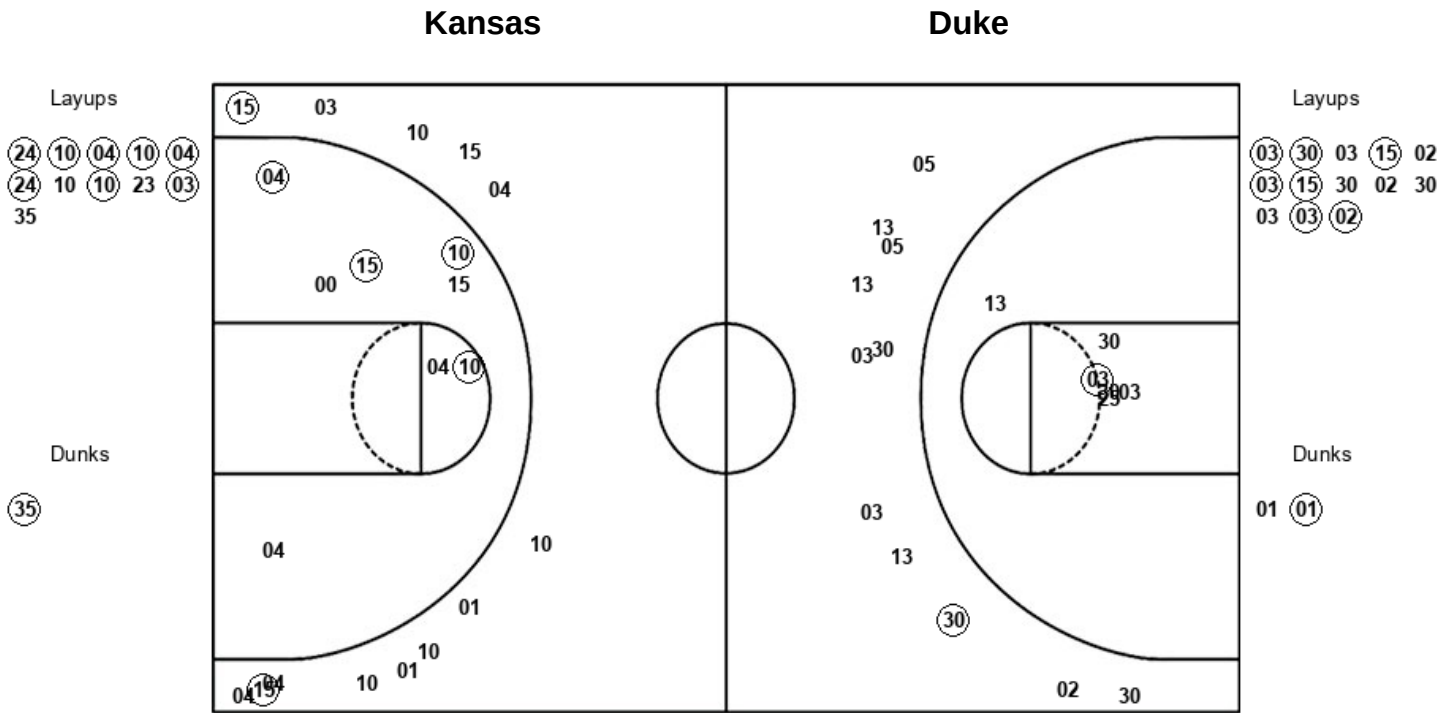
Duke 29, Kansas 33

Official Substitutions Log
Duke vs Kansas
Period 2
November 15, 2022 at Gainbridge Fieldhouse - Indianapolis, IN

| VISITORS: Duke | Time | Score | HOME: Kansas |
|-----------------------------|-------------|--------------|--------------------------|
| 3 ROACH,JEREMY | | | 3 HARRIS,DAJUAN |
| 5 PROCTOR,TYRESE | | | 4 DICK,GRADEY |
| 15 YOUNG,RYAN | | | 10 WILSON,JALEN |
| 25 MITCHELL,MARK | | | 15 MCCULLAR,KEVIN |
| 30 FILIPOWSKI,KYLE | | | 24 ADAMS, JR.,KJ |
| SUB OUT: 1 LIVELY II,DERECK | 20:00 | - | |
| SUB OUT: 2 BLAKES,JAYLEN | 20:00 | | |
| SUB OUT: 13 GRANDISON,JACOB | 20:00 | | |
| SUB IN: 5 PROCTOR,TYRESE | 20:00 | | |
| SUB IN: 25 MITCHELL,MARK | 20:00 | | |
| SUB IN: 30 FILIPOWSKI,KYLE | 20:00 | | |
| | 20:00 | | SUB OUT: PETTIFORD,BOBBY |
| | 20:00 | | SUB OUT: EJIOFOR,ZUBY |
| | 20:00 | | SUB IN: DICK,GRADEY |
| | 20:00 | | SUB IN: ADAMS, JR.,KJ |
| | 17:24 | 34-37 | SUB OUT: MCCULLAR,KEVIN |
| | 17:24 | | SUB IN: UDEH JR.,ERNEST |
| SUB OUT: 15 YOUNG,RYAN | 17:06 | 35-37 | |
| SUB IN: 1 LIVELY II,DERECK | 17:06 | | |
| | 14:44 | 45-41 | SUB OUT: ADAMS, JR.,KJ |
| | 14:44 | | SUB IN: PETTIFORD,BOBBY |
| SUB OUT: 1 LIVELY II,DERECK | 11:09 | 51-47 | |
| SUB OUT: 30 FILIPOWSKI,KYLE | 11:09 | | |
| SUB IN: 2 BLAKES,JAYLEN | 11:09 | | |
| SUB IN: 15 YOUNG,RYAN | 11:09 | | |
| | 11:09 | | SUB OUT: HARRIS,DAJUAN |
| | 11:09 | | SUB OUT: DICK,GRADEY |
| | 11:09 | | SUB OUT: UDEH JR.,ERNEST |
| | 11:09 | | SUB IN: YESUFU,JOSEPH |
| | 11:09 | | SUB IN: MCCULLAR,KEVIN |
| | 11:09 | | SUB IN: EJIOFOR,ZUBY |
| SUB OUT: 5 PROCTOR,TYRESE | 09:47 | 53-51 | |
| SUB IN: 30 FILIPOWSKI,KYLE | 09:47 | | |
| | 09:47 | | SUB OUT: YESUFU,JOSEPH |
| | 09:47 | | SUB IN: HARRIS,DAJUAN |
| SUB OUT: 3 ROACH,JEREMY | 09:12 | 53-53 | |
| SUB IN: 5 PROCTOR,TYRESE | 09:12 | | |
| SUB OUT: 15 YOUNG,RYAN | 09:02 | 53-54 | |
| SUB IN: 1 LIVELY II,DERECK | 09:02 | | |
| SUB OUT: 2 BLAKES,JAYLEN | 08:49 | 55-54 | |
| SUB IN: 3 ROACH,JEREMY | 08:49 | | |
| | 07:51 | 55-54 | SUB OUT: EJIOFOR,ZUBY |
| | 07:51 | | SUB IN: ADAMS, JR.,KJ |
| SUB OUT: 1 LIVELY II,DERECK | 06:43 | 55-54 | |
| SUB IN: 15 YOUNG,RYAN | 06:43 | | |
| | 05:19 | 57-54 | SUB OUT: PETTIFORD,BOBBY |
| | 05:19 | | SUB OUT: ADAMS, JR.,KJ |
| | 05:19 | | SUB IN: DICK,GRADEY |
| | 05:19 | | SUB IN: EJIOFOR,ZUBY |
| SUB OUT: 15 YOUNG,RYAN | 02:54 | 59-56 | |
| SUB IN: 1 LIVELY II,DERECK | 02:54 | | |
| | 02:37 | 59-58 | SUB OUT: EJIOFOR,ZUBY |
| | 02:37 | | SUB IN: ADAMS, JR.,KJ |
| SUB OUT: 5 PROCTOR,TYRESE | 01:23 | 62-63 | |
| SUB IN: 2 BLAKES,JAYLEN | 01:23 | | |
| SUB OUT: 2 BLAKES,JAYLEN | 00:48 | 62-65 | |
| SUB IN: 5 PROCTOR,TYRESE | 00:48 | | |
| SUB OUT: 1 LIVELY II,DERECK | 00:11 | 64-67 | |
| SUB IN: 2 BLAKES,JAYLEN | 00:11 | | |
| | 00:11 | | SUB OUT: ADAMS, JR.,KJ |
| | 00:11 | | SUB IN: PETTIFORD,BOBBY |
| | 00:09 | 64-67 | SUB OUT: DICK,GRADEY |
| | 00:09 | | SUB IN: ADAMS, JR.,KJ |

Duke 64, Kansas 69

Official Shot Chart
Duke vs Kansas
PERIOD 1 Shots
 November 15, 2022 at Gainbridge Fieldhouse - Indianapolis, IN



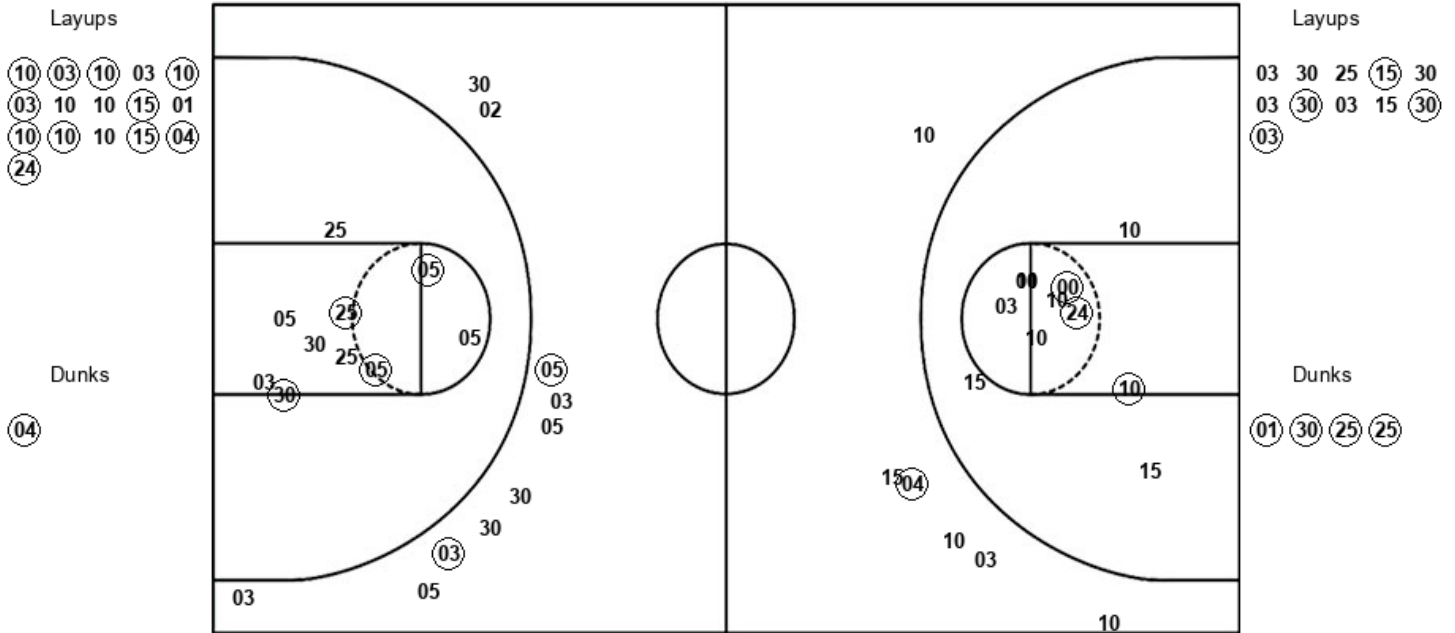
| KU : Period 1 | Made | Att | Pct |
|--------------------------|-------------|------------|-------------|
| Layups | 8 | 11 | 72.7 |
| Dunks | 1 | 1 | 100.0 |
| 2PT Field Goals | 13 | 20 | 65.0 |
| 3PT Field Goals | 2 | 13 | 15.4 |
| Total Field Goals | 15 | 33 | 45.5 |

| DUK : Period 1 | Made | Att | Pct |
|--------------------------|-------------|------------|-------------|
| Layups | 7 | 13 | 53.8 |
| Dunks | 1 | 2 | 50.0 |
| 2PT Field Goals | 9 | 21 | 42.9 |
| 3PT Field Goals | 1 | 11 | 09.1 |
| Total Field Goals | 10 | 32 | 31.3 |

Official Shot Chart
Duke vs Kansas
PERIOD 2 Shots
 November 15, 2022 at Gainbridge Fieldhouse - Indianapolis, IN

Kansas

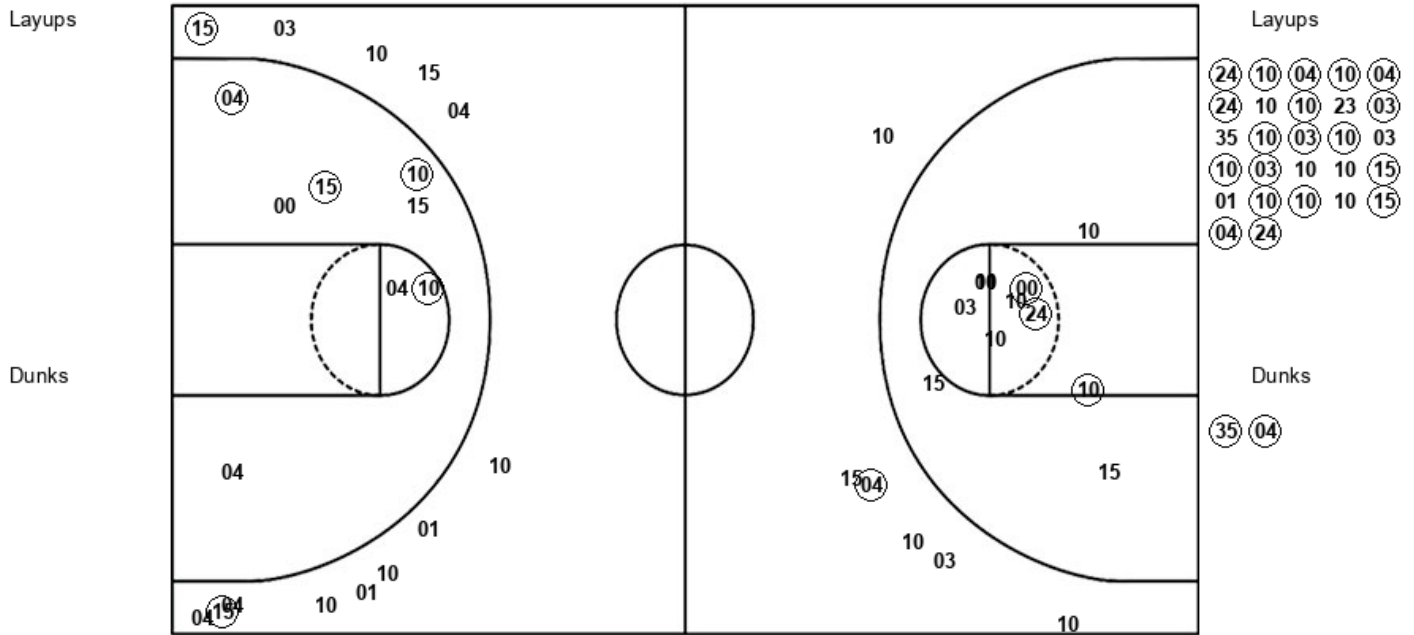
Duke



| KU : Period 2 | Made | Att | Pct |
|--------------------------|-------------|------------|-------------|
| Layups | 11 | 16 | 68.8 |
| Dunks | 1 | 1 | 100.0 |
| 2PT Field Goals | 15 | 28 | 53.6 |
| 3PT Field Goals | 1 | 6 | 16.7 |
| Total Field Goals | 16 | 34 | 47.1 |

| DUK : Period 2 | Made | Att | Pct |
|--------------------------|-------------|------------|-------------|
| Layups | 4 | 11 | 36.4 |
| Dunks | 4 | 4 | 100.0 |
| 2PT Field Goals | 12 | 25 | 48.0 |
| 3PT Field Goals | 2 | 10 | 20.0 |
| Total Field Goals | 14 | 35 | 40.0 |

Official Shot Chart
Duke vs Kansas
Kansas Team Shots
 November 15, 2022 at Gainbridge Fieldhouse - Indianapolis, IN



| KU : Period 1 | Made | Att | Pct |
|--------------------------|-----------|-----------|-------------|
| Layups | 8 | 11 | 72.7 |
| Dunks | 1 | 1 | 100.0 |
| 2PT Field Goals | 13 | 20 | 65.0 |
| 3PT Field Goals | 2 | 13 | 15.4 |
| Total Field Goals | 15 | 33 | 45.5 |

| KU : Period 2 | Made | Att | Pct |
|--------------------------|-----------|-----------|-------------|
| Layups | 11 | 16 | 68.8 |
| Dunks | 1 | 1 | 100.0 |
| 2PT Field Goals | 15 | 28 | 53.6 |
| 3PT Field Goals | 1 | 6 | 16.7 |
| Total Field Goals | 16 | 34 | 47.1 |