

FINAL SCORE



(13) Rutgers

75



(12) Penn St.

50

Big Ten Women's Basketball Tournament

March 02, 2022 • Gainbridge Fieldhouse - Indianapolis, IN



BIG
WOMEN'S BASKETBALL
TOURNAMENT

FINAL STATISTICS

Official Box Score
(13) Rutgers vs (12) Penn St.
Game Totals -- Final Statistics
March 02, 2022 at Gainbridge Fieldhouse - Indianapolis, IN



(13) Rutgers 75

No.	Player	S	Pts	FG	3FG	FT	OR	DR	TR	PF	A	TO	Blk	Stl	Min	+/-
00	PETREE, LASHA	G	6	3-5	0-1	0-0	0	3	3	1	0	2	0	1	20	14
03	DICKSON, SHUG	G	14	5-14	1-1	3-3	3	4	7	3	9	6	1	0	30	21
14	MASON, JAILYN	G	3	1-5	1-5	0-0	0	6	6	1	3	0	0	1	31	26
22	SINGLETON, TYIA	F	10	4-10	0-0	2-4	5	2	7	3	0	2	0	0	21	17
32	BROWN, OSH	F	18	8-11	0-0	2-3	5	8	13	2	3	3	0	1	31	24
01	MARSHALL, DESTINY	G	2	1-1	0-0	0-0	0	2	2	1	0	0	0	1	4	2
05	MORRIS, VICTORIA	G	7	3-7	1-2	0-0	0	1	1	0	0	1	0	0	19	12
10	LAFAYETTE, ERICA	F	2	0-1	0-0	2-2	0	0	0	1	0	0	0	0	2	-1
11	GUIHON, STEPHANIE	G	0	0-0	0-0	0-0	0	0	0	0	1	0	0	0	4	0
15	SIDIBE, AWA	G	0	0-3	0-0	0-0	2	4	6	2	2	1	2	1	18	8
20	MADDOX, JOIYA	G	0	0-1	0-1	0-0	0	1	1	1	0	0	0	0	2	-1
24	SANDERLIN, KIERRA	G	0	0-1	0-0	0-0	1	0	1	0	0	0	0	0	2	-1
35	LASSITER, SAYAWNI	G	9	3-7	1-3	2-2	0	1	1	2	0	0	1	0	12	1
54	CORNWELL, CHYNA	F	4	2-3	0-0	0-1	0	1	1	1	0	0	0	0	4	3
	TEAM						3	2	5	0		0				
TOTALS			75	30-69	4-13	11-15	19	35	54	18	18	15	4	5	199	

Shooting By Period

Period	FG	FG%	3FG	3FG%	FT	FT%
1st Qtr	7-15	47%	1-3	33%	2-4	50%
2nd Qtr	5-12	42%	3-4	75%	1-1	100%
3rd Qtr	9-23	39%	0-3	00%	5-5	100%
4th Qtr	9-19	47%	0-3	00%	3-5	60%
1st Half	12-27	44%	4-7	57%	3-5	60%
2nd Half	18-42	43%	0-6	00%	8-10	80%
Game	30-69	43.5%	4-13	30.8%	11-15	73.3%

Deadball Rebounds: 2,0
Last FG: 4th-02:09
Biggest Run: 10-0
Largest lead: By 28 at 4th-03:06
Technical Fouls: None.

(12) Penn St. 50

No.	Player	S	Pts	FG	3FG	FT	OR	DR	TR	PF	A	TO	Blk	Stl	Min	+/-
04	BEVERLEY, NIYA	G	5	2-9	1-6	0-0	0	2	2	1	0	0	0	0	34	-27
05	KAPINUS, LEILANI	G	16	3-14	1-5	9-11	5	8	13	2	1	2	1	3	37	-16
11	CAMDEN, ANNA	F	2	0-3	0-1	2-2	2	0	2	3	0	1	1	0	18	-11
20	MARISA, MAKENNA	G	15	5-19	0-3	5-8	0	7	7	1	5	3	1	3	38	-24
25	JEKOT, KELLY	G	0	0-1	0-1	0-0	0	1	1	1	0	1	0	0	11	-6
01	BRIGHAM, ALI	C	2	1-1	0-0	0-0	0	0	0	4	1	2	0	0	6	-6
10	SABEL, TOVA	G	4	1-5	1-4	1-2	0	0	0	3	0	1	0	1	17	-14
12	THOMAS, KAYLA	F	1	0-0	0-0	1-2	2	2	4	0	0	0	1	0	7	-2
15	BURKE, MADDIE	G	2	1-2	0-1	0-0	0	1	1	4	1	0	0	1	11	-5
23	HAGANS, SHAY	G	3	1-5	1-2	0-0	1	0	1	0	0	0	0	0	20	-14
	TEAM						0	1	1	0		0				
TOTALS			50	14-59	4-23	18-25	10	22	32	19	8	10	4	8	199	

Shooting By Period

Period	FG	FG%	3FG	3FG%	FT	FT%
1st Qtr	4-16	25%	1-9	11%	2-4	50%
2nd Qtr	5-16	31%	2-5	40%	2-4	50%
3rd Qtr	2-14	14%	1-7	14%	6-8	75%
4th Qtr	3-13	23%	0-2	00%	8-9	89%
1st Half	9-32	28%	3-14	21%	4-8	50%
2nd Half	5-27	19%	1-9	11%	14-17	82%
Game	14-59	23.7%	4-23	17.4%	18-25	72.0%

Deadball Rebounds: 7,0
Last FG: 4th-02:18
Biggest Run: 8-0
Largest lead: By 4 at 1st-07:22
Technical Fouls: None.

Game Notes:

Officials: Felicia Grinter, Gina Cross, Kevin Pethtel

Start Time: 02:03 PM ET

End Time: 04:00 PM ET

Game Duration: 1:56

Neutral Court;

Penn St. is the No. 12 seed and Rutgers is the No. 13 seed

Score	1st	2nd	3rd	4th	TOT
RU	17	14	23	21	75
PSU	11	14	11	14	50

RU led for 33:51. PSU led for 3:56.

Game was tied for 2:00.

Times tied: 0 Lead Changes: 5

Points	RU	PSU
In the Paint	40	20
Off Turns	11	9
2nd Chance	11	7
Fast Break	10	15
Bench	24	12
Per Poss	1.042 36/72	0.746 23/67

Official Box Score
(13) Rutgers vs (12) Penn St.
First Half Statistics Only
March 02, 2022 at Gainbridge Fieldhouse - Indianapolis, IN



BIG
WOUND TO BASTARDY
TOURNAMENT

Rutgers 31

No.	Player	S	Pts	FG	3FG	FT	OR	DR	TR	PF	A	TO	Blk	Stl	Min	+/-
00	PETREE, LASHA	G	2	1-2	0-0	0-0	0	3	3	0	0	2	0	0	12	3
01	MARSHALL, DESTINY	G	0	0-0	0-0	0-0	0	1	1	1	0	0	0	1	2	3
03	DICKSON, SHUG	G	8	3-6	1-1	1-1	1	1	2	1	3	4	0	0	18	7
05	MORRIS, VICTORIA	G	3	1-3	1-1	0-0	0	1	1	0	0	1	0	0	8	3
10	LAFAYETTE, ERICA	F	0	0-0	0-0	0-0	0	0	0	0	0	0	0	0	0	0
11	GUIHON, STEPHANIE	G	0	0-0	0-0	0-0	0	0	0	0	0	0	0	0	0	0
14	MASON, JAILYN	G	3	1-4	1-4	0-0	0	2	2	0	1	0	0	1	16	7
15	SIDIBE, AWA	G	0	0-1	0-0	0-0	0	3	3	1	1	1	1	0	6	-2
20	MADDOX, JOIYA	G	0	0-0	0-0	0-0	0	0	0	0	0	0	0	0	0	0
22	SINGLETON, TYIA	F	8	3-6	0-0	2-4	1	1	2	0	0	1	0	0	14	4
24	SANDERLIN, KIERRA	G	0	0-0	0-0	0-0	0	0	0	0	0	0	0	0	0	0
32	BROWN, OSH	F	4	2-3	0-0	0-0	4	5	9	2	3	3	0	1	17	7
35	LASSITER, SAYAWNI	G	3	1-2	1-1	0-0	0	0	0	2	0	0	1	0	6	-2
54	CORNWELL, CHYNA	F	0	0-0	0-0	0-0	0	0	0	0	0	0	0	0	0	0
	TEAM		0	0-0	0-0	0-0	1	1	2	0	0	0	0	0	0	0
TOTALS			31	12-27	4-7	3-5	7	18	25	7	8	12	2	3	100	

Shooting By Period

Period	FG	FG%	3FG	3FG%	FT	FT%
1st Qtr	7-15	47%	1-3	33%	2-4	50%
2nd Qtr	5-12	42%	3-4	75%	1-1	100%
1st Half	12-27	44%	4-7	57%	3-5	60%
Game	30-69	43.5%	4-13	30.8%	11-15	73.3%

Deadball Rebounds: 2,0
 Last FG Half: RU 2nd-00:08

Penn St. 25

No.	Player	S	Pts	FG	3FG	FT	OR	DR	TR	PF	A	TO	Blk	Stl	Min	+/-
01	BRIGHAM, ALI	C	2	1-1	0-0	0-0	0	0	0	3	1	1	0	0	5	-6
04	BEVERLEY, NIYA	G	5	2-5	1-4	0-0	0	1	1	0	0	0	0	0	17	-8
05	KAPINUS, LEILANI	G	6	2-8	1-3	1-2	2	3	5	0	1	1	0	2	18	2
10	SABEL, TOVA	G	3	1-4	1-3	0-0	0	0	0	0	0	1	0	1	10	-6
11	CAMDEN, ANNA	F	0	0-0	0-0	0-0	1	0	1	2	0	1	0	0	3	4
12	THOMAS, KAYLA	F	1	0-0	0-0	1-2	2	2	4	0	0	0	1	0	6	-2
15	BURKE, MADDIE	G	0	0-1	0-1	0-0	0	0	0	2	1	0	0	1	6	-3
20	MARISA, MAKENNA	G	8	3-11	0-2	2-4	0	3	3	0	3	1	1	2	20	-6
23	HAGANS, SHAY	G	0	0-1	0-0	0-0	1	0	1	0	0	0	0	0	8	1
25	JEKOT, KELLY	G	0	0-1	0-1	0-0	0	1	1	1	0	1	0	0	7	-6
	TEAM		0	0-0	0-0	0-0	0	0	0	0	0	0	0	0	0	0
TOTALS			25	9-32	3-14	4-8	6	10	16	8	6	6	2	6	100	

Shooting By Period

Period	FG	FG%	3FG	3FG%	FT	FT%
1st Qtr	4-16	25%	1-9	11%	2-4	50%
2nd Qtr	5-16	31%	2-5	40%	2-4	50%
1st Half	9-32	28%	3-14	21%	4-8	50%
Game	14-59	23.7%	4-23	17.4%	18-25	72.0%

Deadball Rebounds: 7,0
 Last FG Half: PSU 2nd-00:03

Game Notes:

Officials: Felicia Grinter, Gina Cross, Kevin Pethtel

Start Time: 02:03 PM ET

End Time: 04:00 PM ET

Game Duration: 1:56

Neutral Court;

Penn St. is the No. 12 seed and Rutgers is the No. 13 seed

Score	1st	2nd	3rd	4th	TOT
RU	17	14	23	21	75
PSU	11	14	11	14	50

Points from (This Period)	RU	PSU
In the Paint	12	12
Off Turns	7	7
2nd Chance	4	1
Fast Break	8	13
Bench	6	6

Official Box Score
(13) Rutgers vs (12) Penn St.
First Quarter Statistics Only
March 02, 2022 at Gainbridge Fieldhouse - Indianapolis, IN



Rutgers 17

No.	Player	S	Pts	FG	3FG	FT	OR	DR	TR	PF	A	TO	Blk	Stl	Min	+/-
00	PETREE, LASHA	G	2	1-2	0-0	0-0	0	3	3	0	0	2	0	0	10	6
03	DICKSON, SHUG	G	2	1-3	0-0	0-0	1	0	1	1	2	2	0	0	9	7
14	MASON, JAILYN	G	3	1-3	1-3	0-0	0	2	2	0	0	0	0	1	10	6
22	SINGLETON, TYIA	F	8	3-5	0-0	2-4	1	0	1	0	0	0	0	0	8	8
32	BROWN, OSH	F	2	1-1	0-0	0-0	2	3	5	1	2	2	0	1	10	6
01	MARSHALL, DESTINY	G	0	0-0	0-0	0-0	0	0	0	0	0	0	0	0	0	0
05	MORRIS, VICTORIA	G	0	0-1	0-0	0-0	0	0	0	0	0	0	0	0	0	0
10	LAFAYETTE, ERICA	F	0	0-0	0-0	0-0	0	0	0	0	0	0	0	0	0	0
11	GUIHON, STEPHANIE	G	0	0-0	0-0	0-0	0	0	0	0	0	0	0	0	0	0
15	SIDIBE, AWA	G	0	0-0	0-0	0-0	0	1	1	0	1	0	0	0	2	-2
20	MADDOX, JOIYA	G	0	0-0	0-0	0-0	0	0	0	0	0	0	0	0	0	0
24	SANDERLIN, KIERRA	G	0	0-0	0-0	0-0	0	0	0	0	0	0	0	0	0	0
35	LASSITER, SAYAWNI	G	0	0-0	0-0	0-0	0	0	0	1	0	0	0	0	1	-1
54	CORNWELL, CHYNA	F	0	0-0	0-0	0-0	0	0	0	0	0	0	0	0	0	0
	TEAM						1	1	2	0		0				
TOTALS			17	7-15	1-3	2-4	5	10	15	3	5	6	0	2	50	

Shooting By Period

Period	FG	FG%	3FG	3FG%	FT	FT%
1st Qtr	7-15	47%	1-3	33%	2-4	50%
2nd Qtr	5-12	42%	3-4	75%	1-1	100%
1st Half	7-15	47%	1-3	33%	2-4	50%
1st Half	12-27	44%	4-7	57%	3-5	60%
Game	30-69	43.5%	4-13	30.8%	11-15	73.3%

Deadball Rebounds: 2,0

Penn St. 11

No.	Player	S	Pts	FG	3FG	FT	OR	DR	TR	PF	A	TO	Blk	Stl	Min	+/-
04	BEVERLEY, NIYA	G	2	1-3	0-2	0-0	0	0	0	0	0	0	0	0	8	-8
05	KAPINUS, LEILANI	G	1	0-2	0-1	1-2	0	1	1	0	0	0	0	2	8	2
11	CAMDEN, ANNA	F	0	0-0	0-0	0-0	1	0	1	2	0	1	0	0	3	4
20	MARISA, MAKENNA	G	5	2-7	0-2	1-2	0	1	1	0	2	1	1	1	10	-6
25	JEKOT, KELLY	G	0	0-1	0-1	0-0	0	1	1	0	0	1	0	0	5	-4
01	BRIGHAM, ALI	C	0	0-0	0-0	0-0	0	0	0	1	1	0	0	0	3	-5
10	SABEL, TOVA	G	3	1-2	1-2	0-0	0	0	0	0	0	0	0	0	4	-5
12	THOMAS, KAYLA	F	0	0-0	0-0	0-0	0	2	2	0	0	0	1	0	3	1
15	BURKE, MADDIE	G	0	0-1	0-1	0-0	0	0	0	0	0	0	0	0	2	-8
23	HAGANS, SHAY	G	0	0-0	0-0	0-0	1	0	1	0	0	0	0	0	4	-1
	TEAM						0	0	0	0		0				
TOTALS			11	4-16	1-9	2-4	2	5	7	3	3	3	2	3	50	

Shooting By Period

Period	FG	FG%	3FG	3FG%	FT	FT%
1st Qtr	4-16	25%	1-9	11%	2-4	50%
2nd Qtr	5-16	31%	2-5	40%	2-4	50%
1st Half	4-16	25%	1-9	11%	2-4	50%
1st Half	9-32	28%	3-14	21%	4-8	50%
Game	14-59	23.7%	4-23	17.4%	18-25	72.0%

Deadball Rebounds: 7,0

Game Notes:

Officials: Felicia Grinter, Gina Cross, Kevin Pethtel

Start Time: 02:03 PM ET

End Time: 04:00 PM ET

Game Duration: 1:56

Neutral Court;

Penn St. is the No. 12 seed and Rutgers is the No. 13 seed

Score	1st	2nd	3rd	4th	TOT
RU	17	14	23	21	75
PSU	11	14	11	14	50

Points (This Period)	RU	PSU
In the Paint	8	6
Off Turns	4	2
2nd Chance	4	0
Fast Break	5	5
Bench	0	3
Per Poss	0.944 8/18	0.579 5/19

Official Play-By-Play
(13) Rutgers vs (12) Penn St.
First Quarter

March 02, 2022 at Gainbridge Fieldhouse - Indianapolis, IN



Period 1

Starters:

Rutgers: 0 PETREE,LASHA (G); 3 DICKSON,SHUG (G); 14 MASON,JAILYN (G); 22 SINGLETON,TYIA (F); 32 BROWN,OSH (F);

Penn St.: 4 BEVERLEY,NIYA (G); 5 KAPINUS,LEILANI (G); 11 CAMDEN,ANNA (F); 20 MARISA,MAKENNA (G); 25 JEKOT,KELLY (G);

Time	VISITORS: Rutgers	Score	Margin	HOME: Penn St.
09:46				FOUL (OFF) by CAMDEN, ANNA
09:46				TURNOVER (OFFENSIVE) by CAMDEN, ANNA
09:32	MISSED LAYUP by PETREE, LASHA			
09:29				REBOUND (DEF) by JEKOT, KELLY
09:13				MISSED 3PTR by BEVERLEY, NIYA
09:10				REBOUND (OFF) by CAMDEN, ANNA
09:08				MISSED 3PTR by MARISA, MAKENNA
09:06	REBOUND (DEF) by TEAM			
08:47	TURNOVER (DRIBBLING) by PETREE, LASHA			
08:29				MISSED 3PTR by JEKOT, KELLY
08:26	REBOUND (DEF) by MASON, JAILYN			
08:10	MISSED JUMPER by DICKSON, SHUG			
08:07	REBOUND (OFF) by DICKSON, SHUG			
08:06	TURNOVER (LOSTBALL) by DICKSON, SHUG			
08:06				STEAL by KAPINUS, LEILANI
08:00		2-0	H 2	GOOD! JUMPER by MARISA, MAKENNA [FB/PNT]
07:28	MISSED 3PTR by MASON, JAILYN			
07:25				REBOUND (DEF) by MARISA, MAKENNA
07:22		4-0	H 4	GOOD! LAYUP by BEVERLEY, NIYA [FB]
07:22				ASSIST by MARISA, MAKENNA
07:12	TIMEOUT 30SEC			
07:12				SUB OUT: JEKOT, KELLY
07:12				SUB IN: HAGANS, SHAY
06:57	MISSED JUMPER by DICKSON, SHUG			
06:54	REBOUND (OFF) by SINGLETON, TYIA			
06:54				FOUL (PERSONAL) by CAMDEN, ANNA
06:54				SUB OUT: CAMDEN, ANNA
06:54				SUB IN: BRIGHAM, ALI
06:54	GOOD! FT by SINGLETON, TYIA	4-1	H 3	
06:51	MISSED FT by SINGLETON, TYIA			
06:50				REBOUND (DEF) by KAPINUS, LEILANI
06:39				MISSED LAYUP by KAPINUS, LEILANI
06:39	REBOUND (DEF) by BROWN, OSH			
06:23	TURNOVER (BADPASS) by BROWN, OSH			
06:23				STEAL by MARISA, MAKENNA
05:43				MISSED JUMPER by MARISA, MAKENNA
05:40	REBOUND (DEF) by PETREE, LASHA			
05:38	GOOD! LAYUP by SINGLETON, TYIA [FB]	4-3	H 1	
05:38	ASSIST by DICKSON, SHUG			
05:31				MISSED 3PTR by KAPINUS, LEILANI
05:27				REBOUND (OFF) by HAGANS, SHAY
05:25				MISSED 3PTR by BEVERLEY, NIYA
05:22	REBOUND (DEF) by PETREE, LASHA			
05:21	TURNOVER (TRAVEL) by BROWN, OSH			
05:21				SUB OUT: KAPINUS, LEILANI
05:21				SUB OUT: HAGANS, SHAY
05:21				SUB IN: BURKE, MADDIE
05:21				SUB IN: JEKOT, KELLY
04:58				MISSED 3PTR by MARISA, MAKENNA
04:55	REBOUND (DEF) by BROWN, OSH			
04:43	GOOD! JUMPER by SINGLETON, TYIA [PNT]	4-5	V 1	
04:26		6-5	H 1	GOOD! LAYUP by MARISA, MAKENNA [PNT]
04:26				ASSIST by BRIGHAM, ALI
04:12	GOOD! JUMPER by DICKSON, SHUG	6-7	V 1	
04:05				MISSED 3PTR by BURKE, MADDIE
04:01	REBOUND (DEF) by MASON, JAILYN			
03:57				FOUL (PERSONAL) by BRIGHAM, ALI
03:57				SUB OUT: BRIGHAM, ALI
03:57				SUB IN: SABEL, TOVA
03:57	GOOD! FT by SINGLETON, TYIA [FB]	6-8	V 2	
03:57	MISSED FT by SINGLETON, TYIA			
03:54	REBOUND (OFF) by BROWN, OSH			
03:50	GOOD! 3PTR by MASON, JAILYN	6-11	V 5	
03:50	ASSIST by BROWN, OSH			
03:27				TURNOVER (LOSTBALL) by JEKOT, KELLY

Time	VISITORS: Rutgers	Score	Margin	HOME: Penn St.
03:27	STEAL by MASON, JAILYN			
03:16	GOOD! LAYUP by SINGLETON, TYIA	6-13	V 7	
03:16	ASSIST by DICKSON, SHUG			
03:13				TIMEOUT 30SEC
03:13				SUB OUT: BURKE, MADDIE
03:13				SUB OUT: JEKOT, KELLY
03:13				SUB IN: KAPINUS, LEILANI
03:13				SUB IN: THOMAS, KAYLA
02:46				TURNOVER (BADPASS) by MARISA, MAKENNA
02:46	STEAL by BROWN, OSH			
02:42	GOOD! LAYUP by PETREE, LASHA [FB]	6-15	V 9	
02:42	ASSIST by BROWN, OSH			
02:35	FOUL (PERSONAL) by DICKSON, SHUG			
02:35				MISSED FT by MARISA, MAKENNA
02:35				REBOUND (OFF) by TEAM
02:35		7-15	V 8	GOOD! FT by MARISA, MAKENNA [FB]
02:26	MISSED JUMPER by SINGLETON, TYIA			
02:22	REBOUND (OFF) by BROWN, OSH			
02:20	MISSED LAYUP by SINGLETON, TYIA			
02:20				BLOCK by THOMAS, KAYLA
02:17				REBOUND (DEF) by THOMAS, KAYLA
02:13				MISSED JUMPER by MARISA, MAKENNA
02:10	REBOUND (DEF) by BROWN, OSH			
01:54	MISSED 3PTR by MASON, JAILYN			
01:51				REBOUND (DEF) by THOMAS, KAYLA
01:45	FOUL (PERSONAL) by BROWN, OSH			
01:45				SUB OUT: BEVERLEY, NIYA
01:45				SUB IN: HAGANS, SHAY
01:45	SUB OUT: SINGLETON, TYIA			
01:45	SUB IN: SIDIBE, AWA			
01:45				MISSED FT by KAPINUS, LEILANI
01:45				REBOUND (OFF) by TEAM
01:45		8-15	V 7	GOOD! FT by KAPINUS, LEILANI
01:33	TURNOVER (OUTOFBOUNDS) by DICKSON, SHUG			
01:20	SUB OUT: DICKSON, SHUG			
01:20	SUB IN: LASSITER, SAYAWNI			
01:19				MISSED 3PTR by SABEL, TOVA
01:15	REBOUND (DEF) by PETREE, LASHA			
00:54	GOOD! JUMPER by BROWN, OSH	8-17	V 9	
00:54	ASSIST by SIDIBE, AWA			
00:46		11-17	V 6	GOOD! 3PTR by SABEL, TOVA
00:46				ASSIST by MARISA, MAKENNA
00:26	TURNOVER (BADPASS) by PETREE, LASHA			
00:26				STEAL by KAPINUS, LEILANI
00:25	FOUL (PERSONAL) by LASSITER, SAYAWNI			
00:25	SUB OUT: PETREE, LASHA			
00:25	SUB IN: MORRIS, VICTORIA			
00:06				MISSED LAYUP by MARISA, MAKENNA
00:04	REBOUND (DEF) by SIDIBE, AWA			
00:01	MISSED LAYUP by MORRIS, VICTORIA			
00:01				BLOCK by MARISA, MAKENNA
00:00	REBOUND (OFF) by TEAM			

Rutgers 17, Penn St. 11

Points (This Period)	RU	PSU
In the Paint	8	6
Off Turns	4	2
2nd Chance	4	0
Fast Break	5	5
Bench	0	3
Per Poss	0.944 8/18	0.579 5/19

Official Box Score
(13) Rutgers vs (12) Penn St.
Second Quarter Statistics Only
March 02, 2022 at Gainbridge Fieldhouse - Indianapolis, IN



Rutgers 14

No.	Player	S	Pts	FG	3FG	FT	OR	DR	TR	PF	A	TO	Blk	Stl	Min	+/-
00	PETREE, LASHA	G	0	0-0	0-0	0-0	0	0	0	0	0	0	0	0	2	-3
03	DICKSON, SHUG	G	6	2-3	1-1	1-1	0	1	1	0	1	2	0	0	9	0
14	MASON, JAILYN	G	0	0-1	0-1	0-0	0	0	0	0	1	0	0	0	6	1
22	SINGLETON, TYIA	F	0	0-1	0-0	0-0	0	1	1	0	0	1	0	0	6	-4
32	BROWN, OSH	F	2	1-2	0-0	0-0	2	2	4	1	1	1	0	0	7	1
01	MARSHALL, DESTINY	G	0	0-0	0-0	0-0	0	1	1	1	0	0	0	1	2	3
05	MORRIS, VICTORIA	G	3	1-2	1-1	0-0	0	1	1	0	0	1	0	0	8	3
10	LAFAYETTE, ERICA	F	0	0-0	0-0	0-0	0	0	0	0	0	0	0	0	0	0
11	GUIHON, STEPHANIE	G	0	0-0	0-0	0-0	0	0	0	0	0	0	0	0	0	0
15	SIDIBE, AWA	G	0	0-1	0-0	0-0	0	2	2	1	0	1	1	0	4	0
20	MADDOX, JOIYA	G	0	0-0	0-0	0-0	0	0	0	0	0	0	0	0	0	0
24	SANDERLIN, KIERRA	G	0	0-0	0-0	0-0	0	0	0	0	0	0	0	0	0	0
35	LASSITER, SAYAWNI	G	3	1-2	1-1	0-0	0	0	0	1	0	0	1	0	5	-1
54	CORNWELL, CHYNA	F	0	0-0	0-0	0-0	0	0	0	0	0	0	0	0	0	0
	TEAM						0	0	0	0		0				
TOTALS			14	5-12	3-4	1-1	2	8	10	4	3	6	2	1	50	

Shooting By Period

Period	FG	FG%	3FG	3FG%	FT	FT%
3rd Qtr	9-23	39%	0-3	00%	5-5	100%
4th Qtr	9-19	47%	0-3	00%	3-5	60%
2nd Half	5-12	42%	3-4	75%	1-1	100%
2nd Half	18-42	43%	0-6	00%	8-10	80%
Game	30-69	43.5%	4-13	30.8%	11-15	73.3%

Deadball Rebounds: 2.0

Penn St. 14

No.	Player	S	Pts	FG	3FG	FT	OR	DR	TR	PF	A	TO	Blk	Stl	Min	+/-
04	BEVERLEY, NIYA	G	3	1-2	1-2	0-0	0	1	1	0	0	0	0	0	9	0
05	KAPINUS, LEILANI	G	5	2-6	1-2	0-0	2	2	4	0	1	1	0	0	10	0
11	CAMDEN, ANNA	F	0	0-0	0-0	0-0	0	0	0	0	0	0	0	0	0	0
20	MARISA, MAKENNA	G	3	1-4	0-0	1-2	0	2	2	0	1	0	0	1	10	0
25	JEKOT, KELLY	G	0	0-0	0-0	0-0	0	0	0	1	0	0	0	0	2	-2
01	BRIGHAM, ALI	C	2	1-1	0-0	0-0	0	0	0	2	0	1	0	0	2	-1
10	SABEL, TOVA	G	0	0-2	0-1	0-0	0	0	0	0	0	1	0	1	6	-1
12	THOMAS, KAYLA	F	1	0-0	0-0	1-2	2	0	2	0	0	0	0	0	3	-3
15	BURKE, MADDIE	G	0	0-0	0-0	0-0	0	0	0	2	1	0	0	1	4	5
23	HAGANS, SHAY	G	0	0-1	0-0	0-0	0	0	0	0	0	0	0	0	4	2
	TEAM						0	0	0	0		0				
TOTALS			14	5-16	2-5	2-4	4	5	9	5	3	3	0	3	50	

Shooting By Period

Period	FG	FG%	3FG	3FG%	FT	FT%
3rd Qtr	2-14	14%	1-7	14%	6-8	75%
4th Qtr	3-13	23%	0-2	00%	8-9	89%
2nd Half	5-16	31%	2-5	40%	2-4	50%
2nd Half	5-27	19%	1-9	11%	14-17	82%
Game	14-59	23.7%	4-23	17.4%	18-25	72.0%

Deadball Rebounds: 7.0

Game Notes:

Officials: Felicia Grinter, Gina Cross, Kevin Pethtel

Start Time: 02:03 PM ET

End Time: 04:00 PM ET

Game Duration: 1:56

Neutral Court;

Penn St. is the No. 12 seed and Rutgers is the No. 13 seed

Score	1st	2nd	3rd	4th	TOT
RU	17	14	23	21	75
PSU	11	14	11	14	50

Points (This Period)	RU	PSU
In the Paint	4	6
Off Turns	3	5
2nd Chance	0	1
Fast Break	3	8
Bench	6	3
Per Poss	0.875 6/16	0.824 6/17

**Official Play-By-Play
(13) Rutgers vs (12) Penn St.
Second Quarter**

March 02, 2022 at Gainbridge Fieldhouse - Indianapolis, IN



Period 2

Starters:

Rutgers: 0 PETREE,LASHA (G); 3 DICKSON,SHUG (G); 14 MASON,JAILYN (G); 22 SINGLETON,TYIA (F); 32 BROWN,OSH (F);

Penn St.: 4 BEVERLEY,NIYA (G); 5 KAPINUS,LEILANI (G); 11 CAMDEN,ANNA (F); 20 MARISA,MAKENNA (G); 25 JEKOT,KELLY (G);

Time	VISITORS: Rutgers	Score	Margin	HOME: Penn St.
09:31				MISSED JUMPER by SABEL, TOVA
09:27	REBOUND (DEF) by MORRIS, VICTORIA			
09:05				SUB OUT: THOMAS, KAYLA
09:05				SUB OUT: HAGANS, SHAY
09:05				SUB IN: BRIGHAM, ALI
09:05				SUB IN: JEKOT, KELLY
09:05	SUB OUT: MASON, JAILYN			
09:05	SUB IN: DICKSON, SHUG			
08:59	MISSED JUMPER by SIDIBE, AWA			
08:55				REBOUND (DEF) by KAPINUS, LEILANI
08:52	FOUL (PERSONAL) by SIDIBE, AWA			
08:52	SUB OUT: BROWN, OSH			
08:52	SUB IN: SINGLETON, TYIA			
08:52				SUB OUT: SABEL, TOVA
08:52				SUB IN: BEVERLEY, NIYA
08:31		13-17	V 4	GOOD! JUMPER by BRIGHAM, ALI [PNT]
08:11	MISSED LAYUP by SINGLETON, TYIA			
08:08				REBOUND (DEF) by KAPINUS, LEILANI
08:03				MISSED LAYUP by KAPINUS, LEILANI
08:00	REBOUND (DEF) by SIDIBE, AWA			
07:54	GOOD! 3PTR by LASSITER, SAYAWNI [FB]	13-20	V 7	
07:54	ASSIST by DICKSON, SHUG			
07:41				SUB OUT: JEKOT, KELLY
07:41				SUB IN: HAGANS, SHAY
07:34				MISSED LAYUP by MARISA, MAKENNA
07:32				REBOUND (OFF) by KAPINUS, LEILANI
07:31				MISSED LAYUP by KAPINUS, LEILANI
07:31	BLOCK by SIDIBE, AWA			
07:30	REBOUND (DEF) by SIDIBE, AWA			
07:30	TURNOVER (DRIBBLING) by SIDIBE, AWA			
07:09				FOUL (OFF) by BRIGHAM, ALI
07:09				TURNOVER (OFFENSIVE) by BRIGHAM, ALI
07:09				SUB OUT: BRIGHAM, ALI
07:09				SUB IN: BURKE, MADDIE
06:53	TURNOVER (BADPASS) by MORRIS, VICTORIA			
06:33		15-20	V 5	GOOD! LAYUP by MARISA, MAKENNA
06:33				ASSIST by KAPINUS, LEILANI
06:08	TURNOVER (3SEC) by SINGLETON, TYIA			
06:08	SUB OUT: SIDIBE, AWA			
06:08	SUB IN: BROWN, OSH			
05:47				MISSED LAYUP by HAGANS, SHAY
05:47	BLOCK by LASSITER, SAYAWNI			
05:43	REBOUND (DEF) by SINGLETON, TYIA			
05:22	MISSED JUMPER by LASSITER, SAYAWNI			
05:19	REBOUND (OFF) by BROWN, OSH			
05:18	MISSED LAYUP by BROWN, OSH			
05:15	REBOUND (OFF) by BROWN, OSH			
05:11	MISSED JUMPER by MORRIS, VICTORIA			
05:07				REBOUND (DEF) by MARISA, MAKENNA
04:47	FOUL (PERSONAL) by LASSITER, SAYAWNI			
04:47				
04:47				SUB OUT: HAGANS, SHAY
04:47				SUB IN: SABEL, TOVA
04:47	SUB OUT: MORRIS, VICTORIA			
04:47	SUB OUT: LASSITER, SAYAWNI			
04:47	SUB IN: PETREE, LASHA			
04:47	SUB IN: MASON, JAILYN			
04:42				MISSED LAYUP by MARISA, MAKENNA
04:39	REBOUND (DEF) by BROWN, OSH			
04:12	TURNOVER (BADPASS) by DICKSON, SHUG			
04:12				STEAL by BURKE, MADDIE
04:07		18-20	V 2	GOOD! 3PTR by BEVERLEY, NIYA [FB]
04:07				ASSIST by BURKE, MADDIE
03:44	MISSED JUMPER by DICKSON, SHUG			
03:40				REBOUND (DEF) by MARISA, MAKENNA

Time	VISITORS: Rutgers	Score	Margin	HOME: Penn St.
03:35		21-20	H 1	GOOD! 3PTR by KAPINUS, LEILANI [FB]
03:35				ASSIST by MARISA, MAKENNA
03:18				FOUL (PERSONAL) by BURKE, MADDIE
03:11	GOOD! 3PTR by DICKSON, SHUG	21-23	V 2	
03:11	ASSIST by MASON, JAILYN			
03:10				FOUL (PERSONAL) by BURKE, MADDIE
03:10				SUB OUT: BURKE, MADDIE
03:10				SUB IN: BRIGHAM, ALI
03:04				FOUL (PERSONAL) by BRIGHAM, ALI
03:04				SUB OUT: BRIGHAM, ALI
03:04				SUB IN: THOMAS, KAYLA
03:04	SUB OUT: SINGLETON, TYIA			
03:04	SUB IN: MORRIS, VICTORIA			
03:01	TURNOVER (BADPASS) by DICKSON, SHUG			
03:01				STEAL by SABEL, TOVA
02:43				MISSED JUMPER by KAPINUS, LEILANI
02:40				REBOUND (OFF) by KAPINUS, LEILANI
02:35				MISSED LAYUP by MARISA, MAKENNA
02:32	REBOUND (DEF) by BROWN, OSH			
02:32	TURNOVER (LOSTBALL) by BROWN, OSH			
02:32				STEAL by MARISA, MAKENNA
02:32	SUB OUT: PETREE, LASHA			
02:32	SUB IN: MARSHALL, DESTINY			
02:18				MISSED 3PTR by SABEL, TOVA
02:14				REBOUND (OFF) by THOMAS, KAYLA
02:13				MISSED 3PTR by BEVERLEY, NIYA
02:10	REBOUND (DEF) by DICKSON, SHUG			
02:00	GOOD! JUMPER by BROWN, OSH [PNT]	21-25	V 4	
01:50				MISSED 3PTR by KAPINUS, LEILANI
01:48				REBOUND (OFF) by THOMAS, KAYLA
01:48	FOUL (PERSONAL) by BROWN, OSH			
01:48		22-25	V 3	GOOD! FT by THOMAS, KAYLA
01:48				MISSED FT by THOMAS, KAYLA
01:47	REBOUND (DEF) by MARSHALL, DESTINY			
01:31	GOOD! 3PTR by MORRIS, VICTORIA	22-28	V 6	
01:31	ASSIST by BROWN, OSH			
01:07				TURNOVER (LOSTBALL) by KAPINUS, LEILANI
01:07	STEAL by MARSHALL, DESTINY			
00:56	MISSED 3PTR by MASON, JAILYN			
00:53				REBOUND (DEF) by BEVERLEY, NIYA
00:52	FOUL (INTENTIONAL) by MARSHALL, DESTINY			
00:52		23-28	V 5	GOOD! FT by MARISA, MAKENNA
00:52				MISSED FT by MARISA, MAKENNA
00:52				REBOUND (OFF) by TEAM
00:37				SUB OUT: THOMAS, KAYLA
00:37				SUB IN: JEKOT, KELLY
00:37	SUB OUT: MARSHALL, DESTINY			
00:37	SUB IN: SIDIBE, AWA			
00:33				TURNOVER (DRIBBLING) by SABEL, TOVA
00:08	GOOD! LAYUP by DICKSON, SHUG	23-30	V 7	
00:08				FOUL (PERSONAL) by JEKOT, KELLY
00:08	GOOD! FT by DICKSON, SHUG	23-31	V 8	
00:03		25-31	V 6	GOOD! LAYUP by KAPINUS, LEILANI [FB]

Rutgers 31, Penn St. 25

Points (This Period)	RU	PSU
In the Paint	4	6
Off Turns	3	5
2nd Chance	0	1
Fast Break	3	8
Bench	6	3
Per Poss	0.875 6/16	0.824 6/17

Official Box Score
(13) Rutgers vs (12) Penn St.
Second Half Statistics Only
March 02, 2022 at Gainbridge Fieldhouse - Indianapolis, IN



Rutgers 44

No.	Player	S	Pts	FG	3FG	FT	OR	DR	TR	PF	A	TO	Blk	Stl	Min	+/-
00	PETREE, LASHA	G	4	2-3	0-1	0-0	0	0	0	1	0	0	0	1	8	11
01	MARSHALL, DESTINY	G	2	1-1	0-0	0-0	0	1	1	0	0	0	0	0	2	-1
03	DICKSON, SHUG	G	6	2-8	0-0	2-2	2	3	5	2	6	2	1	0	13	14
05	MORRIS, VICTORIA	G	4	2-4	0-1	0-0	0	0	0	0	0	0	0	0	10	9
10	LAFAYETTE, ERICA	F	2	0-1	0-0	2-2	0	0	0	1	0	0	0	0	2	-1
11	GUIHON, STEPHANIE	G	0	0-0	0-0	0-0	0	0	0	0	1	0	0	0	4	0
14	MASON, JAILYN	G	0	0-1	0-1	0-0	0	4	4	1	2	0	0	0	15	19
15	SIDIBE, AWA	G	0	0-2	0-0	0-0	2	1	3	1	1	0	1	1	12	10
20	MADDOX, JOIYA	G	0	0-1	0-1	0-0	0	1	1	1	0	0	0	0	2	-1
22	SINGLETON, TYIA	F	2	1-4	0-0	0-0	4	1	5	3	0	1	0	0	7	13
24	SANDERLIN, KIERRA	G	0	0-1	0-0	0-0	1	0	1	0	0	0	0	0	2	-1
32	BROWN, OSH	F	14	6-8	0-0	2-3	1	3	4	0	0	0	0	0	14	17
35	LASSITER, SAYAWNI	G	6	2-5	0-2	2-2	0	1	1	0	0	0	0	0	5	3
54	CORNWELL, CHYNA	F	4	2-3	0-0	0-1	0	1	1	1	0	0	0	0	4	3
	TEAM		0	0-0	0-0	0-0	2	1	3	0	0	0	0	0	0	0
TOTALS			44	18-42	0-6	8-10	12	17	29	11	10	3	2	2	99	

Shooting By Period

Period	FG	FG%	3FG	3FG%	FT	FT%
3rd Qtr	9-23	39%	0-3	00%	5-5	100%
4th Qtr	9-19	47%	0-3	00%	3-5	60%
2nd Half	18-42	43%	0-6	00%	8-10	80%
Game	30-69	43.5%	4-13	30.8%	11-15	73.3%

Deadball Rebounds: 2,0
Last FG Half: RU 4th-02:09

Penn St. 25

No.	Player	S	Pts	FG	3FG	FT	OR	DR	TR	PF	A	TO	Blk	Stl	Min	+/-
01	BRIGHAM, ALI	C	0	0-0	0-0	0-0	0	0	0	1	0	1	0	0	1	0
04	BEVERLEY, NIYA	G	0	0-4	0-2	0-0	0	1	1	1	0	0	0	0	17	-19
05	KAPINUS, LEILANI	G	10	1-6	0-2	8-9	3	5	8	2	0	1	1	1	19	-18
10	SABEL, TOVA	G	1	0-1	0-1	1-2	0	0	0	3	0	0	0	0	7	-8
11	CAMDEN, ANNA	F	2	0-3	0-1	2-2	1	0	1	1	0	0	1	0	15	-15
12	THOMAS, KAYLA	F	0	0-0	0-0	0-0	0	0	0	0	0	0	0	0	0	0
15	BURKE, MADDIE	G	2	1-1	0-0	0-0	0	1	1	2	0	0	0	0	5	-2
20	MARISA, MAKENNA	G	7	2-8	0-1	3-4	0	4	4	1	2	2	0	1	18	-18
23	HAGANS, SHAY	G	3	1-4	1-2	0-0	0	0	0	0	0	0	0	0	13	-15
25	JEKOT, KELLY	G	0	0-0	0-0	0-0	0	0	0	0	0	0	0	0	4	0
	TEAM		0	0-0	0-0	0-0	0	1	1	0	0	0	0	0	0	0
TOTALS			25	5-27	1-9	14-17	4	12	16	11	2	4	2	2	99	

Shooting By Period

Period	FG	FG%	3FG	3FG%	FT	FT%
3rd Qtr	2-14	14%	1-7	14%	6-8	75%
4th Qtr	3-13	23%	0-2	00%	8-9	89%
2nd Half	5-27	19%	1-9	11%	14-17	82%
Game	14-59	23.7%	4-23	17.4%	18-25	72.0%

Deadball Rebounds: 7,0
Last FG Half: PSU 4th-02:18

Game Notes:

Officials: Felicia Grinter, Gina Cross, Kevin Pethtel

Start Time: 02:03 PM ET

End Time: 04:00 PM ET

Game Duration: 1:56

Neutral Court;

Penn St. is the No. 12 seed and Rutgers is the No. 13 seed

Score	1st	2nd	3rd	4th	TOT
RU	17	14	23	21	75
PSU	11	14	11	14	50

Points from (This Period)	RU	PSU
In the Paint	28	8
Off Turns	4	2
2nd Chance	7	6
Fast Break	2	2
Bench	18	6

Official Box Score
(13) Rutgers vs (12) Penn St.
Third Quarter Statistics Only
March 02, 2022 at Gainbridge Fieldhouse - Indianapolis, IN



Rutgers 44

No.	Player	S	Pts	FG	3FG	FT	OR	DR	TR	PF	A	TO	Blk	Stl	Min	+/-
00	PETREE, LASHA	G	0	0-1	0-1	0-0	0	0	0	1	0	0	0	0	6	10
03	DICKSON, SHUG	G	6	2-6	0-0	2-2	1	1	2	1	3	1	1	0	9	11
14	MASON, JAILYN	G	0	0-1	0-1	0-0	0	3	3	0	1	0	0	0	7	11
22	SINGLETON, TYIA	F	2	1-4	0-0	0-0	4	1	5	3	0	1	0	0	7	13
32	BROWN, OSH	F	9	4-6	0-0	1-1	0	1	1	0	0	0	0	0	10	12
01	MARSHALL, DESTINY	G	0	0-0	0-0	0-0	0	0	0	0	0	0	0	0	0	0
05	MORRIS, VICTORIA	G	2	1-3	0-1	0-0	0	0	0	0	0	0	0	0	4	2
10	LAFAYETTE, ERICA	F	0	0-0	0-0	0-0	0	0	0	0	0	0	0	0	0	0
11	GUIHON, STEPHANIE	G	0	0-0	0-0	0-0	0	0	0	0	0	0	0	0	0	0
15	SIDIBE, AWA	G	0	0-1	0-0	0-0	1	1	2	0	1	0	0	1	4	2
20	MADDOX, JOIYA	G	0	0-0	0-0	0-0	0	0	0	0	0	0	0	0	0	0
24	SANDERLIN, KIERRA	G	0	0-0	0-0	0-0	0	0	0	0	0	0	0	0	0	0
35	LASSITER, SAYAWNI	G	4	1-1	0-0	2-2	0	1	1	0	0	0	0	0	3	-1
54	CORNWELL, CHYNA	F	0	0-0	0-0	0-0	0	0	0	0	0	0	0	0	0	0
	TEAM						2	0	2	0		0				
	TOTALS		23	9-23	0-3	5-5	8	8	16	5	5	2	1	1	50	

Shooting By Period

Period	FG	FG%	3FG	3FG%	FT	FT%
2nd Half	0-0	0%	0-0	0%	0-0	0%
Game	30-69	43.5%	4-13	30.8%	11-15	73.3%

Deadball Rebounds: 2,0

Penn St. 25

No.	Player	S	Pts	FG	3FG	FT	OR	DR	TR	PF	A	TO	Blk	Stl	Min	+/-
04	BEVERLEY, NIYA	G	0	0-3	0-2	0-0	0	1	1	0	0	0	0	0	8	-12
05	KAPINUS, LEILANI	G	3	0-2	0-1	3-4	2	1	3	1	0	1	1	1	9	-11
11	CAMDEN, ANNA	F	2	0-2	0-1	2-2	1	0	1	1	0	0	1	0	10	-12
20	MARISA, MAKENNA	G	3	1-3	0-1	1-2	0	2	2	0	1	1	0	0	9	-11
25	JEKOT, KELLY	G	0	0-0	0-0	0-0	0	0	0	0	0	0	0	0	2	-1
01	BRIGHAM, ALI	C	0	0-0	0-0	0-0	0	0	0	0	0	0	0	0	0	0
10	SABEL, TOVA	G	0	0-1	0-1	0-0	0	0	0	3	0	0	0	0	5	-7
12	THOMAS, KAYLA	F	0	0-0	0-0	0-0	0	0	0	0	0	0	0	0	0	0
15	BURKE, MADDIE	G	0	0-0	0-0	0-0	0	0	0	1	0	0	0	0	2	0
23	HAGANS, SHAY	G	3	1-3	1-1	0-0	0	0	0	0	0	0	0	0	5	-6
	TEAM						0	0	0	0		0				
	TOTALS		11	2-14	1-7	6-8	3	4	7	6	1	2	2	1	50	

Shooting By Period

Period	FG	FG%	3FG	3FG%	FT	FT%
2nd Half	0-0	0%	0-0	0%	0-0	0%
Game	14-59	23.7%	4-23	17.4%	18-25	72.0%

Deadball Rebounds: 7,0

Game Notes:

Officials: Felicia Grinter, Gina Cross, Kevin Pethtel

Start Time: 02:03 PM ET

End Time: 04:00 PM ET

Game Duration: 1:56

Neutral Court;

Penn St. is the No. 12 seed and Rutgers is the No. 13 seed

Score	1st	2nd	3rd	4th	TOT
RU	17	14	23	21	75
PSU	11	14	11	14	50

Points (This Period)	RU	PSU
In the Paint	14	2
Off Turns	2	0
2nd Chance	4	3
Fast Break	2	0
Bench	6	3
Per Poss	1.211 12/19	0.688 5/16

**Official Play-By-Play
(13) Rutgers vs (12) Penn St.
Third Quarter**

March 02, 2022 at Gainbridge Fieldhouse - Indianapolis, IN



Period 3

Starters:

Rutgers: 0 PETREE,LASHA (G); 3 DICKSON,SHUG (G); 14 MASON,JAILYN (G); 22 SINGLETON,TYIA (F); 32 BROWN,OSH (F);

Penn St.: 4 BEVERLEY,NIYA (G); 5 KAPINUS,LEILANI (G); 11 CAMDEN,ANNA (F); 20 MARISA,MAKENNA (G); 25 JEKOT,KELLY (G);

Time	VISITORS: Rutgers	Score	Margin	HOME: Penn St.
10:00				SUB OUT: JEKOT, KELLY
10:00				SUB IN: CAMDEN, ANNA
10:00	SUB OUT: MORRIS, VICTORIA			
10:00	SUB OUT: SIDIBE, AWA			
10:00	SUB IN: PETREE, LASHA			
10:00	SUB IN: SINGLETON, TYIA			
09:36	GOOD! JUMPER by BROWN, OSH	25-33	V 8	
09:36	ASSIST by DICKSON, SHUG			
09:09				MISSED JUMPER by BEVERLEY, NIYA
09:06	REBOUND (DEF) by MASON, JAILYN			
08:58	MISSED 3PTR by PETREE, LASHA			
08:57	REBOUND (OFF) by SINGLETON, TYIA			
08:57	MISSED LAYUP by SINGLETON, TYIA			
08:57				BLOCK by KAPINUS, LEILANI
08:57	REBOUND (OFF) by TEAM			
08:41	MISSED JUMPER by BROWN, OSH			
08:39	REBOUND (OFF) by TEAM			
08:39				FOUL (PERSONAL) by SABEL, TOVA
08:36	MISSED 3PTR by MASON, JAILYN			
08:34	REBOUND (OFF) by DICKSON, SHUG			
08:33	GOOD! LAYUP by DICKSON, SHUG	25-35	V 10	
08:18				MISSED 3PTR by SABEL, TOVA
08:15				REBOUND (OFF) by CAMDEN, ANNA
08:14				MISSED LAYUP by CAMDEN, ANNA
08:11	REBOUND (DEF) by MASON, JAILYN			
07:48	GOOD! JUMPER by BROWN, OSH [PNT]	25-37	V 12	
07:48	ASSIST by MASON, JAILYN			
07:36				MISSED 3PTR by CAMDEN, ANNA
07:36				REBOUND (OFF) by TEAM
07:36	FOUL (PERSONAL) by PETREE, LASHA			
07:34	FOUL (PERSONAL) by SINGLETON, TYIA			
07:34		26-37	V 11	GOOD! FT by KAPINUS, LEILANI
07:34		27-37	V 10	GOOD! FT by KAPINUS, LEILANI
07:21	GOOD! LAYUP by BROWN, OSH	27-39	V 12	
07:21	ASSIST by DICKSON, SHUG			
07:13				MISSED LAYUP by KAPINUS, LEILANI
07:13	BLOCK by DICKSON, SHUG			
07:10	REBOUND (DEF) by MASON, JAILYN			
07:08				FOUL (PERSONAL) by SABEL, TOVA
07:08				SUB OUT: SABEL, TOVA
07:08				SUB IN: HAGANS, SHAY
07:08	GOOD! FT by DICKSON, SHUG [FB]	27-40	V 13	
07:08	GOOD! FT by DICKSON, SHUG [FB]	27-41	V 14	
06:46				MISSED 3PTR by MARISA, MAKENNA
06:43				REBOUND (OFF) by KAPINUS, LEILANI
06:41				TURNOVER (TRAVEL) by MARISA, MAKENNA
06:32	MISSED LAYUP by SINGLETON, TYIA			
06:32				BLOCK by CAMDEN, ANNA
06:29				REBOUND (DEF) by BEVERLEY, NIYA
06:24				MISSED 3PTR by KAPINUS, LEILANI
06:21	REBOUND (DEF) by DICKSON, SHUG			
06:16	MISSED LAYUP by DICKSON, SHUG			
06:13	REBOUND (OFF) by SINGLETON, TYIA			
06:13	GOOD! LAYUP by SINGLETON, TYIA	27-43	V 16	
06:12				TIMEOUT 30SEC
06:12				
05:50				MISSED LAYUP by HAGANS, SHAY
05:47	REBOUND (DEF) by BROWN, OSH			
05:26	MISSED JUMPER by DICKSON, SHUG			
05:22	REBOUND (OFF) by SINGLETON, TYIA			
05:21	TURNOVER (BADPASS) by SINGLETON, TYIA			
04:54				MISSED 3PTR by BEVERLEY, NIYA
04:51	REBOUND (DEF) by SINGLETON, TYIA			
04:34	MISSED JUMPER by BROWN, OSH			
04:30	REBOUND (OFF) by SINGLETON, TYIA			

Time	VISITORS: Rutgers	Score	Margin	HOME: Penn St.
04:30	MISSED LAYUP by SINGLETON, TYIA			
04:29				REBOUND (DEF) by KAPINUS, LEILANI
04:22				MISSED 3PTR by BEVERLEY, NIYA
04:18				REBOUND (OFF) by KAPINUS, LEILANI
04:16	FOUL (PERSONAL) by SINGLETON, TYIA			
04:16				
04:16				SUB OUT: BEVERLEY, NIYA
04:16				SUB OUT: HAGANS, SHAY
04:16				SUB IN: SABEL, TOVA
04:16				SUB IN: BURKE, MADDIE
04:16	SUB OUT: PETREE, LASHA			
04:16	SUB OUT: MASON, JAILYN			
04:16	SUB IN: MORRIS, VICTORIA			
04:16	SUB IN: SIDIBE, AWA			
04:16				MISSED FT by KAPINUS, LEILANI
04:16				REBOUND (OFF) by TEAM
04:16		28-43	V 15	GOOD! FT by KAPINUS, LEILANI
04:06	GOOD! JUMPER by DICKSON, SHUG [PNT]	28-45	V 17	
03:41				MISSED JUMPER by MARISA, MAKENNA
03:37	REBOUND (DEF) by SIDIBE, AWA			
03:22	GOOD! JUMPER by MORRIS, VICTORIA [PNT]	28-47	V 19	
03:22	ASSIST by SIDIBE, AWA			
03:12	FOUL (PERSONAL) by SINGLETON, TYIA			
03:12	SUB OUT: SINGLETON, TYIA			
03:12	SUB IN: LASSITER, SAYAWNI			
03:12				MISSED FT by MARISA, MAKENNA
03:12				REBOUND (OFF) by TEAM
03:12		29-47	V 18	GOOD! FT by MARISA, MAKENNA
03:06	MISSED JUMPER by MORRIS, VICTORIA			
03:04	REBOUND (OFF) by TEAM			
03:04				FOUL (PERSONAL) by BURKE, MADDIE
02:53	MISSED 3PTR by MORRIS, VICTORIA			
02:50				REBOUND (DEF) by MARISA, MAKENNA
02:37		31-47	V 16	GOOD! LAYUP by MARISA, MAKENNA
02:18	MISSED LAYUP by DICKSON, SHUG			
02:15	REBOUND (OFF) by SIDIBE, AWA			
02:15	MISSED LAYUP by SIDIBE, AWA			
02:15				REBOUND (DEF) by MARISA, MAKENNA
02:15	FOUL (PERSONAL) by DICKSON, SHUG			
02:15				SUB OUT: BURKE, MADDIE
02:15				SUB IN: HAGANS, SHAY
02:15				SUB OUT: MARISA, MAKENNA
02:15				SUB IN: BEVERLEY, NIYA
02:15		32-47	V 15	GOOD! FT by CAMDEN, ANNA
02:15		33-47	V 14	GOOD! FT by CAMDEN, ANNA
02:10				FOUL (PERSONAL) by CAMDEN, ANNA
02:09	GOOD! LAYUP by BROWN, OSH	33-49	V 16	
02:09	ASSIST by DICKSON, SHUG			
02:09				FOUL (PERSONAL) by SABEL, TOVA
02:09	GOOD! FT by BROWN, OSH	33-50	V 17	
02:09				SUB OUT: SABEL, TOVA
02:09				SUB IN: JEKOT, KELLY
01:52				MISSED JUMPER by HAGANS, SHAY
01:48	REBOUND (DEF) by LASSITER, SAYAWNI			
01:29	MISSED LAYUP by DICKSON, SHUG			
01:28	REBOUND (OFF) by TEAM			
01:25	TURNOVER (LOSTBALL) by DICKSON, SHUG			
01:25				STEAL by KAPINUS, LEILANI
01:25				SUB OUT: HAGANS, SHAY
01:25				SUB IN: MARISA, MAKENNA
01:25	SUB OUT: DICKSON, SHUG			
01:25	SUB IN: MASON, JAILYN			
01:09				TURNOVER (BADPASS) by KAPINUS, LEILANI
01:09	STEAL by SIDIBE, AWA			
01:02				FOUL (PERSONAL) by KAPINUS, LEILANI
01:02				SUB OUT: KAPINUS, LEILANI
01:02				SUB IN: HAGANS, SHAY
01:02	GOOD! FT by LASSITER, SAYAWNI	33-51	V 18	
01:02	GOOD! FT by LASSITER, SAYAWNI	33-52	V 19	
00:41		36-52	V 16	GOOD! 3PTR by HAGANS, SHAY
00:41				ASSIST by MARISA, MAKENNA
00:19	GOOD! JUMPER by LASSITER, SAYAWNI	36-54	V 18	

Rutgers 54, Penn St. 36

Points (This Period)	RU	PSU
In the Paint	14	2
Off Turns	2	0
2nd Chance	4	3
Fast Break	2	0
Bench	6	3
Per Poss	1.211 12/19	0.688 5/16

Official Box Score
(13) Rutgers vs (12) Penn St.
Fourth Quarter Statistics Only
March 02, 2022 at Gainbridge Fieldhouse - Indianapolis, IN



Rutgers 21

No.	Player	S	Pts	FG	3FG	FT	OR	DR	TR	PF	A	TO	Blk	Stl	Min	+/-
00	PETREE, LASHA	G	4	2-2	0-0	0-0	0	0	0	0	0	0	0	1	2	1
03	DICKSON, SHUG	G	0	0-2	0-0	0-0	1	2	3	1	3	1	0	0	4	3
14	MASON, JAILYN	G	0	0-0	0-0	0-0	0	1	1	1	1	0	0	0	8	8
22	SINGLETON, TYIA	F	0	0-0	0-0	0-0	0	0	0	0	0	0	0	0	0	0
32	BROWN, OSH	F	5	2-2	0-0	1-2	1	2	3	0	0	0	0	0	4	5
01	MARSHALL, DESTINY	G	2	1-1	0-0	0-0	0	1	1	0	0	0	0	0	2	-1
05	MORRIS, VICTORIA	G	2	1-1	0-0	0-0	0	0	0	0	0	0	0	0	6	7
10	LAFAYETTE, ERICA	F	2	0-1	0-0	2-2	0	0	0	1	0	0	0	0	2	-1
11	GUIHON, STEPHANIE	G	0	0-0	0-0	0-0	0	0	0	0	1	0	0	0	4	0
15	SIDIBE, AWA	G	0	0-1	0-0	0-0	1	0	1	1	0	0	1	0	8	8
20	MADDOX, JOIYA	G	0	0-1	0-1	0-0	0	1	1	1	0	0	0	0	2	-1
24	SANDERLIN, KIERRA	G	0	0-1	0-0	0-0	1	0	1	0	0	0	0	0	2	-1
35	LASSITER, SAYAWNI	G	2	1-4	0-2	0-0	0	0	0	0	0	0	0	0	2	4
54	CORNWELL, CHYNA	F	4	2-3	0-0	0-1	0	1	1	1	0	0	0	0	4	3
	TEAM						0	1	1	0		0				
	TOTALS		21	9-19	0-3	3-5	4	9	13	6	5	1	1	1	49	

Shooting By Period

Period	FG	FG%	3FG	3FG%	FT	FT%
Game	30-69	43.5%	4-13	30.8%	11-15	73.3%

Deadball Rebounds: 2,0

Penn St. 14

No.	Player	S	Pts	FG	3FG	FT	OR	DR	TR	PF	A	TO	Blk	Stl	Min	+/-
04	BEVERLEY, NIYA	G	0	0-1	0-0	0-0	0	0	0	1	0	0	0	0	9	-7
05	KAPINUS, LEILANI	G	7	1-4	0-1	5-5	1	4	5	1	0	0	0	0	10	-7
11	CAMDEN, ANNA	F	0	0-1	0-0	0-0	0	0	0	0	0	0	0	0	5	-3
20	MARISA, MAKENNA	G	4	1-5	0-0	2-2	0	2	2	1	1	1	0	1	9	-7
25	JEKOT, KELLY	G	0	0-0	0-0	0-0	0	0	0	0	0	0	0	0	2	1
01	BRIGHAM, ALI	C	0	0-0	0-0	0-0	0	0	0	1	0	1	0	0	1	0
10	SABEL, TOVA	G	1	0-0	0-0	1-2	0	0	0	0	0	0	0	0	2	-1
12	THOMAS, KAYLA	F	0	0-0	0-0	0-0	0	0	0	0	0	0	0	0	0	0
15	BURKE, MADDIE	G	2	1-1	0-0	0-0	0	1	1	1	0	0	0	0	3	-2
23	HAGANS, SHAY	G	0	0-1	0-1	0-0	0	0	0	0	0	0	0	0	8	-9
	TEAM						0	1	1	0		0				
	TOTALS		14	3-13	0-2	8-9	1	8	9	5	1	2	0	1	49	

Shooting By Period

Period	FG	FG%	3FG	3FG%	FT	FT%
Game	14-59	23.7%	4-23	17.4%	18-25	72.0%

Deadball Rebounds: 7,0

Game Notes:

Officials: Felicia Grinter, Gina Cross, Kevin Pethtel

Start Time: 02:03 PM ET

End Time: 04:00 PM ET

Game Duration: 1:56

Neutral Court;

Penn St. is the No. 12 seed and Rutgers is the No. 13 seed

Score	1st	2nd	3rd	4th	TOT
RU	17	14	23	21	75
PSU	11	14	11	14	50

Points (This Period)	RU	PSU
In the Paint	14	6
Off Turns	2	2
2nd Chance	3	3
Fast Break	0	2
Bench	12	3
Per Poss	1.167	0.778
	11/18	7/18

**Official Play-By-Play
(13) Rutgers vs (12) Penn St.
Fourth Quarter**

March 02, 2022 at Gainbridge Fieldhouse - Indianapolis, IN



Period 4

Starters:

Rutgers: 0 PETREE,LASHA (G); 3 DICKSON,SHUG (G); 14 MASON,JAILYN (G); 22 SINGLETON,TYIA (F); 32 BROWN,OSH (F);

Penn St.: 4 BEVERLEY,NIYA (G); 5 KAPINUS,LEILANI (G); 11 CAMDEN,ANNA (F); 20 MARISA,MAKENNA (G); 25 JEKOT,KELLY (G);

Time	VISITORS: Rutgers	Score	Margin	HOME: Penn St.
10:00				SUB OUT: JEKOT, KELLY
10:00				SUB IN: KAPINUS, LEILANI
09:46	MISSED JUMPER by LASSITER, SAYAWNI			
09:42	REBOUND (OFF) by SIDIBE, AWA			
09:41	MISSED 3PTR by LASSITER, SAYAWNI			
09:38	REBOUND (OFF) by BROWN, OSH			
09:24	GOOD! JUMPER by BROWN, OSH [PNT]	36-56	V 20	
09:13				MISSED LAYUP by MARISA, MAKENNA
09:10	REBOUND (DEF) by BROWN, OSH			
08:54	GOOD! JUMPER by LASSITER, SAYAWNI	36-58	V 22	
08:33				MISSED LAYUP by KAPINUS, LEILANI
08:33	BLOCK by SIDIBE, AWA			
08:30	REBOUND (DEF) by BROWN, OSH			
08:11	MISSED 3PTR by LASSITER, SAYAWNI			
08:07				REBOUND (DEF) by TEAM
08:07				SUB OUT: CAMDEN, ANNA
08:07				SUB IN: BRIGHAM, ALI
08:07	SUB OUT: LASSITER, SAYAWNI			
08:07	SUB IN: DICKSON, SHUG			
08:00				FOUL (OFF) by BRIGHAM, ALI
08:00				TURNOVER (OFFENSIVE) by BRIGHAM, ALI
07:37	GOOD! LAYUP by BROWN, OSH	36-60	V 24	
07:37	ASSIST by DICKSON, SHUG			
07:29	FOUL (PERSONAL) by DICKSON, SHUG			
07:25				MISSED JUMPER by MARISA, MAKENNA
07:24	REBOUND (DEF) by TEAM			
07:22	TURNOVER (BADPASS) by DICKSON, SHUG			
07:22				STEAL by MARISA, MAKENNA
07:18		38-60	V 22	GOOD! LAYUP by MARISA, MAKENNA
07:08	MISSED LAYUP by DICKSON, SHUG			
07:05	REBOUND (OFF) by DICKSON, SHUG			
06:52				FOUL (PERSONAL) by KAPINUS, LEILANI
06:52				SUB OUT: BRIGHAM, ALI
06:52				SUB IN: BURKE, MADDIE
06:52	GOOD! FT by BROWN, OSH	38-61	V 23	
06:52	MISSED FT by BROWN, OSH			
06:51				REBOUND (DEF) by KAPINUS, LEILANI
06:21				MISSED 3PTR by KAPINUS, LEILANI
06:17	REBOUND (DEF) by DICKSON, SHUG			
06:00	MISSED JUMPER by SIDIBE, AWA			
05:58				REBOUND (DEF) by BURKE, MADDIE
05:58	SUB OUT: BROWN, OSH			
05:58	SUB IN: CORNWELL, CHYNA			
05:47				MISSED LAYUP by MARISA, MAKENNA
05:44	REBOUND (DEF) by DICKSON, SHUG			
05:36	GOOD! JUMPER by CORNWELL, CHYNA	38-63	V 25	
05:36	ASSIST by DICKSON, SHUG			
05:36				FOUL (PERSONAL) by BURKE, MADDIE
05:36	MISSED FT by CORNWELL, CHYNA			
05:35				REBOUND (DEF) by KAPINUS, LEILANI
05:27				MISSED 3PTR by HAGANS, SHAY
05:23	REBOUND (DEF) by MASON, JAILYN			
05:02	GOOD! JUMPER by MORRIS, VICTORIA [PNT]	38-65	V 27	
05:02	ASSIST by DICKSON, SHUG			
04:52		40-65	V 25	GOOD! LAYUP by BURKE, MADDIE
04:52				ASSIST by MARISA, MAKENNA
04:23	MISSED JUMPER by DICKSON, SHUG			
04:21				REBOUND (DEF) by KAPINUS, LEILANI
04:17	FOUL (PERSONAL) by MASON, JAILYN			
04:17				SUB OUT: HAGANS, SHAY
04:17				SUB IN: SABEL, TOVA
04:17	SUB OUT: DICKSON, SHUG			
04:17	SUB OUT: MORRIS, VICTORIA			
04:17	SUB IN: PETREE, LASHA			

Time	VISITORS: Rutgers	Score	Margin	HOME: Penn St.
04:17	SUB IN: GUIHON, STEPHANIE			
04:17		41-65	V 24	GOOD! FT by KAPINUS, LEILANI [FB]
04:17		42-65	V 23	GOOD! FT by KAPINUS, LEILANI [FB]
04:05	TIMEOUT 30SEC			
03:51	GOOD! LAYUP by PETREE, LASHA	42-67	V 25	
03:43	FOUL (PERSONAL) by SIDIBE, AWA			
03:43				MISSED FT by SABEL, TOVA
03:43				REBOUND (OFF) by TEAM
03:43		43-67	V 24	GOOD! FT by SABEL, TOVA
03:43				SUB OUT: BURKE, MADDIE
03:43				SUB IN: HAGANS, SHAY
03:33	GOOD! LAYUP by CORNWELL, CHYNA [PNT]	43-69	V 26	
03:33	ASSIST by MASON, JAILYN			
03:20				MISSED LAYUP by BEVERLEY, NIYA
03:18	REBOUND (DEF) by CORNWELL, CHYNA			
03:10				FOUL (PERSONAL) by BEVERLEY, NIYA
03:10				SUB OUT: BEVERLEY, NIYA
03:10				SUB IN: CAMDEN, ANNA
03:06	GOOD! JUMPER by PETREE, LASHA	43-71	V 28	
02:59				TURNOVER (BADPASS) by MARISA, MAKENNA
02:59	STEAL by PETREE, LASHA			
02:31	MISSED JUMPER by CORNWELL, CHYNA			
02:27				REBOUND (DEF) by MARISA, MAKENNA
02:20				MISSED LAYUP by CAMDEN, ANNA
02:18				REBOUND (OFF) by KAPINUS, LEILANI
02:18		45-71	V 26	GOOD! JUMPER by KAPINUS, LEILANI
02:18	FOUL (PERSONAL) by CORNWELL, CHYNA			
02:18	SUB OUT: PETREE, LASHA			
02:18	SUB OUT: GUIHON, STEPHANIE			
02:18	SUB OUT: MASON, JAILYN			
02:18	SUB OUT: SIDIBE, AWA			
02:18	SUB IN: MARSHALL, DESTINY			
02:18	SUB IN: LAFAYETTE, ERICA			
02:18	SUB IN: MADDOX, JOIYA			
02:18	SUB IN: SANDERLIN, KIERRA			
02:18	SUB OUT: CORNWELL, CHYNA			
02:18	SUB IN: GUIHON, STEPHANIE			
02:18				SUB OUT: SABEL, TOVA
02:18				SUB OUT: HAGANS, SHAY
02:18				SUB IN: BEVERLEY, NIYA
02:18				SUB IN: JEKOT, KELLY
02:18		46-71	V 25	GOOD! FT by KAPINUS, LEILANI
02:09	GOOD! LAYUP by MARSHALL, DESTINY	46-73	V 27	
02:09	ASSIST by GUIHON, STEPHANIE			
01:52	FOUL (PERSONAL) by LAFAYETTE, ERICA			
01:52		47-73	V 26	GOOD! FT by MARISA, MAKENNA
01:52		48-73	V 25	GOOD! FT by MARISA, MAKENNA
01:30	MISSED 3PTR by MADDOX, JOIYA			
01:25	REBOUND (OFF) by SANDERLIN, KIERRA			
01:25	MISSED JUMPER by SANDERLIN, KIERRA			
01:22				REBOUND (DEF) by MARISA, MAKENNA
01:16				MISSED LAYUP by MARISA, MAKENNA
01:13	REBOUND (DEF) by MADDOX, JOIYA			
00:58				FOUL (PERSONAL) by MARISA, MAKENNA
00:58	GOOD! FT by LAFAYETTE, ERICA	48-74	V 26	
00:58	GOOD! FT by LAFAYETTE, ERICA	48-75	V 27	
00:46	FOUL (PERSONAL) by MADDOX, JOIYA			
00:46		49-75	V 26	GOOD! FT by KAPINUS, LEILANI
00:46		50-75	V 25	GOOD! FT by KAPINUS, LEILANI
00:46				SUB OUT: MARISA, MAKENNA
00:46				SUB IN: HAGANS, SHAY
00:26	MISSED JUMPER by LAFAYETTE, ERICA			
00:23				REBOUND (DEF) by KAPINUS, LEILANI
00:17				MISSED LAYUP by KAPINUS, LEILANI
00:14	REBOUND (DEF) by MARSHALL, DESTINY			

Rutgers 75, Penn St. 50

Points (This Period)	RU	PSU
In the Paint	14	6
Off Turns	2	2
2nd Chance	3	3
Fast Break	0	2
Bench	12	3
Per Poss	1.167 11/18	0.778 7/18

**Official Scoring/Possession Reference Chart
(13) Rutgers vs (12) Penn St.
Period 1**

March 02, 2022 at Gainbridge Fieldhouse - Indianapolis, IN



Period 1

Starters:

Rutgers: 0 PETREE,LASHA (G); 3 DICKSON,SHUG (G); 14 MASON,JAILYN (G); 22 SINGLETON,TYIA (F); 32 BROWN,OSH (F);

Penn St.: 4 BEVERLEY,NIYA (G); 5 KAPINUS,LEILANI (G); 11 CAMDEN,ANNA (F); 20 MARISA,MAKENNA (G); 25 JEKOT,KELLY (G);

Time	VISITORS: Rutgers	Score	Margin	HOME: Penn St.
08:00		2-0	H 2	GOOD! JUMPER by MARISA, MAKENNA [FB/PNT]
07:22		4-0	H 4	GOOD! LAYUP by BEVERLEY, NIYA [FB]
06:54	GOOD! FT by SINGLETON, TYIA	4-1	H 3	
05:38	GOOD! LAYUP by SINGLETON, TYIA [FB]	4-3	H 1	
04:43	GOOD! JUMPER by SINGLETON, TYIA [PNT]	4-5	V 1	
04:26		6-5	H 1	GOOD! LAYUP by MARISA, MAKENNA [PNT]
04:12	GOOD! JUMPER by DICKSON, SHUG	6-7	V 1	
03:57	GOOD! FT by SINGLETON, TYIA [FB]	6-8	V 2	
03:50	GOOD! 3PTR by MASON, JAILYN	6-11	V 5	
03:16	GOOD! LAYUP by SINGLETON, TYIA	6-13	V 7	
02:42	GOOD! LAYUP by PETREE, LASHA [FB]	6-15	V 9	
02:35		7-15	V 8	GOOD! FT by MARISA, MAKENNA [FB]
01:45		8-15	V 7	GOOD! FT by KAPINUS, LEILANI
00:54	GOOD! JUMPER by BROWN, OSH	8-17	V 9	
00:46		11-17	V 6	GOOD! 3PTR by SABEL, TOVA

Rutgers 17, Penn St. 11

Official Scoring/Possession Reference Chart
(13) Rutgers vs (12) Penn St.
Period 2
March 02, 2022 at Gainbridge Fieldhouse - Indianapolis, IN



BIG
WOMEN'S BASKETBALL
TOURNAMENT

Period 2

Starters:

Rutgers: 0 PETREE,LASHA (G); 3 DICKSON,SHUG (G); 14 MASON,JAILYN (G); 22 SINGLETON,TYIA (F); 32 BROWN,OSH (F);

Penn St.: 4 BEVERLEY,NIYA (G); 5 KAPINUS,LEILANI (G); 11 CAMDEN,ANNA (F); 20 MARISA,MAKENNA (G); 25 JEKOT,KELLY (G);

Time	VISITORS: Rutgers	Score	Margin	HOME: Penn St.
08:31		13-17	V 4	GOOD! JUMPER by BRIGHAM, ALI [PNT]
07:54	GOOD! 3PTR by LASSITER, SAYAWNI [FB]	13-20	V 7	
06:33		15-20	V 5	GOOD! LAYUP by MARISA, MAKENNA
04:07		18-20	V 2	GOOD! 3PTR by BEVERLEY, NIYA [FB]
03:35		21-20	H 1	GOOD! 3PTR by KAPINUS, LEILANI [FB]
03:11	GOOD! 3PTR by DICKSON, SHUG	21-23	V 2	
02:00	GOOD! JUMPER by BROWN, OSH [PNT]	21-25	V 4	
01:48		22-25	V 3	GOOD! FT by THOMAS, KAYLA
01:31	GOOD! 3PTR by MORRIS, VICTORIA	22-28	V 6	
00:52		23-28	V 5	GOOD! FT by MARISA, MAKENNA
00:08	GOOD! LAYUP by DICKSON, SHUG	23-30	V 7	
00:08	GOOD! FT by DICKSON, SHUG	23-31	V 8	
00:03		25-31	V 6	GOOD! LAYUP by KAPINUS, LEILANI [FB]

Rutgers 31, Penn St. 25

**Official Scoring/Possession Reference Chart
(13) Rutgers vs (12) Penn St.
Period 3**

March 02, 2022 at Gainbridge Fieldhouse - Indianapolis, IN



Period 3

Starters:

Rutgers: 0 PETREE,LASHA (G); 3 DICKSON,SHUG (G); 14 MASON,JAILYN (G); 22 SINGLETON,TYIA (F); 32 BROWN,OSH (F);

Penn St.: 4 BEVERLEY,NIYA (G); 5 KAPINUS,LEILANI (G); 11 CAMDEN,ANNA (F); 20 MARISA,MAKENNA (G); 25 JEKOT,KELLY (G);

Time	VISITORS: Rutgers	Score	Margin	HOME: Penn St.
09:36	GOOD! JUMPER by BROWN, OSH	25-33	V 8	
08:33	GOOD! LAYUP by DICKSON, SHUG	25-35	V 10	
07:48	GOOD! JUMPER by BROWN, OSH [PNT]	25-37	V 12	
07:34		26-37	V 11	GOOD! FT by KAPINUS, LEILANI
07:34		27-37	V 10	GOOD! FT by KAPINUS, LEILANI
07:21	GOOD! LAYUP by BROWN, OSH	27-39	V 12	
07:08	GOOD! FT by DICKSON, SHUG [FB]	27-40	V 13	
07:08	GOOD! FT by DICKSON, SHUG [FB]	27-41	V 14	
06:13	GOOD! LAYUP by SINGLETON, TYIA	27-43	V 16	
04:16		28-43	V 15	GOOD! FT by KAPINUS, LEILANI
04:06	GOOD! JUMPER by DICKSON, SHUG [PNT]	28-45	V 17	
03:22	GOOD! JUMPER by MORRIS, VICTORIA [PNT]	28-47	V 19	
03:12		29-47	V 18	GOOD! FT by MARISA, MAKENNA
02:37		31-47	V 16	GOOD! LAYUP by MARISA, MAKENNA
02:15		32-47	V 15	GOOD! FT by CAMDEN, ANNA
02:15		33-47	V 14	GOOD! FT by CAMDEN, ANNA
02:09	GOOD! LAYUP by BROWN, OSH	33-49	V 16	
02:09	GOOD! FT by BROWN, OSH	33-50	V 17	
01:02	GOOD! FT by LASSITER, SAYAWNI	33-51	V 18	
01:02	GOOD! FT by LASSITER, SAYAWNI	33-52	V 19	
00:41		36-52	V 16	GOOD! 3PTR by HAGANS, SHAY
00:19	GOOD! JUMPER by LASSITER, SAYAWNI	36-54	V 18	

Rutgers 54, Penn St. 36

**Official Scoring/Possession Reference Chart
(13) Rutgers vs (12) Penn St.
Period 4**

March 02, 2022 at Gainbridge Fieldhouse - Indianapolis, IN



Period 4

Starters:

Rutgers: 0 PETREE,LASHA (G); 3 DICKSON,SHUG (G); 14 MASON,JAILYN (G); 22 SINGLETON,TYIA (F); 32 BROWN,OSH (F);

Penn St.: 4 BEVERLEY,NIYA (G); 5 KAPINUS,LEILANI (G); 11 CAMDEN,ANNA (F); 20 MARISA,MAKENNA (G); 25 JEKOT,KELLY (G);

Time	VISITORS: Rutgers	Score	Margin	HOME: Penn St.
09:24	GOOD! JUMPER by BROWN, OSH [PNT]	36-56	V 20	
08:54	GOOD! JUMPER by LASSITER, SAYAWNI	36-58	V 22	
07:37	GOOD! LAYUP by BROWN, OSH	36-60	V 24	
07:18		38-60	V 22	GOOD! LAYUP by MARISA, MAKENNA
06:52	GOOD! FT by BROWN, OSH	38-61	V 23	
05:36	GOOD! JUMPER by CORNWELL, CHYNA	38-63	V 25	
05:02	GOOD! JUMPER by MORRIS, VICTORIA [PNT]	38-65	V 27	
04:52		40-65	V 25	GOOD! LAYUP by BURKE, MADDIE
04:17		41-65	V 24	GOOD! FT by KAPINUS, LEILANI [FB]
04:17		42-65	V 23	GOOD! FT by KAPINUS, LEILANI [FB]
03:51	GOOD! LAYUP by PETREE, LASHA	42-67	V 25	
03:43		43-67	V 24	GOOD! FT by SABEL, TOVA
03:33	GOOD! LAYUP by CORNWELL, CHYNA [PNT]	43-69	V 26	
03:06	GOOD! JUMPER by PETREE, LASHA	43-71	V 28	
02:18		45-71	V 26	GOOD! JUMPER by KAPINUS, LEILANI
02:18		46-71	V 25	GOOD! FT by KAPINUS, LEILANI
02:09	GOOD! LAYUP by MARSHALL, DESTINY	46-73	V 27	
01:52		47-73	V 26	GOOD! FT by MARISA, MAKENNA
01:52		48-73	V 25	GOOD! FT by MARISA, MAKENNA
00:58	GOOD! FT by LAFAYETTE, ERICA	48-74	V 26	
00:58	GOOD! FT by LAFAYETTE, ERICA	48-75	V 27	
00:46		49-75	V 26	GOOD! FT by KAPINUS, LEILANI
00:46		50-75	V 25	GOOD! FT by KAPINUS, LEILANI

Rutgers 75, Penn St. 50

**Official Substitutions Log
(13) Rutgers vs (12) Penn St.
Period 1**

March 02, 2022 at Gainbridge Fieldhouse - Indianapolis, IN



BIG
BIG WOMEN'S BASKETBALL
TOURNAMENT

VISITORS: Rutgers	Time	Score	HOME: Penn St.
0 PETREE,LASHA			4 BEVERLEY,NIYA
3 DICKSON,SHUG			5 KAPINUS,LEILANI
14 MASON,JAILYN			11 CAMDEN,ANNA
22 SINGLETON,TYIA			20 MARISA,MAKENNA
32 BROWN,OSH			25 JEKOT,KELLY
	07:12	0-4	SUB OUT: JEKOT,KELLY
	07:12		SUB IN: HAGANS,SHAY
	06:54	0-4	SUB OUT: CAMDEN,ANNA
	06:54		SUB IN: BRIGHAM,ALI
	05:21	3-4	SUB OUT: KAPINUS,LEILANI
	05:21		SUB OUT: HAGANS,SHAY
	05:21		SUB IN: BURKE,MADDIE
	05:21		SUB IN: JEKOT,KELLY
	03:57	7-6	SUB OUT: BRIGHAM,ALI
	03:57		SUB IN: SABEL,TOVA
	03:13	13-6	SUB OUT: BURKE,MADDIE
	03:13		SUB OUT: JEKOT,KELLY
	03:13		SUB IN: KAPINUS,LEILANI
	03:13		SUB IN: THOMAS,KAYLA
	01:45	15-7	SUB OUT: BEVERLEY,NIYA
	01:45		SUB IN: HAGANS,SHAY
SUB OUT: 22 SINGLETON,TYIA	01:45		
SUB IN: 15 SIDIBE,AWA	01:45		
SUB OUT: 3 DICKSON,SHUG	01:20	15-8	
SUB IN: 35 LASSITER,SAYAWNI	01:20		
SUB OUT: 0 PETREE,LASHA	00:25	17-11	
SUB IN: 5 MORRIS,VICTORIA	00:25		

Rutgers 17, Penn St. 11

**Official Substitutions Log
(13) Rutgers vs (12) Penn St.
Period 2**

March 02, 2022 at Gainbridge Fieldhouse - Indianapolis, IN



BIG
INDIANANAPOLIS
TOURNAMENT

VISITORS: Rutgers	Time	Score	HOME: Penn St.
0 PETREE,LASHA			4 BEVERLEY,NIYA
3 DICKSON,SHUG			5 KAPINUS,LEILANI
14 MASON,JAILYN			11 CAMDEN,ANNA
22 SINGLETON,TYIA			20 MARISA,MAKENNA
32 BROWN,OSH			25 JEKOT,KELLY
	09:05	-	SUB OUT: THOMAS,KAYLA
	09:05		SUB OUT: HAGANS,SHAY
	09:05		SUB IN: BRIGHAM,ALI
	09:05		SUB IN: JEKOT,KELLY
SUB OUT: 14 MASON,JAILYN	09:05		
SUB IN: 3 DICKSON,SHUG	09:05		
SUB OUT: 32 BROWN,OSH	08:52	-	
SUB IN: 22 SINGLETON,TYIA	08:52		
	08:52		SUB OUT: SABEL,TOVA
	08:52		SUB IN: BEVERLEY,NIYA
	07:41	20-13	SUB OUT: JEKOT,KELLY
	07:41		SUB IN: HAGANS,SHAY
	07:09	20-13	SUB OUT: BRIGHAM,ALI
	07:09		SUB IN: BURKE,MADDIE
SUB OUT: 15 SIDIBE,AWA	06:08	20-15	
SUB IN: 32 BROWN,OSH	06:08		
	04:47	20-15	SUB OUT: HAGANS,SHAY
	04:47		SUB IN: SABEL,TOVA
SUB OUT: 5 MORRIS,VICTORIA	04:47		
SUB OUT: 35 LASSITER,SAYAWNI	04:47		
SUB IN: 0 PETREE,LASHA	04:47		
SUB IN: 14 MASON,JAILYN	04:47		
	03:10	23-21	SUB OUT: BURKE,MADDIE
	03:10		SUB IN: BRIGHAM,ALI
	03:04	23-21	SUB OUT: BRIGHAM,ALI
	03:04		SUB IN: THOMAS,KAYLA
SUB OUT: 22 SINGLETON,TYIA	03:04		
SUB IN: 5 MORRIS,VICTORIA	03:04		
SUB OUT: 0 PETREE,LASHA	02:32	23-21	
SUB IN: 1 MARSHALL,DESTINY	02:32		
	00:37	28-23	SUB OUT: THOMAS,KAYLA
	00:37		SUB IN: JEKOT,KELLY
SUB OUT: 1 MARSHALL,DESTINY	00:37		
SUB IN: 15 SIDIBE,AWA	00:37		

Rutgers 31, Penn St. 25

**Official Substitutions Log
(13) Rutgers vs (12) Penn St.
Period 3**

March 02, 2022 at Gainbridge Fieldhouse - Indianapolis, IN



BIG
BIG EAST BASKETBALL
TOURNAMENT

VISITORS: Rutgers	Time	Score	HOME: Penn St.
0 PETREE,LASHA			4 BEVERLEY,NIYA
3 DICKSON,SHUG			5 KAPINUS,LEILANI
14 MASON,JAILYN			11 CAMDEN,ANNA
22 SINGLETON,TYIA			20 MARISA,MAKENNA
32 BROWN,OSH			25 JEKOT,KELLY
	10:00	-	SUB OUT: JEKOT,KELLY
	10:00		SUB IN: CAMDEN,ANNA
SUB OUT: 5 MORRIS,VICTORIA	10:00		
SUB OUT: 15 SIDIBE,AWA	10:00		
SUB IN: 0 PETREE,LASHA	10:00		
SUB IN: 22 SINGLETON,TYIA	10:00		
	07:08	39-27	SUB OUT: SABEL,TOVA
	07:08		SUB IN: HAGANS,SHAY
	04:16	43-27	SUB OUT: BEVERLEY,NIYA
	04:16		SUB OUT: HAGANS,SHAY
	04:16		SUB IN: SABEL,TOVA
	04:16		SUB IN: BURKE,MADDIE
SUB OUT: 0 PETREE,LASHA	04:16		
SUB OUT: 14 MASON,JAILYN	04:16		
SUB IN: 5 MORRIS,VICTORIA	04:16		
SUB IN: 15 SIDIBE,AWA	04:16		
SUB OUT: 22 SINGLETON,TYIA	03:12	47-28	
SUB IN: 35 LASSITER,SAYAWNI	03:12		
	02:15	47-31	SUB OUT: BURKE,MADDIE
	02:15		SUB IN: HAGANS,SHAY
	02:15		SUB OUT: MARISA,MAKENNA
	02:15		SUB IN: BEVERLEY,NIYA
	02:09	50-33	SUB OUT: SABEL,TOVA
	02:09		SUB IN: JEKOT,KELLY
	01:25	50-33	SUB OUT: HAGANS,SHAY
	01:25		SUB IN: MARISA,MAKENNA
SUB OUT: 3 DICKSON,SHUG	01:25		
SUB IN: 14 MASON,JAILYN	01:25		
	01:02	50-33	SUB OUT: KAPINUS,LEILANI
	01:02		SUB IN: HAGANS,SHAY

Rutgers 54, Penn St. 36

**Official Substitutions Log
(13) Rutgers vs (12) Penn St.
Period 4**

March 02, 2022 at Gainbridge Fieldhouse - Indianapolis, IN



BIG
WOMEN'S BASKETBALL
TOURNAMENT

VISITORS: Rutgers	Time	Score	HOME: Penn St.
0 PETREE,LASHA			4 BEVERLEY,NIYA
3 DICKSON,SHUG			5 KAPINUS,LEILANI
14 MASON,JAILYN			11 CAMDEN,ANNA
22 SINGLETON,TYIA			20 MARISA,MAKENNA
32 BROWN,OSH			25 JEKOT,KELLY
	10:00	-	SUB OUT: JEKOT,KELLY
	10:00		SUB IN: KAPINUS,LEILANI
	08:07	58-36	SUB OUT: CAMDEN,ANNA
	08:07		SUB IN: BRIGHAM,ALI
SUB OUT: 35 LASSITER,SAYAWNI	08:07		
SUB IN: 3 DICKSON,SHUG	08:07		
	06:52	60-38	SUB OUT: BRIGHAM,ALI
	06:52		SUB IN: BURKE,MADDIE
SUB OUT: 32 BROWN,OSH	05:58	61-38	
SUB IN: 54 CORNWELL,CHYNA	05:58		
	04:17	65-40	SUB OUT: HAGANS,SHAY
	04:17		SUB IN: SABEL,TOVA
SUB OUT: 3 DICKSON,SHUG	04:17		
SUB OUT: 5 MORRIS,VICTORIA	04:17		
SUB IN: 0 PETREE,LASHA	04:17		
SUB IN: 11 GUIHON,STEPHANIE	04:17		
	03:43	67-43	SUB OUT: BURKE,MADDIE
	03:43		SUB IN: HAGANS,SHAY
	03:10	69-43	SUB OUT: BEVERLEY,NIYA
	03:10		SUB IN: CAMDEN,ANNA
SUB OUT: 0 PETREE,LASHA	02:18	71-45	
SUB OUT: 11 GUIHON,STEPHANIE	02:18		
SUB OUT: 14 MASON,JAILYN	02:18		
SUB OUT: 15 SIDIBE,AWA	02:18		
SUB IN: 1 MARSHALL,DESTINY	02:18		
SUB IN: 10 LAFAYETTE,ERICA	02:18		
SUB IN: 20 MADDOX,JOIYA	02:18		
SUB IN: 24 SANDERLIN,KIERRA	02:18		
SUB OUT: 54 CORNWELL,CHYNA	02:18		
SUB IN: 11 GUIHON,STEPHANIE	02:18		
	02:18		SUB OUT: SABEL,TOVA
	02:18		SUB OUT: HAGANS,SHAY
	02:18		SUB IN: BEVERLEY,NIYA
	02:18		SUB IN: JEKOT,KELLY
	00:46	75-50	SUB OUT: MARISA,MAKENNA
	00:46		SUB IN: HAGANS,SHAY

Rutgers 75, Penn St. 50

Official Shot Chart
(13) Rutgers vs (12) Penn St.
PERIOD 1 Shots
March 02, 2022 at Gainbridge Fieldhouse - Indianapolis, IN



BIG
BIG TEN CONFERENCE
TOURNAMENT

Penn St.

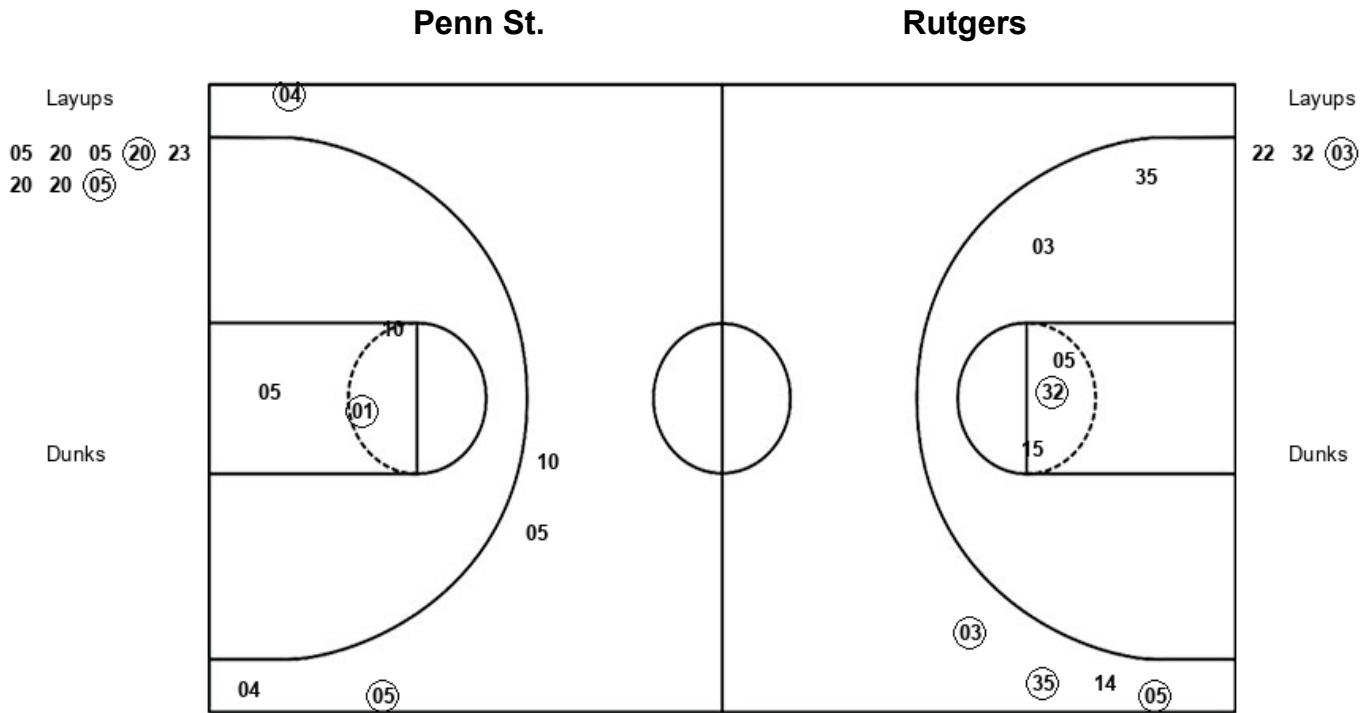


Rutgers

PSU : Period 1	Made	Att	Pct
Layups	2	4	50.0
Dunks	0	0	0
2PT Field Goals	3	7	42.9
3PT Field Goals	1	9	11.1
Total Field Goals	4	16	25.0

RU : Period 1	Made	Att	Pct
Layups	3	6	50.0
Dunks	0	0	0
2PT Field Goals	6	12	50.0
3PT Field Goals	1	3	33.3
Total Field Goals	7	15	46.7

Official Shot Chart
(13) Rutgers vs (12) Penn St.
PERIOD 2 Shots
March 02, 2022 at Gainbridge Fieldhouse - Indianapolis, IN



PSU : Period 2	Made	Att	Pct
Layups	2	8	25.0
Dunks	0	0	0
2PT Field Goals	3	11	27.3
3PT Field Goals	2	5	40.0
Total Field Goals	5	16	31.3

RU : Period 2	Made	Att	Pct
Layups	1	3	33.3
Dunks	0	0	0
2PT Field Goals	2	8	25.0
3PT Field Goals	3	4	75.0
Total Field Goals	5	12	41.7

Official Shot Chart
(13) Rutgers vs (12) Penn St.
PERIOD 3 Shots
March 02, 2022 at Gainbridge Fieldhouse - Indianapolis, IN



Penn St.

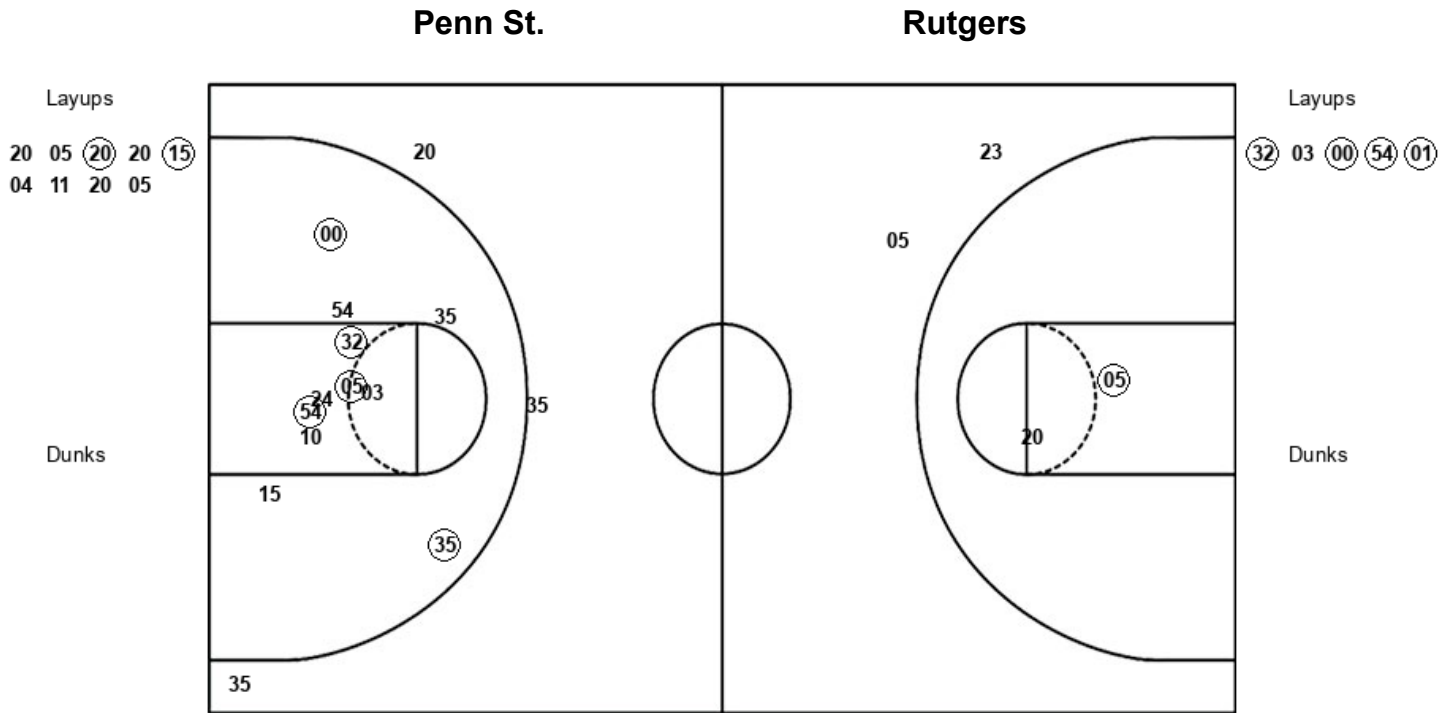


Rutgers

PSU : Period 3	Made	Att	Pct
Layups	1	4	25.0
Dunks	0	0	0
2PT Field Goals	1	7	14.3
3PT Field Goals	1	7	14.3
Total Field Goals	2	14	14.3

RU : Period 3	Made	Att	Pct
Layups	4	11	36.4
Dunks	0	0	0
2PT Field Goals	9	20	45.0
3PT Field Goals	0	3	00.0
Total Field Goals	9	23	39.1

Official Shot Chart
(13) Rutgers vs (12) Penn St.
PERIOD 4 Shots
March 02, 2022 at Gainbridge Fieldhouse - Indianapolis, IN



PSU : Period 4	Made	Att	Pct
Layups	2	9	22.2
Dunks	0	0	0
2PT Field Goals	3	11	27.3
3PT Field Goals	0	2	00.0
Total Field Goals	3	13	23.1

RU : Period 4	Made	Att	Pct
Layups	4	5	80.0
Dunks	0	0	0
2PT Field Goals	9	16	56.3
3PT Field Goals	0	3	00.0
Total Field Goals	9	19	47.4

Official Shot Chart
(13) Rutgers vs (12) Penn St.
Rutgers Team Shots
March 02, 2022 at Gainbridge Fieldhouse - Indianapolis, IN



RU : Period 1	Made	Att	Pct
Layups	3	6	50.0
Dunks	0	0	0
2PT Field Goals	6	12	50.0
3PT Field Goals	1	3	33.3
Total Field Goals	7	15	46.7

RU : Period 3	Made	Att	Pct
Layups	4	11	36.4
Dunks	0	0	0
2PT Field Goals	9	20	45.0
3PT Field Goals	0	3	00.0
Total Field Goals	9	23	39.1

RU : Period 2	Made	Att	Pct
Layups	1	3	33.3
Dunks	0	0	0
2PT Field Goals	2	8	25.0
3PT Field Goals	3	4	75.0
Total Field Goals	5	12	41.7

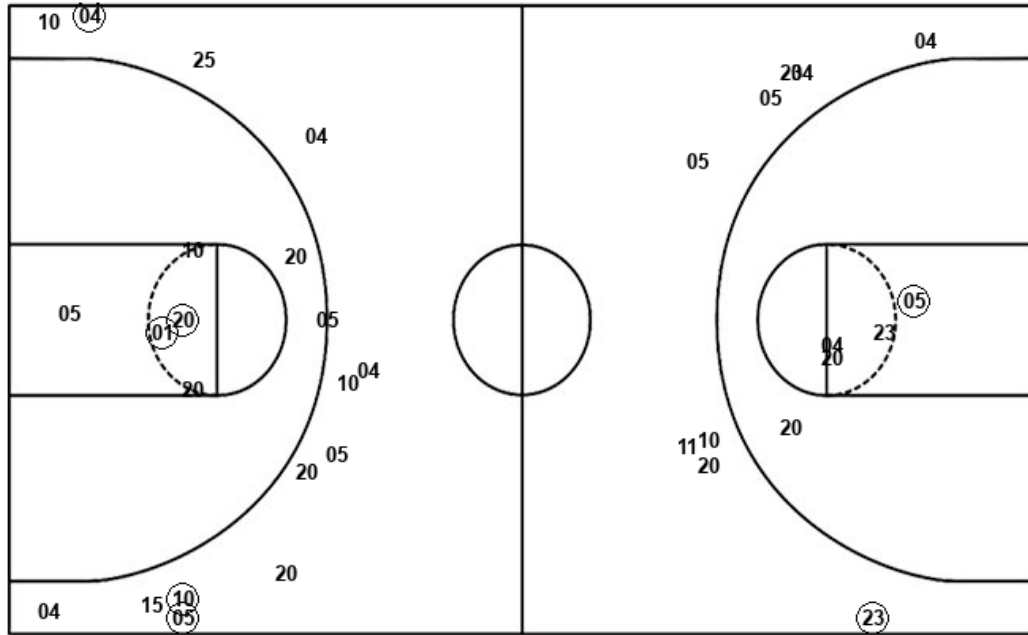
RU : Period 4	Made	Att	Pct
Layups	4	5	80.0
Dunks	0	0	0
2PT Field Goals	9	16	56.3
3PT Field Goals	0	3	00.0
Total Field Goals	9	19	47.4

Official Shot Chart
(13) Rutgers vs (12) Penn St.
Penn St. Team Shots
March 02, 2022 at Gainbridge Fieldhouse - Indianapolis, IN



Layups

Dunks



Layups

Dunks

(04) 05 (20) 20 05
 20 05 (20) 23 20
 20 (05) 11 05 23
 (20) 20 05 (20) 20
 (15) 04 11 20 05

PSU : Period 1	Made	Att	Pct
Layups	2	4	50.0
Dunks	0	0	0
2PT Field Goals	3	7	42.9
3PT Field Goals	1	9	11.1
Total Field Goals	4	16	25.0

PSU : Period 2	Made	Att	Pct
Layups	2	8	25.0
Dunks	0	0	0
2PT Field Goals	3	11	27.3
3PT Field Goals	2	5	40.0
Total Field Goals	5	16	31.3

PSU : Period 3	Made	Att	Pct
Layups	1	4	25.0
Dunks	0	0	0
2PT Field Goals	1	7	14.3
3PT Field Goals	1	7	14.3
Total Field Goals	2	14	14.3

PSU : Period 4	Made	Att	Pct
Layups	2	9	22.2
Dunks	0	0	0
2PT Field Goals	3	11	27.3
3PT Field Goals	0	2	00.0
Total Field Goals	3	13	23.1