

FINAL SCORE



Alabama AM

60



Prairie View

82

March 10, 2020 • William J. Nicks Building - Prairie View

FINAL STATISTICS

Official Box Score
Alabama AM vs Prairie View
Game Totals -- Final Statistics
March 10, 2020 at William J. Nicks Building - Prairie View



Alabama AM 60

No.	Player	S	Pts	FG	3FG	FT	OR	DR	TR	PF	A	TO	Blk	Stl	Min	+/-
03	TUCKER, CAMERON	G	7	3-9	0-1	1-1	1	6	7	2	6	3	1	1	34	-13
05	JOHNSON, JALEN	F	8	3-7	0-0	2-3	1	0	1	1	0	1	0	0	23	-11
10	HICKS, GARRETT	G	7	1-7	1-3	4-4	0	3	3	2	1	1	1	1	32	-17
13	ALFORD, CAMERON	G	4	0-4	0-1	4-4	0	5	5	1	4	4	0	0	14	-15
15	WILLIAMS, EJ	C	6	3-4	0-0	0-1	0	3	3	2	3	2	0	0	16	-5
00	PARHAM, TJ	F	0	0-2	0-1	0-0	1	1	2	1	0	2	0	0	7	-5
02	MILLER, BRANDON	G	11	5-8	1-3	0-1	0	5	5	2	0	3	0	1	28	-16
12	POWELL, BRANDON	G	0	0-0	0-0	0-0	0	3	3	2	0	1	0	0	11	-3
24	WILEY, EVAN	F	0	0-1	0-1	0-0	0	0	0	0	0	2	0	0	9	-17
30	HOUSTON, BRANDON	F	11	5-6	0-0	1-2	0	1	1	1	1	2	0	0	18	-7
35	BROWN, TREMERE	F	6	2-2	0-0	2-4	0	2	2	2	0	1	0	0	7	-1
TEAM							1	0	1	0	3					
TOTALS			60	22-50	2-10	14-20	4	29	33	16	15	25	2	3	200	

Shooting By Period

Period	FG	FG%	3FG	3FG%	FT	FT%
1st Half	8-24	33%	0-5	00%	11-13	85%
2nd Half	14-26	54%	2-5	40%	3-7	43%
Game	22-50	44.0%	2-10	20.0%	14-20	70.0%

Deadball Rebounds: 5,0
Last FG: 2nd-00:36
Biggest Run: 7-0
Largest lead: By 5 at 1st-19:14
Technical Fouls: None.

Prairie View 82

No.	Player	S	Pts	FG	3FG	FT	OR	DR	TR	PF	A	TO	Blk	Stl	Min	+/-
03	ELLIS, CHANCELLOR	G	5	2-6	1-5	0-0	0	1	1	2	2	0	0	0	19	6
04	LISTER, ANTIONE	G	7	3-9	1-3	0-0	2	2	4	3	2	1	3	1	32	7
12	WILLIAMS, FAITE	G	6	2-5	1-1	1-2	1	5	6	4	2	2	0	1	21	10
15	ANDRUS, GERARD	G	32	14-21	0-0	4-4	5	4	9	3	4	0	2	3	33	30
23	PATTERSON, DEVONTE	F	15	4-13	3-6	4-4	0	5	5	3	7	4	0	4	27	21
02	WILLIAMS, DARIUS	G	10	4-9	1-5	1-2	0	1	1	2	1	1	1	1	16	10
11	COX, DEWAYNE	G	6	1-1	0-0	4-4	0	3	3	1	0	0	2	2	15	18
14	SNEED, LEON	G	0	0-1	0-0	0-0	0	1	1	0	5	1	0	2	25	17
24	GRANT, MURRAY	G	0	0-0	0-0	0-0	0	0	0	1	0	1	0	0	3	-6
31	SCOTT, JARED	F	1	0-0	0-0	1-2	0	1	1	0	0	0	0	0	3	-6
35	JACKSON, JONATHAN	F	0	0-0	0-0	0-0	0	0	0	0	0	0	0	0	5	3
TEAM							0	0	0	0	1					
TOTALS			82	30-65	7-20	15-18	8	23	31	19	23	11	8	14	200	

Shooting By Period

Period	FG	FG%	3FG	3FG%	FT	FT%
1st Half	15-34	44%	4-11	36%	3-4	75%
2nd Half	15-31	48%	3-9	33%	12-14	86%
Game	30-65	46.2%	7-20	35.0%	15-18	83.3%

Deadball Rebounds: 1,2
Last FG: 2nd-03:16
Biggest Run: 12-0
Largest lead: By 29 at 2nd-07:54
Technical Fouls: None.

Game Notes:

Officials: John Heatly, Shaun Seales, Adrian Judie
Attendance: 789

Start Time: 06:33 PM ET
End Time: 09:03 PM ET
Game Duration: 2:29

Score	1st	2nd	TOT
AM	27	33	60
PVU	37	45	82

AM led for 3:19. PVU led for 35:40.
Game was tied for 1:01.
Times tied: 2 Lead Changes: 1

Points from	AM	PVU
In the Paint	36	34
Off Turns	9	30
2nd Chance	2	12
Fast Break	10	20
Bench	28	17

Official Box Score
Alabama AM vs Prairie View
First Half Statistics Only
March 10, 2020 at William J. Nicks Building - Prairie View



Alabama AM 27

No.	Player	S	Pts	FG	3FG	FT	OR	DR	TR	PF	A	TO	Blk	Stl	Min	+/-
03	TUCKER, CAMERON	G	7	3-7	0-1	1-1	0	4	4	0	0	1	0	1	19	-4
05	JOHNSON, JALEN	F	8	3-5	0-0	2-3	0	0	0	1	0	0	0	0	16	-2
10	HICKS, GARRETT	G	4	0-2	0-1	4-4	0	2	2	1	0	1	1	1	16	-5
13	ALFORD, CAMERON	G	4	0-4	0-1	4-4	0	4	4	1	3	3	0	0	11	-6
15	WILLIAMS, EJ	C	2	1-2	0-0	0-1	0	3	3	1	2	2	0	0	9	7
00	PARHAM, TJ	F	0	0-0	0-0	0-0	0	1	1	0	0	1	0	0	4	-4
02	MILLER, BRANDON	G	0	0-1	0-1	0-0	0	1	1	1	0	1	0	0	9	-7
12	POWELL, BRANDON	G	0	0-0	0-0	0-0	0	1	1	1	0	1	0	0	3	-5
24	WILEY, EVAN	F	0	0-1	0-1	0-0	0	0	0	0	0	0	0	0	5	-11
30	HOUSTON, BRANDON	F	2	1-2	0-0	0-0	0	1	1	0	0	1	0	0	8	-13
35	BROWN, TREMERE	F	0	0-0	0-0	0-0	0	0	0	0	0	0	0	0	0	0
	TEAM						0	0	0	0		2				
TOTALS			27	8-24	0-5	11-13	0	17	17	6	5	13	1	2	100	

Shooting By Period

Period	FG	FG%	3FG	3FG%	FT	FT%
1st Half	8-24	33%	0-5	00%	11-13	85%
Game	22-50	44.0%	2-10	20.0%	14-20	70.0%

Deadball Rebounds: 5,0
Last FG Half: AM 2nd-00:36

Prairie View 37

No.	Player	S	Pts	FG	3FG	FT	OR	DR	TR	PF	A	TO	Blk	Stl	Min	+/-
03	ELLIS, CHANCELLOR	G	2	1-3	0-2	0-0	0	1	1	1	0	0	0	0	12	-5
04	LISTER, ANTIONE	G	2	1-3	0-0	0-0	2	2	4	2	1	1	2	0	16	1
12	WILLIAMS, FAITE	G	6	2-2	1-1	1-2	0	4	4	3	1	2	0	0	9	9
15	ANDRUS, GERARD	G	12	5-11	0-0	2-2	1	1	2	1	4	0	2	2	18	12
23	PATTERSON, DEVONTE	F	8	3-8	2-3	0-0	0	2	2	2	2	2	0	3	11	6
02	WILLIAMS, DARIUS	G	5	2-6	1-5	0-0	0	1	1	1	0	0	1	0	10	3
11	COX, DEWAYNE	G	2	1-1	0-0	0-0	0	2	2	1	0	0	1	0	6	13
14	SNEED, LEON	G	0	0-0	0-0	0-0	0	1	1	0	4	1	0	1	13	8
24	GRANT, MURRAY	G	0	0-0	0-0	0-0	0	0	0	0	0	0	0	0	0	0
31	SCOTT, JARED	F	0	0-0	0-0	0-0	0	0	0	0	0	0	0	0	0	0
35	JACKSON, JONATHAN	F	0	0-0	0-0	0-0	0	0	0	0	0	0	0	0	5	3
	TEAM						0	0	0	0		0				
TOTALS			37	15-34	4-11	3-4	3	14	17	11	12	6	6	6	100	

Shooting By Period

Period	FG	FG%	3FG	3FG%	FT	FT%
1st Half	15-34	44%	4-11	36%	3-4	75%
Game	30-65	46.2%	7-20	35.0%	15-18	83.3%

Deadball Rebounds: 1,2
Last FG Half: PVU 2nd-03:16

Game Notes:

Officials: John Heatly, Shaun Seales, Adrian Judie
 Attendance: 789

Start Time: 06:33 PM ET
 End Time: 09:03 PM ET
 Game Duration: 2:29

Score	1st	2nd	TOT
AM	27	33	60
PVU	37	45	82

Points from (This Period)	AM	PVU
In the Paint	14	16
Off Turns	5	16
2nd Chance	0	4
Fast Break	4	9
Bench	2	7

**Official Play-By-Play
Alabama AM vs Prairie View
First Half**

March 10, 2020 at William J. Nicks Building - Prairie View



Period 1

Starters:

Alabama AM: 3 TUCKER, CAMERON (G); 5 JOHNSON, JALEN (F); 10 HICKS, GARRETT (G); 13 ALFORD, CAMERON (G); 15 WILLIAMS, EJ (C);

Prairie View: 3 ELLIS, CHANCELLOR (G); 4 LISTER, ANTIONE (G); 12 WILLIAMS, FAITE (G); 15 ANDRUS, GERARD (G); 23 PATTERSON, DEVONTE (F);

Time	VISITORS: Alabama AM	Score	Margin	HOME: Prairie View
19:39				FOUL (PERSONAL) by PATTERSON, DEVONTE
19:39	GOOD! FT by ALFORD, CAMERON	0-1	V 1	
19:39	GOOD! FT by ALFORD, CAMERON	0-2	V 2	
19:26				TURNOVER (LOSTBALL) by WILLIAMS, FAITE
19:16	GOOD! JUMPER by TUCKER, CAMERON [PNT]	0-4	V 4	
19:16	ASSIST by ALFORD, CAMERON			
19:14				FOUL (PERSONAL) by LISTER, ANTIONE
19:14	GOOD! FT by TUCKER, CAMERON	0-5	V 5	
19:07	FOUL (PERSONAL) by WILLIAMS, EJ			
19:02				MISSED JUMPER by PATTERSON, DEVONTE
18:55	REBOUND (DEF) by ALFORD, CAMERON			
18:55	TURNOVER (TRAVEL) by ALFORD, CAMERON			
18:39		3-5	V 2	GOOD! 3PTR by PATTERSON, DEVONTE
18:39				ASSIST by LISTER, ANTIONE
18:12	TURNOVER (LOSTBALL) by ALFORD, CAMERON			
18:12				STEAL by PATTERSON, DEVONTE
18:07		5-5	T	GOOD! JUMPER by ANDRUS, GERARD [FB/PNT]
18:07				ASSIST by PATTERSON, DEVONTE
17:51	GOOD! JUMPER by JOHNSON, JALEN	5-7	V 2	
17:51	ASSIST by WILLIAMS, EJ			
17:34				MISSED LAYUP by PATTERSON, DEVONTE
17:29	REBOUND (DEF) by TUCKER, CAMERON			
17:26				FOUL (PERSONAL) by WILLIAMS, FAITE
17:26	GOOD! FT by ALFORD, CAMERON [FB]	5-8	V 3	
17:26				SUB OUT: ELLIS, CHANCELLOR
17:26				SUB IN: WILLIAMS, DARIUS
17:26	GOOD! FT by ALFORD, CAMERON [FB]	5-9	V 4	
17:24	SUB OUT: WILLIAMS, EJ			
17:24	SUB IN: WILEY, EVAN			
17:04	FOUL (PERSONAL) by JOHNSON, JALEN			
16:53		7-9	V 2	GOOD! JUMPER by PATTERSON, DEVONTE
16:53				ASSIST by ANDRUS, GERARD
16:31	MISSED 3PTR by HICKS, GARRETT			
16:27				REBOUND (DEF) by WILLIAMS, FAITE
16:24				MISSED 3PTR by WILLIAMS, DARIUS
16:20	REBOUND (DEF) by ALFORD, CAMERON			
16:13	MISSED JUMPER by ALFORD, CAMERON			
16:09				REBOUND (DEF) by WILLIAMS, FAITE
16:04	FOUL (PERSONAL) by HICKS, GARRETT			
16:04		8-9	V 1	GOOD! FT by ANDRUS, GERARD
16:04				SUB OUT: LISTER, ANTIONE
16:04				SUB IN: COX, DEWAYNE
16:04	SUB OUT: JOHNSON, JALEN			
16:04	SUB OUT: ALFORD, CAMERON			
16:04	SUB IN: MILLER, BRANDON			
16:04	SUB IN: HOUSTON, BRANDON			
16:04				SUB OUT: WILLIAMS, DARIUS
16:04				SUB IN: SNEED, LEON
16:04		9-9	T	GOOD! FT by ANDRUS, GERARD
15:56	TURNOVER (LOSTBALL) by HOUSTON, BRANDON			
15:56				STEAL by ANDRUS, GERARD
15:40		12-9	H 3	GOOD! 3PTR by PATTERSON, DEVONTE
15:40				ASSIST by ANDRUS, GERARD
15:17	MISSED 3PTR by WILEY, EVAN			
15:12				REBOUND (DEF) by COX, DEWAYNE
14:59				MISSED JUMPER by PATTERSON, DEVONTE
14:56	REBOUND (DEF) by HOUSTON, BRANDON			
14:48	MISSED 3PTR by MILLER, BRANDON			
14:42				REBOUND (DEF) by PATTERSON, DEVONTE
14:41				FOUL (PERSONAL) by COX, DEWAYNE
14:41				
14:39	SUB OUT: TUCKER, CAMERON			
14:39	SUB IN: PARHAM, TJ			
14:38	MISSED JUMPER by HOUSTON, BRANDON			
14:33				REBOUND (DEF) by COX, DEWAYNE
14:17	SUB OUT: HICKS, GARRETT			
14:17	SUB IN: ALFORD, CAMERON			
14:16		14-9	H 5	GOOD! LAYUP by COX, DEWAYNE [PNT]
14:16				ASSIST by PATTERSON, DEVONTE
14:04	TURNOVER (LOSTBALL) by ALFORD, CAMERON			

Time	VISITORS: Alabama AM	Score	Margin	HOME: Prairie View
14:04				STEAL by PATTERSON, DEVONTE
13:55	FOUL (PERSONAL) by MILLER, BRANDON			
13:53		15-9	H 6	GOOD! FT by WILLIAMS, FAITE
13:53	SUB OUT: ALFORD, CAMERON			
13:53	SUB OUT: WILEY, EVAN			
13:53	SUB OUT: HOUSTON, BRANDON			
13:53	SUB IN: TUCKER, CAMERON			
13:53	SUB IN: JOHNSON, JALEN			
13:53	SUB IN: WILLIAMS, EJ			
13:53				MISSED FT by WILLIAMS, FAITE
13:53	REBOUND (DEF) by PARHAM, TJ			
13:50				FOUL (PERSONAL) by WILLIAMS, FAITE
13:50				SUB OUT: WILLIAMS, FAITE
13:50				SUB IN: WILLIAMS, DARIUS
13:22	TURNOVER (SHOTCLOCK) by TEAM			
13:20				SUB OUT: COX, DEWAYNE
13:20				SUB IN: ELLIS, CHANCELLOR
13:08				TURNOVER (TRAVEL) by PATTERSON, DEVONTE
12:51	TURNOVER (LOSTBALL) by PARHAM, TJ			
12:50				MISSED LAYUP by ANDRUS, GERARD
12:46	REBOUND (DEF) by WILLIAMS, EJ			
12:39	TURNOVER (TRAVEL) by TUCKER, CAMERON			
12:39	SUB OUT: PARHAM, TJ			
12:39	SUB IN: HICKS, GARRETT			
12:28		17-9	H 8	GOOD! LAYUP by WILLIAMS, DARIUS [PNT]
12:28				ASSIST by SNEED, LEON
12:01	MISSED 3PTR by TUCKER, CAMERON			
11:57				REBOUND (DEF) by SNEED, LEON
11:51				MISSED 3PTR by ELLIS, CHANCELLOR
11:48	REBOUND (DEF) by TUCKER, CAMERON			
11:42	TURNOVER (TRAVEL) by WILLIAMS, EJ			
11:42				SUB OUT: ANDRUS, GERARD
11:42				SUB IN: LISTER, ANTIONE
11:33				TURNOVER (TRAVEL) by PATTERSON, DEVONTE
11:18	GOOD! LAYUP by TUCKER, CAMERON [PNT]	17-11	H 6	
10:59				MISSED 3PTR by PATTERSON, DEVONTE
10:56				REBOUND (OFF) by LISTER, ANTIONE
10:55		19-11	H 8	GOOD! LAYUP by LISTER, ANTIONE [PNT]
10:33	MISSED LAYUP by JOHNSON, JALEN			
10:25				REBOUND (DEF) by LISTER, ANTIONE
10:23				MISSED 3PTR by WILLIAMS, DARIUS
10:18	REBOUND (DEF) by HICKS, GARRETT			
10:18	GOOD! LAYUP by WILLIAMS, EJ [FB/PNT]	19-13	H 6	
10:18				FOUL (PERSONAL) by ELLIS, CHANCELLOR
10:18	MISSED FT by WILLIAMS, EJ			
10:18				REBOUND (DEF) by LISTER, ANTIONE
10:18				MISSED LAYUP by PATTERSON, DEVONTE
10:16	REBOUND (DEF) by TUCKER, CAMERON			
10:11	MISSED JUMPER by WILLIAMS, EJ			
10:11				BLOCK by LISTER, ANTIONE
10:04				REBOUND (DEF) by PATTERSON, DEVONTE
10:01				MISSED 3PTR by WILLIAMS, DARIUS
09:57	REBOUND (DEF) by HICKS, GARRETT			
09:52	TURNOVER (LOSTBALL) by HICKS, GARRETT			
09:52				STEAL by PATTERSON, DEVONTE
09:45				MISSED LAYUP by LISTER, ANTIONE
09:41	REBOUND (DEF) by WILLIAMS, EJ			
09:27				FOUL (PERSONAL) by PATTERSON, DEVONTE
09:27				SUB OUT: WILLIAMS, DARIUS
09:27				SUB OUT: PATTERSON, DEVONTE
09:27				SUB IN: ANDRUS, GERARD
09:27				SUB IN: JACKSON, JONATHAN
09:27	SUB OUT: MILLER, BRANDON			
09:27	SUB OUT: HICKS, GARRETT			
09:27	SUB OUT: WILLIAMS, EJ			
09:27	SUB IN: POWELL, BRANDON			
09:27	SUB IN: ALFORD, CAMERON			
09:27	SUB IN: HOUSTON, BRANDON			
09:27	MISSED FT by JOHNSON, JALEN			
09:27				REBOUND (DEF) by ANDRUS, GERARD
09:06	FOUL (PERSONAL) by POWELL, BRANDON			
09:06		21-13	H 8	GOOD! JUMPER by ELLIS, CHANCELLOR
09:06				ASSIST by SNEED, LEON
08:40	GOOD! LAYUP by HOUSTON, BRANDON [PNT]	21-15	H 6	
08:40	ASSIST by ALFORD, CAMERON			
08:30				MISSED 3PTR by ELLIS, CHANCELLOR
08:27	REBOUND (DEF) by ALFORD, CAMERON			
08:16	MISSED JUMPER by JOHNSON, JALEN			
08:12				REBOUND (DEF) by ELLIS, CHANCELLOR

Time	VISITORS: Alabama AM	Score	Margin	HOME: Prairie View
07:56				MISSED JUMPER by ANDRUS, GERARD
07:49	REBOUND (DEF) by POWELL, BRANDON			
07:33				
07:30	TURNOVER (10SEC) by TEAM			
07:20				SUB OUT: SNEED, LEON
07:20				SUB IN: WILLIAMS, FAITE
07:05		23-15	H 8	GOOD! LAYUP by WILLIAMS, FAITE [PNT]
06:51	MISSED JUMPER by TUCKER, CAMERON			
06:51				BLOCK by ANDRUS, GERARD
06:51	REBOUND (OFF) by TEAM			
06:51				SUB OUT: ELLIS, CHANCELLOR
06:51				SUB IN: COX, DEWAYNE
06:51	SUB OUT: POWELL, BRANDON			
06:51	SUB IN: HICKS, GARRETT			
06:31	MISSED JUMPER by ALFORD, CAMERON			
06:31				BLOCK by COX, DEWAYNE
06:24				REBOUND (DEF) by WILLIAMS, FAITE
06:23		25-15	H 10	GOOD! LAYUP by ANDRUS, GERARD [FB/PNT]
06:23				ASSIST by WILLIAMS, FAITE
05:50	GOOD! LAYUP by TUCKER, CAMERON [PNT]	25-17	H 8	
05:35		28-17	H 11	GOOD! 3PTR by WILLIAMS, FAITE
05:35				ASSIST by ANDRUS, GERARD
05:17	GOOD! LAYUP by JOHNSON, JALEN [PNT]	28-19	H 9	
05:17	ASSIST by ALFORD, CAMERON			
04:59				MISSED JUMPER by ANDRUS, GERARD
04:54	REBOUND (DEF) by ALFORD, CAMERON			
04:50	MISSED LAYUP by ALFORD, CAMERON			
04:50				BLOCK by ANDRUS, GERARD
04:41				REBOUND (DEF) by WILLIAMS, FAITE
04:40	FOUL (PERSONAL) by ALFORD, CAMERON			
04:36				SUB OUT: COX, DEWAYNE
04:36				SUB OUT: JACKSON, JONATHAN
04:36				SUB IN: WILLIAMS, DARIUS
04:36				SUB IN: ELLIS, CHANCELLOR
04:36	SUB OUT: TUCKER, CAMERON			
04:36	SUB IN: MILLER, BRANDON			
04:23	SUB OUT: ALFORD, CAMERON			
04:23	SUB IN: POWELL, BRANDON			
04:19				FOUL (OFF) by WILLIAMS, FAITE
04:19				TURNOVER (OFFENSIVE) by WILLIAMS, FAITE
04:19				SUB OUT: ELLIS, CHANCELLOR
04:19				SUB OUT: WILLIAMS, FAITE
04:19				SUB IN: COX, DEWAYNE
04:19				SUB IN: SNEED, LEON
04:16	TURNOVER (LOSTBALL) by POWELL, BRANDON			
04:16				STEAL by ANDRUS, GERARD
04:08		31-19	H 12	GOOD! 3PTR by WILLIAMS, DARIUS [FB]
04:08				ASSIST by ANDRUS, GERARD
04:02	TIMEOUT 30SEC			
04:02	TURNOVER (BADPASS) by MILLER, BRANDON			
03:53				SUB OUT: COX, DEWAYNE
03:53				SUB IN: ELLIS, CHANCELLOR
03:53	SUB OUT: POWELL, BRANDON			
03:53	SUB OUT: HOUSTON, BRANDON			
03:53	SUB IN: TUCKER, CAMERON			
03:53	SUB IN: WILLIAMS, EJ			
03:45				MISSED LAYUP by LISTER, ANTIONE
03:40	REBOUND (DEF) by WILLIAMS, EJ			
03:31				FOUL (PERSONAL) by ANDRUS, GERARD
03:31	GOOD! FT by JOHNSON, JALEN	31-20	H 11	
03:31	GOOD! FT by JOHNSON, JALEN	31-21	H 10	
03:24		33-21	H 12	GOOD! JUMPER by ANDRUS, GERARD [FB/PNT]
03:24				ASSIST by SNEED, LEON
03:05	GOOD! LAYUP by JOHNSON, JALEN [PNT]	33-23	H 10	
03:05	ASSIST by WILLIAMS, EJ			
02:34				MISSED JUMPER by ANDRUS, GERARD
02:29				REBOUND (OFF) by LISTER, ANTIONE
02:27				TURNOVER (BADPASS) by LISTER, ANTIONE
02:27	STEAL by TUCKER, CAMERON			
02:21	TURNOVER (LOSTBALL) by WILLIAMS, EJ			
02:21				STEAL by SNEED, LEON
02:12				MISSED JUMPER by ANDRUS, GERARD
02:12	BLOCK by HICKS, GARRETT			
02:01	REBOUND (DEF) by MILLER, BRANDON			
01:53				FOUL (PERSONAL) by WILLIAMS, DARIUS
01:53	GOOD! FT by HICKS, GARRETT	33-24	H 9	
01:53	SUB OUT: MILLER, BRANDON			
01:53	SUB OUT: JOHNSON, JALEN			
01:53	SUB OUT: WILLIAMS, EJ			
01:53	SUB IN: PARHAM, TJ			

Time	VISITORS: Alabama AM	Score	Margin	HOME: Prairie View
01:53	SUB IN: ALFORD, CAMERON			
01:53	SUB IN: WILEY, EVAN			
01:53	GOOD! FT by HICKS, GARRETT	33-25	H 8	
01:50				MISSED 3PTR by WILLIAMS, DARIUS
01:47	REBOUND (DEF) by TUCKER, CAMERON			
01:45	MISSED LAYUP by TUCKER, CAMERON			
01:45				BLOCK by WILLIAMS, DARIUS
01:43				REBOUND (DEF) by TEAM
01:42				MISSED JUMPER by ANDRUS, GERARD
01:37				REBOUND (OFF) by ANDRUS, GERARD
01:34		35-25	H 10	GOOD! JUMPER by ANDRUS, GERARD [PNT]
01:12				FOUL (PERSONAL) by LISTER, ANTIONE
01:12	GOOD! FT by HICKS, GARRETT	35-26	H 9	
01:12	GOOD! FT by HICKS, GARRETT	35-27	H 8	
00:55				TURNOVER (BADPASS) by SNEED, LEON
00:55	STEAL by HICKS, GARRETT			
00:50	MISSED LAYUP by HICKS, GARRETT			
00:50				BLOCK by LISTER, ANTIONE
00:50	REBOUND (OFF) by TEAM			
00:50				SUB OUT: ELLIS, CHANCELLOR
00:50				SUB IN: COX, DEWAYNE
00:27	MISSED 3PTR by ALFORD, CAMERON			
00:23				REBOUND (DEF) by WILLIAMS, DARIUS
00:06		37-27	H 10	GOOD! JUMPER by ANDRUS, GERARD
00:06				ASSIST by SNEED, LEON
00:02	MISSED LAYUP by TUCKER, CAMERON			
00:02				REBOUND (DEF) by TEAM

Alabama AM 27, Prairie View 37

Points from (This Period)	AM	PVU
In the Paint	14	16
Off Turns	5	16
2nd Chance	0	4
Fast Break	4	9
Bench	2	7

Official Box Score
Alabama AM vs Prairie View
Second Half Statistics Only
March 10, 2020 at William J. Nicks Building - Prairie View



Alabama AM 33

No.	Player	S	Pts	FG	3FG	FT	OR	DR	TR	PF	A	TO	Blk	Stl	Min	+/-
03	TUCKER, CAMERON	G	0	0-2	0-0	0-0	1	2	3	2	6	2	1	0	15	-9
05	JOHNSON, JALEN	F	0	0-2	0-0	0-0	1	0	1	0	0	1	0	0	7	-9
10	HICKS, GARRETT	G	3	1-5	1-2	0-0	0	1	1	1	1	0	0	0	16	-12
13	ALFORD, CAMERON	G	0	0-0	0-0	0-0	0	1	1	0	1	1	0	0	3	-9
15	WILLIAMS, EJ	C	4	2-2	0-0	0-0	0	0	0	1	1	0	0	0	7	-12
00	PARHAM, TJ	F	0	0-2	0-1	0-0	1	0	1	1	0	1	0	0	3	-1
02	MILLER, BRANDON	G	11	5-7	1-2	0-1	0	4	4	1	0	2	0	1	19	-9
12	POWELL, BRANDON	G	0	0-0	0-0	0-0	0	2	2	1	0	0	0	0	8	2
24	WILEY, EVAN	F	0	0-0	0-0	0-0	0	0	0	0	0	2	0	0	4	-6
30	HOUSTON, BRANDON	F	9	4-4	0-0	1-2	0	0	0	1	1	1	0	0	11	6
35	BROWN, TREMERE	F	6	2-2	0-0	2-4	0	2	2	2	0	1	0	0	7	-1
	TEAM						1	0	1	0		1				
TOTALS			33	14-26	2-5	3-7	4	12	16	10	10	12	1	1	100	

Shooting By Period

Period	FG	FG%	3FG	3FG%	FT	FT%
2nd Half	14-26	54%	2-5	40%	3-7	43%
Game	22-50	44.0%	2-10	20.0%	14-20	70.0%

Deadball Rebounds: 5,0
Last FG Half: AM -

Prairie View 45

No.	Player	S	Pts	FG	3FG	FT	OR	DR	TR	PF	A	TO	Blk	Stl	Min	+/-
03	ELLIS, CHANCELLOR	G	3	1-3	1-3	0-0	0	0	0	1	2	0	0	0	7	11
04	LISTER, ANTIONE	G	5	2-6	1-3	0-0	0	0	0	1	1	0	1	1	16	6
12	WILLIAMS, FAITE	G	0	0-3	0-0	0-0	1	1	2	1	1	0	0	1	12	1
15	ANDRUS, GERARD	G	20	9-10	0-0	2-2	4	3	7	2	0	0	0	1	16	18
23	PATTERSON, DEVONTE	F	7	1-5	1-3	4-4	0	3	3	1	5	2	0	1	16	15
02	WILLIAMS, DARIUS	G	5	2-3	0-0	1-2	0	0	0	1	1	1	0	1	5	7
11	COX, DEWAYNE	G	4	0-0	0-0	4-4	0	1	1	0	0	0	1	2	9	5
14	SNEED, LEON	G	0	0-1	0-0	0-0	0	0	0	0	1	0	0	1	12	9
24	GRANT, MURRAY	G	0	0-0	0-0	0-0	0	0	0	1	0	1	0	0	3	-6
31	SCOTT, JARED	F	1	0-0	0-0	1-2	0	1	1	0	0	0	0	0	3	-6
35	JACKSON, JONATHAN	F	0	0-0	0-0	0-0	0	0	0	0	0	0	0	0	0	0
	TEAM						0	0	0	0		1				
TOTALS			45	15-31	3-9	12-14	5	9	14	8	11	5	2	8	100	

Shooting By Period

Period	FG	FG%	3FG	3FG%	FT	FT%
2nd Half	15-31	48%	3-9	33%	12-14	86%
Game	30-65	46.2%	7-20	35.0%	15-18	83.3%

Deadball Rebounds: 1,2
Last FG Half: PVU -

Game Notes:

Officials: John Heatly, Shaun Seales, Adrian Judie
 Attendance: 789

Start Time: 06:33 PM ET
 End Time: 09:03 PM ET
 Game Duration: 2:29

Score	1st	2nd	TOT
AM	27	33	60
PVU	37	45	82

Points from (This Period)	AM	PVU
In the Paint	22	18
Off Turns	4	14
2nd Chance	2	8
Fast Break	6	11
Bench	26	10

**Official Play-By-Play
Alabama AM vs Prairie View
Second Half**

March 10, 2020 at William J. Nicks Building - Prairie View



Period 2

Starters:

Alabama AM: 3 TUCKER,CAMERON (G); 5 JOHNSON,JALEN (F); 10 HICKS,GARRETT (G); 13 ALFORD,CAMERON (G); 15 WILLIAMS,EJ (C);

Prairie View: 3 ELLIS,CHANCELLOR (G); 4 LISTER,ANTIONE (G); 12 WILLIAMS,FAITE (G); 15 ANDRUS,GERARD (G); 23 PATTERSON,DEVONTE (F);

Time	VISITORS: Alabama AM	Score	Margin	HOME: Prairie View
20:00				SUB OUT: COX, DEWAYNE
20:00				SUB IN: ELLIS, CHANCELLOR
20:00	SUB OUT: PARHAM, TJ			
20:00	SUB OUT: WILEY, EVAN			
20:00	SUB IN: JOHNSON, JALEN			
20:00	SUB IN: WILLIAMS, EJ			
19:54		40-27	H 13	GOOD! 3PTR by LISTER, ANTIONE
19:54				ASSIST by ELLIS, CHANCELLOR
19:23				SUB OUT: WILLIAMS, DARIUS
19:23				SUB OUT: SNEED, LEON
19:23				SUB IN: WILLIAMS, FAITE
19:23				SUB IN: PATTERSON, DEVONTE
19:22	MISSED JUMPER by HICKS, GARRETT			
19:18				REBOUND (DEF) by PATTERSON, DEVONTE
19:14				MISSED 3PTR by ELLIS, CHANCELLOR
19:10	REBOUND (DEF) by ALFORD, CAMERON			
19:09	SUB OUT: ALFORD, CAMERON			
19:09	SUB IN: MILLER, BRANDON			
19:09	TURNOVER (OTHER) by TEAM			
18:56				MISSED JUMPER by ANDRUS, GERARD
18:52	REBOUND (DEF) by MILLER, BRANDON			
18:50	MISSED JUMPER by HICKS, GARRETT			
18:45	REBOUND (OFF) by JOHNSON, JALEN			
18:37	MISSED JUMPER by JOHNSON, JALEN			
18:37				BLOCK by LISTER, ANTIONE
18:30				REBOUND (DEF) by ANDRUS, GERARD
18:20				MISSED 3PTR by PATTERSON, DEVONTE
18:17	REBOUND (DEF) by TUCKER, CAMERON			
18:11	TURNOVER (BADPASS) by TUCKER, CAMERON			
18:11				STEAL by WILLIAMS, FAITE
17:55		43-27	H 16	GOOD! 3PTR by ELLIS, CHANCELLOR
17:55				ASSIST by LISTER, ANTIONE
17:42	MISSED JUMPER by JOHNSON, JALEN			
17:41	REBOUND (OFF) by TEAM			
17:41	SUB OUT: JOHNSON, JALEN			
17:41	SUB OUT: WILLIAMS, EJ			
17:41	SUB IN: PARHAM, TJ			
17:41	SUB IN: HOUSTON, BRANDON			
17:36	MISSED 3PTR by PARHAM, TJ			
17:31	REBOUND (OFF) by TUCKER, CAMERON			
17:30	GOOD! JUMPER by MILLER, BRANDON [PNT]	43-29	H 14	
17:30	ASSIST by TUCKER, CAMERON			
17:06				MISSED JUMPER by PATTERSON, DEVONTE
17:03	REBOUND (DEF) by MILLER, BRANDON			
16:56	TURNOVER (LOSTBALL) by MILLER, BRANDON			
16:56				STEAL by LISTER, ANTIONE
16:47	FOUL (PERSONAL) by PARHAM, TJ			
16:47		45-29	H 16	GOOD! JUMPER by LISTER, ANTIONE
16:47				ASSIST by ELLIS, CHANCELLOR
16:42				FOUL (PERSONAL) by PATTERSON, DEVONTE
16:36				SUB OUT: ELLIS, CHANCELLOR
16:36				SUB IN: COX, DEWAYNE
16:31				FOUL (PERSONAL) by ANDRUS, GERARD
16:31	MISSED FT by HOUSTON, BRANDON			
16:31	REBOUND (OFF) by TEAM			
16:31	GOOD! FT by HOUSTON, BRANDON	45-30	H 15	
16:30				SUB OUT: COX, DEWAYNE
16:30				SUB IN: ELLIS, CHANCELLOR
16:29		47-30	H 17	GOOD! LAYUP by ANDRUS, GERARD [PNT]
16:29				ASSIST by PATTERSON, DEVONTE
16:15				FOUL (PERSONAL) by LISTER, ANTIONE
16:15				SUB OUT: ELLIS, CHANCELLOR
16:15				SUB IN: COX, DEWAYNE
16:06	GOOD! LAYUP by HOUSTON, BRANDON [PNT]	47-32	H 15	
15:53		49-32	H 17	GOOD! LAYUP by ANDRUS, GERARD [PNT]
15:53				ASSIST by WILLIAMS, FAITE
15:38	MISSED JUMPER by PARHAM, TJ			
15:35				REBOUND (DEF) by PATTERSON, DEVONTE
15:16				MISSED JUMPER by WILLIAMS, FAITE
15:13	REBOUND (DEF) by MILLER, BRANDON			

Time	VISITORS: Alabama AM	Score	Margin	HOME: Prairie View
15:03				
14:50	MISSED LAYUP by TUCKER, CAMERON			
14:50				BLOCK by COX, DEWAYNE
14:42	REBOUND (OFF) by PARHAM, TJ			
14:41	TURNOVER (TRAVEL) by PARHAM, TJ			
14:40				SUB OUT: COX, DEWAYNE
14:40				SUB IN: ELLIS, CHANCELLOR
14:39				TURNOVER (TRAVEL) by PATTERSON, DEVONTE
14:34				SUB OUT: ELLIS, CHANCELLOR
14:34				SUB OUT: ANDRUS, GERARD
14:34				SUB IN: COX, DEWAYNE
14:34				SUB IN: SNEED, LEON
14:13	FOUL (OFF) by HOUSTON, BRANDON			
14:13	TURNOVER (OFFENSIVE) by HOUSTON, BRANDON			
14:13				SUB OUT: COX, DEWAYNE
14:13				SUB OUT: WILLIAMS, FAITE
14:13				SUB IN: WILLIAMS, DARIUS
14:13				SUB IN: ELLIS, CHANCELLOR
14:13	SUB OUT: PARHAM, TJ			
14:13	SUB OUT: HOUSTON, BRANDON			
14:13	SUB IN: WILEY, EVAN			
14:13	SUB IN: BROWN, TREMERE			
13:57				SUB OUT: SNEED, LEON
13:57				SUB IN: WILLIAMS, FAITE
13:56				MISSED LAYUP by WILLIAMS, FAITE
13:49	REBOUND (DEF) by HICKS, GARRETT			
13:47	GOOD! LAYUP by MILLER, BRANDON [PNT]	49-34	H 15	
13:30	FOUL (PERSONAL) by BROWN, TREMERE			
13:30		50-34	H 16	GOOD! FT by PATTERSON, DEVONTE
13:30				SUB OUT: ELLIS, CHANCELLOR
13:30				SUB OUT: WILLIAMS, FAITE
13:30				SUB IN: COX, DEWAYNE
13:30				SUB IN: SNEED, LEON
13:30		51-34	H 17	GOOD! FT by PATTERSON, DEVONTE
13:29	TURNOVER (BADPASS) by WILEY, EVAN			
13:29				STEAL by COX, DEWAYNE
13:19				SUB OUT: LISTER, ANTIONE
13:19				SUB OUT: COX, DEWAYNE
13:19				SUB IN: ELLIS, CHANCELLOR
13:19				SUB IN: ANDRUS, GERARD
12:46				MISSED 3PTR by ELLIS, CHANCELLOR
12:46	BLOCK by TUCKER, CAMERON			
12:40				REBOUND (OFF) by ANDRUS, GERARD
12:38		53-34	H 19	GOOD! LAYUP by ANDRUS, GERARD [PNT]
12:32	MISSED LAYUP by HICKS, GARRETT			
12:27				REBOUND (DEF) by PATTERSON, DEVONTE
12:24		55-34	H 21	GOOD! JUMPER by ANDRUS, GERARD [FB]
12:24				ASSIST by WILLIAMS, DARIUS
12:17				FOUL (PERSONAL) by ELLIS, CHANCELLOR
12:17				SUB OUT: ELLIS, CHANCELLOR
12:17				SUB IN: COX, DEWAYNE
12:17	SUB OUT: TUCKER, CAMERON			
12:17	SUB IN: POWELL, BRANDON			
12:17	SUB OUT: HICKS, GARRETT			
12:17	SUB IN: TUCKER, CAMERON			
12:05				FOUL (PERSONAL) by WILLIAMS, DARIUS
12:05	MISSED FT by BROWN, TREMERE			
12:05	REBOUND (OFF) by TEAM			
12:05	GOOD! FT by BROWN, TREMERE	55-35	H 20	
11:49	MISSED JUMPER by MILLER, BRANDON			
11:46				REBOUND (DEF) by ANDRUS, GERARD
11:39		57-35	H 22	GOOD! LAYUP by WILLIAMS, DARIUS [PNT]
11:21	TURNOVER (BADPASS) by BROWN, TREMERE			
11:21				STEAL by WILLIAMS, DARIUS
11:15	FOUL (PERSONAL) by TUCKER, CAMERON			
11:15				MISSED FT by WILLIAMS, DARIUS
11:15				REBOUND (OFF) by TEAM
11:15		58-35	H 23	GOOD! FT by WILLIAMS, DARIUS
11:14				SUB OUT: COX, DEWAYNE
11:14				SUB IN: ELLIS, CHANCELLOR
11:14	SUB OUT: BROWN, TREMERE			
11:14	SUB IN: WILLIAMS, EJ			
11:09				FOUL (PERSONAL) by ANDRUS, GERARD
10:56	GOOD! LAYUP by WILLIAMS, EJ [PNT]	58-37	H 21	
10:56	ASSIST by TUCKER, CAMERON			
10:49	FOUL (PERSONAL) by WILLIAMS, EJ			
10:49				SUB OUT: ELLIS, CHANCELLOR
10:49				SUB IN: COX, DEWAYNE
10:39				SUB OUT: COX, DEWAYNE
10:39				SUB IN: ELLIS, CHANCELLOR

Time	VISITORS: Alabama AM	Score	Margin	HOME: Prairie View
10:36		60-37	H 23	GOOD! LAYUP by WILLIAMS, DARIUS [PNT]
10:36				ASSIST by PATTERSON, DEVONTE
10:19	TURNOVER (LOSTBALL) by WILEY, EVAN			
10:18	SUB OUT: WILEY, EVAN			
10:18	SUB IN: HICKS, GARRETT			
10:17		62-37	H 25	GOOD! LAYUP by ANDRUS, GERARD [FB/PNT]
10:17				ASSIST by PATTERSON, DEVONTE
10:05	GOOD! 3PTR by MILLER, BRANDON	62-40	H 22	
10:05	ASSIST by HICKS, GARRETT			
09:40				MISSED LAYUP by WILLIAMS, DARIUS
09:37				REBOUND (OFF) by ANDRUS, GERARD
09:36	FOUL (PERSONAL) by POWELL, BRANDON			
09:36		63-40	H 23	GOOD! FT by ANDRUS, GERARD
09:36				SUB OUT: WILLIAMS, DARIUS
09:36				SUB OUT: ELLIS, CHANCELLOR
09:36				SUB IN: COX, DEWAYNE
09:36	SUB OUT: TUCKER, CAMERON			
09:36	SUB IN: ALFORD, CAMERON			
09:36				SUB IN: LISTER, ANTIONE
09:36		64-40	H 24	GOOD! FT by ANDRUS, GERARD
09:32	TIMEOUT 30SEC			
09:19	GOOD! LAYUP by WILLIAMS, EJ [PNT]	64-42	H 22	
09:19	ASSIST by ALFORD, CAMERON			
08:58		66-42	H 24	GOOD! LAYUP by ANDRUS, GERARD [PNT]
08:58				ASSIST by PATTERSON, DEVONTE
08:48	SUB OUT: POWELL, BRANDON			
08:48	SUB IN: JOHNSON, JALEN			
08:46	TURNOVER (BADPASS) by JOHNSON, JALEN			
08:46				STEAL by COX, DEWAYNE
08:39	FOUL (PERSONAL) by MILLER, BRANDON			
08:39		67-42	H 25	GOOD! FT by COX, DEWAYNE [FB]
08:39	TIMEOUT TEAM			
08:39		68-42	H 26	GOOD! FT by COX, DEWAYNE [FB]
08:32	GOOD! JUMPER by MILLER, BRANDON [FB]	68-44	H 24	
08:32	ASSIST by WILLIAMS, EJ			
08:11		71-44	H 27	GOOD! 3PTR by PATTERSON, DEVONTE
08:11				ASSIST by SNEED, LEON
08:00	TURNOVER (BADPASS) by ALFORD, CAMERON			
08:00				STEAL by ANDRUS, GERARD
07:54				
07:54	FOUL (PERSONAL) by HICKS, GARRETT			
07:54		72-44	H 28	GOOD! FT by COX, DEWAYNE [FB]
07:54		73-44	H 29	GOOD! FT by COX, DEWAYNE [FB]
07:16	SUB OUT: ALFORD, CAMERON			
07:16	SUB IN: HOUSTON, BRANDON			
06:56	SUB OUT: WILLIAMS, EJ			
06:56	SUB IN: TUCKER, CAMERON			
06:54	GOOD! 3PTR by HICKS, GARRETT	73-47	H 26	
06:54	ASSIST by TUCKER, CAMERON			
06:41				SUB OUT: SNEED, LEON
06:41				SUB IN: WILLIAMS, DARIUS
06:39				TURNOVER (BADPASS) by WILLIAMS, DARIUS
06:39	STEAL by MILLER, BRANDON			
06:33	GOOD! LAYUP by MILLER, BRANDON [FB/PNT]	73-49	H 24	
06:26				SUB OUT: WILLIAMS, DARIUS
06:26				SUB IN: WILLIAMS, FAITE
06:26				TURNOVER (OTHER) by TEAM
06:25	TURNOVER (LOSTBALL) by TUCKER, CAMERON			
06:25				STEAL by PATTERSON, DEVONTE
06:13				TURNOVER (TRAVEL) by PATTERSON, DEVONTE
06:07	GOOD! LAYUP by HOUSTON, BRANDON [FB/PNT]	73-51	H 22	
06:07	ASSIST by TUCKER, CAMERON			
05:40		75-51	H 24	GOOD! LAYUP by ANDRUS, GERARD [PNT]
05:40				ASSIST by PATTERSON, DEVONTE
05:25	MISSED 3PTR by HICKS, GARRETT			
05:20				REBOUND (DEF) by WILLIAMS, FAITE
05:05				MISSED JUMPER by PATTERSON, DEVONTE
04:59				REBOUND (OFF) by WILLIAMS, FAITE
04:51				MISSED 3PTR by LISTER, ANTIONE
04:47				REBOUND (OFF) by ANDRUS, GERARD
04:47		77-51	H 26	GOOD! JUMPER by ANDRUS, GERARD
04:34	MISSED JUMPER by TUCKER, CAMERON			
04:30				REBOUND (DEF) by ANDRUS, GERARD
04:19				MISSED 3PTR by PATTERSON, DEVONTE
04:15	REBOUND (DEF) by TUCKER, CAMERON			
04:10	MISSED 3PTR by MILLER, BRANDON			
04:05				REBOUND (DEF) by COX, DEWAYNE
04:03	FOUL (PERSONAL) by TUCKER, CAMERON			
04:03				SUB OUT: COX, DEWAYNE
04:03				SUB IN: SNEED, LEON

Time	VISITORS: Alabama AM	Score	Margin	HOME: Prairie View
04:03		78-51	H 27	GOOD! FT by PATTERSON, DEVONTE [FB]
04:03	SUB OUT: JOHNSON, JALEN			
04:03	SUB OUT: HICKS, GARRETT			
04:03	SUB IN: POWELL, BRANDON			
04:03	SUB IN: BROWN, TREMERE			
04:03		79-51	H 28	GOOD! FT by PATTERSON, DEVONTE [FB]
03:45	GOOD! LAYUP by HOUSTON, BRANDON [PNT]	79-53	H 26	
03:45	ASSIST by TUCKER, CAMERON			
03:23				MISSED LAYUP by SNEED, LEON
03:18				REBOUND (OFF) by ANDRUS, GERARD
03:16		81-53	H 28	GOOD! JUMPER by ANDRUS, GERARD [PNT]
03:12				SUB OUT: ANDRUS, GERARD
03:12				SUB OUT: PATTERSON, DEVONTE
03:12				SUB IN: GRANT, MURRAY
03:12				SUB IN: SCOTT, JARED
03:05	GOOD! DUNK by BROWN, TREMERE [PNT]	81-55	H 26	
03:05	ASSIST by HOUSTON, BRANDON			
02:35				MISSED JUMPER by LISTER, ANTIONE
02:32	REBOUND (DEF) by POWELL, BRANDON			
02:16	GOOD! LAYUP by HOUSTON, BRANDON [PNT]	81-57	H 24	
02:16	ASSIST by TUCKER, CAMERON			
01:52				MISSED JUMPER by WILLIAMS, FAITE
01:52	REBOUND (DEF) by BROWN, TREMERE			
01:52	FOUL (PERSONAL) by BROWN, TREMERE			
01:52		82-57	H 25	GOOD! FT by SCOTT, JARED [FB]
01:52	SUB OUT: TUCKER, CAMERON			
01:52	SUB IN: HICKS, GARRETT			
01:52				MISSED FT by SCOTT, JARED
01:52	REBOUND (DEF) by BROWN, TREMERE			
01:43				FOUL (PERSONAL) by WILLIAMS, FAITE
01:43	MISSED FT by BROWN, TREMERE			
01:43	REBOUND (OFF) by TEAM			
01:43	GOOD! FT by BROWN, TREMERE	82-58	H 24	
01:25				TURNOVER (LOSTBALL) by GRANT, MURRAY
01:22				FOUL (PERSONAL) by GRANT, MURRAY
01:20	MISSED FT by MILLER, BRANDON			
01:20				REBOUND (DEF) by SCOTT, JARED
01:02				MISSED JUMPER by LISTER, ANTIONE
00:58	REBOUND (DEF) by POWELL, BRANDON			
00:57	TURNOVER (BADPASS) by MILLER, BRANDON			
00:57				STEAL by SNEED, LEON
00:49				MISSED 3PTR by LISTER, ANTIONE
00:45	REBOUND (DEF) by MILLER, BRANDON			
00:36	GOOD! LAYUP by BROWN, TREMERE [PNT]	82-60	H 22	

Alabama AM 60, Prairie View 82

Points from (This Period)	AM	PVU
In the Paint	22	18
Off Turns	4	14
2nd Chance	2	8
Fast Break	6	11
Bench	26	10

Official Scoring/Possession Reference Chart
Alabama AM vs Prairie View
Period 1
March 10, 2020 at William J. Nicks Building - Prairie View



Period 1

Starters:

Alabama AM: 3 TUCKER, CAMERON (G); 5 JOHNSON, JALEN (F); 10 HICKS, GARRETT (G); 13 ALFORD, CAMERON (G); 15 WILLIAMS, EJ (C);

Prairie View: 3 ELLIS, CHANCELLOR (G); 4 LISTER, ANTIONE (G); 12 WILLIAMS, FAITE (G); 15 ANDRUS, GERARD (G); 23 PATTERSON, DEVONTE (F);

Time	VISITORS: Alabama AM	Score	Margin	HOME: Prairie View
19:39	GOOD! FT by ALFORD, CAMERON	0-1	V 1	
19:39	GOOD! FT by ALFORD, CAMERON	0-2	V 2	
19:16	GOOD! JUMPER by TUCKER, CAMERON [PNT]	0-4	V 4	
19:14	GOOD! FT by TUCKER, CAMERON	0-5	V 5	
18:39		3-5	V 2	GOOD! 3PTR by PATTERSON, DEVONTE
18:07		5-5	T	GOOD! JUMPER by ANDRUS, GERARD [FB/PNT]
17:51	GOOD! JUMPER by JOHNSON, JALEN	5-7	V 2	
17:26	GOOD! FT by ALFORD, CAMERON [FB]	5-8	V 3	
17:26	GOOD! FT by ALFORD, CAMERON [FB]	5-9	V 4	
16:53		7-9	V 2	GOOD! JUMPER by PATTERSON, DEVONTE
16:04		8-9	V 1	GOOD! FT by ANDRUS, GERARD
16:04		9-9	T	GOOD! FT by ANDRUS, GERARD
15:40		12-9	H 3	GOOD! 3PTR by PATTERSON, DEVONTE
14:16		14-9	H 5	GOOD! LAYUP by COX, DEWAYNE [PNT]
13:53		15-9	H 6	GOOD! FT by WILLIAMS, FAITE
12:28		17-9	H 8	GOOD! LAYUP by WILLIAMS, DARIUS [PNT]
11:18	GOOD! LAYUP by TUCKER, CAMERON [PNT]	17-11	H 6	
10:55		19-11	H 8	GOOD! LAYUP by LISTER, ANTIONE [PNT]
10:18	GOOD! LAYUP by WILLIAMS, EJ [FB/PNT]	19-13	H 6	
09:06		21-13	H 8	GOOD! JUMPER by ELLIS, CHANCELLOR
08:40	GOOD! LAYUP by HOUSTON, BRANDON [PNT]	21-15	H 6	
07:05		23-15	H 8	GOOD! LAYUP by WILLIAMS, FAITE [PNT]
06:23		25-15	H 10	GOOD! LAYUP by ANDRUS, GERARD [FB/PNT]
05:50	GOOD! LAYUP by TUCKER, CAMERON [PNT]	25-17	H 8	
05:35		28-17	H 11	GOOD! 3PTR by WILLIAMS, FAITE
05:17	GOOD! LAYUP by JOHNSON, JALEN [PNT]	28-19	H 9	
04:08		31-19	H 12	GOOD! 3PTR by WILLIAMS, DARIUS [FB]
03:31	GOOD! FT by JOHNSON, JALEN	31-20	H 11	
03:31	GOOD! FT by JOHNSON, JALEN	31-21	H 10	
03:24		33-21	H 12	GOOD! JUMPER by ANDRUS, GERARD [FB/PNT]
03:05	GOOD! LAYUP by JOHNSON, JALEN [PNT]	33-23	H 10	
01:53	GOOD! FT by HICKS, GARRETT	33-24	H 9	
01:53	GOOD! FT by HICKS, GARRETT	33-25	H 8	
01:34		35-25	H 10	GOOD! JUMPER by ANDRUS, GERARD [PNT]
01:12	GOOD! FT by HICKS, GARRETT	35-26	H 9	
01:12	GOOD! FT by HICKS, GARRETT	35-27	H 8	
00:06		37-27	H 10	GOOD! JUMPER by ANDRUS, GERARD

Alabama AM 27, Prairie View 37

Official Scoring/Possession Reference Chart
Alabama AM vs Prairie View
Period 2
March 10, 2020 at William J. Nicks Building - Prairie View



Period 2

Starters:

Alabama AM: 3 TUCKER, CAMERON (G); 5 JOHNSON, JALEN (F); 10 HICKS, GARRETT (G); 13 ALFORD, CAMERON (G); 15 WILLIAMS, EJ (C);

Prairie View: 3 ELLIS, CHANCELLOR (G); 4 LISTER, ANTIONE (G); 12 WILLIAMS, FAITE (G); 15 ANDRUS, GERARD (G); 23 PATTERSON, DEVONTE (F);

Time	VISITORS: Alabama AM	Score	Margin	HOME: Prairie View
19:54		40-27	H 13	GOOD! 3PTR by LISTER, ANTIONE
17:55		43-27	H 16	GOOD! 3PTR by ELLIS, CHANCELLOR
17:30	GOOD! JUMPER by MILLER, BRANDON [PNT]	43-29	H 14	
16:47		45-29	H 16	GOOD! JUMPER by LISTER, ANTIONE
16:31	GOOD! FT by HOUSTON, BRANDON	45-30	H 15	
16:29		47-30	H 17	GOOD! LAYUP by ANDRUS, GERARD [PNT]
16:06	GOOD! LAYUP by HOUSTON, BRANDON [PNT]	47-32	H 15	
15:53		49-32	H 17	GOOD! LAYUP by ANDRUS, GERARD [PNT]
13:47	GOOD! LAYUP by MILLER, BRANDON [PNT]	49-34	H 15	
13:30		50-34	H 16	GOOD! FT by PATTERSON, DEVONTE
13:30		51-34	H 17	GOOD! FT by PATTERSON, DEVONTE
12:38		53-34	H 19	GOOD! LAYUP by ANDRUS, GERARD [PNT]
12:24		55-34	H 21	GOOD! JUMPER by ANDRUS, GERARD [FB]
12:05	GOOD! FT by BROWN, TREMERE	55-35	H 20	
11:39		57-35	H 22	GOOD! LAYUP by WILLIAMS, DARIUS [PNT]
11:15		58-35	H 23	GOOD! FT by WILLIAMS, DARIUS
10:56	GOOD! LAYUP by WILLIAMS, EJ [PNT]	58-37	H 21	
10:36		60-37	H 23	GOOD! LAYUP by WILLIAMS, DARIUS [PNT]
10:17		62-37	H 25	GOOD! LAYUP by ANDRUS, GERARD [FB/PNT]
10:05	GOOD! 3PTR by MILLER, BRANDON	62-40	H 22	
09:36		63-40	H 23	GOOD! FT by ANDRUS, GERARD
09:36		64-40	H 24	GOOD! FT by ANDRUS, GERARD
09:19	GOOD! LAYUP by WILLIAMS, EJ [PNT]	64-42	H 22	
08:58		66-42	H 24	GOOD! LAYUP by ANDRUS, GERARD [PNT]
08:39		67-42	H 25	GOOD! FT by COX, DEWAYNE [FB]
08:39		68-42	H 26	GOOD! FT by COX, DEWAYNE [FB]
08:32	GOOD! JUMPER by MILLER, BRANDON [FB]	68-44	H 24	
08:11		71-44	H 27	GOOD! 3PTR by PATTERSON, DEVONTE
07:54		72-44	H 28	GOOD! FT by COX, DEWAYNE [FB]
07:54		73-44	H 29	GOOD! FT by COX, DEWAYNE [FB]
06:54	GOOD! 3PTR by HICKS, GARRETT	73-47	H 26	
06:33	GOOD! LAYUP by MILLER, BRANDON [FB/PNT]	73-49	H 24	
06:07	GOOD! LAYUP by HOUSTON, BRANDON [FB/PNT]	73-51	H 22	
05:40		75-51	H 24	GOOD! LAYUP by ANDRUS, GERARD [PNT]
04:47		77-51	H 26	GOOD! JUMPER by ANDRUS, GERARD
04:03		78-51	H 27	GOOD! FT by PATTERSON, DEVONTE [FB]
04:03		79-51	H 28	GOOD! FT by PATTERSON, DEVONTE [FB]
03:45	GOOD! LAYUP by HOUSTON, BRANDON [PNT]	79-53	H 26	
03:16		81-53	H 28	GOOD! JUMPER by ANDRUS, GERARD [PNT]
03:05	GOOD! DUNK by BROWN, TREMERE [PNT]	81-55	H 26	
02:16	GOOD! LAYUP by HOUSTON, BRANDON [PNT]	81-57	H 24	
01:52		82-57	H 25	GOOD! FT by SCOTT, JARED [FB]
01:43	GOOD! FT by BROWN, TREMERE	82-58	H 24	
00:36	GOOD! LAYUP by BROWN, TREMERE [PNT]	82-60	H 22	

Alabama AM 60, Prairie View 82

**Official Substitutions Log
Alabama AM vs Prairie View
Period 1**

March 10, 2020 at William J. Nicks Building - Prairie View



VISITORS: Alabama AM	Time	Score	HOME: Prairie View
3 TUCKER,CAMERON			3 ELLIS,CHANCELLOR
5 JOHNSON,JALEN			4 LISTER,ANTIONE
10 HICKS,GARRETT			12 WILLIAMS,FAITE
13 ALFORD,CAMERON			15 ANDRUS,GERARD
15 WILLIAMS,EJ			23 PATTERSON,DEVONTE
	17:26	8-5	SUB OUT: ELLIS,CHANCELLOR
	17:26		SUB IN: WILLIAMS,DARIUS
SUB OUT: 15 WILLIAMS,EJ	17:24	9-5	
SUB IN: 24 WILEY,EVAN	17:24		
	16:04	9-8	SUB OUT: LISTER,ANTIONE
	16:04		SUB IN: COX,DEWAYNE
SUB OUT: 5 JOHNSON,JALEN	16:04		
SUB OUT: 13 ALFORD,CAMERON	16:04		
SUB IN: 2 MILLER,BRANDON	16:04		
SUB IN: 30 HOUSTON,BRANDON	16:04		
	16:04		SUB OUT: WILLIAMS,DARIUS
	16:04		SUB IN: SNEED,LEON
SUB OUT: 3 TUCKER,CAMERON	14:39	9-12	
SUB IN: 00 PARHAM,TJ	14:39		
SUB OUT: 10 HICKS,GARRETT	14:17	9-12	
SUB IN: 13 ALFORD,CAMERON	14:17		
SUB OUT: 13 ALFORD,CAMERON	13:53	9-15	
SUB OUT: 24 WILEY,EVAN	13:53		
SUB OUT: 30 HOUSTON,BRANDON	13:53		
SUB IN: 3 TUCKER,CAMERON	13:53		
SUB IN: 5 JOHNSON,JALEN	13:53		
SUB IN: 15 WILLIAMS,EJ	13:53		
	13:50	9-15	SUB OUT: WILLIAMS,FAITE
	13:50		SUB IN: WILLIAMS,DARIUS
	13:20	9-15	SUB OUT: COX,DEWAYNE
	13:20		SUB IN: ELLIS,CHANCELLOR
SUB OUT: 00 PARHAM,TJ	12:39	9-15	
SUB IN: 10 HICKS,GARRETT	12:39		
	11:42	9-17	SUB OUT: ANDRUS,GERARD
	11:42		SUB IN: LISTER,ANTIONE
	09:27	13-19	SUB OUT: WILLIAMS,DARIUS
	09:27		SUB OUT: PATTERSON,DEVONTE
	09:27		SUB IN: ANDRUS,GERARD
	09:27		SUB IN: JACKSON,JONATHAN
SUB OUT: 2 MILLER,BRANDON	09:27		
SUB OUT: 10 HICKS,GARRETT	09:27		
SUB OUT: 15 WILLIAMS,EJ	09:27		
SUB IN: 12 POWELL,BRANDON	09:27		
SUB IN: 13 ALFORD,CAMERON	09:27		
SUB IN: 30 HOUSTON,BRANDON	09:27		
	07:20	15-21	SUB OUT: SNEED,LEON
	07:20		SUB IN: WILLIAMS,FAITE
	06:51	15-23	SUB OUT: ELLIS,CHANCELLOR
	06:51		SUB IN: COX,DEWAYNE
SUB OUT: 12 POWELL,BRANDON	06:51		
SUB IN: 10 HICKS,GARRETT	06:51		
	04:36	19-28	SUB OUT: COX,DEWAYNE
	04:36		SUB OUT: JACKSON,JONATHAN
	04:36		SUB IN: WILLIAMS,DARIUS
	04:36		SUB IN: ELLIS,CHANCELLOR
SUB OUT: 3 TUCKER,CAMERON	04:36		
SUB IN: 2 MILLER,BRANDON	04:36		
SUB OUT: 13 ALFORD,CAMERON	04:23	19-28	
SUB IN: 12 POWELL,BRANDON	04:23		
	04:19	19-28	SUB OUT: ELLIS,CHANCELLOR
	04:19		SUB OUT: WILLIAMS,FAITE
	04:19		SUB IN: COX,DEWAYNE
	04:19		SUB IN: SNEED,LEON
	03:53	19-31	SUB OUT: COX,DEWAYNE
	03:53		SUB IN: ELLIS,CHANCELLOR
SUB OUT: 12 POWELL,BRANDON	03:53		
SUB OUT: 30 HOUSTON,BRANDON	03:53		
SUB IN: 3 TUCKER,CAMERON	03:53		
SUB IN: 15 WILLIAMS,EJ	03:53		
SUB OUT: 2 MILLER,BRANDON	01:53	24-33	
SUB OUT: 5 JOHNSON,JALEN	01:53		
SUB OUT: 15 WILLIAMS,EJ	01:53		
SUB IN: 00 PARHAM,TJ	01:53		
SUB IN: 13 ALFORD,CAMERON	01:53		
SUB IN: 24 WILEY,EVAN	01:53		

VISITORS: Alabama AM	Time	Score	HOME: Prairie View
	00:50	27-35	SUB OUT: ELLIS, CHANCELLOR
	00:50		SUB IN: COX, DEWAYNE

Alabama AM 27, Prairie View 37

**Official Substitutions Log
Alabama AM vs Prairie View
Period 2**

March 10, 2020 at William J. Nicks Building - Prairie View



VISITORS: Alabama AM	Time	Score	HOME: Prairie View
3 TUCKER,CAMERON			3 ELLIS,CHANCELLOR
5 JOHNSON,JALEN			4 LISTER,ANTIONE
10 HICKS,GARRETT			12 WILLIAMS,FAITE
13 ALFORD,CAMERON			15 ANDRUS,GERARD
15 WILLIAMS,EJ			23 PATTERSON,DEVONTE
	20:00	-	SUB OUT: COX,DEWAYNE
	20:00		SUB IN: ELLIS,CHANCELLOR
SUB OUT: 00 PARHAM,TJ	20:00		
SUB OUT: 24 WILEY,EVAN	20:00		
SUB IN: 5 JOHNSON,JALEN	20:00		
SUB IN: 15 WILLIAMS,EJ	20:00		
	19:23	27-40	SUB OUT: WILLIAMS,DARIUS
	19:23		SUB OUT: SNEED,LEON
	19:23		SUB IN: WILLIAMS,FAITE
	19:23		SUB IN: PATTERSON,DEVONTE
SUB OUT: 13 ALFORD,CAMERON	19:09	27-40	
SUB IN: 2 MILLER,BRANDON	19:09		
SUB OUT: 5 JOHNSON,JALEN	17:41	27-43	
SUB OUT: 15 WILLIAMS,EJ	17:41		
SUB IN: 00 PARHAM,TJ	17:41		
SUB IN: 30 HOUSTON,BRANDON	17:41		
	16:36	29-45	SUB OUT: ELLIS,CHANCELLOR
	16:36		SUB IN: COX,DEWAYNE
	16:30	30-45	SUB OUT: COX,DEWAYNE
	16:30		SUB IN: ELLIS,CHANCELLOR
	16:15	30-47	SUB OUT: ELLIS,CHANCELLOR
	16:15		SUB IN: COX,DEWAYNE
	14:40	32-49	SUB OUT: COX,DEWAYNE
	14:40		SUB IN: ELLIS,CHANCELLOR
	14:34	32-49	SUB OUT: ELLIS,CHANCELLOR
	14:34		SUB OUT: ANDRUS,GERARD
	14:34		SUB IN: COX,DEWAYNE
	14:34		SUB IN: SNEED,LEON
	14:13	32-49	SUB OUT: COX,DEWAYNE
	14:13		SUB OUT: WILLIAMS,FAITE
	14:13		SUB IN: WILLIAMS,DARIUS
	14:13		SUB IN: ELLIS,CHANCELLOR
SUB OUT: 00 PARHAM,TJ	14:13		
SUB OUT: 30 HOUSTON,BRANDON	14:13		
SUB IN: 24 WILEY,EVAN	14:13		
SUB IN: 35 BROWN,TREMERE	14:13		
	13:57	32-49	SUB OUT: SNEED,LEON
	13:57		SUB IN: WILLIAMS,FAITE
	13:30	34-50	SUB OUT: ELLIS,CHANCELLOR
	13:30		SUB OUT: WILLIAMS,FAITE
	13:30		SUB IN: COX,DEWAYNE
	13:30		SUB IN: SNEED,LEON
	13:19	34-51	SUB OUT: LISTER,ANTIONE
	13:19		SUB OUT: COX,DEWAYNE
	13:19		SUB IN: ELLIS,CHANCELLOR
	13:19		SUB IN: ANDRUS,GERARD
	12:17	34-55	SUB OUT: ELLIS,CHANCELLOR
	12:17		SUB IN: COX,DEWAYNE
SUB OUT: 3 TUCKER,CAMERON	12:17		
SUB IN: 12 POWELL,BRANDON	12:17		
SUB OUT: 10 HICKS,GARRETT	12:17		
SUB IN: 3 TUCKER,CAMERON	12:17		
	11:14	35-58	SUB OUT: COX,DEWAYNE
	11:14		SUB IN: ELLIS,CHANCELLOR
SUB OUT: 35 BROWN,TREMERE	11:14		
SUB IN: 15 WILLIAMS,EJ	11:14		
	10:49	37-58	SUB OUT: ELLIS,CHANCELLOR
	10:49		SUB IN: COX,DEWAYNE
	10:39	37-58	SUB OUT: COX,DEWAYNE
	10:39		SUB IN: ELLIS,CHANCELLOR
SUB OUT: 24 WILEY,EVAN	10:18	37-60	
SUB IN: 10 HICKS,GARRETT	10:18		
	09:36	40-63	SUB OUT: WILLIAMS,DARIUS
	09:36		SUB OUT: ELLIS,CHANCELLOR
	09:36		SUB IN: COX,DEWAYNE
SUB OUT: 3 TUCKER,CAMERON	09:36		
SUB IN: 13 ALFORD,CAMERON	09:36		
	09:36		SUB IN: LISTER,ANTIONE
SUB OUT: 12 POWELL,BRANDON	08:48	42-66	
SUB IN: 5 JOHNSON,JALEN	08:48		

VISITORS: Alabama AM	Time	Score	HOME: Prairie View
SUB OUT: 13 ALFORD,CAMERON	07:16	44-73	
SUB IN: 30 HOUSTON,BRANDON	07:16		
SUB OUT: 15 WILLIAMS,EJ	06:56	44-73	
SUB IN: 3 TUCKER,CAMERON	06:56		
	06:41	47-73	SUB OUT: SNEED,LEON
	06:41		SUB IN: WILLIAMS,DARIUS
	06:26	49-73	SUB OUT: WILLIAMS,DARIUS
	06:26		SUB IN: WILLIAMS,FAITE
	04:03	51-77	SUB OUT: COX,DEWAYNE
	04:03		SUB IN: SNEED,LEON
SUB OUT: 5 JOHNSON,JALEN	04:03		
SUB OUT: 10 HICKS,GARRETT	04:03		
SUB IN: 12 POWELL,BRANDON	04:03		
SUB IN: 35 BROWN,TREMERE	04:03		
	03:12	53-81	SUB OUT: ANDRUS,GERARD
	03:12		SUB OUT: PATTERSON,DEVONTE
	03:12		SUB IN: GRANT,MURRAY
	03:12		SUB IN: SCOTT,JARED
SUB OUT: 3 TUCKER,CAMERON	01:52	57-82	
SUB IN: 10 HICKS,GARRETT	01:52		

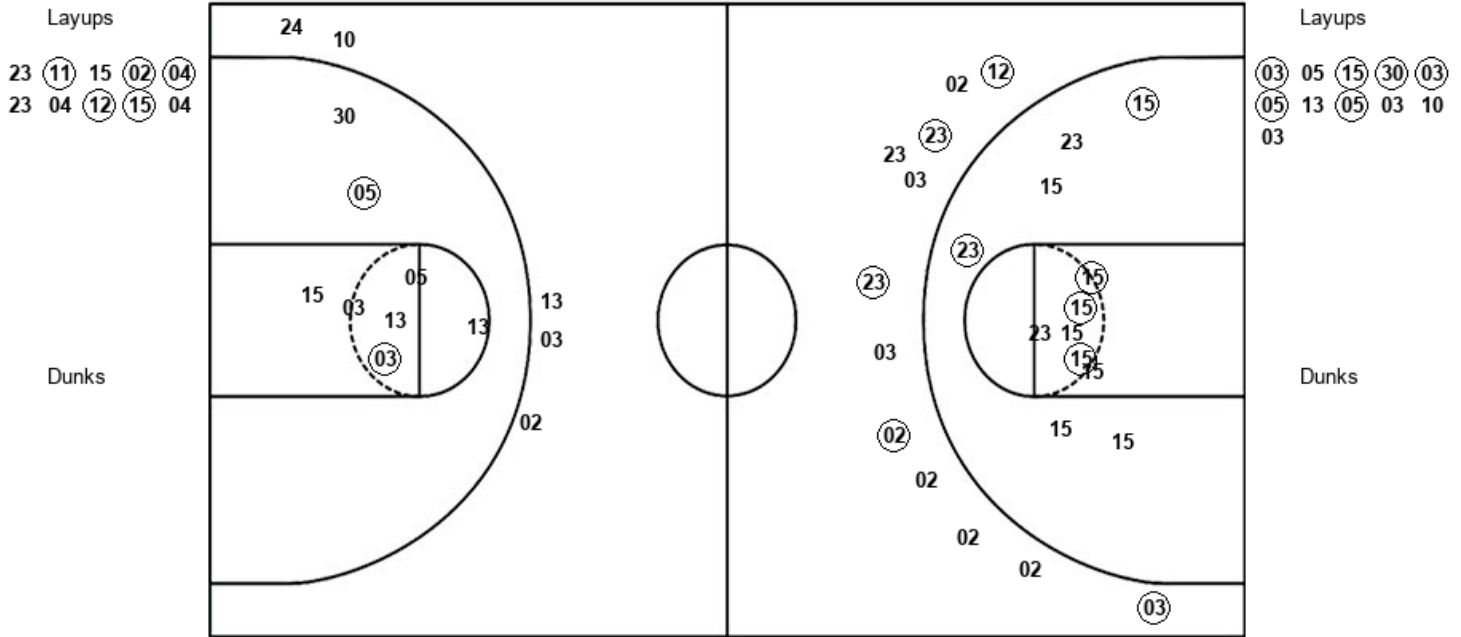
Alabama AM 60, Prairie View 82

Official Shot Chart
Alabama AM vs Prairie View
PERIOD 1 Shots
 March 10, 2020 at William J. Nicks Building - Prairie View



Prairie View

Alabama AM



PVU : Period 1	Made	Att	Pct
Layups	5	10	50.0
Dunks	0	0	0
2PT Field Goals	11	23	47.8
3PT Field Goals	4	11	36.4
Total Field Goals	15	34	44.1

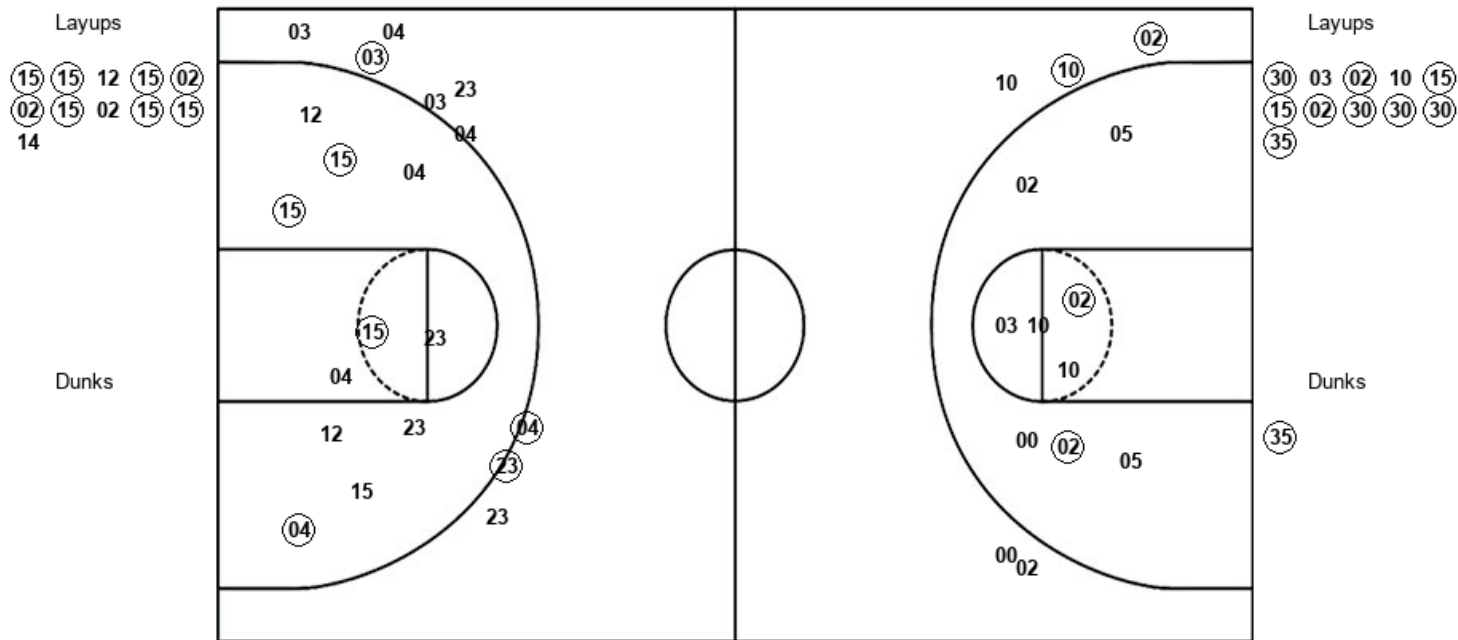
AM : Period 1	Made	Att	Pct
Layups	6	11	54.5
Dunks	0	0	0
2PT Field Goals	8	19	42.1
3PT Field Goals	0	5	00.0
Total Field Goals	8	24	33.3

Official Shot Chart
Alabama AM vs Prairie View
PERIOD 2 Shots
 March 10, 2020 at William J. Nicks Building - Prairie View



Prairie View

Alabama AM



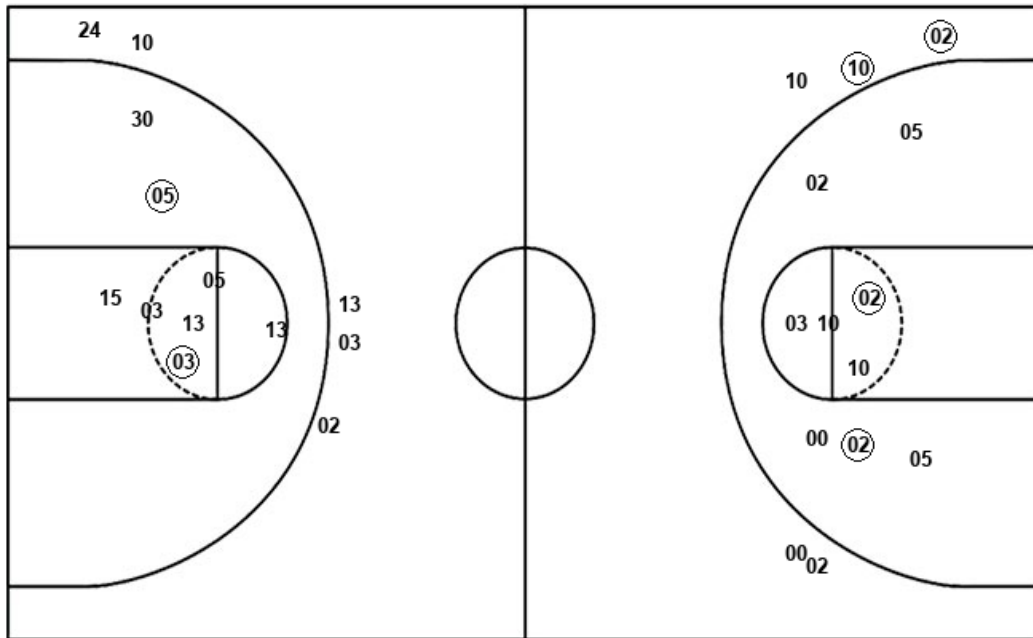
PVU : Period 2	Made	Att	Pct
Layups	8	11	72.7
Dunks	0	0	0
2PT Field Goals	12	22	54.5
3PT Field Goals	3	9	33.3
Total Field Goals	15	31	48.4

AM : Period 2	Made	Att	Pct
Layups	9	11	81.8
Dunks	1	1	100.0
2PT Field Goals	12	21	57.1
3PT Field Goals	2	5	40.0
Total Field Goals	14	26	53.8

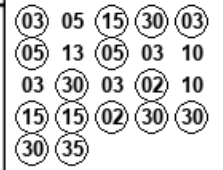
Official Shot Chart
Alabama AM vs Prairie View
Alabama AM Team Shots
March 10, 2020 at William J. Nicks Building - Prairie View



Layups



Layups



Dunks

Dunks



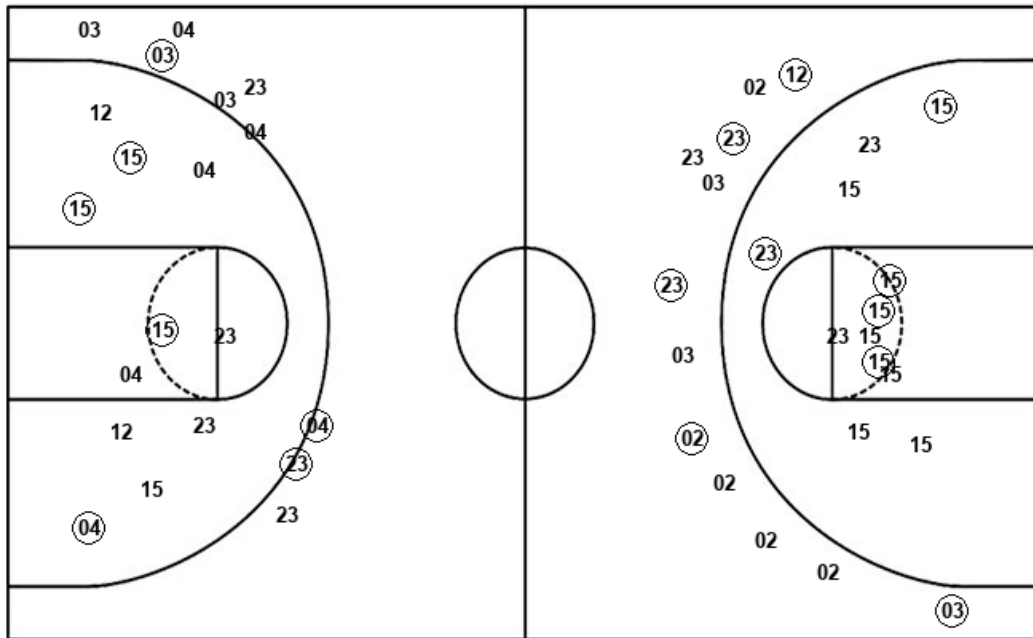
AM : Period 1	Made	Att	Pct
Layups	6	11	54.5
Dunks	0	0	0
2PT Field Goals	8	19	42.1
3PT Field Goals	0	5	00.0
Total Field Goals	8	24	33.3

AM : Period 2	Made	Att	Pct
Layups	9	11	81.8
Dunks	1	1	100.0
2PT Field Goals	12	21	57.1
3PT Field Goals	2	5	40.0
Total Field Goals	14	26	53.8

Official Shot Chart
Alabama AM vs Prairie View
Prairie View Team Shots
March 10, 2020 at William J. Nicks Building - Prairie View



Layups



Layups

23 (11) 15 (02) (04)
 23 04 (12) (15) 04
 (15) (15) 12 (15) (02)
 (02) (15) 02 (15) (15)
 14

Dunks

Dunks

PVU : Period 1	Made	Att	Pct
Layups	5	10	50.0
Dunks	0	0	0
2PT Field Goals	11	23	47.8
3PT Field Goals	4	11	36.4
Total Field Goals	15	34	44.1

PVU : Period 2	Made	Att	Pct
Layups	8	11	72.7
Dunks	0	0	0
2PT Field Goals	12	22	54.5
3PT Field Goals	3	9	33.3
Total Field Goals	15	31	48.4