

FINAL SCORE**Grove City****18****Hope****69****NCAA Division III Women's Basketball Championship First, Second Rounds -
Campus Sites****March 06, 2020 • DeVos Fieldhouse - Holland****FINAL STATISTICS**

Official Box Score
Grove City vs Hope
Game Totals -- Final Statistics
March 06, 2020 at DeVos Fieldhouse - Holland



Grove City 18

No.	Player	S	Pts	FG	3FG	FT	OR	DR	TR	PF	A	TO	Blk	Stl	Min	+/-
11	MCCONNELL, JORDAN	G	1	0-2	0-1	1-4	0	3	3	2	1	5	0	0	27	-33
14	BOWEN, JESS	G	0	0-9	0-5	0-0	1	5	6	2	2	3	0	1	26	-25
15	PODKUL, ALLISON	F	4	2-6	0-0	0-0	2	4	6	2	0	2	1	0	30	-36
23	BALCOM, KATE	G	6	2-11	1-4	1-2	1	4	5	3	0	4	2	1	27	-25
34	BOOK, JESS	F	2	1-4	0-0	0-0	1	5	6	2	0	3	0	0	27	-33
10	FREDERICK, LAUREN	G	0	0-2	0-1	0-0	0	0	0	1	0	1	0	0	3	-8
12	STANFORTH, LINDSEY	G	0	0-2	0-1	0-0	0	1	1	1	0	1	0	1	11	-13
20	KIMBRELL, JESSICA	F	0	0-1	0-1	0-0	0	0	0	1	1	0	1	1	16	-23
30	VEZZOSI, EMMA	G	5	1-8	0-3	3-6	0	1	1	4	0	6	0	1	17	-25
32	ELSEY, GRETCHEN	G	0	0-2	0-2	0-0	0	1	1	1	0	1	0	0	10	-24
42	CANO, NINA	C	0	0-0	0-0	0-0	0	0	0	0	0	0	0	0	5	-10
44	CAMPBELL, SEDONA	C	0	0-0	0-0	0-0	0	0	0	0	0	0	0	0	2	0
TEAM							3	4	7	0	2					
TOTALS			18	6-47	1-18	5-12	8	28	36	19	4	28	4	5	200	

Shooting By Period

Period	FG	FG%	3FG	3FG%	FT	FT%
1st Qtr	4-13	31%	0-2	00%	0-0	0%
2nd Qtr	1-14	07%	0-4	00%	1-2	50%
3rd Qtr	0-7	00%	0-4	00%	4-8	50%
4th Qtr	1-13	08%	1-8	13%	0-2	00%
1st Half	5-27	19%	0-6	00%	1-2	50%
2nd Half	1-20	05%	1-12	08%	4-10	40%
Game	6-47	12.8%	1-18	05.6%	5-12	41.7%

Deadball Rebounds: 3,1

Last FG: 4th-01:41

Biggest Run: 6-0

Largest lead: By 4 at 1st-07:14

Technical Fouls: None.

Hope 69

No.	Player	S	Pts	FG	3FG	FT	OR	DR	TR	PF	A	TO	Blk	Stl	Min	+/-
05	VOSKUIL, OLIVIA	C	4	2-8	0-0	0-0	0	4	4	0	2	3	3	0	15	13
12	DESMIT, KASEY	G	5	1-4	0-2	3-6	0	3	3	3	1	1	0	4	21	21
20	SCHOONVELD, KENEDY	G	8	3-8	1-4	1-2	1	2	3	1	2	0	0	0	19	17
23	NEWMAN, LAUREN	G	5	2-9	1-3	0-0	1	3	4	1	0	0	0	0	16	15
25	THOMAS, ASHLEIGH	C	2	1-2	0-0	0-0	0	4	4	1	2	1	0	1	13	9
02	MOREHOUSE, MEG	G	2	1-2	0-1	0-0	1	1	2	3	1	2	0	2	15	18
03	MOORMAN, JESSICA	F	9	2-6	1-2	4-4	3	5	8	2	1	2	0	2	18	22
04	BAGULEY, CLAIRE	F	9	4-7	1-4	0-0	0	2	2	2	1	2	0	1	15	16
10	TOLBERT, ARIKA	G	0	0-2	0-1	0-0	0	1	1	0	1	2	0	2	12	14
14	MAJERUS, KATE	F	4	2-5	0-2	0-0	0	1	1	0	0	0	0	3	8	18
15	MCKINNEY, ELLA	G	2	1-1	0-0	0-0	0	1	1	0	1	0	0	1	8	18
24	RUSSELL, KAYLA	F	7	1-5	0-0	5-6	3	0	3	1	1	0	0	0	9	20
31	GERBER, MALLORY	F	8	2-3	1-2	3-4	1	1	2	0	0	0	0	0	8	17
32	BARNES, COURTENEY	C	4	2-6	0-0	0-0	1	2	3	0	0	0	0	1	17	21
33	SMITH, HANNAH	F	0	0-0	0-0	0-0	0	5	5	1	0	0	0	0	7	16
TEAM							4	2	6	0	0					
TOTALS			69	24-68	5-21	16-22	15	37	52	15	13	13	3	17	200	

Shooting By Period

Period	FG	FG%	3FG	3FG%	FT	FT%
1st Qtr	4-15	27%	1-7	14%	4-6	67%
2nd Qtr	5-22	23%	0-5	00%	2-4	50%
3rd Qtr	8-14	57%	3-4	75%	2-2	100%
4th Qtr	7-17	41%	1-5	20%	8-10	80%
1st Half	9-37	24%	1-12	08%	6-10	60%
2nd Half	15-31	48%	4-9	44%	10-12	83%
Game	24-68	35.3%	5-21	23.8%	16-22	72.7%

Deadball Rebounds: 6,0

Last FG: 4th-01:23

Biggest Run: 20-0

Largest lead: By 51 at 4th-01:23

Technical Fouls: #0 TEAM (Admin Technical) @ 3rd - 02:43;

Game Notes:

Officials: Sean Black, Amanda Bender, Nicole Fisher
 Attendance: 1915

Start Time: 07:35 PM ET

End Time: 09:16 PM ET

Game Duration: 1:41

Score	1st	2nd	3rd	4th	TOT
GCC	8	3	4	3	18
HPE	13	12	21	23	69

GCC led for 4:18. HPE led for 35:01.

Game was tied for 0:41.

Times tied: 2 Lead Changes: 4

Points from	GCC	HPE
In the Paint	10	38
Off Turns	6	20
2nd Chance	0	12
Fast Break	1	18
Bench	5	45

Official Box Score
Grove City vs Hope
First Half Statistics Only
March 06, 2020 at DeVos Fieldhouse - Holland



Grove City 11

No.	Player	S	Pts	FG	3FG	FT	OR	DR	TR	PF	A	TO	Blk	Stl	Min	+/-
10	FREDERICK, LAUREN	G	0	0-0	0-0	0-0	0	0	0	0	0	0	0	0	0	0
11	MCCONNELL, JORDAN	G	0	0-0	0-0	0-0	0	2	2	2	1	2	0	0	15	-11
12	STANFORTH, LINDSEY	G	0	0-1	0-1	0-0	0	0	0	0	0	1	0	1	6	-5
14	BOWEN, JESS	G	0	0-6	0-2	0-0	0	5	5	2	2	1	0	1	16	-13
15	PODKUL, ALLISON	F	4	2-6	0-0	0-0	2	4	6	0	0	2	1	0	18	-15
20	KIMBRELL, JESSICA	F	0	0-0	0-0	0-0	0	0	0	1	0	0	0	0	5	-3
23	BALCOM, KATE	G	2	1-7	0-1	0-0	1	2	3	2	0	3	0	1	14	-3
30	VEZZOSI, EMMA	G	3	1-4	0-1	1-2	0	1	1	2	0	2	0	0	8	-8
32	ELSEY, GRETCHEN	G	0	0-1	0-1	0-0	0	1	1	0	0	0	0	0	2	-2
34	BOOK, JESS	F	2	1-2	0-0	0-0	1	4	5	0	0	2	0	0	15	-10
42	CANO, NINA	C	0	0-0	0-0	0-0	0	0	0	0	0	0	0	0	0	0
44	CAMPBELL, SEDONA	C	0	0-0	0-0	0-0	0	0	0	0	0	0	0	0	1	0
	TEAM		0	0-0	0-0	0-0	0	2	2	0	0	2	0	0	0	0
	TOTALS		11	5-27	0-6	1-2	4	21	25	9	3	15	1	3	100	

Shooting By Period

Period	FG	FG%	3FG	3FG%	FT	FT%
1st Qtr	4-13	31%	0-2	00%	0-0	0%
2nd Qtr	1-14	07%	0-4	00%	1-2	50%
1st Half	5-27	19%	0-6	00%	1-2	50%
Game	6-47	12.8%	1-18	05.6%	5-12	41.7%

Deadball Rebounds: 3,1
Last FG Half: GCC 2nd-03:28

Hope 25

No.	Player	S	Pts	FG	3FG	FT	OR	DR	TR	PF	A	TO	Blk	Stl	Min	+/-
02	MOREHOUSE, MEG	G	0	0-1	0-1	0-0	0	1	1	0	0	0	0	1	7	4
04	BAGULEY, CLAIRE	F	0	0-3	0-3	0-0	0	1	1	1	1	1	0	0	7	2
05	VOSKUIL, OLIVIA	C	4	2-8	0-0	0-0	0	3	3	0	1	2	2	0	13	11
10	TOLBERT, ARIKA	G	0	0-2	0-1	0-0	0	1	1	0	0	1	0	1	6	0
12	DESMIT, KASEY	G	5	1-2	0-1	3-6	0	2	2	0	1	1	0	4	14	14
14	MAJERUS, KATE	F	0	0-0	0-0	0-0	0	0	0	0	0	0	0	0	0	0
15	MCKINNEY, ELLA	G	0	0-0	0-0	0-0	0	0	0	0	0	0	0	0	0	0
20	SCHOONVELD, KENEDY	G	6	2-6	1-4	1-2	1	1	2	1	1	0	0	0	14	12
23	NEWMAN, LAUREN	G	2	1-8	0-2	0-0	1	3	4	1	0	0	0	0	12	10
24	RUSSELL, KAYLA	F	0	0-0	0-0	0-0	0	0	0	0	0	0	0	0	0	0
25	THOMAS, ASHLEIGH	C	2	1-2	0-0	0-0	0	3	3	1	2	0	0	1	11	7
31	GERBER, MALLORY	F	0	0-0	0-0	0-0	0	0	0	0	0	0	0	0	0	0
32	BARNES, COURTENEY	C	2	1-3	0-0	0-0	1	0	1	0	0	0	0	1	7	3
33	SMITH, HANNAH	F	0	0-0	0-0	0-0	0	0	0	0	0	0	0	0	0	0
03	MOORMAN, JESSICA	F	4	1-2	0-0	2-2	1	2	3	1	0	1	0	2	9	7
	TEAM		0	0-0	0-0	0-0	3	2	5	0	0	0	0	0	0	0
	TOTALS		25	9-37	1-12	6-10	7	19	26	5	6	6	2	10	100	

Shooting By Period

Period	FG	FG%	3FG	3FG%	FT	FT%
1st Qtr	4-15	27%	1-7	14%	4-6	67%
2nd Qtr	5-22	23%	0-5	00%	2-4	50%
1st Half	9-37	24%	1-12	08%	6-10	60%
Game	24-68	35.3%	5-21	23.8%	16-22	72.7%

Deadball Rebounds: 6,0
Last FG Half: HPE 2nd-03:04

Game Notes:

Officials: Sean Black, Amanda Bender, Nicole Fisher
Attendance: 1915

Start Time: 07:35 PM ET
End Time: 09:16 PM ET
Game Duration: 1:41

Score	1st	2nd	3rd	4th	TOT
GCC	8	3	4	3	18
HPE	13	12	21	23	69

Points from (This Period)	GCC	HPE
In the Paint	10	16
Off Turns	5	9
2nd Chance	0	6
Fast Break	1	3
Bench	3	6

Official Box Score
Grove City vs Hope
First Quarter Statistics Only
March 06, 2020 at DeVos Fieldhouse - Holland



Grove City 8

No.	Player	S	Pts	FG	3FG	FT	OR	DR	TR	PF	A	TO	Blk	Stl	Min	+/-
11	MCCONNELL, JORDAN	G	0	0-0	0-0	0-0	0	1	1	2	1	1	0	0	8	-5
14	BOWEN, JESS	G	0	0-3	0-1	0-0	0	3	3	0	2	0	0	1	9	-6
15	PODKUL, ALLISON	F	2	1-3	0-0	0-0	0	2	2	0	0	1	1	0	9	-6
23	BALCOM, KATE	G	2	1-4	0-0	0-0	1	1	2	0	0	1	0	1	8	0
34	BOOK, JESS	F	2	1-1	0-0	0-0	1	1	2	0	0	0	0	0	8	-3
10	FREDERICK, LAUREN	G	0	0-0	0-0	0-0	0	0	0	0	0	0	0	0	0	0
12	STANFORTH, LINDSEY	G	0	0-0	0-0	0-0	0	0	0	0	0	1	0	1	3	-1
20	KIMBRELL, JESSICA	F	0	0-0	0-0	0-0	0	0	0	1	0	0	0	0	3	-1
30	VEZZOSI, EMMA	G	2	1-2	0-1	0-0	0	1	1	1	0	1	0	0	3	-3
32	ELSEY, GRETCHEN	G	0	0-0	0-0	0-0	0	0	0	0	0	0	0	0	0	0
42	CANO, NINA	C	0	0-0	0-0	0-0	0	0	0	0	0	0	0	0	0	0
44	CAMPBELL, SEDONA	C	0	0-0	0-0	0-0	0	0	0	0	0	0	0	0	0	0
	TEAM						0	0	0	0		2				
	TOTALS		8	4-13	0-2	0-0	2	9	11	4	3	7	1	3	50	

Shooting By Period

Period	FG	FG%	3FG	3FG%	FT	FT%
1st Qtr	4-13	31%	0-2	00%	0-0	0%
2nd Qtr	1-14	07%	0-4	00%	1-2	50%
1st Half	4-13	31%	0-2	00%	0-0	0%
1st Half	5-27	19%	0-6	00%	1-2	50%
Game	6-47	12.8%	1-18	05.6%	5-12	41.7%

Deadball Rebounds: 3,1

Hope 13

No.	Player	S	Pts	FG	3FG	FT	OR	DR	TR	PF	A	TO	Blk	Stl	Min	+/-
05	VOSKUIL, OLIVIA	C	2	1-3	0-0	0-0	0	2	2	0	0	1	1	0	7	5
12	DESMIT, KASEY	G	2	0-0	0-0	2-4	0	1	1	0	1	1	0	1	7	5
20	SCHOONVELD, KENEDY	G	3	1-3	1-3	0-0	1	0	1	0	1	0	0	0	8	5
23	NEWMAN, LAUREN	G	0	0-5	0-2	0-0	0	1	1	0	0	0	0	0	6	3
25	THOMAS, ASHLEIGH	C	2	1-1	0-0	0-0	0	0	0	0	0	0	0	1	6	3
02	MOREHOUSE, MEG	G	0	0-0	0-0	0-0	0	0	0	0	0	0	0	0	3	2
03	MOORMAN, JESSICA	F	2	0-0	0-0	2-2	0	1	1	1	0	0	0	2	4	2
04	BAGULEY, CLAIRE	F	0	0-1	0-1	0-0	0	0	0	0	1	1	0	0	3	0
10	TOLBERT, ARIKA	G	0	0-1	0-1	0-0	0	0	0	0	0	1	0	0	3	0
14	MAJERUS, KATE	F	0	0-0	0-0	0-0	0	0	0	0	0	0	0	0	0	0
15	MCKINNEY, ELLA	G	0	0-0	0-0	0-0	0	0	0	0	0	0	0	0	0	0
24	RUSSELL, KAYLA	F	0	0-0	0-0	0-0	0	0	0	0	0	0	0	0	0	0
31	GERBER, MALLORY	F	0	0-0	0-0	0-0	0	0	0	0	0	0	0	0	0	0
32	BARNES, COURTENEY	C	2	1-1	0-0	0-0	0	0	0	0	0	0	0	0	3	0
33	SMITH, HANNAH	F	0	0-0	0-0	0-0	0	0	0	0	0	0	0	0	0	0
	TEAM						2	2	4	0		0				
	TOTALS		13	4-15	1-7	4-6	3	7	10	1	3	4	1	4	50	

Shooting By Period

Period	FG	FG%	3FG	3FG%	FT	FT%
1st Qtr	4-15	27%	1-7	14%	4-6	67%
2nd Qtr	5-22	23%	0-5	00%	2-4	50%
1st Half	4-15	27%	1-7	14%	4-6	67%
1st Half	9-37	24%	1-12	08%	6-10	60%
Game	24-68	35.3%	5-21	23.8%	16-22	72.7%

Deadball Rebounds: 6,0

Game Notes:

Officials: Sean Black, Amanda Bender, Nicole Fisher
Attendance: 1915

Start Time: 07:35 PM ET
End Time: 09:16 PM ET
Game Duration: 1:41

Score	1st	2nd	3rd	4th	TOT
GCC	8	3	4	3	18
HPE	13	12	21	23	69

Points from (This Period)	GCC	HPE
In the Paint	8	6
Off Turns	4	5
2nd Chance	0	2
Fast Break	0	2
Bench	2	4

Official Play-By-Play
Grove City vs Hope
First Quarter
March 06, 2020 at DeVos Fieldhouse - Holland



Period 1

Starters:

Grove City: 11 MCCONNELL, JORDAN (G); 14 BOWEN, JESS (G); 15 PODKUL, ALLISON (F); 23 BALCOM, KATE (G); 34 BOOK, JESS (F);

Hope: 5 VOSKUIL, OLIVIA (C); 12 DESMIT, KASEY (G); 20 SCHOONVELD, KENEDY (G); 23 NEWMAN, LAUREN (G); 25 THOMAS, ASHLEIGH (C);

Time	VISITORS: Grove City	Score	Margin	HOME: Hope
09:50		2-0	H 2	GOOD! LAYUP by VOSKUIL, OLIVIA
09:17	TURNOVER (SHOTCLOCK) by TEAM			
08:52				MISSED JUMPER by NEWMAN, LAUREN
08:52	BLOCK by PODKUL, ALLISON			
08:47	REBOUND (DEF) by BALCOM, KATE			
08:45	GOOD! LAYUP by PODKUL, ALLISON	2-2	T	
08:45	ASSIST by MCCONNELL, JORDAN			
08:24				MISSED LAYUP by VOSKUIL, OLIVIA
08:20	REBOUND (DEF) by BOWEN, JESS			
08:14	GOOD! LAYUP by BOOK, JESS [PNT]	2-4	V 2	
08:14	ASSIST by BOWEN, JESS			
07:47				MISSED 3PTR by NEWMAN, LAUREN
07:44	REBOUND (DEF) by PODKUL, ALLISON			
07:41	MISSED LAYUP by PODKUL, ALLISON			
07:38				REBOUND (DEF) by NEWMAN, LAUREN
07:30				MISSED LAYUP by NEWMAN, LAUREN
07:26	REBOUND (DEF) by MCCONNELL, JORDAN			
07:22	MISSED LAYUP by BALCOM, KATE			
07:19				REBOUND (DEF) by VOSKUIL, OLIVIA
07:17				TURNOVER (BADPASS) by VOSKUIL, OLIVIA
07:17	STEAL by BOWEN, JESS			
07:14	GOOD! LAYUP by BALCOM, KATE	2-6	V 4	
07:14	ASSIST by BOWEN, JESS			
06:45				MISSED 3PTR by NEWMAN, LAUREN
06:41				REBOUND (OFF) by SCHOONVELD, KENEDY
06:30				MISSED JUMPER by NEWMAN, LAUREN
06:28	REBOUND (DEF) by BOWEN, JESS			
06:05	MISSED LAYUP by BOWEN, JESS			
06:05				BLOCK by VOSKUIL, OLIVIA
05:59				REBOUND (DEF) by VOSKUIL, OLIVIA
05:51		5-6	V 1	GOOD! 3PTR by SCHOONVELD, KENEDY
05:51				ASSIST by DESMIT, KASEY
05:30	MISSED JUMPER by PODKUL, ALLISON			
05:27				REBOUND (DEF) by TEAM
05:26				SUB OUT: VOSKUIL, OLIVIA
05:26				SUB OUT: DESMIT, KASEY
05:26				SUB OUT: NEWMAN, LAUREN
05:26				SUB OUT: THOMAS, ASHLEIGH
05:26				SUB IN: MOORMAN, JESSICA
05:26				SUB IN: BAGULEY, CLAIRE
05:26				SUB IN: TOLBERT, ARIKA
05:26				SUB IN: BARNES, COURTENEY
05:26	SUB OUT: BALCOM, KATE			
05:26	SUB IN: STANFORTH, LINDSEY			
05:14				MISSED 3PTR by BAGULEY, CLAIRE
05:11				REBOUND (OFF) by TEAM
05:11	SUB OUT: BOOK, JESS			
05:11	SUB IN: KIMBRELL, JESSICA			
05:11				MISSED 3PTR by SCHOONVELD, KENEDY
05:11	REBOUND (DEF) by BOWEN, JESS			
05:01	TURNOVER (BADPASS) by STANFORTH, LINDSEY			
05:01				STEAL by MOORMAN, JESSICA
04:58	FOUL (PERSONAL) by MCCONNELL, JORDAN			
04:52				
04:40				MISSED 3PTR by TOLBERT, ARIKA
04:36				REBOUND (OFF) by TEAM
04:36				SUB OUT: SCHOONVELD, KENEDY
04:36				SUB IN: MOREHOUSE, MEG
04:18		7-6	H 1	GOOD! LAYUP by BARNES, COURTENEY
04:18				ASSIST by BAGULEY, CLAIRE
03:56	MISSED LAYUP by BOWEN, JESS			
03:53				REBOUND (DEF) by MOORMAN, JESSICA
03:50				TURNOVER (LOSTBALL) by TOLBERT, ARIKA
03:50	STEAL by STANFORTH, LINDSEY			
03:36				FOUL (PERSONAL) by MOORMAN, JESSICA
03:36	SUB OUT: MCCONNELL, JORDAN			
03:36	SUB OUT: BOWEN, JESS			
03:36	SUB OUT: PODKUL, ALLISON			
03:36	SUB IN: BALCOM, KATE			
03:36	SUB IN: VEZZOSI, EMMA			

Time	VISITORS: Grove City	Score	Margin	HOME: Hope
03:36	SUB IN: BOOK, JESS			
03:26	MISSED LAYUP by BALCOM, KATE			
03:23	REBOUND (OFF) by BOOK, JESS			
03:03	TURNOVER (SHOTCLOCK) by TEAM			
02:51				TURNOVER (BADPASS) by BAGULEY, CLAIRE
02:42	GOOD! LAYUP by VEZZOSI, EMMA [PNT]	7-8	V 1	
02:20	FOUL (PERSONAL) by KIMBRELL, JESSICA			
02:20				SUB OUT: BAGULEY, CLAIRE
02:20				SUB OUT: TOLBERT, ARIKA
02:20				SUB OUT: BARNES, COURTENEY
02:20				SUB IN: VOSKUIL, OLIVIA
02:20				SUB IN: DESMIT, KASEY
02:20				SUB IN: SCHOONVELD, KENEDY
02:20		8-8	T	GOOD! FT by MOORMAN, JESSICA
02:20	SUB OUT: STANFORTH, LINDSEY			
02:20	SUB OUT: KIMBRELL, JESSICA			
02:20	SUB IN: BOWEN, JESS			
02:20	SUB IN: PODKUL, ALLISON			
02:20		9-8	H 1	GOOD! FT by MOORMAN, JESSICA
02:12	TURNOVER (LOSTBALL) by VEZZOSI, EMMA			
02:12				STEAL by DESMIT, KASEY
02:01				MISSED 3PTR by SCHOONVELD, KENEDY
01:58	REBOUND (DEF) by VEZZOSI, EMMA			
01:55	MISSED 3PTR by BOWEN, JESS			
01:51				REBOUND (DEF) by TEAM
01:37				MISSED LAYUP by VOSKUIL, OLIVIA
01:35	REBOUND (DEF) by PODKUL, ALLISON			
01:27	MISSED 3PTR by VEZZOSI, EMMA			
01:24	REBOUND (OFF) by BALCOM, KATE			
01:21	TURNOVER (BADPASS) by BALCOM, KATE			
01:21				STEAL by MOORMAN, JESSICA
01:15	FOUL (PERSONAL) by VEZZOSI, EMMA			
01:15				SUB OUT: MOREHOUSE, MEG
01:15				SUB OUT: MOORMAN, JESSICA
01:15				SUB IN: NEWMAN, LAUREN
01:15				SUB IN: THOMAS, ASHLEIGH
01:15	SUB OUT: VEZZOSI, EMMA			
01:15	SUB IN: MCCONNELL, JORDAN			
01:15				MISSED FT by DESMIT, KASEY
01:15				REBOUND (OFF) by TEAM
01:15		10-8	H 2	GOOD! FT by DESMIT, KASEY [FB]
00:50	TURNOVER (LOSTBALL) by PODKUL, ALLISON			
00:43				TURNOVER (LOSTBALL) by DESMIT, KASEY
00:43	STEAL by BALCOM, KATE			
00:27	MISSED LAYUP by BALCOM, KATE			
00:25				REBOUND (DEF) by DESMIT, KASEY
00:20	FOUL (PERSONAL) by MCCONNELL, JORDAN			
00:20	SUB OUT: BALCOM, KATE			
00:20	SUB IN: VEZZOSI, EMMA			
00:20		11-8	H 3	GOOD! FT by DESMIT, KASEY [FB]
00:20				MISSED FT by DESMIT, KASEY
00:20	REBOUND (DEF) by BOOK, JESS			
00:11	TURNOVER (BADPASS) by MCCONNELL, JORDAN			
00:11				STEAL by THOMAS, ASHLEIGH
00:06		13-8	H 5	GOOD! LAYUP by THOMAS, ASHLEIGH [PNT]
00:06				ASSIST by SCHOONVELD, KENEDY

Grove City 8, Hope 13

Points from (This Period)	GCC	HPE
In the Paint	8	6
Off Turns	4	5
2nd Chance	0	2
Fast Break	0	2
Bench	2	4

Official Box Score
Grove City vs Hope
Second Quarter Statistics Only
March 06, 2020 at DeVos Fieldhouse - Holland



Grove City 3

No.	Player	S	Pts	FG	3FG	FT	OR	DR	TR	PF	A	TO	Blk	Stl	Min	+/-
11	MCCONNELL, JORDAN	G	0	0-0	0-0	0-0	0	1	1	0	0	1	0	0	7	-6
14	BOWEN, JESS	G	0	0-3	0-1	0-0	0	2	2	2	0	1	0	0	7	-7
15	PODKUL, ALLISON	F	2	1-3	0-0	0-0	2	2	4	0	0	1	0	0	9	-9
23	BALCOM, KATE	G	0	0-3	0-1	0-0	0	1	1	2	0	2	0	0	6	-3
34	BOOK, JESS	F	0	0-1	0-0	0-0	0	3	3	0	0	2	0	0	7	-7
10	FREDERICK, LAUREN	G	0	0-0	0-0	0-0	0	0	0	0	0	0	0	0	0	0
12	STANFORTH, LINDSEY	G	0	0-1	0-1	0-0	0	0	0	0	0	0	0	0	3	-4
20	KIMBRELL, JESSICA	F	0	0-0	0-0	0-0	0	0	0	0	0	0	0	0	2	-2
30	VEZZOSI, EMMA	G	1	0-2	0-0	1-2	0	0	0	1	0	1	0	0	5	-5
32	ELSEY, GRETCHEN	G	0	0-1	0-1	0-0	0	1	1	0	0	0	0	0	2	-2
42	CANO, NINA	C	0	0-0	0-0	0-0	0	0	0	0	0	0	0	0	0	0
44	CAMPBELL, SEDONA	C	0	0-0	0-0	0-0	0	0	0	0	0	0	0	0	1	0
	TEAM						0	2	2	0		0				
	TOTALS		3	1-14	0-4	1-2	2	12	14	5	0	8	0	0	50	

Shooting By Period

Period	FG	FG%	3FG	3FG%	FT	FT%
3rd Qtr	0-7	00%	0-4	00%	4-8	50%
4th Qtr	1-13	08%	1-8	13%	0-2	00%
2nd Half	1-14	07%	0-4	00%	1-2	50%
2nd Half	1-20	05%	1-12	08%	4-10	40%
Game	6-47	12.8%	1-18	05.6%	5-12	41.7%

Deadball Rebounds: 3,1

Hope 12

No.	Player	S	Pts	FG	3FG	FT	OR	DR	TR	PF	A	TO	Blk	Stl	Min	+/-
05	VOSKUIL, OLIVIA	C	2	1-5	0-0	0-0	0	1	1	0	1	1	1	0	6	6
12	DESMIT, KASEY	G	3	1-2	0-1	1-2	0	1	1	0	0	0	0	3	7	9
20	SCHOONVELD, KENEDY	G	3	1-3	0-1	1-2	0	1	1	1	0	0	0	0	6	7
23	NEWMAN, LAUREN	G	2	1-3	0-0	0-0	1	2	3	1	0	0	0	0	6	7
25	THOMAS, ASHLEIGH	C	0	0-1	0-0	0-0	0	3	3	1	2	0	0	0	5	4
02	MOREHOUSE, MEG	G	0	0-1	0-1	0-0	0	1	1	0	0	0	0	1	4	2
03	MOORMAN, JESSICA	F	2	1-2	0-0	0-0	1	1	2	0	0	1	0	0	5	5
04	BAGULEY, CLAIRE	F	0	0-2	0-2	0-0	0	1	1	1	0	0	0	0	4	2
10	TOLBERT, ARIKA	G	0	0-1	0-0	0-0	0	1	1	0	0	0	0	1	3	0
14	MAJERUS, KATE	F	0	0-0	0-0	0-0	0	0	0	0	0	0	0	0	0	0
15	MCKINNEY, ELLA	G	0	0-0	0-0	0-0	0	0	0	0	0	0	0	0	0	0
24	RUSSELL, KAYLA	F	0	0-0	0-0	0-0	0	0	0	0	0	0	0	0	0	0
31	GERBER, MALLORY	F	0	0-0	0-0	0-0	0	0	0	0	0	0	0	0	0	0
32	BARNES, COURTENEY	C	0	0-2	0-0	0-0	1	0	1	0	0	0	0	1	4	3
33	SMITH, HANNAH	F	0	0-0	0-0	0-0	0	0	0	0	0	0	0	0	0	0
	TEAM						1	0	1	0		0				
	TOTALS		12	5-22	0-5	2-4	4	12	16	4	3	2	1	6	50	

Shooting By Period

Period	FG	FG%	3FG	3FG%	FT	FT%
3rd Qtr	8-14	57%	3-4	75%	2-2	100%
4th Qtr	7-17	41%	1-5	20%	8-10	80%
2nd Half	5-22	23%	0-5	00%	2-4	50%
2nd Half	15-31	48%	4-9	44%	10-12	83%
Game	24-68	35.3%	5-21	23.8%	16-22	72.7%

Deadball Rebounds: 6,0

Game Notes:

Officials: Sean Black, Amanda Bender, Nicole Fisher
Attendance: 1915

Start Time: 07:35 PM ET
End Time: 09:16 PM ET
Game Duration: 1:41

Score	1st	2nd	3rd	4th	TOT
GCC	8	3	4	3	18
HPE	13	12	21	23	69

Points from (This Period)	GCC	HPE
In the Paint	2	10
Off Turns	1	4
2nd Chance	0	4
Fast Break	1	1
Bench	1	2

Official Play-By-Play
Grove City vs Hope
Second Quarter
March 06, 2020 at DeVos Fieldhouse - Holland



Period 2

Starters:

Grove City: 11 MCCONNELL, JORDAN (G); 14 BOWEN, JESS (G); 15 PODKUL, ALLISON (F); 23 BALCOM, KATE (G); 34 BOOK, JESS (F);

Hope: 5 VOSKUIL, OLIVIA (C); 12 DESMIT, KASEY (G); 20 SCHOONVELD, KENEDY (G); 23 NEWMAN, LAUREN (G); 25 THOMAS, ASHLEIGH (C);

Time	VISITORS: Grove City	Score	Margin	HOME: Hope
09:45				MISSED LAYUP by VOSKUIL, OLIVIA
09:41				REBOUND (OFF) by NEWMAN, LAUREN
09:34		15-8	H 7	GOOD! LAYUP by NEWMAN, LAUREN [PNT]
09:34				ASSIST by THOMAS, ASHLEIGH
09:21	MISSED LAYUP by VEZZOSI, EMMA			
09:18				REBOUND (DEF) by THOMAS, ASHLEIGH
09:03	FOUL (PERSONAL) by BOWEN, JESS			
09:03				SUB OUT: VOSKUIL, OLIVIA
09:03				SUB OUT: THOMAS, ASHLEIGH
09:03				SUB IN: MOORMAN, JESSICA
09:03				SUB IN: BARNES, COURTENEY
09:03	SUB OUT: MCCONNELL, JORDAN			
09:03	SUB IN: BALCOM, KATE			
09:03				MISSED FT by SCHOONVELD, KENEDY
09:03				REBOUND (OFF) by TEAM
09:03		16-8	H 8	GOOD! FT by SCHOONVELD, KENEDY
09:03				SUB OUT: SCHOONVELD, KENEDY
09:03				SUB IN: BAGULEY, CLAIRE
09:03	SUB OUT: BOOK, JESS			
09:03	SUB IN: KIMBRELL, JESSICA			
08:47	MISSED JUMPER by PODKUL, ALLISON			
08:39				REBOUND (DEF) by NEWMAN, LAUREN
08:35	FOUL (PERSONAL) by BALCOM, KATE			
08:23				MISSED LAYUP by BARNES, COURTENEY
08:19				REBOUND (OFF) by MOORMAN, JESSICA
08:18		18-8	H 10	GOOD! LAYUP by MOORMAN, JESSICA [PNT]
08:06	MISSED LAYUP by BOWEN, JESS			
08:02				REBOUND (DEF) by MOORMAN, JESSICA
08:02				TURNOVER (TRAVEL) by MOORMAN, JESSICA
08:02				SUB OUT: DESMIT, KASEY
08:02				SUB IN: TOLBERT, ARIKA
08:02				SUB OUT: NEWMAN, LAUREN
08:02				SUB IN: MOREHOUSE, MEG
07:55	MISSED LAYUP by BOWEN, JESS			
07:53				REBOUND (DEF) by TOLBERT, ARIKA
07:28	FOUL (PERSONAL) by BOWEN, JESS			
07:28	SUB OUT: BOWEN, JESS			
07:28	SUB OUT: PODKUL, ALLISON			
07:28	SUB IN: ELSEY, GRETCHEN			
07:28	SUB IN: BOOK, JESS			
07:17				MISSED LAYUP by TOLBERT, ARIKA
07:14	REBOUND (DEF) by TEAM			
07:13	TURNOVER (LOSTBALL) by VEZZOSI, EMMA			
07:13				STEAL by TOLBERT, ARIKA
07:06				MISSED JUMPER by MOORMAN, JESSICA
07:04				REBOUND (OFF) by BARNES, COURTENEY
07:04				MISSED JUMPER by BARNES, COURTENEY
07:01	REBOUND (DEF) by TEAM			
06:57	SUB OUT: ELSEY, GRETCHEN			
06:57	SUB IN: MCCONNELL, JORDAN			
06:41	TURNOVER (BADPASS) by BALCOM, KATE			
06:41	SUB OUT: KIMBRELL, JESSICA			
06:41	SUB IN: PODKUL, ALLISON			
06:41				STEAL by MOREHOUSE, MEG
06:21				MISSED 3PTR by BAGULEY, CLAIRE
06:16	REBOUND (DEF) by MCCONNELL, JORDAN			
06:12	MISSED LAYUP by VEZZOSI, EMMA			
06:09				REBOUND (DEF) by BAGULEY, CLAIRE
05:49				MISSED 3PTR by BAGULEY, CLAIRE
05:45	REBOUND (DEF) by BOOK, JESS			
05:32	MISSED 3PTR by BALCOM, KATE			
05:29	REBOUND (OFF) by PODKUL, ALLISON			
05:29				FOUL (PERSONAL) by BAGULEY, CLAIRE
05:29				SUB OUT: BAGULEY, CLAIRE
05:29				SUB OUT: TOLBERT, ARIKA
05:29				SUB IN: DESMIT, KASEY
05:29				SUB IN: SCHOONVELD, KENEDY
05:29	SUB OUT: VEZZOSI, EMMA			
05:29	SUB IN: ELSEY, GRETCHEN			
05:23	MISSED 3PTR by ELSEY, GRETCHEN			

Time	VISITORS: Grove City	Score	Margin	HOME: Hope
05:20				REBOUND (DEF) by SCHOONVELD, KENEDY
05:12				MISSED 3PTR by MOREHOUSE, MEG
05:10	REBOUND (DEF) by PODKUL, ALLISON			
04:56	TURNOVER (BADPASS) by BALCOM, KATE			
04:56				STEAL by BARNES, COURTENEY
04:52	FOUL (PERSONAL) by BALCOM, KATE			
04:49				
04:49	SUB OUT: BALCOM, KATE			
04:49	SUB IN: STANFORTH, LINDSEY			
04:49				SUB OUT: BARNES, COURTENEY
04:49				SUB IN: VOSKUIL, OLIVIA
04:39		20-8	H 12	GOOD! LAYUP by SCHOONVELD, KENEDY
04:39				ASSIST by VOSKUIL, OLIVIA
04:23	MISSED JUMPER by BOOK, JESS			
04:19				REBOUND (DEF) by MOREHOUSE, MEG
04:10				MISSED 3PTR by DESMIT, KASEY
04:07	REBOUND (DEF) by ELSEY, GRETCHEN			
04:00	TURNOVER (BADPASS) by MCCONNELL, JORDAN			
04:00				SUB OUT: MOREHOUSE, MEG
04:00				SUB IN: NEWMAN, LAUREN
04:00	SUB OUT: ELSEY, GRETCHEN			
04:00	SUB IN: BOWEN, JESS			
03:40				MISSED JUMPER by VOSKUIL, OLIVIA
03:40	REBOUND (DEF) by BOOK, JESS			
03:40				SUB OUT: MOORMAN, JESSICA
03:40				SUB IN: THOMAS, ASHLEIGH
03:28	GOOD! LAYUP by PODKUL, ALLISON [PNT]	20-10	H 10	
03:13		22-10	H 12	GOOD! LAYUP by VOSKUIL, OLIVIA [PNT]
03:13				ASSIST by THOMAS, ASHLEIGH
03:09	TURNOVER (BADPASS) by BOOK, JESS			
03:09				STEAL by DESMIT, KASEY
03:04		24-10	H 14	GOOD! LAYUP by DESMIT, KASEY
02:48	MISSED 3PTR by STANFORTH, LINDSEY			
02:45	REBOUND (OFF) by PODKUL, ALLISON			
02:44	MISSED JUMPER by PODKUL, ALLISON			
02:41				REBOUND (DEF) by THOMAS, ASHLEIGH
02:25				TURNOVER (BADPASS) by VOSKUIL, OLIVIA
02:25	SUB OUT: MCCONNELL, JORDAN			
02:25	SUB OUT: BOOK, JESS			
02:25	SUB IN: VEZZOSI, EMMA			
02:25	SUB IN: CAMPBELL, SEDONA			
02:19				FOUL (PERSONAL) by THOMAS, ASHLEIGH
02:19	GOOD! FT by VEZZOSI, EMMA [FB]	24-11	H 13	
02:19	MISSED FT by VEZZOSI, EMMA			
02:19				REBOUND (DEF) by DESMIT, KASEY
02:12	FOUL (PERSONAL) by VEZZOSI, EMMA			
02:12				MISSED FT by DESMIT, KASEY
02:12				REBOUND (OFF) by TEAM
02:12		25-11	H 14	GOOD! FT by DESMIT, KASEY [FB]
01:48				FOUL (PERSONAL) by SCHOONVELD, KENEDY
01:48	SUB OUT: STANFORTH, LINDSEY			
01:48	SUB OUT: VEZZOSI, EMMA			
01:48	SUB IN: MCCONNELL, JORDAN			
01:48	SUB IN: BALCOM, KATE			
01:43	MISSED JUMPER by BALCOM, KATE			
01:41				REBOUND (DEF) by VOSKUIL, OLIVIA
01:36				MISSED LAYUP by NEWMAN, LAUREN
01:34	REBOUND (DEF) by BALCOM, KATE			
01:27				FOUL (PERSONAL) by NEWMAN, LAUREN
01:27	SUB OUT: CAMPBELL, SEDONA			
01:27	SUB IN: BOOK, JESS			
01:25	MISSED 3PTR by BOWEN, JESS			
01:22				REBOUND (DEF) by THOMAS, ASHLEIGH
01:09				MISSED JUMPER by VOSKUIL, OLIVIA
01:06	REBOUND (DEF) by BOWEN, JESS			
00:56	TURNOVER (BADPASS) by PODKUL, ALLISON			
00:56				STEAL by DESMIT, KASEY
00:42				MISSED LAYUP by SCHOONVELD, KENEDY
00:39	REBOUND (DEF) by PODKUL, ALLISON			
00:31	MISSED LAYUP by BALCOM, KATE			
00:31				BLOCK by VOSKUIL, OLIVIA
00:27				REBOUND (DEF) by NEWMAN, LAUREN
00:25				MISSED LAYUP by NEWMAN, LAUREN
00:23	REBOUND (DEF) by BOOK, JESS			
00:22	TURNOVER (BADPASS) by BOOK, JESS			
00:22				STEAL by DESMIT, KASEY
00:13				MISSED JUMPER by VOSKUIL, OLIVIA
00:10	REBOUND (DEF) by BOWEN, JESS			
00:10	TURNOVER (DRIBBLING) by BOWEN, JESS			
00:10				SUB OUT: DESMIT, KASEY

Time	VISITORS: Grove City	Score	Margin	HOME: Hope
00:10				SUB IN: TOLBERT, ARIKA
00:01				MISSED JUMPER by THOMAS, ASHLEIGH
00:00				MISSED 3PTR by SCHOONVELD, KENEDY
00:00				REBOUND (OFF) by TEAM
00:00				REBOUND (OFF) by TEAM

Grove City 11, Hope 25

Points from (This Period)	GCC	HPE
In the Paint	2	10
Off Turns	1	4
2nd Chance	0	4
Fast Break	1	1
Bench	1	2

Official Box Score
Grove City vs Hope
Second Half Statistics Only
March 06, 2020 at DeVos Fieldhouse - Holland



Grove City 7

No.	Player	S	Pts	FG	3FG	FT	OR	DR	TR	PF	A	TO	Blk	Stl	Min	+/-
10	FREDERICK, LAUREN	G	0	0-2	0-1	0-0	0	0	0	1	0	1	0	0	3	-8
11	MCCONNELL, JORDAN	G	1	0-2	0-1	1-4	0	1	1	0	0	3	0	0	12	-22
12	STANFORTH, LINDSEY	G	0	0-1	0-0	0-0	0	1	1	1	0	0	0	0	5	-8
14	BOWEN, JESS	G	0	0-3	0-3	0-0	1	0	1	0	0	2	0	0	10	-12
15	PODKUL, ALLISON	F	0	0-0	0-0	0-0	0	0	0	2	0	0	0	0	12	-21
20	KIMBRELL, JESSICA	F	0	0-1	0-1	0-0	0	0	0	0	1	0	1	1	11	-20
23	BALCOM, KATE	G	4	1-4	1-3	1-2	0	2	2	1	0	1	2	0	12	-22
30	VEZZOSI, EMMA	G	2	0-4	0-2	2-4	0	0	0	2	0	4	0	1	9	-17
32	ELSEY, GRETCHEN	G	0	0-1	0-1	0-0	0	0	0	1	0	1	0	0	7	-22
34	BOOK, JESS	F	0	0-2	0-0	0-0	0	1	1	2	0	1	0	0	11	-23
42	CANO, NINA	C	0	0-0	0-0	0-0	0	0	0	0	0	0	0	0	5	-10
44	CAMPBELL, SEDONA	C	0	0-0	0-0	0-0	0	0	0	0	0	0	0	0	1	0
	TEAM		0	0-0	0-0	0-0	3	2	5	0	0	0	0	0	0	0
	TOTALS		7	1-20	1-12	4-10	4	7	11	10	1	13	3	2	100	

Shooting By Period

Period	FG	FG%	3FG	3FG%	FT	FT%
3rd Qtr	0-7	00%	0-4	00%	4-8	50%
4th Qtr	1-13	08%	1-8	13%	0-2	00%
2nd Half	1-20	05%	1-12	08%	4-10	40%
Game	6-47	12.8%	1-18	05.6%	5-12	41.7%

Deadball Rebounds: 3,1
 Last FG Half: GCC 4th-01:41

Hope 44

No.	Player	S	Pts	FG	3FG	FT	OR	DR	TR	PF	A	TO	Blk	Stl	Min	+/-
02	MOREHOUSE, MEG	G	2	1-1	0-0	0-0	1	0	1	3	1	2	0	1	7	14
04	BAGULEY, CLAIRE	F	9	4-4	1-1	0-0	0	1	1	1	0	1	0	1	8	14
05	VOSKUIL, OLIVIA	C	0	0-0	0-0	0-0	0	1	1	0	1	1	1	0	3	2
10	TOLBERT, ARIKA	G	0	0-0	0-0	0-0	0	0	0	0	1	1	0	1	6	14
12	DESMIT, KASEY	G	0	0-2	0-1	0-0	0	1	1	3	0	0	0	0	7	7
14	MAJERUS, KATE	F	4	2-5	0-2	0-0	0	1	1	0	0	0	0	3	8	18
15	MCKINNEY, ELLA	G	2	1-1	0-0	0-0	0	1	1	0	1	0	0	1	8	18
20	SCHOONVELD, KENEDY	G	2	1-2	0-0	0-0	0	1	1	0	1	0	0	0	5	5
23	NEWMAN, LAUREN	G	3	1-1	1-1	0-0	0	0	0	0	0	0	0	0	4	5
24	RUSSELL, KAYLA	F	7	1-5	0-0	5-6	3	0	3	1	1	0	0	0	9	20
25	THOMAS, ASHLEIGH	C	0	0-0	0-0	0-0	0	1	1	0	0	1	0	0	2	2
31	GERBER, MALLORY	F	8	2-3	1-2	3-4	1	1	2	0	0	0	0	0	8	17
32	BARNES, COURTENEY	C	2	1-3	0-0	0-0	0	2	2	0	0	0	0	0	9	18
33	SMITH, HANNAH	F	0	0-0	0-0	0-0	0	5	5	1	0	0	0	0	7	16
03	MOORMAN, JESSICA	F	5	1-4	1-2	2-2	2	3	5	1	1	1	0	0	9	15
	TEAM		0	0-0	0-0	0-0	1	0	1	0	0	0	0	0	0	0
	TOTALS		44	15-31	4-9	10-12	8	18	26	10	7	7	1	7	100	

Shooting By Period

Period	FG	FG%	3FG	3FG%	FT	FT%
3rd Qtr	8-14	57%	3-4	75%	2-2	100%
4th Qtr	7-17	41%	1-5	20%	8-10	80%
2nd Half	15-31	48%	4-9	44%	10-12	83%
Game	24-68	35.3%	5-21	23.8%	16-22	72.7%

Deadball Rebounds: 6,0
 Last FG Half: HPE 4th-01:23

Game Notes:

Officials: Sean Black, Amanda Bender, Nicole Fisher
 Attendance: 1915

Start Time: 07:35 PM ET
 End Time: 09:16 PM ET
 Game Duration: 1:41

Score	1st	2nd	3rd	4th	TOT
GCC	8	3	4	3	18
HPE	13	12	21	23	69

Points from (This Period)	GCC	HPE
In the Paint	0	22
Off Turns	1	11
2nd Chance	0	6
Fast Break	0	15
Bench	2	39

Official Box Score
Grove City vs Hope
Third Quarter Statistics Only
March 06, 2020 at DeVos Fieldhouse - Holland



Grove City 7

No.	Player	S	Pts	FG	3FG	FT	OR	DR	TR	PF	A	TO	Blk	Stl	Min	+/-
11	MCCONNELL, JORDAN	G	1	0-2	0-1	1-4	0	0	0	0	0	2	0	0	8	-17
14	BOWEN, JESS	G	0	0-1	0-1	0-0	0	0	0	0	0	0	0	0	7	-7
15	PODKUL, ALLISON	F	0	0-0	0-0	0-0	0	0	0	1	0	0	0	0	7	-9
23	BALCOM, KATE	G	1	0-2	0-1	1-2	0	1	1	0	0	1	0	0	6	-12
34	BOOK, JESS	F	0	0-0	0-0	0-0	0	1	1	2	0	1	0	0	6	-13
10	FREDERICK, LAUREN	G	0	0-0	0-0	0-0	0	0	0	0	0	0	0	0	0	0
12	STANFORTH, LINDSEY	G	0	0-1	0-0	0-0	0	1	1	0	0	0	0	0	4	-7
20	KIMBRELL, JESSICA	F	0	0-1	0-1	0-0	0	0	0	0	0	0	1	1	6	-12
30	VEZZOSI, EMMA	G	2	0-0	0-0	2-2	0	0	0	1	0	1	0	1	2	0
32	ELSEY, GRETCHEN	G	0	0-0	0-0	0-0	0	0	0	0	0	1	0	0	2	-8
42	CANO, NINA	C	0	0-0	0-0	0-0	0	0	0	0	0	0	0	0	0	0
44	CAMPBELL, SEDONA	C	0	0-0	0-0	0-0	0	0	0	0	0	0	0	0	1	0
	TEAM						0	0	0	0	0	0				
	TOTALS		4	0-7	0-4	4-8	0	3	3	4	0	6	1	2	50	

Shooting By Period

Period	FG	FG%	3FG	3FG%	FT	FT%
2nd Half	0-0	0%	0-0	0%	0-0	0%
Game	6-47	12.8%	1-18	05.6%	5-12	41.7%

Deadball Rebounds: 3,1

Hope 44

No.	Player	S	Pts	FG	3FG	FT	OR	DR	TR	PF	A	TO	Blk	Stl	Min	+/-
05	VOSKUIL, OLIVIA	C	0	0-0	0-0	0-0	0	1	1	0	1	1	1	0	3	2
12	DESMIT, KASEY	G	0	0-2	0-1	0-0	0	0	0	3	0	0	0	0	5	5
20	SCHOONVELD, KENEDY	G	2	1-2	0-0	0-0	0	1	1	0	1	0	0	0	5	5
23	NEWMAN, LAUREN	G	3	1-1	1-1	0-0	0	0	0	0	0	0	0	0	4	5
25	THOMAS, ASHLEIGH	C	0	0-0	0-0	0-0	0	1	1	0	0	1	0	0	2	2
02	MOREHOUSE, MEG	G	2	1-1	0-0	0-0	0	0	0	1	1	1	0	1	5	12
03	MOORMAN, JESSICA	F	5	1-3	1-1	2-2	2	3	5	1	1	1	0	0	8	15
04	BAGULEY, CLAIRE	F	7	3-3	1-1	0-0	0	1	1	1	0	0	0	1	6	12
10	TOLBERT, ARIKA	G	0	0-0	0-0	0-0	0	0	0	0	1	1	0	1	5	12
14	MAJERUS, KATE	F	0	0-0	0-0	0-0	0	0	0	0	0	0	0	0	0	0
15	MCKINNEY, ELLA	G	0	0-0	0-0	0-0	0	0	0	0	0	0	0	0	0	0
24	RUSSELL, KAYLA	F	0	0-0	0-0	0-0	0	0	0	0	0	0	0	0	0	0
31	GERBER, MALLORY	F	0	0-0	0-0	0-0	0	0	0	0	0	0	0	0	0	0
32	BARNES, COURTENEY	C	2	1-2	0-0	0-0	0	2	2	0	0	0	0	0	7	15
33	SMITH, HANNAH	F	0	0-0	0-0	0-0	0	0	0	0	0	0	0	0	0	0
	TEAM						0	0	0	0	0	0				
	TOTALS		21	8-14	3-4	2-2	2	9	11	6	5	5	1	3	50	

Shooting By Period

Period	FG	FG%	3FG	3FG%	FT	FT%
2nd Half	0-0	0%	0-0	0%	0-0	0%
Game	24-68	35.3%	5-21	23.8%	16-22	72.7%

Deadball Rebounds: 6,0

Game Notes:

Officials: Sean Black, Amanda Bender, Nicole Fisher
Attendance: 1915

Start Time: 07:35 PM ET
End Time: 09:16 PM ET
Game Duration: 1:41

Score	1st	2nd	3rd	4th	TOT
GCC	8	3	4	3	18
HPE	13	12	21	23	69

Points from (This Period)	GCC	HPE
In the Paint	0	10
Off Turns	1	4
2nd Chance	0	3
Fast Break	0	6
Bench	2	16

Official Play-By-Play
Grove City vs Hope
Third Quarter
March 06, 2020 at DeVos Fieldhouse - Holland



Period 3

Starters:

Grove City: 11 MCCONNELL, JORDAN (G); 14 BOWEN, JESS (G); 15 PODKUL, ALLISON (F); 23 BALCOM, KATE (G); 34 BOOK, JESS (F);

Hope: 5 VOSKUIL, OLIVIA (C); 12 DESMIT, KASEY (G); 20 SCHOONVELD, KENEDY (G); 23 NEWMAN, LAUREN (G); 25 THOMAS, ASHLEIGH (C);

Time	VISITORS: Grove City	Score	Margin	HOME: Hope
10:00				SUB OUT: TOLBERT, ARIKA
10:00				SUB IN: DESMIT, KASEY
09:44		27-11	H 16	GOOD! LAYUP by SCHOONVELD, KENEDY
09:44				ASSIST by VOSKUIL, OLIVIA
09:33				FOUL (PERSONAL) by DESMIT, KASEY
09:33	MISSED FT by MCCONNELL, JORDAN			
09:33	REBOUND (OFF) by TEAM			
09:33	MISSED FT by MCCONNELL, JORDAN			
09:33				REBOUND (DEF) by SCHOONVELD, KENEDY
09:05				MISSED 3PTR by DESMIT, KASEY
09:02	REBOUND (DEF) by BOOK, JESS			
08:39	MISSED JUMPER by MCCONNELL, JORDAN			
08:35				REBOUND (DEF) by THOMAS, ASHLEIGH
08:10				MISSED LAYUP by DESMIT, KASEY
08:07	REBOUND (DEF) by BALCOM, KATE			
08:03	MISSED JUMPER by BALCOM, KATE			
08:03				BLOCK by VOSKUIL, OLIVIA
07:59				REBOUND (DEF) by VOSKUIL, OLIVIA
07:56				TURNOVER (BADPASS) by THOMAS, ASHLEIGH
07:36	TURNOVER (OTHER) by BALCOM, KATE			
07:33				SUB OUT: THOMAS, ASHLEIGH
07:33				SUB IN: MOORMAN, JESSICA
07:17				TURNOVER (LOSTBALL) by VOSKUIL, OLIVIA
07:17	SUB OUT: BALCOM, KATE			
07:17	SUB IN: STANFORTH, LINDSEY			
07:17				SUB OUT: VOSKUIL, OLIVIA
07:17				SUB IN: BARNES, COURTENEY
06:45	MISSED 3PTR by MCCONNELL, JORDAN			
06:43				REBOUND (DEF) by MOORMAN, JESSICA
06:24		30-11	H 19	GOOD! 3PTR by NEWMAN, LAUREN
06:24				ASSIST by SCHOONVELD, KENEDY
06:08				FOUL (PERSONAL) by DESMIT, KASEY
06:08				SUB OUT: DESMIT, KASEY
06:08				SUB OUT: NEWMAN, LAUREN
06:08				SUB IN: BAGULEY, CLAIRE
06:08				SUB IN: TOLBERT, ARIKA
06:08	SUB OUT: MCCONNELL, JORDAN			
06:08	SUB IN: VEZZOSI, EMMA			
06:05	FOUL (OFF) by BOOK, JESS			
06:05	TURNOVER (OFFENSIVE) by BOOK, JESS			
05:59				TIMEOUT 30SEC
05:59	SUB OUT: BOOK, JESS			
05:59	SUB IN: KIMBRELL, JESSICA			
05:42				MISSED LAYUP by SCHOONVELD, KENEDY
05:39	REBOUND (DEF) by STANFORTH, LINDSEY			
05:38				FOUL (PERSONAL) by MOORMAN, JESSICA
05:24	TURNOVER (TRAVEL) by VEZZOSI, EMMA			
05:17				TURNOVER (LOSTBALL) by TOLBERT, ARIKA
05:17	STEAL by VEZZOSI, EMMA			
05:06	MISSED 3PTR by BOWEN, JESS			
05:03				REBOUND (DEF) by MOORMAN, JESSICA
05:02	FOUL (PERSONAL) by PODKUL, ALLISON			
05:02				SUB OUT: SCHOONVELD, KENEDY
05:02				SUB IN: MOREHOUSE, MEG
04:58	FOUL (PERSONAL) by VEZZOSI, EMMA			
04:57				
04:57	SUB OUT: VEZZOSI, EMMA			
04:57	SUB IN: MCCONNELL, JORDAN			
04:38		32-11	H 21	GOOD! LAYUP by BAGULEY, CLAIRE
04:15	MISSED 3PTR by KIMBRELL, JESSICA			
04:12				REBOUND (DEF) by MOORMAN, JESSICA
03:57				TURNOVER (BADPASS) by MOORMAN, JESSICA
03:57	STEAL by KIMBRELL, JESSICA			
03:46				FOUL (PERSONAL) by MOREHOUSE, MEG
03:46	SUB OUT: BOWEN, JESS			
03:46	SUB IN: BALCOM, KATE			
03:38	MISSED 3PTR by BALCOM, KATE			
03:35				REBOUND (DEF) by BAGULEY, CLAIRE
03:30		34-11	H 23	GOOD! LAYUP by MOREHOUSE, MEG [FB]

Time	VISITORS: Grove City	Score	Margin	HOME: Hope
03:15	MISSED JUMPER by STANFORTH, LINDSEY			
03:08				REBOUND (DEF) by BARNES, COURTENEY
03:08	SUB OUT: STANFORTH, LINDSEY			
03:08	SUB OUT: PODKUL, ALLISON			
03:08	SUB IN: ELSEY, GRETCHEN			
03:08	SUB IN: BOOK, JESS			
02:59		37-11	H 26	GOOD! 3PTR by MOORMAN, JESSICA
02:59				ASSIST by MOREHOUSE, MEG
02:53	TIMEOUT 30SEC			
02:43				FOUL (TECH) by TEAM
02:43	GOOD! FT by MCCONNELL, JORDAN	37-12	H 25	
02:43	MISSED FT by MCCONNELL, JORDAN			
02:43				REBOUND (DEF) by BARNES, COURTENEY
02:22	FOUL (PERSONAL) by BOOK, JESS			
02:22		38-12	H 26	GOOD! FT by MOORMAN, JESSICA
02:22		39-12	H 27	GOOD! FT by MOORMAN, JESSICA
02:06	TURNOVER (BADPASS) by MCCONNELL, JORDAN			
02:06				STEAL by BAGULEY, CLAIRE
02:01		41-12	H 29	GOOD! LAYUP by BAGULEY, CLAIRE [FB]
01:45	TURNOVER (LOSTBALL) by MCCONNELL, JORDAN			
01:45				STEAL by TOLBERT, ARIKA
01:39		43-12	H 31	GOOD! LAYUP by BARNES, COURTENEY [FB]
01:39				ASSIST by TOLBERT, ARIKA
01:08	TURNOVER (LOSTBALL) by ELSEY, GRETCHEN			
01:08				STEAL by MOREHOUSE, MEG
01:03				TURNOVER (BADPASS) by MOREHOUSE, MEG
01:03				SUB OUT: TOLBERT, ARIKA
01:03				SUB IN: DESMIT, KASEY
01:03	SUB OUT: MCCONNELL, JORDAN			
01:03	SUB OUT: ELSEY, GRETCHEN			
01:03	SUB OUT: BOOK, JESS			
01:03	SUB IN: BOWEN, JESS			
01:03	SUB IN: VEZZOSI, EMMA			
01:03	SUB IN: CAMPBELL, SEDONA			
00:50				FOUL (PERSONAL) by BAGULEY, CLAIRE
00:45	MISSED FT by BALCOM, KATE			
00:45	REBOUND (OFF) by TEAM			
00:45	GOOD! FT by BALCOM, KATE	43-13	H 30	
00:24				MISSED LAYUP by BARNES, COURTENEY
00:21				REBOUND (OFF) by MOORMAN, JESSICA
00:20				MISSED LAYUP by MOORMAN, JESSICA
00:18				REBOUND (OFF) by MOORMAN, JESSICA
00:17		46-13	H 33	GOOD! 3PTR by BAGULEY, CLAIRE
00:17				ASSIST by MOORMAN, JESSICA
00:04				FOUL (PERSONAL) by DESMIT, KASEY
00:04	GOOD! FT by VEZZOSI, EMMA	46-14	H 32	
00:04	GOOD! FT by VEZZOSI, EMMA	46-15	H 31	
00:00				MISSED JUMPER by MOORMAN, JESSICA
00:00	BLOCK by KIMBRELL, JESSICA			
00:00				REBOUND (OFF) by TEAM

Grove City 15, Hope 46

Points from (This Period)	GCC	HPE
In the Paint	0	10
Off Turns	1	4
2nd Chance	0	3
Fast Break	0	6
Bench	2	16

Official Box Score
Grove City vs Hope
Fourth Quarter Statistics Only
March 06, 2020 at DeVos Fieldhouse - Holland



Grove City 3

No.	Player	S	Pts	FG	3FG	FT	OR	DR	TR	PF	A	TO	Blk	Stl	Min	+/-
11	MCCONNELL, JORDAN	G	0	0-0	0-0	0-0	0	1	1	0	0	1	0	0	4	-5
14	BOWEN, JESS	G	0	0-2	0-2	0-0	1	0	1	0	0	2	0	0	3	-5
15	PODKUL, ALLISON	F	0	0-0	0-0	0-0	0	0	0	1	0	0	0	0	5	-12
23	BALCOM, KATE	G	3	1-2	1-2	0-0	0	1	1	1	0	0	2	0	6	-10
34	BOOK, JESS	F	0	0-2	0-0	0-0	0	0	0	0	0	0	0	0	5	-10
10	FREDERICK, LAUREN	G	0	0-2	0-1	0-0	0	0	0	1	0	1	0	0	3	-8
12	STANFORTH, LINDSEY	G	0	0-0	0-0	0-0	0	0	0	1	0	0	0	0	1	-1
20	KIMBRELL, JESSICA	F	0	0-0	0-0	0-0	0	0	0	0	1	0	0	0	5	-8
30	VEZZOSI, EMMA	G	0	0-4	0-2	0-2	0	0	0	1	0	3	0	0	7	-17
32	ELSEY, GRETCHEN	G	0	0-1	0-1	0-0	0	0	0	1	0	0	0	0	5	-14
42	CANO, NINA	C	0	0-0	0-0	0-0	0	0	0	0	0	0	0	0	5	-10
44	CAMPBELL, SEDONA	C	0	0-0	0-0	0-0	0	0	0	0	0	0	0	0	0	0
	TEAM						3	2	5	0		0				
	TOTALS		3	1-13	1-8	0-2	4	4	8	6	1	7	2	0	50	

Shooting By Period

Period	FG	FG%	3FG	3FG%	FT	FT%
Game	6-47	12.8%	1-18	05.6%	5-12	41.7%

Deadball Rebounds: 3,1

Hope 23

No.	Player	S	Pts	FG	3FG	FT	OR	DR	TR	PF	A	TO	Blk	Stl	Min	+/-
05	VOSKUIL, OLIVIA	C	0	0-0	0-0	0-0	0	0	0	0	0	0	0	0	0	0
12	DESMIT, KASEY	G	0	0-0	0-0	0-0	0	1	1	0	0	0	0	0	2	2
20	SCHOONVELD, KENEDY	G	0	0-0	0-0	0-0	0	0	0	0	0	0	0	0	0	0
23	NEWMAN, LAUREN	G	0	0-0	0-0	0-0	0	0	0	0	0	0	0	0	0	0
25	THOMAS, ASHLEIGH	C	0	0-0	0-0	0-0	0	0	0	0	0	0	0	0	0	0
02	MOREHOUSE, MEG	G	0	0-0	0-0	0-0	1	0	1	2	0	1	0	0	2	2
03	MOORMAN, JESSICA	F	0	0-1	0-1	0-0	0	0	0	0	0	0	0	0	1	0
04	BAGULEY, CLAIRE	F	2	1-1	0-0	0-0	0	0	0	0	0	1	0	0	2	2
10	TOLBERT, ARIKA	G	0	0-0	0-0	0-0	0	0	0	0	0	0	0	0	1	2
14	MAJERUS, KATE	F	4	2-5	0-2	0-0	0	1	1	0	0	0	0	3	8	18
15	MCKINNEY, ELLA	G	2	1-1	0-0	0-0	0	1	1	0	1	0	0	1	8	18
24	RUSSELL, KAYLA	F	7	1-5	0-0	5-6	3	0	3	1	1	0	0	0	9	20
31	GERBER, MALLORY	F	8	2-3	1-2	3-4	1	1	2	0	0	0	0	0	8	17
32	BARNES, COURTENEY	C	0	0-1	0-0	0-0	0	0	0	0	0	0	0	0	2	3
33	SMITH, HANNAH	F	0	0-0	0-0	0-0	0	5	5	1	0	0	0	0	7	16
	TEAM						1	0	1	0		0				
	TOTALS		23	7-17	1-5	8-10	6	9	15	4	2	2	0	4	50	

Shooting By Period

Period	FG	FG%	3FG	3FG%	FT	FT%
Game	24-68	35.3%	5-21	23.8%	16-22	72.7%

Deadball Rebounds: 6,0

Game Notes:

Officials: Sean Black, Amanda Bender, Nicole Fisher
 Attendance: 1915

Start Time: 07:35 PM ET
 End Time: 09:16 PM ET
 Game Duration: 1:41

Score	1st	2nd	3rd	4th	TOT
GCC	8	3	4	3	18
HPE	13	12	21	23	69

Points from (This Period)	GCC	HPE
In the Paint	0	12
Off Turns	0	7
2nd Chance	0	3
Fast Break	0	9
Bench	0	23

Official Play-By-Play
Grove City vs Hope
Fourth Quarter
March 06, 2020 at DeVos Fieldhouse - Holland



Period 4

Starters:

Grove City: 11 MCCONNELL, JORDAN (G); 14 BOWEN, JESS (G); 15 PODKUL, ALLISON (F); 23 BALCOM, KATE (G); 34 BOOK, JESS (F);

Hope: 5 VOSKUL, OLIVIA (C); 12 DESMIT, KASEY (G); 20 SCHOONVELD, KENEDY (G); 23 NEWMAN, LAUREN (G); 25 THOMAS, ASHLEIGH (C);

Time	VISITORS: Grove City	Score	Margin	HOME: Hope
10:00	SUB OUT: CAMPBELL, SEDONA			
10:00	SUB IN: BOOK, JESS			
09:46				MISSED 3PTR by MOORMAN, JESSICA
09:43				REBOUND (OFF) by MOREHOUSE, MEG
09:37				TURNOVER (BADPASS) by BAGULEY, CLAIRE
09:19	TURNOVER (BADPASS) by VEZZOSI, EMMA			
09:19				SUB OUT: MOORMAN, JESSICA
09:19				SUB IN: RUSSELL, KAYLA
09:19	SUB OUT: KIMBRELL, JESSICA			
09:19	SUB IN: PODKUL, ALLISON			
09:03				FOUL (OFF) by MOREHOUSE, MEG
09:03				TURNOVER (OFFENSIVE) by MOREHOUSE, MEG
08:47	TURNOVER (TRAVEL) by BOWEN, JESS			
08:47	SUB OUT: BALCOM, KATE			
08:47	SUB IN: MCCONNELL, JORDAN			
08:39				MISSED JUMPER by BARNES, COURTENEY
08:34	REBOUND (DEF) by MCCONNELL, JORDAN			
08:34				FOUL (PERSONAL) by MOREHOUSE, MEG
08:18	MISSED 3PTR by VEZZOSI, EMMA			
08:18				REBOUND (DEF) by DESMIT, KASEY
08:18		48-15	H 33	GOOD! LAYUP by BAGULEY, CLAIRE
08:18	MISSED JUMPER by VEZZOSI, EMMA			
08:16	REBOUND (OFF) by TEAM			
08:12	SUB OUT: BOWEN, JESS			
08:12	SUB OUT: BOOK, JESS			
08:12	SUB IN: BALCOM, KATE			
08:12	SUB IN: CANO, NINA			
07:56	FOUL (PERSONAL) by VEZZOSI, EMMA			
07:43				SUB OUT: MOREHOUSE, MEG
07:43				SUB OUT: DESMIT, KASEY
07:43				SUB IN: TOLBERT, ARIKA
07:43				SUB IN: MAJERUS, KATE
07:42				SUB OUT: BAGULEY, CLAIRE
07:42				SUB IN: MCKINNEY, ELLA
07:42	SUB OUT: VEZZOSI, EMMA			
07:42	SUB IN: STANFORTH, LINDSEY			
07:42		49-15	H 34	GOOD! FT by RUSSELL, KAYLA [FB]
07:42				MISSED FT by RUSSELL, KAYLA
07:42	REBOUND (DEF) by TEAM			
07:42				SUB OUT: BARNES, COURTENEY
07:42				SUB IN: GERBER, MALLORY
07:28	TURNOVER (BADPASS) by MCCONNELL, JORDAN			
07:28				STEAL by MCKINNEY, ELLA
07:11				MISSED JUMPER by RUSSELL, KAYLA
07:11	BLOCK by BALCOM, KATE			
07:06				REBOUND (OFF) by RUSSELL, KAYLA
07:00				MISSED LAYUP by RUSSELL, KAYLA
06:57				REBOUND (OFF) by RUSSELL, KAYLA
06:57				MISSED LAYUP by RUSSELL, KAYLA
06:57	BLOCK by BALCOM, KATE			
06:57				REBOUND (OFF) by TEAM
06:57	SUB OUT: MCCONNELL, JORDAN			
06:57	SUB IN: VEZZOSI, EMMA			
06:57	FOUL (PERSONAL) by STANFORTH, LINDSEY			
06:57	SUB OUT: STANFORTH, LINDSEY			
06:57	SUB IN: BOWEN, JESS			
06:41				MISSED LAYUP by MAJERUS, KATE
06:38				REBOUND (OFF) by GERBER, MALLORY
06:37	FOUL (PERSONAL) by BALCOM, KATE			
06:37				MISSED FT by GERBER, MALLORY
06:37				REBOUND (OFF) by TEAM
06:37		50-15	H 35	GOOD! FT by GERBER, MALLORY
06:37				SUB OUT: TOLBERT, ARIKA
06:37				SUB IN: SMITH, HANNAH
06:20	MISSED 3PTR by BOWEN, JESS			
06:18	REBOUND (OFF) by TEAM			
06:18	SUB OUT: BALCOM, KATE			
06:18	SUB IN: FREDERICK, LAUREN			
06:07	MISSED 3PTR by BOWEN, JESS			
06:04				REBOUND (DEF) by MCKINNEY, ELLA

Time	VISITORS: Grove City	Score	Margin	HOME: Hope
05:53	FOUL (PERSONAL) by FREDERICK, LAUREN			
05:53		51-15	H 36	GOOD! FT by GERBER, MALLORY
05:53		52-15	H 37	GOOD! FT by GERBER, MALLORY
05:45	MISSED 3PTR by VEZZOSI, EMMA			
05:40	REBOUND (OFF) by BOWEN, JESS			
05:36	TURNOVER (LOSTBALL) by BOWEN, JESS			
05:36				STEAL by MAJERUS, KATE
05:30	FOUL (PERSONAL) by PODKUL, ALLISON			
05:30	SUB OUT: BOWEN, JESS			
05:30	SUB IN: ELSEY, GRETCHEN			
05:30		53-15	H 38	GOOD! FT by RUSSELL, KAYLA [FB]
05:30		54-15	H 39	GOOD! FT by RUSSELL, KAYLA [FB]
05:10				FOUL (PERSONAL) by SMITH, HANNAH
05:10	MISSED FT by VEZZOSI, EMMA			
05:10	REBOUND (OFF) by TEAM			
05:10	MISSED FT by VEZZOSI, EMMA			
05:10				REBOUND (DEF) by SMITH, HANNAH
05:07				MISSED 3PTR by MAJERUS, KATE
05:03				REBOUND (OFF) by RUSSELL, KAYLA
04:53		56-15	H 41	GOOD! LAYUP by MCKINNEY, ELLA
04:39	MISSED 3PTR by ELSEY, GRETCHEN			
04:36				REBOUND (DEF) by GERBER, MALLORY
04:32		58-15	H 43	GOOD! LAYUP by MAJERUS, KATE [FB]
04:32				ASSIST by MCKINNEY, ELLA
04:16	MISSED LAYUP by VEZZOSI, EMMA			
04:14				REBOUND (DEF) by SMITH, HANNAH
04:02				MISSED 3PTR by GERBER, MALLORY
03:58	REBOUND (DEF) by TEAM			
03:57				
03:57	SUB OUT: FREDERICK, LAUREN			
03:57	SUB OUT: PODKUL, ALLISON			
03:57	SUB OUT: CANO, NINA			
03:57	SUB IN: KIMBRELL, JESSICA			
03:57	SUB IN: BALCOM, KATE			
03:57	SUB IN: BOOK, JESS			
03:34	MISSED LAYUP by BOOK, JESS			
03:30				REBOUND (DEF) by SMITH, HANNAH
03:27	FOUL (PERSONAL) by ELSEY, GRETCHEN			
03:27		59-15	H 44	GOOD! FT by RUSSELL, KAYLA [FB]
03:27		60-15	H 45	GOOD! FT by RUSSELL, KAYLA [FB]
03:11				FOUL (PERSONAL) by RUSSELL, KAYLA
03:04	TURNOVER (BADPASS) by VEZZOSI, EMMA			
03:04				STEAL by MAJERUS, KATE
03:00		62-15	H 47	GOOD! LAYUP by MAJERUS, KATE [FB]
02:45	TURNOVER (OTHER) by VEZZOSI, EMMA			
02:26		64-15	H 49	GOOD! LAYUP by GERBER, MALLORY [PNT]
02:18	SUB OUT: VEZZOSI, EMMA			
02:18	SUB IN: MCCONNELL, JORDAN			
02:11	MISSED JUMPER by BOOK, JESS			
02:08				REBOUND (DEF) by SMITH, HANNAH
01:51		66-15	H 51	GOOD! JUMPER by RUSSELL, KAYLA [PNT]
01:41	GOOD! 3PTR by BALCOM, KATE	66-18	H 48	
01:41	ASSIST by KIMBRELL, JESSICA			
01:37	TIMEOUT 30SEC			
01:23		69-18	H 51	GOOD! 3PTR by GERBER, MALLORY
01:23				ASSIST by RUSSELL, KAYLA
01:04	MISSED 3PTR by BALCOM, KATE			
01:02				REBOUND (DEF) by MAJERUS, KATE
00:53				MISSED LAYUP by RUSSELL, KAYLA
00:49	REBOUND (DEF) by BALCOM, KATE			
00:49	TIMEOUT 30SEC			
00:49	SUB OUT: BALCOM, KATE			
00:49	SUB OUT: BOOK, JESS			
00:49	SUB IN: FREDERICK, LAUREN			
00:49	SUB IN: CANO, NINA			
00:41	MISSED 3PTR by FREDERICK, LAUREN			
00:38	REBOUND (OFF) by TEAM			
00:36	MISSED JUMPER by FREDERICK, LAUREN			
00:34				REBOUND (DEF) by SMITH, HANNAH
00:15				MISSED 3PTR by MAJERUS, KATE
00:11	REBOUND (DEF) by TEAM			
00:03	TURNOVER (BADPASS) by FREDERICK, LAUREN			
00:03				STEAL by MAJERUS, KATE

Grove City 18, Hope 69

Points from (This Period)	GCC	HPE
In the Paint	0	12
Off Turns	0	7
2nd Chance	0	3
Fast Break	0	9
Bench	0	23

Official Scoring/Possession Reference Chart
Grove City vs Hope
Period 1
March 06, 2020 at DeVos Fieldhouse - Holland



Period 1

Starters:

Grove City: 11 MCCONNELL, JORDAN (G); 14 BOWEN, JESS (G); 15 PODKUL, ALLISON (F); 23 BALCOM, KATE (G); 34 BOOK, JESS (F);

Hope: 5 VOSKUIL, OLIVIA (C); 12 DESMIT, KASEY (G); 20 SCHOONVELD, KENEDY (G); 23 NEWMAN, LAUREN (G); 25 THOMAS, ASHLEIGH (C);

Time	VISITORS: Grove City	Score	Margin	HOME: Hope
09:50		2-0	H 2	GOOD! LAYUP by VOSKUIL, OLIVIA
08:45	GOOD! LAYUP by PODKUL, ALLISON	2-2	T	
08:14	GOOD! LAYUP by BOOK, JESS [PNT]	2-4	V 2	
07:14	GOOD! LAYUP by BALCOM, KATE	2-6	V 4	
05:51		5-6	V 1	GOOD! 3PTR by SCHOONVELD, KENEDY
04:18		7-6	H 1	GOOD! LAYUP by BARNES, COURTENEY
02:42	GOOD! LAYUP by VEZZOSI, EMMA [PNT]	7-8	V 1	
02:20		8-8	T	GOOD! FT by MOORMAN, JESSICA
02:20		9-8	H 1	GOOD! FT by MOORMAN, JESSICA
01:15		10-8	H 2	GOOD! FT by DESMIT, KASEY [FB]
00:20		11-8	H 3	GOOD! FT by DESMIT, KASEY [FB]
00:06		13-8	H 5	GOOD! LAYUP by THOMAS, ASHLEIGH [PNT]

Grove City 8, Hope 13

Official Scoring/Possession Reference Chart
Grove City vs Hope
Period 2
March 06, 2020 at DeVos Fieldhouse - Holland



Period 2

Starters:

Grove City: 11 MCCONNELL, JORDAN (G); 14 BOWEN, JESS (G); 15 PODKUL, ALLISON (F); 23 BALCOM, KATE (G); 34 BOOK, JESS (F);

Hope: 5 VOSKUIL, OLIVIA (C); 12 DESMIT, KASEY (G); 20 SCHOONVELD, KENEDY (G); 23 NEWMAN, LAUREN (G); 25 THOMAS, ASHLEIGH (C);

Time	VISITORS: Grove City	Score	Margin	HOME: Hope
09:34		15-8	H 7	GOOD! LAYUP by NEWMAN, LAUREN [PNT]
09:03		16-8	H 8	GOOD! FT by SCHOONVELD, KENEDY
08:18		18-8	H 10	GOOD! LAYUP by MOORMAN, JESSICA [PNT]
04:39		20-8	H 12	GOOD! LAYUP by SCHOONVELD, KENEDY
03:28	GOOD! LAYUP by PODKUL, ALLISON [PNT]	20-10	H 10	
03:13		22-10	H 12	GOOD! LAYUP by VOSKUIL, OLIVIA [PNT]
03:04		24-10	H 14	GOOD! LAYUP by DESMIT, KASEY
02:19	GOOD! FT by VEZZOSI, EMMA [FB]	24-11	H 13	
02:12		25-11	H 14	GOOD! FT by DESMIT, KASEY [FB]

Grove City 11, Hope 25

Official Scoring/Possession Reference Chart
Grove City vs Hope
Period 3
March 06, 2020 at DeVos Fieldhouse - Holland



Period 3

Starters:

Grove City: 11 MCCONNELL, JORDAN (G); 14 BOWEN, JESS (G); 15 PODKUL, ALLISON (F); 23 BALCOM, KATE (G); 34 BOOK, JESS (F);

Hope: 5 VOSKUIL, OLIVIA (C); 12 DESMIT, KASEY (G); 20 SCHOONVELD, KENEDY (G); 23 NEWMAN, LAUREN (G); 25 THOMAS, ASHLEIGH (C);

Time	VISITORS: Grove City	Score	Margin	HOME: Hope
09:44		27-11	H 16	GOOD! LAYUP by SCHOONVELD, KENEDY
06:24		30-11	H 19	GOOD! 3PTR by NEWMAN, LAUREN
04:38		32-11	H 21	GOOD! LAYUP by BAGULEY, CLAIRE
03:30		34-11	H 23	GOOD! LAYUP by MOREHOUSE, MEG [FB]
02:59		37-11	H 26	GOOD! 3PTR by MOORMAN, JESSICA
02:43	GOOD! FT by MCCONNELL, JORDAN	37-12	H 25	
02:22		38-12	H 26	GOOD! FT by MOORMAN, JESSICA
02:22		39-12	H 27	GOOD! FT by MOORMAN, JESSICA
02:01		41-12	H 29	GOOD! LAYUP by BAGULEY, CLAIRE [FB]
01:39		43-12	H 31	GOOD! LAYUP by BARNES, COURTENEY [FB]
00:45	GOOD! FT by BALCOM, KATE	43-13	H 30	
00:17		46-13	H 33	GOOD! 3PTR by BAGULEY, CLAIRE
00:04	GOOD! FT by VEZZOSI, EMMA	46-14	H 32	
00:04	GOOD! FT by VEZZOSI, EMMA	46-15	H 31	

Grove City 15, Hope 46

**Official Scoring/Possession Reference Chart
Grove City vs Hope
Period 4
March 06, 2020 at DeVos Fieldhouse - Holland**



Period 4

Starters:

Grove City: 11 MCCONNELL, JORDAN (G); 14 BOWEN, JESS (G); 15 PODKUL, ALLISON (F); 23 BALCOM, KATE (G); 34 BOOK, JESS (F);

Hope: 5 VOSKUIL, OLIVIA (C); 12 DESMIT, KASEY (G); 20 SCHOONVELD, KENEDY (G); 23 NEWMAN, LAUREN (G); 25 THOMAS, ASHLEIGH (C);

Time	VISITORS: Grove City	Score	Margin	HOME: Hope
08:18		48-15	H 33	GOOD! LAYUP by BAGULEY, CLAIRE
07:42		49-15	H 34	GOOD! FT by RUSSELL, KAYLA [FB]
06:37		50-15	H 35	GOOD! FT by GERBER, MALLORY
05:53		51-15	H 36	GOOD! FT by GERBER, MALLORY
05:53		52-15	H 37	GOOD! FT by GERBER, MALLORY
05:30		53-15	H 38	GOOD! FT by RUSSELL, KAYLA [FB]
05:30		54-15	H 39	GOOD! FT by RUSSELL, KAYLA [FB]
04:53		56-15	H 41	GOOD! LAYUP by MCKINNEY, ELLA
04:32		58-15	H 43	GOOD! LAYUP by MAJERUS, KATE [FB]
03:27		59-15	H 44	GOOD! FT by RUSSELL, KAYLA [FB]
03:27		60-15	H 45	GOOD! FT by RUSSELL, KAYLA [FB]
03:00		62-15	H 47	GOOD! LAYUP by MAJERUS, KATE [FB]
02:26		64-15	H 49	GOOD! LAYUP by GERBER, MALLORY [PNT]
01:51		66-15	H 51	GOOD! JUMPER by RUSSELL, KAYLA [PNT]
01:41	GOOD! 3PTR by BALCOM, KATE	66-18	H 48	
01:23		69-18	H 51	GOOD! 3PTR by GERBER, MALLORY

Grove City 18, Hope 69

Official Substitutions Log
Grove City vs Hope
Period 1
March 06, 2020 at DeVos Fieldhouse - Holland



VISITORS: Grove City	Time	Score	HOME: Hope
11 MCCONNELL, JORDAN			5 VOSKUIL, OLIVIA
14 BOWEN, JESS			12 DESMIT, KASEY
15 PODKUL, ALLISON			20 SCHOONVELD, KENEDY
23 BALCOM, KATE			23 NEWMAN, LAUREN
34 BOOK, JESS			25 THOMAS, ASHLEIGH
	05:26	6-5	SUB OUT: VOSKUIL, OLIVIA
	05:26		SUB OUT: DESMIT, KASEY
	05:26		SUB OUT: NEWMAN, LAUREN
	05:26		SUB OUT: THOMAS, ASHLEIGH
	05:26		SUB IN: MOORMAN, JESSICA
	05:26		SUB IN: BAGULEY, CLAIRE
	05:26		SUB IN: TOLBERT, ARIKA
	05:26		SUB IN: BARNES, COURTENEY
SUB OUT: 23 BALCOM, KATE	05:26		
SUB IN: 12 STANFORTH, LINDSEY	05:26		
SUB OUT: 34 BOOK, JESS	05:11	6-5	
SUB IN: 20 KIMBRELL, JESSICA	05:11		
	04:36	6-5	SUB OUT: SCHOONVELD, KENEDY
	04:36		SUB IN: MOREHOUSE, MEG
SUB OUT: 11 MCCONNELL, JORDAN	03:36	6-7	
SUB OUT: 14 BOWEN, JESS	03:36		
SUB OUT: 15 PODKUL, ALLISON	03:36		
SUB IN: 23 BALCOM, KATE	03:36		
SUB IN: 30 VEZZOSI, EMMA	03:36		
SUB IN: 34 BOOK, JESS	03:36		
	02:20	8-7	SUB OUT: BAGULEY, CLAIRE
	02:20		SUB OUT: TOLBERT, ARIKA
	02:20		SUB OUT: BARNES, COURTENEY
	02:20		SUB IN: VOSKUIL, OLIVIA
	02:20		SUB IN: DESMIT, KASEY
	02:20		SUB IN: SCHOONVELD, KENEDY
SUB OUT: 12 STANFORTH, LINDSEY	02:20		
SUB OUT: 20 KIMBRELL, JESSICA	02:20		
SUB IN: 14 BOWEN, JESS	02:20		
SUB IN: 15 PODKUL, ALLISON	02:20		
	01:15	8-9	SUB OUT: MOREHOUSE, MEG
	01:15		SUB OUT: MOORMAN, JESSICA
	01:15		SUB IN: NEWMAN, LAUREN
	01:15		SUB IN: THOMAS, ASHLEIGH
SUB OUT: 30 VEZZOSI, EMMA	01:15		
SUB IN: 11 MCCONNELL, JORDAN	01:15		
SUB OUT: 23 BALCOM, KATE	00:20	8-10	
SUB IN: 30 VEZZOSI, EMMA	00:20		

Grove City 8, Hope 13

**Official Substitutions Log
Grove City vs Hope
Period 2
March 06, 2020 at DeVos Fieldhouse - Holland**



VISITORS: Grove City	Time	Score	HOME: Hope
11 MCCONNELL, JORDAN			5 VOSKUIL, OLIVIA
14 BOWEN, JESS			12 DESMIT, KASEY
15 PODKUL, ALLISON			20 SCHOONVELD, KENEDY
23 BALCOM, KATE			23 NEWMAN, LAUREN
34 BOOK, JESS			25 THOMAS, ASHLEIGH
	09:03	8-15	SUB OUT: VOSKUIL, OLIVIA
	09:03		SUB OUT: THOMAS, ASHLEIGH
	09:03		SUB IN: MOORMAN, JESSICA
	09:03		SUB IN: BARNES, COURTENEY
SUB OUT: 11 MCCONNELL, JORDAN	09:03		
SUB IN: 23 BALCOM, KATE	09:03		
	09:03		SUB OUT: SCHOONVELD, KENEDY
	09:03		SUB IN: BAGULEY, CLAIRE
SUB OUT: 34 BOOK, JESS	09:03		
SUB IN: 20 KIMBRELL, JESSICA	09:03		
	08:02	8-18	SUB OUT: DESMIT, KASEY
	08:02		SUB IN: TOLBERT, ARIKA
	08:02		SUB OUT: NEWMAN, LAUREN
	08:02		SUB IN: MOREHOUSE, MEG
SUB OUT: 14 BOWEN, JESS	07:28	8-18	
SUB OUT: 15 PODKUL, ALLISON	07:28		
SUB IN: 32 ELSEY, GRETCHEN	07:28		
SUB IN: 34 BOOK, JESS	07:28		
SUB OUT: 32 ELSEY, GRETCHEN	06:57	8-18	
SUB IN: 11 MCCONNELL, JORDAN	06:57		
SUB OUT: 20 KIMBRELL, JESSICA	06:41	8-18	
SUB IN: 15 PODKUL, ALLISON	06:41		
	05:29	8-18	SUB OUT: BAGULEY, CLAIRE
	05:29		SUB OUT: TOLBERT, ARIKA
	05:29		SUB IN: DESMIT, KASEY
	05:29		SUB IN: SCHOONVELD, KENEDY
SUB OUT: 30 VEZZOSI, EMMA	05:29		
SUB IN: 32 ELSEY, GRETCHEN	05:29		
SUB OUT: 23 BALCOM, KATE	04:49	8-18	
SUB IN: 12 STANFORTH, LINDSEY	04:49		
	04:49		SUB OUT: BARNES, COURTENEY
	04:49		SUB IN: VOSKUIL, OLIVIA
	04:00	8-20	SUB OUT: MOREHOUSE, MEG
	04:00		SUB IN: NEWMAN, LAUREN
SUB OUT: 32 ELSEY, GRETCHEN	04:00		
SUB IN: 14 BOWEN, JESS	04:00		
	03:40	8-20	SUB OUT: MOORMAN, JESSICA
	03:40		SUB IN: THOMAS, ASHLEIGH
SUB OUT: 11 MCCONNELL, JORDAN	02:25	10-24	
SUB OUT: 34 BOOK, JESS	02:25		
SUB IN: 30 VEZZOSI, EMMA	02:25		
SUB IN: 44 CAMPBELL, SEDONA	02:25		
SUB OUT: 12 STANFORTH, LINDSEY	01:48	11-25	
SUB OUT: 30 VEZZOSI, EMMA	01:48		
SUB IN: 11 MCCONNELL, JORDAN	01:48		
SUB IN: 23 BALCOM, KATE	01:48		
SUB OUT: 44 CAMPBELL, SEDONA	01:27	11-25	
SUB IN: 34 BOOK, JESS	01:27		
	00:10	11-25	SUB OUT: DESMIT, KASEY
	00:10		SUB IN: TOLBERT, ARIKA

Grove City 11, Hope 25

**Official Substitutions Log
Grove City vs Hope
Period 3
March 06, 2020 at DeVos Fieldhouse - Holland**



VISITORS: Grove City	Time	Score	HOME: Hope
11 MCCONNELL, JORDAN			5 VOSKUIL, OLIVIA
14 BOWEN, JESS			12 DESMIT, KASEY
15 PODKUL, ALLISON			20 SCHOONVELD, KENEDY
23 BALCOM, KATE			23 NEWMAN, LAUREN
34 BOOK, JESS			25 THOMAS, ASHLEIGH
	10:00	-	SUB OUT: TOLBERT, ARIKA
	10:00		SUB IN: DESMIT, KASEY
	07:33	11-27	SUB OUT: THOMAS, ASHLEIGH
	07:33		SUB IN: MOORMAN, JESSICA
SUB OUT: 23 BALCOM, KATE	07:17	11-27	
SUB IN: 12 STANFORTH, LINDSEY	07:17		
	07:17		SUB OUT: VOSKUIL, OLIVIA
	07:17		SUB IN: BARNES, COURTENEY
	06:08	11-30	SUB OUT: DESMIT, KASEY
	06:08		SUB OUT: NEWMAN, LAUREN
	06:08		SUB IN: BAGULEY, CLAIRE
	06:08		SUB IN: TOLBERT, ARIKA
SUB OUT: 11 MCCONNELL, JORDAN	06:08		
SUB IN: 30 VEZZOSI, EMMA	06:08		
SUB OUT: 34 BOOK, JESS	05:59	11-30	
SUB IN: 20 KIMBRELL, JESSICA	05:59		
	05:02	11-30	SUB OUT: SCHOONVELD, KENEDY
	05:02		SUB IN: MOREHOUSE, MEG
SUB OUT: 30 VEZZOSI, EMMA	04:57	11-30	
SUB IN: 11 MCCONNELL, JORDAN	04:57		
SUB OUT: 14 BOWEN, JESS	03:46	11-32	
SUB IN: 23 BALCOM, KATE	03:46		
SUB OUT: 12 STANFORTH, LINDSEY	03:08	11-34	
SUB OUT: 15 PODKUL, ALLISON	03:08		
SUB IN: 32 ELSEY, GRETCHEN	03:08		
SUB IN: 34 BOOK, JESS	03:08		
	01:03	12-43	SUB OUT: TOLBERT, ARIKA
	01:03		SUB IN: DESMIT, KASEY
SUB OUT: 11 MCCONNELL, JORDAN	01:03		
SUB OUT: 32 ELSEY, GRETCHEN	01:03		
SUB OUT: 34 BOOK, JESS	01:03		
SUB IN: 14 BOWEN, JESS	01:03		
SUB IN: 30 VEZZOSI, EMMA	01:03		
SUB IN: 44 CAMPBELL, SEDONA	01:03		

Grove City 15, Hope 46

Official Substitutions Log
Grove City vs Hope
Period 4
March 06, 2020 at DeVos Fieldhouse - Holland



VISITORS: Grove City	Time	Score	HOME: Hope
11 MCCONNELL, JORDAN			5 VOSKUIL, OLIVIA
14 BOWEN, JESS			12 DESMIT, KASEY
15 PODKUL, ALLISON			20 SCHOONVELD, KENEDY
23 BALCOM, KATE			23 NEWMAN, LAUREN
34 BOOK, JESS			25 THOMAS, ASHLEIGH
SUB OUT: 44 CAMPBELL, SEDONA	10:00	-	
SUB IN: 34 BOOK, JESS	10:00		
	09:19	-	SUB OUT: MOORMAN, JESSICA
	09:19		SUB IN: RUSSELL, KAYLA
SUB OUT: 20 KIMBRELL, JESSICA	09:19		
SUB IN: 15 PODKUL, ALLISON	09:19		
SUB OUT: 23 BALCOM, KATE	08:47	-	
SUB IN: 11 MCCONNELL, JORDAN	08:47		
SUB OUT: 14 BOWEN, JESS	08:12	15-48	
SUB OUT: 34 BOOK, JESS	08:12		
SUB IN: 23 BALCOM, KATE	08:12		
SUB IN: 42 CANO, NINA	08:12		
	07:43	15-48	SUB OUT: MOREHOUSE, MEG
	07:43		SUB OUT: DESMIT, KASEY
	07:43		SUB IN: TOLBERT, ARIKA
	07:43		SUB IN: MAJERUS, KATE
	07:42	15-48	SUB OUT: BAGULEY, CLAIRE
	07:42		SUB IN: MCKINNEY, ELLA
SUB OUT: 30 VEZZOSI, EMMA	07:42		
SUB IN: 12 STANFORTH, LINDSEY	07:42		
	07:42		SUB OUT: BARNES, COURTENEY
	07:42		SUB IN: GERBER, MALLORY
SUB OUT: 11 MCCONNELL, JORDAN	06:57	15-49	
SUB IN: 30 VEZZOSI, EMMA	06:57		
SUB OUT: 12 STANFORTH, LINDSEY	06:57		
SUB IN: 14 BOWEN, JESS	06:57		
	06:37	15-50	SUB OUT: TOLBERT, ARIKA
	06:37		SUB IN: SMITH, HANNAH
SUB OUT: 23 BALCOM, KATE	06:18	15-50	
SUB IN: 10 FREDERICK, LAUREN	06:18		
SUB OUT: 14 BOWEN, JESS	05:30	15-52	
SUB IN: 32 ELSEY, GRETCHEN	05:30		
SUB OUT: 10 FREDERICK, LAUREN	03:57	15-58	
SUB OUT: 15 PODKUL, ALLISON	03:57		
SUB OUT: 42 CANO, NINA	03:57		
SUB IN: 20 KIMBRELL, JESSICA	03:57		
SUB IN: 23 BALCOM, KATE	03:57		
SUB IN: 34 BOOK, JESS	03:57		
SUB OUT: 30 VEZZOSI, EMMA	02:18	15-64	
SUB IN: 11 MCCONNELL, JORDAN	02:18		
SUB OUT: 23 BALCOM, KATE	00:49	18-69	
SUB OUT: 34 BOOK, JESS	00:49		
SUB IN: 10 FREDERICK, LAUREN	00:49		
SUB IN: 42 CANO, NINA	00:49		

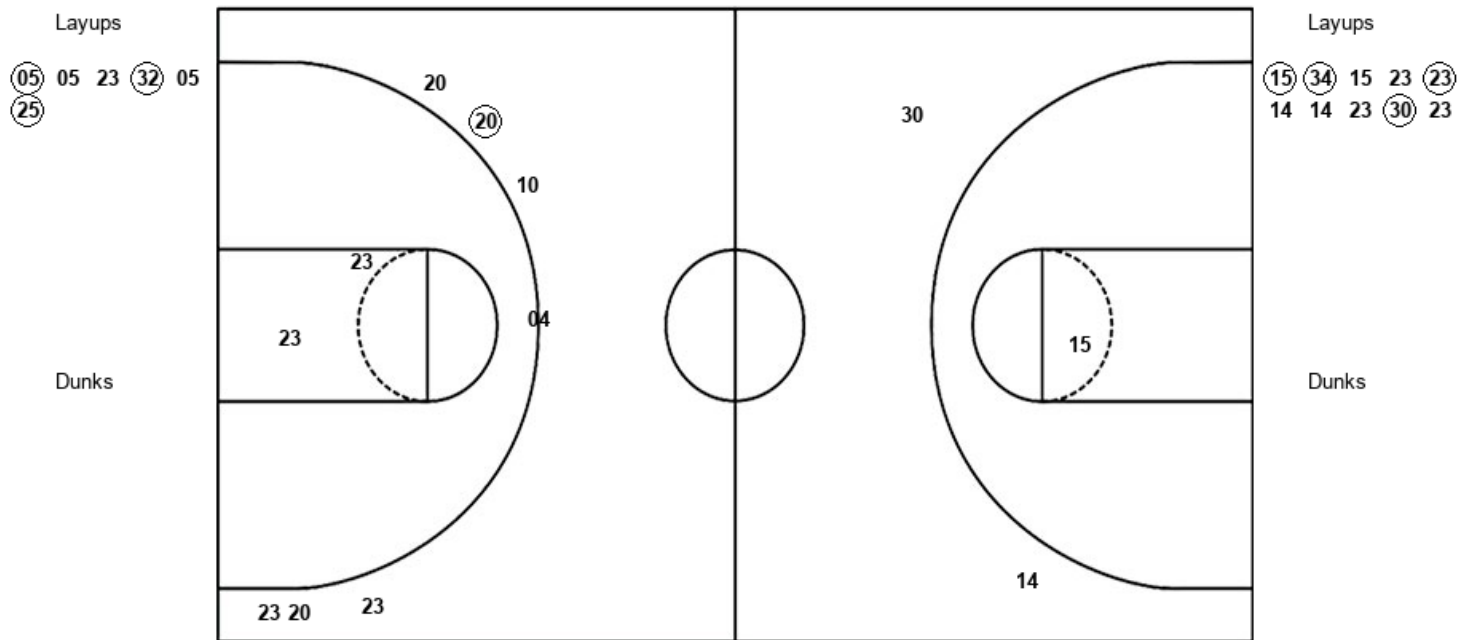
Grove City 18, Hope 69

Official Shot Chart
Grove City vs Hope
PERIOD 1 Shots
 March 06, 2020 at DeVos Fieldhouse - Holland



Hope

Grove City



HPE : Period 1	Made	Att	Pct
Layups	3	6	50.0
Dunks	0	0	0
2PT Field Goals	3	8	37.5
3PT Field Goals	1	7	14.3
Total Field Goals	4	15	26.7

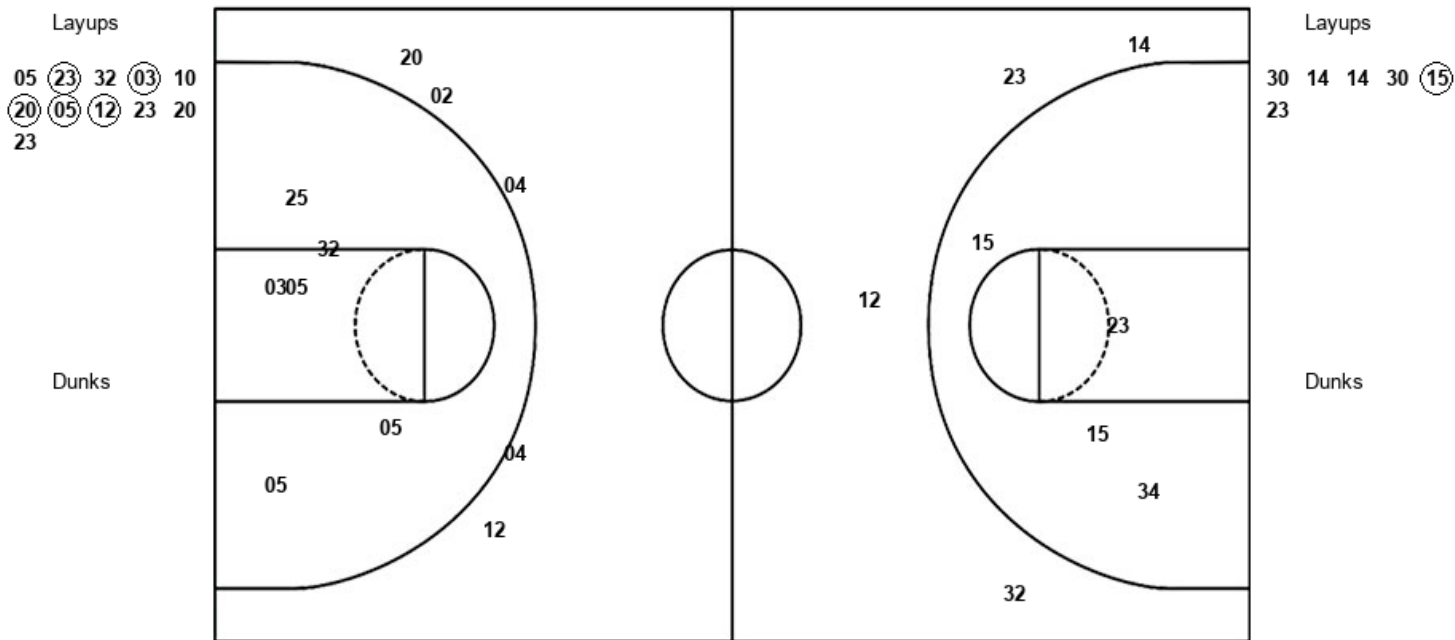
GCC : Period 1	Made	Att	Pct
Layups	4	10	40.0
Dunks	0	0	0
2PT Field Goals	4	11	36.4
3PT Field Goals	0	2	00.0
Total Field Goals	4	13	30.8

Official Shot Chart
Grove City vs Hope
PERIOD 2 Shots
 March 06, 2020 at DeVos Fieldhouse - Holland



Hope

Grove City



HPE : Period 2	Made	Att	Pct
Layups	5	11	45.5
Dunks	0	0	0
2PT Field Goals	5	17	29.4
3PT Field Goals	0	5	00.0
Total Field Goals	5	22	22.7

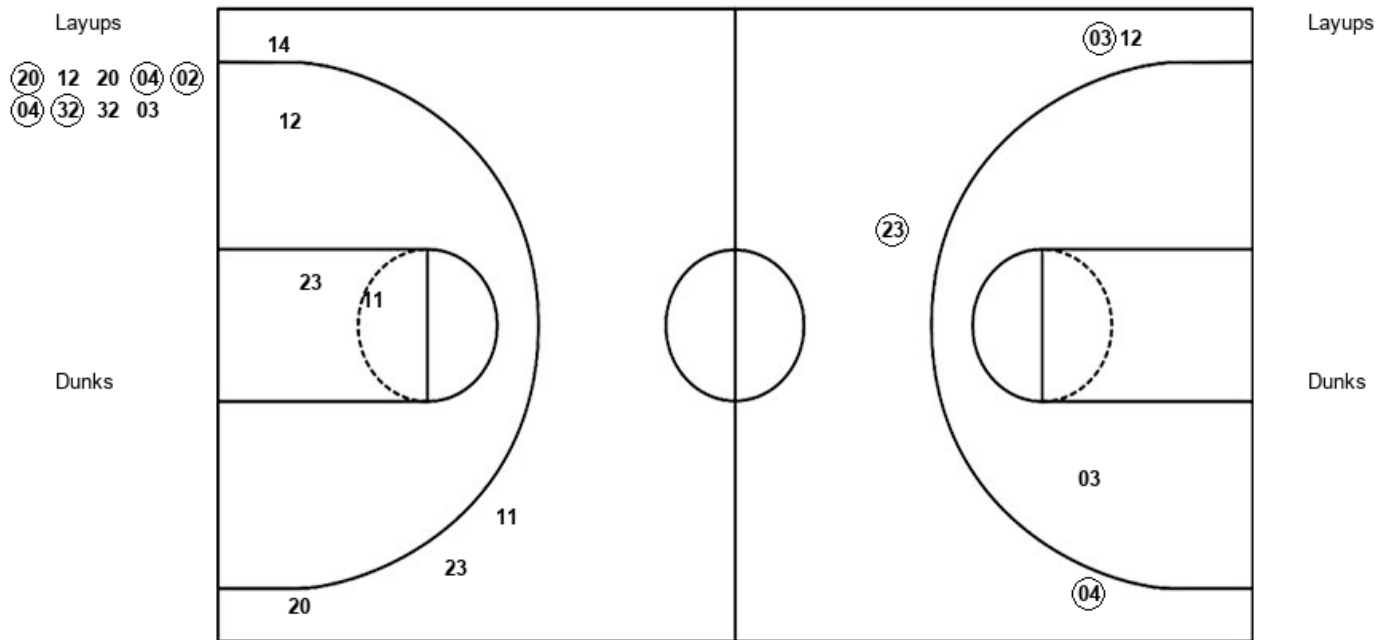
GCC : Period 2	Made	Att	Pct
Layups	1	6	16.7
Dunks	0	0	0
2PT Field Goals	1	10	10.0
3PT Field Goals	0	4	00.0
Total Field Goals	1	14	07.1

Official Shot Chart
Grove City vs Hope
PERIOD 3 Shots
 March 06, 2020 at DeVos Fieldhouse - Holland



Hope

Grove City



HPE : Period 3	Made	Att	Pct
Layups	5	9	55.6
Dunks	0	0	0
2PT Field Goals	5	10	50.0
3PT Field Goals	3	4	75.0
Total Field Goals	8	14	57.1

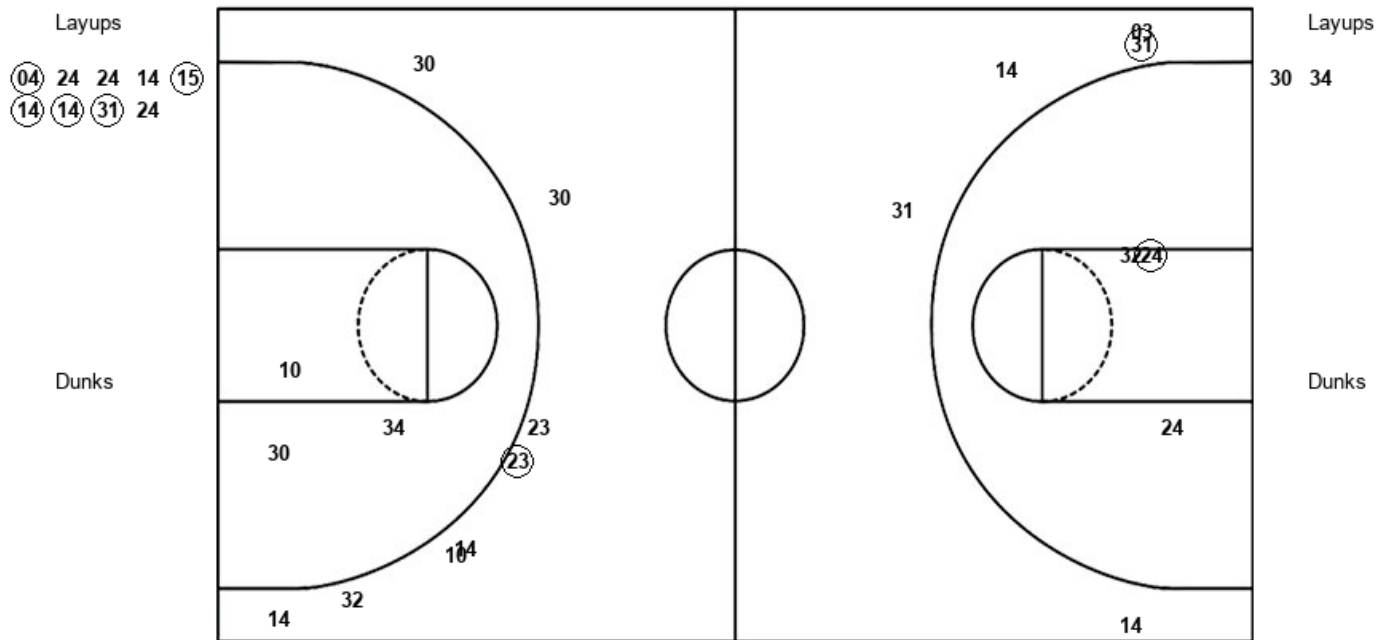
GCC : Period 3	Made	Att	Pct
Layups	0	0	0
Dunks	0	0	0
2PT Field Goals	0	3	00.0
3PT Field Goals	0	4	00.0
Total Field Goals	0	7	00.0

Official Shot Chart
Grove City vs Hope
PERIOD 4 Shots
 March 06, 2020 at DeVos Fieldhouse - Holland



Hope

Grove City



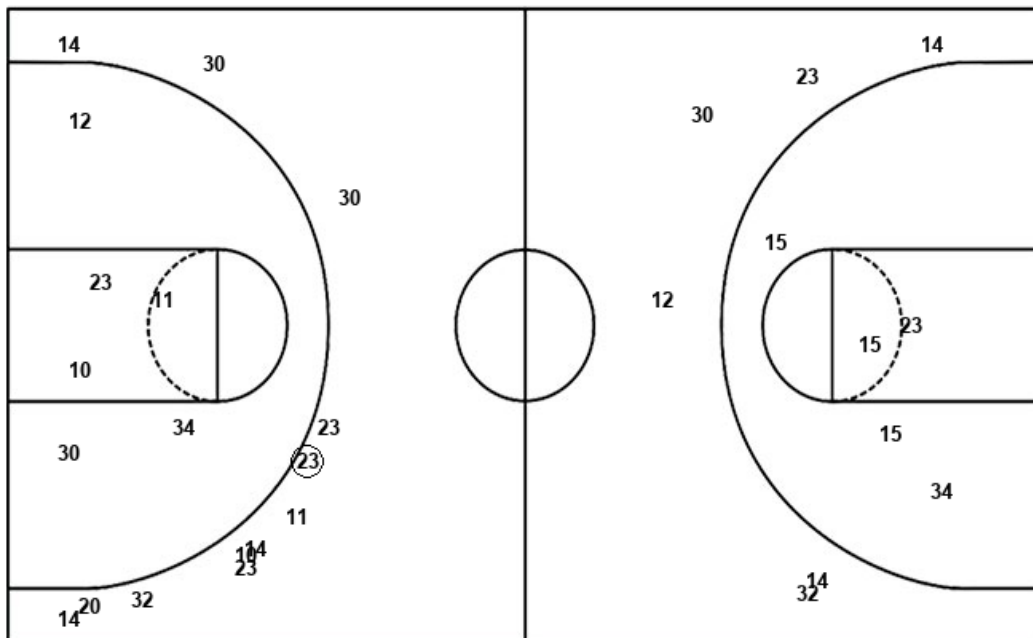
HPE : Period 4	Made	Att	Pct
Layups	5	9	55.6
Dunks	0	0	0
2PT Field Goals	6	12	50.0
3PT Field Goals	1	5	20.0
Total Field Goals	7	17	41.2

GCC : Period 4	Made	Att	Pct
Layups	0	2	00.0
Dunks	0	0	0
2PT Field Goals	0	5	00.0
3PT Field Goals	1	8	12.5
Total Field Goals	1	13	07.7

Official Shot Chart
Grove City vs Hope
Grove City Team Shots
March 06, 2020 at DeVos Fieldhouse - Holland



Layups



Layups

(15) (34) 15 23 (23)
 14 14 23 (30) 23
 30 14 14 30 (15)
 23 30 34

Dunks

Dunks

GCC : Period 1	Made	Att	Pct
Layups	4	10	40.0
Dunks	0	0	0
2PT Field Goals	4	11	36.4
3PT Field Goals	0	2	00.0
Total Field Goals	4	13	30.8

GCC : Period 2	Made	Att	Pct
Layups	1	6	16.7
Dunks	0	0	0
2PT Field Goals	1	10	10.0
3PT Field Goals	0	4	00.0
Total Field Goals	1	14	07.1

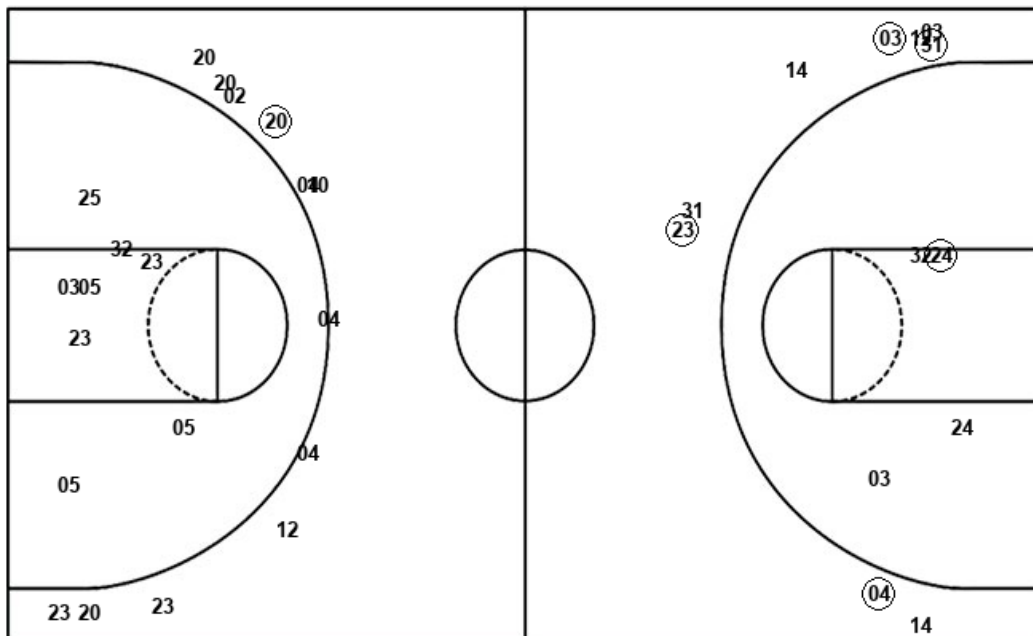
GCC : Period 3	Made	Att	Pct
Layups	0	0	0
Dunks	0	0	0
2PT Field Goals	0	3	00.0
3PT Field Goals	0	4	00.0
Total Field Goals	0	7	00.0

GCC : Period 4	Made	Att	Pct
Layups	0	2	00.0
Dunks	0	0	0
2PT Field Goals	0	5	00.0
3PT Field Goals	1	8	12.5
Total Field Goals	1	13	07.7

Official Shot Chart
Grove City vs Hope
Hope Team Shots
March 06, 2020 at DeVos Fieldhouse - Holland



Layups



Layups

- (05) 05 23 (32) 05
- (25) 05 (23) 32 (03)
- 10 (20) (05) (12) 23
- 20 23 (20) 12 20
- (04) (02) (04) (32) 32
- 03 (04) 24 24 14
- (15) (14) (14) (31) 24

Dunks

Dunks

HPE : Period 1	Made	Att	Pct
Layups	3	6	50.0
Dunks	0	0	0
2PT Field Goals	3	8	37.5
3PT Field Goals	1	7	14.3
Total Field Goals	4	15	26.7

HPE : Period 2	Made	Att	Pct
Layups	5	11	45.5
Dunks	0	0	0
2PT Field Goals	5	17	29.4
3PT Field Goals	0	5	00.0
Total Field Goals	5	22	22.7

HPE : Period 3	Made	Att	Pct
Layups	5	9	55.6
Dunks	0	0	0
2PT Field Goals	5	10	50.0
3PT Field Goals	3	4	75.0
Total Field Goals	8	14	57.1

HPE : Period 4	Made	Att	Pct
Layups	5	9	55.6
Dunks	0	0	0
2PT Field Goals	6	12	50.0
3PT Field Goals	1	5	20.0
Total Field Goals	7	17	41.2