

FINAL SCORE**Berea****50****Ill. Wesleyan****76****NCAA Division III Women's Basketball Championship First, Second Rounds -
Campus Sites****March 06, 2020 • DeVos Fieldhouse - Holland****FINAL STATISTICS**

Official Box Score
Berea vs III. Wesleyan
Game Totals -- Final Statistics
March 06, 2020 at DeVos Fieldhouse - Holland

Berea 50

No.	Player	S	Pts	FG	3FG	FT	OR	DR	TR	PF	A	TO	Blk	Stl	Min	+/-
01	VANOVER, BAILEE	G	12	5-14	0-3	2-4	1	1	2	1	1	3	0	4	28	-23
02	WILLIAMS, BETHANIE	G	7	2-7	1-4	2-2	0	3	3	1	1	1	0	1	26	-16
03	HAMPTON, AALIYAH	G	9	3-13	0-3	3-6	0	4	4	2	2	6	0	0	29	-28
23	GREENE, NAKEISHA	F	0	0-0	0-0	0-0	0	5	5	1	0	1	0	1	13	-18
32	LANHAM, BRI	G	3	1-4	1-4	0-0	0	0	0	3	1	1	0	1	28	-21
10	GINTER, JAILYN	G	0	0-1	0-1	0-0	0	1	1	0	0	0	0	0	3	5
12	BARNES, KRISTEN	G	6	2-4	1-3	1-2	0	2	2	2	1	3	0	2	22	-14
22	PARKER, LEAH	G	5	2-12	1-6	0-0	0	1	1	1	0	1	0	2	19	-10
25	LOVE, DESTANIE	F	8	4-8	0-0	0-1	2	10	12	2	0	0	0	1	22	-14
35	BEGGS, ADRIENNE	F	0	0-1	0-0	0-0	1	2	3	0	0	1	0	0	3	5
45	HILL, ISIS	F	0	0-0	0-0	0-0	0	1	1	1	0	0	0	1	5	4
TEAM							5	0	5	0		1				
TOTALS			50	19-64	4-24	8-15	9	30	39	14	6	18	0	13	198	

Shooting By Period

Period	FG	FG%	3FG	3FG%	FT	FT%
1st Qtr	4-14	29%	2-6	33%	2-2	100%
2nd Qtr	4-15	27%	1-5	20%	4-6	67%
3rd Qtr	7-18	39%	0-5	00%	2-5	40%
4th Qtr	4-17	24%	1-8	13%	0-2	00%
1st Half	8-29	28%	3-11	27%	6-8	75%
2nd Half	11-35	31%	1-13	08%	2-7	29%
Game	19-64	29.7%	4-24	16.7%	8-15	53.3%

Deadball Rebounds: 4,0
Last FG: 4th-00:50
Biggest Run: 5-0
Largest lead: By 2 at 1st-09:44
Technical Fouls: None.

III. Wesleyan 76

No.	Player	S	Pts	FG	3FG	FT	OR	DR	TR	PF	A	TO	Blk	Stl	Min	+/-
05	BROVELLI, RILEY	F	15	7-12	0-0	1-2	6	7	13	3	2	3	1	1	30	31
12	SHANKS, SYDNEY	F	11	4-10	0-1	3-3	0	6	6	2	1	2	2	0	23	12
14	MUNROE, SAMANTHA	G	4	2-6	0-4	0-0	0	8	8	2	4	2	0	0	34	30
15	LANSFORD, BROOKE	G	8	2-10	1-4	3-4	0	5	5	2	2	0	0	0	35	29
24	SOSA, KENDALL	G	26	10-19	4-9	2-2	0	5	5	0	4	4	2	3	33	30
03	MOODY, MEGAN	G	0	0-2	0-2	0-0	0	1	1	0	0	0	0	0	3	-5
10	COLLINS, EMILY	G	2	1-1	0-0	0-0	0	2	2	0	0	0	0	0	3	-5
20	BOWEN, KAIA	F	8	2-4	0-0	4-6	3	3	6	3	0	0	0	4	19	12
21	RETFERFORD, CLAIRE	F	0	0-1	0-0	0-0	1	0	1	0	0	0	0	0	3	-5
22	HELLER, KATELYN	G	2	1-4	0-0	0-2	0	1	1	0	1	2	0	0	11	2
23	CARLSON, KELLY	F	0	0-0	0-0	0-0	0	0	0	1	0	1	0	0	5	1
25	SMITH, HANNAH	C	0	0-0	0-0	0-0	0	1	1	0	0	1	0	0	1	-2
TEAM							5	0	5	0		0				
TOTALS			76	29-69	5-20	13-19	15	39	54	13	14	15	5	8	198	

Shooting By Period

Period	FG	FG%	3FG	3FG%	FT	FT%
1st Qtr	8-19	42%	3-6	50%	2-2	100%
2nd Qtr	7-14	50%	1-5	20%	5-7	71%
3rd Qtr	10-22	45%	1-5	20%	3-4	75%
4th Qtr	4-14	29%	0-4	00%	3-6	50%
1st Half	15-33	45%	4-11	36%	7-9	78%
2nd Half	14-36	39%	1-9	11%	6-10	60%
Game	29-69	42.0%	5-20	25.0%	13-19	68.4%

Deadball Rebounds: 1,0
Last FG: 4th-01:36
Biggest Run: 13-0
Largest lead: By 32 at 4th-06:07
Technical Fouls: None.

Game Notes:

Officials: **Brad Duistermars, JR Schoon, Todd Hoke**
 Attendance: **1001**

Start Time: **05:30 PM ET**
 End Time: **06:59 PM ET**
 Game Duration: **1:29**
 Neutral Court;

Score	1st	2nd	3rd	4th	TOT
BER	12	13	16	9	50
IWU	21	20	24	11	76

BER led for 0:24. IWU led for 38:57.
 Game was tied for 0:16.
 Times tied: 0 Lead Changes: 1

Points from	BER	IWU
In the Paint	26	44
Off Turns	10	23
2nd Chance	9	8
Fast Break	3	8
Bench	19	12

Official Box Score
Berea vs III. Wesleyan
First Half Statistics Only
March 06, 2020 at DeVos Fieldhouse - Holland



Berea 25

No.	Player	S	Pts	FG	3FG	FT	OR	DR	TR	PF	A	TO	Blk	Stl	Min	+/-
01	VANOVER, BAILEE	G	5	2-4	0-0	1-2	0	1	1	0	0	2	0	1	13	-16
02	WILLIAMS, BETHANIE	G	7	2-6	1-3	2-2	0	2	2	0	0	1	0	1	15	-10
03	HAMPTON, AALIYAH	G	5	1-8	0-3	3-4	0	3	3	2	2	3	0	0	18	-19
10	GINTER, JAILYN	G	0	0-0	0-0	0-0	0	0	0	0	0	0	0	0	0	0
12	BARNES, KRISTEN	G	3	1-2	1-2	0-0	0	1	1	1	0	2	0	1	12	-1
22	PARKER, LEAH	G	0	0-4	0-2	0-0	0	1	1	0	0	0	0	0	7	-6
23	GREENE, NAKEISHA	F	0	0-0	0-0	0-0	0	2	2	1	0	0	0	0	6	-10
25	LOVE, DESTANIE	F	2	1-4	0-0	0-0	1	3	4	1	0	0	0	1	10	-10
32	LANHAM, BRI	G	3	1-1	1-1	0-0	0	0	0	0	1	1	0	0	16	-10
35	BEGGS, ADRIENNE	F	0	0-0	0-0	0-0	0	0	0	0	0	0	0	0	0	0
45	HILL, ISIS	F	0	0-0	0-0	0-0	0	1	1	1	0	0	0	1	4	2
	TEAM		0	0-0	0-0	0-0	3	0	3	0	0	0	0	0	0	0
TOTALS			25	8-29	3-11	6-8	4	14	18	6	3	9	0	5	100	

Shooting By Period

Period	FG	FG%	3FG	3FG%	FT	FT%
1st Qtr	4-14	29%	2-6	33%	2-2	100%
2nd Qtr	4-15	27%	1-5	20%	4-6	67%
1st Half	8-29	28%	3-11	27%	6-8	75%
Game	19-64	29.7%	4-24	16.7%	8-15	53.3%

Deadball Rebounds: 4,0
Last FG Half: BER 2nd-01:10

III. Wesleyan 41

No.	Player	S	Pts	FG	3FG	FT	OR	DR	TR	PF	A	TO	Blk	Stl	Min	+/-
03	MOODY, MEGAN	G	0	0-0	0-0	0-0	0	0	0	0	0	0	0	0	0	0
05	BROVELLI, RILEY	F	8	4-7	0-0	0-0	4	4	8	1	2	2	0	0	18	16
10	COLLINS, EMILY	G	0	0-0	0-0	0-0	0	0	0	0	0	0	0	0	0	0
12	SHANKS, SYDNEY	F	9	3-4	0-0	3-3	0	2	2	2	0	0	1	0	11	8
14	MUNROE, SAMANTHA	G	2	1-3	0-2	0-0	0	4	4	0	2	0	0	0	19	15
15	LANSFORD, BROOKE	G	4	1-4	1-2	1-2	0	4	4	2	1	0	0	0	18	14
20	BOWEN, KAIA	F	3	1-1	0-0	1-2	1	2	3	2	0	0	0	0	11	8
21	RETFERFORD, CLAIRE	F	0	0-0	0-0	0-0	0	0	0	0	0	0	0	0	0	0
22	HELLER, KATELYN	G	0	0-2	0-0	0-0	0	0	0	0	1	1	0	0	4	3
23	CARLSON, KELLY	F	0	0-0	0-0	0-0	0	0	0	0	0	0	0	0	0	2
24	SOSA, KENDALL	G	15	5-12	3-7	2-2	0	1	1	0	1	3	0	1	19	14
25	SMITH, HANNAH	C	0	0-0	0-0	0-0	0	0	0	0	0	0	0	0	0	0
	TEAM		0	0-0	0-0	0-0	1	0	1	0	0	0	0	0	0	0
TOTALS			41	15-33	4-11	7-9	6	17	23	7	7	6	1	1	100	

Shooting By Period

Period	FG	FG%	3FG	3FG%	FT	FT%
1st Qtr	8-19	42%	3-6	50%	2-2	100%
2nd Qtr	7-14	50%	1-5	20%	5-7	71%
1st Half	15-33	45%	4-11	36%	7-9	78%
Game	29-69	42.0%	5-20	25.0%	13-19	68.4%

Deadball Rebounds: 1,0
Last FG Half: IWU 2nd-01:25

Game Notes:

Officials: Brad Duistermars, JR Schoon, Todd Hoke
 Attendance: 1001

Start Time: 05:30 PM ET
 End Time: 06:59 PM ET
 Game Duration: 1:29
 Neutral Court;

Score	1st	2nd	3rd	4th	TOT
BER	12	13	16	9	50
IWU	21	20	24	11	76

Points from (This Period)	BER	IWU
In the Paint	8	20
Off Turns	6	9
2nd Chance	4	7
Fast Break	3	0
Bench	5	3

Official Box Score
Berea vs Ill. Wesleyan
First Quarter Statistics Only
March 06, 2020 at DeVos Fieldhouse - Holland



Berea 12

No.	Player	S	Pts	FG	3FG	FT	OR	DR	TR	PF	A	TO	Blk	Stl	Min	+/-
01	VANOVER, BAILEE	G	0	0-1	0-0	0-0	0	1	1	0	0	2	0	0	4	-10
02	WILLIAMS, BETHANIE	G	2	1-2	0-1	0-0	0	1	1	0	0	1	0	0	7	-8
03	HAMPTON, AALIYAH	G	2	0-6	0-3	2-2	0	1	1	0	2	1	0	0	10	-9
23	GREENE, NAKEISHA	F	0	0-0	0-0	0-0	0	2	2	1	0	0	0	0	6	-10
32	LANHAM, BRI	G	3	1-1	1-1	0-0	0	0	0	0	1	0	0	0	10	-9
10	GINTER, JAILYN	G	0	0-0	0-0	0-0	0	0	0	0	0	0	0	0	0	0
12	BARNES, KRISTEN	G	3	1-1	1-1	0-0	0	0	0	1	0	1	0	1	6	1
22	PARKER, LEAH	G	0	0-0	0-0	0-0	0	1	1	0	0	0	0	0	3	-1
25	LOVE, DESTANIE	F	2	1-3	0-0	0-0	0	1	1	0	0	0	0	1	4	1
35	BEGGS, ADRIENNE	F	0	0-0	0-0	0-0	0	0	0	0	0	0	0	0	0	0
45	HILL, ISIS	F	0	0-0	0-0	0-0	0	0	0	0	0	0	0	0	0	0
	TEAM						1	0	1	0		0				
TOTALS			12	4-14	2-6	2-2	1	7	8	2	3	5	0	2	50	

Shooting By Period

Period	FG	FG%	3FG	3FG%	FT	FT%
1st Qtr	4-14	29%	2-6	33%	2-2	100%
2nd Qtr	4-15	27%	1-5	20%	4-6	67%
1st Half	4-14	29%	2-6	33%	2-2	100%
1st Half	8-29	28%	3-11	27%	6-8	75%
Game	19-64	29.7%	4-24	16.7%	8-15	53.3%

Deadball Rebounds: 4,0

Ill. Wesleyan 21

No.	Player	S	Pts	FG	3FG	FT	OR	DR	TR	PF	A	TO	Blk	Stl	Min	+/-
05	BROVELLI, RILEY	F	6	3-5	0-0	0-0	4	4	8	1	2	0	0	0	8	10
12	SHANKS, SYDNEY	F	4	1-2	0-0	2-2	0	1	1	1	0	0	0	0	8	7
14	MUNROE, SAMANTHA	G	2	1-2	0-1	0-0	0	0	0	0	0	0	0	0	10	7
15	LANSFORD, BROOKE	G	0	0-1	0-0	0-0	0	2	2	1	1	0	0	0	8	7
24	SOSA, KENDALL	G	9	3-8	3-5	0-0	0	1	1	0	0	2	0	1	10	7
03	MOODY, MEGAN	G	0	0-0	0-0	0-0	0	0	0	0	0	0	0	0	0	0
10	COLLINS, EMILY	G	0	0-0	0-0	0-0	0	0	0	0	0	0	0	0	0	0
20	BOWEN, KAIA	F	0	0-0	0-0	0-0	0	1	1	1	0	0	0	0	4	1
21	RETFERFORD, CLAIRE	F	0	0-0	0-0	0-0	0	0	0	0	0	0	0	0	0	0
22	HELLER, KATELYN	G	0	0-1	0-0	0-0	0	0	0	0	1	0	0	0	2	4
23	CARLSON, KELLY	F	0	0-0	0-0	0-0	0	0	0	0	0	0	0	0	0	2
25	SMITH, HANNAH	C	0	0-0	0-0	0-0	0	0	0	0	0	0	0	0	0	0
	TEAM						0	0	0	0		0				
TOTALS			21	8-19	3-6	2-2	4	9	13	4	4	2	0	1	50	

Shooting By Period

Period	FG	FG%	3FG	3FG%	FT	FT%
1st Qtr	8-19	42%	3-6	50%	2-2	100%
2nd Qtr	7-14	50%	1-5	20%	5-7	71%
1st Half	8-19	42%	3-6	50%	2-2	100%
1st Half	15-33	45%	4-11	36%	7-9	78%
Game	29-69	42.0%	5-20	25.0%	13-19	68.4%

Deadball Rebounds: 1,0

Game Notes:

Officials: Brad Duistermars, JR Schoon, Todd Hoke
 Attendance: 1001

Start Time: 05:30 PM ET
 End Time: 06:59 PM ET
 Game Duration: 1:29
 Neutral Court;

Score	1st	2nd	3rd	4th	TOT
BER	12	13	16	9	50
IWU	21	20	24	11	76

Points from (This Period)	BER	IWU
In the Paint	4	8
Off Turns	3	7
2nd Chance	0	4
Fast Break	0	0
Bench	5	0

Official Play-By-Play
Berea vs III. Wesleyan
First Quarter
March 06, 2020 at DeVos Fieldhouse - Holland



Period 1

Starters:

Berea: 1 VANOVER, BAILEE (G); 2 WILLIAMS, BETHANIE (G); 3 HAMPTON, AALIYAH (G); 23 GREENE, NAKEISHA (F); 32 LANHAM, BRI (G);

III. Wesleyan: 5 BROVELLI, RILEY (F); 12 SHANKS, SYDNEY (F); 14 MUNROE, SAMANTHA (G); 15 LANSFORD, BROOKE (G); 24 SOSA, KENDALL (G);

Time	VISITORS: Berea	Score	Margin	HOME: III. Wesleyan
09:44	GOOD! JUMPER by WILLIAMS, BETHANIE [PNT]	0-2	V 2	
09:20		3-2	H 1	GOOD! 3PTR by SOSA, KENDALL
09:20				ASSIST by BROVELLI, RILEY
09:08	TURNOVER (BADPASS) by VANOVER, BAILEE			
08:54		6-2	H 4	GOOD! 3PTR by SOSA, KENDALL
08:54				ASSIST by BROVELLI, RILEY
08:19	MISSED LAYUP by HAMPTON, AALIYAH			
08:16				REBOUND (DEF) by LANSFORD, BROOKE
07:54		8-2	H 6	GOOD! JUMPER by BROVELLI, RILEY
07:32	MISSED LAYUP by VANOVER, BAILEE			
07:29				REBOUND (DEF) by BROVELLI, RILEY
07:20				MISSED 3PTR by SOSA, KENDALL
07:16	REBOUND (DEF) by VANOVER, BAILEE			
07:08	MISSED 3PTR by HAMPTON, AALIYAH			
07:04				REBOUND (DEF) by SOSA, KENDALL
07:00				MISSED JUMPER by SOSA, KENDALL
06:56				REBOUND (OFF) by BROVELLI, RILEY
06:56				MISSED JUMPER by BROVELLI, RILEY
06:52	REBOUND (DEF) by GREENE, NAKEISHA			
06:50	TURNOVER (TRAVEL) by HAMPTON, AALIYAH			
06:39				MISSED JUMPER by LANSFORD, BROOKE
06:36	REBOUND (DEF) by WILLIAMS, BETHANIE			
06:32	TURNOVER (LOSTBALL) by VANOVER, BAILEE			
06:07				MISSED JUMPER by BROVELLI, RILEY
06:04				REBOUND (OFF) by BROVELLI, RILEY
06:04		10-2	H 8	GOOD! LAYUP by BROVELLI, RILEY
05:47	SUB OUT: VANOVER, BAILEE			
05:47	SUB OUT: GREENE, NAKEISHA			
05:47	SUB IN: BARNES, KRISTEN			
05:47	SUB IN: LOVE, DESTANIE			
05:38	MISSED 3PTR by WILLIAMS, BETHANIE			
05:34				REBOUND (DEF) by BROVELLI, RILEY
05:29		13-2	H 11	GOOD! 3PTR by SOSA, KENDALL
05:29				ASSIST by LANSFORD, BROOKE
05:15	GOOD! LAYUP by LOVE, DESTANIE	13-4	H 9	
05:15	ASSIST by LANHAM, BRI			
04:55		15-4	H 11	GOOD! JUMPER by MUNROE, SAMANTHA
04:51				FOUL (PERSONAL) by LANSFORD, BROOKE
04:51				
04:36	TURNOVER (TRAVEL) by WILLIAMS, BETHANIE			
04:21				TURNOVER (BADPASS) by SOSA, KENDALL
04:21	STEAL by LOVE, DESTANIE			
04:13	GOOD! 3PTR by BARNES, KRISTEN	15-7	H 8	
04:13	ASSIST by HAMPTON, AALIYAH			
04:00		17-7	H 10	GOOD! JUMPER by SHANKS, SYDNEY [PNT]
03:51				FOUL (PERSONAL) by BROVELLI, RILEY
03:41	GOOD! FT by HAMPTON, AALIYAH	17-8	H 9	
03:41	GOOD! FT by HAMPTON, AALIYAH	17-9	H 8	
03:41				SUB OUT: BROVELLI, RILEY
03:41				SUB IN: BOWEN, KAIA
03:29				MISSED 3PTR by SOSA, KENDALL
03:25	REBOUND (DEF) by LOVE, DESTANIE			
03:21				FOUL (PERSONAL) by BOWEN, KAIA
03:12	MISSED 3PTR by HAMPTON, AALIYAH			
03:09				REBOUND (DEF) by LANSFORD, BROOKE
03:05				TURNOVER (BADPASS) by SOSA, KENDALL
03:05	STEAL by BARNES, KRISTEN			
02:59				FOUL (PERSONAL) by SHANKS, SYDNEY
02:59	SUB OUT: WILLIAMS, BETHANIE			
02:59	SUB IN: PARKER, LEAH			
02:37	MISSED LAYUP by HAMPTON, AALIYAH			
02:34				REBOUND (DEF) by SHANKS, SYDNEY
02:28				MISSED JUMPER by SHANKS, SYDNEY
02:25	REBOUND (DEF) by PARKER, LEAH			
02:21	GOOD! 3PTR by LANHAM, BRI	17-12	H 5	
02:21	ASSIST by HAMPTON, AALIYAH			
01:56	FOUL (PERSONAL) by BARNES, KRISTEN			
01:56				SUB OUT: LANSFORD, BROOKE
01:56				SUB IN: HELLER, KATELYN
01:56		18-12	H 6	GOOD! FT by SHANKS, SYDNEY

Time	VISITORS: Berea	Score	Margin	HOME: III. Wesleyan
01:56		19-12	H 7	GOOD! FT by SHANKS, SYDNEY
01:56				SUB OUT: SHANKS, SYDNEY
01:56				SUB IN: BROVELLI, RILEY
01:42	MISSED JUMPER by LOVE, DESTANIE			
01:38				REBOUND (DEF) by BROVELLI, RILEY
01:34				MISSED JUMPER by HELLER, KATELYN
01:30	REBOUND (DEF) by HAMPTON, AALIYAH			
01:21	MISSED JUMPER by LOVE, DESTANIE			
01:19	REBOUND (OFF) by TEAM			
01:19	SUB OUT: LOVE, DESTANIE			
01:19	SUB IN: GREENE, NAKEISHA			
01:04	MISSED 3PTR by HAMPTON, AALIYAH			
00:59				REBOUND (DEF) by BROVELLI, RILEY
00:46				MISSED 3PTR by MUNROE, SAMANTHA
00:43				REBOUND (OFF) by BROVELLI, RILEY
00:36				MISSED JUMPER by SOSA, KENDALL
00:33	REBOUND (DEF) by GREENE, NAKEISHA			
00:25	TURNOVER (LOSTBALL) by BARNES, KRISTEN			
00:25				STEAL by SOSA, KENDALL
00:20				MISSED LAYUP by SOSA, KENDALL
00:17				REBOUND (OFF) by BROVELLI, RILEY
00:15	FOUL (PERSONAL) by GREENE, NAKEISHA			
00:15				SUB OUT: SOSA, KENDALL
00:15				SUB IN: CARLSON, KELLY
00:15	SUB OUT: BARNES, KRISTEN			
00:15	SUB IN: VANOVER, BAILEE			
00:15				SUB OUT: MUNROE, SAMANTHA
00:15				SUB IN: LANSFORD, BROOKE
00:15		21-12	H 9	GOOD! JUMPER by BROVELLI, RILEY [PNT]
00:15				ASSIST by HELLER, KATELYN
00:06	MISSED LAYUP by HAMPTON, AALIYAH			
00:03				REBOUND (DEF) by BOWEN, KAIA

Berea 12, III. Wesleyan 21

Points from (This Period)	BER	IWU
In the Paint	4	8
Off Turns	3	7
2nd Chance	0	4
Fast Break	0	0
Bench	5	0

Official Box Score
Berea vs Ill. Wesleyan
Second Quarter Statistics Only
March 06, 2020 at DeVos Fieldhouse - Holland



Berea 13

No.	Player	S	Pts	FG	3FG	FT	OR	DR	TR	PF	A	TO	Blk	Stl	Min	+/-
01	VANOVER, BAILEE	G	5	2-3	0-0	1-2	0	0	0	0	0	0	0	1	9	-6
02	WILLIAMS, BETHANIE	G	5	1-4	1-2	2-2	0	1	1	0	0	0	0	1	8	-2
03	HAMPTON, AALIYAH	G	3	1-2	0-0	1-2	0	2	2	2	0	2	0	0	8	-10
23	GREENE, NAKEISHA	F	0	0-0	0-0	0-0	0	0	0	0	0	0	0	0	0	0
32	LANHAM, BRI	G	0	0-0	0-0	0-0	0	0	0	0	0	1	0	0	6	-1
10	GINTER, JAILYN	G	0	0-0	0-0	0-0	0	0	0	0	0	0	0	0	0	0
12	BARNES, KRISTEN	G	0	0-1	0-1	0-0	0	1	1	0	0	1	0	0	6	-2
22	PARKER, LEAH	G	0	0-4	0-2	0-0	0	0	0	0	0	0	0	0	4	-5
25	LOVE, DESTANIE	F	0	0-1	0-0	0-0	1	2	3	1	0	0	0	0	6	-11
35	BEGGS, ADRIENNE	F	0	0-0	0-0	0-0	0	0	0	0	0	0	0	0	0	0
45	HILL, ISIS	F	0	0-0	0-0	0-0	0	1	1	1	0	0	0	1	4	2
	TEAM						2	0	2	0		0				
TOTALS			13	4-15	1-5	4-6	3	7	10	4	0	4	0	3	50	

Shooting By Period

Period	FG	FG%	3FG	3FG%	FT	FT%
3rd Qtr	7-18	39%	0-5	00%	2-5	40%
4th Qtr	4-17	24%	1-8	13%	0-2	00%
2nd Half	4-15	27%	1-5	20%	4-6	67%
2nd Half	11-35	31%	1-13	08%	2-7	29%
Game	19-64	29.7%	4-24	16.7%	8-15	53.3%

Deadball Rebounds: 4,0

Ill. Wesleyan 20

No.	Player	S	Pts	FG	3FG	FT	OR	DR	TR	PF	A	TO	Blk	Stl	Min	+/-
05	BROVELLI, RILEY	F	2	1-2	0-0	0-0	0	0	0	0	0	2	0	0	10	6
12	SHANKS, SYDNEY	F	5	2-2	0-0	1-1	0	1	1	1	0	0	1	0	3	1
14	MUNROE, SAMANTHA	G	0	0-1	0-1	0-0	0	4	4	0	2	0	0	0	9	8
15	LANSFORD, BROOKE	G	4	1-3	1-2	1-2	0	2	2	1	0	0	0	0	10	7
24	SOSA, KENDALL	G	6	2-4	0-2	2-2	0	0	0	0	1	1	0	0	9	7
03	MOODY, MEGAN	G	0	0-0	0-0	0-0	0	0	0	0	0	0	0	0	0	0
10	COLLINS, EMILY	G	0	0-0	0-0	0-0	0	0	0	0	0	0	0	0	0	0
20	BOWEN, KAIA	F	3	1-1	0-0	1-2	1	1	2	1	0	0	0	0	7	7
21	RETFERFORD, CLAIRE	F	0	0-0	0-0	0-0	0	0	0	0	0	0	0	0	0	0
22	HELLER, KATELYN	G	0	0-1	0-0	0-0	0	0	0	0	0	1	0	0	2	-1
23	CARLSON, KELLY	F	0	0-0	0-0	0-0	0	0	0	0	0	0	0	0	0	0
25	SMITH, HANNAH	C	0	0-0	0-0	0-0	0	0	0	0	0	0	0	0	0	0
	TEAM						1	0	1	0		0				
TOTALS			20	7-14	1-5	5-7	2	8	10	3	3	4	1	0	50	

Shooting By Period

Period	FG	FG%	3FG	3FG%	FT	FT%
3rd Qtr	10-22	45%	1-5	20%	3-4	75%
4th Qtr	4-14	29%	0-4	00%	3-6	50%
2nd Half	7-14	50%	1-5	20%	5-7	71%
2nd Half	14-36	39%	1-9	11%	6-10	60%
Game	29-69	42.0%	5-20	25.0%	13-19	68.4%

Deadball Rebounds: 1,0

Game Notes:

Officials: Brad Duistermars, JR Schoon, Todd Hoke
Attendance: 1001

Start Time: 05:30 PM ET
End Time: 06:59 PM ET
Game Duration: 1:29
Neutral Court;

Score	1st	2nd	3rd	4th	TOT
BER	12	13	16	9	50
IWU	21	20	24	11	76

Points from (This Period)	BER	IWU
In the Paint	4	12
Off Turns	3	2
2nd Chance	4	3
Fast Break	3	0
Bench	0	3

Official Play-By-Play
Berea vs III. Wesleyan
Second Quarter
March 06, 2020 at DeVos Fieldhouse - Holland



Period 2

Starters:

Berea: 1 VANOVER, BAILEE (G); 2 WILLIAMS, BETHANIE (G); 3 HAMPTON, AALIYAH (G); 23 GREENE, NAKEISHA (F); 32 LANHAM, BRI (G);

III. Wesleyan: 5 BROVELLI, RILEY (F); 12 SHANKS, SYDNEY (F); 14 MUNROE, SAMANTHA (G); 15 LANSFORD, BROOKE (G); 24 SOSA, KENDALL (G);

Time	VISITORS: Berea	Score	Margin	HOME: III. Wesleyan
10:00				SUB OUT: BOWEN, KAIA
10:00				SUB OUT: HELLER, KATELYN
10:00				SUB OUT: CARLSON, KELLY
10:00				SUB IN: SHANKS, SYDNEY
10:00				SUB IN: MUNROE, SAMANTHA
10:00				SUB IN: SOSA, KENDALL
10:00	SUB OUT: GREENE, NAKEISHA			
10:00	SUB IN: LOVE, DESTANIE			
09:53	MISSED 3PTR by PARKER, LEAH			
09:50	REBOUND (OFF) by LOVE, DESTANIE			
09:41	MISSED LAYUP by HAMPTON, AALIYAH			
09:41				BLOCK by SHANKS, SYDNEY
09:37	REBOUND (OFF) by TEAM			
09:29	GOOD! LAYUP by VANOVER, BAILEE	21-14	H 7	
09:12		23-14	H 9	GOOD! JUMPER by SHANKS, SYDNEY
08:56	MISSED JUMPER by PARKER, LEAH			
08:52				REBOUND (DEF) by LANSFORD, BROOKE
08:46				TURNOVER (LOSTBALL) by BROVELLI, RILEY
08:46	STEAL by VANOVER, BAILEE			
08:40				FOUL (PERSONAL) by SHANKS, SYDNEY
08:40	MISSED FT by VANOVER, BAILEE			
08:40	REBOUND (OFF) by TEAM			
08:40	GOOD! FT by VANOVER, BAILEE [FB]	23-15	H 8	
08:40				SUB OUT: SHANKS, SYDNEY
08:40				SUB IN: BOWEN, KAIA
08:32				MISSED 3PTR by SOSA, KENDALL
08:28	REBOUND (DEF) by LOVE, DESTANIE			
08:24	MISSED 3PTR by PARKER, LEAH			
08:20				REBOUND (DEF) by MUNROE, SAMANTHA
08:05		25-15	H 10	GOOD! LAYUP by SOSA, KENDALL
08:05				ASSIST by MUNROE, SAMANTHA
07:50	MISSED LAYUP by VANOVER, BAILEE			
07:47				REBOUND (DEF) by BOWEN, KAIA
07:40	FOUL (PERSONAL) by HAMPTON, AALIYAH			
07:40		26-15	H 11	GOOD! FT by LANSFORD, BROOKE
07:40				MISSED FT by LANSFORD, BROOKE
07:40				REBOUND (OFF) by TEAM
07:40		29-15	H 14	GOOD! 3PTR by LANSFORD, BROOKE
07:40				ASSIST by MUNROE, SAMANTHA
07:40	SUB OUT: LANHAM, BRI			
07:40	SUB IN: WILLIAMS, BETHANIE			
07:39	MISSED LAYUP by PARKER, LEAH			
07:34				REBOUND (DEF) by MUNROE, SAMANTHA
07:04				MISSED JUMPER by LANSFORD, BROOKE
07:01	REBOUND (DEF) by WILLIAMS, BETHANIE			
06:53	TURNOVER (BADPASS) by HAMPTON, AALIYAH			
06:25	FOUL (PERSONAL) by HAMPTON, AALIYAH			
06:19	SUB OUT: PARKER, LEAH			
06:19	SUB IN: BARNES, KRISTEN			
06:19		30-15	H 15	GOOD! FT by SOSA, KENDALL
06:19		31-15	H 16	GOOD! FT by SOSA, KENDALL
06:15	MISSED 3PTR by WILLIAMS, BETHANIE			
06:13				REBOUND (DEF) by MUNROE, SAMANTHA
05:56		33-15	H 18	GOOD! LAYUP by SOSA, KENDALL
05:35	TURNOVER (TRAVEL) by BARNES, KRISTEN			
05:23				MISSED 3PTR by SOSA, KENDALL
05:20	REBOUND (DEF) by LOVE, DESTANIE			
05:14				FOUL (PERSONAL) by BOWEN, KAIA
05:14	MISSED FT by HAMPTON, AALIYAH			
05:14	REBOUND (OFF) by TEAM			
05:14	GOOD! FT by HAMPTON, AALIYAH	33-16	H 17	
05:14				SUB OUT: BOWEN, KAIA
05:14				SUB IN: SHANKS, SYDNEY
04:54		35-16	H 19	GOOD! JUMPER by BROVELLI, RILEY [PNT]
04:34	MISSED JUMPER by LOVE, DESTANIE			
04:30				REBOUND (DEF) by SHANKS, SYDNEY
04:21				MISSED 3PTR by LANSFORD, BROOKE
04:18	REBOUND (DEF) by HAMPTON, AALIYAH			
04:15	GOOD! LAYUP by HAMPTON, AALIYAH	35-18	H 17	
03:55		37-18	H 19	GOOD! JUMPER by SHANKS, SYDNEY

Time	VISITORS: Berea	Score	Margin	HOME: III. Wesleyan
03:55				ASSIST by SOSA, KENDALL
03:55	FOUL (PERSONAL) by LOVE, DESTANIE			
03:55				
03:55		38-18	H 20	GOOD! FT by SHANKS, SYDNEY
03:55				SUB OUT: MUNROE, SAMANTHA
03:55				SUB IN: HELLER, KATELYN
03:55	SUB OUT: LOVE, DESTANIE			
03:55	SUB IN: LANHAM, BRI			
03:55				FOUL (PERSONAL) by LANSFORD, BROOKE
03:55	GOOD! FT by WILLIAMS, BETHANIE [FB]	38-19	H 19	
03:55	GOOD! FT by WILLIAMS, BETHANIE [FB]	38-20	H 18	
03:47	SUB OUT: VANOVER, BAILEE			
03:47	SUB IN: HILL, ISIS			
03:42	FOUL (PERSONAL) by HILL, ISIS			
03:23				SUB OUT: BROVELLI, RILEY
03:23				SUB IN: BOWEN, KAIA
03:16		39-20	H 19	GOOD! FT by BOWEN, KAIA
03:15				MISSED FT by BOWEN, KAIA
03:13	REBOUND (DEF) by HILL, ISIS			
03:07	TURNOVER (DRIBBLING) by LANHAM, BRI			
03:07				SUB OUT: SHANKS, SYDNEY
03:07				SUB IN: BROVELLI, RILEY
03:06				TURNOVER (3SEC) by BROVELLI, RILEY
02:58				SUB OUT: SOSA, KENDALL
02:58				SUB IN: MUNROE, SAMANTHA
02:46	MISSED LAYUP by WILLIAMS, BETHANIE			
02:43				REBOUND (DEF) by LANSFORD, BROOKE
02:38				MISSED JUMPER by HELLER, KATELYN
02:35				REBOUND (OFF) by BOWEN, KAIA
02:33				MISSED 3PTR by MUNROE, SAMANTHA
02:30	REBOUND (DEF) by HAMPTON, AALIYAH			
02:24	TURNOVER (BADPASS) by HAMPTON, AALIYAH			
02:24	SUB OUT: HAMPTON, AALIYAH			
02:24	SUB IN: VANOVER, BAILEE			
02:17				TURNOVER (BADPASS) by HELLER, KATELYN
02:17	STEAL by WILLIAMS, BETHANIE			
01:55	MISSED LAYUP by WILLIAMS, BETHANIE			
01:51	REBOUND (OFF) by TEAM			
01:51				SUB OUT: HELLER, KATELYN
01:51				SUB IN: SOSA, KENDALL
01:45	GOOD! JUMPER by VANOVER, BAILEE	39-22	H 17	
01:25		41-22	H 19	GOOD! LAYUP by BOWEN, KAIA
01:10	GOOD! 3PTR by WILLIAMS, BETHANIE	41-25	H 16	
00:53				TURNOVER (LOSTBALL) by SOSA, KENDALL
00:53	STEAL by HILL, ISIS			
00:27	MISSED 3PTR by BARNES, KRISTEN			
00:24				REBOUND (DEF) by MUNROE, SAMANTHA
00:03				MISSED JUMPER by BROVELLI, RILEY
00:00	REBOUND (DEF) by BARNES, KRISTEN			

Berea 25, III. Wesleyan 41

Points from (This Period)	BER	IWU
In the Paint	4	12
Off Turns	3	2
2nd Chance	4	3
Fast Break	3	0
Bench	0	3

Official Box Score
Berea vs III. Wesleyan
Second Half Statistics Only
March 06, 2020 at DeVos Fieldhouse - Holland



Berea 25

No.	Player	S	Pts	FG	3FG	FT	OR	DR	TR	PF	A	TO	Blk	Stl	Min	+/-
01	VANOVER, BAILEE	G	7	3-10	0-3	1-2	1	0	1	1	1	1	0	3	15	-7
02	WILLIAMS, BETHANIE	G	0	0-1	0-1	0-0	0	1	1	1	1	0	0	0	12	-6
03	HAMPTON, AALIYAH	G	4	2-5	0-0	0-2	0	1	1	0	0	3	0	0	11	-9
10	GINTER, JAILYN	G	0	0-1	0-1	0-0	0	1	1	0	0	0	0	0	3	5
12	BARNES, KRISTEN	G	3	1-2	0-1	1-2	0	1	1	1	1	1	0	1	10	-13
22	PARKER, LEAH	G	5	2-8	1-4	0-0	0	0	0	1	0	1	0	2	12	-4
23	GREENE, NAKEISHA	F	0	0-0	0-0	0-0	0	3	3	0	0	1	0	1	7	-8
25	LOVE, DESTANIE	F	6	3-4	0-0	0-1	1	7	8	1	0	0	0	0	11	-4
32	LANHAM, BRI	G	0	0-3	0-3	0-0	0	0	0	3	0	0	0	1	12	-11
35	BEGGS, ADRIENNE	F	0	0-1	0-0	0-0	1	2	3	0	0	1	0	0	3	5
45	HILL, ISIS	F	0	0-0	0-0	0-0	0	0	0	0	0	0	0	0	1	2
	TEAM		0	0-0	0-0	0-0	2	0	2	0	0	1	0	0	0	
TOTALS			25	11-35	1-13	2-7	5	16	21	8	3	9	0	8	98	

Shooting By Period

Period	FG	FG%	3FG	3FG%	FT	FT%
3rd Qtr	7-18	39%	0-5	00%	2-5	40%
4th Qtr	4-17	24%	1-8	13%	0-2	00%
2nd Half	11-35	31%	1-13	08%	2-7	29%
Game	19-64	29.7%	4-24	16.7%	8-15	53.3%

Deadball Rebounds: 4,0

Last FG Half: BER 4th-00:50

III. Wesleyan 35

No.	Player	S	Pts	FG	3FG	FT	OR	DR	TR	PF	A	TO	Blk	Stl	Min	+/-
03	MOODY, MEGAN	G	0	0-2	0-2	0-0	0	1	1	0	0	0	0	0	3	-5
05	BROVELLI, RILEY	F	7	3-5	0-0	1-2	2	3	5	2	0	1	1	1	12	15
10	COLLINS, EMILY	G	2	1-1	0-0	0-0	0	2	2	0	0	0	0	0	3	-5
12	SHANKS, SYDNEY	F	2	1-6	0-1	0-0	0	4	4	0	1	2	1	0	12	4
14	MUNROE, SAMANTHA	G	2	1-3	0-2	0-0	0	4	4	2	2	2	0	0	15	15
15	LANSFORD, BROOKE	G	4	1-6	0-2	2-2	0	1	1	0	1	0	0	0	16	15
20	BOWEN, KAIA	F	5	1-3	0-0	3-4	2	1	3	1	0	0	0	4	8	4
21	RETFERD, CLAIRE	F	0	0-1	0-0	0-0	1	0	1	0	0	0	0	0	3	-5
22	HELLER, KATELYN	G	2	1-2	0-0	0-2	0	1	1	0	0	1	0	0	7	-1
23	CARLSON, KELLY	F	0	0-0	0-0	0-0	0	0	0	1	0	1	0	0	5	-1
24	SOSA, KENDALL	G	11	5-7	1-2	0-0	0	4	4	0	3	1	2	2	14	16
25	SMITH, HANNAH	C	0	0-0	0-0	0-0	0	1	1	0	0	1	0	0	1	-2
	TEAM		0	0-0	0-0	0-0	4	0	4	0	0	0	0	0	0	
TOTALS			35	14-36	1-9	6-10	9	22	31	6	7	9	4	7	98	

Shooting By Period

Period	FG	FG%	3FG	3FG%	FT	FT%
3rd Qtr	10-22	45%	1-5	20%	3-4	75%
4th Qtr	4-14	29%	0-4	00%	3-6	50%
2nd Half	14-36	39%	1-9	11%	6-10	60%
Game	29-69	42.0%	5-20	25.0%	13-19	68.4%

Deadball Rebounds: 1,0

Last FG Half: IWU 4th-01:36

Game Notes:

Officials: Brad Duistermars, JR Schoon, Todd Hoke

Attendance: 1001

Start Time: 05:30 PM ET

End Time: 06:59 PM ET

Game Duration: 1:29

Neutral Court;

Score	1st	2nd	3rd	4th	TOT
BER	12	13	16	9	50
IWU	21	20	24	11	76

Points from (This Period)	BER	IWU
In the Paint	18	24
Off Turns	4	14
2nd Chance	5	1
Fast Break	0	8
Bench	14	9

Official Box Score
Berea vs III. Wesleyan
Third Quarter Statistics Only
March 06, 2020 at DeVos Fieldhouse - Holland



Berea 25

No.	Player	S	Pts	FG	3FG	FT	OR	DR	TR	PF	A	TO	Blk	Stl	Min	+/-
01	VANOVER, BAILEE	G	5	2-5	0-1	1-2	1	0	1	0	0	1	0	1	10	-8
02	WILLIAMS, BETHANIE	G	0	0-1	0-1	0-0	0	1	1	0	1	0	0	0	8	-3
03	HAMPTON, AALIYAH	G	2	1-3	0-0	0-0	0	1	1	0	0	3	0	0	7	-6
23	GREENE, NAKEISHA	F	0	0-0	0-0	0-0	0	2	2	0	0	1	0	0	4	-4
32	LANHAM, BRI	G	0	0-1	0-1	0-0	0	0	0	1	0	0	0	0	5	-4
10	GINTER, JAILYN	G	0	0-0	0-0	0-0	0	0	0	0	0	0	0	0	0	0
12	BARNES, KRISTEN	G	3	1-1	0-0	1-2	0	1	1	1	1	0	0	0	7	-9
22	PARKER, LEAH	G	0	0-4	0-2	0-0	0	0	0	1	0	0	0	1	3	-2
25	LOVE, DESTANIE	F	6	3-3	0-0	0-1	1	3	4	0	0	0	0	0	6	-4
35	BEGGS, ADRIENNE	F	0	0-0	0-0	0-0	0	0	0	0	0	0	0	0	0	0
45	HILL, ISIS	F	0	0-0	0-0	0-0	0	0	0	0	0	0	0	0	0	0
	TEAM						2	0	2	0		0				
TOTALS			16	7-18	0-5	2-5	4	8	12	3	2	5	0	2	50	

Shooting By Period

Period	FG	FG%	3FG	3FG%	FT	FT%
2nd Half	0-0	0%	0-0	0%	0-0	0%
Game	19-64	29.7%	4-24	16.7%	8-15	53.3%

Deadball Rebounds: 4,0

III. Wesleyan 35

No.	Player	S	Pts	FG	3FG	FT	OR	DR	TR	PF	A	TO	Blk	Stl	Min	+/-
05	BROVELLI, RILEY	F	2	1-2	0-0	0-0	2	0	2	2	0	0	0	0	6	8
12	SHANKS, SYDNEY	F	0	0-4	0-1	0-0	0	2	2	0	1	1	1	0	5	-3
14	MUNROE, SAMANTHA	G	2	1-2	0-1	0-0	0	3	3	2	0	1	0	0	10	8
15	LANSFORD, BROOKE	G	2	1-5	0-1	0-0	0	0	0	0	1	0	0	0	10	8
24	SOSA, KENDALL	G	11	5-6	1-2	0-0	0	3	3	0	2	0	1	1	10	8
03	MOODY, MEGAN	G	0	0-0	0-0	0-0	0	0	0	0	0	0	0	0	0	0
10	COLLINS, EMILY	G	0	0-0	0-0	0-0	0	0	0	0	0	0	0	0	0	0
20	BOWEN, KAIA	F	5	1-2	0-0	3-4	0	1	1	0	0	0	0	3	5	5
21	RETFERFORD, CLAIRE	F	0	0-0	0-0	0-0	0	0	0	0	0	0	0	0	0	0
22	HELLER, KATELYN	G	2	1-1	0-0	0-0	0	0	0	0	0	0	0	0	2	4
23	CARLSON, KELLY	F	0	0-0	0-0	0-0	0	0	0	0	0	0	0	0	3	2
25	SMITH, HANNAH	C	0	0-0	0-0	0-0	0	0	0	0	0	0	0	0	0	0
	TEAM						3	0	3	0		0				
TOTALS			24	10-22	1-5	3-4	5	9	14	4	4	2	2	4	50	

Shooting By Period

Period	FG	FG%	3FG	3FG%	FT	FT%
2nd Half	0-0	0%	0-0	0%	0-0	0%
Game	29-69	42.0%	5-20	25.0%	13-19	68.4%

Deadball Rebounds: 1,0

Game Notes:

Officials: Brad Duistermars, JR Schoon, Todd Hoke
Attendance: 1001

Start Time: 05:30 PM ET
End Time: 06:59 PM ET
Game Duration: 1:29
Neutral Court;

Score	1st	2nd	3rd	4th	TOT
BER	12	13	16	9	50
IWU	21	20	24	11	76

Points from (This Period)	BER	IWU
In the Paint	12	16
Off Turns	2	10
2nd Chance	5	1
Fast Break	0	4
Bench	9	7

Official By-By-Play
Berea vs III. Wesleyan
Third Quarter
March 06, 2020 at DeVos Fieldhouse - Holland



Period 3

Starters:

Berea: 1 VANOVER, BAILEE (G); 2 WILLIAMS, BETHANIE (G); 3 HAMPTON, AALIYAH (G); 23 GREENE, NAKEISHA (F); 32 LANHAM, BRI (G);

III. Wesleyan: 5 BROVELLI, RILEY (F); 12 SHANKS, SYDNEY (F); 14 MUNROE, SAMANTHA (G); 15 LANSFORD, BROOKE (G); 24 SOSA, KENDALL (G);

Time	VISITORS: Berea	Score	Margin	HOME: III. Wesleyan
10:00				SUB OUT: BOWEN, KAIA
10:00				SUB IN: SHANKS, SYDNEY
10:00	SUB OUT: BARNES, KRISTEN			
10:00	SUB OUT: HILL, ISIS			
10:00	SUB IN: HAMPTON, AALIYAH			
10:00	SUB IN: GREENE, NAKEISHA			
09:58	TURNOVER (BADPASS) by HAMPTON, AALIYAH			
09:52		43-25	H 18	GOOD! LAYUP by SOSA, KENDALL
09:52				ASSIST by SHANKS, SYDNEY
09:37	MISSED 3PTR by LANHAM, BRI			
09:33				REBOUND (DEF) by SOSA, KENDALL
09:27				MISSED 3PTR by MUNROE, SAMANTHA
09:24	REBOUND (DEF) by GREENE, NAKEISHA			
09:07	MISSED JUMPER by HAMPTON, AALIYAH			
09:05				REBOUND (DEF) by SHANKS, SYDNEY
09:01				MISSED LAYUP by LANSFORD, BROOKE
08:58				REBOUND (OFF) by BROVELLI, RILEY
08:56				MISSED 3PTR by SHANKS, SYDNEY
08:48				REBOUND (OFF) by TEAM
08:47	FOUL (PERSONAL) by LANHAM, BRI			
08:47	SUB OUT: GREENE, NAKEISHA			
08:47	SUB IN: LOVE, DESTANIE			
08:27				MISSED JUMPER by SHANKS, SYDNEY
08:24	REBOUND (DEF) by LOVE, DESTANIE			
08:18	MISSED JUMPER by VANOVER, BAILEE			
08:13	REBOUND (OFF) by TEAM			
08:02				FOUL (PERSONAL) by BROVELLI, RILEY
07:56	SUB OUT: LANHAM, BRI			
07:56	SUB IN: PARKER, LEAH			
07:56	GOOD! FT by VANOVER, BAILEE	43-26	H 17	
07:56	MISSED FT by VANOVER, BAILEE			
07:56				REBOUND (DEF) by SHANKS, SYDNEY
07:46				MISSED JUMPER by SHANKS, SYDNEY
07:42				REBOUND (OFF) by TEAM
07:42				SUB OUT: BROVELLI, RILEY
07:42				SUB IN: BOWEN, KAIA
07:36				MISSED LAYUP by BOWEN, KAIA
07:33	REBOUND (DEF) by LOVE, DESTANIE			
07:27	MISSED LAYUP by VANOVER, BAILEE			
07:27				BLOCK by SHANKS, SYDNEY
07:22				REBOUND (DEF) by MUNROE, SAMANTHA
07:22				TURNOVER (LOSTBALL) by MUNROE, SAMANTHA
07:22	STEAL by PARKER, LEAH			
07:17	MISSED JUMPER by PARKER, LEAH			
07:17	REBOUND (OFF) by LOVE, DESTANIE			
07:17	GOOD! JUMPER by LOVE, DESTANIE	43-28	H 15	
07:17				FOUL (PERSONAL) by MUNROE, SAMANTHA
07:17	MISSED FT by LOVE, DESTANIE			
07:17				REBOUND (DEF) by MUNROE, SAMANTHA
07:17	SUB OUT: WILLIAMS, BETHANIE			
07:17	SUB IN: BARNES, KRISTEN			
07:06		45-28	H 17	GOOD! JUMPER by SOSA, KENDALL [PNT]
06:58	GOOD! LAYUP by HAMPTON, AALIYAH	45-30	H 15	
06:42				TIMEOUT 30SEC
06:42				
06:37				TURNOVER (BADPASS) by SHANKS, SYDNEY
06:37	STEAL by VANOVER, BAILEE			
06:36	MISSED 3PTR by PARKER, LEAH			
06:33				REBOUND (DEF) by MUNROE, SAMANTHA
06:32				MISSED JUMPER by SHANKS, SYDNEY
06:29	REBOUND (DEF) by BARNES, KRISTEN			
06:20	MISSED LAYUP by HAMPTON, AALIYAH			
06:20				BLOCK by SOSA, KENDALL
06:14	REBOUND (OFF) by TEAM			
06:14				SUB OUT: SHANKS, SYDNEY
06:14				SUB IN: BROVELLI, RILEY
06:07	MISSED LAYUP by PARKER, LEAH			
06:04				REBOUND (DEF) by BOWEN, KAIA
05:53				MISSED JUMPER by BROVELLI, RILEY
05:47				REBOUND (OFF) by TEAM

Time	VISITORS: Berea	Score	Margin	HOME: III. Wesleyan
05:47	FOUL (PERSONAL) by PARKER, LEAH			
05:47		46-30	H 16	GOOD! FT by BOWEN, KAIA
05:47				MISSED FT by BOWEN, KAIA
05:47	REBOUND (DEF) by LOVE, DESTANIE			
05:37	TURNOVER (LOSTBALL) by VANOVER, BAILEE			
05:37				STEAL by BOWEN, KAIA
05:29		48-30	H 18	GOOD! JUMPER by BROVELLI, RILEY [PNT]
05:29				ASSIST by LANSFORD, BROOKE
05:08	MISSED 3PTR by PARKER, LEAH			
05:05				REBOUND (DEF) by SOSA, KENDALL
05:03		50-30	H 20	GOOD! LAYUP by MUNROE, SAMANTHA
05:03				ASSIST by SOSA, KENDALL
04:57	TIMEOUT 30SEC			
04:57				
04:57	SUB OUT: PARKER, LEAH			
04:57	SUB IN: WILLIAMS, BETHANIE			
04:41	TURNOVER (LOSTBALL) by HAMPTON, AALIYAH			
04:41				STEAL by BOWEN, KAIA
04:32	FOUL (PERSONAL) by BARNES, KRISTEN			
04:32		51-30	H 21	GOOD! FT by BOWEN, KAIA
04:32		52-30	H 22	GOOD! FT by BOWEN, KAIA
04:11	TURNOVER (LOSTBALL) by HAMPTON, AALIYAH			
04:11				STEAL by BOWEN, KAIA
04:06		54-30	H 24	GOOD! LAYUP by BOWEN, KAIA [FB]
03:46	GOOD! LAYUP by LOVE, DESTANIE	54-32	H 22	
03:46	ASSIST by WILLIAMS, BETHANIE			
03:30		56-32	H 24	GOOD! JUMPER by SOSA, KENDALL
03:14	GOOD! JUMPER by LOVE, DESTANIE	56-34	H 22	
03:14	ASSIST by BARNES, KRISTEN			
02:58				MISSED JUMPER by LANSFORD, BROOKE
02:55				REBOUND (OFF) by BROVELLI, RILEY
02:53				MISSED 3PTR by SOSA, KENDALL
02:49	REBOUND (DEF) by HAMPTON, AALIYAH			
02:49				FOUL (PERSONAL) by BROVELLI, RILEY
02:49				SUB OUT: BROVELLI, RILEY
02:49				SUB OUT: BOWEN, KAIA
02:49				SUB IN: SHANKS, SYDNEY
02:49				SUB IN: CARLSON, KELLY
02:49	SUB OUT: HAMPTON, AALIYAH			
02:49	SUB OUT: LOVE, DESTANIE			
02:49	SUB IN: GREENE, NAKEISHA			
02:49	SUB IN: LANHAM, BRI			
02:34	MISSED 3PTR by VANOVER, BAILEE			
02:31	REBOUND (OFF) by VANOVER, BAILEE			
02:30	GOOD! LAYUP by VANOVER, BAILEE	56-36	H 20	
02:12				MISSED 3PTR by LANSFORD, BROOKE
02:08	REBOUND (DEF) by WILLIAMS, BETHANIE			
01:59				FOUL (PERSONAL) by MUNROE, SAMANTHA
01:59				SUB OUT: SHANKS, SYDNEY
01:59				SUB IN: HELLER, KATELYN
01:59	MISSED FT by BARNES, KRISTEN			
01:59	REBOUND (OFF) by TEAM			
01:59	GOOD! FT by BARNES, KRISTEN	56-37	H 19	
01:45		59-37	H 22	GOOD! 3PTR by SOSA, KENDALL
01:17	MISSED 3PTR by WILLIAMS, BETHANIE			
01:14				REBOUND (DEF) by SOSA, KENDALL
01:11		61-37	H 24	GOOD! LAYUP by LANSFORD, BROOKE [FB]
01:11				ASSIST by SOSA, KENDALL
00:59	GOOD! LAYUP by VANOVER, BAILEE [PNT]	61-39	H 22	
00:46				MISSED JUMPER by LANSFORD, BROOKE
00:43	REBOUND (DEF) by GREENE, NAKEISHA			
00:41	TURNOVER (BADPASS) by GREENE, NAKEISHA			
00:41				STEAL by SOSA, KENDALL
00:36		63-39	H 24	GOOD! LAYUP by SOSA, KENDALL
00:15	GOOD! JUMPER by BARNES, KRISTEN	63-41	H 22	
00:05		65-41	H 24	GOOD! LAYUP by HELLER, KATELYN

Berea 41, III. Wesleyan 65

Points from (This Period)	BER	IWU
In the Paint	12	16
Off Turns	2	10
2nd Chance	5	1
Fast Break	0	4
Bench	9	7

Official Box Score
Berea vs III. Wesleyan
Fourth Quarter Statistics Only
March 06, 2020 at DeVos Fieldhouse - Holland



Berea 9

No.	Player	S	Pts	FG	3FG	FT	OR	DR	TR	PF	A	TO	Blk	Stl	Min	+/-
01	VANOVER, BAILEE	G	2	1-5	0-2	0-0	0	0	0	1	1	0	0	2	5	1
02	WILLIAMS, BETHANIE	G	0	0-0	0-0	0-0	0	0	0	1	0	0	0	0	4	-3
03	HAMPTON, AALIYAH	G	2	1-2	0-0	0-2	0	0	0	0	0	0	0	0	4	-3
23	GREENE, NAKEISHA	F	0	0-0	0-0	0-0	0	1	1	0	0	0	0	1	3	-4
32	LANHAM, BRI	G	0	0-2	0-2	0-0	0	0	0	2	0	0	0	1	7	-7
10	GINTER, JAILYN	G	0	0-1	0-1	0-0	0	1	1	0	0	0	0	0	3	5
12	BARNES, KRISTEN	G	0	0-1	0-1	0-0	0	0	0	0	0	1	0	1	3	-4
22	PARKER, LEAH	G	5	2-4	1-2	0-0	0	0	0	0	0	1	0	1	9	-2
25	LOVE, DESTANIE	F	0	0-1	0-0	0-0	0	4	4	1	0	0	0	0	5	0
35	BEGGS, ADRIENNE	F	0	0-1	0-0	0-0	1	2	3	0	0	1	0	0	3	5
45	HILL, ISIS	F	0	0-0	0-0	0-0	0	0	0	0	0	0	0	0	1	2
	TEAM						0	0	0	0		1				
TOTALS			9	4-17	1-8	0-2	1	8	9	5	1	4	0	6	48	

Shooting By Period

Period	FG	FG%	3FG	3FG%	FT	FT%
Game	19-64	29.7%	4-24	16.7%	8-15	53.3%

Deadball Rebounds: 4,0

III. Wesleyan 11

No.	Player	S	Pts	FG	3FG	FT	OR	DR	TR	PF	A	TO	Blk	Stl	Min	+/-
05	BROVELLI, RILEY	F	5	2-3	0-0	1-2	0	3	3	0	0	1	1	1	6	7
12	SHANKS, SYDNEY	F	2	1-2	0-0	0-0	0	2	2	0	0	1	0	0	7	7
14	MUNROE, SAMANTHA	G	0	0-1	0-1	0-0	0	1	1	0	2	1	0	0	5	7
15	LANSFORD, BROOKE	G	2	0-1	0-1	2-2	0	1	1	0	0	0	0	0	6	7
24	SOSA, KENDALL	G	0	0-1	0-0	0-0	0	1	1	0	1	1	1	1	4	8
03	MOODY, MEGAN	G	0	0-2	0-2	0-0	0	1	1	0	0	0	0	0	3	-5
10	COLLINS, EMILY	G	2	1-1	0-0	0-0	0	2	2	0	0	0	0	0	3	-5
20	BOWEN, KAIA	F	0	0-1	0-0	0-0	2	0	2	1	0	0	0	1	3	-1
21	RETFERFORD, CLAIRE	F	0	0-1	0-0	0-0	1	0	1	0	0	0	0	0	3	-5
22	HELLER, KATELYN	G	0	0-1	0-0	0-2	0	1	1	0	0	1	0	0	5	-5
23	CARLSON, KELLY	F	0	0-0	0-0	0-0	0	0	0	1	0	1	0	0	2	-3
25	SMITH, HANNAH	C	0	0-0	0-0	0-0	0	1	1	0	0	1	0	0	1	-2
	TEAM						1	0	1	0		0				
TOTALS			11	4-14	0-4	3-6	4	13	17	2	3	7	2	3	48	

Shooting By Period

Period	FG	FG%	3FG	3FG%	FT	FT%
Game	29-69	42.0%	5-20	25.0%	13-19	68.4%

Deadball Rebounds: 1,0

Game Notes:

Officials: **Brad Duistermars, JR Schoon, Todd Hoke**
 Attendance: **1001**

Start Time: **05:30 PM ET**
 End Time: **06:59 PM ET**
 Game Duration: **1:29**
 Neutral Court;

Score	1st	2nd	3rd	4th	TOT
BER	12	13	16	9	50
IWU	21	20	24	11	76

Points from (This Period)	BER	IWU
In the Paint	6	8
Off Turns	2	4
2nd Chance	0	0
Fast Break	0	4
Bench	5	2

Official Play-By-Play
Berea vs Ill. Wesleyan
Fourth Quarter
March 06, 2020 at DeVos Fieldhouse - Holland



Period 4

Starters:

Berea: 1 VANOVER, BAILEE (G); 2 WILLIAMS, BETHANIE (G); 3 HAMPTON, AALIYAH (G); 23 GREENE, NAKEISHA (F); 32 LANHAM, BRI (G);

Ill. Wesleyan: 5 BROVELLI, RILEY (F); 12 SHANKS, SYDNEY (F); 14 MUNROE, SAMANTHA (G); 15 LANSFORD, BROOKE (G); 24 SOSA, KENDALL (G);

Time	VISITORS: Berea	Score	Margin	HOME: Ill. Wesleyan
10:00				SUB OUT: HELLER, KATELYN
10:00				SUB OUT: CARLSON, KELLY
10:00				SUB IN: BROVELLI, RILEY
10:00				SUB IN: SHANKS, SYDNEY
09:45	MISSED 3PTR by VANOVER, BAILEE			
09:37				REBOUND (DEF) by MUNROE, SAMANTHA
09:34				TURNOVER (TRAVEL) by SOSA, KENDALL
09:34	SUB OUT: WILLIAMS, BETHANIE			
09:34	SUB IN: PARKER, LEAH			
09:24	MISSED JUMPER by VANOVER, BAILEE			
09:24				BLOCK by BROVELLI, RILEY
09:18				REBOUND (DEF) by LANSFORD, BROOKE
09:18	FOUL (PERSONAL) by LANHAM, BRI			
09:13				TURNOVER (BADPASS) by SHANKS, SYDNEY
09:13	STEAL by GREENE, NAKEISHA			
09:03	MISSED LAYUP by PARKER, LEAH			
08:59				REBOUND (DEF) by SHANKS, SYDNEY
08:58		67-41	H 26	GOOD! LAYUP by BROVELLI, RILEY
08:58				ASSIST by MUNROE, SAMANTHA
08:43	TURNOVER (LOSTBALL) by BARNES, KRISTEN			
08:43				STEAL by SOSA, KENDALL
08:38		69-41	H 28	GOOD! LAYUP by SHANKS, SYDNEY [FB/PNT]
08:38				ASSIST by SOSA, KENDALL
08:19	MISSED JUMPER by VANOVER, BAILEE			
08:19				BLOCK by SOSA, KENDALL
08:14				REBOUND (DEF) by BROVELLI, RILEY
08:13				TURNOVER (LOSTBALL) by MUNROE, SAMANTHA
08:13	STEAL by BARNES, KRISTEN			
08:05	MISSED 3PTR by LANHAM, BRI			
08:01				REBOUND (DEF) by BROVELLI, RILEY
07:47				MISSED JUMPER by SOSA, KENDALL
07:44	REBOUND (DEF) by GREENE, NAKEISHA			
07:33	MISSED 3PTR by BARNES, KRISTEN			
07:30				REBOUND (DEF) by BROVELLI, RILEY
07:21				TURNOVER (LOSTBALL) by BROVELLI, RILEY
07:21	STEAL by LANHAM, BRI			
07:06	TIMEOUT 30SEC			
07:06				
07:06	SUB OUT: VANOVER, BAILEE			
07:06	SUB OUT: BARNES, KRISTEN			
07:06	SUB OUT: GREENE, NAKEISHA			
07:06	SUB IN: WILLIAMS, BETHANIE			
07:06	SUB IN: HAMPTON, AALIYAH			
07:06	SUB IN: LOVE, DESTANIE			
06:48	TURNOVER (SHOTCLOCK) by TEAM			
06:26		71-41	H 30	GOOD! LAYUP by BROVELLI, RILEY
06:26				ASSIST by MUNROE, SAMANTHA
06:13	MISSED 3PTR by PARKER, LEAH			
06:09				REBOUND (DEF) by SOSA, KENDALL
06:07	FOUL (PERSONAL) by LANHAM, BRI			
06:07		72-41	H 31	GOOD! FT by LANSFORD, BROOKE [FB]
06:07		73-41	H 32	GOOD! FT by LANSFORD, BROOKE [FB]
06:07				SUB OUT: SOSA, KENDALL
06:07				SUB IN: BOWEN, KAIA
05:50	TURNOVER (BADPASS) by PARKER, LEAH			
05:50				STEAL by BROVELLI, RILEY
05:30				MISSED 3PTR by MUNROE, SAMANTHA
05:25	REBOUND (DEF) by LOVE, DESTANIE			
05:19	GOOD! LAYUP by HAMPTON, AALIYAH	73-43	H 30	
04:57	FOUL (PERSONAL) by LOVE, DESTANIE			
04:57		74-43	H 31	GOOD! FT by BROVELLI, RILEY
04:57				MISSED FT by BROVELLI, RILEY
04:57				REBOUND (OFF) by TEAM
04:57	FOUL (PERSONAL) by WILLIAMS, BETHANIE			
04:57				SUB OUT: MUNROE, SAMANTHA
04:57				SUB IN: HELLER, KATELYN
04:43				MISSED 3PTR by LANSFORD, BROOKE
04:40				REBOUND (OFF) by BOWEN, KAIA
04:29				MISSED JUMPER by BROVELLI, RILEY
04:26				REBOUND (OFF) by BOWEN, KAIA

Time	VISITORS: Berea	Score	Margin	HOME: III. Wesleyan
04:25				MISSED JUMPER by BOWEN, KAIA
04:23	REBOUND (DEF) by LOVE, DESTANIE			
04:19	MISSED LAYUP by HAMPTON, AALIYAH			
04:17				REBOUND (DEF) by HELLER, KATELYN
03:58				MISSED JUMPER by HELLER, KATELYN
03:55	REBOUND (DEF) by LOVE, DESTANIE			
03:48				FOUL (PERSONAL) by BOWEN, KAIA
03:48				SUB OUT: BROVELLI, RILEY
03:48				SUB OUT: LANSFORD, BROOKE
03:48				SUB IN: MOODY, MEGAN
03:48				SUB IN: CARLSON, KELLY
03:48	SUB OUT: WILLIAMS, BETHANIE			
03:48	SUB IN: BEGGS, ADRIENNE			
03:48	MISSED FT by HAMPTON, AALIYAH			
03:48	REBOUND (OFF) by TEAM			
03:48	MISSED FT by HAMPTON, AALIYAH			
03:47				REBOUND (DEF) by SHANKS, SYDNEY
03:39	SUB OUT: LANHAM, BRI			
03:39	SUB IN: GINTER, JAILYN			
03:37				MISSED 3PTR by MOODY, MEGAN
03:32	REBOUND (DEF) by BEGGS, ADRIENNE			
03:31	TURNOVER (BADPASS) by BEGGS, ADRIENNE			
03:31				STEAL by BOWEN, KAIA
03:03				MISSED JUMPER by SHANKS, SYDNEY
02:59	REBOUND (DEF) by LOVE, DESTANIE			
02:59				FOUL (PERSONAL) by CARLSON, KELLY
02:59				SUB OUT: SHANKS, SYDNEY
02:59				SUB OUT: BOWEN, KAIA
02:59				SUB IN: COLLINS, EMILY
02:59				SUB IN: RETHERFORD, CLAIRE
02:59	SUB OUT: HAMPTON, AALIYAH			
02:59	SUB IN: VANOVER, BAILEE			
02:50	GOOD! 3PTR by PARKER, LEAH	74-46	H 28	
02:50	ASSIST by VANOVER, BAILEE			
02:39				TURNOVER (LOSTBALL) by HELLER, KATELYN
02:39	STEAL by VANOVER, BAILEE			
02:31	MISSED 3PTR by GINTER, JAILYN			
02:26				REBOUND (DEF) by MOODY, MEGAN
02:04				TURNOVER (BADPASS) by CARLSON, KELLY
02:04	STEAL by VANOVER, BAILEE			
01:55	MISSED JUMPER by LOVE, DESTANIE			
01:49	REBOUND (OFF) by BEGGS, ADRIENNE			
01:49	MISSED JUMPER by BEGGS, ADRIENNE			
01:46				REBOUND (DEF) by COLLINS, EMILY
01:41				TIMEOUT 30SEC
01:41				SUB OUT: CARLSON, KELLY
01:41				SUB IN: SMITH, HANNAH
01:41	SUB OUT: LOVE, DESTANIE			
01:41	SUB IN: HILL, ISIS			
01:36		76-46	H 30	GOOD! JUMPER by COLLINS, EMILY [PNT]
01:24	MISSED 3PTR by VANOVER, BAILEE			
01:20				REBOUND (DEF) by SMITH, HANNAH
01:19				TURNOVER (BADPASS) by SMITH, HANNAH
01:19	STEAL by PARKER, LEAH			
01:16	GOOD! LAYUP by PARKER, LEAH	76-48	H 28	
00:59				MISSED JUMPER by RETHERFORD, CLAIRE
00:54	REBOUND (DEF) by BEGGS, ADRIENNE			
00:50	GOOD! LAYUP by VANOVER, BAILEE	76-50	H 26	
00:42	FOUL (PERSONAL) by VANOVER, BAILEE			
00:42				MISSED FT by HELLER, KATELYN
00:42				REBOUND (OFF) by TEAM
00:42				MISSED FT by HELLER, KATELYN
00:42				REBOUND (OFF) by RETHERFORD, CLAIRE
00:42				MISSED 3PTR by MOODY, MEGAN
00:42	REBOUND (DEF) by GINTER, JAILYN			
00:39	SUB OUT: VANOVER, BAILEE			
00:39	SUB OUT: GINTER, JAILYN			
00:39	SUB OUT: PARKER, LEAH			
00:39	SUB OUT: BEGGS, ADRIENNE			
00:39	SUB IN: WILLIAMS, BETHANIE			
00:39	SUB IN: BARNES, KRISTEN			
00:39	SUB IN: GREENE, NAKEISHA			
00:39	SUB IN: LANHAM, BRI			
00:27	MISSED 3PTR by LANHAM, BRI			
00:23				REBOUND (DEF) by COLLINS, EMILY

Berea 50, III. Wesleyan 76

Points from (This Period)	BER	IWU
In the Paint	6	8
Off Turns	2	4
2nd Chance	0	0
Fast Break	0	4
Bench	5	2

Official Scoring/Possession Reference Chart
Berea vs III. Wesleyan
Period 1
March 06, 2020 at DeVos Fieldhouse - Holland



Period 1

Starters:

Berea: 1 VANOVER, BAILEE (G); 2 WILLIAMS, BETHANIE (G); 3 HAMPTON, AALIYAH (G); 23 GREENE, NAKEISHA (F); 32 LANHAM, BRI (G);

III. Wesleyan: 5 BROVELLI, RILEY (F); 12 SHANKS, SYDNEY (F); 14 MUNROE, SAMANTHA (G); 15 LANSFORD, BROOKE (G); 24 SOSA, KENDALL (G);

Time	VISITORS: Berea	Score	Margin	HOME: III. Wesleyan
09:44	GOOD! JUMPER by WILLIAMS, BETHANIE [PNT]	0-2	V 2	
09:20		3-2	H 1	GOOD! 3PTR by SOSA, KENDALL
08:54		6-2	H 4	GOOD! 3PTR by SOSA, KENDALL
07:54		8-2	H 6	GOOD! JUMPER by BROVELLI, RILEY
06:04		10-2	H 8	GOOD! LAYUP by BROVELLI, RILEY
05:29		13-2	H 11	GOOD! 3PTR by SOSA, KENDALL
05:15	GOOD! LAYUP by LOVE, DESTANIE	13-4	H 9	
04:55		15-4	H 11	GOOD! JUMPER by MUNROE, SAMANTHA
04:13	GOOD! 3PTR by BARNES, KRISTEN	15-7	H 8	
04:00		17-7	H 10	GOOD! JUMPER by SHANKS, SYDNEY [PNT]
03:41	GOOD! FT by HAMPTON, AALIYAH	17-8	H 9	
03:41	GOOD! FT by HAMPTON, AALIYAH	17-9	H 8	
02:21	GOOD! 3PTR by LANHAM, BRI	17-12	H 5	
01:56		18-12	H 6	GOOD! FT by SHANKS, SYDNEY
01:56		19-12	H 7	GOOD! FT by SHANKS, SYDNEY
00:15		21-12	H 9	GOOD! JUMPER by BROVELLI, RILEY [PNT]

Berea 12, III. Wesleyan 21

Official Scoring/Possession Reference Chart
Berea vs III. Wesleyan
Period 2
March 06, 2020 at DeVos Fieldhouse - Holland



Period 2

Starters:

Berea: 1 VANOVER, BAILEE (G); 2 WILLIAMS, BETHANIE (G); 3 HAMPTON, AALIYAH (G); 23 GREENE, NAKEISHA (F); 32 LANHAM, BRI (G);

III. Wesleyan: 5 BROVELLI, RILEY (F); 12 SHANKS, SYDNEY (F); 14 MUNROE, SAMANTHA (G); 15 LANSFORD, BROOKE (G); 24 SOSA, KENDALL (G);

Time	VISITORS: Berea	Score	Margin	HOME: III. Wesleyan
09:29	GOOD! LAYUP by VANOVER, BAILEE	21-14	H 7	
09:12		23-14	H 9	GOOD! JUMPER by SHANKS, SYDNEY
08:40	GOOD! FT by VANOVER, BAILEE [FB]	23-15	H 8	
08:05		25-15	H 10	GOOD! LAYUP by SOSA, KENDALL
07:40		26-15	H 11	GOOD! FT by LANSFORD, BROOKE
07:40		29-15	H 14	GOOD! 3PTR by LANSFORD, BROOKE
06:19		30-15	H 15	GOOD! FT by SOSA, KENDALL
06:19		31-15	H 16	GOOD! FT by SOSA, KENDALL
05:56		33-15	H 18	GOOD! LAYUP by SOSA, KENDALL
05:14	GOOD! FT by HAMPTON, AALIYAH	33-16	H 17	
04:54		35-16	H 19	GOOD! JUMPER by BROVELLI, RILEY [PNT]
04:15	GOOD! LAYUP by HAMPTON, AALIYAH	35-18	H 17	
03:55		37-18	H 19	GOOD! JUMPER by SHANKS, SYDNEY
03:55		38-18	H 20	GOOD! FT by SHANKS, SYDNEY
03:55	GOOD! FT by WILLIAMS, BETHANIE [FB]	38-19	H 19	
03:55	GOOD! FT by WILLIAMS, BETHANIE [FB]	38-20	H 18	
03:16		39-20	H 19	GOOD! FT by BOWEN, KAIA
01:45	GOOD! JUMPER by VANOVER, BAILEE	39-22	H 17	
01:25		41-22	H 19	GOOD! LAYUP by BOWEN, KAIA
01:10	GOOD! 3PTR by WILLIAMS, BETHANIE	41-25	H 16	

Berea 25, III. Wesleyan 41

Official Scoring/Possession Reference Chart
Berea vs III. Wesleyan
Period 3
March 06, 2020 at DeVos Fieldhouse - Holland



Period 3

Starters:

Berea: 1 VANOVER, BAILEE (G); 2 WILLIAMS, BETHANIE (G); 3 HAMPTON, AALIYAH (G); 23 GREENE, NAKEISHA (F); 32 LANHAM, BRI (G);

III. Wesleyan: 5 BROVELLI, RILEY (F); 12 SHANKS, SYDNEY (F); 14 MUNROE, SAMANTHA (G); 15 LANSFORD, BROOKE (G); 24 SOSA, KENDALL (G);

Time	VISITORS: Berea	Score	Margin	HOME: III. Wesleyan
09:52		43-25	H 18	GOOD! LAYUP by SOSA, KENDALL
07:56	GOOD! FT by VANOVER, BAILEE	43-26	H 17	
07:17	GOOD! JUMPER by LOVE, DESTANIE	43-28	H 15	
07:06		45-28	H 17	GOOD! JUMPER by SOSA, KENDALL [PNT]
06:58	GOOD! LAYUP by HAMPTON, AALIYAH	45-30	H 15	
05:47		46-30	H 16	GOOD! FT by BOWEN, KAIA
05:29		48-30	H 18	GOOD! JUMPER by BROVELLI, RILEY [PNT]
05:03		50-30	H 20	GOOD! LAYUP by MUNROE, SAMANTHA
04:32		51-30	H 21	GOOD! FT by BOWEN, KAIA
04:32		52-30	H 22	GOOD! FT by BOWEN, KAIA
04:06		54-30	H 24	GOOD! LAYUP by BOWEN, KAIA [FB]
03:46	GOOD! LAYUP by LOVE, DESTANIE	54-32	H 22	
03:30		56-32	H 24	GOOD! JUMPER by SOSA, KENDALL
03:14	GOOD! JUMPER by LOVE, DESTANIE	56-34	H 22	
02:30	GOOD! LAYUP by VANOVER, BAILEE	56-36	H 20	
01:59	GOOD! FT by BARNES, KRISTEN	56-37	H 19	
01:45		59-37	H 22	GOOD! 3PTR by SOSA, KENDALL
01:11		61-37	H 24	GOOD! LAYUP by LANSFORD, BROOKE [FB]
00:59	GOOD! LAYUP by VANOVER, BAILEE [PNT]	61-39	H 22	
00:36		63-39	H 24	GOOD! LAYUP by SOSA, KENDALL
00:15	GOOD! JUMPER by BARNES, KRISTEN	63-41	H 22	
00:05		65-41	H 24	GOOD! LAYUP by HELLER, KATELYN

Berea 41, III. Wesleyan 65

Official Scoring/Possession Reference Chart
Berea vs III. Wesleyan
Period 4
March 06, 2020 at DeVos Fieldhouse - Holland



Period 4

Starters:

Berea: 1 VANOVER, BAILEE (G); 2 WILLIAMS, BETHANIE (G); 3 HAMPTON, AALIYAH (G); 23 GREENE, NAKEISHA (F); 32 LANHAM, BRI (G);

III. Wesleyan: 5 BROVELLI, RILEY (F); 12 SHANKS, SYDNEY (F); 14 MUNROE, SAMANTHA (G); 15 LANSFORD, BROOKE (G); 24 SOSA, KENDALL (G);

Time	VISITORS: Berea	Score	Margin	HOME: III. Wesleyan
08:58		67-41	H 26	GOOD! LAYUP by BROVELLI, RILEY
08:38		69-41	H 28	GOOD! LAYUP by SHANKS, SYDNEY [FB/PNT]
06:26		71-41	H 30	GOOD! LAYUP by BROVELLI, RILEY
06:07		72-41	H 31	GOOD! FT by LANSFORD, BROOKE [FB]
06:07		73-41	H 32	GOOD! FT by LANSFORD, BROOKE [FB]
05:19	GOOD! LAYUP by HAMPTON, AALIYAH	73-43	H 30	
04:57		74-43	H 31	GOOD! FT by BROVELLI, RILEY
02:50	GOOD! 3PTR by PARKER, LEAH	74-46	H 28	
01:36		76-46	H 30	GOOD! JUMPER by COLLINS, EMILY [PNT]
01:16	GOOD! LAYUP by PARKER, LEAH	76-48	H 28	
00:50	GOOD! LAYUP by VANOVER, BAILEE	76-50	H 26	

Berea 50, III. Wesleyan 76

Official Substitutions Log
Berea vs III. Wesleyan
Period 1
March 06, 2020 at DeVos Fieldhouse - Holland

VISITORS: Berea	Time	Score	HOME: III. Wesleyan
1 VANOVER, BAILEE			5 BROVELLI, RILEY
2 WILLIAMS, BETHANIE			12 SHANKS, SYDNEY
3 HAMPTON, AALIYAH			14 MUNROE, SAMANTHA
23 GREENE, NAKEISHA			15 LANSFORD, BROOKE
32 LANHAM, BRI			24 SOSA, KENDALL
SUB OUT: 1 VANOVER, BAILEE	05:47	2-10	
SUB OUT: 23 GREENE, NAKEISHA	05:47		
SUB IN: 12 BARNES, KRISTEN	05:47		
SUB IN: 25 LOVE, DESTANIE	05:47		
	03:41	9-17	SUB OUT: BROVELLI, RILEY
	03:41		SUB IN: BOWEN, KAIA
SUB OUT: 2 WILLIAMS, BETHANIE	02:59	9-17	
SUB IN: 22 PARKER, LEAH	02:59		
	01:56	12-17	SUB OUT: LANSFORD, BROOKE
	01:56		SUB IN: HELLER, KATELYN
	01:56		SUB OUT: SHANKS, SYDNEY
	01:56		SUB IN: BROVELLI, RILEY
SUB OUT: 25 LOVE, DESTANIE	01:19	12-19	
SUB IN: 23 GREENE, NAKEISHA	01:19		
	00:15	12-19	SUB OUT: SOSA, KENDALL
	00:15		SUB IN: CARLSON, KELLY
SUB OUT: 12 BARNES, KRISTEN	00:15		
SUB IN: 1 VANOVER, BAILEE	00:15		
	00:15		SUB OUT: MUNROE, SAMANTHA
	00:15		SUB IN: LANSFORD, BROOKE

Berea 12, III. Wesleyan 21

Official Substitutions Log
Berea vs III. Wesleyan
Period 2
March 06, 2020 at DeVos Fieldhouse - Holland

VISITORS: Berea	Time	Score	HOME: III. Wesleyan
1 VANOVER, BAILEE			5 BROVELLI, RILEY
2 WILLIAMS, BETHANIE			12 SHANKS, SYDNEY
3 HAMPTON, AALIYAH			14 MUNROE, SAMANTHA
23 GREENE, NAKEISHA			15 LANSFORD, BROOKE
32 LANHAM, BRI			24 SOSA, KENDALL
	10:00	-	SUB OUT: BOWEN, KAIA
	10:00		SUB OUT: HELLER, KATELYN
	10:00		SUB OUT: CARLSON, KELLY
	10:00		SUB IN: SHANKS, SYDNEY
	10:00		SUB IN: MUNROE, SAMANTHA
	10:00		SUB IN: SOSA, KENDALL
SUB OUT: 23 GREENE, NAKEISHA	10:00		
SUB IN: 25 LOVE, DESTANIE	10:00		
	08:40	15-23	SUB OUT: SHANKS, SYDNEY
	08:40		SUB IN: BOWEN, KAIA
SUB OUT: 32 LANHAM, BRI	07:40	15-29	
SUB IN: 2 WILLIAMS, BETHANIE	07:40		
SUB OUT: 22 PARKER, LEAH	06:19	15-29	
SUB IN: 12 BARNES, KRISTEN	06:19		
	05:14	16-33	SUB OUT: BOWEN, KAIA
	05:14		SUB IN: SHANKS, SYDNEY
	03:55	18-38	SUB OUT: MUNROE, SAMANTHA
	03:55		SUB IN: HELLER, KATELYN
SUB OUT: 25 LOVE, DESTANIE	03:55		
SUB IN: 32 LANHAM, BRI	03:55		
SUB OUT: 1 VANOVER, BAILEE	03:47	20-38	
SUB IN: 45 HILL, ISIS	03:47		
	03:23	20-38	SUB OUT: BROVELLI, RILEY
	03:23		SUB IN: BOWEN, KAIA
	03:07	20-39	SUB OUT: SHANKS, SYDNEY
	03:07		SUB IN: BROVELLI, RILEY
	02:58	20-39	SUB OUT: SOSA, KENDALL
	02:58		SUB IN: MUNROE, SAMANTHA
SUB OUT: 3 HAMPTON, AALIYAH	02:24	20-39	
SUB IN: 1 VANOVER, BAILEE	02:24		
	01:51	20-39	SUB OUT: HELLER, KATELYN
	01:51		SUB IN: SOSA, KENDALL

Berea 25, III. Wesleyan 41

Official Substitutions Log
Berea vs III. Wesleyan
Period 3
March 06, 2020 at DeVos Fieldhouse - Holland

VISITORS: Berea	Time	Score	HOME: III. Wesleyan
1 VANOVER, BAILEE			5 BROVELLI, RILEY
2 WILLIAMS, BETHANIE			12 SHANKS, SYDNEY
3 HAMPTON, AALIYAH			14 MUNROE, SAMANTHA
23 GREENE, NAKEISHA			15 LANSFORD, BROOKE
32 LANHAM, BRI			24 SOSA, KENDALL
	10:00	-	SUB OUT: BOWEN, KAIA
	10:00		SUB IN: SHANKS, SYDNEY
SUB OUT: 12 BARNES, KRISTEN	10:00		
SUB OUT: 45 HILL, ISIS	10:00		
SUB IN: 3 HAMPTON, AALIYAH	10:00		
SUB IN: 23 GREENE, NAKEISHA	10:00		
SUB OUT: 23 GREENE, NAKEISHA	08:47	25-43	
SUB IN: 25 LOVE, DESTANIE	08:47		
SUB OUT: 32 LANHAM, BRI	07:56	25-43	
SUB IN: 22 PARKER, LEAH	07:56		
	07:42	26-43	SUB OUT: BROVELLI, RILEY
	07:42		SUB IN: BOWEN, KAIA
SUB OUT: 2 WILLIAMS, BETHANIE	07:17	28-43	
SUB IN: 12 BARNES, KRISTEN	07:17		
	06:14	30-45	SUB OUT: SHANKS, SYDNEY
	06:14		SUB IN: BROVELLI, RILEY
SUB OUT: 22 PARKER, LEAH	04:57	30-50	
SUB IN: 2 WILLIAMS, BETHANIE	04:57		
	02:49	34-56	SUB OUT: BROVELLI, RILEY
	02:49		SUB OUT: BOWEN, KAIA
	02:49		SUB IN: SHANKS, SYDNEY
	02:49		SUB IN: CARLSON, KELLY
SUB OUT: 3 HAMPTON, AALIYAH	02:49		
SUB OUT: 25 LOVE, DESTANIE	02:49		
SUB IN: 23 GREENE, NAKEISHA	02:49		
SUB IN: 32 LANHAM, BRI	02:49		
	01:59	36-56	SUB OUT: SHANKS, SYDNEY
	01:59		SUB IN: HELLER, KATELYN

Berea 41, III. Wesleyan 65

Official Substitutions Log
Berea vs Ill. Wesleyan
Period 4
March 06, 2020 at DeVos Fieldhouse - Holland

VISITORS: Berea	Time	Score	HOME: Ill. Wesleyan
1 VANOVER,BAILEE			5 BROVELLI,RILEY
2 WILLIAMS,BETHANIE			12 SHANKS,SYDNEY
3 HAMPTON,AALIYAH			14 MUNROE,SAMANTHA
23 GREENE,NAKEISHA			15 LANSFORD,BROOKE
32 LANHAM,BRI			24 SOSA,KENDALL
	10:00	-	SUB OUT: HELLER,KATELYN
	10:00		SUB OUT: CARLSON,KELLY
	10:00		SUB IN: BROVELLI,RILEY
	10:00		SUB IN: SHANKS,SYDNEY
SUB OUT: 2 WILLIAMS,BETHANIE	09:34	-	
SUB IN: 22 PARKER,LEAH	09:34		
SUB OUT: 1 VANOVER,BAILEE	07:06	41-69	
SUB OUT: 12 BARNES,KRISTEN	07:06		
SUB OUT: 23 GREENE,NAKEISHA	07:06		
SUB IN: 2 WILLIAMS,BETHANIE	07:06		
SUB IN: 3 HAMPTON,AALIYAH	07:06		
SUB IN: 25 LOVE,DESTANIE	07:06		
	06:07	41-73	SUB OUT: SOSA,KENDALL
	06:07		SUB IN: BOWEN,KAIA
	04:57	43-74	SUB OUT: MUNROE,SAMANTHA
	04:57		SUB IN: HELLER,KATELYN
	03:48	43-74	SUB OUT: BROVELLI,RILEY
	03:48		SUB OUT: LANSFORD,BROOKE
	03:48		SUB IN: MOODY,MEGAN
	03:48		SUB IN: CARLSON,KELLY
SUB OUT: 2 WILLIAMS,BETHANIE	03:48		
SUB IN: 35 BEGGS,ADRIENNE	03:48		
SUB OUT: 32 LANHAM,BRI	03:39	43-74	
SUB IN: 10 GINTER,JAILYN	03:39		
	02:59	43-74	SUB OUT: SHANKS,SYDNEY
	02:59		SUB OUT: BOWEN,KAIA
	02:59		SUB IN: COLLINS,EMILY
	02:59		SUB IN: RETHERFORD,CLAIRE
SUB OUT: 3 HAMPTON,AALIYAH	02:59		
SUB IN: 1 VANOVER,BAILEE	02:59		
	01:41	46-74	SUB OUT: CARLSON,KELLY
	01:41		SUB IN: SMITH,HANNAH
SUB OUT: 25 LOVE,DESTANIE	01:41		
SUB IN: 45 HILL,ISIS	01:41		
SUB OUT: 1 VANOVER,BAILEE	00:39	50-76	
SUB OUT: 10 GINTER,JAILYN	00:39		
SUB OUT: 22 PARKER,LEAH	00:39		
SUB OUT: 35 BEGGS,ADRIENNE	00:39		
SUB IN: 2 WILLIAMS,BETHANIE	00:39		
SUB IN: 12 BARNES,KRISTEN	00:39		
SUB IN: 23 GREENE,NAKEISHA	00:39		
SUB IN: 32 LANHAM,BRI	00:39		

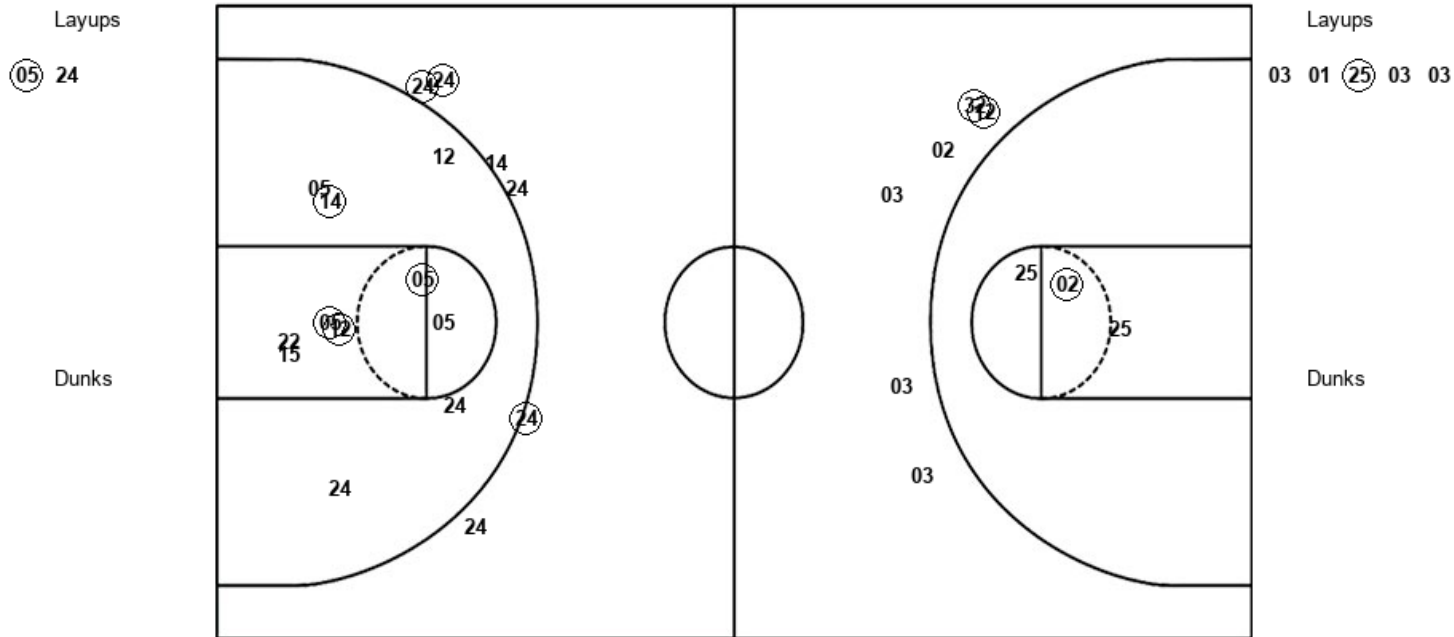
Berea 50, Ill. Wesleyan 76

Official Shot Chart
Berea vs III. Wesleyan
 PERIOD 1 Shots
 March 06, 2020 at DeVos Fieldhouse - Holland



III. Wesleyan

Berea



IWU : Period 1	Made	Att	Pct
Layups	1	2	50.0
Dunks	0	0	0
2PT Field Goals	5	13	38.5
3PT Field Goals	3	6	50.0
Total Field Goals	8	19	42.1

BER : Period 1	Made	Att	Pct
Layups	1	5	20.0
Dunks	0	0	0
2PT Field Goals	2	8	25.0
3PT Field Goals	2	6	33.3
Total Field Goals	4	14	28.6

Official Shot Chart
Berea vs III. Wesleyan
PERIOD 2 Shots
 March 06, 2020 at DeVos Fieldhouse - Holland



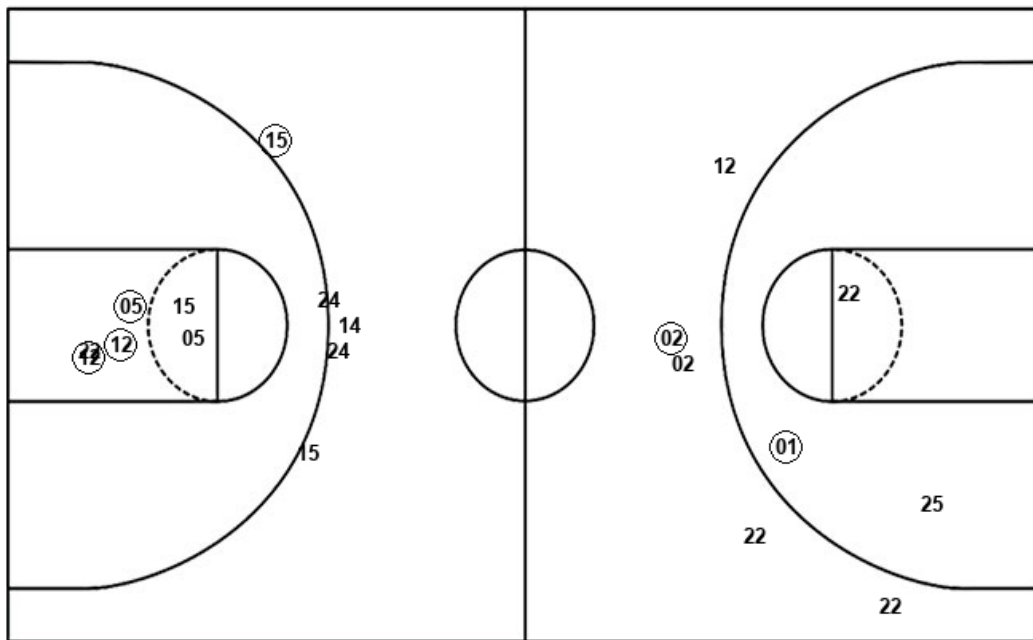
III. Wesleyan

Berea

Layups

24 24 20

Dunks



Layups

03 01 01 22 03
02 02

Dunks

IWU : Period 2	Made	Att	Pct
Layups	3	3	100.0
Dunks	0	0	0
2PT Field Goals	6	9	66.7
3PT Field Goals	1	5	20.0
Total Field Goals	7	14	50.0

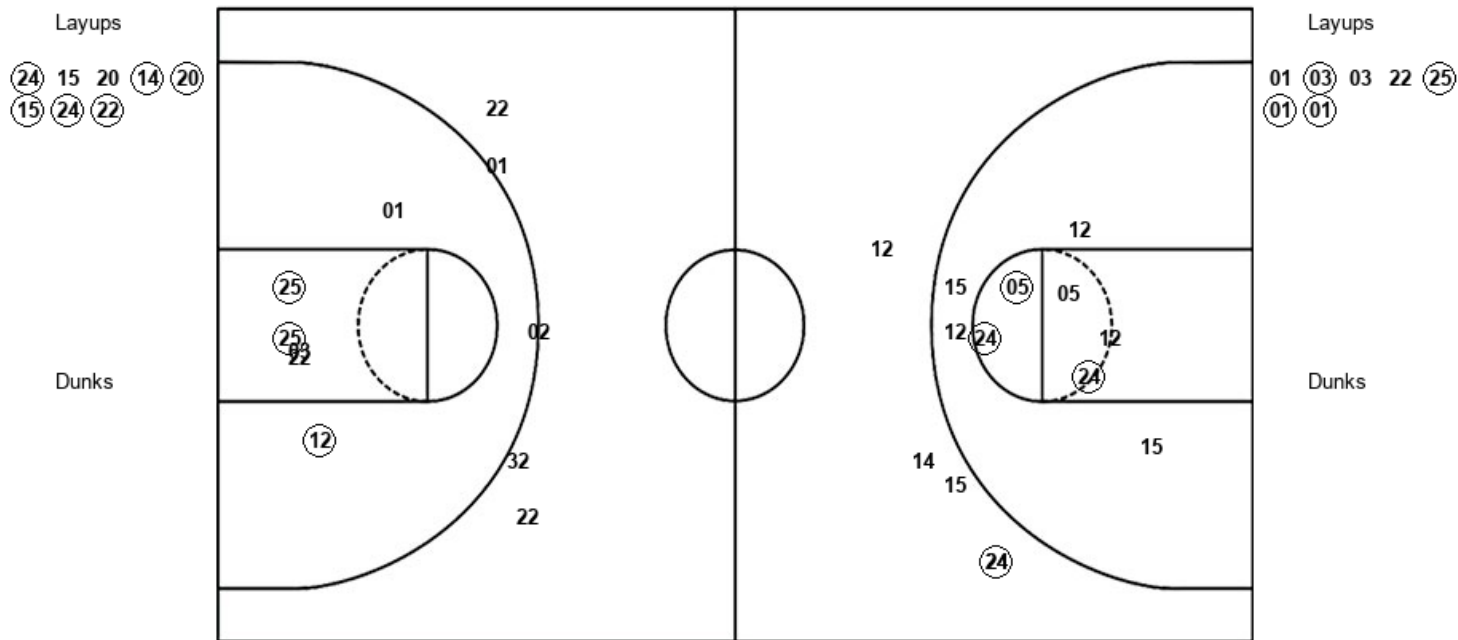
BER : Period 2	Made	Att	Pct
Layups	2	7	28.6
Dunks	0	0	0
2PT Field Goals	3	10	30.0
3PT Field Goals	1	5	20.0
Total Field Goals	4	15	26.7

Official Shot Chart
Berea vs III. Wesleyan
PERIOD 3 Shots
 March 06, 2020 at DeVos Fieldhouse - Holland



III. Wesleyan

Berea



IWU : Period 3	Made	Att	Pct
Layups	6	8	75.0
Dunks	0	0	0
2PT Field Goals	9	17	52.9
3PT Field Goals	1	5	20.0
Total Field Goals	10	22	45.5

BER : Period 3	Made	Att	Pct
Layups	4	7	57.1
Dunks	0	0	0
2PT Field Goals	7	13	53.8
3PT Field Goals	0	5	00.0
Total Field Goals	7	18	38.9

Official Shot Chart
Berea vs III. Wesleyan
PERIOD 4 Shots
 March 06, 2020 at DeVos Fieldhouse - Holland



III. Wesleyan

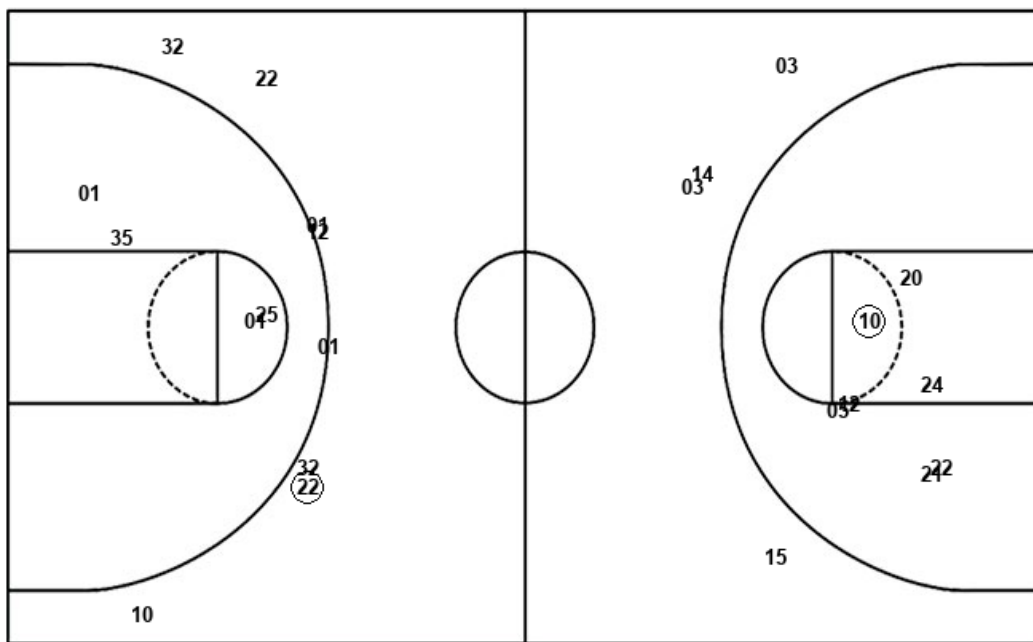
Berea

Layups
 05 12 05

Layups
 22 03 03 22 01

Dunks

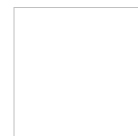
Dunks



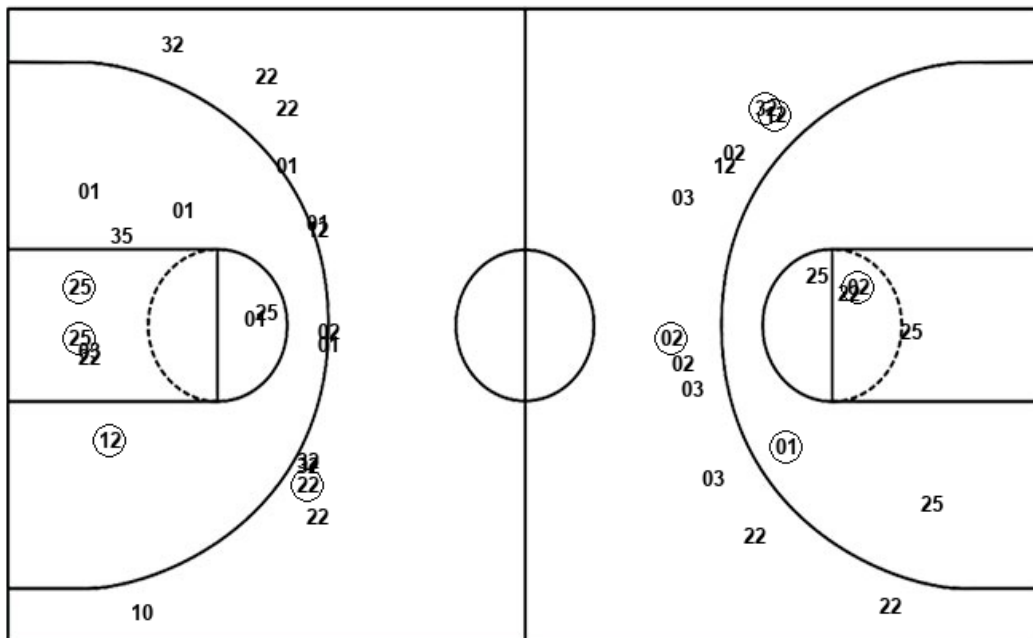
IWU : Period 4	Made	Att	Pct
Layups	3	3	100.0
Dunks	0	0	0
2PT Field Goals	4	10	40.0
3PT Field Goals	0	4	00.0
Total Field Goals	4	14	28.6

BER : Period 4	Made	Att	Pct
Layups	3	5	60.0
Dunks	0	0	0
2PT Field Goals	3	9	33.3
3PT Field Goals	1	8	12.5
Total Field Goals	4	17	23.5

Official Shot Chart
Berea vs Ill. Wesleyan
Berea Team Shots
March 06, 2020 at DeVos Fieldhouse - Holland



Layups



Layups

03 01 (25) 03 03
 03 (01) 01 22 (03)
 02 02 01 (03) 03
 22 (25) (01) (01) 22
 (03) 03 (22) (01)

Dunks

Dunks

BER : Period 1	Made	Att	Pct
Layups	1	5	20.0
Dunks	0	0	0
2PT Field Goals	2	8	25.0
3PT Field Goals	2	6	33.3
Total Field Goals	4	14	28.6

BER : Period 2	Made	Att	Pct
Layups	2	7	28.6
Dunks	0	0	0
2PT Field Goals	3	10	30.0
3PT Field Goals	1	5	20.0
Total Field Goals	4	15	26.7

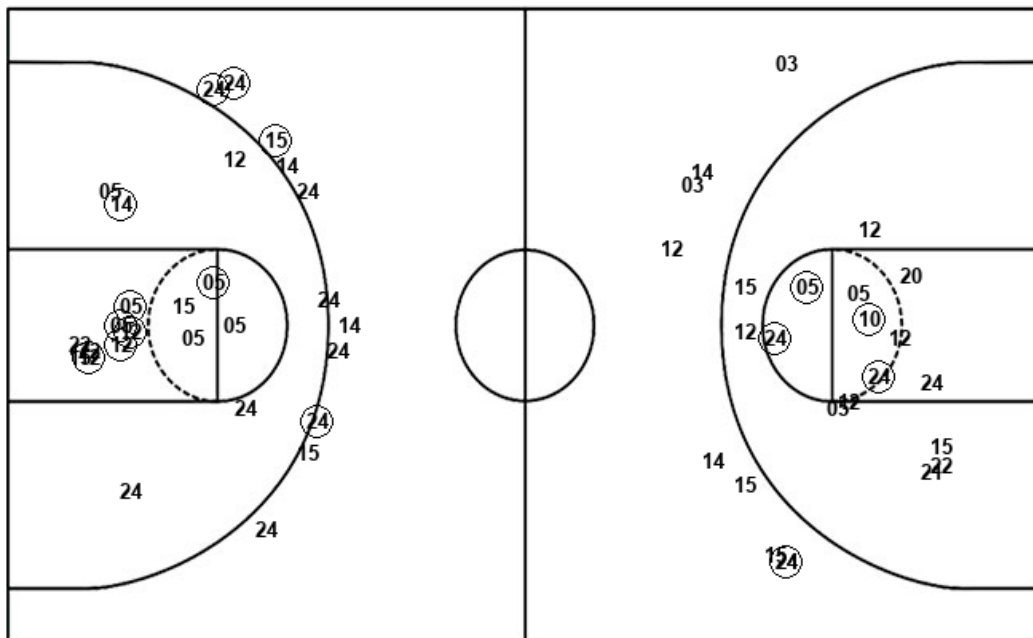
BER : Period 3	Made	Att	Pct
Layups	4	7	57.1
Dunks	0	0	0
2PT Field Goals	7	13	53.8
3PT Field Goals	0	5	00.0
Total Field Goals	7	18	38.9

BER : Period 4	Made	Att	Pct
Layups	3	5	60.0
Dunks	0	0	0
2PT Field Goals	3	9	33.3
3PT Field Goals	1	8	12.5
Total Field Goals	4	17	23.5

Official Shot Chart
Berea vs Ill. Wesleyan
Ill. Wesleyan Team Shots
March 06, 2020 at DeVos Fieldhouse - Holland



Layups



Layups

(05) 24 (24) (24) (20)
 (24) 15 20 (14) (20)
 (15) (24) (22) (05) (12)
 (05)

Dunks

Dunks

IWU : Period 1	Made	Att	Pct
Layups	1	2	50.0
Dunks	0	0	0
2PT Field Goals	5	13	38.5
3PT Field Goals	3	6	50.0
Total Field Goals	8	19	42.1

IWU : Period 2	Made	Att	Pct
Layups	3	3	100.0
Dunks	0	0	0
2PT Field Goals	6	9	66.7
3PT Field Goals	1	5	20.0
Total Field Goals	7	14	50.0

IWU : Period 3	Made	Att	Pct
Layups	6	8	75.0
Dunks	0	0	0
2PT Field Goals	9	17	52.9
3PT Field Goals	1	5	20.0
Total Field Goals	10	22	45.5

IWU : Period 4	Made	Att	Pct
Layups	3	3	100.0
Dunks	0	0	0
2PT Field Goals	4	10	40.0
3PT Field Goals	0	4	00.0
Total Field Goals	4	14	28.6