

FINAL SCORE**Keystone****47****Messiah****72****NCAA Division III Women's Basketball Championship First, Second Rounds -
Campus Sites****March 06, 2020 • Hitchcock Arena - Mechanicsburg****FINAL STATISTICS**

Official Box Score
Keystone vs Messiah
Game Totals -- Final Statistics
March 06, 2020 at Hitchcock Arena - Mechanicsburg



Keystone 47

No.	Player	S	Pts	FG	3FG	FT	OR	DR	TR	PF	A	TO	Blk	Stl	Min	+/-
01	ORIBELLO, MAC	G	4	2-14	0-5	0-0	2	1	3	1	2	1	1	2	37	-28
12	GORDON, KHALIAH	G	5	2-7	0-0	1-1	0	2	2	1	0	5	0	4	33	-25
14	ALBERICI, RENATA	F	1	0-3	0-2	1-2	1	4	5	3	0	1	0	0	26	-27
20	PRICE, KATIE	G	7	3-5	1-2	0-0	0	0	0	0	0	2	0	0	12	-8
33	LAMONEA, BELLA	G	19	8-18	2-9	1-1	0	7	7	2	1	2	0	0	38	-27
10	SHIFFER, FAITH	G	7	2-5	0-1	3-3	0	3	3	0	0	3	0	0	25	-16
22	WEBER, MEGAN	G	0	0-1	0-1	0-0	0	0	0	0	0	1	0	0	9	5
25	FARAH, SAMY	F	4	2-5	0-0	0-0	1	1	2	4	0	0	0	0	19	1
TEAM								3	4	7	0	1				
TOTALS			47	19-58	3-20	6-7	7	22	29	11	3	16	1	6	199	

Shooting By Period

Period	FG	FG%	3FG	3FG%	FT	FT%
1st Qtr	6-16	38%	0-7	00%	1-1	100%
2nd Qtr	8-15	53%	2-4	50%	4-4	100%
3rd Qtr	1-14	07%	0-4	00%	1-2	50%
4th Qtr	4-13	31%	1-5	20%	0-0	0%
1st Half	14-31	45%	2-11	18%	5-5	100%
2nd Half	5-27	19%	1-9	11%	1-2	50%
Game	19-58	32.8%	3-20	15.0%	6-7	85.7%

Deadball Rebounds: 1,1
Last FG: 4th-00:49
Biggest Run: 10-0
Largest lead: By 0 at 1st-08:09
Technical Fouls: None.

Messiah 72

No.	Player	S	Pts	FG	3FG	FT	OR	DR	TR	PF	A	TO	Blk	Stl	Min	+/-
03	ECKLEY, ELEANA	G	10	3-12	2-7	2-2	0	2	2	1	4	1	0	2	33	29
11	CRYAN, GRACIE	G	5	2-3	1-1	0-0	0	2	2	1	9	2	2	1	25	36
22	DAVIS, JAYNEISHA	G	26	10-14	5-8	1-2	0	4	4	3	2	2	0	2	33	23
33	SPRINGER, LEAH	F	14	5-10	1-3	3-4	2	6	8	1	2	0	2	1	32	29
34	ZIMMERMAN, MEGAN	F	10	3-4	0-0	4-4	0	8	8	0	0	1	2	0	16	27
05	PLOSKER, LOGAN	G	0	0-1	0-0	0-0	0	0	0	0	0	1	0	0	3	-4
10	STUTZMAN, SIDNEY	G	0	0-1	0-1	0-0	1	1	2	0	0	2	0	0	14	-8
12	HIGH, AMBER	G	0	0-0	0-0	0-0	0	1	1	0	1	0	2	0	5	-5
13	BREINICH, BROOKE	F	4	2-4	0-0	0-0	1	4	5	2	0	2	1	0	20	2
21	MCMONIGLE, SASHA	G	0	0-0	0-0	0-0	0	1	1	0	0	0	0	0	4	-2
30	SWANN, BRE	F	0	0-1	0-0	0-0	0	1	1	0	0	1	0	0	3	-4
32	EICH, MADISON	G	3	1-4	1-2	0-0	1	0	1	1	0	1	0	0	10	2
TEAM								0	2	2	0	0				
TOTALS			72	26-54	10-22	10-12	5	32	37	9	18	13	9	6	199	

Shooting By Period

Period	FG	FG%	3FG	3FG%	FT	FT%
1st Qtr	9-16	56%	5-8	63%	0-0	0%
2nd Qtr	6-13	46%	1-5	20%	3-4	75%
3rd Qtr	8-11	73%	3-4	75%	7-8	88%
4th Qtr	3-14	21%	1-5	20%	0-0	0%
1st Half	15-29	52%	6-13	46%	3-4	75%
2nd Half	11-25	44%	4-9	44%	7-8	88%
Game	26-54	48.1%	10-22	45.5%	10-12	83.3%

Deadball Rebounds: 2,0
Last FG: 4th-03:40
Biggest Run: 21-0
Largest lead: By 32 at 4th-07:23
Technical Fouls: None.

Game Notes:

Officials: , ,
Attendance: 750

Start Time: 07:12 PM ET
End Time: 08:37 PM ET
Game Duration: 1:24

Score	1st	2nd	3rd	4th	TOT
KEY	13	22	3	9	47
MES	23	16	26	7	72

KEY led for 0:00. MES led for 38:24.
Game was tied for 1:30.
Times tied: 2 Lead Changes: 0

Points from	KEY	MES
In the Paint	24	20
Off Turns	8	13
2nd Chance	2	5
Fast Break	4	8
Bench	11	7

Official Box Score
Keystone vs Messiah
First Half Statistics Only
March 06, 2020 at Hitchcock Arena - Mechanicsburg



Keystone 35

No.	Player	S	Pts	FG	3FG	FT	OR	DR	TR	PF	A	TO	Blk	Stl	Min	+/-
01	ORIBELLO, MAC	G	4	2-7	0-3	0-0	1	0	1	0	2	1	1	1	19	-5
10	SHIFFER, FAITH	G	5	1-2	0-0	3-3	0	2	2	0	0	2	0	0	8	-4
12	GORDON, KHALIAH	G	5	2-4	0-0	1-1	0	2	2	0	0	2	0	3	19	-2
14	ALBERICI, RENATA	F	0	0-2	0-1	0-0	1	2	3	2	0	1	0	0	13	-15
20	PRICE, KATIE	G	5	2-4	1-2	0-0	0	0	0	0	0	1	0	0	9	1
22	WEBER, MEGAN	G	0	0-0	0-0	0-0	0	0	0	0	0	0	0	0	1	1
25	FARAH, SAMY	F	2	1-2	0-0	0-0	0	1	1	1	0	0	0	0	11	8
33	LAMONEA, BELLA	G	14	6-10	1-5	1-1	0	3	3	0	1	0	0	0	20	-4
	TEAM		0	0-0	0-0	0-0	1	3	4	0	0	0	0	0	0	
TOTALS			35	14-31	2-11	5-5	3	13	16	3	3	7	1	4	100	

Shooting By Period

Period	FG	FG%	3FG	3FG%	FT	FT%
1st Qtr	6-16	38%	0-7	00%	1-1	100%
2nd Qtr	8-15	53%	2-4	50%	4-4	100%
1st Half	14-31	45%	2-11	18%	5-5	100%
Game	19-58	32.8%	3-20	15.0%	6-7	85.7%

Deadball Rebounds: 1,1
 Last FG Half: KEY 2nd-00:18

Messiah 39

No.	Player	S	Pts	FG	3FG	FT	OR	DR	TR	PF	A	TO	Blk	Stl	Min	+/-
03	ECKLEY, ELEANA	G	5	2-7	1-4	0-0	0	1	1	1	3	0	0	1	19	5
05	PLOSKER, LOGAN	G	0	0-0	0-0	0-0	0	0	0	0	0	0	0	0	0	0
10	STUTZMAN, SIDNEY	G	0	0-0	0-0	0-0	0	0	0	0	0	0	0	0	3	-8
11	CRYAN, GRACIE	G	5	2-3	1-1	0-0	0	2	2	1	5	1	1	1	14	15
12	HIGH, AMBER	G	0	0-0	0-0	0-0	0	0	0	0	0	0	0	0	0	0
13	BREINICH, BROOKE	F	2	1-2	0-0	0-0	0	1	1	1	0	2	1	0	11	-5
21	MCMONIGLE, SASHA	G	0	0-0	0-0	0-0	0	0	0	0	0	0	0	0	0	0
22	DAVIS, JAYNEISHA	G	18	7-9	3-5	1-2	0	2	2	1	1	2	0	1	20	4
30	SWANN, BRE	F	0	0-0	0-0	0-0	0	0	0	0	0	0	0	0	0	0
32	EICH, MADISON	G	0	0-1	0-0	0-0	1	0	1	1	0	1	0	0	4	-4
33	SPRINGER, LEAH	F	7	2-5	1-3	2-2	0	3	3	0	2	0	2	1	20	4
34	ZIMMERMAN, MEGAN	F	2	1-2	0-0	0-0	0	4	4	0	0	0	1	0	9	9
	TEAM		0	0-0	0-0	0-0	0	1	1	0	0	0	0	0	0	
TOTALS			39	15-29	6-13	3-4	1	14	15	5	11	6	5	4	100	

Shooting By Period

Period	FG	FG%	3FG	3FG%	FT	FT%
1st Qtr	9-16	56%	5-8	63%	0-0	0%
2nd Qtr	6-13	46%	1-5	20%	3-4	75%
1st Half	15-29	52%	6-13	46%	3-4	75%
Game	26-54	48.1%	10-22	45.5%	10-12	83.3%

Deadball Rebounds: 2,0
 Last FG Half: MES 2nd-00:43

Game Notes:
 Officials: , ,
 Attendance: 750

Start Time: 07:12 PM ET
 End Time: 08:37 PM ET
 Game Duration: 1:24

Score	1st	2nd	3rd	4th	TOT
KEY	13	22	3	9	47
MES	23	16	26	7	72

Points from (This Period)	KEY	MES
In the Paint	18	10
Off Turns	6	6
2nd Chance	0	0
Fast Break	4	6
Bench	7	2

Official Box Score
Keystone vs Messiah
First Quarter Statistics Only
March 06, 2020 at Hitchcock Arena - Mechanicsburg



Keystone 13

No.	Player	S	Pts	FG	3FG	FT	OR	DR	TR	PF	A	TO	Blk	Stl	Min	+/-
01	ORIBELLO, MAC	G	2	1-5	0-2	0-0	1	0	1	0	0	0	1	0	10	-10
12	GORDON, KHALIAH	G	0	0-1	0-0	0-0	0	2	2	0	0	1	0	1	10	-10
14	ALBERICI, RENATA	F	0	0-1	0-1	0-0	0	1	1	0	0	1	0	0	8	-13
20	PRICE, KATIE	G	2	1-2	0-1	0-0	0	0	0	0	0	1	0	0	5	-8
33	LAMONEA, BELLA	G	4	2-5	0-3	0-0	0	0	0	0	1	0	0	0	10	-10
10	SHIFFER, FAITH	G	3	1-1	0-0	1-1	0	1	1	0	0	0	0	0	5	-2
22	WEBER, MEGAN	G	0	0-0	0-0	0-0	0	0	0	0	0	0	0	0	0	0
25	FARAH, SAMY	F	2	1-1	0-0	0-0	0	1	1	0	0	0	0	0	2	3
TEAM							0	1	1	0	0					
TOTALS			13	6-16	0-7	1-1	1	6	7	0	1	3	1	1	50	

Shooting By Period

Period	FG	FG%	3FG	3FG%	FT	FT%
1st Qtr	6-16	38%	0-7	00%	1-1	100%
2nd Qtr	8-15	53%	2-4	50%	4-4	100%
1st Half	6-16	38%	0-7	00%	1-1	100%
1st Half	14-31	45%	2-11	18%	5-5	100%
Game	19-58	32.8%	3-20	15.0%	6-7	85.7%

Deadball Rebounds: 1,1

Messiah 23

No.	Player	S	Pts	FG	3FG	FT	OR	DR	TR	PF	A	TO	Blk	Stl	Min	+/-
03	ECKLEY, ELEANA	G	5	2-4	1-2	0-0	0	1	1	0	3	0	0	0	10	10
11	CRYAN, GRACIE	G	0	0-1	0-0	0-0	0	1	1	0	3	1	1	1	7	13
22	DAVIS, JAYNEISHA	G	13	5-6	3-4	0-0	0	1	1	0	0	1	0	0	10	10
33	SPRINGER, LEAH	F	3	1-2	1-2	0-0	0	1	1	0	1	0	0	0	10	10
34	ZIMMERMAN, MEGAN	F	2	1-2	0-0	0-0	0	4	4	0	0	0	1	0	7	13
05	PLOSKER, LOGAN	G	0	0-0	0-0	0-0	0	0	0	0	0	0	0	0	0	0
10	STUTZMAN, SIDNEY	G	0	0-0	0-0	0-0	0	0	0	0	0	0	0	0	0	0
12	HIGH, AMBER	G	0	0-0	0-0	0-0	0	0	0	0	0	0	0	0	0	0
13	BREINICH, BROOKE	F	0	0-0	0-0	0-0	0	0	0	0	0	0	1	0	3	-3
21	MCMONIGLE, SASHA	G	0	0-0	0-0	0-0	0	0	0	0	0	0	0	0	0	0
30	SWANN, BRE	F	0	0-0	0-0	0-0	0	0	0	0	0	0	0	0	0	0
32	EICH, MADISON	G	0	0-1	0-0	0-0	1	0	1	1	0	0	0	0	3	-3
TEAM							0	1	1	0	0					
TOTALS			23	9-16	5-8	0-0	1	9	10	1	7	2	3	1	50	

Shooting By Period

Period	FG	FG%	3FG	3FG%	FT	FT%
1st Qtr	9-16	56%	5-8	63%	0-0	0%
2nd Qtr	6-13	46%	1-5	20%	3-4	75%
1st Half	9-16	56%	5-8	63%	0-0	0%
1st Half	15-29	52%	6-13	46%	3-4	75%
Game	26-54	48.1%	10-22	45.5%	10-12	83.3%

Deadball Rebounds: 2,0

Game Notes:

Officials: , ,
 Attendance: 750

Start Time: 07:12 PM ET
 End Time: 08:37 PM ET
 Game Duration: 1:24

Score	1st	2nd	3rd	4th	TOT
KEY	13	22	3	9	47
MES	23	16	26	7	72

Points from (This Period)	KEY	MES
In the Paint	8	4
Off Turns	0	0
2nd Chance	0	0
Fast Break	0	2
Bench	5	0

Official Play-By-Play
Keystone vs Messiah
First Quarter
March 06, 2020 at Hitchcock Arena - Mechanicsburg



Period 1

Starters:

Keystone: 1 ORIBELLO,MAC (G); 12 GORDON,KHALIAH (G); 14 ALBERICI,RENATA (F); 20 PRICE,KATIE (G); 33 LAMONEA,BELLA (G);
Messiah: 3 ECKLEY,ELEANA (G); 11 CRYAN,GRACIE (G); 22 DAVIS,JAYNEISHA (G); 33 SPRINGER,LEAH (F); 34 ZIMMERMAN,MEGAN (F);

Time	VISITORS: Keystone	Score	Margin	HOME: Messiah
09:32	MISSED 3PTR by ORIBELLO, MAC			
09:32				BLOCK by CRYAN, GRACIE
09:25				REBOUND (DEF) by ZIMMERMAN, MEGAN
09:10		2-0	H 2	GOOD! JUMPER by DAVIS, JAYNEISHA
09:10				ASSIST by ECKLEY, ELEANA
09:08	TURNOVER (BADPASS) by PRICE, KATIE			
09:08				STEAL by CRYAN, GRACIE
09:04				MISSED LAYUP by CRYAN, GRACIE
09:04	REBOUND (DEF) by GORDON, KHALIAH			
08:51	GOOD! JUMPER by PRICE, KATIE	2-2	T	
08:31		4-2	H 2	GOOD! JUMPER by ECKLEY, ELEANA
08:09	GOOD! JUMPER by LAMONEA, BELLA	4-4	T	
07:49		7-4	H 3	GOOD! 3PTR by SPRINGER, LEAH
07:49				ASSIST by CRYAN, GRACIE
07:24	GOOD! LAYUP by LAMONEA, BELLA	7-6	H 1	
07:07		10-6	H 4	GOOD! 3PTR by ECKLEY, ELEANA
07:07				ASSIST by CRYAN, GRACIE
06:48	MISSED 3PTR by ALBERICI, RENATA			
06:45				REBOUND (DEF) by SPRINGER, LEAH
06:27		13-6	H 7	GOOD! 3PTR by DAVIS, JAYNEISHA
06:27				ASSIST by SPRINGER, LEAH
06:09	MISSED 3PTR by PRICE, KATIE			
06:06				REBOUND (DEF) by ECKLEY, ELEANA
06:00		16-6	H 10	GOOD! 3PTR by DAVIS, JAYNEISHA
06:00				ASSIST by CRYAN, GRACIE
05:29	GOOD! LAYUP by ORIBELLO, MAC	16-8	H 8	
05:10				TURNOVER (LOSTBALL) by CRYAN, GRACIE
05:10	STEAL by GORDON, KHALIAH			
05:03	MISSED 3PTR by LAMONEA, BELLA			
04:59				REBOUND (DEF) by ZIMMERMAN, MEGAN
04:55	SUB OUT: PRICE, KATIE			
04:55	SUB IN: SHIFFER, FAITH			
04:55				
04:49		19-8	H 11	GOOD! 3PTR by DAVIS, JAYNEISHA
04:49				ASSIST by ECKLEY, ELEANA
04:20	MISSED 3PTR by LAMONEA, BELLA			
04:17				REBOUND (DEF) by ZIMMERMAN, MEGAN
04:02				MISSED 3PTR by ECKLEY, ELEANA
03:59	REBOUND (DEF) by SHIFFER, FAITH			
03:50	MISSED LAYUP by GORDON, KHALIAH			
03:50				BLOCK by ZIMMERMAN, MEGAN
03:45				REBOUND (DEF) by CRYAN, GRACIE
03:39				MISSED LAYUP by ZIMMERMAN, MEGAN
03:36	REBOUND (DEF) by ALBERICI, RENATA			
03:26	MISSED JUMPER by ORIBELLO, MAC			
03:23				REBOUND (DEF) by ZIMMERMAN, MEGAN
03:08		21-8	H 13	GOOD! LAYUP by ZIMMERMAN, MEGAN
03:08				ASSIST by ECKLEY, ELEANA
02:42	TURNOVER (3SEC) by ALBERICI, RENATA			
02:42				SUB OUT: CRYAN, GRACIE
02:42				SUB OUT: ZIMMERMAN, MEGAN
02:42				SUB IN: BREINICH, BROOKE
02:42				SUB IN: EICH, MADISON
02:23				MISSED JUMPER by ECKLEY, ELEANA
02:21				REBOUND (OFF) by EICH, MADISON
02:20				MISSED JUMPER by EICH, MADISON
02:17	REBOUND (DEF) by GORDON, KHALIAH			
02:12	MISSED 3PTR by LAMONEA, BELLA			
02:10				REBOUND (DEF) by TEAM
01:51				MISSED 3PTR by SPRINGER, LEAH
01:49	REBOUND (DEF) by TEAM			
01:49	SUB OUT: ALBERICI, RENATA			
01:49	SUB IN: FARAH, SAMY			
01:35	MISSED 3PTR by ORIBELLO, MAC			
01:31				REBOUND (DEF) by DAVIS, JAYNEISHA
01:28		23-8	H 15	GOOD! JUMPER by DAVIS, JAYNEISHA [FB/PNT]
01:14	GOOD! LAYUP by SHIFFER, FAITH [PNT]	23-10	H 13	
01:14				FOUL (PERSONAL) by EICH, MADISON
01:14	GOOD! FT by SHIFFER, FAITH	23-11	H 12	
00:59				TURNOVER (TRAVEL) by DAVIS, JAYNEISHA

Time	VISITORS: Keystone	Score	Margin	HOME: Messiah
00:40	MISSED JUMPER by ORIBELLO, MAC			
00:40				BLOCK by BREINICH, BROOKE
00:37	REBOUND (OFF) by ORIBELLO, MAC			
00:37	TURNOVER (OTHER) by GORDON, KHALIAH			
00:11				MISSED 3PTR by DAVIS, JAYNEISHA
00:11	BLOCK by ORIBELLO, MAC			
00:06	REBOUND (DEF) by FARAH, SAMY			
00:03	GOOD! LAYUP by FARAH, SAMY	23-13	H 10	
00:03	ASSIST by LAMONEA, BELLA			

Keystone 13, Messiah 23

Points from (This Period)	KEY	MES
In the Paint	8	4
Off Turns	0	0
2nd Chance	0	0
Fast Break	0	2
Bench	5	0

Official Box Score
Keystone vs Messiah
Second Quarter Statistics Only
March 06, 2020 at Hitchcock Arena - Mechanicsburg



Keystone 22

No.	Player	S	Pts	FG	3FG	FT	OR	DR	TR	PF	A	TO	Blk	Stl	Min	+/-	
01	ORIBELLO, MAC	G	2	1-2	0-1	0-0	0	0	0	0	2	1	0	1	9	5	
12	GORDON, KHALIAH	G	5	2-3	0-0	1-1	0	0	0	0	0	1	0	2	9	8	
14	ALBERICI, RENATA	F	0	0-1	0-0	0-0	1	1	2	2	0	0	0	0	5	-2	
20	PRICE, KATIE	G	3	1-2	1-1	0-0	0	0	0	0	0	0	0	0	4	9	
33	LAMONEA, BELLA	G	10	4-5	1-2	1-1	0	3	3	0	0	0	0	0	10	6	
10	SHIFFER, FAITH	G	2	0-1	0-0	2-2	0	1	1	0	0	2	0	0	3	-2	
22	WEBER, MEGAN	G	0	0-0	0-0	0-0	0	0	0	0	0	0	0	0	1	1	
25	FARAH, SAMY	F	0	0-1	0-0	0-0	0	0	0	1	0	0	0	0	9	5	
TEAM							1	2	3	0							
TOTALS			22	8-15	2-4	4-4	2	7	9	3	2	4	0	3	50		

Shooting By Period

Period	FG	FG%	3FG	3FG%	FT	FT%
3rd Qtr	1-14	07%	0-4	00%	1-2	50%
4th Qtr	4-13	31%	1-5	20%	0-0	0%
2nd Half	8-15	53%	2-4	50%	4-4	100%
2nd Half	5-27	19%	1-9	11%	1-2	50%
Game	19-58	32.8%	3-20	15.0%	6-7	85.7%

Deadball Rebounds: 1,1

Messiah 16

No.	Player	S	Pts	FG	3FG	FT	OR	DR	TR	PF	A	TO	Blk	Stl	Min	+/-	
03	ECKLEY, ELEANA	G	0	0-3	0-2	0-0	0	0	0	1	0	0	0	1	9	-5	
11	CRYAN, GRACIE	G	5	2-2	1-1	0-0	0	1	1	1	2	0	0	0	7	2	
22	DAVIS, JAYNEISHA	G	5	2-3	0-1	1-2	0	1	1	1	1	1	0	1	10	-6	
33	SPRINGER, LEAH	F	4	1-3	0-1	2-2	0	2	2	0	1	0	2	1	10	-6	
34	ZIMMERMAN, MEGAN	F	0	0-0	0-0	0-0	0	0	0	0	0	0	0	0	2	-4	
05	PLOSKER, LOGAN	G	0	0-0	0-0	0-0	0	0	0	0	0	0	0	0	0	0	
10	STUTZMAN, SIDNEY	G	0	0-0	0-0	0-0	0	0	0	0	0	0	0	0	3	-8	
12	HIGH, AMBER	G	0	0-0	0-0	0-0	0	0	0	0	0	0	0	0	0	0	
13	BREINICH, BROOKE	F	2	1-2	0-0	0-0	0	1	1	1	0	2	0	0	8	-2	
21	MCMONIGLE, SASHA	G	0	0-0	0-0	0-0	0	0	0	0	0	0	0	0	0	0	
30	SWANN, BRE	F	0	0-0	0-0	0-0	0	0	0	0	0	0	0	0	0	0	
32	EICH, MADISON	G	0	0-0	0-0	0-0	0	0	0	0	0	1	0	0	1	-1	
TEAM							0	0	0	0							
TOTALS			16	6-13	1-5	3-4	0	5	5	4	4	4	2	3	50		

Shooting By Period

Period	FG	FG%	3FG	3FG%	FT	FT%
3rd Qtr	8-11	73%	3-4	75%	7-8	88%
4th Qtr	3-14	21%	1-5	20%	0-0	0%
2nd Half	6-13	46%	1-5	20%	3-4	75%
2nd Half	11-25	44%	4-9	44%	7-8	88%
Game	26-54	48.1%	10-22	45.5%	10-12	83.3%

Deadball Rebounds: 2,0

Game Notes:

Officials: , ,
 Attendance: 750

Start Time: 07:12 PM ET
 End Time: 08:37 PM ET
 Game Duration: 1:24

Score	1st	2nd	3rd	4th	TOT
KEY	13	22	3	9	47
MES	23	16	26	7	72

Points from (This Period)	KEY	MES
In the Paint	10	6
Off Turns	6	6
2nd Chance	0	0
Fast Break	4	4
Bench	2	2

Official Play-By-Play
Keystone vs Messiah
Second Quarter
March 06, 2020 at Hitchcock Arena - Mechanicsburg



Period 2

Starters:

Keystone: 1 ORIBELLO,MAC (G); 12 GORDON,KHALIAH (G); 14 ALBERICI,RENATA (F); 20 PRICE,KATIE (G); 33 LAMONEA,BELLA (G);

Messiah: 3 ECKLEY,ELEANA (G); 11 CRYAN,GRACIE (G); 22 DAVIS,JAYNEISHA (G); 33 SPRINGER,LEAH (F); 34 ZIMMERMAN,MEGAN (F);

Time	VISITORS: Keystone	Score	Margin	HOME: Messiah
10:00				SUB OUT: EICH, MADISON
10:00				SUB IN: CRYAN, GRACIE
09:30	FOUL (PERSONAL) by FARAH, SAMY			
09:30				MISSED FT by DAVIS, JAYNEISHA
09:30				REBOUND (OFF) by TEAM
09:30		24-13	H 11	GOOD! FT by DAVIS, JAYNEISHA
09:04	GOOD! LAYUP by GORDON, KHALIAH	24-15	H 9	
09:04				FOUL (PERSONAL) by BREINICH, BROOKE
09:04	GOOD! FT by GORDON, KHALIAH	24-16	H 8	
08:44				MISSED JUMPER by SPRINGER, LEAH
08:42	REBOUND (DEF) by TEAM			
08:30	TURNOVER (LOSTBALL) by ORIBELLO, MAC			
08:30				STEAL by SPRINGER, LEAH
08:23		26-16	H 10	GOOD! JUMPER by BREINICH, BROOKE
08:23				ASSIST by DAVIS, JAYNEISHA
08:00				FOUL (PERSONAL) by CRYAN, GRACIE
08:00	SUB OUT: GORDON, KHALIAH			
08:00	SUB IN: ALBERICI, RENATA			
08:00	GOOD! FT by SHIFFER, FAITH	26-17	H 9	
08:00	GOOD! FT by SHIFFER, FAITH	26-18	H 8	
07:45				MISSED 3PTR by SPRINGER, LEAH
07:42	REBOUND (DEF) by SHIFFER, FAITH			
07:37	MISSED LAYUP by SHIFFER, FAITH			
07:37				BLOCK by SPRINGER, LEAH
07:32				REBOUND (DEF) by SPRINGER, LEAH
07:30				MISSED JUMPER by BREINICH, BROOKE
07:26	REBOUND (DEF) by LAMONEA, BELLA			
07:11	MISSED 3PTR by ORIBELLO, MAC			
07:08				REBOUND (DEF) by CRYAN, GRACIE
07:04		28-18	H 10	GOOD! LAYUP by DAVIS, JAYNEISHA [FB/PNT]
07:04				ASSIST by CRYAN, GRACIE
07:01	TIMEOUT 30SEC			
06:52	TURNOVER (BADPASS) by SHIFFER, FAITH			
06:52				STEAL by DAVIS, JAYNEISHA
06:47		30-18	H 12	GOOD! LAYUP by DAVIS, JAYNEISHA [FB]
06:38	TURNOVER (LOSTBALL) by SHIFFER, FAITH			
06:38				STEAL by ECKLEY, ELEANA
06:35				MISSED JUMPER by ECKLEY, ELEANA
06:34	REBOUND (DEF) by ALBERICI, RENATA			
06:34				FOUL (PERSONAL) by ECKLEY, ELEANA
06:34	SUB OUT: SHIFFER, FAITH			
06:34	SUB IN: GORDON, KHALIAH			
06:16	MISSED 3PTR by LAMONEA, BELLA			
06:12	REBOUND (OFF) by ALBERICI, RENATA			
06:10	MISSED JUMPER by ALBERICI, RENATA			
06:10				BLOCK by SPRINGER, LEAH
06:10	REBOUND (OFF) by TEAM			
06:09	MISSED JUMPER by FARAH, SAMY			
06:05				REBOUND (DEF) by DAVIS, JAYNEISHA
05:42		33-18	H 15	GOOD! 3PTR by CRYAN, GRACIE
05:42				ASSIST by SPRINGER, LEAH
05:21	GOOD! JUMPER by LAMONEA, BELLA	33-20	H 13	
04:48		35-20	H 15	GOOD! LAYUP by SPRINGER, LEAH [PNT]
04:48				ASSIST by CRYAN, GRACIE
04:24	MISSED JUMPER by GORDON, KHALIAH			
04:19				REBOUND (DEF) by BREINICH, BROOKE
04:12				TURNOVER (BADPASS) by DAVIS, JAYNEISHA
04:12	STEAL by ORIBELLO, MAC			
04:07	GOOD! LAYUP by ORIBELLO, MAC [FB]	35-22	H 13	
03:46	FOUL (PERSONAL) by ALBERICI, RENATA			
03:46				SUB OUT: ECKLEY, ELEANA
03:46				SUB OUT: CRYAN, GRACIE
03:46				SUB IN: STUTZMAN, SIDNEY
03:46				SUB IN: EICH, MADISON
03:46	SUB OUT: ORIBELLO, MAC			
03:46	SUB OUT: FARAH, SAMY			
03:46	SUB IN: PRICE, KATIE			
03:46	SUB IN: WEBER, MEGAN			
03:46		36-22	H 14	GOOD! FT by SPRINGER, LEAH
03:46		37-22	H 15	GOOD! FT by SPRINGER, LEAH

Time	VISITORS: Keystone	Score	Margin	HOME: Messiah
03:30	GOOD! LAYUP by LAMONEA, BELLA	37-24	H 13	
03:30				FOUL (PERSONAL) by DAVIS, JAYNEISHA
03:30	GOOD! FT by LAMONEA, BELLA	37-25	H 12	
03:10				TURNOVER (BADPASS) by EICH, MADISON
03:10	STEAL by GORDON, KHALIAH			
03:02	MISSED LAYUP by PRICE, KATIE			
02:59				REBOUND (DEF) by SPRINGER, LEAH
02:59	FOUL (PERSONAL) by ALBERICI, RENATA			
02:59				SUB OUT: EICH, MADISON
02:59				SUB IN: ECKLEY, ELEANA
02:59	SUB OUT: ALBERICI, RENATA			
02:59	SUB OUT: WEBER, MEGAN			
02:59	SUB IN: ORIBELLO, MAC			
02:59	SUB IN: FARAH, SAMY			
02:45				TURNOVER (TRAVEL) by BREINICH, BROOKE
02:34	GOOD! LAYUP by LAMONEA, BELLA	37-27	H 10	
02:34	ASSIST by ORIBELLO, MAC			
02:21				TURNOVER (BADPASS) by BREINICH, BROOKE
02:21	STEAL by GORDON, KHALIAH			
02:16	GOOD! LAYUP by GORDON, KHALIAH [FB]	37-29	H 8	
02:13				TIMEOUT 30SEC
02:10				SUB OUT: BREINICH, BROOKE
02:10				SUB IN: ZIMMERMAN, MEGAN
01:58				MISSED 3PTR by ECKLEY, ELEANA
01:54	REBOUND (DEF) by LAMONEA, BELLA			
01:43	GOOD! 3PTR by LAMONEA, BELLA	37-32	H 5	
01:43	ASSIST by ORIBELLO, MAC			
01:08				MISSED 3PTR by DAVIS, JAYNEISHA
01:05	REBOUND (DEF) by LAMONEA, BELLA			
01:00	TURNOVER (TRAVEL) by GORDON, KHALIAH			
01:00				SUB OUT: STUTZMAN, SIDNEY
01:00				SUB IN: CRYAN, GRACIE
00:43		39-32	H 7	GOOD! JUMPER by CRYAN, GRACIE
00:18	GOOD! 3PTR by PRICE, KATIE	39-35	H 4	
00:06				MISSED 3PTR by ECKLEY, ELEANA
00:00	REBOUND (DEF) by TEAM			

Keystone 35, Messiah 39

Points from (This Period)	KEY	MES
In the Paint	10	6
Off Turns	6	6
2nd Chance	0	0
Fast Break	4	4
Bench	2	2

Official Box Score
Keystone vs Messiah
Second Half Statistics Only
March 06, 2020 at Hitchcock Arena - Mechanicsburg



Keystone 12

No.	Player	S	Pts	FG	3FG	FT	OR	DR	TR	PF	A	TO	Blk	Stl	Min	+/-
01	ORIBELLO, MAC	G	0	0-7	0-2	0-0	1	1	2	1	0	0	0	1	17	-23
10	SHIFFER, FAITH	G	2	1-3	0-1	0-0	0	1	1	0	0	1	0	0	16	-12
12	GORDON, KHALIAH	G	0	0-3	0-0	0-0	0	0	0	1	0	3	0	1	14	-23
14	ALBERICI, RENATA	F	1	0-1	0-1	1-2	0	2	2	1	0	0	0	0	14	-12
20	PRICE, KATIE	G	2	1-1	0-0	0-0	0	0	0	0	0	1	0	0	4	-9
22	WEBER, MEGAN	G	0	0-1	0-1	0-0	0	0	0	0	0	1	0	0	8	4
25	FARAH, SAMY	F	2	1-3	0-0	0-0	1	0	1	3	0	0	0	0	8	-7
33	LAMONEA, BELLA	G	5	2-8	1-4	0-0	0	4	4	2	0	2	0	0	18	-23
	TEAM		0	0-0	0-0	0-0	2	1	3	0	0	1	0	0	0	0
TOTALS			12	5-27	1-9	1-2	4	9	13	8	0	9	0	2	99	

Shooting By Period

Period	FG	FG%	3FG	3FG%	FT	FT%
3rd Qtr	1-14	07%	0-4	00%	1-2	50%
4th Qtr	4-13	31%	1-5	20%	0-0	0%
2nd Half	5-27	19%	1-9	11%	1-2	50%
Game	19-58	32.8%	3-20	15.0%	6-7	85.7%

Deadball Rebounds: 1,1
 Last FG Half: KEY 4th-00:49

Messiah 33

No.	Player	S	Pts	FG	3FG	FT	OR	DR	TR	PF	A	TO	Blk	Stl	Min	+/-
03	ECKLEY, ELEANA	G	5	1-5	1-3	2-2	0	1	1	0	1	1	0	1	14	24
05	PLOSKER, LOGAN	G	0	0-1	0-0	0-0	0	0	0	0	0	1	0	0	3	-4
10	STUTZMAN, SIDNEY	G	0	0-1	0-1	0-0	1	1	2	0	0	2	0	0	11	0
11	CRYAN, GRACIE	G	0	0-0	0-0	0-0	0	0	0	0	4	1	1	0	11	21
12	HIGH, AMBER	G	0	0-0	0-0	0-0	0	1	1	0	1	0	2	0	5	-5
13	BREINICH, BROOKE	F	2	1-2	0-0	0-0	1	3	4	1	0	0	0	0	10	7
21	MCMONIGLE, SASHA	G	0	0-0	0-0	0-0	0	1	1	0	0	0	0	0	4	-2
22	DAVIS, JAYNEISHA	G	8	3-5	2-3	0-0	0	2	2	2	1	0	0	1	13	19
30	SWANN, BRE	F	0	0-1	0-0	0-0	0	1	1	0	0	1	0	0	3	-4
32	EICH, MADISON	G	3	1-3	1-2	0-0	0	0	0	0	0	0	0	0	6	6
33	SPRINGER, LEAH	F	7	3-5	0-0	1-2	2	3	5	1	0	0	0	0	12	25
34	ZIMMERMAN, MEGAN	F	8	2-2	0-0	4-4	0	4	4	0	0	1	1	0	7	18
	TEAM		0	0-0	0-0	0-0	0	1	1	0	0	0	0	0	0	0
TOTALS			33	11-25	4-9	7-8	4	18	22	4	7	7	4	2	99	

Shooting By Period

Period	FG	FG%	3FG	3FG%	FT	FT%
3rd Qtr	8-11	73%	3-4	75%	7-8	88%
4th Qtr	3-14	21%	1-5	20%	0-0	0%
2nd Half	11-25	44%	4-9	44%	7-8	88%
Game	26-54	48.1%	10-22	45.5%	10-12	83.3%

Deadball Rebounds: 2,0
 Last FG Half: MES 4th-03:40

Game Notes:

Officials: , ,
 Attendance: 750

Start Time: 07:12 PM ET
 End Time: 08:37 PM ET
 Game Duration: 1:24

Score	1st	2nd	3rd	4th	TOT
KEY	13	22	3	9	47
MES	23	16	26	7	72

Points from (This Period)	KEY	MES
In the Paint	6	10
Off Turns	2	7
2nd Chance	2	5
Fast Break	0	2
Bench	4	5

Official Box Score
Keystone vs Messiah
Third Quarter Statistics Only
March 06, 2020 at Hitchcock Arena - Mechanicsburg



Keystone 12

No.	Player	S	Pts	FG	3FG	FT	OR	DR	TR	PF	A	TO	Blk	Stl	Min	+/-
01	ORIBELLO, MAC	G	0	0-5	0-1	0-0	1	0	1	1	0	0	0	1	10	-23
12	GORDON, KHALIAH	G	0	0-2	0-0	0-0	0	0	0	0	0	1	0	0	10	-23
14	ALBERICI, RENATA	F	1	0-0	0-0	1-2	0	0	0	1	0	0	0	0	6	-14
20	PRICE, KATIE	G	2	1-1	0-0	0-0	0	0	0	0	0	1	0	0	4	-9
33	LAMONEA, BELLA	G	0	0-4	0-2	0-0	0	1	1	1	0	1	0	0	10	-23
10	SHIFFER, FAITH	G	0	0-2	0-1	0-0	0	0	0	0	0	0	0	0	6	-14
22	WEBER, MEGAN	G	0	0-0	0-0	0-0	0	0	0	0	0	0	0	0	0	0
25	FARAH, SAMY	F	0	0-0	0-0	0-0	0	0	0	3	0	0	0	0	4	-9
TEAM							1	1	2	0		1				
TOTALS			3	1-14	0-4	1-2	2	2	4	6	0	4	0	1	50	

Shooting By Period

Period	FG	FG%	3FG	3FG%	FT	FT%
2nd Half	0-0	0%	0-0	0%	0-0	0%
Game	19-58	32.8%	3-20	15.0%	6-7	85.7%

Deadball Rebounds: 1,1

Messiah 33

No.	Player	S	Pts	FG	3FG	FT	OR	DR	TR	PF	A	TO	Blk	Stl	Min	+/-
03	ECKLEY, ELEANA	G	5	1-1	1-1	2-2	0	0	0	0	1	0	0	0	10	23
11	CRYAN, GRACIE	G	0	0-0	0-0	0-0	0	0	0	0	3	1	1	0	8	20
22	DAVIS, JAYNEISHA	G	8	3-3	2-2	0-0	0	1	1	2	1	0	0	1	9	21
33	SPRINGER, LEAH	F	5	2-4	0-0	1-2	1	3	4	1	0	0	0	0	10	23
34	ZIMMERMAN, MEGAN	F	8	2-2	0-0	4-4	0	4	4	0	0	1	1	0	7	18
05	PLOSKER, LOGAN	G	0	0-0	0-0	0-0	0	0	0	0	0	0	0	0	0	0
10	STUTZMAN, SIDNEY	G	0	0-0	0-0	0-0	0	0	0	0	0	0	0	0	1	2
12	HIGH, AMBER	G	0	0-0	0-0	0-0	0	0	0	0	0	0	0	0	0	0
13	BREINICH, BROOKE	F	0	0-0	0-0	0-0	0	2	2	1	0	0	0	0	3	5
21	MCMONIGLE, SASHA	G	0	0-0	0-0	0-0	0	0	0	0	0	0	0	0	0	0
30	SWANN, BRE	F	0	0-0	0-0	0-0	0	0	0	0	0	0	0	0	0	0
32	EICH, MADISON	G	0	0-1	0-1	0-0	0	0	0	0	0	0	0	0	2	3
TEAM							0	1	1	0		0				
TOTALS			26	8-11	3-4	7-8	1	11	12	4	5	2	2	1	50	

Shooting By Period

Period	FG	FG%	3FG	3FG%	FT	FT%
2nd Half	0-0	0%	0-0	0%	0-0	0%
Game	26-54	48.1%	10-22	45.5%	10-12	83.3%

Deadball Rebounds: 2,0

Game Notes:

Officials: , ,
Attendance: 750

Start Time: 07:12 PM ET
End Time: 08:37 PM ET
Game Duration: 1:24

Score	1st	2nd	3rd	4th	TOT
KEY	13	22	3	9	47
MES	23	16	26	7	72

Points from (This Period)	KEY	MES
In the Paint	0	8
Off Turns	0	3
2nd Chance	0	1
Fast Break	0	2
Bench	0	0

Official Play-By-Play
Keystone vs Messiah
Third Quarter
March 06, 2020 at Hitchcock Arena - Mechanicsburg



Period 3

Starters:

Keystone: 1 ORIBELLO,MAC (G); 12 GORDON,KHALIAH (G); 14 ALBERICI,RENATA (F); 20 PRICE,KATIE (G); 33 LAMONEA,BELLA (G);

Messiah: 3 ECKLEY,ELEANA (G); 11 CRYAN,GRACIE (G); 22 DAVIS,JAYNEISHA (G); 33 SPRINGER,LEAH (F); 34 ZIMMERMAN,MEGAN (F);

Time	VISITORS: Keystone	Score	Margin	HOME: Messiah
10:00	SUB OUT: FARAH, SAMY			
10:00	SUB IN: ALBERICI, RENATA			
09:46	MISSED 3PTR by ORIBELLO, MAC			
09:44				REBOUND (DEF) by TEAM
09:30	FOUL (PERSONAL) by ALBERICI, RENATA			
09:30		40-35	H 5	GOOD! FT by ZIMMERMAN, MEGAN
09:30		41-35	H 6	GOOD! FT by ZIMMERMAN, MEGAN
09:28	SUB OUT: ALBERICI, RENATA			
09:28	SUB IN: FARAH, SAMY			
09:08	GOOD! JUMPER by PRICE, KATIE	41-37	H 4	
08:48		44-37	H 7	GOOD! 3PTR by DAVIS, JAYNEISHA
08:48				ASSIST by CRYAN, GRACIE
08:26	MISSED JUMPER by GORDON, KHALIAH			
08:23				REBOUND (DEF) by SPRINGER, LEAH
08:19		46-37	H 9	GOOD! LAYUP by DAVIS, JAYNEISHA [FB]
07:55	MISSED JUMPER by ORIBELLO, MAC			
07:53				REBOUND (DEF) by ZIMMERMAN, MEGAN
07:46		48-37	H 11	GOOD! JUMPER by SPRINGER, LEAH
07:46				ASSIST by DAVIS, JAYNEISHA
07:46				
07:46	SUB OUT: PRICE, KATIE			
07:46	SUB IN: SHIFFER, FAITH			
07:25	TURNOVER (LOSTBALL) by GORDON, KHALIAH			
07:13	FOUL (PERSONAL) by FARAH, SAMY			
07:13		49-37	H 12	GOOD! FT by ZIMMERMAN, MEGAN
07:13		50-37	H 13	GOOD! FT by ZIMMERMAN, MEGAN
06:54	MISSED JUMPER by LAMONEA, BELLA			
06:54				BLOCK by ZIMMERMAN, MEGAN
06:50				REBOUND (DEF) by DAVIS, JAYNEISHA
06:50	FOUL (PERSONAL) by FARAH, SAMY			
06:36		52-37	H 15	GOOD! JUMPER by ZIMMERMAN, MEGAN [PNT]
06:36				ASSIST by CRYAN, GRACIE
06:18	TURNOVER (TRAVEL) by LAMONEA, BELLA			
05:55				MISSED JUMPER by SPRINGER, LEAH
05:51	REBOUND (DEF) by LAMONEA, BELLA			
05:51				FOUL (PERSONAL) by SPRINGER, LEAH
05:34	MISSED JUMPER by ORIBELLO, MAC			
05:32				REBOUND (DEF) by SPRINGER, LEAH
05:32	FOUL (PERSONAL) by FARAH, SAMY			
05:11	FOUL (PERSONAL) by LAMONEA, BELLA			
05:11	SUB OUT: FARAH, SAMY			
05:11	SUB IN: ALBERICI, RENATA			
05:11		53-37	H 16	GOOD! FT by ECKLEY, ELEANA
05:11		54-37	H 17	GOOD! FT by ECKLEY, ELEANA
04:56	MISSED JUMPER by SHIFFER, FAITH			
04:56				BLOCK by CRYAN, GRACIE
04:56	REBOUND (OFF) by TEAM			
04:56				
04:52	MISSED JUMPER by GORDON, KHALIAH			
04:49				REBOUND (DEF) by ZIMMERMAN, MEGAN
04:34		57-37	H 20	GOOD! 3PTR by DAVIS, JAYNEISHA
04:34				ASSIST by CRYAN, GRACIE
04:11	MISSED 3PTR by SHIFFER, FAITH			
04:07				REBOUND (DEF) by ZIMMERMAN, MEGAN
03:40		59-37	H 22	GOOD! LAYUP by ZIMMERMAN, MEGAN
03:40				ASSIST by ECKLEY, ELEANA
03:29	MISSED LAYUP by ORIBELLO, MAC			
03:26				REBOUND (DEF) by ZIMMERMAN, MEGAN
03:11				TURNOVER (LOSTBALL) by ZIMMERMAN, MEGAN
03:11	STEAL by ORIBELLO, MAC			
03:09				SUB OUT: ZIMMERMAN, MEGAN
03:09				SUB IN: BREINICH, BROOKE
03:09	SUB OUT: SHIFFER, FAITH			
03:09	SUB IN: PRICE, KATIE			
03:04				FOUL (PERSONAL) by DAVIS, JAYNEISHA
03:00	TURNOVER (LOSTBALL) by PRICE, KATIE			
03:00				STEAL by DAVIS, JAYNEISHA
02:52				TURNOVER (TRAVEL) by CRYAN, GRACIE
02:33	MISSED JUMPER by LAMONEA, BELLA			
02:30				REBOUND (DEF) by SPRINGER, LEAH

Time	VISITORS: Keystone	Score	Margin	HOME: Messiah
02:22		61-37	H 24	GOOD! JUMPER by SPRINGER, LEAH [PNT]
01:51	MISSED 3PTR by LAMONEA, BELLA			
01:48	REBOUND (OFF) by TEAM			
01:48	TURNOVER (SHOTCLOCK) by TEAM			
01:48	SUB OUT: PRICE, KATIE			
01:48	SUB IN: SHIFFER, FAITH			
01:48				SUB OUT: CRYAN, GRACIE
01:48				SUB IN: EICH, MADISON
01:34				MISSED LAYUP by SPRINGER, LEAH
01:32				REBOUND (OFF) by SPRINGER, LEAH
01:32	FOUL (PERSONAL) by ORIBELLO, MAC			
01:32				MISSED FT by SPRINGER, LEAH
01:32				REBOUND (OFF) by TEAM
01:32		62-37	H 25	GOOD! FT by SPRINGER, LEAH
01:09				FOUL (PERSONAL) by DAVIS, JAYNEISHA
01:09				SUB OUT: DAVIS, JAYNEISHA
01:09				SUB IN: STUTZMAN, SIDNEY
00:58				FOUL (PERSONAL) by BREINICH, BROOKE
00:58	GOOD! FT by ALBERICI, RENATA	62-38	H 24	
00:58	MISSED FT by ALBERICI, RENATA			
00:57				REBOUND (DEF) by BREINICH, BROOKE
00:45		65-38	H 27	GOOD! 3PTR by ECKLEY, ELEANA
00:23	MISSED LAYUP by ORIBELLO, MAC			
00:21	REBOUND (OFF) by ORIBELLO, MAC			
00:19	MISSED 3PTR by LAMONEA, BELLA			
00:16				REBOUND (DEF) by BREINICH, BROOKE
00:03				MISSED 3PTR by EICH, MADISON
00:00	REBOUND (DEF) by TEAM			

Keystone 38, Messiah 65

Points from (This Period)	KEY	MES
In the Paint	0	8
Off Turns	0	3
2nd Chance	0	1
Fast Break	0	2
Bench	0	0

Official Box Score
Keystone vs Messiah
Fourth Quarter Statistics Only
March 06, 2020 at Hitchcock Arena - Mechanicsburg



Keystone 9

No.	Player	S	Pts	FG	3FG	FT	OR	DR	TR	PF	A	TO	Blk	Stl	Min	+/-
01	ORIBELLO, MAC	G	0	0-2	0-1	0-0	0	1	1	0	0	0	0	0	7	0
12	GORDON, KHALIAH	G	0	0-1	0-0	0-0	0	0	0	1	0	2	0	1	4	0
14	ALBERICI, RENATA	F	0	0-1	0-1	0-0	0	2	2	0	0	0	0	0	8	2
20	PRICE, KATIE	G	0	0-0	0-0	0-0	0	0	0	0	0	0	0	0	0	0
33	LAMONEA, BELLA	G	5	2-4	1-2	0-0	0	3	3	1	0	1	0	0	8	0
10	SHIFFER, FAITH	G	2	1-1	0-0	0-0	0	1	1	0	0	1	0	0	10	2
22	WEBER, MEGAN	G	0	0-1	0-1	0-0	0	0	0	0	0	1	0	0	8	4
25	FARAH, SAMY	F	2	1-3	0-0	0-0	1	0	1	0	0	0	0	0	4	2
TEAM							1	0	1	0	0					
TOTALS			9	4-13	1-5	0-0	2	7	9	2	0	5	0	1	49	

Shooting By Period

Period	FG	FG%	3FG	3FG%	FT	FT%
Game	19-58	32.8%	3-20	15.0%	6-7	85.7%

Deadball Rebounds: 1,1

Messiah 7

No.	Player	S	Pts	FG	3FG	FT	OR	DR	TR	PF	A	TO	Blk	Stl	Min	+/-
03	ECKLEY, ELEANA	G	0	0-4	0-2	0-0	0	1	1	0	0	1	0	1	4	1
11	CRYAN, GRACIE	G	0	0-0	0-0	0-0	0	0	0	0	1	0	0	0	3	1
22	DAVIS, JAYNEISHA	G	0	0-2	0-1	0-0	0	1	1	0	0	0	0	0	4	-2
33	SPRINGER, LEAH	F	2	1-1	0-0	0-0	1	0	1	0	0	0	0	0	2	2
34	ZIMMERMAN, MEGAN	F	0	0-0	0-0	0-0	0	0	0	0	0	0	0	0	0	0
05	PLOSKER, LOGAN	G	0	0-1	0-0	0-0	0	0	0	0	0	1	0	0	3	-4
10	STUTZMAN, SIDNEY	G	0	0-1	0-1	0-0	1	1	2	0	0	2	0	0	10	-2
12	HIGH, AMBER	G	0	0-0	0-0	0-0	0	1	1	0	1	0	2	0	5	-5
13	BREINICH, BROOKE	F	2	1-2	0-0	0-0	1	1	2	0	0	0	0	0	7	2
21	MCMONIGLE, SASHA	G	0	0-0	0-0	0-0	0	1	1	0	0	0	0	0	4	-2
30	SWANN, BRE	F	0	0-1	0-0	0-0	0	1	1	0	0	1	0	0	3	-4
32	EICH, MADISON	G	3	1-2	1-1	0-0	0	0	0	0	0	0	0	0	4	3
TEAM							0	0	0	0	0					
TOTALS			7	3-14	1-5	0-0	3	7	10	0	2	5	2	1	49	

Shooting By Period

Period	FG	FG%	3FG	3FG%	FT	FT%
Game	26-54	48.1%	10-22	45.5%	10-12	83.3%

Deadball Rebounds: 2,0

Game Notes:

Officials: , ,
Attendance: 750

Start Time: 07:12 PM ET
End Time: 08:37 PM ET
Game Duration: 1:24

Score	1st	2nd	3rd	4th	TOT
KEY	13	22	3	9	47
MES	23	16	26	7	72

Points from (This Period)	KEY	MES
In the Paint	6	2
Off Turns	2	4
2nd Chance	2	4
Fast Break	0	0
Bench	4	5

Official Play-By-Play
Keystone vs Messiah
Fourth Quarter
March 06, 2020 at Hitchcock Arena - Mechanicsburg



Period 4

Starters:

Keystone: 1 ORIBELLO,MAC (G); 12 GORDON,KHALIAH (G); 14 ALBERICI,RENATA (F); 20 PRICE,KATIE (G); 33 LAMONEA,BELLA (G);

Messiah: 3 ECKLEY,ELEANA (G); 11 CRYAN,GRACIE (G); 22 DAVIS,JAYNEISHA (G); 33 SPRINGER,LEAH (F); 34 ZIMMERMAN,MEGAN (F);

Time	VISITORS: Keystone	Score	Margin	HOME: Messiah
09:42				MISSED JUMPER by ECKLEY, ELEANA
09:38	REBOUND (DEF) by ORIBELLO, MAC			
09:27	FOUL (OFF) by GORDON, KHALIAH			
09:27	TURNOVER (OFFENSIVE) by GORDON, KHALIAH			
09:01				MISSED LAYUP by ECKLEY, ELEANA
08:57				REBOUND (OFF) by SPRINGER, LEAH
08:57		67-38	H 29	GOOD! LAYUP by SPRINGER, LEAH
08:43	MISSED 3PTR by ORIBELLO, MAC			
08:39				REBOUND (DEF) by STUTZMAN, SIDNEY
08:33				MISSED 3PTR by ECKLEY, ELEANA
08:28	REBOUND (DEF) by ALBERICI, RENATA			
08:08	TURNOVER (TRAVEL) by GORDON, KHALIAH			
08:08				SUB OUT: ECKLEY, ELEANA
08:08				SUB OUT: STUTZMAN, SIDNEY
08:08				SUB IN: CRYAN, GRACIE
08:08				SUB IN: DAVIS, JAYNEISHA
08:08	SUB OUT: GORDON, KHALIAH			
08:08	SUB IN: WEBER, MEGAN			
07:58				SUB OUT: SPRINGER, LEAH
07:58				SUB IN: STUTZMAN, SIDNEY
07:52				MISSED 3PTR by DAVIS, JAYNEISHA
07:49	REBOUND (DEF) by ALBERICI, RENATA			
07:34	MISSED 3PTR by ALBERICI, RENATA			
07:31				REBOUND (DEF) by DAVIS, JAYNEISHA
07:23		70-38	H 32	GOOD! 3PTR by EICH, MADISON
07:23				ASSIST by CRYAN, GRACIE
07:13				
06:55	GOOD! JUMPER by LAMONEA, BELLA [PNT]	70-40	H 30	
06:26				MISSED JUMPER by DAVIS, JAYNEISHA
06:23	REBOUND (DEF) by LAMONEA, BELLA			
06:15	MISSED LAYUP by ORIBELLO, MAC			
06:09				REBOUND (DEF) by BREINICH, BROOKE
05:52				MISSED JUMPER by EICH, MADISON
05:49	REBOUND (DEF) by SHIFFER, FAITH			
05:35	FOUL (OFF) by LAMONEA, BELLA			
05:35	TURNOVER (OFFENSIVE) by LAMONEA, BELLA			
05:35				SUB OUT: CRYAN, GRACIE
05:35				SUB OUT: EICH, MADISON
05:35				SUB IN: ECKLEY, ELEANA
05:35				SUB IN: HIGH, AMBER
05:17				MISSED JUMPER by BREINICH, BROOKE
05:14	REBOUND (DEF) by LAMONEA, BELLA			
05:07	GOOD! 3PTR by LAMONEA, BELLA	70-43	H 27	
04:46				TURNOVER (DRIBBLING) by ECKLEY, ELEANA
04:15	MISSED LAYUP by LAMONEA, BELLA			
04:13				REBOUND (DEF) by ECKLEY, ELEANA
04:10				TURNOVER (LOSTBALL) by STUTZMAN, SIDNEY
04:03	TURNOVER (BADPASS) by SHIFFER, FAITH			
04:03				SUB OUT: DAVIS, JAYNEISHA
04:03				SUB IN: MCMONIGLE, SASHA
04:03	SUB OUT: ALBERICI, RENATA			
04:03	SUB IN: FARAH, SAMY			
03:49				MISSED 3PTR by ECKLEY, ELEANA
03:47				REBOUND (OFF) by BREINICH, BROOKE
03:40		72-43	H 29	GOOD! JUMPER by BREINICH, BROOKE
03:40				ASSIST by HIGH, AMBER
03:27	TURNOVER (BADPASS) by WEBER, MEGAN			
03:27				STEAL by ECKLEY, ELEANA
03:23				TURNOVER (LOSTBALL) by STUTZMAN, SIDNEY
03:23				SUB OUT: ECKLEY, ELEANA
03:23				SUB OUT: BREINICH, BROOKE
03:23				SUB IN: PLOSKER, LOGAN
03:23				SUB IN: SWANN, BRE
03:02	MISSED LAYUP by FARAH, SAMY			
02:59	REBOUND (OFF) by FARAH, SAMY			
02:59	GOOD! LAYUP by FARAH, SAMY [PNT]	72-45	H 27	
02:39				TURNOVER (TRAVEL) by SWANN, BRE
02:39	SUB OUT: ORIBELLO, MAC			
02:39	SUB IN: GORDON, KHALIAH			
02:17	MISSED 3PTR by LAMONEA, BELLA			

Time	VISITORS: Keystone	Score	Margin	HOME: Messiah
02:15				REBOUND (DEF) by SWANN, BRE
01:58				MISSED JUMPER by SWANN, BRE
01:52	REBOUND (DEF) by LAMONEA, BELLA			
01:44	MISSED LAYUP by GORDON, KHALIAH			
01:44				BLOCK by HIGH, AMBER
01:44	REBOUND (OFF) by TEAM			
01:44	SUB OUT: LAMONEA, BELLA			
01:44	SUB IN: ALBERICI, RENATA			
01:35	MISSED JUMPER by FARAH, SAMY			
01:32				REBOUND (DEF) by HIGH, AMBER
01:06				MISSED JUMPER by PLOSKER, LOGAN
01:05	REBOUND (DEF) by TEAM			
00:49	GOOD! LAYUP by SHIFFER, FAITH [PNT]	72-47	H 25	
00:35				MISSED 3PTR by STUTZMAN, SIDNEY
00:32				REBOUND (OFF) by STUTZMAN, SIDNEY
00:21				TURNOVER (BADPASS) by PLOSKER, LOGAN
00:21	STEAL by GORDON, KHALIAH			
00:13	MISSED 3PTR by WEBER, MEGAN			
00:13				BLOCK by HIGH, AMBER
00:06				REBOUND (DEF) by MCMONIGLE, SASHA

Keystone 47, Messiah 72

Points from (This Period)	KEY	MES
In the Paint	6	2
Off Turns	2	4
2nd Chance	2	4
Fast Break	0	0
Bench	4	5

Official Scoring/Possession Reference Chart
Keystone vs Messiah
Period 1
March 06, 2020 at Hitchcock Arena - Mechanicsburg



Period 1

Starters:

Keystone: 1 ORIBELLO,MAC (G); 12 GORDON,KHALIAH (G); 14 ALBERICI,RENATA (F); 20 PRICE,KATIE (G); 33 LAMONEA,BELLA (G);
Messiah: 3 ECKLEY,ELEANA (G); 11 CRYAN,GRACIE (G); 22 DAVIS,JAYNEISHA (G); 33 SPRINGER,LEAH (F); 34 ZIMMERMAN,MEGAN (F);

Time	VISITORS: Keystone	Score	Margin	HOME: Messiah
09:10		2-0	H 2	GOOD! JUMPER by DAVIS, JAYNEISHA
08:51	GOOD! JUMPER by PRICE, KATIE	2-2	T	
08:31		4-2	H 2	GOOD! JUMPER by ECKLEY, ELEANA
08:09	GOOD! JUMPER by LAMONEA, BELLA	4-4	T	
07:49		7-4	H 3	GOOD! 3PTR by SPRINGER, LEAH
07:24	GOOD! LAYUP by LAMONEA, BELLA	7-6	H 1	
07:07		10-6	H 4	GOOD! 3PTR by ECKLEY, ELEANA
06:27		13-6	H 7	GOOD! 3PTR by DAVIS, JAYNEISHA
06:00		16-6	H 10	GOOD! 3PTR by DAVIS, JAYNEISHA
05:29	GOOD! LAYUP by ORIBELLO, MAC	16-8	H 8	
04:49		19-8	H 11	GOOD! 3PTR by DAVIS, JAYNEISHA
03:08		21-8	H 13	GOOD! LAYUP by ZIMMERMAN, MEGAN
01:28		23-8	H 15	GOOD! JUMPER by DAVIS, JAYNEISHA [FB/PNT]
01:14	GOOD! LAYUP by SHIFFER, FAITH [PNT]	23-10	H 13	
01:14	GOOD! FT by SHIFFER, FAITH	23-11	H 12	
00:03	GOOD! LAYUP by FARAH, SAMY	23-13	H 10	

Keystone 13, Messiah 23

Official Scoring/Possession Reference Chart
Keystone vs Messiah
Period 2
March 06, 2020 at Hitchcock Arena - Mechanicsburg



Period 2

Starters:

Keystone: 1 ORIBELLO,MAC (G); 12 GORDON,KHALIAH (G); 14 ALBERICI,RENATA (F); 20 PRICE,KATIE (G); 33 LAMONEA,BELLA (G);

Messiah: 3 ECKLEY,ELEANA (G); 11 CRYAN,GRACIE (G); 22 DAVIS,JAYNEISHA (G); 33 SPRINGER,LEAH (F); 34 ZIMMERMAN,MEGAN (F);

Time	VISITORS: Keystone	Score	Margin	HOME: Messiah
09:30		24-13	H 11	GOOD! FT by DAVIS, JAYNEISHA
09:04	GOOD! LAYUP by GORDON, KHALIAH	24-15	H 9	
09:04	GOOD! FT by GORDON, KHALIAH	24-16	H 8	
08:23		26-16	H 10	GOOD! JUMPER by BREINICH, BROOKE
08:00	GOOD! FT by SHIFFER, FAITH	26-17	H 9	
08:00	GOOD! FT by SHIFFER, FAITH	26-18	H 8	
07:04		28-18	H 10	GOOD! LAYUP by DAVIS, JAYNEISHA [FB/PNT]
06:47		30-18	H 12	GOOD! LAYUP by DAVIS, JAYNEISHA [FB]
05:42		33-18	H 15	GOOD! 3PTR by CRYAN, GRACIE
05:21	GOOD! JUMPER by LAMONEA, BELLA	33-20	H 13	
04:48		35-20	H 15	GOOD! LAYUP by SPRINGER, LEAH [PNT]
04:07	GOOD! LAYUP by ORIBELLO, MAC [FB]	35-22	H 13	
03:46		36-22	H 14	GOOD! FT by SPRINGER, LEAH
03:46		37-22	H 15	GOOD! FT by SPRINGER, LEAH
03:30	GOOD! LAYUP by LAMONEA, BELLA	37-24	H 13	
03:30	GOOD! FT by LAMONEA, BELLA	37-25	H 12	
02:34	GOOD! LAYUP by LAMONEA, BELLA	37-27	H 10	
02:16	GOOD! LAYUP by GORDON, KHALIAH [FB]	37-29	H 8	
01:43	GOOD! 3PTR by LAMONEA, BELLA	37-32	H 5	
00:43		39-32	H 7	GOOD! JUMPER by CRYAN, GRACIE
00:18	GOOD! 3PTR by PRICE, KATIE	39-35	H 4	

Keystone 35, Messiah 39

Official Scoring/Possession Reference Chart
Keystone vs Messiah
Period 3
March 06, 2020 at Hitchcock Arena - Mechanicsburg



Period 3

Starters:

Keystone: 1 ORIBELLO,MAC (G); 12 GORDON,KHALIAH (G); 14 ALBERICI,RENATA (F); 20 PRICE,KATIE (G); 33 LAMONEA,BELLA (G);
Messiah: 3 ECKLEY,ELEANA (G); 11 CRYAN,GRACIE (G); 22 DAVIS,JAYNEISHA (G); 33 SPRINGER,LEAH (F); 34 ZIMMERMAN,MEGAN (F);

Time	VISITORS: Keystone	Score	Margin	HOME: Messiah
09:30		40-35	H 5	GOOD! FT by ZIMMERMAN, MEGAN
09:30		41-35	H 6	GOOD! FT by ZIMMERMAN, MEGAN
09:08	GOOD! JUMPER by PRICE, KATIE	41-37	H 4	
08:48		44-37	H 7	GOOD! 3PTR by DAVIS, JAYNEISHA
08:19		46-37	H 9	GOOD! LAYUP by DAVIS, JAYNEISHA [FB]
07:46		48-37	H 11	GOOD! JUMPER by SPRINGER, LEAH
07:13		49-37	H 12	GOOD! FT by ZIMMERMAN, MEGAN
07:13		50-37	H 13	GOOD! FT by ZIMMERMAN, MEGAN
06:36		52-37	H 15	GOOD! JUMPER by ZIMMERMAN, MEGAN [PNT]
05:11		53-37	H 16	GOOD! FT by ECKLEY, ELEANA
05:11		54-37	H 17	GOOD! FT by ECKLEY, ELEANA
04:34		57-37	H 20	GOOD! 3PTR by DAVIS, JAYNEISHA
03:40		59-37	H 22	GOOD! LAYUP by ZIMMERMAN, MEGAN
02:22		61-37	H 24	GOOD! JUMPER by SPRINGER, LEAH [PNT]
01:32		62-37	H 25	GOOD! FT by SPRINGER, LEAH
00:58	GOOD! FT by ALBERICI, RENATA	62-38	H 24	
00:45		65-38	H 27	GOOD! 3PTR by ECKLEY, ELEANA

Keystone 38, Messiah 65

Official Scoring/Possession Reference Chart
Keystone vs Messiah
Period 4
March 06, 2020 at Hitchcock Arena - Mechanicsburg



Period 4

Starters:

Keystone: 1 ORIBELLO,MAC (G); 12 GORDON,KHALIAH (G); 14 ALBERICI,RENATA (F); 20 PRICE,KATIE (G); 33 LAMONEA,BELLA (G);
Messiah: 3 ECKLEY,ELEANA (G); 11 CRYAN,GRACIE (G); 22 DAVIS,JAYNEISHA (G); 33 SPRINGER,LEAH (F); 34 ZIMMERMAN,MEGAN (F);

Time	VISITORS: Keystone	Score	Margin	HOME: Messiah
08:57		67-38	H 29	GOOD! LAYUP by SPRINGER, LEAH
07:23		70-38	H 32	GOOD! 3PTR by EICH, MADISON
06:55	GOOD! JUMPER by LAMONEA, BELLA [PNT]	70-40	H 30	
05:07	GOOD! 3PTR by LAMONEA, BELLA	70-43	H 27	
03:40		72-43	H 29	GOOD! JUMPER by BREINICH, BROOKE
02:59	GOOD! LAYUP by FARAH, SAMY [PNT]	72-45	H 27	
00:49	GOOD! LAYUP by SHIFFER, FAITH [PNT]	72-47	H 25	

Keystone 47, Messiah 72

Official Substitutions Log
Keystone vs Messiah
Period 1
March 06, 2020 at Hitchcock Arena - Mechanicsburg



VISITORS: Keystone	Time	Score	HOME: Messiah
1 ORIBELLO,MAC			3 ECKLEY,ELEANA
12 GORDON,KHALIAH			11 CRYAN,GRACIE
14 ALBERICI,RENATA			22 DAVIS,JAYNEISHA
20 PRICE,KATIE			33 SPRINGER,LEAH
33 LAMONEA,BELLA			34 ZIMMERMAN,MEGAN
SUB OUT: 20 PRICE,KATIE	04:55	8-16	
SUB IN: 10 SHIFFER,FAITH	04:55		
	02:42	8-21	SUB OUT: CRYAN,GRACIE
	02:42		SUB OUT: ZIMMERMAN,MEGAN
	02:42		SUB IN: BREINICH,BROOKE
	02:42		SUB IN: EICH,MADISON
SUB OUT: 14 ALBERICI,RENATA	01:49	8-21	
SUB IN: 25 FARAH,SAMY	01:49		

Keystone 13, Messiah 23

Official Substitutions Log
Keystone vs Messiah
Period 2
March 06, 2020 at Hitchcock Arena - Mechanicsburg



VISITORS: Keystone	Time	Score	HOME: Messiah
1 ORIBELLO,MAC			3 ECKLEY,ELEANA
12 GORDON,KHALIAH			11 CRYAN,GRACIE
14 ALBERICI,RENATA			22 DAVIS,JAYNEISHA
20 PRICE,KATIE			33 SPRINGER,LEAH
33 LAMONEA,BELLA			34 ZIMMERMAN,MEGAN
	10:00	-	SUB OUT: EICH,MADISON
	10:00		SUB IN: CRYAN,GRACIE
SUB OUT: 12 GORDON,KHALIAH	08:00	16-26	
SUB IN: 14 ALBERICI,RENATA	08:00		
SUB OUT: 10 SHIFFER,FAITH	06:34	18-30	
SUB IN: 12 GORDON,KHALIAH	06:34		
	03:46	22-35	SUB OUT: ECKLEY,ELEANA
	03:46		SUB OUT: CRYAN,GRACIE
	03:46		SUB IN: STUTZMAN,SIDNEY
	03:46		SUB IN: EICH,MADISON
SUB OUT: 1 ORIBELLO,MAC	03:46		
SUB OUT: 25 FARAH,SAMY	03:46		
SUB IN: 20 PRICE,KATIE	03:46		
SUB IN: 22 WEBER,MEGAN	03:46		
	02:59	25-37	SUB OUT: EICH,MADISON
	02:59		SUB IN: ECKLEY,ELEANA
SUB OUT: 14 ALBERICI,RENATA	02:59		
SUB OUT: 22 WEBER,MEGAN	02:59		
SUB IN: 1 ORIBELLO,MAC	02:59		
SUB IN: 25 FARAH,SAMY	02:59		
	02:10	29-37	SUB OUT: BREINICH,BROOKE
	02:10		SUB IN: ZIMMERMAN,MEGAN
	01:00	32-37	SUB OUT: STUTZMAN,SIDNEY
	01:00		SUB IN: CRYAN,GRACIE

Keystone 35, Messiah 39

**Official Substitutions Log
Keystone vs Messiah
Period 3
March 06, 2020 at Hitchcock Arena - Mechanicsburg**



VISITORS: Keystone	Time	Score	HOME: Messiah
1 ORIBELLO,MAC			3 ECKLEY,ELEANA
12 GORDON,KHALIAH			11 CRYAN,GRACIE
14 ALBERICI,RENATA			22 DAVIS,JAYNEISHA
20 PRICE,KATIE			33 SPRINGER,LEAH
33 LAMONEA,BELLA			34 ZIMMERMAN,MEGAN
SUB OUT: 25 FARAH,SAMY	10:00	-	
SUB IN: 14 ALBERICI,RENATA	10:00		
SUB OUT: 14 ALBERICI,RENATA	09:28	35-41	
SUB IN: 25 FARAH,SAMY	09:28		
SUB OUT: 20 PRICE,KATIE	07:46	37-48	
SUB IN: 10 SHIFFER,FAITH	07:46		
SUB OUT: 25 FARAH,SAMY	05:11	37-52	
SUB IN: 14 ALBERICI,RENATA	05:11		
	03:09	37-59	SUB OUT: ZIMMERMAN,MEGAN
	03:09		SUB IN: BREINICH,BROOKE
SUB OUT: 10 SHIFFER,FAITH	03:09		
SUB IN: 20 PRICE,KATIE	03:09		
SUB OUT: 20 PRICE,KATIE	01:48	37-61	
SUB IN: 10 SHIFFER,FAITH	01:48		
	01:48		SUB OUT: CRYAN,GRACIE
	01:48		SUB IN: EICH,MADISON
	01:09	37-62	SUB OUT: DAVIS,JAYNEISHA
	01:09		SUB IN: STUTZMAN,SIDNEY

Keystone 38, Messiah 65

Official Substitutions Log
Keystone vs Messiah
Period 4
March 06, 2020 at Hitchcock Arena - Mechanicsburg



VISITORS: Keystone	Time	Score	HOME: Messiah
1 ORIBELLO,MAC			3 ECKLEY,ELEANA
12 GORDON,KHALIAH			11 CRYAN,GRACIE
14 ALBERICI,RENATA			22 DAVIS,JAYNEISHA
20 PRICE,KATIE			33 SPRINGER,LEAH
33 LAMONEA,BELLA			34 ZIMMERMAN,MEGAN
	08:08	38-67	SUB OUT: ECKLEY,ELEANA
	08:08		SUB OUT: STUTZMAN,SIDNEY
	08:08		SUB IN: CRYAN,GRACIE
	08:08		SUB IN: DAVIS,JAYNEISHA
SUB OUT: 12 GORDON,KHALIAH	08:08		
SUB IN: 22 WEBER,MEGAN	08:08		
	07:58	38-67	SUB OUT: SPRINGER,LEAH
	07:58		SUB IN: STUTZMAN,SIDNEY
	05:35	40-70	SUB OUT: CRYAN,GRACIE
	05:35		SUB OUT: EICH,MADISON
	05:35		SUB IN: ECKLEY,ELEANA
	05:35		SUB IN: HIGH,AMBER
	04:03	43-70	SUB OUT: DAVIS,JAYNEISHA
	04:03		SUB IN: MCMONIGLE,SASHA
SUB OUT: 14 ALBERICI,RENATA	04:03		
SUB IN: 25 FARAH,SAMY	04:03		
	03:23	43-72	SUB OUT: ECKLEY,ELEANA
	03:23		SUB OUT: BREINICH,BROOKE
	03:23		SUB IN: PLOSKER,LOGAN
	03:23		SUB IN: SWANN,BRE
SUB OUT: 1 ORIBELLO,MAC	02:39	45-72	
SUB IN: 12 GORDON,KHALIAH	02:39		
SUB OUT: 33 LAMONEA,BELLA	01:44	45-72	
SUB IN: 14 ALBERICI,RENATA	01:44		

Keystone 47, Messiah 72

Official Shot Chart
Keystone vs Messiah
PERIOD 1 Shots
 March 06, 2020 at Hitchcock Arena - Mechanicsburg



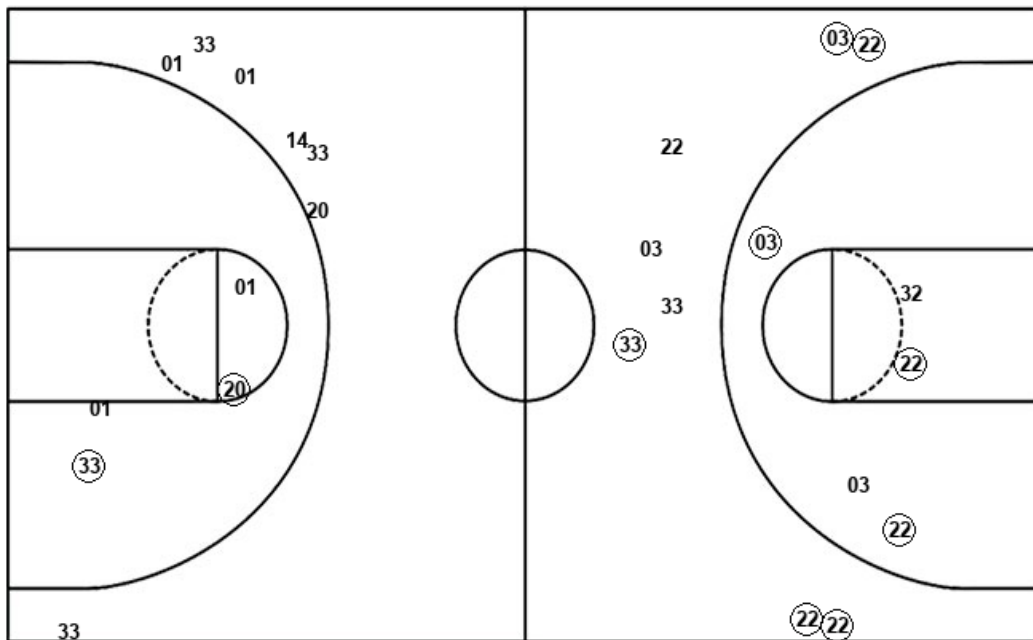
Messiah

Keystone

Layups

11 34 (34)

Dunks



Layups

(33) 01 12 (10) (25)

Dunks

MES : Period 1	Made	Att	Pct
Layups	1	3	33.3
Dunks	0	0	0
2PT Field Goals	4	8	50.0
3PT Field Goals	5	8	62.5
Total Field Goals	9	16	56.3

KEY : Period 1	Made	Att	Pct
Layups	4	5	80.0
Dunks	0	0	0
2PT Field Goals	6	9	66.7
3PT Field Goals	0	7	00.0
Total Field Goals	6	16	37.5

Official Shot Chart
Keystone vs Messiah
PERIOD 2 Shots
 March 06, 2020 at Hitchcock Arena - Mechanicsburg



Messiah

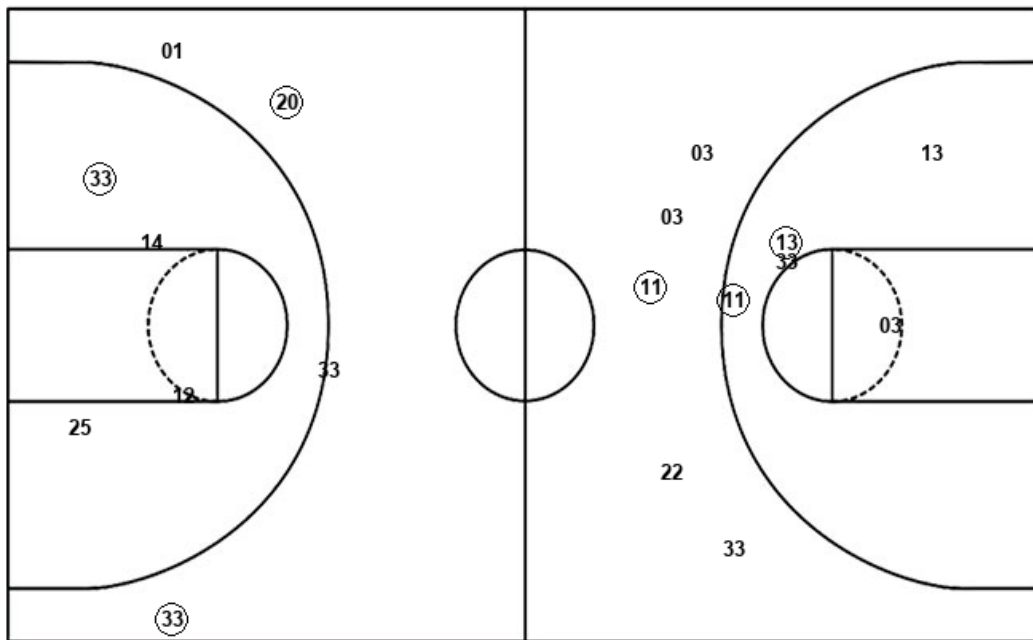
Keystone

Layups
 (22) (22) (33)

Layups
 (12) 10 (01) (33) 20
 (33) (12)

Dunks

Dunks



MES : Period 2	Made	Att	Pct
Layups	3	3	100.0
Dunks	0	0	0
2PT Field Goals	5	8	62.5
3PT Field Goals	1	5	20.0
Total Field Goals	6	13	46.2

KEY : Period 2	Made	Att	Pct
Layups	5	7	71.4
Dunks	0	0	0
2PT Field Goals	6	11	54.5
3PT Field Goals	2	4	50.0
Total Field Goals	8	15	53.3

Official Shot Chart
Keystone vs Messiah
PERIOD 3 Shots
 March 06, 2020 at Hitchcock Arena - Mechanicsburg



Messiah

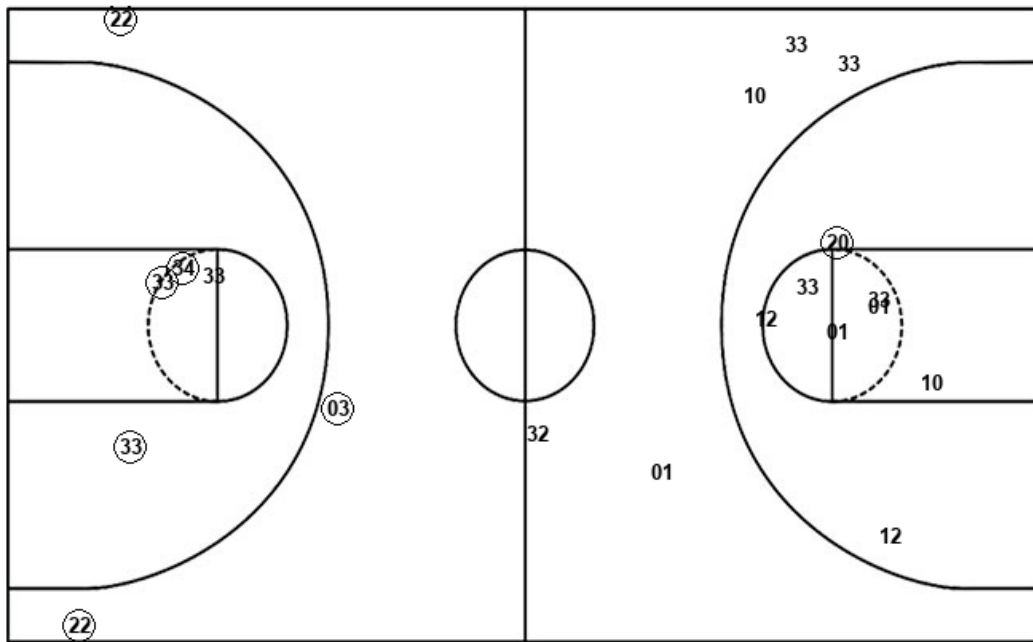
Keystone

Layups
 22 34 33

Layups
 01 01

Dunks

Dunks



MES : Period 3	Made	Att	Pct
Layups	2	3	66.7
Dunks	0	0	0
2PT Field Goals	5	7	71.4
3PT Field Goals	3	4	75.0
Total Field Goals	8	11	72.7

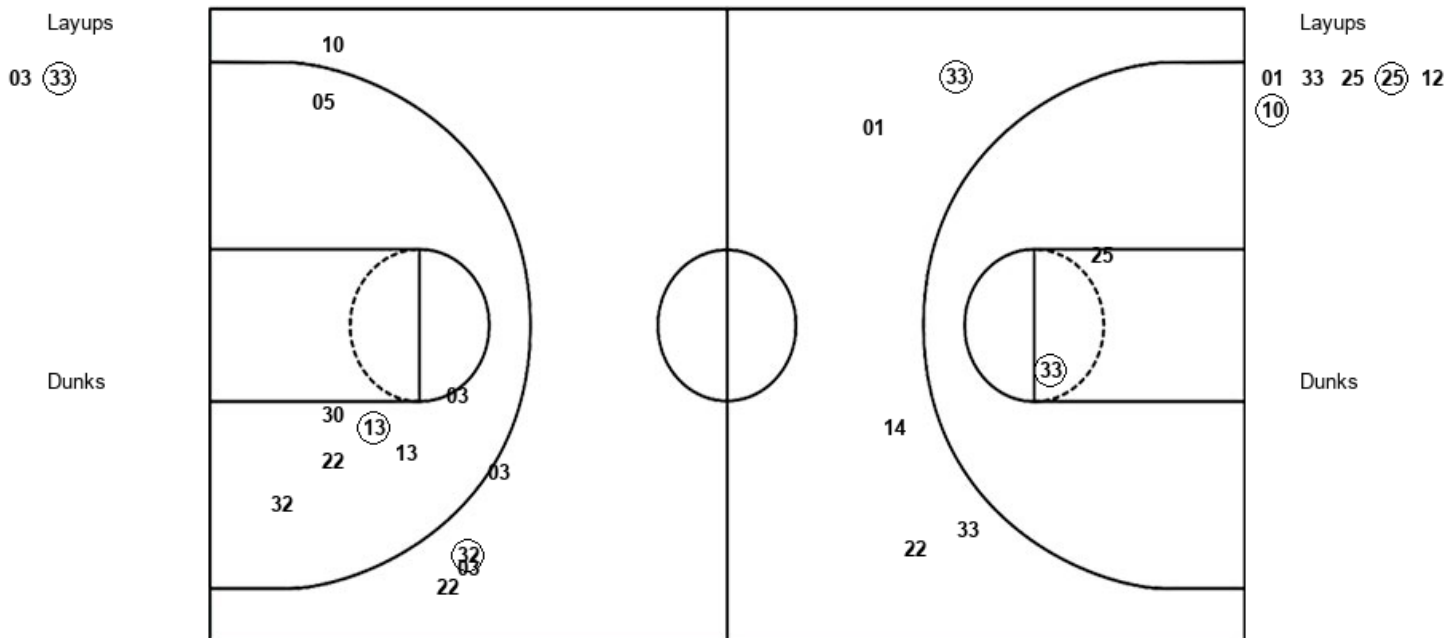
KEY : Period 3	Made	Att	Pct
Layups	0	2	00.0
Dunks	0	0	0
2PT Field Goals	1	10	10.0
3PT Field Goals	0	4	00.0
Total Field Goals	1	14	07.1

Official Shot Chart
Keystone vs Messiah
PERIOD 4 Shots
 March 06, 2020 at Hitchcock Arena - Mechanicsburg



Messiah

Keystone



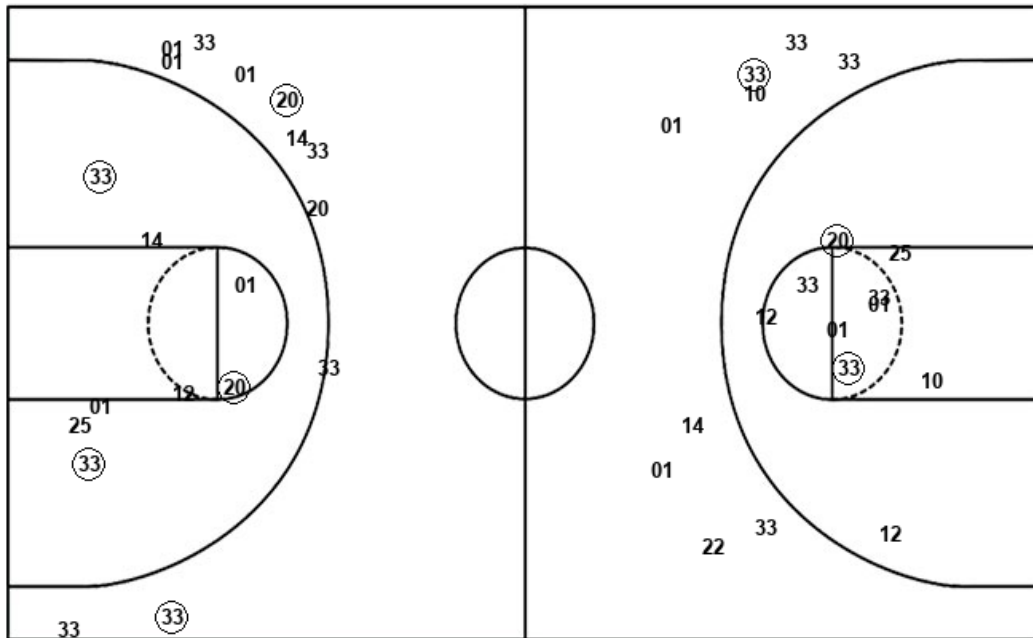
MES : Period 4	Made	Att	Pct
Layups	1	2	50.0
Dunks	0	0	0
2PT Field Goals	2	9	22.2
3PT Field Goals	1	5	20.0
Total Field Goals	3	14	21.4

KEY : Period 4	Made	Att	Pct
Layups	2	6	33.3
Dunks	0	0	0
2PT Field Goals	3	8	37.5
3PT Field Goals	1	5	20.0
Total Field Goals	4	13	30.8

Official Shot Chart
Keystone vs Messiah
Keystone Team Shots
 March 06, 2020 at Hitchcock Arena - Mechanicsburg



Layups



Layups

(33) (01) 12 (10) (25)
 (12) 10 (01) (33) 20
 (33) (12) 01 01 01
 33 25 (25) 12 (10)

Dunks

Dunks

KEY : Period 1	Made	Att	Pct
Layups	4	5	80.0
Dunks	0	0	0
2PT Field Goals	6	9	66.7
3PT Field Goals	0	7	00.0
Total Field Goals	6	16	37.5

KEY : Period 3	Made	Att	Pct
Layups	0	2	00.0
Dunks	0	0	0
2PT Field Goals	1	10	10.0
3PT Field Goals	0	4	00.0
Total Field Goals	1	14	07.1

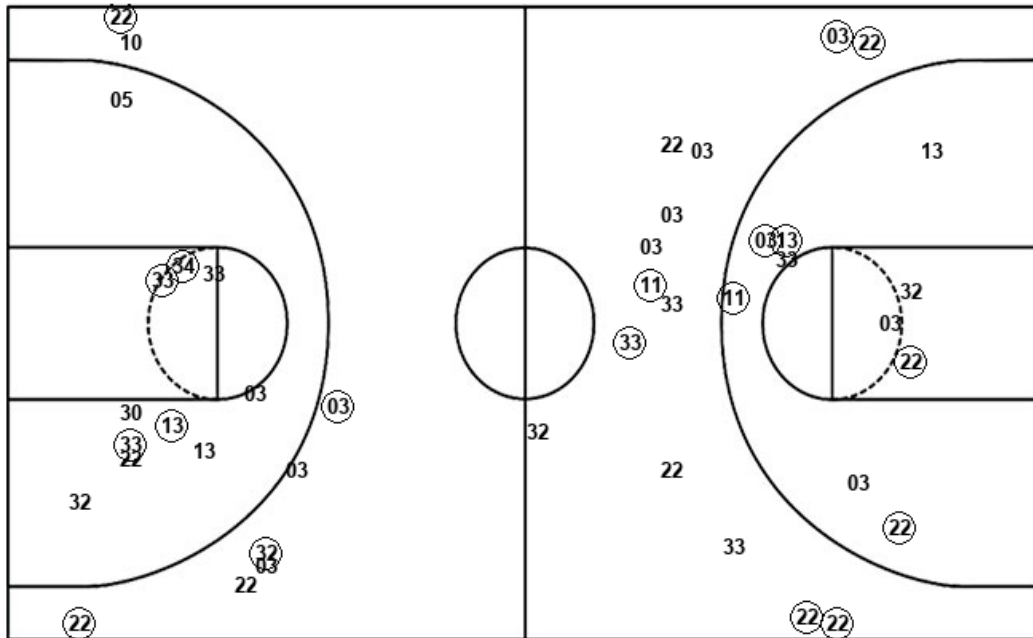
KEY : Period 2	Made	Att	Pct
Layups	5	7	71.4
Dunks	0	0	0
2PT Field Goals	6	11	54.5
3PT Field Goals	2	4	50.0
Total Field Goals	8	15	53.3

KEY : Period 4	Made	Att	Pct
Layups	2	6	33.3
Dunks	0	0	0
2PT Field Goals	3	8	37.5
3PT Field Goals	1	5	20.0
Total Field Goals	4	13	30.8

Official Shot Chart
Keystone vs Messiah
Messiah Team Shots
 March 06, 2020 at Hitchcock Arena - Mechanicsburg



Layups



Layups

Dunks

Dunks

MES : Period 1	Made	Att	Pct
Layups	1	3	33.3
Dunks	0	0	0
2PT Field Goals	4	8	50.0
3PT Field Goals	5	8	62.5
Total Field Goals	9	16	56.3

MES : Period 3	Made	Att	Pct
Layups	2	3	66.7
Dunks	0	0	0
2PT Field Goals	5	7	71.4
3PT Field Goals	3	4	75.0
Total Field Goals	8	11	72.7

MES : Period 2	Made	Att	Pct
Layups	3	3	100.0
Dunks	0	0	0
2PT Field Goals	5	8	62.5
3PT Field Goals	1	5	20.0
Total Field Goals	6	13	46.2

MES : Period 4	Made	Att	Pct
Layups	1	2	50.0
Dunks	0	0	0
2PT Field Goals	2	9	22.2
3PT Field Goals	1	5	20.0
Total Field Goals	3	14	21.4