

FINAL SCORE**Eastern Conn. St.****50****Messiah****60****NCAA Division III Women's Basketball Championship Second Rounds - Campus Sites**

March 07, 2020 •

FINAL STATISTICS

Official Box Score
Eastern Conn. St. vs Messiah
Game Totals -- Final Statistics
March 07, 2020



Eastern Conn. St. 50

No.	Player	S	Pts	FG	3FG	FT	OR	DR	TR	PF	A	TO	Blk	Stl	Min	+/-
03	O'BRIEN, DANIELLE	G	1	0-4	0-4	1-2	0	7	7	3	2	2	0	2	40	-10
21	CRETELLA, LIZZY	G	2	1-5	0-0	0-0	1	7	8	3	3	1	1	0	34	-11
23	KECKLER, JULIE	G	9	2-7	0-2	5-5	0	1	1	5	2	6	0	1	24	9
24	BARRY, ANNA	F	20	10-17	0-0	0-1	0	10	10	4	0	5	8	2	39	-8
45	VILLARD, MYA	F	8	2-6	0-0	4-6	1	3	4	2	1	6	0	1	28	-5
10	SERRANTINO, JENNA	G	2	1-3	0-1	0-0	2	2	4	2	0	1	0	0	19	-18
15	LEMERE, SABRINA	G	2	1-1	0-0	0-0	0	0	0	0	0	2	0	0	2	0
20	WARD, AIYANA	F	0	0-0	0-0	0-0	0	0	0	0	0	0	0	0	0	2
44	DUNN, MARIAH	F	6	3-8	0-0	0-0	7	0	7	2	0	3	0	0	12	-9
	TEAM						1	2	3	0		1				
TOTALS			50	20-51	0-7	10-14	12	32	44	21	8	27	9	6	199	

Shooting By Period

Period	FG	FG%	3FG	3FG%	FT	FT%
1st Qtr	6-9	67%	0-2	00%	0-0	0%
2nd Qtr	6-18	33%	0-3	00%	0-0	0%
3rd Qtr	5-14	36%	0-2	00%	7-8	88%
4th Qtr	3-10	30%	0-0	0%	3-6	50%
1st Half	12-27	44%	0-5	00%	0-0	0%
2nd Half	8-24	33%	0-2	00%	10-14	71%
Game	20-51	39.2%	0-7	00.0%	10-14	71.4%

Deadball Rebounds: 3.0
 Last FG: 4th-00:34
 Biggest Run: 7-0
 Largest lead: By 8 at 1st-00:57
 Technical Fouls: None.

Messiah 60

No.	Player	S	Pts	FG	3FG	FT	OR	DR	TR	PF	A	TO	Blk	Stl	Min	+/-
03	ECKLEY, ELEANA	G	21	6-16	2-7	7-7	2	1	3	2	2	2	1	0	40	10
11	CRYAN, GRACIE	G	7	2-7	2-2	1-2	1	3	4	3	4	5	0	2	36	8
22	DAVIS, JAYNEISHA	G	14	6-18	2-6	0-0	1	3	4	2	2	2	0	2	34	11
33	SPRINGER, LEAH	F	14	4-13	1-4	5-6	1	5	6	3	1	1	3	1	32	9
34	ZIMMERMAN, MEGAN	F	0	0-3	0-0	0-0	0	4	4	4	1	1	0	0	22	12
10	STUTZMAN, SIDNEY	G	0	0-0	0-0	0-0	1	0	1	0	0	0	0	0	1	-2
13	BREINICH, BROOKE	F	4	2-3	0-0	0-0	1	3	4	2	0	2	0	0	25	-1
32	EICH, MADISON	G	0	0-1	0-0	0-0	0	0	0	0	0	0	0	0	8	3
	TEAM						2	1	3	0		0				
TOTALS			60	20-61	7-19	13-15	9	20	29	16	10	13	4	5	199	

Shooting By Period

Period	FG	FG%	3FG	3FG%	FT	FT%
1st Qtr	3-16	19%	2-5	40%	1-2	50%
2nd Qtr	5-14	36%	2-4	50%	4-4	100%
3rd Qtr	6-15	40%	0-2	00%	3-4	75%
4th Qtr	6-16	38%	3-8	38%	5-5	100%
1st Half	8-30	27%	4-9	44%	5-6	83%
2nd Half	12-31	39%	3-10	30%	8-9	89%
Game	20-61	32.8%	7-19	36.8%	13-15	86.7%

Deadball Rebounds: 2.0
 Last FG: 4th-01:18
 Biggest Run: 16-0
 Largest lead: By 12 at 4th-00:45
 Technical Fouls: None.

Game Notes:
 Officials: , ,
 Attendance: 415

Start Time: 05:59 PM ET
 End Time: 07:48 PM ET
 Game Duration: 1:48

Score	1st	2nd	3rd	4th	TOT
ECS	12	12	17	9	50
MES	9	16	15	20	60

ECS led for 27:08. MES led for 10:44.
 Game was tied for 1:52.
 Times tied: 5 Lead Changes: 9

Points from	ECS	MES
In the Paint	38	16
Off Turns	13	24
2nd Chance	10	10
Fast Break	12	9
Bench	10	4

Official Box Score
Eastern Conn. St. vs Messiah
First Half Statistics Only
March 07, 2020



Eastern Conn. St. 24

No.	Player	S	Pts	FG	3FG	FT	OR	DR	TR	PF	A	TO	Blk	Stl	Min	+/-
03	O'BRIEN, DANIELLE	G	0	0-3	0-3	0-0	0	2	2	1	0	0	0	0	20	-1
10	SERRANTINO, JENNA	G	2	1-3	0-1	0-0	2	2	4	1	0	1	0	0	10	-4
15	LEMERE, SABRINA	G	2	1-1	0-0	0-0	0	0	0	0	0	2	0	0	2	0
20	WARD, AIYANA	F	0	0-0	0-0	0-0	0	0	0	0	0	0	0	0	0	0
21	CRETELLA, LIZZY	G	0	0-1	0-0	0-0	0	3	3	2	2	0	1	0	15	-2
23	KECKLER, JULIE	G	0	0-2	0-1	0-0	0	0	0	2	2	4	0	0	14	4
24	BARRY, ANNA	F	12	6-9	0-0	0-0	0	6	6	1	0	3	3	2	20	-1
44	DUNN, MARIAH	F	6	3-7	0-0	0-0	6	0	6	1	0	3	0	0	11	-7
45	VILLARD, MYA	F	2	1-1	0-0	0-0	0	1	1	2	0	2	0	1	9	6
	TEAM		0	0-0	0-0	0-0	0	1	1	0	0	1	0	0	0	
TOTALS			24	12-27	0-5	0-0	8	15	23	10	4	16	4	3	100	

Shooting By Period

Period	FG	FG%	3FG	3FG%	FT	FT%
1st Qtr	6-9	67%	0-2	00%	0-0	0%
2nd Qtr	6-18	33%	0-3	00%	0-0	0%
1st Half	12-27	44%	0-5	00%	0-0	0%
Game	20-51	39.2%	0-7	00.0%	10-14	71.4%

Deadball Rebounds: 3,0
Last FG Half: ECS 2nd-00:54

Messiah 25

No.	Player	S	Pts	FG	3FG	FT	OR	DR	TR	PF	A	TO	Blk	Stl	Min	+/-
03	ECKLEY, ELEANA	G	10	2-6	2-4	4-4	2	0	2	0	1	1	0	0	20	1
10	STUTZMAN, SIDNEY	G	0	0-0	0-0	0-0	1	0	1	0	0	0	0	0	1	-2
11	CRYAN, GRACIE	G	7	2-5	2-2	1-2	0	2	2	2	2	4	0	0	19	1
13	BREINICH, BROOKE	F	2	1-2	0-0	0-0	1	0	1	0	0	1	0	0	15	4
22	DAVIS, JAYNEISHA	G	6	3-10	0-2	0-0	1	1	2	0	0	2	0	2	17	2
32	EICH, MADISON	G	0	0-1	0-0	0-0	0	0	0	0	0	0	0	0	3	1
33	SPRINGER, LEAH	F	0	0-4	0-1	0-0	0	1	1	0	1	0	0	1	13	-2
34	ZIMMERMAN, MEGAN	F	0	0-2	0-0	0-0	0	1	1	2	0	1	0	0	12	0
	TEAM		0	0-0	0-0	0-0	2	1	3	0	0	0	0	0	0	
TOTALS			25	8-30	4-9	5-6	7	6	13	4	4	9	0	3	100	

Shooting By Period

Period	FG	FG%	3FG	3FG%	FT	FT%
1st Qtr	3-16	19%	2-5	40%	1-2	50%
2nd Qtr	5-14	36%	2-4	50%	4-4	100%
1st Half	8-30	27%	4-9	44%	5-6	83%
Game	20-61	32.8%	7-19	36.8%	13-15	86.7%

Deadball Rebounds: 2,0
Last FG Half: MES 2nd-02:15

Game Notes:

Officials: , ,
Attendance: 415

Start Time: 05:59 PM ET
End Time: 07:48 PM ET
Game Duration: 1:48

Score	1st	2nd	3rd	4th	TOT
ECS	12	12	17	9	50
MES	9	16	15	20	60

Points from (This Period)	ECS	MES
In the Paint	24	2
Off Turns	10	9
2nd Chance	8	5
Fast Break	2	4
Bench	10	2

Official Box Score
Eastern Conn. St. vs Messiah
First Quarter Statistics Only
March 07, 2020



Eastern Conn. St. 12

No.	Player	S	Pts	FG	3FG	FT	OR	DR	TR	PF	A	TO	Blk	Stl	Min	+/-
03	O'BRIEN, DANIELLE	G	0	0-2	0-2	0-0	0	1	1	0	0	0	0	0	10	3
21	CRETELLA, LIZZY	G	0	0-0	0-0	0-0	0	3	3	0	2	0	1	0	10	3
23	KECKLER, JULIE	G	0	0-0	0-0	0-0	0	0	0	2	2	4	0	0	10	3
24	BARRY, ANNA	F	8	4-4	0-0	0-0	0	3	3	1	0	2	1	2	10	3
45	VILLARD, MYA	F	2	1-1	0-0	0-0	0	1	1	2	0	2	0	1	9	6
10	SERRANTINO, JENNA	G	0	0-0	0-0	0-0	0	0	0	0	0	0	0	0	0	0
15	LEMERE, SABRINA	G	0	0-0	0-0	0-0	0	0	0	0	0	0	0	0	0	0
20	WARD, AIYANA	F	0	0-0	0-0	0-0	0	0	0	0	0	0	0	0	0	0
44	DUNN, MARIAH	F	2	1-2	0-0	0-0	1	0	1	0	0	0	0	0	1	-3
	TEAM						0	1	1	0		0				
TOTALS			12	6-9	0-2	0-0	1	9	10	5	4	8	2	3	50	

Shooting By Period

Period	FG	FG%	3FG	3FG%	FT	FT%
1st Qtr	6-9	67%	0-2	00%	0-0	0%
2nd Qtr	6-18	33%	0-3	00%	0-0	0%
1st Half	6-9	67%	0-2	00%	0-0	0%
1st Half	12-27	44%	0-5	00%	0-0	0%
Game	20-51	39.2%	0-7	00.0%	10-14	71.4%

Deadball Rebounds: 3.0

Messiah 9

No.	Player	S	Pts	FG	3FG	FT	OR	DR	TR	PF	A	TO	Blk	Stl	Min	+/-
03	ECKLEY, ELEANA	G	6	2-5	2-4	0-0	1	0	1	0	0	1	0	0	10	-3
11	CRYAN, GRACIE	G	1	0-2	0-0	1-2	0	1	1	0	2	1	0	0	10	-3
22	DAVIS, JAYNEISHA	G	2	1-4	0-1	0-0	0	0	0	0	0	0	0	1	10	-3
33	SPRINGER, LEAH	F	0	0-2	0-0	0-0	0	0	0	0	0	0	0	0	3	-6
34	ZIMMERMAN, MEGAN	F	0	0-2	0-0	0-0	0	1	1	0	0	1	0	0	10	-3
10	STUTZMAN, SIDNEY	G	0	0-0	0-0	0-0	0	0	0	0	0	0	0	0	0	0
13	BREINICH, BROOKE	F	0	0-1	0-0	0-0	1	0	1	0	0	0	0	0	7	3
32	EICH, MADISON	G	0	0-0	0-0	0-0	0	0	0	0	0	0	0	0	0	0
	TEAM						2	0	2	0		0				
TOTALS			9	3-16	2-5	1-2	4	2	6	0	2	3	0	1	50	

Shooting By Period

Period	FG	FG%	3FG	3FG%	FT	FT%
1st Qtr	3-16	19%	2-5	40%	1-2	50%
2nd Qtr	5-14	36%	2-4	50%	4-4	100%
1st Half	3-16	19%	2-5	40%	1-2	50%
1st Half	8-30	27%	4-9	44%	5-6	83%
Game	20-61	32.8%	7-19	36.8%	13-15	86.7%

Deadball Rebounds: 2.0

Game Notes:

Officials: , ,
Attendance: 415

Start Time: 05:59 PM ET
End Time: 07:48 PM ET
Game Duration: 1:48

Score	1st	2nd	3rd	4th	TOT
ECS	12	12	17	9	50
MES	9	16	15	20	60

Points from (This Period)	ECS	MES
In the Paint	12	0
Off Turns	4	5
2nd Chance	2	3
Fast Break	2	2
Bench	2	0

Official Play-By-Play
Eastern Conn. St. vs Messiah
First Quarter
March 07, 2020



Period 1

Starters:

Eastern Conn. St.: 3 O'BRIEN, DANIELLE (G); 21 CRETELLA, LIZZY (G); 23 KECKLER, JULIE (G); 24 BARRY, ANNA (F); 45 VILLARD, MYA (F);
Messiah: 3 ECKLEY, ELEANA (G); 11 CRYAN, GRACIE (G); 22 DAVIS, JAYNEISHA (G); 33 SPRINGER, LEAH (F); 34 ZIMMERMAN, MEGAN (F);

Time	VISITORS: Eastern Conn. St.	Score	Margin	HOME: Messiah
09:29	GOOD! LAYUP by BARRY, ANNA	0-2	V 2	
09:29	ASSIST by KECKLER, JULIE			
09:00				MISSED LAYUP by CRYAN, GRACIE
08:57	REBOUND (DEF) by BARRY, ANNA			
08:45	TURNOVER (TRAVEL) by VILLARD, MYA			
08:27				MISSED JUMPER by SPRINGER, LEAH
08:22				REBOUND (OFF) by TEAM
08:15				MISSED JUMPER by ECKLEY, ELEANA
08:12	REBOUND (DEF) by O'BRIEN, DANIELLE			
08:04	GOOD! LAYUP by VILLARD, MYA [PNT]	0-4	V 4	
08:04	ASSIST by CRETELLA, LIZZY			
07:43				MISSED JUMPER by SPRINGER, LEAH
07:40	REBOUND (DEF) by VILLARD, MYA			
07:32	MISSED 3PTR by O'BRIEN, DANIELLE			
07:27				REBOUND (DEF) by CRYAN, GRACIE
07:17				TURNOVER (LOSTBALL) by ZIMMERMAN, MEGAN
07:17	STEAL by VILLARD, MYA			
07:11	GOOD! LAYUP by BARRY, ANNA [FB]	0-6	V 6	
07:11	ASSIST by KECKLER, JULIE			
07:05				SUB OUT: SPRINGER, LEAH
07:05				SUB IN: BREINICH, BROOKE
06:47	FOUL (PERSONAL) by VILLARD, MYA			
06:34				MISSED LAYUP by ZIMMERMAN, MEGAN
06:32	REBOUND (DEF) by CRETELLA, LIZZY			
06:23	TURNOVER (BADPASS) by KECKLER, JULIE			
05:56				MISSED JUMPER by CRYAN, GRACIE
05:53	REBOUND (DEF) by CRETELLA, LIZZY			
05:35	MISSED 3PTR by O'BRIEN, DANIELLE			
05:32				REBOUND (DEF) by ZIMMERMAN, MEGAN
05:26	FOUL (PERSONAL) by KECKLER, JULIE			
05:26				MISSED FT by CRYAN, GRACIE
05:26				REBOUND (OFF) by TEAM
05:26		1-6	V 5	GOOD! FT by CRYAN, GRACIE
05:16	GOOD! LAYUP by BARRY, ANNA [PNT]	1-8	V 7	
05:16	ASSIST by CRETELLA, LIZZY			
05:04				MISSED 3PTR by ECKLEY, ELEANA
04:59				REBOUND (OFF) by ECKLEY, ELEANA
04:49				MISSED JUMPER by DAVIS, JAYNEISHA
04:46	REBOUND (DEF) by BARRY, ANNA			
04:35	TURNOVER (BADPASS) by VILLARD, MYA			
04:35				
04:20				MISSED JUMPER by BREINICH, BROOKE
04:16				REBOUND (OFF) by BREINICH, BROOKE
04:15	FOUL (PERSONAL) by BARRY, ANNA			
03:56		4-8	V 4	GOOD! 3PTR by ECKLEY, ELEANA
03:56				ASSIST by CRYAN, GRACIE
03:32	TURNOVER (DRIBBLING) by KECKLER, JULIE			
03:17				TURNOVER (LOSTBALL) by CRYAN, GRACIE
03:17	STEAL by BARRY, ANNA			
02:59	GOOD! LAYUP by BARRY, ANNA [PNT]	4-10	V 6	
02:37				MISSED JUMPER by ZIMMERMAN, MEGAN
02:34	REBOUND (DEF) by BARRY, ANNA			
02:14	TURNOVER (LOSTBALL) by KECKLER, JULIE			
02:01				TURNOVER (LOSTBALL) by ECKLEY, ELEANA
02:01	STEAL by BARRY, ANNA			
01:39	TURNOVER (TRAVEL) by BARRY, ANNA			
01:24				MISSED 3PTR by DAVIS, JAYNEISHA
01:24				REBOUND (OFF) by TEAM
01:24	FOUL (PERSONAL) by VILLARD, MYA			
01:24	SUB OUT: VILLARD, MYA			
01:24	SUB IN: DUNN, MARIAH			
01:16				MISSED LAYUP by DAVIS, JAYNEISHA
01:16	BLOCK by BARRY, ANNA			
01:13	REBOUND (DEF) by CRETELLA, LIZZY			
01:01	MISSED JUMPER by DUNN, MARIAH			
00:57	REBOUND (OFF) by DUNN, MARIAH			
00:57	GOOD! LAYUP by DUNN, MARIAH	4-12	V 8	
00:44		7-12	V 5	GOOD! 3PTR by ECKLEY, ELEANA
00:44				ASSIST by CRYAN, GRACIE
00:24	TURNOVER (BADPASS) by BARRY, ANNA			

Time	VISITORS: Eastern Conn. St.	Score	Margin	HOME: Messiah
00:24				STEAL by DAVIS, JAYNEISHA
00:19		9-12	V 3	GOOD! JUMPER by DAVIS, JAYNEISHA [FB]
00:06	FOUL (OFF) by KECKLER, JULIE			
00:06	TURNOVER (OFFENSIVE) by KECKLER, JULIE			
00:04				MISSED 3PTR by ECKLEY, ELEANA
00:04	BLOCK by CRETELLA, LIZZY			
00:00	REBOUND (DEF) by TEAM			

Eastern Conn. St. 12, Messiah 9

Points from (This Period)	ECS	MES
In the Paint	12	0
Off Turns	4	5
2nd Chance	2	3
Fast Break	2	2
Bench	2	0

Official Box Score
Eastern Conn. St. vs Messiah
Second Quarter Statistics Only
March 07, 2020



Eastern Conn. St. 12

No.	Player	S	Pts	FG	3FG	FT	OR	DR	TR	PF	A	TO	Blk	Stl	Min	+/-
03	O'BRIEN, DANIELLE	G	0	0-1	0-1	0-0	0	1	1	1	0	0	0	0	10	-4
21	CRETELLA, LIZZY	G	0	0-1	0-0	0-0	0	0	0	2	0	0	0	0	5	-5
23	KECKLER, JULIE	G	0	0-2	0-1	0-0	0	0	0	0	0	0	0	0	4	1
24	BARRY, ANNA	F	4	2-5	0-0	0-0	0	3	3	0	0	1	2	0	10	-4
45	VILLARD, MYA	F	0	0-0	0-0	0-0	0	0	0	0	0	0	0	0	0	0
10	SERRANTINO, JENNA	G	2	1-3	0-1	0-0	2	2	4	1	0	1	0	0	10	-4
15	LEMERE, SABRINA	G	2	1-1	0-0	0-0	0	0	0	0	0	2	0	0	2	0
20	WARD, AIYANA	F	0	0-0	0-0	0-0	0	0	0	0	0	0	0	0	0	0
44	DUNN, MARIAH	F	4	2-5	0-0	0-0	5	0	5	1	0	3	0	0	10	-4
TEAM							0	0	0	0		1				
TOTALS			12	6-18	0-3	0-0	7	6	13	5	0	8	2	0	50	

Shooting By Period

Period	FG	FG%	3FG	3FG%	FT	FT%
3rd Qtr	5-14	36%	0-2	00%	7-8	88%
4th Qtr	3-10	30%	0-0	0%	3-6	50%
2nd Half	6-18	33%	0-3	00%	0-0	0%
2nd Half	8-24	33%	0-2	00%	10-14	71%
Game	20-51	39.2%	0-7	00.0%	10-14	71.4%

Deadball Rebounds: 3.0

Messiah 16

No.	Player	S	Pts	FG	3FG	FT	OR	DR	TR	PF	A	TO	Blk	Stl	Min	+/-
03	ECKLEY, ELEANA	G	4	0-1	0-0	4-4	1	0	1	0	1	0	0	0	10	4
11	CRYAN, GRACIE	G	6	2-3	2-2	0-0	0	1	1	2	0	3	0	0	9	4
22	DAVIS, JAYNEISHA	G	4	2-6	0-1	0-0	1	1	2	0	0	2	0	1	7	5
33	SPRINGER, LEAH	F	0	0-2	0-1	0-0	0	1	1	0	1	0	0	1	10	4
34	ZIMMERMAN, MEGAN	F	0	0-0	0-0	0-0	0	0	0	2	0	0	0	0	2	3
10	STUTZMAN, SIDNEY	G	0	0-0	0-0	0-0	1	0	1	0	0	0	0	0	1	-2
13	BREINICH, BROOKE	F	2	1-1	0-0	0-0	0	0	0	0	0	1	0	0	8	1
32	EICH, MADISON	G	0	0-1	0-0	0-0	0	0	0	0	0	0	0	0	3	1
TEAM							0	1	1	0		0				
TOTALS			16	5-14	2-4	4-4	3	4	7	4	2	6	0	2	50	

Shooting By Period

Period	FG	FG%	3FG	3FG%	FT	FT%
3rd Qtr	6-15	40%	0-2	00%	3-4	75%
4th Qtr	6-16	38%	3-8	38%	5-5	100%
2nd Half	5-14	36%	2-4	50%	4-4	100%
2nd Half	12-31	39%	3-10	30%	8-9	89%
Game	20-61	32.8%	7-19	36.8%	13-15	86.7%

Deadball Rebounds: 2.0

Game Notes:

Officials: , ,
 Attendance: 415

Start Time: 05:59 PM ET
 End Time: 07:48 PM ET
 Game Duration: 1:48

Score	1st	2nd	3rd	4th	TOT
ECS	12	12	17	9	50
MES	9	16	15	20	60

Points from (This Period)	ECS	MES
In the Paint	12	2
Off Turns	6	4
2nd Chance	6	2
Fast Break	0	2
Bench	8	2

Official Play-By-Play
Eastern Conn. St. vs Messiah
Second Quarter
March 07, 2020



Period 2

Starters:

Eastern Conn. St.: 3 O'BRIEN,DANIELLE (G); 21 CRETELLA,LIZZY (G); 23 KECKLER,JULIE (G); 24 BARRY,ANNA (F); 45 VILLARD,MYA (F);
Messiah: 3 ECKLEY,ELEANA (G); 11 CRYAN,GRACIE (G); 22 DAVIS,JAYNEISHA (G); 33 SPRINGER,LEAH (F); 34 ZIMMERMAN,MEGAN (F);

Time	VISITORS: Eastern Conn. St.	Score	Margin	HOME: Messiah
10:00				SUB OUT: ZIMMERMAN, MEGAN
10:00				SUB IN: SPRINGER, LEAH
10:00	SUB OUT: KECKLER, JULIE			
10:00	SUB IN: SERRANTINO, JENNA			
09:48				MISSED LAYUP by DAVIS, JAYNEISHA
09:46				REBOUND (OFF) by DAVIS, JAYNEISHA
09:45		11-12	V 1	GOOD! LAYUP by DAVIS, JAYNEISHA [PNT]
09:13	MISSED JUMPER by CRETELLA, LIZZY			
09:09				REBOUND (DEF) by CRYAN, GRACIE
09:03				MISSED LAYUP by ECKLEY, ELEANA
09:01				REBOUND (OFF) by ECKLEY, ELEANA
09:00				SUB OUT: BREINICH, BROOKE
09:00				SUB IN: ZIMMERMAN, MEGAN
08:52	FOUL (PERSONAL) by CRETELLA, LIZZY			
08:43				TURNOVER (TRAVEL) by DAVIS, JAYNEISHA
08:14	MISSED JUMPER by DUNN, MARIAH			
08:13	REBOUND (OFF) by TEAM			
08:13	TURNOVER (SHOTCLOCK) by TEAM			
08:02				MISSED 3PTR by DAVIS, JAYNEISHA
07:59	REBOUND (DEF) by O'BRIEN, DANIELLE			
07:50	MISSED LAYUP by BARRY, ANNA			
07:50	REBOUND (OFF) by DUNN, MARIAH			
07:50				FOUL (PERSONAL) by ZIMMERMAN, MEGAN
07:48	MISSED 3PTR by O'BRIEN, DANIELLE			
07:45				REBOUND (DEF) by TEAM
07:29		14-12	H 2	GOOD! 3PTR by CRYAN, GRACIE
07:29				ASSIST by ECKLEY, ELEANA
07:14	GOOD! LAYUP by BARRY, ANNA	14-14	T	
07:00		16-14	H 2	GOOD! JUMPER by DAVIS, JAYNEISHA
06:45	MISSED 3PTR by SERRANTINO, JENNA			
06:40	REBOUND (OFF) by DUNN, MARIAH			
06:40				FOUL (PERSONAL) by ZIMMERMAN, MEGAN
06:40				SUB OUT: ZIMMERMAN, MEGAN
06:40				SUB IN: BREINICH, BROOKE
06:39	TURNOVER (TRAVEL) by BARRY, ANNA			
06:30				MISSED JUMPER by CRYAN, GRACIE
06:30	BLOCK by BARRY, ANNA			
06:27	REBOUND (DEF) by SERRANTINO, JENNA			
06:19	MISSED JUMPER by DUNN, MARIAH			
06:15	REBOUND (OFF) by DUNN, MARIAH			
06:13	MISSED LAYUP by DUNN, MARIAH			
06:11	REBOUND (OFF) by DUNN, MARIAH			
06:10	GOOD! LAYUP by DUNN, MARIAH	16-16	T	
05:53		18-16	H 2	GOOD! JUMPER by BREINICH, BROOKE
05:42	FOUL (OFF) by SERRANTINO, JENNA			
05:42	TURNOVER (OFFENSIVE) by SERRANTINO, JENNA			
05:26	FOUL (PERSONAL) by CRETELLA, LIZZY			
05:26	SUB OUT: CRETELLA, LIZZY			
05:26	SUB IN: KECKLER, JULIE			
05:26		19-16	H 3	GOOD! FT by ECKLEY, ELEANA
05:26		20-16	H 4	GOOD! FT by ECKLEY, ELEANA
05:12	MISSED LAYUP by KECKLER, JULIE			
05:09				REBOUND (DEF) by SPRINGER, LEAH
04:54				TURNOVER (BADPASS) by CRYAN, GRACIE
04:54				
04:39	GOOD! LAYUP by BARRY, ANNA	20-18	H 2	
04:24				MISSED LAYUP by SPRINGER, LEAH
04:24	BLOCK by BARRY, ANNA			
04:20	REBOUND (DEF) by BARRY, ANNA			
04:19	TURNOVER (LOSTBALL) by DUNN, MARIAH			
03:54				MISSED JUMPER by DAVIS, JAYNEISHA
03:51	REBOUND (DEF) by BARRY, ANNA			
03:42	MISSED JUMPER by BARRY, ANNA			
03:39				REBOUND (DEF) by DAVIS, JAYNEISHA
03:15				MISSED JUMPER by DAVIS, JAYNEISHA
03:12	REBOUND (DEF) by BARRY, ANNA			
03:01	MISSED 3PTR by KECKLER, JULIE			
02:56	REBOUND (OFF) by SERRANTINO, JENNA			
02:56	GOOD! LAYUP by SERRANTINO, JENNA	20-20	T	
02:46				TURNOVER (TRAVEL) by BREINICH, BROOKE

Time	VISITORS: Eastern Conn. St.	Score	Margin	HOME: Messiah
02:46				SUB OUT: DAVIS, JAYNEISHA
02:46				SUB IN: EICH, MADISON
02:37	MISSED JUMPER by BARRY, ANNA			
02:34	REBOUND (OFF) by DUNN, MARIAH			
02:34	GOOD! LAYUP by DUNN, MARIAH	20-22	V 2	
02:15		23-22	H 1	GOOD! 3PTR by CRYAN, GRACIE
02:15				ASSIST by SPRINGER, LEAH
01:52	FOUL (OFF) by DUNN, MARIAH			
01:52	TURNOVER (OFFENSIVE) by DUNN, MARIAH			
01:52	SUB OUT: KECKLER, JULIE			
01:52	SUB IN: LEMERE, SABRINA			
01:42				FOUL (OFF) by CRYAN, GRACIE
01:42				TURNOVER (OFFENSIVE) by CRYAN, GRACIE
01:21	MISSED JUMPER by SERRANTINO, JENNA			
01:18	REBOUND (OFF) by SERRANTINO, JENNA			
01:17	TURNOVER (TRAVEL) by LEMERE, SABRINA			
01:09				TURNOVER (LOSTBALL) by CRYAN, GRACIE
01:01				FOUL (PERSONAL) by CRYAN, GRACIE
01:01				SUB OUT: CRYAN, GRACIE
01:01				SUB IN: STUTZMAN, SIDNEY
00:54	GOOD! LAYUP by LEMERE, SABRINA [PNT]	23-24	V 1	
00:32				MISSED JUMPER by EICH, MADISON
00:30				REBOUND (OFF) by STUTZMAN, SIDNEY
00:25				MISSED 3PTR by SPRINGER, LEAH
00:22	REBOUND (DEF) by SERRANTINO, JENNA			
00:07	TURNOVER (LOSTBALL) by LEMERE, SABRINA			
00:07				STEAL by SPRINGER, LEAH
00:05	FOUL (PERSONAL) by O'BRIEN, DANIELLE			
00:05				SUB OUT: STUTZMAN, SIDNEY
00:05				SUB IN: DAVIS, JAYNEISHA
00:05		24-24	T	GOOD! FT by ECKLEY, ELEANA [FB]
00:05		25-24	H 1	GOOD! FT by ECKLEY, ELEANA [FB]
00:04	TURNOVER (BADPASS) by DUNN, MARIAH			
00:04				STEAL by DAVIS, JAYNEISHA
00:03				TURNOVER (DRIBBLING) by DAVIS, JAYNEISHA

Eastern Conn. St. 24, Messiah 25

Points from (This Period)	ECS	MES
In the Paint	12	2
Off Turns	6	4
2nd Chance	6	2
Fast Break	0	2
Bench	8	2

Official Box Score
Eastern Conn. St. vs Messiah
Second Half Statistics Only
March 07, 2020



Eastern Conn. St. 26

No.	Player	S	Pts	FG	3FG	FT	OR	DR	TR	PF	A	TO	Blk	Stl	Min	+/-
03	O'BRIEN, DANIELLE	G	1	0-1	0-1	1-2	0	5	5	2	2	2	0	2	20	-9
10	SERRANTINO, JENNA	G	0	0-0	0-0	0-0	0	0	0	1	0	0	0	0	9	-14
15	LEMERE, SABRINA	G	0	0-0	0-0	0-0	0	0	0	0	0	0	0	0	0	0
20	WARD, AIYANA	F	0	0-0	0-0	0-0	0	0	0	0	0	0	0	0	0	2
21	CRETELLA, LIZZY	G	2	1-4	0-0	0-0	1	4	5	1	1	1	0	0	20	-9
23	KECKLER, JULIE	G	9	2-5	0-1	5-5	0	1	1	3	0	2	0	1	11	5
24	BARRY, ANNA	F	8	4-8	0-0	0-1	0	4	4	3	0	2	5	0	19	-7
44	DUNN, MARIAH	F	0	0-1	0-0	0-0	1	0	1	1	0	0	0	0	1	-2
45	VILLARD, MYA	F	6	1-5	0-0	4-6	1	2	3	0	1	4	0	0	19	-11
	TEAM		0	0-0	0-0	0-0	1	1	2	0	0	0	0	0	0	0
TOTALS			26	8-24	0-2	10-14	4	17	21	11	4	11	5	3	99	

Shooting By Period

Period	FG	FG%	3FG	3FG%	FT	FT%
3rd Qtr	5-14	36%	0-2	00%	7-8	88%
4th Qtr	3-10	30%	0-0	0%	3-6	50%
2nd Half	8-24	33%	0-2	00%	10-14	71%
Game	20-51	39.2%	0-7	00.0%	10-14	71.4%

Deadball Rebounds: 3,0
 Last FG Half: ECS 4th-00:34

Messiah 35

No.	Player	S	Pts	FG	3FG	FT	OR	DR	TR	PF	A	TO	Blk	Stl	Min	+/-
03	ECKLEY, ELEANA	G	11	4-10	0-3	3-3	0	1	1	2	1	1	1	0	20	9
10	STUTZMAN, SIDNEY	G	0	0-0	0-0	0-0	0	0	0	0	0	0	0	0	0	0
11	CRYAN, GRACIE	G	0	0-2	0-0	0-0	1	1	2	1	2	1	0	2	18	7
13	BREINICH, BROOKE	F	2	1-1	0-0	0-0	0	3	3	2	0	1	0	0	10	-5
22	DAVIS, JAYNEISHA	G	8	3-8	2-4	0-0	0	2	2	2	2	0	0	0	16	9
32	EICH, MADISON	G	0	0-0	0-0	0-0	0	0	0	0	0	0	0	0	5	2
33	SPRINGER, LEAH	F	14	4-9	1-3	5-6	1	4	5	3	0	1	3	0	19	11
34	ZIMMERMAN, MEGAN	F	0	0-1	0-0	0-0	0	3	3	2	1	0	0	0	10	12
	TEAM		0	0-0	0-0	0-0	0	0	0	0	0	0	0	0	0	0
TOTALS			35	12-31	3-10	8-9	2	14	16	12	6	4	4	2	99	

Shooting By Period

Period	FG	FG%	3FG	3FG%	FT	FT%
3rd Qtr	6-15	40%	0-2	00%	3-4	75%
4th Qtr	6-16	38%	3-8	38%	5-5	100%
2nd Half	12-31	39%	3-10	30%	8-9	89%
Game	20-61	32.8%	7-19	36.8%	13-15	86.7%

Deadball Rebounds: 2,0
 Last FG Half: MES 4th-01:18

Game Notes:

Officials: , ,
 Attendance: 415

Start Time: 05:59 PM ET
 End Time: 07:48 PM ET
 Game Duration: 1:48

Score	1st	2nd	3rd	4th	TOT
ECS	12	12	17	9	50
MES	9	16	15	20	60

Points from (This Period)	ECS	MES
In the Paint	14	14
Off Turns	3	15
2nd Chance	2	5
Fast Break	10	5
Bench	0	2

Official Box Score
Eastern Conn. St. vs Messiah
Third Quarter Statistics Only
March 07, 2020



Eastern Conn. St. 26

No.	Player	S	Pts	FG	3FG	FT	OR	DR	TR	PF	A	TO	Blk	Stl	Min	+/-
03	O'BRIEN, DANIELLE	G	0	0-1	0-1	0-0	0	3	3	0	1	1	0	1	10	2
21	CRETELLA, LIZZY	G	0	0-2	0-0	0-0	0	1	1	0	1	1	0	0	10	2
23	KECKLER, JULIE	G	5	1-3	0-1	3-3	0	0	0	1	0	1	0	1	6	1
24	BARRY, ANNA	F	6	3-4	0-0	0-1	0	2	2	2	0	1	3	0	9	4
45	VILLARD, MYA	F	6	1-3	0-0	4-4	1	2	3	0	0	1	0	0	10	2
10	SERRANTINO, JENNA	G	0	0-0	0-0	0-0	0	0	0	1	0	0	0	0	4	1
15	LEMERE, SABRINA	G	0	0-0	0-0	0-0	0	0	0	0	0	0	0	0	0	0
20	WARD, AIYANA	F	0	0-0	0-0	0-0	0	0	0	0	0	0	0	0	0	0
44	DUNN, MARIAH	F	0	0-1	0-0	0-0	1	0	1	1	0	0	0	0	1	-2
TEAM							1	0	1	0		0				
TOTALS			17	5-14	0-2	7-8	3	8	11	5	2	5	3	2	50	

Shooting By Period

Period	FG	FG%	3FG	3FG%	FT	FT%
2nd Half	0-0	0%	0-0	0%	0-0	0%
Game	20-51	39.2%	0-7	00.0%	10-14	71.4%

Deadball Rebounds: 3,0

Messiah 35

No.	Player	S	Pts	FG	3FG	FT	OR	DR	TR	PF	A	TO	Blk	Stl	Min	+/-
03	ECKLEY, ELEANA	G	6	3-5	0-1	0-0	0	1	1	0	1	1	1	0	10	-2
11	CRYAN, GRACIE	G	0	0-2	0-0	0-0	0	0	0	1	1	1	0	1	8	-4
22	DAVIS, JAYNEISHA	G	2	1-5	0-1	0-0	0	1	1	1	1	0	0	0	8	-4
33	SPRINGER, LEAH	F	5	1-2	0-0	3-4	1	1	2	0	0	1	0	0	10	-2
34	ZIMMERMAN, MEGAN	F	0	0-0	0-0	0-0	0	1	1	2	0	0	0	0	2	-1
10	STUTZMAN, SIDNEY	G	0	0-0	0-0	0-0	0	0	0	0	0	0	0	0	0	0
13	BREINICH, BROOKE	F	2	1-1	0-0	0-0	0	3	3	2	0	0	0	0	8	-1
32	EICH, MADISON	G	0	0-0	0-0	0-0	0	0	0	0	0	0	0	0	4	4
TEAM							0	0	0	0		0				
TOTALS			15	6-15	0-2	3-4	1	7	8	6	3	3	1	1	50	

Shooting By Period

Period	FG	FG%	3FG	3FG%	FT	FT%
2nd Half	0-0	0%	0-0	0%	0-0	0%
Game	20-61	32.8%	7-19	36.8%	13-15	86.7%

Deadball Rebounds: 2,0

Game Notes:

Officials: , ,
 Attendance: 415

Start Time: 05:59 PM ET
 End Time: 07:48 PM ET
 Game Duration: 1:48

Score	1st	2nd	3rd	4th	TOT
ECS	12	12	17	9	50
MES	9	16	15	20	60

Points from (This Period)	ECS	MES
In the Paint	10	10
Off Turns	3	4
2nd Chance	2	2
Fast Break	7	0
Bench	0	2

Official Play-By-Play
Eastern Conn. St. vs Messiah
Third Quarter
March 07, 2020



Period 3

Starters:

Eastern Conn. St.: 3 O'BRIEN,DANIELLE (G); 21 CRETELLA,LIZZY (G); 23 KECKLER,JULIE (G); 24 BARRY,ANNA (F); 45 VILLARD,MYA (F);
Messiah: 3 ECKLEY,ELEANA (G); 11 CRYAN,GRACIE (G); 22 DAVIS,JAYNEISHA (G); 33 SPRINGER,LEAH (F); 34 ZIMMERMAN,MEGAN (F);

Time	VISITORS: Eastern Conn. St.	Score	Margin	HOME: Messiah
10:00				SUB OUT: BREINICH, BROOKE
10:00				SUB OUT: EICH, MADISON
10:00				SUB IN: CRYAN, GRACIE
10:00				SUB IN: ZIMMERMAN, MEGAN
10:00	SUB OUT: SERRANTINO, JENNA			
10:00	SUB OUT: LEMERE, SABRINA			
10:00	SUB OUT: DUNN, MARIAH			
10:00	SUB IN: CRETELLA, LIZZY			
10:00	SUB IN: KECKLER, JULIE			
10:00	SUB IN: VILLARD, MYA			
09:51	MISSED LAYUP by BARRY, ANNA			
09:48				REBOUND (DEF) by ZIMMERMAN, MEGAN
09:37				TURNOVER (BADPASS) by ECKLEY, ELEANA
09:37	STEAL by O'BRIEN, DANIELLE			
09:19	TURNOVER (TRAVEL) by KECKLER, JULIE			
09:05		27-24	H 3	GOOD! LAYUP by ECKLEY, ELEANA
08:50	TURNOVER (LOSTBALL) by CRETELLA, LIZZY			
08:50				STEAL by CRYAN, GRACIE
08:46				TURNOVER (LOSTBALL) by CRYAN, GRACIE
08:46	STEAL by KECKLER, JULIE			
08:41	GOOD! LAYUP by KECKLER, JULIE [FB/PNT]	27-26	H 1	
08:41				FOUL (PERSONAL) by ZIMMERMAN, MEGAN
08:41	GOOD! FT by KECKLER, JULIE [FB]	27-27	T	
08:27				MISSED JUMPER by DAVIS, JAYNEISHA
08:24	REBOUND (DEF) by BARRY, ANNA			
08:13				FOUL (PERSONAL) by ZIMMERMAN, MEGAN
08:13				SUB OUT: ZIMMERMAN, MEGAN
08:13				SUB IN: BREINICH, BROOKE
08:13	GOOD! FT by VILLARD, MYA	27-28	V 1	
08:13	GOOD! FT by VILLARD, MYA	27-29	V 2	
08:02	FOUL (PERSONAL) by KECKLER, JULIE			
08:02	SUB OUT: KECKLER, JULIE			
08:02	SUB IN: SERRANTINO, JENNA			
07:55				MISSED LAYUP by DAVIS, JAYNEISHA
07:55	BLOCK by BARRY, ANNA			
07:49	REBOUND (DEF) by O'BRIEN, DANIELLE			
07:48	GOOD! LAYUP by BARRY, ANNA [FB/PNT]	27-31	V 4	
07:48	ASSIST by O'BRIEN, DANIELLE			
07:26		29-31	V 2	GOOD! JUMPER by SPRINGER, LEAH
07:26				ASSIST by ECKLEY, ELEANA
07:03	GOOD! LAYUP by VILLARD, MYA	29-33	V 4	
06:45	FOUL (PERSONAL) by BARRY, ANNA			
06:45				MISSED FT by SPRINGER, LEAH
06:45				REBOUND (OFF) by TEAM
06:45		30-33	V 3	GOOD! FT by SPRINGER, LEAH
06:35				FOUL (PERSONAL) by CRYAN, GRACIE
06:27	GOOD! LAYUP by BARRY, ANNA [PNT]	30-35	V 5	
06:27				FOUL (PERSONAL) by BREINICH, BROOKE
06:27				SUB OUT: CRYAN, GRACIE
06:27				SUB IN: EICH, MADISON
06:27	MISSED FT by BARRY, ANNA			
06:24				REBOUND (DEF) by SPRINGER, LEAH
06:03				MISSED LAYUP by ECKLEY, ELEANA
06:03	BLOCK by BARRY, ANNA			
05:59	REBOUND (DEF) by O'BRIEN, DANIELLE			
05:52	MISSED LAYUP by CRETELLA, LIZZY			
05:50				REBOUND (DEF) by BREINICH, BROOKE
05:45	FOUL (PERSONAL) by SERRANTINO, JENNA			
05:38				TURNOVER (BADPASS) by SPRINGER, LEAH
05:23	MISSED LAYUP by VILLARD, MYA			
05:20				REBOUND (DEF) by BREINICH, BROOKE
05:14				MISSED 3PTR by DAVIS, JAYNEISHA
05:10	REBOUND (DEF) by CRETELLA, LIZZY			
04:45	MISSED 3PTR by O'BRIEN, DANIELLE			
04:41				REBOUND (DEF) by ECKLEY, ELEANA
04:32		32-35	V 3	GOOD! LAYUP by ECKLEY, ELEANA
04:32				ASSIST by DAVIS, JAYNEISHA
04:08	FOUL (OFF) by BARRY, ANNA			
04:08	TURNOVER (OFFENSIVE) by BARRY, ANNA			
04:08				SUB OUT: DAVIS, JAYNEISHA

Time	VISITORS: Eastern Conn. St.	Score	Margin	HOME: Messiah
04:08				SUB IN: CRYAN, GRACIE
04:08	SUB OUT: SERRANTINO, JENNA			
04:08	SUB IN: KECKLER, JULIE			
03:51		34-35	V 1	GOOD! LAYUP by ECKLEY, ELEANA
03:36	TURNOVER (TRAVEL) by VILLARD, MYA			
03:19				MISSED JUMPER by CRYAN, GRACIE
03:16	REBOUND (DEF) by VILLARD, MYA			
02:51	TURNOVER (BADPASS) by O'BRIEN, DANIELLE			
02:38				MISSED JUMPER by SPRINGER, LEAH
02:35	REBOUND (DEF) by O'BRIEN, DANIELLE			
02:31	MISSED LAYUP by KECKLER, JULIE			
02:27				REBOUND (DEF) by BREINICH, BROOKE
02:12				SUB OUT: EICH, MADISON
02:12				SUB IN: DAVIS, JAYNEISHA
02:00		36-35	H 1	GOOD! LAYUP by DAVIS, JAYNEISHA [PNT]
01:47	GOOD! LAYUP by BARRY, ANNA [PNT]	36-37	V 1	
01:47	ASSIST by CRETELLA, LIZZY			
01:35				MISSED 3PTR by ECKLEY, ELEANA
01:33	REBOUND (DEF) by BARRY, ANNA			
01:28				FOUL (PERSONAL) by DAVIS, JAYNEISHA
01:28	GOOD! FT by KECKLER, JULIE [FB]	36-38	V 2	
01:28	GOOD! FT by KECKLER, JULIE [FB]	36-39	V 3	
01:16				MISSED LAYUP by CRYAN, GRACIE
01:16	BLOCK by BARRY, ANNA			
01:12	REBOUND (DEF) by VILLARD, MYA			
00:58	MISSED LAYUP by CRETELLA, LIZZY			
00:58				BLOCK by ECKLEY, ELEANA
00:58	REBOUND (OFF) by TEAM			
00:48	MISSED LAYUP by VILLARD, MYA			
00:47	REBOUND (OFF) by VILLARD, MYA			
00:47				FOUL (PERSONAL) by BREINICH, BROOKE
00:47	SUB OUT: BARRY, ANNA			
00:47	SUB IN: DUNN, MARIAH			
00:47	GOOD! FT by VILLARD, MYA	36-40	V 4	
00:47	GOOD! FT by VILLARD, MYA	36-41	V 5	
00:39				MISSED LAYUP by DAVIS, JAYNEISHA
00:38				REBOUND (OFF) by SPRINGER, LEAH
00:38	FOUL (PERSONAL) by DUNN, MARIAH			
00:38		37-41	V 4	GOOD! FT by SPRINGER, LEAH
00:38		38-41	V 3	GOOD! FT by SPRINGER, LEAH
00:24	MISSED 3PTR by KECKLER, JULIE			
00:20	REBOUND (OFF) by DUNN, MARIAH			
00:19	MISSED LAYUP by DUNN, MARIAH			
00:16				REBOUND (DEF) by DAVIS, JAYNEISHA
00:05		40-41	V 1	GOOD! LAYUP by BREINICH, BROOKE
00:05				ASSIST by CRYAN, GRACIE

Eastern Conn. St. 41, Messiah 40

Points from (This Period)	ECS	MES
In the Paint	10	10
Off Turns	3	4
2nd Chance	2	2
Fast Break	7	0
Bench	0	2

Official Box Score
Eastern Conn. St. vs Messiah
Fourth Quarter Statistics Only
March 07, 2020



Eastern Conn. St. 9

No.	Player	S	Pts	FG	3FG	FT	OR	DR	TR	PF	A	TO	Blk	Stl	Min	+/-
03	O'BRIEN, DANIELLE	G	1	0-0	0-0	1-2	0	2	2	2	1	1	0	1	10	-11
21	CRETELLA, LIZZY	G	2	1-2	0-0	0-0	1	3	4	1	0	0	0	0	10	-11
23	KECKLER, JULIE	G	4	1-2	0-0	2-2	0	1	1	2	0	1	0	0	5	4
24	BARRY, ANNA	F	2	1-4	0-0	0-0	0	2	2	1	0	1	2	0	10	-11
45	VILLARD, MYA	F	0	0-2	0-0	0-2	0	0	0	0	1	3	0	0	9	-13
10	SERRANTINO, JENNA	G	0	0-0	0-0	0-0	0	0	0	0	0	0	0	0	5	-15
15	LEMERE, SABRINA	G	0	0-0	0-0	0-0	0	0	0	0	0	0	0	0	0	0
20	WARD, AIYANA	F	0	0-0	0-0	0-0	0	0	0	0	0	0	0	0	0	2
44	DUNN, MARIAH	F	0	0-0	0-0	0-0	0	0	0	0	0	0	0	0	0	0
	TEAM						0	1	1	0		0				
TOTALS			9	3-10	0-0	3-6	1	9	10	6	2	6	2	1	49	

Shooting By Period

Period	FG	FG%	3FG	3FG%	FT	FT%
Game	20-51	39.2%	0-7	00.0%	10-14	71.4%

Deadball Rebounds: 3,0

Messiah 20

No.	Player	S	Pts	FG	3FG	FT	OR	DR	TR	PF	A	TO	Blk	Stl	Min	+/-
03	ECKLEY, ELEANA	G	5	1-5	0-2	3-3	0	0	0	2	0	0	0	0	10	11
11	CRYAN, GRACIE	G	0	0-0	0-0	0-0	1	1	2	0	1	0	0	1	10	11
22	DAVIS, JAYNEISHA	G	6	2-3	2-3	0-0	0	1	1	1	1	0	0	0	8	13
33	SPRINGER, LEAH	F	9	3-7	1-3	2-2	0	3	3	3	0	0	3	0	9	13
34	ZIMMERMAN, MEGAN	F	0	0-1	0-0	0-0	0	2	2	0	1	0	0	0	8	13
10	STUTZMAN, SIDNEY	G	0	0-0	0-0	0-0	0	0	0	0	0	0	0	0	0	0
13	BREINICH, BROOKE	F	0	0-0	0-0	0-0	0	0	0	0	0	1	0	0	2	-4
32	EICH, MADISON	G	0	0-0	0-0	0-0	0	0	0	0	0	0	0	0	1	-2
	TEAM						0	0	0	0		0				
TOTALS			20	6-16	3-8	5-5	1	7	8	6	3	1	3	1	49	

Shooting By Period

Period	FG	FG%	3FG	3FG%	FT	FT%
Game	20-61	32.8%	7-19	36.8%	13-15	86.7%

Deadball Rebounds: 2,0

Game Notes:

Officials: , ,
Attendance: 415

Start Time: 05:59 PM ET
End Time: 07:48 PM ET
Game Duration: 1:48

Score	1st	2nd	3rd	4th	TOT
ECS	12	12	17	9	50
MES	9	16	15	20	60

Points from (This Period)	ECS	MES
In the Paint	4	4
Off Turns	0	11
2nd Chance	0	3
Fast Break	3	5
Bench	0	0

Official Play-By-Play
Eastern Conn. St. vs Messiah
Fourth Quarter
March 07, 2020



Period 4

Starters:

Eastern Conn. St.: 3 O'BRIEN,DANIELLE (G); 21 CRETELLA,LIZZY (G); 23 KECKLER,JULIE (G); 24 BARRY,ANNA (F); 45 VILLARD,MYA (F);
Messiah: 3 ECKLEY,ELEANA (G); 11 CRYAN,GRACIE (G); 22 DAVIS,JAYNEISHA (G); 33 SPRINGER,LEAH (F); 34 ZIMMERMAN,MEGAN (F);

Time	VISITORS: Eastern Conn. St.	Score	Margin	HOME: Messiah
10:00				SUB OUT: DAVIS, JAYNEISHA
10:00				SUB IN: EICH, MADISON
10:00	SUB OUT: DUNN, MARIAH			
10:00	SUB IN: BARRY, ANNA			
09:46				MISSED 3PTR by SPRINGER, LEAH
09:43	REBOUND (DEF) by O'BRIEN, DANIELLE			
09:29	MISSED LAYUP by VILLARD, MYA			
09:29				BLOCK by SPRINGER, LEAH
09:25				REBOUND (DEF) by CRYAN, GRACIE
08:59				MISSED JUMPER by SPRINGER, LEAH
08:56	REBOUND (DEF) by CRETELLA, LIZZY			
08:51	GOOD! LAYUP by KECKLER, JULIE [FB]	40-43	V 3	
08:34				MISSED LAYUP by ECKLEY, ELEANA
08:34	BLOCK by BARRY, ANNA			
08:34	REBOUND (DEF) by TEAM			
08:34				SUB OUT: BREINICH, BROOKE
08:34				SUB OUT: EICH, MADISON
08:34				SUB IN: DAVIS, JAYNEISHA
08:34				SUB IN: ZIMMERMAN, MEGAN
08:23				FOUL (PERSONAL) by SPRINGER, LEAH
08:23	GOOD! FT by KECKLER, JULIE	40-44	V 4	
08:23	GOOD! FT by KECKLER, JULIE	40-45	V 5	
08:05				MISSED JUMPER by ECKLEY, ELEANA
08:02	REBOUND (DEF) by CRETELLA, LIZZY			
07:42	TURNOVER (BADPASS) by VILLARD, MYA			
07:29		42-45	V 3	GOOD! JUMPER by SPRINGER, LEAH [PNT]
07:29				ASSIST by DAVIS, JAYNEISHA
07:05	MISSED JUMPER by KECKLER, JULIE			
07:02				REBOUND (DEF) by SPRINGER, LEAH
07:02	FOUL (PERSONAL) by KECKLER, JULIE			
06:45				MISSED LAYUP by SPRINGER, LEAH
06:42	REBOUND (DEF) by BARRY, ANNA			
06:25	GOOD! JUMPER by CRETELLA, LIZZY	42-47	V 5	
06:25	ASSIST by VILLARD, MYA			
06:23	TIMEOUT 30SEC			
06:12				MISSED 3PTR by ECKLEY, ELEANA
06:12	BLOCK by BARRY, ANNA			
06:08	REBOUND (DEF) by O'BRIEN, DANIELLE			
05:59	MISSED LAYUP by BARRY, ANNA			
05:59				BLOCK by SPRINGER, LEAH
05:55				REBOUND (DEF) by ZIMMERMAN, MEGAN
05:47				MISSED 3PTR by DAVIS, JAYNEISHA
05:42	REBOUND (DEF) by KECKLER, JULIE			
05:32				FOUL (PERSONAL) by SPRINGER, LEAH
05:26	FOUL (OFF) by KECKLER, JULIE			
05:26	TURNOVER (OFFENSIVE) by KECKLER, JULIE			
05:26	SUB OUT: KECKLER, JULIE			
05:26	SUB IN: SERRANTINO, JENNA			
05:26				
05:10				MISSED 3PTR by SPRINGER, LEAH
05:07				REBOUND (OFF) by CRYAN, GRACIE
05:03		45-47	V 2	GOOD! 3PTR by SPRINGER, LEAH
05:03				ASSIST by CRYAN, GRACIE
04:27	TURNOVER (TRAVEL) by VILLARD, MYA			
04:00		48-47	H 1	GOOD! 3PTR by DAVIS, JAYNEISHA
03:49				FOUL (PERSONAL) by DAVIS, JAYNEISHA
03:38	TURNOVER (TRAVEL) by BARRY, ANNA			
03:23				MISSED 3PTR by ECKLEY, ELEANA
03:17	REBOUND (DEF) by CRETELLA, LIZZY			
03:08				FOUL (PERSONAL) by SPRINGER, LEAH
03:06	MISSED LAYUP by BARRY, ANNA			
03:03				REBOUND (DEF) by DAVIS, JAYNEISHA
02:54				MISSED JUMPER by ZIMMERMAN, MEGAN
02:50	REBOUND (DEF) by BARRY, ANNA			
02:40	MISSED LAYUP by CRETELLA, LIZZY			
02:40				BLOCK by SPRINGER, LEAH
02:36	REBOUND (OFF) by CRETELLA, LIZZY			
02:35				FOUL (PERSONAL) by ECKLEY, ELEANA
02:35	MISSED FT by VILLARD, MYA			
02:35	REBOUND (OFF) by TEAM			

Time	VISITORS: Eastern Conn. St.	Score	Margin	HOME: Messiah
02:35	MISSED FT by VILLARD, MYA			
02:34				REBOUND (DEF) by ZIMMERMAN, MEGAN
02:19		50-47	H 3	GOOD! JUMPER by SPRINGER, LEAH
02:19				ASSIST by ZIMMERMAN, MEGAN
02:09	TIMEOUT TEAM			
01:53	MISSED LAYUP by BARRY, ANNA			
01:50				REBOUND (DEF) by SPRINGER, LEAH
01:40		53-47	H 6	GOOD! 3PTR by DAVIS, JAYNEISHA
01:18	TURNOVER (LOSTBALL) by VILLARD, MYA			
01:18		55-47	H 8	GOOD! LAYUP by ECKLEY, ELEANA [FB]
01:14	FOUL (PERSONAL) by O'BRIEN, DANIELLE			
01:14		56-47	H 9	GOOD! FT by ECKLEY, ELEANA [FB]
01:07	MISSED LAYUP by VILLARD, MYA			
01:05				REBOUND (DEF) by SPRINGER, LEAH
00:59	FOUL (PERSONAL) by O'BRIEN, DANIELLE			
00:59				TIMEOUT 30SEC
00:58	FOUL (PERSONAL) by CRETELLA, LIZZY			
00:58		57-47	H 10	GOOD! FT by ECKLEY, ELEANA
00:58		58-47	H 11	GOOD! FT by ECKLEY, ELEANA
00:50				FOUL (PERSONAL) by ECKLEY, ELEANA
00:50	MISSED FT by O'BRIEN, DANIELLE			
00:50	REBOUND (OFF) by TEAM			
00:50	GOOD! FT by O'BRIEN, DANIELLE [FB]	58-48	H 10	
00:50				TIMEOUT 30SEC
00:45	FOUL (PERSONAL) by BARRY, ANNA			
00:45		59-48	H 11	GOOD! FT by SPRINGER, LEAH [FB]
00:45		60-48	H 12	GOOD! FT by SPRINGER, LEAH [FB]
00:40	SUB OUT: VILLARD, MYA			
00:40	SUB IN: WARD, AIYANA			
00:40				SUB OUT: SPRINGER, LEAH
00:40				SUB IN: BREINICH, BROOKE
00:40	TIMEOUT 30SEC			
00:34	GOOD! LAYUP by BARRY, ANNA	60-50	H 10	
00:34	ASSIST by O'BRIEN, DANIELLE			
00:18				TURNOVER (LOSTBALL) by BREINICH, BROOKE
00:18	STEAL by O'BRIEN, DANIELLE			
00:16	TURNOVER (LOSTBALL) by O'BRIEN, DANIELLE			
00:16				STEAL by CRYAN, GRACIE

Eastern Conn. St. 50, Messiah 60

Points from (This Period)	ECS	MES
In the Paint	4	4
Off Turns	0	11
2nd Chance	0	3
Fast Break	3	5
Bench	0	0

Official Scoring/Possession Reference Chart
Eastern Conn. St. vs Messiah
Period 1
March 07, 2020



Period 1

Starters:

Eastern Conn. St.: 3 O'BRIEN,DANIELLE (G); 21 CRETILLA,LIZZY (G); 23 KECKLER,JULIE (G); 24 BARRY,ANNA (F); 45 VILLARD,MYA (F);
Messiah: 3 ECKLEY,ELEANA (G); 11 CRYAN,GRACIE (G); 22 DAVIS,JAYNEISHA (G); 33 SPRINGER,LEAH (F); 34 ZIMMERMAN,MEGAN (F);

Time	VISITORS: Eastern Conn. St.	Score	Margin	HOME: Messiah
09:29	GOOD! LAYUP by BARRY, ANNA	0-2	V 2	
08:04	GOOD! LAYUP by VILLARD, MYA [PNT]	0-4	V 4	
07:11	GOOD! LAYUP by BARRY, ANNA [FB]	0-6	V 6	
05:26		1-6	V 5	GOOD! FT by CRYAN, GRACIE
05:16	GOOD! LAYUP by BARRY, ANNA [PNT]	1-8	V 7	
03:56		4-8	V 4	GOOD! 3PTR by ECKLEY, ELEANA
02:59	GOOD! LAYUP by BARRY, ANNA [PNT]	4-10	V 6	
00:57	GOOD! LAYUP by DUNN, MARIAH	4-12	V 8	
00:44		7-12	V 5	GOOD! 3PTR by ECKLEY, ELEANA
00:19		9-12	V 3	GOOD! JUMPER by DAVIS, JAYNEISHA [FB]

Eastern Conn. St. 12, Messiah 9

Official Scoring/Possession Reference Chart
Eastern Conn. St. vs Messiah
Period 2
March 07, 2020



Period 2

Starters:

Eastern Conn. St.: 3 O'BRIEN,DANIELLE (G); 21 CRETILLA,LIZZY (G); 23 KECKLER,JULIE (G); 24 BARRY,ANNA (F); 45 VILLARD,MYA (F);
Messiah: 3 ECKLEY,ELEANA (G); 11 CRYAN,GRACIE (G); 22 DAVIS,JAYNEISHA (G); 33 SPRINGER,LEAH (F); 34 ZIMMERMAN,MEGAN (F);

Time	VISITORS: Eastern Conn. St.	Score	Margin	HOME: Messiah
09:45		11-12	V 1	GOOD! LAYUP by DAVIS, JAYNEISHA [PNT]
07:29		14-12	H 2	GOOD! 3PTR by CRYAN, GRACIE
07:14	GOOD! LAYUP by BARRY, ANNA	14-14	T	
07:00		16-14	H 2	GOOD! JUMPER by DAVIS, JAYNEISHA
06:10	GOOD! LAYUP by DUNN, MARIAH	16-16	T	
05:53		18-16	H 2	GOOD! JUMPER by BREINICH, BROOKE
05:26		19-16	H 3	GOOD! FT by ECKLEY, ELEANA
05:26		20-16	H 4	GOOD! FT by ECKLEY, ELEANA
04:39	GOOD! LAYUP by BARRY, ANNA	20-18	H 2	
02:56	GOOD! LAYUP by SERRANTINO, JENNA	20-20	T	
02:34	GOOD! LAYUP by DUNN, MARIAH	20-22	V 2	
02:15		23-22	H 1	GOOD! 3PTR by CRYAN, GRACIE
00:54	GOOD! LAYUP by LEMERE, SABRINA [PNT]	23-24	V 1	
00:05		24-24	T	GOOD! FT by ECKLEY, ELEANA [FB]
00:05		25-24	H 1	GOOD! FT by ECKLEY, ELEANA [FB]

Eastern Conn. St. 24, Messiah 25

Official Scoring/Possession Reference Chart
Eastern Conn. St. vs Messiah
Period 3
March 07, 2020



Period 3

Starters:

Eastern Conn. St.: 3 O'BRIEN,DANIELLE (G); 21 CRETELLA,LIZZY (G); 23 KECKLER,JULIE (G); 24 BARRY,ANNA (F); 45 VILLARD,MYA (F);
Messiah: 3 ECKLEY,ELEANA (G); 11 CRYAN,GRACIE (G); 22 DAVIS,JAYNEISHA (G); 33 SPRINGER,LEAH (F); 34 ZIMMERMAN,MEGAN (F);

Time	VISITORS: Eastern Conn. St.	Score	Margin	HOME: Messiah
09:05		27-24	H 3	GOOD! LAYUP by ECKLEY, ELEANA
08:41	GOOD! LAYUP by KECKLER, JULIE [FB/PNT]	27-26	H 1	
08:41	GOOD! FT by KECKLER, JULIE [FB]	27-27	T	
08:13	GOOD! FT by VILLARD, MYA	27-28	V 1	
08:13	GOOD! FT by VILLARD, MYA	27-29	V 2	
07:48	GOOD! LAYUP by BARRY, ANNA [FB/PNT]	27-31	V 4	
07:26		29-31	V 2	GOOD! JUMPER by SPRINGER, LEAH
07:03	GOOD! LAYUP by VILLARD, MYA	29-33	V 4	
06:45		30-33	V 3	GOOD! FT by SPRINGER, LEAH
06:27	GOOD! LAYUP by BARRY, ANNA [PNT]	30-35	V 5	
04:32		32-35	V 3	GOOD! LAYUP by ECKLEY, ELEANA
03:51		34-35	V 1	GOOD! LAYUP by ECKLEY, ELEANA
02:00		36-35	H 1	GOOD! LAYUP by DAVIS, JAYNEISHA [PNT]
01:47	GOOD! LAYUP by BARRY, ANNA [PNT]	36-37	V 1	
01:28	GOOD! FT by KECKLER, JULIE [FB]	36-38	V 2	
01:28	GOOD! FT by KECKLER, JULIE [FB]	36-39	V 3	
00:47	GOOD! FT by VILLARD, MYA	36-40	V 4	
00:47	GOOD! FT by VILLARD, MYA	36-41	V 5	
00:38		37-41	V 4	GOOD! FT by SPRINGER, LEAH
00:38		38-41	V 3	GOOD! FT by SPRINGER, LEAH
00:05		40-41	V 1	GOOD! LAYUP by BREINICH, BROOKE

Eastern Conn. St. 41, Messiah 40

Official Scoring/Possession Reference Chart
Eastern Conn. St. vs Messiah
Period 4
March 07, 2020



Period 4

Starters:

Eastern Conn. St.: 3 O'BRIEN, DANIELLE (G); 21 CRETELLA, LIZZY (G); 23 KECKLER, JULIE (G); 24 BARRY, ANNA (F); 45 VILLARD, MYA (F);
Messiah: 3 ECKLEY, ELEANA (G); 11 CRYAN, GRACIE (G); 22 DAVIS, JAYNEISHA (G); 33 SPRINGER, LEAH (F); 34 ZIMMERMAN, MEGAN (F);

Time	VISITORS: Eastern Conn. St.	Score	Margin	HOME: Messiah
08:51	GOOD! LAYUP by KECKLER, JULIE [FB]	40-43	V 3	
08:23	GOOD! FT by KECKLER, JULIE	40-44	V 4	
08:23	GOOD! FT by KECKLER, JULIE	40-45	V 5	
07:29		42-45	V 3	GOOD! JUMPER by SPRINGER, LEAH [PNT]
06:25	GOOD! JUMPER by CRETELLA, LIZZY	42-47	V 5	
05:03		45-47	V 2	GOOD! 3PTR by SPRINGER, LEAH
04:00		48-47	H 1	GOOD! 3PTR by DAVIS, JAYNEISHA
02:19		50-47	H 3	GOOD! JUMPER by SPRINGER, LEAH
01:40		53-47	H 6	GOOD! 3PTR by DAVIS, JAYNEISHA
01:18		55-47	H 8	GOOD! LAYUP by ECKLEY, ELEANA [FB]
01:14		56-47	H 9	GOOD! FT by ECKLEY, ELEANA [FB]
00:58		57-47	H 10	GOOD! FT by ECKLEY, ELEANA
00:58		58-47	H 11	GOOD! FT by ECKLEY, ELEANA
00:50	GOOD! FT by O'BRIEN, DANIELLE [FB]	58-48	H 10	
00:45		59-48	H 11	GOOD! FT by SPRINGER, LEAH [FB]
00:45		60-48	H 12	GOOD! FT by SPRINGER, LEAH [FB]
00:34	GOOD! LAYUP by BARRY, ANNA	60-50	H 10	

Eastern Conn. St. 50, Messiah 60

Official Substitutions Log
Eastern Conn. St. vs Messiah
Period 1
March 07, 2020



VISITORS: Eastern Conn. St.	Time	Score	HOME: Messiah
3 O'BRIEN, DANIELLE			3 ECKLEY, ELEANA
21 CRETELLA, LIZZY			11 CRYAN, GRACIE
23 KECKLER, JULIE			22 DAVIS, JAYNEISHA
24 BARRY, ANNA			33 SPRINGER, LEAH
45 VILLARD, MYA			34 ZIMMERMAN, MEGAN
	07:05	6-0	SUB OUT: SPRINGER, LEAH
	07:05		SUB IN: BREINICH, BROOKE
SUB OUT: 45 VILLARD, MYA	01:24	10-4	
SUB IN: 44 DUNN, MARIAH	01:24		

Eastern Conn. St. 12, Messiah 9

Official Substitutions Log
Eastern Conn. St. vs Messiah
Period 2
March 07, 2020



VISITORS: Eastern Conn. St.	Time	Score	HOME: Messiah
3 O'BRIEN,DANIELLE			3 ECKLEY,ELEANA
21 CRETELLA,LIZZY			11 CRYAN,GRACIE
23 KECKLER,JULIE			22 DAVIS,JAYNEISHA
24 BARRY,ANNA			33 SPRINGER,LEAH
45 VILLARD,MYA			34 ZIMMERMAN,MEGAN
	10:00	-	SUB OUT: ZIMMERMAN,MEGAN
	10:00		SUB IN: SPRINGER,LEAH
SUB OUT: 23 KECKLER,JULIE	10:00		
SUB IN: 10 SERRANTINO,JENNA	10:00		
	09:00	12-11	SUB OUT: BREINICH,BROOKE
	09:00		SUB IN: ZIMMERMAN,MEGAN
	06:40	14-16	SUB OUT: ZIMMERMAN,MEGAN
	06:40		SUB IN: BREINICH,BROOKE
SUB OUT: 21 CRETELLA,LIZZY	05:26	16-18	
SUB IN: 23 KECKLER,JULIE	05:26		
	02:46	20-20	SUB OUT: DAVIS,JAYNEISHA
	02:46		SUB IN: EICH,MADISON
SUB OUT: 23 KECKLER,JULIE	01:52	22-23	
SUB IN: 15 LEMERE,SABRINA	01:52		
	01:01	22-23	SUB OUT: CRYAN,GRACIE
	01:01		SUB IN: STUTZMAN,SIDNEY
	00:05	24-23	SUB OUT: STUTZMAN,SIDNEY
	00:05		SUB IN: DAVIS,JAYNEISHA

Eastern Conn. St. 24, Messiah 25

Official Substitutions Log
Eastern Conn. St. vs Messiah
Period 3
March 07, 2020



VISITORS: Eastern Conn. St.	Time	Score	HOME: Messiah
3 O'BRIEN,DANIELLE			3 ECKLEY,ELEANA
21 CRETELLA,LIZZY			11 CRYAN,GRACIE
23 KECKLER,JULIE			22 DAVIS,JAYNEISHA
24 BARRY,ANNA			33 SPRINGER,LEAH
45 VILLARD,MYA			34 ZIMMERMAN,MEGAN
	10:00	-	SUB OUT: BREINICH,BROOKE
	10:00		SUB OUT: EICH,MADISON
	10:00		SUB IN: CRYAN,GRACIE
	10:00		SUB IN: ZIMMERMAN,MEGAN
SUB OUT: 10 SERRANTINO,JENNA	10:00		
SUB OUT: 15 LEMERE,SABRINA	10:00		
SUB OUT: 44 DUNN,MARIAH	10:00		
SUB IN: 21 CRETELLA,LIZZY	10:00		
SUB IN: 23 KECKLER,JULIE	10:00		
SUB IN: 45 VILLARD,MYA	10:00		
	08:13	27-27	SUB OUT: ZIMMERMAN,MEGAN
	08:13		SUB IN: BREINICH,BROOKE
SUB OUT: 23 KECKLER,JULIE	08:02	29-27	
SUB IN: 10 SERRANTINO,JENNA	08:02		
	06:27	35-30	SUB OUT: CRYAN,GRACIE
	06:27		SUB IN: EICH,MADISON
	04:08	35-32	SUB OUT: DAVIS,JAYNEISHA
	04:08		SUB IN: CRYAN,GRACIE
SUB OUT: 10 SERRANTINO,JENNA	04:08		
SUB IN: 23 KECKLER,JULIE	04:08		
	02:12	35-34	SUB OUT: EICH,MADISON
	02:12		SUB IN: DAVIS,JAYNEISHA
SUB OUT: 24 BARRY,ANNA	00:47	39-36	
SUB IN: 44 DUNN,MARIAH	00:47		

Eastern Conn. St. 41, Messiah 40

**Official Substitutions Log
Eastern Conn. St. vs Messiah
Period 4
March 07, 2020**



VISITORS: Eastern Conn. St.	Time	Score	HOME: Messiah
3 O'BRIEN, DANIELLE			3 ECKLEY, ELEANA
21 CRETELLA, LIZZY			11 CRYAN, GRACIE
23 KECKLER, JULIE			22 DAVIS, JAYNEISHA
24 BARRY, ANNA			33 SPRINGER, LEAH
45 VILLARD, MYA			34 ZIMMERMAN, MEGAN
	10:00	-	SUB OUT: DAVIS, JAYNEISHA
	10:00		SUB IN: EICH, MADISON
SUB OUT: 44 DUNN, MARIAH	10:00		
SUB IN: 24 BARRY, ANNA	10:00		
	08:34	43-40	SUB OUT: BREINICH, BROOKE
	08:34		SUB OUT: EICH, MADISON
	08:34		SUB IN: DAVIS, JAYNEISHA
	08:34		SUB IN: ZIMMERMAN, MEGAN
SUB OUT: 23 KECKLER, JULIE	05:26	47-42	
SUB IN: 10 SERRANTINO, JENNA	05:26		
SUB OUT: 45 VILLARD, MYA	00:40	48-60	
SUB IN: 20 WARD, AIYANA	00:40		
	00:40		SUB OUT: SPRINGER, LEAH
	00:40		SUB IN: BREINICH, BROOKE

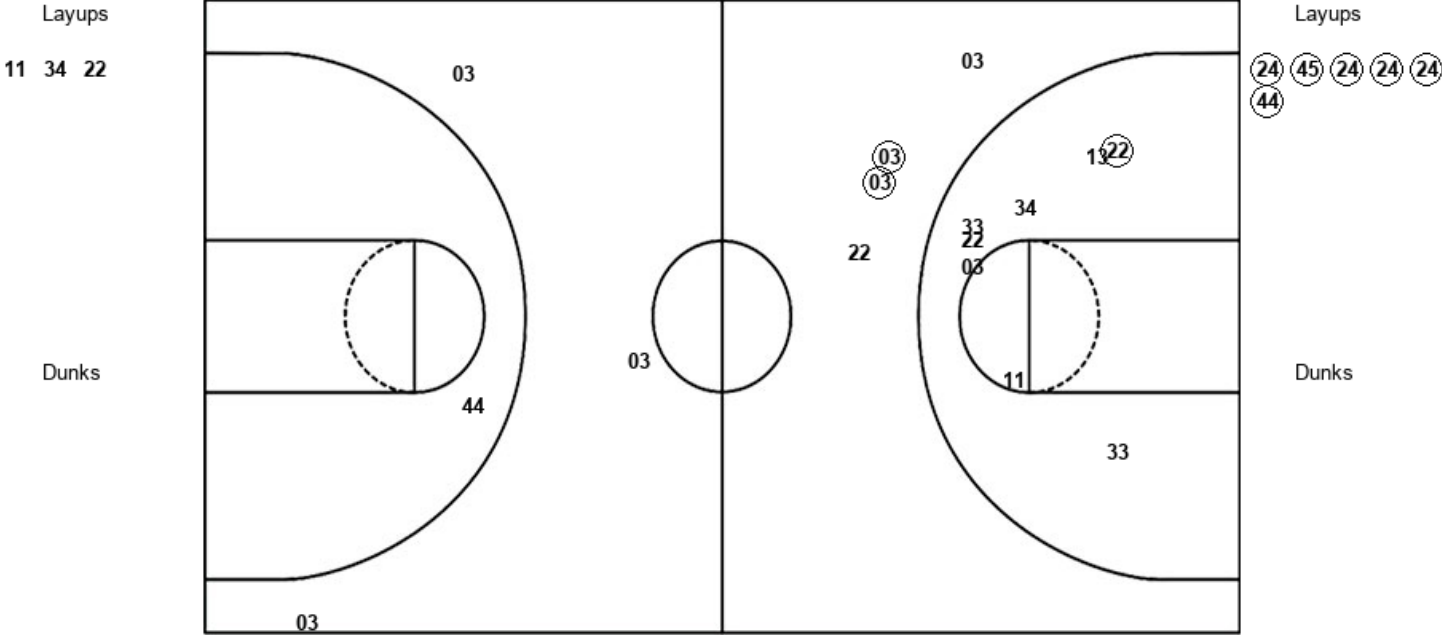
Eastern Conn. St. 50, Messiah 60

Official Shot Chart
Eastern Conn. St. vs Messiah
PERIOD 1 Shots
March 07, 2020



Messiah

Eastern Conn. St.



MES : Period 1	Made	Att	Pct
Layups	0	3	00.0
Dunks	0	0	0
2PT Field Goals	1	11	09.1
3PT Field Goals	2	5	40.0
Total Field Goals	3	16	18.8

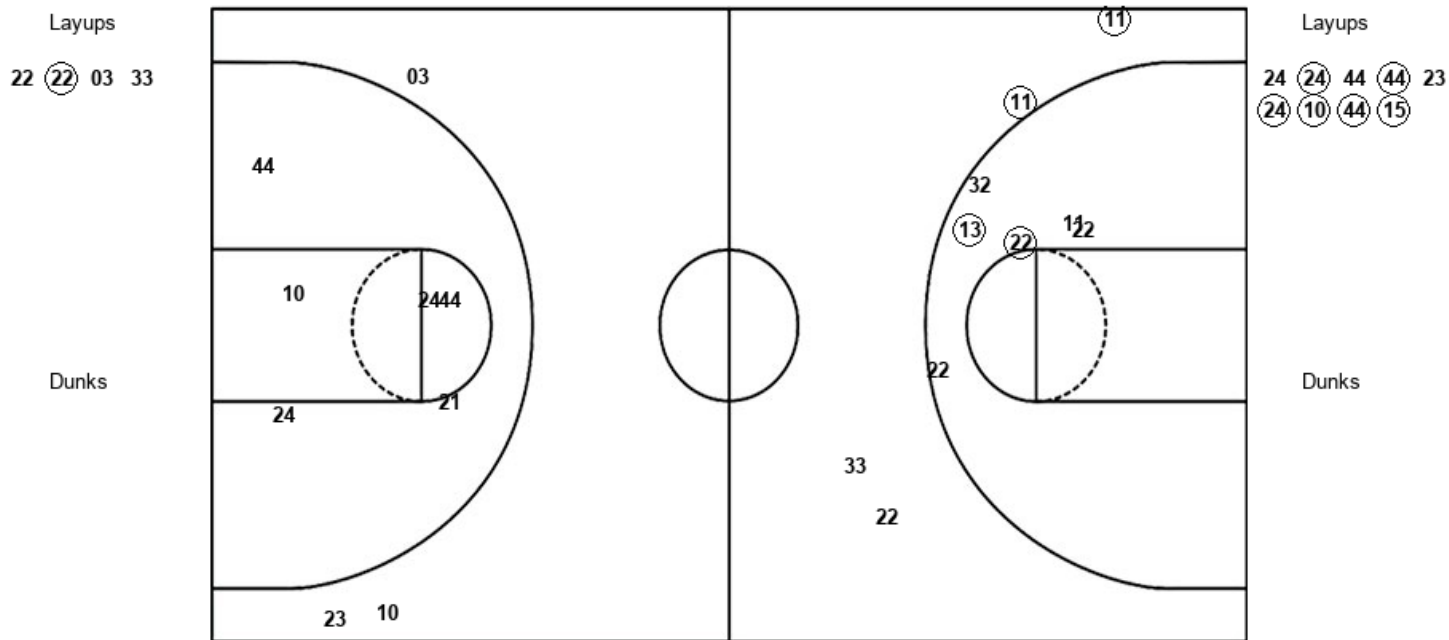
ECS : Period 1	Made	Att	Pct
Layups	6	6	100.0
Dunks	0	0	0
2PT Field Goals	6	7	85.7
3PT Field Goals	0	2	00.0
Total Field Goals	6	9	66.7

Official Shot Chart
 Eastern Conn. St. vs Messiah
 PERIOD 2 Shots
 March 07, 2020



Messiah

Eastern Conn. St.



MES : Period 2	Made	Att	Pct
Layups	1	4	25.0
Dunks	0	0	0
2PT Field Goals	3	10	30.0
3PT Field Goals	2	4	50.0
Total Field Goals	5	14	35.7

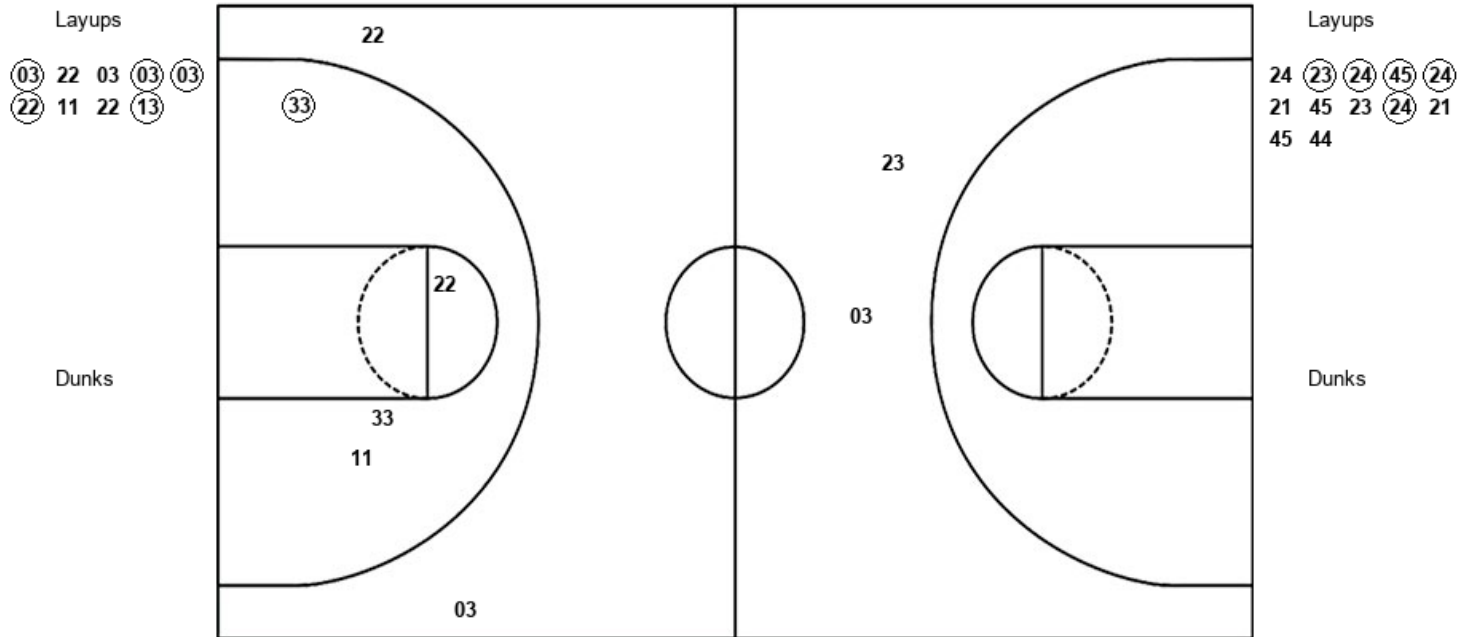
ECS : Period 2	Made	Att	Pct
Layups	6	9	66.7
Dunks	0	0	0
2PT Field Goals	6	15	40.0
3PT Field Goals	0	3	00.0
Total Field Goals	6	18	33.3

Official Shot Chart
 Eastern Conn. St. vs Messiah
 PERIOD 3 Shots
 March 07, 2020



Messiah

Eastern Conn. St.



MES : Period 3	Made	Att	Pct
Layups	5	9	55.6
Dunks	0	0	0
2PT Field Goals	6	13	46.2
3PT Field Goals	0	2	00.0
Total Field Goals	6	15	40.0

ECS : Period 3	Made	Att	Pct
Layups	5	12	41.7
Dunks	0	0	0
2PT Field Goals	5	12	41.7
3PT Field Goals	0	2	00.0
Total Field Goals	5	14	35.7

Official Shot Chart
 Eastern Conn. St. vs Messiah
 PERIOD 4 Shots
 March 07, 2020



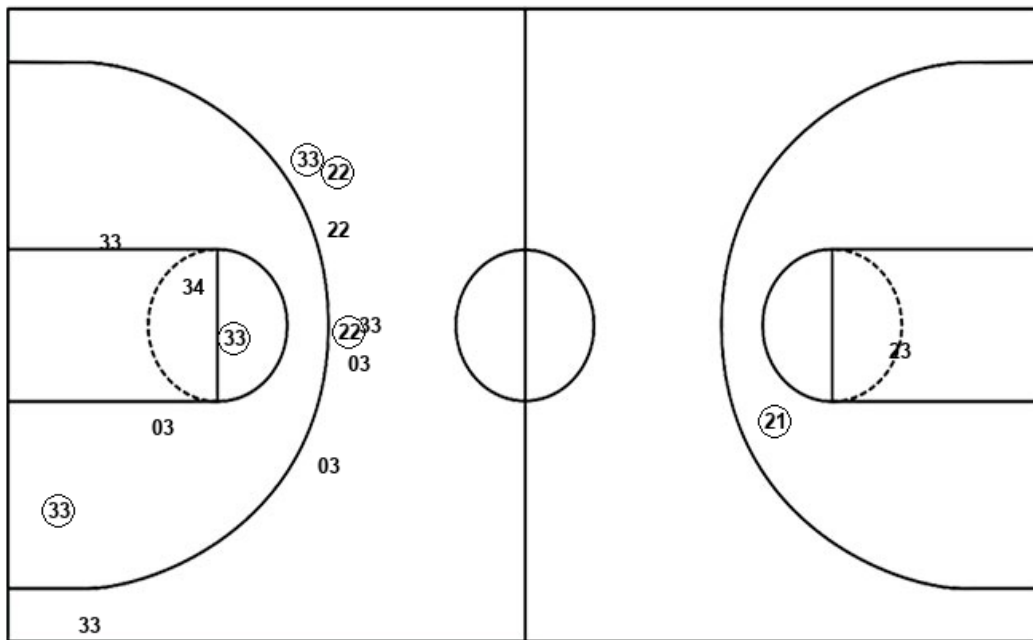
Messiah

Eastern Conn. St.

Layups

03 33 (03)

Dunks



Layups

45 (23) 24 24 21
 24 45 (24)

Dunks

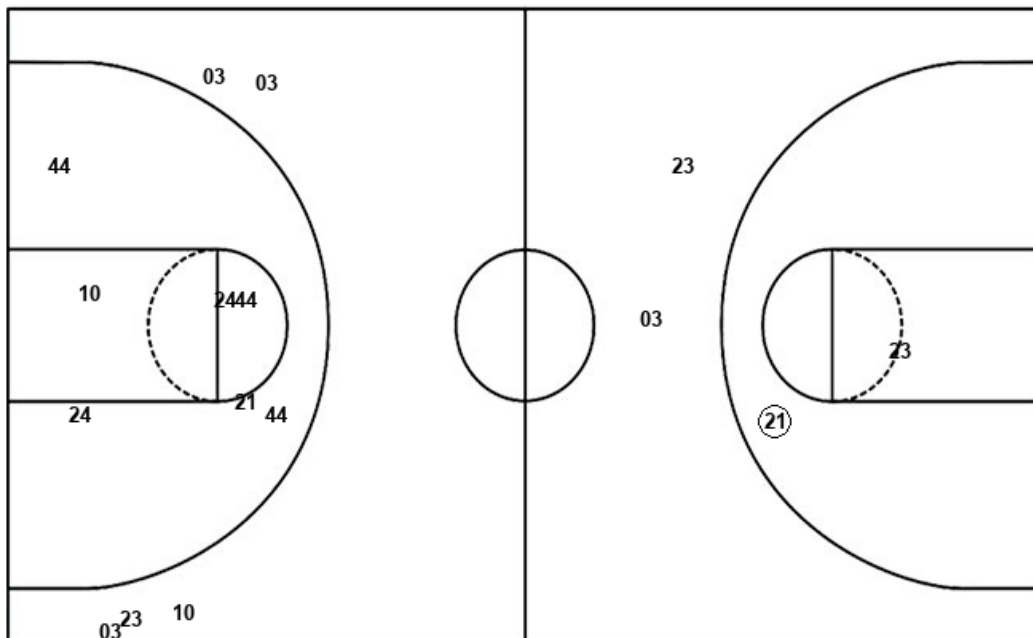
MES : Period 4	Made	Att	Pct
Layups	1	3	33.3
Dunks	0	0	0
2PT Field Goals	3	8	37.5
3PT Field Goals	3	8	37.5
Total Field Goals	6	16	37.5

ECS : Period 4	Made	Att	Pct
Layups	2	8	25.0
Dunks	0	0	0
2PT Field Goals	3	10	30.0
3PT Field Goals	0	0	0
Total Field Goals	3	10	30.0

Official Shot Chart
Eastern Conn. St. vs Messiah
 Eastern Conn. St. Team Shots
 March 07, 2020



Layups



Layups



Dunks

Dunks

ECS : Period 1	Made	Att	Pct
Layups	6	6	100.0
Dunks	0	0	0
2PT Field Goals	6	7	85.7
3PT Field Goals	0	2	00.0
Total Field Goals	6	9	66.7

ECS : Period 2	Made	Att	Pct
Layups	6	9	66.7
Dunks	0	0	0
2PT Field Goals	6	15	40.0
3PT Field Goals	0	3	00.0
Total Field Goals	6	18	33.3

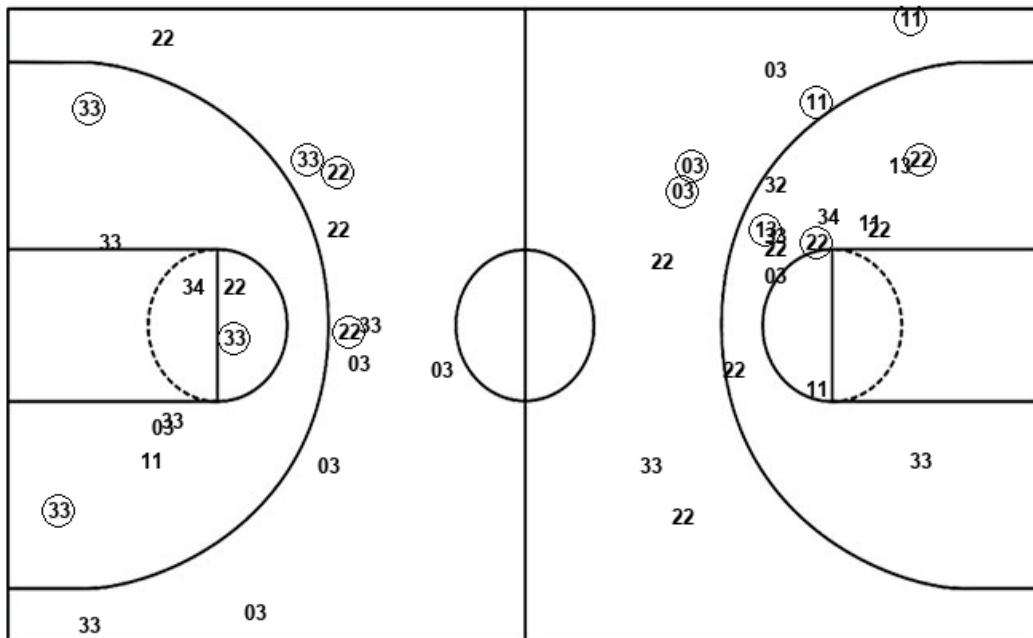
ECS : Period 3	Made	Att	Pct
Layups	5	12	41.7
Dunks	0	0	0
2PT Field Goals	5	12	41.7
3PT Field Goals	0	2	00.0
Total Field Goals	5	14	35.7

ECS : Period 4	Made	Att	Pct
Layups	2	8	25.0
Dunks	0	0	0
2PT Field Goals	3	10	30.0
3PT Field Goals	0	0	0
Total Field Goals	3	10	30.0

Official Shot Chart
 Eastern Conn. St. vs Messiah
 Messiah Team Shots
 March 07, 2020



Layups



Layups

11 34 22 22 (22)
 03 33 (03) 22 03
 (03) (03) (22) 11 22
 (13) 03 33 (03)

Dunks

Dunks

MES : Period 1	Made	Att	Pct
Layups	0	3	00.0
Dunks	0	0	0
2PT Field Goals	1	11	09.1
3PT Field Goals	2	5	40.0
Total Field Goals	3	16	18.8

MES : Period 2	Made	Att	Pct
Layups	1	4	25.0
Dunks	0	0	0
2PT Field Goals	3	10	30.0
3PT Field Goals	2	4	50.0
Total Field Goals	5	14	35.7

MES : Period 3	Made	Att	Pct
Layups	5	9	55.6
Dunks	0	0	0
2PT Field Goals	6	13	46.2
3PT Field Goals	0	2	00.0
Total Field Goals	6	15	40.0

MES : Period 4	Made	Att	Pct
Layups	1	3	33.3
Dunks	0	0	0
2PT Field Goals	3	8	37.5
3PT Field Goals	3	8	37.5
Total Field Goals	6	16	37.5