

FINAL SCORE



Richmond

68



Dayton

79

Atlantic 10 Women's Basketball Tournament

March 06, 2020 • University of Dayton Arena (Tom Blackburn Court) - Dayton, Ohio



FINAL STATISTICS

Official Box Score
Richmond vs Dayton
Game Totals -- Final Statistics

March 06, 2020 at University of Dayton Arena (Tom Blackburn Court) - Dayton, Ohio



Richmond 68

No.	Player	S	Pts	FG	3FG	FT	OR	DR	TR	PF	A	TO	Blk	Stl	Min	+/-
01	HINDS-CLARKE, JAIDE	F	20	8-15	1-3	3-4	1	4	5	5	1	2	1	2	22	-2
10	NEFF, MADELYN	F	0	0-2	0-2	0-0	0	0	0	2	0	0	1	0	14	-10
12	HOLT, CLAIRE	G	7	3-8	1-6	0-0	1	1	2	2	3	6	0	2	27	-23
13	PARSON, ALEX	G	2	0-3	0-1	2-4	0	3	3	1	2	1	0	0	18	-15
24	KLIMKIEWICZ, KATE	G	13	4-9	2-5	3-4	4	4	8	4	1	1	0	2	35	-11
02	CARPENTER, ANIYAH	G	8	3-5	2-4	0-0	0	2	2	1	1	0	0	0	21	5
05	WISEMAN, RAGAN	F	0	0-0	0-0	0-0	0	0	0	0	0	0	0	0	0	-2
15	SQUIRES, EMMA	F	2	1-4	0-3	0-0	1	1	2	0	3	2	1	0	17	-8
22	MRAZ, MOLLY	G	0	0-0	0-0	0-0	0	0	0	0	0	0	0	0	1	-1
31	CHAPMAN, ELAINA	F	3	1-6	0-0	1-2	2	0	2	1	0	0	0	1	24	1
33	DUGGAN, AMY	F	0	0-1	0-0	0-0	0	0	0	1	0	0	0	0	1	1
41	BURGOS, ANGEL	G	13	5-7	1-1	2-4	1	4	5	4	0	2	0	0	18	10
TEAM							1	2	3	0		0				
TOTALS			68	25-60	7-25	11-18	11	21	32	21	11	14	3	7	199	

Shooting By Period

Period	FG	FG%	3FG	3FG%	FT	FT%
1st Qtr	7-14	50%	2-7	29%	1-2	50%
2nd Qtr	7-17	41%	2-7	29%	6-10	60%
3rd Qtr	8-16	50%	2-5	40%	2-2	100%
4th Qtr	3-13	23%	1-6	17%	2-4	50%
1st Half	14-31	45%	4-14	29%	7-12	58%
2nd Half	11-29	38%	3-11	27%	4-6	67%
Game	25-60	41.7%	7-25	28.0%	11-18	61.1%

Deadball Rebounds: 5,0

Last FG: 4th-02:49

Biggest Run: 9-0

Largest lead: By 3 at 1st-09:28

Technical Fouls: None.

Dayton 79

No.	Player	S	Pts	FG	3FG	FT	OR	DR	TR	PF	A	TO	Blk	Stl	Min	+/-
01	BRADSHAW, ARAION	G	1	0-5	0-2	1-4	2	2	4	2	2	1	0	2	18	0
05	WHITEHEAD, KYLA	F	18	6-9	2-2	4-4	3	6	9	1	0	2	0	0	34	6
21	WHALEN, ERIN	G	21	6-12	6-7	3-3	4	4	8	4	1	4	0	1	27	19
22	WILMOTH, JORDAN	F	2	1-5	0-0	0-0	2	0	2	2	1	0	0	0	11	-5
42	SCAIFE, JAYLA	G	11	2-11	2-7	5-8	2	7	9	1	2	4	0	0	31	10
03	WARD, BRITTANY	F	0	0-1	0-1	0-2	1	1	2	1	1	0	0	0	9	-2
04	FOWLER, SHAKEELA	G	8	3-7	0-2	2-2	1	1	2	0	7	2	0	1	29	11
10	SZABO, CHRISTINE	G	0	0-0	0-0	0-0	0	0	0	0	0	0	0	0	1	1
12	GIACONE, JENNA	G	11	4-10	2-6	1-1	1	1	2	2	1	1	0	0	18	4
13	CHANDLER, JULIA	F	5	2-2	1-1	0-0	1	1	2	3	0	2	1	0	12	7
14	SKEENS, ELLA	F	0	0-0	0-0	0-0	0	0	0	0	0	0	0	0	1	-5
23	PEREZ, MARIAH	F	2	1-1	0-0	0-0	1	0	1	1	0	0	0	0	7	9
TEAM							2	3	5	0		1				
TOTALS			79	25-63	13-28	16-24	20	26	46	17	15	17	1	4	199	

Shooting By Period

Period	FG	FG%	3FG	3FG%	FT	FT%
1st Qtr	13-21	62%	7-9	78%	0-0	0%
2nd Qtr	6-14	43%	4-8	50%	8-12	67%
3rd Qtr	5-11	45%	2-4	50%	5-8	63%
4th Qtr	1-17	06%	0-7	00%	3-4	75%
1st Half	19-35	54%	11-17	65%	8-12	67%
2nd Half	6-28	21%	2-11	18%	8-12	67%
Game	25-63	39.7%	13-28	46.4%	16-24	66.7%

Deadball Rebounds: 5,0

Last FG: 4th-02:23

Biggest Run: 10-0

Largest lead: By 21 at 2nd-02:47

Technical Fouls: None.

Game Notes:

Officials: Charlie Hust, Bob Enterline, Regina Odomes
Attendance: 2955

Start Time: 11:03 AM ET
End Time: 12:55 PM ET
Game Duration: 1:52

Score	1st	2nd	3rd	4th	TOT
RIC	17	22	20	9	68
DAY	33	24	17	5	79

RIC led for 1:51. DAY led for 36:49.
Game was tied for 1:03.
Times tied: 2 Lead Changes: 1

Points from	RIC	DAY
In the Paint	28	22
Off Turns	11	14
2nd Chance	9	18
Fast Break	14	7
Bench	26	26

Official Box Score
Richmond vs Dayton
First Half Statistics Only
March 06, 2020 at University of Dayton Arena (Tom Blackburn Court) - Dayton, Ohio



Richmond 39

No.	Player	S	Pts	FG	3FG	FT	OR	DR	TR	PF	A	TO	Blk	Stl	Min	+/-
01	HINDS-CLARKE, JAIDE	F	11	4-9	0-2	3-4	1	2	3	0	1	1	1	1	14	-9
02	CARPENTER, ANIYAH	G	8	3-4	2-3	0-0	0	0	0	1	1	0	0	0	10	-1
05	WISEMAN, RAGAN	F	0	0-0	0-0	0-0	0	0	0	0	0	0	0	0	0	0
10	NEFF, MADELYN	F	0	0-1	0-1	0-0	0	0	0	1	0	0	0	0	7	-12
12	HOLT, CLAIRE	G	0	0-2	0-2	0-0	1	0	1	0	3	3	0	1	14	-22
13	PARSON, ALEX	G	2	0-2	0-0	2-4	0	3	3	1	1	1	0	0	10	-17
15	SQUIRES, EMMA	F	2	1-2	0-1	0-0	1	0	1	0	2	1	0	0	8	-10
22	MRAZ, MOLLY	G	0	0-0	0-0	0-0	0	0	0	0	0	0	0	0	1	-1
24	KLIMKIEWICZ, KATE	G	11	4-8	2-5	1-2	4	2	6	2	0	0	0	0	18	-18
31	CHAPMAN, ELAINA	F	2	1-1	0-0	0-0	0	0	0	1	0	0	0	0	10	-5
33	DUGGAN, AMY	F	0	0-0	0-0	0-0	0	0	0	0	0	0	0	0	0	0
41	BURGOS, ANGEL	G	3	1-2	0-0	1-2	0	1	1	2	0	1	0	0	6	5
	TEAM		0	0-0	0-0	0-0	1	1	2	0	0	0	0	0	0	0
	TOTALS		39	14-31	4-14	7-12	8	9	17	8	8	7	1	2	100	

Shooting By Period

Period	FG	FG%	3FG	3FG%	FT	FT%
1st Qtr	7-14	50%	2-7	29%	1-2	50%
2nd Qtr	7-17	41%	2-7	29%	6-10	60%
1st Half	14-31	45%	4-14	29%	7-12	58%
Game	25-60	41.7%	7-25	28.0%	11-18	61.1%

Deadball Rebounds: 5,0
 Last FG Half: RIC 2nd-00:39

Dayton 57

No.	Player	S	Pts	FG	3FG	FT	OR	DR	TR	PF	A	TO	Blk	Stl	Min	+/-
01	BRADSHAW, ARAION	G	0	0-2	0-1	0-0	0	0	0	2	1	0	0	1	3	2
03	WARD, BRITTANY	F	0	0-1	0-1	0-2	1	1	2	1	1	0	0	0	7	4
04	FOWLER, SHAKEELA	G	6	3-3	0-0	0-0	0	0	0	6	1	0	0	0	17	16
05	WHITEHEAD, KYLA	F	4	2-4	0-0	0-0	1	2	3	1	0	0	0	0	15	13
10	SZABO, CHRISTINE	G	0	0-0	0-0	0-0	0	0	0	0	0	0	0	0	1	1
12	GIACONE, JENNA	G	11	4-7	2-4	1-1	1	1	2	0	1	0	0	0	12	4
13	CHANDLER, JULIA	F	3	1-1	1-1	0-0	0	1	1	1	0	1	0	0	5	9
14	SKEENS, ELLA	F	0	0-0	0-0	0-0	0	0	0	0	0	0	0	0	1	-5
21	WHALEN, ERIN	G	21	6-8	6-6	3-3	3	2	5	2	1	0	0	1	17	24
22	WILMOTH, JORDAN	F	2	1-3	0-0	0-0	2	0	2	2	1	0	0	0	6	-2
23	PEREZ, MARIAH	F	0	0-0	0-0	0-0	0	0	0	1	0	0	0	0	2	7
42	SCAIFE, JAYLA	G	10	2-6	2-4	4-6	1	3	4	0	2	3	0	0	15	17
	TEAM		0	0-0	0-0	0-0	0	1	1	0	0	0	0	0	0	0
	TOTALS		57	19-35	11-17	8-12	9	11	20	10	13	5	0	2	100	

Shooting By Period

Period	FG	FG%	3FG	3FG%	FT	FT%
1st Qtr	13-21	62%	7-9	78%	0-0	0%
2nd Qtr	6-14	43%	4-8	50%	8-12	67%
1st Half	19-35	54%	11-17	65%	8-12	67%
Game	25-63	39.7%	13-28	46.4%	16-24	66.7%

Deadball Rebounds: 5,0
 Last FG Half: DAY 2nd-00:49

Game Notes:

Officials: **Charlie Hust, Bob Enterline, Regina Odomes**
 Attendance: **2955**

Start Time: **11:03 AM ET**
 End Time: **12:55 PM ET**
 Game Duration: **1:52**

Score	1st	2nd	3rd	4th	TOT
RIC	17	22	20	9	68
DAY	33	24	17	5	79

Points from (This Period)	RIC	DAY
In the Paint	16	14
Off Turns	0	10
2nd Chance	5	12
Fast Break	6	5
Bench	15	20

Official Box Score
Richmond vs Dayton
First Quarter Statistics Only
March 06, 2020 at University of Dayton Arena (Tom Blackburn Court) - Dayton, Ohio



Richmond 17

No.	Player	S	Pts	FG	3FG	FT	OR	DR	TR	PF	A	TO	Blk	Stl	Min	+/-
01	HINDS-CLARKE, JAIDE	F	0	0-3	0-2	0-0	1	1	2	0	0	0	0	0	5	-10
10	NEFF, MADELYN	F	0	0-0	0-0	0-0	0	0	0	0	0	0	0	0	5	-10
12	HOLT, CLAIRE	G	0	0-2	0-2	0-0	0	0	0	0	2	1	0	0	8	-16
13	PARSON, ALEX	G	1	0-1	0-0	1-2	0	2	2	1	1	1	0	0	7	-10
24	KLIMKIEWICZ, KATE	G	5	2-3	1-2	0-0	0	1	1	0	0	0	0	0	8	-16
02	CARPENTER, ANIYAH	G	5	2-2	1-1	0-0	0	0	0	0	0	0	0	0	5	-6
05	WISEMAN, RAGAN	F	0	0-0	0-0	0-0	0	0	0	0	0	0	0	0	0	0
15	SQUIRES, EMMA	F	2	1-1	0-0	0-0	1	0	1	0	1	1	0	0	5	-6
22	MRAZ, MOLLY	G	0	0-0	0-0	0-0	0	0	0	0	0	0	0	0	0	0
31	CHAPMAN, ELAINA	F	2	1-1	0-0	0-0	0	0	0	0	0	0	0	0	5	-6
33	DUGGAN, AMY	F	0	0-0	0-0	0-0	0	0	0	0	0	0	0	0	0	0
41	BURGOS, ANGEL	G	2	1-1	0-0	0-0	0	0	0	0	0	0	0	0	2	0
	TEAM						0	0	0	0		0				
TOTALS			17	7-14	2-7	1-2	2	4	6	1	4	3	0	0	50	

Shooting By Period

Period	FG	FG%	3FG	3FG%	FT	FT%
1st Qtr	7-14	50%	2-7	29%	1-2	50%
2nd Qtr	7-17	41%	2-7	29%	6-10	60%
1st Half	7-14	50%	2-7	29%	1-2	50%
1st Half	14-31	45%	4-14	29%	7-12	58%
Game	25-60	41.7%	7-25	28.0%	11-18	61.1%

Deadball Rebounds: 5,0

Dayton 33

No.	Player	S	Pts	FG	3FG	FT	OR	DR	TR	PF	A	TO	Blk	Stl	Min	+/-
01	BRADSHAW, ARAION	G	0	0-1	0-0	0-0	0	0	0	1	1	0	0	1	2	0
05	WHITEHEAD, KYLA	F	4	2-3	0-0	0-0	0	1	1	0	0	0	0	0	8	16
21	WHALEN, ERIN	G	12	4-5	4-4	0-0	1	1	2	1	0	0	0	0	10	16
22	WILMOTH, JORDAN	F	2	1-3	0-0	0-0	2	0	2	0	1	0	0	0	4	3
42	SCAIFE, JAYLA	G	3	1-2	1-1	0-0	0	1	1	0	1	0	0	0	7	10
03	WARD, BRITTANY	F	0	0-1	0-1	0-0	0	1	1	0	1	0	0	0	3	3
04	FOWLER, SHAKEELA	G	4	2-2	0-0	0-0	0	0	0	0	5	0	0	0	8	16
10	SZABO, CHRISTINE	G	0	0-0	0-0	0-0	0	0	0	0	0	0	0	0	0	0
12	GIACONE, JENNA	G	5	2-3	1-2	0-0	1	0	1	0	0	0	0	0	5	6
13	CHANDLER, JULIA	F	3	1-1	1-1	0-0	0	1	1	0	0	0	0	0	3	10
14	SKEENS, ELLA	F	0	0-0	0-0	0-0	0	0	0	0	0	0	0	0	0	0
23	PEREZ, MARIAH	F	0	0-0	0-0	0-0	0	0	0	0	0	0	0	0	0	0
	TEAM						0	0	0	0		0				
TOTALS			33	13-21	7-9	0-0	4	5	9	2	9	0	0	1	50	

Shooting By Period

Period	FG	FG%	3FG	3FG%	FT	FT%
1st Qtr	13-21	62%	7-9	78%	0-0	0%
2nd Qtr	6-14	43%	4-8	50%	8-12	67%
1st Half	13-21	62%	7-9	78%	0-0	0%
1st Half	19-35	54%	11-17	65%	8-12	67%
Game	25-63	39.7%	13-28	46.4%	16-24	66.7%

Deadball Rebounds: 5,0

Game Notes:

Officials: **Charlie Hust, Bob Enterline, Regina Odomes**
 Attendance: **2955**

Start Time: **11:03 AM ET**
 End Time: **12:55 PM ET**
 Game Duration: **1:52**

Score	1st	2nd	3rd	4th	TOT
RIC	17	22	20	9	68
DAY	33	24	17	5	79

Points from (This Period)	RIC	DAY
In the Paint	8	12
Off Turns	0	6
2nd Chance	2	9
Fast Break	3	3
Bench	11	12

**Official Play-By-Play
Richmond vs Dayton
First Quarter**

March 06, 2020 at University of Dayton Arena (Tom Blackburn Court) - Dayton, Ohio



Period 1

Starters:

Richmond: 1 HINDS-CLARKE, JAIDE (F); 10 NEFF, MADELYN (F); 12 HOLT, CLAIRE (G); 13 PARSON, ALEX (G); 24 KLIMKIEWICZ, KATE (G);

Dayton: 1 BRADSHAW, ARAION (G); 5 WHITEHEAD, KYLA (F); 21 WHALEN, ERIN (G); 22 WILMOTH, JORDAN (F); 42 SCAIFE, JAYLA (G);

Time	VISITORS: Richmond	Score	Margin	HOME: Dayton
09:34				MISSED LAYUP by BRADSHAW, ARAION
09:31	REBOUND (DEF) by PARSON, ALEX			
09:28	GOOD! 3PTR by KLIMKIEWICZ, KATE [FB]	0-3	V 3	
09:28	ASSIST by PARSON, ALEX			
09:03				MISSED JUMPER by WILMOTH, JORDAN
09:01	REBOUND (DEF) by HINDS-CLARKE, JAIDE			
08:52	MISSED JUMPER by HINDS-CLARKE, JAIDE			
08:48				REBOUND (DEF) by WHALEN, ERIN
08:40				MISSED JUMPER by WHITEHEAD, KYLA
08:37	REBOUND (DEF) by PARSON, ALEX			
08:34	FOUL (OFF) by PARSON, ALEX			
08:34	TURNOVER (OFFENSIVE) by PARSON, ALEX			
08:06				MISSED JUMPER by SCAIFE, JAYLA
08:01	REBOUND (DEF) by KLIMKIEWICZ, KATE			
07:57	TURNOVER (BADPASS) by HOLT, CLAIRE			
07:57				STEAL by BRADSHAW, ARAION
07:50		3-3	T	GOOD! 3PTR by WHALEN, ERIN
07:50				ASSIST by BRADSHAW, ARAION
07:32				FOUL (PERSONAL) by BRADSHAW, ARAION
07:32				SUB OUT: BRADSHAW, ARAION
07:32				SUB OUT: WILMOTH, JORDAN
07:32				SUB IN: FOWLER, SHAKEELA
07:32				SUB IN: CHANDLER, JULIA
07:32	MISSED FT by PARSON, ALEX			
07:32	REBOUND (OFF) by TEAM			
07:32	GOOD! FT by PARSON, ALEX	3-4	V 1	
07:19		6-4	H 2	GOOD! 3PTR by CHANDLER, JULIA
07:19				ASSIST by SCAIFE, JAYLA
06:55	GOOD! JUMPER by KLIMKIEWICZ, KATE [PNT]	6-6	T	
06:42		8-6	H 2	GOOD! LAYUP by FOWLER, SHAKEELA
06:31	MISSED 3PTR by HOLT, CLAIRE			
06:28	REBOUND (OFF) by HINDS-CLARKE, JAIDE			
06:26	MISSED 3PTR by KLIMKIEWICZ, KATE			
06:22				REBOUND (DEF) by CHANDLER, JULIA
06:09		10-6	H 4	GOOD! LAYUP by WHITEHEAD, KYLA
06:09				ASSIST by FOWLER, SHAKEELA
05:51	MISSED 3PTR by HINDS-CLARKE, JAIDE			
05:46				REBOUND (DEF) by WHITEHEAD, KYLA
05:41		13-6	H 7	GOOD! 3PTR by SCAIFE, JAYLA [FB]
05:41				ASSIST by FOWLER, SHAKEELA
05:19	MISSED 3PTR by HINDS-CLARKE, JAIDE			
05:15				REBOUND (DEF) by SCAIFE, JAYLA
05:09		16-6	H 10	GOOD! 3PTR by WHALEN, ERIN
05:09				ASSIST by FOWLER, SHAKEELA
04:59	TIMEOUT 30SEC			
04:59				SUB OUT: WHITEHEAD, KYLA
04:59				SUB OUT: CHANDLER, JULIA
04:59				SUB IN: WARD, BRITTANY
04:59				SUB IN: GIACONE, JENNA
04:59	SUB OUT: HINDS-CLARKE, JAIDE			
04:59	SUB OUT: NEFF, MADELYN			
04:59	SUB OUT: HOLT, CLAIRE			
04:59	SUB IN: CARPENTER, ANIYAH			
04:59	SUB IN: SQUIRES, EMMA			
04:59	SUB IN: CHAPMAN, ELAINA			
04:46	GOOD! 3PTR by CARPENTER, ANIYAH	16-9	H 7	
04:46	ASSIST by SQUIRES, EMMA			
04:32				MISSED JUMPER by WHALEN, ERIN
04:27				REBOUND (OFF) by WHALEN, ERIN
04:13		19-9	H 10	GOOD! 3PTR by WHALEN, ERIN
04:13				ASSIST by FOWLER, SHAKEELA
03:56	MISSED LAYUP by PARSON, ALEX			
03:52				REBOUND (DEF) by WARD, BRITTANY
03:36				MISSED 3PTR by WARD, BRITTANY
03:30				REBOUND (OFF) by GIACONE, JENNA
03:30		21-9	H 12	GOOD! LAYUP by GIACONE, JENNA
03:06	GOOD! LAYUP by CHAPMAN, ELAINA	21-11	H 10	
02:56				SUB OUT: SCAIFE, JAYLA
02:56				SUB IN: WHITEHEAD, KYLA

Time	VISITORS: Richmond	Score	Margin	HOME: Dayton
02:56	SUB OUT: PARSON, ALEX			
02:56	SUB IN: HOLT, CLAIRE			
02:52		24-11	H 13	GOOD! 3PTR by WHALEN, ERIN
02:52				ASSIST by WARD, BRITTANY
02:38	GOOD! LAYUP by SQUIRES, EMMA	24-13	H 11	
02:38	ASSIST by HOLT, CLAIRE			
02:27		26-13	H 13	GOOD! LAYUP by FOWLER, SHAKEELA
02:01	TURNOVER (TRAVEL) by SQUIRES, EMMA			
02:01				SUB OUT: WARD, BRITTANY
02:01				SUB IN: WILMOTH, JORDAN
01:50		29-13	H 16	GOOD! 3PTR by GIACONE, JENNA
01:50				ASSIST by FOWLER, SHAKEELA
01:32				FOUL (PERSONAL) by WHALEN, ERIN
01:32	SUB OUT: KLIMKIEWICZ, KATE			
01:32	SUB IN: BURGOS, ANGEL			
01:20	GOOD! JUMPER by CARPENTER, ANIYAH	29-15	H 14	
01:20	ASSIST by HOLT, CLAIRE			
01:07				MISSED JUMPER by WILMOTH, JORDAN
01:02				REBOUND (OFF) by WILMOTH, JORDAN
01:02		31-15	H 16	GOOD! LAYUP by WILMOTH, JORDAN
00:51	MISSED 3PTR by HOLT, CLAIRE			
00:47	REBOUND (OFF) by SQUIRES, EMMA			
00:41	GOOD! LAYUP by BURGOS, ANGEL [PNT]	31-17	H 14	
00:13				MISSED 3PTR by GIACONE, JENNA
00:08				REBOUND (OFF) by WILMOTH, JORDAN
00:08		33-17	H 16	GOOD! LAYUP by WHITEHEAD, KYLA
00:08				ASSIST by WILMOTH, JORDAN

Richmond 17, Dayton 33

Points from (This Period)	RIC	DAY
In the Paint	8	12
Off Turns	0	6
2nd Chance	2	9
Fast Break	3	3
Bench	11	12

Official Box Score
Richmond vs Dayton
Second Quarter Statistics Only
March 06, 2020 at University of Dayton Arena (Tom Blackburn Court) - Dayton, Ohio



Richmond 22

No.	Player	S	Pts	FG	3FG	FT	OR	DR	TR	PF	A	TO	Blk	Stl	Min	+/-
01	HINDS-CLARKE, JAIDE	F	11	4-6	0-0	3-4	0	1	1	0	1	1	1	1	9	1
10	NEFF, MADELYN	F	0	0-1	0-1	0-0	0	0	0	1	0	0	0	0	2	-2
12	HOLT, CLAIRE	G	0	0-0	0-0	0-0	1	0	1	0	1	2	0	1	6	-6
13	PARSON, ALEX	G	1	0-1	0-0	1-2	0	1	1	0	0	0	0	0	3	-7
24	KLIMKIEWICZ, KATE	G	6	2-5	1-3	1-2	4	1	5	2	0	0	0	0	10	-2
02	CARPENTER, ANIYAH	G	3	1-2	1-2	0-0	0	0	0	1	1	0	0	0	5	5
05	WISEMAN, RAGAN	F	0	0-0	0-0	0-0	0	0	0	0	0	0	0	0	0	0
15	SQUIRES, EMMA	F	0	0-1	0-1	0-0	0	0	0	0	1	0	0	0	3	-4
22	MRAZ, MOLLY	G	0	0-0	0-0	0-0	0	0	0	0	0	0	0	0	1	-1
31	CHAPMAN, ELAINA	F	0	0-0	0-0	0-0	0	0	0	1	0	0	0	0	5	1
33	DUGGAN, AMY	F	0	0-0	0-0	0-0	0	0	0	0	0	0	0	0	0	0
41	BURGOS, ANGEL	G	1	0-1	0-0	1-2	0	1	1	2	0	1	0	0	4	5
TEAM							1	1	2	0						
TOTALS			22	7-17	2-7	6-10	6	5	11	7	4	4	1	2	50	

Shooting By Period

Period	FG	FG%	3FG	3FG%	FT	FT%
3rd Qtr	8-16	50%	2-5	40%	2-2	100%
4th Qtr	3-13	23%	1-6	17%	2-4	50%
2nd Half	7-17	41%	2-7	29%	6-10	60%
2nd Half	11-29	38%	3-11	27%	4-6	67%
Game	25-60	41.7%	7-25	28.0%	11-18	61.1%

Deadball Rebounds: 5,0

Dayton 24

No.	Player	S	Pts	FG	3FG	FT	OR	DR	TR	PF	A	TO	Blk	Stl	Min	+/-
01	BRADSHAW, ARAION	G	0	0-1	0-1	0-0	0	0	0	1	0	0	0	0	1	2
05	WHITEHEAD, KYLA	F	0	0-1	0-0	0-0	1	1	2	1	0	0	0	0	7	-3
21	WHALEN, ERIN	G	9	2-3	2-2	3-3	2	1	3	1	1	0	0	1	7	8
22	WILMOTH, JORDAN	F	0	0-0	0-0	0-0	0	0	0	2	0	0	0	0	2	-5
42	SCAIFE, JAYLA	G	7	1-4	1-3	4-6	1	2	3	0	1	3	0	0	8	7
03	WARD, BRITTANY	F	0	0-0	0-0	0-2	1	0	1	1	0	0	0	0	4	1
04	FOWLER, SHAKEELA	G	2	1-1	0-0	0-0	0	0	0	0	1	1	0	0	9	0
10	SZABO, CHRISTINE	G	0	0-0	0-0	0-0	0	0	0	0	0	0	0	0	1	1
12	GIACONE, JENNA	G	6	2-4	1-2	1-1	0	1	1	0	1	0	0	0	7	-2
13	CHANDLER, JULIA	F	0	0-0	0-0	0-0	0	0	0	1	0	1	0	0	2	-1
14	SKEENS, ELLA	F	0	0-0	0-0	0-0	0	0	0	0	0	0	0	0	1	-5
23	PEREZ, MARIAH	F	0	0-0	0-0	0-0	0	0	0	1	0	0	0	0	2	7
TEAM							0	1	1	0						
TOTALS			24	6-14	4-8	8-12	5	6	11	8	4	5	0	1	50	

Shooting By Period

Period	FG	FG%	3FG	3FG%	FT	FT%
3rd Qtr	5-11	45%	2-4	50%	5-8	63%
4th Qtr	1-17	06%	0-7	00%	3-4	75%
2nd Half	6-14	43%	4-8	50%	8-12	67%
2nd Half	6-28	21%	2-11	18%	8-12	67%
Game	25-63	39.7%	13-28	46.4%	16-24	66.7%

Deadball Rebounds: 5,0

Game Notes:

Officials: **Charlie Hust, Bob Enterline, Regina Odomes**
 Attendance: **2955**

Start Time: **11:03 AM ET**
 End Time: **12:55 PM ET**
 Game Duration: **1:52**

Score	1st	2nd	3rd	4th	TOT
RIC	17	22	20	9	68
DAY	33	24	17	5	79

Points from (This Period)	RIC	DAY
In the Paint	8	2
Off Turns	0	4
2nd Chance	3	3
Fast Break	3	2
Bench	4	8

**Official Play-By-Play
Richmond vs Dayton
Second Quarter**

March 06, 2020 at University of Dayton Arena (Tom Blackburn Court) - Dayton, Ohio



Period 2

Starters:

Richmond: 1 HINDS-CLARKE, JAIDE (F); 10 NEFF, MADELYN (F); 12 HOLT, CLAIRE (G); 13 PARSON, ALEX (G); 24 KLIMKIEWICZ, KATE (G);

Dayton: 1 BRADSHAW, ARAION (G); 5 WHITEHEAD, KYLA (F); 21 WHALEN, ERIN (G); 22 WILMOTH, JORDAN (F); 42 SCAIFE, JAYLA (G);

Time	VISITORS: Richmond	Score	Margin	HOME: Dayton
10:00				SUB OUT: WHALEN, ERIN
10:00				SUB IN: SKEENS, ELLA
10:00	SUB OUT: HOLT, CLAIRE			
10:00	SUB OUT: SQUIRES, EMMA			
10:00	SUB IN: HINDS-CLARKE, JAIDE			
10:00	SUB IN: KLIMKIEWICZ, KATE			
09:38	GOOD! JUMPER by HINDS-CLARKE, JAIDE [PNT]	33-19	H 14	
09:38	ASSIST by CARPENTER, ANIYAH			
09:28				MISSED JUMPER by GIACONE, JENNA
09:25	REBOUND (DEF) by BURGOS, ANGEL			
09:20	GOOD! 3PTR by KLIMKIEWICZ, KATE [FB]	33-22	H 11	
09:11	FOUL (PERSONAL) by CARPENTER, ANIYAH			
09:11				SUB OUT: SKEENS, ELLA
09:11				SUB OUT: WILMOTH, JORDAN
09:11				SUB IN: CHANDLER, JULIA
09:11				SUB IN: SCAIFE, JAYLA
08:59		36-22	H 14	GOOD! 3PTR by SCAIFE, JAYLA
08:59				ASSIST by GIACONE, JENNA
08:45	GOOD! 3PTR by CARPENTER, ANIYAH	36-25	H 11	
08:45	ASSIST by HINDS-CLARKE, JAIDE			
08:34				MISSED 3PTR by GIACONE, JENNA
08:32				REBOUND (OFF) by SCAIFE, JAYLA
08:29				MISSED 3PTR by SCAIFE, JAYLA
08:26	REBOUND (DEF) by TEAM			
08:07				FOUL (PERSONAL) by CHANDLER, JULIA
08:03				FOUL (PERSONAL) by WHITEHEAD, KYLA
08:03	MISSED FT by BURGOS, ANGEL			
08:03	REBOUND (OFF) by TEAM			
08:03	GOOD! FT by BURGOS, ANGEL	36-26	H 10	
07:42				TURNOVER (TRAVEL) by CHANDLER, JULIA
07:42				SUB OUT: GIACONE, JENNA
07:42				SUB IN: WHALEN, ERIN
07:25	TURNOVER (LOSTBALL) by HINDS-CLARKE, JAIDE			
07:19	FOUL (PERSONAL) by BURGOS, ANGEL			
07:19				SUB OUT: FOWLER, SHAKEELA
07:19				SUB OUT: CHANDLER, JULIA
07:19				SUB IN: BRADSHAW, ARAION
07:19				SUB IN: WARD, BRITTANY
07:19		37-26	H 11	GOOD! FT by SCAIFE, JAYLA [FB]
07:19		38-26	H 12	GOOD! FT by SCAIFE, JAYLA [FB]
07:15	TURNOVER (BADPASS) by BURGOS, ANGEL			
06:52				MISSED 3PTR by BRADSHAW, ARAION
06:48				REBOUND (OFF) by WARD, BRITTANY
06:31				MISSED 3PTR by SCAIFE, JAYLA
06:28				REBOUND (OFF) by WHITEHEAD, KYLA
06:28	SUB OUT: CARPENTER, ANIYAH			
06:28	SUB OUT: CHAPMAN, ELAINA			
06:28	SUB OUT: BURGOS, ANGEL			
06:28	SUB IN: NEFF, MADELYN			
06:28	SUB IN: HOLT, CLAIRE			
06:28	SUB IN: PARSON, ALEX			
06:26				MISSED LAYUP by WHITEHEAD, KYLA
06:23	REBOUND (DEF) by KLIMKIEWICZ, KATE			
06:19				FOUL (PERSONAL) by WARD, BRITTANY
06:16				FOUL (PERSONAL) by BRADSHAW, ARAION
06:16				SUB OUT: BRADSHAW, ARAION
06:16				SUB IN: FOWLER, SHAKEELA
06:16	GOOD! FT by PARSON, ALEX	38-27	H 11	
06:16	MISSED FT by PARSON, ALEX			
06:14				REBOUND (DEF) by WHITEHEAD, KYLA
06:05				TURNOVER (BADPASS) by FOWLER, SHAKEELA
05:59	MISSED 3PTR by KLIMKIEWICZ, KATE			
05:54				REBOUND (DEF) by SCAIFE, JAYLA
05:39				TURNOVER (LOSTBALL) by SCAIFE, JAYLA
05:39	STEAL by HINDS-CLARKE, JAIDE			
05:35	MISSED LAYUP by HINDS-CLARKE, JAIDE			
05:30	REBOUND (OFF) by KLIMKIEWICZ, KATE			
05:30	MISSED LAYUP by KLIMKIEWICZ, KATE			
05:26	REBOUND (OFF) by HOLT, CLAIRE			
05:26	TURNOVER (LOSTBALL) by HOLT, CLAIRE			

Time	VISITORS: Richmond	Score	Margin	HOME: Dayton
05:26				STEAL by WHALEN, ERIN
05:18				SUB OUT: WARD, BRITTANY
05:18				SUB IN: PEREZ, MARIAH
05:02				MISSED JUMPER by SCAIFE, JAYLA
04:58	REBOUND (DEF) by PARSON, ALEX			
04:50	MISSED JUMPER by HINDS-CLARKE, JAIDE			
04:49	REBOUND (OFF) by TEAM			
04:49				
04:49	SUB OUT: HINDS-CLARKE, JAIDE			
04:49	SUB IN: CHAPMAN, ELAINA			
04:46	MISSED 3PTR by KLIMKIEWICZ, KATE			
04:41				REBOUND (DEF) by SCAIFE, JAYLA
04:37	FOUL (PERSONAL) by NEFF, MADELYN			
04:37		39-27	H 12	GOOD! FT by WHALEN, ERIN
04:37		40-27	H 13	GOOD! FT by WHALEN, ERIN
04:37		41-27	H 14	GOOD! FT by WHALEN, ERIN
04:20	MISSED 3PTR by NEFF, MADELYN			
04:17				REBOUND (DEF) by WHALEN, ERIN
04:13	FOUL (PERSONAL) by CHAPMAN, ELAINA			
04:13				SUB OUT: WHITEHEAD, KYLA
04:13				SUB IN: GIACONE, JENNA
04:13	SUB OUT: NEFF, MADELYN			
04:13	SUB OUT: CHAPMAN, ELAINA			
04:13	SUB IN: HINDS-CLARKE, JAIDE			
04:13	SUB IN: SQUIRES, EMMA			
04:13				MISSED FT by SCAIFE, JAYLA
04:13				REBOUND (OFF) by TEAM
04:13				MISSED FT by SCAIFE, JAYLA
04:12				REBOUND (OFF) by WHALEN, ERIN
04:10				MISSED JUMPER by WHALEN, ERIN
04:10	BLOCK by HINDS-CLARKE, JAIDE			
04:06				REBOUND (OFF) by WHALEN, ERIN
04:04		44-27	H 17	GOOD! 3PTR by GIACONE, JENNA
04:04				ASSIST by WHALEN, ERIN
03:51	MISSED LAYUP by PARSON, ALEX			
03:47	REBOUND (OFF) by KLIMKIEWICZ, KATE			
03:47	GOOD! LAYUP by KLIMKIEWICZ, KATE	44-29	H 15	
03:38		47-29	H 18	GOOD! 3PTR by WHALEN, ERIN
03:38				ASSIST by SCAIFE, JAYLA
03:24				FOUL (PERSONAL) by PEREZ, MARIAH
03:24				SUB OUT: PEREZ, MARIAH
03:24				SUB IN: WILMOTH, JORDAN
03:24	GOOD! FT by HINDS-CLARKE, JAIDE	47-30	H 17	
03:24	GOOD! FT by HINDS-CLARKE, JAIDE	47-31	H 16	
03:15		50-31	H 19	GOOD! 3PTR by WHALEN, ERIN
03:15				ASSIST by FOWLER, SHAKEELA
02:59	TURNOVER (LOSTBALL) by HOLT, CLAIRE			
02:59	SUB OUT: PARSON, ALEX			
02:59	SUB IN: CARPENTER, ANIYAH			
02:47	FOUL (PERSONAL) by KLIMKIEWICZ, KATE			
02:47		51-31	H 20	GOOD! FT by SCAIFE, JAYLA
02:47		52-31	H 21	GOOD! FT by SCAIFE, JAYLA
02:28	GOOD! JUMPER by HINDS-CLARKE, JAIDE	52-33	H 19	
02:28				FOUL (PERSONAL) by WILMOTH, JORDAN
02:28	GOOD! FT by HINDS-CLARKE, JAIDE	52-34	H 18	
02:08		54-34	H 20	GOOD! JUMPER by FOWLER, SHAKEELA [PNT]
01:55	GOOD! JUMPER by HINDS-CLARKE, JAIDE	54-36	H 18	
01:55	ASSIST by SQUIRES, EMMA			
01:55				FOUL (PERSONAL) by WILMOTH, JORDAN
01:55				SUB OUT: WILMOTH, JORDAN
01:55				SUB OUT: SCAIFE, JAYLA
01:55				SUB IN: WARD, BRITTANY
01:55				SUB IN: SZABO, CHRISTINE
01:55	SUB OUT: CARPENTER, ANIYAH			
01:55	SUB IN: BURGOS, ANGEL			
01:55	MISSED FT by HINDS-CLARKE, JAIDE			
01:55				REBOUND (DEF) by GIACONE, JENNA
01:35	FOUL (PERSONAL) by BURGOS, ANGEL			
01:35				MISSED FT by WARD, BRITTANY
01:35				REBOUND (OFF) by TEAM
01:35				MISSED FT by WARD, BRITTANY
01:33	REBOUND (DEF) by HINDS-CLARKE, JAIDE			
01:19	MISSED 3PTR by SQUIRES, EMMA			
01:17	REBOUND (OFF) by KLIMKIEWICZ, KATE			
01:10	MISSED LAYUP by BURGOS, ANGEL			
01:09	REBOUND (OFF) by KLIMKIEWICZ, KATE			
01:09				FOUL (PERSONAL) by WHALEN, ERIN
01:09				SUB OUT: WHALEN, ERIN
01:09				SUB IN: SCAIFE, JAYLA
01:09	SUB OUT: SQUIRES, EMMA			

Time	VISITORS: Richmond	Score	Margin	HOME: Dayton
01:09	SUB IN: CHAPMAN, ELAINA			
01:09	MISSED FT by KLIMKIEWICZ, KATE			
01:09	REBOUND (OFF) by TEAM			
01:09	GOOD! FT by KLIMKIEWICZ, KATE	54-37	H 17	
01:09	SUB OUT: BURGOS, ANGEL			
01:09	SUB IN: MRAZ, MOLLY			
00:49		56-37	H 19	GOOD! JUMPER by GIACONE, JENNA [PNT]
00:49	FOUL (PERSONAL) by KLIMKIEWICZ, KATE			
00:49				SUB OUT: SZABO, CHRISTINE
00:49				SUB IN: WHITEHEAD, KYLA
00:49		57-37	H 20	GOOD! FT by GIACONE, JENNA
00:39	GOOD! LAYUP by HINDS-CLARKE, JAIDE	57-39	H 18	
00:39	ASSIST by HOLT, CLAIRE			
00:13				TURNOVER (TRAVEL) by SCAIFE, JAYLA
00:13	SUB OUT: MRAZ, MOLLY			
00:13	SUB OUT: CHAPMAN, ELAINA			
00:13	SUB IN: CARPENTER, ANIYAH			
00:13	SUB IN: SQUIRES, EMMA			
00:05	MISSED 3PTR by CARPENTER, ANIYAH			
00:02				REBOUND (DEF) by TEAM
00:02	SUB OUT: KLIMKIEWICZ, KATE			
00:02	SUB IN: MRAZ, MOLLY			
00:01				TURNOVER (BADPASS) by SCAIFE, JAYLA
00:01	STEAL by HOLT, CLAIRE			

Richmond 39, Dayton 57

Points from (This Period)	RIC	DAY
In the Paint	8	2
Off Turns	0	4
2nd Chance	3	3
Fast Break	3	2
Bench	4	8

Official Box Score
Richmond vs Dayton
Second Half Statistics Only
March 06, 2020 at University of Dayton Arena (Tom Blackburn Court) - Dayton, Ohio



Richmond 29

No.	Player	S	Pts	FG	3FG	FT	OR	DR	TR	PF	A	TO	Blk	Stl	Min	+/-
01	HINDS-CLARKE, JAIDE	F	9	4-6	1-1	0-0	0	2	2	5	0	1	0	1	8	7
02	CARPENTER, ANIYAH	G	0	0-1	0-1	0-0	0	2	2	0	0	0	0	0	11	6
05	WISEMAN, RAGAN	F	0	0-0	0-0	0-0	0	0	0	0	0	0	0	0	0	-2
10	NEFF, MADELYN	F	0	0-1	0-1	0-0	0	0	0	1	0	0	1	0	7	2
12	HOLT, CLAIRE	G	7	3-6	1-4	0-0	0	1	1	2	0	3	0	1	13	-1
13	PARSON, ALEX	G	0	0-1	0-1	0-0	0	0	0	0	1	0	0	0	7	2
15	SQUIRES, EMMA	F	0	0-2	0-2	0-0	0	1	1	0	1	1	1	0	9	2
22	MRAZ, MOLLY	G	0	0-0	0-0	0-0	0	0	0	0	0	0	0	0	0	0
24	KLIMKIEWICZ, KATE	G	2	0-1	0-0	2-2	0	2	2	2	1	1	0	2	17	7
31	CHAPMAN, ELAINA	F	1	0-5	0-0	1-2	2	0	2	0	0	0	0	1	14	6
33	DUGGAN, AMY	F	0	0-1	0-0	0-0	0	0	0	1	0	0	0	0	1	1
41	BURGOS, ANGEL	G	10	4-5	1-1	1-2	1	3	4	2	0	1	0	0	12	5
	TEAM		0	0-0	0-0	0-0	0	1	1	0	0	0	0	0	0	0
TOTALS			29	11-29	3-11	4-6	3	12	15	13	3	7	2	5	99	

Shooting By Period

Period	FG	FG%	3FG	3FG%	FT	FT%
3rd Qtr	8-16	50%	2-5	40%	2-2	100%
4th Qtr	3-13	23%	1-6	17%	2-4	50%
2nd Half	11-29	38%	3-11	27%	4-6	67%
Game	25-60	41.7%	7-25	28.0%	11-18	61.1%

Deadball Rebounds: 5,0
Last FG Half: RIC 4th-02:49

Dayton 22

No.	Player	S	Pts	FG	3FG	FT	OR	DR	TR	PF	A	TO	Blk	Stl	Min	+/-
01	BRADSHAW, ARAION	G	1	0-3	0-1	1-4	2	2	4	0	1	1	0	1	15	-2
03	WARD, BRITTANY	F	0	0-0	0-0	0-0	0	0	0	0	0	0	0	0	2	-6
04	FOWLER, SHAKEELA	G	2	0-4	0-2	2-2	1	1	2	0	1	1	0	1	13	-5
05	WHITEHEAD, KYLA	F	14	4-5	2-2	4-4	2	4	6	0	0	2	0	0	20	-7
10	SZABO, CHRISTINE	G	0	0-0	0-0	0-0	0	0	0	0	0	0	0	0	0	0
12	GIACONE, JENNA	G	0	0-3	0-2	0-0	0	0	0	2	0	1	0	0	6	0
13	CHANDLER, JULIA	F	2	1-1	0-0	0-0	1	0	1	2	0	1	1	0	7	-2
14	SKEENS, ELLA	F	0	0-0	0-0	0-0	0	0	0	0	0	0	0	0	0	0
21	WHALEN, ERIN	G	0	0-4	0-1	0-0	1	2	3	2	0	4	0	0	11	-5
22	WILMOTH, JORDAN	F	0	0-2	0-0	0-0	0	0	0	0	0	0	0	0	5	-3
23	PEREZ, MARIAH	F	2	1-1	0-0	0-0	1	0	1	0	0	0	0	0	5	2
42	SCAIFE, JAYLA	G	1	0-5	0-3	1-2	1	4	5	1	0	1	0	0	15	-7
	TEAM		0	0-0	0-0	0-0	2	2	4	0	0	1	0	0	0	0
TOTALS			22	6-28	2-11	8-12	11	15	26	7	2	12	1	2	99	

Shooting By Period

Period	FG	FG%	3FG	3FG%	FT	FT%
3rd Qtr	5-11	45%	2-4	50%	5-8	63%
4th Qtr	1-17	06%	0-7	00%	3-4	75%
2nd Half	6-28	21%	2-11	18%	8-12	67%
Game	25-63	39.7%	13-28	46.4%	16-24	66.7%

Deadball Rebounds: 5,0
Last FG Half: DAY 4th-02:23

Game Notes:

Officials: **Charlie Hust, Bob Enterline, Regina Odomes**
 Attendance: **2955**

Start Time: **11:03 AM ET**
 End Time: **12:55 PM ET**
 Game Duration: **1:52**

Score	1st	2nd	3rd	4th	TOT
RIC	17	22	20	9	68
DAY	33	24	17	5	79

Points from (This Period)	RIC	DAY
In the Paint	12	8
Off Turns	11	4
2nd Chance	4	6
Fast Break	8	2
Bench	11	6

Official Box Score
Richmond vs Dayton
Third Quarter Statistics Only
March 06, 2020 at University of Dayton Arena (Tom Blackburn Court) - Dayton, Ohio



Richmond 29

No.	Player	S	Pts	FG	3FG	FT	OR	DR	TR	PF	A	TO	Blk	Stl	Min	+/-
01	HINDS-CLARKE, JAIDE	F	7	3-4	1-1	0-0	0	1	1	4	0	1	0	1	5	3
10	NEFF, MADELYN	F	0	0-1	0-1	0-0	0	0	0	1	0	0	1	0	7	2
12	HOLT, CLAIRE	G	4	2-3	0-1	0-0	0	1	1	0	0	2	0	0	5	-1
13	PARSON, ALEX	G	0	0-0	0-0	0-0	0	0	0	0	1	0	0	0	5	2
24	KLIMKIEWICZ, KATE	G	2	0-1	0-0	2-2	0	1	1	1	1	0	0	2	10	3
02	CARPENTER, ANIYAH	G	0	0-1	0-1	0-0	0	0	0	0	0	0	0	0	5	4
05	WISEMAN, RAGAN	F	0	0-0	0-0	0-0	0	0	0	0	0	0	0	0	0	0
15	SQUIRES, EMMA	F	0	0-0	0-0	0-0	0	0	0	0	0	1	0	0	3	1
22	MRAZ, MOLLY	G	0	0-0	0-0	0-0	0	0	0	0	0	0	0	0	0	0
31	CHAPMAN, ELAINA	F	0	0-3	0-0	0-0	1	0	1	0	0	0	0	1	5	0
33	DUGGAN, AMY	F	0	0-0	0-0	0-0	0	0	0	0	0	0	0	0	0	0
41	BURGOS, ANGEL	G	7	3-3	1-1	0-0	1	0	1	1	0	0	0	0	5	1
TEAM							0	0	0	0	0	0				
TOTALS			20	8-16	2-5	2-2	2	3	5	7	2	4	1	4	50	

Shooting By Period

Period	FG	FG%	3FG	3FG%	FT	FT%
2nd Half	0-0	0%	0-0	0%	0-0	0%
Game	25-60	41.7%	7-25	28.0%	11-18	61.1%

Deadball Rebounds: 5,0

Dayton 22

No.	Player	S	Pts	FG	3FG	FT	OR	DR	TR	PF	A	TO	Blk	Stl	Min	+/-
01	BRADSHAW, ARAION	G	1	0-2	0-1	1-4	1	2	3	0	1	1	0	1	10	-3
05	WHITEHEAD, KYLA	F	14	4-5	2-2	4-4	1	2	3	0	0	2	0	0	10	-3
21	WHALEN, ERIN	G	0	0-0	0-0	0-0	0	0	0	1	0	1	0	0	3	-1
22	WILMOTH, JORDAN	F	0	0-1	0-0	0-0	0	0	0	0	0	0	0	0	3	-1
42	SCAIFE, JAYLA	G	0	0-1	0-1	0-0	0	2	2	0	0	1	0	0	8	-5
03	WARD, BRITTANY	F	0	0-0	0-0	0-0	0	0	0	0	0	0	0	0	2	-4
04	FOWLER, SHAKEELA	G	0	0-0	0-0	0-0	0	0	0	0	1	1	0	1	5	-2
10	SZABO, CHRISTINE	G	0	0-0	0-0	0-0	0	0	0	0	0	0	0	0	0	0
12	GIACONE, JENNA	G	0	0-1	0-0	0-0	0	0	0	1	0	0	0	0	4	2
13	CHANDLER, JULIA	F	0	0-0	0-0	0-0	0	0	0	2	0	1	1	0	3	0
14	SKEENS, ELLA	F	0	0-0	0-0	0-0	0	0	0	0	0	0	0	0	0	0
23	PEREZ, MARIAH	F	2	1-1	0-0	0-0	1	0	1	0	0	0	0	0	3	2
TEAM							1	0	1	0	0	0				
TOTALS			17	5-11	2-4	5-8	4	6	10	4	2	7	1	2	50	

Shooting By Period

Period	FG	FG%	3FG	3FG%	FT	FT%
2nd Half	0-0	0%	0-0	0%	0-0	0%
Game	25-63	39.7%	13-28	46.4%	16-24	66.7%

Deadball Rebounds: 5,0

Game Notes:

Officials: **Charlie Hust, Bob Enterline, Regina Odomes**
 Attendance: **2955**

Start Time: **11:03 AM ET**
 End Time: **12:55 PM ET**
 Game Duration: **1:52**

Score	1st	2nd	3rd	4th	TOT
RIC	17	22	20	9	68
DAY	33	24	17	5	79

Points from (This Period)	RIC	DAY
In the Paint	8	6
Off Turns	6	4
2nd Chance	3	4
Fast Break	7	2
Bench	7	2

**Official Play-By-Play
Richmond vs Dayton
Third Quarter**

March 06, 2020 at University of Dayton Arena (Tom Blackburn Court) - Dayton, Ohio



Period 3

Starters:

Richmond: 1 HINDS-CLARKE, JAIDE (F); 10 NEFF, MADELYN (F); 12 HOLT, CLAIRE (G); 13 PARSON, ALEX (G); 24 KLIMKIEWICZ, KATE (G);

Dayton: 1 BRADSHAW, ARAION (G); 5 WHITEHEAD, KYLA (F); 21 WHALEN, ERIN (G); 22 WILMOTH, JORDAN (F); 42 SCAIFE, JAYLA (G);

Time	VISITORS: Richmond	Score	Margin	HOME: Dayton
10:00				SUB OUT: WARD, BRITTANY
10:00				SUB OUT: FOWLER, SHAKEELA
10:00				SUB OUT: GIACONE, JENNA
10:00				SUB IN: BRADSHAW, ARAION
10:00				SUB IN: WHALEN, ERIN
10:00				SUB IN: WILMOTH, JORDAN
10:00	SUB OUT: CARPENTER, ANIYAH			
10:00	SUB OUT: SQUIRES, EMMA			
10:00	SUB OUT: MRAZ, MOLLY			
10:00	SUB IN: NEFF, MADELYN			
10:00	SUB IN: PARSON, ALEX			
10:00	SUB IN: KLIMKIEWICZ, KATE			
09:49	MISSED 3PTR by HOLT, CLAIRE			
09:42				REBOUND (DEF) by SCAIFE, JAYLA
09:12		59-39	H 20	GOOD! LAYUP by WHITEHEAD, KYLA
08:57	TURNOVER (LOSTBALL) by HOLT, CLAIRE			
08:34				MISSED JUMPER by WILMOTH, JORDAN
08:30	REBOUND (DEF) by HINDS-CLARKE, JAIDE			
08:26	GOOD! 3PTR by HINDS-CLARKE, JAIDE [FB]	59-42	H 17	
08:26	ASSIST by PARSON, ALEX			
08:03				MISSED JUMPER by WHITEHEAD, KYLA
08:03	BLOCK by NEFF, MADELYN			
07:56				REBOUND (OFF) by WHITEHEAD, KYLA
07:55		61-42	H 19	GOOD! LAYUP by WHITEHEAD, KYLA
07:45	GOOD! LAYUP by HOLT, CLAIRE	61-44	H 17	
07:22				FOUL (OFF) by WHALEN, ERIN
07:22				TURNOVER (OFFENSIVE) by WHALEN, ERIN
07:22				SUB OUT: WHALEN, ERIN
07:22				SUB OUT: WILMOTH, JORDAN
07:22				SUB IN: WARD, BRITTANY
07:22				SUB IN: FOWLER, SHAKEELA
07:06	GOOD! JUMPER by HINDS-CLARKE, JAIDE [PNT]	61-46	H 15	
06:53				MISSED 3PTR by BRADSHAW, ARAION
06:48	REBOUND (DEF) by HOLT, CLAIRE			
06:43	TURNOVER (LOSTBALL) by HOLT, CLAIRE			
06:43				STEAL by FOWLER, SHAKEELA
06:17	FOUL (PERSONAL) by HINDS-CLARKE, JAIDE			
06:17	SUB OUT: HOLT, CLAIRE			
06:17	SUB IN: CARPENTER, ANIYAH			
06:11				TURNOVER (TRAVEL) by SCAIFE, JAYLA
05:57	GOOD! JUMPER by HINDS-CLARKE, JAIDE	61-48	H 13	
05:45				MISSED 3PTR by SCAIFE, JAYLA
05:42				REBOUND (OFF) by BRADSHAW, ARAION
05:39	FOUL (PERSONAL) by HINDS-CLARKE, JAIDE			
05:39				SUB OUT: WARD, BRITTANY
05:39				SUB IN: CHANDLER, JULIA
05:39	SUB OUT: PARSON, ALEX			
05:39	SUB IN: BURGOS, ANGEL			
05:39	FOUL (PERSONAL) by HINDS-CLARKE, JAIDE			
05:37				TURNOVER (BADPASS) by WHITEHEAD, KYLA
05:37	STEAL by HINDS-CLARKE, JAIDE			
05:18	MISSED LAYUP by HINDS-CLARKE, JAIDE			
05:15				REBOUND (DEF) by SCAIFE, JAYLA
05:12				TURNOVER (LOSTBALL) by CHANDLER, JULIA
05:12	SUB IN: CHAPMAN, ELAINA			
05:12	SUB OUT: HINDS-CLARKE, JAIDE			
05:01				FOUL (PERSONAL) by CHANDLER, JULIA
04:54	MISSED 3PTR by CARPENTER, ANIYAH			
04:50				REBOUND (DEF) by WHITEHEAD, KYLA
04:27				TURNOVER (BADPASS) by FOWLER, SHAKEELA
04:27	STEAL by CHAPMAN, ELAINA			
04:14	MISSED JUMPER by CHAPMAN, ELAINA			
04:14				BLOCK by CHANDLER, JULIA
04:10				REBOUND (DEF) by BRADSHAW, ARAION
04:10	FOUL (PERSONAL) by NEFF, MADELYN			
04:10				
04:10				SUB OUT: FOWLER, SHAKEELA
04:10				SUB IN: GIACONE, JENNA
04:10	SUB OUT: NEFF, MADELYN			
04:10	SUB IN: SQUIRES, EMMA			

Time	VISITORS: Richmond	Score	Margin	HOME: Dayton
04:10		62-48	H 14	GOOD! FT by WHITEHEAD, KYLA [FB]
04:10		63-48	H 15	GOOD! FT by WHITEHEAD, KYLA [FB]
03:56				FOUL (PERSONAL) by GIACONE, JENNA
03:56	GOOD! FT by KLIMKIEWICZ, KATE	63-49	H 14	
03:56	GOOD! FT by KLIMKIEWICZ, KATE	63-50	H 13	
03:33	FOUL (PERSONAL) by BURGOS, ANGEL			
03:33				MISSED FT by BRADSHAW, ARAION
03:33				REBOUND (OFF) by TEAM
03:33				MISSED FT by BRADSHAW, ARAION
03:32	REBOUND (DEF) by KLIMKIEWICZ, KATE			
03:12				FOUL (PERSONAL) by CHANDLER, JULIA
03:07	MISSED LAYUP by CHAPMAN, ELAINA			
03:04	REBOUND (OFF) by CHAPMAN, ELAINA			
02:59	TURNOVER (TRAVEL) by SQUIRES, EMMA			
02:59				SUB OUT: CHANDLER, JULIA
02:59				SUB IN: PEREZ, MARIAH
02:45		66-50	H 16	GOOD! 3PTR by WHITEHEAD, KYLA
02:45				ASSIST by BRADSHAW, ARAION
02:31	MISSED JUMPER by CHAPMAN, ELAINA			
02:28	REBOUND (OFF) by BURGOS, ANGEL			
02:27	GOOD! 3PTR by BURGOS, ANGEL	66-53	H 13	
02:05				TURNOVER (BADPASS) by BRADSHAW, ARAION
02:05	STEAL by KLIMKIEWICZ, KATE			
01:59	GOOD! LAYUP by BURGOS, ANGEL [FB/PNT]	66-55	H 11	
01:59	ASSIST by KLIMKIEWICZ, KATE			
01:40				TURNOVER (BADPASS) by WHITEHEAD, KYLA
01:40	STEAL by KLIMKIEWICZ, KATE			
01:35	MISSED LAYUP by KLIMKIEWICZ, KATE			
01:32				REBOUND (DEF) by WHITEHEAD, KYLA
01:32	FOUL (PERSONAL) by KLIMKIEWICZ, KATE			
01:32	SUB OUT: CARPENTER, ANIYAH			
01:32	SUB OUT: SQUIRES, EMMA			
01:32	SUB OUT: CHAPMAN, ELAINA			
01:32	SUB OUT: BURGOS, ANGEL			
01:32	SUB IN: HINDS-CLARKE, JAIDE			
01:32	SUB IN: NEFF, MADELYN			
01:32	SUB IN: HOLT, CLAIRE			
01:32	SUB IN: PARSON, ALEX			
01:32		67-55	H 12	GOOD! FT by WHITEHEAD, KYLA
01:32		68-55	H 13	GOOD! FT by WHITEHEAD, KYLA
01:32				SUB OUT: SCAIFE, JAYLA
01:32				SUB IN: FOWLER, SHAKEELA
01:18	TURNOVER (LOSTBALL) by HINDS-CLARKE, JAIDE			
01:18				STEAL by BRADSHAW, ARAION
01:15	FOUL (PERSONAL) by HINDS-CLARKE, JAIDE			
01:15	TIMEOUT 30SEC			
01:15				
01:15	SUB OUT: HINDS-CLARKE, JAIDE			
01:15	SUB IN: CHAPMAN, ELAINA			
01:15				MISSED FT by BRADSHAW, ARAION
01:15				REBOUND (OFF) by TEAM
01:15		69-55	H 14	GOOD! FT by BRADSHAW, ARAION
01:05	MISSED 3PTR by NEFF, MADELYN			
01:01				REBOUND (DEF) by BRADSHAW, ARAION
00:50				MISSED LAYUP by GIACONE, JENNA
00:49				REBOUND (OFF) by TEAM
00:49	SUB OUT: NEFF, MADELYN			
00:49	SUB OUT: PARSON, ALEX			
00:49	SUB IN: SQUIRES, EMMA			
00:49	SUB IN: BURGOS, ANGEL			
00:44				MISSED LAYUP by BRADSHAW, ARAION
00:40				REBOUND (OFF) by PEREZ, MARIAH
00:40		71-55	H 16	GOOD! LAYUP by PEREZ, MARIAH
00:37	GOOD! JUMPER by BURGOS, ANGEL [FB]	71-57	H 14	
00:17		74-57	H 17	GOOD! 3PTR by WHITEHEAD, KYLA
00:17				ASSIST by FOWLER, SHAKEELA
00:00	GOOD! JUMPER by HOLT, CLAIRE [PNT]	74-59	H 15	

Richmond 59, Dayton 74

Points from (This Period)	RIC	DAY
In the Paint	8	6
Off Turns	6	4
2nd Chance	3	4
Fast Break	7	2
Bench	7	2

Official Box Score
Richmond vs Dayton
Fourth Quarter Statistics Only
March 06, 2020 at University of Dayton Arena (Tom Blackburn Court) - Dayton, Ohio



Richmond 9

No.	Player	S	Pts	FG	3FG	FT	OR	DR	TR	PF	A	TO	Blk	Stl	Min	+/-
01	HINDS-CLARKE, JAIDE	F	2	1-2	0-0	0-0	0	1	1	1	0	0	0	0	3	4
10	NEFF, MADELYN	F	0	0-0	0-0	0-0	0	0	0	0	0	0	0	0	0	0
12	HOLT, CLAIRE	G	3	1-3	1-3	0-0	0	0	0	2	0	1	0	1	8	0
13	PARSON, ALEX	G	0	0-1	0-1	0-0	0	0	0	0	0	0	0	0	2	0
24	KLIMKIEWICZ, KATE	G	0	0-0	0-0	0-0	0	1	1	1	0	1	0	0	7	4
02	CARPENTER, ANIYAH	G	0	0-0	0-0	0-0	0	2	2	0	0	0	0	0	6	2
05	WISEMAN, RAGAN	F	0	0-0	0-0	0-0	0	0	0	0	0	0	0	0	0	-2
15	SQUIRES, EMMA	F	0	0-2	0-2	0-0	0	1	1	0	1	0	1	0	6	1
22	MRAZ, MOLLY	G	0	0-0	0-0	0-0	0	0	0	0	0	0	0	0	0	0
31	CHAPMAN, ELAINA	F	1	0-2	0-0	1-2	1	0	1	0	0	0	0	0	9	6
33	DUGGAN, AMY	F	0	0-1	0-0	0-0	0	0	0	1	0	0	0	0	1	1
41	BURGOS, ANGEL	G	3	1-2	0-0	1-2	0	3	3	1	0	1	0	0	7	4
TEAM							0	1	1	0	0	0	0	0	0	0
TOTALS			9	3-13	1-6	2-4	1	9	10	6	1	3	1	1	49	

Shooting By Period

Period	FG	FG%	3FG	3FG%	FT	FT%	Deadball Rebounds: 5,0
Game	25-60	41.7%	7-25	28.0%	11-18	61.1%	

Dayton 5

No.	Player	S	Pts	FG	3FG	FT	OR	DR	TR	PF	A	TO	Blk	Stl	Min	+/-
01	BRADSHAW, ARAION	G	0	0-1	0-0	0-0	1	0	1	0	0	0	0	0	5	1
05	WHITEHEAD, KYLA	F	0	0-0	0-0	0-0	1	2	3	0	0	0	0	0	10	-4
21	WHALEN, ERIN	G	0	0-4	0-1	0-0	1	2	3	1	0	3	0	0	8	-4
22	WILMOTH, JORDAN	F	0	0-1	0-0	0-0	0	0	0	0	0	0	0	0	2	-2
42	SCAIFE, JAYLA	G	1	0-4	0-2	1-2	1	2	3	1	0	0	0	0	7	-2
03	WARD, BRITTANY	F	0	0-0	0-0	0-0	0	0	0	0	0	0	0	0	0	-2
04	FOWLER, SHAKEELA	G	2	0-4	0-2	2-2	1	1	2	0	0	0	0	0	8	-3
10	SZABO, CHRISTINE	G	0	0-0	0-0	0-0	0	0	0	0	0	0	0	0	0	0
12	GIACONE, JENNA	G	0	0-2	0-2	0-0	0	0	0	1	0	1	0	0	2	-2
13	CHANDLER, JULIA	F	2	1-1	0-0	0-0	1	0	1	0	0	0	0	0	4	-2
14	SKEENS, ELLA	F	0	0-0	0-0	0-0	0	0	0	0	0	0	0	0	0	0
23	PEREZ, MARIAH	F	0	0-0	0-0	0-0	0	0	0	0	0	0	0	0	2	0
TEAM							1	2	3	0	0	1	0	0	0	
TOTALS			5	1-17	0-7	3-4	7	9	16	3	0	5	0	0	49	

Shooting By Period

Period	FG	FG%	3FG	3FG%	FT	FT%	Deadball Rebounds: 5,0
Game	25-63	39.7%	13-28	46.4%	16-24	66.7%	

Game Notes:

Officials: Charlie Hust, Bob Enterline, Regina Odomes
Attendance: 2955

Start Time: 11:03 AM ET
End Time: 12:55 PM ET
Game Duration: 1:52

Score	1st	2nd	3rd	4th	TOT
RIC	17	22	20	9	68
DAY	33	24	17	5	79

Points from (This Period)	RIC	DAY
In the Paint	4	2
Off Turns	5	0
2nd Chance	1	2
Fast Break	1	0
Bench	4	4

**Official Play-By-Play
Richmond vs Dayton
Fourth Quarter**

March 06, 2020 at University of Dayton Arena (Tom Blackburn Court) - Dayton, Ohio



Period 4

Starters:

Richmond: 1 HINDS-CLARKE, JAIDE (F); 10 NEFF, MADELYN (F); 12 HOLT, CLAIRE (G); 13 PARSON, ALEX (G); 24 KLIMKIEWICZ, KATE (G);

Dayton: 1 BRADSHAW, ARAION (G); 5 WHITEHEAD, KYLA (F); 21 WHALEN, ERIN (G); 22 WILMOTH, JORDAN (F); 42 SCAIFE, JAYLA (G);

Time	VISITORS: Richmond	Score	Margin	HOME: Dayton
09:44	TURNOVER (BADPASS) by BURGOS, ANGEL			
09:16				FOUL (OFF) by GIACONE, JENNA
09:16				TURNOVER (OFFENSIVE) by GIACONE, JENNA
08:53	MISSED 3PTR by SQUIRES, EMMA			
08:49				REBOUND (DEF) by WHITEHEAD, KYLA
08:44				MISSED 3PTR by GIACONE, JENNA
08:41				REBOUND (OFF) by BRADSHAW, ARAION
08:21				MISSED 3PTR by FOWLER, SHAKEELA
08:20				REBOUND (OFF) by TEAM
08:20				TURNOVER (SHOTCLOCK) by TEAM
08:20				SUB OUT: BRADSHAW, ARAION
08:20				SUB OUT: PEREZ, MARIAH
08:20				SUB IN: WARD, BRITTANY
08:20				SUB IN: WHALEN, ERIN
08:20	SUB OUT: HOLT, CLAIRE			
08:20	SUB OUT: SQUIRES, EMMA			
08:20	SUB IN: HINDS-CLARKE, JAIDE			
08:20	SUB IN: CARPENTER, ANIYAH			
08:04	GOOD! JUMPER by HINDS-CLARKE, JAIDE	74-61	H 13	
08:04				SUB OUT: WARD, BRITTANY
08:04				SUB IN: WILMOTH, JORDAN
07:50				MISSED 3PTR by GIACONE, JENNA
07:46	REBOUND (DEF) by CARPENTER, ANIYAH			
07:32	MISSED JUMPER by CHAPMAN, ELAINA			
07:32				REBOUND (DEF) by TEAM
07:32				SUB OUT: GIACONE, JENNA
07:32				SUB IN: SCAIFE, JAYLA
07:14				MISSED JUMPER by WHALEN, ERIN
07:11	REBOUND (DEF) by HINDS-CLARKE, JAIDE			
06:57	GOOD! LAYUP by BURGOS, ANGEL	74-63	H 11	
06:46				MISSED 3PTR by FOWLER, SHAKEELA
06:40	REBOUND (DEF) by KLIMKIEWICZ, KATE			
06:38	FOUL (OFF) by KLIMKIEWICZ, KATE			
06:38	TURNOVER (OFFENSIVE) by KLIMKIEWICZ, KATE			
06:26				MISSED JUMPER by WILMOTH, JORDAN
06:21				REBOUND (OFF) by WHITEHEAD, KYLA
06:12	FOUL (PERSONAL) by BURGOS, ANGEL			
06:12				SUB OUT: WILMOTH, JORDAN
06:12				SUB IN: CHANDLER, JULIA
06:12	SUB OUT: KLIMKIEWICZ, KATE			
06:12	SUB OUT: CHAPMAN, ELAINA			
06:12	SUB IN: HOLT, CLAIRE			
06:12	SUB IN: SQUIRES, EMMA			
06:12	SUB OUT: BURGOS, ANGEL			
06:12	SUB IN: PARSON, ALEX			
06:01				TURNOVER (LOSTBALL) by WHALEN, ERIN
06:01	STEAL by HOLT, CLAIRE			
05:49	MISSED JUMPER by HINDS-CLARKE, JAIDE			
05:47				REBOUND (DEF) by WHALEN, ERIN
05:47				TURNOVER (LOSTBALL) by WHALEN, ERIN
05:43	FOUL (OFF) by HOLT, CLAIRE			
05:43	TURNOVER (OFFENSIVE) by HOLT, CLAIRE			
05:24				MISSED LAYUP by SCAIFE, JAYLA
05:24				REBOUND (OFF) by SCAIFE, JAYLA
05:24	FOUL (PERSONAL) by HINDS-CLARKE, JAIDE			
05:24	SUB OUT: HINDS-CLARKE, JAIDE			
05:24	SUB IN: CHAPMAN, ELAINA			
05:10				MISSED 3PTR by SCAIFE, JAYLA
05:06				REBOUND (OFF) by FOWLER, SHAKEELA
04:47				MISSED JUMPER by FOWLER, SHAKEELA
04:45	REBOUND (DEF) by CARPENTER, ANIYAH			
04:42	MISSED 3PTR by HOLT, CLAIRE			
04:35				REBOUND (DEF) by SCAIFE, JAYLA
04:24				MISSED LAYUP by SCAIFE, JAYLA
04:24	BLOCK by SQUIRES, EMMA			
04:18	REBOUND (DEF) by SQUIRES, EMMA			
04:16	MISSED 3PTR by PARSON, ALEX			
04:13				REBOUND (DEF) by WHALEN, ERIN
03:56				MISSED 3PTR by SCAIFE, JAYLA
03:52				REBOUND (OFF) by WHALEN, ERIN

Time	VISITORS: Richmond	Score	Margin	HOME: Dayton
03:50				MISSED JUMPER by WHALEN, ERIN
03:48	REBOUND (DEF) by TEAM			
03:48				
03:48				SUB OUT: FOWLER, SHAKEELA
03:48				SUB IN: BRADSHAW, ARAION
03:48	SUB OUT: CARPENTER, ANIYAH			
03:48	SUB OUT: PARSON, ALEX			
03:48	SUB IN: KLIMKIEWICZ, KATE			
03:48	SUB IN: BURGOS, ANGEL			
03:25	MISSED 3PTR by SQUIRES, EMMA			
03:21				REBOUND (DEF) by SCAIFE, JAYLA
03:04				TURNOVER (TRAVEL) by WHALEN, ERIN
02:49	GOOD! 3PTR by HOLT, CLAIRE	74-66	H 8	
02:49	ASSIST by SQUIRES, EMMA			
02:29				MISSED 3PTR by WHALEN, ERIN
02:23				REBOUND (OFF) by CHANDLER, JULIA
02:23		76-66	H 10	GOOD! LAYUP by CHANDLER, JULIA
02:10	MISSED 3PTR by HOLT, CLAIRE			
02:08				REBOUND (DEF) by TEAM
02:08				SUB OUT: BRADSHAW, ARAION
02:08				SUB IN: FOWLER, SHAKEELA
02:08	SUB OUT: SQUIRES, EMMA			
02:08	SUB IN: DUGGAN, AMY			
01:53				MISSED JUMPER by WHALEN, ERIN
01:49	REBOUND (DEF) by BURGOS, ANGEL			
01:44	MISSED JUMPER by CHAPMAN, ELAINA			
01:43	REBOUND (OFF) by CHAPMAN, ELAINA			
01:43				FOUL (PERSONAL) by WHALEN, ERIN
01:43	MISSED FT by CHAPMAN, ELAINA			
01:43	REBOUND (OFF) by TEAM			
01:43	GOOD! FT by CHAPMAN, ELAINA	76-67	H 9	
01:43				SUB OUT: CHANDLER, JULIA
01:43				SUB IN: BRADSHAW, ARAION
01:43	SUB OUT: KLIMKIEWICZ, KATE			
01:43	SUB IN: CARPENTER, ANIYAH			
01:37	SUB OUT: DUGGAN, AMY			
01:37	SUB IN: KLIMKIEWICZ, KATE			
01:16				MISSED LAYUP by FOWLER, SHAKEELA
01:16				REBOUND (OFF) by TEAM
01:16	SUB OUT: KLIMKIEWICZ, KATE			
01:16	SUB IN: DUGGAN, AMY			
01:09				MISSED LAYUP by BRADSHAW, ARAION
01:06	REBOUND (DEF) by BURGOS, ANGEL			
01:04				FOUL (PERSONAL) by SCAIFE, JAYLA
01:04	MISSED FT by BURGOS, ANGEL			
01:04	REBOUND (OFF) by TEAM			
01:04	GOOD! FT by BURGOS, ANGEL [FB]	76-68	H 8	
01:04	TIMEOUT 30SEC			
01:01	FOUL (PERSONAL) by HOLT, CLAIRE			
01:01		77-68	H 9	GOOD! FT by SCAIFE, JAYLA
01:01				MISSED FT by SCAIFE, JAYLA
00:59	REBOUND (DEF) by BURGOS, ANGEL			
00:35	MISSED JUMPER by DUGGAN, AMY			
00:32	FOUL (PERSONAL) by DUGGAN, AMY			
00:32	SUB OUT: DUGGAN, AMY			
00:32	SUB IN: KLIMKIEWICZ, KATE			
00:32	SUB OUT: CHAPMAN, ELAINA			
00:32	SUB IN: WISEMAN, RAGAN			
00:32		78-68	H 10	GOOD! FT by FOWLER, SHAKEELA
00:32		79-68	H 11	GOOD! FT by FOWLER, SHAKEELA
00:32				REBOUND (DEF) by WHITEHEAD, KYLA
00:22	MISSED JUMPER by BURGOS, ANGEL			
00:17				REBOUND (DEF) by FOWLER, SHAKEELA

Richmond 68, Dayton 79

Points from (This Period)	RIC	DAY
In the Paint	4	2
Off Turns	5	0
2nd Chance	1	2
Fast Break	1	0
Bench	4	4

**Official Scoring/Possession Reference Chart
Richmond vs Dayton
Period 1**

March 06, 2020 at University of Dayton Arena (Tom Blackburn Court) - Dayton, Ohio



Period 1

Starters:

Richmond: 1 HINDS-CLARKE, JAIDE (F); 10 NEFF, MADELYN (F); 12 HOLT, CLAIRE (G); 13 PARSON, ALEX (G); 24 KLIMKIEWICZ, KATE (G);

Dayton: 1 BRADSHAW, ARAION (G); 5 WHITEHEAD, KYLA (F); 21 WHALEN, ERIN (G); 22 WILMOTH, JORDAN (F); 42 SCAIFE, JAYLA (G);

Time	VISITORS: Richmond	Score	Margin	HOME: Dayton
09:28	GOOD! 3PTR by KLIMKIEWICZ, KATE [FB]	0-3	V 3	
07:50		3-3	T	GOOD! 3PTR by WHALEN, ERIN
07:32	GOOD! FT by PARSON, ALEX	3-4	V 1	
07:19		6-4	H 2	GOOD! 3PTR by CHANDLER, JULIA
06:55	GOOD! JUMPER by KLIMKIEWICZ, KATE [PNT]	6-6	T	
06:42		8-6	H 2	GOOD! LAYUP by FOWLER, SHAKEELA
06:09		10-6	H 4	GOOD! LAYUP by WHITEHEAD, KYLA
05:41		13-6	H 7	GOOD! 3PTR by SCAIFE, JAYLA [FB]
05:09		16-6	H 10	GOOD! 3PTR by WHALEN, ERIN
04:46	GOOD! 3PTR by CARPENTER, ANIYAH	16-9	H 7	
04:13		19-9	H 10	GOOD! 3PTR by WHALEN, ERIN
03:30		21-9	H 12	GOOD! LAYUP by GIACONE, JENNA
03:06	GOOD! LAYUP by CHAPMAN, ELAINA	21-11	H 10	
02:52		24-11	H 13	GOOD! 3PTR by WHALEN, ERIN
02:38	GOOD! LAYUP by SQUIRES, EMMA	24-13	H 11	
02:27		26-13	H 13	GOOD! LAYUP by FOWLER, SHAKEELA
01:50		29-13	H 16	GOOD! 3PTR by GIACONE, JENNA
01:20	GOOD! JUMPER by CARPENTER, ANIYAH	29-15	H 14	
01:02		31-15	H 16	GOOD! LAYUP by WILMOTH, JORDAN
00:41	GOOD! LAYUP by BURGOS, ANGEL [PNT]	31-17	H 14	
00:08		33-17	H 16	GOOD! LAYUP by WHITEHEAD, KYLA

Richmond 17, Dayton 33

Official Scoring/Possession Reference Chart
Richmond vs Dayton
Period 2

March 06, 2020 at University of Dayton Arena (Tom Blackburn Court) - Dayton, Ohio



Period 2

Starters:

Richmond: 1 HINDS-CLARKE, JAIDE (F); 10 NEFF, MADELYN (F); 12 HOLT, CLAIRE (G); 13 PARSON, ALEX (G); 24 KLIMKIEWICZ, KATE (G);

Dayton: 1 BRADSHAW, ARAION (G); 5 WHITEHEAD, KYLA (F); 21 WHALEN, ERIN (G); 22 WILMOTH, JORDAN (F); 42 SCAIFE, JAYLA (G);

Time	VISITORS: Richmond	Score	Margin	HOME: Dayton
09:38	GOOD! JUMPER by HINDS-CLARKE, JAIDE [PNT]	33-19	H 14	
09:20	GOOD! 3PTR by KLIMKIEWICZ, KATE [FB]	33-22	H 11	
08:59		36-22	H 14	GOOD! 3PTR by SCAIFE, JAYLA
08:45	GOOD! 3PTR by CARPENTER, ANIYAH	36-25	H 11	
08:03	GOOD! FT by BURGOS, ANGEL	36-26	H 10	
07:19		37-26	H 11	GOOD! FT by SCAIFE, JAYLA [FB]
07:19		38-26	H 12	GOOD! FT by SCAIFE, JAYLA [FB]
06:16	GOOD! FT by PARSON, ALEX	38-27	H 11	
04:37		39-27	H 12	GOOD! FT by WHALEN, ERIN
04:37		40-27	H 13	GOOD! FT by WHALEN, ERIN
04:37		41-27	H 14	GOOD! FT by WHALEN, ERIN
04:04		44-27	H 17	GOOD! 3PTR by GIACONE, JENNA
03:47	GOOD! LAYUP by KLIMKIEWICZ, KATE	44-29	H 15	
03:38		47-29	H 18	GOOD! 3PTR by WHALEN, ERIN
03:24	GOOD! FT by HINDS-CLARKE, JAIDE	47-30	H 17	
03:24	GOOD! FT by HINDS-CLARKE, JAIDE	47-31	H 16	
03:15		50-31	H 19	GOOD! 3PTR by WHALEN, ERIN
02:47		51-31	H 20	GOOD! FT by SCAIFE, JAYLA
02:47		52-31	H 21	GOOD! FT by SCAIFE, JAYLA
02:28	GOOD! JUMPER by HINDS-CLARKE, JAIDE	52-33	H 19	
02:28	GOOD! FT by HINDS-CLARKE, JAIDE	52-34	H 18	
02:08		54-34	H 20	GOOD! JUMPER by FOWLER, SHAKEELA [PNT]
01:55	GOOD! JUMPER by HINDS-CLARKE, JAIDE	54-36	H 18	
01:09	GOOD! FT by KLIMKIEWICZ, KATE	54-37	H 17	
00:49		56-37	H 19	GOOD! JUMPER by GIACONE, JENNA [PNT]
00:49		57-37	H 20	GOOD! FT by GIACONE, JENNA
00:39	GOOD! LAYUP by HINDS-CLARKE, JAIDE	57-39	H 18	

Richmond 39, Dayton 57

**Official Scoring/Possession Reference Chart
Richmond vs Dayton
Period 3**

March 06, 2020 at University of Dayton Arena (Tom Blackburn Court) - Dayton, Ohio



Period 3

Starters:

Richmond: 1 HINDS-CLARKE, JAIDE (F); 10 NEFF, MADELYN (F); 12 HOLT, CLAIRE (G); 13 PARSON, ALEX (G); 24 KLIMKIEWICZ, KATE (G);

Dayton: 1 BRADSHAW, ARAION (G); 5 WHITEHEAD, KYLA (F); 21 WHALEN, ERIN (G); 22 WILMOTH, JORDAN (F); 42 SCAIFE, JAYLA (G);

Time	VISITORS: Richmond	Score	Margin	HOME: Dayton
09:12		59-39	H 20	GOOD! LAYUP by WHITEHEAD, KYLA
08:26	GOOD! 3PTR by HINDS-CLARKE, JAIDE [FB]	59-42	H 17	
07:55		61-42	H 19	GOOD! LAYUP by WHITEHEAD, KYLA
07:45	GOOD! LAYUP by HOLT, CLAIRE	61-44	H 17	
07:06	GOOD! JUMPER by HINDS-CLARKE, JAIDE [PNT]	61-46	H 15	
05:57	GOOD! JUMPER by HINDS-CLARKE, JAIDE	61-48	H 13	
04:10		62-48	H 14	GOOD! FT by WHITEHEAD, KYLA [FB]
04:10		63-48	H 15	GOOD! FT by WHITEHEAD, KYLA [FB]
03:56	GOOD! FT by KLIMKIEWICZ, KATE	63-49	H 14	
03:56	GOOD! FT by KLIMKIEWICZ, KATE	63-50	H 13	
02:45		66-50	H 16	GOOD! 3PTR by WHITEHEAD, KYLA
02:27	GOOD! 3PTR by BURGOS, ANGEL	66-53	H 13	
01:59	GOOD! LAYUP by BURGOS, ANGEL [FB/PNT]	66-55	H 11	
01:32		67-55	H 12	GOOD! FT by WHITEHEAD, KYLA
01:32		68-55	H 13	GOOD! FT by WHITEHEAD, KYLA
01:15		69-55	H 14	GOOD! FT by BRADSHAW, ARAION
00:40		71-55	H 16	GOOD! LAYUP by PEREZ, MARIAH
00:37	GOOD! JUMPER by BURGOS, ANGEL [FB]	71-57	H 14	
00:17		74-57	H 17	GOOD! 3PTR by WHITEHEAD, KYLA
00:00	GOOD! JUMPER by HOLT, CLAIRE [PNT]	74-59	H 15	

Richmond 59, Dayton 74

**Official Scoring/Possession Reference Chart
Richmond vs Dayton
Period 4**

March 06, 2020 at University of Dayton Arena (Tom Blackburn Court) - Dayton, Ohio



Period 4

Starters:

Richmond: 1 HINDS-CLARKE, JAIDE (F); 10 NEFF, MADELYN (F); 12 HOLT, CLAIRE (G); 13 PARSON, ALEX (G); 24 KLIMKIEWICZ, KATE (G);

Dayton: 1 BRADSHAW, ARAION (G); 5 WHITEHEAD, KYLA (F); 21 WHALEN, ERIN (G); 22 WILMOTH, JORDAN (F); 42 SCAIFE, JAYLA (G);

Time	VISITORS: Richmond	Score	Margin	HOME: Dayton
08:04	GOOD! JUMPER by HINDS-CLARKE, JAIDE	74-61	H 13	
06:57	GOOD! LAYUP by BURGOS, ANGEL	74-63	H 11	
02:49	GOOD! 3PTR by HOLT, CLAIRE	74-66	H 8	
02:23		76-66	H 10	GOOD! LAYUP by CHANDLER, JULIA
01:43	GOOD! FT by CHAPMAN, ELAINA	76-67	H 9	
01:04	GOOD! FT by BURGOS, ANGEL [FB]	76-68	H 8	
01:01		77-68	H 9	GOOD! FT by SCAIFE, JAYLA
00:32		78-68	H 10	GOOD! FT by FOWLER, SHAKEELA
00:32		79-68	H 11	GOOD! FT by FOWLER, SHAKEELA

Richmond 68, Dayton 79

**Official Substitutions Log
Richmond vs Dayton
Period 1**

March 06, 2020 at University of Dayton Arena (Tom Blackburn Court) - Dayton, Ohio



VISITORS: Richmond	Time	Score	HOME: Dayton
1 HINDS-CLARKE, JAIDE			1 BRADSHAW, ARAION
10 NEFF, MADELYN			5 WHITEHEAD, KYLA
12 HOLT, CLAIRE			21 WHALEN, ERIN
13 PARSON, ALEX			22 WILMOTH, JORDAN
24 KLIMKIEWICZ, KATE			42 SCAIFE, JAYLA
	07:32	3-3	SUB OUT: BRADSHAW, ARAION
	07:32		SUB OUT: WILMOTH, JORDAN
	07:32		SUB IN: FOWLER, SHAKEELA
	07:32		SUB IN: CHANDLER, JULIA
	04:59	6-16	SUB OUT: WHITEHEAD, KYLA
	04:59		SUB OUT: CHANDLER, JULIA
	04:59		SUB IN: WARD, BRITTANY
	04:59		SUB IN: GIACONE, JENNA
SUB OUT: 1 HINDS-CLARKE, JAIDE	04:59		
SUB OUT: 10 NEFF, MADELYN	04:59		
SUB OUT: 12 HOLT, CLAIRE	04:59		
SUB IN: 2 CARPENTER, ANIYAH	04:59		
SUB IN: 15 SQUIRES, EMMA	04:59		
SUB IN: 31 CHAPMAN, ELAINA	04:59		
	02:56	11-21	SUB OUT: SCAIFE, JAYLA
	02:56		SUB IN: WHITEHEAD, KYLA
SUB OUT: 13 PARSON, ALEX	02:56		
SUB IN: 12 HOLT, CLAIRE	02:56		
	02:01	13-26	SUB OUT: WARD, BRITTANY
	02:01		SUB IN: WILMOTH, JORDAN
SUB OUT: 24 KLIMKIEWICZ, KATE	01:32	13-29	
SUB IN: 41 BURGOS, ANGEL	01:32		

Richmond 17, Dayton 33

**Official Substitutions Log
Richmond vs Dayton
Period 2**

March 06, 2020 at University of Dayton Arena (Tom Blackburn Court) - Dayton, Ohio



VISITORS: Richmond	Time	Score	HOME: Dayton
1 HINDS-CLARKE, JAIDE			1 BRADSHAW, ARAION
10 NEFF, MADELYN			5 WHITEHEAD, KYLA
12 HOLT, CLAIRE			21 WHALEN, ERIN
13 PARSON, ALEX			22 WILMOTH, JORDAN
24 KLIMKIEWICZ, KATE			42 SCAIFE, JAYLA
	10:00	-	SUB OUT: WHALEN, ERIN
	10:00		SUB IN: SKEENS, ELLA
SUB OUT: 12 HOLT, CLAIRE	10:00		
SUB OUT: 15 SQUIRES, EMMA	10:00		
SUB IN: 1 HINDS-CLARKE, JAIDE	10:00		
SUB IN: 24 KLIMKIEWICZ, KATE	10:00		
	09:11	22-33	SUB OUT: SKEENS, ELLA
	09:11		SUB OUT: WILMOTH, JORDAN
	09:11		SUB IN: CHANDLER, JULIA
	09:11		SUB IN: SCAIFE, JAYLA
	07:42	26-36	SUB OUT: GIACONE, JENNA
	07:42		SUB IN: WHALEN, ERIN
	07:19	26-36	SUB OUT: FOWLER, SHAKEELA
	07:19		SUB OUT: CHANDLER, JULIA
	07:19		SUB IN: BRADSHAW, ARAION
	07:19		SUB IN: WARD, BRITTANY
SUB OUT: 2 CARPENTER, ANIYAH	06:28	26-38	
SUB OUT: 31 CHAPMAN, ELAINA	06:28		
SUB OUT: 41 BURGOS, ANGEL	06:28		
SUB IN: 10 NEFF, MADELYN	06:28		
SUB IN: 12 HOLT, CLAIRE	06:28		
SUB IN: 13 PARSON, ALEX	06:28		
	06:16	26-38	SUB OUT: BRADSHAW, ARAION
	06:16		SUB IN: FOWLER, SHAKEELA
	05:18	27-38	SUB OUT: WARD, BRITTANY
	05:18		SUB IN: PEREZ, MARIAH
SUB OUT: 1 HINDS-CLARKE, JAIDE	04:49	27-38	
SUB IN: 31 CHAPMAN, ELAINA	04:49		
	04:13	27-41	SUB OUT: WHITEHEAD, KYLA
	04:13		SUB IN: GIACONE, JENNA
SUB OUT: 10 NEFF, MADELYN	04:13		
SUB OUT: 31 CHAPMAN, ELAINA	04:13		
SUB IN: 1 HINDS-CLARKE, JAIDE	04:13		
SUB IN: 15 SQUIRES, EMMA	04:13		
	03:24	29-47	SUB OUT: PEREZ, MARIAH
	03:24		SUB IN: WILMOTH, JORDAN
SUB OUT: 13 PARSON, ALEX	02:59	31-50	
SUB IN: 2 CARPENTER, ANIYAH	02:59		
	01:55	36-54	SUB OUT: WILMOTH, JORDAN
	01:55		SUB OUT: SCAIFE, JAYLA
	01:55		SUB IN: WARD, BRITTANY
	01:55		SUB IN: SZABO, CHRISTINE
SUB OUT: 2 CARPENTER, ANIYAH	01:55		
SUB IN: 41 BURGOS, ANGEL	01:55		
	01:09	36-54	SUB OUT: WHALEN, ERIN
	01:09		SUB IN: SCAIFE, JAYLA
SUB OUT: 15 SQUIRES, EMMA	01:09		
SUB IN: 31 CHAPMAN, ELAINA	01:09		
SUB OUT: 41 BURGOS, ANGEL	01:09		
SUB IN: 22 MRAZ, MOLLY	01:09		
	00:49	37-56	SUB OUT: SZABO, CHRISTINE
	00:49		SUB IN: WHITEHEAD, KYLA
SUB OUT: 22 MRAZ, MOLLY	00:13	39-57	
SUB OUT: 31 CHAPMAN, ELAINA	00:13		
SUB IN: 2 CARPENTER, ANIYAH	00:13		
SUB IN: 15 SQUIRES, EMMA	00:13		
SUB OUT: 24 KLIMKIEWICZ, KATE	00:02	39-57	
SUB IN: 22 MRAZ, MOLLY	00:02		

Richmond 39, Dayton 57

**Official Substitutions Log
Richmond vs Dayton
Period 3**

March 06, 2020 at University of Dayton Arena (Tom Blackburn Court) - Dayton, Ohio



VISITORS: Richmond	Time	Score	HOME: Dayton
1 HINDS-CLARKE, JAIDE			1 BRADSHAW, ARAION
10 NEFF, MADELYN			5 WHITEHEAD, KYLA
12 HOLT, CLAIRE			21 WHALEN, ERIN
13 PARSON, ALEX			22 WILMOTH, JORDAN
24 KLIMKIEWICZ, KATE			42 SCAIFE, JAYLA
	10:00	-	SUB OUT: WARD, BRITTANY
	10:00		SUB OUT: FOWLER, SHAKEELA
	10:00		SUB OUT: GIACONE, JENNA
	10:00		SUB IN: BRADSHAW, ARAION
	10:00		SUB IN: WHALEN, ERIN
	10:00		SUB IN: WILMOTH, JORDAN
SUB OUT: 2 CARPENTER, ANIYAH	10:00		
SUB OUT: 15 SQUIRES, EMMA	10:00		
SUB OUT: 22 MRAZ, MOLLY	10:00		
SUB IN: 10 NEFF, MADELYN	10:00		
SUB IN: 13 PARSON, ALEX	10:00		
SUB IN: 24 KLIMKIEWICZ, KATE	10:00		
	07:22	44-61	SUB OUT: WHALEN, ERIN
	07:22		SUB OUT: WILMOTH, JORDAN
	07:22		SUB IN: WARD, BRITTANY
	07:22		SUB IN: FOWLER, SHAKEELA
SUB OUT: 12 HOLT, CLAIRE	06:17	46-61	
SUB IN: 2 CARPENTER, ANIYAH	06:17		
	05:39	48-61	SUB OUT: WARD, BRITTANY
	05:39		SUB IN: CHANDLER, JULIA
SUB OUT: 13 PARSON, ALEX	05:39		
SUB IN: 41 BURGOS, ANGEL	05:39		
SUB IN: 31 CHAPMAN, ELAINA	05:12	48-61	
SUB OUT: 1 HINDS-CLARKE, JAIDE	05:12		
	04:10	48-61	SUB OUT: FOWLER, SHAKEELA
	04:10		SUB IN: GIACONE, JENNA
SUB OUT: 10 NEFF, MADELYN	04:10		
SUB IN: 15 SQUIRES, EMMA	04:10		
	02:59	50-63	SUB OUT: CHANDLER, JULIA
	02:59		SUB IN: PEREZ, MARIAH
SUB OUT: 2 CARPENTER, ANIYAH	01:32	55-66	
SUB OUT: 15 SQUIRES, EMMA	01:32		
SUB OUT: 31 CHAPMAN, ELAINA	01:32		
SUB OUT: 41 BURGOS, ANGEL	01:32		
SUB IN: 1 HINDS-CLARKE, JAIDE	01:32		
SUB IN: 10 NEFF, MADELYN	01:32		
SUB IN: 12 HOLT, CLAIRE	01:32		
SUB IN: 13 PARSON, ALEX	01:32		
	01:32		SUB OUT: SCAIFE, JAYLA
	01:32		SUB IN: FOWLER, SHAKEELA
SUB OUT: 1 HINDS-CLARKE, JAIDE	01:15	55-68	
SUB IN: 31 CHAPMAN, ELAINA	01:15		
SUB OUT: 10 NEFF, MADELYN	00:49	55-69	
SUB OUT: 13 PARSON, ALEX	00:49		
SUB IN: 15 SQUIRES, EMMA	00:49		
SUB IN: 41 BURGOS, ANGEL	00:49		

Richmond 59, Dayton 74

**Official Substitutions Log
Richmond vs Dayton
Period 4**

March 06, 2020 at University of Dayton Arena (Tom Blackburn Court) - Dayton, Ohio



VISITORS: Richmond	Time	Score	HOME: Dayton
1 HINDS-CLARKE, JAIDE			1 BRADSHAW, ARAION
10 NEFF, MADELYN			5 WHITEHEAD, KYLA
12 HOLT, CLAIRE			21 WHALEN, ERIN
13 PARSON, ALEX			22 WILMOTH, JORDAN
24 KLIMKIEWICZ, KATE			42 SCAIFE, JAYLA
	08:20	-	SUB OUT: BRADSHAW, ARAION
	08:20		SUB OUT: PEREZ, MARIAH
	08:20		SUB IN: WARD, BRITTANY
	08:20		SUB IN: WHALEN, ERIN
SUB OUT: 12 HOLT, CLAIRE	08:20		
SUB OUT: 15 SQUIRES, EMMA	08:20		
SUB IN: 1 HINDS-CLARKE, JAIDE	08:20		
SUB IN: 2 CARPENTER, ANIYAH	08:20		
	08:04	61-74	SUB OUT: WARD, BRITTANY
	08:04		SUB IN: WILMOTH, JORDAN
	07:32	61-74	SUB OUT: GIACONE, JENNA
	07:32		SUB IN: SCAIFE, JAYLA
	06:12	63-74	SUB OUT: WILMOTH, JORDAN
	06:12		SUB IN: CHANDLER, JULIA
SUB OUT: 24 KLIMKIEWICZ, KATE	06:12		
SUB OUT: 31 CHAPMAN, ELAINA	06:12		
SUB IN: 12 HOLT, CLAIRE	06:12		
SUB IN: 15 SQUIRES, EMMA	06:12		
SUB OUT: 41 BURGOS, ANGEL	06:12		
SUB IN: 13 PARSON, ALEX	06:12		
SUB OUT: 1 HINDS-CLARKE, JAIDE	05:24	63-74	
SUB IN: 31 CHAPMAN, ELAINA	05:24		
	03:48	63-74	SUB OUT: FOWLER, SHAKEELA
	03:48		SUB IN: BRADSHAW, ARAION
SUB OUT: 2 CARPENTER, ANIYAH	03:48		
SUB OUT: 13 PARSON, ALEX	03:48		
SUB IN: 24 KLIMKIEWICZ, KATE	03:48		
SUB IN: 41 BURGOS, ANGEL	03:48		
	02:08	66-76	SUB OUT: BRADSHAW, ARAION
	02:08		SUB IN: FOWLER, SHAKEELA
SUB OUT: 15 SQUIRES, EMMA	02:08		
SUB IN: 33 DUGGAN, AMY	02:08		
	01:43	67-76	SUB OUT: CHANDLER, JULIA
	01:43		SUB IN: BRADSHAW, ARAION
SUB OUT: 24 KLIMKIEWICZ, KATE	01:43		
SUB IN: 2 CARPENTER, ANIYAH	01:43		
SUB OUT: 33 DUGGAN, AMY	01:37	67-76	
SUB IN: 24 KLIMKIEWICZ, KATE	01:37		
SUB OUT: 24 KLIMKIEWICZ, KATE	01:16	67-76	
SUB IN: 33 DUGGAN, AMY	01:16		
SUB OUT: 33 DUGGAN, AMY	00:32	68-77	
SUB IN: 24 KLIMKIEWICZ, KATE	00:32		
SUB OUT: 31 CHAPMAN, ELAINA	00:32		
SUB IN: 5 WISEMAN, RAGAN	00:32		

Richmond 68, Dayton 79

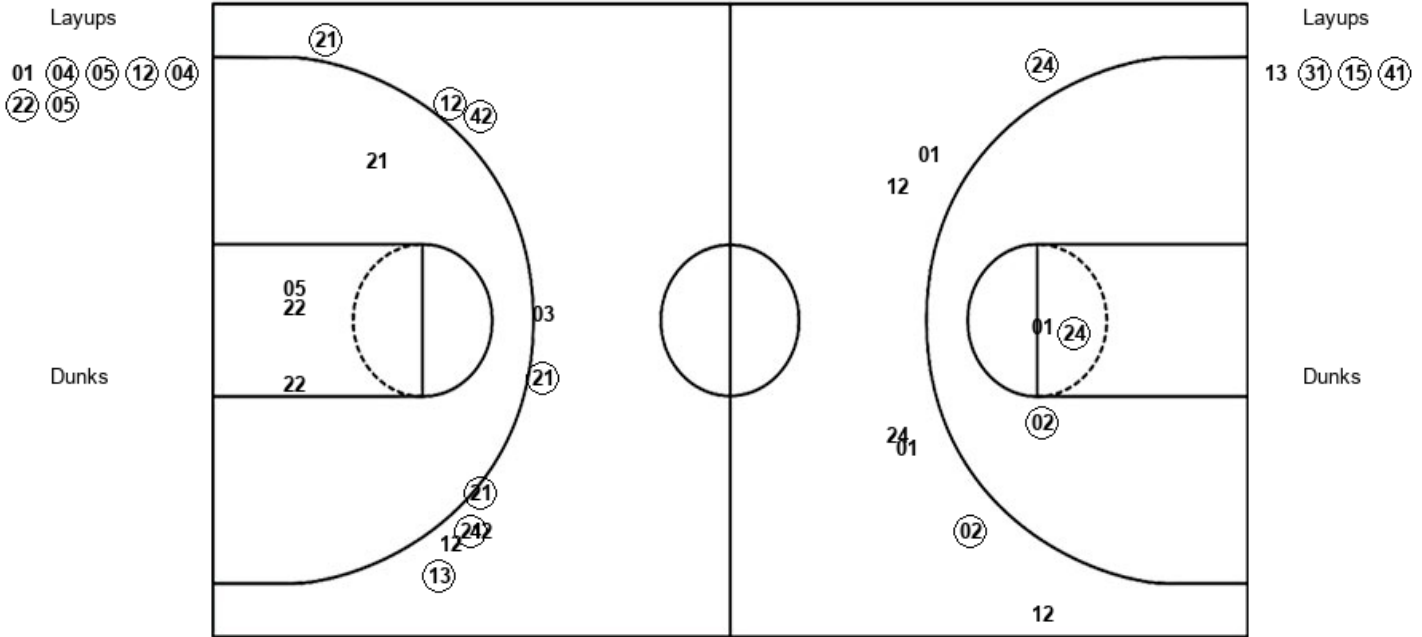
Official Shot Chart
 Richmond vs Dayton
 PERIOD 1 Shots

March 06, 2020 at University of Dayton Arena (Tom Blackburn Court) - Dayton, Ohio



Dayton

Richmond



DAY : Period 1	Made	Att	Pct
Layups	6	7	85.7
Dunks	0	0	0
2PT Field Goals	6	12	50.0
3PT Field Goals	7	9	77.8
Total Field Goals	13	21	61.9

RIC : Period 1	Made	Att	Pct
Layups	3	4	75.0
Dunks	0	0	0
2PT Field Goals	5	7	71.4
3PT Field Goals	2	7	28.6
Total Field Goals	7	14	50.0

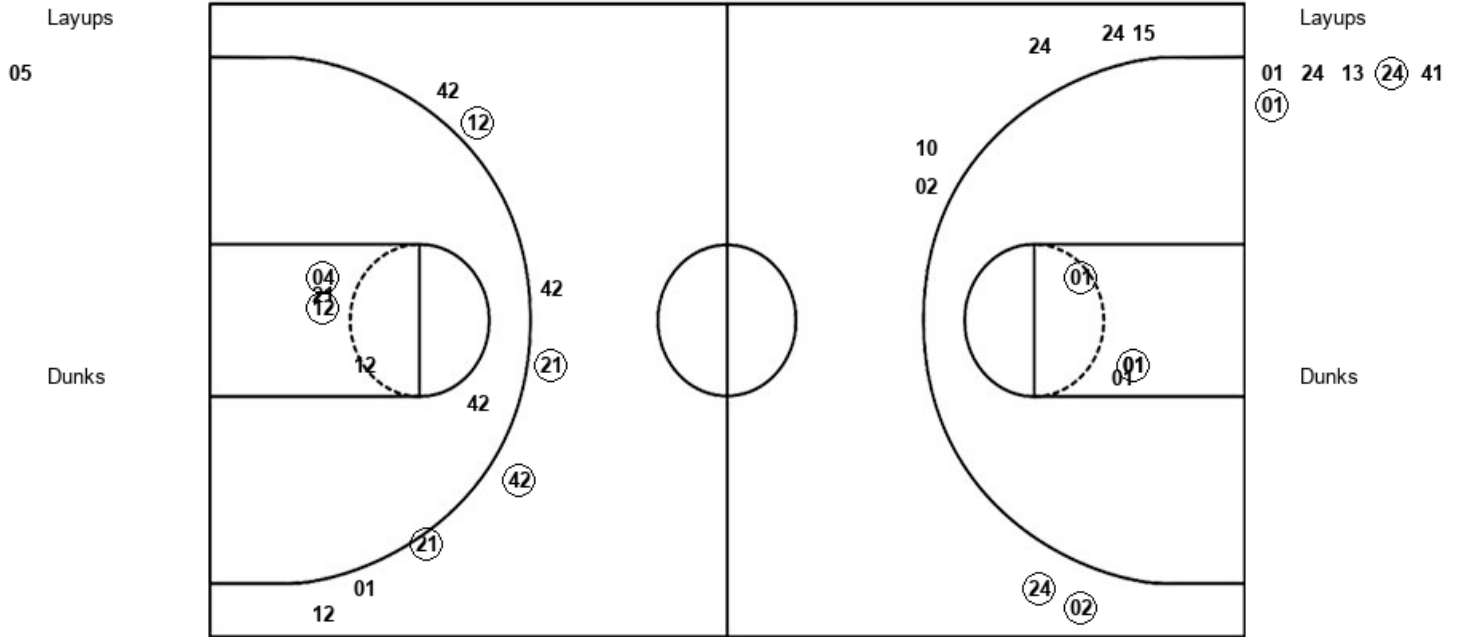
Official Shot Chart
 Richmond vs Dayton
 PERIOD 2 Shots

March 06, 2020 at University of Dayton Arena (Tom Blackburn Court) - Dayton, Ohio



Dayton

Richmond



DAY : Period 2	Made	Att	Pct
Layups	0	1	00.0
Dunks	0	0	0
2PT Field Goals	2	6	33.3
3PT Field Goals	4	8	50.0
Total Field Goals	6	14	42.9

RIC : Period 2	Made	Att	Pct
Layups	2	6	33.3
Dunks	0	0	0
2PT Field Goals	5	10	50.0
3PT Field Goals	2	7	28.6
Total Field Goals	7	17	41.2

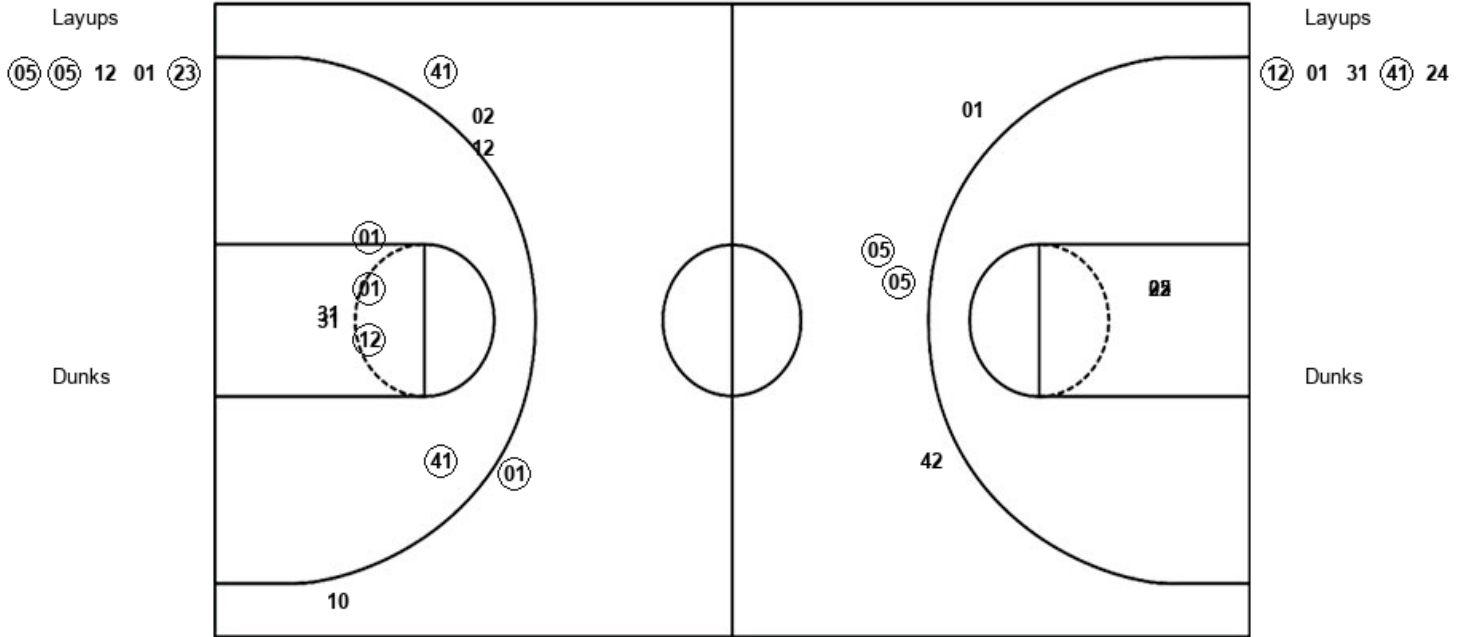
Official Shot Chart
 Richmond vs Dayton
 PERIOD 3 Shots

March 06, 2020 at University of Dayton Arena (Tom Blackburn Court) - Dayton, Ohio



Dayton

Richmond



DAY : Period 3	Made	Att	Pct
Layups	3	5	60.0
Dunks	0	0	0
2PT Field Goals	3	7	42.9
3PT Field Goals	2	4	50.0
Total Field Goals	5	11	45.5

RIC : Period 3	Made	Att	Pct
Layups	2	5	40.0
Dunks	0	0	0
2PT Field Goals	6	11	54.5
3PT Field Goals	2	5	40.0
Total Field Goals	8	16	50.0

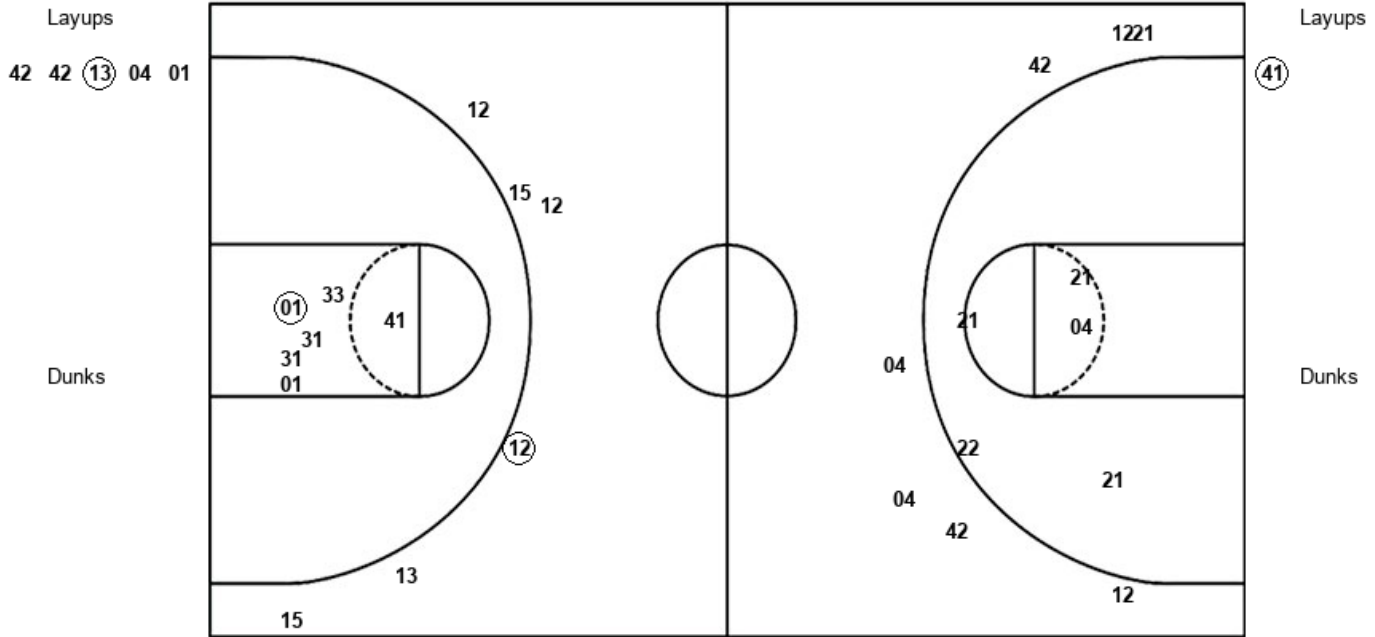
Official Shot Chart
 Richmond vs Dayton
 PERIOD 4 Shots

March 06, 2020 at University of Dayton Arena (Tom Blackburn Court) - Dayton, Ohio



Dayton

Richmond



DAY : Period 4	Made	Att	Pct
Layups	1	5	20.0
Dunks	0	0	0
2PT Field Goals	1	10	10.0
3PT Field Goals	0	7	00.0
Total Field Goals	1	17	05.9

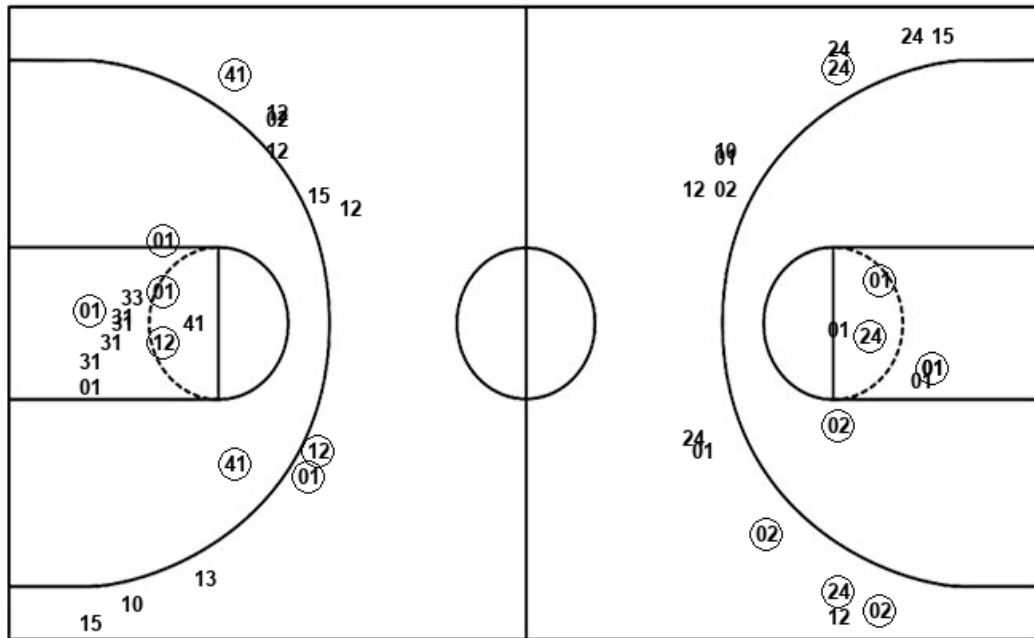
RIC : Period 4	Made	Att	Pct
Layups	1	1	100.0
Dunks	0	0	0
2PT Field Goals	2	7	28.6
3PT Field Goals	1	6	16.7
Total Field Goals	3	13	23.1

Official Shot Chart
 Richmond vs Dayton
 Richmond Team Shots

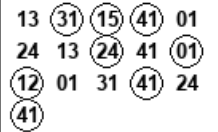
March 06, 2020 at University of Dayton Arena (Tom Blackburn Court) - Dayton, Ohio



Layups



Layups



Dunks

Dunks

RIC : Period 1	Made	Att	Pct
Layups	3	4	75.0
Dunks	0	0	0
2PT Field Goals	5	7	71.4
3PT Field Goals	2	7	28.6
Total Field Goals	7	14	50.0

RIC : Period 2	Made	Att	Pct
Layups	2	6	33.3
Dunks	0	0	0
2PT Field Goals	5	10	50.0
3PT Field Goals	2	7	28.6
Total Field Goals	7	17	41.2

RIC : Period 3	Made	Att	Pct
Layups	2	5	40.0
Dunks	0	0	0
2PT Field Goals	6	11	54.5
3PT Field Goals	2	5	40.0
Total Field Goals	8	16	50.0

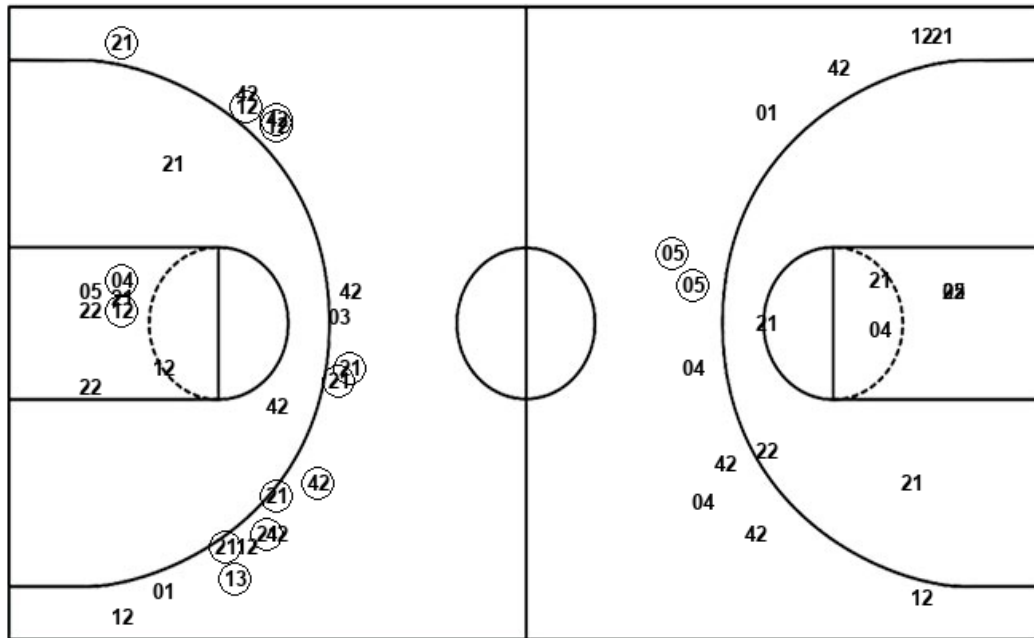
RIC : Period 4	Made	Att	Pct
Layups	1	1	100.0
Dunks	0	0	0
2PT Field Goals	2	7	28.6
3PT Field Goals	1	6	16.7
Total Field Goals	3	13	23.1

Official Shot Chart
 Richmond vs Dayton
 Dayton Team Shots

March 06, 2020 at University of Dayton Arena (Tom Blackburn Court) - Dayton, Ohio



Layups



Layups

- 01 (04) (05) (12) (04)
- (22) (05) (05) (05) (05)
- 12 01 (23) 42 42
- (13) 04 01

Dunks

Dunks

DAY : Period 1	Made	Att	Pct
Layups	6	7	85.7
Dunks	0	0	0
2PT Field Goals	6	12	50.0
3PT Field Goals	7	9	77.8
Total Field Goals	13	21	61.9

DAY : Period 2	Made	Att	Pct
Layups	0	1	00.0
Dunks	0	0	0
2PT Field Goals	2	6	33.3
3PT Field Goals	4	8	50.0
Total Field Goals	6	14	42.9

DAY : Period 3	Made	Att	Pct
Layups	3	5	60.0
Dunks	0	0	0
2PT Field Goals	3	7	42.9
3PT Field Goals	2	4	50.0
Total Field Goals	5	11	45.5

DAY : Period 4	Made	Att	Pct
Layups	1	5	20.0
Dunks	0	0	0
2PT Field Goals	1	10	10.0
3PT Field Goals	0	7	00.0
Total Field Goals	1	17	05.9