

## FINAL SCORE



**South Alabama**

**55**



**UT Arlington**

**47**

**Sun Belt Basketball Championships**

March 11, 2020 • College Park Center - Arlington, TX



## FINAL STATISTICS

**Official Box Score**  
**South Alabama vs UT Arlington**  
**Game Totals -- Final Statistics**  
**March 11, 2020 at College Park Center - Arlington, TX**



**South Alabama 55**

No.	Player	S	Pts	FG	3FG	FT	OR	DR	TR	PF	A	TO	Blk	Stl	Min	+/-
02	KINES, SHAFORIA	G	28	7-13	5-8	9-10	0	5	5	2	3	3	0	1	40	8
12	TELEMAQUE, DAMAYA	G	0	0-1	0-1	0-0	0	2	2	3	1	4	0	0	22	-5
14	JONES, SAVANNAH	G	4	1-7	1-4	1-2	0	1	1	2	2	0	1	3	38	9
25	CENTERS, KENNEDI	F	3	1-8	0-3	1-4	0	10	10	2	2	3	1	1	34	16
35	LEWIS, ANTOINETTE	C	10	2-6	0-1	6-10	2	9	11	2	0	2	0	3	35	8
03	MORROW, JAYLA	G	0	0-0	0-0	0-0	0	0	0	0	0	0	0	0	0	2
04	VAUGHT, MAHOGANY	G	5	2-3	1-1	0-2	0	1	1	0	1	1	0	2	11	5
22	MALLARD, JAYLEN	F	0	0-0	0-0	0-0	0	0	0	2	0	0	0	0	10	-9
23	BUSTER, JALA	G	5	2-5	1-2	0-0	0	0	0	3	1	3	0	1	9	6
TEAM							2	3	5	0		4				
<b>TOTALS</b>			<b>55</b>	<b>15-43</b>	<b>8-20</b>	<b>17-28</b>	<b>4</b>	<b>31</b>	<b>35</b>	<b>16</b>	<b>10</b>	<b>20</b>	<b>2</b>	<b>11</b>	<b>200</b>	

*Shooting By Period*

Period	FG	FG%	3FG	3FG%	FT	FT%
1st Qtr	3-10	30%	2-7	29%	4-6	67%
2nd Qtr	4-15	27%	3-9	33%	3-4	75%
3rd Qtr	7-11	64%	3-4	75%	2-2	100%
4th Qtr	1-7	14%	0-0	0%	8-16	50%
1st Half	7-25	28%	5-16	31%	7-10	70%
2nd Half	8-18	44%	3-4	75%	10-18	56%
<b>Game</b>	<b>15-43</b>	<b>34.9%</b>	<b>8-20</b>	<b>40.0%</b>	<b>17-28</b>	<b>60.7%</b>

Deadball Rebounds: 6,0

Last FG: 4th-04:55

Biggest Run: 9-0

Largest lead: By 10 at 4th-02:00

Technical Fouls: None.

**UT Arlington 47**

No.	Player	S	Pts	FG	3FG	FT	OR	DR	TR	PF	A	TO	Blk	Stl	Min	+/-
12	BENSON, MARIE	F	3	1-9	0-0	1-2	1	4	5	4	0	2	0	4	34	-8
20	CHASTAIN, CLAIRE	G	12	4-12	2-8	2-4	1	1	2	2	1	2	0	2	33	-5
21	MILTON, TERRY	G	6	2-8	0-2	2-2	1	5	6	2	3	2	0	0	36	-11
24	EVANS, AYSIA	G	10	3-8	1-4	3-4	2	0	2	4	0	3	0	0	20	-2
41	FERRELL, KATIE	F	3	1-7	0-2	1-2	1	14	15	2	5	1	1	2	34	-3
01	MAYHUE, KATIE	G	3	1-6	1-5	0-0	1	0	1	3	1	0	0	1	15	6
03	DOSSEY, MISTY	C	5	2-6	0-0	1-2	6	0	6	5	1	1	0	0	11	-1
31	WICKWARE, BRE	F	5	2-3	0-1	1-3	0	2	2	1	2	1	0	0	11	1
33	BENSON, BARBARA	G	0	0-1	0-1	0-0	0	0	0	0	0	1	0	0	2	-8
45	HALVERSON, EMMA	F	0	0-0	0-0	0-0	1	0	1	1	0	3	0	1	5	-9
TEAM							3	3	6	1		1				
<b>TOTALS</b>			<b>47</b>	<b>16-60</b>	<b>4-23</b>	<b>11-19</b>	<b>17</b>	<b>29</b>	<b>46</b>	<b>25</b>	<b>13</b>	<b>17</b>	<b>1</b>	<b>10</b>	<b>200</b>	

*Shooting By Period*

Period	FG	FG%	3FG	3FG%	FT	FT%
1st Qtr	6-20	30%	2-6	33%	3-4	75%
2nd Qtr	6-11	55%	2-5	40%	3-7	43%
3rd Qtr	3-16	19%	0-6	00%	1-2	50%
4th Qtr	1-13	08%	0-6	00%	4-6	67%
1st Half	12-31	39%	4-11	36%	6-11	55%
2nd Half	4-29	14%	0-12	00%	5-8	63%
<b>Game</b>	<b>16-60</b>	<b>26.7%</b>	<b>4-23</b>	<b>17.4%</b>	<b>11-19</b>	<b>57.9%</b>

Deadball Rebounds: 4,0

Last FG: 4th-00:35

Biggest Run: 7-0

Largest lead: By 11 at 2nd-01:03

Technical Fouls: #0 TEAM (Coach Technical) @ 4th - 05:49;

Game Notes:

Officials: Jody Cantrell, Angel Stanton, Troy Winders

Attendance: 848

Start Time: 08:02 PM ET

End Time: 10:07 PM ET

Game Duration: 2:05

Score	1st	2nd	3rd	4th	TOT
USA	12	14	19	10	<b>55</b>
UTA	17	17	7	6	<b>47</b>

USA led for 11:10. UTA led for 26:46.

Game was tied for 2:04.

Times tied: 2      Lead Changes: 3

Points from	USA	UTA
In the Paint	12	14
Off Turns	18	13
2nd Chance	6	8
Fast Break	11	10
Bench	10	13

**Official Box Score**  
**South Alabama vs UT Arlington**  
**First Half Statistics Only**  
**March 11, 2020 at College Park Center - Arlington, TX**



### South Alabama 26

No.	Player	S	Pts	FG	3FG	FT	OR	DR	TR	PF	A	TO	Blk	Stl	Min	+/-
02	KINES, SHAFORIA	G	15	4-8	3-5	4-4	0	4	4	1	1	1	0	1	20	-8
03	MORROW, JAYLA	G	0	0-0	0-0	0-0	0	0	0	0	0	0	0	0	0	2
04	VAUGHT, MAHOGANY	G	0	0-0	0-0	0-0	0	0	0	0	1	0	0	1	2	-1
12	TELEMAQUE, DAMAYA	G	0	0-1	0-1	0-0	0	0	0	2	0	2	0	0	12	-15
14	JONES, SAVANNAH	G	4	1-4	1-4	1-2	0	1	1	1	1	0	0	0	18	-7
22	MALLARD, JAYLEN	F	0	0-0	0-0	0-0	0	0	0	1	0	0	0	0	7	-11
23	BUSTER, JALA	G	3	1-4	1-2	0-0	0	0	0	1	0	1	0	1	7	3
25	CENTERS, KENNEDI	F	3	1-5	0-3	1-2	0	2	2	1	1	0	1	0	16	3
35	LEWIS, ANTOINETTE	C	1	0-3	0-1	1-2	2	2	4	0	0	0	0	1	19	-6
	TEAM		0	0-0	0-0	0-0	1	1	2	0	0	3	0	0	0	
<b>TOTALS</b>			<b>26</b>	<b>7-25</b>	<b>5-16</b>	<b>7-10</b>	<b>3</b>	<b>10</b>	<b>13</b>	<b>7</b>	<b>4</b>	<b>7</b>	<b>1</b>	<b>4</b>	<b>100</b>	

#### Shooting By Period

Period	FG	FG%	3FG	3FG%	FT	FT%
1st Qtr	3-10	30%	2-7	29%	4-6	67%
2nd Qtr	4-15	27%	3-9	33%	3-4	75%
1st Half	7-25	28%	5-16	31%	7-10	70%
Game	15-43	34.9%	8-20	40.0%	17-28	60.7%

Deadball Rebounds: 6,0

Last FG Half: USA 2nd-00:01

### UT Arlington 34

No.	Player	S	Pts	FG	3FG	FT	OR	DR	TR	PF	A	TO	Blk	Stl	Min	+/-
01	MAYHUE, KATIE	G	3	1-3	1-3	0-0	0	0	0	1	1	0	0	1	9	9
03	DOSSEY, MISTY	C	5	2-6	0-0	1-2	4	0	4	2	0	0	0	0	8	1
12	BENSON, MARIE	F	0	0-5	0-0	0-0	1	1	2	1	0	0	0	1	17	6
20	CHASTAIN, CLAIRE	G	9	3-4	2-3	1-2	1	0	1	2	0	2	0	1	14	9
21	MILTON, TERRY	G	0	0-3	0-1	0-0	1	3	4	0	2	1	0	0	17	3
24	EVANS, AYSIA	G	9	3-4	1-1	2-2	1	0	1	2	0	1	0	0	7	5
31	WICKWARE, BRE	F	5	2-3	0-1	1-3	0	2	2	0	2	0	0	0	10	3
33	BENSON, BARBARA	G	0	0-0	0-0	0-0	0	0	0	0	0	0	0	0	0	0
41	FERRELL, KATIE	F	3	1-3	0-2	1-2	0	8	8	1	5	0	0	0	17	11
45	HALVERSON, EMMA	F	0	0-0	0-0	0-0	0	0	0	0	0	2	0	0	2	-7
	TEAM		0	0-0	0-0	0-0	2	2	4	0	0	0	0	0	0	
<b>TOTALS</b>			<b>34</b>	<b>12-31</b>	<b>4-11</b>	<b>6-11</b>	<b>10</b>	<b>16</b>	<b>26</b>	<b>9</b>	<b>10</b>	<b>6</b>	<b>0</b>	<b>3</b>	<b>100</b>	

#### Shooting By Period

Period	FG	FG%	3FG	3FG%	FT	FT%
1st Qtr	6-20	30%	2-6	33%	3-4	75%
2nd Qtr	6-11	55%	2-5	40%	3-7	43%
1st Half	12-31	39%	4-11	36%	6-11	55%
Game	16-60	26.7%	4-23	17.4%	11-19	57.9%

Deadball Rebounds: 4,0

Last FG Half: UTA 2nd-01:45

#### Game Notes:

Officials: Jody Cantrell, Angel Stanton, Troy Winders  
Attendance: 848

Start Time: 08:02 PM ET  
End Time: 10:07 PM ET  
Game Duration: 2:05

Score	1st	2nd	3rd	4th	TOT
USA	12	14	19	10	55
UTA	17	17	7	6	47

Points from (This Period)	USA	UTA
In the Paint	4	10
Off Turns	11	7
2nd Chance	4	8
Fast Break	7	5
Bench	3	13

**Official Box Score**  
**South Alabama vs UT Arlington**  
**First Quarter Statistics Only**  
**March 11, 2020 at College Park Center - Arlington, TX**



### South Alabama 12

No.	Player	S	Pts	FG	3FG	FT	OR	DR	TR	PF	A	TO	Blk	Stl	Min	+/-
02	KINES, SHAFORIA	G	8	2-3	2-2	2-2	0	0	0	0	0	0	0	0	10	-5
12	TELEMAQUE, DAMAYA	G	0	0-0	0-0	0-0	0	0	0	1	0	1	0	0	7	-10
14	JONES, SAVANNAH	G	1	0-1	0-1	1-2	0	1	1	0	0	0	0	0	10	-5
25	CENTERS, KENNEDI	F	3	1-3	0-2	1-2	0	2	2	1	1	0	1	0	9	-2
35	LEWIS, ANTOINETTE	C	0	0-1	0-1	0-0	1	1	2	0	0	0	0	0	9	-3
03	MORROW, JAYLA	G	0	0-0	0-0	0-0	0	0	0	0	0	0	0	0	0	2
04	VAUGHT, MAHOGANY	G	0	0-0	0-0	0-0	0	0	0	0	0	0	0	0	0	0
22	MALLARD, JAYLEN	F	0	0-0	0-0	0-0	0	0	0	0	0	0	0	0	3	-5
23	BUSTER, JALA	G	0	0-2	0-1	0-0	0	0	0	0	0	0	0	1	3	3
	TEAM						0	0	0	0		2				
<b>TOTALS</b>			<b>12</b>	<b>3-10</b>	<b>2-7</b>	<b>4-6</b>	<b>1</b>	<b>4</b>	<b>5</b>	<b>2</b>	<b>1</b>	<b>3</b>	<b>1</b>	<b>1</b>	<b>50</b>	

#### Shooting By Period

Period	FG	FG%	3FG	3FG%	FT	FT%
1st Qtr	3-10	30%	2-7	29%	4-6	67%
2nd Qtr	4-15	27%	3-9	33%	3-4	75%
1st Half	3-10	30%	2-7	29%	4-6	67%
1st Half	7-25	28%	5-16	31%	7-10	70%
Game	15-43	34.9%	8-20	40.0%	17-28	60.7%

Deadball Rebounds: 6,0

### UT Arlington 17

No.	Player	S	Pts	FG	3FG	FT	OR	DR	TR	PF	A	TO	Blk	Stl	Min	+/-
12	BENSON, MARIE	F	0	0-4	0-0	0-0	1	0	1	1	0	0	0	0	8	0
20	CHASTAIN, CLAIRE	G	3	1-2	1-2	0-0	1	0	1	1	0	1	0	0	10	5
21	MILTON, TERRYIN	G	0	0-1	0-0	0-0	1	2	3	0	1	0	0	0	10	5
24	EVANS, AYSIA	G	9	3-4	1-1	2-2	1	0	1	2	0	1	0	0	7	5
41	FERRELL, KATIE	F	2	1-2	0-1	0-0	0	3	3	0	3	0	0	0	7	8
01	MAYHUE, KATIE	G	0	0-2	0-2	0-0	0	0	0	1	0	0	0	0	3	0
03	DOSSEY, MISTY	C	3	1-5	0-0	1-2	4	0	4	1	0	0	0	0	6	2
31	WICKWARE, BRE	F	0	0-0	0-0	0-0	0	0	0	0	0	0	0	0	0	0
33	BENSON, BARBARA	G	0	0-0	0-0	0-0	0	0	0	0	0	0	0	0	0	0
45	HALVERSON, EMMA	F	0	0-0	0-0	0-0	0	0	0	0	0	0	0	0	0	0
	TEAM						2	2	4	0		0				
<b>TOTALS</b>			<b>17</b>	<b>6-20</b>	<b>2-6</b>	<b>3-4</b>	<b>10</b>	<b>7</b>	<b>17</b>	<b>6</b>	<b>4</b>	<b>2</b>	<b>0</b>	<b>0</b>	<b>50</b>	

#### Shooting By Period

Period	FG	FG%	3FG	3FG%	FT	FT%
1st Qtr	6-20	30%	2-6	33%	3-4	75%
2nd Qtr	6-11	55%	2-5	40%	3-7	43%
1st Half	6-20	30%	2-6	33%	3-4	75%
1st Half	12-31	39%	4-11	36%	6-11	55%
Game	16-60	26.7%	4-23	17.4%	11-19	57.9%

Deadball Rebounds: 4,0

#### Game Notes:

Officials: Jody Cantrell, Angel Stanton, Troy Winders  
Attendance: 848

Start Time: 08:02 PM ET  
End Time: 10:07 PM ET  
Game Duration: 2:05

Score	1st	2nd	3rd	4th	TOT
USA	12	14	19	10	<b>55</b>
UTA	17	17	7	6	<b>47</b>

Points from (This Period)	USA	UTA
In the Paint	2	4
Off Turns	3	5
2nd Chance	3	8
Fast Break	2	0
Bench	0	3

**Official Play-By-Play**  
**South Alabama vs UT Arlington**  
**First Quarter**  
**March 11, 2020 at College Park Center - Arlington, TX**



**Period 1**

**Starters:**

**South Alabama:** 2 KINES, SHAFORIA (G); 12 TELEMAQUE, DAMAYA (G); 14 JONES, SAVANNAH (G); 25 CENTERS, KENNEDI (F); 35 LEWIS, ANTOINETTE (C);  
**UT Arlington:** 12 BENSON, MARIE (F); 20 CHASTAIN, CLAIRE (G); 21 MILTON, TERRY (G); 24 EVANS, AYSIA (G); 41 FERRELL, KATIE (F);

Time	VISITORS: South Alabama	Score	Margin	HOME: UT Arlington
09:39				MISSED JUMPER by MILTON, TERRY
09:36	REBOUND (DEF) by CENTERS, KENNEDI			
09:36				FOUL (PERSONAL) by BENSON, MARIE
09:09	TURNOVER (SHOTCLOCK) by TEAM			
08:50				MISSED JUMPER by BENSON, MARIE
08:47				REBOUND (OFF) by MILTON, TERRY
08:44		3-0	H 3	GOOD! 3PTR by CHASTAIN, CLAIRE
08:44				ASSIST by FERRELL, KATIE
08:14	MISSED 3PTR by JONES, SAVANNAH			
08:08				REBOUND (DEF) by MILTON, TERRY
08:03		5-0	H 5	GOOD! LAYUP by EVANS, AYSIA [PNT]
08:03				ASSIST by MILTON, TERRY
07:46	MISSED 3PTR by CENTERS, KENNEDI			
07:43				REBOUND (DEF) by FERRELL, KATIE
07:34				MISSED LAYUP by BENSON, MARIE
07:30				REBOUND (OFF) by BENSON, MARIE
07:15	FOUL (PERSONAL) by TELEMAQUE, DAMAYA			
07:15		6-0	H 6	GOOD! FT by EVANS, AYSIA
07:15		7-0	H 7	GOOD! FT by EVANS, AYSIA
06:50	GOOD! 3PTR by KINES, SHAFORIA	7-3	H 4	
06:50	ASSIST by CENTERS, KENNEDI			
06:37				TURNOVER (LOSTBALL) by CHASTAIN, CLAIRE
06:29	GOOD! LAYUP by CENTERS, KENNEDI [FB]	7-5	H 2	
06:20		10-5	H 5	GOOD! 3PTR by EVANS, AYSIA
06:20				ASSIST by FERRELL, KATIE
05:56				FOUL (PERSONAL) by CHASTAIN, CLAIRE
05:56				SUB OUT: EVANS, AYSIA
05:56				SUB IN: MAYHUE, KATIE
05:56	SUB OUT: TELEMAQUE, DAMAYA			
05:56	SUB IN: MORROW, JAYLA			
05:56	GOOD! FT by KINES, SHAFORIA	10-6	H 4	
05:56	GOOD! FT by KINES, SHAFORIA	10-7	H 3	
05:38				MISSED JUMPER by BENSON, MARIE
05:35	REBOUND (DEF) by CENTERS, KENNEDI			
05:35				SUB OUT: FERRELL, KATIE
05:35				SUB IN: DOSSEY, MISTY
05:35	SUB OUT: MORROW, JAYLA			
05:35	SUB IN: BUSTER, JALA			
05:17				FOUL (PERSONAL) by MAYHUE, KATIE
04:55	MISSED JUMPER by BUSTER, JALA			
04:55				REBOUND (DEF) by TEAM
04:55				
04:35				MISSED JUMPER by DOSSEY, MISTY
04:35	BLOCK by CENTERS, KENNEDI			
04:35				REBOUND (OFF) by TEAM
04:28				MISSED 3PTR by MAYHUE, KATIE
04:25	REBOUND (DEF) by LEWIS, ANTOINETTE			
03:56	MISSED 3PTR by BUSTER, JALA			
03:56				REBOUND (DEF) by TEAM
03:56				SUB OUT: MAYHUE, KATIE
03:56				SUB IN: EVANS, AYSIA
03:56	TURNOVER (SHOTCLOCK) by TEAM			
03:33				MISSED JUMPER by BENSON, MARIE
03:30				REBOUND (OFF) by DOSSEY, MISTY
03:29				MISSED LAYUP by DOSSEY, MISTY
03:27				REBOUND (OFF) by DOSSEY, MISTY
03:26				MISSED LAYUP by DOSSEY, MISTY
03:23				REBOUND (OFF) by EVANS, AYSIA
03:23				MISSED LAYUP by EVANS, AYSIA
03:20	REBOUND (DEF) by JONES, SAVANNAH			
03:01	MISSED 3PTR by CENTERS, KENNEDI			
02:58	REBOUND (OFF) by LEWIS, ANTOINETTE			
02:52	GOOD! 3PTR by KINES, SHAFORIA	10-10	T	
02:39				TURNOVER (LOSTBALL) by EVANS, AYSIA
02:39	STEAL by BUSTER, JALA			
02:39				FOUL (PERSONAL) by EVANS, AYSIA
02:30	SUB OUT: BUSTER, JALA			
02:30	SUB OUT: LEWIS, ANTOINETTE			
02:30	SUB IN: TELEMAQUE, DAMAYA			
02:30	SUB IN: MALLARD, JAYLEN			

Time	VISITORS: South Alabama	Score	Margin	HOME: UT Arlington
02:30				FOUL (PERSONAL) by DOSSEY, MISTY
02:30				SUB OUT: BENSON, MARIE
02:30				SUB IN: FERRELL, KATIE
02:30	MISSED FT by JONES, SAVANNAH			
02:30	REBOUND (OFF) by TEAM			
02:30	GOOD! FT by JONES, SAVANNAH	10-11	V 1	
02:17		12-11	H 1	GOOD! JUMPER by DOSSEY, MISTY
02:17				ASSIST by FERRELL, KATIE
02:00	TURNOVER (BADPASS) by TELEMAQUE, DAMAYA			
01:48		14-11	H 3	GOOD! JUMPER by EVANS, AYSIA [PNT]
01:18				FOUL (PERSONAL) by EVANS, AYSIA
01:18				SUB OUT: EVANS, AYSIA
01:18				SUB IN: MAYHUE, KATIE
01:18	GOOD! FT by CENTERS, KENNEDI	14-12	H 2	
01:18	MISSED FT by CENTERS, KENNEDI			
01:18				REBOUND (DEF) by FERRELL, KATIE
01:10				MISSED 3PTR by CHASTAIN, CLAIRE
01:07				REBOUND (OFF) by DOSSEY, MISTY
01:07				MISSED LAYUP by DOSSEY, MISTY
01:07				REBOUND (OFF) by DOSSEY, MISTY
01:07	FOUL (PERSONAL) by CENTERS, KENNEDI			
01:07	SUB OUT: CENTERS, KENNEDI			
01:07	SUB IN: LEWIS, ANTOINETTE			
01:07				MISSED FT by DOSSEY, MISTY
01:07				REBOUND (OFF) by TEAM
01:07		15-12	H 3	GOOD! FT by DOSSEY, MISTY
00:44	MISSED 3PTR by LEWIS, ANTOINETTE			
00:41				REBOUND (DEF) by FERRELL, KATIE
00:35				MISSED 3PTR by MAYHUE, KATIE
00:32				REBOUND (OFF) by CHASTAIN, CLAIRE
00:29		17-12	H 5	GOOD! JUMPER by FERRELL, KATIE
00:09	MISSED JUMPER by KINES, SHAFORIA			
00:03				REBOUND (DEF) by MILTON, TERRYN
00:00				MISSED 3PTR by FERRELL, KATIE
00:00				REBOUND (OFF) by TEAM

South Alabama 12, UT Arlington 17

Points from (This Period)	USA	UTA
In the Paint	2	4
Off Turns	3	5
2nd Chance	3	8
Fast Break	2	0
Bench	0	3

**Official Box Score**  
**South Alabama vs UT Arlington**  
**Second Quarter Statistics Only**  
**March 11, 2020 at College Park Center - Arlington, TX**



### South Alabama 14

No.	Player	S	Pts	FG	3FG	FT	OR	DR	TR	PF	A	TO	Blk	Stl	Min	+/-
02	KINES, SHAFORIA	G	7	2-5	1-3	2-2	0	4	4	1	1	1	0	1	10	-3
12	TELEMAQUE, DAMAYA	G	0	0-1	0-1	0-0	0	0	0	1	0	1	0	0	5	-5
14	JONES, SAVANNAH	G	3	1-3	1-3	0-0	0	0	0	1	1	0	0	0	8	-2
25	CENTERS, KENNEDI	F	0	0-2	0-1	0-0	0	0	0	0	0	0	0	0	7	5
35	LEWIS, ANTOINETTE	C	1	0-2	0-0	1-2	1	1	2	0	0	0	0	1	10	-3
03	MORROW, JAYLA	G	0	0-0	0-0	0-0	0	0	0	0	0	0	0	0	0	0
04	VAUGHT, MAHOGANY	G	0	0-0	0-0	0-0	0	0	0	0	1	0	0	1	2	-1
22	MALLARD, JAYLEN	F	0	0-0	0-0	0-0	0	0	0	1	0	0	0	0	4	-6
23	BUSTER, JALA	G	3	1-2	1-1	0-0	0	0	0	1	0	1	0	0	4	0
	TEAM						1	1	2	0		1				
<b>TOTALS</b>			<b>14</b>	<b>4-15</b>	<b>3-9</b>	<b>3-4</b>	<b>2</b>	<b>6</b>	<b>8</b>	<b>5</b>	<b>3</b>	<b>4</b>	<b>0</b>	<b>3</b>	<b>50</b>	

#### Shooting By Period

Period	FG	FG%	3FG	3FG%	FT	FT%
3rd Qtr	7-11	64%	3-4	75%	2-2	100%
4th Qtr	1-7	14%	0-0	0%	8-16	50%
2nd Half	4-15	27%	3-9	33%	3-4	75%
2nd Half	8-18	44%	3-4	75%	10-18	56%
Game	15-43	34.9%	8-20	40.0%	17-28	60.7%

Deadball Rebounds: 6,0

### UT Arlington 17

No.	Player	S	Pts	FG	3FG	FT	OR	DR	TR	PF	A	TO	Blk	Stl	Min	+/-
12	BENSON, MARIE	F	0	0-1	0-0	0-0	0	1	1	0	0	0	0	1	9	6
20	CHASTAIN, CLAIRE	G	6	2-2	1-1	1-2	0	0	0	1	0	1	0	1	4	4
21	MILTON, TERRY	G	0	0-2	0-1	0-0	0	1	1	0	1	1	0	0	7	-2
24	EVANS, AYSIA	G	0	0-0	0-0	0-0	0	0	0	0	0	0	0	0	0	0
41	FERRELL, KATIE	F	1	0-1	0-1	1-2	0	5	5	1	2	0	0	0	10	3
01	MAYHUE, KATIE	G	3	1-1	1-1	0-0	0	0	0	0	1	0	0	1	6	9
03	DOSSEY, MISTY	C	2	1-1	0-0	0-0	0	0	0	1	0	0	0	0	2	-1
31	WICKWARE, BRE	F	5	2-3	0-1	1-3	0	2	2	0	2	0	0	0	10	3
33	BENSON, BARBARA	G	0	0-0	0-0	0-0	0	0	0	0	0	0	0	0	0	0
45	HALVERSON, EMMA	F	0	0-0	0-0	0-0	0	0	0	0	0	2	0	0	2	-7
	TEAM						0	0	0	0		0				
<b>TOTALS</b>			<b>17</b>	<b>6-11</b>	<b>2-5</b>	<b>3-7</b>	<b>0</b>	<b>9</b>	<b>9</b>	<b>3</b>	<b>6</b>	<b>4</b>	<b>0</b>	<b>3</b>	<b>50</b>	

#### Shooting By Period

Period	FG	FG%	3FG	3FG%	FT	FT%
3rd Qtr	3-16	19%	0-6	00%	1-2	50%
4th Qtr	1-13	08%	0-6	00%	4-6	67%
2nd Half	6-11	55%	2-5	40%	3-7	43%
2nd Half	4-29	14%	0-12	00%	5-8	63%
Game	16-60	26.7%	4-23	17.4%	11-19	57.9%

Deadball Rebounds: 4,0

#### Game Notes:

Officials: Jody Cantrell, Angel Stanton, Troy Winders  
Attendance: 848

Start Time: 08:02 PM ET  
End Time: 10:07 PM ET  
Game Duration: 2:05

Score	1st	2nd	3rd	4th	TOT
USA	12	14	19	10	<b>55</b>
UTA	17	17	7	6	<b>47</b>

Points from (This Period)	USA	UTA
In the Paint	2	6
Off Turns	8	2
2nd Chance	1	0
Fast Break	5	5
Bench	3	10

**Official Play-By-Play**  
**South Alabama vs UT Arlington**  
**Second Quarter**  
**March 11, 2020 at College Park Center - Arlington, TX**



**Period 2**

**Starters:**

**South Alabama:** 2 KINES, SHAFORIA (G); 12 TEHEMAQUE, DAMAYA (G); 14 JONES, SAVANNAH (G); 25 CENTERS, KENNEDI (F); 35 LEWIS, ANTOINETTE (C);

**UT Arlington:** 12 BENSON, MARIE (F); 20 CHASTAIN, CLAIRE (G); 21 MILTON, TERRY (G); 24 EVANS, AYSIA (G); 41 FERRELL, KATIE (F);

Time	VISITORS: South Alabama	Score	Margin	HOME: UT Arlington
10:00				SUB OUT: CHASTAIN, CLAIRE
10:00				SUB OUT: MILTON, TERRY
10:00				SUB IN: BENSON, MARIE
10:00				SUB IN: WICKWARE, BRE
09:40	TURNOVER (LOSTBALL) by TEHEMAQUE, DAMAYA			
09:40				STEAL by BENSON, MARIE
09:36				MISSED JUMPER by BENSON, MARIE
09:33	REBOUND (DEF) by KINES, SHAFORIA			
09:24	MISSED 3PTR by KINES, SHAFORIA			
09:23				REBOUND (DEF) by BENSON, MARIE
09:23	FOUL (PERSONAL) by MALLARD, JAYLEN			
09:09		19-12	H 7	GOOD! LAYUP by DOSSEY, MISTY
09:09				ASSIST by WICKWARE, BRE
08:52	MISSED LAYUP by LEWIS, ANTOINETTE			
08:49				REBOUND (DEF) by WICKWARE, BRE
08:37				MISSED 3PTR by WICKWARE, BRE
08:33	REBOUND (DEF) by KINES, SHAFORIA			
08:22	MISSED 3PTR by KINES, SHAFORIA			
08:20	REBOUND (OFF) by LEWIS, ANTOINETTE			
08:20				FOUL (PERSONAL) by DOSSEY, MISTY
08:20				SUB OUT: DOSSEY, MISTY
08:20				SUB IN: CHASTAIN, CLAIRE
08:20	SUB OUT: MALLARD, JAYLEN			
08:20	SUB IN: CENTERS, KENNEDI			
08:20	MISSED FT by LEWIS, ANTOINETTE			
08:20	REBOUND (OFF) by TEAM			
08:20	GOOD! FT by LEWIS, ANTOINETTE	19-13	H 6	
07:53		21-13	H 8	GOOD! LAYUP by WICKWARE, BRE
07:53				ASSIST by FERRELL, KATIE
07:26	MISSED 3PTR by JONES, SAVANNAH			
07:23				REBOUND (DEF) by WICKWARE, BRE
07:03				MISSED 3PTR by FERRELL, KATIE
06:59	REBOUND (DEF) by KINES, SHAFORIA			
06:56	MISSED LAYUP by KINES, SHAFORIA			
06:53				REBOUND (DEF) by FERRELL, KATIE
06:48		23-13	H 10	GOOD! JUMPER by CHASTAIN, CLAIRE [FB]
06:48				ASSIST by FERRELL, KATIE
06:47	TIMEOUT 30SEC			
06:47				
06:47				SUB OUT: MAYHUE, KATIE
06:47				SUB IN: MILTON, TERRY
06:22	GOOD! 3PTR by JONES, SAVANNAH	23-16	H 7	
06:22	ASSIST by KINES, SHAFORIA			
06:04		26-16	H 10	GOOD! 3PTR by CHASTAIN, CLAIRE
06:04				ASSIST by WICKWARE, BRE
05:52	MISSED 3PTR by JONES, SAVANNAH			
05:49				REBOUND (DEF) by FERRELL, KATIE
05:40				MISSED 3PTR by MILTON, TERRY
05:39	REBOUND (DEF) by TEAM			
05:19	MISSED 3PTR by TEHEMAQUE, DAMAYA			
05:17				REBOUND (DEF) by MILTON, TERRY
05:06	FOUL (PERSONAL) by TEHEMAQUE, DAMAYA			
05:06	SUB OUT: TEHEMAQUE, DAMAYA			
05:06	SUB IN: BUSTER, JALA			
05:06				MISSED FT by CHASTAIN, CLAIRE
05:06				REBOUND (OFF) by TEAM
05:06		27-16	H 11	GOOD! FT by CHASTAIN, CLAIRE
04:43	TURNOVER (LOSTBALL) by BUSTER, JALA			
04:43				STEAL by CHASTAIN, CLAIRE
04:22				FOUL (OFF) by CHASTAIN, CLAIRE
04:22				TURNOVER (OFFENSIVE) by CHASTAIN, CLAIRE
04:22				SUB OUT: CHASTAIN, CLAIRE
04:22				SUB IN: HALVERSON, EMMA
04:03	GOOD! 3PTR by BUSTER, JALA	27-19	H 8	
04:03	ASSIST by JONES, SAVANNAH			
03:51				MISSED LAYUP by MILTON, TERRY
03:47	REBOUND (DEF) by LEWIS, ANTOINETTE			
03:30				FOUL (PERSONAL) by FERRELL, KATIE
03:30	SUB OUT: JONES, SAVANNAH			
03:30	SUB IN: VAUGHT, MAHOGANY			



Time	VISITORS: South Alabama	Score	Margin	HOME: UT Arlington
03:30	GOOD! FT by KINES, SHAFORIA	27-20	H 7	
03:30	GOOD! FT by KINES, SHAFORIA	27-21	H 6	
03:13				TURNOVER (LOSTBALL) by HALVERSON, EMMA
03:13	STEAL by LEWIS, ANTOINETTE			
02:49	MISSED JUMPER by CENTERS, KENNEDI			
02:40				REBOUND (DEF) by FERRELL, KATIE
02:34				TURNOVER (LOSTBALL) by HALVERSON, EMMA
02:34	STEAL by VAUGHT, MAHOGANY			
02:29	GOOD! LAYUP by KINES, SHAFORIA [FB]	27-23	H 4	
02:29	ASSIST by VAUGHT, MAHOGANY			
02:25				TIMEOUT 30SEC
02:25				SUB OUT: HALVERSON, EMMA
02:25				SUB IN: MAYHUE, KATIE
02:25	SUB OUT: CENTERS, KENNEDI			
02:25	SUB IN: MALLARD, JAYLEN			
01:57		30-23	H 7	GOOD! 3PTR by MAYHUE, KATIE
01:57				ASSIST by MILTON, TERRYN
01:50	TURNOVER (LOSTBALL) by KINES, SHAFORIA			
01:50				STEAL by MAYHUE, KATIE
01:45		32-23	H 9	GOOD! JUMPER by WICKWARE, BRE [FB/PNT]
01:45				ASSIST by MAYHUE, KATIE
01:45	FOUL (PERSONAL) by KINES, SHAFORIA			
01:45				MISSED FT by WICKWARE, BRE
01:45	REBOUND (DEF) by KINES, SHAFORIA			
01:34	MISSED JUMPER by LEWIS, ANTOINETTE			
01:23				REBOUND (DEF) by FERRELL, KATIE
01:22	FOUL (PERSONAL) by BUSTER, JALA			
01:22	SUB OUT: VAUGHT, MAHOGANY			
01:22	SUB IN: JONES, SAVANNAH			
01:22				MISSED FT by FERRELL, KATIE
01:22				REBOUND (OFF) by TEAM
01:22		33-23	H 10	GOOD! FT by FERRELL, KATIE
01:10	MISSED LAYUP by BUSTER, JALA			
01:05				REBOUND (DEF) by FERRELL, KATIE
01:03	FOUL (PERSONAL) by JONES, SAVANNAH			
01:03	SUB OUT: BUSTER, JALA			
01:03	SUB IN: CENTERS, KENNEDI			
01:03				MISSED FT by WICKWARE, BRE
01:03				REBOUND (OFF) by TEAM
01:03		34-23	H 11	GOOD! FT by WICKWARE, BRE [FB]
00:35	MISSED 3PTR by CENTERS, KENNEDI			
00:34	REBOUND (OFF) by TEAM			
00:32	TURNOVER (SHOTCLOCK) by TEAM			
00:32				SUB OUT: BENSON, MARIE
00:32				SUB IN: DOSSEY, MISTY
00:05				TURNOVER (BADPASS) by MILTON, TERRYN
00:05	STEAL by KINES, SHAFORIA			
00:01	GOOD! 3PTR by KINES, SHAFORIA [FB]	34-26	H 8	

South Alabama 26, UT Arlington 34

Points from (This Period)	USA	UTA
In the Paint	2	6
Off Turns	8	2
2nd Chance	1	0
Fast Break	5	5
Bench	3	10

**Official Box Score**  
**South Alabama vs UT Arlington**  
**Second Half Statistics Only**  
**March 11, 2020 at College Park Center - Arlington, TX**



### South Alabama 29

No.	Player	S	Pts	FG	3FG	FT	OR	DR	TR	PF	A	TO	Blk	Stl	Min	+/-
02	KINES, SHAFORIA	G	13	3-5	2-3	5-6	0	1	1	1	2	2	0	0	20	16
03	MORROW, JAYLA	G	0	0-0	0-0	0-0	0	0	0	0	0	0	0	0	0	0
04	VAUGHT, MAHOGANY	G	5	2-3	1-1	0-2	0	1	1	0	0	1	0	1	10	6
12	TELEMAQUE, DAMAYA	G	0	0-0	0-0	0-0	0	2	2	1	1	2	0	0	10	10
14	JONES, SAVANNAH	G	0	0-3	0-0	0-0	0	0	0	1	1	0	1	3	20	16
22	MALLARD, JAYLEN	F	0	0-0	0-0	0-0	0	0	0	1	0	0	0	0	4	2
23	BUSTER, JALA	G	2	1-1	0-0	0-0	0	0	0	2	1	2	0	0	2	3
25	CENTERS, KENNEDI	F	0	0-3	0-0	0-2	0	8	8	1	1	3	0	1	18	13
35	LEWIS, ANTOINETTE	C	9	2-3	0-0	5-8	0	7	7	2	0	2	0	2	16	14
	TEAM		0	0-0	0-0	0-0	1	2	3	0	0	1	0	0	0	
<b>TOTALS</b>			<b>29</b>	<b>8-18</b>	<b>3-4</b>	<b>10-18</b>	<b>1</b>	<b>21</b>	<b>22</b>	<b>9</b>	<b>6</b>	<b>13</b>	<b>1</b>	<b>7</b>	<b>100</b>	

#### Shooting By Period

Period	FG	FG%	3FG	3FG%	FT	FT%
3rd Qtr	7-11	64%	3-4	75%	2-2	100%
4th Qtr	1-7	14%	0-0	0%	8-16	50%
2nd Half	8-18	44%	3-4	75%	10-18	56%
Game	15-43	34.9%	8-20	40.0%	17-28	60.7%

Deadball Rebounds: 6,0

Last FG Half: USA 4th-04:55

### UT Arlington 13

No.	Player	S	Pts	FG	3FG	FT	OR	DR	TR	PF	A	TO	Blk	Stl	Min	+/-
01	MAYHUE, KATIE	G	0	0-3	0-2	0-0	1	0	1	2	0	0	0	0	6	-3
03	DOSSEY, MISTY	C	0	0-0	0-0	0-0	2	0	2	3	1	1	0	0	3	-2
12	BENSON, MARIE	F	3	1-4	0-0	1-2	0	3	3	3	0	2	0	3	17	-14
20	CHASTAIN, CLAIRE	G	3	1-8	0-5	1-2	0	1	1	0	1	0	0	1	19	-14
21	MILTON, TERRY	G	6	2-5	0-1	2-2	0	2	2	2	1	1	0	0	19	-14
24	EVANS, AYSIA	G	1	0-4	0-3	1-2	1	0	1	2	0	2	0	0	14	-7
31	WICKWARE, BRE	F	0	0-0	0-0	0-0	0	0	0	1	0	1	0	0	1	-2
33	BENSON, BARBARA	G	0	0-1	0-1	0-0	0	0	0	0	0	1	0	0	2	-8
41	FERRELL, KATIE	F	0	0-4	0-0	0-0	1	6	7	1	0	1	1	2	16	-14
45	HALVERSON, EMMA	F	0	0-0	0-0	0-0	1	0	1	1	0	1	0	1	3	-2
	TEAM		0	0-0	0-0	0-0	1	1	2	1	0	1	0	0	0	
<b>TOTALS</b>			<b>13</b>	<b>4-29</b>	<b>0-12</b>	<b>5-8</b>	<b>7</b>	<b>13</b>	<b>20</b>	<b>16</b>	<b>3</b>	<b>11</b>	<b>1</b>	<b>7</b>	<b>100</b>	

#### Shooting By Period

Period	FG	FG%	3FG	3FG%	FT	FT%
3rd Qtr	3-16	19%	0-6	00%	1-2	50%
4th Qtr	1-13	08%	0-6	00%	4-6	67%
2nd Half	4-29	14%	0-12	00%	5-8	63%
Game	16-60	26.7%	4-23	17.4%	11-19	57.9%

Deadball Rebounds: 4,0

Last FG Half: UTA 4th-00:35

#### Game Notes:

Officials: Jody Cantrell, Angel Stanton, Troy Winders  
Attendance: 848

Start Time: 08:02 PM ET  
End Time: 10:07 PM ET  
Game Duration: 2:05

Score	1st	2nd	3rd	4th	TOT
USA	12	14	19	10	55
UTA	17	17	7	6	47

Points from (This Period)	USA	UTA
In the Paint	8	4
Off Turns	7	6
2nd Chance	2	0
Fast Break	4	5
Bench	7	0

**Official Box Score**  
**South Alabama vs UT Arlington**  
**Third Quarter Statistics Only**  
**March 11, 2020 at College Park Center - Arlington, TX**



### South Alabama 29

No.	Player	S	Pts	FG	3FG	FT	OR	DR	TR	PF	A	TO	Blk	Stl	Min	+/-
02	KINES, SHAFORIA	G	6	2-3	2-3	0-0	0	1	1	1	2	1	0	0	10	12
12	TELEMAQUE, DAMAYA	G	0	0-0	0-0	0-0	0	2	2	0	1	2	0	0	7	6
14	JONES, SAVANNAH	G	0	0-1	0-0	0-0	0	0	0	1	1	0	1	3	10	12
25	CENTERS, KENNEDI	F	0	0-1	0-0	0-0	0	2	2	0	1	1	0	1	8	9
35	LEWIS, ANTOINETTE	C	6	2-3	0-0	2-2	0	4	4	1	0	1	0	1	8	9
03	MORROW, JAYLA	G	0	0-0	0-0	0-0	0	0	0	0	0	0	0	0	0	0
04	VAUGHT, MAHOGANY	G	5	2-2	1-1	0-0	0	0	0	0	0	0	0	0	3	6
22	MALLARD, JAYLEN	F	0	0-0	0-0	0-0	0	0	0	0	0	0	0	0	2	3
23	BUSTER, JALA	G	2	1-1	0-0	0-0	0	0	0	2	1	2	0	0	2	3
	TEAM						0	1	1	0		1				
<b>TOTALS</b>			<b>19</b>	<b>7-11</b>	<b>3-4</b>	<b>2-2</b>	<b>0</b>	<b>10</b>	<b>10</b>	<b>5</b>	<b>6</b>	<b>8</b>	<b>1</b>	<b>5</b>	<b>50</b>	

#### Shooting By Period

Period	FG	FG%	3FG	3FG%	FT	FT%
2nd Half	0-0	0%	0-0	0%	0-0	0%
Game	15-43	34.9%	8-20	40.0%	17-28	60.7%

Deadball Rebounds: 6,0

### UT Arlington 13

No.	Player	S	Pts	FG	3FG	FT	OR	DR	TR	PF	A	TO	Blk	Stl	Min	+/-
12	BENSON, MARIE	F	3	1-3	0-0	1-2	0	1	1	1	0	1	0	1	10	-12
20	CHASTAIN, CLAIRE	G	0	0-5	0-3	0-0	0	1	1	0	1	0	0	0	10	-12
21	MILTON, TERRY	G	4	2-3	0-0	0-0	0	0	0	2	1	1	0	0	9	-10
24	EVANS, AYSIA	G	0	0-2	0-2	0-0	0	0	0	0	0	2	0	0	6	-6
41	FERRELL, KATIE	F	0	0-1	0-0	0-0	1	2	3	0	0	1	1	2	7	-10
01	MAYHUE, KATIE	G	0	0-1	0-0	0-0	1	0	1	0	0	0	0	0	4	-2
03	DOSSEY, MISTY	C	0	0-0	0-0	0-0	2	0	2	2	1	1	0	0	3	-2
31	WICKWARE, BRE	F	0	0-0	0-0	0-0	0	0	0	0	0	0	0	0	0	0
33	BENSON, BARBARA	G	0	0-1	0-1	0-0	0	0	0	0	0	1	0	0	1	-6
45	HALVERSON, EMMA	F	0	0-0	0-0	0-0	0	0	0	0	0	0	0	0	0	0
	TEAM						0	0	0	0		0				
<b>TOTALS</b>			<b>7</b>	<b>3-16</b>	<b>0-6</b>	<b>1-2</b>	<b>4</b>	<b>4</b>	<b>8</b>	<b>5</b>	<b>3</b>	<b>7</b>	<b>1</b>	<b>3</b>	<b>50</b>	

#### Shooting By Period

Period	FG	FG%	3FG	3FG%	FT	FT%
2nd Half	0-0	0%	0-0	0%	0-0	0%
Game	16-60	26.7%	4-23	17.4%	11-19	57.9%

Deadball Rebounds: 4,0

#### Game Notes:

Officials: Jody Cantrell, Angel Stanton, Troy Winders  
Attendance: 848

Start Time: 08:02 PM ET  
End Time: 10:07 PM ET  
Game Duration: 2:05

Score	1st	2nd	3rd	4th	TOT
USA	12	14	19	10	<b>55</b>
UTA	17	17	7	6	<b>47</b>

Points from (This Period)	USA	UTA
In the Paint	6	4
Off Turns	5	4
2nd Chance	0	0
Fast Break	2	0
Bench	7	0

**Official Play-By-Play**  
**South Alabama vs UT Arlington**  
**Third Quarter**  
**March 11, 2020 at College Park Center - Arlington, TX**



**Period 3**

**Starters:**

**South Alabama:** 2 KINES, SHAFORIA (G); 12 TEHEMAQUE, DAMAYA (G); 14 JONES, SAVANNAH (G); 25 CENTERS, KENNEDI (F); 35 LEWIS, ANTOINETTE (C);

**UT Arlington:** 12 BENSON, MARIE (F); 20 CHASTAIN, CLAIRE (G); 21 MILTON, TERRY (G); 24 EVANS, AYSIA (G); 41 FERRELL, KATIE (F);

Time	VISITORS: South Alabama	Score	Margin	HOME: UT Arlington
10:00				SUB OUT: MAYHUE, KATIE
10:00				SUB OUT: DOSSEY, MISTY
10:00				SUB OUT: WICKWARE, BRE
10:00				SUB IN: BENSON, MARIE
10:00				SUB IN: CHASTAIN, CLAIRE
10:00				SUB IN: EVANS, AYSIA
10:00	SUB OUT: MALLARD, JAYLEN			
10:00	SUB IN: TEHEMAQUE, DAMAYA			
09:52	MISSED JUMPER by LEWIS, ANTOINETTE			
09:50				REBOUND (DEF) by BENSON, MARIE
09:50	FOUL (PERSONAL) by LEWIS, ANTOINETTE			
09:35				MISSED JUMPER by BENSON, MARIE
09:31	REBOUND (DEF) by LEWIS, ANTOINETTE			
09:23	GOOD! LAYUP by LEWIS, ANTOINETTE	34-28	H 6	
09:23	ASSIST by CENTERS, KENNEDI			
09:14				FOUL (OFF) by MILTON, TERRY
09:14				TURNOVER (OFFENSIVE) by MILTON, TERRY
08:48	TURNOVER (LOSTBALL) by TEHEMAQUE, DAMAYA			
08:48				STEAL by FERRELL, KATIE
08:39				MISSED LAYUP by CHASTAIN, CLAIRE
08:37				REBOUND (OFF) by FERRELL, KATIE
08:35				MISSED LAYUP by FERRELL, KATIE
08:33	REBOUND (DEF) by LEWIS, ANTOINETTE			
08:30	FOUL (OFF) by KINES, SHAFORIA			
08:30	TURNOVER (OFFENSIVE) by KINES, SHAFORIA			
08:16				MISSED JUMPER by BENSON, MARIE
08:13	REBOUND (DEF) by KINES, SHAFORIA			
08:08				FOUL (PERSONAL) by BENSON, MARIE
08:08	GOOD! FT by LEWIS, ANTOINETTE [FB]	34-29	H 5	
08:08	GOOD! FT by LEWIS, ANTOINETTE [FB]	34-30	H 4	
07:49				TURNOVER (BADPASS) by EVANS, AYSIA
07:49	STEAL by JONES, SAVANNAH			
07:41	MISSED JUMPER by CENTERS, KENNEDI			
07:41				BLOCK by FERRELL, KATIE
07:37				REBOUND (DEF) by CHASTAIN, CLAIRE
07:28				MISSED 3PTR by EVANS, AYSIA
07:26	REBOUND (DEF) by TEAM			
07:26				SUB OUT: EVANS, AYSIA
07:26				SUB IN: MAYHUE, KATIE
07:09				FOUL (PERSONAL) by MILTON, TERRY
07:09				SUB OUT: FERRELL, KATIE
07:09				SUB IN: DOSSEY, MISTY
07:01	GOOD! LAYUP by LEWIS, ANTOINETTE	34-32	H 2	
07:01	ASSIST by JONES, SAVANNAH			
06:48				MISSED JUMPER by CHASTAIN, CLAIRE
06:47	REBOUND (DEF) by LEWIS, ANTOINETTE			
06:47				FOUL (PERSONAL) by DOSSEY, MISTY
06:47				SUB OUT: DOSSEY, MISTY
06:47				SUB IN: FERRELL, KATIE
06:35	MISSED JUMPER by JONES, SAVANNAH			
06:32				REBOUND (DEF) by FERRELL, KATIE
06:24				TURNOVER (BADPASS) by FERRELL, KATIE
06:24	STEAL by CENTERS, KENNEDI			
06:08	MISSED 3PTR by KINES, SHAFORIA			
06:05				REBOUND (DEF) by FERRELL, KATIE
05:58				MISSED JUMPER by MILTON, TERRY
05:55	REBOUND (DEF) by CENTERS, KENNEDI			
05:47	TURNOVER (BADPASS) by TEHEMAQUE, DAMAYA			
05:47				STEAL by BENSON, MARIE
05:39				MISSED JUMPER by MAYHUE, KATIE
05:36				REBOUND (OFF) by MAYHUE, KATIE
05:31				MISSED 3PTR by CHASTAIN, CLAIRE
05:31	BLOCK by JONES, SAVANNAH			
05:25	REBOUND (DEF) by TEHEMAQUE, DAMAYA			
05:05	TURNOVER (LOSTBALL) by LEWIS, ANTOINETTE			
05:05				STEAL by FERRELL, KATIE
04:54		36-32	H 4	GOOD! LAYUP by MILTON, TERRY [PNT]
04:54				ASSIST by CHASTAIN, CLAIRE
04:49				
04:49				SUB OUT: MILTON, TERRY

Time	VISITORS: South Alabama	Score	Margin	HOME: UT Arlington
04:49				SUB IN: EVANS, AYSIA
04:49	SUB OUT: CENTERS, KENNEDI			
04:49	SUB OUT: LEWIS, ANTOINETTE			
04:49	SUB IN: MALLARD, JAYLEN			
04:49	SUB IN: BUSTER, JALA			
04:24	FOUL (OFF) by BUSTER, JALA			
04:24	TURNOVER (OFFENSIVE) by BUSTER, JALA			
04:13				MISSED 3PTR by CHASTAIN, CLAIRE
04:11	REBOUND (DEF) by TELEMAQUE, DAMAYA			
04:01	GOOD! JUMPER by BUSTER, JALA	36-34	H 2	
04:01	ASSIST by TELEMAQUE, DAMAYA			
03:52				TURNOVER (LOSTBALL) by EVANS, AYSIA
03:52	STEAL by JONES, SAVANNAH			
03:45	FOUL (OFF) by BUSTER, JALA			
03:45	TURNOVER (OFFENSIVE) by BUSTER, JALA			
03:45				SUB OUT: MAYHUE, KATIE
03:45				SUB OUT: FERRELL, KATIE
03:45				SUB IN: DOSSEY, MISTY
03:45				SUB IN: MILTON, TERRYN
03:29		38-34	H 4	GOOD! JUMPER by MILTON, TERRYN
03:29				ASSIST by DOSSEY, MISTY
03:00	GOOD! 3PTR by KINES, SHAFORIA	38-37	H 1	
03:00	ASSIST by BUSTER, JALA			
02:47	FOUL (PERSONAL) by JONES, SAVANNAH			
02:47	SUB OUT: MALLARD, JAYLEN			
02:47	SUB OUT: BUSTER, JALA			
02:47	SUB IN: CENTERS, KENNEDI			
02:47	SUB IN: LEWIS, ANTOINETTE			
02:47		39-37	H 2	GOOD! FT by BENSON, MARIE
02:47				MISSED FT by BENSON, MARIE
02:46	REBOUND (DEF) by LEWIS, ANTOINETTE			
02:36	TURNOVER (10SEC) by TEAM			
02:36	SUB OUT: TELEMAQUE, DAMAYA			
02:36	SUB IN: VAUGHT, MAHOGANY			
02:29				MISSED 3PTR by CHASTAIN, CLAIRE
02:26				REBOUND (OFF) by DOSSEY, MISTY
02:17				TURNOVER (LOSTBALL) by BENSON, MARIE
02:17	STEAL by LEWIS, ANTOINETTE			
02:09	TURNOVER (BADPASS) by CENTERS, KENNEDI			
01:55				MISSED 3PTR by EVANS, AYSIA
01:51				REBOUND (OFF) by DOSSEY, MISTY
01:44				FOUL (OFF) by DOSSEY, MISTY
01:44				TURNOVER (OFFENSIVE) by DOSSEY, MISTY
01:24				SUB OUT: DOSSEY, MISTY
01:24				SUB OUT: EVANS, AYSIA
01:24				SUB IN: BENSON, BARBARA
01:24				SUB IN: FERRELL, KATIE
01:23	GOOD! LAYUP by VAUGHT, MAHOGANY [PNT]	39-39	T	
01:23	ASSIST by KINES, SHAFORIA			
01:09				MISSED 3PTR by BENSON, BARBARA
01:05	REBOUND (DEF) by CENTERS, KENNEDI			
00:57	GOOD! 3PTR by VAUGHT, MAHOGANY	39-42	V 3	
00:57	ASSIST by KINES, SHAFORIA			
00:39				TURNOVER (BADPASS) by BENSON, BARBARA
00:39	STEAL by JONES, SAVANNAH			
00:30	GOOD! 3PTR by KINES, SHAFORIA	39-45	V 6	
00:09		41-45	V 4	GOOD! LAYUP by BENSON, MARIE
00:09				ASSIST by MILTON, TERRYN

South Alabama 45, UT Arlington 41

Points from (This Period)	USA	UTA
In the Paint	6	4
Off Turns	5	4
2nd Chance	0	0
Fast Break	2	0
Bench	7	0

**Official Box Score**  
**South Alabama vs UT Arlington**  
**Fourth Quarter Statistics Only**  
**March 11, 2020 at College Park Center - Arlington, TX**



### South Alabama 10

No.	Player	S	Pts	FG	3FG	FT	OR	DR	TR	PF	A	TO	Blk	Stl	Min	+/-
02	KINES, SHAFORIA	G	7	1-2	0-0	5-6	0	0	0	0	0	1	0	0	10	4
12	TELEMAQUE, DAMAYA	G	0	0-0	0-0	0-0	0	0	0	1	0	0	0	0	3	4
14	JONES, SAVANNAH	G	0	0-2	0-0	0-0	0	0	0	0	0	0	0	0	10	4
25	CENTERS, KENNEDI	F	0	0-2	0-0	0-2	0	6	6	1	0	2	0	0	10	4
35	LEWIS, ANTOINETTE	C	3	0-0	0-0	3-6	0	3	3	1	0	1	0	1	8	5
03	MORROW, JAYLA	G	0	0-0	0-0	0-0	0	0	0	0	0	0	0	0	0	0
04	VAUGHT, MAHOGANY	G	0	0-1	0-0	0-2	0	1	1	0	0	1	0	1	7	0
22	MALLARD, JAYLEN	F	0	0-0	0-0	0-0	0	0	0	1	0	0	0	0	2	-1
23	BUSTER, JALA	G	0	0-0	0-0	0-0	0	0	0	0	0	0	0	0	0	0
	TEAM						1	1	2	0		0				
<b>TOTALS</b>			<b>10</b>	<b>1-7</b>	<b>0-0</b>	<b>8-16</b>	<b>1</b>	<b>11</b>	<b>12</b>	<b>4</b>	<b>0</b>	<b>5</b>	<b>0</b>	<b>2</b>	<b>50</b>	

#### Shooting By Period

Period	FG	FG%	3FG	3FG%	FT	FT%
Game	15-43	34.9%	8-20	40.0%	17-28	60.7%

Deadball Rebounds: 6,0

### UT Arlington 6

No.	Player	S	Pts	FG	3FG	FT	OR	DR	TR	PF	A	TO	Blk	Stl	Min	+/-
12	BENSON, MARIE	F	0	0-1	0-0	0-0	0	2	2	2	0	1	0	2	7	-2
20	CHASTAIN, CLAIRE	G	3	1-3	0-2	1-2	0	0	0	0	0	0	0	1	9	-2
21	MILTON, TERRY	G	2	0-2	0-1	2-2	0	2	2	0	0	0	0	0	10	-4
24	EVANS, AYSIA	G	1	0-2	0-1	1-2	1	0	1	2	0	0	0	0	8	-1
41	FERRELL, KATIE	F	0	0-3	0-0	0-0	0	4	4	1	0	0	0	0	9	-4
01	MAYHUE, KATIE	G	0	0-2	0-2	0-0	0	0	0	2	0	0	0	0	2	-1
03	DOSSEY, MISTY	C	0	0-0	0-0	0-0	0	0	0	1	0	0	0	0	0	0
31	WICKWARE, BRE	F	0	0-0	0-0	0-0	0	0	0	1	0	1	0	0	1	-2
33	BENSON, BARBARA	G	0	0-0	0-0	0-0	0	0	0	0	0	0	0	0	1	-2
45	HALVERSON, EMMA	F	0	0-0	0-0	0-0	1	0	1	1	0	1	0	1	3	-2
	TEAM						1	1	2	1		1				
<b>TOTALS</b>			<b>6</b>	<b>1-13</b>	<b>0-6</b>	<b>4-6</b>	<b>3</b>	<b>9</b>	<b>12</b>	<b>11</b>	<b>0</b>	<b>4</b>	<b>0</b>	<b>4</b>	<b>50</b>	

#### Shooting By Period

Period	FG	FG%	3FG	3FG%	FT	FT%
Game	16-60	26.7%	4-23	17.4%	11-19	57.9%

Deadball Rebounds: 4,0

#### Game Notes:

Officials: Jody Cantrell, Angel Stanton, Troy Winders  
Attendance: 848

Start Time: 08:02 PM ET  
End Time: 10:07 PM ET  
Game Duration: 2:05

Score	1st	2nd	3rd	4th	TOT
USA	12	14	19	10	<b>55</b>
UTA	17	17	7	6	<b>47</b>

Points from (This Period)	USA	UTA
In the Paint	2	0
Off Turns	2	2
2nd Chance	2	0
Fast Break	2	5
Bench	0	0

**Official Play-By-Play**  
**South Alabama vs UT Arlington**  
**Fourth Quarter**  
**March 11, 2020 at College Park Center - Arlington, TX**



**Period 4**

**Starters:**

**South Alabama:** 2 KINES, SHAFORIA (G); 12 TELEMAQUE, DAMAYA (G); 14 JONES, SAVANNAH (G); 25 CENTERS, KENNEDI (F); 35 LEWIS, ANTOINETTE (C);  
**UT Arlington:** 12 BENSON, MARIE (F); 20 CHASTAIN, CLAIRE (G); 21 MILTON, TERRY (G); 24 EVANS, AYSIA (G); 41 FERRELL, KATIE (F);

Time	VISITORS: South Alabama	Score	Margin	HOME: UT Arlington
10:00				SUB OUT: CHASTAIN, CLAIRE
10:00				SUB IN: WICKWARE, BRE
09:49				MISSED 3PTR by MILTON, TERRY
09:46	REBOUND (DEF) by CENTERS, KENNEDI			
09:31				FOUL (PERSONAL) by BENSON, MARIE
09:31	GOOD! FT by LEWIS, ANTOINETTE	41-46	V 5	
09:31	GOOD! FT by LEWIS, ANTOINETTE	41-47	V 6	
09:08				TURNOVER (LOSTBALL) by WICKWARE, BRE
09:08	STEAL by LEWIS, ANTOINETTE			
09:08				FOUL (PERSONAL) by WICKWARE, BRE
09:08				SUB OUT: WICKWARE, BRE
09:08				SUB OUT: BENSON, BARBARA
09:08				SUB IN: CHASTAIN, CLAIRE
09:08				SUB IN: EVANS, AYSIA
08:52	TURNOVER (BADPASS) by VAUGHT, MAHOGANY			
08:52				STEAL by BENSON, MARIE
08:47				FOUL (OFF) by BENSON, MARIE
08:47				TURNOVER (OFFENSIVE) by BENSON, MARIE
08:47				SUB OUT: BENSON, MARIE
08:47				SUB IN: DOSSEY, MISTY
08:31				FOUL (PERSONAL) by DOSSEY, MISTY
08:31				SUB OUT: DOSSEY, MISTY
08:31				SUB IN: HALVERSON, EMMA
08:26	MISSED JUMPER by JONES, SAVANNAH			
08:24				REBOUND (DEF) by FERRELL, KATIE
08:03				MISSED JUMPER by FERRELL, KATIE
08:00	REBOUND (DEF) by VAUGHT, MAHOGANY			
07:56	MISSED LAYUP by VAUGHT, MAHOGANY			
07:53				REBOUND (DEF) by FERRELL, KATIE
07:44				MISSED LAYUP by FERRELL, KATIE
07:41				REBOUND (OFF) by HALVERSON, EMMA
07:41				TURNOVER (LOSTBALL) by HALVERSON, EMMA
07:41	STEAL by VAUGHT, MAHOGANY			
07:41				TIMEOUT 30SEC
07:41				
07:41	SUB OUT: LEWIS, ANTOINETTE			
07:41	SUB IN: MALLARD, JAYLEN			
07:13	TURNOVER (LOSTBALL) by CENTERS, KENNEDI			
07:13				STEAL by HALVERSON, EMMA
06:55				MISSED 3PTR by EVANS, AYSIA
06:52	REBOUND (DEF) by CENTERS, KENNEDI			
06:39	MISSED JUMPER by JONES, SAVANNAH			
06:36				REBOUND (DEF) by FERRELL, KATIE
06:23	FOUL (PERSONAL) by MALLARD, JAYLEN			
06:23		42-47	V 5	GOOD! FT by CHASTAIN, CLAIRE
06:23				MISSED FT by CHASTAIN, CLAIRE
06:22	REBOUND (DEF) by CENTERS, KENNEDI			
06:06	SUB OUT: VAUGHT, MAHOGANY			
06:06	SUB OUT: MALLARD, JAYLEN			
06:06	SUB IN: TELEMAQUE, DAMAYA			
06:06	SUB IN: LEWIS, ANTOINETTE			
06:04				FOUL (PERSONAL) by HALVERSON, EMMA
06:04	MISSED FT by LEWIS, ANTOINETTE			
06:04	REBOUND (OFF) by TEAM			
06:04	GOOD! FT by LEWIS, ANTOINETTE	42-48	V 6	
05:54				MISSED 3PTR by CHASTAIN, CLAIRE
05:51				REBOUND (OFF) by EVANS, AYSIA
05:49				FOUL (TECH) by TEAM
05:49				TURNOVER (OFFENSIVE) by TEAM
05:49	GOOD! FT by KINES, SHAFORIA [FB]	42-49	V 7	
05:49	GOOD! FT by KINES, SHAFORIA [FB]	42-50	V 8	
05:29				FOUL (PERSONAL) by EVANS, AYSIA
05:29	MISSED FT by CENTERS, KENNEDI			
05:29	REBOUND (OFF) by TEAM			
05:29	MISSED FT by CENTERS, KENNEDI			
05:29				REBOUND (DEF) by MILTON, TERRY
05:26	FOUL (PERSONAL) by TELEMAQUE, DAMAYA			
05:26				SUB OUT: HALVERSON, EMMA
05:26				SUB IN: BENSON, MARIE
05:26		43-50	V 7	GOOD! FT by EVANS, AYSIA [FB]

Time	VISITORS: South Alabama	Score	Margin	HOME: UT Arlington
05:26				MISSED FT by EVANS, AYSIA
05:26	REBOUND (DEF) by LEWIS, ANTOINETTE			
05:00	MISSED LAYUP by CENTERS, KENNEDI			
05:00	REBOUND (OFF) by TEAM			
05:00				
04:55	GOOD! LAYUP by KINES, SHAFORIA [PNT]	43-52	V 9	
04:42				MISSED JUMPER by BENSON, MARIE
04:40				REBOUND (OFF) by TEAM
04:24				MISSED 3PTR by CHASTAIN, CLAIRE
04:21	REBOUND (DEF) by CENTERS, KENNEDI			
04:13	MISSED LAYUP by KINES, SHAFORIA			
04:12				REBOUND (DEF) by BENSON, MARIE
04:12	FOUL (OFF) by LEWIS, ANTOINETTE			
04:12	TURNOVER (OFFENSIVE) by LEWIS, ANTOINETTE			
03:45				MISSED JUMPER by MILTON, TERRYN
03:38	REBOUND (DEF) by CENTERS, KENNEDI			
03:17				FOUL (PERSONAL) by EVANS, AYSIA
03:17				SUB OUT: EVANS, AYSIA
03:17				SUB IN: MAYHUE, KATIE
03:17	SUB OUT: TELEMAQUE, DAMAYA			
03:17	SUB IN: VAUGHT, MAHOGANY			
03:17	GOOD! FT by KINES, SHAFORIA	43-53	V 10	
03:17	MISSED FT by KINES, SHAFORIA			
03:15				REBOUND (DEF) by FERRELL, KATIE
03:00				MISSED JUMPER by FERRELL, KATIE
02:55	REBOUND (DEF) by CENTERS, KENNEDI			
02:32	TURNOVER (LOSTBALL) by KINES, SHAFORIA			
02:32				STEAL by CHASTAIN, CLAIRE
02:25	FOUL (PERSONAL) by CENTERS, KENNEDI			
02:25		44-53	V 9	GOOD! FT by MILTON, TERRYN [FB]
02:25		45-53	V 8	GOOD! FT by MILTON, TERRYN [FB]
02:00				FOUL (PERSONAL) by MAYHUE, KATIE
02:00	GOOD! FT by KINES, SHAFORIA	45-54	V 9	
02:00	GOOD! FT by KINES, SHAFORIA	45-55	V 10	
02:00	TIMEOUT TEAM			
01:49				MISSED 3PTR by MAYHUE, KATIE
01:47	REBOUND (DEF) by TEAM			
01:47				SUB OUT: CHASTAIN, CLAIRE
01:47				SUB IN: EVANS, AYSIA
01:38				FOUL (PERSONAL) by MAYHUE, KATIE
01:38				SUB OUT: FERRELL, KATIE
01:38				SUB IN: CHASTAIN, CLAIRE
01:38	MISSED FT by VAUGHT, MAHOGANY			
01:38	REBOUND (OFF) by TEAM			
01:38	MISSED FT by VAUGHT, MAHOGANY			
01:38				REBOUND (DEF) by MILTON, TERRYN
01:27				MISSED 3PTR by MAYHUE, KATIE
01:24	REBOUND (DEF) by LEWIS, ANTOINETTE			
00:55	TURNOVER (LOSTBALL) by CENTERS, KENNEDI			
00:55				STEAL by BENSON, MARIE
00:55				TIMEOUT 30SEC
00:55				SUB OUT: MAYHUE, KATIE
00:55				SUB IN: FERRELL, KATIE
00:47				MISSED JUMPER by EVANS, AYSIA
00:43	REBOUND (DEF) by LEWIS, ANTOINETTE			
00:42				FOUL (PERSONAL) by FERRELL, KATIE
00:42	MISSED FT by LEWIS, ANTOINETTE			
00:42	REBOUND (OFF) by TEAM			
00:42	MISSED FT by LEWIS, ANTOINETTE			
00:38				REBOUND (DEF) by BENSON, MARIE
00:35		47-55	V 8	GOOD! JUMPER by CHASTAIN, CLAIRE [FB]
00:34				TIMEOUT 30SEC
00:34	SUB OUT: VAUGHT, MAHOGANY			
00:34	SUB IN: TELEMAQUE, DAMAYA			
00:03	MISSED JUMPER by CENTERS, KENNEDI			
00:00				REBOUND (DEF) by TEAM

South Alabama 55, UT Arlington 47

Points from (This Period)	USA	UTA
In the Paint	2	0
Off Turns	2	2
2nd Chance	2	0
Fast Break	2	5
Bench	0	0



**Official Scoring/Possession Reference Chart**  
**South Alabama vs UT Arlington**  
**Period 1**  
**March 11, 2020 at College Park Center - Arlington, TX**



**Period 1**

**Starters:**

**South Alabama:** 2 KINES, SHAFORIA (G); 12 TEHEMAQUE, DAMAYA (G); 14 JONES, SAVANNAH (G); 25 CENTERS, KENNEDI (F); 35 LEWIS, ANTOINETTE (C);

**UT Arlington:** 12 BENSON, MARIE (F); 20 CHASTAIN, CLAIRE (G); 21 MILTON, TERRY (G); 24 EVANS, AYSIA (G); 41 FERRELL, KATIE (F);

Time	VISITORS: South Alabama	Score	Margin	HOME: UT Arlington
08:44		3-0	H 3	GOOD! 3PTR by CHASTAIN, CLAIRE
08:03		5-0	H 5	GOOD! LAYUP by EVANS, AYSIA [PNT]
07:15		6-0	H 6	GOOD! FT by EVANS, AYSIA
07:15		7-0	H 7	GOOD! FT by EVANS, AYSIA
06:50	GOOD! 3PTR by KINES, SHAFORIA	7-3	H 4	
06:29	GOOD! LAYUP by CENTERS, KENNEDI [FB]	7-5	H 2	
06:20		10-5	H 5	GOOD! 3PTR by EVANS, AYSIA
05:56	GOOD! FT by KINES, SHAFORIA	10-6	H 4	
05:56	GOOD! FT by KINES, SHAFORIA	10-7	H 3	
02:52	GOOD! 3PTR by KINES, SHAFORIA	10-10	T	
02:30	GOOD! FT by JONES, SAVANNAH	10-11	V 1	
02:17		12-11	H 1	GOOD! JUMPER by DOSSEY, MISTY
01:48		14-11	H 3	GOOD! JUMPER by EVANS, AYSIA [PNT]
01:18	GOOD! FT by CENTERS, KENNEDI	14-12	H 2	
01:07		15-12	H 3	GOOD! FT by DOSSEY, MISTY
00:29		17-12	H 5	GOOD! JUMPER by FERRELL, KATIE

**South Alabama 12, UT Arlington 17**

**Official Scoring/Possession Reference Chart**  
**South Alabama vs UT Arlington**  
**Period 2**  
**March 11, 2020 at College Park Center - Arlington, TX**



**Period 2**

**Starters:**

**South Alabama:** 2 KINES, SHAFORIA (G); 12 TEHEMAQUE, DAMAYA (G); 14 JONES, SAVANNAH (G); 25 CENTERS, KENNEDI (F); 35 LEWIS, ANTOINETTE (C);

**UT Arlington:** 12 BENSON, MARIE (F); 20 CHASTAIN, CLAIRE (G); 21 MILTON, TERRY (G); 24 EVANS, AYSIA (G); 41 FERRELL, KATIE (F);

Time	VISITORS: South Alabama	Score	Margin	HOME: UT Arlington
09:09		19-12	H 7	GOOD! LAYUP by DOSSEY, MISTY
08:20	GOOD! FT by LEWIS, ANTOINETTE	19-13	H 6	
07:53		21-13	H 8	GOOD! LAYUP by WICKWARE, BRE
06:48		23-13	H 10	GOOD! JUMPER by CHASTAIN, CLAIRE [FB]
06:22	GOOD! 3PTR by JONES, SAVANNAH	23-16	H 7	
06:04		26-16	H 10	GOOD! 3PTR by CHASTAIN, CLAIRE
05:06		27-16	H 11	GOOD! FT by CHASTAIN, CLAIRE
04:03	GOOD! 3PTR by BUSTER, JALA	27-19	H 8	
03:30	GOOD! FT by KINES, SHAFORIA	27-20	H 7	
03:30	GOOD! FT by KINES, SHAFORIA	27-21	H 6	
02:29	GOOD! LAYUP by KINES, SHAFORIA [FB]	27-23	H 4	
01:57		30-23	H 7	GOOD! 3PTR by MAYHUE, KATIE
01:45		32-23	H 9	GOOD! JUMPER by WICKWARE, BRE [FB/PNT]
01:22		33-23	H 10	GOOD! FT by FERRELL, KATIE
01:03		34-23	H 11	GOOD! FT by WICKWARE, BRE [FB]
00:01	GOOD! 3PTR by KINES, SHAFORIA [FB]	34-26	H 8	

**South Alabama 26, UT Arlington 34**

**Official Scoring/Possession Reference Chart**  
**South Alabama vs UT Arlington**  
**Period 3**  
**March 11, 2020 at College Park Center - Arlington, TX**



**Period 3**

**Starters:**

**South Alabama:** 2 KINES, SHAFORIA (G); 12 TEHEMAQUE, DAMAYA (G); 14 JONES, SAVANNAH (G); 25 CENTERS, KENNEDI (F); 35 LEWIS, ANTOINETTE (C);

**UT Arlington:** 12 BENSON, MARIE (F); 20 CHASTAIN, CLAIRE (G); 21 MILTON, TERRY (G); 24 EVANS, AYSIA (G); 41 FERRELL, KATIE (F);

Time	VISITORS: South Alabama	Score	Margin	HOME: UT Arlington
09:23	GOOD! LAYUP by LEWIS, ANTOINETTE	34-28	H 6	
08:08	GOOD! FT by LEWIS, ANTOINETTE [FB]	34-29	H 5	
08:08	GOOD! FT by LEWIS, ANTOINETTE [FB]	34-30	H 4	
07:01	GOOD! LAYUP by LEWIS, ANTOINETTE	34-32	H 2	
04:54		36-32	H 4	GOOD! LAYUP by MILTON, TERRY (PNT)
04:01	GOOD! JUMPER by BUSTER, JALA	36-34	H 2	
03:29		38-34	H 4	GOOD! JUMPER by MILTON, TERRY
03:00	GOOD! 3PTR by KINES, SHAFORIA	38-37	H 1	
02:47		39-37	H 2	GOOD! FT by BENSON, MARIE
01:23	GOOD! LAYUP by VAUGHT, MAHOGANY (PNT)	39-39	T	
00:57	GOOD! 3PTR by VAUGHT, MAHOGANY	39-42	V 3	
00:30	GOOD! 3PTR by KINES, SHAFORIA	39-45	V 6	
00:09		41-45	V 4	GOOD! LAYUP by BENSON, MARIE

**South Alabama 45, UT Arlington 41**

**Official Scoring/Possession Reference Chart**  
**South Alabama vs UT Arlington**  
**Period 4**  
**March 11, 2020 at College Park Center - Arlington, TX**



**Period 4**

**Starters:**

**South Alabama:** 2 KINES, SHAFORIA (G); 12 TELEMAQUE, DAMAYA (G); 14 JONES, SAVANNAH (G); 25 CENTERS, KENNEDI (F); 35 LEWIS, ANTOINETTE (C);

**UT Arlington:** 12 BENSON, MARIE (F); 20 CHASTAIN, CLAIRE (G); 21 MILTON, TERRY (G); 24 EVANS, AYSIA (G); 41 FERRELL, KATIE (F);

Time	VISITORS: South Alabama	Score	Margin	HOME: UT Arlington
09:31	GOOD! FT by LEWIS, ANTOINETTE	41-46	V 5	
09:31	GOOD! FT by LEWIS, ANTOINETTE	41-47	V 6	
06:23		42-47	V 5	GOOD! FT by CHASTAIN, CLAIRE
06:04	GOOD! FT by LEWIS, ANTOINETTE	42-48	V 6	
05:49	GOOD! FT by KINES, SHAFORIA [FB]	42-49	V 7	
05:49	GOOD! FT by KINES, SHAFORIA [FB]	42-50	V 8	
05:26		43-50	V 7	GOOD! FT by EVANS, AYSIA [FB]
04:55	GOOD! LAYUP by KINES, SHAFORIA [PNT]	43-52	V 9	
03:17	GOOD! FT by KINES, SHAFORIA	43-53	V 10	
02:25		44-53	V 9	GOOD! FT by MILTON, TERRY (FB)
02:25		45-53	V 8	GOOD! FT by MILTON, TERRY (FB)
02:00	GOOD! FT by KINES, SHAFORIA	45-54	V 9	
02:00	GOOD! FT by KINES, SHAFORIA	45-55	V 10	
00:35		47-55	V 8	GOOD! JUMPER by CHASTAIN, CLAIRE [FB]

**South Alabama 55, UT Arlington 47**

**Official Substitutions Log**  
**South Alabama vs UT Arlington**  
**Period 1**  
**March 11, 2020 at College Park Center - Arlington, TX**



VISITORS: South Alabama	Time	Score	HOME: UT Arlington
2 KINES, SHAFORIA			12 BENSON, MARIE
12 TELEMAQUE, DAMAYA			20 CHASTAIN, CLAIRE
14 JONES, SAVANNAH			21 MILTON, TERRY N
25 CENTERS, KENNEDI			24 EVANS, AYSIA
35 LEWIS, ANTOINETTE			41 FERRELL, KATIE
	05:56	5-10	SUB OUT: EVANS, AYSIA
	05:56		SUB IN: MAYHUE, KATIE
SUB OUT: 12 TELEMAQUE, DAMAYA	05:56		
SUB IN: 3 MORROW, JAYLA	05:56		
	05:35	7-10	SUB OUT: FERRELL, KATIE
	05:35		SUB IN: DOSSEY, MISTY
SUB OUT: 3 MORROW, JAYLA	05:35		
SUB IN: 23 BUSTER, JALA	05:35		
	03:56	7-10	SUB OUT: MAYHUE, KATIE
	03:56		SUB IN: EVANS, AYSIA
SUB OUT: 23 BUSTER, JALA	02:30	10-10	
SUB OUT: 35 LEWIS, ANTOINETTE	02:30		
SUB IN: 12 TELEMAQUE, DAMAYA	02:30		
SUB IN: 22 MALLARD, JAYLEN	02:30		
	02:30		SUB OUT: BENSON, MARIE
	02:30		SUB IN: FERRELL, KATIE
	01:18	11-14	SUB OUT: EVANS, AYSIA
	01:18		SUB IN: MAYHUE, KATIE
SUB OUT: 25 CENTERS, KENNEDI	01:07	12-14	
SUB IN: 35 LEWIS, ANTOINETTE	01:07		

**South Alabama 12, UT Arlington 17**

**Official Substitutions Log**  
**South Alabama vs UT Arlington**  
**Period 2**  
**March 11, 2020 at College Park Center - Arlington, TX**



VISITORS: South Alabama	Time	Score	HOME: UT Arlington
2 KINES, SHAFORIA			12 BENSON, MARIE
12 TEHEMAQUE, DAMAYA			20 CHASTAIN, CLAIRE
14 JONES, SAVANNAH			21 MILTON, TERRY
25 CENTERS, KENNEDY			24 EVANS, AYSIA
35 LEWIS, ANTOINETTE			41 FERRELL, KATIE
	10:00	-	SUB OUT: CHASTAIN, CLAIRE
	10:00		SUB OUT: MILTON, TERRY
	10:00		SUB IN: BENSON, MARIE
	10:00		SUB IN: WICKWARE, BRE
	08:20	12-19	SUB OUT: DOSSEY, MISTY
	08:20		SUB IN: CHASTAIN, CLAIRE
SUB OUT: 22 MALLARD, JAYLEN	08:20		
SUB IN: 25 CENTERS, KENNEDY	08:20		
	06:47	13-23	SUB OUT: MAYHUE, KATIE
	06:47		SUB IN: MILTON, TERRY
SUB OUT: 12 TEHEMAQUE, DAMAYA	05:06	16-26	
SUB IN: 23 BUSTER, JALA	05:06		
	04:22	16-27	SUB OUT: CHASTAIN, CLAIRE
	04:22		SUB IN: HALVERSON, EMMA
SUB OUT: 14 JONES, SAVANNAH	03:30	19-27	
SUB IN: 4 VAUGHT, MAHOGANY	03:30		
	02:25	23-27	SUB OUT: HALVERSON, EMMA
	02:25		SUB IN: MAYHUE, KATIE
SUB OUT: 25 CENTERS, KENNEDY	02:25		
SUB IN: 22 MALLARD, JAYLEN	02:25		
SUB OUT: 4 VAUGHT, MAHOGANY	01:22	23-32	
SUB IN: 14 JONES, SAVANNAH	01:22		
SUB OUT: 23 BUSTER, JALA	01:03	23-33	
SUB IN: 25 CENTERS, KENNEDY	01:03		
	00:32	23-34	SUB OUT: BENSON, MARIE
	00:32		SUB IN: DOSSEY, MISTY

**South Alabama 26, UT Arlington 34**

**Official Substitutions Log**  
**South Alabama vs UT Arlington**  
**Period 3**  
**March 11, 2020 at College Park Center - Arlington, TX**



VISITORS: South Alabama	Time	Score	HOME: UT Arlington
2 KINES, SHAFORIA			12 BENSON, MARIE
12 TELEMAQUE, DAMAYA			20 CHASTAIN, CLAIRE
14 JONES, SAVANNAH			21 MILTON, TERRY
25 CENTERS, KENNEDY			24 EVANS, AYSIA
35 LEWIS, ANTOINETTE			41 FERRELL, KATIE
	10:00	-	SUB OUT: MAYHUE, KATIE
	10:00		SUB OUT: DOSSEY, MISTY
	10:00		SUB OUT: WICKWARE, BRE
	10:00		SUB IN: BENSON, MARIE
	10:00		SUB IN: CHASTAIN, CLAIRE
	10:00		SUB IN: EVANS, AYSIA
SUB OUT: 22 MALLARD, JAYLEN	10:00		
SUB IN: 12 TELEMAQUE, DAMAYA	10:00		
	07:26	30-34	SUB OUT: EVANS, AYSIA
	07:26		SUB IN: MAYHUE, KATIE
	07:09	30-34	SUB OUT: FERRELL, KATIE
	07:09		SUB IN: DOSSEY, MISTY
	06:47	32-34	SUB OUT: DOSSEY, MISTY
	06:47		SUB IN: FERRELL, KATIE
	04:49	32-36	SUB OUT: MILTON, TERRY
	04:49		SUB IN: EVANS, AYSIA
SUB OUT: 25 CENTERS, KENNEDY	04:49		
SUB OUT: 35 LEWIS, ANTOINETTE	04:49		
SUB IN: 22 MALLARD, JAYLEN	04:49		
SUB IN: 23 BUSTER, JALA	04:49		
	03:45	34-36	SUB OUT: MAYHUE, KATIE
	03:45		SUB OUT: FERRELL, KATIE
	03:45		SUB IN: DOSSEY, MISTY
	03:45		SUB IN: MILTON, TERRY
SUB OUT: 22 MALLARD, JAYLEN	02:47	37-38	
SUB OUT: 23 BUSTER, JALA	02:47		
SUB IN: 25 CENTERS, KENNEDY	02:47		
SUB IN: 35 LEWIS, ANTOINETTE	02:47		
SUB OUT: 12 TELEMAQUE, DAMAYA	02:36	37-39	
SUB IN: 4 VAUGHT, MAHOGANY	02:36		
	01:24	37-39	SUB OUT: DOSSEY, MISTY
	01:24		SUB OUT: EVANS, AYSIA
	01:24		SUB IN: BENSON, BARBARA
	01:24		SUB IN: FERRELL, KATIE

**South Alabama 45, UT Arlington 41**

**Official Substitutions Log**  
**South Alabama vs UT Arlington**  
**Period 4**  
**March 11, 2020 at College Park Center - Arlington, TX**



VISITORS: South Alabama	Time	Score	HOME: UT Arlington
2 KINES, SHAFORIA			12 BENSON, MARIE
12 TELEMAQUE, DAMAYA			20 CHASTAIN, CLAIRE
14 JONES, SAVANNAH			21 MILTON, TERRY N
25 CENTERS, KENNEDI			24 EVANS, AYSIA
35 LEWIS, ANTOINETTE			41 FERRELL, KATIE
	10:00	-	SUB OUT: CHASTAIN, CLAIRE
	10:00		SUB IN: WICKWARE, BRE
	09:08	47-41	SUB OUT: WICKWARE, BRE
	09:08		SUB OUT: BENSON, BARBARA
	09:08		SUB IN: CHASTAIN, CLAIRE
	09:08		SUB IN: EVANS, AYSIA
	08:47	47-41	SUB OUT: BENSON, MARIE
	08:47		SUB IN: DOSSEY, MISTY
	08:31	47-41	SUB OUT: DOSSEY, MISTY
	08:31		SUB IN: HALVERSON, EMMA
SUB OUT: 35 LEWIS, ANTOINETTE	07:41	47-41	
SUB IN: 22 MALLARD, JAYLEN	07:41		
SUB OUT: 4 VAUGHT, MAHOGANY	06:06	47-42	
SUB OUT: 22 MALLARD, JAYLEN	06:06		
SUB IN: 12 TELEMAQUE, DAMAYA	06:06		
SUB IN: 35 LEWIS, ANTOINETTE	06:06		
	05:26	50-42	SUB OUT: HALVERSON, EMMA
	05:26		SUB IN: BENSON, MARIE
	03:17	52-43	SUB OUT: EVANS, AYSIA
	03:17		SUB IN: MAYHUE, KATIE
SUB OUT: 12 TELEMAQUE, DAMAYA	03:17		
SUB IN: 4 VAUGHT, MAHOGANY	03:17		
	01:47	55-45	SUB OUT: CHASTAIN, CLAIRE
	01:47		SUB IN: EVANS, AYSIA
	01:38	55-45	SUB OUT: FERRELL, KATIE
	01:38		SUB IN: CHASTAIN, CLAIRE
	00:55	55-45	SUB OUT: MAYHUE, KATIE
	00:55		SUB IN: FERRELL, KATIE
SUB OUT: 4 VAUGHT, MAHOGANY	00:34	55-47	
SUB IN: 12 TELEMAQUE, DAMAYA	00:34		

**South Alabama 55, UT Arlington 47**

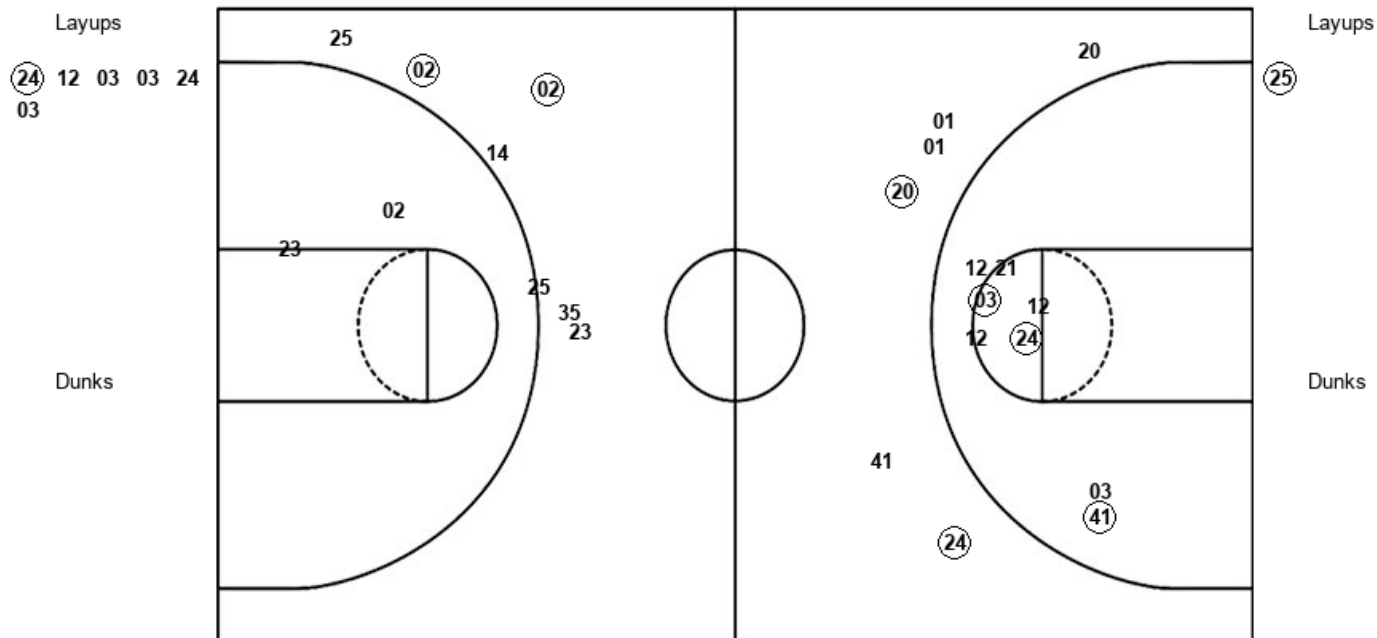


Official Shot Chart  
**South Alabama vs UT Arlington**  
 PERIOD 1 Shots  
 March 11, 2020 at College Park Center - Arlington, TX



**UT Arlington**

**South Alabama**



UTA : Period 1	Made	Att	Pct
Layups	1	6	16.7
Dunks	0	0	0
2PT Field Goals	4	14	28.6
3PT Field Goals	2	6	33.3
<b>Total Field Goals</b>	<b>6</b>	<b>20</b>	<b>30.0</b>

USA : Period 1	Made	Att	Pct
Layups	1	1	100.0
Dunks	0	0	0
2PT Field Goals	1	3	33.3
3PT Field Goals	2	7	28.6
<b>Total Field Goals</b>	<b>3</b>	<b>10</b>	<b>30.0</b>

Official Shot Chart  
**South Alabama vs UT Arlington**  
 PERIOD 2 Shots  
 March 11, 2020 at College Park Center - Arlington, TX

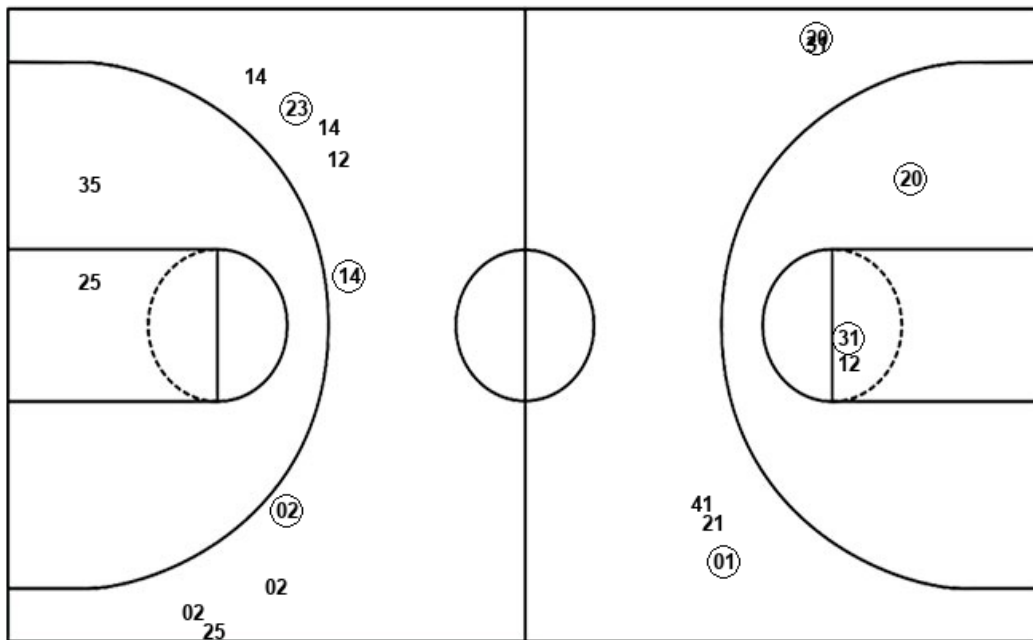


**UT Arlington**

**South Alabama**

Layups  
 (03) (31) 21

Dunks



Layups

35 02 (02) 23

Dunks

UTA : Period 2	Made	Att	Pct
Layups	2	3	66.7
Dunks	0	0	0
2PT Field Goals	4	6	66.7
3PT Field Goals	2	5	40.0
<b>Total Field Goals</b>	<b>6</b>	<b>11</b>	<b>54.5</b>

USA : Period 2	Made	Att	Pct
Layups	1	4	25.0
Dunks	0	0	0
2PT Field Goals	1	6	16.7
3PT Field Goals	3	9	33.3
<b>Total Field Goals</b>	<b>4</b>	<b>15</b>	<b>26.7</b>

Official Shot Chart  
**South Alabama vs UT Arlington**  
 PERIOD 3 Shots  
 March 11, 2020 at College Park Center - Arlington, TX

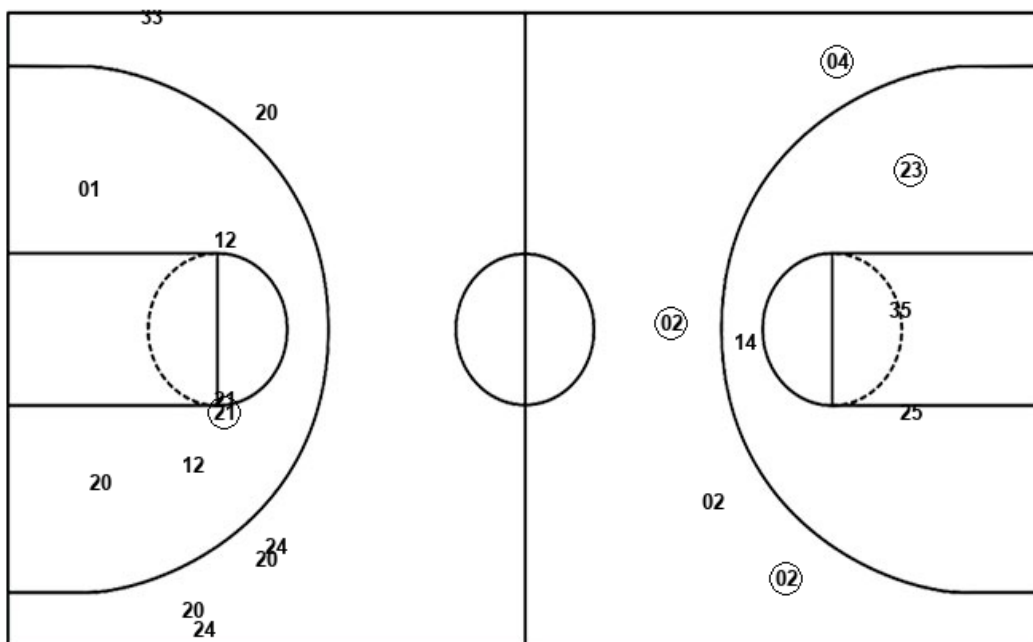


**UT Arlington**

**South Alabama**

Layups  
 20 41 (21) (12)

Dunks



Layups

(35) (35) (04)

Dunks

UTA : Period 3	Made	Att	Pct
Layups	2	4	50.0
Dunks	0	0	0
2PT Field Goals	3	10	30.0
3PT Field Goals	0	6	00.0
<b>Total Field Goals</b>	<b>3</b>	<b>16</b>	<b>18.8</b>

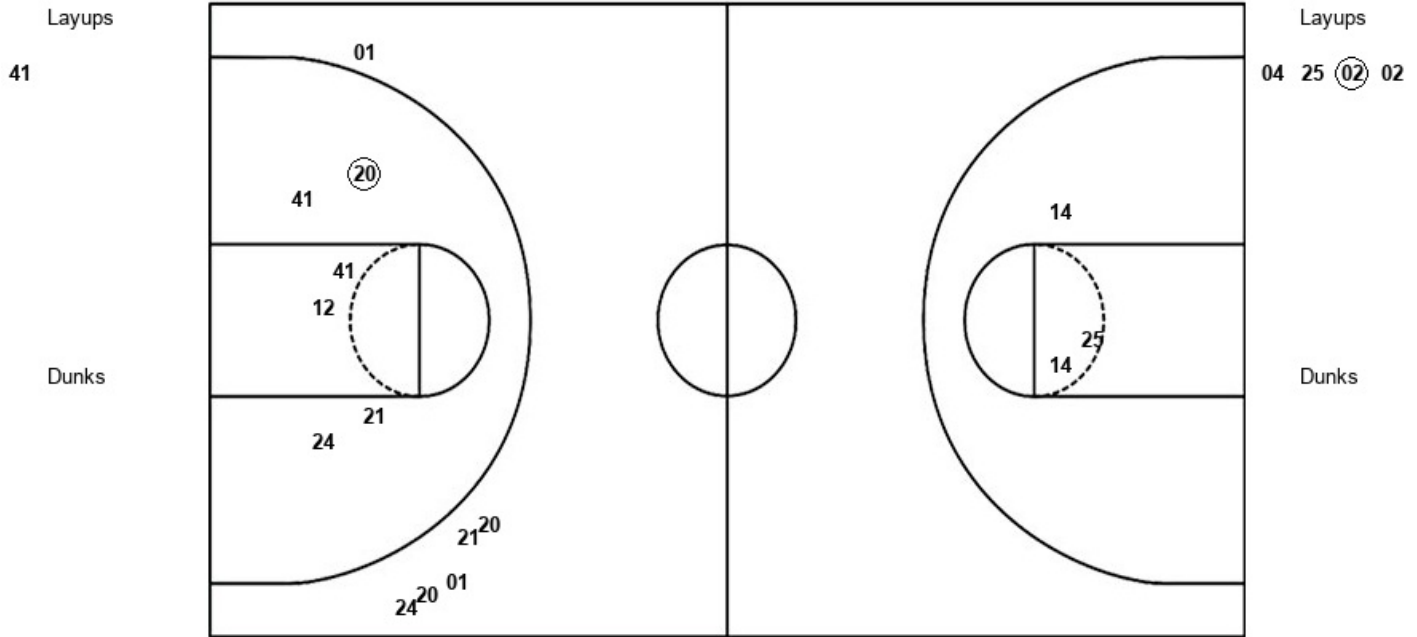
USA : Period 3	Made	Att	Pct
Layups	3	3	100.0
Dunks	0	0	0
2PT Field Goals	4	7	57.1
3PT Field Goals	3	4	75.0
<b>Total Field Goals</b>	<b>7</b>	<b>11</b>	<b>63.6</b>

Official Shot Chart  
**South Alabama vs UT Arlington**  
 PERIOD 4 Shots  
 March 11, 2020 at College Park Center - Arlington, TX



**UT Arlington**

**South Alabama**



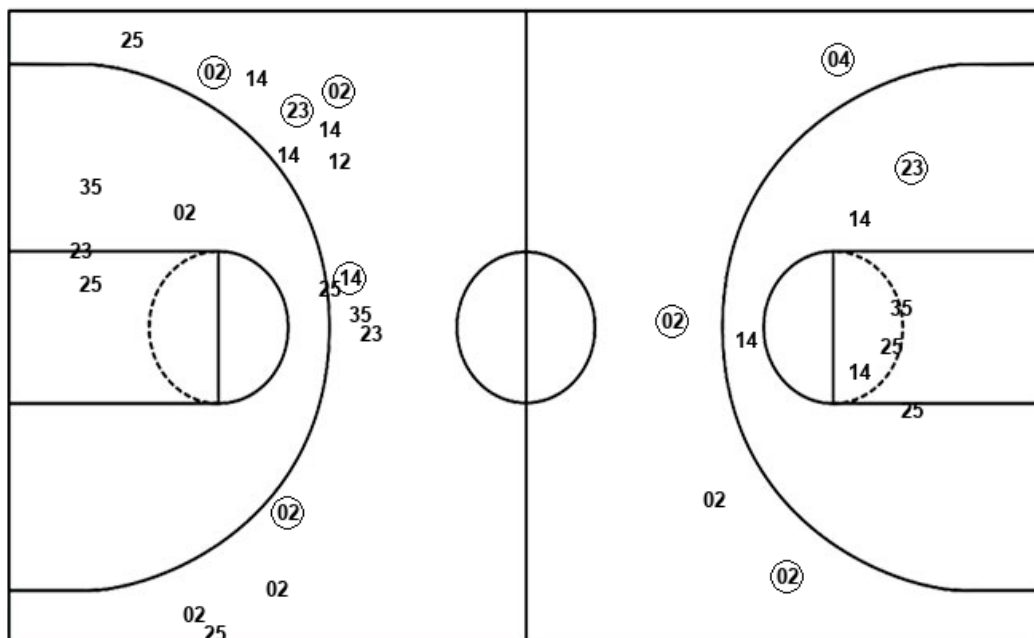
UTA : Period 4	Made	Att	Pct
Layups	0	1	00.0
Dunks	0	0	0
2PT Field Goals	1	7	14.3
3PT Field Goals	0	6	00.0
<b>Total Field Goals</b>	<b>1</b>	<b>13</b>	<b>07.7</b>

USA : Period 4	Made	Att	Pct
Layups	1	4	25.0
Dunks	0	0	0
2PT Field Goals	1	7	14.3
3PT Field Goals	0	0	0
<b>Total Field Goals</b>	<b>1</b>	<b>7</b>	<b>14.3</b>

Official Shot Chart  
**South Alabama vs UT Arlington**  
 South Alabama Team Shots  
 March 11, 2020 at College Park Center - Arlington, TX



Layups



Layups

(25) 35 02 (02) 23  
 (35) (35) (04) 04 25  
 (02) 02

Dunks

Dunks

USA : Period 1	Made	Att	Pct
Layups	1	1	100.0
Dunks	0	0	0
2PT Field Goals	1	3	33.3
3PT Field Goals	2	7	28.6
<b>Total Field Goals</b>	<b>3</b>	<b>10</b>	<b>30.0</b>

USA : Period 3	Made	Att	Pct
Layups	3	3	100.0
Dunks	0	0	0
2PT Field Goals	4	7	57.1
3PT Field Goals	3	4	75.0
<b>Total Field Goals</b>	<b>7</b>	<b>11</b>	<b>63.6</b>

USA : Period 2	Made	Att	Pct
Layups	1	4	25.0
Dunks	0	0	0
2PT Field Goals	1	6	16.7
3PT Field Goals	3	9	33.3
<b>Total Field Goals</b>	<b>4</b>	<b>15</b>	<b>26.7</b>

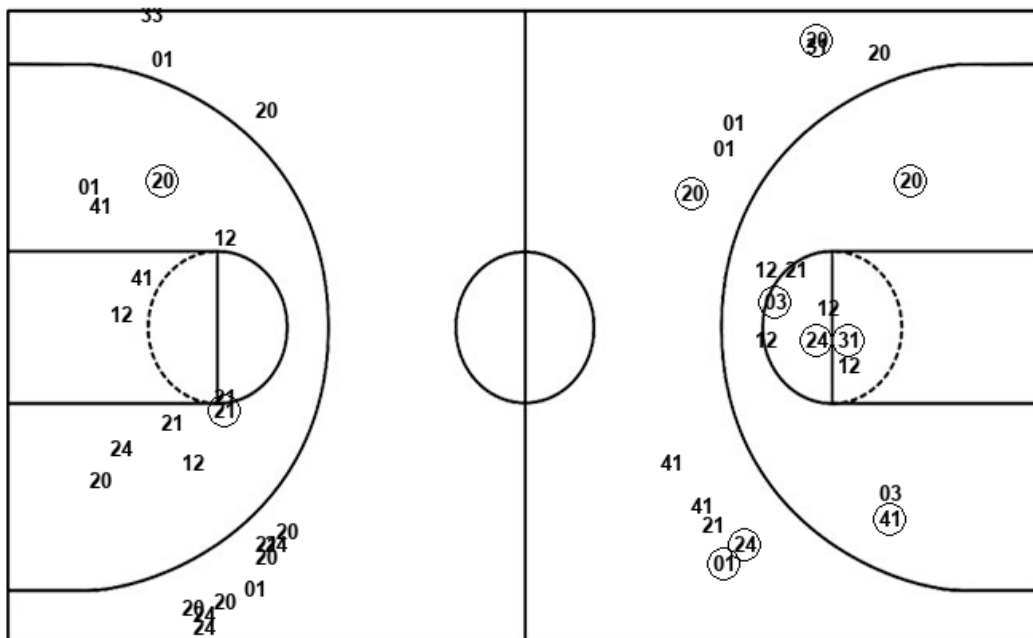
USA : Period 4	Made	Att	Pct
Layups	1	4	25.0
Dunks	0	0	0
2PT Field Goals	1	7	14.3
3PT Field Goals	0	0	0
<b>Total Field Goals</b>	<b>1</b>	<b>7</b>	<b>14.3</b>

Official Shot Chart  
**South Alabama vs UT Arlington**  
 UT Arlington Team Shots  
 March 11, 2020 at College Park Center - Arlington, TX



Layups

Dunks



Layups

Dunks

(24) 12 03 03 24  
 03 (03) (31) 21 20  
 41 (21) (12) 41

UTA : Period 1	Made	Att	Pct
Layups	1	6	16.7
Dunks	0	0	0
2PT Field Goals	4	14	28.6
3PT Field Goals	2	6	33.3
<b>Total Field Goals</b>	<b>6</b>	<b>20</b>	<b>30.0</b>

UTA : Period 3	Made	Att	Pct
Layups	2	4	50.0
Dunks	0	0	0
2PT Field Goals	3	10	30.0
3PT Field Goals	0	6	00.0
<b>Total Field Goals</b>	<b>3</b>	<b>16</b>	<b>18.8</b>

UTA : Period 2	Made	Att	Pct
Layups	2	3	66.7
Dunks	0	0	0
2PT Field Goals	4	6	66.7
3PT Field Goals	2	5	40.0
<b>Total Field Goals</b>	<b>6</b>	<b>11</b>	<b>54.5</b>

UTA : Period 4	Made	Att	Pct
Layups	0	1	00.0
Dunks	0	0	0
2PT Field Goals	1	7	14.3
3PT Field Goals	0	6	00.0
<b>Total Field Goals</b>	<b>1</b>	<b>13</b>	<b>07.7</b>