

FINAL SCORE

Southern Ill.

59



Bradley

64



Game 4 -- State Farm Missouri Valley Conference Tournament

March 06, 2020 • Enterprise Center - St. Louis, Mo.



FINAL STATISTICS

Official Box Score
Southern III. vs Bradley
Game Totals -- Final Statistics
March 06, 2020 at Enterprise Center - St. Louis, Mo.



Southern III. 59

No.	Player	S	Pts	FG	3FG	FT	OR	DR	TR	PF	A	TO	Blk	Stl	Min	+/-
01	DOMASK, MARCUS	F	6	2-10	2-3	0-0	0	4	4	4	1	2	0	1	33	-6
03	SUGGS, RONNIE	G	8	2-3	1-1	3-3	0	1	1	3	1	1	0	1	20	-9
04	MCGILL, ERIC	G	10	3-9	0-2	4-4	2	7	9	2	4	1	0	0	38	-7
05	JONES, LANCE	G	20	9-20	2-5	0-1	0	3	3	2	2	2	0	1	40	-5
40	BENSON, BARRET	C	9	3-8	2-3	1-2	2	6	8	3	1	3	3	0	38	-8
02	DAVIS, KARRINGTON	G	0	0-1	0-0	0-0	0	0	0	0	0	0	0	0	4	3
24	BROWN, TRENT	G	3	1-4	1-4	0-0	0	0	0	2	3	0	1	1	22	6
25	GOOCH, BRENDON	F	3	1-1	1-1	0-0	0	0	0	1	0	0	0	0	5	1
TEAM							2	2	4	0		1				
TOTALS			59	21-56	9-19	8-10	6	23	29	17	12	10	4	4	200	

Shooting By Period

Period	FG	FG%	3FG	3FG%	FT	FT%
1st Half	11-31	35%	5-11	45%	0-0	0%
2nd Half	10-25	40%	4-8	50%	8-10	80%
Game	21-56	37.5%	9-19	47.4%	8-10	80.0%

Deadball Rebounds: 1,0
Last FG: 2nd-03:16
Biggest Run: 12-0
Largest lead: By 9 at 2nd-15:11
Technical Fouls: None.

Bradley 64

No.	Player	S	Pts	FG	3FG	FT	OR	DR	TR	PF	A	TO	Blk	Stl	Min	+/-
00	KINGSBY, DANYA	G	2	1-5	0-0	0-0	2	4	6	0	0	2	1	0	25	-5
05	BROWN, DARRELL	G	19	7-13	0-2	5-5	0	2	2	2	8	5	0	1	38	8
10	CHILDS, ELIJAH	F	16	5-15	1-3	5-6	1	8	9	2	0	1	5	0	30	2
12	BAR, KOCH	C	4	2-3	0-0	0-0	1	2	3	2	2	1	2	0	21	8
25	KENNEL, NATE	G	3	1-6	1-4	0-0	2	2	4	3	2	1	0	1	28	10
01	BOYA, ARI	C	2	1-1	0-0	0-0	1	3	4	1	0	1	4	0	10	-2
02	THOMAS, ANTONIO	G	0	0-0	0-0	0-0	0	0	0	0	0	1	0	0	4	-3
22	HENRY, JA'SHON	F	6	2-7	0-1	2-2	2	4	6	3	1	0	0	0	19	-2
23	TAHVANAINEN, VILLE	G	12	4-8	4-8	0-0	1	4	5	1	1	1	0	1	25	9
TEAM							3	1	4	0		0				
TOTALS			64	23-58	6-18	12-13	13	30	43	14	14	13	12	3	200	

Shooting By Period

Period	FG	FG%	3FG	3FG%	FT	FT%
1st Half	10-29	34%	2-8	25%	2-3	67%
2nd Half	13-29	45%	4-10	40%	10-10	100%
Game	23-58	39.7%	6-18	33.3%	12-13	92.3%

Deadball Rebounds: 0,0
Last FG: 2nd-00:19
Biggest Run: 7-0
Largest lead: By 5 at 2nd-00:06
Technical Fouls: None.

Game Notes:

Officials: Gerry Pollard,Ray Natili,Randy Heimerman
 Attendance: 7399

Start Time: 03:39 PM ET
 End Time: 05:31 PM ET
 Game Duration: 1:51
 Neutral Court;

Score	1st	2nd	TOT
SIU	27	32	59
BRD	24	40	64

SIU led for 28:45. BRD led for 8:17.
 Game was tied for 2:56.
 Times tied: 7 Lead Changes: 6

Points from	SIU	BRD
In the Paint	20	26
Off Turns	13	13
2nd Chance	5	6
Fast Break	6	3
Bench	6	20

Official Box Score
Southern Ill. vs Bradley
First Half Statistics Only
 March 06, 2020 at Enterprise Center - St. Louis, Mo.



Southern Ill. 27

No.	Player	S	Pts	FG	3FG	FT	OR	DR	TR	PF	A	TO	Blk	Stl	Min	+/-
01	DOMASK, MARCUS	F	0	0-4	0-0	0-0	0	1	1	2	0	0	0	1	13	2
03	SUGGS, RONNIE	G	0	0-1	0-0	0-0	0	0	0	0	0	0	0	0	3	-3
04	MCGILL, ERIC	G	4	2-5	0-1	0-0	1	4	5	0	3	0	0	0	20	3
05	JONES, LANCE	G	12	5-10	2-4	0-0	0	2	2	1	0	1	0	0	20	3
40	BENSON, BARRET	C	5	2-5	1-1	0-0	1	4	5	0	0	3	2	0	18	0
02	DAVIS, KARRINGTON	G	0	0-1	0-0	0-0	0	0	0	0	0	0	0	0	4	3
24	BROWN, TRENT	G	3	1-4	1-4	0-0	0	0	0	1	3	0	1	1	17	6
25	GOOCH, BRENDON	F	3	1-1	1-1	0-0	0	0	0	1	0	0	0	0	5	1
	TEAM						2	1	3	0		1				
TOTALS			27	11-31	5-11	0-0	4	12	16	5	6	5	3	2	100	

Shooting By Period

Period	FG	FG%	3FG	3FG%	FT	FT%
1st Half	11-31	35%	5-11	45%	0-0	0%
Game	21-56	37.5%	9-19	47.4%	8-10	80.0%

Deadball Rebounds: 1,0
 Last FG Half: SIU 2nd-03:16

Bradley 24

No.	Player	S	Pts	FG	3FG	FT	OR	DR	TR	PF	A	TO	Blk	Stl	Min	+/-
00	KINGSBY, DANYA	G	2	1-4	0-0	0-0	2	1	3	0	0	2	0	0	17	-5
05	BROWN, DARRELL	G	4	2-6	0-1	0-0	0	1	1	1	5	2	0	1	19	-3
10	CHILDS, ELIJAH	F	10	4-8	1-2	1-2	0	6	6	0	0	1	4	0	14	0
12	BAR, KOCH	C	2	1-1	0-0	0-0	1	1	2	1	0	1	2	0	11	3
25	KENNEL, NATE	G	0	0-2	0-1	0-0	0	1	1	2	1	0	0	0	8	2
01	BOYA, ARI	C	0	0-0	0-0	0-0	1	2	3	1	0	1	2	0	6	-3
02	THOMAS, ANTONIO	G	0	0-0	0-0	0-0	0	0	0	0	0	1	0	0	3	-2
22	HENRY, JA'SHON	F	3	1-4	0-0	1-1	2	1	3	1	0	0	0	0	9	-6
23	TAHVANAINEN, VILLE	G	3	1-4	1-4	0-0	1	2	3	0	0	1	0	0	13	-1
	TEAM						1	1	2	0		0				
TOTALS			24	10-29	2-8	2-3	8	16	24	6	6	9	8	1	100	

Shooting By Period

Period	FG	FG%	3FG	3FG%	FT	FT%
1st Half	10-29	34%	2-8	25%	2-3	67%
Game	23-58	39.7%	6-18	33.3%	12-13	92.3%

Deadball Rebounds: 0,0
 Last FG Half: BRD 2nd-00:19

Game Notes:

Officials: Gerry Pollard,Ray Natili,Randy Heimerman
 Attendance: 7399

Start Time: 03:39 PM ET
 End Time: 05:31 PM ET
 Game Duration: 1:51
 Neutral Court;

Score	1st	2nd	TOT
SIU	27	32	59
BRD	24	40	64

Points from (This Period)	SIU	BRD
In the Paint	8	10
Off Turns	9	5
2nd Chance	2	0
Fast Break	2	3
Bench	6	6

Official Play-By-Play
Southern III. vs Bradley
First Half
March 06, 2020 at Enterprise Center - St. Louis, Mo.



Period 1

Starters:

Southern III.: 1 DOMASK, MARCUS (F); 3 SUGGS, RONNIE (G); 4 MCGILL, ERIC (G); 5 JONES, LANCE (G); 40 BENSON, BARRET (C);

Bradley: 00 KINGSBY, DANYA (G); 5 BROWN, DARRELL (G); 10 CHILDS, ELIJAH (F); 12 BAR, KOCH (C); 25 KENNELL, NATE (G);

Time	VISITORS: Southern III.	Score	Margin	HOME: Bradley
19:32	MISSED 3PTR by JONES, LANCE			
19:27				REBOUND (DEF) by CHILDS, ELIJAH
19:01		2-0	H 2	GOOD! JUMPER by BAR, KOCH
19:01				ASSIST by BROWN, DARRELL
18:37	MISSED JUMPER by DOMASK, MARCUS			
18:33				REBOUND (DEF) by BROWN, DARRELL
18:28				MISSED 3PTR by KENNELL, NATE
18:25	REBOUND (DEF) by DOMASK, MARCUS			
18:18	MISSED JUMPER by JONES, LANCE			
18:15				REBOUND (DEF) by BAR, KOCH
18:04	FOUL (PERSONAL) by DOMASK, MARCUS			
18:04		3-0	H 3	GOOD! FT by CHILDS, ELIJAH
18:04				MISSED FT by CHILDS, ELIJAH
18:02	REBOUND (DEF) by MCGILL, ERIC			
17:46	MISSED JUMPER by BENSON, BARRET			
17:46				BLOCK by CHILDS, ELIJAH
17:46	REBOUND (OFF) by TEAM			
17:36	MISSED LAYUP by SUGGS, RONNIE			
17:36				BLOCK by CHILDS, ELIJAH
17:33				REBOUND (DEF) by KINGSBY, DANYA
17:29				TURNOVER (LOSTBALL) by KINGSBY, DANYA
17:29	STEAL by DOMASK, MARCUS			
17:22				FOUL (PERSONAL) by KENNELL, NATE
17:22	SUB OUT: SUGGS, RONNIE			
17:22	SUB IN: BROWN, TRENT			
17:11	MISSED 3PTR by BROWN, TRENT			
17:06				REBOUND (DEF) by KENNELL, NATE
17:02	FOUL (PERSONAL) by JONES, LANCE			
17:02				SUB OUT: CHILDS, ELIJAH
17:02				SUB OUT: BAR, KOCH
17:02				SUB IN: BOYA, ARI
17:02				SUB IN: HENRY, JA'SHON
17:02		5-0	H 5	GOOD! JUMPER by KINGSBY, DANYA
17:02				ASSIST by KENNELL, NATE
16:58	MISSED JUMPER by BENSON, BARRET			
16:58				BLOCK by BOYA, ARI
16:49				REBOUND (DEF) by HENRY, JA'SHON
16:43				MISSED JUMPER by HENRY, JA'SHON
16:40				REBOUND (OFF) by HENRY, JA'SHON
16:37				MISSED LAYUP by HENRY, JA'SHON
16:37	BLOCK by BENSON, BARRET			
16:27	REBOUND (DEF) by BENSON, BARRET			
16:25				FOUL (PERSONAL) by HENRY, JA'SHON
16:20	TURNOVER (LOSTBALL) by BENSON, BARRET			
16:01				MISSED LAYUP by KENNELL, NATE
15:57				REBOUND (OFF) by HENRY, JA'SHON
15:55				MISSED LAYUP by HENRY, JA'SHON
15:52	REBOUND (DEF) by MCGILL, ERIC			
15:51	GOOD! 3PTR by JONES, LANCE	5-3	H 2	
15:51	ASSIST by MCGILL, ERIC			
15:37				MISSED JUMPER by BROWN, DARRELL
15:33	REBOUND (DEF) by JONES, LANCE			
15:25	GOOD! JUMPER by BENSON, BARRET [PNT]	5-5	T	
15:04				FOUL (OFF) by BOYA, ARI
15:04				TURNOVER (OFFENSIVE) by BOYA, ARI
15:04				SUB OUT: KINGSBY, DANYA
15:04				SUB OUT: BOYA, ARI
15:04				SUB OUT: HENRY, JA'SHON
15:04				SUB IN: CHILDS, ELIJAH
15:04				SUB IN: BAR, KOCH
15:04				SUB IN: TAHVANAINEN, VILLE
14:46	GOOD! JUMPER by MCGILL, ERIC	5-7	V 2	
14:31	FOUL (PERSONAL) by DOMASK, MARCUS			
14:31	SUB OUT: DOMASK, MARCUS			
14:31	SUB IN: DAVIS, KARRINGTON			
14:25				MISSED JUMPER by BROWN, DARRELL
14:22				REBOUND (OFF) by BAR, KOCH
14:03				MISSED 3PTR by TAHVANAINEN, VILLE
14:00	REBOUND (DEF) by MCGILL, ERIC			

Time	VISITORS: Southern Ill.	Score	Margin	HOME: Bradley
13:35	MISSED 3PTR by BROWN, TRENT			
13:31				REBOUND (DEF) by CHILDS, ELIJAH
13:23				MISSED JUMPER by CHILDS, ELIJAH
13:18	REBOUND (DEF) by MCGILL, ERIC			
13:13				FOUL (PERSONAL) by KENNEL, NATE
13:13				SUB OUT: KENNEL, NATE
13:13				SUB IN: KINGSBY, DANYA
13:06	MISSED 3PTR by MCGILL, ERIC			
13:01				REBOUND (DEF) by CHILDS, ELIJAH
12:51				MISSED 3PTR by TAHVANAINEN, VILLE
12:47	REBOUND (DEF) by JONES, LANCE			
12:43	MISSED LAYUP by JONES, LANCE			
12:43				BLOCK by BAR, KOCH
12:39	REBOUND (OFF) by BENSON, BARRET			
12:39	TURNOVER (LOSTBALL) by BENSON, BARRET			
12:39				SUB OUT: BAR, KOCH
12:39				SUB IN: HENRY, JA'SHON
12:39	SUB OUT: BENSON, BARRET			
12:39	SUB IN: GOOCH, BRENDON			
12:13				MISSED JUMPER by KINGSBY, DANYA
12:13	BLOCK by BROWN, TRENT			
12:13				REBOUND (OFF) by TAHVANAINEN, VILLE
12:13				TURNOVER (LOSTBALL) by TAHVANAINEN, VILLE
12:00	GOOD! 3PTR by GOOCH, BRENDON	5-10	V 5	
12:00	ASSIST by MCGILL, ERIC			
11:47				FOUL (OFF) by BROWN, DARRELL
11:47				TURNOVER (OFFENSIVE) by BROWN, DARRELL
11:47				
11:32	MISSED JUMPER by DAVIS, KARRINGTON			
11:32				BLOCK by CHILDS, ELIJAH
11:26				REBOUND (DEF) by CHILDS, ELIJAH
11:22				MISSED 3PTR by BROWN, DARRELL
11:18	REBOUND (DEF) by TEAM			
10:50	MISSED JUMPER by JONES, LANCE			
10:47				REBOUND (DEF) by CHILDS, ELIJAH
10:36				MISSED LAYUP by CHILDS, ELIJAH
10:35				REBOUND (OFF) by TEAM
10:35				SUB OUT: BROWN, DARRELL
10:35				SUB IN: THOMAS, ANTONIO
10:35	SUB OUT: DAVIS, KARRINGTON			
10:35	SUB IN: BENSON, BARRET			
10:21				TURNOVER (BADPASS) by CHILDS, ELIJAH
09:56	MISSED JUMPER by MCGILL, ERIC			
09:56				BLOCK by CHILDS, ELIJAH
09:49				REBOUND (DEF) by TAHVANAINEN, VILLE
09:49				SUB OUT: CHILDS, ELIJAH
09:49				SUB IN: BOYA, ARI
09:46				MISSED 3PTR by TAHVANAINEN, VILLE
09:42				REBOUND (OFF) by BOYA, ARI
09:37				TURNOVER (LOSTBALL) by KINGSBY, DANYA
09:37				SUB OUT: TAHVANAINEN, VILLE
09:37				SUB IN: BROWN, DARRELL
09:22	MISSED LAYUP by BENSON, BARRET			
09:17				REBOUND (DEF) by BOYA, ARI
09:09	SUB OUT: GOOCH, BRENDON			
09:09	SUB IN: DOMASK, MARCUS			
08:59				TURNOVER (LOSTBALL) by BROWN, DARRELL
08:59	STEAL by BROWN, TRENT			
08:52	GOOD! LAYUP by JONES, LANCE [FB/PNT]	5-12	V 7	
08:52	ASSIST by BROWN, TRENT			
08:41		7-12	V 5	GOOD! JUMPER by BROWN, DARRELL
08:20	MISSED JUMPER by DOMASK, MARCUS			
08:20				BLOCK by BOYA, ARI
08:18	REBOUND (OFF) by TEAM			
08:06	MISSED 3PTR by JONES, LANCE			
08:00				REBOUND (DEF) by TEAM
08:00				
07:45				MISSED LAYUP by KINGSBY, DANYA
07:45	BLOCK by BENSON, BARRET			
07:41				REBOUND (OFF) by KINGSBY, DANYA
07:37				MISSED LAYUP by KINGSBY, DANYA
07:33				REBOUND (OFF) by KINGSBY, DANYA
07:32				TURNOVER (LOSTBALL) by THOMAS, ANTONIO
07:20	GOOD! LAYUP by JONES, LANCE	7-14	V 7	
07:12	FOUL (PERSONAL) by BROWN, TRENT			
07:12				SUB OUT: BOYA, ARI
07:12				SUB OUT: THOMAS, ANTONIO
07:12				SUB IN: CHILDS, ELIJAH
07:12				SUB IN: BAR, KOCH
07:12				SUB OUT: HENRY, JA'SHON

Time	VISITORS: Southern III.	Score	Margin	HOME: Bradley
07:12				SUB IN: TAHVANAINEN, VILLE
07:00				FOUL (OFF) by BAR, KOCH
07:00				TURNOVER (OFFENSIVE) by BAR, KOCH
06:29	TURNOVER (SHOTCLOCK) by TEAM			
06:11		9-14	V 5	GOOD! LAYUP by CHILDS, ELIJAH
05:51	TURNOVER (TRAVEL) by BENSON, BARRET			
05:44				SUB OUT: KINGSBY, DANYA
05:44				SUB IN: KENNEL, NATE
05:22				MISSED LAYUP by CHILDS, ELIJAH
05:18	REBOUND (DEF) by BENSON, BARRET			
05:13	MISSED LAYUP by DOMASK, MARCUS			
05:13				BLOCK by BAR, KOCH
05:09				REBOUND (DEF) by TAHVANAINEN, VILLE
04:59		11-14	V 3	GOOD! DUNK by CHILDS, ELIJAH
04:59				ASSIST by BROWN, DARRELL
04:57	TIMEOUT 30SEC			
04:57				SUB OUT: KENNEL, NATE
04:57				SUB IN: KINGSBY, DANYA
04:43	GOOD! 3PTR by BROWN, TRENT	11-17	V 6	
04:43	ASSIST by MCGILL, ERIC			
04:23		14-17	V 3	GOOD! 3PTR by CHILDS, ELIJAH
04:23				ASSIST by BROWN, DARRELL
03:58	GOOD! 3PTR by JONES, LANCE	14-20	V 6	
03:58	ASSIST by BROWN, TRENT			
03:39				MISSED JUMPER by BROWN, DARRELL
03:35	REBOUND (DEF) by BENSON, BARRET			
03:28	TURNOVER (BADPASS) by JONES, LANCE			
03:28				STEAL by BROWN, DARRELL
03:20		17-20	V 3	GOOD! 3PTR by TAHVANAINEN, VILLE [FB]
03:20				ASSIST by BROWN, DARRELL
03:02	MISSED 3PTR by BROWN, TRENT			
02:58				REBOUND (DEF) by CHILDS, ELIJAH
02:50		19-20	V 1	GOOD! LAYUP by CHILDS, ELIJAH
02:50				ASSIST by BROWN, DARRELL
02:27	GOOD! JUMPER by JONES, LANCE	19-22	V 3	
01:56				MISSED 3PTR by CHILDS, ELIJAH
01:52	REBOUND (DEF) by BENSON, BARRET			
01:44	MISSED JUMPER by DOMASK, MARCUS			
01:41	REBOUND (OFF) by MCGILL, ERIC			
01:37	GOOD! LAYUP by MCGILL, ERIC	19-24	V 5	
01:37				TIMEOUT 30SEC
01:37				SUB OUT: KINGSBY, DANYA
01:37				SUB OUT: CHILDS, ELIJAH
01:37				SUB OUT: BAR, KOCH
01:37				SUB IN: BOYA, ARI
01:37				SUB IN: HENRY, JA'SHON
01:37				SUB IN: KENNEL, NATE
01:37	SUB OUT: DOMASK, MARCUS			
01:37	SUB IN: GOOCH, BRENDON			
01:14		21-24	V 3	GOOD! LAYUP by HENRY, JA'SHON
01:14	FOUL (PERSONAL) by GOOCH, BRENDON			
01:14				SUB OUT: KENNEL, NATE
01:14				SUB IN: KINGSBY, DANYA
01:14		22-24	V 2	GOOD! FT by HENRY, JA'SHON
00:58	GOOD! 3PTR by BENSON, BARRET	22-27	V 5	
00:58	ASSIST by BROWN, TRENT			
00:31		24-27	V 3	GOOD! JUMPER by BROWN, DARRELL [PNT]
00:03	MISSED JUMPER by MCGILL, ERIC			
00:00				REBOUND (DEF) by BOYA, ARI

Southern III. 27, Bradley 24

Points from (This Period)	SIU	BRD
In the Paint	8	10
Off Turns	9	5
2nd Chance	2	0
Fast Break	2	3
Bench	6	6

Official Box Score
Southern III. vs Bradley
Second Half Statistics Only
 March 06, 2020 at Enterprise Center - St. Louis, Mo.



Southern III. 32

No.	Player	S	Pts	FG	3FG	FT	OR	DR	TR	PF	A	TO	Blk	Stl	Min	+/-
01	DOMASK, MARCUS	F	6	2-6	2-3	0-0	0	3	3	2	1	2	0	0	20	-8
03	SUGGS, RONNIE	G	8	2-2	1-1	3-3	0	1	1	3	1	1	0	1	18	-6
04	MCGILL, ERIC	G	6	1-4	0-1	4-4	1	3	4	2	1	1	0	0	18	-10
05	JONES, LANCE	G	8	4-10	0-1	0-1	0	1	1	1	2	1	0	1	20	-8
40	BENSON, BARRET	C	4	1-3	1-2	1-2	1	2	3	3	1	0	1	0	20	-8
02	DAVIS, KARRINGTON	G	0	0-0	0-0	0-0	0	0	0	0	0	0	0	0	0	0
24	BROWN, TRENT	G	0	0-0	0-0	0-0	0	0	0	1	0	0	0	0	5	0
25	GOOCH, BRENDON	F	0	0-0	0-0	0-0	0	0	0	0	0	0	0	0	0	0
TEAM							0	1	1	0		0				
TOTALS			32	10-25	4-8	8-10	2	11	13	12	6	5	1	2	100	

Shooting By Period

Period	FG	FG%	3FG	3FG%	FT	FT%
2nd Half	10-25	40%	4-8	50%	8-10	80%
Game	21-56	37.5%	9-19	47.4%	8-10	80.0%

Deadball Rebounds: 1,0
Last FG Half: SIU -

Bradley 40

No.	Player	S	Pts	FG	3FG	FT	OR	DR	TR	PF	A	TO	Blk	Stl	Min	+/-
00	KINGSBY, DANYA	G	0	0-1	0-0	0-0	0	3	3	0	0	0	1	0	8	0
05	BROWN, DARRELL	G	15	5-7	0-1	5-5	0	1	1	1	3	3	0	0	19	11
10	CHILDS, ELIJAH	F	6	1-7	0-1	4-4	1	2	3	2	0	0	1	0	17	2
12	BAR, KOCH	C	2	1-2	0-0	0-0	0	1	1	1	2	0	0	0	10	5
25	KENNEL, NATE	G	3	1-4	1-3	0-0	2	1	3	1	1	1	0	1	20	8
01	BOYA, ARI	C	2	1-1	0-0	0-0	0	1	1	0	0	0	2	0	3	1
02	THOMAS, ANTONIO	G	0	0-0	0-0	0-0	0	0	0	0	0	0	0	0	0	-1
22	HENRY, JA'SHON	F	3	1-3	0-1	1-1	0	3	3	2	1	0	0	0	10	4
23	TAHVANAINEN, VILLE	G	9	3-4	3-4	0-0	0	2	2	1	1	0	0	1	12	10
TEAM							2	0	2	0		0				
TOTALS			40	13-29	4-10	10-10	5	14	19	8	8	4	4	2	100	

Shooting By Period

Period	FG	FG%	3FG	3FG%	FT	FT%
2nd Half	13-29	45%	4-10	40%	10-10	100%
Game	23-58	39.7%	6-18	33.3%	12-13	92.3%

Deadball Rebounds: 0,0
Last FG Half: BRD -

Game Notes:

Officials: Gerry Pollard,Ray Natili,Randy Heimerman
 Attendance: 7399

Start Time: 03:39 PM ET
 End Time: 05:31 PM ET
 Game Duration: 1:51
 Neutral Court;

Score	1st	2nd	TOT
SIU	27	32	59
BRD	24	40	64

Points from (This Period)	SIU	BRD
In the Paint	12	16
Off Turns	4	8
2nd Chance	3	6
Fast Break	4	0
Bench	0	14

Official Play-By-Play
Southern III. vs Bradley
Second Half
March 06, 2020 at Enterprise Center - St. Louis, Mo.



Period 2

Starters:

Southern III.: 1 DOMASK, MARCUS (F); 3 SUGGS, RONNIE (G); 4 MCGILL, ERIC (G); 5 JONES, LANCE (G); 40 BENSON, BARRET (C);

Bradley: 00 KINGSBY, DANYA (G); 5 BROWN, DARRELL (G); 10 CHILDS, ELIJAH (F); 12 BAR, KOCH (C); 25 KENNEL, NATE (G);

Time	VISITORS: Southern III.	Score	Margin	HOME: Bradley
20:00				SUB OUT: BOYA, ARI
20:00				SUB OUT: HENRY, JA'SHON
20:00				SUB OUT: TAHVANAINEN, VILLE
20:00				SUB IN: CHILDS, ELIJAH
20:00				SUB IN: BAR, KOCH
20:00				SUB IN: KENNEL, NATE
20:00	SUB OUT: BROWN, TRENT			
20:00	SUB OUT: GOOCH, BRENDON			
20:00	SUB IN: DOMASK, MARCUS			
20:00	SUB IN: SUGGS, RONNIE			
19:46				MISSED 3PTR by CHILDS, ELIJAH
19:42	REBOUND (DEF) by MCGILL, ERIC			
19:14	GOOD! LAYUP by JONES, LANCE [PNT]	24-29	V 5	
19:14	ASSIST by BENSON, BARRET			
19:01				MISSED JUMPER by CHILDS, ELIJAH
18:58	REBOUND (DEF) by BENSON, BARRET			
18:54	MISSED 3PTR by DOMASK, MARCUS			
18:43				REBOUND (DEF) by KINGSBY, DANYA
18:31				TURNOVER (BADPASS) by KENNEL, NATE
18:31	STEAL by JONES, LANCE			
18:26	GOOD! LAYUP by MCGILL, ERIC [FB]	24-31	V 7	
18:26	ASSIST by JONES, LANCE			
18:00		26-31	V 5	GOOD! DUNK by CHILDS, ELIJAH
18:00				ASSIST by BAR, KOCH
17:36	TURNOVER (LOSTBALL) by DOMASK, MARCUS			
17:36				SUB OUT: CHILDS, ELIJAH
17:36				SUB IN: HENRY, JA'SHON
17:27				TURNOVER (LOSTBALL) by BROWN, DARRELL
17:04	MISSED JUMPER by JONES, LANCE			
16:59				REBOUND (DEF) by KINGSBY, DANYA
16:55				MISSED LAYUP by HENRY, JA'SHON
16:53	REBOUND (DEF) by MCGILL, ERIC			
16:48	MISSED JUMPER by MCGILL, ERIC			
16:48				BLOCK by KINGSBY, DANYA
16:43				REBOUND (DEF) by KINGSBY, DANYA
16:34				SUB OUT: KINGSBY, DANYA
16:34				SUB OUT: BAR, KOCH
16:34				SUB IN: CHILDS, ELIJAH
16:34				SUB IN: TAHVANAINEN, VILLE
16:31		28-31	V 3	GOOD! JUMPER by BROWN, DARRELL [PNT]
16:31				ASSIST by TAHVANAINEN, VILLE
16:03	GOOD! 3PTR by DOMASK, MARCUS	28-34	V 6	
16:03	ASSIST by SUGGS, RONNIE			
15:34				MISSED JUMPER by CHILDS, ELIJAH
15:30	REBOUND (DEF) by SUGGS, RONNIE			
15:11	GOOD! 3PTR by SUGGS, RONNIE	28-37	V 9	
15:11	ASSIST by DOMASK, MARCUS			
14:57				TIMEOUT 30SEC
14:57				
14:49	FOUL (PERSONAL) by SUGGS, RONNIE			
14:46		31-37	V 6	GOOD! 3PTR by TAHVANAINEN, VILLE
14:46				ASSIST by HENRY, JA'SHON
14:18	MISSED JUMPER by DOMASK, MARCUS			
14:15				REBOUND (DEF) by HENRY, JA'SHON
14:12				MISSED 3PTR by KENNEL, NATE
14:09	REBOUND (DEF) by BENSON, BARRET			
14:09				FOUL (PERSONAL) by HENRY, JA'SHON
13:56	FOUL (OFF) by MCGILL, ERIC			
13:56	TURNOVER (OFFENSIVE) by MCGILL, ERIC			
13:50	FOUL (PERSONAL) by MCGILL, ERIC			
13:44		34-37	V 3	GOOD! 3PTR by KENNEL, NATE
13:12	MISSED LAYUP by JONES, LANCE			
13:08				REBOUND (DEF) by HENRY, JA'SHON
13:05				MISSED 3PTR by TAHVANAINEN, VILLE
13:02	REBOUND (DEF) by MCGILL, ERIC			
12:47				FOUL (PERSONAL) by CHILDS, ELIJAH
12:47	SUB OUT: MCGILL, ERIC			
12:47	SUB IN: BROWN, TRENT			
12:47	MISSED FT by BENSON, BARRET			
12:47	REBOUND (OFF) by TEAM			

Time	VISITORS: Southern Ill.	Score	Margin	HOME: Bradley
12:47	GOOD! FT by BENSON, BARRET	34-38	V 4	
12:35	FOUL (PERSONAL) by BENSON, BARRET			
12:29				MISSED 3PTR by HENRY, JA'SHON
12:28	REBOUND (DEF) by TEAM			
12:28				SUB OUT: BROWN, DARRELL
12:28				SUB IN: KINGSBY, DANYA
12:06	GOOD! LAYUP by SUGGS, RONNIE	34-40	V 6	
12:06				FOUL (PERSONAL) by TAHVANAINEN, VILLE
12:06				SUB OUT: TAHVANAINEN, VILLE
12:06				SUB IN: THOMAS, ANTONIO
12:06	GOOD! FT by SUGGS, RONNIE	34-41	V 7	
11:51	FOUL (PERSONAL) by JONES, LANCE			
11:51				
11:51				SUB OUT: THOMAS, ANTONIO
11:51				SUB OUT: HENRY, JA'SHON
11:51				SUB IN: BOYA, ARI
11:51				SUB IN: BROWN, DARRELL
11:32				MISSED LAYUP by CHILDS, ELIJAH
11:31				REBOUND (OFF) by TEAM
11:28				MISSED LAYUP by KINGSBY, DANYA
11:26				REBOUND (OFF) by TEAM
11:16				MISSED JUMPER by CHILDS, ELIJAH
11:12	REBOUND (DEF) by DOMASK, MARCUS			
10:57	MISSED 3PTR by JONES, LANCE			
10:51				REBOUND (DEF) by BROWN, DARRELL
10:48		36-41	V 5	GOOD! JUMPER by BROWN, DARRELL [PNT]
10:23	TURNOVER (LOSTBALL) by SUGGS, RONNIE			
10:23	SUB OUT: SUGGS, RONNIE			
10:23	SUB IN: MCGILL, ERIC			
10:15				TURNOVER (BADPASS) by BROWN, DARRELL
09:36	MISSED LAYUP by DOMASK, MARCUS			
09:36				BLOCK by BOYA, ARI
09:30				REBOUND (DEF) by BOYA, ARI
09:24		38-41	V 3	GOOD! LAYUP by BOYA, ARI [PNT]
09:24				ASSIST by BROWN, DARRELL
09:11	MISSED LAYUP by MCGILL, ERIC			
09:11				BLOCK by BOYA, ARI
09:05	REBOUND (OFF) by MCGILL, ERIC			
08:59	GOOD! 3PTR by BENSON, BARRET	38-44	V 6	
08:59	ASSIST by MCGILL, ERIC			
08:52		40-44	V 4	GOOD! JUMPER by BROWN, DARRELL
08:35	GOOD! LAYUP by JONES, LANCE	40-46	V 6	
08:22	FOUL (PERSONAL) by BROWN, TRENT			
08:22				SUB OUT: BOYA, ARI
08:22				SUB OUT: CHILDS, ELIJAH
08:22				SUB IN: BAR, KOCH
08:22				SUB IN: TAHVANAINEN, VILLE
08:22	SUB OUT: BROWN, TRENT			
08:22	SUB IN: SUGGS, RONNIE			
08:17		42-46	V 4	GOOD! DUNK by BAR, KOCH
08:17				ASSIST by BROWN, DARRELL
07:53	TURNOVER (BADPASS) by JONES, LANCE			
07:53				STEAL by TAHVANAINEN, VILLE
07:48				MISSED 3PTR by BROWN, DARRELL
07:44				REBOUND (OFF) by KENNEL, NATE
07:37		44-46	V 2	GOOD! LAYUP by BROWN, DARRELL
07:37	FOUL (PERSONAL) by BENSON, BARRET			
07:37				
07:37				SUB OUT: KINGSBY, DANYA
07:37				SUB IN: CHILDS, ELIJAH
07:37		45-46	V 1	GOOD! FT by BROWN, DARRELL
07:22	TURNOVER (BADPASS) by DOMASK, MARCUS			
07:22				STEAL by KENNEL, NATE
07:03	FOUL (PERSONAL) by DOMASK, MARCUS			
07:03		46-46	T	GOOD! FT by CHILDS, ELIJAH
07:03		47-46	H 1	GOOD! FT by CHILDS, ELIJAH
06:36	MISSED 3PTR by BENSON, BARRET			
06:32				REBOUND (DEF) by CHILDS, ELIJAH
06:12				MISSED JUMPER by CHILDS, ELIJAH
06:09				REBOUND (OFF) by CHILDS, ELIJAH
06:06				MISSED JUMPER by KENNEL, NATE
06:03	REBOUND (DEF) by DOMASK, MARCUS			
05:51				FOUL (PERSONAL) by BAR, KOCH
05:51	GOOD! FT by MCGILL, ERIC	47-47	T	
05:51				SUB OUT: CHILDS, ELIJAH
05:51				SUB IN: HENRY, JA'SHON
05:51	GOOD! FT by MCGILL, ERIC	47-48	V 1	
05:34		50-48	H 2	GOOD! 3PTR by TAHVANAINEN, VILLE
05:34				ASSIST by BAR, KOCH
05:06	GOOD! 3PTR by DOMASK, MARCUS	50-51	V 1	

Time	VISITORS: Southern Ill.	Score	Margin	HOME: Bradley
05:06	ASSIST by JONES, LANCE			
04:49				MISSED LAYUP by BROWN, DARRELL
04:46	REBOUND (DEF) by JONES, LANCE			
04:42	MISSED LAYUP by JONES, LANCE			
04:39				REBOUND (DEF) by TAHVANAINEN, VILLE
04:26				MISSED 3PTR by KENNEL, NATE
04:22				REBOUND (OFF) by KENNEL, NATE
04:21		53-51	H 2	GOOD! 3PTR by TAHVANAINEN, VILLE
04:21				ASSIST by BROWN, DARRELL
04:12	TIMEOUT 30SEC			
04:12				
04:12				SUB OUT: HENRY, JA'SHON
04:12				SUB IN: CHILDS, ELIJAH
03:53				FOUL (PERSONAL) by BROWN, DARRELL
03:46	GOOD! LAYUP by JONES, LANCE	53-53	T	
03:46				FOUL (PERSONAL) by CHILDS, ELIJAH
03:46	MISSED FT by JONES, LANCE			
03:44				REBOUND (DEF) by BAR, KOCH
03:30	FOUL (PERSONAL) by SUGGS, RONNIE			
03:30		54-53	H 1	GOOD! FT by BROWN, DARRELL
03:30				SUB OUT: TAHVANAINEN, VILLE
03:30				SUB IN: HENRY, JA'SHON
03:30		55-53	H 2	GOOD! FT by BROWN, DARRELL
03:16	GOOD! LAYUP by JONES, LANCE	55-55	T	
02:47	FOUL (PERSONAL) by BENSON, BARRET			
02:47		56-55	H 1	GOOD! FT by CHILDS, ELIJAH
02:47				SUB OUT: HENRY, JA'SHON
02:47				SUB IN: TAHVANAINEN, VILLE
02:47		57-55	H 2	GOOD! FT by CHILDS, ELIJAH
02:21	MISSED LAYUP by JONES, LANCE			
02:17	REBOUND (OFF) by BENSON, BARRET			
02:17	MISSED LAYUP by BENSON, BARRET			
02:15				REBOUND (DEF) by KENNEL, NATE
02:12				MISSED LAYUP by BAR, KOCH
02:12	BLOCK by BENSON, BARRET			
02:06	REBOUND (DEF) by DOMASK, MARCUS			
01:48				FOUL (PERSONAL) by KENNEL, NATE
01:48	GOOD! FT by MCGILL, ERIC	57-56	H 1	
01:48				SUB OUT: BAR, KOCH
01:48				SUB IN: HENRY, JA'SHON
01:48	GOOD! FT by MCGILL, ERIC	57-57	T	
01:38		59-57	H 2	GOOD! LAYUP by BROWN, DARRELL [PNT]
01:12	TIMEOUT 30SEC			
01:07	MISSED JUMPER by DOMASK, MARCUS			
01:07				BLOCK by CHILDS, ELIJAH
01:03				REBOUND (DEF) by HENRY, JA'SHON
00:47				TURNOVER (LOSTBALL) by BROWN, DARRELL
00:47	STEAL by SUGGS, RONNIE			
00:43				FOUL (PERSONAL) by HENRY, JA'SHON
00:43	GOOD! FT by SUGGS, RONNIE [FB]	59-58	H 1	
00:43	GOOD! FT by SUGGS, RONNIE [FB]	59-59	T	
00:38				TIMEOUT 30SEC
00:19		61-59	H 2	GOOD! LAYUP by HENRY, JA'SHON
00:19				ASSIST by KENNEL, NATE
00:19	FOUL (PERSONAL) by SUGGS, RONNIE			
00:19	SUB OUT: SUGGS, RONNIE			
00:19	SUB IN: BROWN, TRENT			
00:19		62-59	H 3	GOOD! FT by HENRY, JA'SHON
00:11	MISSED LAYUP by JONES, LANCE			
00:07				REBOUND (DEF) by CHILDS, ELIJAH
00:06	FOUL (PERSONAL) by DOMASK, MARCUS			
00:06		63-59	H 4	GOOD! FT by BROWN, DARRELL
00:06		64-59	H 5	GOOD! FT by BROWN, DARRELL
00:02	MISSED 3PTR by MCGILL, ERIC			
00:01				REBOUND (DEF) by TAHVANAINEN, VILLE

Southern Ill. 59, Bradley 64

Points from (This Period)	SIU	BRD
In the Paint	12	16
Off Turns	4	8
2nd Chance	3	6
Fast Break	4	0
Bench	0	14

Official Scoring/Possession Reference Chart
Southern III. vs Bradley
Period 1
March 06, 2020 at Enterprise Center - St. Louis, Mo.



Period 1

Starters:

Southern III.: 1 DOMASK, MARCUS (F); 3 SUGGS, RONNIE (G); 4 MCGILL, ERIC (G); 5 JONES, LANCE (G); 40 BENSON, BARRET (C);

Bradley: 00 KINGSBY, DANYA (G); 5 BROWN, DARRELL (G); 10 CHILDS, ELIJAH (F); 12 BAR, KOCH (C); 25 KENNEL, NATE (G);

Time	VISITORS: Southern III.	Score	Margin	HOME: Bradley
19:01		2-0	H 2	GOOD! JUMPER by BAR, KOCH
18:04		3-0	H 3	GOOD! FT by CHILDS, ELIJAH
17:02		5-0	H 5	GOOD! JUMPER by KINGSBY, DANYA
15:51	GOOD! 3PTR by JONES, LANCE	5-3	H 2	
15:25	GOOD! JUMPER by BENSON, BARRET [PNT]	5-5	T	
14:46	GOOD! JUMPER by MCGILL, ERIC	5-7	V 2	
12:00	GOOD! 3PTR by GOOCH, BRENDON	5-10	V 5	
08:52	GOOD! LAYUP by JONES, LANCE [FB/PNT]	5-12	V 7	
08:41		7-12	V 5	GOOD! JUMPER by BROWN, DARRELL
07:20	GOOD! LAYUP by JONES, LANCE	7-14	V 7	
06:11		9-14	V 5	GOOD! LAYUP by CHILDS, ELIJAH
04:59		11-14	V 3	GOOD! DUNK by CHILDS, ELIJAH
04:43	GOOD! 3PTR by BROWN, TRENT	11-17	V 6	
04:23		14-17	V 3	GOOD! 3PTR by CHILDS, ELIJAH
03:58	GOOD! 3PTR by JONES, LANCE	14-20	V 6	
03:20		17-20	V 3	GOOD! 3PTR by TAHVANAINEN, VILLE [FB]
02:50		19-20	V 1	GOOD! LAYUP by CHILDS, ELIJAH
02:27	GOOD! JUMPER by JONES, LANCE	19-22	V 3	
01:37	GOOD! LAYUP by MCGILL, ERIC	19-24	V 5	
01:14		21-24	V 3	GOOD! LAYUP by HENRY, JA'SHON
01:14		22-24	V 2	GOOD! FT by HENRY, JA'SHON
00:58	GOOD! 3PTR by BENSON, BARRET	22-27	V 5	
00:31		24-27	V 3	GOOD! JUMPER by BROWN, DARRELL [PNT]

Southern III. 27, Bradley 24

Official Scoring/Possession Reference Chart
Southern III. vs Bradley
Period 2
March 06, 2020 at Enterprise Center - St. Louis, Mo.



Period 2

Starters:

Southern III.: 1 DOMASK, MARCUS (F); 3 SUGGS, RONNIE (G); 4 MCGILL, ERIC (G); 5 JONES, LANCE (G); 40 BENSON, BARRET (C);
Bradley: 00 KINGSBY, DANYA (G); 5 BROWN, DARRELL (G); 10 CHILDS, ELIJAH (F); 12 BAR, KOCH (C); 25 KENNEL, NATE (G);

Time	VISITORS: Southern III.	Score	Margin	HOME: Bradley
19:14	GOOD! LAYUP by JONES, LANCE [PNT]	24-29	V 5	
18:26	GOOD! LAYUP by MCGILL, ERIC [FB]	24-31	V 7	
18:00		26-31	V 5	GOOD! DUNK by CHILDS, ELIJAH
16:31		28-31	V 3	GOOD! JUMPER by BROWN, DARRELL [PNT]
16:03	GOOD! 3PTR by DOMASK, MARCUS	28-34	V 6	
15:11	GOOD! 3PTR by SUGGS, RONNIE	28-37	V 9	
14:46		31-37	V 6	GOOD! 3PTR by TAHVANAINEN, VILLE
13:44		34-37	V 3	GOOD! 3PTR by KENNEL, NATE
12:47	GOOD! FT by BENSON, BARRET	34-38	V 4	
12:06	GOOD! LAYUP by SUGGS, RONNIE	34-40	V 6	
12:06	GOOD! FT by SUGGS, RONNIE	34-41	V 7	
10:48		36-41	V 5	GOOD! JUMPER by BROWN, DARRELL [PNT]
09:24		38-41	V 3	GOOD! LAYUP by BOYA, ARI [PNT]
08:59	GOOD! 3PTR by BENSON, BARRET	38-44	V 6	
08:52		40-44	V 4	GOOD! JUMPER by BROWN, DARRELL
08:35	GOOD! LAYUP by JONES, LANCE	40-46	V 6	
08:17		42-46	V 4	GOOD! DUNK by BAR, KOCH
07:37		44-46	V 2	GOOD! LAYUP by BROWN, DARRELL
07:37		45-46	V 1	GOOD! FT by BROWN, DARRELL
07:03		46-46	T	GOOD! FT by CHILDS, ELIJAH
07:03		47-46	H 1	GOOD! FT by CHILDS, ELIJAH
05:51	GOOD! FT by MCGILL, ERIC	47-47	T	
05:51	GOOD! FT by MCGILL, ERIC	47-48	V 1	
05:34		50-48	H 2	GOOD! 3PTR by TAHVANAINEN, VILLE
05:06	GOOD! 3PTR by DOMASK, MARCUS	50-51	V 1	
04:21		53-51	H 2	GOOD! 3PTR by TAHVANAINEN, VILLE
03:46	GOOD! LAYUP by JONES, LANCE	53-53	T	
03:30		54-53	H 1	GOOD! FT by BROWN, DARRELL
03:30		55-53	H 2	GOOD! FT by BROWN, DARRELL
03:16	GOOD! LAYUP by JONES, LANCE	55-55	T	
02:47		56-55	H 1	GOOD! FT by CHILDS, ELIJAH
02:47		57-55	H 2	GOOD! FT by CHILDS, ELIJAH
01:48	GOOD! FT by MCGILL, ERIC	57-56	H 1	
01:48	GOOD! FT by MCGILL, ERIC	57-57	T	
01:38		59-57	H 2	GOOD! LAYUP by BROWN, DARRELL [PNT]
00:43	GOOD! FT by SUGGS, RONNIE [FB]	59-58	H 1	
00:43	GOOD! FT by SUGGS, RONNIE [FB]	59-59	T	
00:19		61-59	H 2	GOOD! LAYUP by HENRY, JA'SHON
00:19		62-59	H 3	GOOD! FT by HENRY, JA'SHON
00:06		63-59	H 4	GOOD! FT by BROWN, DARRELL
00:06		64-59	H 5	GOOD! FT by BROWN, DARRELL

Southern III. 59, Bradley 64

Official Substitutions Log
Southern III. vs Bradley
Period 1
March 06, 2020 at Enterprise Center - St. Louis, Mo.



VISITORS: Southern III.	Time	Score	HOME: Bradley
1 DOMASK, MARCUS			00 KINGSBY, DANYA
3 SUGGS, RONNIE			5 BROWN, DARRELL
4 MCGILL, ERIC			10 CHILDS, ELIJAH
5 JONES, LANCE			12 BAR, KOCH
40 BENSON, BARRET			25 KENNEL, NATE
SUB OUT: 3 SUGGS, RONNIE	17:22	0-3	
SUB IN: 24 BROWN, TRENT	17:22		
	17:02	0-3	SUB OUT: CHILDS, ELIJAH
	17:02		SUB OUT: BAR, KOCH
	17:02		SUB IN: BOYA, ARI
	17:02		SUB IN: HENRY, JA'SHON
	15:04	5-5	SUB OUT: KINGSBY, DANYA
	15:04		SUB OUT: BOYA, ARI
	15:04		SUB OUT: HENRY, JA'SHON
	15:04		SUB IN: CHILDS, ELIJAH
	15:04		SUB IN: BAR, KOCH
	15:04		SUB IN: TAHVANAINEN, VILLE
SUB OUT: 1 DOMASK, MARCUS	14:31	7-5	
SUB IN: 2 DAVIS, KARRINGTON	14:31		
	13:13	7-5	SUB OUT: KENNEL, NATE
	13:13		SUB IN: KINGSBY, DANYA
	12:39	7-5	SUB OUT: BAR, KOCH
	12:39		SUB IN: HENRY, JA'SHON
SUB OUT: 40 BENSON, BARRET	12:39		
SUB IN: 25 GOOCH, BRENDON	12:39		
	10:35	10-5	SUB OUT: BROWN, DARRELL
	10:35		SUB IN: THOMAS, ANTONIO
SUB OUT: 2 DAVIS, KARRINGTON	10:35		
SUB IN: 40 BENSON, BARRET	10:35		
	09:49	10-5	SUB OUT: CHILDS, ELIJAH
	09:49		SUB IN: BOYA, ARI
	09:37	10-5	SUB OUT: TAHVANAINEN, VILLE
	09:37		SUB IN: BROWN, DARRELL
SUB OUT: 25 GOOCH, BRENDON	09:09	10-5	
SUB IN: 1 DOMASK, MARCUS	09:09		
	07:12	14-7	SUB OUT: BOYA, ARI
	07:12		SUB OUT: THOMAS, ANTONIO
	07:12		SUB IN: CHILDS, ELIJAH
	07:12		SUB IN: BAR, KOCH
	07:12		SUB OUT: HENRY, JA'SHON
	07:12		SUB IN: TAHVANAINEN, VILLE
	05:44	14-9	SUB OUT: KINGSBY, DANYA
	05:44		SUB IN: KENNEL, NATE
	04:57	14-11	SUB OUT: KENNEL, NATE
	04:57		SUB IN: KINGSBY, DANYA
	01:37	24-19	SUB OUT: KINGSBY, DANYA
	01:37		SUB OUT: CHILDS, ELIJAH
	01:37		SUB OUT: BAR, KOCH
	01:37		SUB IN: BOYA, ARI
	01:37		SUB IN: HENRY, JA'SHON
	01:37		SUB IN: KENNEL, NATE
SUB OUT: 1 DOMASK, MARCUS	01:37		
SUB IN: 25 GOOCH, BRENDON	01:37		
	01:14	24-21	SUB OUT: KENNEL, NATE
	01:14		SUB IN: KINGSBY, DANYA

Southern III. 27, Bradley 24

**Official Substitutions Log
Southern III. vs Bradley
Period 2**

March 06, 2020 at Enterprise Center - St. Louis, Mo.



VISITORS: Southern III.	Time	Score	HOME: Bradley
1 DOMASK, MARCUS			00 KINGSBY, DANYA
3 SUGGS, RONNIE			5 BROWN, DARRELL
4 MCGILL, ERIC			10 CHILDS, ELIJAH
5 JONES, LANCE			12 BAR, KOCH
40 BENSON, BARRET			25 KENNEL, NATE
	20:00	-	SUB OUT: BOYA, ARI
	20:00		SUB OUT: HENRY, JA'SHON
	20:00		SUB OUT: TAHVANAINEN, VILLE
	20:00		SUB IN: CHILDS, ELIJAH
	20:00		SUB IN: BAR, KOCH
	20:00		SUB IN: KENNEL, NATE
SUB OUT: 24 BROWN, TRENT	20:00		
SUB OUT: 25 GOOCH, BRENDON	20:00		
SUB IN: 1 DOMASK, MARCUS	20:00		
SUB IN: 3 SUGGS, RONNIE	20:00		
	17:36	31-26	SUB OUT: CHILDS, ELIJAH
	17:36		SUB IN: HENRY, JA'SHON
	16:34	31-26	SUB OUT: KINGSBY, DANYA
	16:34		SUB OUT: BAR, KOCH
	16:34		SUB IN: CHILDS, ELIJAH
	16:34		SUB IN: TAHVANAINEN, VILLE
SUB OUT: 4 MCGILL, ERIC	12:47	37-34	
SUB IN: 24 BROWN, TRENT	12:47		
	12:28	38-34	SUB OUT: BROWN, DARRELL
	12:28		SUB IN: KINGSBY, DANYA
	12:06	40-34	SUB OUT: TAHVANAINEN, VILLE
	12:06		SUB IN: THOMAS, ANTONIO
	11:51	41-34	SUB OUT: THOMAS, ANTONIO
	11:51		SUB OUT: HENRY, JA'SHON
	11:51		SUB IN: BOYA, ARI
	11:51		SUB IN: BROWN, DARRELL
SUB OUT: 3 SUGGS, RONNIE	10:23	41-36	
SUB IN: 4 MCGILL, ERIC	10:23		
	08:22	46-40	SUB OUT: BOYA, ARI
	08:22		SUB OUT: CHILDS, ELIJAH
	08:22		SUB IN: BAR, KOCH
	08:22		SUB IN: TAHVANAINEN, VILLE
SUB OUT: 24 BROWN, TRENT	08:22		
SUB IN: 3 SUGGS, RONNIE	08:22		
	07:37	46-44	SUB OUT: KINGSBY, DANYA
	07:37		SUB IN: CHILDS, ELIJAH
	05:51	47-47	SUB OUT: CHILDS, ELIJAH
	05:51		SUB IN: HENRY, JA'SHON
	04:12	51-53	SUB OUT: HENRY, JA'SHON
	04:12		SUB IN: CHILDS, ELIJAH
	03:30	53-54	SUB OUT: TAHVANAINEN, VILLE
	03:30		SUB IN: HENRY, JA'SHON
	02:47	55-56	SUB OUT: HENRY, JA'SHON
	02:47		SUB IN: TAHVANAINEN, VILLE
	01:48	56-57	SUB OUT: BAR, KOCH
	01:48		SUB IN: HENRY, JA'SHON
SUB OUT: 3 SUGGS, RONNIE	00:19	59-61	
SUB IN: 24 BROWN, TRENT	00:19		

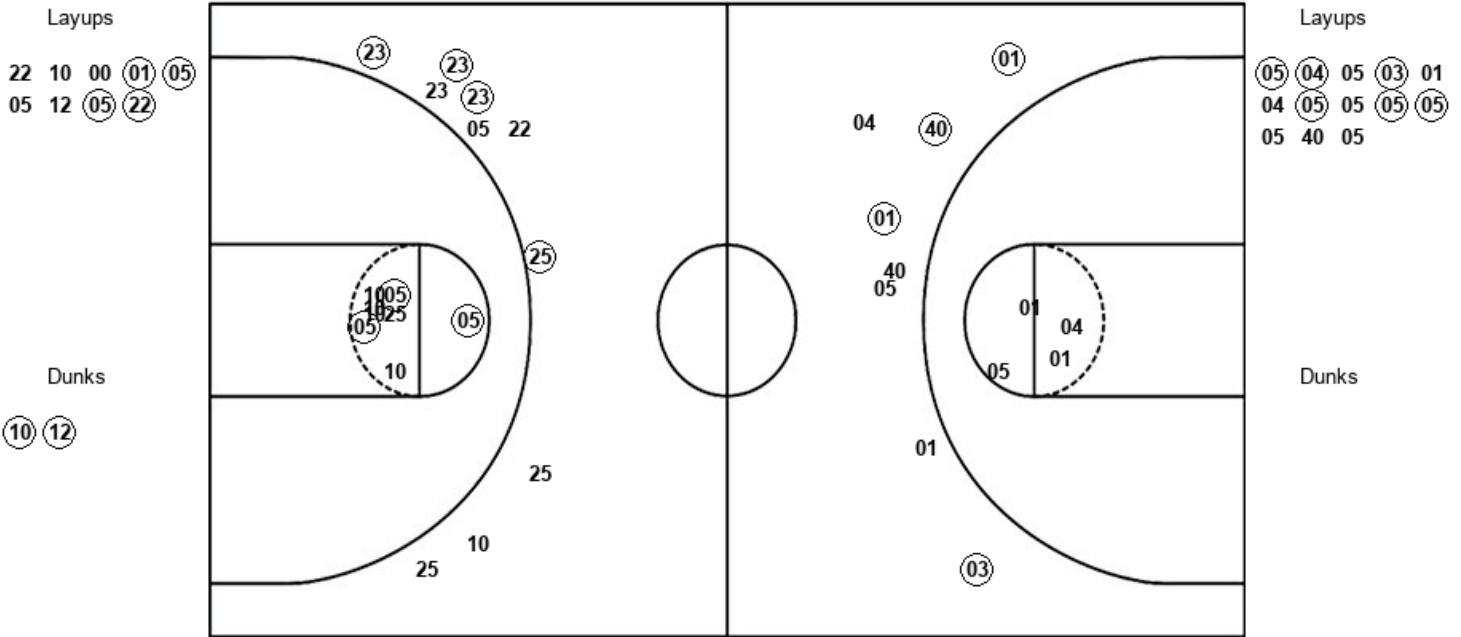
Southern III. 59, Bradley 64

Official Shot Chart
Southern III. vs Bradley
PERIOD 2 Shots
 March 06, 2020 at Enterprise Center - St. Louis, Mo.



Bradley

Southern III.



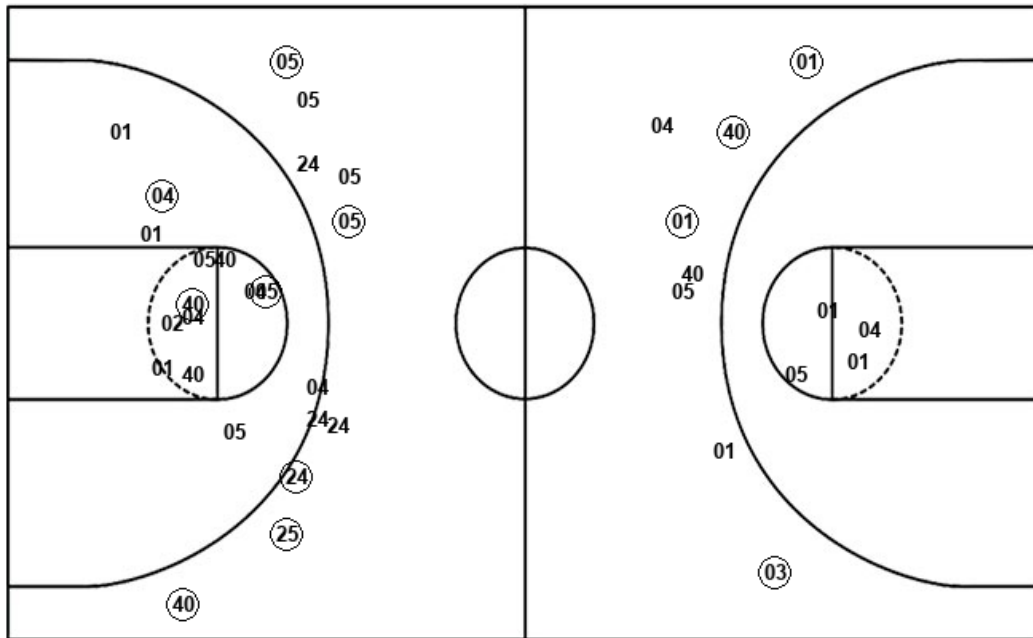
BRD : Period 2	Made	Att	Pct
Layups	4	9	44.4
Dunks	2	2	100.0
2PT Field Goals	9	19	47.4
3PT Field Goals	4	10	40.0
Total Field Goals	13	29	44.8

SIU : Period 2	Made	Att	Pct
Layups	6	13	46.2
Dunks	0	0	0
2PT Field Goals	6	17	35.3
3PT Field Goals	4	8	50.0
Total Field Goals	10	25	40.0

Official Shot Chart
Southern III. vs Bradley
Southern III. Team Shots
 March 06, 2020 at Enterprise Center - St. Louis, Mo.



Layups



Layups

03 05 40 (05) (05)
 01 (04) (05) (04) 05
 (03) 01 04 (05) 05
 (05) (05) 05 40 05

Dunks

Dunks

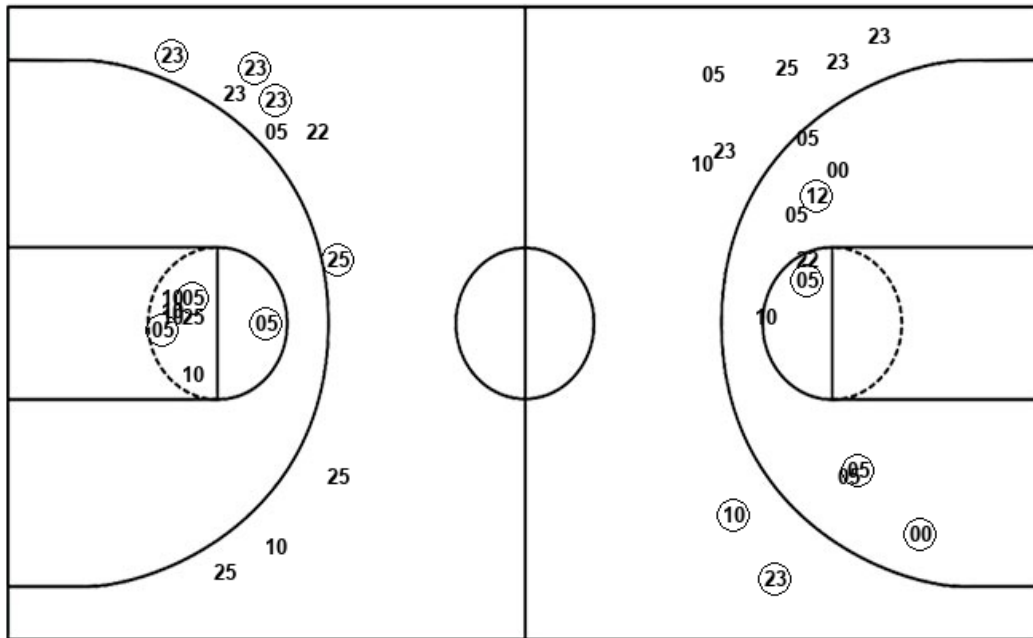
SIU : Period 1	Made	Att	Pct
Layups	3	7	42.9
Dunks	0	0	0
2PT Field Goals	6	20	30.0
3PT Field Goals	5	11	45.5
Total Field Goals	11	31	35.5

SIU : Period 2	Made	Att	Pct
Layups	6	13	46.2
Dunks	0	0	0
2PT Field Goals	6	17	35.3
3PT Field Goals	4	8	50.0
Total Field Goals	10	25	40.0

Official Shot Chart
Southern III. vs Bradley
Bradley Team Shots
 March 06, 2020 at Enterprise Center - St. Louis, Mo.



Layups



Layups

22	25	22	10	00
00	10	10	10	22
22	10	00	01	05
05	12	05	22	

Dunks

Dunks

10	10	12
----	----	----

BRD : Period 1	Made	Att	Pct
Layups	3	10	30.0
Dunks	1	1	100.0
2PT Field Goals	8	21	38.1
3PT Field Goals	2	8	25.0
Total Field Goals	10	29	34.5

BRD : Period 2	Made	Att	Pct
Layups	4	9	44.4
Dunks	2	2	100.0
2PT Field Goals	9	19	47.4
3PT Field Goals	4	10	40.0
Total Field Goals	13	29	44.8