

FINAL SCORE



South Fla.

38



UConn

79

American Athletic Conference Championship - Game 9

March 08, 2020 • Mohegan Sun Arena - Uncasville, Conn.



FINAL STATISTICS

Official Box Score
South Fla. vs UConn
Game Totals -- Final Statistics
March 08, 2020 at Mohegan Sun Arena - Uncasville, Conn.



South Fla. 38

No.	Player	S	Pts	FG	3FG	FT	OR	DR	TR	PF	A	TO	Blk	Stl	Min	+/-
03	HARVEY, SYDNI	G	7	2-12	1-5	2-2	1	1	2	1	0	3	0	0	33	-36
04	PINZAN, ELISA	G	0	0-3	0-1	0-0	0	3	3	0	0	4	0	0	16	-20
05	TSINEKE, ELENA	G	9	3-16	3-7	0-0	0	2	2	3	3	1	0	1	40	-41
20	MUNUNGA, BETHY	F	4	2-5	0-0	0-0	2	5	7	4	0	2	1	0	20	-30
21	LEVERETT, SHAE	F	6	2-3	0-0	2-2	4	1	5	5	0	3	0	1	20	-22
00	PEHADZIC, ENNA	G	3	1-2	1-2	0-0	0	1	1	0	0	1	0	0	10	-7
12	BERMEJO, CRISTINA	F	0	0-1	0-1	0-0	2	1	3	0	0	3	0	1	9	-11
22	BRABENCOVA, KRISTYNA	F	2	1-9	0-2	0-0	1	0	1	1	1	0	1	0	12	-8
23	HENSHAW, TAMARA	F	3	1-3	0-0	1-2	3	2	5	0	2	1	1	1	20	-11
31	JORDAO, BEATRIZ	C	4	0-4	0-0	4-4	1	3	4	0	0	0	1	0	20	-19
TEAM							3	4	7	0		1				
TOTALS			38	12-58	5-18	9-10	17	23	40	14	6	19	4	4	200	

Shooting By Period

Period	FG	FG%	3FG	3FG%	FT	FT%
1st Qtr	1-13	08%	0-1	00%	3-3	100%
2nd Qtr	4-13	31%	2-5	40%	2-2	100%
3rd Qtr	2-19	11%	0-6	00%	1-1	100%
4th Qtr	5-13	38%	3-6	50%	3-4	75%
1st Half	5-26	19%	2-6	33%	5-5	100%
2nd Half	7-32	22%	3-12	25%	4-5	80%
Game	12-58	20.7%	5-18	27.8%	9-10	90.0%

Deadball Rebounds: 1,1
Last FG: 4th-01:15
Biggest Run: 7-0
Largest lead: By 0 at -
Technical Fouls: None.

UConn 79

No.	Player	S	Pts	FG	3FG	FT	OR	DR	TR	PF	A	TO	Blk	Stl	Min	+/-
03	WALKER, MEGAN	F	21	8-19	3-7	2-3	2	5	7	1	0	1	0	2	28	34
05	DANGERFIELD, CRYSTAL	G	13	5-13	1-7	2-2	1	5	6	3	2	2	0	1	28	33
13	WILLIAMS, CHRISTYN	G	15	5-9	1-3	4-4	2	2	4	2	0	2	1	1	35	41
20	NELSON-ODODA, OLIVIA	F	9	3-8	0-0	3-3	3	4	7	1	2	0	3	4	27	32
24	MAKURAT, ANNA	G	3	1-4	1-2	0-0	0	3	3	1	4	1	0	1	30	23
10	BENT, MOLLY	G	6	2-4	2-4	0-0	0	0	0	1	1	0	0	0	12	7
14	ADEBAYO, EVELYN	F	2	1-1	0-0	0-1	1	1	2	3	2	0	0	1	13	9
25	IRWIN, KYLA	F	0	0-0	0-0	0-0	0	1	1	0	0	0	0	0	1	0
32	CAMARA, BATOULY	F	0	0-0	0-0	0-0	0	0	0	1	0	0	1	0	3	3
44	GRIFFIN, AUBREY	G	10	4-5	0-0	2-2	1	3	4	0	1	1	1	1	24	23
TEAM							1	4	5	0		1				
TOTALS			79	29-63	8-23	13-15	11	28	39	13	12	8	6	11	200	

Shooting By Period

Period	FG	FG%	3FG	3FG%	FT	FT%
1st Qtr	7-19	37%	1-8	13%	3-3	100%
2nd Qtr	7-16	44%	2-4	50%	4-4	100%
3rd Qtr	7-17	41%	2-6	33%	2-3	67%
4th Qtr	8-11	73%	3-5	60%	4-5	80%
1st Half	14-35	40%	3-12	25%	7-7	100%
2nd Half	15-28	54%	5-11	45%	6-8	75%
Game	29-63	46.0%	8-23	34.8%	13-15	86.7%

Deadball Rebounds: 1,1
Last FG: 4th-00:21
Biggest Run: 15-0
Largest lead: By 41 at 4th-00:21
Technical Fouls: None.

Game Notes:

Officials: Denise Brooks, Tom Danaher, Maggie Tieman

Start Time: 04:02 PM ET

End Time: 05:49 PM ET

Game Duration: 1:46

Neutral Court;

Score	1st	2nd	3rd	4th	TOT
USF	5	12	5	16	38
UCN	18	20	18	23	79

USF led for 0:00. UCN led for 38:58.
 Game was tied for 1:02.
 Times tied: 0 Lead Changes: 0

Points from	USF	UCN
In the Paint	10	32
Off Turns	0	23
2nd Chance	13	10
Fast Break	0	8
Bench	12	18

Official Box Score
South Fla. vs UConn
First Half Statistics Only
March 08, 2020 at Mohegan Sun Arena - Uncasville, Conn.



South Fla. 17

No.	Player	S	Pts	FG	3FG	FT	OR	DR	TR	PF	A	TO	Blk	Stl	Min	+/-
00	PEHADZIC, ENNA	G	0	0-0	0-0	0-0	0	0	0	0	0	0	0	0	0	0
03	HARVEY, SYDNI	G	7	2-7	1-2	2-2	1	1	2	0	0	2	0	0	20	-21
04	PINZAN, ELISA	G	0	0-3	0-1	0-0	0	3	3	0	0	4	0	0	15	-20
05	TSINEKE, ELENA	G	3	1-5	1-2	0-0	0	2	2	1	2	1	0	1	20	-21
12	BERMEJO, CRISTINA	F	0	0-0	0-0	0-0	0	0	0	0	0	0	0	0	0	0
20	MUNUNGA, BETHY	F	0	0-3	0-0	0-0	1	4	5	3	0	2	1	0	11	-12
21	LEVERETT, SHAE	F	3	1-2	0-0	1-1	2	0	2	4	0	3	0	0	12	-17
22	BRABENCOVA, KRISTYNA	F	2	1-3	0-1	0-0	0	0	0	0	0	0	0	0	5	-1
23	HENSHAW, TAMARA	F	0	0-1	0-0	0-0	1	1	2	0	0	1	1	0	9	-9
31	JORDAO, BEATRIZ	C	2	0-2	0-0	2-2	0	2	2	0	0	0	1	0	8	-4
	TEAM		0	0-0	0-0	0-0	2	1	3	0	0	1	0	0	0	
TOTALS			17	5-26	2-6	5-5	7	14	21	8	2	14	3	1	100	

Shooting By Period

Period	FG	FG%	3FG	3FG%	FT	FT%
1st Qtr	1-13	08%	0-1	00%	3-3	100%
2nd Qtr	4-13	31%	2-5	40%	2-2	100%
1st Half	5-26	19%	2-6	33%	5-5	100%
Game	12-58	20.7%	5-18	27.8%	9-10	90.0%

Deadball Rebounds: 1,1
Last FG Half: USF 2nd-00:33

UConn 38

No.	Player	S	Pts	FG	3FG	FT	OR	DR	TR	PF	A	TO	Blk	Stl	Min	+/-
10	BENT, MOLLY	G	0	0-0	0-0	0-0	0	0	0	0	0	0	0	0	0	0
13	WILLIAMS, CHRISTYN	G	7	3-5	1-3	0-0	1	0	1	0	0	0	1	1	19	21
14	ADEBAYO, EVELYN	F	0	0-0	0-0	0-0	0	0	0	0	0	0	0	0	0	0
20	NELSON-ODODA, OLIVIA	F	7	2-4	0-0	3-3	3	1	4	1	1	0	3	3	20	21
24	MAKURAT, ANNA	G	0	0-2	0-0	0-0	0	2	2	1	2	1	0	1	18	17
25	IRWIN, KYLA	F	0	0-0	0-0	0-0	0	0	0	0	0	0	0	0	0	0
32	CAMARA, BATOULY	F	0	0-0	0-0	0-0	0	0	0	0	0	0	0	0	0	0
44	GRIFFIN, AUBREY	G	8	3-3	0-0	2-2	0	1	1	0	0	0	0	1	7	7
03	WALKER, MEGAN	F	12	4-13	2-5	2-2	2	3	5	1	0	1	0	1	20	21
05	DANGERFIELD, CRYSTAL	G	4	2-8	0-4	0-0	0	4	4	2	2	0	0	1	16	18
	TEAM		0	0-0	0-0	0-0	0	2	2	0	0	1	0	0	0	
TOTALS			38	14-35	3-12	7-7	6	13	19	5	5	3	4	8	100	

Shooting By Period

Period	FG	FG%	3FG	3FG%	FT	FT%
1st Qtr	7-19	37%	1-8	13%	3-3	100%
2nd Qtr	7-16	44%	2-4	50%	4-4	100%
1st Half	14-35	40%	3-12	25%	7-7	100%
Game	29-63	46.0%	8-23	34.8%	13-15	86.7%

Deadball Rebounds: 1,1
Last FG Half: UCN 2nd-00:14

Game Notes:

Officials: Denise Brooks, Tom Danaher, Maggie Tieman

Start Time: 04:02 PM ET

End Time: 05:49 PM ET

Game Duration: 1:46

Neutral Court;

Score	1st	2nd	3rd	4th	TOT
USF	5	12	5	16	38
UCN	18	20	18	23	79

Points from (This Period)	USF	UCN
In the Paint	2	18
Off Turns	0	13
2nd Chance	3	6
Fast Break	0	4
Bench	4	8

Official Box Score
South Fla. vs UConn
First Quarter Statistics Only
March 08, 2020 at Mohegan Sun Arena - Uncasville, Conn.



South Fla. 5

No.	Player	S	Pts	FG	3FG	FT	OR	DR	TR	PF	A	TO	Blk	Stl	Min	+/-
03	HARVEY, SYDNI	G	2	0-3	0-1	2-2	1	0	1	0	0	2	0	0	10	-13
04	PINZAN, ELISA	G	0	0-2	0-0	0-0	0	1	1	0	0	1	0	0	8	-13
05	TSINEKE, ELENA	G	0	0-2	0-0	0-0	0	2	2	0	0	1	0	1	10	-13
20	MUNUNGA, BETHY	F	0	0-3	0-0	0-0	1	4	5	0	0	2	0	0	7	-8
21	LEVERETT, SHAE	F	3	1-2	0-0	1-1	2	0	2	2	0	2	0	0	9	-13
00	PEHADZIC, ENNA	G	0	0-0	0-0	0-0	0	0	0	0	0	0	0	0	0	0
12	BERMEJO, CRISTINA	F	0	0-0	0-0	0-0	0	0	0	0	0	0	0	0	0	0
22	BRABENCOVA, KRISTYNA	F	0	0-0	0-0	0-0	0	0	0	0	0	0	0	0	2	0
23	HENSHAW, TAMARA	F	0	0-0	0-0	0-0	0	1	1	0	0	0	0	0	3	-5
31	JORDAO, BEATRIZ	C	0	0-1	0-0	0-0	0	0	0	0	0	0	0	0	1	0
TEAM							1	0	1	0		1				
TOTALS			5	1-13	0-1	3-3	5	8	13	2	0	9	0	1	50	

Shooting By Period

Period	FG	FG%	3FG	3FG%	FT	FT%
1st Qtr	1-13	08%	0-1	00%	3-3	100%
2nd Qtr	4-13	31%	2-5	40%	2-2	100%
1st Half	1-13	08%	0-1	00%	3-3	100%
1st Half	5-26	19%	2-6	33%	5-5	100%
Game	12-58	20.7%	5-18	27.8%	9-10	90.0%

Deadball Rebounds: 1,1

UConn 18

No.	Player	S	Pts	FG	3FG	FT	OR	DR	TR	PF	A	TO	Blk	Stl	Min	+/-
03	WALKER, MEGAN	F	2	1-5	0-2	0-0	1	1	2	0	0	1	0	1	10	13
05	DANGERFIELD, CRYSTAL	G	2	1-6	0-4	0-0	0	3	3	1	2	0	0	0	10	13
13	WILLIAMS, CHRISTYN	G	7	3-4	1-2	0-0	1	0	1	0	0	0	1	1	10	13
20	NELSON-ODODA, OLIVIA	F	7	2-3	0-0	3-3	2	0	2	0	0	0	2	2	10	13
24	MAKURAT, ANNA	G	0	0-1	0-0	0-0	0	1	1	1	1	1	0	1	10	13
10	BENT, MOLLY	G	0	0-0	0-0	0-0	0	0	0	0	0	0	0	0	0	0
14	ADEBAYO, EVELYN	F	0	0-0	0-0	0-0	0	0	0	0	0	0	0	0	0	0
25	IRWIN, KYLA	F	0	0-0	0-0	0-0	0	0	0	0	0	0	0	0	0	0
32	CAMARA, BATOULY	F	0	0-0	0-0	0-0	0	0	0	0	0	0	0	0	0	0
44	GRIFFIN, AUBREY	G	0	0-0	0-0	0-0	0	0	0	0	0	0	0	0	0	0
TEAM							0	1	1	0		0				
TOTALS			18	7-19	1-8	3-3	4	6	10	2	3	2	3	5	50	

Shooting By Period

Period	FG	FG%	3FG	3FG%	FT	FT%
1st Qtr	7-19	37%	1-8	13%	3-3	100%
2nd Qtr	7-16	44%	2-4	50%	4-4	100%
1st Half	7-19	37%	1-8	13%	3-3	100%
1st Half	14-35	40%	3-12	25%	7-7	100%
Game	29-63	46.0%	8-23	34.8%	13-15	86.7%

Deadball Rebounds: 1,1

Game Notes:

Officials: Denise Brooks, Tom Danaher, Maggie Tieman

Start Time: 04:02 PM ET

End Time: 05:49 PM ET

Game Duration: 1:46

Neutral Court;

Score	1st	2nd	3rd	4th	TOT
USF	5	12	5	16	38
UCN	18	20	18	23	79

Points from (This Period)	USF	UCN
In the Paint	2	12
Off Turns	0	11
2nd Chance	3	6
Fast Break	0	4
Bench	0	0

Official Play-By-Play
South Fla. vs UConn
First Quarter
March 08, 2020 at Mohegan Sun Arena - Uncasville, Conn.



Period 1

Starters:

South Fla.: 3 HARVEY, SYDNI (G); 4 PINZAN, ELISA (G); 5 TSINEKE, ELENA (G); 20 MUNUNGA, BETHY (F); 21 LEVERETT, SHAE (F);

UConn: 13 WILLIAMS, CHRISTYN (G); 20 NELSON-ODODA, OLIVIA (F); 24 MAKURAT, ANNA (G); 3 WALKER, MEGAN (F); 5 DANGERFIELD, CRYSTAL (G);

Time	VISITORS: South Fla.	Score	Margin	HOME: UConn
09:47				TURNOVER (BADPASS) by WALKER, MEGAN
09:47	STEAL by TSINEKE, ELENA			
09:19	MISSED JUMPER by HARVEY, SYDNI			
09:19				BLOCK by WILLIAMS, CHRISTYN
09:16	REBOUND (OFF) by HARVEY, SYDNI			
09:16	MISSED LAYUP by HARVEY, SYDNI			
09:14	REBOUND (OFF) by TEAM			
09:14	TURNOVER (SHOTCLOCK) by TEAM			
08:58		3-0	H 3	GOOD! 3PTR by WILLIAMS, CHRISTYN
08:58				ASSIST by DANGERFIELD, CRYSTAL
08:31	MISSED LAYUP by TSINEKE, ELENA			
08:31				BLOCK by NELSON-ODODA, OLIVIA
08:31	REBOUND (OFF) by TEAM			
08:23	TURNOVER (BADPASS) by MUNUNGA, BETHY			
08:23				STEAL by MAKURAT, ANNA
08:16				MISSED JUMPER by WALKER, MEGAN
08:14				REBOUND (OFF) by NELSON-ODODA, OLIVIA
08:12	FOUL (PERSONAL) by LEVERETT, SHAE			
08:12		4-0	H 4	GOOD! FT by NELSON-ODODA, OLIVIA
08:12		5-0	H 5	GOOD! FT by NELSON-ODODA, OLIVIA
08:03	MISSED 3PTR by HARVEY, SYDNI			
08:00				REBOUND (DEF) by DANGERFIELD, CRYSTAL
07:53				MISSED 3PTR by WILLIAMS, CHRISTYN
07:50	REBOUND (DEF) by MUNUNGA, BETHY			
07:29	MISSED JUMPER by MUNUNGA, BETHY			
07:26	REBOUND (OFF) by LEVERETT, SHAE			
07:26	GOOD! LAYUP by LEVERETT, SHAE	5-2	H 3	
07:26				FOUL (PERSONAL) by MAKURAT, ANNA
07:26	GOOD! FT by LEVERETT, SHAE	5-3	H 2	
07:17				MISSED 3PTR by DANGERFIELD, CRYSTAL
07:13	REBOUND (DEF) by MUNUNGA, BETHY			
07:07	MISSED LAYUP by LEVERETT, SHAE			
07:07				BLOCK by NELSON-ODODA, OLIVIA
07:02				REBOUND (DEF) by MAKURAT, ANNA
06:54				MISSED 3PTR by WALKER, MEGAN
06:52	REBOUND (DEF) by PINZAN, ELISA			
06:36	TURNOVER (BADPASS) by HARVEY, SYDNI			
06:36				STEAL by NELSON-ODODA, OLIVIA
06:30				MISSED LAYUP by NELSON-ODODA, OLIVIA
06:27				REBOUND (OFF) by WILLIAMS, CHRISTYN
06:27		7-3	H 4	GOOD! LAYUP by WILLIAMS, CHRISTYN
05:58	TURNOVER (BADPASS) by MUNUNGA, BETHY			
05:45				TURNOVER (TRAVEL) by MAKURAT, ANNA
05:31	MISSED JUMPER by PINZAN, ELISA			
05:28				REBOUND (DEF) by DANGERFIELD, CRYSTAL
05:24		9-3	H 6	GOOD! LAYUP by WALKER, MEGAN [FB]
05:24				ASSIST by DANGERFIELD, CRYSTAL
05:08	TURNOVER (TRAVEL) by LEVERETT, SHAE			
04:52				MISSED 3PTR by WALKER, MEGAN
04:48	REBOUND (DEF) by MUNUNGA, BETHY			
04:43	MISSED LAYUP by TSINEKE, ELENA			
04:40				REBOUND (DEF) by DANGERFIELD, CRYSTAL
04:32				MISSED 3PTR by DANGERFIELD, CRYSTAL
04:29	REBOUND (DEF) by MUNUNGA, BETHY			
04:12	TURNOVER (BADPASS) by PINZAN, ELISA			
04:12				
03:54				MISSED JUMPER by MAKURAT, ANNA
03:52				REBOUND (OFF) by WALKER, MEGAN
03:42				MISSED 3PTR by DANGERFIELD, CRYSTAL
03:38	REBOUND (DEF) by TSINEKE, ELENA			
03:12	MISSED LAYUP by MUNUNGA, BETHY			
03:10	REBOUND (OFF) by MUNUNGA, BETHY			
03:09	MISSED LAYUP by MUNUNGA, BETHY			
03:07				REBOUND (DEF) by WALKER, MEGAN
02:53		11-3	H 8	GOOD! JUMPER by NELSON-ODODA, OLIVIA [PNT]
02:53	FOUL (PERSONAL) by LEVERETT, SHAE			
02:53	SUB OUT: MUNUNGA, BETHY			
02:53	SUB IN: HENSHAW, TAMARA			
02:53		12-3	H 9	GOOD! FT by NELSON-ODODA, OLIVIA
02:34	MISSED LAYUP by PINZAN, ELISA			

Time	VISITORS: South Fla.	Score	Margin	HOME: UConn
02:32	REBOUND (OFF) by LEVERETT, SHAE			
02:29	TURNOVER (LOSTBALL) by LEVERETT, SHAE			
02:29				STEAL by WILLIAMS, CHRISTYN
02:17				MISSED JUMPER by WALKER, MEGAN
02:14				REBOUND (OFF) by NELSON-ODODA, OLIVIA
02:13		14-3	H 11	GOOD! LAYUP by NELSON-ODODA, OLIVIA
01:50	TURNOVER (BADPASS) by TSINEKE, ELENA			
01:50				STEAL by NELSON-ODODA, OLIVIA
01:46		16-3	H 13	GOOD! LAYUP by DANGERFIELD, CRYSTAL [FB]
01:46				ASSIST by MAKURAT, ANNA
01:45	TIMEOUT 30SEC			
01:45	SUB OUT: PINZAN, ELISA			
01:45	SUB IN: BRABENCOVA, KRISTYNA			
01:34	TURNOVER (BADPASS) by HARVEY, SYDNI			
01:34				STEAL by WALKER, MEGAN
01:22				MISSED 3PTR by DANGERFIELD, CRYSTAL
01:17	REBOUND (DEF) by HENSHAW, TAMARA			
00:56				FOUL (PERSONAL) by DANGERFIELD, CRYSTAL
00:56	SUB OUT: LEVERETT, SHAE			
00:56	SUB IN: JORDAO, BEATRIZ			
00:56	GOOD! FT by HARVEY, SYDNI	16-4	H 12	
00:56	GOOD! FT by HARVEY, SYDNI	16-5	H 11	
00:52		18-5	H 13	GOOD! LAYUP by WILLIAMS, CHRISTYN
00:24	MISSED JUMPER by JORDAO, BEATRIZ			
00:22				REBOUND (DEF) by TEAM
00:02				MISSED JUMPER by DANGERFIELD, CRYSTAL
00:00	REBOUND (DEF) by TSINEKE, ELENA			

South Fla. 5, UConn 18

Points from (This Period)	USF	UCN
In the Paint	2	12
Off Turns	0	11
2nd Chance	3	6
Fast Break	0	4
Bench	0	0

Official Box Score
South Fla. vs UConn
Second Quarter Statistics Only
March 08, 2020 at Mohegan Sun Arena - Uncasville, Conn.



South Fla. 12

No.	Player	S	Pts	FG	3FG	FT	OR	DR	TR	PF	A	TO	Blk	Stl	Min	+/-
03	HARVEY, SYDNI	G	5	2-4	1-1	0-0	0	1	1	0	0	0	0	0	10	-8
04	PINZAN, ELISA	G	0	0-1	0-1	0-0	0	2	2	0	0	3	0	0	7	-7
05	TSINEKE, ELENA	G	3	1-3	1-2	0-0	0	0	0	1	2	0	0	0	10	-8
20	MUNUNGA, BETHY	F	0	0-0	0-0	0-0	0	0	0	3	0	0	1	0	4	-4
21	LEVERETT, SHAE	F	0	0-0	0-0	0-0	0	0	0	2	0	1	0	0	3	-4
00	PEHADZIC, ENNA	G	0	0-0	0-0	0-0	0	0	0	0	0	0	0	0	0	0
12	BERMEJO, CRISTINA	F	0	0-0	0-0	0-0	0	0	0	0	0	0	0	0	0	0
22	BRABENCOVA, KRISTYNA	F	2	1-3	0-1	0-0	0	0	0	0	0	0	0	0	3	-1
23	HENSHAW, TAMARA	F	0	0-1	0-0	0-0	1	0	1	0	0	1	1	0	6	-4
31	JORDAO, BEATRIZ	C	2	0-1	0-0	2-2	0	2	2	0	0	0	1	0	7	-4
TEAM								1	1	2	0	0				
TOTALS			12	4-13	2-5	2-2	2	6	8	6	2	5	3	0	50	

Shooting By Period

Period	FG	FG%	3FG	3FG%	FT	FT%
3rd Qtr	2-19	11%	0-6	00%	1-1	100%
4th Qtr	5-13	38%	3-6	50%	3-4	75%
2nd Half	4-13	31%	2-5	40%	2-2	100%
2nd Half	7-32	22%	3-12	25%	4-5	80%
Game	12-58	20.7%	5-18	27.8%	9-10	90.0%

Deadball Rebounds: 1,1

UConn 20

No.	Player	S	Pts	FG	3FG	FT	OR	DR	TR	PF	A	TO	Blk	Stl	Min	+/-
03	WALKER, MEGAN	F	10	3-8	2-3	2-2	1	2	3	1	0	0	0	0	10	8
05	DANGERFIELD, CRYSTAL	G	2	1-2	0-0	0-0	0	1	1	1	0	0	0	1	6	5
13	WILLIAMS, CHRISTYN	G	0	0-1	0-1	0-0	0	0	0	0	0	0	0	0	9	8
20	NELSON-ODODA, OLIVIA	F	0	0-1	0-0	0-0	1	1	2	1	1	0	1	1	10	8
24	MAKURAT, ANNA	G	0	0-1	0-0	0-0	0	1	1	0	1	0	0	0	8	4
10	BENT, MOLLY	G	0	0-0	0-0	0-0	0	0	0	0	0	0	0	0	0	0
14	ADEBAYO, EVELYN	F	0	0-0	0-0	0-0	0	0	0	0	0	0	0	0	0	0
25	IRWIN, KYLA	F	0	0-0	0-0	0-0	0	0	0	0	0	0	0	0	0	0
32	CAMARA, BATOULY	F	0	0-0	0-0	0-0	0	0	0	0	0	0	0	0	0	0
44	GRIFFIN, AUBREY	G	8	3-3	0-0	2-2	0	1	1	0	0	0	0	1	7	7
TEAM								0	1	1	0	1				
TOTALS			20	7-16	2-4	4-4	2	7	9	3	2	1	1	3	50	

Shooting By Period

Period	FG	FG%	3FG	3FG%	FT	FT%
3rd Qtr	7-17	41%	2-6	33%	2-3	67%
4th Qtr	8-11	73%	3-5	60%	4-5	80%
2nd Half	7-16	44%	2-4	50%	4-4	100%
2nd Half	15-28	54%	5-11	45%	6-8	75%
Game	29-63	46.0%	8-23	34.8%	13-15	86.7%

Deadball Rebounds: 1,1

Game Notes:

Officials: Denise Brooks, Tom Danaher, Maggie Tieman

Start Time: 04:02 PM ET

End Time: 05:49 PM ET

Game Duration: 1:46

Neutral Court;

Score	1st	2nd	3rd	4th	TOT
USF	5	12	5	16	38
UCN	18	20	18	23	79

Points from (This Period)	USF	UCN
In the Paint	0	6
Off Turns	0	2
2nd Chance	0	0
Fast Break	0	0
Bench	4	8

Official Play-By-Play
South Fla. vs UConn
Second Quarter
March 08, 2020 at Mohegan Sun Arena - Uncasville, Conn.



Period 2

Starters:

South Fla.: 3 HARVEY, SYDNI (G); 4 PINZAN, ELISA (G); 5 TSINEKE, ELENA (G); 20 MUNUNGA, BETHY (F); 21 LEVERETT, SHAE (F);

UConn: 13 WILLIAMS, CHRISTYN (G); 20 NELSON-ODODA, OLIVIA (F); 24 MAKURAT, ANNA (G); 3 WALKER, MEGAN (F); 5 DANGERFIELD, CRYSTAL (G);

Time	VISITORS: South Fla.	Score	Margin	HOME: UConn
09:47	TURNOVER (LOSTBALL) by HENSHAW, TAMARA			
09:31				MISSED 3PTR by WILLIAMS, CHRISTYN
09:28	REBOUND (DEF) by HARVEY, SYDNI			
09:01	MISSED JUMPER by JORDAO, BEATRIZ			
09:01				BLOCK by NELSON-ODODA, OLIVIA
08:56				REBOUND (DEF) by MAKURAT, ANNA
08:50				MISSED LAYUP by WALKER, MEGAN
08:50	BLOCK by HENSHAW, TAMARA			
08:45	REBOUND (DEF) by JORDAO, BEATRIZ			
08:33	GOOD! JUMPER by BRABENCOVA, KRISTYNA	18-7	H 11	
08:11		21-7	H 14	GOOD! 3PTR by WALKER, MEGAN
07:52	MISSED JUMPER by BRABENCOVA, KRISTYNA			
07:49				REBOUND (DEF) by DANGERFIELD, CRYSTAL
07:42				MISSED 3PTR by WALKER, MEGAN
07:39	REBOUND (DEF) by JORDAO, BEATRIZ			
07:22	MISSED 3PTR by BRABENCOVA, KRISTYNA			
07:19	REBOUND (OFF) by TEAM			
07:19				SUB OUT: MAKURAT, ANNA
07:19				SUB IN: GRIFFIN, AUBREY
07:19	SUB OUT: BRABENCOVA, KRISTYNA			
07:19	SUB OUT: HENSHAW, TAMARA			
07:19	SUB OUT: JORDAO, BEATRIZ			
07:19	SUB IN: PINZAN, ELISA			
07:19	SUB IN: MUNUNGA, BETHY			
07:19	SUB IN: LEVERETT, SHAE			
07:16	MISSED JUMPER by HARVEY, SYDNI			
07:13				REBOUND (DEF) by GRIFFIN, AUBREY
06:54	FOUL (PERSONAL) by TSINEKE, ELENA			
06:51	FOUL (PERSONAL) by MUNUNGA, BETHY			
06:51		22-7	H 15	GOOD! FT by WALKER, MEGAN
06:51		23-7	H 16	GOOD! FT by WALKER, MEGAN
06:38	TURNOVER (BADPASS) by PINZAN, ELISA			
06:38				STEAL by DANGERFIELD, CRYSTAL
06:25		25-7	H 18	GOOD! JUMPER by DANGERFIELD, CRYSTAL [PNT]
06:25				ASSIST by NELSON-ODODA, OLIVIA
06:06	GOOD! JUMPER by HARVEY, SYDNI	25-9	H 16	
06:06	ASSIST by TSINEKE, ELENA			
05:59	FOUL (PERSONAL) by MUNUNGA, BETHY			
05:57		27-9	H 18	GOOD! JUMPER by WALKER, MEGAN
05:42	MISSED JUMPER by HARVEY, SYDNI			
05:39				REBOUND (DEF) by TEAM
05:22				MISSED LAYUP by NELSON-ODODA, OLIVIA
05:20				REBOUND (OFF) by NELSON-ODODA, OLIVIA
05:20	FOUL (PERSONAL) by LEVERETT, SHAE			
05:14				MISSED JUMPER by DANGERFIELD, CRYSTAL
05:12	REBOUND (DEF) by TEAM			
05:12				SUB OUT: WILLIAMS, CHRISTYN
05:12				SUB IN: MAKURAT, ANNA
04:48	FOUL (OFF) by LEVERETT, SHAE			
04:48	TURNOVER (OFFENSIVE) by LEVERETT, SHAE			
04:48				
04:48	SUB OUT: LEVERETT, SHAE			
04:48	SUB IN: JORDAO, BEATRIZ			
04:20				MISSED JUMPER by WALKER, MEGAN
04:20	BLOCK by MUNUNGA, BETHY			
04:19				REBOUND (OFF) by TEAM
04:19				TURNOVER (SHOTCLOCK) by TEAM
04:01				FOUL (PERSONAL) by DANGERFIELD, CRYSTAL
04:01				SUB OUT: DANGERFIELD, CRYSTAL
04:01				SUB IN: WILLIAMS, CHRISTYN
03:47	MISSED JUMPER by TSINEKE, ELENA			
03:44				REBOUND (DEF) by WALKER, MEGAN
03:31	FOUL (PERSONAL) by MUNUNGA, BETHY			
03:31	SUB OUT: MUNUNGA, BETHY			
03:31	SUB IN: HENSHAW, TAMARA			
03:31		28-9	H 19	GOOD! FT by GRIFFIN, AUBREY
03:31		29-9	H 20	GOOD! FT by GRIFFIN, AUBREY
03:17				FOUL (PERSONAL) by NELSON-ODODA, OLIVIA
03:06				FOUL (PERSONAL) by WALKER, MEGAN
03:06	GOOD! FT by JORDAO, BEATRIZ	29-10	H 19	

Time	VISITORS: South Fla.	Score	Margin	HOME: UConn
03:05	GOOD! FT by JORDAO, BEATRIZ	29-11	H 18	
02:47		31-11	H 20	GOOD! JUMPER by GRIFFIN, AUBREY
02:31	GOOD! 3PTR by TSINEKE, ELENA	31-14	H 17	
02:17		34-14	H 20	GOOD! 3PTR by WALKER, MEGAN
02:17				ASSIST by MAKURAT, ANNA
02:03	TURNOVER (BADPASS) by PINZAN, ELISA			
02:03				STEAL by NELSON-ODODA, OLIVIA
01:58				MISSED LAYUP by WALKER, MEGAN
01:56				REBOUND (OFF) by WALKER, MEGAN
01:55				MISSED LAYUP by WALKER, MEGAN
01:55	BLOCK by JORDAO, BEATRIZ			
01:52	REBOUND (DEF) by PINZAN, ELISA			
01:50	MISSED 3PTR by PINZAN, ELISA			
01:47				REBOUND (DEF) by WALKER, MEGAN
01:41		36-14	H 22	GOOD! LAYUP by GRIFFIN, AUBREY [PNT]
01:08	MISSED 3PTR by TSINEKE, ELENA			
01:05	REBOUND (OFF) by HENSHAW, TAMARA			
01:04	MISSED JUMPER by HENSHAW, TAMARA			
01:02				REBOUND (DEF) by NELSON-ODODA, OLIVIA
00:51				MISSED LAYUP by MAKURAT, ANNA
00:49	REBOUND (DEF) by PINZAN, ELISA			
00:33	GOOD! 3PTR by HARVEY, SYDNI	36-17	H 19	
00:33	ASSIST by TSINEKE, ELENA			
00:14		38-17	H 21	GOOD! LAYUP by GRIFFIN, AUBREY [PNT]
00:00	TURNOVER (BADPASS) by PINZAN, ELISA			
00:00				STEAL by GRIFFIN, AUBREY

South Fla. 17, UConn 38

Points from (This Period)	USF	UCN
In the Paint	0	6
Off Turns	0	2
2nd Chance	0	0
Fast Break	0	0
Bench	4	8

Official Box Score
South Fla. vs UConn
Second Half Statistics Only
March 08, 2020 at Mohegan Sun Arena - Uncasville, Conn.



South Fla. 21

No.	Player	S	Pts	FG	3FG	FT	OR	DR	TR	PF	A	TO	Blk	Stl	Min	+/-
00	PEHADZIC, ENNA	G	3	1-2	1-2	0-0	0	1	1	0	0	1	0	0	10	-7
03	HARVEY, SYDNI	G	0	0-5	0-3	0-0	0	0	0	1	0	1	0	0	13	-15
04	PINZAN, ELISA	G	0	0-0	0-0	0-0	0	0	0	0	0	0	0	0	0	0
05	TSINEKE, ELENA	G	6	2-11	2-5	0-0	0	0	0	2	1	0	0	0	20	-20
12	BERMEJO, CRISTINA	F	0	0-1	0-1	0-0	2	1	3	0	0	3	0	1	9	-11
20	MUNUNGA, BETHY	F	4	2-2	0-0	0-0	1	1	2	1	0	0	0	0	9	-18
21	LEVERETT, SHAE	F	3	1-1	0-0	1-1	2	1	3	1	0	0	0	1	9	-5
22	BRABENCOVA, KRISTYNA	F	0	0-6	0-1	0-0	1	0	1	1	1	0	1	0	8	-7
23	HENSHAW, TAMARA	F	3	1-2	0-0	1-2	2	1	3	0	2	0	0	1	11	-2
31	JORDAO, BEATRIZ	C	2	0-2	0-0	2-2	1	1	2	0	0	0	0	0	11	-15
	TEAM		0	0-0	0-0	0-0	1	3	4	0	0	0	0	0	0	0
	TOTALS		21	7-32	3-12	4-5	10	9	19	6	4	5	1	3	100	

Shooting By Period

Period	FG	FG%	3FG	3FG%	FT	FT%
3rd Qtr	2-19	11%	0-6	00%	1-1	100%
4th Qtr	5-13	38%	3-6	50%	3-4	75%
2nd Half	7-32	22%	3-12	25%	4-5	80%
Game	12-58	20.7%	5-18	27.8%	9-10	90.0%

Deadball Rebounds: 1,1
Last FG Half: USF 4th-01:15

UConn 41

No.	Player	S	Pts	FG	3FG	FT	OR	DR	TR	PF	A	TO	Blk	Stl	Min	+/-
10	BENT, MOLLY	G	6	2-4	2-4	0-0	0	0	0	1	1	0	0	0	12	7
13	WILLIAMS, CHRISTYN	G	8	2-4	0-0	4-4	1	2	3	2	0	2	0	0	16	20
14	ADEBAYO, EVELYN	F	2	1-1	0-0	0-1	1	1	2	3	2	0	0	1	13	9
20	NELSON-ODODA, OLIVIA	F	2	1-4	0-0	0-0	0	3	3	0	1	0	0	1	7	11
24	MAKURAT, ANNA	G	3	1-2	1-2	0-0	0	1	1	0	2	0	0	0	13	6
25	IRWIN, KYLA	F	0	0-0	0-0	0-0	0	1	1	0	0	0	0	0	1	0
32	CAMARA, BATOULY	F	0	0-0	0-0	0-0	0	0	0	1	0	0	1	0	3	3
44	GRIFFIN, AUBREY	G	2	1-2	0-0	0-0	1	2	3	0	1	1	1	0	16	16
03	WALKER, MEGAN	F	9	4-6	1-2	0-1	0	2	2	0	0	0	0	1	8	13
05	DANGERFIELD, CRYSTAL	G	9	3-5	1-3	2-2	1	1	2	1	0	2	0	0	12	15
	TEAM		0	0-0	0-0	0-0	1	2	3	0	0	0	0	0	0	0
	TOTALS		41	15-28	5-11	6-8	5	15	20	8	7	5	2	3	100	

Shooting By Period

Period	FG	FG%	3FG	3FG%	FT	FT%
3rd Qtr	7-17	41%	2-6	33%	2-3	67%
4th Qtr	8-11	73%	3-5	60%	4-5	80%
2nd Half	15-28	54%	5-11	45%	6-8	75%
Game	29-63	46.0%	8-23	34.8%	13-15	86.7%

Deadball Rebounds: 1,1
Last FG Half: UCN 4th-00:21

Game Notes:

Officials: Denise Brooks, Tom Danaher, Maggie Tieman

Start Time: 04:02 PM ET
 End Time: 05:49 PM ET
 Game Duration: 1:46
 Neutral Court;

Score	1st	2nd	3rd	4th	TOT
USF	5	12	5	16	38
UCN	18	20	18	23	79

Points from (This Period)	USF	UCN
In the Paint	8	14
Off Turns	0	10
2nd Chance	10	4
Fast Break	0	4
Bench	8	10

Official Box Score
South Fla. vs UConn
Third Quarter Statistics Only
March 08, 2020 at Mohegan Sun Arena - Uncasville, Conn.



South Fla. 21

No.	Player	S	Pts	FG	3FG	FT	OR	DR	TR	PF	A	TO	Blk	Stl	Min	+/-
03	HARVEY, SYDNI	G	0	0-4	0-3	0-0	0	0	0	1	0	1	0	0	10	-13
04	PINZAN, ELISA	G	0	0-0	0-0	0-0	0	0	0	0	0	0	0	0	0	0
05	TSINEKE, ELENA	G	0	0-4	0-1	0-0	0	0	0	0	0	0	0	0	10	-13
20	MUNUNGA, BETHY	F	0	0-0	0-0	0-0	0	1	1	1	0	0	0	0	4	-11
21	LEVERETT, SHAE	F	3	1-1	0-0	1-1	2	1	3	0	0	0	0	1	5	-5
00	PEHADZIC, ENNA	G	0	0-0	0-0	0-0	0	0	0	0	0	0	0	0	0	0
12	BERMEJO, CRISTINA	F	0	0-1	0-1	0-0	2	1	3	0	0	2	0	0	2	-6
22	BRABENCOVA, KRISTYNA	F	0	0-6	0-1	0-0	1	0	1	1	1	0	1	0	8	-7
23	HENSHAW, TAMARA	F	2	1-2	0-0	0-0	0	1	1	0	0	0	0	1	6	-2
31	JORDAO, BEATRIZ	C	0	0-1	0-0	0-0	1	1	2	0	0	0	0	0	5	-8
TEAM							1	2	3	0		0				
TOTALS			5	2-19	0-6	1-1	7	7	14	3	1	3	1	2	50	

Shooting By Period

Period	FG	FG%	3FG	3FG%	FT	FT%
2nd Half	0-0	0%	0-0	0%	0-0	0%
Game	12-58	20.7%	5-18	27.8%	9-10	90.0%

Deadball Rebounds: 1,1

UConn 41

No.	Player	S	Pts	FG	3FG	FT	OR	DR	TR	PF	A	TO	Blk	Stl	Min	+/-
03	WALKER, MEGAN	F	9	4-6	1-2	0-1	0	2	2	0	0	0	0	1	8	13
05	DANGERFIELD, CRYSTAL	G	5	2-4	1-3	0-0	1	1	2	1	0	2	0	0	10	13
13	WILLIAMS, CHRISTYN	G	2	0-1	0-0	2-2	1	1	2	1	0	0	0	0	6	13
20	NELSON-ODODA, OLIVIA	F	2	1-4	0-0	0-0	0	3	3	0	1	0	0	1	7	11
24	MAKURAT, ANNA	G	0	0-0	0-0	0-0	0	0	0	0	2	0	0	0	8	4
10	BENT, MOLLY	G	0	0-1	0-1	0-0	0	0	0	1	0	0	0	0	2	0
14	ADEBAYO, EVELYN	F	0	0-0	0-0	0-0	0	1	1	1	0	0	0	0	3	2
25	IRWIN, KYLA	F	0	0-0	0-0	0-0	0	1	1	0	0	0	0	0	1	0
32	CAMARA, BATOULY	F	0	0-0	0-0	0-0	0	0	0	0	0	0	0	0	0	0
44	GRIFFIN, AUBREY	G	0	0-1	0-0	0-0	1	0	1	0	0	0	1	0	6	9
TEAM							0	1	1	0		0				
TOTALS			18	7-17	2-6	2-3	3	10	13	4	3	2	1	2	50	

Shooting By Period

Period	FG	FG%	3FG	3FG%	FT	FT%
2nd Half	0-0	0%	0-0	0%	0-0	0%
Game	29-63	46.0%	8-23	34.8%	13-15	86.7%

Deadball Rebounds: 1,1

Game Notes:

Officials: Denise Brooks, Tom Danaher, Maggie Tieman

Start Time: 04:02 PM ET

End Time: 05:49 PM ET

Game Duration: 1:46

Neutral Court;

Score	1st	2nd	3rd	4th	TOT
USF	5	12	5	16	38
UCN	18	20	18	23	79

Points from (This Period)	USF	UCN
In the Paint	4	8
Off Turns	0	6
2nd Chance	3	4
Fast Break	0	2
Bench	2	0

Official Play-By-Play
South Fla. vs UConn
Third Quarter
March 08, 2020 at Mohegan Sun Arena - Uncasville, Conn.



Period 3

Starters:

South Fla.: 3 HARVEY, SYDNI (G); 4 PINZAN, ELISA (G); 5 TSINEKE, ELENA (G); 20 MUNUNGA, BETHY (F); 21 LEVERETT, SHAE (F);

UConn: 13 WILLIAMS, CHRISTYN (G); 20 NELSON-ODODA, OLIVIA (F); 24 MAKURAT, ANNA (G); 3 WALKER, MEGAN (F); 5 DANGERFIELD, CRYSTAL (G);

Time	VISITORS: South Fla.	Score	Margin	HOME: UConn
10:00				SUB OUT: GRIFFIN, AUBREY
10:00				SUB IN: DANGERFIELD, CRYSTAL
10:00	SUB OUT: PINZAN, ELISA			
10:00	SUB IN: BRABENCOVA, KRISTYNA			
09:43				MISSED LAYUP by WALKER, MEGAN
09:40	REBOUND (DEF) by HENSHAW, TAMARA			
09:24	MISSED LAYUP by JORDAO, BEATRIZ			
09:22	REBOUND (OFF) by BRABENCOVA, KRISTYNA			
09:15	MISSED JUMPER by BRABENCOVA, KRISTYNA			
09:12				REBOUND (DEF) by NELSON-ODODA, OLIVIA
08:52				MISSED 3PTR by DANGERFIELD, CRYSTAL
08:47	REBOUND (DEF) by JORDAO, BEATRIZ			
08:27	MISSED LAYUP by BRABENCOVA, KRISTYNA			
08:24				REBOUND (DEF) by NELSON-ODODA, OLIVIA
08:11		40-17	H 23	GOOD! JUMPER by NELSON-ODODA, OLIVIA
07:54	MISSED JUMPER by BRABENCOVA, KRISTYNA			
07:51	REBOUND (OFF) by JORDAO, BEATRIZ			
07:48				FOUL (PERSONAL) by WILLIAMS, CHRISTYN
07:48	SUB OUT: HENSHAW, TAMARA			
07:48	SUB IN: MUNUNGA, BETHY			
07:47	TURNOVER (BADPASS) by HARVEY, SYDNI			
07:24				MISSED JUMPER by NELSON-ODODA, OLIVIA
07:23				REBOUND (OFF) by WILLIAMS, CHRISTYN
07:23	FOUL (PERSONAL) by BRABENCOVA, KRISTYNA			
07:23	SUB OUT: BRABENCOVA, KRISTYNA			
07:23	SUB IN: BERMEJO, CRISTINA			
07:23		41-17	H 24	GOOD! FT by WILLIAMS, CHRISTYN
07:23		42-17	H 25	GOOD! FT by WILLIAMS, CHRISTYN
06:59	MISSED 3PTR by TSINEKE, ELENA			
06:56	REBOUND (OFF) by BERMEJO, CRISTINA			
06:52	MISSED 3PTR by HARVEY, SYDNI			
06:49	REBOUND (OFF) by BERMEJO, CRISTINA			
06:47	MISSED 3PTR by BERMEJO, CRISTINA			
06:43				REBOUND (DEF) by WALKER, MEGAN
06:29				MISSED JUMPER by NELSON-ODODA, OLIVIA
06:24	REBOUND (DEF) by BERMEJO, CRISTINA			
06:16	TIMEOUT 30SEC			
06:16				SUB OUT: MAKURAT, ANNA
06:16				SUB IN: GRIFFIN, AUBREY
06:05	MISSED JUMPER by TSINEKE, ELENA			
06:03				REBOUND (DEF) by NELSON-ODODA, OLIVIA
05:58				MISSED LAYUP by WILLIAMS, CHRISTYN
05:55	REBOUND (DEF) by MUNUNGA, BETHY			
05:44	TURNOVER (BADPASS) by BERMEJO, CRISTINA			
05:44				STEAL by WALKER, MEGAN
05:40		44-17	H 27	GOOD! LAYUP by WALKER, MEGAN [FB]
05:40	FOUL (PERSONAL) by HARVEY, SYDNI			
05:40				MISSED FT by WALKER, MEGAN
05:39	REBOUND (DEF) by TEAM			
05:06	TURNOVER (BADPASS) by BERMEJO, CRISTINA			
05:06				STEAL by NELSON-ODODA, OLIVIA
04:55		46-17	H 29	GOOD! JUMPER by DANGERFIELD, CRYSTAL
04:54	FOUL (PERSONAL) by MUNUNGA, BETHY			
04:54				
04:54	SUB OUT: BERMEJO, CRISTINA			
04:54	SUB OUT: JORDAO, BEATRIZ			
04:54	SUB IN: LEVERETT, SHAE			
04:54	SUB IN: BRABENCOVA, KRISTYNA			
04:52				MISSED LAYUP by GRIFFIN, AUBREY
04:50				REBOUND (OFF) by DANGERFIELD, CRYSTAL
04:44		48-17	H 31	GOOD! LAYUP by WALKER, MEGAN
04:29	MISSED 3PTR by HARVEY, SYDNI			
04:26				REBOUND (DEF) by WILLIAMS, CHRISTYN
04:17		51-17	H 34	GOOD! 3PTR by WALKER, MEGAN
04:17				ASSIST by NELSON-ODODA, OLIVIA
03:59	TIMEOUT 30SEC			
03:59				SUB OUT: WILLIAMS, CHRISTYN
03:59				SUB IN: MAKURAT, ANNA
03:59	SUB OUT: MUNUNGA, BETHY			
03:59	SUB IN: HENSHAW, TAMARA			

Time	VISITORS: South Fla.	Score	Margin	HOME: UConn
03:49	GOOD! JUMPER by HENSHAW, TAMARA [PNT]	51-19	H 32	
03:29				MISSED LAYUP by NELSON-ODODA, OLIVIA
03:29	REBOUND (DEF) by TEAM			
03:29				FOUL (PERSONAL) by DANGERFIELD, CRYSTAL
03:17	MISSED 3PTR by BRABENCOVA, KRISTYNA			
03:13	REBOUND (OFF) by LEVERETT, SHAE			
03:13				SUB OUT: NELSON-ODODA, OLIVIA
03:13				SUB IN: IRWIN, KYLA
03:09	MISSED LAYUP by BRABENCOVA, KRISTYNA			
03:06				REBOUND (DEF) by WALKER, MEGAN
02:57				TURNOVER (LOSTBALL) by DANGERFIELD, CRYSTAL
02:57	STEAL by HENSHAW, TAMARA			
02:51	MISSED LAYUP by TSINEKE, ELENA			
02:48				REBOUND (DEF) by IRWIN, KYLA
02:43				MISSED 3PTR by WALKER, MEGAN
02:40	REBOUND (DEF) by LEVERETT, SHAE			
02:40				SUB OUT: IRWIN, KYLA
02:40				SUB IN: ADEBAYO, EVELYN
02:28	MISSED LAYUP by HENSHAW, TAMARA			
02:25				REBOUND (DEF) by ADEBAYO, EVELYN
02:09		53-19	H 34	GOOD! LAYUP by WALKER, MEGAN [PNT]
02:09				ASSIST by MAKURAT, ANNA
01:43	MISSED LAYUP by BRABENCOVA, KRISTYNA			
01:41				REBOUND (DEF) by TEAM
01:41				SUB OUT: WALKER, MEGAN
01:41				SUB IN: BENT, MOLLY
01:25		56-19	H 37	GOOD! 3PTR by DANGERFIELD, CRYSTAL
01:25				ASSIST by MAKURAT, ANNA
01:02	MISSED JUMPER by HARVEY, SYDNI			
01:01	REBOUND (OFF) by TEAM			
01:01				FOUL (PERSONAL) by ADEBAYO, EVELYN
00:53	GOOD! LAYUP by LEVERETT, SHAE	56-21	H 35	
00:53	ASSIST by BRABENCOVA, KRISTYNA			
00:53				FOUL (PERSONAL) by BENT, MOLLY
00:53	GOOD! FT by LEVERETT, SHAE	56-22	H 34	
00:41				TURNOVER (BADPASS) by DANGERFIELD, CRYSTAL
00:41	STEAL by LEVERETT, SHAE			
00:29	MISSED 3PTR by HARVEY, SYDNI			
00:25	REBOUND (OFF) by LEVERETT, SHAE			
00:15	MISSED JUMPER by TSINEKE, ELENA			
00:15				BLOCK by GRIFFIN, AUBREY
00:10				REBOUND (DEF) by DANGERFIELD, CRYSTAL
00:05				MISSED 3PTR by DANGERFIELD, CRYSTAL
00:02				REBOUND (OFF) by GRIFFIN, AUBREY
00:00				MISSED 3PTR by BENT, MOLLY
00:00	BLOCK by BRABENCOVA, KRISTYNA			
00:00	REBOUND (DEF) by TEAM			

South Fla. 22, UConn 56

Points from (This Period)	USF	UCN
In the Paint	4	8
Off Turns	0	6
2nd Chance	3	4
Fast Break	0	2
Bench	2	0

Official Box Score
South Fla. vs UConn
Fourth Quarter Statistics Only
March 08, 2020 at Mohegan Sun Arena - Uncasville, Conn.



South Fla. 16

No.	Player	S	Pts	FG	3FG	FT	OR	DR	TR	PF	A	TO	Blk	Stl	Min	+/-
03	HARVEY, SYDNI	G	0	0-1	0-0	0-0	0	0	0	0	0	0	0	0	3	-2
04	PINZAN, ELISA	G	0	0-0	0-0	0-0	0	0	0	0	0	0	0	0	0	0
05	TSINEKE, ELENA	G	6	2-7	2-4	0-0	0	0	0	2	1	0	0	0	10	-7
20	MUNUNGA, BETHY	F	4	2-2	0-0	0-0	1	0	1	0	0	0	0	0	5	-7
21	LEVERETT, SHAE	F	0	0-0	0-0	0-0	0	0	0	1	0	0	0	0	4	0
00	PEHADZIC, ENNA	G	3	1-2	1-2	0-0	0	1	1	0	0	1	0	0	10	-7
12	BERMEJO, CRISTINA	F	0	0-0	0-0	0-0	0	0	0	0	0	1	0	1	7	-5
22	BRABENCOVA, KRISTYNA	F	0	0-0	0-0	0-0	0	0	0	0	0	0	0	0	0	0
23	HENSHAW, TAMARA	F	1	0-0	0-0	1-2	2	0	2	0	2	0	0	0	5	0
31	JORDAO, BEATRIZ	C	2	0-1	0-0	2-2	0	0	0	0	0	0	0	0	6	-7
TEAM							0	1	1	0		0				
TOTALS			16	5-13	3-6	3-4	3	2	5	3	3	2	0	1	50	

Shooting By Period

Period	FG	FG%	3FG	3FG%	FT	FT%
Game	12-58	20.7%	5-18	27.8%	9-10	90.0%

Deadball Rebounds: 1,1

UConn 23

No.	Player	S	Pts	FG	3FG	FT	OR	DR	TR	PF	A	TO	Blk	Stl	Min	+/-
03	WALKER, MEGAN	F	0	0-0	0-0	0-0	0	0	0	0	0	0	0	0	0	0
05	DANGERFIELD, CRYSTAL	G	4	1-1	0-0	2-2	0	0	0	0	0	0	0	0	2	2
13	WILLIAMS, CHRISTYN	G	6	2-3	0-0	2-2	0	1	1	1	0	2	0	0	10	7
20	NELSON-ODODA, OLIVIA	F	0	0-0	0-0	0-0	0	0	0	0	0	0	0	0	0	0
24	MAKURAT, ANNA	G	3	1-2	1-2	0-0	0	1	1	0	0	0	0	0	5	2
10	BENT, MOLLY	G	6	2-3	2-3	0-0	0	0	0	0	1	0	0	0	10	7
14	ADEBAYO, EVELYN	F	2	1-1	0-0	0-1	1	0	1	2	2	0	0	1	10	7
25	IRWIN, KYLA	F	0	0-0	0-0	0-0	0	0	0	0	0	0	0	0	0	0
32	CAMARA, BATOULY	F	0	0-0	0-0	0-0	0	0	0	1	0	0	1	0	3	3
44	GRIFFIN, AUBREY	G	2	1-1	0-0	0-0	0	2	2	0	1	1	0	0	10	7
TEAM							1	1	2	0		0				
TOTALS			23	8-11	3-5	4-5	2	5	7	4	4	3	1	1	50	

Shooting By Period

Period	FG	FG%	3FG	3FG%	FT	FT%
Game	29-63	46.0%	8-23	34.8%	13-15	86.7%

Deadball Rebounds: 1,1

Game Notes:

Officials: Denise Brooks, Tom Danaher, Maggie Tieman

Start Time: 04:02 PM ET

End Time: 05:49 PM ET

Game Duration: 1:46

Neutral Court;

Score	1st	2nd	3rd	4th	TOT
USF	5	12	5	16	38
UCN	18	20	18	23	79

Points from (This Period)	USF	UCN
In the Paint	4	6
Off Turns	0	4
2nd Chance	7	0
Fast Break	0	2
Bench	6	10

Official Play-By-Play
South Fla. vs UConn
Fourth Quarter
March 08, 2020 at Mohegan Sun Arena - Uncasville, Conn.



Period 4

Starters:

South Fla.: 3 HARVEY, SYDNI (G); 4 PINZAN, ELISA (G); 5 TSINEKE, ELENA (G); 20 MUNUNGA, BETHY (F); 21 LEVERETT, SHAE (F);

UConn: 13 WILLIAMS, CHRISTYN (G); 20 NELSON-ODODA, OLIVIA (F); 24 MAKURAT, ANNA (G); 3 WALKER, MEGAN (F); 5 DANGERFIELD, CRYSTAL (G);

Time	VISITORS: South Fla.	Score	Margin	HOME: UConn
10:00				SUB OUT: DANGERFIELD, CRYSTAL
10:00				SUB IN: WILLIAMS, CHRISTYN
10:00	SUB OUT: BRABENCOVA, KRISTYNA			
10:00	SUB IN: PEHADZIC, ENNA			
09:37		58-22	H 36	GOOD! JUMPER by WILLIAMS, CHRISTYN
09:37				ASSIST by GRIFFIN, AUBREY
09:08	MISSED 3PTR by TSINEKE, ELENA			
09:05				REBOUND (DEF) by TEAM
08:49		61-22	H 39	GOOD! 3PTR by MAKURAT, ANNA
08:31	GOOD! 3PTR by TSINEKE, ELENA	61-25	H 36	
08:31	ASSIST by HENSHAW, TAMARA			
08:24				TURNOVER (TRAVEL) by GRIFFIN, AUBREY
08:12	MISSED LAYUP by TSINEKE, ELENA			
08:09				REBOUND (DEF) by GRIFFIN, AUBREY
08:01				MISSED JUMPER by WILLIAMS, CHRISTYN
07:57	REBOUND (DEF) by TEAM			
07:42				FOUL (PERSONAL) by ADEBAYO, EVELYN
07:32	MISSED JUMPER by HARVEY, SYDNI			
07:30				REBOUND (DEF) by MAKURAT, ANNA
07:23				MISSED 3PTR by MAKURAT, ANNA
07:19				REBOUND (OFF) by ADEBAYO, EVELYN
07:12				MISSED 3PTR by BENT, MOLLY
07:09	REBOUND (DEF) by PEHADZIC, ENNA			
06:53				FOUL (PERSONAL) by WILLIAMS, CHRISTYN
06:53	SUB OUT: HARVEY, SYDNI			
06:53	SUB IN: BERMEJO, CRISTINA			
06:53	GOOD! FT by HENSHAW, TAMARA	61-26	H 35	
06:53	MISSED FT by HENSHAW, TAMARA			
06:51	REBOUND (OFF) by HENSHAW, TAMARA			
06:36	GOOD! 3PTR by TSINEKE, ELENA	61-29	H 32	
06:36	ASSIST by HENSHAW, TAMARA			
06:10		63-29	H 34	GOOD! LAYUP by ADEBAYO, EVELYN [PNT]
06:10				ASSIST by BENT, MOLLY
06:10	FOUL (PERSONAL) by LEVERETT, SHAE			
06:10	SUB OUT: LEVERETT, SHAE			
06:10	SUB IN: JORDAO, BEATRIZ			
06:10				MISSED FT by ADEBAYO, EVELYN
06:08				REBOUND (OFF) by TEAM
06:03				TURNOVER (LOSTBALL) by WILLIAMS, CHRISTYN
06:03	STEAL by BERMEJO, CRISTINA			
05:57	MISSED JUMPER by JORDAO, BEATRIZ			
05:53				REBOUND (DEF) by GRIFFIN, AUBREY
05:49	FOUL (PERSONAL) by TSINEKE, ELENA			
05:49		64-29	H 35	GOOD! FT by WILLIAMS, CHRISTYN [FB]
05:49		65-29	H 36	GOOD! FT by WILLIAMS, CHRISTYN [FB]
05:20	MISSED 3PTR by TSINEKE, ELENA			
05:15	REBOUND (OFF) by HENSHAW, TAMARA			
05:15				SUB OUT: MAKURAT, ANNA
05:15				SUB IN: DANGERFIELD, CRYSTAL
05:11				FOUL (PERSONAL) by ADEBAYO, EVELYN
05:11	GOOD! FT by JORDAO, BEATRIZ	65-30	H 35	
05:11	GOOD! FT by JORDAO, BEATRIZ	65-31	H 34	
04:53	FOUL (PERSONAL) by TSINEKE, ELENA			
04:53				
04:53	SUB OUT: HENSHAW, TAMARA			
04:53	SUB IN: MUNUNGA, BETHY			
04:53		66-31	H 35	GOOD! FT by DANGERFIELD, CRYSTAL
04:53		67-31	H 36	GOOD! FT by DANGERFIELD, CRYSTAL
04:31	TURNOVER (BADPASS) by PEHADZIC, ENNA			
04:31				STEAL by ADEBAYO, EVELYN
04:11		69-31	H 38	GOOD! JUMPER by DANGERFIELD, CRYSTAL
04:11				ASSIST by ADEBAYO, EVELYN
03:42	MISSED JUMPER by TSINEKE, ELENA			
03:39	REBOUND (OFF) by MUNUNGA, BETHY			
03:38	GOOD! LAYUP by MUNUNGA, BETHY [PNT]	69-33	H 36	
03:12		71-33	H 38	GOOD! LAYUP by GRIFFIN, AUBREY
02:53	TURNOVER (BADPASS) by BERMEJO, CRISTINA			
02:53				SUB OUT: DANGERFIELD, CRYSTAL
02:53				SUB IN: CAMARA, BATOULY
02:30		73-33	H 40	GOOD! LAYUP by WILLIAMS, CHRISTYN [PNT]

Time	VISITORS: South Fla.	Score	Margin	HOME: UConn
02:07	GOOD! 3PTR by PEHADZIC, ENNA	73-36	H 37	
02:07	ASSIST by TSINEKE, ELENA			
01:35		76-36	H 40	GOOD! 3PTR by BENT, MOLLY
01:15	GOOD! LAYUP by MUNUNGA, BETHY	76-38	H 38	
00:55				TURNOVER (BADPASS) by WILLIAMS, CHRISTYN
00:37				FOUL (PERSONAL) by CAMARA, BATOULY
00:36	MISSED 3PTR by PEHADZIC, ENNA			
00:32				REBOUND (DEF) by WILLIAMS, CHRISTYN
00:21		79-38	H 41	GOOD! 3PTR by BENT, MOLLY
00:21				ASSIST by ADEBAYO, EVELYN
00:00	MISSED LAYUP by TSINEKE, ELENA			
00:00				BLOCK by CAMARA, BATOULY
00:00				REBOUND (DEF) by TEAM

South Fla. 38, UConn 79

Points from (This Period)	USF	UCN
In the Paint	4	6
Off Turns	0	4
2nd Chance	7	0
Fast Break	0	2
Bench	6	10

Official Scoring/Possession Reference Chart
South Fla. vs UConn
Period 1
March 08, 2020 at Mohegan Sun Arena - Uncasville, Conn.



Period 1

Starters:

South Fla.: 3 HARVEY, SYDNI (G); 4 PINZAN, ELISA (G); 5 TSINEKE, ELENA (G); 20 MUNUNGA, BETHY (F); 21 LEVERETT, SHAE (F);

UConn: 13 WILLIAMS, CHRISTYN (G); 20 NELSON-ODODA, OLIVIA (F); 24 MAKURAT, ANNA (G); 3 WALKER, MEGAN (F); 5 DANGERFIELD, CRYSTAL (G);

Time	VISITORS: South Fla.	Score	Margin	HOME: UConn
08:58		3-0	H 3	GOOD! 3PTR by WILLIAMS, CHRISTYN
08:12		4-0	H 4	GOOD! FT by NELSON-ODODA, OLIVIA
08:12		5-0	H 5	GOOD! FT by NELSON-ODODA, OLIVIA
07:26	GOOD! LAYUP by LEVERETT, SHAE	5-2	H 3	
07:26	GOOD! FT by LEVERETT, SHAE	5-3	H 2	
06:27		7-3	H 4	GOOD! LAYUP by WILLIAMS, CHRISTYN
05:24		9-3	H 6	GOOD! LAYUP by WALKER, MEGAN [FB]
02:53		11-3	H 8	GOOD! JUMPER by NELSON-ODODA, OLIVIA [PNT]
02:53		12-3	H 9	GOOD! FT by NELSON-ODODA, OLIVIA
02:13		14-3	H 11	GOOD! LAYUP by NELSON-ODODA, OLIVIA
01:46		16-3	H 13	GOOD! LAYUP by DANGERFIELD, CRYSTAL [FB]
00:56	GOOD! FT by HARVEY, SYDNI	16-4	H 12	
00:56	GOOD! FT by HARVEY, SYDNI	16-5	H 11	
00:52		18-5	H 13	GOOD! LAYUP by WILLIAMS, CHRISTYN

South Fla. 5, UConn 18

Official Scoring/Possession Reference Chart
South Fla. vs UConn
Period 2
March 08, 2020 at Mohegan Sun Arena - Uncasville, Conn.



Period 2

Starters:

South Fla.: 3 HARVEY, SYDNI (G); 4 PINZAN, ELISA (G); 5 TSINEKE, ELENA (G); 20 MUNUNGA, BETHY (F); 21 LEVERETT, SHAE (F);

UConn: 13 WILLIAMS, CHRISTYN (G); 20 NELSON-ODODA, OLIVIA (F); 24 MAKURAT, ANNA (G); 3 WALKER, MEGAN (F); 5 DANGERFIELD, CRYSTAL (G);

Time	VISITORS: South Fla.	Score	Margin	HOME: UConn
08:33	GOOD! JUMPER by BRABENCOVA, KRISTYNA	18-7	H 11	
08:11		21-7	H 14	GOOD! 3PTR by WALKER, MEGAN
06:51		22-7	H 15	GOOD! FT by WALKER, MEGAN
06:51		23-7	H 16	GOOD! FT by WALKER, MEGAN
06:25		25-7	H 18	GOOD! JUMPER by DANGERFIELD, CRYSTAL [PNT]
06:06	GOOD! JUMPER by HARVEY, SYDNI	25-9	H 16	
05:57		27-9	H 18	GOOD! JUMPER by WALKER, MEGAN
03:31		28-9	H 19	GOOD! FT by GRIFFIN, AUBREY
03:31		29-9	H 20	GOOD! FT by GRIFFIN, AUBREY
03:06	GOOD! FT by JORDAO, BEATRIZ	29-10	H 19	
03:05	GOOD! FT by JORDAO, BEATRIZ	29-11	H 18	
02:47		31-11	H 20	GOOD! JUMPER by GRIFFIN, AUBREY
02:31	GOOD! 3PTR by TSINEKE, ELENA	31-14	H 17	
02:17		34-14	H 20	GOOD! 3PTR by WALKER, MEGAN
01:41		36-14	H 22	GOOD! LAYUP by GRIFFIN, AUBREY [PNT]
00:33	GOOD! 3PTR by HARVEY, SYDNI	36-17	H 19	
00:14		38-17	H 21	GOOD! LAYUP by GRIFFIN, AUBREY [PNT]

South Fla. 17, UConn 38

Official Scoring/Possession Reference Chart
South Fla. vs UConn
Period 3
March 08, 2020 at Mohegan Sun Arena - Uncasville, Conn.



Period 3

Starters:

South Fla.: 3 HARVEY, SYDNI (G); 4 PINZAN, ELISA (G); 5 TSINEKE, ELENA (G); 20 MUNUNGA, BETHY (F); 21 LEVERETT, SHAE (F);

UConn: 13 WILLIAMS, CHRISTYN (G); 20 NELSON-ODODA, OLIVIA (F); 24 MAKURAT, ANNA (G); 3 WALKER, MEGAN (F); 5 DANGERFIELD, CRYSTAL (G);

Time	VISITORS: South Fla.	Score	Margin	HOME: UConn
08:11		40-17	H 23	GOOD! JUMPER by NELSON-ODODA, OLIVIA
07:23		41-17	H 24	GOOD! FT by WILLIAMS, CHRISTYN
07:23		42-17	H 25	GOOD! FT by WILLIAMS, CHRISTYN
05:40		44-17	H 27	GOOD! LAYUP by WALKER, MEGAN [FB]
04:55		46-17	H 29	GOOD! JUMPER by DANGERFIELD, CRYSTAL
04:44		48-17	H 31	GOOD! LAYUP by WALKER, MEGAN
04:17		51-17	H 34	GOOD! 3PTR by WALKER, MEGAN
03:49	GOOD! JUMPER by HENSHAW, TAMARA [PNT]	51-19	H 32	
02:09		53-19	H 34	GOOD! LAYUP by WALKER, MEGAN [PNT]
01:25		56-19	H 37	GOOD! 3PTR by DANGERFIELD, CRYSTAL
00:53	GOOD! LAYUP by LEVERETT, SHAE	56-21	H 35	
00:53	GOOD! FT by LEVERETT, SHAE	56-22	H 34	

South Fla. 22, UConn 56

Official Scoring/Possession Reference Chart
South Fla. vs UConn
Period 4
March 08, 2020 at Mohegan Sun Arena - Uncasville, Conn.



Period 4

Starters:

South Fla.: 3 HARVEY, SYDNI (G); 4 PINZAN, ELISA (G); 5 TSINEKE, ELENA (G); 20 MUNUNGA, BETHY (F); 21 LEVERETT, SHAE (F);

UConn: 13 WILLIAMS, CHRISTYN (G); 20 NELSON-ODODA, OLIVIA (F); 24 MAKURAT, ANNA (G); 3 WALKER, MEGAN (F); 5 DANGERFIELD, CRYSTAL (G);

Time	VISITORS: South Fla.	Score	Margin	HOME: UConn
09:37		58-22	H 36	GOOD! JUMPER by WILLIAMS, CHRISTYN
08:49		61-22	H 39	GOOD! 3PTR by MAKURAT, ANNA
08:31	GOOD! 3PTR by TSINEKE, ELENA	61-25	H 36	
06:53	GOOD! FT by HENSHAW, TAMARA	61-26	H 35	
06:36	GOOD! 3PTR by TSINEKE, ELENA	61-29	H 32	
06:10		63-29	H 34	GOOD! LAYUP by ADEBAYO, EVELYN [PNT]
05:49		64-29	H 35	GOOD! FT by WILLIAMS, CHRISTYN [FB]
05:49		65-29	H 36	GOOD! FT by WILLIAMS, CHRISTYN [FB]
05:11	GOOD! FT by JORDAO, BEATRIZ	65-30	H 35	
05:11	GOOD! FT by JORDAO, BEATRIZ	65-31	H 34	
04:53		66-31	H 35	GOOD! FT by DANGERFIELD, CRYSTAL
04:53		67-31	H 36	GOOD! FT by DANGERFIELD, CRYSTAL
04:11		69-31	H 38	GOOD! JUMPER by DANGERFIELD, CRYSTAL
03:38	GOOD! LAYUP by MUNUNGA, BETHY [PNT]	69-33	H 36	
03:12		71-33	H 38	GOOD! LAYUP by GRIFFIN, AUBREY
02:30		73-33	H 40	GOOD! LAYUP by WILLIAMS, CHRISTYN [PNT]
02:07	GOOD! 3PTR by PEHADZIC, ENNA	73-36	H 37	
01:35		76-36	H 40	GOOD! 3PTR by BENT, MOLLY
01:15	GOOD! LAYUP by MUNUNGA, BETHY	76-38	H 38	
00:21		79-38	H 41	GOOD! 3PTR by BENT, MOLLY

South Fla. 38, UConn 79

Official Substitutions Log
South Fla. vs UConn
Period 1
March 08, 2020 at Mohegan Sun Arena - Uncasville, Conn.



VISITORS: South Fla.	Time	Score	HOME: UConn
3 HARVEY, SYDNI			13 WILLIAMS, CHRISTYN
4 PINZAN, ELISA			20 NELSON-ODODA, OLIVIA
5 TSINEKE, ELENA			24 MAKURAT, ANNA
20 MUNUNGA, BETHY			3 WALKER, MEGAN
21 LEVERETT, SHAE			5 DANGERFIELD, CRYSTAL
SUB OUT: 20 MUNUNGA, BETHY	02:53	3-11	
SUB IN: 23 HENSHAW, TAMARA	02:53		
SUB OUT: 4 PINZAN, ELISA	01:45	3-16	
SUB IN: 22 BRABENCOVA, KRISTYNA	01:45		
SUB OUT: 21 LEVERETT, SHAE	00:56	3-16	
SUB IN: 31 JORDAO, BEATRIZ	00:56		

South Fla. 5, UConn 18

Official Substitutions Log
South Fla. vs UConn
Period 2
March 08, 2020 at Mohegan Sun Arena - Uncasville, Conn.



VISITORS: South Fla.	Time	Score	HOME: UConn
3 HARVEY, SYDNI			13 WILLIAMS, CHRISTYN
4 PINZAN, ELISA			20 NELSON-ODODA, OLIVIA
5 TSINEKE, ELENA			24 MAKURAT, ANNA
20 MUNUNGA, BETHY			3 WALKER, MEGAN
21 LEVERETT, SHAE			5 DANGERFIELD, CRYSTAL
	07:19	7-21	SUB OUT: MAKURAT, ANNA
	07:19		SUB IN: GRIFFIN, AUBREY
SUB OUT: 22 BRABENCOVA, KRISTYNA	07:19		
SUB OUT: 23 HENSHAW, TAMARA	07:19		
SUB OUT: 31 JORDAO, BEATRIZ	07:19		
SUB IN: 4 PINZAN, ELISA	07:19		
SUB IN: 20 MUNUNGA, BETHY	07:19		
SUB IN: 21 LEVERETT, SHAE	07:19		
	05:12	9-27	SUB OUT: WILLIAMS, CHRISTYN
	05:12		SUB IN: MAKURAT, ANNA
SUB OUT: 21 LEVERETT, SHAE	04:48	9-27	
SUB IN: 31 JORDAO, BEATRIZ	04:48		
	04:01	9-27	SUB OUT: DANGERFIELD, CRYSTAL
	04:01		SUB IN: WILLIAMS, CHRISTYN
SUB OUT: 20 MUNUNGA, BETHY	03:31	9-27	
SUB IN: 23 HENSHAW, TAMARA	03:31		

South Fla. 17, UConn 38

Official Substitutions Log
South Fla. vs UConn
Period 3
March 08, 2020 at Mohegan Sun Arena - Uncasville, Conn.



VISITORS: South Fla.	Time	Score	HOME: UConn
3 HARVEY, SYDNI			13 WILLIAMS, CHRISTYN
4 PINZAN, ELISA			20 NELSON-ODODA, OLIVIA
5 TSINEKE, ELENA			24 MAKURAT, ANNA
20 MUNUNGA, BETHY			3 WALKER, MEGAN
21 LEVERETT, SHAE			5 DANGERFIELD, CRYSTAL
	10:00	-	SUB OUT: GRIFFIN, AUBREY
	10:00		SUB IN: DANGERFIELD, CRYSTAL
SUB OUT: 4 PINZAN, ELISA	10:00		
SUB IN: 22 BRABENCOVA, KRISTYNA	10:00		
SUB OUT: 23 HENSHAW, TAMARA	07:48	17-40	
SUB IN: 20 MUNUNGA, BETHY	07:48		
SUB OUT: 22 BRABENCOVA, KRISTYNA	07:23	17-40	
SUB IN: 12 BERMEJO, CRISTINA	07:23		
	06:16	17-42	SUB OUT: MAKURAT, ANNA
	06:16		SUB IN: GRIFFIN, AUBREY
SUB OUT: 12 BERMEJO, CRISTINA	04:54	17-46	
SUB OUT: 31 JORDAO, BEATRIZ	04:54		
SUB IN: 21 LEVERETT, SHAE	04:54		
SUB IN: 22 BRABENCOVA, KRISTYNA	04:54		
	03:59	17-51	SUB OUT: WILLIAMS, CHRISTYN
	03:59		SUB IN: MAKURAT, ANNA
SUB OUT: 20 MUNUNGA, BETHY	03:59		
SUB IN: 23 HENSHAW, TAMARA	03:59		
	03:13	19-51	SUB OUT: NELSON-ODODA, OLIVIA
	03:13		SUB IN: IRWIN, KYLA
	02:40	19-51	SUB OUT: IRWIN, KYLA
	02:40		SUB IN: ADEBAYO, EVELYN
	01:41	19-53	SUB OUT: WALKER, MEGAN
	01:41		SUB IN: BENT, MOLLY

South Fla. 22, UConn 56

Official Substitutions Log
South Fla. vs UConn
Period 4
March 08, 2020 at Mohegan Sun Arena - Uncasville, Conn.



VISITORS: South Fla.	Time	Score	HOME: UConn
3 HARVEY, SYDNI			13 WILLIAMS, CHRISTYN
4 PINZAN, ELISA			20 NELSON-ODODA, OLIVIA
5 TSINEKE, ELENA			24 MAKURAT, ANNA
20 MUNUNGA, BETHY			3 WALKER, MEGAN
21 LEVERETT, SHAE			5 DANGERFIELD, CRYSTAL
	10:00	-	SUB OUT: DANGERFIELD, CRYSTAL
	10:00		SUB IN: WILLIAMS, CHRISTYN
SUB OUT: 22 BRABENCOVA, KRISTYNA	10:00		
SUB IN: 0 PEHADZIC, ENNA	10:00		
SUB OUT: 3 HARVEY, SYDNI	06:53	25-61	
SUB IN: 12 BERMEJO, CRISTINA	06:53		
SUB OUT: 21 LEVERETT, SHAE	06:10	29-63	
SUB IN: 31 JORDAO, BEATRIZ	06:10		
	05:15	29-65	SUB OUT: MAKURAT, ANNA
	05:15		SUB IN: DANGERFIELD, CRYSTAL
SUB OUT: 23 HENSHAW, TAMARA	04:53	31-65	
SUB IN: 20 MUNUNGA, BETHY	04:53		
	02:53	33-71	SUB OUT: DANGERFIELD, CRYSTAL
	02:53		SUB IN: CAMARA, BATOULY

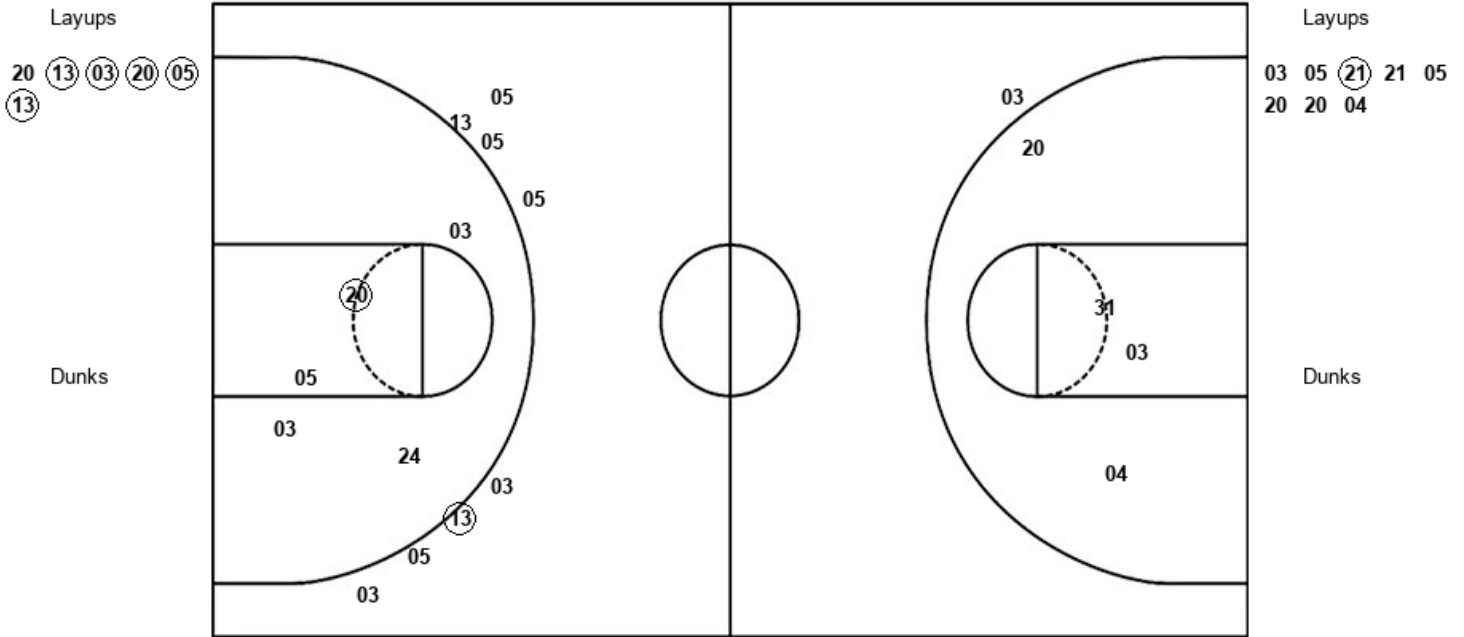
South Fla. 38, UConn 79

Official Shot Chart
South Fla. vs UConn
PERIOD 1 Shots
 March 08, 2020 at Mohegan Sun Arena - Uncasville, Conn.



UConn

South Fla.



UCN : Period 1	Made	Att	Pct
Layups	5	6	83.3
Dunks	0	0	0
2PT Field Goals	6	11	54.5
3PT Field Goals	1	8	12.5
Total Field Goals	7	19	36.8

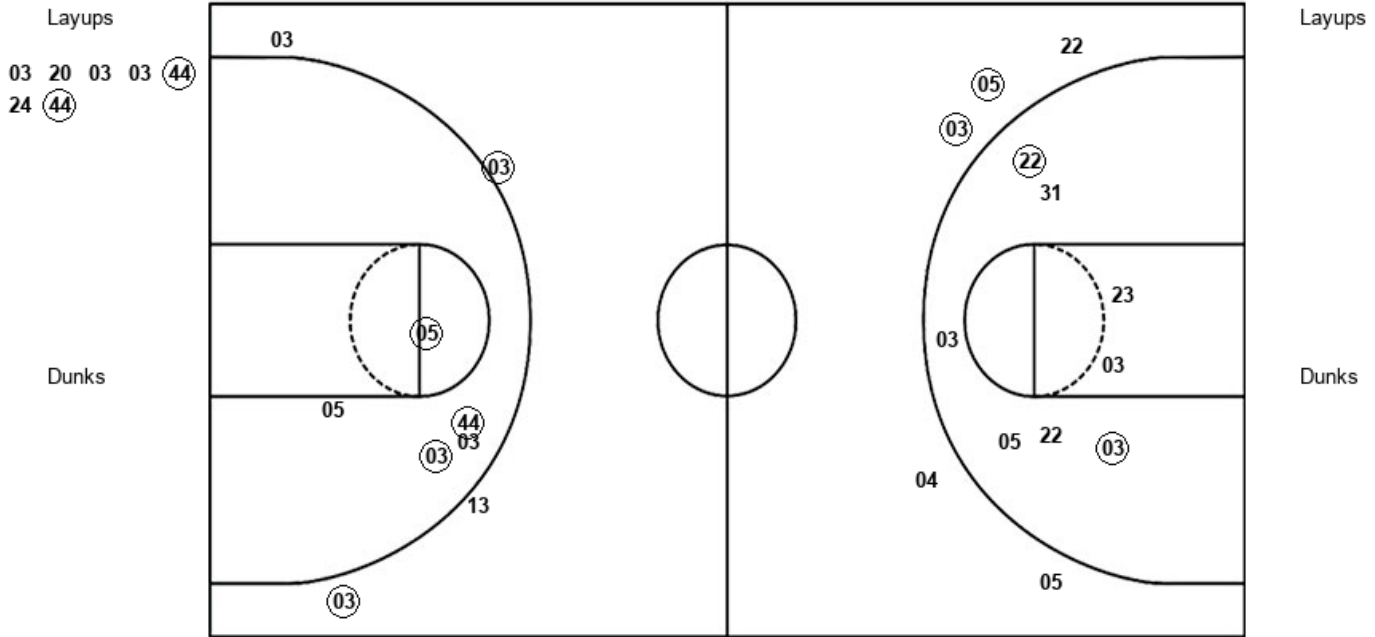
USF : Period 1	Made	Att	Pct
Layups	1	8	12.5
Dunks	0	0	0
2PT Field Goals	1	12	08.3
3PT Field Goals	0	1	00.0
Total Field Goals	1	13	07.7

Official Shot Chart
South Fla. vs UConn
PERIOD 2 Shots
 March 08, 2020 at Mohegan Sun Arena - Uncasville, Conn.



UConn

South Fla.



UCN : Period 2	Made	Att	Pct
Layups	2	7	28.6
Dunks	0	0	0
2PT Field Goals	5	12	41.7
3PT Field Goals	2	4	50.0
Total Field Goals	7	16	43.8

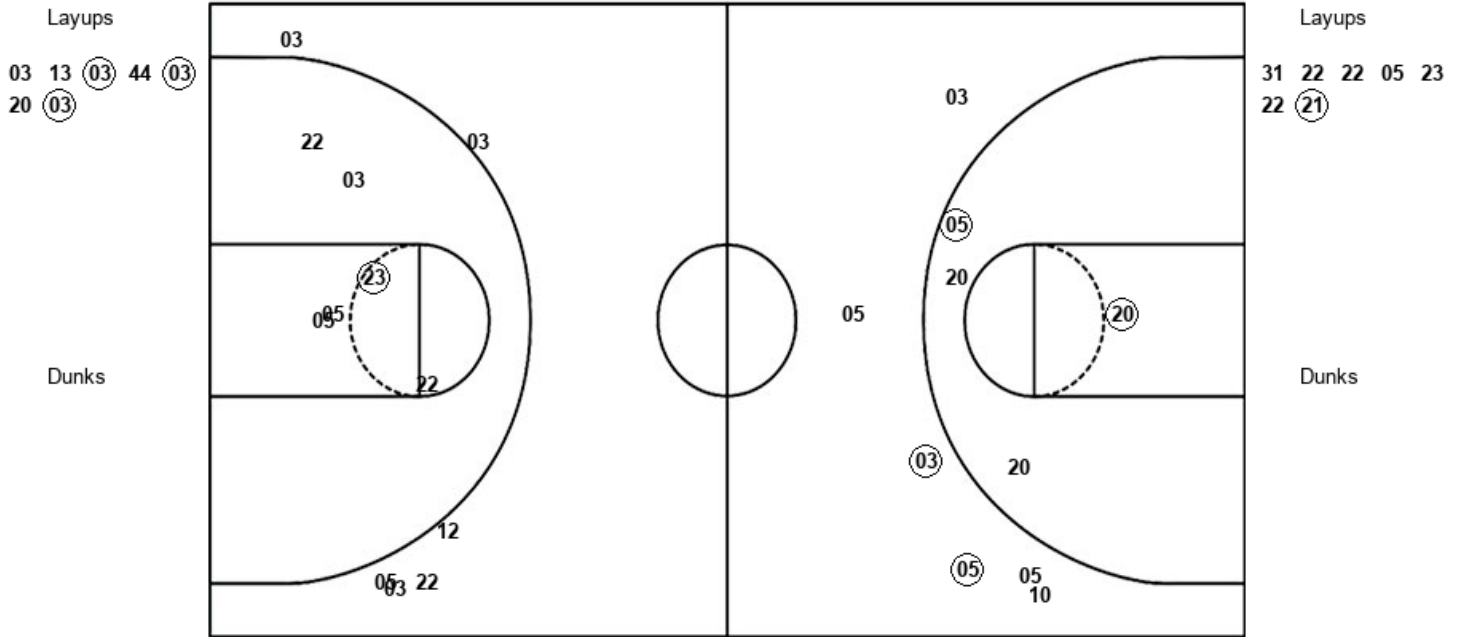
USF : Period 2	Made	Att	Pct
Layups	0	0	0
Dunks	0	0	0
2PT Field Goals	2	8	25.0
3PT Field Goals	2	5	40.0
Total Field Goals	4	13	30.8

Official Shot Chart
South Fla. vs UConn
PERIOD 3 Shots
 March 08, 2020 at Mohegan Sun Arena - Uncasville, Conn.



UConn

South Fla.



UCN : Period 3	Made	Att	Pct
Layups	3	7	42.9
Dunks	0	0	0
2PT Field Goals	5	11	45.5
3PT Field Goals	2	6	33.3
Total Field Goals	7	17	41.2

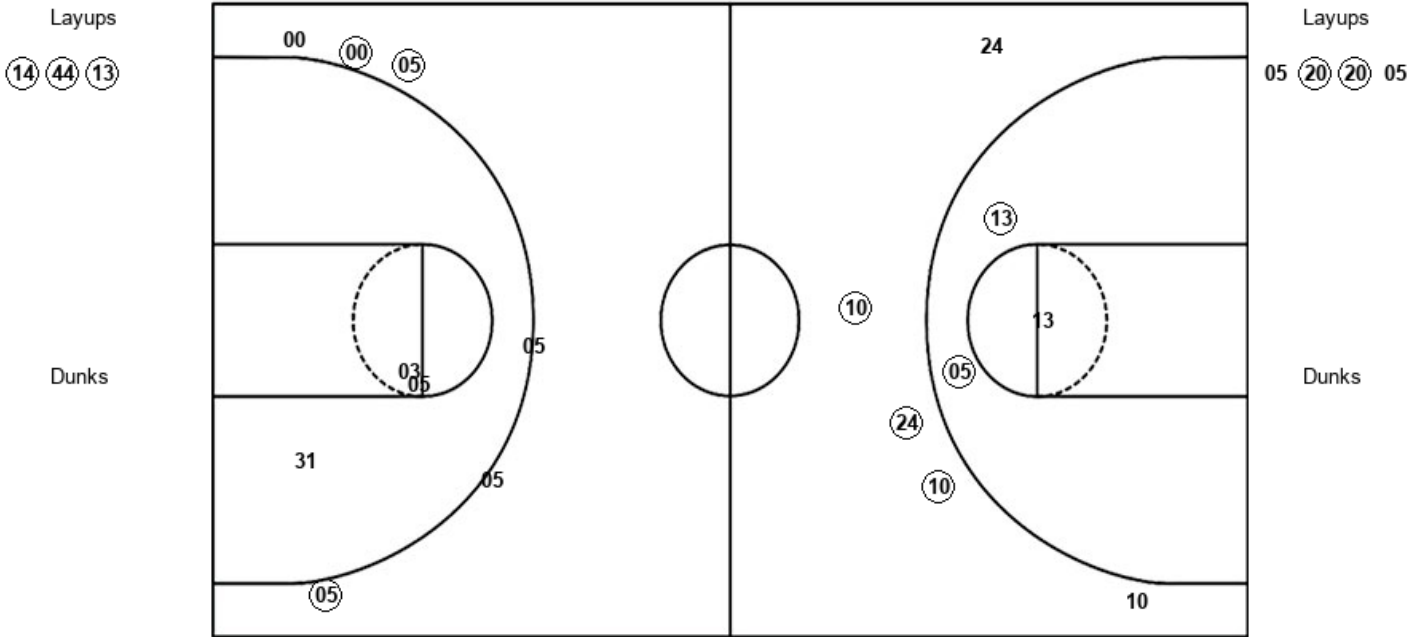
USF : Period 3	Made	Att	Pct
Layups	1	7	14.3
Dunks	0	0	0
2PT Field Goals	2	13	15.4
3PT Field Goals	0	6	00.0
Total Field Goals	2	19	10.5

Official Shot Chart
South Fla. vs UConn
PERIOD 4 Shots
 March 08, 2020 at Mohegan Sun Arena - Uncasville, Conn.



UConn

South Fla.



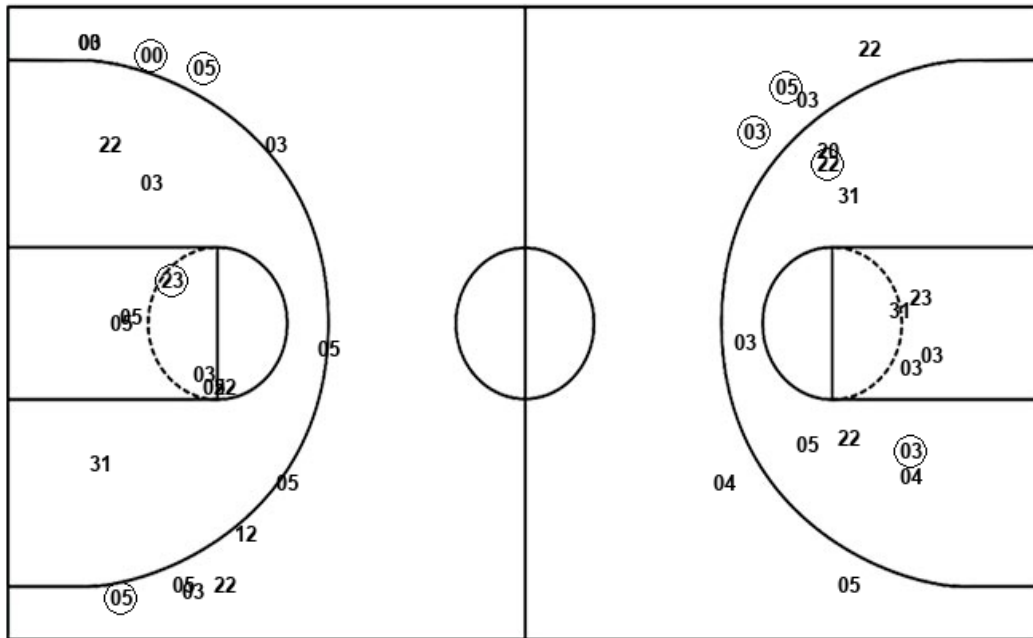
UCN : Period 4	Made	Att	Pct
Layups	3	3	100.0
Dunks	0	0	0
2PT Field Goals	5	6	83.3
3PT Field Goals	3	5	60.0
Total Field Goals	8	11	72.7

USF : Period 4	Made	Att	Pct
Layups	2	4	50.0
Dunks	0	0	0
2PT Field Goals	2	7	28.6
3PT Field Goals	3	6	50.0
Total Field Goals	5	13	38.5

Official Shot Chart
South Fla. vs UConn
South Fla. Team Shots
 March 08, 2020 at Mohegan Sun Arena - Uncasville, Conn.



Layups



Layups

03 05 (21) 21 05
 20 20 04 31 22
 22 05 23 22 (21)
 05 (20) (20) 05

Dunks

Dunks

USF : Period 1	Made	Att	Pct
Layups	1	8	12.5
Dunks	0	0	0
2PT Field Goals	1	12	08.3
3PT Field Goals	0	1	00.0
Total Field Goals	1	13	07.7

USF : Period 3	Made	Att	Pct
Layups	1	7	14.3
Dunks	0	0	0
2PT Field Goals	2	13	15.4
3PT Field Goals	0	6	00.0
Total Field Goals	2	19	10.5

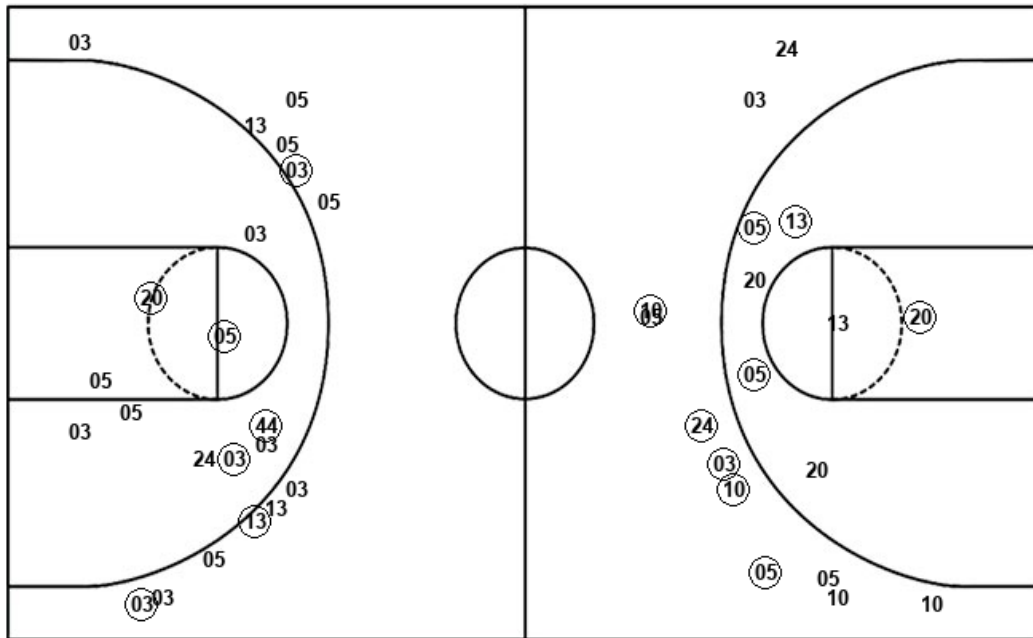
USF : Period 2	Made	Att	Pct
Layups	0	0	0
Dunks	0	0	0
2PT Field Goals	2	8	25.0
3PT Field Goals	2	5	40.0
Total Field Goals	4	13	30.8

USF : Period 4	Made	Att	Pct
Layups	2	4	50.0
Dunks	0	0	0
2PT Field Goals	2	7	28.6
3PT Field Goals	3	6	50.0
Total Field Goals	5	13	38.5

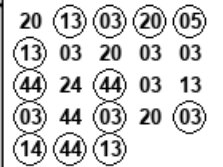
Official Shot Chart
South Fla. vs UConn
UConn Team Shots
 March 08, 2020 at Mohegan Sun Arena - Uncasville, Conn.



Layups



Layups



Dunks

Dunks

UCN : Period 1	Made	Att	Pct
Layups	5	6	83.3
Dunks	0	0	0
2PT Field Goals	6	11	54.5
3PT Field Goals	1	8	12.5
Total Field Goals	7	19	36.8

UCN : Period 3	Made	Att	Pct
Layups	3	7	42.9
Dunks	0	0	0
2PT Field Goals	5	11	45.5
3PT Field Goals	2	6	33.3
Total Field Goals	7	17	41.2

UCN : Period 2	Made	Att	Pct
Layups	2	7	28.6
Dunks	0	0	0
2PT Field Goals	5	12	41.7
3PT Field Goals	2	4	50.0
Total Field Goals	7	16	43.8

UCN : Period 4	Made	Att	Pct
Layups	3	3	100.0
Dunks	0	0	0
2PT Field Goals	5	6	83.3
3PT Field Goals	3	5	60.0
Total Field Goals	8	11	72.7