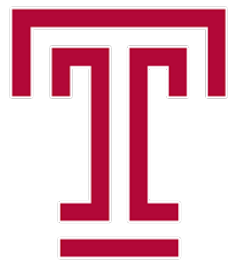


FINAL SCORE



Temple

61



UConn

94

American Athletic Conference Championship - Game 6

March 07, 2020 • Mohegan Sun Arena - Uncasville, Conn.



FINAL STATISTICS

Official Box Score
Temple vs UConn
Game Totals -- Final Statistics
March 07, 2020 at Mohegan Sun Arena - Uncasville, Conn.



Temple 61

No.	Player	S	Pts	FG	3FG	FT	OR	DR	TR	PF	A	TO	Blk	Stl	Min	+/-
00	JONES, ASHLEY	G	13	5-19	3-10	0-0	0	5	5	2	6	5	0	0	36	-25
01	NIANG, LENA	G	8	3-6	2-4	0-0	0	4	4	2	1	2	1	1	27	-31
12	MAYO, EMANI	G	1	0-4	0-2	1-2	2	2	4	1	0	0	0	1	21	-16
20	WILLIAMSON, ALEXA	F	4	2-5	0-0	0-1	4	1	5	3	0	1	0	0	12	-11
25	DAVIS, MIA	F	21	8-14	0-2	5-6	0	4	4	2	0	1	0	0	36	-24
02	ALEXANDER, ASONAH	G	8	4-9	0-3	0-0	2	1	3	1	1	0	0	0	25	-23
03	WALKER, RAYNIAH	G	2	1-2	0-1	0-0	0	4	4	2	0	0	0	0	11	-8
05	MACKINS, MARISSA	G	2	1-9	0-5	0-0	1	3	4	3	1	0	1	0	18	-16
10	MAYO, NICOLETTE	G	0	0-0	0-0	0-0	0	0	0	0	0	0	0	0	2	-3
11	ATKINSON, SHANNEN	C	2	1-1	0-0	0-0	1	0	1	3	0	1	0	0	10	-5
15	FORDE, CIARA	G	0	0-0	0-0	0-0	0	0	0	0	0	0	0	0	2	-3
TEAM							3	1	4	0		1				
TOTALS			61	25-69	5-27	6-9	13	25	38	19	9	11	2	2	200	

Shooting By Period

Period	FG	FG%	3FG	3FG%	FT	FT%
1st Qtr	5-16	31%	1-7	14%	2-2	100%
2nd Qtr	6-17	35%	2-9	22%	1-2	50%
3rd Qtr	7-18	39%	2-7	29%	2-3	67%
4th Qtr	7-18	39%	0-4	00%	1-2	50%
1st Half	11-33	33%	3-16	19%	3-4	75%
2nd Half	14-36	39%	2-11	18%	3-5	60%
Game	25-69	36.2%	5-27	18.5%	6-9	66.7%

Deadball Rebounds: 1,0
Last FG: 4th-01:30
Biggest Run: 6-0
Largest lead: By 7 at 1st-07:03
Technical Fouls: None.

UConn 94

No.	Player	S	Pts	FG	3FG	FT	OR	DR	TR	PF	A	TO	Blk	Stl	Min	+/-
03	WALKER, MEGAN	F	17	5-14	3-6	4-4	1	5	6	2	3	0	0	0	31	26
05	DANGERFIELD, CRYSTAL	G	22	8-15	6-9	0-0	0	4	4	0	3	1	0	1	37	28
13	WILLIAMS, CHRISTYN	G	12	4-11	2-6	2-2	0	1	1	1	0	2	0	0	37	31
20	NELSON-ODODA, OLIVIA	F	12	5-8	0-0	2-2	2	6	8	3	0	2	2	0	17	7
24	MAKURAT, ANNA	G	14	4-8	3-5	3-3	0	6	6	1	8	0	1	0	37	31
10	BENT, MOLLY	G	0	0-0	0-0	0-0	0	1	1	0	1	0	0	0	6	5
14	ADEBAYO, EVELYN	F	0	0-0	0-0	0-0	0	2	2	0	0	0	0	0	6	5
25	IRWIN, KYLA	F	0	0-0	0-0	0-0	0	0	0	0	1	0	0	0	5	3
32	CAMARA, BATOULY	F	2	1-1	0-0	0-0	0	0	0	0	1	0	0	0	2	1
44	GRIFFIN, AUBREY	G	15	2-6	0-0	11-17	8	8	16	1	1	1	1	3	22	28
TEAM							0	0	0	0		0				
TOTALS			94	29-63	14-26	22-28	11	33	44	8	18	6	4	4	200	

Shooting By Period

Period	FG	FG%	3FG	3FG%	FT	FT%
1st Qtr	5-16	31%	2-5	40%	3-5	60%
2nd Qtr	8-15	53%	6-7	86%	10-11	91%
3rd Qtr	9-18	50%	2-6	33%	6-6	100%
4th Qtr	7-14	50%	4-8	50%	3-6	50%
1st Half	13-31	42%	8-12	67%	13-16	81%
2nd Half	16-32	50%	6-14	43%	9-12	75%
Game	29-63	46.0%	14-26	53.8%	22-28	78.6%

Deadball Rebounds: 4,0
Last FG: 4th-01:15
Biggest Run: 9-0
Largest lead: By 33 at 4th-01:15
Technical Fouls: None.

Game Notes:

Officials: Ed Sidlasky, Mark Resch, Talisa Green
Attendance: 5763

Start Time: 02:21 PM ET
End Time: 04:04 PM ET
Game Duration: 1:42
Neutral Court:

Score	1st	2nd	3rd	4th	TOT
TEM	13	15	18	15	61
UCN	15	32	26	21	94

TEM led for 6:05. UCN led for 33:22.
Game was tied for 0:33.
Times tied: 1 *Lead Changes: 1*

Points from	TEM	UCN
In the Paint	32	24
Off Turns	2	13
2nd Chance	11	11
Fast Break	2	15
Bench	14	17

Official Box Score
Temple vs UConn
First Half Statistics Only
March 07, 2020 at Mohegan Sun Arena - Uncasville, Conn.



Temple 28

No.	Player	S	Pts	FG	3FG	FT	OR	DR	TR	PF	A	TO	Blk	Stl	Min	+/-
00	JONES, ASHLEY	G	8	3-12	2-6	0-0	0	3	3	1	2	4	0	0	19	-16
10	MAYO, NICOLETTE	G	0	0-0	0-0	0-0	0	0	0	0	0	0	0	0	0	0
11	ATKINSON, SHANNEN	C	2	1-1	0-0	0-0	1	0	1	3	0	1	0	0	7	-10
12	MAYO, EMANI	G	1	0-2	0-2	1-2	1	2	3	1	0	0	0	0	14	-5
15	FORDE, CIARA	G	0	0-0	0-0	0-0	0	0	0	0	0	0	0	0	0	0
20	WILLIAMSON, ALEXA	F	2	1-2	0-0	0-0	3	1	4	3	0	1	0	0	6	-1
25	DAVIS, MIA	F	10	4-6	0-1	2-2	0	2	2	0	0	0	0	0	19	-15
01	NIANG, LENA	G	5	2-5	1-3	0-0	0	3	3	1	1	2	1	1	19	-19
02	ALEXANDER, ASONAH	G	0	0-2	0-2	0-0	0	1	1	0	0	0	0	0	10	-15
03	WALKER, RAYNIAH	G	0	0-0	0-0	0-0	0	0	0	0	0	0	0	0	0	0
05	MACKINS, MARISSA	G	0	0-3	0-2	0-0	0	1	1	3	0	0	1	0	8	-14
	TEAM		0	0-0	0-0	0-0	1	1	2	0	0	0	0	0	0	0
TOTALS			28	11-33	3-16	3-4	6	14	20	12	3	8	2	1	100	

Shooting By Period

Period	FG	FG%	3FG	3FG%	FT	FT%
1st Qtr	5-16	31%	1-7	14%	2-2	100%
2nd Qtr	6-17	35%	2-9	22%	1-2	50%
1st Half	11-33	33%	3-16	19%	3-4	75%
Game	25-69	36.2%	5-27	18.5%	6-9	66.7%

Deadball Rebounds: 1,0
Last FG Half: TEM 2nd-01:43

UConn 47

No.	Player	S	Pts	FG	3FG	FT	OR	DR	TR	PF	A	TO	Blk	Stl	Min	+/-
10	BENT, MOLLY	G	0	0-0	0-0	0-0	0	0	0	0	0	0	0	0	0	0
13	WILLIAMS, CHRISTYN	G	0	0-3	0-0	0-0	0	1	1	0	0	2	0	0	20	19
14	ADEBAYO, EVELYN	F	0	0-0	0-0	0-0	0	0	0	0	0	0	0	0	0	0
20	NELSON-ODODA, OLIVIA	F	6	2-3	0-0	2-2	1	1	2	2	0	1	0	0	8	1
24	MAKURAT, ANNA	G	9	2-4	2-3	3-3	0	3	3	0	4	0	0	0	20	19
25	IRWIN, KYLA	F	0	0-0	0-0	0-0	0	0	0	0	0	0	0	0	0	0
32	CAMARA, BATOULY	F	0	0-0	0-0	0-0	0	0	0	0	0	0	0	0	0	0
44	GRIFFIN, AUBREY	G	12	2-4	0-0	8-11	4	6	10	1	0	1	0	2	12	18
03	WALKER, MEGAN	F	11	4-9	3-4	0-0	0	4	4	2	1	0	0	0	20	19
05	DANGERFIELD, CRYSTAL	G	9	3-8	3-5	0-0	0	1	1	0	3	0	0	1	20	19
	TEAM		0	0-0	0-0	0-0	0	0	0	0	0	0	0	0	0	0
TOTALS			47	13-31	8-12	13-16	5	16	21	5	8	4	0	3	100	

Shooting By Period

Period	FG	FG%	3FG	3FG%	FT	FT%
1st Qtr	5-16	31%	2-5	40%	3-5	60%
2nd Qtr	8-15	53%	6-7	86%	10-11	91%
1st Half	13-31	42%	8-12	67%	13-16	81%
Game	29-63	46.0%	14-26	53.8%	22-28	78.6%

Deadball Rebounds: 4,0
Last FG Half: UCN 2nd-00:55

Game Notes:

Officials: Ed Sidlasky, Mark Resch, Talisa Green
 Attendance: 5763

Start Time: 02:21 PM ET
 End Time: 04:04 PM ET
 Game Duration: 1:42
 Neutral Court;

Score	1st	2nd	3rd	4th	TOT
TEM	13	15	18	15	61
UCN	15	32	26	21	94

Points from (This Period)	TEM	UCN
In the Paint	16	8
Off Turns	2	9
2nd Chance	4	7
Fast Break	0	4
Bench	2	12

Official Box Score
Temple vs UConn
First Quarter Statistics Only
March 07, 2020 at Mohegan Sun Arena - Uncasville, Conn.



Temple 13

No.	Player	S	Pts	FG	3FG	FT	OR	DR	TR	PF	A	TO	Blk	Stl	Min	+/-
00	JONES, ASHLEY	G	3	1-5	1-2	0-0	0	2	2	0	1	3	0	0	10	-2
01	NIANG, LENA	G	2	1-3	0-1	0-0	0	2	2	1	1	1	0	0	10	-2
12	MAYO, EMANI	G	0	0-1	0-1	0-0	1	2	3	0	0	0	0	0	8	4
20	WILLIAMSON, ALEXA	F	0	0-1	0-0	0-0	1	0	1	2	0	0	0	0	2	3
25	DAVIS, MIA	F	6	2-3	0-1	2-2	0	2	2	0	0	0	0	0	10	-2
02	ALEXANDER, ASONAH	G	0	0-0	0-0	0-0	0	0	0	0	0	0	0	0	0	0
03	WALKER, RAYNIAH	G	0	0-0	0-0	0-0	0	0	0	0	0	0	0	0	0	0
05	MACKINS, MARISSA	G	0	0-2	0-2	0-0	0	1	1	1	0	0	1	0	7	-9
10	MAYO, NICOLETTE	G	0	0-0	0-0	0-0	0	0	0	0	0	0	0	0	0	0
11	ATKINSON, SHANNEN	C	2	1-1	0-0	0-0	1	0	1	2	0	1	0	0	4	-2
15	FORDE, CIARA	G	0	0-0	0-0	0-0	0	0	0	0	0	0	0	0	0	0
	TEAM						1	0	1	0		0				
TOTALS			13	5-16	1-7	2-2	4	9	13	6	2	5	1	0	50	

Shooting By Period

Period	FG	FG%	3FG	3FG%	FT	FT%
1st Qtr	5-16	31%	1-7	14%	2-2	100%
2nd Qtr	6-17	35%	2-9	22%	1-2	50%
1st Half	5-16	31%	1-7	14%	2-2	100%
1st Half	11-33	33%	3-16	19%	3-4	75%
Game	25-69	36.2%	5-27	18.5%	6-9	66.7%

Deadball Rebounds: 1,0

UConn 15

No.	Player	S	Pts	FG	3FG	FT	OR	DR	TR	PF	A	TO	Blk	Stl	Min	+/-
03	WALKER, MEGAN	F	3	1-3	1-1	0-0	0	3	3	1	0	0	0	0	10	2
05	DANGERFIELD, CRYSTAL	G	3	1-5	1-3	0-0	0	1	1	0	1	0	0	1	10	2
13	WILLIAMS, CHRISTYN	G	0	0-3	0-0	0-0	0	0	0	0	0	2	0	0	10	2
20	NELSON-ODODA, OLIVIA	F	6	2-3	0-0	2-2	1	1	2	2	0	1	0	0	8	1
24	MAKURAT, ANNA	G	0	0-1	0-1	0-0	0	1	1	0	1	0	0	0	10	2
10	BENT, MOLLY	G	0	0-0	0-0	0-0	0	0	0	0	0	0	0	0	0	0
14	ADEBAYO, EVELYN	F	0	0-0	0-0	0-0	0	0	0	0	0	0	0	0	0	0
25	IRWIN, KYLA	F	0	0-0	0-0	0-0	0	0	0	0	0	0	0	0	0	0
32	CAMARA, BATOULY	F	0	0-0	0-0	0-0	0	0	0	0	0	0	0	0	0	0
44	GRIFFIN, AUBREY	G	3	1-1	0-0	1-3	2	1	3	0	0	0	0	0	2	1
	TEAM						0	0	0	0		0				
TOTALS			15	5-16	2-5	3-5	3	7	10	3	2	3	0	1	50	

Shooting By Period

Period	FG	FG%	3FG	3FG%	FT	FT%
1st Qtr	5-16	31%	2-5	40%	3-5	60%
2nd Qtr	8-15	53%	6-7	86%	10-11	91%
1st Half	5-16	31%	2-5	40%	3-5	60%
1st Half	13-31	42%	8-12	67%	13-16	81%
Game	29-63	46.0%	14-26	53.8%	22-28	78.6%

Deadball Rebounds: 4,0

Game Notes:

Officials: Ed Sidlasky, Mark Resch, Talisa Green
 Attendance: 5763

Start Time: 02:21 PM ET
 End Time: 04:04 PM ET
 Game Duration: 1:42
 Neutral Court;

Score	1st	2nd	3rd	4th	TOT
TEM	13	15	18	15	61
UCN	15	32	26	21	94

Points from (This Period)	TEM	UCN
In the Paint	8	6
Off Turns	2	6
2nd Chance	2	3
Fast Break	0	0
Bench	2	3

Official Play-By-Play
Temple vs UConn
First Quarter
March 07, 2020 at Mohegan Sun Arena - Uncasville, Conn.



Period 1

Starters:

Temple: 0 JONES,ASHLEY (G); 12 MAYO,EMANI (G); 20 WILLIAMSON,ALEXA (F); 25 DAVIS,MIA (F); 1 NIANG,LENA (G);

UConn: 13 WILLIAMS,CHRISTYN (G); 20 NELSON-ODODA,OLIVIA (F); 24 MAKURAT,ANNA (G); 3 WALKER,MEGAN (F); 5 DANGERFIELD,CRYSTAL (G);

Time	VISITORS: Temple	Score	Margin	HOME: UConn
09:40	GOOD! 3PTR by JONES, ASHLEY	0-3	V 3	
09:19	FOUL (PERSONAL) by WILLIAMSON, ALEXA			
09:12		2-3	V 1	GOOD! LAYUP by NELSON-ODODA, OLIVIA [PNT]
08:58	MISSED JUMPER by NIANG, LENA			
08:55	REBOUND (OFF) by WILLIAMSON, ALEXA			
08:54	MISSED JUMPER by WILLIAMSON, ALEXA			
08:51				REBOUND (DEF) by WALKER, MEGAN
08:41				TURNOVER (TRAVEL) by WILLIAMS, CHRISTYN
08:32	GOOD! LAYUP by NIANG, LENA [PNT]	2-5	V 3	
08:18	FOUL (PERSONAL) by WILLIAMSON, ALEXA			
08:18	SUB OUT: WILLIAMSON, ALEXA			
08:18	SUB IN: ATKINSON, SHANNEN			
08:16				MISSED JUMPER by WILLIAMS, CHRISTYN
08:13	REBOUND (DEF) by DAVIS, MIA			
08:02	TURNOVER (LOSTBALL) by JONES, ASHLEY			
08:02				STEAL by DANGERFIELD, CRYSTAL
07:56				MISSED 3PTR by MAKURAT, ANNA
07:52	REBOUND (DEF) by MAYO, EMANI			
07:35				FOUL (PERSONAL) by NELSON-ODODA, OLIVIA
07:35	GOOD! FT by DAVIS, MIA	2-6	V 4	
07:35	GOOD! FT by DAVIS, MIA	2-7	V 5	
07:19				MISSED LAYUP by NELSON-ODODA, OLIVIA
07:16	REBOUND (DEF) by JONES, ASHLEY			
07:08	MISSED 3PTR by MAYO, EMANI			
07:04	REBOUND (OFF) by ATKINSON, SHANNEN			
07:03	GOOD! LAYUP by ATKINSON, SHANNEN [PNT]	2-9	V 7	
06:44	FOUL (PERSONAL) by ATKINSON, SHANNEN			
06:44	SUB OUT: MAYO, EMANI			
06:44	SUB IN: MACKINS, MARISSA			
06:44		3-9	V 6	GOOD! FT by NELSON-ODODA, OLIVIA
06:44		4-9	V 5	GOOD! FT by NELSON-ODODA, OLIVIA
06:34	MISSED 3PTR by DAVIS, MIA			
06:31				REBOUND (DEF) by DANGERFIELD, CRYSTAL
06:26				TURNOVER (BADPASS) by WILLIAMS, CHRISTYN
06:08	TURNOVER (DRIBBLING) by ATKINSON, SHANNEN			
05:50		7-9	V 2	GOOD! 3PTR by DANGERFIELD, CRYSTAL
05:36	GOOD! LAYUP by DAVIS, MIA	7-11	V 4	
05:36	ASSIST by NIANG, LENA			
05:24		10-11	V 1	GOOD! 3PTR by WALKER, MEGAN
05:24				ASSIST by DANGERFIELD, CRYSTAL
05:04	MISSED JUMPER by JONES, ASHLEY			
05:02	REBOUND (OFF) by TEAM			
05:02				FOUL (PERSONAL) by WALKER, MEGAN
04:49	MISSED JUMPER by JONES, ASHLEY			
04:48				REBOUND (DEF) by WALKER, MEGAN
04:48	FOUL (PERSONAL) by ATKINSON, SHANNEN			
04:48				
04:48	SUB OUT: ATKINSON, SHANNEN			
04:48	SUB IN: MAYO, EMANI			
04:32				MISSED JUMPER by WALKER, MEGAN
04:32	BLOCK by MACKINS, MARISSA			
04:28	REBOUND (DEF) by NIANG, LENA			
04:02	MISSED 3PTR by MACKINS, MARISSA			
03:58				REBOUND (DEF) by MAKURAT, ANNA
03:54				MISSED 3PTR by DANGERFIELD, CRYSTAL
03:51	REBOUND (DEF) by JONES, ASHLEY			
03:47	TURNOVER (LOSTBALL) by JONES, ASHLEY			
03:39				MISSED JUMPER by WILLIAMS, CHRISTYN
03:36				REBOUND (OFF) by NELSON-ODODA, OLIVIA
03:35		12-11	H 1	GOOD! LAYUP by NELSON-ODODA, OLIVIA
03:17	MISSED 3PTR by JONES, ASHLEY			
03:12	REBOUND (OFF) by MAYO, EMANI			
02:55	TURNOVER (OTHER) by NIANG, LENA			
02:30				MISSED LAYUP by DANGERFIELD, CRYSTAL
02:28	REBOUND (DEF) by MACKINS, MARISSA			
02:25	MISSED 3PTR by MACKINS, MARISSA			
02:21				REBOUND (DEF) by NELSON-ODODA, OLIVIA
02:13				SUB OUT: NELSON-ODODA, OLIVIA
02:13				SUB IN: GRIFFIN, AUBREY
02:12				TURNOVER (OFFENSIVE) by NELSON-ODODA, OLIVIA

Time	VISITORS: Temple	Score	Margin	HOME: UConn
02:12				FOUL (OFF) by NELSON-ODODA, OLIVIA
01:51	TURNOVER (TRAVEL) by JONES, ASHLEY			
01:39				MISSED JUMPER by WILLIAMS, CHRISTYN
01:36				REBOUND (OFF) by GRIFFIN, AUBREY
01:28	FOUL (PERSONAL) by NIANG, LENA			
01:28				MISSED FT by GRIFFIN, AUBREY
01:28				REBOUND (OFF) by TEAM
01:28		13-11	H 2	GOOD! FT by GRIFFIN, AUBREY
01:16	MISSED 3PTR by NIANG, LENA			
01:12				REBOUND (DEF) by WALKER, MEGAN
01:05				MISSED JUMPER by WALKER, MEGAN
01:02				REBOUND (OFF) by GRIFFIN, AUBREY
00:59				MISSED 3PTR by DANGERFIELD, CRYSTAL
00:55	REBOUND (DEF) by MAYO, EMANI			
00:48	MISSED LAYUP by JONES, ASHLEY			
00:45				REBOUND (DEF) by GRIFFIN, AUBREY
00:37				MISSED LAYUP by DANGERFIELD, CRYSTAL
00:33	REBOUND (DEF) by NIANG, LENA			
00:15	GOOD! LAYUP by DAVIS, MIA	13-13	T	
00:15	ASSIST by JONES, ASHLEY			
00:02		15-13	H 2	GOOD! LAYUP by GRIFFIN, AUBREY [PNT]
00:02				ASSIST by MAKURAT, ANNA
00:02	FOUL (PERSONAL) by MACKINS, MARISSA			
00:02				MISSED FT by GRIFFIN, AUBREY
00:01	REBOUND (DEF) by DAVIS, MIA			

Temple 13, UConn 15

Points from (This Period)	TEM	UCN
In the Paint	8	6
Off Turns	2	6
2nd Chance	2	3
Fast Break	0	0
Bench	2	3

Official Box Score
Temple vs UConn
Second Quarter Statistics Only
March 07, 2020 at Mohegan Sun Arena - Uncasville, Conn.



Temple 15

No.	Player	S	Pts	FG	3FG	FT	OR	DR	TR	PF	A	TO	Blk	Stl	Min	+/-
00	JONES, ASHLEY	G	5	2-7	1-4	0-0	0	1	1	1	1	1	0	0	9	-14
01	NIANG, LENA	G	3	1-2	1-2	0-0	0	1	1	0	0	1	1	1	9	-17
12	MAYO, EMANI	G	1	0-1	0-1	1-2	0	0	0	1	0	0	0	0	6	-9
20	WILLIAMSON, ALEXA	F	2	1-1	0-0	0-0	2	1	3	1	0	1	0	0	4	-4
25	DAVIS, MIA	F	4	2-3	0-0	0-0	0	0	0	0	0	0	0	0	9	-13
02	ALEXANDER, ASONAH	G	0	0-2	0-2	0-0	0	1	1	0	0	0	0	0	10	-15
03	WALKER, RAYNIAH	G	0	0-0	0-0	0-0	0	0	0	0	0	0	0	0	0	0
05	MACKINS, MARISSA	G	0	0-1	0-0	0-0	0	0	0	2	0	0	0	0	1	-5
10	MAYO, NICOLETTE	G	0	0-0	0-0	0-0	0	0	0	0	0	0	0	0	0	0
11	ATKINSON, SHANNEN	C	0	0-0	0-0	0-0	0	0	0	1	0	0	0	0	3	-8
15	FORDE, CIARA	G	0	0-0	0-0	0-0	0	0	0	0	0	0	0	0	0	0
	TEAM						0	1	1	0		0				
TOTALS			15	6-17	2-9	1-2	2	5	7	6	1	3	1	1	50	

Shooting By Period

Period	FG	FG%	3FG	3FG%	FT	FT%
3rd Qtr	7-18	39%	2-7	29%	2-3	67%
4th Qtr	7-18	39%	0-4	00%	1-2	50%
2nd Half	6-17	35%	2-9	22%	1-2	50%
2nd Half	14-36	39%	2-11	18%	3-5	60%
Game	25-69	36.2%	5-27	18.5%	6-9	66.7%

Deadball Rebounds: 1,0

UConn 32

No.	Player	S	Pts	FG	3FG	FT	OR	DR	TR	PF	A	TO	Blk	Stl	Min	+/-
03	WALKER, MEGAN	F	8	3-6	2-3	0-0	0	1	1	1	1	0	0	0	10	17
05	DANGERFIELD, CRYSTAL	G	6	2-3	2-2	0-0	0	0	0	0	2	0	0	0	10	17
13	WILLIAMS, CHRISTYN	G	0	0-0	0-0	0-0	0	1	1	0	0	0	0	0	10	17
20	NELSON-ODODA, OLIVIA	F	0	0-0	0-0	0-0	0	0	0	0	0	0	0	0	0	0
24	MAKURAT, ANNA	G	9	2-3	2-2	3-3	0	2	2	0	3	0	0	0	10	17
10	BENT, MOLLY	G	0	0-0	0-0	0-0	0	0	0	0	0	0	0	0	0	0
14	ADEBAYO, EVELYN	F	0	0-0	0-0	0-0	0	0	0	0	0	0	0	0	0	0
25	IRWIN, KYLA	F	0	0-0	0-0	0-0	0	0	0	0	0	0	0	0	0	0
32	CAMARA, BATOULY	F	0	0-0	0-0	0-0	0	0	0	0	0	0	0	0	0	0
44	GRIFFIN, AUBREY	G	9	1-3	0-0	7-8	2	5	7	1	0	1	0	2	10	17
	TEAM						0	0	0	0		0				
TOTALS			32	8-15	6-7	10-11	2	9	11	2	6	1	0	2	50	

Shooting By Period

Period	FG	FG%	3FG	3FG%	FT	FT%
3rd Qtr	9-18	50%	2-6	33%	6-6	100%
4th Qtr	7-14	50%	4-8	50%	3-6	50%
2nd Half	8-15	53%	6-7	86%	10-11	91%
2nd Half	16-32	50%	6-14	43%	9-12	75%
Game	29-63	46.0%	14-26	53.8%	22-28	78.6%

Deadball Rebounds: 4,0

Game Notes:

Officials: Ed Sidlasky, Mark Resch, Talisa Green
 Attendance: 5763

Start Time: 02:21 PM ET
 End Time: 04:04 PM ET
 Game Duration: 1:42
 Neutral Court;

Score	1st	2nd	3rd	4th	TOT
TEM	13	15	18	15	61
UCN	15	32	26	21	94

Points from (This Period)	TEM	UCN
In the Paint	8	2
Off Turns	0	3
2nd Chance	2	4
Fast Break	0	4
Bench	0	9

Official Play-By-Play
Temple vs UConn
Second Quarter
March 07, 2020 at Mohegan Sun Arena - Uncasville, Conn.



Period 2

Starters:

Temple: 0 JONES,ASHLEY (G); 12 MAYO,EMANI (G); 20 WILLIAMSON,ALEXA (F); 25 DAVIS,MIA (F); 1 NIANG,LENA (G);

UConn: 13 WILLIAMS,CHRISTYN (G); 20 NELSON-ODODA,OLIVIA (F); 24 MAKURAT,ANNA (G); 3 WALKER,MEGAN (F); 5 DANGERFIELD,CRYSTAL (G);

Time	VISITORS: Temple	Score	Margin	HOME: UConn
10:00	SUB OUT: NIANG, LENA			
10:00	SUB IN: WILLIAMSON, ALEXA			
09:43	FOUL (PERSONAL) by MACKINS, MARISSA			
09:43		16-13	H 3	GOOD! FT by GRIFFIN, AUBREY
09:43		17-13	H 4	GOOD! FT by GRIFFIN, AUBREY
09:43	SUB OUT: MACKINS, MARISSA			
09:43	SUB IN: ALEXANDER, ASONAH			
09:21	GOOD! LAYUP by DAVIS, MIA [PNT]	17-15	H 2	
09:08		20-15	H 5	GOOD! 3PTR by DANGERFIELD, CRYSTAL
09:08				ASSIST by MAKURAT, ANNA
08:47	GOOD! 3PTR by JONES, ASHLEY	20-18	H 2	
08:32				MISSED LAYUP by MAKURAT, ANNA
08:31	REBOUND (DEF) by TEAM			
08:31	SUB OUT: DAVIS, MIA			
08:31	SUB IN: NIANG, LENA			
08:20	MISSED 3PTR by ALEXANDER, ASONAH			
08:16	REBOUND (OFF) by WILLIAMSON, ALEXA			
08:11	MISSED 3PTR by MAYO, EMANI			
08:08				REBOUND (DEF) by GRIFFIN, AUBREY
08:01	SUB OUT: WILLIAMSON, ALEXA			
08:01	SUB IN: ATKINSON, SHANNEN			
07:50				MISSED JUMPER by DANGERFIELD, CRYSTAL
07:47				REBOUND (OFF) by GRIFFIN, AUBREY
07:47	FOUL (PERSONAL) by MAYO, EMANI			
07:47		21-18	H 3	GOOD! FT by GRIFFIN, AUBREY
07:47		22-18	H 4	GOOD! FT by GRIFFIN, AUBREY
07:33	MISSED 3PTR by NIANG, LENA			
07:30				REBOUND (DEF) by GRIFFIN, AUBREY
07:21				MISSED LAYUP by GRIFFIN, AUBREY
07:20				REBOUND (OFF) by GRIFFIN, AUBREY
07:20		24-18	H 6	GOOD! LAYUP by GRIFFIN, AUBREY
07:20	TIMEOUT 30SEC			
07:20	SUB OUT: ATKINSON, SHANNEN			
07:20	SUB IN: DAVIS, MIA			
06:54	MISSED LAYUP by DAVIS, MIA			
06:52				REBOUND (DEF) by WALKER, MEGAN
06:41		27-18	H 9	GOOD! 3PTR by WALKER, MEGAN
06:41				ASSIST by MAKURAT, ANNA
06:19	GOOD! LAYUP by DAVIS, MIA	27-20	H 7	
05:56				MISSED JUMPER by WALKER, MEGAN
05:53	REBOUND (DEF) by JONES, ASHLEY			
05:49	MISSED LAYUP by JONES, ASHLEY			
05:46				REBOUND (DEF) by WILLIAMS, CHRISTYN
05:34	FOUL (PERSONAL) by JONES, ASHLEY			
05:34	SUB OUT: JONES, ASHLEY			
05:34	SUB IN: WILLIAMSON, ALEXA			
05:34	SUB OUT: MAYO, EMANI			
05:34	SUB IN: MACKINS, MARISSA			
05:26		30-20	H 10	GOOD! 3PTR by MAKURAT, ANNA
05:26				ASSIST by WALKER, MEGAN
05:11	MISSED JUMPER by MACKINS, MARISSA			
05:08				REBOUND (DEF) by MAKURAT, ANNA
05:02	FOUL (PERSONAL) by MACKINS, MARISSA			
05:01	SUB OUT: MACKINS, MARISSA			
05:01	SUB IN: JONES, ASHLEY			
05:01		31-20	H 11	GOOD! FT by MAKURAT, ANNA
05:01		32-20	H 12	GOOD! FT by MAKURAT, ANNA
05:01		33-20	H 13	GOOD! FT by MAKURAT, ANNA
04:45	TURNOVER (BADPASS) by NIANG, LENA			
04:45				STEAL by GRIFFIN, AUBREY
04:39				MISSED 3PTR by WALKER, MEGAN
04:36	REBOUND (DEF) by NIANG, LENA			
04:29	MISSED 3PTR by JONES, ASHLEY			
04:26	REBOUND (OFF) by WILLIAMSON, ALEXA			
04:24	GOOD! JUMPER by WILLIAMSON, ALEXA [PNT]	33-22	H 11	
04:04				MISSED JUMPER by WALKER, MEGAN
04:02	REBOUND (DEF) by WILLIAMSON, ALEXA			
04:01	TURNOVER (BADPASS) by WILLIAMSON, ALEXA			
04:01				STEAL by GRIFFIN, AUBREY
04:01	FOUL (PERSONAL) by WILLIAMSON, ALEXA			

Time	VISITORS: Temple	Score	Margin	HOME: UConn
04:01	SUB OUT: WILLIAMSON, ALEXA			
04:01	SUB IN: ATKINSON, SHANNEN			
04:01				MISSED FT by GRIFFIN, AUBREY
04:01				REBOUND (OFF) by TEAM
04:01		34-22	H 12	GOOD! FT by GRIFFIN, AUBREY [FB]
03:44				FOUL (PERSONAL) by GRIFFIN, AUBREY
03:29	MISSED 3PTR by ALEXANDER, ASONAH			
03:26				REBOUND (DEF) by MAKURAT, ANNA
03:21		37-22	H 15	GOOD! 3PTR by DANGERFIELD, CRYSTAL [FB]
03:21				ASSIST by MAKURAT, ANNA
03:17	TIMEOUT 30SEC			
03:07	TURNOVER (BADPASS) by JONES, ASHLEY			
02:46		39-22	H 17	GOOD! JUMPER by WALKER, MEGAN
02:25	MISSED 3PTR by JONES, ASHLEY			
02:21				REBOUND (DEF) by GRIFFIN, AUBREY
02:16		42-22	H 20	GOOD! 3PTR by MAKURAT, ANNA
02:16				ASSIST by DANGERFIELD, CRYSTAL
01:58	GOOD! 3PTR by NIANG, LENA	42-25	H 17	
01:58	ASSIST by JONES, ASHLEY			
01:51				MISSED LAYUP by GRIFFIN, AUBREY
01:51	BLOCK by NIANG, LENA			
01:47	REBOUND (DEF) by ALEXANDER, ASONAH			
01:43	GOOD! LAYUP by JONES, ASHLEY [PNT]	42-27	H 15	
01:22	FOUL (PERSONAL) by ATKINSON, SHANNEN			
01:22	SUB OUT: ATKINSON, SHANNEN			
01:22	SUB IN: MAYO, EMANI			
01:22		43-27	H 16	GOOD! FT by GRIFFIN, AUBREY
01:22		44-27	H 17	GOOD! FT by GRIFFIN, AUBREY
01:07	MISSED 3PTR by JONES, ASHLEY			
01:03				REBOUND (DEF) by GRIFFIN, AUBREY
00:55		47-27	H 20	GOOD! 3PTR by WALKER, MEGAN
00:55				ASSIST by DANGERFIELD, CRYSTAL
00:33				FOUL (PERSONAL) by WALKER, MEGAN
00:33	MISSED FT by MAYO, EMANI			
00:33	REBOUND (OFF) by TEAM			
00:33	GOOD! FT by MAYO, EMANI	47-28	H 19	
00:13				TURNOVER (LOSTBALL) by GRIFFIN, AUBREY
00:13	STEAL by NIANG, LENA			
00:03	MISSED JUMPER by JONES, ASHLEY			
00:00				REBOUND (DEF) by GRIFFIN, AUBREY

Temple 28, UConn 47

Points from (This Period)	TEM	UCN
In the Paint	8	2
Off Turns	0	3
2nd Chance	2	4
Fast Break	0	4
Bench	0	9

Official Box Score
Temple vs UConn
Second Half Statistics Only
March 07, 2020 at Mohegan Sun Arena - Uncasville, Conn.



Temple 33

No.	Player	S	Pts	FG	3FG	FT	OR	DR	TR	PF	A	TO	Blk	Stl	Min	+/-
00	JONES, ASHLEY	G	5	2-7	1-4	0-0	0	2	2	1	4	1	0	0	17	-9
10	MAYO, NICOLETTE	G	0	0-0	0-0	0-0	0	0	0	0	0	0	0	0	2	-3
11	ATKINSON, SHANNEN	C	0	0-0	0-0	0-0	0	0	0	0	0	0	0	0	3	5
12	MAYO, EMANI	G	0	0-2	0-0	0-0	1	0	1	0	0	0	0	1	6	-11
15	FORDE, CIARA	G	0	0-0	0-0	0-0	0	0	0	0	0	0	0	0	2	-3
20	WILLIAMSON, ALEXA	F	2	1-3	0-0	0-1	1	0	1	0	0	0	0	0	6	-10
25	DAVIS, MIA	F	11	4-8	0-1	3-4	0	2	2	2	0	1	0	0	17	-9
01	NIANG, LENA	G	3	1-1	1-1	0-0	0	1	1	1	0	0	0	0	8	-12
02	ALEXANDER, ASONAH	G	8	4-7	0-1	0-0	2	0	2	1	1	0	0	0	16	-8
03	WALKER, RAYNIAH	G	2	1-2	0-1	0-0	0	4	4	2	0	0	0	0	11	-8
05	MACKINS, MARISSA	G	2	1-6	0-3	0-0	1	2	3	0	1	0	0	0	11	-2
	TEAM		0	0-0	0-0	0-0	2	0	2	0	0	1	0	0	0	0
TOTALS			33	14-36	2-11	3-5	7	11	18	7	6	3	0	1	100	

Shooting By Period

Period	FG	FG%	3FG	3FG%	FT	FT%
3rd Qtr	7-18	39%	2-7	29%	2-3	67%
4th Qtr	7-18	39%	0-4	00%	1-2	50%
2nd Half	14-36	39%	2-11	18%	3-5	60%
Game	25-69	36.2%	5-27	18.5%	6-9	66.7%

Deadball Rebounds: 1,0
 Last FG Half: TEM 4th-01:30

UConn 47

No.	Player	S	Pts	FG	3FG	FT	OR	DR	TR	PF	A	TO	Blk	Stl	Min	+/-
10	BENT, MOLLY	G	0	0-0	0-0	0-0	0	1	1	0	1	0	0	0	6	5
13	WILLIAMS, CHRISTYN	G	12	4-8	2-6	2-2	0	0	0	1	0	0	0	0	17	12
14	ADEBAYO, EVELYN	F	0	0-0	0-0	0-0	0	2	2	0	0	0	0	0	6	5
20	NELSON-ODODA, OLIVIA	F	6	3-5	0-0	0-0	1	5	6	1	0	1	2	0	9	6
24	MAKURAT, ANNA	G	5	2-4	1-2	0-0	0	3	3	1	4	0	1	0	17	12
25	IRWIN, KYLA	F	0	0-0	0-0	0-0	0	0	0	0	1	0	0	0	5	3
32	CAMARA, BATOULY	F	2	1-1	0-0	0-0	0	0	0	0	1	0	0	0	2	1
44	GRIFFIN, AUBREY	G	3	0-2	0-0	3-6	4	2	6	0	1	0	1	1	10	10
03	WALKER, MEGAN	F	6	1-5	0-2	4-4	1	1	2	0	2	0	0	0	11	7
05	DANGERFIELD, CRYSTAL	G	13	5-7	3-4	0-0	0	3	3	0	0	1	0	0	17	9
	TEAM		0	0-0	0-0	0-0	0	0	0	0	0	0	0	0	0	0
TOTALS			47	16-32	6-14	9-12	6	17	23	3	10	2	4	1	100	

Shooting By Period

Period	FG	FG%	3FG	3FG%	FT	FT%
3rd Qtr	9-18	50%	2-6	33%	6-6	100%
4th Qtr	7-14	50%	4-8	50%	3-6	50%
2nd Half	16-32	50%	6-14	43%	9-12	75%
Game	29-63	46.0%	14-26	53.8%	22-28	78.6%

Deadball Rebounds: 4,0
 Last FG Half: UCN 4th-01:15

Game Notes:

Officials: Ed Sidlasky, Mark Resch, Talisa Green
 Attendance: 5763

Start Time: 02:21 PM ET
 End Time: 04:04 PM ET
 Game Duration: 1:42
 Neutral Court;

Score	1st	2nd	3rd	4th	TOT
TEM	13	15	18	15	61
UCN	15	32	26	21	94

Points from (This Period)	TEM	UCN
In the Paint	16	16
Off Turns	0	4
2nd Chance	7	4
Fast Break	2	11
Bench	12	5

Official Box Score
Temple vs UConn
Third Quarter Statistics Only
March 07, 2020 at Mohegan Sun Arena - Uncasville, Conn.



Temple 33

No.	Player	S	Pts	FG	3FG	FT	OR	DR	TR	PF	A	TO	Blk	Stl	Min	+/-
00	JONES, ASHLEY	G	5	2-4	1-2	0-0	0	0	0	0	1	0	0	0	9	-6
01	NIANG, LENA	G	3	1-1	1-1	0-0	0	1	1	1	0	0	0	0	7	-13
12	MAYO, EMANI	G	0	0-1	0-0	0-0	0	0	0	0	0	0	0	1	3	-7
20	WILLIAMSON, ALEXA	F	2	1-3	0-0	0-1	1	0	1	0	0	0	0	0	4	-9
25	DAVIS, MIA	F	4	1-2	0-1	2-2	0	1	1	2	0	1	0	0	9	-6
02	ALEXANDER, ASONAH	G	2	1-2	0-0	0-0	1	0	1	1	1	0	0	0	7	-1
03	WALKER, RAYNIAH	G	0	0-0	0-0	0-0	0	0	0	0	0	0	0	0	1	-2
05	MACKINS, MARISSA	G	2	1-5	0-3	0-0	1	2	3	0	1	0	0	0	7	-1
10	MAYO, NICOLETTE	G	0	0-0	0-0	0-0	0	0	0	0	0	0	0	0	0	0
11	ATKINSON, SHANNEN	C	0	0-0	0-0	0-0	0	0	0	0	0	0	0	0	3	5
15	FORDE, CIARA	G	0	0-0	0-0	0-0	0	0	0	0	0	0	0	0	0	0
	TEAM						0	0	0	0		0				
TOTALS			18	7-18	2-7	2-3	3	4	7	4	3	1	0	1	50	

Shooting By Period

Period	FG	FG%	3FG	3FG%	FT	FT%
2nd Half	0-0	0%	0-0	0%	0-0	0%
Game	25-69	36.2%	5-27	18.5%	6-9	66.7%

Deadball Rebounds: 1,0

UConn 47

No.	Player	S	Pts	FG	3FG	FT	OR	DR	TR	PF	A	TO	Blk	Stl	Min	+/-
03	WALKER, MEGAN	F	4	1-4	0-2	2-2	1	1	2	0	2	0	0	0	10	8
05	DANGERFIELD, CRYSTAL	G	2	1-2	0-0	0-0	0	0	0	0	0	1	0	0	9	6
13	WILLIAMS, CHRISTYN	G	7	2-3	1-2	2-2	0	0	0	0	0	0	0	0	7	6
20	NELSON-ODODA, OLIVIA	F	6	3-5	0-0	0-0	1	5	6	1	0	1	2	0	9	6
24	MAKURAT, ANNA	G	5	2-3	1-2	0-0	0	3	3	1	3	0	1	0	10	8
10	BENT, MOLLY	G	0	0-0	0-0	0-0	0	0	0	0	0	0	0	0	0	0
14	ADEBAYO, EVELYN	F	0	0-0	0-0	0-0	0	0	0	0	0	0	0	0	0	0
25	IRWIN, KYLA	F	0	0-0	0-0	0-0	0	0	0	0	0	0	0	0	1	2
32	CAMARA, BATOULY	F	0	0-0	0-0	0-0	0	0	0	0	0	0	0	0	0	0
44	GRIFFIN, AUBREY	G	2	0-1	0-0	2-2	3	0	3	0	0	0	0	0	4	4
	TEAM						0	0	0	0		0				
TOTALS			26	9-18	2-6	6-6	5	9	14	2	5	2	3	0	50	

Shooting By Period

Period	FG	FG%	3FG	3FG%	FT	FT%
2nd Half	0-0	0%	0-0	0%	0-0	0%
Game	29-63	46.0%	14-26	53.8%	22-28	78.6%

Deadball Rebounds: 4,0

Game Notes:

Officials: Ed Sidlasky, Mark Resch, Talisa Green
 Attendance: 5763

Start Time: 02:21 PM ET
 End Time: 04:04 PM ET
 Game Duration: 1:42
 Neutral Court;

Score	1st	2nd	3rd	4th	TOT
TEM	13	15	18	15	61
UCN	15	32	26	21	94

Points from (This Period)	TEM	UCN
In the Paint	8	10
Off Turns	0	2
2nd Chance	5	4
Fast Break	2	3
Bench	4	2

Official Play-By-Play
Temple vs UConn
Third Quarter
March 07, 2020 at Mohegan Sun Arena - Uncasville, Conn.



Period 3

Starters:

Temple: 0 JONES,ASHLEY (G); 12 MAYO,EMANI (G); 20 WILLIAMSON,ALEXA (F); 25 DAVIS,MIA (F); 1 NIANG,LENA (G);

UConn: 13 WILLIAMS,CHRISTYN (G); 20 NELSON-ODODA,OLIVIA (F); 24 MAKURAT,ANNA (G); 3 WALKER,MEGAN (F); 5 DANGERFIELD,CRYSTAL (G);

Time	VISITORS: Temple	Score	Margin	HOME: UConn
10:00				SUB OUT: GRIFFIN, AUBREY
10:00				SUB IN: NELSON-ODODA, OLIVIA
10:00	SUB OUT: ALEXANDER, ASONAH			
10:00	SUB IN: WILLIAMSON, ALEXA			
09:47				MISSED JUMPER by WALKER, MEGAN
09:45	REBOUND (DEF) by DAVIS, MIA			
09:32	MISSED JUMPER by WILLIAMSON, ALEXA			
09:32				BLOCK by NELSON-ODODA, OLIVIA
09:28				REBOUND (DEF) by WALKER, MEGAN
09:19		49-28	H 21	GOOD! LAYUP by NELSON-ODODA, OLIVIA [PNT]
09:19				ASSIST by MAKURAT, ANNA
09:02	GOOD! 3PTR by NIANG, LENA	49-31	H 18	
09:02	ASSIST by JONES, ASHLEY			
08:46		51-31	H 20	GOOD! JUMPER by DANGERFIELD, CRYSTAL
08:31	MISSED LAYUP by JONES, ASHLEY			
08:31				BLOCK by NELSON-ODODA, OLIVIA
08:28				REBOUND (DEF) by NELSON-ODODA, OLIVIA
08:24				MISSED 3PTR by WILLIAMS, CHRISTYN
08:19				REBOUND (OFF) by NELSON-ODODA, OLIVIA
08:08				TURNOVER (BADPASS) by DANGERFIELD, CRYSTAL
08:08	STEAL by MAYO, EMANI			
07:58	MISSED JUMPER by WILLIAMSON, ALEXA			
07:55				REBOUND (DEF) by NELSON-ODODA, OLIVIA
07:41				MISSED 3PTR by WALKER, MEGAN
07:38	REBOUND (DEF) by NIANG, LENA			
07:21	MISSED LAYUP by MAYO, EMANI			
07:18				REBOUND (DEF) by MAKURAT, ANNA
07:14		54-31	H 23	GOOD! 3PTR by WILLIAMS, CHRISTYN [FB]
07:14				ASSIST by MAKURAT, ANNA
06:47	MISSED 3PTR by DAVIS, MIA			
06:44				REBOUND (DEF) by NELSON-ODODA, OLIVIA
06:36		57-31	H 26	GOOD! 3PTR by MAKURAT, ANNA
06:36				ASSIST by WALKER, MEGAN
06:33	TIMEOUT 30SEC			
06:33	SUB OUT: NIANG, LENA			
06:33	SUB OUT: MAYO, EMANI			
06:33	SUB OUT: WILLIAMSON, ALEXA			
06:33	SUB IN: ALEXANDER, ASONAH			
06:33	SUB IN: MACKINS, MARISSA			
06:33	SUB IN: ATKINSON, SHANNEN			
06:13	GOOD! JUMPER by JONES, ASHLEY	57-33	H 24	
05:53		59-33	H 26	GOOD! JUMPER by WALKER, MEGAN [PNT]
05:43	MISSED 3PTR by MACKINS, MARISSA			
05:39	REBOUND (OFF) by MACKINS, MARISSA			
05:38	MISSED LAYUP by MACKINS, MARISSA			
05:38				BLOCK by MAKURAT, ANNA
05:36				REBOUND (DEF) by NELSON-ODODA, OLIVIA
05:36				TURNOVER (TRAVEL) by NELSON-ODODA, OLIVIA
05:33	MISSED 3PTR by JONES, ASHLEY			
05:29				REBOUND (DEF) by MAKURAT, ANNA
05:16				MISSED LAYUP by NELSON-ODODA, OLIVIA
05:13	REBOUND (DEF) by MACKINS, MARISSA			
05:10	GOOD! LAYUP by ALEXANDER, ASONAH [FB]	59-35	H 24	
05:10	ASSIST by MACKINS, MARISSA			
04:51	FOUL (PERSONAL) by DAVIS, MIA			
04:51				
04:41				MISSED JUMPER by DANGERFIELD, CRYSTAL
04:38	REBOUND (DEF) by MACKINS, MARISSA			
04:24	MISSED 3PTR by MACKINS, MARISSA			
04:20	REBOUND (OFF) by ALEXANDER, ASONAH			
04:16	GOOD! 3PTR by JONES, ASHLEY	59-38	H 21	
04:16	ASSIST by ALEXANDER, ASONAH			
03:53	FOUL (PERSONAL) by ALEXANDER, ASONAH			
03:53	SUB OUT: ATKINSON, SHANNEN			
03:53	SUB IN: NIANG, LENA			
03:53		60-38	H 22	GOOD! FT by WILLIAMS, CHRISTYN
03:53		61-38	H 23	GOOD! FT by WILLIAMS, CHRISTYN
03:53				SUB OUT: WILLIAMS, CHRISTYN
03:53				SUB IN: GRIFFIN, AUBREY
03:39	TURNOVER (LOSTBALL) by DAVIS, MIA			

Time	VISITORS: Temple	Score	Margin	HOME: UConn
03:30				MISSED JUMPER by NELSON-ODODA, OLIVIA
03:26				REBOUND (OFF) by WALKER, MEGAN
03:26	FOUL (PERSONAL) by DAVIS, MIA			
03:26		62-38	H 24	GOOD! FT by WALKER, MEGAN
03:26		63-38	H 25	GOOD! FT by WALKER, MEGAN
03:15	MISSED 3PTR by MACKINS, MARISSA			
03:12				REBOUND (DEF) by NELSON-ODODA, OLIVIA
03:00		65-38	H 27	GOOD! LAYUP by NELSON-ODODA, OLIVIA
03:00				ASSIST by MAKURAT, ANNA
02:29				FOUL (PERSONAL) by NELSON-ODODA, OLIVIA
02:29	GOOD! FT by DAVIS, MIA	65-39	H 26	
02:29	GOOD! FT by DAVIS, MIA	65-40	H 25	
02:13		67-40	H 27	GOOD! LAYUP by NELSON-ODODA, OLIVIA
02:13				ASSIST by WALKER, MEGAN
01:52	GOOD! JUMPER by MACKINS, MARISSA [PNT]	67-42	H 25	
01:29		69-42	H 27	GOOD! JUMPER by MAKURAT, ANNA
01:09	GOOD! LAYUP by DAVIS, MIA [PNT]	69-44	H 25	
00:53				MISSED 3PTR by WALKER, MEGAN
00:50				REBOUND (OFF) by GRIFFIN, AUBREY
00:49				MISSED LAYUP by GRIFFIN, AUBREY
00:48				REBOUND (OFF) by GRIFFIN, AUBREY
00:48				SUB OUT: DANGERFIELD, CRYSTAL
00:48				SUB OUT: NELSON-ODODA, OLIVIA
00:48				SUB IN: WILLIAMS, CHRISTYN
00:48				SUB IN: IRWIN, KYLA
00:48	SUB OUT: JONES, ASHLEY			
00:48	SUB OUT: DAVIS, MIA			
00:48	SUB IN: WALKER, RAYNIAH			
00:48	SUB IN: WILLIAMSON, ALEXA			
00:46				MISSED 3PTR by MAKURAT, ANNA
00:43				REBOUND (OFF) by GRIFFIN, AUBREY
00:43	FOUL (PERSONAL) by NIANG, LENA			
00:43		70-44	H 26	GOOD! FT by GRIFFIN, AUBREY
00:43		71-44	H 27	GOOD! FT by GRIFFIN, AUBREY
00:33	MISSED LAYUP by ALEXANDER, ASONAH			
00:32	REBOUND (OFF) by WILLIAMSON, ALEXA			
00:32	GOOD! LAYUP by WILLIAMSON, ALEXA	71-46	H 25	
00:32				FOUL (PERSONAL) by MAKURAT, ANNA
00:32	MISSED FT by WILLIAMSON, ALEXA			
00:30				REBOUND (DEF) by MAKURAT, ANNA
00:04		73-46	H 27	GOOD! LAYUP by WILLIAMS, CHRISTYN

Temple 46, UConn 73

Points from (This Period)	TEM	UCN
In the Paint	8	10
Off Turns	0	2
2nd Chance	5	4
Fast Break	2	3
Bench	4	2

Official Box Score
Temple vs UConn
Fourth Quarter Statistics Only
March 07, 2020 at Mohegan Sun Arena - Uncasville, Conn.



Temple 15

No.	Player	S	Pts	FG	3FG	FT	OR	DR	TR	PF	A	TO	Blk	Stl	Min	+/-
00	JONES, ASHLEY	G	0	0-3	0-2	0-0	0	2	2	1	3	1	0	0	8	-3
01	NIANG, LENA	G	0	0-0	0-0	0-0	0	0	0	0	0	0	0	0	1	1
12	MAYO, EMANI	G	0	0-1	0-0	0-0	1	0	1	0	0	0	0	0	3	-4
20	WILLIAMSON, ALEXA	F	0	0-0	0-0	0-0	0	0	0	0	0	0	0	0	2	-1
25	DAVIS, MIA	F	7	3-6	0-0	1-2	0	1	1	0	0	0	0	0	8	-3
02	ALEXANDER, ASONAH	G	6	3-5	0-1	0-0	1	0	1	0	0	0	0	0	9	-7
03	WALKER, RAYNIAH	G	2	1-2	0-1	0-0	0	4	4	2	0	0	0	0	10	-6
05	MACKINS, MARISSA	G	0	0-1	0-0	0-0	0	0	0	0	0	0	0	0	4	-1
10	MAYO, NICOLETTE	G	0	0-0	0-0	0-0	0	0	0	0	0	0	0	0	2	-3
11	ATKINSON, SHANNEN	C	0	0-0	0-0	0-0	0	0	0	0	0	0	0	0	0	0
15	FORDE, CIARA	G	0	0-0	0-0	0-0	0	0	0	0	0	0	0	0	2	-3
	TEAM						2	0	2	0		1				
TOTALS			15	7-18	0-4	1-2	4	7	11	3	3	2	0	0	50	

Shooting By Period

Period	FG	FG%	3FG	3FG%	FT	FT%
Game	25-69	36.2%	5-27	18.5%	6-9	66.7%

Deadball Rebounds: 1,0

UConn 21

No.	Player	S	Pts	FG	3FG	FT	OR	DR	TR	PF	A	TO	Blk	Stl	Min	+/-
03	WALKER, MEGAN	F	2	0-1	0-0	2-2	0	0	0	0	0	0	0	0	1	-1
05	DANGERFIELD, CRYSTAL	G	11	4-5	3-4	0-0	0	3	3	0	0	0	0	0	8	3
13	WILLIAMS, CHRISTYN	G	5	2-5	1-4	0-0	0	0	0	1	0	0	0	0	10	6
20	NELSON-ODODA, OLIVIA	F	0	0-0	0-0	0-0	0	0	0	0	0	0	0	0	0	0
24	MAKURAT, ANNA	G	0	0-1	0-0	0-0	0	0	0	0	1	0	0	0	7	4
10	BENT, MOLLY	G	0	0-0	0-0	0-0	0	1	1	0	1	0	0	0	6	5
14	ADEBAYO, EVELYN	F	0	0-0	0-0	0-0	0	2	2	0	0	0	0	0	6	5
25	IRWIN, KYLA	F	0	0-0	0-0	0-0	0	0	0	0	1	0	0	0	4	1
32	CAMARA, BATOULY	F	2	1-1	0-0	0-0	0	0	0	0	1	0	0	0	2	1
44	GRIFFIN, AUBREY	G	1	0-1	0-0	1-4	1	2	3	0	1	0	1	1	6	6
	TEAM						0	0	0	0		0				
TOTALS			21	7-14	4-8	3-6	1	8	9	1	5	0	1	1	50	

Shooting By Period

Period	FG	FG%	3FG	3FG%	FT	FT%
Game	29-63	46.0%	14-26	53.8%	22-28	78.6%

Deadball Rebounds: 4,0

Game Notes:

Officials: Ed Sidlasky, Mark Resch, Talisa Green
Attendance: 5763

Start Time: 02:21 PM ET
End Time: 04:04 PM ET
Game Duration: 1:42
Neutral Court;

Score	1st	2nd	3rd	4th	TOT
TEM	13	15	18	15	61
UCN	15	32	26	21	94

Points from (This Period)	TEM	UCN
In the Paint	8	6
Off Turns	0	2
2nd Chance	2	0
Fast Break	0	8
Bench	8	3

Official Play-By-Play
Temple vs UConn
Fourth Quarter
March 07, 2020 at Mohegan Sun Arena - Uncasville, Conn.



Period 4

Starters:

Temple: 0 JONES,ASHLEY (G); 12 MAYO,EMANI (G); 20 WILLIAMSON,ALEXA (F); 25 DAVIS,MIA (F); 1 NIANG,LENA (G);

UConn: 13 WILLIAMS,CHRISTYN (G); 20 NELSON-ODODA,OLIVIA (F); 24 MAKURAT,ANNA (G); 3 WALKER,MEGAN (F); 5 DANGERFIELD,CRYSTAL (G);

Time	VISITORS: Temple	Score	Margin	HOME: UConn
10:00				SUB OUT: WALKER, MEGAN
10:00				SUB IN: DANGERFIELD, CRYSTAL
10:00	SUB OUT: NIANG, LENA			
10:00	SUB OUT: WILLIAMSON, ALEXA			
10:00	SUB IN: JONES, ASHLEY			
10:00	SUB IN: DAVIS, MIA			
09:47	MISSED 3PTR by JONES, ASHLEY			
09:43	REBOUND (OFF) by TEAM			
09:38	MISSED LAYUP by DAVIS, MIA			
09:34	REBOUND (OFF) by ALEXANDER, ASONAH			
09:34	GOOD! LAYUP by ALEXANDER, ASONAH [PNT]	73-48	H 25	
09:10	FOUL (PERSONAL) by WALKER, RAYNIAH			
09:10				MISSED FT by GRIFFIN, AUBREY
09:10				REBOUND (OFF) by TEAM
09:10		74-48	H 26	GOOD! FT by GRIFFIN, AUBREY
08:57	GOOD! JUMPER by DAVIS, MIA [PNT]	74-50	H 24	
08:29				MISSED 3PTR by WILLIAMS, CHRISTYN
08:26				REBOUND (OFF) by GRIFFIN, AUBREY
08:25				MISSED LAYUP by GRIFFIN, AUBREY
08:23	REBOUND (DEF) by DAVIS, MIA			
08:14	MISSED LAYUP by MACKINS, MARISSA			
08:11				REBOUND (DEF) by GRIFFIN, AUBREY
08:02				MISSED 3PTR by DANGERFIELD, CRYSTAL
07:59	REBOUND (DEF) by WALKER, RAYNIAH			
07:36	GOOD! LAYUP by DAVIS, MIA	74-52	H 22	
07:36	ASSIST by JONES, ASHLEY			
07:18				MISSED JUMPER by MAKURAT, ANNA
07:14	REBOUND (DEF) by WALKER, RAYNIAH			
07:04	MISSED LAYUP by DAVIS, MIA			
07:01				REBOUND (DEF) by DANGERFIELD, CRYSTAL
06:56		77-52	H 25	GOOD! 3PTR by DANGERFIELD, CRYSTAL [FB]
06:56				ASSIST by MAKURAT, ANNA
06:39	MISSED JUMPER by JONES, ASHLEY			
06:36				REBOUND (DEF) by DANGERFIELD, CRYSTAL
06:29		80-52	H 28	GOOD! 3PTR by DANGERFIELD, CRYSTAL
06:29				ASSIST by IRWIN, KYLA
06:05	MISSED JUMPER by DAVIS, MIA			
06:02				REBOUND (DEF) by GRIFFIN, AUBREY
05:54	FOUL (PERSONAL) by WALKER, RAYNIAH			
05:54				SUB OUT: MAKURAT, ANNA
05:54				SUB OUT: IRWIN, KYLA
05:54				SUB IN: BENT, MOLLY
05:54				SUB IN: ADEBAYO, EVELYN
05:54	SUB OUT: MACKINS, MARISSA			
05:54	SUB IN: MAYO, EMANI			
05:54				MISSED FT by GRIFFIN, AUBREY
05:54				REBOUND (OFF) by TEAM
05:54				MISSED FT by GRIFFIN, AUBREY
05:53	REBOUND (DEF) by WALKER, RAYNIAH			
05:37	GOOD! JUMPER by WALKER, RAYNIAH	80-54	H 26	
05:37	ASSIST by JONES, ASHLEY			
05:17		82-54	H 28	GOOD! LAYUP by WILLIAMS, CHRISTYN [PNT]
04:53	TURNOVER (LOSTBALL) by JONES, ASHLEY			
04:53				STEAL by GRIFFIN, AUBREY
04:50		84-54	H 30	GOOD! LAYUP by DANGERFIELD, CRYSTAL [FB]
04:50				ASSIST by GRIFFIN, AUBREY
04:29	MISSED 3PTR by WALKER, RAYNIAH			
04:26	REBOUND (OFF) by MAYO, EMANI			
04:23	MISSED JUMPER by MAYO, EMANI			
04:23				BLOCK by GRIFFIN, AUBREY
04:18				REBOUND (DEF) by BENT, MOLLY
04:15		87-54	H 33	GOOD! 3PTR by DANGERFIELD, CRYSTAL [FB]
04:15				ASSIST by BENT, MOLLY
03:53				FOUL (PERSONAL) by WILLIAMS, CHRISTYN
03:53				
03:53				SUB OUT: GRIFFIN, AUBREY
03:53				SUB IN: WALKER, MEGAN
03:53	SUB OUT: ALEXANDER, ASONAH			
03:53	SUB IN: NIANG, LENA			
03:53	GOOD! FT by DAVIS, MIA	87-55	H 32	

Time	VISITORS: Temple	Score	Margin	HOME: UConn
03:53	MISSED FT by DAVIS, MIA			
03:51				REBOUND (DEF) by ADEBAYO, EVELYN
03:30				MISSED JUMPER by WALKER, MEGAN
03:27	REBOUND (DEF) by JONES, ASHLEY			
03:13	MISSED 3PTR by JONES, ASHLEY			
03:10				REBOUND (DEF) by DANGERFIELD, CRYSTAL
02:58				MISSED 3PTR by WILLIAMS, CHRISTYN
02:55	REBOUND (DEF) by JONES, ASHLEY			
02:49	GOOD! JUMPER by DAVIS, MIA	87-57	H 30	
02:49	ASSIST by JONES, ASHLEY			
02:28	FOUL (PERSONAL) by JONES, ASHLEY			
02:28				SUB OUT: DANGERFIELD, CRYSTAL
02:28				SUB IN: MAKURAT, ANNA
02:28	SUB OUT: JONES, ASHLEY			
02:28	SUB OUT: DAVIS, MIA			
02:28	SUB IN: MAYO, NICOLETTE			
02:28	SUB IN: FORDE, CIARA			
02:28		88-57	H 31	GOOD! FT by WALKER, MEGAN
02:28		89-57	H 32	GOOD! FT by WALKER, MEGAN
02:28				SUB OUT: WALKER, MEGAN
02:28				SUB IN: CAMARA, BATOULY
02:28	SUB OUT: MAYO, EMANI			
02:28	SUB IN: ALEXANDER, ASONAH			
02:28	SUB OUT: NIANG, LENA			
02:28	SUB IN: WILLIAMSON, ALEXA			
02:16	GOOD! LAYUP by ALEXANDER, ASONAH [PNT]	89-59	H 30	
01:59		92-59	H 33	GOOD! 3PTR by WILLIAMS, CHRISTYN
01:59				ASSIST by CAMARA, BATOULY
01:30	GOOD! JUMPER by ALEXANDER, ASONAH	92-61	H 31	
01:15		94-61	H 33	GOOD! JUMPER by CAMARA, BATOULY [PNT]
00:58	MISSED LAYUP by ALEXANDER, ASONAH			
00:55				REBOUND (DEF) by ADEBAYO, EVELYN
00:50				MISSED 3PTR by WILLIAMS, CHRISTYN
00:46	REBOUND (DEF) by WALKER, RAYNIAH			
00:23	MISSED 3PTR by ALEXANDER, ASONAH			
00:21	REBOUND (OFF) by TEAM			
00:01	TURNOVER (SHOTCLOCK) by TEAM			

Temple 61, UConn 94

Points from (This Period)	TEM	UCN
In the Paint	8	6
Off Turns	0	2
2nd Chance	2	0
Fast Break	0	8
Bench	8	3

Official Scoring/Possession Reference Chart
Temple vs UConn
Period 1
March 07, 2020 at Mohegan Sun Arena - Uncasville, Conn.



Period 1

Starters:

Temple: 0 JONES,ASHLEY (G); 12 MAYO,EMANI (G); 20 WILLIAMSON,ALEXA (F); 25 DAVIS,MIA (F); 1 NIANG,LENA (G);

UConn: 13 WILLIAMS,CHRISTYN (G); 20 NELSON-ODODA,OLIVIA (F); 24 MAKURAT,ANNA (G); 3 WALKER,MEGAN (F); 5 DANGERFIELD,CRYSTAL (G);

Time	VISITORS: Temple	Score	Margin	HOME: UConn
09:40	GOOD! 3PTR by JONES, ASHLEY	0-3	V 3	
09:12		2-3	V 1	GOOD! LAYUP by NELSON-ODODA, OLIVIA [PNT]
08:32	GOOD! LAYUP by NIANG, LENA [PNT]	2-5	V 3	
07:35	GOOD! FT by DAVIS, MIA	2-6	V 4	
07:35	GOOD! FT by DAVIS, MIA	2-7	V 5	
07:03	GOOD! LAYUP by ATKINSON, SHANNEN [PNT]	2-9	V 7	
06:44		3-9	V 6	GOOD! FT by NELSON-ODODA, OLIVIA
06:44		4-9	V 5	GOOD! FT by NELSON-ODODA, OLIVIA
05:50		7-9	V 2	GOOD! 3PTR by DANGERFIELD, CRYSTAL
05:36	GOOD! LAYUP by DAVIS, MIA	7-11	V 4	
05:24		10-11	V 1	GOOD! 3PTR by WALKER, MEGAN
03:35		12-11	H 1	GOOD! LAYUP by NELSON-ODODA, OLIVIA
01:28		13-11	H 2	GOOD! FT by GRIFFIN, AUBREY
00:15	GOOD! LAYUP by DAVIS, MIA	13-13	T	
00:02		15-13	H 2	GOOD! LAYUP by GRIFFIN, AUBREY [PNT]

Temple 13, UConn 15

Official Scoring/Possession Reference Chart
Temple vs UConn
Period 2
March 07, 2020 at Mohegan Sun Arena - Uncasville, Conn.



Period 2

Starters:

Temple: 0 JONES,ASHLEY (G); 12 MAYO,EMANI (G); 20 WILLIAMSON,ALEXA (F); 25 DAVIS,MIA (F); 1 NIANG,LENA (G);

UConn: 13 WILLIAMS,CHRISTYN (G); 20 NELSON-ODODA,OLIVIA (F); 24 MAKURAT,ANNA (G); 3 WALKER,MEGAN (F); 5 DANGERFIELD,CRYSTAL (G);

Time	VISITORS: Temple	Score	Margin	HOME: UConn
09:43		16-13	H 3	GOOD! FT by GRIFFIN, AUBREY
09:43		17-13	H 4	GOOD! FT by GRIFFIN, AUBREY
09:21	GOOD! LAYUP by DAVIS, MIA [PNT]	17-15	H 2	
09:08		20-15	H 5	GOOD! 3PTR by DANGERFIELD, CRYSTAL
08:47	GOOD! 3PTR by JONES, ASHLEY	20-18	H 2	
07:47		21-18	H 3	GOOD! FT by GRIFFIN, AUBREY
07:47		22-18	H 4	GOOD! FT by GRIFFIN, AUBREY
07:20		24-18	H 6	GOOD! LAYUP by GRIFFIN, AUBREY
06:41		27-18	H 9	GOOD! 3PTR by WALKER, MEGAN
06:19	GOOD! LAYUP by DAVIS, MIA	27-20	H 7	
05:26		30-20	H 10	GOOD! 3PTR by MAKURAT, ANNA
05:01		31-20	H 11	GOOD! FT by MAKURAT, ANNA
05:01		32-20	H 12	GOOD! FT by MAKURAT, ANNA
05:01		33-20	H 13	GOOD! FT by MAKURAT, ANNA
04:24	GOOD! JUMPER by WILLIAMSON, ALEXA [PNT]	33-22	H 11	
04:01		34-22	H 12	GOOD! FT by GRIFFIN, AUBREY [FB]
03:21		37-22	H 15	GOOD! 3PTR by DANGERFIELD, CRYSTAL [FB]
02:46		39-22	H 17	GOOD! JUMPER by WALKER, MEGAN
02:16		42-22	H 20	GOOD! 3PTR by MAKURAT, ANNA
01:58	GOOD! 3PTR by NIANG, LENA	42-25	H 17	
01:43	GOOD! LAYUP by JONES, ASHLEY [PNT]	42-27	H 15	
01:22		43-27	H 16	GOOD! FT by GRIFFIN, AUBREY
01:22		44-27	H 17	GOOD! FT by GRIFFIN, AUBREY
00:55		47-27	H 20	GOOD! 3PTR by WALKER, MEGAN
00:33	GOOD! FT by MAYO, EMANI	47-28	H 19	

Temple 28, UConn 47

Official Scoring/Possession Reference Chart
Temple vs UConn
Period 3
March 07, 2020 at Mohegan Sun Arena - Uncasville, Conn.



Period 3

Starters:

Temple: 0 JONES,ASHLEY (G); 12 MAYO,EMANI (G); 20 WILLIAMSON,ALEXA (F); 25 DAVIS,MIA (F); 1 NIANG,LENA (G);

UConn: 13 WILLIAMS,CHRISTYN (G); 20 NELSON-ODODA,OLIVIA (F); 24 MAKURAT,ANNA (G); 3 WALKER,MEGAN (F); 5 DANGERFIELD,CRYSTAL (G);

Time	VISITORS: Temple	Score	Margin	HOME: UConn
09:19		49-28	H 21	GOOD! LAYUP by NELSON-ODODA, OLIVIA [PNT]
09:02	GOOD! 3PTR by NIANG, LENA	49-31	H 18	
08:46		51-31	H 20	GOOD! JUMPER by DANGERFIELD, CRYSTAL
07:14		54-31	H 23	GOOD! 3PTR by WILLIAMS, CHRISTYN [FB]
06:36		57-31	H 26	GOOD! 3PTR by MAKURAT, ANNA
06:13	GOOD! JUMPER by JONES, ASHLEY	57-33	H 24	
05:53		59-33	H 26	GOOD! JUMPER by WALKER, MEGAN [PNT]
05:10	GOOD! LAYUP by ALEXANDER, ASONAH [FB]	59-35	H 24	
04:16	GOOD! 3PTR by JONES, ASHLEY	59-38	H 21	
03:53		60-38	H 22	GOOD! FT by WILLIAMS, CHRISTYN
03:53		61-38	H 23	GOOD! FT by WILLIAMS, CHRISTYN
03:26		62-38	H 24	GOOD! FT by WALKER, MEGAN
03:26		63-38	H 25	GOOD! FT by WALKER, MEGAN
03:00		65-38	H 27	GOOD! LAYUP by NELSON-ODODA, OLIVIA
02:29	GOOD! FT by DAVIS, MIA	65-39	H 26	
02:29	GOOD! FT by DAVIS, MIA	65-40	H 25	
02:13		67-40	H 27	GOOD! LAYUP by NELSON-ODODA, OLIVIA
01:52	GOOD! JUMPER by MACKINS, MARISSA [PNT]	67-42	H 25	
01:29		69-42	H 27	GOOD! JUMPER by MAKURAT, ANNA
01:09	GOOD! LAYUP by DAVIS, MIA [PNT]	69-44	H 25	
00:43		70-44	H 26	GOOD! FT by GRIFFIN, AUBREY
00:43		71-44	H 27	GOOD! FT by GRIFFIN, AUBREY
00:32	GOOD! LAYUP by WILLIAMSON, ALEXA	71-46	H 25	
00:04		73-46	H 27	GOOD! LAYUP by WILLIAMS, CHRISTYN

Temple 46, UConn 73

Official Scoring/Possession Reference Chart
Temple vs UConn
Period 4
March 07, 2020 at Mohegan Sun Arena - Uncasville, Conn.



Period 4

Starters:

Temple: 0 JONES,ASHLEY (G); 12 MAYO,EMANI (G); 20 WILLIAMSON,ALEXA (F); 25 DAVIS,MIA (F); 1 NIANG,LENA (G);

UConn: 13 WILLIAMS,CHRISTYN (G); 20 NELSON-ODODA,OLIVIA (F); 24 MAKURAT,ANNA (G); 3 WALKER,MEGAN (F); 5 DANGERFIELD,CRYSTAL (G);

Time	VISITORS: Temple	Score	Margin	HOME: UConn
09:34	GOOD! LAYUP by ALEXANDER, ASONAH [PNT]	73-48	H 25	
09:10		74-48	H 26	GOOD! FT by GRIFFIN, AUBREY
08:57	GOOD! JUMPER by DAVIS, MIA [PNT]	74-50	H 24	
07:36	GOOD! LAYUP by DAVIS, MIA	74-52	H 22	
06:56		77-52	H 25	GOOD! 3PTR by DANGERFIELD, CRYSTAL [FB]
06:29		80-52	H 28	GOOD! 3PTR by DANGERFIELD, CRYSTAL
05:37	GOOD! JUMPER by WALKER, RAYNIAH	80-54	H 26	
05:17		82-54	H 28	GOOD! LAYUP by WILLIAMS, CHRISTYN [PNT]
04:50		84-54	H 30	GOOD! LAYUP by DANGERFIELD, CRYSTAL [FB]
04:15		87-54	H 33	GOOD! 3PTR by DANGERFIELD, CRYSTAL [FB]
03:53	GOOD! FT by DAVIS, MIA	87-55	H 32	
02:49	GOOD! JUMPER by DAVIS, MIA	87-57	H 30	
02:28		88-57	H 31	GOOD! FT by WALKER, MEGAN
02:28		89-57	H 32	GOOD! FT by WALKER, MEGAN
02:16	GOOD! LAYUP by ALEXANDER, ASONAH [PNT]	89-59	H 30	
01:59		92-59	H 33	GOOD! 3PTR by WILLIAMS, CHRISTYN
01:30	GOOD! JUMPER by ALEXANDER, ASONAH	92-61	H 31	
01:15		94-61	H 33	GOOD! JUMPER by CAMARA, BATOULY [PNT]

Temple 61, UConn 94

Official Substitutions Log
Temple vs UConn
Period 1
March 07, 2020 at Mohegan Sun Arena - Uncasville, Conn.



VISITORS: Temple	Time	Score	HOME: UConn
0 JONES,ASHLEY			13 WILLIAMS,CHRISTYN
12 MAYO,EMANI			20 NELSON-ODODA,OLIVIA
20 WILLIAMSON,ALEXA			24 MAKURAT,ANNA
25 DAVIS,MIA			3 WALKER,MEGAN
1 NIANG,LENA			5 DANGERFIELD,CRYSTAL
SUB OUT: 20 WILLIAMSON,ALEXA	08:18	5-2	
SUB IN: 11 ATKINSON,SHANNEN	08:18		
SUB OUT: 12 MAYO,EMANI	06:44	9-2	
SUB IN: 5 MACKINS,MARISSA	06:44		
SUB OUT: 11 ATKINSON,SHANNEN	04:48	11-10	
SUB IN: 12 MAYO,EMANI	04:48		
	02:13	11-12	SUB OUT: NELSON-ODODA,OLIVIA
	02:13		SUB IN: GRIFFIN,AUBREY

Temple 13, UConn 15

Official Substitutions Log
Temple vs UConn
Period 2
March 07, 2020 at Mohegan Sun Arena - Uncasville, Conn.



VISITORS: Temple	Time	Score	HOME: UConn
0 JONES,ASHLEY			13 WILLIAMS,CHRISTYN
12 MAYO,EMANI			20 NELSON-ODODA,OLIVIA
20 WILLIAMSON,ALEXA			24 MAKURAT,ANNA
25 DAVIS,MIA			3 WALKER,MEGAN
1 NIANG,LENA			5 DANGERFIELD,CRYSTAL
SUB OUT: 1 NIANG,LENA	10:00	-	
SUB IN: 20 WILLIAMSON,ALEXA	10:00		
SUB OUT: 5 MACKINS,MARISSA	09:43	13-17	
SUB IN: 2 ALEXANDER,ASONAH	09:43		
SUB OUT: 25 DAVIS,MIA	08:31	18-20	
SUB IN: 1 NIANG,LENA	08:31		
SUB OUT: 20 WILLIAMSON,ALEXA	08:01	18-20	
SUB IN: 11 ATKINSON,SHANNEN	08:01		
SUB OUT: 11 ATKINSON,SHANNEN	07:20	18-24	
SUB IN: 25 DAVIS,MIA	07:20		
SUB OUT: 0 JONES,ASHLEY	05:34	20-27	
SUB IN: 20 WILLIAMSON,ALEXA	05:34		
SUB OUT: 12 MAYO,EMANI	05:34		
SUB IN: 5 MACKINS,MARISSA	05:34		
SUB OUT: 5 MACKINS,MARISSA	05:01	20-30	
SUB IN: 0 JONES,ASHLEY	05:01		
SUB OUT: 20 WILLIAMSON,ALEXA	04:01	22-33	
SUB IN: 11 ATKINSON,SHANNEN	04:01		
SUB OUT: 11 ATKINSON,SHANNEN	01:22	27-42	
SUB IN: 12 MAYO,EMANI	01:22		

Temple 28, UConn 47

Official Substitutions Log
Temple vs UConn
Period 3
March 07, 2020 at Mohegan Sun Arena - Uncasville, Conn.



VISITORS: Temple	Time	Score	HOME: UConn
0 JONES,ASHLEY			13 WILLIAMS,CHRISTYN
12 MAYO,EMANI			20 NELSON-ODODA,OLIVIA
20 WILLIAMSON,ALEXA			24 MAKURAT,ANNA
25 DAVIS,MIA			3 WALKER,MEGAN
1 NIANG,LENA			5 DANGERFIELD,CRYSTAL
	10:00	-	SUB OUT: GRIFFIN,AUBREY
	10:00		SUB IN: NELSON-ODODA,OLIVIA
SUB OUT: 2 ALEXANDER,ASONAH	10:00		
SUB IN: 20 WILLIAMSON,ALEXA	10:00		
SUB OUT: 1 NIANG,LENA	06:33	31-57	
SUB OUT: 12 MAYO,EMANI	06:33		
SUB OUT: 20 WILLIAMSON,ALEXA	06:33		
SUB IN: 2 ALEXANDER,ASONAH	06:33		
SUB IN: 5 MACKINS,MARISSA	06:33		
SUB IN: 11 ATKINSON,SHANNEN	06:33		
SUB OUT: 11 ATKINSON,SHANNEN	03:53	38-59	
SUB IN: 1 NIANG,LENA	03:53		
	03:53		SUB OUT: WILLIAMS,CHRISTYN
	03:53		SUB IN: GRIFFIN,AUBREY
	00:48	44-69	SUB OUT: DANGERFIELD,CRYSTAL
	00:48		SUB OUT: NELSON-ODODA,OLIVIA
	00:48		SUB IN: WILLIAMS,CHRISTYN
	00:48		SUB IN: IRWIN,KYLA
SUB OUT: 0 JONES,ASHLEY	00:48		
SUB OUT: 25 DAVIS,MIA	00:48		
SUB IN: 3 WALKER,RAYNIAH	00:48		
SUB IN: 20 WILLIAMSON,ALEXA	00:48		

Temple 46, UConn 73

Official Substitutions Log
Temple vs UConn
Period 4
March 07, 2020 at Mohegan Sun Arena - Uncasville, Conn.



VISITORS: Temple	Time	Score	HOME: UConn
0 JONES,ASHLEY			13 WILLIAMS,CHRISTYN
12 MAYO,EMANI			20 NELSON-ODODA,OLIVIA
20 WILLIAMSON,ALEXA			24 MAKURAT,ANNA
25 DAVIS,MIA			3 WALKER,MEGAN
1 NIANG,LENA			5 DANGERFIELD,CRYSTAL
	10:00	-	SUB OUT: WALKER,MEGAN
	10:00		SUB IN: DANGERFIELD,CRYSTAL
SUB OUT: 1 NIANG,LENA	10:00		
SUB OUT: 20 WILLIAMSON,ALEXA	10:00		
SUB IN: 0 JONES,ASHLEY	10:00		
SUB IN: 25 DAVIS,MIA	10:00		
	05:54	52-80	SUB OUT: MAKURAT,ANNA
	05:54		SUB OUT: IRWIN,KYLA
	05:54		SUB IN: BENT,MOLLY
	05:54		SUB IN: ADEBAYO,EVELYN
SUB OUT: 5 MACKINS,MARISSA	05:54		
SUB IN: 12 MAYO,EMANI	05:54		
	03:53	54-87	SUB OUT: GRIFFIN,AUBREY
	03:53		SUB IN: WALKER,MEGAN
SUB OUT: 2 ALEXANDER,ASONAH	03:53		
SUB IN: 1 NIANG,LENA	03:53		
	02:28	57-87	SUB OUT: DANGERFIELD,CRYSTAL
	02:28		SUB IN: MAKURAT,ANNA
SUB OUT: 0 JONES,ASHLEY	02:28		
SUB OUT: 25 DAVIS,MIA	02:28		
SUB IN: 10 MAYO,NICOLETTE	02:28		
SUB IN: 15 FORDE,CIARA	02:28		
	02:28		SUB OUT: WALKER,MEGAN
	02:28		SUB IN: CAMARA,BATOULY
SUB OUT: 12 MAYO,EMANI	02:28		
SUB IN: 2 ALEXANDER,ASONAH	02:28		
SUB OUT: 1 NIANG,LENA	02:28		
SUB IN: 20 WILLIAMSON,ALEXA	02:28		

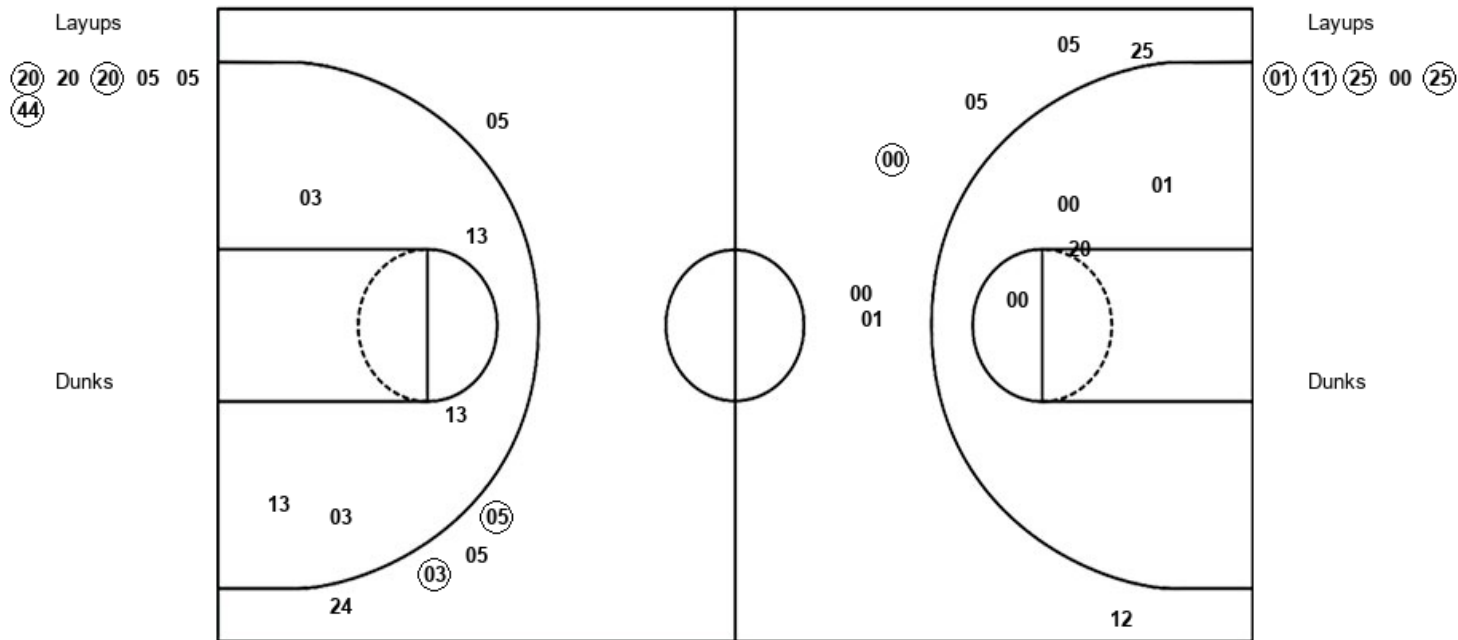
Temple 61, UConn 94

Official Shot Chart
Temple vs UConn
PERIOD 1 Shots
 March 07, 2020 at Mohegan Sun Arena - Uncasville, Conn.



UConn

Temple



UCN : Period 1	Made	Att	Pct
Layups	3	6	50.0
Dunks	0	0	0
2PT Field Goals	3	11	27.3
3PT Field Goals	2	5	40.0
Total Field Goals	5	16	31.3

TEM : Period 1	Made	Att	Pct
Layups	4	5	80.0
Dunks	0	0	0
2PT Field Goals	4	9	44.4
3PT Field Goals	1	7	14.3
Total Field Goals	5	16	31.3

Official Shot Chart
Temple vs UConn
PERIOD 2 Shots
 March 07, 2020 at Mohegan Sun Arena - Uncasville, Conn.



UConn

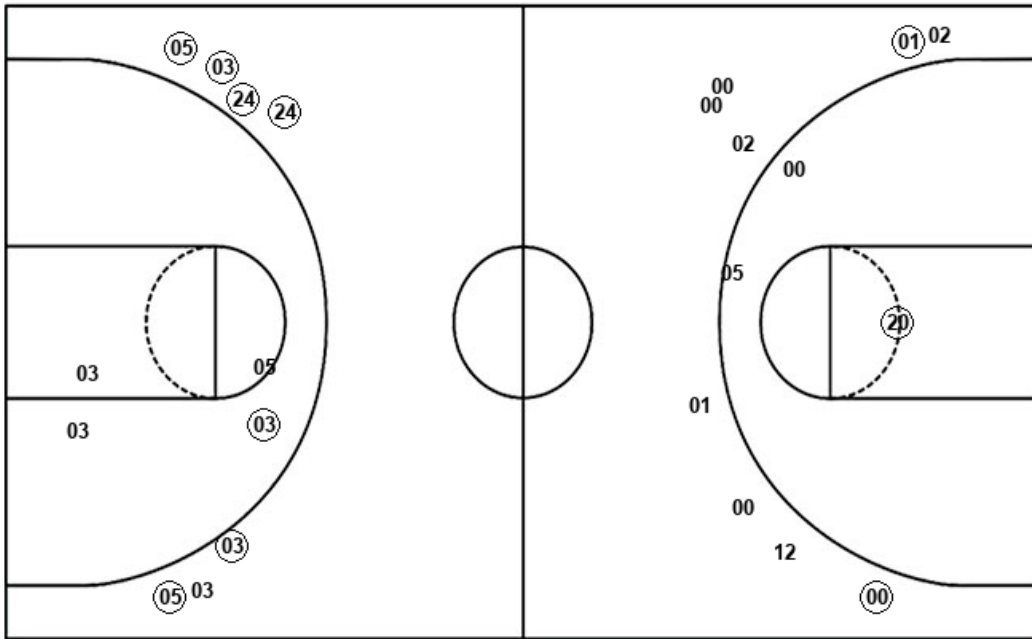
Temple

Layups
 24 44 (44) 44

Layups
 (25) 25 (25) 00 (00)

Dunks

Dunks



UCN : Period 2	Made	Att	Pct
Layups	1	4	25.0
Dunks	0	0	0
2PT Field Goals	2	8	25.0
3PT Field Goals	6	7	85.7
Total Field Goals	8	15	53.3

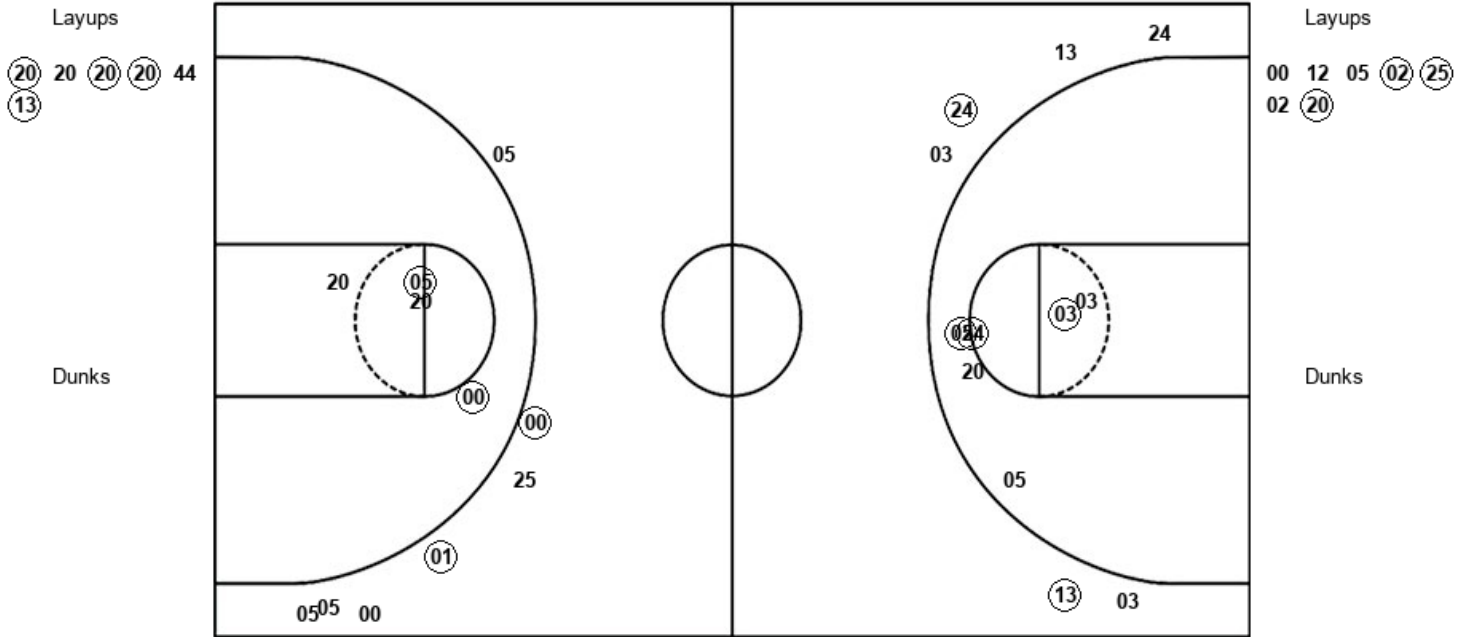
TEM : Period 2	Made	Att	Pct
Layups	3	5	60.0
Dunks	0	0	0
2PT Field Goals	4	8	50.0
3PT Field Goals	2	9	22.2
Total Field Goals	6	17	35.3

Official Shot Chart
Temple vs UConn
PERIOD 3 Shots
 March 07, 2020 at Mohegan Sun Arena - Uncasville, Conn.



UConn

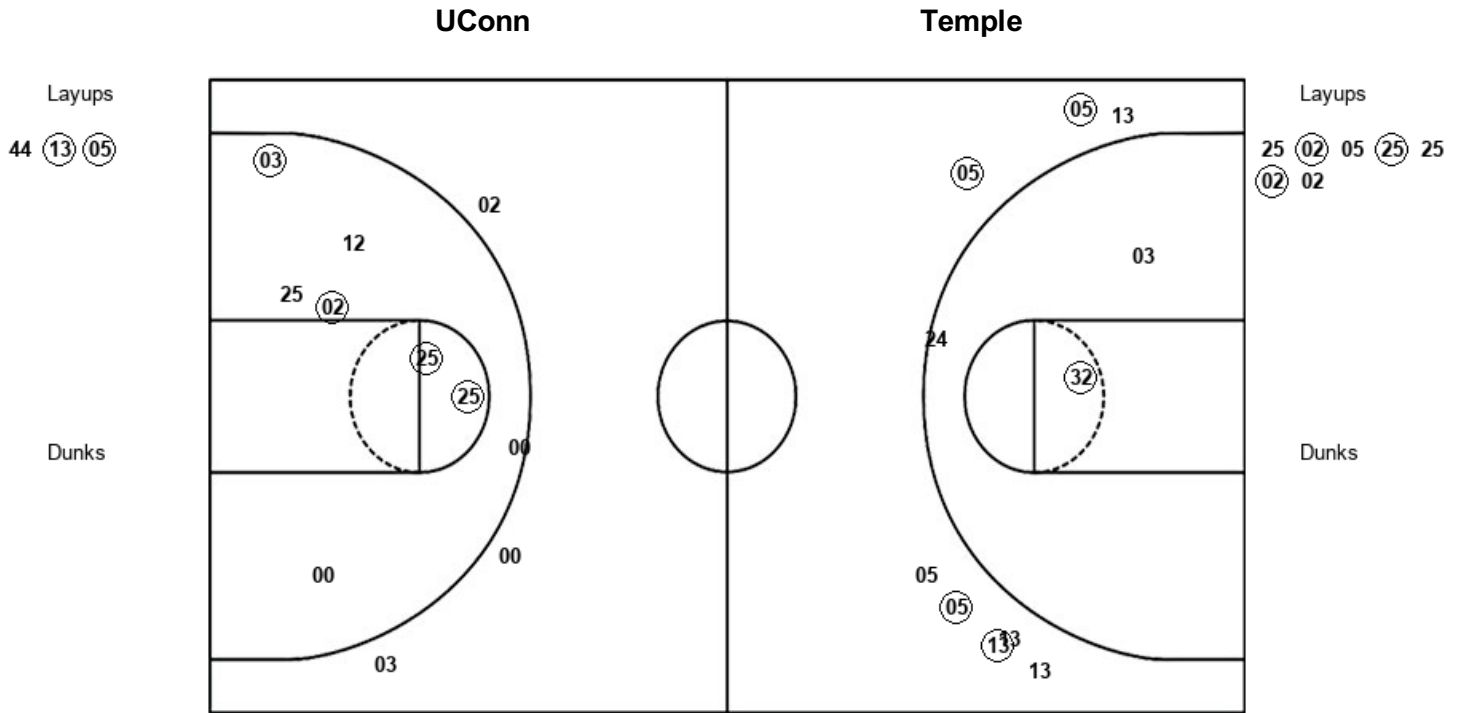
Temple



UCN : Period 3	Made	Att	Pct
Layups	4	6	66.7
Dunks	0	0	0
2PT Field Goals	7	12	58.3
3PT Field Goals	2	6	33.3
Total Field Goals	9	18	50.0

TEM : Period 3	Made	Att	Pct
Layups	3	7	42.9
Dunks	0	0	0
2PT Field Goals	5	11	45.5
3PT Field Goals	2	7	28.6
Total Field Goals	7	18	38.9

Official Shot Chart
Temple vs UConn
PERIOD 4 Shots
 March 07, 2020 at Mohegan Sun Arena - Uncasville, Conn.



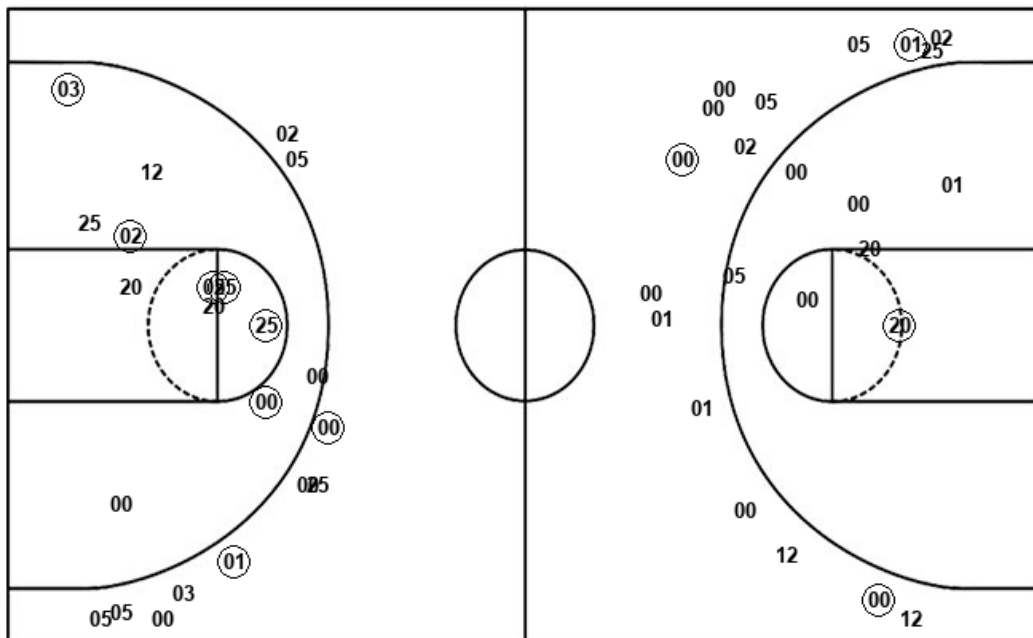
UCN : Period 4	Made	Att	Pct
Layups	2	3	66.7
Dunks	0	0	0
2PT Field Goals	3	6	50.0
3PT Field Goals	4	8	50.0
Total Field Goals	7	14	50.0

TEM : Period 4	Made	Att	Pct
Layups	3	7	42.9
Dunks	0	0	0
2PT Field Goals	7	14	50.0
3PT Field Goals	0	4	00.0
Total Field Goals	7	18	38.9

Official Shot Chart
Temple vs UConn
Temple Team Shots
March 07, 2020 at Mohegan Sun Arena - Uncasville, Conn.



Layups



Layups

01	11	25	00	25
25	25	25	00	00
00	12	05	02	25
02	20	25	02	05
25	25	02	02	

Dunks

Dunks

TEM : Period 1	Made	Att	Pct
Layups	4	5	80.0
Dunks	0	0	0
2PT Field Goals	4	9	44.4
3PT Field Goals	1	7	14.3
Total Field Goals	5	16	31.3

TEM : Period 2	Made	Att	Pct
Layups	3	5	60.0
Dunks	0	0	0
2PT Field Goals	4	8	50.0
3PT Field Goals	2	9	22.2
Total Field Goals	6	17	35.3

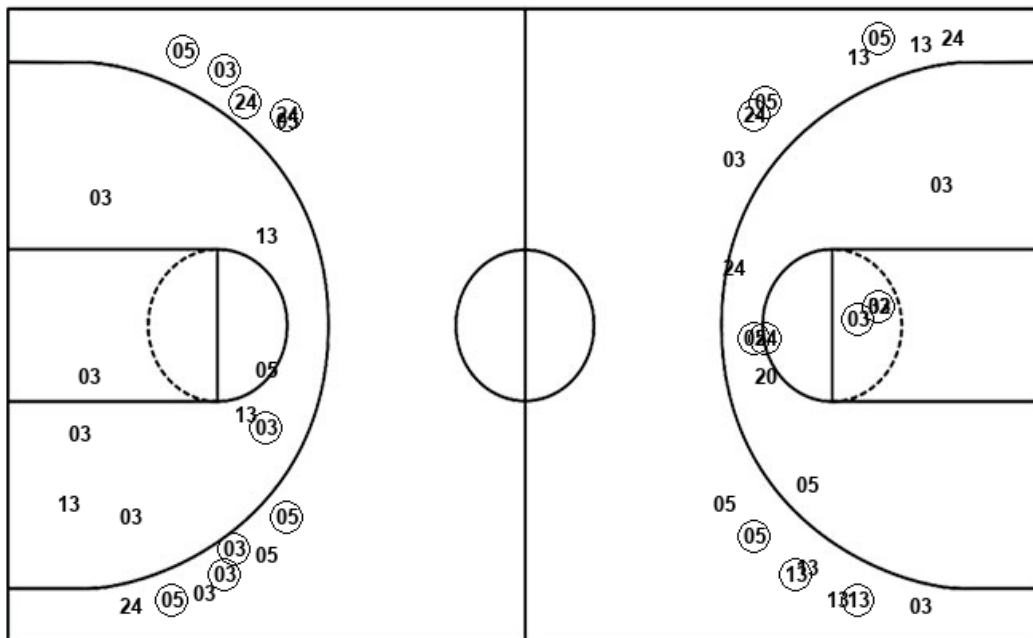
TEM : Period 3	Made	Att	Pct
Layups	3	7	42.9
Dunks	0	0	0
2PT Field Goals	5	11	45.5
3PT Field Goals	2	7	28.6
Total Field Goals	7	18	38.9

TEM : Period 4	Made	Att	Pct
Layups	3	7	42.9
Dunks	0	0	0
2PT Field Goals	7	14	50.0
3PT Field Goals	0	4	00.0
Total Field Goals	7	18	38.9

Official Shot Chart
Temple vs UConn
UConn Team Shots
 March 07, 2020 at Mohegan Sun Arena - Uncasville, Conn.



Layups



Dunks

Layups

(20)	20	(20)	05	05
(44)	24	44	(44)	44
(20)	20	(20)	(20)	44
(13)	44	(13)	(05)	

Dunks

UCN : Period 1	Made	Att	Pct
Layups	3	6	50.0
Dunks	0	0	0
2PT Field Goals	3	11	27.3
3PT Field Goals	2	5	40.0
Total Field Goals	5	16	31.3

UCN : Period 2	Made	Att	Pct
Layups	1	4	25.0
Dunks	0	0	0
2PT Field Goals	2	8	25.0
3PT Field Goals	6	7	85.7
Total Field Goals	8	15	53.3

UCN : Period 3	Made	Att	Pct
Layups	4	6	66.7
Dunks	0	0	0
2PT Field Goals	7	12	58.3
3PT Field Goals	2	6	33.3
Total Field Goals	9	18	50.0

UCN : Period 4	Made	Att	Pct
Layups	2	3	66.7
Dunks	0	0	0
2PT Field Goals	3	6	50.0
3PT Field Goals	4	8	50.0
Total Field Goals	7	14	50.0