

FINAL SCORE



Houston

64



Wichita St.

72

American Athletic Conference Championship - Game 3

March 06, 2020 • Mohegan Sun Arena - Uncasville, Conn.



FINAL STATISTICS

Official Box Score
Houston vs Wichita St.
Game Totals -- Final Statistics
March 06, 2020 at Mohegan Sun Arena - Uncasville, Conn.



Houston 64

No.	Player	S	Pts	FG	3FG	FT	OR	DR	TR	PF	A	TO	Blk	Stl	Min	+/-
01	PATTERSON, BRIA	F	2	1-8	0-2	0-0	1	2	3	3	2	2	0	5	26	1
03	BRANCH, DORIAN	F	0	0-6	0-5	0-0	0	2	2	1	4	1	1	0	28	-10
05	GLADNEY, DYMOND	G	21	7-19	7-15	0-0	3	3	6	2	3	1	0	0	40	-8
23	BLACKSHELL-FAIR, JULIA	G	17	6-10	0-0	5-5	3	3	6	2	7	2	0	1	37	-6
30	HILL, TATYANA	F	13	5-11	0-0	3-8	3	5	8	4	0	3	1	2	33	-6
22	PEACE, KEASJA	F	0	0-2	0-0	0-0	0	0	0	1	0	0	0	0	7	-6
24	JONES, MAYA	F	11	3-8	3-5	2-2	0	3	3	2	0	2	1	1	26	-7
44	LEWIS, JAZMAINE	F	0	0-1	0-0	0-0	0	1	1	1	0	0	0	0	3	2
TEAM								2	2	4	0	1				
TOTALS			64	22-65	10-27	10-15	12	21	33	16	16	12	3	9	199	

Shooting By Period

Period	FG	FG%	3FG	3FG%	FT	FT%
1st Qtr	2-15	13%	0-5	00%	3-4	75%
2nd Qtr	3-13	23%	3-8	38%	4-6	67%
3rd Qtr	8-16	50%	3-7	43%	1-3	33%
4th Qtr	9-21	43%	4-7	57%	2-2	100%
1st Half	5-28	18%	3-13	23%	7-10	70%
2nd Half	17-37	46%	7-14	50%	3-5	60%
Game	22-65	33.8%	10-27	37.0%	10-15	66.7%

Deadball Rebounds: 3,1
Last FG: 4th-00:24
Biggest Run: 11-0
Largest lead: By 3 at 1st-07:18
Technical Fouls: None.

Wichita St. 72

No.	Player	S	Pts	FG	3FG	FT	OR	DR	TR	PF	A	TO	Blk	Stl	Min	+/-
02	MCCULLY, MARIAH	G	12	5-15	1-4	1-1	0	2	2	3	2	2	0	0	24	9
12	BREMAUD, CARLA	G	11	4-5	3-4	0-0	0	5	5	0	0	1	1	1	30	2
13	PRINCE, RAVEN	F	6	2-4	0-0	2-2	1	4	5	2	0	5	0	0	26	3
23	BASTIN, SERAPHINE	G	8	1-5	0-0	6-6	2	2	4	3	4	2	0	0	23	-7
24	COLBERT, TRAJATA	F	11	4-11	0-0	3-4	4	7	11	3	0	0	1	0	27	-4
01	MCCARTY, DJ	G	9	4-6	1-2	0-0	0	4	4	1	4	6	0	1	22	14
05	REID, ASHLEY	G	2	1-1	0-0	0-0	0	2	2	0	5	1	0	0	13	6
21	BREWER, MAYA	G	7	2-5	1-2	2-2	0	1	1	0	0	0	0	1	16	12
42	HENDERSON, ASIA	F	6	3-6	0-0	0-0	2	3	5	2	0	0	5	1	18	5
TEAM								1	3	4	0	1				
TOTALS			72	26-58	6-12	14-15	10	33	43	14	15	18	7	4	199	

Shooting By Period

Period	FG	FG%	3FG	3FG%	FT	FT%
1st Qtr	9-14	64%	2-3	67%	2-2	100%
2nd Qtr	5-11	45%	3-5	60%	4-5	80%
3rd Qtr	6-19	32%	1-1	100%	1-1	100%
4th Qtr	6-14	43%	0-3	00%	7-7	100%
1st Half	14-25	56%	5-8	63%	6-7	86%
2nd Half	12-33	36%	1-4	25%	8-8	100%
Game	26-58	44.8%	6-12	50.0%	14-15	93.3%

Deadball Rebounds: 1,0
Last FG: 4th-00:44
Biggest Run: 13-0
Largest lead: By 22 at 2nd-01:36
Technical Fouls: None.

Game Notes:

Officials: Ron Ledington, Natasha Carry, Linda Miles

Start Time: 06:02 PM ET

End Time: 07:47 PM ET

Game Duration: 1:45

Neutral Court;

Score	1st	2nd	3rd	4th	TOT
HOU	7	13	20	24	64
WSU	22	17	14	19	72

HOU led for 3:09. WSU led for 36:26.
 Game was tied for 0:18.
 Times tied: 1 Lead Changes: 3

Points from	HOU	WSU
In the Paint	16	36
Off Turns	13	17
2nd Chance	9	9
Fast Break	8	18
Bench	11	24

Official Box Score
Houston vs Wichita St.
First Half Statistics Only
March 06, 2020 at Mohegan Sun Arena - Uncasville, Conn.



Houston 20

No.	Player	S	Pts	FG	3FG	FT	OR	DR	TR	PF	A	TO	Blk	Stl	Min	+/-
01	PATTERSON, BRIA	F	0	0-3	0-1	0-0	0	1	1	1	2	0	0	3	13	-6
03	BRANCH, DORIAN	F	0	0-3	0-2	0-0	0	2	2	1	1	1	1	0	16	-17
05	GLADNEY, DYMOND	G	6	2-11	2-9	0-0	0	1	1	0	1	0	0	0	20	-19
22	PEACE, KEASJA	F	0	0-2	0-0	0-0	0	0	0	1	0	0	0	0	7	-6
23	BLACKSHELL-FAIR, JULIA	G	8	2-3	0-0	4-4	3	0	3	0	0	2	0	0	17	-17
24	JONES, MAYA	F	3	1-3	1-1	0-0	0	1	1	1	0	2	0	0	11	-15
30	HILL, TATYANA	F	3	0-2	0-0	3-6	1	2	3	3	0	3	0	1	13	-17
44	LEWIS, JAZMAINE	F	0	0-1	0-0	0-0	0	1	1	1	0	0	0	0	3	2
	TEAM		0	0-0	0-0	0-0	1	1	2	0	0	1	0	0	0	
TOTALS			20	5-28	3-13	7-10	5	9	14	8	4	9	1	4	100	

Shooting By Period

Period	FG	FG%	3FG	3FG%	FT	FT%
1st Qtr	2-15	13%	0-5	00%	3-4	75%
2nd Qtr	3-13	23%	3-8	38%	4-6	67%
1st Half	5-28	18%	3-13	23%	7-10	70%
Game	22-65	33.8%	10-27	37.0%	10-15	66.7%

Deadball Rebounds: 3,1
 Last FG Half: HOU 2nd-01:24

Wichita St. 39

No.	Player	S	Pts	FG	3FG	FT	OR	DR	TR	PF	A	TO	Blk	Stl	Min	+/-
01	MCCARTY, DJ	G	7	3-3	1-1	0-0	0	3	3	1	3	4	0	1	14	17
02	MCCULLY, MARIAH	G	3	1-4	1-2	0-0	0	1	1	2	1	1	0	0	9	11
05	REID, ASHLEY	G	2	1-1	0-0	0-0	0	2	2	0	4	1	0	0	8	8
12	BREMAUD, CARLA	G	6	2-3	2-3	0-0	0	3	3	0	0	0	1	1	16	10
13	PRINCE, RAVEN	F	6	2-3	0-0	2-2	1	3	4	1	0	3	0	0	12	11
21	BREWER, MAYA	G	7	2-4	1-2	2-2	0	1	1	0	0	0	0	1	13	17
23	BASTIN, SERAPHINE	G	0	0-1	0-0	0-0	0	1	1	2	2	1	0	0	9	2
24	COLBERT, TRAJATA	F	4	1-4	0-0	2-3	0	3	3	1	0	0	0	0	13	10
42	HENDERSON, ASIA	F	4	2-2	0-0	0-0	1	1	2	1	0	0	3	0	7	9
	TEAM		0	0-0	0-0	0-0	1	1	2	0	0	0	0	0	0	
TOTALS			39	14-25	5-8	6-7	3	19	22	8	10	10	4	3	100	

Shooting By Period

Period	FG	FG%	3FG	3FG%	FT	FT%
1st Qtr	9-14	64%	2-3	67%	2-2	100%
2nd Qtr	5-11	45%	3-5	60%	4-5	80%
1st Half	14-25	56%	5-8	63%	6-7	86%
Game	26-58	44.8%	6-12	50.0%	14-15	93.3%

Deadball Rebounds: 1,0
 Last FG Half: WSU 2nd-01:36

Game Notes:

Officials: Ron Ledington, Natasha Carry, Linda Miles

Start Time: 06:02 PM ET

End Time: 07:47 PM ET

Game Duration: 1:45

Neutral Court;

Score	1st	2nd	3rd	4th	TOT
HOU	7	13	20	24	64
WSU	22	17	14	19	72

Points from (This Period)	HOU	WSU
In the Paint	0	18
Off Turns	0	11
2nd Chance	5	4
Fast Break	0	8
Bench	3	20

Official Box Score
Houston vs Wichita St.
First Quarter Statistics Only
March 06, 2020 at Mohegan Sun Arena - Uncasville, Conn.



Houston 7

No.	Player	S	Pts	FG	3FG	FT	OR	DR	TR	PF	A	TO	Blk	Stl	Min	+/-
01	PATTERSON, BRIA	F	0	0-2	0-0	0-0	0	0	0	1	0	0	0	2	6	-2
03	BRANCH, DORIAN	F	0	0-2	0-1	0-0	0	1	1	0	0	1	0	0	10	-15
05	GLADNEY, DYMOND	G	0	0-6	0-4	0-0	0	0	0	0	1	0	0	0	10	-15
23	BLACKSHELL-FAIR, JULIA	G	4	2-2	0-0	0-0	2	0	2	0	0	1	0	0	10	-15
30	HILL, TATYANA	F	3	0-2	0-0	3-4	1	1	2	1	0	1	0	1	10	-15
22	PEACE, KEASJA	F	0	0-0	0-0	0-0	0	0	0	0	0	0	0	0	0	0
24	JONES, MAYA	F	0	0-1	0-0	0-0	0	0	0	0	0	2	0	0	4	-13
44	LEWIS, JAZMAINE	F	0	0-0	0-0	0-0	0	0	0	0	0	0	0	0	0	0
TEAM							0	1	1	0						
TOTALS			7	2-15	0-5	3-4	3	3	6	2	1	5	0	3	50	

Shooting By Period

Period	FG	FG%	3FG	3FG%	FT	FT%
1st Qtr	2-15	13%	0-5	00%	3-4	75%
2nd Qtr	3-13	23%	3-8	38%	4-6	67%
1st Half	2-15	13%	0-5	00%	3-4	75%
1st Half	5-28	18%	3-13	23%	7-10	70%
Game	22-65	33.8%	10-27	37.0%	10-15	66.7%

Deadball Rebounds: 3,1

Wichita St. 22

No.	Player	S	Pts	FG	3FG	FT	OR	DR	TR	PF	A	TO	Blk	Stl	Min	+/-
02	MCCULLY, MARIAH	G	3	1-3	1-1	0-0	0	1	1	1	1	1	0	0	8	11
12	BREMAUD, CARLA	G	0	0-0	0-0	0-0	0	1	1	0	0	0	0	1	7	6
13	PRINCE, RAVEN	F	6	2-3	0-0	2-2	1	3	4	0	0	1	0	0	8	11
23	BASTIN, SERAPHINE	G	0	0-0	0-0	0-0	0	1	1	1	2	1	0	0	7	4
24	COLBERT, TRAJATA	F	0	0-1	0-0	0-0	0	1	1	1	0	0	0	0	5	2
01	MCCARTY, DJ	G	2	1-1	0-0	0-0	0	1	1	0	2	1	0	1	4	13
05	REID, ASHLEY	G	2	1-1	0-0	0-0	0	1	1	0	0	1	0	0	2	4
21	BREWER, MAYA	G	5	2-3	1-2	0-0	0	0	0	0	0	0	0	1	5	11
42	HENDERSON, ASIA	F	4	2-2	0-0	0-0	1	0	1	0	0	0	3	0	5	13
TEAM							0	1	1	0						
TOTALS			22	9-14	2-3	2-2	2	10	12	3	5	5	3	3	50	

Shooting By Period

Period	FG	FG%	3FG	3FG%	FT	FT%
1st Qtr	9-14	64%	2-3	67%	2-2	100%
2nd Qtr	5-11	45%	3-5	60%	4-5	80%
1st Half	9-14	64%	2-3	67%	2-2	100%
1st Half	14-25	56%	5-8	63%	6-7	86%
Game	26-58	44.8%	6-12	50.0%	14-15	93.3%

Deadball Rebounds: 1,0

Game Notes:

Officials: Ron Ledington, Natasha Carry, Linda Miles

Start Time: 06:02 PM ET

End Time: 07:47 PM ET

Game Duration: 1:45

Neutral Court;

Score	1st	2nd	3rd	4th	TOT
HOU	7	13	20	24	64
WSU	22	17	14	19	72

Points from (This Period)	HOU	WSU
In the Paint	0	14
Off Turns	0	8
2nd Chance	3	2
Fast Break	0	6
Bench	0	13

Official Play-By-Play
Houston vs Wichita St.
First Quarter
March 06, 2020 at Mohegan Sun Arena - Uncasville, Conn.



Period 1

Starters:

Houston: 1 PATTERSON, BRIA (F); 3 BRANCH, DORIAN (F); 5 GLADNEY, DYMOND (G); 23 BLACKSHELL-FAIR, JULIA (G); 30 HILL, TATYANA (F);
Wichita St.: 2 MCCULLY, MARIAH (G); 12 BREMAUD, CARLA (G); 13 PRINCE, RAVEN (F); 23 BASTIN, SERAPHINE (G); 24 COLBERT, TRAJATA (F);

Time	VISITORS: Houston	Score	Margin	HOME: Wichita St.
09:44	MISSED LAYUP by HILL, TATYANA			
09:43	REBOUND (OFF) by HILL, TATYANA			
09:42				FOUL (PERSONAL) by MCCULLY, MARIAH
09:42	MISSED FT by HILL, TATYANA			
09:42	REBOUND (OFF) by TEAM			
09:42	GOOD! FT by HILL, TATYANA	0-1	V 1	
09:36				TURNOVER (BADPASS) by MCCULLY, MARIAH
09:36	STEAL by PATTERSON, BRIA			
09:30	MISSED LAYUP by HILL, TATYANA			
09:28				REBOUND (DEF) by PRINCE, RAVEN
09:06		2-1	H 1	GOOD! LAYUP by PRINCE, RAVEN
08:38	MISSED 3PTR by GLADNEY, DYMOND			
08:35				REBOUND (DEF) by MCCULLY, MARIAH
08:30				MISSED LAYUP by MCCULLY, MARIAH
08:30	REBOUND (DEF) by TEAM			
08:13				FOUL (PERSONAL) by COLBERT, TRAJATA
08:13	GOOD! FT by HILL, TATYANA	2-2	T	
08:13	GOOD! FT by HILL, TATYANA	2-3	V 1	
08:03				TURNOVER (BADPASS) by PRINCE, RAVEN
08:03	STEAL by PATTERSON, BRIA			
07:58	MISSED 3PTR by GLADNEY, DYMOND			
07:54				REBOUND (DEF) by BREMAUD, CARLA
07:36				MISSED JUMPER by COLBERT, TRAJATA
07:32	REBOUND (DEF) by BRANCH, DORIAN			
07:22	MISSED JUMPER by PATTERSON, BRIA			
07:20	REBOUND (OFF) by BLACKSHELL-FAIR, JULIA			
07:18	GOOD! JUMPER by BLACKSHELL-FAIR, JULIA	2-5	V 3	
07:00				TURNOVER (OFFENSIVE) by BASTIN, SERAPHINE
07:00				FOUL (OFF) by BASTIN, SERAPHINE
06:35	MISSED JUMPER by GLADNEY, DYMOND			
06:33				REBOUND (DEF) by COLBERT, TRAJATA
06:25		4-5	V 1	GOOD! LAYUP by PRINCE, RAVEN [FB]
06:25				ASSIST by BASTIN, SERAPHINE
06:02	MISSED JUMPER by PATTERSON, BRIA			
06:01				REBOUND (DEF) by TEAM
05:40		7-5	H 2	GOOD! 3PTR by MCCULLY, MARIAH
05:18	TURNOVER (BADPASS) by HILL, TATYANA			
05:18				STEAL by BREMAUD, CARLA
05:10	FOUL (PERSONAL) by PATTERSON, BRIA			
05:10				SUB OUT: BREMAUD, CARLA
05:10				SUB OUT: COLBERT, TRAJATA
05:10				SUB IN: BREWER, MAYA
05:10				SUB IN: HENDERSON, ASIA
05:00		9-5	H 4	GOOD! LAYUP by BREWER, MAYA [PNT]
05:00				ASSIST by BASTIN, SERAPHINE
04:49	MISSED 3PTR by BRANCH, DORIAN			
04:44				REBOUND (DEF) by PRINCE, RAVEN
04:29				MISSED LAYUP by MCCULLY, MARIAH
04:26				REBOUND (OFF) by PRINCE, RAVEN
04:25				MISSED JUMPER by PRINCE, RAVEN
04:22	REBOUND (DEF) by HILL, TATYANA			
04:12	GOOD! JUMPER by BLACKSHELL-FAIR, JULIA	9-7	H 2	
04:12	ASSIST by GLADNEY, DYMOND			
03:52	FOUL (PERSONAL) by HILL, TATYANA			
03:52				SUB OUT: BASTIN, SERAPHINE
03:52				SUB IN: MCCARTY, DJ
03:52	SUB OUT: PATTERSON, BRIA			
03:52	SUB IN: JONES, MAYA			
03:52		10-7	H 3	GOOD! FT by PRINCE, RAVEN
03:52		11-7	H 4	GOOD! FT by PRINCE, RAVEN
03:25	MISSED JUMPER by GLADNEY, DYMOND			
03:25				BLOCK by HENDERSON, ASIA
03:20				REBOUND (DEF) by PRINCE, RAVEN
03:09		14-7	H 7	GOOD! 3PTR by BREWER, MAYA
02:48	TURNOVER (TRAVEL) by BRANCH, DORIAN			
02:26		16-7	H 9	GOOD! LAYUP by HENDERSON, ASIA [PNT]
02:26				ASSIST by MCCARTY, DJ
02:10	MISSED 3PTR by GLADNEY, DYMOND			
02:07	REBOUND (OFF) by BLACKSHELL-FAIR, JULIA			

Time	VISITORS: Houston	Score	Margin	HOME: Wichita St.
02:05	TURNOVER (BADPASS) by BLACKSHELL-FAIR, JULIA			STEAL by MCCARTY, DJ
02:00		18-7	H 11	GOOD! LAYUP by MCCARTY, DJ [FB/PNT]
02:00				ASSIST by MCCULLY, MARIAH
01:58	TIMEOUT 30SEC			SUB OUT: MCCULLY, MARIAH
01:58				SUB OUT: PRINCE, RAVEN
01:58				SUB IN: REID, ASHLEY
01:58				SUB IN: BREMAUD, CARLA
01:44	TURNOVER (BADPASS) by JONES, MAYA			STEAL by BREWER, MAYA
01:26				TURNOVER (LOSTBALL) by MCCARTY, DJ
01:26	STEAL by HILL, TATYANA			
01:23	TURNOVER (TRAVEL) by JONES, MAYA			MISSED 3PTR by BREWER, MAYA
01:06				REBOUND (OFF) by HENDERSON, ASIA
01:04				GOOD! LAYUP by HENDERSON, ASIA [PNT]
01:03		20-7	H 13	
00:42	MISSED JUMPER by JONES, MAYA			BLOCK by HENDERSON, ASIA
00:42				REBOUND (DEF) by REID, ASHLEY
00:38				TURNOVER (TRAVEL) by REID, ASHLEY
00:37				SUB OUT: BREWER, MAYA
00:37				SUB IN: BASTIN, SERAPHINE
00:19	MISSED JUMPER by BRANCH, DORIAN			BLOCK by HENDERSON, ASIA
00:19				REBOUND (DEF) by MCCARTY, DJ
00:15				GOOD! JUMPER by REID, ASHLEY [FB/PNT]
00:12		22-7	H 15	ASSIST by MCCARTY, DJ
00:12				
00:03	MISSED 3PTR by GLADNEY, DYMOND			
00:00				REBOUND (DEF) by BASTIN, SERAPHINE

Houston 7, Wichita St. 22

Points from (This Period)	HOU	WSU
In the Paint	0	14
Off Turns	0	8
2nd Chance	3	2
Fast Break	0	6
Bench	0	13

Official Box Score
Houston vs Wichita St.
Second Quarter Statistics Only
March 06, 2020 at Mohegan Sun Arena - Uncasville, Conn.



Houston 13

No.	Player	S	Pts	FG	3FG	FT	OR	DR	TR	PF	A	TO	Blk	Stl	Min	+/-
01	PATTERSON, BRIA	F	0	0-1	0-1	0-0	0	1	1	0	2	0	0	1	7	-4
03	BRANCH, DORIAN	F	0	0-1	0-1	0-0	0	1	1	1	1	0	1	0	6	-2
05	GLADNEY, DYMOND	G	6	2-5	2-5	0-0	0	1	1	0	0	0	0	0	10	-4
23	BLACKSHELL-FAIR, JULIA	G	4	0-1	0-0	4-4	1	0	1	0	0	1	0	0	7	-2
30	HILL, TATYANA	F	0	0-0	0-0	0-2	0	1	1	2	0	2	0	0	3	-2
22	PEACE, KEASJA	F	0	0-2	0-0	0-0	0	0	0	1	0	0	0	0	7	-6
24	JONES, MAYA	F	3	1-2	1-1	0-0	0	1	1	1	0	0	0	0	7	-2
44	LEWIS, JAZMAINE	F	0	0-1	0-0	0-0	0	1	1	1	0	0	0	0	3	2
	TEAM						1	0	1	0		1				
TOTALS			13	3-13	3-8	4-6	2	6	8	6	3	4	1	1	50	

Shooting By Period

Period	FG	FG%	3FG	3FG%	FT	FT%
3rd Qtr	8-16	50%	3-7	43%	1-3	33%
4th Qtr	9-21	43%	4-7	57%	2-2	100%
2nd Half	3-13	23%	3-8	38%	4-6	67%
2nd Half	17-37	46%	7-14	50%	3-5	60%
Game	22-65	33.8%	10-27	37.0%	10-15	66.7%

Deadball Rebounds: 3,1

Wichita St. 17

No.	Player	S	Pts	FG	3FG	FT	OR	DR	TR	PF	A	TO	Blk	Stl	Min	+/-
02	MCCULLY, MARIAH	G	0	0-1	0-1	0-0	0	0	0	1	0	0	0	0	1	0
12	BREMAUD, CARLA	G	6	2-3	2-3	0-0	0	2	2	0	0	0	1	0	9	4
13	PRINCE, RAVEN	F	0	0-0	0-0	0-0	0	0	0	1	0	2	0	0	4	0
23	BASTIN, SERAPHINE	G	0	0-1	0-0	0-0	0	0	0	1	0	0	0	0	2	-2
24	COLBERT, TRAJATA	F	4	1-3	0-0	2-3	0	2	2	0	0	0	0	0	8	8
01	MCCARTY, DJ	G	5	2-2	1-1	0-0	0	2	2	1	1	3	0	0	10	4
05	REID, ASHLEY	G	0	0-0	0-0	0-0	0	1	1	0	4	0	0	0	6	4
21	BREWER, MAYA	G	2	0-1	0-0	2-2	0	1	1	0	0	0	0	0	8	6
42	HENDERSON, ASIA	F	0	0-0	0-0	0-0	0	1	1	1	0	0	0	0	2	-4
	TEAM						1	0	1	0		0				
TOTALS			17	5-11	3-5	4-5	1	9	10	5	5	5	1	0	50	

Shooting By Period

Period	FG	FG%	3FG	3FG%	FT	FT%
3rd Qtr	6-19	32%	1-1	100%	1-1	100%
4th Qtr	6-14	43%	0-3	00%	7-7	100%
2nd Half	5-11	45%	3-5	60%	4-5	80%
2nd Half	12-33	36%	1-4	25%	8-8	100%
Game	26-58	44.8%	6-12	50.0%	14-15	93.3%

Deadball Rebounds: 1,0

Game Notes:

Officials: Ron Ledington, Natasha Carry, Linda Miles

Start Time: 06:02 PM ET

End Time: 07:47 PM ET

Game Duration: 1:45

Neutral Court;

Score	1st	2nd	3rd	4th	TOT
HOU	7	13	20	24	64
WSU	22	17	14	19	72

Points from (This Period)	HOU	WSU
In the Paint	0	4
Off Turns	0	3
2nd Chance	2	2
Fast Break	0	2
Bench	3	7

Official Play-By-Play
Houston vs Wichita St.
Second Quarter
March 06, 2020 at Mohegan Sun Arena - Uncasville, Conn.



Period 2

Starters:

Houston: 1 PATTERSON, BRIA (F); 3 BRANCH, DORIAN (F); 5 GLADNEY, DYMOND (G); 23 BLACKSHELL-FAIR, JULIA (G); 30 HILL, TATYANA (F);
Wichita St.: 2 MCCULLY, MARIAH (G); 12 BREMAUD, CARLA (G); 13 PRINCE, RAVEN (F); 23 BASTIN, SERAPHINE (G); 24 COLBERT, TRAJATA (F);

Time	VISITORS: Houston	Score	Margin	HOME: Wichita St.
10:00	SUB OUT: BRANCH, DORIAN			
10:00	SUB OUT: HILL, TATYANA			
10:00	SUB IN: PATTERSON, BRIA			
10:00	SUB IN: LEWIS, JAZMAINE			
09:54	MISSED 3PTR by GLADNEY, DYMOND			
09:50	REBOUND (OFF) by BLACKSHELL-FAIR, JULIA			
09:49				FOUL (PERSONAL) by HENDERSON, ASIA
09:49	GOOD! FT by BLACKSHELL-FAIR, JULIA	22-8	H 14	
09:49	GOOD! FT by BLACKSHELL-FAIR, JULIA	22-9	H 13	
09:28				MISSED 3PTR by BREMAUD, CARLA
09:25	REBOUND (DEF) by PATTERSON, BRIA			
09:15	MISSED JUMPER by BLACKSHELL-FAIR, JULIA			
09:11				REBOUND (DEF) by HENDERSON, ASIA
08:57				MISSED LAYUP by BASTIN, SERAPHINE
08:55	REBOUND (DEF) by LEWIS, JAZMAINE			
08:47	TURNOVER (BADPASS) by BLACKSHELL-FAIR, JULIA			
08:47				SUB IN: MCCULLY, MARIAH
08:47				SUB OUT: BREMAUD, CARLA
08:31				MISSED 3PTR by MCCULLY, MARIAH
08:27	REBOUND (DEF) by GLADNEY, DYMOND			
08:15				FOUL (PERSONAL) by BASTIN, SERAPHINE
08:15				SUB OUT: BASTIN, SERAPHINE
08:15				SUB IN: BREWER, MAYA
08:05				FOUL (PERSONAL) by MCCULLY, MARIAH
08:05				SUB OUT: MCCULLY, MARIAH
08:05				SUB IN: BREMAUD, CARLA
08:05	GOOD! FT by BLACKSHELL-FAIR, JULIA	22-10	H 12	
08:05	GOOD! FT by BLACKSHELL-FAIR, JULIA	22-11	H 11	
07:42				TURNOVER (TRAVEL) by MCCARTY, DJ
07:42				SUB OUT: HENDERSON, ASIA
07:42				SUB IN: COLBERT, TRAJATA
07:28	MISSED 3PTR by PATTERSON, BRIA			
07:23				REBOUND (DEF) by REID, ASHLEY
07:18		24-11	H 13	GOOD! LAYUP by MCCARTY, DJ [FB]
07:18				ASSIST by REID, ASHLEY
07:02	MISSED LAYUP by LEWIS, JAZMAINE			
07:02				BLOCK by BREMAUD, CARLA
06:59				REBOUND (DEF) by MCCARTY, DJ
06:48	FOUL (PERSONAL) by LEWIS, JAZMAINE			
06:48	SUB OUT: LEWIS, JAZMAINE			
06:48	SUB IN: PEACE, KEASJA			
06:48		25-11	H 14	GOOD! FT by BREWER, MAYA
06:48		26-11	H 15	GOOD! FT by BREWER, MAYA
06:31	GOOD! 3PTR by GLADNEY, DYMOND	26-14	H 12	
06:31	ASSIST by PATTERSON, BRIA			
06:02		29-14	H 15	GOOD! 3PTR by MCCARTY, DJ
06:02				ASSIST by REID, ASHLEY
05:45	MISSED 3PTR by GLADNEY, DYMOND			
05:42				REBOUND (DEF) by BREWER, MAYA
05:36	FOUL (PERSONAL) by JONES, MAYA			
05:36		30-14	H 16	GOOD! FT by COLBERT, TRAJATA
05:36		31-14	H 17	GOOD! FT by COLBERT, TRAJATA
05:36	SUB OUT: BLACKSHELL-FAIR, JULIA			
05:36	SUB IN: BRANCH, DORIAN			
05:13	MISSED LAYUP by JONES, MAYA			
05:10				REBOUND (DEF) by BREMAUD, CARLA
05:00				
05:00	SUB OUT: JONES, MAYA			
05:00	SUB IN: HILL, TATYANA			
04:50				MISSED LAYUP by COLBERT, TRAJATA
04:48				REBOUND (OFF) by TEAM
04:48	FOUL (PERSONAL) by BRANCH, DORIAN			
04:45		33-14	H 19	GOOD! LAYUP by COLBERT, TRAJATA [PNT]
04:45				ASSIST by REID, ASHLEY
04:45	FOUL (PERSONAL) by PEACE, KEASJA			
04:45				MISSED FT by COLBERT, TRAJATA
04:44	REBOUND (DEF) by HILL, TATYANA			
04:23	GOOD! 3PTR by GLADNEY, DYMOND	33-17	H 16	
04:23	ASSIST by PATTERSON, BRIA			
04:06		36-17	H 19	GOOD! 3PTR by BREMAUD, CARLA

Time	VISITORS: Houston	Score	Margin	HOME: Wichita St.
04:06				ASSIST by REID, ASHLEY
03:52	MISSED JUMPER by PEACE, KEASJA			
03:49				REBOUND (DEF) by MCCARTY, DJ
03:48				TURNOVER (LOSTBALL) by MCCARTY, DJ
03:48	STEAL by PATTERSON, BRIA			
03:46	FOUL (OFF) by HILL, TATYANA			
03:46	TURNOVER (OFFENSIVE) by HILL, TATYANA			
03:46				SUB OUT: REID, ASHLEY
03:46				SUB IN: PRINCE, RAVEN
03:28				TURNOVER (3SEC) by PRINCE, RAVEN
02:56	TURNOVER (SHOTCLOCK) by TEAM			
02:31				FOUL (OFF) by PRINCE, RAVEN
02:31				TURNOVER (OFFENSIVE) by PRINCE, RAVEN
02:31	SUB OUT: PATTERSON, BRIA			
02:31	SUB IN: BLACKSHELL-FAIR, JULIA			
02:17	MISSED 3PTR by BRANCH, DORIAN			
02:16	REBOUND (OFF) by TEAM			
02:16				FOUL (PERSONAL) by MCCARTY, DJ
02:16	MISSED FT by HILL, TATYANA			
02:16	REBOUND (OFF) by TEAM			
02:16	MISSED FT by HILL, TATYANA			
02:15				REBOUND (DEF) by BREMAUD, CARLA
01:58				TURNOVER (LOSTBALL) by MCCARTY, DJ
01:50	FOUL (OFF) by HILL, TATYANA			
01:50	TURNOVER (OFFENSIVE) by HILL, TATYANA			
01:50	SUB OUT: HILL, TATYANA			
01:50	SUB IN: JONES, MAYA			
01:36		39-17	H 22	GOOD! 3PTR by BREMAUD, CARLA
01:36				ASSIST by MCCARTY, DJ
01:24	GOOD! 3PTR by JONES, MAYA	39-20	H 19	
01:24	ASSIST by BRANCH, DORIAN			
01:05				MISSED LAYUP by BREWER, MAYA
01:05	BLOCK by BRANCH, DORIAN			
00:59	REBOUND (DEF) by BRANCH, DORIAN			
00:57	MISSED 3PTR by GLADNEY, DYMOND			
00:53				REBOUND (DEF) by COLBERT, TRAJATA
00:27				MISSED JUMPER by COLBERT, TRAJATA
00:24	REBOUND (DEF) by JONES, MAYA			
00:04	MISSED JUMPER by PEACE, KEASJA			
00:02				REBOUND (DEF) by COLBERT, TRAJATA

Houston 20, Wichita St. 39

Points from (This Period)	HOU	WSU
In the Paint	0	4
Off Turns	0	3
2nd Chance	2	2
Fast Break	0	2
Bench	3	7

Official Box Score
Houston vs Wichita St.
Second Half Statistics Only
March 06, 2020 at Mohegan Sun Arena - Uncasville, Conn.



Houston 44

No.	Player	S	Pts	FG	3FG	FT	OR	DR	TR	PF	A	TO	Blk	Stl	Min	+/-
01	PATTERSON, BRIA	F	2	1-5	0-1	0-0	1	1	2	2	0	2	0	2	13	7
03	BRANCH, DORIAN	F	0	0-3	0-3	0-0	0	0	0	0	3	0	0	0	12	7
05	GLADNEY, DYMOND	G	15	5-8	5-6	0-0	3	2	5	2	2	1	0	0	20	11
22	PEACE, KEASJA	F	0	0-0	0-0	0-0	0	0	0	0	0	0	0	0	0	0
23	BLACKSHELL-FAIR, JULIA	G	9	4-7	0-0	1-1	0	3	3	2	7	0	0	1	20	11
24	JONES, MAYA	F	8	2-5	2-4	2-2	0	2	2	1	0	0	1	1	15	8
30	HILL, TATYANA	F	10	5-9	0-0	0-2	2	3	5	1	0	0	1	1	20	11
44	LEWIS, JAZMAINE	F	0	0-0	0-0	0-0	0	0	0	0	0	0	0	0	0	0
	TEAM		0	0-0	0-0	0-0	1	1	2	0	0	0	0	0	0	0
TOTALS			44	17-37	7-14	3-5	7	12	19	8	12	3	2	5	99	

Shooting By Period

Period	FG	FG%	3FG	3FG%	FT	FT%
3rd Qtr	8-16	50%	3-7	43%	1-3	33%
4th Qtr	9-21	43%	4-7	57%	2-2	100%
2nd Half	17-37	46%	7-14	50%	3-5	60%
Game	22-65	33.8%	10-27	37.0%	10-15	66.7%

Deadball Rebounds: 3,1
Last FG Half: HOU 4th-00:24

Wichita St. 33

No.	Player	S	Pts	FG	3FG	FT	OR	DR	TR	PF	A	TO	Blk	Stl	Min	+/-
01	MCCARTY, DJ	G	2	1-3	0-1	0-0	0	1	1	0	1	2	0	0	8	-3
02	MCCULLY, MARIAH	G	9	4-11	0-2	1-1	0	1	1	1	1	1	0	0	16	-2
05	REID, ASHLEY	G	0	0-0	0-0	0-0	0	0	0	0	1	0	0	0	5	-2
12	BREMAUD, CARLA	G	5	2-2	1-1	0-0	0	2	2	0	0	1	0	0	13	-8
13	PRINCE, RAVEN	F	0	0-1	0-0	0-0	0	1	1	1	0	2	0	0	15	-8
21	BREWER, MAYA	G	0	0-1	0-0	0-0	0	0	0	0	0	0	0	0	3	-5
23	BASTIN, SERAPHINE	G	8	1-4	0-0	6-6	2	1	3	1	2	1	0	0	15	-9
24	COLBERT, TRAJATA	F	7	3-7	0-0	1-1	4	4	8	2	0	0	1	0	14	-14
42	HENDERSON, ASIA	F	2	1-4	0-0	0-0	1	2	3	1	0	0	2	1	11	-4
	TEAM		0	0-0	0-0	0-0	0	2	2	0	0	1	0	0	0	0
TOTALS			33	12-33	1-4	8-8	7	14	21	6	5	8	3	1	99	

Shooting By Period

Period	FG	FG%	3FG	3FG%	FT	FT%
3rd Qtr	6-19	32%	1-1	100%	1-1	100%
4th Qtr	6-14	43%	0-3	00%	7-7	100%
2nd Half	12-33	36%	1-4	25%	8-8	100%
Game	26-58	44.8%	6-12	50.0%	14-15	93.3%

Deadball Rebounds: 1,0
Last FG Half: WSU 4th-00:44

Game Notes:

Officials: Ron Ledington, Natasha Carry, Linda Miles

Start Time: 06:02 PM ET
 End Time: 07:47 PM ET
 Game Duration: 1:45
 Neutral Court;

Score	1st	2nd	3rd	4th	TOT
HOU	7	13	20	24	64
WSU	22	17	14	19	72

Points from (This Period)	HOU	WSU
In the Paint	16	18
Off Turns	13	6
2nd Chance	4	5
Fast Break	8	10
Bench	8	4

Official Box Score
Houston vs Wichita St.
Third Quarter Statistics Only
March 06, 2020 at Mohegan Sun Arena - Uncasville, Conn.



Houston 44

No.	Player	S	Pts	FG	3FG	FT	OR	DR	TR	PF	A	TO	Blk	Stl	Min	+/-
01	PATTERSON, BRIA	F	0	0-1	0-0	0-0	0	1	1	0	0	1	0	0	5	3
03	BRANCH, DORIAN	F	0	0-3	0-3	0-0	0	0	0	0	2	0	0	0	10	6
05	GLADNEY, DYMOND	G	9	3-5	3-4	0-0	1	2	3	0	0	0	0	0	10	6
23	BLACKSHELL-FAIR, JULIA	G	3	1-2	0-0	1-1	0	2	2	1	4	0	0	1	10	6
30	HILL, TATYANA	F	8	4-5	0-0	0-2	1	2	3	0	0	0	0	0	10	6
22	PEACE, KEASJA	F	0	0-0	0-0	0-0	0	0	0	0	0	0	0	0	0	0
24	JONES, MAYA	F	0	0-0	0-0	0-0	0	1	1	0	0	0	1	0	5	3
44	LEWIS, JAZMAINE	F	0	0-0	0-0	0-0	0	0	0	0	0	0	0	0	0	0
TEAM							0	0	0	0	0					
TOTALS			20	8-16	3-7	1-3	2	8	10	1	6	1	1	1	50	

Shooting By Period

Period	FG	FG%	3FG	3FG%	FT	FT%
2nd Half	0-0	0%	0-0	0%	0-0	0%
Game	22-65	33.8%	10-27	37.0%	10-15	66.7%

Deadball Rebounds: 3,1

Wichita St. 33

No.	Player	S	Pts	FG	3FG	FT	OR	DR	TR	PF	A	TO	Blk	Stl	Min	+/-
02	MCCULLY, MARIAH	G	7	3-5	0-0	1-1	0	1	1	1	0	0	0	0	7	-1
12	BREMAUD, CARLA	G	3	1-1	1-1	0-0	0	1	1	0	0	0	0	0	6	-3
13	PRINCE, RAVEN	F	0	0-1	0-0	0-0	0	0	0	0	0	0	0	0	10	-6
23	BASTIN, SERAPHINE	G	2	1-4	0-0	0-0	1	0	1	1	0	0	0	0	8	-8
24	COLBERT, TRAJATA	F	0	0-3	0-0	0-0	2	1	3	0	0	0	0	0	4	-5
01	MCCARTY, DJ	G	0	0-1	0-0	0-0	0	1	1	0	1	2	0	0	4	-3
05	REID, ASHLEY	G	0	0-0	0-0	0-0	0	0	0	0	1	0	0	0	2	2
21	BREWER, MAYA	G	0	0-1	0-0	0-0	0	0	0	0	0	0	0	0	3	-5
42	HENDERSON, ASIA	F	2	1-3	0-0	0-0	1	2	3	0	0	0	1	0	6	-1
TEAM							0	1	1	0	0					
TOTALS			14	6-19	1-1	1-1	4	7	11	2	2	2	1	0	50	

Shooting By Period

Period	FG	FG%	3FG	3FG%	FT	FT%
2nd Half	0-0	0%	0-0	0%	0-0	0%
Game	26-58	44.8%	6-12	50.0%	14-15	93.3%

Deadball Rebounds: 1,0

Game Notes:

Officials: Ron Ledington, Natasha Carry, Linda Miles

Start Time: 06:02 PM ET

End Time: 07:47 PM ET

Game Duration: 1:45

Neutral Court;

Score	1st	2nd	3rd	4th	TOT
HOU	7	13	20	24	64
WSU	22	17	14	19	72

Points from (This Period)	HOU	WSU
In the Paint	6	6
Off Turns	3	2
2nd Chance	2	2
Fast Break	6	0
Bench	0	2

Official Play-By-Play
Houston vs Wichita St.
Third Quarter
March 06, 2020 at Mohegan Sun Arena - Uncasville, Conn.



Period 3

Starters:

Houston: 1 PATTERSON, BRIA (F); 3 BRANCH, DORIAN (F); 5 GLADNEY, DYMOND (G); 23 BLACKSHELL-FAIR, JULIA (G); 30 HILL, TATYANA (F);

Wichita St.: 2 MCCULLY, MARIAH (G); 12 BREMAUD, CARLA (G); 13 PRINCE, RAVEN (F); 23 BASTIN, SERAPHINE (G); 24 COLBERT, TRAJATA (F);

Time	VISITORS: Houston	Score	Margin	HOME: Wichita St.
10:00				SUB OUT: MCCARTY, DJ
10:00				SUB OUT: BREWER, MAYA
10:00				SUB IN: MCCULLY, MARIAH
10:00				SUB IN: BASTIN, SERAPHINE
10:00	SUB OUT: PEACE, KEASJA			
10:00	SUB OUT: JONES, MAYA			
10:00	SUB IN: PATTERSON, BRIA			
10:00	SUB IN: HILL, TATYANA			
09:46				MISSED LAYUP by MCCULLY, MARIAH
09:44	REBOUND (DEF) by BLACKSHELL-FAIR, JULIA			
09:39	GOOD! 3PTR by GLADNEY, DYMOND	39-23	H 16	
09:39	ASSIST by BLACKSHELL-FAIR, JULIA			
09:12				MISSED JUMPER by BASTIN, SERAPHINE
09:08				REBOUND (OFF) by BASTIN, SERAPHINE
09:08				MISSED LAYUP by BASTIN, SERAPHINE
09:07	REBOUND (DEF) by GLADNEY, DYMOND			
09:00	GOOD! JUMPER by HILL, TATYANA	39-25	H 14	
09:00	ASSIST by BLACKSHELL-FAIR, JULIA			
08:35				MISSED JUMPER by COLBERT, TRAJATA
08:33				REBOUND (OFF) by COLBERT, TRAJATA
08:32				MISSED LAYUP by COLBERT, TRAJATA
08:30	REBOUND (DEF) by HILL, TATYANA			
08:25	GOOD! 3PTR by GLADNEY, DYMOND [FB]	39-28	H 11	
08:25	ASSIST by BLACKSHELL-FAIR, JULIA			
08:21				TIMEOUT 30SEC
08:06		41-28	H 13	GOOD! LAYUP by MCCULLY, MARIAH
08:06	FOUL (PERSONAL) by BLACKSHELL-FAIR, JULIA			
08:06		42-28	H 14	GOOD! FT by MCCULLY, MARIAH
07:48	MISSED JUMPER by PATTERSON, BRIA			
07:46				REBOUND (DEF) by COLBERT, TRAJATA
07:22				MISSED LAYUP by COLBERT, TRAJATA
07:20	REBOUND (DEF) by PATTERSON, BRIA			
06:57	GOOD! JUMPER by HILL, TATYANA	42-30	H 12	
06:57	ASSIST by BRANCH, DORIAN			
06:30				MISSED JUMPER by BASTIN, SERAPHINE
06:27				REBOUND (OFF) by COLBERT, TRAJATA
06:18		44-30	H 14	GOOD! JUMPER by MCCULLY, MARIAH
06:04	MISSED JUMPER by BLACKSHELL-FAIR, JULIA			
06:01	REBOUND (OFF) by GLADNEY, DYMOND			
05:59	MISSED JUMPER by GLADNEY, DYMOND			
05:55				REBOUND (DEF) by BREMAUD, CARLA
05:46				MISSED LAYUP by MCCULLY, MARIAH
05:43	REBOUND (DEF) by HILL, TATYANA			
05:38	TURNOVER (TRAVEL) by PATTERSON, BRIA			
05:38				SUB OUT: BREMAUD, CARLA
05:38				SUB OUT: COLBERT, TRAJATA
05:38				SUB IN: MCCARTY, DJ
05:38				SUB IN: HENDERSON, ASIA
05:24		46-30	H 16	GOOD! LAYUP by BASTIN, SERAPHINE
05:11				FOUL (PERSONAL) by MCCULLY, MARIAH
05:11				SUB OUT: MCCULLY, MARIAH
05:11				SUB IN: BREWER, MAYA
05:11	SUB OUT: PATTERSON, BRIA			
05:11	SUB IN: JONES, MAYA			
05:11	MISSED FT by HILL, TATYANA			
05:11	REBOUND (OFF) by TEAM			
05:11	MISSED FT by HILL, TATYANA			
05:10				REBOUND (DEF) by HENDERSON, ASIA
04:53				TURNOVER (TRAVEL) by MCCARTY, DJ
04:53				
04:47	MISSED LAYUP by HILL, TATYANA			
04:47				BLOCK by HENDERSON, ASIA
04:44				REBOUND (DEF) by HENDERSON, ASIA
04:25				MISSED LAYUP by MCCARTY, DJ
04:23				REBOUND (OFF) by HENDERSON, ASIA
04:23				MISSED LAYUP by HENDERSON, ASIA
04:23	BLOCK by JONES, MAYA			
04:20	REBOUND (DEF) by JONES, MAYA			
04:10	MISSED 3PTR by BRANCH, DORIAN			
04:07				REBOUND (DEF) by TEAM

Time	VISITORS: Houston	Score	Margin	HOME: Wichita St.
03:40				MISSED JUMPER by HENDERSON, ASIA
03:38	REBOUND (DEF) by BLACKSHELL-FAIR, JULIA			
03:29	GOOD! LAYUP by HILL, TATYANA	46-32	H 14	
03:29	ASSIST by BRANCH, DORIAN			
03:07				TURNOVER (BADPASS) by MCCARTY, DJ
03:07	STEAL by BLACKSHELL-FAIR, JULIA			
03:02	GOOD! 3PTR by GLADNEY, DYMOND [FB]	46-35	H 11	
03:02	ASSIST by BLACKSHELL-FAIR, JULIA			
02:42				MISSED JUMPER by BREWER, MAYA
02:39	REBOUND (DEF) by GLADNEY, DYMOND			
02:29	MISSED 3PTR by BRANCH, DORIAN			
02:23				REBOUND (DEF) by MCCARTY, DJ
02:02		48-35	H 13	GOOD! JUMPER by HENDERSON, ASIA [PNT]
02:02				ASSIST by MCCARTY, DJ
01:54	GOOD! LAYUP by BLACKSHELL-FAIR, JULIA	48-37	H 11	
01:54				FOUL (PERSONAL) by BASTIN, SERAPHINE
01:54				SUB OUT: MCCARTY, DJ
01:54				SUB OUT: BREWER, MAYA
01:54				SUB OUT: BASTIN, SERAPHINE
01:54				SUB IN: MCCULLY, MARIAH
01:54				SUB IN: REID, ASHLEY
01:54				SUB IN: BREMAUD, CARLA
01:54	GOOD! FT by BLACKSHELL-FAIR, JULIA	48-38	H 10	
01:32		51-38	H 13	GOOD! 3PTR by BREMAUD, CARLA
01:32				ASSIST by REID, ASHLEY
01:22	MISSED 3PTR by BRANCH, DORIAN			
01:19				REBOUND (DEF) by MCCULLY, MARIAH
00:53		53-38	H 15	GOOD! JUMPER by MCCULLY, MARIAH
00:34	MISSED 3PTR by GLADNEY, DYMOND			
00:30	REBOUND (OFF) by HILL, TATYANA			
00:30	GOOD! LAYUP by HILL, TATYANA	53-40	H 13	
00:00				MISSED JUMPER by PRINCE, RAVEN
00:00	REBOUND (DEF) by TEAM			

Houston 40, Wichita St. 53

Points from (This Period)	HOU	WSU
In the Paint	6	6
Off Turns	3	2
2nd Chance	2	2
Fast Break	6	0
Bench	0	2

Official Box Score
Houston vs Wichita St.
Fourth Quarter Statistics Only
March 06, 2020 at Mohegan Sun Arena - Uncasville, Conn.



Houston 24

No.	Player	S	Pts	FG	3FG	FT	OR	DR	TR	PF	A	TO	Blk	Stl	Min	+/-
01	PATTERSON, BRIA	F	2	1-4	0-1	0-0	1	0	1	2	0	1	0	2	8	4
03	BRANCH, DORIAN	F	0	0-0	0-0	0-0	0	0	0	0	1	0	0	0	2	1
05	GLADNEY, DYMOND	G	6	2-3	2-2	0-0	2	0	2	2	2	1	0	0	10	5
23	BLACKSHELL-FAIR, JULIA	G	6	3-5	0-0	0-0	0	1	1	1	3	0	0	0	10	5
30	HILL, TATYANA	F	2	1-4	0-0	0-0	1	1	2	1	0	0	1	1	10	5
22	PEACE, KEASJA	F	0	0-0	0-0	0-0	0	0	0	0	0	0	0	0	0	0
24	JONES, MAYA	F	8	2-5	2-4	2-2	0	1	1	1	0	0	0	1	10	5
44	LEWIS, JAZMAINE	F	0	0-0	0-0	0-0	0	0	0	0	0	0	0	0	0	0
	TEAM						1	1	2	0		0				
TOTALS			24	9-21	4-7	2-2	5	4	9	7	6	2	1	4	49	

Shooting By Period

Period	FG	FG%	3FG	3FG%	FT	FT%
Game	22-65	33.8%	10-27	37.0%	10-15	66.7%

Deadball Rebounds: 3,1

Wichita St. 19

No.	Player	S	Pts	FG	3FG	FT	OR	DR	TR	PF	A	TO	Blk	Stl	Min	+/-
02	MCCULLY, MARIAH	G	2	1-6	0-2	0-0	0	0	0	0	1	1	0	0	9	-1
12	BREMAUD, CARLA	G	2	1-1	0-0	0-0	0	1	1	0	0	1	0	0	7	-5
13	PRINCE, RAVEN	F	0	0-0	0-0	0-0	0	1	1	1	0	2	0	0	5	-2
23	BASTIN, SERAPHINE	G	6	0-0	0-0	6-6	1	1	2	0	2	1	0	0	7	-1
24	COLBERT, TRAJATA	F	7	3-4	0-0	1-1	2	3	5	2	0	0	1	0	10	-9
01	MCCARTY, DJ	G	2	1-2	0-1	0-0	0	0	0	0	0	0	0	0	4	0
05	REID, ASHLEY	G	0	0-0	0-0	0-0	0	0	0	0	0	0	0	0	3	-4
21	BREWER, MAYA	G	0	0-0	0-0	0-0	0	0	0	0	0	0	0	0	0	0
42	HENDERSON, ASIA	F	0	0-1	0-0	0-0	0	0	0	1	0	0	1	1	5	-3
	TEAM						0	1	1	0		1				
TOTALS			19	6-14	0-3	7-7	3	7	10	4	3	6	2	1	49	

Shooting By Period

Period	FG	FG%	3FG	3FG%	FT	FT%
Game	26-58	44.8%	6-12	50.0%	14-15	93.3%

Deadball Rebounds: 1,0

Game Notes:

Officials: Ron Ledington, Natasha Carry, Linda Miles

Start Time: 06:02 PM ET

End Time: 07:47 PM ET

Game Duration: 1:45

Neutral Court;

Score	1st	2nd	3rd	4th	TOT
HOU	7	13	20	24	64
WSU	22	17	14	19	72

Points from (This Period)	HOU	WSU
In the Paint	10	12
Off Turns	10	4
2nd Chance	2	3
Fast Break	2	10
Bench	8	2

Official Play-By-Play
Houston vs Wichita St.
Fourth Quarter
March 06, 2020 at Mohegan Sun Arena - Uncasville, Conn.



Period 4

Starters:

Houston: 1 PATTERSON, BRIA (F); 3 BRANCH, DORIAN (F); 5 GLADNEY, DYMOND (G); 23 BLACKSHELL-FAIR, JULIA (G); 30 HILL, TATYANA (F);

Wichita St.: 2 MCCULLY, MARIAH (G); 12 BREMAUD, CARLA (G); 13 PRINCE, RAVEN (F); 23 BASTIN, SERAPHINE (G); 24 COLBERT, TRAJATA (F);

Time	VISITORS: Houston	Score	Margin	HOME: Wichita St.
10:00				SUB OUT: HENDERSON, ASIA
10:00				SUB IN: COLBERT, TRAJATA
10:00	SUB OUT: BRANCH, DORIAN			
10:00	SUB IN: PATTERSON, BRIA			
09:45	MISSED LAYUP by JONES, MAYA			
09:45				BLOCK by COLBERT, TRAJATA
09:42	REBOUND (OFF) by HILL, TATYANA			
09:39	FOUL (OFF) by PATTERSON, BRIA			
09:39	TURNOVER (OFFENSIVE) by PATTERSON, BRIA			
09:22		55-40	H 15	GOOD! LAYUP by COLBERT, TRAJATA
09:22				ASSIST by MCCULLY, MARIAH
09:13	MISSED 3PTR by PATTERSON, BRIA			
09:10				REBOUND (DEF) by COLBERT, TRAJATA
08:41				MISSED JUMPER by MCCULLY, MARIAH
08:40				REBOUND (OFF) by TEAM
08:40				TURNOVER (SHOTCLOCK) by TEAM
08:28	GOOD! 3PTR by JONES, MAYA	55-43	H 12	
08:28	ASSIST by BLACKSHELL-FAIR, JULIA			
08:09				TURNOVER (LOSTBALL) by BREMAUD, CARLA
08:09	STEAL by PATTERSON, BRIA			
08:04	MISSED LAYUP by PATTERSON, BRIA			
08:01	REBOUND (OFF) by GLADNEY, DYMOND			
08:01	MISSED LAYUP by GLADNEY, DYMOND			
08:01	REBOUND (OFF) by PATTERSON, BRIA			
08:00	MISSED LAYUP by PATTERSON, BRIA			
07:57				REBOUND (DEF) by TEAM
07:57	FOUL (PERSONAL) by PATTERSON, BRIA			
07:57				SUB OUT: PRINCE, RAVEN
07:57				SUB IN: HENDERSON, ASIA
07:34				MISSED LAYUP by COLBERT, TRAJATA
07:34	BLOCK by HILL, TATYANA			
07:34	REBOUND (DEF) by TEAM			
07:14	GOOD! 3PTR by GLADNEY, DYMOND	55-46	H 9	
07:14	ASSIST by BLACKSHELL-FAIR, JULIA			
06:59				TIMEOUT 30SEC
06:59				SUB OUT: REID, ASHLEY
06:59				SUB IN: BASTIN, SERAPHINE
06:46				MISSED JUMPER by HENDERSON, ASIA
06:44				REBOUND (OFF) by COLBERT, TRAJATA
06:44		57-46	H 11	GOOD! LAYUP by COLBERT, TRAJATA
06:44	FOUL (PERSONAL) by HILL, TATYANA			
06:44		58-46	H 12	GOOD! FT by COLBERT, TRAJATA
06:37	GOOD! LAYUP by BLACKSHELL-FAIR, JULIA [PNT]	58-48	H 10	
06:14		60-48	H 12	GOOD! LAYUP by BREMAUD, CARLA
06:14				ASSIST by BASTIN, SERAPHINE
06:06	MISSED 3PTR by JONES, MAYA			
06:02				REBOUND (DEF) by COLBERT, TRAJATA
05:43				TURNOVER (BADPASS) by BASTIN, SERAPHINE
05:43	STEAL by PATTERSON, BRIA			
05:43				FOUL (PERSONAL) by HENDERSON, ASIA
05:36	GOOD! 3PTR by GLADNEY, DYMOND	60-51	H 9	
05:36	ASSIST by BLACKSHELL-FAIR, JULIA			
05:36	TIMEOUT 30SEC			
05:27				SUB OUT: BREMAUD, CARLA
05:27				SUB IN: MCCARTY, DJ
05:22				MISSED 3PTR by MCCULLY, MARIAH
05:19				REBOUND (OFF) by COLBERT, TRAJATA
05:00				TURNOVER (BADPASS) by MCCULLY, MARIAH
05:00	STEAL by JONES, MAYA			
04:51	MISSED 3PTR by JONES, MAYA			
04:48	REBOUND (OFF) by GLADNEY, DYMOND			
04:47	GOOD! LAYUP by HILL, TATYANA	60-53	H 7	
04:47	ASSIST by GLADNEY, DYMOND			
04:26				MISSED 3PTR by MCCULLY, MARIAH
04:24				REBOUND (OFF) by BASTIN, SERAPHINE
04:12				MISSED JUMPER by MCCULLY, MARIAH
04:10	REBOUND (DEF) by HILL, TATYANA			
04:10				FOUL (PERSONAL) by COLBERT, TRAJATA
04:03	TURNOVER (BADPASS) by GLADNEY, DYMOND			
04:03				STEAL by HENDERSON, ASIA

Time	VISITORS: Houston	Score	Margin	HOME: Wichita St.
03:58		62-53	H 9	GOOD! LAYUP by MCCARTY, DJ [FB/PNT]
03:34	GOOD! LAYUP by PATTERSON, BRIA	62-55	H 7	
03:34	ASSIST by GLADNEY, DYMOND			
03:18				MISSED LAYUP by MCCULLY, MARIAH
03:17	REBOUND (DEF) by JONES, MAYA			
03:10	MISSED LAYUP by BLACKSHELL-FAIR, JULIA			
03:10				BLOCK by HENDERSON, ASIA
03:06				REBOUND (DEF) by BASTIN, SERAPHINE
03:04		64-55	H 9	GOOD! LAYUP by COLBERT, TRAJATA [FB]
03:04				ASSIST by BASTIN, SERAPHINE
02:43	MISSED LAYUP by BLACKSHELL-FAIR, JULIA			
02:42	REBOUND (OFF) by TEAM			
02:42				SUB OUT: MCCULLY, MARIAH
02:42				SUB OUT: HENDERSON, ASIA
02:42				SUB IN: BREMAUD, CARLA
02:42				SUB IN: PRINCE, RAVEN
02:40	MISSED JUMPER by HILL, TATYANA			
02:37				REBOUND (DEF) by COLBERT, TRAJATA
02:23				FOUL (OFF) by PRINCE, RAVEN
02:23				TURNOVER (OFFENSIVE) by PRINCE, RAVEN
02:23	TIMEOUT TEAM			
02:23	SUB OUT: PATTERSON, BRIA			
02:23	SUB IN: BRANCH, DORIAN			
02:16	GOOD! LAYUP by BLACKSHELL-FAIR, JULIA	64-57	H 7	
01:43				MISSED 3PTR by MCCARTY, DJ
01:40	REBOUND (DEF) by BLACKSHELL-FAIR, JULIA			
01:24				FOUL (PERSONAL) by COLBERT, TRAJATA
01:24	GOOD! FT by JONES, MAYA	64-58	H 6	
01:24	GOOD! FT by JONES, MAYA	64-59	H 5	
01:24				SUB OUT: MCCARTY, DJ
01:24				SUB IN: MCCULLY, MARIAH
01:22				TURNOVER (BADPASS) by PRINCE, RAVEN
01:22	STEAL by HILL, TATYANA			
01:08	MISSED JUMPER by HILL, TATYANA			
01:05				REBOUND (DEF) by BREMAUD, CARLA
01:00				TIMEOUT 30SEC
00:44		66-59	H 7	GOOD! LAYUP by MCCULLY, MARIAH [PNT]
00:39	GOOD! LAYUP by BLACKSHELL-FAIR, JULIA [FB]	66-61	H 5	
00:37	FOUL (PERSONAL) by GLADNEY, DYMOND			
00:37	FOUL (PERSONAL) by GLADNEY, DYMOND			
00:37		67-61	H 6	GOOD! FT by BASTIN, SERAPHINE [FB]
00:37		68-61	H 7	GOOD! FT by BASTIN, SERAPHINE [FB]
00:24	GOOD! 3PTR by JONES, MAYA	68-64	H 4	
00:24	ASSIST by BRANCH, DORIAN			
00:24	TIMEOUT 30SEC			
00:24	SUB OUT: HILL, TATYANA			
00:24	SUB IN: PATTERSON, BRIA			
00:19	FOUL (PERSONAL) by BLACKSHELL-FAIR, JULIA			
00:19				SUB OUT: COLBERT, TRAJATA
00:19				SUB IN: MCCARTY, DJ
00:19	SUB OUT: PATTERSON, BRIA			
00:19	SUB IN: HILL, TATYANA			
00:19		69-64	H 5	GOOD! FT by BASTIN, SERAPHINE [FB]
00:19		70-64	H 6	GOOD! FT by BASTIN, SERAPHINE [FB]
00:11	MISSED LAYUP by HILL, TATYANA			
00:09				REBOUND (DEF) by PRINCE, RAVEN
00:07	FOUL (PERSONAL) by JONES, MAYA			
00:07		71-64	H 7	GOOD! FT by BASTIN, SERAPHINE [FB]
00:07		72-64	H 8	GOOD! FT by BASTIN, SERAPHINE [FB]

Houston 64, Wichita St. 72

Points from (This Period)	HOU	WSU
In the Paint	10	12
Off Turns	10	4
2nd Chance	2	3
Fast Break	2	10
Bench	8	2

Official Scoring/Possession Reference Chart
Houston vs Wichita St.
Period 1
March 06, 2020 at Mohegan Sun Arena - Uncasville, Conn.



Period 1

Starters:

Houston: 1 PATTERSON, BRIA (F); 3 BRANCH, DORIAN (F); 5 GLADNEY, DYMOND (G); 23 BLACKSHELL-FAIR, JULIA (G); 30 HILL, TATYANA (F);

Wichita St.: 2 MCCULLY, MARIAH (G); 12 BREMAUD, CARLA (G); 13 PRINCE, RAVEN (F); 23 BASTIN, SERAPHINE (G); 24 COLBERT, TRAJATA (F);

Time	VISITORS: Houston	Score	Margin	HOME: Wichita St.
09:42	GOOD! FT by HILL, TATYANA	0-1	V 1	
09:06		2-1	H 1	GOOD! LAYUP by PRINCE, RAVEN
08:13	GOOD! FT by HILL, TATYANA	2-2	T	
08:13	GOOD! FT by HILL, TATYANA	2-3	V 1	
07:18	GOOD! JUMPER by BLACKSHELL-FAIR, JULIA	2-5	V 3	
06:25		4-5	V 1	GOOD! LAYUP by PRINCE, RAVEN [FB]
05:40		7-5	H 2	GOOD! 3PTR by MCCULLY, MARIAH
05:00		9-5	H 4	GOOD! LAYUP by BREWER, MAYA [PNT]
04:12	GOOD! JUMPER by BLACKSHELL-FAIR, JULIA	9-7	H 2	
03:52		10-7	H 3	GOOD! FT by PRINCE, RAVEN
03:52		11-7	H 4	GOOD! FT by PRINCE, RAVEN
03:09		14-7	H 7	GOOD! 3PTR by BREWER, MAYA
02:26		16-7	H 9	GOOD! LAYUP by HENDERSON, ASIA [PNT]
02:00		18-7	H 11	GOOD! LAYUP by MCCARTY, DJ [FB/PNT]
01:03		20-7	H 13	GOOD! LAYUP by HENDERSON, ASIA [PNT]
00:12		22-7	H 15	GOOD! JUMPER by REID, ASHLEY [FB/PNT]

Houston 7, Wichita St. 22

Official Scoring/Possession Reference Chart
Houston vs Wichita St.
Period 2
March 06, 2020 at Mohegan Sun Arena - Uncasville, Conn.



Period 2

Starters:

Houston: 1 PATTERSON, BRIA (F); 3 BRANCH, DORIAN (F); 5 GLADNEY, DYMOND (G); 23 BLACKSHELL-FAIR, JULIA (G); 30 HILL, TATYANA (F);

Wichita St.: 2 MCCULLY, MARIAH (G); 12 BREMAUD, CARLA (G); 13 PRINCE, RAVEN (F); 23 BASTIN, SERAPHINE (G); 24 COLBERT, TRAJATA (F);

Time	VISITORS: Houston	Score	Margin	HOME: Wichita St.
09:49	GOOD! FT by BLACKSHELL-FAIR, JULIA	22-8	H 14	
09:49	GOOD! FT by BLACKSHELL-FAIR, JULIA	22-9	H 13	
08:05	GOOD! FT by BLACKSHELL-FAIR, JULIA	22-10	H 12	
08:05	GOOD! FT by BLACKSHELL-FAIR, JULIA	22-11	H 11	
07:18		24-11	H 13	GOOD! LAYUP by MCCARTY, DJ [FB]
06:48		25-11	H 14	GOOD! FT by BREWER, MAYA
06:48		26-11	H 15	GOOD! FT by BREWER, MAYA
06:31	GOOD! 3PTR by GLADNEY, DYMOND	26-14	H 12	
06:02		29-14	H 15	GOOD! 3PTR by MCCARTY, DJ
05:36		30-14	H 16	GOOD! FT by COLBERT, TRAJATA
05:36		31-14	H 17	GOOD! FT by COLBERT, TRAJATA
04:45		33-14	H 19	GOOD! LAYUP by COLBERT, TRAJATA [PNT]
04:23	GOOD! 3PTR by GLADNEY, DYMOND	33-17	H 16	
04:06		36-17	H 19	GOOD! 3PTR by BREMAUD, CARLA
01:36		39-17	H 22	GOOD! 3PTR by BREMAUD, CARLA
01:24	GOOD! 3PTR by JONES, MAYA	39-20	H 19	

Houston 20, Wichita St. 39

Official Scoring/Possession Reference Chart
Houston vs Wichita St.
Period 3
March 06, 2020 at Mohegan Sun Arena - Uncasville, Conn.



Period 3

Starters:

Houston: 1 PATTERSON, BRIA (F); 3 BRANCH, DORIAN (F); 5 GLADNEY, DYMOND (G); 23 BLACKSHELL-FAIR, JULIA (G); 30 HILL, TATYANA (F);

Wichita St.: 2 MCCULLY, MARIAH (G); 12 BREMAUD, CARLA (G); 13 PRINCE, RAVEN (F); 23 BASTIN, SERAPHINE (G); 24 COLBERT, TRAJATA (F);

Time	VISITORS: Houston	Score	Margin	HOME: Wichita St.
09:39	GOOD! 3PTR by GLADNEY, DYMOND	39-23	H 16	
09:00	GOOD! JUMPER by HILL, TATYANA	39-25	H 14	
08:25	GOOD! 3PTR by GLADNEY, DYMOND [FB]	39-28	H 11	
08:06		41-28	H 13	GOOD! LAYUP by MCCULLY, MARIAH
08:06		42-28	H 14	GOOD! FT by MCCULLY, MARIAH
06:57	GOOD! JUMPER by HILL, TATYANA	42-30	H 12	
06:18		44-30	H 14	GOOD! JUMPER by MCCULLY, MARIAH
05:24		46-30	H 16	GOOD! LAYUP by BASTIN, SERAPHINE
03:29	GOOD! LAYUP by HILL, TATYANA	46-32	H 14	
03:02	GOOD! 3PTR by GLADNEY, DYMOND [FB]	46-35	H 11	
02:02		48-35	H 13	GOOD! JUMPER by HENDERSON, ASIA [PNT]
01:54	GOOD! LAYUP by BLACKSHELL-FAIR, JULIA	48-37	H 11	
01:54	GOOD! FT by BLACKSHELL-FAIR, JULIA	48-38	H 10	
01:32		51-38	H 13	GOOD! 3PTR by BREMAUD, CARLA
00:53		53-38	H 15	GOOD! JUMPER by MCCULLY, MARIAH
00:30	GOOD! LAYUP by HILL, TATYANA	53-40	H 13	

Houston 40, Wichita St. 53

Official Scoring/Possession Reference Chart
Houston vs Wichita St.
Period 4
March 06, 2020 at Mohegan Sun Arena - Uncasville, Conn.



Period 4

Starters:

Houston: 1 PATTERSON, BRIA (F); 3 BRANCH, DORIAN (F); 5 GLADNEY, DYMOND (G); 23 BLACKSHELL-FAIR, JULIA (G); 30 HILL, TATYANA (F);

Wichita St.: 2 MCCULLY, MARIAH (G); 12 BREMAUD, CARLA (G); 13 PRINCE, RAVEN (F); 23 BASTIN, SERAPHINE (G); 24 COLBERT, TRAJATA (F);

Time	VISITORS: Houston	Score	Margin	HOME: Wichita St.
09:22		55-40	H 15	GOOD! LAYUP by COLBERT, TRAJATA
08:28	GOOD! 3PTR by JONES, MAYA	55-43	H 12	
07:14	GOOD! 3PTR by GLADNEY, DYMOND	55-46	H 9	
06:44		57-46	H 11	GOOD! LAYUP by COLBERT, TRAJATA
06:44		58-46	H 12	GOOD! FT by COLBERT, TRAJATA
06:37	GOOD! LAYUP by BLACKSHELL-FAIR, JULIA [PNT]	58-48	H 10	
06:14		60-48	H 12	GOOD! LAYUP by BREMAUD, CARLA
05:36	GOOD! 3PTR by GLADNEY, DYMOND	60-51	H 9	
04:47	GOOD! LAYUP by HILL, TATYANA	60-53	H 7	
03:58		62-53	H 9	GOOD! LAYUP by MCCARTY, DJ [FB/PNT]
03:34	GOOD! LAYUP by PATTERSON, BRIA	62-55	H 7	
03:04		64-55	H 9	GOOD! LAYUP by COLBERT, TRAJATA [FB]
02:16	GOOD! LAYUP by BLACKSHELL-FAIR, JULIA	64-57	H 7	
01:24	GOOD! FT by JONES, MAYA	64-58	H 6	
01:24	GOOD! FT by JONES, MAYA	64-59	H 5	
00:44		66-59	H 7	GOOD! LAYUP by MCCULLY, MARIAH [PNT]
00:39	GOOD! LAYUP by BLACKSHELL-FAIR, JULIA [FB]	66-61	H 5	
00:37		67-61	H 6	GOOD! FT by BASTIN, SERAPHINE [FB]
00:37		68-61	H 7	GOOD! FT by BASTIN, SERAPHINE [FB]
00:24	GOOD! 3PTR by JONES, MAYA	68-64	H 4	
00:19		69-64	H 5	GOOD! FT by BASTIN, SERAPHINE [FB]
00:19		70-64	H 6	GOOD! FT by BASTIN, SERAPHINE [FB]
00:07		71-64	H 7	GOOD! FT by BASTIN, SERAPHINE [FB]
00:07		72-64	H 8	GOOD! FT by BASTIN, SERAPHINE [FB]

Houston 64, Wichita St. 72

**Official Substitutions Log
Houston vs Wichita St.
Period 1
March 06, 2020 at Mohegan Sun Arena - Uncasville, Conn.**



VISITORS: Houston	Time	Score	HOME: Wichita St.
1 PATTERSON,BRIA			2 MCCULLY,MARIAH
3 BRANCH,DORIAN			12 BREMAUD,CARLA
5 GLADNEY,DYMOND			13 PRINCE,RAVEN
23 BLACKSHELL-FAIR,JULIA			23 BASTIN,SERAPHINE
30 HILL,TATYANA			24 COLBERT,TRAJATA
	05:10	5-7	SUB OUT: BREMAUD,CARLA
	05:10		SUB OUT: COLBERT,TRAJATA
	05:10		SUB IN: BREWER,MAYA
	05:10		SUB IN: HENDERSON,ASIA
	03:52	7-9	SUB OUT: BASTIN,SERAPHINE
	03:52		SUB IN: MCCARTY,DJ
SUB OUT: 1 PATTERSON,BRIA	03:52		
SUB IN: 24 JONES,MAYA	03:52		
	01:58	7-18	SUB OUT: MCCULLY,MARIAH
	01:58		SUB OUT: PRINCE,RAVEN
	01:58		SUB IN: REID,ASHLEY
	01:58		SUB IN: BREMAUD,CARLA
	00:37	7-20	SUB OUT: BREWER,MAYA
	00:37		SUB IN: BASTIN,SERAPHINE

Houston 7, Wichita St. 22

Official Substitutions Log
Houston vs Wichita St.
Period 2
March 06, 2020 at Mohegan Sun Arena - Uncasville, Conn.



VISITORS: Houston	Time	Score	HOME: Wichita St.
1 PATTERSON, BRIA			2 MCCULLY, MARIAH
3 BRANCH, DORIAN			12 BREMAUD, CARLA
5 GLADNEY, DYMOND			13 PRINCE, RAVEN
23 BLACKSHELL-FAIR, JULIA			23 BASTIN, SERAPHINE
30 HILL, TATYANA			24 COLBERT, TRAJATA
SUB OUT: 3 BRANCH, DORIAN	10:00	-	
SUB OUT: 30 HILL, TATYANA	10:00		
SUB IN: 1 PATTERSON, BRIA	10:00		
SUB IN: 44 LEWIS, JAZMAINE	10:00		
	08:47	9-22	SUB IN: MCCULLY, MARIAH
	08:47		SUB OUT: BREMAUD, CARLA
	08:15	9-22	SUB OUT: BASTIN, SERAPHINE
	08:15		SUB IN: BREWER, MAYA
	08:05	9-22	SUB OUT: MCCULLY, MARIAH
	08:05		SUB IN: BREMAUD, CARLA
	07:42	11-22	SUB OUT: HENDERSON, ASIA
	07:42		SUB IN: COLBERT, TRAJATA
SUB OUT: 44 LEWIS, JAZMAINE	06:48	11-24	
SUB IN: 22 PEACE, KEASJA	06:48		
SUB OUT: 23 BLACKSHELL-FAIR, JULIA	05:36	14-31	
SUB IN: 3 BRANCH, DORIAN	05:36		
SUB OUT: 24 JONES, MAYA	05:00	14-31	
SUB IN: 30 HILL, TATYANA	05:00		
	03:46	17-36	SUB OUT: REID, ASHLEY
	03:46		SUB IN: PRINCE, RAVEN
SUB OUT: 1 PATTERSON, BRIA	02:31	17-36	
SUB IN: 23 BLACKSHELL-FAIR, JULIA	02:31		
SUB OUT: 30 HILL, TATYANA	01:50	17-36	
SUB IN: 24 JONES, MAYA	01:50		

Houston 20, Wichita St. 39

Official Substitutions Log
Houston vs Wichita St.
Period 3
March 06, 2020 at Mohegan Sun Arena - Uncasville, Conn.



VISITORS: Houston	Time	Score	HOME: Wichita St.
1 PATTERSON,BRIA			2 MCCULLY,MARIAH
3 BRANCH,DORIAN			12 BREMAUD,CARLA
5 GLADNEY,DYMOND			13 PRINCE,RAVEN
23 BLACKSHELL-FAIR,JULIA			23 BASTIN,SERAPHINE
30 HILL,TATYANA			24 COLBERT,TRAJATA
	10:00	-	SUB OUT: MCCARTY,DJ
	10:00		SUB OUT: BREWER,MAYA
	10:00		SUB IN: MCCULLY,MARIAH
	10:00		SUB IN: BASTIN,SERAPHINE
SUB OUT: 22 PEACE,KEASJA	10:00		
SUB OUT: 24 JONES,MAYA	10:00		
SUB IN: 1 PATTERSON,BRIA	10:00		
SUB IN: 30 HILL,TATYANA	10:00		
	05:38	30-44	SUB OUT: BREMAUD,CARLA
	05:38		SUB OUT: COLBERT,TRAJATA
	05:38		SUB IN: MCCARTY,DJ
	05:38		SUB IN: HENDERSON,ASIA
	05:11	30-46	SUB OUT: MCCULLY,MARIAH
	05:11		SUB IN: BREWER,MAYA
SUB OUT: 1 PATTERSON,BRIA	05:11		
SUB IN: 24 JONES,MAYA	05:11		
	01:54	37-48	SUB OUT: MCCARTY,DJ
	01:54		SUB OUT: BREWER,MAYA
	01:54		SUB OUT: BASTIN,SERAPHINE
	01:54		SUB IN: MCCULLY,MARIAH
	01:54		SUB IN: REID,ASHLEY
	01:54		SUB IN: BREMAUD,CARLA

Houston 40, Wichita St. 53

Official Substitutions Log
Houston vs Wichita St.
Period 4
March 06, 2020 at Mohegan Sun Arena - Uncasville, Conn.



VISITORS: Houston	Time	Score	HOME: Wichita St.
1 PATTERSON,BRIA			2 MCCULLY,MARIAH
3 BRANCH,DORIAN			12 BREMAUD,CARLA
5 GLADNEY,DYMOND			13 PRINCE,RAVEN
23 BLACKSHELL-FAIR,JULIA			23 BASTIN,SERAPHINE
30 HILL,TATYANA			24 COLBERT,TRAJATA
	10:00	-	SUB OUT: HENDERSON,ASIA
	10:00		SUB IN: COLBERT,TRAJATA
SUB OUT: 3 BRANCH,DORIAN	10:00		
SUB IN: 1 PATTERSON,BRIA	10:00		
	07:57	43-55	SUB OUT: PRINCE,RAVEN
	07:57		SUB IN: HENDERSON,ASIA
	06:59	46-55	SUB OUT: REID,ASHLEY
	06:59		SUB IN: BASTIN,SERAPHINE
	05:27	51-60	SUB OUT: BREMAUD,CARLA
	05:27		SUB IN: MCCARTY,DJ
	02:42	55-64	SUB OUT: MCCULLY,MARIAH
	02:42		SUB OUT: HENDERSON,ASIA
	02:42		SUB IN: BREMAUD,CARLA
	02:42		SUB IN: PRINCE,RAVEN
SUB OUT: 1 PATTERSON,BRIA	02:23	55-64	
SUB IN: 3 BRANCH,DORIAN	02:23		
	01:24	59-64	SUB OUT: MCCARTY,DJ
	01:24		SUB IN: MCCULLY,MARIAH
SUB OUT: 30 HILL,TATYANA	00:24	64-68	
SUB IN: 1 PATTERSON,BRIA	00:24		
	00:19	64-68	SUB OUT: COLBERT,TRAJATA
	00:19		SUB IN: MCCARTY,DJ
SUB OUT: 1 PATTERSON,BRIA	00:19		
SUB IN: 30 HILL,TATYANA	00:19		

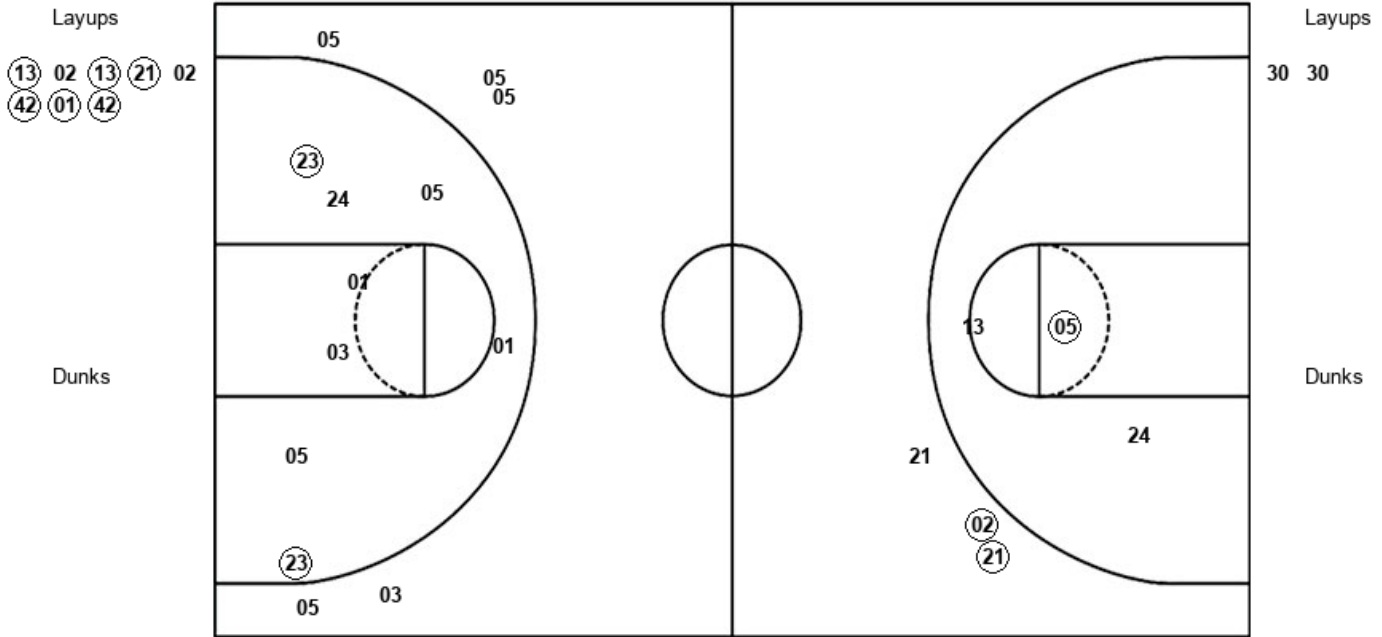
Houston 64, Wichita St. 72

Official Shot Chart
Houston vs Wichita St.
PERIOD 1 Shots
 March 06, 2020 at Mohegan Sun Arena - Uncasville, Conn.



Wichita St.

Houston



WSU : Period 1	Made	Att	Pct
Layups	6	8	75.0
Dunks	0	0	0
2PT Field Goals	7	11	63.6
3PT Field Goals	2	3	66.7
Total Field Goals	9	14	64.3

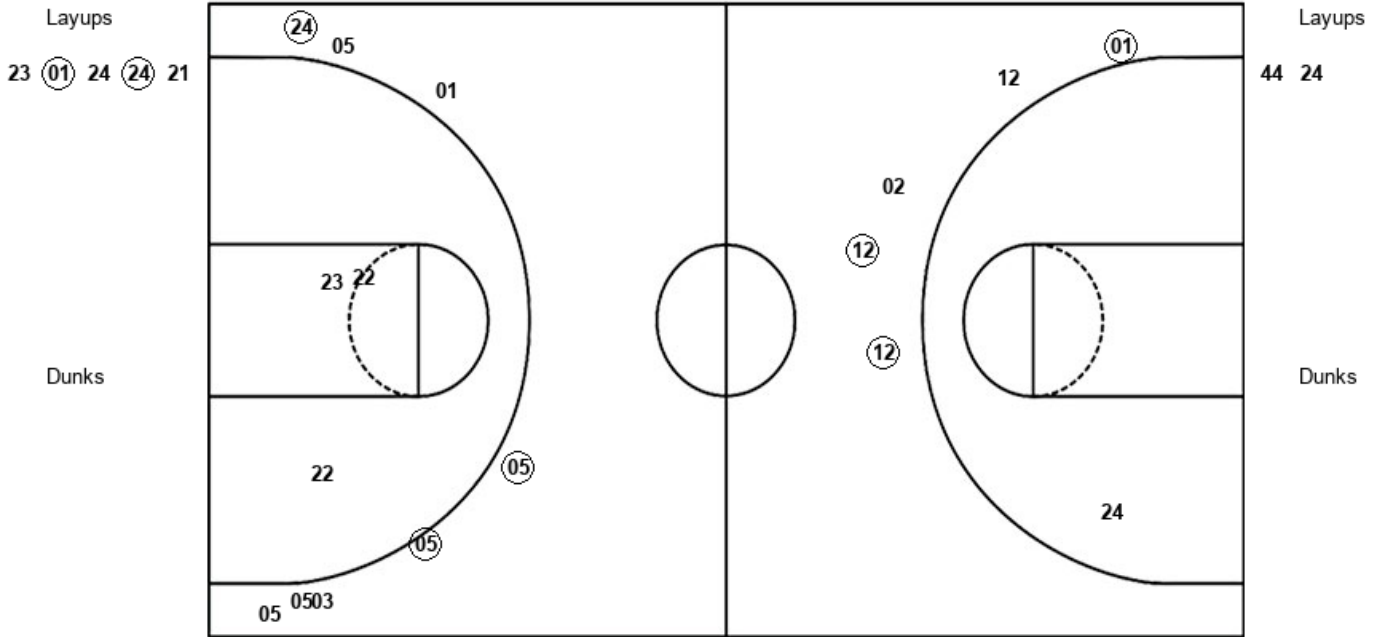
HOU : Period 1	Made	Att	Pct
Layups	0	2	00.0
Dunks	0	0	0
2PT Field Goals	2	10	20.0
3PT Field Goals	0	5	00.0
Total Field Goals	2	15	13.3

Official Shot Chart
Houston vs Wichita St.
PERIOD 2 Shots
 March 06, 2020 at Mohegan Sun Arena - Uncasville, Conn.



Wichita St.

Houston



WSU : Period 2	Made	Att	Pct
Layups	2	5	40.0
Dunks	0	0	0
2PT Field Goals	2	6	33.3
3PT Field Goals	3	5	60.0
Total Field Goals	5	11	45.5

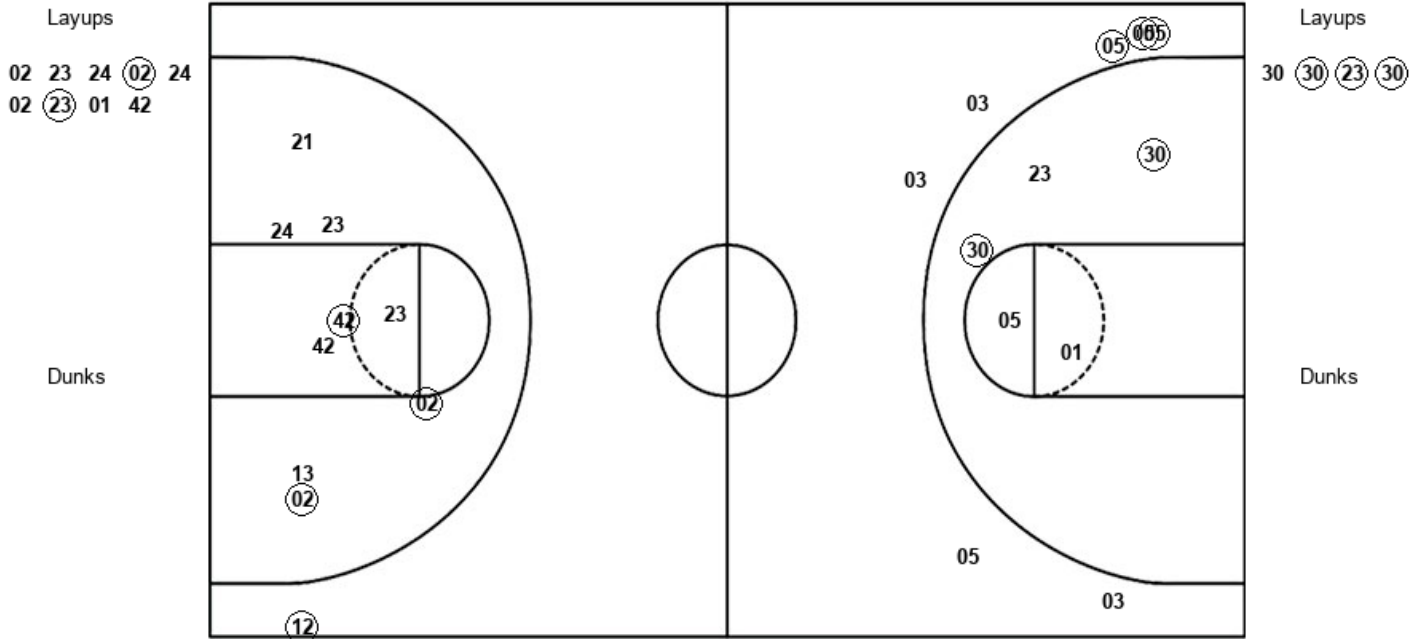
HOU : Period 2	Made	Att	Pct
Layups	0	2	00.0
Dunks	0	0	0
2PT Field Goals	0	5	00.0
3PT Field Goals	3	8	37.5
Total Field Goals	3	13	23.1

Official Shot Chart
Houston vs Wichita St.
PERIOD 3 Shots
 March 06, 2020 at Mohegan Sun Arena - Uncasville, Conn.



Wichita St.

Houston



WSU : Period 3	Made	Att	Pct
Layups	2	9	22.2
Dunks	0	0	0
2PT Field Goals	5	18	27.8
3PT Field Goals	1	1	100.0
Total Field Goals	6	19	31.6

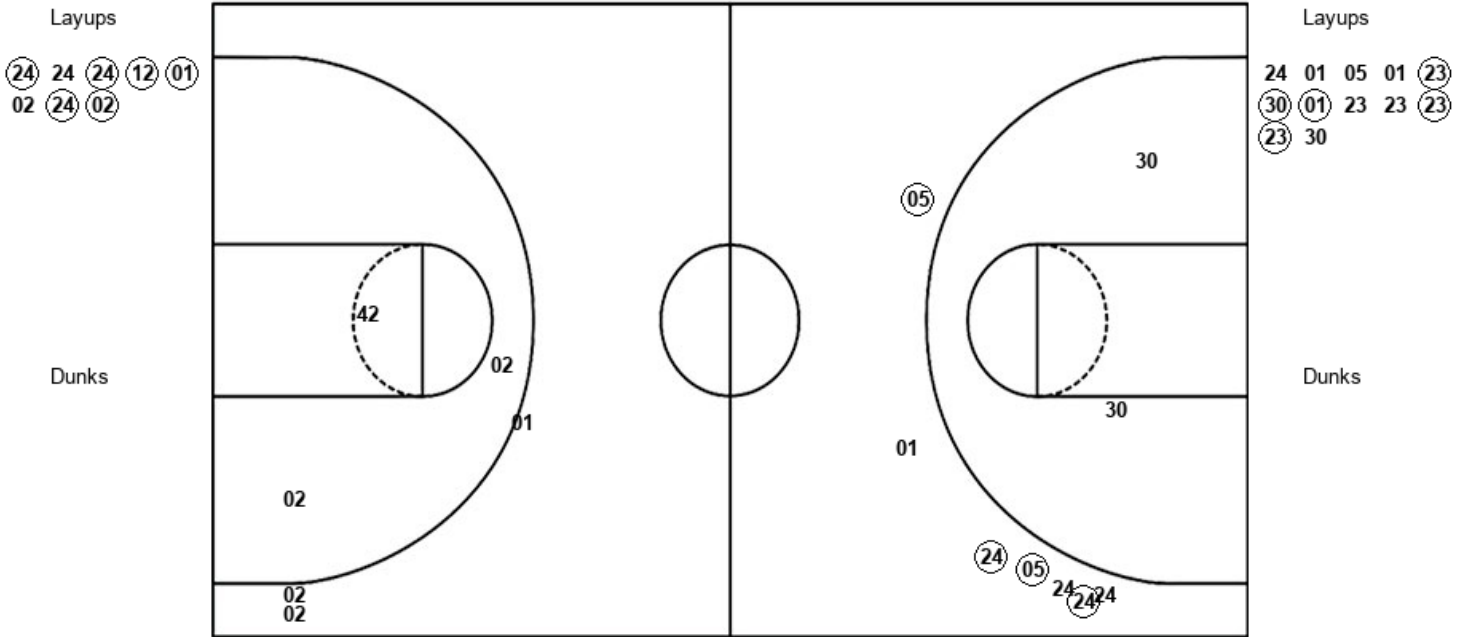
HOU : Period 3	Made	Att	Pct
Layups	3	4	75.0
Dunks	0	0	0
2PT Field Goals	5	9	55.6
3PT Field Goals	3	7	42.9
Total Field Goals	8	16	50.0

Official Shot Chart
Houston vs Wichita St.
PERIOD 4 Shots
 March 06, 2020 at Mohegan Sun Arena - Uncasville, Conn.



Wichita St.

Houston



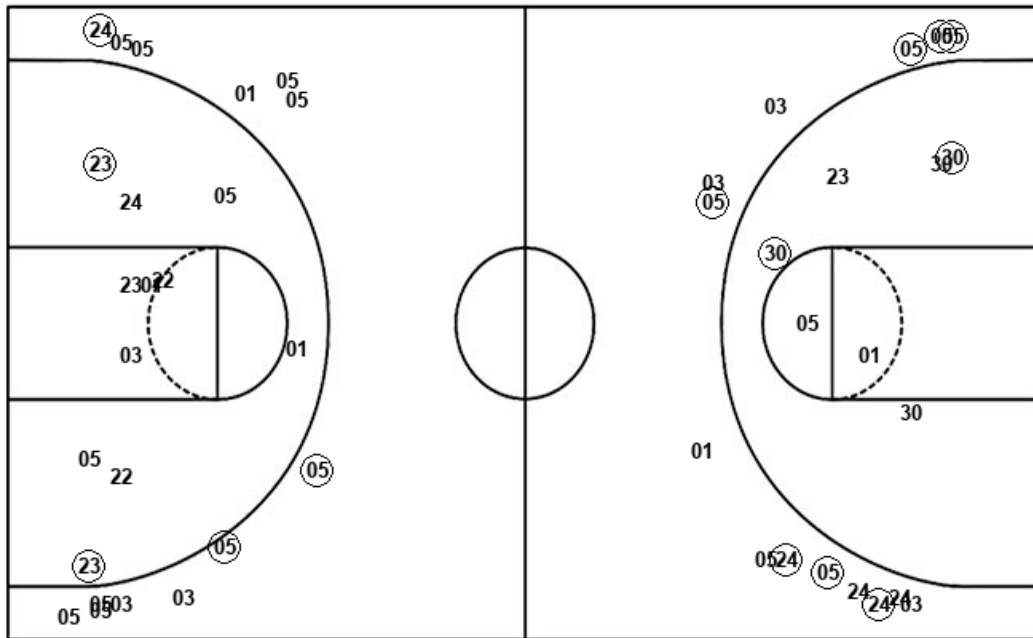
WSU : Period 4	Made	Att	Pct
Layups	6	8	75.0
Dunks	0	0	0
2PT Field Goals	6	11	54.5
3PT Field Goals	0	3	00.0
Total Field Goals	6	14	42.9

HOU : Period 4	Made	Att	Pct
Layups	5	12	41.7
Dunks	0	0	0
2PT Field Goals	5	14	35.7
3PT Field Goals	4	7	57.1
Total Field Goals	9	21	42.9

Official Shot Chart
Houston vs Wichita St.
Houston Team Shots
 March 06, 2020 at Mohegan Sun Arena - Uncasville, Conn.



Layups



Layups

30	30	44	24	30
30	23	30	24	01
05	01	23	30	01
23	23	23	23	30

Dunks

Dunks

HOU : Period 1	Made	Att	Pct
Layups	0	2	00.0
Dunks	0	0	0
2PT Field Goals	2	10	20.0
3PT Field Goals	0	5	00.0
Total Field Goals	2	15	13.3

HOU : Period 2	Made	Att	Pct
Layups	0	2	00.0
Dunks	0	0	0
2PT Field Goals	0	5	00.0
3PT Field Goals	3	8	37.5
Total Field Goals	3	13	23.1

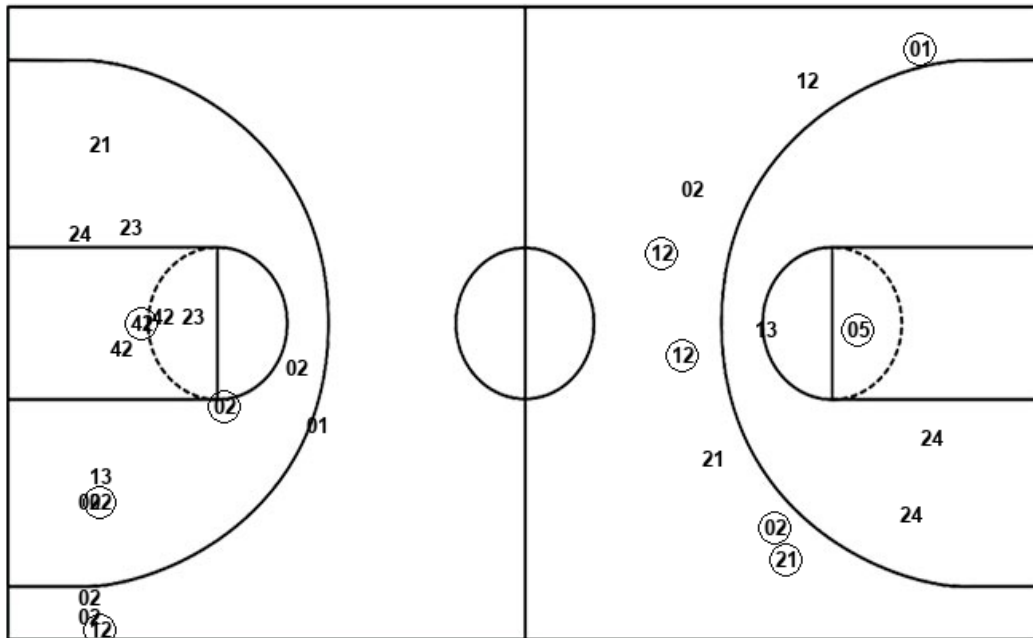
HOU : Period 3	Made	Att	Pct
Layups	3	4	75.0
Dunks	0	0	0
2PT Field Goals	5	9	55.6
3PT Field Goals	3	7	42.9
Total Field Goals	8	16	50.0

HOU : Period 4	Made	Att	Pct
Layups	5	12	41.7
Dunks	0	0	0
2PT Field Goals	5	14	35.7
3PT Field Goals	4	7	57.1
Total Field Goals	9	21	42.9

Official Shot Chart
Houston vs Wichita St.
Wichita St. Team Shots
 March 06, 2020 at Mohegan Sun Arena - Uncasville, Conn.



Layups



Layups

- (13) 02 (13) (21) 02
- (42) (01) (42) 23 (01)
- 24 (24) 21 02 23
- 24 (02) 24 02 (23)
- 01 42 (24) 24 (24)
- (12) (01) 02 (24) (02)

Dunks

Dunks

WSU : Period 1	Made	Att	Pct
Layups	6	8	75.0
Dunks	0	0	0
2PT Field Goals	7	11	63.6
3PT Field Goals	2	3	66.7
Total Field Goals	9	14	64.3

WSU : Period 3	Made	Att	Pct
Layups	2	9	22.2
Dunks	0	0	0
2PT Field Goals	5	18	27.8
3PT Field Goals	1	1	100.0
Total Field Goals	6	19	31.6

WSU : Period 2	Made	Att	Pct
Layups	2	5	40.0
Dunks	0	0	0
2PT Field Goals	2	6	33.3
3PT Field Goals	3	5	60.0
Total Field Goals	5	11	45.5

WSU : Period 4	Made	Att	Pct
Layups	6	8	75.0
Dunks	0	0	0
2PT Field Goals	6	11	54.5
3PT Field Goals	0	3	00.0
Total Field Goals	6	14	42.9