

FINAL SCORE

Cal St. Fullerton

59



Hawaii

72



Big West Tournament Quarterfinals

March 11, 2020 • Walter Pyramid - Long Beach, Calif.



FINAL STATISTICS

Official Box Score
Cal St. Fullerton vs Hawaii
Game Totals -- Final Statistics
March 11, 2020 at Walter Pyramid - Long Beach, Calif.



Cal St. Fullerton 59

No.	Player	S	Pts	FG	3FG	FT	OR	DR	TR	PF	A	TO	Blk	Stl	Min	+/-
02	PEREZ, RAINA	G	10	4-20	0-4	2-2	1	5	6	0	3	5	0	0	36	-6
13	BOOK, AMIEE	F	14	6-13	2-7	0-0	1	5	6	3	1	0	0	0	40	-13
21	TURNERY, TAYLOR	G	16	5-14	0-4	6-7	1	3	4	4	3	2	1	0	35	-19
22	FREEMON, MADISON	F	4	1-3	0-1	2-2	0	7	7	3	0	1	0	2	29	-8
23	GILL, CAROLYN	F	5	1-4	1-2	2-2	3	3	6	3	1	1	0	0	23	-18
00	FREY, ANNIKEN	G	0	0-1	0-1	0-0	0	0	0	0	0	0	0	1	8	-3
04	NEFF, KATHRYN	F	0	0-0	0-0	0-0	0	0	0	0	0	0	0	0	2	1
10	NIETO, MEGAN	F	4	2-2	0-0	0-0	0	0	0	2	0	1	0	0	11	-5
12	ANE, ASHLEE	F	6	2-2	2-2	0-0	0	2	2	2	0	1	0	0	15	6
	TEAM						1	1	2	0		0				
TOTALS			59	21-59	5-21	12-13	7	26	33	17	8	11	1	3	199	

Shooting By Period

Period	FG	FG%	3FG	3FG%	FT	FT%
1st Qtr	2-13	15%	0-4	00%	3-4	75%
2nd Qtr	5-15	33%	1-4	25%	2-2	100%
3rd Qtr	8-14	57%	3-6	50%	0-0	0%
4th Qtr	6-17	35%	1-7	14%	7-7	100%
1st Half	7-28	25%	1-8	13%	5-6	83%
2nd Half	14-31	45%	4-13	31%	7-7	100%
Game	21-59	35.6%	5-21	23.8%	12-13	92.3%

Deadball Rebounds: 0,0
 Last FG: 4th-00:52
 Biggest Run: 10-0
 Largest lead: By 4 at 1st-09:16
 Technical Fouls: None.

Hawaii 72

No.	Player	S	Pts	FG	3FG	FT	OR	DR	TR	PF	A	TO	Blk	Stl	Min	+/-
00	TAGO, JULISSA	G	15	4-9	0-2	7-9	0	5	5	0	1	2	0	0	34	11
02	MIDDAP, COURTNEY	G	3	1-5	1-1	0-0	0	4	4	1	1	0	0	0	20	8
04	REIER, SAVANNAH	G	8	3-5	0-1	2-2	0	2	2	3	5	2	0	1	26	13
14	REWERS, LAUREN	C	4	2-3	0-0	0-0	0	3	3	1	0	1	0	0	12	1
24	CALHOUN, NAE NAE	G	10	3-11	0-3	4-4	1	6	7	2	0	1	0	2	28	19
03	EDWARDS, MAKAYLA	F	0	0-1	0-1	0-0	0	0	0	0	0	1	0	0	5	-5
05	JOSEPH, MYRRAH	F	9	4-6	0-0	1-2	0	6	6	1	3	1	0	3	25	12
15	ALEXANDER, JADYNN	G	7	2-4	2-3	1-2	0	2	2	4	0	0	0	0	13	-4
21	NEUBERT, KASEY	F	9	3-3	1-1	2-2	1	2	3	1	2	0	0	1	19	6
25	ATWELL, AMY	F	7	2-4	2-3	1-2	0	1	1	2	0	1	0	0	17	4
	TEAM						2	1	3	0		0				
TOTALS			72	24-51	6-15	18-23	4	32	36	15	12	9	0	7	199	

Shooting By Period

Period	FG	FG%	3FG	3FG%	FT	FT%
1st Qtr	6-11	55%	1-2	50%	5-6	83%
2nd Qtr	6-16	38%	3-7	43%	0-2	00%
3rd Qtr	6-12	50%	2-6	33%	4-5	80%
4th Qtr	6-12	50%	0-0	0%	9-10	90%
1st Half	12-27	44%	4-9	44%	5-8	63%
2nd Half	12-24	50%	2-6	33%	13-15	87%
Game	24-51	47.1%	6-15	40.0%	18-23	78.3%

Deadball Rebounds: 2,0
 Last FG: 4th-02:30
 Biggest Run: 8-0
 Largest lead: By 21 at 3rd-05:48
 Technical Fouls: None.

Game Notes:

Officials: Jack Jones, Esther Hsu, Janetta Graham

Start Time: 11:33 PM ET
 End Time: 01:25 AM ET
 Game Duration: 1:51
 Neutral Court:

Score	1st	2nd	3rd	4th	TOT
CSF	7	13	19	20	59
HAW	18	15	18	21	72

CSF led for 1:00. HAW led for 36:40.
 Game was tied for 2:10.
 Times tied: 2 Lead Changes: 1

Points from	CSF	HAW
In the Paint	22	26
Off Turns	7	13
2nd Chance	2	6
Fast Break	0	9
Bench	10	32

Official Box Score
Cal St. Fullerton vs Hawaii
First Half Statistics Only
March 11, 2020 at Walter Pyramid - Long Beach, Calif.



Cal St. Fullerton 20

No.	Player	S	Pts	FG	3FG	FT	OR	DR	TR	PF	A	TO	Blk	Stl	Min	+/-
00	FREY, ANNIKEN	G	0	0-0	0-0	0-0	0	0	0	0	0	0	0	0	5	-5
02	PEREZ, RAINA	G	4	2-12	0-3	0-0	1	4	5	0	2	2	0	0	18	-7
04	NEFF, KATHRYN	F	0	0-0	0-0	0-0	0	0	0	0	0	0	0	0	2	1
10	NIETO, MEGAN	F	2	1-1	0-0	0-0	0	0	0	2	0	1	0	0	10	-5
12	ANE, ASHLEE	F	0	0-0	0-0	0-0	0	0	0	0	0	1	0	0	4	3
13	BOOK, AMIEE	F	5	2-5	1-2	0-0	1	3	4	1	0	0	0	0	20	-13
21	TURNEY, TAYLOR	G	5	1-6	0-2	3-4	1	2	3	0	0	1	0	0	17	-14
22	FREEMON, MADISON	F	4	1-2	0-0	2-2	0	3	3	1	0	0	0	0	10	-8
23	GILL, CAROLYN	F	0	0-2	0-1	0-0	1	1	2	2	1	0	0	0	13	-17
	TEAM		0	0-0	0-0	0-0	1	1	2	0	0	0	0	0	0	0
TOTALS			20	7-28	1-8	5-6	5	14	19	6	3	5	0	0	100	

Shooting By Period

Period	FG	FG%	3FG	3FG%	FT	FT%
1st Qtr	2-13	15%	0-4	00%	3-4	75%
2nd Qtr	5-15	33%	1-4	25%	2-2	100%
1st Half	7-28	25%	1-8	13%	5-6	83%
Game	21-59	35.6%	5-21	23.8%	12-13	92.3%

Deadball Rebounds: 0,0

Last FG Half: CSF 2nd-01:06

Hawaii 33

No.	Player	S	Pts	FG	3FG	FT	OR	DR	TR	PF	A	TO	Blk	Stl	Min	+/-
00	TAGO, JULISSA	G	2	0-2	0-2	2-4	0	1	1	0	1	1	0	0	18	9
02	MIDDAP, COURTNEY	G	3	1-4	1-1	0-0	0	3	3	1	1	0	0	0	12	8
03	EDWARDS, MAKAYLA	F	0	0-0	0-0	0-0	0	0	0	0	0	0	0	0	0	0
04	REIER, SAVANNAH	G	0	0-0	0-0	0-0	0	1	1	1	3	0	0	0	14	3
05	JOSEPH, MYRRAH	F	8	4-6	0-0	0-0	0	3	3	1	1	0	0	1	13	13
14	REWERS, LAUREN	C	4	2-3	0-0	0-0	0	2	2	1	0	0	0	0	4	0
15	ALEXANDER, JADYNN	G	3	1-1	1-1	0-0	0	1	1	2	0	0	0	0	5	7
21	NEUBERT, KASEY	F	5	2-2	1-1	0-0	1	2	3	1	1	0	0	0	10	5
24	CALHOUN, NAE NAE	G	4	1-6	0-2	2-2	1	3	4	0	0	1	0	1	14	12
25	ATWELL, AMY	F	4	1-3	1-2	1-2	0	0	0	0	0	1	0	0	11	8
	TEAM		0	0-0	0-0	0-0	1	1	2	0	0	0	0	0	0	0
TOTALS			33	12-27	4-9	5-8	3	17	20	7	7	3	0	2	100	

Shooting By Period

Period	FG	FG%	3FG	3FG%	FT	FT%
1st Qtr	6-11	55%	1-2	50%	5-6	83%
2nd Qtr	6-16	38%	3-7	43%	0-2	00%
1st Half	12-27	44%	4-9	44%	5-8	63%
Game	24-51	47.1%	6-15	40.0%	18-23	78.3%

Deadball Rebounds: 2,0

Last FG Half: HAW 2nd-00:45

Game Notes:

Officials: Jack Jones, Esther Hsu, Janetta Graham

Start Time: 11:33 PM ET

End Time: 01:25 AM ET

Game Duration: 1:51

Neutral Court;

Score	1st	2nd	3rd	4th	TOT
CSF	7	13	19	20	59
HAW	18	15	18	21	72

Points from (This Period)	CSF	HAW
In the Paint	8	12
Off Turns	4	7
2nd Chance	0	4
Fast Break	0	1
Bench	2	20

Official Box Score
Cal St. Fullerton vs Hawaii
First Quarter Statistics Only
March 11, 2020 at Walter Pyramid - Long Beach, Calif.



Cal St. Fullerton 7

No.	Player	S	Pts	FG	3FG	FT	OR	DR	TR	PF	A	TO	Blk	Stl	Min	+/-
02	PEREZ, RAINA	G	0	0-7	0-3	0-0	1	2	3	0	0	2	0	0	10	-11
13	BOOK, AMIEE	F	0	0-0	0-0	0-0	0	0	0	1	0	0	0	0	10	-11
21	TURNEY, TAYLOR	G	3	1-2	0-0	1-2	1	0	1	0	0	1	0	0	10	-11
22	FREEMON, MADISON	F	4	1-2	0-0	2-2	0	1	1	1	0	0	0	0	5	-3
23	GILL, CAROLYN	F	0	0-2	0-1	0-0	1	1	2	2	1	0	0	0	10	-11
00	FREY, ANNIKEN	G	0	0-0	0-0	0-0	0	0	0	0	0	0	0	0	0	0
04	NEFF, KATHRYN	F	0	0-0	0-0	0-0	0	0	0	0	0	0	0	0	0	0
10	NIETO, MEGAN	F	0	0-0	0-0	0-0	0	0	0	1	0	1	0	0	5	-8
12	ANE, ASHLEE	F	0	0-0	0-0	0-0	0	0	0	0	0	0	0	0	0	0
TEAM							0	1	1	0		0				
TOTALS			7	2-13	0-4	3-4	3	5	8	5	1	4	0	0	50	

Shooting By Period

Period	FG	FG%	3FG	3FG%	FT	FT%
1st Qtr	2-13	15%	0-4	00%	3-4	75%
2nd Qtr	5-15	33%	1-4	25%	2-2	100%
1st Half	2-13	15%	0-4	00%	3-4	75%
1st Half	7-28	25%	1-8	13%	5-6	83%
Game	21-59	35.6%	5-21	23.8%	12-13	92.3%

Deadball Rebounds: 0,0

Hawaii 18

No.	Player	S	Pts	FG	3FG	FT	OR	DR	TR	PF	A	TO	Blk	Stl	Min	+/-
00	TAGO, JULISSA	G	2	0-0	0-0	2-2	0	1	1	0	1	1	0	0	8	7
02	MIDDAP, COURTNEY	G	0	0-0	0-0	0-0	0	1	1	1	1	0	0	0	6	5
04	REIER, SAVANNAH	G	0	0-0	0-0	0-0	0	1	1	1	2	0	0	0	7	6
14	REWERS, LAUREN	C	2	1-1	0-0	0-0	0	1	1	1	0	0	0	0	2	0
24	CALHOUN, NAE NAE	G	4	1-4	0-1	2-2	0	2	2	0	0	1	0	1	7	8
03	EDWARDS, MAKAYLA	F	0	0-0	0-0	0-0	0	0	0	0	0	0	0	0	0	0
05	JOSEPH, MYRRAH	F	6	3-4	0-0	0-0	0	1	1	0	0	0	0	1	7	10
15	ALEXANDER, JADYNN	G	3	1-1	1-1	0-0	0	1	1	2	0	0	0	0	5	7
21	NEUBERT, KASEY	F	0	0-0	0-0	0-0	0	0	0	0	0	0	0	0	1	1
25	ATWELL, AMY	F	1	0-1	0-0	1-2	0	0	0	0	0	0	0	0	7	11
TEAM							1	1	2	0		0				
TOTALS			18	6-11	1-2	5-6	1	9	10	5	4	2	0	2	50	

Shooting By Period

Period	FG	FG%	3FG	3FG%	FT	FT%
1st Qtr	6-11	55%	1-2	50%	5-6	83%
2nd Qtr	6-16	38%	3-7	43%	0-2	00%
1st Half	6-11	55%	1-2	50%	5-6	83%
1st Half	12-27	44%	4-9	44%	5-8	63%
Game	24-51	47.1%	6-15	40.0%	18-23	78.3%

Deadball Rebounds: 2,0

Game Notes:

Officials: Jack Jones, Esther Hsu, Janetta Graham

Start Time: 11:33 PM ET
 End Time: 01:25 AM ET
 Game Duration: 1:51
 Neutral Court;

Score	1st	2nd	3rd	4th	TOT
CSF	7	13	19	20	59
HAW	18	15	18	21	72

Points from (This Period)	CSF	HAW
In the Paint	2	10
Off Turns	2	4
2nd Chance	0	2
Fast Break	0	1
Bench	0	10

Official By-By-Play
Cal St. Fullerton vs Hawaii
First Quarter
March 11, 2020 at Walter Pyramid - Long Beach, Calif.



Period 1

Starters:

Cal St. Fullerton: 2 PEREZ, RAINA (G); 13 BOOK, AMIEE (F); 21 TURNEY, TAYLOR (G); 22 FREEMON, MADISON (F); 23 GILL, CAROLYN (F);
Hawaii: 0 TAGO, JULISSA (G); 2 MIDDAP, COURTNEY (G); 4 REIER, SAVANNAH (G); 14 REWERS, LAUREN (C); 24 CALHOUN, NAE NAE (G);

Time	VISITORS: Cal St. Fullerton	Score	Margin	HOME: Hawaii
09:34				FOUL (PERSONAL) by REWERS, LAUREN
09:34	GOOD! FT by FREEMON, MADISON	0-1	V 1	
09:34	GOOD! FT by FREEMON, MADISON	0-2	V 2	
09:25				MISSED LAYUP by CALHOUN, NAE NAE
09:22	REBOUND (DEF) by PEREZ, RAINA			
09:16	GOOD! JUMPER by FREEMON, MADISON	0-4	V 4	
09:16	ASSIST by GILL, CAROLYN			
08:56		2-4	V 2	GOOD! JUMPER by REWERS, LAUREN [PNT]
08:41	MISSED JUMPER by PEREZ, RAINA			
08:35				REBOUND (DEF) by CALHOUN, NAE NAE
08:34	FOUL (PERSONAL) by FREEMON, MADISON			
08:34		3-4	V 1	GOOD! FT by CALHOUN, NAE NAE
08:34		4-4	T	GOOD! FT by CALHOUN, NAE NAE
08:17	MISSED 3PTR by PEREZ, RAINA			
08:14	REBOUND (OFF) by PEREZ, RAINA			
07:59	MISSED JUMPER by PEREZ, RAINA			
07:56				REBOUND (DEF) by REWERS, LAUREN
07:52	FOUL (PERSONAL) by BOOK, AMIEE			
07:52				SUB OUT: REWERS, LAUREN
07:52				SUB IN: JOSEPH, MYRRAH
07:42				MISSED 3PTR by CALHOUN, NAE NAE
07:38	REBOUND (DEF) by FREEMON, MADISON			
07:19	MISSED 3PTR by GILL, CAROLYN			
07:14				REBOUND (DEF) by MIDDAP, COURTNEY
07:09				MISSED JUMPER by JOSEPH, MYRRAH
07:09				REBOUND (OFF) by TEAM
07:09				SUB OUT: MIDDAP, COURTNEY
07:09				SUB OUT: CALHOUN, NAE NAE
07:09				SUB IN: ALEXANDER, JADYNN
07:09				SUB IN: ATWELL, AMY
07:09	SUB OUT: FREEMON, MADISON			
07:09	SUB IN: NIETO, MEGAN			
07:07		6-4	H 2	GOOD! LAYUP by JOSEPH, MYRRAH
07:07				ASSIST by REIER, SAVANNAH
06:36	MISSED JUMPER by TURNEY, TAYLOR			
06:33	REBOUND (OFF) by TURNEY, TAYLOR			
06:23				FOUL (PERSONAL) by REIER, SAVANNAH
06:10	TURNOVER (LOSTBALL) by PEREZ, RAINA			
06:10				STEAL by JOSEPH, MYRRAH
06:03				TURNOVER (BADPASS) by TAGO, JULISSA
05:38	GOOD! JUMPER by TURNEY, TAYLOR [PNT]	6-6	T	
05:21		9-6	H 3	GOOD! 3PTR by ALEXANDER, JADYNN
05:21				ASSIST by REIER, SAVANNAH
05:11				FOUL (PERSONAL) by ALEXANDER, JADYNN
05:11				SUB OUT: REIER, SAVANNAH
05:11				SUB IN: MIDDAP, COURTNEY
04:56	MISSED 3PTR by PEREZ, RAINA			
04:52	REBOUND (OFF) by GILL, CAROLYN			
04:36				FOUL (PERSONAL) by MIDDAP, COURTNEY
04:36				SUB OUT: JOSEPH, MYRRAH
04:36				SUB IN: CALHOUN, NAE NAE
04:36	SUB OUT: NIETO, MEGAN			
04:36	SUB IN: FREEMON, MADISON			
04:36				SUB OUT: TAGO, JULISSA
04:36				SUB IN: JOSEPH, MYRRAH
04:27	MISSED JUMPER by PEREZ, RAINA			
04:24				REBOUND (DEF) by CALHOUN, NAE NAE
04:08		11-6	H 5	GOOD! JUMPER by JOSEPH, MYRRAH [PNT]
04:08				ASSIST by MIDDAP, COURTNEY
03:47	TURNOVER (LOSTBALL) by PEREZ, RAINA			
03:47				STEAL by CALHOUN, NAE NAE
03:36		13-6	H 7	GOOD! LAYUP by CALHOUN, NAE NAE
03:08	MISSED JUMPER by FREEMON, MADISON			
03:04				REBOUND (DEF) by ALEXANDER, JADYNN
02:53				MISSED LAYUP by ATWELL, AMY
02:52	REBOUND (DEF) by TEAM			
02:26				FOUL (PERSONAL) by ALEXANDER, JADYNN
02:26				SUB OUT: ALEXANDER, JADYNN
02:26				SUB IN: TAGO, JULISSA

Time	VISITORS: Cal St. Fullerton	Score	Margin	HOME: Hawaii
02:26	GOOD! FT by TURNEY, TAYLOR	13-7	H 6	
02:25	MISSED FT by TURNEY, TAYLOR			
02:23				REBOUND (DEF) by JOSEPH, MYRRAH
02:10	FOUL (PERSONAL) by GILL, CAROLYN			
02:10	SUB OUT: FREEMON, MADISON			
02:10	SUB IN: NIETO, MEGAN			
02:10		14-7	H 7	GOOD! FT by TAGO, JULISSA
02:10		15-7	H 8	GOOD! FT by TAGO, JULISSA
01:54	TURNOVER (TRAVEL) by TURNEY, TAYLOR			
01:54				SUB OUT: MIDDAP, COURTNEY
01:54				SUB IN: REIER, SAVANNAH
01:35				MISSED LAYUP by CALHOUN, NAE NAE
01:31	REBOUND (DEF) by PEREZ, RAINA			
01:24	FOUL (OFF) by NIETO, MEGAN			
01:24	TURNOVER (OFFENSIVE) by NIETO, MEGAN			
01:11		17-7	H 10	GOOD! LAYUP by JOSEPH, MYRRAH
01:11				ASSIST by TAGO, JULISSA
00:46	MISSED JUMPER by PEREZ, RAINA			
00:43				REBOUND (DEF) by TAGO, JULISSA
00:39	FOUL (PERSONAL) by GILL, CAROLYN			
00:39				SUB OUT: JOSEPH, MYRRAH
00:39				SUB IN: NEUBERT, KASEY
00:39		18-7	H 11	GOOD! FT by ATWELL, AMY [FB]
00:39				MISSED FT by ATWELL, AMY
00:37	REBOUND (DEF) by GILL, CAROLYN			
00:26	MISSED JUMPER by GILL, CAROLYN			
00:22				REBOUND (DEF) by REIER, SAVANNAH
00:02				TURNOVER (TRAVEL) by CALHOUN, NAE NAE
00:02	SUB OUT: GILL, CAROLYN			
00:02	SUB IN: NEFF, KATHRYN			
00:00	MISSED 3PTR by PEREZ, RAINA			
00:00				REBOUND (DEF) by TEAM

Cal St. Fullerton 7, Hawaii 18

Points from (This Period)	CSF	HAW
In the Paint	2	10
Off Turns	2	4
2nd Chance	0	2
Fast Break	0	1
Bench	0	10

Official Box Score
Cal St. Fullerton vs Hawaii
Second Quarter Statistics Only
March 11, 2020 at Walter Pyramid - Long Beach, Calif.



Cal St. Fullerton 13

No.	Player	S	Pts	FG	3FG	FT	OR	DR	TR	PF	A	TO	Blk	Stl	Min	+/-
02	PEREZ, RAINA	G	4	2-5	0-0	0-0	0	2	2	0	2	0	0	0	8	4
13	BOOK, AMIEE	F	5	2-5	1-2	0-0	1	3	4	0	0	0	0	0	10	-2
21	TURNEY, TAYLOR	G	2	0-4	0-2	2-2	0	2	2	0	0	0	0	0	7	-3
22	FREEMON, MADISON	F	0	0-0	0-0	0-0	0	2	2	0	0	0	0	0	5	-5
23	GILL, CAROLYN	F	0	0-0	0-0	0-0	0	0	0	0	0	0	0	0	3	-6
00	FREY, ANNIKEN	G	0	0-0	0-0	0-0	0	0	0	0	0	0	0	0	5	-5
04	NEFF, KATHRYN	F	0	0-0	0-0	0-0	0	0	0	0	0	0	0	0	2	1
10	NIETO, MEGAN	F	2	1-1	0-0	0-0	0	0	0	1	0	0	0	0	5	3
12	ANE, ASHLEE	F	0	0-0	0-0	0-0	0	0	0	0	0	1	0	0	4	3
TEAM							1	0	1	0	0	0	0	0		
TOTALS			13	5-15	1-4	2-2	2	9	11	1	2	1	0	0	50	

Shooting By Period

Period	FG	FG%	3FG	3FG%	FT	FT%
3rd Qtr	8-14	57%	3-6	50%	0-0	0%
4th Qtr	6-17	35%	1-7	14%	7-7	100%
2nd Half	5-15	33%	1-4	25%	2-2	100%
2nd Half	14-31	45%	4-13	31%	7-7	100%
Game	21-59	35.6%	5-21	23.8%	12-13	92.3%

Deadball Rebounds: 0,0

Hawaii 15

No.	Player	S	Pts	FG	3FG	FT	OR	DR	TR	PF	A	TO	Blk	Stl	Min	+/-
00	TAGO, JULISSA	G	0	0-2	0-2	0-2	0	0	0	0	0	0	0	0	10	2
02	MIDDAP, COURTNEY	G	3	1-4	1-1	0-0	0	2	2	0	0	0	0	0	6	3
04	REIER, SAVANNAH	G	0	0-0	0-0	0-0	0	0	0	0	1	0	0	0	7	-3
14	REWERS, LAUREN	C	2	1-2	0-0	0-0	0	1	1	0	0	0	0	0	2	0
24	CALHOUN, NAE NAE	G	0	0-2	0-1	0-0	1	1	2	0	0	0	0	0	7	4
03	EDWARDS, MAKAYLA	F	0	0-0	0-0	0-0	0	0	0	0	0	0	0	0	0	0
05	JOSEPH, MYRRAH	F	2	1-2	0-0	0-0	0	2	2	1	1	0	0	0	6	3
15	ALEXANDER, JADYNN	G	0	0-0	0-0	0-0	0	0	0	0	0	0	0	0	0	0
21	NEUBERT, KASEY	F	5	2-2	1-1	0-0	1	2	3	1	1	0	0	0	9	4
25	ATWELL, AMY	F	3	1-2	1-2	0-0	0	0	0	0	0	1	0	0	4	-3
TEAM							0	0	0	0	0	0	0	0		
TOTALS			15	6-16	3-7	0-2	2	8	10	2	3	1	0	0	50	

Shooting By Period

Period	FG	FG%	3FG	3FG%	FT	FT%
3rd Qtr	6-12	50%	2-6	33%	4-5	80%
4th Qtr	6-12	50%	0-0	0%	9-10	90%
2nd Half	6-16	38%	3-7	43%	0-2	00%
2nd Half	12-24	50%	2-6	33%	13-15	87%
Game	24-51	47.1%	6-15	40.0%	18-23	78.3%

Deadball Rebounds: 2,0

Game Notes:

Officials: Jack Jones, Esther Hsu, Janetta Graham

Start Time: 11:33 PM ET
 End Time: 01:25 AM ET
 Game Duration: 1:51
 Neutral Court;

Score	1st	2nd	3rd	4th	TOT
CSF	7	13	19	20	59
HAW	18	15	18	21	72

Points from (This Period)	CSF	HAW
In the Paint	6	2
Off Turns	2	3
2nd Chance	0	2
Fast Break	0	0
Bench	2	10

Official Play-By-Play
Cal St. Fullerton vs Hawaii
Second Quarter
March 11, 2020 at Walter Pyramid - Long Beach, Calif.



Period 2

Starters:

Cal St. Fullerton: 2 PEREZ, RAINA (G); 13 BOOK, AMIEE (F); 21 TURNEY, TAYLOR (G); 22 FREEMON, MADISON (F); 23 GILL, CAROLYN (F);
Hawaii: 0 TAGO, JULISSA (G); 2 MIDDAP, COURTNEY (G); 4 REIER, SAVANNAH (G); 14 REWERS, LAUREN (C); 24 CALHOUN, NAE NAE (G);

Time	VISITORS: Cal St. Fullerton	Score	Margin	HOME: Hawaii
09:42				MISSED 3PTR by TAGO, JULISSA
09:37				REBOUND (OFF) by CALHOUN, NAE NAE
09:29				MISSED 3PTR by CALHOUN, NAE NAE
09:25	REBOUND (DEF) by BOOK, AMIEE			
08:59	GOOD! JUMPER by PEREZ, RAINA	18-9	H 9	
08:32		21-9	H 12	GOOD! 3PTR by ATWELL, AMY
08:32				ASSIST by REIER, SAVANNAH
08:16	GOOD! FT by TURNEY, TAYLOR	21-10	H 11	
08:16	GOOD! FT by TURNEY, TAYLOR	21-11	H 10	
08:16				FOUL (PERSONAL) by NEUBERT, KASEY
08:00				MISSED JUMPER by JOSEPH, MYRRAH
08:00	REBOUND (DEF) by BOOK, AMIEE			
08:00				FOUL (PERSONAL) by JOSEPH, MYRRAH
08:00	MISSED LAYUP by TURNEY, TAYLOR			
08:00				REBOUND (DEF) by JOSEPH, MYRRAH
07:40				SUB OUT: NEUBERT, KASEY
07:40				SUB OUT: CALHOUN, NAE NAE
07:40				SUB IN: MIDDAP, COURTNEY
07:40				SUB IN: JOSEPH, MYRRAH
07:40	SUB OUT: NEFF, KATHRYN			
07:40	SUB IN: ANE, ASHLEE			
07:33				MISSED LAYUP by MIDDAP, COURTNEY
07:25	REBOUND (DEF) by PEREZ, RAINA			
07:20	GOOD! JUMPER by PEREZ, RAINA	21-13	H 8	
07:15				MISSED JUMPER by MIDDAP, COURTNEY
07:11	REBOUND (DEF) by TURNEY, TAYLOR			
06:59	MISSED 3PTR by BOOK, AMIEE			
06:55	REBOUND (OFF) by BOOK, AMIEE			
06:54	MISSED JUMPER by BOOK, AMIEE			
06:52				REBOUND (DEF) by JOSEPH, MYRRAH
06:45				MISSED 3PTR by ATWELL, AMY
06:42	REBOUND (DEF) by TURNEY, TAYLOR			
06:38	MISSED JUMPER by TURNEY, TAYLOR			
06:34				REBOUND (DEF) by MIDDAP, COURTNEY
06:10				TURNOVER (TRAVEL) by ATWELL, AMY
06:10	SUB OUT: TURNEY, TAYLOR			
06:10	SUB IN: FREY, ANNIKEN			
06:10				SUB OUT: ATWELL, AMY
06:10				SUB IN: NEUBERT, KASEY
05:45	GOOD! JUMPER by NIETO, MEGAN	21-15	H 6	
05:45	ASSIST by PEREZ, RAINA			
05:24		23-15	H 8	GOOD! JUMPER by JOSEPH, MYRRAH
05:07	MISSED LAYUP by PEREZ, RAINA			
05:04				REBOUND (DEF) by NEUBERT, KASEY
04:57	FOUL (PERSONAL) by NIETO, MEGAN			
04:57				SUB OUT: REIER, SAVANNAH
04:57				SUB IN: CALHOUN, NAE NAE
04:57	SUB OUT: NIETO, MEGAN			
04:57	SUB IN: FREEMON, MADISON			
04:57				MISSED FT by TAGO, JULISSA
04:57				REBOUND (OFF) by TEAM
04:57				MISSED FT by TAGO, JULISSA
04:57	REBOUND (DEF) by BOOK, AMIEE			
04:45	GOOD! 3PTR by BOOK, AMIEE	23-18	H 5	
04:45	ASSIST by PEREZ, RAINA			
04:25				MISSED 3PTR by TAGO, JULISSA
04:22	REBOUND (DEF) by FREEMON, MADISON			
04:03	MISSED JUMPER by PEREZ, RAINA			
03:58				REBOUND (DEF) by CALHOUN, NAE NAE
03:51				MISSED JUMPER by MIDDAP, COURTNEY
03:44				REBOUND (OFF) by NEUBERT, KASEY
03:43		25-18	H 7	GOOD! JUMPER by NEUBERT, KASEY
03:19	TURNOVER (TRAVEL) by ANE, ASHLEE			
03:19	SUB OUT: PEREZ, RAINA			
03:19	SUB OUT: ANE, ASHLEE			
03:19	SUB IN: TURNEY, TAYLOR			
03:19	SUB IN: GILL, CAROLYN			
03:01		28-18	H 10	GOOD! 3PTR by MIDDAP, COURTNEY
03:01				ASSIST by NEUBERT, KASEY

Time	VISITORS: Cal St. Fullerton	Score	Margin	HOME: Hawaii
02:29	MISSED JUMPER by BOOK, AMIEE			
02:25				REBOUND (DEF) by MIDDAP, COURTNEY
02:01		31-18	H 13	GOOD! 3PTR by NEUBERT, KASEY
02:01				ASSIST by JOSEPH, MYRRAH
01:50	MISSED 3PTR by TURNEY, TAYLOR			
01:47				REBOUND (DEF) by NEUBERT, KASEY
01:34				SUB OUT: MIDDAP, COURTNEY
01:34				SUB OUT: JOSEPH, MYRRAH
01:34				SUB IN: REIER, SAVANNAH
01:34	SUB OUT: FREY, ANNIKEN			SUB IN: REWERS, LAUREN
01:34	SUB IN: PEREZ, RAINA			
01:18				MISSED JUMPER by REWERS, LAUREN
01:15	REBOUND (DEF) by PEREZ, RAINA			
01:06	GOOD! JUMPER by BOOK, AMIEE [PNT]	31-20	H 11	
00:45		33-20	H 13	GOOD! JUMPER by REWERS, LAUREN
00:32	MISSED JUMPER by PEREZ, RAINA			
00:27				REBOUND (DEF) by REWERS, LAUREN
00:04				MISSED JUMPER by CALHOUN, NAE NAE
00:01	REBOUND (DEF) by FREEMON, MADISON			
00:00	MISSED 3PTR by TURNEY, TAYLOR			
00:00	REBOUND (OFF) by TEAM			

Cal St. Fullerton 20, Hawaii 33

Points from (This Period)	CSF	HAW
In the Paint	6	2
Off Turns	2	3
2nd Chance	0	2
Fast Break	0	0
Bench	2	10

Official Box Score
Cal St. Fullerton vs Hawaii
Second Half Statistics Only
March 11, 2020 at Walter Pyramid - Long Beach, Calif.



Cal St. Fullerton 39

No.	Player	S	Pts	FG	3FG	FT	OR	DR	TR	PF	A	TO	Blk	Stl	Min	+/-
00	FREY, ANNIKEN	G	0	0-1	0-1	0-0	0	0	0	0	0	0	0	1	3	2
02	PEREZ, RAINA	G	6	2-8	0-1	2-2	0	1	1	0	1	3	0	0	18	1
04	NEFF, KATHRYN	F	0	0-0	0-0	0-0	0	0	0	0	0	0	0	0	0	0
10	NIETO, MEGAN	F	2	1-1	0-0	0-0	0	0	0	0	0	0	0	0	1	0
12	ANE, ASHLEE	F	6	2-2	2-2	0-0	0	2	2	2	0	0	0	0	10	3
13	BOOK, AMIEE	F	9	4-8	1-5	0-0	0	2	2	2	1	0	0	0	20	0
21	TURNERY, TAYLOR	G	11	4-8	0-2	3-3	0	1	1	4	3	1	1	0	19	-5
22	FREEMON, MADISON	F	0	0-1	0-1	0-0	0	4	4	2	0	1	0	2	18	0
23	GILL, CAROLYN	F	5	1-2	1-1	2-2	2	2	4	1	0	1	0	0	10	-1
	TEAM		0	0-0	0-0	0-0	0	0	0	0	0	0	0	0	0	0
TOTALS			39	14-31	4-13	7-7	2	12	14	11	5	6	1	3	99	

Shooting By Period

Period	FG	FG%	3FG	3FG%	FT	FT%
3rd Qtr	8-14	57%	3-6	50%	0-0	0%
4th Qtr	6-17	35%	1-7	14%	7-7	100%
2nd Half	14-31	45%	4-13	31%	7-7	100%
Game	21-59	35.6%	5-21	23.8%	12-13	92.3%

Deadball Rebounds: 0,0
 Last FG Half: CSF 4th-00:52

Hawaii 39

No.	Player	S	Pts	FG	3FG	FT	OR	DR	TR	PF	A	TO	Blk	Stl	Min	+/-
00	TAGO, JULISSA	G	13	4-7	0-0	5-5	0	4	4	0	0	1	0	0	17	2
02	MIDDAP, COURTNEY	G	0	0-1	0-0	0-0	0	1	1	0	0	0	0	0	8	0
03	EDWARDS, MAKAYLA	F	0	0-1	0-1	0-0	0	0	0	0	0	1	0	0	5	-5
04	REIER, SAVANNAH	G	8	3-5	0-1	2-2	0	1	1	2	2	2	0	1	12	10
05	JOSEPH, MYRRAH	F	1	0-0	0-0	1-2	0	3	3	0	2	1	0	2	12	-1
14	REWERS, LAUREN	C	0	0-0	0-0	0-0	0	1	1	0	0	1	0	0	8	1
15	ALEXANDER, JADYNN	G	4	1-3	1-2	1-2	0	1	1	2	0	0	0	0	8	-11
21	NEUBERT, KASEY	F	4	1-1	0-0	2-2	0	0	0	0	1	0	0	1	10	1
24	CALHOUN, NAE NAE	G	6	2-5	0-1	2-2	0	3	3	2	0	0	0	1	13	7
25	ATWELL, AMY	F	3	1-1	1-1	0-0	0	1	1	2	0	0	0	0	6	-4
	TEAM		0	0-0	0-0	0-0	1	0	1	0	0	0	0	0	0	0
TOTALS			39	12-24	2-6	13-15	1	15	16	8	5	6	0	5	99	

Shooting By Period

Period	FG	FG%	3FG	3FG%	FT	FT%
3rd Qtr	6-12	50%	2-6	33%	4-5	80%
4th Qtr	6-12	50%	0-0	0%	9-10	90%
2nd Half	12-24	50%	2-6	33%	13-15	87%
Game	24-51	47.1%	6-15	40.0%	18-23	78.3%

Deadball Rebounds: 2,0
 Last FG Half: HAW 4th-02:30

Game Notes:

Officials: Jack Jones, Esther Hsu, Janetta Graham

Start Time: 11:33 PM ET

End Time: 01:25 AM ET

Game Duration: 1:51

Neutral Court;

Score	1st	2nd	3rd	4th	TOT
CSF	7	13	19	20	59
HAW	18	15	18	21	72

Points from (This Period)	CSF	HAW
In the Paint	14	14
Off Turns	3	6
2nd Chance	2	2
Fast Break	0	8
Bench	8	12

Official Box Score
Cal St. Fullerton vs Hawaii
Third Quarter Statistics Only
March 11, 2020 at Walter Pyramid - Long Beach, Calif.



Cal St. Fullerton 39

No.	Player	S	Pts	FG	3FG	FT	OR	DR	TR	PF	A	TO	Blk	Stl	Min	+/-
02	PEREZ, RAINA	G	0	0-3	0-0	0-0	0	0	0	0	1	2	0	0	8	2
13	BOOK, AMIEE	F	9	4-5	1-2	0-0	0	1	1	1	0	0	0	0	10	1
21	TURNEY, TAYLOR	G	4	2-2	0-0	0-0	0	0	0	2	2	0	0	0	9	-2
22	FREEMON, MADISON	F	0	0-1	0-1	0-0	0	2	2	0	0	0	0	2	10	1
23	GILL, CAROLYN	F	0	0-0	0-0	0-0	0	0	0	1	0	1	0	0	3	-4
00	FREY, ANNIKEN	G	0	0-1	0-1	0-0	0	0	0	0	0	0	0	0	3	2
04	NEFF, KATHRYN	F	0	0-0	0-0	0-0	0	0	0	0	0	0	0	0	0	0
10	NIETO, MEGAN	F	0	0-0	0-0	0-0	0	0	0	0	0	0	0	0	0	0
12	ANE, ASHLEE	F	6	2-2	2-2	0-0	0	2	2	0	0	0	0	0	7	5
TEAM							0	0	0	0		0				
TOTALS			19	8-14	3-6	0-0	0	5	5	4	3	3	0	2	50	

Shooting By Period

Period	FG	FG%	3FG	3FG%	FT	FT%
2nd Half	0-0	0%	0-0	0%	0-0	0%
Game	21-59	35.6%	5-21	23.8%	12-13	92.3%

Deadball Rebounds: 0.0

Hawaii 39

No.	Player	S	Pts	FG	3FG	FT	OR	DR	TR	PF	A	TO	Blk	Stl	Min	+/-
00	TAGO, JULISSA	G	3	1-2	0-0	1-1	0	2	2	0	0	0	0	0	7	1
02	MIDDAP, COURTNEY	G	0	0-0	0-0	0-0	0	0	0	0	0	0	0	0	4	3
04	REIER, SAVANNAH	G	6	3-4	0-1	0-0	0	0	0	0	2	2	0	1	6	6
14	REWERS, LAUREN	C	0	0-0	0-0	0-0	0	1	1	0	0	0	0	0	5	4
24	CALHOUN, NAE NAE	G	2	0-2	0-1	2-2	0	0	0	0	0	0	0	1	7	3
03	EDWARDS, MAKAYLA	F	0	0-1	0-1	0-0	0	0	0	0	0	1	0	0	5	-5
05	JOSEPH, MYRRAH	F	0	0-0	0-0	0-0	0	1	1	0	0	0	0	1	5	-5
15	ALEXANDER, JADYNN	G	4	1-2	1-2	1-2	0	1	1	0	0	0	0	0	5	-8
21	NEUBERT, KASEY	F	0	0-0	0-0	0-0	0	0	0	0	0	0	0	0	0	0
25	ATWELL, AMY	F	3	1-1	1-1	0-0	0	1	1	2	0	0	0	0	6	-4
TEAM							1	0	1	0		0				
TOTALS			18	6-12	2-6	4-5	1	6	7	2	2	3	0	3	50	

Shooting By Period

Period	FG	FG%	3FG	3FG%	FT	FT%
2nd Half	0-0	0%	0-0	0%	0-0	0%
Game	24-51	47.1%	6-15	40.0%	18-23	78.3%

Deadball Rebounds: 2.0

Game Notes:

Officials: Jack Jones, Esther Hsu, Janetta Graham

Start Time: 11:33 PM ET

End Time: 01:25 AM ET

Game Duration: 1:51

Neutral Court;

Score	1st	2nd	3rd	4th	TOT
CSF	7	13	19	20	59
HAW	18	15	18	21	72

Points from (This Period)	CSF	HAW
In the Paint	4	4
Off Turns	0	2
2nd Chance	0	2
Fast Break	0	2
Bench	6	7

Official By-By-Play
Cal St. Fullerton vs Hawaii
Third Quarter
March 11, 2020 at Walter Pyramid - Long Beach, Calif.



Period 3

Starters:

Cal St. Fullerton: 2 PEREZ, RAINA (G); 13 BOOK, AMIEE (F); 21 TURNEY, TAYLOR (G); 22 FREEMON, MADISON (F); 23 GILL, CAROLYN (F);
Hawaii: 0 TAGO, JULISSA (G); 2 MIDDAP, COURTNEY (G); 4 REIER, SAVANNAH (G); 14 REWERS, LAUREN (C); 24 CALHOUN, NAE NAE (G);

Time	VISITORS: Cal St. Fullerton	Score	Margin	HOME: Hawaii
10:00				SUB OUT: NEUBERT, KASEY
10:00				SUB IN: MIDDAP, COURTNEY
09:47	GOOD! JUMPER by BOOK, AMIEE	33-22	H 11	
09:22				TURNOVER (BADPASS) by REIER, SAVANNAH
09:22	STEAL by FREEMON, MADISON			
09:09	MISSED JUMPER by PEREZ, RAINA			
09:06				REBOUND (DEF) by TAGO, JULISSA
08:51		35-22	H 13	GOOD! JUMPER by REIER, SAVANNAH
08:30	MISSED 3PTR by BOOK, AMIEE			
08:26				REBOUND (DEF) by TAGO, JULISSA
08:15				MISSED 3PTR by CALHOUN, NAE NAE
08:13				REBOUND (OFF) by TEAM
07:56		37-22	H 15	GOOD! JUMPER by REIER, SAVANNAH
07:40	TURNOVER (BADPASS) by GILL, CAROLYN			
07:40				STEAL by REIER, SAVANNAH
07:31				TURNOVER (BADPASS) by REIER, SAVANNAH
07:31	STEAL by FREEMON, MADISON			
07:24	MISSED JUMPER by PEREZ, RAINA			
07:21				REBOUND (DEF) by REWERS, LAUREN
07:13		39-22	H 17	GOOD! LAYUP by TAGO, JULISSA
07:13	FOUL (PERSONAL) by GILL, CAROLYN			
07:13	SUB OUT: GILL, CAROLYN			
07:13	SUB IN: ANE, ASHLEE			
07:13		40-22	H 18	GOOD! FT by TAGO, JULISSA
06:54	GOOD! JUMPER by BOOK, AMIEE	40-24	H 16	
06:24				MISSED 3PTR by REIER, SAVANNAH
06:20	REBOUND (DEF) by BOOK, AMIEE			
06:15	TURNOVER (LOSTBALL) by PEREZ, RAINA			
06:15				STEAL by CALHOUN, NAE NAE
06:11	FOUL (PERSONAL) by BOOK, AMIEE			
06:11	SUB OUT: PEREZ, RAINA			
06:11	SUB IN: FREY, ANNIKEN			
06:11				SUB OUT: MIDDAP, COURTNEY
06:11				SUB IN: ATWELL, AMY
06:11		41-24	H 17	GOOD! FT by CALHOUN, NAE NAE [FB]
06:11		42-24	H 18	GOOD! FT by CALHOUN, NAE NAE [FB]
06:11				SUB OUT: CALHOUN, NAE NAE
06:11				SUB IN: ALEXANDER, JADYNN
05:57	MISSED 3PTR by FREEMON, MADISON			
05:53				REBOUND (DEF) by ALEXANDER, JADYNN
05:48		45-24	H 21	GOOD! 3PTR by ALEXANDER, JADYNN
05:48				ASSIST by REIER, SAVANNAH
05:33	GOOD! JUMPER by BOOK, AMIEE	45-26	H 19	
05:06				MISSED LAYUP by TAGO, JULISSA
05:03	REBOUND (DEF) by ANE, ASHLEE			
04:57	GOOD! LAYUP by TURNEY, TAYLOR	45-28	H 17	
04:37	FOUL (PERSONAL) by TURNEY, TAYLOR			
04:37				
04:37	SUB OUT: TURNEY, TAYLOR			
04:37	SUB IN: PEREZ, RAINA			
04:37				SUB OUT: REIER, SAVANNAH
04:37				SUB OUT: REWERS, LAUREN
04:37				SUB IN: EDWARDS, MAKAYLA
04:37				SUB IN: JOSEPH, MYRRAH
04:31				TURNOVER (BADPASS) by EDWARDS, MAKAYLA
04:16				FOUL (PERSONAL) by ATWELL, AMY
04:09	MISSED 3PTR by FREY, ANNIKEN			
04:05				REBOUND (DEF) by JOSEPH, MYRRAH
03:44				MISSED 3PTR by ALEXANDER, JADYNN
03:40	REBOUND (DEF) by FREEMON, MADISON			
03:24	GOOD! 3PTR by ANE, ASHLEE	45-31	H 14	
03:24	ASSIST by PEREZ, RAINA			
03:11				SUB OUT: TAGO, JULISSA
03:11				SUB IN: CALHOUN, NAE NAE
03:11	SUB OUT: FREY, ANNIKEN			
03:11	SUB IN: TURNEY, TAYLOR			
02:55				MISSED JUMPER by CALHOUN, NAE NAE
02:52	REBOUND (DEF) by FREEMON, MADISON			
02:47	TURNOVER (LOSTBALL) by PEREZ, RAINA			
02:47				STEAL by JOSEPH, MYRRAH

Time	VISITORS: Cal St. Fullerton	Score	Margin	HOME: Hawaii
02:17				MISSED 3PTR by EDWARDS, MAKAYLA
02:15	REBOUND (DEF) by ANE, ASHLEE			
02:15				FOUL (PERSONAL) by ATWELL, AMY
01:53	GOOD! 3PTR by ANE, ASHLEE	45-34	H 11	
01:53	ASSIST by TURNEY, TAYLOR			
01:34	FOUL (PERSONAL) by TURNEY, TAYLOR			
01:34				MISSED FT by ALEXANDER, JADYNN
01:34				REBOUND (OFF) by TEAM
01:34		46-34	H 12	GOOD! FT by ALEXANDER, JADYNN
01:22	GOOD! LAYUP by TURNEY, TAYLOR [PNT]	46-36	H 10	
01:06				SUB OUT: ALEXANDER, JADYNN
01:06				SUB IN: REIER, SAVANNAH
00:57		48-36	H 12	GOOD! LAYUP by REIER, SAVANNAH
00:40	MISSED JUMPER by PEREZ, RAINA			
00:36				REBOUND (DEF) by ATWELL, AMY
00:24		51-36	H 15	GOOD! 3PTR by ATWELL, AMY
00:24				ASSIST by REIER, SAVANNAH
00:04	GOOD! 3PTR by BOOK, AMIEE	51-39	H 12	
00:04	ASSIST by TURNEY, TAYLOR			

Cal St. Fullerton 39, Hawaii 51

Points from (This Period)	CSF	HAW
In the Paint	4	4
Off Turns	0	2
2nd Chance	0	2
Fast Break	0	2
Bench	6	7

Official Box Score
Cal St. Fullerton vs Hawaii
Fourth Quarter Statistics Only
March 11, 2020 at Walter Pyramid - Long Beach, Calif.



Cal St. Fullerton 20

No.	Player	S	Pts	FG	3FG	FT	OR	DR	TR	PF	A	TO	Blk	Stl	Min	+/-
02	PEREZ, RAINA	G	6	2-5	0-1	2-2	0	1	1	0	0	1	0	0	10	-1
13	BOOK, AMIEE	F	0	0-3	0-3	0-0	0	1	1	1	1	0	0	0	10	-1
21	TURNEY, TAYLOR	G	7	2-6	0-2	3-3	0	1	1	2	1	1	1	0	10	-3
22	FREEMON, MADISON	F	0	0-0	0-0	0-0	0	2	2	2	0	1	0	0	8	-1
23	GILL, CAROLYN	F	5	1-2	1-1	2-2	2	2	4	0	0	0	0	0	7	3
00	FREY, ANNIKEN	G	0	0-0	0-0	0-0	0	0	0	0	0	0	0	1	0	0
04	NEFF, KATHRYN	F	0	0-0	0-0	0-0	0	0	0	0	0	0	0	0	0	0
10	NIETO, MEGAN	F	2	1-1	0-0	0-0	0	0	0	0	0	0	0	0	1	0
12	ANE, ASHLEE	F	0	0-0	0-0	0-0	0	0	0	2	0	0	0	0	3	-2
	TEAM						0	0	0	0		0				
TOTALS			20	6-17	1-7	7-7	2	7	9	7	2	3	1	1	49	

Shooting By Period

Period	FG	FG%	3FG	3FG%	FT	FT%	Deadball Rebounds: 0,0
Game	21-59	35.6%	5-21	23.8%	12-13	92.3%	

Hawaii 21

No.	Player	S	Pts	FG	3FG	FT	OR	DR	TR	PF	A	TO	Blk	Stl	Min	+/-
00	TAGO, JULISSA	G	10	3-5	0-0	4-4	0	2	2	0	0	1	0	0	10	1
02	MIDDAP, COURTNEY	G	0	0-1	0-0	0-0	0	1	1	0	0	0	0	0	4	-3
04	REIER, SAVANNAH	G	2	0-1	0-0	2-2	0	1	1	2	0	0	0	0	6	4
14	REWERS, LAUREN	C	0	0-0	0-0	0-0	0	0	0	0	0	1	0	0	3	-3
24	CALHOUN, NAE NAE	G	4	2-3	0-0	0-0	0	3	3	2	0	0	0	0	6	4
03	EDWARDS, MAKAYLA	F	0	0-0	0-0	0-0	0	0	0	0	0	0	0	0	0	0
05	JOSEPH, MYRRAH	F	1	0-0	0-0	1-2	0	2	2	0	2	1	0	1	7	4
15	ALEXANDER, JADYNN	G	0	0-1	0-0	0-0	0	0	0	2	0	0	0	0	3	-3
21	NEUBERT, KASEY	F	4	1-1	0-0	2-2	0	0	0	0	1	0	0	1	10	1
25	ATWELL, AMY	F	0	0-0	0-0	0-0	0	0	0	0	0	0	0	0	0	0
	TEAM						0	0	0	0		0				
TOTALS			21	6-12	0-0	9-10	0	9	9	6	3	3	0	2	49	

Shooting By Period

Period	FG	FG%	3FG	3FG%	FT	FT%	Deadball Rebounds: 2,0
Game	24-51	47.1%	6-15	40.0%	18-23	78.3%	

Game Notes:

Officials: Jack Jones, Esther Hsu, Janetta Graham

Start Time: 11:33 PM ET

End Time: 01:25 AM ET

Game Duration: 1:51

Neutral Court;

Score	1st	2nd	3rd	4th	TOT
CSF	7	13	19	20	59
HAW	18	15	18	21	72

Points from (This Period)	CSF	HAW
In the Paint	10	10
Off Turns	3	4
2nd Chance	2	0
Fast Break	0	6
Bench	2	5

Official By-By-Play
Cal St. Fullerton vs Hawaii
Fourth Quarter
March 11, 2020 at Walter Pyramid - Long Beach, Calif.



Period 4

Starters:

Cal St. Fullerton: 2 PEREZ, RAINA (G); 13 BOOK, AMIEE (F); 21 TURNEY, TAYLOR (G); 22 FREEMON, MADISON (F); 23 GILL, CAROLYN (F);
Hawaii: 0 TAGO, JULISSA (G); 2 MIDDAP, COURTNEY (G); 4 REIER, SAVANNAH (G); 14 REWERS, LAUREN (C); 24 CALHOUN, NAE NAE (G);

Time	VISITORS: Cal St. Fullerton	Score	Margin	HOME: Hawaii
10:00				SUB OUT: EDWARDS, MAKAYLA
10:00				SUB OUT: ATWELL, AMY
10:00				SUB IN: TAGO, JULISSA
10:00				SUB IN: NEUBERT, KASEY
09:51	MISSED 3PTR by TURNEY, TAYLOR			
09:48				REBOUND (DEF) by CALHOUN, NAE NAE
09:25		53-39	H 14	GOOD! LAYUP by CALHOUN, NAE NAE
09:13	MISSED 3PTR by BOOK, AMIEE			
09:09				REBOUND (DEF) by CALHOUN, NAE NAE
09:05		55-39	H 16	GOOD! LAYUP by CALHOUN, NAE NAE [FB]
08:57	GOOD! JUMPER by TURNEY, TAYLOR [PNT]	55-41	H 14	
08:57				FOUL (PERSONAL) by REIER, SAVANNAH
08:57	GOOD! FT by TURNEY, TAYLOR	55-42	H 13	
08:45	FOUL (PERSONAL) by FREEMON, MADISON			
08:45		56-42	H 14	GOOD! FT by JOSEPH, MYRRAH
08:45				MISSED FT by JOSEPH, MYRRAH
08:43	REBOUND (DEF) by FREEMON, MADISON			
08:23				FOUL (PERSONAL) by CALHOUN, NAE NAE
08:14	TURNOVER (LOSTBALL) by FREEMON, MADISON			
07:46				MISSED JUMPER by REIER, SAVANNAH
07:46	BLOCK by TURNEY, TAYLOR			
07:41	REBOUND (DEF) by FREEMON, MADISON			
07:38	TURNOVER (LOSTBALL) by PEREZ, RAINA			
07:38				STEAL by JOSEPH, MYRRAH
07:33		58-42	H 16	GOOD! LAYUP by TAGO, JULISSA [FB]
07:33				ASSIST by JOSEPH, MYRRAH
07:12	MISSED JUMPER by PEREZ, RAINA			
07:12				REBOUND (DEF) by REIER, SAVANNAH
07:12	FOUL (PERSONAL) by TURNEY, TAYLOR			
07:12				SUB OUT: REIER, SAVANNAH
07:12				SUB IN: MIDDAP, COURTNEY
07:12	SUB OUT: ANE, ASHLEE			
07:12	SUB IN: GILL, CAROLYN			
06:54				TURNOVER (TRAVEL) by JOSEPH, MYRRAH
06:54				SUB OUT: CALHOUN, NAE NAE
06:54				SUB IN: ALEXANDER, JADYNN
06:42	TURNOVER (BADPASS) by TURNEY, TAYLOR			
06:42				STEAL by NEUBERT, KASEY
06:36		60-42	H 18	GOOD! LAYUP by TAGO, JULISSA [FB]
06:36				ASSIST by NEUBERT, KASEY
06:23				FOUL (PERSONAL) by ALEXANDER, JADYNN
06:23	GOOD! FT by TURNEY, TAYLOR	60-43	H 17	
06:23	GOOD! FT by TURNEY, TAYLOR	60-44	H 16	
06:23				SUB OUT: JOSEPH, MYRRAH
06:23				SUB IN: REWERS, LAUREN
06:11				MISSED LAYUP by MIDDAP, COURTNEY
06:08	REBOUND (DEF) by TURNEY, TAYLOR			
06:00	MISSED 3PTR by PEREZ, RAINA			
05:56				REBOUND (DEF) by TAGO, JULISSA
05:51				TURNOVER (3SEC) by REWERS, LAUREN
05:25	GOOD! 3PTR by GILL, CAROLYN	60-47	H 13	
05:25	ASSIST by BOOK, AMIEE			
05:04				MISSED JUMPER by ALEXANDER, JADYNN
05:00	REBOUND (DEF) by GILL, CAROLYN			
04:56	GOOD! JUMPER by PEREZ, RAINA [PNT]	60-49	H 11	
04:44	FOUL (PERSONAL) by FREEMON, MADISON			
04:44		61-49	H 12	GOOD! FT by TAGO, JULISSA
04:44		62-49	H 13	GOOD! FT by TAGO, JULISSA
04:17	MISSED 3PTR by BOOK, AMIEE			
04:13	REBOUND (OFF) by GILL, CAROLYN			
04:11	MISSED JUMPER by TURNEY, TAYLOR			
04:07				REBOUND (DEF) by MIDDAP, COURTNEY
03:46				MISSED JUMPER by TAGO, JULISSA
03:40	REBOUND (DEF) by BOOK, AMIEE			
03:34				FOUL (PERSONAL) by ALEXANDER, JADYNN
03:34				SUB OUT: MIDDAP, COURTNEY
03:34				SUB OUT: REWERS, LAUREN
03:34				SUB OUT: ALEXANDER, JADYNN
03:34				SUB IN: REIER, SAVANNAH

Time	VISITORS: Cal St. Fullerton	Score	Margin	HOME: Hawaii
03:34				SUB IN: JOSEPH, MYRRAH
03:34				SUB IN: CALHOUN, NAE NAE
03:20	MISSED JUMPER by PEREZ, RAINA			
03:17				REBOUND (DEF) by JOSEPH, MYRRAH
03:07		64-49	H 15	GOOD! LAYUP by NEUBERT, KASEY
03:07				ASSIST by JOSEPH, MYRRAH
03:00	GOOD! LAYUP by TURNEY, TAYLOR	64-51	H 13	
02:30		66-51	H 15	GOOD! JUMPER by TAGO, JULISSA
02:08	MISSED JUMPER by GILL, CAROLYN			
02:05				REBOUND (DEF) by TAGO, JULISSA
01:44				MISSED JUMPER by CALHOUN, NAE NAE
01:40	REBOUND (DEF) by PEREZ, RAINA			
01:39				FOUL (PERSONAL) by CALHOUN, NAE NAE
01:39	SUB OUT: FREEMON, MADISON			
01:39	SUB IN: NIETO, MEGAN			
01:39	SUB OUT: TURNEY, TAYLOR			
01:39	SUB IN: ANE, ASHLEE			
01:39	GOOD! FT by PEREZ, RAINA	66-52	H 14	
01:39	GOOD! FT by PEREZ, RAINA	66-53	H 13	
01:39	SUB OUT: PEREZ, RAINA			
01:39	SUB IN: FREY, ANNIKEN			
01:37				TURNOVER (BADPASS) by TAGO, JULISSA
01:37	STEAL by FREY, ANNIKEN			
01:37	SUB OUT: FREY, ANNIKEN			
01:37	SUB OUT: ANE, ASHLEE			
01:37	SUB IN: PEREZ, RAINA			
01:37	SUB IN: TURNEY, TAYLOR			
01:34	MISSED 3PTR by TURNEY, TAYLOR			
01:29				REBOUND (DEF) by CALHOUN, NAE NAE
01:29	SUB OUT: TURNEY, TAYLOR			
01:29	SUB IN: ANE, ASHLEE			
01:27	FOUL (PERSONAL) by ANE, ASHLEE			
01:24	FOUL (PERSONAL) by ANE, ASHLEE			
01:24	SUB OUT: ANE, ASHLEE			
01:24	SUB IN: TURNEY, TAYLOR			
01:24		67-53	H 14	GOOD! FT by TAGO, JULISSA
01:24		68-53	H 15	GOOD! FT by TAGO, JULISSA
01:10	GOOD! JUMPER by NIETO, MEGAN [PNT]	68-55	H 13	
01:10	ASSIST by TURNEY, TAYLOR			
01:04	FOUL (PERSONAL) by TURNEY, TAYLOR			
01:04		69-55	H 14	GOOD! FT by REIER, SAVANNAH
01:04		70-55	H 15	GOOD! FT by REIER, SAVANNAH
00:57	MISSED 3PTR by BOOK, AMIEE			
00:57	REBOUND (OFF) by GILL, CAROLYN			
00:57				FOUL (PERSONAL) by REIER, SAVANNAH
00:57	SUB OUT: PEREZ, RAINA			
00:57	SUB OUT: NIETO, MEGAN			
00:57	SUB OUT: TURNEY, TAYLOR			
00:57	SUB IN: FREY, ANNIKEN			
00:57	SUB IN: ANE, ASHLEE			
00:57	SUB IN: FREEMON, MADISON			
00:57	GOOD! FT by GILL, CAROLYN	70-56	H 14	
00:57	GOOD! FT by GILL, CAROLYN	70-57	H 13	
00:57				TIMEOUT 30SEC
00:55	FOUL (PERSONAL) by BOOK, AMIEE			
00:55	SUB OUT: FREEMON, MADISON			
00:55	SUB IN: NIETO, MEGAN			
00:55		71-57	H 14	GOOD! FT by NEUBERT, KASEY
00:55		72-57	H 15	GOOD! FT by NEUBERT, KASEY
00:55	SUB OUT: FREY, ANNIKEN			
00:55	SUB OUT: ANE, ASHLEE			
00:55	SUB IN: PEREZ, RAINA			
00:55	SUB IN: TURNEY, TAYLOR			
00:55	TIMEOUT 30SEC			
00:52	GOOD! LAYUP by PEREZ, RAINA	72-59	H 13	
00:28				MISSED JUMPER by TAGO, JULISSA
00:25	REBOUND (DEF) by GILL, CAROLYN			
00:13	MISSED JUMPER by TURNEY, TAYLOR			
00:10				REBOUND (DEF) by JOSEPH, MYRRAH

Cal St. Fullerton 59, Hawaii 72

Points from (This Period)	CSF	HAW
In the Paint	10	10
Off Turns	3	4
2nd Chance	2	0
Fast Break	0	6
Bench	2	5

Official Scoring/Possession Reference Chart
Cal St. Fullerton vs Hawaii
Period 1
March 11, 2020 at Walter Pyramid - Long Beach, Calif.



Period 1

Starters:

Cal St. Fullerton: 2 PEREZ, RAINA (G); 13 BOOK, AMIEE (F); 21 TURNEY, TAYLOR (G); 22 FREEMON, MADISON (F); 23 GILL, CAROLYN (F);
Hawaii: 0 TAGO, JULISSA (G); 2 MIDDAP, COURTNEY (G); 4 REIER, SAVANNAH (G); 14 REWERS, LAUREN (C); 24 CALHOUN, NAE NAE (G);

Time	VISITORS: Cal St. Fullerton	Score	Margin	HOME: Hawaii
09:34	GOOD! FT by FREEMON, MADISON	0-1	V 1	
09:34	GOOD! FT by FREEMON, MADISON	0-2	V 2	
09:16	GOOD! JUMPER by FREEMON, MADISON	0-4	V 4	
08:56		2-4	V 2	GOOD! JUMPER by REWERS, LAUREN [PNT]
08:34		3-4	V 1	GOOD! FT by CALHOUN, NAE NAE
08:34		4-4	T	GOOD! FT by CALHOUN, NAE NAE
07:07		6-4	H 2	GOOD! LAYUP by JOSEPH, MYRRAH
05:38	GOOD! JUMPER by TURNEY, TAYLOR [PNT]	6-6	T	
05:21		9-6	H 3	GOOD! 3PTR by ALEXANDER, JADYNN
04:08		11-6	H 5	GOOD! JUMPER by JOSEPH, MYRRAH [PNT]
03:36		13-6	H 7	GOOD! LAYUP by CALHOUN, NAE NAE
02:26	GOOD! FT by TURNEY, TAYLOR	13-7	H 6	
02:10		14-7	H 7	GOOD! FT by TAGO, JULISSA
02:10		15-7	H 8	GOOD! FT by TAGO, JULISSA
01:11		17-7	H 10	GOOD! LAYUP by JOSEPH, MYRRAH
00:39		18-7	H 11	GOOD! FT by ATWELL, AMY [FB]

Cal St. Fullerton 7, Hawaii 18

Official Scoring/Possession Reference Chart
Cal St. Fullerton vs Hawaii
Period 2
March 11, 2020 at Walter Pyramid - Long Beach, Calif.



Period 2

Starters:

Cal St. Fullerton: 2 PEREZ, RAINA (G); 13 BOOK, AMIEE (F); 21 TURNEY, TAYLOR (G); 22 FREEMON, MADISON (F); 23 GILL, CAROLYN (F);
Hawaii: 0 TAGO, JULISSA (G); 2 MIDDAP, COURTNEY (G); 4 REIER, SAVANNAH (G); 14 REWERS, LAUREN (C); 24 CALHOUN, NAE NAE (G);

Time	VISITORS: Cal St. Fullerton	Score	Margin	HOME: Hawaii
08:59	GOOD! JUMPER by PEREZ, RAINA	18-9	H 9	
08:32		21-9	H 12	GOOD! 3PTR by ATWELL, AMY
08:16	GOOD! FT by TURNEY, TAYLOR	21-10	H 11	
08:16	GOOD! FT by TURNEY, TAYLOR	21-11	H 10	
07:20	GOOD! JUMPER by PEREZ, RAINA	21-13	H 8	
05:45	GOOD! JUMPER by NIETO, MEGAN	21-15	H 6	
05:24		23-15	H 8	GOOD! JUMPER by JOSEPH, MYRRAH
04:45	GOOD! 3PTR by BOOK, AMIEE	23-18	H 5	
03:43		25-18	H 7	GOOD! JUMPER by NEUBERT, KASEY
03:01		28-18	H 10	GOOD! 3PTR by MIDDAP, COURTNEY
02:01		31-18	H 13	GOOD! 3PTR by NEUBERT, KASEY
01:06	GOOD! JUMPER by BOOK, AMIEE [PNT]	31-20	H 11	
00:45		33-20	H 13	GOOD! JUMPER by REWERS, LAUREN

Cal St. Fullerton 20, Hawaii 33

Official Scoring/Possession Reference Chart
Cal St. Fullerton vs Hawaii
Period 3
March 11, 2020 at Walter Pyramid - Long Beach, Calif.



Period 3

Starters:

Cal St. Fullerton: 2 PEREZ, RAINA (G); 13 BOOK, AMIEE (F); 21 TURNEY, TAYLOR (G); 22 FREEMON, MADISON (F); 23 GILL, CAROLYN (F);
Hawaii: 0 TAGO, JULISSA (G); 2 MIDDAP, COURTNEY (G); 4 REIER, SAVANNAH (G); 14 REWERS, LAUREN (C); 24 CALHOUN, NAE NAE (G);

Time	VISITORS: Cal St. Fullerton	Score	Margin	HOME: Hawaii
09:47	GOOD! JUMPER by BOOK, AMIEE	33-22	H 11	
08:51		35-22	H 13	GOOD! JUMPER by REIER, SAVANNAH
07:56		37-22	H 15	GOOD! JUMPER by REIER, SAVANNAH
07:13		39-22	H 17	GOOD! LAYUP by TAGO, JULISSA
07:13		40-22	H 18	GOOD! FT by TAGO, JULISSA
06:54	GOOD! JUMPER by BOOK, AMIEE	40-24	H 16	
06:11		41-24	H 17	GOOD! FT by CALHOUN, NAE NAE [FB]
06:11		42-24	H 18	GOOD! FT by CALHOUN, NAE NAE [FB]
05:48		45-24	H 21	GOOD! 3PTR by ALEXANDER, JADYNN
05:33	GOOD! JUMPER by BOOK, AMIEE	45-26	H 19	
04:57	GOOD! LAYUP by TURNEY, TAYLOR	45-28	H 17	
03:24	GOOD! 3PTR by ANE, ASHLEE	45-31	H 14	
01:53	GOOD! 3PTR by ANE, ASHLEE	45-34	H 11	
01:34		46-34	H 12	GOOD! FT by ALEXANDER, JADYNN
01:22	GOOD! LAYUP by TURNEY, TAYLOR [PNT]	46-36	H 10	
00:57		48-36	H 12	GOOD! LAYUP by REIER, SAVANNAH
00:24		51-36	H 15	GOOD! 3PTR by ATWELL, AMY
00:04	GOOD! 3PTR by BOOK, AMIEE	51-39	H 12	

Cal St. Fullerton 39, Hawaii 51

Official Scoring/Possession Reference Chart
Cal St. Fullerton vs Hawaii
Period 4
March 11, 2020 at Walter Pyramid - Long Beach, Calif.



Period 4

Starters:

Cal St. Fullerton: 2 PEREZ, RAINA (G); 13 BOOK, AMIEE (F); 21 TURNEY, TAYLOR (G); 22 FREEMON, MADISON (F); 23 GILL, CAROLYN (F);
 Hawaii: 0 TAGO, JULISSA (G); 2 MIDDAP, COURTNEY (G); 4 REIER, SAVANNAH (G); 14 REWERS, LAUREN (C); 24 CALHOUN, NAE NAE (G);

Time	VISITORS: Cal St. Fullerton	Score	Margin	HOME: Hawaii
09:25		53-39	H 14	GOOD! LAYUP by CALHOUN, NAE NAE
09:05		55-39	H 16	GOOD! LAYUP by CALHOUN, NAE NAE [FB]
08:57	GOOD! JUMPER by TURNEY, TAYLOR [PNT]	55-41	H 14	
08:57	GOOD! FT by TURNEY, TAYLOR	55-42	H 13	
08:45		56-42	H 14	GOOD! FT by JOSEPH, MYRRAH
07:33		58-42	H 16	GOOD! LAYUP by TAGO, JULISSA [FB]
06:36		60-42	H 18	GOOD! LAYUP by TAGO, JULISSA [FB]
06:23	GOOD! FT by TURNEY, TAYLOR	60-43	H 17	
06:23	GOOD! FT by TURNEY, TAYLOR	60-44	H 16	
05:25	GOOD! 3PTR by GILL, CAROLYN	60-47	H 13	
04:56	GOOD! JUMPER by PEREZ, RAINA [PNT]	60-49	H 11	
04:44		61-49	H 12	GOOD! FT by TAGO, JULISSA
04:44		62-49	H 13	GOOD! FT by TAGO, JULISSA
03:07		64-49	H 15	GOOD! LAYUP by NEUBERT, KASEY
03:00	GOOD! LAYUP by TURNEY, TAYLOR	64-51	H 13	
02:30		66-51	H 15	GOOD! JUMPER by TAGO, JULISSA
01:39	GOOD! FT by PEREZ, RAINA	66-52	H 14	
01:39	GOOD! FT by PEREZ, RAINA	66-53	H 13	
01:24		67-53	H 14	GOOD! FT by TAGO, JULISSA
01:24		68-53	H 15	GOOD! FT by TAGO, JULISSA
01:10	GOOD! JUMPER by NIETO, MEGAN [PNT]	68-55	H 13	
01:04		69-55	H 14	GOOD! FT by REIER, SAVANNAH
01:04		70-55	H 15	GOOD! FT by REIER, SAVANNAH
00:57	GOOD! FT by GILL, CAROLYN	70-56	H 14	
00:57	GOOD! FT by GILL, CAROLYN	70-57	H 13	
00:55		71-57	H 14	GOOD! FT by NEUBERT, KASEY
00:55		72-57	H 15	GOOD! FT by NEUBERT, KASEY
00:52	GOOD! LAYUP by PEREZ, RAINA	72-59	H 13	

Cal St. Fullerton 59, Hawaii 72

Official Substitutions Log
Cal St. Fullerton vs Hawaii
Period 1
March 11, 2020 at Walter Pyramid - Long Beach, Calif.



VISITORS: Cal St. Fullerton	Time	Score	HOME: Hawaii
2 PEREZ,RAINA			0 TAGO,JULISSA
13 BOOK,AMIEE			2 MIDDAP,COURTNEY
21 TURNEY,TAYLOR			4 REIER,SAVANNAH
22 FREEMON,MADISON			14 REWERS,LAUREN
23 GILL,CAROLYN			24 CALHOUN,NAE NAE
	07:52	4-4	SUB OUT: REWERS,LAUREN
	07:52		SUB IN: JOSEPH,MYRRAH
	07:09	4-4	SUB OUT: MIDDAP,COURTNEY
	07:09		SUB OUT: CALHOUN,NAE NAE
	07:09		SUB IN: ALEXANDER,JADYNN
	07:09		SUB IN: ATWELL,AMY
SUB OUT: 22 FREEMON,MADISON	07:09		
SUB IN: 10 NIETO,MEGAN	07:09		
	05:11	6-9	SUB OUT: REIER,SAVANNAH
	05:11		SUB IN: MIDDAP,COURTNEY
	04:36	6-9	SUB OUT: JOSEPH,MYRRAH
	04:36		SUB IN: CALHOUN,NAE NAE
SUB OUT: 10 NIETO,MEGAN	04:36		
SUB IN: 22 FREEMON,MADISON	04:36		
	04:36		SUB OUT: TAGO,JULISSA
	04:36		SUB IN: JOSEPH,MYRRAH
	02:26	6-13	SUB OUT: ALEXANDER,JADYNN
	02:26		SUB IN: TAGO,JULISSA
SUB OUT: 22 FREEMON,MADISON	02:10	7-13	
SUB IN: 10 NIETO,MEGAN	02:10		
	01:54	7-15	SUB OUT: MIDDAP,COURTNEY
	01:54		SUB IN: REIER,SAVANNAH
	00:39	7-17	SUB OUT: JOSEPH,MYRRAH
	00:39		SUB IN: NEUBERT,KASEY
SUB OUT: 23 GILL,CAROLYN	00:02	7-18	
SUB IN: 4 NEFF,KATHRYN	00:02		

Cal St. Fullerton 7, Hawaii 18

Official Substitutions Log
Cal St. Fullerton vs Hawaii
Period 2
March 11, 2020 at Walter Pyramid - Long Beach, Calif.



VISITORS: Cal St. Fullerton	Time	Score	HOME: Hawaii
2 PEREZ,RAINA			0 TAGO,JULISSA
13 BOOK,AMIEE			2 MIDDAP,COURTNEY
21 TURNEY,TAYLOR			4 REIER,SAVANNAH
22 FREEMON,MADISON			14 REWERS,LAUREN
23 GILL,CAROLYN			24 CALHOUN,NAE NAE
	07:40	11-21	SUB OUT: NEUBERT,KASEY
	07:40		SUB OUT: CALHOUN,NAE NAE
	07:40		SUB IN: MIDDAP,COURTNEY
	07:40		SUB IN: JOSEPH,MYRRAH
SUB OUT: 4 NEFF,KATHRYN	07:40		
SUB IN: 12 ANE,ASHLEE	07:40		
SUB OUT: 21 TURNEY,TAYLOR	06:10	13-21	
SUB IN: 0 FREY,ANNIKEN	06:10		
	06:10		SUB OUT: ATWELL,AMY
	06:10		SUB IN: NEUBERT,KASEY
	04:57	15-23	SUB OUT: REIER,SAVANNAH
	04:57		SUB IN: CALHOUN,NAE NAE
SUB OUT: 10 NIETO,MEGAN	04:57		
SUB IN: 22 FREEMON,MADISON	04:57		
SUB OUT: 2 PEREZ,RAINA	03:19	18-25	
SUB OUT: 12 ANE,ASHLEE	03:19		
SUB IN: 21 TURNEY,TAYLOR	03:19		
SUB IN: 23 GILL,CAROLYN	03:19		
	01:34	18-31	SUB OUT: MIDDAP,COURTNEY
	01:34		SUB OUT: JOSEPH,MYRRAH
	01:34		SUB IN: REIER,SAVANNAH
	01:34		SUB IN: REWERS,LAUREN
SUB OUT: 0 FREY,ANNIKEN	01:34		
SUB IN: 2 PEREZ,RAINA	01:34		

Cal St. Fullerton 20, Hawaii 33

Official Substitutions Log
Cal St. Fullerton vs Hawaii
Period 3
March 11, 2020 at Walter Pyramid - Long Beach, Calif.



VISITORS: Cal St. Fullerton	Time	Score	HOME: Hawaii
2 PEREZ,RAINA			0 TAGO,JULISSA
13 BOOK,AMIEE			2 MIDDAP,COURTNEY
21 TURNEY,TAYLOR			4 REIER,SAVANNAH
22 FREEMON,MADISON			14 REWERS,LAUREN
23 GILL,CAROLYN			24 CALHOUN,NAE NAE
	10:00	-	SUB OUT: NEUBERT,KASEY
	10:00		SUB IN: MIDDAP,COURTNEY
SUB OUT: 23 GILL,CAROLYN	07:13	22-39	
SUB IN: 12 ANE,ASHLEE	07:13		
SUB OUT: 2 PEREZ,RAINA	06:11	24-40	
SUB IN: 0 FREY,ANNIKEN	06:11		
	06:11		SUB OUT: MIDDAP,COURTNEY
	06:11		SUB IN: ATWELL,AMY
	06:11		SUB OUT: CALHOUN,NAE NAE
	06:11		SUB IN: ALEXANDER,JADYNN
SUB OUT: 21 TURNEY,TAYLOR	04:37	28-45	
SUB IN: 2 PEREZ,RAINA	04:37		
	04:37		SUB OUT: REIER,SAVANNAH
	04:37		SUB OUT: REWERS,LAUREN
	04:37		SUB IN: EDWARDS,MAKAYLA
	04:37		SUB IN: JOSEPH,MYRRAH
	03:11	31-45	SUB OUT: TAGO,JULISSA
	03:11		SUB IN: CALHOUN,NAE NAE
SUB OUT: 0 FREY,ANNIKEN	03:11		
SUB IN: 21 TURNEY,TAYLOR	03:11		
	01:06	36-46	SUB OUT: ALEXANDER,JADYNN
	01:06		SUB IN: REIER,SAVANNAH

Cal St. Fullerton 39, Hawaii 51

Official Substitutions Log
Cal St. Fullerton vs Hawaii
Period 4
March 11, 2020 at Walter Pyramid - Long Beach, Calif.



VISITORS: Cal St. Fullerton	Time	Score	HOME: Hawaii
2 PEREZ,RAINA			0 TAGO,JULISSA
13 BOOK,AMIEE			2 MIDDAP,COURTNEY
21 TURNEY,TAYLOR			4 REIER,SAVANNAH
22 FREEMON,MADISON			14 REWERS,LAUREN
23 GILL,CAROLYN			24 CALHOUN,NAE NAE
	10:00	-	SUB OUT: EDWARDS,MAKAYLA
	10:00		SUB OUT: ATWELL,AMY
	10:00		SUB IN: TAGO,JULISSA
	10:00		SUB IN: NEUBERT,KASEY
	07:12	42-58	SUB OUT: REIER,SAVANNAH
	07:12		SUB IN: MIDDAP,COURTNEY
SUB OUT: 12 ANE,ASHLEE	07:12		
SUB IN: 23 GILL,CAROLYN	07:12		
	06:54	42-58	SUB OUT: CALHOUN,NAE NAE
	06:54		SUB IN: ALEXANDER,JADYNN
	06:23	44-60	SUB OUT: JOSEPH,MYRRAH
	06:23		SUB IN: REWERS,LAUREN
	03:34	49-62	SUB OUT: MIDDAP,COURTNEY
	03:34		SUB OUT: REWERS,LAUREN
	03:34		SUB OUT: ALEXANDER,JADYNN
	03:34		SUB IN: REIER,SAVANNAH
	03:34		SUB IN: JOSEPH,MYRRAH
	03:34		SUB IN: CALHOUN,NAE NAE
SUB OUT: 22 FREEMON,MADISON	01:39	51-66	
SUB IN: 10 NIETO,MEGAN	01:39		
SUB OUT: 21 TURNEY,TAYLOR	01:39		
SUB IN: 12 ANE,ASHLEE	01:39		
SUB OUT: 2 PEREZ,RAINA	01:39		
SUB IN: 0 FREY,ANNIKEN	01:39		
SUB OUT: 0 FREY,ANNIKEN	01:37	53-66	
SUB OUT: 12 ANE,ASHLEE	01:37		
SUB IN: 2 PEREZ,RAINA	01:37		
SUB IN: 21 TURNEY,TAYLOR	01:37		
SUB OUT: 21 TURNEY,TAYLOR	01:29	53-66	
SUB IN: 12 ANE,ASHLEE	01:29		
SUB OUT: 12 ANE,ASHLEE	01:24	53-66	
SUB IN: 21 TURNEY,TAYLOR	01:24		
SUB OUT: 2 PEREZ,RAINA	00:57	55-70	
SUB OUT: 10 NIETO,MEGAN	00:57		
SUB OUT: 21 TURNEY,TAYLOR	00:57		
SUB IN: 0 FREY,ANNIKEN	00:57		
SUB IN: 12 ANE,ASHLEE	00:57		
SUB IN: 22 FREEMON,MADISON	00:57		
SUB OUT: 22 FREEMON,MADISON	00:55	57-70	
SUB IN: 10 NIETO,MEGAN	00:55		
SUB OUT: 0 FREY,ANNIKEN	00:55		
SUB OUT: 12 ANE,ASHLEE	00:55		
SUB IN: 2 PEREZ,RAINA	00:55		
SUB IN: 21 TURNEY,TAYLOR	00:55		

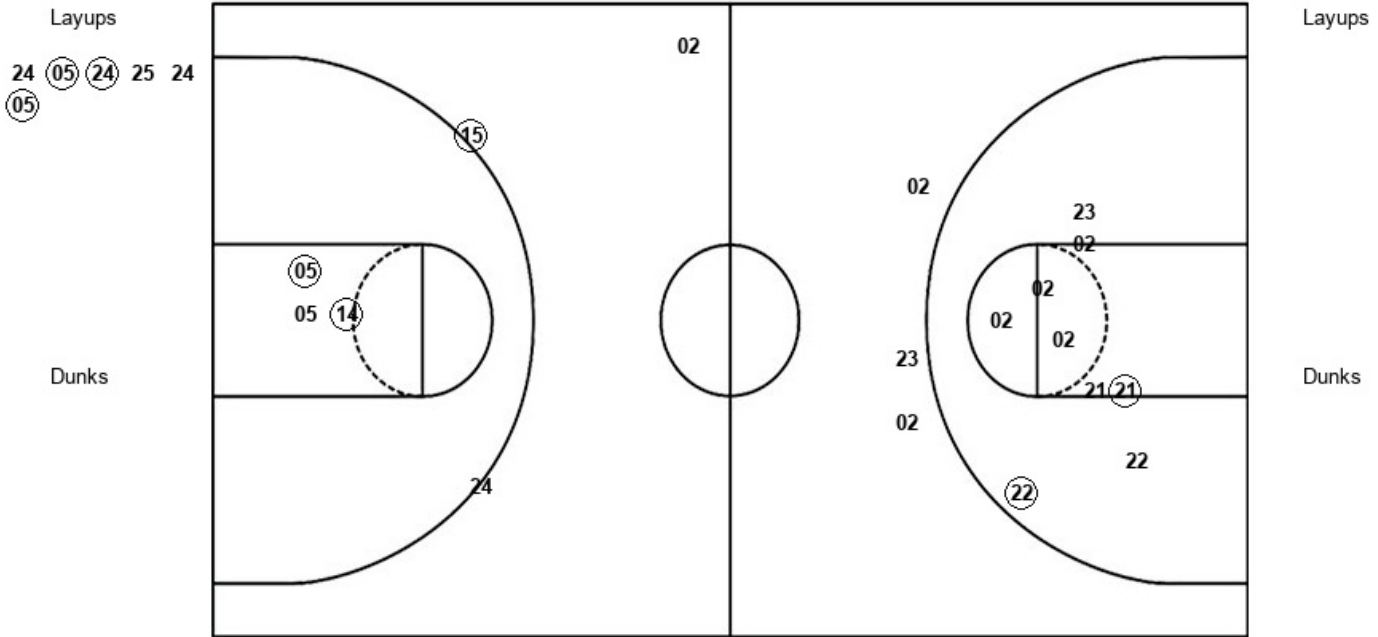
Cal St. Fullerton 59, Hawaii 72

Official Shot Chart
Cal St. Fullerton vs Hawaii
PERIOD 1 Shots
 March 11, 2020 at Walter Pyramid - Long Beach, Calif.



Hawaii

Cal St. Fullerton



HAW : Period 1	Made	Att	Pct
Layups	3	6	50.0
Dunks	0	0	0
2PT Field Goals	5	9	55.6
3PT Field Goals	1	2	50.0
Total Field Goals	6	11	54.5

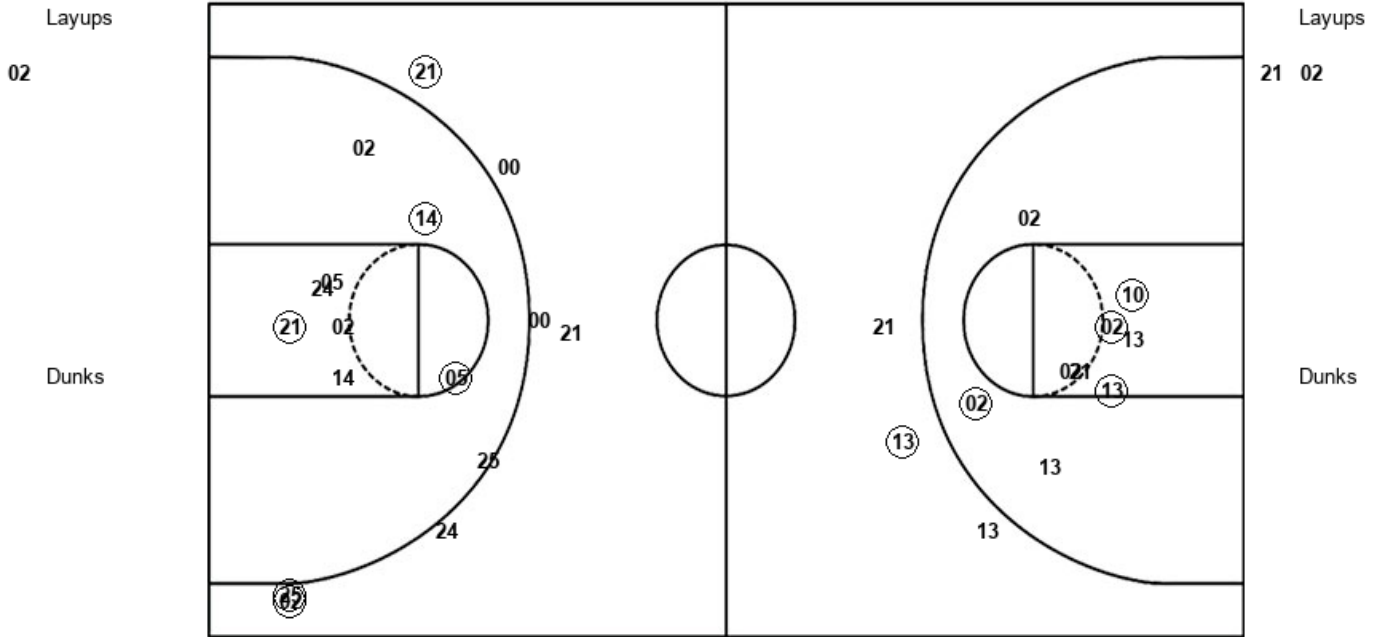
CSF : Period 1	Made	Att	Pct
Layups	0	0	0
Dunks	0	0	0
2PT Field Goals	2	9	22.2
3PT Field Goals	0	4	00.0
Total Field Goals	2	13	15.4

Official Shot Chart
Cal St. Fullerton vs Hawaii
PERIOD 2 Shots
 March 11, 2020 at Walter Pyramid - Long Beach, Calif.



Hawaii

Cal St. Fullerton



HAW : Period 2	Made	Att	Pct
Layups	0	1	00.0
Dunks	0	0	0
2PT Field Goals	3	9	33.3
3PT Field Goals	3	7	42.9
Total Field Goals	6	16	37.5

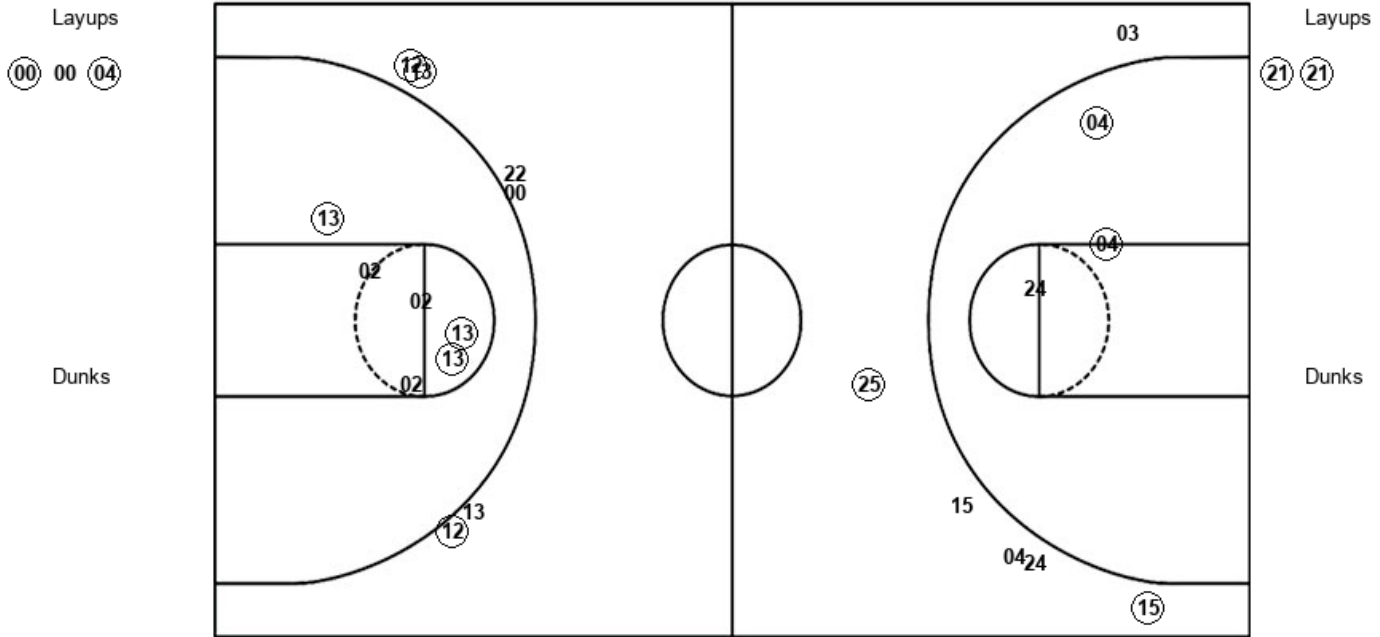
CSF : Period 2	Made	Att	Pct
Layups	0	2	00.0
Dunks	0	0	0
2PT Field Goals	4	11	36.4
3PT Field Goals	1	4	25.0
Total Field Goals	5	15	33.3

Official Shot Chart
Cal St. Fullerton vs Hawaii
PERIOD 3 Shots
 March 11, 2020 at Walter Pyramid - Long Beach, Calif.



Hawaii

Cal St. Fullerton



HAW : Period 3	Made	Att	Pct
Layups	2	3	66.7
Dunks	0	0	0
2PT Field Goals	4	6	66.7
3PT Field Goals	2	6	33.3
Total Field Goals	6	12	50.0

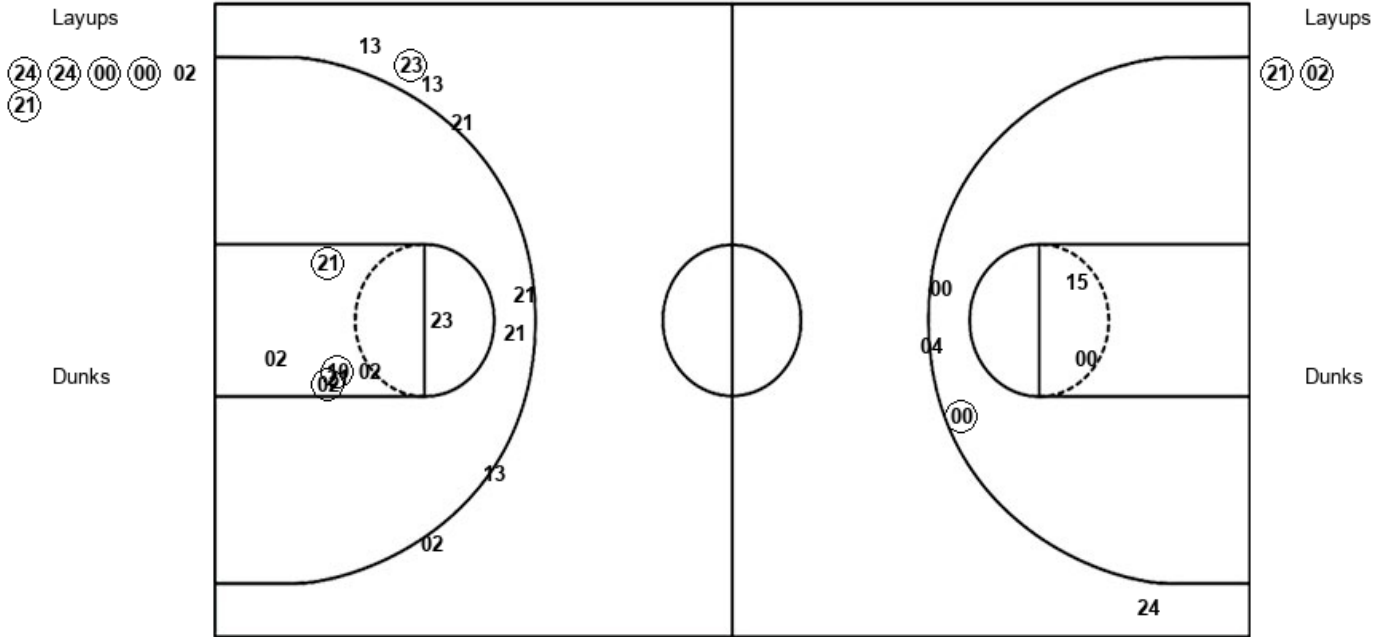
CSF : Period 3	Made	Att	Pct
Layups	2	2	100.0
Dunks	0	0	0
2PT Field Goals	5	8	62.5
3PT Field Goals	3	6	50.0
Total Field Goals	8	14	57.1

Official Shot Chart
Cal St. Fullerton vs Hawaii
PERIOD 4 Shots
 March 11, 2020 at Walter Pyramid - Long Beach, Calif.



Hawaii

Cal St. Fullerton



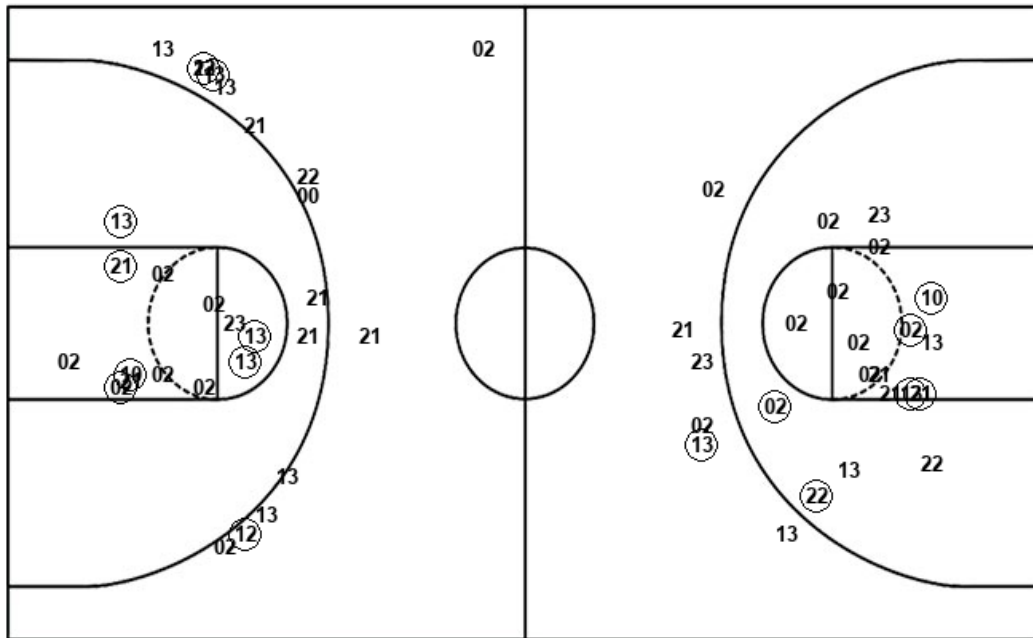
HAW : Period 4	Made	Att	Pct
Layups	5	6	83.3
Dunks	0	0	0
2PT Field Goals	6	12	50.0
3PT Field Goals	0	0	0
Total Field Goals	6	12	50.0

CSF : Period 4	Made	Att	Pct
Layups	2	2	100.0
Dunks	0	0	0
2PT Field Goals	5	10	50.0
3PT Field Goals	1	7	14.3
Total Field Goals	6	17	35.3

Official Shot Chart
Cal St. Fullerton vs Hawaii
Cal St. Fullerton Team Shots
March 11, 2020 at Walter Pyramid - Long Beach, Calif.



Layups



Layups

Dunks

Dunks

CSF : Period 1	Made	Att	Pct
Layups	0	0	0
Dunks	0	0	0
2PT Field Goals	2	9	22.2
3PT Field Goals	0	4	00.0
Total Field Goals	2	13	15.4

CSF : Period 3	Made	Att	Pct
Layups	2	2	100.0
Dunks	0	0	0
2PT Field Goals	5	8	62.5
3PT Field Goals	3	6	50.0
Total Field Goals	8	14	57.1

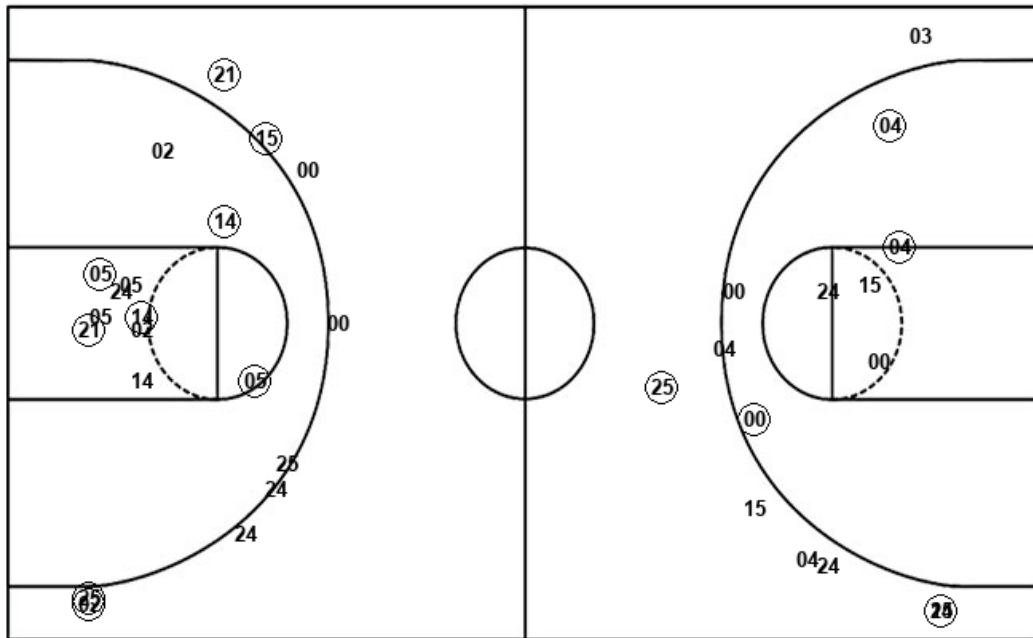
CSF : Period 2	Made	Att	Pct
Layups	0	2	00.0
Dunks	0	0	0
2PT Field Goals	4	11	36.4
3PT Field Goals	1	4	25.0
Total Field Goals	5	15	33.3

CSF : Period 4	Made	Att	Pct
Layups	2	2	100.0
Dunks	0	0	0
2PT Field Goals	5	10	50.0
3PT Field Goals	1	7	14.3
Total Field Goals	6	17	35.3

Official Shot Chart
Cal St. Fullerton vs Hawaii
Hawaii Team Shots
March 11, 2020 at Walter Pyramid - Long Beach, Calif.



Layups



Layups

24 (05) (24) 25 24
 (05) 02 (00) 00 (04)
 (24) (24) (00) (00) 02
 (21)

Dunks

Dunks

HAW : Period 1	Made	Att	Pct
Layups	3	6	50.0
Dunks	0	0	0
2PT Field Goals	5	9	55.6
3PT Field Goals	1	2	50.0
Total Field Goals	6	11	54.5

HAW : Period 3	Made	Att	Pct
Layups	2	3	66.7
Dunks	0	0	0
2PT Field Goals	4	6	66.7
3PT Field Goals	2	6	33.3
Total Field Goals	6	12	50.0

HAW : Period 2	Made	Att	Pct
Layups	0	1	00.0
Dunks	0	0	0
2PT Field Goals	3	9	33.3
3PT Field Goals	3	7	42.9
Total Field Goals	6	16	37.5

HAW : Period 4	Made	Att	Pct
Layups	5	6	83.3
Dunks	0	0	0
2PT Field Goals	6	12	50.0
3PT Field Goals	0	0	0
Total Field Goals	6	12	50.0