

## FINAL SCORE



**Georgia**

**81**



**Ole Miss**

**63**

**SEC Men's Basketball Tournament**

March 11, 2020 • Bridgestone Arena



## FINAL STATISTICS

**Official Box Score**  
**Georgia vs Ole Miss**  
**Game Totals -- Final Statistics**  
**March 11, 2020 at Bridgestone Arena**



**Georgia 81**

| No.           | Player               | S | Pts       | FG           | 3FG         | FT           | OR       | DR        | TR        | PF        | A         | TO        | Blk      | Stl      | Min        | +/- |
|---------------|----------------------|---|-----------|--------------|-------------|--------------|----------|-----------|-----------|-----------|-----------|-----------|----------|----------|------------|-----|
| 02            | HARRIS, JORDAN       | G | 21        | 8-11         | 3-4         | 2-4          | 1        | 6         | 7         | 1         | 0         | 0         | 1        | 0        | 35         | 28  |
| 05            | EDWARDS, ANTHONY     |   | 6         | 2-13         | 1-9         | 1-2          | 1        | 1         | 2         | 2         | 4         | 1         | 0        | 0        | 40         | 18  |
| 10            | CAMARA, TOUMANI      |   | 9         | 3-3          | 0-0         | 3-4          | 0        | 3         | 3         | 5         | 0         | 2         | 1        | 0        | 23         | 8   |
| 15            | WHEELER, SAHVIR      |   | 15        | 5-9          | 1-2         | 4-4          | 0        | 3         | 3         | 0         | 8         | 5         | 0        | 1        | 29         | 11  |
| 20            | HAMMONDS, RAYSHAUN   | F | 22        | 9-13         | 2-3         | 2-3          | 2        | 9         | 11        | 5         | 4         | 2         | 0        | 2        | 36         | 10  |
| 00            | GRESHAM JR., DONNELL | G | 0         | 0-0          | 0-0         | 0-1          | 1        | 3         | 4         | 1         | 2         | 1         | 0        | 2        | 12         | 11  |
| 03            | BROWN, CHRISTIAN     |   | 0         | 0-2          | 0-0         | 0-0          | 0        | 1         | 1         | 2         | 0         | 0         | 0        | 1        | 4          | 6   |
| 14            | FAGAN, TYE           | G | 2         | 1-2          | 0-0         | 0-0          | 0        | 0         | 0         | 0         | 1         | 0         | 0        | 1        | 12         | -1  |
| 30            | PEAKE, MIKE          |   | 6         | 2-2          | 0-0         | 2-2          | 1        | 0         | 1         | 1         | 0         | 1         | 1        | 0        | 9          | -1  |
|               | TEAM                 |   |           |              |             |              | 0        | 1         | 1         | 0         |           | 0         |          |          |            |     |
| <b>TOTALS</b> |                      |   | <b>81</b> | <b>30-55</b> | <b>7-18</b> | <b>14-20</b> | <b>6</b> | <b>27</b> | <b>33</b> | <b>17</b> | <b>19</b> | <b>12</b> | <b>3</b> | <b>7</b> | <b>200</b> |     |

*Shooting By Period*

| Period      | FG           | FG%          | 3FG         | 3FG%         | FT           | FT%          |
|-------------|--------------|--------------|-------------|--------------|--------------|--------------|
| 1st Half    | 15-27        | 56%          | 5-11        | 45%          | 6-11         | 55%          |
| 2nd Half    | 15-28        | 54%          | 2-7         | 29%          | 8-9          | 89%          |
| <b>Game</b> | <b>30-55</b> | <b>54.5%</b> | <b>7-18</b> | <b>38.9%</b> | <b>14-20</b> | <b>70.0%</b> |

*Last FG: 2nd-00:31*  
*Largest lead: By 18 at*  
*Technical Fouls: None.*

**Ole Miss 63**

| No.           | Player           | S | Pts       | FG           | 3FG         | FT           | OR        | DR        | TR        | PF        | A        | TO        | Blk      | Stl      | Min        | +/- |
|---------------|------------------|---|-----------|--------------|-------------|--------------|-----------|-----------|-----------|-----------|----------|-----------|----------|----------|------------|-----|
| 00            | HINSON, BLAKE    | G | 8         | 2-6          | 0-4         | 4-4          | 0         | 2         | 2         | 4         | 0        | 1         | 0        | 0        | 30         | -13 |
| 02            | SHULER, DEVONTAE | G | 17        | 8-15         | 0-3         | 1-4          | 1         | 3         | 4         | 3         | 2        | 4         | 0        | 1        | 35         | -18 |
| 03            | SY, KHADIM       | F | 7         | 3-4          | 0-0         | 1-1          | 1         | 6         | 7         | 2         | 2        | 2         | 1        | 2        | 20         | -7  |
| 04            | TYREE, BREEIN    | G | 18        | 6-16         | 2-6         | 4-5          | 1         | 2         | 3         | 2         | 1        | 4         | 0        | 2        | 39         | -20 |
| 05            | BUFFEN, KJ       | F | 11        | 5-9          | 0-0         | 1-2          | 2         | 6         | 8         | 5         | 0        | 2         | 1        | 0        | 29         | -18 |
| 01            | CROWLEY, AUSTIN  | G | 0         | 0-2          | 0-1         | 0-0          | 2         | 1         | 3         | 1         | 0        | 1         | 0        | 0        | 27         | -1  |
| 13            | WILLIAMS, BRYCE  | G | 0         | 0-1          | 0-1         | 0-0          | 0         | 1         | 1         | 1         | 0        | 1         | 0        | 0        | 8          | -10 |
| 23            | HUNTER, SAMMY    | F | 2         | 1-6          | 0-0         | 0-1          | 2         | 0         | 2         | 1         | 1        | 0         | 0        | 0        | 12         | -3  |
|               | TEAM             |   |           |              |             |              | 1         | 1         | 2         | 0         |          | 0         |          |          |            |     |
| <b>TOTALS</b> |                  |   | <b>63</b> | <b>25-59</b> | <b>2-15</b> | <b>11-17</b> | <b>10</b> | <b>22</b> | <b>32</b> | <b>19</b> | <b>6</b> | <b>15</b> | <b>2</b> | <b>5</b> | <b>200</b> |     |

*Shooting By Period*

| Period      | FG           | FG%          | 3FG         | 3FG%         | FT           | FT%          |
|-------------|--------------|--------------|-------------|--------------|--------------|--------------|
| 1st Half    | 14-28        | 50%          | 2-7         | 29%          | 0-2          | 00%          |
| 2nd Half    | 11-31        | 35%          | 0-8         | 00%          | 11-15        | 73%          |
| <b>Game</b> | <b>25-59</b> | <b>42.4%</b> | <b>2-15</b> | <b>13.3%</b> | <b>11-17</b> | <b>64.7%</b> |

*Last FG: 2nd-02:07*  
*Largest lead: By 0 at*  
*Technical Fouls: None.*

Game Notes:

Officials: Don Daily, Bart Lenox, Josue Nieves

Start Time: 11:00 PM  
 Neutral Court;

| Score | 1st | 2nd | TOT       |
|-------|-----|-----|-----------|
| UGA   | 41  | 40  | <b>81</b> |
| UM    | 30  | 33  | <b>63</b> |

UGA led for 39:04. UM led for 0:00.  
 Game was tied for 0:0.  
 Times tied: 0      Lead Changes: 0

| Points from  | UGA | UM |
|--------------|-----|----|
| In the Paint | 42  | 38 |
| Off Turns    | 9   | 2  |
| 2nd Chance   | 11  | 8  |
| Fast Break   | 10  | 8  |
| Bench        | 8   | 2  |

**Official Box Score**  
**Georgia vs Ole Miss**  
**First Half Statistics Only**  
**March 11, 2020 at Bridgestone Arena**



**Georgia 41**

| No.           | Player               | S | Pts       | FG           | 3FG         | FT          | OR       | DR        | TR        | PF       | A        | TO       | Blk      | Stl      | Min        |
|---------------|----------------------|---|-----------|--------------|-------------|-------------|----------|-----------|-----------|----------|----------|----------|----------|----------|------------|
| 02            | HARRIS, JORDAN       | G | 11        | 4-5          | 2-3         | 1-3         | 0        | 3         | 3         | 1        | 0        | 0        | 1        | 0        | 18         |
| 05            | EDWARDS, ANTHONY     |   | 0         | 0-6          | 0-4         | 0-0         | 1        | 1         | 2         | 0        | 3        | 1        | 0        | 0        | 20         |
| 10            | CAMARA, TOUMANI      |   | 3         | 1-1          | 0-0         | 1-2         | 0        | 2         | 2         | 2        | 0        | 2        | 1        | 0        | 9          |
| 15            | WHEELER, SAHVIR      |   | 7         | 3-4          | 1-2         | 0-0         | 0        | 2         | 2         | 0        | 2        | 3        | 0        | 0        | 13         |
| 20            | HAMMONDS, RAYSHAUN   | F | 14        | 5-6          | 2-2         | 2-3         | 2        | 2         | 4         | 0        | 3        | 0        | 0        | 2        | 18         |
| 00            | GRESHAM JR., DONNELL | G | 0         | 0-0          | 0-0         | 0-1         | 1        | 1         | 2         | 0        | 1        | 0        | 0        | 1        | 7          |
| 03            | BROWN, CHRISTIAN     |   | 0         | 0-2          | 0-0         | 0-0         | 0        | 1         | 1         | 2        | 0        | 0        | 0        | 1        | 4          |
| 14            | FAGAN, TYE           | G | 2         | 1-2          | 0-0         | 0-0         | 0        | 0         | 0         | 0        | 0        | 0        | 0        | 0        | 7          |
| 30            | PEAKE, MIKE          |   | 4         | 1-1          | 0-0         | 2-2         | 1        | 0         | 1         | 0        | 0        | 0        | 0        | 0        | 4          |
|               | TEAM                 |   |           | 0-0          |             |             | 0        | 1         | 1         | 0        |          | 0        |          |          |            |
| <b>TOTALS</b> |                      |   | <b>41</b> | <b>15-27</b> | <b>5-11</b> | <b>6-11</b> | <b>5</b> | <b>13</b> | <b>18</b> | <b>5</b> | <b>9</b> | <b>6</b> | <b>2</b> | <b>4</b> | <b>100</b> |

*Shooting By Period*

| Period   | FG    | FG%   | 3FG  | 3FG%  | FT    | FT%   |
|----------|-------|-------|------|-------|-------|-------|
| 1st Half | 15-27 | 56%   | 5-11 | 45%   | 6-11  | 55%   |
| Game     | 30-55 | 54.5% | 7-18 | 38.9% | 14-20 | 70.0% |

*Last FG Half: UGA 2nd-00:31*

**Ole Miss 30**

| No.           | Player           | S | Pts       | FG           | 3FG        | FT         | OR       | DR        | TR        | PF        | A        | TO       | Blk      | Stl      | Min        |
|---------------|------------------|---|-----------|--------------|------------|------------|----------|-----------|-----------|-----------|----------|----------|----------|----------|------------|
| 00            | HINSON, BLAKE    | G | 0         | 0-3          | 0-3        | 0-0        | 0        | 0         | 0         | 3         | 0        | 0        | 0        | 0        | 10         |
| 02            | SHULER, DEVONTAE | G | 12        | 6-7          | 0-0        | 0-0        | 1        | 3         | 4         | 1         | 1        | 3        | 0        | 0        | 17         |
| 03            | SY, KHADIM       | F | 2         | 1-1          | 0-0        | 0-0        | 0        | 2         | 2         | 0         | 1        | 1        | 0        | 2        | 9          |
| 04            | TYREE, BREEIN    | G | 10        | 4-7          | 2-3        | 0-1        | 0        | 1         | 1         | 1         | 0        | 2        | 0        | 1        | 19         |
| 05            | BUFFEN, KJ       | F | 4         | 2-6          | 0-0        | 0-0        | 1        | 3         | 4         | 2         | 0        | 2        | 0        | 0        | 15         |
| 01            | CROWLEY, AUSTIN  | G | 0         | 0-1          | 0-0        | 0-0        | 1        | 1         | 2         | 1         | 0        | 1        | 0        | 0        | 13         |
| 13            | WILLIAMS, BRYCE  | G | 0         | 0-1          | 0-1        | 0-0        | 0        | 1         | 1         | 1         | 0        | 0        | 0        | 0        | 5          |
| 23            | HUNTER, SAMMY    | F | 2         | 1-2          | 0-0        | 0-1        | 0        | 0         | 0         | 1         | 1        | 0        | 0        | 0        | 10         |
|               | TEAM             |   |           | 0-0          |            |            | 0        | 0         | 0         | 0         |          | 0        |          |          |            |
| <b>TOTALS</b> |                  |   | <b>30</b> | <b>14-28</b> | <b>2-7</b> | <b>0-2</b> | <b>3</b> | <b>11</b> | <b>14</b> | <b>10</b> | <b>3</b> | <b>9</b> | <b>0</b> | <b>3</b> | <b>100</b> |

*Shooting By Period*

| Period   | FG    | FG%   | 3FG  | 3FG%  | FT    | FT%   |
|----------|-------|-------|------|-------|-------|-------|
| 1st Half | 14-28 | 50%   | 2-7  | 29%   | 0-2   | 00%   |
| Game     | 25-59 | 42.4% | 2-15 | 13.3% | 11-17 | 64.7% |

*Last FG Half: UM 2nd-02:07*

*Game Notes:*

Officials: Don Daily, Bart Lenox, Josue Nieves

Start Time: 11:00 PM

Neutral Court;

| Score | 1st | 2nd | TOT       |
|-------|-----|-----|-----------|
| UGA   | 41  | 40  | <b>81</b> |
| UM    | 30  | 33  | <b>63</b> |

| Points from (This Period) | UGA | UM |
|---------------------------|-----|----|
| In the Paint              | 20  | 20 |
| Off Turns                 | 2   | 2  |
| 2nd Chance                | 8   | 4  |
| Fast Break                | 8   | 2  |
| Bench                     | 6   | 2  |

**Official Play-By-Play**  
**Georgia vs Ole Miss**  
**First Half**  
**March 11, 2020 at Bridgestone Arena**



**Period 1**

**Starters:**

**Georgia:** 2 HARRIS, JORDAN (G); 5 EDWARDS, ANTHONY; 10 CAMARA, TOUMANI; 15 WHEELER, SAHVIR; 20 HAMMONDS, RAYSHAUN (F);  
**Ole Miss:** 00 HINSON, BLAKE (G); 2 SHULER, DEVONTAE (G); 3 SY, KHADIM (F); 4 TYREE, BREEIN (G); 5 BUFFEN, KJ (F);

| Time  | VISITORS: Georgia                          | Score | Margin | HOME: Ole Miss                    |
|-------|--|-------|--------|-----------------------------------|
| 19:53 |  |       |        | MISSED LAYUP by BUFFEN, KJ        |
| 19:50 | REBOUND (DEF) by HARRIS, JORDAN            |       |        |                                   |
| 19:30 | GOOD! LAYUP by WHEELER, SAHVIR             | 0-2   | V 2    |                                   |
| 19:08 |  | 2-2   | T      | GOOD! LAYUP by SHULER, DEVONTAE   |
| 18:48 | GOOD! JUMPER by HAMMONDS, RAYSHAUN [PNT]   | 2-4   | V 2    |                                   |
| 18:32 |  |       |        | MISSED JUMPER by TYREE, BREEIN    |
| 18:26 | REBOUND (DEF) by HARRIS, JORDAN            |       |        |                                   |
| 18:24 | MISSED 3PTR by EDWARDS, ANTHONY            |       |        |                                   |
| 18:21 |  |       |        | REBOUND (DEF) by SY, KHADIM       |
| 18:13 |  |       |        | TURNOVER by SHULER, DEVONTAE      |
| 17:48 | TURNOVER by EDWARDS, ANTHONY               |       |        |                                   |
| 17:48 |  |       |        | STEAL by SY, KHADIM               |
| 17:44 |  |       |        | MISSED LAYUP by BUFFEN, KJ [PNT]  |
| 17:44 | BLOCK by HARRIS, JORDAN                    |       |        |                                   |
| 17:40 | REBOUND (DEF) by EDWARDS, ANTHONY          |       |        |                                   |
| 17:38 | GOOD! LAYUP by HAMMONDS, RAYSHAUN [FB/PNT] | 2-6   | V 4    |                                   |
| 17:38 | ASSIST by EDWARDS, ANTHONY                 |       |        |                                   |
| 17:15 |  |       |        | MISSED 3PTR by HINSON, BLAKE      |
| 17:12 |  |       |        | REBOUND (OFF) by SHULER, DEVONTAE |
| 17:10 |  | 4-6   | V 2    | GOOD! LAYUP by SHULER, DEVONTAE   |
| 17:04 | GOOD! 3PTR by HAMMONDS, RAYSHAUN [FB]      | 4-9   | V 5    |                                   |
| 17:04 | ASSIST by WHEELER, SAHVIR                  |       |        |                                   |
| 17:00 |  |       |        | TIMEOUT 30SEC                     |
| 17:00 |  |       |        | SUB OUT: BUFFEN, KJ               |
| 17:00 |  |       |        | SUB IN: CROWLEY, AUSTIN           |
| 16:35 |  |       |        | MISSED 3PTR by HINSON, BLAKE      |
| 16:31 | REBOUND (DEF) by HAMMONDS, RAYSHAUN        |       |        |                                   |
| 16:28 |  |       |        | FOUL by HINSON, BLAKE             |
| 16:28 | GOOD! FT by CAMARA, TOUMANI [FB]           | 4-10  | V 6    |                                   |
| 16:28 |  |       |        | SUB OUT: HINSON, BLAKE            |
| 16:28 |  |       |        | SUB IN: BUFFEN, KJ                |
| 16:28 | MISSED FT by CAMARA, TOUMANI [FB]          |       |        |                                   |
| 16:26 | REBOUND (OFF) by HAMMONDS, RAYSHAUN        |       |        |                                   |
| 16:23 | GOOD! LAYUP by CAMARA, TOUMANI             | 4-12  | V 8    |                                   |
| 15:57 |  | 6-12  | V 6    | GOOD! LAYUP by TYREE, BREEIN      |
| 15:57 | FOUL by CAMARA, TOUMANI                    |       |        |                                   |
| 15:57 | TIMEOUT MEDIA                              |       |        |                                   |
| 15:57 |  |       |        | SUB OUT: SY, KHADIM               |
| 15:57 |  |       |        | SUB IN: HUNTER, SAMMY             |
| 15:57 |  |       |        | MISSED FT by TYREE, BREEIN        |
| 15:56 | REBOUND (DEF) by CAMARA, TOUMANI           |       |        |                                   |
| 15:40 | TURNOVER by CAMARA, TOUMANI                |       |        |                                   |
| 15:15 |  |       |        | TURNOVER by SHULER, DEVONTAE      |
| 15:15 |  |       |        | SUB OUT: SHULER, DEVONTAE         |
| 15:15 |  |       |        | SUB IN: WILLIAMS, BRYCE           |
| 14:57 | TURNOVER by WHEELER, SAHVIR                |       |        |                                   |
| 14:45 |  |       |        | TURNOVER by TYREE, BREEIN         |
| 14:45 | STEAL by HAMMONDS, RAYSHAUN                |       |        |                                   |
| 14:42 | TURNOVER by CAMARA, TOUMANI [PNT]          |       |        |                                   |
| 14:23 |  |       |        | MISSED JUMPER by BUFFEN, KJ       |
| 14:22 | REBOUND (DEF) by TEAM                      |       |        |                                   |
| 14:04 | GOOD! LAYUP by HARRIS, JORDAN              | 6-14  | V 8    |                                   |
| 14:04 | ASSIST by HAMMONDS, RAYSHAUN               |       |        |                                   |
| 13:47 |  |       |        | MISSED LAYUP by HUNTER, SAMMY     |
| 13:47 | BLOCK by CAMARA, TOUMANI                   |       |        |                                   |
| 13:43 | REBOUND (DEF) by CAMARA, TOUMANI           |       |        |                                   |
| 13:36 |  |       |        | FOUL by BUFFEN, KJ                |
| 13:36 | MISSED FT by HARRIS, JORDAN                |       |        |                                   |
| 13:36 | REBOUND (DEADB) by TEAM                    |       |        |                                   |
| 13:36 |  |       |        | SUB OUT: TYREE, BREEIN            |
| 13:36 |  |       |        | SUB OUT: BUFFEN, KJ               |
| 13:36 |  |       |        | SUB OUT: HUNTER, SAMMY            |
| 13:36 |  |       |        | SUB IN: HINSON, BLAKE             |
| 13:36 |  |       |        | SUB IN: SHULER, DEVONTAE          |
| 13:36 |  |       |        | SUB IN: SY, KHADIM                |
| 13:36 | MISSED FT by HARRIS, JORDAN                |       |        |                                   |
| 13:34 |  |       |        | REBOUND (DEF) by WILLIAMS, BRYCE  |
| 13:22 |  | 8-14  | V 6    | GOOD! LAYUP by SY, KHADIM         |
| 13:22 |  |       |        | ASSIST by SHULER, DEVONTAE        |
| 12:59 |  |       |        | FOUL by CROWLEY, AUSTIN [PNT]     |

| Time  | VISITORS: Georgia                     | Score | Margin | HOME: Ole Miss                         |
|-------|---------------------------------------|-------|--------|--|
| 12:59 |                                       |       |        | SUB OUT: CROWLEY, AUSTIN               |
| 12:59 |                                       |       |        | SUB IN: TYREE, BREEIN                  |
| 12:43 | MISSED 3PTR by WHEELER, SAHVIR        |       |        |  |
| 12:40 |                                       |       |        | REBOUND (DEF) by TYREE, BREEIN         |
| 12:34 |                                       |       |        | MISSED 3PTR by WILLIAMS, BRYCE         |
| 12:29 | REBOUND (DEF) by HARRIS, JORDAN       |       |        |  |
| 12:21 | MISSED JUMPER by HAMMONDS, RAYSHAUN   |       |        |  |
| 12:17 |                                       |       |        | REBOUND (DEF) by SY, KHADIM            |
| 12:05 |                                       | 10-14 | V 4    | GOOD! JUMPER by SHULER, DEVONTAE       |
| 11:42 | MISSED 3PTR by EDWARDS, ANTHONY       |       |        |  |
| 11:37 | REBOUND (OFF) by EDWARDS, ANTHONY     |       |        |  |
| 11:35 | MISSED JUMPER by EDWARDS, ANTHONY     |       |        |  |
| 11:32 | REBOUND (OFF) by HAMMONDS, RAYSHAUN   |       |        |  |
| 11:30 | GOOD! 3PTR by HARRIS, JORDAN          | 10-17 | V 7    |  |
| 11:30 | ASSIST by HAMMONDS, RAYSHAUN          |       |        |  |
| 11:12 | FOUL by CAMARA, TOUMANI               |       |        |  |
| 11:12 | TIMEOUT MEDIA                         |       |        |  |
| 11:12 |                                       |       |        | SUB OUT: SY, KHADIM                    |
| 11:12 |                                       |       |        | SUB OUT: WILLIAMS, BRYCE               |
| 11:12 |                                       |       |        | SUB IN: CROWLEY, AUSTIN                |
| 11:12 |                                       |       |        | SUB IN: BUFFEN, KJ                     |
| 11:12 | SUB OUT: CAMARA, TOUMANI              |       |        |  |
| 11:12 | SUB OUT: WHEELER, SAHVIR              |       |        |  |
| 11:12 | SUB IN: GRESHAM JR., DONNELL          |       |        |  |
| 11:12 | SUB IN: BROWN, CHRISTIAN              |       |        |  |
| 11:04 |                                       |       |        | MISSED JUMPER by SHULER, DEVONTAE      |
| 11:00 | REBOUND (DEF) by GRESHAM JR., DONNELL |       |        |  |
| 10:31 | GOOD! LAYUP by HARRIS, JORDAN         | 10-19 | V 9    |  |
| 10:31 |                                       |       |        | FOUL by TYREE, BREEIN                  |
| 10:31 | GOOD! FT by HARRIS, JORDAN            | 10-20 | V 10   |  |
| 10:06 |                                       |       |        | TURNOVER by TYREE, BREEIN              |
| 09:39 | MISSED LAYUP by BROWN, CHRISTIAN      |       |        |  |
| 09:38 |                                       |       |        | REBOUND (DEF) by BUFFEN, KJ            |
| 09:38 | FOUL by BROWN, CHRISTIAN              |       |        |  |
| 09:27 |                                       |       |        | TURNOVER by CROWLEY, AUSTIN            |
| 09:27 | STEAL by BROWN, CHRISTIAN             |       |        |  |
| 09:10 | MISSED 3PTR by EDWARDS, ANTHONY       |       |        |  |
| 09:05 |                                       |       |        | REBOUND (DEF) by SHULER, DEVONTAE      |
| 08:52 |                                       |       |        | TURNOVER by BUFFEN, KJ                 |
| 08:52 | STEAL by GRESHAM JR., DONNELL         |       |        |  |
| 08:45 |                                       |       |        | FOUL by HINSON, BLAKE [PNT]            |
| 08:45 |                                       |       |        | SUB OUT: HINSON, BLAKE                 |
| 08:45 |                                       |       |        | SUB OUT: BUFFEN, KJ                    |
| 08:45 |                                       |       |        | SUB IN: SY, KHADIM                     |
| 08:45 |                                       |       |        | SUB IN: HUNTER, SAMMY                  |
| 08:45 | SUB OUT: HAMMONDS, RAYSHAUN           |       |        |  |
| 08:45 | SUB IN: FAGAN, TYE                    |       |        |  |
| 08:43 | MISSED 3PTR by HARRIS, JORDAN         |       |        |  |
| 08:40 |                                       |       |        | REBOUND (DEF) by SHULER, DEVONTAE      |
| 08:34 | FOUL by BROWN, CHRISTIAN              |       |        |  |
| 08:28 |                                       |       |        | TURNOVER by SY, KHADIM                 |
| 08:28 |                                       |       |        | SUB OUT: SY, KHADIM                    |
| 08:28 |                                       |       |        | SUB IN: BUFFEN, KJ                     |
| 08:11 | MISSED 3PTR by EDWARDS, ANTHONY       |       |        |  |
| 08:08 |                                       |       |        | REBOUND (DEF) by BUFFEN, KJ            |
| 07:47 |                                       |       |        | MISSED DUNK by BUFFEN, KJ [PNT]        |
| 07:43 | REBOUND (DEF) by BROWN, CHRISTIAN     |       |        |  |
| 07:31 | MISSED LAYUP by BROWN, CHRISTIAN      |       |        |  |
| 07:28 | REBOUND (OFF) by GRESHAM JR., DONNELL |       |        |  |
| 07:27 | GOOD! 3PTR by HARRIS, JORDAN          | 10-23 | V 13   |  |
| 07:27 | ASSIST by GRESHAM JR., DONNELL        |       |        |  |
| 07:11 |                                       |       |        | FOUL by SHULER, DEVONTAE               |
| 07:11 |                                       |       |        | TURNOVER by SHULER, DEVONTAE           |
| 07:11 | TIMEOUT MEDIA                         |       |        |  |
| 07:11 |                                       |       |        | SUB OUT: SHULER, DEVONTAE              |
| 07:11 |                                       |       |        | SUB OUT: HUNTER, SAMMY                 |
| 07:11 |                                       |       |        | SUB IN: SY, KHADIM                     |
| 07:11 |                                       |       |        | SUB IN: WILLIAMS, BRYCE                |
| 07:11 | SUB OUT: BROWN, CHRISTIAN             |       |        |  |
| 07:11 | SUB IN: HAMMONDS, RAYSHAUN            |       |        |  |
| 07:03 |                                       |       |        | FOUL by WILLIAMS, BRYCE                |
| 07:03 | MISSED FT by GRESHAM JR., DONNELL     |       |        |  |
| 07:02 |                                       |       |        | REBOUND (DEF) by BUFFEN, KJ            |
| 06:38 |                                       |       |        | MISSED JUMPER by CROWLEY, AUSTIN [PNT] |
| 06:34 |                                       |       |        | REBOUND (OFF) by BUFFEN, KJ            |
| 06:33 |                                       |       |        | TURNOVER by BUFFEN, KJ                 |
| 06:33 | STEAL by HAMMONDS, RAYSHAUN           |       |        |  |
| 06:33 |                                       |       |        | SUB OUT: SY, KHADIM                    |
| 06:33 |                                       |       |        | SUB IN: HINSON, BLAKE                  |
| 06:18 |                                       |       |        | FOUL by BUFFEN, KJ                     |

| Time  | VISITORS: Georgia                        | Score | Margin | HOME: Ole Miss                        |
|-------|--|-------|--------|---------------------------------------|
| 06:18 | GOOD! FT by HAMMONDS, RAYSHAUN           | 10-24 | V 14   |                                       |
| 06:18 |  |       |        | SUB OUT: BUFFEN, KJ                   |
| 06:18 |  |       |        | SUB OUT: WILLIAMS, BRYCE              |
| 06:18 |  |       |        | SUB IN: SHULER, DEVONTAE              |
| 06:18 |  |       |        | SUB IN: HUNTER, SAMMY                 |
| 06:18 | GOOD! FT by HAMMONDS, RAYSHAUN           | 10-25 | V 15   |                                       |
| 06:02 |  | 12-25 | V 13   | GOOD! LAYUP by SHULER, DEVONTAE [PNT] |
| 05:41 | MISSED JUMPER by EDWARDS, ANTHONY [PNT]  |       |        |                                       |
| 05:39 |  |       |        | REBOUND (DEF) by CROWLEY, AUSTIN      |
| 05:33 |  |       |        | MISSED 3PTR by HINSON, BLAKE          |
| 05:28 |  |       |        | REBOUND (OFF) by CROWLEY, AUSTIN      |
| 05:23 |  | 14-25 | V 11   | GOOD! LAYUP by SHULER, DEVONTAE       |
| 05:00 | GOOD! LAYUP by FAGAN, TYE                | 14-27 | V 13   |                                       |
| 05:00 | ASSIST by HAMMONDS, RAYSHAUN             |       |        |                                       |
| 04:39 |  | 16-27 | V 11   | GOOD! LAYUP by HUNTER, SAMMY          |
| 04:39 | FOUL by HARRIS, JORDAN                   |       |        |                                       |
| 04:39 | SUB OUT: GRESHAM JR., DONNELL            |       |        |                                       |
| 04:39 | SUB OUT: HARRIS, JORDAN                  |       |        |                                       |
| 04:39 | SUB IN: WHEELER, SAHVIR                  |       |        |                                       |
| 04:39 | SUB IN: PEAKE, MIKE                      |       |        |                                       |
| 04:39 |  |       |        | MISSED FT by HUNTER, SAMMY            |
| 04:38 | REBOUND (DEF) by HAMMONDS, RAYSHAUN      |       |        |                                       |
| 04:38 |  |       |        | FOUL by HINSON, BLAKE                 |
| 04:38 |  |       |        | SUB OUT: HINSON, BLAKE                |
| 04:38 |  |       |        | SUB IN: BUFFEN, KJ                    |
| 04:38 | MISSED FT by HAMMONDS, RAYSHAUN          |       |        |                                       |
| 04:37 |  |       |        | REBOUND (DEF) by SHULER, DEVONTAE     |
| 04:26 |  | 19-27 | V 8    | GOOD! 3PTR by TYREE, BREEIN           |
| 04:01 | MISSED LAYUP by FAGAN, TYE               |       |        |                                       |
| 03:58 | REBOUND (OFF) by PEAKE, MIKE             |       |        |                                       |
| 03:50 | TURNOVER by WHEELER, SAHVIR              |       |        |                                       |
| 03:50 |  |       |        | STEAL by TYREE, BREEIN                |
| 03:47 |  |       |        | MISSED 3PTR by TYREE, BREEIN          |
| 03:44 | REBOUND (DEF) by WHEELER, SAHVIR         |       |        |                                       |
| 03:35 | GOOD! JUMPER by HAMMONDS, RAYSHAUN [PNT] | 19-29 | V 10   |                                       |
| 03:35 | ASSIST by EDWARDS, ANTHONY               |       |        |                                       |
| 03:09 |  | 22-29 | V 7    | GOOD! 3PTR by TYREE, BREEIN           |
| 02:59 | GOOD! DUNK by PEAKE, MIKE [FB]           | 22-31 | V 9    |                                       |
| 02:59 | ASSIST by EDWARDS, ANTHONY               |       |        |                                       |
| 02:36 |  | 24-31 | V 7    | GOOD! DUNK by BUFFEN, KJ              |
| 02:36 |  |       |        | ASSIST by HUNTER, SAMMY               |
| 02:15 |  |       |        | FOUL by HUNTER, SAMMY                 |
| 02:15 | TIMEOUT MEDIA                            |       |        |                                       |
| 02:15 | SUB OUT: FAGAN, TYE                      |       |        |                                       |
| 02:15 | SUB IN: HARRIS, JORDAN                   |       |        |                                       |
| 02:15 | GOOD! FT by PEAKE, MIKE                  | 24-32 | V 8    |                                       |
| 02:15 | GOOD! FT by PEAKE, MIKE                  | 24-33 | V 9    |                                       |
| 02:00 |  |       |        | SUB OUT: BUFFEN, KJ                   |
| 02:00 |  |       |        | SUB IN: SY, KHADIM                    |
| 01:59 |  | 26-33 | V 7    | GOOD! JUMPER by TYREE, BREEIN         |
| 01:44 | GOOD! LAYUP by WHEELER, SAHVIR           | 26-35 | V 9    |                                       |
| 01:44 |  |       |        | SUB OUT: CROWLEY, AUSTIN              |
| 01:44 |  |       |        | SUB IN: BUFFEN, KJ                    |
| 01:42 |  | 28-35 | V 7    | GOOD! LAYUP by BUFFEN, KJ             |
| 01:35 | TURNOVER by WHEELER, SAHVIR              |       |        |                                       |
| 01:35 |  |       |        | STEAL by SY, KHADIM                   |
| 01:20 |  | 30-35 | V 5    | GOOD! DUNK by SHULER, DEVONTAE [FB]   |
| 01:20 |  |       |        | ASSIST by SY, KHADIM                  |
| 01:03 |  |       |        | TIMEOUT 30SEC                         |
| 00:39 | GOOD! 3PTR by HAMMONDS, RAYSHAUN         | 30-38 | V 8    |                                       |
| 00:39 | ASSIST by WHEELER, SAHVIR                |       |        |                                       |
| 00:12 |  |       |        | SUB OUT: SY, KHADIM                   |
| 00:12 |  |       |        | SUB IN: WILLIAMS, BRYCE               |
| 00:12 | SUB OUT: PEAKE, MIKE                     |       |        |                                       |
| 00:12 | SUB IN: FAGAN, TYE                       |       |        |                                       |
| 00:06 |  |       |        | MISSED JUMPER by TYREE, BREEIN        |
| 00:02 | REBOUND (DEF) by WHEELER, SAHVIR         |       |        |                                       |
| 00:00 | GOOD! 3PTR by WHEELER, SAHVIR            | 30-41 | V 11   |                                       |

### Georgia 41, Ole Miss 30

| Points from (This Period) | UGA | UM |
|---------------------------|-----|----|
| In the Paint              | 20  | 20 |
| Off Turns                 | 2   | 2  |
| 2nd Chance                | 8   | 4  |
| Fast Break                | 8   | 2  |
| Bench                     | 6   | 2  |

**Official Box Score**  
**Georgia vs Ole Miss**  
**Second Half Statistics Only**  
**March 11, 2020 at Bridgestone Arena**



**Georgia 40**

| No.           | Player               | S | Pts       | FG           | 3FG        | FT         | OR       | DR        | TR        | PF        | A         | TO       | Blk      | Stl      | Min        |
|---------------|----------------------|---|-----------|--------------|------------|------------|----------|-----------|-----------|-----------|-----------|----------|----------|----------|------------|
| 02            | HARRIS, JORDAN       | G | 10        | 4-6          | 1-1        | 1-1        | 1        | 3         | 4         | 0         | 0         | 0        | 0        | 0        | 17         |
| 05            | EDWARDS, ANTHONY     |   | 6         | 2-7          | 1-5        | 1-2        | 0        | 0         | 0         | 2         | 1         | 0        | 0        | 0        | 20         |
| 10            | CAMARA, TOUMANI      |   | 6         | 2-2          | 0-0        | 2-2        | 0        | 1         | 1         | 3         | 0         | 0        | 0        | 0        | 14         |
| 15            | WHEELER, SAHVIR      |   | 8         | 2-5          | 0-0        | 4-4        | 0        | 1         | 1         | 0         | 6         | 2        | 0        | 1        | 15         |
| 20            | HAMMONDS, RAYSHAUN   | F | 8         | 4-7          | 0-1        | 0-0        | 0        | 7         | 7         | 5         | 1         | 2        | 0        | 0        | 18         |
| 00            | GRESHAM JR., DONNELL | G | 0         | 0-0          | 0-0        | 0-0        | 0        | 2         | 2         | 1         | 1         | 1        | 0        | 1        | 6          |
| 03            | BROWN, CHRISTIAN     |   | 0         | 0-0          | 0-0        | 0-0        | 0        | 0         | 0         | 0         | 0         | 0        | 0        | 0        | 0          |
| 14            | FAGAN, TYE           | G | 0         | 0-0          | 0-0        | 0-0        | 0        | 0         | 0         | 0         | 1         | 0        | 0        | 1        | 5          |
| 30            | PEAKE, MIKE          |   | 2         | 1-1          | 0-0        | 0-0        | 0        | 0         | 0         | 1         | 0         | 1        | 1        | 0        | 4          |
|               | TEAM                 |   |           | 0-0          |            |            | 0        | 0         | 0         | 0         |           | 0        |          |          |            |
| <b>TOTALS</b> |                      |   | <b>40</b> | <b>15-28</b> | <b>2-7</b> | <b>8-9</b> | <b>1</b> | <b>14</b> | <b>15</b> | <b>12</b> | <b>10</b> | <b>6</b> | <b>1</b> | <b>3</b> | <b>100</b> |

*Shooting By Period*

| Period   | FG    | FG%   | 3FG  | 3FG%  | FT    | FT%   |
|----------|-------|-------|------|-------|-------|-------|
| 2nd Half | 15-28 | 54%   | 2-7  | 29%   | 8-9   | 89%   |
| Game     | 30-55 | 54.5% | 7-18 | 38.9% | 14-20 | 70.0% |

*Last FG Half: UGA -*

**Ole Miss 33**

| No.           | Player           | S | Pts       | FG           | 3FG        | FT           | OR       | DR        | TR        | PF       | A        | TO       | Blk      | Stl      | Min        |
|---------------|------------------|---|-----------|--------------|------------|--------------|----------|-----------|-----------|----------|----------|----------|----------|----------|------------|
| 00            | HINSON, BLAKE    | G | 8         | 2-3          | 0-1        | 4-4          | 0        | 2         | 2         | 1        | 0        | 1        | 0        | 0        | 20         |
| 02            | SHULER, DEVONTAE | G | 5         | 2-8          | 0-3        | 1-4          | 0        | 0         | 0         | 2        | 1        | 1        | 0        | 1        | 18         |
| 03            | SY, KHADIM       | F | 5         | 2-3          | 0-0        | 1-1          | 1        | 4         | 5         | 2        | 1        | 1        | 1        | 0        | 11         |
| 04            | TYREE, BREEIN    | G | 8         | 2-9          | 0-3        | 4-4          | 1        | 1         | 2         | 1        | 1        | 2        | 0        | 1        | 20         |
| 05            | BUFFEN, KJ       | F | 7         | 3-3          | 0-0        | 1-2          | 1        | 3         | 4         | 3        | 0        | 0        | 1        | 0        | 14         |
| 01            | CROWLEY, AUSTIN  | G | 0         | 0-1          | 0-1        | 0-0          | 1        | 0         | 1         | 0        | 0        | 0        | 0        | 0        | 14         |
| 13            | WILLIAMS, BRYCE  | G | 0         | 0-0          | 0-0        | 0-0          | 0        | 0         | 0         | 0        | 0        | 1        | 0        | 0        | 3          |
| 23            | HUNTER, SAMMY    | F | 0         | 0-4          | 0-0        | 0-0          | 2        | 0         | 2         | 0        | 0        | 0        | 0        | 0        | 2          |
|               | TEAM             |   |           | 0-0          |            |              | 1        | 1         | 2         | 0        |          | 0        |          |          |            |
| <b>TOTALS</b> |                  |   | <b>33</b> | <b>11-31</b> | <b>0-8</b> | <b>11-15</b> | <b>7</b> | <b>11</b> | <b>18</b> | <b>9</b> | <b>3</b> | <b>6</b> | <b>2</b> | <b>2</b> | <b>100</b> |

*Shooting By Period*

| Period   | FG    | FG%   | 3FG  | 3FG%  | FT    | FT%   |
|----------|-------|-------|------|-------|-------|-------|
| 2nd Half | 11-31 | 35%   | 0-8  | 00%   | 11-15 | 73%   |
| Game     | 25-59 | 42.4% | 2-15 | 13.3% | 11-17 | 64.7% |

*Last FG Half: UM -*

Game Notes:

Officials: Don Daily, Bart Lenox, Josue Nieves

Start Time: 11:00 PM

Neutral Court;

| Score | 1st | 2nd | TOT       |
|-------|-----|-----|-----------|
| UGA   | 41  | 40  | <b>81</b> |
| UM    | 30  | 33  | <b>63</b> |

| Points from (This Period) | UGA | UM |
|---------------------------|-----|----|
| In the Paint              | 22  | 18 |
| Off Turns                 | 7   | 0  |
| 2nd Chance                | 3   | 4  |
| Fast Break                | 2   | 6  |
| Bench                     | 2   | 0  |

**Official Play-By-Play**  
**Georgia vs Ole Miss**  
**Second Half**  
**March 11, 2020 at Bridgestone Arena**



**Period 2**

**Starters:**

**Georgia:** 2 HARRIS, JORDAN (G); 5 EDWARDS, ANTHONY; 10 CAMARA, TOUMANI; 15 WHEELER, SAHVIR; 20 HAMMONDS, RAYSHAUN (F);

**Ole Miss:** 00 HINSON, BLAKE (G); 2 SHULER, DEVONTAE (G); 3 SY, KHADIM (F); 4 TYREE, BREEIN (G); 5 BUFFEN, KJ (F);

| Time  | VISITORS: Georgia                     | Score | Margin | HOME: Ole Miss                          |
|-------|---------------------------------------|-------|--------|---|
| 20:00 |                                       |       |        | SUB OUT: WILLIAMS, BRYCE                |
| 20:00 |                                       |       |        | SUB OUT: HUNTER, SAMMY                  |
| 20:00 |                                       |       |        | SUB IN: HINSON, BLAKE                   |
| 20:00 |                                       |       |        | SUB IN: SY, KHADIM                      |
| 20:00 | SUB OUT: FAGAN, TYE                   |       |        |   |
| 20:00 | SUB IN: CAMARA, TOUMANI               |       |        |   |
| 19:49 | GOOD! JUMPER by HAMMONDS, RAYSHAUN    | 30-43 | V 13   |   |
| 19:49 | ASSIST by WHEELER, SAHVIR             |       |        |   |
| 19:19 |                                       |       |        | TURNOVER by HINSON, BLAKE               |
| 19:06 | GOOD! 3PTR by EDWARDS, ANTHONY        | 30-46 | V 16   |   |
| 19:06 | ASSIST by WHEELER, SAHVIR             |       |        |   |
| 18:43 |                                       |       |        | MISSED JUMPER by SHULER, DEVONTAE [PNT] |
| 18:38 |                                       |       |        | REBOUND (OFF) by BUFFEN, KJ             |
| 18:38 |                                       | 32-46 | V 14   | GOOD! LAYUP by BUFFEN, KJ               |
| 18:30 | GOOD! JUMPER by HARRIS, JORDAN        | 32-48 | V 16   |   |
| 18:30 | ASSIST by WHEELER, SAHVIR             |       |        |   |
| 18:30 |                                       |       |        | FOUL by SHULER, DEVONTAE                |
| 18:30 |                                       |       |        | SUB OUT: SHULER, DEVONTAE               |
| 18:30 |                                       |       |        | SUB IN: CROWLEY, AUSTIN                 |
| 18:30 | GOOD! FT by HARRIS, JORDAN            | 32-49 | V 17   |   |
| 18:22 |                                       |       |        | MISSED JUMPER by TYREE, BREEIN          |
| 18:19 | REBOUND (DEF) by HAMMONDS, RAYSHAUN   |       |        |   |
| 18:13 | MISSED DUNK by HARRIS, JORDAN [PNT]   |       |        |   |
| 18:13 |                                       |       |        | BLOCK by SY, KHADIM                     |
| 18:09 |                                       |       |        | REBOUND (DEF) by SY, KHADIM             |
| 18:04 | FOUL by HAMMONDS, RAYSHAUN            |       |        |   |
| 18:04 |                                       |       |        | MISSED FT by BUFFEN, KJ                 |
| 18:04 |                                       |       |        | REBOUND (DEADB) by TEAM                 |
| 18:04 |                                       | 33-49 | V 16   | GOOD! FT by BUFFEN, KJ                  |
| 17:40 | MISSED 3PTR by HAMMONDS, RAYSHAUN     |       |        |   |
| 17:36 |                                       |       |        | REBOUND (DEF) by HINSON, BLAKE          |
| 17:25 |                                       | 35-49 | V 14   | GOOD! LAYUP by BUFFEN, KJ               |
| 17:06 |                                       |       |        | FOUL by SY, KHADIM [PNT]                |
| 17:06 |                                       |       |        | SUB OUT: SY, KHADIM                     |
| 17:06 |                                       |       |        | SUB IN: SHULER, DEVONTAE                |
| 17:04 | GOOD! DUNK by HARRIS, JORDAN          | 35-51 | V 16   |   |
| 17:04 | ASSIST by WHEELER, SAHVIR             |       |        |   |
| 16:36 |                                       |       |        | MISSED 3PTR by TYREE, BREEIN            |
| 16:33 | REBOUND (DEF) by HAMMONDS, RAYSHAUN   |       |        |   |
| 16:28 | MISSED 3PTR by EDWARDS, ANTHONY       |       |        |   |
| 16:25 |                                       |       |        | REBOUND (DEADB) by TEAM                 |
| 16:09 | FOUL by HAMMONDS, RAYSHAUN            |       |        |   |
| 15:52 |                                       | 37-51 | V 14   | GOOD! DUNK by BUFFEN, KJ                |
| 15:52 |                                       |       |        | ASSIST by SHULER, DEVONTAE              |
| 15:27 | FOUL by HAMMONDS, RAYSHAUN            |       |        |   |
| 15:27 | TURNOVER by HAMMONDS, RAYSHAUN        |       |        |   |
| 15:27 | TIMEOUT MEDIA                         |       |        |   |
| 15:11 | FOUL by CAMARA, TOUMANI               |       |        |   |
| 15:08 |                                       |       |        | MISSED JUMPER by TYREE, BREEIN          |
| 15:05 | REBOUND (DEF) by CAMARA, TOUMANI      |       |        |   |
| 14:51 | MISSED 3PTR by EDWARDS, ANTHONY       |       |        |   |
| 14:47 |                                       |       |        | REBOUND (DEF) by BUFFEN, KJ             |
| 14:41 |                                       | 39-51 | V 12   | GOOD! LAYUP by TYREE, BREEIN [FB/PNT]   |
| 14:21 | GOOD! JUMPER by HAMMONDS, RAYSHAUN    | 39-53 | V 14   |   |
| 14:01 |                                       | 41-53 | V 12   | GOOD! LAYUP by HINSON, BLAKE [PNT]      |
| 13:35 | GOOD! JUMPER by HAMMONDS, RAYSHAUN    | 41-55 | V 14   |   |
| 13:35 | ASSIST by WHEELER, SAHVIR             |       |        |   |
| 13:21 |                                       | 43-55 | V 12   | GOOD! JUMPER by TYREE, BREEIN           |
| 13:00 |                                       |       |        | FOUL by BUFFEN, KJ [PNT]                |
| 12:51 | TURNOVER by WHEELER, SAHVIR           |       |        |   |
| 12:37 |                                       |       |        | TURNOVER by TYREE, BREEIN [PNT]         |
| 12:37 | STEAL by WHEELER, SAHVIR              |       |        |   |
| 12:31 | TURNOVER by WHEELER, SAHVIR           |       |        |   |
| 12:31 | SUB OUT: WHEELER, SAHVIR              |       |        |   |
| 12:31 | SUB IN: GRESHAM JR., DONNELL          |       |        |   |
| 12:14 |                                       |       |        | MISSED 3PTR by TYREE, BREEIN            |
| 12:09 | REBOUND (DEF) by GRESHAM JR., DONNELL |       |        |   |
| 12:04 | GOOD! DUNK by CAMARA, TOUMANI         | 43-57 | V 14   |   |
| 12:04 | ASSIST by EDWARDS, ANTHONY            |       |        |   |
| 11:48 | FOUL by CAMARA, TOUMANI               |       |        |   |



| Time  | VISITORS: Georgia                         | Score | Margin | HOME: Ole Miss                          |
|-------|---|-------|--------|---|
| 11:48 | TIMEOUT MEDIA                             |       |        |   |
| 11:48 |   |       |        | SUB OUT: SHULER, DEVONTAE               |
| 11:48 |   |       |        | SUB IN: WILLIAMS, BRYCE                 |
| 11:48 | SUB OUT: CAMARA, TOUMANI                  |       |        |   |
| 11:48 | SUB IN: PEAKE, MIKE                       |       |        |   |
| 11:48 |   | 44-57 | V 13   | GOOD! FT by HINSON, BLAKE               |
| 11:48 |   | 45-57 | V 12   | GOOD! FT by HINSON, BLAKE               |
| 11:27 | GOOD! DUNK by PEAKE, MIKE                 | 45-59 | V 14   |   |
| 11:27 | ASSIST by HAMMONDS, RAYSHAUN              |       |        |   |
| 11:10 | FOUL by PEAKE, MIKE [PNT]                 |       |        |   |
| 11:10 |   | 46-59 | V 13   | GOOD! FT by HINSON, BLAKE               |
| 11:10 |   |       |        | SUB OUT: CROWLEY, AUSTIN                |
| 11:10 |   |       |        | SUB OUT: WILLIAMS, BRYCE                |
| 11:10 |   |       |        | SUB IN: SHULER, DEVONTAE                |
| 11:10 |   |       |        | SUB IN: SY, KHADIM                      |
| 11:10 |   | 47-59 | V 12   | GOOD! FT by HINSON, BLAKE               |
| 10:55 | MISSED LAYUP by HAMMONDS, RAYSHAUN [PNT]  |       |        |   |
| 10:53 | REBOUND (OFF) by HARRIS, JORDAN           |       |        |   |
| 10:51 | GOOD! 3PTR by HARRIS, JORDAN              | 47-62 | V 15   |   |
| 10:45 |   |       |        | TIMEOUT 30SEC                           |
| 10:36 |   |       |        | TURNOVER by SY, KHADIM                  |
| 10:36 | STEAL by GRESHAM JR., DONNELL             |       |        |   |
| 10:14 | MISSED JUMPER by HAMMONDS, RAYSHAUN [PNT] |       |        |   |
| 10:14 |   |       |        | BLOCK by BUFFEN, KJ                     |
| 10:09 |   |       |        | REBOUND (DEF) by BUFFEN, KJ             |
| 10:07 | FOUL by EDWARDS, ANTHONY                  |       |        |   |
| 10:07 |   | 48-62 | V 14   | GOOD! FT by TYREE, BREEIN [FB]          |
| 10:07 |   |       |        | SUB OUT: SY, KHADIM                     |
| 10:07 |   |       |        | SUB IN: HUNTER, SAMMY                   |
| 10:07 |   | 49-62 | V 13   | GOOD! FT by TYREE, BREEIN [FB]          |
| 09:56 | FOUL by GRESHAM JR., DONNELL              |       |        |   |
| 09:56 | TURNOVER by GRESHAM JR., DONNELL          |       |        |   |
| 09:41 |   |       |        | MISSED JUMPER by HUNTER, SAMMY [PNT]    |
| 09:39 |   |       |        | REBOUND (OFF) by HUNTER, SAMMY          |
| 09:38 |   |       |        | MISSED LAYUP by HUNTER, SAMMY           |
| 09:36 |   |       |        | REBOUND (OFF) by HUNTER, SAMMY          |
| 09:35 |   |       |        | MISSED JUMPER by HUNTER, SAMMY          |
| 09:35 | BLOCK by PEAKE, MIKE                      |       |        |   |
| 09:30 |   |       |        | REBOUND (OFF) by TYREE, BREEIN          |
| 09:28 |   |       |        | MISSED JUMPER by SHULER, DEVONTAE [PNT] |
| 09:24 | REBOUND (DEF) by GRESHAM JR., DONNELL     |       |        |   |
| 09:19 | GOOD! JUMPER by HARRIS, JORDAN            | 49-64 | V 15   |   |
| 09:19 | ASSIST by GRESHAM JR., DONNELL            |       |        |   |
| 09:02 |   |       |        | MISSED LAYUP by HUNTER, SAMMY [PNT]     |
| 08:59 | REBOUND (DEF) by HARRIS, JORDAN           |       |        |   |
| 08:42 | MISSED 3PTR by EDWARDS, ANTHONY           |       |        |   |
| 08:37 |   |       |        | REBOUND (DEF) by BUFFEN, KJ             |
| 08:31 |   |       |        | SUB OUT: HUNTER, SAMMY                  |
| 08:31 |   |       |        | SUB IN: CROWLEY, AUSTIN                 |
| 08:31 | SUB OUT: HARRIS, JORDAN                   |       |        |   |
| 08:31 | SUB IN: FAGAN, TYE                        |       |        |   |
| 08:27 |   |       |        | TURNOVER by SHULER, DEVONTAE            |
| 08:15 | TURNOVER by PEAKE, MIKE [PNT]             |       |        |   |
| 08:15 |   |       |        | STEAL by TYREE, BREEIN                  |
| 08:07 |   |       |        | MISSED 3PTR by SHULER, DEVONTAE         |
| 08:05 | REBOUND (DEF) by HAMMONDS, RAYSHAUN       |       |        |   |
| 08:05 |   |       |        | FOUL by HINSON, BLAKE                   |
| 08:05 | SUB OUT: GRESHAM JR., DONNELL             |       |        |   |
| 08:05 | SUB OUT: PEAKE, MIKE                      |       |        |   |
| 08:05 | SUB IN: CAMARA, TOUMANI                   |       |        |   |
| 08:05 | SUB IN: WHEELER, SAHVIR                   |       |        |   |
| 07:44 |   |       |        | FOUL by SHULER, DEVONTAE                |
| 07:44 | TIMEOUT MEDIA                             |       |        |   |
| 07:44 |   |       |        | SUB OUT: BUFFEN, KJ                     |
| 07:44 |   |       |        | SUB IN: SY, KHADIM                      |
| 07:44 | GOOD! FT by CAMARA, TOUMANI               | 49-65 | V 16   |   |
| 07:44 | GOOD! FT by CAMARA, TOUMANI               | 49-66 | V 17   |   |
| 07:25 |   | 51-66 | V 15   | GOOD! JUMPER by SHULER, DEVONTAE        |
| 07:06 | MISSED JUMPER by WHEELER, SAHVIR          |       |        |   |
| 07:04 |   |       |        | REBOUND (DEF) by SY, KHADIM             |
| 07:00 |   | 53-66 | V 13   | GOOD! LAYUP by SHULER, DEVONTAE [FB]    |
| 07:00 |   |       |        | ASSIST by SY, KHADIM                    |
| 06:39 | MISSED LAYUP by EDWARDS, ANTHONY          |       |        |   |
| 06:37 |   |       |        | REBOUND (DEF) by SY, KHADIM             |
| 06:33 | FOUL by EDWARDS, ANTHONY                  |       |        |   |
| 06:33 |   | 54-66 | V 12   | GOOD! FT by TYREE, BREEIN               |
| 06:33 |   | 55-66 | V 11   | GOOD! FT by TYREE, BREEIN               |
| 06:16 | MISSED LAYUP by WHEELER, SAHVIR           |       |        |   |
| 06:13 |   |       |        | REBOUND (DEF) by HINSON, BLAKE          |
| 06:04 |   |       |        | MISSED JUMPER by SY, KHADIM             |

| Time  | VISITORS: Georgia                      | Score | Margin | HOME: Ole Miss                   |
|-------|--|-------|--------|----------------------------------|
| 06:01 |  |       |        | REBOUND (OFF) by CROWLEY, AUSTIN |
| 05:59 |  |       |        | MISSED 3PTR by CROWLEY, AUSTIN   |
| 05:57 |  |       |        | REBOUND (OFF) by SY, KHADIM      |
| 05:57 |  | 57-66 | V 9    | GOOD! DUNK by SY, KHADIM         |
| 05:57 | TIMEOUT 30SEC                          |       |        |                                  |
| 05:57 | SUB OUT: FAGAN, TYE                    |       |        |                                  |
| 05:57 | SUB IN: HARRIS, JORDAN                 |       |        |                                  |
| 05:39 | MISSED 3PTR by EDWARDS, ANTHONY        |       |        |                                  |
| 05:35 |  |       |        | REBOUND (DEF) by TYREE, BREEIN   |
| 05:30 |  |       |        | MISSED 3PTR by TYREE, BREEIN     |
| 05:26 | REBOUND (DEF) by HAMMONDS, RAYSHAUN    |       |        |                                  |
| 05:18 |  |       |        | FOUL by SY, KHADIM               |
| 05:18 | MISSED FT by EDWARDS, ANTHONY          |       |        |                                  |
| 05:18 | REBOUND (DEADB) by TEAM                |       |        |                                  |
| 05:18 | GOOD! FT by EDWARDS, ANTHONY           | 57-67 | V 10   |                                  |
| 05:03 |  |       |        | MISSED 3PTR by HINSON, BLAKE     |
| 05:00 | REBOUND (DEF) by HAMMONDS, RAYSHAUN    |       |        |                                  |
| 04:44 | TURNOVER by HAMMONDS, RAYSHAUN         |       |        |                                  |
| 04:44 |  |       |        | STEAL by SHULER, DEVONTAE        |
| 04:39 |  |       |        | MISSED LAYUP by SHULER, DEVONTAE |
| 04:37 | REBOUND (DEF) by HAMMONDS, RAYSHAUN    |       |        |                                  |
| 04:28 | GOOD! LAYUP by HAMMONDS, RAYSHAUN      | 57-69 | V 12   |                                  |
| 04:28 | ASSIST by WHEELER, SAHVIR              |       |        |                                  |
| 04:05 |  | 59-69 | V 10   | GOOD! LAYUP by HINSON, BLAKE     |
| 03:43 | GOOD! LAYUP by CAMARA, TOUMANI         | 59-71 | V 12   |                                  |
| 03:30 | FOUL by HAMMONDS, RAYSHAUN [PNT]       |       |        |                                  |
| 03:30 | TIMEOUT MEDIA                          |       |        |                                  |
| 03:30 |  |       |        | SUB OUT: CROWLEY, AUSTIN         |
| 03:30 |  |       |        | SUB IN: BUFFEN, KJ               |
| 03:30 |  |       |        | MISSED FT by SHULER, DEVONTAE    |
| 03:30 |  |       |        | REBOUND (DEADB) by TEAM          |
| 03:30 |  | 60-71 | V 11   | GOOD! FT by SHULER, DEVONTAE     |
| 03:17 | MISSED LAYUP by HARRIS, JORDAN [PNT]   |       |        |                                  |
| 03:14 |  |       |        | REBOUND (DEF) by SY, KHADIM      |
| 03:09 |  |       |        | FOUL by TYREE, BREEIN            |
| 03:09 |  |       |        | TURNOVER by TYREE, BREEIN        |
| 02:46 | GOOD! LAYUP by WHEELER, SAHVIR         | 60-73 | V 13   |                                  |
| 02:28 | FOUL by CAMARA, TOUMANI [PNT]          |       |        |                                  |
| 02:28 | SUB OUT: CAMARA, TOUMANI               |       |        |                                  |
| 02:28 | SUB IN: FAGAN, TYE                     |       |        |                                  |
| 02:28 |  |       |        | MISSED FT by SHULER, DEVONTAE    |
| 02:28 |  |       |        | REBOUND (DEADB) by TEAM          |
| 02:28 |  |       |        | MISSED FT by SHULER, DEVONTAE    |
| 02:26 | REBOUND (DEF) by HAMMONDS, RAYSHAUN    |       |        |                                  |
| 02:14 |  |       |        | FOUL by BUFFEN, KJ               |
| 02:14 | GOOD! FT by WHEELER, SAHVIR            | 60-74 | V 14   |                                  |
| 02:14 | GOOD! FT by WHEELER, SAHVIR            | 60-75 | V 15   |                                  |
| 02:07 |  | 62-75 | V 13   | GOOD! LAYUP by SY, KHADIM        |
| 02:07 |  |       |        | ASSIST by TYREE, BREEIN          |
| 02:07 | FOUL by HAMMONDS, RAYSHAUN             |       |        |                                  |
| 02:07 | SUB OUT: HAMMONDS, RAYSHAUN            |       |        |                                  |
| 02:07 | SUB IN: PEAKE, MIKE                    |       |        |                                  |
| 02:07 |  | 63-75 | V 12   | GOOD! FT by SY, KHADIM           |
| 02:03 |  |       |        | FOUL by BUFFEN, KJ               |
| 02:03 |  |       |        | SUB OUT: BUFFEN, KJ              |
| 02:03 |  |       |        | SUB IN: WILLIAMS, BRYCE          |
| 02:03 | GOOD! FT by WHEELER, SAHVIR            | 63-76 | V 13   |                                  |
| 02:03 | GOOD! FT by WHEELER, SAHVIR            | 63-77 | V 14   |                                  |
| 01:54 |  |       |        | MISSED JUMPER by TYREE, BREEIN   |
| 01:50 | REBOUND (DEF) by WHEELER, SAHVIR       |       |        |                                  |
| 01:22 | MISSED JUMPER by WHEELER, SAHVIR [PNT] |       |        |                                  |
| 01:21 |  |       |        | REBOUND (DEF) by TEAM            |
| 01:21 |  |       |        | SUB OUT: SY, KHADIM              |
| 01:21 |  |       |        | SUB IN: CROWLEY, AUSTIN          |
| 01:21 | SUB OUT: PEAKE, MIKE                   |       |        |                                  |
| 01:21 | SUB IN: GRESHAM JR., DONNELL           |       |        |                                  |
| 01:13 |  |       |        | MISSED JUMPER by TYREE, BREEIN   |
| 01:10 | REBOUND (DEF) by HARRIS, JORDAN        |       |        |                                  |
| 00:44 | GOOD! LAYUP by WHEELER, SAHVIR         | 63-79 | V 16   |                                  |
| 00:36 |  |       |        | TURNOVER by WILLIAMS, BRYCE      |
| 00:36 | STEAL by FAGAN, TYE                    |       |        |                                  |
| 00:31 | GOOD! JUMPER by EDWARDS, ANTHONY [FB]  | 63-81 | V 18   |                                  |
| 00:31 | ASSIST by FAGAN, TYE                   |       |        |                                  |
| 00:20 |  |       |        | MISSED 3PTR by SHULER, DEVONTAE  |
| 00:17 |  |       |        | REBOUND (OFF) by TEAM            |
| 00:08 |  |       |        | MISSED 3PTR by SHULER, DEVONTAE  |
| 00:05 | REBOUND (DEF) by HARRIS, JORDAN        |       |        |                                  |

Georgia 81, Ole Miss 63

| <b>Points from (This Period)</b> | <b>UGA</b> | <b>UM</b> |
|----------------------------------|------------|-----------|
| In the Paint                     | 22         | 18        |
| Off Turns                        | 7          | 0         |
| 2nd Chance                       | 3          | 4         |
| Fast Break                       | 2          | 6         |
| Bench                            | 2          | 0         |

**Official Scoring/Possession Reference Chart**  
**Georgia vs Ole Miss**  
**Period 1**  
**March 11, 2020 at Bridgestone Arena**



**Period 1**

**Starters:**

**Georgia:** 2 HARRIS, JORDAN (G); 5 EDWARDS, ANTHONY; 10 CAMARA, TOUMANI; 15 WHEELER, SAHVIR; 20 HAMMONDS, RAYSHAUN (F);

**Ole Miss:** 00 HINSON, BLAKE (G); 2 SHULER, DEVONTAE (G); 3 SY, KHADIM (F); 4 TYREE, BREEIN (G); 5 BUFFEN, KJ (F);

| Time  | VISITORS: Georgia                          | Score | Margin | HOME: Ole Miss                        |
|-------|--|-------|--------|---------------------------------------|
| 19:30 | GOOD! LAYUP by WHEELER, SAHVIR             | 0-2   | V 2    |                                       |
| 19:08 |  | 2-2   | T      | GOOD! LAYUP by SHULER, DEVONTAE       |
| 18:48 | GOOD! JUMPER by HAMMONDS, RAYSHAUN [PNT]   | 2-4   | V 2    |                                       |
| 17:38 | GOOD! LAYUP by HAMMONDS, RAYSHAUN [FB/PNT] | 2-6   | V 4    |                                       |
| 17:10 |  | 4-6   | V 2    | GOOD! LAYUP by SHULER, DEVONTAE       |
| 17:04 | GOOD! 3PTR by HAMMONDS, RAYSHAUN [FB]      | 4-9   | V 5    |                                       |
| 16:28 | GOOD! FT by CAMARA, TOUMANI [FB]           | 4-10  | V 6    |                                       |
| 16:23 | GOOD! LAYUP by CAMARA, TOUMANI             | 4-12  | V 8    |                                       |
| 15:57 |  | 6-12  | V 6    | GOOD! LAYUP by TYREE, BREEIN          |
| 14:04 | GOOD! LAYUP by HARRIS, JORDAN              | 6-14  | V 8    |                                       |
| 13:22 |  | 8-14  | V 6    | GOOD! LAYUP by SY, KHADIM             |
| 12:05 |  | 10-14 | V 4    | GOOD! JUMPER by SHULER, DEVONTAE      |
| 11:30 | GOOD! 3PTR by HARRIS, JORDAN               | 10-17 | V 7    |                                       |
| 10:31 | GOOD! LAYUP by HARRIS, JORDAN              | 10-19 | V 9    |                                       |
| 10:31 | GOOD! FT by HARRIS, JORDAN                 | 10-20 | V 10   |                                       |
| 07:27 | GOOD! 3PTR by HARRIS, JORDAN               | 10-23 | V 13   |                                       |
| 06:18 | GOOD! FT by HAMMONDS, RAYSHAUN             | 10-24 | V 14   |                                       |
| 06:18 | GOOD! FT by HAMMONDS, RAYSHAUN             | 10-25 | V 15   |                                       |
| 06:02 |  | 12-25 | V 13   | GOOD! LAYUP by SHULER, DEVONTAE [PNT] |
| 05:23 |  | 14-25 | V 11   | GOOD! LAYUP by SHULER, DEVONTAE       |
| 05:00 | GOOD! LAYUP by FAGAN, TYE                  | 14-27 | V 13   |                                       |
| 04:39 |  | 16-27 | V 11   | GOOD! LAYUP by HUNTER, SAMMY          |
| 04:26 |  | 19-27 | V 8    | GOOD! 3PTR by TYREE, BREEIN           |
| 03:35 | GOOD! JUMPER by HAMMONDS, RAYSHAUN [PNT]   | 19-29 | V 10   |                                       |
| 03:09 |  | 22-29 | V 7    | GOOD! 3PTR by TYREE, BREEIN           |
| 02:59 | GOOD! DUNK by PEAKE, MIKE [FB]             | 22-31 | V 9    |                                       |
| 02:36 |  | 24-31 | V 7    | GOOD! DUNK by BUFFEN, KJ              |
| 02:15 | GOOD! FT by PEAKE, MIKE                    | 24-32 | V 8    |                                       |
| 02:15 | GOOD! FT by PEAKE, MIKE                    | 24-33 | V 9    |                                       |
| 01:59 |  | 26-33 | V 7    | GOOD! JUMPER by TYREE, BREEIN         |
| 01:44 | GOOD! LAYUP by WHEELER, SAHVIR             | 26-35 | V 9    |                                       |
| 01:42 |  | 28-35 | V 7    | GOOD! LAYUP by BUFFEN, KJ             |
| 01:20 |  | 30-35 | V 5    | GOOD! DUNK by SHULER, DEVONTAE [FB]   |
| 00:39 | GOOD! 3PTR by HAMMONDS, RAYSHAUN           | 30-38 | V 8    |                                       |
| 00:00 | GOOD! 3PTR by WHEELER, SAHVIR              | 30-41 | V 11   |                                       |

**Georgia 41, Ole Miss 30**

**Official Scoring/Possession Reference Chart**  
**Georgia vs Ole Miss**  
**Period 2**  
**March 11, 2020 at Bridgestone Arena**



**Period 2**

**Starters:**

**Georgia:** 2 HARRIS, JORDAN (G); 5 EDWARDS, ANTHONY; 10 CAMARA, TOUMANI; 15 WHEELER, SAHVIR; 20 HAMMONDS, RAYSHAUN (F);  
**Ole Miss:** 00 HINSON, BLAKE (G); 2 SHULER, DEVONTAE (G); 3 SY, KHADIM (F); 4 TYREE, BREEIN (G); 5 BUFFEN, KJ (F);

| Time  | VISITORS: Georgia                     | Score | Margin | HOME: Ole Miss                        |
|-------|---------------------------------------|-------|--------|---------------------------------------|
| 19:49 | GOOD! JUMPER by HAMMONDS, RAYSHAUN    | 30-43 | V 13   |                                       |
| 19:06 | GOOD! 3PTR by EDWARDS, ANTHONY        | 30-46 | V 16   |                                       |
| 18:38 |                                       | 32-46 | V 14   | GOOD! LAYUP by BUFFEN, KJ             |
| 18:30 | GOOD! JUMPER by HARRIS, JORDAN        | 32-48 | V 16   |                                       |
| 18:30 | GOOD! FT by HARRIS, JORDAN            | 32-49 | V 17   |                                       |
| 18:04 |                                       | 33-49 | V 16   | GOOD! FT by BUFFEN, KJ                |
| 17:25 |                                       | 35-49 | V 14   | GOOD! LAYUP by BUFFEN, KJ             |
| 17:04 | GOOD! DUNK by HARRIS, JORDAN          | 35-51 | V 16   |                                       |
| 15:52 |                                       | 37-51 | V 14   | GOOD! DUNK by BUFFEN, KJ              |
| 14:41 |                                       | 39-51 | V 12   | GOOD! LAYUP by TYREE, BREEIN [FB/PNT] |
| 14:21 | GOOD! JUMPER by HAMMONDS, RAYSHAUN    | 39-53 | V 14   |                                       |
| 14:01 |                                       | 41-53 | V 12   | GOOD! LAYUP by HINSON, BLAKE [PNT]    |
| 13:35 | GOOD! JUMPER by HAMMONDS, RAYSHAUN    | 41-55 | V 14   |                                       |
| 13:21 |                                       | 43-55 | V 12   | GOOD! JUMPER by TYREE, BREEIN         |
| 12:04 | GOOD! DUNK by CAMARA, TOUMANI         | 43-57 | V 14   |                                       |
| 11:48 |                                       | 44-57 | V 13   | GOOD! FT by HINSON, BLAKE             |
| 11:48 |                                       | 45-57 | V 12   | GOOD! FT by HINSON, BLAKE             |
| 11:27 | GOOD! DUNK by PEAKE, MIKE             | 45-59 | V 14   |                                       |
| 11:10 |                                       | 46-59 | V 13   | GOOD! FT by HINSON, BLAKE             |
| 11:10 |                                       | 47-59 | V 12   | GOOD! FT by HINSON, BLAKE             |
| 10:51 | GOOD! 3PTR by HARRIS, JORDAN          | 47-62 | V 15   |                                       |
| 10:07 |                                       | 48-62 | V 14   | GOOD! FT by TYREE, BREEIN [FB]        |
| 10:07 |                                       | 49-62 | V 13   | GOOD! FT by TYREE, BREEIN [FB]        |
| 09:19 | GOOD! JUMPER by HARRIS, JORDAN        | 49-64 | V 15   |                                       |
| 07:44 | GOOD! FT by CAMARA, TOUMANI           | 49-65 | V 16   |                                       |
| 07:44 | GOOD! FT by CAMARA, TOUMANI           | 49-66 | V 17   |                                       |
| 07:25 |                                       | 51-66 | V 15   | GOOD! JUMPER by SHULER, DEVONTAE      |
| 07:00 |                                       | 53-66 | V 13   | GOOD! LAYUP by SHULER, DEVONTAE [FB]  |
| 06:33 |                                       | 54-66 | V 12   | GOOD! FT by TYREE, BREEIN             |
| 06:33 |                                       | 55-66 | V 11   | GOOD! FT by TYREE, BREEIN             |
| 05:57 |                                       | 57-66 | V 9    | GOOD! DUNK by SY, KHADIM              |
| 05:18 | GOOD! FT by EDWARDS, ANTHONY          | 57-67 | V 10   |                                       |
| 04:28 | GOOD! LAYUP by HAMMONDS, RAYSHAUN     | 57-69 | V 12   |                                       |
| 04:05 |                                       | 59-69 | V 10   | GOOD! LAYUP by HINSON, BLAKE          |
| 03:43 | GOOD! LAYUP by CAMARA, TOUMANI        | 59-71 | V 12   |                                       |
| 03:30 |                                       | 60-71 | V 11   | GOOD! FT by SHULER, DEVONTAE          |
| 02:46 | GOOD! LAYUP by WHEELER, SAHVIR        | 60-73 | V 13   |                                       |
| 02:14 | GOOD! FT by WHEELER, SAHVIR           | 60-74 | V 14   |                                       |
| 02:14 | GOOD! FT by WHEELER, SAHVIR           | 60-75 | V 15   |                                       |
| 02:07 |                                       | 62-75 | V 13   | GOOD! LAYUP by SY, KHADIM             |
| 02:07 |                                       | 63-75 | V 12   | GOOD! FT by SY, KHADIM                |
| 02:03 | GOOD! FT by WHEELER, SAHVIR           | 63-76 | V 13   |                                       |
| 02:03 | GOOD! FT by WHEELER, SAHVIR           | 63-77 | V 14   |                                       |
| 00:44 | GOOD! LAYUP by WHEELER, SAHVIR        | 63-79 | V 16   |                                       |
| 00:31 | GOOD! JUMPER by EDWARDS, ANTHONY [FB] | 63-81 | V 18   |                                       |

**Georgia 81, Ole Miss 63**

**Official Substitutions Log**  
**Georgia vs Ole Miss**  
**Period 1**  
**March 11, 2020 at Bridgestone Arena**



| VISITORS: Georgia                | Time  | Score | HOME: Ole Miss            |
|----------------------------------|-------|-------|---------------------------|
| 2 HARRIS, JORDAN                 |       |       | 00 HINSON, BLAKE          |
| 5 EDWARDS, ANTHONY               |       |       | 2 SHULER, DEVONTAE        |
| 10 CAMARA, TOUMANI               |       |       | 3 SY, KHADIM              |
| 15 WHEELER, SAHVIR               |       |       | 4 TYREE, BREEIN           |
| 20 HAMMONDS, RAYSHAUN            |       |       | 5 BUFFEN, KJ              |
|                                  | 17:00 | 9-4   | SUB OUT: BUFFEN, KJ       |
|                                  | 17:00 |       | SUB IN: CROWLEY, AUSTIN   |
|                                  | 16:28 | 10-4  | SUB OUT: HINSON, BLAKE    |
|                                  | 16:28 |       | SUB IN: BUFFEN, KJ        |
|                                  | 15:57 | 12-6  | SUB OUT: SY, KHADIM       |
|                                  | 15:57 |       | SUB IN: HUNTER, SAMMY     |
|                                  | 15:15 | 12-6  | SUB OUT: SHULER, DEVONTAE |
|                                  | 15:15 |       | SUB IN: WILLIAMS, BRYCE   |
|                                  | 13:36 | 14-6  | SUB OUT: TYREE, BREEIN    |
|                                  | 13:36 |       | SUB OUT: BUFFEN, KJ       |
|                                  | 13:36 |       | SUB OUT: HUNTER, SAMMY    |
|                                  | 13:36 |       | SUB IN: HINSON, BLAKE     |
|                                  | 13:36 |       | SUB IN: SHULER, DEVONTAE  |
|                                  | 13:36 |       | SUB IN: SY, KHADIM        |
|                                  | 12:59 | 14-8  | SUB OUT: CROWLEY, AUSTIN  |
|                                  | 12:59 |       | SUB IN: TYREE, BREEIN     |
|                                  | 11:12 | 17-10 | SUB OUT: SY, KHADIM       |
|                                  | 11:12 |       | SUB OUT: WILLIAMS, BRYCE  |
|                                  | 11:12 |       | SUB IN: CROWLEY, AUSTIN   |
|                                  | 11:12 |       | SUB IN: BUFFEN, KJ        |
| SUB OUT: 10 CAMARA, TOUMANI      | 11:12 |       |                           |
| SUB OUT: 15 WHEELER, SAHVIR      | 11:12 |       |                           |
| SUB IN: 00 GRESHAM JR., DONNELL  | 11:12 |       |                           |
| SUB IN: 3 BROWN, CHRISTIAN       | 11:12 |       |                           |
|                                  | 08:45 | 20-10 | SUB OUT: HINSON, BLAKE    |
|                                  | 08:45 |       | SUB OUT: BUFFEN, KJ       |
|                                  | 08:45 |       | SUB IN: SY, KHADIM        |
|                                  | 08:45 |       | SUB IN: HUNTER, SAMMY     |
| SUB OUT: 20 HAMMONDS, RAYSHAUN   | 08:45 |       |                           |
| SUB IN: 14 FAGAN, TYE            | 08:45 |       |                           |
|                                  | 08:28 | 20-10 | SUB OUT: SY, KHADIM       |
|                                  | 08:28 |       | SUB IN: BUFFEN, KJ        |
|                                  | 07:11 | 23-10 | SUB OUT: SHULER, DEVONTAE |
|                                  | 07:11 |       | SUB OUT: HUNTER, SAMMY    |
|                                  | 07:11 |       | SUB IN: SY, KHADIM        |
|                                  | 07:11 |       | SUB IN: WILLIAMS, BRYCE   |
| SUB OUT: 3 BROWN, CHRISTIAN      | 07:11 |       |                           |
| SUB IN: 20 HAMMONDS, RAYSHAUN    | 07:11 |       |                           |
|                                  | 06:33 | 23-10 | SUB OUT: SY, KHADIM       |
|                                  | 06:33 |       | SUB IN: HINSON, BLAKE     |
|                                  | 06:18 | 24-10 | SUB OUT: BUFFEN, KJ       |
|                                  | 06:18 |       | SUB OUT: WILLIAMS, BRYCE  |
|                                  | 06:18 |       | SUB IN: SHULER, DEVONTAE  |
|                                  | 06:18 |       | SUB IN: HUNTER, SAMMY     |
| SUB OUT: 00 GRESHAM JR., DONNELL | 04:39 | 27-16 |                           |
| SUB OUT: 2 HARRIS, JORDAN        | 04:39 |       |                           |
| SUB IN: 15 WHEELER, SAHVIR       | 04:39 |       |                           |
| SUB IN: 30 PEAKE, MIKE           | 04:39 |       |                           |
|                                  | 04:38 | 27-16 | SUB OUT: HINSON, BLAKE    |
|                                  | 04:38 |       | SUB IN: BUFFEN, KJ        |
| SUB OUT: 14 FAGAN, TYE           | 02:15 | 31-24 |                           |
| SUB IN: 2 HARRIS, JORDAN         | 02:15 |       |                           |
|                                  | 02:00 | 33-24 | SUB OUT: BUFFEN, KJ       |
|                                  | 02:00 |       | SUB IN: SY, KHADIM        |
|                                  | 01:44 | 35-26 | SUB OUT: CROWLEY, AUSTIN  |
|                                  | 01:44 |       | SUB IN: BUFFEN, KJ        |
|                                  | 00:12 | 38-30 | SUB OUT: SY, KHADIM       |
|                                  | 00:12 |       | SUB IN: WILLIAMS, BRYCE   |
| SUB OUT: 30 PEAKE, MIKE          | 00:12 |       |                           |
| SUB IN: 14 FAGAN, TYE            | 00:12 |       |                           |

**Georgia 41, Ole Miss 30**

**Official Substitutions Log**  
**Georgia vs Ole Miss**  
**Period 2**  
**March 11, 2020 at Bridgestone Arena**



| VISITORS: Georgia                | Time  | Score | HOME: Ole Miss            |
|----------------------------------|-------|-------|---------------------------|
| 2 HARRIS, JORDAN                 |       |       | 00 HINSON, BLAKE          |
| 5 EDWARDS, ANTHONY               |       |       | 2 SHULER, DEVONTAE        |
| 10 CAMARA, TOUMANI               |       |       | 3 SY, KHADIM              |
| 15 WHEELER, SAHVIR               |       |       | 4 TYREE, BREEIN           |
| 20 HAMMONDS, RAYSHAUN            |       |       | 5 BUFFEN, KJ              |
|                                  | 20:00 | -     | SUB OUT: WILLIAMS, BRYCE  |
|                                  | 20:00 |       | SUB OUT: HUNTER, SAMMY    |
|                                  | 20:00 |       | SUB IN: HINSON, BLAKE     |
|                                  | 20:00 |       | SUB IN: SY, KHADIM        |
| SUB OUT: 14 FAGAN, TYE           | 20:00 |       |                           |
| SUB IN: 10 CAMARA, TOUMANI       | 20:00 |       |                           |
|                                  | 18:30 | 48-32 | SUB OUT: SHULER, DEVONTAE |
|                                  | 18:30 |       | SUB IN: CROWLEY, AUSTIN   |
|                                  | 17:06 | 49-35 | SUB OUT: SY, KHADIM       |
|                                  | 17:06 |       | SUB IN: SHULER, DEVONTAE  |
| SUB OUT: 15 WHEELER, SAHVIR      | 12:31 | 55-43 |                           |
| SUB IN: 00 GRESHAM JR., DONNELL  | 12:31 |       |                           |
|                                  | 11:48 | 57-43 | SUB OUT: SHULER, DEVONTAE |
|                                  | 11:48 |       | SUB IN: WILLIAMS, BRYCE   |
| SUB OUT: 10 CAMARA, TOUMANI      | 11:48 |       |                           |
| SUB IN: 30 PEAKE, MIKE           | 11:48 |       |                           |
|                                  | 11:10 | 59-46 | SUB OUT: CROWLEY, AUSTIN  |
|                                  | 11:10 |       | SUB OUT: WILLIAMS, BRYCE  |
|                                  | 11:10 |       | SUB IN: SHULER, DEVONTAE  |
|                                  | 11:10 |       | SUB IN: SY, KHADIM        |
|                                  | 10:07 | 62-48 | SUB OUT: SY, KHADIM       |
|                                  | 10:07 |       | SUB IN: HUNTER, SAMMY     |
|                                  | 08:31 | 64-49 | SUB OUT: HUNTER, SAMMY    |
|                                  | 08:31 |       | SUB IN: CROWLEY, AUSTIN   |
| SUB OUT: 2 HARRIS, JORDAN        | 08:31 |       |                           |
| SUB IN: 14 FAGAN, TYE            | 08:31 |       |                           |
| SUB OUT: 00 GRESHAM JR., DONNELL | 08:05 | 64-49 |                           |
| SUB OUT: 30 PEAKE, MIKE          | 08:05 |       |                           |
| SUB IN: 10 CAMARA, TOUMANI       | 08:05 |       |                           |
| SUB IN: 15 WHEELER, SAHVIR       | 08:05 |       |                           |
|                                  | 07:44 | 64-49 | SUB OUT: BUFFEN, KJ       |
|                                  | 07:44 |       | SUB IN: SY, KHADIM        |
| SUB OUT: 14 FAGAN, TYE           | 05:57 | 66-57 |                           |
| SUB IN: 2 HARRIS, JORDAN         | 05:57 |       |                           |
|                                  | 03:30 | 71-59 | SUB OUT: CROWLEY, AUSTIN  |
|                                  | 03:30 |       | SUB IN: BUFFEN, KJ        |
| SUB OUT: 10 CAMARA, TOUMANI      | 02:28 | 73-60 |                           |
| SUB IN: 14 FAGAN, TYE            | 02:28 |       |                           |
| SUB OUT: 20 HAMMONDS, RAYSHAUN   | 02:07 | 75-62 |                           |
| SUB IN: 30 PEAKE, MIKE           | 02:07 |       |                           |
|                                  | 02:03 | 75-63 | SUB OUT: BUFFEN, KJ       |
|                                  | 02:03 |       | SUB IN: WILLIAMS, BRYCE   |
|                                  | 01:21 | 77-63 | SUB OUT: SY, KHADIM       |
|                                  | 01:21 |       | SUB IN: CROWLEY, AUSTIN   |
| SUB OUT: 30 PEAKE, MIKE          | 01:21 |       |                           |
| SUB IN: 00 GRESHAM JR., DONNELL  | 01:21 |       |                           |

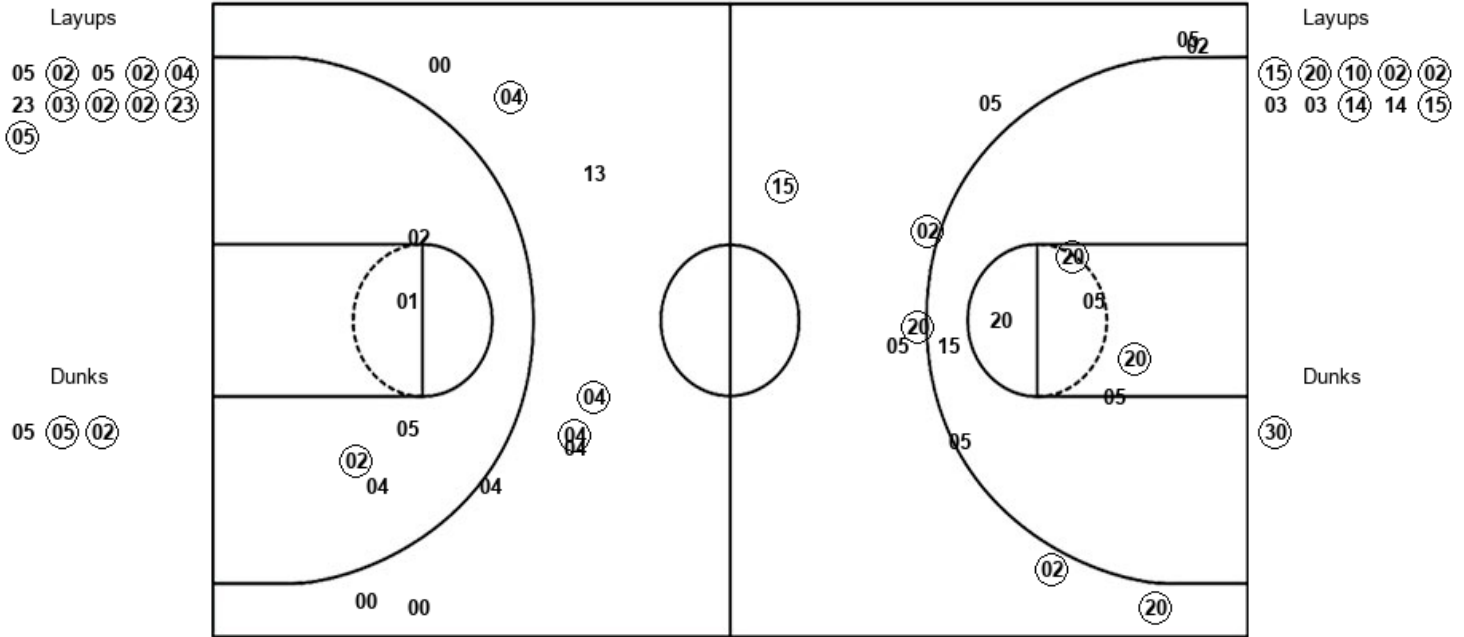
**Georgia 81, Ole Miss 63**

**Official Shot Chart**  
**Georgia vs Ole Miss**  
**PERIOD 1 Shots**  
**March 11, 2020 at Bridgestone Arena**



**Ole Miss**

**Georgia**



| UM : Period 1            | Made      | Att       | Pct         |
|--------------------------|-----------|-----------|-------------|
| Layups                   | 8         | 11        | 72.7        |
| Dunks                    | 2         | 3         | 66.7        |
| 2PT Field Goals          | 12        | 21        | 57.1        |
| 3PT Field Goals          | 2         | 7         | 28.6        |
| <b>Total Field Goals</b> | <b>14</b> | <b>28</b> | <b>50.0</b> |

| UGA : Period 1           | Made      | Att       | Pct         |
|--------------------------|-----------|-----------|-------------|
| Layups                   | 7         | 10        | 70.0        |
| Dunks                    | 1         | 1         | 100.0       |
| 2PT Field Goals          | 10        | 16        | 62.5        |
| 3PT Field Goals          | 5         | 11        | 45.5        |
| <b>Total Field Goals</b> | <b>15</b> | <b>27</b> | <b>55.6</b> |

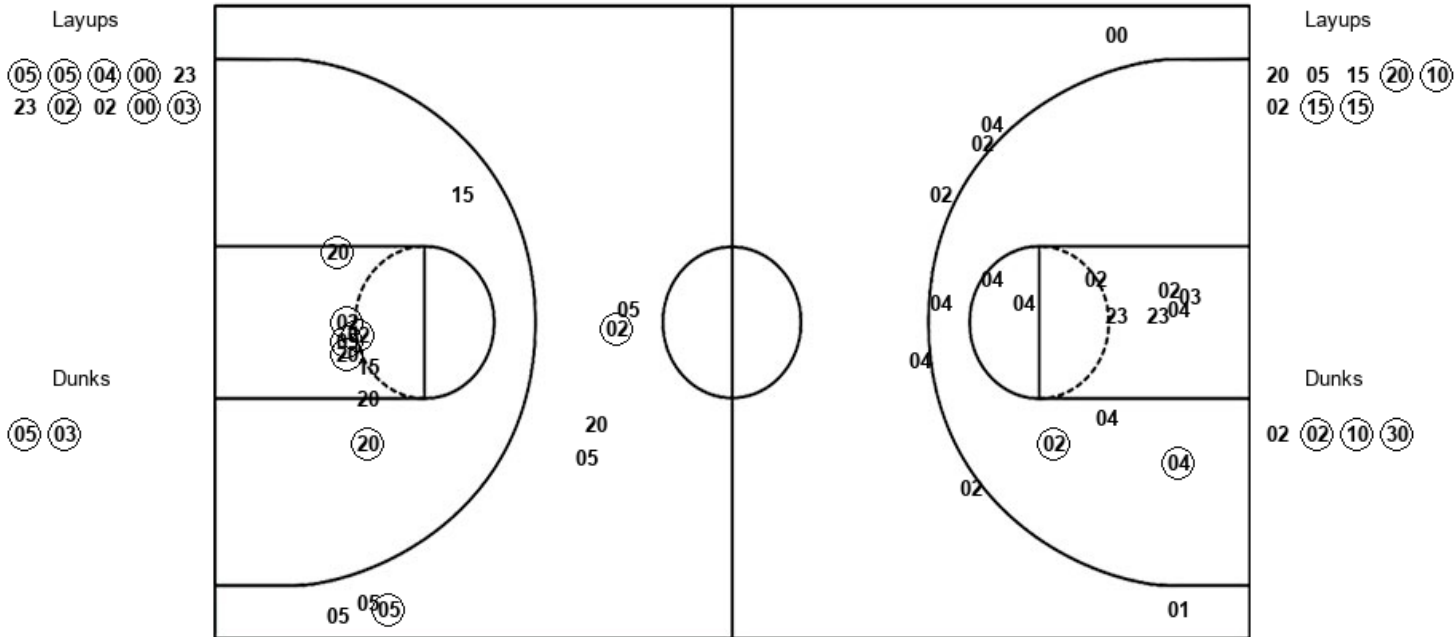


**Official Shot Chart**  
**Georgia vs Ole Miss**  
**PERIOD 2 Shots**  
**March 11, 2020 at Bridgestone Arena**



**Ole Miss**

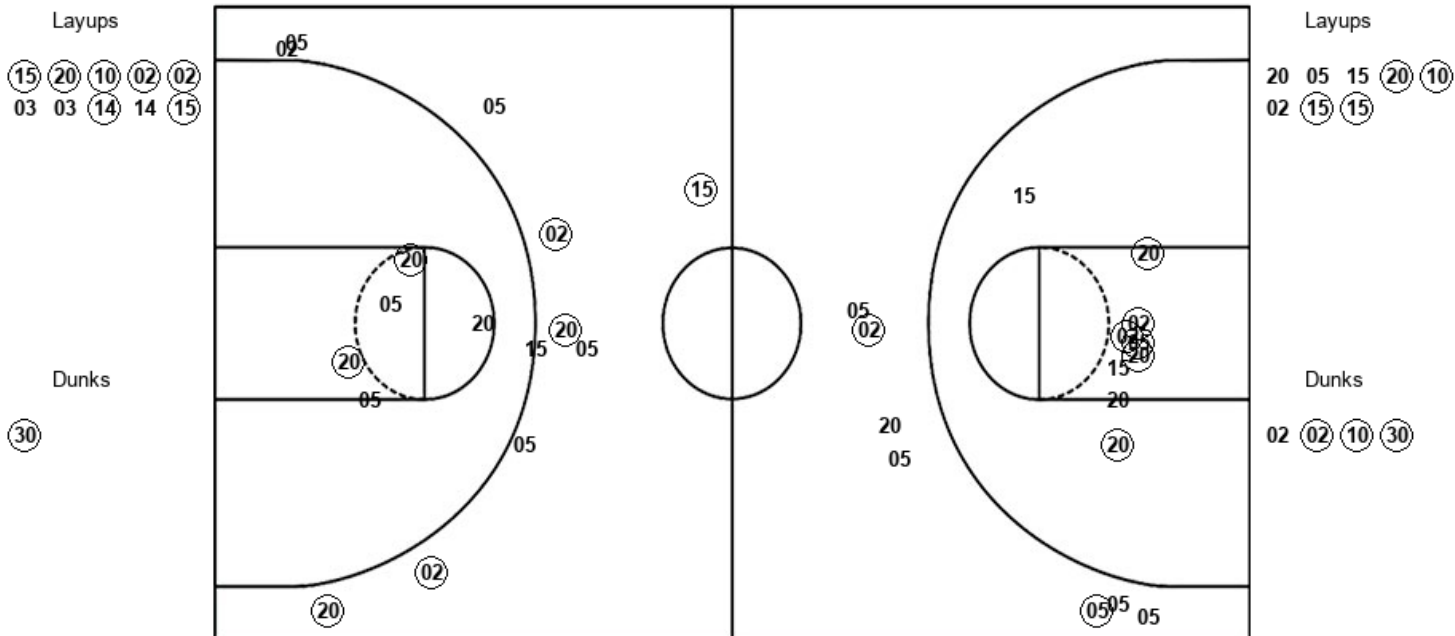
**Georgia**



| <b>UM : Period 2</b>     | <b>Made</b> | <b>Att</b> | <b>Pct</b>  |
|--------------------------|-------------|------------|-------------|
| Layups                   | 7           | 10         | 70.0        |
| Dunks                    | 2           | 2          | 100.0       |
| 2PT Field Goals          | 11          | 23         | 47.8        |
| 3PT Field Goals          | 0           | 8          | 00.0        |
| <b>Total Field Goals</b> | <b>11</b>   | <b>31</b>  | <b>35.5</b> |

| <b>UGA : Period 2</b>    | <b>Made</b> | <b>Att</b> | <b>Pct</b>  |
|--------------------------|-------------|------------|-------------|
| Layups                   | 4           | 8          | 50.0        |
| Dunks                    | 3           | 4          | 75.0        |
| 2PT Field Goals          | 13          | 21         | 61.9        |
| 3PT Field Goals          | 2           | 7          | 28.6        |
| <b>Total Field Goals</b> | <b>15</b>   | <b>28</b>  | <b>53.6</b> |

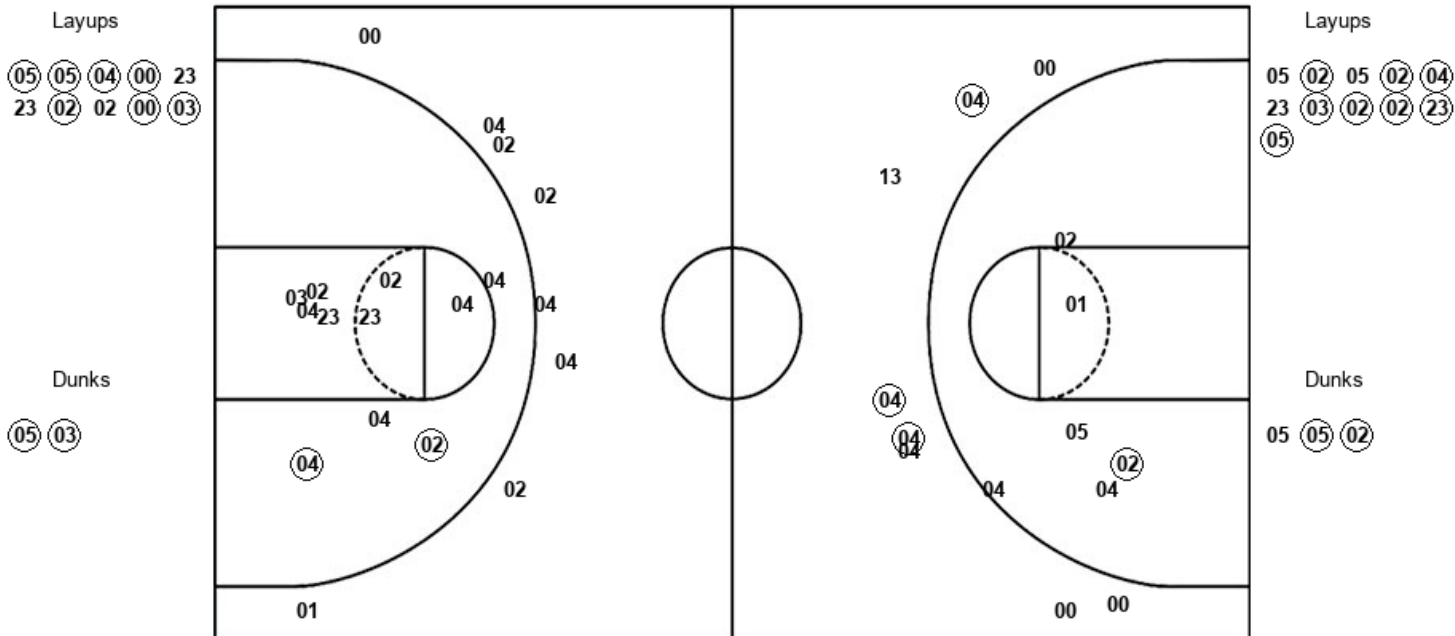
Official Shot Chart  
**Georgia vs Ole Miss**  
 Georgia Team Shots  
 March 11, 2020 at Bridgestone Arena



| UGA : Period 1           | Made      | Att       | Pct         |
|--------------------------|-----------|-----------|-------------|
| Layups                   | 7         | 10        | 70.0        |
| Dunks                    | 1         | 1         | 100.0       |
| 2PT Field Goals          | 10        | 16        | 62.5        |
| 3PT Field Goals          | 5         | 11        | 45.5        |
| <b>Total Field Goals</b> | <b>15</b> | <b>27</b> | <b>55.6</b> |

| UGA : Period 2           | Made      | Att       | Pct         |
|--------------------------|-----------|-----------|-------------|
| Layups                   | 4         | 8         | 50.0        |
| Dunks                    | 3         | 4         | 75.0        |
| 2PT Field Goals          | 13        | 21        | 61.9        |
| 3PT Field Goals          | 2         | 7         | 28.6        |
| <b>Total Field Goals</b> | <b>15</b> | <b>28</b> | <b>53.6</b> |

**Official Shot Chart**  
**Georgia vs Ole Miss**  
**Ole Miss Team Shots**  
**March 11, 2020 at Bridgestone Arena**



| UM : Period 1            | Made      | Att       | Pct         |
|--------------------------|-----------|-----------|-------------|
| Layups                   | 8         | 11        | 72.7        |
| Dunks                    | 2         | 3         | 66.7        |
| 2PT Field Goals          | 12        | 21        | 57.1        |
| 3PT Field Goals          | 2         | 7         | 28.6        |
| <b>Total Field Goals</b> | <b>14</b> | <b>28</b> | <b>50.0</b> |

| UM : Period 2            | Made      | Att       | Pct         |
|--------------------------|-----------|-----------|-------------|
| Layups                   | 7         | 10        | 70.0        |
| Dunks                    | 2         | 2         | 100.0       |
| 2PT Field Goals          | 11        | 23        | 47.8        |
| 3PT Field Goals          | 0         | 8         | 00.0        |
| <b>Total Field Goals</b> | <b>11</b> | <b>31</b> | <b>35.5</b> |