

FINAL SCORE



Wofford

58



ETSU

72

Ingles Southern Conference Basketball Championships presented by

March 09, 2020 • Harrahs Cherokee Center Asheville



FINAL STATISTICS

Official Box Score
Wofford vs ETSU
Game Totals -- Final Statistics
March 09, 2020 at Harrahs Cherokee Center Asheville



Wofford 58

No.	Player	S	Pts	FG	3FG	FT	OR	DR	TR	PF	A	TO	Blk	Stl	Min	+/-	
01	GOODWIN, CHEVEZ	F	18	8-8	0-0	2-4	2	3	5	3	0	1	1	0	27	-14	
05	MURPHY, STORM	G	9	3-11	2-5	1-3	0	1	1	2	5	1	0	1	34	-23	
10	HOOVER, NATHAN	G	7	2-8	1-5	2-2	0	0	0	0	0	0	0	1	31	-16	
11	LARSON, RYAN	G	3	1-7	0-3	1-2	2	5	7	4	0	4	0	3	24	-4	
15	STUMPE, TREVOR	G	0	0-6	0-6	0-0	1	3	4	2	1	0	1	0	26	-9	
00	RICHARDSON, ZION	G	0	0-0	0-0	0-0	0	0	0	0	0	0	0	0	3	0	
04	BIGELOW, ISAIAH	F	0	0-1	0-1	0-0	0	1	1	1	0	0	0	0	14	-11	
21	HOLLOWELL, TRAY	G	13	5-7	3-5	0-0	0	3	3	3	1	2	0	1	22	6	
25	JONES, MESSIAH	F	8	4-5	0-0	0-0	2	0	2	3	0	0	0	0	12	2	
31	THEME-LOVE, DONOVAN	G	0	0-0	0-0	0-0	0	1	1	0	0	1	0	0	5	-1	
TEAM							2	1	3	0	2						
TOTALS			58	23-53	6-25	6-11	9	18	27	18	7	11	2	6	198		

Shooting By Period

Period	FG	FG%	3FG	3FG%	FT	FT%
1st Half	13-27	48%	3-15	20%	2-4	50%
2nd Half	10-26	38%	3-10	30%	4-7	57%
Game	23-53	43.4%	6-25	24.0%	6-11	54.5%

Last FG: 2nd-00:26
 Largest lead: By 5 at
 Technical Fouls: None.

ETSU 72

No.	Player	S	Pts	FG	3FG	FT	OR	DR	TR	PF	A	TO	Blk	Stl	Min	+/-	
01	BOYD III, TRAY	G	11	4-10	1-5	2-2	0	2	2	1	3	1	0	0	34	14	
03	HODGES, BO	G	8	4-7	0-1	0-0	2	6	8	4	1	4	1	0	31	9	
05	WILLIAMSON, DAVIEN	G	5	1-6	1-2	2-2	0	2	2	1	4	2	0	2	30	1	
15	TISDALE, ISAIAH	G	24	5-8	4-7	10-11	0	0	0	1	1	1	0	0	37	22	
25	N'GUESSAN, LUCAS	C	4	2-3	0-0	0-0	2	1	3	4	0	0	1	1	9	5	
10	GOOD, PATRICK	G	6	2-3	2-3	0-0	0	1	1	0	1	0	0	0	20	20	
11	RODRIGUEZ, JEROMY	F	6	3-4	0-0	0-0	1	3	4	2	2	1	0	1	16	8	
13	CORLEY, OCTAVION	C	0	0-0	0-0	0-0	0	0	0	0	0	0	0	0	1	-3	
21	HUGLEY, JOE	F	8	2-4	1-3	3-4	3	4	7	2	0	3	0	0	13	4	
23	PATTERSON, VONNIE	F	0	0-2	0-0	0-0	0	0	0	1	0	0	0	0	5	-4	
24	COFFIN, JORDAN	G	0	0-0	0-0	0-0	0	0	0	0	0	0	0	0	1	-3	
33	WEBER, CHARLIE	F	0	0-0	0-0	0-0	0	0	0	0	0	0	0	0	1	-3	
TEAM							0	5	5	0	1						
TOTALS			72	23-47	9-21	17-19	8	24	32	16	12	13	2	4	198		

Shooting By Period

Period	FG	FG%	3FG	3FG%	FT	FT%
1st Half	12-25	48%	6-10	60%	6-7	86%
2nd Half	11-22	50%	3-11	27%	11-12	92%
Game	23-47	48.9%	9-21	42.9%	17-19	89.5%

Last FG: 2nd-03:09
 Largest lead: By 18 at
 Technical Fouls: None.

Game Notes:

Officials: **Doug Sirmons, Tony Greene, Todd Austin**
 Attendance: **6400**

Start Time: **11:00 PM**
 Neutral Court;

Score	1st	2nd	TOT
WOF	31	27	58
ETS	36	36	72

WOF led for 5:24. ETS led for 31:22.
 Game was tied for 0:0.
 Times tied: 0 Lead Changes: 0

Points from	WOF	ETS
In the Paint	26	24
Off Turns	17	15
2nd Chance	6	7
Fast Break	6	4
Bench	21	20

Official Box Score
Wofford vs ETSU
First Half Statistics Only
March 09, 2020 at Harrahs Cherokee Center Asheville



Wofford 31

No.	Player	S	Pts	FG	3FG	FT	OR	DR	TR	PF	A	TO	Blk	Stl	Min
01	GOODWIN, CHEVEZ	F	8	4-4	0-0	0-2	1	1	2	1	0	1	1	0	15
05	MURPHY, STORM	G	8	3-5	2-3	0-0	0	1	1	1	2	1	0	1	16
10	HOOVER, NATHAN	G	4	1-4	0-3	2-2	0	0	0	0	0	0	0	0	14
11	LARSON, RYAN	G	2	1-4	0-2	0-0	1	2	3	2	0	1	0	3	12
15	STUMPE, TREVOR	G	0	0-3	0-3	0-0	0	2	2	1	1	0	1	0	12
00	RICHARDSON, ZION	G	0	0-0	0-0	0-0	0	0	0	0	0	0	0	0	2
04	BIGELOW, ISAIAH	F	0	0-1	0-1	0-0	0	1	1	0	0	0	0	0	8
21	HOLLOWELL, TRAY	G	5	2-4	1-3	0-0	0	2	2	1	1	1	0	1	11
25	JONES, MESSIAH	F	4	2-2	0-0	0-0	0	0	0	2	0	0	0	0	5
31	THEME-LOVE, DONOVAN	G	0	0-0	0-0	0-0	0	1	1	0	0	1	0	0	5
	TEAM			0-0			1	0	1	0		1			
TOTALS			31	13-27	3-15	2-4	3	10	13	8	4	6	2	5	100

Shooting By Period

Period	FG	FG%	3FG	3FG%	FT	FT%
1st Half	13-27	48%	3-15	20%	2-4	50%
Game	23-53	43.4%	6-25	24.0%	6-11	54.5%

Last FG Half: WOF 2nd-00:26

ETSU 36

No.	Player	S	Pts	FG	3FG	FT	OR	DR	TR	PF	A	TO	Blk	Stl	Min
01	BOYD III, TRAY	G	7	3-6	1-3	0-0	0	1	1	0	1	1	0	0	18
03	HODGES, BO	G	4	2-4	0-0	0-0	1	1	2	1	1	2	0	0	18
05	WILLIAMSON, DAIVIEN	G	3	1-4	1-1	0-0	0	1	1	0	2	1	0	2	15
15	TISDALE, ISAIAH	G	16	4-5	3-4	5-5	0	0	0	0	0	1	0	0	18
25	N'GUESSAN, LUCAS	C	0	0-0	0-0	0-0	0	1	1	2	0	0	1	0	5
10	GOOD, PATRICK	G	3	1-1	1-1	0-0	0	1	1	0	0	0	0	0	7
11	RODRIGUEZ, JEROMY	F	0	0-1	0-0	0-0	0	1	1	1	1	1	0	0	8
13	CORLEY, OCTAVION	C	0	0-0	0-0	0-0	0	0	0	0	0	0	0	0	0
21	HUGLEY, JOE	F	3	1-2	0-1	1-2	3	2	5	1	0	3	0	0	7
23	PATTERSON, VONNIE	F	0	0-2	0-0	0-0	0	0	0	1	0	0	0	0	4
24	COFFIN, JORDAN	G	0	0-0	0-0	0-0	0	0	0	0	0	0	0	0	0
33	WEBER, CHARLIE	F	0	0-0	0-0	0-0	0	0	0	0	0	0	0	0	0
	TEAM			0-0			0	4	4	0		0			
TOTALS			36	12-25	6-10	6-7	4	12	16	6	5	9	1	2	100

Shooting By Period

Period	FG	FG%	3FG	3FG%	FT	FT%
1st Half	12-25	48%	6-10	60%	6-7	86%
Game	23-47	48.9%	9-21	42.9%	17-19	89.5%

Last FG Half: ETS 2nd-03:09

Game Notes:

Officials: **Doug Sirmons, Tony Greene, Todd Austin**
Attendance: **6400**

Start Time: **11:00 PM**
Neutral Court;

Score	1st	2nd	TOT
WOF	31	27	58
ETS	36	36	72

Points from (This Period)	WOF	ETS
In the Paint	14	12
Off Turns	10	9
2nd Chance	2	5
Fast Break	6	2
Bench	9	6

Official Play-By-Play
Wofford vs ETSU
First Half
March 09, 2020 at Harrahs Cherokee Center Asheville



Period 1

Starters:

Wofford: 1 GOODWIN,CHEVEZ (F); 5 MURPHY,STORM (G); 10 HOOVER,NATHAN (G); 11 LARSON,RYAN (G); 15 STUMPE,TREVOR (G);
ETSU: 1 BOYD III,TRAY (G); 3 HODGES,BO (G); 5 WILLIAMSON,DAIVIEN (G); 15 TISDALE,ISAIAH (G); 25 N'GUESSAN,LUCAS (C);

Time	VISITORS: Wofford	Score	Margin	HOME: ETSU
19:40		3-0	H 3	GOOD! 3PTR by TISDALE, ISAIAH
19:40				ASSIST by BOYD III, TRAY
19:06	MISSED 3PTR by LARSON, RYAN			
19:04	REBOUND (OFF) by GOODWIN, CHEVEZ			
19:04	GOOD! LAYUP by GOODWIN, CHEVEZ	3-2	H 1	
18:36		6-2	H 4	GOOD! 3PTR by BOYD III, TRAY
18:36				ASSIST by WILLIAMSON, DAIVIEN
18:19	FOUL by MURPHY, STORM			
18:19	TURNOVER by MURPHY, STORM			
18:05				MISSED JUMPER by WILLIAMSON, DAIVIEN
18:02				REBOUND (OFF) by HODGES, BO
18:01		8-2	H 6	GOOD! LAYUP by HODGES, BO
17:43	MISSED 3PTR by HOOVER, NATHAN			
17:42	REBOUND (OFF) by LARSON, RYAN			
17:42	MISSED LAYUP by LARSON, RYAN			
17:42				BLOCK by N'GUESSAN, LUCAS
17:42	REBOUND (OFF) by TEAM			
17:33	MISSED 3PTR by HOOVER, NATHAN			
17:33				REBOUND (DEF) by TEAM
17:11		11-2	H 9	GOOD! 3PTR by WILLIAMSON, DAIVIEN
17:11				ASSIST by HODGES, BO
17:11	TIMEOUT 30SEC			
17:11	SUB OUT: HOOVER, NATHAN			
17:11	SUB IN: HOLLOWELL, TRAY			
16:58	GOOD! 3PTR by MURPHY, STORM	11-5	H 6	
16:35				MISSED 3PTR by BOYD III, TRAY
16:30	REBOUND (DEF) by LARSON, RYAN			
16:27	GOOD! DUNK by GOODWIN, CHEVEZ [FB]	11-7	H 4	
16:27	ASSIST by MURPHY, STORM			
16:11				TURNOVER by HODGES, BO [PNT]
16:11	STEAL by HOLLOWELL, TRAY			
16:07				FOUL by N'GUESSAN, LUCAS
16:07				SUB OUT: N'GUESSAN, LUCAS
16:07				SUB IN: HUGLEY, JOE
16:07	SUB OUT: GOODWIN, CHEVEZ			
16:07	SUB OUT: STUMPE, TREVOR			
16:07	SUB IN: BIGELOW, ISAIAH			
16:07	SUB IN: JONES, MESSIAH			
15:59	GOOD! LAYUP by JONES, MESSIAH	11-9	H 2	
15:44				TURNOVER by WILLIAMSON, DAIVIEN
15:44	STEAL by LARSON, RYAN			
15:41	GOOD! LAYUP by LARSON, RYAN [FB]	11-11	T	
15:27				FOUL by HUGLEY, JOE
15:27	TIMEOUT MEDIA			
15:27				SUB OUT: WILLIAMSON, DAIVIEN
15:27				SUB IN: GOOD, PATRICK
15:27	SUB OUT: LARSON, RYAN			
15:27	SUB IN: THEME-LOVE, DONOVAN			
15:27				TURNOVER by HUGLEY, JOE
15:13	MISSED JUMPER by MURPHY, STORM			
15:08				REBOUND (DEF) by HUGLEY, JOE
14:55				MISSED JUMPER by HODGES, BO [PNT]
14:53				REBOUND (OFF) by HUGLEY, JOE
14:53		13-11	H 2	GOOD! LAYUP by HUGLEY, JOE
14:53	FOUL by JONES, MESSIAH			
14:52		14-11	H 3	GOOD! FT by HUGLEY, JOE
14:34	MISSED 3PTR by HOLLOWELL, TRAY			
14:31				REBOUND (DEF) by GOOD, PATRICK
14:15				TURNOVER by HUGLEY, JOE [PNT]
14:15	STEAL by MURPHY, STORM			
14:08	MISSED 3PTR by BIGELOW, ISAIAH			
14:07				REBOUND (DEF) by HUGLEY, JOE
14:07	FOUL by JONES, MESSIAH			
14:07				SUB OUT: BOYD III, TRAY
14:07				SUB OUT: HUGLEY, JOE
14:07				SUB IN: WILLIAMSON, DAIVIEN
14:07				SUB IN: RODRIGUEZ, JEROMY
14:07	SUB OUT: HOLLOWELL, TRAY			
14:07	SUB IN: LARSON, RYAN			
14:07	SUB OUT: JONES, MESSIAH			

Time	VISITORS: Wofford	Score	Margin	HOME: ETSU
14:07	SUB IN: GOODWIN, CHEVEZ			
13:44		17-11	H 6	GOOD! 3PTR by TISDALE, ISAIAH
13:20	MISSED 3PTR by LARSON, RYAN			
13:19				SUB OUT: HODGES, BO
13:19				SUB IN: PATTERSON, VONNIE
13:19	SUB OUT: GOODWIN, CHEVEZ			
13:19	SUB IN: JONES, MESSIAH			
13:18				REBOUND (DEF) by TEAM
12:59				TURNOVER by TISDALE, ISAIAH
12:59	SUB OUT: BIGELOW, ISAIAH			
12:59	SUB OUT: MURPHY, STORM			
12:59	SUB OUT: JONES, MESSIAH			
12:59	SUB IN: GOODWIN, CHEVEZ			
12:59	SUB IN: HOOVER, NATHAN			
12:59	SUB IN: STUMPE, TREVOR			
12:34	GOOD! JUMPER by GOODWIN, CHEVEZ [PNT]	17-13	H 4	
12:17				MISSED JUMPER by WILLIAMSON, DAIVIEN
12:14	REBOUND (DEF) by GOODWIN, CHEVEZ			
12:12	TURNOVER by LARSON, RYAN [PNT]			
12:12				STEAL by WILLIAMSON, DAIVIEN
12:02				TURNOVER by RODRIGUEZ, JEROMY
12:02	STEAL by LARSON, RYAN			
11:45				FOUL by PATTERSON, VONNIE
11:45	TIMEOUT MEDIA			
11:45				SUB OUT: GOOD, PATRICK
11:45				SUB OUT: TISDALE, ISAIAH
11:45				SUB IN: BOYD III, TRAY
11:45				SUB IN: HODGES, BO
11:45	SUB OUT: THEME-LOVE, DONOVAN			
11:45	SUB IN: HOLLOWELL, TRAY			
11:30	GOOD! JUMPER by HOOVER, NATHAN	17-15	H 2	
11:08				MISSED LAYUP by RODRIGUEZ, JEROMY
11:08	BLOCK by STUMPE, TREVOR			
11:03	REBOUND (DEF) by STUMPE, TREVOR			
10:57	MISSED 3PTR by STUMPE, TREVOR			
10:54				REBOUND (DEF) by WILLIAMSON, DAIVIEN
10:28				MISSED LAYUP by PATTERSON, VONNIE
10:28	BLOCK by GOODWIN, CHEVEZ			
10:21	REBOUND (DEF) by HOLLOWELL, TRAY			
10:20	GOOD! LAYUP by HOLLOWELL, TRAY [FB]	17-17	T	
09:59		19-17	H 2	GOOD! JUMPER by HODGES, BO [PNT]
09:41	GOOD! 3PTR by HOLLOWELL, TRAY	19-20	V 1	
09:41	ASSIST by STUMPE, TREVOR			
09:19				MISSED LAYUP by PATTERSON, VONNIE
09:18	REBOUND (DEF) by LARSON, RYAN			
09:18	FOUL by LARSON, RYAN			
09:17				SUB OUT: RODRIGUEZ, JEROMY
09:17				SUB OUT: PATTERSON, VONNIE
09:17				SUB IN: TISDALE, ISAIAH
09:17				SUB IN: N'GUESSAN, LUCAS
09:17	SUB OUT: GOODWIN, CHEVEZ			
09:17	SUB OUT: LARSON, RYAN			
09:17	SUB IN: MURPHY, STORM			
09:17	SUB IN: JONES, MESSIAH			
09:16				MISSED 3PTR by BOYD III, TRAY
09:14	REBOUND (DEF) by STUMPE, TREVOR			
08:46	MISSED 3PTR by STUMPE, TREVOR			
08:45				REBOUND (DEF) by N'GUESSAN, LUCAS
08:36				MISSED LAYUP by HODGES, BO
08:34	REBOUND (DEF) by HOLLOWELL, TRAY			
08:27				FOUL by N'GUESSAN, LUCAS [PNT]
08:27	GOOD! FT by HOOVER, NATHAN	19-21	V 2	
08:27				SUB OUT: N'GUESSAN, LUCAS
08:27				SUB IN: HUGLEY, JOE
08:27	SUB OUT: STUMPE, TREVOR			
08:27	SUB IN: BIGELOW, ISAIAH			
08:27	GOOD! FT by HOOVER, NATHAN	19-22	V 3	
08:16				MISSED LAYUP by WILLIAMSON, DAIVIEN
08:15				REBOUND (OFF) by HUGLEY, JOE
08:15				TURNOVER by HUGLEY, JOE
07:57	GOOD! LAYUP by JONES, MESSIAH	19-24	V 5	
07:57	ASSIST by MURPHY, STORM			
07:39				FOUL by HODGES, BO
07:39				TURNOVER by HODGES, BO
07:39	TIMEOUT MEDIA			
07:39	SUB OUT: JONES, MESSIAH			
07:39	SUB IN: GOODWIN, CHEVEZ			
07:20	TURNOVER by HOLLOWELL, TRAY			
07:20				STEAL by WILLIAMSON, DAIVIEN
07:14		21-24	V 3	GOOD! JUMPER by BOYD III, TRAY [FB/PNT]

Time	VISITORS: Wofford	Score	Margin	HOME: ETSU
07:14				ASSIST by WILLIAMSON, DAIVIEN
06:53	MISSED 3PTR by MURPHY, STORM			
06:53				REBOUND (DEF) by TEAM
06:31				MISSED 3PTR by HUGLEY, JOE
06:27	REBOUND (DEF) by BIGELOW, ISIAIAH			
06:16	MISSED 3PTR by HOOVER, NATHAN			
06:16				REBOUND (DEF) by TEAM
06:16	SUB OUT: HOLLOWELL, TRAY			
06:16	SUB IN: LARSON, RYAN			
05:46				TURNOVER by BOYD III, TRAY
05:46	STEAL by LARSON, RYAN			
05:33	FOUL by GOODWIN, CHEVEZ			
05:33	TURNOVER by GOODWIN, CHEVEZ			
05:33				SUB OUT: HUGLEY, JOE
05:33				SUB IN: GOOD, PATRICK
05:33				SUB OUT: WILLIAMSON, DAIVIEN
05:33				SUB IN: RODRIGUEZ, JEROMY
05:08		23-24	V 1	GOOD! JUMPER by BOYD III, TRAY [PNT]
04:40	GOOD! JUMPER by GOODWIN, CHEVEZ	23-26	V 3	
04:17		26-26	T	GOOD! 3PTR by GOOD, PATRICK
04:17				ASSIST by RODRIGUEZ, JEROMY
03:59	TIMEOUT MEDIA			
03:59	SUB OUT: BIGELOW, ISIAIAH			
03:59	SUB OUT: HOOVER, NATHAN			
03:59	SUB IN: RICHARDSON, ZION			
03:59	SUB IN: STUMPE, TREVOR			
03:40	TURNOVER by TEAM			
03:13	FOUL by LARSON, RYAN			
03:13		27-26	H 1	GOOD! FT by TISDALE, ISIAIAH
03:13		28-26	H 2	GOOD! FT by TISDALE, ISIAIAH
03:13	SUB OUT: LARSON, RYAN			
03:13	SUB IN: HOLLOWELL, TRAY			
03:13		29-26	H 3	GOOD! FT by TISDALE, ISIAIAH
03:00	GOOD! 3PTR by MURPHY, STORM	29-29	T	
03:00	ASSIST by HOLLOWELL, TRAY			
02:45		32-29	H 3	GOOD! 3PTR by TISDALE, ISIAIAH
02:15	MISSED 3PTR by HOLLOWELL, TRAY			
02:13				REBOUND (DEF) by RODRIGUEZ, JEROMY
02:09				MISSED 3PTR by TISDALE, ISIAIAH
02:05	REBOUND (DEF) by MURPHY, STORM			
02:00				FOUL by RODRIGUEZ, JEROMY
02:00	MISSED FT by GOODWIN, CHEVEZ			
02:00	REBOUND (DEADB) by TEAM			
02:00				SUB OUT: GOOD, PATRICK
02:00				SUB OUT: RODRIGUEZ, JEROMY
02:00				SUB IN: WILLIAMSON, DAIVIEN
02:00				SUB IN: HUGLEY, JOE
02:00	SUB OUT: RICHARDSON, ZION			
02:00	SUB IN: HOOVER, NATHAN			
02:00	MISSED FT by GOODWIN, CHEVEZ			
01:59				REBOUND (DEF) by BOYD III, TRAY
01:43		34-29	H 5	GOOD! LAYUP by TISDALE, ISIAIAH
01:16	GOOD! JUMPER by MURPHY, STORM	34-31	H 3	
00:57	FOUL by HOLLOWELL, TRAY [PNT]			
00:57		35-31	H 4	GOOD! FT by TISDALE, ISIAIAH
00:57	SUB OUT: GOODWIN, CHEVEZ			
00:57	SUB OUT: HOLLOWELL, TRAY			
00:57	SUB IN: JONES, MESSIAH			
00:57	SUB IN: THEME-LOVE, DONOVAN			
00:57		36-31	H 5	GOOD! FT by TISDALE, ISIAIAH
00:45	MISSED 3PTR by STUMPE, TREVOR			
00:43				REBOUND (DEF) by HODGES, BO
00:24				MISSED LAYUP by BOYD III, TRAY
00:24	FOUL by STUMPE, TREVOR			
00:24				MISSED FT by HUGLEY, JOE
00:24				REBOUND (OFF) by HUGLEY, JOE
00:23	REBOUND (DEF) by THEME-LOVE, DONOVAN			
00:00	TURNOVER by THEME-LOVE, DONOVAN			

Wofford 31, ETSU 36

Points from (This Period)	WOF	ETS
In the Paint	14	12
Off Turns	10	9
2nd Chance	2	5
Fast Break	6	2
Bench	9	6

Official Box Score
Wofford vs ETSU
Second Half Statistics Only
March 09, 2020 at Harrahs Cherokee Center Asheville



Wofford 27

No.	Player	S	Pts	FG	3FG	FT	OR	DR	TR	PF	A	TO	Blk	Stl	Min
01	GOODWIN, CHEVEZ	F	10	4-4	0-0	2-2	1	2	3	2	0	0	0	0	12
05	MURPHY, STORM	G	1	0-6	0-2	1-3	0	0	0	1	3	0	0	0	18
10	HOOVER, NATHAN	G	3	1-4	1-2	0-0	0	0	0	0	0	0	0	1	17
11	LARSON, RYAN	G	1	0-3	0-1	1-2	1	3	4	2	0	3	0	0	12
15	STUMPE, TREVOR	G	0	0-3	0-3	0-0	1	1	2	1	0	0	0	0	14
00	RICHARDSON, ZION	G	0	0-0	0-0	0-0	0	0	0	0	0	0	0	0	1
04	BIGELOW, ISAIAH	F	0	0-0	0-0	0-0	0	0	0	1	0	0	0	0	7
21	HOLLOWELL, TRAY	G	8	3-3	2-2	0-0	0	1	1	2	0	1	0	0	11
25	JONES, MESSIAH	F	4	2-3	0-0	0-0	2	0	2	1	0	0	0	0	7
31	THEME-LOVE, DONOVAN	G	0	0-0	0-0	0-0	0	0	0	0	0	0	0	0	1
	TEAM			0-0			1	1	2	0		1			
TOTALS			27	10-26	3-10	4-7	6	8	14	10	3	5	0	1	98

Shooting By Period

Period	FG	FG%	3FG	3FG%	FT	FT%
2nd Half	10-26	38%	3-10	30%	4-7	57%
Game	23-53	43.4%	6-25	24.0%	6-11	54.5%

Last FG Half: WOF -

ETSU 36

No.	Player	S	Pts	FG	3FG	FT	OR	DR	TR	PF	A	TO	Blk	Stl	Min
01	BOYD III, TRAY	G	4	1-4	0-2	2-2	0	1	1	1	2	0	0	0	16
03	HODGES, BO	G	4	2-3	0-1	0-0	1	5	6	3	0	2	1	0	12
05	WILLIAMSON, DAIVIEN	G	2	0-2	0-1	2-2	0	1	1	1	2	1	0	0	15
15	TISDALE, ISAIAH	G	8	1-3	1-3	5-6	0	0	0	1	1	0	0	0	19
25	N'GUESSAN, LUCAS	C	4	2-3	0-0	0-0	2	0	2	2	0	0	0	1	4
10	GOOD, PATRICK	G	3	1-2	1-2	0-0	0	0	0	0	1	0	0	0	13
11	RODRIGUEZ, JEROMY	F	6	3-3	0-0	0-0	1	2	3	1	1	0	0	1	8
13	CORLEY, OCTAVION	C	0	0-0	0-0	0-0	0	0	0	0	0	0	0	0	1
21	HUGLEY, JOE	F	5	1-2	1-2	2-2	0	2	2	1	0	0	0	0	6
23	PATTERSON, VONNIE	F	0	0-0	0-0	0-0	0	0	0	0	0	0	0	0	1
24	COFFIN, JORDAN	G	0	0-0	0-0	0-0	0	0	0	0	0	0	0	0	1
33	WEBER, CHARLIE	F	0	0-0	0-0	0-0	0	0	0	0	0	0	0	0	1
	TEAM			0-0			0	1	1	0		1			
TOTALS			36	11-22	3-11	11-12	4	12	16	10	7	4	1	2	98

Shooting By Period

Period	FG	FG%	3FG	3FG%	FT	FT%
2nd Half	11-22	50%	3-11	27%	11-12	92%
Game	23-47	48.9%	9-21	42.9%	17-19	89.5%

Last FG Half: ETS -

Game Notes:

Officials: **Doug Sirmons, Tony Greene, Todd Austin**
 Attendance: **6400**

Start Time: **11:00 PM**
 Neutral Court;

Score	1st	2nd	TOT
WOF	31	27	58
ETS	36	36	72

Points from (This Period)	WOF	ETS
In the Paint	12	12
Off Turns	7	6
2nd Chance	4	2
Fast Break	0	2
Bench	12	14

Official Play-By-Play
Wofford vs ETSU
Second Half
March 09, 2020 at Harrahs Cherokee Center Asheville



Period 2

Starters:

Wofford: 1 GOODWIN,CHEVEZ (F); 5 MURPHY,STORM (G); 10 HOOVER,NATHAN (G); 11 LARSON,RYAN (G); 15 STUMPE,TREVOR (G);
ETSU: 1 BOYD III,TRAY (G); 3 HODGES,BO (G); 5 WILLIAMSON,DAIVIEN (G); 15 TISDALE,ISAIAH (G); 25 N'GUESSAN,LUCAS (C);

Time	VISITORS: Wofford	Score	Margin	HOME: ETSU
20:00				SUB OUT: HUGLEY, JOE
20:00				SUB IN: N'GUESSAN, LUCAS
20:00	SUB OUT: JONES, MESSIAH			
20:00	SUB OUT: THEME-LOVE, DONOVAN			
20:00	SUB IN: GOODWIN, CHEVEZ			
20:00	SUB IN: LARSON, RYAN			
19:43	MISSED 3PTR by STUMPE, TREVOR			
19:39				REBOUND (DEF) by BOYD III, TRAY
19:20	FOUL by STUMPE, TREVOR			
19:12				MISSED LAYUP by N'GUESSAN, LUCAS
19:10				REBOUND (OFF) by N'GUESSAN, LUCAS
19:09		38-31	H 7	GOOD! LAYUP by N'GUESSAN, LUCAS
18:55	GOOD! 3PTR by HOOVER, NATHAN	38-34	H 4	
18:55	ASSIST by MURPHY, STORM			
18:39				FOUL by HODGES, BO
18:39				TURNOVER by WILLIAMSON, DAIVIEN
18:23	MISSED JUMPER by HOOVER, NATHAN			
18:20				REBOUND (DEF) by HODGES, BO
17:59				MISSED 3PTR by TISDALE, ISAIAH
17:54				REBOUND (OFF) by HODGES, BO
17:51				MISSED 3PTR by BOYD III, TRAY
17:47				REBOUND (OFF) by N'GUESSAN, LUCAS
17:38				MISSED 3PTR by BOYD III, TRAY
17:37				FOUL by N'GUESSAN, LUCAS
17:37				SUB OUT: N'GUESSAN, LUCAS
17:37				SUB IN: HUGLEY, JOE
17:36	REBOUND (DEF) by LARSON, RYAN			
17:30	MISSED 3PTR by MURPHY, STORM			
17:25	REBOUND (OFF) by TEAM			
17:21	MISSED LAYUP by LARSON, RYAN			
17:17	REBOUND (OFF) by LARSON, RYAN			
17:17	TURNOVER by LARSON, RYAN			
17:17				SUB OUT: BOYD III, TRAY
17:17				SUB IN: GOOD, PATRICK
17:00		40-34	H 6	GOOD! DUNK by HODGES, BO
17:00				ASSIST by TISDALE, ISAIAH
16:39	GOOD! DUNK by GOODWIN, CHEVEZ	40-36	H 4	
16:39	ASSIST by MURPHY, STORM			
16:27	FOUL by GOODWIN, CHEVEZ			
16:27				SUB OUT: HUGLEY, JOE
16:27				SUB IN: RODRIGUEZ, JEROMY
16:27	SUB OUT: GOODWIN, CHEVEZ			
16:27	SUB OUT: LARSON, RYAN			
16:27	SUB IN: HOLLOWELL, TRAY			
16:27	SUB IN: JONES, MESSIAH			
16:18				TURNOVER by HODGES, BO
16:18	STEAL by HOOVER, NATHAN			
15:54	MISSED JUMPER by MURPHY, STORM			
15:51	REBOUND (OFF) by JONES, MESSIAH			
15:50	GOOD! LAYUP by JONES, MESSIAH	40-38	H 2	
15:16		42-38	H 4	GOOD! LAYUP by RODRIGUEZ, JEROMY
14:55	MISSED LAYUP by JONES, MESSIAH			
14:55				BLOCK by HODGES, BO
14:52				REBOUND (DEF) by HODGES, BO
14:51	FOUL by HOLLOWELL, TRAY			
14:51	TIMEOUT MEDIA			
14:51	SUB OUT: STUMPE, TREVOR			
14:51	SUB IN: BIGELOW, ISAIAH			
14:51		43-38	H 5	GOOD! FT by WILLIAMSON, DAIVIEN [FB]
14:51		44-38	H 6	GOOD! FT by WILLIAMSON, DAIVIEN [FB]
14:28				FOUL by TISDALE, ISAIAH [PNT]
14:28				SUB OUT: WILLIAMSON, DAIVIEN
14:28				SUB IN: BOYD III, TRAY
14:07	TURNOVER by TEAM			
14:07	SUB OUT: HOOVER, NATHAN			
14:07	SUB IN: LARSON, RYAN			
13:43				MISSED JUMPER by BOYD III, TRAY [PNT]
13:41	REBOUND (DEF) by LARSON, RYAN			
13:19				FOUL by HODGES, BO
13:19				SUB OUT: HODGES, BO

Time	VISITORS: Wofford	Score	Margin	HOME: ETSU
13:19				SUB IN: WILLIAMSON, DAIVIEN
13:19				SUB OUT: RODRIGUEZ, JEROMY
13:19				SUB IN: N'GUESSAN, LUCAS
13:07	TURNOVER by LARSON, RYAN [PNT]			
13:07				STEAL by N'GUESSAN, LUCAS
12:55		46-38	H 8	GOOD! JUMPER by N'GUESSAN, LUCAS
12:55				ASSIST by BOYD III, TRAY
12:27	SUB OUT: MURPHY, STORM			
12:27	SUB IN: HOOVER, NATHAN			
12:09	GOOD! JUMPER by HOLLOWELL, TRAY	46-40	H 6	
11:39		49-40	H 9	GOOD! 3PTR by GOOD, PATRICK
11:23	MISSED LAYUP by LARSON, RYAN			
11:23	REBOUND (OFF) by JONES, MESSIAH			
11:23				FOUL by N'GUESSAN, LUCAS
11:23	TIMEOUT MEDIA			
11:23				SUB OUT: N'GUESSAN, LUCAS
11:23				SUB IN: HUGLEY, JOE
11:23	SUB OUT: BIGELOW, ISAIAH			
11:23	SUB OUT: HOLLOWELL, TRAY			
11:23	SUB OUT: JONES, MESSIAH			
11:23	SUB IN: GOODWIN, CHEVEZ			
11:23	SUB IN: MURPHY, STORM			
11:23	SUB IN: STUMPE, TREVOR			
11:10	MISSED JUMPER by MURPHY, STORM [PNT]			
11:07				REBOUND (DEF) by HUGLEY, JOE
10:45		52-40	H 12	GOOD! 3PTR by HUGLEY, JOE
10:45				ASSIST by WILLIAMSON, DAIVIEN
10:25	MISSED 3PTR by LARSON, RYAN			
10:21				REBOUND (DEF) by HUGLEY, JOE
10:14				MISSED 3PTR by HUGLEY, JOE
10:13	SUB OUT: GOODWIN, CHEVEZ			
10:13	SUB IN: JONES, MESSIAH			
10:12	REBOUND (DEF) by TEAM			
10:01	GOOD! LAYUP by JONES, MESSIAH	52-42	H 10	
10:01	ASSIST by MURPHY, STORM			
09:43	FOUL by JONES, MESSIAH			
09:43	SUB OUT: JONES, MESSIAH			
09:43	SUB IN: GOODWIN, CHEVEZ			
09:43		53-42	H 11	GOOD! FT by HUGLEY, JOE
09:43		54-42	H 12	GOOD! FT by HUGLEY, JOE
09:31	MISSED 3PTR by MURPHY, STORM			
09:28				REBOUND (DEF) by TEAM
09:04		56-42	H 14	GOOD! JUMPER by BOYD III, TRAY
09:04				ASSIST by WILLIAMSON, DAIVIEN
08:51	FOUL by LARSON, RYAN			
08:51	TURNOVER by LARSON, RYAN			
08:34	FOUL by LARSON, RYAN			
08:34	SUB OUT: LARSON, RYAN			
08:34	SUB IN: HOLLOWELL, TRAY			
08:18				MISSED 3PTR by WILLIAMSON, DAIVIEN
08:15	REBOUND (DEF) by GOODWIN, CHEVEZ			
08:05	GOOD! JUMPER by GOODWIN, CHEVEZ [PNT]	56-44	H 12	
07:41				MISSED 3PTR by GOOD, PATRICK
07:37	REBOUND (DEF) by GOODWIN, CHEVEZ			
07:30	MISSED 3PTR by HOOVER, NATHAN			
07:25				REBOUND (DEF) by WILLIAMSON, DAIVIEN
07:20				MISSED JUMPER by WILLIAMSON, DAIVIEN [PNT]
07:18	REBOUND (DEF) by STUMPE, TREVOR			
06:54	GOOD! JUMPER by GOODWIN, CHEVEZ [PNT]	56-46	H 10	
06:39		59-46	H 13	GOOD! 3PTR by TISDALE, ISAIAH
06:39				ASSIST by GOOD, PATRICK
06:11				FOUL by HUGLEY, JOE
06:11	TIMEOUT MEDIA			
06:11				SUB OUT: GOOD, PATRICK
06:11				SUB OUT: HUGLEY, JOE
06:11				SUB IN: HODGES, BO
06:11				SUB IN: RODRIGUEZ, JEROMY
06:11	SUB OUT: STUMPE, TREVOR			
06:11	SUB OUT: HOLLOWELL, TRAY			
06:11	SUB IN: BIGELOW, ISAIAH			
06:11	SUB IN: LARSON, RYAN			
06:11	GOOD! FT by GOODWIN, CHEVEZ	59-47	H 12	
06:11	GOOD! FT by GOODWIN, CHEVEZ	59-48	H 11	
05:53		61-48	H 13	GOOD! LAYUP by RODRIGUEZ, JEROMY
05:53				ASSIST by BOYD III, TRAY
05:39				FOUL by WILLIAMSON, DAIVIEN [PNT]
05:39	GOOD! FT by LARSON, RYAN	61-49	H 12	
05:39	MISSED FT by LARSON, RYAN			
05:39				REBOUND (DEF) by HODGES, BO
05:11				MISSED 3PTR by HODGES, BO

Time	VISITORS: Wofford	Score	Margin	HOME: ETSU
05:08				REBOUND (OFF) by RODRIGUEZ, JEROMY
05:01				MISSED 3PTR by TISDALE, ISAIAH
04:56	REBOUND (DEF) by LARSON, RYAN			
04:46	MISSED JUMPER by MURPHY, STORM			
04:43				REBOUND (DEF) by HODGES, BO
04:25	FOUL by GOODWIN, CHEVEZ			
04:25		62-49	H 13	GOOD! FT by TISDALE, ISAIAH
04:25				SUB OUT: WILLIAMSON, DAIVIEN
04:25				SUB IN: GOOD, PATRICK
04:25	SUB OUT: GOODWIN, CHEVEZ			
04:25	SUB OUT: BIGELOW, ISAIAH			
04:25	SUB OUT: LARSON, RYAN			
04:25	SUB IN: STUMPE, TREVOR			
04:25	SUB IN: HOLLOWELL, TRAY			
04:25	SUB IN: JONES, MESSIAH			
04:25				MISSED FT by TISDALE, ISAIAH
04:25	REBOUND (DEF) by HOLLOWELL, TRAY			
04:08	TURNOVER by HOLLOWELL, TRAY			
04:08				STEAL by RODRIGUEZ, JEROMY
03:53		64-49	H 15	GOOD! LAYUP by RODRIGUEZ, JEROMY
03:33	GOOD! 3PTR by HOLLOWELL, TRAY	64-52	H 12	
03:30	TIMEOUT 30SEC			
03:30	SUB OUT: JONES, MESSIAH			
03:30	SUB IN: GOODWIN, CHEVEZ			
03:09		66-52	H 14	GOOD! LAYUP by HODGES, BO
03:09				ASSIST by RODRIGUEZ, JEROMY
02:53	MISSED LAYUP by MURPHY, STORM [PNT]			
02:51				REBOUND (DEF) by RODRIGUEZ, JEROMY
02:27				FOUL by HODGES, BO
02:27				TURNOVER by HODGES, BO
02:27	TIMEOUT MEDIA			
02:27				SUB OUT: GOOD, PATRICK
02:27				SUB IN: PATTERSON, VONNIE
02:15	MISSED 3PTR by STUMPE, TREVOR			
02:11	REBOUND (OFF) by STUMPE, TREVOR			
02:09	MISSED 3PTR by STUMPE, TREVOR			
02:04	REBOUND (OFF) by GOODWIN, CHEVEZ			
02:03	GOOD! JUMPER by GOODWIN, CHEVEZ [PNT]	66-54	H 12	
01:45	FOUL by HOLLOWELL, TRAY			
01:45	SUB OUT: GOODWIN, CHEVEZ			
01:45	SUB IN: BIGELOW, ISAIAH			
01:45		67-54	H 13	GOOD! FT by TISDALE, ISAIAH
01:45		68-54	H 14	GOOD! FT by TISDALE, ISAIAH
01:32	MISSED JUMPER by HOOVER, NATHAN			
01:28				REBOUND (DEF) by RODRIGUEZ, JEROMY
01:26	FOUL by BIGELOW, ISAIAH			
01:26		69-54	H 15	GOOD! FT by TISDALE, ISAIAH
01:26		70-54	H 16	GOOD! FT by TISDALE, ISAIAH
01:19				FOUL by BOYD III, TRAY
01:19				SUB OUT: RODRIGUEZ, JEROMY
01:19				SUB OUT: PATTERSON, VONNIE
01:19				SUB IN: GOOD, PATRICK
01:19				SUB IN: N'GUESSAN, LUCAS
01:19	MISSED FT by MURPHY, STORM			
01:18				REBOUND (DEF) by HODGES, BO
01:11	FOUL by MURPHY, STORM			
01:11		71-54	H 17	GOOD! FT by BOYD III, TRAY
01:11				SUB OUT: GOOD, PATRICK
01:11				SUB OUT: N'GUESSAN, LUCAS
01:11				SUB IN: RODRIGUEZ, JEROMY
01:11				SUB IN: PATTERSON, VONNIE
01:11		72-54	H 18	GOOD! FT by BOYD III, TRAY
01:03				FOUL by RODRIGUEZ, JEROMY
01:03	MISSED FT by MURPHY, STORM			
01:03	REBOUND (DEADB) by TEAM			
01:03				SUB OUT: RODRIGUEZ, JEROMY
01:03				SUB OUT: PATTERSON, VONNIE
01:03				SUB IN: GOOD, PATRICK
01:03				SUB IN: N'GUESSAN, LUCAS
01:03	SUB OUT: HOOVER, NATHAN			
01:03	SUB IN: THEME-LOVE, DONOVAN			
01:03	SUB OUT: STUMPE, TREVOR			
01:03	SUB IN: LARSON, RYAN			
01:03	GOOD! FT by MURPHY, STORM	72-55	H 17	
01:03	SUB OUT: MURPHY, STORM			
01:03	SUB IN: RICHARDSON, ZION			
01:03				SUB OUT: BOYD III, TRAY
01:03				SUB OUT: GOOD, PATRICK
01:03				SUB OUT: N'GUESSAN, LUCAS
01:03				SUB IN: CORLEY, OCTAVION

Time	VISITORS: Wofford	Score	Margin	HOME: ETSU
01:03				SUB IN: COFFIN, JORDAN
01:03				SUB IN: WEBER, CHARLIE
00:33				TURNOVER by TEAM
00:33				SUB OUT: TISDALE, ISAIAH
00:33				SUB IN: WILLIAMSON, DAIVIEN
00:26	GOOD! 3PTR by HOLLOWELL, TRAY	72-58	H 14	

Wofford 58, ETSU 72

Points from (This Period)	WOF	ETS
In the Paint	12	12
Off Turns	7	6
2nd Chance	4	2
Fast Break	0	2
Bench	12	14

Official Scoring/Possession Reference Chart
Wofford vs ETSU
Period 1
March 09, 2020 at Harrahs Cherokee Center Asheville



Period 1

Starters:

Wofford: 1 GOODWIN,CHEVEZ (F); 5 MURPHY,STORM (G); 10 HOOVER,NATHAN (G); 11 LARSON,RYAN (G); 15 STUMPE,TREVOR (G);
ETSU: 1 BOYD III,TRAY (G); 3 HODGES,BO (G); 5 WILLIAMSON,DAIVIEN (G); 15 TISDALE,ISIAIAH (G); 25 N'GUESSAN,LUCAS (C);

Time	VISITORS: Wofford	Score	Margin	HOME: ETSU
19:40		3-0	H 3	GOOD! 3PTR by TISDALE, ISIAIAH
19:04	GOOD! LAYUP by GOODWIN, CHEVEZ	3-2	H 1	
18:36		6-2	H 4	GOOD! 3PTR by BOYD III, TRAY
18:01		8-2	H 6	GOOD! LAYUP by HODGES, BO
17:11		11-2	H 9	GOOD! 3PTR by WILLIAMSON, DAIVIEN
16:58	GOOD! 3PTR by MURPHY, STORM	11-5	H 6	
16:27	GOOD! DUNK by GOODWIN, CHEVEZ [FB]	11-7	H 4	
15:59	GOOD! LAYUP by JONES, MESSIAH	11-9	H 2	
15:41	GOOD! LAYUP by LARSON, RYAN [FB]	11-11	T	
14:53		13-11	H 2	GOOD! LAYUP by HUGLEY, JOE
14:52		14-11	H 3	GOOD! FT by HUGLEY, JOE
13:44		17-11	H 6	GOOD! 3PTR by TISDALE, ISIAIAH
12:34	GOOD! JUMPER by GOODWIN, CHEVEZ [PNT]	17-13	H 4	
11:30	GOOD! JUMPER by HOOVER, NATHAN	17-15	H 2	
10:20	GOOD! LAYUP by HOLLOWELL, TRAY [FB]	17-17	T	
09:59		19-17	H 2	GOOD! JUMPER by HODGES, BO [PNT]
09:41	GOOD! 3PTR by HOLLOWELL, TRAY	19-20	V 1	
08:27	GOOD! FT by HOOVER, NATHAN	19-21	V 2	
08:27	GOOD! FT by HOOVER, NATHAN	19-22	V 3	
07:57	GOOD! LAYUP by JONES, MESSIAH	19-24	V 5	
07:14		21-24	V 3	GOOD! JUMPER by BOYD III, TRAY [FB/PNT]
05:08		23-24	V 1	GOOD! JUMPER by BOYD III, TRAY [PNT]
04:40	GOOD! JUMPER by GOODWIN, CHEVEZ	23-26	V 3	
04:17		26-26	T	GOOD! 3PTR by GOOD, PATRICK
03:13		27-26	H 1	GOOD! FT by TISDALE, ISIAIAH
03:13		28-26	H 2	GOOD! FT by TISDALE, ISIAIAH
03:13		29-26	H 3	GOOD! FT by TISDALE, ISIAIAH
03:00	GOOD! 3PTR by MURPHY, STORM	29-29	T	
02:45		32-29	H 3	GOOD! 3PTR by TISDALE, ISIAIAH
01:43		34-29	H 5	GOOD! LAYUP by TISDALE, ISIAIAH
01:16	GOOD! JUMPER by MURPHY, STORM	34-31	H 3	
00:57		35-31	H 4	GOOD! FT by TISDALE, ISIAIAH
00:57		36-31	H 5	GOOD! FT by TISDALE, ISIAIAH

Wofford 31, ETSU 36

Official Scoring/Possession Reference Chart
Wofford vs ETSU
Period 2
March 09, 2020 at Harrahs Cherokee Center Asheville



Period 2

Starters:

Wofford: 1 GOODWIN,CHEVEZ (F); 5 MURPHY,STORM (G); 10 HOOVER,NATHAN (G); 11 LARSON,RYAN (G); 15 STUMPE,TREVOR (G);
ETSU: 1 BOYD III,TRAY (G); 3 HODGES,BO (G); 5 WILLIAMSON,DAIVIEN (G); 15 TISDALE,ISAIAH (G); 25 N'GUESSAN,LUCAS (C);

Time	VISITORS: Wofford	Score	Margin	HOME: ETSU
19:09		38-31	H 7	GOOD! LAYUP by N'GUESSAN, LUCAS
18:55	GOOD! 3PTR by HOOVER, NATHAN	38-34	H 4	
17:00		40-34	H 6	GOOD! DUNK by HODGES, BO
16:39	GOOD! DUNK by GOODWIN, CHEVEZ	40-36	H 4	
15:50	GOOD! LAYUP by JONES, MESSIAH	40-38	H 2	
15:16		42-38	H 4	GOOD! LAYUP by RODRIGUEZ, JEROMY
14:51		43-38	H 5	GOOD! FT by WILLIAMSON, DAVIEN [FB]
14:51		44-38	H 6	GOOD! FT by WILLIAMSON, DAVIEN [FB]
12:55		46-38	H 8	GOOD! JUMPER by N'GUESSAN, LUCAS
12:09	GOOD! JUMPER by HOLLOWELL, TRAY	46-40	H 6	
11:39		49-40	H 9	GOOD! 3PTR by GOOD, PATRICK
10:45		52-40	H 12	GOOD! 3PTR by HUGLEY, JOE
10:01	GOOD! LAYUP by JONES, MESSIAH	52-42	H 10	
09:43		53-42	H 11	GOOD! FT by HUGLEY, JOE
09:43		54-42	H 12	GOOD! FT by HUGLEY, JOE
09:04		56-42	H 14	GOOD! JUMPER by BOYD III, TRAY
08:05	GOOD! JUMPER by GOODWIN, CHEVEZ [PNT]	56-44	H 12	
06:54	GOOD! JUMPER by GOODWIN, CHEVEZ [PNT]	56-46	H 10	
06:39		59-46	H 13	GOOD! 3PTR by TISDALE, ISAIAH
06:11	GOOD! FT by GOODWIN, CHEVEZ	59-47	H 12	
06:11	GOOD! FT by GOODWIN, CHEVEZ	59-48	H 11	
05:53		61-48	H 13	GOOD! LAYUP by RODRIGUEZ, JEROMY
05:39	GOOD! FT by LARSON, RYAN	61-49	H 12	
04:25		62-49	H 13	GOOD! FT by TISDALE, ISAIAH
03:53		64-49	H 15	GOOD! LAYUP by RODRIGUEZ, JEROMY
03:33	GOOD! 3PTR by HOLLOWELL, TRAY	64-52	H 12	
03:09		66-52	H 14	GOOD! LAYUP by HODGES, BO
02:03	GOOD! JUMPER by GOODWIN, CHEVEZ [PNT]	66-54	H 12	
01:45		67-54	H 13	GOOD! FT by TISDALE, ISAIAH
01:45		68-54	H 14	GOOD! FT by TISDALE, ISAIAH
01:26		69-54	H 15	GOOD! FT by TISDALE, ISAIAH
01:26		70-54	H 16	GOOD! FT by TISDALE, ISAIAH
01:11		71-54	H 17	GOOD! FT by BOYD III, TRAY
01:11		72-54	H 18	GOOD! FT by BOYD III, TRAY
01:03	GOOD! FT by MURPHY, STORM	72-55	H 17	
00:26	GOOD! 3PTR by HOLLOWELL, TRAY	72-58	H 14	

Wofford 58, ETSU 72

Official Substitutions Log
Wofford vs ETSU
Period 1
March 09, 2020 at Harrahs Cherokee Center Asheville



PRESENTED BY General State

VISITORS: Wofford	Time	Score	HOME: ETSU
1 GOODWIN,CHEVEZ			1 BOYD III,TRAY
5 MURPHY,STORM			3 HODGES,BO
10 HOOVER,NATHAN			5 WILLIAMSON,DAIVIEN
11 LARSON,RYAN			15 TISDALE,ISAAH
15 STUMPE,TREVOR			25 N'GUESSAN,LUCAS
SUB OUT: 10 HOOVER,NATHAN	17:11	2-11	
SUB IN: 21 HOLLOWELL,TRAY	17:11		
	16:07	7-11	SUB OUT: N'GUESSAN,LUCAS
	16:07		SUB IN: HUGLEY,JOE
SUB OUT: 1 GOODWIN,CHEVEZ	16:07		
SUB OUT: 15 STUMPE,TREVOR	16:07		
SUB IN: 4 BIGELOW,ISAAH	16:07		
SUB IN: 25 JONES,MESSIAH	16:07		
	15:27	11-11	SUB OUT: WILLIAMSON,DAIVIEN
	15:27		SUB IN: GOOD,PATRICK
SUB OUT: 11 LARSON,RYAN	15:27		
SUB IN: 31 THEME-LOVE,DONOVAN	15:27		
	14:07	11-14	SUB OUT: BOYD III,TRAY
	14:07		SUB OUT: HUGLEY,JOE
	14:07		SUB IN: WILLIAMSON,DAIVIEN
	14:07		SUB IN: RODRIGUEZ,JEROMY
SUB OUT: 21 HOLLOWELL,TRAY	14:07		
SUB IN: 11 LARSON,RYAN	14:07		
SUB OUT: 25 JONES,MESSIAH	14:07		
SUB IN: 1 GOODWIN,CHEVEZ	14:07		
	13:19	11-17	SUB OUT: HODGES,BO
	13:19		SUB IN: PATTERSON,VONNIE
SUB OUT: 1 GOODWIN,CHEVEZ	13:19		
SUB IN: 25 JONES,MESSIAH	13:19		
SUB OUT: 4 BIGELOW,ISAAH	12:59	11-17	
SUB OUT: 5 MURPHY,STORM	12:59		
SUB OUT: 25 JONES,MESSIAH	12:59		
SUB IN: 1 GOODWIN,CHEVEZ	12:59		
SUB IN: 10 HOOVER,NATHAN	12:59		
SUB IN: 15 STUMPE,TREVOR	12:59		
	11:45	13-17	SUB OUT: GOOD,PATRICK
	11:45		SUB OUT: TISDALE,ISAAH
	11:45		SUB IN: BOYD III,TRAY
	11:45		SUB IN: HODGES,BO
SUB OUT: 31 THEME-LOVE,DONOVAN	11:45		
SUB IN: 21 HOLLOWELL,TRAY	11:45		
	09:17	20-19	SUB OUT: RODRIGUEZ,JEROMY
	09:17		SUB OUT: PATTERSON,VONNIE
	09:17		SUB IN: TISDALE,ISAAH
	09:17		SUB IN: N'GUESSAN,LUCAS
SUB OUT: 1 GOODWIN,CHEVEZ	09:17		
SUB OUT: 11 LARSON,RYAN	09:17		
SUB IN: 5 MURPHY,STORM	09:17		
SUB IN: 25 JONES,MESSIAH	09:17		
	08:27	21-19	SUB OUT: N'GUESSAN,LUCAS
	08:27		SUB IN: HUGLEY,JOE
SUB OUT: 15 STUMPE,TREVOR	08:27		
SUB IN: 4 BIGELOW,ISAAH	08:27		
SUB OUT: 25 JONES,MESSIAH	07:39	24-19	
SUB IN: 1 GOODWIN,CHEVEZ	07:39		
SUB OUT: 21 HOLLOWELL,TRAY	06:16	24-21	
SUB IN: 11 LARSON,RYAN	06:16		
	05:33	24-21	SUB OUT: HUGLEY,JOE
	05:33		SUB IN: GOOD,PATRICK
	05:33		SUB OUT: WILLIAMSON,DAIVIEN
	05:33		SUB IN: RODRIGUEZ,JEROMY
SUB OUT: 4 BIGELOW,ISAAH	03:59	26-26	
SUB OUT: 10 HOOVER,NATHAN	03:59		
SUB IN: 0 RICHARDSON,ZION	03:59		
SUB IN: 15 STUMPE,TREVOR	03:59		
SUB OUT: 11 LARSON,RYAN	03:13	26-28	
SUB IN: 21 HOLLOWELL,TRAY	03:13		
	02:00	29-32	SUB OUT: GOOD,PATRICK
	02:00		SUB OUT: RODRIGUEZ,JEROMY
	02:00		SUB IN: WILLIAMSON,DAIVIEN
	02:00		SUB IN: HUGLEY,JOE
SUB OUT: 0 RICHARDSON,ZION	02:00		
SUB IN: 10 HOOVER,NATHAN	02:00		
SUB OUT: 1 GOODWIN,CHEVEZ	00:57	31-35	
SUB OUT: 21 HOLLOWELL,TRAY	00:57		

VISITORS: Wofford	Time	Score	HOME: ETSU
SUB IN: 25 JONES, MESSIAH	00:57		
SUB IN: 31 THEME-LOVE, DONOVAN	00:57		

Wofford 31, ETSU 36

Official Substitutions Log
Wofford vs ETSU
Period 2
March 09, 2020 at Harrahs Cherokee Center Asheville



PRESENTED BY General State

VISITORS: Wofford	Time	Score	HOME: ETSU
1 GOODWIN,CHEVEZ			1 BOYD III,TRAY
5 MURPHY,STORM			3 HODGES,BO
10 HOOVER,NATHAN			5 WILLIAMSON,DAIVIEN
11 LARSON,RYAN			15 TISDALE,ISAIHAH
15 STUMPE,TREVOR			25 N'GUESSAN,LUCAS
	20:00	-	SUB OUT: HUGLEY,JOE
	20:00		SUB IN: N'GUESSAN,LUCAS
SUB OUT: 25 JONES,MESSIAH	20:00		
SUB OUT: 31 THEME-LOVE,DONOVAN	20:00		
SUB IN: 1 GOODWIN,CHEVEZ	20:00		
SUB IN: 11 LARSON,RYAN	20:00		
	17:37	34-38	SUB OUT: N'GUESSAN,LUCAS
	17:37		SUB IN: HUGLEY,JOE
	17:17	34-38	SUB OUT: BOYD III,TRAY
	17:17		SUB IN: GOOD,PATRICK
	16:27	36-40	SUB OUT: HUGLEY,JOE
	16:27		SUB IN: RODRIGUEZ,JEROMY
SUB OUT: 1 GOODWIN,CHEVEZ	16:27		
SUB OUT: 11 LARSON,RYAN	16:27		
SUB IN: 21 HOLLOWELL,TRAY	16:27		
SUB IN: 25 JONES,MESSIAH	16:27		
SUB OUT: 15 STUMPE,TREVOR	14:51	38-42	
SUB IN: 4 BIGELOW,ISAIHAH	14:51		
	14:28	38-44	SUB OUT: WILLIAMSON,DAIVIEN
	14:28		SUB IN: BOYD III,TRAY
SUB OUT: 10 HOOVER,NATHAN	14:07	38-44	
SUB IN: 11 LARSON,RYAN	14:07		
	13:19	38-44	SUB OUT: HODGES,BO
	13:19		SUB IN: WILLIAMSON,DAIVIEN
	13:19		SUB OUT: RODRIGUEZ,JEROMY
	13:19		SUB IN: N'GUESSAN,LUCAS
SUB OUT: 5 MURPHY,STORM	12:27	38-46	
SUB IN: 10 HOOVER,NATHAN	12:27		
	11:23	40-49	SUB OUT: N'GUESSAN,LUCAS
	11:23		SUB IN: HUGLEY,JOE
SUB OUT: 4 BIGELOW,ISAIHAH	11:23		
SUB OUT: 21 HOLLOWELL,TRAY	11:23		
SUB OUT: 25 JONES,MESSIAH	11:23		
SUB IN: 1 GOODWIN,CHEVEZ	11:23		
SUB IN: 5 MURPHY,STORM	11:23		
SUB IN: 15 STUMPE,TREVOR	11:23		
SUB OUT: 1 GOODWIN,CHEVEZ	10:13	40-52	
SUB IN: 25 JONES,MESSIAH	10:13		
SUB OUT: 25 JONES,MESSIAH	09:43	42-52	
SUB IN: 1 GOODWIN,CHEVEZ	09:43		
SUB OUT: 11 LARSON,RYAN	08:34	42-56	
SUB IN: 21 HOLLOWELL,TRAY	08:34		
	06:11	46-59	SUB OUT: GOOD,PATRICK
	06:11		SUB OUT: HUGLEY,JOE
	06:11		SUB IN: HODGES,BO
	06:11		SUB IN: RODRIGUEZ,JEROMY
SUB OUT: 15 STUMPE,TREVOR	06:11		
SUB OUT: 21 HOLLOWELL,TRAY	06:11		
SUB IN: 4 BIGELOW,ISAIHAH	06:11		
SUB IN: 11 LARSON,RYAN	06:11		
	04:25	49-62	SUB OUT: WILLIAMSON,DAIVIEN
	04:25		SUB IN: GOOD,PATRICK
SUB OUT: 1 GOODWIN,CHEVEZ	04:25		
SUB OUT: 4 BIGELOW,ISAIHAH	04:25		
SUB OUT: 11 LARSON,RYAN	04:25		
SUB IN: 15 STUMPE,TREVOR	04:25		
SUB IN: 21 HOLLOWELL,TRAY	04:25		
SUB IN: 25 JONES,MESSIAH	04:25		
SUB OUT: 25 JONES,MESSIAH	03:30	52-64	
SUB IN: 1 GOODWIN,CHEVEZ	03:30		
	02:27	52-66	SUB OUT: GOOD,PATRICK
	02:27		SUB IN: PATTERSON,VONNIE
SUB OUT: 1 GOODWIN,CHEVEZ	01:45	54-66	
SUB IN: 4 BIGELOW,ISAIHAH	01:45		
	01:19	54-70	SUB OUT: RODRIGUEZ,JEROMY
	01:19		SUB OUT: PATTERSON,VONNIE
	01:19		SUB IN: GOOD,PATRICK
	01:19		SUB IN: N'GUESSAN,LUCAS
	01:11	54-71	SUB OUT: GOOD,PATRICK
	01:11		SUB OUT: N'GUESSAN,LUCAS

VISITORS: Wofford	Time	Score	HOME: ETSU
	01:11		SUB IN: RODRIGUEZ, JEROMY
	01:11		SUB IN: PATTERSON, VONNIE
	01:03	54-72	SUB OUT: RODRIGUEZ, JEROMY
	01:03		SUB OUT: PATTERSON, VONNIE
	01:03		SUB IN: GOOD, PATRICK
	01:03		SUB IN: N'GUESSAN, LUCAS
SUB OUT: 10 HOOVER, NATHAN	01:03		
SUB IN: 31 THEME-LOVE, DONOVAN	01:03		
SUB OUT: 15 STUMPE, TREVOR	01:03		
SUB IN: 11 LARSON, RYAN	01:03		
SUB OUT: 5 MURPHY, STORM	01:03		
SUB IN: 0 RICHARDSON, ZION	01:03		
	01:03		SUB OUT: BOYD III, TRAY
	01:03		SUB OUT: GOOD, PATRICK
	01:03		SUB OUT: N'GUESSAN, LUCAS
	01:03		SUB IN: CORLEY, OCTAVION
	01:03		SUB IN: COFFIN, JORDAN
	01:03		SUB IN: WEBER, CHARLIE
	00:33	55-72	SUB OUT: TISDALE, ISAIAH
	00:33		SUB IN: WILLIAMSON, DAIVIEN

Wofford 58, ETSU 72

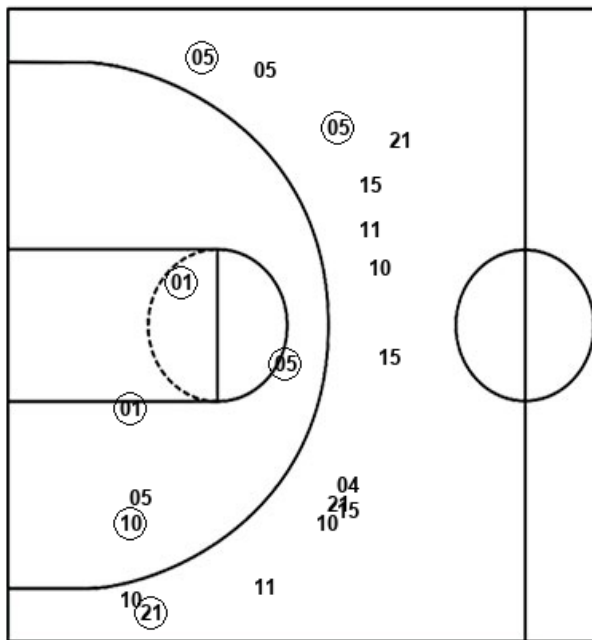
Official Shot Chart
Wofford vs ETSU
PERIOD 1 Shots
 March 09, 2020 at Harrahs Cherokee Center Asheville



ETSU

Wofford

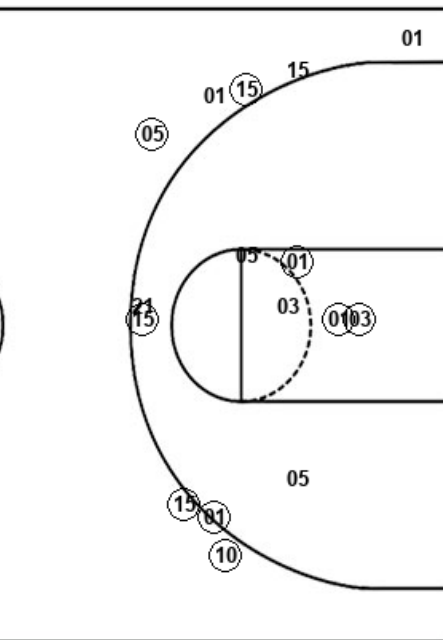
Layups
 (03) (21) 11 23 23
 03 05 (15) 01



Dunks

ETS : Period 1	Made	Att	Pct
Layups	3	9	33.3
Dunks	0	0	0
2PT Field Goals	6	15	40.0
3PT Field Goals	6	10	60.0
Total Field Goals	12	25	48.0

Layups
 (01) 11 (25) (11) (21)
 (25)



Dunks

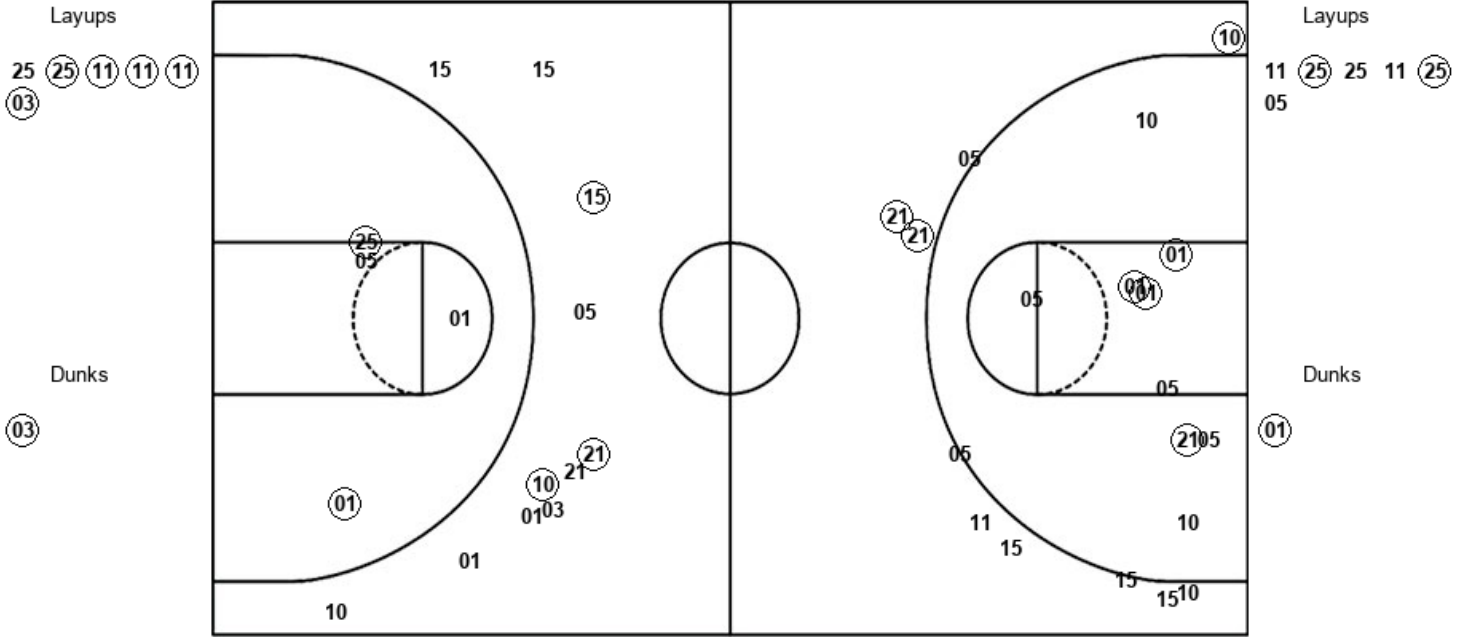
WOF : Period 1	Made	Att	Pct
Layups	5	6	83.3
Dunks	1	1	100.0
2PT Field Goals	10	12	83.3
3PT Field Goals	3	15	20.0
Total Field Goals	13	27	48.1

Official Shot Chart
Wofford vs ETSU
PERIOD 2 Shots
 March 09, 2020 at Harrahs Cherokee Center Asheville



ETSU

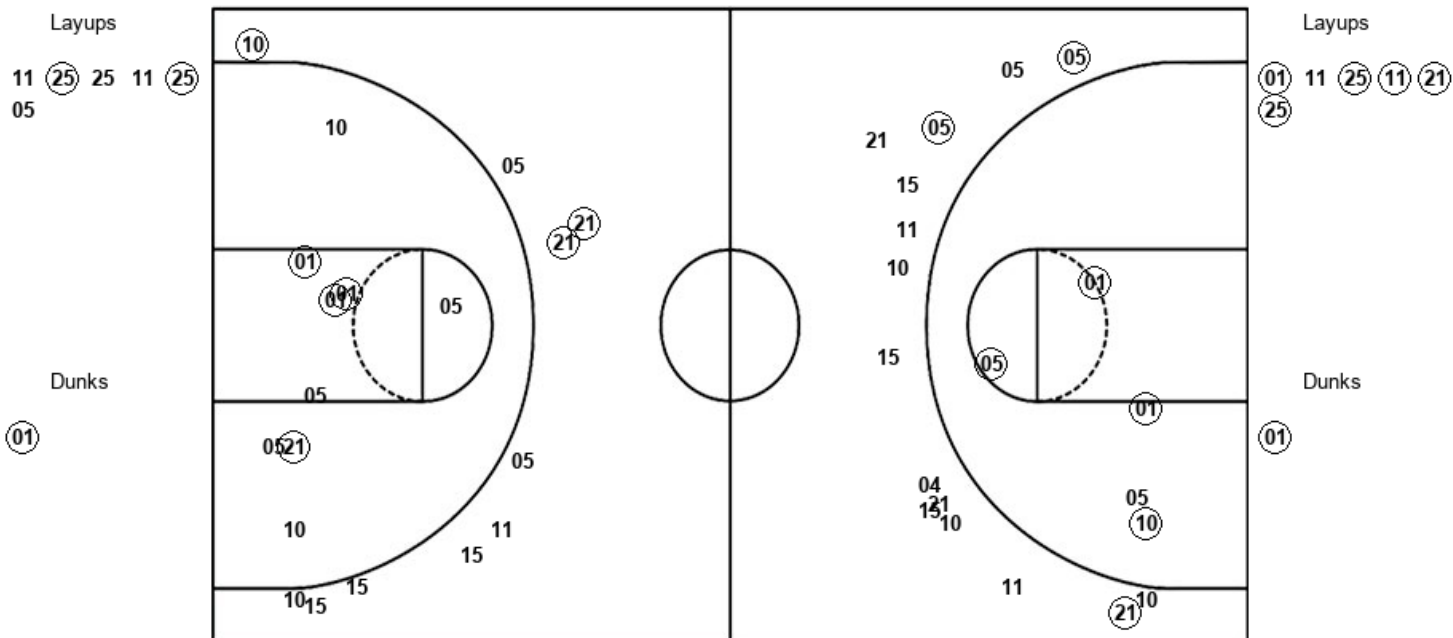
Wofford



ETS : Period 2	Made	Att	Pct
Layups	5	6	83.3
Dunks	1	1	100.0
2PT Field Goals	8	11	72.7
3PT Field Goals	3	11	27.3
Total Field Goals	11	22	50.0

WOF : Period 2	Made	Att	Pct
Layups	2	6	33.3
Dunks	1	1	100.0
2PT Field Goals	7	16	43.8
3PT Field Goals	3	10	30.0
Total Field Goals	10	26	38.5

Official Shot Chart
Wofford vs ETSU
Wofford Team Shots
 March 09, 2020 at Harrahs Cherokee Center Asheville



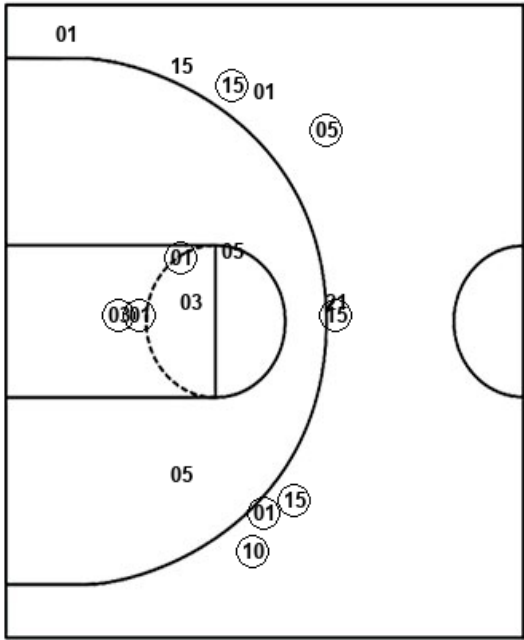
WOF : Period 1	Made	Att	Pct
Layups	5	6	83.3
Dunks	1	1	100.0
2PT Field Goals	10	12	83.3
3PT Field Goals	3	15	20.0
Total Field Goals	13	27	48.1

WOF : Period 2	Made	Att	Pct
Layups	2	6	33.3
Dunks	1	1	100.0
2PT Field Goals	7	16	43.8
3PT Field Goals	3	10	30.0
Total Field Goals	10	26	38.5

Official Shot Chart
Wofford vs ETSU
ETSU Team Shots
March 09, 2020 at Harrahs Cherokee Center Asheville



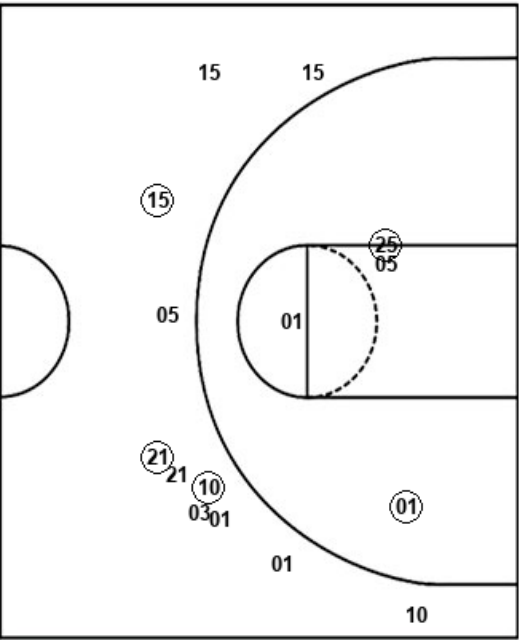
Layups
 (03) (21) 11 23 23
 03 05 (15) 01



Dunks

ETS : Period 1	Made	Att	Pct
Layups	3	9	33.3
Dunks	0	0	0
2PT Field Goals	6	15	40.0
3PT Field Goals	6	10	60.0
Total Field Goals	12	25	48.0

Layups
 25 (25) (11) (11) (11)
 (03)



Dunks

ETS : Period 2	Made	Att	Pct
Layups	5	6	83.3
Dunks	1	1	100.0
2PT Field Goals	8	11	72.7
3PT Field Goals	3	11	27.3
Total Field Goals	11	22	50.0