

**FINAL SCORE**

**Pepperdine**

**44**



**San Diego**

**59**

**WCC Basketball Championships**

March 09, 2020 • Orleans Arena - Las Vegas, NV



**FINAL STATISTICS**

**Official Box Score**  
**Pepperdine vs San Diego**  
**Game Totals -- Final Statistics**  
**March 09, 2020 at Orleans Arena - Las Vegas, NV**



**Pepperdine 44**

No.	Player	S	Pts	FG	3FG	FT	OR	DR	TR	PF	A	TO	Blk	Stl	Min	+/-	
01	BAMBRICK, MALIA	G	6	2-16	0-9	2-2	0	3	3	4	2	0	0	0	38	-10	
11	ANDRIUOLO, MONIQUE	F	8	4-8	0-1	0-0	3	6	9	3	1	1	0	2	33	-10	
14	RUFFUS-MILNER, JAYLA	G	9	4-6	0-0	1-2	2	1	3	0	0	0	0	1	28	-5	
23	SITANGGAN, BARBARA	G	4	1-10	0-0	2-2	1	5	6	1	5	3	0	2	37	-10	
24	FRIEND, HANNAH	F	15	6-13	2-5	1-2	2	4	6	5	0	7	2	0	31	-5	
03	RUFFUS-MILNER, JAYDA	G	0	0-1	0-0	0-0	0	2	2	2	0	0	0	0	8	-11	
10	FECSKE, PAIGE	G	0	0-2	0-2	0-1	0	0	0	2	0	1	0	0	8	-12	
22	BATTLE, DEEZHA	G	0	0-0	0-0	0-0	0	0	0	0	0	1	0	0	6	-8	
32	SATIE, MIA	G	2	0-0	0-0	2-2	1	1	2	1	0	0	0	0	4	1	
33	QUIRKE, ASHLEEN	F	0	0-1	0-0	0-0	0	0	0	1	0	0	1	0	7	-5	
<b>TEAM</b>							0	0	0	0	2						
<b>TOTALS</b>			<b>44</b>	<b>17-57</b>	<b>2-17</b>	<b>8-11</b>	<b>9</b>	<b>22</b>	<b>31</b>	<b>19</b>	<b>8</b>	<b>15</b>	<b>3</b>	<b>5</b>	<b>200</b>		

*Shooting By Period*

Period	FG	FG%	3FG	3FG%	FT	FT%
1st Qtr	5-15	33%	1-3	33%	0-1	00%
2nd Qtr	5-15	33%	1-5	20%	2-2	100%
3rd Qtr	2-11	18%	0-3	00%	2-4	50%
4th Qtr	5-16	31%	0-6	00%	4-4	100%
1st Half	10-30	33%	2-8	25%	2-3	67%
2nd Half	7-27	26%	0-9	00%	6-8	75%
<b>Game</b>	<b>17-57</b>	<b>29.8%</b>	<b>2-17</b>	<b>11.8%</b>	<b>8-11</b>	<b>72.7%</b>

*Deadball Rebounds: 2,1*  
*Last FG: 4th-00:37*  
*Biggest Run: 7-0*  
*Largest lead: By 5 at 1st-04:34*  
*Technical Fouls: None.*

**San Diego 59**

No.	Player	S	Pts	FG	3FG	FT	OR	DR	TR	PF	A	TO	Blk	Stl	Min	+/-	
10	PACE, MYAH	G	19	6-12	0-1	7-8	1	5	6	3	3	2	1	3	38	17	
11	POLLOCK, MADISON	G	2	1-5	0-0	0-0	1	3	4	1	1	0	0	0	13	2	
23	EDWARDS, JORDYN	G	8	3-8	2-4	0-0	2	5	7	3	0	0	0	2	38	13	
32	HUNTER, SYDNEY	G	7	3-11	1-1	0-0	2	0	2	3	2	0	0	0	27	7	
34	BROSSMANN, PATRICIA	F	2	0-4	0-0	2-2	2	7	9	2	0	3	0	3	33	13	
02	DOSSO, AMINATA	G	0	0-0	0-0	0-0	0	1	1	1	0	0	0	0	3	3	
04	RAMOS, ANA	G	0	0-0	0-0	0-0	0	0	0	0	0	0	0	0	2	4	
05	KHALFANI, AYANNA	G	2	1-2	0-0	0-0	1	2	3	2	0	0	0	0	10	9	
15	SOARES, LETICIA	C	19	6-11	0-0	7-10	0	5	5	1	0	5	0	0	32	15	
20	MARTINSEN, ERICA	G	0	0-1	0-1	0-0	0	1	1	0	0	0	0	0	3	-8	
25	BLAKES, NICOLE	F	0	0-0	0-0	0-0	0	0	0	0	0	0	0	0	1	0	
<b>TEAM</b>							0	0	0	0	4						
<b>TOTALS</b>			<b>59</b>	<b>20-54</b>	<b>3-7</b>	<b>16-20</b>	<b>9</b>	<b>29</b>	<b>38</b>	<b>16</b>	<b>6</b>	<b>14</b>	<b>1</b>	<b>8</b>	<b>200</b>		

*Shooting By Period*

Period	FG	FG%	3FG	3FG%	FT	FT%
1st Qtr	6-16	38%	0-0	0%	5-6	83%
2nd Qtr	6-19	32%	0-2	00%	0-0	0%
3rd Qtr	3-12	25%	1-2	50%	4-6	67%
4th Qtr	5-7	71%	2-3	67%	7-8	88%
1st Half	12-35	34%	0-2	00%	5-6	83%
2nd Half	8-19	42%	3-5	60%	11-14	79%
<b>Game</b>	<b>20-54</b>	<b>37.0%</b>	<b>3-7</b>	<b>42.9%</b>	<b>16-20</b>	<b>80.0%</b>

*Deadball Rebounds: 6,3*  
*Last FG: 4th-02:57*  
*Biggest Run: 13-0*  
*Largest lead: By 17 at 4th-00:42*  
*Technical Fouls: None.*

*Game Notes:*

*Officials: Robert Schofield, Tiffany Bird, Benny Luna*  
*Attendance: 4250*

*Start Time: 05:29 PM ET*  
*End Time: 07:29 PM ET*  
*Game Duration: 1:59*  
*Neutral Court:*

Score	1st	2nd	3rd	4th	TOT
PEP	11	13	6	14	<b>44</b>
USD	17	12	11	19	<b>59</b>

*PEP led for 4:05. USD led for 33:21.*  
*Game was tied for 2:35.*  
*Times tied: 2*      *Lead Changes: 5*

Points from	PEP	USD
In the Paint	22	32
Off Turns	6	10
2nd Chance	8	8
Fast Break	6	9
Bench	2	21

**Official Box Score**  
**Pepperdine vs San Diego**  
**First Half Statistics Only**  
**March 09, 2020 at Orleans Arena - Las Vegas, NV**



### Pepperdine 24

No.	Player	S	Pts	FG	3FG	FT	OR	DR	TR	PF	A	TO	Blk	Stl	Min	+/-
01	BAMBRICK, MALIA	G	4	2-8	0-4	0-0	0	3	3	0	1	0	0	0	20	-5
03	RUFFUS-MILNER, JAYDA	G	0	0-1	0-0	0-0	0	2	2	2	0	0	0	0	8	-7
10	FECSKE, PAIGE	G	0	0-0	0-0	0-1	0	0	0	2	0	0	0	0	1	-4
11	ANDRIUOLO, MONIQUE	F	4	2-5	0-1	0-0	1	3	4	1	1	1	0	0	15	-2
14	RUFFUS-MILNER, JAYLA	G	4	2-2	0-0	0-0	1	0	1	0	0	0	0	0	7	5
22	BATTLE, DEEZHA	G	0	0-0	0-0	0-0	0	0	0	0	0	1	0	0	4	-5
23	SITANGGAN, BARBARA	G	0	0-6	0-0	0-0	1	2	3	1	3	2	0	0	19	-3
24	FRIEND, HANNAH	F	10	4-8	2-3	0-0	1	3	4	2	0	4	2	0	17	-2
32	SATIE, MIA	G	2	0-0	0-0	2-2	1	1	2	1	0	0	0	0	4	1
33	QUIRKE, ASHLEEN	F	0	0-0	0-0	0-0	0	0	0	0	0	0	0	0	5	-3
	TEAM		0	0-0	0-0	0-0	0	0	0	0	0	0	0	0	0	
<b>TOTALS</b>			<b>24</b>	<b>10-30</b>	<b>2-8</b>	<b>2-3</b>	<b>5</b>	<b>14</b>	<b>19</b>	<b>9</b>	<b>5</b>	<b>8</b>	<b>2</b>	<b>0</b>	<b>100</b>	

*Shooting By Period*

Period	FG	FG%	3FG	3FG%	FT	FT%
1st Qtr	5-15	33%	1-3	33%	0-1	00%
2nd Qtr	5-15	33%	1-5	20%	2-2	100%
1st Half	10-30	33%	2-8	25%	2-3	67%
Game	17-57	29.8%	2-17	11.8%	8-11	72.7%

*Deadball Rebounds: 2,1*  
*Last FG Half: PEP 2nd-02:28*

### San Diego 29

No.	Player	S	Pts	FG	3FG	FT	OR	DR	TR	PF	A	TO	Blk	Stl	Min	+/-
02	DOSSO, AMINATA	G	0	0-0	0-0	0-0	0	0	0	0	0	0	0	0	0	0
04	RAMOS, ANA	G	0	0-0	0-0	0-0	0	0	0	0	0	0	0	0	2	4
05	KHALFANI, AYANNA	G	2	1-1	0-0	0-0	1	1	2	2	0	0	0	0	5	6
10	PACE, MYAH	G	10	3-8	0-1	4-4	1	3	4	0	1	1	0	2	18	7
11	POLLOCK, MADISON	G	2	1-5	0-0	0-0	1	3	4	1	1	0	0	0	11	3
15	SOARES, LETICIA	C	11	5-8	0-0	1-2	0	3	3	1	0	1	0	0	14	4
20	MARTINSEN, ERICA	G	0	0-0	0-0	0-0	0	0	0	0	0	0	0	0	2	-6
23	EDWARDS, JORDYN	G	0	0-3	0-1	0-0	1	3	4	1	0	0	0	1	17	3
25	BLAKES, NICOLE	F	0	0-0	0-0	0-0	0	0	0	0	0	0	0	0	1	0
32	HUNTER, SYDNEY	G	4	2-7	0-0	0-0	2	0	2	1	2	0	0	0	15	1
34	BROSSMANN, PATRICIA	F	0	0-3	0-0	0-0	1	2	3	2	0	0	0	1	14	3
	TEAM		0	0-0	0-0	0-0	0	0	0	0	0	1	0	0	0	
<b>TOTALS</b>			<b>29</b>	<b>12-35</b>	<b>0-2</b>	<b>5-6</b>	<b>7</b>	<b>15</b>	<b>22</b>	<b>8</b>	<b>4</b>	<b>3</b>	<b>0</b>	<b>4</b>	<b>100</b>	

*Shooting By Period*

Period	FG	FG%	3FG	3FG%	FT	FT%
1st Qtr	6-16	38%	0-0	0%	5-6	83%
2nd Qtr	6-19	32%	0-2	00%	0-0	0%
1st Half	12-35	34%	0-2	00%	5-6	83%
Game	20-54	37.0%	3-7	42.9%	16-20	80.0%

*Deadball Rebounds: 6,3*  
*Last FG Half: USD 2nd-01:12*

Game Notes:

Officials: Robert Schofield, Tiffany Bird, Benny Luna  
 Attendance: 4250

Start Time: 05:29 PM ET  
 End Time: 07:29 PM ET  
 Game Duration: 1:59  
 Neutral Court;

Score	1st	2nd	3rd	4th	TOT
PEP	11	13	6	14	<b>44</b>
USD	17	12	11	19	<b>59</b>

Points from (This Period)	PEP	USD
In the Paint	10	22
Off Turns	0	6
2nd Chance	7	6
Fast Break	2	4
Bench	2	13

**Official Box Score**  
**Pepperdine vs San Diego**  
**First Quarter Statistics Only**  
**March 09, 2020 at Orleans Arena - Las Vegas, NV**



**Pepperdine 11**

No.	Player	S	Pts	FG	3FG	FT	OR	DR	TR	PF	A	TO	Blk	Stl	Min	+/-
01	BAMBRICK, MALIA	G	0	0-1	0-1	0-0	0	3	3	0	0	0	0	0	10	-6
11	ANDRIUOLO, MONIQUE	F	4	2-3	0-0	0-0	1	1	2	1	1	1	0	0	9	-3
14	RUFFUS-MILNER, JAYLA	G	2	1-1	0-0	0-0	0	0	0	0	0	0	0	0	5	5
23	SITANGGAN, BARBARA	G	0	0-5	0-0	0-0	1	1	2	1	2	1	0	0	10	-6
24	FRIEND, HANNAH	F	5	2-4	1-2	0-0	0	1	1	1	0	3	2	0	9	-3
03	RUFFUS-MILNER, JAYDA	G	0	0-1	0-0	0-0	0	1	1	1	0	0	0	0	4	-7
10	FECSKE, PAIGE	G	0	0-0	0-0	0-1	0	0	0	2	0	0	0	0	1	-4
22	BATTLE, DEEZHA	G	0	0-0	0-0	0-0	0	0	0	0	0	1	0	0	1	-3
32	SATIE, MIA	G	0	0-0	0-0	0-0	0	0	0	0	0	0	0	0	0	0
33	QUIRKE, ASHLEEN	F	0	0-0	0-0	0-0	0	0	0	0	0	0	0	0	1	-3
<b>TEAM</b>							0	0	0	0		0				
<b>TOTALS</b>			<b>11</b>	<b>5-15</b>	<b>1-3</b>	<b>0-1</b>	<b>2</b>	<b>7</b>	<b>9</b>	<b>6</b>	<b>3</b>	<b>6</b>	<b>2</b>	<b>0</b>	<b>50</b>	

*Shooting By Period*

Period	FG	FG%	3FG	3FG%	FT	FT%
1st Qtr	5-15	33%	1-3	33%	0-1	00%
2nd Qtr	5-15	33%	1-5	20%	2-2	100%
1st Half	5-15	33%	1-3	33%	0-1	00%
1st Half	10-30	33%	2-8	25%	2-3	67%
Game	17-57	29.8%	2-17	11.8%	8-11	72.7%

*Deadball Rebounds: 2,1*

**San Diego 17**

No.	Player	S	Pts	FG	3FG	FT	OR	DR	TR	PF	A	TO	Blk	Stl	Min	+/-
10	PACE, MYAH	G	6	1-2	0-0	4-4	0	2	2	0	0	0	0	1	10	6
11	POLLOCK, MADISON	G	2	1-3	0-0	0-0	1	1	2	1	0	0	0	0	6	2
23	EDWARDS, JORDYN	G	0	0-1	0-0	0-0	0	2	2	0	0	0	0	1	8	2
32	HUNTER, SYDNEY	G	4	2-4	0-0	0-0	1	0	1	1	2	0	0	0	9	3
34	BROSSMANN, PATRICIA	F	0	0-3	0-0	0-0	0	2	2	0	0	0	0	1	9	3
02	DOSSO, AMINATA	G	0	0-0	0-0	0-0	0	0	0	0	0	0	0	0	0	0
04	RAMOS, ANA	G	0	0-0	0-0	0-0	0	0	0	0	0	0	0	0	2	4
05	KHALFANI, AYANNA	G	0	0-0	0-0	0-0	0	0	0	0	0	0	0	0	1	3
15	SOARES, LETICIA	C	5	2-3	0-0	1-2	0	2	2	1	0	1	0	0	5	7
20	MARTINSEN, ERICA	G	0	0-0	0-0	0-0	0	0	0	0	0	0	0	0	0	0
25	BLAKES, NICOLE	F	0	0-0	0-0	0-0	0	0	0	0	0	0	0	0	0	0
<b>TEAM</b>							0	0	0	0		0				
<b>TOTALS</b>			<b>17</b>	<b>6-16</b>	<b>0-0</b>	<b>5-6</b>	<b>2</b>	<b>9</b>	<b>11</b>	<b>3</b>	<b>2</b>	<b>1</b>	<b>0</b>	<b>3</b>	<b>50</b>	

*Shooting By Period*

Period	FG	FG%	3FG	3FG%	FT	FT%
1st Qtr	6-16	38%	0-0	0%	5-6	83%
2nd Qtr	6-19	32%	0-2	00%	0-0	0%
1st Half	6-16	38%	0-0	0%	5-6	83%
1st Half	12-35	34%	0-2	00%	5-6	83%
Game	20-54	37.0%	3-7	42.9%	16-20	80.0%

*Deadball Rebounds: 6,3*

*Game Notes:*

Officials: Robert Schofield, Tiffany Bird, Benny Luna  
Attendance: 4250

Start Time: 05:29 PM ET  
End Time: 07:29 PM ET  
Game Duration: 1:59  
Neutral Court;

Score	1st	2nd	3rd	4th	TOT
PEP	11	13	6	14	<b>44</b>
USD	17	12	11	19	<b>59</b>

Points from (This Period)	PEP	USD
In the Paint	6	10
Off Turns	0	4
2nd Chance	3	4
Fast Break	2	0
Bench	0	5

**Official Play-By-Play**  
**Pepperdine vs San Diego**  
**First Quarter**  
**March 09, 2020 at Orleans Arena - Las Vegas, NV**



**Period 1**

**Starters:**

**Pepperdine:** 1 BAMBRICK, MALIA (G); 11 ANDRIUOLO, MONIQUE (F); 14 RUFFUS-MILNER, JAYLA (G); 23 SITANGGAN, BARBARA (G); 24 FRIEND, HANNAH (F);  
**San Diego:** 10 PACE, MYAH (G); 11 POLLOCK, MADISON (G); 23 EDWARDS, JORDYN (G); 32 HUNTER, SYDNEY (G); 34 BROSSMANN, PATRICIA (F);

Time	VISITORS: Pepperdine	Score	Margin	HOME: San Diego
09:41	GOOD! LAYUP by FRIEND, HANNAH	0-2	V 2	
09:32				MISSED LAYUP by HUNTER, SYDNEY
09:32	BLOCK by FRIEND, HANNAH			
09:26	REBOUND (DEF) by BAMBRICK, MALIA			
09:22	TURNOVER (LOSTBALL) by FRIEND, HANNAH			
09:22				SUB OUT: EDWARDS, JORDYN
09:22				SUB IN: RAMOS, ANA
08:58		2-2	T	GOOD! LAYUP by PACE, MYAH [PNT]
08:58				ASSIST by HUNTER, SYDNEY
08:41	MISSED 3PTR by FRIEND, HANNAH			
08:34				REBOUND (DEF) by BROSSMANN, PATRICIA
08:17				MISSED LAYUP by BROSSMANN, PATRICIA
08:14				REBOUND (OFF) by POLLOCK, MADISON
08:14		4-2	H 2	GOOD! LAYUP by POLLOCK, MADISON [PNT]
07:53	MISSED JUMPER by SITANGGAN, BARBARA			
07:50				REBOUND (DEF) by POLLOCK, MADISON
07:50				SUB OUT: RAMOS, ANA
07:50				SUB IN: EDWARDS, JORDYN
07:33				MISSED JUMPER by EDWARDS, JORDYN
07:29	REBOUND (DEF) by BAMBRICK, MALIA			
07:27	TURNOVER (BADPASS) by ANDRIUOLO, MONIQUE			
07:27				STEAL by BROSSMANN, PATRICIA
07:17				MISSED JUMPER by POLLOCK, MADISON
07:14	REBOUND (DEF) by BAMBRICK, MALIA			
06:55	MISSED LAYUP by SITANGGAN, BARBARA			
06:51				REBOUND (DEF) by EDWARDS, JORDYN
06:46				MISSED JUMPER by POLLOCK, MADISON
06:43	REBOUND (DEF) by ANDRIUOLO, MONIQUE			
06:31	MISSED LAYUP by ANDRIUOLO, MONIQUE			
06:28	REBOUND (OFF) by ANDRIUOLO, MONIQUE			
06:27	GOOD! 3PTR by FRIEND, HANNAH	4-5	V 1	
06:27	ASSIST by ANDRIUOLO, MONIQUE			
06:09		6-5	H 1	GOOD! LAYUP by HUNTER, SYDNEY
05:45	GOOD! LAYUP by ANDRIUOLO, MONIQUE	6-7	V 1	
05:26				MISSED JUMPER by BROSSMANN, PATRICIA
05:23	REBOUND (DEF) by TEAM			
05:23				FOUL (PERSONAL) by POLLOCK, MADISON
05:23				SUB OUT: POLLOCK, MADISON
05:23				SUB IN: SOARES, LETICIA
04:56	GOOD! JUMPER by ANDRIUOLO, MONIQUE	6-9	V 3	
04:56	ASSIST by SITANGGAN, BARBARA			
04:40				MISSED LAYUP by PACE, MYAH
04:37	REBOUND (DEF) by SITANGGAN, BARBARA			
04:34	GOOD! LAYUP by RUFFUS-MILNER, JAYLA [FB]	6-11	V 5	
04:34	ASSIST by SITANGGAN, BARBARA			
04:34				FOUL (PERSONAL) by HUNTER, SYDNEY
04:34				
04:34	SUB OUT: RUFFUS-MILNER, JAYLA			
04:34	SUB IN: FECSKE, PAIGE			
04:34	MISSED FT by FECSKE, PAIGE			
04:32				REBOUND (DEF) by SOARES, LETICIA
04:25	FOUL (PERSONAL) by FECSKE, PAIGE			
04:25		7-11	V 4	GOOD! FT by PACE, MYAH
04:25		8-11	V 3	GOOD! FT by PACE, MYAH
04:05	MISSED JUMPER by SITANGGAN, BARBARA			
04:02				REBOUND (DEF) by EDWARDS, JORDYN
03:54		10-11	V 1	GOOD! LAYUP by SOARES, LETICIA [PNT]
03:54				ASSIST by HUNTER, SYDNEY
03:32	FOUL (OFF) by FRIEND, HANNAH			
03:32	TURNOVER (OFFENSIVE) by FRIEND, HANNAH			
03:32	SUB OUT: BAMBRICK, MALIA			
03:32	SUB IN: RUFFUS-MILNER, JAYDA			
03:20	FOUL (PERSONAL) by FECSKE, PAIGE			
03:10				TURNOVER (3SEC) by SOARES, LETICIA
03:10	SUB OUT: FECSKE, PAIGE			
03:10	SUB IN: BAMBRICK, MALIA			
02:51	TURNOVER (BADPASS) by SITANGGAN, BARBARA			
02:51				STEAL by EDWARDS, JORDYN
02:46				MISSED LAYUP by BROSSMANN, PATRICIA
02:42				REBOUND (OFF) by HUNTER, SYDNEY

Time	VISITORS: Pepperdine	Score	Margin	HOME: San Diego
02:41		12-11	H 1	GOOD! JUMPER by HUNTER, SYDNEY
02:31	MISSED JUMPER by RUFFUS-MILNER, JAYDA			
02:27				REBOUND (DEF) by PACE, MYAH
02:25				MISSED LAYUP by HUNTER, SYDNEY
02:25	BLOCK by FRIEND, HANNAH			
02:21	REBOUND (DEF) by FRIEND, HANNAH			
02:21	TURNOVER (LOSTBALL) by FRIEND, HANNAH			
02:03				MISSED LAYUP by SOARES, LETICIA
02:00	REBOUND (DEF) by RUFFUS-MILNER, JAYDA			
01:42	MISSED JUMPER by FRIEND, HANNAH			
01:38				REBOUND (DEF) by BROSSMANN, PATRICIA
01:21		14-11	H 3	GOOD! LAYUP by SOARES, LETICIA [PNT]
01:12				SUB OUT: HUNTER, SYDNEY
01:12				SUB IN: KHALFANI, AYANNA
01:12				SUB OUT: BROSSMANN, PATRICIA
01:12				SUB IN: POLLOCK, MADISON
00:57	MISSED JUMPER by SITANGGAN, BARBARA			
00:55				REBOUND (DEF) by SOARES, LETICIA
00:55	FOUL (PERSONAL) by SITANGGAN, BARBARA			
00:55	SUB OUT: FRIEND, HANNAH			
00:55	SUB IN: BATTLE, DEEZHA			
00:42	FOUL (PERSONAL) by ANDRIUOLO, MONIQUE			
00:42	SUB OUT: ANDRIUOLO, MONIQUE			
00:42	SUB IN: QUIRKE, ASHLEEN			
00:42				MISSED FT by SOARES, LETICIA
00:42				REBOUND (OFF) by TEAM
00:42		15-11	H 4	GOOD! FT by SOARES, LETICIA
00:30				FOUL (PERSONAL) by SOARES, LETICIA
00:25	MISSED JUMPER by SITANGGAN, BARBARA			
00:20	REBOUND (OFF) by SITANGGAN, BARBARA			
00:16	MISSED 3PTR by BAMBRICK, MALIA			
00:12				REBOUND (DEF) by PACE, MYAH
00:05	FOUL (PERSONAL) by RUFFUS-MILNER, JAYDA			
00:05		16-11	H 5	GOOD! FT by PACE, MYAH
00:05		17-11	H 6	GOOD! FT by PACE, MYAH
00:02	TURNOVER (LOSTBALL) by BATTLE, DEEZHA			
00:02				STEAL by PACE, MYAH

### Pepperdine 11, San Diego 17

Points from (This Period)	PEP	USD
In the Paint	6	10
Off Turns	0	4
2nd Chance	3	4
Fast Break	2	0
Bench	0	5

**Official Box Score**  
**Pepperdine vs San Diego**  
**Second Quarter Statistics Only**  
**March 09, 2020 at Orleans Arena - Las Vegas, NV**



**Pepperdine 13**

No.	Player	S	Pts	FG	3FG	FT	OR	DR	TR	PF	A	TO	Blk	Stl	Min	+/-
01	BAMBRICK, MALIA	G	4	2-7	0-3	0-0	0	0	0	0	1	0	0	0	10	1
11	ANDRIUOLO, MONIQUE	F	0	0-2	0-1	0-0	0	2	2	0	0	0	0	0	6	1
14	RUFFUS-MILNER, JAYLA	G	2	1-1	0-0	0-0	1	0	1	0	0	0	0	0	2	0
23	SITANGGAN, BARBARA	G	0	0-1	0-0	0-0	0	1	1	0	1	1	0	0	9	3
24	FRIEND, HANNAH	F	5	2-4	1-1	0-0	1	2	3	1	0	1	0	0	8	1
03	RUFFUS-MILNER, JAYDA	G	0	0-0	0-0	0-0	0	1	1	1	0	0	0	0	4	0
10	FECSKE, PAIGE	G	0	0-0	0-0	0-0	0	0	0	0	0	0	0	0	0	0
22	BATTLE, DEEZHA	G	0	0-0	0-0	0-0	0	0	0	0	0	0	0	0	3	-2
32	SATIE, MIA	G	2	0-0	0-0	2-2	1	1	2	1	0	0	0	0	4	1
33	QUIRKE, ASHLEEN	F	0	0-0	0-0	0-0	0	0	0	0	0	0	0	0	4	0
<b>TEAM</b>							0	0	0	0		0				
<b>TOTALS</b>			<b>13</b>	<b>5-15</b>	<b>1-5</b>	<b>2-2</b>	<b>3</b>	<b>7</b>	<b>10</b>	<b>3</b>	<b>2</b>	<b>2</b>	<b>0</b>	<b>0</b>	<b>50</b>	

*Shooting By Period*

Period	FG	FG%	3FG	3FG%	FT	FT%
3rd Qtr	2-11	18%	0-3	00%	2-4	50%
4th Qtr	5-16	31%	0-6	00%	4-4	100%
2nd Half	5-15	33%	1-5	20%	2-2	100%
2nd Half	7-27	26%	0-9	00%	6-8	75%
Game	17-57	29.8%	2-17	11.8%	8-11	72.7%

*Deadball Rebounds: 2,1*

**San Diego 12**

No.	Player	S	Pts	FG	3FG	FT	OR	DR	TR	PF	A	TO	Blk	Stl	Min	+/-
10	PACE, MYAH	G	4	2-6	0-1	0-0	1	1	2	0	1	1	0	1	8	1
11	POLLOCK, MADISON	G	0	0-2	0-0	0-0	0	2	2	0	1	0	0	0	5	1
23	EDWARDS, JORDYN	G	0	0-2	0-1	0-0	1	1	2	1	0	0	0	0	9	1
32	HUNTER, SYDNEY	G	0	0-3	0-0	0-0	1	0	1	0	0	0	0	0	6	-2
34	BROSSMANN, PATRICIA	F	0	0-0	0-0	0-0	1	0	1	2	0	0	0	0	5	0
02	DOSSO, AMINATA	G	0	0-0	0-0	0-0	0	0	0	0	0	0	0	0	0	0
04	RAMOS, ANA	G	0	0-0	0-0	0-0	0	0	0	0	0	0	0	0	0	0
05	KHALFANI, AYANNA	G	2	1-1	0-0	0-0	1	1	2	2	0	0	0	0	4	3
15	SOARES, LETICIA	C	6	3-5	0-0	0-0	0	1	1	0	0	0	0	0	9	-3
20	MARTINSEN, ERICA	G	0	0-0	0-0	0-0	0	0	0	0	0	0	0	0	2	-6
25	BLAKES, NICOLE	F	0	0-0	0-0	0-0	0	0	0	0	0	0	0	0	1	0
<b>TEAM</b>							0	0	0	0		1				
<b>TOTALS</b>			<b>12</b>	<b>6-19</b>	<b>0-2</b>	<b>0-0</b>	<b>5</b>	<b>6</b>	<b>11</b>	<b>5</b>	<b>2</b>	<b>2</b>	<b>0</b>	<b>1</b>	<b>50</b>	

*Shooting By Period*

Period	FG	FG%	3FG	3FG%	FT	FT%
3rd Qtr	3-12	25%	1-2	50%	4-6	67%
4th Qtr	5-7	71%	2-3	67%	7-8	88%
2nd Half	6-19	32%	0-2	00%	0-0	0%
2nd Half	8-19	42%	3-5	60%	11-14	79%
Game	20-54	37.0%	3-7	42.9%	16-20	80.0%

*Deadball Rebounds: 6,3*

*Game Notes:*

Officials: Robert Schofield, Tiffany Bird, Benny Luna  
 Attendance: 4250

Start Time: 05:29 PM ET  
 End Time: 07:29 PM ET  
 Game Duration: 1:59  
 Neutral Court:

Score	1st	2nd	3rd	4th	TOT
PEP	11	13	6	14	<b>44</b>
USD	17	12	11	19	<b>59</b>

Points from (This Period)	PEP	USD
In the Paint	4	12
Off Turns	0	2
2nd Chance	4	2
Fast Break	0	4
Bench	2	8

**Official Play-By-Play**  
**Pepperdine vs San Diego**  
**Second Quarter**  
**March 09, 2020 at Orleans Arena - Las Vegas, NV**



**Period 2**

**Starters:**

**Pepperdine:** 1 BAMBRICK, MALIA (G); 11 ANDRIUOLO, MONIQUE (F); 14 RUFFUS-MILNER, JAYLA (G); 23 SITANGGAN, BARBARA (G); 24 FRIEND, HANNAH (F);

**San Diego:** 10 PACE, MYAH (G); 11 POLLOCK, MADISON (G); 23 EDWARDS, JORDYN (G); 32 HUNTER, SYDNEY (G); 34 BROSSMANN, PATRICIA (F);

Time	VISITORS: Pepperdine	Score	Margin	HOME: San Diego
10:00				SUB OUT: KHALFANI, AYANNA
10:00				SUB IN: HUNTER, SYDNEY
10:00	SUB OUT: RUFFUS-MILNER, JAYDA			
10:00	SUB IN: RUFFUS-MILNER, JAYLA			
09:28				TURNOVER (SHOTCLOCK) by TEAM
09:28				SUB OUT: POLLOCK, MADISON
09:28				SUB IN: BROSSMANN, PATRICIA
09:00	MISSED JUMPER by BAMBRICK, MALIA			
08:55				REBOUND (DEF) by EDWARDS, JORDYN
08:53		19-11	H 8	GOOD! LAYUP by SOARES, LETICIA [FB/PNT]
08:53				ASSIST by PACE, MYAH
08:38				SUB OUT: EDWARDS, JORDYN
08:38				SUB IN: MARTINSEN, ERICA
08:33	MISSED JUMPER by BAMBRICK, MALIA			
08:28	REBOUND (OFF) by RUFFUS-MILNER, JAYLA			
08:28	GOOD! LAYUP by RUFFUS-MILNER, JAYLA	19-13	H 6	
08:06				MISSED JUMPER by PACE, MYAH
08:02				REBOUND (OFF) by BROSSMANN, PATRICIA
07:52				MISSED JUMPER by SOARES, LETICIA
07:52				REBOUND (OFF) by TEAM
07:52	SUB OUT: SITANGGAN, BARBARA			
07:52	SUB IN: FRIEND, HANNAH			
07:52	SUB OUT: RUFFUS-MILNER, JAYLA			
07:52	SUB IN: RUFFUS-MILNER, JAYDA			
07:52				TURNOVER (BADPASS) by PACE, MYAH
07:52				SUB OUT: MARTINSEN, ERICA
07:52				SUB IN: EDWARDS, JORDYN
07:52	SUB OUT: QUIRKE, ASHLEEN			
07:52	SUB IN: ANDRIUOLO, MONIQUE			
07:38	TURNOVER (BADPASS) by FRIEND, HANNAH			
07:38				STEAL by PACE, MYAH
07:33				MISSED LAYUP by PACE, MYAH
07:30				REBOUND (OFF) by HUNTER, SYDNEY
07:29				MISSED LAYUP by HUNTER, SYDNEY
07:26				REBOUND (OFF) by PACE, MYAH
07:26	FOUL (PERSONAL) by RUFFUS-MILNER, JAYDA			
07:26				SUB OUT: PACE, MYAH
07:26				SUB IN: KHALFANI, AYANNA
07:13				MISSED JUMPER by HUNTER, SYDNEY
07:09				REBOUND (OFF) by EDWARDS, JORDYN
07:03				MISSED 3PTR by EDWARDS, JORDYN
06:59				REBOUND (OFF) by KHALFANI, AYANNA
06:59		21-13	H 8	GOOD! LAYUP by KHALFANI, AYANNA [PNT]
06:59				FOUL (PERSONAL) by KHALFANI, AYANNA
06:37				FOUL (PERSONAL) by KHALFANI, AYANNA
06:37	SUB OUT: BATTLE, DEEZHA			
06:37	SUB IN: SITANGGAN, BARBARA			
06:37				SUB OUT: KHALFANI, AYANNA
06:37				SUB IN: MARTINSEN, ERICA
06:21	GOOD! JUMPER by BAMBRICK, MALIA	21-15	H 6	
06:21	ASSIST by SITANGGAN, BARBARA			
06:05				MISSED JUMPER by EDWARDS, JORDYN
06:01	REBOUND (DEF) by FRIEND, HANNAH			
05:48	GOOD! JUMPER by BAMBRICK, MALIA	21-17	H 4	
05:33				MISSED JUMPER by HUNTER, SYDNEY
05:32	REBOUND (DEF) by RUFFUS-MILNER, JAYDA			
05:32				FOUL (PERSONAL) by BROSSMANN, PATRICIA
05:32				SUB OUT: SOARES, LETICIA
05:32				SUB OUT: MARTINSEN, ERICA
05:32				SUB OUT: HUNTER, SYDNEY
05:32				SUB IN: KHALFANI, AYANNA
05:32				SUB IN: PACE, MYAH
05:32				SUB IN: POLLOCK, MADISON
05:15	MISSED JUMPER by SITANGGAN, BARBARA			
05:12				REBOUND (DEF) by KHALFANI, AYANNA
05:08		23-17	H 6	GOOD! LAYUP by PACE, MYAH [FB/PNT]
04:35	MISSED LAYUP by FRIEND, HANNAH			
04:30	REBOUND (OFF) by FRIEND, HANNAH			
04:29	MISSED LAYUP by FRIEND, HANNAH			
04:24				REBOUND (DEF) by POLLOCK, MADISON



Time	VISITORS: Pepperdine	Score	Margin	HOME: San Diego
04:23				MISSED LAYUP by PACE, MYAH
04:22	REBOUND (DEF) by FRIEND, HANNAH			
04:22				FOUL (PERSONAL) by BROSSMANN, PATRICIA
04:22				
04:22				SUB OUT: BROSSMANN, PATRICIA
04:22				SUB IN: SOARES, LETICIA
04:22	SUB OUT: RUFFUS-MILNER, JAYDA			
04:22	SUB IN: SATIE, MIA			
04:03	MISSED JUMPER by ANDRIUOLO, MONIQUE			
03:58				REBOUND (DEF) by POLLOCK, MADISON
03:51				MISSED LAYUP by SOARES, LETICIA
03:49	REBOUND (DEF) by ANDRIUOLO, MONIQUE			
03:43	TURNOVER (LOSTBALL) by SITANGGAN, BARBARA			
03:15				MISSED JUMPER by POLLOCK, MADISON
03:12	REBOUND (DEF) by SATIE, MIA			
02:55	GOOD! LAYUP by FRIEND, HANNAH	23-19	H 4	
02:44		25-19	H 6	GOOD! LAYUP by SOARES, LETICIA [PNT]
02:44				ASSIST by POLLOCK, MADISON
02:28	GOOD! 3PTR by FRIEND, HANNAH	25-22	H 3	
02:28	ASSIST by BAMBRICK, MALIA			
02:06		27-22	H 5	GOOD! LAYUP by PACE, MYAH [PNT]
01:59	MISSED 3PTR by BAMBRICK, MALIA			
01:54				REBOUND (DEF) by SOARES, LETICIA
01:54	FOUL (PERSONAL) by FRIEND, HANNAH			
01:54				SUB OUT: KHALFANI, AYANNA
01:54				SUB IN: HUNTER, SYDNEY
01:37				MISSED JUMPER by POLLOCK, MADISON
01:35	REBOUND (DEF) by ANDRIUOLO, MONIQUE			
01:29	MISSED 3PTR by ANDRIUOLO, MONIQUE			
01:26				REBOUND (DEF) by PACE, MYAH
01:23	FOUL (PERSONAL) by SATIE, MIA			
01:23				SUB OUT: POLLOCK, MADISON
01:23				SUB IN: BLAKES, NICOLE
01:23	SUB OUT: ANDRIUOLO, MONIQUE			
01:23	SUB IN: QUIRKE, ASHLEEN			
01:12		29-22	H 7	GOOD! LAYUP by SOARES, LETICIA [PNT]
00:44	MISSED 3PTR by BAMBRICK, MALIA			
00:41	REBOUND (OFF) by SATIE, MIA			
00:41				FOUL (PERSONAL) by EDWARDS, JORDYN
00:41	GOOD! FT by SATIE, MIA	29-23	H 6	
00:41	GOOD! FT by SATIE, MIA	29-24	H 5	
00:17				MISSED 3PTR by PACE, MYAH
00:13	REBOUND (DEF) by SITANGGAN, BARBARA			
00:00	MISSED 3PTR by BAMBRICK, MALIA			
00:00				REBOUND (DEF) by TEAM

### Pepperdine 24, San Diego 29

Points from (This Period)	PEP	USD
In the Paint	4	12
Off Turns	0	2
2nd Chance	4	2
Fast Break	0	4
Bench	2	8

**Official Box Score**  
**Pepperdine vs San Diego**  
**Second Half Statistics Only**  
**March 09, 2020 at Orleans Arena - Las Vegas, NV**



**Pepperdine 20**

No.	Player	S	Pts	FG	3FG	FT	OR	DR	TR	PF	A	TO	Blk	Stl	Min	+/-
01	BAMBRICK, MALIA	G	2	0-8	0-5	2-2	0	0	0	4	1	0	0	0	18	-5
03	RUFFUS-MILNER, JAYDA	G	0	0-0	0-0	0-0	0	0	0	0	0	0	0	0	1	-4
10	FECSKE, PAIGE	G	0	0-2	0-2	0-0	0	0	0	0	0	1	0	0	7	-8
11	ANDRIUOLO, MONIQUE	F	4	2-3	0-0	0-0	2	3	5	2	0	0	0	2	18	-8
14	RUFFUS-MILNER, JAYLA	G	5	2-4	0-0	1-2	1	1	2	0	0	0	0	1	20	-10
22	BATTLE, DEEZHA	G	0	0-0	0-0	0-0	0	0	0	0	0	0	0	0	2	-3
23	SITANGGAN, BARBARA	G	4	1-4	0-0	2-2	0	3	3	0	2	1	0	2	18	-7
24	FRIEND, HANNAH	F	5	2-5	0-2	1-2	1	1	2	3	0	3	0	0	14	-3
32	SATIE, MIA	G	0	0-0	0-0	0-0	0	0	0	0	0	0	0	0	0	0
33	QUIRKE, ASHLEEN	F	0	0-1	0-0	0-0	0	0	0	1	0	0	1	0	2	-2
	TEAM		0	0-0	0-0	0-0	0	0	0	0	0	2	0	0	0	
<b>TOTALS</b>			<b>20</b>	<b>7-27</b>	<b>0-9</b>	<b>6-8</b>	<b>4</b>	<b>8</b>	<b>12</b>	<b>10</b>	<b>3</b>	<b>7</b>	<b>1</b>	<b>5</b>	<b>100</b>	

*Shooting By Period*

Period	FG	FG%	3FG	3FG%	FT	FT%
3rd Qtr	2-11	18%	0-3	00%	2-4	50%
4th Qtr	5-16	31%	0-6	00%	4-4	100%
2nd Half	7-27	26%	0-9	00%	6-8	75%
Game	17-57	29.8%	2-17	11.8%	8-11	72.7%

Deadball Rebounds: 2,1  
 Last FG Half: PEP 4th-00:37

**San Diego 30**

No.	Player	S	Pts	FG	3FG	FT	OR	DR	TR	PF	A	TO	Blk	Stl	Min	+/-
02	DOSSO, AMINATA	G	0	0-0	0-0	0-0	0	1	1	1	0	0	0	0	3	3
04	RAMOS, ANA	G	0	0-0	0-0	0-0	0	0	0	0	0	0	0	0	0	0
05	KHALFANI, AYANNA	G	0	0-1	0-0	0-0	0	1	1	0	0	0	0	0	4	3
10	PACE, MYAH	G	9	3-4	0-0	3-4	0	2	2	3	2	1	1	1	20	10
11	POLLOCK, MADISON	G	0	0-0	0-0	0-0	0	0	0	0	0	0	0	0	3	-1
15	SOARES, LETICIA	C	8	1-3	0-0	6-8	0	2	2	0	0	4	0	0	18	11
20	MARTINSEN, ERICA	G	0	0-1	0-1	0-0	0	1	1	0	0	0	0	0	1	-2
23	EDWARDS, JORDYN	G	8	3-5	2-3	0-0	1	2	3	2	0	0	0	1	20	10
25	BLAKES, NICOLE	F	0	0-0	0-0	0-0	0	0	0	0	0	0	0	0	0	0
32	HUNTER, SYDNEY	G	3	1-4	1-1	0-0	0	0	0	2	0	0	0	0	12	6
34	BROSSMANN, PATRICIA	F	2	0-1	0-0	2-2	1	5	6	0	0	3	0	2	19	10
	TEAM		0	0-0	0-0	0-0	0	0	0	0	0	3	0	0	0	
<b>TOTALS</b>			<b>30</b>	<b>8-19</b>	<b>3-5</b>	<b>11-14</b>	<b>2</b>	<b>14</b>	<b>16</b>	<b>8</b>	<b>2</b>	<b>11</b>	<b>1</b>	<b>4</b>	<b>100</b>	

*Shooting By Period*

Period	FG	FG%	3FG	3FG%	FT	FT%
3rd Qtr	3-12	25%	1-2	50%	4-6	67%
4th Qtr	5-7	71%	2-3	67%	7-8	88%
2nd Half	8-19	42%	3-5	60%	11-14	79%
Game	20-54	37.0%	3-7	42.9%	16-20	80.0%

Deadball Rebounds: 6,3  
 Last FG Half: USD 4th-02:57

*Game Notes:*

Officials: Robert Schofield, Tiffany Bird, Benny Luna  
 Attendance: 4250

Start Time: 05:29 PM ET  
 End Time: 07:29 PM ET  
 Game Duration: 1:59  
 Neutral Court;

Score	1st	2nd	3rd	4th	TOT
PEP	11	13	6	14	<b>44</b>
USD	17	12	11	19	<b>59</b>

Points from (This Period)	PEP	USD
In the Paint	12	10
Off Turns	6	4
2nd Chance	1	2
Fast Break	4	5
Bench	0	8

**Official Box Score**  
**Pepperdine vs San Diego**  
**Third Quarter Statistics Only**  
**March 09, 2020 at Orleans Arena - Las Vegas, NV**



**Pepperdine 20**

No.	Player	S	Pts	FG	3FG	FT	OR	DR	TR	PF	A	TO	Blk	Stl	Min	+/-
01	BAMBRICK, MALIA	G	0	0-1	0-0	0-0	0	0	0	0	0	0	0	0	8	0
11	ANDRIUOLO, MONIQUE	F	0	0-0	0-0	0-0	1	1	2	1	0	0	0	0	8	-3
14	RUFFUS-MILNER, JAYLA	G	3	1-2	0-0	1-2	1	1	2	0	0	0	0	1	10	-5
23	SITANGGAN, BARBARA	G	0	0-2	0-0	0-0	0	3	3	0	0	0	0	0	8	-2
24	FRIEND, HANNAH	F	3	1-4	0-2	1-2	1	1	2	1	0	2	0	0	6	-2
03	RUFFUS-MILNER, JAYDA	G	0	0-0	0-0	0-0	0	0	0	0	0	0	0	0	0	0
10	FECSKE, PAIGE	G	0	0-1	0-1	0-0	0	0	0	0	0	1	0	0	6	-8
22	BATTLE, DEEZHA	G	0	0-0	0-0	0-0	0	0	0	0	0	0	0	0	2	-3
32	SATIE, MIA	G	0	0-0	0-0	0-0	0	0	0	0	0	0	0	0	0	0
33	QUIRKE, ASHLEEN	F	0	0-1	0-0	0-0	0	0	0	1	0	0	1	0	2	-2
TEAM							0	0	0	0		2				
<b>TOTALS</b>			<b>6</b>	<b>2-11</b>	<b>0-3</b>	<b>2-4</b>	<b>3</b>	<b>6</b>	<b>9</b>	<b>3</b>	<b>0</b>	<b>5</b>	<b>1</b>	<b>1</b>	<b>50</b>	

*Shooting By Period*

Period	FG	FG%	3FG	3FG%	FT	FT%
2nd Half	0-0	0%	0-0	0%	0-0	0%
Game	17-57	29.8%	2-17	11.8%	8-11	72.7%

*Deadball Rebounds: 2,1*

**San Diego 30**

No.	Player	S	Pts	FG	3FG	FT	OR	DR	TR	PF	A	TO	Blk	Stl	Min	+/-
10	PACE, MYAH	G	3	1-2	0-0	1-2	0	1	1	1	0	0	0	0	10	5
11	POLLOCK, MADISON	G	0	0-0	0-0	0-0	0	0	0	0	0	0	0	0	2	-1
23	EDWARDS, JORDYN	G	3	1-2	1-1	0-0	1	2	3	1	0	0	0	1	10	5
32	HUNTER, SYDNEY	G	0	0-2	0-0	0-0	0	0	0	2	0	0	0	0	3	-1
34	BROSSMANN, PATRICIA	F	0	0-1	0-0	0-0	1	1	2	0	0	0	0	2	10	5
02	DOSSO, AMINATA	G	0	0-0	0-0	0-0	0	0	0	0	0	0	0	0	2	5
04	RAMOS, ANA	G	0	0-0	0-0	0-0	0	0	0	0	0	0	0	0	0	0
05	KHALFANI, AYANNA	G	0	0-1	0-0	0-0	0	1	1	0	0	0	0	0	4	3
15	SOARES, LETICIA	C	5	1-3	0-0	3-4	0	1	1	0	0	3	0	0	8	6
20	MARTINSEN, ERICA	G	0	0-1	0-1	0-0	0	1	1	0	0	0	0	0	1	-2
25	BLAKES, NICOLE	F	0	0-0	0-0	0-0	0	0	0	0	0	0	0	0	0	0
TEAM							0	0	0	0		1				
<b>TOTALS</b>			<b>11</b>	<b>3-12</b>	<b>1-2</b>	<b>4-6</b>	<b>2</b>	<b>7</b>	<b>9</b>	<b>4</b>	<b>0</b>	<b>4</b>	<b>0</b>	<b>3</b>	<b>50</b>	

*Shooting By Period*

Period	FG	FG%	3FG	3FG%	FT	FT%
2nd Half	0-0	0%	0-0	0%	0-0	0%
Game	20-54	37.0%	3-7	42.9%	16-20	80.0%

*Deadball Rebounds: 6,3*

Game Notes:

Officials: Robert Schofield, Tiffany Bird, Benny Luna  
 Attendance: 4250

Start Time: 05:29 PM ET  
 End Time: 07:29 PM ET  
 Game Duration: 1:59  
 Neutral Court;

Score	1st	2nd	3rd	4th	TOT
PEP	11	13	6	14	<b>44</b>
USD	17	12	11	19	<b>59</b>

Points from (This Period)	PEP	USD
In the Paint	4	4
Off Turns	2	3
2nd Chance	1	2
Fast Break	0	1
Bench	0	5

**Official Play-By-Play**  
**Pepperdine vs San Diego**  
**Third Quarter**  
**March 09, 2020 at Orleans Arena - Las Vegas, NV**



**Period 3**

**Starters:**

**Pepperdine:** 1 BAMBRICK, MALIA (G); 11 ANDRIUOLO, MONIQUE (F); 14 RUFFUS-MILNER, JAYLA (G); 23 SITANGGAN, BARBARA (G); 24 FRIEND, HANNAH (F);  
**San Diego:** 10 PACE, MYAH (G); 11 POLLOCK, MADISON (G); 23 EDWARDS, JORDYN (G); 32 HUNTER, SYDNEY (G); 34 BROSSMANN, PATRICIA (F);

Time	VISITORS: Pepperdine	Score	Margin	HOME: San Diego
10:00				SUB OUT: SOARES, LETICIA
10:00				SUB OUT: BLAKES, NICOLE
10:00				SUB IN: POLLOCK, MADISON
10:00				SUB IN: BROSSMANN, PATRICIA
10:00	SUB OUT: SATIE, MIA			
10:00	SUB OUT: QUIRKE, ASHLEEN			
10:00	SUB IN: ANDRIUOLO, MONIQUE			
10:00	SUB IN: RUFFUS-MILNER, JAYLA			
09:36				MISSED JUMPER by HUNTER, SYDNEY
09:32	REBOUND (DEF) by FRIEND, HANNAH			
09:14				FOUL (PERSONAL) by HUNTER, SYDNEY
09:14	GOOD! FT by FRIEND, HANNAH	29-25	H 4	
09:14	MISSED FT by FRIEND, HANNAH			
09:11	REBOUND (OFF) by ANDRIUOLO, MONIQUE			
08:52	TURNOVER (SHOTCLOCK) by TEAM			
08:22				MISSED JUMPER by HUNTER, SYDNEY
08:22				REBOUND (OFF) by TEAM
08:22				TURNOVER (SHOTCLOCK) by TEAM
08:22				SUB OUT: POLLOCK, MADISON
08:22				SUB IN: SOARES, LETICIA
07:57	MISSED JUMPER by SITANGGAN, BARBARA			
07:55	REBOUND (OFF) by FRIEND, HANNAH			
07:55				FOUL (PERSONAL) by EDWARDS, JORDYN
07:55	MISSED LAYUP by SITANGGAN, BARBARA			
07:51				REBOUND (DEF) by PACE, MYAH
07:44				MISSED JUMPER by PACE, MYAH
07:40				REBOUND (OFF) by BROSSMANN, PATRICIA
07:39				MISSED LAYUP by BROSSMANN, PATRICIA
07:36	REBOUND (DEF) by ANDRIUOLO, MONIQUE			
07:20	TURNOVER (LOSTBALL) by FRIEND, HANNAH			
07:20				STEAL by EDWARDS, JORDYN
07:15				MISSED LAYUP by SOARES, LETICIA
07:14	REBOUND (DEF) by SITANGGAN, BARBARA			
07:14				FOUL (PERSONAL) by HUNTER, SYDNEY
07:14				SUB OUT: HUNTER, SYDNEY
07:14				SUB IN: MARTINSEN, ERICA
07:06	GOOD! LAYUP by FRIEND, HANNAH [PNT]	29-27	H 2	
06:41				MISSED 3PTR by MARTINSEN, ERICA
06:36	REBOUND (DEF) by SITANGGAN, BARBARA			
06:23	MISSED JUMPER by FRIEND, HANNAH			
06:20				REBOUND (DEF) by MARTINSEN, ERICA
06:12				TURNOVER (BADPASS) by SOARES, LETICIA
06:12	STEAL by RUFFUS-MILNER, JAYLA			
06:03	MISSED 3PTR by FRIEND, HANNAH			
06:00				REBOUND (DEF) by SOARES, LETICIA
05:52				TURNOVER (BADPASS) by SOARES, LETICIA
05:52				TIMEOUT 30SEC
05:52				SUB OUT: MARTINSEN, ERICA
05:52				SUB IN: KHALFANI, AYANNA
05:52	SUB OUT: FRIEND, HANNAH			
05:52	SUB IN: FECSKE, PAIGE			
05:40	GOOD! LAYUP by RUFFUS-MILNER, JAYLA [PNT]	29-29	T	
05:16				MISSED LAYUP by KHALFANI, AYANNA
05:12	REBOUND (DEF) by SITANGGAN, BARBARA			
04:54	MISSED JUMPER by RUFFUS-MILNER, JAYLA			
04:51				REBOUND (DEF) by KHALFANI, AYANNA
04:25				MISSED LAYUP by EDWARDS, JORDYN
04:23				REBOUND (OFF) by EDWARDS, JORDYN
04:08		31-29	H 2	GOOD! LAYUP by SOARES, LETICIA
03:35	MISSED 3PTR by FECSKE, PAIGE			
03:32				REBOUND (DEF) by EDWARDS, JORDYN
03:31	FOUL (PERSONAL) by ANDRIUOLO, MONIQUE			
03:31				
03:31	SUB OUT: ANDRIUOLO, MONIQUE			
03:31	SUB OUT: SITANGGAN, BARBARA			
03:31	SUB IN: BATTLE, DEEZHA			
03:31	SUB IN: QUIRKE, ASHLEEN			
03:31				MISSED FT by SOARES, LETICIA
03:31				REBOUND (OFF) by TEAM

Time	VISITORS: Pepperdine	Score	Margin	HOME: San Diego
03:31		32-29	H 3	GOOD! FT by SOARES, LETICIA [FB]
03:00	TURNOVER (SHOTCLOCK) by TEAM			
02:42				MISSED JUMPER by SOARES, LETICIA
02:42	BLOCK by QUIRKE, ASHLEEN			
02:37	REBOUND (DEF) by RUFFUS-MILNER, JAYLA			
02:19	MISSED LAYUP by BAMBRICK, MALIA			
02:15				REBOUND (DEF) by BROSSMANN, PATRICIA
02:08		34-29	H 5	GOOD! LAYUP by PACE, MYAH
01:51	MISSED JUMPER by QUIRKE, ASHLEEN			
01:50	REBOUND (OFF) by RUFFUS-MILNER, JAYLA			
01:50				FOUL (PERSONAL) by PACE, MYAH
01:50				SUB OUT: KHALFANI, AYANNA
01:50				SUB IN: DOSSO, AMINATA
01:50	SUB OUT: BAMBRICK, MALIA			
01:50	SUB OUT: BATTLE, DEEZHA			
01:50	SUB IN: SITANGGAN, BARBARA			
01:50	SUB IN: FRIEND, HANNAH			
01:50	MISSED FT by RUFFUS-MILNER, JAYLA			
01:50	REBOUND (OFF) by TEAM			
01:50	GOOD! FT by RUFFUS-MILNER, JAYLA	34-30	H 4	
01:27				TURNOVER (3SEC) by SOARES, LETICIA
01:13	TURNOVER (BADPASS) by FRIEND, HANNAH			
01:13				STEAL by BROSSMANN, PATRICIA
01:02	FOUL (PERSONAL) by QUIRKE, ASHLEEN			
01:02	SUB OUT: QUIRKE, ASHLEEN			
01:02	SUB IN: ANDRIUOLO, MONIQUE			
01:02		35-30	H 5	GOOD! FT by SOARES, LETICIA
01:02		36-30	H 6	GOOD! FT by SOARES, LETICIA
00:56	TURNOVER (BADPASS) by FECSKE, PAIGE			
00:56				STEAL by BROSSMANN, PATRICIA
00:34	FOUL (PERSONAL) by FRIEND, HANNAH			
00:34				MISSED FT by PACE, MYAH
00:34				REBOUND (OFF) by TEAM
00:34		37-30	H 7	GOOD! FT by PACE, MYAH
00:13	MISSED 3PTR by FRIEND, HANNAH			
00:10				REBOUND (DEF) by EDWARDS, JORDYN
00:00		40-30	H 10	GOOD! 3PTR by EDWARDS, JORDYN

### Pepperdine 30, San Diego 40

Points from (This Period)	PEP	USD
In the Paint	4	4
Off Turns	2	3
2nd Chance	1	2
Fast Break	0	1
Bench	0	5

**Official Box Score**  
**Pepperdine vs San Diego**  
**Fourth Quarter Statistics Only**  
**March 09, 2020 at Orleans Arena - Las Vegas, NV**



### Pepperdine 14

No.	Player	S	Pts	FG	3FG	FT	OR	DR	TR	PF	A	TO	Blk	Stl	Min	+/-
01	BAMBRICK, MALIA	G	2	0-7	0-5	2-2	0	0	0	4	1	0	0	0	10	-5
11	ANDRIUOLO, MONIQUE	F	4	2-3	0-0	0-0	1	2	3	1	0	0	0	2	10	-5
14	RUFFUS-MILNER, JAYLA	G	2	1-2	0-0	0-0	0	0	0	0	0	0	0	0	10	-5
23	SITANGGAN, BARBARA	G	4	1-2	0-0	2-2	0	0	0	0	2	1	0	2	10	-5
24	FRIEND, HANNAH	F	2	1-1	0-0	0-0	0	0	0	2	0	1	0	0	8	-1
03	RUFFUS-MILNER, JAYDA	G	0	0-0	0-0	0-0	0	0	0	0	0	0	0	0	1	-4
10	FECSKE, PAIGE	G	0	0-1	0-1	0-0	0	0	0	0	0	0	0	0	1	0
22	BATTLE, DEEZHA	G	0	0-0	0-0	0-0	0	0	0	0	0	0	0	0	0	0
32	SATIE, MIA	G	0	0-0	0-0	0-0	0	0	0	0	0	0	0	0	0	0
33	QUIRKE, ASHLEEN	F	0	0-0	0-0	0-0	0	0	0	0	0	0	0	0	0	0
TEAM							0	0	0	0		0				
<b>TOTALS</b>			<b>14</b>	<b>5-16</b>	<b>0-6</b>	<b>4-4</b>	<b>1</b>	<b>2</b>	<b>3</b>	<b>7</b>	<b>3</b>	<b>2</b>	<b>0</b>	<b>4</b>	<b>50</b>	

*Shooting By Period*

Period	FG	FG%	3FG	3FG%	FT	FT%
Game	17-57	29.8%	2-17	11.8%	8-11	72.7%

*Deadball Rebounds: 2,1*

### San Diego 19

No.	Player	S	Pts	FG	3FG	FT	OR	DR	TR	PF	A	TO	Blk	Stl	Min	+/-
10	PACE, MYAH	G	6	2-2	0-0	2-2	0	1	1	2	2	1	1	1	10	5
11	POLLOCK, MADISON	G	0	0-0	0-0	0-0	0	0	0	0	0	0	0	0	1	0
23	EDWARDS, JORDYN	G	5	2-3	1-2	0-0	0	0	0	1	0	0	0	0	10	5
32	HUNTER, SYDNEY	G	3	1-2	1-1	0-0	0	0	0	0	0	0	0	0	9	7
34	BROSSMANN, PATRICIA	F	2	0-0	0-0	2-2	0	4	4	0	0	3	0	0	9	5
02	DOSSO, AMINATA	G	0	0-0	0-0	0-0	0	1	1	1	0	0	0	0	1	-2
04	RAMOS, ANA	G	0	0-0	0-0	0-0	0	0	0	0	0	0	0	0	0	0
05	KHALFANI, AYANNA	G	0	0-0	0-0	0-0	0	0	0	0	0	0	0	0	0	0
15	SOARES, LETICIA	C	3	0-0	0-0	3-4	0	1	1	0	0	1	0	0	10	5
20	MARTINSEN, ERICA	G	0	0-0	0-0	0-0	0	0	0	0	0	0	0	0	0	0
25	BLAKES, NICOLE	F	0	0-0	0-0	0-0	0	0	0	0	0	0	0	0	0	0
TEAM							0	0	0	0		2				
<b>TOTALS</b>			<b>19</b>	<b>5-7</b>	<b>2-3</b>	<b>7-8</b>	<b>0</b>	<b>7</b>	<b>7</b>	<b>4</b>	<b>2</b>	<b>7</b>	<b>1</b>	<b>1</b>	<b>50</b>	

*Shooting By Period*

Period	FG	FG%	3FG	3FG%	FT	FT%
Game	20-54	37.0%	3-7	42.9%	16-20	80.0%

*Deadball Rebounds: 6,3*

Game Notes:

Officials: Robert Schofield, Tiffany Bird, Benny Luna  
 Attendance: 4250

Start Time: 05:29 PM ET  
 End Time: 07:29 PM ET  
 Game Duration: 1:59  
 Neutral Court;

Score	1st	2nd	3rd	4th	TOT
PEP	11	13	6	14	<b>44</b>
USD	17	12	11	19	<b>59</b>

Points from (This Period)	PEP	USD
In the Paint	8	6
Off Turns	4	1
2nd Chance	0	0
Fast Break	4	4
Bench	0	3

**Official By-By-Play**  
**Pepperdine vs San Diego**  
**Fourth Quarter**  
**March 09, 2020 at Orleans Arena - Las Vegas, NV**



**Period 4**

**Starters:**

**Pepperdine:** 1 BAMBRICK, MALIA (G); 11 ANDRIUOLO, MONIQUE (F); 14 RUFFUS-MILNER, JAYLA (G); 23 SITANGGAN, BARBARA (G); 24 FRIEND, HANNAH (F);

**San Diego:** 10 PACE, MYAH (G); 11 POLLOCK, MADISON (G); 23 EDWARDS, JORDYN (G); 32 HUNTER, SYDNEY (G); 34 BROSSMANN, PATRICIA (F);

Time	VISITORS: Pepperdine	Score	Margin	HOME: San Diego
10:00	SUB OUT: FECSKE, PAIGE			
10:00	SUB IN: BAMBRICK, MALIA			
09:43				FOUL (PERSONAL) by DOSSO, AMINATA
09:29	GOOD! JUMPER by SITANGGAN, BARBARA	40-32	H 8	
09:21				TURNOVER (BADPASS) by BROSSMANN, PATRICIA
09:21	STEAL by ANDRIUOLO, MONIQUE			
09:11	MISSED JUMPER by SITANGGAN, BARBARA			
09:06				REBOUND (DEF) by DOSSO, AMINATA
09:03				TIMEOUT 30SEC
09:03				
09:03				SUB OUT: DOSSO, AMINATA
09:03				SUB IN: HUNTER, SYDNEY
08:36				MISSED 3PTR by EDWARDS, JORDYN
08:33	REBOUND (DEF) by ANDRIUOLO, MONIQUE			
08:03	MISSED 3PTR by BAMBRICK, MALIA			
08:01				REBOUND (DEF) by BROSSMANN, PATRICIA
07:47		42-32	H 10	GOOD! JUMPER by PACE, MYAH [PNT]
07:21	MISSED 3PTR by BAMBRICK, MALIA			
07:18	REBOUND (OFF) by TEAM			
06:58	MISSED JUMPER by RUFFUS-MILNER, JAYLA			
06:55				REBOUND (DEF) by BROSSMANN, PATRICIA
06:52				TURNOVER (BADPASS) by BROSSMANN, PATRICIA
06:52	STEAL by SITANGGAN, BARBARA			
06:48				FOUL (PERSONAL) by PACE, MYAH
06:48				SUB OUT: BROSSMANN, PATRICIA
06:48				SUB IN: POLLOCK, MADISON
06:48	GOOD! FT by SITANGGAN, BARBARA [FB]	42-33	H 9	
06:48	GOOD! FT by SITANGGAN, BARBARA [FB]	42-34	H 8	
06:20		44-34	H 10	GOOD! LAYUP by PACE, MYAH
06:12	MISSED 3PTR by BAMBRICK, MALIA			
06:08	REBOUND (OFF) by ANDRIUOLO, MONIQUE			
06:07	MISSED LAYUP by ANDRIUOLO, MONIQUE			
06:05				REBOUND (DEF) by TEAM
06:05				SUB OUT: POLLOCK, MADISON
06:05				SUB IN: BROSSMANN, PATRICIA
05:51				TURNOVER (BADPASS) by BROSSMANN, PATRICIA
05:51	STEAL by ANDRIUOLO, MONIQUE			
05:30				FOUL (PERSONAL) by EDWARDS, JORDYN
05:30	GOOD! FT by BAMBRICK, MALIA	44-35	H 9	
05:30	GOOD! FT by BAMBRICK, MALIA	44-36	H 8	
05:30	TIMEOUT 30SEC			
05:30				
05:20				TURNOVER (10SEC) by TEAM
05:00	TURNOVER (BADPASS) by SITANGGAN, BARBARA			
04:44	FOUL (PERSONAL) by ANDRIUOLO, MONIQUE			
04:44				MISSED FT by SOARES, LETICIA
04:44				REBOUND (OFF) by TEAM
04:44		45-36	H 9	GOOD! FT by SOARES, LETICIA
04:22	MISSED JUMPER by BAMBRICK, MALIA			
04:19				REBOUND (DEF) by BROSSMANN, PATRICIA
04:19	FOUL (PERSONAL) by FRIEND, HANNAH			
04:19	SUB OUT: FRIEND, HANNAH			
04:19	SUB IN: RUFFUS-MILNER, JAYDA			
04:08		48-36	H 12	GOOD! 3PTR by EDWARDS, JORDYN
04:08				ASSIST by PACE, MYAH
03:53	GOOD! LAYUP by RUFFUS-MILNER, JAYLA [PNT]	48-38	H 10	
03:53	ASSIST by SITANGGAN, BARBARA			
03:20		51-38	H 13	GOOD! 3PTR by HUNTER, SYDNEY
03:20				ASSIST by PACE, MYAH
03:12				FOUL (PERSONAL) by PACE, MYAH
03:12	SUB OUT: RUFFUS-MILNER, JAYDA			
03:12	SUB IN: FRIEND, HANNAH			
03:10	GOOD! LAYUP by FRIEND, HANNAH [PNT]	51-40	H 11	
02:57		53-40	H 13	GOOD! LAYUP by EDWARDS, JORDYN
02:34	TURNOVER (BADPASS) by FRIEND, HANNAH			
02:34				STEAL by PACE, MYAH
02:13				TURNOVER (LOSTBALL) by SOARES, LETICIA
02:13	STEAL by SITANGGAN, BARBARA			
02:07	MISSED 3PTR by BAMBRICK, MALIA			
02:03				REBOUND (DEF) by TEAM

Time	VISITORS: Pepperdine	Score	Margin	HOME: San Diego
02:03	TIMEOUT TEAM			
02:03				SUB OUT: SOARES, LETICIA
02:03				SUB IN: POLLOCK, MADISON
02:00				TIMEOUT 30SEC
01:42				TURNOVER (BADPASS) by PACE, MYAH
01:42				SUB OUT: POLLOCK, MADISON
01:42				SUB IN: SOARES, LETICIA
01:31	MISSED 3PTR by BAMBRICK, MALIA			
01:31				BLOCK by PACE, MYAH
01:26				REBOUND (DEF) by PACE, MYAH
01:16	FOUL (PERSONAL) by BAMBRICK, MALIA			
01:14	FOUL (PERSONAL) by BAMBRICK, MALIA			
01:11	SUB OUT: FRIEND, HANNAH			
01:11	SUB IN: RUFFUS-MILNER, JAYDA			
01:10	FOUL (PERSONAL) by BAMBRICK, MALIA			
01:10	SUB OUT: RUFFUS-MILNER, JAYDA			
01:10	SUB IN: FRIEND, HANNAH			
01:10		54-40	H 14	GOOD! FT by PACE, MYAH
01:10		55-40	H 15	GOOD! FT by PACE, MYAH
00:57	GOOD! JUMPER by ANDRIUOLO, MONIQUE [PNT]	55-42	H 13	
00:57	ASSIST by BAMBRICK, MALIA			
00:54				TIMEOUT TEAM
00:51	FOUL (PERSONAL) by BAMBRICK, MALIA			
00:51		56-42	H 14	GOOD! FT by SOARES, LETICIA [FB]
00:51		57-42	H 15	GOOD! FT by SOARES, LETICIA [FB]
00:44	MISSED LAYUP by BAMBRICK, MALIA			
00:42				REBOUND (DEF) by BROSSMANN, PATRICIA
00:42	FOUL (PERSONAL) by FRIEND, HANNAH			
00:42	SUB OUT: FRIEND, HANNAH			
00:42	SUB IN: FECSKE, PAIGE			
00:42		58-42	H 16	GOOD! FT by BROSSMANN, PATRICIA [FB]
00:42		59-42	H 17	GOOD! FT by BROSSMANN, PATRICIA [FB]
00:37	GOOD! LAYUP by ANDRIUOLO, MONIQUE [FB]	59-44	H 15	
00:37	ASSIST by SITANGGAN, BARBARA			
00:37	TIMEOUT 30SEC			
00:27				MISSED LAYUP by HUNTER, SYDNEY
00:24	REBOUND (DEF) by ANDRIUOLO, MONIQUE			
00:19	MISSED 3PTR by FECSKE, PAIGE			
00:15				REBOUND (DEF) by SOARES, LETICIA
00:02				TURNOVER (10SEC) by TEAM

### Pepperdine 44, San Diego 59

Points from (This Period)	PEP	USD
In the Paint	8	6
Off Turns	4	1
2nd Chance	0	0
Fast Break	4	4
Bench	0	3



**Official Scoring/Possession Reference Chart**  
**Pepperdine vs San Diego**  
**Period 1**  
**March 09, 2020 at Orleans Arena - Las Vegas, NV**



**Period 1**

**Starters:**

**Pepperdine:** 1 BAMBRICK, MALIA (G); 11 ANDRIUOLO, MONIQUE (F); 14 RUFFUS-MILNER, JAYLA (G); 23 SITANGGAN, BARBARA (G); 24 FRIEND, HANNAH (F);  
**San Diego:** 10 PACE, MYAH (G); 11 POLLOCK, MADISON (G); 23 EDWARDS, JORDYN (G); 32 HUNTER, SYDNEY (G); 34 BROSSMANN, PATRICIA (F);

Time	VISITORS: Pepperdine	Score	Margin	HOME: San Diego
09:41	GOOD! LAYUP by FRIEND, HANNAH	0-2	V 2	
08:58		2-2	T	GOOD! LAYUP by PACE, MYAH [PNT]
08:14		4-2	H 2	GOOD! LAYUP by POLLOCK, MADISON [PNT]
06:27	GOOD! 3PTR by FRIEND, HANNAH	4-5	V 1	
06:09		6-5	H 1	GOOD! LAYUP by HUNTER, SYDNEY
05:45	GOOD! LAYUP by ANDRIUOLO, MONIQUE	6-7	V 1	
04:56	GOOD! JUMPER by ANDRIUOLO, MONIQUE	6-9	V 3	
04:34	GOOD! LAYUP by RUFFUS-MILNER, JAYLA [FB]	6-11	V 5	
04:25		7-11	V 4	GOOD! FT by PACE, MYAH
04:25		8-11	V 3	GOOD! FT by PACE, MYAH
03:54		10-11	V 1	GOOD! LAYUP by SOARES, LETICIA [PNT]
02:41		12-11	H 1	GOOD! JUMPER by HUNTER, SYDNEY
01:21		14-11	H 3	GOOD! LAYUP by SOARES, LETICIA [PNT]
00:42		15-11	H 4	GOOD! FT by SOARES, LETICIA
00:05		16-11	H 5	GOOD! FT by PACE, MYAH
00:05		17-11	H 6	GOOD! FT by PACE, MYAH

**Pepperdine 11, San Diego 17**

**Official Scoring/Possession Reference Chart**  
**Pepperdine vs San Diego**  
**Period 2**  
**March 09, 2020 at Orleans Arena - Las Vegas, NV**



**Period 2**

**Starters:**

**Pepperdine:** 1 BAMBRICK, MALIA (G); 11 ANDRIUOLO, MONIQUE (F); 14 RUFFUS-MILNER, JAYLA (G); 23 SITANGGAN, BARBARA (G); 24 FRIEND, HANNAH (F);  
**San Diego:** 10 PACE, MYAH (G); 11 POLLOCK, MADISON (G); 23 EDWARDS, JORDYN (G); 32 HUNTER, SYDNEY (G); 34 BROSSMANN, PATRICIA (F);

Time	VISITORS: Pepperdine	Score	Margin	HOME: San Diego
08:53		19-11	H 8	GOOD! LAYUP by SOARES, LETICIA [FB/PNT]
08:28	GOOD! LAYUP by RUFFUS-MILNER, JAYLA	19-13	H 6	
06:59		21-13	H 8	GOOD! LAYUP by KHALFANI, AYANNA [PNT]
06:21	GOOD! JUMPER by BAMBRICK, MALIA	21-15	H 6	
05:48	GOOD! JUMPER by BAMBRICK, MALIA	21-17	H 4	
05:08		23-17	H 6	GOOD! LAYUP by PACE, MYAH [FB/PNT]
02:55	GOOD! LAYUP by FRIEND, HANNAH	23-19	H 4	
02:44		25-19	H 6	GOOD! LAYUP by SOARES, LETICIA [PNT]
02:28	GOOD! 3PTR by FRIEND, HANNAH	25-22	H 3	
02:06		27-22	H 5	GOOD! LAYUP by PACE, MYAH [PNT]
01:12		29-22	H 7	GOOD! LAYUP by SOARES, LETICIA [PNT]
00:41	GOOD! FT by SATIE, MIA	29-23	H 6	
00:41	GOOD! FT by SATIE, MIA	29-24	H 5	

**Pepperdine 24, San Diego 29**

**Official Scoring/Possession Reference Chart**  
**Pepperdine vs San Diego**  
**Period 3**  
**March 09, 2020 at Orleans Arena - Las Vegas, NV**



**Period 3**

**Starters:**

**Pepperdine:** 1 BAMBRICK, MALIA (G); 11 ANDRIUOLO, MONIQUE (F); 14 RUFFUS-MILNER, JAYLA (G); 23 SITANGGAN, BARBARA (G); 24 FRIEND, HANNAH (F);  
**San Diego:** 10 PACE, MYAH (G); 11 POLLOCK, MADISON (G); 23 EDWARDS, JORDYN (G); 32 HUNTER, SYDNEY (G); 34 BROSSMANN, PATRICIA (F);

Time	VISITORS: Pepperdine	Score	Margin	HOME: San Diego
09:14	GOOD! FT by FRIEND, HANNAH	29-25	H 4	
07:06	GOOD! LAYUP by FRIEND, HANNAH [PNT]	29-27	H 2	
05:40	GOOD! LAYUP by RUFFUS-MILNER, JAYLA [PNT]	29-29	T	
04:08		31-29	H 2	GOOD! LAYUP by SOARES, LETICIA
03:31		32-29	H 3	GOOD! FT by SOARES, LETICIA [FB]
02:08		34-29	H 5	GOOD! LAYUP by PACE, MYAH
01:50	GOOD! FT by RUFFUS-MILNER, JAYLA	34-30	H 4	
01:02		35-30	H 5	GOOD! FT by SOARES, LETICIA
01:02		36-30	H 6	GOOD! FT by SOARES, LETICIA
00:34		37-30	H 7	GOOD! FT by PACE, MYAH
00:00		40-30	H 10	GOOD! 3PTR by EDWARDS, JORDYN

**Pepperdine 30, San Diego 40**

**Official Scoring/Possession Reference Chart**  
**Pepperdine vs San Diego**  
**Period 4**  
**March 09, 2020 at Orleans Arena - Las Vegas, NV**



**Period 4**

**Starters:**

**Pepperdine:** 1 BAMBRICK, MALIA (G); 11 ANDRIUOLO, MONIQUE (F); 14 RUFFUS-MILNER, JAYLA (G); 23 SITANGGAN, BARBARA (G); 24 FRIEND, HANNAH (F);  
**San Diego:** 10 PACE, MYAH (G); 11 POLLOCK, MADISON (G); 23 EDWARDS, JORDYN (G); 32 HUNTER, SYDNEY (G); 34 BROSSMANN, PATRICIA (F);

Time	VISITORS: Pepperdine	Score	Margin	HOME: San Diego
09:29	GOOD! JUMPER by SITANGGAN, BARBARA	40-32	H 8	
07:47		42-32	H 10	GOOD! JUMPER by PACE, MYAH [PNT]
06:48	GOOD! FT by SITANGGAN, BARBARA [FB]	42-33	H 9	
06:48	GOOD! FT by SITANGGAN, BARBARA [FB]	42-34	H 8	
06:20		44-34	H 10	GOOD! LAYUP by PACE, MYAH
05:30	GOOD! FT by BAMBRICK, MALIA	44-35	H 9	
05:30	GOOD! FT by BAMBRICK, MALIA	44-36	H 8	
04:44		45-36	H 9	GOOD! FT by SOARES, LETICIA
04:08		48-36	H 12	GOOD! 3PTR by EDWARDS, JORDYN
03:53	GOOD! LAYUP by RUFFUS-MILNER, JAYLA [PNT]	48-38	H 10	
03:20		51-38	H 13	GOOD! 3PTR by HUNTER, SYDNEY
03:10	GOOD! LAYUP by FRIEND, HANNAH [PNT]	51-40	H 11	
02:57		53-40	H 13	GOOD! LAYUP by EDWARDS, JORDYN
01:10		54-40	H 14	GOOD! FT by PACE, MYAH
01:10		55-40	H 15	GOOD! FT by PACE, MYAH
00:57	GOOD! JUMPER by ANDRIUOLO, MONIQUE [PNT]	55-42	H 13	
00:51		56-42	H 14	GOOD! FT by SOARES, LETICIA [FB]
00:51		57-42	H 15	GOOD! FT by SOARES, LETICIA [FB]
00:42		58-42	H 16	GOOD! FT by BROSSMANN, PATRICIA [FB]
00:42		59-42	H 17	GOOD! FT by BROSSMANN, PATRICIA [FB]
00:37	GOOD! LAYUP by ANDRIUOLO, MONIQUE [FB]	59-44	H 15	

**Pepperdine 44, San Diego 59**

**Official Substitutions Log**  
**Pepperdine vs San Diego**  
**Period 1**  
**March 09, 2020 at Orleans Arena - Las Vegas, NV**



VISITORS: Pepperdine	Time	Score	HOME: San Diego
1 BAMBRICK, MALIA			10 PACE, MYAH
11 ANDRIUOLO, MONIQUE			11 POLLOCK, MADISON
14 RUFFUS-MILNER, JAYLA			23 EDWARDS, JORDYN
23 SITANGGAN, BARBARA			32 HUNTER, SYDNEY
24 FRIEND, HANNAH			34 BROSSMANN, PATRICIA
	09:22	2-0	SUB OUT: EDWARDS, JORDYN
	09:22		SUB IN: RAMOS, ANA
	07:50	2-4	SUB OUT: RAMOS, ANA
	07:50		SUB IN: EDWARDS, JORDYN
	05:23	7-6	SUB OUT: POLLOCK, MADISON
	05:23		SUB IN: SOARES, LETICIA
SUB OUT: 14 RUFFUS-MILNER, JAYLA	04:34	11-6	
SUB IN: 10 FECSKE, PAIGE	04:34		
SUB OUT: 1 BAMBRICK, MALIA	03:32	11-10	
SUB IN: 3 RUFFUS-MILNER, JAYDA	03:32		
SUB OUT: 10 FECSKE, PAIGE	03:10	11-10	
SUB IN: 1 BAMBRICK, MALIA	03:10		
	01:12	11-14	SUB OUT: HUNTER, SYDNEY
	01:12		SUB IN: KHALFANI, AYANNA
	01:12		SUB OUT: BROSSMANN, PATRICIA
	01:12		SUB IN: POLLOCK, MADISON
SUB OUT: 24 FRIEND, HANNAH	00:55	11-14	
SUB IN: 22 BATTLE, DEEZHA	00:55		
SUB OUT: 11 ANDRIUOLO, MONIQUE	00:42	11-14	
SUB IN: 33 QUIRKE, ASHLEEN	00:42		

**Pepperdine 11, San Diego 17**

**Official Substitutions Log**  
**Pepperdine vs San Diego**  
**Period 2**  
**March 09, 2020 at Orleans Arena - Las Vegas, NV**



VISITORS: Pepperdine	Time	Score	HOME: San Diego
1 BAMBRICK, MALIA			10 PACE, MYAH
11 ANDRIUOLO, MONIQUE			11 POLLOCK, MADISON
14 RUFFUS-MILNER, JAYLA			23 EDWARDS, JORDYN
23 SITANGGAN, BARBARA			32 HUNTER, SYDNEY
24 FRIEND, HANNAH			34 BROSSMANN, PATRICIA
	10:00	-	SUB OUT: KHALFANI, AYANNA
	10:00		SUB IN: HUNTER, SYDNEY
SUB OUT: 3 RUFFUS-MILNER, JAYDA	10:00		
SUB IN: 14 RUFFUS-MILNER, JAYLA	10:00		
	09:28	-	SUB OUT: POLLOCK, MADISON
	09:28		SUB IN: BROSSMANN, PATRICIA
	08:38	11-19	SUB OUT: EDWARDS, JORDYN
	08:38		SUB IN: MARTINSEN, ERICA
SUB OUT: 23 SITANGGAN, BARBARA	07:52	13-19	
SUB IN: 24 FRIEND, HANNAH	07:52		
SUB OUT: 14 RUFFUS-MILNER, JAYLA	07:52		
SUB IN: 3 RUFFUS-MILNER, JAYDA	07:52		
	07:52		SUB OUT: MARTINSEN, ERICA
	07:52		SUB IN: EDWARDS, JORDYN
SUB OUT: 33 QUIRKE, ASHLEEN	07:52		
SUB IN: 11 ANDRIUOLO, MONIQUE	07:52		
	07:26	13-19	SUB OUT: PACE, MYAH
	07:26		SUB IN: KHALFANI, AYANNA
SUB OUT: 22 BATTLE, DEEZHA	06:37	13-21	
SUB IN: 23 SITANGGAN, BARBARA	06:37		
	06:37		SUB OUT: KHALFANI, AYANNA
	06:37		SUB IN: MARTINSEN, ERICA
	05:32	17-21	SUB OUT: SOARES, LETICIA
	05:32		SUB OUT: MARTINSEN, ERICA
	05:32		SUB OUT: HUNTER, SYDNEY
	05:32		SUB IN: KHALFANI, AYANNA
	05:32		SUB IN: PACE, MYAH
	05:32		SUB IN: POLLOCK, MADISON
	04:22	17-23	SUB OUT: BROSSMANN, PATRICIA
	04:22		SUB IN: SOARES, LETICIA
SUB OUT: 3 RUFFUS-MILNER, JAYDA	04:22		
SUB IN: 32 SATIE, MIA	04:22		
	01:54	22-27	SUB OUT: KHALFANI, AYANNA
	01:54		SUB IN: HUNTER, SYDNEY
	01:23	22-27	SUB OUT: POLLOCK, MADISON
	01:23		SUB IN: BLAKES, NICOLE
SUB OUT: 11 ANDRIUOLO, MONIQUE	01:23		
SUB IN: 33 QUIRKE, ASHLEEN	01:23		

**Pepperdine 24, San Diego 29**

**Official Substitutions Log**  
**Pepperdine vs San Diego**  
**Period 3**  
**March 09, 2020 at Orleans Arena - Las Vegas, NV**



VISITORS: Pepperdine	Time	Score	HOME: San Diego
1 BAMBRICK, MALIA			10 PACE, MYAH
11 ANDRIUOLO, MONIQUE			11 POLLOCK, MADISON
14 RUFFUS-MILNER, JAYLA			23 EDWARDS, JORDYN
23 SITANGGAN, BARBARA			32 HUNTER, SYDNEY
24 FRIEND, HANNAH			34 BROSSMANN, PATRICIA
	10:00	-	SUB OUT: SOARES, LETICIA
	10:00		SUB OUT: BLAKES, NICOLE
	10:00		SUB IN: POLLOCK, MADISON
	10:00		SUB IN: BROSSMANN, PATRICIA
SUB OUT: 32 SATIE, MIA	10:00		
SUB OUT: 33 QUIRKE, ASHLEEN	10:00		
SUB IN: 11 ANDRIUOLO, MONIQUE	10:00		
SUB IN: 14 RUFFUS-MILNER, JAYLA	10:00		
	08:22	25-29	SUB OUT: POLLOCK, MADISON
	08:22		SUB IN: SOARES, LETICIA
	07:14	25-29	SUB OUT: HUNTER, SYDNEY
	07:14		SUB IN: MARTINSEN, ERICA
	05:52	27-29	SUB OUT: MARTINSEN, ERICA
	05:52		SUB IN: KHALFANI, AYANNA
SUB OUT: 24 FRIEND, HANNAH	05:52		
SUB IN: 10 FECSKE, PAIGE	05:52		
SUB OUT: 11 ANDRIUOLO, MONIQUE	03:31	29-31	
SUB OUT: 23 SITANGGAN, BARBARA	03:31		
SUB IN: 22 BATTLE, DEEZHA	03:31		
SUB IN: 33 QUIRKE, ASHLEEN	03:31		
	01:50	29-34	SUB OUT: KHALFANI, AYANNA
	01:50		SUB IN: DOSSO, AMINATA
SUB OUT: 1 BAMBRICK, MALIA	01:50		
SUB OUT: 22 BATTLE, DEEZHA	01:50		
SUB IN: 23 SITANGGAN, BARBARA	01:50		
SUB IN: 24 FRIEND, HANNAH	01:50		
SUB OUT: 33 QUIRKE, ASHLEEN	01:02	30-34	
SUB IN: 11 ANDRIUOLO, MONIQUE	01:02		

**Pepperdine 30, San Diego 40**

**Official Substitutions Log**  
**Pepperdine vs San Diego**  
**Period 4**  
**March 09, 2020 at Orleans Arena - Las Vegas, NV**



VISITORS: Pepperdine	Time	Score	HOME: San Diego
1 BAMBRICK, MALIA			10 PACE, MYAH
11 ANDRIUOLO, MONIQUE			11 POLLOCK, MADISON
14 RUFFUS-MILNER, JAYLA			23 EDWARDS, JORDYN
23 SITANGGAN, BARBARA			32 HUNTER, SYDNEY
24 FRIEND, HANNAH			34 BROSSMANN, PATRICIA
SUB OUT: 10 FECSKE, PAIGE	10:00	-	
SUB IN: 1 BAMBRICK, MALIA	10:00		
	09:03	32-40	SUB OUT: DOSSO, AMINATA
	09:03		SUB IN: HUNTER, SYDNEY
	06:48	32-42	SUB OUT: BROSSMANN, PATRICIA
	06:48		SUB IN: POLLOCK, MADISON
	06:05	34-44	SUB OUT: POLLOCK, MADISON
	06:05		SUB IN: BROSSMANN, PATRICIA
SUB OUT: 24 FRIEND, HANNAH	04:19	36-45	
SUB IN: 3 RUFFUS-MILNER, JAYDA	04:19		
SUB OUT: 3 RUFFUS-MILNER, JAYDA	03:12	38-51	
SUB IN: 24 FRIEND, HANNAH	03:12		
	02:03	40-53	SUB OUT: SOARES, LETICIA
	02:03		SUB IN: POLLOCK, MADISON
	01:42	40-53	SUB OUT: POLLOCK, MADISON
	01:42		SUB IN: SOARES, LETICIA
SUB OUT: 24 FRIEND, HANNAH	01:11	40-53	
SUB IN: 3 RUFFUS-MILNER, JAYDA	01:11		
SUB OUT: 3 RUFFUS-MILNER, JAYDA	01:10	40-53	
SUB IN: 24 FRIEND, HANNAH	01:10		
SUB OUT: 24 FRIEND, HANNAH	00:42	42-57	
SUB IN: 10 FECSKE, PAIGE	00:42		

**Pepperdine 44, San Diego 59**

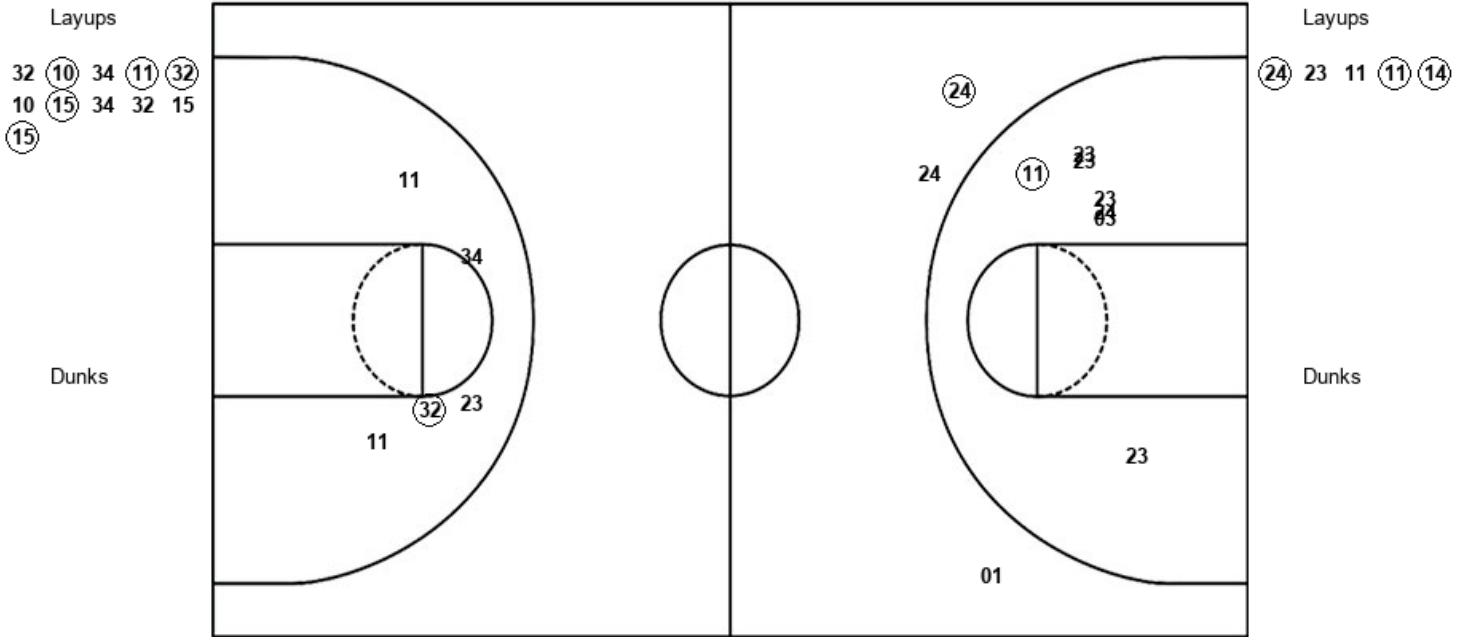


**Official Shot Chart**  
**Pepperdine vs San Diego**  
**PERIOD 1 Shots**  
 March 09, 2020 at Orleans Arena - Las Vegas, NV



**San Diego**

**Pepperdine**



<b>USD : Period 1</b>	<b>Made</b>	<b>Att</b>	<b>Pct</b>
Layups	5	11	45.5
Dunks	0	0	0
2PT Field Goals	6	16	37.5
3PT Field Goals	0	0	0
<b>Total Field Goals</b>	<b>6</b>	<b>16</b>	<b>37.5</b>

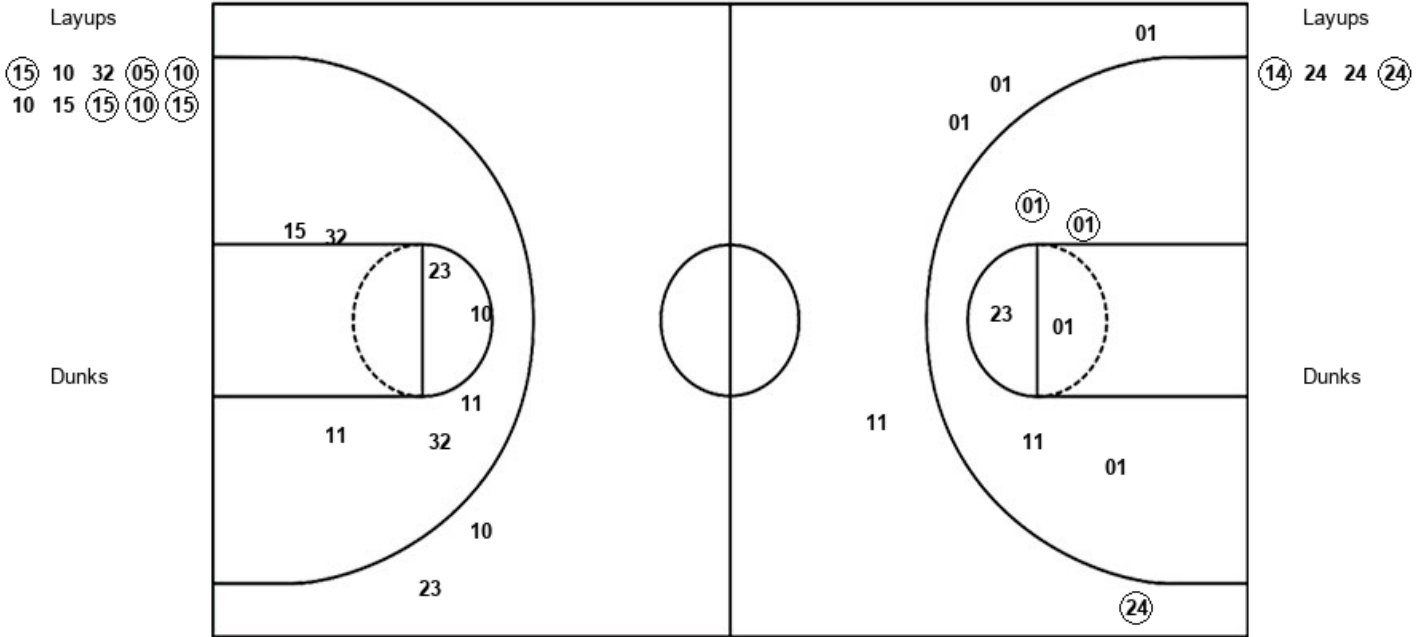
<b>PEP : Period 1</b>	<b>Made</b>	<b>Att</b>	<b>Pct</b>
Layups	3	5	60.0
Dunks	0	0	0
2PT Field Goals	4	12	33.3
3PT Field Goals	1	3	33.3
<b>Total Field Goals</b>	<b>5</b>	<b>15</b>	<b>33.3</b>

**Official Shot Chart**  
**Pepperdine vs San Diego**  
**PERIOD 2 Shots**  
 March 09, 2020 at Orleans Arena - Las Vegas, NV



**San Diego**

**Pepperdine**



<b>USD : Period 2</b>	<b>Made</b>	<b>Att</b>	<b>Pct</b>
Layups	6	10	60.0
Dunks	0	0	0
2PT Field Goals	6	17	35.3
3PT Field Goals	0	2	00.0
<b>Total Field Goals</b>	<b>6</b>	<b>19</b>	<b>31.6</b>

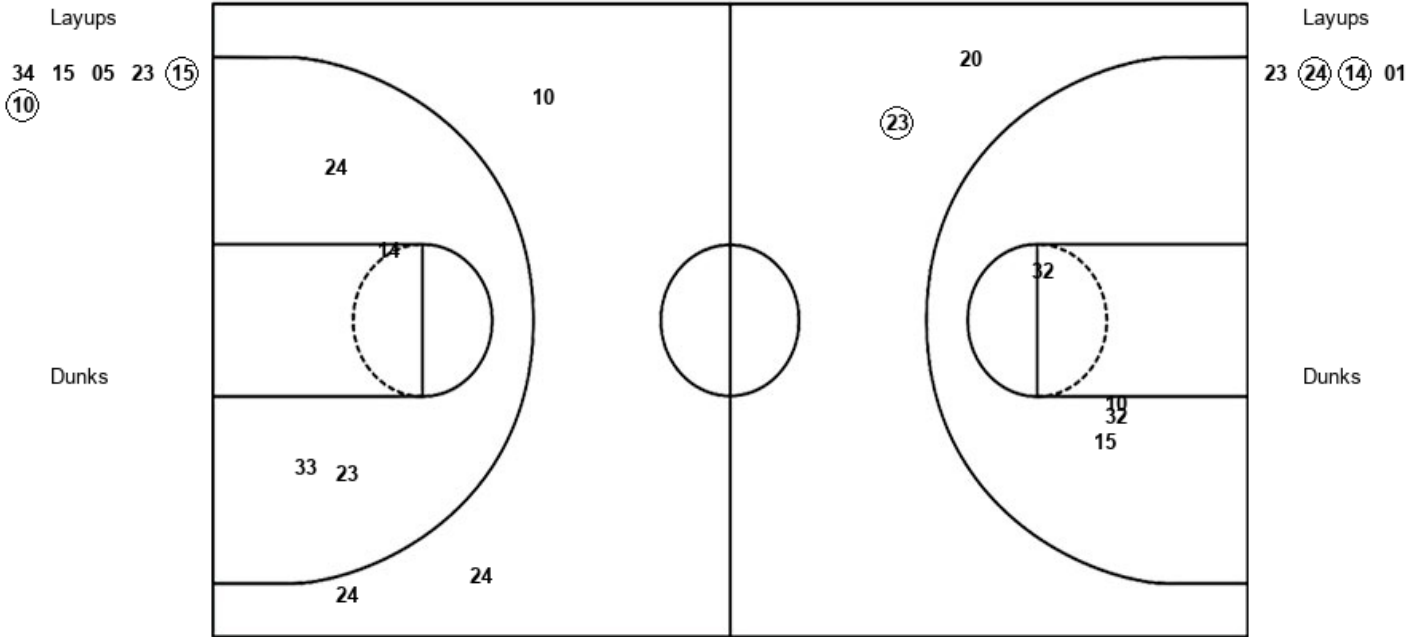
<b>PEP : Period 2</b>	<b>Made</b>	<b>Att</b>	<b>Pct</b>
Layups	2	4	50.0
Dunks	0	0	0
2PT Field Goals	4	10	40.0
3PT Field Goals	1	5	20.0
<b>Total Field Goals</b>	<b>5</b>	<b>15</b>	<b>33.3</b>

**Official Shot Chart**  
**Pepperdine vs San Diego**  
**PERIOD 3 Shots**  
 March 09, 2020 at Orleans Arena - Las Vegas, NV



**San Diego**

**Pepperdine**



USD : Period 3	Made	Att	Pct
Layups	2	6	33.3
Dunks	0	0	0
2PT Field Goals	2	10	20.0
3PT Field Goals	1	2	50.0
<b>Total Field Goals</b>	<b>3</b>	<b>12</b>	<b>25.0</b>

PEP : Period 3	Made	Att	Pct
Layups	2	4	50.0
Dunks	0	0	0
2PT Field Goals	2	8	25.0
3PT Field Goals	0	3	00.0
<b>Total Field Goals</b>	<b>2</b>	<b>11</b>	<b>18.2</b>

**Official Shot Chart**  
**Pepperdine vs San Diego**  
**PERIOD 4 Shots**  
 March 09, 2020 at Orleans Arena - Las Vegas, NV



**San Diego**

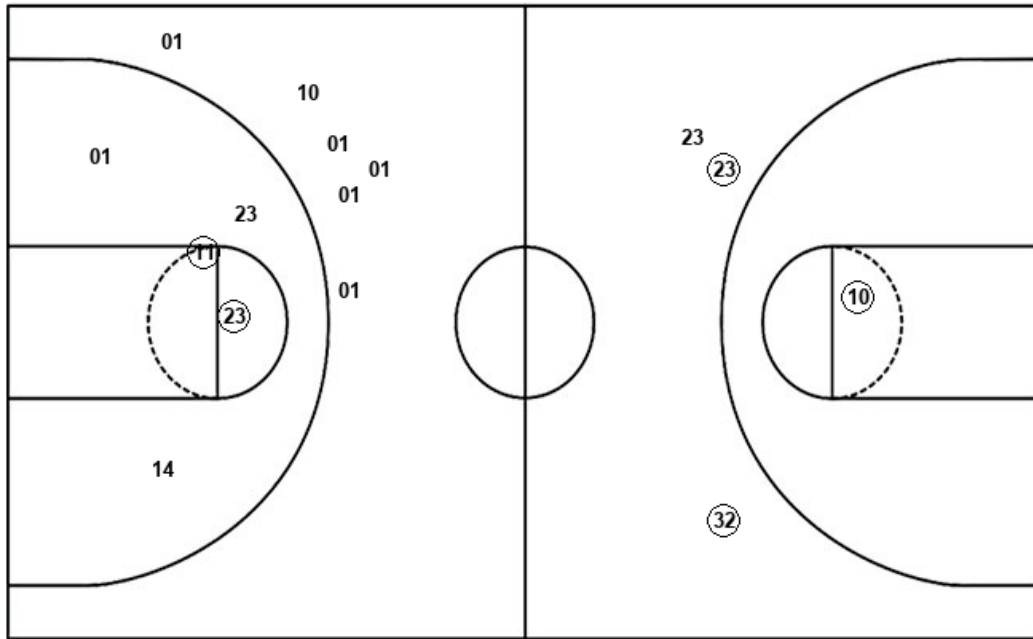
**Pepperdine**

Layups  
 10 23 32

Layups  
 11 14 24 01 11

Dunks

Dunks



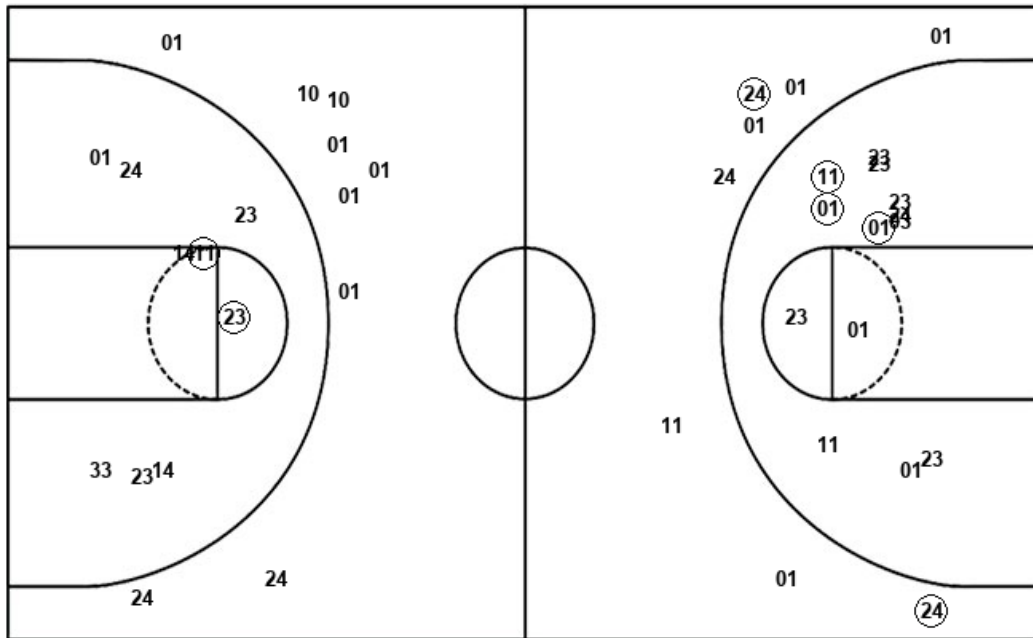
<b>USD : Period 4</b>	<b>Made</b>	<b>Att</b>	<b>Pct</b>
Layups	2	3	66.7
Dunks	0	0	0
2PT Field Goals	3	4	75.0
3PT Field Goals	2	3	66.7
<b>Total Field Goals</b>	<b>5</b>	<b>7</b>	<b>71.4</b>

<b>PEP : Period 4</b>	<b>Made</b>	<b>Att</b>	<b>Pct</b>
Layups	3	5	60.0
Dunks	0	0	0
2PT Field Goals	5	10	50.0
3PT Field Goals	0	6	00.0
<b>Total Field Goals</b>	<b>5</b>	<b>16</b>	<b>31.3</b>

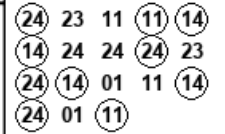
**Official Shot Chart**  
**Pepperdine vs San Diego**  
**Pepperdine Team Shots**  
 March 09, 2020 at Orleans Arena - Las Vegas, NV



Layups



Layups



Dunks

Dunks

PEP : Period 1	Made	Att	Pct
Layups	3	5	60.0
Dunks	0	0	0
2PT Field Goals	4	12	33.3
3PT Field Goals	1	3	33.3
<b>Total Field Goals</b>	<b>5</b>	<b>15</b>	<b>33.3</b>

PEP : Period 2	Made	Att	Pct
Layups	2	4	50.0
Dunks	0	0	0
2PT Field Goals	4	10	40.0
3PT Field Goals	1	5	20.0
<b>Total Field Goals</b>	<b>5</b>	<b>15</b>	<b>33.3</b>

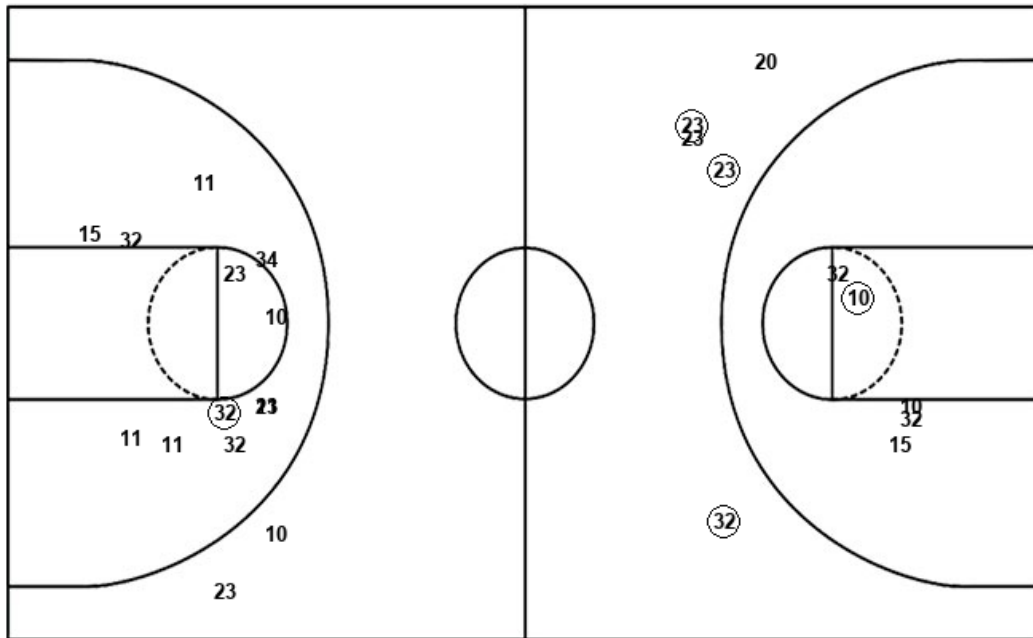
PEP : Period 3	Made	Att	Pct
Layups	2	4	50.0
Dunks	0	0	0
2PT Field Goals	2	8	25.0
3PT Field Goals	0	3	00.0
<b>Total Field Goals</b>	<b>2</b>	<b>11</b>	<b>18.2</b>

PEP : Period 4	Made	Att	Pct
Layups	3	5	60.0
Dunks	0	0	0
2PT Field Goals	5	10	50.0
3PT Field Goals	0	6	00.0
<b>Total Field Goals</b>	<b>5</b>	<b>16</b>	<b>31.3</b>

**Official Shot Chart**  
**Pepperdine vs San Diego**  
**San Diego Team Shots**  
 March 09, 2020 at Orleans Arena - Las Vegas, NV



Layups



Layups

32	(10)	34	(11)	(32)
10	(15)	34	32	15
(15)	(15)	10	32	(05)
(10)	10	15	(15)	(10)
(15)	34	15	05	23
(15)	(10)	(10)	(23)	32

Dunks

Dunks

USD : Period 1	Made	Att	Pct
Layups	5	11	45.5
Dunks	0	0	0
2PT Field Goals	6	16	37.5
3PT Field Goals	0	0	0
<b>Total Field Goals</b>	<b>6</b>	<b>16</b>	<b>37.5</b>

USD : Period 3	Made	Att	Pct
Layups	2	6	33.3
Dunks	0	0	0
2PT Field Goals	2	10	20.0
3PT Field Goals	1	2	50.0
<b>Total Field Goals</b>	<b>3</b>	<b>12</b>	<b>25.0</b>

USD : Period 2	Made	Att	Pct
Layups	6	10	60.0
Dunks	0	0	0
2PT Field Goals	6	17	35.3
3PT Field Goals	0	2	00.0
<b>Total Field Goals</b>	<b>6</b>	<b>19</b>	<b>31.6</b>

USD : Period 4	Made	Att	Pct
Layups	2	3	66.7
Dunks	0	0	0
2PT Field Goals	3	4	75.0
3PT Field Goals	2	3	66.7
<b>Total Field Goals</b>	<b>5</b>	<b>7</b>	<b>71.4</b>