

**FINAL SCORE**



**Pepperdine**

**82**



**Saint Mary's (CA)**

**89**

**WCC Basketball Championships**

March 07, 2020 •



**FINAL STATISTICS**

**Official Box Score**  
**Pepperdine vs Saint Mary's (CA)**  
**Game Totals -- Final Statistics**  
**March 07, 2020**



**Pepperdine 82**

No.	Player	S	Pts	FG	3FG	FT	OR	DR	TR	PF	A	TO	Blk	Stl	Min	+/-
00	ALTMAN, SEDRICK	G	6	2-6	2-3	0-0	0	3	3	3	3	1	3	0	44	2
04	ROSS, COLBEY	G	43	13-29	7-13	10-11	0	8	8	5	5	7	0	1	47	-1
15	EDWARDS, KESSLER	F	21	8-14	3-7	2-4	3	7	10	2	1	2	2	0	50	-7
20	EDWARDS, KAMERON	F	4	2-3	0-0	0-0	0	6	6	4	1	3	0	0	25	2
33	CHAVEZ, SKYLAR	G	2	1-6	0-0	0-0	1	0	1	1	1	0	0	2	31	-7
02	POLK JR., DARRYL	G	0	0-2	0-2	0-0	0	1	1	0	0	2	0	0	6	-10
11	SMITH, KEITH	G	2	1-2	0-0	0-0	0	3	3	1	1	1	1	1	22	-5
34	OHIA OBIOHA, VICTOR	C	4	1-1	0-0	2-2	0	2	2	4	2	0	1	0	23	-10
50	STORMO, JACKSON	C	0	0-0	0-0	0-0	1	0	1	0	1	0	0	0	2	1
<b>TEAM</b>							0	0	0	0		1				
<b>TOTALS</b>			<b>82</b>	<b>28-63</b>	<b>12-25</b>	<b>14-17</b>	<b>5</b>	<b>30</b>	<b>35</b>	<b>20</b>	<b>15</b>	<b>17</b>	<b>7</b>	<b>4</b>	<b>249</b>	

*Shooting By Period*

Period	FG	FG%	3FG	3FG%	FT	FT%
1st Half	9-24	38%	5-10	50%	8-9	89%
2nd Half	15-26	58%	6-10	60%	5-7	71%
3rd Half	3-7	43%	1-1	100%	1-1	100%
4th Half	1-6	17%	0-4	00%	0-0	0%
<b>Game</b>	<b>28-63</b>	<b>44.4%</b>	<b>12-25</b>	<b>48.0%</b>	<b>14-17</b>	<b>82.4%</b>

*Deadball Rebounds: 2.0*  
*Last FG: 4th-03:51*  
*Biggest Run: 10-0*  
*Largest lead: By 7 at 1st-14:41*  
*Technical Fouls: None.*

**Saint Mary's (CA) 89**

No.	Player	S	Pts	FG	3FG	FT	OR	DR	TR	PF	A	TO	Blk	Stl	Min	+/-
00	KREBS, TANNER	G	7	2-10	1-6	2-3	0	3	3	2	0	1	0	2	44	5
03	FORD, JORDAN	G	42	17-30	5-12	3-4	0	5	5	1	1	0	0	1	50	7
12	KUHSE, TOMMY	G	11	4-10	1-3	2-4	1	7	8	4	5	3	1	2	45	-3
24	FITTS, MALIK	F	11	3-8	1-4	4-6	2	3	5	3	1	2	0	1	37	0
42	FOTU, DAN	F	6	3-5	0-0	0-0	3	5	8	4	2	1	0	1	34	-6
01	JOHNSON, LOGAN	G	0	0-1	0-0	0-0	0	0	0	0	0	0	0	0	0	0
05	PERRY, JOCK	C	4	1-2	0-0	2-2	2	0	2	0	0	0	0	0	4	2
14	BOWEN, KYLE	F	6	3-4	0-1	0-0	0	3	3	2	1	0	0	2	25	18
44	DUCAS, ALEX	G	2	1-2	0-1	0-0	2	1	3	0	0	1	0	0	10	12
<b>TEAM</b>							0	0	0	0		1				
<b>TOTALS</b>			<b>89</b>	<b>34-72</b>	<b>8-27</b>	<b>13-19</b>	<b>10</b>	<b>27</b>	<b>37</b>	<b>16</b>	<b>10</b>	<b>9</b>	<b>1</b>	<b>9</b>	<b>249</b>	

*Shooting By Period*

Period	FG	FG%	3FG	3FG%	FT	FT%
1st Half	17-32	53%	2-8	25%	4-4	100%
2nd Half	12-28	43%	4-12	33%	4-7	57%
3rd Half	2-5	40%	1-3	33%	3-6	50%
4th Half	3-7	43%	1-4	25%	2-2	100%
<b>Game</b>	<b>34-72</b>	<b>47.2%</b>	<b>8-27</b>	<b>29.6%</b>	<b>13-19</b>	<b>68.4%</b>

*Deadball Rebounds: 4.4*  
*Last FG: 4th-00:26*  
*Biggest Run: 9-0*  
*Largest lead: By 13 at 2nd-18:55*  
*Technical Fouls: None.*

*Game Notes:*

Officials: **BOB STAFFEN, ERIC CURRY, COBAN LOPEZ**  
 Attendance: **4350**

Start Time: **9:38 PM PT**  
 End Time: **03:54 AM ET**  
 Game Duration: **2:16**  
 Neutral Court;

Score	1st	2nd	3rd	4th	TOT
PEP	31	41	8	2	<b>82</b>
SMC	40	32	8	9	<b>89</b>

PEP led for 11:14. SMC led for 33:49.  
**Game was tied for 4:43.**  
 Times tied: 8      Lead Changes: 5

Points from	PEP	SMC
In the Paint	30	52
Off Turns	6	19
2nd Chance	10	15
Fast Break	8	18
Bench	6	12

**Official Box Score**  
**Pepperdine vs Saint Mary's (CA)**  
**First Half Statistics Only**  
**March 07, 2020**



**Pepperdine 31**

No.	Player	S	Pts	FG	3FG	FT	OR	DR	TR	PF	A	TO	Blk	Stl	Min	+/-
00	ALTMAN, SEDRICK	G	3	1-2	1-1	0-0	0	3	3	1	1	1	2	0	17	-3
04	ROSS, COLBEY	G	16	4-10	2-4	6-6	0	2	2	2	3	3	0	1	17	-5
15	EDWARDS, KESSLER	F	6	2-3	2-3	0-1	1	0	1	0	1	1	1	0	20	-9
20	EDWARDS, KAMERON	F	4	2-2	0-0	0-0	0	1	1	3	0	2	0	0	6	5
33	CHAVEZ, SKYLAR	G	0	0-5	0-0	0-0	1	0	1	1	0	0	0	2	17	-7
02	POLK JR., DARRYL	G	0	0-2	0-2	0-0	0	1	1	0	0	0	0	0	5	-6
11	SMITH, KEITH	G	0	0-0	0-0	0-0	0	1	1	0	0	1	1	0	3	-6
34	OHIA OBIOHA, VICTOR	C	2	0-0	0-0	2-2	0	1	1	2	0	0	0	0	12	-15
50	STORMO, JACKSON	C	0	0-0	0-0	0-0	1	0	1	0	1	0	0	0	2	1
	TEAM						0	0	0	0		1				
<b>TOTALS</b>			<b>31</b>	<b>9-24</b>	<b>5-10</b>	<b>8-9</b>	<b>3</b>	<b>9</b>	<b>12</b>	<b>9</b>	<b>6</b>	<b>9</b>	<b>4</b>	<b>3</b>	<b>100</b>	

*Shooting By Period*

Period	FG	FG%	3FG	3FG%	FT	FT%
1st Half	9-24	38%	5-10	50%	8-9	89%
Game	28-63	44.4%	12-25	48.0%	14-17	82.4%

*Deadball Rebounds: 2,0*

*Last FG Half: PEP 2nd-03:01*

**Saint Mary's (CA) 40**

No.	Player	S	Pts	FG	3FG	FT	OR	DR	TR	PF	A	TO	Blk	Stl	Min	+/-
00	KREBS, TANNER	G	3	1-5	0-2	1-1	0	1	1	2	0	0	0	1	16	7
03	FORD, JORDAN	G	14	6-10	1-3	1-1	0	1	1	0	1	0	0	0	20	9
12	KUHSE, TOMMY	G	4	2-5	0-1	0-0	0	1	1	2	2	1	1	1	17	3
24	FITTS, MALIK	F	7	3-5	1-2	0-0	1	2	3	0	0	2	0	1	17	8
42	FOTU, DAN	F	4	2-2	0-0	0-0	1	2	3	2	0	0	0	0	8	-4
01	JOHNSON, LOGAN	G	0	0-1	0-0	0-0	0	0	0	0	0	0	0	0	0	0
05	PERRY, JOCK	C	4	1-2	0-0	2-2	2	0	2	0	0	0	0	0	4	2
14	BOWEN, KYLE	F	4	2-2	0-0	0-0	0	0	0	2	0	0	0	0	11	12
44	DUCAS, ALEX	G	0	0-0	0-0	0-0	1	1	2	0	0	1	0	0	6	8
	TEAM						0	0	0	0		1				
<b>TOTALS</b>			<b>40</b>	<b>17-32</b>	<b>2-8</b>	<b>4-4</b>	<b>5</b>	<b>8</b>	<b>13</b>	<b>8</b>	<b>3</b>	<b>5</b>	<b>1</b>	<b>3</b>	<b>100</b>	

*Shooting By Period*

Period	FG	FG%	3FG	3FG%	FT	FT%
1st Half	17-32	53%	2-8	25%	4-4	100%
Game	34-72	47.2%	8-27	29.6%	13-19	68.4%

*Deadball Rebounds: 4,4*

*Last FG Half: SMC 2nd-03:53*

Game Notes:

Officials: **BOB STAFFEN, ERIC CURRY, COBAN LOPEZ**

Attendance: **4350**

Start Time: **9:38 PM PT**

End Time: **03:54 AM ET**

Game Duration: **2:16**

Neutral Court;

Score	1st	2nd	3rd	4th	TOT
PEP	31	41	8	2	<b>82</b>
SMC	40	32	8	9	<b>89</b>

Points from (This Period)	PEP	SMC
In the Paint	8	30
Off Turns	2	11
2nd Chance	6	8
Fast Break	2	9
Bench	2	8

**Official Play-By-Play**  
**Pepperdine vs Saint Mary's (CA)**  
**First Half**  
**March 07, 2020**



**Period 1**

**Starters:**

**Pepperdine:** 0 ALTMAN, SEDRICK (G); 4 ROSS, COLBEY (G); 15 EDWARDS, KESSLER (F); 20 EDWARDS, KAMERON (F); 33 CHAVEZ, SKYLAR (G);  
**Saint Mary's (CA):** 0 KREBS, TANNER (G); 3 FORD, JORDAN (G); 12 KUHSE, TOMMY (G); 24 FITTS, MALIK (F); 42 FOTU, DAN (F);

Time	VISITORS: Pepperdine	Score	Margin	HOME: Saint Mary's (CA)
19:40	GOOD! JUMPER by ROSS, COLBEY [PNT]	0-2	V 2	
19:17				MISSED LAYUP by FORD, JORDAN
19:17	BLOCK by EDWARDS, KESSLER			
19:11	REBOUND (DEF) by EDWARDS, KAMERON			
19:04	MISSED JUMPER by ALTMAN, SEDRICK			
19:00	REBOUND (OFF) by TEAM			
18:53	GOOD! 3PTR by ROSS, COLBEY	0-5	V 5	
18:53	ASSIST by EDWARDS, KESSLER			
18:26		2-5	V 3	GOOD! LAYUP by FOTU, DAN
18:11	GOOD! JUMPER by ROSS, COLBEY	2-7	V 5	
17:52		4-7	V 3	GOOD! JUMPER by FITTS, MALIK [PNT]
17:38				FOUL (PERSONAL) by FOTU, DAN
17:34	TURNOVER (BADPASS) by ROSS, COLBEY			
17:34				STEAL by KUHSE, TOMMY
17:29		6-7	V 1	GOOD! LAYUP by KUHSE, TOMMY [FB]
17:12	GOOD! LAYUP by EDWARDS, KAMERON [PNT]	6-9	V 3	
17:12	ASSIST by ALTMAN, SEDRICK			
16:54				MISSED LAYUP by FITTS, MALIK
16:51	REBOUND (DEF) by ROSS, COLBEY			
16:47	GOOD! LAYUP by EDWARDS, KAMERON [FB]	6-11	V 5	
16:47	ASSIST by ROSS, COLBEY			
16:14				TURNOVER (LOSTBALL) by FITTS, MALIK
16:14	STEAL by ROSS, COLBEY			
16:10	FOUL (OFF) by EDWARDS, KAMERON			
16:10	TURNOVER (OFFENSIVE) by EDWARDS, KAMERON			
15:48	FOUL (PERSONAL) by ROSS, COLBEY			
15:48				
15:31				MISSED 3PTR by KREBS, TANNER
15:29				REBOUND (OFF) by TEAM
15:29	FOUL (PERSONAL) by EDWARDS, KAMERON			
15:29	SUB OUT: EDWARDS, KAMERON			
15:29	SUB IN: OHIA OBIOHA, VICTOR			
15:29				TURNOVER (5SEC) by TEAM
15:16	MISSED LAYUP by CHAVEZ, SKYLAR			
15:14				REBOUND (DEF) by TEAM
15:14	FOUL (PERSONAL) by OHIA OBIOHA, VICTOR			
15:08				TURNOVER (TRAVEL) by FITTS, MALIK
15:08				SUB OUT: FITTS, MALIK
15:08				SUB IN: BOWEN, KYLE
14:42				FOUL (PERSONAL) by BOWEN, KYLE
14:41	GOOD! FT by OHIA OBIOHA, VICTOR	6-12	V 6	
14:41	SUB OUT: CHAVEZ, SKYLAR			
14:41	SUB IN: POLK JR., DARRYL			
14:41	GOOD! FT by OHIA OBIOHA, VICTOR	6-13	V 7	
14:15				MISSED LAYUP by KUHSE, TOMMY
14:09				REBOUND (OFF) by FOTU, DAN
14:09		8-13	V 5	GOOD! LAYUP by FOTU, DAN
13:42	MISSED 3PTR by POLK JR., DARRYL			
13:39				REBOUND (DEF) by FOTU, DAN
13:35		10-13	V 3	GOOD! LAYUP by FORD, JORDAN [FB]
13:35	FOUL (PERSONAL) by ALTMAN, SEDRICK			
13:35		11-13	V 2	GOOD! FT by FORD, JORDAN [FB]
13:10	MISSED 3PTR by ROSS, COLBEY			
13:06				REBOUND (DEF) by FOTU, DAN
12:47		13-13	T	GOOD! LAYUP by KUHSE, TOMMY
12:30	GOOD! 3PTR by EDWARDS, KESSLER	13-16	V 3	
12:30	ASSIST by ROSS, COLBEY			
12:12		15-16	V 1	GOOD! JUMPER by FORD, JORDAN [PNT]
11:58	GOOD! 3PTR by EDWARDS, KESSLER	15-19	V 4	
11:58	ASSIST by ROSS, COLBEY			
11:57				FOUL (PERSONAL) by FOTU, DAN
11:57				
11:57				SUB OUT: KUHSE, TOMMY
11:57				SUB OUT: FOTU, DAN
11:57				SUB IN: FITTS, MALIK
11:57				SUB IN: DUCAS, ALEX
11:57	SUB OUT: ALTMAN, SEDRICK			
11:57	SUB OUT: POLK JR., DARRYL			
11:57	SUB IN: SMITH, KEITH			
11:57	SUB IN: CHAVEZ, SKYLAR			

Time	VISITORS: Pepperdine	Score	Margin	HOME: Saint Mary's (CA)
11:57	MISSED FT by EDWARDS, KESSLER			
11:56				REBOUND (DEF) by DUCAS, ALEX
11:33		17-19	V 2	GOOD! LAYUP by FORD, JORDAN
11:10	MISSED JUMPER by ROSS, COLBEY			
11:07				REBOUND (DEF) by FITTS, MALIK
10:53		19-19	T	GOOD! LAYUP by KREBS, TANNER
10:53	FOUL (PERSONAL) by CHAVEZ, SKYLAR			
10:53		20-19	H 1	GOOD! FT by KREBS, TANNER
10:27	TURNOVER (LOSTBALL) by SMITH, KEITH			
10:27				STEAL by KREBS, TANNER
10:21				MISSED LAYUP by KREBS, TANNER
10:21	BLOCK by SMITH, KEITH			
10:16				REBOUND (OFF) by DUCAS, ALEX
10:09		23-19	H 4	GOOD! 3PTR by FITTS, MALIK
10:09				ASSIST by FORD, JORDAN
09:50				FOUL (PERSONAL) by BOWEN, KYLE
09:50	GOOD! FT by ROSS, COLBEY	23-20	H 3	
09:50	GOOD! FT by ROSS, COLBEY	23-21	H 2	
09:50				SUB OUT: KREBS, TANNER
09:50				SUB OUT: BOWEN, KYLE
09:50				SUB IN: PERRY, JOCK
09:50				SUB IN: KUHSE, TOMMY
09:50	SUB OUT: OHIA OBIOHA, VICTOR			
09:50	SUB IN: EDWARDS, KAMERON			
09:37				MISSED 3PTR by KUHSE, TOMMY
09:33				REBOUND (OFF) by FITTS, MALIK
09:32				MISSED 3PTR by FORD, JORDAN
09:28	REBOUND (DEF) by SMITH, KEITH			
09:26	MISSED 3PTR by ROSS, COLBEY			
09:22				REBOUND (DEF) by FORD, JORDAN
08:58				TURNOVER (BADPASS) by DUCAS, ALEX
08:58	STEAL by CHAVEZ, SKYLAR			
08:46				FOUL (PERSONAL) by KUHSE, TOMMY
08:46				SUB OUT: PERRY, JOCK
08:46				SUB IN: BOWEN, KYLE
08:46	SUB OUT: SMITH, KEITH			
08:46	SUB IN: ALTMAN, SEDRICK			
08:42	TURNOVER (TRAVEL) by ROSS, COLBEY			
08:42	SUB OUT: ROSS, COLBEY			
08:42	SUB IN: POLK JR., DARRYL			
08:36				MISSED 3PTR by FITTS, MALIK
08:30	REBOUND (DEF) by ALTMAN, SEDRICK			
08:27	MISSED 3PTR by POLK JR., DARRYL			
08:22	REBOUND (OFF) by EDWARDS, KESSLER			
08:19	FOUL (OFF) by EDWARDS, KAMERON			
08:19	TURNOVER (OFFENSIVE) by EDWARDS, KAMERON			
08:19	SUB OUT: EDWARDS, KAMERON			
08:19	SUB IN: OHIA OBIOHA, VICTOR			
07:51		25-21	H 4	GOOD! LAYUP by FORD, JORDAN [PNT]
07:26	MISSED LAYUP by CHAVEZ, SKYLAR			
07:26				BLOCK by KUHSE, TOMMY
07:22	REBOUND (OFF) by CHAVEZ, SKYLAR			
07:21	TURNOVER (LOSTBALL) by EDWARDS, KESSLER			
07:21				SUB OUT: DUCAS, ALEX
07:21				SUB IN: KREBS, TANNER
07:09		27-21	H 6	GOOD! LAYUP by BOWEN, KYLE
07:09				ASSIST by KUHSE, TOMMY
06:36	MISSED JUMPER by CHAVEZ, SKYLAR			
06:32	REBOUND (OFF) by TEAM			
06:32	TURNOVER (SHOTCLOCK) by TEAM			
06:32	SUB OUT: POLK JR., DARRYL			
06:32	SUB IN: ROSS, COLBEY			
06:21				MISSED JUMPER by FORD, JORDAN
06:17	REBOUND (DEF) by ROSS, COLBEY			
06:10	MISSED JUMPER by ROSS, COLBEY			
06:06				REBOUND (DEF) by KUHSE, TOMMY
06:02				TURNOVER (BADPASS) by KUHSE, TOMMY
06:02	STEAL by CHAVEZ, SKYLAR			
05:56				FOUL (PERSONAL) by KUHSE, TOMMY
05:50	FOUL (OFF) by ROSS, COLBEY			
05:50	TURNOVER (OFFENSIVE) by ROSS, COLBEY			
05:28				MISSED 3PTR by FORD, JORDAN
05:23	REBOUND (DEF) by ALTMAN, SEDRICK			
05:16	TURNOVER (BADPASS) by ALTMAN, SEDRICK			
05:16				STEAL by FITTS, MALIK
05:10		29-21	H 8	GOOD! LAYUP by FITTS, MALIK [FB]
04:50				FOUL (PERSONAL) by KREBS, TANNER
04:50				SUB OUT: BOWEN, KYLE
04:50				SUB IN: PERRY, JOCK

Time	VISITORS: Pepperdine	Score	Margin	HOME: Saint Mary's (CA)
04:50	GOOD! FT by ROSS, COLBEY	29-22	H 7	
04:49	GOOD! FT by ROSS, COLBEY	29-23	H 6	
04:23				MISSED LAYUP by KUHSE, TOMMY
04:23	BLOCK by ALTMAN, SEDRICK			
04:18	REBOUND (DEF) by ALTMAN, SEDRICK			
04:16	MISSED JUMPER by CHAVEZ, SKYLAR			
04:14				REBOUND (DEF) by TEAM
04:14	FOUL (PERSONAL) by OHIA OBIOHA, VICTOR			
04:14		30-23	H 7	GOOD! FT by PERRY, JOCK [FB]
04:14		31-23	H 8	GOOD! FT by PERRY, JOCK [FB]
04:00	MISSED JUMPER by CHAVEZ, SKYLAR			
03:54				REBOUND (DEF) by FITTS, MALIK
03:42		33-23	H 10	GOOD! JUMPER by PERRY, JOCK
03:26	GOOD! 3PTR by ROSS, COLBEY	33-26	H 7	
02:54				MISSED JUMPER by KREBS, TANNER
02:50	REBOUND (DEF) by OHIA OBIOHA, VICTOR			
02:44	MISSED JUMPER by ROSS, COLBEY			
02:41				REBOUND (DEF) by KREBS, TANNER
02:20				MISSED 3PTR by KREBS, TANNER
02:16				REBOUND (OFF) by PERRY, JOCK
02:15				MISSED JUMPER by PERRY, JOCK
02:12				REBOUND (OFF) by PERRY, JOCK
02:11		36-26	H 10	GOOD! 3PTR by FORD, JORDAN
02:11				ASSIST by KUHSE, TOMMY
01:56				FOUL (PERSONAL) by KREBS, TANNER
01:56				
01:56				SUB OUT: PERRY, JOCK
01:56				SUB IN: BOWEN, KYLE
01:56	SUB OUT: OHIA OBIOHA, VICTOR			
01:56	SUB IN: STORMO, JACKSON			
01:56	GOOD! FT by ROSS, COLBEY	36-27	H 9	
01:56				SUB OUT: KREBS, TANNER
01:56				SUB IN: DUCAS, ALEX
01:56	GOOD! FT by ROSS, COLBEY	36-28	H 8	
01:36		38-28	H 10	GOOD! JUMPER by BOWEN, KYLE [PNT]
01:18	MISSED JUMPER by ROSS, COLBEY			
01:14	REBOUND (OFF) by STORMO, JACKSON			
01:12	GOOD! 3PTR by ALTMAN, SEDRICK	38-31	H 7	
01:12	ASSIST by STORMO, JACKSON			
00:55		40-31	H 9	GOOD! LAYUP by FORD, JORDAN
00:32	MISSED 3PTR by EDWARDS, KESSLER			
00:29				REBOUND (DEF) by TEAM
00:29				SUB OUT: KUHSE, TOMMY
00:29				SUB IN: JOHNSON, LOGAN
00:29	SUB OUT: ROSS, COLBEY			
00:29	SUB IN: POLK JR., DARRYL			
00:29				SUB OUT: DUCAS, ALEX
00:29				SUB IN: KREBS, TANNER
00:04				MISSED LAYUP by JOHNSON, LOGAN
00:04	BLOCK by ALTMAN, SEDRICK			
00:00	REBOUND (DEF) by POLK JR., DARRYL			

### Pepperdine 31, Saint Mary's (CA) 40

Points from (This Period)	PEP	SMC
In the Paint	8	30
Off Turns	2	11
2nd Chance	6	8
Fast Break	2	9
Bench	2	8

**Official Box Score**  
**Pepperdine vs Saint Mary's (CA)**  
**Second Half Statistics Only**  
**March 07, 2020**



**Pepperdine 41**

No.	Player	S	Pts	FG	3FG	FT	OR	DR	TR	PF	A	TO	Blk	Stl	Min	+/-
00	ALTMAN, SEDRICK	G	0	0-2	0-0	0-0	0	0	0	2	2	0	1	0	17	12
04	ROSS, COLBEY	G	22	7-11	5-7	3-4	0	5	5	1	1	1	0	0	20	9
15	EDWARDS, KESSLER	F	15	6-10	1-3	2-3	2	5	7	0	0	0	1	0	20	9
20	EDWARDS, KAMERON	F	0	0-0	0-0	0-0	0	1	1	1	0	1	0	0	9	4
33	CHAVEZ, SKYLAR	G	2	1-1	0-0	0-0	0	0	0	0	1	0	0	0	12	0
02	POLK JR., DARRYL	G	0	0-0	0-0	0-0	0	0	0	0	0	2	0	0	1	-4
11	SMITH, KEITH	G	0	0-1	0-0	0-0	0	1	1	1	1	0	0	1	10	10
34	OHIA OBIOHA, VICTOR	C	2	1-1	0-0	0-0	0	1	1	2	2	0	1	0	11	5
50	STORMO, JACKSON	C	0	0-0	0-0	0-0	0	0	0	0	0	0	0	0	0	0
	TEAM						0	0	0	0	0	0				
<b>TOTALS</b>			<b>41</b>	<b>15-26</b>	<b>6-10</b>	<b>5-7</b>	<b>2</b>	<b>13</b>	<b>15</b>	<b>7</b>	<b>7</b>	<b>4</b>	<b>3</b>	<b>1</b>	<b>100</b>	

*Shooting By Period*

Period	FG	FG%	3FG	3FG%	FT	FT%
2nd Half	15-26	58%	6-10	60%	5-7	71%
Game	28-63	44.4%	12-25	48.0%	14-17	82.4%

Deadball Rebounds: 2,0  
 Last FG Half: PEP 4th-03:51

**Saint Mary's (CA) 32**

No.	Player	S	Pts	FG	3FG	FT	OR	DR	TR	PF	A	TO	Blk	Stl	Min	+/-
00	KREBS, TANNER	G	0	0-2	0-1	0-0	0	1	1	0	0	1	0	1	18	-9
03	FORD, JORDAN	G	19	8-14	3-7	0-1	0	3	3	1	0	0	0	0	20	-9
12	KUHSE, TOMMY	G	7	2-4	1-1	2-4	1	3	4	1	1	2	0	1	20	-9
24	FITTS, MALIK	F	2	0-2	0-1	2-2	1	0	1	3	1	0	0	0	14	-8
42	FOTU, DAN	F	2	1-3	0-0	0-0	2	2	4	2	2	1	0	0	16	-9
01	JOHNSON, LOGAN	G	0	0-0	0-0	0-0	0	0	0	0	0	0	0	0	0	0
05	PERRY, JOCK	C	0	0-0	0-0	0-0	0	0	0	0	0	0	0	0	0	0
14	BOWEN, KYLE	F	2	1-2	0-1	0-0	0	2	2	0	1	0	0	1	10	-1
44	DUCAS, ALEX	G	0	0-1	0-1	0-0	0	0	0	0	0	0	0	0	2	0
	TEAM						0	0	0	0	0	0				
<b>TOTALS</b>			<b>32</b>	<b>12-28</b>	<b>4-12</b>	<b>4-7</b>	<b>4</b>	<b>11</b>	<b>15</b>	<b>7</b>	<b>5</b>	<b>4</b>	<b>0</b>	<b>3</b>	<b>100</b>	

*Shooting By Period*

Period	FG	FG%	3FG	3FG%	FT	FT%
2nd Half	12-28	43%	4-12	33%	4-7	57%
Game	34-72	47.2%	8-27	29.6%	13-19	68.4%

Deadball Rebounds: 4,4  
 Last FG Half: SMC 4th-00:26

*Game Notes:*

Officials: **BOB STAFFEN, ERIC CURRY, COBAN LOPEZ**  
 Attendance: **4350**

Start Time: **9:38 PM PT**  
 End Time: **03:54 AM ET**  
 Game Duration: **2:16**  
 Neutral Court;

Score	1st	2nd	3rd	4th	TOT
PEP	31	41	8	2	<b>82</b>
SMC	40	32	8	9	<b>89</b>

Points from (This Period)	PEP	SMC
In the Paint	16	16
Off Turns	4	4
2nd Chance	4	5
Fast Break	6	4
Bench	2	2

**Official Play-By-Play**  
**Pepperdine vs Saint Mary's (CA)**  
**Second Half**  
**March 07, 2020**



**Period 2**

**Starters:**

**Pepperdine:** 0 ALTMAN, SEDRICK (G); 4 ROSS, COLBEY (G); 15 EDWARDS, KESSLER (F); 20 EDWARDS, KAMERON (F); 33 CHAVEZ, SKYLAR (G);  
**Saint Mary's (CA):** 0 KREBS, TANNER (G); 3 FORD, JORDAN (G); 12 KUHSE, TOMMY (G); 24 FITTS, MALIK (F); 42 FOTU, DAN (F);

Time	VISITORS: Pepperdine	Score	Margin	HOME: Saint Mary's (CA)
20:00				SUB OUT: JOHNSON, LOGAN
20:00				SUB OUT: BOWEN, KYLE
20:00				SUB IN: KUHSE, TOMMY
20:00				SUB IN: FOTU, DAN
20:00	SUB OUT: POLK JR., DARRYL			
20:00	SUB OUT: STORMO, JACKSON			
20:00	SUB IN: ROSS, COLBEY			
20:00	SUB IN: EDWARDS, KAMERON			
19:40		42-31	H 11	GOOD! JUMPER by FOTU, DAN [PNT]
19:23	MISSED LAYUP by EDWARDS, KESSLER			
19:22	REBOUND (OFF) by EDWARDS, KESSLER			
19:22				FOUL (PERSONAL) by FORD, JORDAN
19:22	GOOD! FT by EDWARDS, KESSLER	42-32	H 10	
19:22	MISSED FT by EDWARDS, KESSLER			
19:21				REBOUND (DEF) by KUHSE, TOMMY
18:55		45-32	H 13	GOOD! 3PTR by KUHSE, TOMMY
18:55				ASSIST by FITTS, MALIK
18:31	MISSED 3PTR by EDWARDS, KESSLER			
18:23				REBOUND (DEF) by KREBS, TANNER
18:20				TURNOVER (TRAVEL) by KUHSE, TOMMY
18:07	GOOD! LAYUP by CHAVEZ, SKYLAR	45-34	H 11	
18:07	ASSIST by ALTMAN, SEDRICK			
17:50	FOUL (PERSONAL) by EDWARDS, KAMERON			
17:50				MISSED FT by KUHSE, TOMMY
17:50				REBOUND (OFF) by TEAM
17:50	SUB OUT: EDWARDS, KAMERON			
17:50	SUB IN: OHIA OBIOHA, VICTOR			
17:50				MISSED FT by KUHSE, TOMMY
17:50	REBOUND (DEF) by OHIA OBIOHA, VICTOR			
17:38	GOOD! 3PTR by ROSS, COLBEY	45-37	H 8	
17:38	ASSIST by CHAVEZ, SKYLAR			
17:12		47-37	H 10	GOOD! LAYUP by FORD, JORDAN [PNT]
17:12				ASSIST by FOTU, DAN
16:54	GOOD! 3PTR by ROSS, COLBEY	47-40	H 7	
16:54	ASSIST by ALTMAN, SEDRICK			
16:23				MISSED LAYUP by FOTU, DAN
16:23	BLOCK by OHIA OBIOHA, VICTOR			
16:18	REBOUND (DEF) by ROSS, COLBEY			
16:18				FOUL (PERSONAL) by KUHSE, TOMMY
16:18	GOOD! FT by ROSS, COLBEY [FB]	47-41	H 6	
16:18	MISSED FT by ROSS, COLBEY			
16:15				REBOUND (DEF) by FORD, JORDAN
15:53				MISSED LAYUP by FOTU, DAN
15:51				REBOUND (OFF) by FOTU, DAN
15:48				MISSED 3PTR by KREBS, TANNER
15:46	REBOUND (DEF) by EDWARDS, KESSLER			
15:39	GOOD! 3PTR by ROSS, COLBEY	47-44	H 3	
15:19		50-44	H 6	GOOD! 3PTR by FORD, JORDAN
15:16				TIMEOUT 30SEC
15:16				
15:16				SUB OUT: KREBS, TANNER
15:16				SUB IN: DUCAS, ALEX
15:00	MISSED LAYUP by ROSS, COLBEY			
14:57				REBOUND (DEF) by FORD, JORDAN
14:54		52-44	H 8	GOOD! LAYUP by FORD, JORDAN [FB/PNT]
14:33	MISSED JUMPER by ALTMAN, SEDRICK			
14:32	REBOUND (OFF) by EDWARDS, KESSLER			
14:32	GOOD! LAYUP by EDWARDS, KESSLER	52-46	H 6	
14:32				FOUL (PERSONAL) by FITTS, MALIK
14:32				
14:32	GOOD! FT by EDWARDS, KESSLER	52-47	H 5	
14:12		54-47	H 7	GOOD! LAYUP by KUHSE, TOMMY [PNT]
14:12				ASSIST by FOTU, DAN
13:45	GOOD! JUMPER by ROSS, COLBEY [PNT]	54-49	H 5	
13:29				MISSED 3PTR by DUCAS, ALEX
13:27				REBOUND (OFF) by FITTS, MALIK
13:27	FOUL (PERSONAL) by OHIA OBIOHA, VICTOR			
13:27		55-49	H 6	GOOD! FT by FITTS, MALIK
13:27				SUB OUT: DUCAS, ALEX
13:27				SUB IN: KREBS, TANNER



Time	VISITORS: Pepperdine	Score	Margin	HOME: Saint Mary's (CA)
13:27		56-49	H 7	GOOD! FT by FITTS, MALIK
13:09				FOUL (PERSONAL) by FITTS, MALIK
13:05				FOUL (PERSONAL) by FITTS, MALIK
13:05				SUB OUT: FITTS, MALIK
13:05				SUB IN: BOWEN, KYLE
13:00	GOOD! LAYUP by EDWARDS, KESSLER	56-51	H 5	
12:36				MISSED 3PTR by BOWEN, KYLE
12:30	REBOUND (DEF) by ROSS, COLBEY			
12:06	MISSED 3PTR by ROSS, COLBEY			
12:02				REBOUND (DEF) by FORD, JORDAN
11:59				MISSED 3PTR by FORD, JORDAN
11:55				REBOUND (OFF) by FOTU, DAN
11:55	FOUL (PERSONAL) by ALTMAN, SEDRICK			
11:42		59-51	H 8	GOOD! 3PTR by FORD, JORDAN
11:42				ASSIST by KUHSE, TOMMY
11:14	MISSED 3PTR by EDWARDS, KESSLER			
11:10				REBOUND (DEF) by FOTU, DAN
11:02				MISSED JUMPER by FORD, JORDAN
10:58	REBOUND (DEF) by EDWARDS, KESSLER			
10:52	GOOD! DUNK by EDWARDS, KESSLER	59-53	H 6	
10:52	ASSIST by OHIA OBIOHA, VICTOR			
10:27				FOUL (OFF) by FOTU, DAN
10:27				TURNOVER (OFFENSIVE) by FOTU, DAN
10:27				SUB OUT: FOTU, DAN
10:27				SUB IN: FITTS, MALIK
10:27	SUB OUT: ALTMAN, SEDRICK			
10:27	SUB IN: POLK JR., DARRYL			
10:19	TURNOVER (BADPASS) by POLK JR., DARRYL			
10:19				STEAL by BOWEN, KYLE
10:15		61-53	H 8	GOOD! DUNK by BOWEN, KYLE [FB/PNT]
09:55	TURNOVER (LOSTBALL) by POLK JR., DARRYL			
09:55				STEAL by KUHSE, TOMMY
09:42		63-53	H 10	GOOD! LAYUP by FORD, JORDAN
09:33	TIMEOUT 30SEC			
09:33	SUB OUT: POLK JR., DARRYL			
09:33	SUB IN: SMITH, KEITH			
09:29	GOOD! LAYUP by OHIA OBIOHA, VICTOR	63-55	H 8	
09:29	ASSIST by ROSS, COLBEY			
09:10	FOUL (PERSONAL) by OHIA OBIOHA, VICTOR			
08:59		66-55	H 11	GOOD! 3PTR by FORD, JORDAN
08:46	GOOD! JUMPER by EDWARDS, KESSLER	66-57	H 9	
08:46	ASSIST by SMITH, KEITH			
08:25		68-57	H 11	GOOD! LAYUP by FORD, JORDAN [PNT]
08:25				ASSIST by BOWEN, KYLE
08:12	GOOD! LAYUP by ROSS, COLBEY	68-59	H 9	
07:46				MISSED 3PTR by FORD, JORDAN
07:40	REBOUND (DEF) by ROSS, COLBEY			
07:37	TURNOVER (TRAVEL) by ROSS, COLBEY			
07:37				
07:37	SUB OUT: CHAVEZ, SKYLAR			
07:37	SUB IN: ALTMAN, SEDRICK			
07:22	FOUL (PERSONAL) by SMITH, KEITH			
07:10				MISSED 3PTR by FITTS, MALIK
07:07	REBOUND (DEF) by ROSS, COLBEY			
06:56	GOOD! 3PTR by EDWARDS, KESSLER	68-62	H 6	
06:56	ASSIST by OHIA OBIOHA, VICTOR			
06:37				TURNOVER (BADPASS) by KUHSE, TOMMY
06:37	SUB OUT: OHIA OBIOHA, VICTOR			
06:37	SUB IN: EDWARDS, KAMERON			
06:37				SUB OUT: BOWEN, KYLE
06:37				SUB IN: FOTU, DAN
06:21	GOOD! LAYUP by EDWARDS, KESSLER	68-64	H 4	
05:51				MISSED JUMPER by FITTS, MALIK
05:48	REBOUND (DEF) by EDWARDS, KESSLER			
05:41	GOOD! 3PTR by ROSS, COLBEY	68-67	H 1	
05:09	FOUL (PERSONAL) by ROSS, COLBEY			
05:09		69-67	H 2	GOOD! FT by KUHSE, TOMMY
05:09				SUB OUT: FITTS, MALIK
05:09				SUB IN: BOWEN, KYLE
05:09		70-67	H 3	GOOD! FT by KUHSE, TOMMY
04:56	MISSED 3PTR by ROSS, COLBEY			
04:51				REBOUND (DEF) by BOWEN, KYLE
04:27				MISSED JUMPER by KREBS, TANNER
04:27	BLOCK by EDWARDS, KESSLER			
04:18	REBOUND (DEF) by EDWARDS, KESSLER			
04:17	MISSED LAYUP by ALTMAN, SEDRICK			
04:13				REBOUND (DEF) by BOWEN, KYLE
03:53		72-67	H 5	GOOD! LAYUP by FORD, JORDAN [PNT]
03:36	MISSED JUMPER by EDWARDS, KESSLER			

Time	VISITORS: Pepperdine	Score	Margin	HOME: Saint Mary's (CA)
03:32				REBOUND (DEF) by KUHSE, TOMMY
03:09				MISSED 3PTR by FORD, JORDAN
03:06	REBOUND (DEF) by SMITH, KEITH			
03:01	GOOD! 3PTR by ROSS, COLBEY [FB]	72-70	H 2	
02:32	FOUL (PERSONAL) by ALTMAN, SEDRICK			
02:32				
02:32				MISSED FT by FORD, JORDAN
02:30	REBOUND (DEF) by EDWARDS, KAMERON			
02:01	MISSED JUMPER by SMITH, KEITH			
01:55				REBOUND (DEF) by FOTU, DAN
01:48				TIMEOUT 30SEC
01:48				SUB OUT: BOWEN, KYLE
01:48				SUB IN: FITTS, MALIK
01:33				MISSED LAYUP by KUHSE, TOMMY
01:30	REBOUND (DEF) by EDWARDS, KESSLER			
01:15	MISSED LAYUP by ROSS, COLBEY			
01:12				REBOUND (DEF) by KUHSE, TOMMY
00:49				TURNOVER (LOSTBALL) by KREBS, TANNER
00:49	STEAL by SMITH, KEITH			
00:39	TURNOVER (LOSTBALL) by EDWARDS, KAMERON			
00:39				STEAL by KREBS, TANNER
00:11				MISSED LAYUP by FORD, JORDAN
00:11	BLOCK by ALTMAN, SEDRICK			
00:09	REBOUND (DEF) by ROSS, COLBEY			
00:09				FOUL (PERSONAL) by FOTU, DAN
00:09	GOOD! FT by ROSS, COLBEY [FB]	72-71	H 1	
00:09	GOOD! FT by ROSS, COLBEY [FB]	72-72	T	
00:04				MISSED 3PTR by FORD, JORDAN
00:02				REBOUND (OFF) by KUHSE, TOMMY
00:02				MISSED LAYUP by KUHSE, TOMMY
00:00				REBOUND (OFF) by TEAM

### Pepperdine 72, Saint Mary's (CA) 72

Points from (This Period)	PEP	SMC
In the Paint	16	16
Off Turns	4	4
2nd Chance	4	5
Fast Break	6	4
Bench	2	2

Official Play-By-Play  
**Pepperdine vs Saint Mary's (CA)**  
Overtime  
March 07, 2020



### Period 3

#### Starters:

Pepperdine: 0 ALTMAN, SEDRICK (G); 4 ROSS, COLBEY (G); 15 EDWARDS, KESSLER (F); 20 EDWARDS, KAMERON (F); 33 CHAVEZ, SKYLAR (G);

Saint Mary's (CA): 0 KREBS, TANNER (G); 3 FORD, JORDAN (G); 12 KUHSE, TOMMY (G); 24 FITTS, MALIK (F); 42 FOTU, DAN (F);

Time	VISITORS: Pepperdine	Score	Margin	HOME: Saint Mary's (CA)
04:45	MISSED JUMPER by ROSS, COLBEY			
04:42				REBOUND (DEF) by KUHSE, TOMMY
04:38		75-72	H 3	GOOD! 3PTR by KREBS, TANNER [FB]
04:38				ASSIST by KUHSE, TOMMY
04:09	GOOD! 3PTR by ALTMAN, SEDRICK	75-75	T	
04:09	ASSIST by ROSS, COLBEY			
03:38				MISSED 3PTR by FORD, JORDAN
03:35	REBOUND (DEF) by ROSS, COLBEY			
03:23	GOOD! LAYUP by ROSS, COLBEY	75-77	V 2	
03:00				MISSED 3PTR by KREBS, TANNER
02:55	REBOUND (DEF) by SMITH, KEITH			
02:40	TURNOVER (LOSTBALL) by ROSS, COLBEY			
02:40				SUB OUT: KUHSE, TOMMY
02:40				SUB IN: DUCAS, ALEX
02:23	FOUL (PERSONAL) by ROSS, COLBEY			
02:23				MISSED FT by FITTS, MALIK
02:23				REBOUND (OFF) by TEAM
02:23				SUB OUT: DUCAS, ALEX
02:23				SUB IN: KUHSE, TOMMY
02:23				MISSED FT by FITTS, MALIK
02:21	REBOUND (DEF) by EDWARDS, KAMERON			
02:08	TURNOVER (BADPASS) by ROSS, COLBEY			
02:08				STEAL by FOTU, DAN
02:02		77-77	T	GOOD! LAYUP by FORD, JORDAN
02:02				ASSIST by KUHSE, TOMMY
01:36	MISSED JUMPER by ROSS, COLBEY			
01:33				REBOUND (DEF) by KUHSE, TOMMY
01:21	FOUL (PERSONAL) by EDWARDS, KESSLER			
01:21		78-77	H 1	GOOD! FT by FITTS, MALIK
01:21		79-77	H 2	GOOD! FT by FITTS, MALIK
01:21				SUB OUT: FITTS, MALIK
01:21				SUB IN: BOWEN, KYLE
01:21				TIMEOUT TEAM
01:21	SUB OUT: SMITH, KEITH			
01:21	SUB IN: CHAVEZ, SKYLAR			
01:11	MISSED LAYUP by EDWARDS, KAMERON			
01:09				REBOUND (DEF) by BOWEN, KYLE
00:43				MISSED JUMPER by FORD, JORDAN
00:39	REBOUND (DEF) by EDWARDS, KESSLER			
00:30	GOOD! LAYUP by ROSS, COLBEY	79-79	T	
00:30				FOUL (PERSONAL) by KUHSE, TOMMY
00:30				SUB OUT: BOWEN, KYLE
00:30				SUB IN: FITTS, MALIK
00:30	SUB OUT: CHAVEZ, SKYLAR			
00:30	SUB IN: SMITH, KEITH			
00:30	GOOD! FT by ROSS, COLBEY	79-80	V 1	
00:18	FOUL (PERSONAL) by EDWARDS, KESSLER			
00:18		80-80	T	GOOD! FT by KREBS, TANNER
00:18				SUB OUT: FITTS, MALIK
00:18				SUB IN: BOWEN, KYLE
00:18				MISSED FT by KREBS, TANNER
00:16	REBOUND (DEF) by EDWARDS, KAMERON			
00:02	MISSED JUMPER by ROSS, COLBEY			
00:00				REBOUND (DEF) by KUHSE, TOMMY

### Pepperdine 80, Saint Mary's (CA) 80

Points from (This Period)	PEP	SMC
In the Paint	4	2
Off Turns	0	2
2nd Chance	0	0
Fast Break	0	3
Bench	0	0

## Period 4

### Starters:

Pepperdine: 0 ALTMAN, SEDRICK (G); 4 ROSS, COLBEY (G); 15 EDWARDS, KESSLER (F); 20 EDWARDS, KAMERON (F); 33 CHAVEZ, SKYLAR (G);

Saint Mary's (CA): 0 KREBS, TANNER (G); 3 FORD, JORDAN (G); 12 KUHSE, TOMMY (G); 24 FITTS, MALIK (F); 42 FOTU, DAN (F);

Time	VISITORS: Pepperdine	Score	Margin	HOME: Saint Mary's (CA)
05:00				SUB OUT: BOWEN, KYLE
05:00				SUB IN: FITTS, MALIK
04:40	MISSED 3PTR by ROSS, COLBEY			
04:36				REBOUND (DEF) by FITTS, MALIK
04:15				MISSED 3PTR by FITTS, MALIK
04:11	REBOUND (DEF) by EDWARDS, KAMERON			
03:51	GOOD! DUNK by SMITH, KEITH	80-82	V 2	
03:51	ASSIST by EDWARDS, KAMERON			
03:33				MISSED 3PTR by KUHSE, TOMMY
03:29	REBOUND (DEF) by EDWARDS, KAMERON			
03:03	TURNOVER (LOSTBALL) by ROSS, COLBEY			
03:03				STEAL by FORD, JORDAN
03:03				SUB OUT: KUHSE, TOMMY
03:03				SUB OUT: FITTS, MALIK
03:03				SUB IN: BOWEN, KYLE
03:03				SUB IN: DUCAS, ALEX
02:47				MISSED 3PTR by KREBS, TANNER
02:43				REBOUND (OFF) by DUCAS, ALEX
02:41		82-82	T	GOOD! LAYUP by DUCAS, ALEX
02:24	MISSED 3PTR by ALTMAN, SEDRICK			
02:20				REBOUND (DEF) by FOTU, DAN
02:00		84-82	H 2	GOOD! LAYUP by FORD, JORDAN [PNT]
01:35	TURNOVER (LOSTBALL) by EDWARDS, KESSLER			
01:35				STEAL by BOWEN, KYLE
01:07				MISSED JUMPER by FORD, JORDAN
01:03	REBOUND (DEF) by EDWARDS, KESSLER			
00:56	MISSED JUMPER by ROSS, COLBEY			
00:52				REBOUND (DEF) by KREBS, TANNER
00:42				TIMEOUT TEAM
00:42				SUB OUT: DUCAS, ALEX
00:42				SUB IN: KUHSE, TOMMY
00:34				TIMEOUT TEAM
00:26		87-82	H 5	GOOD! 3PTR by FORD, JORDAN
00:22	MISSED 3PTR by ROSS, COLBEY			
00:19				REBOUND (DEF) by FORD, JORDAN
00:19	FOUL (PERSONAL) by ROSS, COLBEY			
00:19	SUB OUT: SMITH, KEITH			
00:19	SUB IN: CHAVEZ, SKYLAR			
00:19	SUB OUT: ROSS, COLBEY			
00:19	SUB IN: SMITH, KEITH			
00:19		88-82	H 6	GOOD! FT by FORD, JORDAN [FB]
00:19		89-82	H 7	GOOD! FT by FORD, JORDAN [FB]
00:16	MISSED 3PTR by EDWARDS, KESSLER			
00:14				REBOUND (DEF) by TEAM

Pepperdine 82, Saint Mary's (CA) 89

Points from (This Period)	PEP	SMC
In the Paint	2	4
Off Turns	0	2
2nd Chance	0	2
Fast Break	0	2
Bench	2	2

**Official Scoring/Possession Reference Chart  
Pepperdine vs Saint Mary's (CA)**

**Period 1  
March 07, 2020**



**Period 1**

**Starters:**

**Pepperdine:** 0 ALTMAN, SEDRICK (G); 4 ROSS, COLBEY (G); 15 EDWARDS, KESSLER (F); 20 EDWARDS, KAMERON (F); 33 CHAVEZ, SKYLAR (G);  
**Saint Mary's (CA):** 0 KREBS, TANNER (G); 3 FORD, JORDAN (G); 12 KUHSE, TOMMY (G); 24 FITTS, MALIK (F); 42 FOTU, DAN (F);

Time	VISITORS: Pepperdine	Score	Margin	HOME: Saint Mary's (CA)
19:40	GOOD! JUMPER by ROSS, COLBEY [PNT]	0-2	V 2	
18:53	GOOD! 3PTR by ROSS, COLBEY	0-5	V 5	
18:26		2-5	V 3	GOOD! LAYUP by FOTU, DAN
18:11	GOOD! JUMPER by ROSS, COLBEY	2-7	V 5	
17:52		4-7	V 3	GOOD! JUMPER by FITTS, MALIK [PNT]
17:29		6-7	V 1	GOOD! LAYUP by KUHSE, TOMMY [FB]
17:12	GOOD! LAYUP by EDWARDS, KAMERON [PNT]	6-9	V 3	
16:47	GOOD! LAYUP by EDWARDS, KAMERON [FB]	6-11	V 5	
14:41	GOOD! FT by OHIA OBIOHA, VICTOR	6-12	V 6	
14:41	GOOD! FT by OHIA OBIOHA, VICTOR	6-13	V 7	
14:09		8-13	V 5	GOOD! LAYUP by FOTU, DAN
13:35		10-13	V 3	GOOD! LAYUP by FORD, JORDAN [FB]
13:35		11-13	V 2	GOOD! FT by FORD, JORDAN [FB]
12:47		13-13	T	GOOD! LAYUP by KUHSE, TOMMY
12:30	GOOD! 3PTR by EDWARDS, KESSLER	13-16	V 3	
12:12		15-16	V 1	GOOD! JUMPER by FORD, JORDAN [PNT]
11:58	GOOD! 3PTR by EDWARDS, KESSLER	15-19	V 4	
11:33		17-19	V 2	GOOD! LAYUP by FORD, JORDAN
10:53		19-19	T	GOOD! LAYUP by KREBS, TANNER
10:53		20-19	H 1	GOOD! FT by KREBS, TANNER
10:09		23-19	H 4	GOOD! 3PTR by FITTS, MALIK
09:50	GOOD! FT by ROSS, COLBEY	23-20	H 3	
09:50	GOOD! FT by ROSS, COLBEY	23-21	H 2	
07:51		25-21	H 4	GOOD! LAYUP by FORD, JORDAN [PNT]
07:09		27-21	H 6	GOOD! LAYUP by BOWEN, KYLE
05:10		29-21	H 8	GOOD! LAYUP by FITTS, MALIK [FB]
04:50	GOOD! FT by ROSS, COLBEY	29-22	H 7	
04:49	GOOD! FT by ROSS, COLBEY	29-23	H 6	
04:14		30-23	H 7	GOOD! FT by PERRY, JOCK [FB]
04:14		31-23	H 8	GOOD! FT by PERRY, JOCK [FB]
03:42		33-23	H 10	GOOD! JUMPER by PERRY, JOCK
03:26	GOOD! 3PTR by ROSS, COLBEY	33-26	H 7	
02:11		36-26	H 10	GOOD! 3PTR by FORD, JORDAN
01:56	GOOD! FT by ROSS, COLBEY	36-27	H 9	
01:56	GOOD! FT by ROSS, COLBEY	36-28	H 8	
01:36		38-28	H 10	GOOD! JUMPER by BOWEN, KYLE [PNT]
01:12	GOOD! 3PTR by ALTMAN, SEDRICK	38-31	H 7	
00:55		40-31	H 9	GOOD! LAYUP by FORD, JORDAN

**Pepperdine 31, Saint Mary's (CA) 40**

**Official Scoring/Possession Reference Chart**  
**Pepperdine vs Saint Mary's (CA)**  
**Period 2**  
**March 07, 2020**



**Period 2**

**Starters:**

**Pepperdine:** 0 ALTMAN, SEDRICK (G); 4 ROSS, COLBEY (G); 15 EDWARDS, KESSLER (F); 20 EDWARDS, KAMERON (F); 33 CHAVEZ, SKYLAR (G);  
**Saint Mary's (CA):** 0 KREBS, TANNER (G); 3 FORD, JORDAN (G); 12 KUHSE, TOMMY (G); 24 FITTS, MALIK (F); 42 FOTU, DAN (F);

Time	VISITORS: Pepperdine	Score	Margin	HOME: Saint Mary's (CA)
19:40		42-31	H 11	GOOD! JUMPER by FOTU, DAN [PNT]
19:22	GOOD! FT by EDWARDS, KESSLER	42-32	H 10	
18:55		45-32	H 13	GOOD! 3PTR by KUHSE, TOMMY
18:07	GOOD! LAYUP by CHAVEZ, SKYLAR	45-34	H 11	
17:38	GOOD! 3PTR by ROSS, COLBEY	45-37	H 8	
17:12		47-37	H 10	GOOD! LAYUP by FORD, JORDAN [PNT]
16:54	GOOD! 3PTR by ROSS, COLBEY	47-40	H 7	
16:18	GOOD! FT by ROSS, COLBEY [FB]	47-41	H 6	
15:39	GOOD! 3PTR by ROSS, COLBEY	47-44	H 3	
15:19		50-44	H 6	GOOD! 3PTR by FORD, JORDAN
14:54		52-44	H 8	GOOD! LAYUP by FORD, JORDAN [FB/PNT]
14:32	GOOD! LAYUP by EDWARDS, KESSLER	52-46	H 6	
14:32	GOOD! FT by EDWARDS, KESSLER	52-47	H 5	
14:12		54-47	H 7	GOOD! LAYUP by KUHSE, TOMMY [PNT]
13:45	GOOD! JUMPER by ROSS, COLBEY [PNT]	54-49	H 5	
13:27		55-49	H 6	GOOD! FT by FITTS, MALIK
13:27		56-49	H 7	GOOD! FT by FITTS, MALIK
13:00	GOOD! LAYUP by EDWARDS, KESSLER	56-51	H 5	
11:42		59-51	H 8	GOOD! 3PTR by FORD, JORDAN
10:52	GOOD! DUNK by EDWARDS, KESSLER	59-53	H 6	
10:15		61-53	H 8	GOOD! DUNK by BOWEN, KYLE [FB/PNT]
09:42		63-53	H 10	GOOD! LAYUP by FORD, JORDAN
09:29	GOOD! LAYUP by OHIA OBIOHA, VICTOR	63-55	H 8	
08:59		66-55	H 11	GOOD! 3PTR by FORD, JORDAN
08:46	GOOD! JUMPER by EDWARDS, KESSLER	66-57	H 9	
08:25		68-57	H 11	GOOD! LAYUP by FORD, JORDAN [PNT]
08:12	GOOD! LAYUP by ROSS, COLBEY	68-59	H 9	
06:56	GOOD! 3PTR by EDWARDS, KESSLER	68-62	H 6	
06:21	GOOD! LAYUP by EDWARDS, KESSLER	68-64	H 4	
05:41	GOOD! 3PTR by ROSS, COLBEY	68-67	H 1	
05:09		69-67	H 2	GOOD! FT by KUHSE, TOMMY
05:09		70-67	H 3	GOOD! FT by KUHSE, TOMMY
03:53		72-67	H 5	GOOD! LAYUP by FORD, JORDAN [PNT]
03:01	GOOD! 3PTR by ROSS, COLBEY [FB]	72-70	H 2	
00:09	GOOD! FT by ROSS, COLBEY [FB]	72-71	H 1	
00:09	GOOD! FT by ROSS, COLBEY [FB]	72-72	T	

**Pepperdine 72, Saint Mary's (CA) 72**

**Official Scoring/Possession Reference Chart**  
**Pepperdine vs Saint Mary's (CA)**  
**Period 3**  
**March 07, 2020**



**Period 3**

**Starters:**

**Pepperdine:** 0 ALTMAN, SEDRICK (G); 4 ROSS, COLBEY (G); 15 EDWARDS, KESSLER (F); 20 EDWARDS, KAMERON (F); 33 CHAVEZ, SKYLAR (G);  
**Saint Mary's (CA):** 0 KREBS, TANNER (G); 3 FORD, JORDAN (G); 12 KUHSE, TOMMY (G); 24 FITTS, MALIK (F); 42 FOTU, DAN (F);

Time	VISITORS: Pepperdine	Score	Margin	HOME: Saint Mary's (CA)
04:38		75-72	H 3	GOOD! 3PTR by KREBS, TANNER [FB]
04:09	GOOD! 3PTR by ALTMAN, SEDRICK	75-75	T	
03:23	GOOD! LAYUP by ROSS, COLBEY	75-77	V 2	
02:02		77-77	T	GOOD! LAYUP by FORD, JORDAN
01:21		78-77	H 1	GOOD! FT by FITTS, MALIK
01:21		79-77	H 2	GOOD! FT by FITTS, MALIK
00:30	GOOD! LAYUP by ROSS, COLBEY	79-79	T	
00:30	GOOD! FT by ROSS, COLBEY	79-80	V 1	
00:18		80-80	T	GOOD! FT by KREBS, TANNER

**Pepperdine 80, Saint Mary's (CA) 80**

**Official Scoring/Possession Reference Chart**  
**Pepperdine vs Saint Mary's (CA)**  
**Period 4**  
**March 07, 2020**



**Period 4**

**Starters:**

**Pepperdine:** 0 ALTMAN, SEDRICK (G); 4 ROSS, COLBEY (G); 15 EDWARDS, KESSLER (F); 20 EDWARDS, KAMERON (F); 33 CHAVEZ, SKYLAR (G);  
**Saint Mary's (CA):** 0 KREBS, TANNER (G); 3 FORD, JORDAN (G); 12 KUHSE, TOMMY (G); 24 FITTS, MALIK (F); 42 FOTU, DAN (F);

Time	VISITORS: Pepperdine	Score	Margin	HOME: Saint Mary's (CA)
03:51	GOOD! DUNK by SMITH, KEITH	80-82	V 2	
02:41		82-82	T	GOOD! LAYUP by DUCAS, ALEX
02:00		84-82	H 2	GOOD! LAYUP by FORD, JORDAN [PNT]
00:26		87-82	H 5	GOOD! 3PTR by FORD, JORDAN
00:19		88-82	H 6	GOOD! FT by FORD, JORDAN [FB]
00:19		89-82	H 7	GOOD! FT by FORD, JORDAN [FB]

**Pepperdine 82, Saint Mary's (CA) 89**



**Official Substitutions Log  
Pepperdine vs Saint Mary's (CA)  
Period 1  
March 07, 2020**



VISITORS: Pepperdine	Time	Score	HOME: Saint Mary's (CA)
0 ALTMAN, SEDRICK			0 KREBS, TANNER
4 ROSS, COLBEY			3 FORD, JORDAN
15 EDWARDS, KESSLER			12 KUHSE, TOMMY
20 EDWARDS, KAMERON			24 FITTS, MALIK
33 CHAVEZ, SKYLAR			42 FOTU, DAN
SUB OUT: 20 EDWARDS, KAMERON	15:29	11-6	
SUB IN: 34 OHIA OBIOHA, VICTOR	15:29		
	15:08	11-6	SUB OUT: FITTS, MALIK
	15:08		SUB IN: BOWEN, KYLE
SUB OUT: 33 CHAVEZ, SKYLAR	14:41	12-6	
SUB IN: 2 POLK JR., DARRYL	14:41		
	11:57	19-15	SUB OUT: KUHSE, TOMMY
	11:57		SUB OUT: FOTU, DAN
	11:57		SUB IN: FITTS, MALIK
	11:57		SUB IN: DUCAS, ALEX
SUB OUT: 0 ALTMAN, SEDRICK	11:57		
SUB OUT: 2 POLK JR., DARRYL	11:57		
SUB IN: 11 SMITH, KEITH	11:57		
SUB IN: 33 CHAVEZ, SKYLAR	11:57		
	09:50	21-23	SUB OUT: KREBS, TANNER
	09:50		SUB OUT: BOWEN, KYLE
	09:50		SUB IN: PERRY, JOCK
	09:50		SUB IN: KUHSE, TOMMY
SUB OUT: 34 OHIA OBIOHA, VICTOR	09:50		
SUB IN: 20 EDWARDS, KAMERON	09:50		
	08:46	21-23	SUB OUT: PERRY, JOCK
	08:46		SUB IN: BOWEN, KYLE
SUB OUT: 11 SMITH, KEITH	08:46		
SUB IN: 0 ALTMAN, SEDRICK	08:46		
SUB OUT: 4 ROSS, COLBEY	08:42	21-23	
SUB IN: 2 POLK JR., DARRYL	08:42		
SUB OUT: 20 EDWARDS, KAMERON	08:19	21-23	
SUB IN: 34 OHIA OBIOHA, VICTOR	08:19		
	07:21	21-25	SUB OUT: DUCAS, ALEX
	07:21		SUB IN: KREBS, TANNER
SUB OUT: 2 POLK JR., DARRYL	06:32	21-27	
SUB IN: 4 ROSS, COLBEY	06:32		
	04:50	21-29	SUB OUT: BOWEN, KYLE
	04:50		SUB IN: PERRY, JOCK
	01:56	26-36	SUB OUT: PERRY, JOCK
	01:56		SUB IN: BOWEN, KYLE
SUB OUT: 34 OHIA OBIOHA, VICTOR	01:56		
SUB IN: 50 STORMO, JACKSON	01:56		
	01:56		SUB OUT: KREBS, TANNER
	01:56		SUB IN: DUCAS, ALEX
	00:29	31-40	SUB OUT: KUHSE, TOMMY
	00:29		SUB IN: JOHNSON, LOGAN
SUB OUT: 4 ROSS, COLBEY	00:29		
SUB IN: 2 POLK JR., DARRYL	00:29		
	00:29		SUB OUT: DUCAS, ALEX
	00:29		SUB IN: KREBS, TANNER

**Pepperdine 31, Saint Mary's (CA) 40**

**Official Substitutions Log**  
**Pepperdine vs Saint Mary's (CA)**  
**Period 2**  
**March 07, 2020**



VISITORS: Pepperdine	Time	Score	HOME: Saint Mary's (CA)
0 ALTMAN, SEDRICK			0 KREBS, TANNER
4 ROSS, COLBEY			3 FORD, JORDAN
15 EDWARDS, KESSLER			12 KUHSE, TOMMY
20 EDWARDS, KAMERON			24 FITTS, MALIK
33 CHAVEZ, SKYLAR			42 FOTU, DAN
	20:00	-	SUB OUT: JOHNSON, LOGAN
	20:00		SUB OUT: BOWEN, KYLE
	20:00		SUB IN: KUHSE, TOMMY
	20:00		SUB IN: FOTU, DAN
SUB OUT: 2 POLK JR., DARRYL	20:00		
SUB OUT: 50 STORMO, JACKSON	20:00		
SUB IN: 4 ROSS, COLBEY	20:00		
SUB IN: 20 EDWARDS, KAMERON	20:00		
SUB OUT: 20 EDWARDS, KAMERON	17:50	34-45	
SUB IN: 34 OHIA OBIOHA, VICTOR	17:50		
	15:16	44-50	SUB OUT: KREBS, TANNER
	15:16		SUB IN: DUCAS, ALEX
	13:27	49-55	SUB OUT: DUCAS, ALEX
	13:27		SUB IN: KREBS, TANNER
	13:05	49-56	SUB OUT: FITTS, MALIK
	13:05		SUB IN: BOWEN, KYLE
	10:27	53-59	SUB OUT: FOTU, DAN
	10:27		SUB IN: FITTS, MALIK
SUB OUT: 0 ALTMAN, SEDRICK	10:27		
SUB IN: 2 POLK JR., DARRYL	10:27		
SUB OUT: 2 POLK JR., DARRYL	09:33	53-63	
SUB IN: 11 SMITH, KEITH	09:33		
SUB OUT: 33 CHAVEZ, SKYLAR	07:37	59-68	
SUB IN: 0 ALTMAN, SEDRICK	07:37		
SUB OUT: 34 OHIA OBIOHA, VICTOR	06:37	62-68	
SUB IN: 20 EDWARDS, KAMERON	06:37		
	06:37		SUB OUT: BOWEN, KYLE
	06:37		SUB IN: FOTU, DAN
	05:09	67-69	SUB OUT: FITTS, MALIK
	05:09		SUB IN: BOWEN, KYLE
	01:48	70-72	SUB OUT: BOWEN, KYLE
	01:48		SUB IN: FITTS, MALIK

**Pepperdine 72, Saint Mary's (CA) 72**



**Official Substitutions Log**  
**Pepperdine vs Saint Mary's (CA)**  
**Period 3**  
**March 07, 2020**



<b>VISITORS: Pepperdine</b>	<b>Time</b>	<b>Score</b>	<b>HOME: Saint Mary's (CA)</b>
0 ALTMAN, SEDRICK			0 KREBS, TANNER
4 ROSS, COLBEY			3 FORD, JORDAN
15 EDWARDS, KESSLER			12 KUHSE, TOMMY
20 EDWARDS, KAMERON			24 FITTS, MALIK
33 CHAVEZ, SKYLAR			42 FOTU, DAN
	02:40	77-75	SUB OUT: KUHSE, TOMMY
	02:40		SUB IN: DUCAS, ALEX
	02:23	77-75	SUB OUT: DUCAS, ALEX
	02:23		SUB IN: KUHSE, TOMMY
	01:21	77-79	SUB OUT: FITTS, MALIK
	01:21		SUB IN: BOWEN, KYLE
SUB OUT: 11 SMITH, KEITH	01:21		
SUB IN: 33 CHAVEZ, SKYLAR	01:21		
	00:30	79-79	SUB OUT: BOWEN, KYLE
	00:30		SUB IN: FITTS, MALIK
SUB OUT: 33 CHAVEZ, SKYLAR	00:30		
SUB IN: 11 SMITH, KEITH	00:30		
	00:18	80-80	SUB OUT: FITTS, MALIK
	00:18		SUB IN: BOWEN, KYLE

**Pepperdine 80, Saint Mary's (CA) 80**



**Official Substitutions Log**  
**Pepperdine vs Saint Mary's (CA)**  
**Period 4**  
**March 07, 2020**



<b>VISITORS: Pepperdine</b>	<b>Time</b>	<b>Score</b>	<b>HOME: Saint Mary's (CA)</b>
0 ALTMAN, SEDRICK			0 KREBS, TANNER
4 ROSS, COLBEY			3 FORD, JORDAN
15 EDWARDS, KESSLER			12 KUHSE, TOMMY
20 EDWARDS, KAMERON			24 FITTS, MALIK
33 CHAVEZ, SKYLAR			42 FOTU, DAN
	05:00	-	SUB OUT: BOWEN, KYLE
	05:00		SUB IN: FITTS, MALIK
	03:03	82-80	SUB OUT: KUHSE, TOMMY
	03:03		SUB OUT: FITTS, MALIK
	03:03		SUB IN: BOWEN, KYLE
	03:03		SUB IN: DUCAS, ALEX
	00:42	82-84	SUB OUT: DUCAS, ALEX
	00:42		SUB IN: KUHSE, TOMMY
SUB OUT: 11 SMITH, KEITH	00:19	82-87	
SUB IN: 33 CHAVEZ, SKYLAR	00:19		
SUB OUT: 4 ROSS, COLBEY	00:19		
SUB IN: 11 SMITH, KEITH	00:19		

**Pepperdine 82, Saint Mary's (CA) 89**

Official Shot Chart  
 Pepperdine vs Saint Mary's (CA)  
 PERIOD 1 Shots  
 March 07, 2020

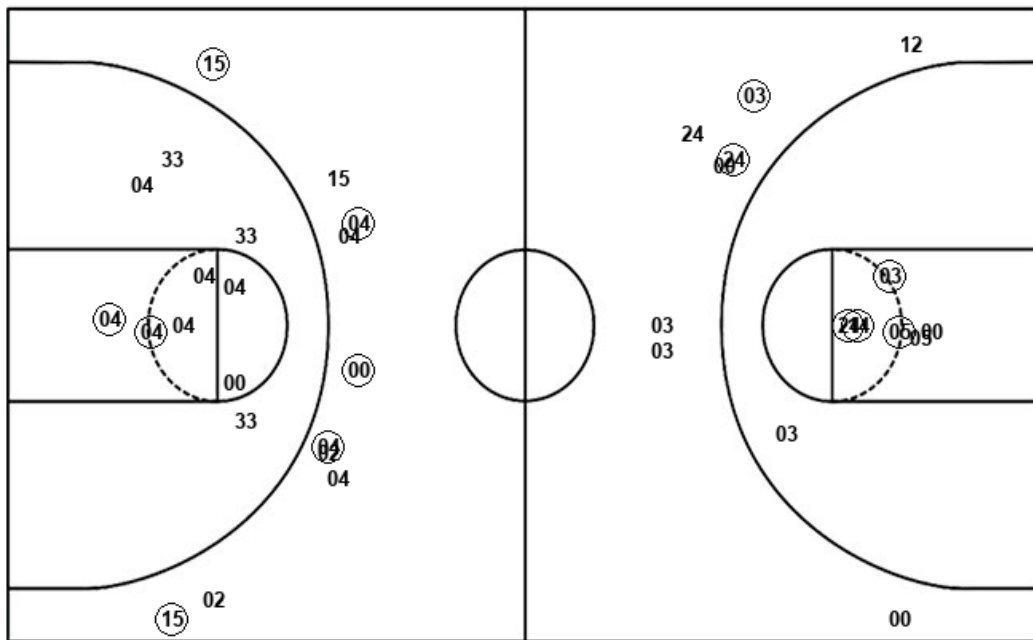


Saint Mary's (CA)

Pepperdine

Layups  
 03 42 12 24 12  
 42 03 12 03 00  
 00 03 14 24 12  
 03 01

Layups  
 20 20 33 33



Dunks

Dunks

SMC : Period 1	Made	Att	Pct
Layups	11	17	64.7
Dunks	0	0	0
2PT Field Goals	15	24	62.5
3PT Field Goals	2	8	25.0
<b>Total Field Goals</b>	<b>17</b>	<b>32</b>	<b>53.1</b>

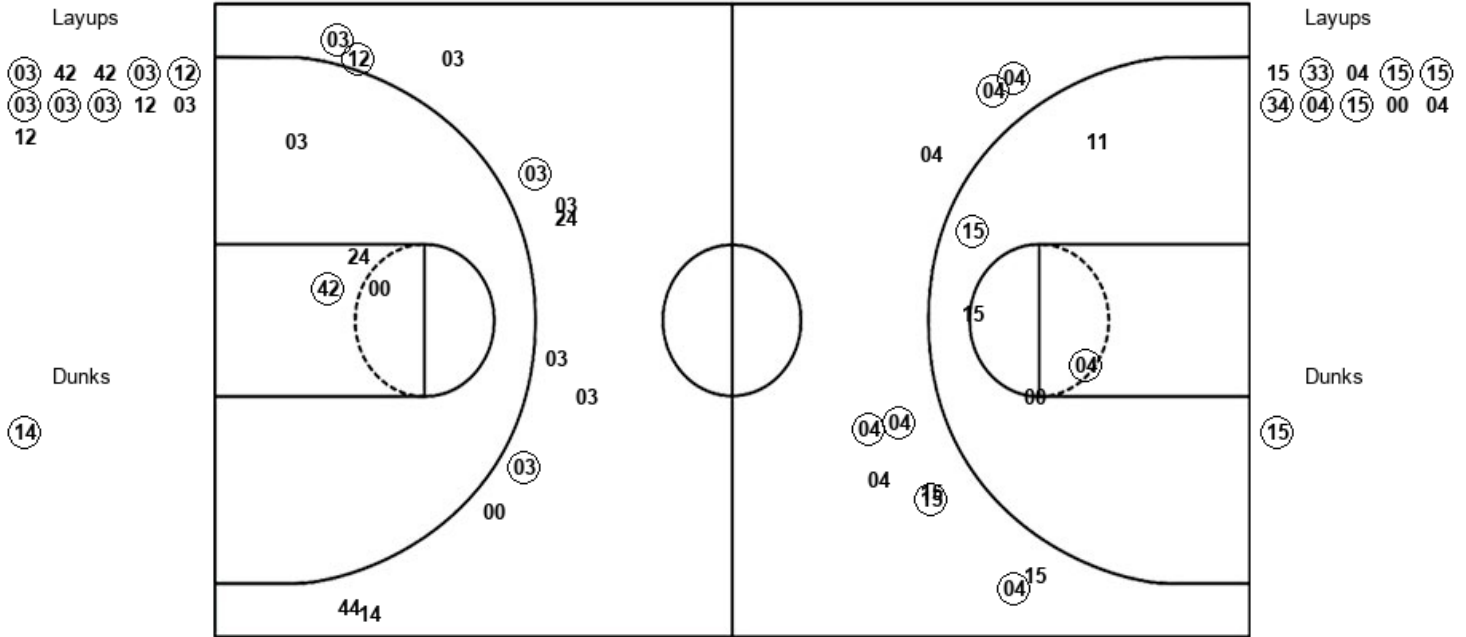
PEP : Period 1	Made	Att	Pct
Layups	2	4	50.0
Dunks	0	0	0
2PT Field Goals	4	14	28.6
3PT Field Goals	5	10	50.0
<b>Total Field Goals</b>	<b>9</b>	<b>24</b>	<b>37.5</b>

Official Shot Chart  
 Pepperdine vs Saint Mary's (CA)  
 PERIOD 2 Shots  
 March 07, 2020



Saint Mary's (CA)

Pepperdine



SMC : Period 2	Made	Att	Pct
Layups	6	11	54.5
Dunks	1	1	100.0
2PT Field Goals	8	16	50.0
3PT Field Goals	4	12	33.3
<b>Total Field Goals</b>	<b>12</b>	<b>28</b>	<b>42.9</b>

PEP : Period 2	Made	Att	Pct
Layups	6	10	60.0
Dunks	1	1	100.0
2PT Field Goals	9	16	56.3
3PT Field Goals	6	10	60.0
<b>Total Field Goals</b>	<b>15</b>	<b>26</b>	<b>57.7</b>

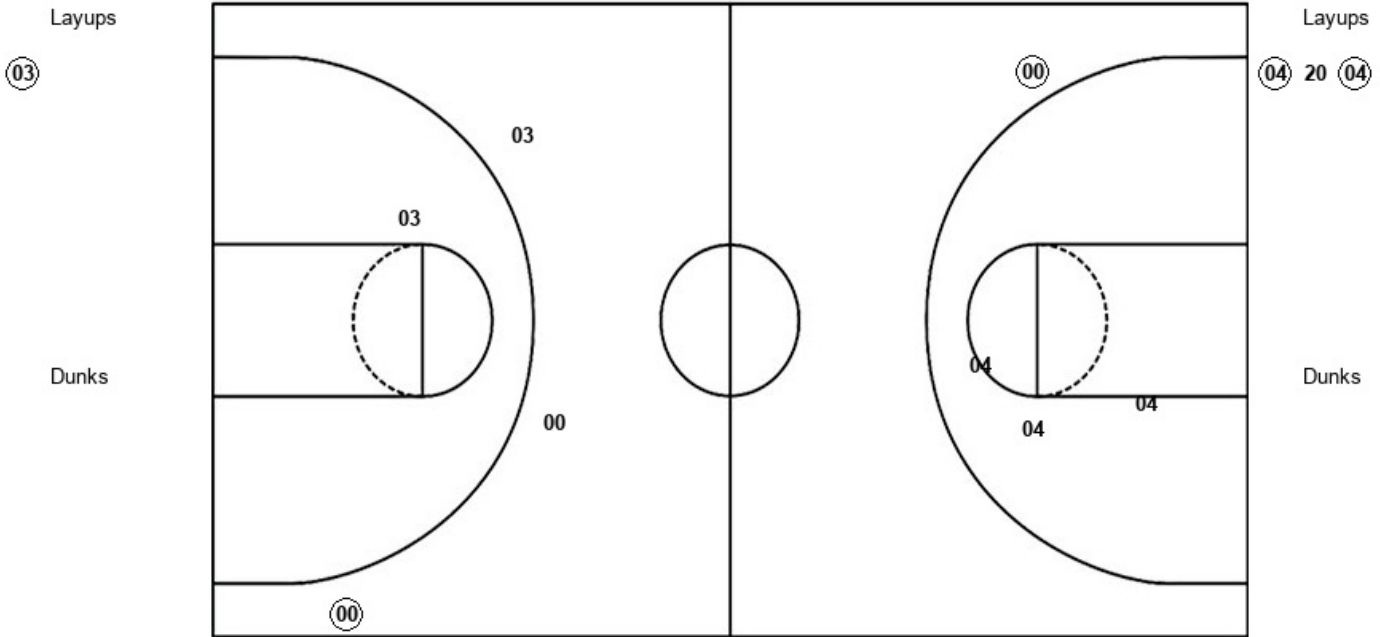


Official Shot Chart  
 Pepperdine vs Saint Mary's (CA)  
 PERIOD 3 Shots  
 March 07, 2020



Saint Mary's (CA)

Pepperdine



SMC : Period 3	Made	Att	Pct
Layups	1	1	100.0
Dunks	0	0	0
2PT Field Goals	1	2	50.0
3PT Field Goals	1	3	33.3
<b>Total Field Goals</b>	<b>2</b>	<b>5</b>	<b>40.0</b>

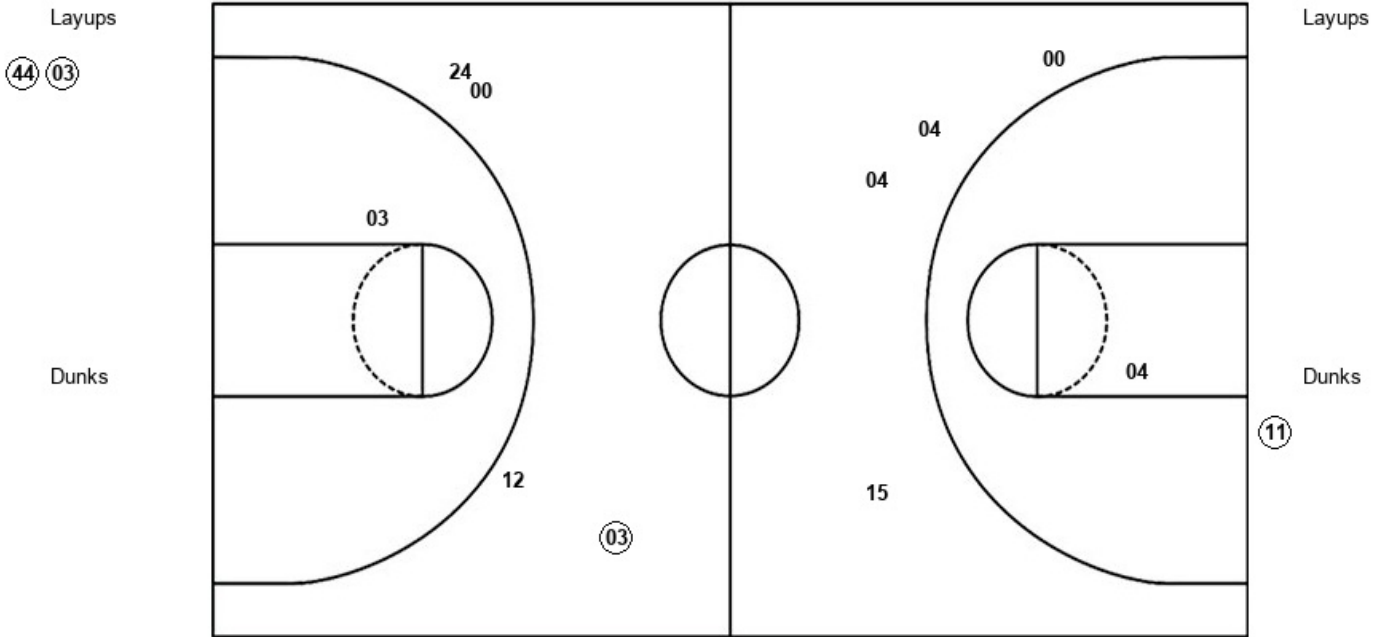
PEP : Period 3	Made	Att	Pct
Layups	2	3	66.7
Dunks	0	0	0
2PT Field Goals	2	6	33.3
3PT Field Goals	1	1	100.0
<b>Total Field Goals</b>	<b>3</b>	<b>7</b>	<b>42.9</b>

Official Shot Chart  
 Pepperdine vs Saint Mary's (CA)  
 PERIOD 4 Shots  
 March 07, 2020



Saint Mary's (CA)

Pepperdine



SMC : Period 4	Made	Att	Pct
Layups	2	2	100.0
Dunks	0	0	0
2PT Field Goals	2	3	66.7
3PT Field Goals	1	4	25.0
<b>Total Field Goals</b>	<b>3</b>	<b>7</b>	<b>42.9</b>

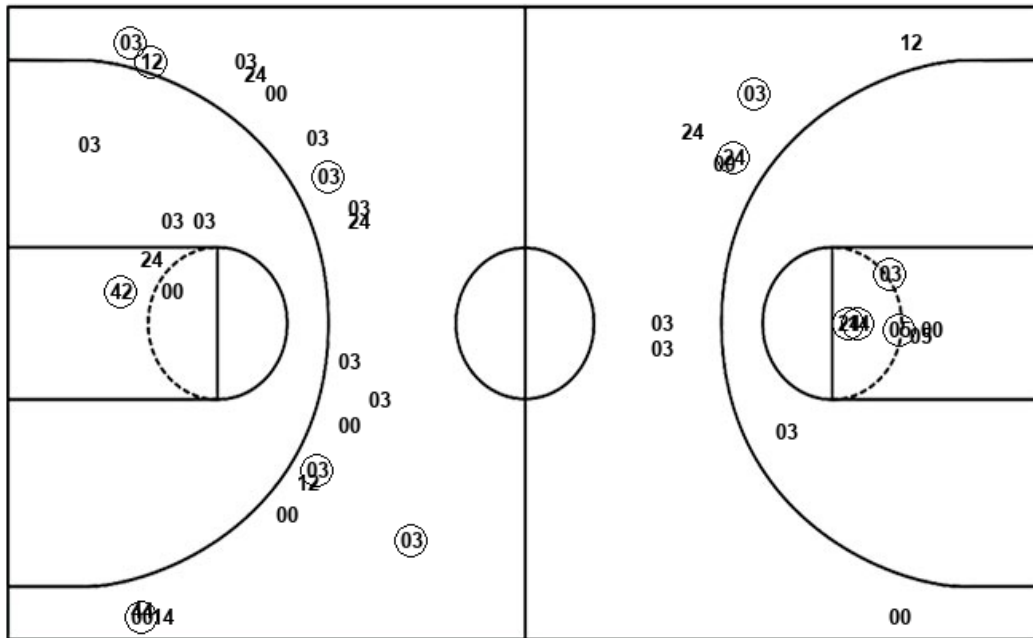
PEP : Period 4	Made	Att	Pct
Layups	0	0	0
Dunks	1	1	100.0
2PT Field Goals	1	2	50.0
3PT Field Goals	0	4	00.0
<b>Total Field Goals</b>	<b>1</b>	<b>6</b>	<b>16.7</b>



**Official Shot Chart**  
**Pepperdine vs Saint Mary's (CA)**  
**Saint Mary's (CA) Team Shots**  
**March 07, 2020**



Layups



Layups

03	42	12	24	12
42	03	12	03	00
00	03	14	24	12
03	01	03	42	42
03	12	03	03	03
12	03	12	03	44
03				

Dunks

Dunks

14

SMC : Period 1	Made	Att	Pct
Layups	11	17	64.7
Dunks	0	0	0
2PT Field Goals	15	24	62.5
3PT Field Goals	2	8	25.0
<b>Total Field Goals</b>	<b>17</b>	<b>32</b>	<b>53.1</b>

SMC : Period 3	Made	Att	Pct
Layups	1	1	100.0
Dunks	0	0	0
2PT Field Goals	1	2	50.0
3PT Field Goals	1	3	33.3
<b>Total Field Goals</b>	<b>2</b>	<b>5</b>	<b>40.0</b>

SMC : Period 2	Made	Att	Pct
Layups	6	11	54.5
Dunks	1	1	100.0
2PT Field Goals	8	16	50.0
3PT Field Goals	4	12	33.3
<b>Total Field Goals</b>	<b>12</b>	<b>28</b>	<b>42.9</b>

SMC : Period 4	Made	Att	Pct
Layups	2	2	100.0
Dunks	0	0	0
2PT Field Goals	2	3	66.7
3PT Field Goals	1	4	25.0
<b>Total Field Goals</b>	<b>3</b>	<b>7</b>	<b>42.9</b>