

FINAL SCORE



Southern California

66

UCLA



73

Pac-12 Women's Basketball Tournament

March 06, 2020 • Mandalay Bay Arena - Las Vegas. NV



FINAL STATISTICS

Official Box Score
Southern California vs UCLA
Game Totals -- Final Statistics
March 06, 2020 at Mandalay Bay Arena - Las Vegas. NV



Southern California 66

No.	Player	S	Pts	FG	3FG	FT	OR	DR	TR	PF	A	TO	Blk	Stl	Min	+/-
01	OVERBECK, KAYLA	F	12	5-10	0-0	2-3	5	8	13	4	1	5	1	2	40	-7
04	ROGERS, ENDYIA	G	18	7-16	2-4	2-3	1	2	3	5	5	5	0	1	32	4
22	WHITE, KYRA	G	5	2-6	1-3	0-0	0	2	2	1	1	0	0	1	11	3
24	CALDWELL, DESIREE	G	6	2-7	1-4	1-2	0	1	1	2	0	0	1	1	38	-4
35	PILI, ALISSA	F	11	3-8	0-1	5-6	0	6	6	4	1	3	0	0	20	-7
11	JEUNE, ALIYAH	G	11	5-10	1-5	0-1	0	6	6	4	2	3	1	3	31	-18
25	MIURA, ALYSON	G	3	1-3	1-2	0-0	0	3	3	3	1	0	0	0	28	-6
TEAM							3	1	4	0		0				
TOTALS			66	25-60	6-19	10-15	9	29	38	23	11	16	3	8	200	

Shooting By Period

Period	FG	FG%	3FG	3FG%	FT	FT%
1st Qtr	9-14	64%	2-5	40%	3-4	75%
2nd Qtr	5-14	36%	3-6	50%	0-0	0%
3rd Qtr	6-22	27%	1-5	20%	3-4	75%
4th Qtr	5-10	50%	0-3	00%	4-7	57%
1st Half	14-28	50%	5-11	45%	3-4	75%
2nd Half	11-32	34%	1-8	13%	7-11	64%
Game	25-60	41.7%	6-19	31.6%	10-15	66.7%

Deadball Rebounds: 3,0

Last FG: 4th-00:45

Biggest Run: 12-0

Largest lead: By 15 at 1st-02:17

Technical Fouls: #11 JEUNE @ 4th - 05:16;

UCLA 73

No.	Player	S	Pts	FG	3FG	FT	OR	DR	TR	PF	A	TO	Blk	Stl	Min	+/-
04	CORSARO, LINDSEY	G	11	4-10	3-5	0-0	1	2	3	1	4	2	2	0	33	15
20	OSBORNE, CHARISMA	G	9	4-10	0-3	1-3	2	2	4	1	1	1	0	1	26	16
21	ONYENWERE, MICHAELA	F	26	11-27	0-4	4-4	6	9	15	2	1	3	1	0	35	9
24	DEAN, JAPREECE	G	9	2-11	0-1	5-6	4	4	8	2	9	3	0	3	38	7
33	MILLER, LAURYN	F	2	1-4	0-0	0-0	0	2	2	5	3	0	2	0	22	8
00	HORVAT, CHANTEL	G	2	1-5	0-2	0-0	0	2	2	3	0	2	1	0	20	-4
03	JEFFERSON, KIARA	G	0	0-2	0-2	0-0	0	1	1	0	0	0	0	0	8	-10
23	CHOU, NATALIE	G	14	5-5	2-2	2-3	0	2	2	0	0	1	1	3	16	-5
35	BROWN, CAMRYN	G	0	0-0	0-0	0-0	0	0	0	0	0	0	0	0	3	-1
TEAM							4	3	7	0		1				
TOTALS			73	28-74	5-19	12-16	17	27	44	14	18	13	7	7	200	

Shooting By Period

Period	FG	FG%	3FG	3FG%	FT	FT%
1st Qtr	5-22	23%	0-7	00%	2-3	67%
2nd Qtr	10-16	63%	4-6	67%	1-1	100%
3rd Qtr	4-15	27%	1-2	50%	0-0	0%
4th Qtr	9-21	43%	0-4	00%	9-12	75%
1st Half	15-38	39%	4-13	31%	3-4	75%
2nd Half	13-36	36%	1-6	17%	9-12	75%
Game	28-74	37.8%	5-19	26.3%	12-16	75.0%

Deadball Rebounds: 4,1

Last FG: 4th-02:40

Biggest Run: 9-0

Largest lead: By 9 at 4th-02:40

Technical Fouls: None.

Game Notes:

Officials: Michol Murray, Michael Price, InFini Robinson

Attendance: 5548

Start Time: 09:06 PM ET

End Time: 11:03 PM ET

Game Duration: 1:56

Neutral Court;

Score	1st	2nd	3rd	4th	TOT
USC	23	13	16	14	66
UCL	12	25	9	27	73

USC led for 18:51. UCLA led for 18:28.

Game was tied for 2:41.

Times tied: 6

Lead Changes: 9

Points from	USC	UCL
In the Paint	26	28
Off Turns	11	24
2nd Chance	9	16
Fast Break	6	10
Bench	14	16

Official Box Score
Southern California vs UCLA
First Half Statistics Only
March 06, 2020 at Mandalay Bay Arena - Las Vegas. NV



Southern California 36

No.	Player	S	Pts	FG	3FG	FT	OR	DR	TR	PF	A	TO	Blk	Stl	Min	+/-
04	ROGERS, ENDYIA	G	15	6-10	2-4	1-2	1	1	2	2	3	1	0	1	18	6
11	JEUNE, ALIYAH	G	0	0-1	0-0	0-0	0	1	1	2	1	2	0	1	14	-13
22	WHITE, KYRA	G	5	2-3	1-2	0-0	0	2	2	0	0	0	0	0	8	6
24	CALDWELL, DESIREE	G	3	1-2	1-2	0-0	0	1	1	0	0	0	0	0	19	-2
25	MIURA, ALYSON	G	3	1-3	1-2	0-0	0	0	0	1	1	0	0	0	11	-3
35	PILI, ALISSA	F	4	1-4	0-1	2-2	0	3	3	3	0	2	0	0	10	2
01	OVERBECK, KAYLA	F	6	3-5	0-0	0-0	1	4	5	2	0	2	1	2	20	-1
	TEAM		0	0-0	0-0	0-0	1	1	2	0	0	0	0	0	0	
TOTALS			36	14-28	5-11	3-4	3	13	16	10	5	7	1	4	100	

Shooting By Period

Period	FG	FG%	3FG	3FG%	FT	FT%
1st Qtr	9-14	64%	2-5	40%	3-4	75%
2nd Qtr	5-14	36%	3-6	50%	0-0	0%
1st Half	14-28	50%	5-11	45%	3-4	75%
Game	25-60	41.7%	6-19	31.6%	10-15	66.7%

Deadball Rebounds: 3,0

Last FG Half: USC 2nd-01:26

UCLA 37

No.	Player	S	Pts	FG	3FG	FT	OR	DR	TR	PF	A	TO	Blk	Stl	Min	+/-
00	HORVAT, CHANTEL	G	2	1-1	0-0	0-0	0	2	2	0	0	2	1	0	10	-3
03	JEFFERSON, KIARA	G	0	0-2	0-2	0-0	0	0	0	0	0	0	0	0	4	-7
04	CORSARO, LINDSEY	G	6	2-4	2-2	0-0	1	0	1	1	2	2	0	0	15	5
20	OSBORNE, CHARISMA	G	3	1-5	0-3	1-1	2	2	4	1	1	0	0	0	11	1
21	ONYENWERE, MICHAELA	F	8	4-11	0-3	0-0	2	2	4	0	1	1	0	0	16	5
23	CHOU, NATALIE	G	12	4-4	2-2	2-3	0	0	0	0	0	0	1	3	10	3
24	DEAN, JAPREECE	G	4	2-8	0-1	0-0	2	2	4	1	5	1	0	1	20	1
33	MILLER, LAURYN	F	2	1-3	0-0	0-0	0	2	2	1	2	0	1	0	11	1
35	BROWN, CAMRYN	G	0	0-0	0-0	0-0	0	0	0	0	0	0	0	0	3	-1
	TEAM		0	0-0	0-0	0-0	2	1	3	0	0	0	0	0	0	
TOTALS			37	15-38	4-13	3-4	9	11	20	4	11	6	3	4	100	

Shooting By Period

Period	FG	FG%	3FG	3FG%	FT	FT%
1st Qtr	5-22	23%	0-7	00%	2-3	67%
2nd Qtr	10-16	63%	4-6	67%	1-1	100%
1st Half	15-38	39%	4-13	31%	3-4	75%
Game	28-74	37.8%	5-19	26.3%	12-16	75.0%

Deadball Rebounds: 4,1

Last FG Half: UCL 2nd-01:54

Game Notes:

Officials: Michol Murray, Michael Price, InFini Robinson
Attendance: 5548

Start Time: 09:06 PM ET
End Time: 11:03 PM ET
Game Duration: 1:56
Neutral Court;

Score	1st	2nd	3rd	4th	TOT
USC	23	13	16	14	66
UCL	12	25	9	27	73

Points from (This Period)	USC	UCL
In the Paint	8	16
Off Turns	7	8
2nd Chance	2	9
Fast Break	0	4
Bench	3	14

Official Box Score
Southern California vs UCLA
First Quarter Statistics Only
March 06, 2020 at Mandalay Bay Arena - Las Vegas. NV



Southern California 23

No.	Player	S	Pts	FG	3FG	FT	OR	DR	TR	PF	A	TO	Blk	Stl	Min	+/-
01	OVERBECK, KAYLA	F	6	3-3	0-0	0-0	0	3	3	2	0	1	0	1	10	11
04	ROGERS, ENDYIA	G	8	3-5	1-2	1-2	1	0	1	1	1	0	0	1	10	11
22	WHITE, KYRA	G	5	2-3	1-2	0-0	0	1	1	0	0	0	0	0	6	13
24	CALDWELL, DESIREE	G	0	0-1	0-1	0-0	0	0	0	0	0	0	0	0	9	10
35	PILI, ALISSA	F	4	1-1	0-0	2-2	0	3	3	2	0	1	0	0	5	12
11	JEUNE, ALIYAH	G	0	0-0	0-0	0-0	0	1	1	1	1	1	0	0	5	-1
25	MIURA, ALYSON	G	0	0-1	0-0	0-0	0	0	0	1	0	0	0	0	5	-1
TEAM							0	0	0	0		0				
TOTALS			23	9-14	2-5	3-4	1	8	9	7	2	3	0	2	50	

Shooting By Period

Period	FG	FG%	3FG	3FG%	FT	FT%
1st Qtr	9-14	64%	2-5	40%	3-4	75%
2nd Qtr	5-14	36%	3-6	50%	0-0	0%
1st Half	9-14	64%	2-5	40%	3-4	75%
1st Half	14-28	50%	5-11	45%	3-4	75%
Game	25-60	41.7%	6-19	31.6%	10-15	66.7%

Deadball Rebounds: 3,0

UCLA 12

No.	Player	S	Pts	FG	3FG	FT	OR	DR	TR	PF	A	TO	Blk	Stl	Min	+/-
04	CORSARO, LINDSEY	G	0	0-1	0-0	0-0	1	0	1	0	1	1	0	0	7	-7
20	OSBORNE, CHARISMA	G	3	1-5	0-3	1-1	2	1	3	1	1	0	0	0	7	-2
21	ONYENWERE, MICHAELA	F	2	1-8	0-3	0-0	1	2	3	0	0	1	0	0	8	-7
24	DEAN, JAPREECE	G	4	2-6	0-0	0-0	2	0	2	1	0	1	0	0	10	-11
33	MILLER, LAURYN	F	0	0-0	0-0	0-0	0	1	1	1	1	0	0	0	5	-6
00	HORVAT, CHANTEL	G	2	1-1	0-0	0-0	0	0	0	0	0	1	0	0	6	-8
03	JEFFERSON, KIARA	G	0	0-1	0-1	0-0	0	0	0	0	0	0	0	0	3	-9
23	CHOU, NATALIE	G	1	0-0	0-0	1-2	0	0	0	0	0	0	0	2	3	-4
35	BROWN, CAMRYN	G	0	0-0	0-0	0-0	0	0	0	0	0	0	0	0	1	-1
TEAM							2	0	2	0		0				
TOTALS			12	5-22	0-7	2-3	8	4	12	3	3	4	0	2	50	

Shooting By Period

Period	FG	FG%	3FG	3FG%	FT	FT%
1st Qtr	5-22	23%	0-7	00%	2-3	67%
2nd Qtr	10-16	63%	4-6	67%	1-1	100%
1st Half	5-22	23%	0-7	00%	2-3	67%
1st Half	15-38	39%	4-13	31%	3-4	75%
Game	28-74	37.8%	5-19	26.3%	12-16	75.0%

Deadball Rebounds: 4,1

Game Notes:

Officials: Michol Murray, Michael Price, InFini Robinson
Attendance: 5548

Start Time: 09:06 PM ET

End Time: 11:03 PM ET

Game Duration: 1:56

Neutral Court;

Score	1st	2nd	3rd	4th	TOT
USC	23	13	16	14	66
UCL	12	25	9	27	73

Points from (This Period)	USC	UCL
In the Paint	6	8
Off Turns	7	1
2nd Chance	2	7
Fast Break	0	1
Bench	0	3

Official Play-By-Play
Southern California vs UCLA
First Quarter
March 06, 2020 at Mandalay Bay Arena - Las Vegas. NV



Period 1

Starters:

Southern California: 4 ROGERS,ENDYIA (G); 22 WHITE,KYRA (G); 24 CALDWELL,DESIREE (G); 35 PILI,ALISSA (F); 1 OVERBECK,KAYLA (F);
UCLA: 4 CORSARO,LINDSEY (G); 20 OSBORNE,CHARISMA (G); 21 ONYENWERE,MICHAELA (F); 24 DEAN,JAPREECE (G); 33 MILLER,LAURYN (F);

Time	VISITORS: Southern California	Score	Margin	HOME: UCLA
09:41				TURNOVER (BADPASS) by ONYENWERE, MICHAELA
09:22	GOOD! JUMPER by WHITE, KYRA	0-2	V 2	
09:06				MISSED JUMPER by ONYENWERE, MICHAELA
09:03	REBOUND (DEF) by PILI, ALISSA			
08:54	MISSED 3PTR by ROGERS, ENDYIA			
08:50				REBOUND (DEF) by OSBORNE, CHARISMA
08:44				MISSED 3PTR by ONYENWERE, MICHAELA
08:39	REBOUND (DEF) by PILI, ALISSA			
08:19	MISSED 3PTR by WHITE, KYRA			
08:15				REBOUND (DEF) by MILLER, LAURYN
08:09				TURNOVER (TRAVEL) by CORSARO, LINDSEY
08:09				SUB OUT: OSBORNE, CHARISMA
08:09				SUB OUT: MILLER, LAURYN
08:09				SUB IN: HORVAT, CHANTEL
08:09				SUB IN: JEFFERSON, KIARA
07:57	GOOD! JUMPER by PILI, ALISSA	0-4	V 4	
07:46	FOUL (PERSONAL) by OVERBECK, KAYLA			
07:39				MISSED JUMPER by ONYENWERE, MICHAELA
07:38				REBOUND (OFF) by TEAM
07:38	FOUL (PERSONAL) by PILI, ALISSA			
07:29				MISSED 3PTR by ONYENWERE, MICHAELA
07:26	REBOUND (DEF) by OVERBECK, KAYLA			
07:14	GOOD! JUMPER by ROGERS, ENDYIA	0-6	V 6	
07:04				TURNOVER (LOSTBALL) by DEAN, JAPREECE
07:04	STEAL by ROGERS, ENDYIA			
06:57	GOOD! 3PTR by WHITE, KYRA	0-9	V 9	
06:57	ASSIST by ROGERS, ENDYIA			
06:54				TIMEOUT 30SEC
06:37				MISSED 3PTR by ONYENWERE, MICHAELA
06:31				REBOUND (OFF) by CORSARO, LINDSEY
06:30				MISSED LAYUP by CORSARO, LINDSEY
06:27	REBOUND (DEF) by WHITE, KYRA			
06:16	MISSED 3PTR by CALDWELL, DESIREE			
06:12				REBOUND (DEF) by ONYENWERE, MICHAELA
06:06				MISSED 3PTR by JEFFERSON, KIARA
06:02	REBOUND (DEF) by PILI, ALISSA			
05:52				FOUL (PERSONAL) by DEAN, JAPREECE
05:52				SUB OUT: JEFFERSON, KIARA
05:52				SUB OUT: CORSARO, LINDSEY
05:52				SUB OUT: ONYENWERE, MICHAELA
05:52				SUB IN: OSBORNE, CHARISMA
05:52				SUB IN: CHOU, NATALIE
05:52				SUB IN: MILLER, LAURYN
05:52	GOOD! FT by PILI, ALISSA	0-10	V 10	
05:52	GOOD! FT by PILI, ALISSA	0-11	V 11	
05:39		2-11	V 9	GOOD! JUMPER by DEAN, JAPREECE
05:39				ASSIST by MILLER, LAURYN
05:20	GOOD! 3PTR by ROGERS, ENDYIA	2-14	V 12	
05:01				TURNOVER (BADPASS) by HORVAT, CHANTEL
05:01	STEAL by OVERBECK, KAYLA			
04:50	TURNOVER (BADPASS) by PILI, ALISSA			
04:50				STEAL by CHOU, NATALIE
04:43				MISSED 3PTR by OSBORNE, CHARISMA
04:39				REBOUND (OFF) by TEAM
04:39	FOUL (PERSONAL) by PILI, ALISSA			
04:39	SUB OUT: WHITE, KYRA			
04:39	SUB OUT: PILI, ALISSA			
04:39	SUB IN: JEUNE, ALIYAH			
04:39	SUB IN: MIURA, ALYSON			
04:37				MISSED JUMPER by DEAN, JAPREECE
04:34	REBOUND (DEF) by JEUNE, ALIYAH			
04:22				FOUL (PERSONAL) by MILLER, LAURYN
04:22				SUB OUT: HORVAT, CHANTEL
04:22				SUB IN: ONYENWERE, MICHAELA
04:17	GOOD! LAYUP by OVERBECK, KAYLA	2-16	V 14	
04:17	ASSIST by JEUNE, ALIYAH			
04:06				MISSED LAYUP by DEAN, JAPREECE
04:02				REBOUND (OFF) by DEAN, JAPREECE
03:56	FOUL (PERSONAL) by ROGERS, ENDYIA			
03:41		4-16	V 12	GOOD! LAYUP by DEAN, JAPREECE (PNT)

Time	VISITORS: Southern California	Score	Margin	HOME: UCLA
03:32	TURNOVER (BADPASS) by JEUNE, ALIYAH			
03:32				STEAL by CHOU, NATALIE
03:31	FOUL (PERSONAL) by JEUNE, ALIYAH			
03:31				MISSED FT by CHOU, NATALIE
03:31				REBOUND (OFF) by TEAM
03:31		5-16	V 11	GOOD! FT by CHOU, NATALIE [FB]
03:12	MISSED LAYUP by ROGERS, ENDYIA			
03:10	REBOUND (OFF) by ROGERS, ENDYIA			
03:03	GOOD! LAYUP by OVERBECK, KAYLA [PNT]	5-18	V 13	
02:55				MISSED 3PTR by OSBORNE, CHARISMA
02:51				REBOUND (OFF) by DEAN, JAPREECE
02:47				MISSED JUMPER by ONYENWERE, MICHAELA
02:44	REBOUND (DEF) by OVERBECK, KAYLA			
02:44	FOUL (OFF) by OVERBECK, KAYLA			
02:44				MISSED JUMPER by OSBORNE, CHARISMA
02:44	TURNOVER (OFFENSIVE) by OVERBECK, KAYLA			
02:37	REBOUND (DEF) by OVERBECK, KAYLA			
02:32				SUB OUT: CHOU, NATALIE
02:32				SUB OUT: MILLER, LAURYN
02:32				SUB IN: HORVAT, CHANTEL
02:32				SUB IN: CORSARO, LINDSEY
02:17	GOOD! JUMPER by OVERBECK, KAYLA	5-20	V 15	
02:07		7-20	V 13	GOOD! LAYUP by ONYENWERE, MICHAELA
02:07				ASSIST by OSBORNE, CHARISMA
01:44				FOUL (PERSONAL) by OSBORNE, CHARISMA
01:44	MISSED FT by ROGERS, ENDYIA			
01:44	REBOUND (OFF) by TEAM			
01:44	GOOD! FT by ROGERS, ENDYIA	7-21	V 14	
01:37				MISSED JUMPER by DEAN, JAPREECE
01:32				REBOUND (OFF) by ONYENWERE, MICHAELA
01:30				MISSED JUMPER by ONYENWERE, MICHAELA
01:30				REBOUND (OFF) by TEAM
01:27		9-21	V 12	GOOD! JUMPER by HORVAT, CHANTEL [PNT]
01:27				ASSIST by CORSARO, LINDSEY
01:03	MISSED JUMPER by MIURA, ALYSON			
00:58				REBOUND (DEF) by ONYENWERE, MICHAELA
00:51				MISSED JUMPER by DEAN, JAPREECE
00:47				REBOUND (OFF) by OSBORNE, CHARISMA
00:38				MISSED 3PTR by OSBORNE, CHARISMA
00:35				REBOUND (OFF) by OSBORNE, CHARISMA
00:35		11-21	V 10	GOOD! LAYUP by OSBORNE, CHARISMA
00:35	FOUL (PERSONAL) by MIURA, ALYSON			
00:35				SUB OUT: ONYENWERE, MICHAELA
00:35				SUB IN: BROWN, CAMRYN
00:35	SUB OUT: CALDWELL, DESIREE			
00:35	SUB IN: WHITE, KYRA			
00:35		12-21	V 9	GOOD! FT by OSBORNE, CHARISMA
00:35				SUB OUT: OSBORNE, CHARISMA
00:35				SUB IN: JEFFERSON, KIARA
00:05	GOOD! LAYUP by ROGERS, ENDYIA [PNT]	12-23	V 11	

Southern California 23, UCLA 12

Points from (This Period)	USC	UCL
In the Paint	6	8
Off Turns	7	1
2nd Chance	2	7
Fast Break	0	1
Bench	0	3

Official Box Score
Southern California vs UCLA
Second Quarter Statistics Only
March 06, 2020 at Mandalay Bay Arena - Las Vegas. NV



Southern California 13

No.	Player	S	Pts	FG	3FG	FT	OR	DR	TR	PF	A	TO	Blk	Stl	Min	+/-
01	OVERBECK, KAYLA	F	0	0-2	0-0	0-0	1	1	2	0	0	1	1	1	10	-12
04	ROGERS, ENDYIA	G	7	3-5	1-2	0-0	0	1	1	1	2	1	0	0	8	-5
22	WHITE, KYRA	G	0	0-0	0-0	0-0	0	1	1	0	0	0	0	0	2	-7
24	CALDWELL, DESIREE	G	3	1-1	1-1	0-0	0	1	1	0	0	0	0	0	10	-12
35	PILI, ALISSA	F	0	0-3	0-1	0-0	0	0	0	1	0	1	0	0	5	-10
11	JEUNE, ALIYAH	G	0	0-1	0-0	0-0	0	0	0	1	0	1	0	1	9	-12
25	MIURA, ALYSON	G	3	1-2	1-2	0-0	0	0	0	0	1	0	0	0	6	-2
TEAM							1	1	2	0		0				
TOTALS			13	5-14	3-6	0-0	2	5	7	3	3	4	1	2	50	

Shooting By Period

Period	FG	FG%	3FG	3FG%	FT	FT%
3rd Qtr	6-22	27%	1-5	20%	3-4	75%
4th Qtr	5-10	50%	0-3	00%	4-7	57%
2nd Half	5-14	36%	3-6	50%	0-0	0%
2nd Half	11-32	34%	1-8	13%	7-11	64%
Game	25-60	41.7%	6-19	31.6%	10-15	66.7%

Deadball Rebounds: 3,0

UCLA 25

No.	Player	S	Pts	FG	3FG	FT	OR	DR	TR	PF	A	TO	Blk	Stl	Min	+/-
04	CORSARO, LINDSEY	G	6	2-3	2-2	0-0	0	0	0	1	1	1	0	0	8	12
20	OSBORNE, CHARISMA	G	0	0-0	0-0	0-0	0	1	1	0	0	0	0	0	4	3
21	ONYENWERE, MICHAELA	F	6	3-3	0-0	0-0	1	0	1	0	1	0	0	0	8	12
24	DEAN, JAPREECE	G	0	0-2	0-1	0-0	0	2	2	0	5	0	0	1	10	12
33	MILLER, LAURYN	F	2	1-3	0-0	0-0	0	1	1	0	1	0	1	0	6	7
00	HORVAT, CHANTEL	G	0	0-0	0-0	0-0	0	2	2	0	0	1	1	0	4	5
03	JEFFERSON, KIARA	G	0	0-1	0-1	0-0	0	0	0	0	0	0	0	0	1	2
23	CHOU, NATALIE	G	11	4-4	2-2	1-1	0	0	0	0	0	0	1	1	7	7
35	BROWN, CAMRYN	G	0	0-0	0-0	0-0	0	0	0	0	0	0	0	0	2	0
TEAM							0	1	1	0		0				
TOTALS			25	10-16	4-6	1-1	1	7	8	1	8	2	3	2	50	

Shooting By Period

Period	FG	FG%	3FG	3FG%	FT	FT%
3rd Qtr	4-15	27%	1-2	50%	0-0	0%
4th Qtr	9-21	43%	0-4	00%	9-12	75%
2nd Half	10-16	63%	4-6	67%	1-1	100%
2nd Half	13-36	36%	1-6	17%	9-12	75%
Game	28-74	37.8%	5-19	26.3%	12-16	75.0%

Deadball Rebounds: 4,1

Game Notes:

Officials: Michol Murray, Michael Price, InFin Robinson
Attendance: 5548

Start Time: 09:06 PM ET
End Time: 11:03 PM ET
Game Duration: 1:56
Neutral Court;

Score	1st	2nd	3rd	4th	TOT
USC	23	13	16	14	66
UCL	12	25	9	27	73

Points from (This Period)	USC	UCL
In the Paint	2	8
Off Turns	0	7
2nd Chance	0	2
Fast Break	0	3
Bench	3	11

Official Play-By-Play
Southern California vs UCLA
Second Quarter
March 06, 2020 at Mandalay Bay Arena - Las Vegas. NV



Period 2

Starters:

Southern California: 4 ROGERS,ENDYIA (G); 22 WHITE,KYRA (G); 24 CALDWELL,DESIREE (G); 35 PILI,ALISSA (F); 1 OVERBECK,KAYLA (F);
UCLA: 4 CORSARO,LINDSEY (G); 20 OSBORNE,CHARISMA (G); 21 ONYENWERE,MICHAELA (F); 24 DEAN,JAPREECE (G); 33 MILLER,LAURYN (F);

Time	VISITORS: Southern California	Score	Margin	HOME: UCLA
09:55		14-23	V 9	GOOD! JUMPER by MILLER, LAURYN [PNT]
09:55				ASSIST by DEAN, JAPREECE
09:40	MISSED 3PTR by PILI, ALISSA			
09:35	REBOUND (OFF) by OVERBECK, KAYLA			
09:26	MISSED JUMPER by OVERBECK, KAYLA			
09:23				REBOUND (DEF) by TEAM
09:11				MISSED 3PTR by JEFFERSON, KIARA
09:05	REBOUND (DEF) by WHITE, KYRA			
08:42	TURNOVER (TRAVEL) by OVERBECK, KAYLA			
08:36				SUB OUT: HORVAT, CHANTEL
08:36				SUB OUT: BROWN, CAMRYN
08:36				SUB IN: ONYENWERE, MICHAELA
08:36				SUB IN: MILLER, LAURYN
08:36	SUB OUT: ROGERS, ENDYIA			
08:36	SUB OUT: MIURA, ALYSON			
08:36	SUB IN: CALDWELL, DESIREE			
08:36	SUB IN: PILI, ALISSA			
08:32		17-23	V 6	GOOD! 3PTR by CORSARO, LINDSEY
08:32				ASSIST by DEAN, JAPREECE
08:32				SUB OUT: JEFFERSON, KIARA
08:32				SUB IN: CHOU, NATALIE
08:11	MISSED JUMPER by PILI, ALISSA			
08:11				BLOCK by MILLER, LAURYN
08:07				REBOUND (DEF) by DEAN, JAPREECE
08:02		19-23	V 4	GOOD! JUMPER by CHOU, NATALIE
08:02				ASSIST by DEAN, JAPREECE
08:02	FOUL (PERSONAL) by JEUNE, ALIYAH			
08:02	SUB OUT: WHITE, KYRA			
08:02	SUB IN: ROGERS, ENDYIA			
08:02		20-23	V 3	GOOD! FT by CHOU, NATALIE
07:40	GOOD! 3PTR by CALDWELL, DESIREE	20-26	V 6	
07:40	ASSIST by ROGERS, ENDYIA			
07:24				MISSED JUMPER by MILLER, LAURYN
07:20				REBOUND (OFF) by ONYENWERE, MICHAELA
07:20		22-26	V 4	GOOD! LAYUP by ONYENWERE, MICHAELA
06:50	MISSED JUMPER by PILI, ALISSA			
06:50				BLOCK by CHOU, NATALIE
06:45				REBOUND (DEF) by DEAN, JAPREECE
06:42		25-26	V 1	GOOD! 3PTR by CHOU, NATALIE [FB]
06:42				ASSIST by DEAN, JAPREECE
06:26				FOUL (PERSONAL) by CORSARO, LINDSEY
06:26	SUB OUT: JEUNE, ALIYAH			
06:26	SUB IN: MIURA, ALYSON			
06:08	GOOD! 3PTR by MIURA, ALYSON	25-29	V 4	
06:08	ASSIST by ROGERS, ENDYIA			
06:00				SUB OUT: MILLER, LAURYN
06:00				SUB IN: HORVAT, CHANTEL
05:54		28-29	V 1	GOOD! 3PTR by CHOU, NATALIE
05:54				ASSIST by ONYENWERE, MICHAELA
05:31	TURNOVER (BADPASS) by PILI, ALISSA			
05:31				STEAL by CHOU, NATALIE
05:21	FOUL (PERSONAL) by PILI, ALISSA			
05:21	SUB OUT: PILI, ALISSA			
05:21	SUB IN: JEUNE, ALIYAH			
05:21		30-29	H 1	GOOD! LAYUP by ONYENWERE, MICHAELA
05:21				ASSIST by CORSARO, LINDSEY
05:06	MISSED 3PTR by MIURA, ALYSON			
05:01				REBOUND (DEF) by HORVAT, CHANTEL
05:00				TURNOVER (LOSTBALL) by HORVAT, CHANTEL
05:00	STEAL by JEUNE, ALIYAH			
04:51	TURNOVER (LOSTBALL) by JEUNE, ALIYAH			
04:51				STEAL by DEAN, JAPREECE
04:41				MISSED LAYUP by CORSARO, LINDSEY
04:41	BLOCK by OVERBECK, KAYLA			
04:34	REBOUND (DEF) by ROGERS, ENDYIA			
04:28	GOOD! 3PTR by ROGERS, ENDYIA	30-32	V 2	
04:28	ASSIST by MIURA, ALYSON			
04:14				MISSED JUMPER by DEAN, JAPREECE
04:09	REBOUND (DEF) by TEAM			
04:09				

Time	VISITORS: Southern California	Score	Margin	HOME: UCLA
04:05				SUB OUT: CHOU, NATALIE
04:05				SUB IN: OSBORNE, CHARISMA
03:49	MISSED JUMPER by OVERBECK, KAYLA			
03:49				BLOCK by HORVAT, CHANTEL
03:44				REBOUND (DEF) by HORVAT, CHANTEL
03:38		32-32	T	GOOD! JUMPER by ONYENWERE, MICHAELA [PNT]
03:19	GOOD! JUMPER by ROGERS, ENDYIA	32-34	V 2	
03:05		35-34	H 1	GOOD! 3PTR by CORSARO, LINDSEY
03:05				ASSIST by DEAN, JAPREECE
02:43	MISSED JUMPER by JEUNE, ALIYAH			
02:39				REBOUND (DEF) by OSBORNE, CHARISMA
02:25				TURNOVER (BADPASS) by CORSARO, LINDSEY
02:25	STEAL by OVERBECK, KAYLA			
02:04	FOUL (OFF) by ROGERS, ENDYIA			
02:04	TURNOVER (OFFENSIVE) by ROGERS, ENDYIA			
02:04				SUB OUT: HORVAT, CHANTEL
02:04				SUB OUT: CORSARO, LINDSEY
02:04				SUB OUT: ONYENWERE, MICHAELA
02:04				SUB IN: CHOU, NATALIE
02:04				SUB IN: MILLER, LAURYN
02:04				SUB IN: BROWN, CAMRYN
01:54		37-34	H 3	GOOD! JUMPER by CHOU, NATALIE
01:54				ASSIST by MILLER, LAURYN
01:26	GOOD! LAYUP by ROGERS, ENDYIA [PNT]	37-36	H 1	
01:01				MISSED 3PTR by DEAN, JAPREECE
00:55	REBOUND (DEF) by CALDWELL, DESIREE			
00:42	MISSED LAYUP by ROGERS, ENDYIA			
00:39				REBOUND (DEF) by MILLER, LAURYN
00:20				MISSED JUMPER by MILLER, LAURYN
00:17	REBOUND (DEF) by OVERBECK, KAYLA			
00:01	MISSED 3PTR by ROGERS, ENDYIA			
00:00	REBOUND (OFF) by TEAM			

Southern California 36, UCLA 37

Points from (This Period)	USC	UCL
In the Paint	2	8
Off Turns	0	7
2nd Chance	0	2
Fast Break	0	3
Bench	3	11

Official Box Score
Southern California vs UCLA
Second Half Statistics Only
March 06, 2020 at Mandalay Bay Arena - Las Vegas, NV



Southern California 30

No.	Player	S	Pts	FG	3FG	FT	OR	DR	TR	PF	A	TO	Blk	Stl	Min	+/-
04	ROGERS, ENDYIA	G	3	1-6	0-0	1-1	0	1	1	3	2	4	0	0	14	-2
11	JEUNE, ALIYAH	G	11	5-9	1-5	0-1	0	5	5	2	1	1	1	2	18	-5
22	WHITE, KYRA	G	0	0-3	0-1	0-0	0	0	0	1	1	0	0	1	4	-3
24	CALDWELL, DESIREE	G	3	1-5	0-2	1-2	0	0	0	2	0	0	1	1	18	-2
25	MIURA, ALYSON	G	0	0-0	0-0	0-0	0	3	3	2	0	0	0	0	16	-3
35	PILI, ALISSA	F	7	2-4	0-0	3-4	0	3	3	1	1	1	0	0	10	-9
01	OVERBECK, KAYLA	F	6	2-5	0-0	2-3	4	4	8	2	1	3	0	0	20	-6
	TEAM		0	0-0	0-0	0-0	2	0	2	0	0	0	0	0	0	
TOTALS			30	11-32	1-8	7-11	6	16	22	13	6	9	2	4	100	

Shooting By Period

Period	FG	FG%	3FG	3FG%	FT	FT%
3rd Qtr	6-22	27%	1-5	20%	3-4	75%
4th Qtr	5-10	50%	0-3	00%	4-7	57%
2nd Half	11-32	34%	1-8	13%	7-11	64%
Game	25-60	41.7%	6-19	31.6%	10-15	66.7%

Deadball Rebounds: 3,0

Last FG Half: USC 4th-00:45

UCLA 36

No.	Player	S	Pts	FG	3FG	FT	OR	DR	TR	PF	A	TO	Blk	Stl	Min	+/-
00	HORVAT, CHANTEL	G	0	0-4	0-2	0-0	0	0	0	3	0	0	0	0	10	-1
03	JEFFERSON, KIARA	G	0	0-0	0-0	0-0	0	1	1	0	0	0	0	0	4	-3
04	CORSARO, LINDSEY	G	5	2-6	1-3	0-0	0	2	2	0	2	0	2	0	19	10
20	OSBORNE, CHARISMA	G	6	3-5	0-0	0-2	0	0	0	0	0	1	0	1	15	15
21	ONYENWERE, MICHAELA	F	18	7-16	0-1	4-4	4	7	11	2	0	2	1	0	19	4
23	CHOU, NATALIE	G	2	1-1	0-0	0-0	0	2	2	0	0	1	0	0	6	-8
24	DEAN, JAPREECE	G	5	0-3	0-0	5-6	2	2	4	1	4	2	0	2	18	6
33	MILLER, LAURYN	F	0	0-1	0-0	0-0	0	0	0	4	1	0	1	0	10	7
35	BROWN, CAMRYN	G	0	0-0	0-0	0-0	0	0	0	0	0	0	0	0	0	0
	TEAM		0	0-0	0-0	0-0	2	2	4	0	0	1	0	0	0	
TOTALS			36	13-36	1-6	9-12	8	16	24	10	7	7	4	3	100	

Shooting By Period

Period	FG	FG%	3FG	3FG%	FT	FT%
3rd Qtr	4-15	27%	1-2	50%	0-0	0%
4th Qtr	9-21	43%	0-4	00%	9-12	75%
2nd Half	13-36	36%	1-6	17%	9-12	75%
Game	28-74	37.8%	5-19	26.3%	12-16	75.0%

Deadball Rebounds: 4,1

Last FG Half: UCL 4th-02:40

Game Notes:

Officials: Michol Murray, Michael Price, InFini Robinson
Attendance: 5548

Start Time: 09:06 PM ET

End Time: 11:03 PM ET

Game Duration: 1:56

Neutral Court;

Score	1st	2nd	3rd	4th	TOT
USC	23	13	16	14	66
UCL	12	25	9	27	73

Points from (This Period)	USC	UCL
In the Paint	18	12
Off Turns	4	16
2nd Chance	7	7
Fast Break	6	6
Bench	11	2

Official Box Score
Southern California vs UCLA
Third Quarter Statistics Only
March 06, 2020 at Mandalay Bay Arena - Las Vegas. NV



Southern California 30

No.	Player	S	Pts	FG	3FG	FT	OR	DR	TR	PF	A	TO	Blk	Stl	Min	+/-
01	OVERBECK, KAYLA	F	6	2-5	0-0	2-3	3	3	6	0	0	0	0	0	10	7
04	ROGERS, ENDYIA	G	3	1-6	0-0	1-1	0	1	1	0	2	0	0	0	10	7
22	WHITE, KYRA	G	0	0-3	0-1	0-0	0	0	0	1	1	0	0	1	4	-3
24	CALDWELL, DESIREE	G	0	0-2	0-1	0-0	0	0	0	0	0	0	1	1	10	7
35	PILI, ALISSA	F	2	1-2	0-0	0-0	0	0	0	1	0	1	0	0	2	-1
11	JEUNE, ALIYAH	G	5	2-4	1-3	0-0	0	2	2	1	0	0	0	1	8	8
25	MIURA, ALYSON	G	0	0-0	0-0	0-0	0	3	3	0	0	0	0	0	6	10
TEAM							2	0	2	0		0				
TOTALS			16	6-22	1-5	3-4	5	9	14	3	3	1	1	3	50	

Shooting By Period

Period	FG	FG%	3FG	3FG%	FT	FT%
2nd Half	0-0	0%	0-0	0%	0-0	0%
Game	25-60	41.7%	6-19	31.6%	10-15	66.7%

Deadball Rebounds: 3,0

UCLA 36

No.	Player	S	Pts	FG	3FG	FT	OR	DR	TR	PF	A	TO	Blk	Stl	Min	+/-
04	CORSARO, LINDSEY	G	3	1-3	1-1	0-0	0	1	1	0	1	0	2	0	9	-4
20	OSBORNE, CHARISMA	G	0	0-1	0-0	0-0	0	0	0	0	0	1	0	0	5	2
21	ONYENWERE, MICHAELA	F	4	2-6	0-0	0-0	1	5	6	1	0	1	1	0	10	-7
24	DEAN, JAPREECE	G	0	0-1	0-0	0-0	0	1	1	0	1	2	0	0	8	-7
33	MILLER, LAURYN	F	0	0-1	0-0	0-0	0	0	0	1	0	0	1	0	4	-2
00	HORVAT, CHANTEL	G	0	0-2	0-1	0-0	0	0	0	2	0	0	0	0	6	-5
03	JEFFERSON, KIARA	G	0	0-0	0-0	0-0	0	1	1	0	0	0	0	0	4	-3
23	CHOU, NATALIE	G	2	1-1	0-0	0-0	0	1	1	0	0	1	0	0	5	-9
35	BROWN, CAMRYN	G	0	0-0	0-0	0-0	0	0	0	0	0	0	0	0	0	0
TEAM							1	2	3	0		0				
TOTALS			9	4-15	1-2	0-0	2	11	13	4	2	5	4	0	50	

Shooting By Period

Period	FG	FG%	3FG	3FG%	FT	FT%
2nd Half	0-0	0%	0-0	0%	0-0	0%
Game	28-74	37.8%	5-19	26.3%	12-16	75.0%

Deadball Rebounds: 4,1

Game Notes:

Officials: Michol Murray, Michael Price, InFini Robinson
Attendance: 5548

Start Time: 09:06 PM ET
End Time: 11:03 PM ET
Game Duration: 1:56
Neutral Court;

Score	1st	2nd	3rd	4th	TOT
USC	23	13	16	14	66
UCL	12	25	9	27	73

Points from (This Period)	USC	UCL
In the Paint	8	4
Off Turns	2	2
2nd Chance	5	0
Fast Break	0	2
Bench	5	2

Official Play-By-Play
Southern California vs UCLA
Third Quarter
March 06, 2020 at Mandalay Bay Arena - Las Vegas. NV



Period 3

Starters:

Southern California: 4 ROGERS,ENDYIA (G); 22 WHITE,KYRA (G); 24 CALDWELL,DESIREE (G); 35 PILI,ALISSA (F); 1 OVERBECK,KAYLA (F);
UCLA: 4 CORSARO,LINDSEY (G); 20 OSBORNE,CHARISMA (G); 21 ONYENWERE,MICHAELA (F); 24 DEAN,JAPREECE (G); 33 MILLER,LAURYN (F);

Time	VISITORS: Southern California	Score	Margin	HOME: UCLA
10:00				SUB OUT: CHOU, NATALIE
10:00				SUB OUT: BROWN, CAMRYN
10:00				SUB IN: CORSARO, LINDSEY
10:00				SUB IN: ONYENWERE, MICHAELA
10:00	SUB OUT: JEUNE, ALIYAH			
10:00	SUB OUT: MIURA, ALYSON			
10:00	SUB IN: WHITE, KYRA			
10:00	SUB IN: PILI, ALISSA			
09:36	MISSED LAYUP by WHITE, KYRA			
09:34				REBOUND (DEF) by CORSARO, LINDSEY
09:34	FOUL (PERSONAL) by WHITE, KYRA			
09:25				MISSED JUMPER by ONYENWERE, MICHAELA
09:22	REBOUND (DEF) by OVERBECK, KAYLA			
09:07	MISSED 3PTR by WHITE, KYRA			
09:05				REBOUND (DEF) by TEAM
08:52				TURNOVER (LOSTBALL) by OSBORNE, CHARISMA
08:52	STEAL by CALDWELL, DESIREE			
08:33				FOUL (PERSONAL) by MILLER, LAURYN
08:30	GOOD! LAYUP by PILI, ALISSA	37-38	V 1	
08:30	ASSIST by WHITE, KYRA			
08:06		40-38	H 2	GOOD! 3PTR by CORSARO, LINDSEY
08:06				ASSIST by DEAN, JAPREECE
07:43	MISSED LAYUP by PILI, ALISSA			
07:43				BLOCK by MILLER, LAURYN
07:43	REBOUND (OFF) by TEAM			
07:43				SUB OUT: MILLER, LAURYN
07:43				SUB IN: HORVAT, CHANTEL
07:42	FOUL (OFF) by PILI, ALISSA			
07:42	TURNOVER (OFFENSIVE) by PILI, ALISSA			
07:42	SUB OUT: PILI, ALISSA			
07:42	SUB IN: JEUNE, ALIYAH			
07:31		42-38	H 4	GOOD! LAYUP by ONYENWERE, MICHAELA [PNT]
07:08	MISSED JUMPER by CALDWELL, DESIREE			
07:05	REBOUND (OFF) by OVERBECK, KAYLA			
07:05	MISSED JUMPER by OVERBECK, KAYLA			
07:05				BLOCK by ONYENWERE, MICHAELA
07:05	REBOUND (OFF) by TEAM			
06:54	MISSED 3PTR by CALDWELL, DESIREE			
06:50				REBOUND (DEF) by DEAN, JAPREECE
06:45				TURNOVER (LOSTBALL) by DEAN, JAPREECE
06:45	STEAL by WHITE, KYRA			
06:35	MISSED LAYUP by WHITE, KYRA			
06:35				BLOCK by CORSARO, LINDSEY
06:30				REBOUND (DEF) by ONYENWERE, MICHAELA
06:28				MISSED LAYUP by ONYENWERE, MICHAELA
06:28	BLOCK by CALDWELL, DESIREE			
06:28				REBOUND (OFF) by TEAM
06:28				SUB OUT: DEAN, JAPREECE
06:28				SUB IN: JEFFERSON, KIARA
06:28	SUB OUT: WHITE, KYRA			
06:28	SUB IN: MIURA, ALYSON			
06:20				MISSED JUMPER by ONYENWERE, MICHAELA
06:16	REBOUND (DEF) by JEUNE, ALIYAH			
06:07	MISSED JUMPER by ROGERS, ENDYIA			
06:03				REBOUND (DEF) by ONYENWERE, MICHAELA
06:00				MISSED LAYUP by OSBORNE, CHARISMA
05:57				REBOUND (OFF) by ONYENWERE, MICHAELA
05:55				TURNOVER (LOSTBALL) by ONYENWERE, MICHAELA
05:55	STEAL by JEUNE, ALIYAH			
05:48	MISSED LAYUP by ROGERS, ENDYIA			
05:48				REBOUND (DEF) by TEAM
05:48	FOUL (PERSONAL) by JEUNE, ALIYAH			
05:43		44-38	H 6	GOOD! JUMPER by CHOU, NATALIE
05:43				ASSIST by CORSARO, LINDSEY
05:43				SUB OUT: OSBORNE, CHARISMA
05:43				SUB IN: CHOU, NATALIE
05:18	TIMEOUT 30SEC			
05:06	GOOD! JUMPER by JEUNE, ALIYAH	44-40	H 4	
05:06	ASSIST by ROGERS, ENDYIA			
04:53				MISSED LAYUP by CORSARO, LINDSEY

Time	VISITORS: Southern California	Score	Margin	HOME: UCLA
04:47	REBOUND (DEF) by MIURA, ALYSON			
04:43	MISSED JUMPER by ROGERS, ENDYIA			
04:39				REBOUND (DEF) by ONYENWERE, MICHAELA
04:36		46-40	H 6	GOOD! JUMPER by ONYENWERE, MICHAELA [FB/PNT]
04:09	MISSED 3PTR by JEUNE, ALIYAH			
04:05	REBOUND (OFF) by OVERBECK, KAYLA			
04:05	GOOD! LAYUP by OVERBECK, KAYLA	46-42	H 4	
04:05				FOUL (PERSONAL) by HORVAT, CHANTEL
04:05				
04:05				SUB OUT: HORVAT, CHANTEL
04:05				SUB IN: MILLER, LAURYN
04:05	GOOD! FT by OVERBECK, KAYLA	46-43	H 3	
04:05				SUB OUT: CORSARO, LINDSEY
04:05				SUB IN: DEAN, JAPREECE
03:41				MISSED JUMPER by ONYENWERE, MICHAELA
03:38	REBOUND (DEF) by MIURA, ALYSON			
03:32	MISSED LAYUP by ROGERS, ENDYIA			
03:27	REBOUND (OFF) by OVERBECK, KAYLA			
03:27	GOOD! LAYUP by OVERBECK, KAYLA	46-45	H 1	
03:17				TURNOVER (BADPASS) by CHOU, NATALIE
02:57	MISSED JUMPER by OVERBECK, KAYLA			
02:52				REBOUND (DEF) by JEFFERSON, KIARA
02:44				TURNOVER (TRAVEL) by DEAN, JAPREECE
02:44				SUB OUT: JEFFERSON, KIARA
02:44				SUB IN: CORSARO, LINDSEY
02:27	MISSED JUMPER by OVERBECK, KAYLA			
02:24				REBOUND (DEF) by CHOU, NATALIE
02:19				MISSED LAYUP by MILLER, LAURYN
02:16	REBOUND (DEF) by OVERBECK, KAYLA			
02:08				FOUL (PERSONAL) by ONYENWERE, MICHAELA
02:08				SUB OUT: MILLER, LAURYN
02:08				SUB IN: HORVAT, CHANTEL
02:08	GOOD! FT by OVERBECK, KAYLA	46-46	T	
02:08	MISSED FT by OVERBECK, KAYLA			
02:07				REBOUND (DEF) by ONYENWERE, MICHAELA
01:56				MISSED JUMPER by DEAN, JAPREECE
01:52	REBOUND (DEF) by JEUNE, ALIYAH			
01:45	MISSED LAYUP by ROGERS, ENDYIA			
01:45				BLOCK by CORSARO, LINDSEY
01:41				REBOUND (DEF) by ONYENWERE, MICHAELA
01:36				MISSED LAYUP by HORVAT, CHANTEL
01:33	REBOUND (DEF) by OVERBECK, KAYLA			
01:13	GOOD! 3PTR by JEUNE, ALIYAH	46-49	V 3	
01:13	ASSIST by ROGERS, ENDYIA			
00:56				MISSED LAYUP by CORSARO, LINDSEY
00:52	REBOUND (DEF) by ROGERS, ENDYIA			
00:45	GOOD! LAYUP by ROGERS, ENDYIA [PNT]	46-51	V 5	
00:45				FOUL (PERSONAL) by HORVAT, CHANTEL
00:45				SUB OUT: CHOU, NATALIE
00:45				SUB IN: OSBORNE, CHARISMA
00:45	GOOD! FT by ROGERS, ENDYIA	46-52	V 6	
00:30				MISSED 3PTR by HORVAT, CHANTEL
00:26	REBOUND (DEF) by MIURA, ALYSON			
00:01	MISSED 3PTR by JEUNE, ALIYAH			
00:00				REBOUND (DEF) by TEAM

Southern California 52, UCLA 46

Points from (This Period)	USC	UCL
In the Paint	8	4
Off Turns	2	2
2nd Chance	5	0
Fast Break	0	2
Bench	5	2

Official Box Score
Southern California vs UCLA
Fourth Quarter Statistics Only
March 06, 2020 at Mandalay Bay Arena - Las Vegas. NV



Southern California 14

No.	Player	S	Pts	FG	3FG	FT	OR	DR	TR	PF	A	TO	Blk	Stl	Min	+/-
01	OVERBECK, KAYLA	F	0	0-0	0-0	0-0	1	1	2	2	1	3	0	0	10	-13
04	ROGERS, ENDYIA	G	0	0-0	0-0	0-0	0	0	0	3	0	4	0	0	4	-9
22	WHITE, KYRA	G	0	0-0	0-0	0-0	0	0	0	0	0	0	0	0	0	0
24	CALDWELL, DESIREE	G	3	1-3	0-1	1-2	0	0	0	2	0	0	0	0	8	-9
35	PILI, ALISSA	F	5	1-2	0-0	3-4	0	3	3	0	1	0	0	0	8	-8
11	JEUNE, ALIYAH	G	6	3-5	0-2	0-1	0	3	3	1	1	1	1	1	10	-13
25	MIURA, ALYSON	G	0	0-0	0-0	0-0	0	0	0	2	0	0	0	0	10	-13
TEAM							0	0	0	0		0				
TOTALS			14	5-10	0-3	4-7	1	7	8	10	3	8	1	1	50	

Shooting By Period

Period	FG	FG%	3FG	3FG%	FT	FT%
Game	25-60	41.7%	6-19	31.6%	10-15	66.7%

Deadball Rebounds: 3,0

UCLA 27

No.	Player	S	Pts	FG	3FG	FT	OR	DR	TR	PF	A	TO	Blk	Stl	Min	+/-
04	CORSARO, LINDSEY	G	2	1-3	0-2	0-0	0	1	1	0	1	0	0	0	10	14
20	OSBORNE, CHARISMA	G	6	3-4	0-0	0-2	0	0	0	0	0	0	0	1	10	13
21	ONYENWERE, MICHAELA	F	14	5-10	0-1	4-4	3	2	5	1	0	1	0	0	9	11
24	DEAN, JAPREECE	G	5	0-2	0-0	5-6	2	1	3	1	3	0	0	2	10	13
33	MILLER, LAURYN	F	0	0-0	0-0	0-0	0	0	0	3	1	0	0	0	6	9
00	HORVAT, CHANTEL	G	0	0-2	0-1	0-0	0	0	0	1	0	0	0	0	4	4
03	JEFFERSON, KIARA	G	0	0-0	0-0	0-0	0	0	0	0	0	0	0	0	0	0
23	CHOU, NATALIE	G	0	0-0	0-0	0-0	0	1	1	0	0	0	0	0	1	1
35	BROWN, CAMRYN	G	0	0-0	0-0	0-0	0	0	0	0	0	0	0	0	0	0
TEAM							1	0	1	0		1				
TOTALS			27	9-21	0-4	9-12	6	5	11	6	5	2	0	3	50	

Shooting By Period

Period	FG	FG%	3FG	3FG%	FT	FT%
Game	28-74	37.8%	5-19	26.3%	12-16	75.0%

Deadball Rebounds: 4,1

Game Notes:

Officials: Michol Murray, Michael Price, InFini Robinson
Attendance: 5548

Start Time: 09:06 PM ET

End Time: 11:03 PM ET

Game Duration: 1:56

Neutral Court;

Score	1st	2nd	3rd	4th	TOT
USC	23	13	16	14	66
UCL	12	25	9	27	73

Points from (This Period)	USC	UCL
In the Paint	10	8
Off Turns	2	14
2nd Chance	2	7
Fast Break	6	4
Bench	6	0

Official Play-By-Play
Southern California vs UCLA
Fourth Quarter
March 06, 2020 at Mandalay Bay Arena - Las Vegas. NV



Period 4

Starters:

Southern California: 4 ROGERS,ENDYIA (G); 22 WHITE,KYRA (G); 24 CALDWELL,DESIREE (G); 35 PILI,ALISSA (F); 1 OVERBECK,KAYLA (F);
UCLA: 4 CORSARO,LINDSEY (G); 20 OSBORNE,CHARISMA (G); 21 ONYENWERE,MICHAELA (F); 24 DEAN,JAPREECE (G); 33 MILLER,LAURYN (F);

Time	VISITORS: Southern California	Score	Margin	HOME: UCLA
09:45		48-52	V 4	GOOD! JUMPER by ONYENWERE, MICHAELA
09:45				ASSIST by DEAN, JAPREECE
09:25	FOUL (OFF) by ROGERS, ENDYIA			
09:25	TURNOVER (OFFENSIVE) by ROGERS, ENDYIA			
09:12				MISSED JUMPER by DEAN, JAPREECE
09:08				REBOUND (OFF) by ONYENWERE, MICHAELA
09:06		50-52	V 2	GOOD! JUMPER by ONYENWERE, MICHAELA [PNT]
09:05	TIMEOUT 30SEC			
09:01	TURNOVER (LOSTBALL) by ROGERS, ENDYIA			
09:01				STEAL by DEAN, JAPREECE
09:01		52-52	T	GOOD! LAYUP by ONYENWERE, MICHAELA [PNT]
09:01				ASSIST by CORSARO, LINDSEY
09:01	FOUL (PERSONAL) by CALDWELL, DESIREE			
09:01		53-52	H 1	GOOD! FT by ONYENWERE, MICHAELA
09:01				FOUL (PERSONAL) by ONYENWERE, MICHAELA
09:00	TURNOVER (BADPASS) by JEUNE, ALIYAH			
08:51				MISSED JUMPER by ONYENWERE, MICHAELA
08:48	REBOUND (DEF) by JEUNE, ALIYAH			
08:28	MISSED 3PTR by CALDWELL, DESIREE			
08:23				REBOUND (DEF) by ONYENWERE, MICHAELA
08:22				TURNOVER (LOSTBALL) by ONYENWERE, MICHAELA
08:22	STEAL by JEUNE, ALIYAH			
08:16	GOOD! LAYUP by JEUNE, ALIYAH [FB]	53-54	V 1	
08:10				MISSED JUMPER by HORVAT, CHANTEL
08:07	REBOUND (DEF) by JEUNE, ALIYAH			
07:50	FOUL (OFF) by ROGERS, ENDYIA			
07:50	TURNOVER (OFFENSIVE) by ROGERS, ENDYIA			
07:50				SUB OUT: HORVAT, CHANTEL
07:50				SUB IN: MILLER, LAURYN
07:50	SUB OUT: CALDWELL, DESIREE			
07:50	SUB IN: PILI, ALISSA			
07:31				MISSED JUMPER by DEAN, JAPREECE
07:26				REBOUND (OFF) by DEAN, JAPREECE
07:17				MISSED LAYUP by ONYENWERE, MICHAELA
07:16				REBOUND (OFF) by TEAM
07:16	SUB OUT: ROGERS, ENDYIA			
07:16	SUB IN: CALDWELL, DESIREE			
07:08	FOUL (PERSONAL) by MIURA, ALYSON			
07:08				MISSED FT by OSBORNE, CHARISMA
07:08				REBOUND (OFF) by TEAM
07:08				MISSED FT by OSBORNE, CHARISMA
07:06				REBOUND (OFF) by ONYENWERE, MICHAELA
07:06		55-54	H 1	GOOD! LAYUP by ONYENWERE, MICHAELA
07:06	FOUL (PERSONAL) by CALDWELL, DESIREE			
07:06		56-54	H 2	GOOD! FT by ONYENWERE, MICHAELA
06:53	MISSED LAYUP by PILI, ALISSA			
06:48				REBOUND (DEF) by CORSARO, LINDSEY
06:44				MISSED JUMPER by ONYENWERE, MICHAELA
06:44	BLOCK by JEUNE, ALIYAH			
06:39	REBOUND (DEF) by PILI, ALISSA			
06:37	GOOD! LAYUP by JEUNE, ALIYAH [FB]	56-56	T	
06:37	ASSIST by PILI, ALISSA			
06:37				FOUL (PERSONAL) by MILLER, LAURYN
06:37				SUB OUT: ONYENWERE, MICHAELA
06:37				SUB IN: CHOU, NATALIE
06:37	MISSED FT by JEUNE, ALIYAH			
06:34				REBOUND (DEF) by CHOU, NATALIE
06:17		58-56	H 2	GOOD! JUMPER by OSBORNE, CHARISMA
06:17				ASSIST by MILLER, LAURYN
06:02	GOOD! JUMPER by PILI, ALISSA [PNT]	58-58	T	
06:02	ASSIST by JEUNE, ALIYAH			
05:41		60-58	H 2	GOOD! JUMPER by CORSARO, LINDSEY
05:41				ASSIST by DEAN, JAPREECE
05:40				TIMEOUT 30SEC
05:40				SUB OUT: CORSARO, LINDSEY
05:40				SUB IN: ONYENWERE, MICHAELA
05:24	GOOD! JUMPER by JEUNE, ALIYAH [PNT]	60-60	T	
05:24	ASSIST by OVERBECK, KAYLA			
05:16	FOUL (TECH) by JEUNE, ALIYAH			
05:16				MISSED FT by DEAN, JAPREECE

Time	VISITORS: Southern California	Score	Margin	HOME: UCLA
05:16				REBOUND (OFF) by TEAM
05:16		61-60	H 1	GOOD! FT by DEAN, JAPREECE
05:16				SUB OUT: CHOU, NATALIE
05:16				SUB IN: CORSARO, LINDSEY
05:13				MISSED JUMPER by ONYENWERE, MICHAELA
05:10	REBOUND (DEF) by OVERBECK, KAYLA			
04:47	MISSED 3PTR by JEUNE, ALIYAH			
04:43				REBOUND (DEF) by ONYENWERE, MICHAELA
04:25				MISSED JUMPER by OSBORNE, CHARISMA
04:17				REBOUND (OFF) by ONYENWERE, MICHAELA
04:17	FOUL (PERSONAL) by OVERBECK, KAYLA			
04:17	SUB OUT: CALDWELL, DESIREE			
04:17	SUB IN: ROGERS, ENDYIA			
04:17		62-60	H 2	GOOD! FT by ONYENWERE, MICHAELA
04:17		63-60	H 3	GOOD! FT by ONYENWERE, MICHAELA
04:01	TURNOVER (LOSTBALL) by OVERBECK, KAYLA			
03:43				MISSED 3PTR by CORSARO, LINDSEY
03:40	REBOUND (DEF) by PILI, ALISSA			
03:38	TURNOVER (BADPASS) by OVERBECK, KAYLA			
03:38				STEAL by OSBORNE, CHARISMA
03:22		65-60	H 5	GOOD! LAYUP by OSBORNE, CHARISMA [PNT]
03:15	FOUL (OFF) by ROGERS, ENDYIA			
03:15	TURNOVER (OFFENSIVE) by ROGERS, ENDYIA			
03:15	SUB OUT: ROGERS, ENDYIA			
03:15	SUB IN: CALDWELL, DESIREE			
03:08		67-60	H 7	GOOD! JUMPER by OSBORNE, CHARISMA
02:58	TURNOVER (BADPASS) by OVERBECK, KAYLA			
02:58				STEAL by DEAN, JAPREECE
02:40		69-60	H 9	GOOD! JUMPER by ONYENWERE, MICHAELA
02:40				ASSIST by DEAN, JAPREECE
02:38	TIMEOUT 30SEC			
02:33				FOUL (PERSONAL) by MILLER, LAURYN
02:33	MISSED FT by CALDWELL, DESIREE			
02:33	REBOUND (OFF) by TEAM			
02:33	GOOD! FT by CALDWELL, DESIREE [FB]	69-61	H 8	
02:07				MISSED 3PTR by CORSARO, LINDSEY
02:01				REBOUND (OFF) by DEAN, JAPREECE
01:48				MISSED 3PTR by ONYENWERE, MICHAELA
01:44	REBOUND (DEF) by JEUNE, ALIYAH			
01:29	MISSED LAYUP by CALDWELL, DESIREE			
01:29	REBOUND (OFF) by OVERBECK, KAYLA			
01:29				FOUL (PERSONAL) by MILLER, LAURYN
01:29				SUB OUT: MILLER, LAURYN
01:29				SUB IN: HORVAT, CHANTEL
01:27				FOUL (PERSONAL) by HORVAT, CHANTEL
01:27	GOOD! FT by PILI, ALISSA	69-62	H 7	
01:27	GOOD! FT by PILI, ALISSA	69-63	H 6	
01:00				MISSED 3PTR by HORVAT, CHANTEL
00:56	REBOUND (DEF) by PILI, ALISSA			
00:54				FOUL (PERSONAL) by DEAN, JAPREECE
00:54	MISSED FT by PILI, ALISSA			
00:54	REBOUND (OFF) by TEAM			
00:54	GOOD! FT by PILI, ALISSA [FB]	69-64	H 5	
00:49	FOUL (PERSONAL) by OVERBECK, KAYLA			
00:49		70-64	H 6	GOOD! FT by DEAN, JAPREECE [FB]
00:49		71-64	H 7	GOOD! FT by DEAN, JAPREECE [FB]
00:49	TIMEOUT TEAM			
00:45	GOOD! LAYUP by CALDWELL, DESIREE	71-66	H 5	
00:42	FOUL (PERSONAL) by MIURA, ALYSON			
00:42		72-66	H 6	GOOD! FT by DEAN, JAPREECE [FB]
00:42		73-66	H 7	GOOD! FT by DEAN, JAPREECE [FB]
00:35	MISSED 3PTR by JEUNE, ALIYAH			
00:31				REBOUND (DEF) by DEAN, JAPREECE
00:00				TURNOVER (SHOTCLOCK) by TEAM

Southern California 66, UCLA 73

Points from (This Period)	USC	UCL
In the Paint	10	8
Off Turns	2	14
2nd Chance	2	7
Fast Break	6	4
Bench	6	0

Official Scoring/Possession Reference Chart
Southern California vs UCLA
Period 1
March 06, 2020 at Mandalay Bay Arena - Las Vegas. NV



Period 1

Starters:

Southern California: 4 ROGERS, ENDYIA (G); 22 WHITE, KYRA (G); 24 CALDWELL, DESIREE (G); 35 PILI, ALISSA (F); 1 OVERBECK, KAYLA (F);

UCLA: 4 CORSARO, LINDSEY (G); 20 OSBORNE, CHARISMA (G); 21 ONYENWERE, MICHAELA (F); 24 DEAN, JAPREECE (G); 33 MILLER, LAURYN (F);

Time	VISITORS: Southern California	Score	Margin	HOME: UCLA
09:22	GOOD! JUMPER by WHITE, KYRA	0-2	V 2	
07:57	GOOD! JUMPER by PILI, ALISSA	0-4	V 4	
07:14	GOOD! JUMPER by ROGERS, ENDYIA	0-6	V 6	
06:57	GOOD! 3PTR by WHITE, KYRA	0-9	V 9	
05:52	GOOD! FT by PILI, ALISSA	0-10	V 10	
05:52	GOOD! FT by PILI, ALISSA	0-11	V 11	
05:39		2-11	V 9	GOOD! JUMPER by DEAN, JAPREECE
05:20	GOOD! 3PTR by ROGERS, ENDYIA	2-14	V 12	
04:17	GOOD! LAYUP by OVERBECK, KAYLA	2-16	V 14	
03:41		4-16	V 12	GOOD! LAYUP by DEAN, JAPREECE [PNT]
03:31		5-16	V 11	GOOD! FT by CHOU, NATALIE [FB]
03:03	GOOD! LAYUP by OVERBECK, KAYLA [PNT]	5-18	V 13	
02:17	GOOD! JUMPER by OVERBECK, KAYLA	5-20	V 15	
02:07		7-20	V 13	GOOD! LAYUP by ONYENWERE, MICHAELA
01:44	GOOD! FT by ROGERS, ENDYIA	7-21	V 14	
01:27		9-21	V 12	GOOD! JUMPER by HORVAT, CHANTEL [PNT]
00:35		11-21	V 10	GOOD! LAYUP by OSBORNE, CHARISMA
00:35		12-21	V 9	GOOD! FT by OSBORNE, CHARISMA
00:05	GOOD! LAYUP by ROGERS, ENDYIA [PNT]	12-23	V 11	

Southern California 23, UCLA 12

Official Scoring/Possession Reference Chart
Southern California vs UCLA
Period 2
March 06, 2020 at Mandalay Bay Arena - Las Vegas. NV



Period 2

Starters:

Southern California: 4 ROGERS, ENDYIA (G); 22 WHITE, KYRA (G); 24 CALDWELL, DESIREE (G); 35 PILI, ALISSA (F); 1 OVERBECK, KAYLA (F);

UCLA: 4 CORSARO, LINDSEY (G); 20 OSBORNE, CHARISMA (G); 21 ONYENWERE, MICHAELA (F); 24 DEAN, JAPREECE (G); 33 MILLER, LAURYN (F);

Time	VISITORS: Southern California	Score	Margin	HOME: UCLA
09:55		14-23	V 9	GOOD! JUMPER by MILLER, LAURYN [PNT]
08:32		17-23	V 6	GOOD! 3PTR by CORSARO, LINDSEY
08:02		19-23	V 4	GOOD! JUMPER by CHOU, NATALIE
08:02		20-23	V 3	GOOD! FT by CHOU, NATALIE
07:40	GOOD! 3PTR by CALDWELL, DESIREE	20-26	V 6	
07:20		22-26	V 4	GOOD! LAYUP by ONYENWERE, MICHAELA
06:42		25-26	V 1	GOOD! 3PTR by CHOU, NATALIE [FB]
06:08	GOOD! 3PTR by MIURA, ALYSON	25-29	V 4	
05:54		28-29	V 1	GOOD! 3PTR by CHOU, NATALIE
05:21		30-29	H 1	GOOD! LAYUP by ONYENWERE, MICHAELA
04:28	GOOD! 3PTR by ROGERS, ENDYIA	30-32	V 2	
03:38		32-32	T	GOOD! JUMPER by ONYENWERE, MICHAELA [PNT]
03:19	GOOD! JUMPER by ROGERS, ENDYIA	32-34	V 2	
03:05		35-34	H 1	GOOD! 3PTR by CORSARO, LINDSEY
01:54		37-34	H 3	GOOD! JUMPER by CHOU, NATALIE
01:26	GOOD! LAYUP by ROGERS, ENDYIA [PNT]	37-36	H 1	

Southern California 36, UCLA 37

Official Scoring/Possession Reference Chart
Southern California vs UCLA
Period 3
March 06, 2020 at Mandalay Bay Arena - Las Vegas. NV



Period 3

Starters:

Southern California: 4 ROGERS, ENDYIA (G); 22 WHITE, KYRA (G); 24 CALDWELL, DESIREE (G); 35 PILI, ALISSA (F); 1 OVERBECK, KAYLA (F);

UCLA: 4 CORSARO, LINDSEY (G); 20 OSBORNE, CHARISMA (G); 21 ONYENWERE, MICHAELA (F); 24 DEAN, JAPREECE (G); 33 MILLER, LAURYN (F);

Time	VISITORS: Southern California	Score	Margin	HOME: UCLA
08:30	GOOD! LAYUP by PILI, ALISSA	37-38	V 1	
08:06		40-38	H 2	GOOD! 3PTR by CORSARO, LINDSEY
07:31		42-38	H 4	GOOD! LAYUP by ONYENWERE, MICHAELA [PNT]
05:43		44-38	H 6	GOOD! JUMPER by CHOU, NATALIE
05:06	GOOD! JUMPER by JEUNE, ALIYAH	44-40	H 4	
04:36		46-40	H 6	GOOD! JUMPER by ONYENWERE, MICHAELA [FB/PNT]
04:05	GOOD! LAYUP by OVERBECK, KAYLA	46-42	H 4	
04:05	GOOD! FT by OVERBECK, KAYLA	46-43	H 3	
03:27	GOOD! LAYUP by OVERBECK, KAYLA	46-45	H 1	
02:08	GOOD! FT by OVERBECK, KAYLA	46-46	T	
01:13	GOOD! 3PTR by JEUNE, ALIYAH	46-49	V 3	
00:45	GOOD! LAYUP by ROGERS, ENDYIA [PNT]	46-51	V 5	
00:45	GOOD! FT by ROGERS, ENDYIA	46-52	V 6	

Southern California 52, UCLA 46

Official Scoring/Possession Reference Chart
Southern California vs UCLA
Period 4
March 06, 2020 at Mandalay Bay Arena - Las Vegas. NV



Period 4

Starters:

Southern California: 4 ROGERS,ENDYIA (G); 22 WHITE,KYRA (G); 24 CALDWELL,DESIREE (G); 35 PILI,ALISSA (F); 1 OVERBECK,KAYLA (F);

UCLA: 4 CORSARO,LINDSEY (G); 20 OSBORNE,CHARISMA (G); 21 ONYENWERE,MICHAELA (F); 24 DEAN,JAPREECE (G); 33 MILLER,LAURYN (F);

Time	VISITORS: Southern California	Score	Margin	HOME: UCLA
09:45		48-52	V 4	GOOD! JUMPER by ONYENWERE, MICHAELA
09:06		50-52	V 2	GOOD! JUMPER by ONYENWERE, MICHAELA [PNT]
09:01		52-52	T	GOOD! LAYUP by ONYENWERE, MICHAELA [PNT]
09:01		53-52	H 1	GOOD! FT by ONYENWERE, MICHAELA
08:16	GOOD! LAYUP by JEUNE, ALIYAH [FB]	53-54	V 1	
07:06		55-54	H 1	GOOD! LAYUP by ONYENWERE, MICHAELA
07:06		56-54	H 2	GOOD! FT by ONYENWERE, MICHAELA
06:37	GOOD! LAYUP by JEUNE, ALIYAH [FB]	56-56	T	
06:17		58-56	H 2	GOOD! JUMPER by OSBORNE, CHARISMA
06:02	GOOD! JUMPER by PILI, ALISSA [PNT]	58-58	T	
05:41		60-58	H 2	GOOD! JUMPER by CORSARO, LINDSEY
05:24	GOOD! JUMPER by JEUNE, ALIYAH [PNT]	60-60	T	
05:16		61-60	H 1	GOOD! FT by DEAN, JAPREECE
04:17		62-60	H 2	GOOD! FT by ONYENWERE, MICHAELA
04:17		63-60	H 3	GOOD! FT by ONYENWERE, MICHAELA
03:22		65-60	H 5	GOOD! LAYUP by OSBORNE, CHARISMA [PNT]
03:08		67-60	H 7	GOOD! JUMPER by OSBORNE, CHARISMA
02:40		69-60	H 9	GOOD! JUMPER by ONYENWERE, MICHAELA
02:33	GOOD! FT by CALDWELL, DESIREE [FB]	69-61	H 8	
01:27	GOOD! FT by PILI, ALISSA	69-62	H 7	
01:27	GOOD! FT by PILI, ALISSA	69-63	H 6	
00:54	GOOD! FT by PILI, ALISSA [FB]	69-64	H 5	
00:49		70-64	H 6	GOOD! FT by DEAN, JAPREECE [FB]
00:49		71-64	H 7	GOOD! FT by DEAN, JAPREECE [FB]
00:45	GOOD! LAYUP by CALDWELL, DESIREE	71-66	H 5	
00:42		72-66	H 6	GOOD! FT by DEAN, JAPREECE [FB]
00:42		73-66	H 7	GOOD! FT by DEAN, JAPREECE [FB]

Southern California 66, UCLA 73

Official Substitutions Log
Southern California vs UCLA
Period 1
March 06, 2020 at Mandalay Bay Arena - Las Vegas. NV



VISITORS: Southern California	Time	Score	HOME: UCLA
4 ROGERS,ENDYIA			4 CORSARO,LINDSEY
22 WHITE,KYRA			20 OSBORNE,CHARISMA
24 CALDWELL,DESIREE			21 ONYENWERE,MICHAELA
35 PILI,ALISSA			24 DEAN,JAPREECE
1 OVERBECK,KAYLA			33 MILLER,LAURYN
	08:09	2-0	SUB OUT: OSBORNE,CHARISMA
	08:09		SUB OUT: MILLER,LAURYN
	08:09		SUB IN: HORVAT,CHANTEL
	08:09		SUB IN: JEFFERSON,KIARA
	05:52	9-0	SUB OUT: JEFFERSON,KIARA
	05:52		SUB OUT: CORSARO,LINDSEY
	05:52		SUB OUT: ONYENWERE,MICHAELA
	05:52		SUB IN: OSBORNE,CHARISMA
	05:52		SUB IN: CHOU,NATALIE
	05:52		SUB IN: MILLER,LAURYN
SUB OUT: 22 WHITE,KYRA	04:39	14-2	
SUB OUT: 35 PILI,ALISSA	04:39		
SUB IN: 11 JEUNE,ALIYAH	04:39		
SUB IN: 25 MIURA,ALYSON	04:39		
	04:22	14-2	SUB OUT: HORVAT,CHANTEL
	04:22		SUB IN: ONYENWERE,MICHAELA
	02:32	18-5	SUB OUT: CHOU,NATALIE
	02:32		SUB OUT: MILLER,LAURYN
	02:32		SUB IN: HORVAT,CHANTEL
	02:32		SUB IN: CORSARO,LINDSEY
	00:35	21-11	SUB OUT: ONYENWERE,MICHAELA
	00:35		SUB IN: BROWN,CAMRYN
SUB OUT: 24 CALDWELL,DESIREE	00:35		
SUB IN: 22 WHITE,KYRA	00:35		
	00:35		SUB OUT: OSBORNE,CHARISMA
	00:35		SUB IN: JEFFERSON,KIARA

Southern California 23, UCLA 12

Official Substitutions Log
Southern California vs UCLA
Period 2
March 06, 2020 at Mandalay Bay Arena - Las Vegas. NV



VISITORS: Southern California	Time	Score	HOME: UCLA
4 ROGERS, ENDYIA			4 CORSARO, LINDSEY
22 WHITE, KYRA			20 OSBORNE, CHARISMA
24 CALDWELL, DESIREE			21 ONYENWERE, MICHAELA
35 PILI, ALISSA			24 DEAN, JAPREECE
1 OVERBECK, KAYLA			33 MILLER, LAURYN
	08:36	23-14	SUB OUT: HORVAT, CHANTEL
	08:36		SUB OUT: BROWN, CAMRYN
	08:36		SUB IN: ONYENWERE, MICHAELA
	08:36		SUB IN: MILLER, LAURYN
SUB OUT: 4 ROGERS, ENDYIA	08:36		
SUB OUT: 25 MIURA, ALYSON	08:36		
SUB IN: 24 CALDWELL, DESIREE	08:36		
SUB IN: 35 PILI, ALISSA	08:36		
	08:32	23-17	SUB OUT: JEFFERSON, KIARA
	08:32		SUB IN: CHOU, NATALIE
SUB OUT: 22 WHITE, KYRA	08:02	23-19	
SUB IN: 4 ROGERS, ENDYIA	08:02		
SUB OUT: 11 JEUNE, ALIYAH	06:26	26-25	
SUB IN: 25 MIURA, ALYSON	06:26		
	06:00	29-25	SUB OUT: MILLER, LAURYN
	06:00		SUB IN: HORVAT, CHANTEL
SUB OUT: 35 PILI, ALISSA	05:21	29-28	
SUB IN: 11 JEUNE, ALIYAH	05:21		
	04:05	32-30	SUB OUT: CHOU, NATALIE
	04:05		SUB IN: OSBORNE, CHARISMA
	02:04	34-35	SUB OUT: HORVAT, CHANTEL
	02:04		SUB OUT: CORSARO, LINDSEY
	02:04		SUB OUT: ONYENWERE, MICHAELA
	02:04		SUB IN: CHOU, NATALIE
	02:04		SUB IN: MILLER, LAURYN
	02:04		SUB IN: BROWN, CAMRYN

Southern California 36, UCLA 37

Official Substitutions Log
Southern California vs UCLA
Period 3
March 06, 2020 at Mandalay Bay Arena - Las Vegas. NV



VISITORS: Southern California	Time	Score	HOME: UCLA
4 ROGERS, ENDYIA			4 CORSARO, LINDSEY
22 WHITE, KYRA			20 OSBORNE, CHARISMA
24 CALDWELL, DESIREE			21 ONYENWERE, MICHAELA
35 PILI, ALISSA			24 DEAN, JAPREECE
1 OVERBECK, KAYLA			33 MILLER, LAURYN
	10:00	-	SUB OUT: CHOU, NATALIE
	10:00		SUB OUT: BROWN, CAMRYN
	10:00		SUB IN: CORSARO, LINDSEY
	10:00		SUB IN: ONYENWERE, MICHAELA
SUB OUT: 11 JEUNE, ALIYAH	10:00		
SUB OUT: 25 MIURA, ALYSON	10:00		
SUB IN: 22 WHITE, KYRA	10:00		
SUB IN: 35 PILI, ALISSA	10:00		
	07:43	38-40	SUB OUT: MILLER, LAURYN
	07:43		SUB IN: HORVAT, CHANTEL
SUB OUT: 35 PILI, ALISSA	07:42	38-40	
SUB IN: 11 JEUNE, ALIYAH	07:42		
	06:28	38-42	SUB OUT: DEAN, JAPREECE
	06:28		SUB IN: JEFFERSON, KIARA
SUB OUT: 22 WHITE, KYRA	06:28		
SUB IN: 25 MIURA, ALYSON	06:28		
	05:43	38-44	SUB OUT: OSBORNE, CHARISMA
	05:43		SUB IN: CHOU, NATALIE
	04:05	42-46	SUB OUT: HORVAT, CHANTEL
	04:05		SUB IN: MILLER, LAURYN
	04:05		SUB OUT: CORSARO, LINDSEY
	04:05		SUB IN: DEAN, JAPREECE
	02:44	45-46	SUB OUT: JEFFERSON, KIARA
	02:44		SUB IN: CORSARO, LINDSEY
	02:08	45-46	SUB OUT: MILLER, LAURYN
	02:08		SUB IN: HORVAT, CHANTEL
	00:45	51-46	SUB OUT: CHOU, NATALIE
	00:45		SUB IN: OSBORNE, CHARISMA

Southern California 52, UCLA 46

Official Substitutions Log
Southern California vs UCLA
Period 4
March 06, 2020 at Mandalay Bay Arena - Las Vegas. NV



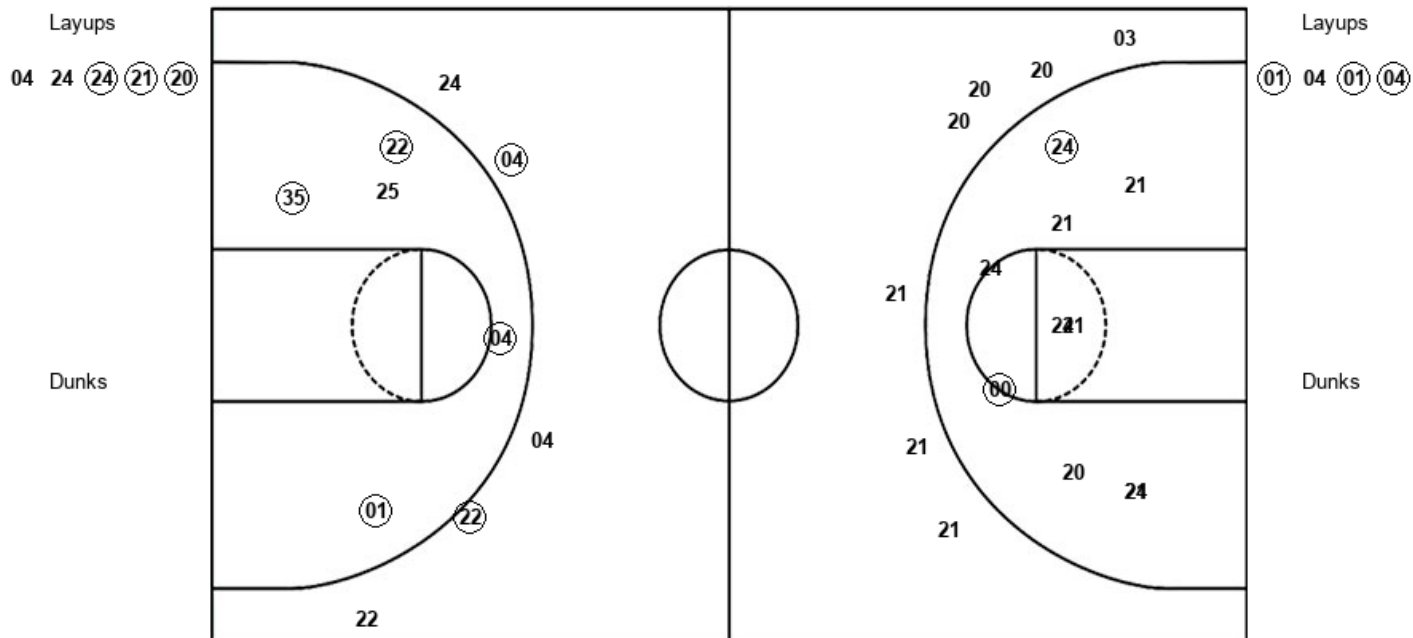
VISITORS: Southern California	Time	Score	HOME: UCLA
4 ROGERS, ENDYIA			4 CORSARO, LINDSEY
22 WHITE, KYRA			20 OSBORNE, CHARISMA
24 CALDWELL, DESIREE			21 ONYENWERE, MICHAELA
35 PILI, ALISSA			24 DEAN, JAPREECE
1 OVERBECK, KAYLA			33 MILLER, LAURYN
	07:50	54-53	SUB OUT: HORVAT, CHANTEL
	07:50		SUB IN: MILLER, LAURYN
SUB OUT: 24 CALDWELL, DESIREE	07:50		
SUB IN: 35 PILI, ALISSA	07:50		
SUB OUT: 4 ROGERS, ENDYIA	07:16	54-53	
SUB IN: 24 CALDWELL, DESIREE	07:16		
	06:37	56-56	SUB OUT: ONYENWERE, MICHAELA
	06:37		SUB IN: CHOU, NATALIE
	05:40	58-60	SUB OUT: CORSARO, LINDSEY
	05:40		SUB IN: ONYENWERE, MICHAELA
	05:16	60-61	SUB OUT: CHOU, NATALIE
	05:16		SUB IN: CORSARO, LINDSEY
SUB OUT: 24 CALDWELL, DESIREE	04:17	60-61	
SUB IN: 4 ROGERS, ENDYIA	04:17		
SUB OUT: 4 ROGERS, ENDYIA	03:15	60-65	
SUB IN: 24 CALDWELL, DESIREE	03:15		
	01:29	61-69	SUB OUT: MILLER, LAURYN
	01:29		SUB IN: HORVAT, CHANTEL

Southern California 66, UCLA 73



PAC-12
WOMEN'S
BASKETBALL
TOURNAMENT

Southern California



UCL : Period 1	Made	Att	Pct
Layups	3	5	60.0
Dunks	0	0	0
2PT Field Goals	5	15	33.3
3PT Field Goals	0	7	00.0
Total Field Goals	5	22	22.7

USC : Period 1	Made	Att	Pct
Layups	3	4	75.0
Dunks	0	0	0
2PT Field Goals	7	9	77.8
3PT Field Goals	2	5	40.0
Total Field Goals	9	14	64.3

Official Shot Chart
Southern California vs UCLA
 PERIOD 2 Shots
 March 06, 2020 at Mandalay Bay Arena - Las Vegas, NV

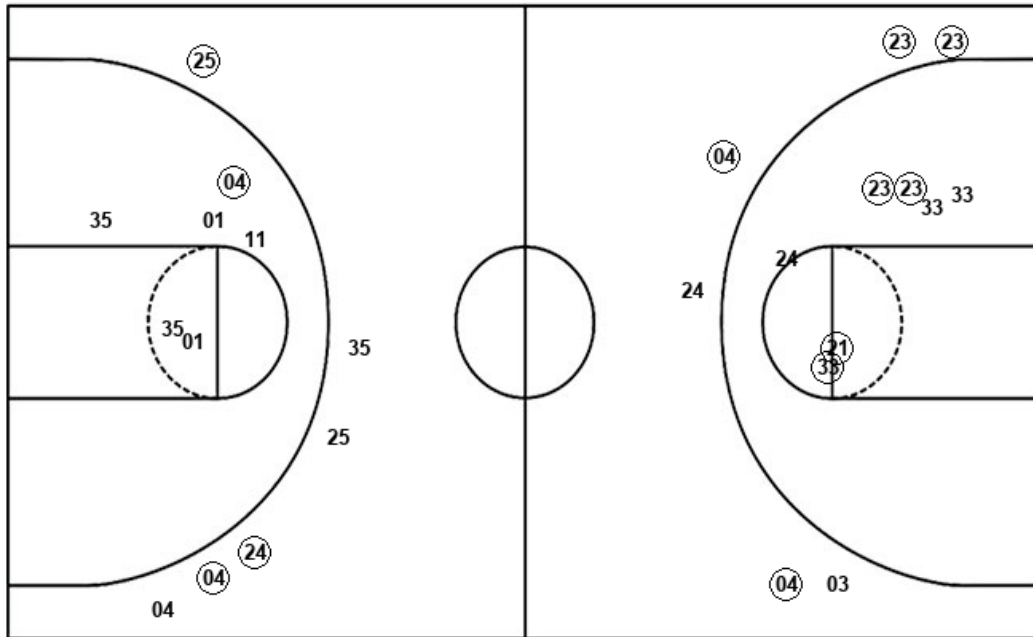


UCLA

Southern California

Layups
 (21) (21) 04

Dunks



Layups

(04) 04

Dunks

UCL : Period 2	Made	Att	Pct
Layups	2	3	66.7
Dunks	0	0	0
2PT Field Goals	6	10	60.0
3PT Field Goals	4	6	66.7
Total Field Goals	10	16	62.5

USC : Period 2	Made	Att	Pct
Layups	1	2	50.0
Dunks	0	0	0
2PT Field Goals	2	8	25.0
3PT Field Goals	3	6	50.0
Total Field Goals	5	14	35.7

Official Shot Chart
Southern California vs UCLA
 PERIOD 3 Shots
 March 06, 2020 at Mandalay Bay Arena - Las Vegas. NV

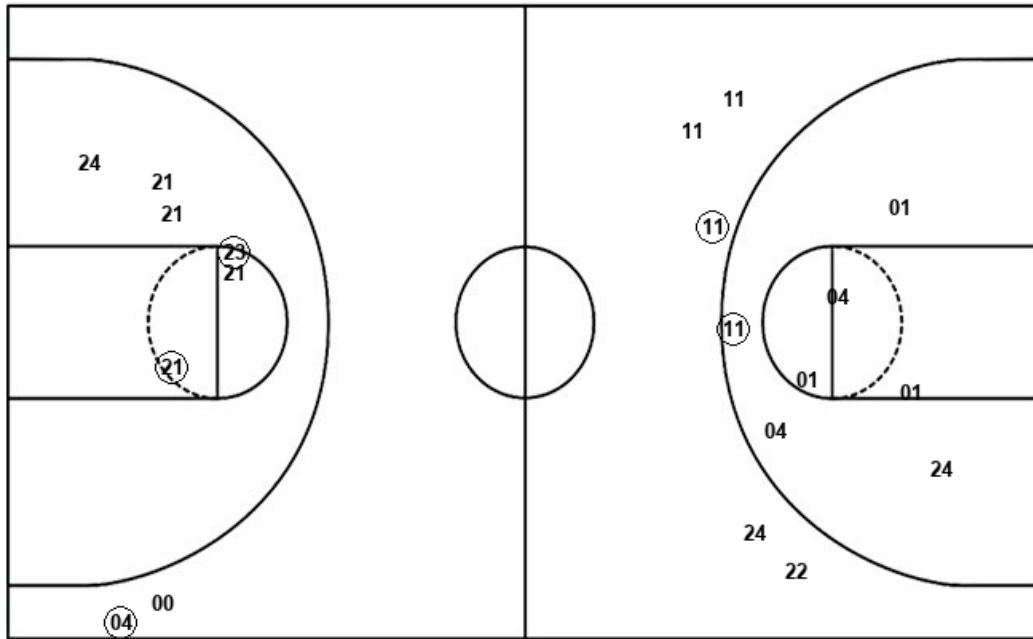


UCLA

Southern California

Layups
 (21) 21 20 04 33
 00 04

Dunks



Layups
 22 (35) 35 22 04
 (01) 04 (01) 04 (04)

Dunks

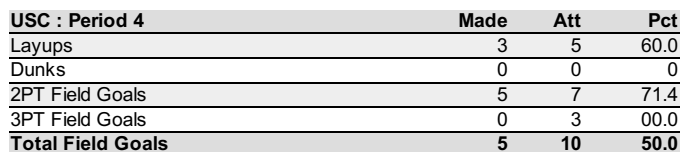
UCL : Period 3	Made	Att	Pct
Layups	1	7	14.3
Dunks	0	0	0
2PT Field Goals	3	13	23.1
3PT Field Goals	1	2	50.0
Total Field Goals	4	15	26.7

USC : Period 3	Made	Att	Pct
Layups	4	10	40.0
Dunks	0	0	0
2PT Field Goals	5	17	29.4
3PT Field Goals	1	5	20.0
Total Field Goals	6	22	27.3



PAC-12
WOMEN'S
BASKETBALL
TOURNAMENT

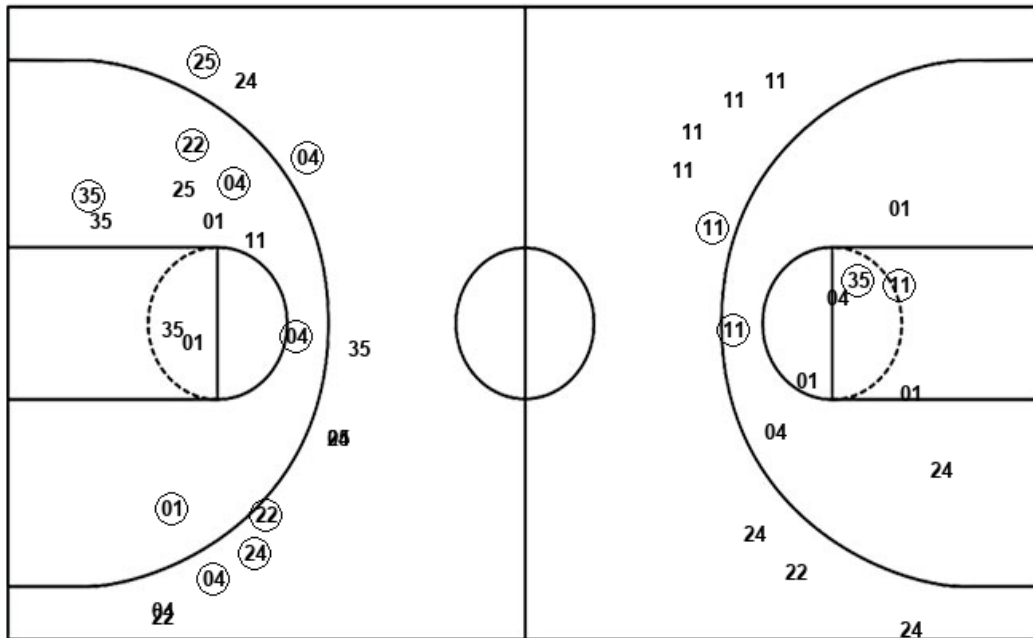
Southern California





**WOMEN'S
BASKETBALL
TOURNAMENT**

OFFICIAL
NEW YORK LIFE



01 04 01 04 04
 04 22 35 35 22
 04 01 04 01 04
 04 11 35 11 24
 24

Dunks

USC : Period 4	Made	Att	Pct
Layups	3	5	60.0
Dunks	0	0	0
2PT Field Goals	5	7	71.4
3PT Field Goals	0	3	00.0
Total Field Goals	5	10	50.0



**WOMEN'S
BASKETBALL
TOURNAMENT**

Dunks

UCL : Period 4	Made	Att	Pct
Layups	3	4	75.0
Dunks	0	0	0
2PT Field Goals	9	17	52.9
3PT Field Goals	0	4	00.0
Total Field Goals	9	21	42.9