

## FINAL SCORE



**Purdue**

**72**



**Michigan St.**

**63**

**Big Ten Women's Basketball Tournament**

March 05, 2020 • Bankers Life Fieldhouse - Indianapolis, IN



**BIG**  
WOMEN'S BASKETBALL  
TOURNAMENT

## FINAL STATISTICS



**Official Box Score**  
**Purdue vs Michigan St.**  
**Game Totals -- Final Statistics**  
**March 05, 2020 at Bankers Life Fieldhouse - Indianapolis, IN**



### Purdue 72

No.	Player	S	Pts	FG	3FG	FT	OR	DR	TR	PF	A	TO	Blk	Stl	Min	+/-
01	MCLAUGHLIN, KARISSA	G	17	6-19	3-12	2-4	0	2	2	0	7	1	0	0	40	9
11	ODEN, DOMINIQUE	G	15	7-10	0-0	1-1	0	4	4	3	3	1	0	3	28	10
22	GRANT, JENELLE	F	6	2-4	1-2	1-2	0	6	6	3	3	3	2	0	28	7
23	TRAYLOR, KAYANA	G	5	2-5	0-1	1-2	0	1	1	2	4	3	0	1	32	5
32	HARRIS, AE'RIANNA	F	15	5-12	0-0	5-8	4	6	10	3	1	2	7	2	30	7
03	WHILBY, LYNDSLEY	G	0	0-0	0-0	0-0	1	3	4	1	0	2	0	1	5	0
05	HARDIN, CASSIDY	G	3	1-3	1-3	0-0	0	0	0	1	1	0	0	0	11	4
12	MAKOLO, ROXANE	G	0	0-1	0-0	0-2	0	0	0	0	1	0	0	0	9	2
45	DIAGNE, FATOU	C	11	4-7	0-0	3-4	3	9	12	2	0	0	1	0	15	1
TEAM							1	1	2	0		1				
<b>TOTALS</b>			<b>72</b>	<b>27-61</b>	<b>5-18</b>	<b>13-23</b>	<b>9</b>	<b>32</b>	<b>41</b>	<b>15</b>	<b>20</b>	<b>13</b>	<b>10</b>	<b>7</b>	<b>200</b>	

#### Shooting By Period

Period	FG	FG%	3FG	3FG%	FT	FT%
1st Qtr	9-19	47%	2-4	50%	0-2	00%
2nd Qtr	5-12	42%	3-9	33%	4-8	50%
3rd Qtr	5-14	36%	0-3	00%	6-9	67%
4th Qtr	8-16	50%	0-2	00%	3-4	75%
1st Half	14-31	45%	5-13	38%	4-10	40%
2nd Half	13-30	43%	0-5	00%	9-13	69%
<b>Game</b>	<b>27-61</b>	<b>44.3%</b>	<b>5-18</b>	<b>27.8%</b>	<b>13-23</b>	<b>56.5%</b>

Deadball Rebounds: 5,2

Last FG: 4th-00:56

Biggest Run: 9-0

Largest lead: By 15 at 4th-05:14

Technical Fouls: None.

### Michigan St. 63

No.	Player	S	Pts	FG	3FG	FT	OR	DR	TR	PF	A	TO	Blk	Stl	Min	+/-
01	OZMENT, TORY	G	0	0-3	0-2	0-0	1	4	5	1	0	4	0	0	15	-4
04	MCCUTCHEON, TARYN	G	10	4-15	2-7	0-0	4	6	10	0	5	3	0	1	38	-12
14	PARKS, TAIYIER	F	3	1-5	0-0	1-2	2	1	3	2	0	0	0	1	14	-6
22	JOINER, MOIRA	G	8	3-10	2-4	0-0	1	2	3	4	1	2	0	4	22	-8
24	CLOUDEN, NIA	G	14	5-16	0-4	4-4	2	6	8	4	1	1	1	1	33	-11
00	COLLEY, SHAY	G	14	5-8	1-3	3-3	2	3	5	2	2	1	0	0	20	2
03	WINSTON, ALYZA	G	1	0-1	0-0	1-2	0	1	1	1	1	0	0	0	8	2
12	HOLLIE, NIA	F	2	1-3	0-0	0-0	0	0	0	2	0	0	2	0	13	1
40	AYRAULT, JULIA	G	11	4-14	1-5	2-3	4	6	10	3	0	1	3	1	25	-5
42	BELLES, KAYLA	F	0	0-3	0-0	0-2	2	0	2	1	0	0	0	0	5	2
50	DODD, CYDNI	C	0	0-0	0-0	0-0	0	0	0	1	0	0	0	0	7	-6
TEAM							5	1	6	0		1				
<b>TOTALS</b>			<b>63</b>	<b>23-78</b>	<b>6-25</b>	<b>11-16</b>	<b>23</b>	<b>30</b>	<b>53</b>	<b>21</b>	<b>10</b>	<b>13</b>	<b>6</b>	<b>8</b>	<b>200</b>	

#### Shooting By Period

Period	FG	FG%	3FG	3FG%	FT	FT%
1st Qtr	4-17	24%	1-9	11%	2-2	100%
2nd Qtr	4-18	22%	1-2	50%	6-8	75%
3rd Qtr	4-20	20%	2-7	29%	2-4	50%
4th Qtr	11-23	48%	2-7	29%	1-2	50%
1st Half	8-35	23%	2-11	18%	8-10	80%
2nd Half	15-43	35%	4-14	29%	3-6	50%
<b>Game</b>	<b>23-78</b>	<b>29.5%</b>	<b>6-25</b>	<b>24.0%</b>	<b>11-16</b>	<b>68.8%</b>

Deadball Rebounds: 3,0

Last FG: 4th-00:52

Biggest Run: 6-0

Largest lead: By 0 at 1st-08:56

Technical Fouls: None.

#### Game Notes:

Officials: Mark Zentz, Gina Cross, Cameron Inouye

Start Time: 12:04 PM ET

End Time: 01:55 PM ET

Game Duration: 1:51

Neutral Court;

Score	1st	2nd	3rd	4th	TOT
PUR	20	17	16	19	<b>72</b>
MSU	11	15	12	25	<b>63</b>

PUR led for 39:16. MSU led for 0:00.

Game was tied for 0:44.

Times tied: 2 Lead Changes: 0

Points from	PUR	MSU
In the Paint	34	28
Off Turns	17	7
2nd Chance	4	13
Fast Break	16	20
Bench	14	28



**Official Box Score**  
**Purdue vs Michigan St.**  
**First Half Statistics Only**  
**March 05, 2020 at Bankers Life Fieldhouse - Indianapolis, IN**



### Purdue 37

No.	Player	S	Pts	FG	3FG	FT	OR	DR	TR	PF	A	TO	Blk	Stl	Min	+/-
01	MCLAUGHLIN, KARISSA	G	11	4-9	3-7	0-0	0	1	1	0	2	1	0	0	20	11
03	WHILBY, LYNDSLEY	G	0	0-0	0-0	0-0	1	3	4	1	0	2	0	1	5	0
05	HARDIN, CASSIDY	G	3	1-3	1-3	0-0	0	0	0	0	0	0	0	0	9	2
11	ODEN, DOMINIQUE	G	8	4-6	0-0	0-0	0	3	3	2	1	0	0	1	11	13
12	MAKOLO, ROXANE	G	0	0-0	0-0	0-2	0	0	0	0	1	0	0	0	7	1
22	GRANT, JENELLE	F	3	1-3	1-2	0-0	0	3	3	0	3	0	1	0	15	11
23	TRAYLOR, KAYANA	G	3	1-3	0-1	1-2	0	0	0	2	3	0	0	1	13	6
32	HARRIS, AE'RIANNA	F	8	3-6	0-0	2-4	2	4	6	2	1	2	6	2	16	5
45	DIAGNE, FATOU	C	1	0-1	0-0	1-2	0	3	3	0	0	0	0	0	4	6
	TEAM		0	0-0	0-0	0-0	0	0	0	0	0	1	0	0	0	
<b>TOTALS</b>			<b>37</b>	<b>14-31</b>	<b>5-13</b>	<b>4-10</b>	<b>3</b>	<b>17</b>	<b>20</b>	<b>7</b>	<b>11</b>	<b>6</b>	<b>7</b>	<b>5</b>	<b>100</b>	

#### Shooting By Period

Period	FG	FG%	3FG	3FG%	FT	FT%
1st Qtr	9-19	47%	2-4	50%	0-2	00%
2nd Qtr	5-12	42%	3-9	33%	4-8	50%
1st Half	14-31	45%	5-13	38%	4-10	40%
Game	27-61	44.3%	5-18	27.8%	13-23	56.5%

Deadball Rebounds: 5,2

Last FG Half: PUR 2nd-01:00

### Michigan St. 26

No.	Player	S	Pts	FG	3FG	FT	OR	DR	TR	PF	A	TO	Blk	Stl	Min	+/-
00	COLLEY, SHAY	G	0	0-1	0-1	0-0	0	1	1	1	0	1	0	0	4	-4
01	OZMENT, TORY	G	0	0-1	0-1	0-0	1	3	4	1	0	4	0	0	8	-8
03	WINSTON, ALYZA	G	1	0-1	0-0	1-2	0	1	1	0	0	0	0	0	4	0
04	MCCUTCHEON, TARYN	G	5	2-5	1-2	0-0	1	3	4	0	3	1	0	0	20	-10
12	HOLLIE, NIA	F	0	0-0	0-0	0-0	0	0	0	2	0	0	0	0	5	-1
14	PARKS, TAIYIER	F	3	1-3	0-0	1-2	1	0	1	1	0	0	0	0	8	-7
22	JOINER, MOIRA	G	3	1-6	1-3	0-0	1	1	2	1	1	1	0	3	14	-8
24	CLOUDEN, NIA	G	10	3-10	0-3	4-4	1	4	5	1	0	1	1	0	18	-11
40	AYRAULT, JULIA	G	4	1-7	0-1	2-2	3	2	5	1	0	1	1	0	12	-3
42	BELLES, KAYLA	F	0	0-1	0-0	0-0	0	0	0	1	0	0	0	0	3	1
50	DODD, CYDNI	C	0	0-0	0-0	0-0	0	0	0	0	0	0	0	0	5	-4
	TEAM		0	0-0	0-0	0-0	3	1	4	0	0	0	0	0	0	
<b>TOTALS</b>			<b>26</b>	<b>8-35</b>	<b>2-11</b>	<b>8-10</b>	<b>11</b>	<b>16</b>	<b>27</b>	<b>9</b>	<b>4</b>	<b>9</b>	<b>2</b>	<b>3</b>	<b>100</b>	

#### Shooting By Period

Period	FG	FG%	3FG	3FG%	FT	FT%
1st Qtr	4-17	24%	1-9	11%	2-2	100%
2nd Qtr	4-18	22%	1-2	50%	6-8	75%
1st Half	8-35	23%	2-11	18%	8-10	80%
Game	23-78	29.5%	6-25	24.0%	11-16	68.8%

Deadball Rebounds: 3,0

Last FG Half: MSU 2nd-00:14

#### Game Notes:

Officials: Mark Zentz, Gina Cross, Cameron Inouye

Start Time: 12:04 PM ET

End Time: 01:55 PM ET

Game Duration: 1:51

Neutral Court;

Score	1st	2nd	3rd	4th	TOT
PUR	20	17	16	19	<b>72</b>
MSU	11	15	12	25	<b>63</b>

Points from (This Period)	PUR	MSU
In the Paint	14	8
Off Turns	11	3
2nd Chance	0	8
Fast Break	10	4
Bench	4	5



**Official Box Score**  
**Purdue vs Michigan St.**  
**First Quarter Statistics Only**  
**March 05, 2020 at Bankers Life Fieldhouse - Indianapolis, IN**



### Purdue 20

No.	Player	S	Pts	FG	3FG	FT	OR	DR	TR	PF	A	TO	Blk	Stl	Min	+/-
01	MCLAUGHLIN, KARISSA	G	3	1-4	1-3	0-0	0	0	0	0	1	0	0	0	10	9
11	ODEN, DOMINIQUE	G	6	3-4	0-0	0-0	0	3	3	1	1	0	0	1	9	11
22	GRANT, JENELLE	F	3	1-2	1-1	0-0	0	1	1	0	2	0	0	0	7	7
23	TRAYLOR, KAYANA	G	2	1-2	0-0	0-0	0	0	0	1	3	0	0	0	9	11
32	HARRIS, AE'RIANNA	F	6	3-6	0-0	0-2	2	2	4	0	1	0	1	2	8	5
03	WHILBY, LYNDSY	G	0	0-0	0-0	0-0	1	0	1	0	0	0	0	0	3	2
05	HARDIN, CASSIDY	G	0	0-0	0-0	0-0	0	0	0	0	0	0	0	0	1	-2
12	MAKOLO, ROXANE	G	0	0-0	0-0	0-0	0	0	0	0	0	0	0	0	1	-2
45	DIAGNE, FATOU	C	0	0-1	0-0	0-0	0	3	3	0	0	0	0	0	2	4
	TEAM						0	0	0	0		1				
<b>TOTALS</b>			<b>20</b>	<b>9-19</b>	<b>2-4</b>	<b>0-2</b>	<b>3</b>	<b>9</b>	<b>12</b>	<b>2</b>	<b>8</b>	<b>1</b>	<b>1</b>	<b>3</b>	<b>50</b>	

#### Shooting By Period

Period	FG	FG%	3FG	3FG%	FT	FT%
1st Qtr	9-19	47%	2-4	50%	0-2	00%
2nd Qtr	5-12	42%	3-9	33%	4-8	50%
1st Half	9-19	47%	2-4	50%	0-2	00%
1st Half	14-31	45%	5-13	38%	4-10	40%
Game	27-61	44.3%	5-18	27.8%	13-23	56.5%

Deadball Rebounds: 5,2

### Michigan St. 11

No.	Player	S	Pts	FG	3FG	FT	OR	DR	TR	PF	A	TO	Blk	Stl	Min	+/-
01	OZMENT, TORY	G	0	0-1	0-1	0-0	1	2	3	0	0	3	0	0	7	-7
04	MCCUTCHEON, TARYN	G	5	2-3	1-2	0-0	1	1	2	0	1	0	0	0	10	-9
14	PARKS, TAIYIER	F	2	1-2	0-0	0-0	1	0	1	0	0	0	0	0	5	-7
22	JOINER, MOIRA	G	0	0-4	0-2	0-0	1	0	1	1	1	1	0	0	7	-7
24	CLOUDEN, NIA	G	4	1-5	0-2	2-2	0	3	3	0	0	0	0	0	9	-11
00	COLLEY, SHAY	G	0	0-1	0-1	0-0	0	0	0	0	0	0	0	0	3	-2
03	WINSTON, ALYZA	G	0	0-0	0-0	0-0	0	1	1	0	0	0	0	0	1	2
12	HOLLIE, NIA	F	0	0-0	0-0	0-0	0	0	0	0	0	0	0	0	0	0
40	AYRAULT, JULIA	G	0	0-1	0-1	0-0	0	1	1	1	0	0	1	0	3	-2
42	BELLES, KAYLA	F	0	0-0	0-0	0-0	0	0	0	1	0	0	0	0	1	2
50	DODD, CYDNI	C	0	0-0	0-0	0-0	0	0	0	0	0	0	0	0	5	-4
	TEAM						0	0	0	0		0				
<b>TOTALS</b>			<b>11</b>	<b>4-17</b>	<b>1-9</b>	<b>2-2</b>	<b>4</b>	<b>8</b>	<b>12</b>	<b>3</b>	<b>2</b>	<b>4</b>	<b>1</b>	<b>0</b>	<b>50</b>	

#### Shooting By Period

Period	FG	FG%	3FG	3FG%	FT	FT%
1st Qtr	4-17	24%	1-9	11%	2-2	100%
2nd Qtr	4-18	22%	1-2	50%	6-8	75%
1st Half	4-17	24%	1-9	11%	2-2	100%
1st Half	8-35	23%	2-11	18%	8-10	80%
Game	23-78	29.5%	6-25	24.0%	11-16	68.8%

Deadball Rebounds: 3,0

#### Game Notes:

Officials: Mark Zentz, Gina Cross, Cameron Inouye

Start Time: 12:04 PM ET

End Time: 01:55 PM ET

Game Duration: 1:51

Neutral Court;

Score	1st	2nd	3rd	4th	TOT
PUR	20	17	16	19	<b>72</b>
MSU	11	15	12	25	<b>63</b>

Points from (This Period)	PUR	MSU
In the Paint	12	4
Off Turns	2	0
2nd Chance	0	2
Fast Break	9	3
Bench	0	0



**Official Play-By-Play  
Purdue vs Michigan St.  
First Quarter**

**March 05, 2020 at Bankers Life Fieldhouse - Indianapolis, IN**



**Period 1**

**Starters:**

**Purdue:** 1 MCLAUGHLIN, KARISSA (G); 11 ODEN, DOMINIQUE (G); 22 GRANT, JENELLE (F); 23 TRAYLOR, KAYANA (G); 32 HARRIS, AE'RIANNA (F);

**Michigan St.:** 1 OZMENT, TORY (G); 4 MCCUTCHEON, TARYN (G); 14 PARKS, TAIYIER (F); 22 JOINER, MOIRA (G); 24 CLOUDEN, NIA (G);

Time	VISITORS: Purdue	Score	Margin	HOME: Michigan St.
09:43	GOOD! LAYUP by HARRIS, AE'RIANNA	0-2	V 2	
09:43	ASSIST by GRANT, JENELLE			
09:30		2-2	T	GOOD! LAYUP by CLOUDEN, NIA
09:16	GOOD! LAYUP by HARRIS, AE'RIANNA	2-4	V 2	
09:16	ASSIST by GRANT, JENELLE			
08:56	FOUL (PERSONAL) by TRAYLOR, KAYANA			
08:56		3-4	V 1	GOOD! FT by CLOUDEN, NIA
08:56		4-4	T	GOOD! FT by CLOUDEN, NIA
08:43	GOOD! 3PTR by MCLAUGHLIN, KARISSA	4-7	V 3	
08:43	ASSIST by HARRIS, AE'RIANNA			
08:16				MISSED JUMPER by CLOUDEN, NIA
08:13	REBOUND (DEF) by HARRIS, AE'RIANNA			
08:12				FOUL (PERSONAL) by JOINER, MOIRA
08:04	MISSED JUMPER by MCLAUGHLIN, KARISSA			
08:01				REBOUND (DEF) by CLOUDEN, NIA
07:57				MISSED 3PTR by JOINER, MOIRA
07:52				REBOUND (OFF) by PARKS, TAIYIER
07:52		6-7	V 1	GOOD! LAYUP by PARKS, TAIYIER
07:52				ASSIST by MCCUTCHEON, TARYN
07:19	TURNOVER (SHOTCLOCK) by TEAM			
07:08				TURNOVER (BADPASS) by OZMENT, TORY
06:50	MISSED JUMPER by GRANT, JENELLE			
06:45				REBOUND (DEF) by OZMENT, TORY
06:38				TURNOVER (LOSTBALL) by OZMENT, TORY
06:38	STEAL by ODEN, DOMINIQUE			
06:33	GOOD! LAYUP by ODEN, DOMINIQUE [FB]	6-9	V 3	
06:33	ASSIST by TRAYLOR, KAYANA			
06:09				MISSED JUMPER by PARKS, TAIYIER
06:09	BLOCK by HARRIS, AE'RIANNA			
06:04	REBOUND (DEF) by GRANT, JENELLE			
05:57	GOOD! JUMPER by HARRIS, AE'RIANNA [PNT]	6-11	V 5	
05:57	ASSIST by TRAYLOR, KAYANA			
05:35				MISSED JUMPER by JOINER, MOIRA
05:32	REBOUND (DEF) by HARRIS, AE'RIANNA			
05:27	GOOD! LAYUP by ODEN, DOMINIQUE [FB]	6-13	V 7	
05:27	ASSIST by TRAYLOR, KAYANA			
05:26				TIMEOUT 30SEC
05:26				
05:26				SUB OUT: PARKS, TAIYIER
05:26				SUB IN: DODD, CYDNI
05:17				MISSED 3PTR by JOINER, MOIRA
05:13				REBOUND (OFF) by OZMENT, TORY
05:12				TURNOVER (BADPASS) by OZMENT, TORY
05:12	STEAL by HARRIS, AE'RIANNA			
04:58	MISSED LAYUP by HARRIS, AE'RIANNA			
04:56				REBOUND (DEF) by MCCUTCHEON, TARYN
04:51				MISSED LAYUP by JOINER, MOIRA
04:48	REBOUND (DEF) by ODEN, DOMINIQUE			
04:42	GOOD! 3PTR by GRANT, JENELLE [FB]	6-16	V 10	
04:42	ASSIST by ODEN, DOMINIQUE			
04:27				TURNOVER (BADPASS) by JOINER, MOIRA
04:27	STEAL by HARRIS, AE'RIANNA			
03:59	MISSED JUMPER by ODEN, DOMINIQUE			
03:55	REBOUND (OFF) by HARRIS, AE'RIANNA			
03:55	MISSED LAYUP by HARRIS, AE'RIANNA			
03:53				REBOUND (DEF) by CLOUDEN, NIA
03:46				MISSED 3PTR by OZMENT, TORY
03:42				REBOUND (OFF) by JOINER, MOIRA
03:40				MISSED 3PTR by MCCUTCHEON, TARYN
03:37	REBOUND (DEF) by ODEN, DOMINIQUE			
03:28	MISSED JUMPER by HARRIS, AE'RIANNA			
03:25				REBOUND (DEF) by OZMENT, TORY
03:18		9-16	V 7	GOOD! 3PTR by MCCUTCHEON, TARYN [FB]
03:18				ASSIST by JOINER, MOIRA
02:58				SUB OUT: OZMENT, TORY
02:58				SUB OUT: JOINER, MOIRA
02:58				SUB IN: COLLEY, SHAY
02:58				SUB IN: AYRAULT, JULIA
02:58	SUB OUT: GRANT, JENELLE			
02:58	SUB OUT: HARRIS, AE'RIANNA			



Time	VISITORS: Purdue	Score	Margin	HOME: Michigan St.
02:58	SUB IN: WHILBY, LYNDSEY			
02:58	SUB IN: DIAGNE, FATOU			
02:47	MISSED JUMPER by DIAGNE, FATOU			
02:45				REBOUND (DEF) by CLOUDEN, NIA
02:40				MISSED LAYUP by CLOUDEN, NIA
02:38	REBOUND (DEF) by DIAGNE, FATOU			
02:34	GOOD! JUMPER by ODEN, DOMINIQUE [FB]	9-18	V 9	
02:34	ASSIST by MCLAUGHLIN, KARISSA			
02:22	FOUL (PERSONAL) by ODEN, DOMINIQUE			
02:04				MISSED 3PTR by COLLEY, SHAY
02:01				REBOUND (OFF) by MCCUTCHEON, TARYN
01:45				MISSED 3PTR by AYRAULT, JULIA
01:41	REBOUND (DEF) by DIAGNE, FATOU			
01:30	GOOD! LAYUP by TRAYLOR, KAYANA	9-20	V 11	
01:12				MISSED 3PTR by CLOUDEN, NIA
01:08	REBOUND (DEF) by DIAGNE, FATOU			
01:01	MISSED LAYUP by TRAYLOR, KAYANA			
01:01				BLOCK by AYRAULT, JULIA
00:58				REBOUND (DEF) by AYRAULT, JULIA
00:53				MISSED 3PTR by CLOUDEN, NIA
00:52	REBOUND (DEF) by ODEN, DOMINIQUE			
00:51				FOUL (PERSONAL) by AYRAULT, JULIA
00:51				SUB OUT: CLOUDEN, NIA
00:51				SUB OUT: DODD, CYDNI
00:51				SUB IN: WINSTON, ALYZA
00:51				SUB IN: BELLES, KAYLA
00:51	SUB OUT: TRAYLOR, KAYANA			
00:51	SUB OUT: DIAGNE, FATOU			
00:51	SUB IN: HARDIN, CASSIDY			
00:51	SUB IN: HARRIS, AE'RIANNA			
00:37				FOUL (PERSONAL) by BELLES, KAYLA
00:37	SUB OUT: ODEN, DOMINIQUE			
00:37	SUB IN: MAKOLO, ROXANE			
00:37	MISSED FT by HARRIS, AE'RIANNA			
00:37	REBOUND (OFF) by TEAM			
00:37	MISSED FT by HARRIS, AE'RIANNA			
00:35	REBOUND (OFF) by WHILBY, LYNDSEY			
00:32	MISSED 3PTR by MCLAUGHLIN, KARISSA			
00:28	REBOUND (OFF) by HARRIS, AE'RIANNA			
00:12	MISSED 3PTR by MCLAUGHLIN, KARISSA			
00:10				REBOUND (DEF) by WINSTON, ALYZA
00:02		11-20	V 9	GOOD! JUMPER by MCCUTCHEON, TARYN

Purdue 20, Michigan St. 11

Points from (This Period)	PUR	MSU
In the Paint	12	4
Off Turns	2	0
2nd Chance	0	2
Fast Break	9	3
Bench	0	0



**Official Box Score**  
**Purdue vs Michigan St.**  
**Second Quarter Statistics Only**  
**March 05, 2020 at Bankers Life Fieldhouse - Indianapolis, IN**



### Purdue 17

No.	Player	S	Pts	FG	3FG	FT	OR	DR	TR	PF	A	TO	Blk	Stl	Min	+/-
01	MCLAUGHLIN, KARISSA	G	8	3-5	2-4	0-0	0	1	1	0	1	1	0	0	10	2
11	ODEN, DOMINIQUE	G	2	1-2	0-0	0-0	0	0	0	1	0	0	0	0	2	2
22	GRANT, JENELLE	F	0	0-1	0-1	0-0	0	2	2	0	1	0	1	0	8	4
23	TRAYLOR, KAYANA	G	1	0-1	0-1	1-2	0	0	0	1	0	0	0	1	4	-5
32	HARRIS, AE'RIANNA	F	2	0-0	0-0	2-2	0	2	2	2	0	2	5	0	8	0
03	WHILBY, LYNDSEY	G	0	0-0	0-0	0-0	0	3	3	1	0	2	0	1	2	-2
05	HARDIN, CASSIDY	G	3	1-3	1-3	0-0	0	0	0	0	0	0	0	0	8	4
12	MAKOLO, ROXANE	G	0	0-0	0-0	0-2	0	0	0	0	1	0	0	0	6	3
45	DIAGNE, FATOU	C	1	0-0	0-0	1-2	0	0	0	0	0	0	0	0	2	2
TEAM							0	0	0	0		0				
<b>TOTALS</b>			<b>17</b>	<b>5-12</b>	<b>3-9</b>	<b>4-8</b>	<b>0</b>	<b>8</b>	<b>8</b>	<b>5</b>	<b>3</b>	<b>5</b>	<b>6</b>	<b>2</b>	<b>50</b>	

#### Shooting By Period

Period	FG	FG%	3FG	3FG%	FT	FT%
3rd Qtr	5-14	36%	0-3	00%	6-9	67%
4th Qtr	8-16	50%	0-2	00%	3-4	75%
2nd Half	5-12	42%	3-9	33%	4-8	50%
2nd Half	13-30	43%	0-5	00%	9-13	69%
Game	27-61	44.3%	5-18	27.8%	13-23	56.5%

Deadball Rebounds: 5,2

### Michigan St. 15

No.	Player	S	Pts	FG	3FG	FT	OR	DR	TR	PF	A	TO	Blk	Stl	Min	+/-
01	OZMENT, TORY	G	0	0-0	0-0	0-0	0	1	1	1	0	1	0	0	1	-1
04	MCCUTCHEON, TARYN	G	0	0-2	0-0	0-0	0	2	2	0	2	1	0	0	10	-1
14	PARKS, TAIYIER	F	1	0-1	0-0	1-2	0	0	0	1	0	0	0	0	3	0
22	JOINER, MOIRA	G	3	1-2	1-1	0-0	0	1	1	0	0	0	0	3	7	-1
24	CLOUDEN, NIA	G	6	2-5	0-1	2-2	1	1	2	1	0	1	1	0	9	0
00	COLLEY, SHAY	G	0	0-0	0-0	0-0	0	1	1	1	0	1	0	0	1	-2
03	WINSTON, ALYZA	G	1	0-1	0-0	1-2	0	0	0	0	0	0	0	0	3	-2
12	HOLLIE, NIA	F	0	0-0	0-0	0-0	0	0	0	2	0	0	0	0	5	-1
40	AYRAULT, JULIA	G	4	1-6	0-0	2-2	3	1	4	0	0	1	0	0	9	-1
42	BELLES, KAYLA	F	0	0-1	0-0	0-0	0	0	0	0	0	0	0	0	2	-1
50	DODD, CYDNI	C	0	0-0	0-0	0-0	0	0	0	0	0	0	0	0	0	0
TEAM							3	1	4	0		0				
<b>TOTALS</b>			<b>15</b>	<b>4-18</b>	<b>1-2</b>	<b>6-8</b>	<b>7</b>	<b>8</b>	<b>15</b>	<b>6</b>	<b>2</b>	<b>5</b>	<b>1</b>	<b>3</b>	<b>50</b>	

#### Shooting By Period

Period	FG	FG%	3FG	3FG%	FT	FT%
3rd Qtr	4-20	20%	2-7	29%	2-4	50%
4th Qtr	11-23	48%	2-7	29%	1-2	50%
2nd Half	4-18	22%	1-2	50%	6-8	75%
2nd Half	15-43	35%	4-14	29%	3-6	50%
Game	23-78	29.5%	6-25	24.0%	11-16	68.8%

Deadball Rebounds: 3,0

#### Game Notes:

Officials: Mark Zentz, Gina Cross, Cameron Inouye

Start Time: 12:04 PM ET

End Time: 01:55 PM ET

Game Duration: 1:51

Neutral Court;

Score	1st	2nd	3rd	4th	TOT
PUR	20	17	16	19	<b>72</b>
MSU	11	15	12	25	<b>63</b>

Points from (This Period)	PUR	MSU
In the Paint	2	4
Off Turns	9	3
2nd Chance	0	6
Fast Break	1	1
Bench	4	5



**Official Play-By-Play**  
**Purdue vs Michigan St.**  
**Second Quarter**  
**March 05, 2020 at Bankers Life Fieldhouse - Indianapolis, IN**



**Period 2**

**Starters:**

**Purdue:** 1 MCLAUGHLIN, KARISSA (G); 11 ODEN, DOMINIQUE (G); 22 GRANT, JENELLE (F); 23 TRAYLOR, KAYANA (G); 32 HARRIS, AE'RIANNA (F);

**Michigan St.:** 1 OZMENT, TORY (G); 4 MCCUTCHEON, TARYN (G); 14 PARKS, TAIYIER (F); 22 JOINER, MOIRA (G); 24 CLOUDEN, NIA (G);

Time	VISITORS: Purdue	Score	Margin	HOME: Michigan St.
10:00	SUB OUT: WHILBY, LYNDESEY			
10:00	SUB IN: GRANT, JENELLE			
09:51				MISSED JUMPER by AYRAULT, JULIA
09:48	REBOUND (DEF) by GRANT, JENELLE			
09:42	MISSED 3PTR by HARDIN, CASSIDY			
09:39				REBOUND (DEF) by COLLEY, SHAY
09:34				TURNOVER (TRAVEL) by COLLEY, SHAY
09:34	SUB OUT: MAKOLO, ROXANE			
09:34	SUB IN: ODEN, DOMINIQUE			
09:22				FOUL (PERSONAL) by COLLEY, SHAY
09:09	GOOD! LAYUP by ODEN, DOMINIQUE	11-22	V 11	
09:09	ASSIST by MCLAUGHLIN, KARISSA			
08:52				MISSED LAYUP by AYRAULT, JULIA
08:52	BLOCK by HARRIS, AE'RIANNA			
08:52				REBOUND (OFF) by TEAM
08:52				SUB OUT: COLLEY, SHAY
08:52				SUB OUT: WINSTON, ALYZA
08:52				SUB IN: JOINER, MOIRA
08:52				SUB IN: CLOUDEN, NIA
08:42				MISSED LAYUP by BELLES, KAYLA
08:42	BLOCK by HARRIS, AE'RIANNA			
08:38	REBOUND (DEF) by MCLAUGHLIN, KARISSA			
08:31	MISSED 3PTR by GRANT, JENELLE			
08:28				REBOUND (DEF) by MCCUTCHEON, TARYN
08:22				MISSED LAYUP by MCCUTCHEON, TARYN
08:22	BLOCK by HARRIS, AE'RIANNA			
08:21				SUB OUT: BELLES, KAYLA
08:21				SUB IN: HOLLIE, NIA
08:21				REBOUND (OFF) by TEAM
08:10				MISSED JUMPER by MCCUTCHEON, TARYN
08:06	REBOUND (DEF) by HARRIS, AE'RIANNA			
07:48	MISSED JUMPER by ODEN, DOMINIQUE			
07:48				BLOCK by CLOUDEN, NIA
07:48				REBOUND (DEF) by CLOUDEN, NIA
07:48	SUB OUT: ODEN, DOMINIQUE			
07:48	SUB IN: TRAYLOR, KAYANA			
07:46	FOUL (PERSONAL) by ODEN, DOMINIQUE			
07:20		14-22	V 8	GOOD! 3PTR by JOINER, MOIRA
07:20				ASSIST by MCCUTCHEON, TARYN
06:47	GOOD! JUMPER by MCLAUGHLIN, KARISSA	14-24	V 10	
06:33				MISSED JUMPER by CLOUDEN, NIA
06:29				REBOUND (OFF) by AYRAULT, JULIA
06:29				MISSED LAYUP by AYRAULT, JULIA
06:27				REBOUND (OFF) by AYRAULT, JULIA
06:27				MISSED LAYUP by AYRAULT, JULIA
06:27				REBOUND (OFF) by AYRAULT, JULIA
06:27	FOUL (PERSONAL) by HARRIS, AE'RIANNA			
06:27	SUB OUT: GRANT, JENELLE			
06:27	SUB IN: WHILBY, LYNDESEY			
06:27		15-24	V 9	GOOD! FT by AYRAULT, JULIA
06:27		16-24	V 8	GOOD! FT by AYRAULT, JULIA
06:27				SUB OUT: AYRAULT, JULIA
06:27				SUB IN: OZMENT, TORY
06:17	MISSED 3PTR by MCLAUGHLIN, KARISSA			
06:14	REBOUND (OFF) by TEAM			
06:14				FOUL (PERSONAL) by HOLLIE, NIA
06:11	TURNOVER (LOSTBALL) by MCLAUGHLIN, KARISSA			
06:11				STEAL by JOINER, MOIRA
06:00				TURNOVER (BADPASS) by OZMENT, TORY
06:00	STEAL by WHILBY, LYNDESEY			
05:53	MISSED 3PTR by HARDIN, CASSIDY			
05:51				REBOUND (DEF) by OZMENT, TORY
05:39				TURNOVER (LOSTBALL) by CLOUDEN, NIA
05:39	STEAL by TRAYLOR, KAYANA			
05:34				FOUL (PERSONAL) by OZMENT, TORY
05:34	SUB OUT: HARDIN, CASSIDY			
05:34	SUB IN: MAKOLO, ROXANE			
05:34	MISSED FT by TRAYLOR, KAYANA			
05:34	REBOUND (OFF) by TEAM			
05:34	GOOD! FT by TRAYLOR, KAYANA [FB]	16-25	V 9	



Time	VISITORS: Purdue	Score	Margin	HOME: Michigan St.
05:23				MISSED 3PTR by CLOUDEN, NIA
05:19	REBOUND (DEF) by WHILBY, LYNDESEY			
05:14	TURNOVER (LOSTBALL) by HARRIS, AE'RIANNA			
05:14				STEAL by JOINER, MOIRA
05:14				SUB OUT: OZMENT, TORY
05:14				SUB OUT: HOLLIE, NIA
05:14				SUB IN: PARKS, TAIYIER
05:14				SUB IN: AYRAULT, JULIA
05:00				MISSED JUMPER by AYRAULT, JULIA
05:00	BLOCK by HARRIS, AE'RIANNA			
04:56	REBOUND (DEF) by WHILBY, LYNDESEY			
04:55	TURNOVER (LOSTBALL) by WHILBY, LYNDESEY			
04:55				STEAL by JOINER, MOIRA
04:54	FOUL (PERSONAL) by WHILBY, LYNDESEY			
04:54				
04:54		17-25	V 8	GOOD! FT by PARKS, TAIYIER
04:54				MISSED FT by PARKS, TAIYIER
04:53	REBOUND (DEF) by HARRIS, AE'RIANNA			
04:32	MISSED 3PTR by TRAYLOR, KAYANA			
04:30				REBOUND (DEF) by MCCUTCHEON, TARYN
04:16				MISSED LAYUP by PARKS, TAIYIER
04:13	REBOUND (DEF) by WHILBY, LYNDESEY			
04:10	TURNOVER (TRAVEL) by WHILBY, LYNDESEY			
04:10	SUB OUT: WHILBY, LYNDESEY			
04:10	SUB IN: GRANT, JENELLE			
03:53				MISSED LAYUP by JOINER, MOIRA
03:53	BLOCK by HARRIS, AE'RIANNA			
03:52				REBOUND (OFF) by TEAM
03:52				SUB OUT: JOINER, MOIRA
03:52				SUB IN: WINSTON, ALYZA
03:44	FOUL (PERSONAL) by TRAYLOR, KAYANA			
03:44		18-25	V 7	GOOD! FT by CLOUDEN, NIA
03:44		19-25	V 6	GOOD! FT by CLOUDEN, NIA
03:44	SUB OUT: TRAYLOR, KAYANA			
03:44	SUB IN: HARDIN, CASSIDY			
03:25	TURNOVER (LOSTBALL) by HARRIS, AE'RIANNA			
03:16				TURNOVER (BADPASS) by AYRAULT, JULIA
03:07	GOOD! 3PTR by MCLAUGHLIN, KARISSA	19-28	V 9	
03:07	ASSIST by GRANT, JENELLE			
02:55				MISSED LAYUP by CLOUDEN, NIA
02:52				REBOUND (OFF) by CLOUDEN, NIA
02:52		21-28	V 7	GOOD! LAYUP by CLOUDEN, NIA
02:22				FOUL (PERSONAL) by PARKS, TAIYIER
02:22				SUB OUT: MCCUTCHEON, TARYN
02:22				SUB IN: JOINER, MOIRA
02:22	GOOD! FT by HARRIS, AE'RIANNA	21-29	V 8	
02:22	GOOD! FT by HARRIS, AE'RIANNA	21-30	V 9	
02:22				SUB OUT: PARKS, TAIYIER
02:22				SUB IN: HOLLIE, NIA
02:01				MISSED JUMPER by WINSTON, ALYZA
02:01	BLOCK by GRANT, JENELLE			
01:59	REBOUND (DEF) by GRANT, JENELLE			
01:59				FOUL (PERSONAL) by CLOUDEN, NIA
01:59	MISSED FT by MAKOLO, ROXANE			
01:59	REBOUND (OFF) by TEAM			
01:59	MISSED FT by MAKOLO, ROXANE			
01:58				REBOUND (DEF) by AYRAULT, JULIA
01:53	FOUL (PERSONAL) by HARRIS, AE'RIANNA			
01:53	SUB OUT: HARRIS, AE'RIANNA			
01:53	SUB IN: DIAGNE, FATOU			
01:53				MISSED FT by WINSTON, ALYZA
01:53				REBOUND (OFF) by TEAM
01:53		22-30	V 8	GOOD! FT by WINSTON, ALYZA [FB]
01:53				SUB OUT: WINSTON, ALYZA
01:53				SUB IN: MCCUTCHEON, TARYN
01:32	GOOD! 3PTR by MCLAUGHLIN, KARISSA	22-33	V 11	
01:19				TURNOVER (TRAVEL) by MCCUTCHEON, TARYN
01:00	GOOD! 3PTR by HARDIN, CASSIDY	22-36	V 14	
01:00	ASSIST by MAKOLO, ROXANE			
00:42		24-36	V 12	GOOD! LAYUP by CLOUDEN, NIA
00:22				FOUL (PERSONAL) by HOLLIE, NIA
00:22				SUB OUT: HOLLIE, NIA
00:22				SUB IN: BELLES, KAYLA
00:22	GOOD! FT by DIAGNE, FATOU	24-37	V 13	
00:22	MISSED FT by DIAGNE, FATOU			
00:22				REBOUND (DEF) by JOINER, MOIRA
00:14		26-37	V 11	GOOD! JUMPER by AYRAULT, JULIA
00:14				ASSIST by MCCUTCHEON, TARYN
00:02	MISSED 3PTR by MCLAUGHLIN, KARISSA			
00:00				REBOUND (DEF) by TEAM



**Purdue 37, Michigan St. 26**

<b>Points from (This Period)</b>	<b>PUR</b>	<b>MSU</b>
In the Paint	2	4
Off Turns	9	3
2nd Chance	0	6
Fast Break	1	1
Bench	4	5



**Official Box Score**  
**Purdue vs Michigan St.**  
**Second Half Statistics Only**  
**March 05, 2020 at Bankers Life Fieldhouse - Indianapolis, IN**



### Purdue 35

No.	Player	S	Pts	FG	3FG	FT	OR	DR	TR	PF	A	TO	Blk	Stl	Min	+/-
01	MCLAUGHLIN, KARISSA	G	6	2-10	0-5	2-4	0	1	1	0	5	0	0	0	20	-2
03	WHILBY, LYNDSLEY	G	0	0-0	0-0	0-0	0	0	0	0	0	0	0	0	0	0
05	HARDIN, CASSIDY	G	0	0-0	0-0	0-0	0	0	0	1	1	0	0	0	3	2
11	ODEN, DOMINIQUE	G	7	3-4	0-0	1-1	0	1	1	1	2	1	0	2	17	-3
12	MAKOLO, ROXANE	G	0	0-1	0-0	0-0	0	0	0	0	0	0	0	0	2	1
22	GRANT, JENELLE	F	3	1-1	0-0	1-2	0	3	3	3	0	3	1	0	13	-4
23	TRAYLOR, KAYANA	G	2	1-2	0-0	0-0	0	1	1	0	1	3	0	0	19	-1
32	HARRIS, AE'RIANNA	F	7	2-6	0-0	3-4	2	2	4	1	0	0	1	0	15	2
45	DIAGNE, FATOU	C	10	4-6	0-0	2-2	3	6	9	2	0	0	1	0	11	-5
	TEAM		0	0-0	0-0	0-0	1	1	2	0	0	0	0	0	0	0
<b>TOTALS</b>			<b>35</b>	<b>13-30</b>	<b>0-5</b>	<b>9-13</b>	<b>6</b>	<b>15</b>	<b>21</b>	<b>8</b>	<b>9</b>	<b>7</b>	<b>3</b>	<b>2</b>	<b>100</b>	

#### Shooting By Period

Period	FG	FG%	3FG	3FG%	FT	FT%
3rd Qtr	5-14	36%	0-3	00%	6-9	67%
4th Qtr	8-16	50%	0-2	00%	3-4	75%
2nd Half	13-30	43%	0-5	00%	9-13	69%
Game	27-61	44.3%	5-18	27.8%	13-23	56.5%

Deadball Rebounds: 5,2

Last FG Half: PUR 4th-00:56

### Michigan St. 37

No.	Player	S	Pts	FG	3FG	FT	OR	DR	TR	PF	A	TO	Blk	Stl	Min	+/-
00	COLLEY, SHAY	G	14	5-7	1-2	3-3	2	2	4	1	2	0	0	0	16	6
01	OZMENT, TORY	G	0	0-2	0-1	0-0	0	1	1	0	0	0	0	0	7	4
03	WINSTON, ALYZA	G	0	0-0	0-0	0-0	0	0	0	1	1	0	0	0	3	2
04	MCCUTCHEON, TARYN	G	5	2-10	1-5	0-0	3	3	6	0	2	2	0	1	18	-2
12	HOLLIE, NIA	F	2	1-3	0-0	0-0	0	0	0	0	0	0	2	0	8	2
14	PARKS, TAIYIER	F	0	0-2	0-0	0-0	1	1	2	1	0	0	0	1	7	1
22	JOINER, MOIRA	G	5	2-4	1-1	0-0	0	1	1	3	0	1	0	1	7	0
24	CLOUDEN, NIA	G	4	2-6	0-1	0-0	1	2	3	3	1	0	0	1	15	0
40	AYRAULT, JULIA	G	7	3-7	1-4	0-1	1	4	5	2	0	0	2	1	13	-2
42	BELLES, KAYLA	F	0	0-2	0-0	0-2	2	0	2	0	0	0	0	0	2	1
50	DODD, CYDNI	C	0	0-0	0-0	0-0	0	0	0	1	0	0	0	0	3	-2
	TEAM		0	0-0	0-0	0-0	2	0	2	0	0	1	0	0	0	0
<b>TOTALS</b>			<b>37</b>	<b>15-43</b>	<b>4-14</b>	<b>3-6</b>	<b>12</b>	<b>14</b>	<b>26</b>	<b>12</b>	<b>6</b>	<b>4</b>	<b>4</b>	<b>5</b>	<b>100</b>	

#### Shooting By Period

Period	FG	FG%	3FG	3FG%	FT	FT%
3rd Qtr	4-20	20%	2-7	29%	2-4	50%
4th Qtr	11-23	48%	2-7	29%	1-2	50%
2nd Half	15-43	35%	4-14	29%	3-6	50%
Game	23-78	29.5%	6-25	24.0%	11-16	68.8%

Deadball Rebounds: 3,0

Last FG Half: MSU 4th-00:52

#### Game Notes:

Officials: Mark Zentz, Gina Cross, Cameron Inouye

Start Time: 12:04 PM ET

End Time: 01:55 PM ET

Game Duration: 1:51

Neutral Court;

Score	1st	2nd	3rd	4th	TOT
PUR	20	17	16	19	<b>72</b>
MSU	11	15	12	25	<b>63</b>

Points from (This Period)	PUR	MSU
In the Paint	20	20
Off Turns	6	4
2nd Chance	4	5
Fast Break	6	16
Bench	10	23



**Official Box Score**  
**Purdue vs Michigan St.**  
**Third Quarter Statistics Only**  
**March 05, 2020 at Bankers Life Fieldhouse - Indianapolis, IN**



### Purdue 35

No.	Player	S	Pts	FG	3FG	FT	OR	DR	TR	PF	A	TO	Blk	Stl	Min	+/-
01	MCLAUGHLIN, KARISSA	G	1	0-5	0-3	1-2	0	0	0	0	1	0	0	0	10	4
11	ODEN, DOMINIQUE	G	3	1-1	0-0	1-1	0	1	1	1	1	1	0	1	7	3
22	GRANT, JENELLE	F	1	0-0	0-0	1-2	0	1	1	1	0	2	0	0	7	2
23	TRAYLOR, KAYANA	G	2	1-2	0-0	0-0	0	1	1	0	1	0	0	0	10	4
32	HARRIS, AE'RIANNA	F	3	1-2	0-0	1-2	1	2	3	1	0	0	0	0	6	4
03	WHILBY, LYNDSEY	G	0	0-0	0-0	0-0	0	0	0	0	0	0	0	0	0	0
05	HARDIN, CASSIDY	G	0	0-0	0-0	0-0	0	0	0	0	1	0	0	0	2	3
12	MAKOLO, ROXANE	G	0	0-1	0-0	0-0	0	0	0	0	0	0	0	0	1	-2
45	DIAGNE, FATOU	C	6	2-3	0-0	2-2	2	5	7	2	0	0	1	0	7	2
TEAM							0	0	0	0		0				
<b>TOTALS</b>			<b>16</b>	<b>5-14</b>	<b>0-3</b>	<b>6-9</b>	<b>3</b>	<b>10</b>	<b>13</b>	<b>5</b>	<b>4</b>	<b>3</b>	<b>1</b>	<b>1</b>	<b>50</b>	

#### Shooting By Period

Period	FG	FG%	3FG	3FG%	FT	FT%
2nd Half	0-0	0%	0-0	0%	0-0	0%
Game	27-61	44.3%	5-18	27.8%	13-23	56.5%

Deadball Rebounds: 5,2

### Michigan St. 37

No.	Player	S	Pts	FG	3FG	FT	OR	DR	TR	PF	A	TO	Blk	Stl	Min	+/-
01	OZMENT, TORY	G	0	0-0	0-0	0-0	0	1	1	0	0	0	0	0	5	0
04	MCCUTCHEON, TARYN	G	0	0-6	0-3	0-0	2	1	3	0	1	0	0	0	10	-4
14	PARKS, TAIYER	F	0	0-2	0-0	0-0	1	1	2	1	0	0	0	0	5	-3
22	JOINER, MOIRA	G	5	2-3	1-1	0-0	0	0	0	2	0	1	0	0	5	-4
24	CLOUDEN, NIA	G	2	1-3	0-0	0-0	0	2	2	2	1	0	0	0	6	-5
00	COLLEY, SHAY	G	5	1-2	1-1	2-2	0	1	1	0	0	0	0	0	6	0
03	WINSTON, ALYZA	G	0	0-0	0-0	0-0	0	0	0	0	1	0	0	0	3	1
12	HOLLIE, NIA	F	0	0-0	0-0	0-0	0	0	0	0	0	0	0	0	0	0
40	AYRAULT, JULIA	G	0	0-2	0-2	0-0	0	3	3	0	0	0	1	1	5	-4
42	BELLES, KAYLA	F	0	0-2	0-0	0-2	2	0	2	0	0	0	0	0	2	1
50	DODD, CYDNI	C	0	0-0	0-0	0-0	0	0	0	1	0	0	0	0	3	-2
TEAM							1	0	1	0		0				
<b>TOTALS</b>			<b>12</b>	<b>4-20</b>	<b>2-7</b>	<b>2-4</b>	<b>6</b>	<b>9</b>	<b>15</b>	<b>6</b>	<b>3</b>	<b>1</b>	<b>1</b>	<b>1</b>	<b>50</b>	

#### Shooting By Period

Period	FG	FG%	3FG	3FG%	FT	FT%
2nd Half	0-0	0%	0-0	0%	0-0	0%
Game	23-78	29.5%	6-25	24.0%	11-16	68.8%

Deadball Rebounds: 3,0

#### Game Notes:

Officials: Mark Zentz, Gina Cross, Cameron Inouye

Start Time: 12:04 PM ET

End Time: 01:55 PM ET

Game Duration: 1:51

Neutral Court;

Score	1st	2nd	3rd	4th	TOT
PUR	20	17	16	19	<b>72</b>
MSU	11	15	12	25	<b>63</b>

Points from (This Period)	PUR	MSU
In the Paint	10	4
Off Turns	0	0
2nd Chance	4	0
Fast Break	4	4
Bench	6	5



**Official Play-By-Play  
Purdue vs Michigan St.  
Third Quarter**

**March 05, 2020 at Bankers Life Fieldhouse - Indianapolis, IN**



**Period 3**

**Starters:**

**Purdue:** 1 MCLAUGHLIN, KARISSA (G); 11 ODEN, DOMINIQUE (G); 22 GRANT, JENELLE (F); 23 TRAYLOR, KAYANA (G); 32 HARRIS, AE'RIANNA (F);

**Michigan St.:** 1 OZMENT, TORY (G); 4 MCCUTCHEON, TARYN (G); 14 PARKS, TAIYIER (F); 22 JOINER, MOIRA (G); 24 CLOUDEN, NIA (G);

Time	VISITORS: Purdue	Score	Margin	HOME: Michigan St.
10:00				SUB OUT: BELLES, KAYLA
10:00				SUB IN: PARKS, TAIYIER
10:00	SUB OUT: HARDIN, CASSIDY			
10:00	SUB OUT: MAKOLO, ROXANE			
10:00	SUB OUT: DIAGNE, FATOU			
10:00	SUB IN: ODEN, DOMINIQUE			
10:00	SUB IN: TRAYLOR, KAYANA			
10:00	SUB IN: HARRIS, AE'RIANNA			
09:51	GOOD! LAYUP by HARRIS, AE'RIANNA	26-39	V 13	
09:51	ASSIST by ODEN, DOMINIQUE			
09:26				MISSED LAYUP by CLOUDEN, NIA
09:23				REBOUND (OFF) by PARKS, TAIYIER
09:23				MISSED LAYUP by PARKS, TAIYIER
09:20				REBOUND (OFF) by MCCUTCHEON, TARYN
09:09				MISSED JUMPER by MCCUTCHEON, TARYN
09:05				REBOUND (OFF) by MCCUTCHEON, TARYN
09:04				MISSED 3PTR by AYRAULT, JULIA
09:01	REBOUND (DEF) by HARRIS, AE'RIANNA			
08:39	TURNOVER (BADPASS) by GRANT, JENELLE			
08:39				STEAL by AYRAULT, JULIA
08:35				TURNOVER (BADPASS) by JOINER, MOIRA
08:35	STEAL by ODEN, DOMINIQUE			
08:29	MISSED 3PTR by MCLAUGHLIN, KARISSA			
08:27				REBOUND (DEF) by CLOUDEN, NIA
08:24				MISSED LAYUP by JOINER, MOIRA
08:20	REBOUND (DEF) by TRAYLOR, KAYANA			
07:55				FOUL (PERSONAL) by JOINER, MOIRA
07:55				SUB OUT: PARKS, TAIYIER
07:55				SUB IN: DODD, CYDNI
07:55	SUB OUT: GRANT, JENELLE			
07:55	SUB IN: DIAGNE, FATOU			
07:55	GOOD! FT by HARRIS, AE'RIANNA	26-40	V 14	
07:55	MISSED FT by HARRIS, AE'RIANNA			
07:55				REBOUND (DEF) by CLOUDEN, NIA
07:45		29-40	V 11	GOOD! 3PTR by JOINER, MOIRA
07:45				ASSIST by CLOUDEN, NIA
07:30	MISSED LAYUP by TRAYLOR, KAYANA			
07:28				REBOUND (DEF) by AYRAULT, JULIA
07:18				MISSED JUMPER by MCCUTCHEON, TARYN
07:15	REBOUND (DEF) by HARRIS, AE'RIANNA			
07:10	GOOD! LAYUP by ODEN, DOMINIQUE [FB]	29-42	V 13	
07:10	ASSIST by MCLAUGHLIN, KARISSA			
07:10				FOUL (PERSONAL) by DODD, CYDNI
07:10	GOOD! FT by ODEN, DOMINIQUE [FB]	29-43	V 14	
06:51				MISSED 3PTR by AYRAULT, JULIA
06:47	REBOUND (DEF) by DIAGNE, FATOU			
06:44				FOUL (PERSONAL) by CLOUDEN, NIA
06:44				SUB OUT: JOINER, MOIRA
06:44				SUB IN: COLLEY, SHAY
06:44	GOOD! FT by MCLAUGHLIN, KARISSA [FB]	29-44	V 15	
06:44	MISSED FT by MCLAUGHLIN, KARISSA			
06:42	REBOUND (OFF) by HARRIS, AE'RIANNA			
06:26	MISSED JUMPER by HARRIS, AE'RIANNA			
06:23				REBOUND (DEF) by AYRAULT, JULIA
06:18		31-44	V 13	GOOD! LAYUP by CLOUDEN, NIA [FB]
06:01	MISSED 3PTR by MCLAUGHLIN, KARISSA			
05:58				REBOUND (DEF) by AYRAULT, JULIA
05:39				MISSED 3PTR by MCCUTCHEON, TARYN
05:36	REBOUND (DEF) by DIAGNE, FATOU			
05:23	MISSED LAYUP by DIAGNE, FATOU			
05:23				BLOCK by AYRAULT, JULIA
05:19	REBOUND (OFF) by DIAGNE, FATOU			
05:19	GOOD! LAYUP by DIAGNE, FATOU	31-46	V 15	
05:10				MISSED LAYUP by CLOUDEN, NIA
05:07	REBOUND (DEF) by DIAGNE, FATOU			
05:07				FOUL (PERSONAL) by CLOUDEN, NIA
05:07				SUB OUT: CLOUDEN, NIA
05:07				SUB OUT: AYRAULT, JULIA
05:07				SUB OUT: DODD, CYDNI
05:07				SUB IN: OZMENT, TORY



Time	VISITORS: Purdue	Score	Margin	HOME: Michigan St.
05:07				SUB IN: WINSTON, ALYZA
05:07				SUB IN: BELLES, KAYLA
05:07	SUB OUT: DIAGNE, FATOU			
05:07	SUB IN: GRANT, JENELLE			
04:57	FOUL (OFF) by GRANT, JENELLE			
04:57	TURNOVER (OFFENSIVE) by GRANT, JENELLE			
04:57				
04:46				MISSED 3PTR by MCCUTCHEON, TARYN
04:42				REBOUND (OFF) by TEAM
04:26				MISSED JUMPER by BELLES, KAYLA
04:25				REBOUND (OFF) by BELLES, KAYLA
04:25	FOUL (PERSONAL) by HARRIS, AE'RIANNA			
04:25	SUB OUT: HARRIS, AE'RIANNA			
04:25	SUB IN: DIAGNE, FATOU			
04:25				MISSED FT by BELLES, KAYLA
04:25				REBOUND (OFF) by TEAM
04:25				MISSED FT by BELLES, KAYLA
04:24	REBOUND (DEF) by ODEN, DOMINIQUE			
04:15	MISSED JUMPER by MCLAUGHLIN, KARISSA			
04:11				REBOUND (DEF) by OZMENT, TORY
03:52	FOUL (PERSONAL) by DIAGNE, FATOU			
03:50		34-46	V 12	GOOD! 3PTR by COLLEY, SHAY
03:50				ASSIST by WINSTON, ALYZA
03:26	GOOD! LAYUP by DIAGNE, FATOU	34-48	V 14	
03:26	ASSIST by TRAYLOR, KAYANA			
03:01				MISSED LAYUP by COLLEY, SHAY
02:59				REBOUND (OFF) by BELLES, KAYLA
02:58				MISSED LAYUP by BELLES, KAYLA
02:55	REBOUND (DEF) by DIAGNE, FATOU			
02:42	FOUL (OFF) by ODEN, DOMINIQUE			
02:42	TURNOVER (OFFENSIVE) by ODEN, DOMINIQUE			
02:42				SUB OUT: BELLES, KAYLA
02:42				SUB IN: PARKS, TAIYIER
02:42	SUB OUT: ODEN, DOMINIQUE			
02:42	SUB IN: MAKOLO, ROXANE			
02:33				MISSED JUMPER by MCCUTCHEON, TARYN
02:29	REBOUND (DEF) by GRANT, JENELLE			
02:03	MISSED 3PTR by MCLAUGHLIN, KARISSA			
02:01	FOUL (PERSONAL) by DIAGNE, FATOU			
02:01				SUB OUT: WINSTON, ALYZA
02:01				SUB IN: JOINER, MOIRA
02:01		35-48	V 13	GOOD! FT by COLLEY, SHAY
02:01		36-48	V 12	GOOD! FT by COLLEY, SHAY
02:00				REBOUND (DEF) by COLLEY, SHAY
01:34	MISSED LAYUP by MAKOLO, ROXANE			
01:32	REBOUND (OFF) by DIAGNE, FATOU			
01:31				FOUL (PERSONAL) by PARKS, TAIYIER
01:31	SUB OUT: MAKOLO, ROXANE			
01:31	SUB IN: HARDIN, CASSIDY			
01:31	GOOD! FT by DIAGNE, FATOU	36-49	V 13	
01:31	GOOD! FT by DIAGNE, FATOU	36-50	V 14	
01:27		38-50	V 12	GOOD! LAYUP by JOINER, MOIRA [FB/PNT]
01:27				ASSIST by MCCUTCHEON, TARYN
00:51	GOOD! LAYUP by TRAYLOR, KAYANA	38-52	V 14	
00:51	ASSIST by HARDIN, CASSIDY			
00:51				SUB OUT: COLLEY, SHAY
00:51				SUB IN: CLOUDEN, NIA
00:34				MISSED LAYUP by PARKS, TAIYIER
00:34	BLOCK by DIAGNE, FATOU			
00:34	REBOUND (DEF) by TEAM			
00:34				FOUL (PERSONAL) by JOINER, MOIRA
00:34	GOOD! FT by GRANT, JENELLE	38-53	V 15	
00:34	MISSED FT by GRANT, JENELLE			
00:33				REBOUND (DEF) by MCCUTCHEON, TARYN
00:29				MISSED 3PTR by MCCUTCHEON, TARYN
00:26	REBOUND (DEF) by DIAGNE, FATOU			
00:03	MISSED LAYUP by MCLAUGHLIN, KARISSA			
00:00				REBOUND (DEF) by PARKS, TAIYIER

Purdue 53, Michigan St. 38

Points from (This Period)	PUR	MSU
In the Paint	10	4
Off Turns	0	0
2nd Chance	4	0
Fast Break	4	4
Bench	6	5



**Official Box Score**  
**Purdue vs Michigan St.**  
**Fourth Quarter Statistics Only**  
**March 05, 2020 at Bankers Life Fieldhouse - Indianapolis, IN**



### Purdue 19

No.	Player	S	Pts	FG	3FG	FT	OR	DR	TR	PF	A	TO	Blk	Stl	Min	+/-
01	MCLAUGHLIN, KARISSA	G	5	2-5	0-2	1-2	0	1	1	0	4	0	0	0	10	-6
11	ODEN, DOMINIQUE	G	4	2-3	0-0	0-0	0	0	0	0	1	0	0	1	10	-6
22	GRANT, JENELLE	F	2	1-1	0-0	0-0	0	2	2	2	0	1	1	0	6	-6
23	TRAYLOR, KAYANA	G	0	0-0	0-0	0-0	0	0	0	0	0	3	0	0	9	-5
32	HARRIS, AE'RIANNA	F	4	1-4	0-0	2-2	1	0	1	0	0	0	1	0	9	-2
03	WHILBY, LYNDSY	G	0	0-0	0-0	0-0	0	0	0	0	0	0	0	0	0	0
05	HARDIN, CASSIDY	G	0	0-0	0-0	0-0	0	0	0	1	0	0	0	0	1	-1
12	MAKOLO, ROXANE	G	0	0-0	0-0	0-0	0	0	0	0	0	0	0	0	1	3
45	DIAGNE, FATOU	C	4	2-3	0-0	0-0	1	1	2	0	0	0	0	0	4	-7
	TEAM						1	1	2	0		0				
<b>TOTALS</b>			<b>19</b>	<b>8-16</b>	<b>0-2</b>	<b>3-4</b>	<b>3</b>	<b>5</b>	<b>8</b>	<b>3</b>	<b>5</b>	<b>4</b>	<b>2</b>	<b>1</b>	<b>50</b>	

#### Shooting By Period

Period	FG	FG%	3FG	3FG%	FT	FT%
Game	27-61	44.3%	5-18	27.8%	13-23	56.5%

Deadball Rebounds: 5,2

### Michigan St. 25

No.	Player	S	Pts	FG	3FG	FT	OR	DR	TR	PF	A	TO	Blk	Stl	Min	+/-
01	OZMENT, TORY	G	0	0-2	0-1	0-0	0	0	0	0	0	0	0	0	2	4
04	MCCUTCHEON, TARYN	G	5	2-4	1-2	0-0	1	2	3	0	1	2	0	1	8	2
14	PARKS, TAIYIER	F	0	0-0	0-0	0-0	0	0	0	0	0	0	0	1	2	4
22	JOINER, MOIRA	G	0	0-1	0-0	0-0	0	1	1	1	0	0	0	1	2	4
24	CLOUDEN, NIA	G	2	1-3	0-1	0-0	1	0	1	1	0	0	0	1	9	5
00	COLLEY, SHAY	G	9	4-5	0-1	1-1	2	1	3	1	2	0	0	0	10	6
03	WINSTON, ALYZA	G	0	0-0	0-0	0-0	0	0	0	1	0	0	0	0	0	1
12	HOLLIE, NIA	F	2	1-3	0-0	0-0	0	0	0	0	0	0	2	0	8	2
40	AYRAULT, JULIA	G	7	3-5	1-2	0-1	1	1	2	2	0	0	1	0	8	2
42	BELLES, KAYLA	F	0	0-0	0-0	0-0	0	0	0	0	0	0	0	0	0	0
50	DODD, CYDNI	C	0	0-0	0-0	0-0	0	0	0	0	0	0	0	0	0	0
	TEAM						1	0	1	0		1				
<b>TOTALS</b>			<b>25</b>	<b>11-23</b>	<b>2-7</b>	<b>1-2</b>	<b>6</b>	<b>5</b>	<b>11</b>	<b>6</b>	<b>3</b>	<b>3</b>	<b>3</b>	<b>4</b>	<b>50</b>	

#### Shooting By Period

Period	FG	FG%	3FG	3FG%	FT	FT%
Game	23-78	29.5%	6-25	24.0%	11-16	68.8%

Deadball Rebounds: 3,0

#### Game Notes:

Officials: Mark Zentz, Gina Cross, Cameron Inouye

Start Time: 12:04 PM ET

End Time: 01:55 PM ET

Game Duration: 1:51

Neutral Court;

Score	1st	2nd	3rd	4th	TOT
PUR	20	17	16	19	<b>72</b>
MSU	11	15	12	25	<b>63</b>

Points from (This Period)	PUR	MSU
In the Paint	10	16
Off Turns	6	4
2nd Chance	0	5
Fast Break	2	12
Bench	4	18



**Official Play-By-Play  
Purdue vs Michigan St.  
Fourth Quarter**

**March 05, 2020 at Bankers Life Fieldhouse - Indianapolis, IN**



**Period 4**

**Starters:**

**Purdue:** 1 MCLAUGHLIN, KARISSA (G); 11 ODEN, DOMINIQUE (G); 22 GRANT, JENELLE (F); 23 TRAYLOR, KAYANA (G); 32 HARRIS, AE'RIANNA (F);

**Michigan St.:** 1 OZMENT, TORY (G); 4 MCCUTCHEON, TARYN (G); 14 PARKS, TAIYIER (F); 22 JOINER, MOIRA (G); 24 CLOUDEN, NIA (G);

Time	VISITORS: Purdue	Score	Margin	HOME: Michigan St.
10:00				SUB OUT: MCCUTCHEON, TARYN
10:00				SUB IN: COLLEY, SHAY
10:00	SUB OUT: HARDIN, CASSIDY			
10:00	SUB OUT: DIAGNE, FATOU			
10:00	SUB IN: ODEN, DOMINIQUE			
10:00	SUB IN: HARRIS, AE'RIANNA			
09:51				MISSED 3PTR by OZMENT, TORY
09:48	REBOUND (DEF) by MCLAUGHLIN, KARISSA			
09:26	TURNOVER (BADPASS) by TRAYLOR, KAYANA			
09:26				STEAL by JOINER, MOIRA
09:17				MISSED LAYUP by JOINER, MOIRA
09:17	BLOCK by HARRIS, AE'RIANNA			
09:15	REBOUND (DEF) by GRANT, JENELLE			
09:01	TURNOVER (BADPASS) by GRANT, JENELLE			
09:01				STEAL by PARKS, TAIYIER
08:57				MISSED LAYUP by OZMENT, TORY
08:57	BLOCK by GRANT, JENELLE			
08:54	REBOUND (DEF) by GRANT, JENELLE			
08:44	MISSED LAYUP by MCLAUGHLIN, KARISSA			
08:42	REBOUND (OFF) by HARRIS, AE'RIANNA			
08:40	MISSED LAYUP by HARRIS, AE'RIANNA			
08:38				REBOUND (DEF) by COLLEY, SHAY
08:35		40-53	V 13	GOOD! LAYUP by COLLEY, SHAY [FB]
08:15	MISSED JUMPER by HARRIS, AE'RIANNA			
08:11				REBOUND (DEF) by JOINER, MOIRA
08:08		42-53	V 11	GOOD! LAYUP by COLLEY, SHAY [FB]
08:05	TIMEOUT 30SEC			
08:05				
08:05				SUB OUT: OZMENT, TORY
08:05				SUB OUT: PARKS, TAIYIER
08:05				SUB OUT: JOINER, MOIRA
08:05				SUB IN: MCCUTCHEON, TARYN
08:05				SUB IN: HOLLIE, NIA
08:05				SUB IN: AYRAULT, JULIA
07:42	MISSED LAYUP by HARRIS, AE'RIANNA			
07:42				REBOUND (DEF) by AYRAULT, JULIA
07:42				BLOCK by HOLLIE, NIA
07:12				MISSED JUMPER by AYRAULT, JULIA
07:11				REBOUND (OFF) by TEAM
07:11				TURNOVER (SHOTCLOCK) by TEAM
06:47	GOOD! JUMPER by ODEN, DOMINIQUE	42-55	V 13	
06:47	ASSIST by MCLAUGHLIN, KARISSA			
06:42				TURNOVER (BADPASS) by MCCUTCHEON, TARYN
06:28	GOOD! LAYUP by GRANT, JENELLE	42-57	V 15	
06:28	ASSIST by MCLAUGHLIN, KARISSA			
05:55		44-57	V 13	GOOD! LAYUP by COLLEY, SHAY [PNT]
05:28	MISSED 3PTR by MCLAUGHLIN, KARISSA			
05:22				REBOUND (DEF) by MCCUTCHEON, TARYN
05:17				TURNOVER (LOSTBALL) by MCCUTCHEON, TARYN
05:17	STEAL by ODEN, DOMINIQUE			
05:14	GOOD! LAYUP by HARRIS, AE'RIANNA [FB]	44-59	V 15	
05:14	ASSIST by MCLAUGHLIN, KARISSA			
05:08		46-59	V 13	GOOD! LAYUP by AYRAULT, JULIA [FB]
05:08				ASSIST by COLLEY, SHAY
05:08	FOUL (PERSONAL) by GRANT, JENELLE			
05:08	SUB OUT: HARRIS, AE'RIANNA			
05:08	SUB IN: DIAGNE, FATOU			
05:08				MISSED FT by AYRAULT, JULIA
05:07	REBOUND (DEF) by DIAGNE, FATOU			
04:40	MISSED 3PTR by MCLAUGHLIN, KARISSA			
04:40				BLOCK by HOLLIE, NIA
04:36	REBOUND (OFF) by DIAGNE, FATOU			
04:34	MISSED LAYUP by DIAGNE, FATOU			
04:32				REBOUND (DEF) by MCCUTCHEON, TARYN
04:28				MISSED LAYUP by CLOUDEN, NIA
04:26				REBOUND (OFF) by AYRAULT, JULIA
04:25		48-59	V 11	GOOD! LAYUP by AYRAULT, JULIA
04:01	TURNOVER (BADPASS) by TRAYLOR, KAYANA			
04:01				STEAL by MCCUTCHEON, TARYN
03:58		50-59	V 9	GOOD! LAYUP by HOLLIE, NIA [FB]



Time	VISITORS: Purdue	Score	Margin	HOME: Michigan St.
03:58				ASSIST by MCCUTCHEON, TARYN
03:58				
03:58	TIMEOUT 30SEC			
03:58	SUB OUT: DIAGNE, FATOU			
03:58	SUB IN: HARRIS, AE'RIANNA			
03:44	GOOD! JUMPER by ODEN, DOMINIQUE [PNT]	50-61	V 11	
03:35				MISSED 3PTR by CLOUDEN, NIA
03:32				REBOUND (OFF) by COLLEY, SHAY
03:32		52-61	V 9	GOOD! LAYUP by COLLEY, SHAY [PNT]
03:32	FOUL (PERSONAL) by GRANT, JENELLE			
03:32	SUB OUT: GRANT, JENELLE			
03:32	SUB IN: DIAGNE, FATOU			
03:32		53-61	V 8	GOOD! FT by COLLEY, SHAY
03:18	MISSED LAYUP by ODEN, DOMINIQUE			
03:18				BLOCK by AYRAULT, JULIA
03:17	REBOUND (OFF) by TEAM			
03:09	TURNOVER (LOSTBALL) by TRAYLOR, KAYANA			
03:09				STEAL by CLOUDEN, NIA
03:05		55-61	V 6	GOOD! LAYUP by CLOUDEN, NIA [FB]
02:38	GOOD! JUMPER by MCLAUGHLIN, KARISSA	55-63	V 8	
02:20				MISSED 3PTR by MCCUTCHEON, TARYN
02:18	REBOUND (DEF) by TEAM			
02:18	SUB OUT: TRAYLOR, KAYANA			
02:18	SUB IN: HARDIN, CASSIDY			
01:55	GOOD! JUMPER by MCLAUGHLIN, KARISSA	55-65	V 10	
01:32	FOUL (PERSONAL) by HARDIN, CASSIDY			
01:28		58-65	V 7	GOOD! 3PTR by AYRAULT, JULIA
01:28				ASSIST by COLLEY, SHAY
01:26				TIMEOUT 30SEC
01:26	SUB OUT: HARDIN, CASSIDY			
01:26	SUB IN: TRAYLOR, KAYANA			
01:24				FOUL (PERSONAL) by CLOUDEN, NIA
01:24				SUB OUT: CLOUDEN, NIA
01:24				SUB IN: JOINER, MOIRA
01:19				FOUL (PERSONAL) by JOINER, MOIRA
01:19				SUB OUT: JOINER, MOIRA
01:19				SUB IN: WINSTON, ALYZA
01:18				FOUL (PERSONAL) by WINSTON, ALYZA
01:17				FOUL (PERSONAL) by COLLEY, SHAY
01:15	GOOD! LAYUP by DIAGNE, FATOU [PNT]	58-67	V 9	
01:15	ASSIST by ODEN, DOMINIQUE			
01:07		61-67	V 6	GOOD! 3PTR by MCCUTCHEON, TARYN
00:56	GOOD! LAYUP by DIAGNE, FATOU	61-69	V 8	
00:56	ASSIST by MCLAUGHLIN, KARISSA			
00:52		63-69	V 6	GOOD! JUMPER by MCCUTCHEON, TARYN [FB]
00:51				TIMEOUT 30SEC
00:51	TIMEOUT 30SEC			
00:51				SUB OUT: WINSTON, ALYZA
00:51				SUB IN: CLOUDEN, NIA
00:47				FOUL (PERSONAL) by AYRAULT, JULIA
00:47	SUB OUT: DIAGNE, FATOU			
00:47	SUB IN: MAKOLO, ROXANE			
00:47	MISSED FT by MCLAUGHLIN, KARISSA			
00:47	REBOUND (OFF) by TEAM			
00:47	GOOD! FT by MCLAUGHLIN, KARISSA	63-70	V 7	
00:42				MISSED 3PTR by COLLEY, SHAY
00:40	REBOUND (DEF) by TEAM			
00:40				FOUL (PERSONAL) by AYRAULT, JULIA
00:40	GOOD! FT by HARRIS, AE'RIANNA	63-71	V 8	
00:40	GOOD! FT by HARRIS, AE'RIANNA	63-72	V 9	
00:34				MISSED 3PTR by AYRAULT, JULIA
00:30				REBOUND (OFF) by CLOUDEN, NIA
00:23				MISSED LAYUP by MCCUTCHEON, TARYN
00:18				REBOUND (OFF) by MCCUTCHEON, TARYN
00:14				MISSED JUMPER by HOLLIE, NIA
00:10				REBOUND (OFF) by COLLEY, SHAY
00:00				MISSED JUMPER by HOLLIE, NIA
00:00				REBOUND (OFF) by TEAM

Purdue 72, Michigan St. 63

Points from (This Period)	PUR	MSU
In the Paint	10	16
Off Turns	6	4
2nd Chance	0	5
Fast Break	2	12
Bench	4	18



**Official Scoring/Possession Reference Chart  
Purdue vs Michigan St.**

**Period 1**

**March 05, 2020 at Bankers Life Fieldhouse - Indianapolis, IN**



**Period 1**

**Starters:**

**Purdue:** 1 MCLAUGHLIN, KARISSA (G); 11 ODEN, DOMINIQUE (G); 22 GRANT, JENELLE (F); 23 TRAYLOR, KAYANA (G); 32 HARRIS, AE'RIANNA (F);

**Michigan St.:** 1 OZMENT, TORY (G); 4 MCCUTCHEON, TARYN (G); 14 PARKS, TAIYIER (F); 22 JOINER, MOIRA (G); 24 CLOUDEN, NIA (G);

Time	VISITORS: Purdue	Score	Margin	HOME: Michigan St.
09:43	GOOD! LAYUP by HARRIS, AE'RIANNA	0-2	V 2	
09:30		2-2	T	GOOD! LAYUP by CLOUDEN, NIA
09:16	GOOD! LAYUP by HARRIS, AE'RIANNA	2-4	V 2	
08:56		3-4	V 1	GOOD! FT by CLOUDEN, NIA
08:56		4-4	T	GOOD! FT by CLOUDEN, NIA
08:43	GOOD! 3PTR by MCLAUGHLIN, KARISSA	4-7	V 3	
07:52		6-7	V 1	GOOD! LAYUP by PARKS, TAIYIER
06:33	GOOD! LAYUP by ODEN, DOMINIQUE [FB]	6-9	V 3	
05:57	GOOD! JUMPER by HARRIS, AE'RIANNA [PNT]	6-11	V 5	
05:27	GOOD! LAYUP by ODEN, DOMINIQUE [FB]	6-13	V 7	
04:42	GOOD! 3PTR by GRANT, JENELLE [FB]	6-16	V 10	
03:18		9-16	V 7	GOOD! 3PTR by MCCUTCHEON, TARYN [FB]
02:34	GOOD! JUMPER by ODEN, DOMINIQUE [FB]	9-18	V 9	
01:30	GOOD! LAYUP by TRAYLOR, KAYANA	9-20	V 11	
00:02		11-20	V 9	GOOD! JUMPER by MCCUTCHEON, TARYN

**Purdue 20, Michigan St. 11**



**Official Scoring/Possession Reference Chart**  
**Purdue vs Michigan St.**  
**Period 2**  
**March 05, 2020 at Bankers Life Fieldhouse - Indianapolis, IN**



**Period 2**

**Starters:**

**Purdue:** 1 MCLAUGHLIN, KARISSA (G); 11 ODEN, DOMINIQUE (G); 22 GRANT, JENELLE (F); 23 TRAYLOR, KAYANA (G); 32 HARRIS, AE'RIANNA (F);

**Michigan St.:** 1 OZMENT, TORY (G); 4 MCCUTCHEON, TARYN (G); 14 PARKS, TAIYIER (F); 22 JOINER, MOIRA (G); 24 CLOUDEN, NIA (G);

Time	VISITORS: Purdue	Score	Margin	HOME: Michigan St.
09:09	GOOD! LAYUP by ODEN, DOMINIQUE	11-22	V 11	
07:20		14-22	V 8	GOOD! 3PTR by JOINER, MOIRA
06:47	GOOD! JUMPER by MCLAUGHLIN, KARISSA	14-24	V 10	
06:27		15-24	V 9	GOOD! FT by AYRAULT, JULIA
06:27		16-24	V 8	GOOD! FT by AYRAULT, JULIA
05:34	GOOD! FT by TRAYLOR, KAYANA [FB]	16-25	V 9	
04:54		17-25	V 8	GOOD! FT by PARKS, TAIYIER
03:44		18-25	V 7	GOOD! FT by CLOUDEN, NIA
03:44		19-25	V 6	GOOD! FT by CLOUDEN, NIA
03:07	GOOD! 3PTR by MCLAUGHLIN, KARISSA	19-28	V 9	
02:52		21-28	V 7	GOOD! LAYUP by CLOUDEN, NIA
02:22	GOOD! FT by HARRIS, AE'RIANNA	21-29	V 8	
02:22	GOOD! FT by HARRIS, AE'RIANNA	21-30	V 9	
01:53		22-30	V 8	GOOD! FT by WINSTON, ALYZA [FB]
01:32	GOOD! 3PTR by MCLAUGHLIN, KARISSA	22-33	V 11	
01:00	GOOD! 3PTR by HARDIN, CASSIDY	22-36	V 14	
00:42		24-36	V 12	GOOD! LAYUP by CLOUDEN, NIA
00:22	GOOD! FT by DIAGNE, FATOU	24-37	V 13	
00:14		26-37	V 11	GOOD! JUMPER by AYRAULT, JULIA

**Purdue 37, Michigan St. 26**



**Official Scoring/Possession Reference Chart**  
**Purdue vs Michigan St.**  
**Period 3**  
**March 05, 2020 at Bankers Life Fieldhouse - Indianapolis, IN**



**Period 3**

**Starters:**

**Purdue:** 1 MCLAUGHLIN, KARISSA (G); 11 ODEN, DOMINIQUE (G); 22 GRANT, JENELLE (F); 23 TRAYLOR, KAYANA (G); 32 HARRIS, AE'RIANNA (F);

**Michigan St.:** 1 OZMENT, TORY (G); 4 MCCUTCHEON, TARYN (G); 14 PARKS, TAIYIER (F); 22 JOINER, MOIRA (G); 24 CLOUDEN, NIA (G);

Time	VISITORS: Purdue	Score	Margin	HOME: Michigan St.
09:51	GOOD! LAYUP by HARRIS, AE'RIANNA	26-39	V 13	
07:55	GOOD! FT by HARRIS, AE'RIANNA	26-40	V 14	
07:45		29-40	V 11	GOOD! 3PTR by JOINER, MOIRA
07:10	GOOD! LAYUP by ODEN, DOMINIQUE [FB]	29-42	V 13	
07:10	GOOD! FT by ODEN, DOMINIQUE [FB]	29-43	V 14	
06:44	GOOD! FT by MCLAUGHLIN, KARISSA [FB]	29-44	V 15	
06:18		31-44	V 13	GOOD! LAYUP by CLOUDEN, NIA [FB]
05:19	GOOD! LAYUP by DIAGNE, FATOU	31-46	V 15	
03:50		34-46	V 12	GOOD! 3PTR by COLLEY, SHAY
03:26	GOOD! LAYUP by DIAGNE, FATOU	34-48	V 14	
02:01		35-48	V 13	GOOD! FT by COLLEY, SHAY
02:01		36-48	V 12	GOOD! FT by COLLEY, SHAY
01:31	GOOD! FT by DIAGNE, FATOU	36-49	V 13	
01:31	GOOD! FT by DIAGNE, FATOU	36-50	V 14	
01:27		38-50	V 12	GOOD! LAYUP by JOINER, MOIRA [FB/PNT]
00:51	GOOD! LAYUP by TRAYLOR, KAYANA	38-52	V 14	
00:34	GOOD! FT by GRANT, JENELLE	38-53	V 15	

**Purdue 53, Michigan St. 38**



**Official Scoring/Possession Reference Chart  
Purdue vs Michigan St.**

**Period 4**

**March 05, 2020 at Bankers Life Fieldhouse - Indianapolis, IN**



**Period 4**

**Starters:**

**Purdue:** 1 MCLAUGHLIN, KARISSA (G); 11 ODEN, DOMINIQUE (G); 22 GRANT, JENELLE (F); 23 TRAYLOR, KAYANA (G); 32 HARRIS, AE'RIANNA (F);

**Michigan St.:** 1 OZMENT, TORY (G); 4 MCCUTCHEON, TARYN (G); 14 PARKS, TAIYIER (F); 22 JOINER, MOIRA (G); 24 CLOUDEN, NIA (G);

Time	VISITORS: Purdue	Score	Margin	HOME: Michigan St.
08:35		40-53	V 13	GOOD! LAYUP by COLLEY, SHAY [FB]
08:08		42-53	V 11	GOOD! LAYUP by COLLEY, SHAY [FB]
06:47	GOOD! JUMPER by ODEN, DOMINIQUE	42-55	V 13	
06:28	GOOD! LAYUP by GRANT, JENELLE	42-57	V 15	
05:55		44-57	V 13	GOOD! LAYUP by COLLEY, SHAY [PNT]
05:14	GOOD! LAYUP by HARRIS, AE'RIANNA [FB]	44-59	V 15	
05:08		46-59	V 13	GOOD! LAYUP by AYRAULT, JULIA [FB]
04:25		48-59	V 11	GOOD! LAYUP by AYRAULT, JULIA
03:58		50-59	V 9	GOOD! LAYUP by HOLLIE, NIA [FB]
03:44	GOOD! JUMPER by ODEN, DOMINIQUE [PNT]	50-61	V 11	
03:32		52-61	V 9	GOOD! LAYUP by COLLEY, SHAY [PNT]
03:32		53-61	V 8	GOOD! FT by COLLEY, SHAY
03:05		55-61	V 6	GOOD! LAYUP by CLOUDEN, NIA [FB]
02:38	GOOD! JUMPER by MCLAUGHLIN, KARISSA	55-63	V 8	
01:55	GOOD! JUMPER by MCLAUGHLIN, KARISSA	55-65	V 10	
01:28		58-65	V 7	GOOD! 3PTR by AYRAULT, JULIA
01:15	GOOD! LAYUP by DIAGNE, FATOU [PNT]	58-67	V 9	
01:07		61-67	V 6	GOOD! 3PTR by MCCUTCHEON, TARYN
00:56	GOOD! LAYUP by DIAGNE, FATOU	61-69	V 8	
00:52		63-69	V 6	GOOD! JUMPER by MCCUTCHEON, TARYN [FB]
00:47	GOOD! FT by MCLAUGHLIN, KARISSA	63-70	V 7	
00:40	GOOD! FT by HARRIS, AE'RIANNA	63-71	V 8	
00:40	GOOD! FT by HARRIS, AE'RIANNA	63-72	V 9	

**Purdue 72, Michigan St. 63**



**Official Substitutions Log**  
**Purdue vs Michigan St.**  
**Period 1**  
**March 05, 2020 at Bankers Life Fieldhouse - Indianapolis, IN**



VISITORS: Purdue	Time	Score	HOME: Michigan St.
1 MCLAUGHLIN, KARISSA			1 OZMENT, TORY
11 ODEN, DOMINIQUE			4 MCCUTCHEON, TARYN
22 GRANT, JENELLE			14 PARKS, TAIYIER
23 TRAYLOR, KAYANA			22 JOINER, MOIRA
32 HARRIS, AE'RIANNA			24 CLOUDEN, NIA
	05:26	13-6	SUB OUT: PARKS, TAIYIER
	05:26		SUB IN: DODD, CYDNI
	02:58	16-9	SUB OUT: OZMENT, TORY
	02:58		SUB OUT: JOINER, MOIRA
	02:58		SUB IN: COLLEY, SHAY
	02:58		SUB IN: AYRAULT, JULIA
SUB OUT: 22 GRANT, JENELLE	02:58		
SUB OUT: 32 HARRIS, AE'RIANNA	02:58		
SUB IN: 3 WHILBY, LYNDESEY	02:58		
SUB IN: 45 DIAGNE, FATOU	02:58		
	00:51	20-9	SUB OUT: CLOUDEN, NIA
	00:51		SUB OUT: DODD, CYDNI
	00:51		SUB IN: WINSTON, ALYZA
	00:51		SUB IN: BELLES, KAYLA
SUB OUT: 23 TRAYLOR, KAYANA	00:51		
SUB OUT: 45 DIAGNE, FATOU	00:51		
SUB IN: 5 HARDIN, CASSIDY	00:51		
SUB IN: 32 HARRIS, AE'RIANNA	00:51		
SUB OUT: 11 ODEN, DOMINIQUE	00:37	20-9	
SUB IN: 12 MAKOLO, ROXANE	00:37		

**Purdue 20, Michigan St. 11**



**Official Substitutions Log**  
**Purdue vs Michigan St.**  
**Period 2**  
**March 05, 2020 at Bankers Life Fieldhouse - Indianapolis, IN**



VISITORS: Purdue	Time	Score	HOME: Michigan St.
1 MCLAUGHLIN, KARISSA			1 OZMENT, TORY
11 ODEN, DOMINIQUE			4 MCCUTCHEON, TARYN
22 GRANT, JENELLE			14 PARKS, TAIYIER
23 TRAYLOR, KAYANA			22 JOINER, MOIRA
32 HARRIS, AE'RIANNA			24 CLOUDEN, NIA
SUB OUT: 3 WHILBY, LYNDESEY	10:00	-	
SUB IN: 22 GRANT, JENELLE	10:00		
SUB OUT: 12 MAKOLO, ROXANE	09:34	-	
SUB IN: 11 ODEN, DOMINIQUE	09:34		
	08:52	22-11	SUB OUT: COLLEY, SHAY
	08:52		SUB OUT: WINSTON, ALYZA
	08:52		SUB IN: JOINER, MOIRA
	08:52		SUB IN: CLOUDEN, NIA
	08:21	22-11	SUB OUT: BELLES, KAYLA
	08:21		SUB IN: HOLLIE, NIA
SUB OUT: 11 ODEN, DOMINIQUE	07:48	22-11	
SUB IN: 23 TRAYLOR, KAYANA	07:48		
SUB OUT: 22 GRANT, JENELLE	06:27	24-14	
SUB IN: 3 WHILBY, LYNDESEY	06:27		
	06:27		SUB OUT: AYRAULT, JULIA
	06:27		SUB IN: OZMENT, TORY
SUB OUT: 5 HARDIN, CASSIDY	05:34	24-16	
SUB IN: 12 MAKOLO, ROXANE	05:34		
	05:14	25-16	SUB OUT: OZMENT, TORY
	05:14		SUB OUT: HOLLIE, NIA
	05:14		SUB IN: PARKS, TAIYIER
	05:14		SUB IN: AYRAULT, JULIA
SUB OUT: 3 WHILBY, LYNDESEY	04:10	25-17	
SUB IN: 22 GRANT, JENELLE	04:10		
	03:52	25-17	SUB OUT: JOINER, MOIRA
	03:52		SUB IN: WINSTON, ALYZA
SUB OUT: 23 TRAYLOR, KAYANA	03:44	25-19	
SUB IN: 5 HARDIN, CASSIDY	03:44		
	02:22	28-21	SUB OUT: MCCUTCHEON, TARYN
	02:22		SUB IN: JOINER, MOIRA
	02:22		SUB OUT: PARKS, TAIYIER
	02:22		SUB IN: HOLLIE, NIA
SUB OUT: 32 HARRIS, AE'RIANNA	01:53	30-21	
SUB IN: 45 DIAGNE, FATOU	01:53		
	01:53		SUB OUT: WINSTON, ALYZA
	01:53		SUB IN: MCCUTCHEON, TARYN
	00:22	36-24	SUB OUT: HOLLIE, NIA
	00:22		SUB IN: BELLES, KAYLA

**Purdue 37, Michigan St. 26**



**Official Substitutions Log  
Purdue vs Michigan St.  
Period 3**

**March 05, 2020 at Bankers Life Fieldhouse - Indianapolis, IN**



VISITORS: Purdue	Time	Score	HOME: Michigan St.
1 MCLAUGHLIN,KARISSA			1 OZMENT,TORY
11 ODEN,DOMINIQUE			4 MCCUTCHEON,TARYN
22 GRANT,JENELLE			14 PARKS,TAIYIER
23 TRAYLOR,KAYANA			22 JOINER,MOIRA
32 HARRIS,AE'RIANNA			24 CLOUDEN,NIA
	10:00	-	SUB OUT: BELLES,KAYLA
	10:00		SUB IN: PARKS,TAIYIER
SUB OUT: 5 HARDIN,CASSIDY	10:00		
SUB OUT: 12 MAKOLO,ROXANE	10:00		
SUB OUT: 45 DIAGNE,FATOU	10:00		
SUB IN: 11 ODEN,DOMINIQUE	10:00		
SUB IN: 23 TRAYLOR,KAYANA	10:00		
SUB IN: 32 HARRIS,AE'RIANNA	10:00		
	07:55	39-26	SUB OUT: PARKS,TAIYIER
	07:55		SUB IN: DODD,CYDNI
SUB OUT: 22 GRANT,JENELLE	07:55		
SUB IN: 45 DIAGNE,FATOU	07:55		
	06:44	43-29	SUB OUT: JOINER,MOIRA
	06:44		SUB IN: COLLEY,SHAY
	05:07	46-31	SUB OUT: CLOUDEN,NIA
	05:07		SUB OUT: AYRAULT,JULIA
	05:07		SUB OUT: DODD,CYDNI
	05:07		SUB IN: OZMENT,TORY
	05:07		SUB IN: WINSTON,ALYZA
	05:07		SUB IN: BELLES,KAYLA
SUB OUT: 45 DIAGNE,FATOU	05:07		
SUB IN: 22 GRANT,JENELLE	05:07		
SUB OUT: 32 HARRIS,AE'RIANNA	04:25	46-31	
SUB IN: 45 DIAGNE,FATOU	04:25		
	02:42	48-34	SUB OUT: BELLES,KAYLA
	02:42		SUB IN: PARKS,TAIYIER
SUB OUT: 11 ODEN,DOMINIQUE	02:42		
SUB IN: 12 MAKOLO,ROXANE	02:42		
	02:01	48-34	SUB OUT: WINSTON,ALYZA
	02:01		SUB IN: JOINER,MOIRA
SUB OUT: 12 MAKOLO,ROXANE	01:31	48-36	
SUB IN: 5 HARDIN,CASSIDY	01:31		
	00:51	52-38	SUB OUT: COLLEY,SHAY
	00:51		SUB IN: CLOUDEN,NIA

**Purdue 53, Michigan St. 38**



**Official Substitutions Log  
Purdue vs Michigan St.  
Period 4**

**March 05, 2020 at Bankers Life Fieldhouse - Indianapolis, IN**



VISITORS: Purdue	Time	Score	HOME: Michigan St.
1 MCLAUGHLIN,KARISSA			1 OZMENT,TORY
11 ODEN,DOMINIQUE			4 MCCUTCHEON,TARYN
22 GRANT,JENELLE			14 PARKS,TAIYIER
23 TRAYLOR,KAYANA			22 JOINER,MOIRA
32 HARRIS,AE'RIANNA			24 CLOUDEN,NIA
	10:00	-	SUB OUT: MCCUTCHEON,TARYN
	10:00		SUB IN: COLLEY,SHAY
SUB OUT: 5 HARDIN,CASSIDY	10:00		
SUB OUT: 45 DIAGNE,FATOU	10:00		
SUB IN: 11 ODEN,DOMINIQUE	10:00		
SUB IN: 32 HARRIS,AE'RIANNA	10:00		
	08:05	53-42	SUB OUT: OZMENT,TORY
	08:05		SUB OUT: PARKS,TAIYIER
	08:05		SUB OUT: JOINER,MOIRA
	08:05		SUB IN: MCCUTCHEON,TARYN
	08:05		SUB IN: HOLLIE,NIA
	08:05		SUB IN: AYRAULT,JULIA
SUB OUT: 32 HARRIS,AE'RIANNA	05:08	59-46	
SUB IN: 45 DIAGNE,FATOU	05:08		
SUB OUT: 45 DIAGNE,FATOU	03:58	59-50	
SUB IN: 32 HARRIS,AE'RIANNA	03:58		
SUB OUT: 22 GRANT,JENELLE	03:32	61-52	
SUB IN: 45 DIAGNE,FATOU	03:32		
SUB OUT: 23 TRAYLOR,KAYANA	02:18	63-55	
SUB IN: 5 HARDIN,CASSIDY	02:18		
SUB OUT: 5 HARDIN,CASSIDY	01:26	65-58	
SUB IN: 23 TRAYLOR,KAYANA	01:26		
	01:24	65-58	SUB OUT: CLOUDEN,NIA
	01:24		SUB IN: JOINER,MOIRA
	01:19	65-58	SUB OUT: JOINER,MOIRA
	01:19		SUB IN: WINSTON,ALYZA
	00:51	69-63	SUB OUT: WINSTON,ALYZA
	00:51		SUB IN: CLOUDEN,NIA
SUB OUT: 45 DIAGNE,FATOU	00:47	69-63	
SUB IN: 12 MAKOLO,ROXANE	00:47		

**Purdue 72, Michigan St. 63**



Official Shot Chart  
**Purdue vs Michigan St.**  
 PERIOD 1 Shots  
 March 05, 2020 at Bankers Life Fieldhouse - Indianapolis, IN

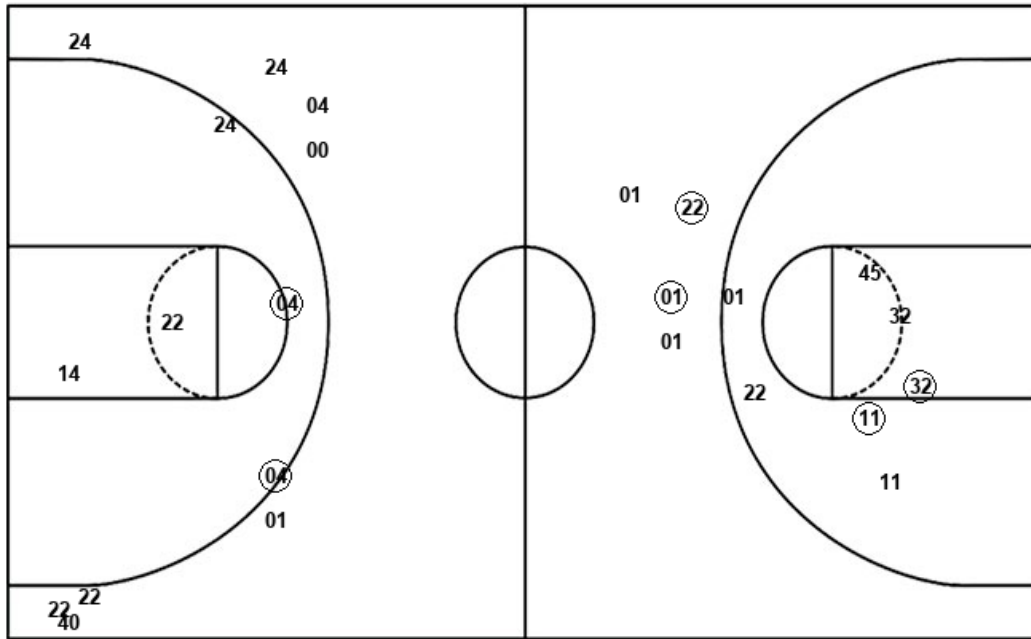


**Michigan St.**

**Purdue**

Layups  
 (24) (14) 22 24

Dunks



Layups  
 (32) (32) (11) (11) 32  
 32 (23) 23

Dunks

MSU : Period 1	Made	Att	Pct
Layups	2	4	50.0
Dunks	0	0	0
2PT Field Goals	3	8	37.5
3PT Field Goals	1	9	11.1
<b>Total Field Goals</b>	<b>4</b>	<b>17</b>	<b>23.5</b>

PUR : Period 1	Made	Att	Pct
Layups	5	8	62.5
Dunks	0	0	0
2PT Field Goals	7	15	46.7
3PT Field Goals	2	4	50.0
<b>Total Field Goals</b>	<b>9</b>	<b>19</b>	<b>47.4</b>

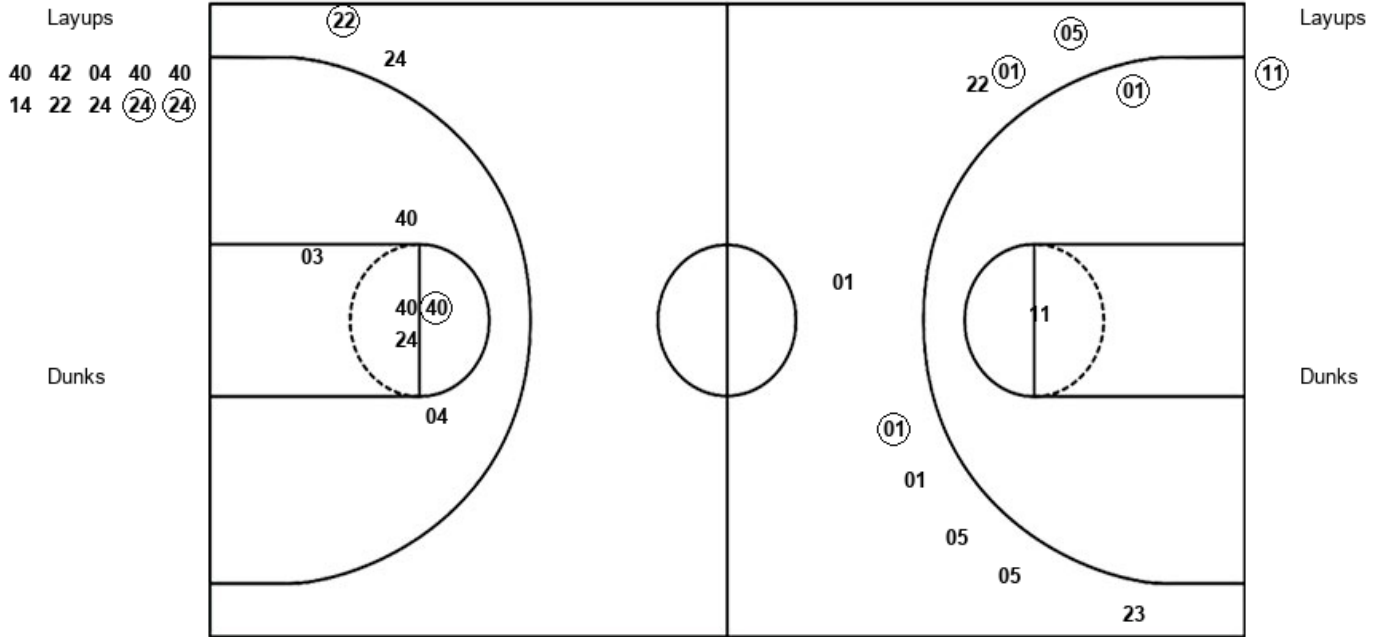


Official Shot Chart  
**Purdue vs Michigan St.**  
 PERIOD 2 Shots  
 March 05, 2020 at Bankers Life Fieldhouse - Indianapolis, IN



**Michigan St.**

**Purdue**



MSU : Period 2	Made	Att	Pct
Layups	2	10	20.0
Dunks	0	0	0
2PT Field Goals	3	16	18.8
3PT Field Goals	1	2	50.0
<b>Total Field Goals</b>	<b>4</b>	<b>18</b>	<b>22.2</b>

PUR : Period 2	Made	Att	Pct
Layups	1	1	100.0
Dunks	0	0	0
2PT Field Goals	2	3	66.7
3PT Field Goals	3	9	33.3
<b>Total Field Goals</b>	<b>5</b>	<b>12</b>	<b>41.7</b>

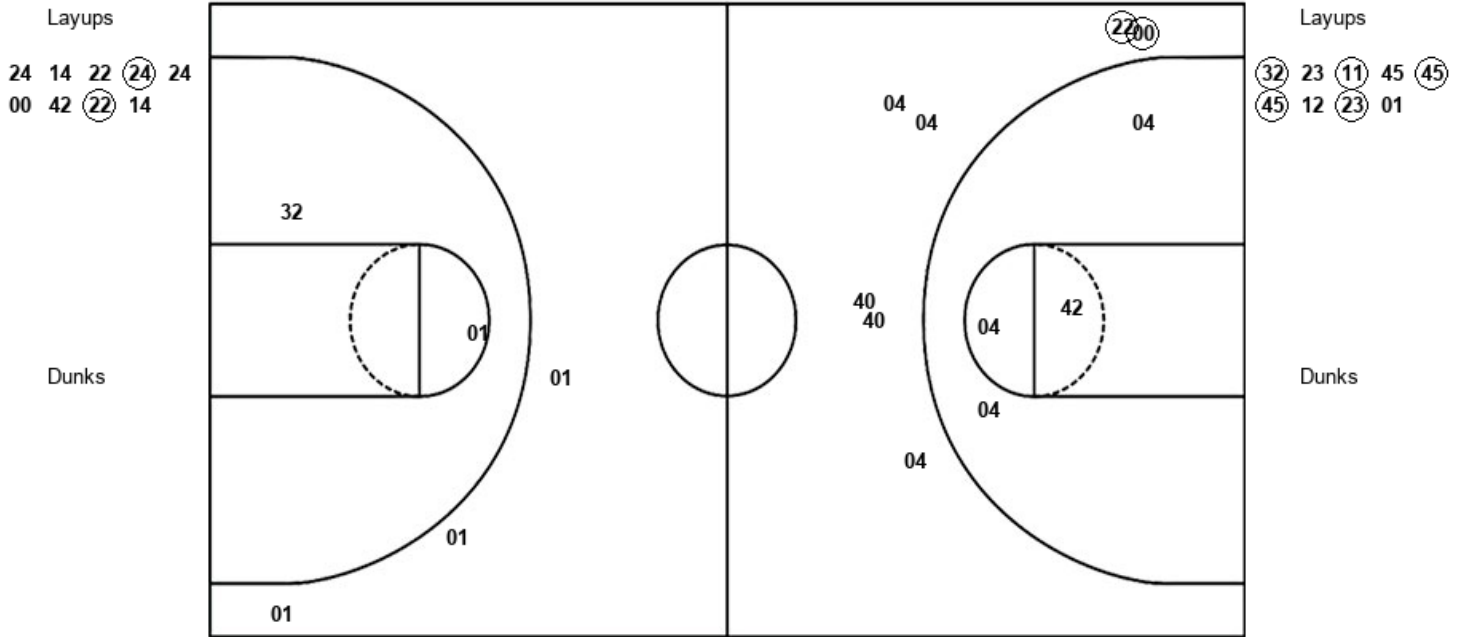


Official Shot Chart  
**Purdue vs Michigan St.**  
 PERIOD 3 Shots  
 March 05, 2020 at Bankers Life Fieldhouse - Indianapolis, IN



**Michigan St.**

**Purdue**



MSU : Period 3	Made	Att	Pct
Layups	2	9	22.2
Dunks	0	0	0
2PT Field Goals	2	13	15.4
3PT Field Goals	2	7	28.6
<b>Total Field Goals</b>	<b>4</b>	<b>20</b>	<b>20.0</b>

PUR : Period 3	Made	Att	Pct
Layups	5	9	55.6
Dunks	0	0	0
2PT Field Goals	5	11	45.5
3PT Field Goals	0	3	00.0
<b>Total Field Goals</b>	<b>5</b>	<b>14</b>	<b>35.7</b>

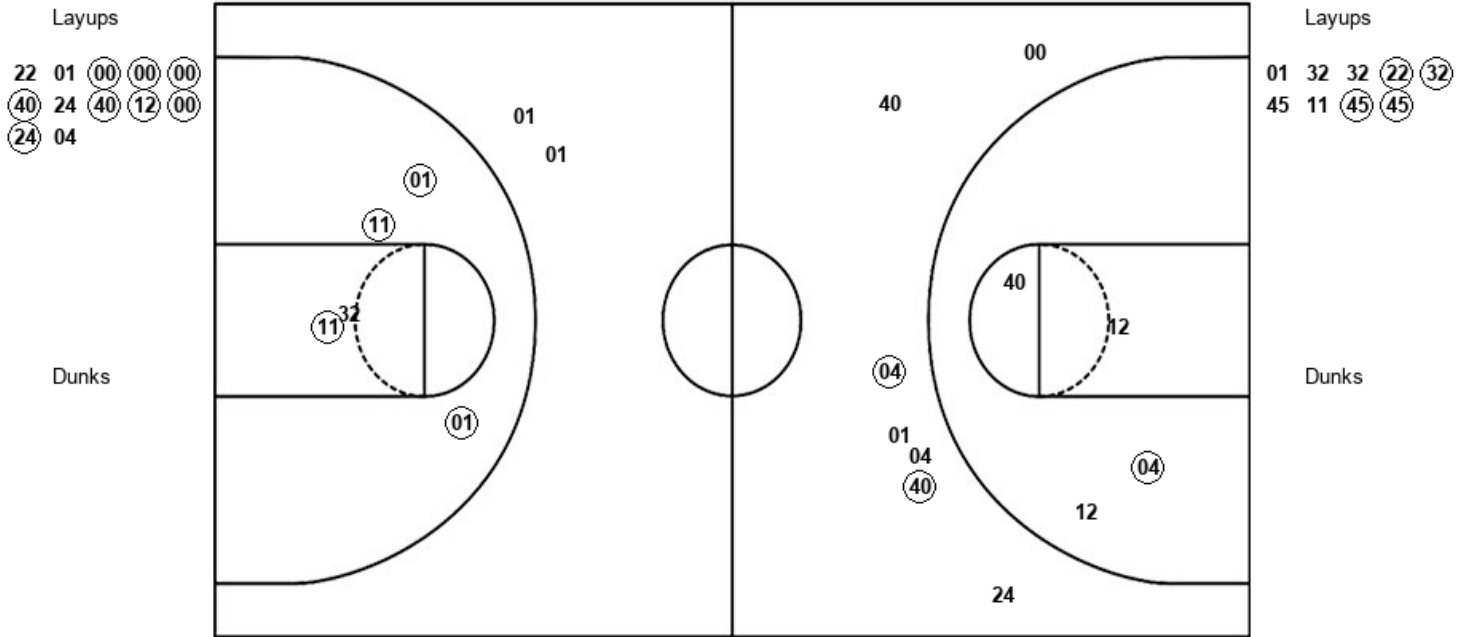


Official Shot Chart  
**Purdue vs Michigan St.**  
 PERIOD 4 Shots  
 March 05, 2020 at Bankers Life Fieldhouse - Indianapolis, IN



**Michigan St.**

**Purdue**



MSU : Period 4	Made	Att	Pct
Layups	8	12	66.7
Dunks	0	0	0
2PT Field Goals	9	16	56.3
3PT Field Goals	2	7	28.6
<b>Total Field Goals</b>	<b>11</b>	<b>23</b>	<b>47.8</b>

PUR : Period 4	Made	Att	Pct
Layups	4	9	44.4
Dunks	0	0	0
2PT Field Goals	8	14	57.1
3PT Field Goals	0	2	00.0
<b>Total Field Goals</b>	<b>8</b>	<b>16</b>	<b>50.0</b>

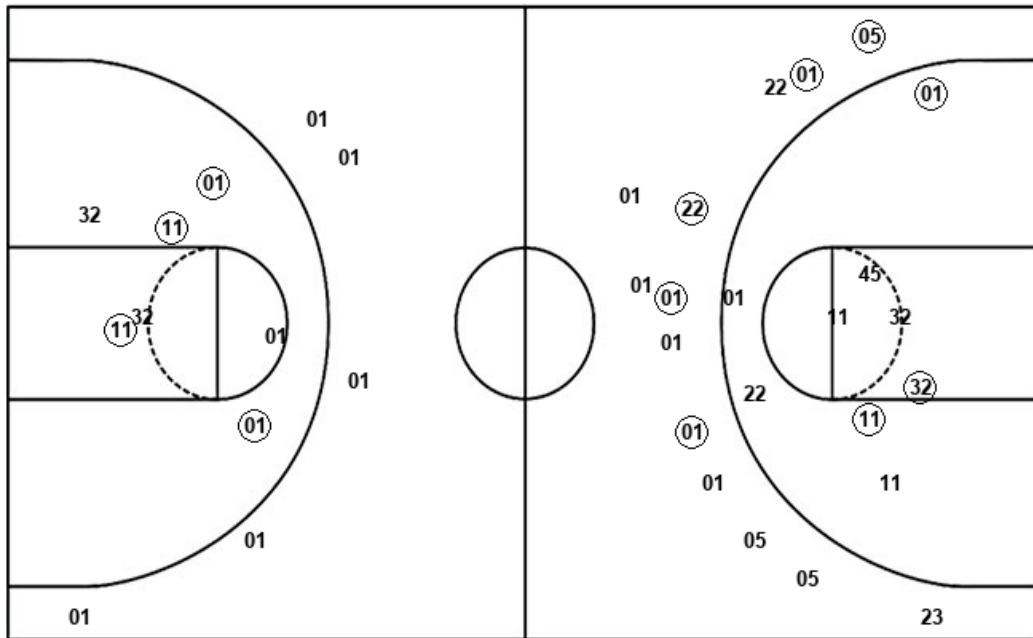


**Official Shot Chart**  
**Purdue vs Michigan St.**  
**Purdue Team Shots**  
**March 05, 2020 at Bankers Life Fieldhouse - Indianapolis, IN**



Layups

Dunks



Layups

Dunks

32 32 11 11 32  
 32 23 23 11 32  
 23 11 45 45 45  
 12 23 01 01 32  
 32 22 32 45 11  
 45 45

PUR : Period 1	Made	Att	Pct
Layups	5	8	62.5
Dunks	0	0	0
2PT Field Goals	7	15	46.7
3PT Field Goals	2	4	50.0
<b>Total Field Goals</b>	<b>9</b>	<b>19</b>	<b>47.4</b>

PUR : Period 3	Made	Att	Pct
Layups	5	9	55.6
Dunks	0	0	0
2PT Field Goals	5	11	45.5
3PT Field Goals	0	3	00.0
<b>Total Field Goals</b>	<b>5</b>	<b>14</b>	<b>35.7</b>

PUR : Period 2	Made	Att	Pct
Layups	1	1	100.0
Dunks	0	0	0
2PT Field Goals	2	3	66.7
3PT Field Goals	3	9	33.3
<b>Total Field Goals</b>	<b>5</b>	<b>12</b>	<b>41.7</b>

PUR : Period 4	Made	Att	Pct
Layups	4	9	44.4
Dunks	0	0	0
2PT Field Goals	8	14	57.1
3PT Field Goals	0	2	00.0
<b>Total Field Goals</b>	<b>8</b>	<b>16</b>	<b>50.0</b>

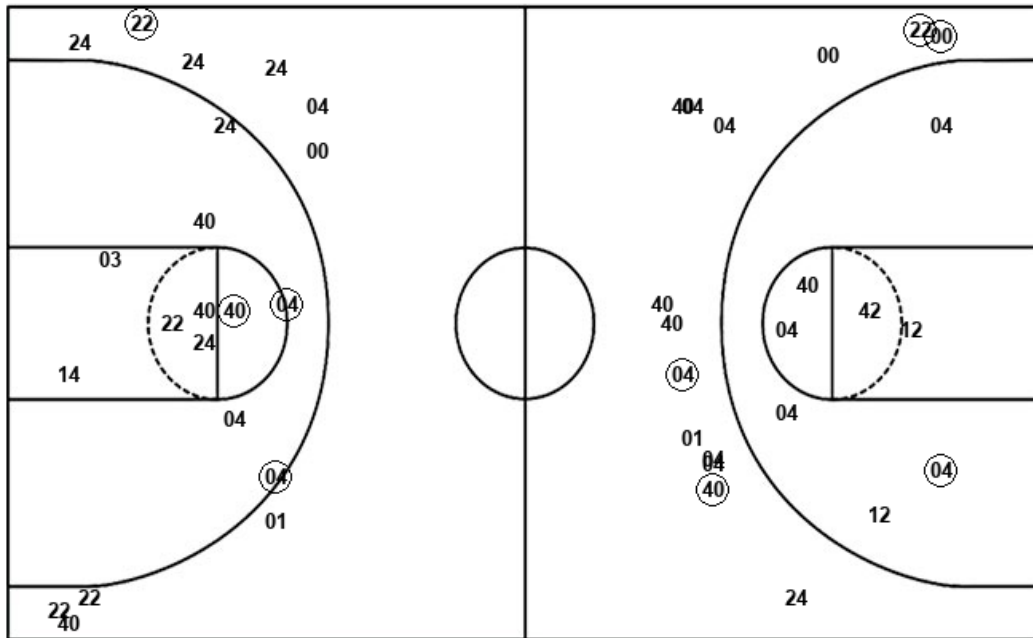


**Official Shot Chart**  
**Purdue vs Michigan St.**  
**Michigan St. Team Shots**  
**March 05, 2020 at Bankers Life Fieldhouse - Indianapolis, IN**



Layups

Dunks



Layups

Dunks

(24) (14) 22 24 40  
 42 04 40 40 14  
 22 24 (24) (24) 24  
 14 22 (24) 24 00  
 42 (22) 14 22 01  
 (00) (00) (00) (40) 24  
 (40) (12) (00) (24) 04

MSU : Period 1	Made	Att	Pct
Layups	2	4	50.0
Dunks	0	0	0
2PT Field Goals	3	8	37.5
3PT Field Goals	1	9	11.1
<b>Total Field Goals</b>	<b>4</b>	<b>17</b>	<b>23.5</b>

MSU : Period 3	Made	Att	Pct
Layups	2	9	22.2
Dunks	0	0	0
2PT Field Goals	2	13	15.4
3PT Field Goals	2	7	28.6
<b>Total Field Goals</b>	<b>4</b>	<b>20</b>	<b>20.0</b>

MSU : Period 2	Made	Att	Pct
Layups	2	10	20.0
Dunks	0	0	0
2PT Field Goals	3	16	18.8
3PT Field Goals	1	2	50.0
<b>Total Field Goals</b>	<b>4</b>	<b>18</b>	<b>22.2</b>

MSU : Period 4	Made	Att	Pct
Layups	8	12	66.7
Dunks	0	0	0
2PT Field Goals	9	16	56.3
3PT Field Goals	2	7	28.6
<b>Total Field Goals</b>	<b>11</b>	<b>23</b>	<b>47.8</b>