

## FINAL SCORE

**USA**

**79**

**UCONN**

**64**



January 27, 2020 • XL Center - Hartford, Conn.

## FINAL STATISTICS

**Official Box Score**  
**USA vs UCONN**  
**Game Totals -- Final Statistics**  
**January 27, 2020 at XL Center - Hartford, Conn.**



**USA 79**

No.	Player	S	Pts	FG	3FG	FT	OR	DR	TR	PF	A	TO	Blk	Stl	Min	+/-
06	BIRD, SUE	*	9	3-5	3-4	0-0	0	0	0	0	3	0	0	1	20	-1
10	STEWART, BREANNA	*	3	1-7	1-3	0-0	0	3	3	2	0	0	1	1	17	1
13	FOWLES, SYLVIA	*	19	7-10	0-0	5-5	2	4	6	4	1	2	0	0	19	5
14	CHARLES, TINA	*	6	3-11	0-0	0-0	4	5	9	3	5	1	1	1	22	14
17	DIGGINS-SMITH, SKYLAR	*	4	2-6	0-1	0-0	1	0	1	1	1	3	0	1	16	5
16	OQWUMIKE, NNEMKADI		14	5-10	0-2	4-4	1	4	5	2	3	1	0	2	27	11
18	GRAY, CHELSEA		2	1-8	0-1	0-0	2	6	8	0	6	4	0	0	24	10
23	CLARENDON, LAYSHIA		0	0-0	0-0	0-0	0	0	0	2	0	0	0	0	5	-1
25	PLUM, KELSEY		8	3-5	2-4	0-0	2	0	2	1	5	1	0	2	17	13
32	MCBRIDE, KAYLA		12	5-11	2-5	0-0	2	2	4	0	1	0	0	3	25	21
33	SAMUELSON, KATIE LOU		2	1-3	0-2	0-0	0	0	0	2	0	0	0	0	7	-3
	TEAM						2	4	6	0		1				
<b>TOTALS</b>			<b>79</b>	<b>31-76</b>	<b>8-22</b>	<b>9-9</b>	<b>16</b>	<b>28</b>	<b>44</b>	<b>17</b>	<b>25</b>	<b>13</b>	<b>2</b>	<b>11</b>	<b>199</b>	

*Shooting By Period*

Period	FG	FG%	3FG	3FG%	FT	FT%
1st Qtr	9-19	47%	3-9	33%	0-0	0%
2nd Qtr	5-23	22%	0-6	00%	0-0	0%
3rd Qtr	7-18	39%	3-4	75%	4-4	100%
4th Qtr	10-16	63%	2-3	67%	5-5	100%
1st Half	14-42	33%	3-15	20%	0-0	0%
2nd Half	17-34	50%	5-7	71%	9-9	100%
<b>Game</b>	<b>31-76</b>	<b>40.8%</b>	<b>8-22</b>	<b>36.4%</b>	<b>9-9</b>	<b>100.0%</b>

*Deadball Rebounds: 0,0*  
*Last FG: 4th-00:09*  
*Biggest Run: 10-0*  
*Largest lead: By 15 at 4th-00:09*  
*Technical Fouls: None.*

**UCONN 64**

No.	Player	S	Pts	FG	3FG	FT	OR	DR	TR	PF	A	TO	Blk	Stl	Min	+/-
03	WALKER, MEGAN	*	22	9-16	3-7	1-2	0	7	7	5	2	6	1	1	38	-13
05	DANGERFIELD, CRYSTAL	*	11	3-11	2-6	3-3	0	3	3	0	4	2	0	3	36	-14
13	WILLIAMS, CHRISTYN	*	7	2-8	0-2	3-3	0	3	3	3	1	0	0	0	33	-21
20	NELSON-ODODA, OLIVIA	*	10	2-3	0-0	6-8	2	4	6	3	3	2	0	0	31	-21
25	IRWIN, KYLA	*	0	0-0	0-0	0-0	1	0	1	0	0	1	0	0	4	-7
10	BENT, MOLLY		0	0-1	0-1	0-0	0	1	1	0	1	0	0	0	6	6
14	ADEBAYO, EVELYN		2	1-1	0-0	0-0	1	1	2	0	0	1	0	0	6	8
24	MAKURAT, ANNA		10	3-9	2-8	2-2	1	3	4	0	3	3	1	2	31	1
44	GRIFFIN, AUBREY		2	1-3	0-0	0-3	1	4	5	2	0	2	0	0	14	-14
	TEAM						1	1	2	0		3				
<b>TOTALS</b>			<b>64</b>	<b>21-52</b>	<b>7-24</b>	<b>15-21</b>	<b>7</b>	<b>27</b>	<b>34</b>	<b>13</b>	<b>14</b>	<b>20</b>	<b>2</b>	<b>6</b>	<b>199</b>	

*Shooting By Period*

Period	FG	FG%	3FG	3FG%	FT	FT%
1st Qtr	3-12	25%	1-4	25%	4-8	50%
2nd Qtr	8-16	50%	4-11	36%	0-0	0%
3rd Qtr	6-13	46%	2-5	40%	6-6	100%
4th Qtr	4-11	36%	0-4	00%	5-7	71%
1st Half	11-28	39%	5-15	33%	4-8	50%
2nd Half	10-24	42%	2-9	22%	11-13	85%
<b>Game</b>	<b>21-52</b>	<b>40.4%</b>	<b>7-24</b>	<b>29.2%</b>	<b>15-21</b>	<b>71.4%</b>

*Deadball Rebounds: 2,2*  
*Last FG: 4th-01:25*  
*Biggest Run: 11-0*  
*Largest lead: By 4 at 3rd-01:05*  
*Technical Fouls: None.*

*Game Notes:*

Officials: **Tiara Cruz, Krystal Appeleniz, Theresa Stuck**  
 Attendance: **13919**

Start Time: **07:09 PM ET**  
 End Time: **08:54 PM ET**  
 Game Duration: **1:45**

Score	1st	2nd	3rd	4th	TOT
USA	21	10	21	27	<b>79</b>
UCN	11	20	20	13	<b>64</b>

USA led for 31:25. UCN led for 3:22.  
 Game was tied for 5:04.  
 Times tied: 5      Lead Changes: 10

Points from	USA	UCN
In the Paint	38	16
Off Turns	19	14
2nd Chance	10	2
Fast Break	12	5
Bench	38	14

**Official Box Score**  
**USA vs UCONN**  
**First Half Statistics Only**  
**January 27, 2020 at XL Center - Hartford, Conn.**



**USA 31**

No.	Player	S	Pts	FG	3FG	FT	OR	DR	TR	PF	A	TO	Blk	Stl	Min	+/-
06	BIRD, SUE	*	3	1-2	1-2	0-0	0	0	0	0	3	0	0	1	13	1
10	STEWART, BREANNA	*	3	1-4	1-3	0-0	0	1	1	0	0	0	0	0	9	-4
13	FOWLES, SYLVIA	*	4	2-4	0-0	0-0	1	3	4	1	0	2	0	0	9	-2
14	CHARLES, TINA	*	6	3-8	0-0	0-0	3	4	7	1	3	0	0	0	14	5
16	OQWUMIKE, NNEMKADI		4	2-7	0-2	0-0	1	2	3	1	0	0	0	1	12	-2
17	DIGGINS-SMITH, SKYLAR	*	4	2-3	0-1	0-0	0	0	0	1	1	2	0	0	12	3
18	GRAY, CHELSEA		0	0-3	0-1	0-0	0	3	3	0	2	1	0	0	8	-3
23	CLARENDON, LAYSHIA		0	0-0	0-0	0-0	0	0	0	0	0	0	0	0	0	0
25	PLUM, KELSEY		0	0-1	0-1	0-0	1	0	1	0	3	0	0	2	7	-1
32	MCBRIDE, KAYLA		5	2-8	1-4	0-0	0	0	0	0	0	0	1	12	4	
33	SAMUELSON, KATIE LOU		2	1-2	0-1	0-0	0	0	0	1	0	0	0	0	4	-1
	TEAM		0	0-0	0-0	0-0	1	3	4	0	0	1	0	0	0	
<b>TOTALS</b>			<b>31</b>	<b>14-42</b>	<b>3-15</b>	<b>0-0</b>	<b>7</b>	<b>16</b>	<b>23</b>	<b>5</b>	<b>12</b>	<b>6</b>	<b>0</b>	<b>5</b>	<b>100</b>	

*Shooting By Period*

Period	FG	FG%	3FG	3FG%	FT	FT%
1st Qtr	9-19	47%	3-9	33%	0-0	0%
2nd Qtr	5-23	22%	0-6	00%	0-0	0%
1st Half	14-42	33%	3-15	20%	0-0	0%
Game	31-76	40.8%	8-22	36.4%	9-9	100.0%

*Deadball Rebounds: 0,0*  
*Last FG Half: USA 2nd-01:43*

**UCONN 31**

No.	Player	S	Pts	FG	3FG	FT	OR	DR	TR	PF	A	TO	Blk	Stl	Min	+/-
03	WALKER, MEGAN	*	12	5-9	2-4	0-0	0	4	4	2	0	2	1	1	19	0
05	DANGERFIELD, CRYSTAL	*	6	2-6	2-4	0-0	0	2	2	0	3	0	0	1	16	1
10	BENT, MOLLY		0	0-1	0-1	0-0	0	1	1	0	1	0	0	0	6	8
13	WILLIAMS, CHRISTYN	*	2	1-4	0-1	0-0	0	3	3	3	1	0	0	0	13	-6
14	ADEBAYO, EVELYN		2	1-1	0-0	0-0	1	1	2	0	0	1	0	0	6	8
20	NELSON-ODODA, OLIVIA	*	2	0-1	0-0	2-4	1	3	4	1	1	1	0	0	13	-8
24	MAKURAT, ANNA		7	2-6	1-5	2-2	0	3	3	0	1	1	0	1	16	7
25	IRWIN, KYLA	*	0	0-0	0-0	0-0	1	0	1	0	0	1	0	0	4	-7
44	GRIFFIN, AUBREY		0	0-0	0-0	0-2	0	2	2	0	0	2	0	0	6	-3
	TEAM		0	0-0	0-0	0-0	0	0	0	0	0	2	0	0	0	
<b>TOTALS</b>			<b>31</b>	<b>11-28</b>	<b>5-15</b>	<b>4-8</b>	<b>3</b>	<b>19</b>	<b>22</b>	<b>6</b>	<b>7</b>	<b>10</b>	<b>1</b>	<b>3</b>	<b>100</b>	

*Shooting By Period*

Period	FG	FG%	3FG	3FG%	FT	FT%
1st Qtr	3-12	25%	1-4	25%	4-8	50%
2nd Qtr	8-16	50%	4-11	36%	0-0	0%
1st Half	11-28	39%	5-15	33%	4-8	50%
Game	21-52	40.4%	7-24	29.2%	15-21	71.4%

*Deadball Rebounds: 2,2*  
*Last FG Half: UCN 2nd-01:55*

Game Notes:

Officials: Tiara Cruz, Krystal Appeleniz, Theresa Stuck  
Attendance: 13919

Start Time: 07:09 PM ET  
End Time: 08:54 PM ET  
Game Duration: 1:45

Score	1st	2nd	3rd	4th	TOT
USA	21	10	21	27	<b>79</b>
UCN	11	20	20	13	<b>64</b>

Points from (This Period)	USA	UCN
In the Paint	16	6
Off Turns	6	6
2nd Chance	0	0
Fast Break	7	0
Bench	11	9

**Official Box Score**  
**USA vs UCONN**  
**First Quarter Statistics Only**  
**January 27, 2020 at XL Center - Hartford, Conn.**



**USA 21**

No.	Player	S	Pts	FG	3FG	FT	OR	DR	TR	PF	A	TO	Blk	Stl	Min	+/-
06	BIRD, SUE	*	3	1-2	1-2	0-0	0	0	0	0	2	0	0	0	7	9
10	STEWART, BREANNA	*	3	1-1	1-1	0-0	0	0	0	0	0	0	0	0	4	7
13	FOWLES, SYLVIA	*	2	1-1	0-0	0-0	0	2	2	1	0	1	0	0	5	9
14	CHARLES, TINA	*	6	3-6	0-0	0-0	2	2	4	1	2	0	0	0	8	13
17	DIGGINS-SMITH, SKYLAR	*	2	1-1	0-0	0-0	0	0	0	1	1	2	0	0	6	11
16	OQWUMIKE, NNEMKADI		2	1-2	0-1	0-0	0	2	2	1	0	0	0	1	5	1
18	GRAY, CHELSEA		0	0-1	0-1	0-0	0	2	2	0	2	0	0	0	4	-1
23	CLARENDON, LAYSHIA		0	0-0	0-0	0-0	0	0	0	0	0	0	0	0	0	0
25	PLUM, KELSEY		0	0-1	0-1	0-0	0	0	0	0	1	0	0	0	3	1
32	MCBRIDE, KAYLA		3	1-4	1-3	0-0	0	0	0	0	0	0	0	1	6	3
33	SAMUELSON, KATIE LOU		0	0-0	0-0	0-0	0	0	0	1	0	0	0	0	2	-3
	TEAM						0	1	1	0		1				
<b>TOTALS</b>			<b>21</b>	<b>9-19</b>	<b>3-9</b>	<b>0-0</b>	<b>2</b>	<b>9</b>	<b>11</b>	<b>5</b>	<b>8</b>	<b>4</b>	<b>0</b>	<b>2</b>	<b>50</b>	

*Shooting By Period*

Period	FG	FG%	3FG	3FG%	FT	FT%
1st Qtr	9-19	47%	3-9	33%	0-0	0%
2nd Qtr	5-23	22%	0-6	00%	0-0	0%
1st Half	9-19	47%	3-9	33%	0-0	0%
1st Half	14-42	33%	3-15	20%	0-0	0%
Game	31-76	40.8%	8-22	36.4%	9-9	100.0%

Deadball Rebounds: 0,0

**UCONN 11**

No.	Player	S	Pts	FG	3FG	FT	OR	DR	TR	PF	A	TO	Blk	Stl	Min	+/-
03	WALKER, MEGAN	*	2	1-3	0-0	0-0	0	1	1	0	0	1	0	1	9	-10
05	DANGERFIELD, CRYSTAL	*	3	1-4	1-2	0-0	0	0	0	0	0	0	0	0	7	-9
13	WILLIAMS, CHRISTYN	*	0	0-2	0-1	0-0	0	2	2	2	1	0	0	0	10	-10
20	NELSON-ODODA, OLIVIA	*	2	0-1	0-0	2-4	1	1	2	1	0	0	0	0	9	-10
25	IRWIN, KYLA	*	0	0-0	0-0	0-0	1	0	1	0	0	1	0	0	4	-7
10	BENT, MOLLY		0	0-0	0-0	0-0	0	0	0	0	0	0	0	0	0	0
14	ADEBAYO, EVELYN		0	0-0	0-0	0-0	0	0	0	0	0	0	0	0	0	0
24	MAKURAT, ANNA		4	1-2	0-1	2-2	0	1	1	0	0	0	0	0	6	-3
44	GRIFFIN, AUBREY		0	0-0	0-0	0-2	0	2	2	0	0	1	0	0	4	-1
	TEAM						0	0	0	0		2				
<b>TOTALS</b>			<b>11</b>	<b>3-12</b>	<b>1-4</b>	<b>4-8</b>	<b>2</b>	<b>7</b>	<b>9</b>	<b>3</b>	<b>1</b>	<b>5</b>	<b>0</b>	<b>1</b>	<b>50</b>	

*Shooting By Period*

Period	FG	FG%	3FG	3FG%	FT	FT%
1st Qtr	3-12	25%	1-4	25%	4-8	50%
2nd Qtr	8-16	50%	4-11	36%	0-0	0%
1st Half	3-12	25%	1-4	25%	4-8	50%
1st Half	11-28	39%	5-15	33%	4-8	50%
Game	21-52	40.4%	7-24	29.2%	15-21	71.4%

Deadball Rebounds: 2,2

*Game Notes:*

Officials: Tiara Cruz, Krystal Appeleniz, Theresa Stuck  
 Attendance: 13919

Start Time: 07:09 PM ET  
 End Time: 08:54 PM ET  
 Game Duration: 1:45

Score	1st	2nd	3rd	4th	TOT
USA	21	10	21	27	<b>79</b>
UCN	11	20	20	13	<b>64</b>

Points from (This Period)	USA	UCN
In the Paint	10	2
Off Turns	2	2
2nd Chance	0	0
Fast Break	5	0
Bench	5	4

**Official Play-By-Play**  
**USA vs UCONN**  
**First Quarter**  
**January 27, 2020 at XL Center - Hartford, Conn.**



**Period 1**

**Starters:**

**USA:** 6 BIRD, SUE; 10 STEWART, BREANNA; 13 FOWLES, SYLVIA; 14 CHARLES, TINA; 17 DIGGINS-SMITH, SKYLAR;  
**UCONN:** 3 WALKER, MEGAN; 5 DANGERFIELD, CRYSTAL; 13 WILLIAMS, CHRISTYN; 20 NELSON-ODODA, OLIVIA; 25 IRWIN, KYLA;

Time	VISITORS: USA	Score	Margin	HOME: UCONN
09:49	TURNOVER (10SEC) by TEAM			
09:22				TURNOVER (SHOTCLOCK) by TEAM
09:08	GOOD! JUMPER by DIGGINS-SMITH, SKYLAR [PNT]	0-2	V 2	
08:39				TURNOVER (SHOTCLOCK) by TEAM
08:25	TURNOVER (BADPASS) by FOWLES, SYLVIA			
08:12				MISSED 3PTR by WILLIAMS, CHRISTYN
08:09	REBOUND (DEF) by CHARLES, TINA			
08:03	GOOD! 3PTR by STEWART, BREANNA [FB]	0-5	V 5	
08:03	ASSIST by BIRD, SUE			
07:34				MISSED JUMPER by WALKER, MEGAN
07:31				REBOUND (OFF) by IRWIN, KYLA
07:17				MISSED JUMPER by WILLIAMS, CHRISTYN
07:15	REBOUND (DEF) by FOWLES, SYLVIA			
07:08	GOOD! LAYUP by CHARLES, TINA [PNT]	0-7	V 7	
07:08	ASSIST by BIRD, SUE			
07:08				TIMEOUT 30SEC
06:51		3-7	V 4	GOOD! 3PTR by DANGERFIELD, CRYSTAL
06:51				ASSIST by WILLIAMS, CHRISTYN
06:33	GOOD! 3PTR by BIRD, SUE	3-10	V 7	
06:33	ASSIST by DIGGINS-SMITH, SKYLAR			
06:20				TURNOVER (BADPASS) by IRWIN, KYLA
06:20				SUB OUT: IRWIN, KYLA
06:20				SUB IN: MAKURAT, ANNA
06:20	SUB OUT: STEWART, BREANNA			
06:20	SUB IN: MCBRIDE, KAYLA			
06:07	TURNOVER (TRAVEL) by DIGGINS-SMITH, SKYLAR			
05:52				MISSED 3PTR by MAKURAT, ANNA
05:49				REBOUND (OFF) by NELSON-ODODA, OLIVIA
05:48	FOUL (PERSONAL) by FOWLES, SYLVIA			
05:48				MISSED FT by NELSON-ODODA, OLIVIA
05:48				REBOUND (OFF) by TEAM
05:48				MISSED FT by NELSON-ODODA, OLIVIA
05:47	REBOUND (DEF) by FOWLES, SYLVIA			
05:39	GOOD! LAYUP by FOWLES, SYLVIA [PNT]	3-12	V 9	
05:39	ASSIST by CHARLES, TINA			
05:27				MISSED 3PTR by DANGERFIELD, CRYSTAL
05:23	REBOUND (DEF) by CHARLES, TINA			
05:22	SUB OUT: FOWLES, SYLVIA			
05:22	SUB IN: OQWUMIKE, NNEMKADI			
05:13	GOOD! LAYUP by OQWUMIKE, NNEMKADI	3-14	V 11	
05:13	ASSIST by CHARLES, TINA			
04:58				TURNOVER (LOSTBALL) by WALKER, MEGAN
04:58	STEAL by OQWUMIKE, NNEMKADI			
04:54	MISSED LAYUP by MCBRIDE, KAYLA			
04:52	REBOUND (OFF) by CHARLES, TINA			
04:51	MISSED LAYUP by CHARLES, TINA			
04:49	REBOUND (OFF) by CHARLES, TINA			
04:48	MISSED JUMPER by CHARLES, TINA			
04:46				REBOUND (DEF) by WALKER, MEGAN
04:36				MISSED LAYUP by WALKER, MEGAN
04:34	REBOUND (DEF) by OQWUMIKE, NNEMKADI			
04:26	TURNOVER (BADPASS) by DIGGINS-SMITH, SKYLAR			
04:26				STEAL by WALKER, MEGAN
04:13	FOUL (PERSONAL) by DIGGINS-SMITH, SKYLAR			
04:13	SUB OUT: DIGGINS-SMITH, SKYLAR			
04:13	SUB IN: GRAY, CHELSEA			
04:13		4-14	V 10	GOOD! FT by NELSON-ODODA, OLIVIA
04:13		5-14	V 9	GOOD! FT by NELSON-ODODA, OLIVIA
04:13				SUB OUT: NELSON-ODODA, OLIVIA
04:13				SUB IN: GRIFFIN, AUBREY
03:56	MISSED 3PTR by BIRD, SUE			
03:54				REBOUND (DEF) by GRIFFIN, AUBREY
03:32				MISSED JUMPER by DANGERFIELD, CRYSTAL
03:32	REBOUND (DEF) by GRAY, CHELSEA			
03:32				FOUL (PERSONAL) by WILLIAMS, CHRISTYN
03:32				SUB OUT: WALKER, MEGAN
03:32				SUB IN: NELSON-ODODA, OLIVIA
03:23				FOUL (PERSONAL) by NELSON-ODODA, OLIVIA
03:17	MISSED 3PTR by GRAY, CHELSEA			
03:14				REBOUND (DEF) by MAKURAT, ANNA

Time	VISITORS: USA	Score	Margin	HOME: UCONN
03:07				MISSED LAYUP by DANGERFIELD, CRYSTAL
03:05	REBOUND (DEF) by TEAM			
03:05	SUB OUT: BIRD, SUE			
03:05	SUB IN: PLUM, KELSEY			
02:54	MISSED 3PTR by MCBRIDE, KAYLA			
02:51				REBOUND (DEF) by GRIFFIN, AUBREY
02:38	FOUL (PERSONAL) by OQWUMIKE, NNEMKADI			
02:38				SUB OUT: DANGERFIELD, CRYSTAL
02:38				SUB IN: WALKER, MEGAN
02:38				MISSED FT by GRIFFIN, AUBREY
02:38				REBOUND (OFF) by TEAM
02:38				MISSED FT by GRIFFIN, AUBREY
02:36	REBOUND (DEF) by OQWUMIKE, NNEMKADI			
02:23	GOOD! JUMPER by CHARLES, TINA	5-16	V 11	
02:23	ASSIST by GRAY, CHELSEA			
02:23				FOUL (PERSONAL) by WILLIAMS, CHRISTYN
02:21	MISSED JUMPER by CHARLES, TINA			
02:17				REBOUND (DEF) by WILLIAMS, CHRISTYN
02:00				MISSED JUMPER by NELSON-ODODA, OLIVIA
01:57	REBOUND (DEF) by GRAY, CHELSEA			
01:52	GOOD! LAYUP by CHARLES, TINA [FB/PNT]	5-18	V 13	
01:52	ASSIST by GRAY, CHELSEA			
01:41	FOUL (PERSONAL) by CHARLES, TINA			
01:41	SUB OUT: CHARLES, TINA			
01:41	SUB IN: SAMUELSON, KATIE LOU			
01:28		7-18	V 11	GOOD! LAYUP by WALKER, MEGAN
01:16	MISSED 3PTR by PLUM, KELSEY			
01:12				REBOUND (DEF) by NELSON-ODODA, OLIVIA
01:06	FOUL (PERSONAL) by SAMUELSON, KATIE LOU			
01:06		8-18	V 10	GOOD! FT by MAKURAT, ANNA
01:06		9-18	V 9	GOOD! FT by MAKURAT, ANNA
00:58	GOOD! 3PTR by MCBRIDE, KAYLA	9-21	V 12	
00:58	ASSIST by PLUM, KELSEY			
00:37		11-21	V 10	GOOD! JUMPER by MAKURAT, ANNA
00:30	MISSED 3PTR by MCBRIDE, KAYLA			
00:26				REBOUND (DEF) by WILLIAMS, CHRISTYN
00:19				TURNOVER (BADPASS) by GRIFFIN, AUBREY
00:19	STEAL by MCBRIDE, KAYLA			
00:01	MISSED 3PTR by OQWUMIKE, NNEMKADI			
00:00				REBOUND (DEF) by TEAM

### USA 21, UCONN 11

Points from (This Period)	USA	UCN
In the Paint	10	2
Off Turns	2	2
2nd Chance	0	0
Fast Break	5	0
Bench	5	4

**Official Box Score**  
**USA vs UCONN**  
**Second Quarter Statistics Only**  
**January 27, 2020 at XL Center - Hartford, Conn.**



**USA 10**

No.	Player	S	Pts	FG	3FG	FT	OR	DR	TR	PF	A	TO	Blk	Stl	Min	+/-
06	BIRD, SUE	*	0	0-0	0-0	0-0	0	0	0	0	1	0	0	1	6	-8
10	STEWART, BREANNA	*	0	0-3	0-2	0-0	0	1	1	0	0	0	0	0	5	-11
13	FOWLES, SYLVIA	*	2	1-3	0-0	0-0	1	1	2	0	0	1	0	0	4	-11
14	CHARLES, TINA	*	0	0-2	0-0	0-0	1	2	3	0	1	0	0	0	6	-8
17	DIGGINS-SMITH, SKYLAR	*	2	1-2	0-1	0-0	0	0	0	0	0	0	0	0	6	-8
16	OQWUMIKE, NNEMKADI		2	1-5	0-1	0-0	1	0	1	0	0	0	0	0	7	-3
18	GRAY, CHELSEA		0	0-2	0-0	0-0	0	1	1	0	0	1	0	0	4	-2
23	CLARENDON, LAYSHIA		0	0-0	0-0	0-0	0	0	0	0	0	0	0	0	0	0
25	PLUM, KELSEY		0	0-0	0-0	0-0	1	0	1	0	2	0	0	2	4	-2
32	MCBRIDE, KAYLA		2	1-4	0-1	0-0	0	0	0	0	0	0	0	0	6	1
33	SAMUELSON, KATIE LOU		2	1-2	0-1	0-0	0	0	0	0	0	0	0	0	2	2
	TEAM						1	2	3	0		0				
<b>TOTALS</b>			<b>10</b>	<b>5-23</b>	<b>0-6</b>	<b>0-0</b>	<b>5</b>	<b>7</b>	<b>12</b>	<b>0</b>	<b>4</b>	<b>2</b>	<b>0</b>	<b>3</b>	<b>50</b>	

*Shooting By Period*

Period	FG	FG%	3FG	3FG%	FT	FT%
3rd Qtr	7-18	39%	3-4	75%	4-4	100%
4th Qtr	10-16	63%	2-3	67%	5-5	100%
2nd Half	5-23	22%	0-6	00%	0-0	0%
2nd Half	17-34	50%	5-7	71%	9-9	100%
Game	31-76	40.8%	8-22	36.4%	9-9	100.0%

*Deadball Rebounds: 0,0*

**UCONN 20**

No.	Player	S	Pts	FG	3FG	FT	OR	DR	TR	PF	A	TO	Blk	Stl	Min	+/-
03	WALKER, MEGAN	*	10	4-6	2-4	0-0	0	3	3	2	0	1	1	0	10	10
05	DANGERFIELD, CRYSTAL	*	3	1-2	1-2	0-0	0	2	2	0	3	0	0	1	9	10
13	WILLIAMS, CHRISTYN	*	2	1-2	0-0	0-0	0	1	1	1	0	0	0	0	3	4
20	NELSON-ODODA, OLIVIA	*	0	0-0	0-0	0-0	0	2	2	0	1	1	0	0	4	2
25	IRWIN, KYLA	*	0	0-0	0-0	0-0	0	0	0	0	0	0	0	0	0	0
10	BENT, MOLLY		0	0-1	0-1	0-0	0	1	1	0	1	0	0	0	6	8
14	ADEBAYO, EVELYN		2	1-1	0-0	0-0	1	1	2	0	0	1	0	0	6	8
24	MAKURAT, ANNA		3	1-4	1-4	0-0	0	2	2	0	1	1	0	1	10	10
44	GRIFFIN, AUBREY		0	0-0	0-0	0-0	0	0	0	0	0	1	0	0	2	-2
	TEAM						0	0	0	0		0				
<b>TOTALS</b>			<b>20</b>	<b>8-16</b>	<b>4-11</b>	<b>0-0</b>	<b>1</b>	<b>12</b>	<b>13</b>	<b>3</b>	<b>6</b>	<b>5</b>	<b>1</b>	<b>2</b>	<b>50</b>	

*Shooting By Period*

Period	FG	FG%	3FG	3FG%	FT	FT%
3rd Qtr	6-13	46%	2-5	40%	6-6	100%
4th Qtr	4-11	36%	0-4	00%	5-7	71%
2nd Half	8-16	50%	4-11	36%	0-0	0%
2nd Half	10-24	42%	2-9	22%	11-13	85%
Game	21-52	40.4%	7-24	29.2%	15-21	71.4%

*Deadball Rebounds: 2,2*

*Game Notes:*

Officials: Tiara Cruz, Krystal Appeleniz, Theresa Stuck  
 Attendance: 13919

Start Time: 07:09 PM ET  
 End Time: 08:54 PM ET  
 Game Duration: 1:45

Score	1st	2nd	3rd	4th	TOT
USA	21	10	21	27	<b>79</b>
UCN	11	20	20	13	<b>64</b>

Points from (This Period)	USA	UCN
In the Paint	6	4
Off Turns	4	4
2nd Chance	0	0
Fast Break	2	0
Bench	6	5

**Official Play-By-Play**  
**USA vs UCONN**  
**Second Quarter**  
**January 27, 2020 at XL Center - Hartford, Conn.**



**Period 2**

**Starters:**

**USA:** 6 BIRD,SUE; 10 STEWART,BREANNA; 13 FOWLES,SYLVIA; 14 CHARLES,TINA; 17 DIGGINS-SMITH,SKYLAR;

**UCONN:** 3 WALKER,MEGAN; 5 DANGERFIELD,CRYSTAL; 13 WILLIAMS,CHRISTYN; 20 NELSON-ODODA,OLIVIA; 25 IRWIN,KYLA;

Time	VISITORS: USA	Score	Margin	HOME: UCONN
09:59				TURNOVER (BADPASS) by GRIFFIN, AUBREY
09:59	STEAL by PLUM, KELSEY			
09:56				FOUL (PERSONAL) by WILLIAMS, CHRISTYN
09:54	MISSED JUMPER by GRAY, CHELSEA			
09:51				REBOUND (DEF) by WILLIAMS, CHRISTYN
09:29				TURNOVER (BADPASS) by NELSON-ODODA, OLIVIA
09:19	MISSED JUMPER by MCBRIDE, KAYLA			
09:17				REBOUND (DEF) by MAKURAT, ANNA
09:08				FOUL (OFF) by WALKER, MEGAN
09:08				TURNOVER (OFFENSIVE) by WALKER, MEGAN
09:08				SUB OUT: WILLIAMS, CHRISTYN
09:08				SUB IN: DANGERFIELD, CRYSTAL
08:56	GOOD! LAYUP by SAMUELSON, KATIE LOU [PNT]	11-23	V 12	
08:56	ASSIST by PLUM, KELSEY			
08:41				TURNOVER (BADPASS) by MAKURAT, ANNA
08:41	STEAL by PLUM, KELSEY			
08:36	GOOD! LAYUP by OQWUMIKE, NNEMKADI [FB]	11-25	V 14	
08:36	ASSIST by PLUM, KELSEY			
08:17				MISSED 3PTR by MAKURAT, ANNA
08:14	REBOUND (DEF) by GRAY, CHELSEA			
08:09	TURNOVER (BADPASS) by GRAY, CHELSEA			
08:09				STEAL by MAKURAT, ANNA
07:59		13-25	V 12	GOOD! JUMPER by WALKER, MEGAN
07:51	MISSED 3PTR by SAMUELSON, KATIE LOU			
07:47				REBOUND (DEF) by NELSON-ODODA, OLIVIA
07:34				MISSED 3PTR by WALKER, MEGAN
07:32	REBOUND (DEF) by TEAM			
07:32				SUB OUT: GRIFFIN, AUBREY
07:32				SUB IN: WILLIAMS, CHRISTYN
07:32	SUB OUT: SAMUELSON, KATIE LOU			
07:32	SUB IN: FOWLES, SYLVIA			
07:32	SUB OUT: MCBRIDE, KAYLA			
07:32	SUB IN: STEWART, BREANNA			
07:20	MISSED JUMPER by FOWLES, SYLVIA			
07:17				REBOUND (DEF) by WALKER, MEGAN
07:04				MISSED 3PTR by MAKURAT, ANNA
07:00	REBOUND (DEF) by FOWLES, SYLVIA			
06:56	TURNOVER (LOSTBALL) by FOWLES, SYLVIA			
06:56				STEAL by DANGERFIELD, CRYSTAL
06:44		15-25	V 10	GOOD! LAYUP by WALKER, MEGAN [PNT]
06:44				ASSIST by NELSON-ODODA, OLIVIA
06:27	MISSED LAYUP by FOWLES, SYLVIA			
06:24				REBOUND (DEF) by NELSON-ODODA, OLIVIA
06:18				MISSED JUMPER by WILLIAMS, CHRISTYN
06:16	REBOUND (DEF) by STEWART, BREANNA			
06:08	MISSED 3PTR by STEWART, BREANNA			
06:05	REBOUND (OFF) by OQWUMIKE, NNEMKADI			
06:04	MISSED JUMPER by OQWUMIKE, NNEMKADI			
06:01	REBOUND (OFF) by PLUM, KELSEY			
05:52	MISSED JUMPER by GRAY, CHELSEA			
05:49				REBOUND (DEF) by DANGERFIELD, CRYSTAL
05:40		17-25	V 8	GOOD! JUMPER by WILLIAMS, CHRISTYN
05:40				ASSIST by MAKURAT, ANNA
05:36	TIMEOUT 30SEC			
05:36				SUB OUT: WILLIAMS, CHRISTYN
05:36				SUB OUT: NELSON-ODODA, OLIVIA
05:36				SUB IN: BENT, MOLLY
05:36				SUB IN: ADEBAYO, EVELYN
05:36	SUB OUT: OQWUMIKE, NNEMKADI			
05:36	SUB OUT: GRAY, CHELSEA			
05:36	SUB OUT: PLUM, KELSEY			
05:36	SUB IN: BIRD, SUE			
05:36	SUB IN: CHARLES, TINA			
05:36	SUB IN: DIGGINS-SMITH, SKYLAR			
05:19	GOOD! LAYUP by FOWLES, SYLVIA	17-27	V 10	
05:19	ASSIST by CHARLES, TINA			
05:00		20-27	V 7	GOOD! 3PTR by MAKURAT, ANNA
05:00				ASSIST by BENT, MOLLY
04:42	MISSED JUMPER by CHARLES, TINA			
04:39				REBOUND (DEF) by MAKURAT, ANNA



Time	VISITORS: USA	Score	Margin	HOME: UCONN
04:31		23-27	V 4	GOOD! 3PTR by WALKER, MEGAN
04:31				ASSIST by DANGERFIELD, CRYSTAL
04:10	MISSED 3PTR by STEWART, BREANNA			
04:07	REBOUND (OFF) by FOWLES, SYLVIA			
04:04	MISSED 3PTR by DIGGINS-SMITH, SKYLAR			
04:00				REBOUND (DEF) by BENT, MOLLY
03:50		26-27	V 1	GOOD! 3PTR by WALKER, MEGAN
03:50				ASSIST by DANGERFIELD, CRYSTAL
03:48	TIMEOUT 30SEC			
03:48	SUB OUT: FOWLES, SYLVIA			
03:48	SUB IN: MCBRIDE, KAYLA			
03:37	MISSED 3PTR by MCBRIDE, KAYLA			
03:34	REBOUND (OFF) by TEAM			
03:19	MISSED JUMPER by STEWART, BREANNA			
03:14	REBOUND (OFF) by CHARLES, TINA			
03:13	MISSED LAYUP by CHARLES, TINA			
03:13				BLOCK by WALKER, MEGAN
03:08				REBOUND (DEF) by WALKER, MEGAN
02:57		28-27	H 1	GOOD! LAYUP by ADEBAYO, EVELYN
02:57				ASSIST by DANGERFIELD, CRYSTAL
02:44				FOUL (PERSONAL) by WALKER, MEGAN
02:42	GOOD! JUMPER by DIGGINS-SMITH, SKYLAR	28-29	V 1	
02:42	ASSIST by BIRD, SUE			
02:15				MISSED 3PTR by BENT, MOLLY
02:14	REBOUND (DEF) by TEAM			
02:14	SUB OUT: STEWART, BREANNA			
02:14	SUB IN: OQWUMIKE, NNEMKADI			
02:04	MISSED JUMPER by OQWUMIKE, NNEMKADI			
02:02				REBOUND (DEF) by DANGERFIELD, CRYSTAL
01:55		31-29	H 2	GOOD! 3PTR by DANGERFIELD, CRYSTAL
01:43	GOOD! JUMPER by MCBRIDE, KAYLA	31-31	T	
01:21				MISSED 3PTR by WALKER, MEGAN
01:19				REBOUND (OFF) by ADEBAYO, EVELYN
01:17				TURNOVER (LOSTBALL) by ADEBAYO, EVELYN
01:17	STEAL by BIRD, SUE			
01:05	MISSED JUMPER by OQWUMIKE, NNEMKADI			
01:02				REBOUND (DEF) by ADEBAYO, EVELYN
00:42				MISSED 3PTR by DANGERFIELD, CRYSTAL
00:39	REBOUND (DEF) by CHARLES, TINA			
00:28	MISSED JUMPER by MCBRIDE, KAYLA			
00:25				REBOUND (DEF) by WALKER, MEGAN
00:11				MISSED 3PTR by MAKURAT, ANNA
00:08	REBOUND (DEF) by CHARLES, TINA			
00:00	MISSED 3PTR by OQWUMIKE, NNEMKADI			
00:00				REBOUND (DEF) by TEAM

### USA 31, UCONN 31

Points from (This Period)	USA	UCN
In the Paint	6	4
Off Turns	4	4
2nd Chance	0	0
Fast Break	2	0
Bench	6	5

**Official Box Score**  
**USA vs UCONN**  
**Second Half Statistics Only**  
**January 27, 2020 at XL Center - Hartford, Conn.**



**USA 48**

No.	Player	S	Pts	FG	3FG	FT	OR	DR	TR	PF	A	TO	Blk	Stl	Min	+/-
06	BIRD, SUE	*	6	2-3	2-2	0-0	0	0	0	0	0	0	0	0	7	-2
10	STEWART, BREANNA	*	0	0-3	0-0	0-0	0	2	2	2	0	0	1	1	9	5
13	FOWLES, SYLVIA	*	15	5-6	0-0	5-5	1	1	2	3	1	0	0	0	10	7
14	CHARLES, TINA	*	0	0-3	0-0	0-0	1	1	2	2	1	1	1	1	8	9
16	OQWUMIKE, NNEMKADI		10	3-3	0-0	4-4	0	2	2	1	3	1	0	1	15	13
17	DIGGINS-SMITH, SKYLAR	*	0	0-3	0-0	0-0	1	0	1	0	0	1	0	1	5	2
18	GRAY, CHELSEA		2	1-5	0-0	0-0	2	3	5	0	4	3	0	0	15	13
23	CLARENDON, LAYSHIA		0	0-0	0-0	0-0	0	0	0	2	0	0	0	0	5	-1
25	PLUM, KELSEY		8	3-4	2-3	0-0	1	0	1	1	2	1	0	0	10	14
32	MCBRIDE, KAYLA		7	3-3	1-1	0-0	2	2	4	0	1	0	0	2	13	17
33	SAMUELSON, KATIE LOU		0	0-1	0-1	0-0	0	0	0	1	0	0	0	0	3	-2
	TEAM		0	0-0	0-0	0-0	1	1	2	0	0	0	0	0	0	
<b>TOTALS</b>			<b>48</b>	<b>17-34</b>	<b>5-7</b>	<b>9-9</b>	<b>9</b>	<b>12</b>	<b>21</b>	<b>12</b>	<b>13</b>	<b>7</b>	<b>2</b>	<b>6</b>	<b>99</b>	

*Shooting By Period*

Period	FG	FG%	3FG	3FG%	FT	FT%
3rd Qtr	7-18	39%	3-4	75%	4-4	100%
4th Qtr	10-16	63%	2-3	67%	5-5	100%
2nd Half	17-34	50%	5-7	71%	9-9	100%
Game	31-76	40.8%	8-22	36.4%	9-9	100.0%

*Deadball Rebounds: 0,0*  
*Last FG Half: USA 4th-00:09*

**UCONN 33**

No.	Player	S	Pts	FG	3FG	FT	OR	DR	TR	PF	A	TO	Blk	Stl	Min	+/-
03	WALKER, MEGAN	*	10	4-7	1-3	1-2	0	3	3	3	2	4	0	0	19	-13
05	DANGERFIELD, CRYSTAL	*	5	1-5	0-2	3-3	0	1	1	0	1	2	0	2	20	-15
10	BENT, MOLLY		0	0-0	0-0	0-0	0	0	0	0	0	0	0	0	1	-2
13	WILLIAMS, CHRISTYN	*	5	1-4	0-1	3-3	0	0	0	0	0	0	0	0	20	-15
14	ADEBAYO, EVELYN		0	0-0	0-0	0-0	0	0	0	0	0	0	0	0	0	0
20	NELSON-ODODA, OLIVIA	*	8	2-2	0-0	4-4	1	1	2	2	2	1	0	0	18	-13
24	MAKURAT, ANNA		3	1-3	1-3	0-0	1	0	1	0	2	2	1	1	15	-6
25	IRWIN, KYLA	*	0	0-0	0-0	0-0	0	0	0	0	0	0	0	0	0	0
44	GRIFFIN, AUBREY		2	1-3	0-0	0-1	1	2	3	2	0	0	0	0	7	-11
	TEAM		0	0-0	0-0	0-0	1	1	2	0	0	1	0	0	0	
<b>TOTALS</b>			<b>33</b>	<b>10-24</b>	<b>2-9</b>	<b>11-13</b>	<b>4</b>	<b>8</b>	<b>12</b>	<b>7</b>	<b>7</b>	<b>10</b>	<b>1</b>	<b>3</b>	<b>99</b>	

*Shooting By Period*

Period	FG	FG%	3FG	3FG%	FT	FT%
3rd Qtr	6-13	46%	2-5	40%	6-6	100%
4th Qtr	4-11	36%	0-4	00%	5-7	71%
2nd Half	10-24	42%	2-9	22%	11-13	85%
Game	21-52	40.4%	7-24	29.2%	15-21	71.4%

*Deadball Rebounds: 2,2*  
*Last FG Half: UCN 4th-01:25*

*Game Notes:*

Officials: Tiara Cruz, Krystal Appeleniz, Theresa Stuck  
Attendance: 13919

Start Time: 07:09 PM ET  
End Time: 08:54 PM ET  
Game Duration: 1:45

Score	1st	2nd	3rd	4th	TOT
USA	21	10	21	27	<b>79</b>
UCN	11	20	20	13	<b>64</b>

Points from (This Period)	USA	UCN
In the Paint	22	10
Off Turns	13	8
2nd Chance	10	2
Fast Break	5	5
Bench	27	5

**Official Box Score**  
**USA vs UCONN**  
**Third Quarter Statistics Only**  
**January 27, 2020 at XL Center - Hartford, Conn.**



**USA 48**

No.	Player	S	Pts	FG	3FG	FT	OR	DR	TR	PF	A	TO	Blk	Stl	Min	+/-
06	BIRD, SUE	*	6	2-3	2-2	0-0	0	0	0	0	0	0	0	0	7	-2
10	STEWART, BREANNA	*	0	0-2	0-0	0-0	0	1	1	1	0	0	0	1	5	2
13	FOWLES, SYLVIA	*	8	3-4	0-0	2-2	1	0	1	1	1	0	0	0	7	3
14	CHARLES, TINA	*	0	0-2	0-0	0-0	1	1	2	1	1	1	0	1	5	2
17	DIGGINS-SMITH, SKYLAR	*	0	0-3	0-0	0-0	1	0	1	0	0	1	0	1	5	2
16	OQWUMIKE, NNEMKADI		2	0-0	0-0	2-2	0	1	1	0	2	1	0	0	5	-1
18	GRAY, CHELSEA		2	1-2	0-0	0-0	1	0	1	0	1	1	0	0	5	-1
23	CLARENDON, LAYSHIA		0	0-0	0-0	0-0	0	0	0	2	0	0	0	0	5	-1
25	PLUM, KELSEY		0	0-0	0-0	0-0	0	0	0	0	0	0	0	0	0	0
32	MCBRIDE, KAYLA		3	1-1	1-1	0-0	0	2	2	0	0	0	0	0	3	3
33	SAMUELSON, KATIE LOU		0	0-1	0-1	0-0	0	0	0	1	0	0	0	0	3	-2
	TEAM						1	1	2	0		0				
<b>TOTALS</b>			<b>21</b>	<b>7-18</b>	<b>3-4</b>	<b>4-4</b>	<b>5</b>	<b>6</b>	<b>11</b>	<b>6</b>	<b>5</b>	<b>4</b>	<b>0</b>	<b>3</b>	<b>50</b>	

*Shooting By Period*

Period	FG	FG%	3FG	3FG%	FT	FT%
2nd Half	0-0	0%	0-0	0%	0-0	0%
Game	31-76	40.8%	8-22	36.4%	9-9	100.0%

*Deadball Rebounds: 0,0*

**UCONN 33**

No.	Player	S	Pts	FG	3FG	FT	OR	DR	TR	PF	A	TO	Blk	Stl	Min	+/-
03	WALKER, MEGAN	*	9	4-6	1-2	0-0	0	3	3	0	0	2	0	0	10	-1
05	DANGERFIELD, CRYSTAL	*	0	0-3	0-1	0-0	0	1	1	0	1	1	0	2	10	-1
13	WILLIAMS, CHRISTYN	*	2	0-1	0-0	2-2	0	0	0	0	0	0	0	0	10	-1
20	NELSON-ODODA, OLIVIA	*	6	1-1	0-0	4-4	0	1	1	2	2	0	0	0	10	-1
25	IRWIN, KYLA	*	0	0-0	0-0	0-0	0	0	0	0	0	0	0	0	0	0
10	BENT, MOLLY		0	0-0	0-0	0-0	0	0	0	0	0	0	0	0	0	0
14	ADEBAYO, EVELYN		0	0-0	0-0	0-0	0	0	0	0	0	0	0	0	0	0
24	MAKURAT, ANNA		3	1-2	1-2	0-0	0	0	0	0	2	1	0	1	10	-1
44	GRIFFIN, AUBREY		0	0-0	0-0	0-0	0	0	0	0	0	0	0	0	0	0
	TEAM						1	1	2	0		0				
<b>TOTALS</b>			<b>20</b>	<b>6-13</b>	<b>2-5</b>	<b>6-6</b>	<b>1</b>	<b>6</b>	<b>7</b>	<b>2</b>	<b>5</b>	<b>4</b>	<b>0</b>	<b>3</b>	<b>50</b>	

*Shooting By Period*

Period	FG	FG%	3FG	3FG%	FT	FT%
2nd Half	0-0	0%	0-0	0%	0-0	0%
Game	21-52	40.4%	7-24	29.2%	15-21	71.4%

*Deadball Rebounds: 2,2*

Game Notes:

Officials: Tiara Cruz, Krystal Appeleniz, Theresa Stuck  
 Attendance: 13919

Start Time: 07:09 PM ET  
 End Time: 08:54 PM ET  
 Game Duration: 1:45

Score	1st	2nd	3rd	4th	TOT
USA	21	10	21	27	<b>79</b>
UCN	11	20	20	13	<b>64</b>

Points from (This Period)	USA	UCN
In the Paint	8	4
Off Turns	5	8
2nd Chance	5	2
Fast Break	3	5
Bench	7	3

**Official Play-By-Play**  
**USA vs UCONN**  
**Third Quarter**  
**January 27, 2020 at XL Center - Hartford, Conn.**



**Period 3**

**Starters:**

**USA:** 6 BIRD,SUE; 10 STEWART,BREANNA; 13 FOWLES,SYLVIA; 14 CHARLES,TINA; 17 DIGGINS-SMITH,SKYLAR;

**UCONN:** 3 WALKER,MEGAN; 5 DANGERFIELD,CRYSTAL; 13 WILLIAMS,CHRISTYN; 20 NELSON-ODODA,OLIVIA; 25 IRWIN,KYLA;

Time	VISITORS: USA	Score	Margin	HOME: UCONN
10:00				SUB OUT: BENT, MOLLY
10:00				SUB OUT: ADEBAYO, EVELYN
10:00				SUB IN: WILLIAMS, CHRISTYN
10:00				SUB IN: NELSON-ODODA, OLIVIA
10:00	SUB OUT: OQWUMIKE, NNEMKADI			
10:00	SUB OUT: MCBRIDE, KAYLA			
10:00	SUB IN: STEWART, BREANNA			
10:00	SUB IN: FOWLES, SYLVIA			
09:51	GOOD! LAYUP by FOWLES, SYLVIA	31-33	V 2	
09:51	ASSIST by CHARLES, TINA			
09:38				TURNOVER (BADPASS) by WALKER, MEGAN
09:38	STEAL by CHARLES, TINA			
09:23	MISSED JUMPER by BIRD, SUE			
09:19	REBOUND (OFF) by CHARLES, TINA			
09:14	MISSED JUMPER by DIGGINS-SMITH, SKYLAR			
09:12	REBOUND (OFF) by TEAM			
09:07	MISSED JUMPER by DIGGINS-SMITH, SKYLAR			
09:04	REBOUND (OFF) by FOWLES, SYLVIA			
09:01	GOOD! 3PTR by BIRD, SUE	31-36	V 5	
09:01	ASSIST by FOWLES, SYLVIA			
08:30				MISSED 3PTR by WALKER, MEGAN
08:30				REBOUND (OFF) by TEAM
08:30	FOUL (PERSONAL) by STEWART, BREANNA			
08:27		33-36	V 3	GOOD! JUMPER by WALKER, MEGAN
08:27				ASSIST by MAKURAT, ANNA
08:12	MISSED JUMPER by CHARLES, TINA			
08:09				REBOUND (DEF) by NELSON-ODODA, OLIVIA
07:56				MISSED JUMPER by DANGERFIELD, CRYSTAL
07:54	REBOUND (DEF) by STEWART, BREANNA			
07:50	MISSED JUMPER by STEWART, BREANNA			
07:47	REBOUND (OFF) by DIGGINS-SMITH, SKYLAR			
07:37				FOUL (PERSONAL) by NELSON-ODODA, OLIVIA
07:37	GOOD! FT by FOWLES, SYLVIA	33-37	V 4	
07:37	GOOD! FT by FOWLES, SYLVIA	33-38	V 5	
07:23				TURNOVER (BADPASS) by MAKURAT, ANNA
07:23	STEAL by STEWART, BREANNA			
07:18	MISSED LAYUP by DIGGINS-SMITH, SKYLAR			
07:16				REBOUND (DEF) by WALKER, MEGAN
07:16				TURNOVER (BADPASS) by WALKER, MEGAN
07:10	GOOD! JUMPER by FOWLES, SYLVIA [PNT]	33-40	V 7	
06:44	FOUL (PERSONAL) by FOWLES, SYLVIA			
06:44		34-40	V 6	GOOD! FT by NELSON-ODODA, OLIVIA
06:44		35-40	V 5	GOOD! FT by NELSON-ODODA, OLIVIA
06:33	MISSED JUMPER by STEWART, BREANNA			
06:30				REBOUND (DEF) by WALKER, MEGAN
06:24				TURNOVER (LOSTBALL) by DANGERFIELD, CRYSTAL
06:24	STEAL by DIGGINS-SMITH, SKYLAR			
06:20	TURNOVER (TRAVEL) by DIGGINS-SMITH, SKYLAR			
06:07		38-40	V 2	GOOD! 3PTR by WALKER, MEGAN
06:07				ASSIST by NELSON-ODODA, OLIVIA
05:48	TURNOVER (BADPASS) by CHARLES, TINA			
05:48				STEAL by MAKURAT, ANNA
05:34				MISSED 3PTR by DANGERFIELD, CRYSTAL
05:31	REBOUND (DEF) by CHARLES, TINA			
05:20	SUB OUT: STEWART, BREANNA			
05:20	SUB IN: GRAY, CHELSEA			
05:13	MISSED JUMPER by CHARLES, TINA			
05:10				REBOUND (DEF) by DANGERFIELD, CRYSTAL
05:05	FOUL (PERSONAL) by CHARLES, TINA			
05:05	SUB OUT: FOWLES, SYLVIA			
05:05	SUB OUT: CHARLES, TINA			
05:05	SUB OUT: DIGGINS-SMITH, SKYLAR			
05:05	SUB IN: OQWUMIKE, NNEMKADI			
05:05	SUB IN: CLARENDON, LAYSHIA			
05:05	SUB IN: SAMUELSON, KATIE LOU			
04:59		40-40	T	GOOD! JUMPER by NELSON-ODODA, OLIVIA
04:59				ASSIST by MAKURAT, ANNA
04:38	TURNOVER (LOSTBALL) by OQWUMIKE, NNEMKADI			
04:38				STEAL by DANGERFIELD, CRYSTAL
04:33		43-40	H 3	GOOD! 3PTR by MAKURAT, ANNA [FB]

Time	VISITORS: USA	Score	Margin	HOME: UCONN
04:33				ASSIST by DANGERFIELD, CRYSTAL
04:16	GOOD! 3PTR by BIRD, SUE	43-43	T	
04:16	ASSIST by OQWUMIKE, NNEMKADI			
03:56	FOUL (PERSONAL) by SAMUELSON, KATIE LOU			
03:56				
03:48				MISSED JUMPER by WILLIAMS, CHRISTYN
03:47	REBOUND (DEF) by TEAM			
03:35	MISSED JUMPER by GRAY, CHELSEA			
03:32	REBOUND (OFF) by GRAY, CHELSEA			
03:30	TURNOVER (BADPASS) by GRAY, CHELSEA			
03:30				STEAL by DANGERFIELD, CRYSTAL
03:17		45-43	H 2	GOOD! LAYUP by WALKER, MEGAN
03:17				ASSIST by NELSON-ODODA, OLIVIA
02:58				FOUL (PERSONAL) by NELSON-ODODA, OLIVIA
02:58	SUB OUT: BIRD, SUE			
02:58	SUB IN: MCBRIDE, KAYLA			
02:58	GOOD! FT by OQWUMIKE, NNEMKADI	45-44	H 1	
02:58	GOOD! FT by OQWUMIKE, NNEMKADI	45-45	T	
02:34				MISSED LAYUP by DANGERFIELD, CRYSTAL
02:32	REBOUND (DEF) by MCBRIDE, KAYLA			
02:28	MISSED 3PTR by SAMUELSON, KATIE LOU			
02:26				REBOUND (DEF) by TEAM
02:26	FOUL (PERSONAL) by CLARENDON, LAYSHIA			
02:26	SUB OUT: SAMUELSON, KATIE LOU			
02:26	SUB IN: FOWLES, SYLVIA			
02:26		46-45	H 1	GOOD! FT by WILLIAMS, CHRISTYN [FB]
02:26		47-45	H 2	GOOD! FT by WILLIAMS, CHRISTYN [FB]
02:11	GOOD! LAYUP by FOWLES, SYLVIA [PNT]	47-47	T	
02:11	ASSIST by OQWUMIKE, NNEMKADI			
01:48		49-47	H 2	GOOD! LAYUP by WALKER, MEGAN [PNT]
01:26	MISSED LAYUP by FOWLES, SYLVIA			
01:24				REBOUND (DEF) by WALKER, MEGAN
01:05	FOUL (PERSONAL) by CLARENDON, LAYSHIA			
01:05		50-47	H 3	GOOD! FT by NELSON-ODODA, OLIVIA
01:05		51-47	H 4	GOOD! FT by NELSON-ODODA, OLIVIA
00:48	GOOD! JUMPER by GRAY, CHELSEA [PNT]	51-49	H 2	
00:25				MISSED JUMPER by WALKER, MEGAN
00:23	REBOUND (DEF) by MCBRIDE, KAYLA			
00:18	GOOD! 3PTR by MCBRIDE, KAYLA [FB]	51-52	V 1	
00:18	ASSIST by GRAY, CHELSEA			
00:04				MISSED 3PTR by MAKURAT, ANNA
00:01	REBOUND (DEF) by OQWUMIKE, NNEMKADI			

### USA 52, UCONN 51

Points from (This Period)	USA	UCN
In the Paint	8	4
Off Turns	5	8
2nd Chance	5	2
Fast Break	3	5
Bench	7	3

**Official Box Score**  
**USA vs UCONN**  
**Fourth Quarter Statistics Only**  
**January 27, 2020 at XL Center - Hartford, Conn.**



**USA 27**

No.	Player	S	Pts	FG	3FG	FT	OR	DR	TR	PF	A	TO	Blk	Stl	Min	+/-
06	BIRD, SUE	*	0	0-0	0-0	0-0	0	0	0	0	0	0	0	0	0	0
10	STEWART, BREANNA	*	0	0-1	0-0	0-0	0	1	1	1	0	0	1	0	4	3
13	FOWLES, SYLVIA	*	7	2-2	0-0	3-3	0	1	1	2	0	0	0	0	3	4
14	CHARLES, TINA	*	0	0-1	0-0	0-0	0	0	0	1	1	0	1	0	3	7
17	DIGGINS-SMITH, SKYLAR	*	0	0-0	0-0	0-0	0	0	0	0	0	0	0	0	0	0
16	OQWUMIKE, NNEMKADI		8	3-3	0-0	2-2	0	1	1	1	1	0	0	1	10	14
18	GRAY, CHELSEA		0	0-3	0-0	0-0	1	3	4	0	3	2	0	0	10	14
23	CLARENDON, LAYSHIA		0	0-0	0-0	0-0	0	0	0	0	0	0	0	0	0	0
25	PLUM, KELSEY		8	3-4	2-3	0-0	1	0	1	1	2	1	0	0	10	14
32	MCBRIDE, KAYLA		4	2-2	0-0	0-0	2	0	2	0	1	0	0	2	10	14
33	SAMUELSON, KATIE LOU		0	0-0	0-0	0-0	0	0	0	0	0	0	0	0	0	0
	TEAM						0	0	0	0	0	0				
<b>TOTALS</b>			<b>27</b>	<b>10-16</b>	<b>2-3</b>	<b>5-5</b>	<b>4</b>	<b>6</b>	<b>10</b>	<b>6</b>	<b>8</b>	<b>3</b>	<b>2</b>	<b>3</b>	<b>49</b>	

*Shooting By Period*

Period	FG	FG%	3FG	3FG%	FT	FT%
Game	31-76	40.8%	8-22	36.4%	9-9	100.0%

*Deadball Rebounds: 0,0*

**UCONN 13**

No.	Player	S	Pts	FG	3FG	FT	OR	DR	TR	PF	A	TO	Blk	Stl	Min	+/-
03	WALKER, MEGAN	*	1	0-1	0-1	1-2	0	0	0	3	2	2	0	0	9	-12
05	DANGERFIELD, CRYSTAL	*	5	1-2	0-1	3-3	0	0	0	0	0	1	0	0	10	-14
13	WILLIAMS, CHRISTYN	*	3	1-3	0-1	1-1	0	0	0	0	0	0	0	0	10	-14
20	NELSON-ODODA, OLIVIA	*	2	1-1	0-0	0-0	1	0	1	0	0	1	0	0	8	-12
25	IRWIN, KYLA	*	0	0-0	0-0	0-0	0	0	0	0	0	0	0	0	0	0
10	BENT, MOLLY		0	0-0	0-0	0-0	0	0	0	0	0	0	0	0	1	-2
14	ADEBAYO, EVELYN		0	0-0	0-0	0-0	0	0	0	0	0	0	0	0	0	0
24	MAKURAT, ANNA		0	0-1	0-1	0-0	1	0	1	0	0	1	1	0	5	-5
44	GRIFFIN, AUBREY		2	1-3	0-0	0-1	1	2	3	2	0	0	0	0	7	-11
	TEAM						0	0	0	0		1				
<b>TOTALS</b>			<b>13</b>	<b>4-11</b>	<b>0-4</b>	<b>5-7</b>	<b>3</b>	<b>2</b>	<b>5</b>	<b>5</b>	<b>2</b>	<b>6</b>	<b>1</b>	<b>0</b>	<b>49</b>	

*Shooting By Period*

Period	FG	FG%	3FG	3FG%	FT	FT%
Game	21-52	40.4%	7-24	29.2%	15-21	71.4%

*Deadball Rebounds: 2,2*

*Game Notes:*

Officials: Tiara Cruz, Krystal Appeleniz, Theresa Stuck  
 Attendance: 13919

Start Time: 07:09 PM ET  
 End Time: 08:54 PM ET  
 Game Duration: 1:45

Score	1st	2nd	3rd	4th	TOT
USA	21	10	21	27	<b>79</b>
UCN	11	20	20	13	<b>64</b>

Points from (This Period)	USA	UCN
In the Paint	14	6
Off Turns	8	0
2nd Chance	5	0
Fast Break	2	0
Bench	20	2

**Official Play-By-Play  
USA vs UCONN  
Fourth Quarter  
January 27, 2020 at XL Center - Hartford, Conn.**



**Period 4**

**Starters:**

**USA:** 6 BIRD,SUE; 10 STEWART,BREANNA; 13 FOWLES,SYLVIA; 14 CHARLES,TINA; 17 DIGGINS-SMITH,SKYLAR;

**UCONN:** 3 WALKER,MEGAN; 5 DANGERFIELD,CRYSTAL; 13 WILLIAMS,CHRISTYN; 20 NELSON-ODODA,OLIVIA; 25 IRWIN,KYLA;

Time	VISITORS: USA	Score	Margin	HOME: UCONN
10:00				SUB OUT: MAKURAT, ANNA
10:00				SUB IN: GRIFFIN, AUBREY
10:00	SUB OUT: CLARENDON, LAYSHIA			
10:00	SUB IN: PLUM, KELSEY			
09:46	FOUL (PERSONAL) by FOWLES, SYLVIA			
09:35		53-52	H 1	GOOD! LAYUP by GRIFFIN, AUBREY
09:35	FOUL (PERSONAL) by FOWLES, SYLVIA			
09:35				MISSED FT by GRIFFIN, AUBREY
09:34	REBOUND (DEF) by FOWLES, SYLVIA			
09:18	GOOD! LAYUP by FOWLES, SYLVIA [PNT]	53-54	V 1	
09:18	ASSIST by GRAY, CHELSEA			
09:05		55-54	H 1	GOOD! LAYUP by WILLIAMS, CHRISTYN
09:05				ASSIST by WALKER, MEGAN
09:05	FOUL (PERSONAL) by OQWUMIKE, NNEMKADI			
09:05	SUB OUT: FOWLES, SYLVIA			
09:05	SUB IN: CHARLES, TINA			
09:05		56-54	H 2	GOOD! FT by WILLIAMS, CHRISTYN
08:48	GOOD! 3PTR by PLUM, KELSEY	56-57	V 1	
08:48	ASSIST by CHARLES, TINA			
08:31				TURNOVER (BADPASS) by NELSON-ODODA, OLIVIA
08:31	STEAL by MCBRIDE, KAYLA			
08:26	GOOD! JUMPER by PLUM, KELSEY [FB/PNT]	56-59	V 3	
08:02				MISSED JUMPER by WILLIAMS, CHRISTYN
07:58	REBOUND (DEF) by GRAY, CHELSEA			
07:46	TURNOVER (TRAVEL) by PLUM, KELSEY			
07:22				MISSED 3PTR by DANGERFIELD, CRYSTAL
07:19				REBOUND (OFF) by GRIFFIN, AUBREY
07:19				MISSED LAYUP by GRIFFIN, AUBREY
07:19	BLOCK by CHARLES, TINA			
07:14				REBOUND (OFF) by NELSON-ODODA, OLIVIA
07:13				MISSED 3PTR by WILLIAMS, CHRISTYN
07:09	REBOUND (DEF) by GRAY, CHELSEA			
07:08	MISSED LAYUP by GRAY, CHELSEA			
07:06	REBOUND (OFF) by MCBRIDE, KAYLA			
07:04	GOOD! 3PTR by PLUM, KELSEY	56-62	V 6	
07:04	ASSIST by MCBRIDE, KAYLA			
06:43				TURNOVER (LOSTBALL) by WALKER, MEGAN
06:43				SUB OUT: NELSON-ODODA, OLIVIA
06:43				SUB IN: MAKURAT, ANNA
06:28	MISSED LAYUP by CHARLES, TINA			
06:28				BLOCK by MAKURAT, ANNA
06:23				REBOUND (DEF) by GRIFFIN, AUBREY
06:17				TURNOVER (LOSTBALL) by DANGERFIELD, CRYSTAL
06:17	STEAL by MCBRIDE, KAYLA			
06:05	MISSED JUMPER by GRAY, CHELSEA			
06:03				REBOUND (DEF) by GRIFFIN, AUBREY
06:03	FOUL (PERSONAL) by CHARLES, TINA			
06:03	SUB OUT: CHARLES, TINA			
06:03	SUB IN: STEWART, BREANNA			
05:41				MISSED JUMPER by GRIFFIN, AUBREY
05:41	BLOCK by STEWART, BREANNA			
05:36	REBOUND (DEF) by OQWUMIKE, NNEMKADI			
05:34	TURNOVER (BADPASS) by GRAY, CHELSEA			
05:08				TURNOVER (SHOTCLOCK) by TEAM
04:57				FOUL (PERSONAL) by WALKER, MEGAN
04:57				
04:49	GOOD! LAYUP by OQWUMIKE, NNEMKADI [PNT]	56-64	V 8	
04:49	ASSIST by PLUM, KELSEY			
04:24	FOUL (PERSONAL) by STEWART, BREANNA			
04:24				SUB OUT: GRIFFIN, AUBREY
04:24				SUB IN: NELSON-ODODA, OLIVIA
04:24		57-64	V 7	GOOD! FT by WALKER, MEGAN
04:24				MISSED FT by WALKER, MEGAN
04:23	REBOUND (DEF) by STEWART, BREANNA			
04:07	GOOD! JUMPER by MCBRIDE, KAYLA	57-66	V 9	
04:07	ASSIST by PLUM, KELSEY			
03:48		59-66	V 7	GOOD! LAYUP by NELSON-ODODA, OLIVIA [PNT]
03:48				ASSIST by WALKER, MEGAN
03:33	MISSED JUMPER by GRAY, CHELSEA			
03:30	REBOUND (OFF) by PLUM, KELSEY			

Time	VISITORS: USA	Score	Margin	HOME: UCONN
03:18	MISSED 3PTR by PLUM, KELSEY			
03:15	REBOUND (OFF) by MCBRIDE, KAYLA			
03:14	GOOD! LAYUP by MCBRIDE, KAYLA	59-68	V 9	
02:51				MISSED 3PTR by MAKURAT, ANNA
02:48				REBOUND (OFF) by MAKURAT, ANNA
02:43				MISSED 3PTR by WALKER, MEGAN
02:40	REBOUND (DEF) by GRAY, CHELSEA			
02:24	MISSED JUMPER by STEWART, BREANNA			
02:21	REBOUND (OFF) by GRAY, CHELSEA			
02:17	TURNOVER (BADPASS) by GRAY, CHELSEA			
02:17	SUB OUT: STEWART, BREANNA			
02:17	SUB IN: FOWLES, SYLVIA			
02:17				TIMEOUT 30SEC
02:00				TURNOVER (BADPASS) by MAKURAT, ANNA
02:00	STEAL by OQWUMIKE, NNEMKADI			
01:59				FOUL (UNSPORTSMANLIKE) by WALKER, MEGAN
01:59	GOOD! FT by OQWUMIKE, NNEMKADI	59-69	V 10	
01:59	GOOD! FT by OQWUMIKE, NNEMKADI	59-70	V 11	
01:59				SUB OUT: MAKURAT, ANNA
01:59				SUB IN: GRIFFIN, AUBREY
01:51	GOOD! JUMPER by OQWUMIKE, NNEMKADI [PNT]	59-72	V 13	
01:51	ASSIST by GRAY, CHELSEA			
01:25		61-72	V 11	GOOD! JUMPER by DANGERFIELD, CRYSTAL
01:11				FOUL (PERSONAL) by GRIFFIN, AUBREY
01:11	GOOD! FT by FOWLES, SYLVIA	61-73	V 12	
01:11	GOOD! FT by FOWLES, SYLVIA	61-74	V 13	
00:58				FOUL (OFF) by WALKER, MEGAN
00:58				TURNOVER (OFFENSIVE) by WALKER, MEGAN
00:58				SUB OUT: WALKER, MEGAN
00:58				SUB IN: BENT, MOLLY
00:45	GOOD! LAYUP by OQWUMIKE, NNEMKADI	61-76	V 15	
00:45	ASSIST by GRAY, CHELSEA			
00:27	FOUL (PERSONAL) by PLUM, KELSEY			
00:27		62-76	V 14	GOOD! FT by DANGERFIELD, CRYSTAL
00:27		63-76	V 13	GOOD! FT by DANGERFIELD, CRYSTAL
00:27		64-76	V 12	GOOD! FT by DANGERFIELD, CRYSTAL
00:09	GOOD! LAYUP by FOWLES, SYLVIA	64-78	V 14	
00:09	ASSIST by OQWUMIKE, NNEMKADI			
00:09				FOUL (PERSONAL) by GRIFFIN, AUBREY
00:09	GOOD! FT by FOWLES, SYLVIA	64-79	V 15	

### USA 79, UCONN 64

Points from (This Period)	USA	UCN
In the Paint	14	6
Off Turns	8	0
2nd Chance	5	0
Fast Break	2	0
Bench	20	2



**Official Scoring/Possession Reference Chart**  
**USA vs UCONN**  
**Period 1**  
**January 27, 2020 at XL Center - Hartford, Conn.**



**Period 1**

**Starters:**

**USA:** 6 BIRD,SUE; 10 STEWART,BREANNA; 13 FOWLES,SYLVIA; 14 CHARLES,TINA; 17 DIGGINS-SMITH,SKYLAR;  
**UCONN:** 3 WALKER,MEGAN; 5 DANGERFIELD,CRYSTAL; 13 WILLIAMS,CHRISTYN; 20 NELSON-ODODA,OLIVIA; 25 IRWIN,KYLA;

Time	VISITORS: USA	Score	Margin	HOME: UCONN
09:08	GOOD! JUMPER by DIGGINS-SMITH, SKYLAR [PNT]	0-2	V 2	
08:03	GOOD! 3PTR by STEWART, BREANNA [FB]	0-5	V 5	
07:08	GOOD! LAYUP by CHARLES, TINA [PNT]	0-7	V 7	
06:51		3-7	V 4	GOOD! 3PTR by DANGERFIELD, CRYSTAL
06:33	GOOD! 3PTR by BIRD, SUE	3-10	V 7	
05:39	GOOD! LAYUP by FOWLES, SYLVIA [PNT]	3-12	V 9	
05:13	GOOD! LAYUP by OQWUMIKE, NNEMKADI	3-14	V 11	
04:13		4-14	V 10	GOOD! FT by NELSON-ODODA, OLIVIA
04:13		5-14	V 9	GOOD! FT by NELSON-ODODA, OLIVIA
02:23	GOOD! JUMPER by CHARLES, TINA	5-16	V 11	
01:52	GOOD! LAYUP by CHARLES, TINA [FB/PNT]	5-18	V 13	
01:28		7-18	V 11	GOOD! LAYUP by WALKER, MEGAN
01:06		8-18	V 10	GOOD! FT by MAKURAT, ANNA
01:06		9-18	V 9	GOOD! FT by MAKURAT, ANNA
00:58	GOOD! 3PTR by MCBRIDE, KAYLA	9-21	V 12	
00:37		11-21	V 10	GOOD! JUMPER by MAKURAT, ANNA

**USA 21, UCONN 11**

**Official Scoring/Possession Reference Chart**  
**USA vs UCONN**  
**Period 2**  
**January 27, 2020 at XL Center - Hartford, Conn.**



**Period 2**

**Starters:**

**USA:** 6 BIRD,SUE; 10 STEWART,BREANNA; 13 FOWLES,SYLVIA; 14 CHARLES,TINA; 17 DIGGINS-SMITH,SKYLAR;

**UCONN:** 3 WALKER,MEGAN; 5 DANGERFIELD,CRYSTAL; 13 WILLIAMS,CHRISTYN; 20 NELSON-ODODA,OLIVIA; 25 IRWIN,KYLA;

Time	VISITORS: USA	Score	Margin	HOME: UCONN
08:56	GOOD! LAYUP by SAMUELSON, KATIE LOU [PNT]	11-23	V 12	
08:36	GOOD! LAYUP by OQWUMIKE, NNEMKADI [FB]	11-25	V 14	
07:59		13-25	V 12	GOOD! JUMPER by WALKER, MEGAN
06:44		15-25	V 10	GOOD! LAYUP by WALKER, MEGAN [PNT]
05:40		17-25	V 8	GOOD! JUMPER by WILLIAMS, CHRISTYN
05:19	GOOD! LAYUP by FOWLES, SYLVIA	17-27	V 10	
05:00		20-27	V 7	GOOD! 3PTR by MAKURAT, ANNA
04:31		23-27	V 4	GOOD! 3PTR by WALKER, MEGAN
03:50		26-27	V 1	GOOD! 3PTR by WALKER, MEGAN
02:57		28-27	H 1	GOOD! LAYUP by ADEBAYO, EVELYN
02:42	GOOD! JUMPER by DIGGINS-SMITH, SKYLAR	28-29	V 1	
01:55		31-29	H 2	GOOD! 3PTR by DANGERFIELD, CRYSTAL
01:43	GOOD! JUMPER by MCBRIDE, KAYLA	31-31	T	

**USA 31, UCONN 31**

**Official Scoring/Possession Reference Chart**  
**USA vs UCONN**  
**Period 3**  
**January 27, 2020 at XL Center - Hartford, Conn.**



**Period 3**

**Starters:**

**USA:** 6 BIRD,SUE; 10 STEWART,BREANNA; 13 FOWLES,SYLVIA; 14 CHARLES,TINA; 17 DIGGINS-SMITH,SKYLAR;

**UCONN:** 3 WALKER,MEGAN; 5 DANGERFIELD,CRYSTAL; 13 WILLIAMS,CHRISTYN; 20 NELSON-ODODA,OLIVIA; 25 IRWIN,KYLA;

Time	VISITORS: USA	Score	Margin	HOME: UCONN
09:51	GOOD! LAYUP by FOWLES, SYLVIA	31-33	V 2	
09:01	GOOD! 3PTR by BIRD, SUE	31-36	V 5	
08:27		33-36	V 3	GOOD! JUMPER by WALKER, MEGAN
07:37	GOOD! FT by FOWLES, SYLVIA	33-37	V 4	
07:37	GOOD! FT by FOWLES, SYLVIA	33-38	V 5	
07:10	GOOD! JUMPER by FOWLES, SYLVIA [PNT]	33-40	V 7	
06:44		34-40	V 6	GOOD! FT by NELSON-ODODA, OLIVIA
06:44		35-40	V 5	GOOD! FT by NELSON-ODODA, OLIVIA
06:07		38-40	V 2	GOOD! 3PTR by WALKER, MEGAN
04:59		40-40	T	GOOD! JUMPER by NELSON-ODODA, OLIVIA
04:33		43-40	H 3	GOOD! 3PTR by MAKURAT, ANNA [FB]
04:16	GOOD! 3PTR by BIRD, SUE	43-43	T	
03:17		45-43	H 2	GOOD! LAYUP by WALKER, MEGAN
02:58	GOOD! FT by OQWUMIKE, NNEMKADI	45-44	H 1	
02:58	GOOD! FT by OQWUMIKE, NNEMKADI	45-45	T	
02:26		46-45	H 1	GOOD! FT by WILLIAMS, CHRISTYN [FB]
02:26		47-45	H 2	GOOD! FT by WILLIAMS, CHRISTYN [FB]
02:11	GOOD! LAYUP by FOWLES, SYLVIA [PNT]	47-47	T	
01:48		49-47	H 2	GOOD! LAYUP by WALKER, MEGAN [PNT]
01:05		50-47	H 3	GOOD! FT by NELSON-ODODA, OLIVIA
01:05		51-47	H 4	GOOD! FT by NELSON-ODODA, OLIVIA
00:48	GOOD! JUMPER by GRAY, CHELSEA [PNT]	51-49	H 2	
00:18	GOOD! 3PTR by MCBRIDE, KAYLA [FB]	51-52	V 1	

**USA 52, UCONN 51**

**Official Scoring/Possession Reference Chart**  
**USA vs UCONN**  
**Period 4**  
**January 27, 2020 at XL Center - Hartford, Conn.**



**Period 4**

**Starters:**

**USA:** 6 BIRD,SUE; 10 STEWART,BREANNA; 13 FOWLES,SYLVIA; 14 CHARLES,TINA; 17 DIGGINS-SMITH,SKYLAR;

**UCONN:** 3 WALKER,MEGAN; 5 DANGERFIELD,CRYSTAL; 13 WILLIAMS,CHRISTYN; 20 NELSON-ODODA,OLIVIA; 25 IRWIN,KYLA;

Time	VISITORS: USA	Score	Margin	HOME: UCONN
09:35		53-52	H 1	GOOD! LAYUP by GRIFFIN, AUBREY
09:18	GOOD! LAYUP by FOWLES, SYLVIA [PNT]	53-54	V 1	
09:05		55-54	H 1	GOOD! LAYUP by WILLIAMS, CHRISTYN
09:05		56-54	H 2	GOOD! FT by WILLIAMS, CHRISTYN
08:48	GOOD! 3PTR by PLUM, KELSEY	56-57	V 1	
08:26	GOOD! JUMPER by PLUM, KELSEY [FB/PNT]	56-59	V 3	
07:04	GOOD! 3PTR by PLUM, KELSEY	56-62	V 6	
04:49	GOOD! LAYUP by OQWUMIKE, NNEMKADI [PNT]	56-64	V 8	
04:24		57-64	V 7	GOOD! FT by WALKER, MEGAN
04:07	GOOD! JUMPER by MCBRIDE, KAYLA	57-66	V 9	
03:48		59-66	V 7	GOOD! LAYUP by NELSON-ODODA, OLIVIA [PNT]
03:14	GOOD! LAYUP by MCBRIDE, KAYLA	59-68	V 9	
01:59	GOOD! FT by OQWUMIKE, NNEMKADI	59-69	V 10	
01:59	GOOD! FT by OQWUMIKE, NNEMKADI	59-70	V 11	
01:51	GOOD! JUMPER by OQWUMIKE, NNEMKADI [PNT]	59-72	V 13	
01:25		61-72	V 11	GOOD! JUMPER by DANGERFIELD, CRYSTAL
01:11	GOOD! FT by FOWLES, SYLVIA	61-73	V 12	
01:11	GOOD! FT by FOWLES, SYLVIA	61-74	V 13	
00:45	GOOD! LAYUP by OQWUMIKE, NNEMKADI	61-76	V 15	
00:27		62-76	V 14	GOOD! FT by DANGERFIELD, CRYSTAL
00:27		63-76	V 13	GOOD! FT by DANGERFIELD, CRYSTAL
00:27		64-76	V 12	GOOD! FT by DANGERFIELD, CRYSTAL
00:09	GOOD! LAYUP by FOWLES, SYLVIA	64-78	V 14	
00:09	GOOD! FT by FOWLES, SYLVIA	64-79	V 15	

**USA 79, UCONN 64**

**Official Substitutions Log**  
**USA vs UCONN**  
**Period 1**  
**January 27, 2020 at XL Center - Hartford, Conn.**



VISITORS: USA	Time	Score	HOME: UCONN
6 BIRD,SUE			3 WALKER,MEGAN
10 STEWART,BREANNA			5 DANGERFIELD,CRYSTAL
13 FOWLES,SYLVIA			13 WILLIAMS,CHRISTYN
14 CHARLES,TINA			20 NELSON-ODODA,OLIVIA
17 DIGGINS-SMITH,SKYLAR			25 IRWIN,KYLA
	06:20	10-3	SUB OUT: IRWIN,KYLA
	06:20		SUB IN: MAKURAT,ANNA
SUB OUT: 10 STEWART,BREANNA	06:20		
SUB IN: 32 MCBRIDE,KAYLA	06:20		
SUB OUT: 13 FOWLES,SYLVIA	05:22	12-3	
SUB IN: 16 OQWUMIKE,NNEMKADI	05:22		
SUB OUT: 17 DIGGINS-SMITH,SKYLAR	04:13	14-3	
SUB IN: 18 GRAY,CHELSEA	04:13		
	04:13		SUB OUT: NELSON-ODODA,OLIVIA
	04:13		SUB IN: GRIFFIN,AUBREY
	03:32	14-5	SUB OUT: WALKER,MEGAN
	03:32		SUB IN: NELSON-ODODA,OLIVIA
SUB OUT: 6 BIRD,SUE	03:05	14-5	
SUB IN: 25 PLUM,KELSEY	03:05		
	02:38	14-5	SUB OUT: DANGERFIELD,CRYSTAL
	02:38		SUB IN: WALKER,MEGAN
SUB OUT: 14 CHARLES,TINA	01:41	18-5	
SUB IN: 33 SAMUELSON,KATIE LOU	01:41		

**USA 21, UCONN 11**

**Official Substitutions Log**  
**USA vs UCONN**  
**Period 2**  
**January 27, 2020 at XL Center - Hartford, Conn.**



VISITORS: USA	Time	Score	HOME: UCONN
6 BIRD,SUE			3 WALKER,MEGAN
10 STEWART,BREANNA			5 DANGERFIELD,CRYSTAL
13 FOWLES,SYLVIA			13 WILLIAMS,CHRISTYN
14 CHARLES,TINA			20 NELSON-ODODA,OLIVIA
17 DIGGINS-SMITH,SKYLAR			25 IRWIN,KYLA
	09:08	-	SUB OUT: WILLIAMS,CHRISTYN
	09:08		SUB IN: DANGERFIELD,CRYSTAL
	07:32	25-13	SUB OUT: GRIFFIN,AUBREY
	07:32		SUB IN: WILLIAMS,CHRISTYN
SUB OUT: 33 SAMUELSON,KATIE LOU	07:32		
SUB IN: 13 FOWLES,SYLVIA	07:32		
SUB OUT: 32 MCBRIDE,KAYLA	07:32		
SUB IN: 10 STEWART,BREANNA	07:32		
	05:36	25-17	SUB OUT: WILLIAMS,CHRISTYN
	05:36		SUB OUT: NELSON-ODODA,OLIVIA
	05:36		SUB IN: BENT,MOLLY
	05:36		SUB IN: ADEBAYO,EVELYN
SUB OUT: 16 OQWUMIKE,NNEMKADI	05:36		
SUB OUT: 18 GRAY,CHELSEA	05:36		
SUB OUT: 25 PLUM,KELSEY	05:36		
SUB IN: 6 BIRD,SUE	05:36		
SUB IN: 14 CHARLES,TINA	05:36		
SUB IN: 17 DIGGINS-SMITH,SKYLAR	05:36		
SUB OUT: 13 FOWLES,SYLVIA	03:48	27-26	
SUB IN: 32 MCBRIDE,KAYLA	03:48		
SUB OUT: 10 STEWART,BREANNA	02:14	29-28	
SUB IN: 16 OQWUMIKE,NNEMKADI	02:14		

**USA 31, UCONN 31**

**Official Substitutions Log**  
**USA vs UCONN**  
**Period 3**  
**January 27, 2020 at XL Center - Hartford, Conn.**



<b>VISITORS: USA</b>	<b>Time</b>	<b>Score</b>	<b>HOME: UCONN</b>
6 BIRD,SUE			3 WALKER,MEGAN
10 STEWART,BREANNA			5 DANGERFIELD,CRYSTAL
13 FOWLES,SYLVIA			13 WILLIAMS,CHRISTYN
14 CHARLES,TINA			20 NELSON-ODODA,OLIVIA
17 DIGGINS-SMITH,SKYLAR			25 IRWIN,KYLA
	10:00	-	SUB OUT: BENT,MOLLY
	10:00		SUB OUT: ADEBAYO,EVELYN
	10:00		SUB IN: WILLIAMS,CHRISTYN
	10:00		SUB IN: NELSON-ODODA,OLIVIA
SUB OUT: 16 OQWUMIKE,NNEMKADI	10:00		
SUB OUT: 32 MCBRIDE,KAYLA	10:00		
SUB IN: 10 STEWART,BREANNA	10:00		
SUB IN: 13 FOWLES,SYLVIA	10:00		
SUB OUT: 10 STEWART,BREANNA	05:20	40-38	
SUB IN: 18 GRAY,CHELSEA	05:20		
SUB OUT: 13 FOWLES,SYLVIA	05:05	40-38	
SUB OUT: 14 CHARLES,TINA	05:05		
SUB OUT: 17 DIGGINS-SMITH,SKYLAR	05:05		
SUB IN: 16 OQWUMIKE,NNEMKADI	05:05		
SUB IN: 23 CLARENDON,LAYSHIA	05:05		
SUB IN: 33 SAMUELSON,KATIE LOU	05:05		
SUB OUT: 6 BIRD,SUE	02:58	43-45	
SUB IN: 32 MCBRIDE,KAYLA	02:58		
SUB OUT: 33 SAMUELSON,KATIE LOU	02:26	45-45	
SUB IN: 13 FOWLES,SYLVIA	02:26		

**USA 52, UCONN 51**

**Official Substitutions Log  
USA vs UCONN  
Period 4  
January 27, 2020 at XL Center - Hartford, Conn.**



<b>VISITORS: USA</b>	<b>Time</b>	<b>Score</b>	<b>HOME: UCONN</b>
6 BIRD,SUE			3 WALKER,MEGAN
10 STEWART,BREANNA			5 DANGERFIELD,CRYSTAL
13 FOWLES,SYLVIA			13 WILLIAMS,CHRISTYN
14 CHARLES,TINA			20 NELSON-ODODA,OLIVIA
17 DIGGINS-SMITH,SKYLAR			25 IRWIN,KYLA
	10:00	-	SUB OUT: MAKURAT,ANNA
	10:00		SUB IN: GRIFFIN,AUBREY
SUB OUT: 23 CLARENDON,LAYSHIA	10:00		
SUB IN: 25 PLUM,KELSEY	10:00		
SUB OUT: 13 FOWLES,SYLVIA	09:05	54-55	
SUB IN: 14 CHARLES,TINA	09:05		
	06:43	62-56	SUB OUT: NELSON-ODODA,OLIVIA
	06:43		SUB IN: MAKURAT,ANNA
SUB OUT: 14 CHARLES,TINA	06:03	62-56	
SUB IN: 10 STEWART,BREANNA	06:03		
	04:24	64-56	SUB OUT: GRIFFIN,AUBREY
	04:24		SUB IN: NELSON-ODODA,OLIVIA
SUB OUT: 10 STEWART,BREANNA	02:17	68-59	
SUB IN: 13 FOWLES,SYLVIA	02:17		
	01:59	70-59	SUB OUT: MAKURAT,ANNA
	01:59		SUB IN: GRIFFIN,AUBREY
	00:58	74-61	SUB OUT: WALKER,MEGAN
	00:58		SUB IN: BENT,MOLLY

**USA 79, UCONN 64**

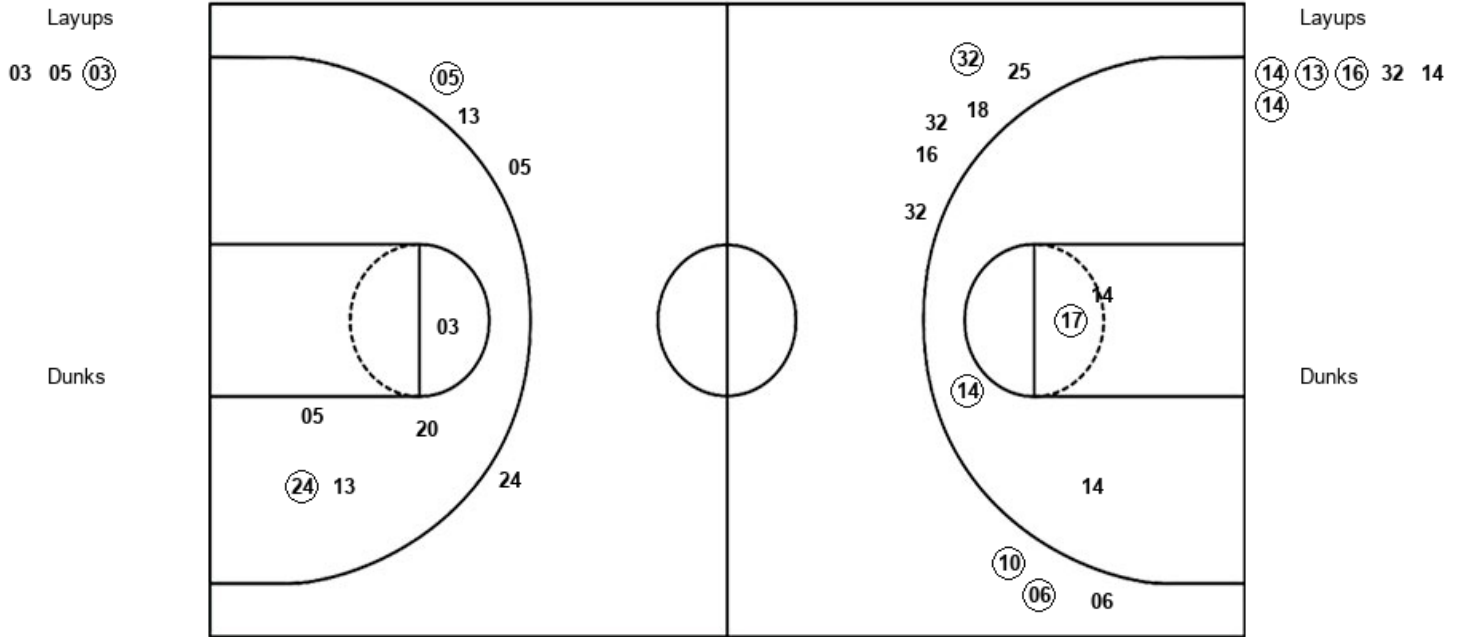


**Official Shot Chart**  
**USA vs UCONN**  
**PERIOD 1 Shots**  
 January 27, 2020 at XL Center - Hartford, Conn.



**UCONN**

**USA**



UCN : Period 1	Made	Att	Pct
Layups	1	3	33.3
Dunks	0	0	0
2PT Field Goals	2	8	25.0
3PT Field Goals	1	4	25.0
<b>Total Field Goals</b>	<b>3</b>	<b>12</b>	<b>25.0</b>

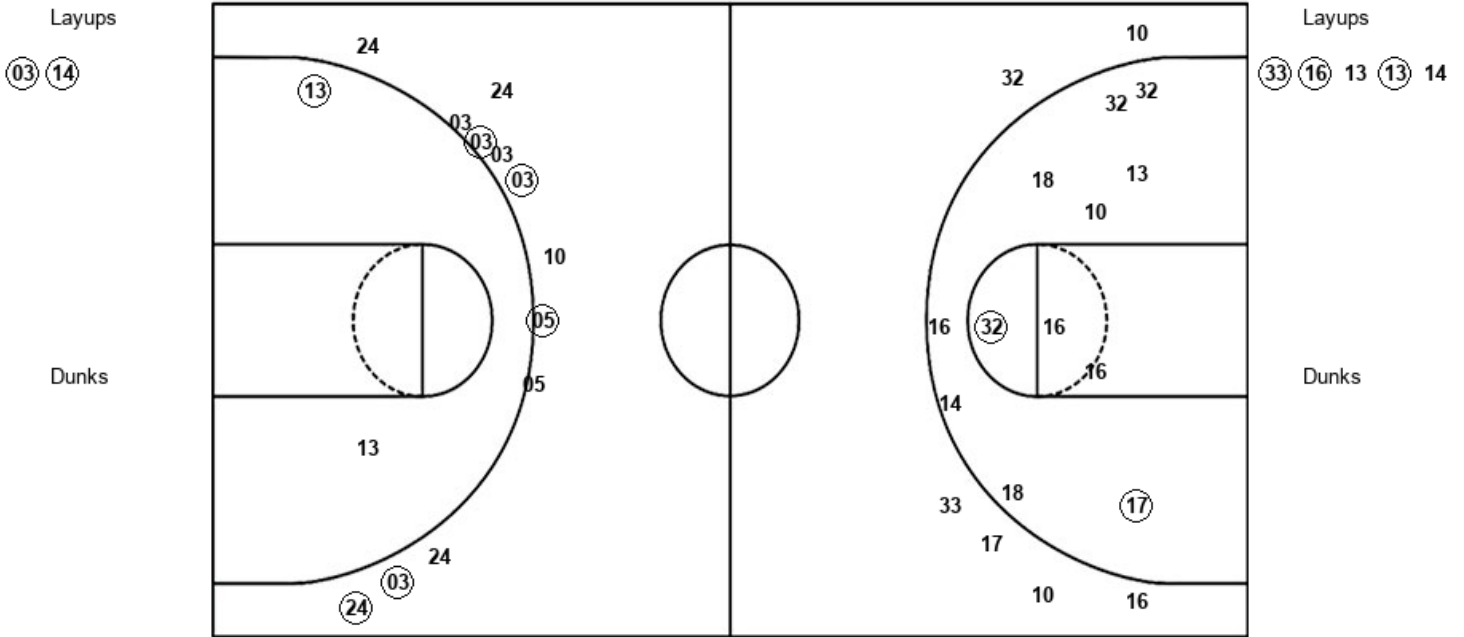
USA : Period 1	Made	Att	Pct
Layups	4	6	66.7
Dunks	0	0	0
2PT Field Goals	6	10	60.0
3PT Field Goals	3	9	33.3
<b>Total Field Goals</b>	<b>9</b>	<b>19</b>	<b>47.4</b>

**Official Shot Chart**  
**USA vs UCONN**  
**PERIOD 2 Shots**  
 January 27, 2020 at XL Center - Hartford, Conn.



**UCONN**

**USA**



UCN : Period 2	Made	Att	Pct
Layups	2	2	100.0
Dunks	0	0	0
2PT Field Goals	4	5	80.0
3PT Field Goals	4	11	36.4
<b>Total Field Goals</b>	<b>8</b>	<b>16</b>	<b>50.0</b>

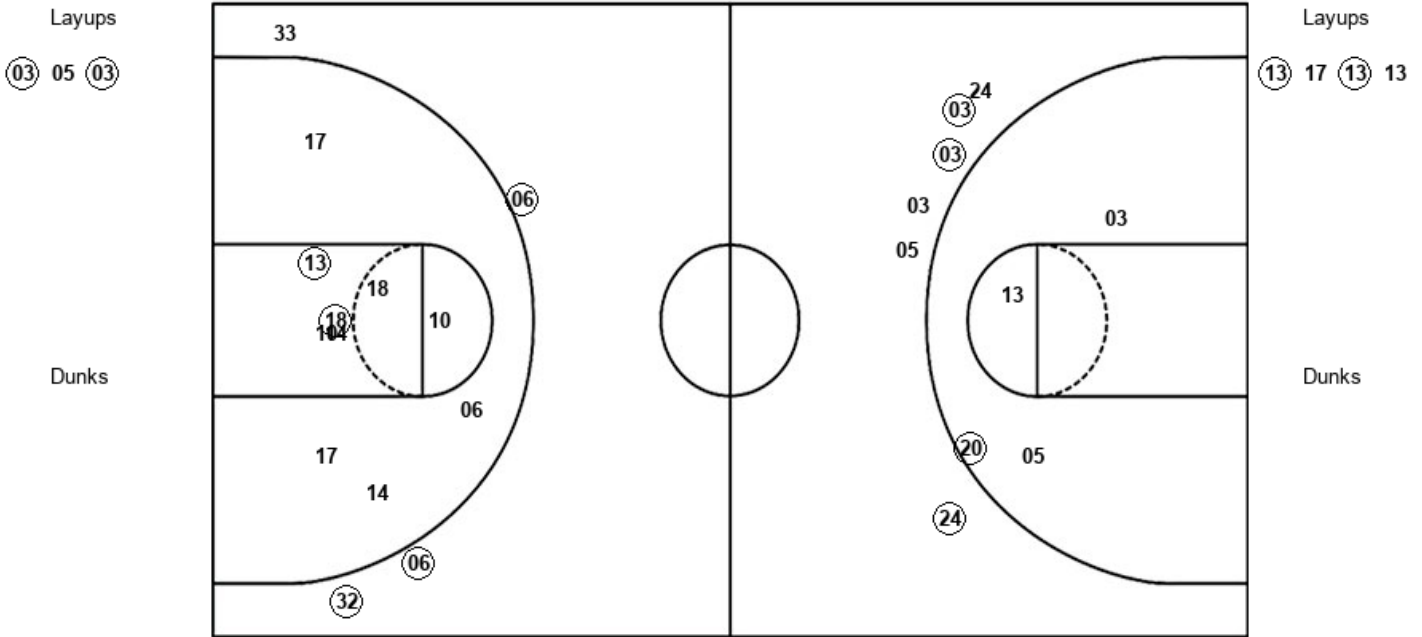
USA : Period 2	Made	Att	Pct
Layups	3	5	60.0
Dunks	0	0	0
2PT Field Goals	5	17	29.4
3PT Field Goals	0	6	00.0
<b>Total Field Goals</b>	<b>5</b>	<b>23</b>	<b>21.7</b>

**Official Shot Chart**  
**USA vs UCONN**  
**PERIOD 3 Shots**  
 January 27, 2020 at XL Center - Hartford, Conn.



**UCONN**

**USA**



UCN : Period 3	Made	Att	Pct
Layups	2	3	66.7
Dunks	0	0	0
2PT Field Goals	4	8	50.0
3PT Field Goals	2	5	40.0
<b>Total Field Goals</b>	<b>6</b>	<b>13</b>	<b>46.2</b>

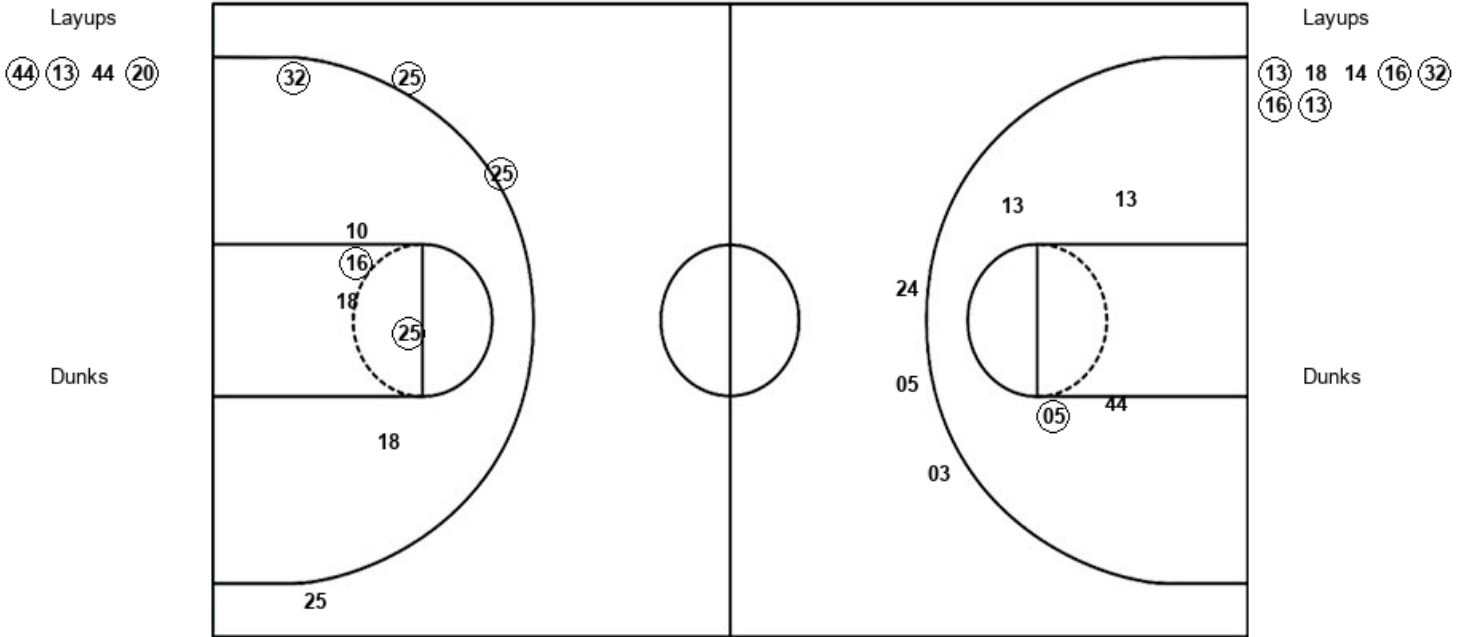
USA : Period 3	Made	Att	Pct
Layups	2	4	50.0
Dunks	0	0	0
2PT Field Goals	4	14	28.6
3PT Field Goals	3	4	75.0
<b>Total Field Goals</b>	<b>7</b>	<b>18</b>	<b>38.9</b>

**Official Shot Chart**  
**USA vs UCONN**  
**PERIOD 4 Shots**  
 January 27, 2020 at XL Center - Hartford, Conn.



**UCONN**

**USA**



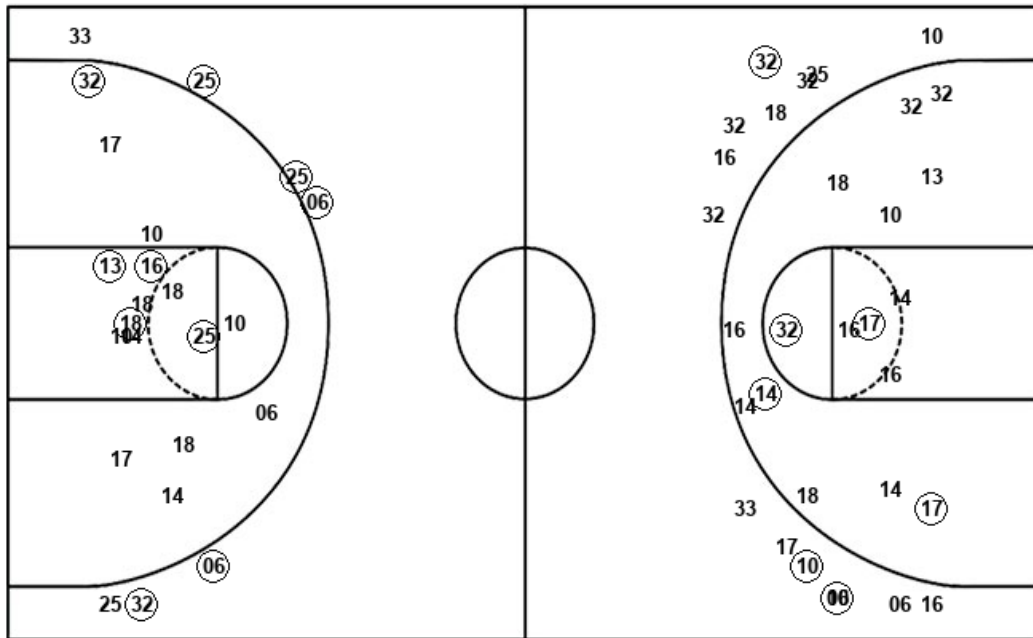
UCN : Period 4	Made	Att	Pct
Layups	3	4	75.0
Dunks	0	0	0
2PT Field Goals	4	7	57.1
3PT Field Goals	0	4	00.0
<b>Total Field Goals</b>	<b>4</b>	<b>11</b>	<b>36.4</b>

USA : Period 4	Made	Att	Pct
Layups	5	7	71.4
Dunks	0	0	0
2PT Field Goals	8	13	61.5
3PT Field Goals	2	3	66.7
<b>Total Field Goals</b>	<b>10</b>	<b>16</b>	<b>62.5</b>

**Official Shot Chart**  
**USA vs UCONN**  
**USA Team Shots**  
 January 27, 2020 at XL Center - Hartford, Conn.



Layups



Layups



Dunks

Dunks

USA : Period 1	Made	Att	Pct
Layups	4	6	66.7
Dunks	0	0	0
2PT Field Goals	6	10	60.0
3PT Field Goals	3	9	33.3
<b>Total Field Goals</b>	<b>9</b>	<b>19</b>	<b>47.4</b>

USA : Period 2	Made	Att	Pct
Layups	3	5	60.0
Dunks	0	0	0
2PT Field Goals	5	17	29.4
3PT Field Goals	0	6	00.0
<b>Total Field Goals</b>	<b>5</b>	<b>23</b>	<b>21.7</b>

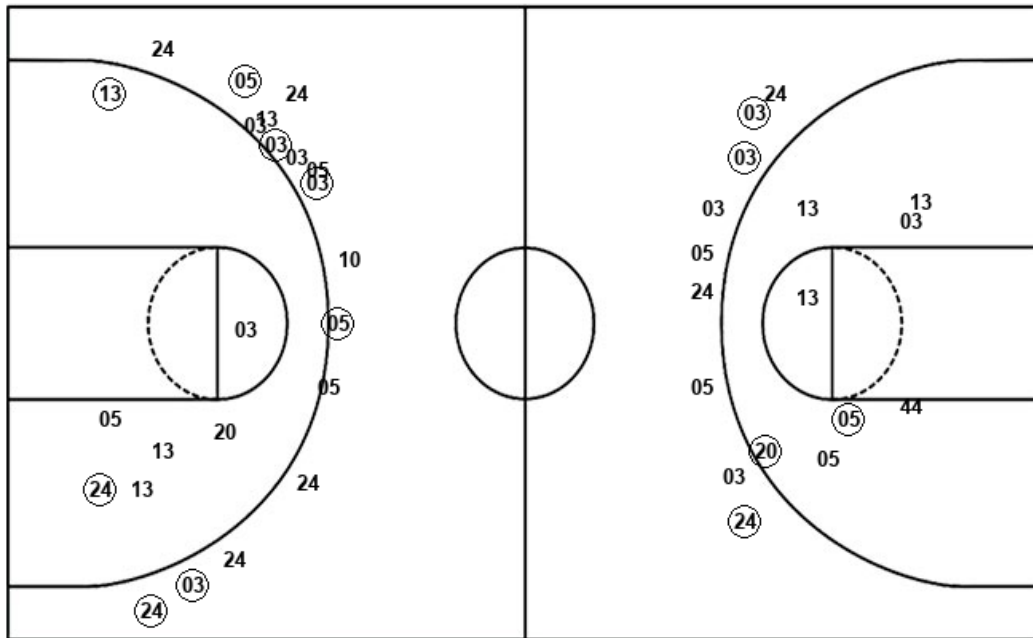
USA : Period 3	Made	Att	Pct
Layups	2	4	50.0
Dunks	0	0	0
2PT Field Goals	4	14	28.6
3PT Field Goals	3	4	75.0
<b>Total Field Goals</b>	<b>7</b>	<b>18</b>	<b>38.9</b>

USA : Period 4	Made	Att	Pct
Layups	5	7	71.4
Dunks	0	0	0
2PT Field Goals	8	13	61.5
3PT Field Goals	2	3	66.7
<b>Total Field Goals</b>	<b>10</b>	<b>16</b>	<b>62.5</b>

**Official Shot Chart**  
**USA vs UCONN**  
**UCONN Team Shots**  
 January 27, 2020 at XL Center - Hartford, Conn.



Layups



Layups

Dunks

Dunks

UCN : Period 1	Made	Att	Pct
Layups	1	3	33.3
Dunks	0	0	0
2PT Field Goals	2	8	25.0
3PT Field Goals	1	4	25.0
<b>Total Field Goals</b>	<b>3</b>	<b>12</b>	<b>25.0</b>

UCN : Period 3	Made	Att	Pct
Layups	2	3	66.7
Dunks	0	0	0
2PT Field Goals	4	8	50.0
3PT Field Goals	2	5	40.0
<b>Total Field Goals</b>	<b>6</b>	<b>13</b>	<b>46.2</b>

UCN : Period 2	Made	Att	Pct
Layups	2	2	100.0
Dunks	0	0	0
2PT Field Goals	4	5	80.0
3PT Field Goals	4	11	36.4
<b>Total Field Goals</b>	<b>8</b>	<b>16</b>	<b>50.0</b>

UCN : Period 4	Made	Att	Pct
Layups	3	4	75.0
Dunks	0	0	0
2PT Field Goals	4	7	57.1
3PT Field Goals	0	4	00.0
<b>Total Field Goals</b>	<b>4</b>	<b>11</b>	<b>36.4</b>