

FINAL SCORE



Purdue Fort Wayne

77



South Dakota State

74

Summit League Men's Basketball Championship — Quarterfinal #2

March 07, 2020 • Denny Sanford PREMIER Center - Sioux Falls, SD



FINAL STATISTICS

Official Box Score
Purdue Fort Wayne vs South Dakota State
Game Totals -- Final Statistics
March 07, 2020 at Denny Sanford PREMIER Center - Sioux Falls, SD



Purdue Fort Wayne 77

No.	Player	S	Pts	FG	3FG	FT	OR	DR	TR	PF	A	TO	Blk	Stl	Min	+/-
01	GODFREY, JARRED	G	12	5-14	1-7	1-2	2	4	6	1	7	1	0	0	35	-2
02	PATRICK, BRIAN	G	11	3-9	3-6	2-2	1	3	4	3	1	3	0	3	21	3
11	CARL, DYLAN	F	6	3-6	0-0	0-0	1	3	4	1	5	1	1	1	24	12
13	HOLBA, MATT	F	21	7-14	6-13	1-2	0	7	7	1	1	1	0	1	31	13
15	BILLUPS, DEONTE	G	12	5-10	2-5	0-2	0	5	5	1	4	0	1	1	36	3
05	ROLLINS, TIONNE	G	0	0-2	0-2	0-0	0	1	1	0	3	1	1	0	8	8
24	BLACK, DEMIERRE	G	8	3-5	0-0	2-2	1	1	2	3	0	2	1	2	17	-3
34	BENFORD, CAMERON	F	2	1-2	0-0	0-0	4	1	5	4	0	1	0	0	16	-8
41	DEBERRY, MARCUS	G	5	2-5	1-3	0-0	0	0	0	0	1	0	0	1	12	-11
TEAM							1	1	2	0		0				
TOTALS			77	29-67	13-36	6-10	10	26	36	14	22	10	4	9	199	

Shooting By Period

Period	FG	FG%	3FG	3FG%	FT	FT%
1st Half	16-35	46%	8-21	38%	0-0	0%
2nd Half	13-32	41%	5-15	33%	6-10	60%
Game	29-67	43.3%	13-36	36.1%	6-10	60.0%

Deadball Rebounds: 0,0

Last FG: 2nd-00:07

Biggest Run: 9-0

Largest lead: By 10 at 1st-04:03

Technical Fouls: #11 CARL (Admin Technical) @ 2nd - 10:46;

South Dakota State 74

No.	Player	S	Pts	FG	3FG	FT	OR	DR	TR	PF	A	TO	Blk	Stl	Min	+/-
03	SCHEIERMAN, BAYLOR	F	4	1-5	0-3	2-2	1	5	6	3	1	2	0	0	21	-8
11	FREIDEL, NOAH	G	35	11-20	7-14	6-8	0	2	2	4	1	3	0	0	39	3
32	DENTLINGER, MATT	F	6	2-6	0-0	2-2	1	6	7	0	3	1	1	1	30	4
34	ARIANS, ALEX	G	15	6-11	1-5	2-2	0	10	10	1	3	3	1	0	38	2
50	WINGETT, DAVID	G	5	1-4	0-1	3-5	1	3	4	1	0	2	0	0	31	3
00	KEY, BRANDON	G	0	0-1	0-0	0-0	0	0	0	0	0	0	0	0	2	-11
01	MIMS, MATT	G	3	1-4	1-4	0-0	1	1	2	2	0	1	0	0	27	-1
10	DILLON, ALOU	F	6	2-3	0-1	2-3	1	2	3	1	0	0	0	1	9	-7
TEAM							0	3	3	0		0				
TOTALS			74	24-54	9-28	17-22	5	32	37	12	8	12	2	2	199	

Shooting By Period

Period	FG	FG%	3FG	3FG%	FT	FT%
1st Half	10-27	37%	5-15	33%	8-9	89%
2nd Half	14-27	52%	4-13	31%	9-13	69%
Game	24-54	44.4%	9-28	32.1%	17-22	77.3%

Deadball Rebounds: 4,0

Last FG: 2nd-00:14

Biggest Run: 6-0

Largest lead: By 6 at 1st-18:13

Technical Fouls: None.

Game Notes:

Officials: Chris Beaver, Bryan Anslinger, Brian McNutt
Attendance: 8614

Start Time: 09:36 PM ET

End Time: 11:31 PM ET

Game Duration: 1:54

Neutral Court;

Score	1st	2nd	TOT
PFW	40	37	77
SDS	33	41	74

PFW led for 28:45. SDS led for 5:01.

Game was tied for 6:07.

Times tied: 9 Lead Changes: 5

Points from	PFW	SDS
In the Paint	32	26
Off Turns	20	14
2nd Chance	7	9
Fast Break	9	7
Bench	15	9

Official Box Score
Purdue Fort Wayne vs South Dakota State
First Half Statistics Only
March 07, 2020 at Denny Sanford PREMIER Center - Sioux Falls, SD



Purdue Fort Wayne 40

No.	Player	S	Pts	FG	3FG	FT	OR	DR	TR	PF	A	TO	Blk	Stl	Min	+/-
01	GODFREY, JARRED	G	8	4-8	0-3	0-0	1	2	3	0	3	1	0	0	19	2
02	PATRICK, BRIAN	G	9	3-6	3-5	0-0	0	2	2	1	1	1	0	3	11	7
11	CARL, DYLAN	F	6	3-4	0-0	0-0	1	1	2	1	1	0	1	1	11	8
13	HOLBA, MATT	F	8	3-8	2-7	0-0	0	3	3	1	1	1	0	1	13	12
15	BILLUPS, DEONTE	G	6	2-6	2-4	0-0	0	2	2	0	2	0	1	1	18	3
05	ROLLINS, TIONNE	G	0	0-0	0-0	0-0	0	1	1	0	2	1	1	0	3	9
24	BLACK, DEMIERRE	G	0	0-0	0-0	0-0	0	1	1	2	0	1	0	1	8	0
34	BENFORD, CAMERON	F	0	0-1	0-0	0-0	1	0	1	0	0	0	0	0	9	-1
41	DEBERRY, MARCUS	G	3	1-2	1-2	0-0	0	0	0	0	1	0	0	0	7	-5
	TEAM						0	1	1	0		0				
TOTALS			40	16-35	8-21	0-0	3	13	16	5	11	5	3	7	100	

Shooting By Period

Period	FG	FG%	3FG	3FG%	FT	FT%
1st Half	16-35	46%	8-21	38%	0-0	0%
Game	29-67	43.3%	13-36	36.1%	6-10	60.0%

Deadball Rebounds: 0,0

Last FG Half: PFW 2nd-00:07

South Dakota State 33

No.	Player	S	Pts	FG	3FG	FT	OR	DR	TR	PF	A	TO	Blk	Stl	Min	+/-
03	SCHEIERMAN, BAYLOR	F	4	1-2	0-1	2-2	1	3	4	2	1	2	0	0	13	-7
11	FREIDEL, NOAH	G	17	5-11	3-7	4-5	0	1	1	0	0	3	0	0	19	-3
32	DENTLINGER, MATT	F	2	1-3	0-0	0-0	0	3	3	0	1	1	0	1	18	2
34	ARIANS, ALEX	G	7	2-5	1-3	2-2	0	3	3	0	0	1	0	0	19	-2
50	WINGETT, DAVID	G	0	0-1	0-0	0-0	1	3	4	0	0	2	0	0	17	-1
00	KEY, BRANDON	G	0	0-1	0-0	0-0	0	0	0	0	0	0	0	0	2	-9
01	MIMS, MATT	G	3	1-4	1-4	0-0	1	1	2	0	0	0	0	0	10	-6
10	DILLON, ALOU	F	0	0-0	0-0	0-0	1	1	2	1	0	0	0	0	2	-9
	TEAM						0	1	1	0		0				
TOTALS			33	10-27	5-15	8-9	4	16	20	3	2	9	0	1	100	

Shooting By Period

Period	FG	FG%	3FG	3FG%	FT	FT%
1st Half	10-27	37%	5-15	33%	8-9	89%
Game	24-54	44.4%	9-28	32.1%	17-22	77.3%

Deadball Rebounds: 4,0

Last FG Half: SDS 2nd-00:14

Game Notes:

Officials: Chris Beaver, Bryan Anslinger, Brian McNutt
Attendance: 8614

Start Time: 09:36 PM ET

End Time: 11:31 PM ET

Game Duration: 1:54

Neutral Court;

Score	1st	2nd	TOT
PFW	40	37	77
SDS	33	41	74

Points from (This Period)	PFW	SDS
In the Paint	16	8
Off Turns	15	8
2nd Chance	0	5
Fast Break	7	3
Bench	3	3

Official Play-By-Play
Purdue Fort Wayne vs South Dakota State
First Half
March 07, 2020 at Denny Sanford PREMIER Center - Sioux Falls, SD



Period 1

Starters:

Purdue Fort Wayne: 1 GODFREY, JARRED (G); 2 PATRICK, BRIAN (G); 11 CARL, DYLAN (F); 13 HOLBA, MATT (F); 15 BILLUPS, DEONTE (G);

South Dakota State: 3 SCHEIERMAN, BAYLOR (F); 11 FREIDEL, NOAH (G); 32 DENTLINGER, MATT (F); 34 ARIANS, ALEX (G); 50 WINGETT, DAVID (G);

Time	VISITORS: Purdue Fort Wayne	Score	Margin	HOME: South Dakota State
19:41	MISSED 3PTR by PATRICK, BRIAN			
19:38				REBOUND (DEF) by DENTLINGER, MATT
19:24		2-0	H 2	GOOD! JUMPER by DENTLINGER, MATT [PNT]
19:08	MISSED 3PTR by HOLBA, MATT			
19:06				REBOUND (DEF) by SCHEIERMAN, BAYLOR
18:48				TURNOVER (BADPASS) by FREIDEL, NOAH
18:48	STEAL by PATRICK, BRIAN			
18:43	GOOD! LAYUP by GODFREY, JARRED [FB]	2-2	T	
18:30		5-2	H 3	GOOD! 3PTR by FREIDEL, NOAH
18:18	TURNOVER (BADPASS) by GODFREY, JARRED			
18:18				STEAL by DENTLINGER, MATT
18:13		8-2	H 6	GOOD! 3PTR by FREIDEL, NOAH [FB]
17:59	GOOD! 3PTR by PATRICK, BRIAN	8-5	H 3	
17:59	ASSIST by GODFREY, JARRED			
17:50				MISSED LAYUP by FREIDEL, NOAH
17:47	REBOUND (DEF) by PATRICK, BRIAN			
17:35	GOOD! LAYUP by GODFREY, JARRED	8-7	H 1	
17:35	ASSIST by CARL, DYLAN			
17:20	FOUL (PERSONAL) by CARL, DYLAN			
17:20		9-7	H 2	GOOD! FT by SCHEIERMAN, BAYLOR
17:20	SUB OUT: CARL, DYLAN			
17:20	SUB IN: BENFORD, CAMERON			
17:20		10-7	H 3	GOOD! FT by SCHEIERMAN, BAYLOR
17:06	GOOD! 3PTR by HOLBA, MATT	10-10	T	
17:06	ASSIST by GODFREY, JARRED			
16:49				MISSED 3PTR by ARIANS, ALEX
16:47	REBOUND (DEF) by GODFREY, JARRED			
16:38	MISSED 3PTR by BILLUPS, DEONTE			
16:36				REBOUND (DEF) by ARIANS, ALEX
16:24				MISSED LAYUP by DENTLINGER, MATT
16:20				REBOUND (OFF) by SCHEIERMAN, BAYLOR
16:20		12-10	H 2	GOOD! LAYUP by SCHEIERMAN, BAYLOR
15:58	MISSED 3PTR by HOLBA, MATT			
15:56				REBOUND (DEF) by SCHEIERMAN, BAYLOR
15:52				TURNOVER (LOSTBALL) by SCHEIERMAN, BAYLOR
15:52	STEAL by BILLUPS, DEONTE			
15:36	GOOD! LAYUP by HOLBA, MATT	12-12	T	
15:18				MISSED JUMPER by DENTLINGER, MATT
15:15	REBOUND (DEF) by HOLBA, MATT			
15:05	GOOD! JUMPER by GODFREY, JARRED	12-14	V 2	
14:52				
14:52				SUB OUT: SCHEIERMAN, BAYLOR
14:52				SUB IN: MIMS, MATT
14:52	SUB OUT: PATRICK, BRIAN			
14:52	SUB OUT: HOLBA, MATT			
14:52	SUB IN: BLACK, DEMIERRE			
14:52	SUB IN: DEBERRY, MARCUS			
14:45		14-14	T	GOOD! LAYUP by ARIANS, ALEX [PNT]
14:45				ASSIST by DENTLINGER, MATT
14:21	MISSED 3PTR by GODFREY, JARRED			
14:18				REBOUND (DEF) by WINGETT, DAVID
14:11				TURNOVER (BADPASS) by WINGETT, DAVID
14:11	STEAL by BLACK, DEMIERRE			
13:48	GOOD! 3PTR by BILLUPS, DEONTE	14-17	V 3	
13:48	ASSIST by DEBERRY, MARCUS			
13:19		17-17	T	GOOD! 3PTR by FREIDEL, NOAH
12:56	MISSED 3PTR by DEBERRY, MARCUS			
12:53				REBOUND (DEF) by DENTLINGER, MATT
12:39		19-17	H 2	GOOD! JUMPER by FREIDEL, NOAH [PNT]
12:09	MISSED 3PTR by GODFREY, JARRED			
12:07	REBOUND (OFF) by BENFORD, CAMERON			
11:55	MISSED JUMPER by BILLUPS, DEONTE			
11:52				REBOUND (DEF) by MIMS, MATT
11:40				MISSED 3PTR by MIMS, MATT
11:36	REBOUND (DEF) by TEAM			
11:36				
11:36				SUB OUT: DENTLINGER, MATT
11:36				SUB OUT: ARIANS, ALEX
11:36				SUB OUT: WINGETT, DAVID
11:36				SUB IN: KEY, BRANDON

Time	VISITORS: Purdue Fort Wayne	Score	Margin	HOME: South Dakota State
11:36				SUB IN: SCHEIERMAN, BAYLOR
11:36				SUB IN: DILLON, ALOU
11:36	SUB OUT: GODFREY, JARRED			
11:36	SUB OUT: BENFORD, CAMERON			
11:36	SUB OUT: DEBERRY, MARCUS			
11:36	SUB IN: ROLLINS, TIONNE			
11:36	SUB IN: CARL, DYLAN			
11:36	SUB IN: HOLBA, MATT			
11:18	MISSED JUMPER by CARL, DYLAN			
11:15				REBOUND (DEF) by DILLON, ALOU
11:11				MISSED 3PTR by FREIDEL, NOAH
11:08				REBOUND (OFF) by DILLON, ALOU
11:01				TURNOVER (BADPASS) by FREIDEL, NOAH
11:01	STEAL by CARL, DYLAN			
10:51	GOOD! 3PTR by HOLBA, MATT	19-20	V 1	
10:51	ASSIST by BILLUPS, DEONTE			
10:32				MISSED 3PTR by MIMS, MATT
10:28	REBOUND (DEF) by CARL, DYLAN			
10:07	GOOD! LAYUP by CARL, DYLAN	19-22	V 3	
10:07	ASSIST by ROLLINS, TIONNE			
10:07				FOUL (PERSONAL) by DILLON, ALOU
10:07				SUB OUT: FREIDEL, NOAH
10:07				SUB IN: ARIANS, ALEX
10:07	SUB OUT: BILLUPS, DEONTE			
10:07	SUB OUT: BLACK, DEMIERRE			
10:07	SUB IN: GODFREY, JARRED			
10:07	SUB IN: PATRICK, BRIAN			
10:07	TURNOVER (LANEVIOLATION) by ROLLINS, TIONNE			
09:58	FOUL (PERSONAL) by HOLBA, MATT			
09:58		20-22	V 2	GOOD! FT by ARIANS, ALEX
09:58		21-22	V 1	GOOD! FT by ARIANS, ALEX
09:38	GOOD! 3PTR by PATRICK, BRIAN	21-25	V 4	
09:38	ASSIST by ROLLINS, TIONNE			
09:32				MISSED LAYUP by KEY, BRANDON
09:32	BLOCK by ROLLINS, TIONNE			
09:28	REBOUND (DEF) by ROLLINS, TIONNE			
09:23	GOOD! 3PTR by PATRICK, BRIAN [FB]	21-28	V 7	
09:23	ASSIST by HOLBA, MATT			
09:20				TIMEOUT 30SEC
09:20				SUB OUT: KEY, BRANDON
09:20				SUB OUT: MIMS, MATT
09:20				SUB OUT: DILLON, ALOU
09:20				SUB IN: FREIDEL, NOAH
09:20				SUB IN: DENTLINGER, MATT
09:20				SUB IN: WINGETT, DAVID
09:07				TURNOVER (OTHER) by SCHEIERMAN, BAYLOR
08:54				FOUL (PERSONAL) by SCHEIERMAN, BAYLOR
08:52	MISSED 3PTR by HOLBA, MATT			
08:50				REBOUND (DEF) by FREIDEL, NOAH
08:38				TURNOVER (LOSTBALL) by ARIANS, ALEX
08:38	STEAL by PATRICK, BRIAN			
08:31	MISSED JUMPER by PATRICK, BRIAN			
08:29				REBOUND (DEF) by SCHEIERMAN, BAYLOR
08:23				MISSED LAYUP by WINGETT, DAVID
08:23	BLOCK by CARL, DYLAN			
08:18				REBOUND (OFF) by WINGETT, DAVID
08:15	FOUL (PERSONAL) by PATRICK, BRIAN			
08:15	SUB OUT: ROLLINS, TIONNE			
08:15	SUB OUT: CARL, DYLAN			
08:15	SUB IN: BILLUPS, DEONTE			
08:15	SUB IN: BENFORD, CAMERON			
08:14	SUB OUT: HOLBA, MATT			
08:14	SUB IN: DEBERRY, MARCUS			
08:08				TURNOVER (LOSTBALL) by FREIDEL, NOAH
07:53	GOOD! 3PTR by BILLUPS, DEONTE	21-31	V 10	
07:53	ASSIST by GODFREY, JARRED			
07:35		24-31	V 7	GOOD! 3PTR by ARIANS, ALEX
07:35				ASSIST by SCHEIERMAN, BAYLOR
07:19				
07:19	SUB OUT: PATRICK, BRIAN			
07:19	SUB IN: BLACK, DEMIERRE			
07:03	MISSED JUMPER by GODFREY, JARRED			
07:01				REBOUND (DEF) by WINGETT, DAVID
06:42	FOUL (PERSONAL) by BLACK, DEMIERRE			
06:42		25-31	V 6	GOOD! FT by FREIDEL, NOAH
06:42		26-31	V 5	GOOD! FT by FREIDEL, NOAH
06:42		27-31	V 4	GOOD! FT by FREIDEL, NOAH
06:12	MISSED JUMPER by BENFORD, CAMERON			
06:10				REBOUND (DEF) by DENTLINGER, MATT
05:53				MISSED 3PTR by FREIDEL, NOAH

Time	VISITORS: Purdue Fort Wayne	Score	Margin	HOME: South Dakota State
05:49	REBOUND (DEF) by BILLUPS, DEONTE			
05:39	GOOD! 3PTR by DEBERRY, MARCUS	27-34	V 7	
05:39	ASSIST by BILLUPS, DEONTE			
05:09				MISSED 3PTR by ARIANS, ALEX
05:06	REBOUND (DEF) by BLACK, DEMIERRE			
04:54	MISSED 3PTR by BILLUPS, DEONTE			
04:52				REBOUND (DEF) by ARIANS, ALEX
04:43	FOUL (PERSONAL) by BLACK, DEMIERRE			
04:43		28-34	V 6	GOOD! FT by FREIDEL, NOAH
04:43				SUB OUT: SCHEIERMAN, BAYLOR
04:43				SUB IN: MIMS, MATT
04:43	SUB OUT: BLACK, DEMIERRE			
04:43	SUB OUT: BENFORD, CAMERON			
04:43	SUB OUT: DEBERRY, MARCUS			
04:43	SUB IN: PATRICK, BRIAN			
04:43	SUB IN: CARL, DYLAN			
04:43	SUB IN: HOLBA, MATT			
04:43				MISSED FT by FREIDEL, NOAH
04:42	REBOUND (DEF) by HOLBA, MATT			
04:35	GOOD! LAYUP by GODFREY, JARRED [FB/PNT]	28-36	V 8	
04:15				TURNOVER (LOSTBALL) by DENTLINGER, MATT
04:15	STEAL by HOLBA, MATT			
04:03	GOOD! LAYUP by CARL, DYLAN	28-38	V 10	
04:03	ASSIST by PATRICK, BRIAN			
03:52				TURNOVER (LOSTBALL) by WINGETT, DAVID
03:52	STEAL by PATRICK, BRIAN			
03:48	TURNOVER (TRAVEL) by PATRICK, BRIAN			
03:48				
03:48				SUB OUT: WINGETT, DAVID
03:48				SUB IN: SCHEIERMAN, BAYLOR
03:32				MISSED 3PTR by SCHEIERMAN, BAYLOR
03:29				REBOUND (OFF) by MIMS, MATT
03:27		31-38	V 7	GOOD! 3PTR by MIMS, MATT
03:05				FOUL (PERSONAL) by SCHEIERMAN, BAYLOR
03:05				SUB OUT: SCHEIERMAN, BAYLOR
03:05				SUB IN: WINGETT, DAVID
02:49	MISSED 3PTR by PATRICK, BRIAN			
02:45				REBOUND (DEF) by WINGETT, DAVID
02:40				MISSED 3PTR by MIMS, MATT
02:38	REBOUND (DEF) by PATRICK, BRIAN			
02:31	GOOD! DUNK by CARL, DYLAN	31-40	V 9	
02:16		33-40	V 7	GOOD! JUMPER by FREIDEL, NOAH
02:03	MISSED 3PTR by HOLBA, MATT			
02:01	REBOUND (OFF) by CARL, DYLAN			
01:53	MISSED LAYUP by BILLUPS, DEONTE			
01:51				REBOUND (DEF) by ARIANS, ALEX
01:40				MISSED 3PTR by FREIDEL, NOAH
01:38	REBOUND (DEF) by GODFREY, JARRED			
01:32	TIMEOUT 30SEC			
01:32	SUB OUT: PATRICK, BRIAN			
01:32	SUB IN: BLACK, DEMIERRE			
01:21	TURNOVER (BADPASS) by HOLBA, MATT			
01:12				MISSED LAYUP by ARIANS, ALEX
01:12	BLOCK by BILLUPS, DEONTE			
01:08	REBOUND (DEF) by BILLUPS, DEONTE			
00:55	MISSED 3PTR by GODFREY, JARRED			
00:47	REBOUND (OFF) by GODFREY, JARRED			
00:41	TURNOVER (TRAVEL) by BLACK, DEMIERRE			
00:41	SUB OUT: BLACK, DEMIERRE			
00:41	SUB IN: DEBERRY, MARCUS			
00:34				MISSED LAYUP by FREIDEL, NOAH
00:32	REBOUND (DEF) by HOLBA, MATT			
00:05	MISSED 3PTR by HOLBA, MATT			
00:01				REBOUND (DEF) by TEAM
00:00				MISSED 3PTR by FREIDEL, NOAH
00:00				REBOUND (OFF) by TEAM

Purdue Fort Wayne 40, South Dakota State 33

Points from (This Period)	PFW	SDS
In the Paint	16	8
Off Turns	15	8
2nd Chance	0	5
Fast Break	7	3
Bench	3	3

Official Box Score
Purdue Fort Wayne vs South Dakota State
Second Half Statistics Only
March 07, 2020 at Denny Sanford PREMIER Center - Sioux Falls, SD



Purdue Fort Wayne 37

No.	Player	S	Pts	FG	3FG	FT	OR	DR	TR	PF	A	TO	Blk	Stl	Min	+/-
01	GODFREY, JARRED	G	4	1-6	1-4	1-2	1	2	3	1	4	0	0	0	17	-4
02	PATRICK, BRIAN	G	2	0-3	0-1	2-2	1	1	2	2	0	2	0	0	10	-4
11	CARL, DYLAN	F	0	0-2	0-0	0-0	0	2	2	0	4	1	0	0	13	4
13	HOLBA, MATT	F	13	4-6	4-6	1-2	0	4	4	0	0	0	0	0	17	1
15	BILLUPS, DEONTE	G	6	3-4	0-1	0-2	0	3	3	1	2	0	0	0	17	0
05	ROLLINS, TIONNE	G	0	0-2	0-2	0-0	0	0	0	0	1	0	0	0	5	-1
24	BLACK, DEMIERRE	G	8	3-5	0-0	2-2	1	0	1	1	0	1	1	1	9	-3
34	BENFORD, CAMERON	F	2	1-1	0-0	0-0	3	1	4	4	0	1	0	0	7	-7
41	DEBERRY, MARCUS	G	2	1-3	0-1	0-0	0	0	0	0	0	0	0	1	4	-6
	TEAM						1	0	1	0		0				
TOTALS			37	13-32	5-15	6-10	7	13	20	9	11	5	1	2	99	

Shooting By Period

Period	FG	FG%	3FG	3FG%	FT	FT%
2nd Half	13-32	41%	5-15	33%	6-10	60%
Game	29-67	43.3%	13-36	36.1%	6-10	60.0%

Deadball Rebounds: 0,0

Last FG Half: PFW -

South Dakota State 41

No.	Player	S	Pts	FG	3FG	FT	OR	DR	TR	PF	A	TO	Blk	Stl	Min	+/-
03	SCHEIERMAN, BAYLOR	F	0	0-3	0-2	0-0	0	2	2	1	0	0	0	0	9	-1
11	FREIDEL, NOAH	G	18	6-9	4-7	2-3	0	1	1	4	1	0	0	0	20	6
32	DENTLINGER, MATT	F	4	1-3	0-0	2-2	1	3	4	0	2	0	1	0	13	2
34	ARIANS, ALEX	G	8	4-6	0-2	0-0	0	7	7	1	3	2	1	0	20	4
50	WINGETT, DAVID	G	5	1-3	0-1	3-5	0	0	0	1	0	0	0	0	14	4
00	KEY, BRANDON	G	0	0-0	0-0	0-0	0	0	0	0	0	0	0	0	0	-2
01	MIMS, MATT	G	0	0-0	0-0	0-0	0	0	0	2	0	1	0	0	17	5
10	DILLON, ALOU	F	6	2-3	0-1	2-3	0	1	1	0	0	0	0	1	7	2
	TEAM						0	2	2	0		0				
TOTALS			41	14-27	4-13	9-13	1	16	17	9	6	3	2	1	99	

Shooting By Period

Period	FG	FG%	3FG	3FG%	FT	FT%
2nd Half	14-27	52%	4-13	31%	9-13	69%
Game	24-54	44.4%	9-28	32.1%	17-22	77.3%

Deadball Rebounds: 4,0

Last FG Half: SDS -

Game Notes:

Officials: Chris Beaver, Bryan Anslinger, Brian McNutt
Attendance: 8614

Start Time: 09:36 PM ET
End Time: 11:31 PM ET
Game Duration: 1:54
Neutral Court;

Score	1st	2nd	TOT
PFW	40	37	77
SDS	33	41	74

Points from (This Period)	PFW	SDS
In the Paint	16	18
Off Turns	5	6
2nd Chance	7	4
Fast Break	2	4
Bench	12	6

Official Play-By-Play
Purdue Fort Wayne vs South Dakota State
Second Half
March 07, 2020 at Denny Sanford PREMIER Center - Sioux Falls, SD



Period 2

Starters:

Purdue Fort Wayne: 1 GODFREY, JARRED (G); 2 PATRICK, BRIAN (G); 11 CARL, DYLAN (F); 13 HOLBA, MATT (F); 15 BILLUPS, DEONTE (G);

South Dakota State: 3 SCHEIERMAN, BAYLOR (F); 11 FREIDEL, NOAH (G); 32 DENTLINGER, MATT (F); 34 ARIANS, ALEX (G); 50 WINGETT, DAVID (G);

Time	VISITORS: Purdue Fort Wayne	Score	Margin	HOME: South Dakota State
20:00				SUB OUT: MIMS, MATT
20:00				SUB IN: SCHEIERMAN, BAYLOR
20:00	SUB OUT: DEBERRY, MARCUS			
20:00	SUB IN: PATRICK, BRIAN			
19:34				MISSED 3PTR by SCHEIERMAN, BAYLOR
19:31	REBOUND (DEF) by BILLUPS, DEONTE			
19:03	MISSED JUMPER by CARL, DYLAN			
19:02				REBOUND (DEF) by TEAM
18:48	FOUL (PERSONAL) by PATRICK, BRIAN			
18:47				MISSED FT by WINGETT, DAVID
18:47				REBOUND (OFF) by TEAM
18:47		34-40	V 6	GOOD! FT by WINGETT, DAVID
18:47				MISSED FT by WINGETT, DAVID
18:46	REBOUND (DEF) by HOLBA, MATT			
18:24	GOOD! LAYUP by BILLUPS, DEONTE	34-42	V 8	
18:24	ASSIST by CARL, DYLAN			
18:24				FOUL (PERSONAL) by SCHEIERMAN, BAYLOR
18:24	MISSED FT by BILLUPS, DEONTE			
18:22				REBOUND (DEF) by DENTLINGER, MATT
18:14		37-42	V 5	GOOD! 3PTR by FREIDEL, NOAH
18:14				ASSIST by ARIANS, ALEX
17:51	GOOD! 3PTR by HOLBA, MATT	37-45	V 8	
17:51	ASSIST by GODFREY, JARRED			
17:39		39-45	V 6	GOOD! LAYUP by ARIANS, ALEX
17:39				ASSIST by DENTLINGER, MATT
17:24	GOOD! JUMPER by BILLUPS, DEONTE [PNT]	39-47	V 8	
17:15	FOUL (PERSONAL) by GODFREY, JARRED			
17:15				SUB OUT: SCHEIERMAN, BAYLOR
17:15				SUB IN: MIMS, MATT
17:15	SUB OUT: PATRICK, BRIAN			
17:15	SUB OUT: CARL, DYLAN			
17:15	SUB OUT: HOLBA, MATT			
17:15	SUB IN: BLACK, DEMIERRE			
17:15	SUB IN: BENFORD, CAMERON			
17:15	SUB IN: DEBERRY, MARCUS			
17:02	FOUL (PERSONAL) by BENFORD, CAMERON			
17:02		40-47	V 7	GOOD! FT by WINGETT, DAVID
17:02		41-47	V 6	GOOD! FT by WINGETT, DAVID
16:46	MISSED 3PTR by GODFREY, JARRED			
16:42				REBOUND (DEF) by TEAM
16:17	FOUL (PERSONAL) by BLACK, DEMIERRE			
16:17				MISSED FT by FREIDEL, NOAH
16:17				REBOUND (OFF) by TEAM
16:17	SUB OUT: BLACK, DEMIERRE			
16:17	SUB IN: ROLLINS, TIONNE			
16:17		42-47	V 5	GOOD! FT by FREIDEL, NOAH
15:47	MISSED 3PTR by ROLLINS, TIONNE			
15:44				REBOUND (DEF) by FREIDEL, NOAH
15:44	FOUL (PERSONAL) by BENFORD, CAMERON			
15:44				
15:44	SUB OUT: ROLLINS, TIONNE			
15:44	SUB IN: HOLBA, MATT			
15:21				MISSED LAYUP by DENTLINGER, MATT
15:18	REBOUND (DEF) by HOLBA, MATT			
15:00	MISSED LAYUP by DEBERRY, MARCUS			
14:57	REBOUND (OFF) by BENFORD, CAMERON			
14:57	TURNOVER (LOSTBALL) by BENFORD, CAMERON			
14:37				TURNOVER (BADPASS) by MIMS, MATT
14:37	STEAL by DEBERRY, MARCUS			
14:37				FOUL (PERSONAL) by MIMS, MATT
14:11	MISSED 3PTR by DEBERRY, MARCUS			
14:09	REBOUND (OFF) by TEAM			
14:09	SUB OUT: DEBERRY, MARCUS			
14:09	SUB IN: ROLLINS, TIONNE			
14:04	MISSED JUMPER by GODFREY, JARRED			
13:58	REBOUND (OFF) by BENFORD, CAMERON			
13:58	GOOD! LAYUP by BENFORD, CAMERON	42-49	V 7	
13:38				MISSED LAYUP by DENTLINGER, MATT
13:35	REBOUND (DEF) by HOLBA, MATT			
13:30	MISSED 3PTR by ROLLINS, TIONNE			

Time	VISITORS: Purdue Fort Wayne	Score	Margin	HOME: South Dakota State
13:26				REBOUND (DEF) by ARIANS, ALEX
13:18		44-49	V 5	GOOD! JUMPER by FREIDEL, NOAH [PNT]
13:11	TIMEOUT 30SEC			
13:11				
13:11				SUB OUT: DENTLINGER, MATT
13:11				SUB IN: DILLON, ALOU
13:11	SUB OUT: GODFREY, JARRED			
13:11	SUB OUT: BENFORD, CAMERON			
13:11	SUB IN: CARL, DYLAN			
13:11	SUB IN: BLACK, DEMIERRE			
13:01				FOUL (PERSONAL) by FREIDEL, NOAH
13:01	GOOD! FT by HOLBA, MATT	44-50	V 6	
13:01	MISSED FT by HOLBA, MATT			
13:00	REBOUND (OFF) by BLACK, DEMIERRE			
12:45	GOOD! 3PTR by HOLBA, MATT	44-53	V 9	
12:45	ASSIST by ROLLINS, TIONNE			
12:24		46-53	V 7	GOOD! LAYUP by DILLON, ALOU
12:24				ASSIST by FREIDEL, NOAH
12:17				FOUL (PERSONAL) by MIMS, MATT
12:11				FOUL (PERSONAL) by WINGETT, DAVID
12:01	MISSED 3PTR by HOLBA, MATT			
11:57				REBOUND (DEF) by ARIANS, ALEX
11:42				MISSED 3PTR by WINGETT, DAVID
11:40	REBOUND (DEF) by CARL, DYLAN			
11:35	TURNOVER (LOSTBALL) by BLACK, DEMIERRE			
11:35				STEAL by DILLON, ALOU
11:30		48-53	V 5	GOOD! DUNK by WINGETT, DAVID [FB/PNT]
11:30				ASSIST by ARIANS, ALEX
11:04	GOOD! LAYUP by BLACK, DEMIERRE	48-55	V 7	
11:04	ASSIST by CARL, DYLAN			
10:46		50-55	V 5	GOOD! LAYUP by DILLON, ALOU [PNT]
10:46	FOUL (TECH) by CARL, DYLAN			
10:46	TURNOVER (OFFENSIVE) by CARL, DYLAN			
10:46				
10:46	SUB OUT: ROLLINS, TIONNE			
10:46	SUB OUT: CARL, DYLAN			
10:46	SUB OUT: HOLBA, MATT			
10:46	SUB OUT: BILLUPS, DEONTE			
10:46	SUB IN: GODFREY, JARRED			
10:46	SUB IN: PATRICK, BRIAN			
10:46	SUB IN: BENFORD, CAMERON			
10:46	SUB IN: DEBERRY, MARCUS			
10:46		51-55	V 4	GOOD! FT by FREIDEL, NOAH
10:17	MISSED 3PTR by PATRICK, BRIAN			
10:15				REBOUND (DEF) by ARIANS, ALEX
10:11		53-55	V 2	GOOD! LAYUP by ARIANS, ALEX [FB]
09:43	MISSED LAYUP by PATRICK, BRIAN			
09:43	REBOUND (OFF) by PATRICK, BRIAN			
09:43				FOUL (PERSONAL) by FREIDEL, NOAH
09:43	GOOD! FT by PATRICK, BRIAN	53-56	V 3	
09:43	SUB OUT: DEBERRY, MARCUS			
09:43	SUB IN: HOLBA, MATT			
09:43	GOOD! FT by PATRICK, BRIAN	53-57	V 4	
09:27		56-57	V 1	GOOD! 3PTR by FREIDEL, NOAH
09:27				ASSIST by ARIANS, ALEX
09:26	FOUL (OFF) by PATRICK, BRIAN			
09:26	TURNOVER (OFFENSIVE) by PATRICK, BRIAN			
09:18				MISSED 3PTR by FREIDEL, NOAH
09:16	REBOUND (DEF) by PATRICK, BRIAN			
09:07	MISSED JUMPER by BLACK, DEMIERRE			
09:05				REBOUND (DEF) by ARIANS, ALEX
09:01	FOUL (PERSONAL) by BENFORD, CAMERON			
09:01	SUB OUT: BLACK, DEMIERRE			
09:01	SUB IN: BILLUPS, DEONTE			
09:01				MISSED FT by DILLON, ALOU
09:00	REBOUND (DEF) by BENFORD, CAMERON			
08:51				FOUL (PERSONAL) by FREIDEL, NOAH
08:51	MISSED FT by BILLUPS, DEONTE			
08:51				REBOUND (DEF) by DILLON, ALOU
08:51	FOUL (PERSONAL) by BENFORD, CAMERON			
08:51	SUB OUT: BENFORD, CAMERON			
08:51	SUB IN: CARL, DYLAN			
08:51		57-57	T	GOOD! FT by DILLON, ALOU
08:51		58-57	H 1	GOOD! FT by DILLON, ALOU
08:36	MISSED 3PTR by GODFREY, JARRED			
08:36				BLOCK by ARIANS, ALEX
08:31	REBOUND (OFF) by GODFREY, JARRED			
08:27	GOOD! 3PTR by HOLBA, MATT	58-60	V 2	
08:27	ASSIST by GODFREY, JARRED			
08:07		60-60	T	GOOD! LAYUP by ARIANS, ALEX [PNT]

Time	VISITORS: Purdue Fort Wayne	Score	Margin	HOME: South Dakota State
07:52	GOOD! 3PTR by HOLBA, MATT	60-63	V 3	
07:52	ASSIST by GODFREY, JARRED			
07:29				
07:16				MISSED 3PTR by DILLON, ALOU
07:13	REBOUND (DEF) by HOLBA, MATT			
06:58	MISSED 3PTR by BILLUPS, DEONTE			
06:55				REBOUND (DEF) by ARIANS, ALEX
06:48				MISSED LAYUP by WINGETT, DAVID
06:46	REBOUND (DEF) by BILLUPS, DEONTE			
06:36	MISSED 3PTR by GODFREY, JARRED			
06:31				REBOUND (DEF) by ARIANS, ALEX
06:14				MISSED 3PTR by ARIANS, ALEX
06:12	REBOUND (DEF) by BILLUPS, DEONTE			
05:59	TURNOVER (TRAVEL) by PATRICK, BRIAN			
05:59				SUB OUT: DILLON, ALOU
05:59				SUB OUT: WINGETT, DAVID
05:59				SUB IN: SCHEIERMAN, BAYLOR
05:59				SUB IN: DENTLINGER, MATT
05:41		63-63	T	GOOD! 3PTR by FREIDEL, NOAH
05:41				ASSIST by DENTLINGER, MATT
05:18	GOOD! LAYUP by BILLUPS, DEONTE	63-65	V 2	
05:18	ASSIST by CARL, DYLAN			
05:08				MISSED 3PTR by ARIANS, ALEX
05:03				REBOUND (OFF) by DENTLINGER, MATT
05:03		65-65	T	GOOD! LAYUP by DENTLINGER, MATT
04:38	MISSED JUMPER by CARL, DYLAN			
04:36				REBOUND (DEF) by SCHEIERMAN, BAYLOR
04:15				TURNOVER (BADPASS) by ARIANS, ALEX
04:15	SUB OUT: GODFREY, JARRED			
04:15	SUB OUT: CARL, DYLAN			
04:15	SUB OUT: BILLUPS, DEONTE			
04:15	SUB IN: ROLLINS, TIONNE			
04:15	SUB IN: BLACK, DEMIERRE			
04:15	SUB IN: BENFORD, CAMERON			
03:55	MISSED JUMPER by PATRICK, BRIAN			
03:48	REBOUND (OFF) by BENFORD, CAMERON			
03:48	MISSED LAYUP by BLACK, DEMIERRE			
03:47				REBOUND (DEF) by SCHEIERMAN, BAYLOR
03:35				TURNOVER (LOSTBALL) by ARIANS, ALEX
03:35	STEAL by BLACK, DEMIERRE			
03:35				
03:35	SUB OUT: PATRICK, BRIAN			
03:35	SUB OUT: ROLLINS, TIONNE			
03:35	SUB OUT: BENFORD, CAMERON			
03:35	SUB IN: GODFREY, JARRED			
03:35	SUB IN: CARL, DYLAN			
03:35	SUB IN: BILLUPS, DEONTE			
03:17	GOOD! 3PTR by GODFREY, JARRED	65-68	V 3	
03:17	ASSIST by BILLUPS, DEONTE			
02:56				MISSED LAYUP by SCHEIERMAN, BAYLOR
02:53	REBOUND (DEF) by CARL, DYLAN			
02:30	MISSED 3PTR by HOLBA, MATT			
02:28				REBOUND (DEF) by DENTLINGER, MATT
02:10				MISSED 3PTR by FREIDEL, NOAH
02:08	REBOUND (DEF) by GODFREY, JARRED			
01:46	GOOD! LAYUP by BLACK, DEMIERRE [PNT]	65-70	V 5	
01:46	ASSIST by CARL, DYLAN			
01:45				TIMEOUT 30SEC
01:37		67-70	V 3	GOOD! JUMPER by ARIANS, ALEX
01:22	MISSED LAYUP by GODFREY, JARRED			
01:22				BLOCK by DENTLINGER, MATT
01:19				REBOUND (DEF) by ARIANS, ALEX
01:10				MISSED 3PTR by FREIDEL, NOAH
01:10	BLOCK by BLACK, DEMIERRE			
01:08				REBOUND (OFF) by TEAM
01:08	FOUL (PERSONAL) by BILLUPS, DEONTE			
01:08		68-70	V 2	GOOD! FT by DENTLINGER, MATT
01:08		69-70	V 1	GOOD! FT by DENTLINGER, MATT
00:50	GOOD! LAYUP by BLACK, DEMIERRE	69-72	V 3	
00:50	ASSIST by BILLUPS, DEONTE			
00:39				MISSED 3PTR by SCHEIERMAN, BAYLOR
00:37	REBOUND (DEF) by GODFREY, JARRED			
00:35				FOUL (PERSONAL) by ARIANS, ALEX
00:35	GOOD! FT by GODFREY, JARRED	69-73	V 4	
00:35	MISSED FT by GODFREY, JARRED			
00:34				REBOUND (DEF) by DENTLINGER, MATT
00:26		71-73	V 2	GOOD! LAYUP by FREIDEL, NOAH [PNT]
00:25				TIMEOUT TEAM
00:22				FOUL (PERSONAL) by FREIDEL, NOAH
00:22	GOOD! FT by BLACK, DEMIERRE	71-74	V 3	

Time	VISITORS: Purdue Fort Wayne	Score	Margin	HOME: South Dakota State
00:22	GOOD! FT by BLACK, DEMIERRE	71-75	V 4	
00:22	TIMEOUT 30SEC			
00:22	SUB OUT: CARL, DYLAN			
00:22	SUB IN: DEBERRY, MARCUS			
00:14		74-75	V 1	GOOD! 3PTR by FREIDEL, NOAH
00:14				TIMEOUT 30SEC
00:14				SUB OUT: FREIDEL, NOAH
00:14				SUB IN: KEY, BRANDON
00:07	GOOD! LAYUP by DEBERRY, MARCUS [FB/PNT]	74-77	V 3	
00:07	ASSIST by GODFREY, JARRED			

Purdue Fort Wayne 77, South Dakota State 74

Points from (This Period)	PFW	SDS
In the Paint	16	18
Off Turns	5	6
2nd Chance	7	4
Fast Break	2	4
Bench	12	6

**Official Scoring/Possession Reference Chart
Purdue Fort Wayne vs South Dakota State
Period 1**

March 07, 2020 at Denny Sanford PREMIER Center - Sioux Falls, SD



Period 1

Starters:

Purdue Fort Wayne: 1 GODFREY, JARRED (G); 2 PATRICK, BRIAN (G); 11 CARL, DYLAN (F); 13 HOLBA, MATT (F); 15 BILLUPS, DEONTE (G);

South Dakota State: 3 SCHEIERMAN, BAYLOR (F); 11 FREIDEL, NOAH (G); 32 DENTLINGER, MATT (F); 34 ARIANS, ALEX (G); 50 WINGETT, DAVID (G);

Time	VISITORS: Purdue Fort Wayne	Score	Margin	HOME: South Dakota State
19:24		2-0	H 2	GOOD! JUMPER by DENTLINGER, MATT [PNT]
18:43	GOOD! LAYUP by GODFREY, JARRED [FB]	2-2	T	
18:30		5-2	H 3	GOOD! 3PTR by FREIDEL, NOAH
18:13		8-2	H 6	GOOD! 3PTR by FREIDEL, NOAH [FB]
17:59	GOOD! 3PTR by PATRICK, BRIAN	8-5	H 3	
17:35	GOOD! LAYUP by GODFREY, JARRED	8-7	H 1	
17:20		9-7	H 2	GOOD! FT by SCHEIERMAN, BAYLOR
17:20		10-7	H 3	GOOD! FT by SCHEIERMAN, BAYLOR
17:06	GOOD! 3PTR by HOLBA, MATT	10-10	T	
16:20		12-10	H 2	GOOD! LAYUP by SCHEIERMAN, BAYLOR
15:36	GOOD! LAYUP by HOLBA, MATT	12-12	T	
15:05	GOOD! JUMPER by GODFREY, JARRED	12-14	V 2	
14:45		14-14	T	GOOD! LAYUP by ARIANS, ALEX [PNT]
13:48	GOOD! 3PTR by BILLUPS, DEONTE	14-17	V 3	
13:19		17-17	T	GOOD! 3PTR by FREIDEL, NOAH
12:39		19-17	H 2	GOOD! JUMPER by FREIDEL, NOAH [PNT]
10:51	GOOD! 3PTR by HOLBA, MATT	19-20	V 1	
10:07	GOOD! LAYUP by CARL, DYLAN	19-22	V 3	
09:58		20-22	V 2	GOOD! FT by ARIANS, ALEX
09:58		21-22	V 1	GOOD! FT by ARIANS, ALEX
09:38	GOOD! 3PTR by PATRICK, BRIAN	21-25	V 4	
09:23	GOOD! 3PTR by PATRICK, BRIAN [FB]	21-28	V 7	
07:53	GOOD! 3PTR by BILLUPS, DEONTE	21-31	V 10	
07:35		24-31	V 7	GOOD! 3PTR by ARIANS, ALEX
06:42		25-31	V 6	GOOD! FT by FREIDEL, NOAH
06:42		26-31	V 5	GOOD! FT by FREIDEL, NOAH
06:42		27-31	V 4	GOOD! FT by FREIDEL, NOAH
05:39	GOOD! 3PTR by DEBERRY, MARCUS	27-34	V 7	
04:43		28-34	V 6	GOOD! FT by FREIDEL, NOAH
04:35	GOOD! LAYUP by GODFREY, JARRED [FB/PNT]	28-36	V 8	
04:03	GOOD! LAYUP by CARL, DYLAN	28-38	V 10	
03:27		31-38	V 7	GOOD! 3PTR by MIMS, MATT
02:31	GOOD! DUNK by CARL, DYLAN	31-40	V 9	
02:16		33-40	V 7	GOOD! JUMPER by FREIDEL, NOAH

Purdue Fort Wayne 40, South Dakota State 33

**Official Scoring/Possession Reference Chart
Purdue Fort Wayne vs South Dakota State
Period 2**

March 07, 2020 at Denny Sanford PREMIER Center - Sioux Falls, SD



Period 2

Starters:

Purdue Fort Wayne: 1 GODFREY, JARRED (G); 2 PATRICK, BRIAN (G); 11 CARL, DYLAN (F); 13 HOLBA, MATT (F); 15 BILLUPS, DEONTE (G);

South Dakota State: 3 SCHEIERMAN, BAYLOR (F); 11 FREIDEL, NOAH (G); 32 DENTLINGER, MATT (F); 34 ARIANS, ALEX (G); 50 WINGETT, DAVID (G);

Time	VISITORS: Purdue Fort Wayne	Score	Margin	HOME: South Dakota State
18:47		34-40	V 6	GOOD! FT by WINGETT, DAVID
18:24	GOOD! LAYUP by BILLUPS, DEONTE	34-42	V 8	
18:14		37-42	V 5	GOOD! 3PTR by FREIDEL, NOAH
17:51	GOOD! 3PTR by HOLBA, MATT	37-45	V 8	
17:39		39-45	V 6	GOOD! LAYUP by ARIANS, ALEX
17:24	GOOD! JUMPER by BILLUPS, DEONTE [PNT]	39-47	V 8	
17:02		40-47	V 7	GOOD! FT by WINGETT, DAVID
17:02		41-47	V 6	GOOD! FT by WINGETT, DAVID
16:17		42-47	V 5	GOOD! FT by FREIDEL, NOAH
13:58	GOOD! LAYUP by BENFORD, CAMERON	42-49	V 7	
13:18		44-49	V 5	GOOD! JUMPER by FREIDEL, NOAH [PNT]
13:01	GOOD! FT by HOLBA, MATT	44-50	V 6	
12:45	GOOD! 3PTR by HOLBA, MATT	44-53	V 9	
12:24		46-53	V 7	GOOD! LAYUP by DILLON, ALOU
11:30		48-53	V 5	GOOD! DUNK by WINGETT, DAVID [FB/PNT]
11:04	GOOD! LAYUP by BLACK, DEMIERRE	48-55	V 7	
10:46		50-55	V 5	GOOD! LAYUP by DILLON, ALOU [PNT]
10:46		51-55	V 4	GOOD! FT by FREIDEL, NOAH
10:11		53-55	V 2	GOOD! LAYUP by ARIANS, ALEX [FB]
09:43	GOOD! FT by PATRICK, BRIAN	53-56	V 3	
09:43	GOOD! FT by PATRICK, BRIAN	53-57	V 4	
09:27		56-57	V 1	GOOD! 3PTR by FREIDEL, NOAH
08:51		57-57	T	GOOD! FT by DILLON, ALOU
08:51		58-57	H 1	GOOD! FT by DILLON, ALOU
08:27	GOOD! 3PTR by HOLBA, MATT	58-60	V 2	
08:07		60-60	T	GOOD! LAYUP by ARIANS, ALEX [PNT]
07:52	GOOD! 3PTR by HOLBA, MATT	60-63	V 3	
05:41		63-63	T	GOOD! 3PTR by FREIDEL, NOAH
05:18	GOOD! LAYUP by BILLUPS, DEONTE	63-65	V 2	
05:03		65-65	T	GOOD! LAYUP by DENTLINGER, MATT
03:17	GOOD! 3PTR by GODFREY, JARRED	65-68	V 3	
01:46	GOOD! LAYUP by BLACK, DEMIERRE [PNT]	65-70	V 5	
01:37		67-70	V 3	GOOD! JUMPER by ARIANS, ALEX
01:08		68-70	V 2	GOOD! FT by DENTLINGER, MATT
01:08		69-70	V 1	GOOD! FT by DENTLINGER, MATT
00:50	GOOD! LAYUP by BLACK, DEMIERRE	69-72	V 3	
00:35	GOOD! FT by GODFREY, JARRED	69-73	V 4	
00:26		71-73	V 2	GOOD! LAYUP by FREIDEL, NOAH [PNT]
00:22	GOOD! FT by BLACK, DEMIERRE	71-74	V 3	
00:22	GOOD! FT by BLACK, DEMIERRE	71-75	V 4	
00:14		74-75	V 1	GOOD! 3PTR by FREIDEL, NOAH
00:07	GOOD! LAYUP by DEBERRY, MARCUS [FB/PNT]	74-77	V 3	

Purdue Fort Wayne 77, South Dakota State 74

Official Substitutions Log
Purdue Fort Wayne vs South Dakota State
Period 1
March 07, 2020 at Denny Sanford PREMIER Center - Sioux Falls, SD



VISITORS: Purdue Fort Wayne		Time	Score	HOME: South Dakota State
1 GODFREY, JARRED				3 SCHEIERMAN, BAYLOR
2 PATRICK, BRIAN				11 FREIDEL, NOAH
11 CARL, DYLAN				32 DENTLINGER, MATT
13 HOLBA, MATT				34 ARIANS, ALEX
15 BILLUPS, DEONTE				50 WINGETT, DAVID
SUB OUT: 11 CARL, DYLAN	17:20	7-9		
SUB IN: 34 BENFORD, CAMERON	17:20			
	14:52	14-12		SUB OUT: SCHEIERMAN, BAYLOR
	14:52			SUB IN: MIMS, MATT
SUB OUT: 2 PATRICK, BRIAN	14:52			
SUB OUT: 13 HOLBA, MATT	14:52			
SUB IN: 24 BLACK, DEMIERRE	14:52			
SUB IN: 41 DEBERRY, MARCUS	14:52			
	11:36	17-19		SUB OUT: DENTLINGER, MATT
	11:36			SUB OUT: ARIANS, ALEX
	11:36			SUB OUT: WINGETT, DAVID
	11:36			SUB IN: KEY, BRANDON
	11:36			SUB IN: SCHEIERMAN, BAYLOR
	11:36			SUB IN: DILLON, ALOU
SUB OUT: 1 GODFREY, JARRED	11:36			
SUB OUT: 34 BENFORD, CAMERON	11:36			
SUB OUT: 41 DEBERRY, MARCUS	11:36			
SUB IN: 5 ROLLINS, TIONNE	11:36			
SUB IN: 11 CARL, DYLAN	11:36			
SUB IN: 13 HOLBA, MATT	11:36			
	10:07	22-19		SUB OUT: FREIDEL, NOAH
	10:07			SUB IN: ARIANS, ALEX
SUB OUT: 15 BILLUPS, DEONTE	10:07			
SUB OUT: 24 BLACK, DEMIERRE	10:07			
SUB IN: 1 GODFREY, JARRED	10:07			
SUB IN: 2 PATRICK, BRIAN	10:07			
	09:20	28-21		SUB OUT: KEY, BRANDON
	09:20			SUB OUT: MIMS, MATT
	09:20			SUB OUT: DILLON, ALOU
	09:20			SUB IN: FREIDEL, NOAH
	09:20			SUB IN: DENTLINGER, MATT
	09:20			SUB IN: WINGETT, DAVID
SUB OUT: 5 ROLLINS, TIONNE	08:15	28-21		
SUB OUT: 11 CARL, DYLAN	08:15			
SUB IN: 15 BILLUPS, DEONTE	08:15			
SUB IN: 34 BENFORD, CAMERON	08:15			
SUB OUT: 13 HOLBA, MATT	08:14	28-21		
SUB IN: 41 DEBERRY, MARCUS	08:14			
SUB OUT: 2 PATRICK, BRIAN	07:19	31-24		
SUB IN: 24 BLACK, DEMIERRE	07:19			
	04:43	34-28		SUB OUT: SCHEIERMAN, BAYLOR
	04:43			SUB IN: MIMS, MATT
SUB OUT: 24 BLACK, DEMIERRE	04:43			
SUB OUT: 34 BENFORD, CAMERON	04:43			
SUB OUT: 41 DEBERRY, MARCUS	04:43			
SUB IN: 2 PATRICK, BRIAN	04:43			
SUB IN: 11 CARL, DYLAN	04:43			
SUB IN: 13 HOLBA, MATT	04:43			
	03:48	38-28		SUB OUT: WINGETT, DAVID
	03:48			SUB IN: SCHEIERMAN, BAYLOR
	03:05	38-31		SUB OUT: SCHEIERMAN, BAYLOR
	03:05			SUB IN: WINGETT, DAVID
SUB OUT: 2 PATRICK, BRIAN	01:32	40-33		
SUB IN: 24 BLACK, DEMIERRE	01:32			
SUB OUT: 24 BLACK, DEMIERRE	00:41	40-33		
SUB IN: 41 DEBERRY, MARCUS	00:41			

Purdue Fort Wayne 40, South Dakota State 33

Official Substitutions Log
Purdue Fort Wayne vs South Dakota State
Period 2
March 07, 2020 at Denny Sanford PREMIER Center - Sioux Falls, SD



VISITORS: Purdue Fort Wayne	Time	Score	HOME: South Dakota State
1 GODFREY,JARRED			3 SCHEIERMAN,BAYLOR
2 PATRICK,BRIAN			11 FREIDEL,NOAH
11 CARL,DYLAN			32 DENTLINGER,MATT
13 HOLBA,MATT			34 ARIANS,ALEX
15 BILLUPS,DEONTE			50 WINGETT,DAVID
	20:00	-	SUB OUT: MIMS,MATT
	20:00		SUB IN: SCHEIERMAN,BAYLOR
SUB OUT: 41 DEBERRY,MARCUS	20:00		
SUB IN: 2 PATRICK,BRIAN	20:00		
	17:15	47-39	SUB OUT: SCHEIERMAN,BAYLOR
	17:15		SUB IN: MIMS,MATT
SUB OUT: 2 PATRICK,BRIAN	17:15		
SUB OUT: 11 CARL,DYLAN	17:15		
SUB OUT: 13 HOLBA,MATT	17:15		
SUB IN: 24 BLACK,DEMIERRE	17:15		
SUB IN: 34 BENFORD,CAMERON	17:15		
SUB IN: 41 DEBERRY,MARCUS	17:15		
SUB OUT: 24 BLACK,DEMIERRE	16:17	47-41	
SUB IN: 5 ROLLINS,TIONNE	16:17		
SUB OUT: 5 ROLLINS,TIONNE	15:44	47-42	
SUB IN: 13 HOLBA,MATT	15:44		
SUB OUT: 41 DEBERRY,MARCUS	14:09	47-42	
SUB IN: 5 ROLLINS,TIONNE	14:09		
	13:11	49-44	SUB OUT: DENTLINGER,MATT
	13:11		SUB IN: DILLON,ALOU
SUB OUT: 1 GODFREY,JARRED	13:11		
SUB OUT: 34 BENFORD,CAMERON	13:11		
SUB IN: 11 CARL,DYLAN	13:11		
SUB IN: 24 BLACK,DEMIERRE	13:11		
SUB OUT: 5 ROLLINS,TIONNE	10:46	55-50	
SUB OUT: 11 CARL,DYLAN	10:46		
SUB OUT: 13 HOLBA,MATT	10:46		
SUB OUT: 15 BILLUPS,DEONTE	10:46		
SUB IN: 1 GODFREY,JARRED	10:46		
SUB IN: 2 PATRICK,BRIAN	10:46		
SUB IN: 34 BENFORD,CAMERON	10:46		
SUB IN: 41 DEBERRY,MARCUS	10:46		
SUB OUT: 41 DEBERRY,MARCUS	09:43	56-53	
SUB IN: 13 HOLBA,MATT	09:43		
SUB OUT: 24 BLACK,DEMIERRE	09:01	57-56	
SUB IN: 15 BILLUPS,DEONTE	09:01		
SUB OUT: 34 BENFORD,CAMERON	08:51	57-56	
SUB IN: 11 CARL,DYLAN	08:51		
	05:59	63-60	SUB OUT: DILLON,ALOU
	05:59		SUB OUT: WINGETT,DAVID
	05:59		SUB IN: SCHEIERMAN,BAYLOR
	05:59		SUB IN: DENTLINGER,MATT
SUB OUT: 1 GODFREY,JARRED	04:15	65-65	
SUB OUT: 11 CARL,DYLAN	04:15		
SUB OUT: 15 BILLUPS,DEONTE	04:15		
SUB IN: 5 ROLLINS,TIONNE	04:15		
SUB IN: 24 BLACK,DEMIERRE	04:15		
SUB IN: 34 BENFORD,CAMERON	04:15		
SUB OUT: 2 PATRICK,BRIAN	03:35	65-65	
SUB OUT: 5 ROLLINS,TIONNE	03:35		
SUB OUT: 34 BENFORD,CAMERON	03:35		
SUB IN: 1 GODFREY,JARRED	03:35		
SUB IN: 11 CARL,DYLAN	03:35		
SUB IN: 15 BILLUPS,DEONTE	03:35		
SUB OUT: 11 CARL,DYLAN	00:22	75-71	
SUB IN: 41 DEBERRY,MARCUS	00:22		
	00:14	75-74	SUB OUT: FREIDEL,NOAH
	00:14		SUB IN: KEY,BRANDON

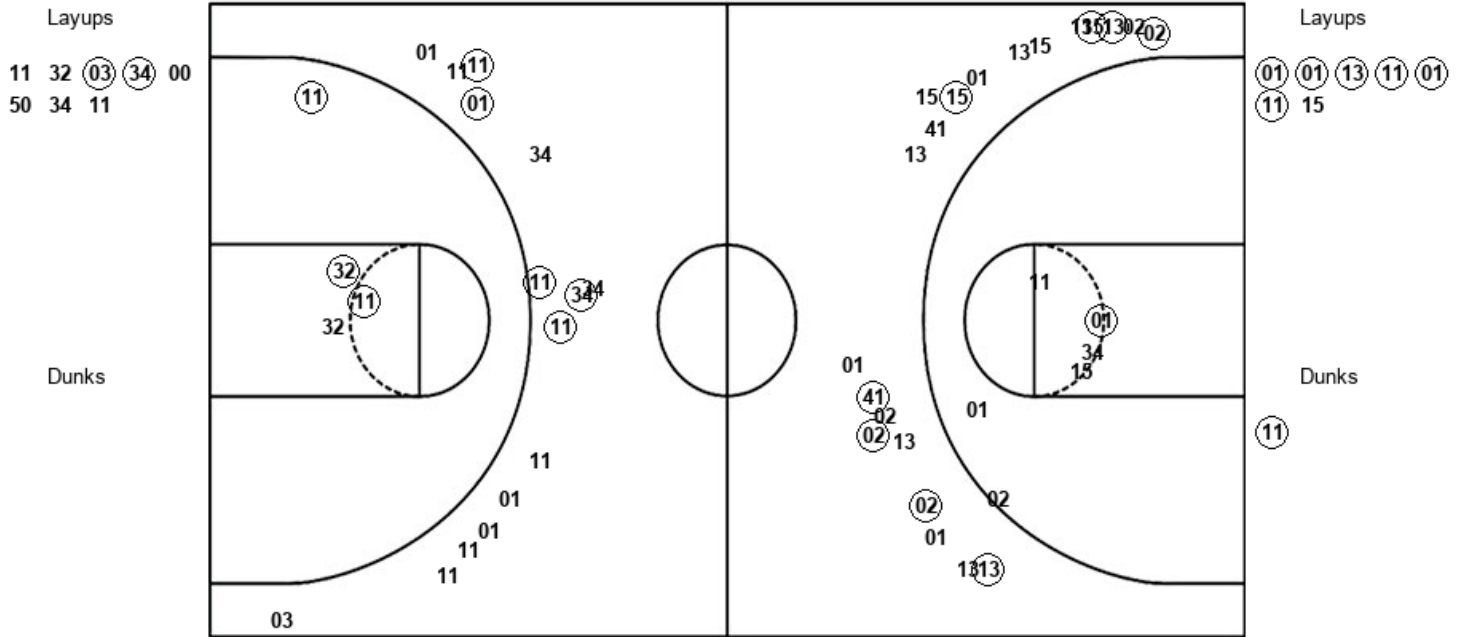
Purdue Fort Wayne 77, South Dakota State 74

Official Shot Chart
Purdue Fort Wayne vs South Dakota State
 PERIOD 1 Shots
 March 07, 2020 at Denny Sanford PREMIER Center - Sioux Falls, SD



South Dakota State

Purdue Fort Wayne



SDS : Period 1	Made	Att	Pct
Layups	2	8	25.0
Dunks	0	0	0
2PT Field Goals	5	12	41.7
3PT Field Goals	5	15	33.3
Total Field Goals	10	27	37.0

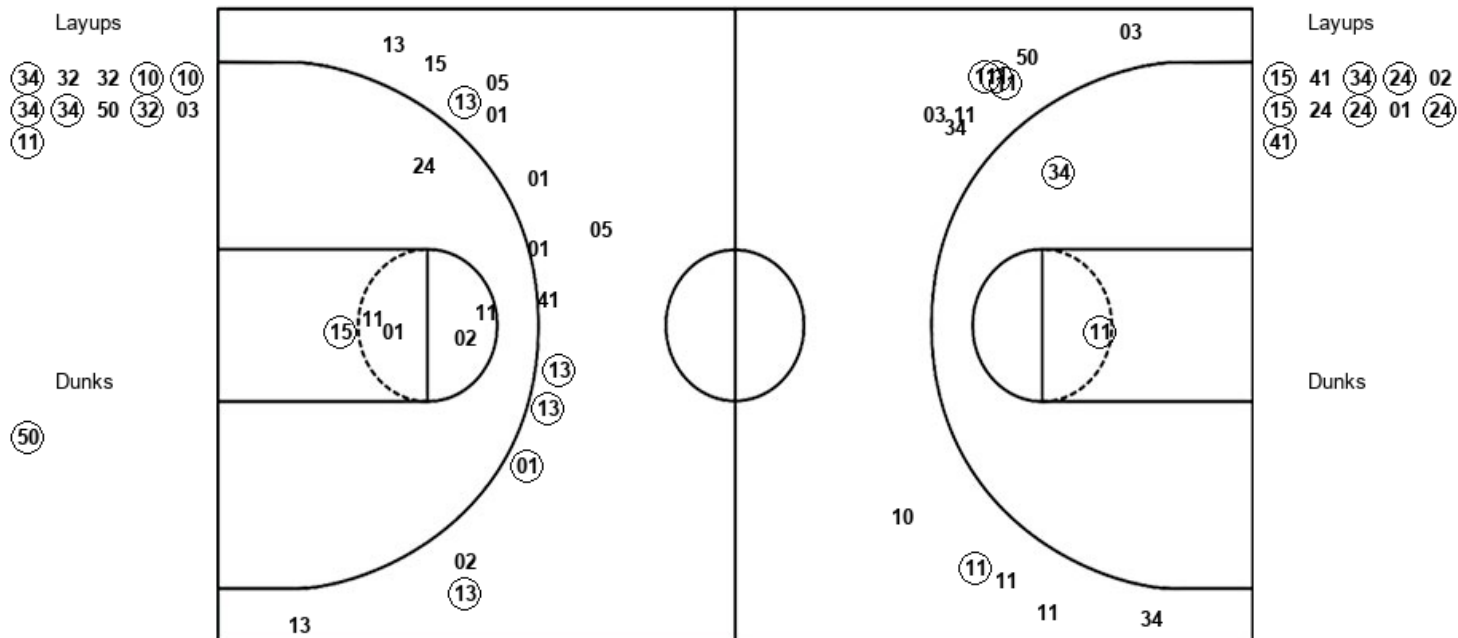
PFW : Period 1	Made	Att	Pct
Layups	6	7	85.7
Dunks	1	1	100.0
2PT Field Goals	8	14	57.1
3PT Field Goals	8	21	38.1
Total Field Goals	16	35	45.7

Official Shot Chart
Purdue Fort Wayne vs South Dakota State
 PERIOD 2 Shots
 March 07, 2020 at Denny Sanford PREMIER Center - Sioux Falls, SD



South Dakota State

Purdue Fort Wayne



SDS : Period 2	Made	Att	Pct
Layups	7	11	63.6
Dunks	1	1	100.0
2PT Field Goals	10	14	71.4
3PT Field Goals	4	13	30.8
Total Field Goals	14	27	51.9

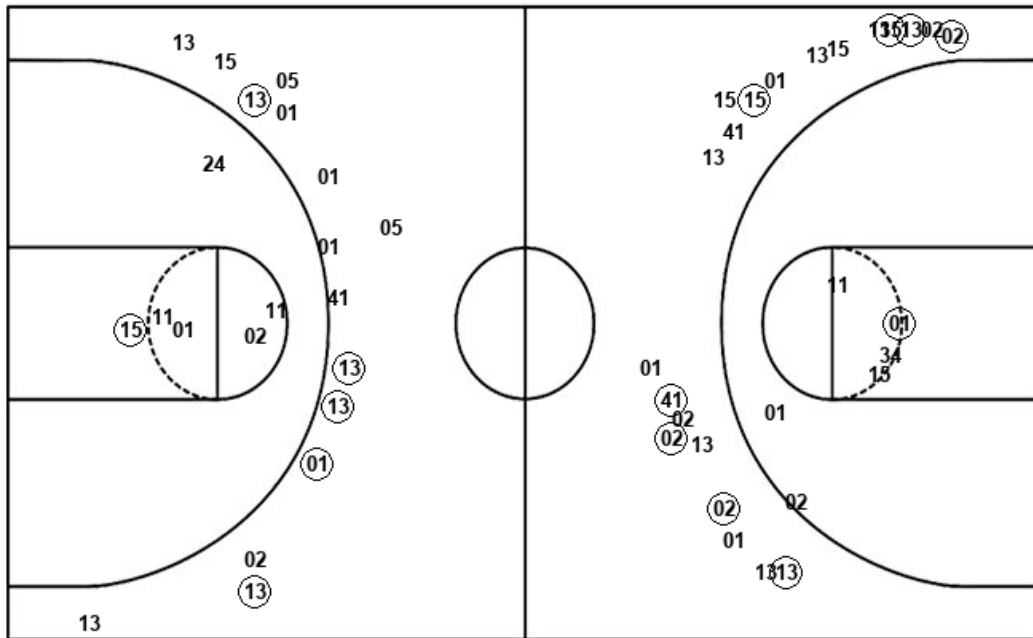
PFW : Period 2	Made	Att	Pct
Layups	7	11	63.6
Dunks	0	0	0
2PT Field Goals	8	17	47.1
3PT Field Goals	5	15	33.3
Total Field Goals	13	32	40.6

Official Shot Chart
Purdue Fort Wayne vs South Dakota State
Purdue Fort Wayne Team Shots
March 07, 2020 at Denny Sanford PREMIER Center - Sioux Falls, SD



Layups

Dunks



Layups

Dunks

PFW : Period 1	Made	Att	Pct
Layups	6	7	85.7
Dunks	1	1	100.0
2PT Field Goals	8	14	57.1
3PT Field Goals	8	21	38.1
Total Field Goals	16	35	45.7

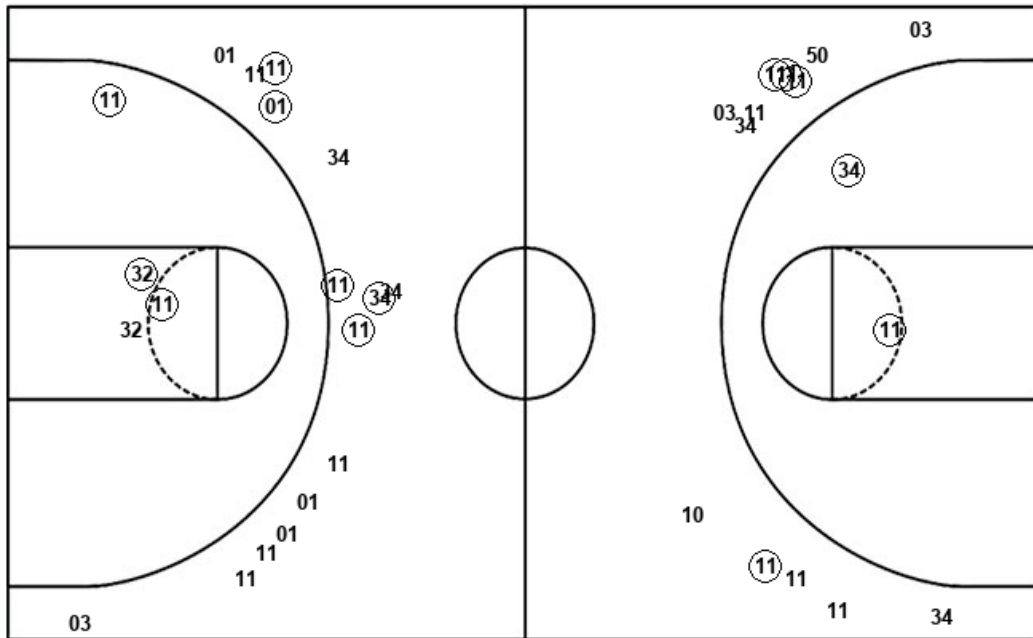
PFW : Period 2	Made	Att	Pct
Layups	7	11	63.6
Dunks	0	0	0
2PT Field Goals	8	17	47.1
3PT Field Goals	5	15	33.3
Total Field Goals	13	32	40.6

Official Shot Chart
Purdue Fort Wayne vs South Dakota State
 South Dakota State Team Shots
 March 07, 2020 at Denny Sanford PREMIER Center - Sioux Falls, SD



Layups

Dunks



Layups

Dunks

11 32 03 34 00
 50 34 11 34 32
 32 10 10 34 34
 50 32 03 11

50

SDS : Period 1	Made	Att	Pct
Layups	2	8	25.0
Dunks	0	0	0
2PT Field Goals	5	12	41.7
3PT Field Goals	5	15	33.3
Total Field Goals	10	27	37.0

SDS : Period 2	Made	Att	Pct
Layups	7	11	63.6
Dunks	1	1	100.0
2PT Field Goals	10	14	71.4
3PT Field Goals	4	13	30.8
Total Field Goals	14	27	51.9