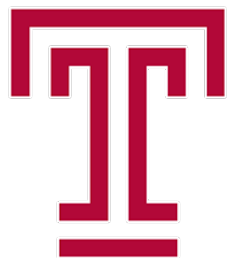


FINAL SCORE**Temple****61****Houston****58**

January 08, 2020 • Fertitta Center (Penick Court) - Houston

FINAL STATISTICS

Official Box Score
Temple vs Houston
Game Totals -- Final Statistics
January 08, 2020 at Fertitta Center (Penick Court) - Houston



Temple 61

No.	Player	S	Pts	FG	3FG	FT	OR	DR	TR	PF	A	TO	Blk	Stl	Min	+/-
01	NIANG, LENA	G	5	2-8	1-5	0-0	4	4	8	1	0	1	0	0	36	8
02	ALEXANDER, ASONAH	G	0	0-4	0-2	0-0	3	2	5	1	3	0	0	1	19	-2
05	MACKINS, MARISSA	G	0	0-7	0-7	0-0	0	3	3	4	3	6	0	1	26	-2
20	WILLIAMSON, ALEXA	F	9	4-11	0-0	1-1	3	2	5	3	0	1	3	0	15	8
25	DAVIS, MIA	F	16	6-15	0-2	4-5	9	9	18	4	0	4	0	0	35	0
00	JONES, ASHLEY	G	23	9-19	5-9	0-0	1	4	5	3	1	2	0	2	34	1
11	ATKINSON, SHANNEN	C	8	4-6	0-0	0-0	0	2	2	0	0	0	0	1	24	-3
12	MAYO, EMANI	G	0	0-0	0-0	0-0	0	0	0	0	0	0	0	0	11	5
TEAM							3	1	4	0		2				
TOTALS			61	25-70	6-25	5-6	23	27	50	16	7	16	3	5	200	

Shooting By Period

Period	FG	FG%	3FG	3FG%	FT	FT%
1st Qtr	6-25	24%	0-6	00%	1-2	50%
2nd Qtr	7-15	47%	2-8	25%	0-0	0%
3rd Qtr	5-16	31%	2-5	40%	3-3	100%
4th Qtr	7-14	50%	2-6	33%	1-1	100%
1st Half	13-40	33%	2-14	14%	1-2	50%
2nd Half	12-30	40%	4-11	36%	4-4	100%
Game	25-70	35.7%	6-25	24.0%	5-6	83.3%

Deadball Rebounds: 1,0

Last FG: 4th-01:44

Biggest Run: 11-0

Largest lead: By 10 at 2nd-06:39

Technical Fouls: None.

Houston 58

No.	Player	S	Pts	FG	3FG	FT	OR	DR	TR	PF	A	TO	Blk	Stl	Min	+/-
01	PATTERSON, BRIA	F	9	3-9	3-7	0-0	3	1	4	2	0	0	0	0	33	8
03	BRANCH, DORIAN	F	7	2-9	2-7	1-3	1	2	3	1	5	2	1	3	40	-3
05	GLADNEY, DYMOND	G	13	4-9	2-5	3-4	1	4	5	3	2	3	0	0	40	-3
23	BLACKSHELL-FAIR, JULIA	G	13	5-13	0-1	3-3	1	4	5	1	2	2	0	3	40	-3
30	HILL, TATYANA	F	7	3-7	0-0	1-2	2	4	6	4	0	2	1	0	17	-4
22	PEACE, KEASJA	F	3	1-5	0-1	1-1	2	4	6	1	0	1	1	0	15	-8
24	JONES, MAYA	F	6	2-6	0-1	2-4	1	1	2	2	1	1	0	0	15	-2
TEAM							2	2	4	0		0				
TOTALS			58	20-58	7-22	11-17	13	22	35	14	10	11	3	6	200	

Shooting By Period

Period	FG	FG%	3FG	3FG%	FT	FT%
1st Qtr	3-13	23%	0-5	00%	0-0	0%
2nd Qtr	8-15	53%	5-8	63%	2-4	50%
3rd Qtr	7-16	44%	1-3	33%	2-2	100%
4th Qtr	2-14	14%	1-6	17%	7-11	64%
1st Half	11-28	39%	5-13	38%	2-4	50%
2nd Half	9-30	30%	2-9	22%	9-13	69%
Game	20-58	34.5%	7-22	31.8%	11-17	64.7%

Deadball Rebounds: 4,0

Last FG: 4th-07:23

Biggest Run: 12-0

Largest lead: By 5 at 3rd-05:56

Technical Fouls: None.

Game Notes:

Officials: Maj Forsberg, Tom Donaher, Bruce Morris
Attendance: 738

Start Time: 08:02 PM ET

End Time: 10:05 PM ET

Game Duration: 2:03

Conference Game;

Score	1st	2nd	3rd	4th	TOT
TEM	13	16	15	17	61
HOU	6	23	17	12	58

TEM led for 27:58. HOU led for 10:24.

Game was tied for 1:39.

Times tied: 3 Lead Changes: 6

Points from	TEM	HOU
In the Paint	32	26
Off Turns	10	12
2nd Chance	16	6
Fast Break	3	16
Bench	31	9

Official Box Score
Temple vs Houston
First Half Statistics Only
January 08, 2020 at Fertitta Center (Penick Court) - Houston



Temple 29

No.	Player	S	Pts	FG	3FG	FT	OR	DR	TR	PF	A	TO	Blk	Stl	Min	+/-
00	JONES, ASHLEY	G	10	4-8	2-4	0-0	1	2	3	1	0	1	0	2	15	-4
11	ATKINSON, SHANNEN	C	6	3-3	0-0	0-0	0	1	1	0	0	0	0	0	10	-4
12	MAYO, EMANI	G	0	0-0	0-0	0-0	0	0	0	0	0	0	0	0	1	0
20	WILLIAMSON, ALEXA	F	6	3-9	0-0	0-0	3	0	3	2	0	0	3	0	10	4
25	DAVIS, MIA	F	5	2-6	0-1	1-2	6	4	10	0	0	1	0	0	15	-3
01	NIANG, LENA	G	2	1-6	0-3	0-0	3	2	5	0	0	0	0	0	16	5
02	ALEXANDER, ASONAH	G	0	0-3	0-1	0-0	2	1	3	0	3	0	0	1	16	3
05	MACKINS, MARISSA	G	0	0-5	0-5	0-0	0	3	3	0	3	5	0	1	18	-1
	TEAM		0	0-0	0-0	0-0	1	0	1	0	0	1	0	0	0	
TOTALS			29	13-40	2-14	1-2	16	13	29	3	6	8	3	4	100	

Shooting By Period

Period	FG	FG%	3FG	3FG%	FT	FT%
1st Qtr	6-25	24%	0-6	00%	1-2	50%
2nd Qtr	7-15	47%	2-8	25%	0-0	0%
1st Half	13-40	33%	2-14	14%	1-2	50%
Game	25-70	35.7%	6-25	24.0%	5-6	83.3%

Deadball Rebounds: 1,0

Last FG Half: TEM 2nd-04:03

Houston 29

No.	Player	S	Pts	FG	3FG	FT	OR	DR	TR	PF	A	TO	Blk	Stl	Min	+/-
01	PATTERSON, BRIA	F	6	2-5	2-4	0-0	1	0	1	1	0	0	0	0	17	2
03	BRANCH, DORIAN	F	6	2-5	2-4	0-0	0	1	1	0	3	1	1	2	20	0
05	GLADNEY, DYMOND	G	5	2-4	1-3	0-0	0	3	3	0	1	3	0	0	20	0
22	PEACE, KEASJA	F	3	1-3	0-1	1-1	2	4	6	1	0	1	1	0	10	-5
23	BLACKSHELL-FAIR, JULIA	G	6	3-8	0-1	0-0	0	1	1	1	1	1	0	2	20	0
24	JONES, MAYA	F	3	1-3	0-0	1-3	1	1	2	1	1	0	0	0	11	7
30	HILL, TATYANA	F	0	0-0	0-0	0-0	0	0	0	2	0	1	0	0	3	-4
	TEAM		0	0-0	0-0	0-0	1	1	2	0	0	0	0	0	0	
TOTALS			29	11-28	5-13	2-4	5	11	16	6	6	7	2	4	100	

Shooting By Period

Period	FG	FG%	3FG	3FG%	FT	FT%
1st Qtr	3-13	23%	0-5	00%	0-0	0%
2nd Qtr	8-15	53%	5-8	63%	2-4	50%
1st Half	11-28	39%	5-13	38%	2-4	50%
Game	20-58	34.5%	7-22	31.8%	11-17	64.7%

Deadball Rebounds: 4,0

Last FG Half: HOU 2nd-00:32

Game Notes:

Officials: Maj Forsberg, Tom Donaher, Bruce Morris
Attendance: 738

Start Time: 08:02 PM ET

End Time: 10:05 PM ET

Game Duration: 2:03

Conference Game;

Score	1st	2nd	3rd	4th	TOT
TEM	13	16	15	17	61
HOU	6	23	17	12	58

Points from (This Period)	TEM	HOU
In the Paint	18	12
Off Turns	3	7
2nd Chance	6	3
Fast Break	3	7
Bench	16	6

Official Box Score
Temple vs Houston
First Quarter Statistics Only
January 08, 2020 at Fertitta Center (Penick Court) - Houston



Temple 13

No.	Player	S	Pts	FG	3FG	FT	OR	DR	TR	PF	A	TO	Blk	Stl	Min	+/-
01	NIANG, LENA	G	2	1-5	0-2	0-0	2	1	3	0	0	0	0	0	10	7
02	ALEXANDER, ASONAH	G	0	0-2	0-0	0-0	1	1	2	0	1	0	0	1	8	5
05	MACKINS, MARISSA	G	0	0-3	0-3	0-0	0	3	3	0	2	3	0	1	8	6
20	WILLIAMSON, ALEXA	F	4	2-8	0-0	0-0	3	0	3	0	0	0	2	0	8	6
25	DAVIS, MIA	F	5	2-5	0-1	1-2	4	2	6	0	0	0	0	0	9	7
00	JONES, ASHLEY	G	0	0-1	0-0	0-0	1	0	1	0	0	0	0	1	5	3
11	ATKINSON, SHANNEN	C	2	1-1	0-0	0-0	0	0	0	0	0	0	0	0	2	1
12	MAYO, EMANI	G	0	0-0	0-0	0-0	0	0	0	0	0	0	0	0	1	0
TEAM							1	0	1	0		0				
TOTALS			13	6-25	0-6	1-2	12	7	19	0	3	3	2	3	50	

Shooting By Period

Period	FG	FG%	3FG	3FG%	FT	FT%
1st Qtr	6-25	24%	0-6	00%	1-2	50%
2nd Qtr	7-15	47%	2-8	25%	0-0	0%
1st Half	6-25	24%	0-6	00%	1-2	50%
1st Half	13-40	33%	2-14	14%	1-2	50%
Game	25-70	35.7%	6-25	24.0%	5-6	83.3%

Deadball Rebounds: 1,0

Houston 6

No.	Player	S	Pts	FG	3FG	FT	OR	DR	TR	PF	A	TO	Blk	Stl	Min	+/-
01	PATTERSON, BRIA	F	0	0-3	0-2	0-0	0	0	0	1	0	0	0	0	7	-5
03	BRANCH, DORIAN	F	0	0-2	0-1	0-0	0	0	0	0	1	1	0	1	10	-7
05	GLADNEY, DYMOND	G	2	1-3	0-2	0-0	0	3	3	0	0	2	0	0	10	-7
23	BLACKSHELL-FAIR, JULIA	G	4	2-3	0-0	0-0	0	1	1	1	0	1	0	1	10	-7
30	HILL, TATYANA	F	0	0-0	0-0	0-0	0	0	0	2	0	1	0	0	3	-4
22	PEACE, KEASJA	F	0	0-0	0-0	0-0	1	3	4	1	0	1	1	0	6	-2
24	JONES, MAYA	F	0	0-2	0-0	0-0	1	0	1	0	0	0	0	0	5	-3
TEAM							1	0	1	0		0				
TOTALS			6	3-13	0-5	0-0	3	7	10	5	1	6	1	2	50	

Shooting By Period

Period	FG	FG%	3FG	3FG%	FT	FT%
1st Qtr	3-13	23%	0-5	00%	0-0	0%
2nd Qtr	8-15	53%	5-8	63%	2-4	50%
1st Half	3-13	23%	0-5	00%	0-0	0%
1st Half	11-28	39%	5-13	38%	2-4	50%
Game	20-58	34.5%	7-22	31.8%	11-17	64.7%

Deadball Rebounds: 4,0

Game Notes:

Officials: Maj Forsberg, Tom Donaher, Bruce Morris
Attendance: 738

Start Time: 08:02 PM ET
End Time: 10:05 PM ET
Game Duration: 2:03
Conference Game;

Score	1st	2nd	3rd	4th	TOT
TEM	13	16	15	17	61
HOU	6	23	17	12	58

Points from (This Period)	TEM	HOU
In the Paint	10	6
Off Turns	3	2
2nd Chance	4	0
Fast Break	1	2
Bench	2	0

Official Play-By-Play
Temple vs Houston
First Quarter
January 08, 2020 at Fertitta Center (Penick Court) - Houston



Period 1

Starters:

Temple: 20 WILLIAMSON, ALEXA (F); 25 DAVIS, MIA (F); 1 NIANG, LENA (G); 2 ALEXANDER, ASONAH (G); 5 MACKINS, MARISSA (G);

Houston: 1 PATTERSON, BRIA (F); 3 BRANCH, DORIAN (F); 5 GLADNEY, DYMOND (G); 23 BLACKSHELL-FAIR, JULIA (G); 30 HILL, TATYANA (F);

Time	VISITORS: Temple	Score	Margin	HOME: Houston
09:38	GOOD! LAYUP by WILLIAMSON, ALEXA	0-2	V 2	
09:38	ASSIST by MACKINS, MARISSA			
09:28				MISSED JUMPER by PATTERSON, BRIA
09:25	REBOUND (DEF) by NIANG, LENA			
09:09				FOUL (PERSONAL) by HILL, TATYANA
08:59	MISSED 3PTR by DAVIS, MIA			
08:56				REBOUND (DEF) by BLACKSHELL-FAIR, JULIA
08:50				TURNOVER (BADPASS) by HILL, TATYANA
08:50	STEAL by MACKINS, MARISSA			
08:42	MISSED 3PTR by NIANG, LENA			
08:40				REBOUND (DEF) by GLADNEY, DYMOND
08:26				MISSED 3PTR by BRANCH, DORIAN
08:23	REBOUND (DEF) by MACKINS, MARISSA			
08:19	MISSED LAYUP by NIANG, LENA			
08:16	REBOUND (OFF) by DAVIS, MIA			
08:15	GOOD! LAYUP by DAVIS, MIA [PNT]	0-4	V 4	
07:59				MISSED 3PTR by PATTERSON, BRIA
07:56	REBOUND (DEF) by MACKINS, MARISSA			
07:31	MISSED 3PTR by MACKINS, MARISSA			
07:30	REBOUND (OFF) by WILLIAMSON, ALEXA			
07:30				FOUL (PERSONAL) by HILL, TATYANA
07:30				SUB OUT: HILL, TATYANA
07:30				SUB IN: PEACE, KEASJA
07:19	TURNOVER (BADPASS) by MACKINS, MARISSA			
07:19				STEAL by BLACKSHELL-FAIR, JULIA
07:15		2-4	V 2	GOOD! LAYUP by BLACKSHELL-FAIR, JULIA [FB/PNT]
06:48	MISSED LAYUP by WILLIAMSON, ALEXA			
06:42				REBOUND (DEF) by GLADNEY, DYMOND
06:40				MISSED 3PTR by GLADNEY, DYMOND
06:37	REBOUND (DEF) by MACKINS, MARISSA			
06:29	GOOD! JUMPER by DAVIS, MIA [PNT]	2-6	V 4	
06:19				TURNOVER (BADPASS) by BRANCH, DORIAN
06:14	MISSED LAYUP by WILLIAMSON, ALEXA			
06:12	REBOUND (OFF) by DAVIS, MIA			
06:10				FOUL (PERSONAL) by PATTERSON, BRIA
06:03	MISSED 3PTR by MACKINS, MARISSA			
05:58	REBOUND (OFF) by NIANG, LENA			
05:52	TURNOVER (BADPASS) by MACKINS, MARISSA			
05:52				STEAL by BRANCH, DORIAN
05:47				MISSED LAYUP by BRANCH, DORIAN
05:47	BLOCK by WILLIAMSON, ALEXA			
05:44	REBOUND (DEF) by ALEXANDER, ASONAH			
05:41	MISSED LAYUP by WILLIAMSON, ALEXA			
05:41				BLOCK by PEACE, KEASJA
05:36	REBOUND (OFF) by NIANG, LENA			
05:35	MISSED JUMPER by NIANG, LENA			
05:32				REBOUND (DEF) by PEACE, KEASJA
05:27				MISSED 3PTR by PATTERSON, BRIA
05:25	REBOUND (DEF) by DAVIS, MIA			
05:21	MISSED LAYUP by WILLIAMSON, ALEXA			
05:18				REBOUND (DEF) by PEACE, KEASJA
05:18				SUB OUT: PATTERSON, BRIA
05:18				SUB IN: JONES, MAYA
05:03				MISSED JUMPER by BLACKSHELL-FAIR, JULIA
05:03	BLOCK by WILLIAMSON, ALEXA			
04:58				REBOUND (OFF) by PEACE, KEASJA
04:56				
04:53				TURNOVER (BADPASS) by GLADNEY, DYMOND
04:53	STEAL by ALEXANDER, ASONAH			
04:48	MISSED LAYUP by ALEXANDER, ASONAH			
04:45	REBOUND (OFF) by WILLIAMSON, ALEXA			
04:45	MISSED LAYUP by WILLIAMSON, ALEXA			
04:42				REBOUND (DEF) by PEACE, KEASJA
04:38				TURNOVER (LOSTBALL) by GLADNEY, DYMOND
04:38	MISSED 3PTR by NIANG, LENA			
04:38	REBOUND (OFF) by DAVIS, MIA			
04:38	MISSED LAYUP by DAVIS, MIA			
04:36	REBOUND (OFF) by TEAM			
04:30	SUB OUT: ALEXANDER, ASONAH			
04:30	SUB IN: JONES, ASHLEY			

Time	VISITORS: Temple	Score	Margin	HOME: Houston
04:19				FOUL (PERSONAL) by PEACE, KEASJA
04:11	MISSED 3PTR by MACKINS, MARISSA			
04:09	REBOUND (OFF) by WILLIAMSON, ALEXA			
04:08	MISSED LAYUP by WILLIAMSON, ALEXA			
04:05	REBOUND (OFF) by DAVIS, MIA			
04:04	MISSED LAYUP by JONES, ASHLEY			
04:04	REBOUND (OFF) by JONES, ASHLEY			
03:29	GOOD! JUMPER by WILLIAMSON, ALEXA [PNT]	2-8	V 6	
03:29	ASSIST by MACKINS, MARISSA			
03:00				TURNOVER (TRAVEL) by PEACE, KEASJA
02:33	TURNOVER (TRAVEL) by MACKINS, MARISSA			
02:29				MISSED 3PTR by GLADNEY, DYMOND
02:29				REBOUND (OFF) by TEAM
02:23	SUB OUT: MACKINS, MARISSA			
02:23	SUB OUT: WILLIAMSON, ALEXA			
02:23	SUB IN: ALEXANDER, ASONAH			
02:23	SUB IN: ATKINSON, SHANNEN			
02:09				MISSED JUMPER by JONES, MAYA
02:04				REBOUND (OFF) by JONES, MAYA
02:04				MISSED LAYUP by JONES, MAYA
02:02	REBOUND (DEF) by DAVIS, MIA			
01:58				SUB OUT: PEACE, KEASJA
01:58				SUB IN: PATTERSON, BRIA
01:58	MISSED LAYUP by DAVIS, MIA			
01:58	REBOUND (OFF) by ALEXANDER, ASONAH			
01:58	MISSED LAYUP by ALEXANDER, ASONAH			
01:52				REBOUND (DEF) by GLADNEY, DYMOND
01:44		4-8	V 4	GOOD! LAYUP by GLADNEY, DYMOND [PNT]
01:09	GOOD! JUMPER by NIANG, LENA	4-10	V 6	
00:49				TURNOVER (BADPASS) by BLACKSHELL-FAIR, JULIA
00:49	STEAL by JONES, ASHLEY			
00:43				FOUL (PERSONAL) by BLACKSHELL-FAIR, JULIA
00:43	MISSED FT by DAVIS, MIA			
00:43	REBOUND (OFF) by TEAM			
00:43	GOOD! FT by DAVIS, MIA [FB]	4-11	V 7	
00:43	SUB OUT: DAVIS, MIA			
00:43	SUB IN: MAYO, EMANI			
00:26		6-11	V 5	GOOD! LAYUP by BLACKSHELL-FAIR, JULIA [PNT]
00:26				ASSIST by BRANCH, DORIAN
00:15	GOOD! LAYUP by ATKINSON, SHANNEN [PNT]	6-13	V 7	
00:15	ASSIST by ALEXANDER, ASONAH			

Temple 13, Houston 6

Points from (This Period)	TEM	HOU
In the Paint	10	6
Off Turns	3	2
2nd Chance	4	0
Fast Break	1	2
Bench	2	0

Official Box Score
Temple vs Houston
Second Quarter Statistics Only
January 08, 2020 at Fertitta Center (Penick Court) - Houston



Temple 16

No.	Player	S	Pts	FG	3FG	FT	OR	DR	TR	PF	A	TO	Blk	Stl	Min	+/-
01	NIANG, LENA	G	0	0-1	0-1	0-0	1	1	2	0	0	0	0	0	6	-2
02	ALEXANDER, ASONAH	G	0	0-1	0-1	0-0	1	0	1	0	2	0	0	0	8	-2
05	MACKINS, MARISSA	G	0	0-2	0-2	0-0	0	0	0	0	1	2	0	0	10	-7
20	WILLIAMSON, ALEXA	F	2	1-1	0-0	0-0	0	0	0	2	0	0	1	0	2	-2
25	DAVIS, MIA	F	0	0-1	0-0	0-0	2	2	4	0	0	1	0	0	6	-10
00	JONES, ASHLEY	G	10	4-7	2-4	0-0	0	2	2	1	0	1	0	1	10	-7
11	ATKINSON, SHANNEN	C	4	2-2	0-0	0-0	0	1	1	0	0	0	0	0	8	-5
12	MAYO, EMANI	G	0	0-0	0-0	0-0	0	0	0	0	0	0	0	0	0	0
TEAM							0	0	0	0		1				
TOTALS			16	7-15	2-8	0-0	4	6	10	3	3	5	1	1	50	

Shooting By Period

Period	FG	FG%	3FG	3FG%	FT	FT%
3rd Qtr	5-16	31%	2-5	40%	3-3	100%
4th Qtr	7-14	50%	2-6	33%	1-1	100%
2nd Half	7-15	47%	2-8	25%	0-0	0%
2nd Half	12-30	40%	4-11	36%	4-4	100%
Game	25-70	35.7%	6-25	24.0%	5-6	83.3%

Deadball Rebounds: 1,0

Houston 23

No.	Player	S	Pts	FG	3FG	FT	OR	DR	TR	PF	A	TO	Blk	Stl	Min	+/-
01	PATTERSON, BRIA	F	6	2-2	2-2	0-0	1	0	1	0	0	0	0	0	10	7
03	BRANCH, DORIAN	F	6	2-3	2-3	0-0	0	1	1	0	2	0	1	1	10	7
05	GLADNEY, DYMOND	G	3	1-1	1-1	0-0	0	0	0	0	1	1	0	0	10	7
23	BLACKSHELL-FAIR, JULIA	G	2	1-5	0-1	0-0	0	0	0	0	1	0	0	1	10	7
30	HILL, TATYANA	F	0	0-0	0-0	0-0	0	0	0	0	0	0	0	0	0	0
22	PEACE, KEASJA	F	3	1-3	0-1	1-1	1	1	2	0	0	0	0	0	4	-3
24	JONES, MAYA	F	3	1-1	0-0	1-3	0	1	1	1	1	0	0	0	6	10
TEAM							0	1	1	0		0				
TOTALS			23	8-15	5-8	2-4	2	4	6	1	5	1	1	2	50	

Shooting By Period

Period	FG	FG%	3FG	3FG%	FT	FT%
3rd Qtr	7-16	44%	1-3	33%	2-2	100%
4th Qtr	2-14	14%	1-6	17%	7-11	64%
2nd Half	8-15	53%	5-8	63%	2-4	50%
2nd Half	9-30	30%	2-9	22%	9-13	69%
Game	20-58	34.5%	7-22	31.8%	11-17	64.7%

Deadball Rebounds: 4,0

Game Notes:

Officials: Maj Forsberg, Tom Donaher, Bruce Morris
Attendance: 738

Start Time: 08:02 PM ET
End Time: 10:05 PM ET
Game Duration: 2:03
Conference Game;

Score	1st	2nd	3rd	4th	TOT
TEM	13	16	15	17	61
HOU	6	23	17	12	58

Points from (This Period)	TEM	HOU
In the Paint	8	6
Off Turns	0	5
2nd Chance	2	3
Fast Break	2	5
Bench	14	6

Official Play-By-Play
Temple vs Houston
Second Quarter
January 08, 2020 at Fertitta Center (Penick Court) - Houston



Period 2

Starters:

Temple: 20 WILLIAMSON, ALEXA (F); 25 DAVIS, MIA (F); 1 NIANG, LENA (G); 2 ALEXANDER, ASONAH (G); 5 MACKINS, MARISSA (G);

Houston: 1 PATTERSON, BRIA (F); 3 BRANCH, DORIAN (F); 5 GLADNEY, DYMOND (G); 23 BLACKSHELL-FAIR, JULIA (G); 30 HILL, TATYANA (F);

Time	VISITORS: Temple	Score	Margin	HOME: Houston
10:00	SUB OUT: MAYO, EMANI			
10:00	SUB IN: MACKINS, MARISSA			
09:38	GOOD! LAYUP by ATKINSON, SHANNEN	6-15	V 9	
09:38	ASSIST by ALEXANDER, ASONAH			
09:22		9-15	V 6	GOOD! 3PTR by BRANCH, DORIAN
09:22				ASSIST by GLADNEY, DYMOND
09:12	GOOD! 3PTR by JONES, ASHLEY	9-18	V 9	
08:43		12-18	V 6	GOOD! 3PTR by PATTERSON, BRIA
08:43				ASSIST by BLACKSHELL-FAIR, JULIA
08:20	MISSED LAYUP by JONES, ASHLEY			
08:14	REBOUND (OFF) by NIANG, LENA			
08:11	GOOD! JUMPER by ATKINSON, SHANNEN	12-20	V 8	
07:52		15-20	V 5	GOOD! 3PTR by PATTERSON, BRIA
07:52				ASSIST by JONES, MAYA
07:34	TURNOVER (BADPASS) by MACKINS, MARISSA			
07:34				STEAL by BRANCH, DORIAN
07:34				SUB OUT: JONES, MAYA
07:34				SUB IN: PEACE, KEASJA
07:24				MISSED LAYUP by BLACKSHELL-FAIR, JULIA
07:22	REBOUND (DEF) by ATKINSON, SHANNEN			
07:15	GOOD! 3PTR by JONES, ASHLEY	15-23	V 8	
07:15	ASSIST by ALEXANDER, ASONAH			
06:51				MISSED 3PTR by BLACKSHELL-FAIR, JULIA
06:47	REBOUND (DEF) by NIANG, LENA			
06:39	GOOD! LAYUP by JONES, ASHLEY	15-25	V 10	
06:28				MISSED 3PTR by PEACE, KEASJA
06:25	REBOUND (DEF) by JONES, ASHLEY			
06:20	MISSED 3PTR by NIANG, LENA			
06:16	REBOUND (OFF) by ALEXANDER, ASONAH			
05:57	TURNOVER (SHOTCLOCK) by TEAM			
05:54	SUB OUT: ATKINSON, SHANNEN			
05:54	SUB IN: WILLIAMSON, ALEXA			
05:54	SUB OUT: NIANG, LENA			
05:54	SUB IN: DAVIS, MIA			
05:46		18-25	V 7	GOOD! 3PTR by BRANCH, DORIAN
05:23	GOOD! LAYUP by WILLIAMSON, ALEXA [PNT]	18-27	V 9	
05:23	ASSIST by MACKINS, MARISSA			
05:00				MISSED JUMPER by BLACKSHELL-FAIR, JULIA
04:56				REBOUND (OFF) by PATTERSON, BRIA
04:55				MISSED LAYUP by BLACKSHELL-FAIR, JULIA
04:53				REBOUND (OFF) by PEACE, KEASJA
04:53		20-27	V 7	GOOD! LAYUP by PEACE, KEASJA [PNT]
04:53	FOUL (PERSONAL) by WILLIAMSON, ALEXA			
04:53				
04:53		21-27	V 6	GOOD! FT by PEACE, KEASJA
04:24	MISSED 3PTR by JONES, ASHLEY			
04:20				REBOUND (DEF) by PEACE, KEASJA
04:10				MISSED JUMPER by PEACE, KEASJA
04:10	BLOCK by WILLIAMSON, ALEXA			
04:05	REBOUND (DEF) by JONES, ASHLEY			
04:03	GOOD! LAYUP by JONES, ASHLEY [FB/PNT]	21-29	V 8	
03:33				SUB OUT: PEACE, KEASJA
03:33				SUB IN: JONES, MAYA
03:27	FOUL (PERSONAL) by WILLIAMSON, ALEXA			
03:27	SUB OUT: WILLIAMSON, ALEXA			
03:27	SUB IN: ATKINSON, SHANNEN			
03:27				MISSED FT by JONES, MAYA
03:27				REBOUND (OFF) by TEAM
03:27		22-29	V 7	GOOD! FT by JONES, MAYA
02:56	MISSED 3PTR by ALEXANDER, ASONAH			
02:53	REBOUND (OFF) by DAVIS, MIA			
02:53	MISSED LAYUP by DAVIS, MIA			
02:53				BLOCK by BRANCH, DORIAN
02:48				REBOUND (DEF) by BRANCH, DORIAN
02:29		24-29	V 5	GOOD! LAYUP by JONES, MAYA [PNT]
02:29				ASSIST by BRANCH, DORIAN
02:29	FOUL (PERSONAL) by JONES, ASHLEY			
02:29				MISSED FT by JONES, MAYA
02:29	REBOUND (DEF) by DAVIS, MIA			
02:13	MISSED 3PTR by MACKINS, MARISSA			

Time	VISITORS: Temple	Score	Margin	HOME: Houston
02:09	REBOUND (OFF) by DAVIS, MIA			
02:06	TURNOVER (BADPASS) by DAVIS, MIA			
02:06	TIMEOUT 30SEC			
02:06	SUB OUT: ALEXANDER, ASONAH			
02:06	SUB IN: NIANG, LENA			
01:57				TURNOVER (BADPASS) by GLADNEY, DYMOND
01:57	STEAL by JONES, ASHLEY			
01:49	TURNOVER (BADPASS) by MACKINS, MARISSA			
01:22				MISSED 3PTR by BRANCH, DORIAN
01:18	REBOUND (DEF) by DAVIS, MIA			
01:15				FOUL (PERSONAL) by JONES, MAYA
01:13	MISSED 3PTR by MACKINS, MARISSA			
01:10				REBOUND (DEF) by JONES, MAYA
01:05		27-29	V 2	GOOD! 3PTR by GLADNEY, DYMOND [FB]
01:05				ASSIST by BRANCH, DORIAN
00:37	TURNOVER (BADPASS) by JONES, ASHLEY			
00:37				STEAL by BLACKSHELL-FAIR, JULIA
00:32		29-29	T	GOOD! LAYUP by BLACKSHELL-FAIR, JULIA [FB/PNT]
00:21	MISSED 3PTR by JONES, ASHLEY			
00:16				REBOUND (DEF) by TEAM

Temple 29, Houston 29

Points from (This Period)	TEM	HOU
In the Paint	8	6
Off Turns	0	5
2nd Chance	2	3
Fast Break	2	5
Bench	14	6

Official Box Score
Temple vs Houston
Second Half Statistics Only
January 08, 2020 at Fertitta Center (Penick Court) - Houston



Temple 32

No.	Player	S	Pts	FG	3FG	FT	OR	DR	TR	PF	A	TO	Blk	Stl	Min	+/-
00	JONES, ASHLEY	G	13	5-11	3-5	0-0	0	2	2	2	1	1	0	0	19	5
11	ATKINSON, SHANNEN	C	2	1-3	0-0	0-0	0	1	1	0	0	0	0	1	14	1
12	MAYO, EMANI	G	0	0-0	0-0	0-0	0	0	0	0	0	0	0	0	11	5
20	WILLIAMSON, ALEXA	F	3	1-2	0-0	1-1	0	2	2	1	0	1	0	0	5	4
25	DAVIS, MIA	F	11	4-9	0-1	3-3	3	5	8	4	0	3	0	0	20	3
01	NIANG, LENA	G	3	1-2	1-2	0-0	1	2	3	1	0	1	0	0	20	3
02	ALEXANDER, ASONAH	G	0	0-1	0-1	0-0	1	1	2	1	0	0	0	0	3	-5
05	MACKINS, MARISSA	G	0	0-2	0-2	0-0	0	0	0	4	0	1	0	0	8	-1
	TEAM		0	0-0	0-0	0-0	2	1	3	0	0	1	0	0	0	
TOTALS			32	12-30	4-11	4-4	7	14	21	13	1	8	0	1	100	

Shooting By Period

Period	FG	FG%	3FG	3FG%	FT	FT%
3rd Qtr	5-16	31%	2-5	40%	3-3	100%
4th Qtr	7-14	50%	2-6	33%	1-1	100%
2nd Half	12-30	40%	4-11	36%	4-4	100%
Game	25-70	35.7%	6-25	24.0%	5-6	83.3%

Deadball Rebounds: 1,0

Last FG Half: TEM 4th-01:44

Houston 29

No.	Player	S	Pts	FG	3FG	FT	OR	DR	TR	PF	A	TO	Blk	Stl	Min	+/-
01	PATTERSON, BRIA	F	3	1-4	1-3	0-0	2	1	3	1	0	0	0	0	17	6
03	BRANCH, DORIAN	F	1	0-4	0-3	1-3	1	1	2	1	2	1	0	1	20	-3
05	GLADNEY, DYMOND	G	8	2-5	1-2	3-4	1	1	2	3	1	0	0	0	20	-3
22	PEACE, KEASJA	F	0	0-2	0-0	0-0	0	0	0	0	0	0	0	0	5	-3
23	BLACKSHELL-FAIR, JULIA	G	7	2-5	0-0	3-3	1	3	4	0	1	1	0	1	20	-3
24	JONES, MAYA	F	3	1-3	0-1	1-1	0	0	0	1	0	1	0	0	3	-9
30	HILL, TATYANA	F	7	3-7	0-0	1-2	2	4	6	2	0	1	1	0	15	0
	TEAM		0	0-0	0-0	0-0	1	1	2	0	0	0	0	0	0	
TOTALS			29	9-30	2-9	9-13	8	11	19	8	4	4	1	2	100	

Shooting By Period

Period	FG	FG%	3FG	3FG%	FT	FT%
3rd Qtr	7-16	44%	1-3	33%	2-2	100%
4th Qtr	2-14	14%	1-6	17%	7-11	64%
2nd Half	9-30	30%	2-9	22%	9-13	69%
Game	20-58	34.5%	7-22	31.8%	11-17	64.7%

Deadball Rebounds: 4,0

Last FG Half: HOU 4th-07:23

Game Notes:

Officials: Maj Forsberg, Tom Donaher, Bruce Morris
Attendance: 738

Start Time: 08:02 PM ET
End Time: 10:05 PM ET
Game Duration: 2:03
Conference Game;

Score	1st	2nd	3rd	4th	TOT
TEM	13	16	15	17	61
HOU	6	23	17	12	58

Points from (This Period)	TEM	HOU
In the Paint	14	14
Off Turns	7	5
2nd Chance	10	3
Fast Break	0	9
Bench	15	3

Official Box Score
Temple vs Houston
Third Quarter Statistics Only
January 08, 2020 at Fertitta Center (Penick Court) - Houston



Temple 32

No.	Player	S	Pts	FG	3FG	FT	OR	DR	TR	PF	A	TO	Blk	Stl	Min	+/-
01	NIANG, LENA	G	0	0-1	0-1	0-0	0	1	1	0	0	0	0	0	10	-2
02	ALEXANDER, ASONAH	G	0	0-1	0-1	0-0	1	0	1	0	0	0	0	0	1	-2
05	MACKINS, MARISSA	G	0	0-0	0-0	0-0	0	0	0	2	0	0	0	0	1	-5
20	WILLIAMSON, ALEXA	F	0	0-1	0-0	0-0	0	0	0	0	0	0	0	0	2	-2
25	DAVIS, MIA	F	7	2-6	0-1	3-3	2	4	6	3	0	3	0	0	10	-2
00	JONES, ASHLEY	G	6	2-4	2-2	0-0	0	1	1	0	1	0	0	0	9	0
11	ATKINSON, SHANNEN	C	2	1-3	0-0	0-0	0	0	0	0	0	0	0	1	8	0
12	MAYO, EMANI	G	0	0-0	0-0	0-0	0	0	0	0	0	0	0	0	9	3
TEAM							1	0	1	0		0				
TOTALS			15	5-16	2-5	3-3	4	6	10	5	1	3	0	1	50	

Shooting By Period

Period	FG	FG%	3FG	3FG%	FT	FT%
2nd Half	0-0	0%	0-0	0%	0-0	0%
Game	25-70	35.7%	6-25	24.0%	5-6	83.3%

Deadball Rebounds: 1,0

Houston 29

No.	Player	S	Pts	FG	3FG	FT	OR	DR	TR	PF	A	TO	Blk	Stl	Min	+/-
01	PATTERSON, BRIA	F	0	0-0	0-0	0-0	1	1	2	1	0	0	0	0	7	11
03	BRANCH, DORIAN	F	0	0-2	0-1	0-0	1	1	2	1	1	1	0	1	10	2
05	GLADNEY, DYMOND	G	5	2-3	1-1	0-0	0	1	1	0	1	0	0	0	10	2
23	BLACKSHELL-FAIR, JULIA	G	5	2-3	0-0	1-1	1	2	3	0	0	0	0	1	10	2
30	HILL, TATYANA	F	4	2-3	0-0	0-0	0	2	2	1	0	1	1	0	5	5
22	PEACE, KEASJA	F	0	0-2	0-0	0-0	0	0	0	0	0	0	0	0	5	-3
24	JONES, MAYA	F	3	1-3	0-1	1-1	0	0	0	1	0	1	0	0	3	-9
TEAM							0	0	0	0		0				
TOTALS			17	7-16	1-3	2-2	3	7	10	4	2	3	1	2	50	

Shooting By Period

Period	FG	FG%	3FG	3FG%	FT	FT%
2nd Half	0-0	0%	0-0	0%	0-0	0%
Game	20-58	34.5%	7-22	31.8%	11-17	64.7%

Deadball Rebounds: 4,0

Game Notes:

Officials: Maj Forsberg, Tom Donaher, Bruce Morris
Attendance: 738

Start Time: 08:02 PM ET
End Time: 10:05 PM ET
Game Duration: 2:03
Conference Game;

Score	1st	2nd	3rd	4th	TOT
TEM	13	16	15	17	61
HOU	6	23	17	12	58

Points from (This Period)	TEM	HOU
In the Paint	4	12
Off Turns	5	5
2nd Chance	2	0
Fast Break	0	7
Bench	8	3

Official Play-By-Play
Temple vs Houston
Third Quarter
January 08, 2020 at Fertitta Center (Penick Court) - Houston



Period 3

Starters:

Temple: 20 WILLIAMSON, ALEXA (F); 25 DAVIS, MIA (F); 1 NIANG, LENA (G); 2 ALEXANDER, ASONAH (G); 5 MACKINS, MARISSA (G);

Houston: 1 PATTERSON, BRIA (F); 3 BRANCH, DORIAN (F); 5 GLADNEY, DYMOND (G); 23 BLACKSHELL-FAIR, JULIA (G); 30 HILL, TATYANA (F);

Time	VISITORS: Temple	Score	Margin	HOME: Houston
10:00				SUB OUT: JONES, MAYA
10:00				SUB IN: HILL, TATYANA
10:00	SUB OUT: JONES, ASHLEY			
10:00	SUB OUT: ATKINSON, SHANNEN			
10:00	SUB IN: ALEXANDER, ASONAH			
10:00	SUB IN: WILLIAMSON, ALEXA			
10:00	MISSED JUMPER by DAVIS, MIA			
09:54	REBOUND (OFF) by ALEXANDER, ASONAH			
09:40		31-29	H 2	GOOD! JUMPER by HILL, TATYANA [PNT]
09:30	TURNOVER (BADPASS) by DAVIS, MIA			
09:30				STEAL by BLACKSHELL-FAIR, JULIA
09:27	SUB OUT: ALEXANDER, ASONAH			
09:27	SUB OUT: MACKINS, MARISSA			
09:27	SUB IN: JONES, ASHLEY			
09:27	SUB IN: MAYO, EMANI			
09:25		33-29	H 4	GOOD! LAYUP by HILL, TATYANA [FB/PNT]
09:25				ASSIST by GLADNEY, DYMOND
09:06	GOOD! LAYUP by DAVIS, MIA [PNT]	33-31	H 2	
08:49				MISSED LAYUP by HILL, TATYANA
08:49	FOUL (PERSONAL) by MACKINS, MARISSA			
08:47				REBOUND (OFF) by BLACKSHELL-FAIR, JULIA
08:44				MISSED LAYUP by BLACKSHELL-FAIR, JULIA
08:42	REBOUND (DEF) by DAVIS, MIA			
08:36	MISSED JUMPER by WILLIAMSON, ALEXA			
08:36				BLOCK by HILL, TATYANA
08:32				REBOUND (DEF) by HILL, TATYANA
08:23				TURNOVER (LOSTBALL) by HILL, TATYANA
08:13	SUB OUT: WILLIAMSON, ALEXA			
08:13	SUB IN: ATKINSON, SHANNEN			
07:53	MISSED JUMPER by DAVIS, MIA			
07:50				REBOUND (DEF) by PATTERSON, BRIA
07:48	FOUL (PERSONAL) by DAVIS, MIA			
07:14				MISSED 3PTR by BRANCH, DORIAN
07:12	REBOUND (DEF) by DAVIS, MIA			
06:55	MISSED 3PTR by NIANG, LENA			
06:53				REBOUND (DEF) by GLADNEY, DYMOND
06:48		35-31	H 4	GOOD! LAYUP by GLADNEY, DYMOND [FB]
06:30				FOUL (PERSONAL) by BRANCH, DORIAN
06:30				SUB OUT: PATTERSON, BRIA
06:30				SUB IN: JONES, MAYA
06:30	MISSED LAYUP by ATKINSON, SHANNEN			
06:30	REBOUND (OFF) by DAVIS, MIA			
06:30	MISSED LAYUP by DAVIS, MIA			
06:30	REBOUND (OFF) by DAVIS, MIA			
06:27				FOUL (PERSONAL) by HILL, TATYANA
06:15	GOOD! FT by DAVIS, MIA	35-32	H 3	
06:15	GOOD! FT by DAVIS, MIA	35-33	H 2	
06:15				SUB OUT: HILL, TATYANA
06:15				SUB IN: PEACE, KEASJA
05:56		37-33	H 4	GOOD! LAYUP by JONES, MAYA [PNT]
05:56	FOUL (PERSONAL) by DAVIS, MIA			
05:56		38-33	H 5	GOOD! FT by JONES, MAYA
05:31	GOOD! 3PTR by JONES, ASHLEY	38-36	H 2	
05:08				TURNOVER (BADPASS) by JONES, MAYA
05:08	STEAL by ATKINSON, SHANNEN			
04:58	GOOD! 3PTR by JONES, ASHLEY	38-39	V 1	
04:33				MISSED 3PTR by JONES, MAYA
04:28	REBOUND (DEF) by JONES, ASHLEY			
04:25	MISSED 3PTR by DAVIS, MIA			
04:23				REBOUND (DEF) by BRANCH, DORIAN
04:12				MISSED LAYUP by BRANCH, DORIAN
04:08				REBOUND (OFF) by BRANCH, DORIAN
04:08				TURNOVER (TRAVEL) by BRANCH, DORIAN
04:08				
03:41	GOOD! LAYUP by ATKINSON, SHANNEN [PNT]	38-41	V 3	
03:41	ASSIST by JONES, ASHLEY			
03:28				MISSED JUMPER by JONES, MAYA
03:23	REBOUND (DEF) by NIANG, LENA			
03:20	GOOD! JUMPER by DAVIS, MIA	38-43	V 5	
03:13				FOUL (PERSONAL) by JONES, MAYA

Time	VISITORS: Temple	Score	Margin	HOME: Houston
03:13				SUB OUT: JONES, MAYA
03:13				SUB IN: PATTERSON, BRIA
03:13	GOOD! FT by DAVIS, MIA	38-44	V 6	
03:00				MISSED JUMPER by PEACE, KEASJA
02:57				REBOUND (OFF) by PATTERSON, BRIA
02:57				MISSED LAYUP by PEACE, KEASJA
02:54	REBOUND (DEF) by DAVIS, MIA			
02:50	TURNOVER (BADPASS) by DAVIS, MIA			
02:50				STEAL by BRANCH, DORIAN
02:43		41-44	V 3	GOOD! 3PTR by GLADNEY, DYMOND [FB]
02:43				ASSIST by BRANCH, DORIAN
02:11	MISSED JUMPER by JONES, ASHLEY			
02:06				REBOUND (DEF) by BLACKSHELL-FAIR, JULIA
02:00		43-44	V 1	GOOD! LAYUP by BLACKSHELL-FAIR, JULIA
01:32	FOUL (OFF) by DAVIS, MIA			
01:32	TURNOVER (OFFENSIVE) by DAVIS, MIA			
01:32				SUB OUT: PEACE, KEASJA
01:32				SUB IN: HILL, TATYANA
01:32				
01:18				MISSED LAYUP by GLADNEY, DYMOND
01:15	REBOUND (DEF) by DAVIS, MIA			
01:09				FOUL (PERSONAL) by PATTERSON, BRIA
01:04	MISSED JUMPER by JONES, ASHLEY			
00:58	REBOUND (OFF) by TEAM			
00:56	SUB OUT: MAYO, EMANI			
00:56	SUB IN: MACKINS, MARISSA			
00:55	MISSED LAYUP by ATKINSON, SHANNEN			
00:54				REBOUND (DEF) by HILL, TATYANA
00:40		45-44	H 1	GOOD! LAYUP by BLACKSHELL-FAIR, JULIA [PNT]
00:40	FOUL (PERSONAL) by MACKINS, MARISSA			
00:40		46-44	H 2	GOOD! FT by BLACKSHELL-FAIR, JULIA
00:40				SUB OUT: HILL, TATYANA
00:40				SUB IN: PEACE, KEASJA
00:22	MISSED 3PTR by ALEXANDER, ASONAH			
00:18				REBOUND (DEF) by BLACKSHELL-FAIR, JULIA

Temple 44, Houston 46

Points from (This Period)	TEM	HOU
In the Paint	4	12
Off Turns	5	5
2nd Chance	2	0
Fast Break	0	7
Bench	8	3

Official Box Score
Temple vs Houston
Fourth Quarter Statistics Only
January 08, 2020 at Fertitta Center (Penick Court) - Houston



Temple 17

No.	Player	S	Pts	FG	3FG	FT	OR	DR	TR	PF	A	TO	Blk	Stl	Min	+/-
01	NIANG, LENA	G	3	1-1	1-1	0-0	1	1	2	1	0	1	0	0	10	5
02	ALEXANDER, ASONAH	G	0	0-0	0-0	0-0	0	1	1	1	0	0	0	0	2	-3
05	MACKINS, MARISSA	G	0	0-2	0-2	0-0	0	0	0	2	0	1	0	0	7	4
20	WILLIAMSON, ALEXA	F	3	1-1	0-0	1-1	0	2	2	1	0	1	0	0	3	6
25	DAVIS, MIA	F	4	2-3	0-0	0-0	1	1	2	1	0	0	0	0	10	5
00	JONES, ASHLEY	G	7	3-7	1-3	0-0	0	1	1	2	0	1	0	0	10	5
11	ATKINSON, SHANNEN	C	0	0-0	0-0	0-0	0	1	1	0	0	0	0	0	6	1
12	MAYO, EMANI	G	0	0-0	0-0	0-0	0	0	0	0	0	0	0	0	2	2
TEAM							1	1	2	0		1				
TOTALS			17	7-14	2-6	1-1	3	8	11	8	0	5	0	0	50	

Shooting By Period

Period	FG	FG%	3FG	3FG%	FT	FT%
Game	25-70	35.7%	6-25	24.0%	5-6	83.3%

Deadball Rebounds: 1,0

Houston 12

No.	Player	S	Pts	FG	3FG	FT	OR	DR	TR	PF	A	TO	Blk	Stl	Min	+/-
01	PATTERSON, BRIA	F	3	1-4	1-3	0-0	1	0	1	0	0	0	0	0	10	-5
03	BRANCH, DORIAN	F	1	0-2	0-2	1-3	0	0	0	0	1	0	0	0	10	-5
05	GLADNEY, DYMOND	G	3	0-2	0-1	3-4	1	0	1	3	0	0	0	0	10	-5
23	BLACKSHELL-FAIR, JULIA	G	2	0-2	0-0	2-2	0	1	1	0	1	1	0	0	10	-5
30	HILL, TATYANA	F	3	1-4	0-0	1-2	2	2	4	1	0	0	0	0	10	-5
22	PEACE, KEASJA	F	0	0-0	0-0	0-0	0	0	0	0	0	0	0	0	0	0
24	JONES, MAYA	F	0	0-0	0-0	0-0	0	0	0	0	0	0	0	0	0	0
TEAM							1	1	2	0		0				
TOTALS			12	2-14	1-6	7-11	5	4	9	4	2	1	0	0	50	

Shooting By Period

Period	FG	FG%	3FG	3FG%	FT	FT%
Game	20-58	34.5%	7-22	31.8%	11-17	64.7%

Deadball Rebounds: 4,0

Game Notes:

Officials: Maj Forsberg, Tom Donaher, Bruce Morris
Attendance: 738

Start Time: 08:02 PM ET
End Time: 10:05 PM ET
Game Duration: 2:03
Conference Game;

Score	1st	2nd	3rd	4th	TOT
TEM	13	16	15	17	61
HOU	6	23	17	12	58

Points from (This Period)	TEM	HOU
In the Paint	10	2
Off Turns	2	0
2nd Chance	8	3
Fast Break	0	2
Bench	7	0

Official Play-By-Play
Temple vs Houston
Fourth Quarter
January 08, 2020 at Fertitta Center (Penick Court) - Houston



Period 4

Starters:

Temple: 20 WILLIAMSON, ALEXA (F); 25 DAVIS, MIA (F); 1 NIANG, LENA (G); 2 ALEXANDER, ASONAH (G); 5 MACKINS, MARISSA (G);

Houston: 1 PATTERSON, BRIA (F); 3 BRANCH, DORIAN (F); 5 GLADNEY, DYMOND (G); 23 BLACKSHELL-FAIR, JULIA (G); 30 HILL, TATYANA (F);

Time	VISITORS: Temple	Score	Margin	HOME: Houston
09:57				SUB OUT: PEACE, KEASJA
09:57				SUB IN: HILL, TATYANA
09:52				MISSED 3PTR by PATTERSON, BRIA
09:49	REBOUND (DEF) by NIANG, LENA			
09:33	TURNOVER (TRAVEL) by NIANG, LENA			
09:21	MISSED LAYUP by JONES, ASHLEY			
09:18				REBOUND (DEF) by HILL, TATYANA
09:09	FOUL (PERSONAL) by JONES, ASHLEY			
08:54		48-44	H 4	GOOD! LAYUP by HILL, TATYANA [PNT]
08:54				ASSIST by BRANCH, DORIAN
08:26	GOOD! LAYUP by JONES, ASHLEY [PNT]	48-46	H 2	
08:08				MISSED LAYUP by GLADNEY, DYMOND
08:03	REBOUND (DEF) by ALEXANDER, ASONAH			
07:54	SUB OUT: MACKINS, MARISSA			
07:54	SUB IN: ALEXANDER, ASONAH			
07:47	GOOD! JUMPER by DAVIS, MIA [PNT]	48-48	T	
07:23		51-48	H 3	GOOD! 3PTR by PATTERSON, BRIA
07:23				ASSIST by BLACKSHELL-FAIR, JULIA
06:49	MISSED JUMPER by DAVIS, MIA			
06:48				REBOUND (DEF) by TEAM
06:48	SUB OUT: ALEXANDER, ASONAH			
06:48	SUB IN: MACKINS, MARISSA			
06:41				MISSED LAYUP by BLACKSHELL-FAIR, JULIA
06:38				REBOUND (OFF) by PATTERSON, BRIA
06:37				MISSED LAYUP by PATTERSON, BRIA
06:35	REBOUND (DEF) by DAVIS, MIA			
06:14	MISSED 3PTR by MACKINS, MARISSA			
06:12				REBOUND (DEF) by BLACKSHELL-FAIR, JULIA
06:05				MISSED JUMPER by HILL, TATYANA
06:03	REBOUND (DEF) by ATKINSON, SHANNEN			
05:54				
05:46	MISSED 3PTR by MACKINS, MARISSA			
05:42	REBOUND (OFF) by DAVIS, MIA			
05:41	GOOD! LAYUP by DAVIS, MIA [PNT]	51-50	H 1	
05:22				MISSED 3PTR by PATTERSON, BRIA
05:20	REBOUND (DEF) by JONES, ASHLEY			
04:51	GOOD! 3PTR by JONES, ASHLEY	51-53	V 2	
04:28	FOUL (PERSONAL) by NIANG, LENA			
04:18	FOUL (PERSONAL) by MACKINS, MARISSA			
04:17				MISSED FT by BRANCH, DORIAN
04:17				REBOUND (OFF) by TEAM
04:17		52-53	V 1	GOOD! FT by BRANCH, DORIAN
04:17				MISSED FT by BRANCH, DORIAN
04:17				REBOUND (OFF) by GLADNEY, DYMOND
04:15	FOUL (PERSONAL) by ALEXANDER, ASONAH			
04:11		53-53	T	GOOD! FT by GLADNEY, DYMOND [FB]
04:11		54-53	H 1	GOOD! FT by GLADNEY, DYMOND [FB]
04:11	SUB OUT: MACKINS, MARISSA			
04:11	SUB OUT: ATKINSON, SHANNEN			
04:11	SUB IN: MAYO, EMANI			
04:11	SUB IN: WILLIAMSON, ALEXA			
04:04	MISSED 3PTR by JONES, ASHLEY			
04:04	FOUL (PERSONAL) by WILLIAMSON, ALEXA			
04:01	REBOUND (OFF) by NIANG, LENA			
03:55	GOOD! 3PTR by NIANG, LENA	54-56	V 2	
03:35	FOUL (PERSONAL) by JONES, ASHLEY			
03:35				MISSED FT by GLADNEY, DYMOND
03:35				REBOUND (OFF) by TEAM
03:35		55-56	V 1	GOOD! FT by GLADNEY, DYMOND
03:35	SUB OUT: MAYO, EMANI			
03:35	SUB IN: MACKINS, MARISSA			
03:17	MISSED LAYUP by JONES, ASHLEY			
03:14	REBOUND (OFF) by TEAM			
03:14	GOOD! LAYUP by WILLIAMSON, ALEXA [PNT]	55-58	V 3	
03:09				FOUL (PERSONAL) by HILL, TATYANA
02:54	SUB OUT: MACKINS, MARISSA			
02:54	SUB IN: MAYO, EMANI			
02:44	GOOD! FT by WILLIAMSON, ALEXA	55-59	V 4	
02:42				TIMEOUT TEAM
02:33				MISSED LAYUP by BLACKSHELL-FAIR, JULIA

Time	VISITORS: Temple	Score	Margin	HOME: Houston
02:28				REBOUND (OFF) by HILL, TATYANA
02:27	FOUL (PERSONAL) by DAVIS, MIA			
02:04				MISSED FT by HILL, TATYANA
02:04				REBOUND (OFF) by TEAM
01:58		56-59	V 3	GOOD! FT by HILL, TATYANA
01:56	SUB OUT: MAYO, EMANI			
01:56	SUB IN: MACKINS, MARISSA			
01:56	TURNOVER (BADPASS) by JONES, ASHLEY			
01:56	SUB OUT: MACKINS, MARISSA			
01:56	SUB IN: MAYO, EMANI			
01:56				MISSED 3PTR by GLADNEY, DYMOND
01:56	REBOUND (DEF) by TEAM			
01:56	SUB OUT: MAYO, EMANI			
01:56	SUB IN: MACKINS, MARISSA			
01:56	TURNOVER (OTHER) by MACKINS, MARISSA			
01:56	SUB OUT: MACKINS, MARISSA			
01:56	SUB IN: MAYO, EMANI			
01:56				MISSED LAYUP by HILL, TATYANA
01:56				REBOUND (OFF) by HILL, TATYANA
01:56				MISSED LAYUP by HILL, TATYANA
01:56	REBOUND (DEF) by WILLIAMSON, ALEXA			
01:56	TURNOVER (BADPASS) by WILLIAMSON, ALEXA			
01:50				TURNOVER (BADPASS) by BLACKSHELL-FAIR, JULIA
01:50	SUB OUT: MAYO, EMANI			
01:50	SUB IN: ALEXANDER, ASONAH			
01:44				FOUL (PERSONAL) by GLADNEY, DYMOND
01:44	SUB OUT: ALEXANDER, ASONAH			
01:44	SUB IN: MACKINS, MARISSA			
01:44	GOOD! LAYUP by JONES, ASHLEY [PNT]	56-61	V 5	
01:24				MISSED 3PTR by BRANCH, DORIAN
01:21	REBOUND (DEF) by WILLIAMSON, ALEXA			
01:14				FOUL (PERSONAL) by GLADNEY, DYMOND
01:14	SUB OUT: WILLIAMSON, ALEXA			
01:14	SUB IN: ALEXANDER, ASONAH			
01:14				FOUL (PERSONAL) by GLADNEY, DYMOND
00:52	MISSED 3PTR by JONES, ASHLEY			
00:49				REBOUND (DEF) by HILL, TATYANA
00:40	FOUL (PERSONAL) by MACKINS, MARISSA			
00:40		57-61	V 4	GOOD! FT by BLACKSHELL-FAIR, JULIA
00:40		58-61	V 3	GOOD! FT by BLACKSHELL-FAIR, JULIA
00:40	TIMEOUT 30SEC			
00:09	TURNOVER (SHOTCLOCK) by TEAM			
00:09	SUB OUT: MACKINS, MARISSA			
00:09	SUB IN: MAYO, EMANI			
00:09				TIMEOUT 30SEC
00:09				MISSED 3PTR by BRANCH, DORIAN
00:09				REBOUND (OFF) by TEAM

Temple 61, Houston 58

Points from (This Period)	TEM	HOU
In the Paint	10	2
Off Turns	2	0
2nd Chance	8	3
Fast Break	0	2
Bench	7	0

Official Scoring/Possession Reference Chart
Temple vs Houston
Period 1
January 08, 2020 at Fertitta Center (Penick Court) - Houston



Period 1

Starters:

Temple: 20 WILLIAMSON, ALEXA (F); 25 DAVIS, MIA (F); 1 NIANG, LENA (G); 2 ALEXANDER, ASONAH (G); 5 MACKINS, MARISSA (G);

Houston: 1 PATTERSON, BRIA (F); 3 BRANCH, DORIAN (F); 5 GLADNEY, DYMOND (G); 23 BLACKSHELL-FAIR, JULIA (G); 30 HILL, TATYANA (F);

Time	VISITORS: Temple	Score	Margin	HOME: Houston
09:38	GOOD! LAYUP by WILLIAMSON, ALEXA	0-2	V 2	
08:15	GOOD! LAYUP by DAVIS, MIA [PNT]	0-4	V 4	
07:15		2-4	V 2	GOOD! LAYUP by BLACKSHELL-FAIR, JULIA [FB/PNT]
06:29	GOOD! JUMPER by DAVIS, MIA [PNT]	2-6	V 4	
03:29	GOOD! JUMPER by WILLIAMSON, ALEXA [PNT]	2-8	V 6	
01:44		4-8	V 4	GOOD! LAYUP by GLADNEY, DYMOND [PNT]
01:09	GOOD! JUMPER by NIANG, LENA	4-10	V 6	
00:43	GOOD! FT by DAVIS, MIA [FB]	4-11	V 7	
00:26		6-11	V 5	GOOD! LAYUP by BLACKSHELL-FAIR, JULIA [PNT]
00:15	GOOD! LAYUP by ATKINSON, SHANNEN [PNT]	6-13	V 7	

Temple 13, Houston 6

Official Scoring/Possession Reference Chart
Temple vs Houston
Period 2
January 08, 2020 at Fertitta Center (Penick Court) - Houston



Period 2

Starters:

Temple: 20 WILLIAMSON,ALEXA (F); 25 DAVIS,MIA (F); 1 NIANG,LENA (G); 2 ALEXANDER,ASONAH (G); 5 MACKINS,MARISSA (G);

Houston: 1 PATTERSON,BRIA (F); 3 BRANCH,DORIAN (F); 5 GLADNEY,DYMOND (G); 23 BLACKSHELL-FAIR,JULIA (G); 30 HILL,TATYANA (F);

Time	VISITORS: Temple	Score	Margin	HOME: Houston
09:38	GOOD! LAYUP by ATKINSON, SHANNEN	6-15	V 9	
09:22		9-15	V 6	GOOD! 3PTR by BRANCH, DORIAN
09:12	GOOD! 3PTR by JONES, ASHLEY	9-18	V 9	
08:43		12-18	V 6	GOOD! 3PTR by PATTERSON, BRIA
08:11	GOOD! JUMPER by ATKINSON, SHANNEN	12-20	V 8	
07:52		15-20	V 5	GOOD! 3PTR by PATTERSON, BRIA
07:15	GOOD! 3PTR by JONES, ASHLEY	15-23	V 8	
06:39	GOOD! LAYUP by JONES, ASHLEY	15-25	V 10	
05:46		18-25	V 7	GOOD! 3PTR by BRANCH, DORIAN
05:23	GOOD! LAYUP by WILLIAMSON, ALEXA [PNT]	18-27	V 9	
04:53		20-27	V 7	GOOD! LAYUP by PEACE, KEASJA [PNT]
04:53		21-27	V 6	GOOD! FT by PEACE, KEASJA
04:03	GOOD! LAYUP by JONES, ASHLEY [FB/PNT]	21-29	V 8	
03:27		22-29	V 7	GOOD! FT by JONES, MAYA
02:29		24-29	V 5	GOOD! LAYUP by JONES, MAYA [PNT]
01:05		27-29	V 2	GOOD! 3PTR by GLADNEY, DYMOND [FB]
00:32		29-29	T	GOOD! LAYUP by BLACKSHELL-FAIR, JULIA [FB/PNT]

Temple 29, Houston 29

Official Scoring/Possession Reference Chart
Temple vs Houston
Period 3
January 08, 2020 at Fertitta Center (Penick Court) - Houston



Period 3

Starters:

Temple: 20 WILLIAMSON,ALEXA (F); 25 DAVIS,MIA (F); 1 NIANG,LENA (G); 2 ALEXANDER,ASONAH (G); 5 MACKINS,MARISSA (G);

Houston: 1 PATTERSON,BRIA (F); 3 BRANCH,DORIAN (F); 5 GLADNEY,DYMOND (G); 23 BLACKSHELL-FAIR,JULIA (G); 30 HILL,TATYANA (F);

Time	VISITORS: Temple	Score	Margin	HOME: Houston
09:40		31-29	H 2	GOOD! JUMPER by HILL, TATYANA [PNT]
09:25		33-29	H 4	GOOD! LAYUP by HILL, TATYANA [FB/PNT]
09:06	GOOD! LAYUP by DAVIS, MIA [PNT]	33-31	H 2	
06:48		35-31	H 4	GOOD! LAYUP by GLADNEY, DYMOND [FB]
06:15	GOOD! FT by DAVIS, MIA	35-32	H 3	
06:15	GOOD! FT by DAVIS, MIA	35-33	H 2	
05:56		37-33	H 4	GOOD! LAYUP by JONES, MAYA [PNT]
05:56		38-33	H 5	GOOD! FT by JONES, MAYA
05:31	GOOD! 3PTR by JONES, ASHLEY	38-36	H 2	
04:58	GOOD! 3PTR by JONES, ASHLEY	38-39	V 1	
03:41	GOOD! LAYUP by ATKINSON, SHANNEN [PNT]	38-41	V 3	
03:20	GOOD! JUMPER by DAVIS, MIA	38-43	V 5	
03:13	GOOD! FT by DAVIS, MIA	38-44	V 6	
02:43		41-44	V 3	GOOD! 3PTR by GLADNEY, DYMOND [FB]
02:00		43-44	V 1	GOOD! LAYUP by BLACKSHELL-FAIR, JULIA
00:40		45-44	H 1	GOOD! LAYUP by BLACKSHELL-FAIR, JULIA [PNT]
00:40		46-44	H 2	GOOD! FT by BLACKSHELL-FAIR, JULIA

Temple 44, Houston 46

Official Scoring/Possession Reference Chart
Temple vs Houston
Period 4
January 08, 2020 at Fertitta Center (Penick Court) - Houston



Period 4

Starters:

Temple: 20 WILLIAMSON,ALEXA (F); 25 DAVIS,MIA (F); 1 NIANG,LENA (G); 2 ALEXANDER,ASONAH (G); 5 MACKINS,MARISSA (G);

Houston: 1 PATTERSON,BRIA (F); 3 BRANCH,DORIAN (F); 5 GLADNEY,DYMOND (G); 23 BLACKSHELL-FAIR,JULIA (G); 30 HILL,TATYANA (F);

Time	VISITORS: Temple	Score	Margin	HOME: Houston
08:54		48-44	H 4	GOOD! LAYUP by HILL, TATYANA [PNT]
08:26	GOOD! LAYUP by JONES, ASHLEY [PNT]	48-46	H 2	
07:47	GOOD! JUMPER by DAVIS, MIA [PNT]	48-48	T	
07:23		51-48	H 3	GOOD! 3PTR by PATTERSON, BRIA
05:41	GOOD! LAYUP by DAVIS, MIA [PNT]	51-50	H 1	
04:51	GOOD! 3PTR by JONES, ASHLEY	51-53	V 2	
04:17		52-53	V 1	GOOD! FT by BRANCH, DORIAN
04:11		53-53	T	GOOD! FT by GLADNEY, DYMOND [FB]
04:11		54-53	H 1	GOOD! FT by GLADNEY, DYMOND [FB]
03:55	GOOD! 3PTR by NIANG, LENA	54-56	V 2	
03:35		55-56	V 1	GOOD! FT by GLADNEY, DYMOND
03:14	GOOD! LAYUP by WILLIAMSON, ALEXA [PNT]	55-58	V 3	
02:44	GOOD! FT by WILLIAMSON, ALEXA	55-59	V 4	
01:58		56-59	V 3	GOOD! FT by HILL, TATYANA
01:44	GOOD! LAYUP by JONES, ASHLEY [PNT]	56-61	V 5	
00:40		57-61	V 4	GOOD! FT by BLACKSHELL-FAIR, JULIA
00:40		58-61	V 3	GOOD! FT by BLACKSHELL-FAIR, JULIA

Temple 61, Houston 58

Official Substitutions Log
Temple vs Houston
Period 1
January 08, 2020 at Fertitta Center (Penick Court) - Houston



VISITORS: Temple	Time	Score	HOME: Houston
20 WILLIAMSON,ALEXA			1 PATTERSON,BRIA
25 DAVIS,MIA			3 BRANCH,DORIAN
1 NIANG,LENA			5 GLADNEY,DYMOND
2 ALEXANDER,ASONAH			23 BLACKSHELL-FAIR,JULIA
5 MACKINS,MARISSA			30 HILL,TATYANA
	07:30	4-0	SUB OUT: HILL,TATYANA
	07:30		SUB IN: PEACE,KEASJA
	05:18	6-2	SUB OUT: PATTERSON,BRIA
	05:18		SUB IN: JONES,MAYA
SUB OUT: 2 ALEXANDER,ASONAH	04:30	6-2	
SUB IN: 00 JONES,ASHLEY	04:30		
SUB OUT: 5 MACKINS,MARISSA	02:23	8-2	
SUB OUT: 20 WILLIAMSON,ALEXA	02:23		
SUB IN: 2 ALEXANDER,ASONAH	02:23		
SUB IN: 11 ATKINSON,SHANNEN	02:23		
	01:58	8-2	SUB OUT: PEACE,KEASJA
	01:58		SUB IN: PATTERSON,BRIA
SUB OUT: 25 DAVIS,MIA	00:43	11-4	
SUB IN: 12 MAYO,EMANI	00:43		

Temple 13, Houston 6

Official Substitutions Log
Temple vs Houston
Period 2
January 08, 2020 at Fertitta Center (Penick Court) - Houston



VISITORS: Temple	Time	Score	HOME: Houston
20 WILLIAMSON,ALEXA			1 PATTERSON,BRIA
25 DAVIS,MIA			3 BRANCH,DORIAN
1 NIANG,LENA			5 GLADNEY,DYMOND
2 ALEXANDER,ASONAH			23 BLACKSHELL-FAIR,JULIA
5 MACKINS,MARISSA			30 HILL,TATYANA
SUB OUT: 12 MAYO,EMANI	10:00	-	
SUB IN: 5 MACKINS,MARISSA	10:00		
	07:34	20-15	SUB OUT: JONES,MAYA
	07:34		SUB IN: PEACE,KEASJA
SUB OUT: 11 ATKINSON,SHANNEN	05:54	25-15	
SUB IN: 20 WILLIAMSON,ALEXA	05:54		
SUB OUT: 1 NIANG,LENA	05:54		
SUB IN: 25 DAVIS,MIA	05:54		
	03:33	29-21	SUB OUT: PEACE,KEASJA
	03:33		SUB IN: JONES,MAYA
SUB OUT: 20 WILLIAMSON,ALEXA	03:27	29-21	
SUB IN: 11 ATKINSON,SHANNEN	03:27		
SUB OUT: 2 ALEXANDER,ASONAH	02:06	29-24	
SUB IN: 1 NIANG,LENA	02:06		

Temple 29, Houston 29

Official Substitutions Log
Temple vs Houston
Period 3
January 08, 2020 at Fertitta Center (Penick Court) - Houston



VISITORS: Temple	Time	Score	HOME: Houston
20 WILLIAMSON,ALEXA			1 PATTERSON,BRIA
25 DAVIS,MIA			3 BRANCH,DORIAN
1 NIANG,LENA			5 GLADNEY,DYMOND
2 ALEXANDER,ASONAH			23 BLACKSHELL-FAIR,JULIA
5 MACKINS,MARISSA			30 HILL,TATYANA
	10:00	-	SUB OUT: JONES,MAYA
	10:00		SUB IN: HILL,TATYANA
SUB OUT: 00 JONES,ASHLEY	10:00		
SUB OUT: 11 ATKINSON,SHANNEN	10:00		
SUB IN: 2 ALEXANDER,ASONAH	10:00		
SUB IN: 20 WILLIAMSON,ALEXA	10:00		
SUB OUT: 2 ALEXANDER,ASONAH	09:27	29-31	
SUB OUT: 5 MACKINS,MARISSA	09:27		
SUB IN: 00 JONES,ASHLEY	09:27		
SUB IN: 12 MAYO,EMANI	09:27		
SUB OUT: 20 WILLIAMSON,ALEXA	08:13	31-33	
SUB IN: 11 ATKINSON,SHANNEN	08:13		
	06:30	31-35	SUB OUT: PATTERSON,BRIA
	06:30		SUB IN: JONES,MAYA
	06:15	33-35	SUB OUT: HILL,TATYANA
	06:15		SUB IN: PEACE,KEASJA
	03:13	43-38	SUB OUT: JONES,MAYA
	03:13		SUB IN: PATTERSON,BRIA
	01:32	44-43	SUB OUT: PEACE,KEASJA
	01:32		SUB IN: HILL,TATYANA
SUB OUT: 12 MAYO,EMANI	00:56	44-43	
SUB IN: 5 MACKINS,MARISSA	00:56		
	00:40	44-46	SUB OUT: HILL,TATYANA
	00:40		SUB IN: PEACE,KEASJA

Temple 44, Houston 46

Official Substitutions Log
Temple vs Houston
Period 4
January 08, 2020 at Fertitta Center (Penick Court) - Houston



VISITORS: Temple	Time	Score	HOME: Houston
20 WILLIAMSON,ALEXA			1 PATTERSON,BRIA
25 DAVIS,MIA			3 BRANCH,DORIAN
1 NIANG,LENA			5 GLADNEY,DYMOND
2 ALEXANDER,ASONAH			23 BLACKSHELL-FAIR,JULIA
5 MACKINS,MARISSA			30 HILL,TATYANA
	09:57	-	SUB OUT: PEACE,KEASJA
	09:57		SUB IN: HILL,TATYANA
SUB OUT: 5 MACKINS,MARISSA	07:54	46-48	
SUB IN: 2 ALEXANDER,ASONAH	07:54		
SUB OUT: 2 ALEXANDER,ASONAH	06:48	48-51	
SUB IN: 5 MACKINS,MARISSA	06:48		
SUB OUT: 5 MACKINS,MARISSA	04:11	53-54	
SUB OUT: 11 ATKINSON,SHANNEN	04:11		
SUB IN: 12 MAYO,EMANI	04:11		
SUB IN: 20 WILLIAMSON,ALEXA	04:11		
SUB OUT: 12 MAYO,EMANI	03:35	56-55	
SUB IN: 5 MACKINS,MARISSA	03:35		
SUB OUT: 5 MACKINS,MARISSA	02:54	58-55	
SUB IN: 12 MAYO,EMANI	02:54		
SUB OUT: 12 MAYO,EMANI	01:56	59-56	
SUB IN: 5 MACKINS,MARISSA	01:56		
SUB OUT: 5 MACKINS,MARISSA	01:56		
SUB IN: 12 MAYO,EMANI	01:56		
SUB OUT: 12 MAYO,EMANI	01:56		
SUB IN: 5 MACKINS,MARISSA	01:56		
SUB OUT: 5 MACKINS,MARISSA	01:56		
SUB IN: 12 MAYO,EMANI	01:56		
SUB OUT: 12 MAYO,EMANI	01:50	59-56	
SUB IN: 2 ALEXANDER,ASONAH	01:50		
SUB OUT: 2 ALEXANDER,ASONAH	01:44	59-56	
SUB IN: 5 MACKINS,MARISSA	01:44		
SUB OUT: 20 WILLIAMSON,ALEXA	01:14	61-56	
SUB IN: 2 ALEXANDER,ASONAH	01:14		
SUB OUT: 5 MACKINS,MARISSA	00:09	61-58	
SUB IN: 12 MAYO,EMANI	00:09		

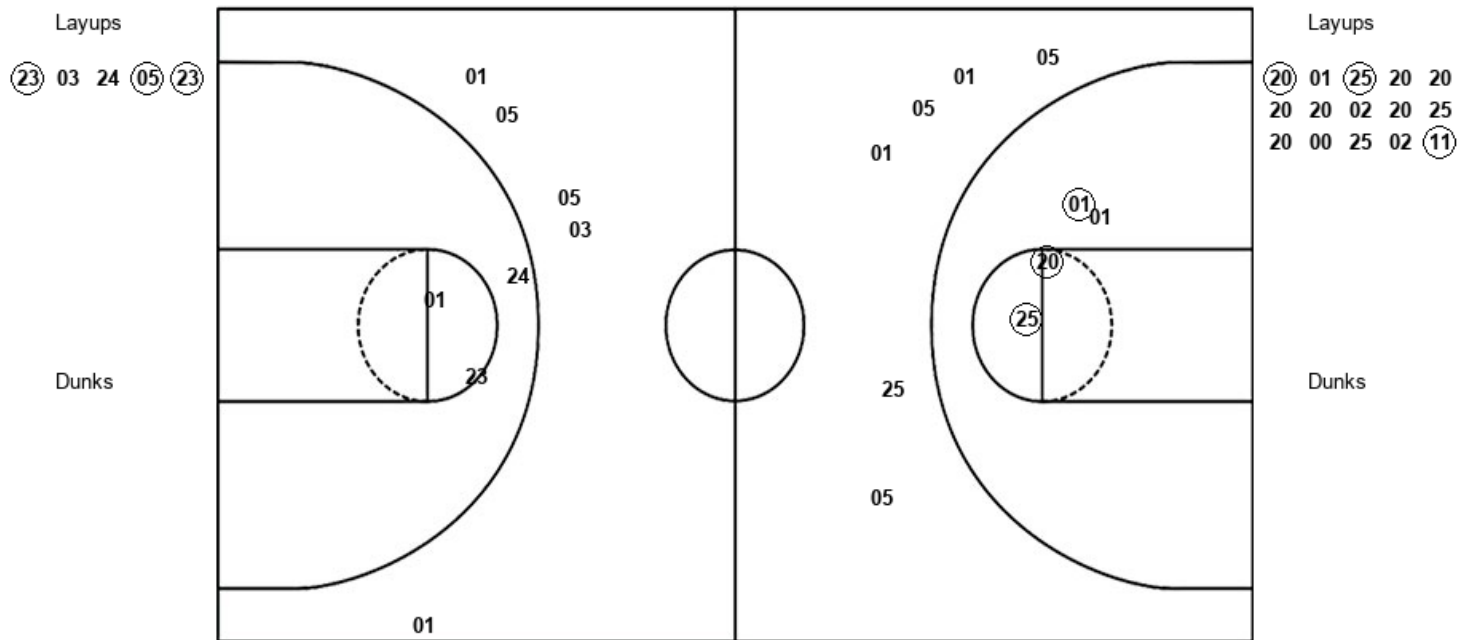
Temple 61, Houston 58

Official Shot Chart
Temple vs Houston
 PERIOD 1 Shots
 January 08, 2020 at Fertitta Center (Penick Court) - Houston



Houston

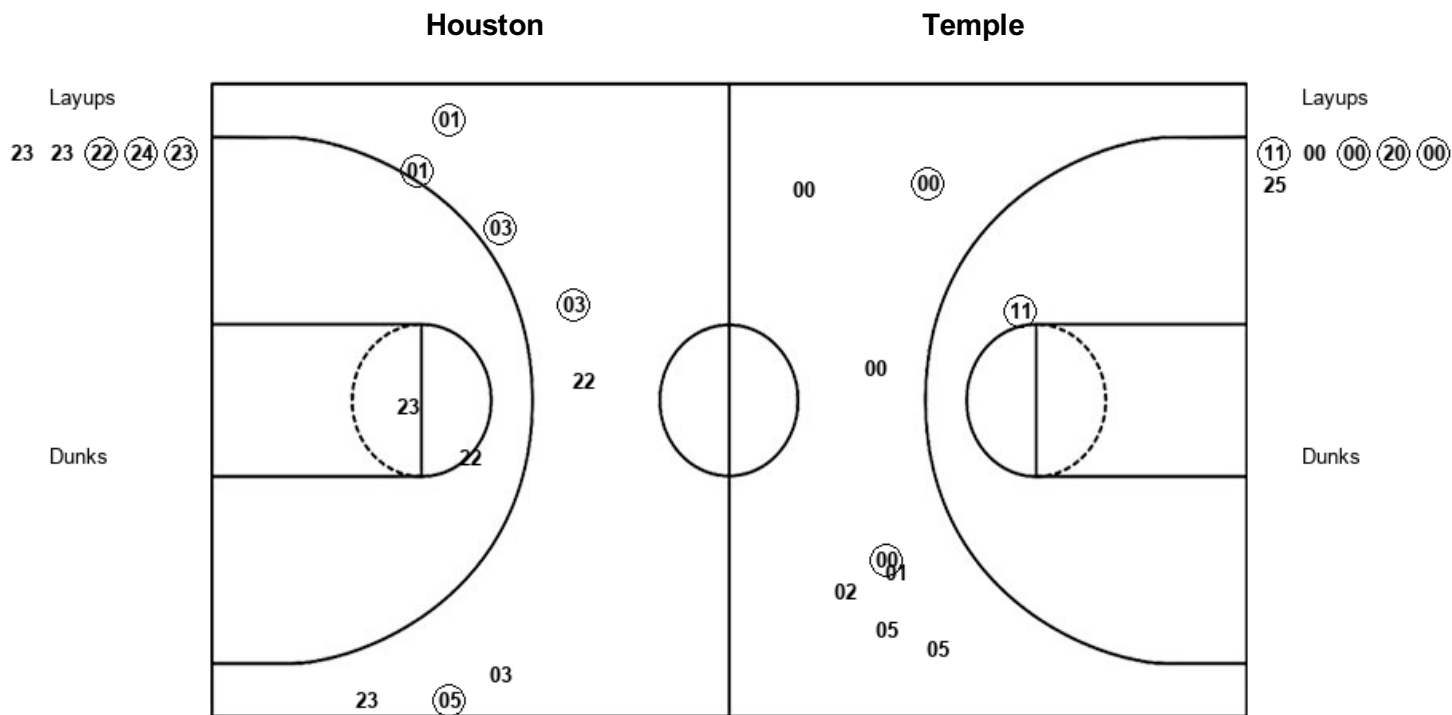
Temple



HOU : Period 1	Made	Att	Pct
Layups	3	5	60.0
Dunks	0	0	0
2PT Field Goals	3	8	37.5
3PT Field Goals	0	5	00.0
Total Field Goals	3	13	23.1

TEM : Period 1	Made	Att	Pct
Layups	3	15	20.0
Dunks	0	0	0
2PT Field Goals	6	19	31.6
3PT Field Goals	0	6	00.0
Total Field Goals	6	25	24.0

Official Shot Chart
Temple vs Houston
 PERIOD 2 Shots
 January 08, 2020 at Fertitta Center (Penick Court) - Houston



HOU : Period 2	Made	Att	Pct
Layups	3	5	60.0
Dunks	0	0	0
2PT Field Goals	3	7	42.9
3PT Field Goals	5	8	62.5
Total Field Goals	8	15	53.3

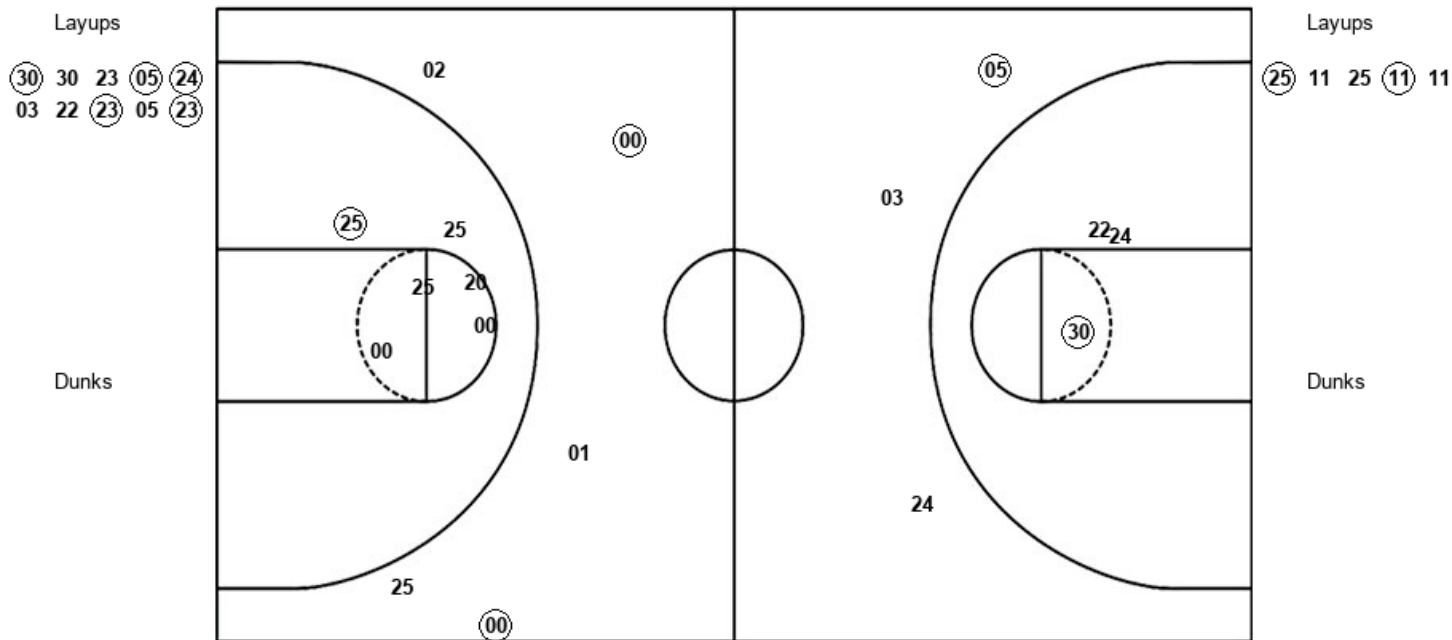
TEM : Period 2	Made	Att	Pct
Layups	4	6	66.7
Dunks	0	0	0
2PT Field Goals	5	7	71.4
3PT Field Goals	2	8	25.0
Total Field Goals	7	15	46.7

Official Shot Chart
Temple vs Houston
 PERIOD 3 Shots
 January 08, 2020 at Fertitta Center (Penick Court) - Houston



Houston

Temple



HOU : Period 3	Made	Att	Pct
Layups	5	10	50.0
Dunks	0	0	0
2PT Field Goals	6	13	46.2
3PT Field Goals	1	3	33.3
Total Field Goals	7	16	43.8

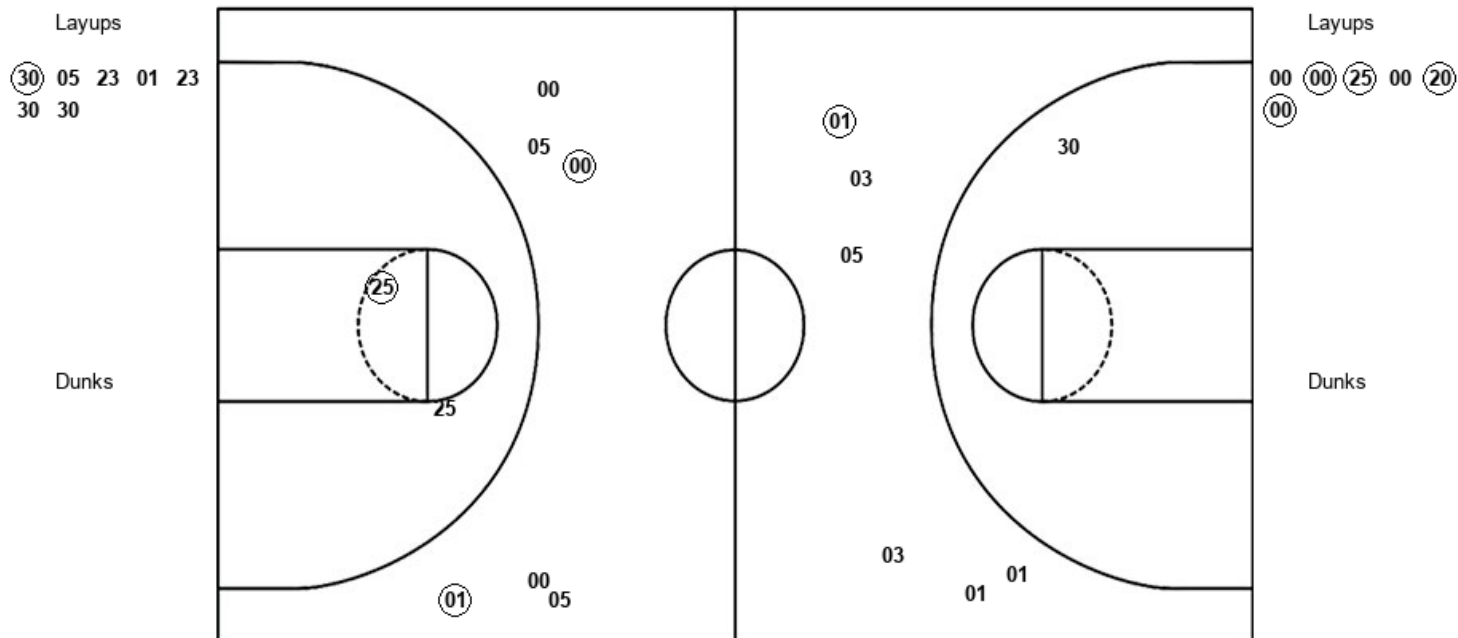
TEM : Period 3	Made	Att	Pct
Layups	2	5	40.0
Dunks	0	0	0
2PT Field Goals	3	11	27.3
3PT Field Goals	2	5	40.0
Total Field Goals	5	16	31.3

Official Shot Chart
Temple vs Houston
 PERIOD 4 Shots
 January 08, 2020 at Fertitta Center (Penick Court) - Houston



Houston

Temple



HOU : Period 4	Made	Att	Pct
Layups	1	7	14.3
Dunks	0	0	0
2PT Field Goals	1	8	12.5
3PT Field Goals	1	6	16.7
Total Field Goals	2	14	14.3

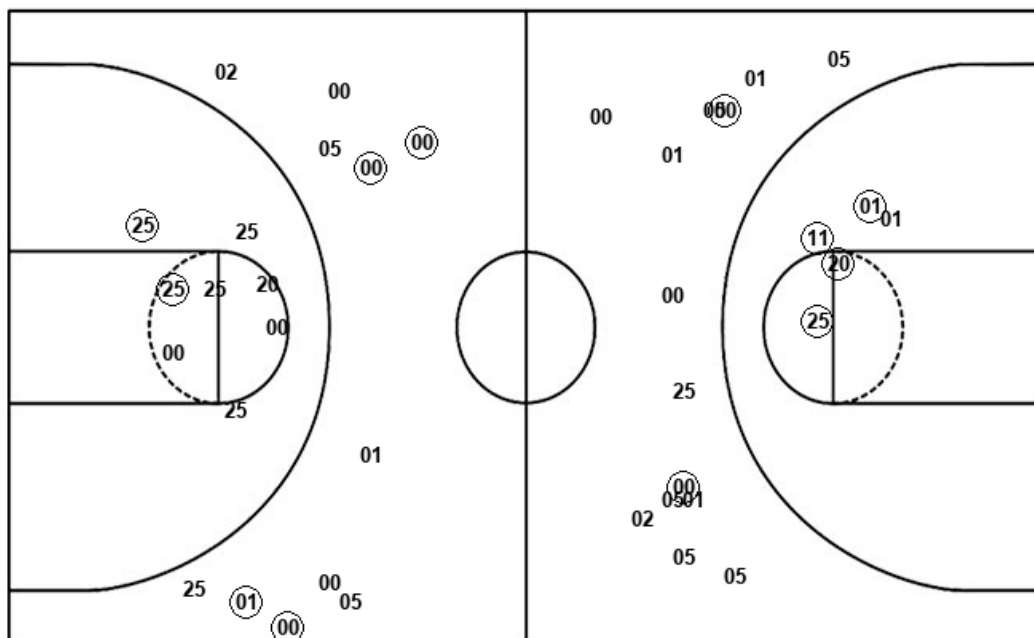
TEM : Period 4	Made	Att	Pct
Layups	4	6	66.7
Dunks	0	0	0
2PT Field Goals	5	8	62.5
3PT Field Goals	2	6	33.3
Total Field Goals	7	14	50.0

Official Shot Chart
Temple vs Houston
 Temple Team Shots
 January 08, 2020 at Fertitta Center (Penick Court) - Houston



Layups

Dunks



Layups

Dunks

(20) 01 (25) 20 20
 20 20 02 20 25
 20 00 25 02 (11)
 (11) 00 (00) (20) (00)
 25 (25) 11 25 (11)
 11 00 (00) (25) 00
 (20) (00)

TEM : Period 1	Made	Att	Pct
Layups	3	15	20.0
Dunks	0	0	0
2PT Field Goals	6	19	31.6
3PT Field Goals	0	6	00.0
Total Field Goals	6	25	24.0

TEM : Period 3	Made	Att	Pct
Layups	2	5	40.0
Dunks	0	0	0
2PT Field Goals	3	11	27.3
3PT Field Goals	2	5	40.0
Total Field Goals	5	16	31.3

TEM : Period 2	Made	Att	Pct
Layups	4	6	66.7
Dunks	0	0	0
2PT Field Goals	5	7	71.4
3PT Field Goals	2	8	25.0
Total Field Goals	7	15	46.7

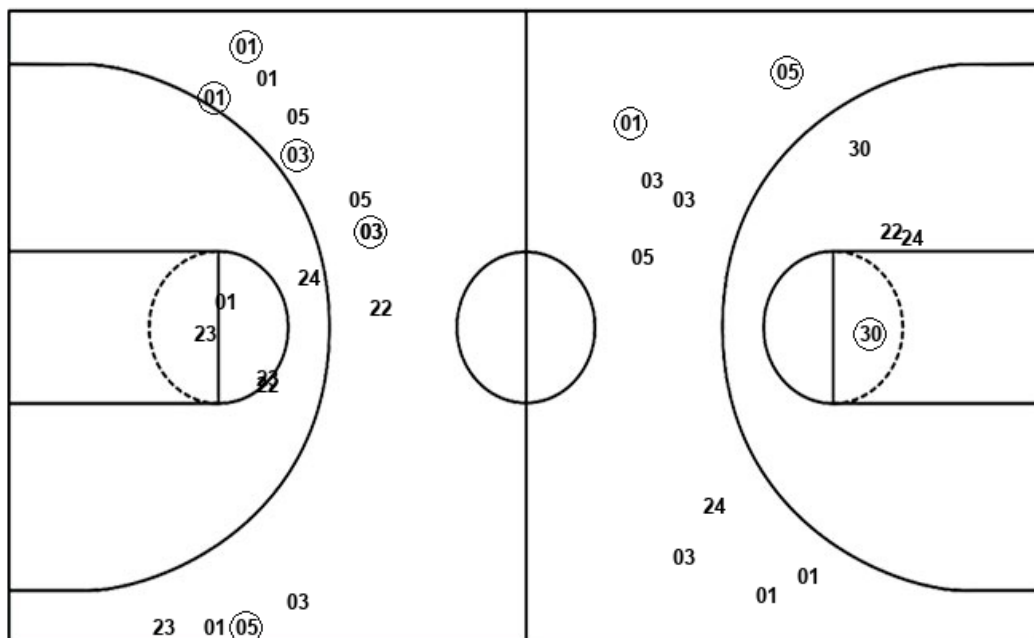
TEM : Period 4	Made	Att	Pct
Layups	4	6	66.7
Dunks	0	0	0
2PT Field Goals	5	8	62.5
3PT Field Goals	2	6	33.3
Total Field Goals	7	14	50.0

Official Shot Chart
Temple vs Houston
Houston Team Shots
January 08, 2020 at Fertitta Center (Penick Court) - Houston



Layups

Dunks



Layups

Dunks

(23) 03 24 (05) (23)
23 23 (22) (24) (23)
(30) 30 23 (05) (24)
03 22 (23) 05 (23)
(30) 05 23 01 23
30 30

HOU : Period 1	Made	Att	Pct
Layups	3	5	60.0
Dunks	0	0	0
2PT Field Goals	3	8	37.5
3PT Field Goals	0	5	00.0
Total Field Goals	3	13	23.1

HOU : Period 3	Made	Att	Pct
Layups	5	10	50.0
Dunks	0	0	0
2PT Field Goals	6	13	46.2
3PT Field Goals	1	3	33.3
Total Field Goals	7	16	43.8

HOU : Period 2	Made	Att	Pct
Layups	3	5	60.0
Dunks	0	0	0
2PT Field Goals	3	7	42.9
3PT Field Goals	5	8	62.5
Total Field Goals	8	15	53.3

HOU : Period 4	Made	Att	Pct
Layups	1	7	14.3
Dunks	0	0	0
2PT Field Goals	1	8	12.5
3PT Field Goals	1	6	16.7
Total Field Goals	2	14	14.3