

FINAL SCORE



**Chicago State
University**

69



**Western Michigan
University**

90

December 14, 2019 • University Arena - Kalamazoo, Mich.

FINAL STATISTICS

Official Box Score
Chicago State University vs Western Michigan University
Game Totals -- Final Statistics
December 14, 2019 at University Arena - Kalamazoo, Mich.



Chicago State University 69

No.	Player	S	Pts	FG	3FG	FT	OR	DR	TR	PF	A	TO	Blk	Stl	Min	+/-
04	CLIFF, ALEXANDRIA	F	6	3-5	0-0	0-1	1	1	2	2	1	1	0	0	23	-13
10	BOWERS, TYESHIA	G	14	4-15	0-2	6-8	2	3	5	1	4	2	0	2	33	-22
21	PHOUMIPHAT, AJA	G	2	0-5	0-2	2-2	0	1	1	2	1	5	1	1	20	-29
22	MATA BOIS, INES	F	6	3-4	0-0	0-0	1	1	2	3	2	5	0	2	31	-9
23	CRANE, KOURTNEY	G	21	7-13	3-5	4-5	0	5	5	3	0	6	0	6	30	-8
02	ROBINSON, TAYLOR	G	2	1-1	0-0	0-0	2	3	5	1	2	1	0	0	12	-2
11	DINC, TUANA	F	2	0-2	0-0	2-2	1	1	2	1	1	1	0	0	11	7
20	CARSTENS, BETHANY	G	16	7-18	0-6	2-2	1	2	3	3	3	1	0	1	33	-17
24	JOHNSON, ZIPPORA	F	0	0-1	0-0	0-0	0	1	1	0	0	0	0	0	6	-12
TEAM							2	1	3	0		0				
TOTALS			69	25-64	3-15	16-20	10	19	29	16	14	22	1	12	200	

Shooting By Period

Period	FG	FG%	3FG	3FG%	FT	FT%
1st Qtr	4-15	27%	0-4	00%	0-0	0%
2nd Qtr	6-14	43%	0-1	00%	4-7	57%
3rd Qtr	6-18	33%	3-8	38%	6-7	86%
4th Qtr	9-17	53%	0-2	00%	6-6	100%
1st Half	10-29	34%	0-5	00%	4-7	57%
2nd Half	15-35	43%	3-10	30%	12-13	92%
Game	25-64	39.1%	3-15	20.0%	16-20	80.0%

Deadball Rebounds: 1.0
 Last FG: 4th-00:27
 Biggest Run: 8-0
 Largest lead: By 0 at 1-08
 Technical Fouls: None.

Western Michigan University 90

No.	Player	S	Pts	FG	3FG	FT	OR	DR	TR	PF	A	TO	Blk	Stl	Min	+/-
05	BAILEY, CHELAYNE	G	5	2-4	1-1	0-0	0	2	2	4	9	1	0	4	25	23
10	MOBLEY, BREANNA	F	17	6-9	0-0	5-7	1	9	10	1	2	3	1	3	27	25
11	REED, KAMRIN	G	10	4-7	1-4	1-2	1	2	3	1	2	0	0	0	24	28
23	WALKER, JORDAN	G	27	11-19	3-6	2-2	4	2	6	2	0	3	0	2	27	31
24	WOOL, LEIGHAH-AMORI	F	10	4-10	1-2	1-1	2	6	8	1	2	2	1	0	20	19
01	BROOKS, KIA	G	0	0-2	0-1	0-0	0	0	0	2	1	0	0	1	9	-6
02	WATTERS, MADDIE	G	0	0-0	0-0	0-0	1	1	2	0	0	0	0	1	6	-3
03	FLETCHER, JILL	G	3	1-3	1-2	0-0	1	1	2	3	1	6	0	0	11	-4
12	JACOBSON, REILLY	F	10	4-4	0-0	2-2	3	2	5	1	4	1	1	0	18	7
13	WALKER, ANIYA	F	1	0-2	0-2	1-2	0	0	0	2	1	2	1	1	7	-13
20	SHAFER, SYDNEY	G	5	1-4	1-4	2-2	1	1	2	0	2	3	0	1	15	-2
31	KONKLE, ASHLEY	F	2	1-4	0-0	0-0	1	2	3	0	0	2	0	1	10	0
TEAM							0	2	2	0		0				
TOTALS			90	34-68	8-22	14-18	15	30	45	17	24	23	4	14	200	

Shooting By Period

Period	FG	FG%	3FG	3FG%	FT	FT%
1st Qtr	10-17	59%	2-3	67%	1-1	100%
2nd Qtr	10-19	53%	1-6	17%	1-2	50%
3rd Qtr	9-14	64%	4-5	80%	10-12	83%
4th Qtr	5-18	28%	1-8	13%	2-3	67%
1st Half	20-36	56%	3-9	33%	2-3	67%
2nd Half	14-32	44%	5-13	38%	12-15	80%
Game	34-68	50.0%	8-22	36.4%	14-18	77.8%

Deadball Rebounds: 4.2
 Last FG: 4th-03:49
 Biggest Run: 10-0
 Largest lead: By 35 at 3-02
 Technical Fouls: None.

Game Notes:

Officials: , ,
 Attendance: 389

Start Time: 02:03 PM ET
 End Time: 03:57 PM ET
 Game Duration: 1:53

Score	1st	2nd	3rd	4th	TOT
302	8	16	21	24	69
774	23	22	32	13	90

302 led for 0:00. 774 led for 39:15.
 Game was tied for 0:45.
 Times tied: 1 Lead Changes: 0

Points from	302	774
In the Paint	40	50
Off Turns	20	27
2nd Chance	5	16
Fast Break	17	11
Bench	20	21

Official Box Score
Chicago State University vs Western Michigan University
First Half Statistics Only
December 14, 2019 at University Arena - Kalamazoo, Mich.



Chicago State University 24

No.	Player	S	Pts	FG	3FG	FT	OR	DR	TR	PF	A	TO	Blk	Stl	Min	+/-
02	ROBINSON, TAYLOR	G	0	0-0	0-0	0-0	0	2	2	0	0	0	0	0	4	-5
04	CLIFF, ALEXANDRIA	F	4	2-4	0-0	0-1	1	0	1	1	0	1	0	0	18	-20
10	BOWERS, TYESHIA	G	10	4-12	0-1	2-4	1	2	3	0	1	2	0	2	20	-21
11	DINC, TUANA	F	0	0-0	0-0	0-0	0	0	0	0	0	0	0	0	0	0
20	CARSTENS, BETHANY	G	6	3-7	0-2	0-0	1	0	1	1	1	0	0	0	15	-15
21	PHOUMIPHAT, AJA	G	2	0-3	0-2	2-2	0	1	1	1	0	4	1	0	10	-13
22	MATA BOIS, INES	F	0	0-0	0-0	0-0	0	1	1	1	1	2	0	0	17	-16
23	CRANE, KOURTNEY	G	2	1-2	0-0	0-0	0	2	2	1	0	4	0	1	13	-12
24	JOHNSON, ZIPPORA	F	0	0-1	0-0	0-0	0	1	1	0	0	0	0	0	4	-3
	TEAM		0	0-0	0-0	0-0	1	1	2	0	0	0	0	0	0	0
TOTALS			24	10-29	0-5	4-7	4	10	14	5	3	13	1	3	100	

Shooting By Period

Period	FG	FG%	3FG	3FG%	FT	FT%
1st Qtr	4-15	27%	0-4	00%	0-0	0%
2nd Qtr	6-14	43%	0-1	00%	4-7	57%
1st Half	10-29	34%	0-5	00%	4-7	57%
Game	25-64	39.1%	3-15	20.0%	16-20	80.0%

Deadball Rebounds: 1,0

Last FG Half: 302 2nd-00:35

Western Michigan University 45

No.	Player	S	Pts	FG	3FG	FT	OR	DR	TR	PF	A	TO	Blk	Stl	Min	+/-
01	BROOKS, KIA	G	0	0-0	0-0	0-0	0	0	0	0	0	0	0	0	0	0
02	WATTERS, MADDIE	G	0	0-0	0-0	0-0	1	1	2	0	0	0	0	1	4	3
05	BAILEY, CHELAYNE	G	2	1-1	0-0	0-0	0	1	1	2	5	1	0	2	16	18
10	MOBLEY, BREANNA	F	5	2-5	0-0	1-2	0	6	6	1	2	2	0	2	14	10
11	REED, KAMRIN	G	7	3-5	1-3	0-0	1	0	1	1	1	0	0	0	16	18
12	JACOBSON, REILLY	F	8	4-4	0-0	0-0	2	0	2	1	3	1	1	0	10	13
13	WALKER, ANIYA	F	0	0-1	0-1	0-0	0	0	0	1	1	2	0	1	4	-4
20	SHAFER, SYDNEY	G	0	0-2	0-2	0-0	0	1	1	0	0	1	0	0	4	3
23	WALKER, JORDAN	G	18	8-11	2-3	0-0	1	1	2	0	0	2	0	0	16	25
24	WOOL, LEIGHAH-AMORI	F	5	2-6	0-0	1-1	2	3	5	0	1	1	1	0	13	14
31	KONKLE, ASHLEY	F	0	0-1	0-0	0-0	0	1	1	0	0	0	0	1	3	5
03	FLETCHER, JILL	G	0	0-0	0-0	0-0	0	0	0	0	0	0	0	0	0	0
	TEAM		0	0-0	0-0	0-0	0	2	2	0	0	0	0	0	0	0
TOTALS			45	20-36	3-9	2-3	7	16	23	6	13	10	2	7	100	

Shooting By Period

Period	FG	FG%	3FG	3FG%	FT	FT%
1st Qtr	10-17	59%	2-3	67%	1-1	100%
2nd Qtr	10-19	53%	1-6	17%	1-2	50%
1st Half	20-36	56%	3-9	33%	2-3	67%
Game	34-68	50.0%	8-22	36.4%	14-18	77.8%

Deadball Rebounds: 4,2

Last FG Half: 774 2nd-00:47

Game Notes:

Officials: , ,
 Attendance: 389

Start Time: 02:03 PM ET
 End Time: 03:57 PM ET
 Game Duration: 1:53

Score	1st	2nd	3rd	4th	TOT
302	8	16	21	24	69
774	23	22	32	13	90

Points from (This Period)	302	774
In the Paint	20	34
Off Turns	4	11
2nd Chance	2	11
Fast Break	4	2
Bench	6	8

Official Box Score
Chicago State University vs Western Michigan University
First Quarter Statistics Only
December 14, 2019 at University Arena - Kalamazoo, Mich.



Chicago State University 8

No.	Player	S	Pts	FG	3FG	FT	OR	DR	TR	PF	A	TO	Blk	Stl	Min	+/-
04	CLIFF, ALEXANDRIA	F	0	0-1	0-0	0-0	0	0	0	1	0	0	0	0	9	-17
10	BOWERS, TYESHIA	G	8	4-9	0-1	0-0	0	1	1	0	0	1	0	1	10	-15
21	PHOUMIPHAT, AJA	G	0	0-2	0-1	0-0	0	1	1	0	0	2	1	0	7	-13
22	MATA BOIS, INES	F	0	0-0	0-0	0-0	0	1	1	0	0	2	0	0	10	-15
23	CRANE, KOURTNEY	G	0	0-0	0-0	0-0	0	0	0	1	0	2	0	0	5	-6
02	ROBINSON, TAYLOR	G	0	0-0	0-0	0-0	0	2	2	0	0	0	0	0	3	-2
11	DINC, TUANA	F	0	0-0	0-0	0-0	0	0	0	0	0	0	0	0	0	0
20	CARSTENS, BETHANY	G	0	0-3	0-2	0-0	0	0	0	0	0	0	0	0	6	-9
24	JOHNSON, ZIPPORA	F	0	0-0	0-0	0-0	0	0	0	0	0	0	0	0	1	2
TEAM							0	0	0	0	0	0	0	0	0	0
TOTALS			8	4-15	0-4	0-0	0	5	5	2	0	7	1	1	50	

Shooting By Period

Period	FG	FG%	3FG	3FG%	FT	FT%
1st Qtr	4-15	27%	0-4	00%	0-0	0%
2nd Qtr	6-14	43%	0-1	00%	4-7	57%
1st Half	4-15	27%	0-4	00%	0-0	0%
1st Half	10-29	34%	0-5	00%	4-7	57%
Game	25-64	39.1%	3-15	20.0%	16-20	80.0%

Deadball Rebounds: 1,0

Western Michigan University 23

No.	Player	S	Pts	FG	3FG	FT	OR	DR	TR	PF	A	TO	Blk	Stl	Min	+/-
05	BAILEY, CHELAYNE	G	0	0-0	0-0	0-0	0	1	1	0	4	0	0	1	9	17
10	MOBLEY, BREANNA	F	2	1-3	0-0	0-0	0	5	5	0	0	2	0	1	7	9
11	REED, KAMRIN	G	3	1-1	1-1	0-0	0	0	0	0	1	0	0	0	9	17
23	WALKER, JORDAN	G	13	6-7	1-2	0-0	0	0	0	0	0	2	0	0	10	15
24	WOOL, LEIGHAH-AMORI	F	3	1-4	0-0	1-1	1	2	3	0	1	1	0	0	8	11
01	BROOKS, KIA	G	0	0-0	0-0	0-0	0	0	0	0	0	0	0	0	0	0
02	WATTERS, MADDIE	G	0	0-0	0-0	0-0	0	0	0	0	0	0	0	0	1	-2
03	FLETCHER, JILL	G	0	0-0	0-0	0-0	0	0	0	0	0	0	0	0	0	0
12	JACOBSON, REILLY	F	2	1-1	0-0	0-0	1	0	1	0	1	0	1	0	5	10
13	WALKER, ANIYA	F	0	0-0	0-0	0-0	0	0	0	0	0	0	0	0	0	0
20	SHAFFER, SYDNEY	G	0	0-0	0-0	0-0	0	0	0	0	0	0	0	0	1	-2
31	KONKLE, ASHLEY	F	0	0-1	0-0	0-0	0	0	0	0	0	0	0	0	0	0
TEAM							0	2	2	0	0	0	0	0	0	
TOTALS			23	10-17	2-3	1-1	2	10	12	0	7	5	1	2	50	

Shooting By Period

Period	FG	FG%	3FG	3FG%	FT	FT%
1st Qtr	10-17	59%	2-3	67%	1-1	100%
2nd Qtr	10-19	53%	1-6	17%	1-2	50%
1st Half	10-17	59%	2-3	67%	1-1	100%
1st Half	20-36	56%	3-9	33%	2-3	67%
Game	34-68	50.0%	8-22	36.4%	14-18	77.8%

Deadball Rebounds: 4,2

Game Notes:
 Officials: , ,
 Attendance: 389

Start Time: 02:03 PM ET
 End Time: 03:57 PM ET
 Game Duration: 1:53

Score	1st	2nd	3rd	4th	TOT
302	8	16	21	24	69
774	23	22	32	13	90

Points from (This Period)	302	774
In the Paint	8	16
Off Turns	2	7
2nd Chance	0	5
Fast Break	2	0
Bench	0	2

Official Play-By-Play
Chicago State University vs Western Michigan University
First Quarter
December 14, 2019 at University Arena - Kalamazoo, Mich.



Period 1

Starters:

Chicago State University: 4 CLIFF, ALEXANDRIA (F); 10 BOWERS, TYESHIA (G); 21 PHOUMIPHAT, AJA (G); 22 MATA BOIS, INES (F); 23 CRANE, KOURTNEY (G);

Western Michigan University: 5 BAILEY, CHELAYNE (G); 10 MOBLEY, BREANNA (F); 11 REED, KAMRIN (G); 23 WALKER, JORDAN (G); 24 WOOL, LEIGHAH-AMORI (F);

Time	VISITORS: Chicago State University	Score	Margin	HOME: Western Michigan University
09:21	TURNOVER (BADPASS) by PHOUMIPHAT, AJA			
09:21				STEAL by BAILEY, CHELAYNE
09:15		2-0	H 2	GOOD! JUMPER by WALKER, JORDAN [PNT]
09:15				ASSIST by BAILEY, CHELAYNE
08:56	MISSED JUMPER by BOWERS, TYESHIA			
08:53				REBOUND (DEF) by MOBLEY, BREANNA
08:49				TURNOVER (DRIBBLING) by MOBLEY, BREANNA
08:48	GOOD! LAYUP by BOWERS, TYESHIA [PNT]	2-2	T	
08:48		4-2	H 2	GOOD! LAYUP by MOBLEY, BREANNA [PNT]
08:48				ASSIST by REED, KAMRIN
08:32	MISSED LAYUP by PHOUMIPHAT, AJA			
08:28				REBOUND (DEF) by MOBLEY, BREANNA
08:25				MISSED 3PTR by WALKER, JORDAN
08:22	REBOUND (DEF) by BOWERS, TYESHIA			
08:17	TURNOVER (OTHER) by CRANE, KOURTNEY			
08:17	FOUL (OFF) by CRANE, KOURTNEY			
08:17	TURNOVER (OFFENSIVE) by CRANE, KOURTNEY			
08:04				MISSED JUMPER by MOBLEY, BREANNA
08:00	REBOUND (DEF) by MATA BOIS, INES			
07:36	TURNOVER (BADPASS) by MATA BOIS, INES			
07:36				STEAL by MOBLEY, BREANNA
07:31				TURNOVER (BADPASS) by WALKER, JORDAN
07:14	TURNOVER (TRAVEL) by BOWERS, TYESHIA			
07:00				TURNOVER (LOSTBALL) by WALKER, JORDAN
06:35	MISSED 3PTR by PHOUMIPHAT, AJA			
06:30				REBOUND (DEF) by TEAM
06:21				TURNOVER (BADPASS) by WOOL, LEIGHAH-AMORI
06:21	STEAL by BOWERS, TYESHIA			
06:12	TURNOVER (LOSTBALL) by MATA BOIS, INES			
05:59				MISSED LAYUP by WOOL, LEIGHAH-AMORI
05:55				REBOUND (OFF) by WOOL, LEIGHAH-AMORI
05:54		6-2	H 4	GOOD! JUMPER by WALKER, JORDAN [PNT]
05:54				ASSIST by WOOL, LEIGHAH-AMORI
05:41	MISSED JUMPER by BOWERS, TYESHIA			
05:37				REBOUND (DEF) by MOBLEY, BREANNA
05:30		8-2	H 6	GOOD! LAYUP by WOOL, LEIGHAH-AMORI
05:30				ASSIST by BAILEY, CHELAYNE
05:30	FOUL (PERSONAL) by CLIFF, ALEXANDRIA			
05:30	SUB OUT: CRANE, KOURTNEY			
05:30	SUB IN: CARSTENS, BETHANY			
05:30		9-2	H 7	GOOD! FT by WOOL, LEIGHAH-AMORI
05:30				SUB OUT: MOBLEY, BREANNA
05:30				SUB IN: JACOBSON, REILLY
05:11	MISSED JUMPER by BOWERS, TYESHIA			
05:07				REBOUND (DEF) by WOOL, LEIGHAH-AMORI
04:59				
04:57		11-2	H 9	GOOD! LAYUP by JACOBSON, REILLY
04:57				ASSIST by BAILEY, CHELAYNE
04:51	GOOD! LAYUP by BOWERS, TYESHIA [FB]	11-4	H 7	
04:32				MISSED LAYUP by WOOL, LEIGHAH-AMORI
04:29				REBOUND (OFF) by JACOBSON, REILLY
04:28		14-4	H 10	GOOD! 3PTR by REED, KAMRIN
04:28				ASSIST by JACOBSON, REILLY
04:01	MISSED LAYUP by BOWERS, TYESHIA			
03:50				REBOUND (DEF) by BAILEY, CHELAYNE
03:49				MISSED LAYUP by WOOL, LEIGHAH-AMORI
03:49	BLOCK by PHOUMIPHAT, AJA			
03:37	REBOUND (DEF) by PHOUMIPHAT, AJA			
03:36	TURNOVER (BADPASS) by PHOUMIPHAT, AJA			
03:28		17-4	H 13	GOOD! 3PTR by WALKER, JORDAN
03:22	MISSED 3PTR by BOWERS, TYESHIA			
03:16				REBOUND (DEF) by TEAM
03:15				SUB OUT: WOOL, LEIGHAH-AMORI
03:15				SUB IN: MOBLEY, BREANNA
03:15	SUB OUT: PHOUMIPHAT, AJA			
03:15	SUB IN: ROBINSON, TAYLOR			
03:00		19-4	H 15	GOOD! JUMPER by WALKER, JORDAN [PNT]
03:00				ASSIST by BAILEY, CHELAYNE
02:39	MISSED LAYUP by CLIFF, ALEXANDRIA			
02:36				REBOUND (DEF) by MOBLEY, BREANNA

Time	VISITORS: Chicago State University	Score	Margin	HOME: Western Michigan University
02:26		21-4	H 17	GOOD! JUMPER by WALKER, JORDAN [PNT]
02:10	GOOD! LAYUP by BOWERS, TYESHIA [PNT]	21-6	H 15	
01:52				MISSED JUMPER by MOBLEY, BREANNA
01:49	REBOUND (DEF) by ROBINSON, TAYLOR			
01:22	MISSED JUMPER by CARSTENS, BETHANY			
01:22				REBOUND (DEF) by MOBLEY, BREANNA
01:11		23-6	H 17	GOOD! LAYUP by WALKER, JORDAN [PNT]
00:49				SUB OUT: BAILEY, CHELAYNE
00:49				SUB OUT: REED, KAMRIN
00:49				SUB OUT: JACOBSON, REILLY
00:49				SUB IN: WATTERS, MADDIE
00:49				SUB IN: SHAFER, SYDNEY
00:49				SUB IN: WOOL, LEIGHAH-AMORI
00:49	SUB OUT: CLIFF, ALEXANDRIA			
00:49	SUB IN: JOHNSON, ZIPPORA			
00:46	GOOD! LAYUP by BOWERS, TYESHIA [PNT]	23-8	H 15	
00:29				TURNOVER (LOSTBALL) by MOBLEY, BREANNA
00:29				SUB OUT: MOBLEY, BREANNA
00:29				SUB IN: KONKLE, ASHLEY
00:29	SUB OUT: BOWERS, TYESHIA			
00:29	SUB IN: ADEDIRAN, PRECIOUS			
00:29	SUB OUT: ADEDIRAN, PRECIOUS			
00:29	SUB IN: PHOUMIPHAT, AJA			
00:15	MISSED 3PTR by CARSTENS, BETHANY			
00:11				REBOUND (DEF) by WOOL, LEIGHAH-AMORI
00:07				MISSED LAYUP by KONKLE, ASHLEY
00:02	REBOUND (DEF) by ROBINSON, TAYLOR			
00:00	MISSED 3PTR by CARSTENS, BETHANY			
00:00				REBOUND (DEF) by TEAM

Chicago State University 8, Western Michigan University 23

Points from (This Period)	302	774
In the Paint	8	16
Off Turns	2	7
2nd Chance	0	5
Fast Break	2	0
Bench	0	2

Official Box Score
Chicago State University vs Western Michigan University
Second Quarter Statistics Only
December 14, 2019 at University Arena - Kalamazoo, Mich.



Chicago State University 16

No.	Player	S	Pts	FG	3FG	FT	OR	DR	TR	PF	A	TO	Blk	Stl	Min	+/-
04	CLIFF, ALEXANDRIA	F	4	2-3	0-0	0-1	1	0	1	0	0	1	0	0	9	-3
10	BOWERS, TYESHIA	G	2	0-3	0-0	2-4	1	1	2	0	1	1	0	1	10	-6
21	PHOUMIPHAT, AJA	G	2	0-1	0-1	2-2	0	0	0	1	0	2	0	0	3	0
22	MATA BOIS, INES	F	0	0-0	0-0	0-0	0	0	0	1	1	0	0	0	7	-1
23	CRANE, KOURTNEY	G	2	1-2	0-0	0-0	0	2	2	0	0	2	0	1	8	-6
02	ROBINSON, TAYLOR	G	0	0-0	0-0	0-0	0	0	0	0	0	0	0	0	1	-3
11	DINC, TUANA	F	0	0-0	0-0	0-0	0	0	0	0	0	0	0	0	0	0
20	CARSTENS, BETHANY	G	6	3-4	0-0	0-0	1	0	1	1	1	0	0	0	9	-6
24	JOHNSON, ZIPPORA	F	0	0-1	0-0	0-0	0	1	1	0	0	0	0	0	3	-5
TEAM							1	1	2	0						
TOTALS			16	6-14	0-1	4-7	4	5	9	3	3	6	0	2	50	

Shooting By Period

Period	FG	FG%	3FG	3FG%	FT	FT%
3rd Qtr	6-18	33%	3-8	38%	6-7	86%
4th Qtr	9-17	53%	0-2	00%	6-6	100%
2nd Half	6-14	43%	0-1	00%	4-7	57%
2nd Half	15-35	43%	3-10	30%	12-13	92%
Game	25-64	39.1%	3-15	20.0%	16-20	80.0%

Deadball Rebounds: 1.0

Western Michigan University 22

No.	Player	S	Pts	FG	3FG	FT	OR	DR	TR	PF	A	TO	Blk	Stl	Min	+/-
05	BAILEY, CHELAYNE	G	2	1-1	0-0	0-0	0	0	0	2	1	1	0	1	7	1
10	MOBLEY, BREANNA	F	3	1-2	0-0	1-2	0	1	1	1	2	0	0	1	7	1
11	REED, KAMRIN	G	4	2-4	0-2	0-0	1	0	1	1	0	0	0	0	7	1
23	WALKER, JORDAN	G	5	2-4	1-1	0-0	1	1	2	0	0	0	0	0	6	10
24	WOOL, LEIGHAH-AMORI	F	2	1-2	0-0	0-0	1	1	2	0	0	0	1	0	5	3
01	BROOKS, KIA	G	0	0-0	0-0	0-0	0	0	0	0	0	0	0	0	0	0
02	WATTERS, MADDIE	G	0	0-0	0-0	0-0	1	1	2	0	0	0	0	1	3	5
03	FLETCHER, JILL	G	0	0-0	0-0	0-0	0	0	0	0	0	0	0	0	0	0
12	JACOBSON, REILLY	F	6	3-3	0-0	0-0	1	0	1	1	2	1	0	0	5	3
13	WALKER, ANIYA	F	0	0-1	0-1	0-0	0	0	0	1	1	2	0	1	4	-4
20	SHAFFER, SYDNEY	G	0	0-2	0-2	0-0	0	1	1	0	0	1	0	0	3	5
31	KONKLE, ASHLEY	F	0	0-0	0-0	0-0	0	1	1	0	0	0	0	1	3	5
TEAM							0	0	0	0						
TOTALS			22	10-19	1-6	1-2	5	6	11	6	6	5	1	5	50	

Shooting By Period

Period	FG	FG%	3FG	3FG%	FT	FT%
3rd Qtr	9-14	64%	4-5	80%	10-12	83%
4th Qtr	5-18	28%	1-8	13%	2-3	67%
2nd Half	10-19	53%	1-6	17%	1-2	50%
2nd Half	14-32	44%	5-13	38%	12-15	80%
Game	34-68	50.0%	8-22	36.4%	14-18	77.8%

Deadball Rebounds: 4.2

Game Notes:

Officials: , ,
Attendance: 389

Start Time: 02:03 PM ET
End Time: 03:57 PM ET
Game Duration: 1:53

Score	1st	2nd	3rd	4th	TOT
302	8	16	21	24	69
774	23	22	32	13	90

Points from (This Period)	302	774
In the Paint	12	18
Off Turns	2	4
2nd Chance	2	6
Fast Break	2	2
Bench	6	6

Official By-By-Play
Chicago State University vs Western Michigan University
Second Quarter
December 14, 2019 at University Arena - Kalamazoo, Mich.



Period 2

Starters:

Chicago State University: 4 CLIFF, ALEXANDRIA (F); 10 BOWERS, TYESHIA (G); 21 PHOUMIPHAT, AJA (G); 22 MATA BOIS, INES (F); 23 CRANE, KOURTNEY (G);

Western Michigan University: 5 BAILEY, CHELAYNE (G); 10 MOBLEY, BREANNA (F); 11 REED, KAMRIN (G); 23 WALKER, JORDAN (G); 24 WOOL, LEIGHAH-AMORI (F);

Time	VISITORS: Chicago State University	Score	Margin	HOME: Western Michigan University
10:00	SUB OUT: MATA BOIS, INES			
10:00	SUB IN: CRANE, KOURTNEY			
09:54	MISSED LAYUP by JOHNSON, ZIPPORA			
09:54				BLOCK by WOOL, LEIGHAH-AMORI
09:54	REBOUND (OFF) by TEAM			
09:41	SUB OUT: PHOUMIPHAT, AJA			
09:41	SUB IN: BOWERS, TYESHIA			
09:33	MISSED LAYUP by CRANE, KOURTNEY			
09:30				REBOUND (DEF) by SHAFER, SYDNEY
09:26		26-8	H 18	GOOD! 3PTR by WALKER, JORDAN
09:17	MISSED JUMPER by BOWERS, TYESHIA			
09:12				REBOUND (DEF) by WATTERS, MADDIE
09:07				MISSED JUMPER by WALKER, JORDAN
09:03				REBOUND (OFF) by WATTERS, MADDIE
09:00				MISSED 3PTR by SHAFER, SYDNEY
08:56	REBOUND (DEF) by TEAM			
08:46	MISSED JUMPER by BOWERS, TYESHIA			
08:42				REBOUND (DEF) by KONKLE, ASHLEY
08:37	FOUL (PERSONAL) by CARSTENS, BETHANY			
08:37	SUB OUT: ROBINSON, TAYLOR			
08:37	SUB OUT: JOHNSON, ZIPPORA			
08:37	SUB IN: CLIFF, ALEXANDRIA			
08:37	SUB IN: MATA BOIS, INES			
08:35				MISSED LAYUP by WOOL, LEIGHAH-AMORI
08:32				REBOUND (OFF) by WOOL, LEIGHAH-AMORI
08:31		28-8	H 20	GOOD! LAYUP by WOOL, LEIGHAH-AMORI [PNT]
07:46	TURNOVER (LOSTBALL) by BOWERS, TYESHIA			
07:46				STEAL by WATTERS, MADDIE
07:38				MISSED 3PTR by SHAFER, SYDNEY
07:34	REBOUND (DEF) by CRANE, KOURTNEY			
07:23	TURNOVER (BADPASS) by CLIFF, ALEXANDRIA			
07:23				STEAL by KONKLE, ASHLEY
07:17				TURNOVER (TRAVEL) by SHAFER, SYDNEY
07:17				SUB OUT: WATTERS, MADDIE
07:17				SUB OUT: SHAFER, SYDNEY
07:17				SUB OUT: WALKER, JORDAN
07:17				SUB OUT: KONKLE, ASHLEY
07:17				SUB IN: BAILEY, CHELAYNE
07:17				SUB IN: MOBLEY, BREANNA
07:17				SUB IN: REED, KAMRIN
07:17				SUB IN: WALKER, ANIYA
07:17	SUB OUT: CARSTENS, BETHANY			
07:17	SUB IN: PHOUMIPHAT, AJA			
07:06	MISSED LAYUP by CLIFF, ALEXANDRIA			
07:02				REBOUND (DEF) by WOOL, LEIGHAH-AMORI
06:58				MISSED 3PTR by WALKER, ANIYA
06:52	REBOUND (DEF) by CRANE, KOURTNEY			
06:44				FOUL (PERSONAL) by WALKER, ANIYA
06:44	GOOD! FT by PHOUMIPHAT, AJA	28-9	H 19	
06:44	GOOD! FT by PHOUMIPHAT, AJA	28-10	H 18	
06:38				FOUL (PERSONAL) by BAILEY, CHELAYNE
06:38				TURNOVER (OTHER) by BAILEY, CHELAYNE
06:30	TURNOVER (BADPASS) by CRANE, KOURTNEY			
06:30				STEAL by BAILEY, CHELAYNE
06:23		30-10	H 20	GOOD! JUMPER by MOBLEY, BREANNA [PNT]
06:23				ASSIST by WALKER, ANIYA
06:12	SUB OUT: CRANE, KOURTNEY			
06:12	SUB IN: CARSTENS, BETHANY			
05:58	MISSED 3PTR by PHOUMIPHAT, AJA			
05:54	REBOUND (OFF) by CLIFF, ALEXANDRIA			
05:52	GOOD! JUMPER by CLIFF, ALEXANDRIA [PNT]	30-12	H 18	
05:52	ASSIST by CARSTENS, BETHANY			
05:36				TURNOVER (BADPASS) by WALKER, ANIYA
05:36	STEAL by BOWERS, TYESHIA			
05:24	TURNOVER (BADPASS) by PHOUMIPHAT, AJA			
05:14	FOUL (PERSONAL) by PHOUMIPHAT, AJA			
05:14				SUB OUT: WOOL, LEIGHAH-AMORI
05:14				SUB IN: JACOBSON, REILLY
05:06				MISSED 3PTR by REED, KAMRIN
05:00				REBOUND (OFF) by REED, KAMRIN

Time	VISITORS: Chicago State University	Score	Margin	HOME: Western Michigan University
04:57				MISSED 3PTR by REED, KAMRIN
04:53	REBOUND (DEF) by BOWERS, TYESHIA			
04:43	TURNOVER (BADPASS) by PHOUMIPHAT, AJA			
04:43				STEAL by MOBLEY, BREANNA
04:36		32-12	H 20	GOOD! LAYUP by REED, KAMRIN [FB]
04:36				ASSIST by JACOBSON, REILLY
04:24				FOUL (PERSONAL) by REED, KAMRIN
04:24	SUB OUT: PHOUMIPHAT, AJA			
04:24	SUB IN: CRANE, KOURTNEY			
04:24				
04:23	GOOD! LAYUP by CRANE, KOURTNEY [PNT]	32-14	H 18	
04:23	ASSIST by MATA BOIS, INES			
04:08				TURNOVER (LOSTBALL) by JACOBSON, REILLY
04:08	STEAL by CRANE, KOURTNEY			
04:02	TURNOVER (LOSTBALL) by CRANE, KOURTNEY			
04:02				STEAL by WALKER, ANIYA
03:52				TURNOVER (BADPASS) by WALKER, ANIYA
03:46	GOOD! LAYUP by CARSTENS, BETHANY	32-16	H 16	
03:27	FOUL (PERSONAL) by MATA BOIS, INES			
03:27				SUB OUT: WALKER, ANIYA
03:27				SUB IN: WALKER, JORDAN
03:27		33-16	H 17	GOOD! FT by MOBLEY, BREANNA
03:27				MISSED FT by MOBLEY, BREANNA
03:27				REBOUND (OFF) by JACOBSON, REILLY
03:11		35-16	H 19	GOOD! LAYUP by REED, KAMRIN [PNT]
03:11				ASSIST by JACOBSON, REILLY
02:49	GOOD! JUMPER by CARSTENS, BETHANY [PNT]	35-18	H 17	
02:31		37-18	H 19	GOOD! JUMPER by JACOBSON, REILLY [PNT]
02:31				ASSIST by MOBLEY, BREANNA
02:21	MISSED LAYUP by BOWERS, TYESHIA			
02:18	REBOUND (OFF) by BOWERS, TYESHIA			
01:55		39-18	H 21	GOOD! JUMPER by JACOBSON, REILLY [PNT]
01:55				ASSIST by BAILEY, CHELAYNE
01:49	GOOD! LAYUP by CLIFF, ALEXANDRIA [PNT]	39-20	H 19	
01:49				FOUL (PERSONAL) by JACOBSON, REILLY
01:49	SUB OUT: MATA BOIS, INES			
01:49	SUB IN: JOHNSON, ZIPPORA			
01:49	MISSED FT by CLIFF, ALEXANDRIA			
01:49	REBOUND (OFF) by CARSTENS, BETHANY			
01:49	MISSED LAYUP by CARSTENS, BETHANY			
01:49				REBOUND (DEF) by WALKER, JORDAN
01:34		41-20	H 21	GOOD! LAYUP by JACOBSON, REILLY [PNT]
01:34				ASSIST by MOBLEY, BREANNA
01:26				FOUL (PERSONAL) by MOBLEY, BREANNA
01:26	GOOD! FT by BOWERS, TYESHIA [FB]	41-21	H 20	
01:26	GOOD! FT by BOWERS, TYESHIA [FB]	41-22	H 19	
01:19		43-22	H 21	GOOD! LAYUP by BAILEY, CHELAYNE [PNT]
01:05				FOUL (PERSONAL) by BAILEY, CHELAYNE
01:05	MISSED FT by BOWERS, TYESHIA			
01:05	REBOUND (OFF) by TEAM			
01:05	MISSED FT by BOWERS, TYESHIA			
01:05				REBOUND (DEF) by MOBLEY, BREANNA
00:53				MISSED JUMPER by MOBLEY, BREANNA
00:48				REBOUND (OFF) by WALKER, JORDAN
00:47		45-22	H 23	GOOD! LAYUP by WALKER, JORDAN [PNT]
00:35	GOOD! JUMPER by CARSTENS, BETHANY [PNT]	45-24	H 21	
00:35	ASSIST by BOWERS, TYESHIA			
00:03				MISSED JUMPER by WALKER, JORDAN
00:00	REBOUND (DEF) by JOHNSON, ZIPPORA			
01:22				BLOCK by JACOBSON, REILLY

Chicago State University 24, Western Michigan University 45

Points from (This Period)	302	774
In the Paint	12	18
Off Turns	2	4
2nd Chance	2	6
Fast Break	2	2
Bench	6	6

Official Box Score
Chicago State University vs Western Michigan University
Second Half Statistics Only
December 14, 2019 at University Arena - Kalamazoo, Mich.



Chicago State University 45

No.	Player	S	Pts	FG	3FG	FT	OR	DR	TR	PF	A	TO	Blk	Stl	Min	+/-
02	ROBINSON, TAYLOR	G	2	1-1	0-0	0-0	2	1	3	1	2	1	0	0	7	3
04	CLIFF, ALEXANDRIA	F	2	1-1	0-0	0-0	0	1	1	1	1	0	0	0	6	7
10	BOWERS, TYESHIA	G	4	0-3	0-1	4-4	1	1	2	1	3	0	0	0	14	-1
11	DINC, TUANA	F	2	0-2	0-0	2-2	1	1	2	1	1	1	0	0	11	7
20	CARSTENS, BETHANY	G	10	4-11	0-4	2-2	0	2	2	2	2	1	0	1	19	-2
21	PHOUMIPHAT, AJA	G	0	0-2	0-0	0-0	0	0	0	1	1	1	0	1	10	-16
22	MATA BOIS, INES	F	6	3-4	0-0	0-0	1	0	1	2	1	3	0	2	14	7
23	CRANE, KOURTNEY	G	19	6-11	3-5	4-5	0	3	3	2	0	2	0	5	18	4
24	JOHNSON, ZIPPORA	F	0	0-0	0-0	0-0	0	0	0	0	0	0	0	0	2	-9
	TEAM		0	0-0	0-0	0-0	1	0	1	0	0	0	0	0	0	
TOTALS			45	15-35	3-10	12-13	6	9	15	11	11	9	0	9	100	

Shooting By Period

Period	FG	FG%	3FG	3FG%	FT	FT%
3rd Qtr	6-18	33%	3-8	38%	6-7	86%
4th Qtr	9-17	53%	0-2	00%	6-6	100%
2nd Half	15-35	43%	3-10	30%	12-13	92%
Game	25-64	39.1%	3-15	20.0%	16-20	80.0%

Deadball Rebounds: 1,0
Last FG Half: 302 4th-00:27

Western Michigan University 45

No.	Player	S	Pts	FG	3FG	FT	OR	DR	TR	PF	A	TO	Blk	Stl	Min	+/-
01	BROOKS, KIA	G	0	0-2	0-1	0-0	0	0	0	2	1	0	0	1	9	-6
02	WATTERS, MADDIE	G	0	0-0	0-0	0-0	0	0	0	0	0	0	0	0	3	-6
05	BAILEY, CHELAYNE	G	3	1-3	1-1	0-0	0	1	1	2	4	0	0	2	8	5
10	MOBLEY, BREANNA	F	12	4-4	0-0	4-5	1	3	4	0	0	1	1	1	12	15
11	REED, KAMRIN	G	3	1-2	0-1	1-2	0	2	2	0	1	0	0	0	8	10
12	JACOBSON, REILLY	F	2	0-0	0-0	2-2	1	2	3	0	1	0	0	0	8	-6
13	WALKER, ANIYA	F	1	0-1	0-1	1-2	0	0	0	1	0	0	1	0	4	-9
20	SHAFER, SYDNEY	G	5	1-2	1-2	2-2	1	0	1	0	2	2	0	1	12	-5
23	WALKER, JORDAN	G	9	3-8	1-3	2-2	3	1	4	2	0	1	0	2	11	6
24	WOOL, LEIGHAH-AMORI	F	5	2-4	1-2	0-0	0	3	3	1	1	1	0	0	8	5
31	KONKLE, ASHLEY	F	2	1-3	0-0	0-0	1	1	2	0	0	2	0	0	7	-5
03	FLETCHER, JILL	G	3	1-3	1-2	0-0	1	1	2	3	1	6	0	0	11	-4
	TEAM		0	0-0	0-0	0-0	0	0	0	0	0	0	0	0	0	
TOTALS			45	14-32	5-13	12-15	8	14	22	11	11	13	2	7	100	

Shooting By Period

Period	FG	FG%	3FG	3FG%	FT	FT%
3rd Qtr	9-14	64%	4-5	80%	10-12	83%
4th Qtr	5-18	28%	1-8	13%	2-3	67%
2nd Half	14-32	44%	5-13	38%	12-15	80%
Game	34-68	50.0%	8-22	36.4%	14-18	77.8%

Deadball Rebounds: 4,2
Last FG Half: 774 4th-03:49

Game Notes:
 Officials: , ,
 Attendance: 389

Start Time: 02:03 PM ET
 End Time: 03:57 PM ET
 Game Duration: 1:53

Score	1st	2nd	3rd	4th	TOT
302	8	16	21	24	69
774	23	22	32	13	90

Points from (This Period)	302	774
In the Paint	20	16
Off Turns	16	16
2nd Chance	3	5
Fast Break	13	9
Bench	14	13

Official Box Score
Chicago State University vs Western Michigan University
Third Quarter Statistics Only
December 14, 2019 at University Arena - Kalamazoo, Mich.



Chicago State University 45

No.	Player	S	Pts	FG	3FG	FT	OR	DR	TR	PF	A	TO	Blk	Stl	Min	+/-	
04	CLIFF, ALEXANDRIA	F	0	0-0	0-0	0-0	0	0	0	1	1	0	0	0	3	1	
10	BOWERS, TYESHIA	G	4	0-2	0-1	4-4	1	0	1	1	0	0	0	0	8	-12	
21	PHOUMIPHAT, AJA	G	0	0-2	0-0	0-0	0	0	0	1	1	1	0	0	8	-12	
22	MATA BOIS, INES	F	2	1-1	0-0	0-0	0	0	0	0	1	0	0	0	4	-4	
23	CRANE, KOURTNEY	G	13	4-8	3-5	2-3	0	1	1	2	0	1	0	3	10	-11	
02	ROBINSON, TAYLOR	G	0	0-0	0-0	0-0	0	0	0	0	0	0	0	0	2	1	
11	DINC, TUANA	F	0	0-0	0-0	0-0	1	0	1	0	0	1	0	0	4	2	
20	CARSTENS, BETHANY	G	2	1-5	0-2	0-0	0	1	1	2	2	1	0	1	10	-11	
24	JOHNSON, ZIPPORA	F	0	0-0	0-0	0-0	0	0	0	0	0	0	0	0	2	-9	
TEAM							1	0	1	0	0						
TOTALS			21	6-18	3-8	6-7	3	2	5	7	5	4	0	4	50		

Shooting By Period

Period	FG	FG%	3FG	3FG%	FT	FT%
2nd Half	0-0	0%	0-0	0%	0-0	0%
Game	25-64	39.1%	3-15	20.0%	16-20	80.0%

Deadball Rebounds: 1,0

Western Michigan University 45

No.	Player	S	Pts	FG	3FG	FT	OR	DR	TR	PF	A	TO	Blk	Stl	Min	+/-	
05	BAILEY, CHELAYNE	G	3	1-3	1-1	0-0	0	1	1	2	4	0	0	2	5	11	
10	MOBLEY, BREANNA	F	7	2-2	0-0	3-4	1	3	4	0	0	1	1	1	10	11	
11	REED, KAMRIN	G	3	1-2	0-1	1-2	0	1	1	0	0	0	0	0	4	6	
23	WALKER, JORDAN	G	7	2-3	1-1	2-2	2	0	2	2	0	0	0	1	8	12	
24	WOOL, LEIGHAH-AMORI	F	5	2-3	1-1	0-0	0	3	3	1	1	0	0	0	5	11	
01	BROOKS, KIA	G	0	0-0	0-0	0-0	0	0	0	0	0	0	0	0	2	-1	
02	WATTERS, MADDIE	G	0	0-0	0-0	0-0	0	0	0	0	0	0	0	0	0	0	
03	FLETCHER, JILL	G	3	1-1	1-1	0-0	0	0	0	1	1	3	0	0	6	5	
12	JACOBSON, REILLY	F	2	0-0	0-0	2-2	0	1	1	0	1	0	0	0	5	0	
13	WALKER, ANIYA	F	0	0-0	0-0	0-0	0	0	0	0	0	0	0	0	0	0	
20	SHAFER, SYDNEY	G	2	0-0	0-0	2-2	0	0	0	0	0	1	0	0	5	0	
31	KONKLE, ASHLEY	F	0	0-0	0-0	0-0	0	0	0	0	0	0	0	0	0	0	
TEAM							0	0	0	0	0						
TOTALS			32	9-14	4-5	10-12	3	9	12	6	7	5	1	4	50		

Shooting By Period

Period	FG	FG%	3FG	3FG%	FT	FT%
2nd Half	0-0	0%	0-0	0%	0-0	0%
Game	34-68	50.0%	8-22	36.4%	14-18	77.8%

Deadball Rebounds: 4,2

Game Notes:

Officials: , ,
Attendance: 389

Start Time: 02:03 PM ET
End Time: 03:57 PM ET
Game Duration: 1:53

Score	1st	2nd	3rd	4th	TOT
302	8	16	21	24	69
774	23	22	32	13	90

Points from (This Period)	302	774
In the Paint	6	8
Off Turns	8	6
2nd Chance	1	5
Fast Break	5	7
Bench	2	7

Official By-By-Play
Chicago State University vs Western Michigan University
Third Quarter
December 14, 2019 at University Arena - Kalamazoo, Mich.



Period 3

Starters:

Chicago State University: 4 CLIFF,ALEXANDRIA (F); 10 BOWERS,TYESHIA (G); 21 PHOUMIPHAT,AJA (G); 22 MATA BOIS,INES (F); 23 CRANE,KOURTNEY (G);

Western Michigan University: 5 BAILEY,CHELAYNE (G); 10 MOBLEY,BREANNA (F); 11 REED,KAMRIN (G); 23 WALKER,JORDAN (G); 24 WOOL,LEIGHAH-AMORI (F);

Time	VISITORS: Chicago State University	Score	Margin	HOME: Western Michigan University
09:46				SUB OUT: JACOBSON, REILLY
09:46				SUB IN: WOOL, LEIGHAH-AMORI
09:46	SUB OUT: CLIFF, ALEXANDRIA			
09:46	SUB IN: PHOUMIPHAT, AJA			
09:35	TURNOVER (BADPASS) by CRANE, KOURTNEY			
09:35				STEAL by BAILEY, CHELAYNE
09:30		47-24	H 23	GOOD! LAYUP by REED, KAMRIN [FB]
09:30				ASSIST by BAILEY, CHELAYNE
09:23	MISSED 3PTR by CRANE, KOURTNEY			
09:18				REBOUND (DEF) by WOOL, LEIGHAH-AMORI
09:17	FOUL (PERSONAL) by CRANE, KOURTNEY			
09:17				MISSED FT by MOBLEY, BREANNA
09:17				REBOUND (OFF) by TEAM
09:17		48-24	H 24	GOOD! FT by MOBLEY, BREANNA [FB]
09:09	MISSED JUMPER by CARSTENS, BETHANY			
09:02				REBOUND (DEF) by MOBLEY, BREANNA
08:51				MISSED JUMPER by BAILEY, CHELAYNE
08:47				REBOUND (OFF) by WALKER, JORDAN
08:44		51-24	H 27	GOOD! 3PTR by BAILEY, CHELAYNE
08:44				ASSIST by WOOL, LEIGHAH-AMORI
08:30				FOUL (PERSONAL) by WALKER, JORDAN
08:30	MISSED 3PTR by CARSTENS, BETHANY			
08:30				REBOUND (DEF) by REED, KAMRIN
08:17		54-24	H 30	GOOD! 3PTR by WALKER, JORDAN
08:17				ASSIST by BAILEY, CHELAYNE
07:58	MISSED JUMPER by PHOUMIPHAT, AJA			
07:51	REBOUND (OFF) by TEAM			
07:43	SUB OUT: JOHNSON, ZIPPORA			
07:43	SUB IN: DINC, TUANA			
07:39				FOUL (PERSONAL) by BAILEY, CHELAYNE
07:38				FOUL (PERSONAL) by WOOL, LEIGHAH-AMORI
07:38	GOOD! FT by CRANE, KOURTNEY	54-25	H 29	
07:38	MISSED FT by CRANE, KOURTNEY			
07:38				REBOUND (DEF) by WOOL, LEIGHAH-AMORI
07:34				MISSED JUMPER by WALKER, JORDAN
07:31	REBOUND (DEF) by CRANE, KOURTNEY			
07:23	GOOD! 3PTR by CRANE, KOURTNEY	54-28	H 26	
07:23	ASSIST by CARSTENS, BETHANY			
07:09		56-28	H 28	GOOD! LAYUP by MOBLEY, BREANNA
07:09				ASSIST by BAILEY, CHELAYNE
06:49	TURNOVER (LOSTBALL) by DINC, TUANA			
06:49				STEAL by WALKER, JORDAN
06:43	FOUL (PERSONAL) by CARSTENS, BETHANY			
06:43				MISSED FT by REED, KAMRIN
06:43				REBOUND (OFF) by TEAM
06:43		57-28	H 29	GOOD! FT by REED, KAMRIN [FB]
06:28	GOOD! JUMPER by CARSTENS, BETHANY [PNT]	57-30	H 27	
06:13				MISSED 3PTR by REED, KAMRIN
06:09				REBOUND (OFF) by MOBLEY, BREANNA
06:09				SUB OUT: REED, KAMRIN
06:09				SUB IN: FLETCHER, JILL
06:08				MISSED JUMPER by WOOL, LEIGHAH-AMORI
06:04	REBOUND (DEF) by CARSTENS, BETHANY			
06:01				FOUL (PERSONAL) by WALKER, JORDAN
06:01	GOOD! FT by CRANE, KOURTNEY [FB]	57-31	H 26	
05:56		59-31	H 28	GOOD! LAYUP by WALKER, JORDAN [PNT]
05:42	MISSED 3PTR by CARSTENS, BETHANY			
05:39				REBOUND (DEF) by BAILEY, CHELAYNE
05:32				TURNOVER (BADPASS) by FLETCHER, JILL
05:32	STEAL by CRANE, KOURTNEY			
05:25	MISSED JUMPER by CARSTENS, BETHANY			
05:22	REBOUND (OFF) by DINC, TUANA			
05:21	MISSED JUMPER by PHOUMIPHAT, AJA			
05:18				REBOUND (DEF) by WOOL, LEIGHAH-AMORI
05:10				MISSED JUMPER by BAILEY, CHELAYNE
05:05				REBOUND (OFF) by WALKER, JORDAN
05:03		61-31	H 30	GOOD! JUMPER by WOOL, LEIGHAH-AMORI
04:57	TURNOVER (BADPASS) by PHOUMIPHAT, AJA			
04:57				STEAL by BAILEY, CHELAYNE
04:51		64-31	H 33	GOOD! 3PTR by WOOL, LEIGHAH-AMORI [FB]

Time	VISITORS: Chicago State University	Score	Margin	HOME: Western Michigan University
04:51				ASSIST by BAILEY, CHELAYNE
04:43				FOUL (PERSONAL) by BAILEY, CHELAYNE
04:43				
04:38	GOOD! FT by BOWERS, TYESHIA [FB]	64-32	H 32	
04:38				SUB OUT: BAILEY, CHELAYNE
04:38				SUB OUT: WOOL, LEIGHAH-AMORI
04:38				SUB IN: JACOBSON, REILLY
04:38				SUB IN: SHAFER, SYDNEY
04:38	GOOD! FT by BOWERS, TYESHIA [FB]	64-33	H 31	
04:21				TURNOVER (LOSTBALL) by SHAFER, SYDNEY
04:21	STEAL by CRANE, KOURTNEY			
04:14	MISSED LAYUP by BOWERS, TYESHIA			
04:10				REBOUND (DEF) by MOBLEY, BREANNA
04:09				TURNOVER (LOSTBALL) by MOBLEY, BREANNA
04:09	STEAL by CRANE, KOURTNEY			
04:07	GOOD! 3PTR by CRANE, KOURTNEY	64-36	H 28	
04:07	ASSIST by PHOUMIPHAT, AJA			
03:45	SUB OUT: DINC, TUANA			
03:45	SUB IN: MATA BOIS, INES			
03:42		67-36	H 31	GOOD! 3PTR by FLETCHER, JILL
03:42				ASSIST by JACOBSON, REILLY
03:25				FOUL (PERSONAL) by FLETCHER, JILL
03:25	GOOD! FT by BOWERS, TYESHIA	67-37	H 30	
03:25	GOOD! FT by BOWERS, TYESHIA	67-38	H 29	
03:13	FOUL (PERSONAL) by BOWERS, TYESHIA			
03:10	FOUL (PERSONAL) by PHOUMIPHAT, AJA			
03:10		68-38	H 30	GOOD! FT by WALKER, JORDAN
03:10		69-38	H 31	GOOD! FT by WALKER, JORDAN
03:00	MISSED LAYUP by CRANE, KOURTNEY			
03:00				REBOUND (DEF) by MOBLEY, BREANNA
02:51		71-38	H 33	GOOD! LAYUP by MOBLEY, BREANNA [PNT]
02:51				ASSIST by FLETCHER, JILL
02:43	MISSED JUMPER by CRANE, KOURTNEY			
02:39	REBOUND (OFF) by BOWERS, TYESHIA			
02:38	MISSED 3PTR by BOWERS, TYESHIA			
02:35				REBOUND (DEF) by JACOBSON, REILLY
02:22				SUB OUT: WALKER, JORDAN
02:22				SUB IN: BROOKS, KIA
02:22	SUB OUT: BOWERS, TYESHIA			
02:22	SUB IN: CLIFF, ALEXANDRIA			
02:14	FOUL (PERSONAL) by CRANE, KOURTNEY			
02:14	SUB OUT: PHOUMIPHAT, AJA			
02:14	SUB IN: ROBINSON, TAYLOR			
02:14		72-38	H 34	GOOD! FT by JACOBSON, REILLY
02:14		73-38	H 35	GOOD! FT by JACOBSON, REILLY
02:02	GOOD! LAYUP by MATA BOIS, INES	73-40	H 33	
02:02	ASSIST by CLIFF, ALEXANDRIA			
01:48				TURNOVER (BADPASS) by FLETCHER, JILL
01:48	STEAL by CARSTENS, BETHANY			
01:43	GOOD! LAYUP by CRANE, KOURTNEY [FB]	73-42	H 31	
01:43	ASSIST by CARSTENS, BETHANY			
01:40				TIMEOUT 30SEC
03:00				BLOCK by MOBLEY, BREANNA
01:31	FOUL (PERSONAL) by CLIFF, ALEXANDRIA			
01:31		74-42	H 32	GOOD! FT by MOBLEY, BREANNA
01:31		75-42	H 33	GOOD! FT by MOBLEY, BREANNA
01:13	TURNOVER (BADPASS) by CARSTENS, BETHANY			
01:13				STEAL by MOBLEY, BREANNA
00:53				TURNOVER (LOSTBALL) by FLETCHER, JILL
00:38	GOOD! 3PTR by CRANE, KOURTNEY	75-45	H 30	
00:38	ASSIST by MATA BOIS, INES			
00:03	FOUL (PERSONAL) by CARSTENS, BETHANY			
00:03		76-45	H 31	GOOD! FT by SHAFER, SYDNEY
00:03		77-45	H 32	GOOD! FT by SHAFER, SYDNEY
00:00	MISSED 3PTR by CRANE, KOURTNEY			
00:00				REBOUND (DEF) by TEAM

Chicago State University 45, Western Michigan University 77

Points from (This Period)	302	774
In the Paint	6	8
Off Turns	8	6
2nd Chance	1	5
Fast Break	5	7
Bench	2	7

Official Box Score
Chicago State University vs Western Michigan University
Fourth Quarter Statistics Only
December 14, 2019 at University Arena - Kalamazoo, Mich.



Chicago State University 24

No.	Player	S	Pts	FG	3FG	FT	OR	DR	TR	PF	A	TO	Blk	Stl	Min	+/-
04	CLIFF, ALEXANDRIA	F	2	1-1	0-0	0-0	0	1	1	0	0	0	0	0	3	6
10	BOWERS, TYESHIA	G	0	0-1	0-0	0-0	0	1	1	0	3	0	0	0	6	11
21	PHOUMIPHAT, AJA	G	0	0-0	0-0	0-0	0	0	0	0	0	0	0	1	2	-4
22	MATA BOIS, INES	F	4	2-3	0-0	0-0	1	0	1	2	0	3	0	2	10	11
23	CRANE, KOURTNEY	G	6	2-3	0-0	2-2	0	2	2	0	0	1	0	2	8	15
02	ROBINSON, TAYLOR	G	2	1-1	0-0	0-0	2	1	3	1	2	1	0	0	5	2
11	DINC, TUANA	F	2	0-2	0-0	2-2	0	1	1	1	1	0	0	0	7	5
20	CARSTENS, BETHANY	G	8	3-6	0-2	2-2	0	1	1	0	0	0	0	0	9	9
24	JOHNSON, ZIPPORA	F	0	0-0	0-0	0-0	0	0	0	0	0	0	0	0	0	0
TEAM							0	0	0	0		0				
TOTALS			24	9-17	0-2	6-6	3	7	10	4	6	5	0	5	50	

Shooting By Period

Period	FG	FG%	3FG	3FG%	FT	FT%
Game	25-64	39.1%	3-15	20.0%	16-20	80.0%

Deadball Rebounds: 1,0

Western Michigan University 13

No.	Player	S	Pts	FG	3FG	FT	OR	DR	TR	PF	A	TO	Blk	Stl	Min	+/-
05	BAILEY, CHELAYNE	G	0	0-0	0-0	0-0	0	0	0	0	0	0	0	0	3	-6
10	MOBLEY, BREANNA	F	5	2-2	0-0	1-1	0	0	0	0	0	0	0	0	2	4
11	REED, KAMRIN	G	0	0-0	0-0	0-0	0	1	1	0	1	0	0	0	4	4
23	WALKER, JORDAN	G	2	1-5	0-2	0-0	1	1	2	0	0	1	0	1	3	-6
24	WOOL, LEIGHAH-AMORI	F	0	0-1	0-1	0-0	0	0	0	0	0	1	0	0	3	-6
01	BROOKS, KIA	G	0	0-2	0-1	0-0	0	0	0	2	1	0	0	1	7	-5
02	WATTERS, MADDIE	G	0	0-0	0-0	0-0	0	0	0	0	0	0	0	0	3	-6
03	FLETCHER, JILL	G	0	0-2	0-1	0-0	1	1	2	2	0	3	0	0	5	-9
12	JACOBSON, REILLY	F	0	0-0	0-0	0-0	1	1	2	0	0	0	0	0	3	-6
13	WALKER, ANIYA	F	1	0-1	0-1	1-2	0	0	0	1	0	0	1	0	4	-9
20	SHAFFER, SYDNEY	G	3	1-2	1-2	0-0	1	0	1	0	2	1	0	1	7	-5
31	KONKLE, ASHLEY	F	2	1-3	0-0	0-0	1	1	2	0	0	2	0	0	7	-5
TEAM							0	0	0	0		0				
TOTALS			13	5-18	1-8	2-3	5	5	10	5	4	8	1	3	50	

Shooting By Period

Period	FG	FG%	3FG	3FG%	FT	FT%
Game	34-68	50.0%	8-22	36.4%	14-18	77.8%

Deadball Rebounds: 4,2

Game Notes:

Officials: , ,
 Attendance: 389

Start Time: 02:03 PM ET
 End Time: 03:57 PM ET
 Game Duration: 1:53

Score	1st	2nd	3rd	4th	TOT
302	8	16	21	24	69
774	23	22	32	13	90

Points from (This Period)	302	774
In the Paint	14	8
Off Turns	8	10
2nd Chance	2	0
Fast Break	8	2
Bench	12	6

Official Play-By-Play
Chicago State University vs Western Michigan University
Fourth Quarter
December 14, 2019 at University Arena - Kalamazoo, Mich.



Period 4

Starters:

Chicago State University: 4 CLIFF,ALEXANDRIA (F); 10 BOWERS, TYESHIA (G); 21 PHOUMIPHAT,AJA (G); 22 MATA BOIS,INES (F); 23 CRANE,KOURTNEY (G);

Western Michigan University: 5 BAILEY,CHELAYNE (G); 10 MOBLEY,BREANNA (F); 11 REED,KAMRIN (G); 23 WALKER,JORDAN (G); 24 WOOL,LEIGHAH-AMORI (F);

Time	VISITORS: Chicago State University	Score	Margin	HOME: Western Michigan University
10:00				SUB OUT: BROOKS, KIA
10:00				SUB OUT: FLETCHER, JILL
10:00				SUB OUT: MOBLEY, BREANNA
10:00				SUB OUT: SHAFER, SYDNEY
10:00				SUB IN: WATTERS, MADDIE
10:00				SUB IN: BAILEY, CHELAYNE
10:00				SUB IN: WALKER, JORDAN
10:00				SUB IN: WOOL, LEIGHAH-AMORI
10:00	SUB OUT: CARSTENS, BETHANY			
10:00	SUB IN: BOWERS, TYESHIA			
09:50	GOOD! JUMPER by ROBINSON, TAYLOR	77-47	H 30	
09:50	ASSIST by BOWERS, TYESHIA			
09:38				MISSED 3PTR by WOOL, LEIGHAH-AMORI
09:35				REBOUND (OFF) by WALKER, JORDAN
09:35				TURNOVER (TRAVEL) by WALKER, JORDAN
09:21	TURNOVER (BADPASS) by CRANE, KOURTNEY			
09:21				STEAL by WALKER, JORDAN
09:17		79-47	H 32	GOOD! LAYUP by WALKER, JORDAN [FB]
09:03	GOOD! LAYUP by CRANE, KOURTNEY [PNT]	79-49	H 30	
09:03	ASSIST by BOWERS, TYESHIA			
08:53				MISSED JUMPER by WALKER, JORDAN
08:50	REBOUND (DEF) by CLIFF, ALEXANDRIA			
08:43	MISSED JUMPER by BOWERS, TYESHIA			
08:40				REBOUND (DEF) by JACOBSON, REILLY
08:33				MISSED 3PTR by WALKER, JORDAN
08:32				REBOUND (OFF) by JACOBSON, REILLY
08:32	FOUL (PERSONAL) by MATA BOIS, INES			
08:32	SUB OUT: BOWERS, TYESHIA			
08:32	SUB IN: CARSTENS, BETHANY			
08:32				MISSED JUMPER by WALKER, JORDAN
08:32	REBOUND (DEF) by CARSTENS, BETHANY			
08:02	GOOD! LAYUP by MATA BOIS, INES	79-51	H 28	
08:02	ASSIST by ROBINSON, TAYLOR			
07:41				TURNOVER (BADPASS) by WOOL, LEIGHAH-AMORI
07:41	STEAL by CRANE, KOURTNEY			
07:37	MISSED LAYUP by CRANE, KOURTNEY			
07:34	REBOUND (OFF) by ROBINSON, TAYLOR			
07:30	GOOD! JUMPER by CLIFF, ALEXANDRIA	79-53	H 26	
07:30	ASSIST by ROBINSON, TAYLOR			
07:19				MISSED 3PTR by WALKER, JORDAN
07:16	REBOUND (DEF) by CRANE, KOURTNEY			
07:09	MISSED 3PTR by CARSTENS, BETHANY			
07:06				REBOUND (DEF) by WALKER, JORDAN
07:06				TIMEOUT 30SEC
07:05				SUB OUT: WATTERS, MADDIE
07:05				SUB OUT: BAILEY, CHELAYNE
07:05				SUB OUT: JACOBSON, REILLY
07:05				SUB OUT: WALKER, JORDAN
07:05				SUB OUT: WOOL, LEIGHAH-AMORI
07:05				SUB IN: BROOKS, KIA
07:05				SUB IN: MOBLEY, BREANNA
07:05				SUB IN: REED, KAMRIN
07:05				SUB IN: SHAFER, SYDNEY
07:05				SUB IN: KONKLE, ASHLEY
07:05	SUB OUT: CLIFF, ALEXANDRIA			
07:05	SUB OUT: CRANE, KOURTNEY			
07:05	SUB IN: DINC, TUANA			
07:05	SUB IN: PHOUMIPHAT, AJA			
06:54				TURNOVER (LOSTBALL) by KONKLE, ASHLEY
06:54	STEAL by PHOUMIPHAT, AJA			
06:48	MISSED LAYUP by CARSTENS, BETHANY			
06:45	REBOUND (OFF) by ROBINSON, TAYLOR			
06:44	TURNOVER (LOSTBALL) by ROBINSON, TAYLOR			
06:44				STEAL by BROOKS, KIA
06:25		81-53	H 28	GOOD! LAYUP by MOBLEY, BREANNA [PNT]
06:25				ASSIST by REED, KAMRIN
06:25	FOUL (PERSONAL) by ROBINSON, TAYLOR			
06:25		82-53	H 29	GOOD! FT by MOBLEY, BREANNA
06:08	GOOD! JUMPER by CARSTENS, BETHANY	82-55	H 27	
05:57				MISSED 3PTR by BROOKS, KIA

Time	VISITORS: Chicago State University	Score	Margin	HOME: Western Michigan University
05:53	REBOUND (DEF) by ROBINSON, TAYLOR			
05:45	MISSED JUMPER by DINC, TUANA			
05:41	REBOUND (OFF) by MATA BOIS, INES			
05:41	TURNOVER (LOSTBALL) by MATA BOIS, INES			
05:26		85-55	H 30	GOOD! 3PTR by SHAFER, SYDNEY
05:26				ASSIST by BROOKS, KIA
05:20	TURNOVER (BADPASS) by MATA BOIS, INES			
05:20				STEAL by SHAFER, SYDNEY
05:15		87-55	H 32	GOOD! LAYUP by MOBLEY, BREANNA
05:15				ASSIST by SHAFER, SYDNEY
05:00	MISSED LAYUP by DINC, TUANA			
04:55				REBOUND (DEF) by KONKLE, ASHLEY
04:54				TURNOVER (BADPASS) by KONKLE, ASHLEY
04:54	STEAL by MATA BOIS, INES			
04:50	GOOD! LAYUP by MATA BOIS, INES [PNT]	87-57	H 30	
04:50	ASSIST by DINC, TUANA			
04:50				SUB OUT: MOBLEY, BREANNA
04:50				SUB IN: FLETCHER, JILL
04:50	SUB OUT: ROBINSON, TAYLOR			
04:50	SUB OUT: PHOUMIPHAT, AJA			
04:50	SUB IN: BOWERS, TYESHIA			
04:50	SUB IN: CRANE, KOURTNEY			
04:42				TURNOVER (BADPASS) by FLETCHER, JILL
04:30	MISSED 3PTR by CARSTENS, BETHANY			
04:26				REBOUND (DEF) by REED, KAMRIN
04:22				MISSED 3PTR by FLETCHER, JILL
04:19				REBOUND (OFF) by SHAFER, SYDNEY
04:17	FOUL (PERSONAL) by DINC, TUANA			
04:13				MISSED JUMPER by KONKLE, ASHLEY
04:10	REBOUND (DEF) by DINC, TUANA			
04:06	GOOD! JUMPER by CARSTENS, BETHANY [FB]	87-59	H 28	
03:49		89-59	H 30	GOOD! LAYUP by KONKLE, ASHLEY [PNT]
03:49				ASSIST by SHAFER, SYDNEY
03:33				FOUL (PERSONAL) by BROOKS, KIA
03:33				SUB OUT: REED, KAMRIN
03:33				SUB IN: WALKER, ANIYA
03:13	MISSED JUMPER by MATA BOIS, INES			
03:13				REBOUND (DEF) by FLETCHER, JILL
02:55				TURNOVER (LOSTBALL) by SHAFER, SYDNEY
02:55	STEAL by CRANE, KOURTNEY			
02:50				FOUL (PERSONAL) by BROOKS, KIA
02:48	GOOD! FT by CRANE, KOURTNEY [FB]	89-60	H 29	
02:48	GOOD! FT by CRANE, KOURTNEY [FB]	89-61	H 28	
02:33	FOUL (PERSONAL) by MATA BOIS, INES			
02:33				MISSED FT by WALKER, ANIYA
02:33				REBOUND (OFF) by TEAM
02:33		90-61	H 29	GOOD! FT by WALKER, ANIYA
02:29	GOOD! JUMPER by CARSTENS, BETHANY [PNT]	90-63	H 27	
02:15				FOUL (PERSONAL) by FLETCHER, JILL
02:15				TURNOVER (OTHER) by FLETCHER, JILL
02:07	TURNOVER (BADPASS) by MATA BOIS, INES			
01:57				TURNOVER (BADPASS) by FLETCHER, JILL
01:57	STEAL by MATA BOIS, INES			
01:52				FOUL (PERSONAL) by FLETCHER, JILL
01:52	GOOD! FT by DINC, TUANA [FB]	90-64	H 26	
01:52	GOOD! FT by DINC, TUANA [FB]	90-65	H 25	
01:30				MISSED LAYUP by BROOKS, KIA
01:23	REBOUND (DEF) by CRANE, KOURTNEY			
01:18				FOUL (PERSONAL) by WALKER, ANIYA
01:18	GOOD! FT by CARSTENS, BETHANY	90-66	H 24	
01:18	GOOD! FT by CARSTENS, BETHANY	90-67	H 23	
01:03				MISSED JUMPER by KONKLE, ASHLEY
01:02				REBOUND (OFF) by TEAM
00:57				MISSED JUMPER by FLETCHER, JILL
00:54				REBOUND (OFF) by FLETCHER, JILL
00:37				MISSED 3PTR by WALKER, ANIYA
00:34				REBOUND (OFF) by KONKLE, ASHLEY
00:33				MISSED 3PTR by SHAFER, SYDNEY
00:30	REBOUND (DEF) by BOWERS, TYESHIA			
00:27	GOOD! LAYUP by CRANE, KOURTNEY [FB/PNT]	90-69	H 21	
00:27	ASSIST by BOWERS, TYESHIA			
03:13				BLOCK by WALKER, ANIYA

Chicago State University 69, Western Michigan University 90

Points from (This Period)	302	774
In the Paint	14	8
Off Turns	8	10
2nd Chance	2	0
Fast Break	8	2
Bench	12	6

Official Scoring/Possession Reference Chart
Chicago State University vs Western Michigan University
Period 1
December 14, 2019 at University Arena - Kalamazoo, Mich.



Period 1

Starters:

Chicago State University: 4 CLIFF,ALEXANDRIA (F); 10 BOWERS, TYESHIA (G); 21 PHOUMIPHAT,AJA (G); 22 MATA BOIS,INES (F); 23 CRANE,KOURTNEY (G);

Western Michigan University: 5 BAILEY,CHELAYNE (G); 10 MOBLEY,BREANNA (F); 11 REED,KAMRIN (G); 23 WALKER,JORDAN (G); 24 WOOL,LEIGHAH-AMORI (F);

Time	VISITORS: Chicago State University	Score	Margin	HOME: Western Michigan University
09:15		2-0	H 2	GOOD! JUMPER by WALKER, JORDAN [PNT]
08:48	GOOD! LAYUP by BOWERS, TYESHIA [PNT]	2-2	T	
08:48		4-2	H 2	GOOD! LAYUP by MOBLEY, BREANNA [PNT]
05:54		6-2	H 4	GOOD! JUMPER by WALKER, JORDAN [PNT]
05:30		8-2	H 6	GOOD! LAYUP by WOOL, LEIGHAH-AMORI
05:30		9-2	H 7	GOOD! FT by WOOL, LEIGHAH-AMORI
04:57		11-2	H 9	GOOD! LAYUP by JACOBSON, REILLY
04:51	GOOD! LAYUP by BOWERS, TYESHIA [FB]	11-4	H 7	
04:28		14-4	H 10	GOOD! 3PTR by REED, KAMRIN
03:28		17-4	H 13	GOOD! 3PTR by WALKER, JORDAN
03:00		19-4	H 15	GOOD! JUMPER by WALKER, JORDAN [PNT]
02:26		21-4	H 17	GOOD! JUMPER by WALKER, JORDAN [PNT]
02:10	GOOD! LAYUP by BOWERS, TYESHIA [PNT]	21-6	H 15	
01:11		23-6	H 17	GOOD! LAYUP by WALKER, JORDAN [PNT]
00:46	GOOD! LAYUP by BOWERS, TYESHIA [PNT]	23-8	H 15	

Chicago State University 8, Western Michigan University 23

Official Scoring/Possession Reference Chart
Chicago State University vs Western Michigan University
Period 2
December 14, 2019 at University Arena - Kalamazoo, Mich.



Period 2

Starters:

Chicago State University: 4 CLIFF,ALEXANDRIA (F); 10 BOWERS, TYESHIA (G); 21 PHOUMIPHAT,AJA (G); 22 MATA BOIS,INES (F); 23 CRANE,KOURTNEY (G);

Western Michigan University: 5 BAILEY,CHELAYNE (G); 10 MOBLEY,BREANNA (F); 11 REED,KAMRIN (G); 23 WALKER,JORDAN (G); 24 WOOL,LEIGHAH-AMORI (F);

Time	VISITORS: Chicago State University	Score	Margin	HOME: Western Michigan University
09:26		26-8	H 18	GOOD! 3PTR by WALKER, JORDAN
08:31		28-8	H 20	GOOD! LAYUP by WOOL, LEIGHAH-AMORI [PNT]
06:44	GOOD! FT by PHOUMIPHAT, AJA	28-9	H 19	
06:44	GOOD! FT by PHOUMIPHAT, AJA	28-10	H 18	
06:23		30-10	H 20	GOOD! JUMPER by MOBLEY, BREANNA [PNT]
05:52	GOOD! JUMPER by CLIFF, ALEXANDRIA [PNT]	30-12	H 18	
04:36		32-12	H 20	GOOD! LAYUP by REED, KAMRIN [FB]
04:23	GOOD! LAYUP by CRANE, KOURTNEY [PNT]	32-14	H 18	
03:46	GOOD! LAYUP by CARSTENS, BETHANY	32-16	H 16	
03:27		33-16	H 17	GOOD! FT by MOBLEY, BREANNA
03:11		35-16	H 19	GOOD! LAYUP by REED, KAMRIN [PNT]
02:49	GOOD! JUMPER by CARSTENS, BETHANY [PNT]	35-18	H 17	
02:31		37-18	H 19	GOOD! JUMPER by JACOBSON, REILLY [PNT]
01:55		39-18	H 21	GOOD! JUMPER by JACOBSON, REILLY [PNT]
01:49	GOOD! LAYUP by CLIFF, ALEXANDRIA [PNT]	39-20	H 19	
01:34		41-20	H 21	GOOD! LAYUP by JACOBSON, REILLY [PNT]
01:26	GOOD! FT by BOWERS, TYESHIA [FB]	41-21	H 20	
01:26	GOOD! FT by BOWERS, TYESHIA [FB]	41-22	H 19	
01:19		43-22	H 21	GOOD! LAYUP by BAILEY, CHELAYNE [PNT]
00:47		45-22	H 23	GOOD! LAYUP by WALKER, JORDAN [PNT]
00:35	GOOD! JUMPER by CARSTENS, BETHANY [PNT]	45-24	H 21	

Chicago State University 24, Western Michigan University 45

Official Scoring/Possession Reference Chart
Chicago State University vs Western Michigan University
Period 3
December 14, 2019 at University Arena - Kalamazoo, Mich.



Period 3

Starters:

Chicago State University: 4 CLIFF,ALEXANDRIA (F); 10 BOWERS, TYESHIA (G); 21 PHOUMIPHAT,AJA (G); 22 MATA BOIS,INES (F); 23 CRANE,KOURTNEY (G);

Western Michigan University: 5 BAILEY,CHELAYNE (G); 10 MOBLEY,BREANNA (F); 11 REED,KAMRIN (G); 23 WALKER,JORDAN (G); 24 WOOL,LEIGHAH-AMORI (F);

Time	VISITORS: Chicago State University	Score	Margin	HOME: Western Michigan University
09:30		47-24	H 23	GOOD! LAYUP by REED, KAMRIN [FB]
09:17		48-24	H 24	GOOD! FT by MOBLEY, BREANNA [FB]
08:44		51-24	H 27	GOOD! 3PTR by BAILEY, CHELAYNE
08:17		54-24	H 30	GOOD! 3PTR by WALKER, JORDAN
07:38	GOOD! FT by CRANE, KOURTNEY	54-25	H 29	
07:23	GOOD! 3PTR by CRANE, KOURTNEY	54-28	H 26	
07:09		56-28	H 28	GOOD! LAYUP by MOBLEY, BREANNA
06:43		57-28	H 29	GOOD! FT by REED, KAMRIN [FB]
06:28	GOOD! JUMPER by CARSTENS, BETHANY [PNT]	57-30	H 27	
06:01	GOOD! FT by CRANE, KOURTNEY [FB]	57-31	H 26	
05:56		59-31	H 28	GOOD! LAYUP by WALKER, JORDAN [PNT]
05:03		61-31	H 30	GOOD! JUMPER by WOOL, LEIGHAH-AMORI
04:51		64-31	H 33	GOOD! 3PTR by WOOL, LEIGHAH-AMORI [FB]
04:38	GOOD! FT by BOWERS, TYESHIA [FB]	64-32	H 32	
04:38	GOOD! FT by BOWERS, TYESHIA [FB]	64-33	H 31	
04:07	GOOD! 3PTR by CRANE, KOURTNEY	64-36	H 28	
03:42		67-36	H 31	GOOD! 3PTR by FLETCHER, JILL
03:25	GOOD! FT by BOWERS, TYESHIA	67-37	H 30	
03:25	GOOD! FT by BOWERS, TYESHIA	67-38	H 29	
03:10		68-38	H 30	GOOD! FT by WALKER, JORDAN
03:10		69-38	H 31	GOOD! FT by WALKER, JORDAN
02:51		71-38	H 33	GOOD! LAYUP by MOBLEY, BREANNA [PNT]
02:14		72-38	H 34	GOOD! FT by JACOBSON, REILLY
02:14		73-38	H 35	GOOD! FT by JACOBSON, REILLY
02:02	GOOD! LAYUP by MATA BOIS, INES	73-40	H 33	
01:43	GOOD! LAYUP by CRANE, KOURTNEY [FB]	73-42	H 31	
01:31		74-42	H 32	GOOD! FT by MOBLEY, BREANNA
01:31		75-42	H 33	GOOD! FT by MOBLEY, BREANNA
00:38	GOOD! 3PTR by CRANE, KOURTNEY	75-45	H 30	
00:03		76-45	H 31	GOOD! FT by SHAFER, SYDNEY
00:03		77-45	H 32	GOOD! FT by SHAFER, SYDNEY

Chicago State University 45, Western Michigan University 77

Official Scoring/Possession Reference Chart
Chicago State University vs Western Michigan University
Period 4
December 14, 2019 at University Arena - Kalamazoo, Mich.



Period 4

Starters:

Chicago State University: 4 CLIFF,ALEXANDRIA (F); 10 BOWERS,TYESHIA (G); 21 PHOUMIPHAT,AJA (G); 22 MATA BOIS,INES (F); 23 CRANE,KOURTNEY (G);

Western Michigan University: 5 BAILEY,CHELAYNE (G); 10 MOBLEY,BREANNA (F); 11 REED,KAMRIN (G); 23 WALKER,JORDAN (G); 24 WOOL,LEIGHAH-AMORI (F);

Time	VISITORS: Chicago State University	Score	Margin	HOME: Western Michigan University
09:50	GOOD! JUMPER by ROBINSON, TAYLOR	77-47	H 30	
09:17		79-47	H 32	GOOD! LAYUP by WALKER, JORDAN [FB]
09:03	GOOD! LAYUP by CRANE, KOURTNEY [PNT]	79-49	H 30	
08:02	GOOD! LAYUP by MATA BOIS, INES	79-51	H 28	
07:30	GOOD! JUMPER by CLIFF, ALEXANDRIA	79-53	H 26	
06:25		81-53	H 28	GOOD! LAYUP by MOBLEY, BREANNA [PNT]
06:25		82-53	H 29	GOOD! FT by MOBLEY, BREANNA
06:08	GOOD! JUMPER by CARSTENS, BETHANY	82-55	H 27	
05:26		85-55	H 30	GOOD! 3PTR by SHAFER, SYDNEY
05:15		87-55	H 32	GOOD! LAYUP by MOBLEY, BREANNA
04:50	GOOD! LAYUP by MATA BOIS, INES [PNT]	87-57	H 30	
04:06	GOOD! JUMPER by CARSTENS, BETHANY [FB]	87-59	H 28	
03:49		89-59	H 30	GOOD! LAYUP by KONKLE, ASHLEY [PNT]
02:48	GOOD! FT by CRANE, KOURTNEY [FB]	89-60	H 29	
02:48	GOOD! FT by CRANE, KOURTNEY [FB]	89-61	H 28	
02:33		90-61	H 29	GOOD! FT by WALKER, ANIYA
02:29	GOOD! JUMPER by CARSTENS, BETHANY [PNT]	90-63	H 27	
01:52	GOOD! FT by DINC, TUANA [FB]	90-64	H 26	
01:52	GOOD! FT by DINC, TUANA [FB]	90-65	H 25	
01:18	GOOD! FT by CARSTENS, BETHANY	90-66	H 24	
01:18	GOOD! FT by CARSTENS, BETHANY	90-67	H 23	
00:27	GOOD! LAYUP by CRANE, KOURTNEY [FB/PNT]	90-69	H 21	

Chicago State University 69, Western Michigan University 90

Official Substitutions Log
Chicago State University vs Western Michigan University
Period 1
December 14, 2019 at University Arena - Kalamazoo, Mich.



VISITORS: Chicago State University	Time	Score	HOME: Western Michigan University
4 CLIFF,ALEXANDRIA			5 BAILEY,CHELAYNE
10 BOWERS,TYESHIA			10 MOBLEY,BREANNA
21 PHOUMIPHAT,AJA			11 REED,KAMRIN
22 MATA BOIS,INES			23 WALKER,JORDAN
23 CRANE,KOURTNEY			24 WOOL,LEIGHAH-AMORI
SUB OUT: 23 CRANE,KOURTNEY	05:30	2-8	
SUB IN: 20 CARSTENS,BETHANY	05:30		
	05:30		SUB OUT: MOBLEY,BREANNA
	05:30		SUB IN: JACOBSON,REILLY
	03:15	4-17	SUB OUT: WOOL,LEIGHAH-AMORI
	03:15		SUB IN: MOBLEY,BREANNA
SUB OUT: 21 PHOUMIPHAT,AJA	03:15		
SUB IN: 2 ROBINSON,TAYLOR	03:15		
	00:49	6-23	SUB OUT: BAILEY,CHELAYNE
	00:49		SUB OUT: REED,KAMRIN
	00:49		SUB OUT: JACOBSON,REILLY
	00:49		SUB IN: WATTERS,MADDIE
	00:49		SUB IN: SHAFER,SYDNEY
	00:49		SUB IN: WOOL,LEIGHAH-AMORI
SUB OUT: 4 CLIFF,ALEXANDRIA	00:49		
SUB IN: 24 JOHNSON,ZIPPORA	00:49		
	00:29	8-23	SUB OUT: MOBLEY,BREANNA
	00:29		SUB IN: KONKLE,ASHLEY
SUB OUT: 10 BOWERS,TYESHIA	00:29		
SUB IN: 14 ADEDIRAN,PRECIOUS	00:29		
SUB OUT: 14 ADEDIRAN,PRECIOUS	00:29		
SUB IN: 21 PHOUMIPHAT,AJA	00:29		

Chicago State University 8, Western Michigan University 23

Official Substitutions Log
Chicago State University vs Western Michigan University
Period 2
December 14, 2019 at University Arena - Kalamazoo, Mich.



VISITORS: Chicago State University	Time	Score	HOME: Western Michigan University
4 CLIFF,ALEXANDRIA			5 BAILEY,CHELAYNE
10 BOWERS,TYESHIA			10 MOBLEY,BREANNA
21 PHOUMIPHAT,AJA			11 REED,KAMRIN
22 MATA BOIS,INES			23 WALKER,JORDAN
23 CRANE,KOURTNEY			24 WOOL,LEIGHAH-AMORI
SUB OUT: 22 MATA BOIS,INES	10:00	-	
SUB IN: 23 CRANE,KOURTNEY	10:00		
SUB OUT: 21 PHOUMIPHAT,AJA	09:41	-	
SUB IN: 10 BOWERS,TYESHIA	09:41		
SUB OUT: 2 ROBINSON,TAYLOR	08:37	8-26	
SUB OUT: 24 JOHNSON,ZIPPORA	08:37		
SUB IN: 4 CLIFF,ALEXANDRIA	08:37		
SUB IN: 22 MATA BOIS,INES	08:37		
	07:17	8-28	SUB OUT: WATTERS,MADDIE
	07:17		SUB OUT: SHAFER,SYDNEY
	07:17		SUB OUT: WALKER,JORDAN
	07:17		SUB OUT: KONKLE,ASHLEY
	07:17		SUB IN: BAILEY,CHELAYNE
	07:17		SUB IN: MOBLEY,BREANNA
	07:17		SUB IN: REED,KAMRIN
	07:17		SUB IN: WALKER,ANIYA
SUB OUT: 20 CARSTENS,BETHANY	07:17		
SUB IN: 21 PHOUMIPHAT,AJA	07:17		
SUB OUT: 23 CRANE,KOURTNEY	06:12	10-30	
SUB IN: 20 CARSTENS,BETHANY	06:12		
	05:14	12-30	SUB OUT: WOOL,LEIGHAH-AMORI
	05:14		SUB IN: JACOBSON,REILLY
SUB OUT: 21 PHOUMIPHAT,AJA	04:24	12-32	
SUB IN: 23 CRANE,KOURTNEY	04:24		
	03:27	16-32	SUB OUT: WALKER,ANIYA
	03:27		SUB IN: WALKER,JORDAN
SUB OUT: 22 MATA BOIS,INES	01:49	20-39	
SUB IN: 24 JOHNSON,ZIPPORA	01:49		

Chicago State University 24, Western Michigan University 45

Official Substitutions Log
Chicago State University vs Western Michigan University
Period 3
December 14, 2019 at University Arena - Kalamazoo, Mich.



VISITORS: Chicago State University	Time	Score	HOME: Western Michigan University
4 CLIFF,ALEXANDRIA			5 BAILEY,CHELAYNE
10 BOWERS,TYESHIA			10 MOBLEY,BREANNA
21 PHOUMIPHAT,AJA			11 REED,KAMRIN
22 MATA BOIS,INES			23 WALKER,JORDAN
23 CRANE,KOURTNEY			24 WOOL,LEIGHAH-AMORI
	09:46	-	SUB OUT: JACOBSON,REILLY
	09:46		SUB IN: WOOL,LEIGHAH-AMORI
SUB OUT: 4 CLIFF,ALEXANDRIA	09:46		
SUB IN: 21 PHOUMIPHAT,AJA	09:46		
SUB OUT: 24 JOHNSON,ZIPPORA	07:43	24-54	
SUB IN: 11 DINC,TJANA	07:43		
	06:09	30-57	SUB OUT: REED,KAMRIN
	06:09		SUB IN: FLETCHER,JILL
	04:38	32-64	SUB OUT: BAILEY,CHELAYNE
	04:38		SUB OUT: WOOL,LEIGHAH-AMORI
	04:38		SUB IN: JACOBSON,REILLY
	04:38		SUB IN: SHAFER,SYDNEY
SUB OUT: 11 DINC,TJANA	03:45	36-64	
SUB IN: 22 MATA BOIS,INES	03:45		
	02:22	38-71	SUB OUT: WALKER,JORDAN
	02:22		SUB IN: BROOKS,KIA
SUB OUT: 10 BOWERS,TYESHIA	02:22		
SUB IN: 4 CLIFF,ALEXANDRIA	02:22		
SUB OUT: 21 PHOUMIPHAT,AJA	02:14	38-71	
SUB IN: 2 ROBINSON,TAYLOR	02:14		

Chicago State University 45, Western Michigan University 77

Official Substitutions Log
Chicago State University vs Western Michigan University
Period 4
December 14, 2019 at University Arena - Kalamazoo, Mich.



VISITORS: Chicago State University	Time	Score	HOME: Western Michigan University
4 CLIFF,ALEXANDRIA			5 BAILEY,CHELAYNE
10 BOWERS,TYESHIA			10 MOBLEY,BREANNA
21 PHOUMIPHAT,AJA			11 REED,KAMRIN
22 MATA BOIS,INES			23 WALKER,JORDAN
23 CRANE,KOURTNEY			24 WOOL,LEIGHAH-AMORI
	10:00	-	SUB OUT: BROOKS,KIA
	10:00		SUB OUT: FLETCHER,JILL
	10:00		SUB OUT: MOBLEY,BREANNA
	10:00		SUB OUT: SHAFER,SYDNEY
	10:00		SUB IN: WATTERS,MADDIE
	10:00		SUB IN: BAILEY,CHELAYNE
	10:00		SUB IN: WALKER,JORDAN
	10:00		SUB IN: WOOL,LEIGHAH-AMORI
SUB OUT: 20 CARSTENS,BETHANY	10:00		
SUB IN: 10 BOWERS,TYESHIA	10:00		
SUB OUT: 10 BOWERS,TYESHIA	08:32	49-79	
SUB IN: 20 CARSTENS,BETHANY	08:32		
	07:05	53-79	SUB OUT: WATTERS,MADDIE
	07:05		SUB OUT: BAILEY,CHELAYNE
	07:05		SUB OUT: JACOBSON,REILLY
	07:05		SUB OUT: WALKER,JORDAN
	07:05		SUB OUT: WOOL,LEIGHAH-AMORI
	07:05		SUB IN: BROOKS,KIA
	07:05		SUB IN: MOBLEY,BREANNA
	07:05		SUB IN: REED,KAMRIN
	07:05		SUB IN: SHAFER,SYDNEY
	07:05		SUB IN: KONKLE,ASHLEY
SUB OUT: 4 CLIFF,ALEXANDRIA	07:05		
SUB OUT: 23 CRANE,KOURTNEY	07:05		
SUB IN: 11 DINC,TUANA	07:05		
SUB IN: 21 PHOUMIPHAT,AJA	07:05		
	04:50	57-87	SUB OUT: MOBLEY,BREANNA
	04:50		SUB IN: FLETCHER,JILL
SUB OUT: 2 ROBINSON,TAYLOR	04:50		
SUB OUT: 21 PHOUMIPHAT,AJA	04:50		
SUB IN: 10 BOWERS,TYESHIA	04:50		
SUB IN: 23 CRANE,KOURTNEY	04:50		
	03:33	59-89	SUB OUT: REED,KAMRIN
	03:33		SUB IN: WALKER,ANIYA

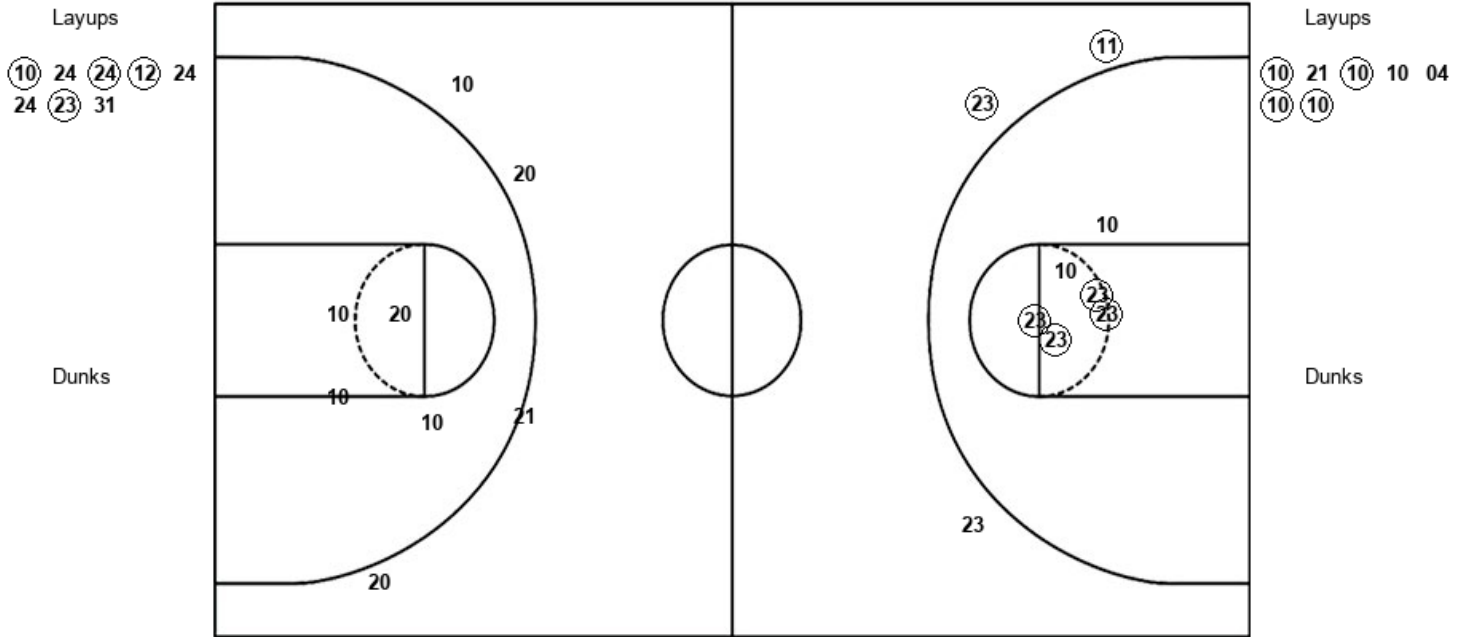
Chicago State University 69, Western Michigan University 90

Official Shot Chart
Chicago State University vs Western Michigan University
PERIOD 1 Shots
 December 14, 2019 at University Arena - Kalamazoo, Mich.



Western Michigan University

Chicago State University



774 : Period 1	Made	Att	Pct
Layups	4	8	50.0
Dunks	0	0	0
2PT Field Goals	8	14	57.1
3PT Field Goals	2	3	66.7
Total Field Goals	10	17	58.8

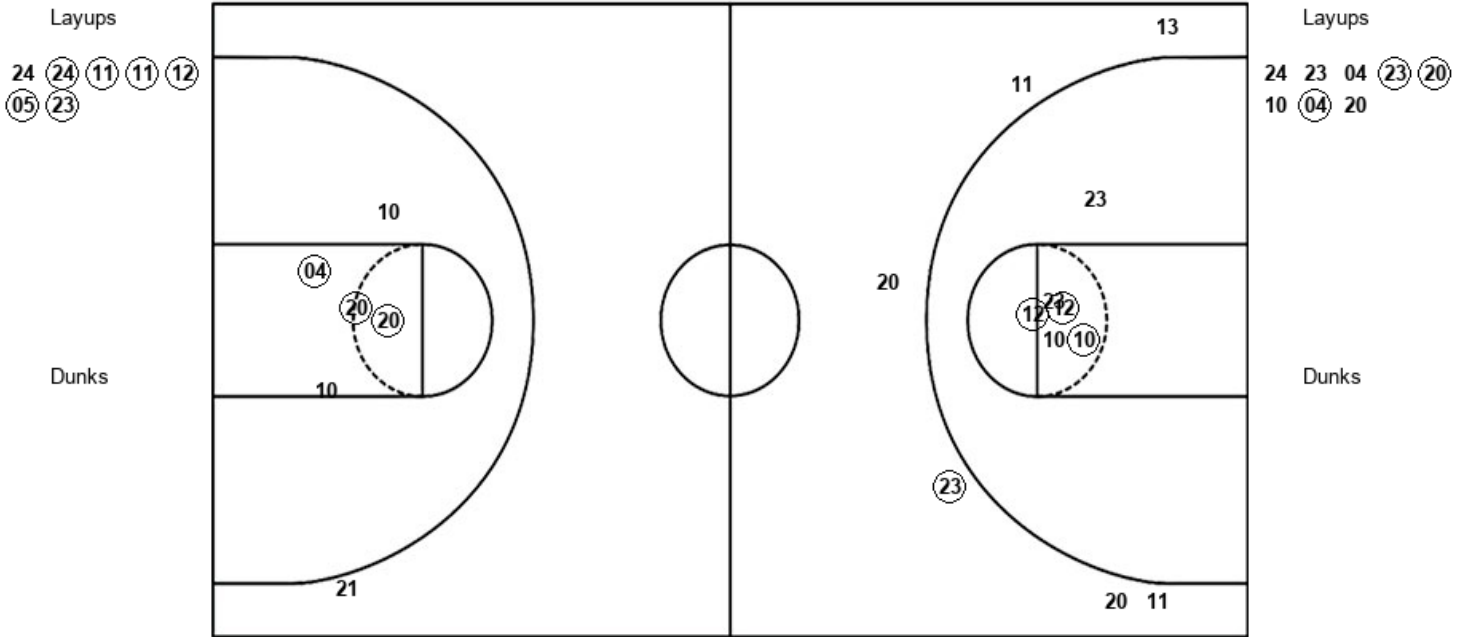
302 : Period 1	Made	Att	Pct
Layups	4	7	57.1
Dunks	0	0	0
2PT Field Goals	4	11	36.4
3PT Field Goals	0	4	00.0
Total Field Goals	4	15	26.7

Official Shot Chart
Chicago State University vs Western Michigan University
 PERIOD 2 Shots
 December 14, 2019 at University Arena - Kalamazoo, Mich.



Western Michigan University

Chicago State University



774 : Period 2	Made	Att	Pct
Layups	6	7	85.7
Dunks	0	0	0
2PT Field Goals	9	13	69.2
3PT Field Goals	1	6	16.7
Total Field Goals	10	19	52.6

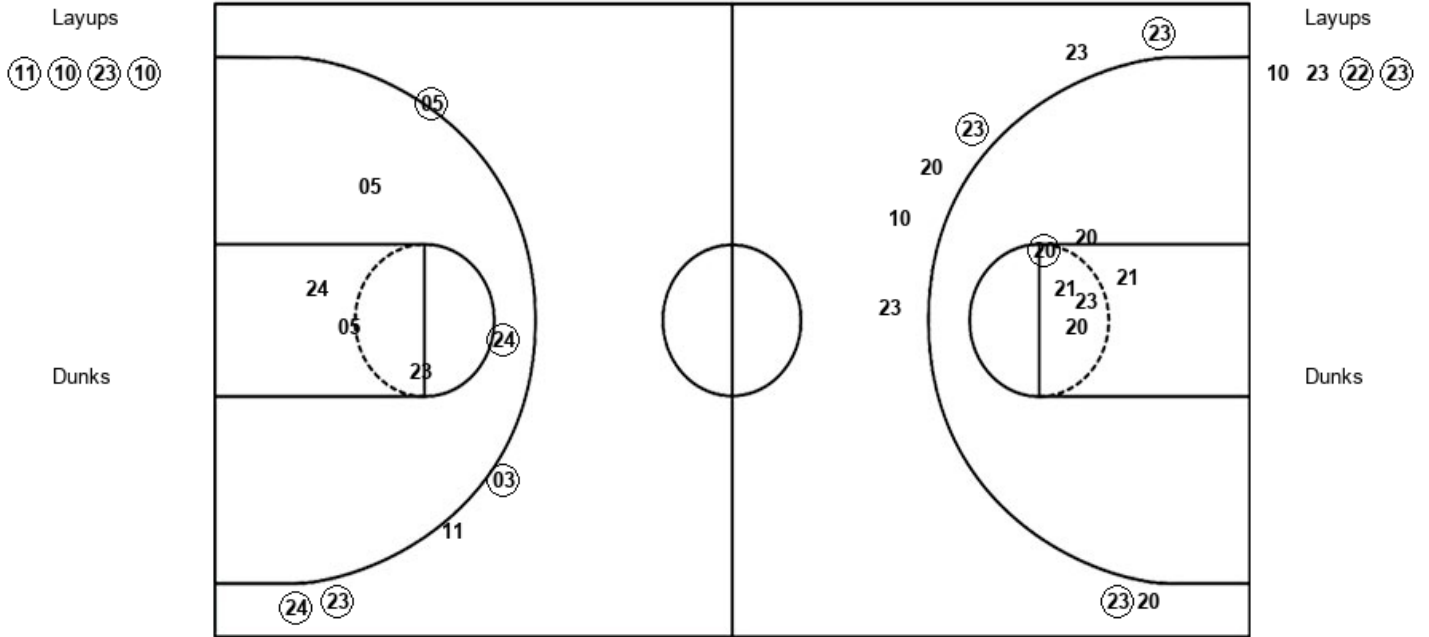
302 : Period 2	Made	Att	Pct
Layups	3	8	37.5
Dunks	0	0	0
2PT Field Goals	6	13	46.2
3PT Field Goals	0	1	00.0
Total Field Goals	6	14	42.9

Official Shot Chart
Chicago State University vs Western Michigan University
PERIOD 3 Shots
 December 14, 2019 at University Arena - Kalamazoo, Mich.



Western Michigan University

Chicago State University



774 : Period 3	Made	Att	Pct
Layups	4	4	100.0
Dunks	0	0	0
2PT Field Goals	5	9	55.6
3PT Field Goals	4	5	80.0
Total Field Goals	9	14	64.3

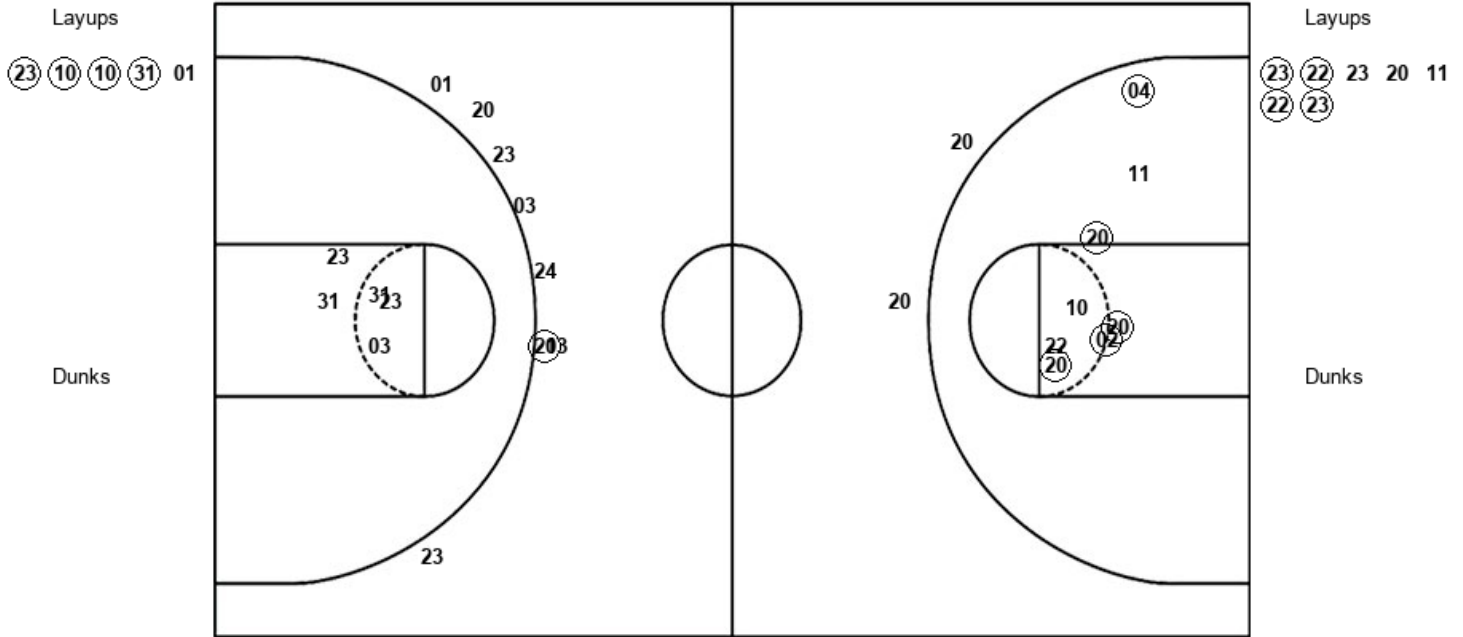
302 : Period 3	Made	Att	Pct
Layups	2	4	50.0
Dunks	0	0	0
2PT Field Goals	3	10	30.0
3PT Field Goals	3	8	37.5
Total Field Goals	6	18	33.3

Official Shot Chart
Chicago State University vs Western Michigan University
PERIOD 4 Shots
 December 14, 2019 at University Arena - Kalamazoo, Mich.



Western Michigan University

Chicago State University



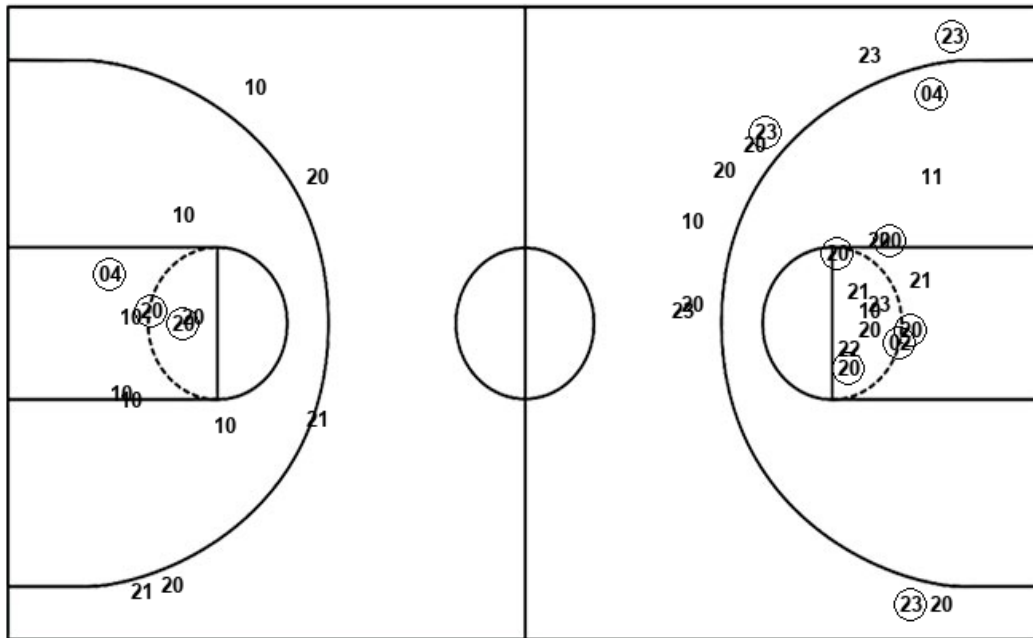
774 : Period 4	Made	Att	Pct
Layups	4	5	80.0
Dunks	0	0	0
2PT Field Goals	4	10	40.0
3PT Field Goals	1	8	12.5
Total Field Goals	5	18	27.8

302 : Period 4	Made	Att	Pct
Layups	4	7	57.1
Dunks	0	0	0
2PT Field Goals	9	15	60.0
3PT Field Goals	0	2	00.0
Total Field Goals	9	17	52.9

Official Shot Chart
Chicago State University vs Western Michigan University
 Chicago State University Team Shots
 December 14, 2019 at University Arena - Kalamazoo, Mich.



Layups



Layups

10	21	10	10	04
10	10	24	23	04
23	20	10	04	20
10	23	22	23	23
22	23	20	11	22
23				

Dunks

Dunks

302 : Period 1	Made	Att	Pct
Layups	4	7	57.1
Dunks	0	0	0
2PT Field Goals	4	11	36.4
3PT Field Goals	0	4	00.0
Total Field Goals	4	15	26.7

302 : Period 2	Made	Att	Pct
Layups	3	8	37.5
Dunks	0	0	0
2PT Field Goals	6	13	46.2
3PT Field Goals	0	1	00.0
Total Field Goals	6	14	42.9

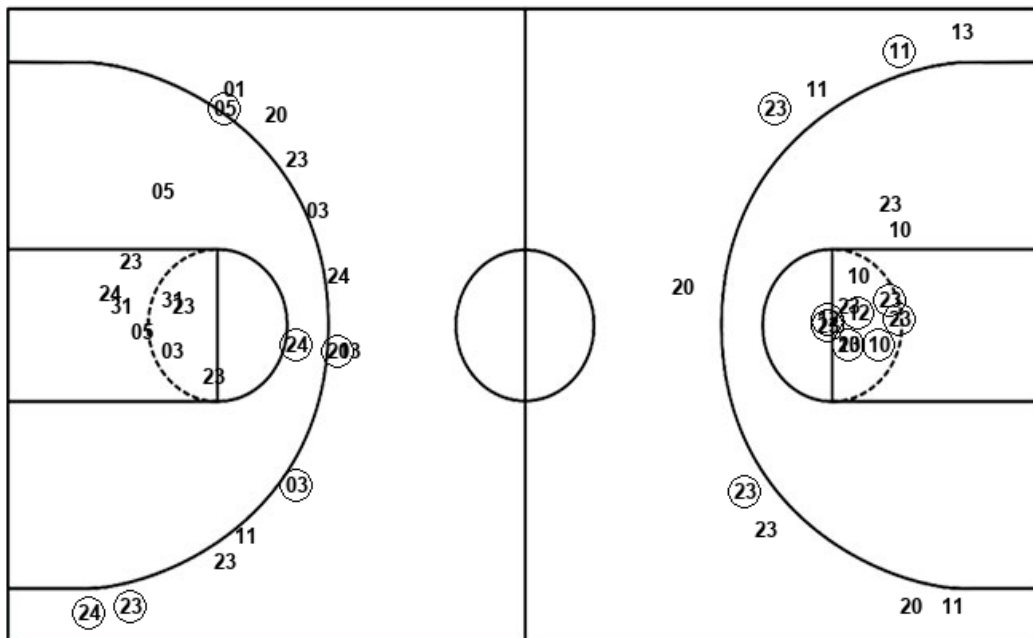
302 : Period 3	Made	Att	Pct
Layups	2	4	50.0
Dunks	0	0	0
2PT Field Goals	3	10	30.0
3PT Field Goals	3	8	37.5
Total Field Goals	6	18	33.3

302 : Period 4	Made	Att	Pct
Layups	4	7	57.1
Dunks	0	0	0
2PT Field Goals	9	15	60.0
3PT Field Goals	0	2	00.0
Total Field Goals	9	17	52.9

Official Shot Chart
Chicago State University vs Western Michigan University
Western Michigan University Team Shots
December 14, 2019 at University Arena - Kalamazoo, Mich.



Layups



Layups



Dunks

Dunks

774 : Period 1	Made	Att	Pct
Layups	4	8	50.0
Dunks	0	0	0
2PT Field Goals	8	14	57.1
3PT Field Goals	2	3	66.7
Total Field Goals	10	17	58.8

774 : Period 3	Made	Att	Pct
Layups	4	4	100.0
Dunks	0	0	0
2PT Field Goals	5	9	55.6
3PT Field Goals	4	5	80.0
Total Field Goals	9	14	64.3

774 : Period 2	Made	Att	Pct
Layups	6	7	85.7
Dunks	0	0	0
2PT Field Goals	9	13	69.2
3PT Field Goals	1	6	16.7
Total Field Goals	10	19	52.6

774 : Period 4	Made	Att	Pct
Layups	4	5	80.0
Dunks	0	0	0
2PT Field Goals	4	10	40.0
3PT Field Goals	1	8	12.5
Total Field Goals	5	18	27.8