

## FINAL SCORE



**Michigan St.**

**57**



**West Virginia**

**63**

December 21, 2019 • Alfond Sports Center (Warden Arena) - Winter Park, Fla.

## FINAL STATISTICS

**Official Box Score**  
**Michigan St. vs West Virginia**  
**Game Totals -- Final Statistics**  
**December 21, 2019 at Alford Sports Center (Warden Arena) - Winter Park, Fla.**

**Michigan St. 57**

No.	Player	S	Pts	FG	3FG	FT	OR	DR	TR	PF	A	TO	Blk	Stl	Min	+/-
00	COLLEY, SHAY	G	11	5-13	0-3	1-2	1	2	3	0	2	3	0	2	28	3
02	COOK, MARDREKIA	F	2	1-2	0-0	0-0	1	1	2	1	0	0	0	0	17	-16
04	MCCUTCHEON, TARYN	G	5	2-5	1-3	0-0	0	2	2	0	2	0	0	0	24	-8
15	GAINES, VICTORIA	F	4	1-5	0-0	2-2	1	0	1	4	1	1	0	0	14	-8
24	CLOUDEN, NIA	G	16	5-14	1-4	5-5	2	6	8	3	1	2	0	2	29	0
01	OZMENT, TORY	G	2	0-4	0-2	2-2	0	3	3	1	1	1	0	0	19	-3
03	WINSTON, ALYZA	G	0	0-1	0-0	0-2	0	1	1	0	0	2	0	0	5	-7
12	HOLLIE, NIA	F	8	3-5	2-2	0-0	0	1	1	5	1	0	0	0	22	12
14	PARKS, TAIYIER	F	4	2-6	0-0	0-4	4	4	8	3	0	3	1	1	18	5
22	JOINER, MOIRA	G	3	1-4	1-2	0-0	1	2	3	2	1	0	0	0	15	-5
40	AYRAULT, JULIA	G	0	0-0	0-0	0-0	0	1	1	1	0	2	0	0	1	0
42	BELLES, KAYLA	F	2	1-1	0-0	0-0	0	2	2	1	1	2	2	1	6	-1
50	DODD, CYDNI	C	0	0-0	0-0	0-0	0	0	0	0	0	1	0	0	2	-2
TEAM							3	1	4	0		1				
<b>TOTALS</b>			<b>57</b>	<b>21-60</b>	<b>5-16</b>	<b>10-17</b>	<b>13</b>	<b>26</b>	<b>39</b>	<b>21</b>	<b>10</b>	<b>18</b>	<b>3</b>	<b>6</b>	<b>200</b>	

*Shooting By Period*

Period	FG	FG%	3FG	3FG%	FT	FT%
1st Qtr	6-17	35%	1-2	50%	2-6	33%
2nd Qtr	5-13	38%	3-6	50%	2-2	100%
3rd Qtr	5-11	45%	0-2	00%	2-2	100%
4th Qtr	5-19	26%	1-6	17%	4-7	57%
1st Half	11-30	37%	4-8	50%	4-8	50%
2nd Half	10-30	33%	1-8	13%	6-9	67%
<b>Game</b>	<b>21-60</b>	<b>35.0%</b>	<b>5-16</b>	<b>31.3%</b>	<b>10-17</b>	<b>58.8%</b>

Deadball Rebounds: 4,3  
Last FG: 4th-00:40  
Biggest Run: 6-0  
Largest lead: By 7 at 2-03  
Technical Fouls: None.

**West Virginia 63**

No.	Player	S	Pts	FG	3FG	FT	OR	DR	TR	PF	A	TO	Blk	Stl	Min	+/-
02	GONDREZICK, KYSRE	G	14	4-14	2-6	4-4	2	3	5	3	2	4	0	2	31	4
05	MARTIN, TYNICE	G	11	3-17	1-8	4-4	1	3	4	0	1	2	0	1	37	6
14	NIBLACK, KARI	F	21	8-10	0-0	5-6	2	6	8	4	1	3	7	0	28	7
30	SMITH, MADISEN	G	5	2-6	1-3	0-0	1	2	3	2	2	3	0	1	26	8
31	NORRIS, ROCHELLE	C	0	0-3	0-0	0-0	5	3	8	2	0	2	1	2	22	0
03	DEANS, KIRSTEN	G	6	2-4	2-4	0-0	1	4	5	3	3	2	0	1	16	-2
04	RUDD, LUCKY	G	1	0-0	0-0	1-2	0	1	1	0	1	0	0	0	6	6
12	MARTINEZ, ESMERY	F	2	0-2	0-0	2-2	1	1	2	3	2	0	0	0	12	-1
22	EJIOFOR, BLESSING	C	2	1-2	0-0	0-0	0	2	2	4	0	0	2	0	17	4
24	MCELROY, ARLEIGHSHYA	G	1	0-1	0-0	1-2	0	0	0	0	0	1	0	1	5	-2
TEAM							0	3	3	0		0				
<b>TOTALS</b>			<b>63</b>	<b>20-59</b>	<b>6-21</b>	<b>17-20</b>	<b>13</b>	<b>28</b>	<b>41</b>	<b>21</b>	<b>12</b>	<b>17</b>	<b>10</b>	<b>8</b>	<b>200</b>	

*Shooting By Period*

Period	FG	FG%	3FG	3FG%	FT	FT%
1st Qtr	5-16	31%	2-6	33%	3-3	100%
2nd Qtr	4-13	31%	0-3	00%	4-5	80%
3rd Qtr	6-18	33%	3-8	38%	3-4	75%
4th Qtr	5-12	42%	1-4	25%	7-8	88%
1st Half	9-29	31%	2-9	22%	7-8	88%
2nd Half	11-30	37%	4-12	33%	10-12	83%
<b>Game</b>	<b>20-59</b>	<b>33.9%</b>	<b>6-21</b>	<b>28.6%</b>	<b>17-20</b>	<b>85.0%</b>

Deadball Rebounds: 0,1  
Last FG: 4th-00:46  
Biggest Run: 9-0  
Largest lead: By 6 at 4-00  
Technical Fouls: None.

Game Notes:

Officials: Kevin Pethtel, Nykesha Thompson, Natasha Curry  
Attendance: 329

Start Time: 01:30 PM ET  
End Time: 03:21 PM ET  
Game Duration: 1:51  
Neutral Court;

Score	1st	2nd	3rd	4th	TOT
MSU	15	15	12	15	<b>57</b>
WVU	15	12	18	18	<b>63</b>

MSU led for 17:30. WVU led for 17:38.  
Game was tied for 4:52.  
Times tied: 7      Lead Changes: 8

Points from	MSU	WVU
In the Paint	22	24
Off Turns	13	16
2nd Chance	9	14
Fast Break	6	9
Bench	19	12

**Official Box Score**  
**Michigan St. vs West Virginia**  
**First Half Statistics Only**  
**December 21, 2019 at Alfond Sports Center (Warden Arena) - Winter Park, Fla.**

### Michigan St. 30

No.	Player	S	Pts	FG	3FG	FT	OR	DR	TR	PF	A	TO	Blk	Stl	Min	+/-
00	COLLEY, SHAY	G	6	3-7	0-1	0-0	0	1	1	0	1	2	0	2	16	1
01	OZMENT, TORY	G	0	0-2	0-1	0-0	0	2	2	0	1	0	0	0	9	0
02	COOK, MARDREKIA	F	2	1-1	0-0	0-0	0	1	1	1	0	0	0	0	9	-7
03	WINSTON, ALYZA	G	0	0-1	0-0	0-2	0	1	1	0	0	2	0	0	5	-7
04	MCCUTCHEON, TARYN	G	5	2-3	1-2	0-0	0	1	1	0	2	0	0	0	13	6
12	HOLLIE, NIA	F	3	1-2	1-1	0-0	0	0	0	1	1	0	0	0	9	10
14	PARKS, TAIYIER	F	0	0-2	0-0	0-2	2	2	4	2	0	3	0	1	9	0
15	GAINES, VICTORIA	F	2	0-3	0-0	2-2	0	0	0	2	0	1	0	0	6	2
22	JOINER, MOIRA	G	3	1-2	1-1	0-0	0	1	1	1	0	0	0	0	6	3
24	CLOUDEN, NIA	G	7	2-6	1-2	2-2	1	1	2	2	0	0	0	1	10	6
40	AYRAULT, JULIA	G	0	0-0	0-0	0-0	0	1	1	1	0	2	0	0	1	0
42	BELLES, KAYLA	F	2	1-1	0-0	0-0	0	0	0	0	1	0	1	1	4	3
50	DODD, CYDNI	C	0	0-0	0-0	0-0	0	0	0	0	0	1	0	0	2	-2
	TEAM		0	0-0	0-0	0-0	2	1	3	0	0	0	0	0	0	
<b>TOTALS</b>			<b>30</b>	<b>11-30</b>	<b>4-8</b>	<b>4-8</b>	<b>5</b>	<b>12</b>	<b>17</b>	<b>10</b>	<b>6</b>	<b>11</b>	<b>1</b>	<b>5</b>	<b>100</b>	

*Shooting By Period*

Period	FG	FG%	3FG	3FG%	FT	FT%
1st Qtr	6-17	35%	1-2	50%	2-6	33%
2nd Qtr	5-13	38%	3-6	50%	2-2	100%
1st Half	11-30	37%	4-8	50%	4-8	50%
Game	21-60	35.0%	5-16	31.3%	10-17	58.8%

Deadball Rebounds: 4,3

Last FG Half: MSU 2nd-03:51

### West Virginia 27

No.	Player	S	Pts	FG	3FG	FT	OR	DR	TR	PF	A	TO	Blk	Stl	Min	+/-
02	GONDREZICK, KYSRE	G	4	1-5	0-1	2-2	2	1	3	2	1	3	0	1	13	-1
03	DEANS, KIRSTEN	G	3	1-3	1-3	0-0	1	1	2	2	0	2	0	1	7	-2
04	RUDD, LUCKY	G	0	0-0	0-0	0-0	0	1	1	0	0	0	0	0	3	2
12	MARTINEZ, ESMERY	F	0	0-2	0-0	0-0	0	1	1	1	1	0	0	0	7	-2
14	NIBLACK, KARI	F	10	4-5	0-0	2-2	1	3	4	2	0	3	2	0	13	-1
22	EJIOFOR, BLESSING	C	2	1-1	0-0	0-0	0	1	1	1	0	0	0	0	7	5
24	MCELROY, ARLEIGHSHYA	G	1	0-1	0-0	1-2	0	0	0	0	0	1	0	1	5	-2
30	SMITH, MADISEN	G	3	1-3	1-2	0-0	0	1	1	2	1	1	0	1	14	-3
31	NORRIS, ROCHELLE	C	0	0-1	0-0	0-0	2	1	3	1	0	2	0	2	13	-8
05	MARTIN, TYNICE	G	4	1-8	0-3	2-2	1	2	3	0	1	2	0	1	18	-3
	TEAM		0	0-0	0-0	0-0	0	2	2	0	0	0	0	0	0	
<b>TOTALS</b>			<b>27</b>	<b>9-29</b>	<b>2-9</b>	<b>7-8</b>	<b>7</b>	<b>14</b>	<b>21</b>	<b>11</b>	<b>4</b>	<b>14</b>	<b>2</b>	<b>7</b>	<b>100</b>	

*Shooting By Period*

Period	FG	FG%	3FG	3FG%	FT	FT%
1st Qtr	5-16	31%	2-6	33%	3-3	100%
2nd Qtr	4-13	31%	0-3	00%	4-5	80%
1st Half	9-29	31%	2-9	22%	7-8	88%
Game	20-59	33.9%	6-21	28.6%	17-20	85.0%

Deadball Rebounds: 0,1

Last FG Half: WVU 2nd-00:46

Game Notes:

Officials: Kevin Pethtel, Nykesha Thompson, Natasha Curry  
Attendance: 329

Start Time: 01:30 PM ET  
End Time: 03:21 PM ET  
Game Duration: 1:51  
Neutral Court;

Score	1st	2nd	3rd	4th	TOT
MSU	15	15	12	15	57
WVU	15	12	18	18	63

Points from (This Period)	MSU	WVU
In the Paint	10	12
Off Turns	11	6
2nd Chance	4	5
Fast Break	2	5
Bench	8	6

**Official Box Score**  
**Michigan St. vs West Virginia**  
**First Quarter Statistics Only**  
**December 21, 2019 at Alford Sports Center (Warden Arena) - Winter Park, Fla.**



### Michigan St. 15

No.	Player	S	Pts	FG	3FG	FT	OR	DR	TR	PF	A	TO	Blk	Stl	Min	+/-
00	COLLEY, SHAY	G	6	3-4	0-1	0-0	0	1	1	0	0	1	0	1	8	-2
02	COOK, MARDREKIA	F	2	1-1	0-0	0-0	0	0	0	1	0	0	0	0	6	-3
04	MCCUTCHEON, TARYN	G	0	0-0	0-0	0-0	0	0	0	0	1	0	0	0	6	1
15	GAINES, VICTORIA	F	0	0-2	0-0	0-0	0	0	0	1	0	0	0	0	4	3
24	CLOUDEN, NIA	G	7	2-5	1-1	2-2	1	1	2	1	0	0	0	1	7	3
01	OZMENT, TORY	G	0	0-1	0-0	0-0	0	1	1	0	0	0	0	0	4	-1
03	WINSTON, ALYZA	G	0	0-1	0-0	0-2	0	1	1	0	0	0	0	0	3	-3
12	HOLLIE, NIA	F	0	0-1	0-0	0-0	0	0	0	1	1	0	0	0	3	3
14	PARKS, TAIYIER	F	0	0-1	0-0	0-2	2	2	4	1	0	2	0	1	6	-3
22	JOINER, MOIRA	G	0	0-1	0-0	0-0	0	0	0	0	0	0	0	0	2	2
40	AYRAULT, JULIA	G	0	0-0	0-0	0-0	0	0	0	0	0	0	0	0	0	0
42	BELLES, KAYLA	F	0	0-0	0-0	0-0	0	0	0	0	0	0	0	0	0	0
50	DODD, CYDNI	C	0	0-0	0-0	0-0	0	0	0	0	0	0	0	0	0	0
TEAM							2	0	2	0		0				
<b>TOTALS</b>			<b>15</b>	<b>6-17</b>	<b>1-2</b>	<b>2-6</b>	<b>5</b>	<b>6</b>	<b>11</b>	<b>5</b>	<b>2</b>	<b>3</b>	<b>0</b>	<b>3</b>	<b>50</b>	

#### Shooting By Period

Period	FG	FG%	3FG	3FG%	FT	FT%
1st Qtr	6-17	35%	1-2	50%	2-6	33%
2nd Qtr	5-13	38%	3-6	50%	2-2	100%
1st Half	6-17	35%	1-2	50%	2-6	33%
1st Half	11-30	37%	4-8	50%	4-8	50%
Game	21-60	35.0%	5-16	31.3%	10-17	58.8%

Deadball Rebounds: 4,3

### West Virginia 15

No.	Player	S	Pts	FG	3FG	FT	OR	DR	TR	PF	A	TO	Blk	Stl	Min	+/-
02	GONDREZICK, KYSRE	G	0	0-2	0-1	0-0	0	1	1	1	1	2	0	0	9	2
05	MARTIN, TYNICE	G	2	0-4	0-1	2-2	1	1	2	0	0	1	0	1	9	0
14	NIBLACK, KARI	F	7	3-4	0-0	1-1	1	1	2	1	0	1	1	0	7	-1
30	SMITH, MADISEN	G	3	1-2	1-1	0-0	0	1	1	1	1	0	0	0	8	-3
31	NORRIS, ROCHELLE	C	0	0-0	0-0	0-0	1	0	1	0	0	1	0	0	6	-1
03	DEANS, KIRSTEN	G	3	1-3	1-3	0-0	1	1	2	0	0	1	0	0	4	1
04	RUDD, LUCKY	G	0	0-0	0-0	0-0	0	0	0	0	0	0	0	0	0	0
12	MARTINEZ, ESMERY	F	0	0-1	0-0	0-0	0	1	1	1	0	0	0	0	3	1
22	EJIOFOR, BLESSING	C	0	0-0	0-0	0-0	0	1	1	1	0	0	0	0	4	1
24	MCELROY, ARLEIGHSHYA	G	0	0-0	0-0	0-0	0	0	0	0	0	0	0	0	0	0
TEAM							0	1	1	0		0				
<b>TOTALS</b>			<b>15</b>	<b>5-16</b>	<b>2-6</b>	<b>3-3</b>	<b>4</b>	<b>8</b>	<b>12</b>	<b>5</b>	<b>2</b>	<b>6</b>	<b>1</b>	<b>1</b>	<b>50</b>	

#### Shooting By Period

Period	FG	FG%	3FG	3FG%	FT	FT%
1st Qtr	5-16	31%	2-6	33%	3-3	100%
2nd Qtr	4-13	31%	0-3	00%	4-5	80%
1st Half	5-16	31%	2-6	33%	3-3	100%
1st Half	9-29	31%	2-9	22%	7-8	88%
Game	20-59	33.9%	6-21	28.6%	17-20	85.0%

Deadball Rebounds: 0,1

#### Game Notes:

Officials: Kevin Pethtel, Nykesha Thompson, Natasha Curry  
Attendance: 329

Start Time: 01:30 PM ET

End Time: 03:21 PM ET

Game Duration: 1:51

Neutral Court;

Score	1st	2nd	3rd	4th	TOT
MSU	15	15	12	15	<b>57</b>
WVU	15	12	18	18	<b>63</b>

Points from (This Period)	MSU	WVU
In the Paint	8	6
Off Turns	6	0
2nd Chance	2	3
Fast Break	2	2
Bench	0	3

**Official Play-By-Play**  
**Michigan St. vs West Virginia**  
**First Quarter**

**December 21, 2019 at Alfond Sports Center (Warden Arena) - Winter Park, Fla.**

**Period 1**

**Starters:**

**Michigan St.:** 0 COLLEY, SHAY (G); 2 COOK, MARDREKIA (F); 4 MCCUTCHEON, TARYN (G); 15 GAINES, VICTORIA (F); 24 CLOUDEN, NIA (G);

**West Virginia:** 2 GONDREZICK, KYSRE (G); 14 NIBLACK, KARI (F); 30 SMITH, MADISEN (G); 31 NORRIS, ROCHELLE (C); 5 MARTIN, TYNICE (G);

Time	VISITORS: Michigan St.	Score	Margin	HOME: West Virginia
09:45		2-0	H 2	GOOD! LAYUP by NIBLACK, KARI [PNT]
09:45				ASSIST by SMITH, MADISEN
09:15	MISSED JUMPER by GAINES, VICTORIA			
09:10				REBOUND (DEF) by SMITH, MADISEN
09:04				FOUL (OFF) by GONDREZICK, KYSRE
09:04				TURNOVER (OFFENSIVE) by GONDREZICK, KYSRE
08:46	GOOD! JUMPER by CLOUDEN, NIA [PNT]	2-2	T	
08:30				TURNOVER (BADPASS) by MARTIN, TYNICE
08:30	STEAL by CLOUDEN, NIA			
08:24	MISSED LAYUP by CLOUDEN, NIA			
08:20				REBOUND (DEF) by GONDREZICK, KYSRE
08:18				TURNOVER (LOSTBALL) by GONDREZICK, KYSRE
08:18	STEAL by COLLEY, SHAY			
08:13	GOOD! LAYUP by COLLEY, SHAY [FB]	2-4	V 2	
07:55				MISSED 3PTR by MARTIN, TYNICE
07:48	REBOUND (DEF) by CLOUDEN, NIA			
07:45	MISSED JUMPER by CLOUDEN, NIA			
07:42	REBOUND (OFF) by CLOUDEN, NIA			
07:31	MISSED LAYUP by GAINES, VICTORIA			
07:31				BLOCK by NIBLACK, KARI
07:29	REBOUND (OFF) by TEAM			
07:29	GOOD! JUMPER by COLLEY, SHAY	2-6	V 4	
07:29	ASSIST by MCCUTCHEON, TARYN			
07:01				MISSED JUMPER by GONDREZICK, KYSRE
06:58				REBOUND (OFF) by NIBLACK, KARI
06:58	FOUL (PERSONAL) by COOK, MARDREKIA			
06:41		4-6	V 2	GOOD! LAYUP by NIBLACK, KARI [PNT]
06:41				ASSIST by GONDREZICK, KYSRE
06:41	FOUL (PERSONAL) by CLOUDEN, NIA			
06:41		5-6	V 1	GOOD! FT by NIBLACK, KARI
06:32	GOOD! LAYUP by COLLEY, SHAY	5-8	V 3	
06:12				MISSED JUMPER by MARTIN, TYNICE
06:06				REBOUND (OFF) by NORRIS, ROCHELLE
06:03	FOUL (PERSONAL) by GAINES, VICTORIA			
06:03	SUB OUT: GAINES, VICTORIA			
06:03	SUB IN: PARKS, TAIYIER			
05:59				TURNOVER (TRAVEL) by NORRIS, ROCHELLE
05:48	MISSED JUMPER by CLOUDEN, NIA			
05:41				REBOUND (DEF) by NIBLACK, KARI
05:35		8-8	T	GOOD! 3PTR by SMITH, MADISEN
05:26	FOUL (OFF) by PARKS, TAIYIER			
05:26	TURNOVER (OFFENSIVE) by PARKS, TAIYIER			
05:26	SUB OUT: COOK, MARDREKIA			
05:26	SUB IN: HOLLIE, NIA			
05:09		10-8	H 2	GOOD! LAYUP by NIBLACK, KARI [PNT]
04:56	GOOD! 3PTR by CLOUDEN, NIA	10-11	V 1	
04:56	ASSIST by HOLLIE, NIA			
04:32				MISSED JUMPER by MARTIN, TYNICE
04:27	REBOUND (DEF) by PARKS, TAIYIER			
04:20	MISSED 3PTR by COLLEY, SHAY			
04:03				REBOUND (DEF) by TEAM
04:16				
04:16	SUB OUT: COLLEY, SHAY			
04:16	SUB OUT: MCCUTCHEON, TARYN			
04:16	SUB IN: OZMENT, TORY			
04:16	SUB IN: JOINER, MOIRA			
04:16				SUB OUT: MARTIN, TYNICE
04:16				SUB OUT: NORRIS, ROCHELLE
04:16				SUB IN: DEANS, KIRSTEN
04:16				SUB IN: EJIOFOR, BLESSING
04:09				MISSED JUMPER by NIBLACK, KARI
04:05	REBOUND (DEF) by OZMENT, TORY			
04:01	MISSED JUMPER by JOINER, MOIRA			
03:55	REBOUND (OFF) by TEAM			
03:42	MISSED LAYUP by HOLLIE, NIA			
03:38				REBOUND (DEF) by EJIOFOR, BLESSING
03:27				TURNOVER (BADPASS) by NIBLACK, KARI
03:27	STEAL by PARKS, TAIYIER			
03:04				FOUL (PERSONAL) by NIBLACK, KARI
03:04				SUB OUT: GONDREZICK, KYSRE

Time	VISITORS: Michigan St.	Score	Margin	HOME: West Virginia
03:04				SUB OUT: NIBLACK, KARI
03:04				SUB IN: MARTIN, TYNICE
03:04				SUB IN: MARTINEZ, ESMERY
03:04	GOOD! FT by CLOUDEN, NIA	10-12	V 2	
03:04	GOOD! FT by CLOUDEN, NIA	10-13	V 3	
03:04	SUB OUT: CLOUDEN, NIA			
03:04	SUB IN: WINSTON, ALYZA			
02:56				MISSED LAYUP by SMITH, MADISEN
02:53	REBOUND (DEF) by TEAM			
02:53				FOUL (PERSONAL) by EJIOFOR, BLESSING
02:33	MISSED JUMPER by WINSTON, ALYZA			
02:30	REBOUND (OFF) by PARKS, TAIYIER			
02:30				FOUL (PERSONAL) by MARTINEZ, ESMERY
02:30	MISSED FT by PARKS, TAIYIER			
02:30	REBOUND (OFF) by TEAM			
02:30	MISSED FT by PARKS, TAIYIER			
02:29				REBOUND (DEF) by DEANS, KIRSTEN
02:09				MISSED 3PTR by DEANS, KIRSTEN
02:05	REBOUND (DEF) by WINSTON, ALYZA			
02:05				FOUL (PERSONAL) by SMITH, MADISEN
02:05				SUB OUT: SMITH, MADISEN
02:05				SUB IN: GONDREZICK, KYSRE
02:05	MISSED FT by WINSTON, ALYZA			
02:05	REBOUND (OFF) by TEAM			
02:05	MISSED FT by WINSTON, ALYZA			
02:05				REBOUND (DEF) by MARTIN, TYNICE
02:03	FOUL (PERSONAL) by HOLLIE, NIA			
02:03	SUB OUT: HOLLIE, NIA			
02:03	SUB OUT: JOINER, MOIRA			
02:03	SUB IN: COLLEY, SHAY			
02:03	SUB IN: COOK, MARDREKIA			
02:03		11-13	V 2	GOOD! FT by MARTIN, TYNICE [FB]
02:03		12-13	V 1	GOOD! FT by MARTIN, TYNICE [FB]
01:55	MISSED LAYUP by PARKS, TAIYIER			
01:51	REBOUND (OFF) by PARKS, TAIYIER			
01:50	MISSED JUMPER by OZMENT, TORY			
01:45				REBOUND (DEF) by MARTINEZ, ESMERY
01:40				MISSED 3PTR by GONDREZICK, KYSRE
01:35	REBOUND (DEF) by PARKS, TAIYIER			
01:28	GOOD! LAYUP by COOK, MARDREKIA	12-15	V 3	
01:00		15-15	T	GOOD! 3PTR by DEANS, KIRSTEN
00:38	TURNOVER (LOSTBALL) by PARKS, TAIYIER			
00:38				STEAL by MARTIN, TYNICE
00:32				MISSED LAYUP by MARTINEZ, ESMERY
00:28				REBOUND (OFF) by MARTIN, TYNICE
00:27				MISSED LAYUP by MARTIN, TYNICE
00:23				REBOUND (OFF) by DEANS, KIRSTEN
00:23				TURNOVER (LOSTBALL) by DEANS, KIRSTEN
00:23	SUB OUT: WINSTON, ALYZA			
00:23	SUB OUT: PARKS, TAIYIER			
00:23	SUB IN: CLOUDEN, NIA			
00:23	SUB IN: BELLES, KAYLA			
00:23				SUB OUT: EJIOFOR, BLESSING
00:23				SUB IN: NORRIS, ROCHELLE
00:23	SUB OUT: COOK, MARDREKIA			
00:23	SUB IN: AYRAULT, JULIA			
00:08	TURNOVER (TRAVEL) by COLLEY, SHAY			
00:02				MISSED 3PTR by DEANS, KIRSTEN
00:00	REBOUND (DEF) by COLLEY, SHAY			

Michigan St. 15, West Virginia 15

Points from (This Period)	MSU	WVU
In the Paint	8	6
Off Turns	6	0
2nd Chance	2	3
Fast Break	2	2
Bench	0	3

**Official Box Score**  
**Michigan St. vs West Virginia**  
**Second Quarter Statistics Only**  
**December 21, 2019 at Alford Sports Center (Warden Arena) - Winter Park, Fla.**



### Michigan St. 15

No.	Player	S	Pts	FG	3FG	FT	OR	DR	TR	PF	A	TO	Blk	Stl	Min	+/-
00	COLLEY, SHAY	G	0	0-3	0-0	0-0	0	0	0	0	1	1	0	1	8	3
02	COOK, MARDREKIA	F	0	0-0	0-0	0-0	0	1	1	0	0	0	0	0	3	-4
04	MCCUTCHEON, TARYN	G	5	2-3	1-2	0-0	0	1	1	0	1	0	0	0	7	5
15	GAINES, VICTORIA	F	2	0-1	0-0	2-2	0	0	0	1	0	1	0	0	2	-1
24	CLOUDEN, NIA	G	0	0-1	0-1	0-0	0	0	0	1	0	0	0	0	3	3
01	OZMENT, TORY	G	0	0-1	0-1	0-0	0	1	1	0	1	0	0	0	5	1
03	WINSTON, ALYZA	G	0	0-0	0-0	0-0	0	0	0	0	0	2	0	0	2	-4
12	HOLLIE, NIA	F	3	1-1	1-1	0-0	0	0	0	0	0	0	0	0	6	7
14	PARKS, TAIYIER	F	0	0-1	0-0	0-0	0	0	0	1	0	1	0	0	3	3
22	JOINER, MOIRA	G	3	1-1	1-1	0-0	0	1	1	1	0	0	0	0	4	1
40	AYRAULT, JULIA	G	0	0-0	0-0	0-0	0	1	1	1	0	2	0	0	1	0
42	BELLES, KAYLA	F	2	1-1	0-0	0-0	0	0	0	0	1	0	1	1	4	3
50	DODD, CYDNI	C	0	0-0	0-0	0-0	0	0	0	0	0	1	0	0	2	-2
	TEAM						0	1	1	0		0				
<b>TOTALS</b>			<b>15</b>	<b>5-13</b>	<b>3-6</b>	<b>2-2</b>	<b>0</b>	<b>6</b>	<b>6</b>	<b>5</b>	<b>4</b>	<b>8</b>	<b>1</b>	<b>2</b>	<b>50</b>	

#### Shooting By Period

Period	FG	FG%	3FG	3FG%	FT	FT%
3rd Qtr	5-11	45%	0-2	00%	2-2	100%
4th Qtr	5-19	26%	1-6	17%	4-7	57%
2nd Half	5-13	38%	3-6	50%	2-2	100%
2nd Half	10-30	33%	1-8	13%	6-9	67%
Game	21-60	35.0%	5-16	31.3%	10-17	58.8%

Deadball Rebounds: 4,3

### West Virginia 12

No.	Player	S	Pts	FG	3FG	FT	OR	DR	TR	PF	A	TO	Blk	Stl	Min	+/-
02	GONDREZICK, KYSRE	G	4	1-3	0-0	2-2	2	0	2	1	0	1	0	1	4	-3
05	MARTIN, TYNICE	G	2	1-4	0-2	0-0	0	1	1	0	1	1	0	0	9	-3
14	NIBLACK, KARI	F	3	1-1	0-0	1-1	0	2	2	1	0	2	1	0	6	0
30	SMITH, MADISEN	G	0	0-1	0-1	0-0	0	0	0	1	0	1	0	1	6	0
31	NORRIS, ROCHELLE	C	0	0-1	0-0	0-0	1	1	2	1	0	1	0	2	7	-7
03	DEANS, KIRSTEN	G	0	0-0	0-0	0-0	0	0	0	2	0	1	0	1	3	-3
04	RUDD, LUCKY	G	0	0-0	0-0	0-0	0	1	1	0	0	0	0	0	3	2
12	MARTINEZ, ESMERY	F	0	0-1	0-0	0-0	0	0	0	0	1	0	0	0	4	-3
22	EJIOFOR, BLESSING	C	2	1-1	0-0	0-0	0	0	0	0	0	0	0	0	3	4
24	MCELROY, ARLEIGHSHYA	G	1	0-1	0-0	1-2	0	0	0	0	0	1	0	1	5	-2
	TEAM						0	1	1	0		0				
<b>TOTALS</b>			<b>12</b>	<b>4-13</b>	<b>0-3</b>	<b>4-5</b>	<b>3</b>	<b>6</b>	<b>9</b>	<b>6</b>	<b>2</b>	<b>8</b>	<b>1</b>	<b>6</b>	<b>50</b>	

#### Shooting By Period

Period	FG	FG%	3FG	3FG%	FT	FT%
3rd Qtr	6-18	33%	3-8	38%	3-4	75%
4th Qtr	5-12	42%	1-4	25%	7-8	88%
2nd Half	4-13	31%	0-3	00%	4-5	80%
2nd Half	11-30	37%	4-12	33%	10-12	83%
Game	20-59	33.9%	6-21	28.6%	17-20	85.0%

Deadball Rebounds: 0,1

#### Game Notes:

Officials: Kevin Pethtel, Nykesha Thompson, Natasha Curry  
Attendance: 329

Start Time: 01:30 PM ET

End Time: 03:21 PM ET

Game Duration: 1:51

Neutral Court;

Score	1st	2nd	3rd	4th	TOT
MSU	15	15	12	15	<b>57</b>
WVU	15	12	18	18	<b>63</b>

Points from (This Period)	MSU	WVU
In the Paint	2	6
Off Turns	5	6
2nd Chance	2	2
Fast Break	0	3
Bench	8	3

**Official Play-By-Play**  
**Michigan St. vs West Virginia**  
**Second Quarter**

**December 21, 2019 at Alford Sports Center (Warden Arena) - Winter Park, Fla.**

**Period 2**

**Starters:**

**Michigan St.:** 0 COLLEY, SHAY (G); 2 COOK, MARDREKIA (F); 4 MCCUTCHEON, TARYN (G); 15 GAINES, VICTORIA (F); 24 CLOUDEN, NIA (G);

**West Virginia:** 2 GONDREZICK, KYSRE (G); 14 NIBLACK, KARI (F); 30 SMITH, MADISEN (G); 31 NORRIS, ROCHELLE (C); 5 MARTIN, TYNICE (G);

Time	VISITORS: Michigan St.	Score	Margin	HOME: West Virginia
09:49	GOOD! LAYUP by BELLES, KAYLA [PNT]	15-17	V 2	
09:49	ASSIST by OZMENT, TORY			
09:32				MISSED LAYUP by MARTINEZ, ESMERY
09:32	REBOUND (DEF) by AYRAULT, JULIA			
09:24	TURNOVER (LOSTBALL) by AYRAULT, JULIA			
09:24				STEAL by DEANS, KIRSTEN
09:20				FOUL (OFF) by DEANS, KIRSTEN
09:20				TURNOVER (OFFENSIVE) by DEANS, KIRSTEN
09:20				SUB OUT: DEANS, KIRSTEN
09:20				SUB IN: SMITH, MADISEN
09:20	TURNOVER (LOSTBALL) by AYRAULT, JULIA			
09:20				STEAL by GONDREZICK, KYSRE
09:13	FOUL (PERSONAL) by AYRAULT, JULIA			
09:13	SUB OUT: OZMENT, TORY			
09:13	SUB IN: MCCUTCHEON, TARYN			
09:13		16-17	V 1	GOOD! FT by GONDREZICK, KYSRE [FB]
09:13		17-17	T	GOOD! FT by GONDREZICK, KYSRE [FB]
09:13	SUB OUT: AYRAULT, JULIA			
09:13	SUB IN: HOLLIE, NIA			
08:59	GOOD! 3PTR by MCCUTCHEON, TARYN	17-20	V 3	
08:59	ASSIST by BELLES, KAYLA			
08:28				MISSED JUMPER by GONDREZICK, KYSRE
08:24				REBOUND (OFF) by NORRIS, ROCHELLE
08:23				MISSED LAYUP by NORRIS, ROCHELLE
08:19	REBOUND (DEF) by MCCUTCHEON, TARYN			
08:06	GOOD! JUMPER by MCCUTCHEON, TARYN	17-22	V 5	
07:39				TURNOVER (BADPASS) by MARTIN, TYNICE
07:39	STEAL by BELLES, KAYLA			
07:32	MISSED 3PTR by CLOUDEN, NIA			
07:28				REBOUND (DEF) by MARTIN, TYNICE
07:26				MISSED JUMPER by MARTIN, TYNICE
07:20				REBOUND (OFF) by GONDREZICK, KYSRE
07:19				MISSED LAYUP by GONDREZICK, KYSRE
07:16				REBOUND (OFF) by GONDREZICK, KYSRE
07:14		19-22	V 3	GOOD! LAYUP by GONDREZICK, KYSRE
07:08	MISSED LAYUP by COLLEY, SHAY			
07:08				BLOCK by NIBLACK, KARI
06:55				REBOUND (DEF) by NORRIS, ROCHELLE
06:53				SUB OUT: MARTINEZ, ESMERY
06:53				SUB IN: NIBLACK, KARI
06:53	FOUL (PERSONAL) by CLOUDEN, NIA			
06:53				SUB OUT: MARTIN, TYNICE
06:53				SUB IN: RUDD, LUCKY
06:53	SUB OUT: CLOUDEN, NIA			
06:53	SUB IN: JOINER, MOIRA			
06:53	SUB OUT: BELLES, KAYLA			
06:53	SUB IN: DODD, CYDNI			
06:36				MISSED 3PTR by SMITH, MADISEN
06:30	REBOUND (DEF) by JOINER, MOIRA			
06:26	TURNOVER (BADPASS) by COLLEY, SHAY			
06:26				STEAL by NORRIS, ROCHELLE
06:22				TURNOVER (LOSTBALL) by NORRIS, ROCHELLE
06:22				SUB OUT: SMITH, MADISEN
06:22				SUB IN: DEANS, KIRSTEN
06:22	MISSED JUMPER by COLLEY, SHAY			
06:18				REBOUND (DEF) by TEAM
06:03				FOUL (OFF) by GONDREZICK, KYSRE
06:03				TURNOVER (OFFENSIVE) by GONDREZICK, KYSRE
06:03				SUB OUT: GONDREZICK, KYSRE
06:03				SUB IN: MARTIN, TYNICE
05:50	MISSED 3PTR by MCCUTCHEON, TARYN			
05:45				REBOUND (DEF) by RUDD, LUCKY
05:30		21-22	V 1	GOOD! JUMPER by MARTIN, TYNICE
05:06	TURNOVER (LOSTBALL) by DODD, CYDNI			
05:06				STEAL by NORRIS, ROCHELLE
05:06	SUB OUT: DODD, CYDNI			
05:06	SUB IN: PARKS, TAIYIER			
04:52				MISSED 3PTR by MARTIN, TYNICE
04:51	REBOUND (DEF) by TEAM			
04:51				FOUL (PERSONAL) by NORRIS, ROCHELLE



Time	VISITORS: Michigan St.	Score	Margin	HOME: West Virginia
04:51				
04:51				SUB OUT: RUDD, LUCKY
04:51				SUB IN: MCELROY, ARLEIGHSHYA
04:37	GOOD! 3PTR by JOINER, MOIRA	21-25	V 4	
04:37	ASSIST by COLLEY, SHAY			
04:12				TURNOVER (LOSTBALL) by NIBLACK, KARI
04:12	STEAL by COLLEY, SHAY			
04:12	SUB OUT: COLLEY, SHAY			
04:12	SUB IN: OZMENT, TORY			
04:04				FOUL (PERSONAL) by DEANS, KIRSTEN
04:04				SUB OUT: DEANS, KIRSTEN
04:04				SUB IN: SMITH, MADISEN
03:51	GOOD! 3PTR by HOLLIE, NIA	21-28	V 7	
03:51	ASSIST by MCCUTCHEON, TARYN			
03:41	SUB OUT: MCCUTCHEON, TARYN			
03:41	SUB IN: WINSTON, ALYZA			
03:41				TIMEOUT 30SEC
03:24				TURNOVER (BADPASS) by MCELROY, ARLEIGHSHYA
03:24				SUB OUT: NORRIS, ROCHELLE
03:24				SUB IN: EJIOFOR, BLESSING
03:15	MISSED JUMPER by PARKS, TAIYIER			
03:11				REBOUND (DEF) by NIBLACK, KARI
03:11				TURNOVER (TRAVEL) by NIBLACK, KARI
03:02	TURNOVER (LOSTBALL) by PARKS, TAIYIER			
03:02				STEAL by SMITH, MADISEN
02:56	FOUL (PERSONAL) by JOINER, MOIRA			
02:56	SUB OUT: HOLLIE, NIA			
02:56	SUB IN: COOK, MARDREKIA			
02:56		22-28	V 6	GOOD! FT by MCELROY, ARLEIGHSHYA [FB]
02:56				MISSED FT by MCELROY, ARLEIGHSHYA
02:56	REBOUND (DEF) by OZMENT, TORY			
02:47	TURNOVER (TRAVEL) by WINSTON, ALYZA			
02:29		24-28	V 4	GOOD! LAYUP by NIBLACK, KARI [PNT]
02:29				ASSIST by MARTIN, TYNICE
02:29	FOUL (PERSONAL) by PARKS, TAIYIER			
02:29	SUB OUT: PARKS, TAIYIER			
02:29	SUB OUT: JOINER, MOIRA			
02:29	SUB IN: COLLEY, SHAY			
02:29	SUB IN: GAINES, VICTORIA			
02:29		25-28	V 3	GOOD! FT by NIBLACK, KARI
02:11	TURNOVER (LOSTBALL) by WINSTON, ALYZA			
02:11				STEAL by MCELROY, ARLEIGHSHYA
01:51				MISSED 3PTR by MARTIN, TYNICE
01:47	REBOUND (DEF) by COOK, MARDREKIA			
01:29	MISSED LAYUP by GAINES, VICTORIA			
01:26				REBOUND (DEF) by NIBLACK, KARI
01:24				FOUL (OFF) by SMITH, MADISEN
01:24				TURNOVER (OFFENSIVE) by SMITH, MADISEN
01:24	SUB OUT: WINSTON, ALYZA			
01:24	SUB IN: MCCUTCHEON, TARYN			
01:08	MISSED 3PTR by OZMENT, TORY			
01:06	REBOUND (OFF) by TEAM			
01:06				FOUL (PERSONAL) by NIBLACK, KARI
01:06				SUB OUT: NIBLACK, KARI
01:06				SUB OUT: SMITH, MADISEN
01:06				SUB IN: RUDD, LUCKY
01:06				SUB IN: MARTINEZ, ESMERY
01:06	GOOD! FT by GAINES, VICTORIA	25-29	V 4	
01:06	GOOD! FT by GAINES, VICTORIA	25-30	V 5	
00:46		27-30	V 3	GOOD! LAYUP by EJIOFOR, BLESSING
00:46				ASSIST by MARTINEZ, ESMERY
00:34	FOUL (OFF) by GAINES, VICTORIA			
00:34	TURNOVER (OFFENSIVE) by GAINES, VICTORIA			
00:34	SUB OUT: GAINES, VICTORIA			
00:34	SUB IN: BELLES, KAYLA			
00:23				MISSED JUMPER by MCELROY, ARLEIGHSHYA
00:20	REBOUND (DEF) by TEAM			
00:00	MISSED JUMPER by COLLEY, SHAY			
00:00				REBOUND (DEF) by TEAM

### Michigan St. 30, West Virginia 27

Points from (This Period)	MSU	WVU
In the Paint	2	6
Off Turns	5	6
2nd Chance	2	2
Fast Break	0	3
Bench	8	3

**Official Box Score**  
**Michigan St. vs West Virginia**  
**Second Half Statistics Only**  
**December 21, 2019 at Alfond Sports Center (Warden Arena) - Winter Park, Fla.**

### Michigan St. 27

No.	Player	S	Pts	FG	3FG	FT	OR	DR	TR	PF	A	TO	Blk	Stl	Min	+/-
00	COLLEY, SHAY	G	5	2-6	0-2	1-2	1	1	2	0	1	1	0	0	12	2
01	OZMENT, TORY	G	2	0-2	0-1	2-2	0	1	1	1	0	1	0	0	10	-3
02	COOK, MARDREKIA	F	0	0-1	0-0	0-0	1	0	1	0	0	0	0	0	7	-9
03	WINSTON, ALYZA	G	0	0-0	0-0	0-0	0	0	0	0	0	0	0	0	0	0
04	MCCUTCHEON, TARYN	G	0	0-2	0-1	0-0	0	1	1	0	0	0	0	0	11	-14
12	HOLLIE, NIA	F	5	2-3	1-1	0-0	0	1	1	4	0	0	0	0	13	2
14	PARKS, TAIYIER	F	4	2-4	0-0	0-2	2	2	4	1	0	0	1	0	10	5
15	GAINES, VICTORIA	F	2	1-2	0-0	0-0	1	0	1	2	1	0	0	0	8	-10
22	JOINER, MOIRA	G	0	0-2	0-1	0-0	1	1	2	1	1	0	0	0	9	-8
24	CLOUDEN, NIA	G	9	3-8	0-2	3-3	1	5	6	1	1	2	0	1	18	-6
40	AYRAULT, JULIA	G	0	0-0	0-0	0-0	0	0	0	0	0	0	0	0	0	0
42	BELLES, KAYLA	F	0	0-0	0-0	0-0	0	2	2	1	0	2	1	0	2	-4
50	DODD, CYDNI	C	0	0-0	0-0	0-0	0	0	0	0	0	0	0	0	0	0
	TEAM		0	0-0	0-0	0-0	1	0	1	0	0	1	0	0	0	0
<b>TOTALS</b>			<b>27</b>	<b>10-30</b>	<b>1-8</b>	<b>6-9</b>	<b>8</b>	<b>14</b>	<b>22</b>	<b>11</b>	<b>4</b>	<b>7</b>	<b>2</b>	<b>1</b>	<b>100</b>	

#### Shooting By Period

Period	FG	FG%	3FG	3FG%	FT	FT%
3rd Qtr	5-11	45%	0-2	00%	2-2	100%
4th Qtr	5-19	26%	1-6	17%	4-7	57%
2nd Half	10-30	33%	1-8	13%	6-9	67%
Game	21-60	35.0%	5-16	31.3%	10-17	58.8%

Deadball Rebounds: 4,3

Last FG Half: MSU 4th-00:40

### West Virginia 36

No.	Player	S	Pts	FG	3FG	FT	OR	DR	TR	PF	A	TO	Blk	Stl	Min	+/-
02	GONDREZICK, KYSRE	G	10	3-9	2-5	2-2	0	2	2	1	1	1	0	1	18	5
03	DEANS, KIRSTEN	G	3	1-1	1-1	0-0	0	3	3	1	3	0	0	0	9	0
04	RUDD, LUCKY	G	1	0-0	0-0	1-2	0	0	0	0	1	0	0	0	3	4
12	MARTINEZ, ESMERY	F	2	0-0	0-0	2-2	1	0	1	2	1	0	0	0	4	1
14	NIBLACK, KARI	F	11	4-5	0-0	3-4	1	3	4	2	1	0	5	0	16	8
22	EJIOFOR, BLESSING	C	0	0-1	0-0	0-0	0	1	1	3	0	0	2	0	10	-1
24	MCELROY, ARLEIGHSHYA	G	0	0-0	0-0	0-0	0	0	0	0	0	0	0	0	0	0
30	SMITH, MADISEN	G	2	1-3	0-1	0-0	1	1	2	0	1	2	0	0	12	11
31	NORRIS, ROCHELLE	C	0	0-2	0-0	0-0	3	2	5	1	0	0	1	0	9	8
05	MARTIN, TYNICE	G	7	2-9	1-5	2-2	0	1	1	0	0	0	0	0	19	9
	TEAM		0	0-0	0-0	0-0	0	1	1	0	0	0	0	0	0	0
<b>TOTALS</b>			<b>36</b>	<b>11-30</b>	<b>4-12</b>	<b>10-12</b>	<b>6</b>	<b>14</b>	<b>20</b>	<b>10</b>	<b>8</b>	<b>3</b>	<b>8</b>	<b>1</b>	<b>100</b>	

#### Shooting By Period

Period	FG	FG%	3FG	3FG%	FT	FT%
3rd Qtr	6-18	33%	3-8	38%	3-4	75%
4th Qtr	5-12	42%	1-4	25%	7-8	88%
2nd Half	11-30	37%	4-12	33%	10-12	83%
Game	20-59	33.9%	6-21	28.6%	17-20	85.0%

Deadball Rebounds: 0,1

Last FG Half: WVU 4th-00:46

#### Game Notes:

Officials: Kevin Pethtel, Nykesha Thompson, Natasha Curry  
Attendance: 329

Start Time: 01:30 PM ET  
End Time: 03:21 PM ET  
Game Duration: 1:51  
Neutral Court;

Score	1st	2nd	3rd	4th	TOT
MSU	15	15	12	15	57
WVU	15	12	18	18	63

Points from (This Period)	MSU	WVU
In the Paint	12	12
Off Turns	2	10
2nd Chance	5	9
Fast Break	4	4
Bench	11	6

**Official Box Score**  
**Michigan St. vs West Virginia**  
**Third Quarter Statistics Only**  
**December 21, 2019 at Alfond Sports Center (Warden Arena) - Winter Park, Fla.**

### Michigan St. 27

No.	Player	S	Pts	FG	3FG	FT	OR	DR	TR	PF	A	TO	Blk	Stl	Min	+/-
00	COLLEY, SHAY	G	4	2-3	0-1	0-0	0	1	1	0	1	1	0	0	5	3
02	COOK, MARDREKIA	F	0	0-1	0-0	0-0	0	0	0	0	0	0	0	0	4	-7
04	MCCUTCHEON, TARYN	G	0	0-1	0-0	0-0	0	1	1	0	0	0	0	0	7	-9
15	GAINES, VICTORIA	F	0	0-0	0-0	0-0	0	0	0	0	0	0	0	0	3	-7
24	CLOUDEN, NIA	G	2	1-2	0-1	0-0	0	1	1	0	1	1	0	0	8	-3
01	OZMENT, TORY	G	2	0-0	0-0	2-2	0	1	1	1	0	1	0	0	5	-1
03	WINSTON, ALYZA	G	0	0-0	0-0	0-0	0	0	0	0	0	0	0	0	0	0
12	HOLLIE, NIA	F	0	0-1	0-0	0-0	0	0	0	1	0	0	0	0	6	1
14	PARKS, TAIYIER	F	4	2-2	0-0	0-0	1	1	2	1	0	0	1	0	5	5
22	JOINER, MOIRA	G	0	0-1	0-0	0-0	0	1	1	1	0	0	0	0	5	-8
40	AYRAULT, JULIA	G	0	0-0	0-0	0-0	0	0	0	0	0	0	0	0	0	0
42	BELLES, KAYLA	F	0	0-0	0-0	0-0	0	2	2	1	0	2	1	0	2	-4
50	DODD, CYDNI	C	0	0-0	0-0	0-0	0	0	0	0	0	0	0	0	0	0
	TEAM						1	0	1	0		1				
<b>TOTALS</b>			<b>12</b>	<b>5-11</b>	<b>0-2</b>	<b>2-2</b>	<b>2</b>	<b>8</b>	<b>10</b>	<b>5</b>	<b>2</b>	<b>6</b>	<b>2</b>	<b>0</b>	<b>50</b>	

*Shooting By Period*

Period	FG	FG%	3FG	3FG%	FT	FT%
2nd Half	0-0	0%	0-0	0%	0-0	0%
Game	21-60	35.0%	5-16	31.3%	10-17	58.8%

Deadball Rebounds: 4,3

### West Virginia 36

No.	Player	S	Pts	FG	3FG	FT	OR	DR	TR	PF	A	TO	Blk	Stl	Min	+/-
02	GONDREZICK, KYSRE	G	6	2-3	2-3	0-0	0	0	0	1	1	1	0	1	8	2
05	MARTIN, TYNICE	G	0	0-6	0-3	0-0	0	0	0	0	0	0	0	0	9	6
14	NIBLACK, KARI	F	4	2-3	0-0	0-0	1	3	4	0	0	0	2	0	8	7
30	SMITH, MADISEN	G	2	1-3	0-1	0-0	1	0	1	0	1	1	0	0	7	6
31	NORRIS, ROCHELLE	C	0	0-2	0-0	0-0	2	1	3	0	0	0	1	0	7	9
03	DEANS, KIRSTEN	G	3	1-1	1-1	0-0	0	0	0	1	0	0	0	0	3	0
04	RUDD, LUCKY	G	1	0-0	0-0	1-2	0	0	0	0	1	0	0	0	3	4
12	MARTINEZ, ESMERY	F	2	0-0	0-0	2-2	1	0	1	1	1	0	0	0	2	-1
22	EJIOFOR, BLESSING	C	0	0-0	0-0	0-0	0	0	0	1	0	0	1	0	3	-3
24	MCELROY, ARLEIGHSHYA	G	0	0-0	0-0	0-0	0	0	0	0	0	0	0	0	0	0
	TEAM						0	0	0	0		0				
<b>TOTALS</b>			<b>18</b>	<b>6-18</b>	<b>3-8</b>	<b>3-4</b>	<b>5</b>	<b>4</b>	<b>9</b>	<b>4</b>	<b>4</b>	<b>2</b>	<b>4</b>	<b>1</b>	<b>50</b>	

*Shooting By Period*

Period	FG	FG%	3FG	3FG%	FT	FT%
2nd Half	0-0	0%	0-0	0%	0-0	0%
Game	20-59	33.9%	6-21	28.6%	17-20	85.0%

Deadball Rebounds: 0,1

Game Notes:

Officials: Kevin Pethtel, Nykesha Thompson, Natasha Curry  
Attendance: 329

Start Time: 01:30 PM ET  
End Time: 03:21 PM ET  
Game Duration: 1:51  
Neutral Court;

Score	1st	2nd	3rd	4th	TOT
MSU	15	15	12	15	<b>57</b>
WVU	15	12	18	18	<b>63</b>

Points from (This Period)	MSU	WVU
In the Paint	6	4
Off Turns	0	10
2nd Chance	2	7
Fast Break	2	0
Bench	6	6

**Official Play-By-Play**  
**Michigan St. vs West Virginia**  
**Third Quarter**

**December 21, 2019 at Alfond Sports Center (Warden Arena) - Winter Park, Fla.**



**Period 3**

**Starters:**

**Michigan St.:** 0 COLLEY, SHAY (G); 2 COOK, MARDREKIA (F); 4 MCCUTCHEON, TARYN (G); 15 GAINES, VICTORIA (F); 24 CLOUDEN, NIA (G);

**West Virginia:** 2 GONDREZICK, KYSRE (G); 14 NIBLACK, KARI (F); 30 SMITH, MADISEN (G); 31 NORRIS, ROCHELLE (C); 5 MARTIN, TYNICE (G);

Time	VISITORS: Michigan St.	Score	Margin	HOME: West Virginia
09:32	BLOCK by BELLES, KAYLA			
10:00	SUB OUT: COLLEY, SHAY			
10:00	SUB IN: JOINER, MOIRA			
10:00	SUB OUT: OZMENT, TORY			
10:00	SUB OUT: BELLES, KAYLA			
10:00	SUB IN: GAINES, VICTORIA			
10:00	SUB IN: CLOUDEN, NIA			
10:00				SUB OUT: RUDD, LUCKY
10:00				SUB OUT: MARTINEZ, ESMERY
10:00				SUB OUT: EJIOFOR, BLESSING
10:00				SUB OUT: MCELROY, ARLEIGHSHYA
10:00				SUB IN: GONDREZICK, KYSRE
10:00				SUB IN: NIBLACK, KARI
10:00				SUB IN: SMITH, MADISEN
10:00				SUB IN: NORRIS, ROCHELLE
09:47				MISSED JUMPER by MARTIN, TYNICE
09:42				REBOUND (OFF) by SMITH, MADISEN
09:40		30-30	T	GOOD! 3PTR by GONDREZICK, KYSRE
09:40				ASSIST by SMITH, MADISEN
09:18	MISSED LAYUP by JOINER, MOIRA			
09:18				BLOCK by NIBLACK, KARI
09:11				REBOUND (DEF) by NIBLACK, KARI
09:05	FOUL (PERSONAL) by JOINER, MOIRA			
08:52				FOUL (OFF) by GONDREZICK, KYSRE
08:52				TURNOVER (OFFENSIVE) by GONDREZICK, KYSRE
08:40	MISSED LAYUP by MCCUTCHEON, TARYN			
08:40				REBOUND (DEF) by NIBLACK, KARI
08:30				MISSED 3PTR by SMITH, MADISEN
08:27	REBOUND (DEF) by MCCUTCHEON, TARYN			
08:23	MISSED LAYUP by COOK, MARDREKIA			
08:23				BLOCK by NORRIS, ROCHELLE
08:18				REBOUND (DEF) by NORRIS, ROCHELLE
08:40				BLOCK by NIBLACK, KARI
08:17	SUB OUT: COOK, MARDREKIA			
08:17	SUB IN: HOLLIE, NIA			
08:00		32-30	H 2	GOOD! JUMPER by NIBLACK, KARI
08:00				ASSIST by GONDREZICK, KYSRE
07:26	TURNOVER (SHOTCLOCK) by TEAM			
07:26	SUB OUT: JOINER, MOIRA			
07:26	SUB IN: COLLEY, SHAY			
07:11				MISSED JUMPER by MARTIN, TYNICE
07:06				REBOUND (OFF) by NIBLACK, KARI
07:05		34-30	H 4	GOOD! LAYUP by NIBLACK, KARI
06:47	SUB OUT: MCCUTCHEON, TARYN			
06:47	SUB OUT: GAINES, VICTORIA			
06:47	SUB IN: OZMENT, TORY			
06:47	SUB IN: PARKS, TAIYIER			
06:45	GOOD! JUMPER by COLLEY, SHAY	34-32	H 2	
06:45	ASSIST by CLOUDEN, NIA			
06:28				MISSED 3PTR by MARTIN, TYNICE
06:24	REBOUND (DEF) by CLOUDEN, NIA			
06:17	TURNOVER (BADPASS) by COLLEY, SHAY			
06:17				STEAL by GONDREZICK, KYSRE
06:10		36-32	H 4	GOOD! LAYUP by SMITH, MADISEN
05:55	GOOD! JUMPER by COLLEY, SHAY	36-34	H 2	
05:34				SUB OUT: NIBLACK, KARI
05:34				SUB IN: MARTINEZ, ESMERY
05:24				TURNOVER (OTHER) by SMITH, MADISEN
05:12				FOUL (PERSONAL) by MARTINEZ, ESMERY
05:12				SUB OUT: NORRIS, ROCHELLE
05:12				SUB IN: EJIOFOR, BLESSING
05:11	TURNOVER (OTHER) by CLOUDEN, NIA			
04:59		39-34	H 5	GOOD! 3PTR by GONDREZICK, KYSRE
04:59				ASSIST by MARTINEZ, ESMERY
04:47	GOOD! LAYUP by PARKS, TAIYIER [PNT]	39-36	H 3	
04:47	ASSIST by COLLEY, SHAY			
04:20				MISSED JUMPER by SMITH, MADISEN
04:20	BLOCK by PARKS, TAIYIER			
04:14	REBOUND (DEF) by OZMENT, TORY			
04:08				FOUL (PERSONAL) by EJIOFOR, BLESSING

Time	VISITORS: Michigan St.	Score	Margin	HOME: West Virginia
04:08				
04:08				SUB OUT: SMITH, MADISEN
04:08				SUB IN: DEANS, KIRSTEN
04:08	GOOD! FT by OZMENT, TORY	39-37	H 2	
04:08	GOOD! FT by OZMENT, TORY	39-38	H 1	
04:08	SUB OUT: OZMENT, TORY			
04:08	SUB IN: MCCUTCHEON, TARYN			
03:47				MISSED 3PTR by MARTIN, TYNICE
03:43	REBOUND (DEF) by COLLEY, SHAY			
03:39	GOOD! LAYUP by CLOUDEN, NIA [FB]	39-40	V 1	
03:20				MISSED JUMPER by MARTIN, TYNICE
03:16				REBOUND (OFF) by MARTINEZ, ESMERY
03:16	FOUL (PERSONAL) by HOLLIE, NIA			
03:16				SUB OUT: MARTIN, TYNICE
03:16				SUB IN: RUDD, LUCKY
03:16		40-40	T	GOOD! FT by MARTINEZ, ESMERY
03:16		41-40	H 1	GOOD! FT by MARTINEZ, ESMERY
03:16				SUB OUT: MARTINEZ, ESMERY
03:16				SUB IN: NIBLACK, KARI
03:00	MISSED JUMPER by HOLLIE, NIA			
03:00				BLOCK by EJIOFOR, BLESSING
02:55	REBOUND (OFF) by TEAM			
02:52	MISSED 3PTR by COLLEY, SHAY			
02:48	REBOUND (OFF) by PARKS, TAIYIER			
02:46	GOOD! LAYUP by PARKS, TAIYIER	41-42	V 1	
02:36	SUB OUT: COLLEY, SHAY			
02:36	SUB OUT: HOLLIE, NIA			
02:36	SUB IN: OZMENT, TORY			
02:36	SUB IN: COOK, MARDREKIA			
02:36				SUB OUT: EJIOFOR, BLESSING
02:36				SUB IN: NORRIS, ROCHELLE
02:28				MISSED 3PTR by GONDREZICK, KYSRE
02:24	REBOUND (DEF) by PARKS, TAIYIER			
02:18	MISSED 3PTR by CLOUDEN, NIA			
02:15				REBOUND (DEF) by NIBLACK, KARI
02:08	FOUL (PERSONAL) by PARKS, TAIYIER			
02:08	SUB OUT: PARKS, TAIYIER			
02:08	SUB IN: BELLES, KAYLA			
02:08				SUB OUT: GONDREZICK, KYSRE
02:08				SUB IN: MARTIN, TYNICE
02:08		42-42	T	GOOD! FT by RUDD, LUCKY
02:08				MISSED FT by RUDD, LUCKY
02:08	REBOUND (DEF) by BELLES, KAYLA			
01:56	FOUL (OFF) by OZMENT, TORY			
01:56	TURNOVER (OFFENSIVE) by OZMENT, TORY			
01:56	SUB OUT: CLOUDEN, NIA			
01:56	SUB IN: JOINER, MOIRA			
01:35		45-42	H 3	GOOD! 3PTR by DEANS, KIRSTEN
01:35				ASSIST by RUDD, LUCKY
01:20				FOUL (PERSONAL) by DEANS, KIRSTEN
01:20				SUB OUT: DEANS, KIRSTEN
01:20				SUB IN: SMITH, MADISEN
01:07	FOUL (OFF) by BELLES, KAYLA			
01:07	TURNOVER (OFFENSIVE) by BELLES, KAYLA			
00:47				MISSED LAYUP by NIBLACK, KARI
00:47	BLOCK by BELLES, KAYLA			
00:42	REBOUND (DEF) by JOINER, MOIRA			
00:37	TURNOVER (TRAVEL) by BELLES, KAYLA			
00:09				MISSED 3PTR by MARTIN, TYNICE
00:03				REBOUND (OFF) by NORRIS, ROCHELLE
00:01				MISSED LAYUP by NORRIS, ROCHELLE
00:00	REBOUND (DEF) by BELLES, KAYLA			

### Michigan St. 42, West Virginia 45

Points from (This Period)	MSU	WVU
In the Paint	6	4
Off Turns	0	10
2nd Chance	2	7
Fast Break	2	0
Bench	6	6

**Official Box Score**  
**Michigan St. vs West Virginia**  
**Fourth Quarter Statistics Only**  
**December 21, 2019 at Alford Sports Center (Warden Arena) - Winter Park, Fla.**

### Michigan St. 15

No.	Player	S	Pts	FG	3FG	FT	OR	DR	TR	PF	A	TO	Blk	Stl	Min	+/-
00	COLLEY, SHAY	G	1	0-3	0-1	1-2	1	0	1	0	0	0	0	0	7	-1
02	COOK, MARDREKIA	F	0	0-0	0-0	0-0	1	0	1	0	0	0	0	0	3	-2
04	MCCUTCHEON, TARYN	G	0	0-1	0-1	0-0	0	0	0	0	0	0	0	0	4	-5
15	GAINES, VICTORIA	F	2	1-2	0-0	0-0	1	0	1	2	1	0	0	0	5	-3
24	CLOUDEN, NIA	G	7	2-6	0-1	3-3	1	4	5	1	0	1	0	1	10	-3
01	OZMENT, TORY	G	0	0-2	0-1	0-0	0	0	0	0	0	0	0	0	5	-2
03	WINSTON, ALYZA	G	0	0-0	0-0	0-0	0	0	0	0	0	0	0	0	0	0
12	HOLLIE, NIA	F	5	2-2	1-1	0-0	0	1	1	3	0	0	0	0	7	1
14	PARKS, TAIYIER	F	0	0-2	0-0	0-2	1	1	2	0	0	0	0	0	5	0
22	JOINER, MOIRA	G	0	0-1	0-1	0-0	1	0	1	0	1	0	0	0	4	0
40	AYRAULT, JULIA	G	0	0-0	0-0	0-0	0	0	0	0	0	0	0	0	0	0
42	BELLES, KAYLA	F	0	0-0	0-0	0-0	0	0	0	0	0	0	0	0	0	0
50	DODD, CYDNI	C	0	0-0	0-0	0-0	0	0	0	0	0	0	0	0	0	0
TEAM							0	0	0	0		0				
<b>TOTALS</b>			<b>15</b>	<b>5-19</b>	<b>1-6</b>	<b>4-7</b>	<b>6</b>	<b>6</b>	<b>12</b>	<b>6</b>	<b>2</b>	<b>1</b>	<b>0</b>	<b>1</b>	<b>50</b>	

Shooting By Period

Period	FG	FG%	3FG	3FG%	FT	FT%
Game	21-60	35.0%	5-16	31.3%	10-17	58.8%

Deadball Rebounds: 4,3

### West Virginia 18

No.	Player	S	Pts	FG	3FG	FT	OR	DR	TR	PF	A	TO	Blk	Stl	Min	+/-
02	GONDREZICK, KYSRE	G	4	1-6	0-2	2-2	0	2	2	0	0	0	0	0	10	3
05	MARTIN, TYNICE	G	7	2-3	1-2	2-2	0	1	1	0	0	0	0	0	10	3
14	NIBLACK, KARI	F	7	2-2	0-0	3-4	0	0	0	2	1	0	3	0	8	1
30	SMITH, MADISEN	G	0	0-0	0-0	0-0	0	1	1	0	0	1	0	0	5	5
31	NORRIS, ROCHELLE	C	0	0-0	0-0	0-0	1	1	2	1	0	0	0	0	2	-1
03	DEANS, KIRSTEN	G	0	0-0	0-0	0-0	0	3	3	0	3	0	0	0	6	0
04	RUDD, LUCKY	G	0	0-0	0-0	0-0	0	0	0	0	0	0	0	0	0	0
12	MARTINEZ, ESMERY	F	0	0-0	0-0	0-0	0	0	0	1	0	0	0	0	2	2
22	EJIOFOR, BLESSING	C	0	0-1	0-0	0-0	0	1	1	2	0	0	1	0	7	2
24	MCELROY, ARLEIGHSHYA	G	0	0-0	0-0	0-0	0	0	0	0	0	0	0	0	0	0
TEAM							0	1	1	0		0				
<b>TOTALS</b>			<b>18</b>	<b>5-12</b>	<b>1-4</b>	<b>7-8</b>	<b>1</b>	<b>10</b>	<b>11</b>	<b>6</b>	<b>4</b>	<b>1</b>	<b>4</b>	<b>0</b>	<b>50</b>	

Shooting By Period

Period	FG	FG%	3FG	3FG%	FT	FT%
Game	20-59	33.9%	6-21	28.6%	17-20	85.0%

Deadball Rebounds: 0,1

Game Notes:

Officials: Kevin Pethel, Nykesha Thompson, Natasha Curry  
Attendance: 329

Start Time: 01:30 PM ET  
End Time: 03:21 PM ET  
Game Duration: 1:51  
Neutral Court;

Score	1st	2nd	3rd	4th	TOT
MSU	15	15	12	15	<b>57</b>
WVU	15	12	18	18	<b>63</b>

Points from (This Period)	MSU	WVU
In the Paint	6	8
Off Turns	2	0
2nd Chance	3	2
Fast Break	2	4
Bench	5	0

**Official Play-By-Play**  
**Michigan St. vs West Virginia**  
**Fourth Quarter**

**December 21, 2019 at Alford Sports Center (Warden Arena) - Winter Park, Fla.**

**Period 4**

**Starters:**

**Michigan St.:** 0 COLLEY, SHAY (G); 2 COOK, MARDREKIA (F); 4 MCCUTCHEON, TARYN (G); 15 GAINES, VICTORIA (F); 24 CLOUDEN, NIA (G);

**West Virginia:** 2 GONDREZICK, KYSRE (G); 14 NIBLACK, KARI (F); 30 SMITH, MADISEN (G); 31 NORRIS, ROCHELLE (C); 5 MARTIN, TYNICE (G);

Time	VISITORS: Michigan St.	Score	Margin	HOME: West Virginia
00:02				MISSED LAYUP by NORRIS, ROCHELLE
00:02				REBOUND (OFF) by NORRIS, ROCHELLE
10:00	SUB OUT: OZMENT, TORY			
10:00	SUB OUT: JOINER, MOIRA			
10:00	SUB OUT: BELLES, KAYLA			
10:00	SUB IN: COLLEY, SHAY			
10:00	SUB IN: GAINES, VICTORIA			
10:00	SUB IN: CLOUDEN, NIA			
10:00				SUB OUT: RUDD, LUCKY
10:00				SUB IN: GONDREZICK, KYSRE
09:44	MISSED JUMPER by CLOUDEN, NIA			
09:40	REBOUND (OFF) by CLOUDEN, NIA			
09:38	MISSED LAYUP by CLOUDEN, NIA			
09:35	REBOUND (OFF) by COLLEY, SHAY			
09:34	MISSED LAYUP by COLLEY, SHAY			
09:30				REBOUND (DEF) by NORRIS, ROCHELLE
09:16	FOUL (PERSONAL) by CLOUDEN, NIA			
09:16	SUB OUT: COOK, MARDREKIA			
09:16	SUB IN: HOLLIE, NIA			
09:16		46-42	H 4	GOOD! FT by NIBLACK, KARI
09:16		47-42	H 5	GOOD! FT by NIBLACK, KARI
09:01	MISSED JUMPER by COLLEY, SHAY			
09:01				BLOCK by NIBLACK, KARI
08:57				REBOUND (DEF) by TEAM
08:57	FOUL (PERSONAL) by GAINES, VICTORIA			
08:39	FOUL (PERSONAL) by HOLLIE, NIA			
08:39		48-42	H 6	GOOD! FT by NIBLACK, KARI
08:39				MISSED FT by NIBLACK, KARI
08:38	REBOUND (DEF) by CLOUDEN, NIA			
08:32				FOUL (PERSONAL) by NORRIS, ROCHELLE
08:32	SUB OUT: MCCUTCHEON, TARYN			
08:32	SUB OUT: GAINES, VICTORIA			
08:32	SUB IN: OZMENT, TORY			
08:32	SUB IN: PARKS, TAIYIER			
08:32	GOOD! FT by CLOUDEN, NIA [FB]	48-43	H 5	
08:32	GOOD! FT by CLOUDEN, NIA [FB]	48-44	H 4	
08:16				TURNOVER (LOSTBALL) by SMITH, MADISEN
08:16	STEAL by CLOUDEN, NIA			
07:59	GOOD! LAYUP by CLOUDEN, NIA [PNT]	48-46	H 2	
07:54				MISSED 3PTR by MARTIN, TYNICE
07:50				REBOUND (OFF) by NORRIS, ROCHELLE
07:49				SUB OUT: NORRIS, ROCHELLE
07:49				SUB IN: EJIOFOR, BLESSING
07:36		50-46	H 4	GOOD! LAYUP by NIBLACK, KARI
07:15	MISSED JUMPER by PARKS, TAIYIER			
07:11	REBOUND (OFF) by PARKS, TAIYIER			
07:11				FOUL (PERSONAL) by EJIOFOR, BLESSING
07:11	MISSED FT by PARKS, TAIYIER			
07:11	REBOUND (OFF) by TEAM			
07:11	MISSED FT by PARKS, TAIYIER			
07:11				REBOUND (DEF) by EJIOFOR, BLESSING
07:11				MISSED 3PTR by GONDREZICK, KYSRE
07:11	REBOUND (DEF) by CLOUDEN, NIA			
06:59	MISSED LAYUP by PARKS, TAIYIER			
06:59				BLOCK by NIBLACK, KARI
06:53				REBOUND (DEF) by SMITH, MADISEN
06:28				MISSED JUMPER by GONDREZICK, KYSRE
06:28	REBOUND (DEF) by TEAM			
06:28				FOUL (PERSONAL) by NIBLACK, KARI
06:28	SUB OUT: COLLEY, SHAY			
06:28	SUB IN: MCCUTCHEON, TARYN			
06:08	TIMEOUT 30SEC			
06:03	SUB OUT: HOLLIE, NIA			
06:03	SUB IN: COOK, MARDREKIA			
06:03				SUB OUT: NIBLACK, KARI
06:03				SUB OUT: SMITH, MADISEN
06:03				SUB IN: DEANS, KIRSTEN
06:03				SUB IN: MARTINEZ, ESMERY
05:59				FOUL (PERSONAL) by MARTINEZ, ESMERY
05:46	MISSED JUMPER by CLOUDEN, NIA			

Time	VISITORS: Michigan St.	Score	Margin	HOME: West Virginia
05:46				BLOCK by EJIOFOR, BLESSING
05:40				REBOUND (DEF) by DEANS, KIRSTEN
05:39		52-46	H 6	GOOD! LAYUP by GONDREZICK, KYSRE [FB]
05:39				ASSIST by DEANS, KIRSTEN
05:22	MISSED JUMPER by OZMENT, TORY			
05:19	REBOUND (OFF) by COOK, MARDREKIA			
05:04	MISSED 3PTR by CLOUDEN, NIA			
05:00				REBOUND (DEF) by GONDREZICK, KYSRE
04:38				MISSED JUMPER by GONDREZICK, KYSRE
04:33	REBOUND (DEF) by CLOUDEN, NIA			
04:30	MISSED 3PTR by MCCUTCHEON, TARYN			
04:27				REBOUND (DEF) by GONDREZICK, KYSRE
04:05				MISSED JUMPER by EJIOFOR, BLESSING
04:01	REBOUND (DEF) by PARKS, TAIYIER			
03:40				
03:40	SUB OUT: OZMENT, TORY			
03:40	SUB OUT: COOK, MARDREKIA			
03:40	SUB OUT: MCCUTCHEON, TARYN			
03:40	SUB OUT: PARKS, TAIYIER			
03:40	SUB IN: COLLEY, SHAY			
03:40	SUB IN: HOLLIE, NIA			
03:40	SUB IN: GAINES, VICTORIA			
03:40	SUB IN: JOINER, MOIRA			
03:40				SUB OUT: MARTINEZ, ESMERY
03:40				SUB IN: NIBLACK, KARI
03:35	GOOD! JUMPER by HOLLIE, NIA	52-48	H 4	
03:35	ASSIST by GAINES, VICTORIA			
03:02				MISSED 3PTR by GONDREZICK, KYSRE
02:59	REBOUND (DEF) by CLOUDEN, NIA			
02:43				FOUL (PERSONAL) by NIBLACK, KARI
02:43	GOOD! FT by COLLEY, SHAY	52-49	H 3	
02:43	MISSED FT by COLLEY, SHAY			
02:42				REBOUND (DEF) by DEANS, KIRSTEN
02:27		54-49	H 5	GOOD! LAYUP by NIBLACK, KARI
02:27				ASSIST by DEANS, KIRSTEN
02:17	GOOD! LAYUP by GAINES, VICTORIA	54-51	H 3	
01:56		57-51	H 6	GOOD! 3PTR by MARTIN, TYNICE
01:56				ASSIST by DEANS, KIRSTEN
01:44	TURNOVER (BADPASS) by CLOUDEN, NIA			
01:43	TIMEOUT 30SEC			
01:26				MISSED JUMPER by GONDREZICK, KYSRE
01:21	REBOUND (DEF) by HOLLIE, NIA			
01:19	MISSED 3PTR by JOINER, MOIRA			
01:19				BLOCK by NIBLACK, KARI
01:12	REBOUND (OFF) by JOINER, MOIRA			
01:10	GOOD! 3PTR by HOLLIE, NIA	57-54	H 3	
01:10	ASSIST by JOINER, MOIRA			
00:46		59-54	H 5	GOOD! LAYUP by MARTIN, TYNICE [PNT]
00:46				ASSIST by NIBLACK, KARI
00:40	GOOD! LAYUP by CLOUDEN, NIA	59-56	H 3	
00:40				FOUL (PERSONAL) by EJIOFOR, BLESSING
00:40	GOOD! FT by CLOUDEN, NIA	59-57	H 2	
00:36				TIMEOUT 30SEC
00:36				SUB OUT: DEANS, KIRSTEN
00:36				SUB IN: SMITH, MADISEN
00:21	FOUL (PERSONAL) by HOLLIE, NIA			
00:21				TIMEOUT TEAM
00:19	FOUL (PERSONAL) by GAINES, VICTORIA			
00:19		60-57	H 3	GOOD! FT by GONDREZICK, KYSRE
00:19		61-57	H 4	GOOD! FT by GONDREZICK, KYSRE
00:19				SUB OUT: EJIOFOR, BLESSING
00:19				SUB IN: DEANS, KIRSTEN
00:19	TIMEOUT 30SEC			
00:12	MISSED 3PTR by COLLEY, SHAY			
00:07	REBOUND (OFF) by GAINES, VICTORIA			
00:07	MISSED LAYUP by GAINES, VICTORIA			
00:07				REBOUND (DEF) by MARTIN, TYNICE
00:07	FOUL (PERSONAL) by HOLLIE, NIA			
00:07	SUB OUT: HOLLIE, NIA			
00:07	SUB IN: OZMENT, TORY			
00:07		62-57	H 5	GOOD! FT by MARTIN, TYNICE [FB]
00:07		63-57	H 6	GOOD! FT by MARTIN, TYNICE [FB]
00:07	TIMEOUT TEAM			
00:02	MISSED 3PTR by OZMENT, TORY			
00:00				REBOUND (DEF) by DEANS, KIRSTEN

Michigan St. 57, West Virginia 63



Points from (This Period)	MSU	WVU
In the Paint	6	8
Off Turns	2	0
2nd Chance	3	2
Fast Break	2	4
Bench	5	0

# Official Scoring/Possession Reference Chart

## Michigan St. vs West Virginia

Period 1

December 21, 2019 at Alford Sports Center (Warden Arena) - Winter Park, Fla.



### Period 1

#### Starters:

Michigan St.: 0 COLLEY, SHAY (G); 2 COOK, MARDREKIA (F); 4 MCCUTCHEON, TARYN (G); 15 GAINES, VICTORIA (F); 24 CLOUDEN, NIA (G);

West Virginia: 2 GONDREZICK, KYSRE (G); 14 NIBLACK, KARI (F); 30 SMITH, MADISEN (G); 31 NORRIS, ROCHELLE (C); 5 MARTIN, TYNICE (G);

Time	VISITORS: Michigan St.	Score	Margin	HOME: West Virginia
09:45		2-0	H 2	GOOD! LAYUP by NIBLACK, KARI [PNT]
08:46	GOOD! JUMPER by CLOUDEN, NIA [PNT]	2-2	T	
08:13	GOOD! LAYUP by COLLEY, SHAY [FB]	2-4	V 2	
07:29	GOOD! JUMPER by COLLEY, SHAY	2-6	V 4	
06:41		4-6	V 2	GOOD! LAYUP by NIBLACK, KARI [PNT]
06:41		5-6	V 1	GOOD! FT by NIBLACK, KARI
06:32	GOOD! LAYUP by COLLEY, SHAY	5-8	V 3	
05:35		8-8	T	GOOD! 3PTR by SMITH, MADISEN
05:09		10-8	H 2	GOOD! LAYUP by NIBLACK, KARI [PNT]
04:56	GOOD! 3PTR by CLOUDEN, NIA	10-11	V 1	
03:04	GOOD! FT by CLOUDEN, NIA	10-12	V 2	
03:04	GOOD! FT by CLOUDEN, NIA	10-13	V 3	
02:03		11-13	V 2	GOOD! FT by MARTIN, TYNICE [FB]
02:03		12-13	V 1	GOOD! FT by MARTIN, TYNICE [FB]
01:28	GOOD! LAYUP by COOK, MARDREKIA	12-15	V 3	
01:00		15-15	T	GOOD! 3PTR by DEANS, KIRSTEN

Michigan St. 15, West Virginia 15

# Official Scoring/Possession Reference Chart

## Michigan St. vs West Virginia

Period 2

December 21, 2019 at Alford Sports Center (Warden Arena) - Winter Park, Fla.



### Period 2

#### Starters:

Michigan St.: 0 COLLEY, SHAY (G); 2 COOK, MARDREKIA (F); 4 MCCUTCHEON, TARYN (G); 15 GAINES, VICTORIA (F); 24 CLOUDEN, NIA (G);

West Virginia: 2 GONDREZICK, KYSRE (G); 14 NIBLACK, KARI (F); 30 SMITH, MADISEN (G); 31 NORRIS, ROCHELLE (C); 5 MARTIN, TYNICE (G);

Time	VISITORS: Michigan St.	Score	Margin	HOME: West Virginia
09:49	GOOD! LAYUP by BELLES, KAYLA [PNT]	15-17	V 2	
09:13		16-17	V 1	GOOD! FT by GONDREZICK, KYSRE [FB]
09:13		17-17	T	GOOD! FT by GONDREZICK, KYSRE [FB]
08:59	GOOD! 3PTR by MCCUTCHEON, TARYN	17-20	V 3	
08:06	GOOD! JUMPER by MCCUTCHEON, TARYN	17-22	V 5	
07:14		19-22	V 3	GOOD! LAYUP by GONDREZICK, KYSRE
05:30		21-22	V 1	GOOD! JUMPER by MARTIN, TYNICE
04:37	GOOD! 3PTR by JOINER, MOIRA	21-25	V 4	
03:51	GOOD! 3PTR by HOLLIE, NIA	21-28	V 7	
02:56		22-28	V 6	GOOD! FT by MCELROY, ARLEIGHSHYA [FB]
02:29		24-28	V 4	GOOD! LAYUP by NIBLACK, KARI [PNT]
02:29		25-28	V 3	GOOD! FT by NIBLACK, KARI
01:06	GOOD! FT by GAINES, VICTORIA	25-29	V 4	
01:06	GOOD! FT by GAINES, VICTORIA	25-30	V 5	
00:46		27-30	V 3	GOOD! LAYUP by EJIOFOR, BLESSING

Michigan St. 30, West Virginia 27

# Official Scoring/Possession Reference Chart

## Michigan St. vs West Virginia

Period 3

December 21, 2019 at Alford Sports Center (Warden Arena) - Winter Park, Fla.



### Period 3

#### Starters:

Michigan St.: 0 COLLEY, SHAY (G); 2 COOK, MARDREKIA (F); 4 MCCUTCHEON, TARYN (G); 15 GAINES, VICTORIA (F); 24 CLOUDEN, NIA (G);

West Virginia: 2 GONDREZICK, KYSRE (G); 14 NIBLACK, KARI (F); 30 SMITH, MADISEN (G); 31 NORRIS, ROCHELLE (C); 5 MARTIN, TYNICE (G);

Time	VISITORS: Michigan St.	Score	Margin	HOME: West Virginia
09:40		30-30	T	GOOD! 3PTR by GONDREZICK, KYSRE
08:00		32-30	H 2	GOOD! JUMPER by NIBLACK, KARI
07:05		34-30	H 4	GOOD! LAYUP by NIBLACK, KARI
06:45	GOOD! JUMPER by COLLEY, SHAY	34-32	H 2	
06:10		36-32	H 4	GOOD! LAYUP by SMITH, MADISEN
05:55	GOOD! JUMPER by COLLEY, SHAY	36-34	H 2	
04:59		39-34	H 5	GOOD! 3PTR by GONDREZICK, KYSRE
04:47	GOOD! LAYUP by PARKS, TAIYIER [PNT]	39-36	H 3	
04:08	GOOD! FT by OZMENT, TORY	39-37	H 2	
04:08	GOOD! FT by OZMENT, TORY	39-38	H 1	
03:39	GOOD! LAYUP by CLOUDEN, NIA [FB]	39-40	V 1	
03:16		40-40	T	GOOD! FT by MARTINEZ, ESMERY
03:16		41-40	H 1	GOOD! FT by MARTINEZ, ESMERY
02:46	GOOD! LAYUP by PARKS, TAIYIER	41-42	V 1	
02:08		42-42	T	GOOD! FT by RUDD, LUCKY
01:35		45-42	H 3	GOOD! 3PTR by DEANS, KIRSTEN

Michigan St. 42, West Virginia 45

**Official Scoring/Possession Reference Chart**  
**Michigan St. vs West Virginia**  
**Period 4**

**December 21, 2019 at Alford Sports Center (Warden Arena) - Winter Park, Fla.**



**Period 4**

**Starters:**

**Michigan St.:** 0 COLLEY, SHAY (G); 2 COOK, MARDREKIA (F); 4 MCCUTCHEON, TARYN (G); 15 GAINES, VICTORIA (F); 24 CLOUDEN, NIA (G);

**West Virginia:** 2 GONDREZICK, KYSRE (G); 14 NIBLACK, KARI (F); 30 SMITH, MADISEN (G); 31 NORRIS, ROCHELLE (C); 5 MARTIN, TYNICE (G);

Time	VISITORS: Michigan St.	Score	Margin	HOME: West Virginia
09:16		46-42	H 4	GOOD! FT by NIBLACK, KARI
09:16		47-42	H 5	GOOD! FT by NIBLACK, KARI
08:39		48-42	H 6	GOOD! FT by NIBLACK, KARI
08:32	GOOD! FT by CLOUDEN, NIA [FB]	48-43	H 5	
08:32	GOOD! FT by CLOUDEN, NIA [FB]	48-44	H 4	
07:59	GOOD! LAYUP by CLOUDEN, NIA [PNT]	48-46	H 2	
07:36		50-46	H 4	GOOD! LAYUP by NIBLACK, KARI
05:39		52-46	H 6	GOOD! LAYUP by GONDREZICK, KYSRE [FB]
03:35	GOOD! JUMPER by HOLLIE, NIA	52-48	H 4	
02:43	GOOD! FT by COLLEY, SHAY	52-49	H 3	
02:27		54-49	H 5	GOOD! LAYUP by NIBLACK, KARI
02:17	GOOD! LAYUP by GAINES, VICTORIA	54-51	H 3	
01:56		57-51	H 6	GOOD! 3PTR by MARTIN, TYNICE
01:10	GOOD! 3PTR by HOLLIE, NIA	57-54	H 3	
00:46		59-54	H 5	GOOD! LAYUP by MARTIN, TYNICE [PNT]
00:40	GOOD! LAYUP by CLOUDEN, NIA	59-56	H 3	
00:40	GOOD! FT by CLOUDEN, NIA	59-57	H 2	
00:19		60-57	H 3	GOOD! FT by GONDREZICK, KYSRE
00:19		61-57	H 4	GOOD! FT by GONDREZICK, KYSRE
00:07		62-57	H 5	GOOD! FT by MARTIN, TYNICE [FB]
00:07		63-57	H 6	GOOD! FT by MARTIN, TYNICE [FB]

**Michigan St. 57, West Virginia 63**

**Official Substitutions Log**  
**Michigan St. vs West Virginia**  
**Period 1**

**December 21, 2019 at Alford Sports Center (Warden Arena) - Winter Park, Fla.**

VISITORS: Michigan St.	Time	Score	HOME: West Virginia
0 COLLEY, SHAY			2 GONDREZICK, KYSRE
2 COOK, MARDREKIA			14 NIBLACK, KARI
4 MCCUTCHEON, TARYN			30 SMITH, MADISEN
15 GAINES, VICTORIA			31 NORRIS, ROCHELLE
24 CLOUDEN, NIA			5 MARTIN, TYNICE
SUB OUT: 15 GAINES, VICTORIA	06:03	8-5	
SUB IN: 14 PARKS, TAIYIER	06:03		
SUB OUT: 2 COOK, MARDREKIA	05:26	8-8	
SUB IN: 12 HOLLIE, NIA	05:26		
SUB OUT: 0 COLLEY, SHAY	04:16	11-10	
SUB OUT: 4 MCCUTCHEON, TARYN	04:16		
SUB IN: 1 OZMENT, TORY	04:16		
SUB IN: 22 JOINER, MOIRA	04:16		
	04:16		SUB OUT: MARTIN, TYNICE
	04:16		SUB OUT: NORRIS, ROCHELLE
	04:16		SUB IN: DEANS, KIRSTEN
	04:16		SUB IN: EJIOFOR, BLESSING
	03:04	11-10	SUB OUT: GONDREZICK, KYSRE
	03:04		SUB OUT: NIBLACK, KARI
	03:04		SUB IN: MARTIN, TYNICE
	03:04		SUB IN: MARTINEZ, ESMERY
SUB OUT: 24 CLOUDEN, NIA	03:04		
SUB IN: 3 WINSTON, ALYZA	03:04		
	02:05	13-10	SUB OUT: SMITH, MADISEN
	02:05		SUB IN: GONDREZICK, KYSRE
SUB OUT: 12 HOLLIE, NIA	02:03	13-10	
SUB OUT: 22 JOINER, MOIRA	02:03		
SUB IN: 0 COLLEY, SHAY	02:03		
SUB IN: 2 COOK, MARDREKIA	02:03		
SUB OUT: 3 WINSTON, ALYZA	00:23	15-15	
SUB OUT: 14 PARKS, TAIYIER	00:23		
SUB IN: 24 CLOUDEN, NIA	00:23		
SUB IN: 42 BELLES, KAYLA	00:23		
	00:23		SUB OUT: EJIOFOR, BLESSING
	00:23		SUB IN: NORRIS, ROCHELLE
SUB OUT: 2 COOK, MARDREKIA	00:23		
SUB IN: 40 AYRAULT, JULIA	00:23		

**Michigan St. 15, West Virginia 15**

**Official Substitutions Log**  
**Michigan St. vs West Virginia**  
**Period 2**

**December 21, 2019 at Alford Sports Center (Warden Arena) - Winter Park, Fla.**

<b>VISITORS: Michigan St.</b>	<b>Time</b>	<b>Score</b>	<b>HOME: West Virginia</b>
0 COLLEY, SHAY			2 GONDREZICK, KYSRE
2 COOK, MARDREKIA			14 NIBLACK, KARI
4 MCCUTCHEON, TARYN			30 SMITH, MADISEN
15 GAINES, VICTORIA			31 NORRIS, ROCHELLE
24 CLOUDEN, NIA			5 MARTIN, TYNICE
	09:20	17-15	SUB OUT: DEANS, KIRSTEN
	09:20		SUB IN: SMITH, MADISEN
SUB OUT: 1 OZMENT, TORY	09:13	17-15	
SUB IN: 4 MCCUTCHEON, TARYN	09:13		
SUB OUT: 40 AYRAULT, JULIA	09:13		
SUB IN: 12 HOLLIE, NIA	09:13		
	06:53	22-19	SUB OUT: MARTINEZ, ESMERY
	06:53		SUB IN: NIBLACK, KARI
	06:53		SUB OUT: MARTIN, TYNICE
	06:53		SUB IN: RUDD, LUCKY
SUB OUT: 24 CLOUDEN, NIA	06:53		
SUB IN: 22 JOINER, MOIRA	06:53		
SUB OUT: 42 BELLES, KAYLA	06:53		
SUB IN: 50 DODD, CYDNI	06:53		
	06:22	22-19	SUB OUT: SMITH, MADISEN
	06:22		SUB IN: DEANS, KIRSTEN
	06:03	22-19	SUB OUT: GONDREZICK, KYSRE
	06:03		SUB IN: MARTIN, TYNICE
SUB OUT: 50 DODD, CYDNI	05:06	22-21	
SUB IN: 14 PARKS, TAIYIER	05:06		
	04:51	22-21	SUB OUT: RUDD, LUCKY
	04:51		SUB IN: MCELROY, ARLEIGHSHYA
SUB OUT: 0 COLLEY, SHAY	04:12	25-21	
SUB IN: 1 OZMENT, TORY	04:12		
	04:04	25-21	SUB OUT: DEANS, KIRSTEN
	04:04		SUB IN: SMITH, MADISEN
SUB OUT: 4 MCCUTCHEON, TARYN	03:41	28-21	
SUB IN: 3 WINSTON, ALYZA	03:41		
	03:24	28-21	SUB OUT: NORRIS, ROCHELLE
	03:24		SUB IN: EJIOFOR, BLESSING
SUB OUT: 12 HOLLIE, NIA	02:56	28-21	
SUB IN: 2 COOK, MARDREKIA	02:56		
SUB OUT: 14 PARKS, TAIYIER	02:29	28-24	
SUB OUT: 22 JOINER, MOIRA	02:29		
SUB IN: 0 COLLEY, SHAY	02:29		
SUB IN: 15 GAINES, VICTORIA	02:29		
SUB OUT: 3 WINSTON, ALYZA	01:24	28-25	
SUB IN: 4 MCCUTCHEON, TARYN	01:24		
	01:06	28-25	SUB OUT: NIBLACK, KARI
	01:06		SUB OUT: SMITH, MADISEN
	01:06		SUB IN: RUDD, LUCKY
	01:06		SUB IN: MARTINEZ, ESMERY
SUB OUT: 15 GAINES, VICTORIA	00:34	30-27	
SUB IN: 42 BELLES, KAYLA	00:34		

**Michigan St. 30, West Virginia 27**

**Official Substitutions Log**  
**Michigan St. vs West Virginia**  
**Period 3**

**December 21, 2019 at Alford Sports Center (Warden Arena) - Winter Park, Fla.**

<b>VISITORS: Michigan St.</b>	<b>Time</b>	<b>Score</b>	<b>HOME: West Virginia</b>
0 COLLEY, SHAY			2 GONDREZICK, KYSRE
2 COOK, MARDREKIA			14 NIBLACK, KARI
4 MCCUTCHEON, TARYN			30 SMITH, MADISEN
15 GAINES, VICTORIA			31 NORRIS, ROCHELLE
24 CLOUDEN, NIA			5 MARTIN, TYNICE
SUB OUT: 0 COLLEY, SHAY	10:00	-	
SUB IN: 22 JOINER, MOIRA	10:00		
SUB OUT: 1 OZMENT, TORY	10:00		
SUB OUT: 42 BELLES, KAYLA	10:00		
SUB IN: 15 GAINES, VICTORIA	10:00		
SUB IN: 24 CLOUDEN, NIA	10:00		
	10:00		SUB OUT: RUDD, LUCKY
	10:00		SUB OUT: MARTINEZ, ESMERY
	10:00		SUB OUT: EJIOFOR, BLESSING
	10:00		SUB OUT: MCELROY, ARLEIGH SHYA
	10:00		SUB IN: GONDREZICK, KYSRE
	10:00		SUB IN: NIBLACK, KARI
	10:00		SUB IN: SMITH, MADISEN
	10:00		SUB IN: NORRIS, ROCHELLE
SUB OUT: 2 COOK, MARDREKIA	08:17	30-30	
SUB IN: 12 HOLLIE, NIA	08:17		
SUB OUT: 22 JOINER, MOIRA	07:26	30-32	
SUB IN: 0 COLLEY, SHAY	07:26		
SUB OUT: 4 MCCUTCHEON, TARYN	06:47	30-34	
SUB OUT: 15 GAINES, VICTORIA	06:47		
SUB IN: 1 OZMENT, TORY	06:47		
SUB IN: 14 PARKS, TAIYIER	06:47		
	05:34	34-36	SUB OUT: NIBLACK, KARI
	05:34		SUB IN: MARTINEZ, ESMERY
	05:12	34-36	SUB OUT: NORRIS, ROCHELLE
	05:12		SUB IN: EJIOFOR, BLESSING
	04:08	36-39	SUB OUT: SMITH, MADISEN
	04:08		SUB IN: DEANS, KIRSTEN
SUB OUT: 1 OZMENT, TORY	04:08		
SUB IN: 4 MCCUTCHEON, TARYN	04:08		
	03:16	40-39	SUB OUT: MARTIN, TYNICE
	03:16		SUB IN: RUDD, LUCKY
	03:16		SUB OUT: MARTINEZ, ESMERY
	03:16		SUB IN: NIBLACK, KARI
SUB OUT: 0 COLLEY, SHAY	02:36	42-41	
SUB OUT: 12 HOLLIE, NIA	02:36		
SUB IN: 1 OZMENT, TORY	02:36		
SUB IN: 2 COOK, MARDREKIA	02:36		
	02:36		SUB OUT: EJIOFOR, BLESSING
	02:36		SUB IN: NORRIS, ROCHELLE
SUB OUT: 14 PARKS, TAIYIER	02:08	42-41	
SUB IN: 42 BELLES, KAYLA	02:08		
	02:08		SUB OUT: GONDREZICK, KYSRE
	02:08		SUB IN: MARTIN, TYNICE
SUB OUT: 24 CLOUDEN, NIA	01:56	42-42	
SUB IN: 22 JOINER, MOIRA	01:56		
	01:20	42-45	SUB OUT: DEANS, KIRSTEN
	01:20		SUB IN: SMITH, MADISEN

**Michigan St. 42, West Virginia 45**



**Official Substitutions Log**  
**Michigan St. vs West Virginia**  
**Period 4**

**December 21, 2019 at Alfond Sports Center (Warden Arena) - Winter Park, Fla.**

VISITORS: Michigan St.	Time	Score	HOME: West Virginia
0 COLLEY, SHAY			2 GONDREZICK, KYSRE
2 COOK, MARDREKIA			14 NIBLACK, KARI
4 MCCUTCHEON, TARYN			30 SMITH, MADISEN
15 GAINES, VICTORIA			31 NORRIS, ROCHELLE
24 CLOUDEN, NIA			5 MARTIN, TYNICE
SUB OUT: 1 OZMENT, TORY	10:00	-	
SUB OUT: 22 JOINER, MOIRA	10:00		
SUB OUT: 42 BELLES, KAYLA	10:00		
SUB IN: 0 COLLEY, SHAY	10:00		
SUB IN: 15 GAINES, VICTORIA	10:00		
SUB IN: 24 CLOUDEN, NIA	10:00		
	10:00		SUB OUT: RUDD, LUCKY
	10:00		SUB IN: GONDREZICK, KYSRE
SUB OUT: 2 COOK, MARDREKIA	09:16	-	
SUB IN: 12 HOLLIE, NIA	09:16		
SUB OUT: 4 MCCUTCHEON, TARYN	08:32	42-48	
SUB OUT: 15 GAINES, VICTORIA	08:32		
SUB IN: 1 OZMENT, TORY	08:32		
SUB IN: 14 PARKS, TAIYIER	08:32		
	07:49	46-48	SUB OUT: NORRIS, ROCHELLE
	07:49		SUB IN: EJIOFOR, BLESSING
SUB OUT: 0 COLLEY, SHAY	06:28	46-50	
SUB IN: 4 MCCUTCHEON, TARYN	06:28		
SUB OUT: 12 HOLLIE, NIA	06:03	46-50	
SUB IN: 2 COOK, MARDREKIA	06:03		
	06:03		SUB OUT: NIBLACK, KARI
	06:03		SUB OUT: SMITH, MADISEN
	06:03		SUB IN: DEANS, KIRSTEN
	06:03		SUB IN: MARTINEZ, ESMERY
SUB OUT: 1 OZMENT, TORY	03:40	46-52	
SUB OUT: 2 COOK, MARDREKIA	03:40		
SUB OUT: 4 MCCUTCHEON, TARYN	03:40		
SUB OUT: 14 PARKS, TAIYIER	03:40		
SUB IN: 0 COLLEY, SHAY	03:40		
SUB IN: 12 HOLLIE, NIA	03:40		
SUB IN: 15 GAINES, VICTORIA	03:40		
SUB IN: 22 JOINER, MOIRA	03:40		
	03:40		SUB OUT: MARTINEZ, ESMERY
	03:40		SUB IN: NIBLACK, KARI
	00:36	57-59	SUB OUT: DEANS, KIRSTEN
	00:36		SUB IN: SMITH, MADISEN
	00:19	57-61	SUB OUT: EJIOFOR, BLESSING
	00:19		SUB IN: DEANS, KIRSTEN
SUB OUT: 12 HOLLIE, NIA	00:07	57-61	
SUB IN: 1 OZMENT, TORY	00:07		

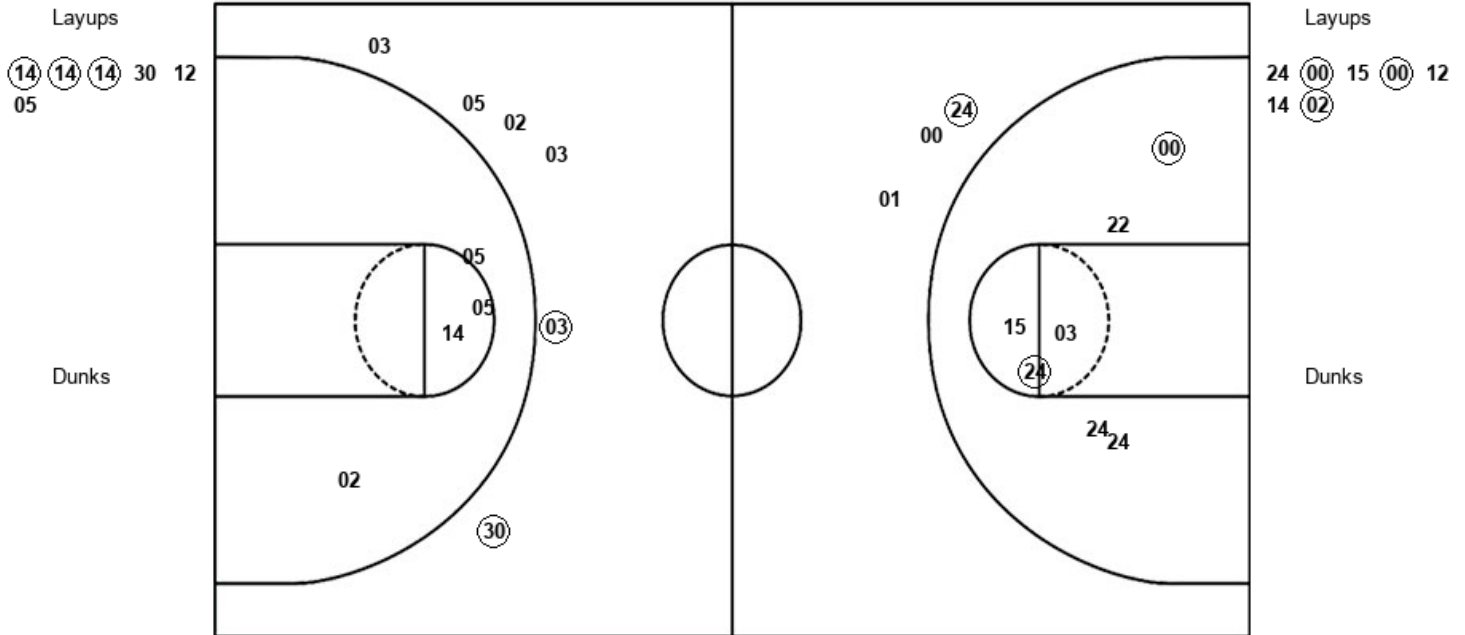
**Michigan St. 57, West Virginia 63**

Official Shot Chart  
**Michigan St. vs West Virginia**  
 PERIOD 1 Shots  
 December 21, 2019 at Alford Sports Center (Warden Arena) - Winter Park, Fla.



**West Virginia**

**Michigan St.**



WVU : Period 1	Made	Att	Pct
Layups	3	6	50.0
Dunks	0	0	0
2PT Field Goals	3	10	30.0
3PT Field Goals	2	6	33.3
<b>Total Field Goals</b>	<b>5</b>	<b>16</b>	<b>31.3</b>

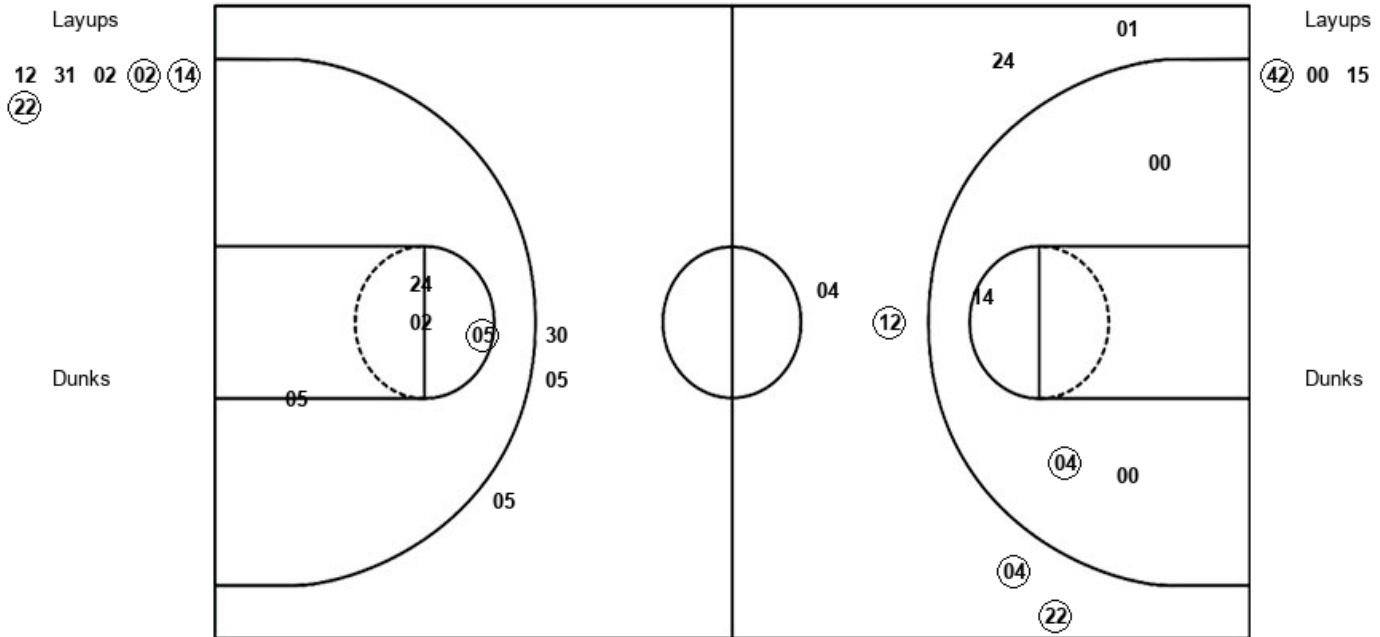
MSU : Period 1	Made	Att	Pct
Layups	3	7	42.9
Dunks	0	0	0
2PT Field Goals	5	15	33.3
3PT Field Goals	1	2	50.0
<b>Total Field Goals</b>	<b>6</b>	<b>17</b>	<b>35.3</b>

Official Shot Chart  
**Michigan St. vs West Virginia**  
 PERIOD 2 Shots  
 December 21, 2019 at Alfond Sports Center (Warden Arena) - Winter Park, Fla.



**West Virginia**

**Michigan St.**

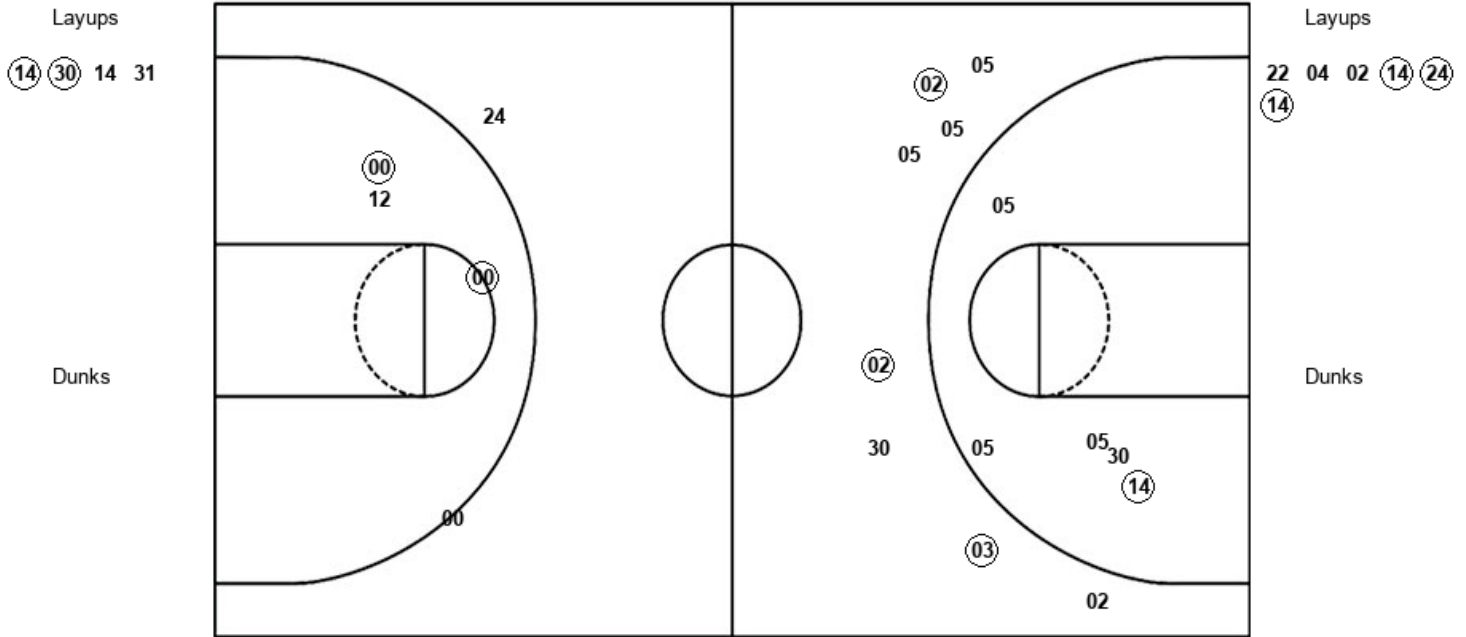


WVU : Period 2	Made	Att	Pct
Layups	3	6	50.0
Dunks	0	0	0
2PT Field Goals	4	10	40.0
3PT Field Goals	0	3	00.0
<b>Total Field Goals</b>	<b>4</b>	<b>13</b>	<b>30.8</b>

MSU : Period 2	Made	Att	Pct
Layups	1	3	33.3
Dunks	0	0	0
2PT Field Goals	2	7	28.6
3PT Field Goals	3	6	50.0
<b>Total Field Goals</b>	<b>5</b>	<b>13</b>	<b>38.5</b>

**December 21, 2019 at Alfond Sports Center (Warden Arena) - Winter Park, Fla.**

**Michigan St.**



WVU : Period 3	Made	Att	Pct
Layups	2	4	50.0
Dunks	0	0	0
2PT Field Goals	3	10	30.0
3PT Field Goals	3	8	37.5
<b>Total Field Goals</b>	<b>6</b>	<b>18</b>	<b>33.3</b>

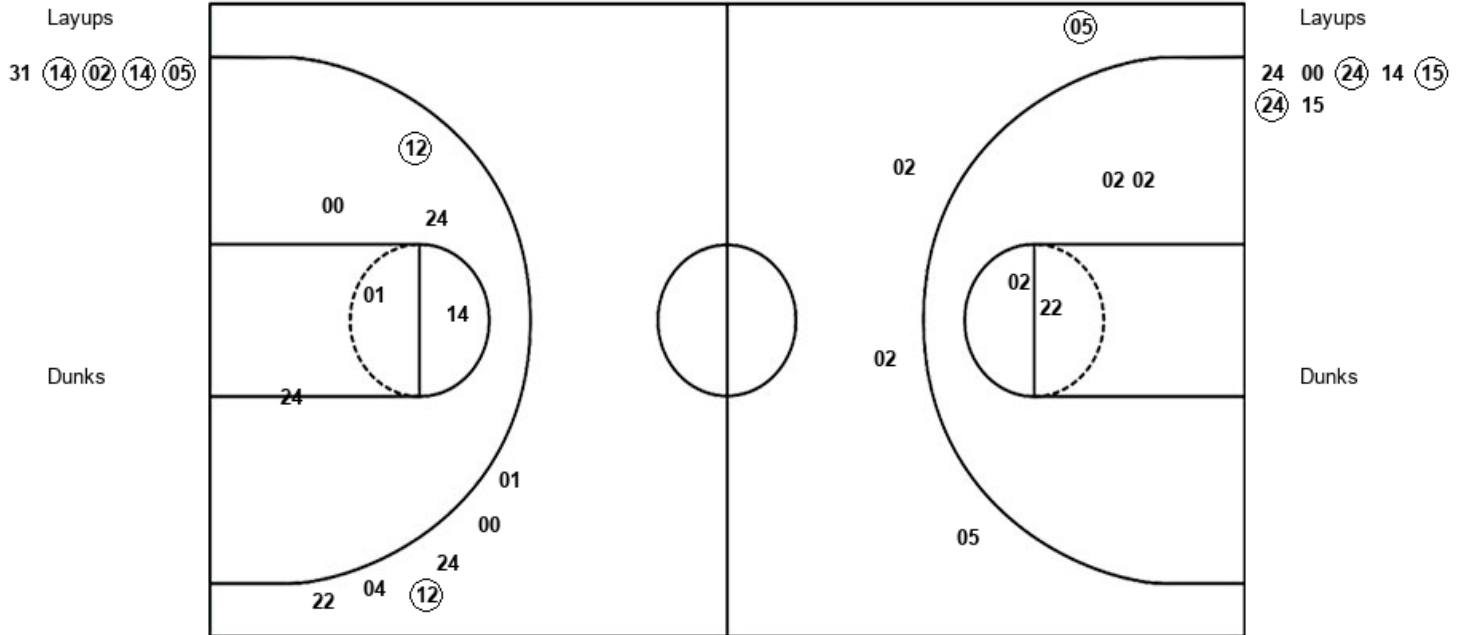
MSU : Period 3	Made	Att	Pct
Layups	3	6	50.0
Dunks	0	0	0
2PT Field Goals	5	9	55.6
3PT Field Goals	0	2	00.0
<b>Total Field Goals</b>	<b>5</b>	<b>11</b>	<b>45.5</b>

Official Shot Chart  
**Michigan St. vs West Virginia**  
 PERIOD 4 Shots  
 December 21, 2019 at Alfond Sports Center (Warden Arena) - Winter Park, Fla.



**West Virginia**

**Michigan St.**



WVU : Period 4	Made	Att	Pct
Layups	4	5	80.0
Dunks	0	0	0
2PT Field Goals	4	8	50.0
3PT Field Goals	1	4	25.0
<b>Total Field Goals</b>	<b>5</b>	<b>12</b>	<b>41.7</b>

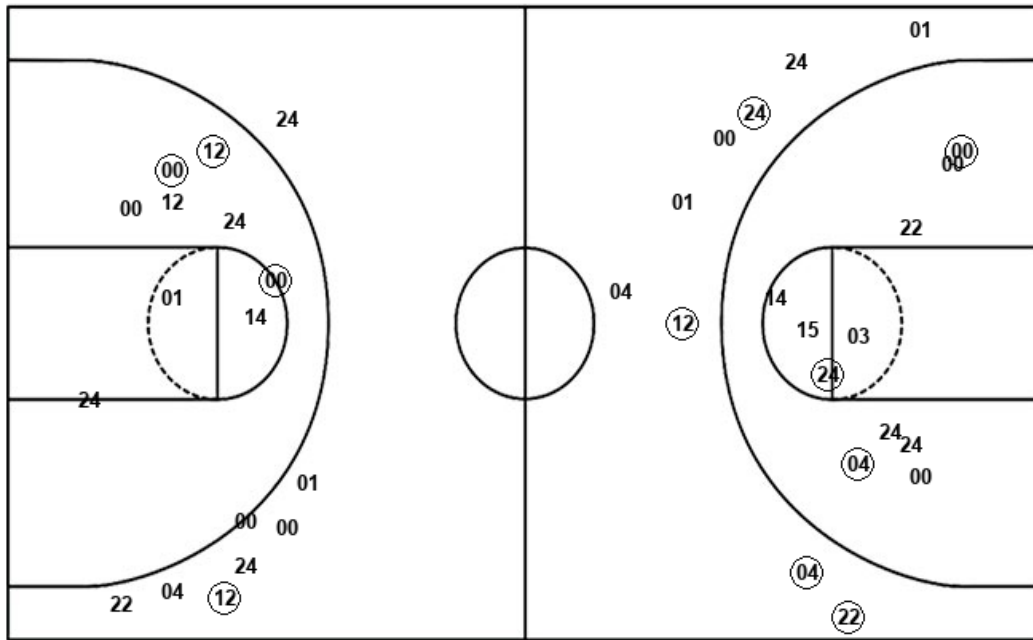
MSU : Period 4	Made	Att	Pct
Layups	3	7	42.9
Dunks	0	0	0
2PT Field Goals	4	13	30.8
3PT Field Goals	1	6	16.7
<b>Total Field Goals</b>	<b>5</b>	<b>19</b>	<b>26.3</b>

**Official Shot Chart**  
**Michigan St. vs West Virginia**  
**Michigan St. Team Shots**  
**December 21, 2019 at Alford Sports Center (Warden Arena) - Winter Park, Fla.**



Layups

Dunks



Layups

Dunks

24 00 15 00 12  
 14 02 42 00 15  
 22 04 02 14 24  
 14 24 00 24 14  
 15 24 15

MSU : Period 1	Made	Att	Pct
Layups	3	7	42.9
Dunks	0	0	0
2PT Field Goals	5	15	33.3
3PT Field Goals	1	2	50.0
<b>Total Field Goals</b>	<b>6</b>	<b>17</b>	<b>35.3</b>

MSU : Period 3	Made	Att	Pct
Layups	3	6	50.0
Dunks	0	0	0
2PT Field Goals	5	9	55.6
3PT Field Goals	0	2	00.0
<b>Total Field Goals</b>	<b>5</b>	<b>11</b>	<b>45.5</b>

MSU : Period 2	Made	Att	Pct
Layups	1	3	33.3
Dunks	0	0	0
2PT Field Goals	2	7	28.6
3PT Field Goals	3	6	50.0
<b>Total Field Goals</b>	<b>5</b>	<b>13</b>	<b>38.5</b>

MSU : Period 4	Made	Att	Pct
Layups	3	7	42.9
Dunks	0	0	0
2PT Field Goals	4	13	30.8
3PT Field Goals	1	6	16.7
<b>Total Field Goals</b>	<b>5</b>	<b>19</b>	<b>26.3</b>

