

**FINAL SCORE**

**Eastern N.M.**

**77**



**Colorado St.-Pueblo**

**59**



**2019 Pak-A-Sak WT Thanksgiving Classic**

November 29, 2019 • First United Bank Center - Canyon

**FINAL STATISTICS**

**Official Box Score**  
**Eastern N.M. vs Colorado St.-Pueblo**  
**Game Totals -- Final Statistics**  
**November 29, 2019 at First United Bank Center - Canyon**

**Eastern N.M. 77**

No.	Player	S	Pts	FG	3FG	FT	OR	DR	TR	PF	A	TO	Blk	Stl	Min	+/-
01	HURST, ANASHA	G	0	0-2	0-0	0-0	1	1	2	0	0	3	0	1	5	-4
02	WILLIAMS, JASMINE	F	12	5-8	0-0	2-2	8	9	17	2	1	4	0	1	29	22
12	COX, ZAMORYE	G	10	4-10	2-3	0-0	3	2	5	2	3	2	0	2	30	23
21	LEWIS, ALIVIA	F	18	5-11	0-0	8-9	3	7	10	3	4	1	1	0	25	12
24	DELONGE, NATALIE	C	0	0-5	0-0	0-0	0	6	6	1	1	2	1	0	18	17
04	STICE, NATALIE	G	3	1-4	0-3	1-2	0	2	2	0	0	2	0	0	13	-3
11	RIPPEE, TAYLEE	F	2	1-2	0-0	0-0	1	0	1	0	0	1	0	0	8	-20
14	CHAVEZ, JULIA	G	0	0-0	0-0	0-0	0	0	0	1	0	1	0	1	3	3
15	MEHLBRECH, JENA	G	10	4-9	2-4	0-0	0	1	1	0	0	2	0	0	19	9
23	HUNTER, CHELSEA	G	2	1-4	0-3	0-0	0	2	2	0	2	2	0	2	16	24
30	ROWE, LAURA	G	8	3-7	2-3	0-0	2	1	3	0	0	3	0	0	17	-1
34	SMITH, JERRAYSHA	C	2	0-1	0-0	2-2	1	0	1	0	0	2	0	1	7	7
35	DECKER, KAMIRAH	C	10	5-8	0-0	0-0	0	0	0	5	1	2	0	1	10	1
	TEAM						1	0	1	1		0				
<b>TOTALS</b>			<b>77</b>	<b>29-71</b>	<b>6-16</b>	<b>13-15</b>	<b>20</b>	<b>31</b>	<b>51</b>	<b>15</b>	<b>12</b>	<b>27</b>	<b>2</b>	<b>9</b>	<b>200</b>	

*Shooting By Period*

Period	FG	FG%	3FG	3FG%	FT	FT%
1st Qtr	6-13	46%	0-0	0%	2-2	100%
2nd Qtr	6-17	35%	0-0	0%	3-4	75%
3rd Qtr	7-20	35%	2-7	29%	2-3	67%
4th Qtr	10-21	48%	4-9	44%	6-6	100%
1st Half	12-30	40%	0-0	0%	5-6	83%
2nd Half	17-41	41%	6-16	38%	8-9	89%
<b>Game</b>	<b>29-71</b>	<b>40.8%</b>	<b>6-16</b>	<b>37.5%</b>	<b>13-15</b>	<b>86.7%</b>

*Deadball Rebounds: 4,8*  
*Last FG: 4th-01:15*  
*Biggest Run: 20-0*  
*Largest lead: By 23 at 4-01*  
*Technical Fouls: #02 WILLIAMS @ 3rd - 00:52;*

**Colorado St.-Pueblo 59**

No.	Player	S	Pts	FG	3FG	FT	OR	DR	TR	PF	A	TO	Blk	Stl	Min	+/-
02	DAVIS, JANAIYA	G	16	5-17	1-6	5-6	0	0	0	1	5	2	0	3	40	-18
03	WILLIAMS, SYDNI	F	5	2-4	0-0	1-1	2	4	6	5	0	3	0	2	18	-1
13	ADAMS, KHIYA	G	4	2-9	0-2	0-0	1	3	4	5	1	4	1	3	14	5
21	WATTS, KANSAS	G	9	4-11	1-5	0-0	0	2	2	2	1	4	1	2	34	-22
24	DIAZ, HANNA	G	8	3-8	2-6	0-0	0	2	2	1	1	1	1	0	25	-32
05	PETTIS, HARMONY	G	5	2-8	1-5	0-0	1	2	3	1	3	0	0	2	34	-8
12	ADAMS, JADE	F	12	6-15	0-0	0-0	3	4	7	5	1	3	2	1	29	1
	TEAM						0	2	2	0		0				
<b>TOTALS</b>			<b>59</b>	<b>24-72</b>	<b>5-24</b>	<b>6-7</b>	<b>7</b>	<b>19</b>	<b>26</b>	<b>20</b>	<b>12</b>	<b>17</b>	<b>5</b>	<b>13</b>	<b>193</b>	

*Shooting By Period*

Period	FG	FG%	3FG	3FG%	FT	FT%
1st Qtr	4-15	27%	1-8	13%	0-0	0%
2nd Qtr	6-19	32%	1-4	25%	1-2	50%
3rd Qtr	9-20	45%	1-2	50%	3-3	100%
4th Qtr	5-18	28%	2-10	20%	2-2	100%
1st Half	10-34	29%	2-12	17%	1-2	50%
2nd Half	14-38	37%	3-12	25%	5-5	100%
<b>Game</b>	<b>24-72</b>	<b>33.3%</b>	<b>5-24</b>	<b>20.8%</b>	<b>6-7</b>	<b>85.7%</b>

*Deadball Rebounds: 3,1*  
*Last FG: 4th-00:44*  
*Biggest Run: 10-0*  
*Largest lead: By 5 at 2-07*  
*Technical Fouls: None.*

Game Notes:

Officials: Shane Pope, Reggie Cooper, Johnny Atwood

Attendance: 75

Start Time: 12:59 PM ET

End Time: 02:40 PM ET

Game Duration: 1:41

Neutral Court;

Score	1st	2nd	3rd	4th	TOT
ENM	14	15	18	30	<b>77</b>
CSP	9	14	22	14	<b>59</b>

ENM led for 31:30. CSP led for 5:37.  
 Game was tied for 1:34.  
 Times tied: 4      Lead Changes: 10

Points from	ENM	CSP
In the Paint	42	30
Off Turns	15	24
2nd Chance	20	5
Fast Break	9	15
Bench	37	17

**Official Box Score**  
**Eastern N.M. vs Colorado St.-Pueblo**  
**First Half Statistics Only**  
**November 29, 2019 at First United Bank Center - Canyon**



**Eastern N.M. 29**

No.	Player	S	Pts	FG	3FG	FT	OR	DR	TR	PF	A	TO	Blk	Stl	Min	+/-
01	HURST, ANASHA	G	0	0-1	0-0	0-0	0	1	1	0	0	1	0	1	5	-4
02	WILLIAMS, JASMINE	F	6	3-5	0-0	0-0	4	4	8	1	0	1	0	0	17	6
04	STICE, NATALIE	G	3	1-1	0-0	1-2	0	0	0	0	1	0	0	0	6	9
12	COX, ZAMORYE	G	2	1-4	0-0	0-0	2	1	3	0	0	1	0	1	15	9
14	CHAVEZ, JULIA	G	0	0-0	0-0	0-0	0	0	0	0	0	0	0	0	0	0
15	MEHLBRECH, JENA	G	2	1-3	0-0	0-0	0	0	0	0	0	0	0	0	6	-6
21	LEWIS, ALVIA	F	6	2-5	0-0	2-2	1	2	3	2	2	1	0	0	12	0
23	HUNTER, CHELSEA	G	2	1-1	0-0	0-0	0	2	2	0	0	2	0	0	8	4
24	DELONGE, NATALIE	C	0	0-4	0-0	0-0	0	3	3	1	1	2	1	0	13	12
30	ROWE, LAURA	G	2	1-3	0-0	0-0	1	0	1	0	0	2	0	0	9	7
11	RIPPEE, TAYLEE	F	0	0-0	0-0	0-0	0	0	0	0	0	1	0	0	4	-8
34	SMITH, JERRAYSHA	C	2	0-1	0-0	2-2	0	0	0	0	0	1	0	0	3	2
35	DECKER, KAMIRAH	C	4	2-2	0-0	0-0	0	0	0	2	0	2	0	1	3	-1
	TEAM		0	0-0	0-0	0-0	0	0	0	1	0	0	0	0	0	0
<b>TOTALS</b>			<b>29</b>	<b>12-30</b>	<b>0-0</b>	<b>5-6</b>	<b>8</b>	<b>13</b>	<b>21</b>	<b>7</b>	<b>3</b>	<b>15</b>	<b>1</b>	<b>3</b>	<b>100</b>	

*Shooting By Period*

Period	FG	FG%	3FG	3FG%	FT	FT%
1st Qtr	6-13	46%	0-0	0%	2-2	100%
2nd Qtr	6-17	35%	0-0	0%	3-4	75%
1st Half	12-30	40%	0-0	0%	5-6	83%
Game	29-71	40.8%	6-16	37.5%	13-15	86.7%

*Deadball Rebounds: 4,8*  
*Last FG Half: ENM 2nd-00:44*

**Colorado St.-Pueblo 23**

No.	Player	S	Pts	FG	3FG	FT	OR	DR	TR	PF	A	TO	Blk	Stl	Min	+/-
02	DAVIS, JANAIYA	G	3	1-6	0-2	1-2	0	0	0	1	2	0	0	1	20	-6
03	WILLIAMS, SYDNI	F	2	1-1	0-0	0-0	1	1	2	2	0	2	0	0	6	-8
05	PETTIS, HARMONY	G	0	0-3	0-2	0-0	1	0	1	1	1	0	0	0	16	-3
12	ADAMS, JADE	F	6	3-9	0-0	0-0	2	2	4	1	1	2	1	1	18	-2
13	ADAMS, KHIYA	G	4	2-6	0-1	0-0	1	3	4	3	1	3	1	2	12	5
21	WATTS, KANSAS	G	5	2-5	1-3	0-0	0	0	0	0	0	1	1	1	17	-4
24	DIAZ, HANNA	G	3	1-4	1-4	0-0	0	0	0	1	0	0	1	0	11	-12
	TEAM		0	0-0	0-0	0-0	0	1	1	0	0	0	0	0	0	0
<b>TOTALS</b>			<b>23</b>	<b>10-34</b>	<b>2-12</b>	<b>1-2</b>	<b>5</b>	<b>7</b>	<b>12</b>	<b>9</b>	<b>5</b>	<b>8</b>	<b>4</b>	<b>5</b>	<b>100</b>	

*Shooting By Period*

Period	FG	FG%	3FG	3FG%	FT	FT%
1st Qtr	4-15	27%	1-8	13%	0-0	0%
2nd Qtr	6-19	32%	1-4	25%	1-2	50%
1st Half	10-34	29%	2-12	17%	1-2	50%
Game	24-72	33.3%	5-24	20.8%	6-7	85.7%

*Deadball Rebounds: 3,1*  
*Last FG Half: CSP 2nd-02:29*

*Game Notes:*

Officials: **Shane Pope, Reggie Cooper, Johnny Atwood**  
Attendance: **75**

Start Time: **12:59 PM ET**  
End Time: **02:40 PM ET**  
Game Duration: **1:41**  
Neutral Court;

Score	1st	2nd	3rd	4th	TOT
ENM	14	15	18	30	<b>77</b>
CSP	9	14	22	14	<b>59</b>

Points from (This Period)	ENM	CSP
In the Paint	22	12
Off Turns	3	11
2nd Chance	8	2
Fast Break	3	3
Bench	15	6

**Official Box Score**  
**Eastern N.M. vs Colorado St.-Pueblo**  
**First Quarter Statistics Only**  
**November 29, 2019 at First United Bank Center - Canyon**



**Eastern N.M. 14**

No.	Player	S	Pts	FG	3FG	FT	OR	DR	TR	PF	A	TO	Blk	Stl	Min	+/-
01	HURST, ANASHA	G	0	0-0	0-0	0-0	0	1	1	0	0	0	0	0	3	1
02	WILLIAMS, JASMINE	F	2	1-1	0-0	0-0	0	2	2	0	0	1	0	0	8	7
12	COX, ZAMORYE	G	0	0-1	0-0	0-0	1	1	2	0	0	0	0	0	7	1
21	LEWIS, ALIVIA	F	4	1-3	0-0	2-2	1	2	3	0	2	1	0	0	8	5
24	DELONGE, NATALIE	C	0	0-1	0-0	0-0	0	1	1	1	0	2	0	0	6	4
04	STICE, NATALIE	G	0	0-0	0-0	0-0	0	0	0	0	0	0	0	0	2	2
11	RIPPEE, TAYLEE	F	0	0-0	0-0	0-0	0	0	0	0	0	0	0	0	1	2
14	CHAVEZ, JULIA	G	0	0-0	0-0	0-0	0	0	0	0	0	0	0	0	0	0
15	MEHLBRECH, JENA	G	2	1-2	0-0	0-0	0	0	0	0	0	0	0	0	3	4
23	HUNTER, CHELSEA	G	2	1-1	0-0	0-0	0	0	0	0	0	1	0	0	5	2
30	ROWE, LAURA	G	0	0-1	0-0	0-0	1	0	1	0	0	1	0	0	2	-2
34	SMITH, JERRAYSHA	C	0	0-1	0-0	0-0	0	0	0	0	0	0	0	0	2	0
35	DECKER, KAMIRAH	C	4	2-2	0-0	0-0	0	0	0	2	0	2	0	1	3	-1
	TEAM						0	0	0	0		0				
<b>TOTALS</b>			<b>14</b>	<b>6-13</b>	<b>0-0</b>	<b>2-2</b>	<b>3</b>	<b>7</b>	<b>10</b>	<b>3</b>	<b>2</b>	<b>8</b>	<b>0</b>	<b>1</b>	<b>50</b>	

*Shooting By Period*

Period	FG	FG%	3FG	3FG%	FT	FT%
1st Qtr	6-13	46%	0-0	0%	2-2	100%
2nd Qtr	6-17	35%	0-0	0%	3-4	75%
1st Half	6-13	46%	0-0	0%	2-2	100%
1st Half	12-30	40%	0-0	0%	5-6	83%
Game	29-71	40.8%	6-16	37.5%	13-15	86.7%

*Deadball Rebounds: 4,8*

**Colorado St.-Pueblo 9**

No.	Player	S	Pts	FG	3FG	FT	OR	DR	TR	PF	A	TO	Blk	Stl	Min	+/-
02	DAVIS, JANAIYA	G	2	1-3	0-1	0-0	0	0	0	0	1	0	0	1	10	-5
03	WILLIAMS, SYDNI	F	0	0-0	0-0	0-0	0	0	0	2	0	0	0	0	2	-4
13	ADAMS, KHIYA	G	2	1-4	0-1	0-0	0	2	2	0	0	1	0	2	8	-3
21	WATTS, KANSAS	G	0	0-1	0-1	0-0	0	0	0	0	0	0	0	1	7	-3
24	DIAZ, HANNA	G	3	1-4	1-4	0-0	0	0	0	0	0	0	1	0	9	-7
05	PETTIS, HARMONY	G	0	0-1	0-1	0-0	0	0	0	0	0	0	0	0	6	-2
12	ADAMS, JADE	F	2	1-2	0-0	0-0	0	1	1	1	1	2	0	0	8	-1
	TEAM						0	0	0	0		0				
<b>TOTALS</b>			<b>9</b>	<b>4-15</b>	<b>1-8</b>	<b>0-0</b>	<b>0</b>	<b>3</b>	<b>3</b>	<b>3</b>	<b>2</b>	<b>3</b>	<b>1</b>	<b>4</b>	<b>50</b>	

*Shooting By Period*

Period	FG	FG%	3FG	3FG%	FT	FT%
1st Qtr	4-15	27%	1-8	13%	0-0	0%
2nd Qtr	6-19	32%	1-4	25%	1-2	50%
1st Half	4-15	27%	1-8	13%	0-0	0%
1st Half	10-34	29%	2-12	17%	1-2	50%
Game	24-72	33.3%	5-24	20.8%	6-7	85.7%

*Deadball Rebounds: 3,1*

*Game Notes:*

Officials: **Shane Pope, Reggie Cooper, Johnny Atwood**  
Attendance: **75**

Start Time: **12:59 PM ET**  
End Time: **02:40 PM ET**  
Game Duration: **1:41**  
Neutral Court;

Score	1st	2nd	3rd	4th	TOT
ENM	14	15	18	30	<b>77</b>
CSP	9	14	22	14	<b>59</b>

Points from (This Period)	ENM	CSP
In the Paint	10	4
Off Turns	0	5
2nd Chance	2	0
Fast Break	2	2
Bench	8	2

**Official Play-By-Play**  
**Eastern N.M. vs Colorado St.-Pueblo**  
**First Quarter**  
**November 29, 2019 at First United Bank Center - Canyon**



**Period 1**

**Starters:**

**Eastern N.M.:** 1 HURST,ANASHA (G); 2 WILLIAMS,JASMINE (F); 12 COX,ZAMORYE (G); 21 LEWIS,ALIVIA (F); 24 DELONGE,NATALIE (C);  
**Colorado St.-Pueblo:** 2 DAVIS,JANAIYA (G); 3 WILLIAMS ,SYDNI (F); 13 ADAMS,KHIYA (G); 21 WATTS,KANSAS (G); 24 DIAZ,HANNA (G);

Time	VISITORS: Eastern N.M.	Score	Margin	HOME: Colorado St.-Pueblo
09:39	TURNOVER (TRAVEL) by DELONGE, NATALIE			
09:13				MISSED 3PTR by DIAZ, HANNA
09:09	REBOUND (DEF) by LEWIS, ALIVIA			
08:58	MISSED LAYUP by LEWIS, ALIVIA			
08:53	REBOUND (OFF) by LEWIS, ALIVIA			
08:52				FOUL (PERSONAL) by WILLIAMS , SYDNI
08:35	GOOD! FT by LEWIS, ALIVIA [FB]	0-1	V 1	
08:23	GOOD! FT by LEWIS, ALIVIA [FB]	0-2	V 2	
08:21				MISSED LAYUP by DAVIS, JANAIYA
08:21	REBOUND (DEF) by HURST, ANASHA			
08:21	GOOD! LAYUP by WILLIAMS, JASMINE	0-4	V 4	
08:21	ASSIST by LEWIS, ALIVIA			
08:21				MISSED 3PTR by ADAMS, KHIYA
08:21	REBOUND (DEF) by WILLIAMS, JASMINE			
08:18				FOUL (PERSONAL) by WILLIAMS , SYDNI
08:18				SUB OUT: WILLIAMS , SYDNI
08:18				SUB IN: ADAMS, JADE
08:18	MISSED JUMPER by LEWIS, ALIVIA			
08:18				REBOUND (DEF) by ADAMS, JADE
08:18	FOUL (PERSONAL) by DELONGE, NATALIE			
08:18	SUB OUT: DELONGE, NATALIE			
08:18	SUB IN: DECKER, KAMIRAH			
08:04				TURNOVER (LOSTBALL) by ADAMS, JADE
08:04	STEAL by DECKER, KAMIRAH			
07:52	TURNOVER (LOSTBALL) by DECKER, KAMIRAH			
07:52				STEAL by DAVIS, JANAIYA
07:31				FOUL (OFF) by ADAMS, JADE
07:31				TURNOVER (OFFENSIVE) by ADAMS, JADE
07:07	TURNOVER (BADPASS) by LEWIS, ALIVIA			
07:07				STEAL by WATTS, KANSAS
07:07	FOUL (PERSONAL) by DECKER, KAMIRAH			
07:05		3-4	V 1	GOOD! 3PTR by DIAZ, HANNA
07:05				ASSIST by ADAMS, JADE
06:49	TURNOVER (LOSTBALL) by WILLIAMS, JASMINE			
06:49	SUB OUT: HURST, ANASHA			
06:49	SUB OUT: LEWIS, ALIVIA			
06:49	SUB IN: HUNTER, CHELSEA			
06:49	SUB IN: SMITH, JERRYASHA			
06:37				MISSED 3PTR by DIAZ, HANNA
06:35	REBOUND (DEF) by TEAM			
06:16	GOOD! JUMPER by DECKER, KAMIRAH [PNT]	3-6	V 3	
06:00				MISSED JUMPER by ADAMS, KHIYA
05:57				REBOUND (OFF) by TEAM
05:56	SUB OUT: DECKER, KAMIRAH			
05:56	SUB IN: DELONGE, NATALIE			
05:50				MISSED 3PTR by DAVIS, JANAIYA
05:46	REBOUND (DEF) by COX, ZAMORYE			
05:37	TURNOVER (LOSTBALL) by DELONGE, NATALIE			
05:37				STEAL by ADAMS, KHIYA
05:36				TURNOVER (TRAVEL) by ADAMS, KHIYA
05:36				SUB OUT: DIAZ, HANNA
05:36				SUB IN: PETTIS, HARMONY
05:36	SUB OUT: WILLIAMS, JASMINE			
05:36	SUB IN: ROWE, LAURA			
05:25	MISSED JUMPER by SMITH, JERRYASHA			
05:22				REBOUND (DEF) by ADAMS, KHIYA
05:17		5-6	V 1	GOOD! LAYUP by DAVIS, JANAIYA [FB]
04:55	MISSED JUMPER by COX, ZAMORYE			
04:53	REBOUND (OFF) by COX, ZAMORYE			
04:53				SUB OUT: WATTS, KANSAS
04:53				SUB IN: DIAZ, HANNA
04:39	MISSED JUMPER by ROWE, LAURA			
04:37	REBOUND (OFF) by TEAM			
04:37	SUB OUT: SMITH, JERRYASHA			
04:37	SUB IN: LEWIS, ALIVIA			
04:16	MISSED LAYUP by DELONGE, NATALIE			
04:14	REBOUND (OFF) by ROWE, LAURA			
04:14	TURNOVER (LOSTBALL) by ROWE, LAURA			
04:14				STEAL by ADAMS, KHIYA

Time	VISITORS: Eastern N.M.	Score	Margin	HOME: Colorado St.-Pueblo
03:50		7-6	H 1	GOOD! LAYUP by ADAMS, KHIYA
03:31	GOOD! LAYUP by LEWIS, ALIVIA	7-8	V 1	
03:17				MISSED JUMPER by ADAMS, KHIYA
03:15	REBOUND (DEF) by TEAM			
03:15				SUB OUT: ADAMS, KHIYA
03:15				SUB IN: WATTS, KANSAS
03:15	SUB OUT: COX, ZAMORYE			
03:15	SUB OUT: ROWE, LAURA			
03:15	SUB IN: WILLIAMS, JASMINE			
03:15	SUB IN: MEHLBRECH, JENA			
02:48	TURNOVER (OTHER) by HUNTER, CHELSEA			
02:30				MISSED JUMPER by ADAMS, JADE
02:26	REBOUND (DEF) by DELONGE, NATALIE			
02:20	GOOD! LAYUP by HUNTER, CHELSEA	7-10	V 3	
02:04				MISSED 3PTR by WATTS, KANSAS
02:01	REBOUND (DEF) by WILLIAMS, JASMINE			
01:49	SUB OUT: HUNTER, CHELSEA			
01:49	SUB OUT: DELONGE, NATALIE			
01:49	SUB IN: STICE, NATALIE			
01:49	SUB IN: DECKER, KAMIRAH			
01:39	GOOD! JUMPER by DECKER, KAMIRAH	7-12	V 5	
01:39	ASSIST by LEWIS, ALIVIA			
01:26		9-12	V 3	GOOD! JUMPER by ADAMS, JADE
01:26				ASSIST by DAVIS, JANAIYA
01:21	FOUL (OFF) by DECKER, KAMIRAH			
01:21	TURNOVER (OFFENSIVE) by DECKER, KAMIRAH			
01:07				SUB OUT: WATTS, KANSAS
01:07				SUB IN: ADAMS, KHIYA
01:07	SUB OUT: DECKER, KAMIRAH			
01:07	SUB IN: DELONGE, NATALIE			
00:47				MISSED 3PTR by DIAZ, HANNA
00:45	REBOUND (DEF) by TEAM			
00:45	SUB OUT: DELONGE, NATALIE			
00:45	SUB IN: RIPPEE, TAYLEE			
00:36	GOOD! JUMPER by MEHLBRECH, JENA [PNT]	9-14	V 5	
00:29				MISSED 3PTR by PETTIS, HARMONY
00:24	REBOUND (DEF) by LEWIS, ALIVIA			
00:11	MISSED JUMPER by MEHLBRECH, JENA			
00:11				BLOCK by DIAZ, HANNA
00:11				REBOUND (DEF) by ADAMS, KHIYA

### Eastern N.M. 14, Colorado St.-Pueblo 9

Points from (This Period)	ENM	CSP
In the Paint	10	4
Off Turns	0	5
2nd Chance	2	0
Fast Break	2	2
Bench	8	2

**Official Box Score**  
**Eastern N.M. vs Colorado St.-Pueblo**  
**Second Quarter Statistics Only**  
**November 29, 2019 at First United Bank Center - Canyon**



**Eastern N.M. 15**

No.	Player	S	Pts	FG	3FG	FT	OR	DR	TR	PF	A	TO	Blk	Stl	Min	+/-
01	HURST, ANASHA	G	0	0-1	0-0	0-0	0	0	0	0	0	1	0	1	2	-5
02	WILLIAMS, JASMINE	F	4	2-4	0-0	0-0	4	2	6	1	0	0	0	0	9	-1
12	COX, ZAMORYE	G	2	1-3	0-0	0-0	1	0	1	0	0	1	0	1	8	8
21	LEWIS, ALIVIA	F	2	1-2	0-0	0-0	0	0	0	2	0	0	0	0	4	-5
24	DELONGE, NATALIE	C	0	0-3	0-0	0-0	0	2	2	0	1	0	1	0	7	8
04	STICE, NATALIE	G	3	1-1	0-0	1-2	0	0	0	0	0	1	0	0	4	7
11	RIPPEE, TAYLEE	F	0	0-0	0-0	0-0	0	0	0	0	0	1	0	0	3	-10
14	CHAVEZ, JULIA	G	0	0-0	0-0	0-0	0	0	0	0	0	0	0	0	0	0
15	MEHLBRECH, JENA	G	0	0-1	0-0	0-0	0	0	0	0	0	0	0	0	3	-10
23	HUNTER, CHELSEA	G	0	0-0	0-0	0-0	0	2	2	0	0	1	0	0	3	2
30	ROWE, LAURA	G	2	1-2	0-0	0-0	0	0	0	0	0	1	0	0	7	9
34	SMITH, JERRAYSHA	C	2	0-0	0-0	2-2	0	0	0	0	0	1	0	0	1	2
35	DECKER, KAMIRAH	C	0	0-0	0-0	0-0	0	0	0	0	0	0	0	0	0	0
	TEAM						0	0	0	1		0				
<b>TOTALS</b>			<b>15</b>	<b>6-17</b>	<b>0-0</b>	<b>3-4</b>	<b>5</b>	<b>6</b>	<b>11</b>	<b>4</b>	<b>1</b>	<b>7</b>	<b>1</b>	<b>2</b>	<b>50</b>	

*Shooting By Period*

Period	FG	FG%	3FG	3FG%	FT	FT%
3rd Qtr	7-20	35%	2-7	29%	2-3	67%
4th Qtr	10-21	48%	4-9	44%	6-6	100%
2nd Half	6-17	35%	0-0	0%	3-4	75%
2nd Half	17-41	41%	6-16	38%	8-9	89%
Game	29-71	40.8%	6-16	37.5%	13-15	86.7%

*Deadball Rebounds: 4,8*

**Colorado St.-Pueblo 14**

No.	Player	S	Pts	FG	3FG	FT	OR	DR	TR	PF	A	TO	Blk	Stl	Min	+/-
02	DAVIS, JANAIYA	G	1	0-3	0-1	1-2	0	0	0	1	1	0	0	0	10	-1
03	WILLIAMS, SYDNI	F	2	1-1	0-0	0-0	1	1	2	0	0	2	0	0	4	-4
13	ADAMS, KHIYA	G	2	1-2	0-0	0-0	1	1	2	3	1	2	1	0	4	8
21	WATTS, KANSAS	G	5	2-4	1-2	0-0	0	0	0	0	0	1	1	0	10	-1
24	DIAZ, HANNA	G	0	0-0	0-0	0-0	0	0	0	1	0	0	0	0	2	-5
05	PETTIS, HARMONY	G	0	0-2	0-1	0-0	1	0	1	1	1	0	0	0	10	-1
12	ADAMS, JADE	F	4	2-7	0-0	0-0	2	1	3	0	0	0	1	1	10	-1
	TEAM						0	1	1	0		0				
<b>TOTALS</b>			<b>14</b>	<b>6-19</b>	<b>1-4</b>	<b>1-2</b>	<b>5</b>	<b>4</b>	<b>9</b>	<b>6</b>	<b>3</b>	<b>5</b>	<b>3</b>	<b>1</b>	<b>50</b>	

*Shooting By Period*

Period	FG	FG%	3FG	3FG%	FT	FT%
3rd Qtr	9-20	45%	1-2	50%	3-3	100%
4th Qtr	5-18	28%	2-10	20%	2-2	100%
2nd Half	6-19	32%	1-4	25%	1-2	50%
2nd Half	14-38	37%	3-12	25%	5-5	100%
Game	24-72	33.3%	5-24	20.8%	6-7	85.7%

*Deadball Rebounds: 3,1*

*Game Notes:*

Officials: **Shane Pope, Reggie Cooper, Johnny Atwood**  
Attendance: **75**

Start Time: **12:59 PM ET**  
End Time: **02:40 PM ET**  
Game Duration: **1:41**  
Neutral Court;

Score	1st	2nd	3rd	4th	TOT
ENM	14	15	18	30	<b>77</b>
CSP	9	14	22	14	<b>59</b>

Points from (This Period)	ENM	CSP
In the Paint	12	8
Off Turns	3	6
2nd Chance	6	2
Fast Break	1	1
Bench	7	4

**Official Play-By-Play**  
**Eastern N.M. vs Colorado St.-Pueblo**  
**Second Quarter**  
**November 29, 2019 at First United Bank Center - Canyon**



**Period 2**

**Starters:**

**Eastern N.M.:** 1 HURST,ANASHA (G); 2 WILLIAMS,JASMINE (F); 12 COX,ZAMORYE (G); 21 LEWIS,ALIVIA (F); 24 DELONGE,NATALIE (C);  
**Colorado St.-Pueblo:** 2 DAVIS,JANAIYA (G); 3 WILLIAMS ,SYDNI (F); 13 ADAMS,KHIYA (G); 21 WATTS,KANSAS (G); 24 DIAZ,HANNA (G);

Time	VISITORS: Eastern N.M.	Score	Margin	HOME: Colorado St.-Pueblo
10:00				SUB OUT: DIAZ, HANNA
10:00				SUB IN: WATTS, KANSAS
10:00	SUB OUT: STICE, NATALIE			
10:00	SUB IN: HURST, ANASHA			
09:51				FOUL (PERSONAL) by ADAMS, KHIYA
09:47	MISSED LAYUP by LEWIS, ALIVIA			
09:47				BLOCK by ADAMS, KHIYA
09:47				REBOUND (DEF) by ADAMS, KHIYA
09:39		11-14	V 3	GOOD! JUMPER by ADAMS, KHIYA [PNT]
09:39				ASSIST by PETTIS, HARMONY
09:27				FOUL (PERSONAL) by PETTIS, HARMONY
09:22	TURNOVER (TRAVEL) by RIPPEE, TAYLEE			
09:03				MISSED 3PTR by PETTIS, HARMONY
09:00				REBOUND (OFF) by ADAMS, KHIYA
08:59				TURNOVER (BADPASS) by ADAMS, KHIYA
08:59	STEAL by HURST, ANASHA			
08:54	TURNOVER (BADPASS) by HURST, ANASHA			
08:45		14-14	T	GOOD! 3PTR by WATTS, KANSAS
08:45				ASSIST by ADAMS, KHIYA
08:27	MISSED JUMPER by HURST, ANASHA			
08:23	REBOUND (OFF) by WILLIAMS, JASMINE			
08:23	MISSED LAYUP by WILLIAMS, JASMINE			
08:23	REBOUND (OFF) by TEAM			
08:23	SUB OUT: HURST, ANASHA			
08:23	SUB IN: HUNTER, CHELSEA			
08:18	TURNOVER (LOSTBALL) by HUNTER, CHELSEA			
08:17	SUB OUT: HUNTER, CHELSEA			
08:17	SUB IN: STICE, NATALIE			
08:08		16-14	H 2	GOOD! JUMPER by WATTS, KANSAS
08:07	SUB OUT: STICE, NATALIE			
08:07	SUB OUT: LEWIS, ALIVIA			
08:07	SUB IN: COX, ZAMORYE			
08:07	SUB IN: DELONGE, NATALIE			
07:48	MISSED JUMPER by MEHLBRECH, JENA			
07:47	REBOUND (OFF) by WILLIAMS, JASMINE			
07:47	MISSED JUMPER by COX, ZAMORYE			
07:47	REBOUND (OFF) by COX, ZAMORYE			
07:46	TURNOVER (OTHER) by COX, ZAMORYE			
07:46	FOUL (COACHTECHNICAL) by TEAM			
07:46				MISSED FT by DAVIS, JANAIYA
07:46				REBOUND (OFF) by TEAM
07:46		17-14	H 3	GOOD! FT by DAVIS, JANAIYA [FB]
07:30				MISSED 3PTR by WATTS, KANSAS
07:26				REBOUND (OFF) by ADAMS, JADE
07:24				MISSED JUMPER by ADAMS, JADE
07:24				REBOUND (OFF) by ADAMS, JADE
07:24		19-14	H 5	GOOD! LAYUP by ADAMS, JADE
07:15				FOUL (PERSONAL) by DAVIS, JANAIYA
07:15	SUB OUT: RIPPEE, TAYLEE			
07:15	SUB OUT: MEHLBRECH, JENA			
07:15	SUB IN: STICE, NATALIE			
07:15	SUB IN: SMITH, JERRYASHA			
07:04	TURNOVER (LOSTBALL) by SMITH, JERRYASHA			
06:43				MISSED JUMPER by ADAMS, KHIYA
06:43	REBOUND (DEF) by DELONGE, NATALIE			
06:31				FOUL (PERSONAL) by ADAMS, KHIYA
06:31	GOOD! FT by SMITH, JERRYASHA	19-15	H 4	
06:31	GOOD! FT by SMITH, JERRYASHA	19-16	H 3	
06:31				SUB OUT: PETTIS, HARMONY
06:31				SUB IN: DIAZ, HANNA
06:31	SUB OUT: SMITH, JERRYASHA			
06:31	SUB IN: ROWE, LAURA			
06:24				FOUL (OFF) by ADAMS, KHIYA
06:24				TURNOVER (OFFENSIVE) by ADAMS, KHIYA
06:24				SUB OUT: ADAMS, KHIYA
06:24				SUB IN: PETTIS, HARMONY
06:18	TURNOVER (OTHER) by ROWE, LAURA			
06:07				MISSED JUMPER by ADAMS, JADE
06:07	BLOCK by DELONGE, NATALIE			
06:07	REBOUND (DEF) by TEAM			



Time	VISITORS: Eastern N.M.	Score	Margin	HOME: Colorado St.-Pueblo
05:55	TURNOVER (BADPASS) by STICE, NATALIE			
05:55				STEAL by ADAMS, JADE
05:49				TURNOVER (BADPASS) by WATTS, KANSAS
05:49	STEAL by COX, ZAMORYE			
05:45				FOUL (PERSONAL) by DIAZ, HANNA
05:45	MISSED FT by STICE, NATALIE			
05:45	REBOUND (OFF) by TEAM			
05:45	GOOD! FT by STICE, NATALIE [FB]	19-17	H 2	
05:35				MISSED JUMPER by DAVIS, JANAIYA
05:25	REBOUND (DEF) by WILLIAMS, JASMINE			
05:22	MISSED JUMPER by DELONGE, NATALIE			
05:17	REBOUND (OFF) by WILLIAMS, JASMINE			
05:17	GOOD! LAYUP by WILLIAMS, JASMINE	19-19	T	
04:56				MISSED JUMPER by WATTS, KANSAS
04:53	REBOUND (DEF) by DELONGE, NATALIE			
04:44	GOOD! LAYUP by STICE, NATALIE [PNT]	19-21	V 2	
04:44	ASSIST by DELONGE, NATALIE			
04:22				MISSED JUMPER by ADAMS, JADE
04:16	REBOUND (DEF) by TEAM			
04:15				
04:15				SUB OUT: DIAZ, HANNA
04:15				SUB IN: WILLIAMS , SYDNI
04:15	SUB OUT: WILLIAMS, JASMINE			
04:15	SUB IN: LEWIS, ALIVIA			
04:00	MISSED JUMPER by DELONGE, NATALIE			
04:00				BLOCK by ADAMS, JADE
04:00	REBOUND (OFF) by TEAM			
03:52	GOOD! LAYUP by ROWE, LAURA	19-23	V 4	
03:25		21-23	V 2	GOOD! JUMPER by ADAMS, JADE [PNT]
03:25				ASSIST by DAVIS, JANAIYA
03:08	GOOD! JUMPER by LEWIS, ALIVIA [PNT]	21-25	V 4	
02:57				TURNOVER (TRAVEL) by WILLIAMS , SYDNI
02:57	SUB OUT: STICE, NATALIE			
02:57	SUB OUT: DELONGE, NATALIE			
02:57	SUB IN: WILLIAMS, JASMINE			
02:57	SUB IN: HUNTER, CHELSEA			
02:42	GOOD! LAYUP by COX, ZAMORYE [PNT]	21-27	V 6	
02:29		23-27	V 4	GOOD! LAYUP by WILLIAMS , SYDNI [PNT]
02:13	MISSED JUMPER by WILLIAMS, JASMINE			
02:11				REBOUND (DEF) by ADAMS, JADE
02:11	FOUL (PERSONAL) by LEWIS, ALIVIA			
01:56				MISSED JUMPER by DAVIS, JANAIYA
01:54				REBOUND (OFF) by WILLIAMS , SYDNI
01:54	FOUL (PERSONAL) by LEWIS, ALIVIA			
01:54	SUB OUT: LEWIS, ALIVIA			
01:54	SUB IN: DELONGE, NATALIE			
01:50				TURNOVER (TRAVEL) by WILLIAMS , SYDNI
01:36	MISSED JUMPER by DELONGE, NATALIE			
01:36				REBOUND (DEF) by WILLIAMS , SYDNI
01:36	FOUL (PERSONAL) by WILLIAMS, JASMINE			
01:14				MISSED JUMPER by ADAMS, JADE
01:11	REBOUND (DEF) by WILLIAMS, JASMINE			
00:50	MISSED JUMPER by ROWE, LAURA			
00:44	REBOUND (OFF) by WILLIAMS, JASMINE			
00:44	GOOD! LAYUP by WILLIAMS, JASMINE	23-29	V 6	
00:37				MISSED 3PTR by DAVIS, JANAIYA
00:33				REBOUND (OFF) by PETTIS, HARMONY
00:32				MISSED JUMPER by PETTIS, HARMONY
00:32	REBOUND (DEF) by HUNTER, CHELSEA			
00:31	MISSED JUMPER by COX, ZAMORYE			
00:31				BLOCK by WATTS, KANSAS
00:28				REBOUND (DEF) by TEAM
00:05				MISSED JUMPER by ADAMS, JADE
00:05	REBOUND (DEF) by HUNTER, CHELSEA			

### Eastern N.M. 29, Colorado St.-Pueblo 23

Points from (This Period)	ENM	CSP
In the Paint	12	8
Off Turns	3	6
2nd Chance	6	2
Fast Break	1	1
Bench	7	4

**Official Box Score**  
**Eastern N.M. vs Colorado St.-Pueblo**  
**Second Half Statistics Only**  
**November 29, 2019 at First United Bank Center - Canyon**



**Eastern N.M. 48**

No.	Player	S	Pts	FG	3FG	FT	OR	DR	TR	PF	A	TO	Blk	Stl	Min	+/-
01	HURST, ANASHA	G	0	0-1	0-0	0-0	1	0	1	0	0	2	0	0	1	0
02	WILLIAMS, JASMINE	F	6	2-3	0-0	2-2	4	5	9	1	1	3	0	1	13	16
04	STICE, NATALIE	G	0	0-3	0-3	0-0	0	2	2	0	0	1	0	0	6	-12
12	COX, ZAMORYE	G	8	3-6	2-3	0-0	1	1	2	2	3	1	0	1	15	14
14	CHAVEZ, JULIA	G	0	0-0	0-0	0-0	0	0	0	1	0	1	0	1	2	3
15	MEHLBRECH, JENA	G	8	3-6	2-4	0-0	0	1	1	0	0	2	0	0	14	15
21	LEWIS, ALIVIA	F	12	3-6	0-0	6-7	2	5	7	1	2	0	1	0	13	12
23	HUNTER, CHELSEA	G	0	0-3	0-3	0-0	0	0	0	2	0	0	0	2	9	20
24	DELONGE, NATALIE	C	0	0-1	0-0	0-0	0	3	3	0	0	0	0	0	5	5
30	ROWE, LAURA	G	6	2-4	2-3	0-0	1	1	2	0	0	1	0	0	7	-8
11	RIPPEE, TAYLEE	F	2	1-2	0-0	0-0	1	0	1	0	0	0	0	0	5	-12
34	SMITH, JERRAYSHA	C	0	0-0	0-0	0-0	1	0	1	0	0	1	0	1	4	5
35	DECKER, KAMIRAH	C	6	3-6	0-0	0-0	0	0	0	3	1	0	0	0	7	2
	TEAM		0	0-0	0-0	0-0	1	0	1	0	0	0	0	0	0	0
	<b>TOTALS</b>		<b>48</b>	<b>17-41</b>	<b>6-16</b>	<b>8-9</b>	<b>12</b>	<b>18</b>	<b>30</b>	<b>8</b>	<b>9</b>	<b>12</b>	<b>1</b>	<b>6</b>	<b>100</b>	

*Shooting By Period*

Period	FG	FG%	3FG	3FG%	FT	FT%
3rd Qtr	7-20	35%	2-7	29%	2-3	67%
4th Qtr	10-21	48%	4-9	44%	6-6	100%
2nd Half	17-41	41%	6-16	38%	8-9	89%
Game	29-71	40.8%	6-16	37.5%	13-15	86.7%

*Deadball Rebounds: 4,8*

*Last FG Half: ENM 4th-01:15*

**Colorado St.-Pueblo 36**

No.	Player	S	Pts	FG	3FG	FT	OR	DR	TR	PF	A	TO	Blk	Stl	Min	+/-
02	DAVIS, JANAIYA	G	13	4-11	1-4	4-4	0	0	0	0	3	2	0	2	20	-12
03	WILLIAMS, SYDNI	F	3	1-3	0-0	1-1	1	3	4	3	0	1	0	2	12	7
05	PETTIS, HARMONY	G	5	2-5	1-3	0-0	0	2	2	0	2	0	0	2	18	-5
12	ADAMS, JADE	F	6	3-6	0-0	0-0	1	2	3	4	0	1	1	0	11	3
13	ADAMS, KHIYA	G	0	0-3	0-1	0-0	0	0	0	2	0	1	0	1	2	0
21	WATTS, KANSAS	G	4	2-6	0-2	0-0	0	2	2	2	1	3	0	1	17	-18
24	DIAZ, HANNA	G	5	2-4	1-2	0-0	0	2	2	0	1	1	0	0	13	-20
	TEAM		0	0-0	0-0	0-0	0	1	1	0	0	0	0	0	0	0
	<b>TOTALS</b>		<b>36</b>	<b>14-38</b>	<b>3-12</b>	<b>5-5</b>	<b>2</b>	<b>12</b>	<b>14</b>	<b>11</b>	<b>7</b>	<b>9</b>	<b>1</b>	<b>8</b>	<b>93</b>	

*Shooting By Period*

Period	FG	FG%	3FG	3FG%	FT	FT%
3rd Qtr	9-20	45%	1-2	50%	3-3	100%
4th Qtr	5-18	28%	2-10	20%	2-2	100%
2nd Half	14-38	37%	3-12	25%	5-5	100%
Game	24-72	33.3%	5-24	20.8%	6-7	85.7%

*Deadball Rebounds: 3,1*

*Last FG Half: CSP 4th-00:44*

*Game Notes:*

Officials: Shane Pope, Reggie Cooper, Johnny Atwood  
 Attendance: 75

Start Time: 12:59 PM ET

End Time: 02:40 PM ET

Game Duration: 1:41

Neutral Court;

Score	1st	2nd	3rd	4th	TOT
ENM	14	15	18	30	<b>77</b>
CSP	9	14	22	14	<b>59</b>

Points from (This Period)	ENM	CSP
In the Paint	20	18
Off Turns	12	13
2nd Chance	12	3
Fast Break	6	12
Bench	22	11

**Official Box Score**  
**Eastern N.M. vs Colorado St.-Pueblo**  
**Third Quarter Statistics Only**  
**November 29, 2019 at First United Bank Center - Canyon**



**Eastern N.M. 48**

No.	Player	S	Pts	FG	3FG	FT	OR	DR	TR	PF	A	TO	Blk	Stl	Min	+/-
01	HURST, ANASHA	G	0	0-1	0-0	0-0	1	0	1	0	0	2	0	0	1	0
02	WILLIAMS, JASMINE	F	2	1-1	0-0	0-0	1	2	3	1	1	2	0	1	7	5
12	COX, ZAMORYE	G	3	1-3	1-1	0-0	1	0	1	2	1	1	0	0	7	-2
21	LEWIS, ALIVIA	F	6	2-3	0-0	2-3	1	3	4	1	0	0	1	0	7	1
24	DELONGE, NATALIE	C	0	0-1	0-0	0-0	0	1	1	0	0	0	0	0	1	0
04	STICE, NATALIE	G	0	0-0	0-0	0-0	0	1	1	0	0	0	0	0	4	-12
11	RIPPEE, TAYLEE	F	0	0-0	0-0	0-0	0	0	0	0	0	0	0	0	3	-9
14	CHAVEZ, JULIA	G	0	0-0	0-0	0-0	0	0	0	0	0	0	0	0	0	3
15	MEHLBRECH, JENA	G	2	1-4	0-2	0-0	0	1	1	0	0	2	0	0	6	-1
23	HUNTER, CHELSEA	G	0	0-2	0-2	0-0	0	0	0	0	1	0	0	2	5	5
30	ROWE, LAURA	G	3	1-3	1-2	0-0	1	0	1	0	0	1	0	0	5	-8
34	SMITH, JERRYASHA	C	0	0-0	0-0	0-0	0	0	0	0	0	0	0	0	0	0
35	DECKER, KAMIRAH	C	2	1-2	0-0	0-0	0	0	0	1	1	0	0	0	4	-2
<b>TEAM</b>							0	0	0	0	0	0				
<b>TOTALS</b>			<b>18</b>	<b>7-20</b>	<b>2-7</b>	<b>2-3</b>	<b>5</b>	<b>8</b>	<b>13</b>	<b>5</b>	<b>4</b>	<b>8</b>	<b>1</b>	<b>3</b>	<b>50</b>	

*Shooting By Period*

Period	FG	FG%	3FG	3FG%	FT	FT%
2nd Half	0-0	0%	0-0	0%	0-0	0%
Game	29-71	40.8%	6-16	37.5%	13-15	86.7%

*Deadball Rebounds: 4,8*

**Colorado St.-Pueblo 36**

No.	Player	S	Pts	FG	3FG	FT	OR	DR	TR	PF	A	TO	Blk	Stl	Min	+/-
02	DAVIS, JANAIYA	G	11	4-6	1-1	2-2	0	0	0	0	0	1	0	0	10	4
03	WILLIAMS, SYDNI	F	3	1-3	0-0	1-1	1	3	4	1	0	1	0	2	10	4
13	ADAMS, KHIYA	G	0	0-2	0-0	0-0	0	0	0	1	0	1	0	1	1	-3
21	WATTS, KANSAS	G	4	2-3	0-1	0-0	0	1	1	1	1	2	0	0	9	1
24	DIAZ, HANNA	G	0	0-0	0-0	0-0	0	0	0	0	0	0	0	0	3	-4
05	PETTIS, HARMONY	G	0	0-1	0-0	0-0	0	1	1	0	2	0	0	2	8	11
12	ADAMS, JADE	F	4	2-5	0-0	0-0	1	2	3	2	0	1	1	0	9	7
<b>TEAM</b>							0	1	1	0	0	0				
<b>TOTALS</b>			<b>22</b>	<b>9-20</b>	<b>1-2</b>	<b>3-3</b>	<b>2</b>	<b>8</b>	<b>10</b>	<b>5</b>	<b>3</b>	<b>6</b>	<b>1</b>	<b>5</b>	<b>50</b>	

*Shooting By Period*

Period	FG	FG%	3FG	3FG%	FT	FT%
2nd Half	0-0	0%	0-0	0%	0-0	0%
Game	24-72	33.3%	5-24	20.8%	6-7	85.7%

*Deadball Rebounds: 3,1*

Game Notes:

Officials: **Shane Pope, Reggie Cooper, Johnny Atwood**  
 Attendance: **75**

Start Time: **12:59 PM ET**  
 End Time: **02:40 PM ET**  
 Game Duration: **1:41**  
 Neutral Court;

Score	1st	2nd	3rd	4th	TOT
ENM	14	15	18	30	<b>77</b>
CSP	9	14	22	14	<b>59</b>

Points from (This Period)	ENM	CSP
In the Paint	8	14
Off Turns	7	10
2nd Chance	6	3
Fast Break	2	8
Bench	7	4

**Official Play-By-Play**  
**Eastern N.M. vs Colorado St.-Pueblo**  
**Third Quarter**  
**November 29, 2019 at First United Bank Center - Canyon**



**Period 3**

**Starters:**

**Eastern N.M.:** 1 HURST, ANASHA (G); 2 WILLIAMS, JASMINE (F); 12 COX, ZAMORYE (G); 21 LEWIS, ALIVIA (F); 24 DELONGE, NATALIE (C);

**Colorado St.-Pueblo:** 2 DAVIS, JANAIYA (G); 3 WILLIAMS, SYDNI (F); 13 ADAMS, KHIYA (G); 21 WATTS, KANSAS (G); 24 DIAZ, HANNA (G);

Time	VISITORS: Eastern N.M.	Score	Margin	HOME: Colorado St.-Pueblo
10:00				SUB OUT: ADAMS, JADE
10:00				SUB IN: ADAMS, KHIYA
10:00	SUB OUT: HUNTER, CHELSEA			
10:00	SUB OUT: ROWE, LAURA			
10:00	SUB IN: HURST, ANASHA			
10:00	SUB IN: LEWIS, ALIVIA			
09:52	TURNOVER (BADPASS) by HURST, ANASHA			
09:52				STEAL by ADAMS, KHIYA
09:51				TURNOVER (TRAVEL) by ADAMS, KHIYA
09:42	MISSED JUMPER by HURST, ANASHA			
09:41	REBOUND (OFF) by HURST, ANASHA			
09:41				FOUL (PERSONAL) by WATTS, KANSAS
09:35	TURNOVER (BADPASS) by HURST, ANASHA			
09:25	SUB OUT: HURST, ANASHA			
09:25	SUB IN: HUNTER, CHELSEA			
09:22				MISSED JUMPER by ADAMS, KHIYA
09:20				REBOUND (OFF) by TEAM
09:19				MISSED JUMPER by ADAMS, KHIYA
09:19	BLOCK by LEWIS, ALIVIA			
09:19	REBOUND (DEF) by DELONGE, NATALIE			
09:13	MISSED JUMPER by DELONGE, NATALIE			
09:10				REBOUND (DEF) by WILLIAMS, SYDNI
09:04				MISSED LAYUP by DAVIS, JANAIYA
09:00	REBOUND (DEF) by WILLIAMS, JASMINE			
09:00	TURNOVER (BADPASS) by WILLIAMS, JASMINE			
09:00	SUB OUT: DELONGE, NATALIE			
09:00	SUB IN: DECKER, KAMIRAH			
08:56				FOUL (OFF) by WILLIAMS, SYDNI
08:56				TURNOVER (OFFENSIVE) by WILLIAMS, SYDNI
08:42	MISSED JUMPER by DECKER, KAMIRAH			
08:38	REBOUND (OFF) by LEWIS, ALIVIA			
08:38	GOOD! LAYUP by LEWIS, ALIVIA	23-31	V 8	
08:37				FOUL (PERSONAL) by ADAMS, KHIYA
08:37	GOOD! FT by LEWIS, ALIVIA	23-32	V 9	
08:36				SUB OUT: ADAMS, KHIYA
08:36				SUB IN: ADAMS, JADE
08:34	FOUL (PERSONAL) by LEWIS, ALIVIA			
08:22		25-32	V 7	GOOD! LAYUP by ADAMS, JADE [PNT]
08:09	GOOD! JUMPER by DECKER, KAMIRAH	25-34	V 9	
08:09	ASSIST by COX, ZAMORYE			
07:58	FOUL (PERSONAL) by DECKER, KAMIRAH			
07:58	SUB OUT: LEWIS, ALIVIA			
07:58	SUB IN: ROWE, LAURA			
07:53		27-34	V 7	GOOD! JUMPER by ADAMS, JADE
07:53				ASSIST by PETTIS, HARMONY
07:33	MISSED JUMPER by COX, ZAMORYE			
07:27				REBOUND (DEF) by ADAMS, JADE
07:25				TURNOVER (BADPASS) by ADAMS, JADE
07:25	STEAL by HUNTER, CHELSEA			
07:18	MISSED 3PTR by HUNTER, CHELSEA			
07:10	REBOUND (OFF) by COX, ZAMORYE			
07:09	MISSED JUMPER by COX, ZAMORYE			
07:07	REBOUND (OFF) by ROWE, LAURA			
07:07	TURNOVER (LOSTBALL) by ROWE, LAURA			
07:07				STEAL by WILLIAMS, SYDNI
06:59		30-34	V 4	GOOD! 3PTR by DAVIS, JANAIYA
06:43	MISSED 3PTR by HUNTER, CHELSEA			
06:38	REBOUND (OFF) by WILLIAMS, JASMINE			
06:27	GOOD! 3PTR by COX, ZAMORYE	30-37	V 7	
06:27	ASSIST by DECKER, KAMIRAH			
06:19				TURNOVER (BADPASS) by DAVIS, JANAIYA
06:19	SUB OUT: HUNTER, CHELSEA			
06:19	SUB IN: STICE, NATALIE			
06:19	SUB OUT: WILLIAMS, JASMINE			
06:19	SUB IN: RIPPEE, TAYLEE			
06:09				FOUL (PERSONAL) by ADAMS, JADE
06:04	MISSED JUMPER by ROWE, LAURA			
06:04				BLOCK by ADAMS, JADE
05:59				REBOUND (DEF) by PETTIS, HARMONY
05:58		32-37	V 5	GOOD! LAYUP by WATTS, KANSAS [FB/PNT]

Time	VISITORS: Eastern N.M.	Score	Margin	HOME: Colorado St.-Pueblo
05:52	TURNOVER (BADPASS) by COX, ZAMORYE			
05:52				STEAL by PETTIS, HARMONY
05:52				MISSED JUMPER by PETTIS, HARMONY
05:50				REBOUND (OFF) by WILLIAMS , SYDNI
05:50		34-37	V 3	GOOD! LAYUP by WILLIAMS , SYDNI
05:49	FOUL (PERSONAL) by COX, ZAMORYE			
05:35	SUB OUT: COX, ZAMORYE			
05:35	SUB IN: MEHLBRECH, JENA			
05:30		35-37	V 2	GOOD! FT by WILLIAMS , SYDNI
05:14	GOOD! LAYUP by MEHLBRECH, JENA [PNT]	35-39	V 4	
05:06				MISSED JUMPER by DAVIS, JANAIYA
05:03	REBOUND (DEF) by STICE, NATALIE			
04:57	MISSED 3PTR by MEHLBRECH, JENA			
04:54				REBOUND (DEF) by TEAM
04:54				
04:54	SUB OUT: DECKER, KAMIRAH			
04:54	SUB IN: LEWIS, ALIVIA			
04:30		37-39	V 2	GOOD! JUMPER by WATTS, KANSAS [PNT]
04:21	TURNOVER (BADPASS) by MEHLBRECH, JENA			
04:21				STEAL by PETTIS, HARMONY
04:15		39-39	T	GOOD! LAYUP by DAVIS, JANAIYA [FB/PNT]
04:15				ASSIST by PETTIS, HARMONY
04:02	MISSED JUMPER by LEWIS, ALIVIA			
03:59				REBOUND (DEF) by ADAMS, JADE
03:57		41-39	H 2	GOOD! LAYUP by DAVIS, JANAIYA [FB/PNT]
03:57				ASSIST by WATTS, KANSAS
03:37	MISSED 3PTR by ROWE, LAURA			
03:35				REBOUND (DEF) by WILLIAMS , SYDNI
03:29				MISSED 3PTR by WATTS, KANSAS
03:25	REBOUND (DEF) by MEHLBRECH, JENA			
03:18	MISSED JUMPER by MEHLBRECH, JENA			
03:15				REBOUND (DEF) by WATTS, KANSAS
03:13				SUB OUT: PETTIS, HARMONY
03:13				SUB IN: DIAZ, HANNA
03:13	SUB OUT: STICE, NATALIE			
03:13	SUB OUT: RIPPEE, TAYLEE			
03:13	SUB IN: WILLIAMS, JASMINE			
03:13	SUB IN: CHAVEZ, JULIA			
03:06				MISSED JUMPER by ADAMS, JADE
03:03				REBOUND (OFF) by ADAMS, JADE
02:57				MISSED JUMPER by ADAMS, JADE
02:52	REBOUND (DEF) by WILLIAMS, JASMINE			
02:45	GOOD! 3PTR by ROWE, LAURA	41-42	V 1	
02:45	ASSIST by WILLIAMS, JASMINE			
02:44	TIMEOUT 30SEC			
02:44				
02:44	SUB OUT: CHAVEZ, JULIA			
02:44	SUB OUT: ROWE, LAURA			
02:44	SUB IN: COX, ZAMORYE			
02:44	SUB IN: HUNTER, CHELSEA			
02:36				TURNOVER (BADPASS) by WATTS, KANSAS
02:36	STEAL by WILLIAMS, JASMINE			
02:32	GOOD! LAYUP by WILLIAMS, JASMINE [FB/PNT]	41-44	V 3	
02:32	ASSIST by HUNTER, CHELSEA			
02:02				TURNOVER (LOSTBALL) by WATTS, KANSAS
02:02	STEAL by HUNTER, CHELSEA			
01:48	GOOD! JUMPER by LEWIS, ALIVIA [PNT]	41-46	V 5	
01:26				MISSED JUMPER by WILLIAMS , SYDNI
01:23	REBOUND (DEF) by LEWIS, ALIVIA			
01:16				FOUL (PERSONAL) by ADAMS, JADE
01:16				SUB OUT: WATTS, KANSAS
01:16				SUB IN: PETTIS, HARMONY
01:16	SUB OUT: HUNTER, CHELSEA			
01:16	SUB IN: STICE, NATALIE			
01:16	GOOD! FT by LEWIS, ALIVIA	41-47	V 6	
01:16	MISSED FT by LEWIS, ALIVIA			
01:15				REBOUND (DEF) by WILLIAMS , SYDNI
01:15	FOUL (PERSONAL) by COX, ZAMORYE			
01:04				MISSED JUMPER by WILLIAMS , SYDNI
01:01	REBOUND (DEF) by LEWIS, ALIVIA			
00:52	TURNOVER (BADPASS) by MEHLBRECH, JENA			
00:52				STEAL by WILLIAMS , SYDNI
00:52				MISSED LAYUP by ADAMS, JADE
00:52	REBOUND (DEF) by LEWIS, ALIVIA			
00:52	FOUL (TECH) by WILLIAMS, JASMINE			
00:52	TURNOVER (OFFENSIVE) by WILLIAMS, JASMINE			
00:52		42-47	V 5	GOOD! FT by DAVIS, JANAIYA [FB]
00:52		43-47	V 4	GOOD! FT by DAVIS, JANAIYA [FB]
00:25		45-47	V 2	GOOD! JUMPER by DAVIS, JANAIYA [PNT]
00:18	MISSED 3PTR by MEHLBRECH, JENA			

<b>Time</b>	<b>VISITORS: Eastern N.M.</b>	<b>Score</b>	<b>Margin</b>	<b>HOME: Colorado St.-Pueblo</b>
00:14				REBOUND (DEF) by TEAM

**Eastern N.M. 47, Colorado St.-Pueblo 45**

<b>Points from (This Period)</b>	<b>ENM</b>	<b>CSP</b>
In the Paint	8	14
Off Turns	7	10
2nd Chance	6	3
Fast Break	2	8
Bench	7	4

**Official Box Score**  
**Eastern N.M. vs Colorado St.-Pueblo**  
**Fourth Quarter Statistics Only**  
**November 29, 2019 at First United Bank Center - Canyon**



**Eastern N.M. 30**

No.	Player	S	Pts	FG	3FG	FT	OR	DR	TR	PF	A	TO	Blk	Stl	Min	+/-
01	HURST, ANASHA	G	0	0-0	0-0	0-0	0	0	0	0	0	0	0	0	0	0
02	WILLIAMS, JASMINE	F	4	1-2	0-0	2-2	3	3	6	0	0	1	0	0	6	11
12	COX, ZAMORYE	G	5	2-3	1-2	0-0	0	1	1	0	2	0	0	1	8	16
21	LEWIS, ALIVIA	F	6	1-3	0-0	4-4	1	2	3	0	2	0	0	0	6	11
24	DELONGE, NATALIE	C	0	0-0	0-0	0-0	0	2	2	0	0	0	0	0	4	5
04	STICE, NATALIE	G	0	0-3	0-3	0-0	0	1	1	0	0	1	0	0	2	0
11	RIPPEE, TAYLEE	F	2	1-2	0-0	0-0	1	0	1	0	0	0	0	0	2	-3
14	CHAVEZ, JULIA	G	0	0-0	0-0	0-0	0	0	0	1	0	1	0	1	2	0
15	MEHLBRECH, JENA	G	6	2-2	2-2	0-0	0	0	0	0	0	0	0	0	8	16
23	HUNTER, CHELSEA	G	0	0-1	0-1	0-0	0	0	0	0	1	0	0	0	4	15
30	ROWE, LAURA	G	3	1-1	1-1	0-0	0	1	1	0	0	0	0	0	2	0
34	SMITH, JERRYASHA	C	0	0-0	0-0	0-0	1	0	1	0	0	1	0	1	4	5
35	DECKER, KAMIRAH	C	4	2-4	0-0	0-0	0	0	0	2	0	0	0	0	3	4
<b>TEAM</b>							1	0	1	0		0				
<b>TOTALS</b>			<b>30</b>	<b>10-21</b>	<b>4-9</b>	<b>6-6</b>	<b>7</b>	<b>10</b>	<b>17</b>	<b>3</b>	<b>5</b>	<b>4</b>	<b>0</b>	<b>3</b>	<b>50</b>	

*Shooting By Period*

Period	FG	FG%	3FG	3FG%	FT	FT%
Game	29-71	40.8%	6-16	37.5%	13-15	86.7%

*Deadball Rebounds: 4,8*

**Colorado St.-Pueblo 14**

No.	Player	S	Pts	FG	3FG	FT	OR	DR	TR	PF	A	TO	Blk	Stl	Min	+/-
02	DAVIS, JANAIYA	G	2	0-5	0-3	2-2	0	0	0	0	3	1	0	2	10	-16
03	WILLIAMS, SYDNI	F	0	0-0	0-0	0-0	0	0	0	2	0	0	0	0	2	3
13	ADAMS, KHIYA	G	0	0-1	0-1	0-0	0	0	0	1	0	0	0	0	1	3
21	WATTS, KANSAS	G	0	0-3	0-1	0-0	0	1	1	1	0	1	0	1	8	-19
24	DIAZ, HANNA	G	5	2-4	1-2	0-0	0	2	2	0	1	1	0	0	10	-16
05	PETTIS, HARMONY	G	5	2-4	1-3	0-0	0	1	1	0	0	0	0	0	10	-16
12	ADAMS, JADE	F	2	1-1	0-0	0-0	0	0	0	2	0	0	0	0	2	-4
<b>TEAM</b>							0	0	0	0		0				
<b>TOTALS</b>			<b>14</b>	<b>5-18</b>	<b>2-10</b>	<b>2-2</b>	<b>0</b>	<b>4</b>	<b>4</b>	<b>6</b>	<b>4</b>	<b>3</b>	<b>0</b>	<b>3</b>	<b>43</b>	

*Shooting By Period*

Period	FG	FG%	3FG	3FG%	FT	FT%
Game	24-72	33.3%	5-24	20.8%	6-7	85.7%

*Deadball Rebounds: 3,1*

Game Notes:

Officials: Shane Pope, Reggie Cooper, Johnny Atwood  
 Attendance: 75

Start Time: 12:59 PM ET  
 End Time: 02:40 PM ET  
 Game Duration: 1:41  
 Neutral Court;

Score	1st	2nd	3rd	4th	TOT
ENM	14	15	18	30	<b>77</b>
CSP	9	14	22	14	<b>59</b>

Points from (This Period)	ENM	CSP
In the Paint	12	4
Off Turns	5	3
2nd Chance	6	0
Fast Break	4	4
Bench	15	7

**Official Play-By-Play**  
**Eastern N.M. vs Colorado St.-Pueblo**  
**Fourth Quarter**  
**November 29, 2019 at First United Bank Center - Canyon**



**Period 4**

**Starters:**

**Eastern N.M.:** 1 HURST, ANASHA (G); 2 WILLIAMS, JASMINE (F); 12 COX, ZAMORYE (G); 21 LEWIS, ALIVIA (F); 24 DELONGE, NATALIE (C);

**Colorado St.-Pueblo:** 2 DAVIS, JANAIYA (G); 3 WILLIAMS, SYDNI (F); 13 ADAMS, KHIYA (G); 21 WATTS, KANSAS (G); 24 DIAZ, HANNA (G);

Time	VISITORS: Eastern N.M.	Score	Margin	HOME: Colorado St.-Pueblo
10:00				SUB OUT: ADAMS, JADE
10:00				SUB IN: ADAMS, KHIYA
10:00	SUB OUT: STICE, NATALIE			
10:00	SUB IN: DELONGE, NATALIE			
09:49				MISSED 3PTR by ADAMS, KHIYA
09:45	REBOUND (DEF) by COX, ZAMORYE			
09:31	TURNOVER (OTHER) by WILLIAMS, JASMINE			
09:22		48-47	H 1	GOOD! 3PTR by PETTIS, HARMONY
09:22				ASSIST by DAVIS, JANAIYA
09:04				FOUL (PERSONAL) by ADAMS, KHIYA
09:04				SUB OUT: ADAMS, KHIYA
09:04				SUB IN: ADAMS, JADE
08:53	SUB OUT: DELONGE, NATALIE			
08:53	SUB IN: DECKER, KAMIRAH			
08:46	MISSED JUMPER by DECKER, KAMIRAH			
08:44	REBOUND (OFF) by WILLIAMS, JASMINE			
08:42				FOUL (PERSONAL) by WILLIAMS, SYDNI
08:27	MISSED JUMPER by DECKER, KAMIRAH			
08:24	REBOUND (OFF) by LEWIS, ALIVIA			
08:24				FOUL (PERSONAL) by WILLIAMS, SYDNI
08:24				SUB OUT: WILLIAMS, SYDNI
08:24				SUB IN: WATTS, KANSAS
08:24	GOOD! FT by LEWIS, ALIVIA	48-48	T	
08:24	GOOD! FT by LEWIS, ALIVIA	48-49	V 1	
08:17		50-49	H 1	GOOD! LAYUP by ADAMS, JADE [FB/PNT]
08:17				ASSIST by DIAZ, HANNA
08:00	GOOD! JUMPER by DECKER, KAMIRAH [PNT]	50-51	V 1	
08:00	ASSIST by LEWIS, ALIVIA			
07:53				TIMEOUT 30SEC
07:53				
07:46				MISSED 3PTR by DAVIS, JANAIYA
07:43	REBOUND (DEF) by LEWIS, ALIVIA			
07:32	MISSED JUMPER by LEWIS, ALIVIA			
07:28	REBOUND (OFF) by WILLIAMS, JASMINE			
07:28				FOUL (PERSONAL) by ADAMS, JADE
07:25	MISSED JUMPER by LEWIS, ALIVIA			
07:20	REBOUND (OFF) by WILLIAMS, JASMINE			
07:20	MISSED LAYUP by WILLIAMS, JASMINE			
07:18	REBOUND (OFF) by TEAM			
07:05	GOOD! JUMPER by WILLIAMS, JASMINE	50-53	V 3	
06:39				MISSED 3PTR by DAVIS, JANAIYA
06:36	REBOUND (DEF) by WILLIAMS, JASMINE			
06:36				FOUL (PERSONAL) by ADAMS, JADE
06:36				SUB OUT: ADAMS, JADE
06:36	GOOD! FT by WILLIAMS, JASMINE [FB]	50-54	V 4	
06:36	GOOD! FT by WILLIAMS, JASMINE [FB]	50-55	V 5	
06:18		52-55	V 3	GOOD! JUMPER by PETTIS, HARMONY
06:17				TIMEOUT 30SEC
06:05	GOOD! JUMPER by DECKER, KAMIRAH [PNT]	52-57	V 5	
06:05	ASSIST by COX, ZAMORYE			
05:55	FOUL (PERSONAL) by DECKER, KAMIRAH			
05:55		53-57	V 4	GOOD! FT by DAVIS, JANAIYA
05:55		54-57	V 3	GOOD! FT by DAVIS, JANAIYA
05:55	SUB OUT: DECKER, KAMIRAH			
05:55	SUB IN: HUNTER, CHELSEA			
05:45	GOOD! 3PTR by COX, ZAMORYE	54-60	V 6	
05:45	ASSIST by HUNTER, CHELSEA			
05:33				MISSED 3PTR by DIAZ, HANNA
05:32	REBOUND (DEF) by LEWIS, ALIVIA			
05:32				FOUL (PERSONAL) by WATTS, KANSAS
05:32	GOOD! FT by LEWIS, ALIVIA	54-61	V 7	
05:32	GOOD! FT by LEWIS, ALIVIA	54-62	V 8	
05:18				MISSED JUMPER by WATTS, KANSAS
05:16	REBOUND (DEF) by WILLIAMS, JASMINE			
05:07	GOOD! 3PTR by MEHLBRECH, JENA	54-65	V 11	
05:07	ASSIST by LEWIS, ALIVIA			
04:52				MISSED JUMPER by DAVIS, JANAIYA
04:49	REBOUND (DEF) by WILLIAMS, JASMINE			
04:32	GOOD! LAYUP by LEWIS, ALIVIA [PNT]	54-67	V 13	
04:19				MISSED 3PTR by PETTIS, HARMONY



Time	VISITORS: Eastern N.M.	Score	Margin	HOME: Colorado St.-Pueblo
04:16	REBOUND (DEF) by TEAM			
04:16	SUB OUT: LEWIS, ALIVIA			
04:16	SUB IN: DECKER, KAMIRAH			
04:16	SUB OUT: WILLIAMS, JASMINE			
04:16	SUB IN: SMITH, JERRYASHA			
04:05	MISSED 3PTR by HUNTER, CHELSEA			
04:04				REBOUND (DEF) by WATTS, KANSAS
04:04	FOUL (PERSONAL) by DECKER, KAMIRAH			
04:04	SUB OUT: DECKER, KAMIRAH			
04:04	SUB IN: DELONGE, NATALIE			
03:41				MISSED JUMPER by WATTS, KANSAS
03:36	REBOUND (DEF) by DELONGE, NATALIE			
03:28	MISSED 3PTR by COX, ZAMORYE			
03:25	REBOUND (OFF) by SMITH, JERRYASHA			
03:22	TURNOVER (BADPASS) by SMITH, JERRYASHA			
03:22				STEAL by WATTS, KANSAS
03:13				TURNOVER (BADPASS) by DIAZ, HANNA
03:13	STEAL by COX, ZAMORYE			
03:07	GOOD! LAYUP by COX, ZAMORYE [FB/PNT]	54-69	V 15	
02:52				MISSED 3PTR by DAVIS, JANAIYA
02:45	REBOUND (DEF) by DELONGE, NATALIE			
02:37	GOOD! 3PTR by MEHLBRECH, JENA	54-72	V 18	
02:37	ASSIST by COX, ZAMORYE			
02:27				MISSED 3PTR by PETTIS, HARMONY
02:24	REBOUND (DEF) by TEAM			
02:24	SUB OUT: COX, ZAMORYE			
02:24	SUB OUT: MEHLBRECH, JENA			
02:24	SUB OUT: HUNTER, CHELSEA			
02:24	SUB IN: STICE, NATALIE			
02:24	SUB IN: CHAVEZ, JULIA			
02:24	SUB IN: ROWE, LAURA			
02:19	MISSED 3PTR by STICE, NATALIE			
02:16				REBOUND (DEF) by PETTIS, HARMONY
02:09				MISSED JUMPER by DAVIS, JANAIYA
02:06	REBOUND (DEF) by STICE, NATALIE			
01:57	MISSED 3PTR by STICE, NATALIE			
01:52				REBOUND (DEF) by DIAZ, HANNA
01:47				TURNOVER (LOSTBALL) by WATTS, KANSAS
01:47	STEAL by SMITH, JERRYASHA			
01:38	GOOD! 3PTR by ROWE, LAURA	54-75	V 21	
01:37	TIMEOUT 30SEC			
01:37	SUB OUT: DELONGE, NATALIE			
01:37	SUB IN: RIPPEE, TAYLEE			
01:29				MISSED 3PTR by WATTS, KANSAS
01:25	REBOUND (DEF) by ROWE, LAURA			
01:19	MISSED 3PTR by STICE, NATALIE			
01:15	REBOUND (OFF) by RIPPEE, TAYLEE			
01:15	GOOD! LAYUP by RIPPEE, TAYLEE	54-77	V 23	
01:08		56-77	V 21	GOOD! LAYUP by DIAZ, HANNA [FB/PNT]
01:08				ASSIST by DAVIS, JANAIYA
00:56	MISSED JUMPER by RIPPEE, TAYLEE			
00:52				REBOUND (DEF) by DIAZ, HANNA
00:50	FOUL (PERSONAL) by CHAVEZ, JULIA			
00:44		59-77	V 18	GOOD! 3PTR by DIAZ, HANNA
00:44				ASSIST by DAVIS, JANAIYA
00:29	TURNOVER (BADPASS) by STICE, NATALIE			
00:29				STEAL by DAVIS, JANAIYA
00:23				TURNOVER (LOSTBALL) by DAVIS, JANAIYA
00:23	STEAL by CHAVEZ, JULIA			
00:22	TURNOVER (LOSTBALL) by CHAVEZ, JULIA			
00:22				STEAL by DAVIS, JANAIYA
00:13				MISSED JUMPER by DIAZ, HANNA
00:13	REBOUND (DEF) by TEAM			

### Eastern N.M. 77, Colorado St.-Pueblo 59

Points from (This Period)	ENM	CSP
In the Paint	12	4
Off Turns	5	3
2nd Chance	6	0
Fast Break	4	4
Bench	15	7

**Official Scoring/Possession Reference Chart**  
**Eastern N.M. vs Colorado St.-Pueblo**  
**Period 1**  
**November 29, 2019 at First United Bank Center - Canyon**



**Period 1**

**Starters:**

**Eastern N.M.:** 1 HURST, ANASHA (G); 2 WILLIAMS, JASMINE (F); 12 COX, ZAMORYE (G); 21 LEWIS, ALIVIA (F); 24 DELONGE, NATALIE (C);  
**Colorado St.-Pueblo:** 2 DAVIS, JANAIYA (G); 3 WILLIAMS, SYDNI (F); 13 ADAMS, KHIYA (G); 21 WATTS, KANSAS (G); 24 DIAZ, HANNA (G);

Time	VISITORS: Eastern N.M.	Score	Margin	HOME: Colorado St.-Pueblo
08:35	GOOD! FT by LEWIS, ALIVIA [FB]	0-1	V 1	
08:23	GOOD! FT by LEWIS, ALIVIA [FB]	0-2	V 2	
08:21	GOOD! LAYUP by WILLIAMS, JASMINE	0-4	V 4	
07:05		3-4	V 1	GOOD! 3PTR by DIAZ, HANNA
06:16	GOOD! JUMPER by DECKER, KAMIRAH [PNT]	3-6	V 3	
05:17		5-6	V 1	GOOD! LAYUP by DAVIS, JANAIYA [FB]
03:50		7-6	H 1	GOOD! LAYUP by ADAMS, KHIYA
03:31	GOOD! LAYUP by LEWIS, ALIVIA	7-8	V 1	
02:20	GOOD! LAYUP by HUNTER, CHELSEA	7-10	V 3	
01:39	GOOD! JUMPER by DECKER, KAMIRAH	7-12	V 5	
01:26		9-12	V 3	GOOD! JUMPER by ADAMS, JADE
00:36	GOOD! JUMPER by MEHLBRECH, JENA [PNT]	9-14	V 5	

**Eastern N.M. 14, Colorado St.-Pueblo 9**

**Official Scoring/Possession Reference Chart**  
**Eastern N.M. vs Colorado St.-Pueblo**  
**Period 2**  
**November 29, 2019 at First United Bank Center - Canyon**



**Period 2**

**Starters:**

**Eastern N.M.:** 1 HURST, ANASHA (G); 2 WILLIAMS, JASMINE (F); 12 COX, ZAMORYE (G); 21 LEWIS, ALIVIA (F); 24 DELONGE, NATALIE (C);  
**Colorado St.-Pueblo:** 2 DAVIS, JANAIYA (G); 3 WILLIAMS, SYDNI (F); 13 ADAMS, KHIYA (G); 21 WATTS, KANSAS (G); 24 DIAZ, HANNA (G);

Time	VISITORS: Eastern N.M.	Score	Margin	HOME: Colorado St.-Pueblo
09:39		11-14	V 3	GOOD! JUMPER by ADAMS, KHIYA [PNT]
08:45		14-14	T	GOOD! 3PTR by WATTS, KANSAS
08:08		16-14	H 2	GOOD! JUMPER by WATTS, KANSAS
07:46		17-14	H 3	GOOD! FT by DAVIS, JANAIYA [FB]
07:24		19-14	H 5	GOOD! LAYUP by ADAMS, JADE
06:31	GOOD! FT by SMITH, JERRAYSHA	19-15	H 4	
06:31	GOOD! FT by SMITH, JERRAYSHA	19-16	H 3	
05:45	GOOD! FT by STICE, NATALIE [FB]	19-17	H 2	
05:17	GOOD! LAYUP by WILLIAMS, JASMINE	19-19	T	
04:44	GOOD! LAYUP by STICE, NATALIE [PNT]	19-21	V 2	
03:52	GOOD! LAYUP by ROWE, LAURA	19-23	V 4	
03:25		21-23	V 2	GOOD! JUMPER by ADAMS, JADE [PNT]
03:08	GOOD! JUMPER by LEWIS, ALIVIA [PNT]	21-25	V 4	
02:42	GOOD! LAYUP by COX, ZAMORYE [PNT]	21-27	V 6	
02:29		23-27	V 4	GOOD! LAYUP by WILLIAMS, SYDNI [PNT]
00:44	GOOD! LAYUP by WILLIAMS, JASMINE	23-29	V 6	

**Eastern N.M. 29, Colorado St.-Pueblo 23**

**Official Scoring/Possession Reference Chart**  
**Eastern N.M. vs Colorado St.-Pueblo**  
**Period 3**  
**November 29, 2019 at First United Bank Center - Canyon**



**Period 3**

**Starters:**

**Eastern N.M.:** 1 HURST, ANASHA (G); 2 WILLIAMS, JASMINE (F); 12 COX, ZAMORYE (G); 21 LEWIS, ALIVIA (F); 24 DELONGE, NATALIE (C);  
**Colorado St.-Pueblo:** 2 DAVIS, JANAIYA (G); 3 WILLIAMS, SYDNI (F); 13 ADAMS, KHIYA (G); 21 WATTS, KANSAS (G); 24 DIAZ, HANNA (G);

Time	VISITORS: Eastern N.M.	Score	Margin	HOME: Colorado St.-Pueblo
08:38	GOOD! LAYUP by LEWIS, ALIVIA	23-31	V 8	
08:37	GOOD! FT by LEWIS, ALIVIA	23-32	V 9	
08:22		25-32	V 7	GOOD! LAYUP by ADAMS, JADE [PNT]
08:09	GOOD! JUMPER by DECKER, KAMIRAH	25-34	V 9	
07:53		27-34	V 7	GOOD! JUMPER by ADAMS, JADE
06:59		30-34	V 4	GOOD! 3PTR by DAVIS, JANAIYA
06:27	GOOD! 3PTR by COX, ZAMORYE	30-37	V 7	
05:58		32-37	V 5	GOOD! LAYUP by WATTS, KANSAS [FB/PNT]
05:50		34-37	V 3	GOOD! LAYUP by WILLIAMS, SYDNI
05:30		35-37	V 2	GOOD! FT by WILLIAMS, SYDNI
05:14	GOOD! LAYUP by MEHLBRECH, JENA [PNT]	35-39	V 4	
04:30		37-39	V 2	GOOD! JUMPER by WATTS, KANSAS [PNT]
04:15		39-39	T	GOOD! LAYUP by DAVIS, JANAIYA [FB/PNT]
03:57		41-39	H 2	GOOD! LAYUP by DAVIS, JANAIYA [FB/PNT]
02:45	GOOD! 3PTR by ROWE, LAURA	41-42	V 1	
02:32	GOOD! LAYUP by WILLIAMS, JASMINE [FB/PNT]	41-44	V 3	
01:48	GOOD! JUMPER by LEWIS, ALIVIA [PNT]	41-46	V 5	
01:16	GOOD! FT by LEWIS, ALIVIA	41-47	V 6	
00:52		42-47	V 5	GOOD! FT by DAVIS, JANAIYA [FB]
00:52		43-47	V 4	GOOD! FT by DAVIS, JANAIYA [FB]
00:25		45-47	V 2	GOOD! JUMPER by DAVIS, JANAIYA [PNT]

**Eastern N.M. 47, Colorado St.-Pueblo 45**

**Official Scoring/Possession Reference Chart**  
**Eastern N.M. vs Colorado St.-Pueblo**  
**Period 4**  
**November 29, 2019 at First United Bank Center - Canyon**



**Period 4**

**Starters:**

**Eastern N.M.:** 1 HURST, ANASHA (G); 2 WILLIAMS, JASMINE (F); 12 COX, ZAMORYE (G); 21 LEWIS, ALIVIA (F); 24 DELONGE, NATALIE (C);  
**Colorado St.-Pueblo:** 2 DAVIS, JANAIYA (G); 3 WILLIAMS, SYDNI (F); 13 ADAMS, KHIYA (G); 21 WATTS, KANSAS (G); 24 DIAZ, HANNA (G);

Time	VISITORS: Eastern N.M.	Score	Margin	HOME: Colorado St.-Pueblo
09:22		48-47	H 1	GOOD! 3PTR by PETTIS, HARMONY
08:24	GOOD! FT by LEWIS, ALIVIA	48-48	T	
08:24	GOOD! FT by LEWIS, ALIVIA	48-49	V 1	
08:17		50-49	H 1	GOOD! LAYUP by ADAMS, JADE [FB/PNT]
08:00	GOOD! JUMPER by DECKER, KAMIRAH [PNT]	50-51	V 1	
07:05	GOOD! JUMPER by WILLIAMS, JASMINE	50-53	V 3	
06:36	GOOD! FT by WILLIAMS, JASMINE [FB]	50-54	V 4	
06:36	GOOD! FT by WILLIAMS, JASMINE [FB]	50-55	V 5	
06:18		52-55	V 3	GOOD! JUMPER by PETTIS, HARMONY
06:05	GOOD! JUMPER by DECKER, KAMIRAH [PNT]	52-57	V 5	
05:55		53-57	V 4	GOOD! FT by DAVIS, JANAIYA
05:55		54-57	V 3	GOOD! FT by DAVIS, JANAIYA
05:45	GOOD! 3PTR by COX, ZAMORYE	54-60	V 6	
05:32	GOOD! FT by LEWIS, ALIVIA	54-61	V 7	
05:32	GOOD! FT by LEWIS, ALIVIA	54-62	V 8	
05:07	GOOD! 3PTR by MEHLBRECH, JENA	54-65	V 11	
04:32	GOOD! LAYUP by LEWIS, ALIVIA [PNT]	54-67	V 13	
03:07	GOOD! LAYUP by COX, ZAMORYE [FB/PNT]	54-69	V 15	
02:37	GOOD! 3PTR by MEHLBRECH, JENA	54-72	V 18	
01:38	GOOD! 3PTR by ROWE, LAURA	54-75	V 21	
01:15	GOOD! LAYUP by RIPPEE, TAYLEE	54-77	V 23	
01:08		56-77	V 21	GOOD! LAYUP by DIAZ, HANNA [FB/PNT]
00:44		59-77	V 18	GOOD! 3PTR by DIAZ, HANNA

**Eastern N.M. 77, Colorado St.-Pueblo 59**

**Official Substitutions Log**  
**Eastern N.M. vs Colorado St.-Pueblo**  
**Period 1**  
**November 29, 2019 at First United Bank Center - Canyon**

VISITORS: Eastern N.M.	Time	Score	HOME: Colorado St.-Pueblo
1 HURST,ANASHA			2 DAVIS,JANAIYA
2 WILLIAMS,JASMINE			3 WILLIAMS ,SYDNI
12 COX,ZAMORYE			13 ADAMS,KHIYA
21 LEWIS,ALIVIA			21 WATTS,KANSAS
24 DELONGE,NATALIE			24 DIAZ,HANNA
	08:18	4-0	SUB OUT: WILLIAMS ,SYDNI
	08:18		SUB IN: ADAMS,JADE
SUB OUT: 24 DELONGE,NATALIE	08:18		
SUB IN: 35 DECKER,KAMIRAH	08:18		
SUB OUT: 1 HURST,ANASHA	06:49	4-3	
SUB OUT: 21 LEWIS,ALIVIA	06:49		
SUB IN: 23 HUNTER,CHELSEA	06:49		
SUB IN: 34 SMITH,JERRAYSHA	06:49		
SUB OUT: 35 DECKER,KAMIRAH	05:56	6-3	
SUB IN: 24 DELONGE,NATALIE	05:56		
	05:36	6-3	SUB OUT: DIAZ,HANNA
	05:36		SUB IN: PETTIS,HARMONY
SUB OUT: 2 WILLIAMS,JASMINE	05:36		
SUB IN: 30 ROWE,LAURA	05:36		
	04:53	6-5	SUB OUT: WATTS,KANSAS
	04:53		SUB IN: DIAZ,HANNA
SUB OUT: 34 SMITH,JERRAYSHA	04:37	6-5	
SUB IN: 21 LEWIS,ALIVIA	04:37		
	03:15	8-7	SUB OUT: ADAMS,KHIYA
	03:15		SUB IN: WATTS,KANSAS
SUB OUT: 12 COX,ZAMORYE	03:15		
SUB OUT: 30 ROWE,LAURA	03:15		
SUB IN: 2 WILLIAMS,JASMINE	03:15		
SUB IN: 15 MEHLBRECH,JENA	03:15		
SUB OUT: 23 HUNTER,CHELSEA	01:49	10-7	
SUB OUT: 24 DELONGE,NATALIE	01:49		
SUB IN: 4 STICE,NATALIE	01:49		
SUB IN: 35 DECKER,KAMIRAH	01:49		
	01:07	12-9	SUB OUT: WATTS,KANSAS
	01:07		SUB IN: ADAMS,KHIYA
SUB OUT: 35 DECKER,KAMIRAH	01:07		
SUB IN: 24 DELONGE,NATALIE	01:07		
SUB OUT: 24 DELONGE,NATALIE	00:45	12-9	
SUB IN: 11 RIPPEE,TAYLEE	00:45		

**Eastern N.M. 14, Colorado St.-Pueblo 9**

**Official Substitutions Log**  
**Eastern N.M. vs Colorado St.-Pueblo**  
**Period 2**  
**November 29, 2019 at First United Bank Center - Canyon**

<b>VISITORS: Eastern N.M.</b>	<b>Time</b>	<b>Score</b>	<b>HOME: Colorado St.-Pueblo</b>
1 HURST,ANASHA			2 DAVIS,JANAIYA
2 WILLIAMS,JASMINE			3 WILLIAMS ,SYDNI
12 COX,ZAMORYE			13 ADAMS,KHIYA
21 LEWIS,ALIVIA			21 WATTS,KANSAS
24 DELONGE,NATALIE			24 DIAZ,HANNA
	10:00	-	SUB OUT: DIAZ,HANNA
	10:00		SUB IN: WATTS,KANSAS
SUB OUT: 4 STICE,NATALIE	10:00		
SUB IN: 1 HURST,ANASHA	10:00		
SUB OUT: 1 HURST,ANASHA	08:23	14-14	
SUB IN: 23 HUNTER,CHELSEA	08:23		
SUB OUT: 23 HUNTER,CHELSEA	08:17	14-14	
SUB IN: 4 STICE,NATALIE	08:17		
SUB OUT: 4 STICE,NATALIE	08:07	14-16	
SUB OUT: 21 LEWIS,ALIVIA	08:07		
SUB IN: 12 COX,ZAMORYE	08:07		
SUB IN: 24 DELONGE,NATALIE	08:07		
SUB OUT: 11 RIPPEE,TAYLEE	07:15	14-19	
SUB OUT: 15 MEHLBRECH,JENA	07:15		
SUB IN: 4 STICE,NATALIE	07:15		
SUB IN: 34 SMITH,JERRYASHA	07:15		
	06:31	16-19	SUB OUT: PETTIS,HARMONY
	06:31		SUB IN: DIAZ,HANNA
SUB OUT: 34 SMITH,JERRYASHA	06:31		
SUB IN: 30 ROWE,LAURA	06:31		
	06:24	16-19	SUB OUT: ADAMS,KHIYA
	06:24		SUB IN: PETTIS,HARMONY
	04:15	21-19	SUB OUT: DIAZ,HANNA
	04:15		SUB IN: WILLIAMS ,SYDNI
SUB OUT: 2 WILLIAMS,JASMINE	04:15		
SUB IN: 21 LEWIS,ALIVIA	04:15		
SUB OUT: 4 STICE,NATALIE	02:57	25-21	
SUB OUT: 24 DELONGE,NATALIE	02:57		
SUB IN: 2 WILLIAMS,JASMINE	02:57		
SUB IN: 23 HUNTER,CHELSEA	02:57		
SUB OUT: 21 LEWIS,ALIVIA	01:54	27-23	
SUB IN: 24 DELONGE,NATALIE	01:54		

**Eastern N.M. 29, Colorado St.-Pueblo 23**

**Official Substitutions Log**  
**Eastern N.M. vs Colorado St.-Pueblo**  
**Period 3**  
**November 29, 2019 at First United Bank Center - Canyon**

VISITORS: Eastern N.M.	Time	Score	HOME: Colorado St.-Pueblo
1 HURST,ANASHA			2 DAVIS,JANAIIYA
2 WILLIAMS,JASMINE			3 WILLIAMS ,SYDNI
12 COX,ZAMORYE			13 ADAMS,KHIYA
21 LEWIS,ALIVIA			21 WATTS,KANSAS
24 DELONGE,NATALIE			24 DIAZ,HANNA
	10:00	-	SUB OUT: ADAMS,JADE
	10:00		SUB IN: ADAMS,KHIYA
SUB OUT: 23 HUNTER,CHELSEA	10:00		
SUB OUT: 30 ROWE,LAURA	10:00		
SUB IN: 1 HURST,ANASHA	10:00		
SUB IN: 21 LEWIS,ALIVIA	10:00		
SUB OUT: 1 HURST,ANASHA	09:25	-	
SUB IN: 23 HUNTER,CHELSEA	09:25		
SUB OUT: 24 DELONGE,NATALIE	09:00	-	
SUB IN: 35 DECKER,KAMIRAH	09:00		
	08:36	32-23	SUB OUT: ADAMS,KHIYA
	08:36		SUB IN: ADAMS,JADE
SUB OUT: 21 LEWIS,ALIVIA	07:58	34-25	
SUB IN: 30 ROWE,LAURA	07:58		
SUB OUT: 23 HUNTER,CHELSEA	06:19	37-30	
SUB IN: 4 STICE,NATALIE	06:19		
SUB OUT: 2 WILLIAMS,JASMINE	06:19		
SUB IN: 11 RIPPEE,TAYLEE	06:19		
SUB OUT: 12 COX,ZAMORYE	05:35	37-34	
SUB IN: 15 MEHLBRECH,JENA	05:35		
SUB OUT: 35 DECKER,KAMIRAH	04:54	39-35	
SUB IN: 21 LEWIS,ALIVIA	04:54		
	03:13	39-41	SUB OUT: PETTIS,HARMONY
	03:13		SUB IN: DIAZ,HANNA
SUB OUT: 4 STICE,NATALIE	03:13		
SUB OUT: 11 RIPPEE,TAYLEE	03:13		
SUB IN: 2 WILLIAMS,JASMINE	03:13		
SUB IN: 14 CHAVEZ,JULIA	03:13		
SUB OUT: 14 CHAVEZ,JULIA	02:44	42-41	
SUB OUT: 30 ROWE,LAURA	02:44		
SUB IN: 12 COX,ZAMORYE	02:44		
SUB IN: 23 HUNTER,CHELSEA	02:44		
	01:16	46-41	SUB OUT: WATTS,KANSAS
	01:16		SUB IN: PETTIS,HARMONY
SUB OUT: 23 HUNTER,CHELSEA	01:16		
SUB IN: 4 STICE,NATALIE	01:16		

**Eastern N.M. 47, Colorado St.-Pueblo 45**



**Official Substitutions Log**  
**Eastern N.M. vs Colorado St.-Pueblo**  
**Period 4**  
**November 29, 2019 at First United Bank Center - Canyon**

VISITORS: Eastern N.M.	Time	Score	HOME: Colorado St.-Pueblo
1 HURST,ANASHA			2 DAVIS,JANAIIYA
2 WILLIAMS,JASMINE			3 WILLIAMS ,SYDNI
12 COX,ZAMORYE			13 ADAMS,KHIYA
21 LEWIS,ALIVIA			21 WATTS,KANSAS
24 DELONGE,NATALIE			24 DIAZ,HANNA
	10:00	-	SUB OUT: ADAMS,JADE
	10:00		SUB IN: ADAMS,KHIYA
SUB OUT: 4 STICE,NATALIE	10:00		
SUB IN: 24 DELONGE,NATALIE	10:00		
	09:04	47-48	SUB OUT: ADAMS,KHIYA
	09:04		SUB IN: ADAMS,JADE
SUB OUT: 24 DELONGE,NATALIE	08:53	47-48	
SUB IN: 35 DECKER,KAMIRAH	08:53		
	08:24	47-48	SUB OUT: WILLIAMS ,SYDNI
	08:24		SUB IN: WATTS,KANSAS
	06:36	53-50	SUB OUT: ADAMS,JADE
SUB OUT: 35 DECKER,KAMIRAH	05:55	57-54	
SUB IN: 23 HUNTER,CHELSEA	05:55		
SUB OUT: 21 LEWIS,ALIVIA	04:16	67-54	
SUB IN: 35 DECKER,KAMIRAH	04:16		
SUB OUT: 2 WILLIAMS,JASMINE	04:16		
SUB IN: 34 SMITH,JERRYASHA	04:16		
SUB OUT: 35 DECKER,KAMIRAH	04:04	67-54	
SUB IN: 24 DELONGE,NATALIE	04:04		
SUB OUT: 12 COX,ZAMORYE	02:24	72-54	
SUB OUT: 15 MEHLBRECH,JENA	02:24		
SUB OUT: 23 HUNTER,CHELSEA	02:24		
SUB IN: 4 STICE,NATALIE	02:24		
SUB IN: 14 CHAVEZ,JULIA	02:24		
SUB IN: 30 ROWE,LAURA	02:24		
SUB OUT: 24 DELONGE,NATALIE	01:37	75-54	
SUB IN: 11 RIPPEE,TAYLEE	01:37		

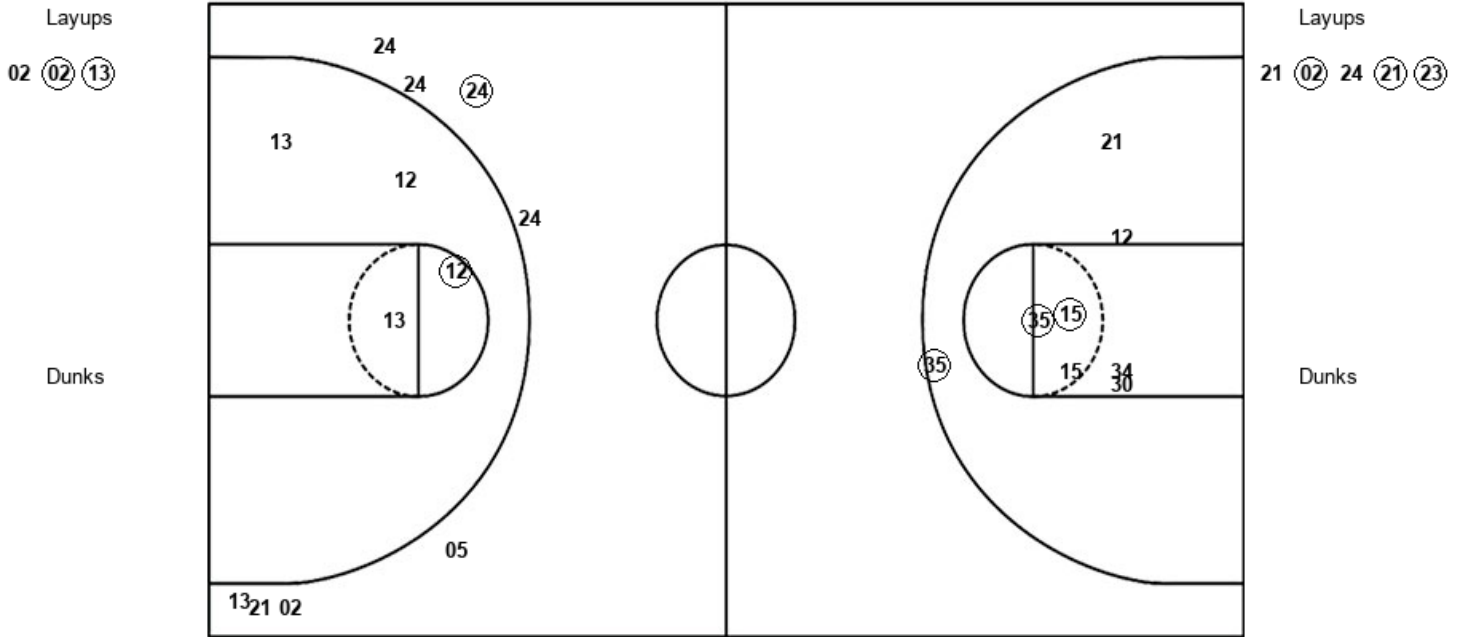
**Eastern N.M. 77, Colorado St.-Pueblo 59**

Official Shot Chart  
**Eastern N.M. vs Colorado St.-Pueblo**  
 PERIOD 1 Shots  
 November 29, 2019 at First United Bank Center - Canyon



**Colorado St.-Pueblo**

**Eastern N.M.**



CSP : Period 1	Made	Att	Pct
Layups	2	3	66.7
Dunks	0	0	0
2PT Field Goals	3	7	42.9
3PT Field Goals	1	8	12.5
<b>Total Field Goals</b>	<b>4</b>	<b>15</b>	<b>26.7</b>

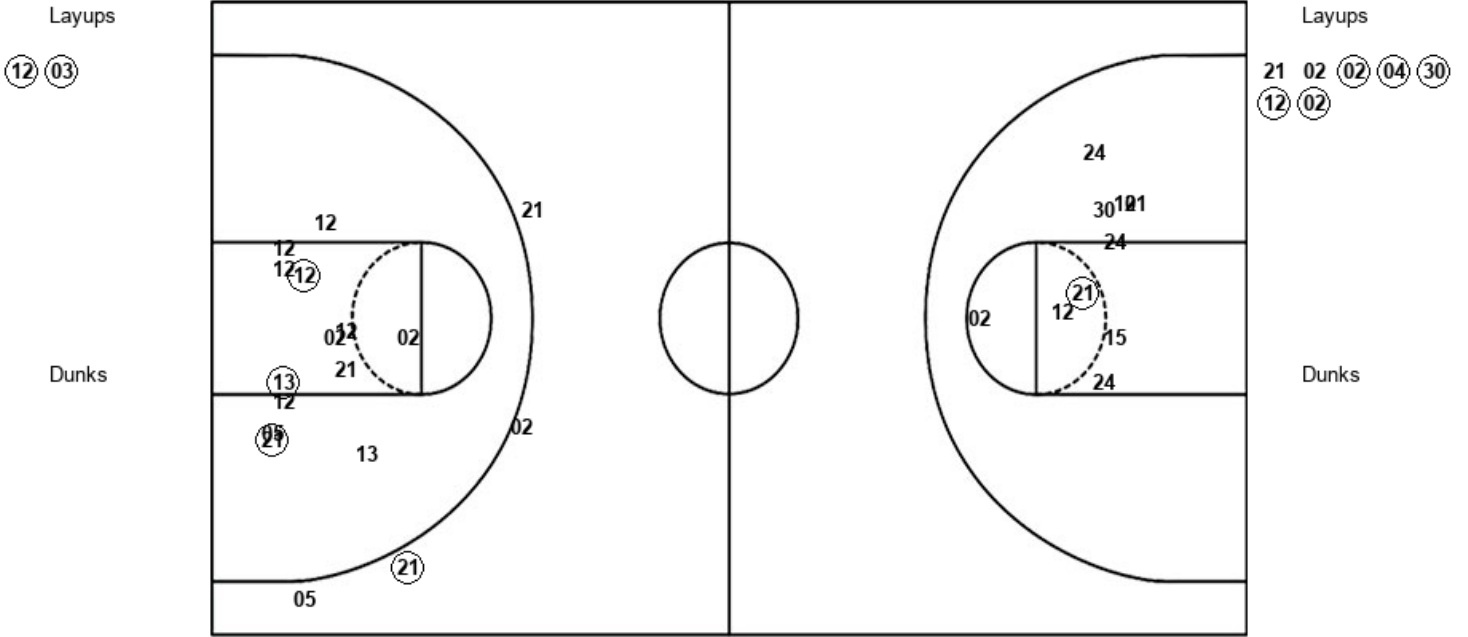
ENM : Period 1	Made	Att	Pct
Layups	3	5	60.0
Dunks	0	0	0
2PT Field Goals	6	13	46.2
3PT Field Goals	0	0	0
<b>Total Field Goals</b>	<b>6</b>	<b>13</b>	<b>46.2</b>

Official Shot Chart  
**Eastern N.M. vs Colorado St.-Pueblo**  
 PERIOD 2 Shots  
 November 29, 2019 at First United Bank Center - Canyon



**Colorado St.-Pueblo**

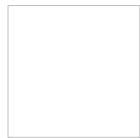
**Eastern N.M.**



<b>CSP : Period 2</b>	<b>Made</b>	<b>Att</b>	<b>Pct</b>
Layups	2	2	100.0
Dunks	0	0	0
2PT Field Goals	5	15	33.3
3PT Field Goals	1	4	25.0
<b>Total Field Goals</b>	<b>6</b>	<b>19</b>	<b>31.6</b>

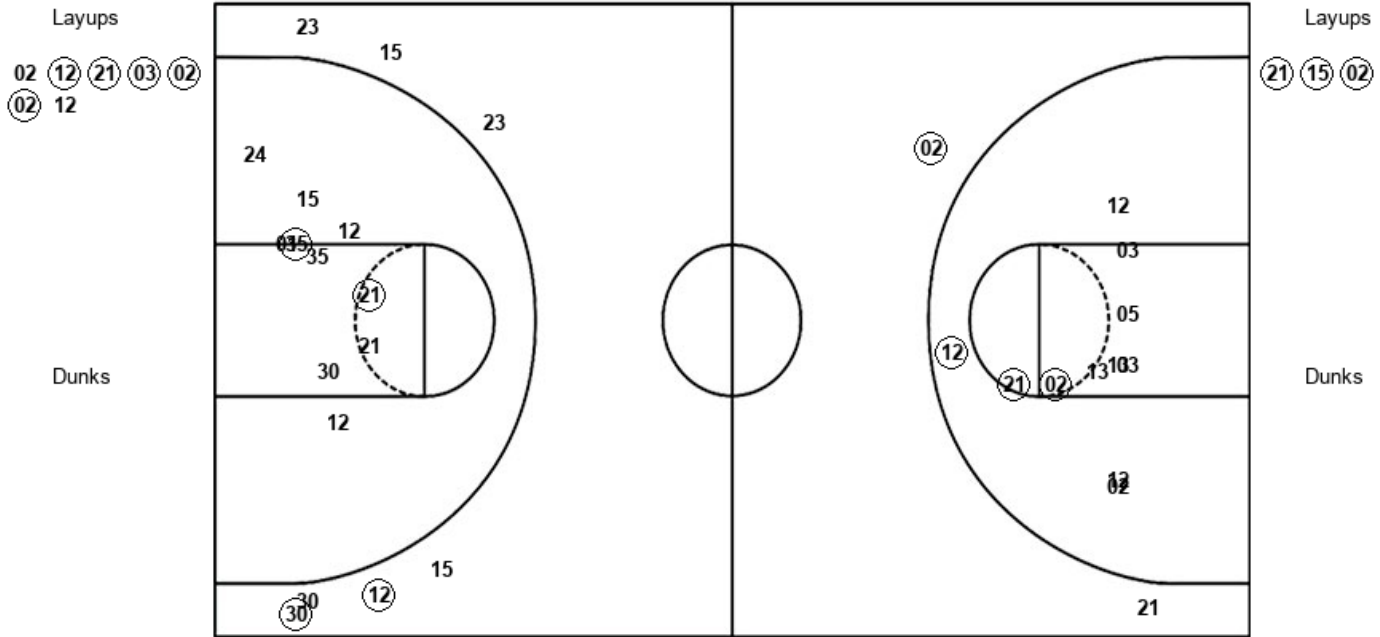
<b>ENM : Period 2</b>	<b>Made</b>	<b>Att</b>	<b>Pct</b>
Layups	5	7	71.4
Dunks	0	0	0
2PT Field Goals	6	17	35.3
3PT Field Goals	0	0	0
<b>Total Field Goals</b>	<b>6</b>	<b>17</b>	<b>35.3</b>

**Official Shot Chart**  
**Eastern N.M. vs Colorado St.-Pueblo**  
**PERIOD 3 Shots**  
**November 29, 2019 at First United Bank Center - Canyon**



**Colorado St.-Pueblo**

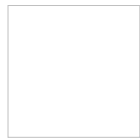
**Eastern N.M.**



<b>CSP : Period 3</b>	<b>Made</b>	<b>Att</b>	<b>Pct</b>
Layups	5	7	71.4
Dunks	0	0	0
2PT Field Goals	8	18	44.4
3PT Field Goals	1	2	50.0
<b>Total Field Goals</b>	<b>9</b>	<b>20</b>	<b>45.0</b>

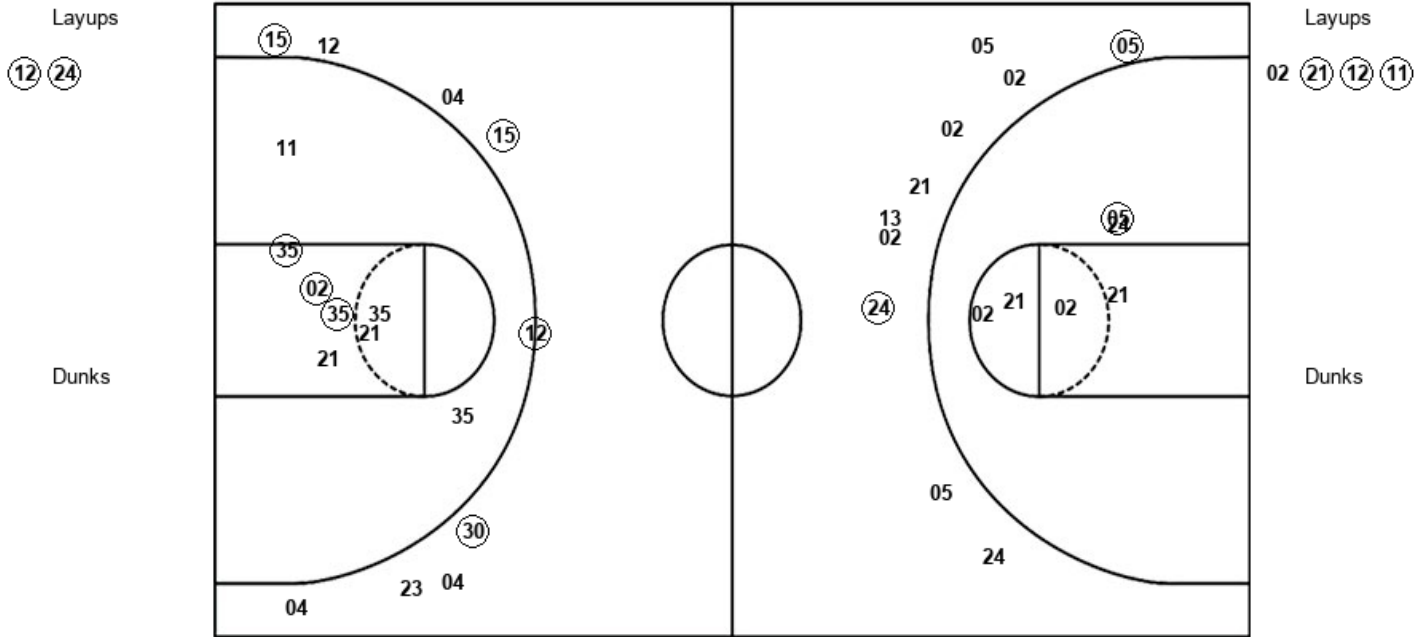
<b>ENM : Period 3</b>	<b>Made</b>	<b>Att</b>	<b>Pct</b>
Layups	3	3	100.0
Dunks	0	0	0
2PT Field Goals	5	13	38.5
3PT Field Goals	2	7	28.6
<b>Total Field Goals</b>	<b>7</b>	<b>20</b>	<b>35.0</b>

**Official Shot Chart**  
**Eastern N.M. vs Colorado St.-Pueblo**  
**PERIOD 4 Shots**  
**November 29, 2019 at First United Bank Center - Canyon**



**Colorado St.-Pueblo**

**Eastern N.M.**



<b>CSP : Period 4</b>	<b>Made</b>	<b>Att</b>	<b>Pct</b>
Layups	2	2	100.0
Dunks	0	0	0
2PT Field Goals	3	8	37.5
3PT Field Goals	2	10	20.0
<b>Total Field Goals</b>	<b>5</b>	<b>18</b>	<b>27.8</b>

<b>ENM : Period 4</b>	<b>Made</b>	<b>Att</b>	<b>Pct</b>
Layups	3	4	75.0
Dunks	0	0	0
2PT Field Goals	6	12	50.0
3PT Field Goals	4	9	44.4
<b>Total Field Goals</b>	<b>10</b>	<b>21</b>	<b>47.6</b>



