

FINAL SCORE

Kentucky St.

41

Western Mich.

80



November 14, 2019 • Read Fieldhouse/University Arena - Kalamazoo

FINAL STATISTICS

Official Box Score
Kentucky St. vs Western Mich.
Game Totals -- Final Statistics
November 14, 2019 at Read Fieldhouse/University Arena - Kalamazoo



Kentucky St. 41

| No. | Player | S | Pts | FG | 3FG | FT | OR | DR | TR | PF | A | TO | Blk | Stl | Min | +/- |
|---------------|-----------------------|---|-----------|--------------|-------------|-------------|-----------|-----------|-----------|-----------|----------|-----------|----------|----------|------------|-----|
| 11 | PONDER, ALLENIA | G | 6 | 2-6 | 0-1 | 2-2 | 1 | 2 | 3 | 3 | 0 | 4 | 0 | 2 | 24 | -25 |
| 22 | KEE, JESSIE | F | 0 | 0-5 | 0-1 | 0-0 | 0 | 4 | 4 | 4 | 1 | 3 | 0 | 3 | 15 | -19 |
| 23 | BROWN, CARNETHIA | G | 13 | 5-18 | 1-8 | 2-2 | 1 | 1 | 2 | 3 | 0 | 3 | 0 | 1 | 29 | -23 |
| 25 | JONES, ERICA | F | 6 | 2-8 | 0-1 | 2-2 | 3 | 7 | 10 | 1 | 1 | 1 | 1 | 1 | 17 | -6 |
| 33 | BLANKENSHIP, VICTORIA | F | 2 | 0-3 | 0-0 | 2-2 | 2 | 4 | 6 | 5 | 1 | 1 | 1 | 1 | 18 | -20 |
| 00 | CUNNINGHAM, CHEYENNE | G | 2 | 1-4 | 0-2 | 0-1 | 1 | 2 | 3 | 3 | 0 | 1 | 0 | 0 | 14 | -19 |
| 01 | WILLIAMS, AMANI | G | 3 | 1-6 | 1-3 | 0-0 | 0 | 4 | 4 | 2 | 1 | 0 | 0 | 0 | 21 | -16 |
| 02 | ANTOINE, DEJA | G | 0 | 0-5 | 0-1 | 0-0 | 0 | 0 | 0 | 0 | 0 | 0 | 0 | 0 | 6 | -11 |
| 04 | HERBERT, KHALIAH | G | 0 | 0-5 | 0-2 | 0-0 | 0 | 0 | 0 | 1 | 0 | 1 | 0 | 0 | 14 | -11 |
| 05 | PLANTER, ASHLEY | G | 4 | 2-3 | 0-1 | 0-0 | 0 | 1 | 1 | 1 | 0 | 6 | 0 | 0 | 16 | -24 |
| 34 | GOTCHER, TAYLORE | F | 5 | 2-3 | 0-0 | 1-3 | 3 | 3 | 6 | 3 | 0 | 2 | 1 | 0 | 26 | -21 |
| TEAM | | | | | | | 4 | 2 | 6 | 0 | | 0 | | | | |
| TOTALS | | | 41 | 15-66 | 2-20 | 9-12 | 15 | 30 | 45 | 26 | 4 | 22 | 3 | 8 | 200 | |

Shooting By Period

| Period | FG | FG% | 3FG | 3FG% | FT | FT% |
|-------------|--------------|--------------|-------------|--------------|-------------|--------------|
| 1st Qtr | 1-14 | 07% | 0-5 | 00% | 0-0 | 0% |
| 2nd Qtr | 4-19 | 21% | 1-8 | 13% | 4-4 | 100% |
| 3rd Qtr | 5-18 | 28% | 1-3 | 33% | 3-4 | 75% |
| 4th Qtr | 5-15 | 33% | 0-4 | 00% | 2-4 | 50% |
| 1st Half | 5-33 | 15% | 1-13 | 08% | 4-4 | 100% |
| 2nd Half | 10-33 | 30% | 1-7 | 14% | 5-8 | 63% |
| Game | 15-66 | 22.7% | 2-20 | 10.0% | 9-12 | 75.0% |

Deadball Rebounds: 1,2
Last FG: 4th-00:05
Biggest Run: 7-0
Largest lead: By 0 at 4-00
Technical Fouls: None.

Western Mich. 80

| No. | Player | S | Pts | FG | 3FG | FT | OR | DR | TR | PF | A | TO | Blk | Stl | Min | +/- |
|---------------|---------------------|---|-----------|--------------|-------------|--------------|-----------|-----------|-----------|-----------|-----------|-----------|----------|----------|------------|-----|
| 05 | BAILEY, CHELAYNE | G | 4 | 1-5 | 0-2 | 2-2 | 0 | 1 | 1 | 1 | 2 | 3 | 0 | 2 | 22 | 25 |
| 10 | MOBLEY, BREANNA | F | 13 | 5-12 | 0-0 | 3-5 | 3 | 10 | 13 | 2 | 1 | 3 | 0 | 1 | 26 | 22 |
| 11 | REED, KAMRIN | G | 14 | 5-10 | 3-8 | 1-1 | 0 | 3 | 3 | 0 | 0 | 1 | 0 | 0 | 24 | 26 |
| 23 | WALKER, JORDAN | G | 19 | 7-10 | 3-6 | 2-2 | 1 | 7 | 8 | 4 | 4 | 3 | 0 | 2 | 25 | 44 |
| 24 | WOOL, LEIGHAH-AMORI | F | 6 | 2-9 | 0-4 | 2-4 | 3 | 6 | 9 | 3 | 3 | 1 | 0 | 0 | 26 | 36 |
| 02 | WATTERS, MADDIE | G | 0 | 0-5 | 0-5 | 0-0 | 0 | 0 | 0 | 0 | 1 | 0 | 0 | 0 | 21 | 3 |
| 03 | FLETCHER, JILLIAN | G | 3 | 1-3 | 1-2 | 0-0 | 1 | 2 | 3 | 0 | 0 | 0 | 0 | 0 | 7 | 2 |
| 13 | WALKER, ANIYA | G | 3 | 1-5 | 1-1 | 0-0 | 2 | 1 | 3 | 1 | 1 | 0 | 0 | 1 | 14 | 5 |
| 20 | SHAFFER, SYDNEY | G | 11 | 2-7 | 1-1 | 6-7 | 2 | 5 | 7 | 1 | 2 | 2 | 0 | 1 | 18 | 14 |
| 21 | DOUGLAS, HANNAH | | 0 | 0-0 | 0-0 | 0-0 | 0 | 0 | 0 | 0 | 0 | 0 | 0 | 0 | 1 | 0 |
| 31 | KONKLE, ASHLEY | F | 7 | 2-3 | 0-0 | 3-4 | 1 | 0 | 1 | 3 | 1 | 1 | 1 | 1 | 16 | 18 |
| 32 | CENCULA, KIANA | | 0 | 0-1 | 0-1 | 0-0 | 0 | 0 | 0 | 0 | 0 | 0 | 0 | 0 | 1 | 0 |
| TEAM | | | | | | | 0 | 3 | 3 | 0 | | 0 | | | | |
| TOTALS | | | 80 | 26-70 | 9-30 | 19-25 | 13 | 38 | 51 | 15 | 15 | 14 | 1 | 8 | 200 | |

Shooting By Period

| Period | FG | FG% | 3FG | 3FG% | FT | FT% |
|-------------|--------------|--------------|-------------|--------------|--------------|--------------|
| 1st Qtr | 9-20 | 45% | 4-10 | 40% | 1-1 | 100% |
| 2nd Qtr | 4-20 | 20% | 3-9 | 33% | 0-0 | 0% |
| 3rd Qtr | 6-14 | 43% | 1-6 | 17% | 11-17 | 65% |
| 4th Qtr | 7-16 | 44% | 1-5 | 20% | 7-7 | 100% |
| 1st Half | 13-40 | 33% | 7-19 | 37% | 1-1 | 100% |
| 2nd Half | 13-30 | 43% | 2-11 | 18% | 18-24 | 75% |
| Game | 26-70 | 37.1% | 9-30 | 30.0% | 19-25 | 76.0% |

Deadball Rebounds: 5,0
Last FG: 4th-01:17
Biggest Run: 23-0
Largest lead: By 41 at -
Technical Fouls: None.

Game Notes:

Officials: , ,
Attendance: 750

Start Time: 07:03 PM ET
End Time: 09:02 PM ET
Game Duration: 1:58

| Score | 1st | 2nd | 3rd | 4th | TOT |
|-------|-----|-----|-----|-----|-----------|
| KSU | 2 | 13 | 14 | 12 | 41 |
| WMU | 23 | 11 | 24 | 22 | 80 |

KSU led for 0:00. WMU led for 39:16.
Game was tied for 0:44.
Times tied: 69 Lead Changes: 0

| Points from | KSU | WMU |
|--------------|-----|-----|
| In the Paint | 24 | 34 |
| Off Turns | 10 | 21 |
| 2nd Chance | 7 | 20 |
| Fast Break | 8 | 20 |
| Bench | 14 | 24 |

Official Box Score
Kentucky St. vs Western Mich.
First Half Statistics Only
November 14, 2019 at Read Fieldhouse/University Arena - Kalamazoo



Kentucky St. 15

| No. | Player | S | Pts | FG | 3FG | FT | OR | DR | TR | PF | A | TO | Blk | Stl | Min | +/- |
|-----|-----------------------|---|-----------|-------------|-------------|------------|----------|-----------|-----------|----------|----------|-----------|----------|----------|------------|-----|
| 00 | CUNNINGHAM, CHEYENNE | G | 0 | 0-0 | 0-0 | 0-0 | 0 | 0 | 0 | 1 | 0 | 1 | 0 | 0 | 3 | -5 |
| 01 | WILLIAMS, AMANI | G | 0 | 0-3 | 0-2 | 0-0 | 0 | 2 | 2 | 0 | 0 | 0 | 0 | 0 | 12 | -11 |
| 02 | ANTOINE, DEJA | G | 0 | 0-3 | 0-1 | 0-0 | 0 | 0 | 0 | 0 | 0 | 0 | 0 | 0 | 4 | -3 |
| 04 | HERBERT, KHALIAH | G | 0 | 0-3 | 0-2 | 0-0 | 0 | 0 | 0 | 1 | 0 | 0 | 0 | 0 | 8 | -9 |
| 05 | PLANTER, ASHLEY | G | 2 | 1-2 | 0-1 | 0-0 | 0 | 1 | 1 | 0 | 0 | 4 | 0 | 0 | 9 | -11 |
| 11 | PONDER, ALLENIA | G | 2 | 1-3 | 0-1 | 0-0 | 0 | 1 | 1 | 0 | 0 | 2 | 0 | 0 | 9 | -5 |
| 22 | KEE, JESSIE | F | 0 | 0-5 | 0-1 | 0-0 | 0 | 3 | 3 | 2 | 0 | 1 | 0 | 3 | 12 | -20 |
| 23 | BROWN, CARNETHIA | G | 5 | 2-7 | 1-4 | 0-0 | 1 | 1 | 2 | 1 | 0 | 1 | 0 | 0 | 12 | -4 |
| 25 | JONES, ERICA | F | 4 | 1-4 | 0-1 | 2-2 | 2 | 5 | 7 | 0 | 1 | 1 | 1 | 1 | 11 | -8 |
| 33 | BLANKENSHIP, VICTORIA | F | 2 | 0-3 | 0-0 | 2-2 | 1 | 2 | 3 | 1 | 0 | 1 | 1 | 0 | 8 | -10 |
| 34 | GOTCHER, TAYLORE | F | 0 | 0-0 | 0-0 | 0-0 | 0 | 2 | 2 | 1 | 0 | 1 | 1 | 0 | 12 | -9 |
| | TEAM | | 0 | 0-0 | 0-0 | 0-0 | 3 | 1 | 4 | 0 | 0 | 0 | 0 | 0 | 0 | 0 |
| | TOTALS | | 15 | 5-33 | 1-13 | 4-4 | 7 | 18 | 25 | 7 | 1 | 12 | 3 | 4 | 100 | |

Shooting By Period

| Period | FG | FG% | 3FG | 3FG% | FT | FT% |
|----------|-------|-------|------|-------|------|-------|
| 1st Qtr | 1-14 | 07% | 0-5 | 00% | 0-0 | 0% |
| 2nd Qtr | 4-19 | 21% | 1-8 | 13% | 4-4 | 100% |
| 1st Half | 5-33 | 15% | 1-13 | 08% | 4-4 | 100% |
| Game | 15-66 | 22.7% | 2-20 | 10.0% | 9-12 | 75.0% |

Deadball Rebounds: 1,2
Last FG Half: KSU 2nd-06:14

Western Mich. 34

| No. | Player | S | Pts | FG | 3FG | FT | OR | DR | TR | PF | A | TO | Blk | Stl | Min | +/- |
|-----|---------------------|---|-----------|--------------|-------------|------------|----------|-----------|-----------|----------|----------|----------|----------|----------|------------|-----|
| 05 | BAILEY, CHELAYNE | G | 2 | 1-5 | 0-2 | 0-0 | 0 | 0 | 0 | 1 | 2 | 2 | 0 | 1 | 13 | 23 |
| 10 | MOBLEY, BREANNA | F | 2 | 1-6 | 0-0 | 0-0 | 1 | 7 | 8 | 1 | 1 | 2 | 0 | 1 | 16 | 11 |
| 11 | REED, KAMRIN | G | 14 | 5-8 | 3-6 | 1-1 | 0 | 3 | 3 | 0 | 0 | 0 | 0 | 0 | 15 | 24 |
| 13 | WALKER, ANIYA | G | 3 | 1-4 | 1-1 | 0-0 | 1 | 1 | 2 | 0 | 0 | 0 | 0 | 0 | 5 | -5 |
| 20 | SHAFER, SYDNEY | G | 3 | 1-4 | 1-1 | 0-0 | 0 | 3 | 3 | 1 | 1 | 2 | 0 | 0 | 7 | -4 |
| 21 | DOUGLAS, HANNAH | | 0 | 0-0 | 0-0 | 0-0 | 0 | 0 | 0 | 0 | 0 | 0 | 0 | 0 | 0 | 0 |
| 23 | WALKER, JORDAN | G | 8 | 3-6 | 2-5 | 0-0 | 1 | 3 | 4 | 2 | 0 | 0 | 0 | 1 | 13 | 23 |
| 24 | WOOL, LEIGHAH-AMORI | F | 0 | 0-3 | 0-2 | 0-0 | 3 | 3 | 6 | 0 | 3 | 0 | 0 | 0 | 14 | 23 |
| 31 | KONKLE, ASHLEY | F | 2 | 1-2 | 0-0 | 0-0 | 1 | 0 | 1 | 1 | 1 | 1 | 1 | 0 | 9 | 10 |
| 32 | CENCULA, KIANA | | 0 | 0-0 | 0-0 | 0-0 | 0 | 0 | 0 | 0 | 0 | 0 | 0 | 0 | 0 | 0 |
| 02 | WATTERS, MADDIE | G | 0 | 0-2 | 0-2 | 0-0 | 0 | 0 | 0 | 0 | 0 | 0 | 0 | 0 | 7 | -4 |
| 03 | FLETCHER, JILLIAN | G | 0 | 0-0 | 0-0 | 0-0 | 0 | 0 | 0 | 0 | 0 | 0 | 0 | 0 | 2 | -6 |
| | TEAM | | 0 | 0-0 | 0-0 | 0-0 | 0 | 1 | 1 | 0 | 0 | 0 | 0 | 0 | 0 | 0 |
| | TOTALS | | 34 | 13-40 | 7-19 | 1-1 | 7 | 21 | 28 | 6 | 8 | 7 | 1 | 3 | 100 | |

Shooting By Period

| Period | FG | FG% | 3FG | 3FG% | FT | FT% |
|----------|-------|-------|------|-------|-------|-------|
| 1st Qtr | 9-20 | 45% | 4-10 | 40% | 1-1 | 100% |
| 2nd Qtr | 4-20 | 20% | 3-9 | 33% | 0-0 | 0% |
| 1st Half | 13-40 | 33% | 7-19 | 37% | 1-1 | 100% |
| Game | 26-70 | 37.1% | 9-30 | 30.0% | 19-25 | 76.0% |

Deadball Rebounds: 5,0
Last FG Half: WMU 2nd-00:44

Game Notes:

Officials: , , ,
 Attendance: 750

Start Time: 07:03 PM ET
 End Time: 09:02 PM ET
 Game Duration: 1:58

| Score | 1st | 2nd | 3rd | 4th | TOT |
|-------|-----|-----|-----|-----|-----|
| KSU | 2 | 13 | 14 | 12 | 41 |
| WMU | 23 | 11 | 24 | 22 | 80 |

| Points from (This Period) | KSU | WMU |
|---------------------------|-----|-----|
| In the Paint | 6 | 12 |
| Off Turns | 2 | 7 |
| 2nd Chance | 0 | 8 |
| Fast Break | 4 | 5 |
| Bench | 2 | 8 |

Official Box Score
Kentucky St. vs Western Mich.
First Quarter Statistics Only
November 14, 2019 at Read Fieldhouse/University Arena - Kalamazoo



Kentucky St. 2

| No. | Player | S | Pts | FG | 3FG | FT | OR | DR | TR | PF | A | TO | Blk | Stl | Min | +/- |
|---------------|-----------------------|---|----------|-------------|------------|------------|----------|----------|----------|----------|----------|----------|----------|----------|-----------|-----|
| 11 | PONDER, ALLENIA | G | 0 | 0-1 | 0-1 | 0-0 | 0 | 0 | 0 | 0 | 0 | 1 | 0 | 0 | 3 | -10 |
| 22 | KEE, JESSIE | F | 0 | 0-5 | 0-1 | 0-0 | 0 | 3 | 3 | 1 | 0 | 1 | 0 | 3 | 10 | -19 |
| 23 | BROWN, CARNETHIA | G | 0 | 0-0 | 0-0 | 0-0 | 0 | 0 | 0 | 0 | 0 | 0 | 0 | 0 | 2 | -6 |
| 25 | JONES, ERICA | F | 0 | 0-2 | 0-1 | 0-0 | 1 | 1 | 2 | 0 | 0 | 1 | 0 | 0 | 4 | -10 |
| 33 | BLANKENSHIP, VICTORIA | F | 0 | 0-1 | 0-0 | 0-0 | 0 | 0 | 0 | 1 | 0 | 0 | 0 | 0 | 2 | -6 |
| 00 | CUNNINGHAM, CHEYENNE | G | 0 | 0-0 | 0-0 | 0-0 | 0 | 0 | 0 | 1 | 0 | 1 | 0 | 0 | 1 | -3 |
| 01 | WILLIAMS, AMANI | G | 0 | 0-1 | 0-1 | 0-0 | 0 | 0 | 0 | 0 | 0 | 0 | 0 | 0 | 5 | -8 |
| 02 | ANTOINE, DEJA | G | 0 | 0-3 | 0-1 | 0-0 | 0 | 0 | 0 | 0 | 0 | 0 | 0 | 0 | 4 | -3 |
| 04 | HERBERT, KHALIAH | G | 0 | 0-0 | 0-0 | 0-0 | 0 | 0 | 0 | 0 | 0 | 0 | 0 | 0 | 4 | -14 |
| 05 | PLANTER, ASHLEY | G | 2 | 1-1 | 0-0 | 0-0 | 0 | 1 | 1 | 0 | 0 | 4 | 0 | 0 | 6 | -11 |
| 34 | GOTCHER, TAYLORE | F | 0 | 0-0 | 0-0 | 0-0 | 0 | 2 | 2 | 0 | 0 | 1 | 1 | 0 | 8 | -15 |
| | TEAM | | | | | | 1 | 0 | 1 | 0 | | 0 | | | | |
| TOTALS | | | 2 | 1-14 | 0-5 | 0-0 | 2 | 7 | 9 | 3 | 0 | 9 | 1 | 3 | 50 | |

Shooting By Period

| Period | FG | FG% | 3FG | 3FG% | FT | FT% |
|----------|-------|-------|------|-------|------|-------|
| 1st Qtr | 1-14 | 07% | 0-5 | 00% | 0-0 | 0% |
| 2nd Qtr | 4-19 | 21% | 1-8 | 13% | 4-4 | 100% |
| 1st Half | 1-14 | 07% | 0-5 | 00% | 0-0 | 0% |
| 1st Half | 5-33 | 15% | 1-13 | 08% | 4-4 | 100% |
| Game | 15-66 | 22.7% | 2-20 | 10.0% | 9-12 | 75.0% |

Deadball Rebounds: 1,2

Western Mich. 23

| No. | Player | S | Pts | FG | 3FG | FT | OR | DR | TR | PF | A | TO | Blk | Stl | Min | +/- |
|---------------|---------------------|---|-----------|-------------|-------------|------------|----------|-----------|-----------|----------|----------|----------|----------|----------|-----------|-----|
| 05 | BAILEY, CHELAYNE | G | 2 | 1-2 | 0-1 | 0-0 | 0 | 0 | 0 | 1 | 1 | 1 | 0 | 1 | 7 | 20 |
| 10 | MOBLEY, BREANNA | F | 2 | 1-3 | 0-0 | 0-0 | 0 | 3 | 3 | 1 | 1 | 1 | 0 | 1 | 8 | 16 |
| 11 | REED, KAMRIN | G | 14 | 5-7 | 3-5 | 1-1 | 0 | 2 | 2 | 0 | 0 | 0 | 0 | 0 | 9 | 21 |
| 23 | WALKER, JORDAN | G | 3 | 1-3 | 1-3 | 0-0 | 1 | 1 | 2 | 1 | 0 | 0 | 0 | 1 | 7 | 20 |
| 24 | WOOL, LEIGHAH-AMORI | F | 0 | 0-1 | 0-1 | 0-0 | 1 | 2 | 3 | 0 | 2 | 0 | 0 | 0 | 8 | 20 |
| 02 | WATTERS, MADDIE | G | 0 | 0-0 | 0-0 | 0-0 | 0 | 0 | 0 | 0 | 0 | 0 | 0 | 0 | 3 | 1 |
| 03 | FLETCHER, JILLIAN | G | 0 | 0-0 | 0-0 | 0-0 | 0 | 0 | 0 | 0 | 0 | 0 | 0 | 0 | 0 | 0 |
| 13 | WALKER, ANIYA | G | 0 | 0-0 | 0-0 | 0-0 | 0 | 0 | 0 | 0 | 0 | 0 | 0 | 0 | 1 | 0 |
| 20 | SHAFER, SYDNEY | G | 0 | 0-2 | 0-0 | 0-0 | 0 | 3 | 3 | 1 | 1 | 1 | 0 | 0 | 3 | 1 |
| 21 | DOUGLAS, HANNAH | | 0 | 0-0 | 0-0 | 0-0 | 0 | 0 | 0 | 0 | 0 | 0 | 0 | 0 | 0 | 0 |
| 31 | KONKLE, ASHLEY | F | 2 | 1-2 | 0-0 | 0-0 | 0 | 0 | 0 | 0 | 0 | 1 | 1 | 0 | 4 | 6 |
| 32 | CENCULA, KIANA | | 0 | 0-0 | 0-0 | 0-0 | 0 | 0 | 0 | 0 | 0 | 0 | 0 | 0 | 0 | 0 |
| | TEAM | | | | | | 0 | 0 | 0 | 0 | | 0 | | | | |
| TOTALS | | | 23 | 9-20 | 4-10 | 1-1 | 2 | 11 | 13 | 4 | 5 | 4 | 1 | 3 | 50 | |

Shooting By Period

| Period | FG | FG% | 3FG | 3FG% | FT | FT% |
|----------|-------|-------|------|-------|-------|-------|
| 1st Qtr | 9-20 | 45% | 4-10 | 40% | 1-1 | 100% |
| 2nd Qtr | 4-20 | 20% | 3-9 | 33% | 0-0 | 0% |
| 1st Half | 9-20 | 45% | 4-10 | 40% | 1-1 | 100% |
| 1st Half | 13-40 | 33% | 7-19 | 37% | 1-1 | 100% |
| Game | 26-70 | 37.1% | 9-30 | 30.0% | 19-25 | 76.0% |

Deadball Rebounds: 5,0

Game Notes:

Officials: , ,
Attendance: 750

Start Time: 07:03 PM ET
End Time: 09:02 PM ET
Game Duration: 1:58

| Score | 1st | 2nd | 3rd | 4th | TOT |
|-------|-----|-----|-----|-----|-----------|
| KSU | 2 | 13 | 14 | 12 | 41 |
| WMU | 23 | 11 | 24 | 22 | 80 |

| Points from (This Period) | KSU | WMU |
|---------------------------|-----|-----|
| In the Paint | 0 | 10 |
| Off Turns | 0 | 7 |
| 2nd Chance | 0 | 6 |
| Fast Break | 0 | 5 |
| Bench | 2 | 2 |

Official Play-By-Play
Kentucky St. vs Western Mich.
First Quarter

November 14, 2019 at Read Fieldhouse/University Arena - Kalamazoo



Period 1

Starters:

Kentucky St.: 11 PONDER, ALLENIA (G); 22 KEE, JESSIE (F); 23 BROWN, CARNETHIA (G); 25 JONES, ERICA (F); 33 BLANKENSHIP, VICTORIA (F);

Western Mich.: 5 BAILEY, CHELAYNE (G); 10 MOBLEY, BREANNA (F); 11 REED, KAMRIN (G); 23 WALKER, JORDAN (G); 24 WOOL, LEIGHAH-AMORI (F);

| Time | VISITORS: Kentucky St. | Score | Margin | HOME: Western Mich. |
|-------|--|-------|--------|--|
| 09:52 | | | | MISSED 3PTR by WOOL, LEIGHAH-AMORI |
| 09:49 | REBOUND (DEF) by JONES, ERICA | | | |
| 09:46 | TURNOVER (LOSTBALL) by JONES, ERICA | | | |
| 09:46 | | | | STEAL by MOBLEY, BREANNA |
| 09:41 | | | | TURNOVER (BADPASS) by BAILEY, CHELAYNE |
| 09:41 | STEAL by KEE, JESSIE | | | |
| 09:24 | | | | FOUL (PERSONAL) by BAILEY, CHELAYNE |
| 09:22 | TURNOVER (BADPASS) by PONDER, ALLENIA | | | |
| 09:22 | | | | STEAL by BAILEY, CHELAYNE |
| 09:16 | | 2-0 | H 2 | GOOD! LAYUP by MOBLEY, BREANNA [FB] |
| 08:47 | MISSED LAYUP by BLANKENSHIP, VICTORIA | | | |
| 08:41 | FOUL (PERSONAL) by KEE, JESSIE | | | |
| 08:47 | | | | REBOUND (DEF) by MOBLEY, BREANNA |
| 08:41 | | 4-0 | H 4 | GOOD! JUMPER by BAILEY, CHELAYNE [PNT] |
| 08:40 | | | | FOUL (PERSONAL) by WALKER, JORDAN |
| 08:30 | MISSED 3PTR by JONES, ERICA | | | |
| 08:25 | | | | REBOUND (DEF) by REED, KAMRIN |
| 08:22 | | | | MISSED 3PTR by BAILEY, CHELAYNE |
| 08:17 | | | | REBOUND (OFF) by WALKER, JORDAN |
| 08:14 | | | | MISSED LAYUP by MOBLEY, BREANNA |
| 08:07 | REBOUND (DEF) by TEAM | | | |
| 08:07 | | | | FOUL (PERSONAL) by MOBLEY, BREANNA |
| 08:07 | SUB OUT: KEE, JESSIE | | | |
| 08:07 | SUB IN: HERBERT, KHALIAH | | | |
| 07:52 | MISSED 3PTR by PONDER, ALLENIA | | | |
| 07:49 | | | | REBOUND (DEF) by REED, KAMRIN |
| 07:41 | | 6-0 | H 6 | GOOD! LAYUP by REED, KAMRIN |
| 07:41 | FOUL (PERSONAL) by BLANKENSHIP, VICTORIA | | | |
| 07:41 | SUB OUT: BROWN, CARNETHIA | | | |
| 07:41 | SUB OUT: BLANKENSHIP, VICTORIA | | | |
| 07:41 | SUB IN: KEE, JESSIE | | | |
| 07:41 | SUB IN: GOTCHER, TAYLORE | | | |
| 07:41 | | 7-0 | H 7 | GOOD! FT by REED, KAMRIN |
| 07:25 | MISSED JUMPER by KEE, JESSIE | | | |
| 07:21 | REBOUND (OFF) by JONES, ERICA | | | |
| 07:19 | MISSED JUMPER by JONES, ERICA | | | |
| 07:16 | | | | REBOUND (DEF) by MOBLEY, BREANNA |
| 06:54 | | | | MISSED 3PTR by REED, KAMRIN |
| 06:50 | | | | REBOUND (OFF) by WOOL, LEIGHAH-AMORI |
| 06:49 | | 10-0 | H 10 | GOOD! 3PTR by WALKER, JORDAN |
| 06:49 | | | | ASSIST by BAILEY, CHELAYNE |
| 06:42 | | | | |
| 06:42 | SUB OUT: PONDER, ALLENIA | | | |
| 06:42 | SUB OUT: JONES, ERICA | | | |
| 06:42 | SUB IN: CUNNINGHAM, CHEYENNE | | | |
| 06:42 | SUB IN: PLANTER, ASHLEY | | | |
| 06:33 | TURNOVER (BADPASS) by CUNNINGHAM, CHEYENNE | | | |
| 06:33 | | | | STEAL by WALKER, JORDAN |
| 06:27 | | | | MISSED 3PTR by WALKER, JORDAN |
| 06:23 | REBOUND (DEF) by KEE, JESSIE | | | |
| 06:04 | MISSED 3PTR by KEE, JESSIE | | | |
| 05:59 | | | | REBOUND (DEF) by WALKER, JORDAN |
| 05:55 | | | | MISSED 3PTR by REED, KAMRIN |
| 05:49 | | | | REBOUND (OFF) by TEAM |
| 05:49 | FOUL (PERSONAL) by CUNNINGHAM, CHEYENNE | | | |
| 05:46 | | 13-0 | H 13 | GOOD! 3PTR by REED, KAMRIN |
| 05:46 | | | | ASSIST by MOBLEY, BREANNA |
| 05:24 | TURNOVER (TRAVEL) by PLANTER, ASHLEY | | | |
| 05:22 | SUB OUT: CUNNINGHAM, CHEYENNE | | | |
| 05:22 | SUB IN: WILLIAMS, AMANI | | | |
| 05:14 | | | | TURNOVER (BADPASS) by MOBLEY, BREANNA |
| 05:14 | STEAL by KEE, JESSIE | | | |
| 05:07 | TURNOVER (TRAVEL) by PLANTER, ASHLEY | | | |
| 04:49 | | 15-0 | H 15 | GOOD! LAYUP by REED, KAMRIN |
| 04:33 | TURNOVER (BADPASS) by GOTCHER, TAYLORE | | | |
| 04:26 | | | | SUB OUT: MOBLEY, BREANNA |
| 04:26 | | | | SUB IN: KONKLE, ASHLEY |
| 04:18 | | 18-0 | H 18 | GOOD! 3PTR by REED, KAMRIN |
| 04:18 | | | | ASSIST by WOOL, LEIGHAH-AMORI |
| 04:09 | TURNOVER (TRAVEL) by PLANTER, ASHLEY | | | |

| Time | VISITORS: Kentucky St. | Score | Margin | HOME: Western Mich. |
|-------|--------------------------------------|-------|--------|---------------------------------------|
| 03:57 | | | | MISSED 3PTR by WALKER, JORDAN |
| 03:52 | REBOUND (DEF) by PLANTER, ASHLEY | | | |
| 03:47 | SUB OUT: HERBERT, KHALIAH | | | |
| 03:47 | SUB IN: ANTOINE, DEJA | | | |
| 03:30 | MISSED JUMPER by ANTOINE, DEJA | | | |
| 03:27 | | | | REBOUND (DEF) by WOOL, LEIGHAH-AMORI |
| 03:23 | | 20-0 | H 20 | GOOD! LAYUP by KONKLE, ASHLEY |
| 03:23 | | | | ASSIST by WOOL, LEIGHAH-AMORI |
| 02:54 | TURNOVER (TRAVEL) by KEE, JESSIE | | | |
| 02:54 | | | | SUB OUT: BAILEY, CHELAYNE |
| 02:54 | | | | SUB OUT: WALKER, JORDAN |
| 02:54 | | | | SUB IN: WATTERS, MADDIE |
| 02:54 | | | | SUB IN: SHAFER, SYDNEY |
| 02:40 | | | | MISSED JUMPER by SHAFER, SYDNEY |
| 02:40 | BLOCK by GOTCHER, TAYLORE | | | |
| 02:31 | REBOUND (DEF) by KEE, JESSIE | | | |
| 02:29 | MISSED JUMPER by KEE, JESSIE | | | |
| 02:22 | | | | REBOUND (DEF) by WOOL, LEIGHAH-AMORI |
| 02:21 | | | | TURNOVER (TRAVEL) by KONKLE, ASHLEY |
| 02:11 | MISSED LAYUP by ANTOINE, DEJA | | | |
| 02:11 | | | | BLOCK by KONKLE, ASHLEY |
| 02:06 | REBOUND (OFF) by TEAM | | | |
| 02:05 | | | | SUB OUT: WOOL, LEIGHAH-AMORI |
| 02:05 | | | | SUB IN: MOBLEY, BREANNA |
| 02:03 | | | | FOUL (PERSONAL) by SHAFER, SYDNEY |
| 01:56 | MISSED JUMPER by KEE, JESSIE | | | |
| 01:53 | | | | REBOUND (DEF) by SHAFER, SYDNEY |
| 01:50 | | | | MISSED LAYUP by KONKLE, ASHLEY |
| 01:47 | REBOUND (DEF) by GOTCHER, TAYLORE | | | |
| 01:36 | MISSED 3PTR by WILLIAMS, AMANI | | | |
| 01:32 | | | | REBOUND (DEF) by MOBLEY, BREANNA |
| 01:29 | | 23-0 | H 23 | GOOD! 3PTR by REED, KAMRIN [FB] |
| 01:29 | | | | ASSIST by SHAFER, SYDNEY |
| 01:10 | GOOD! JUMPER by PLANTER, ASHLEY | 23-2 | H 21 | |
| 00:50 | | | | MISSED JUMPER by MOBLEY, BREANNA |
| 00:46 | REBOUND (DEF) by KEE, JESSIE | | | |
| 00:43 | TURNOVER (TRAVEL) by PLANTER, ASHLEY | | | |
| 00:43 | | | | SUB OUT: REED, KAMRIN |
| 00:43 | | | | SUB IN: WALKER, ANIYA |
| 00:43 | SUB OUT: PLANTER, ASHLEY | | | |
| 00:43 | SUB IN: JONES, ERICA | | | |
| 00:28 | | | | MISSED LAYUP by SHAFER, SYDNEY |
| 00:25 | REBOUND (DEF) by GOTCHER, TAYLORE | | | |
| 00:12 | MISSED 3PTR by ANTOINE, DEJA | | | |
| 00:09 | | | | REBOUND (DEF) by SHAFER, SYDNEY |
| 00:07 | | | | TURNOVER (LOSTBALL) by SHAFER, SYDNEY |
| 00:07 | STEAL by KEE, JESSIE | | | |
| 00:01 | MISSED JUMPER by KEE, JESSIE | | | |
| 00:00 | | | | REBOUND (DEF) by SHAFER, SYDNEY |

Kentucky St. 2, Western Mich. 23

| Points from (This Period) | KSU | WMU |
|---------------------------|-----|-----|
| In the Paint | 0 | 10 |
| Off Turns | 0 | 7 |
| 2nd Chance | 0 | 6 |
| Fast Break | 0 | 5 |
| Bench | 2 | 2 |

Official Box Score
Kentucky St. vs Western Mich.
Second Quarter Statistics Only
November 14, 2019 at Read Fieldhouse/University Arena - Kalamazoo



Kentucky St. 13

| No. | Player | S | Pts | FG | 3FG | FT | OR | DR | TR | PF | A | TO | Blk | Stl | Min | +/- |
|---------------|-----------------------|---|-----------|-------------|------------|------------|----------|-----------|-----------|----------|----------|----------|----------|----------|-----------|-----|
| 11 | PONDER, ALLENIA | G | 2 | 1-2 | 0-0 | 0-0 | 0 | 1 | 1 | 0 | 0 | 1 | 0 | 0 | 6 | 5 |
| 22 | KEE, JESSIE | F | 0 | 0-0 | 0-0 | 0-0 | 0 | 0 | 0 | 1 | 0 | 0 | 0 | 0 | 2 | -1 |
| 23 | BROWN, CARNETHIA | G | 5 | 2-7 | 1-4 | 0-0 | 1 | 1 | 2 | 1 | 0 | 1 | 0 | 0 | 10 | 2 |
| 25 | JONES, ERICA | F | 4 | 1-2 | 0-0 | 2-2 | 1 | 4 | 5 | 0 | 1 | 0 | 1 | 1 | 7 | 2 |
| 33 | BLANKENSHIP, VICTORIA | F | 2 | 0-2 | 0-0 | 2-2 | 1 | 2 | 3 | 0 | 0 | 1 | 1 | 0 | 6 | -4 |
| 00 | CUNNINGHAM, CHEYENNE | G | 0 | 0-0 | 0-0 | 0-0 | 0 | 0 | 0 | 0 | 0 | 0 | 0 | 0 | 2 | -2 |
| 01 | WILLIAMS, AMANI | G | 0 | 0-2 | 0-1 | 0-0 | 0 | 2 | 2 | 0 | 0 | 0 | 0 | 0 | 7 | -3 |
| 02 | ANTOINE, DEJA | G | 0 | 0-0 | 0-0 | 0-0 | 0 | 0 | 0 | 0 | 0 | 0 | 0 | 0 | 0 | 0 |
| 04 | HERBERT, KHALIAH | G | 0 | 0-3 | 0-2 | 0-0 | 0 | 0 | 0 | 1 | 0 | 0 | 0 | 0 | 4 | 5 |
| 05 | PLANTER, ASHLEY | G | 0 | 0-1 | 0-1 | 0-0 | 0 | 0 | 0 | 0 | 0 | 0 | 0 | 0 | 3 | 0 |
| 34 | GOTCHER, TAYLORE | F | 0 | 0-0 | 0-0 | 0-0 | 0 | 0 | 0 | 1 | 0 | 0 | 0 | 0 | 4 | 6 |
| | TEAM | | | | | | 2 | 1 | 3 | 0 | | 0 | | | | |
| TOTALS | | | 13 | 4-19 | 1-8 | 4-4 | 5 | 11 | 16 | 4 | 1 | 3 | 2 | 1 | 50 | |

Shooting By Period

| Period | FG | FG% | 3FG | 3FG% | FT | FT% |
|----------|-------|-------|------|-------|------|-------|
| 3rd Qtr | 5-18 | 28% | 1-3 | 33% | 3-4 | 75% |
| 4th Qtr | 5-15 | 33% | 0-4 | 00% | 2-4 | 50% |
| 2nd Half | 4-19 | 21% | 1-8 | 13% | 4-4 | 100% |
| 2nd Half | 10-33 | 30% | 1-7 | 14% | 5-8 | 63% |
| Game | 15-66 | 22.7% | 2-20 | 10.0% | 9-12 | 75.0% |

Deadball Rebounds: 1,2

Western Mich. 11

| No. | Player | S | Pts | FG | 3FG | FT | OR | DR | TR | PF | A | TO | Blk | Stl | Min | +/- |
|---------------|---------------------|---|-----------|-------------|------------|------------|----------|-----------|-----------|----------|----------|----------|----------|----------|-----------|-----|
| 05 | BAILEY, CHELAYNE | G | 0 | 0-3 | 0-1 | 0-0 | 0 | 0 | 0 | 0 | 1 | 1 | 0 | 0 | 6 | 3 |
| 10 | MOBLEY, BREANNA | F | 0 | 0-3 | 0-0 | 0-0 | 1 | 4 | 5 | 0 | 0 | 1 | 0 | 0 | 8 | -5 |
| 11 | REED, KAMRIN | G | 0 | 0-1 | 0-1 | 0-0 | 0 | 1 | 1 | 0 | 0 | 0 | 0 | 0 | 6 | 3 |
| 23 | WALKER, JORDAN | G | 5 | 2-3 | 1-2 | 0-0 | 0 | 2 | 2 | 1 | 0 | 0 | 0 | 0 | 6 | 3 |
| 24 | WOOL, LEIGHAH-AMORI | F | 0 | 0-2 | 0-1 | 0-0 | 2 | 1 | 3 | 0 | 1 | 0 | 0 | 0 | 6 | 3 |
| 02 | WATTERS, MADDIE | G | 0 | 0-2 | 0-2 | 0-0 | 0 | 0 | 0 | 0 | 0 | 0 | 0 | 0 | 4 | -5 |
| 03 | FLETCHER, JILLIAN | G | 0 | 0-0 | 0-0 | 0-0 | 0 | 0 | 0 | 0 | 0 | 0 | 0 | 0 | 2 | -6 |
| 13 | WALKER, ANIYA | G | 3 | 1-4 | 1-1 | 0-0 | 1 | 1 | 2 | 0 | 0 | 0 | 0 | 0 | 4 | -5 |
| 20 | SHAFER, SYDNEY | G | 3 | 1-2 | 1-1 | 0-0 | 0 | 0 | 0 | 0 | 0 | 1 | 0 | 0 | 4 | -5 |
| 21 | DOUGLAS, HANNAH | | 0 | 0-0 | 0-0 | 0-0 | 0 | 0 | 0 | 0 | 0 | 0 | 0 | 0 | 0 | 0 |
| 31 | KONKLE, ASHLEY | F | 0 | 0-0 | 0-0 | 0-0 | 1 | 0 | 1 | 1 | 1 | 0 | 0 | 0 | 5 | 4 |
| 32 | CENCULA, KIANA | | 0 | 0-0 | 0-0 | 0-0 | 0 | 0 | 0 | 0 | 0 | 0 | 0 | 0 | 0 | 0 |
| | TEAM | | | | | | 0 | 1 | 1 | 0 | | 0 | | | | |
| TOTALS | | | 11 | 4-20 | 3-9 | 0-0 | 5 | 10 | 15 | 2 | 3 | 3 | 0 | 0 | 50 | |

Shooting By Period

| Period | FG | FG% | 3FG | 3FG% | FT | FT% |
|----------|-------|-------|------|-------|-------|-------|
| 3rd Qtr | 6-14 | 43% | 1-6 | 17% | 11-17 | 65% |
| 4th Qtr | 7-16 | 44% | 1-5 | 20% | 7-7 | 100% |
| 2nd Half | 4-20 | 20% | 3-9 | 33% | 0-0 | 0% |
| 2nd Half | 13-30 | 43% | 2-11 | 18% | 18-24 | 75% |
| Game | 26-70 | 37.1% | 9-30 | 30.0% | 19-25 | 76.0% |

Deadball Rebounds: 5,0

Game Notes:

Officials: , ,
Attendance: 750

Start Time: 07:03 PM ET
End Time: 09:02 PM ET
Game Duration: 1:58

| Score | 1st | 2nd | 3rd | 4th | TOT |
|-------|-----|-----|-----|-----|-----------|
| KSU | 2 | 13 | 14 | 12 | 41 |
| WMU | 23 | 11 | 24 | 22 | 80 |

| Points from (This Period) | KSU | WMU |
|---------------------------|-----|-----|
| In the Paint | 6 | 2 |
| Off Turns | 2 | 0 |
| 2nd Chance | 0 | 2 |
| Fast Break | 4 | 0 |
| Bench | 0 | 6 |

Official Play-By-Play
Kentucky St. vs Western Mich.
Second Quarter

November 14, 2019 at Read Fieldhouse/University Arena - Kalamazoo



Period 2

Starters:

Kentucky St.: 11 PONDER, ALLENIA (G); 22 KEE, JESSIE (F); 23 BROWN, CARNETHIA (G); 25 JONES, ERICA (F); 33 BLANKENSHIP, VICTORIA (F);

Western Mich.: 5 BAILEY, CHELAYNE (G); 10 MOBLEY, BREANNA (F); 11 REED, KAMRIN (G); 23 WALKER, JORDAN (G); 24 WOOL, LEIGHAH-AMORI (F);

| Time | VISITORS: Kentucky St. | Score | Margin | HOME: Western Mich. |
|-------|--|-------|--------|---------------------------------------|
| 10:00 | SUB OUT: ANTOINE, DEJA | | | |
| 10:00 | SUB OUT: GOTCHER, TAYLORE | | | |
| 10:00 | SUB IN: BROWN, CARNETHIA | | | |
| 10:00 | SUB IN: BLANKENSHIP, VICTORIA | | | |
| 09:44 | GOOD! 3PTR by BROWN, CARNETHIA | 23-5 | H 18 | |
| 09:22 | | 26-5 | H 21 | GOOD! 3PTR by WALKER, ANIYA |
| 09:22 | | | | ASSIST by KONKLE, ASHLEY |
| 09:10 | MISSED JUMPER by BROWN, CARNETHIA | | | |
| 09:08 | REBOUND (OFF) by TEAM | | | |
| 09:08 | SUB OUT: WILLIAMS, AMANI | | | |
| 09:08 | SUB IN: PONDER, ALLENIA | | | |
| 09:02 | MISSED LAYUP by BLANKENSHIP, VICTORIA | | | |
| 08:57 | | | | REBOUND (DEF) by MOBLEY, BREANNA |
| 08:55 | | | | MISSED JUMPER by WALKER, ANIYA |
| 08:49 | REBOUND (DEF) by JONES, ERICA | | | |
| 08:42 | | | | FOUL (PERSONAL) by KONKLE, ASHLEY |
| 08:42 | GOOD! FT by JONES, ERICA | 26-6 | H 20 | |
| 08:42 | GOOD! FT by JONES, ERICA | 26-7 | H 19 | |
| 08:25 | | 29-7 | H 22 | GOOD! 3PTR by SHAFER, SYDNEY |
| 08:10 | MISSED JUMPER by BROWN, CARNETHIA | | | |
| 08:04 | REBOUND (OFF) by BROWN, CARNETHIA | | | |
| 08:04 | TURNOVER (DRIBBLING) by BROWN, CARNETHIA | | | |
| 07:58 | | | | MISSED 3PTR by WATTERS, MADDIE |
| 07:55 | | | | REBOUND (OFF) by WALKER, ANIYA |
| 07:55 | FOUL (PERSONAL) by KEE, JESSIE | | | |
| 07:55 | | | | SUB OUT: KONKLE, ASHLEY |
| 07:55 | | | | SUB IN: FLETCHER, JILLIAN |
| 07:54 | SUB OUT: KEE, JESSIE | | | |
| 07:54 | SUB IN: HERBERT, KHALIAH | | | |
| 07:49 | | | | MISSED JUMPER by SHAFER, SYDNEY |
| 07:49 | BLOCK by BLANKENSHIP, VICTORIA | | | |
| 07:43 | | | | REBOUND (OFF) by MOBLEY, BREANNA |
| 07:42 | FOUL (PERSONAL) by BROWN, CARNETHIA | | | |
| 07:28 | | | | MISSED 3PTR by WATTERS, MADDIE |
| 07:24 | REBOUND (DEF) by JONES, ERICA | | | |
| 07:24 | SUB OUT: BLANKENSHIP, VICTORIA | | | |
| 07:24 | SUB IN: GOTCHER, TAYLORE | | | |
| 07:16 | MISSED 3PTR by HERBERT, KHALIAH | | | |
| 07:12 | | | | REBOUND (DEF) by WALKER, ANIYA |
| 07:09 | | | | TURNOVER (LOSTBALL) by SHAFER, SYDNEY |
| 07:09 | STEAL by JONES, ERICA | | | |
| 07:04 | GOOD! LAYUP by JONES, ERICA [FB] | 29-9 | H 20 | |
| 06:44 | | | | MISSED JUMPER by WALKER, ANIYA |
| 06:41 | REBOUND (DEF) by JONES, ERICA | | | |
| 06:38 | GOOD! LAYUP by PONDER, ALLENIA | 29-11 | H 18 | |
| 06:38 | ASSIST by JONES, ERICA | | | |
| 06:21 | | | | MISSED JUMPER by WALKER, ANIYA |
| 06:21 | BLOCK by JONES, ERICA | | | |
| 06:15 | REBOUND (DEF) by BROWN, CARNETHIA | | | |
| 06:14 | GOOD! LAYUP by BROWN, CARNETHIA [FB/PNT] | 29-13 | H 16 | |
| 06:08 | | | | |
| 06:08 | | | | SUB OUT: WATTERS, MADDIE |
| 06:08 | | | | SUB OUT: FLETCHER, JILLIAN |
| 06:08 | | | | SUB OUT: WALKER, ANIYA |
| 06:08 | | | | SUB OUT: SHAFER, SYDNEY |
| 06:08 | | | | SUB IN: BAILEY, CHELAYNE |
| 06:08 | | | | SUB IN: REED, KAMRIN |
| 06:08 | | | | SUB IN: WALKER, JORDAN |
| 06:08 | | | | SUB IN: WOOL, LEIGHAH-AMORI |
| 06:08 | SUB OUT: HERBERT, KHALIAH | | | |
| 06:08 | SUB IN: WILLIAMS, AMANI | | | |
| 05:56 | | | | MISSED JUMPER by MOBLEY, BREANNA |
| 05:50 | REBOUND (DEF) by PONDER, ALLENIA | | | |
| 05:42 | MISSED 3PTR by BROWN, CARNETHIA | | | |
| 05:38 | | | | REBOUND (DEF) by MOBLEY, BREANNA |
| 05:21 | | | | TURNOVER (TRAVEL) by MOBLEY, BREANNA |
| 05:00 | MISSED LAYUP by JONES, ERICA | | | |
| 04:56 | | | | REBOUND (DEF) by MOBLEY, BREANNA |
| 04:53 | | | | MISSED LAYUP by BAILEY, CHELAYNE |
| 04:50 | REBOUND (DEF) by JONES, ERICA | | | |

| Time | VISITORS: Kentucky St. | Score | Margin | HOME: Western Mich. |
|-------|--|-------|--------|--------------------------------------|
| 04:29 | MISSED LAYUP by PONDER, ALLENIA | | | |
| 04:26 | REBOUND (OFF) by TEAM | | | |
| 04:26 | SUB OUT: JONES, ERICA | | | |
| 04:26 | SUB IN: PLANTER, ASHLEY | | | |
| 04:25 | TURNOVER (BADPASS) by PONDER, ALLENIA | | | |
| 04:08 | | | | MISSED JUMPER by MOBLEY, BREANNA |
| 04:03 | REBOUND (DEF) by WILLIAMS, AMANI | | | |
| 03:58 | MISSED JUMPER by WILLIAMS, AMANI | | | |
| 03:54 | | | | REBOUND (DEF) by WALKER, JORDAN |
| 03:43 | FOUL (PERSONAL) by GOTCHER, TAYLORE | | | |
| 03:43 | SUB OUT: GOTCHER, TAYLORE | | | |
| 03:43 | SUB IN: BLANKENSHIP, VICTORIA | | | |
| 03:39 | | | | MISSED 3PTR by WALKER, JORDAN |
| 03:34 | REBOUND (DEF) by WILLIAMS, AMANI | | | |
| 03:30 | SUB OUT: PONDER, ALLENIA | | | |
| 03:30 | SUB IN: CUNNINGHAM, CHEYENNE | | | |
| 03:22 | MISSED 3PTR by BROWN, CARNETHIA | | | |
| 03:18 | REBOUND (OFF) by BLANKENSHIP, VICTORIA | | | |
| 03:18 | TURNOVER (TRAVEL) by BLANKENSHIP, VICTORIA | | | |
| 03:16 | | | | MISSED LAYUP by MOBLEY, BREANNA |
| 03:13 | REBOUND (DEF) by BLANKENSHIP, VICTORIA | | | |
| 03:00 | MISSED 3PTR by PLANTER, ASHLEY | | | |
| 02:57 | | | | REBOUND (DEF) by MOBLEY, BREANNA |
| 02:44 | | | | MISSED 3PTR by WOOL, LEIGHAH-AMORI |
| 02:38 | REBOUND (DEF) by TEAM | | | |
| 02:30 | | | | SUB OUT: MOBLEY, BREANNA |
| 02:30 | | | | SUB IN: KONKLE, ASHLEY |
| 02:25 | MISSED JUMPER by BLANKENSHIP, VICTORIA | | | |
| 02:22 | | | | REBOUND (DEF) by WOOL, LEIGHAH-AMORI |
| 02:17 | | | | MISSED 3PTR by BAILEY, CHELAYNE |
| 02:13 | | | | REBOUND (OFF) by KONKLE, ASHLEY |
| 02:10 | | | | MISSED 3PTR by REED, KAMRIN |
| 02:07 | | | | REBOUND (OFF) by WOOL, LEIGHAH-AMORI |
| 02:06 | | 31-13 | H 18 | GOOD! JUMPER by WALKER, JORDAN [PNT] |
| 02:06 | | | | ASSIST by WOOL, LEIGHAH-AMORI |
| 01:48 | | | | FOUL (PERSONAL) by WALKER, JORDAN |
| 01:48 | SUB OUT: CUNNINGHAM, CHEYENNE | | | |
| 01:48 | SUB IN: HERBERT, KHALIAH | | | |
| 01:48 | GOOD! FT by BLANKENSHIP, VICTORIA | 31-14 | H 17 | |
| 01:48 | GOOD! FT by BLANKENSHIP, VICTORIA | 31-15 | H 16 | |
| 01:33 | | | | MISSED LAYUP by WOOL, LEIGHAH-AMORI |
| 01:32 | | | | REBOUND (OFF) by WOOL, LEIGHAH-AMORI |
| 01:32 | FOUL (PERSONAL) by HERBERT, KHALIAH | | | |
| 01:32 | SUB OUT: PLANTER, ASHLEY | | | |
| 01:32 | SUB IN: JONES, ERICA | | | |
| 01:22 | | | | MISSED JUMPER by BAILEY, CHELAYNE |
| 01:18 | REBOUND (DEF) by BLANKENSHIP, VICTORIA | | | |
| 01:03 | MISSED JUMPER by HERBERT, KHALIAH | | | |
| 01:00 | REBOUND (OFF) by JONES, ERICA | | | |
| 00:58 | MISSED 3PTR by HERBERT, KHALIAH | | | |
| 00:55 | | | | REBOUND (DEF) by REED, KAMRIN |
| 00:44 | | 34-15 | H 19 | GOOD! 3PTR by WALKER, JORDAN |
| 00:44 | | | | ASSIST by BAILEY, CHELAYNE |
| 00:35 | MISSED 3PTR by BROWN, CARNETHIA | | | |
| 00:32 | | | | REBOUND (DEF) by WALKER, JORDAN |
| 00:07 | | | | TURNOVER (OTHER) by BAILEY, CHELAYNE |
| 00:03 | MISSED 3PTR by WILLIAMS, AMANI | | | |
| 00:00 | | | | REBOUND (DEF) by TEAM |

Kentucky St. 15, Western Mich. 34

| Points from (This Period) | KSU | WMU |
|---------------------------|-----|-----|
| In the Paint | 6 | 2 |
| Off Turns | 2 | 0 |
| 2nd Chance | 0 | 2 |
| Fast Break | 4 | 0 |
| Bench | 0 | 6 |

Official Box Score
Kentucky St. vs Western Mich.
Second Half Statistics Only
November 14, 2019 at Read Fieldhouse/University Arena - Kalamazoo



Kentucky St. 26

| No. | Player | S | Pts | FG | 3FG | FT | OR | DR | TR | PF | A | TO | Blk | Stl | Min | +/- |
|---------------|-----------------------|---|-----------|--------------|------------|------------|----------|-----------|-----------|-----------|----------|-----------|----------|----------|------------|-----|
| 00 | CUNNINGHAM, CHEYENNE | G | 2 | 1-4 | 0-2 | 0-1 | 1 | 2 | 3 | 2 | 0 | 0 | 0 | 0 | 11 | -14 |
| 01 | WILLIAMS, AMANI | G | 3 | 1-3 | 1-1 | 0-0 | 0 | 2 | 2 | 2 | 1 | 0 | 0 | 0 | 9 | -5 |
| 02 | ANTOINE, DEJA | G | 0 | 0-2 | 0-0 | 0-0 | 0 | 0 | 0 | 0 | 0 | 0 | 0 | 0 | 2 | -8 |
| 04 | HERBERT, KHALIAH | G | 0 | 0-2 | 0-0 | 0-0 | 0 | 0 | 0 | 0 | 0 | 1 | 0 | 0 | 7 | -2 |
| 05 | PLANTER, ASHLEY | G | 2 | 1-1 | 0-0 | 0-0 | 0 | 0 | 0 | 1 | 0 | 2 | 0 | 0 | 7 | -13 |
| 11 | PONDER, ALLENIA | G | 4 | 1-3 | 0-0 | 2-2 | 1 | 1 | 2 | 3 | 0 | 2 | 0 | 2 | 15 | -20 |
| 22 | KEE, JESSIE | F | 0 | 0-0 | 0-0 | 0-0 | 0 | 1 | 1 | 2 | 1 | 2 | 0 | 0 | 3 | 1 |
| 23 | BROWN, CARNETHIA | G | 8 | 3-11 | 0-4 | 2-2 | 0 | 0 | 0 | 2 | 0 | 2 | 0 | 1 | 16 | -19 |
| 25 | JONES, ERICA | F | 2 | 1-4 | 0-0 | 0-0 | 1 | 2 | 3 | 1 | 0 | 0 | 0 | 0 | 6 | 2 |
| 33 | BLANKENSHIP, VICTORIA | F | 0 | 0-0 | 0-0 | 0-0 | 1 | 2 | 3 | 4 | 1 | 0 | 0 | 1 | 10 | -10 |
| 34 | GOTCHER, TAYLORE | F | 5 | 2-3 | 0-0 | 1-3 | 3 | 1 | 4 | 2 | 0 | 1 | 0 | 0 | 15 | -12 |
| | TEAM | | 0 | 0-0 | 0-0 | 0-0 | 1 | 1 | 2 | 0 | 0 | 0 | 0 | 0 | 0 | |
| TOTALS | | | 26 | 10-33 | 1-7 | 5-8 | 8 | 12 | 20 | 19 | 3 | 10 | 0 | 4 | 100 | |

Shooting By Period

| Period | FG | FG% | 3FG | 3FG% | FT | FT% |
|----------|-------|-------|------|-------|------|-------|
| 3rd Qtr | 5-18 | 28% | 1-3 | 33% | 3-4 | 75% |
| 4th Qtr | 5-15 | 33% | 0-4 | 00% | 2-4 | 50% |
| 2nd Half | 10-33 | 30% | 1-7 | 14% | 5-8 | 63% |
| Game | 15-66 | 22.7% | 2-20 | 10.0% | 9-12 | 75.0% |

Deadball Rebounds: 1,2
 Last FG Half: KSU 4th-00:05

Western Mich. 46

| No. | Player | S | Pts | FG | 3FG | FT | OR | DR | TR | PF | A | TO | Blk | Stl | Min | +/- |
|---------------|---------------------|---|-----------|--------------|-------------|--------------|----------|-----------|-----------|----------|----------|----------|----------|----------|------------|-----|
| 05 | BAILEY, CHELAYNE | G | 2 | 0-0 | 0-0 | 2-2 | 0 | 1 | 1 | 0 | 0 | 1 | 0 | 1 | 8 | 2 |
| 10 | MOBLEY, BREANNA | F | 11 | 4-6 | 0-0 | 3-5 | 2 | 3 | 5 | 1 | 0 | 1 | 0 | 0 | 10 | 11 |
| 11 | REED, KAMRIN | G | 0 | 0-2 | 0-2 | 0-0 | 0 | 0 | 0 | 0 | 0 | 1 | 0 | 0 | 8 | 2 |
| 13 | WALKER, ANIYA | G | 0 | 0-1 | 0-0 | 0-0 | 1 | 0 | 1 | 1 | 1 | 0 | 0 | 1 | 9 | 10 |
| 20 | SHAFER, SYDNEY | G | 8 | 1-3 | 0-0 | 6-7 | 2 | 2 | 4 | 0 | 1 | 0 | 0 | 1 | 12 | 18 |
| 21 | DOUGLAS, HANNAH | | 0 | 0-0 | 0-0 | 0-0 | 0 | 0 | 0 | 0 | 0 | 0 | 0 | 0 | 1 | 0 |
| 23 | WALKER, JORDAN | G | 11 | 4-4 | 1-1 | 2-2 | 0 | 4 | 4 | 2 | 4 | 3 | 0 | 1 | 11 | 21 |
| 24 | WOOL, LEIGHAH-AMORI | F | 6 | 2-6 | 0-2 | 2-4 | 0 | 3 | 3 | 3 | 0 | 1 | 0 | 0 | 12 | 13 |
| 31 | KONKLE, ASHLEY | F | 5 | 1-1 | 0-0 | 3-4 | 0 | 0 | 0 | 2 | 0 | 0 | 0 | 1 | 8 | 8 |
| 32 | CENCULA, KIANA | | 0 | 0-1 | 0-1 | 0-0 | 0 | 0 | 0 | 0 | 0 | 0 | 0 | 0 | 1 | 0 |
| 02 | WATTERS, MADDIE | G | 0 | 0-3 | 0-3 | 0-0 | 0 | 0 | 0 | 0 | 1 | 0 | 0 | 0 | 14 | 7 |
| 03 | FLETCHER, JILLIAN | G | 3 | 1-3 | 1-2 | 0-0 | 1 | 2 | 3 | 0 | 0 | 0 | 0 | 0 | 5 | 8 |
| | TEAM | | 0 | 0-0 | 0-0 | 0-0 | 0 | 2 | 2 | 0 | 0 | 0 | 0 | 0 | 0 | |
| TOTALS | | | 46 | 13-30 | 2-11 | 18-24 | 6 | 17 | 23 | 9 | 7 | 7 | 0 | 5 | 100 | |

Shooting By Period

| Period | FG | FG% | 3FG | 3FG% | FT | FT% |
|----------|-------|-------|------|-------|-------|-------|
| 3rd Qtr | 6-14 | 43% | 1-6 | 17% | 11-17 | 65% |
| 4th Qtr | 7-16 | 44% | 1-5 | 20% | 7-7 | 100% |
| 2nd Half | 13-30 | 43% | 2-11 | 18% | 18-24 | 75% |
| Game | 26-70 | 37.1% | 9-30 | 30.0% | 19-25 | 76.0% |

Deadball Rebounds: 5,0
 Last FG Half: WMU 4th-01:17

Game Notes:

Officials: , ,
 Attendance: 750

Start Time: 07:03 PM ET
 End Time: 09:02 PM ET
 Game Duration: 1:58

| Score | 1st | 2nd | 3rd | 4th | TOT |
|-------|-----|-----|-----|-----|-----|
| KSU | 2 | 13 | 14 | 12 | 41 |
| WMU | 23 | 11 | 24 | 22 | 80 |

| Points from (This Period) | KSU | WMU |
|---------------------------|-----|-----|
| In the Paint | 18 | 22 |
| Off Turns | 8 | 14 |
| 2nd Chance | 7 | 12 |
| Fast Break | 4 | 15 |
| Bench | 12 | 16 |

Official Box Score
Kentucky St. vs Western Mich.
Third Quarter Statistics Only
November 14, 2019 at Read Fieldhouse/University Arena - Kalamazoo



Kentucky St. 26

| No. | Player | S | Pts | FG | 3FG | FT | OR | DR | TR | PF | A | TO | Blk | Stl | Min | +/- |
|---------------|-----------------------|---|-----------|-------------|------------|------------|----------|----------|-----------|-----------|----------|----------|----------|----------|-----------|-----|
| 11 | PONDER, ALLENIA | G | 0 | 0-0 | 0-0 | 0-0 | 0 | 0 | 0 | 2 | 0 | 2 | 0 | 1 | 5 | -10 |
| 22 | KEE, JESSIE | F | 0 | 0-0 | 0-0 | 0-0 | 0 | 1 | 1 | 2 | 1 | 2 | 0 | 0 | 3 | 1 |
| 23 | BROWN, CARNETHIA | G | 4 | 1-4 | 0-2 | 2-2 | 0 | 0 | 0 | 1 | 0 | 0 | 0 | 0 | 10 | -10 |
| 25 | JONES, ERICA | F | 2 | 1-4 | 0-0 | 0-0 | 1 | 2 | 3 | 1 | 0 | 0 | 0 | 0 | 6 | 2 |
| 33 | BLANKENSHIP, VICTORIA | F | 0 | 0-0 | 0-0 | 0-0 | 0 | 1 | 1 | 1 | 0 | 0 | 0 | 1 | 3 | -2 |
| 00 | CUNNINGHAM, CHEYENNE | G | 2 | 1-2 | 0-0 | 0-1 | 1 | 1 | 2 | 1 | 0 | 0 | 0 | 0 | 4 | -6 |
| 01 | WILLIAMS, AMANI | G | 3 | 1-3 | 1-1 | 0-0 | 0 | 2 | 2 | 2 | 0 | 0 | 0 | 0 | 6 | -3 |
| 02 | ANTOINE, DEJA | G | 0 | 0-2 | 0-0 | 0-0 | 0 | 0 | 0 | 0 | 0 | 0 | 0 | 0 | 2 | -8 |
| 04 | HERBERT, KHALIAH | G | 0 | 0-2 | 0-0 | 0-0 | 0 | 0 | 0 | 0 | 0 | 0 | 0 | 0 | 3 | -1 |
| 05 | PLANTER, ASHLEY | G | 0 | 0-0 | 0-0 | 0-0 | 0 | 0 | 0 | 0 | 0 | 2 | 0 | 0 | 2 | -5 |
| 34 | GOTCHER, TAYLORE | F | 3 | 1-1 | 0-0 | 1-1 | 1 | 1 | 2 | 1 | 0 | 0 | 0 | 0 | 7 | -8 |
| | TEAM | | | | | | 0 | 0 | 0 | 0 | | 0 | | | | |
| TOTALS | | | 14 | 5-18 | 1-3 | 3-4 | 3 | 8 | 11 | 11 | 1 | 6 | 0 | 2 | 50 | |

Shooting By Period

| Period | FG | FG% | 3FG | 3FG% | FT | FT% |
|----------|-------|-------|------|-------|------|-------|
| 2nd Half | 0-0 | 0% | 0-0 | 0% | 0-0 | 0% |
| Game | 15-66 | 22.7% | 2-20 | 10.0% | 9-12 | 75.0% |

Deadball Rebounds: 1,2

Western Mich. 46

| No. | Player | S | Pts | FG | 3FG | FT | OR | DR | TR | PF | A | TO | Blk | Stl | Min | +/- |
|---------------|---------------------|---|-----------|-------------|------------|--------------|----------|-----------|-----------|----------|----------|----------|----------|----------|-----------|-----|
| 05 | BAILEY, CHELAYNE | G | 2 | 0-0 | 0-0 | 2-2 | 0 | 1 | 1 | 0 | 0 | 1 | 0 | 1 | 8 | 2 |
| 10 | MOBLEY, BREANNA | F | 11 | 4-5 | 0-0 | 3-5 | 2 | 3 | 5 | 1 | 0 | 1 | 0 | 0 | 8 | 2 |
| 11 | REED, KAMRIN | G | 0 | 0-2 | 0-2 | 0-0 | 0 | 0 | 0 | 0 | 0 | 1 | 0 | 0 | 8 | 2 |
| 23 | WALKER, JORDAN | G | 5 | 1-1 | 1-1 | 2-2 | 0 | 2 | 2 | 1 | 2 | 2 | 0 | 1 | 5 | 12 |
| 24 | WOOL, LEIGHAH-AMORI | F | 4 | 1-4 | 0-1 | 2-4 | 0 | 2 | 2 | 1 | 0 | 0 | 0 | 0 | 7 | 11 |
| 02 | WATERS, MADDIE | G | 0 | 0-2 | 0-2 | 0-0 | 0 | 0 | 0 | 0 | 1 | 0 | 0 | 0 | 6 | 6 |
| 03 | FLETCHER, JILLIAN | G | 0 | 0-0 | 0-0 | 0-0 | 0 | 0 | 0 | 0 | 0 | 0 | 0 | 0 | 0 | 0 |
| 13 | WALKER, ANIYA | G | 0 | 0-0 | 0-0 | 0-0 | 0 | 0 | 0 | 0 | 0 | 0 | 0 | 0 | 0 | 0 |
| 20 | SHAFFER, SYDNEY | G | 1 | 0-0 | 0-0 | 1-2 | 0 | 1 | 1 | 0 | 0 | 0 | 0 | 0 | 2 | 8 |
| 21 | DOUGLAS, HANNAH | | 0 | 0-0 | 0-0 | 0-0 | 0 | 0 | 0 | 0 | 0 | 0 | 0 | 0 | 0 | 0 |
| 31 | KONKLE, ASHLEY | F | 1 | 0-0 | 0-0 | 1-2 | 0 | 0 | 0 | 1 | 0 | 0 | 0 | 1 | 5 | 7 |
| 32 | CENCULA, KIANA | | 0 | 0-0 | 0-0 | 0-0 | 0 | 0 | 0 | 0 | 0 | 0 | 0 | 0 | 0 | 0 |
| | TEAM | | | | | | 0 | 2 | 2 | 0 | | 0 | | | | |
| TOTALS | | | 24 | 6-14 | 1-6 | 11-17 | 2 | 11 | 13 | 4 | 3 | 5 | 0 | 3 | 50 | |

Shooting By Period

| Period | FG | FG% | 3FG | 3FG% | FT | FT% |
|----------|-------|-------|------|-------|-------|-------|
| 2nd Half | 0-0 | 0% | 0-0 | 0% | 0-0 | 0% |
| Game | 26-70 | 37.1% | 9-30 | 30.0% | 19-25 | 76.0% |

Deadball Rebounds: 5,0

Game Notes:

Officials: , ,
Attendance: 750

Start Time: 07:03 PM ET
End Time: 09:02 PM ET
Game Duration: 1:58

| Score | 1st | 2nd | 3rd | 4th | TOT |
|-------|-----|-----|-----|-----|-----------|
| KSU | 2 | 13 | 14 | 12 | 41 |
| WMU | 23 | 11 | 24 | 22 | 80 |

| Points from (This Period) | KSU | WMU |
|---------------------------|-----|-----|
| In the Paint | 8 | 10 |
| Off Turns | 4 | 7 |
| 2nd Chance | 7 | 4 |
| Fast Break | 2 | 10 |
| Bench | 8 | 2 |

Official Play-By-Play
Kentucky St. vs Western Mich.
Third Quarter

November 14, 2019 at Read Fieldhouse/University Arena - Kalamazoo



Period 3

Starters:

Kentucky St.: 11 PONDER, ALLENIA (G); 22 KEE, JESSIE (F); 23 BROWN, CARNETHIA (G); 25 JONES, ERICA (F); 33 BLANKENSHIP, VICTORIA (F);

Western Mich.: 5 BAILEY, CHELAYNE (G); 10 MOBLEY, BREANNA (F); 11 REED, KAMRIN (G); 23 WALKER, JORDAN (G); 24 WOOL, LEIGHAH-AMORI (F);

| Time | VISITORS: Kentucky St. | Score | Margin | HOME: Western Mich. |
|-------|--|-------|--------|--|
| 10:00 | | | | SUB OUT: KONKLE, ASHLEY |
| 10:00 | | | | SUB IN: MOBLEY, BREANNA |
| 10:00 | SUB OUT: WILLIAMS, AMANI | | | |
| 10:00 | SUB OUT: HERBERT, KHALIAH | | | |
| 10:00 | SUB IN: PONDER, ALLENIA | | | |
| 10:00 | SUB IN: KEE, JESSIE | | | |
| 09:55 | | | | TURNOVER (BADPASS) by BAILEY, CHELAYNE |
| 09:55 | STEAL by PONDER, ALLENIA | | | |
| 09:47 | | | | TURNOVER (BADPASS) by REED, KAMRIN |
| 09:40 | FOUL (PERSONAL) by KEE, JESSIE | | | |
| 09:21 | FOUL (PERSONAL) by PONDER, ALLENIA | | | |
| 09:21 | SUB OUT: KEE, JESSIE | | | |
| 09:21 | SUB IN: WILLIAMS, AMANI | | | |
| 09:21 | | | | MISSED JUMPER by WOOL, LEIGHAH-AMORI |
| 09:16 | REBOUND (DEF) by BLANKENSHIP, VICTORIA | | | |
| 09:04 | MISSED JUMPER by WILLIAMS, AMANI | | | |
| 09:01 | | | | REBOUND (DEF) by WOOL, LEIGHAH-AMORI |
| 08:45 | | | | MISSED JUMPER by WOOL, LEIGHAH-AMORI |
| 08:41 | REBOUND (DEF) by WILLIAMS, AMANI | | | |
| 08:36 | TURNOVER (BADPASS) by PONDER, ALLENIA | | | |
| 08:27 | | 36-15 | H 21 | GOOD! JUMPER by MOBLEY, BREANNA [PNT] |
| 08:27 | | | | ASSIST by WALKER, JORDAN |
| 08:27 | FOUL (PERSONAL) by JONES, ERICA | | | |
| 08:27 | | | | MISSED FT by MOBLEY, BREANNA |
| 08:27 | REBOUND (DEF) by JONES, ERICA | | | |
| 08:12 | MISSED JUMPER by BROWN, CARNETHIA | | | |
| 08:08 | | | | REBOUND (DEF) by WALKER, JORDAN |
| 08:01 | | | | MISSED 3PTR by WOOL, LEIGHAH-AMORI |
| 07:57 | | | | REBOUND (OFF) by MOBLEY, BREANNA |
| 07:56 | | 38-15 | H 23 | GOOD! LAYUP by MOBLEY, BREANNA [PNT] |
| 07:42 | MISSED 3PTR by BROWN, CARNETHIA | | | |
| 07:39 | | | | REBOUND (DEF) by MOBLEY, BREANNA |
| 07:34 | | | | TURNOVER (LOSTBALL) by WALKER, JORDAN |
| 07:34 | STEAL by BLANKENSHIP, VICTORIA | | | |
| 07:29 | GOOD! LAYUP by BROWN, CARNETHIA [FB/PNT] | 38-17 | H 21 | |
| 07:14 | FOUL (PERSONAL) by BLANKENSHIP, VICTORIA | | | |
| 07:14 | SUB OUT: WILLIAMS, AMANI | | | |
| 07:14 | SUB OUT: PONDER, ALLENIA | | | |
| 07:14 | SUB OUT: BLANKENSHIP, VICTORIA | | | |
| 07:14 | SUB IN: CUNNINGHAM, CHEYENNE | | | |
| 07:14 | SUB IN: HERBERT, KHALIAH | | | |
| 07:14 | SUB IN: GOTCHER, TAYLORE | | | |
| 07:14 | | | | MISSED FT by WOOL, LEIGHAH-AMORI |
| 07:14 | | | | REBOUND (OFF) by TEAM |
| 07:14 | | | | MISSED FT by WOOL, LEIGHAH-AMORI |
| 07:14 | REBOUND (DEF) by CUNNINGHAM, CHEYENNE | | | |
| 07:06 | MISSED JUMPER by HERBERT, KHALIAH | | | |
| 07:06 | | | | REBOUND (DEF) by TEAM |
| 07:06 | FOUL (PERSONAL) by CUNNINGHAM, CHEYENNE | | | |
| 07:06 | | 39-17 | H 22 | GOOD! FT by MOBLEY, BREANNA [FB] |
| 07:06 | | 40-17 | H 23 | GOOD! FT by MOBLEY, BREANNA [FB] |
| 06:59 | | | | FOUL (PERSONAL) by WALKER, JORDAN |
| 06:54 | MISSED JUMPER by JONES, ERICA | | | |
| 06:51 | | | | REBOUND (DEF) by MOBLEY, BREANNA |
| 06:42 | | 42-17 | H 25 | GOOD! LAYUP by WOOL, LEIGHAH-AMORI |
| 06:42 | | | | ASSIST by WALKER, JORDAN |
| 06:31 | MISSED JUMPER by HERBERT, KHALIAH | | | |
| 06:27 | REBOUND (OFF) by JONES, ERICA | | | |
| 06:25 | GOOD! LAYUP by JONES, ERICA | 42-19 | H 23 | |
| 06:20 | | | | TURNOVER (LOSTBALL) by MOBLEY, BREANNA |
| 06:20 | | | | SUB OUT: WALKER, JORDAN |
| 06:20 | | | | SUB IN: WATTERS, MADDIE |
| 06:01 | MISSED JUMPER by JONES, ERICA | | | |
| 05:57 | REBOUND (OFF) by CUNNINGHAM, CHEYENNE | | | |
| 05:55 | GOOD! JUMPER by CUNNINGHAM, CHEYENNE | 42-21 | H 21 | |
| 05:54 | | | | FOUL (PERSONAL) by WOOL, LEIGHAH-AMORI |
| 05:54 | MISSED FT by CUNNINGHAM, CHEYENNE | | | |
| 05:54 | | | | REBOUND (DEF) by MOBLEY, BREANNA |
| 05:38 | | | | MISSED JUMPER by MOBLEY, BREANNA |
| 05:34 | REBOUND (DEF) by GOTCHER, TAYLORE | | | |

| Time | VISITORS: Kentucky St. | Score | Margin | HOME: Western Mich. |
|-------|--|-------|--------|--------------------------------------|
| 05:23 | MISSED 3PTR by BROWN, CARNETHIA | | | |
| 05:19 | REBOUND (OFF) by GOTCHER, TAYLORE | | | |
| 05:19 | GOOD! LAYUP by GOTCHER, TAYLORE | 42-23 | H 19 | |
| 05:19 | | | | FOUL (PERSONAL) by MOBLEY, BREANNA |
| 05:19 | SUB OUT: JONES, ERICA | | | |
| 05:19 | SUB IN: PLANTER, ASHLEY | | | |
| 05:19 | GOOD! FT by GOTCHER, TAYLORE | 42-24 | H 18 | |
| 05:10 | | | | MISSED 3PTR by REED, KAMRIN |
| 05:06 | | | | REBOUND (OFF) by MOBLEY, BREANNA |
| 05:05 | | 44-24 | H 20 | GOOD! LAYUP by MOBLEY, BREANNA |
| 04:57 | MISSED JUMPER by CUNNINGHAM, CHEYENNE | | | |
| 04:53 | | | | REBOUND (DEF) by BAILEY, CHELAYNE |
| 04:47 | | 46-24 | H 22 | GOOD! JUMPER by MOBLEY, BREANNA |
| 04:47 | | | | ASSIST by WATTERS, MADDIE |
| 04:31 | TURNOVER (BADPASS) by PLANTER, ASHLEY | | | |
| 04:31 | | | | |
| 04:31 | | | | SUB OUT: WOOL, LEIGHAH-AMORI |
| 04:31 | | | | SUB IN: KONKLE, ASHLEY |
| 04:31 | SUB OUT: HERBERT, KHALIAH | | | |
| 04:31 | SUB IN: WILLIAMS, AMANI | | | |
| 04:18 | FOUL (PERSONAL) by GOTCHER, TAYLORE | | | |
| 04:18 | SUB OUT: CUNNINGHAM, CHEYENNE | | | |
| 04:18 | SUB IN: KEE, JESSIE | | | |
| 04:18 | | | | MISSED FT by MOBLEY, BREANNA |
| 04:18 | | | | REBOUND (OFF) by TEAM |
| 04:18 | | 47-24 | H 23 | GOOD! FT by MOBLEY, BREANNA [FB] |
| 04:15 | TURNOVER (TRAVEL) by PLANTER, ASHLEY | | | |
| 03:34 | | | | MISSED 3PTR by WATTERS, MADDIE |
| 03:30 | REBOUND (DEF) by WILLIAMS, AMANI | | | |
| 03:05 | TURNOVER (LOSTBALL) by KEE, JESSIE | | | |
| 03:05 | | | | STEAL by KONKLE, ASHLEY |
| 03:04 | FOUL (PERSONAL) by WILLIAMS, AMANI | | | |
| 03:04 | SUB OUT: WILLIAMS, AMANI | | | |
| 03:04 | SUB IN: JONES, ERICA | | | |
| 03:04 | | | | MISSED FT by KONKLE, ASHLEY |
| 03:04 | | | | REBOUND (OFF) by TEAM |
| 03:04 | | 48-24 | H 24 | GOOD! FT by KONKLE, ASHLEY [FB] |
| 03:04 | SUB OUT: PLANTER, ASHLEY | | | |
| 03:04 | SUB IN: WILLIAMS, AMANI | | | |
| 02:44 | MISSED LAYUP by JONES, ERICA | | | |
| 02:41 | | | | REBOUND (DEF) by TEAM |
| 02:18 | | | | MISSED 3PTR by WATTERS, MADDIE |
| 02:18 | REBOUND (DEF) by KEE, JESSIE | | | |
| 02:18 | GOOD! 3PTR by WILLIAMS, AMANI | 48-27 | H 21 | |
| 02:18 | ASSIST by KEE, JESSIE | | | |
| 02:08 | | | | MISSED 3PTR by REED, KAMRIN |
| 02:04 | REBOUND (DEF) by JONES, ERICA | | | |
| 01:52 | TURNOVER (LOSTBALL) by KEE, JESSIE | | | |
| 01:52 | | | | STEAL by BAILEY, CHELAYNE |
| 01:49 | FOUL (PERSONAL) by KEE, JESSIE | | | |
| 01:49 | SUB OUT: KEE, JESSIE | | | |
| 01:49 | SUB OUT: JONES, ERICA | | | |
| 01:49 | SUB IN: ANTOINE, DEJA | | | |
| 01:49 | SUB IN: PONDER, ALLENIA | | | |
| 01:49 | | 49-27 | H 22 | GOOD! FT by BAILEY, CHELAYNE [FB] |
| 01:49 | | 50-27 | H 23 | GOOD! FT by BAILEY, CHELAYNE [FB] |
| 01:39 | | | | FOUL (PERSONAL) by KONKLE, ASHLEY |
| 01:39 | GOOD! FT by BROWN, CARNETHIA | 50-28 | H 22 | |
| 01:39 | GOOD! FT by BROWN, CARNETHIA | 50-29 | H 21 | |
| 01:39 | | | | SUB OUT: BAILEY, CHELAYNE |
| 01:39 | | | | SUB OUT: MOBLEY, BREANNA |
| 01:39 | | | | SUB OUT: REED, KAMRIN |
| 01:39 | | | | SUB IN: SHAFER, SYDNEY |
| 01:39 | | | | SUB IN: WALKER, JORDAN |
| 01:39 | | | | SUB IN: WOOL, LEIGHAH-AMORI |
| 01:26 | FOUL (PERSONAL) by BROWN, CARNETHIA | | | |
| 01:26 | | | | MISSED FT by SHAFER, SYDNEY |
| 01:26 | | | | REBOUND (OFF) by TEAM |
| 01:26 | | 51-29 | H 22 | GOOD! FT by SHAFER, SYDNEY |
| 01:11 | MISSED JUMPER by ANTOINE, DEJA | | | |
| 01:07 | | | | REBOUND (DEF) by WALKER, JORDAN |
| 01:04 | | | | TURNOVER (BADPASS) by WALKER, JORDAN |
| 00:49 | MISSED LAYUP by WILLIAMS, AMANI | | | |
| 00:47 | | | | REBOUND (DEF) by WOOL, LEIGHAH-AMORI |
| 00:47 | FOUL (PERSONAL) by WILLIAMS, AMANI | | | |
| 00:47 | | 52-29 | H 23 | GOOD! FT by WOOL, LEIGHAH-AMORI [FB] |
| 00:47 | | 53-29 | H 24 | GOOD! FT by WOOL, LEIGHAH-AMORI [FB] |
| 00:39 | TURNOVER (LOSTBALL) by PONDER, ALLENIA | | | |
| 00:39 | | | | STEAL by WALKER, JORDAN |
| 00:34 | FOUL (PERSONAL) by PONDER, ALLENIA | | | |

| Time | VISITORS: Kentucky St. | Score | Margin | HOME: Western Mich. |
|-------|--------------------------------|-------|--------|---------------------------------|
| 00:34 | SUB OUT: WILLIAMS, AMANI | | | |
| 00:34 | SUB IN: CUNNINGHAM, CHEYENNE | | | |
| 00:34 | | 54-29 | H 25 | GOOD! FT by WALKER, JORDAN [FB] |
| 00:34 | | 55-29 | H 26 | GOOD! FT by WALKER, JORDAN [FB] |
| 00:19 | MISSED JUMPER by ANTOINE, DEJA | | | |
| 00:15 | | | | REBOUND (DEF) by SHAFER, SYDNEY |
| 00:01 | | 58-29 | H 29 | GOOD! 3PTR by WALKER, JORDAN |

Kentucky St. 29, Western Mich. 58

| Points from (This Period) | KSU | WMU |
|---------------------------|-----|-----|
| In the Paint | 8 | 10 |
| Off Turns | 4 | 7 |
| 2nd Chance | 7 | 4 |
| Fast Break | 2 | 10 |
| Bench | 8 | 2 |

Official Box Score
Kentucky St. vs Western Mich.
Fourth Quarter Statistics Only
November 14, 2019 at Read Fieldhouse/University Arena - Kalamazoo



Kentucky St. 12

| No. | Player | S | Pts | FG | 3FG | FT | OR | DR | TR | PF | A | TO | Blk | Stl | Min | +/- |
|---------------|-----------------------|---|-----------|-------------|------------|------------|----------|----------|----------|----------|----------|----------|----------|----------|-----------|-----|
| 11 | PONDER, ALLENIA | G | 4 | 1-3 | 0-0 | 2-2 | 1 | 1 | 2 | 1 | 0 | 0 | 0 | 1 | 10 | -10 |
| 22 | KEE, JESSIE | F | 0 | 0-0 | 0-0 | 0-0 | 0 | 0 | 0 | 0 | 0 | 0 | 0 | 0 | 0 | 0 |
| 23 | BROWN, CARNETHIA | G | 4 | 2-7 | 0-2 | 0-0 | 0 | 0 | 0 | 1 | 0 | 2 | 0 | 1 | 6 | -9 |
| 25 | JONES, ERICA | F | 0 | 0-0 | 0-0 | 0-0 | 0 | 0 | 0 | 0 | 0 | 0 | 0 | 0 | 0 | 0 |
| 33 | BLANKENSHIP, VICTORIA | F | 0 | 0-0 | 0-0 | 0-0 | 1 | 1 | 2 | 3 | 1 | 0 | 0 | 0 | 7 | -8 |
| 00 | CUNNINGHAM, CHEYENNE | G | 0 | 0-2 | 0-2 | 0-0 | 0 | 1 | 1 | 1 | 0 | 0 | 0 | 0 | 7 | -8 |
| 01 | WILLIAMS, AMANI | G | 0 | 0-0 | 0-0 | 0-0 | 0 | 0 | 0 | 0 | 1 | 0 | 0 | 0 | 3 | -2 |
| 02 | ANTOINE, DEJA | G | 0 | 0-0 | 0-0 | 0-0 | 0 | 0 | 0 | 0 | 0 | 0 | 0 | 0 | 0 | 0 |
| 04 | HERBERT, KHALIAH | G | 0 | 0-0 | 0-0 | 0-0 | 0 | 0 | 0 | 0 | 0 | 1 | 0 | 0 | 4 | -1 |
| 05 | PLANTER, ASHLEY | G | 2 | 1-1 | 0-0 | 0-0 | 0 | 0 | 0 | 1 | 0 | 0 | 0 | 0 | 5 | -8 |
| 34 | GOTCHER, TAYLORE | F | 2 | 1-2 | 0-0 | 0-2 | 2 | 0 | 2 | 1 | 0 | 1 | 0 | 0 | 8 | -4 |
| | TEAM | | | | | | 1 | 1 | 2 | 0 | | 0 | | | | |
| TOTALS | | | 12 | 5-15 | 0-4 | 2-4 | 5 | 4 | 9 | 8 | 2 | 4 | 0 | 2 | 50 | |

Shooting By Period

| Period | FG | FG% | 3FG | 3FG% | FT | FT% |
|--------|-------|-------|------|-------|------|-------|
| Game | 15-66 | 22.7% | 2-20 | 10.0% | 9-12 | 75.0% |

Deadball Rebounds: 1,2

Western Mich. 22

| No. | Player | S | Pts | FG | 3FG | FT | OR | DR | TR | PF | A | TO | Blk | Stl | Min | +/- |
|---------------|---------------------|---|-----------|-------------|------------|------------|----------|----------|-----------|----------|----------|----------|----------|----------|-----------|-----|
| 05 | BAILEY, CHELAYNE | G | 0 | 0-0 | 0-0 | 0-0 | 0 | 0 | 0 | 0 | 0 | 0 | 0 | 0 | 0 | 0 |
| 10 | MOBLEY, BREANNA | F | 0 | 0-1 | 0-0 | 0-0 | 0 | 0 | 0 | 0 | 0 | 0 | 0 | 0 | 2 | 9 |
| 11 | REED, KAMRIN | G | 0 | 0-0 | 0-0 | 0-0 | 0 | 0 | 0 | 0 | 0 | 0 | 0 | 0 | 0 | 0 |
| 23 | WALKER, JORDAN | G | 6 | 3-3 | 0-0 | 0-0 | 0 | 2 | 2 | 1 | 2 | 1 | 0 | 0 | 6 | 9 |
| 24 | WOOL, LEIGHAH-AMORI | F | 2 | 1-2 | 0-1 | 0-0 | 0 | 1 | 1 | 2 | 0 | 1 | 0 | 0 | 5 | 2 |
| 02 | WATERS, MADDIE | G | 0 | 0-1 | 0-1 | 0-0 | 0 | 0 | 0 | 0 | 0 | 0 | 0 | 0 | 8 | 1 |
| 03 | FLETCHER, JILLIAN | G | 3 | 1-3 | 1-2 | 0-0 | 1 | 2 | 3 | 0 | 0 | 0 | 0 | 0 | 5 | 8 |
| 13 | WALKER, ANIYA | G | 0 | 0-1 | 0-0 | 0-0 | 1 | 0 | 1 | 1 | 1 | 0 | 0 | 1 | 9 | 10 |
| 20 | SHAFER, SYDNEY | G | 7 | 1-3 | 0-0 | 5-5 | 2 | 1 | 3 | 0 | 1 | 0 | 0 | 1 | 10 | 10 |
| 21 | DOUGLAS, HANNAH | | 0 | 0-0 | 0-0 | 0-0 | 0 | 0 | 0 | 0 | 0 | 0 | 0 | 0 | 1 | 0 |
| 31 | KONKLE, ASHLEY | F | 4 | 1-1 | 0-0 | 2-2 | 0 | 0 | 0 | 1 | 0 | 0 | 0 | 0 | 3 | 1 |
| 32 | CENCULA, KIANA | | 0 | 0-1 | 0-1 | 0-0 | 0 | 0 | 0 | 0 | 0 | 0 | 0 | 0 | 1 | 0 |
| | TEAM | | | | | | 0 | 0 | 0 | 0 | | 0 | | | | |
| TOTALS | | | 22 | 7-16 | 1-5 | 7-7 | 4 | 6 | 10 | 5 | 4 | 2 | 0 | 2 | 50 | |

Shooting By Period

| Period | FG | FG% | 3FG | 3FG% | FT | FT% |
|--------|-------|-------|------|-------|-------|-------|
| Game | 26-70 | 37.1% | 9-30 | 30.0% | 19-25 | 76.0% |

Deadball Rebounds: 5,0

Game Notes:

Officials: , ,
Attendance: 750

Start Time: 07:03 PM ET
End Time: 09:02 PM ET
Game Duration: 1:58

| Score | 1st | 2nd | 3rd | 4th | TOT |
|-------|-----|-----|-----|-----|-----------|
| KSU | 2 | 13 | 14 | 12 | 41 |
| WMU | 23 | 11 | 24 | 22 | 80 |

| Points from (This Period) | KSU | WMU |
|---------------------------|-----|-----|
| In the Paint | 10 | 12 |
| Off Turns | 4 | 7 |
| 2nd Chance | 0 | 8 |
| Fast Break | 2 | 5 |
| Bench | 4 | 14 |

**Official Play-By-Play
Kentucky St. vs Western Mich.
Fourth Quarter**

November 14, 2019 at Read Fieldhouse/University Arena - Kalamazoo



Period 4

Starters:

Kentucky St.: 11 PONDER, ALLENIA (G); 22 KEE, JESSIE (F); 23 BROWN, CARNETHIA (G); 25 JONES, ERICA (F); 33 BLANKENSHIP, VICTORIA (F);

Western Mich.: 5 BAILEY, CHELAYNE (G); 10 MOBLEY, BREANNA (F); 11 REED, KAMRIN (G); 23 WALKER, JORDAN (G); 24 WOOL, LEIGHAH-AMORI (F);

| Time | VISITORS: Kentucky St. | Score | Margin | HOME: Western Mich. |
|-------|--|-------|--------|--|
| 10:00 | | | | SUB OUT: KONKLE, ASHLEY |
| 10:00 | | | | SUB IN: WALKER, ANIYA |
| 10:00 | SUB OUT: ANTOINE, DEJA | | | |
| 10:00 | SUB IN: BLANKENSHIP, VICTORIA | | | |
| 09:57 | | | | TURNOVER (LOSTBALL) by WALKER, JORDAN |
| 09:57 | STEAL by PONDER, ALLENIA | | | |
| 09:33 | GOOD! LAYUP by GOTCHER, TAYLORE | 58-31 | H 27 | |
| 09:33 | ASSIST by BLANKENSHIP, VICTORIA | | | |
| 09:13 | | | | MISSED 3PTR by WATTERS, MADDIE |
| 09:09 | | | | REBOUND (OFF) by WALKER, ANIYA |
| 09:08 | | 60-31 | H 29 | GOOD! LAYUP by WALKER, JORDAN |
| 09:08 | | | | ASSIST by WALKER, ANIYA |
| 08:57 | TURNOVER (BADPASS) by BROWN, CARNETHIA | | | |
| 08:57 | | | | STEAL by WALKER, ANIYA |
| 08:49 | | | | TURNOVER (LOSTBALL) by WOOL, LEIGHAH-AMORI |
| 08:49 | STEAL by BROWN, CARNETHIA | | | |
| 08:44 | GOOD! LAYUP by BROWN, CARNETHIA [FB] | 60-33 | H 27 | |
| 08:26 | | 62-33 | H 29 | GOOD! JUMPER by WOOL, LEIGHAH-AMORI [PNT] |
| 08:26 | | | | ASSIST by WALKER, JORDAN |
| 08:17 | GOOD! LAYUP by BROWN, CARNETHIA | 62-35 | H 27 | |
| 07:57 | | 64-35 | H 29 | GOOD! LAYUP by SHAFER, SYDNEY [PNT] |
| 07:56 | | | | TIMEOUT 30SEC |
| 07:29 | MISSED LAYUP by PONDER, ALLENIA | | | |
| 07:25 | REBOUND (OFF) by PONDER, ALLENIA | | | |
| 07:24 | MISSED JUMPER by GOTCHER, TAYLORE | | | |
| 07:20 | REBOUND (OFF) by GOTCHER, TAYLORE | | | |
| 07:19 | MISSED JUMPER by BROWN, CARNETHIA | | | |
| 07:13 | | | | REBOUND (DEF) by WOOL, LEIGHAH-AMORI |
| 07:05 | MISSED 3PTR by CUNNINGHAM, CHEYENNE | | | |
| 07:01 | REBOUND (OFF) by BLANKENSHIP, VICTORIA | | | |
| 06:58 | | | | MISSED 3PTR by WOOL, LEIGHAH-AMORI |
| 06:55 | REBOUND (DEF) by CUNNINGHAM, CHEYENNE | | | |
| 06:41 | MISSED 3PTR by BROWN, CARNETHIA | | | |
| 06:38 | REBOUND (OFF) by GOTCHER, TAYLORE | | | |
| 06:38 | | | | FOUL (PERSONAL) by WOOL, LEIGHAH-AMORI |
| 06:38 | MISSED JUMPER by BROWN, CARNETHIA | | | |
| 06:38 | REBOUND (OFF) by TEAM | | | |
| 06:38 | MISSED LAYUP by BROWN, CARNETHIA | | | |
| 06:38 | | | | REBOUND (DEF) by WALKER, JORDAN |
| 06:26 | FOUL (PERSONAL) by BROWN, CARNETHIA | | | |
| 06:15 | FOUL (PERSONAL) by GOTCHER, TAYLORE | | | |
| 06:08 | FOUL (PERSONAL) by PONDER, ALLENIA | | | |
| 06:06 | | | | MISSED JUMPER by WALKER, ANIYA |
| 06:06 | REBOUND (DEF) by BLANKENSHIP, VICTORIA | | | |
| 06:05 | TURNOVER (TRAVEL) by GOTCHER, TAYLORE | | | |
| 05:59 | | | | SUB OUT: WATTERS, MADDIE |
| 05:59 | | | | SUB IN: MOBLEY, BREANNA |
| 05:29 | | | | MISSED JUMPER by SHAFER, SYDNEY |
| 05:25 | | | | REBOUND (OFF) by SHAFER, SYDNEY |
| 05:25 | FOUL (PERSONAL) by BLANKENSHIP, VICTORIA | | | |
| 05:25 | | 65-35 | H 30 | GOOD! FT by SHAFER, SYDNEY |
| 05:25 | | 66-35 | H 31 | GOOD! FT by SHAFER, SYDNEY |
| 05:23 | | | | FOUL (PERSONAL) by WOOL, LEIGHAH-AMORI |
| 05:12 | | | | SUB OUT: WOOL, LEIGHAH-AMORI |
| 05:12 | | | | SUB IN: FLETCHER, JILLIAN |
| 05:12 | SUB OUT: GOTCHER, TAYLORE | | | |
| 05:12 | SUB IN: PLANTER, ASHLEY | | | |
| 04:58 | | | | FOUL (PERSONAL) by WALKER, JORDAN |
| 04:58 | | | | |
| 04:56 | FOUL (PERSONAL) by BLANKENSHIP, VICTORIA | | | |
| 04:42 | | | | MISSED JUMPER by MOBLEY, BREANNA |
| 04:37 | | | | REBOUND (OFF) by FLETCHER, JILLIAN |
| 04:31 | | 68-35 | H 33 | GOOD! LAYUP by WALKER, JORDAN |
| 04:13 | MISSED 3PTR by BROWN, CARNETHIA | | | |
| 04:09 | | | | REBOUND (DEF) by WALKER, JORDAN |
| 04:06 | | 71-35 | H 36 | GOOD! 3PTR by FLETCHER, JILLIAN [FB] |
| 04:06 | | | | ASSIST by WALKER, JORDAN |
| 03:45 | TURNOVER (LOSTBALL) by BROWN, CARNETHIA | | | |
| 03:45 | | | | STEAL by SHAFER, SYDNEY |
| 03:41 | | 73-35 | H 38 | GOOD! LAYUP by WALKER, JORDAN |

| Time | VISITORS: Kentucky St. | Score | Margin | HOME: Western Mich. |
|-------|--|-------|--------|------------------------------------|
| 03:41 | FOUL (PERSONAL) by CUNNINGHAM, CHEYENNE | | | |
| 03:41 | | | | SUB OUT: MOBLEY, BREANNA |
| 03:41 | | | | SUB OUT: WALKER, JORDAN |
| 03:41 | | | | SUB IN: WATTERS, MADDIE |
| 03:41 | | | | SUB IN: KONKLE, ASHLEY |
| 03:41 | SUB OUT: BROWN, CARNETHIA | | | |
| 03:41 | SUB IN: HERBERT, KHALIAH | | | |
| 03:41 | | 74-35 | H 39 | GOOD! FT by SHAFER, SYDNEY |
| 03:32 | MISSED 3PTR by CUNNINGHAM, CHEYENNE | | | |
| 03:28 | | | | REBOUND (DEF) by FLETCHER, JILLIAN |
| 03:25 | | | | MISSED JUMPER by SHAFER, SYDNEY |
| 03:24 | REBOUND (DEF) by TEAM | | | |
| 03:13 | GOOD! JUMPER by PONDER, ALLENIA [PNT] | 74-37 | H 37 | |
| 03:01 | FOUL (PERSONAL) by BLANKENSHIP, VICTORIA | | | |
| 03:01 | SUB OUT: BLANKENSHIP, VICTORIA | | | |
| 03:01 | SUB IN: GOTCHER, TAYLORE | | | |
| 03:01 | | 75-37 | H 38 | GOOD! FT by KONKLE, ASHLEY |
| 03:01 | | 76-37 | H 39 | GOOD! FT by KONKLE, ASHLEY |
| 02:42 | | | | FOUL (PERSONAL) by WALKER, ANIYA |
| 02:42 | SUB OUT: CUNNINGHAM, CHEYENNE | | | |
| 02:42 | SUB IN: WILLIAMS, AMANI | | | |
| 02:42 | GOOD! FT by PONDER, ALLENIA | 76-38 | H 38 | |
| 02:42 | GOOD! FT by PONDER, ALLENIA | 76-39 | H 37 | |
| 02:23 | | | | MISSED 3PTR by FLETCHER, JILLIAN |
| 02:19 | REBOUND (DEF) by PONDER, ALLENIA | | | |
| 02:03 | | | | FOUL (PERSONAL) by KONKLE, ASHLEY |
| 02:03 | MISSED FT by GOTCHER, TAYLORE | | | |
| 02:03 | REBOUND (OFF) by TEAM | | | |
| 02:03 | MISSED FT by GOTCHER, TAYLORE | | | |
| 02:03 | | | | REBOUND (DEF) by FLETCHER, JILLIAN |
| 01:41 | | | | MISSED JUMPER by FLETCHER, JILLIAN |
| 01:40 | REBOUND (DEF) by TEAM | | | |
| 01:24 | MISSED JUMPER by PONDER, ALLENIA | | | |
| 01:20 | | | | REBOUND (DEF) by SHAFER, SYDNEY |
| 01:17 | | 78-39 | H 39 | GOOD! LAYUP by KONKLE, ASHLEY [FB] |
| 01:17 | | | | ASSIST by SHAFER, SYDNEY |
| 01:01 | | | | SUB OUT: WALKER, ANIYA |
| 01:01 | | | | SUB OUT: KONKLE, ASHLEY |
| 01:01 | | | | SUB IN: DOUGLAS, HANNAH |
| 01:01 | | | | SUB IN: CENCULA, KIANA |
| 00:44 | TURNOVER (BADPASS) by HERBERT, KHALIAH | | | |
| 00:23 | | | | MISSED 3PTR by CENCULA, KIANA |
| 00:21 | | | | REBOUND (OFF) by SHAFER, SYDNEY |
| 00:21 | FOUL (PERSONAL) by PLANTER, ASHLEY | | | |
| 00:21 | | 79-39 | H 40 | GOOD! FT by SHAFER, SYDNEY |
| 00:21 | | 80-39 | H 41 | GOOD! FT by SHAFER, SYDNEY |
| 00:05 | GOOD! LAYUP by PLANTER, ASHLEY | 80-41 | H 39 | |
| 00:05 | ASSIST by WILLIAMS, AMANI | | | |

Kentucky St. 41, Western Mich. 80

| Points from (This Period) | KSU | WMU |
|---------------------------|-----|-----|
| In the Paint | 10 | 12 |
| Off Turns | 4 | 7 |
| 2nd Chance | 0 | 8 |
| Fast Break | 2 | 5 |
| Bench | 4 | 14 |

**Official Scoring/Possession Reference Chart
Kentucky St. vs Western Mich.
Period 1**

November 14, 2019 at Read Fieldhouse/University Arena - Kalamazoo



Period 1

Starters:

Kentucky St.: 11 PONDER, ALLENIA (G); 22 KEE, JESSIE (F); 23 BROWN, CARNETHIA (G); 25 JONES, ERICA (F); 33 BLANKENSHIP, VICTORIA (F);

Western Mich.: 5 BAILEY, CHELAYNE (G); 10 MOBLEY, BREANNA (F); 11 REED, KAMRIN (G); 23 WALKER, JORDAN (G); 24 WOOL, LEIGHAH-AMORI (F);

| Time | VISITORS: Kentucky St. | Score | Margin | HOME: Western Mich. |
|-------|---------------------------------|-------|--------|--|
| 09:16 | | 2-0 | H 2 | GOOD! LAYUP by MOBLEY, BREANNA [FB] |
| 08:41 | | 4-0 | H 4 | GOOD! JUMPER by BAILEY, CHELAYNE [PNT] |
| 07:41 | | 6-0 | H 6 | GOOD! LAYUP by REED, KAMRIN |
| 07:41 | | 7-0 | H 7 | GOOD! FT by REED, KAMRIN |
| 06:49 | | 10-0 | H 10 | GOOD! 3PTR by WALKER, JORDAN |
| 05:46 | | 13-0 | H 13 | GOOD! 3PTR by REED, KAMRIN |
| 04:49 | | 15-0 | H 15 | GOOD! LAYUP by REED, KAMRIN |
| 04:18 | | 18-0 | H 18 | GOOD! 3PTR by REED, KAMRIN |
| 03:23 | | 20-0 | H 20 | GOOD! LAYUP by KONKLE, ASHLEY |
| 01:29 | | 23-0 | H 23 | GOOD! 3PTR by REED, KAMRIN [FB] |
| 01:10 | GOOD! JUMPER by PLANTER, ASHLEY | 23-2 | H 21 | |

Kentucky St. 2, Western Mich. 23

Official Scoring/Possession Reference Chart
Kentucky St. vs Western Mich.
Period 2

November 14, 2019 at Read Fieldhouse/University Arena - Kalamazoo



Period 2

Starters:

Kentucky St.: 11 PONDER, ALLENIA (G); 22 KEE, JESSIE (F); 23 BROWN, CARNETHIA (G); 25 JONES, ERICA (F); 33 BLANKENSHIP, VICTORIA (F);

Western Mich.: 5 BAILEY, CHELAYNE (G); 10 MOBLEY, BREANNA (F); 11 REED, KAMRIN (G); 23 WALKER, JORDAN (G); 24 WOOL, LEIGHAH-AMORI (F);

| Time | VISITORS: Kentucky St. | Score | Margin | HOME: Western Mich. |
|-------|--|-------|--------|--------------------------------------|
| 09:44 | GOOD! 3PTR by BROWN, CARNETHIA | 23-5 | H 18 | |
| 09:22 | | 26-5 | H 21 | GOOD! 3PTR by WALKER, ANIYA |
| 08:42 | GOOD! FT by JONES, ERICA | 26-6 | H 20 | |
| 08:42 | GOOD! FT by JONES, ERICA | 26-7 | H 19 | |
| 08:25 | | 29-7 | H 22 | GOOD! 3PTR by SHAFER, SYDNEY |
| 07:04 | GOOD! LAYUP by JONES, ERICA [FB] | 29-9 | H 20 | |
| 06:38 | GOOD! LAYUP by PONDER, ALLENIA | 29-11 | H 18 | |
| 06:14 | GOOD! LAYUP by BROWN, CARNETHIA [FB/PNT] | 29-13 | H 16 | |
| 02:06 | | 31-13 | H 18 | GOOD! JUMPER by WALKER, JORDAN [PNT] |
| 01:48 | GOOD! FT by BLANKENSHIP, VICTORIA | 31-14 | H 17 | |
| 01:48 | GOOD! FT by BLANKENSHIP, VICTORIA | 31-15 | H 16 | |
| 00:44 | | 34-15 | H 19 | GOOD! 3PTR by WALKER, JORDAN |

Kentucky St. 15, Western Mich. 34

Official Scoring/Possession Reference Chart
Kentucky St. vs Western Mich.
Period 3

November 14, 2019 at Read Fieldhouse/University Arena - Kalamazoo



Period 3

Starters:

Kentucky St.: 11 PONDER, ALLENIA (G); 22 KEE, JESSIE (F); 23 BROWN, CARNETHIA (G); 25 JONES, ERICA (F); 33 BLANKENSHIP, VICTORIA (F);

Western Mich.: 5 BAILEY, CHELAYNE (G); 10 MOBLEY, BREANNA (F); 11 REED, KAMRIN (G); 23 WALKER, JORDAN (G); 24 WOOL, LEIGHAH-AMORI (F);

| Time | VISITORS: Kentucky St. | Score | Margin | HOME: Western Mich. |
|-------|--|-------|--------|---------------------------------------|
| 08:27 | | 36-15 | H 21 | GOOD! JUMPER by MOBLEY, BREANNA [PNT] |
| 07:56 | | 38-15 | H 23 | GOOD! LAYUP by MOBLEY, BREANNA [PNT] |
| 07:29 | GOOD! LAYUP by BROWN, CARNETHIA [FB/PNT] | 38-17 | H 21 | |
| 07:06 | | 39-17 | H 22 | GOOD! FT by MOBLEY, BREANNA [FB] |
| 07:06 | | 40-17 | H 23 | GOOD! FT by MOBLEY, BREANNA [FB] |
| 06:42 | | 42-17 | H 25 | GOOD! LAYUP by WOOL, LEIGHAH-AMORI |
| 06:25 | GOOD! LAYUP by JONES, ERICA | 42-19 | H 23 | |
| 05:55 | GOOD! JUMPER by CUNNINGHAM, CHEYENNE | 42-21 | H 21 | |
| 05:19 | GOOD! LAYUP by GOTCHER, TAYLORE | 42-23 | H 19 | |
| 05:19 | GOOD! FT by GOTCHER, TAYLORE | 42-24 | H 18 | |
| 05:05 | | 44-24 | H 20 | GOOD! LAYUP by MOBLEY, BREANNA |
| 04:47 | | 46-24 | H 22 | GOOD! JUMPER by MOBLEY, BREANNA |
| 04:18 | | 47-24 | H 23 | GOOD! FT by MOBLEY, BREANNA [FB] |
| 03:04 | | 48-24 | H 24 | GOOD! FT by KONKLE, ASHLEY [FB] |
| 02:18 | GOOD! 3PTR by WILLIAMS, AMANI | 48-27 | H 21 | |
| 01:49 | | 49-27 | H 22 | GOOD! FT by BAILEY, CHELAYNE [FB] |
| 01:49 | | 50-27 | H 23 | GOOD! FT by BAILEY, CHELAYNE [FB] |
| 01:39 | GOOD! FT by BROWN, CARNETHIA | 50-28 | H 22 | |
| 01:39 | GOOD! FT by BROWN, CARNETHIA | 50-29 | H 21 | |
| 01:26 | | 51-29 | H 22 | GOOD! FT by SHAFER, SYDNEY |
| 00:47 | | 52-29 | H 23 | GOOD! FT by WOOL, LEIGHAH-AMORI [FB] |
| 00:47 | | 53-29 | H 24 | GOOD! FT by WOOL, LEIGHAH-AMORI [FB] |
| 00:34 | | 54-29 | H 25 | GOOD! FT by WALKER, JORDAN [FB] |
| 00:34 | | 55-29 | H 26 | GOOD! FT by WALKER, JORDAN [FB] |
| 00:01 | | 58-29 | H 29 | GOOD! 3PTR by WALKER, JORDAN |

Kentucky St. 29, Western Mich. 58

**Official Scoring/Possession Reference Chart
Kentucky St. vs Western Mich.
Period 4**

November 14, 2019 at Read Fieldhouse/University Arena - Kalamazoo



Period 4

Starters:

Kentucky St.: 11 PONDER, ALLENIA (G); 22 KEE, JESSIE (F); 23 BROWN, CARNETHIA (G); 25 JONES, ERICA (F); 33 BLANKENSHIP, VICTORIA (F);

Western Mich.: 5 BAILEY, CHELAYNE (G); 10 MOBLEY, BREANNA (F); 11 REED, KAMRIN (G); 23 WALKER, JORDAN (G); 24 WOOL, LEIGHAH-AMORI (F);

| Time | VISITORS: Kentucky St. | Score | Margin | HOME: Western Mich. |
|-------|---------------------------------------|-------|--------|---|
| 09:33 | GOOD! LAYUP by GOTCHER, TAYLORE | 58-31 | H 27 | |
| 09:08 | | 60-31 | H 29 | GOOD! LAYUP by WALKER, JORDAN |
| 08:44 | GOOD! LAYUP by BROWN, CARNETHIA [FB] | 60-33 | H 27 | |
| 08:26 | | 62-33 | H 29 | GOOD! JUMPER by WOOL, LEIGHAH-AMORI [PNT] |
| 08:17 | GOOD! LAYUP by BROWN, CARNETHIA | 62-35 | H 27 | |
| 07:57 | | 64-35 | H 29 | GOOD! LAYUP by SHAFER, SYDNEY [PNT] |
| 05:25 | | 65-35 | H 30 | GOOD! FT by SHAFER, SYDNEY |
| 05:25 | | 66-35 | H 31 | GOOD! FT by SHAFER, SYDNEY |
| 04:31 | | 68-35 | H 33 | GOOD! LAYUP by WALKER, JORDAN |
| 04:06 | | 71-35 | H 36 | GOOD! 3PTR by FLETCHER, JILLIAN [FB] |
| 03:41 | | 73-35 | H 38 | GOOD! LAYUP by WALKER, JORDAN |
| 03:41 | | 74-35 | H 39 | GOOD! FT by SHAFER, SYDNEY |
| 03:13 | GOOD! JUMPER by PONDER, ALLENIA [PNT] | 74-37 | H 37 | |
| 03:01 | | 75-37 | H 38 | GOOD! FT by KONKLE, ASHLEY |
| 03:01 | | 76-37 | H 39 | GOOD! FT by KONKLE, ASHLEY |
| 02:42 | GOOD! FT by PONDER, ALLENIA | 76-38 | H 38 | |
| 02:42 | GOOD! FT by PONDER, ALLENIA | 76-39 | H 37 | |
| 01:17 | | 78-39 | H 39 | GOOD! LAYUP by KONKLE, ASHLEY [FB] |
| 00:21 | | 79-39 | H 40 | GOOD! FT by SHAFER, SYDNEY |
| 00:21 | | 80-39 | H 41 | GOOD! FT by SHAFER, SYDNEY |
| 00:05 | GOOD! LAYUP by PLANTER, ASHLEY | 80-41 | H 39 | |

Kentucky St. 41, Western Mich. 80

**Official Substitutions Log
Kentucky St. vs Western Mich.
Period 1**

November 14, 2019 at Read Fieldhouse/University Arena - Kalamazoo



| VISITORS: Kentucky St. | Time | Score | HOME: Western Mich. |
|-----------------------------------|-------------|--------------|------------------------------|
| 11 PONDER, ALLENIA | | | 5 BAILEY, CHELAYNE |
| 22 KEE, JESSIE | | | 10 MOBLEY, BREANNA |
| 23 BROWN, CARNETHIA | | | 11 REED, KAMRIN |
| 25 JONES, ERICA | | | 23 WALKER, JORDAN |
| 33 BLANKENSHIP, VICTORIA | | | 24 WOOL, LEIGHAH-AMORI |
| SUB OUT: 22 KEE, JESSIE | 08:07 | 0-4 | |
| SUB IN: 4 HERBERT, KHALIAH | 08:07 | | |
| SUB OUT: 23 BROWN, CARNETHIA | 07:41 | 0-6 | |
| SUB OUT: 33 BLANKENSHIP, VICTORIA | 07:41 | | |
| SUB IN: 22 KEE, JESSIE | 07:41 | | |
| SUB IN: 34 GOTCHER, TAYLORE | 07:41 | | |
| SUB OUT: 11 PONDER, ALLENIA | 06:42 | 0-10 | |
| SUB OUT: 25 JONES, ERICA | 06:42 | | |
| SUB IN: 00 CUNNINGHAM, CHEYENNE | 06:42 | | |
| SUB IN: 5 PLANTER, ASHLEY | 06:42 | | |
| SUB OUT: 00 CUNNINGHAM, CHEYENNE | 05:22 | 0-13 | |
| SUB IN: 1 WILLIAMS, AMANI | 05:22 | | |
| | 04:26 | 0-15 | SUB OUT: MOBLEY, BREANNA |
| | 04:26 | | SUB IN: KONKLE, ASHLEY |
| SUB OUT: 4 HERBERT, KHALIAH | 03:47 | 0-18 | |
| SUB IN: 2 ANTOINE, DEJA | 03:47 | | |
| | 02:54 | 0-20 | SUB OUT: BAILEY, CHELAYNE |
| | 02:54 | | SUB OUT: WALKER, JORDAN |
| | 02:54 | | SUB IN: WATTERS, MADDIE |
| | 02:54 | | SUB IN: SHAFER, SYDNEY |
| | 02:05 | 0-20 | SUB OUT: WOOL, LEIGHAH-AMORI |
| | 02:05 | | SUB IN: MOBLEY, BREANNA |
| | 00:43 | 2-23 | SUB OUT: REED, KAMRIN |
| | 00:43 | | SUB IN: WALKER, ANIYA |
| SUB OUT: 5 PLANTER, ASHLEY | 00:43 | | |
| SUB IN: 25 JONES, ERICA | 00:43 | | |

Kentucky St. 2, Western Mich. 23

**Official Substitutions Log
Kentucky St. vs Western Mich.
Period 2**

November 14, 2019 at Read Fieldhouse/University Arena - Kalamazoo



| VISITORS: Kentucky St. | Time | Score | HOME: Western Mich. |
|-----------------------------------|-------------|--------------|-----------------------------|
| 11 PONDER, ALLENIA | | | 5 BAILEY, CHELAYNE |
| 22 KEE, JESSIE | | | 10 MOBLEY, BREANNA |
| 23 BROWN, CARNETHIA | | | 11 REED, KAMRIN |
| 25 JONES, ERICA | | | 23 WALKER, JORDAN |
| 33 BLANKENSHIP, VICTORIA | | | 24 WOOL, LEIGHAH-AMORI |
| SUB OUT: 2 ANTOINE, DEJA | 10:00 | - | |
| SUB OUT: 34 GOTCHER, TAYLORE | 10:00 | | |
| SUB IN: 23 BROWN, CARNETHIA | 10:00 | | |
| SUB IN: 33 BLANKENSHIP, VICTORIA | 10:00 | | |
| SUB OUT: 1 WILLIAMS, AMANI | 09:08 | 5-26 | |
| SUB IN: 11 PONDER, ALLENIA | 09:08 | | |
| | 07:55 | 7-29 | SUB OUT: KONKLE, ASHLEY |
| | 07:55 | | SUB IN: FLETCHER, JILLIAN |
| SUB OUT: 22 KEE, JESSIE | 07:54 | 7-29 | |
| SUB IN: 4 HERBERT, KHALIAH | 07:54 | | |
| SUB OUT: 33 BLANKENSHIP, VICTORIA | 07:24 | 7-29 | |
| SUB IN: 34 GOTCHER, TAYLORE | 07:24 | | |
| | 06:08 | 13-29 | SUB OUT: WATTERS, MADDIE |
| | 06:08 | | SUB OUT: FLETCHER, JILLIAN |
| | 06:08 | | SUB OUT: WALKER, ANIYA |
| | 06:08 | | SUB OUT: SHAFER, SYDNEY |
| | 06:08 | | SUB IN: BAILEY, CHELAYNE |
| | 06:08 | | SUB IN: REED, KAMRIN |
| | 06:08 | | SUB IN: WALKER, JORDAN |
| | 06:08 | | SUB IN: WOOL, LEIGHAH-AMORI |
| SUB OUT: 4 HERBERT, KHALIAH | 06:08 | | |
| SUB IN: 1 WILLIAMS, AMANI | 06:08 | | |
| SUB OUT: 25 JONES, ERICA | 04:26 | 13-29 | |
| SUB IN: 5 PLANTER, ASHLEY | 04:26 | | |
| SUB OUT: 34 GOTCHER, TAYLORE | 03:43 | 13-29 | |
| SUB IN: 33 BLANKENSHIP, VICTORIA | 03:43 | | |
| SUB OUT: 11 PONDER, ALLENIA | 03:30 | 13-29 | |
| SUB IN: 00 CUNNINGHAM, CHEYENNE | 03:30 | | |
| | 02:30 | 13-29 | SUB OUT: MOBLEY, BREANNA |
| | 02:30 | | SUB IN: KONKLE, ASHLEY |
| SUB OUT: 00 CUNNINGHAM, CHEYENNE | 01:48 | 13-31 | |
| SUB IN: 4 HERBERT, KHALIAH | 01:48 | | |
| SUB OUT: 5 PLANTER, ASHLEY | 01:32 | 15-31 | |
| SUB IN: 25 JONES, ERICA | 01:32 | | |

Kentucky St. 15, Western Mich. 34

**Official Substitutions Log
Kentucky St. vs Western Mich.
Period 3**

November 14, 2019 at Read Fieldhouse/University Arena - Kalamazoo



| VISITORS: Kentucky St. | Time | Score | HOME: Western Mich. |
|-----------------------------------|-------------|--------------|------------------------------|
| 11 PONDER, ALLENIA | | | 5 BAILEY, CHELAYNE |
| 22 KEE, JESSIE | | | 10 MOBLEY, BREANNA |
| 23 BROWN, CARNETHIA | | | 11 REED, KAMRIN |
| 25 JONES, ERICA | | | 23 WALKER, JORDAN |
| 33 BLANKENSHIP, VICTORIA | | | 24 WOOL, LEIGHAH-AMORI |
| | 10:00 | - | SUB OUT: KONKLE, ASHLEY |
| | 10:00 | | SUB IN: MOBLEY, BREANNA |
| SUB OUT: 1 WILLIAMS, AMANI | 10:00 | | |
| SUB OUT: 4 HERBERT, KHALIAH | 10:00 | | |
| SUB IN: 11 PONDER, ALLENIA | 10:00 | | |
| SUB IN: 22 KEE, JESSIE | 10:00 | | |
| SUB OUT: 22 KEE, JESSIE | 09:21 | - | |
| SUB IN: 1 WILLIAMS, AMANI | 09:21 | | |
| SUB OUT: 1 WILLIAMS, AMANI | 07:14 | 17-38 | |
| SUB OUT: 11 PONDER, ALLENIA | 07:14 | | |
| SUB OUT: 33 BLANKENSHIP, VICTORIA | 07:14 | | |
| SUB IN: 00 CUNNINGHAM, CHEYENNE | 07:14 | | |
| SUB IN: 4 HERBERT, KHALIAH | 07:14 | | |
| SUB IN: 34 GOTCHER, TAYLORE | 07:14 | | |
| | 06:20 | 19-42 | SUB OUT: WALKER, JORDAN |
| | 06:20 | | SUB IN: WATTERS, MADDIE |
| SUB OUT: 25 JONES, ERICA | 05:19 | 23-42 | |
| SUB IN: 5 PLANTER, ASHLEY | 05:19 | | |
| | 04:31 | 24-46 | SUB OUT: WOOL, LEIGHAH-AMORI |
| | 04:31 | | SUB IN: KONKLE, ASHLEY |
| SUB OUT: 4 HERBERT, KHALIAH | 04:31 | | |
| SUB IN: 1 WILLIAMS, AMANI | 04:31 | | |
| SUB OUT: 00 CUNNINGHAM, CHEYENNE | 04:18 | 24-46 | |
| SUB IN: 22 KEE, JESSIE | 04:18 | | |
| SUB OUT: 1 WILLIAMS, AMANI | 03:04 | 24-47 | |
| SUB IN: 25 JONES, ERICA | 03:04 | | |
| SUB OUT: 5 PLANTER, ASHLEY | 03:04 | | |
| SUB IN: 1 WILLIAMS, AMANI | 03:04 | | |
| SUB OUT: 22 KEE, JESSIE | 01:49 | 27-48 | |
| SUB OUT: 25 JONES, ERICA | 01:49 | | |
| SUB IN: 2 ANTOINE, DEJA | 01:49 | | |
| SUB IN: 11 PONDER, ALLENIA | 01:49 | | |
| | 01:39 | 29-50 | SUB OUT: BAILEY, CHELAYNE |
| | 01:39 | | SUB OUT: MOBLEY, BREANNA |
| | 01:39 | | SUB OUT: REED, KAMRIN |
| | 01:39 | | SUB IN: SHAFER, SYDNEY |
| | 01:39 | | SUB IN: WALKER, JORDAN |
| | 01:39 | | SUB IN: WOOL, LEIGHAH-AMORI |
| SUB OUT: 1 WILLIAMS, AMANI | 00:34 | 29-53 | |
| SUB IN: 00 CUNNINGHAM, CHEYENNE | 00:34 | | |

Kentucky St. 29, Western Mich. 58

**Official Substitutions Log
Kentucky St. vs Western Mich.
Period 4**

November 14, 2019 at Read Fieldhouse/University Arena - Kalamazoo



| VISITORS: Kentucky St. | Time | Score | HOME: Western Mich. |
|-----------------------------------|-------------|--------------|------------------------------|
| 11 PONDER, ALLENIA | | | 5 BAILEY, CHELAYNE |
| 22 KEE, JESSIE | | | 10 MOBLEY, BREANNA |
| 23 BROWN, CARNETHIA | | | 11 REED, KAMRIN |
| 25 JONES, ERICA | | | 23 WALKER, JORDAN |
| 33 BLANKENSHIP, VICTORIA | | | 24 WOOL, LEIGHAH-AMORI |
| | 10:00 | - | SUB OUT: KONKLE, ASHLEY |
| | 10:00 | | SUB IN: WALKER, ANIYA |
| SUB OUT: 2 ANTOINE, DEJA | 10:00 | | |
| SUB IN: 33 BLANKENSHIP, VICTORIA | 10:00 | | |
| | 05:59 | 35-64 | SUB OUT: WATTERS, MADDIE |
| | 05:59 | | SUB IN: MOBLEY, BREANNA |
| | 05:12 | 35-66 | SUB OUT: WOOL, LEIGHAH-AMORI |
| | 05:12 | | SUB IN: FLETCHER, JILLIAN |
| SUB OUT: 34 GOTCHER, TAYLORE | 05:12 | | |
| SUB IN: 5 PLANTER, ASHLEY | 05:12 | | |
| | 03:41 | 35-73 | SUB OUT: MOBLEY, BREANNA |
| | 03:41 | | SUB OUT: WALKER, JORDAN |
| | 03:41 | | SUB IN: WATTERS, MADDIE |
| | 03:41 | | SUB IN: KONKLE, ASHLEY |
| SUB OUT: 23 BROWN, CARNETHIA | 03:41 | | |
| SUB IN: 4 HERBERT, KHALIAH | 03:41 | | |
| SUB OUT: 33 BLANKENSHIP, VICTORIA | 03:01 | 37-74 | |
| SUB IN: 34 GOTCHER, TAYLORE | 03:01 | | |
| SUB OUT: 00 CUNNINGHAM, CHEYENNE | 02:42 | 37-76 | |
| SUB IN: 1 WILLIAMS, AMANI | 02:42 | | |
| | 01:01 | 39-78 | SUB OUT: WALKER, ANIYA |
| | 01:01 | | SUB OUT: KONKLE, ASHLEY |
| | 01:01 | | SUB IN: DOUGLAS, HANNAH |
| | 01:01 | | SUB IN: CENCULA, KIANA |

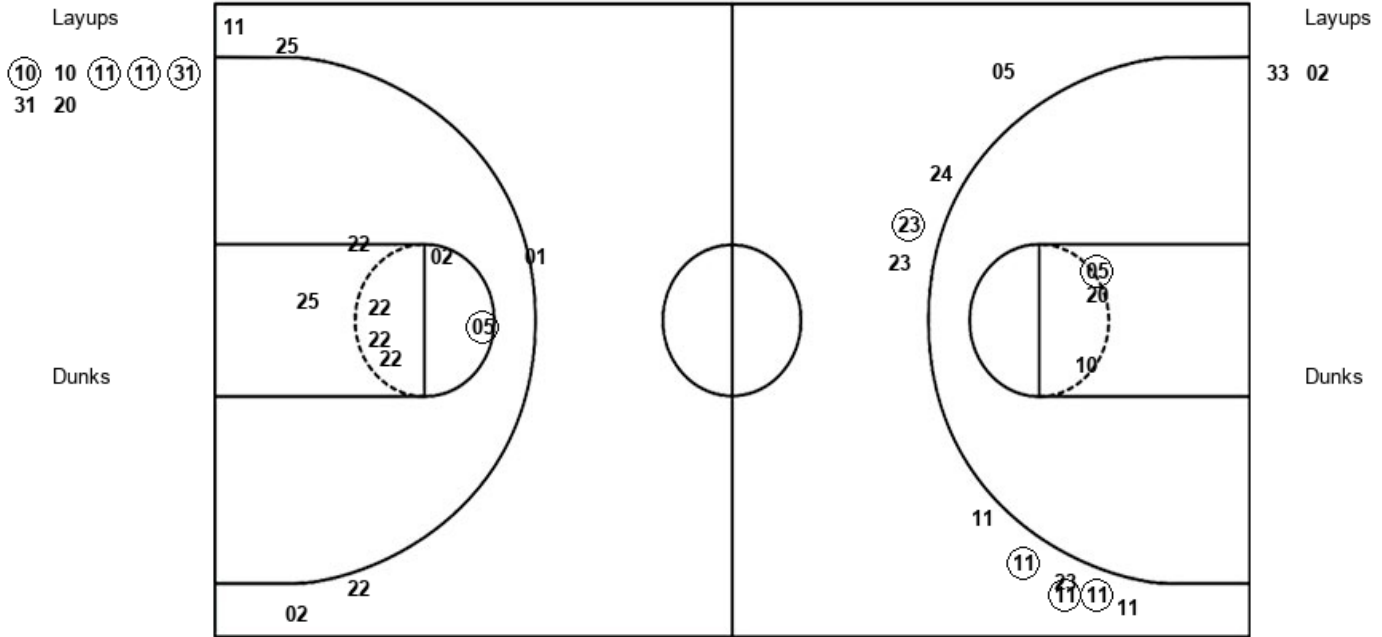
Kentucky St. 41, Western Mich. 80

Official Shot Chart
Kentucky St. vs Western Mich.
 PERIOD 1 Shots
 November 14, 2019 at Read Fieldhouse/University Arena - Kalamazoo



Western Mich.

Kentucky St.



| WMU : Period 1 | Made | Att | Pct |
|--------------------------|----------|-----------|-------------|
| Layups | 4 | 7 | 57.1 |
| Dunks | 0 | 0 | 0 |
| 2PT Field Goals | 5 | 10 | 50.0 |
| 3PT Field Goals | 4 | 10 | 40.0 |
| Total Field Goals | 9 | 20 | 45.0 |

| KSU : Period 1 | Made | Att | Pct |
|--------------------------|----------|-----------|-------------|
| Layups | 0 | 2 | 00.0 |
| Dunks | 0 | 0 | 0 |
| 2PT Field Goals | 1 | 9 | 11.1 |
| 3PT Field Goals | 0 | 5 | 00.0 |
| Total Field Goals | 1 | 14 | 07.1 |

Official Shot Chart
Kentucky St. vs Western Mich.
PERIOD 3 Shots
 November 14, 2019 at Read Fieldhouse/University Arena - Kalamazoo



Western Mich.

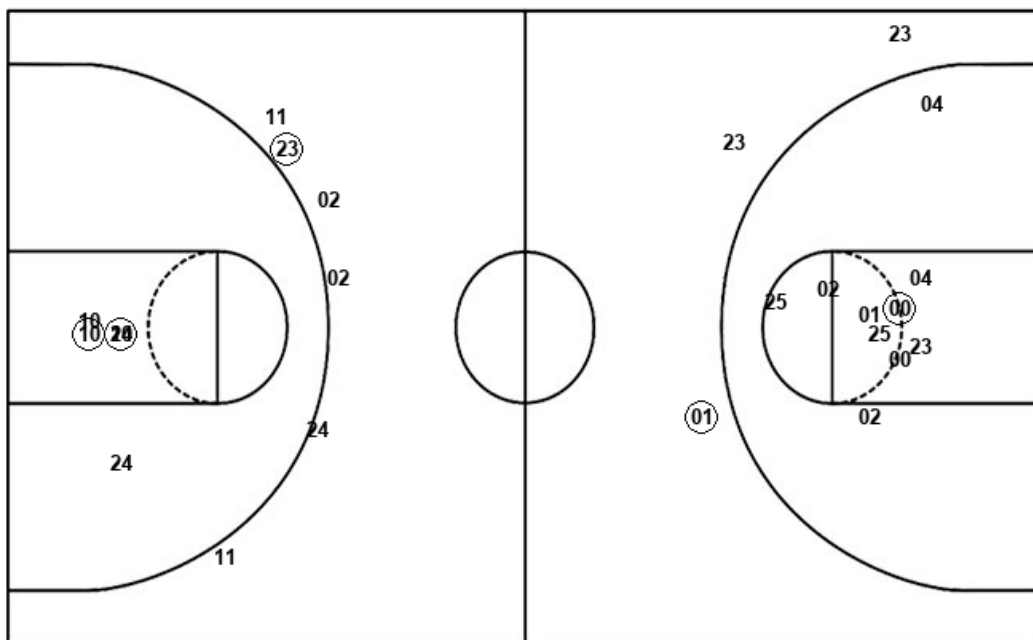
Kentucky St.

Layups
 (10) (24) (10)

Layups
 (23) (25) (34) 25 01

Dunks

Dunks



| WMU : Period 3 | Made | Att | Pct |
|--------------------------|----------|-----------|-------------|
| Layups | 3 | 3 | 100.0 |
| Dunks | 0 | 0 | 0 |
| 2PT Field Goals | 5 | 8 | 62.5 |
| 3PT Field Goals | 1 | 6 | 16.7 |
| Total Field Goals | 6 | 14 | 42.9 |

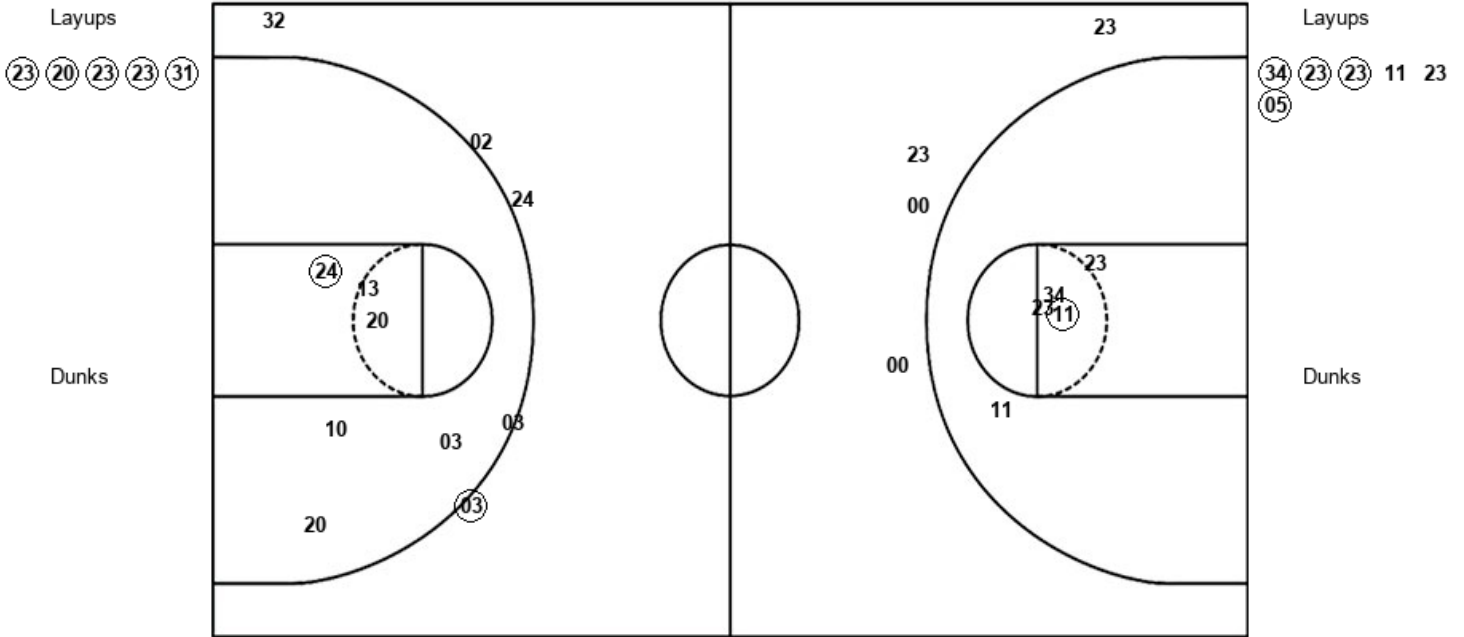
| KSU : Period 3 | Made | Att | Pct |
|--------------------------|----------|-----------|-------------|
| Layups | 3 | 5 | 60.0 |
| Dunks | 0 | 0 | 0 |
| 2PT Field Goals | 4 | 15 | 26.7 |
| 3PT Field Goals | 1 | 3 | 33.3 |
| Total Field Goals | 5 | 18 | 27.8 |

Official Shot Chart
Kentucky St. vs Western Mich.
PERIOD 4 Shots
 November 14, 2019 at Read Fieldhouse/University Arena - Kalamazoo



Western Mich.

Kentucky St.



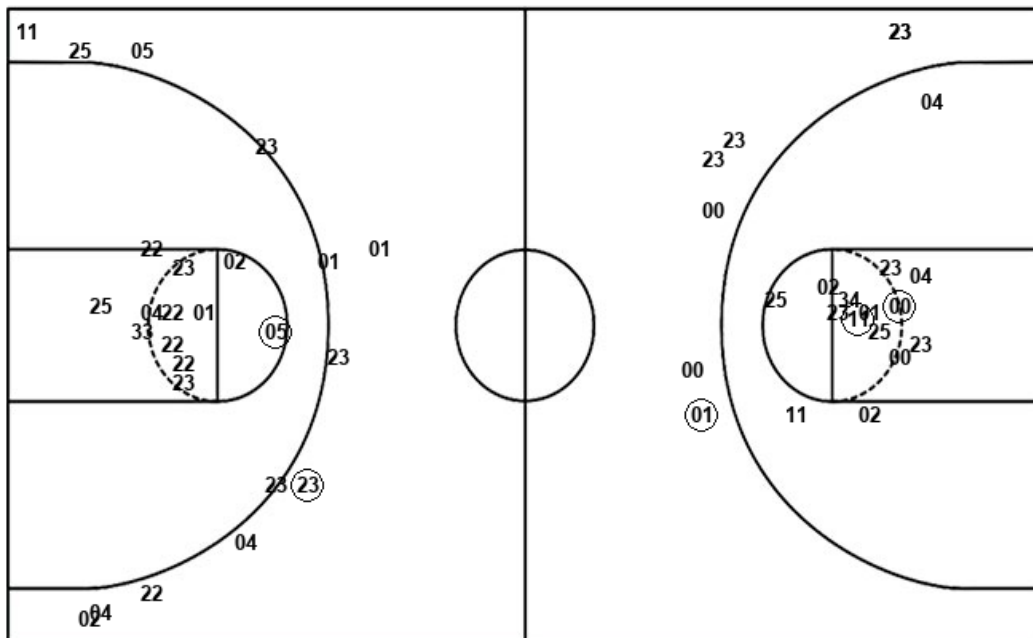
| WMU : Period 4 | Made | Att | Pct |
|--------------------------|-------------|------------|-------------|
| Layups | 5 | 5 | 100.0 |
| Dunks | 0 | 0 | 0 |
| 2PT Field Goals | 6 | 11 | 54.5 |
| 3PT Field Goals | 1 | 5 | 20.0 |
| Total Field Goals | 7 | 16 | 43.8 |

| KSU : Period 4 | Made | Att | Pct |
|--------------------------|-------------|------------|-------------|
| Layups | 4 | 6 | 66.7 |
| Dunks | 0 | 0 | 0 |
| 2PT Field Goals | 5 | 11 | 45.5 |
| 3PT Field Goals | 0 | 4 | 00.0 |
| Total Field Goals | 5 | 15 | 33.3 |

Official Shot Chart
Kentucky St. vs Western Mich.
 Kentucky St. Team Shots
 November 14, 2019 at Read Fieldhouse/University Arena - Kalamazoo



Layups



Layups

- 33 02 33 (25) (11)
- (23) 25 11 (23) (25)
- (34) 25 01 (34) (23)
- (23) 11 23 (05)

Dunks

Dunks

| KSU : Period 1 | Made | Att | Pct |
|--------------------------|----------|-----------|-------------|
| Layups | 0 | 2 | 00.0 |
| Dunks | 0 | 0 | 0 |
| 2PT Field Goals | 1 | 9 | 11.1 |
| 3PT Field Goals | 0 | 5 | 00.0 |
| Total Field Goals | 1 | 14 | 07.1 |

| KSU : Period 2 | Made | Att | Pct |
|--------------------------|----------|-----------|-------------|
| Layups | 3 | 6 | 50.0 |
| Dunks | 0 | 0 | 0 |
| 2PT Field Goals | 3 | 11 | 27.3 |
| 3PT Field Goals | 1 | 8 | 12.5 |
| Total Field Goals | 4 | 19 | 21.1 |

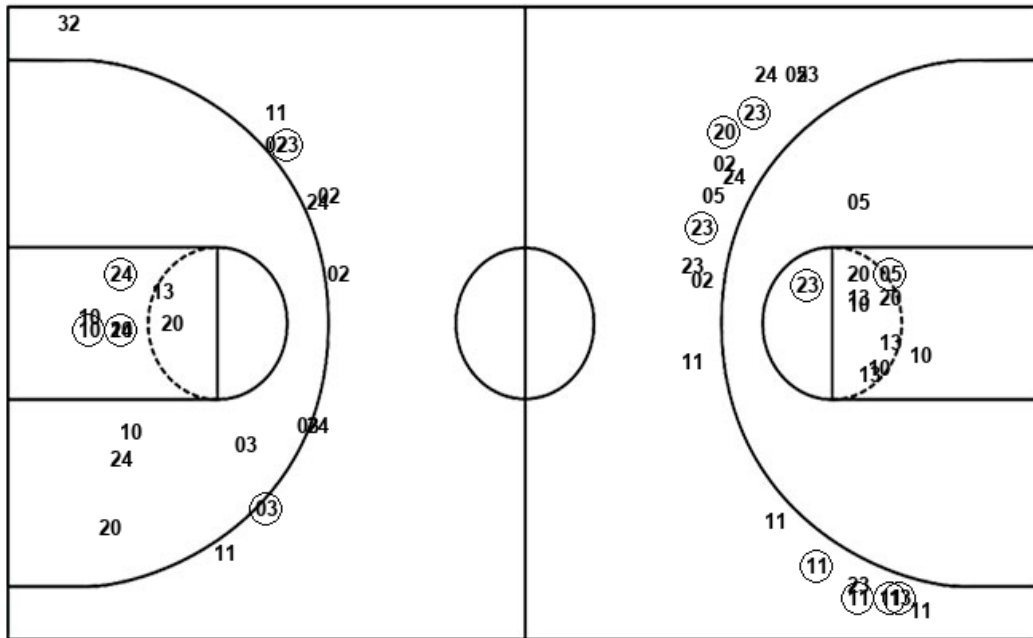
| KSU : Period 3 | Made | Att | Pct |
|--------------------------|----------|-----------|-------------|
| Layups | 3 | 5 | 60.0 |
| Dunks | 0 | 0 | 0 |
| 2PT Field Goals | 4 | 15 | 26.7 |
| 3PT Field Goals | 1 | 3 | 33.3 |
| Total Field Goals | 5 | 18 | 27.8 |

| KSU : Period 4 | Made | Att | Pct |
|--------------------------|----------|-----------|-------------|
| Layups | 4 | 6 | 66.7 |
| Dunks | 0 | 0 | 0 |
| 2PT Field Goals | 5 | 11 | 45.5 |
| 3PT Field Goals | 0 | 4 | 00.0 |
| Total Field Goals | 5 | 15 | 33.3 |

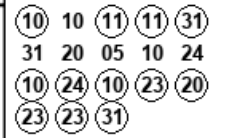
Official Shot Chart
Kentucky St. vs Western Mich.
Western Mich. Team Shots
 November 14, 2019 at Read Fieldhouse/University Arena - Kalamazoo



Layups



Layups



Dunks

Dunks

| WMU : Period 1 | Made | Att | Pct |
|--------------------------|----------|-----------|-------------|
| Layups | 4 | 7 | 57.1 |
| Dunks | 0 | 0 | 0 |
| 2PT Field Goals | 5 | 10 | 50.0 |
| 3PT Field Goals | 4 | 10 | 40.0 |
| Total Field Goals | 9 | 20 | 45.0 |

| WMU : Period 3 | Made | Att | Pct |
|--------------------------|----------|-----------|-------------|
| Layups | 3 | 3 | 100.0 |
| Dunks | 0 | 0 | 0 |
| 2PT Field Goals | 5 | 8 | 62.5 |
| 3PT Field Goals | 1 | 6 | 16.7 |
| Total Field Goals | 6 | 14 | 42.9 |

| WMU : Period 2 | Made | Att | Pct |
|--------------------------|----------|-----------|-------------|
| Layups | 0 | 3 | 00.0 |
| Dunks | 0 | 0 | 0 |
| 2PT Field Goals | 1 | 11 | 09.1 |
| 3PT Field Goals | 3 | 9 | 33.3 |
| Total Field Goals | 4 | 20 | 20.0 |

| WMU : Period 4 | Made | Att | Pct |
|--------------------------|----------|-----------|-------------|
| Layups | 5 | 5 | 100.0 |
| Dunks | 0 | 0 | 0 |
| 2PT Field Goals | 6 | 11 | 54.5 |
| 3PT Field Goals | 1 | 5 | 20.0 |
| Total Field Goals | 7 | 16 | 43.8 |