

FINAL SCORE

Villanova

83

Mississippi St.

76

Myrtle Beach Invitational

November 22, 2019 • The HTC Center - Conway, SC



FINAL STATISTICS

Official Box Score
Villanova vs Mississippi St.
Game Totals -- Final Statistics
November 22, 2019 at The HTC Center - Conway, SC



Villanova 83

No.	Player	S	Pts	FG	3FG	FT	OR	DR	TR	PF	A	TO	Blk	Stl	Min	+/-
02	GILLESPIE, COLLIN	G	18	6-11	2-6	4-6	0	2	2	3	9	6	0	2	37	14
05	MOORE, JUSTIN	G	7	2-5	1-3	2-3	0	3	3	4	1	3	0	1	22	-4
23	SAMUELS, JERMAINE	F	14	5-9	2-6	2-3	0	5	5	2	2	0	1	0	34	6
24	ROBINSON-EARL, JEREMIAH	F	22	9-12	1-1	3-4	1	6	7	2	3	1	0	0	34	6
41	BEY, SADDIQ	F	17	7-10	3-4	0-0	4	3	7	3	3	1	2	1	29	10
01	ANTOINE, BRYAN	G	0	0-0	0-0	0-0	0	0	0	1	0	0	0	0	0	-1
03	SLATER, BRANDON	F	0	0-1	0-1	0-0	0	0	0	0	0	2	0	0	14	-2
10	SWIDER, COLE	F	3	1-4	1-3	0-0	0	3	3	3	2	0	2	0	25	9
21	COSBY-ROUNDTREE, DHAMIF	F	2	1-1	0-0	0-0	2	2	4	0	0	0	0	0	5	-3
TEAM							0	3	3	0		0				
TOTALS			83	31-53	10-24	11-16	7	27	34	18	20	13	5	4	200	

Shooting By Period

Period	FG	FG%	3FG	3FG%	FT	FT%
1st Half	16-25	64%	5-12	42%	5-6	83%
2nd Half	15-28	54%	5-12	42%	6-10	60%
Game	31-53	58.5%	10-24	41.7%	11-16	68.8%

Deadball Rebounds: 1,0
Last FG: 2nd-00:13
Biggest Run: 16-0
Largest lead: By 12 at 1-04
Technical Fouls: None.

Mississippi St. 76

No.	Player	S	Pts	FG	3FG	FT	OR	DR	TR	PF	A	TO	Blk	Stl	Min	+/-
01	PERRY, REGGIE	F	18	6-13	1-3	5-6	3	7	10	3	1	1	0	1	36	-4
05	MOLINAR, IVERSON	G	9	4-10	1-4	0-0	0	1	1	2	3	1	0	1	20	2
12	WOODARD II, ROBERT	G	17	7-14	1-3	2-2	3	5	8	3	2	1	1	2	38	-6
23	CARTER, TYSON	G	22	7-19	3-9	5-5	0	1	1	3	2	1	0	2	36	-3
24	ADO, ABDUL	F	2	1-1	0-0	0-0	2	0	2	5	1	1	0	0	22	1
03	STEWART, D.J.	G	8	3-6	2-2	0-0	1	3	4	3	0	1	0	1	27	-17
15	ODURO, PRINCE	F	0	0-0	0-0	0-0	0	0	0	0	0	0	0	0	2	-6
22	FEAZELL, KEYSHAWN	F	0	0-4	0-1	0-0	1	0	1	0	0	0	0	0	20	-2
TEAM							3	2	5	0		1				
TOTALS			76	28-67	8-22	12-13	13	19	32	19	9	7	1	7	200	

Shooting By Period

Period	FG	FG%	3FG	3FG%	FT	FT%
1st Half	13-30	43%	3-10	30%	4-4	100%
2nd Half	15-37	41%	5-12	42%	8-9	89%
Game	28-67	41.8%	8-22	36.4%	12-13	92.3%

Deadball Rebounds: 0,0
Last FG: 2nd-00:17
Biggest Run: 7-0
Largest lead: By 4 at 1-10
Technical Fouls: None.

Game Notes:

Officials: Michael Eades, Olandis Poole, Clarence Armstrong

Start Time: 12:01 PM ET
 End Time: 01:57 PM ET
 Game Duration: 1:56
 Neutral Court;

Score	1st	2nd	TOT
VIL	42	41	83
MSU	33	43	76

VIL led for 29:34. MSU led for 7:52.
 Game was tied for 2:30.
 Times tied: 5 Lead Changes: 5

Points from	VIL	MSU
In the Paint	42	34
Off Turns	6	13
2nd Chance	8	12
Fast Break	21	6
Bench	5	8

Official Box Score
Villanova vs Mississippi St.
First Half Statistics Only
November 22, 2019 at The HTC Center - Conway, SC



Villanova 42

No.	Player	S	Pts	FG	3FG	FT	OR	DR	TR	PF	A	TO	Blk	Stl	Min	+/-
02	GILLESPIE, COLLIN	G	14	5-7	2-4	2-2	0	0	0	1	5	3	0	2	18	12
05	MOORE, JUSTIN	G	7	2-3	1-2	2-2	0	2	2	2	0	1	0	0	12	5
23	SAMUELS, JERMAINE	F	4	2-4	0-2	0-0	0	3	3	0	2	0	0	0	16	1
24	ROBINSON-EARL, JEREMIAH	F	9	4-6	0-0	1-2	0	6	6	0	2	1	0	0	17	11
41	BEY, SADDIQ	F	3	1-1	1-1	0-0	1	0	1	2	1	1	1	0	11	7
01	ANTOINE, BRYAN	G	0	0-0	0-0	0-0	0	0	0	1	0	0	0	0	0	-1
03	SLATER, BRANDON	F	0	0-1	0-1	0-0	0	0	0	0	0	2	0	0	10	-1
10	SWIDER, COLE	F	3	1-2	1-2	0-0	0	2	2	1	2	0	1	0	14	13
21	COSBY-ROUNDTREE, DHAMIF	F	2	1-1	0-0	0-0	2	0	2	0	0	0	0	0	2	-2
TEAM							0	0	0	0	0	0	0	0	0	
TOTALS			42	16-25	5-12	5-6	3	13	16	7	12	8	2	2	100	

Shooting By Period

Period	FG	FG%	3FG	3FG%	FT	FT%
1st Half	16-25	64%	5-12	42%	5-6	83%
Game	31-53	58.5%	10-24	41.7%	11-16	68.8%

Deadball Rebounds: 1,0
Last FG Half: VIL 2nd-00:13

Mississippi St. 33

No.	Player	S	Pts	FG	3FG	FT	OR	DR	TR	PF	A	TO	Blk	Stl	Min	+/-
01	PERRY, REGGIE	F	11	5-9	1-2	0-0	1	2	3	1	0	1	0	0	17	-6
05	MOLINAR, IVERSON	G	5	2-4	1-3	0-0	0	0	0	2	1	1	0	1	10	6
12	WOODARD II, ROBERT	G	10	4-5	0-0	2-2	1	2	3	1	1	0	0	2	18	-9
23	CARTER, TYSON	G	4	1-7	0-3	2-2	0	0	0	0	2	1	0	2	18	-11
24	ADO, ABDUL	F	0	0-0	0-0	0-0	0	0	0	2	0	1	0	0	11	-4
03	STEWART, D.J.	G	3	1-3	1-1	0-0	0	2	2	1	0	0	0	0	13	-13
15	ODURO, PRINCE	F	0	0-0	0-0	0-0	0	0	0	0	0	0	0	0	2	-6
22	FEAZELL, KEYSHAWN	F	0	0-2	0-1	0-0	1	0	1	0	0	0	0	0	10	-2
TEAM							1	1	2	0	1	0	0	0	0	
TOTALS			33	13-30	3-10	4-4	4	7	11	7	4	5	0	5	100	

Shooting By Period

Period	FG	FG%	3FG	3FG%	FT	FT%
1st Half	13-30	43%	3-10	30%	4-4	100%
Game	28-67	41.8%	8-22	36.4%	12-13	92.3%

Deadball Rebounds: 0,0
Last FG Half: MSU 2nd-00:17

Game Notes:

Officials: Michael Eades, Olandis Poole, Clarence Armstrong

Start Time: 12:01 PM ET

End Time: 01:57 PM ET

Game Duration: 1:56

Neutral Court;

Score	1st	2nd	TOT
VIL	42	41	83
MSU	33	43	76

Points from (This Period)	VIL	MSU
In the Paint	22	16
Off Turns	4	8
2nd Chance	2	4
Fast Break	16	4
Bench	5	3

Official Play-By-Play
Villanova vs Mississippi St.
First Half
November 22, 2019 at The HTC Center - Conway, SC



Period 1

Starters:

Villanova: 5 MOORE, JUSTIN (G); 23 SAMUELS, JERMAINE (F); 24 ROBINSON-EARL, JEREMIAH (F); 41 BEY, SADDIQ (F); 2 GILLESPIE, COLLIN (G);
Mississippi St.: 1 PERRY, REGGIE (F); 5 MOLINAR, IVERSON (G); 12 WOODARD II, ROBERT (G); 23 CARTER, TYSON (G); 24 ADO, ABDUL (F);

Time	VISITORS: Villanova	Score	Margin	HOME: Mississippi St.
19:34		2-0	H 2	GOOD! JUMPER by MOLINAR, IVERSON
19:34				ASSIST by CARTER, TYSON
19:11	TURNOVER (BADPASS) by GILLESPIE, COLLIN			
18:42				MISSED JUMPER by CARTER, TYSON
18:42	BLOCK by BEY, SADDIQ			
18:40				REBOUND (OFF) by TEAM
18:40				TURNOVER (SHOTCLOCK) by TEAM
18:40	SUB OUT: MOORE, JUSTIN			
18:40	SUB IN: SWIDER, COLE			
18:26	MISSED JUMPER by ROBINSON-EARL, JEREMIAH			
18:21	REBOUND (OFF) by BEY, SADDIQ			
18:17	TURNOVER (LOSTBALL) by GILLESPIE, COLLIN			
18:17				STEAL by CARTER, TYSON
18:13				MISSED 3PTR by CARTER, TYSON
18:08	REBOUND (DEF) by SWIDER, COLE			
18:01	GOOD! LAYUP by GILLESPIE, COLLIN [FB]	2-2	T	
18:01	ASSIST by SWIDER, COLE			
17:37		4-2	H 2	GOOD! LAYUP by CARTER, TYSON
17:37				ASSIST by WOODARD II, ROBERT
17:17	MISSED 3PTR by GILLESPIE, COLLIN			
17:14				REBOUND (DEF) by PERRY, REGGIE
17:10	FOUL (PERSONAL) by BEY, SADDIQ			
17:10	SUB OUT: ROBINSON-EARL, JEREMIAH			
17:10	SUB IN: MOORE, JUSTIN			
16:57				MISSED 3PTR by MOLINAR, IVERSON
16:51				REBOUND (OFF) by WOODARD II, ROBERT
16:51		6-2	H 4	GOOD! DUNK by WOODARD II, ROBERT
16:30	GOOD! 3PTR by SWIDER, COLE	6-5	H 1	
16:30	ASSIST by BEY, SADDIQ			
16:08		8-5	H 3	GOOD! LAYUP by PERRY, REGGIE
15:48	GOOD! LAYUP by GILLESPIE, COLLIN	8-7	H 1	
15:29		11-7	H 4	GOOD! 3PTR by PERRY, REGGIE
15:29				ASSIST by MOLINAR, IVERSON
15:13				FOUL (PERSONAL) by MOLINAR, IVERSON
15:13				
15:13				SUB OUT: MOLINAR, IVERSON
15:13				SUB IN: STEWART, D.J.
15:13	SUB OUT: SAMUELS, JERMAINE			
15:13	SUB IN: ROBINSON-EARL, JEREMIAH			
15:13	GOOD! FT by GILLESPIE, COLLIN	11-8	H 3	
15:13	GOOD! FT by GILLESPIE, COLLIN	11-9	H 2	
14:51				MISSED LAYUP by PERRY, REGGIE
14:51	BLOCK by SWIDER, COLE			
14:47	REBOUND (DEF) by ROBINSON-EARL, JEREMIAH			
14:43	GOOD! LAYUP by GILLESPIE, COLLIN [FB]	11-11	T	
14:43	ASSIST by ROBINSON-EARL, JEREMIAH			
14:21				FOUL (OFF) by ADO, ABDUL
14:21				TURNOVER (OFFENSIVE) by ADO, ABDUL
14:21				SUB OUT: ADO, ABDUL
14:21				SUB IN: FEAZELL, KEYSHAWN
14:21	SUB OUT: BEY, SADDIQ			
14:21	SUB IN: SLATER, BRANDON			
14:06	TURNOVER (LOSTBALL) by ROBINSON-EARL, JEREMIAH			
14:06				STEAL by CARTER, TYSON
13:57				MISSED LAYUP by PERRY, REGGIE
13:55	REBOUND (DEF) by MOORE, JUSTIN			
13:51	GOOD! 3PTR by GILLESPIE, COLLIN [FB]	11-14	V 3	
13:51	ASSIST by SWIDER, COLE			
13:47				TIMEOUT 30SEC
13:37				MISSED 3PTR by PERRY, REGGIE
13:33	REBOUND (DEF) by ROBINSON-EARL, JEREMIAH			
13:29	MISSED 3PTR by SWIDER, COLE			
13:26				REBOUND (DEF) by WOODARD II, ROBERT
13:09		13-14	V 1	GOOD! JUMPER by PERRY, REGGIE [PNT]
12:52	TURNOVER (BADPASS) by SLATER, BRANDON			
12:52				STEAL by WOODARD II, ROBERT
12:48		15-14	H 1	GOOD! DUNK by WOODARD II, ROBERT [FB]
12:16				FOUL (PERSONAL) by WOODARD II, ROBERT
12:16	GOOD! FT by MOORE, JUSTIN	15-15	T	
12:16				SUB OUT: PERRY, REGGIE

Time	VISITORS: Villanova	Score	Margin	HOME: Mississippi St.
12:16				SUB OUT: CARTER, TYSON
12:16				SUB IN: MOLINAR, IVERSON
12:16				SUB IN: ADO, ABDUL
12:16	SUB OUT: GILLESPIE, COLLIN			
12:16	SUB OUT: SLATER, BRANDON			
12:16	SUB IN: SAMUELS, JERMAINE			
12:16	SUB IN: BEY, SADDIQ			
12:16	GOOD! FT by MOORE , JUSTIN	15-16	V 1	
12:06				MISSED LAYUP by STEWART, D.J.
12:04				REBOUND (OFF) by FEAZELL, KEYSHAWN
12:04	FOUL (PERSONAL) by MOORE , JUSTIN			
12:04				MISSED 3PTR by FEAZELL, KEYSHAWN
12:04	REBOUND (DEF) by SAMUELS, JERMAINE			
12:04	SUB OUT: SWIDER, COLE			
12:04	SUB IN: SLATER, BRANDON			
11:43	MISSED LAYUP by ROBINSON-EARL, JEREMIAH			
11:39				REBOUND (DEF) by WOODARD II, ROBERT
11:33		18-16	H 2	GOOD! 3PTR by MOLINAR, IVERSON
11:07	GOOD! LAYUP by SAMUELS, JERMAINE	18-18	T	
10:58		20-18	H 2	GOOD! DUNK by WOODARD II, ROBERT
10:35				FOUL (PERSONAL) by STEWART, D.J.
10:35				
10:35				SUB OUT: WOODARD II, ROBERT
10:35				SUB OUT: FEAZELL, KEYSHAWN
10:35				SUB IN: PERRY, REGGIE
10:35				SUB IN: CARTER, TYSON
10:35	SUB OUT: SLATER, BRANDON			
10:35	SUB OUT: ROBINSON-EARL, JEREMIAH			
10:35	SUB IN: GILLESPIE, COLLIN			
10:35	SUB IN: SWIDER, COLE			
10:29	MISSED 3PTR by MOORE , JUSTIN			
10:25				REBOUND (DEF) by STEWART, D.J.
10:06				MISSED JUMPER by CARTER, TYSON
10:02				REBOUND (OFF) by PERRY, REGGIE
10:01		22-18	H 4	GOOD! LAYUP by PERRY, REGGIE
09:40				FOUL (PERSONAL) by ADO, ABDUL
09:40				SUB OUT: ADO, ABDUL
09:40				SUB IN: ODURO, PRINCE
09:40	SUB OUT: SAMUELS, JERMAINE			
09:40	SUB IN: ROBINSON-EARL, JEREMIAH			
09:38	TURNOVER (BADPASS) by BEY, SADDIQ			
09:38				STEAL by MOLINAR, IVERSON
09:16				MISSED 3PTR by MOLINAR, IVERSON
09:13	REBOUND (DEF) by ROBINSON-EARL, JEREMIAH			
09:00	GOOD! LAYUP by ROBINSON-EARL, JEREMIAH	22-20	H 2	
09:00	ASSIST by GILLESPIE, COLLIN			
08:45				FOUL (OFF) by MOLINAR, IVERSON
08:45				TURNOVER (OFFENSIVE) by MOLINAR, IVERSON
08:45	SUB OUT: BEY, SADDIQ			
08:45	SUB IN: SLATER, BRANDON			
08:45				SUB OUT: MOLINAR, IVERSON
08:45				SUB IN: WOODARD II, ROBERT
08:45	SUB OUT: MOORE , JUSTIN			
08:45	SUB IN: SAMUELS, JERMAINE			
08:31	GOOD! DUNK by ROBINSON-EARL, JEREMIAH	22-22	T	
08:31	ASSIST by SAMUELS, JERMAINE			
08:02				TURNOVER (LOSTBALL) by CARTER, TYSON
08:02	STEAL by GILLESPIE, COLLIN			
07:52	GOOD! DUNK by ROBINSON-EARL, JEREMIAH [FB]	22-24	V 2	
07:52	ASSIST by GILLESPIE, COLLIN			
07:51				TIMEOUT 30SEC
07:51				
07:51				SUB OUT: ODURO, PRINCE
07:51				SUB IN: FEAZELL, KEYSHAWN
07:50				TURNOVER (LOSTBALL) by PERRY, REGGIE
07:50	STEAL by GILLESPIE, COLLIN			
07:44	MISSED 3PTR by GILLESPIE, COLLIN			
07:40				REBOUND (DEF) by TEAM
07:35	SUB OUT: SLATER, BRANDON			
07:35	SUB IN: BEY, SADDIQ			
07:20				MISSED JUMPER by STEWART, D.J.
07:17	REBOUND (DEF) by SAMUELS, JERMAINE			
07:13	GOOD! DUNK by ROBINSON-EARL, JEREMIAH [FB]	22-26	V 4	
07:13	ASSIST by GILLESPIE, COLLIN			
06:55				MISSED 3PTR by CARTER, TYSON
06:52	REBOUND (DEF) by SWIDER, COLE			
06:44	MISSED 3PTR by SAMUELS, JERMAINE			
06:42				REBOUND (DEF) by STEWART, D.J.
06:41	FOUL (PERSONAL) by SWIDER, COLE			
06:41				SUB OUT: PERRY, REGGIE

Time	VISITORS: Villanova	Score	Margin	HOME: Mississippi St.
06:41				SUB IN: ADO, ABDUL
06:26				MISSED JUMPER by FEAZELL, KEYSAWN
06:23	REBOUND (DEF) by ROBINSON-EARL, JEREMIAH			
06:16	GOOD! 3PTR by BEY, SADDIQ	22-29	V 7	
06:16	ASSIST by GILLESPIE, COLLIN			
05:50				MISSED JUMPER by WOODARD II, ROBERT
05:47	REBOUND (DEF) by ROBINSON-EARL, JEREMIAH			
05:44	GOOD! DUNK by SAMUELS, JERMAINE [FB]	22-31	V 9	
05:44	ASSIST by GILLESPIE, COLLIN			
05:44				TIMEOUT 30SEC
05:44				SUB OUT: STEWART, D.J.
05:44				SUB OUT: FEAZELL, KEYSAWN
05:44				SUB IN: PERRY, REGGIE
05:44				SUB IN: MOLINAR, IVERSON
05:44	SUB OUT: GILLESPIE, COLLIN			
05:44	SUB OUT: SWIDER, COLE			
05:44	SUB IN: SLATER, BRANDON			
05:44	SUB IN: MOORE , JUSTIN			
05:29	FOUL (PERSONAL) by BEY, SADDIQ			
05:29	SUB OUT: BEY, SADDIQ			
05:29	SUB IN: GILLESPIE, COLLIN			
05:10				MISSED 3PTR by CARTER, TYSON
05:06	REBOUND (DEF) by MOORE , JUSTIN			
04:56	GOOD! 3PTR by MOORE , JUSTIN	22-34	V 12	
04:56	ASSIST by SAMUELS, JERMAINE			
04:29				MISSED LAYUP by PERRY, REGGIE
04:26	REBOUND (DEF) by SAMUELS, JERMAINE			
04:00	TURNOVER (BADPASS) by MOORE , JUSTIN			
04:00				STEAL by WOODARD II, ROBERT
03:57	FOUL (PERSONAL) by MOORE , JUSTIN			
03:57				
03:57				SUB OUT: ADO, ABDUL
03:57				SUB IN: FEAZELL, KEYSAWN
03:57	SUB OUT: MOORE , JUSTIN			
03:57	SUB IN: SWIDER, COLE			
03:57		23-34	V 11	GOOD! FT by WOODARD II, ROBERT
03:57		24-34	V 10	GOOD! FT by WOODARD II, ROBERT
03:57				SUB OUT: MOLINAR, IVERSON
03:57				SUB IN: STEWART, D.J.
03:39	TURNOVER (TRAVEL) by SLATER, BRANDON			
03:15		26-34	V 8	GOOD! JUMPER by PERRY, REGGIE [PNT]
03:00	FOUL (OFF) by GILLESPIE, COLLIN			
03:00	TURNOVER (OFFENSIVE) by GILLESPIE, COLLIN			
02:31		28-34	V 6	GOOD! JUMPER by WOODARD II, ROBERT
01:58				FOUL (PERSONAL) by PERRY, REGGIE
01:58	GOOD! FT by ROBINSON-EARL, JEREMIAH	28-35	V 7	
01:58	SUB OUT: SWIDER, COLE			
01:58	SUB IN: COSBY-ROUNDTREE, DHAMIR			
01:58	MISSED FT by ROBINSON-EARL, JEREMIAH			
01:52	REBOUND (OFF) by COSBY-ROUNDTREE, DHAMIR			
01:40	MISSED 3PTR by SAMUELS, JERMAINE			
01:36				REBOUND (DEF) by PERRY, REGGIE
01:25		31-35	V 4	GOOD! 3PTR by STEWART, D.J.
01:25				ASSIST by CARTER, TYSON
01:04	MISSED 3PTR by SLATER, BRANDON			
01:01	REBOUND (OFF) by COSBY-ROUNDTREE, DHAMIR			
00:58	GOOD! LAYUP by COSBY-ROUNDTREE, DHAMIR	31-37	V 6	
00:35				MISSED JUMPER by CARTER, TYSON
00:32	REBOUND (DEF) by ROBINSON-EARL, JEREMIAH			
00:29	TIMEOUT 30SEC			
00:29	SUB OUT: COSBY-ROUNDTREE, DHAMIR			
00:29	SUB OUT: ROBINSON-EARL, JEREMIAH			
00:29	SUB IN: MOORE , JUSTIN			
00:29	SUB IN: SWIDER, COLE			
00:05	GOOD! LAYUP by MOORE , JUSTIN	31-39	V 8	
00:05	SUB OUT: GILLESPIE, COLLIN			
00:05	SUB OUT: MOORE , JUSTIN			
00:05	SUB OUT: SWIDER, COLE			
00:05	SUB IN: ANTOINE, BRYAN			
00:05	SUB IN: COSBY-ROUNDTREE, DHAMIR			
00:05	SUB IN: ROBINSON-EARL, JEREMIAH			
00:05				SUB OUT: STEWART, D.J.
00:05				SUB IN: MOLINAR, IVERSON
00:02	FOUL (PERSONAL) by ANTOINE, BRYAN			
00:02		32-39	V 7	GOOD! FT by CARTER, TYSON [FB]
00:02				SUB OUT: MOLINAR, IVERSON
00:02				SUB IN: STEWART, D.J.
00:02	SUB OUT: ANTOINE, BRYAN			
00:02	SUB OUT: SLATER, BRANDON			
00:02	SUB OUT: COSBY-ROUNDTREE, DHAMIR			

Time	VISITORS: Villanova	Score	Margin	HOME: Mississippi St.
00:02	SUB OUT: SAMUELS, JERMAINE			
00:02	SUB IN: GILLESPIE, COLLIN			
00:02	SUB IN: MOORE, JUSTIN			
00:02	SUB IN: SWIDER, COLE			
00:02	SUB IN: BEY, SADDIQ			
00:02		33-39	V 6	GOOD! FT by CARTER, TYSON [FB]
00:00	GOOD! 3PTR by GILLESPIE, COLLIN [FB]	33-42	V 9	
00:00	ASSIST by ROBINSON-EARL, JEREMIAH			

Villanova 42, Mississippi St. 33

Points from (This Period)	VIL	MSU
In the Paint	22	16
Off Turns	4	8
2nd Chance	2	4
Fast Break	16	4
Bench	5	3

Official Box Score
Villanova vs Mississippi St.
Second Half Statistics Only
November 22, 2019 at The HTC Center - Conway, SC



Villanova 41

No.	Player	S	Pts	FG	3FG	FT	OR	DR	TR	PF	A	TO	Blk	Stl	Min	+/-
02	GILLESPIE, COLLIN	G	4	1-4	0-2	2-4	0	2	2	2	4	3	0	0	19	2
05	MOORE, JUSTIN	G	0	0-2	0-1	0-1	0	1	1	2	1	2	0	1	10	-9
23	SAMUELS, JERMAINE	F	10	3-5	2-4	2-3	0	2	2	2	0	0	1	0	18	5
24	ROBINSON-EARL, JEREMIAH	F	13	5-6	1-1	2-2	1	0	1	2	1	0	0	0	17	-5
41	BEY, SADDIQ	F	14	6-9	2-3	0-0	3	3	6	1	2	0	1	1	18	3
01	ANTOINE, BRYAN	G	0	0-0	0-0	0-0	0	0	0	0	0	0	0	0	0	0
03	SLATER, BRANDON	F	0	0-0	0-0	0-0	0	0	0	0	0	0	0	0	3	-1
10	SWIDER, COLE	F	0	0-2	0-1	0-0	0	1	1	2	0	0	1	0	11	-4
21	COSBY-ROUNDTREE, DHAMIF	F	0	0-0	0-0	0-0	0	2	2	0	0	0	0	0	3	-1
TEAM							0	3	3	0	0	0	0	0		
TOTALS			41	15-28	5-12	6-10	4	14	18	11	8	5	3	2	100	

Shooting By Period

Period	FG	FG%	3FG	3FG%	FT	FT%
2nd Half	15-28	54%	5-12	42%	6-10	60%
Game	31-53	58.5%	10-24	41.7%	11-16	68.8%

Deadball Rebounds: 1,0

Last FG Half: VIL -

Mississippi St. 43

No.	Player	S	Pts	FG	3FG	FT	OR	DR	TR	PF	A	TO	Blk	Stl	Min	+/-
01	PERRY, REGGIE	F	7	1-4	0-1	5-6	2	5	7	2	1	0	0	1	18	2
05	MOLINAR, IVERSON	G	4	2-6	0-1	0-0	0	1	1	0	2	0	0	0	10	-4
12	WOODARD II, ROBERT	G	7	3-9	1-3	0-0	2	3	5	2	1	1	1	0	19	3
23	CARTER, TYSON	G	18	6-12	3-6	3-3	0	1	1	3	0	0	0	0	18	8
24	ADO, ABDUL	F	2	1-1	0-0	0-0	2	0	2	3	1	0	0	0	11	5
03	STEWART, D.J.	G	5	2-3	1-1	0-0	1	1	2	2	0	1	0	1	14	-4
15	ODURO, PRINCE	F	0	0-0	0-0	0-0	0	0	0	0	0	0	0	0	0	0
22	FEAZELL, KEYSHAWN	F	0	0-2	0-0	0-0	0	0	0	0	0	0	0	0	10	0
TEAM							2	1	3	0	0	0	0	0		
TOTALS			43	15-37	5-12	8-9	9	12	21	12	5	2	1	2	100	

Shooting By Period

Period	FG	FG%	3FG	3FG%	FT	FT%
2nd Half	15-37	41%	5-12	42%	8-9	89%
Game	28-67	41.8%	8-22	36.4%	12-13	92.3%

Deadball Rebounds: 0,0

Last FG Half: MSU -

Game Notes:

Officials: Michael Eades, Olandis Poole, Clarence Armstrong

Start Time: 12:01 PM ET

End Time: 01:57 PM ET

Game Duration: 1:56

Neutral Court;

Score	1st	2nd	TOT
VIL	42	41	83
MSU	33	43	76

Points from (This Period)	VIL	MSU
In the Paint	20	18
Off Turns	2	5
2nd Chance	6	8
Fast Break	5	2
Bench	0	5

Official Play-By-Play
Villanova vs Mississippi St.
Second Half
November 22, 2019 at The HTC Center - Conway, SC



Period 2

Starters:

Villanova: 5 MOORE, JUSTIN (G); 23 SAMUELS, JERMAINE (F); 24 ROBINSON-EARL, JEREMIAH (F); 41 BEY, SADDIQ (F); 2 GILLESPIE, COLLIN (G);
Mississippi St.: 1 PERRY, REGGIE (F); 5 MOLINAR, IVERSON (G); 12 WOODARD II, ROBERT (G); 23 CARTER, TYSON (G); 24 ADO, ABDUL (F);

Time	VISITORS: Villanova	Score	Margin	HOME: Mississippi St.
20:00				SUB OUT: STEWART, D.J.
20:00				SUB OUT: FEAZELL, KEYSHAWN
20:00				SUB IN: MOLINAR, IVERSON
20:00				SUB IN: ADO, ABDUL
20:00	SUB OUT: SWIDER, COLE			
20:00	SUB IN: SAMUELS, JERMAINE			
19:45	MISSED 3PTR by SAMUELS, JERMAINE			
19:38	REBOUND (OFF) by BEY, SADDIQ			
19:38	GOOD! LAYUP by BEY, SADDIQ	33-44	V 11	
19:19	FOUL (PERSONAL) by SAMUELS, JERMAINE			
19:05		35-44	V 9	GOOD! LAYUP by PERRY, REGGIE [PNT]
19:02	TURNOVER (BADPASS) by MOORE, JUSTIN			
19:02				STEAL by PERRY, REGGIE
18:57				MISSED LAYUP by PERRY, REGGIE
18:53	REBOUND (DEF) by MOORE, JUSTIN			
18:49	MISSED JUMPER by MOORE, JUSTIN			
18:42				REBOUND (DEF) by CARTER, TYSON
18:39	SUB OUT: SAMUELS, JERMAINE			
18:39	SUB IN: SWIDER, COLE			
18:36		37-44	V 7	GOOD! JUMPER by CARTER, TYSON
18:36				ASSIST by MOLINAR, IVERSON
18:10	GOOD! LAYUP by BEY, SADDIQ	37-46	V 9	
17:42		39-46	V 7	GOOD! LAYUP by CARTER, TYSON
17:24	MISSED 3PTR by BEY, SADDIQ			
17:20				REBOUND (DEF) by WOODARD II, ROBERT
17:13		42-46	V 4	GOOD! 3PTR by WOODARD II, ROBERT
17:13				ASSIST by MOLINAR, IVERSON
16:54	MISSED 3PTR by GILLESPIE, COLLIN			
16:50				REBOUND (DEF) by PERRY, REGGIE
16:45				MISSED JUMPER by MOLINAR, IVERSON
16:40				REBOUND (OFF) by WOODARD II, ROBERT
16:40				MISSED LAYUP by WOODARD II, ROBERT
16:39	REBOUND (DEF) by GILLESPIE, COLLIN			
16:35	MISSED 3PTR by MOORE, JUSTIN			
16:32				REBOUND (DEF) by MOLINAR, IVERSON
16:27		44-46	V 2	GOOD! LAYUP by MOLINAR, IVERSON [FB]
16:25				
16:25	TIMEOUT 30SEC			
16:25				SUB OUT: MOLINAR, IVERSON
16:25				SUB IN: STEWART, D.J.
16:25	SUB OUT: SWIDER, COLE			
16:25	SUB IN: SAMUELS, JERMAINE			
16:06	GOOD! 3PTR by SAMUELS, JERMAINE	44-49	V 5	
16:06	ASSIST by BEY, SADDIQ			
15:46	FOUL (PERSONAL) by SAMUELS, JERMAINE			
15:46		45-49	V 4	GOOD! FT by PERRY, REGGIE
15:46				MISSED FT by PERRY, REGGIE
15:45	REBOUND (DEF) by BEY, SADDIQ			
15:45				FOUL (PERSONAL) by ADO, ABDUL
15:45				SUB OUT: ADO, ABDUL
15:45				SUB IN: FEAZELL, KEYSHAWN
15:30	FOUL (OFF) by GILLESPIE, COLLIN			
15:30	TURNOVER (OFFENSIVE) by GILLESPIE, COLLIN			
15:17	FOUL (PERSONAL) by BEY, SADDIQ			
15:17		46-49	V 3	GOOD! FT by CARTER, TYSON
15:17	SUB OUT: BEY, SADDIQ			
15:17	SUB IN: SWIDER, COLE			
15:17		47-49	V 2	GOOD! FT by CARTER, TYSON
15:06				FOUL (PERSONAL) by STEWART, D.J.
15:00	MISSED LAYUP by GILLESPIE, COLLIN			
14:59				REBOUND (DEF) by TEAM
14:59	FOUL (PERSONAL) by ROBINSON-EARL, JEREMIAH			
14:36				MISSED JUMPER by FEAZELL, KEYSHAWN
14:35				REBOUND (OFF) by PERRY, REGGIE
14:34	FOUL (PERSONAL) by ROBINSON-EARL, JEREMIAH			
14:19				MISSED JUMPER by CARTER, TYSON
14:11	REBOUND (DEF) by BEY, SADDIQ			
14:10	GOOD! LAYUP by ROBINSON-EARL, JEREMIAH	47-51	V 4	
14:10	ASSIST by MOORE, JUSTIN			

Time	VISITORS: Villanova	Score	Margin	HOME: Mississippi St.
14:00	SUB OUT: GILLESPIE, COLLIN			
14:00	SUB IN: BEY, SADDIQ			
13:52		50-51	V 1	GOOD! 3PTR by CARTER, TYSON
13:45	FOUL (OFF) by MOORE , JUSTIN			
13:45	TURNOVER (OFFENSIVE) by MOORE , JUSTIN			
13:45				SUB OUT: CARTER, TYSON
13:45				SUB IN: MOLINAR, IVERSON
13:45	SUB OUT: MOORE , JUSTIN			
13:45	SUB IN: GILLESPIE, COLLIN			
13:26				MISSED JUMPER by STEWART, D.J.
13:21				REBOUND (OFF) by WOODARD II, ROBERT
13:21				MISSED LAYUP by WOODARD II, ROBERT
13:21	REBOUND (DEF) by TEAM			
12:59	GOOD! 3PTR by ROBINSON-EARL, JEREMIAH	50-54	V 4	
12:59	ASSIST by GILLESPIE, COLLIN			
12:37				MISSED JUMPER by FEAZELL, KEYSHAWN
12:37	BLOCK by SWIDER, COLE			
12:32	REBOUND (DEF) by SWIDER, COLE			
12:25	FOUL (OFF) by GILLESPIE, COLLIN			
12:25	TURNOVER (OFFENSIVE) by GILLESPIE, COLLIN			
12:25				SUB OUT: FEAZELL, KEYSHAWN
12:25				SUB IN: ADO, ABDUL
12:25	SUB OUT: ROBINSON-EARL, JEREMIAH			
12:25	SUB IN: COSBY-ROUNDTREE, DHAMIR			
12:25	SUB OUT: SWIDER, COLE			
12:25	SUB IN: SLATER, BRANDON			
12:05				MISSED JUMPER by PERRY, REGGIE
12:02	REBOUND (DEF) by BEY, SADDIQ			
11:50	GOOD! 3PTR by SAMUELS, JERMAINE	50-57	V 7	
11:50	ASSIST by BEY, SADDIQ			
11:28				MISSED LAYUP by MOLINAR, IVERSON
11:28	BLOCK by SAMUELS, JERMAINE			
11:26				REBOUND (OFF) by TEAM
11:27				
11:27				SUB OUT: PERRY, REGGIE
11:27				SUB OUT: MOLINAR, IVERSON
11:27				SUB IN: FEAZELL, KEYSHAWN
11:27				SUB IN: CARTER, TYSON
11:24				MISSED JUMPER by WOODARD II, ROBERT
11:21	REBOUND (DEF) by COSBY-ROUNDTREE, DHAMIR			
11:19	TURNOVER (BADPASS) by GILLESPIE, COLLIN			
11:19				STEAL by STEWART, D.J.
10:50		53-57	V 4	GOOD! 3PTR by STEWART, D.J.
10:22	GOOD! 3PTR by BEY, SADDIQ	53-60	V 7	
10:22	ASSIST by GILLESPIE, COLLIN			
10:09				MISSED LAYUP by CARTER, TYSON
10:06	REBOUND (DEF) by COSBY-ROUNDTREE, DHAMIR			
09:59				FOUL (PERSONAL) by ADO, ABDUL
09:59	SUB OUT: SLATER, BRANDON			
09:59	SUB OUT: COSBY-ROUNDTREE, DHAMIR			
09:59	SUB IN: SWIDER, COLE			
09:59	SUB IN: ROBINSON-EARL, JEREMIAH			
09:53	GOOD! LAYUP by ROBINSON-EARL, JEREMIAH	53-62	V 9	
09:43				SUB OUT: ADO, ABDUL
09:43				SUB IN: PERRY, REGGIE
09:42	SUB OUT: GILLESPIE, COLLIN			
09:42	SUB IN: MOORE , JUSTIN			
09:24		56-62	V 6	GOOD! 3PTR by CARTER, TYSON
09:24				ASSIST by WOODARD II, ROBERT
09:24	FOUL (PERSONAL) by MOORE , JUSTIN			
09:24				SUB OUT: WOODARD II, ROBERT
09:24				SUB IN: MOLINAR, IVERSON
09:24	SUB OUT: MOORE , JUSTIN			
09:24	SUB IN: GILLESPIE, COLLIN			
09:24		57-62	V 5	GOOD! FT by CARTER, TYSON
09:05	GOOD! LAYUP by ROBINSON-EARL, JEREMIAH	57-64	V 7	
08:57				MISSED 3PTR by CARTER, TYSON
08:54	REBOUND (DEF) by SAMUELS, JERMAINE			
08:52				FOUL (PERSONAL) by CARTER, TYSON
08:52				SUB OUT: STEWART, D.J.
08:52				SUB IN: WOODARD II, ROBERT
08:31	GOOD! DUNK by BEY, SADDIQ	57-66	V 9	
08:31	ASSIST by ROBINSON-EARL, JEREMIAH			
08:16				TIMEOUT TEAM
08:16				
08:16				SUB OUT: FEAZELL, KEYSHAWN
08:16				SUB IN: ADO, ABDUL
08:16	SUB OUT: SWIDER, COLE			
08:16	SUB OUT: BEY, SADDIQ			
08:16	SUB IN: SLATER, BRANDON			

Time	VISITORS: Villanova	Score	Margin	HOME: Mississippi St.
08:16	SUB IN: COSBY-ROUNDTREE, DHAMIR			
08:06		59-66	V 7	GOOD! JUMPER by MOLINAR, IVERSON [PNT]
07:36	MISSED 3PTR by GILLESPIE, COLLIN			
07:33				REBOUND (DEF) by PERRY, REGGIE
07:28				MISSED 3PTR by WOODARD II, ROBERT
07:24				REBOUND (OFF) by ADO, ABDUL
07:21		61-66	V 5	GOOD! DUNK by WOODARD II, ROBERT
07:21				ASSIST by ADO, ABDUL
07:13	TIMEOUT 30SEC			
07:13	SUB OUT: SLATER, BRANDON			
07:13	SUB OUT: COSBY-ROUNDTREE, DHAMIR			
07:13	SUB IN: SWIDER, COLE			
07:13	SUB IN: BEY, SADDIQ			
06:52	GOOD! 3PTR by BEY, SADDIQ	61-69	V 8	
06:52	ASSIST by GILLESPIE, COLLIN			
06:27				MISSED 3PTR by MOLINAR, IVERSON
06:23	REBOUND (DEF) by GILLESPIE, COLLIN			
06:11	MISSED JUMPER by SWIDER, COLE			
06:11				BLOCK by WOODARD II, ROBERT
06:09	REBOUND (OFF) by BEY, SADDIQ			
06:10				FOUL (PERSONAL) by CARTER, TYSON
06:09				SUB OUT: MOLINAR, IVERSON
06:09				SUB IN: STEWART, D.J.
05:49	MISSED JUMPER by ROBINSON-EARL, JEREMIAH			
05:48	REBOUND (OFF) by BEY, SADDIQ			
05:48	GOOD! LAYUP by BEY, SADDIQ	61-71	V 10	
05:32		63-71	V 8	GOOD! DUNK by WOODARD II, ROBERT
05:32				ASSIST by PERRY, REGGIE
05:10	MISSED 3PTR by SWIDER, COLE			
05:08				REBOUND (DEF) by WOODARD II, ROBERT
05:02				MISSED JUMPER by CARTER, TYSON
05:02	BLOCK by BEY, SADDIQ			
04:54				REBOUND (OFF) by ADO, ABDUL
04:54		65-71	V 6	GOOD! LAYUP by ADO, ABDUL
04:38	GOOD! LAYUP by GILLESPIE, COLLIN	65-73	V 8	
04:22	FOUL (PERSONAL) by SWIDER, COLE			
04:22		66-73	V 7	GOOD! FT by PERRY, REGGIE
04:22	SUB OUT: SWIDER, COLE			
04:22	SUB IN: MOORE , JUSTIN			
04:22		67-73	V 6	GOOD! FT by PERRY, REGGIE
04:01	MISSED JUMPER by BEY, SADDIQ			
03:58				REBOUND (DEF) by PERRY, REGGIE
03:52				MISSED 3PTR by WOODARD II, ROBERT
03:50	REBOUND (DEF) by TEAM			
03:49				FOUL (PERSONAL) by ADO, ABDUL
03:49				
03:49				SUB OUT: ADO, ABDUL
03:49				SUB IN: FEAZELL, KEYSHAWN
03:30				FOUL (PERSONAL) by PERRY, REGGIE
03:30	MISSED FT by GILLESPIE, COLLIN			
03:30	REBOUND (OFF) by TEAM			
03:30	GOOD! FT by GILLESPIE, COLLIN	67-74	V 7	
03:17				MISSED JUMPER by WOODARD II, ROBERT
03:16				REBOUND (OFF) by TEAM
03:16	SUB OUT: MOORE , JUSTIN			
03:16	SUB IN: SWIDER, COLE			
03:08				TURNOVER (BADPASS) by WOODARD II, ROBERT
03:08	STEAL by BEY, SADDIQ			
02:46	MISSED LAYUP by BEY, SADDIQ			
02:42	REBOUND (OFF) by ROBINSON-EARL, JEREMIAH			
02:42	GOOD! LAYUP by ROBINSON-EARL, JEREMIAH	67-76	V 9	
02:24				MISSED 3PTR by CARTER, TYSON
02:23				REBOUND (OFF) by PERRY, REGGIE
02:23	FOUL (PERSONAL) by SWIDER, COLE			
02:22		68-76	V 8	GOOD! FT by PERRY, REGGIE
02:22		69-76	V 7	GOOD! FT by PERRY, REGGIE
02:21				FOUL (PERSONAL) by WOODARD II, ROBERT
02:21	GOOD! FT by SAMUELS, JERMAINE [FB]	69-77	V 8	
02:21	MISSED FT by SAMUELS, JERMAINE			
02:19				REBOUND (DEF) by WOODARD II, ROBERT
02:08		72-77	V 5	GOOD! 3PTR by CARTER, TYSON
02:04	TIMEOUT TEAM			
02:04	SUB OUT: SWIDER, COLE			
02:04	SUB IN: MOORE , JUSTIN			
01:49	MISSED 3PTR by SAMUELS, JERMAINE			
01:46				REBOUND (DEF) by STEWART, D.J.
01:30				TURNOVER (LOSTBALL) by STEWART, D.J.
01:30	STEAL by MOORE , JUSTIN			
01:27				FOUL (PERSONAL) by STEWART, D.J.
01:25	MISSED FT by MOORE , JUSTIN			

Time	VISITORS: Villanova	Score	Margin	HOME: Mississippi St.
01:23				REBOUND (DEF) by PERRY, REGGIE
01:12		74-77	V 3	GOOD! LAYUP by CARTER, TYSON
00:35				FOUL (PERSONAL) by WOODARD II, ROBERT
00:35	GOOD! FT by ROBINSON-EARL, JEREMIAH	74-78	V 4	
00:35				SUB OUT: FEAZELL, KEYSAWN
00:35				SUB IN: MOLINAR, IVERSON
00:35	GOOD! FT by ROBINSON-EARL, JEREMIAH	74-79	V 5	
00:29				MISSED 3PTR by CARTER, TYSON
00:27	REBOUND (DEF) by TEAM			
00:25				FOUL (PERSONAL) by PERRY, REGGIE
00:25	GOOD! FT by GILLESPIE, COLLIN [FB]	74-80	V 6	
00:25	MISSED FT by GILLESPIE, COLLIN			
00:24				REBOUND (DEF) by PERRY, REGGIE
00:20				MISSED 3PTR by PERRY, REGGIE
00:18				REBOUND (OFF) by STEWART, D.J.
00:17		76-80	V 4	GOOD! LAYUP by STEWART, D.J.
00:13	GOOD! LAYUP by SAMUELS, JERMAINE [FB]	76-82	V 6	
00:13	ASSIST by GILLESPIE, COLLIN			
00:13				FOUL (PERSONAL) by CARTER, TYSON
00:13	GOOD! FT by SAMUELS, JERMAINE [FB]	76-83	V 7	
00:09				MISSED LAYUP by MOLINAR, IVERSON
00:05	REBOUND (DEF) by SAMUELS, JERMAINE			

Villanova 83, Mississippi St. 76

Points from (This Period)	VIL	MSU
In the Paint	20	18
Off Turns	2	5
2nd Chance	6	8
Fast Break	5	2
Bench	0	5

Official Scoring/Possession Reference Chart
Villanova vs Mississippi St.
Period 1
November 22, 2019 at The HTC Center - Conway, SC



Period 1

Starters:

Villanova: 5 MOORE ,JUSTIN (G); 23 SAMUELS,JERMAINE (F); 24 ROBINSON-EARL,JEREMIAH (F); 41 BEY,SADDIQ (F); 2 GILLESPIE,COLLIN (G);
Mississippi St.: 1 PERRY,REGGIE (F); 5 MOLINAR,IVERSON (G); 12 WOODARD II,ROBERT (G); 23 CARTER,TYSON (G); 24 ADO,ABDUL (F);

Time	VISITORS: Villanova	Score	Margin	HOME: Mississippi St.
19:34		2-0	H 2	GOOD! JUMPER by MOLINAR, IVERSON
18:01	GOOD! LAYUP by GILLESPIE, COLLIN [FB]	2-2	T	
17:37		4-2	H 2	GOOD! LAYUP by CARTER, TYSON
16:51		6-2	H 4	GOOD! DUNK by WOODARD II, ROBERT
16:30	GOOD! 3PTR by SWIDER, COLE	6-5	H 1	
16:08		8-5	H 3	GOOD! LAYUP by PERRY, REGGIE
15:48	GOOD! LAYUP by GILLESPIE, COLLIN	8-7	H 1	
15:29		11-7	H 4	GOOD! 3PTR by PERRY, REGGIE
15:13	GOOD! FT by GILLESPIE, COLLIN	11-8	H 3	
15:13	GOOD! FT by GILLESPIE, COLLIN	11-9	H 2	
14:43	GOOD! LAYUP by GILLESPIE, COLLIN [FB]	11-11	T	
13:51	GOOD! 3PTR by GILLESPIE, COLLIN [FB]	11-14	V 3	
13:09		13-14	V 1	GOOD! JUMPER by PERRY, REGGIE [PNT]
12:48		15-14	H 1	GOOD! DUNK by WOODARD II, ROBERT [FB]
12:16	GOOD! FT by MOORE , JUSTIN	15-15	T	
12:16	GOOD! FT by MOORE , JUSTIN	15-16	V 1	
11:33		18-16	H 2	GOOD! 3PTR by MOLINAR, IVERSON
11:07	GOOD! LAYUP by SAMUELS, JERMAINE	18-18	T	
10:58		20-18	H 2	GOOD! DUNK by WOODARD II, ROBERT
10:01		22-18	H 4	GOOD! LAYUP by PERRY, REGGIE
09:00	GOOD! LAYUP by ROBINSON-EARL, JEREMIAH	22-20	H 2	
08:31	GOOD! DUNK by ROBINSON-EARL, JEREMIAH	22-22	T	
07:52	GOOD! DUNK by ROBINSON-EARL, JEREMIAH [FB]	22-24	V 2	
07:13	GOOD! DUNK by ROBINSON-EARL, JEREMIAH [FB]	22-26	V 4	
06:16	GOOD! 3PTR by BEY, SADDIQ	22-29	V 7	
05:44	GOOD! DUNK by SAMUELS, JERMAINE [FB]	22-31	V 9	
04:56	GOOD! 3PTR by MOORE , JUSTIN	22-34	V 12	
03:57		23-34	V 11	GOOD! FT by WOODARD II, ROBERT
03:57		24-34	V 10	GOOD! FT by WOODARD II, ROBERT
03:15		26-34	V 8	GOOD! JUMPER by PERRY, REGGIE [PNT]
02:31		28-34	V 6	GOOD! JUMPER by WOODARD II, ROBERT
01:58	GOOD! FT by ROBINSON-EARL, JEREMIAH	28-35	V 7	
01:25		31-35	V 4	GOOD! 3PTR by STEWART, D.J.
00:58	GOOD! LAYUP by COSBY-ROUNDTREE, DHAMIR	31-37	V 6	
00:05	GOOD! LAYUP by MOORE , JUSTIN	31-39	V 8	
00:02		32-39	V 7	GOOD! FT by CARTER, TYSON [FB]
00:02		33-39	V 6	GOOD! FT by CARTER, TYSON [FB]
00:00	GOOD! 3PTR by GILLESPIE, COLLIN [FB]	33-42	V 9	

Villanova 42, Mississippi St. 33

Official Scoring/Possession Reference Chart
Villanova vs Mississippi St.
Period 2
November 22, 2019 at The HTC Center - Conway, SC



Period 2

Starters:

Villanova: 5 MOORE, JUSTIN (G); 23 SAMUELS, JERMAINE (F); 24 ROBINSON-EARL, JEREMIAH (F); 41 BEY, SADDIQ (F); 2 GILLESPIE, COLLIN (G);
Mississippi St.: 1 PERRY, REGGIE (F); 5 MOLINAR, IVERSON (G); 12 WOODARD II, ROBERT (G); 23 CARTER, TYSON (G); 24 ADO, ABDUL (F);

Time	VISITORS: Villanova	Score	Margin	HOME: Mississippi St.
19:38	GOOD! LAYUP by BEY, SADDIQ	33-44	V 11	
19:05		35-44	V 9	GOOD! LAYUP by PERRY, REGGIE [PNT]
18:36		37-44	V 7	GOOD! JUMPER by CARTER, TYSON
18:10	GOOD! LAYUP by BEY, SADDIQ	37-46	V 9	
17:42		39-46	V 7	GOOD! LAYUP by CARTER, TYSON
17:13		42-46	V 4	GOOD! 3PTR by WOODARD II, ROBERT
16:27		44-46	V 2	GOOD! LAYUP by MOLINAR, IVERSON [FB]
16:06	GOOD! 3PTR by SAMUELS, JERMAINE	44-49	V 5	
15:46		45-49	V 4	GOOD! FT by PERRY, REGGIE
15:17		46-49	V 3	GOOD! FT by CARTER, TYSON
15:17		47-49	V 2	GOOD! FT by CARTER, TYSON
14:10	GOOD! LAYUP by ROBINSON-EARL, JEREMIAH	47-51	V 4	
13:52		50-51	V 1	GOOD! 3PTR by CARTER, TYSON
12:59	GOOD! 3PTR by ROBINSON-EARL, JEREMIAH	50-54	V 4	
11:50	GOOD! 3PTR by SAMUELS, JERMAINE	50-57	V 7	
10:50		53-57	V 4	GOOD! 3PTR by STEWART, D.J.
10:22	GOOD! 3PTR by BEY, SADDIQ	53-60	V 7	
09:53	GOOD! LAYUP by ROBINSON-EARL, JEREMIAH	53-62	V 9	
09:24		56-62	V 6	GOOD! 3PTR by CARTER, TYSON
09:24		57-62	V 5	GOOD! FT by CARTER, TYSON
09:05	GOOD! LAYUP by ROBINSON-EARL, JEREMIAH	57-64	V 7	
08:31	GOOD! DUNK by BEY, SADDIQ	57-66	V 9	
08:06		59-66	V 7	GOOD! JUMPER by MOLINAR, IVERSON [PNT]
07:21		61-66	V 5	GOOD! DUNK by WOODARD II, ROBERT
06:52	GOOD! 3PTR by BEY, SADDIQ	61-69	V 8	
05:48	GOOD! LAYUP by BEY, SADDIQ	61-71	V 10	
05:32		63-71	V 8	GOOD! DUNK by WOODARD II, ROBERT
04:54		65-71	V 6	GOOD! LAYUP by ADO, ABDUL
04:38	GOOD! LAYUP by GILLESPIE, COLLIN	65-73	V 8	
04:22		66-73	V 7	GOOD! FT by PERRY, REGGIE
04:22		67-73	V 6	GOOD! FT by PERRY, REGGIE
03:30	GOOD! FT by GILLESPIE, COLLIN	67-74	V 7	
02:42	GOOD! LAYUP by ROBINSON-EARL, JEREMIAH	67-76	V 9	
02:22		68-76	V 8	GOOD! FT by PERRY, REGGIE
02:22		69-76	V 7	GOOD! FT by PERRY, REGGIE
02:21	GOOD! FT by SAMUELS, JERMAINE [FB]	69-77	V 8	
02:08		72-77	V 5	GOOD! 3PTR by CARTER, TYSON
01:12		74-77	V 3	GOOD! LAYUP by CARTER, TYSON
00:35	GOOD! FT by ROBINSON-EARL, JEREMIAH	74-78	V 4	
00:35	GOOD! FT by ROBINSON-EARL, JEREMIAH	74-79	V 5	
00:25	GOOD! FT by GILLESPIE, COLLIN [FB]	74-80	V 6	
00:17		76-80	V 4	GOOD! LAYUP by STEWART, D.J.
00:13	GOOD! LAYUP by SAMUELS, JERMAINE [FB]	76-82	V 6	
00:13	GOOD! FT by SAMUELS, JERMAINE [FB]	76-83	V 7	

Villanova 83, Mississippi St. 76

Official Substitutions Log
Villanova vs Mississippi St.
Period 1
November 22, 2019 at The HTC Center - Conway, SC



VISITORS: Villanova	Time	Score	HOME: Mississippi St.
5 MOORE ,JUSTIN			1 PERRY,REGGIE
23 SAMUELS,JERMAINE			5 MOLINAR,IVERSON
24 ROBINSON-EARL,JEREMIAH			12 WOODARD II,ROBERT
41 BEY,SADDIQ			23 CARTER,TYSON
2 GILLESPIE,COLLIN			24 ADO,ABDUL
SUB OUT: 5 MOORE ,JUSTIN	18:40	0-2	
SUB IN: 10 SWIDER,COLE	18:40		
SUB OUT: 24 ROBINSON-EARL,JEREMIAH	17:10	2-4	
SUB IN: 5 MOORE ,JUSTIN	17:10		
	15:13	7-11	SUB OUT: MOLINAR,IVERSON
	15:13		SUB IN: STEWART,D.J.
SUB OUT: 23 SAMUELS,JERMAINE	15:13		
SUB IN: 24 ROBINSON-EARL,JEREMIAH	15:13		
	14:21	11-11	SUB OUT: ADO,ABDUL
	14:21		SUB IN: FEAZELL,KEYSHAWN
SUB OUT: 41 BEY,SADDIQ	14:21		
SUB IN: 3 SLATER,BRANDON	14:21		
	12:16	15-15	SUB OUT: PERRY,REGGIE
	12:16		SUB OUT: CARTER,TYSON
	12:16		SUB IN: MOLINAR,IVERSON
	12:16		SUB IN: ADO,ABDUL
SUB OUT: 2 GILLESPIE,COLLIN	12:16		
SUB OUT: 3 SLATER,BRANDON	12:16		
SUB IN: 23 SAMUELS,JERMAINE	12:16		
SUB IN: 41 BEY,SADDIQ	12:16		
SUB OUT: 10 SWIDER,COLE	12:04	16-15	
SUB IN: 3 SLATER,BRANDON	12:04		
	10:35	18-20	SUB OUT: WOODARD II,ROBERT
	10:35		SUB OUT: FEAZELL,KEYSHAWN
	10:35		SUB IN: PERRY,REGGIE
	10:35		SUB IN: CARTER,TYSON
SUB OUT: 3 SLATER,BRANDON	10:35		
SUB OUT: 24 ROBINSON-EARL,JEREMIAH	10:35		
SUB IN: 2 GILLESPIE,COLLIN	10:35		
SUB IN: 10 SWIDER,COLE	10:35		
	09:40	18-22	SUB OUT: ADO,ABDUL
	09:40		SUB IN: ODURO,PRINCE
SUB OUT: 23 SAMUELS,JERMAINE	09:40		
SUB IN: 24 ROBINSON-EARL,JEREMIAH	09:40		
SUB OUT: 41 BEY,SADDIQ	08:45	20-22	
SUB IN: 3 SLATER,BRANDON	08:45		
	08:45		SUB OUT: MOLINAR,IVERSON
	08:45		SUB IN: WOODARD II,ROBERT
SUB OUT: 5 MOORE ,JUSTIN	08:45		
SUB IN: 23 SAMUELS,JERMAINE	08:45		
	07:51	24-22	SUB OUT: ODURO,PRINCE
	07:51		SUB IN: FEAZELL,KEYSHAWN
SUB OUT: 3 SLATER,BRANDON	07:35	24-22	
SUB IN: 41 BEY,SADDIQ	07:35		
	06:41	26-22	SUB OUT: PERRY,REGGIE
	06:41		SUB IN: ADO,ABDUL
	05:44	31-22	SUB OUT: STEWART,D.J.
	05:44		SUB OUT: FEAZELL,KEYSHAWN
	05:44		SUB IN: PERRY,REGGIE
	05:44		SUB IN: MOLINAR,IVERSON
SUB OUT: 2 GILLESPIE,COLLIN	05:44		
SUB OUT: 10 SWIDER,COLE	05:44		
SUB IN: 3 SLATER,BRANDON	05:44		
SUB IN: 5 MOORE ,JUSTIN	05:44		
SUB OUT: 41 BEY,SADDIQ	05:29	31-22	
SUB IN: 2 GILLESPIE,COLLIN	05:29		
	03:57	34-22	SUB OUT: ADO,ABDUL
	03:57		SUB IN: FEAZELL,KEYSHAWN
SUB OUT: 5 MOORE ,JUSTIN	03:57		
SUB IN: 10 SWIDER,COLE	03:57		
	03:57		SUB OUT: MOLINAR,IVERSON
	03:57		SUB IN: STEWART,D.J.
SUB OUT: 10 SWIDER,COLE	01:58	35-28	
SUB IN: 21 COSBY-ROUNDTREE,DHAMIR	01:58		
SUB OUT: 21 COSBY-ROUNDTREE,DHAMIR	00:29	37-31	
SUB OUT: 24 ROBINSON-EARL,JEREMIAH	00:29		
SUB IN: 5 MOORE ,JUSTIN	00:29		
SUB IN: 10 SWIDER,COLE	00:29		
SUB OUT: 2 GILLESPIE,COLLIN	00:05	39-31	
SUB OUT: 5 MOORE ,JUSTIN	00:05		

VISITORS: Villanova	Time	Score	HOME: Mississippi St.
SUB OUT: 10 SWIDER,COLE	00:05		
SUB IN: 1 ANTOINE,BRYAN	00:05		
SUB IN: 21 COSBY-ROUNDTREE,DHAMIR	00:05		
SUB IN: 24 ROBINSON-EARL,JEREMIAH	00:05		
	00:05		SUB OUT: STEWART,D.J.
	00:05		SUB IN: MOLINAR,IVERSON
	00:02	39-32	SUB OUT: MOLINAR,IVERSON
	00:02		SUB IN: STEWART,D.J.
SUB OUT: 1 ANTOINE,BRYAN	00:02		
SUB OUT: 3 SLATER,BRANDON	00:02		
SUB OUT: 21 COSBY-ROUNDTREE,DHAMIR	00:02		
SUB OUT: 23 SAMUELS,JERMAINE	00:02		
SUB IN: 2 GILLESPIE,COLLIN	00:02		
SUB IN: 5 MOORE ,JUSTIN	00:02		
SUB IN: 10 SWIDER,COLE	00:02		
SUB IN: 41 BEY,SADDIQ	00:02		

Villanova 42, Mississippi St. 33

Official Substitutions Log
Villanova vs Mississippi St.
Period 2
November 22, 2019 at The HTC Center - Conway, SC



VISITORS: Villanova	Time	Score	HOME: Mississippi St.
5 MOORE ,JUSTIN			1 PERRY,REGGIE
23 SAMUELS,JERMAINE			5 MOLINAR,IVERSON
24 ROBINSON-EARL,JEREMIAH			12 WOODARD II,ROBERT
41 BEY,SADDIQ			23 CARTER,TYSON
2 GILLESPIE,COLLIN			24 ADO,ABDUL
	20:00	-	SUB OUT: STEWART,D.J.
	20:00		SUB OUT: FEAZELL,KEYSHAWN
	20:00		SUB IN: MOLINAR,IVERSON
	20:00		SUB IN: ADO,ABDUL
SUB OUT: 10 SWIDER,COLE	20:00		
SUB IN: 23 SAMUELS,JERMAINE	20:00		
SUB OUT: 23 SAMUELS,JERMAINE	18:39	44-35	
SUB IN: 10 SWIDER,COLE	18:39		
	16:25	46-44	SUB OUT: MOLINAR,IVERSON
	16:25		SUB IN: STEWART,D.J.
SUB OUT: 10 SWIDER,COLE	16:25		
SUB IN: 23 SAMUELS,JERMAINE	16:25		
	15:45	49-45	SUB OUT: ADO,ABDUL
	15:45		SUB IN: FEAZELL,KEYSHAWN
SUB OUT: 41 BEY,SADDIQ	15:17	49-46	
SUB IN: 10 SWIDER,COLE	15:17		
SUB OUT: 2 GILLESPIE,COLLIN	14:00	51-47	
SUB IN: 41 BEY,SADDIQ	14:00		
	13:45	51-50	SUB OUT: CARTER,TYSON
	13:45		SUB IN: MOLINAR,IVERSON
SUB OUT: 5 MOORE ,JUSTIN	13:45		
SUB IN: 2 GILLESPIE,COLLIN	13:45		
	12:25	54-50	SUB OUT: FEAZELL,KEYSHAWN
	12:25		SUB IN: ADO,ABDUL
SUB OUT: 24 ROBINSON-EARL,JEREMIAH	12:25		
SUB IN: 21 COSBY-ROUNDTREE,DHAMIR	12:25		
SUB OUT: 10 SWIDER,COLE	12:25		
SUB IN: 3 SLATER,BRANDON	12:25		
	11:27	57-50	SUB OUT: PERRY,REGGIE
	11:27		SUB OUT: MOLINAR,IVERSON
	11:27		SUB IN: FEAZELL,KEYSHAWN
	11:27		SUB IN: CARTER,TYSON
SUB OUT: 3 SLATER,BRANDON	09:59	60-53	
SUB OUT: 21 COSBY-ROUNDTREE,DHAMIR	09:59		
SUB IN: 10 SWIDER,COLE	09:59		
SUB IN: 24 ROBINSON-EARL,JEREMIAH	09:59		
	09:43	62-53	SUB OUT: ADO,ABDUL
	09:43		SUB IN: PERRY,REGGIE
SUB OUT: 2 GILLESPIE,COLLIN	09:42	62-53	
SUB IN: 5 MOORE ,JUSTIN	09:42		
	09:24	62-56	SUB OUT: WOODARD II,ROBERT
	09:24		SUB IN: MOLINAR,IVERSON
SUB OUT: 5 MOORE ,JUSTIN	09:24		
SUB IN: 2 GILLESPIE,COLLIN	09:24		
	08:52	64-57	SUB OUT: STEWART,D.J.
	08:52		SUB IN: WOODARD II,ROBERT
	08:16	66-57	SUB OUT: FEAZELL,KEYSHAWN
	08:16		SUB IN: ADO,ABDUL
SUB OUT: 10 SWIDER,COLE	08:16		
SUB OUT: 41 BEY,SADDIQ	08:16		
SUB IN: 3 SLATER,BRANDON	08:16		
SUB IN: 21 COSBY-ROUNDTREE,DHAMIR	08:16		
SUB OUT: 3 SLATER,BRANDON	07:13	66-61	
SUB OUT: 21 COSBY-ROUNDTREE,DHAMIR	07:13		
SUB IN: 10 SWIDER,COLE	07:13		
SUB IN: 41 BEY,SADDIQ	07:13		
	06:09	69-61	SUB OUT: MOLINAR,IVERSON
	06:09		SUB IN: STEWART,D.J.
SUB OUT: 10 SWIDER,COLE	04:22	73-66	
SUB IN: 5 MOORE ,JUSTIN	04:22		
	03:49	73-67	SUB OUT: ADO,ABDUL
	03:49		SUB IN: FEAZELL,KEYSHAWN
SUB OUT: 5 MOORE ,JUSTIN	03:16	74-67	
SUB IN: 10 SWIDER,COLE	03:16		
SUB OUT: 10 SWIDER,COLE	02:04	77-72	
SUB IN: 5 MOORE ,JUSTIN	02:04		
	00:35	78-74	SUB OUT: FEAZELL,KEYSHAWN
	00:35		SUB IN: MOLINAR,IVERSON

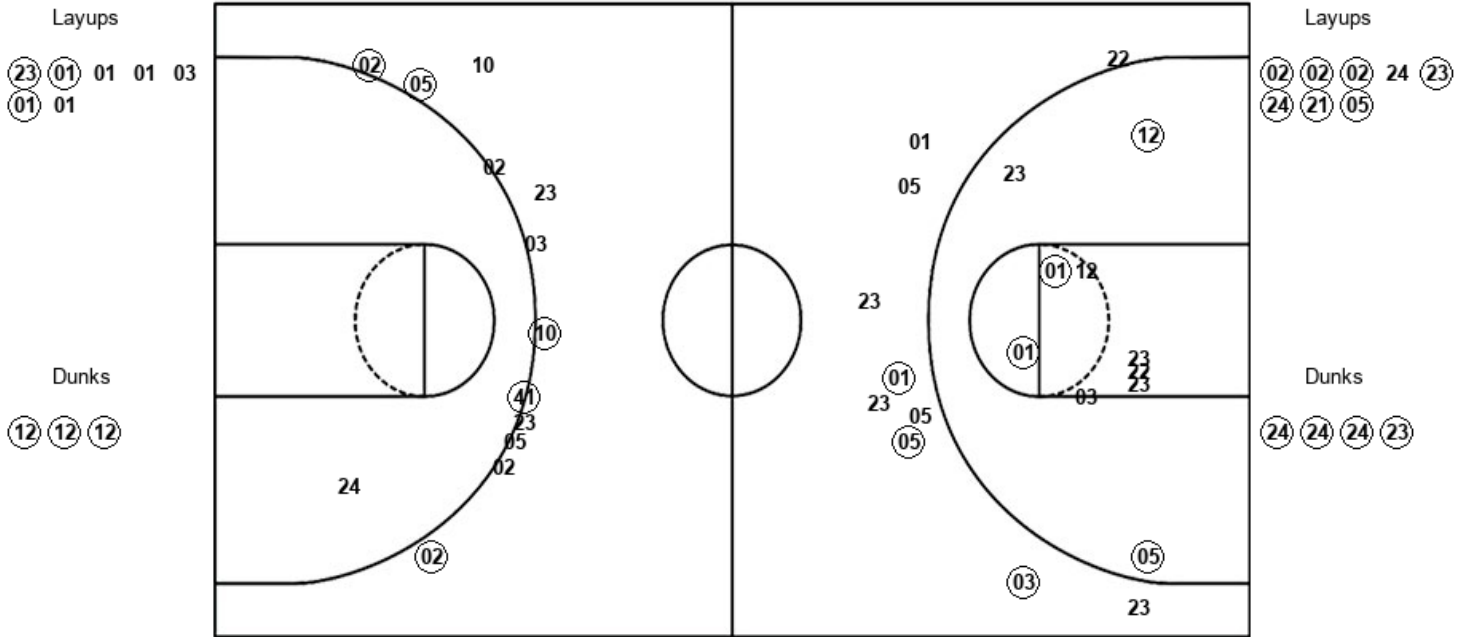
Villanova 83, Mississippi St. 76

Official Shot Chart
Villanova vs Mississippi St.
PERIOD 1 Shots
 November 22, 2019 at The HTC Center - Conway, SC



Mississippi St.

Villanova



MSU : Period 1	Made	Att	Pct
Layups	3	7	42.9
Dunks	3	3	100.0
2PT Field Goals	10	20	50.0
3PT Field Goals	3	10	30.0
Total Field Goals	13	30	43.3

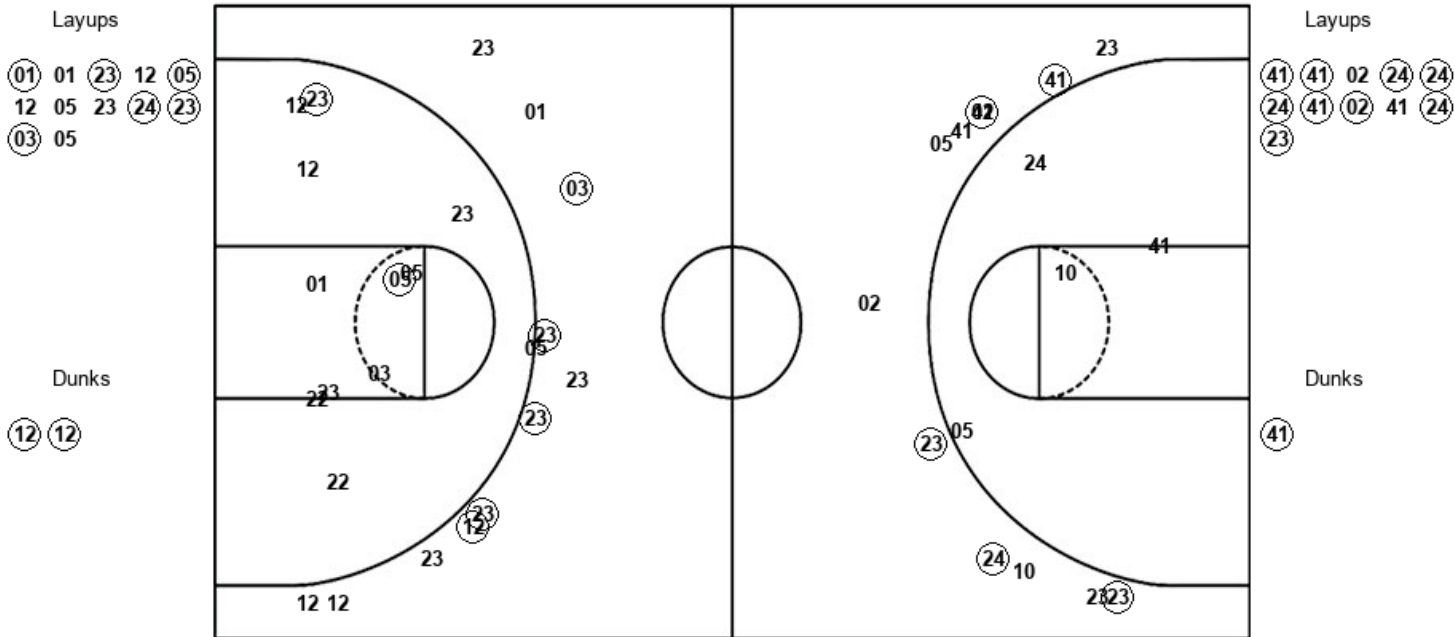
VIL : Period 1	Made	Att	Pct
Layups	7	8	87.5
Dunks	4	4	100.0
2PT Field Goals	11	13	84.6
3PT Field Goals	5	12	41.7
Total Field Goals	16	25	64.0

Official Shot Chart
Villanova vs Mississippi St.
PERIOD 2 Shots
 November 22, 2019 at The HTC Center - Conway, SC



Mississippi St.

Villanova



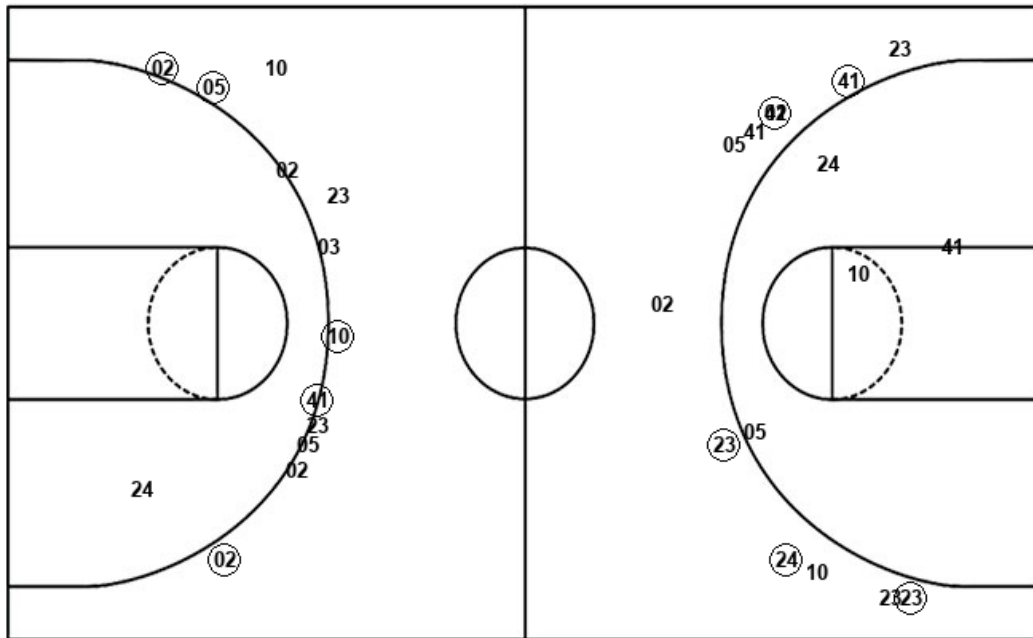
MSU : Period 2	Made	Att	Pct
Layups	6	12	50.0
Dunks	2	2	100.0
2PT Field Goals	10	25	40.0
3PT Field Goals	5	12	41.7
Total Field Goals	15	37	40.5

VIL : Period 2	Made	Att	Pct
Layups	9	11	81.8
Dunks	1	1	100.0
2PT Field Goals	10	16	62.5
3PT Field Goals	5	12	41.7
Total Field Goals	15	28	53.6

Official Shot Chart
Villanova vs Mississippi St.
Villanova Team Shots
November 22, 2019 at The HTC Center - Conway, SC



Layups



Layups



Dunks

Dunks



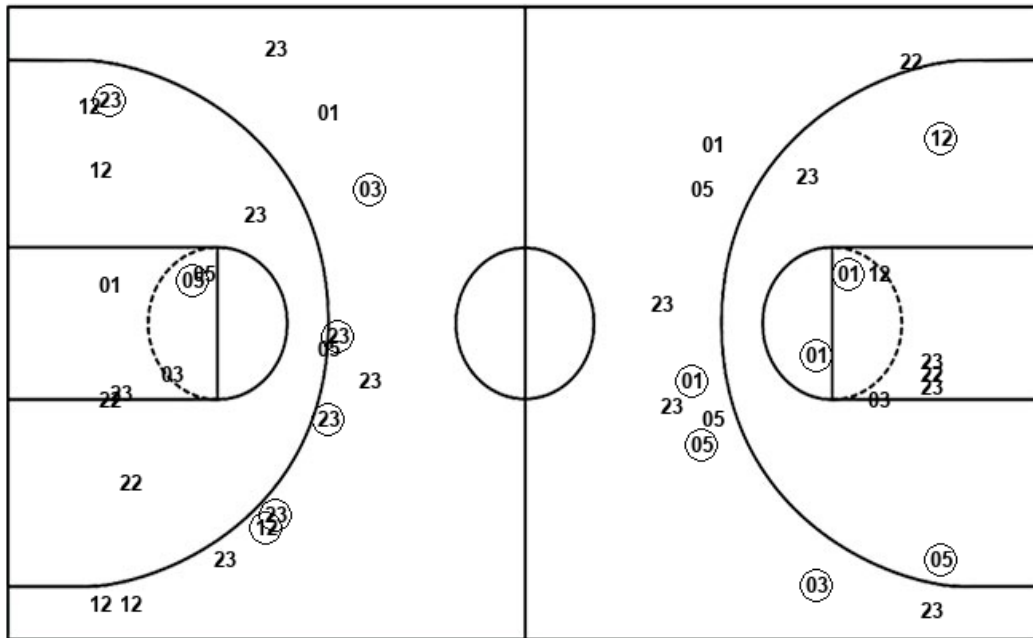
VIL : Period 1	Made	Att	Pct
Layups	7	8	87.5
Dunks	4	4	100.0
2PT Field Goals	11	13	84.6
3PT Field Goals	5	12	41.7
Total Field Goals	16	25	64.0

VIL : Period 2	Made	Att	Pct
Layups	9	11	81.8
Dunks	1	1	100.0
2PT Field Goals	10	16	62.5
3PT Field Goals	5	12	41.7
Total Field Goals	15	28	53.6

Official Shot Chart
Villanova vs Mississippi St.
Mississippi St. Team Shots
November 22, 2019 at The HTC Center - Conway, SC



Layups



Layups

- (23) (01) (01) (01) (03)
- (01) (01) (01) (01) (23)
- 12 (05) 12 05 23
- (24) (23) (03) 05

Dunks

Dunks

- (12) (12) (12) (12) (12)

MSU : Period 1	Made	Att	Pct
Layups	3	7	42.9
Dunks	3	3	100.0
2PT Field Goals	10	20	50.0
3PT Field Goals	3	10	30.0
Total Field Goals	13	30	43.3

MSU : Period 2	Made	Att	Pct
Layups	6	12	50.0
Dunks	2	2	100.0
2PT Field Goals	10	25	40.0
3PT Field Goals	5	12	41.7
Total Field Goals	15	37	40.5