

FINAL SCORE**Middle Tenn.****74****Tulane****86****Myrtle Beach Invitational**

November 22, 2019 • The HTC Center - Conway, SC

**FINAL STATISTICS**

Official Box Score
Middle Tenn. vs Tulane
Game Totals -- Final Statistics
November 22, 2019 at The HTC Center - Conway, SC



Middle Tenn. 74

No.	Player	S	Pts	FG	3FG	FT	OR	DR	TR	PF	A	TO	Blk	Stl	Min	+/-
03	SIMS, DONOVAN	G	11	4-11	3-8	0-0	0	3	3	2	9	5	0	2	36	-14
04	JACKSON, TYSON	F	8	4-4	0-0	0-0	2	1	3	3	1	1	0	1	22	1
13	JOHNSON, JAYCE	G	12	6-7	0-0	0-1	0	0	0	5	1	1	1	1	21	-9
23	JONES, C.J.	G	20	8-14	4-6	0-0	1	2	3	2	0	0	0	0	36	-12
55	GREEN, ANTONIO	G	11	4-14	1-7	2-2	1	6	7	3	4	4	1	0	40	-12
00	CRUMP, ANTHONY	G	8	2-3	2-2	2-4	1	2	3	0	4	4	0	1	25	3
01	MILLIN, TYLER	F	2	1-2	0-1	0-0	1	3	4	2	0	1	0	0	12	-13
05	LAWRENCE, ELI	G	2	1-3	0-2	0-0	0	1	1	0	2	1	0	0	7	-4
TEAM							2	2	4	0		0				
TOTALS			74	30-58	10-26	4-7	8	20	28	17	21	17	2	5	198	

Shooting By Period

Period	FG	FG%	3FG	3FG%	FT	FT%
1st Half	10-27	37%	1-10	10%	4-7	57%
2nd Half	20-31	65%	9-16	56%	0-0	0%
Game	30-58	51.7%	10-26	38.5%	4-7	57.1%

Deadball Rebounds: 1,0

Last FG: 2nd-00:42

Biggest Run: 8-0

Largest lead: By 0 at -

Technical Fouls: None.

Tulane 86

No.	Player	S	Pts	FG	3FG	FT	OR	DR	TR	PF	A	TO	Blk	Stl	Min	+/-
01	LAWSON, K.J.	F	18	4-7	3-4	7-8	1	5	6	1	2	2	0	3	37	17
02	WALKER, JORDAN	G	11	4-9	1-3	2-2	0	2	2	3	5	2	0	2	34	6
04	DAYS, NOBAL	F	0	0-3	0-0	0-0	4	2	6	3	2	2	0	0	26	12
05	HIGHTOWER, TESHAUN	G	20	3-10	1-7	13-16	1	5	6	1	1	1	0	2	35	15
25	THOMPSON, CHRISTION	G	25	8-12	5-6	4-4	1	5	6	3	2	2	0	1	32	13
03	ONA EMBO, RAY	G	7	3-5	1-2	0-0	0	3	3	1	1	3	0	0	20	8
12	ZHANG, KEVIN	F	5	2-4	1-2	0-0	0	0	0	1	0	1	0	1	12	-9
23	MCGEE, R.J.	G	0	0-0	0-0	0-0	0	0	0	2	0	1	0	1	4	-2
TEAM							1	0	1	0		2				
TOTALS			86	24-50	12-24	26-30	8	22	30	15	13	16	0	10	198	

Shooting By Period

Period	FG	FG%	3FG	3FG%	FT	FT%
1st Half	12-23	52%	6-10	60%	12-14	86%
2nd Half	12-27	44%	6-14	43%	14-16	88%
Game	24-50	48.0%	12-24	50.0%	26-30	86.7%

Deadball Rebounds: 2,0

Last FG: 2nd-01:03

Biggest Run: 7-0

Largest lead: By 24 at 2-12

Technical Fouls: None.

Game Notes:

Officials: Brian O'Connell, Lee Cassell, Earl Walton IV

Start Time: 12:01 PM ET

End Time: 01:57 PM ET

Game Duration: 1:56

Neutral Court;

Score	1st	2nd	TOT
MTS	25	49	74
TUL	42	44	86

MTS led for 0:00. TUL led for 39:16.

Game was tied for 0:21.

Times tied: 0 Lead Changes: 0

Points from	MTS	TUL
In the Paint	36	20
Off Turns	16	12
2nd Chance	12	9
Fast Break	18	14
Bench	12	12

Official Box Score
Middle Tenn. vs Tulane
First Half Statistics Only
November 22, 2019 at The HTC Center - Conway, SC



Middle Tenn. 25

No.	Player	S	Pts	FG	3FG	FT	OR	DR	TR	PF	A	TO	Blk	Stl	Min	+/-
03	SIMS, DONOVAN	G	0	0-4	0-2	0-0	0	0	0	1	3	1	0	2	16	-19
04	JACKSON, TYSON	F	0	0-0	0-0	0-0	0	0	0	2	0	1	0	0	3	-8
13	JOHNSON, JAYCE	G	10	5-6	0-0	0-1	0	0	0	2	1	1	1	1	15	-8
23	JONES, C.J.	G	5	2-6	1-2	0-0	1	2	3	1	0	0	0	0	18	-14
55	GREEN, ANTONIO	G	4	1-5	0-3	2-2	0	1	1	0	2	2	1	0	20	-17
00	CRUMP, ANTHONY	G	2	0-1	0-0	2-4	1	1	2	0	1	2	0	0	13	-6
01	MILLIN, TYLER	F	2	1-2	0-1	0-0	1	2	3	1	0	1	0	0	9	-12
05	LAWRENCE, ELI	G	2	1-3	0-2	0-0	0	1	1	0	1	1	0	0	6	-1
	TEAM						1	1	2	0		0				
TOTALS			25	10-27	1-10	4-7	4	8	12	7	8	9	2	3	100	

Shooting By Period

Period	FG	FG%	3FG	3FG%	FT	FT%
1st Half	10-27	37%	1-10	10%	4-7	57%
Game	30-58	51.7%	10-26	38.5%	4-7	57.1%

Deadball Rebounds: 1,0
Last FG Half: MTS 2nd-00:42

Tulane 42

No.	Player	S	Pts	FG	3FG	FT	OR	DR	TR	PF	A	TO	Blk	Stl	Min	+/-
01	LAWSON, K.J.	F	16	4-5	3-3	5-6	1	3	4	0	1	2	0	0	18	19
02	WALKER, JORDAN	G	9	3-4	1-1	2-2	0	2	2	2	3	2	0	1	17	17
04	DAYS, NOBAL	F	0	0-1	0-0	0-0	1	1	2	2	0	0	0	0	10	11
05	HIGHTOWER, TESHAWN	G	12	3-7	1-5	5-6	0	3	3	0	0	0	0	1	17	18
25	THOMPSON, CHRISTION	G	0	0-2	0-0	0-0	0	4	4	1	2	1	0	1	15	15
03	ONA EMBO, RAY	G	5	2-3	1-1	0-0	0	2	2	1	0	3	0	0	13	7
12	ZHANG, KEVIN	F	0	0-1	0-0	0-0	0	0	0	1	0	1	0	0	7	0
23	MCGEE, R.J.	G	0	0-0	0-0	0-0	0	0	0	2	0	1	0	1	4	-2
	TEAM						1	0	1	0		1				
TOTALS			42	12-23	6-10	12-14	3	15	18	9	6	11	0	4	100	

Shooting By Period

Period	FG	FG%	3FG	3FG%	FT	FT%
1st Half	12-23	52%	6-10	60%	12-14	86%
Game	24-50	48.0%	12-24	50.0%	26-30	86.7%

Deadball Rebounds: 2,0
Last FG Half: TUL 2nd-01:03

Game Notes:

Officials: Brian O'Connell, Lee Cassell, Earl Walton IV

Start Time: 12:01 PM ET

End Time: 01:57 PM ET

Game Duration: 1:56

Neutral Court;

Score	1st	2nd	TOT
MTS	25	49	74
TUL	42	44	86

Points from (This Period)	MTS	TUL
In the Paint	18	12
Off Turns	5	6
2nd Chance	3	2
Fast Break	6	7
Bench	6	5

Official Play-By-Play
Middle Tenn. vs Tulane
First Half
November 22, 2019 at The HTC Center - Conway, SC



Period 1

Starters:

Middle Tenn.: 3 SIMS, DONOVAN (G); 4 JACKSON, TYSON (F); 13 JOHNSON, JAYCE (G); 23 JONES, C.J. (G); 55 GREEN, ANTONIO (G);
Tulane: 1 LAWSON, K.J. (F); 2 WALKER, JORDAN (G); 4 DAYS, NOBAL (F); 5 HIGHTOWER, TESHAWN (G); 25 THOMPSON, CHRISTION (G);

Time	VISITORS: Middle Tenn.	Score	Margin	HOME: Tulane
19:38	FOUL (PERSONAL) by JACKSON, TYSON			
19:38		1-0	H 1	GOOD! FT by HIGHTOWER, TESHAWN
19:38		2-0	H 2	GOOD! FT by HIGHTOWER, TESHAWN
19:23	TURNOVER (BADPASS) by JACKSON, TYSON			
19:23				STEAL by THOMPSON, CHRISTION
19:01		4-0	H 4	GOOD! LAYUP by WALKER, JORDAN
18:41	GOOD! LAYUP by JOHNSON, JAYCE	4-2	H 2	
18:41	ASSIST by SIMS, DONOVAN			
18:20	FOUL (PERSONAL) by JOHNSON, JAYCE			
18:20		5-2	H 3	GOOD! FT by LAWSON, K.J.
18:20				MISSED FT by LAWSON, K.J.
18:20				REBOUND (OFF) by TEAM
18:20	SUB OUT: JOHNSON, JAYCE			
18:20	SUB IN: CRUMP, ANTHONY			
18:20		6-2	H 4	GOOD! FT by LAWSON, K.J.
18:05	MISSED JUMPER by CRUMP, ANTHONY			
18:02				REBOUND (DEF) by DAYS, NOBAL
17:43		9-2	H 7	GOOD! 3PTR by LAWSON, K.J.
17:43				ASSIST by WALKER, JORDAN
17:41	TIMEOUT 30SEC			
17:26	MISSED JUMPER by SIMS, DONOVAN			
17:23				REBOUND (DEF) by THOMPSON, CHRISTION
17:22	FOUL (PERSONAL) by JACKSON, TYSON			
17:22		10-2	H 8	GOOD! FT by WALKER, JORDAN [FB]
17:22	SUB OUT: JACKSON, TYSON			
17:22	SUB IN: JOHNSON, JAYCE			
17:22		11-2	H 9	GOOD! FT by WALKER, JORDAN [FB]
16:54	GOOD! 3PTR by JONES, C.J.	11-5	H 6	
16:54	ASSIST by SIMS, DONOVAN			
16:36				TURNOVER (BADPASS) by LAWSON, K.J.
16:36	STEAL by SIMS, DONOVAN			
16:32	GOOD! LAYUP by GREEN, ANTONIO [FB]	11-7	H 4	
16:32	ASSIST by SIMS, DONOVAN			
16:20	FOUL (PERSONAL) by JONES, C.J.			
16:20		12-7	H 5	GOOD! FT by HIGHTOWER, TESHAWN
16:20	SUB OUT: JONES, C.J.			
16:20	SUB IN: LAWRENCE, ELI			
16:20		13-7	H 6	GOOD! FT by HIGHTOWER, TESHAWN
16:06	TURNOVER (BADPASS) by JOHNSON, JAYCE			
16:06	SUB OUT: JOHNSON, JAYCE			
16:06	SUB IN: MILLIN, TYLER			
15:48				TURNOVER (BADPASS) by THOMPSON, CHRISTION
15:48	STEAL by SIMS, DONOVAN			
15:44	TURNOVER (BADPASS) by LAWRENCE, ELI			
15:44				STEAL by WALKER, JORDAN
15:37				MISSED 3PTR by HIGHTOWER, TESHAWN
15:34				REBOUND (OFF) by LAWSON, K.J.
15:32		15-7	H 8	GOOD! LAYUP by LAWSON, K.J.
15:12	MISSED JUMPER by SIMS, DONOVAN			
15:09				REBOUND (DEF) by WALKER, JORDAN
15:06				TURNOVER (TRAVEL) by WALKER, JORDAN
15:06				
15:06				SUB OUT: THOMPSON, CHRISTION
15:06				SUB IN: ONA EMBO, RAY
14:53	TURNOVER (LOSTBALL) by CRUMP, ANTHONY			
14:32				MISSED LAYUP by LAWSON, K.J.
14:29				REBOUND (OFF) by DAYS, NOBAL
14:29				MISSED LAYUP by DAYS, NOBAL
14:29	REBOUND (DEF) by MILLIN, TYLER			
14:29				FOUL (PERSONAL) by DAYS, NOBAL
14:29				SUB OUT: DAYS, NOBAL
14:29				SUB IN: ZHANG, KEVIN
14:16	MISSED 3PTR by LAWRENCE, ELI			
14:13				REBOUND (DEF) by HIGHTOWER, TESHAWN
14:07				FOUL (OFF) by ONA EMBO, RAY
14:07				TURNOVER (OFFENSIVE) by ONA EMBO, RAY
14:07	SUB OUT: LAWRENCE, ELI			
14:07	SUB IN: JONES, C.J.			
13:42	MISSED 3PTR by GREEN, ANTONIO			
13:39				REBOUND (DEF) by ONA EMBO, RAY

Time	VISITORS: Middle Tenn.	Score	Margin	HOME: Tulane
13:22				TURNOVER (LOSTBALL) by ONA EMBO, RAY
13:15	MISSED 3PTR by MILLIN, TYLER			
13:12				REBOUND (DEF) by WALKER, JORDAN
13:01				MISSED 3PTR by HIGHTOWER, TESHAUN
12:58	REBOUND (DEF) by GREEN, ANTONIO			
12:50	MISSED 3PTR by SIMS, DONOVAN			
12:48				REBOUND (DEF) by HIGHTOWER, TESHAUN
12:31		17-7	H 10	GOOD! LAYUP by WALKER, JORDAN
12:13	TURNOVER (OTHER) by MILLIN, TYLER			
12:13	SUB OUT: MILLIN, TYLER			
12:13	SUB IN: JOHNSON, JAYCE			
12:13				SUB OUT: LAWSON, K.J.
12:13				SUB OUT: WALKER, JORDAN
12:13				SUB IN: DAYS, NOBAL
12:13				SUB IN: THOMPSON, CHRISTION
12:03				TURNOVER (BADPASS) by ZHANG, KEVIN
11:46	TURNOVER (3SEC) by SIMS, DONOVAN			
11:46				
11:46				SUB OUT: HIGHTOWER, TESHAUN
11:46				SUB IN: WALKER, JORDAN
11:35				MISSED LAYUP by ZHANG, KEVIN
11:35	BLOCK by JOHNSON, JAYCE			
11:33	REBOUND (DEF) by TEAM			
11:22	MISSED 3PTR by JONES, C.J.			
11:19				REBOUND (DEF) by THOMPSON, CHRISTION
11:06				MISSED LAYUP by WALKER, JORDAN
11:03	REBOUND (DEF) by JONES, C.J.			
10:43	GOOD! JUMPER by JONES, C.J. [PNT]	17-9	H 8	
10:43	ASSIST by CRUMP, ANTHONY			
10:18				MISSED JUMPER by THOMPSON, CHRISTION
10:12	REBOUND (DEF) by JONES, C.J.			
10:09	SUB OUT: CRUMP, ANTHONY			
10:09	SUB IN: MILLIN, TYLER			
10:09				SUB OUT: ZHANG, KEVIN
10:09				SUB IN: LAWSON, K.J.
09:55	MISSED JUMPER by JONES, C.J.			
09:52				REBOUND (DEF) by ONA EMBO, RAY
09:30		20-9	H 11	GOOD! 3PTR by ONA EMBO, RAY
09:30				ASSIST by THOMPSON, CHRISTION
09:14				SUB OUT: ONA EMBO, RAY
09:14				SUB IN: HIGHTOWER, TESHAUN
09:05	MISSED JUMPER by JOHNSON, JAYCE			
09:03				REBOUND (DEF) by THOMPSON, CHRISTION
08:45		23-9	H 14	GOOD! 3PTR by HIGHTOWER, TESHAUN
08:45				ASSIST by THOMPSON, CHRISTION
08:25	MISSED JUMPER by JONES, C.J.			
08:24	REBOUND (OFF) by TEAM			
08:08	GOOD! JUMPER by MILLIN, TYLER [PNT]	23-11	H 12	
07:55		26-11	H 15	GOOD! 3PTR by WALKER, JORDAN
07:55				ASSIST by LAWSON, K.J.
07:37				FOUL (PERSONAL) by THOMPSON, CHRISTION
07:37				
07:21	GOOD! LAYUP by JOHNSON, JAYCE [PNT]	26-13	H 13	
07:21				FOUL (PERSONAL) by DAYS, NOBAL
07:20	MISSED FT by JOHNSON, JAYCE			
07:20				REBOUND (DEF) by LAWSON, K.J.
07:20				TURNOVER (BADPASS) by LAWSON, K.J.
07:20				SUB OUT: DAYS, NOBAL
07:20				SUB IN: ONA EMBO, RAY
07:05	GOOD! LAYUP by JOHNSON, JAYCE [PNT]	26-15	H 11	
07:05	ASSIST by GREEN, ANTONIO			
06:32	FOUL (PERSONAL) by SIMS, DONOVAN			
06:16		29-15	H 14	GOOD! 3PTR by LAWSON, K.J.
06:16				ASSIST by WALKER, JORDAN
06:07	MISSED 3PTR by SIMS, DONOVAN			
06:03				REBOUND (DEF) by LAWSON, K.J.
05:56				MISSED JUMPER by ONA EMBO, RAY
05:56	REBOUND (DEF) by MILLIN, TYLER			
05:56	MISSED JUMPER by JONES, C.J.			
02:56	REBOUND (OFF) by MILLIN, TYLER			
05:17	FOUL (PERSONAL) by MILLIN, TYLER			
05:17		30-15	H 15	GOOD! FT by LAWSON, K.J. [FB]
05:17		31-15	H 16	GOOD! FT by LAWSON, K.J. [FB]
05:17	SUB OUT: MILLIN, TYLER			
05:17	SUB IN: CRUMP, ANTHONY			
05:17				SUB OUT: WALKER, JORDAN
05:17				SUB IN: MCGEE, R.J.
05:17		32-15	H 17	GOOD! FT by LAWSON, K.J. [FB]
05:02	GOOD! LAYUP by JOHNSON, JAYCE	32-17	H 15	
05:02	ASSIST by GREEN, ANTONIO			

Time	VISITORS: Middle Tenn.	Score	Margin	HOME: Tulane
04:36		34-17	H 17	GOOD! LAYUP by HIGHTOWER, TESHAWN
04:28	MISSED 3PTR by GREEN, ANTONIO			
04:24				REBOUND (DEF) by LAWSON, K.J.
04:05		36-17	H 19	GOOD! LAYUP by ONA EMBO, RAY
03:54				FOUL (PERSONAL) by ZHANG, KEVIN
03:54				
05:17				SUB OUT: THOMPSON, CHRISTION
05:17				SUB IN: ZHANG, KEVIN
03:54	SUB OUT: SIMS, DONOVAN			
03:54	SUB IN: LAWRENCE, ELI			
03:54	MISSED FT by CRUMP, ANTHONY			
03:54	REBOUND (OFF) by TEAM			
03:54	GOOD! FT by CRUMP, ANTHONY	36-18	H 18	
03:38				MISSED 3PTR by HIGHTOWER, TESHAWN
03:35	REBOUND (DEF) by LAWRENCE, ELI			
03:28	GOOD! LAYUP by JOHNSON, JAYCE [FB]	36-20	H 16	
03:28	ASSIST by LAWRENCE, ELI			
03:03				TURNOVER (BADPASS) by ONA EMBO, RAY
03:03	STEAL by JOHNSON, JAYCE			
03:03				FOUL (OFF) by MCGEE, R.J.
03:03				TURNOVER (OFFENSIVE) by MCGEE, R.J.
03:03				SUB OUT: HIGHTOWER, TESHAWN
03:03				SUB OUT: ZHANG, KEVIN
03:03				SUB IN: WALKER, JORDAN
03:03				SUB IN: THOMPSON, CHRISTION
02:47	MISSED 3PTR by LAWRENCE, ELI			
02:47	REBOUND (OFF) by CRUMP, ANTHONY			
02:47				FOUL (PERSONAL) by MCGEE, R.J.
02:47				SUB OUT: MCGEE, R.J.
02:47				SUB IN: HIGHTOWER, TESHAWN
02:47	GOOD! FT by CRUMP, ANTHONY	36-21	H 15	
02:45	MISSED FT by CRUMP, ANTHONY			
02:42				REBOUND (DEF) by THOMPSON, CHRISTION
02:23	FOUL (PERSONAL) by JOHNSON, JAYCE			
02:22				MISSED FT by HIGHTOWER, TESHAWN
02:22				REBOUND (OFF) by TEAM
02:22		37-21	H 16	GOOD! FT by HIGHTOWER, TESHAWN
02:09	GOOD! LAYUP by LAWRENCE, ELI	37-23	H 14	
02:09	ASSIST by JOHNSON, JAYCE			
01:37		40-23	H 17	GOOD! 3PTR by LAWSON, K.J.
01:37				ASSIST by WALKER, JORDAN
01:31	TURNOVER (BADPASS) by GREEN, ANTONIO			
01:31				STEAL by HIGHTOWER, TESHAWN
01:27		42-23	H 19	GOOD! DUNK by HIGHTOWER, TESHAWN [FB]
01:22				FOUL (PERSONAL) by WALKER, JORDAN
01:22				SUB OUT: HIGHTOWER, TESHAWN
01:22				SUB IN: MCGEE, R.J.
01:22	GOOD! FT by GREEN, ANTONIO [FB]	42-24	H 18	
01:22	GOOD! FT by GREEN, ANTONIO [FB]	42-25	H 17	
01:07				MISSED JUMPER by THOMPSON, CHRISTION
01:04	REBOUND (DEF) by CRUMP, ANTHONY			
00:59	TURNOVER (TRAVEL) by CRUMP, ANTHONY			
00:59				SUB OUT: MCGEE, R.J.
00:59				SUB IN: HIGHTOWER, TESHAWN
00:59				TIMEOUT 30SEC
00:49				FOUL (OFF) by WALKER, JORDAN
00:49				TURNOVER (OFFENSIVE) by WALKER, JORDAN
00:49				SUB OUT: WALKER, JORDAN
00:49				SUB IN: MCGEE, R.J.
00:40	MISSED 3PTR by GREEN, ANTONIO			
00:37	REBOUND (OFF) by JONES, C.J.			
00:35	MISSED JUMPER by GREEN, ANTONIO			
00:32				REBOUND (DEF) by HIGHTOWER, TESHAWN
00:04				MISSED 3PTR by HIGHTOWER, TESHAWN
00:04	BLOCK by GREEN, ANTONIO			
00:04				REBOUND (OFF) by TEAM
00:04				TURNOVER (SHOTCLOCK) by TEAM
00:04				SUB OUT: ONA EMBO, RAY
00:04				SUB IN: ZHANG, KEVIN
00:00	TURNOVER (BADPASS) by GREEN, ANTONIO			
00:00				STEAL by MCGEE, R.J.

Middle Tenn. 25, Tulane 42

Points from (This Period)	MTS	TUL
In the Paint	18	12
Off Turns	5	6
2nd Chance	3	2
Fast Break	6	7
Bench	6	5

Official Box Score
Middle Tenn. vs Tulane
Second Half Statistics Only
November 22, 2019 at The HTC Center - Conway, SC



Middle Tenn. 49

No.	Player	S	Pts	FG	3FG	FT	OR	DR	TR	PF	A	TO	Blk	Stl	Min	+/-
03	SIMS, DONOVAN	G	11	4-7	3-6	0-0	0	3	3	1	6	4	0	0	20	5
04	JACKSON, TYSON	F	8	4-4	0-0	0-0	2	1	3	1	1	0	0	1	19	9
13	JOHNSON, JAYCE	G	2	1-1	0-0	0-0	0	0	0	3	0	0	0	0	6	-1
23	JONES, C.J.	G	15	6-8	3-4	0-0	0	0	0	1	0	0	0	0	18	2
55	GREEN, ANTONIO	G	7	3-9	1-4	0-0	1	5	6	3	2	2	0	0	20	5
00	CRUMP, ANTHONY	G	6	2-2	2-2	0-0	0	1	1	0	3	2	0	1	12	9
01	MILLIN, TYLER	F	0	0-0	0-0	0-0	0	1	1	1	0	0	0	0	3	-1
05	LAWRENCE, ELI	G	0	0-0	0-0	0-0	0	0	0	0	1	0	0	0	1	-3
TEAM							1	1	2	0		0				
TOTALS			49	20-31	9-16	0-0	4	12	16	10	13	8	0	2	98	

Shooting By Period

Period	FG	FG%	3FG	3FG%	FT	FT%
2nd Half	20-31	65%	9-16	56%	0-0	0%
Game	30-58	51.7%	10-26	38.5%	4-7	57.1%

Deadball Rebounds: 1,0

Last FG Half: MTS -

Tulane 44

No.	Player	S	Pts	FG	3FG	FT	OR	DR	TR	PF	A	TO	Blk	Stl	Min	+/-
01	LAWSON, K.J.	F	2	0-2	0-1	2-2	0	2	2	1	1	0	0	3	19	-2
02	WALKER, JORDAN	G	2	1-5	0-2	0-0	0	0	0	1	2	0	0	1	18	-11
04	DAYS, NOBAL	F	0	0-2	0-0	0-0	3	1	4	1	2	2	0	0	15	1
05	HIGHTOWER, TESHAWN	G	8	0-3	0-2	8-10	1	2	3	1	1	1	0	1	18	-3
25	THOMPSON, CHRISTION	G	25	8-10	5-6	4-4	1	1	2	2	0	1	0	0	17	-2
03	ONA EMBO, RAY	G	2	1-2	0-1	0-0	0	1	1	0	1	0	0	0	6	1
12	ZHANG, KEVIN	F	5	2-3	1-2	0-0	0	0	0	0	0	0	0	1	5	-9
23	MCGEE, R.J.	G	0	0-0	0-0	0-0	0	0	0	0	0	0	0	0	0	0
TEAM							0	0	0	0		1				
TOTALS			44	12-27	6-14	14-16	5	7	12	6	7	5	0	6	98	

Shooting By Period

Period	FG	FG%	3FG	3FG%	FT	FT%
2nd Half	12-27	44%	6-14	43%	14-16	88%
Game	24-50	48.0%	12-24	50.0%	26-30	86.7%

Deadball Rebounds: 2,0

Last FG Half: TUL -

Game Notes:

Officials: Brian O'Connell, Lee Cassell, Earl Walton IV

Start Time: 12:01 PM ET

End Time: 01:57 PM ET

Game Duration: 1:56

Neutral Court;

Score	1st	2nd	TOT
MTS	25	49	74
TUL	42	44	86

Points from (This Period)	MTS	TUL
In the Paint	18	8
Off Turns	11	6
2nd Chance	9	7
Fast Break	12	7
Bench	6	7

Official Play-By-Play
Middle Tenn. vs Tulane
Second Half
November 22, 2019 at The HTC Center - Conway, SC



Period 2

Starters:

Middle Tenn.: 3 SIMS, DONOVAN (G); 4 JACKSON, TYSON (F); 13 JOHNSON, JAYCE (G); 23 JONES, C.J. (G); 55 GREEN, ANTONIO (G);
Tulane: 1 LAWSON, K.J. (F); 2 WALKER, JORDAN (G); 4 DAYS, NOBAL (F); 5 HIGHTOWER, TESHAWN (G); 25 THOMPSON, CHRISTION (G);

Time	VISITORS: Middle Tenn.	Score	Margin	HOME: Tulane
20:00	SUB OUT: CRUMP, ANTHONY			
20:00	SUB OUT: LAWRENCE, ELI			
20:00	SUB IN: SIMS, DONOVAN			
20:00	SUB IN: JACKSON, TYSON			
20:00				SUB OUT: MCGEE, R.J.
20:00				SUB OUT: ZHANG, KEVIN
20:00				SUB IN: WALKER, JORDAN
20:00				SUB IN: DAYS, NOBAL
19:45	MISSED 3PTR by SIMS, DONOVAN			
19:41	REBOUND (OFF) by GREEN, ANTONIO			
19:34	GOOD! JUMPER by JOHNSON, JAYCE	42-27	H 15	
19:34	ASSIST by SIMS, DONOVAN			
19:08				MISSED JUMPER by LAWSON, K.J.
19:06				REBOUND (OFF) by DAYS, NOBAL
19:02		44-27	H 17	GOOD! JUMPER by WALKER, JORDAN
19:02				ASSIST by DAYS, NOBAL
18:43	GOOD! JUMPER by GREEN, ANTONIO [PNT]	44-29	H 15	
18:43	ASSIST by JACKSON, TYSON			
18:19	FOUL (PERSONAL) by GREEN, ANTONIO			
18:19		45-29	H 16	GOOD! FT by HIGHTOWER, TESHAWN
18:19	SUB OUT: JOHNSON, JAYCE			
18:19	SUB IN: MILLIN, TYLER			
18:18				MISSED FT by HIGHTOWER, TESHAWN
18:17	REBOUND (DEF) by MILLIN, TYLER			
18:10	MISSED 3PTR by JONES, C.J.			
18:07				REBOUND (DEF) by LAWSON, K.J.
17:52				MISSED LAYUP by WALKER, JORDAN
17:52	REBOUND (DEF) by TEAM			
17:52				FOUL (PERSONAL) by DAYS, NOBAL
17:31	TURNOVER (BADPASS) by SIMS, DONOVAN			
17:31				STEAL by HIGHTOWER, TESHAWN
17:06				MISSED 3PTR by LAWSON, K.J.
17:03				REBOUND (OFF) by THOMPSON, CHRISTION
17:01		48-29	H 19	GOOD! 3PTR by THOMPSON, CHRISTION
16:45				FOUL (PERSONAL) by THOMPSON, CHRISTION
16:45	SUB OUT: MILLIN, TYLER			
16:45	SUB IN: LAWRENCE, ELI			
16:38	GOOD! 3PTR by SIMS, DONOVAN	48-32	H 16	
16:38	ASSIST by LAWRENCE, ELI			
16:13		51-32	H 19	GOOD! 3PTR by THOMPSON, CHRISTION
16:13				ASSIST by HIGHTOWER, TESHAWN
15:53	TURNOVER (BADPASS) by GREEN, ANTONIO			
15:53				
15:53	SUB OUT: LAWRENCE, ELI			
15:53	SUB IN: JOHNSON, JAYCE			
15:26				MISSED LAYUP by WALKER, JORDAN
15:21				REBOUND (OFF) by DAYS, NOBAL
15:21				MISSED LAYUP by DAYS, NOBAL
15:20	REBOUND (DEF) by GREEN, ANTONIO			
15:19	GOOD! DUNK by JONES, C.J. [FB]	51-34	H 17	
15:19	ASSIST by GREEN, ANTONIO			
15:01	FOUL (PERSONAL) by JONES, C.J.			
15:01		52-34	H 18	GOOD! FT by HIGHTOWER, TESHAWN
15:01				SUB OUT: WALKER, JORDAN
15:01				SUB IN: ONA EMBO, RAY
15:01		53-34	H 19	GOOD! FT by HIGHTOWER, TESHAWN
14:40	TURNOVER (BADPASS) by SIMS, DONOVAN			
14:40				STEAL by LAWSON, K.J.
14:19		56-34	H 22	GOOD! 3PTR by THOMPSON, CHRISTION
14:19				ASSIST by DAYS, NOBAL
14:05	GOOD! JUMPER by JONES, C.J.	56-36	H 20	
14:05	ASSIST by GREEN, ANTONIO			
13:41		59-36	H 23	GOOD! 3PTR by THOMPSON, CHRISTION
13:41				ASSIST by LAWSON, K.J.
13:25				FOUL (PERSONAL) by LAWSON, K.J.
13:25	SUB OUT: JOHNSON, JAYCE			
13:25	SUB IN: MILLIN, TYLER			
13:25				SUB OUT: HIGHTOWER, TESHAWN
13:25				SUB IN: WALKER, JORDAN
13:14	GOOD! LAYUP by SIMS, DONOVAN	59-38	H 21	

Time	VISITORS: Middle Tenn.	Score	Margin	HOME: Tulane
12:46		61-38	H 23	GOOD! LAYUP by THOMPSON, CHRISTION
12:46	FOUL (PERSONAL) by MILLIN, TYLER			
12:45		62-38	H 24	GOOD! FT by THOMPSON, CHRISTION
12:45				SUB OUT: LAWSON, K.J.
12:45				SUB IN: ZHANG, KEVIN
12:37	MISSED 3PTR by GREEN, ANTONIO			
12:33				REBOUND (DEF) by THOMPSON, CHRISTION
12:26				MISSED LAYUP by THOMPSON, CHRISTION
12:23	REBOUND (DEF) by JACKSON, TYSON			
12:20	GOOD! 3PTR by GREEN, ANTONIO [FB]	62-41	H 21	
12:05				MISSED 3PTR by WALKER, JORDAN
12:01	REBOUND (DEF) by GREEN, ANTONIO			
11:58	FOUL (OFF) by GREEN, ANTONIO			
11:58	TURNOVER (OFFENSIVE) by GREEN, ANTONIO			
11:58				
11:58	SUB OUT: MILLIN, TYLER			
11:58	SUB IN: CRUMP, ANTHONY			
11:58				SUB OUT: DAYS, NOBAL
11:58				SUB OUT: THOMPSON, CHRISTION
11:58				SUB IN: LAWSON, K.J.
11:58				SUB IN: HIGHTOWER, TESSHAUN
11:30				TURNOVER (LOSTBALL) by HIGHTOWER, TESSHAUN
11:30	STEAL by CRUMP, ANTHONY			
11:22	GOOD! 3PTR by JONES, C.J. [FB]	62-44	H 18	
11:22	ASSIST by CRUMP, ANTHONY			
10:50		65-44	H 21	GOOD! 3PTR by ZHANG, KEVIN
10:50				ASSIST by ONA EMBO, RAY
10:34	TURNOVER (BADPASS) by CRUMP, ANTHONY			
10:34				STEAL by ZHANG, KEVIN
10:07				MISSED 3PTR by ONA EMBO, RAY
10:04	REBOUND (DEF) by SIMS, DONOVAN			
10:01	GOOD! DUNK by JACKSON, TYSON [FB]	65-46	H 19	
10:01	ASSIST by SIMS, DONOVAN			
09:42				MISSED 3PTR by HIGHTOWER, TESSHAUN
09:38				REBOUND (OFF) by HIGHTOWER, TESSHAUN
09:22		67-46	H 21	GOOD! LAYUP by ONA EMBO, RAY
09:22				ASSIST by WALKER, JORDAN
09:03	GOOD! 3PTR by CRUMP, ANTHONY	67-49	H 18	
09:03	ASSIST by SIMS, DONOVAN			
09:01	TIMEOUT 30SEC			
09:01				
09:01	SUB OUT: JONES, C.J.			
09:01	SUB IN: JOHNSON, JAYCE			
09:01				SUB OUT: ONA EMBO, RAY
09:01				SUB IN: THOMPSON, CHRISTION
08:43		69-49	H 20	GOOD! LAYUP by ZHANG, KEVIN
08:43				ASSIST by WALKER, JORDAN
08:32	MISSED 3PTR by GREEN, ANTONIO			
08:29	REBOUND (OFF) by TEAM			
08:16	GOOD! 3PTR by CRUMP, ANTHONY	69-52	H 17	
08:16	ASSIST by SIMS, DONOVAN			
08:03	FOUL (PERSONAL) by JOHNSON, JAYCE			
07:55				MISSED 3PTR by ZHANG, KEVIN
07:53	REBOUND (DEF) by GREEN, ANTONIO			
07:45	GOOD! JUMPER by JACKSON, TYSON [PNT]	69-54	H 15	
07:32				TURNOVER (BADPASS) by THOMPSON, CHRISTION
07:32				
07:32	SUB OUT: JOHNSON, JAYCE			
07:32	SUB IN: JONES, C.J.			
07:32				SUB OUT: ZHANG, KEVIN
07:32				SUB IN: DAYS, NOBAL
07:08	GOOD! 3PTR by SIMS, DONOVAN	69-57	H 12	
07:08	ASSIST by CRUMP, ANTHONY			
06:44		72-57	H 15	GOOD! 3PTR by THOMPSON, CHRISTION
06:34	GOOD! 3PTR by SIMS, DONOVAN	72-60	H 12	
06:34	ASSIST by CRUMP, ANTHONY			
06:07		74-60	H 14	GOOD! JUMPER by THOMPSON, CHRISTION
05:58	MISSED JUMPER by GREEN, ANTONIO			
05:54	REBOUND (OFF) by JACKSON, TYSON			
05:54	GOOD! LAYUP by JACKSON, TYSON	74-62	H 12	
05:34				MISSED 3PTR by WALKER, JORDAN
05:32	REBOUND (DEF) by GREEN, ANTONIO			
05:32				FOUL (PERSONAL) by THOMPSON, CHRISTION
05:15	MISSED LAYUP by GREEN, ANTONIO			
05:15				REBOUND (DEF) by DAYS, NOBAL
05:15				TURNOVER (BADPASS) by DAYS, NOBAL
05:09	GOOD! 3PTR by JONES, C.J.	74-65	H 9	
05:09	ASSIST by SIMS, DONOVAN			
04:52	FOUL (PERSONAL) by GREEN, ANTONIO			
04:52		75-65	H 10	GOOD! FT by THOMPSON, CHRISTION

Time	VISITORS: Middle Tenn.	Score	Margin	HOME: Tulane
04:52		76-65	H 11	GOOD! FT by THOMPSON, CHRISTION
04:52		77-65	H 12	GOOD! FT by THOMPSON, CHRISTION
04:38	TURNOVER (BADPASS) by CRUMP, ANTHONY			
04:38				STEAL by WALKER, JORDAN
04:21				MISSED 3PTR by HIGHTOWER, TESHAUN
04:17	REBOUND (DEF) by SIMS, DONOVAN			
04:12	TURNOVER (BADPASS) by SIMS, DONOVAN			
04:12				STEAL by LAWSON, K.J.
03:46				MISSED LAYUP by HIGHTOWER, TESHAUN
03:43	REBOUND (DEF) by GREEN, ANTONIO			
03:40	GOOD! LAYUP by GREEN, ANTONIO [FB]	77-67	H 10	
03:21				MISSED 3PTR by THOMPSON, CHRISTION
03:18	REBOUND (DEF) by SIMS, DONOVAN			
03:14				FOUL (PERSONAL) by HIGHTOWER, TESHAUN
03:14				
03:02	GOOD! JUMPER by JONES, C.J. [PNT]	77-69	H 8	
02:39	FOUL (PERSONAL) by JACKSON, TYSON			
02:39		78-69	H 9	GOOD! FT by HIGHTOWER, TESHAUN
02:39		79-69	H 10	GOOD! FT by HIGHTOWER, TESHAUN
02:34				FOUL (PERSONAL) by WALKER, JORDAN
02:22	MISSED JUMPER by JONES, C.J.			
02:18				REBOUND (DEF) by LAWSON, K.J.
01:53				MISSED LAYUP by DAYS, NOBAL
01:49				REBOUND (OFF) by DAYS, NOBAL
01:48				TURNOVER (LOSTBALL) by DAYS, NOBAL
01:48	STEAL by JACKSON, TYSON			
01:43	TURNOVER (BADPASS) by SIMS, DONOVAN			
01:43				STEAL by LAWSON, K.J.
01:16				TURNOVER (SHOTCLOCK) by TEAM
01:06	MISSED LAYUP by GREEN, ANTONIO			
01:02	REBOUND (OFF) by JACKSON, TYSON			
01:05	GOOD! DUNK by JACKSON, TYSON	79-71	H 8	
01:05	TIMEOUT 30SEC			
01:05	SUB OUT: JACKSON, TYSON			
01:05	SUB IN: JOHNSON, JAYCE			
01:03		81-71	H 10	GOOD! DUNK by THOMPSON, CHRISTION [FB]
00:57	MISSED 3PTR by SIMS, DONOVAN			
00:56				REBOUND (DEF) by HIGHTOWER, TESHAUN
00:49	FOUL (PERSONAL) by JOHNSON, JAYCE			
00:49		82-71	H 11	GOOD! FT by HIGHTOWER, TESHAUN [FB]
00:49				SUB OUT: WALKER, JORDAN
00:49				SUB IN: ONA EMBO, RAY
00:49		83-71	H 12	GOOD! FT by HIGHTOWER, TESHAUN [FB]
00:42	GOOD! 3PTR by JONES, C.J.	83-74	H 9	
00:42	ASSIST by SIMS, DONOVAN			
00:42	TIMEOUT TEAM			
00:38	FOUL (PERSONAL) by JOHNSON, JAYCE			
00:38	SUB OUT: JOHNSON, JAYCE			
00:38	SUB IN: LAWRENCE, ELI			
00:38		84-74	H 10	GOOD! FT by LAWSON, K.J. [FB]
00:38		85-74	H 11	GOOD! FT by LAWSON, K.J. [FB]
00:35	MISSED 3PTR by GREEN, ANTONIO			
00:32				REBOUND (DEF) by HIGHTOWER, TESHAUN
00:31	FOUL (PERSONAL) by SIMS, DONOVAN			
00:31		86-74	H 12	GOOD! FT by HIGHTOWER, TESHAUN [FB]
00:31				MISSED FT by HIGHTOWER, TESHAUN
00:29	REBOUND (DEF) by CRUMP, ANTHONY			
00:26	MISSED 3PTR by SIMS, DONOVAN			
00:22				REBOUND (DEF) by ONA EMBO, RAY

Middle Tenn. 74, Tulane 86

Points from (This Period)	MTS	TUL
In the Paint	18	8
Off Turns	11	6
2nd Chance	9	7
Fast Break	12	7
Bench	6	7

Official Scoring/Possession Reference Chart
Middle Tenn. vs Tulane
Period 1
November 22, 2019 at The HTC Center - Conway, SC



Period 1

Starters:

Middle Tenn.: 3 SIMS, DONOVAN (G); 4 JACKSON, TYSON (F); 13 JOHNSON, JAYCE (G); 23 JONES, C.J. (G); 55 GREEN, ANTONIO (G);
Tulane: 1 LAWSON, K.J. (F); 2 WALKER, JORDAN (G); 4 DAYS, NOBAL (F); 5 HIGHTOWER, TESHAWN (G); 25 THOMPSON, CHRISTON (G);

Time	VISITORS: Middle Tenn.	Score	Margin	HOME: Tulane
19:38		1-0	H 1	GOOD! FT by HIGHTOWER, TESHAWN
19:38		2-0	H 2	GOOD! FT by HIGHTOWER, TESHAWN
19:01		4-0	H 4	GOOD! LAYUP by WALKER, JORDAN
18:41	GOOD! LAYUP by JOHNSON, JAYCE	4-2	H 2	
18:20		5-2	H 3	GOOD! FT by LAWSON, K.J.
18:20		6-2	H 4	GOOD! FT by LAWSON, K.J.
17:43		9-2	H 7	GOOD! 3PTR by LAWSON, K.J.
17:22		10-2	H 8	GOOD! FT by WALKER, JORDAN [FB]
17:22		11-2	H 9	GOOD! FT by WALKER, JORDAN [FB]
16:54	GOOD! 3PTR by JONES, C.J.	11-5	H 6	
16:32	GOOD! LAYUP by GREEN, ANTONIO [FB]	11-7	H 4	
16:20		12-7	H 5	GOOD! FT by HIGHTOWER, TESHAWN
16:20		13-7	H 6	GOOD! FT by HIGHTOWER, TESHAWN
15:32		15-7	H 8	GOOD! LAYUP by LAWSON, K.J.
12:31		17-7	H 10	GOOD! LAYUP by WALKER, JORDAN
10:43	GOOD! JUMPER by JONES, C.J. [PNT]	17-9	H 8	
09:30		20-9	H 11	GOOD! 3PTR by ONA EMBO, RAY
08:45		23-9	H 14	GOOD! 3PTR by HIGHTOWER, TESHAWN
08:08	GOOD! JUMPER by MILLIN, TYLER [PNT]	23-11	H 12	
07:55		26-11	H 15	GOOD! 3PTR by WALKER, JORDAN
07:21	GOOD! LAYUP by JOHNSON, JAYCE [PNT]	26-13	H 13	
07:05	GOOD! LAYUP by JOHNSON, JAYCE [PNT]	26-15	H 11	
06:16		29-15	H 14	GOOD! 3PTR by LAWSON, K.J.
05:17		30-15	H 15	GOOD! FT by LAWSON, K.J. [FB]
05:17		31-15	H 16	GOOD! FT by LAWSON, K.J. [FB]
05:17		32-15	H 17	GOOD! FT by LAWSON, K.J. [FB]
05:02	GOOD! LAYUP by JOHNSON, JAYCE	32-17	H 15	
04:36		34-17	H 17	GOOD! LAYUP by HIGHTOWER, TESHAWN
04:05		36-17	H 19	GOOD! LAYUP by ONA EMBO, RAY
03:54	GOOD! FT by CRUMP, ANTHONY	36-18	H 18	
03:28	GOOD! LAYUP by JOHNSON, JAYCE [FB]	36-20	H 16	
02:47	GOOD! FT by CRUMP, ANTHONY	36-21	H 15	
02:22		37-21	H 16	GOOD! FT by HIGHTOWER, TESHAWN
02:09	GOOD! LAYUP by LAWRENCE, ELI	37-23	H 14	
01:37		40-23	H 17	GOOD! 3PTR by LAWSON, K.J.
01:27		42-23	H 19	GOOD! DUNK by HIGHTOWER, TESHAWN [FB]
01:22	GOOD! FT by GREEN, ANTONIO [FB]	42-24	H 18	
01:22	GOOD! FT by GREEN, ANTONIO [FB]	42-25	H 17	

Middle Tenn. 25, Tulane 42

Official Scoring/Possession Reference Chart
Middle Tenn. vs Tulane
Period 2
November 22, 2019 at The HTC Center - Conway, SC



Period 2

Starters:

Middle Tenn.: 3 SIMS, DONOVAN (G); 4 JACKSON, TYSON (F); 13 JOHNSON, JAYCE (G); 23 JONES, C.J. (G); 55 GREEN, ANTONIO (G);
Tulane: 1 LAWSON, K.J. (F); 2 WALKER, JORDAN (G); 4 DAYS, NOBAL (F); 5 HIGHTOWER, TSHAUN (G); 25 THOMPSON, CHRISTION (G);

Time	VISITORS: Middle Tenn.	Score	Margin	HOME: Tulane
19:34	GOOD! JUMPER by JOHNSON, JAYCE	42-27	H 15	
19:02		44-27	H 17	GOOD! JUMPER by WALKER, JORDAN
18:43	GOOD! JUMPER by GREEN, ANTONIO [PNT]	44-29	H 15	
18:19		45-29	H 16	GOOD! FT by HIGHTOWER, TSHAUN
17:01		48-29	H 19	GOOD! 3PTR by THOMPSON, CHRISTION
16:38	GOOD! 3PTR by SIMS, DONOVAN	48-32	H 16	
16:13		51-32	H 19	GOOD! 3PTR by THOMPSON, CHRISTION
15:19	GOOD! DUNK by JONES, C.J. [FB]	51-34	H 17	
15:01		52-34	H 18	GOOD! FT by HIGHTOWER, TSHAUN
15:01		53-34	H 19	GOOD! FT by HIGHTOWER, TSHAUN
14:19		56-34	H 22	GOOD! 3PTR by THOMPSON, CHRISTION
14:05	GOOD! JUMPER by JONES, C.J.	56-36	H 20	
13:41		59-36	H 23	GOOD! 3PTR by THOMPSON, CHRISTION
13:14	GOOD! LAYUP by SIMS, DONOVAN	59-38	H 21	
12:46		61-38	H 23	GOOD! LAYUP by THOMPSON, CHRISTION
12:45		62-38	H 24	GOOD! FT by THOMPSON, CHRISTION
12:20	GOOD! 3PTR by GREEN, ANTONIO [FB]	62-41	H 21	
11:22	GOOD! 3PTR by JONES, C.J. [FB]	62-44	H 18	
10:50		65-44	H 21	GOOD! 3PTR by ZHANG, KEVIN
10:01	GOOD! DUNK by JACKSON, TYSON [FB]	65-46	H 19	
09:22		67-46	H 21	GOOD! LAYUP by ONA EMBO, RAY
09:03	GOOD! 3PTR by CRUMP, ANTHONY	67-49	H 18	
08:43		69-49	H 20	GOOD! LAYUP by ZHANG, KEVIN
08:16	GOOD! 3PTR by CRUMP, ANTHONY	69-52	H 17	
07:45	GOOD! JUMPER by JACKSON, TYSON [PNT]	69-54	H 15	
07:08	GOOD! 3PTR by SIMS, DONOVAN	69-57	H 12	
06:44		72-57	H 15	GOOD! 3PTR by THOMPSON, CHRISTION
06:34	GOOD! 3PTR by SIMS, DONOVAN	72-60	H 12	
06:07		74-60	H 14	GOOD! JUMPER by THOMPSON, CHRISTION
05:54	GOOD! LAYUP by JACKSON, TYSON	74-62	H 12	
05:09	GOOD! 3PTR by JONES, C.J.	74-65	H 9	
04:52		75-65	H 10	GOOD! FT by THOMPSON, CHRISTION
04:52		76-65	H 11	GOOD! FT by THOMPSON, CHRISTION
04:52		77-65	H 12	GOOD! FT by THOMPSON, CHRISTION
03:40	GOOD! LAYUP by GREEN, ANTONIO [FB]	77-67	H 10	
03:02	GOOD! JUMPER by JONES, C.J. [PNT]	77-69	H 8	
02:39		78-69	H 9	GOOD! FT by HIGHTOWER, TSHAUN
02:39		79-69	H 10	GOOD! FT by HIGHTOWER, TSHAUN
01:05	GOOD! DUNK by JACKSON, TYSON	79-71	H 8	
01:03		81-71	H 10	GOOD! DUNK by THOMPSON, CHRISTION [FB]
00:49		82-71	H 11	GOOD! FT by HIGHTOWER, TSHAUN [FB]
00:49		83-71	H 12	GOOD! FT by HIGHTOWER, TSHAUN [FB]
00:42	GOOD! 3PTR by JONES, C.J.	83-74	H 9	
00:38		84-74	H 10	GOOD! FT by LAWSON, K.J. [FB]
00:38		85-74	H 11	GOOD! FT by LAWSON, K.J. [FB]
00:31		86-74	H 12	GOOD! FT by HIGHTOWER, TSHAUN [FB]

Middle Tenn. 74, Tulane 86

Official Substitutions Log
Middle Tenn. vs Tulane
Period 1
November 22, 2019 at The HTC Center - Conway, SC



VISITORS: Middle Tenn.	Time	Score	HOME: Tulane
3 SIMS,DONOVAN			1 LAWSON,K.J.
4 JACKSON,TYSON			2 WALKER,JORDAN
13 JOHNSON,JAYCE			4 DAYS,NOBAL
23 JONES,C.J.			5 HIGHTOWER,TESHAUN
55 GREEN,ANTONIO			25 THOMPSON,CHRISTION
SUB OUT: 13 JOHNSON,JAYCE	18:20	2-5	
SUB IN: 0 CRUMP,ANTHONY	18:20		
SUB OUT: 4 JACKSON,TYSON	17:22	2-10	
SUB IN: 13 JOHNSON,JAYCE	17:22		
SUB OUT: 23 JONES,C.J.	16:20	7-12	
SUB IN: 5 LAWRENCE,ELI	16:20		
SUB OUT: 13 JOHNSON,JAYCE	16:06	7-13	
SUB IN: 1 MILLIN,TYLER	16:06		
	15:06	7-15	SUB OUT: THOMPSON,CHRISTION
	15:06		SUB IN: ONA EMBO,RAY
	14:29	7-15	SUB OUT: DAYS,NOBAL
	14:29		SUB IN: ZHANG,KEVIN
SUB OUT: 5 LAWRENCE,ELI	14:07	7-15	
SUB IN: 23 JONES,C.J.	14:07		
SUB OUT: 1 MILLIN,TYLER	12:13	7-17	
SUB IN: 13 JOHNSON,JAYCE	12:13		
	12:13		SUB OUT: LAWSON,K.J.
	12:13		SUB OUT: WALKER,JORDAN
	12:13		SUB IN: DAYS,NOBAL
	12:13		SUB IN: THOMPSON,CHRISTION
	11:46	7-17	SUB OUT: HIGHTOWER,TESHAUN
	11:46		SUB IN: WALKER,JORDAN
SUB OUT: 0 CRUMP,ANTHONY	10:09	9-17	
SUB IN: 1 MILLIN,TYLER	10:09		
	10:09		SUB OUT: ZHANG,KEVIN
	10:09		SUB IN: LAWSON,K.J.
	09:14	9-20	SUB OUT: ONA EMBO,RAY
	09:14		SUB IN: HIGHTOWER,TESHAUN
	07:20	13-26	SUB OUT: DAYS,NOBAL
	07:20		SUB IN: ONA EMBO,RAY
SUB OUT: 1 MILLIN,TYLER	05:17	15-31	
SUB IN: 0 CRUMP,ANTHONY	05:17		
	05:17		SUB OUT: WALKER,JORDAN
	05:17		SUB IN: MCGEE,R.J.
	05:17		SUB OUT: THOMPSON,CHRISTION
	05:17		SUB IN: ZHANG,KEVIN
SUB OUT: 3 SIMS,DONOVAN	03:54	17-36	
SUB IN: 5 LAWRENCE,ELI	03:54		
	03:03	20-36	SUB OUT: HIGHTOWER,TESHAUN
	03:03		SUB OUT: ZHANG,KEVIN
	03:03		SUB IN: WALKER,JORDAN
	03:03		SUB IN: THOMPSON,CHRISTION
	02:47	20-36	SUB OUT: MCGEE,R.J.
	02:47		SUB IN: HIGHTOWER,TESHAUN
	01:22	23-42	SUB OUT: HIGHTOWER,TESHAUN
	01:22		SUB IN: MCGEE,R.J.
	00:59	25-42	SUB OUT: MCGEE,R.J.
	00:59		SUB IN: HIGHTOWER,TESHAUN
	00:49	25-42	SUB OUT: WALKER,JORDAN
	00:49		SUB IN: MCGEE,R.J.
	00:04	25-42	SUB OUT: ONA EMBO,RAY
	00:04		SUB IN: ZHANG,KEVIN

Middle Tenn. 25, Tulane 42

Official Substitutions Log
Middle Tenn. vs Tulane
Period 2
November 22, 2019 at The HTC Center - Conway, SC



VISITORS: Middle Tenn.	Time	Score	HOME: Tulane
3 SIMS,DONOVAN			1 LAWSON,K.J.
4 JACKSON,TYSON			2 WALKER,JORDAN
13 JOHNSON,JAYCE			4 DAYS,NOBAL
23 JONES,C.J.			5 HIGHTOWER,TESHAUN
55 GREEN,ANTONIO			25 THOMPSON,CHRISTION
SUB OUT: 0 CRUMP,ANTHONY	20:00	-	
SUB OUT: 5 LAWRENCE,ELI	20:00		
SUB IN: 3 SIMS,DONOVAN	20:00		
SUB IN: 4 JACKSON,TYSON	20:00		
	20:00		SUB OUT: MCGEE,R.J.
	20:00		SUB OUT: ZHANG,KEVIN
	20:00		SUB IN: WALKER,JORDAN
	20:00		SUB IN: DAYS,NOBAL
SUB OUT: 13 JOHNSON,JAYCE	18:19	29-45	
SUB IN: 1 MILLIN,TYLER	18:19		
SUB OUT: 1 MILLIN,TYLER	16:45	29-48	
SUB IN: 5 LAWRENCE,ELI	16:45		
SUB OUT: 5 LAWRENCE,ELI	15:53	32-51	
SUB IN: 13 JOHNSON,JAYCE	15:53		
	15:01	34-52	SUB OUT: WALKER,JORDAN
	15:01		SUB IN: ONA EMBO,RAY
SUB OUT: 13 JOHNSON,JAYCE	13:25	36-59	
SUB IN: 1 MILLIN,TYLER	13:25		
	13:25		SUB OUT: HIGHTOWER,TESHAUN
	13:25		SUB IN: WALKER,JORDAN
	12:45	38-62	SUB OUT: LAWSON,K.J.
	12:45		SUB IN: ZHANG,KEVIN
SUB OUT: 1 MILLIN,TYLER	11:58	41-62	
SUB IN: 0 CRUMP,ANTHONY	11:58		
	11:58		SUB OUT: DAYS,NOBAL
	11:58		SUB OUT: THOMPSON,CHRISTION
	11:58		SUB IN: LAWSON,K.J.
	11:58		SUB IN: HIGHTOWER,TESHAUN
SUB OUT: 23 JONES,C.J.	09:01	49-67	
SUB IN: 13 JOHNSON,JAYCE	09:01		
	09:01		SUB OUT: ONA EMBO,RAY
	09:01		SUB IN: THOMPSON,CHRISTION
SUB OUT: 13 JOHNSON,JAYCE	07:32	54-69	
SUB IN: 23 JONES,C.J.	07:32		
	07:32		SUB OUT: ZHANG,KEVIN
	07:32		SUB IN: DAYS,NOBAL
SUB OUT: 4 JACKSON,TYSON	01:05	71-79	
SUB IN: 13 JOHNSON,JAYCE	01:05		
	00:49	71-82	SUB OUT: WALKER,JORDAN
	00:49		SUB IN: ONA EMBO,RAY
SUB OUT: 13 JOHNSON,JAYCE	00:38	74-83	
SUB IN: 5 LAWRENCE,ELI	00:38		

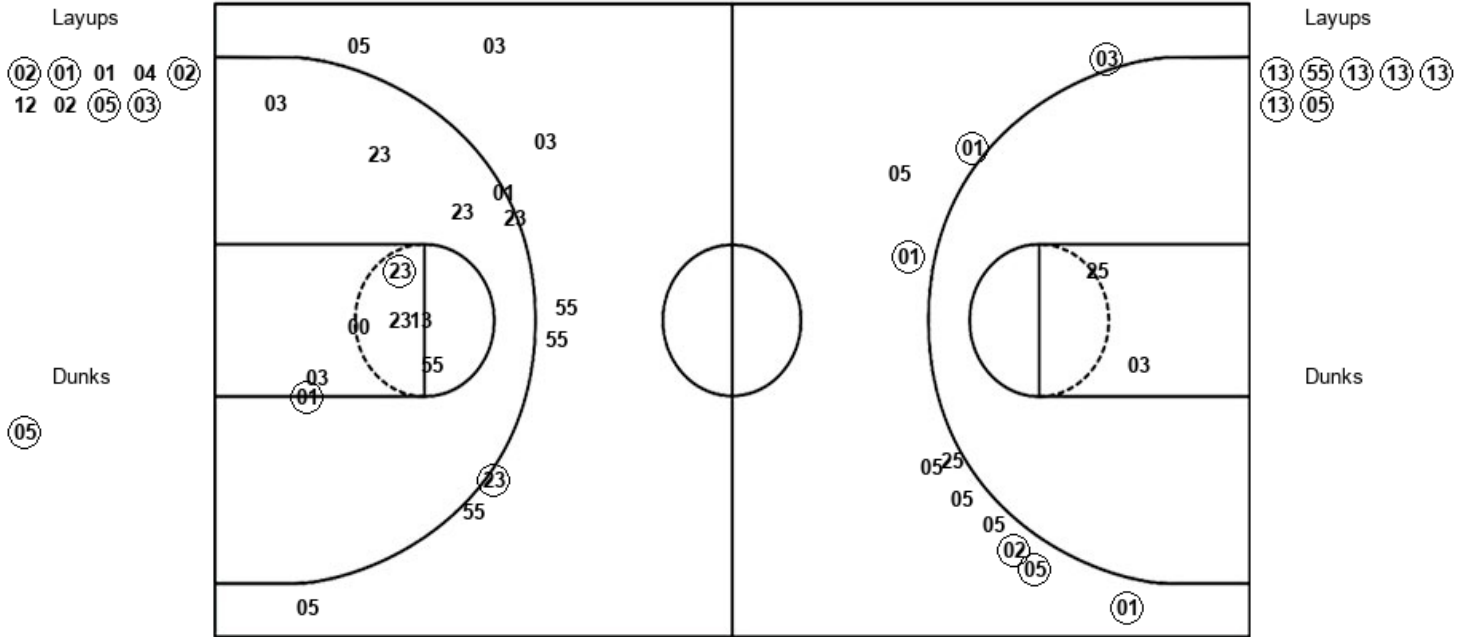
Middle Tenn. 74, Tulane 86

Official Shot Chart
Middle Tenn. vs Tulane
 PERIOD 1 Shots
 November 22, 2019 at The HTC Center - Conway, SC



Tulane

Middle Tenn.



TUL : Period 1	Made	Att	Pct
Layups	5	9	55.6
Dunks	1	1	100.0
2PT Field Goals	6	13	46.2
3PT Field Goals	6	10	60.0
Total Field Goals	12	23	52.2

MTS : Period 1	Made	Att	Pct
Layups	7	7	100.0
Dunks	0	0	0
2PT Field Goals	9	17	52.9
3PT Field Goals	1	10	10.0
Total Field Goals	10	27	37.0

13 55 13 13 13
 13 05 03 04 55
 55 55

23 04 04

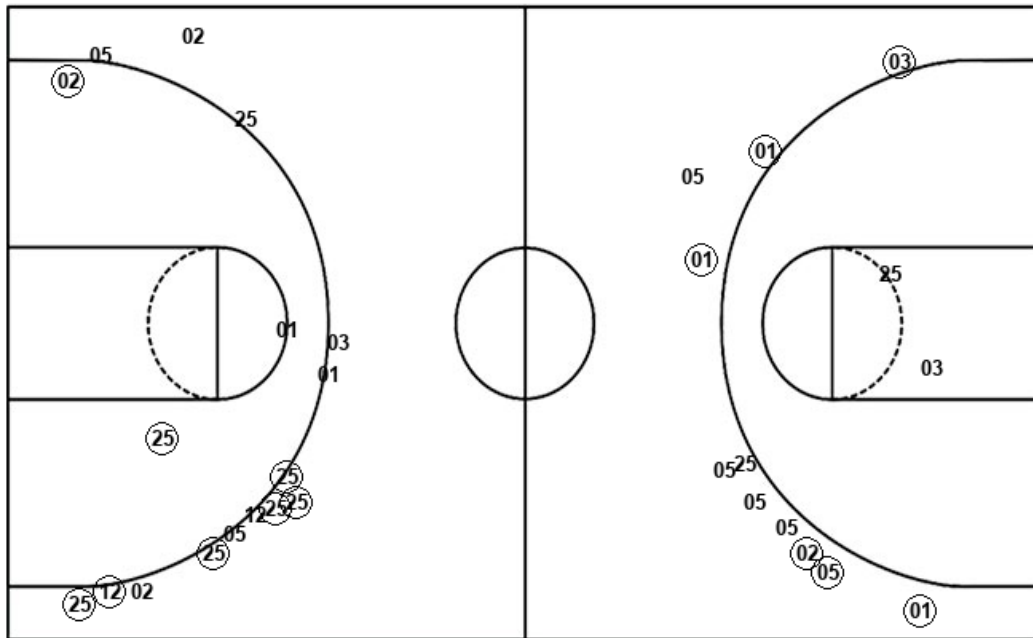
MTS : Period 2	Made	Att	Pct
Layups	3	5	60.0
Dunks	3	3	100.0
2PT Field Goals	11	15	73.3
3PT Field Goals	9	16	56.3
Total Field Goals	20	31	64.5

Official Shot Chart
Middle Tenn. vs Tulane
Tulane Team Shots
November 22, 2019 at The HTC Center - Conway, SC



Layups

Dunks



Layups

Dunks

(02) (01) 01 04 (02)
 12 02 (05) (03) 02
 02 04 (25) 25 (03)
 (12) 05 04

(05) (25)

TUL : Period 1	Made	Att	Pct
Layups	5	9	55.6
Dunks	1	1	100.0
2PT Field Goals	6	13	46.2
3PT Field Goals	6	10	60.0
Total Field Goals	12	23	52.2

TUL : Period 2	Made	Att	Pct
Layups	3	9	33.3
Dunks	1	1	100.0
2PT Field Goals	6	13	46.2
3PT Field Goals	6	14	42.9
Total Field Goals	12	27	44.4