

**FINAL SCORE**



**Air Force**

**68**

**Long Beach St.**

**74**

**BEACH**

December 18, 2019 • Walter Pyramid - Long Beach

**FINAL STATISTICS**

**Official Box Score**  
**Air Force vs Long Beach St.**  
**Game Totals -- Final Statistics**  
**December 18, 2019 at Walter Pyramid - Long Beach**

**BEACH**

**Air Force 68**

No.	Player	S	Pts	FG	3FG	FT	OR	DR	TR	PF	A	TO	Blk	Stl	Min	+/-
00	JONES, HALEY	G	3	1-3	0-0	1-2	2	4	6	4	0	2	0	0	22	-10
01	AUTREY, BRIANA	G	7	3-6	1-2	0-0	0	2	2	5	1	4	0	0	16	-2
13	CONROE, EMILY	G	5	2-3	1-2	0-0	0	3	3	1	1	4	1	1	30	-9
23	SNYDER, RILEY	F	23	8-18	1-3	6-6	1	7	8	4	0	5	1	0	38	-6
32	IMMEL, KAELIN	G	14	6-12	2-3	0-2	0	2	2	1	2	4	0	1	38	-7
03	WINTERS, CIERRA	G	1	0-2	0-1	1-4	2	2	4	5	1	0	0	1	13	0
10	HEATH, KAMRI	G	2	1-2	0-1	0-0	1	0	1	1	1	1	0	0	12	5
12	HESS, GRACE	G	0	0-2	0-1	0-0	0	0	0	0	0	0	0	0	4	-2
22	MARLETT, ALLYAH	G	10	5-7	0-2	0-0	2	4	6	3	1	4	0	0	27	-2
33	MCDONALD, NIKKI	F	3	0-1	0-0	3-4	0	1	1	1	2	0	2	1	26	3
<b>TEAM</b>							1	6	7	0						
<b>TOTALS</b>			<b>68</b>	<b>26-56</b>	<b>5-15</b>	<b>11-18</b>	<b>9</b>	<b>31</b>	<b>40</b>	<b>25</b>	<b>9</b>	<b>24</b>	<b>4</b>	<b>4</b>	<b>225</b>	

*Shooting By Period*

Period	FG	FG%	3FG	3FG%	FT	FT%
1st Qtr	3-14	21%	0-3	00%	5-8	63%
2nd Qtr	7-10	70%	1-3	33%	3-4	75%
3rd Qtr	7-15	47%	3-7	43%	0-0	0%
4th Qtr	7-12	58%	0-1	00%	3-4	75%
5th Qtr	2-5	40%	1-1	100%	0-2	00%
1st Half	10-24	42%	1-6	17%	8-12	67%
2nd Half	14-27	52%	3-8	38%	3-4	75%
<b>Game</b>	<b>26-56</b>	<b>46.4%</b>	<b>5-15</b>	<b>33.3%</b>	<b>11-18</b>	<b>61.1%</b>

*Deadball Rebounds: 3,0*  
*Last FG: 5th-00:24*  
*Biggest Run: 11-0*  
*Largest lead: By 10 at 3-01*  
*Technical Fouls: None.*

**Long Beach St. 74**

No.	Player	S	Pts	FG	3FG	FT	OR	DR	TR	PF	A	TO	Blk	Stl	Min	+/-
00	BERRY, MA'QHI	G	6	2-10	0-0	2-4	1	5	6	4	2	1	0	4	41	10
10	KING, JUSTINA	G	13	4-8	0-0	5-6	0	1	1	3	2	2	0	2	42	5
11	HARDY, JASMINE	G	10	3-9	0-4	4-5	2	4	6	2	1	0	0	3	23	-3
21	DAVISON, SHANAIIJAH	G	26	10-23	1-4	5-9	1	2	3	1	3	4	0	0	42	8
32	GREEN, AARYON	F	8	3-8	0-0	2-4	4	2	6	1	1	1	0	1	33	15
01	KINSLOW, CYDNEE	F	11	4-9	3-7	0-0	1	7	8	3	0	2	0	0	34	-2
02	LEGAN, ALEXIS	G	0	0-0	0-0	0-0	1	0	1	0	0	1	0	0	3	-1
12	JESKEOVA, KRISTYNA	G	0	0-0	0-0	0-0	0	0	0	1	0	0	1	1	4	3
23	GREEN, LAUREN	F	0	0-0	0-0	0-0	0	1	1	2	0	0	0	0	3	-5
<b>TEAM</b>							4	3	7	0						
<b>TOTALS</b>			<b>74</b>	<b>26-67</b>	<b>4-15</b>	<b>18-28</b>	<b>14</b>	<b>25</b>	<b>39</b>	<b>17</b>	<b>9</b>	<b>11</b>	<b>1</b>	<b>11</b>	<b>225</b>	

*Shooting By Period*

Period	FG	FG%	3FG	3FG%	FT	FT%
1st Qtr	9-13	69%	1-2	50%	0-3	00%
2nd Qtr	2-16	13%	1-5	20%	3-6	50%
3rd Qtr	4-15	27%	0-1	00%	4-6	67%
4th Qtr	8-16	50%	2-5	40%	6-7	86%
5th Qtr	3-7	43%	0-2	00%	5-6	83%
1st Half	11-29	38%	2-7	29%	3-9	33%
2nd Half	12-31	39%	2-6	33%	10-13	77%
<b>Game</b>	<b>26-67</b>	<b>38.8%</b>	<b>4-15</b>	<b>26.7%</b>	<b>18-28</b>	<b>64.3%</b>

*Deadball Rebounds: 6,0*  
*Last FG: 5th-01:29*  
*Biggest Run: 7-0*  
*Largest lead: By 9 at 1-03*  
*Technical Fouls: None.*

*Game Notes:*

Officials: **Angie Leite, Dana Pysz, McCall Judd**  
Attendance: **472**

Start Time: **10:08 PM ET**  
End Time: **12:32 AM ET**  
Game Duration: **2:23**

Score	1st	2nd	3rd	4th	5th	TOT
AFA	11	18	17	17	5	<b>68</b>
LBS	19	8	12	24	11	<b>74</b>

**AFA led for 19:50. LBS led for 23:55.**  
**Game was tied for 1:16.**  
Times tied: **1**      Lead Changes: **2**

Points from	AFA	LBS
In the Paint	30	40
Off Turns	10	28
2nd Chance	6	13
Fast Break	10	9
Bench	16	11

**Official Box Score**  
**Air Force vs Long Beach St.**  
**First Half Statistics Only**  
**December 18, 2019 at Walter Pyramid - Long Beach**

**BEACH**

**Air Force 29**

No.	Player	S	Pts	FG	3FG	FT	OR	DR	TR	PF	A	TO	Blk	Stl	Min	+/-
00	JONES, HALEY	G	0	0-1	0-0	0-0	0	1	1	2	0	0	0	0	4	-3
01	AUTREY, BRIANA	G	0	0-2	0-1	0-0	0	1	1	2	0	3	0	0	10	-2
03	WINTERS, CIERRA	G	1	0-2	0-1	1-4	2	0	2	2	0	0	0	1	9	2
10	HEATH, KAMRI	G	2	1-1	0-0	0-0	0	0	0	0	0	0	0	0	6	1
12	HESS, GRACE	G	0	0-2	0-1	0-0	0	0	0	0	0	0	0	0	4	-2
13	CONROE, EMILY	G	0	0-1	0-1	0-0	0	2	2	0	0	3	1	1	13	-3
22	MARLETT, ALLYAH	G	6	3-3	0-0	0-0	1	1	2	0	1	1	0	0	10	9
23	SNYDER, RILEY	F	10	3-5	0-0	4-4	1	3	4	1	0	1	1	0	16	2
32	IMMEL, KAELIN	G	7	3-7	1-2	0-0	0	2	2	1	0	0	0	0	15	1
33	MCDONALD, NIKKI	F	3	0-0	0-0	3-4	0	1	1	1	1	0	1	1	14	5
	TEAM		0	0-0	0-0	0-0	0	5	5	0	0	0	0	0	0	0
<b>TOTALS</b>			<b>29</b>	<b>10-24</b>	<b>1-6</b>	<b>8-12</b>	<b>4</b>	<b>16</b>	<b>20</b>	<b>9</b>	<b>2</b>	<b>8</b>	<b>3</b>	<b>3</b>	<b>100</b>	

*Shooting By Period*

Period	FG	FG%	3FG	3FG%	FT	FT%
1st Qtr	3-14	21%	0-3	00%	5-8	63%
2nd Qtr	7-10	70%	1-3	33%	3-4	75%
1st Half	10-24	42%	1-6	17%	8-12	67%
Game	26-56	46.4%	5-15	33.3%	11-18	61.1%

*Deadball Rebounds: 3,0*

*Last FG Half: AFA 2nd-00:11*

**Long Beach St. 27**

No.	Player	S	Pts	FG	3FG	FT	OR	DR	TR	PF	A	TO	Blk	Stl	Min	+/-
00	BERRY, MA'QHI	G	1	0-6	0-0	1-2	1	2	3	1	1	0	0	1	16	2
01	KINSLOW, CYDNEE	F	3	1-3	1-2	0-0	0	3	3	1	0	1	0	0	12	-11
02	LEGAN, ALEXIS	G	0	0-0	0-0	0-0	1	0	1	0	0	1	0	0	3	-1
10	KING, JUSTINA	G	2	1-4	0-0	0-0	0	1	1	1	2	1	0	1	16	-3
11	HARDY, JASMINE	G	3	1-5	0-3	1-2	1	3	4	1	0	0	0	1	14	-3
12	JESKEOVA, KRISTYNA	G	0	0-0	0-0	0-0	0	0	0	1	0	0	1	1	4	3
21	DAVISON, SHANAIIJAH	G	16	7-9	1-2	1-3	0	2	2	1	1	1	0	0	18	0
23	GREEN, LAUREN	F	0	0-0	0-0	0-0	0	0	0	2	0	0	0	0	2	-5
32	GREEN, AARYON	F	2	1-2	0-0	0-2	0	0	0	1	1	1	0	1	14	8
	TEAM		0	0-0	0-0	0-0	3	1	4	0	0	0	0	0	0	0
<b>TOTALS</b>			<b>27</b>	<b>11-29</b>	<b>2-7</b>	<b>3-9</b>	<b>6</b>	<b>12</b>	<b>18</b>	<b>9</b>	<b>5</b>	<b>5</b>	<b>1</b>	<b>5</b>	<b>100</b>	

*Shooting By Period*

Period	FG	FG%	3FG	3FG%	FT	FT%
1st Qtr	9-13	69%	1-2	50%	0-3	00%
2nd Qtr	2-16	13%	1-5	20%	3-6	50%
1st Half	11-29	38%	2-7	29%	3-9	33%
Game	26-67	38.8%	4-15	26.7%	18-28	64.3%

*Deadball Rebounds: 6,0*

*Last FG Half: LBS 2nd-02:02*

*Game Notes:*

*Officials: Angie Leite, Dana Pysz, McCall Judd*  
*Attendance: 472*

*Start Time: 10:08 PM ET*  
*End Time: 12:32 AM ET*  
*Game Duration: 2:23*

Score	1st	2nd	3rd	4th	5th	TOT
AFA	11	18	17	17	5	<b>68</b>
LBS	19	8	12	24	11	<b>74</b>

Points from (This Period)	AFA	LBS
In the Paint	12	18
Off Turns	5	10
2nd Chance	4	1
Fast Break	8	2
Bench	12	3

**Official Box Score**  
**Air Force vs Long Beach St.**  
**First Quarter Statistics Only**  
**December 18, 2019 at Walter Pyramid - Long Beach**

**BEACH**

**Air Force 11**

No.	Player	S	Pts	FG	3FG	FT	OR	DR	TR	PF	A	TO	Blk	Stl	Min	+/-
00	JONES, HALEY	G	0	0-1	0-0	0-0	0	1	1	2	0	0	0	0	4	-3
01	AUTREY, BRIANA	G	0	0-2	0-1	0-0	0	1	1	1	0	1	0	0	6	-5
13	CONROE, EMILY	G	0	0-1	0-1	0-0	0	0	0	0	0	1	1	0	7	-5
23	SNYDER, RILEY	F	4	1-2	0-0	2-2	1	0	1	0	0	0	0	0	7	-8
32	IMMEL, KAELIN	G	0	0-3	0-0	0-0	0	2	2	0	0	0	0	0	7	-6
03	WINTERS, CIERRA	G	0	0-1	0-0	0-2	2	0	2	0	0	0	0	0	4	-2
10	HEATH, KAMRI	G	2	1-1	0-0	0-0	0	0	0	0	0	0	0	0	3	-3
12	HESS, GRACE	G	0	0-2	0-1	0-0	0	0	0	0	0	0	0	0	3	-3
22	MARLETT, ALLYAH	G	2	1-1	0-0	0-0	0	0	0	0	0	1	0	0	4	-3
33	MCDONALD, NIKKI	F	3	0-0	0-0	3-4	0	0	0	0	0	0	0	1	6	-2
TEAM							0	2	2	0		0				
<b>TOTALS</b>			<b>11</b>	<b>3-14</b>	<b>0-3</b>	<b>5-8</b>	<b>3</b>	<b>6</b>	<b>9</b>	<b>3</b>	<b>0</b>	<b>3</b>	<b>1</b>	<b>1</b>	<b>50</b>	

*Shooting By Period*

Period	FG	FG%	3FG	3FG%	FT	FT%
1st Qtr	3-14	21%	0-3	00%	5-8	63%
2nd Qtr	7-10	70%	1-3	33%	3-4	75%
1st Half	3-14	21%	0-3	00%	5-8	63%
1st Half	10-24	42%	1-6	17%	8-12	67%
Game	26-56	46.4%	5-15	33.3%	11-18	61.1%

*Deadball Rebounds: 3,0*

**Long Beach St. 19**

No.	Player	S	Pts	FG	3FG	FT	OR	DR	TR	PF	A	TO	Blk	Stl	Min	+/-
00	BERRY, MA'QHI	G	0	0-1	0-0	0-0	0	1	1	1	1	0	0	0	8	11
10	KING, JUSTINA	G	2	1-2	0-0	0-0	0	1	1	0	2	1	0	0	9	6
11	HARDY, JASMINE	G	2	1-1	0-0	0-0	0	3	3	0	0	0	0	1	7	3
21	DAVISON, SHANAIAH	G	13	6-7	1-2	0-1	0	1	1	0	0	0	0	0	9	8
32	GREEN, AARYON	F	2	1-2	0-0	0-2	0	0	0	1	1	1	0	1	8	13
01	KINSLOW, CYDNEE	F	0	0-0	0-0	0-0	0	3	3	1	0	1	0	0	4	-1
02	LEGAN, ALEXIS	G	0	0-0	0-0	0-0	0	0	0	0	0	0	0	0	0	0
12	JESKEOVA, KRISTYNA	G	0	0-0	0-0	0-0	0	0	0	1	0	0	1	1	3	5
23	GREEN, LAUREN	F	0	0-0	0-0	0-0	0	0	0	2	0	0	0	0	2	-5
TEAM							0	1	1	0		0				
<b>TOTALS</b>			<b>19</b>	<b>9-13</b>	<b>1-2</b>	<b>0-3</b>	<b>0</b>	<b>10</b>	<b>10</b>	<b>6</b>	<b>4</b>	<b>3</b>	<b>1</b>	<b>3</b>	<b>50</b>	

*Shooting By Period*

Period	FG	FG%	3FG	3FG%	FT	FT%
1st Qtr	9-13	69%	1-2	50%	0-3	00%
2nd Qtr	2-16	13%	1-5	20%	3-6	50%
1st Half	9-13	69%	1-2	50%	0-3	00%
1st Half	11-29	38%	2-7	29%	3-9	33%
Game	26-67	38.8%	4-15	26.7%	18-28	64.3%

*Deadball Rebounds: 6,0*

Game Notes:

Officials: **Angie Leite, Dana Pysz, McCall Judd**  
Attendance: **472**

Start Time: **10:08 PM ET**  
End Time: **12:32 AM ET**  
Game Duration: **2:23**

Score	1st	2nd	3rd	4th	5th	TOT
AFA	11	18	17	17	5	<b>68</b>
LBS	19	8	12	24	11	<b>74</b>

Points from (This Period)	AFA	LBS
In the Paint	6	16
Off Turns	2	5
2nd Chance	2	0
Fast Break	3	0
Bench	7	0

**Official Play-By-Play**  
**Air Force vs Long Beach St.**  
**First Quarter**  
**December 18, 2019 at Walter Pyramid - Long Beach**

**BEACH**

**Period 1**

**Starters:**

**Air Force:** 00 JONES,HALEY (G); 1 AUTREY,BRIANA (G); 13 CONROE,EMILY (G); 23 SNYDER,RILEY (F); 32 IMMEL,KAELIN (G);

**Long Beach St.:** 0 BERRY,MA'QHI (G); 10 KING,JUSTINA (G); 11 HARDY,JASMINE (G); 21 DAVISON,SHANAIAH (G); 32 GREEN,AARYON (F);

Time	VISITORS: Air Force	Score	Margin	HOME: Long Beach St.
09:43	TURNOVER (LOSTBALL) by CONROE, EMILY			
09:43				STEAL by HARDY, JASMINE
09:30		2-0	H 2	GOOD! LAYUP by DAVISON, SHANAIAH
09:30				ASSIST by GREEN, AARYON
09:03	MISSED 3PTR by CONROE, EMILY			
09:01				REBOUND (DEF) by TEAM
08:35		4-0	H 4	GOOD! JUMPER by KING, JUSTINA
08:09	MISSED 3PTR by AUTREY, BRIANA			
08:04				REBOUND (DEF) by HARDY, JASMINE
07:47	FOUL (PERSONAL) by AUTREY, BRIANA			
07:47				MISSED FT by GREEN, AARYON
07:47				REBOUND (OFF) by TEAM
07:47				MISSED FT by GREEN, AARYON
07:44	REBOUND (DEF) by JONES, HALEY			
07:28	MISSED JUMPER by AUTREY, BRIANA			
07:23				REBOUND (DEF) by HARDY, JASMINE
07:18				MISSED JUMPER by BERRY, MA'QHI
07:12	REBOUND (DEF) by IMMEL, KAELIN			
06:50	MISSED JUMPER by JONES, HALEY			
06:46				REBOUND (DEF) by KING, JUSTINA
06:42				MISSED JUMPER by GREEN, AARYON
06:42	BLOCK by CONROE, EMILY			
06:34	REBOUND (DEF) by IMMEL, KAELIN			
06:30	MISSED JUMPER by IMMEL, KAELIN			
06:29				REBOUND (DEF) by HARDY, JASMINE
06:29	FOUL (PERSONAL) by JONES, HALEY			
06:29				SUB OUT: HARDY, JASMINE
06:29				SUB OUT: GREEN, AARYON
06:29				SUB IN: JESKEOVA, KRISTYNA
06:29				SUB IN: GREEN, LAUREN
06:29	SUB OUT: JONES, HALEY			
06:29	SUB OUT: AUTREY, BRIANA			
06:29	SUB OUT: CONROE, EMILY			
06:29	SUB OUT: SNYDER, RILEY			
06:29	SUB OUT: IMMEL, KAELIN			
06:29	SUB IN: WINTERS, CIERRA			
06:29	SUB IN: HEATH, KAMRI			
06:29	SUB IN: HESS, GRACE			
06:29	SUB IN: MARLETT, ALLYAH			
06:29	SUB IN: MCDONALD, NIKKI			
06:18		6-0	H 6	GOOD! LAYUP by DAVISON, SHANAIAH
06:05				FOUL (PERSONAL) by GREEN, LAUREN
06:00	GOOD! LAYUP by MARLETT, ALLYAH	6-2	H 4	
05:47				TURNOVER (BADPASS) by KING, JUSTINA
05:47	STEAL by MCDONALD, NIKKI			
05:42	GOOD! LAYUP by HEATH, KAMRI [FB]	6-4	H 2	
05:30				FOUL (PERSONAL) by JESKEOVA, KRISTYNA
05:23				SUB OUT: GREEN, LAUREN
05:23				SUB IN: GREEN, AARYON
05:03	TURNOVER (BADPASS) by MARLETT, ALLYAH			
05:03				STEAL by JESKEOVA, KRISTYNA
04:49		9-4	H 5	GOOD! 3PTR by DAVISON, SHANAIAH
04:49				ASSIST by KING, JUSTINA
04:37	MISSED 3PTR by HESS, GRACE			
04:31				REBOUND (DEF) by BERRY, MA'QHI
04:25		11-4	H 7	GOOD! JUMPER by GREEN, AARYON [PNT]
04:25				ASSIST by KING, JUSTINA
03:59	MISSED JUMPER by HESS, GRACE			
03:55	REBOUND (OFF) by WINTERS, CIERRA			
03:52	MISSED LAYUP by WINTERS, CIERRA			
03:52				BLOCK by JESKEOVA, KRISTYNA
03:50	REBOUND (OFF) by WINTERS, CIERRA			
03:50				FOUL (PERSONAL) by BERRY, MA'QHI
03:50				
03:50	SUB OUT: HEATH, KAMRI			
03:50	SUB OUT: HESS, GRACE			
03:50	SUB OUT: MARLETT, ALLYAH			
03:50	SUB OUT: MCDONALD, NIKKI			
03:50	SUB IN: JONES, HALEY			
03:50	SUB IN: AUTREY, BRIANA			

Time	VISITORS: Air Force	Score	Margin	HOME: Long Beach St.
03:50	SUB IN: CONRDE, EMILY			
03:50	SUB IN: SNYDER, RILEY			
03:50	MISSED FT by WINTERS, CIERRA			
03:50	REBOUND (OFF) by TEAM			
03:50	MISSED FT by WINTERS, CIERRA			
03:48				REBOUND (DEF) by DAVISON, SHANAIJAH
03:42				SUB OUT: BERRY, MA'QHI
03:42				SUB OUT: JESKEOVA, KRISTYNA
03:42				SUB IN: KINSLOW, CYDNEE
03:42				SUB IN: HARDY, JASMINE
03:44		13-4	H 9	GOOD! LAYUP by DAVISON, SHANAIJAH
03:44	FOUL (PERSONAL) by JONES, HALEY			
03:27	MISSED JUMPER by IMMEL, KAELIN			
03:18	REBOUND (OFF) by SNYDER, RILEY			
03:18				FOUL (PERSONAL) by GREEN, AARYON
03:18	SUB OUT: SNYDER, RILEY			
03:18	SUB IN: MCDONALD, NIKKI			
03:18	GOOD! FT by MCDONALD, NIKKI	13-5	H 8	
03:18	GOOD! FT by MCDONALD, NIKKI	13-6	H 7	
03:13				MISSED LAYUP by KING, JUSTINA
03:13	REBOUND (DEF) by TEAM			
03:13				FOUL (PERSONAL) by GREEN, LAUREN
03:13	GOOD! FT by MCDONALD, NIKKI [FB]	13-7	H 6	
03:13	MISSED FT by MCDONALD, NIKKI			
03:13				REBOUND (DEF) by KINSLOW, CYDNEE
02:38	SUB OUT: JONES, HALEY			
02:38	SUB OUT: WINTERS, CIERRA			
02:38	SUB IN: IMMEL, KAELIN			
02:33		15-7	H 8	GOOD! JUMPER by DAVISON, SHANAIJAH [PNT]
02:17	GOOD! LAYUP by SNYDER, RILEY [PNT]	15-9	H 6	
02:10				SUB OUT: KING, JUSTINA
02:10				SUB IN: BERRY, MA'QHI
02:05		17-9	H 8	GOOD! LAYUP by DAVISON, SHANAIJAH [PNT]
01:56	TURNOVER (BADPASS) by AUTREY, BRIANA			
01:56				STEAL by GREEN, AARYON
01:48				MISSED 3PTR by DAVISON, SHANAIJAH
01:44	REBOUND (DEF) by AUTREY, BRIANA			
01:30				FOUL (PERSONAL) by KINSLOW, CYDNEE
01:30				SUB OUT: DAVISON, SHANAIJAH
01:30				SUB IN: KING, JUSTINA
01:30	SUB OUT: AUTREY, BRIANA			
01:30	SUB IN: MARLETT, ALLYAH			
01:30	GOOD! FT by SNYDER, RILEY	17-10	H 7	
01:30	GOOD! FT by SNYDER, RILEY	17-11	H 6	
01:24				TURNOVER (TRAVEL) by KINSLOW, CYDNEE
00:57	MISSED JUMPER by IMMEL, KAELIN			
00:53				REBOUND (DEF) by KINSLOW, CYDNEE
00:51				TURNOVER (TRAVEL) by GREEN, AARYON
00:36	MISSED JUMPER by SNYDER, RILEY			
00:31				REBOUND (DEF) by KINSLOW, CYDNEE
00:11		19-11	H 8	GOOD! LAYUP by HARDY, JASMINE
00:11				ASSIST by BERRY, MA'QHI

### Air Force 11, Long Beach St. 19

Points from (This Period)	AFA	LBS
In the Paint	6	16
Off Turns	2	5
2nd Chance	2	0
Fast Break	3	0
Bench	7	0

**Official Box Score**  
**Air Force vs Long Beach St.**  
**Second Quarter Statistics Only**  
**December 18, 2019 at Walter Pyramid - Long Beach**

**BEACH**

**Air Force 18**

No.	Player	S	Pts	FG	3FG	FT	OR	DR	TR	PF	A	TO	Blk	Stl	Min	+/-
00	JONES, HALEY	G	0	0-0	0-0	0-0	0	0	0	0	0	0	0	0	0	0
01	AUTREY, BRIANA	G	0	0-0	0-0	0-0	0	0	0	1	0	2	0	0	4	3
13	CONROE, EMILY	G	0	0-0	0-0	0-0	0	2	2	0	0	2	0	1	6	2
23	SNYDER, RILEY	F	6	2-3	0-0	2-2	0	3	3	1	0	1	1	0	9	10
32	IMMEL, KAELIN	G	7	3-4	1-2	0-0	0	0	0	1	0	0	0	0	8	7
03	WINTERS, CIERRA	G	1	0-1	0-1	1-2	0	0	0	2	0	0	0	1	5	4
10	HEATH, KAMRI	G	0	0-0	0-0	0-0	0	0	0	0	0	0	0	0	3	4
12	HESS, GRACE	G	0	0-0	0-0	0-0	0	0	0	0	0	0	0	0	1	1
22	MARLETT, ALLYAH	G	4	2-2	0-0	0-0	1	1	2	0	1	0	0	0	6	12
33	MCDONALD, NIKKI	F	0	0-0	0-0	0-0	0	1	1	1	1	0	1	0	8	7
<b>TEAM</b>							0	3	3	0		0				
<b>TOTALS</b>			<b>18</b>	<b>7-10</b>	<b>1-3</b>	<b>3-4</b>	<b>1</b>	<b>10</b>	<b>11</b>	<b>6</b>	<b>2</b>	<b>5</b>	<b>2</b>	<b>2</b>	<b>50</b>	

*Shooting By Period*

Period	FG	FG%	3FG	3FG%	FT	FT%
3rd Qtr	7-15	47%	3-7	43%	0-0	0%
4th Qtr	7-12	58%	0-1	00%	3-4	75%
2nd Half	7-10	70%	1-3	33%	3-4	75%
2nd Half	14-27	52%	3-8	38%	3-4	75%
Game	26-56	46.4%	5-15	33.3%	11-18	61.1%

*Deadball Rebounds: 3,0*

**Long Beach St. 8**

No.	Player	S	Pts	FG	3FG	FT	OR	DR	TR	PF	A	TO	Blk	Stl	Min	+/-
00	BERRY, MA'QHI	G	1	0-5	0-0	1-2	1	1	2	0	0	0	0	1	8	-9
10	KING, JUSTINA	G	0	0-2	0-0	0-0	0	0	0	1	0	0	0	1	7	-9
11	HARDY, JASMINE	G	1	0-4	0-3	1-2	1	0	1	1	0	0	0	0	7	-6
21	DAVISON, SHANAIJAH	G	3	1-2	0-0	1-2	0	1	1	1	1	1	0	0	9	-8
32	GREEN, AARYON	F	0	0-0	0-0	0-0	0	0	0	0	0	0	0	0	6	-5
01	KINSLOW, CYDNEE	F	3	1-3	1-2	0-0	0	0	0	0	0	0	0	0	8	-10
02	LEGAN, ALEXIS	G	0	0-0	0-0	0-0	1	0	1	0	0	1	0	0	3	-1
12	JESKEOVA, KRISTYNA	G	0	0-0	0-0	0-0	0	0	0	0	0	0	0	0	1	-2
23	GREEN, LAUREN	F	0	0-0	0-0	0-0	0	0	0	0	0	0	0	0	0	0
<b>TEAM</b>							3	0	3	0		0				
<b>TOTALS</b>			<b>8</b>	<b>2-16</b>	<b>1-5</b>	<b>3-6</b>	<b>6</b>	<b>2</b>	<b>8</b>	<b>3</b>	<b>1</b>	<b>2</b>	<b>0</b>	<b>2</b>	<b>50</b>	

*Shooting By Period*

Period	FG	FG%	3FG	3FG%	FT	FT%
3rd Qtr	4-15	27%	0-1	00%	4-6	67%
4th Qtr	8-16	50%	2-5	40%	6-7	86%
2nd Half	2-16	13%	1-5	20%	3-6	50%
2nd Half	12-31	39%	2-6	33%	10-13	77%
Game	26-67	38.8%	4-15	26.7%	18-28	64.3%

*Deadball Rebounds: 6,0*

Game Notes:

Officials: **Angie Leite, Dana Pysz, McCall Judd**  
 Attendance: **472**

Start Time: **10:08 PM ET**  
 End Time: **12:32 AM ET**  
 Game Duration: **2:23**

Score	1st	2nd	3rd	4th	5th	TOT
AFA	11	18	17	17	5	<b>68</b>
LBS	19	8	12	24	11	<b>74</b>

Points from (This Period)	AFA	LBS
In the Paint	6	2
Off Turns	3	5
2nd Chance	2	1
Fast Break	5	2
Bench	5	3

**Official Play-By-Play**  
**Air Force vs Long Beach St.**  
**Second Quarter**  
**December 18, 2019 at Walter Pyramid - Long Beach**

**BEACH**

**Period 2**

**Starters:**

**Air Force:** 00 JONES,HALEY (G); 1 AUTREY,BRIANA (G); 13 CONROE,EMILY (G); 23 SNYDER,RILEY (F); 32 IMMEL,KAELIN (G);

**Long Beach St.:** 0 BERRY,MA'QHI (G); 10 KING,JUSTINA (G); 11 HARDY,JASMINE (G); 21 DAVISON,SHANAIAJAH (G); 32 GREEN,AARYON (F);

Time	VISITORS: Air Force	Score	Margin	HOME: Long Beach St.
10:00				SUB OUT: GREEN, AARYON
10:00				SUB IN: JESKEOVA, KRISTYNA
09:28	MISSED 3PTR by IMMEL, KAELIN			
09:23	REBOUND (OFF) by MARLETT, ALLYAH			
09:12	GOOD! LAYUP by IMMEL, KAELIN [PNT]	19-13	H 6	
09:12	ASSIST by MCDONALD, NIKKI			
08:44				MISSED 3PTR by HARDY, JASMINE
08:42	REBOUND (DEF) by TEAM			
08:42				SUB OUT: JESKEOVA, KRISTYNA
08:42				SUB IN: DAVISON, SHANAIAJAH
08:42	SUB OUT: IMMEL, KAELIN			
08:42	SUB IN: AUTREY, BRIANA			
08:27	TURNOVER (BADPASS) by AUTREY, BRIANA			
08:27				STEAL by BERRY, MA'QHI
08:25	FOUL (PERSONAL) by SNYDER, RILEY			
08:25	SUB OUT: MCDONALD, NIKKI			
08:25	SUB IN: WINTERS, CIERRA			
08:25		20-13	H 7	GOOD! FT by BERRY, MA'QHI [FB]
08:24				MISSED FT by BERRY, MA'QHI
08:22	REBOUND (DEF) by CONROE, EMILY			
08:07	TURNOVER (TRAVEL) by SNYDER, RILEY			
07:53				MISSED JUMPER by BERRY, MA'QHI
07:51				REBOUND (OFF) by TEAM
07:32				MISSED JUMPER by KING, JUSTINA
07:29				REBOUND (OFF) by TEAM
07:24				MISSED 3PTR by HARDY, JASMINE
07:19	REBOUND (DEF) by SNYDER, RILEY			
07:08	GOOD! JUMPER by MARLETT, ALLYAH	20-15	H 5	
06:51				TURNOVER (BADPASS) by DAVISON, SHANAIAJAH
06:51	STEAL by CONROE, EMILY			
06:43	GOOD! LAYUP by SNYDER, RILEY [FB]	20-17	H 3	
06:43	ASSIST by MARLETT, ALLYAH			
06:27				MISSED JUMPER by KING, JUSTINA
06:27	BLOCK by SNYDER, RILEY			
06:27	REBOUND (DEF) by TEAM			
06:27				SUB OUT: HARDY, JASMINE
06:27				SUB IN: GREEN, AARYON
06:27	SUB OUT: WINTERS, CIERRA			
06:27	SUB OUT: CONROE, EMILY			
06:27	SUB IN: IMMEL, KAELIN			
06:27	SUB IN: MCDONALD, NIKKI			
06:14	GOOD! JUMPER by IMMEL, KAELIN	20-19	H 1	
05:56		22-19	H 3	GOOD! LAYUP by DAVISON, SHANAIAJAH [PNT]
05:34	FOUL (OFF) by AUTREY, BRIANA			
05:34	TURNOVER (OFFENSIVE) by AUTREY, BRIANA			
05:34				SUB OUT: KING, JUSTINA
05:34				SUB IN: LEGAN, ALEXIS
05:34	SUB OUT: MARLETT, ALLYAH			
05:34	SUB IN: HESS, GRACE			
05:20	FOUL (PERSONAL) by WINTERS, CIERRA			
05:20	SUB OUT: SNYDER, RILEY			
05:20	SUB IN: WINTERS, CIERRA			
05:17				MISSED JUMPER by KINSLOW, CYDNEE
05:12				REBOUND (OFF) by TEAM
04:58	SUB OUT: AUTREY, BRIANA			
04:58	SUB IN: SNYDER, RILEY			
04:51	FOUL (PERSONAL) by WINTERS, CIERRA			
04:51				
04:40				TURNOVER (BADPASS) by LEGAN, ALEXIS
04:40	STEAL by WINTERS, CIERRA			
04:37				FOUL (PERSONAL) by DAVISON, SHANAIAJAH
04:37	MISSED FT by WINTERS, CIERRA			
04:37	REBOUND (OFF) by TEAM			
04:37	GOOD! FT by WINTERS, CIERRA [FB]	22-20	H 2	
04:37				SUB OUT: KINSLOW, CYDNEE
04:37				SUB IN: HARDY, JASMINE
04:37	SUB OUT: HESS, GRACE			
04:37	SUB IN: CONROE, EMILY			
04:12				MISSED JUMPER by HARDY, JASMINE
04:11	REBOUND (DEF) by TEAM			



Time	VISITORS: Air Force	Score	Margin	HOME: Long Beach St.
03:59	MISSED JUMPER by SNYDER, RILEY			
03:54				REBOUND (DEF) by DAVISON, SHANAIJAH
03:41				MISSED 3PTR by HARDY, JASMINE
03:35				REBOUND (OFF) by LEGAN, ALEXIS
03:23				MISSED JUMPER by BERRY, MA'QHI
03:20				REBOUND (OFF) by BERRY, MA'QHI
03:18				MISSED JUMPER by BERRY, MA'QHI
03:14	REBOUND (DEF) by CONROE, EMILY			
03:11	MISSED 3PTR by WINTERS, CIERRA			
03:06				REBOUND (DEF) by BERRY, MA'QHI
03:02				MISSED JUMPER by BERRY, MA'QHI
03:02				REBOUND (OFF) by HARDY, JASMINE
03:02	FOUL (PERSONAL) by MCDONALD, NIKKI			
03:02				SUB OUT: BERRY, MA'QHI
03:02				SUB OUT: LEGAN, ALEXIS
03:02				SUB IN: KINSLOW, CYDNEE
03:02				SUB IN: KING, JUSTINA
03:02	SUB OUT: WINTERS, CIERRA			
03:02	SUB IN: HEATH, KAMRI			
03:02		23-20	H 3	GOOD! FT by HARDY, JASMINE
03:02				MISSED FT by HARDY, JASMINE
03:00	REBOUND (DEF) by MCDONALD, NIKKI			
02:47				FOUL (PERSONAL) by KING, JUSTINA
02:34	TURNOVER (BADPASS) by CONROE, EMILY			
02:27	FOUL (PERSONAL) by IMMEL, KAELIN			
02:27				MISSED FT by DAVISON, SHANAIJAH
02:27				REBOUND (OFF) by TEAM
02:27		24-20	H 4	GOOD! FT by DAVISON, SHANAIJAH [FB]
02:08	TURNOVER (LOSTBALL) by CONROE, EMILY			
02:08				STEAL by KING, JUSTINA
02:02		27-20	H 7	GOOD! 3PTR by KINSLOW, CYDNEE
02:02				ASSIST by DAVISON, SHANAIJAH
01:47				FOUL (PERSONAL) by HARDY, JASMINE
01:47	GOOD! FT by SNYDER, RILEY	27-21	H 6	
01:47	GOOD! FT by SNYDER, RILEY	27-22	H 5	
01:47	SUB OUT: CONROE, EMILY			
01:47	SUB IN: MARLETT, ALLYAH			
01:38				MISSED LAYUP by DAVISON, SHANAIJAH
01:38	BLOCK by MCDONALD, NIKKI			
01:32	REBOUND (DEF) by MARLETT, ALLYAH			
01:31	GOOD! LAYUP by MARLETT, ALLYAH [FB]	27-24	H 3	
01:30				TIMEOUT 30SEC
01:11				MISSED 3PTR by KINSLOW, CYDNEE
01:07	REBOUND (DEF) by SNYDER, RILEY			
00:59	GOOD! JUMPER by SNYDER, RILEY	27-26	H 1	
00:47				SUB OUT: HARDY, JASMINE
00:47				SUB IN: BERRY, MA'QHI
00:42				MISSED JUMPER by BERRY, MA'QHI
00:38	REBOUND (DEF) by SNYDER, RILEY			
00:11	GOOD! 3PTR by IMMEL, KAELIN	27-29	V 2	

### Air Force 29, Long Beach St. 27

Points from (This Period)	AFA	LBS
In the Paint	6	2
Off Turns	3	5
2nd Chance	2	1
Fast Break	5	2
Bench	5	3

**Official Box Score**  
**Air Force vs Long Beach St.**  
**Second Half Statistics Only**  
**December 18, 2019 at Walter Pyramid - Long Beach**

**BEACH**

**Air Force 34**

No.	Player	S	Pts	FG	3FG	FT	OR	DR	TR	PF	A	TO	Blk	Stl	Min	+/-
00	JONES, HALEY	G	3	1-2	0-0	1-2	1	3	4	1	0	1	0	0	13	0
01	AUTREY, BRIANA	G	7	3-4	1-1	0-0	0	1	1	3	1	1	0	0	7	0
03	WINTERS, CIERRA	G	0	0-0	0-0	0-0	0	2	2	3	1	0	0	0	5	-2
10	HEATH, KAMRI	G	0	0-1	0-1	0-0	1	0	1	1	1	1	0	0	6	4
12	HESS, GRACE	G	0	0-0	0-0	0-0	0	0	0	0	0	0	0	0	0	0
13	CONROE, EMILY	G	2	1-1	0-0	0-0	0	1	1	0	1	1	0	0	13	-3
22	MARLETT, ALLYAH	G	2	1-3	0-2	0-0	0	1	1	1	0	2	0	0	12	-5
23	SNYDER, RILEY	F	13	5-11	1-3	2-2	0	4	4	3	0	3	0	0	17	-2
32	IMMEL, KAELIN	G	7	3-4	1-1	0-0	0	0	0	0	2	3	0	1	19	-2
33	MCDONALD, NIKKI	F	0	0-1	0-0	0-0	0	0	0	0	1	0	1	0	8	0
	TEAM		0	0-0	0-0	0-0	1	1	2	0	0	0	0	0	0	0
<b>TOTALS</b>			<b>34</b>	<b>14-27</b>	<b>3-8</b>	<b>3-4</b>	<b>3</b>	<b>13</b>	<b>16</b>	<b>12</b>	<b>7</b>	<b>12</b>	<b>1</b>	<b>1</b>	<b>100</b>	

*Shooting By Period*

Period	FG	FG%	3FG	3FG%	FT	FT%
3rd Qtr	7-15	47%	3-7	43%	0-0	0%
4th Qtr	7-12	58%	0-1	00%	3-4	75%
2nd Half	14-27	52%	3-8	38%	3-4	75%
Game	26-56	46.4%	5-15	33.3%	11-18	61.1%

*Deadball Rebounds: 3,0*  
*Last FG Half: AFA 4th-02:39*

**Long Beach St. 36**

No.	Player	S	Pts	FG	3FG	FT	OR	DR	TR	PF	A	TO	Blk	Stl	Min	+/-
00	BERRY, MA'QHI	G	3	1-3	0-0	1-2	0	2	2	2	1	1	0	2	20	2
01	KINSLOW, CYDNEE	F	6	2-4	2-4	0-0	0	4	4	2	0	1	0	0	17	3
02	LEGAN, ALEXIS	G	0	0-0	0-0	0-0	0	0	0	0	0	0	0	0	0	0
10	KING, JUSTINA	G	8	3-4	0-0	2-2	0	0	0	2	0	1	0	0	20	2
11	HARDY, JASMINE	G	7	2-4	0-1	3-3	1	1	2	1	1	0	0	2	8	0
12	JESKEOVA, KRISTYNA	G	0	0-0	0-0	0-0	0	0	0	0	0	0	0	0	0	0
21	DAVISON, SHANAIJAH	G	8	2-10	0-1	4-6	1	0	1	0	1	3	0	0	20	2
23	GREEN, LAUREN	F	0	0-0	0-0	0-0	0	1	1	0	0	0	0	0	2	0
32	GREEN, AARYON	F	4	2-6	0-0	0-0	3	2	5	0	0	0	0	0	13	1
	TEAM		0	0-0	0-0	0-0	1	1	2	0	0	0	0	0	0	0
<b>TOTALS</b>			<b>36</b>	<b>12-31</b>	<b>2-6</b>	<b>10-13</b>	<b>6</b>	<b>11</b>	<b>17</b>	<b>7</b>	<b>3</b>	<b>6</b>	<b>0</b>	<b>4</b>	<b>100</b>	

*Shooting By Period*

Period	FG	FG%	3FG	3FG%	FT	FT%
3rd Qtr	4-15	27%	0-1	00%	4-6	67%
4th Qtr	8-16	50%	2-5	40%	6-7	86%
2nd Half	12-31	39%	2-6	33%	10-13	77%
Game	26-67	38.8%	4-15	26.7%	18-28	64.3%

*Deadball Rebounds: 6,0*  
*Last FG Half: LBS 4th-00:21*

*Game Notes:*

Officials: Angie Leite, Dana Pysz, McCall Judd  
 Attendance: 472

Start Time: 10:08 PM ET  
 End Time: 12:32 AM ET  
 Game Duration: 2:23

Score	1st	2nd	3rd	4th	5th	TOT
AFA	11	18	17	17	5	<b>68</b>
LBS	19	8	12	24	11	<b>74</b>

Points from (This Period)	AFA	LBS
In the Paint	16	18
Off Turns	5	13
2nd Chance	0	8
Fast Break	2	4
Bench	2	6

**Official Box Score**  
**Air Force vs Long Beach St.**  
**Third Quarter Statistics Only**  
**December 18, 2019 at Walter Pyramid - Long Beach**

**BEACH**

**Air Force 39**

No.	Player	S	Pts	FG	3FG	FT	OR	DR	TR	PF	A	TO	Blk	Stl	Min	+/-
00	JONES, HALEY	G	0	0-0	0-0	0-0	1	3	4	0	0	0	0	0	7	3
01	AUTREY, BRIANA	G	3	1-1	1-1	0-0	0	0	0	1	1	0	0	0	3	1
13	CONROE, EMILY	G	2	1-1	0-0	0-0	0	1	1	0	1	1	0	0	5	3
23	SNYDER, RILEY	F	5	2-6	1-2	0-0	0	2	2	2	0	2	0	0	7	5
32	IMMEL, KAELIN	G	7	3-3	1-1	0-0	0	0	0	0	2	2	0	1	9	7
03	WINTERS, CIERRA	G	0	0-0	0-0	0-0	0	2	2	1	0	0	0	0	2	-2
10	HEATH, KAMRI	G	0	0-1	0-1	0-0	1	0	1	1	1	1	0	0	6	4
12	HESS, GRACE	G	0	0-0	0-0	0-0	0	0	0	0	0	0	0	0	0	0
22	MARLETT, ALLYAH	G	0	0-2	0-2	0-0	0	1	1	1	0	1	0	0	6	0
33	MCDONALD, NIKKI	F	0	0-1	0-0	0-0	0	0	0	0	0	0	0	0	4	4
TEAM							0	0	0	0	0	0	0	0	0	0
<b>TOTALS</b>			<b>17</b>	<b>7-15</b>	<b>3-7</b>	<b>0-0</b>	<b>2</b>	<b>9</b>	<b>11</b>	<b>6</b>	<b>5</b>	<b>7</b>	<b>0</b>	<b>1</b>	<b>50</b>	

*Shooting By Period*

Period	FG	FG%	3FG	3FG%	FT	FT%
5th Qtr	2-5	40%	1-1	100%	0-2	00%
2nd Half	2-5	40%	1-1	100%	0-2	00%
Game	26-56	46.4%	5-15	33.3%	11-18	61.1%

*Deadball Rebounds: 3,0*

**Long Beach St. 47**

No.	Player	S	Pts	FG	3FG	FT	OR	DR	TR	PF	A	TO	Blk	Stl	Min	+/-
00	BERRY, MA'QHI	G	3	1-2	0-0	1-2	0	1	1	0	0	0	0	1	10	-5
10	KING, JUSTINA	G	4	2-2	0-0	0-0	0	0	0	0	0	1	0	0	10	-5
11	HARDY, JASMINE	G	0	0-2	0-1	0-0	0	1	1	0	0	0	0	2	3	-1
21	DAVISON, SHANAIJAH	G	3	0-4	0-0	3-4	0	0	0	0	0	2	0	0	10	-5
32	GREEN, AARYON	F	2	1-5	0-0	0-0	2	2	4	0	0	0	0	0	8	-5
01	KINSLOW, CYDNEE	F	0	0-0	0-0	0-0	0	1	1	1	0	1	0	0	7	-4
02	LEGAN, ALEXIS	G	0	0-0	0-0	0-0	0	0	0	0	0	0	0	0	0	0
12	JESKEOVA, KRISTYNA	G	0	0-0	0-0	0-0	0	0	0	0	0	0	0	0	0	0
23	GREEN, LAUREN	F	0	0-0	0-0	0-0	0	1	1	0	0	0	0	0	2	0
TEAM							0	0	0	0	0	0	0	0	0	
<b>TOTALS</b>			<b>12</b>	<b>4-15</b>	<b>0-1</b>	<b>4-6</b>	<b>2</b>	<b>6</b>	<b>8</b>	<b>1</b>	<b>0</b>	<b>4</b>	<b>0</b>	<b>3</b>	<b>50</b>	

*Shooting By Period*

Period	FG	FG%	3FG	3FG%	FT	FT%
5th Qtr	3-7	43%	0-2	00%	5-6	83%
2nd Half	3-7	43%	0-2	00%	5-6	83%
Game	26-67	38.8%	4-15	26.7%	18-28	64.3%

*Deadball Rebounds: 6,0*

Game Notes:

Officials: Angie Leite, Dana Pysz, McCall Judd  
 Attendance: 472

Start Time: 10:08 PM ET  
 End Time: 12:32 AM ET  
 Game Duration: 2:23

Score	1st	2nd	3rd	4th	5th	TOT
AFA	11	18	17	17	5	<b>68</b>
LBS	19	8	12	24	11	<b>74</b>

Points from (This Period)	AFA	LBS
In the Paint	6	6
Off Turns	5	4
2nd Chance	0	2
Fast Break	0	3
Bench	0	0

**Official Play-By-Play**  
**Air Force vs Long Beach St.**  
**Third Quarter**  
**December 18, 2019 at Walter Pyramid - Long Beach**

**BEACH**

**Period 3**

**Starters:**

**Air Force:** 00 JONES,HALEY (G); 1 AUTREY,BRIANA (G); 13 CONROE,EMILY (G); 23 SNYDER,RILEY (F); 32 IMMEL,KAELIN (G);

**Long Beach St.:** 0 BERRY,MA'QHI (G); 10 KING,JUSTINA (G); 11 HARDY,JASMINE (G); 21 DAVISON,SHANAIAJAH (G); 32 GREEN,AARYON (F);

Time	VISITORS: Air Force	Score	Margin	HOME: Long Beach St.
03:44				MISSED FT by DAVISON, SHANAIAJAH
03:44	REBOUND (DEF) by TEAM			
10:00				SUB OUT: KINSLOW, CYDNEE
10:00				SUB IN: HARDY, JASMINE
10:00	SUB OUT: HEATH, KAMRI			
10:00	SUB OUT: MARLETT, ALLYAH			
10:00	SUB OUT: MCDONALD, NIKKI			
10:00	SUB IN: JONES, HALEY			
10:00	SUB IN: AUTREY, BRIANA			
10:00	SUB IN: CONROE, EMILY			
09:43	GOOD! JUMPER by IMMEL, KAELIN	27-31	V 4	
09:43	ASSIST by AUTREY, BRIANA			
09:26		29-31	V 2	GOOD! LAYUP by BERRY, MA'QHI
09:10	MISSED JUMPER by SNYDER, RILEY			
09:05				REBOUND (DEF) by BERRY, MA'QHI
09:02				MISSED JUMPER by GREEN, AARYON
08:56	REBOUND (DEF) by JONES, HALEY			
08:36	GOOD! 3PTR by AUTREY, BRIANA	29-34	V 5	
08:36	ASSIST by CONROE, EMILY			
08:11		31-34	V 3	GOOD! JUMPER by KING, JUSTINA
08:04	TURNOVER (LOSTBALL) by SNYDER, RILEY			
08:04				STEAL by HARDY, JASMINE
07:59	FOUL (PERSONAL) by AUTREY, BRIANA			
07:59		32-34	V 2	GOOD! FT by DAVISON, SHANAIAJAH [FB]
07:59		33-34	V 1	GOOD! FT by DAVISON, SHANAIAJAH [FB]
07:50	GOOD! JUMPER by IMMEL, KAELIN [PNT]	33-36	V 3	
07:29				MISSED JUMPER by HARDY, JASMINE
07:25	REBOUND (DEF) by JONES, HALEY			
07:16	TURNOVER (3SEC) by CONROE, EMILY			
07:16				SUB OUT: GREEN, AARYON
07:16				SUB IN: GREEN, LAUREN
07:16	SUB OUT: AUTREY, BRIANA			
07:16	SUB IN: WINTERS, CIERRA			
07:16	SUB OUT: CONROE, EMILY			
07:16	SUB IN: MARLETT, ALLYAH			
07:02				MISSED LAYUP by DAVISON, SHANAIAJAH
06:59	REBOUND (DEF) by WINTERS, CIERRA			
06:52	MISSED JUMPER by SNYDER, RILEY			
06:49				REBOUND (DEF) by HARDY, JASMINE
06:44				MISSED 3PTR by HARDY, JASMINE
06:41	REBOUND (DEF) by MARLETT, ALLYAH			
06:32	TURNOVER (LOSTBALL) by SNYDER, RILEY			
06:32				STEAL by HARDY, JASMINE
06:32				SUB OUT: HARDY, JASMINE
06:32				SUB IN: KINSLOW, CYDNEE
06:23	FOUL (PERSONAL) by WINTERS, CIERRA			
06:17				MISSED JUMPER by BERRY, MA'QHI
06:14	REBOUND (DEF) by SNYDER, RILEY			
06:06	TURNOVER (TRAVEL) by IMMEL, KAELIN			
06:06	SUB OUT: WINTERS, CIERRA			
06:06	SUB IN: HEATH, KAMRI			
05:52				FOUL (OFF) by KINSLOW, CYDNEE
05:52				TURNOVER (OFFENSIVE) by KINSLOW, CYDNEE
05:45	MISSED 3PTR by SNYDER, RILEY			
05:39				REBOUND (DEF) by GREEN, LAUREN
05:31				TURNOVER (BADPASS) by DAVISON, SHANAIAJAH
05:31				SUB OUT: GREEN, LAUREN
05:31				SUB IN: GREEN, AARYON
05:21	GOOD! JUMPER by SNYDER, RILEY [PNT]	33-38	V 5	
04:59		35-38	V 3	GOOD! LAYUP by KING, JUSTINA
04:39	MISSED JUMPER by SNYDER, RILEY			
04:35	REBOUND (OFF) by JONES, HALEY			
04:24	MISSED 3PTR by MARLETT, ALLYAH			
04:19				REBOUND (DEF) by GREEN, AARYON
04:16	FOUL (PERSONAL) by SNYDER, RILEY			
04:16				
04:16	SUB OUT: SNYDER, RILEY			
04:16	SUB IN: MCDONALD, NIKKI			
04:16				MISSED FT by BERRY, MA'QHI
04:16				REBOUND (OFF) by TEAM

Time	VISITORS: Air Force	Score	Margin	HOME: Long Beach St.
04:16		36-38	V 2	GOOD! FT by BERRY, MA'QHI [FB]
03:50	MISSED 3PTR by MARLETT, ALLYAH			
03:47	REBOUND (OFF) by HEATH, KAMRI			
03:47	TURNOVER (TRAVEL) by HEATH, KAMRI			
03:34				MISSED JUMPER by DAVISON, SHANAIJAH
03:28				REBOUND (OFF) by GREEN, AARYON
03:22				TURNOVER (LOSTBALL) by DAVISON, SHANAIJAH
03:22	STEAL by IMMEL, KAELIN			
03:12	GOOD! 3PTR by IMMEL, KAELIN	36-41	V 5	
03:12	ASSIST by HEATH, KAMRI			
02:54				MISSED JUMPER by GREEN, AARYON
02:50	REBOUND (DEF) by JONES, HALEY			
02:42	SUB OUT: JONES, HALEY			
02:42	SUB OUT: MARLETT, ALLYAH			
02:42	SUB IN: CONROE, EMILY			
02:42	SUB IN: SNYDER, RILEY			
02:40	GOOD! JUMPER by CONROE, EMILY [PNT]	36-43	V 7	
02:40	ASSIST by IMMEL, KAELIN			
02:28	FOUL (PERSONAL) by HEATH, KAMRI			
02:04				MISSED JUMPER by GREEN, AARYON
02:01	REBOUND (DEF) by CONROE, EMILY			
01:51	TURNOVER (LOSTBALL) by IMMEL, KAELIN			
01:51				STEAL by BERRY, MA'QHI
01:33				MISSED LAYUP by DAVISON, SHANAIJAH
01:29	REBOUND (DEF) by SNYDER, RILEY			
01:15	GOOD! 3PTR by SNYDER, RILEY	36-46	V 10	
01:15	ASSIST by IMMEL, KAELIN			
01:05	FOUL (PERSONAL) by SNYDER, RILEY			
01:05				MISSED FT by DAVISON, SHANAIJAH
01:05				REBOUND (OFF) by TEAM
01:05		37-46	V 9	GOOD! FT by DAVISON, SHANAIJAH
01:05	SUB OUT: SNYDER, RILEY			
01:05	SUB OUT: IMMEL, KAELIN			
01:05	SUB IN: WINTERS, CIERRA			
01:05	SUB IN: MARLETT, ALLYAH			
00:47	MISSED LAYUP by MCDONALD, NIKKI			
00:42				REBOUND (DEF) by GREEN, AARYON
00:32				MISSED JUMPER by DAVISON, SHANAIJAH
00:28	REBOUND (DEF) by WINTERS, CIERRA			
00:17	MISSED 3PTR by HEATH, KAMRI			
00:14				REBOUND (DEF) by KINSLOW, CYDNEE
00:07				TURNOVER (LOSTBALL) by KING, JUSTINA
00:05	FOUL (OFF) by MARLETT, ALLYAH			
00:05	TURNOVER (OFFENSIVE) by MARLETT, ALLYAH			
00:01				MISSED JUMPER by GREEN, AARYON
00:00				REBOUND (OFF) by GREEN, AARYON
00:00		39-46	V 7	GOOD! JUMPER by GREEN, AARYON

### Air Force 46, Long Beach St. 39

Points from (This Period)	AFA	LBS
In the Paint	6	6
Off Turns	5	4
2nd Chance	0	2
Fast Break	0	3
Bench	0	0

**Official Box Score**  
**Air Force vs Long Beach St.**  
**Fourth Quarter Statistics Only**  
**December 18, 2019 at Walter Pyramid - Long Beach**

**BEACH**

**Air Force 17**

No.	Player	S	Pts	FG	3FG	FT	OR	DR	TR	PF	A	TO	Blk	Stl	Min	+/-
00	JONES, HALEY	G	3	1-2	0-0	1-2	0	0	0	1	0	1	0	0	6	-3
01	AUTREY, BRIANA	G	4	2-3	0-0	0-0	0	1	1	2	0	1	0	0	4	-1
13	CONROE, EMILY	G	0	0-0	0-0	0-0	0	0	0	0	0	0	0	0	8	-6
23	SNYDER, RILEY	F	8	3-5	0-1	2-2	0	2	2	1	0	1	0	0	10	-7
32	IMMEL, KAELIN	G	0	0-1	0-0	0-0	0	0	0	0	0	1	0	0	10	-9
03	WINTERS, CIERRA	G	0	0-0	0-0	0-0	0	0	0	2	1	0	0	0	3	0
10	HEATH, KAMRI	G	0	0-0	0-0	0-0	0	0	0	0	0	0	0	0	0	0
12	HESS, GRACE	G	0	0-0	0-0	0-0	0	0	0	0	0	0	0	0	0	0
22	MARLETT, ALLYAH	G	2	1-1	0-0	0-0	0	0	0	0	0	1	0	0	6	-5
33	MCDONALD, NIKKI	F	0	0-0	0-0	0-0	0	0	0	0	1	0	1	0	4	-4
<b>TEAM</b>								1	1	2	0	0				
<b>TOTALS</b>			<b>17</b>	<b>7-12</b>	<b>0-1</b>	<b>3-4</b>	<b>1</b>	<b>4</b>	<b>5</b>	<b>6</b>	<b>2</b>	<b>5</b>	<b>1</b>	<b>0</b>	<b>50</b>	

*Shooting By Period*

Period	FG	FG%	3FG	3FG%	FT	FT%
Game	26-56	46.4%	5-15	33.3%	11-18	61.1%

*Deadball Rebounds: 3,0*

**Long Beach St. 24**

No.	Player	S	Pts	FG	3FG	FT	OR	DR	TR	PF	A	TO	Blk	Stl	Min	+/-
00	BERRY, MA'QHI	G	0	0-1	0-0	0-0	0	1	1	2	1	1	0	1	10	7
10	KING, JUSTINA	G	4	1-2	0-0	2-2	0	0	0	2	0	0	0	0	10	7
11	HARDY, JASMINE	G	7	2-2	0-0	3-3	1	0	1	1	1	0	0	0	5	1
21	DAVISON, SHANAIAH	G	5	2-6	0-1	1-2	1	0	1	0	1	1	0	0	10	7
32	GREEN, AARYON	F	2	1-1	0-0	0-0	1	0	1	0	0	0	0	0	5	6
01	KINSLOW, CYDNEE	F	6	2-4	2-4	0-0	0	3	3	1	0	0	0	0	10	7
02	LEGAN, ALEXIS	G	0	0-0	0-0	0-0	0	0	0	0	0	0	0	0	0	0
12	JESKEOVA, KRISTYNA	G	0	0-0	0-0	0-0	0	0	0	0	0	0	0	0	0	0
23	GREEN, LAUREN	F	0	0-0	0-0	0-0	0	0	0	0	0	0	0	0	0	0
<b>TEAM</b>								1	1	2	0	0				
<b>TOTALS</b>			<b>24</b>	<b>8-16</b>	<b>2-5</b>	<b>6-7</b>	<b>4</b>	<b>5</b>	<b>9</b>	<b>6</b>	<b>3</b>	<b>2</b>	<b>0</b>	<b>1</b>	<b>50</b>	

*Shooting By Period*

Period	FG	FG%	3FG	3FG%	FT	FT%
Game	26-67	38.8%	4-15	26.7%	18-28	64.3%

*Deadball Rebounds: 6,0*

*Game Notes:*

Officials: **Angie Leite, Dana Pysz, McCall Judd**  
 Attendance: 472

Start Time: 10:08 PM ET  
 End Time: 12:32 AM ET  
 Game Duration: 2:23

Score	1st	2nd	3rd	4th	5th	TOT
AFA	11	18	17	17	5	<b>68</b>
LBS	19	8	12	24	11	<b>74</b>

Points from (This Period)	AFA	LBS
In the Paint	10	12
Off Turns	0	9
2nd Chance	0	6
Fast Break	2	1
Bench	2	6

**Official Play-By-Play**  
**Air Force vs Long Beach St.**  
**Fourth Quarter**  
**December 18, 2019 at Walter Pyramid - Long Beach**

**BEACH**

**Period 4**

**Starters:**

**Air Force:** 00 JONES,HALEY (G); 1 AUTREY,BRIANA (G); 13 CONROE,EMILY (G); 23 SNYDER,RILEY (F); 32 IMMEL,KAELIN (G);

**Long Beach St.:** 0 BERRY,MA'QHI (G); 10 KING,JUSTINA (G); 11 HARDY,JASMINE (G); 21 DAVISON,SHANAIAJAH (G); 32 GREEN,AARYON (F);

Time	VISITORS: Air Force	Score	Margin	HOME: Long Beach St.
10:00	SUB OUT: WINTERS, CIERRA			
10:00	SUB OUT: HEATH, KAMRI			
10:00	SUB OUT: MARLETT, ALLYAH			
10:00	SUB OUT: MCDONALD, NIKKI			
10:00	SUB IN: JONES, HALEY			
10:00	SUB IN: AUTREY, BRIANA			
10:00	SUB IN: SNYDER, RILEY			
10:00	SUB IN: IMMEL, KAELIN			
09:44	MISSED JUMPER by SNYDER, RILEY			
09:37				REBOUND (DEF) by BERRY, MA'QHI
09:34		41-46	V 5	GOOD! JUMPER by DAVISON, SHANAIAJAH [PNT]
09:33				SUB OUT: GREEN, AARYON
09:33				SUB IN: HARDY, JASMINE
09:23	GOOD! JUMPER by SNYDER, RILEY	41-48	V 7	
09:02				MISSED 3PTR by KINSLOW, CYDNEE
08:59	REBOUND (DEF) by SNYDER, RILEY			
08:56	MISSED JUMPER by AUTREY, BRIANA			
08:52				REBOUND (DEF) by KINSLOW, CYDNEE
08:38				MISSED JUMPER by BERRY, MA'QHI
08:35	REBOUND (DEF) by AUTREY, BRIANA			
08:32	GOOD! JUMPER by AUTREY, BRIANA [FB/PNT]	41-50	V 9	
08:08		43-50	V 7	GOOD! JUMPER by HARDY, JASMINE [PNT]
08:08	FOUL (PERSONAL) by JONES, HALEY			
08:08		44-50	V 6	GOOD! FT by HARDY, JASMINE
07:44	MISSED 3PTR by SNYDER, RILEY			
07:42	REBOUND (OFF) by TEAM			
07:42				FOUL (PERSONAL) by HARDY, JASMINE
07:39	TURNOVER (BADPASS) by JONES, HALEY			
07:30		46-50	V 4	GOOD! LAYUP by DAVISON, SHANAIAJAH
07:30				ASSIST by BERRY, MA'QHI
07:23				FOUL (PERSONAL) by KING, JUSTINA
07:23	SUB OUT: IMMEL, KAELIN			
07:23	SUB IN: WINTERS, CIERRA			
07:13	GOOD! JUMPER by AUTREY, BRIANA [PNT]	46-52	V 6	
07:03	FOUL (PERSONAL) by AUTREY, BRIANA			
07:03	SUB OUT: AUTREY, BRIANA			
07:03	SUB IN: IMMEL, KAELIN			
06:51		48-52	V 4	GOOD! JUMPER by HARDY, JASMINE [PNT]
06:30	GOOD! LAYUP by SNYDER, RILEY	48-54	V 6	
06:02		51-54	V 3	GOOD! 3PTR by KINSLOW, CYDNEE
06:02				ASSIST by HARDY, JASMINE
05:39	GOOD! JUMPER by JONES, HALEY	51-56	V 5	
05:39	ASSIST by WINTERS, CIERRA			
05:31	FOUL (PERSONAL) by WINTERS, CIERRA			
05:31	SUB OUT: JONES, HALEY			
05:31	SUB OUT: CONROE, EMILY			
05:31	SUB IN: MARLETT, ALLYAH			
05:31	SUB IN: MCDONALD, NIKKI			
05:31				MISSED FT by DAVISON, SHANAIAJAH
05:31				REBOUND (OFF) by TEAM
05:31		52-56	V 4	GOOD! FT by DAVISON, SHANAIAJAH [FB]
05:13				FOUL (PERSONAL) by KINSLOW, CYDNEE
05:13				SUB OUT: HARDY, JASMINE
05:13				SUB IN: GREEN, AARYON
04:57	MISSED JUMPER by IMMEL, KAELIN			
04:52				REBOUND (DEF) by KINSLOW, CYDNEE
04:42				MISSED JUMPER by DAVISON, SHANAIAJAH
04:42	BLOCK by MCDONALD, NIKKI			
04:42	REBOUND (DEF) by TEAM			
04:42				
04:42	SUB OUT: WINTERS, CIERRA			
04:42	SUB IN: AUTREY, BRIANA			
04:26	TURNOVER (3SEC) by SNYDER, RILEY			
04:20				FOUL (OFF) by BERRY, MA'QHI
04:20				TURNOVER (OFFENSIVE) by BERRY, MA'QHI
04:20	TIMEOUT 30SEC			
03:58	FOUL (OFF) by AUTREY, BRIANA			
03:58	TURNOVER (OFFENSIVE) by AUTREY, BRIANA			
03:58	SUB OUT: AUTREY, BRIANA			
03:58	SUB IN: WINTERS, CIERRA			





No.	Player	S	Pts	FG	3FG	FT	OR	DR	TR	PF	A	TO	Blk	Stl	Min	+/-
	TEAM		0	0-0	0-0	0-0	0	0	0	0	0	0	0	0	0	

<b>TOTALS</b>		<b>5</b>	<b>2-5</b>	<b>1-1</b>	<b>0-2</b>	<b>2</b>	<b>2</b>	<b>4</b>	<b>4</b>	<b>0</b>	<b>4</b>	<b>0</b>	<b>0</b>	<b>0</b>	<b>25</b>	
---------------	--	----------	------------	------------	------------	----------	----------	----------	----------	----------	----------	----------	----------	----------	-----------	--

Shooting By Period

Period	FG	FG%	3FG	3FG%	FT	FT%
5th Qtr	2-5	40%	1-1	100%	0-2	00%
2nd Half	2-5	40%	1-1	100%	0-2	00%
Game	26-56	46.4%	5-15	33.3%	11-18	61.1%

Deadball Rebounds: 3,0  
Last FG Half: AFA 5th-00:24

**Long Beach St. 11**

No.	Player	S	Pts	FG	3FG	FT	OR	DR	TR	PF	A	TO	Blk	Stl	Min	+/-
00	BERRY, MA'QHI	G	2	1-1	0-0	0-0	0	1	1	1	0	0	0	1	5	6
01	KINSLOW, CYDNEE	F	2	1-2	0-1	0-0	1	0	1	0	0	0	0	0	5	6
02	LEGAN, ALEXIS	G	0	0-0	0-0	0-0	0	0	0	0	0	0	0	0	0	0
10	KING, JUSTINA	G	3	0-0	0-0	3-4	0	0	0	0	0	0	0	1	5	6
11	HARDY, JASMINE	G	0	0-0	0-0	0-0	0	0	0	0	0	0	0	0	0	0
12	JESKEOVA, KRISTYNA	G	0	0-0	0-0	0-0	0	0	0	0	0	0	0	0	0	0
21	DAVISON, SHANAIJAH	G	2	1-4	0-1	0-0	0	0	0	0	1	0	0	0	5	6
23	GREEN, LAUREN	F	0	0-0	0-0	0-0	0	0	0	0	0	0	0	0	0	0
32	GREEN, AARYON	F	2	0-0	0-0	2-2	1	0	1	0	0	0	0	0	5	6
	TEAM		0	0-0	0-0	0-0	0	1	1	0	0	0	0	0	0	
<b>TOTALS</b>			<b>11</b>	<b>3-7</b>	<b>0-2</b>	<b>5-6</b>	<b>2</b>	<b>2</b>	<b>4</b>	<b>1</b>	<b>1</b>	<b>0</b>	<b>0</b>	<b>2</b>	<b>25</b>	

Shooting By Period

Period	FG	FG%	3FG	3FG%	FT	FT%
5th Qtr	3-7	43%	0-2	00%	5-6	83%
2nd Half	3-7	43%	0-2	00%	5-6	83%
Game	26-67	38.8%	4-15	26.7%	18-28	64.3%

Deadball Rebounds: 6,0  
Last FG Half: LBS 5th-01:29

Game Notes:

Officials: **Angie Leite, Dana Pysz, McCall Judd**  
Attendance: **472**

Start Time: **10:08 PM ET**  
End Time: **12:32 AM ET**  
Game Duration: **2:23**

Score	1st	2nd	3rd	4th	5th	TOT
AFA	11	18	17	17	5	<b>68</b>
LBS	19	8	12	24	11	<b>74</b>

Points from (This Period)	AFA	LBS
In the Paint	2	4
Off Turns	0	5
2nd Chance	2	4
Fast Break	0	3
Bench	2	2

Official Play-By-Play  
**Air Force vs Long Beach St.**  
Overtime  
December 18, 2019 at Walter Pyramid - Long Beach

BEACH

**Period 5**

**Starters:**

**Air Force:** 00 JONES, HALEY (G); 1 AUTREY, BRIANA (G); 13 CONROE, EMILY (G); 23 SNYDER, RILEY (F); 32 IMMEL, KAELIN (G);

**Long Beach St.:** 0 BERRY, MA'QHI (G); 10 KING, JUSTINA (G); 11 HARDY, JASMINE (G); 21 DAVISON, SHANAIJAH (G); 32 GREEN, AARYON (F);

Time	VISITORS: Air Force	Score	Margin	HOME: Long Beach St.
04:39				MISSED LAYUP by DAVISON, SHANAIJAH
04:35				REBOUND (OFF) by GREEN, AARYON
04:25		65-63	H 2	GOOD! JUMPER by BERRY, MA'QHI [PNT]
04:03	MISSED JUMPER by SNYDER, RILEY			
03:59	REBOUND (OFF) by JONES, HALEY			
03:56	TURNOVER (BADPASS) by JONES, HALEY			
03:56				STEAL by BERRY, MA'QHI
03:50				MISSED JUMPER by DAVISON, SHANAIJAH
03:46				REBOUND (OFF) by KINSLOW, CYDNEE
03:37		67-63	H 4	GOOD! JUMPER by DAVISON, SHANAIJAH [PNT]
03:04	MISSED LAYUP by IMMEL, KAELIN			
02:59				REBOUND (DEF) by BERRY, MA'QHI
02:58	FOUL (PERSONAL) by MARLETT, ALLYAH			
02:58	TIMEOUT 30SEC			
02:58	SUB OUT: CONROE, EMILY			
02:58	SUB IN: MCDONALD, NIKKI			
02:58		68-63	H 5	GOOD! FT by GREEN, AARYON [FB]
02:58		69-63	H 6	GOOD! FT by GREEN, AARYON [FB]
02:39	MISSED JUMPER by SNYDER, RILEY			
02:35	REBOUND (OFF) by MARLETT, ALLYAH			
02:34	GOOD! LAYUP by MARLETT, ALLYAH	69-65	H 4	
02:09				MISSED 3PTR by KINSLOW, CYDNEE
02:05	REBOUND (DEF) by MARLETT, ALLYAH			
01:49	TURNOVER (3SEC) by SNYDER, RILEY			
01:29		71-65	H 6	GOOD! JUMPER by KINSLOW, CYDNEE
01:29				ASSIST by DAVISON, SHANAIJAH
01:15				FOUL (PERSONAL) by BERRY, MA'QHI
01:13	MISSED FT by IMMEL, KAELIN			
01:13	MISSED FT by IMMEL, KAELIN			
01:13				REBOUND (DEF) by TEAM
01:13	REBOUND (OFF) by TEAM			
00:43				MISSED 3PTR by DAVISON, SHANAIJAH
00:39	REBOUND (DEF) by MARLETT, ALLYAH			
00:37	FOUL (OFF) by MARLETT, ALLYAH			
00:37	TURNOVER (OFFENSIVE) by MARLETT, ALLYAH			
00:37				SUB OUT: GREEN, AARYON
00:37				SUB IN: HARDY, JASMINE
00:31	FOUL (PERSONAL) by JONES, HALEY			
00:31				SUB OUT: HARDY, JASMINE
00:31				SUB IN: GREEN, AARYON
00:31				MISSED FT by KING, JUSTINA
00:31				REBOUND (OFF) by TEAM
00:31		72-65	H 7	GOOD! FT by KING, JUSTINA [FB]
00:31	TIMEOUT 30SEC			
00:31	SUB OUT: MCDONALD, NIKKI			
00:31	SUB IN: CONROE, EMILY			
00:31	SUB OUT: JONES, HALEY			
00:31	SUB IN: MCDONALD, NIKKI			
00:24	GOOD! 3PTR by CONROE, EMILY	72-68	H 4	
00:16	FOUL (PERSONAL) by CONROE, EMILY			
00:16		73-68	H 5	GOOD! FT by KING, JUSTINA
00:16		74-68	H 6	GOOD! FT by KING, JUSTINA
00:16	TIMEOUT 30SEC			
00:10	TURNOVER (BADPASS) by IMMEL, KAELIN			
00:10				STEAL by KING, JUSTINA

**Air Force 68, Long Beach St. 74**

Points from (This Period)	AFA	LBS
In the Paint	2	4
Off Turns	0	5
2nd Chance	2	4
Fast Break	0	3
Bench	2	2

**Official Scoring/Possession Reference Chart**  
**Air Force vs Long Beach St.**  
**Period 1**  
**December 18, 2019 at Walter Pyramid - Long Beach**

**BEACH**

**Period 1**

**Starters:**

**Air Force:** 00 JONES,HALEY (G); 1 AUTREY,BRIANA (G); 13 CONROE,EMILY (G); 23 SNYDER,RILEY (F); 32 IMMEL,KAELIN (G);

**Long Beach St.:** 0 BERRY,MA'QHI (G); 10 KING,JUSTINA (G); 11 HARDY,JASMINE (G); 21 DAVISON,SHANAIAJAH (G); 32 GREEN,AARYON (F);

Time	VISITORS: Air Force	Score	Margin	HOME: Long Beach St.
09:30		2-0	H 2	GOOD! LAYUP by DAVISON, SHANAIAJAH
08:35		4-0	H 4	GOOD! JUMPER by KING, JUSTINA
06:18		6-0	H 6	GOOD! LAYUP by DAVISON, SHANAIAJAH
06:00	GOOD! LAYUP by MARLETT, ALLYAH	6-2	H 4	
05:42	GOOD! LAYUP by HEATH, KAMRI [FB]	6-4	H 2	
04:49		9-4	H 5	GOOD! 3PTR by DAVISON, SHANAIAJAH
04:25		11-4	H 7	GOOD! JUMPER by GREEN, AARYON [PNT]
03:44		13-4	H 9	GOOD! LAYUP by DAVISON, SHANAIAJAH
03:18	GOOD! FT by MCDONALD, NIKKI	13-5	H 8	
03:18	GOOD! FT by MCDONALD, NIKKI	13-6	H 7	
03:13	GOOD! FT by MCDONALD, NIKKI [FB]	13-7	H 6	
02:33		15-7	H 8	GOOD! JUMPER by DAVISON, SHANAIAJAH [PNT]
02:17	GOOD! LAYUP by SNYDER, RILEY [PNT]	15-9	H 6	
02:05		17-9	H 8	GOOD! LAYUP by DAVISON, SHANAIAJAH [PNT]
01:30	GOOD! FT by SNYDER, RILEY	17-10	H 7	
01:30	GOOD! FT by SNYDER, RILEY	17-11	H 6	
00:11		19-11	H 8	GOOD! LAYUP by HARDY, JASMINE

**Air Force 11, Long Beach St. 19**

**Official Scoring/Possession Reference Chart**  
**Air Force vs Long Beach St.**  
**Period 2**  
**December 18, 2019 at Walter Pyramid - Long Beach**



**Period 2**

**Starters:**

**Air Force:** 00 JONES,HALEY (G); 1 AUTREY,BRIANA (G); 13 CONROE,EMILY (G); 23 SNYDER,RILEY (F); 32 IMMEL,KAELIN (G);

**Long Beach St.:** 0 BERRY,MA'QHI (G); 10 KING,JUSTINA (G); 11 HARDY,JASMINE (G); 21 DAVISON,SHANAIAH (G); 32 GREEN,AARYON (F);

Time	VISITORS: Air Force	Score	Margin	HOME: Long Beach St.
09:12	GOOD! LAYUP by IMMEL, KAELIN [PNT]	19-13	H 6	
08:25		20-13	H 7	GOOD! FT by BERRY, MA'QHI [FB]
07:08	GOOD! JUMPER by MARLETT, ALLYAH	20-15	H 5	
06:43	GOOD! LAYUP by SNYDER, RILEY [FB]	20-17	H 3	
06:14	GOOD! JUMPER by IMMEL, KAELIN	20-19	H 1	
05:56		22-19	H 3	GOOD! LAYUP by DAVISON, SHANAIAH [PNT]
04:37	GOOD! FT by WINTERS, CIERRA [FB]	22-20	H 2	
03:02		23-20	H 3	GOOD! FT by HARDY, JASMINE
02:27		24-20	H 4	GOOD! FT by DAVISON, SHANAIAH [FB]
02:02		27-20	H 7	GOOD! 3PTR by KINSLOW, CYDNEE
01:47	GOOD! FT by SNYDER, RILEY	27-21	H 6	
01:47	GOOD! FT by SNYDER, RILEY	27-22	H 5	
01:31	GOOD! LAYUP by MARLETT, ALLYAH [FB]	27-24	H 3	
00:59	GOOD! JUMPER by SNYDER, RILEY	27-26	H 1	
00:11	GOOD! 3PTR by IMMEL, KAELIN	27-29	V 2	

**Air Force 29, Long Beach St. 27**

**Official Scoring/Possession Reference Chart**  
**Air Force vs Long Beach St.**  
**Period 3**  
**December 18, 2019 at Walter Pyramid - Long Beach**

**BEACH**

**Period 3**

**Starters:**

**Air Force:** 00 JONES,HALEY (G); 1 AUTREY,BRIANA (G); 13 CONROE,EMILY (G); 23 SNYDER,RILEY (F); 32 IMMEL,KAELIN (G);

**Long Beach St.:** 0 BERRY,MA'QHI (G); 10 KING,JUSTINA (G); 11 HARDY,JASMINE (G); 21 DAVISON,SHANAIJAH (G); 32 GREEN,AARYON (F);

Time	VISITORS: Air Force	Score	Margin	HOME: Long Beach St.
09:43	GOOD! JUMPER by IMMEL, KAELIN	27-31	V 4	
09:26		29-31	V 2	GOOD! LAYUP by BERRY, MA'QHI
08:36	GOOD! 3PTR by AUTREY, BRIANA	29-34	V 5	
08:11		31-34	V 3	GOOD! JUMPER by KING, JUSTINA
07:59		32-34	V 2	GOOD! FT by DAVISON, SHANAIJAH [FB]
07:59		33-34	V 1	GOOD! FT by DAVISON, SHANAIJAH [FB]
07:50	GOOD! JUMPER by IMMEL, KAELIN [PNT]	33-36	V 3	
05:21	GOOD! JUMPER by SNYDER, RILEY [PNT]	33-38	V 5	
04:59		35-38	V 3	GOOD! LAYUP by KING, JUSTINA
04:16		36-38	V 2	GOOD! FT by BERRY, MA'QHI [FB]
03:12	GOOD! 3PTR by IMMEL, KAELIN	36-41	V 5	
02:40	GOOD! JUMPER by CONROE, EMILY [PNT]	36-43	V 7	
01:15	GOOD! 3PTR by SNYDER, RILEY	36-46	V 10	
01:05		37-46	V 9	GOOD! FT by DAVISON, SHANAIJAH
00:00		39-46	V 7	GOOD! JUMPER by GREEN, AARYON

**Air Force 46, Long Beach St. 39**

**Official Scoring/Possession Reference Chart**  
**Air Force vs Long Beach St.**  
**Period 4**  
**December 18, 2019 at Walter Pyramid - Long Beach**

**BEACH**

**Period 4**

**Starters:**

**Air Force:** 00 JONES,HALEY (G); 1 AUTREY,BRIANA (G); 13 CONROE,EMILY (G); 23 SNYDER,RILEY (F); 32 IMMEL,KAELIN (G);

**Long Beach St.:** 0 BERRY,MA'QHI (G); 10 KING,JUSTINA (G); 11 HARDY,JASMINE (G); 21 DAVISON,SHANAIAH (G); 32 GREEN,AARYON (F);

Time	VISITORS: Air Force	Score	Margin	HOME: Long Beach St.
09:34		41-46	V 5	GOOD! JUMPER by DAVISON, SHANAIAH [PNT]
09:23	GOOD! JUMPER by SNYDER, RILEY	41-48	V 7	
08:32	GOOD! JUMPER by AUTREY, BRIANA [FB/PNT]	41-50	V 9	
08:08		43-50	V 7	GOOD! JUMPER by HARDY, JASMINE [PNT]
08:08		44-50	V 6	GOOD! FT by HARDY, JASMINE
07:30		46-50	V 4	GOOD! LAYUP by DAVISON, SHANAIAH
07:13	GOOD! JUMPER by AUTREY, BRIANA [PNT]	46-52	V 6	
06:51		48-52	V 4	GOOD! JUMPER by HARDY, JASMINE [PNT]
06:30	GOOD! LAYUP by SNYDER, RILEY	48-54	V 6	
06:02		51-54	V 3	GOOD! 3PTR by KINSLOW, CYDNEE
05:39	GOOD! JUMPER by JONES, HALEY	51-56	V 5	
05:31		52-56	V 4	GOOD! FT by DAVISON, SHANAIAH [FB]
03:47		53-56	V 3	GOOD! FT by KING, JUSTINA
03:47		54-56	V 2	GOOD! FT by KING, JUSTINA
03:29	GOOD! LAYUP by MARLETT, ALLYAH	54-58	V 4	
02:39	GOOD! JUMPER by SNYDER, RILEY [PNT]	54-60	V 6	
01:47		56-60	V 4	GOOD! LAYUP by KING, JUSTINA [PNT]
01:36	GOOD! FT by SNYDER, RILEY	56-61	V 5	
01:36	GOOD! FT by SNYDER, RILEY	56-62	V 6	
01:23		57-62	V 5	GOOD! FT by HARDY, JASMINE
01:23		58-62	V 4	GOOD! FT by HARDY, JASMINE
01:10		61-62	V 1	GOOD! 3PTR by KINSLOW, CYDNEE
00:21		63-62	H 1	GOOD! JUMPER by GREEN, AARYON [PNT]
00:10	GOOD! FT by JONES, HALEY	63-63	T	

**Air Force 63, Long Beach St. 63**

**Official Scoring/Possession Reference Chart**  
**Air Force vs Long Beach St.**  
**Period 5**  
**December 18, 2019 at Walter Pyramid - Long Beach**



**Period 5**

**Starters:**

**Air Force:** 00 JONES,HALEY (G); 1 AUTREY,BRIANA (G); 13 CONROE,EMILY (G); 23 SNYDER,RILEY (F); 32 IMMEL,KAELIN (G);

**Long Beach St.:** 0 BERRY,MA'QHI (G); 10 KING,JUSTINA (G); 11 HARDY,JASMINE (G); 21 DAVISON,SHANAIJAH (G); 32 GREEN,AARYON (F);

Time	VISITORS: Air Force	Score	Margin	HOME: Long Beach St.
04:25		65-63	H 2	GOOD! JUMPER by BERRY, MA'QHI [PNT]
03:37		67-63	H 4	GOOD! JUMPER by DAVISON, SHANAIJAH [PNT]
02:58		68-63	H 5	GOOD! FT by GREEN, AARYON [FB]
02:58		69-63	H 6	GOOD! FT by GREEN, AARYON [FB]
02:34	GOOD! LAYUP by MARLETT, ALLYAH	69-65	H 4	
01:29		71-65	H 6	GOOD! JUMPER by KINSLOW, CYDNEE
00:31		72-65	H 7	GOOD! FT by KING, JUSTINA [FB]
00:24	GOOD! 3PTR by CONROE, EMILY	72-68	H 4	
00:16		73-68	H 5	GOOD! FT by KING, JUSTINA
00:16		74-68	H 6	GOOD! FT by KING, JUSTINA

**Air Force 68, Long Beach St. 74**



**Official Substitutions Log**  
**Air Force vs Long Beach St.**  
**Period 1**  
**December 18, 2019 at Walter Pyramid - Long Beach**

**BEACH**

VISITORS: Air Force	Time	Score	HOME: Long Beach St.
00 JONES,HALEY			0 BERRY,MA'QHI
1 AUTREY,BRIANA			10 KING,JUSTINA
13 CONROE,EMILY			11 HARDY,JASMINE
23 SNYDER,RILEY			21 DAVISON,SHANAJAH
32 IMMEL,KAELIN			32 GREEN,AARYON
	06:29	0-4	SUB OUT: HARDY,JASMINE
	06:29		SUB OUT: GREEN,AARYON
	06:29		SUB IN: JESKEOVA,KRISTYNA
	06:29		SUB IN: GREEN,LAUREN
SUB OUT: 00 JONES,HALEY	06:29		
SUB OUT: 1 AUTREY,BRIANA	06:29		
SUB OUT: 13 CONROE,EMILY	06:29		
SUB OUT: 23 SNYDER,RILEY	06:29		
SUB OUT: 32 IMMEL,KAELIN	06:29		
SUB IN: 3 WINTERS,CIERRA	06:29		
SUB IN: 10 HEATH,KAMRI	06:29		
SUB IN: 12 HESS,GRACE	06:29		
SUB IN: 22 MARLETT,ALLYAH	06:29		
SUB IN: 33 MCDONALD,NIKKI	06:29		
	05:23	4-6	SUB OUT: GREEN,LAUREN
	05:23		SUB IN: GREEN,AARYON
SUB OUT: 10 HEATH,KAMRI	03:50	4-11	
SUB OUT: 12 HESS,GRACE	03:50		
SUB OUT: 22 MARLETT,ALLYAH	03:50		
SUB OUT: 33 MCDONALD,NIKKI	03:50		
SUB IN: 00 JONES,HALEY	03:50		
SUB IN: 1 AUTREY,BRIANA	03:50		
SUB IN: 13 CONROE,EMILY	03:50		
SUB IN: 23 SNYDER,RILEY	03:50		
	03:42	4-11	SUB OUT: BERRY,MA'QHI
	03:42		SUB OUT: JESKEOVA,KRISTYNA
	03:42		SUB IN: KINSLow,CYDNEE
	03:42		SUB IN: HARDY,JASMINE
SUB OUT: 23 SNYDER,RILEY	03:18	4-13	
SUB IN: 33 MCDONALD,NIKKI	03:18		
SUB OUT: 00 JONES,HALEY	02:38	7-13	
SUB OUT: 3 WINTERS,CIERRA	02:38		
SUB IN: 32 IMMEL,KAELIN	02:38		
	02:10	9-15	SUB OUT: KING,JUSTINA
	02:10		SUB IN: BERRY,MA'QHI
	01:30	9-17	SUB OUT: DAVISON,SHANAJAH
	01:30		SUB IN: KING,JUSTINA
SUB OUT: 1 AUTREY,BRIANA	01:30		
SUB IN: 22 MARLETT,ALLYAH	01:30		

**Air Force 11, Long Beach St. 19**

**Official Substitutions Log**  
**Air Force vs Long Beach St.**  
**Period 2**  
**December 18, 2019 at Walter Pyramid - Long Beach**



VISITORS: Air Force	Time	Score	HOME: Long Beach St.
00 JONES,HALEY			0 BERRY,MA'QHI
1 AUTREY,BRIANA			10 KING,JUSTINA
13 CONROE,EMILY			11 HARDY,JASMINE
23 SNYDER,RILEY			21 DAVISON,SHANAIJAH
32 IMMEL,KAELIN			32 GREEN,AARYON
	10:00	-	SUB OUT: GREEN,AARYON
	10:00		SUB IN: JESKEOVA,KRISTYNA
	08:42	13-19	SUB OUT: JESKEOVA,KRISTYNA
	08:42		SUB IN: DAVISON,SHANAIJAH
SUB OUT: 32 IMMEL,KAELIN	08:42		
SUB IN: 1 AUTREY,BRIANA	08:42		
SUB OUT: 33 MCDONALD,NIKKI	08:25	13-19	
SUB IN: 3 WINTERS,CIERRA	08:25		
	06:27	17-20	SUB OUT: HARDY,JASMINE
	06:27		SUB IN: GREEN,AARYON
SUB OUT: 3 WINTERS,CIERRA	06:27		
SUB OUT: 13 CONROE,EMILY	06:27		
SUB IN: 32 IMMEL,KAELIN	06:27		
SUB IN: 33 MCDONALD,NIKKI	06:27		
	05:34	19-22	SUB OUT: KING,JUSTINA
	05:34		SUB IN: LEGAN,ALEXIS
SUB OUT: 22 MARLETT,ALLYAH	05:34		
SUB IN: 12 HESS,GRACE	05:34		
SUB OUT: 23 SNYDER,RILEY	05:20	19-22	
SUB IN: 3 WINTERS,CIERRA	05:20		
SUB OUT: 1 AUTREY,BRIANA	04:58	19-22	
SUB IN: 23 SNYDER,RILEY	04:58		
	04:37	20-22	SUB OUT: KINSLOW,CYDNEE
	04:37		SUB IN: HARDY,JASMINE
SUB OUT: 12 HESS,GRACE	04:37		
SUB IN: 13 CONROE,EMILY	04:37		
	03:02	20-22	SUB OUT: BERRY,MA'QHI
	03:02		SUB OUT: LEGAN,ALEXIS
	03:02		SUB IN: KINSLOW,CYDNEE
	03:02		SUB IN: KING,JUSTINA
SUB OUT: 3 WINTERS,CIERRA	03:02		
SUB IN: 10 HEATH,KAMRI	03:02		
SUB OUT: 13 CONROE,EMILY	01:47	22-27	
SUB IN: 22 MARLETT,ALLYAH	01:47		
	00:47	26-27	SUB OUT: HARDY,JASMINE
	00:47		SUB IN: BERRY,MA'QHI

**Air Force 29, Long Beach St. 27**

**Official Substitutions Log**  
**Air Force vs Long Beach St.**  
**Period 3**  
**December 18, 2019 at Walter Pyramid - Long Beach**

**BEACH**

VISITORS: Air Force	Time	Score	HOME: Long Beach St.
00 JONES,HALEY			0 BERRY,MA'QHI
1 AUTREY,BRIANA			10 KING,JUSTINA
13 CONROE,EMILY			11 HARDY,JASMINE
23 SNYDER,RILEY			21 DAVISON,SHANAJAH
32 IMMEL,KAELIN			32 GREEN,AARYON
	10:00	-	SUB OUT: KINSLow,CYDNEE
	10:00		SUB IN: HARDY,JASMINE
SUB OUT: 10 HEATH,KAMRI	10:00		
SUB OUT: 22 MARLETT,ALLYAH	10:00		
SUB OUT: 33 MCDONALD,NIKKI	10:00		
SUB IN: 00 JONES,HALEY	10:00		
SUB IN: 1 AUTREY,BRIANA	10:00		
SUB IN: 13 CONROE,EMILY	10:00		
	07:16	36-33	SUB OUT: GREEN,AARYON
	07:16		SUB IN: GREEN,LAUREN
SUB OUT: 1 AUTREY,BRIANA	07:16		
SUB IN: 3 WINTERS,CIERRA	07:16		
SUB OUT: 13 CONROE,EMILY	07:16		
SUB IN: 22 MARLETT,ALLYAH	07:16		
	06:32	36-33	SUB OUT: HARDY,JASMINE
	06:32		SUB IN: KINSLow,CYDNEE
SUB OUT: 3 WINTERS,CIERRA	06:06	36-33	
SUB IN: 10 HEATH,KAMRI	06:06		
	05:31	36-33	SUB OUT: GREEN,LAUREN
	05:31		SUB IN: GREEN,AARYON
SUB OUT: 23 SNYDER,RILEY	04:16	38-35	
SUB IN: 33 MCDONALD,NIKKI	04:16		
SUB OUT: 00 JONES,HALEY	02:42	41-36	
SUB OUT: 22 MARLETT,ALLYAH	02:42		
SUB IN: 13 CONROE,EMILY	02:42		
SUB IN: 23 SNYDER,RILEY	02:42		
SUB OUT: 23 SNYDER,RILEY	01:05	46-37	
SUB OUT: 32 IMMEL,KAELIN	01:05		
SUB IN: 3 WINTERS,CIERRA	01:05		
SUB IN: 22 MARLETT,ALLYAH	01:05		

**Air Force 46, Long Beach St. 39**

**Official Substitutions Log**  
**Air Force vs Long Beach St.**  
**Period 4**  
**December 18, 2019 at Walter Pyramid - Long Beach**

**BEACH**

<b>VISITORS: Air Force</b>	<b>Time</b>	<b>Score</b>	<b>HOME: Long Beach St.</b>
00 JONES,HALEY			0 BERRY,MA'QHI
1 AUTREY,BRIANA			10 KING,JUSTINA
13 CONROE,EMILY			11 HARDY,JASMINE
23 SNYDER,RILEY			21 DAVISON,SHANAJAH
32 IMMEL,KAELIN			32 GREEN,AARYON
SUB OUT: 3 WINTERS,CIERRA	10:00	-	
SUB OUT: 10 HEATH,KAMRI	10:00		
SUB OUT: 22 MARLETT,ALLYAH	10:00		
SUB OUT: 33 MCDONALD,NIKKI	10:00		
SUB IN: 00 JONES,HALEY	10:00		
SUB IN: 1 AUTREY,BRIANA	10:00		
SUB IN: 23 SNYDER,RILEY	10:00		
SUB IN: 32 IMMEL,KAELIN	10:00		
	09:33	46-41	SUB OUT: GREEN,AARYON
	09:33		SUB IN: HARDY,JASMINE
SUB OUT: 32 IMMEL,KAELIN	07:23	50-46	
SUB IN: 3 WINTERS,CIERRA	07:23		
SUB OUT: 1 AUTREY,BRIANA	07:03	52-46	
SUB IN: 32 IMMEL,KAELIN	07:03		
SUB OUT: 00 JONES,HALEY	05:31	56-51	
SUB OUT: 13 CONROE,EMILY	05:31		
SUB IN: 22 MARLETT,ALLYAH	05:31		
SUB IN: 33 MCDONALD,NIKKI	05:31		
	05:13	56-52	SUB OUT: HARDY,JASMINE
	05:13		SUB IN: GREEN,AARYON
SUB OUT: 3 WINTERS,CIERRA	04:42	56-52	
SUB IN: 1 AUTREY,BRIANA	04:42		
SUB OUT: 1 AUTREY,BRIANA	03:58	56-52	
SUB IN: 3 WINTERS,CIERRA	03:58		
SUB OUT: 3 WINTERS,CIERRA	03:47	56-52	
SUB IN: 13 CONROE,EMILY	03:47		
	01:36	60-56	SUB OUT: GREEN,AARYON
	01:36		SUB IN: HARDY,JASMINE
	01:23	62-58	SUB OUT: HARDY,JASMINE
	01:23		SUB IN: GREEN,AARYON
SUB OUT: 33 MCDONALD,NIKKI	01:09	62-61	
SUB IN: 00 JONES,HALEY	01:09		

**Air Force 63, Long Beach St. 63**



**Official Substitutions Log**  
**Air Force vs Long Beach St.**  
**Period 5**  
**December 18, 2019 at Walter Pyramid - Long Beach**

**BEACH**

<b>VISITORS: Air Force</b>	<b>Time</b>	<b>Score</b>	<b>HOME: Long Beach St.</b>
00 JONES,HALEY			0 BERRY,MA'QHI
1 AUTREY,BRIANA			10 KING,JUSTINA
13 CONROE,EMILY			11 HARDY,JASMINE
23 SNYDER,RILEY			21 DAVISON,SHANAJAH
32 IMMEL,KAELIN			32 GREEN,AARYON
SUB OUT: 13 CONROE,EMILY	02:58	63-67	
SUB IN: 33 MCDONALD,NIKKI	02:58		
	00:37	65-71	SUB OUT: GREEN,AARYON
	00:37		SUB IN: HARDY,JASMINE
	00:31	65-71	SUB OUT: HARDY,JASMINE
	00:31		SUB IN: GREEN,AARYON
SUB OUT: 33 MCDONALD,NIKKI	00:31		
SUB IN: 13 CONROE,EMILY	00:31		
SUB OUT: 00 JONES,HALEY	00:31		
SUB IN: 33 MCDONALD,NIKKI	00:31		

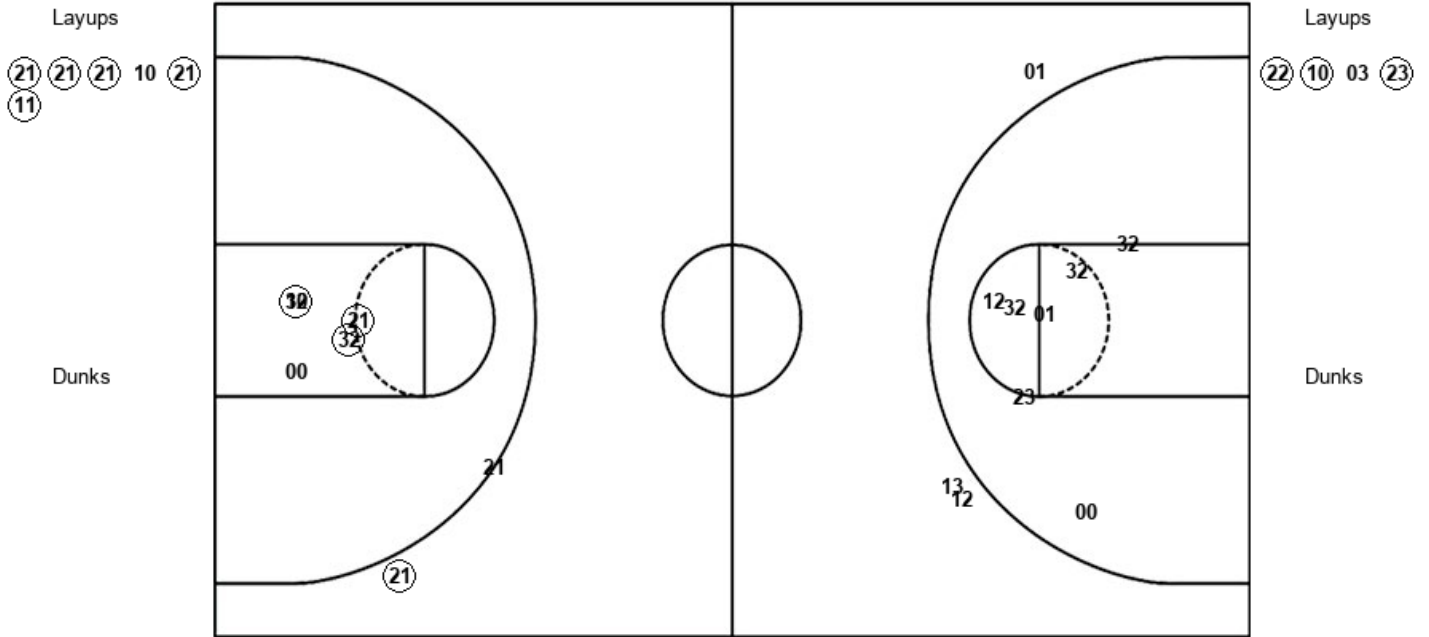
**Air Force 68, Long Beach St. 74**

**Official Shot Chart**  
**Air Force vs Long Beach St.**  
**PERIOD 1 Shots**  
 December 18, 2019 at Walter Pyramid - Long Beach

**BEACH**

**Long Beach St.**

**Air Force**



<b>LBS : Period 1</b>	<b>Made</b>	<b>Att</b>	<b>Pct</b>
Layups	5	6	83.3
Dunks	0	0	0
2PT Field Goals	8	11	72.7
3PT Field Goals	1	2	50.0
<b>Total Field Goals</b>	<b>9</b>	<b>13</b>	<b>69.2</b>

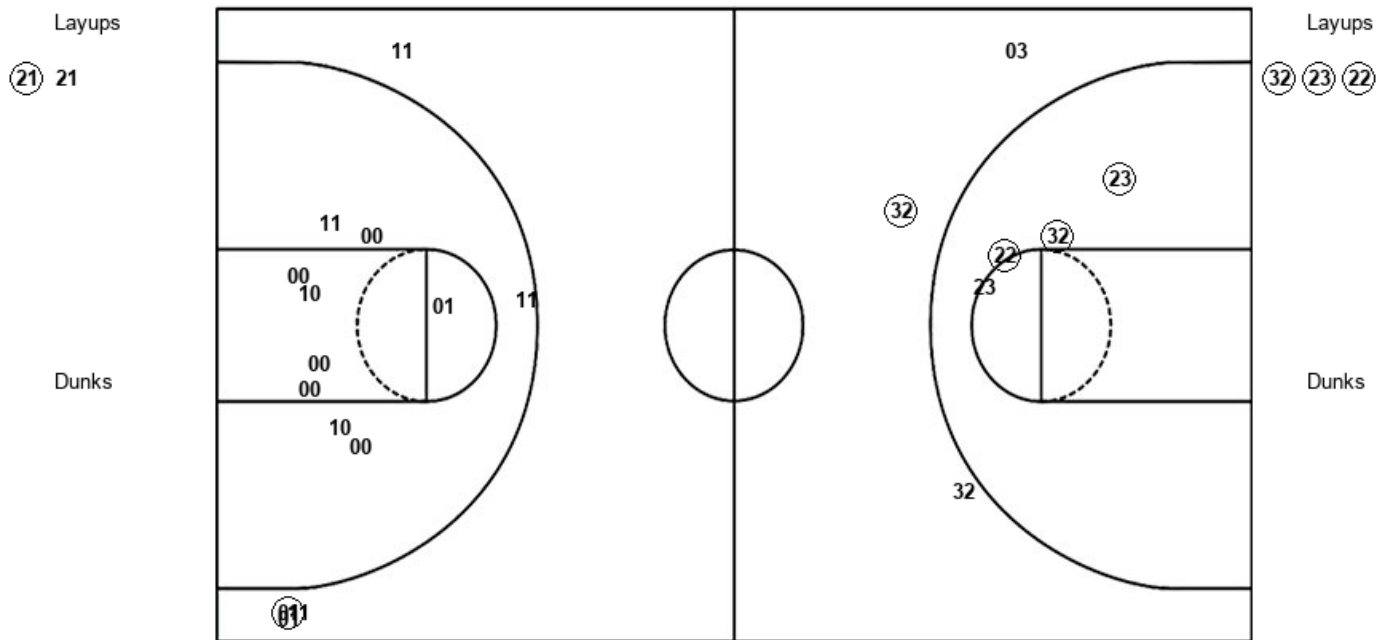
<b>AFA : Period 1</b>	<b>Made</b>	<b>Att</b>	<b>Pct</b>
Layups	3	4	75.0
Dunks	0	0	0
2PT Field Goals	3	11	27.3
3PT Field Goals	0	3	00.0
<b>Total Field Goals</b>	<b>3</b>	<b>14</b>	<b>21.4</b>

**Official Shot Chart**  
**Air Force vs Long Beach St.**  
**PERIOD 2 Shots**  
 December 18, 2019 at Walter Pyramid - Long Beach

**BEACH**

**Long Beach St.**

**Air Force**



<b>LBS : Period 2</b>	<b>Made</b>	<b>Att</b>	<b>Pct</b>
Layups	1	2	50.0
Dunks	0	0	0
2PT Field Goals	1	11	09.1
3PT Field Goals	1	5	20.0
<b>Total Field Goals</b>	<b>2</b>	<b>16</b>	<b>12.5</b>

<b>AFA : Period 2</b>	<b>Made</b>	<b>Att</b>	<b>Pct</b>
Layups	3	3	100.0
Dunks	0	0	0
2PT Field Goals	6	7	85.7
3PT Field Goals	1	3	33.3
<b>Total Field Goals</b>	<b>7</b>	<b>10</b>	<b>70.0</b>



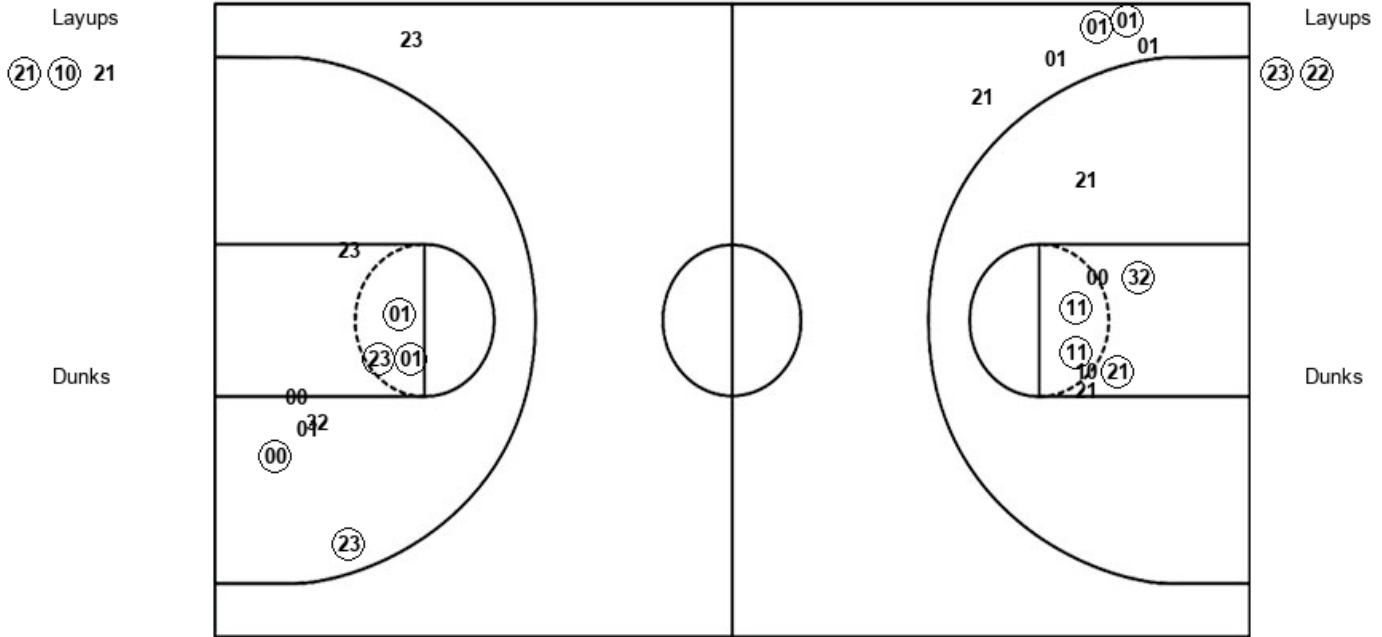


**Official Shot Chart**  
**Air Force vs Long Beach St.**  
**PERIOD 4 Shots**  
 December 18, 2019 at Walter Pyramid - Long Beach

**BEACH**

**Long Beach St.**

**Air Force**



<b>LBS : Period 4</b>	<b>Made</b>	<b>Att</b>	<b>Pct</b>
Layups	2	3	66.7
Dunks	0	0	0
2PT Field Goals	6	11	54.5
3PT Field Goals	2	5	40.0
<b>Total Field Goals</b>	<b>8</b>	<b>16</b>	<b>50.0</b>

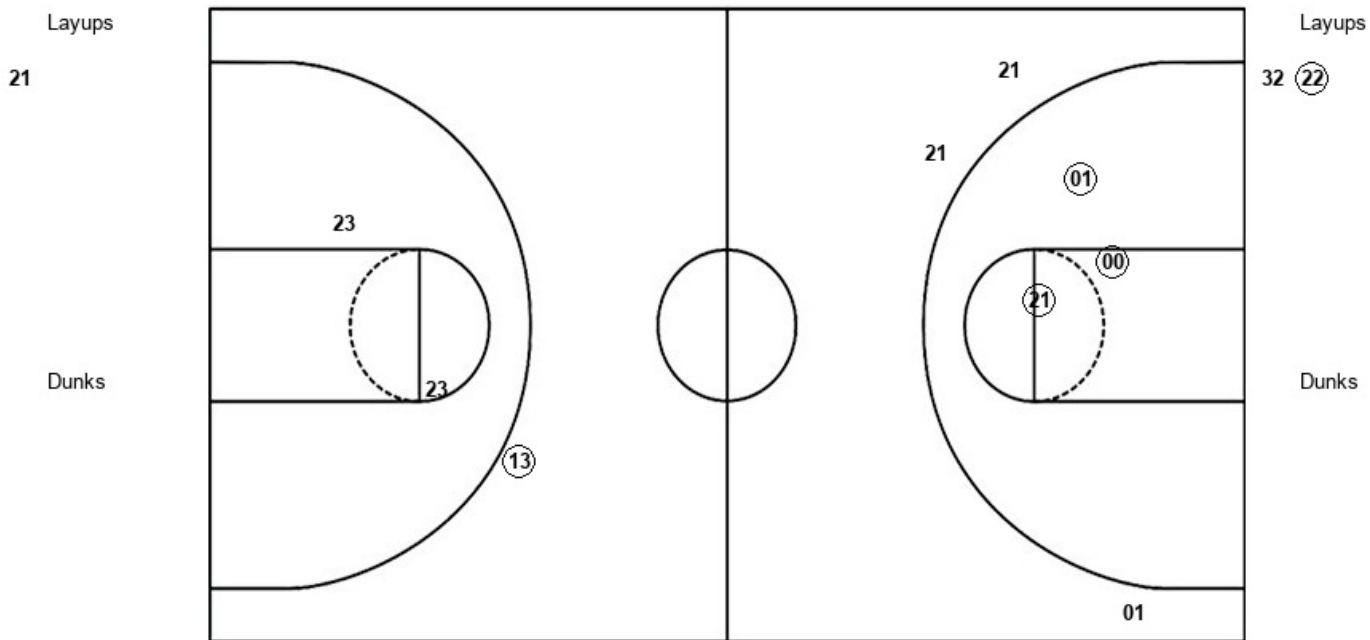
<b>AFA : Period 4</b>	<b>Made</b>	<b>Att</b>	<b>Pct</b>
Layups	2	2	100.0
Dunks	0	0	0
2PT Field Goals	7	11	63.6
3PT Field Goals	0	1	00.0
<b>Total Field Goals</b>	<b>7</b>	<b>12</b>	<b>58.3</b>

**Official Shot Chart**  
**Air Force vs Long Beach St.**  
**PERIOD 5 Shots**  
 December 18, 2019 at Walter Pyramid - Long Beach

**BEACH**

**Long Beach St.**

**Air Force**



<b>LBS : Period 5</b>	<b>Made</b>	<b>Att</b>	<b>Pct</b>
Layups	0	1	00.0
Dunks	0	0	0
2PT Field Goals	3	5	60.0
3PT Field Goals	0	2	00.0
<b>Total Field Goals</b>	<b>3</b>	<b>7</b>	<b>42.9</b>

<b>AFA : Period 5</b>	<b>Made</b>	<b>Att</b>	<b>Pct</b>
Layups	1	2	50.0
Dunks	0	0	0
2PT Field Goals	1	4	25.0
3PT Field Goals	1	1	100.0
<b>Total Field Goals</b>	<b>2</b>	<b>5</b>	<b>40.0</b>



