

FINAL SCORE



Oregon

81

Long Beach St.

BEACH

45

December 14, 2019 • Walter Pyramid - Long Beach, Calif.

FINAL STATISTICS

Official Box Score
Oregon vs Long Beach St.
Game Totals -- Final Statistics
December 14, 2019 at Walter Pyramid - Long Beach, Calif.

BEACH

Oregon 81

No.	Player	S	Pts	FG	3FG	FT	OR	DR	TR	PF	A	TO	Blk	Stl	Min	+/-
00	SABALLY, SATOU	F	6	3-5	0-2	0-0	2	5	7	0	0	2	0	0	13	18
20	IONESCU, SABRINA	G	21	9-14	3-6	0-0	1	11	12	1	7	4	0	3	30	23
21	BOLEY, ERIN	F	2	1-4	0-3	0-0	0	0	0	1	0	1	0	2	17	7
23	MOORE, MINYON	G	3	1-3	1-2	0-0	0	1	1	0	3	2	0	0	16	10
24	HEBARD, RUTHY	F	8	4-4	0-0	0-0	3	0	3	1	2	2	0	0	22	16
02	YAEGER, MORGAN	G	0	0-1	0-1	0-0	0	1	1	0	0	1	0	1	9	-3
03	CHAVEZ, TAYLOR	G	9	4-4	1-1	0-0	0	1	1	0	2	1	0	1	20	29
04	SHELLEY, JAZ	G	17	6-10	5-8	0-0	1	0	1	0	3	4	0	1	30	29
11	WINTERBURN, HOLLY	G	9	4-10	0-4	1-1	1	3	4	1	2	1	0	2	19	20
12	COCHRANE, LUCY	F	4	1-1	0-0	2-2	1	0	1	0	0	2	0	1	10	10
14	GIOMI, LYDIA	F	2	1-1	0-0	0-0	2	1	3	0	0	3	1	1	13	21
TEAM							1	3	4	0	0					
TOTALS			81	34-57	10-27	3-3	12	26	38	4	19	23	1	12	200	

Shooting By Period

Period	FG	FG%	3FG	3FG%	FT	FT%
1st Qtr	13-15	87%	5-6	83%	0-0	0%
2nd Qtr	7-14	50%	1-8	13%	0-0	0%
3rd Qtr	6-14	43%	3-8	38%	0-0	0%
4th Qtr	8-14	57%	1-5	20%	3-3	100%
1st Half	20-29	69%	6-14	43%	0-0	0%
2nd Half	14-28	50%	4-13	31%	3-3	100%
Game	34-57	59.6%	10-27	37.0%	3-3	100.0%

Deadball Rebounds: 0,2
Last FG: 4th-02:50
Biggest Run: 16-0
Largest lead: By 42 at 4-02
Technical Fouls: None.

Long Beach St. 45

No.	Player	S	Pts	FG	3FG	FT	OR	DR	TR	PF	A	TO	Blk	Stl	Min	+/-
00	BERRY, MA'QHI	G	10	5-12	0-2	0-0	1	1	2	0	1	2	0	3	34	-42
01	KINSLOW, CYDNEE	F	3	1-4	1-4	0-0	1	0	1	0	0	2	0	1	25	-13
10	KING, JUSTINA	G	7	3-7	1-5	0-0	0	1	1	1	1	5	0	1	34	-32
23	GREEN, LAUREN	F	0	0-2	0-0	0-0	1	1	2	3	0	1	1	1	12	-5
32	GREEN, AARYON	F	4	2-4	0-0	0-0	1	5	6	1	3	2	0	1	29	-20
11	HARDY, JASMINE	G	11	3-9	1-5	4-4	0	0	0	3	1	3	0	3	32	-26
12	JESKEOVA, KRISTYNA	G	0	0-2	0-1	0-0	1	1	2	2	0	1	0	1	7	-8
21	DAVISON, SHANAIAH	G	10	4-13	2-6	0-0	0	0	0	2	4	2	1	2	27	-34
TEAM							2	1	3	0	1					
TOTALS			45	18-53	5-23	4-4	7	10	17	12	10	19	2	13	200	

Shooting By Period

Period	FG	FG%	3FG	3FG%	FT	FT%
1st Qtr	6-14	43%	0-4	00%	0-0	0%
2nd Qtr	5-15	33%	2-8	25%	2-2	100%
3rd Qtr	4-12	33%	1-5	20%	0-0	0%
4th Qtr	3-12	25%	2-6	33%	2-2	100%
1st Half	11-29	38%	2-12	17%	2-2	100%
2nd Half	7-24	29%	3-11	27%	2-2	100%
Game	18-53	34.0%	5-23	21.7%	4-4	100.0%

Deadball Rebounds: 0,1
Last FG: 4th-00:45
Biggest Run: 7-0
Largest lead: By 2 at 1-09
Technical Fouls: None.

Game Notes:

Officials: Richard Waters, Jen Zylstra, Chaka Wade
Attendance: 1278

Start Time: 04:06 PM ET
End Time: 05:35 PM ET
Game Duration: 1:28

Score	1st	2nd	3rd	4th	TOT
ORE	31	15	15	20	81
LBS	12	14	9	10	45

ORE led for 38:52. LBS led for 0:15.
Game was tied for 0:53.
Times tied: 1 Lead Changes: 1

Points from	ORE	LBS
In the Paint	32	22
Off Turns	30	18
2nd Chance	17	6
Fast Break	4	2
Bench	41	21

Official Box Score
Oregon vs Long Beach St.
First Half Statistics Only
December 14, 2019 at Walter Pyramid - Long Beach, Calif.

BEACH

Oregon 46

No.	Player	S	Pts	FG	3FG	FT	OR	DR	TR	PF	A	TO	Blk	Stl	Min	+/-
00	SABALLY, SATOU	F	6	3-5	0-2	0-0	2	5	7	0	0	2	0	0	13	18
02	YAEGER, MORGAN	G	0	0-0	0-0	0-0	0	1	1	0	0	1	0	0	4	-7
03	CHAVEZ, TAYLOR	G	5	2-2	1-1	0-0	0	0	0	0	2	0	0	0	9	21
04	SHELLEY, JAZ	G	6	2-2	2-2	0-0	0	0	0	0	2	2	0	0	10	13
11	WINTERBURN, HOLLY	G	2	1-4	0-3	0-0	0	0	0	1	1	1	0	1	5	7
12	COCHRANE, LUCY	F	0	0-0	0-0	0-0	0	0	0	0	0	0	0	0	0	0
14	GIOMI, LYDIA	F	2	1-1	0-0	0-0	0	0	0	0	0	0	1	1	7	19
20	IONESCU, SABRINA	G	19	8-10	3-4	0-0	1	7	8	0	3	3	0	1	16	11
21	BOLEY, ERIN	F	2	1-2	0-1	0-0	0	0	0	1	0	1	0	0	13	1
23	MOORE, MINYON	G	0	0-1	0-1	0-0	0	1	1	0	2	1	0	0	10	7
24	HEBARD, RUTHY	F	4	2-2	0-0	0-0	1	0	1	1	2	0	0	0	14	10
	TEAM		0	0-0	0-0	0-0	1	1	2	0	0	0	0	0	0	0
TOTALS			46	20-29	6-14	0-0	5	15	20	3	12	11	1	3	100	

Shooting By Period

Period	FG	FG%	3FG	3FG%	FT	FT%
1st Qtr	13-15	87%	5-6	83%	0-0	0%
2nd Qtr	7-14	50%	1-8	13%	0-0	0%
1st Half	20-29	69%	6-14	43%	0-0	0%
Game	34-57	59.6%	10-27	37.0%	3-3	100.0%

Deadball Rebounds: 0,2
Last FG Half: ORE 2nd-01:30

Long Beach St. 26

No.	Player	S	Pts	FG	3FG	FT	OR	DR	TR	PF	A	TO	Blk	Stl	Min	+/-
00	BERRY, MA'QHI	G	8	4-7	0-1	0-0	0	0	0	0	1	0	0	2	20	-20
01	KINSLOW, CYDNEE	F	3	1-4	1-4	0-0	0	0	0	0	0	1	0	0	14	-13
10	KING, JUSTINA	G	2	1-2	0-1	0-0	0	0	0	1	0	2	0	1	20	-20
11	HARDY, JASMINE	G	6	2-5	0-2	2-2	0	0	0	0	1	1	0	1	16	-12
12	JESKEOVA, KRISTYNA	G	0	0-0	0-0	0-0	0	0	0	0	0	0	0	0	0	0
21	DAVISON, SHANAIAH	G	7	3-10	1-4	0-0	0	0	0	1	1	1	0	0	12	-24
23	GREEN, LAUREN	F	0	0-0	0-0	0-0	0	0	0	2	0	0	0	0	2	-5
32	GREEN, AARYON	F	0	0-1	0-0	0-0	1	4	5	0	3	1	0	1	16	-6
	TEAM		0	0-0	0-0	0-0	1	0	1	0	0	0	0	0	0	0
TOTALS			26	11-29	2-12	2-2	2	4	6	4	6	6	0	5	100	

Shooting By Period

Period	FG	FG%	3FG	3FG%	FT	FT%
1st Qtr	6-14	43%	0-4	00%	0-0	0%
2nd Qtr	5-15	33%	2-8	25%	2-2	100%
1st Half	11-29	38%	2-12	17%	2-2	100%
Game	18-53	34.0%	5-23	21.7%	4-4	100.0%

Deadball Rebounds: 0,1
Last FG Half: LBS 2nd-00:28

Game Notes:

Officials: Richard Waters, Jen Zylstra, Chaka Wade
 Attendance: 1278

Start Time: 04:06 PM ET
 End Time: 05:35 PM ET
 Game Duration: 1:28

Score	1st	2nd	3rd	4th	TOT
ORE	31	15	15	20	81
LBS	12	14	9	10	45

Points from (This Period)	ORE	LBS
In the Paint	16	14
Off Turns	13	10
2nd Chance	10	4
Fast Break	2	2
Bench	15	13

Official Box Score
Oregon vs Long Beach St.
First Quarter Statistics Only
December 14, 2019 at Walter Pyramid - Long Beach, Calif.

BEACH

Oregon 31

No.	Player	S	Pts	FG	3FG	FT	OR	DR	TR	PF	A	TO	Blk	Stl	Min	+/-
00	SABALLY, SATOU	F	4	2-3	0-1	0-0	0	2	2	0	0	1	0	0	7	8
20	IONESCU, SABRINA	G	15	6-7	3-3	0-0	1	5	6	0	3	3	0	1	10	19
21	BOLEY, ERIN	F	2	1-1	0-0	0-0	0	0	0	0	0	0	0	0	7	8
23	MOORE, MINYON	G	0	0-0	0-0	0-0	0	0	0	0	2	1	0	0	6	5
24	HEBARD, RUTHY	F	4	2-2	0-0	0-0	1	0	1	0	2	0	0	0	10	19
02	YAEGER, MORGAN	G	0	0-0	0-0	0-0	0	0	0	0	0	0	0	0	0	0
03	CHAVEZ, TAYLOR	G	0	0-0	0-0	0-0	0	0	0	0	0	0	0	0	3	11
04	SHELLEY, JAZ	G	6	2-2	2-2	0-0	0	0	0	0	0	1	0	0	4	14
11	WINTERBURN, HOLLY	G	0	0-0	0-0	0-0	0	0	0	0	0	0	0	0	0	0
12	COCHRANE, LUCY	F	0	0-0	0-0	0-0	0	0	0	0	0	0	0	0	0	0
14	GIOMI, LYDIA	F	0	0-0	0-0	0-0	0	0	0	0	0	0	1	1	3	11
TEAM							0	0	0	0		0				
TOTALS			31	13-15	5-6	0-0	2	7	9	0	7	6	1	2	50	

Shooting By Period

Period	FG	FG%	3FG	3FG%	FT	FT%
1st Qtr	13-15	87%	5-6	83%	0-0	0%
2nd Qtr	7-14	50%	1-8	13%	0-0	0%
1st Half	13-15	87%	5-6	83%	0-0	0%
1st Half	20-29	69%	6-14	43%	0-0	0%
Game	34-57	59.6%	10-27	37.0%	3-3	100.0%

Deadball Rebounds: 0,2

Long Beach St. 12

No.	Player	S	Pts	FG	3FG	FT	OR	DR	TR	PF	A	TO	Blk	Stl	Min	+/-
00	BERRY, MA'QHI	G	4	2-3	0-0	0-0	0	0	0	0	0	0	0	1	10	-19
01	KINSLOW, CYDNEE	F	0	0-2	0-2	0-0	0	0	0	0	0	1	0	0	7	-17
10	KING, JUSTINA	G	2	1-2	0-1	0-0	0	0	0	0	0	1	0	0	10	-19
23	GREEN, LAUREN	F	0	0-0	0-0	0-0	0	0	0	2	0	0	0	0	2	-5
32	GREEN, AARYON	F	0	0-1	0-0	0-0	0	0	0	0	1	1	0	1	6	-5
11	HARDY, JASMINE	G	2	1-2	0-0	0-0	0	0	0	0	0	1	0	1	8	-14
12	JESKEOVA, KRISTYNA	G	0	0-0	0-0	0-0	0	0	0	0	0	0	0	0	0	0
21	DAVISON, SHANAIAH	G	4	2-4	0-1	0-0	0	0	0	0	1	1	0	0	7	-16
TEAM							1	0	1	0		0				
TOTALS			12	6-14	0-4	0-0	1	0	1	2	2	5	0	3	50	

Shooting By Period

Period	FG	FG%	3FG	3FG%	FT	FT%
1st Qtr	6-14	43%	0-4	00%	0-0	0%
2nd Qtr	5-15	33%	2-8	25%	2-2	100%
1st Half	6-14	43%	0-4	00%	0-0	0%
1st Half	11-29	38%	2-12	17%	2-2	100%
Game	18-53	34.0%	5-23	21.7%	4-4	100.0%

Deadball Rebounds: 0,1

Game Notes:

Officials: Richard Waters, Jen Zylstra, Chaka Wade
Attendance: 1278

Start Time: 04:06 PM ET
End Time: 05:35 PM ET
Game Duration: 1:28

Score	1st	2nd	3rd	4th	TOT
ORE	31	15	15	20	81
LBS	12	14	9	10	45

Points from (This Period)	ORE	LBS
In the Paint	6	8
Off Turns	11	6
2nd Chance	5	2
Fast Break	2	0
Bench	6	6

**Official Play-By-Play
Oregon vs Long Beach St.
First Quarter**

December 14, 2019 at Walter Pyramid - Long Beach, Calif.

BEACH

Period 1

Starters:

Oregon: 00 SABALLY, SATOU (F); 20 IONESCU, SABRINA (G); 21 BOLEY, ERIN (F); 23 MOORE, MINYON (G); 24 HEBARD, RUTHY (F);

Long Beach St.: 0 BERRY, MA'QHI (G); 1 KINSLOW, CYDNEE (F); 10 KING, JUSTINA (G); 23 GREEN, LAUREN (F); 32 GREEN, AARYON (F);

Time	VISITORS: Oregon	Score	Margin	HOME: Long Beach St.
09:39	TURNOVER (LOSTBALL) by IONESCU, SABRINA			
09:39				STEAL by BERRY, MA'QHI
09:31				MISSED LAYUP by BERRY, MA'QHI
09:27	REBOUND (DEF) by IONESCU, SABRINA			
09:27	TURNOVER (BADPASS) by IONESCU, SABRINA			
09:13		2-0	H 2	GOOD! LAYUP by BERRY, MA'QHI [PNT]
08:58	GOOD! LAYUP by HEBARD, RUTHY [PNT]	2-2	T	
08:58	ASSIST by IONESCU, SABRINA			
08:55				TURNOVER (BADPASS) by KINSLOW, CYDNEE
08:52	GOOD! JUMPER by SABALLY, SATOU	2-4	V 2	
08:34				MISSED 3PTR by KINSLOW, CYDNEE
08:31	REBOUND (DEF) by SABALLY, SATOU			
08:31				FOUL (PERSONAL) by GREEN, LAUREN
08:17	GOOD! 3PTR by IONESCU, SABRINA	2-7	V 5	
08:17	ASSIST by MOORE, MINYON			
08:03				MISSED 3PTR by KINSLOW, CYDNEE
07:59	REBOUND (DEF) by SABALLY, SATOU			
07:59				FOUL (PERSONAL) by GREEN, LAUREN
07:59				SUB OUT: GREEN, LAUREN
07:59				SUB IN: HARDY, JASMINE
07:46	TURNOVER (BADPASS) by SABALLY, SATOU			
07:46				STEAL by HARDY, JASMINE
07:25		4-7	V 3	GOOD! JUMPER by BERRY, MA'QHI
07:14	TURNOVER (BADPASS) by MOORE, MINYON			
07:14				STEAL by GREEN, AARYON
07:07				TURNOVER (TRAVEL) by GREEN, AARYON
07:07				SUB OUT: KINSLOW, CYDNEE
07:07				SUB IN: DAVISON, SHANAIJAH
07:01	GOOD! JUMPER by BOLEY, ERIN	4-9	V 5	
06:28		6-9	V 3	GOOD! JUMPER by HARDY, JASMINE
06:28				ASSIST by DAVISON, SHANAIJAH
06:17	MISSED 3PTR by SABALLY, SATOU			
06:12	REBOUND (OFF) by IONESCU, SABRINA			
06:09	GOOD! JUMPER by IONESCU, SABRINA	6-11	V 5	
05:50		8-11	V 3	GOOD! LAYUP by KING, JUSTINA
05:24	TURNOVER (BADPASS) by IONESCU, SABRINA			
05:11				MISSED LAYUP by GREEN, AARYON
05:10				REBOUND (OFF) by TEAM
05:06		10-11	V 1	GOOD! LAYUP by DAVISON, SHANAIJAH
05:06				ASSIST by GREEN, AARYON
04:56	GOOD! LAYUP by HEBARD, RUTHY	10-13	V 3	
04:56	ASSIST by MOORE, MINYON			
04:36				TURNOVER (BADPASS) by KING, JUSTINA
04:36	STEAL by IONESCU, SABRINA			
04:31	GOOD! LAYUP by SABALLY, SATOU [FB]	10-15	V 5	
04:31	ASSIST by IONESCU, SABRINA			
04:09				TURNOVER (BADPASS) by DAVISON, SHANAIJAH
04:09				SUB OUT: GREEN, AARYON
04:09				SUB IN: KINSLOW, CYDNEE
04:09	SUB OUT: MOORE, MINYON			
04:09	SUB IN: SHELLEY, JAZ			
04:04	GOOD! JUMPER by IONESCU, SABRINA	10-17	V 7	
03:54		12-17	V 5	GOOD! LAYUP by DAVISON, SHANAIJAH
03:41	MISSED JUMPER by IONESCU, SABRINA			
03:37	REBOUND (OFF) by HEBARD, RUTHY			
03:36	GOOD! 3PTR by IONESCU, SABRINA	12-20	V 8	
03:36	ASSIST by HEBARD, RUTHY			
03:09				MISSED 3PTR by DAVISON, SHANAIJAH
03:04	REBOUND (DEF) by IONESCU, SABRINA			
02:55	TURNOVER (BADPASS) by SHELLEY, JAZ			
02:55	SUB OUT: BOLEY, ERIN			
02:55	SUB IN: CHAVEZ, TAYLOR			
02:38	SUB OUT: HEBARD, RUTHY			
02:38	SUB IN: GIOMI, LYDIA			
02:26				MISSED JUMPER by HARDY, JASMINE
02:26	BLOCK by GIOMI, LYDIA			
02:18	REBOUND (DEF) by IONESCU, SABRINA			
02:15	GOOD! JUMPER by IONESCU, SABRINA	12-22	V 10	
02:00				MISSED JUMPER by DAVISON, SHANAIJAH
01:56	REBOUND (DEF) by IONESCU, SABRINA			

Time	VISITORS: Oregon	Score	Margin	HOME: Long Beach St.
01:35	GOOD! 3PTR by SHELLEY, JAZ	12-25	V 13	
01:35	ASSIST by HEBARD, RUTHY			
01:17	SUB OUT: SABALLY, SATOU			
01:17	SUB IN: HEBARD, RUTHY			
01:02				MISSED 3PTR by KING, JUSTINA
00:56	REBOUND (DEF) by IONESCU, SABRINA			
00:42	GOOD! 3PTR by SHELLEY, JAZ	12-28	V 16	
00:42	ASSIST by IONESCU, SABRINA			
00:08				TURNOVER (BADPASS) by HARDY, JASMINE
00:08	STEAL by GIOMI, LYDIA			
00:01	GOOD! 3PTR by IONESCU, SABRINA	12-31	V 19	

Oregon 31, Long Beach St. 12

Points from (This Period)	ORE	LBS
In the Paint	6	8
Off Turns	11	6
2nd Chance	5	2
Fast Break	2	0
Bench	6	6

Official Box Score
Oregon vs Long Beach St.
Second Quarter Statistics Only
December 14, 2019 at Walter Pyramid - Long Beach, Calif.

BEACH

Oregon 15

No.	Player	S	Pts	FG	3FG	FT	OR	DR	TR	PF	A	TO	Blk	Stl	Min	+/-
00	SABALLY, SATOU	F	2	1-2	0-1	0-0	2	3	5	0	0	1	0	0	6	10
20	IONESCU, SABRINA	G	4	2-3	0-1	0-0	0	2	2	0	0	0	0	0	6	-8
21	BOLEY, ERIN	F	0	0-1	0-1	0-0	0	0	0	1	0	1	0	0	6	-7
23	MOORE, MINYON	G	0	0-1	0-1	0-0	0	1	1	0	0	0	0	0	4	2
24	HEBARD, RUTHY	F	0	0-0	0-0	0-0	0	0	0	1	0	0	0	0	4	-9
02	YAEGER, MORGAN	G	0	0-0	0-0	0-0	0	1	1	0	0	1	0	0	4	-7
03	CHAVEZ, TAYLOR	G	5	2-2	1-1	0-0	0	0	0	0	2	0	0	0	6	10
04	SHELLEY, JAZ	G	0	0-0	0-0	0-0	0	0	0	0	2	1	0	0	6	-1
11	WINTERBURN, HOLLY	G	2	1-4	0-3	0-0	0	0	0	1	1	1	0	1	5	7
12	COCHRANE, LUCY	F	0	0-0	0-0	0-0	0	0	0	0	0	0	0	0	0	0
14	GIOMI, LYDIA	F	2	1-1	0-0	0-0	0	0	0	0	0	0	0	0	4	8
	TEAM						1	1	2	0		0				
TOTALS			15	7-14	1-8	0-0	3	8	11	3	5	5	0	1	50	

Shooting By Period

Period	FG	FG%	3FG	3FG%	FT	FT%
3rd Qtr	6-14	43%	3-8	38%	0-0	0%
4th Qtr	8-14	57%	1-5	20%	3-3	100%
2nd Half	7-14	50%	1-8	13%	0-0	0%
2nd Half	14-28	50%	4-13	31%	3-3	100%
Game	34-57	59.6%	10-27	37.0%	3-3	100.0%

Deadball Rebounds: 0,2

Long Beach St. 14

No.	Player	S	Pts	FG	3FG	FT	OR	DR	TR	PF	A	TO	Blk	Stl	Min	+/-
00	BERRY, MA'QHI	G	4	2-4	0-1	0-0	0	0	0	0	1	0	0	1	10	-1
01	KINSLOW, CYDNEE	F	3	1-2	1-2	0-0	0	0	0	0	0	0	0	0	7	4
10	KING, JUSTINA	G	0	0-0	0-0	0-0	0	0	0	1	0	1	0	1	10	-1
23	GREEN, LAUREN	F	0	0-0	0-0	0-0	0	0	0	0	0	0	0	0	0	0
32	GREEN, AARYON	F	0	0-0	0-0	0-0	1	4	5	0	2	0	0	0	10	-1
11	HARDY, JASMINE	G	4	1-3	0-2	2-2	0	0	0	0	1	0	0	0	8	2
12	JESKEOVA, KRISTYNA	G	0	0-0	0-0	0-0	0	0	0	0	0	0	0	0	0	0
21	DAVISON, SHANAIAH	G	3	1-6	1-3	0-0	0	0	0	1	0	0	0	0	5	-8
	TEAM						0	0	0	0		0				
TOTALS			14	5-15	2-8	2-2	1	4	5	2	4	1	0	2	50	

Shooting By Period

Period	FG	FG%	3FG	3FG%	FT	FT%
3rd Qtr	4-12	33%	1-5	20%	0-0	0%
4th Qtr	3-12	25%	2-6	33%	2-2	100%
2nd Half	5-15	33%	2-8	25%	2-2	100%
2nd Half	7-24	29%	3-11	27%	2-2	100%
Game	18-53	34.0%	5-23	21.7%	4-4	100.0%

Deadball Rebounds: 0,1

Game Notes:

Officials: Richard Waters, Jen Zylstra, Chaka Wade
Attendance: 1278

Start Time: 04:06 PM ET
End Time: 05:35 PM ET
Game Duration: 1:28

Score	1st	2nd	3rd	4th	TOT
ORE	31	15	15	20	81
LBS	12	14	9	10	45

Points from (This Period)	ORE	LBS
In the Paint	10	6
Off Turns	2	4
2nd Chance	5	2
Fast Break	0	2
Bench	9	7

Official Play-By-Play
Oregon vs Long Beach St.
Second Quarter
December 14, 2019 at Walter Pyramid - Long Beach, Calif.

BEACH

Period 2

Starters:

Oregon: 00 SABALLY, SATOU (F); 20 IONESCU, SABRINA (G); 21 BOLEY, ERIN (F); 23 MOORE, MINYON (G); 24 HEBARD, RUTHY (F);

Long Beach St.: 0 BERRY, MA'QHI (G); 1 KINSLOW, CYDNEE (F); 10 KING, JUSTINA (G); 23 GREEN, LAUREN (F); 32 GREEN, AARYON (F);

Time	VISITORS: Oregon	Score	Margin	HOME: Long Beach St.
09:57				SUB OUT: HARDY, JASMINE
09:57				SUB IN: GREEN, AARYON
09:57	SUB OUT: HEBARD, RUTHY			
09:57	SUB IN: SABALLY, SATOU			
09:50	GOOD! LAYUP by GIOMI, LYDIA [PNT]	12-33	V 21	
09:50	ASSIST by SHELLEY, JAZ			
09:22		15-33	V 18	GOOD! 3PTR by DAVISON, SHANAIJAH
09:22				ASSIST by GREEN, AARYON
08:57	GOOD! LAYUP by IONESCU, SABRINA	15-35	V 20	
08:57	ASSIST by CHAVEZ, TAYLOR			
08:39				MISSED JUMPER by DAVISON, SHANAIJAH
08:36	REBOUND (DEF) by SABALLY, SATOU			
08:36				FOUL (PERSONAL) by KING, JUSTINA
08:35	SUB OUT: IONESCU, SABRINA			
08:35	SUB IN: WINTERBURN, HOLLY			
08:10	GOOD! LAYUP by SABALLY, SATOU	15-37	V 22	
08:10	ASSIST by SHELLEY, JAZ			
08:10				TIMEOUT 30SEC
07:41				MISSED 3PTR by DAVISON, SHANAIJAH
07:37	REBOUND (DEF) by SABALLY, SATOU			
07:37	TURNOVER (BADPASS) by SABALLY, SATOU			
07:37				SUB OUT: KINSLOW, CYDNEE
07:37				SUB IN: HARDY, JASMINE
07:15				MISSED JUMPER by DAVISON, SHANAIJAH
07:11	REBOUND (DEF) by SABALLY, SATOU			
07:05	MISSED 3PTR by WINTERBURN, HOLLY			
07:00	REBOUND (OFF) by SABALLY, SATOU			
06:59	SUB OUT: SHELLEY, JAZ			
06:59	SUB IN: MOORE, MINYON			
06:52	GOOD! 3PTR by CHAVEZ, TAYLOR	15-40	V 25	
06:52	ASSIST by WINTERBURN, HOLLY			
06:34				TURNOVER (BADPASS) by KING, JUSTINA
06:34	STEAL by WINTERBURN, HOLLY			
06:23	GOOD! LAYUP by WINTERBURN, HOLLY	15-42	V 27	
06:23	ASSIST by CHAVEZ, TAYLOR			
06:00				MISSED JUMPER by DAVISON, SHANAIJAH
05:57	REBOUND (DEF) by MOORE, MINYON			
05:57				FOUL (PERSONAL) by DAVISON, SHANAIJAH
05:57	SUB OUT: GIOMI, LYDIA			
05:57	SUB IN: BOLEY, ERIN			
05:44	MISSED 3PTR by SABALLY, SATOU			
05:39				REBOUND (DEF) by GREEN, AARYON
05:13				MISSED 3PTR by DAVISON, SHANAIJAH
05:07	REBOUND (DEF) by TEAM			
05:06				SUB OUT: DAVISON, SHANAIJAH
05:06				SUB IN: KINSLOW, CYDNEE
04:56	MISSED 3PTR by WINTERBURN, HOLLY			
04:52	REBOUND (OFF) by SABALLY, SATOU			
04:48	GOOD! LAYUP by CHAVEZ, TAYLOR	15-44	V 29	
04:29	FOUL (PERSONAL) by WINTERBURN, HOLLY			
04:29	SUB OUT: SABALLY, SATOU			
04:29	SUB OUT: CHAVEZ, TAYLOR			
04:29	SUB IN: IONESCU, SABRINA			
04:29	SUB IN: HEBARD, RUTHY			
04:25				MISSED 3PTR by BERRY, MA'QHI
04:21	REBOUND (DEF) by IONESCU, SABRINA			
03:58	TURNOVER (BADPASS) by WINTERBURN, HOLLY			
03:50		17-44	V 27	GOOD! JUMPER by BERRY, MA'QHI [PNT]
03:50				ASSIST by HARDY, JASMINE
03:39	MISSED 3PTR by WINTERBURN, HOLLY			
03:36				REBOUND (DEF) by GREEN, AARYON
03:36	FOUL (PERSONAL) by HEBARD, RUTHY			
03:36	SUB OUT: WINTERBURN, HOLLY			
03:36	SUB IN: YAEGER, MORGAN			
03:21		20-44	V 24	GOOD! 3PTR by KINSLOW, CYDNEE
03:21				ASSIST by GREEN, AARYON
03:00	MISSED 3PTR by MOORE, MINYON			
02:56				REBOUND (DEF) by GREEN, AARYON
02:51	FOUL (PERSONAL) by BOLEY, ERIN			
02:51	SUB OUT: MOORE, MINYON			

Time	VISITORS: Oregon	Score	Margin	HOME: Long Beach St.
02:51	SUB IN: SHELLEY, JAZ			
02:51		21-44	V 23	GOOD! FT by HARDY, JASMINE
02:51		22-44	V 22	GOOD! FT by HARDY, JASMINE
02:42	MISSED 3PTR by IONESCU, SABRINA			
02:40	REBOUND (OFF) by TEAM			
02:27	TURNOVER (TRAVEL) by BOLEY, ERIN			
02:17				MISSED 3PTR by KINSLOW, CYDNEE
02:11	REBOUND (DEF) by IONESCU, SABRINA			
02:02	TURNOVER (BADPASS) by YAEGER, MORGAN			
02:02				STEAL by KING, JUSTINA
01:46				MISSED 3PTR by HARDY, JASMINE
01:42	REBOUND (DEF) by YAEGER, MORGAN			
01:30	GOOD! JUMPER by IONESCU, SABRINA	22-46	V 24	
00:55				MISSED JUMPER by BERRY, MA'QHI
00:51				REBOUND (OFF) by GREEN, AARYON
00:47		24-46	V 22	GOOD! LAYUP by HARDY, JASMINE
00:47				ASSIST by BERRY, MA'QHI
00:33	TURNOVER (BADPASS) by SHELLEY, JAZ			
00:33				STEAL by BERRY, MA'QHI
00:28		26-46	V 20	GOOD! LAYUP by BERRY, MA'QHI [FB]
00:12	MISSED 3PTR by BOLEY, ERIN			
00:07				REBOUND (DEF) by GREEN, AARYON
00:07	SUB OUT: HEBARD, RUTHY			
00:07	SUB IN: COCHRANE, LUCY			
00:07	SUB OUT: BOLEY, ERIN			
00:07	SUB IN: MOORE, MINYON			
00:00				MISSED 3PTR by HARDY, JASMINE
00:00	REBOUND (DEF) by TEAM			

Oregon 46, Long Beach St. 26

Points from (This Period)	ORE	LBS
In the Paint	10	6
Off Turns	2	4
2nd Chance	5	2
Fast Break	0	2
Bench	9	7

Official Box Score
Oregon vs Long Beach St.
Second Half Statistics Only
December 14, 2019 at Walter Pyramid - Long Beach, Calif.

BEACH

Oregon 35

No.	Player	S	Pts	FG	3FG	FT	OR	DR	TR	PF	A	TO	Blk	Stl	Min	+/-
00	SABALLY, SATOU	F	0	0-0	0-0	0-0	0	0	0	0	0	0	0	0	0	0
02	YAEGER, MORGAN	G	0	0-1	0-1	0-0	0	0	0	0	0	0	0	1	6	4
03	CHAVEZ, TAYLOR	G	4	2-2	0-0	0-0	0	1	1	0	0	1	0	1	11	8
04	SHELLEY, JAZ	G	11	4-8	3-6	0-0	1	0	1	0	1	2	0	1	20	16
11	WINTERBURN, HOLLY	G	7	3-6	0-1	1-1	1	3	4	0	1	0	0	1	14	13
12	COCHRANE, LUCY	F	4	1-1	0-0	2-2	1	0	1	0	0	2	0	1	10	10
14	GIOMI, LYDIA	F	0	0-0	0-0	0-0	2	1	3	0	0	3	0	0	6	2
20	IONESCU, SABRINA	G	2	1-4	0-2	0-0	0	4	4	1	4	1	0	2	14	12
21	BOLEY, ERIN	F	0	0-2	0-2	0-0	0	0	0	0	0	0	0	2	5	6
23	MOORE, MINYON	G	3	1-2	1-1	0-0	0	0	0	0	1	1	0	0	6	3
24	HEBARD, RUTHY	F	4	2-2	0-0	0-0	2	0	2	0	0	2	0	0	8	6
	TEAM		0	0-0	0-0	0-0	0	2	2	0	0	0	0	0	0	0
TOTALS			35	14-28	4-13	3-3	7	11	18	1	7	12	0	9	100	

Shooting By Period

Period	FG	FG%	3FG	3FG%	FT	FT%
3rd Qtr	6-14	43%	3-8	38%	0-0	0%
4th Qtr	8-14	57%	1-5	20%	3-3	100%
2nd Half	14-28	50%	4-13	31%	3-3	100%
Game	34-57	59.6%	10-27	37.0%	3-3	100.0%

Deadball Rebounds: 0,2
Last FG Half: ORE 4th-02:50

Long Beach St. 19

No.	Player	S	Pts	FG	3FG	FT	OR	DR	TR	PF	A	TO	Blk	Stl	Min	+/-
00	BERRY, MA'QHI	G	2	1-5	0-1	0-0	1	1	2	0	0	2	0	1	15	-22
01	KINSLOW, CYDNEE	F	0	0-0	0-0	0-0	1	0	1	0	0	1	0	1	10	0
10	KING, JUSTINA	G	5	2-5	1-4	0-0	0	1	1	0	1	3	0	0	14	-12
11	HARDY, JASMINE	G	5	1-4	1-3	2-2	0	0	0	3	0	2	0	2	17	-14
12	JESKEOVA, KRISTYNA	G	0	0-2	0-1	0-0	1	1	2	2	0	1	0	1	7	-8
21	DAVISON, SHANAIAH	G	3	1-3	1-2	0-0	0	0	0	1	3	1	1	2	15	-10
23	GREEN, LAUREN	F	0	0-2	0-0	0-0	1	1	2	1	0	1	1	1	10	0
32	GREEN, AARYON	F	4	2-3	0-0	0-0	0	1	1	1	0	1	0	0	13	-14
	TEAM		0	0-0	0-0	0-0	1	1	2	0	0	1	0	0	0	0
TOTALS			19	7-24	3-11	2-2	5	6	11	8	4	13	2	8	100	

Shooting By Period

Period	FG	FG%	3FG	3FG%	FT	FT%
3rd Qtr	4-12	33%	1-5	20%	0-0	0%
4th Qtr	3-12	25%	2-6	33%	2-2	100%
2nd Half	7-24	29%	3-11	27%	2-2	100%
Game	18-53	34.0%	5-23	21.7%	4-4	100.0%

Deadball Rebounds: 0,1
Last FG Half: LBS 4th-00:45

Game Notes:

Officials: Richard Waters, Jen Zylstra, Chaka Wade
 Attendance: 1278

Start Time: 04:06 PM ET
 End Time: 05:35 PM ET
 Game Duration: 1:28

Score	1st	2nd	3rd	4th	TOT
ORE	31	15	15	20	81
LBS	12	14	9	10	45

Points from (This Period)	ORE	LBS
In the Paint	16	8
Off Turns	17	8
2nd Chance	7	2
Fast Break	2	0
Bench	26	8

Official Box Score
Oregon vs Long Beach St.
Third Quarter Statistics Only
December 14, 2019 at Walter Pyramid - Long Beach, Calif.

BEACH

Oregon 35

No.	Player	S	Pts	FG	3FG	FT	OR	DR	TR	PF	A	TO	Blk	Stl	Min	+/-
00	SABALLY, SATOU	F	0	0-0	0-0	0-0	0	0	0	0	0	0	0	0	0	0
20	IONESCU, SABRINA	G	2	1-2	0-1	0-0	0	3	3	0	3	1	0	2	10	6
21	BOLEY, ERIN	F	0	0-2	0-2	0-0	0	0	0	0	0	0	0	2	5	6
23	MOORE, MINYON	G	3	1-2	1-1	0-0	0	0	0	0	1	1	0	0	6	3
24	HEBARD, RUTHY	F	4	2-2	0-0	0-0	2	0	2	0	0	2	0	0	8	6
02	YAEGER, MORGAN	G	0	0-0	0-0	0-0	0	0	0	0	0	0	0	0	0	0
03	CHAVEZ, TAYLOR	G	0	0-0	0-0	0-0	0	1	1	0	0	0	0	0	5	0
04	SHELLEY, JAZ	G	6	2-4	2-4	0-0	0	0	0	0	0	1	0	1	10	6
11	WINTERBURN, HOLLY	G	0	0-2	0-0	0-0	0	1	1	0	0	0	0	0	4	3
12	COCHRANE, LUCY	F	0	0-0	0-0	0-0	0	0	0	0	0	0	0	0	0	0
14	GIOMI, LYDIA	F	0	0-0	0-0	0-0	1	0	1	0	0	2	0	0	2	0
	TEAM						0	1	1	0		0				
TOTALS			15	6-14	3-8	0-0	3	6	9	0	4	7	0	5	50	

Shooting By Period

Period	FG	FG%	3FG	3FG%	FT	FT%
2nd Half	0-0	0%	0-0	0%	0-0	0%
Game	34-57	59.6%	10-27	37.0%	3-3	100.0%

Deadball Rebounds: 0,2

Long Beach St. 19

No.	Player	S	Pts	FG	3FG	FT	OR	DR	TR	PF	A	TO	Blk	Stl	Min	+/-
00	BERRY, MA'QHI	G	2	1-2	0-1	0-0	1	0	1	0	0	2	0	1	7	-6
01	KINSLOW, CYDNEE	F	0	0-0	0-0	0-0	0	0	0	0	0	0	0	0	8	-6
10	KING, JUSTINA	G	5	2-4	1-3	0-0	0	1	1	0	1	2	0	0	10	-6
23	GREEN, LAUREN	F	0	0-2	0-0	0-0	1	1	2	1	0	1	0	1	4	-2
32	GREEN, AARYON	F	2	1-2	0-0	0-0	0	1	1	0	0	1	0	0	9	-2
11	HARDY, JASMINE	G	0	0-1	0-1	0-0	0	0	0	0	0	0	0	1	7	-4
12	JESKEOVA, KRISTYNA	G	0	0-0	0-0	0-0	0	0	0	1	0	0	0	0	1	-4
21	DAVISON, SHANAIJAH	G	0	0-1	0-0	0-0	0	0	0	1	1	1	1	1	5	0
	TEAM						0	1	1	0		0				
TOTALS			9	4-12	1-5	0-0	2	4	6	3	2	7	1	4	50	

Shooting By Period

Period	FG	FG%	3FG	3FG%	FT	FT%
2nd Half	0-0	0%	0-0	0%	0-0	0%
Game	18-53	34.0%	5-23	21.7%	4-4	100.0%

Deadball Rebounds: 0,1

Game Notes:

Officials: **Richard Waters, Jen Zylstra, Chaka Wade**
 Attendance: **1278**

Start Time: **04:06 PM ET**
 End Time: **05:35 PM ET**
 Game Duration: **1:28**

Score	1st	2nd	3rd	4th	TOT
ORE	31	15	15	20	81
LBS	12	14	9	10	45

Points from (This Period)	ORE	LBS
In the Paint	4	6
Off Turns	7	5
2nd Chance	5	0
Fast Break	0	0
Bench	6	0

Official Play-By-Play
Oregon vs Long Beach St.
Third Quarter
December 14, 2019 at Walter Pyramid - Long Beach, Calif.

BEACH

Period 3

Starters:

Oregon: 00 SABALLY,SATOU (F); 20 IONESCU,SABRINA (G); 21 BOLEY,ERIN (F); 23 MOORE,MINYON (G); 24 HEBARD,RUTHY (F);

Long Beach St.: 0 BERRY,MA'QHI (G); 1 KINSLOW,CYDNEE (F); 10 KING,JUSTINA (G); 23 GREEN,LAUREN (F); 32 GREEN,AARYON (F);

Time	VISITORS: Oregon	Score	Margin	HOME: Long Beach St.
10:00				SUB OUT: HARDY, JASMINE
10:00				SUB IN: GREEN, LAUREN
10:00	SUB OUT: YAEGER, MORGAN			
10:00	SUB OUT: COCHRANE, LUCY			
10:00	SUB IN: BOLEY, ERIN			
10:00	SUB IN: HEBARD, RUTHY			
09:50	MISSED 3PTR by BOLEY, ERIN			
09:47				REBOUND (DEF) by GREEN, AARYON
09:24				MISSED JUMPER by GREEN, LAUREN
09:19	REBOUND (DEF) by IONESCU, SABRINA			
09:16	MISSED 3PTR by SHELLEY, JAZ			
09:11	REBOUND (OFF) by HEBARD, RUTHY			
08:52	GOOD! 3PTR by MOORE, MINYON	26-49	V 23	
08:52	ASSIST by IONESCU, SABRINA			
08:27				TURNOVER (BADPASS) by BERRY, MA'QHI
08:27	STEAL by BOLEY, ERIN			
08:07	TURNOVER (LOSTBALL) by HEBARD, RUTHY			
08:07				STEAL by GREEN, LAUREN
07:58		28-49	V 21	GOOD! LAYUP by GREEN, AARYON
07:58				ASSIST by KING, JUSTINA
07:40	GOOD! 3PTR by SHELLEY, JAZ	28-52	V 24	
07:40	ASSIST by MOORE, MINYON			
07:15				TURNOVER (LOSTBALL) by GREEN, LAUREN
07:15	STEAL by IONESCU, SABRINA			
07:09	MISSED LAYUP by MOORE, MINYON			
07:06				REBOUND (DEF) by GREEN, LAUREN
06:48		30-52	V 22	GOOD! LAYUP by BERRY, MA'QHI [PNT]
06:34				FOUL (PERSONAL) by GREEN, LAUREN
06:34				SUB OUT: GREEN, LAUREN
06:34				SUB IN: HARDY, JASMINE
06:31	TURNOVER (BADPASS) by SHELLEY, JAZ			
06:19				TURNOVER (BADPASS) by BERRY, MA'QHI
06:18				SUB OUT: GREEN, AARYON
06:18				SUB IN: JESKEOVA, KRISTYNA
06:08				FOUL (PERSONAL) by JESKEOVA, KRISTYNA
05:57	MISSED 3PTR by BOLEY, ERIN			
05:54	REBOUND (OFF) by HEBARD, RUTHY			
05:52	GOOD! LAYUP by HEBARD, RUTHY	30-54	V 24	
05:45				TURNOVER (BADPASS) by KING, JUSTINA
05:45	STEAL by BOLEY, ERIN			
05:28	GOOD! LAYUP by HEBARD, RUTHY	30-56	V 26	
05:28	ASSIST by IONESCU, SABRINA			
05:26				TIMEOUT 30SEC
05:26				SUB OUT: BERRY, MA'QHI
05:26				SUB OUT: JESKEOVA, KRISTYNA
05:26				SUB IN: DAVISON, SHANAIJAH
05:26				SUB IN: GREEN, AARYON
05:26	SUB OUT: BOLEY, ERIN			
05:26	SUB IN: CHAVEZ, TAYLOR			
04:57				MISSED LAYUP by GREEN, AARYON
04:54	REBOUND (DEF) by IONESCU, SABRINA			
04:47	TURNOVER (BADPASS) by MOORE, MINYON			
04:47				STEAL by DAVISON, SHANAIJAH
04:40		33-56	V 23	GOOD! 3PTR by KING, JUSTINA
04:40				ASSIST by DAVISON, SHANAIJAH
04:22	TURNOVER (BADPASS) by IONESCU, SABRINA			
04:22	SUB OUT: MOORE, MINYON			
04:22	SUB IN: WINTERBURN, HOLLY			
04:22				
04:10				FOUL (OFF) by DAVISON, SHANAIJAH
04:10				TURNOVER (OFFENSIVE) by DAVISON, SHANAIJAH
03:51	MISSED LAYUP by WINTERBURN, HOLLY			
03:51				BLOCK by DAVISON, SHANAIJAH
03:45				REBOUND (DEF) by KING, JUSTINA
03:43				MISSED LAYUP by DAVISON, SHANAIJAH
03:40	REBOUND (DEF) by IONESCU, SABRINA			
03:32	GOOD! JUMPER by IONESCU, SABRINA	33-58	V 25	
03:10				TURNOVER (LOSTBALL) by KING, JUSTINA
03:10	STEAL by IONESCU, SABRINA			
02:58	GOOD! 3PTR by SHELLEY, JAZ	33-61	V 28	

Time	VISITORS: Oregon	Score	Margin	HOME: Long Beach St.
02:58	ASSIST by IONESCU, SABRINA			
02:40		35-61	V 26	GOOD! LAYUP by KING, JUSTINA [PNT]
02:29	TURNOVER (LOSTBALL) by HEBARD, RUTHY			
02:29				STEAL by HARDY, JASMINE
02:13				TURNOVER (BADPASS) by GREEN, AARYON
02:13	STEAL by SHELLEY, JAZ			
02:13				SUB OUT: KINSLow, CYDNEE
02:13				SUB IN: BERRY, MA'QHI
02:13	SUB OUT: HEBARD, RUTHY			
02:13	SUB IN: GIOMI, LYDIA			
02:03	TURNOVER (3SEC) by GIOMI, LYDIA			
01:39				MISSED 3PTR by KING, JUSTINA
01:35				REBOUND (OFF) by BERRY, MA'QHI
01:21				MISSED 3PTR by BERRY, MA'QHI
01:16	REBOUND (DEF) by CHAVEZ, TAYLOR			
01:09	MISSED 3PTR by SHELLEY, JAZ			
01:07				REBOUND (DEF) by TEAM
00:53				MISSED 3PTR by HARDY, JASMINE
00:48	REBOUND (DEF) by WINTERBURN, HOLLY			
00:40	MISSED LAYUP by WINTERBURN, HOLLY			
00:37	REBOUND (OFF) by GIOMI, LYDIA			
00:37	TURNOVER (LOSTBALL) by GIOMI, LYDIA			
00:37				STEAL by BERRY, MA'QHI
00:37				SUB OUT: GREEN, AARYON
00:37				SUB IN: GREEN, LAUREN
00:08				MISSED 3PTR by KING, JUSTINA
00:02				REBOUND (OFF) by GREEN, LAUREN
00:02				MISSED LAYUP by GREEN, LAUREN
00:02	REBOUND (DEF) by TEAM			
00:00	MISSED 3PTR by IONESCU, SABRINA			
00:00				REBOUND (DEF) by TEAM

Oregon 61, Long Beach St. 35

Points from (This Period)	ORE	LBS
In the Paint	4	6
Off Turns	7	5
2nd Chance	5	0
Fast Break	0	0
Bench	6	0

Official Box Score
Oregon vs Long Beach St.
Fourth Quarter Statistics Only
December 14, 2019 at Walter Pyramid - Long Beach, Calif.

BEACH

Oregon 20

No.	Player	S	Pts	FG	3FG	FT	OR	DR	TR	PF	A	TO	Blk	Stl	Min	+/-
00	SABALLY, SATOU	F	0	0-0	0-0	0-0	0	0	0	0	0	0	0	0	0	0
20	IONESCU, SABRINA	G	0	0-2	0-1	0-0	0	1	1	1	1	0	0	0	4	6
21	BOLEY, ERIN	F	0	0-0	0-0	0-0	0	0	0	0	0	0	0	0	0	0
23	MOORE, MINYON	G	0	0-0	0-0	0-0	0	0	0	0	0	0	0	0	0	0
24	HEBARD, RUTHY	F	0	0-0	0-0	0-0	0	0	0	0	0	0	0	0	0	0
02	YAEGER, MORGAN	G	0	0-1	0-1	0-0	0	0	0	0	0	0	0	1	6	4
03	CHAVEZ, TAYLOR	G	4	2-2	0-0	0-0	0	0	0	0	0	1	0	1	6	8
04	SHELLEY, JAZ	G	5	2-4	1-2	0-0	1	0	1	0	1	1	0	0	10	10
11	WINTERBURN, HOLLY	G	7	3-4	0-1	1-1	1	2	3	0	1	0	0	1	10	10
12	COCHRANE, LUCY	F	4	1-1	0-0	2-2	1	0	1	0	0	2	0	1	10	10
14	GIOMI, LYDIA	F	0	0-0	0-0	0-0	1	1	2	0	0	1	0	0	4	2
	TEAM						0	1	1	0		0				
TOTALS			20	8-14	1-5	3-3	4	5	9	1	3	5	0	4	50	

Shooting By Period

Period	FG	FG%	3FG	3FG%	FT	FT%
Game	34-57	59.6%	10-27	37.0%	3-3	100.0%

Deadball Rebounds: 0,2

Long Beach St. 10

No.	Player	S	Pts	FG	3FG	FT	OR	DR	TR	PF	A	TO	Blk	Stl	Min	+/-
00	BERRY, MA'QHI	G	0	0-3	0-0	0-0	0	1	1	0	0	0	0	0	8	-16
01	KINSLOW, CYDNEE	F	0	0-0	0-0	0-0	1	0	1	0	0	1	0	1	2	6
10	KING, JUSTINA	G	0	0-1	0-1	0-0	0	0	0	0	0	1	0	0	4	-6
23	GREEN, LAUREN	F	0	0-0	0-0	0-0	0	0	0	0	0	0	1	0	6	2
32	GREEN, AARYON	F	2	1-1	0-0	0-0	0	0	0	1	0	0	0	0	4	-12
11	HARDY, JASMINE	G	5	1-3	1-2	2-2	0	0	0	3	0	2	0	1	10	-10
12	JESKEOVA, KRISTYNA	G	0	0-2	0-1	0-0	1	1	2	1	0	1	0	1	6	-4
21	DAVISON, SHANAIAH	G	3	1-2	1-2	0-0	0	0	0	0	2	0	0	1	10	-10
	TEAM						1	0	1	0		1				
TOTALS			10	3-12	2-6	2-2	3	2	5	5	2	6	1	4	50	

Shooting By Period

Period	FG	FG%	3FG	3FG%	FT	FT%
Game	18-53	34.0%	5-23	21.7%	4-4	100.0%

Deadball Rebounds: 0,1

Game Notes:

Officials: Richard Waters, Jen Zylstra, Chaka Wade
 Attendance: 1278

Start Time: 04:06 PM ET
 End Time: 05:35 PM ET
 Game Duration: 1:28

Score	1st	2nd	3rd	4th	TOT
ORE	31	15	15	20	81
LBS	12	14	9	10	45

Points from (This Period)	ORE	LBS
In the Paint	12	2
Off Turns	10	3
2nd Chance	2	2
Fast Break	2	0
Bench	20	8

Official Play-By-Play
Oregon vs Long Beach St.
Fourth Quarter
December 14, 2019 at Walter Pyramid - Long Beach, Calif.

BEACH

Period 4

Starters:

Oregon: 00 SABALLY,SATOU (F); 20 IONESCU,SABRINA (G); 21 BOLEY,ERIN (F); 23 MOORE,MINYON (G); 24 HEBARD,RUTHY (F);

Long Beach St.: 0 BERRY,MA'QHI (G); 1 KINSLOW,CYDNEE (F); 10 KING,JUSTINA (G); 23 GREEN,LAUREN (F); 32 GREEN,AARYON (F);

Time	VISITORS: Oregon	Score	Margin	HOME: Long Beach St.
10:00	SUB OUT: GIOMI, LYDIA			
10:00	SUB IN: COCHRANE, LUCY			
09:50	MISSED 3PTR by IONESCU, SABRINA			
09:45	REBOUND (OFF) by SHELLEY, JAZ			
09:39	MISSED LAYUP by IONESCU, SABRINA			
09:39				BLOCK by GREEN, LAUREN
09:35				REBOUND (DEF) by BERRY, MA'QHI
09:08				MISSED JUMPER by BERRY, MA'QHI
09:01	REBOUND (DEF) by IONESCU, SABRINA			
08:48	GOOD! JUMPER by COCHRANE, LUCY	35-63	V 28	
08:48	ASSIST by SHELLEY, JAZ			
08:27				MISSED 3PTR by HARDY, JASMINE
08:26				REBOUND (OFF) by TEAM
08:12	FOUL (PERSONAL) by IONESCU, SABRINA			
08:12		36-63	V 27	GOOD! FT by HARDY, JASMINE
08:12		37-63	V 26	GOOD! FT by HARDY, JASMINE
07:48	GOOD! LAYUP by WINTERBURN, HOLLY	37-65	V 28	
07:19				MISSED 3PTR by KING, JUSTINA
07:15	REBOUND (DEF) by TEAM			
07:03	MISSED 3PTR by SHELLEY, JAZ			
07:00	REBOUND (OFF) by WINTERBURN, HOLLY			
06:58	GOOD! LAYUP by WINTERBURN, HOLLY	37-67	V 30	
06:49				MISSED JUMPER by HARDY, JASMINE
06:47	REBOUND (DEF) by TEAM			
06:47				SUB OUT: GREEN, LAUREN
06:47				SUB IN: GREEN, AARYON
06:18	GOOD! LAYUP by CHAVEZ, TAYLOR	37-69	V 32	
06:18	ASSIST by IONESCU, SABRINA			
06:08				TURNOVER (BADPASS) by KING, JUSTINA
06:08	STEAL by CHAVEZ, TAYLOR			
06:04	GOOD! LAYUP by CHAVEZ, TAYLOR [FB]	37-71	V 34	
05:47		39-71	V 32	GOOD! LAYUP by GREEN, AARYON
05:47				ASSIST by DAVISON, SHANAIJAH
05:47				TIMEOUT 30SEC
05:47				SUB OUT: KING, JUSTINA
05:47				SUB IN: JESKEOVA, KRISTYNA
05:32				FOUL (PERSONAL) by GREEN, AARYON
05:32	SUB OUT: IONESCU, SABRINA			
05:32	SUB IN: YAEGER, MORGAN			
05:30	TURNOVER (BADPASS) by SHELLEY, JAZ			
05:30				STEAL by DAVISON, SHANAIJAH
05:24				MISSED JUMPER by BERRY, MA'QHI
05:20	REBOUND (DEF) by WINTERBURN, HOLLY			
05:06	MISSED LAYUP by SHELLEY, JAZ			
05:02	REBOUND (OFF) by COCHRANE, LUCY			
04:54	TURNOVER (BADPASS) by CHAVEZ, TAYLOR			
04:54				STEAL by JESKEOVA, KRISTYNA
04:49				TURNOVER (LOSTBALL) by JESKEOVA, KRISTYNA
04:28	GOOD! LAYUP by SHELLEY, JAZ [PNT]	39-73	V 34	
03:55				MISSED JUMPER by BERRY, MA'QHI
03:53				REBOUND (OFF) by JESKEOVA, KRISTYNA
03:53	SUB OUT: CHAVEZ, TAYLOR			
03:53	SUB IN: GIOMI, LYDIA			
03:53				TURNOVER (SHOTCLOCK) by TEAM
03:53				FOUL (PERSONAL) by HARDY, JASMINE
03:40	GOOD! 3PTR by SHELLEY, JAZ	39-76	V 37	
03:40	ASSIST by WINTERBURN, HOLLY			
03:19				TURNOVER (BADPASS) by HARDY, JASMINE
03:19	STEAL by COCHRANE, LUCY			
03:04				FOUL (PERSONAL) by JESKEOVA, KRISTYNA
02:55	TURNOVER (BADPASS) by COCHRANE, LUCY			
02:55				STEAL by HARDY, JASMINE
02:50				TURNOVER (BADPASS) by HARDY, JASMINE
02:50	STEAL by WINTERBURN, HOLLY			
02:50	GOOD! LAYUP by WINTERBURN, HOLLY	39-78	V 39	
02:50				FOUL (PERSONAL) by HARDY, JASMINE
02:50	GOOD! FT by WINTERBURN, HOLLY	39-79	V 40	
02:29				MISSED JUMPER by JESKEOVA, KRISTYNA
02:25	REBOUND (DEF) by WINTERBURN, HOLLY			
02:18				FOUL (PERSONAL) by HARDY, JASMINE

Time	VISITORS: Oregon	Score	Margin	HOME: Long Beach St.
02:18	GOOD! FT by COCHRANE, LUCY	39-80	V 41	
02:18	GOOD! FT by COCHRANE, LUCY	39-81	V 42	
02:18				SUB OUT: BERRY, MA'QHI
02:18				SUB OUT: GREEN, AARYON
02:18				SUB IN: KINSLOW, CYDNEE
02:18				SUB IN: GREEN, LAUREN
02:06				MISSED 3PTR by DAVISON, SHANAIAH
02:03	REBOUND (DEF) by GIOMI, LYDIA			
01:45	TURNOVER (BADPASS) by COCHRANE, LUCY			
01:45				STEAL by KINSLOW, CYDNEE
01:34		42-81	V 39	GOOD! 3PTR by HARDY, JASMINE
01:34				ASSIST by DAVISON, SHANAIAH
01:08	MISSED 3PTR by YAEGER, MORGAN			
01:03				REBOUND (DEF) by JESKEOVA, KRISTYNA
00:45		45-81	V 36	GOOD! 3PTR by DAVISON, SHANAIAH
00:25	MISSED 3PTR by WINTERBURN, HOLLY			
00:23	REBOUND (OFF) by GIOMI, LYDIA			
00:23	TURNOVER (TRAVEL) by GIOMI, LYDIA			
00:12				MISSED 3PTR by JESKEOVA, KRISTYNA
00:05				REBOUND (OFF) by KINSLOW, CYDNEE
00:03				TURNOVER (LOSTBALL) by KINSLOW, CYDNEE
00:03	STEAL by YAEGER, MORGAN			

Oregon 81, Long Beach St. 45

Points from (This Period)	ORE	LBS
In the Paint	12	2
Off Turns	10	3
2nd Chance	2	2
Fast Break	2	0
Bench	20	8

Official Scoring/Possession Reference Chart
Oregon vs Long Beach St.
Period 1
December 14, 2019 at Walter Pyramid - Long Beach, Calif.

BEACH

Period 1

Starters:

Oregon: 00 SABALLY,SATOU (F); 20 IONESCU,SABRINA (G); 21 BOLEY,ERIN (F); 23 MOORE,MINYON (G); 24 HEBARD,RUTHY (F);
Long Beach St.: 0 BERRY,MA'QHI (G); 1 KINSLOW,CYDNEE (F); 10 KING,JUSTINA (G); 23 GREEN,LAUREN (F); 32 GREEN,AARYON (F);

Time	VISITORS: Oregon	Score	Margin	HOME: Long Beach St.
09:13		2-0	H 2	GOOD! LAYUP by BERRY, MA'QHI [PNT]
08:58	GOOD! LAYUP by HEBARD, RUTHY [PNT]	2-2	T	
08:52	GOOD! JUMPER by SABALLY, SATOU	2-4	V 2	
08:17	GOOD! 3PTR by IONESCU, SABRINA	2-7	V 5	
07:25		4-7	V 3	GOOD! JUMPER by BERRY, MA'QHI
07:01	GOOD! JUMPER by BOLEY, ERIN	4-9	V 5	
06:28		6-9	V 3	GOOD! JUMPER by HARDY, JASMINE
06:09	GOOD! JUMPER by IONESCU, SABRINA	6-11	V 5	
05:50		8-11	V 3	GOOD! LAYUP by KING, JUSTINA
05:06		10-11	V 1	GOOD! LAYUP by DAVISON, SHANAIJAH
04:56	GOOD! LAYUP by HEBARD, RUTHY	10-13	V 3	
04:31	GOOD! LAYUP by SABALLY, SATOU [FB]	10-15	V 5	
04:04	GOOD! JUMPER by IONESCU, SABRINA	10-17	V 7	
03:54		12-17	V 5	GOOD! LAYUP by DAVISON, SHANAIJAH
03:36	GOOD! 3PTR by IONESCU, SABRINA	12-20	V 8	
02:15	GOOD! JUMPER by IONESCU, SABRINA	12-22	V 10	
01:35	GOOD! 3PTR by SHELLEY, JAZ	12-25	V 13	
00:42	GOOD! 3PTR by SHELLEY, JAZ	12-28	V 16	
00:01	GOOD! 3PTR by IONESCU, SABRINA	12-31	V 19	

Oregon 31, Long Beach St. 12

Official Scoring/Possession Reference Chart
Oregon vs Long Beach St.
Period 2
December 14, 2019 at Walter Pyramid - Long Beach, Calif.

BEACH

Period 2

Starters:

Oregon: 00 SABALLY,SATOU (F); 20 IONESCU,SABRINA (G); 21 BOLEY,ERIN (F); 23 MOORE,MINYON (G); 24 HEBARD,RUTHY (F);
Long Beach St.: 0 BERRY,MA'QHI (G); 1 KINSLOW,CYDNEE (F); 10 KING,JUSTINA (G); 23 GREEN,LAUREN (F); 32 GREEN,AARYON (F);

Time	VISITORS: Oregon	Score	Margin	HOME: Long Beach St.
09:50	GOOD! LAYUP by GIOMI, LYDIA [PNT]	12-33	V 21	
09:22		15-33	V 18	GOOD! 3PTR by DAVISON, SHANAIJAH
08:57	GOOD! LAYUP by IONESCU, SABRINA	15-35	V 20	
08:10	GOOD! LAYUP by SABALLY, SATOU	15-37	V 22	
06:52	GOOD! 3PTR by CHAVEZ, TAYLOR	15-40	V 25	
06:23	GOOD! LAYUP by WINTERBURN, HOLLY	15-42	V 27	
04:48	GOOD! LAYUP by CHAVEZ, TAYLOR	15-44	V 29	
03:50		17-44	V 27	GOOD! JUMPER by BERRY, MA'QHI [PNT]
03:21		20-44	V 24	GOOD! 3PTR by KINSLOW, CYDNEE
02:51		21-44	V 23	GOOD! FT by HARDY, JASMINE
02:51		22-44	V 22	GOOD! FT by HARDY, JASMINE
01:30	GOOD! JUMPER by IONESCU, SABRINA	22-46	V 24	
00:47		24-46	V 22	GOOD! LAYUP by HARDY, JASMINE
00:28		26-46	V 20	GOOD! LAYUP by BERRY, MA'QHI [FB]

Oregon 46, Long Beach St. 26

**Official Scoring/Possession Reference Chart
Oregon vs Long Beach St.
Period 3
December 14, 2019 at Walter Pyramid - Long Beach, Calif.**

BEACH

Period 3

Starters:

Oregon: 00 SABALLY,SATOU (F); 20 IONESCU,SABRINA (G); 21 BOLEY,ERIN (F); 23 MOORE,MINYON (G); 24 HEBARD,RUTHY (F);
Long Beach St.: 0 BERRY,MA'QHI (G); 1 KINSLOW,CYDNEE (F); 10 KING,JUSTINA (G); 23 GREEN,LAUREN (F); 32 GREEN,AARYON (F);

Time	VISITORS: Oregon	Score	Margin	HOME: Long Beach St.
08:52	GOOD! 3PTR by MOORE, MINYON	26-49	V 23	
07:58		28-49	V 21	GOOD! LAYUP by GREEN, AARYON
07:40	GOOD! 3PTR by SHELLEY, JAZ	28-52	V 24	
06:48		30-52	V 22	GOOD! LAYUP by BERRY, MA'QHI [PNT]
05:52	GOOD! LAYUP by HEBARD, RUTHY	30-54	V 24	
05:28	GOOD! LAYUP by HEBARD, RUTHY	30-56	V 26	
04:40		33-56	V 23	GOOD! 3PTR by KING, JUSTINA
03:32	GOOD! JUMPER by IONESCU, SABRINA	33-58	V 25	
02:58	GOOD! 3PTR by SHELLEY, JAZ	33-61	V 28	
02:40		35-61	V 26	GOOD! LAYUP by KING, JUSTINA [PNT]

Oregon 61, Long Beach St. 35

**Official Scoring/Possession Reference Chart
Oregon vs Long Beach St.
Period 4
December 14, 2019 at Walter Pyramid - Long Beach, Calif.**

BEACH

Period 4

Starters:

Oregon: 00 SABALLY,SATOU (F); 20 IONESCU,SABRINA (G); 21 BOLEY,ERIN (F); 23 MOORE,MINYON (G); 24 HEBARD,RUTHY (F);
Long Beach St.: 0 BERRY,MA'QHI (G); 1 KINSLOW,CYDNEE (F); 10 KING,JUSTINA (G); 23 GREEN,LAUREN (F); 32 GREEN,AARYON (F);

Time	VISITORS: Oregon	Score	Margin	HOME: Long Beach St.
08:48	GOOD! JUMPER by COCHRANE, LUCY	35-63	V 28	
08:12		36-63	V 27	GOOD! FT by HARDY, JASMINE
08:12		37-63	V 26	GOOD! FT by HARDY, JASMINE
07:48	GOOD! LAYUP by WINTERBURN, HOLLY	37-65	V 28	
06:58	GOOD! LAYUP by WINTERBURN, HOLLY	37-67	V 30	
06:18	GOOD! LAYUP by CHAVEZ, TAYLOR	37-69	V 32	
06:04	GOOD! LAYUP by CHAVEZ, TAYLOR [FB]	37-71	V 34	
05:47		39-71	V 32	GOOD! LAYUP by GREEN, AARYON
04:28	GOOD! LAYUP by SHELLEY, JAZ [PNT]	39-73	V 34	
03:40	GOOD! 3PTR by SHELLEY, JAZ	39-76	V 37	
02:50	GOOD! LAYUP by WINTERBURN, HOLLY	39-78	V 39	
02:50	GOOD! FT by WINTERBURN, HOLLY	39-79	V 40	
02:18	GOOD! FT by COCHRANE, LUCY	39-80	V 41	
02:18	GOOD! FT by COCHRANE, LUCY	39-81	V 42	
01:34		42-81	V 39	GOOD! 3PTR by HARDY, JASMINE
00:45		45-81	V 36	GOOD! 3PTR by DAVISON, SHANAIJAH

Oregon 81, Long Beach St. 45

**Official Substitutions Log
Oregon vs Long Beach St.
Period 1**

December 14, 2019 at Walter Pyramid - Long Beach, Calif.

BEACH

VISITORS: Oregon	Time	Score	HOME: Long Beach St.
00 SABALLY,SATOU			0 BERRY,MA'QHI
20 IONESCU,SABRINA			1 KINSLOW,CYDNEE
21 BOLEY,ERIN			10 KING,JUSTINA
23 MOORE,MINYON			23 GREEN,LAUREN
24 HEBARD,RUTHY			32 GREEN,AARYON
	07:59	7-2	SUB OUT: GREEN,LAUREN
	07:59		SUB IN: HARDY,JASMINE
	07:07	7-4	SUB OUT: KINSLOW,CYDNEE
	07:07		SUB IN: DAVISON,SHANAJAH
	04:09	15-10	SUB OUT: GREEN,AARYON
	04:09		SUB IN: KINSLOW,CYDNEE
SUB OUT: 23 MOORE,MINYON	04:09		
SUB IN: 4 SHELLEY,JAZ	04:09		
SUB OUT: 21 BOLEY,ERIN	02:55	20-12	
SUB IN: 3 CHAVEZ,TAYLOR	02:55		
SUB OUT: 24 HEBARD,RUTHY	02:38	20-12	
SUB IN: 14 GIOMI,LYDIA	02:38		
SUB OUT: 00 SABALLY,SATOU	01:17	25-12	
SUB IN: 24 HEBARD,RUTHY	01:17		

Oregon 31, Long Beach St. 12

**Official Substitutions Log
Oregon vs Long Beach St.
Period 2**

December 14, 2019 at Walter Pyramid - Long Beach, Calif.

BEACH

VISITORS: Oregon	Time	Score	HOME: Long Beach St.
00 SABALLY,SATOU			0 BERRY,MA'QHI
20 IONESCU,SABRINA			1 KINSLOW,CYDNEE
21 BOLEY,ERIN			10 KING,JUSTINA
23 MOORE,MINYON			23 GREEN,LAUREN
24 HEBARD,RUTHY			32 GREEN,AARYON
	09:57	-	SUB OUT: HARDY,JASMINE
	09:57		SUB IN: GREEN,AARYON
SUB OUT: 24 HEBARD,RUTHY	09:57		
SUB IN: 00 SABALLY,SATOU	09:57		
SUB OUT: 20 IONESCU,SABRINA	08:35	35-15	
SUB IN: 11 WINTERBURN,HOLLY	08:35		
	07:37	37-15	SUB OUT: KINSLOW,CYDNEE
	07:37		SUB IN: HARDY,JASMINE
SUB OUT: 4 SHELLEY,JAZ	06:59	37-15	
SUB IN: 23 MOORE,MINYON	06:59		
SUB OUT: 14 GIOMI,LYDIA	05:57	42-15	
SUB IN: 21 BOLEY,ERIN	05:57		
	05:06	42-15	SUB OUT: DAVISON,SHANAJAH
	05:06		SUB IN: KINSLOW,CYDNEE
SUB OUT: 00 SABALLY,SATOU	04:29	44-15	
SUB OUT: 3 CHAVEZ,TAYLOR	04:29		
SUB IN: 20 IONESCU,SABRINA	04:29		
SUB IN: 24 HEBARD,RUTHY	04:29		
SUB OUT: 11 WINTERBURN,HOLLY	03:36	44-17	
SUB IN: 2 YAEGER,MORGAN	03:36		
SUB OUT: 23 MOORE,MINYON	02:51	44-20	
SUB IN: 4 SHELLEY,JAZ	02:51		
SUB OUT: 24 HEBARD,RUTHY	00:07	46-26	
SUB IN: 12 COCHRANE,LUCY	00:07		
SUB OUT: 21 BOLEY,ERIN	00:07		
SUB IN: 23 MOORE,MINYON	00:07		

Oregon 46, Long Beach St. 26

**Official Substitutions Log
Oregon vs Long Beach St.
Period 3**

December 14, 2019 at Walter Pyramid - Long Beach, Calif.



VISITORS: Oregon	Time	Score	HOME: Long Beach St.
00 SABALLY,SATOU			0 BERRY,MA'QHI
20 IONESCU,SABRINA			1 KINSLOW,CYDNEE
21 BOLEY,ERIN			10 KING,JUSTINA
23 MOORE,MINYON			23 GREEN,LAUREN
24 HEBARD,RUTHY			32 GREEN,AARYON
	10:00	-	SUB OUT: HARDY,JASMINE
	10:00		SUB IN: GREEN,LAUREN
SUB OUT: 2 YAEGER,MORGAN	10:00		
SUB OUT: 12 COCHRANE,LUCY	10:00		
SUB IN: 21 BOLEY,ERIN	10:00		
SUB IN: 24 HEBARD,RUTHY	10:00		
	06:34	52-30	SUB OUT: GREEN,LAUREN
	06:34		SUB IN: HARDY,JASMINE
	06:18	52-30	SUB OUT: GREEN,AARYON
	06:18		SUB IN: JESKEOVA,KRISTYNA
	05:26	56-30	SUB OUT: BERRY,MA'QHI
	05:26		SUB OUT: JESKEOVA,KRISTYNA
	05:26		SUB IN: DAVISON,SHANAJAH
	05:26		SUB IN: GREEN,AARYON
SUB OUT: 21 BOLEY,ERIN	05:26		
SUB IN: 3 CHAVEZ,TAYLOR	05:26		
SUB OUT: 23 MOORE,MINYON	04:22	56-33	
SUB IN: 11 WINTERBURN,HOLLY	04:22		
	02:13	61-35	SUB OUT: KINSLOW,CYDNEE
	02:13		SUB IN: BERRY,MA'QHI
SUB OUT: 24 HEBARD,RUTHY	02:13		
SUB IN: 14 GIOMI,LYDIA	02:13		
	00:37	61-35	SUB OUT: GREEN,AARYON
	00:37		SUB IN: GREEN,LAUREN

Oregon 61, Long Beach St. 35

**Official Substitutions Log
Oregon vs Long Beach St.
Period 4**

December 14, 2019 at Walter Pyramid - Long Beach, Calif.

BEACH

VISITORS: Oregon	Time	Score	HOME: Long Beach St.
00 SABALLY,SATOU			0 BERRY,MA'QHI
20 IONESCU,SABRINA			1 KINSLOW,CYDNEE
21 BOLEY,ERIN			10 KING,JUSTINA
23 MOORE,MINYON			23 GREEN,LAUREN
24 HEBARD,RUTHY			32 GREEN,AARYON
SUB OUT: 14 GIOMI,LYDIA	10:00	-	
SUB IN: 12 COCHRANE,LUCY	10:00		
	06:47	67-37	SUB OUT: GREEN,LAUREN
	06:47		SUB IN: GREEN,AARYON
	05:47	71-39	SUB OUT: KING,JUSTINA
	05:47		SUB IN: JESKEOVA,KRISTYNA
SUB OUT: 20 IONESCU,SABRINA	05:32	71-39	
SUB IN: 2 YAEGER,MORGAN	05:32		
SUB OUT: 3 CHAVEZ,TAYLOR	03:53	73-39	
SUB IN: 14 GIOMI,LYDIA	03:53		
	02:18	81-39	SUB OUT: BERRY,MA'QHI
	02:18		SUB OUT: GREEN,AARYON
	02:18		SUB IN: KINSLOW,CYDNEE
	02:18		SUB IN: GREEN,LAUREN

Oregon 81, Long Beach St. 45

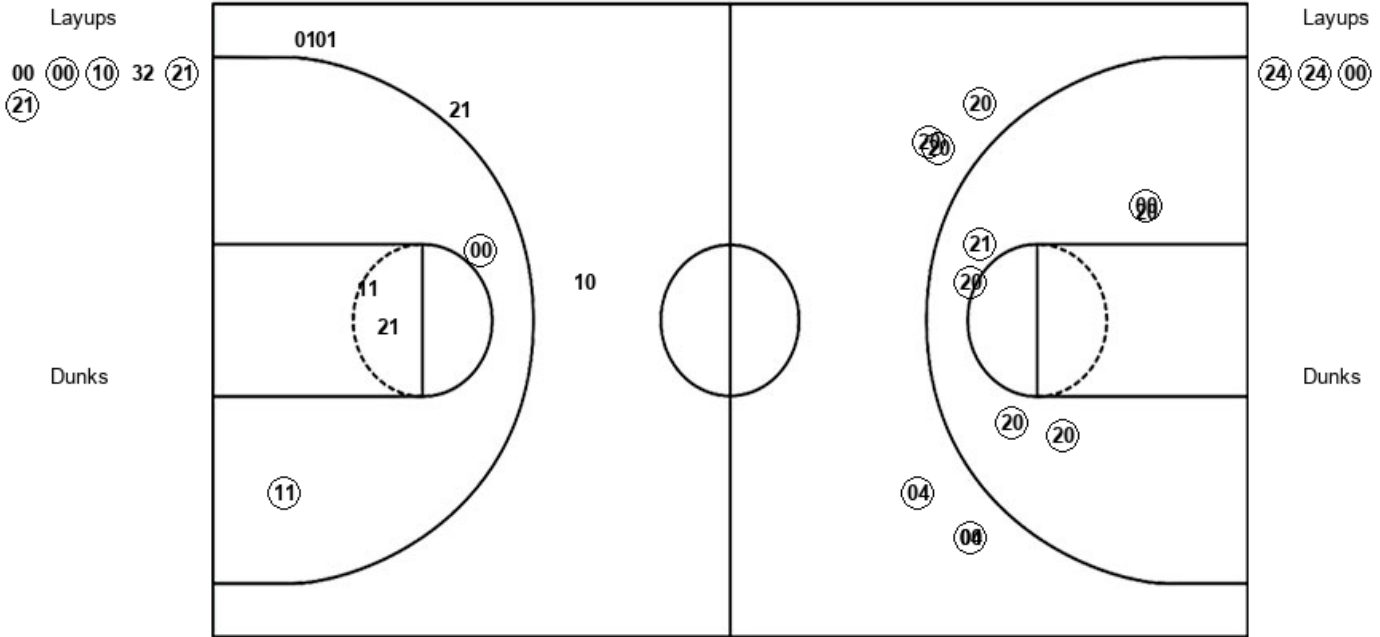
Official Shot Chart
Oregon vs Long Beach St.
PERIOD 1 Shots

December 14, 2019 at Walter Pyramid - Long Beach, Calif.

BEACH

Long Beach St.

Oregon



LBS : Period 1	Made	Att	Pct
Layups	4	6	66.7
Dunks	0	0	0
2PT Field Goals	6	10	60.0
3PT Field Goals	0	4	00.0
Total Field Goals	6	14	42.9

ORE : Period 1	Made	Att	Pct
Layups	3	3	100.0
Dunks	0	0	0
2PT Field Goals	8	9	88.9
3PT Field Goals	5	6	83.3
Total Field Goals	13	15	86.7

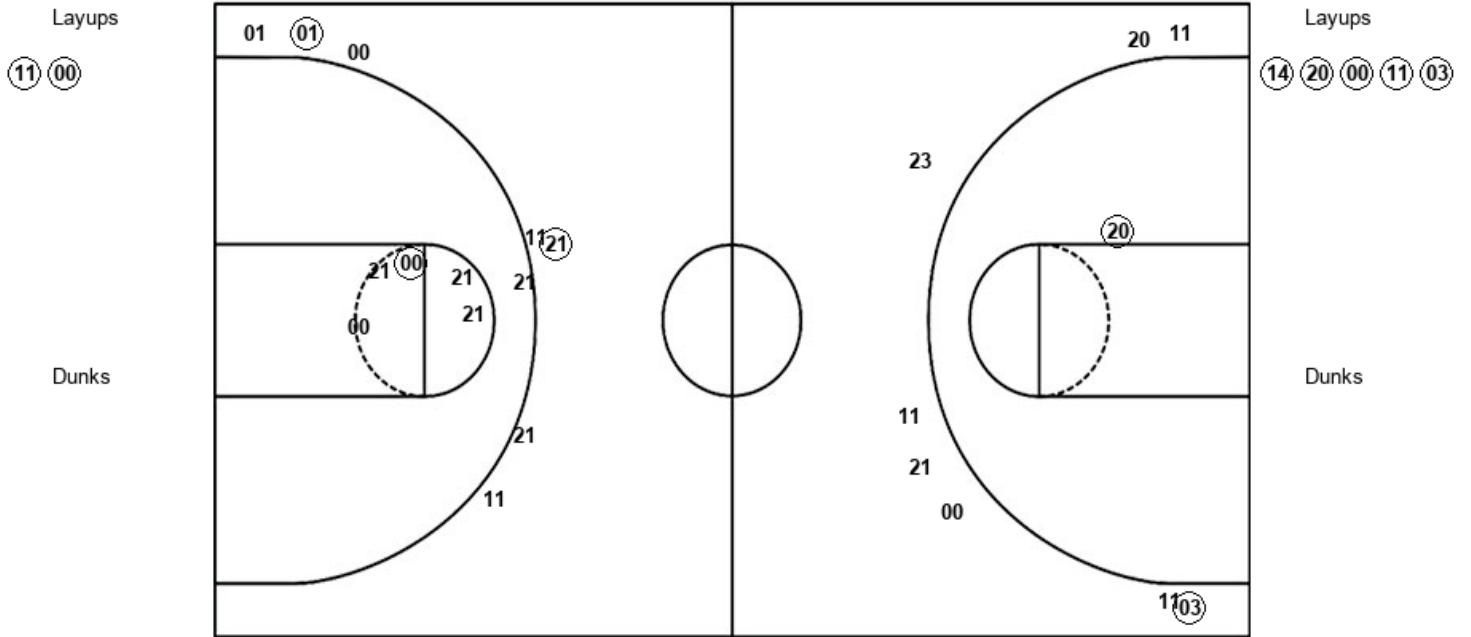
Official Shot Chart
Oregon vs Long Beach St.
PERIOD 2 Shots

December 14, 2019 at Walter Pyramid - Long Beach, Calif.

BEACH

Long Beach St.

Oregon



LBS : Period 2	Made	Att	Pct
Layups	2	2	100.0
Dunks	0	0	0
2PT Field Goals	3	7	42.9
3PT Field Goals	2	8	25.0
Total Field Goals	5	15	33.3

ORE : Period 2	Made	Att	Pct
Layups	5	5	100.0
Dunks	0	0	0
2PT Field Goals	6	6	100.0
3PT Field Goals	1	8	12.5
Total Field Goals	7	14	50.0

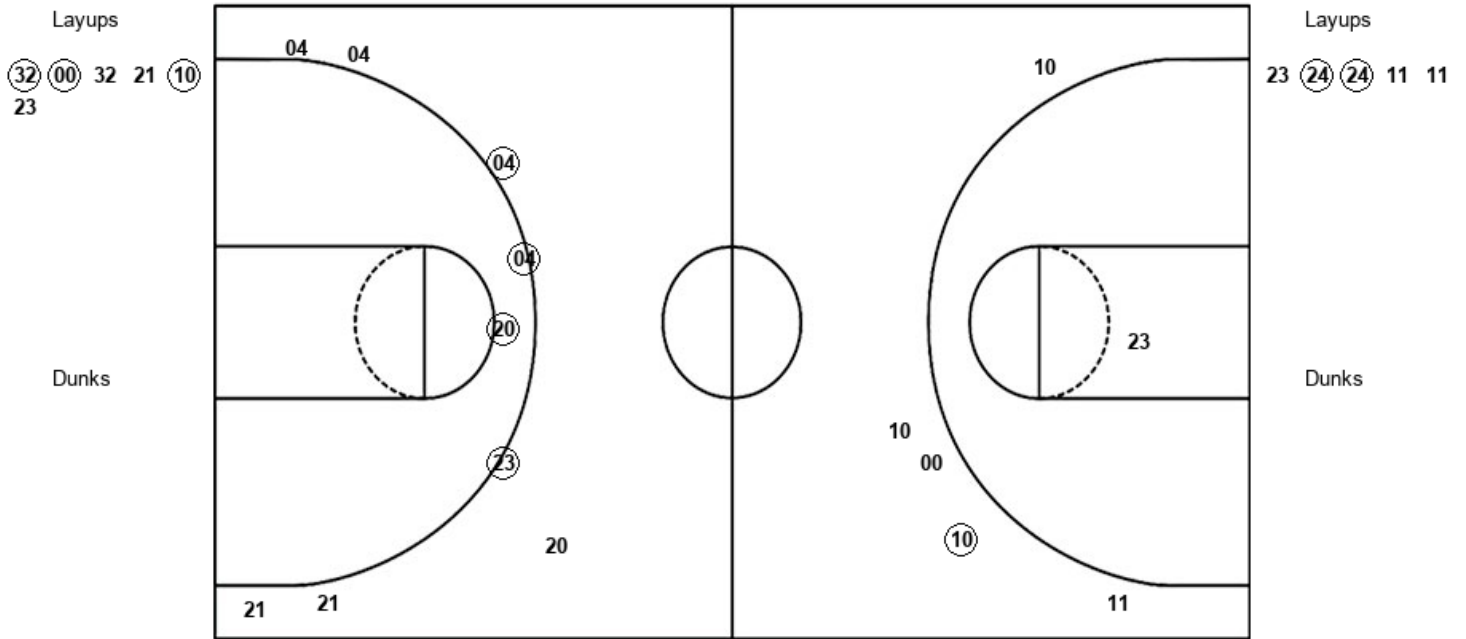
Official Shot Chart
Oregon vs Long Beach St.
PERIOD 3 Shots

December 14, 2019 at Walter Pyramid - Long Beach, Calif.

BEACH

Long Beach St.

Oregon



LBS : Period 3	Made	Att	Pct
Layups	3	6	50.0
Dunks	0	0	0
2PT Field Goals	3	7	42.9
3PT Field Goals	1	5	20.0
Total Field Goals	4	12	33.3

ORE : Period 3	Made	Att	Pct
Layups	2	5	40.0
Dunks	0	0	0
2PT Field Goals	3	6	50.0
3PT Field Goals	3	8	37.5
Total Field Goals	6	14	42.9

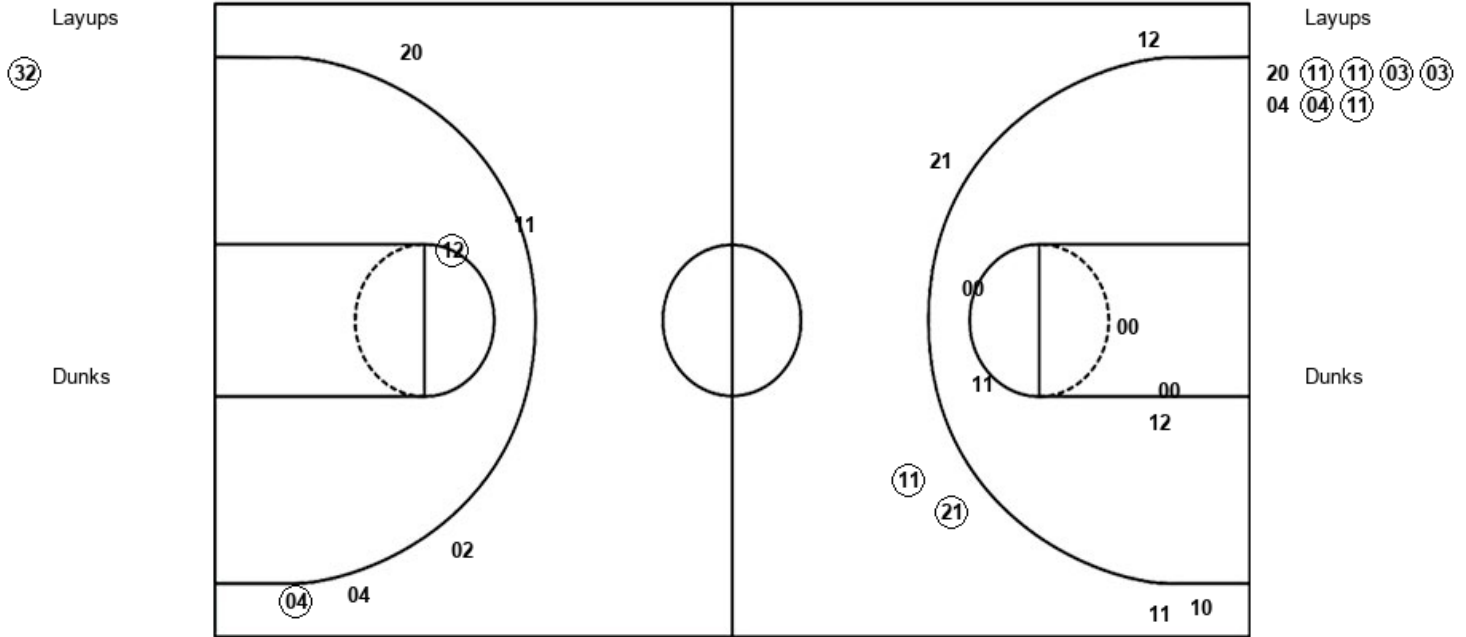
Official Shot Chart
 Oregon vs Long Beach St.
 PERIOD 4 Shots

December 14, 2019 at Walter Pyramid - Long Beach, Calif.

BEACH

Long Beach St.

Oregon



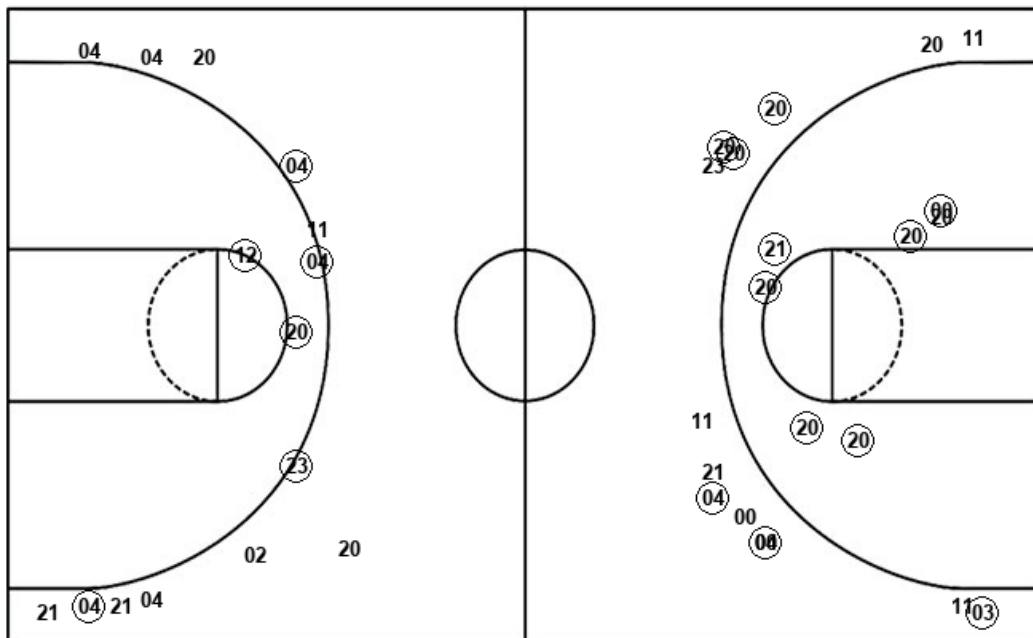
LBS : Period 4	Made	Att	Pct
Layups	1	1	100.0
Dunks	0	0	0
2PT Field Goals	1	6	16.7
3PT Field Goals	2	6	33.3
Total Field Goals	3	12	25.0

ORE : Period 4	Made	Att	Pct
Layups	6	8	75.0
Dunks	0	0	0
2PT Field Goals	7	9	77.8
3PT Field Goals	1	5	20.0
Total Field Goals	8	14	57.1

Official Shot Chart
Oregon vs Long Beach St.
Oregon Team Shots
 December 14, 2019 at Walter Pyramid - Long Beach, Calif.

BEACH

Layups



Layups

Dunks

Dunks

ORE : Period 1	Made	Att	Pct
Layups	3	3	100.0
Dunks	0	0	0
2PT Field Goals	8	9	88.9
3PT Field Goals	5	6	83.3
Total Field Goals	13	15	86.7

ORE : Period 2	Made	Att	Pct
Layups	5	5	100.0
Dunks	0	0	0
2PT Field Goals	6	6	100.0
3PT Field Goals	1	8	12.5
Total Field Goals	7	14	50.0

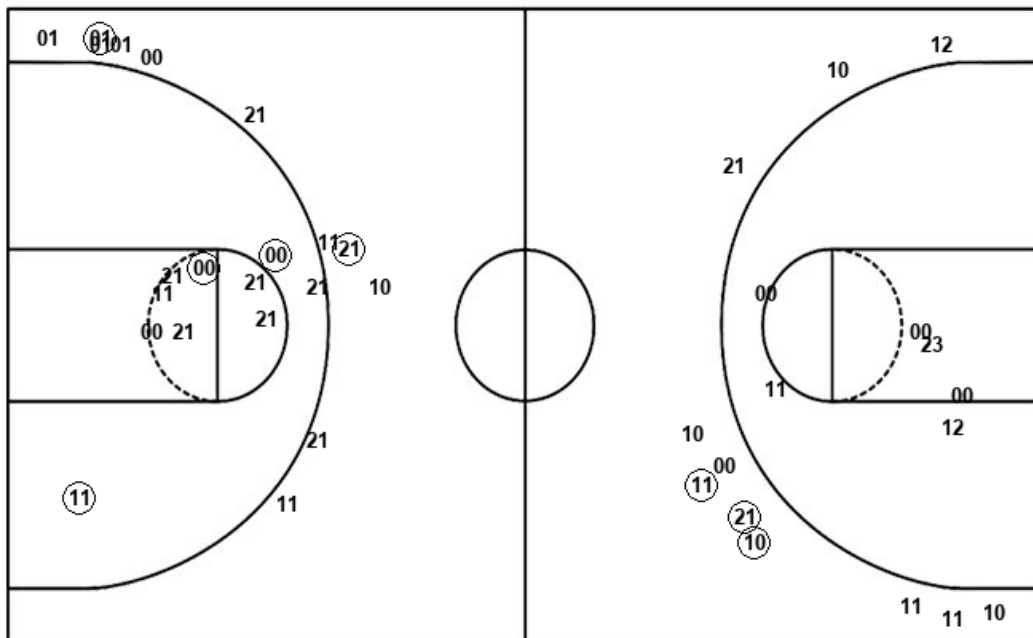
ORE : Period 3	Made	Att	Pct
Layups	2	5	40.0
Dunks	0	0	0
2PT Field Goals	3	6	50.0
3PT Field Goals	3	8	37.5
Total Field Goals	6	14	42.9

ORE : Period 4	Made	Att	Pct
Layups	6	8	75.0
Dunks	0	0	0
2PT Field Goals	7	9	77.8
3PT Field Goals	1	5	20.0
Total Field Goals	8	14	57.1

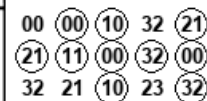
Official Shot Chart
Oregon vs Long Beach St.
Long Beach St. Team Shots
 December 14, 2019 at Walter Pyramid - Long Beach, Calif.

BEACH

Layups



Layups



Dunks

Dunks

LBS : Period 1	Made	Att	Pct
Layups	4	6	66.7
Dunks	0	0	0
2PT Field Goals	6	10	60.0
3PT Field Goals	0	4	00.0
Total Field Goals	6	14	42.9

LBS : Period 2	Made	Att	Pct
Layups	2	2	100.0
Dunks	0	0	0
2PT Field Goals	3	7	42.9
3PT Field Goals	2	8	25.0
Total Field Goals	5	15	33.3

LBS : Period 3	Made	Att	Pct
Layups	3	6	50.0
Dunks	0	0	0
2PT Field Goals	3	7	42.9
3PT Field Goals	1	5	20.0
Total Field Goals	4	12	33.3

LBS : Period 4	Made	Att	Pct
Layups	1	1	100.0
Dunks	0	0	0
2PT Field Goals	1	6	16.7
3PT Field Goals	2	6	33.3
Total Field Goals	3	12	25.0