

FINAL SCORE



Hawaii

60

Long Beach St.

64

BEACH

February 22, 2020 • Walter Pyramid - Long Beach

FINAL STATISTICS

Official Box Score
Hawaii vs Long Beach St.
Game Totals -- Final Statistics
February 22, 2020 at Walter Pyramid - Long Beach

BEACH

Hawaii 60

No.	Player	S	Pts	FG	3FG	FT	OR	DR	TR	PF	A	TO	Blk	Stl	Min	+/-
01	BUGGS, DREW	G	7	3-10	1-4	0-0	2	2	4	4	2	0	0	1	26	3
03	STANSBERRY, EDDIE	G	19	6-14	5-13	2-2	0	4	4	3	1	1	0	2	38	-5
14	RAIMO, ZIGMARS	F	8	4-6	0-0	0-1	4	5	9	2	1	3	0	1	34	1
32	AVEA, SAMUTA	F	0	0-6	0-4	0-0	0	3	3	0	3	1	0	0	24	-8
44	CARPER, DAWSON	C	2	0-0	0-0	2-4	0	1	1	2	0	1	0	0	12	0
02	WEBSTER, JUSTIN	G	15	4-14	1-6	6-7	0	2	2	3	1	1	0	2	32	-1
05	DA SILVA, BERNARDO	F	0	0-0	0-0	0-2	0	0	0	2	0	0	0	0	4	-2
15	HULLAND, OWEN	F	2	1-4	0-0	0-0	1	3	4	0	0	0	0	0	10	-5
42	HEMSLEY, JUSTIN	F	7	2-6	0-1	3-4	2	2	4	4	0	1	0	0	19	-3
	TEAM						0	2	2	0		2				
TOTALS			60	20-60	7-28	13-20	9	24	33	20	8	10	0	6	200	

Shooting By Period

Period	FG	FG%	3FG	3FG%	FT	FT%
1st Half	8-28	29%	3-14	21%	5-6	83%
2nd Half	12-32	38%	4-14	29%	8-14	57%
Game	20-60	33.3%	7-28	25.0%	13-20	65.0%

Deadball Rebounds: 3,2

Last FG: 2nd-00:07

Biggest Run: 7-0

Largest lead: By 6 at 1st-09:06

Technical Fouls: None.

Long Beach St. 64

No.	Player	S	Pts	FG	3FG	FT	OR	DR	TR	PF	A	TO	Blk	Stl	Min	+/-
01	CARTER III, MICHAEL	G	15	4-8	2-4	5-9	0	4	4	2	3	3	0	0	32	12
02	ROBERTS, JORDAN	G	4	0-5	0-0	4-6	1	6	7	4	1	4	0	0	31	0
03	COBB, DREW	G	7	2-4	0-1	3-6	0	4	4	2	1	2	0	0	34	12
14	SLATER, COLIN	G	6	2-4	2-3	0-0	0	2	2	1	3	4	0	1	25	5
24	MORGAN, JOSHUA	C	10	5-6	0-0	0-1	1	5	6	4	0	2	2	1	20	-2
10	DE GEEST, MAX	G	3	1-2	1-1	0-0	0	4	4	1	0	0	0	0	10	-4
11	GRIFFIN, JORDAN	G	0	0-1	0-1	0-0	0	0	0	0	0	0	0	0	5	-7
13	MANSEL, ROMELLE	F	6	2-4	0-0	2-2	1	2	3	1	0	0	0	0	16	-1
31	HUNTER, CHANCE	G	9	3-7	2-4	1-2	0	4	4	1	0	0	0	0	19	1
32	IRISH, TREVER	C	4	2-4	0-0	0-1	1	3	4	1	0	0	0	0	8	6
	TEAM						1	1	2	0		3				
TOTALS			64	21-45	7-14	15-27	5	35	40	17	8	18	2	2	200	

Shooting By Period

Period	FG	FG%	3FG	3FG%	FT	FT%
1st Half	11-25	44%	5-8	63%	7-15	47%
2nd Half	10-20	50%	2-6	33%	8-12	67%
Game	21-45	46.7%	7-14	50.0%	15-27	55.6%

Deadball Rebounds: 5,0

Last FG: 2nd-01:21

Biggest Run: 9-0

Largest lead: By 16 at 2nd-09:41

Technical Fouls: #0 TEAM (Admin Technical) @ 1st - 09:06;

Game Notes:

Officials: Tom Nally, Glen Mayberry, Andy Cohn
Attendance: 2100

Start Time: 07:03 PM ET

End Time: 09:17 PM ET

Game Duration: 2:13

Conference Game;

Score	1st	2nd	TOT
HAW	24	36	60
LBS	34	30	64

HAW led for 4:44. LBS led for 33:06.

Game was tied for 2:08.

Times tied: 1 Lead Changes: 2

Points from	HAW	LBS
In the Paint	14	16
Off Turns	10	10
2nd Chance	3	2
Fast Break	2	7
Bench	24	22

Official Box Score
Hawaii vs Long Beach St.
First Half Statistics Only
February 22, 2020 at Walter Pyramid - Long Beach

BEACH

Hawaii 24

No.	Player	S	Pts	FG	3FG	FT	OR	DR	TR	PF	A	TO	Blk	Stl	Min	+/-
01	BUGGS, DREW	G	0	0-2	0-2	0-0	0	2	2	2	0	0	0	1	10	-7
03	STANSBERRY, EDDIE	G	10	3-6	2-5	2-2	0	3	3	2	1	0	0	1	18	-11
14	RAIMO, ZIGMARS	F	4	2-3	0-0	0-0	1	3	4	1	0	2	0	0	17	-9
32	AVEA, SAMUTA	F	0	0-4	0-3	0-0	0	2	2	0	1	1	0	0	16	-5
44	CARPER, DAWSON	C	1	0-0	0-0	1-2	0	1	1	2	0	0	0	0	7	1
02	WEBSTER, JUSTIN	G	5	1-7	1-3	2-2	0	0	0	0	0	1	0	0	15	-7
05	DA SILVA, BERNARDO	F	0	0-0	0-0	0-0	0	0	0	2	0	0	0	0	1	-1
15	HULLAND, OWEN	F	2	1-4	0-0	0-0	0	3	3	0	0	0	0	0	8	-1
42	HEMSLEY, JUSTIN	F	2	1-2	0-1	0-0	1	0	1	1	0	0	0	0	7	-10
	TEAM						0	1	1	0		0				
TOTALS			24	8-28	3-14	5-6	2	15	17	10	2	4	0	2	100	

Shooting By Period

Period	FG	FG%	3FG	3FG%	FT	FT%
1st Half	8-28	29%	3-14	21%	5-6	83%
Game	20-60	33.3%	7-28	25.0%	13-20	65.0%

Deadball Rebounds: 3,2

Last FG Half: HAW 2nd-00:07

Long Beach St. 34

No.	Player	S	Pts	FG	3FG	FT	OR	DR	TR	PF	A	TO	Blk	Stl	Min	+/-
01	CARTER III, MICHAEL	G	12	3-5	2-3	4-7	0	3	3	1	2	1	0	0	16	14
02	ROBERTS, JORDAN	G	2	0-4	0-0	2-4	1	3	4	1	0	0	0	0	15	5
03	COBB, DREW	G	3	1-2	0-0	1-2	0	2	2	0	0	0	0	0	16	16
14	SLATER, COLIN	G	3	1-2	1-1	0-0	0	0	0	0	2	2	0	1	13	8
24	MORGAN, JOSHUA	C	4	2-2	0-0	0-1	0	2	2	2	0	1	2	1	7	5
10	DE GEEST, MAX	G	3	1-1	1-1	0-0	0	3	3	0	0	0	0	0	5	1
11	GRIFFIN, JORDAN	G	0	0-1	0-1	0-0	0	0	0	0	0	0	0	0	3	-6
13	MANSEL, ROMELLE	F	0	0-1	0-0	0-0	0	2	2	0	0	0	0	0	9	0
31	HUNTER, CHANCE	G	5	2-4	1-2	0-0	0	1	1	0	0	0	0	0	9	1
32	IRISH, TREVER	C	2	1-3	0-0	0-1	1	2	3	0	0	0	0	0	5	8
	TEAM						0	0	0	0		1				
TOTALS			34	11-25	5-8	7-15	2	18	20	4	4	5	2	2	100	

Shooting By Period

Period	FG	FG%	3FG	3FG%	FT	FT%
1st Half	11-25	44%	5-8	63%	7-15	47%
Game	21-45	46.7%	7-14	50.0%	15-27	55.6%

Deadball Rebounds: 5,0

Last FG Half: LBS 2nd-01:21

Game Notes:

Officials: Tom Nally, Glen Mayberry, Andy Cohn
Attendance: 2100

Start Time: 07:03 PM ET
End Time: 09:17 PM ET
Game Duration: 2:13
Conference Game;

Score	1st	2nd	TOT
HAW	24	36	60
LBS	34	30	64

Points from (This Period)	HAW	LBS
In the Paint	4	4
Off Turns	2	4
2nd Chance	0	0
Fast Break	2	7
Bench	9	10

Official Play-By-Play
Hawaii vs Long Beach St.
First Half
February 22, 2020 at Walter Pyramid - Long Beach

BEACH

Period 1

Starters:

Hawaii: 1 BUGGS,DREW (G); 3 STANSBERRY, EDDIE (G); 14 RAIMO,ZIGMARS (F); 32 AVEA,SAMUTA (F); 44 CARPER,DAWSON (C);

Long Beach St.: 1 CARTER III,MICHAEL (G); 2 ROBERTS,JORDAN (G); 3 COBB,DREW (G); 14 SLATER,COLIN (G); 24 MORGAN,JOSHUA (C);

Time	VISITORS: Hawaii	Score	Margin	HOME: Long Beach St.
19:04	MISSED 3PTR by STANSBERRY, EDDIE			
18:49				REBOUND (DEF) by MORGAN, JOSHUA
18:49		2-0	H 2	GOOD! JUMPER by MORGAN, JOSHUA
18:49	FOUL (PERSONAL) by CARPER, DAWSON			
18:48				MISSED FT by MORGAN, JOSHUA
18:44	REBOUND (DEF) by CARPER, DAWSON			
18:38		4-0	H 4	GOOD! JUMPER by MORGAN, JOSHUA
18:38				ASSIST by SLATER, COLIN
18:14				FOUL (PERSONAL) by MORGAN, JOSHUA
18:14	MISSED FT by CARPER, DAWSON			
18:14	REBOUND (OFF) by TEAM			
18:14	GOOD! FT by CARPER, DAWSON	4-1	H 3	
17:56				MISSED LAYUP by CARTER III, MICHAEL
17:50	REBOUND (DEF) by RAIMO, ZIGMARS			
17:29	MISSED 3PTR by AVEA, SAMUTA			
17:22				REBOUND (DEF) by ROBERTS, JORDAN
17:05				MISSED JUMPER by ROBERTS, JORDAN
17:00	REBOUND (DEF) by BUGGS, DREW			
16:42	MISSED JUMPER by RAIMO, ZIGMARS			
16:42				BLOCK by MORGAN, JOSHUA
16:42				REBOUND (DEF) by COBB, DREW
16:33				MISSED JUMPER by COBB, DREW
16:33	REBOUND (DEF) by TEAM			
16:33				FOUL (PERSONAL) by CARTER III, MICHAEL
16:33	GOOD! FT by STANSBERRY, EDDIE [FB]	4-2	H 2	
16:33	GOOD! FT by STANSBERRY, EDDIE [FB]	4-3	H 1	
16:07				TURNOVER (LOSTBALL) by SLATER, COLIN
15:58	TURNOVER (LOSTBALL) by AVEA, SAMUTA			
15:37		6-3	H 3	GOOD! JUMPER by IRISH, TREVER
15:37				SUB OUT: ROBERTS, JORDAN
15:37				SUB OUT: COBB, DREW
15:37				SUB OUT: MORGAN, JOSHUA
15:37				SUB IN: MANSEL, ROMELLE
15:37				SUB IN: HUNTER, CHANCE
15:37				SUB IN: IRISH, TREVER
15:37	SUB OUT: CARPER, DAWSON			
15:37	SUB IN: DA SILVA, BERNARDO			
15:37	MISSED 3PTR by BUGGS, DREW			
15:37				REBOUND (DEF) by CARTER III, MICHAEL
15:29				TURNOVER (BADPASS) by CARTER III, MICHAEL
15:29				SUB OUT: SLATER, COLIN
15:29				SUB IN: COBB, DREW
15:29				FOUL (PERSONAL) by MORGAN, JOSHUA
15:14	SUB OUT: BUGGS, DREW			
15:14	SUB IN: WEBSTER, JUSTIN			
15:12	MISSED 3PTR by STANSBERRY, EDDIE			
15:05				REBOUND (DEF) by HUNTER, CHANCE
14:47				MISSED JUMPER by IRISH, TREVER
14:42	REBOUND (DEF) by STANSBERRY, EDDIE			
14:31	MISSED JUMPER by WEBSTER, JUSTIN			
14:25				REBOUND (DEF) by MANSEL, ROMELLE
14:23	FOUL (PERSONAL) by DA SILVA, BERNARDO			
14:23		7-3	H 4	GOOD! FT by COBB, DREW [FB]
14:23				SUB OUT: IRISH, TREVER
14:23				SUB IN: ROBERTS, JORDAN
14:23	SUB OUT: DA SILVA, BERNARDO			
14:23	SUB IN: CARPER, DAWSON			
13:55				MISSED FT by COBB, DREW
13:51	REBOUND (DEF) by AVEA, SAMUTA			
13:41	GOOD! 3PTR by STANSBERRY, EDDIE	7-6	H 1	
13:20		9-6	H 3	GOOD! LAYUP by CARTER III, MICHAEL [PNT]
13:00	MISSED JUMPER by AVEA, SAMUTA			
12:54				REBOUND (DEF) by ROBERTS, JORDAN
12:43				MISSED 3PTR by HUNTER, CHANCE
12:37	REBOUND (DEF) by STANSBERRY, EDDIE			
12:32	GOOD! 3PTR by STANSBERRY, EDDIE	9-9	T	
12:09	FOUL (PERSONAL) by CARPER, DAWSON			
12:09				SUB OUT: CARTER III, MICHAEL
12:09				SUB OUT: COBB, DREW
12:09				SUB OUT: HUNTER, CHANCE

Time	VISITORS: Hawaii	Score	Margin	HOME: Long Beach St.
12:09				SUB IN: DE GEEST, MAX
12:09				SUB IN: GRIFFIN, JORDAN
12:09				SUB IN: SLATER, COLIN
12:09	SUB OUT: AVEA, SAMUTA			
12:09	SUB OUT: CARPER, DAWSON			
12:09	SUB IN: HULLAND, OWEN			
12:09	SUB IN: HEMSLEY, JUSTIN			
11:58	SUB OUT: RAIMO, ZIGMARS			
11:58	SUB IN: AVEA, SAMUTA			
11:50				MISSED LAYUP by MANSEL, ROMELLE
11:43	REBOUND (DEF) by AVEA, SAMUTA			
11:35	GOOD! JUMPER by HEMSLEY, JUSTIN	9-11	V 2	
11:35	ASSIST by STANSBERRY, EDDIE			
11:12				MISSED JUMPER by ROBERTS, JORDAN
11:06	REBOUND (DEF) by STANSBERRY, EDDIE			
11:03	MISSED 3PTR by AVEA, SAMUTA			
10:58				REBOUND (DEF) by DE GEEST, MAX
10:52				MISSED JUMPER by SLATER, COLIN
10:47				REBOUND (OFF) by TEAM
10:47	SUB OUT: HULLAND, OWEN			
10:47	SUB IN: RAIMO, ZIGMARS			
10:47	GOOD! JUMPER by RAIMO, ZIGMARS	9-13	V 4	
10:47				SUB OUT: SLATER, COLIN
10:47				SUB IN: IRISH, TREVER
10:47	FOUL (PERSONAL) by DA SILVA, BERNARDO			
10:47				MISSED FT by IRISH, TREVER
10:47	REBOUND (DEF) by TEAM			
10:47				SUB OUT: DE GEEST, MAX
10:47				SUB OUT: MANSEL, ROMELLE
10:47				SUB OUT: IRISH, TREVER
10:47				SUB IN: CARTER III, MICHAEL
10:47				SUB IN: SLATER, COLIN
10:47				SUB IN: MORGAN, JOSHUA
10:47	SUB OUT: RAIMO, ZIGMARS			
10:47	SUB IN: HULLAND, OWEN			
10:34				MISSED 3PTR by GRIFFIN, JORDAN
10:30				REBOUND (OFF) by ROBERTS, JORDAN
10:28				MISSED LAYUP by ROBERTS, JORDAN
10:24	REBOUND (DEF) by HULLAND, OWEN			
10:02	MISSED JUMPER by HULLAND, OWEN			
09:55				REBOUND (DEF) by MORGAN, JOSHUA
09:54		12-13	V 1	GOOD! 3PTR by CARTER III, MICHAEL [FB]
09:54				ASSIST by SLATER, COLIN
09:40	MISSED JUMPER by HULLAND, OWEN			
09:40				BLOCK by MORGAN, JOSHUA
09:32				REBOUND (DEF) by CARTER III, MICHAEL
09:27	FOUL (PERSONAL) by HEMSLEY, JUSTIN			
09:27				MISSED FT by ROBERTS, JORDAN
09:27				REBOUND (OFF) by TEAM
09:27	SUB OUT: STANSBERRY, EDDIE			
09:27	SUB OUT: HULLAND, OWEN			
09:27	SUB IN: BUGGS, DREW			
09:27	SUB IN: RAIMO, ZIGMARS			
09:27				MISSED FT by ROBERTS, JORDAN
09:27	REBOUND (DEF) by TEAM			
09:10	GOOD! 3PTR by WEBSTER, JUSTIN	12-16	V 4	
09:06				FOUL (TECH) by TEAM
09:06				TURNOVER (OFFENSIVE) by TEAM
09:06	GOOD! FT by WEBSTER, JUSTIN	12-17	V 5	
09:06	GOOD! FT by WEBSTER, JUSTIN	12-18	V 6	
08:46				SUB OUT: GRIFFIN, JORDAN
08:46				SUB IN: COBB, DREW
08:45		15-18	V 3	GOOD! 3PTR by CARTER III, MICHAEL
08:45	FOUL (PERSONAL) by BUGGS, DREW			
08:45				MISSED FT by CARTER III, MICHAEL
08:45	REBOUND (DEF) by BUGGS, DREW			
08:45	MISSED 3PTR by AVEA, SAMUTA			
08:45	REBOUND (OFF) by HEMSLEY, JUSTIN			
08:45	TURNOVER (BADPASS) by WEBSTER, JUSTIN			
08:45				STEAL by MORGAN, JOSHUA
08:45				TURNOVER (LOSTBALL) by MORGAN, JOSHUA
08:45	STEAL by BUGGS, DREW			
08:45	MISSED JUMPER by WEBSTER, JUSTIN			
08:41				REBOUND (DEF) by CARTER III, MICHAEL
08:36	FOUL (PERSONAL) by RAIMO, ZIGMARS			
08:10		16-18	V 2	GOOD! FT by ROBERTS, JORDAN
07:53				SUB OUT: MORGAN, JOSHUA
07:53				SUB IN: IRISH, TREVER
07:53	SUB OUT: AVEA, SAMUTA			
07:53	SUB IN: STANSBERRY, EDDIE			

Time	VISITORS: Hawaii	Score	Margin	HOME: Long Beach St.
07:43				SUB OUT: SLATER, COLIN
07:43				SUB IN: DE GEEST, MAX
07:38	GOOD! JUMPER by STANSBERRY, EDDIE	16-20	V 4	
07:29		17-20	V 3	GOOD! FT by ROBERTS, JORDAN
07:23				SUB OUT: ROBERTS, JORDAN
07:23				SUB IN: HUNTER, CHANCE
07:13		19-20	V 1	GOOD! JUMPER by HUNTER, CHANCE
07:05	MISSED 3PTR by WEBSTER, JUSTIN			
06:54				REBOUND (DEF) by DE GEEST, MAX
06:51		22-20	H 2	GOOD! 3PTR by DE GEEST, MAX
06:51				ASSIST by CARTER III, MICHAEL
06:28	MISSED JUMPER by HULLAND, OWEN			
06:26				REBOUND (DEF) by IRISH, TREVER
06:20		25-20	H 5	GOOD! 3PTR by HUNTER, CHANCE [FB]
06:20	TIMEOUT 30SEC			
06:20	SUB OUT: RAIMO, ZIGMARS			
06:20	SUB IN: HULLAND, OWEN			
06:20	SUB OUT: HEMSLEY, JUSTIN			
06:20	SUB IN: RAIMO, ZIGMARS			
05:59	MISSED 3PTR by BUGGS, DREW			
05:54				REBOUND (DEF) by DE GEEST, MAX
05:40				MISSED JUMPER by HUNTER, CHANCE
05:37				REBOUND (OFF) by IRISH, TREVER
05:36				MISSED JUMPER by IRISH, TREVER
05:28	REBOUND (DEF) by HULLAND, OWEN			
05:21	MISSED JUMPER by WEBSTER, JUSTIN			
05:15				REBOUND (DEF) by IRISH, TREVER
05:05				MISSED 3PTR by CARTER III, MICHAEL
05:01	REBOUND (DEF) by HULLAND, OWEN			
04:44	GOOD! JUMPER by HULLAND, OWEN [PNT]	25-22	H 3	
04:22	FOUL (PERSONAL) by BUGGS, DREW			
04:22				SUB OUT: DE GEEST, MAX
04:22				SUB OUT: IRISH, TREVER
04:22				SUB IN: MANSEL, ROMELLE
04:22				SUB IN: SLATER, COLIN
04:22				MISSED FT by CARTER III, MICHAEL
04:19	REBOUND (DEF) by RAIMO, ZIGMARS			
04:07	SUB OUT: BUGGS, DREW			
04:07	SUB IN: AVEA, SAMUTA			
04:03	TURNOVER (TRAVEL) by RAIMO, ZIGMARS			
04:03				SUB OUT: CARTER III, MICHAEL
04:03				SUB IN: ROBERTS, JORDAN
03:39		27-22	H 5	GOOD! JUMPER by COBB, DREW [PNT]
03:24	MISSED JUMPER by WEBSTER, JUSTIN			
03:18				REBOUND (DEF) by ROBERTS, JORDAN
03:01				TURNOVER (BADPASS) by SLATER, COLIN
03:01	STEAL by STANSBERRY, EDDIE			
02:41	TURNOVER (LOSTBALL) by RAIMO, ZIGMARS			
02:41				STEAL by SLATER, COLIN
02:29				MISSED JUMPER by ROBERTS, JORDAN
02:26	REBOUND (DEF) by RAIMO, ZIGMARS			
02:26				FOUL (PERSONAL) by ROBERTS, JORDAN
02:26				
02:11	GOOD! LAYUP by RAIMO, ZIGMARS	27-24	H 3	
02:11	ASSIST by AVEA, SAMUTA			
01:55	FOUL (PERSONAL) by STANSBERRY, EDDIE			
01:55				SUB OUT: HUNTER, CHANCE
01:55				SUB IN: CARTER III, MICHAEL
01:55		28-24	H 4	GOOD! FT by CARTER III, MICHAEL
01:55		29-24	H 5	GOOD! FT by CARTER III, MICHAEL
01:37	SUB OUT: RAIMO, ZIGMARS			
01:37	SUB IN: HEMSLEY, JUSTIN			
01:34	MISSED 3PTR by WEBSTER, JUSTIN			
01:29	REBOUND (OFF) by RAIMO, ZIGMARS			
01:24	MISSED 3PTR by HEMSLEY, JUSTIN			
01:18				REBOUND (DEF) by MANSEL, ROMELLE
01:13				TIMEOUT 30SEC
01:06	SUB OUT: HULLAND, OWEN			
01:06	SUB IN: RAIMO, ZIGMARS			
00:55		32-24	H 8	GOOD! 3PTR by SLATER, COLIN
00:55				ASSIST by CARTER III, MICHAEL
00:22	MISSED 3PTR by STANSBERRY, EDDIE			
00:18				REBOUND (DEF) by COBB, DREW
00:01	FOUL (PERSONAL) by STANSBERRY, EDDIE			
00:00				MISSED FT by CARTER III, MICHAEL
00:00				REBOUND (OFF) by TEAM
00:00		33-24	H 9	GOOD! FT by CARTER III, MICHAEL
00:00		34-24	H 10	GOOD! FT by CARTER III, MICHAEL
00:00				SUB OUT: CARTER III, MICHAEL
00:00				SUB IN: DE GEEST, MAX

Hawaii 24, Long Beach St. 34

Points from (This Period)	HAW	LBS
In the Paint	4	4
Off Turns	2	4
2nd Chance	0	0
Fast Break	2	7
Bench	9	10

Official Box Score
Hawaii vs Long Beach St.
Second Half Statistics Only
February 22, 2020 at Walter Pyramid - Long Beach

BEACH

Hawaii 36

No.	Player	S	Pts	FG	3FG	FT	OR	DR	TR	PF	A	TO	Blk	Stl	Min	+/-
01	BUGGS, DREW	G	7	3-8	1-2	0-0	2	0	2	2	2	0	0	0	15	10
03	STANSBERRY, EDDIE	G	9	3-8	3-8	0-0	0	1	1	1	0	1	0	1	20	6
14	RAIMO, ZIGMARS	F	4	2-3	0-0	0-1	3	2	5	1	1	1	0	1	17	10
32	AVEA, SAMUTA	F	0	0-2	0-1	0-0	0	1	1	0	2	0	0	0	8	-3
44	CARPER, DAWSON	C	1	0-0	0-0	1-2	0	0	0	0	0	1	0	0	5	-1
02	WEBSTER, JUSTIN	G	10	3-7	0-3	4-5	0	2	2	3	1	0	0	2	17	6
05	DA SILVA, BERNARDO	F	0	0-0	0-0	0-2	0	0	0	0	0	0	0	0	3	-1
15	HULLAND, OWEN	F	0	0-0	0-0	0-0	1	0	1	0	0	0	0	0	3	-4
42	HEMSLEY, JUSTIN	F	5	1-4	0-0	3-4	1	2	3	3	0	1	0	0	11	7
	TEAM						0	1	1	0		2				
TOTALS			36	12-32	4-14	8-14	7	9	16	10	6	6	0	4	100	

Shooting By Period

Period	FG	FG%	3FG	3FG%	FT	FT%
2nd Half	12-32	38%	4-14	29%	8-14	57%
Game	20-60	33.3%	7-28	25.0%	13-20	65.0%

Deadball Rebounds: 3,2

Last FG Half: HAW -

Long Beach St. 30

No.	Player	S	Pts	FG	3FG	FT	OR	DR	TR	PF	A	TO	Blk	Stl	Min	+/-
01	CARTER III, MICHAEL	G	3	1-3	0-1	1-2	0	1	1	1	1	2	0	0	15	-2
02	ROBERTS, JORDAN	G	2	0-1	0-0	2-2	0	3	3	3	1	4	0	0	16	-5
03	COBB, DREW	G	4	1-2	0-1	2-4	0	2	2	2	1	2	0	0	18	-4
14	SLATER, COLIN	G	3	1-2	1-2	0-0	0	2	2	1	1	2	0	0	12	-3
24	MORGAN, JOSHUA	C	6	3-4	0-0	0-0	1	3	4	2	0	1	0	0	12	-7
10	DE GEEST, MAX	G	0	0-1	0-0	0-0	0	1	1	1	0	0	0	0	5	-5
11	GRIFFIN, JORDAN	G	0	0-0	0-0	0-0	0	0	0	0	0	0	0	0	1	-1
13	MANSEL, ROMELLE	F	6	2-3	0-0	2-2	1	0	1	1	0	0	0	0	7	-1
31	HUNTER, CHANCE	G	4	1-3	1-2	1-2	0	3	3	1	0	0	0	0	10	0
32	IRISH, TREVER	C	2	1-1	0-0	0-0	0	1	1	1	0	0	0	0	3	-2
	TEAM						1	1	2	0		2				
TOTALS			30	10-20	2-6	8-12	3	17	20	13	4	13	0	0	100	

Shooting By Period

Period	FG	FG%	3FG	3FG%	FT	FT%
2nd Half	10-20	50%	2-6	33%	8-12	67%
Game	21-45	46.7%	7-14	50.0%	15-27	55.6%

Deadball Rebounds: 5,0

Last FG Half: LBS -

Game Notes:

Officials: Tom Nally, Glen Mayberry, Andy Cohn
Attendance: 2100

Start Time: 07:03 PM ET

End Time: 09:17 PM ET

Game Duration: 2:13

Conference Game;

Score	1st	2nd	TOT
HAW	24	36	60
LBS	34	30	64

Points from (This Period)	HAW	LBS
In the Paint	10	12
Off Turns	8	6
2nd Chance	3	2
Fast Break	0	0
Bench	15	12

Official Play-By-Play
Hawaii vs Long Beach St.
Second Half
February 22, 2020 at Walter Pyramid - Long Beach

BEACH

Period 2

Starters:

Hawaii: 1 BUGGS,DREW (G); 3 STANSBERRY,EDDIE (G); 14 RAIMO,ZIGMARS (F); 32 AVEA,SAMUTA (F); 44 CARPER,DAWSON (C);

Long Beach St.: 1 CARTER III,MICHAEL (G); 2 ROBERTS,JORDAN (G); 3 COBB,DREW (G); 14 SLATER,COLIN (G); 24 MORGAN,JOSHUA (C);

Time	VISITORS: Hawaii	Score	Margin	HOME: Long Beach St.
20:00				SUB OUT: DE GEEST, MAX
20:00				SUB OUT: MANSEL, ROMELLE
20:00				SUB IN: CARTER III, MICHAEL
20:00				SUB IN: MORGAN, JOSHUA
20:00	SUB OUT: AVEA, SAMUTA			
20:00	SUB OUT: HEMSLEY, JUSTIN			
20:00	SUB IN: BUGGS, DREW			
20:00	SUB IN: CARPER, DAWSON			
19:53				TURNOVER (OTHER) by CARTER III, MICHAEL
19:22	TURNOVER (SHOTCLOCK) by TEAM			
19:09		36-24	H 12	GOOD! JUMPER by MORGAN, JOSHUA
19:09				ASSIST by SLATER, COLIN
18:51	MISSED JUMPER by WEBSTER, JUSTIN			
18:46				REBOUND (DEF) by MORGAN, JOSHUA
18:33				MISSED JUMPER by MORGAN, JOSHUA
18:29	REBOUND (DEF) by WEBSTER, JUSTIN			
18:17	GOOD! 3PTR by STANSBERRY, EDDIE	36-27	H 9	
18:17	ASSIST by RAIMO, ZIGMARS			
17:42				MISSED 3PTR by CARTER III, MICHAEL
17:42				REBOUND (OFF) by TEAM
17:42				TURNOVER (SHOTCLOCK) by TEAM
17:27	MISSED JUMPER by RAIMO, ZIGMARS			
17:21				REBOUND (DEF) by COBB, DREW
17:10		39-27	H 12	GOOD! 3PTR by SLATER, COLIN
17:10				ASSIST by COBB, DREW
16:46	TURNOVER (3SEC) by CARPER, DAWSON			
16:45				SUB OUT: CARTER III, MICHAEL
16:45				SUB OUT: MORGAN, JOSHUA
16:45				SUB IN: DE GEEST, MAX
16:45				SUB IN: IRISH, TREVER
16:28				MISSED 3PTR by COBB, DREW
16:21	REBOUND (DEF) by STANSBERRY, EDDIE			
16:18	GOOD! JUMPER by BUGGS, DREW	39-29	H 10	
15:50		41-29	H 12	GOOD! JUMPER by IRISH, TREVER
15:50				ASSIST by ROBERTS, JORDAN
15:35	MISSED 3PTR by WEBSTER, JUSTIN			
15:31				REBOUND (DEF) by SLATER, COLIN
15:28				MISSED LAYUP by DE GEEST, MAX
15:25	REBOUND (DEF) by WEBSTER, JUSTIN			
15:06				FOUL (PERSONAL) by IRISH, TREVER
15:06				
15:06				SUB OUT: ROBERTS, JORDAN
15:06				SUB OUT: COBB, DREW
15:06				SUB IN: CARTER III, MICHAEL
15:06				SUB IN: MANSEL, ROMELLE
15:06	SUB OUT: WEBSTER, JUSTIN			
15:06	SUB IN: AVEA, SAMUTA			
15:03	GOOD! FT by CARPER, DAWSON	41-30	H 11	
15:02	MISSED FT by CARPER, DAWSON			
15:00	REBOUND (OFF) by RAIMO, ZIGMARS			
14:59	MISSED JUMPER by AVEA, SAMUTA			
14:56	REBOUND (OFF) by RAIMO, ZIGMARS			
14:54	MISSED 3PTR by STANSBERRY, EDDIE			
14:47				REBOUND (DEF) by IRISH, TREVER
14:33				SUB OUT: DE GEEST, MAX
14:33				SUB OUT: IRISH, TREVER
14:33				SUB IN: MORGAN, JOSHUA
14:33				SUB IN: HUNTER, CHANCE
14:33	SUB OUT: CARPER, DAWSON			
14:33	SUB IN: DA SILVA, BERNARDO			
14:33				MISSED JUMPER by HUNTER, CHANCE
14:33	REBOUND (DEF) by RAIMO, ZIGMARS			
14:33				FOUL (PERSONAL) by MORGAN, JOSHUA
14:16				FOUL (PERSONAL) by SLATER, COLIN
14:15				SUB OUT: SLATER, COLIN
14:15				SUB IN: COBB, DREW
13:55	TURNOVER (SHOTCLOCK) by TEAM			
13:33		43-30	H 13	GOOD! LAYUP by CARTER III, MICHAEL
13:07	GOOD! 3PTR by BUGGS, DREW	43-33	H 10	
13:07	ASSIST by AVEA, SAMUTA			

Time	VISITORS: Hawaii	Score	Margin	HOME: Long Beach St.
12:45	FOUL (PERSONAL) by RAIMO, ZIGMARS			
12:45				SUB OUT: MORGAN, JOSHUA
12:45				SUB IN: SLATER, COLIN
12:27		45-33	H 12	GOOD! JUMPER by MANSEL, ROMELLE [PNT]
12:04				FOUL (PERSONAL) by HUNTER, CHANCE
12:02				FOUL (PERSONAL) by MANSEL, ROMELLE
12:02	MISSED FT by DA SILVA, BERNARDO			
12:02	REBOUND (OFF) by TEAM			
12:02				SUB OUT: COBB, DREW
12:02				SUB IN: GRIFFIN, JORDAN
12:02	SUB OUT: RAIMO, ZIGMARS			
12:02	SUB IN: HEMSLEY, JUSTIN			
12:02	MISSED FT by DA SILVA, BERNARDO			
12:00				REBOUND (DEF) by HUNTER, CHANCE
11:54	FOUL (PERSONAL) by BUGGS, DREW			
11:54				
11:54	SUB OUT: BUGGS, DREW			
11:54	SUB OUT: DA SILVA, BERNARDO			
11:54	SUB IN: WEBSTER, JUSTIN			
11:54	SUB IN: HULLAND, OWEN			
11:54		46-33	H 13	GOOD! FT by MANSEL, ROMELLE
11:54		47-33	H 14	GOOD! FT by MANSEL, ROMELLE
11:37	GOOD! 3PTR by STANSBERRY, EDDIE	47-36	H 11	
11:37	ASSIST by AVEA, SAMUTA			
11:05				MISSED JUMPER by CARTER III, MICHAEL
11:01				REBOUND (OFF) by MANSEL, ROMELLE
11:00				MISSED JUMPER by MANSEL, ROMELLE
10:55	REBOUND (DEF) by AVEA, SAMUTA			
10:52	TURNOVER (TRAVEL) by STANSBERRY, EDDIE			
10:52				SUB OUT: GRIFFIN, JORDAN
10:52				SUB OUT: SLATER, COLIN
10:52				SUB IN: ROBERTS, JORDAN
10:52				SUB IN: COBB, DREW
10:31		49-36	H 13	GOOD! JUMPER by MANSEL, ROMELLE [PNT]
10:16	MISSED 3PTR by STANSBERRY, EDDIE			
10:12	REBOUND (OFF) by HULLAND, OWEN			
10:07	MISSED 3PTR by AVEA, SAMUTA			
10:01				REBOUND (DEF) by CARTER III, MICHAEL
09:41		52-36	H 16	GOOD! 3PTR by HUNTER, CHANCE
09:29	TIMEOUT 30SEC			
09:29				SUB OUT: CARTER III, MICHAEL
09:29				SUB IN: DE GEEST, MAX
09:21	SUB OUT: HULLAND, OWEN			
09:21	SUB IN: RAIMO, ZIGMARS			
09:16	SUB OUT: AVEA, SAMUTA			
09:16	SUB IN: BUGGS, DREW			
09:08	MISSED 3PTR by STANSBERRY, EDDIE			
09:03	REBOUND (OFF) by RAIMO, ZIGMARS			
08:53	MISSED 3PTR by BUGGS, DREW			
08:50	REBOUND (OFF) by BUGGS, DREW			
08:50				FOUL (PERSONAL) by DE GEEST, MAX
08:48	GOOD! 3PTR by STANSBERRY, EDDIE	52-39	H 13	
08:48	ASSIST by BUGGS, DREW			
08:33				MISSED 3PTR by HUNTER, CHANCE
08:31	REBOUND (DEF) by TEAM			
08:31				SUB OUT: DE GEEST, MAX
08:31				SUB OUT: MANSEL, ROMELLE
08:31				SUB IN: CARTER III, MICHAEL
08:31				SUB IN: MORGAN, JOSHUA
08:15	GOOD! JUMPER by WEBSTER, JUSTIN	52-41	H 11	
08:15	ASSIST by BUGGS, DREW			
07:53				
07:45				TURNOVER (LOSTBALL) by MORGAN, JOSHUA
07:45	STEAL by RAIMO, ZIGMARS			
07:39	MISSED LAYUP by HEMSLEY, JUSTIN			
07:35				REBOUND (DEF) by MORGAN, JOSHUA
07:35	FOUL (PERSONAL) by HEMSLEY, JUSTIN			
07:31	FOUL (PERSONAL) by BUGGS, DREW			
07:31	SUB OUT: BUGGS, DREW			
07:31	SUB IN: AVEA, SAMUTA			
07:22		54-41	H 13	GOOD! JUMPER by MORGAN, JOSHUA
07:22				ASSIST by CARTER III, MICHAEL
06:52	GOOD! LAYUP by WEBSTER, JUSTIN	54-43	H 11	
06:29				TURNOVER (LOSTBALL) by ROBERTS, JORDAN
06:17				SUB OUT: HUNTER, CHANCE
06:17				SUB IN: SLATER, COLIN
06:17	SUB OUT: AVEA, SAMUTA			
06:17	SUB IN: BUGGS, DREW			
06:16				FOUL (PERSONAL) by COBB, DREW
06:16	GOOD! FT by HEMSLEY, JUSTIN	54-44	H 10	

Time	VISITORS: Hawaii	Score	Margin	HOME: Long Beach St.
06:16	GOOD! FT by HEMSLEY, JUSTIN	54-45	H 9	
05:49	FOUL (PERSONAL) by STANSBERRY, EDDIE			
05:49				MISSED FT by CARTER III, MICHAEL
05:49				REBOUND (OFF) by TEAM
05:49		55-45	H 10	GOOD! FT by CARTER III, MICHAEL
05:49				SUB OUT: CARTER III, MICHAEL
05:49				SUB IN: DE GEEST, MAX
05:33	GOOD! LAYUP by RAIMO, ZIGMARS	55-47	H 8	
05:19				TURNOVER (DRIBBLING) by SLATER, COLIN
05:04	MISSED JUMPER by BUGGS, DREW			
04:58	REBOUND (OFF) by HEMSLEY, JUSTIN			
04:52	TURNOVER (BADPASS) by HEMSLEY, JUSTIN			
04:36				FOUL (OFF) by ROBERTS, JORDAN
04:36				TURNOVER (OFFENSIVE) by ROBERTS, JORDAN
04:26	MISSED JUMPER by HEMSLEY, JUSTIN			
04:22				REBOUND (DEF) by DE GEEST, MAX
04:04		57-47	H 10	GOOD! LAYUP by COBB, DREW
04:04	FOUL (PERSONAL) by HEMSLEY, JUSTIN			
04:04				SUB OUT: MORGAN, JOSHUA
04:04				SUB IN: IRISH, TREVER
04:04		58-47	H 11	GOOD! FT by COBB, DREW
03:44	GOOD! LAYUP by RAIMO, ZIGMARS	58-49	H 9	
03:44	ASSIST by WEBSTER, JUSTIN			
03:44				FOUL (PERSONAL) by ROBERTS, JORDAN
03:44				
03:44				SUB OUT: DE GEEST, MAX
03:44				SUB IN: CARTER III, MICHAEL
03:44	MISSED FT by RAIMO, ZIGMARS			
03:39				REBOUND (DEF) by ROBERTS, JORDAN
03:24				MISSED 3PTR by SLATER, COLIN
03:04	REBOUND (DEF) by HEMSLEY, JUSTIN			
03:02	MISSED JUMPER by HEMSLEY, JUSTIN			
03:02				REBOUND (DEF) by TEAM
02:59				SUB OUT: IRISH, TREVER
02:59				SUB IN: MORGAN, JOSHUA
02:54				FOUL (OFF) by COBB, DREW
02:54				TURNOVER (OFFENSIVE) by COBB, DREW
02:42	GOOD! JUMPER by WEBSTER, JUSTIN	58-51	H 7	
02:28	TURNOVER (BADPASS) by RAIMO, ZIGMARS			
02:26				FOUL (PERSONAL) by MORGAN, JOSHUA
02:26	GOOD! FT by HEMSLEY, JUSTIN	58-52	H 6	
02:26	MISSED FT by HEMSLEY, JUSTIN			
02:23				REBOUND (DEF) by SLATER, COLIN
02:23				TURNOVER (DRIBBLING) by SLATER, COLIN
02:23				SUB OUT: SLATER, COLIN
02:23				SUB IN: HUNTER, CHANCE
02:21	MISSED 3PTR by STANSBERRY, EDDIE			
02:17				REBOUND (DEF) by HUNTER, CHANCE
02:17	FOUL (PERSONAL) by HEMSLEY, JUSTIN			
02:17		59-52	H 7	GOOD! FT by HUNTER, CHANCE
02:15				MISSED FT by HUNTER, CHANCE
02:14	REBOUND (DEF) by HEMSLEY, JUSTIN			
02:08	MISSED JUMPER by BUGGS, DREW			
02:02				REBOUND (DEF) by COBB, DREW
02:02				TURNOVER (BADPASS) by COBB, DREW
02:02	STEAL by WEBSTER, JUSTIN			
02:02				FOUL (PERSONAL) by ROBERTS, JORDAN
02:02	GOOD! FT by WEBSTER, JUSTIN	59-53	H 6	
02:02	GOOD! FT by WEBSTER, JUSTIN	59-54	H 5	
01:59				TURNOVER (LOSTBALL) by CARTER III, MICHAEL
01:59				TIMEOUT 30SEC
01:57	MISSED 3PTR by WEBSTER, JUSTIN			
01:54				REBOUND (DEF) by HUNTER, CHANCE
01:31				MISSED LAYUP by ROBERTS, JORDAN
01:21				REBOUND (OFF) by MORGAN, JOSHUA
01:21		61-54	H 7	GOOD! LAYUP by MORGAN, JOSHUA
01:18	MISSED 3PTR by WEBSTER, JUSTIN			
01:15				REBOUND (DEF) by ROBERTS, JORDAN
01:14				TURNOVER (LOSTBALL) by ROBERTS, JORDAN
01:14	STEAL by WEBSTER, JUSTIN			
01:14	GOOD! JUMPER by HEMSLEY, JUSTIN	61-56	H 5	
01:14	TIMEOUT 30SEC			
01:13	SUB OUT: BUGGS, DREW			
01:13	SUB IN: AVEA, SAMUTA			
01:13	FOUL (PERSONAL) by WEBSTER, JUSTIN			
01:10				MISSED FT by COBB, DREW
01:10				REBOUND (OFF) by TEAM
00:50				TURNOVER (SHOTCLOCK) by TEAM
00:37	MISSED 3PTR by STANSBERRY, EDDIE			
00:34				REBOUND (DEF) by MORGAN, JOSHUA

Time	VISITORS: Hawaii	Score	Margin	HOME: Long Beach St.
00:34	FOUL (PERSONAL) by WEBSTER, JUSTIN			
00:34	SUB OUT: HEMSLEY, JUSTIN			
00:34	SUB IN: BUGGS, DREW			
00:34		62-56	H 6	GOOD! FT by COBB, DREW
00:34				MISSED FT by COBB, DREW
00:32	REBOUND (DEF) by RAIMO, ZIGMARS			
00:18				FOUL (PERSONAL) by CARTER III, MICHAEL
00:18	GOOD! FT by WEBSTER, JUSTIN	62-57	H 5	
00:18	MISSED FT by WEBSTER, JUSTIN			
00:18	REBOUND (OFF) by TEAM			
00:18	GOOD! FT by WEBSTER, JUSTIN	62-58	H 4	
00:16	FOUL (PERSONAL) by WEBSTER, JUSTIN			
00:16		63-58	H 5	GOOD! FT by ROBERTS, JORDAN
00:16		64-58	H 6	GOOD! FT by ROBERTS, JORDAN
00:16				TIMEOUT 30SEC
00:16				SUB OUT: HUNTER, CHANCE
00:16				SUB IN: SLATER, COLIN
00:11				SUB OUT: SLATER, COLIN
00:11				SUB IN: MANSEL, ROMELLE
00:07	GOOD! JUMPER by BUGGS, DREW [PNT]	64-60	H 4	
00:07	TIMEOUT TEAM			
00:04				TURNOVER (BADPASS) by ROBERTS, JORDAN
00:04	STEAL by STANSBERRY, EDDIE			
00:02	MISSED JUMPER by BUGGS, DREW			
00:02	REBOUND (OFF) by BUGGS, DREW			
00:02	MISSED JUMPER by BUGGS, DREW			
00:02				REBOUND (DEF) by ROBERTS, JORDAN

Hawaii 60, Long Beach St. 64

Points from (This Period)	HAW	LBS
In the Paint	10	12
Off Turns	8	6
2nd Chance	3	2
Fast Break	0	0
Bench	15	12

Official Scoring/Possession Reference Chart
Hawaii vs Long Beach St.
Period 1
February 22, 2020 at Walter Pyramid - Long Beach

BEACH

Period 1

Starters:

Hawaii: 1 BUGGS,DREW (G); 3 STANSBERRY,EDDIE (G); 14 RAIMO,ZIGMARS (F); 32 AVEA,SAMUTA (F); 44 CARPER,DAWSON (C);

Long Beach St.: 1 CARTER III,MICHAEL (G); 2 ROBERTS,JORDAN (G); 3 COBB,DREW (G); 14 SLATER,COLIN (G); 24 MORGAN,JOSHUA (C);

Time	VISITORS: Hawaii	Score	Margin	HOME: Long Beach St.
18:49		2-0	H 2	GOOD! JUMPER by MORGAN, JOSHUA
18:38		4-0	H 4	GOOD! JUMPER by MORGAN, JOSHUA
18:14	GOOD! FT by CARPER, DAWSON	4-1	H 3	
16:33	GOOD! FT by STANSBERRY, EDDIE [FB]	4-2	H 2	
16:33	GOOD! FT by STANSBERRY, EDDIE [FB]	4-3	H 1	
15:37		6-3	H 3	GOOD! JUMPER by IRISH, TREVER
14:23		7-3	H 4	GOOD! FT by COBB, DREW [FB]
13:41	GOOD! 3PTR by STANSBERRY, EDDIE	7-6	H 1	
13:20		9-6	H 3	GOOD! LAYUP by CARTER III, MICHAEL [PNT]
12:32	GOOD! 3PTR by STANSBERRY, EDDIE	9-9	T	
11:35	GOOD! JUMPER by HEMSLEY, JUSTIN	9-11	V 2	
10:47	GOOD! JUMPER by RAIMO, ZIGMARS	9-13	V 4	
09:54		12-13	V 1	GOOD! 3PTR by CARTER III, MICHAEL [FB]
09:10	GOOD! 3PTR by WEBSTER, JUSTIN	12-16	V 4	
09:06	GOOD! FT by WEBSTER, JUSTIN	12-17	V 5	
09:06	GOOD! FT by WEBSTER, JUSTIN	12-18	V 6	
08:45		15-18	V 3	GOOD! 3PTR by CARTER III, MICHAEL
08:10		16-18	V 2	GOOD! FT by ROBERTS, JORDAN
07:38	GOOD! JUMPER by STANSBERRY, EDDIE	16-20	V 4	
07:29		17-20	V 3	GOOD! FT by ROBERTS, JORDAN
07:13		19-20	V 1	GOOD! JUMPER by HUNTER, CHANCE
06:51		22-20	H 2	GOOD! 3PTR by DE GEEST, MAX
06:20		25-20	H 5	GOOD! 3PTR by HUNTER, CHANCE [FB]
04:44	GOOD! JUMPER by HULLAND, OWEN [PNT]	25-22	H 3	
03:39		27-22	H 5	GOOD! JUMPER by COBB, DREW [PNT]
02:11	GOOD! LAYUP by RAIMO, ZIGMARS	27-24	H 3	
01:55		28-24	H 4	GOOD! FT by CARTER III, MICHAEL
01:55		29-24	H 5	GOOD! FT by CARTER III, MICHAEL
00:55		32-24	H 8	GOOD! 3PTR by SLATER, COLIN
00:00		33-24	H 9	GOOD! FT by CARTER III, MICHAEL
00:00		34-24	H 10	GOOD! FT by CARTER III, MICHAEL

Hawaii 24, Long Beach St. 34

Official Scoring/Possession Reference Chart
Hawaii vs Long Beach St.
Period 2
February 22, 2020 at Walter Pyramid - Long Beach

BEACH

Period 2

Starters:

Hawaii: 1 BUGGS,DREW (G); 3 STANSBERRY,EDDIE (G); 14 RAIMO,ZIGMARS (F); 32 AVEA,SAMUTA (F); 44 CARPER,DAWSON (C);

Long Beach St.: 1 CARTER III,MICHAEL (G); 2 ROBERTS,JORDAN (G); 3 COBB,DREW (G); 14 SLATER,COLIN (G); 24 MORGAN,JOSHUA (C);

Time	VISITORS: Hawaii	Score	Margin	HOME: Long Beach St.
19:09		36-24	H 12	GOOD! JUMPER by MORGAN, JOSHUA
18:17	GOOD! 3PTR by STANSBERRY, EDDIE	36-27	H 9	
17:10		39-27	H 12	GOOD! 3PTR by SLATER, COLIN
16:18	GOOD! JUMPER by BUGGS, DREW	39-29	H 10	
15:50		41-29	H 12	GOOD! JUMPER by IRISH, TREVER
15:03	GOOD! FT by CARPER, DAWSON	41-30	H 11	
13:33		43-30	H 13	GOOD! LAYUP by CARTER III, MICHAEL
13:07	GOOD! 3PTR by BUGGS, DREW	43-33	H 10	
12:27		45-33	H 12	GOOD! JUMPER by MANSEL, ROMELLE [PNT]
11:54		46-33	H 13	GOOD! FT by MANSEL, ROMELLE
11:54		47-33	H 14	GOOD! FT by MANSEL, ROMELLE
11:37	GOOD! 3PTR by STANSBERRY, EDDIE	47-36	H 11	
10:31		49-36	H 13	GOOD! JUMPER by MANSEL, ROMELLE [PNT]
09:41		52-36	H 16	GOOD! 3PTR by HUNTER, CHANCE
08:48	GOOD! 3PTR by STANSBERRY, EDDIE	52-39	H 13	
08:15	GOOD! JUMPER by WEBSTER, JUSTIN	52-41	H 11	
07:22		54-41	H 13	GOOD! JUMPER by MORGAN, JOSHUA
06:52	GOOD! LAYUP by WEBSTER, JUSTIN	54-43	H 11	
06:16	GOOD! FT by HEMSLEY, JUSTIN	54-44	H 10	
06:16	GOOD! FT by HEMSLEY, JUSTIN	54-45	H 9	
05:49		55-45	H 10	GOOD! FT by CARTER III, MICHAEL
05:33	GOOD! LAYUP by RAIMO, ZIGMARS	55-47	H 8	
04:04		57-47	H 10	GOOD! LAYUP by COBB, DREW
04:04		58-47	H 11	GOOD! FT by COBB, DREW
03:44	GOOD! LAYUP by RAIMO, ZIGMARS	58-49	H 9	
02:42	GOOD! JUMPER by WEBSTER, JUSTIN	58-51	H 7	
02:26	GOOD! FT by HEMSLEY, JUSTIN	58-52	H 6	
02:17		59-52	H 7	GOOD! FT by HUNTER, CHANCE
02:02	GOOD! FT by WEBSTER, JUSTIN	59-53	H 6	
02:02	GOOD! FT by WEBSTER, JUSTIN	59-54	H 5	
01:21		61-54	H 7	GOOD! LAYUP by MORGAN, JOSHUA
01:14	GOOD! JUMPER by HEMSLEY, JUSTIN	61-56	H 5	
00:34		62-56	H 6	GOOD! FT by COBB, DREW
00:18	GOOD! FT by WEBSTER, JUSTIN	62-57	H 5	
00:18	GOOD! FT by WEBSTER, JUSTIN	62-58	H 4	
00:16		63-58	H 5	GOOD! FT by ROBERTS, JORDAN
00:16		64-58	H 6	GOOD! FT by ROBERTS, JORDAN
00:07	GOOD! JUMPER by BUGGS, DREW [PNT]	64-60	H 4	

Hawaii 60, Long Beach St. 64

Official Substitutions Log
Hawaii vs Long Beach St.
Period 1
February 22, 2020 at Walter Pyramid - Long Beach

BEACH

VISITORS: Hawaii	Time	Score	HOME: Long Beach St.
1 BUGGS,DREW			1 CARTER III,MICHAEL
3 STANSBERRY,EDDIE			2 ROBERTS,JORDAN
14 RAIMO,ZIGMARS			3 COBB,DREW
32 AVEA,SAMUTA			14 SLATER,COLIN
44 CARPER,DAWSON			24 MORGAN,JOSHUA
	15:37	3-6	SUB OUT: ROBERTS,JORDAN
	15:37		SUB OUT: COBB,DREW
	15:37		SUB OUT: MORGAN,JOSHUA
	15:37		SUB IN: MANSEL,ROMELLE
	15:37		SUB IN: HUNTER,CHANCE
	15:37		SUB IN: IRISH,TREVER
SUB OUT: 44 CARPER,DAWSON	15:37		
SUB IN: 5 DA SILVA,BERNARDO	15:37		
	15:29	3-6	SUB OUT: SLATER,COLIN
	15:29		SUB IN: COBB,DREW
SUB OUT: 1 BUGGS,DREW	15:14	3-6	
SUB IN: 2 WEBSTER,JUSTIN	15:14		
	14:23	3-7	SUB OUT: IRISH,TREVER
	14:23		SUB IN: ROBERTS,JORDAN
SUB OUT: 5 DA SILVA,BERNARDO	14:23		
SUB IN: 44 CARPER,DAWSON	14:23		
	12:09	9-9	SUB OUT: CARTER III,MICHAEL
	12:09		SUB OUT: COBB,DREW
	12:09		SUB OUT: HUNTER,CHANCE
	12:09		SUB IN: DE GEEST,MAX
	12:09		SUB IN: GRIFFIN,JORDAN
	12:09		SUB IN: SLATER,COLIN
SUB OUT: 32 AVEA,SAMUTA	12:09		
SUB OUT: 44 CARPER,DAWSON	12:09		
SUB IN: 15 HULLAND,OWEN	12:09		
SUB IN: 42 HEMSLEY,JUSTIN	12:09		
SUB OUT: 14 RAIMO,ZIGMARS	11:58	9-9	
SUB IN: 32 AVEA,SAMUTA	11:58		
SUB OUT: 15 HULLAND,OWEN	10:47	11-9	
SUB IN: 14 RAIMO,ZIGMARS	10:47		
	10:47		SUB OUT: SLATER,COLIN
	10:47		SUB IN: IRISH,TREVER
	10:47		SUB OUT: DE GEEST,MAX
	10:47		SUB OUT: MANSEL,ROMELLE
	10:47		SUB OUT: IRISH,TREVER
	10:47		SUB IN: CARTER III,MICHAEL
	10:47		SUB IN: SLATER,COLIN
	10:47		SUB IN: MORGAN,JOSHUA
SUB OUT: 14 RAIMO,ZIGMARS	10:47		
SUB IN: 15 HULLAND,OWEN	10:47		
SUB OUT: 3 STANSBERRY,EDDIE	09:27	13-12	
SUB OUT: 15 HULLAND,OWEN	09:27		
SUB IN: 1 BUGGS,DREW	09:27		
SUB IN: 14 RAIMO,ZIGMARS	09:27		
	08:46	18-12	SUB OUT: GRIFFIN,JORDAN
	08:46		SUB IN: COBB,DREW
	07:53	18-16	SUB OUT: MORGAN,JOSHUA
	07:53		SUB IN: IRISH,TREVER
SUB OUT: 32 AVEA,SAMUTA	07:53		
SUB IN: 3 STANSBERRY,EDDIE	07:53		
	07:43	18-16	SUB OUT: SLATER,COLIN
	07:43		SUB IN: DE GEEST,MAX
	07:23	20-17	SUB OUT: ROBERTS,JORDAN
	07:23		SUB IN: HUNTER,CHANCE
SUB OUT: 14 RAIMO,ZIGMARS	06:20	20-25	
SUB IN: 15 HULLAND,OWEN	06:20		
SUB OUT: 42 HEMSLEY,JUSTIN	06:20		
SUB IN: 14 RAIMO,ZIGMARS	06:20		
	04:22	22-25	SUB OUT: DE GEEST,MAX
	04:22		SUB OUT: IRISH,TREVER
	04:22		SUB IN: MANSEL,ROMELLE
	04:22		SUB IN: SLATER,COLIN
SUB OUT: 1 BUGGS,DREW	04:07	22-25	
SUB IN: 32 AVEA,SAMUTA	04:07		
	04:03	22-25	SUB OUT: CARTER III,MICHAEL
	04:03		SUB IN: ROBERTS,JORDAN
	01:55	24-27	SUB OUT: HUNTER,CHANCE
	01:55		SUB IN: CARTER III,MICHAEL
SUB OUT: 14 RAIMO,ZIGMARS	01:37	24-29	
SUB IN: 42 HEMSLEY,JUSTIN	01:37		

VISITORS: Hawaii		Time	Score	HOME: Long Beach St.
SUB OUT: 15 HULLAND,OWEN		01:06	24-29	
SUB IN: 14 RAIMO,ZIGMARS		01:06		
		00:00	24-34	SUB OUT: CARTER III,MICHAEL
		00:00		SUB IN: DE GEEST,MAX

Hawaii 24, Long Beach St. 34

Official Substitutions Log
Hawaii vs Long Beach St.
Period 2
February 22, 2020 at Walter Pyramid - Long Beach

BEACH

VISITORS: Hawaii	Time	Score	HOME: Long Beach St.
1 BUGGS,DREW			1 CARTER III,MICHAEL
3 STANSBERRY,EDDIE			2 ROBERTS,JORDAN
14 RAIMO,ZIGMARS			3 COBB,DREW
32 AVEA,SAMUTA			14 SLATER,COLIN
44 CARPER,DAWSON			24 MORGAN,JOSHUA
	20:00	-	SUB OUT: DE GEEST,MAX
	20:00		SUB OUT: MANSEL,ROMELLE
	20:00		SUB IN: CARTER III,MICHAEL
	20:00		SUB IN: MORGAN,JOSHUA
SUB OUT: 32 AVEA,SAMUTA	20:00		
SUB OUT: 42 HEMSLEY,JUSTIN	20:00		
SUB IN: 1 BUGGS,DREW	20:00		
SUB IN: 44 CARPER,DAWSON	20:00		
	16:45	27-39	SUB OUT: CARTER III,MICHAEL
	16:45		SUB OUT: MORGAN,JOSHUA
	16:45		SUB IN: DE GEEST,MAX
	16:45		SUB IN: IRISH,TREVER
	15:06	29-41	SUB OUT: ROBERTS,JORDAN
	15:06		SUB OUT: COBB,DREW
	15:06		SUB IN: CARTER III,MICHAEL
	15:06		SUB IN: MANSEL,ROMELLE
SUB OUT: 2 WEBSTER,JUSTIN	15:06		
SUB IN: 32 AVEA,SAMUTA	15:06		
	14:33	30-41	SUB OUT: DE GEEST,MAX
	14:33		SUB OUT: IRISH,TREVER
	14:33		SUB IN: MORGAN,JOSHUA
	14:33		SUB IN: HUNTER,CHANCE
SUB OUT: 44 CARPER,DAWSON	14:33		
SUB IN: 5 DA SILVA,BERNARDO	14:33		
	14:15	30-41	SUB OUT: SLATER,COLIN
	14:15		SUB IN: COBB,DREW
	12:45	33-43	SUB OUT: MORGAN,JOSHUA
	12:45		SUB IN: SLATER,COLIN
	12:02	33-45	SUB OUT: COBB,DREW
	12:02		SUB IN: GRIFFIN,JORDAN
SUB OUT: 14 RAIMO,ZIGMARS	12:02		
SUB IN: 42 HEMSLEY,JUSTIN	12:02		
SUB OUT: 1 BUGGS,DREW	11:54	33-45	
SUB OUT: 5 DA SILVA,BERNARDO	11:54		
SUB IN: 2 WEBSTER,JUSTIN	11:54		
SUB IN: 15 HULLAND,OWEN	11:54		
	10:52	36-47	SUB OUT: GRIFFIN,JORDAN
	10:52		SUB OUT: SLATER,COLIN
	10:52		SUB IN: ROBERTS,JORDAN
	10:52		SUB IN: COBB,DREW
	09:29	36-52	SUB OUT: CARTER III,MICHAEL
	09:29		SUB IN: DE GEEST,MAX
SUB OUT: 15 HULLAND,OWEN	09:21	36-52	
SUB IN: 14 RAIMO,ZIGMARS	09:21		
SUB OUT: 32 AVEA,SAMUTA	09:16	36-52	
SUB IN: 1 BUGGS,DREW	09:16		
	08:31	39-52	SUB OUT: DE GEEST,MAX
	08:31		SUB OUT: MANSEL,ROMELLE
	08:31		SUB IN: CARTER III,MICHAEL
	08:31		SUB IN: MORGAN,JOSHUA
SUB OUT: 1 BUGGS,DREW	07:31	41-52	
SUB IN: 32 AVEA,SAMUTA	07:31		
	06:17	43-54	SUB OUT: HUNTER,CHANCE
	06:17		SUB IN: SLATER,COLIN
SUB OUT: 32 AVEA,SAMUTA	06:17		
SUB IN: 1 BUGGS,DREW	06:17		
	05:49	45-55	SUB OUT: CARTER III,MICHAEL
	05:49		SUB IN: DE GEEST,MAX
	04:04	47-57	SUB OUT: MORGAN,JOSHUA
	04:04		SUB IN: IRISH,TREVER
	03:44	49-58	SUB OUT: DE GEEST,MAX
	03:44		SUB IN: CARTER III,MICHAEL
	02:59	49-58	SUB OUT: IRISH,TREVER
	02:59		SUB IN: MORGAN,JOSHUA
	02:23	52-58	SUB OUT: SLATER,COLIN
	02:23		SUB IN: HUNTER,CHANCE
SUB OUT: 1 BUGGS,DREW	01:13	56-61	
SUB IN: 32 AVEA,SAMUTA	01:13		
SUB OUT: 42 HEMSLEY,JUSTIN	00:34	56-61	
SUB IN: 1 BUGGS,DREW	00:34		

VISITORS: Hawaii		Time	Score	HOME: Long Beach St.
		00:16	58-64	SUB OUT: HUNTER, CHANCE
		00:16		SUB IN: SLATER, COLIN
		00:11	58-64	SUB OUT: SLATER, COLIN
		00:11		SUB IN: MANSEL, ROMELLE

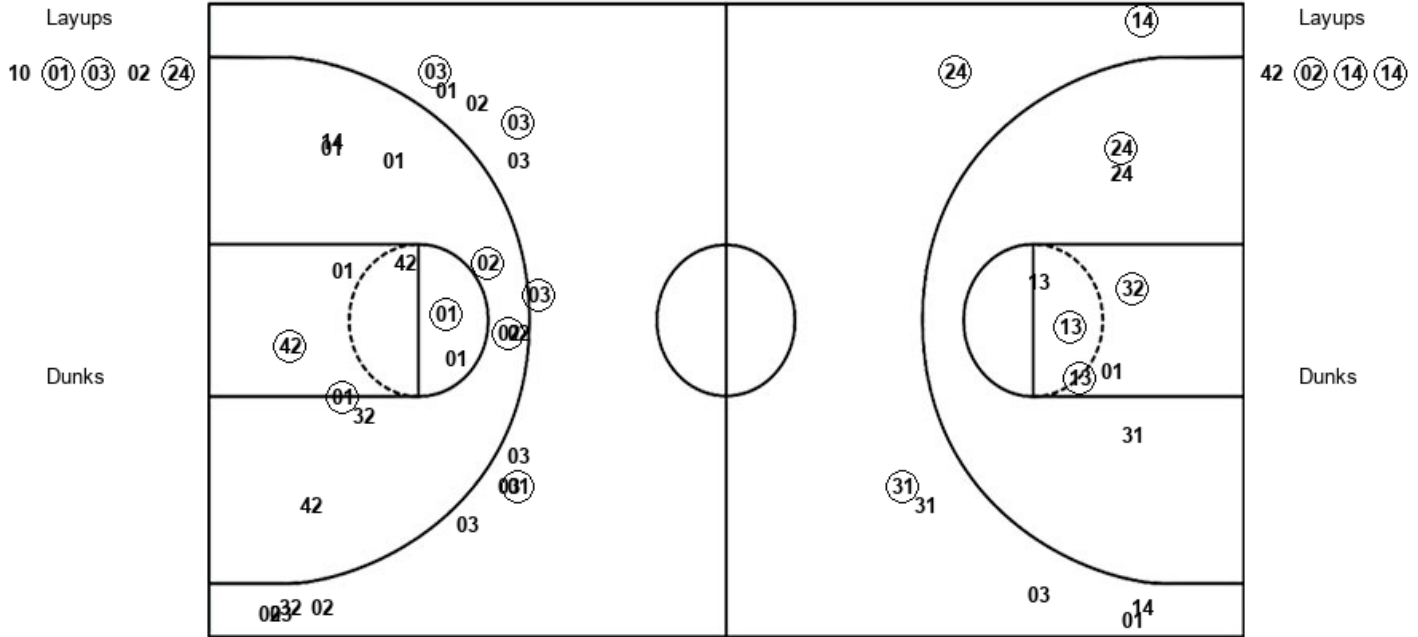
Hawaii 60, Long Beach St. 64

Official Shot Chart
Hawaii vs Long Beach St.
 PERIOD 2 Shots
 February 22, 2020 at Walter Pyramid - Long Beach

BEACH

Long Beach St.

Hawaii

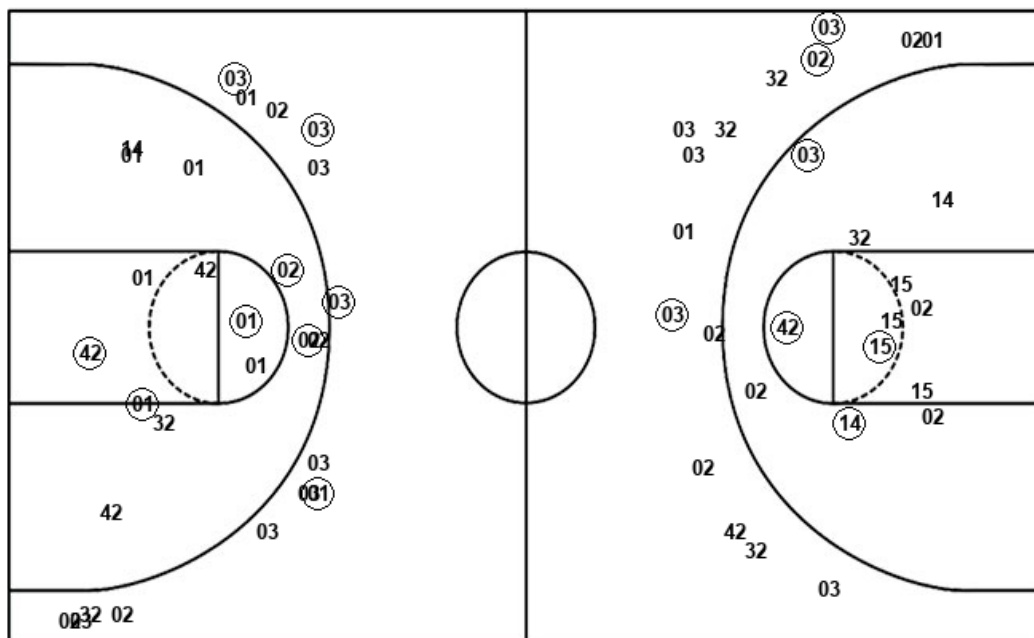


Official Shot Chart
Hawaii vs Long Beach St.
Hawaii Team Shots
February 22, 2020 at Walter Pyramid - Long Beach

BEACH

Layups

Dunks



Layups

Dunks

HAW : Period 1	Made	Att	Pct
Layups	1	1	100.0
Dunks	0	0	0
2PT Field Goals	5	14	35.7
3PT Field Goals	3	14	21.4
Total Field Goals	8	28	28.6

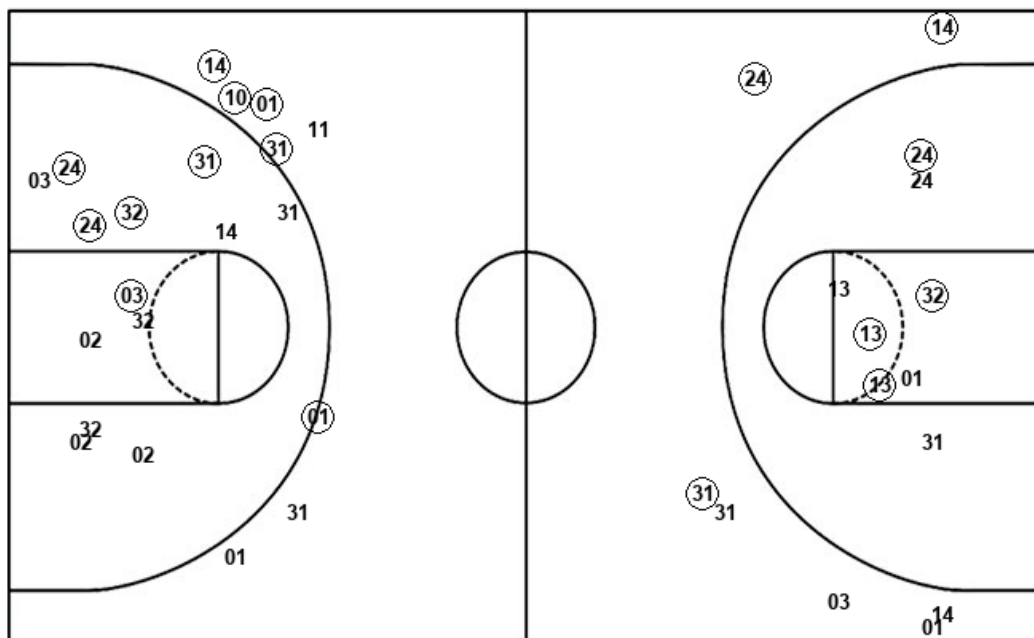
HAW : Period 2	Made	Att	Pct
Layups	3	4	75.0
Dunks	0	0	0
2PT Field Goals	8	18	44.4
3PT Field Goals	4	14	28.6
Total Field Goals	12	32	37.5

Official Shot Chart
Hawaii vs Long Beach St.
 Long Beach St. Team Shots
 February 22, 2020 at Walter Pyramid - Long Beach

BEACH

Layups

Dunks



Layups

Dunks

LBS : Period 1	Made	Att	Pct
Layups	1	4	25.0
Dunks	0	0	0
2PT Field Goals	6	17	35.3
3PT Field Goals	5	8	62.5
Total Field Goals	11	25	44.0

LBS : Period 2	Made	Att	Pct
Layups	3	5	60.0
Dunks	0	0	0
2PT Field Goals	8	14	57.1
3PT Field Goals	2	6	33.3
Total Field Goals	10	20	50.0