

FINAL SCORE



UC Irvine

56

Long Beach St.

BEACH

63

January 22, 2020 • Walter Pyramid - Long Beach

FINAL STATISTICS

Official Box Score
UC Irvine vs Long Beach St.
Game Totals -- Final Statistics
January 22, 2020 at Walter Pyramid - Long Beach

BEACH

UC Irvine 56

No.	Player	S	Pts	FG	3FG	FT	OR	DR	TR	PF	A	TO	Blk	Stl	Min	+/-
04	KRAUSE, AIDEN	G	2	1-1	0-0	0-1	0	0	0	1	0	0	0	0	11	2
14	LEONARD, EVAN	G	14	5-17	3-10	1-2	1	4	5	2	3	4	0	2	33	-1
24	WORKU, EYASSU	G	7	2-10	0-6	3-4	2	0	2	2	0	1	0	2	30	-8
42	RUTHERFORD, TOMMY	F	10	5-6	0-0	0-1	4	1	5	0	0	0	2	0	23	-8
55	GREENE, BRAD	C	5	2-4	0-0	1-1	2	4	6	2	1	1	1	1	22	-3
05	LEE, ISAIAH	G	6	2-8	2-5	0-0	0	2	2	0	0	2	0	0	16	-6
11	EDGAR JR., JOHN	F	10	4-7	0-1	2-2	2	4	6	3	1	4	0	2	22	-10
13	JOHNSON, AUSTIN	F	0	0-1	0-0	0-0	0	2	2	4	0	1	0	0	7	-4
15	ARTEST, JERON	G	0	0-1	0-1	0-0	0	0	0	2	0	1	0	0	8	2
40	WELP, COLLIN	F	2	1-10	0-3	0-0	3	5	8	2	5	2	0	1	27	1
TEAM							2	0	2	0		0				
TOTALS			56	22-65	5-26	7-11	16	22	38	18	10	16	3	8	200	

Shooting By Period

Period	FG	FG%	3FG	3FG%	FT	FT%
1st Half	9-32	28%	2-14	14%	3-3	100%
2nd Half	13-33	39%	3-12	25%	4-8	50%
Game	22-65	33.8%	5-26	19.2%	7-11	63.6%

Deadball Rebounds: 0,0

Last FG: 2nd-00:18

Biggest Run: 8-0

Largest lead: By 4 at 1st-03:41

Technical Fouls: None.

Long Beach St. 63

No.	Player	S	Pts	FG	3FG	FT	OR	DR	TR	PF	A	TO	Blk	Stl	Min	+/-
03	COBB, DREW	G	4	1-4	0-1	2-2	1	4	5	1	0	1	0	0	31	-3
13	MANSEL, ROMELLE	F	5	1-4	0-1	3-6	1	4	5	1	0	2	2	1	32	13
14	SLATER, COLIN	G	19	7-11	0-0	5-6	0	4	4	2	3	0	0	2	35	15
24	MORGAN, JOSHUA	C	7	3-5	0-0	1-2	0	6	6	3	1	3	2	0	28	0
31	HUNTER, CHANCE	G	11	5-15	1-5	0-0	0	5	5	5	0	4	0	0	27	5
02	ROBERTS, JORDAN	G	4	2-5	0-0	0-1	1	4	5	0	0	2	2	1	22	0
10	DE GEEST, MAX	G	5	1-2	1-2	2-3	1	0	1	0	0	0	0	0	7	-3
11	GRIFFIN, JORDAN	G	0	0-1	0-1	0-0	0	0	0	0	0	0	0	1	6	1
32	IRISH, TREVER	C	8	4-5	0-0	0-0	0	1	1	2	1	1	1	0	12	7
TEAM							4	3	7	0		2				
TOTALS			63	24-52	2-10	13-20	8	31	39	14	5	15	7	5	200	

Shooting By Period

Period	FG	FG%	3FG	3FG%	FT	FT%
1st Half	10-28	36%	1-7	14%	4-7	57%
2nd Half	14-24	58%	1-3	33%	9-13	69%
Game	24-52	46.2%	2-10	20.0%	13-20	65.0%

Deadball Rebounds: 5,0

Last FG: 2nd-03:22

Biggest Run: 12-0

Largest lead: By 12 at 2nd-16:57

Technical Fouls: None.

Game Notes:

Officials: **Deldre Carr, Daryl Gelinas, Jeff Wooten**
Attendance: **2262**

Start Time: **10:03 PM ET**

End Time: **12:09 AM ET**

Game Duration: **2:06**

Conference Game;

Score	1st	2nd	TOT
UCI	23	33	56
LBS	25	38	63

UCI led for 2:50. LBS led for 31:10.

Game was tied for 6:01.

Times tied: **4** Lead Changes: **2**

Points from	UCI	LBS
In the Paint	28	28
Off Turns	11	16
2nd Chance	10	12
Fast Break	5	6
Bench	18	17

Official Box Score
UC Irvine vs Long Beach St.
First Half Statistics Only
January 22, 2020 at Walter Pyramid - Long Beach

BEACH

UC Irvine 23

No.	Player	S	Pts	FG	3FG	FT	OR	DR	TR	PF	A	TO	Blk	Stl	Min	+/-
04	KRAUSE, AIDEN	G	0	0-0	0-0	0-0	0	0	0	0	0	0	0	0	6	2
14	LEONARD, EVAN	G	5	2-8	1-5	0-0	1	1	2	0	1	3	0	2	15	2
24	WORKU, EYASSU	G	0	0-6	0-4	0-0	1	0	1	0	0	0	0	1	14	0
42	RUTHERFORD, TOMMY	F	2	1-1	0-0	0-0	1	1	2	0	0	0	1	0	12	2
55	GREENE, BRAD	C	5	2-3	0-0	1-1	1	4	5	1	1	1	0	0	11	2
05	LEE, ISAIAH	G	3	1-3	1-1	0-0	0	2	2	0	0	1	0	0	10	-4
11	EDGAR JR., JOHN	F	8	3-6	0-1	2-2	2	2	4	2	1	2	0	2	12	-6
13	JOHNSON, AUSTIN	F	0	0-1	0-0	0-0	0	2	2	2	0	0	0	0	6	-2
15	ARTEST, JERON	G	0	0-1	0-1	0-0	0	0	0	0	0	0	0	0	4	-1
40	WELP, COLLIN	F	0	0-3	0-2	0-0	0	1	1	0	1	2	0	1	11	-5
TEAM							1	0	1	0		0				
TOTALS			23	9-32	2-14	3-3	7	13	20	5	4	9	1	6	100	

Shooting By Period

Period	FG	FG%	3FG	3FG%	FT	FT%
1st Half	9-32	28%	2-14	14%	3-3	100%
Game	22-65	33.8%	5-26	19.2%	7-11	63.6%

Deadball Rebounds: 0,0

Last FG Half: UCI 2nd-00:18

Long Beach St. 25

No.	Player	S	Pts	FG	3FG	FT	OR	DR	TR	PF	A	TO	Blk	Stl	Min	+/-
03	COBB, DREW	G	0	0-2	0-1	0-0	0	2	2	1	0	1	0	0	14	-4
13	MANSEL, ROMELLE	F	1	0-2	0-1	1-2	0	3	3	0	0	2	0	1	15	5
14	SLATER, COLIN	G	8	4-6	0-0	0-0	0	3	3	2	1	0	0	1	18	8
24	MORGAN, JOSHUA	C	5	2-4	0-0	1-2	0	2	2	1	0	0	1	0	14	-1
31	HUNTER, CHANCE	G	4	2-8	0-3	0-0	0	2	2	1	0	3	0	0	14	5
02	ROBERTS, JORDAN	G	2	1-3	0-0	0-0	0	2	2	0	0	1	1	0	12	0
10	DE GEEST, MAX	G	5	1-1	1-1	2-3	1	0	1	0	0	0	0	0	4	-1
11	GRIFFIN, JORDAN	G	0	0-1	0-1	0-0	0	0	0	0	0	0	0	1	3	-5
32	IRISH, TREVER	C	0	0-1	0-0	0-0	0	0	0	1	0	1	1	0	6	3
TEAM							4	2	6	0		1				
TOTALS			25	10-28	1-7	4-7	5	16	21	6	1	9	3	3	100	

Shooting By Period

Period	FG	FG%	3FG	3FG%	FT	FT%
1st Half	10-28	36%	1-7	14%	4-7	57%
Game	24-52	46.2%	2-10	20.0%	13-20	65.0%

Deadball Rebounds: 5,0

Last FG Half: LBS 2nd-03:22

Game Notes:

Officials: Deldre Carr, Daryl Gelinas, Jeff Wooten
Attendance: 2262

Start Time: 10:03 PM ET
End Time: 12:09 AM ET
Game Duration: 2:06
Conference Game;

Score	1st	2nd	TOT
UCI	23	33	56
LBS	25	38	63

Points from (This Period)	UCI	LBS
In the Paint	12	10
Off Turns	4	6
2nd Chance	3	6
Fast Break	2	2
Bench	11	7

Official Play-By-Play
UC Irvine vs Long Beach St.
First Half
January 22, 2020 at Walter Pyramid - Long Beach

BEACH

Period 1

Starters:

UC Irvine: 4 KRAUSE, AIDEN (G); 14 LEONARD, EVAN (G); 24 WORKU, EYASSU (G); 42 RUTHERFORD, TOMMY (F); 55 GREENE, BRAD (C);
Long Beach St.: 3 COBB, DREW (G); 13 MANSEL, ROMELLE (F); 14 SLATER, COLIN (G); 24 MORGAN, JOSHUA (C); 31 HUNTER, CHANCE (G);

Time	VISITORS: UC Irvine	Score	Margin	HOME: Long Beach St.
19:33	MISSED JUMPER by GREENE, BRAD			
19:28				REBOUND (DEF) by MANSEL, ROMELLE
19:03				TURNOVER (TRAVEL) by HUNTER, CHANCE
18:47	TURNOVER (BADPASS) by LEONARD, EVAN			
18:41				TURNOVER (BADPASS) by HUNTER, CHANCE
18:41	STEAL by LEONARD, EVAN			
18:36	TURNOVER (LOSTBALL) by LEONARD, EVAN			
18:36				STEAL by SLATER, COLIN
18:31		2-0	H 2	GOOD! LAYUP by SLATER, COLIN [FB]
18:17	FOUL (OFF) by GREENE, BRAD			
18:17	TURNOVER (OFFENSIVE) by GREENE, BRAD			
18:08				MISSED JUMPER by HUNTER, CHANCE
18:08	BLOCK by RUTHERFORD, TOMMY			
18:02	REBOUND (DEF) by GREENE, BRAD			
17:45	MISSED 3PTR by LEONARD, EVAN			
17:40				REBOUND (DEF) by HUNTER, CHANCE
17:36		4-0	H 4	GOOD! JUMPER by SLATER, COLIN
17:15	MISSED 3PTR by WORKU, EYASSU			
17:12				REBOUND (DEF) by MANSEL, ROMELLE
17:00				MISSED JUMPER by MORGAN, JOSHUA
16:56	REBOUND (DEF) by GREENE, BRAD			
16:53				FOUL (PERSONAL) by SLATER, COLIN
16:53				SUB OUT: MORGAN, JOSHUA
16:53				SUB IN: IRISH, TREVER
16:53	SUB OUT: RUTHERFORD, TOMMY			
16:53	SUB OUT: GREENE, BRAD			
16:53	SUB IN: JOHNSON, AUSTIN			
16:53	SUB IN: WELP, COLLIN			
16:45	MISSED JUMPER by LEONARD, EVAN			
16:42				REBOUND (DEF) by TEAM
16:25				MISSED JUMPER by IRISH, TREVER
16:24				REBOUND (OFF) by TEAM
16:04				TURNOVER (SHOTCLOCK) by TEAM
15:52				
15:52				SUB OUT: IRISH, TREVER
15:52				SUB IN: MORGAN, JOSHUA
15:52	SUB OUT: KRAUSE, AIDEN			
15:52	SUB OUT: LEONARD, EVAN			
15:52	SUB IN: LEE, ISAIAH			
15:52	SUB IN: EDGAR JR., JOHN			
15:51	TURNOVER (DRIBBLING) by LEONARD, EVAN			
15:37				MISSED JUMPER by SLATER, COLIN
15:33	REBOUND (DEF) by EDGAR JR., JOHN			
15:18	TURNOVER (LOSTBALL) by WELP, COLLIN			
15:18				STEAL by MANSEL, ROMELLE
15:09				MISSED 3PTR by HUNTER, CHANCE
15:06				REBOUND (OFF) by TEAM
15:06		6-0	H 6	GOOD! JUMPER by MORGAN, JOSHUA [PNT]
14:53	MISSED 3PTR by WORKU, EYASSU			
14:49				REBOUND (DEF) by TEAM
14:42				TURNOVER (BADPASS) by COBB, DREW
14:42	STEAL by WELP, COLLIN			
14:36	GOOD! JUMPER by EDGAR JR., JOHN	6-2	H 4	
14:24				MISSED 3PTR by COBB, DREW
14:20	REBOUND (DEF) by LEE, ISAIAH			
14:16	FOUL (OFF) by EDGAR JR., JOHN			
14:16	TURNOVER (OFFENSIVE) by EDGAR JR., JOHN			
14:16				SUB OUT: HUNTER, CHANCE
14:16				SUB IN: ROBERTS, JORDAN
13:57		8-2	H 6	GOOD! JUMPER by SLATER, COLIN
13:36	MISSED JUMPER by JOHNSON, AUSTIN			
13:31				REBOUND (DEF) by COBB, DREW
13:07				MISSED JUMPER by SLATER, COLIN
13:05	REBOUND (DEF) by JOHNSON, AUSTIN			
13:00	MISSED JUMPER by WORKU, EYASSU			
12:55				REBOUND (DEF) by MANSEL, ROMELLE
12:45	FOUL (PERSONAL) by JOHNSON, AUSTIN			
12:45				MISSED FT by MORGAN, JOSHUA
12:45				REBOUND (OFF) by TEAM
12:45	SUB OUT: JOHNSON, AUSTIN			

Time	VISITORS: UC Irvine	Score	Margin	HOME: Long Beach St.
12:45	SUB OUT: WORKU, EYASSU			
12:45	SUB IN: LEONARD, EVAN			
12:45	SUB IN: RUTHERFORD, TOMMY			
12:45				SUB OUT: MANSEL, ROMELLE
12:45				SUB IN: HUNTER, CHANCE
12:45		9-2	H 7	GOOD! FT by MORGAN, JOSHUA
12:45				SUB OUT: MORGAN, JOSHUA
12:45				SUB IN: IRISH, TREVER
12:32	GOOD! JUMPER by RUTHERFORD, TOMMY [PNT]	9-4	H 5	
12:32	ASSIST by LEONARD, EVAN			
12:16				TURNOVER (LOSTBALL) by HUNTER, CHANCE
12:16	STEAL by EDGAR JR., JOHN			
12:12				FOUL (PERSONAL) by IRISH, TREVER
12:12	GOOD! FT by EDGAR JR., JOHN [FB]	9-5	H 4	
12:12				SUB OUT: COBB, DREW
12:12				SUB IN: DE GEEST, MAX
12:12	GOOD! FT by EDGAR JR., JOHN [FB]	9-6	H 3	
11:50				MISSED 3PTR by HUNTER, CHANCE
11:44	REBOUND (DEF) by LEE, ISAIAH			
11:40	MISSED 3PTR by WELP, COLLIN			
11:35				REBOUND (DEF) by SLATER, COLIN
11:27		11-6	H 5	GOOD! JUMPER by ROBERTS, JORDAN [PNT]
11:12	MISSED JUMPER by WELP, COLLIN			
11:07				REBOUND (DEF) by ROBERTS, JORDAN
11:05		14-6	H 8	GOOD! 3PTR by DE GEEST, MAX
10:42	MISSED JUMPER by EDGAR JR., JOHN			
10:38				REBOUND (DEF) by ROBERTS, JORDAN
10:14				MISSED JUMPER by ROBERTS, JORDAN
10:11	REBOUND (DEF) by LEONARD, EVAN			
10:08				FOUL (PERSONAL) by HUNTER, CHANCE
10:08				
10:08				SUB OUT: SLATER, COLIN
10:08				SUB OUT: IRISH, TREVER
10:08				SUB IN: COBB, DREW
10:08				SUB IN: MORGAN, JOSHUA
10:08	SUB OUT: LEE, ISAIAH			
10:08	SUB OUT: EDGAR JR., JOHN			
10:08	SUB OUT: WELP, COLLIN			
10:08	SUB IN: KRAUSE, AIDEN			
10:08	SUB IN: WORKU, EYASSU			
10:08	SUB IN: GREENE, BRAD			
09:53	GOOD! LAYUP by LEONARD, EVAN	14-8	H 6	
09:27				MISSED JUMPER by HUNTER, CHANCE
09:24				REBOUND (OFF) by DE GEEST, MAX
09:18				MISSED 3PTR by HUNTER, CHANCE
09:14	REBOUND (DEF) by RUTHERFORD, TOMMY			
09:02	GOOD! 3PTR by LEONARD, EVAN	14-11	H 3	
09:02	ASSIST by GREENE, BRAD			
08:34				MISSED JUMPER by ROBERTS, JORDAN
08:28	REBOUND (DEF) by GREENE, BRAD			
08:23	MISSED 3PTR by LEONARD, EVAN			
08:20	REBOUND (OFF) by GREENE, BRAD			
08:20	GOOD! LAYUP by GREENE, BRAD	14-13	H 1	
08:20				FOUL (PERSONAL) by MORGAN, JOSHUA
08:20				SUB OUT: DE GEEST, MAX
08:20				SUB OUT: HUNTER, CHANCE
08:20				SUB IN: MANSEL, ROMELLE
08:20				SUB IN: SLATER, COLIN
08:20	SUB OUT: KRAUSE, AIDEN			
08:20	SUB IN: ARTEST, JERON			
08:20	GOOD! FT by GREENE, BRAD	14-14	T	
08:20	SUB OUT: GREENE, BRAD			
08:20	SUB IN: JOHNSON, AUSTIN			
07:51				TURNOVER (BADPASS) by ROBERTS, JORDAN
07:51	STEAL by WORKU, EYASSU			
07:34				FOUL (PERSONAL) by SLATER, COLIN
07:34				
07:21	MISSED LAYUP by LEONARD, EVAN			
07:21				BLOCK by ROBERTS, JORDAN
07:15				REBOUND (DEF) by SLATER, COLIN
06:52				MISSED 3PTR by MANSEL, ROMELLE
06:48	REBOUND (DEF) by JOHNSON, AUSTIN			
06:41	MISSED 3PTR by WORKU, EYASSU			
06:35				REBOUND (DEF) by MORGAN, JOSHUA
06:23	FOUL (PERSONAL) by JOHNSON, AUSTIN			
06:23				MISSED FT by MANSEL, ROMELLE
06:23				REBOUND (OFF) by TEAM
06:23	SUB OUT: JOHNSON, AUSTIN			
06:23	SUB OUT: ARTEST, JERON			
06:23	SUB OUT: WORKU, EYASSU			

Time	VISITORS: UC Irvine	Score	Margin	HOME: Long Beach St.
06:23	SUB OUT: RUTHERFORD, TOMMY			
06:23	SUB IN: LEE, ISAIAH			
06:23	SUB IN: EDGAR JR., JOHN			
06:23	SUB IN: WELP, COLLIN			
06:23	SUB IN: GREENE, BRAD			
06:23		15-14	H 1	GOOD! FT by MANSEL, ROMELLE
06:23				SUB OUT: ROBERTS, JORDAN
06:23				SUB IN: GRIFFIN, JORDAN
05:58	GOOD! 3PTR by LEE, ISAIAH	15-17	V 2	
05:58	ASSIST by WELP, COLLIN			
05:30				MISSED JUMPER by MANSEL, ROMELLE
05:30				REBOUND (OFF) by TEAM
05:29		17-17	T	GOOD! JUMPER by MORGAN, JOSHUA
05:29				ASSIST by SLATER, COLIN
05:15	GOOD! JUMPER by GREENE, BRAD	17-19	V 2	
05:15	ASSIST by EDGAR JR., JOHN			
04:54				MISSED JUMPER by COBB, DREW
04:51	REBOUND (DEF) by WELP, COLLIN			
04:41				FOUL (PERSONAL) by COBB, DREW
04:41				SUB OUT: COBB, DREW
04:41				SUB OUT: MORGAN, JOSHUA
04:41				SUB IN: ROBERTS, JORDAN
04:41				SUB IN: IRISH, TREVER
04:41	SUB OUT: LEONARD, EVAN			
04:41	SUB IN: ARTEST, JERON			
04:37	MISSED JUMPER by LEE, ISAIAH			
04:37				REBOUND (DEF) by SLATER, COLIN
04:37				BLOCK by IRISH, TREVER
04:26				TURNOVER (LOSTBALL) by IRISH, TREVER
04:20	TURNOVER (BADPASS) by WELP, COLLIN			
04:20				STEAL by GRIFFIN, JORDAN
04:14				MISSED 3PTR by GRIFFIN, JORDAN
04:10	REBOUND (DEF) by EDGAR JR., JOHN			
03:51	MISSED 3PTR by ARTEST, JERON			
03:46	REBOUND (OFF) by EDGAR JR., JOHN			
03:45	MISSED 3PTR by WELP, COLLIN			
03:41	REBOUND (OFF) by EDGAR JR., JOHN			
03:41	GOOD! LAYUP by EDGAR JR., JOHN [PNT]	17-21	V 4	
03:41				
03:41				SUB OUT: GRIFFIN, JORDAN
03:41				SUB IN: HUNTER, CHANCE
03:31		19-21	V 2	GOOD! LAYUP by HUNTER, CHANCE
03:03	MISSED JUMPER by LEE, ISAIAH			
02:59				REBOUND (DEF) by HUNTER, CHANCE
02:54		21-21	T	GOOD! JUMPER by SLATER, COLIN
02:33	TURNOVER (TRAVEL) by LEE, ISAIAH			
02:33				SUB OUT: IRISH, TREVER
02:33				SUB IN: MORGAN, JOSHUA
02:33	SUB OUT: LEE, ISAIAH			
02:33	SUB OUT: ARTEST, JERON			
02:33	SUB OUT: WELP, COLLIN			
02:33	SUB IN: LEONARD, EVAN			
02:33	SUB IN: WORKU, EYASSU			
02:33	SUB IN: RUTHERFORD, TOMMY			
02:15				MISSED LAYUP by MORGAN, JOSHUA
02:11	REBOUND (DEF) by GREENE, BRAD			
02:09	MISSED 3PTR by LEONARD, EVAN			
02:05				REBOUND (DEF) by MORGAN, JOSHUA
01:50		23-21	H 2	GOOD! JUMPER by HUNTER, CHANCE [PNT]
01:31	GOOD! JUMPER by EDGAR JR., JOHN [PNT]	23-23	T	
01:15				TURNOVER (BADPASS) by MANSEL, ROMELLE
01:15	STEAL by EDGAR JR., JOHN			
01:05	MISSED 3PTR by LEONARD, EVAN			
00:59	REBOUND (OFF) by WORKU, EYASSU			
00:56	MISSED LAYUP by EDGAR JR., JOHN			
00:56				BLOCK by MORGAN, JOSHUA
00:56	REBOUND (OFF) by TEAM			
00:56				SUB OUT: MANSEL, ROMELLE
00:56				SUB OUT: SLATER, COLIN
00:56				SUB IN: COBB, DREW
00:56				SUB IN: IRISH, TREVER
00:51	MISSED 3PTR by WORKU, EYASSU			
00:48	REBOUND (OFF) by LEONARD, EVAN			
00:46	MISSED 3PTR by EDGAR JR., JOHN			
00:42	REBOUND (OFF) by RUTHERFORD, TOMMY			
00:35	MISSED LAYUP by WORKU, EYASSU			
00:31				REBOUND (DEF) by COBB, DREW
00:28				MISSED JUMPER by HUNTER, CHANCE
00:27				REBOUND (OFF) by TEAM
00:27				TIMEOUT 30SEC

Time	VISITORS: UC Irvine	Score	Margin	HOME: Long Beach St.
00:27				SUB OUT: ROBERTS, JORDAN
00:27				SUB OUT: IRISH, TREVER
00:27				SUB IN: DE GEEST, MAX
00:27				SUB IN: SLATER, COLIN
00:27	SUB OUT: RUTHERFORD, TOMMY			
00:27	SUB IN: KRAUSE, AIDEN			
00:14	FOUL (PERSONAL) by EDGAR JR., JOHN			
00:14				MISSED FT by DE GEEST, MAX
00:14				REBOUND (OFF) by TEAM
00:14		24-23	H 1	GOOD! FT by DE GEEST, MAX
00:14				SUB OUT: SLATER, COLIN
00:14				SUB IN: ROBERTS, JORDAN
00:14	SUB OUT: KRAUSE, AIDEN			
00:14	SUB IN: WELP, COLLIN			
00:14		25-23	H 2	GOOD! FT by DE GEEST, MAX
00:14				SUB OUT: HUNTER, CHANCE
00:14				SUB IN: MANSEL, ROMELLE
00:00	TURNOVER (TRAVEL) by EDGAR JR., JOHN			
00:00				SUB OUT: ROBERTS, JORDAN
00:00				SUB IN: SLATER, COLIN
00:00	SUB OUT: WELP, COLLIN			
00:00	SUB IN: JOHNSON, AUSTIN			
00:00				TURNOVER (BADPASS) by MANSEL, ROMELLE
00:00	STEAL by LEONARD, EVAN			

UC Irvine 23, Long Beach St. 25

Points from (This Period)	UCI	LBS
In the Paint	12	10
Off Turns	4	6
2nd Chance	3	6
Fast Break	2	2
Bench	11	7

Official Box Score
UC Irvine vs Long Beach St.
Second Half Statistics Only
January 22, 2020 at Walter Pyramid - Long Beach

BEACH

UC Irvine 33

No.	Player	S	Pts	FG	3FG	FT	OR	DR	TR	PF	A	TO	Blk	Stl	Min	+/-
04	KRAUSE, AIDEN	G	2	1-1	0-0	0-1	0	0	0	1	0	0	0	0	5	0
14	LEONARD, EVAN	G	9	3-9	2-5	1-2	0	3	3	2	2	1	0	0	18	-3
24	WORKU, EYASSU	G	7	2-4	0-2	3-4	1	0	1	2	0	1	0	1	17	-8
42	RUTHERFORD, TOMMY	F	8	4-5	0-0	0-1	3	0	3	0	0	0	1	0	11	-10
55	GREENE, BRAD	C	0	0-1	0-0	0-0	1	0	1	1	0	0	1	1	11	-5
05	LEE, ISAIAH	G	3	1-5	1-4	0-0	0	0	0	0	0	1	0	0	7	-2
11	EDGAR JR., JOHN	F	2	1-1	0-0	0-0	0	2	2	1	0	2	0	0	10	-4
13	JOHNSON, AUSTIN	F	0	0-0	0-0	0-0	0	0	0	2	0	1	0	0	1	-2
15	ARTEST, JERON	G	0	0-0	0-0	0-0	0	0	0	2	0	1	0	0	3	3
40	WELP, COLLIN	F	2	1-7	0-1	0-0	3	4	7	2	4	0	0	0	16	6
	TEAM						1	0	1	0		0				
TOTALS			33	13-33	3-12	4-8	9	9	18	13	6	7	2	2	100	

Shooting By Period

Period	FG	FG%	3FG	3FG%	FT	FT%
2nd Half	13-33	39%	3-12	25%	4-8	50%
Game	22-65	33.8%	5-26	19.2%	7-11	63.6%

Deadball Rebounds: 0,0

Last FG Half: UCI -

Long Beach St. 38

No.	Player	S	Pts	FG	3FG	FT	OR	DR	TR	PF	A	TO	Blk	Stl	Min	+/-
03	COBB, DREW	G	4	1-2	0-0	2-2	1	2	3	0	0	0	0	0	17	1
13	MANSEL, ROMELLE	F	4	1-2	0-0	2-4	1	1	2	1	0	0	2	0	17	8
14	SLATER, COLIN	G	11	3-5	0-0	5-6	0	1	1	0	2	0	0	1	17	7
24	MORGAN, JOSHUA	C	2	1-1	0-0	0-0	0	4	4	2	1	3	1	0	14	1
31	HUNTER, CHANCE	G	7	3-7	1-2	0-0	0	3	3	4	0	1	0	0	14	0
02	ROBERTS, JORDAN	G	2	1-2	0-0	0-1	1	2	3	0	0	1	1	1	10	0
10	DE GEEST, MAX	G	0	0-1	0-1	0-0	0	0	0	0	0	0	0	0	3	-2
11	GRIFFIN, JORDAN	G	0	0-0	0-0	0-0	0	0	0	0	0	0	0	0	3	6
32	IRISH, TREVER	C	8	4-4	0-0	0-0	0	1	1	1	1	0	0	0	6	4
	TEAM						0	1	1	0		1				
TOTALS			38	14-24	1-3	9-13	3	15	18	8	4	6	4	2	100	

Shooting By Period

Period	FG	FG%	3FG	3FG%	FT	FT%
2nd Half	14-24	58%	1-3	33%	9-13	69%
Game	24-52	46.2%	2-10	20.0%	13-20	65.0%

Deadball Rebounds: 5,0

Last FG Half: LBS -

Game Notes:

Officials: **Deldre Carr, Daryl Gelinias, Jeff Wooten**
Attendance: **2262**

Start Time: **10:03 PM ET**

End Time: **12:09 AM ET**

Game Duration: **2:06**

Conference Game;

Score	1st	2nd	TOT
UCI	23	33	56
LBS	25	38	63

Points from (This Period)	UCI	LBS
In the Paint	16	18
Off Turns	7	10
2nd Chance	7	6
Fast Break	3	4
Bench	7	10

Official Play-By-Play
UC Irvine vs Long Beach St.
Second Half
January 22, 2020 at Walter Pyramid - Long Beach

BEACH

Period 2

Starters:

UC Irvine: 4 KRAUSE,AIDEN (G); 14 LEONARD,EVAN (G); 24 WORKU,EYASSU (G); 42 RUTHERFORD,TOMMY (F); 55 GREENE,BRAD (C);

Long Beach St.: 3 COBB,DREW (G); 13 MANSEL,ROMELLE (F); 14 SLATER,COLIN (G); 24 MORGAN,JOSHUA (C); 31 HUNTER,CHANCE (G);

Time	VISITORS: UC Irvine	Score	Margin	HOME: Long Beach St.
20:00				SUB OUT: DE GEEST, MAX
20:00				SUB IN: HUNTER, CHANCE
20:00	SUB OUT: JOHNSON, AUSTIN			
20:00	SUB IN: RUTHERFORD, TOMMY			
19:41				MISSED JUMPER by HUNTER, CHANCE
19:41	BLOCK by GREENE, BRAD			
19:36				REBOUND (OFF) by MANSEL, ROMELLE
19:35		27-23	H 4	GOOD! LAYUP by MANSEL, ROMELLE
19:08	MISSED JUMPER by RUTHERFORD, TOMMY			
19:08				BLOCK by MANSEL, ROMELLE
19:02				REBOUND (DEF) by MORGAN, JOSHUA
19:00		29-23	H 6	GOOD! JUMPER by HUNTER, CHANCE [FB/PNT]
18:34	MISSED LAYUP by GREENE, BRAD			
18:33	REBOUND (OFF) by RUTHERFORD, TOMMY			
18:33				FOUL (PERSONAL) by MANSEL, ROMELLE
18:28	MISSED 3PTR by WORKU, EYASSU			
18:24				REBOUND (DEF) by MORGAN, JOSHUA
18:19				MISSED 3PTR by HUNTER, CHANCE
18:15				REBOUND (OFF) by COBB, DREW
17:56	FOUL (PERSONAL) by GREENE, BRAD			
17:56		30-23	H 7	GOOD! FT by COBB, DREW
17:56		31-23	H 8	GOOD! FT by COBB, DREW
17:56				SUB OUT: MORGAN, JOSHUA
17:56				SUB IN: IRISH, TREVER
17:31	TURNOVER (BADPASS) by EDGAR JR., JOHN			
17:18		33-23	H 10	GOOD! JUMPER by IRISH, TREVER [PNT]
17:01	TURNOVER (BADPASS) by LEONARD, EVAN			
17:01				STEAL by SLATER, COLIN
16:57		35-23	H 12	GOOD! LAYUP by SLATER, COLIN [FB]
16:57	TIMEOUT 30SEC			
16:56	SUB OUT: EDGAR JR., JOHN			
16:56	SUB OUT: RUTHERFORD, TOMMY			
16:56	SUB IN: KRAUSE, AIDEN			
16:56	SUB IN: WELP, COLLIN			
16:34	GOOD! JUMPER by KRAUSE, AIDEN	35-25	H 10	
16:34	ASSIST by LEONARD, EVAN			
16:34				FOUL (PERSONAL) by HUNTER, CHANCE
16:34	MISSED FT by KRAUSE, AIDEN			
16:31				REBOUND (DEF) by IRISH, TREVER
16:25				MISSED LAYUP by HUNTER, CHANCE
16:23	REBOUND (DEF) by WELP, COLLIN			
16:13				FOUL (PERSONAL) by HUNTER, CHANCE
16:13	GOOD! FT by LEONARD, EVAN	35-26	H 9	
16:13	SUB OUT: GREENE, BRAD			
16:13	SUB IN: RUTHERFORD, TOMMY			
16:13	MISSED FT by LEONARD, EVAN			
16:11	REBOUND (OFF) by WELP, COLLIN			
16:08	GOOD! LAYUP by WELP, COLLIN	35-28	H 7	
15:42		37-28	H 9	GOOD! JUMPER by IRISH, TREVER
15:22	GOOD! JUMPER by WORKU, EYASSU	37-30	H 7	
14:59		39-30	H 9	GOOD! LAYUP by COBB, DREW
14:59				ASSIST by IRISH, TREVER
14:43				
14:43				SUB OUT: HUNTER, CHANCE
14:43				SUB OUT: IRISH, TREVER
14:43				SUB IN: ROBERTS, JORDAN
14:43				SUB IN: MORGAN, JOSHUA
14:43	SUB OUT: KRAUSE, AIDEN			
14:43	SUB IN: ARTEST, JERON			
14:43				SUB OUT: SLATER, COLIN
14:43				SUB IN: DE GEEST, MAX
14:31	GOOD! JUMPER by RUTHERFORD, TOMMY [PNT]	39-32	H 7	
14:31	ASSIST by LEONARD, EVAN			
14:15				TURNOVER (BADPASS) by MORGAN, JOSHUA
14:08	GOOD! LAYUP by LEONARD, EVAN [FB]	39-34	H 5	
13:50				MISSED DUNK by ROBERTS, JORDAN
13:50	BLOCK by RUTHERFORD, TOMMY			
13:46	REBOUND (DEF) by WELP, COLLIN			
13:42	MISSED 3PTR by LEONARD, EVAN			
13:38				REBOUND (DEF) by MANSEL, ROMELLE

Time	VISITORS: UC Irvine	Score	Margin	HOME: Long Beach St.
13:31				MISSED 3PTR by DE GEEST, MAX
13:27				REBOUND (OFF) by ROBERTS, JORDAN
13:25	FOUL (PERSONAL) by LEONARD, EVAN			
13:25	SUB OUT: LEONARD, EVAN			
13:25	SUB IN: LEE, ISIAIAH			
13:25	SUB OUT: RUTHERFORD, TOMMY			
13:25	SUB IN: JOHNSON, AUSTIN			
13:19	FOUL (PERSONAL) by ARTEST, JERON			
13:15	FOUL (PERSONAL) by JOHNSON, AUSTIN			
13:12	FOUL (PERSONAL) by WORKU, EYASSU			
12:56		41-34	H 7	GOOD! JUMPER by ROBERTS, JORDAN
12:56				ASSIST by MORGAN, JOSHUA
12:37	TURNOVER (BADPASS) by LEE, ISIAIAH			
12:37				STEAL by ROBERTS, JORDAN
12:29				TURNOVER (DRIBBLING) by ROBERTS, JORDAN
12:19	FOUL (OFF) by JOHNSON, AUSTIN			
12:19	TURNOVER (OFFENSIVE) by JOHNSON, AUSTIN			
12:19				SUB OUT: DE GEEST, MAX
12:19				SUB IN: GRIFFIN, JORDAN
12:19	SUB OUT: JOHNSON, AUSTIN			
12:19	SUB IN: GREENE, BRAD			
12:03				TURNOVER (3SEC) by MORGAN, JOSHUA
11:53	TURNOVER (BADPASS) by ARTEST, JERON			
11:53				
11:53				SUB OUT: ROBERTS, JORDAN
11:53				SUB OUT: COBB, DREW
11:53				SUB IN: SLATER, COLIN
11:53				SUB IN: HUNTER, CHANCE
11:53	SUB OUT: LEE, ISIAIAH			
11:53	SUB OUT: ARTEST, JERON			
11:53	SUB IN: EDGAR JR., JOHN			
11:53	SUB IN: LEONARD, EVAN			
11:53	SUB OUT: WORKU, EYASSU			
11:53	SUB IN: LEE, ISIAIAH			
11:39		43-34	H 9	GOOD! LAYUP by HUNTER, CHANCE
11:26	GOOD! LAYUP by EDGAR JR., JOHN	43-36	H 7	
11:14				TURNOVER (LOSTBALL) by MORGAN, JOSHUA
11:14	STEAL by GREENE, BRAD			
11:03	GOOD! 3PTR by LEONARD, EVAN	43-39	H 4	
11:03	ASSIST by WELP, COLLIN			
11:01				TIMEOUT 30SEC
10:48		46-39	H 7	GOOD! 3PTR by HUNTER, CHANCE
10:48				ASSIST by SLATER, COLIN
10:23	MISSED JUMPER by WELP, COLLIN			
10:21	REBOUND (OFF) by TEAM			
10:21				SUB OUT: GRIFFIN, JORDAN
10:21				SUB IN: COBB, DREW
10:09	GOOD! 3PTR by LEE, ISIAIAH	46-42	H 4	
10:09	ASSIST by WELP, COLLIN			
09:42				MISSED JUMPER by MANSEL, ROMELLE
09:37	REBOUND (DEF) by LEONARD, EVAN			
09:26				SUB OUT: MORGAN, JOSHUA
09:26				SUB IN: IRISH, TREVER
09:13	MISSED 3PTR by LEE, ISIAIAH			
09:10	REBOUND (OFF) by GREENE, BRAD			
09:05	MISSED 3PTR by LEE, ISIAIAH			
09:01				REBOUND (DEF) by HUNTER, CHANCE
08:47	SUB OUT: LEE, ISIAIAH			
08:47	SUB OUT: EDGAR JR., JOHN			
08:47	SUB OUT: GREENE, BRAD			
08:47	SUB IN: KRAUSE, AIDEN			
08:47	SUB IN: WORKU, EYASSU			
08:47	SUB IN: RUTHERFORD, TOMMY			
08:34				MISSED JUMPER by COBB, DREW
08:31	REBOUND (DEF) by LEONARD, EVAN			
08:22	GOOD! JUMPER by RUTHERFORD, TOMMY	46-44	H 2	
08:05		48-44	H 4	GOOD! JUMPER by IRISH, TREVER
07:40	MISSED 3PTR by LEONARD, EVAN			
07:37				REBOUND (DEF) by HUNTER, CHANCE
07:17		50-44	H 6	GOOD! JUMPER by IRISH, TREVER
06:53	MISSED 3PTR by WORKU, EYASSU			
06:51	REBOUND (OFF) by RUTHERFORD, TOMMY			
06:51				FOUL (PERSONAL) by IRISH, TREVER
06:51				
06:51				SUB OUT: IRISH, TREVER
06:51				SUB IN: MORGAN, JOSHUA
06:51	SUB OUT: KRAUSE, AIDEN			
06:51	SUB OUT: RUTHERFORD, TOMMY			
06:51	SUB IN: EDGAR JR., JOHN			
06:51	SUB IN: GREENE, BRAD			

Time	VISITORS: UC Irvine	Score	Margin	HOME: Long Beach St.
06:51				SUB OUT: MANSEL, ROMELLE
06:51				SUB IN: ROBERTS, JORDAN
06:43	MISSED JUMPER by WELP, COLLIN			
06:40				REBOUND (DEF) by MORGAN, JOSHUA
06:23				TURNOVER (LOSTBALL) by HUNTER, CHANCE
06:23	STEAL by WORKU, EYASSU			
06:15	MISSED 3PTR by WELP, COLLIN			
06:10				REBOUND (DEF) by ROBERTS, JORDAN
06:00				MISSED JUMPER by HUNTER, CHANCE
05:56	REBOUND (DEF) by WELP, COLLIN			
05:48	MISSED JUMPER by WELP, COLLIN			
05:48				BLOCK by ROBERTS, JORDAN
05:43				REBOUND (DEF) by COBB, DREW
05:26				MISSED JUMPER by SLATER, COLIN
05:24	REBOUND (DEF) by EDGAR JR., JOHN			
05:17	GOOD! LAYUP by WORKU, EYASSU	50-46	H 4	
04:55				MISSED LAYUP by SLATER, COLIN
04:52	REBOUND (DEF) by EDGAR JR., JOHN			
04:50	MISSED DUNK by LEONARD, EVAN			
04:47	REBOUND (OFF) by WORKU, EYASSU			
04:47				FOUL (PERSONAL) by HUNTER, CHANCE
04:47				SUB OUT: HUNTER, CHANCE
04:47				SUB IN: MANSEL, ROMELLE
04:47	SUB OUT: GREENE, BRAD			
04:47	SUB IN: RUTHERFORD, TOMMY			
04:33	TURNOVER (TRAVEL) by WORKU, EYASSU			
04:33				SUB OUT: COBB, DREW
04:33				SUB IN: GRIFFIN, JORDAN
04:19		52-46	H 6	GOOD! JUMPER by SLATER, COLIN [PNT]
04:02	TURNOVER (TRAVEL) by EDGAR JR., JOHN			
04:02	SUB OUT: EDGAR JR., JOHN			
04:02	SUB OUT: WELP, COLLIN			
04:02	SUB IN: KRAUSE, AIDEN			
04:02	SUB IN: GREENE, BRAD			
04:02				SUB OUT: MORGAN, JOSHUA
04:02				SUB IN: IRISH, TREVER
03:47		54-46	H 8	GOOD! LAYUP by SLATER, COLIN
03:47	FOUL (PERSONAL) by WORKU, EYASSU			
03:47				
03:47				SUB OUT: IRISH, TREVER
03:47				SUB IN: MORGAN, JOSHUA
03:47				SUB OUT: GRIFFIN, JORDAN
03:47				SUB IN: COBB, DREW
03:47	SUB OUT: KRAUSE, AIDEN			
03:47	SUB OUT: GREENE, BRAD			
03:47	SUB IN: LEE, ISAIAH			
03:47	SUB IN: WELP, COLLIN			
03:33	MISSED LAYUP by LEONARD, EVAN			
03:33				REBOUND (DEF) by TEAM
03:33				SUB OUT: COBB, DREW
03:33				SUB IN: GRIFFIN, JORDAN
03:22		56-46	H 10	GOOD! DUNK by MORGAN, JOSHUA
03:22				ASSIST by SLATER, COLIN
03:14	MISSED 3PTR by LEONARD, EVAN			
03:11				REBOUND (DEF) by MORGAN, JOSHUA
02:59	FOUL (PERSONAL) by WELP, COLLIN			
02:59				SUB OUT: GRIFFIN, JORDAN
02:59				SUB IN: COBB, DREW
02:58				MISSED FT by ROBERTS, JORDAN
02:56	REBOUND (DEF) by LEONARD, EVAN			
02:45				FOUL (PERSONAL) by MORGAN, JOSHUA
02:45	GOOD! FT by WORKU, EYASSU	56-47	H 9	
02:45				SUB OUT: ROBERTS, JORDAN
02:45				SUB OUT: MORGAN, JOSHUA
02:45				SUB IN: HUNTER, CHANCE
02:45				SUB IN: IRISH, TREVER
02:45	SUB OUT: LEE, ISAIAH			
02:45	SUB OUT: WELP, COLLIN			
02:45	SUB OUT: RUTHERFORD, TOMMY			
02:45	SUB IN: KRAUSE, AIDEN			
02:45	SUB IN: ARTEST, JERON			
02:45	SUB IN: GREENE, BRAD			
02:45	GOOD! FT by WORKU, EYASSU	56-48	H 8	
02:39	FOUL (PERSONAL) by ARTEST, JERON			
02:39				SUB OUT: HUNTER, CHANCE
02:39				SUB OUT: IRISH, TREVER
02:39				SUB IN: ROBERTS, JORDAN
02:39				SUB IN: MORGAN, JOSHUA
02:39	SUB OUT: KRAUSE, AIDEN			
02:39	SUB OUT: ARTEST, JERON			

Time	VISITORS: UC Irvine	Score	Margin	HOME: Long Beach St.
02:39	SUB IN: LEE, ISAIAH			
02:39	SUB IN: WELP, COLLIN			
02:39		57-48	H 9	GOOD! FT by MANSEL, ROMELLE
02:39				MISSED FT by MANSEL, ROMELLE
02:37	REBOUND (DEF) by WELP, COLLIN			
02:32				FOUL (PERSONAL) by MORGAN, JOSHUA
02:32	GOOD! FT by WORKU, EYASSU [FB]	57-49	H 8	
02:32				SUB OUT: MANSEL, ROMELLE
02:32				SUB IN: HUNTER, CHANCE
02:32	SUB OUT: LEE, ISAIAH			
02:32	SUB OUT: WELP, COLLIN			
02:32	SUB IN: KRAUSE, AIDEN			
02:32	SUB IN: ARTEST, JERON			
02:31	MISSED FT by WORKU, EYASSU			
02:28				REBOUND (DEF) by COBB, DREW
02:01	FOUL (PERSONAL) by KRAUSE, AIDEN			
02:01				MISSED FT by SLATER, COLIN
02:01				REBOUND (OFF) by TEAM
02:01				SUB OUT: HUNTER, CHANCE
02:01				SUB IN: MANSEL, ROMELLE
02:01	SUB OUT: KRAUSE, AIDEN			
02:01	SUB OUT: ARTEST, JERON			
02:01	SUB IN: LEE, ISAIAH			
02:01	SUB IN: WELP, COLLIN			
02:01		58-49	H 9	GOOD! FT by SLATER, COLIN
01:48	MISSED JUMPER by LEE, ISAIAH			
01:48				BLOCK by MORGAN, JOSHUA
01:43	REBOUND (OFF) by WELP, COLLIN			
01:41	MISSED JUMPER by WELP, COLLIN			
01:41				BLOCK by MANSEL, ROMELLE
01:36	REBOUND (OFF) by WELP, COLLIN			
01:34	MISSED 3PTR by LEE, ISAIAH			
01:31				REBOUND (DEF) by ROBERTS, JORDAN
01:20	FOUL (PERSONAL) by WELP, COLLIN			
01:20				MISSED FT by MANSEL, ROMELLE
01:20				REBOUND (OFF) by TEAM
01:20		59-49	H 10	GOOD! FT by MANSEL, ROMELLE
01:20				SUB OUT: MANSEL, ROMELLE
01:20				SUB IN: HUNTER, CHANCE
01:20	SUB OUT: GREENE, BRAD			
01:20	SUB IN: RUTHERFORD, TOMMY			
01:13	MISSED JUMPER by LEONARD, EVAN			
01:09				REBOUND (DEF) by HUNTER, CHANCE
01:05				TIMEOUT 30SEC
01:05				SUB OUT: MORGAN, JOSHUA
01:05				SUB IN: GRIFFIN, JORDAN
00:54	SUB OUT: LEE, ISAIAH			
00:54	SUB IN: EDGAR JR., JOHN			
00:54				TURNOVER (10SEC) by TEAM
00:54				SUB OUT: GRIFFIN, JORDAN
00:54				SUB IN: MORGAN, JOSHUA
00:50	MISSED LAYUP by WELP, COLLIN			
00:46	REBOUND (OFF) by RUTHERFORD, TOMMY			
00:44	GOOD! LAYUP by RUTHERFORD, TOMMY	59-51	H 8	
00:42	FOUL (PERSONAL) by LEONARD, EVAN			
00:42		60-51	H 9	GOOD! FT by SLATER, COLIN
00:42				SUB OUT: HUNTER, CHANCE
00:42				SUB IN: MANSEL, ROMELLE
00:42		61-51	H 10	GOOD! FT by SLATER, COLIN
00:30	GOOD! 3PTR by LEONARD, EVAN	61-54	H 7	
00:30	ASSIST by WELP, COLLIN			
00:25	FOUL (PERSONAL) by EDGAR JR., JOHN			
00:25				SUB OUT: COBB, DREW
00:25				SUB IN: HUNTER, CHANCE
00:25		62-54	H 8	GOOD! FT by SLATER, COLIN
00:25		63-54	H 9	GOOD! FT by SLATER, COLIN
00:18	GOOD! JUMPER by RUTHERFORD, TOMMY [PNT]	63-56	H 7	
00:18	ASSIST by WELP, COLLIN			
00:18				FOUL (PERSONAL) by HUNTER, CHANCE
00:18				SUB OUT: HUNTER, CHANCE
00:18				SUB IN: DE GEEST, MAX
00:18	MISSED FT by RUTHERFORD, TOMMY			
00:18				REBOUND (DEF) by SLATER, COLIN

Points from (This Period)	UCI	LBS
In the Paint	16	18
Off Turns	7	10
2nd Chance	7	6
Fast Break	3	4
Bench	7	10

Official Scoring/Possession Reference Chart
UC Irvine vs Long Beach St.
Period 1
January 22, 2020 at Walter Pyramid - Long Beach

BEACH

Period 1

Starters:

UC Irvine: 4 KRAUSE,AIDEN (G); 14 LEONARD,EVAN (G); 24 WORKU,EYASSU (G); 42 RUTHERFORD,TOMMY (F); 55 GREENE,BRAD (C);
Long Beach St.: 3 COBB,DREW (G); 13 MANSEL,ROMELLE (F); 14 SLATER,COLIN (G); 24 MORGAN,JOSHUA (C); 31 HUNTER,CHANCE (G);

Time	VISITORS: UC Irvine	Score	Margin	HOME: Long Beach St.
18:31		2-0	H 2	GOOD! LAYUP by SLATER, COLIN [FB]
17:36		4-0	H 4	GOOD! JUMPER by SLATER, COLIN
15:06		6-0	H 6	GOOD! JUMPER by MORGAN, JOSHUA [PNT]
14:36	GOOD! JUMPER by EDGAR JR., JOHN	6-2	H 4	
13:57		8-2	H 6	GOOD! JUMPER by SLATER, COLIN
12:45		9-2	H 7	GOOD! FT by MORGAN, JOSHUA
12:32	GOOD! JUMPER by RUTHERFORD, TOMMY [PNT]	9-4	H 5	
12:12	GOOD! FT by EDGAR JR., JOHN [FB]	9-5	H 4	
12:12	GOOD! FT by EDGAR JR., JOHN [FB]	9-6	H 3	
11:27		11-6	H 5	GOOD! JUMPER by ROBERTS, JORDAN [PNT]
11:05		14-6	H 8	GOOD! 3PTR by DE GEEST, MAX
09:53	GOOD! LAYUP by LEONARD, EVAN	14-8	H 6	
09:02	GOOD! 3PTR by LEONARD, EVAN	14-11	H 3	
08:20	GOOD! LAYUP by GREENE, BRAD	14-13	H 1	
08:20	GOOD! FT by GREENE, BRAD	14-14	T	
06:23		15-14	H 1	GOOD! FT by MANSEL, ROMELLE
05:58	GOOD! 3PTR by LEE, ISAIAH	15-17	V 2	
05:29		17-17	T	GOOD! JUMPER by MORGAN, JOSHUA
05:15	GOOD! JUMPER by GREENE, BRAD	17-19	V 2	
03:41	GOOD! LAYUP by EDGAR JR., JOHN [PNT]	17-21	V 4	
03:31		19-21	V 2	GOOD! LAYUP by HUNTER, CHANCE
02:54		21-21	T	GOOD! JUMPER by SLATER, COLIN
01:50		23-21	H 2	GOOD! JUMPER by HUNTER, CHANCE [PNT]
01:31	GOOD! JUMPER by EDGAR JR., JOHN [PNT]	23-23	T	
00:14		24-23	H 1	GOOD! FT by DE GEEST, MAX
00:14		25-23	H 2	GOOD! FT by DE GEEST, MAX

UC Irvine 23, Long Beach St. 25

Official Scoring/Possession Reference Chart
UC Irvine vs Long Beach St.
Period 2
January 22, 2020 at Walter Pyramid - Long Beach

BEACH

Period 2

Starters:

UC Irvine: 4 KRAUSE, AIDEN (G); 14 LEONARD, EVAN (G); 24 WORKU, EYASSU (G); 42 RUTHERFORD, TOMMY (F); 55 GREENE, BRAD (C);
Long Beach St.: 3 COBB, DREW (G); 13 MANSEL, ROMELLE (F); 14 SLATER, COLIN (G); 24 MORGAN, JOSHUA (C); 31 HUNTER, CHANCE (G);

Time	VISITORS: UC Irvine	Score	Margin	HOME: Long Beach St.
19:35		27-23	H 4	GOOD! LAYUP by MANSEL, ROMELLE
19:00		29-23	H 6	GOOD! JUMPER by HUNTER, CHANCE [FB/PNT]
17:56		30-23	H 7	GOOD! FT by COBB, DREW
17:56		31-23	H 8	GOOD! FT by COBB, DREW
17:18		33-23	H 10	GOOD! JUMPER by IRISH, TREVER [PNT]
16:57		35-23	H 12	GOOD! LAYUP by SLATER, COLIN [FB]
16:34	GOOD! JUMPER by KRAUSE, AIDEN	35-25	H 10	
16:13	GOOD! FT by LEONARD, EVAN	35-26	H 9	
16:08	GOOD! LAYUP by WELP, COLLIN	35-28	H 7	
15:42		37-28	H 9	GOOD! JUMPER by IRISH, TREVER
15:22	GOOD! JUMPER by WORKU, EYASSU	37-30	H 7	
14:59		39-30	H 9	GOOD! LAYUP by COBB, DREW
14:31	GOOD! JUMPER by RUTHERFORD, TOMMY [PNT]	39-32	H 7	
14:08	GOOD! LAYUP by LEONARD, EVAN [FB]	39-34	H 5	
12:56		41-34	H 7	GOOD! JUMPER by ROBERTS, JORDAN
11:39		43-34	H 9	GOOD! LAYUP by HUNTER, CHANCE
11:26	GOOD! LAYUP by EDGAR JR., JOHN	43-36	H 7	
11:03	GOOD! 3PTR by LEONARD, EVAN	43-39	H 4	
10:48		46-39	H 7	GOOD! 3PTR by HUNTER, CHANCE
10:09	GOOD! 3PTR by LEE, ISAIAH	46-42	H 4	
08:22	GOOD! JUMPER by RUTHERFORD, TOMMY	46-44	H 2	
08:05		48-44	H 4	GOOD! JUMPER by IRISH, TREVER
07:17		50-44	H 6	GOOD! JUMPER by IRISH, TREVER
05:17	GOOD! LAYUP by WORKU, EYASSU	50-46	H 4	
04:19		52-46	H 6	GOOD! JUMPER by SLATER, COLIN [PNT]
03:47		54-46	H 8	GOOD! LAYUP by SLATER, COLIN
03:22		56-46	H 10	GOOD! DUNK by MORGAN, JOSHUA
02:45	GOOD! FT by WORKU, EYASSU	56-47	H 9	
02:45	GOOD! FT by WORKU, EYASSU	56-48	H 8	
02:39		57-48	H 9	GOOD! FT by MANSEL, ROMELLE
02:32	GOOD! FT by WORKU, EYASSU [FB]	57-49	H 8	
02:01		58-49	H 9	GOOD! FT by SLATER, COLIN
01:20		59-49	H 10	GOOD! FT by MANSEL, ROMELLE
00:44	GOOD! LAYUP by RUTHERFORD, TOMMY	59-51	H 8	
00:42		60-51	H 9	GOOD! FT by SLATER, COLIN
00:42		61-51	H 10	GOOD! FT by SLATER, COLIN
00:30	GOOD! 3PTR by LEONARD, EVAN	61-54	H 7	
00:25		62-54	H 8	GOOD! FT by SLATER, COLIN
00:25		63-54	H 9	GOOD! FT by SLATER, COLIN
00:18	GOOD! JUMPER by RUTHERFORD, TOMMY [PNT]	63-56	H 7	

UC Irvine 56, Long Beach St. 63

Official Substitutions Log
UC Irvine vs Long Beach St.
Period 1
January 22, 2020 at Walter Pyramid - Long Beach

BEACH

VISITORS: UC Irvine	Time	Score	HOME: Long Beach St.
4 KRAUSE,AIDEN			3 COBB,DREW
14 LEONARD, EVAN			13 MANSEL, ROMELLE
24 WORKU,EYASSU			14 SLATER, COLIN
42 RUTHERFORD, TOMMY			24 MORGAN, JOSHUA
55 GREENE, BRAD			31 HUNTER, CHANCE
	16:53	0-4	SUB OUT: MORGAN, JOSHUA
	16:53		SUB IN: IRISH, TREVER
SUB OUT: 42 RUTHERFORD, TOMMY	16:53		
SUB OUT: 55 GREENE, BRAD	16:53		
SUB IN: 13 JOHNSON, AUSTIN	16:53		
SUB IN: 40 WELP, COLLIN	16:53		
	15:52	0-4	SUB OUT: IRISH, TREVER
	15:52		SUB IN: MORGAN, JOSHUA
SUB OUT: 4 KRAUSE, AIDEN	15:52		
SUB OUT: 14 LEONARD, EVAN	15:52		
SUB IN: 5 LEE, ISAIAH	15:52		
SUB IN: 11 EDGAR JR., JOHN	15:52		
	14:16	2-6	SUB OUT: HUNTER, CHANCE
	14:16		SUB IN: ROBERTS, JORDAN
SUB OUT: 13 JOHNSON, AUSTIN	12:45	2-8	
SUB OUT: 24 WORKU, EYASSU	12:45		
SUB IN: 14 LEONARD, EVAN	12:45		
SUB IN: 42 RUTHERFORD, TOMMY	12:45		
	12:45		SUB OUT: MANSEL, ROMELLE
	12:45		SUB IN: HUNTER, CHANCE
	12:45		SUB OUT: MORGAN, JOSHUA
	12:45		SUB IN: IRISH, TREVER
	12:12	5-9	SUB OUT: COBB, DREW
	12:12		SUB IN: DE GEEST, MAX
	10:08	6-14	SUB OUT: SLATER, COLIN
	10:08		SUB OUT: IRISH, TREVER
	10:08		SUB IN: COBB, DREW
	10:08		SUB IN: MORGAN, JOSHUA
SUB OUT: 5 LEE, ISAIAH	10:08		
SUB OUT: 11 EDGAR JR., JOHN	10:08		
SUB OUT: 40 WELP, COLLIN	10:08		
SUB IN: 4 KRAUSE, AIDEN	10:08		
SUB IN: 24 WORKU, EYASSU	10:08		
SUB IN: 55 GREENE, BRAD	10:08		
	08:20	13-14	SUB OUT: DE GEEST, MAX
	08:20		SUB OUT: HUNTER, CHANCE
	08:20		SUB IN: MANSEL, ROMELLE
	08:20		SUB IN: SLATER, COLIN
SUB OUT: 4 KRAUSE, AIDEN	08:20		
SUB IN: 15 ARTEST, JERON	08:20		
SUB OUT: 55 GREENE, BRAD	08:20		
SUB IN: 13 JOHNSON, AUSTIN	08:20		
SUB OUT: 13 JOHNSON, AUSTIN	06:23	14-14	
SUB OUT: 15 ARTEST, JERON	06:23		
SUB OUT: 24 WORKU, EYASSU	06:23		
SUB OUT: 42 RUTHERFORD, TOMMY	06:23		
SUB IN: 5 LEE, ISAIAH	06:23		
SUB IN: 11 EDGAR JR., JOHN	06:23		
SUB IN: 40 WELP, COLLIN	06:23		
SUB IN: 55 GREENE, BRAD	06:23		
	06:23		SUB OUT: ROBERTS, JORDAN
	06:23		SUB IN: GRIFFIN, JORDAN
	04:41	19-17	SUB OUT: COBB, DREW
	04:41		SUB OUT: MORGAN, JOSHUA
	04:41		SUB IN: ROBERTS, JORDAN
	04:41		SUB IN: IRISH, TREVER
SUB OUT: 14 LEONARD, EVAN	04:41		
SUB IN: 15 ARTEST, JERON	04:41		
	03:41	21-17	SUB OUT: GRIFFIN, JORDAN
	03:41		SUB IN: HUNTER, CHANCE
	02:33	21-21	SUB OUT: IRISH, TREVER
	02:33		SUB IN: MORGAN, JOSHUA
SUB OUT: 5 LEE, ISAIAH	02:33		
SUB OUT: 15 ARTEST, JERON	02:33		
SUB OUT: 40 WELP, COLLIN	02:33		
SUB IN: 14 LEONARD, EVAN	02:33		
SUB IN: 24 WORKU, EYASSU	02:33		
SUB IN: 42 RUTHERFORD, TOMMY	02:33		
	00:56	23-23	SUB OUT: MANSEL, ROMELLE
	00:56		SUB OUT: SLATER, COLIN

VISITORS: UC Irvine	Time	Score	HOME: Long Beach St.
	00:56		SUB IN: COBB,DREW
	00:56		SUB IN: IRISH,TREVER
	00:27	23-23	SUB OUT: ROBERTS,JORDAN
	00:27		SUB OUT: IRISH,TREVER
	00:27		SUB IN: DE GEEST,MAX
	00:27		SUB IN: SLATER,COLIN
SUB OUT: 42 RUTHERFORD,TOMMY	00:27		
SUB IN: 4 KRAUSE,AIDEN	00:27		
	00:14	23-24	SUB OUT: SLATER,COLIN
	00:14		SUB IN: ROBERTS,JORDAN
SUB OUT: 4 KRAUSE,AIDEN	00:14		
SUB IN: 40 WELP,COLLIN	00:14		
	00:14		SUB OUT: HUNTER,CHANCE
	00:14		SUB IN: MANSEL,ROMELLE
	00:00	23-25	SUB OUT: ROBERTS,JORDAN
	00:00		SUB IN: SLATER,COLIN
SUB OUT: 40 WELP,COLLIN	00:00		
SUB IN: 13 JOHNSON,AUSTIN	00:00		

UC Irvine 23, Long Beach St. 25

Official Substitutions Log
UC Irvine vs Long Beach St.
Period 2
January 22, 2020 at Walter Pyramid - Long Beach

BEACH

VISITORS: UC Irvine	Time	Score	HOME: Long Beach St.
4 KRAUSE,AIDEN			3 COBB,DREW
14 LEONARD,EVAN			13 MANSEL,ROMELLE
24 WORKU,EYASSU			14 SLATER,COLIN
42 RUTHERFORD,TOMMY			24 MORGAN,JOSHUA
55 GREENE,BRAD			31 HUNTER,CHANCE
	20:00	-	SUB OUT: DE GEEST,MAX
	20:00		SUB IN: HUNTER,CHANCE
SUB OUT: 13 JOHNSON,AUSTIN	20:00		
SUB IN: 42 RUTHERFORD,TOMMY	20:00		
	17:56	23-31	SUB OUT: MORGAN,JOSHUA
	17:56		SUB IN: IRISH,TREVER
SUB OUT: 11 EDGAR JR.,JOHN	16:56	23-35	
SUB OUT: 42 RUTHERFORD,TOMMY	16:56		
SUB IN: 4 KRAUSE,AIDEN	16:56		
SUB IN: 40 WELP,COLLIN	16:56		
SUB OUT: 55 GREENE,BRAD	16:13	26-35	
SUB IN: 42 RUTHERFORD,TOMMY	16:13		
	14:43	30-39	SUB OUT: HUNTER,CHANCE
	14:43		SUB OUT: IRISH,TREVER
	14:43		SUB IN: ROBERTS,JORDAN
	14:43		SUB IN: MORGAN,JOSHUA
SUB OUT: 4 KRAUSE,AIDEN	14:43		
SUB IN: 15 ARTEST,JERON	14:43		
	14:43		SUB OUT: SLATER,COLIN
	14:43		SUB IN: DE GEEST,MAX
SUB OUT: 14 LEONARD,EVAN	13:25	34-39	
SUB IN: 5 LEE,ISAIAH	13:25		
SUB OUT: 42 RUTHERFORD,TOMMY	13:25		
SUB IN: 13 JOHNSON,AUSTIN	13:25		
	12:19	34-41	SUB OUT: DE GEEST,MAX
	12:19		SUB IN: GRIFFIN,JORDAN
SUB OUT: 13 JOHNSON,AUSTIN	12:19		
SUB IN: 55 GREENE,BRAD	12:19		
	11:53	34-41	SUB OUT: ROBERTS,JORDAN
	11:53		SUB OUT: COBB,DREW
	11:53		SUB IN: SLATER,COLIN
	11:53		SUB IN: HUNTER,CHANCE
SUB OUT: 5 LEE,ISAIAH	11:53		
SUB OUT: 15 ARTEST,JERON	11:53		
SUB IN: 11 EDGAR JR.,JOHN	11:53		
SUB IN: 14 LEONARD,EVAN	11:53		
SUB OUT: 24 WORKU,EYASSU	11:53		
SUB IN: 5 LEE,ISAIAH	11:53		
	10:21	39-46	SUB OUT: GRIFFIN,JORDAN
	10:21		SUB IN: COBB,DREW
	09:26	42-46	SUB OUT: MORGAN,JOSHUA
	09:26		SUB IN: IRISH,TREVER
SUB OUT: 5 LEE,ISAIAH	08:47	42-46	
SUB OUT: 11 EDGAR JR.,JOHN	08:47		
SUB OUT: 55 GREENE,BRAD	08:47		
SUB IN: 4 KRAUSE,AIDEN	08:47		
SUB IN: 24 WORKU,EYASSU	08:47		
SUB IN: 42 RUTHERFORD,TOMMY	08:47		
	06:51	44-50	SUB OUT: IRISH,TREVER
	06:51		SUB IN: MORGAN,JOSHUA
SUB OUT: 4 KRAUSE,AIDEN	06:51		
SUB OUT: 42 RUTHERFORD,TOMMY	06:51		
SUB IN: 11 EDGAR JR.,JOHN	06:51		
SUB IN: 55 GREENE,BRAD	06:51		
	06:51		SUB OUT: MANSEL,ROMELLE
	06:51		SUB IN: ROBERTS,JORDAN
	04:47	46-50	SUB OUT: HUNTER,CHANCE
	04:47		SUB IN: MANSEL,ROMELLE
SUB OUT: 55 GREENE,BRAD	04:47		
SUB IN: 42 RUTHERFORD,TOMMY	04:47		
	04:33	46-50	SUB OUT: COBB,DREW
	04:33		SUB IN: GRIFFIN,JORDAN
SUB OUT: 11 EDGAR JR.,JOHN	04:02	46-52	
SUB OUT: 40 WELP,COLLIN	04:02		
SUB IN: 4 KRAUSE,AIDEN	04:02		
SUB IN: 55 GREENE,BRAD	04:02		
	04:02		SUB OUT: MORGAN,JOSHUA
	04:02		SUB IN: IRISH,TREVER
	03:47	46-54	SUB OUT: IRISH,TREVER
	03:47		SUB IN: MORGAN,JOSHUA

VISITORS: UC Irvine	Time	Score	HOME: Long Beach St.
	03:47		SUB OUT: GRIFFIN,JORDAN
	03:47		SUB IN: COBB,DREW
SUB OUT: 4 KRAUSE,AIDEN	03:47		
SUB OUT: 55 GREENE,BRAD	03:47		
SUB IN: 5 LEE,ISAIAH	03:47		
SUB IN: 40 WELP,COLLIN	03:47		
	03:33	46-54	SUB OUT: COBB,DREW
	03:33		SUB IN: GRIFFIN,JORDAN
	02:59	46-56	SUB OUT: GRIFFIN,JORDAN
	02:59		SUB IN: COBB,DREW
	02:45	47-56	SUB OUT: ROBERTS,JORDAN
	02:45		SUB OUT: MORGAN,JOSHUA
	02:45		SUB IN: HUNTER,CHANCE
	02:45		SUB IN: IRISH,TREVER
SUB OUT: 5 LEE,ISAIAH	02:45		
SUB OUT: 40 WELP,COLLIN	02:45		
SUB OUT: 42 RUTHERFORD,TOMMY	02:45		
SUB IN: 4 KRAUSE,AIDEN	02:45		
SUB IN: 15 ARTEST,JERON	02:45		
SUB IN: 55 GREENE,BRAD	02:45		
	02:39	48-56	SUB OUT: HUNTER,CHANCE
	02:39		SUB OUT: IRISH,TREVER
	02:39		SUB IN: ROBERTS,JORDAN
	02:39		SUB IN: MORGAN,JOSHUA
SUB OUT: 4 KRAUSE,AIDEN	02:39		
SUB OUT: 15 ARTEST,JERON	02:39		
SUB IN: 5 LEE,ISAIAH	02:39		
SUB IN: 40 WELP,COLLIN	02:39		
	02:32	49-57	SUB OUT: MANSEL,ROMELLE
	02:32		SUB IN: HUNTER,CHANCE
SUB OUT: 5 LEE,ISAIAH	02:32		
SUB OUT: 40 WELP,COLLIN	02:32		
SUB IN: 4 KRAUSE,AIDEN	02:32		
SUB IN: 15 ARTEST,JERON	02:32		
	02:01	49-57	SUB OUT: HUNTER,CHANCE
	02:01		SUB IN: MANSEL,ROMELLE
SUB OUT: 4 KRAUSE,AIDEN	02:01		
SUB OUT: 15 ARTEST,JERON	02:01		
SUB IN: 5 LEE,ISAIAH	02:01		
SUB IN: 40 WELP,COLLIN	02:01		
	01:20	49-59	SUB OUT: MANSEL,ROMELLE
	01:20		SUB IN: HUNTER,CHANCE
SUB OUT: 55 GREENE,BRAD	01:20		
SUB IN: 42 RUTHERFORD,TOMMY	01:20		
	01:05	49-59	SUB OUT: MORGAN,JOSHUA
	01:05		SUB IN: GRIFFIN,JORDAN
SUB OUT: 5 LEE,ISAIAH	00:54	49-59	
SUB IN: 11 EDGAR JR.,JOHN	00:54		
	00:54		SUB OUT: GRIFFIN,JORDAN
	00:54		SUB IN: MORGAN,JOSHUA
	00:42	51-60	SUB OUT: HUNTER,CHANCE
	00:42		SUB IN: MANSEL,ROMELLE
	00:25	54-61	SUB OUT: COBB,DREW
	00:25		SUB IN: HUNTER,CHANCE
	00:18	56-63	SUB OUT: HUNTER,CHANCE
	00:18		SUB IN: DE GEEST,MAX

UC Irvine 56, Long Beach St. 63

Official Shot Chart
UC Irvine vs Long Beach St.
 PERIOD 1 Shots
 January 22, 2020 at Walter Pyramid - Long Beach

BEACH

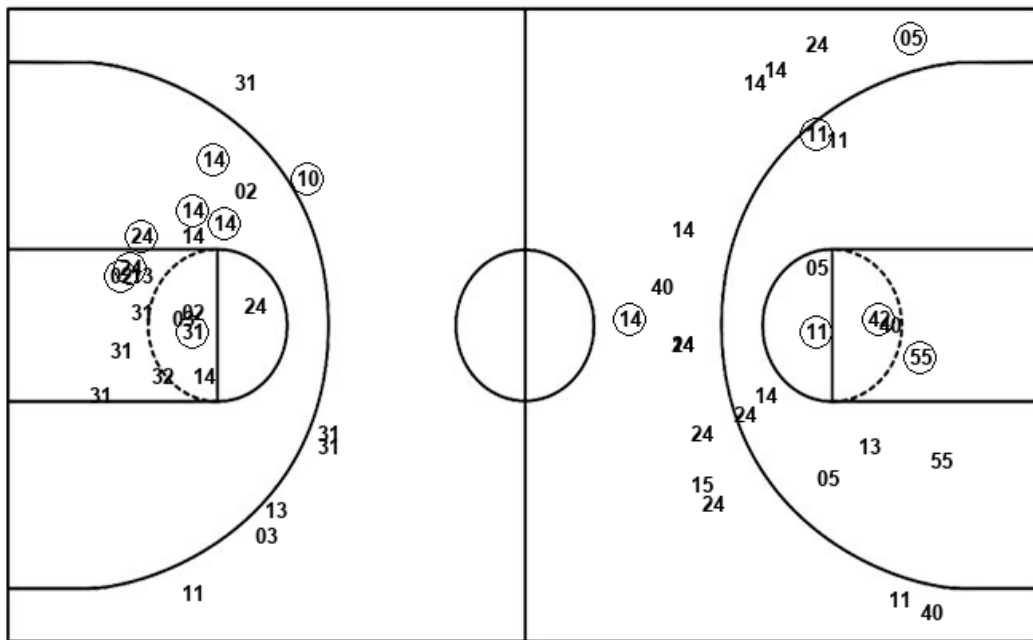
Long Beach St.

UC Irvine

Layups

14 31 24

Dunks



LBS : Period 1	Made	Att	Pct
Layups	2	3	66.7
Dunks	0	0	0
2PT Field Goals	9	21	42.9
3PT Field Goals	1	7	14.3
Total Field Goals	10	28	35.7

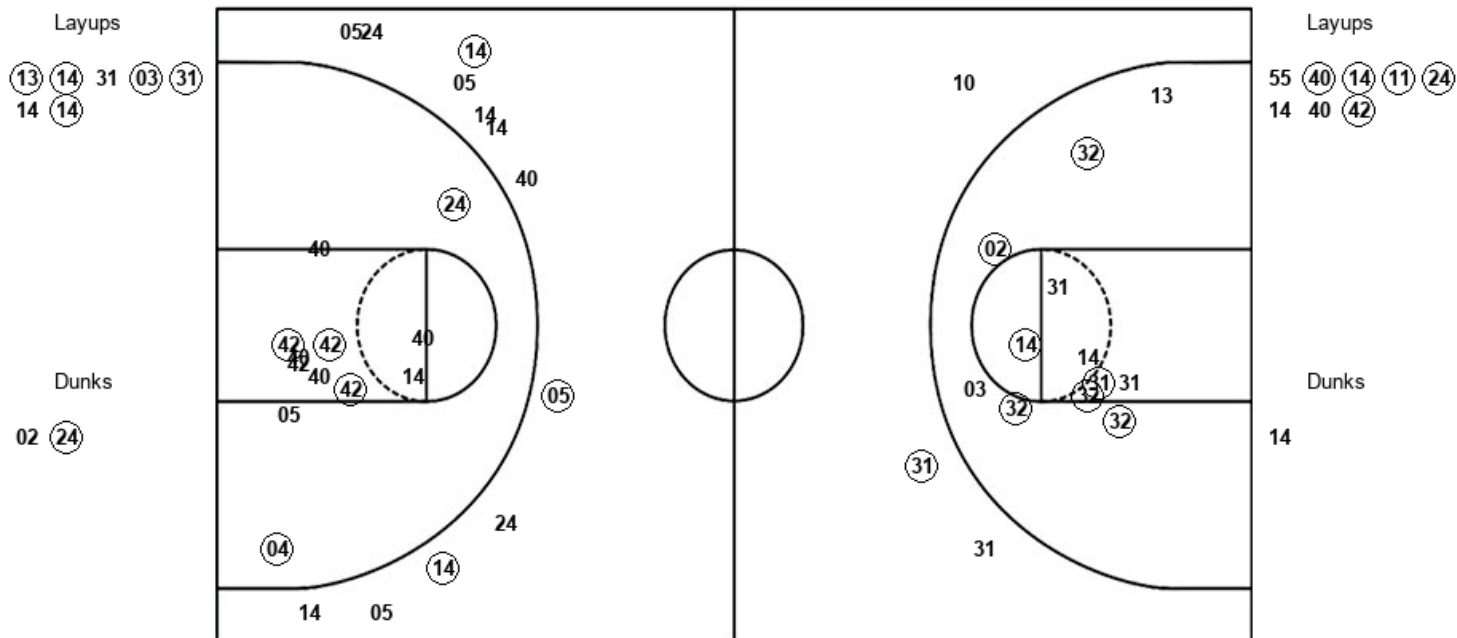
UCI : Period 1	Made	Att	Pct
Layups	3	6	50.0
Dunks	0	0	0
2PT Field Goals	7	18	38.9
3PT Field Goals	2	14	14.3
Total Field Goals	9	32	28.1

Official Shot Chart
UC Irvine vs Long Beach St.
 PERIOD 2 Shots
 January 22, 2020 at Walter Pyramid - Long Beach

BEACH

Long Beach St.

UC Irvine



BEACH

Dunks

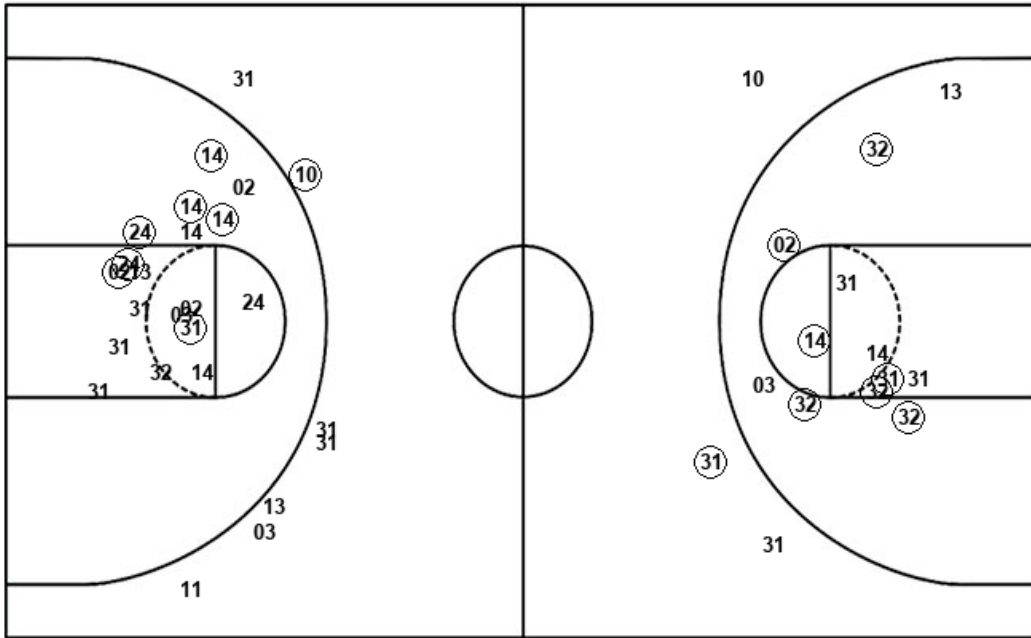
UCI : Period 2	Made	Att	Pct
Layups	5	8	62.5
Dunks	0	1	00.0
2PT Field Goals	10	21	47.6
3PT Field Goals	3	12	25.0
Total Field Goals	13	33	39.4

Official Shot Chart
UC Irvine vs Long Beach St.
 Long Beach St. Team Shots
 January 22, 2020 at Walter Pyramid - Long Beach

BEACH

Layups

Dunks



Layups

Dunks

LBS : Period 1	Made	Att	Pct
Layups	2	3	66.7
Dunks	0	0	0
2PT Field Goals	9	21	42.9
3PT Field Goals	1	7	14.3
Total Field Goals	10	28	35.7

LBS : Period 2	Made	Att	Pct
Layups	5	7	71.4
Dunks	1	2	50.0
2PT Field Goals	13	21	61.9
3PT Field Goals	1	3	33.3
Total Field Goals	14	24	58.3