

FINAL SCORE



Omaha

59



South Dakota St.

69

February 08, 2020 • Frost Arena - Brookings, S.D.

FINAL STATISTICS

Official Box Score
Omaha vs South Dakota St.
Game Totals -- Final Statistics
February 08, 2020 at Frost Arena - Brookings, S.D.



Omaha 59

No.	Player	S	Pts	FG	3FG	FT	OR	DR	TR	PF	A	TO	Blk	Stl	Min	+/-
02	CARTER, RAYANNA	G	7	3-10	0-1	1-2	0	4	4	0	7	5	0	0	33	-15
10	OGIER, ELLA	G	0	0-5	0-2	0-0	1	4	5	2	1	4	0	1	19	-20
11	KILLIAN, CLAIRE	G	3	1-4	0-3	1-2	1	2	3	1	0	0	0	0	16	-18
25	FILER, JOSIE	F	9	3-5	3-5	0-0	0	6	6	1	1	1	0	2	31	-4
33	MURDIE, MARIAH	C	15	7-13	1-2	0-2	0	4	4	5	1	3	0	0	19	-8
01	SCHMITT, SARAH	G	0	0-0	0-0	0-0	0	2	2	0	1	0	0	0	4	12
03	FELICI, AKILI	G	15	5-7	5-7	0-0	0	2	2	1	1	0	0	2	16	12
05	PILAKOUTA, ELENA	C	4	2-5	0-0	0-0	1	1	2	2	1	1	0	0	10	9
12	EKDAHL, MIKAELA	G	0	0-0	0-0	0-0	0	0	0	2	4	1	0	0	16	3
21	JOHNSON, ABBY	F	0	0-0	0-0	0-0	0	0	0	0	0	0	0	0	1	3
22	WILSON, KIA	F	4	1-3	0-0	2-2	1	1	2	4	0	1	0	0	15	-15
42	JOHNSTON, SOPHIE	G	2	1-3	0-1	0-0	0	1	1	0	2	0	0	0	19	-9
TEAM							1	4	5	0		1				
TOTALS			59	23-55	9-21	4-8	5	31	36	18	19	17	0	5	199	

Shooting By Period

Period	FG	FG%	3FG	3FG%	FT	FT%
1st Qtr	6-16	38%	0-4	00%	0-0	0%
2nd Qtr	3-14	21%	0-5	00%	0-0	0%
3rd Qtr	6-13	46%	2-4	50%	2-6	33%
4th Qtr	8-12	67%	7-8	88%	2-2	100%
1st Half	9-30	30%	0-9	00%	0-0	0%
2nd Half	14-25	56%	9-12	75%	4-8	50%
Game	23-55	41.8%	9-21	42.9%	4-8	50.0%

Deadball Rebounds: 1,0

Last FG: 4th-01:04

Biggest Run: 10-0

Largest lead: By 2 at 1st-06:31

Technical Fouls: None.

South Dakota St. 69

No.	Player	S	Pts	FG	3FG	FT	OR	DR	TR	PF	A	TO	Blk	Stl	Min	+/-
02	CASCIO JENSEN, RYLIE	G	3	1-5	1-4	0-0	0	2	2	1	6	2	0	2	30	22
20	NELSON, TORI	F	8	2-3	0-0	4-5	1	6	7	0	2	0	1	2	27	9
21	IRWIN, TYLEE	G	13	5-9	3-4	0-2	3	2	5	3	1	0	0	1	23	22
24	LARSON, TAGYN	F	16	7-14	0-2	2-6	3	6	9	1	3	3	2	0	29	28
33	BURCKHARD, PAITON	F	10	5-15	0-0	0-0	1	4	5	2	2	1	0	2	20	10
03	THEUNINCK, LINDSEY	G	7	3-4	1-2	0-0	0	0	0	1	5	0	0	2	25	2
10	RONGISCH, LAUREN	G	0	0-0	0-0	0-0	0	0	0	0	0	0	0	0	4	-9
30	FERRAND, JORDAN	F	0	0-1	0-0	0-0	0	0	0	0	0	0	0	0	2	-3
35	STAPLETON, SYDNEY	G	2	0-3	0-3	2-2	0	0	0	0	2	1	0	0	17	-12
50	BULTSMA, MEGAN	C	10	5-9	0-0	0-2	2	3	5	1	0	1	0	0	17	-10
52	HIRSCHMAN, ADDISON	C	0	0-2	0-0	0-0	0	1	1	0	0	0	0	0	4	-9
TEAM							0	6	6	0		0				
TOTALS			69	28-65	5-15	8-17	10	30	40	9	21	8	3	9	199	

Shooting By Period

Period	FG	FG%	3FG	3FG%	FT	FT%
1st Qtr	6-17	35%	0-4	00%	3-3	100%
2nd Qtr	8-17	47%	4-5	80%	1-5	20%
3rd Qtr	8-16	50%	0-3	00%	3-7	43%
4th Qtr	6-15	40%	1-3	33%	1-2	50%
1st Half	14-34	41%	4-9	44%	4-8	50%
2nd Half	14-31	45%	1-6	17%	4-9	44%
Game	28-65	43.1%	5-15	33.3%	8-17	47.1%

Deadball Rebounds: 5,0

Last FG: 4th-02:34

Biggest Run: 18-0

Largest lead: By 24 at 4th-04:55

Technical Fouls: None.

Game Notes:

Officials: **Zac Brost, Erika Herriman-Camarota, Marlin**

Schoonhoven

Attendance: **2929**

Start Time: **03:05 PM ET**

End Time: **04:43 PM ET**

Game Duration: **1:37**

Conference Game;

Score	1st	2nd	3rd	4th	TOT
UNO	12	6	16	25	59
SDS	15	21	19	14	69

UNO led for 1:13. SDS led for 34:07.

Game was tied for 4:23.

Times tied: **4** Lead Changes: **2**

Points from	UNO	SDS
In the Paint	20	42
Off Turns	13	18
2nd Chance	4	5
Fast Break	5	4
Bench	25	19

Official Box Score
Omaha vs South Dakota St.
First Half Statistics Only
February 08, 2020 at Frost Arena - Brookings, S.D.



Omaha 18

No.	Player	S	Pts	FG	3FG	FT	OR	DR	TR	PF	A	TO	Blk	Stl	Min	+/-
01	SCHMITT, SARAH	G	0	0-0	0-0	0-0	0	0	0	0	0	0	0	0	0	0
02	CARTER, RAYANNA	G	4	2-6	0-1	0-0	0	2	2	0	3	2	0	0	18	-11
03	FELICI, AKILI	G	0	0-0	0-0	0-0	0	0	0	0	0	0	0	0	0	0
05	PILAKOUTA, ELENA	C	0	0-1	0-0	0-0	0	0	0	1	0	1	0	0	2	-3
10	OGIER, ELLA	G	0	0-5	0-2	0-0	1	4	5	0	1	3	0	1	16	-16
11	KILLIAN, CLAIRE	G	2	1-4	0-3	0-0	1	2	3	1	0	0	0	0	13	-14
12	EKDAHL, MIKAELA	G	0	0-0	0-0	0-0	0	0	0	0	1	1	0	0	6	-9
21	JOHNSON, ABBY	F	0	0-0	0-0	0-0	0	0	0	0	0	0	0	0	0	0
22	WILSON, KIA	F	2	1-2	0-0	0-0	1	0	1	3	0	1	0	0	7	-13
25	FILER, JOSIE	F	0	0-1	0-1	0-0	0	4	4	0	0	0	0	1	14	-12
33	MURDIE, MARIAH	C	8	4-8	0-1	0-0	0	2	2	3	1	1	0	0	12	-3
42	JOHNSTON, SOPHIE	G	2	1-3	0-1	0-0	0	1	1	0	1	0	0	0	13	-9
	TEAM		0	0-0	0-0	0-0	1	2	3	0	0	0	0	0	0	0
	TOTALS		18	9-30	0-9	0-0	4	17	21	8	7	9	0	2	100	

Shooting By Period

Period	FG	FG%	3FG	3FG%	FT	FT%
1st Qtr	6-16	38%	0-4	00%	0-0	0%
2nd Qtr	3-14	21%	0-5	00%	0-0	0%
1st Half	9-30	30%	0-9	00%	0-0	0%
Game	23-55	41.8%	9-21	42.9%	4-8	50.0%

Deadball Rebounds: 1,0
 Last FG Half: UNO 2nd-02:14

South Dakota St. 36

No.	Player	S	Pts	FG	3FG	FT	OR	DR	TR	PF	A	TO	Blk	Stl	Min	+/-
02	CASCIO JENSEN, RYLIE	G	3	1-3	1-2	0-0	0	0	0	0	2	0	0	1	16	22
03	THEUNINCK, LINDSEY	G	5	2-2	1-1	0-0	0	0	0	1	4	0	0	1	13	11
10	RONGSCH, LAUREN	G	0	0-0	0-0	0-0	0	0	0	0	0	0	0	0	0	0
20	NELSON, TORI	F	5	1-1	0-0	3-3	0	4	4	0	0	0	1	1	14	6
21	IRWIN, TYLEE	G	10	4-7	2-3	0-0	2	1	3	2	1	0	0	0	13	14
24	LARSON, TAGYN	F	7	3-7	0-1	1-3	2	4	6	1	2	2	2	0	16	17
30	FERRAND, JORDAN	F	0	0-0	0-0	0-0	0	0	0	0	0	0	0	0	0	0
33	BURCKHARD, PAITON	F	2	1-8	0-0	0-0	0	3	3	0	2	0	0	2	11	12
35	STAPLETON, SYDNEY	G	0	0-2	0-2	0-0	0	0	0	0	0	0	0	0	8	2
50	BULTSMA, MEGAN	C	4	2-4	0-0	0-2	1	1	2	0	0	1	0	0	9	6
52	HIRSCHMAN, ADDISON	C	0	0-0	0-0	0-0	0	0	0	0	0	0	0	0	0	0
	TEAM		0	0-0	0-0	0-0	0	4	4	0	0	0	0	0	0	0
	TOTALS		36	14-34	4-9	4-8	5	17	22	4	11	3	3	5	100	

Shooting By Period

Period	FG	FG%	3FG	3FG%	FT	FT%
1st Qtr	6-17	35%	0-4	00%	3-3	100%
2nd Qtr	8-17	47%	4-5	80%	1-5	20%
1st Half	14-34	41%	4-9	44%	4-8	50%
Game	28-65	43.1%	5-15	33.3%	8-17	47.1%

Deadball Rebounds: 5,0
 Last FG Half: SDS 2nd-00:05

Game Notes:

Officials: **Zac Brost, Erika Herriman-Camarota, Marlin Schoonhoven**
 Attendance: **2929**

Start Time: **03:05 PM ET**
 End Time: **04:43 PM ET**
 Game Duration: **1:37**
 Conference Game;

Score	1st	2nd	3rd	4th	TOT
UNO	12	6	16	25	59
SDS	15	21	19	14	69

Points from (This Period)	UNO	SDS
In the Paint	14	18
Off Turns	0	10
2nd Chance	4	0
Fast Break	2	0
Bench	4	9

Official Box Score
Omaha vs South Dakota St.
First Quarter Statistics Only
February 08, 2020 at Frost Arena - Brookings, S.D.



Omaha 12

No.	Player	S	Pts	FG	3FG	FT	OR	DR	TR	PF	A	TO	Blk	Stl	Min	+/-
02	CARTER, RAYANNA	G	2	1-2	0-0	0-0	0	0	0	0	2	1	0	0	10	-3
10	OGIER, ELLA	G	0	0-3	0-0	0-0	0	2	2	0	1	1	0	0	8	-2
11	KILLIAN, CLAIRE	G	0	0-2	0-2	0-0	0	2	2	1	0	0	0	0	6	-2
25	FILER, JOSIE	F	0	0-1	0-1	0-0	0	2	2	0	0	0	0	1	9	-2
33	MURDIE, MARIAH	C	8	4-7	0-1	0-0	0	1	1	1	0	0	0	0	9	-1
01	SCHMITT, SARAH	G	0	0-0	0-0	0-0	0	0	0	0	0	0	0	0	0	0
03	FELICI, AKILI	G	0	0-0	0-0	0-0	0	0	0	0	0	0	0	0	0	0
05	PILAKOUTA, ELENA	C	0	0-0	0-0	0-0	0	0	0	0	0	0	0	0	0	0
12	EKDAHL, MIKAELA	G	0	0-0	0-0	0-0	0	0	0	0	1	0	0	0	2	-1
21	JOHNSON, ABBY	F	0	0-0	0-0	0-0	0	0	0	0	0	0	0	0	0	0
22	WILSON, KIA	F	0	0-0	0-0	0-0	0	0	0	1	0	0	0	0	2	-3
42	JOHNSTON, SOPHIE	G	2	1-1	0-0	0-0	0	0	0	0	0	0	0	0	4	-1
TEAM							1	1	2	0						
TOTALS			12	6-16	0-4	0-0	1	8	9	3	4	2	0	1	50	

Shooting By Period

Period	FG	FG%	3FG	3FG%	FT	FT%
1st Qtr	6-16	38%	0-4	00%	0-0	0%
2nd Qtr	3-14	21%	0-5	00%	0-0	0%
1st Half	6-16	38%	0-4	00%	0-0	0%
1st Half	9-30	30%	0-9	00%	0-0	0%
Game	23-55	41.8%	9-21	42.9%	4-8	50.0%

Deadball Rebounds: 1,0

South Dakota St. 15

No.	Player	S	Pts	FG	3FG	FT	OR	DR	TR	PF	A	TO	Blk	Stl	Min	+/-
02	CASCIO JENSEN, RYLIE	G	0	0-2	0-1	0-0	0	0	0	0	0	0	0	1	9	3
20	NELSON, TORI	F	2	0-0	0-0	2-2	0	2	2	0	0	0	1	0	7	0
21	IRWIN, TYLEE	G	2	1-2	0-1	0-0	2	1	3	0	0	0	0	0	6	-2
24	LARSON, TAGYN	F	5	2-4	0-1	1-1	0	2	2	0	1	1	1	0	8	3
33	BURCKHARD, PAITON	F	0	0-5	0-0	0-0	0	1	1	0	1	0	0	0	5	-2
03	THEUNINCK, LINDSEY	G	2	1-1	0-0	0-0	0	0	0	0	2	0	0	0	5	5
10	RONGISCH, LAUREN	G	0	0-0	0-0	0-0	0	0	0	0	0	0	0	0	0	0
30	FERRAND, JORDAN	F	0	0-0	0-0	0-0	0	0	0	0	0	0	0	0	0	0
35	STAPLETON, SYDNEY	G	0	0-1	0-1	0-0	0	0	0	0	0	0	0	0	5	3
50	BULTSMA, MEGAN	C	4	2-2	0-0	0-0	1	1	2	0	0	1	0	0	5	5
52	HIRSCHMAN, ADDISON	C	0	0-0	0-0	0-0	0	0	0	0	0	0	0	0	0	0
TEAM							0	2	2	0						
TOTALS			15	6-17	0-4	3-3	3	9	12	0	4	2	2	1	50	

Shooting By Period

Period	FG	FG%	3FG	3FG%	FT	FT%
1st Qtr	6-17	35%	0-4	00%	3-3	100%
2nd Qtr	8-17	47%	4-5	80%	1-5	20%
1st Half	6-17	35%	0-4	00%	3-3	100%
1st Half	14-34	41%	4-9	44%	4-8	50%
Game	28-65	43.1%	5-15	33.3%	8-17	47.1%

Deadball Rebounds: 5,0

Game Notes:

Officials: **Zac Brost, Erika Herriman-Camarota, Marlin Schoonhoven**
 Attendance: **2929**

Start Time: **03:05 PM ET**
 End Time: **04:43 PM ET**
 Game Duration: **1:37**
 Conference Game;

Score	1st	2nd	3rd	4th	TOT
UNO	12	6	16	25	59
SDS	15	21	19	14	69

Points from (This Period)	UNO	SDS
In the Paint	10	10
Off Turns	0	0
2nd Chance	2	0
Fast Break	2	0
Bench	2	6

Official Play-By-Play
Omaha vs South Dakota St.
First Quarter
February 08, 2020 at Frost Arena - Brookings, S.D.



Period 1

Starters:

Omaha: 2 CARTER, RAYANNA (G); 10 OGIER, ELLA (G); 11 KILLIAN, CLAIRE (G); 25 FILER, JOSIE (F); 33 MURDIE, MARIAH (C);

South Dakota St.: 2 CASCIO JENSEN, RYLIE (G); 20 NELSON, TORI (F); 21 IRWIN, TYLEE (G); 24 LARSON, TAGYN (F); 33 BURCKHARD, PAITON (F);

Time	VISITORS: Omaha	Score	Margin	HOME: South Dakota St.
09:48				TURNOVER (BADPASS) by LARSON, TAGYN
09:31	MISSED LAYUP by OGIER, ELLA			
09:27				REBOUND (DEF) by BURCKHARD, PAITON
09:21				MISSED 3PTR by LARSON, TAGYN
09:17				REBOUND (OFF) by IRWIN, TYLEE
09:07				MISSED LAYUP by BURCKHARD, PAITON
09:03	REBOUND (DEF) by KILLIAN, CLAIRE			
08:53	TURNOVER (TRAVEL) by OGIER, ELLA			
08:37				MISSED LAYUP by BURCKHARD, PAITON
08:34	REBOUND (DEF) by OGIER, ELLA			
08:30	MISSED 3PTR by KILLIAN, CLAIRE			
08:27				REBOUND (DEF) by TEAM
08:16		2-0	H 2	GOOD! LAYUP by LARSON, TAGYN
08:16				ASSIST by BURCKHARD, PAITON
07:57	MISSED 3PTR by KILLIAN, CLAIRE			
07:51				REBOUND (DEF) by IRWIN, TYLEE
07:39				MISSED LAYUP by BURCKHARD, PAITON
07:35				REBOUND (OFF) by IRWIN, TYLEE
07:29				MISSED 3PTR by IRWIN, TYLEE
07:25	REBOUND (DEF) by MURDIE, MARIAH			
07:20	TURNOVER (LOSTBALL) by CARTER, RAYANNA			
07:20				STEAL by CASCIO JENSEN, RYLIE
07:06				MISSED JUMPER by BURCKHARD, PAITON
07:02	REBOUND (DEF) by FILER, JOSIE			
06:54	GOOD! JUMPER by MURDIE, MARIAH [PNT]	2-2	T	
06:54	ASSIST by CARTER, RAYANNA			
06:39				MISSED LAYUP by LARSON, TAGYN
06:35	REBOUND (DEF) by OGIER, ELLA			
06:31	GOOD! LAYUP by MURDIE, MARIAH [FB]	2-4	V 2	
06:31	ASSIST by CARTER, RAYANNA			
06:15				MISSED 3PTR by CASCIO JENSEN, RYLIE
06:11	REBOUND (DEF) by KILLIAN, CLAIRE			
06:04	MISSED JUMPER by MURDIE, MARIAH			
06:04				BLOCK by NELSON, TORI
05:57				REBOUND (DEF) by NELSON, TORI
05:50				MISSED JUMPER by BURCKHARD, PAITON
05:46	REBOUND (DEF) by FILER, JOSIE			
05:27	MISSED 3PTR by FILER, JOSIE			
05:22				REBOUND (DEF) by NELSON, TORI
05:18	FOUL (PERSONAL) by KILLIAN, CLAIRE			
05:18				SUB OUT: IRWIN, TYLEE
05:18				SUB OUT: BURCKHARD, PAITON
05:18				SUB IN: THEUNINCK, LINDSEY
05:18				SUB IN: BULTSMA, MEGAN
05:18		3-4	V 1	GOOD! FT by NELSON, TORI
05:18		4-4	T	GOOD! FT by NELSON, TORI
05:18				SUB OUT: NELSON, TORI
05:18				SUB IN: STAPLETON, SYDNEY
04:59	MISSED LAYUP by OGIER, ELLA			
04:56				REBOUND (DEF) by LARSON, TAGYN
04:45		6-4	H 2	GOOD! JUMPER by BULTSMA, MEGAN
04:45				ASSIST by LARSON, TAGYN
04:20	GOOD! JUMPER by MURDIE, MARIAH [PNT]	6-6	T	
04:20	ASSIST by OGIER, ELLA			
04:06		8-6	H 2	GOOD! JUMPER by BULTSMA, MEGAN [PNT]
04:06				ASSIST by THEUNINCK, LINDSEY
03:46	MISSED LAYUP by OGIER, ELLA			
03:46				BLOCK by LARSON, TAGYN
03:46	REBOUND (OFF) by TEAM			
03:46				
03:46	SUB OUT: KILLIAN, CLAIRE			
03:46	SUB IN: JOHNSTON, SOPHIE			
03:44	GOOD! JUMPER by MURDIE, MARIAH [PNT]	8-8	T	
03:22				MISSED LAYUP by CASCIO JENSEN, RYLIE
03:19				REBOUND (OFF) by BULTSMA, MEGAN
03:19				TURNOVER (LOSTBALL) by BULTSMA, MEGAN
03:19	STEAL by FILER, JOSIE			
03:07	MISSED 3PTR by MURDIE, MARIAH			
03:03				REBOUND (DEF) by LARSON, TAGYN
02:56				MISSED 3PTR by STAPLETON, SYDNEY

Time	VISITORS: Omaha	Score	Margin	HOME: South Dakota St.
02:53	REBOUND (DEF) by TEAM			
02:31	MISSED JUMPER by MURDIE, MARIAH			
02:28				REBOUND (DEF) by TEAM
02:28	SUB OUT: FILER, JOSIE			
02:28	SUB IN: WILSON, KIA			
02:15		10-8	H 2	GOOD! LAYUP by LARSON, TAGYN
02:15				ASSIST by THEUNINCK, LINDSEY
02:15	FOUL (PERSONAL) by WILSON, KIA			
02:15	SUB OUT: OGIER, ELLA			
02:15	SUB IN: EKDAHL, MIKAELA			
02:15		11-8	H 3	GOOD! FT by LARSON, TAGYN
02:15				SUB OUT: LARSON, TAGYN
02:15				SUB IN: NELSON, TORI
01:49	GOOD! JUMPER by CARTER, RAYANNA	11-10	H 1	
01:28	FOUL (PERSONAL) by MURDIE, MARIAH			
01:28	SUB OUT: MURDIE, MARIAH			
01:28	SUB IN: FILER, JOSIE			
01:24		13-10	H 3	GOOD! LAYUP by THEUNINCK, LINDSEY
01:07				SUB OUT: CASCIO JENSEN, RYLIE
01:07				SUB IN: IRWIN, TYLEE
00:47	MISSED JUMPER by CARTER, RAYANNA			
00:43				REBOUND (DEF) by BULTSMA, MEGAN
00:31		15-10	H 5	GOOD! LAYUP by IRWIN, TYLEE
00:03	GOOD! LAYUP by JOHNSTON, SOPHIE	15-12	H 3	
00:03	ASSIST by EKDAHL, MIKAELA			

Omaha 12, South Dakota St. 15

Points from (This Period)	UNO	SDS
In the Paint	10	10
Off Turns	0	0
2nd Chance	2	0
Fast Break	2	0
Bench	2	6

Official Box Score
Omaha vs South Dakota St.
Second Quarter Statistics Only
February 08, 2020 at Frost Arena - Brookings, S.D.



Omaha 6

No.	Player	S	Pts	FG	3FG	FT	OR	DR	TR	PF	A	TO	Blk	Stl	Min	+/-
02	CARTER, RAYANNA	G	2	1-4	0-1	0-0	0	2	2	0	1	1	0	0	8	-8
10	OGIER, ELLA	G	0	0-2	0-2	0-0	1	2	3	0	0	2	0	1	8	-14
11	KILLIAN, CLAIRE	G	2	1-2	0-1	0-0	1	0	1	0	0	0	0	0	7	-12
25	FILER, JOSIE	F	0	0-0	0-0	0-0	0	2	2	0	0	0	0	0	5	-10
33	MURDIE, MARIAH	C	0	0-1	0-0	0-0	0	1	1	2	1	1	0	0	3	-2
01	SCHMITT, SARAH	G	0	0-0	0-0	0-0	0	0	0	0	0	0	0	0	0	0
03	FELICI, AKILI	G	0	0-0	0-0	0-0	0	0	0	0	0	0	0	0	0	0
05	PILAKOUTA, ELENA	C	0	0-1	0-0	0-0	0	0	0	1	0	1	0	0	2	-3
12	EKDAHL, MIKAELA	G	0	0-0	0-0	0-0	0	0	0	0	0	1	0	0	4	-8
21	JOHNSON, ABBY	F	0	0-0	0-0	0-0	0	0	0	0	0	0	0	0	0	0
22	WILSON, KIA	F	2	1-2	0-0	0-0	1	0	1	2	0	1	0	0	5	-10
42	JOHNSTON, SOPHIE	G	0	0-2	0-1	0-0	0	1	1	0	1	0	0	0	9	-8
TEAM							0	1	1	0	0	0	0	0	0	0
TOTALS			6	3-14	0-5	0-0	3	9	12	5	3	7	0	1	50	

Shooting By Period

Period	FG	FG%	3FG	3FG%	FT	FT%
3rd Qtr	6-13	46%	2-4	50%	2-6	33%
4th Qtr	8-12	67%	7-8	88%	2-2	100%
2nd Half	3-14	21%	0-5	00%	0-0	0%
2nd Half	14-25	56%	9-12	75%	4-8	50%
Game	23-55	41.8%	9-21	42.9%	4-8	50.0%

Deadball Rebounds: 1,0

South Dakota St. 21

No.	Player	S	Pts	FG	3FG	FT	OR	DR	TR	PF	A	TO	Blk	Stl	Min	+/-
02	CASCIO JENSEN, RYLIE	G	3	1-1	1-1	0-0	0	0	0	0	2	0	0	0	7	19
20	NELSON, TORI	F	3	1-1	0-0	1-1	0	2	2	0	0	0	0	1	7	6
21	IRWIN, TYLEE	G	8	3-5	2-2	0-0	0	0	0	2	1	0	0	0	7	16
24	LARSON, TAGYN	F	2	1-3	0-0	0-2	2	2	4	1	1	1	1	0	8	14
33	BURCKHARD, PAITON	F	2	1-3	0-0	0-0	0	2	2	0	1	0	0	2	6	14
03	THEUNINCK, LINDSEY	G	3	1-1	1-1	0-0	0	0	0	1	2	0	0	1	8	6
10	RONGISCH, LAUREN	G	0	0-0	0-0	0-0	0	0	0	0	0	0	0	0	0	0
30	FERRAND, JORDAN	F	0	0-0	0-0	0-0	0	0	0	0	0	0	0	0	0	0
35	STAPLETON, SYDNEY	G	0	0-1	0-1	0-0	0	0	0	0	0	0	0	0	3	-1
50	BULTSMA, MEGAN	C	0	0-2	0-0	0-2	0	0	0	0	0	0	0	0	4	1
52	HIRSCHMAN, ADDISON	C	0	0-0	0-0	0-0	0	0	0	0	0	0	0	0	0	0
TEAM							0	2	2	0	0	0	0	0	0	
TOTALS			21	8-17	4-5	1-5	2	8	10	4	7	1	1	4	50	

Shooting By Period

Period	FG	FG%	3FG	3FG%	FT	FT%
3rd Qtr	8-16	50%	0-3	00%	3-7	43%
4th Qtr	6-15	40%	1-3	33%	1-2	50%
2nd Half	8-17	47%	4-5	80%	1-5	20%
2nd Half	14-31	45%	1-6	17%	4-9	44%
Game	28-65	43.1%	5-15	33.3%	8-17	47.1%

Deadball Rebounds: 5,0

Game Notes:

Officials: **Zac Brost, Erika Herriman-Camarota, Marlin**

Schoonhoven

Attendance: **2929**

Start Time: **03:05 PM ET**

End Time: **04:43 PM ET**

Game Duration: **1:37**

Conference Game;

Score	1st	2nd	3rd	4th	TOT
UNO	12	6	16	25	59
SDS	15	21	19	14	69

Points from (This Period)	UNO	SDS
In the Paint	4	8
Off Turns	0	10
2nd Chance	2	0
Fast Break	0	0
Bench	2	3

Official Play-By-Play
Omaha vs South Dakota St.
Second Quarter
February 08, 2020 at Frost Arena - Brookings, S.D.



Period 2

Starters:

Omaha: 2 CARTER, RAYANNA (G); 10 OGIER, ELLA (G); 11 KILLIAN, CLAIRE (G); 25 FILER, JOSIE (F); 33 MURDIE, MARIAH (C);

South Dakota St.: 2 CASCIO JENSEN, RYLIE (G); 20 NELSON, TORI (F); 21 IRWIN, TYLEE (G); 24 LARSON, TAGYN (F); 33 BURCKHARD, PAITON (F);

Time	VISITORS: Omaha	Score	Margin	HOME: South Dakota St.
10:00				SUB OUT: STAPLETON, SYDNEY
10:00				SUB IN: CASCIO JENSEN, RYLIE
09:42				MISSED LAYUP by IRWIN, TYLEE
09:38	REBOUND (DEF) by FILER, JOSIE			
09:32	GOOD! LAYUP by WILSON, KIA	15-14	H 1	
09:32	ASSIST by JOHNSTON, SOPHIE			
09:16				MISSED JUMPER by BULTSMA, MEGAN
09:11	REBOUND (DEF) by FILER, JOSIE			
08:50	MISSED JUMPER by CARTER, RAYANNA			
08:46				REBOUND (DEF) by NELSON, TORI
08:41		18-14	H 4	GOOD! 3PTR by THEUNINCK, LINDSEY
08:41				ASSIST by CASCIO JENSEN, RYLIE
08:15				SUB OUT: NELSON, TORI
08:15				SUB OUT: BULTSMA, MEGAN
08:15				SUB IN: LARSON, TAGYN
08:15				SUB IN: BURCKHARD, PAITON
08:15	SUB OUT: CARTER, RAYANNA			
08:15	SUB OUT: FILER, JOSIE			
08:15	SUB IN: KILLIAN, CLAIRE			
08:15	SUB IN: MURDIE, MARIAH			
08:10	TURNOVER (TRAVEL) by MURDIE, MARIAH			
07:52	FOUL (PERSONAL) by MURDIE, MARIAH			
07:52	SUB OUT: MURDIE, MARIAH			
07:52	SUB OUT: JOHNSTON, SOPHIE			
07:52	SUB IN: OGIER, ELLA			
07:52	SUB IN: FILER, JOSIE			
07:45		20-14	H 6	GOOD! LAYUP by BURCKHARD, PAITON
07:45				ASSIST by THEUNINCK, LINDSEY
07:30	FOUL (OFF) by WILSON, KIA			
07:30	TURNOVER (OFFENSIVE) by WILSON, KIA			
07:12		22-14	H 8	GOOD! LAYUP by LARSON, TAGYN
07:12				ASSIST by IRWIN, TYLEE
06:56	MISSED 3PTR by KILLIAN, CLAIRE			
06:52	REBOUND (OFF) by WILSON, KIA			
06:47				FOUL (PERSONAL) by THEUNINCK, LINDSEY
06:35	TURNOVER (BADPASS) by EKDAHL, MIKAELA			
06:35				STEAL by BURCKHARD, PAITON
06:25		25-14	H 11	GOOD! 3PTR by CASCIO JENSEN, RYLIE
06:25				ASSIST by THEUNINCK, LINDSEY
06:22	TIMEOUT 30SEC			
06:22				
06:22	SUB OUT: KILLIAN, CLAIRE			
06:22	SUB IN: JOHNSTON, SOPHIE			
06:09	MISSED LAYUP by WILSON, KIA			
06:09				BLOCK by LARSON, TAGYN
06:09				REBOUND (DEF) by LARSON, TAGYN
06:09	SUB OUT: EKDAHL, MIKAELA			
06:09	SUB IN: CARTER, RAYANNA			
05:56		27-14	H 13	GOOD! LAYUP by IRWIN, TYLEE
05:35	TURNOVER (BADPASS) by OGIER, ELLA			
05:14				MISSED LAYUP by BURCKHARD, PAITON
05:11	REBOUND (DEF) by OGIER, ELLA			
05:11				FOUL (PERSONAL) by IRWIN, TYLEE
05:11				SUB OUT: THEUNINCK, LINDSEY
05:11				SUB IN: NELSON, TORI
04:57	MISSED LAYUP by JOHNSTON, SOPHIE			
04:53				REBOUND (DEF) by LARSON, TAGYN
04:41				MISSED LAYUP by LARSON, TAGYN
04:37				REBOUND (OFF) by LARSON, TAGYN
04:37	FOUL (PERSONAL) by WILSON, KIA			
04:37	SUB OUT: WILSON, KIA			
04:37	SUB OUT: FILER, JOSIE			
04:37	SUB IN: KILLIAN, CLAIRE			
04:37	SUB IN: MURDIE, MARIAH			
04:37				MISSED FT by LARSON, TAGYN
04:37				REBOUND (OFF) by TEAM
04:37				MISSED FT by LARSON, TAGYN
04:35	REBOUND (DEF) by OGIER, ELLA			
04:22	TURNOVER (BADPASS) by CARTER, RAYANNA			
04:22				STEAL by BURCKHARD, PAITON

Time	VISITORS: Omaha	Score	Margin	HOME: South Dakota St.
04:15		30-14	H 16	GOOD! 3PTR by IRWIN, TYLEE
04:15				ASSIST by CASCIO JENSEN, RYLIE
04:05	MISSED 3PTR by JOHNSTON, SOPHIE			
04:00				REBOUND (DEF) by BURCKHARD, PAITON
03:43		33-14	H 19	GOOD! 3PTR by IRWIN, TYLEE
03:43				ASSIST by BURCKHARD, PAITON
03:19	MISSED LAYUP by MURDIE, MARIAH			
03:14				REBOUND (DEF) by BURCKHARD, PAITON
03:10				MISSED LAYUP by IRWIN, TYLEE
03:07	REBOUND (DEF) by MURDIE, MARIAH			
02:52				FOUL (PERSONAL) by IRWIN, TYLEE
02:52				SUB OUT: CASCIO JENSEN, RYLIE
02:52				SUB OUT: IRWIN, TYLEE
02:52				SUB IN: THEUNINCK, LINDSEY
02:52				SUB IN: STAPLETON, SYDNEY
02:49	GOOD! LAYUP by KILLIAN, CLAIRE [PNT]	33-16	H 17	
02:49	ASSIST by CARTER, RAYANNA			
02:33				MISSED LAYUP by BURCKHARD, PAITON
02:29	REBOUND (DEF) by JOHNSTON, SOPHIE			
02:19	MISSED 3PTR by CARTER, RAYANNA			
02:17	REBOUND (OFF) by OGIER, ELLA			
02:17				FOUL (PERSONAL) by LARSON, TAGYN
02:17				SUB OUT: BURCKHARD, PAITON
02:17				SUB IN: BULTSMA, MEGAN
02:14	GOOD! JUMPER by CARTER, RAYANNA	33-18	H 15	
02:14	ASSIST by MURDIE, MARIAH			
02:03	FOUL (PERSONAL) by MURDIE, MARIAH			
02:02	SUB OUT: MURDIE, MARIAH			
02:02	SUB IN: PILAKOUTA, ELENA			
02:02				MISSED FT by BULTSMA, MEGAN
02:02				REBOUND (OFF) by TEAM
02:02				MISSED FT by BULTSMA, MEGAN
02:00	REBOUND (DEF) by CARTER, RAYANNA			
01:53	MISSED 3PTR by OGIER, ELLA			
01:47	REBOUND (OFF) by KILLIAN, CLAIRE			
01:34	MISSED JUMPER by PILAKOUTA, ELENA			
01:29				REBOUND (DEF) by NELSON, TORI
01:20				MISSED JUMPER by BULTSMA, MEGAN
01:17	REBOUND (DEF) by TEAM			
00:58	TURNOVER (LOSTBALL) by OGIER, ELLA			
00:58				STEAL by NELSON, TORI
00:49				TURNOVER (BADPASS) by LARSON, TAGYN
00:49	STEAL by OGIER, ELLA			
00:39	TURNOVER (LOSTBALL) by PILAKOUTA, ELENA			
00:39				STEAL by THEUNINCK, LINDSEY
00:34				MISSED LAYUP by LARSON, TAGYN
00:30				REBOUND (OFF) by LARSON, TAGYN
00:27				MISSED 3PTR by STAPLETON, SYDNEY
00:24	REBOUND (DEF) by CARTER, RAYANNA			
00:15	MISSED 3PTR by OGIER, ELLA			
00:14				REBOUND (DEF) by TEAM
00:14				SUB OUT: THEUNINCK, LINDSEY
00:14				SUB IN: CASCIO JENSEN, RYLIE
00:05		35-18	H 17	GOOD! LAYUP by NELSON, TORI [PNT]
00:05				ASSIST by LARSON, TAGYN
00:05	FOUL (PERSONAL) by PILAKOUTA, ELENA			
00:05				SUB OUT: BULTSMA, MEGAN
00:05				SUB IN: BURCKHARD, PAITON
00:05		36-18	H 18	GOOD! FT by NELSON, TORI
00:05				SUB OUT: NELSON, TORI
00:05				SUB IN: THEUNINCK, LINDSEY
00:00	MISSED LAYUP by CARTER, RAYANNA			
00:00				REBOUND (DEF) by TEAM

Omaha 18, South Dakota St. 36

Points from (This Period)	UNO	SDS
In the Paint	4	8
Off Turns	0	10
2nd Chance	2	0
Fast Break	0	0
Bench	2	3

Official Box Score
Omaha vs South Dakota St.
Second Half Statistics Only
February 08, 2020 at Frost Arena - Brookings, S.D.



Omaha 41

No.	Player	S	Pts	FG	3FG	FT	OR	DR	TR	PF	A	TO	Blk	Stl	Min	+/-
01	SCHMITT, SARAH	G	0	0-0	0-0	0-0	0	2	2	0	1	0	0	0	4	12
02	CARTER, RAYANNA	G	3	1-4	0-0	1-2	0	2	2	0	4	3	0	0	15	-4
03	FELICI, AKILI	G	15	5-7	5-7	0-0	0	2	2	1	1	0	0	2	17	12
05	PILAKOUTA, ELENA	C	4	2-4	0-0	0-0	1	1	2	1	1	0	0	0	7	12
10	OGIER, ELLA	G	0	0-0	0-0	0-0	0	0	0	2	0	1	0	0	3	-4
11	KILLIAN, CLAIRE	G	1	0-0	0-0	1-2	0	0	0	0	0	0	0	0	3	-4
12	EKDAHL, MIKAELA	G	0	0-0	0-0	0-0	0	0	0	2	3	0	0	0	9	12
21	JOHNSON, ABBY	F	0	0-0	0-0	0-0	0	0	0	0	0	0	0	0	1	3
22	WILSON, KIA	F	2	0-1	0-0	2-2	0	1	1	1	0	0	0	0	7	-2
25	FILER, JOSIE	F	9	3-4	3-4	0-0	0	2	2	1	1	1	0	1	16	8
33	MURDIE, MARIAH	C	7	3-5	1-1	0-2	0	2	2	2	0	2	0	0	8	-5
42	JOHNSTON, SOPHIE	G	0	0-0	0-0	0-0	0	0	0	0	1	0	0	0	7	0
	TEAM		0	0-0	0-0	0-0	0	2	2	0	0	1	0	0	0	0
	TOTALS		41	14-25	9-12	4-8	1	14	15	10	12	8	0	3	99	

Shooting By Period

Period	FG	FG%	3FG	3FG%	FT	FT%
3rd Qtr	6-13	46%	2-4	50%	2-6	33%
4th Qtr	8-12	67%	7-8	88%	2-2	100%
2nd Half	14-25	56%	9-12	75%	4-8	50%
Game	23-55	41.8%	9-21	42.9%	4-8	50.0%

Deadball Rebounds: 1,0
Last FG Half: UNO 4th-01:04

South Dakota St. 33

No.	Player	S	Pts	FG	3FG	FT	OR	DR	TR	PF	A	TO	Blk	Stl	Min	+/-
02	CASCIO JENSEN, RYLIE	G	0	0-2	0-2	0-0	0	2	2	1	4	2	0	1	13	0
03	THEUNINCK, LINDSEY	G	2	1-2	0-1	0-0	0	0	0	0	1	0	0	1	13	-9
10	RONGISCH, LAUREN	G	0	0-0	0-0	0-0	0	0	0	0	0	0	0	0	4	-9
20	NELSON, TORI	F	3	1-2	0-0	1-2	1	2	3	0	2	0	0	1	13	3
21	IRWIN, TYLEE	G	3	1-2	1-1	0-2	1	1	2	1	0	0	0	1	10	8
24	LARSON, TAGYN	F	9	4-7	0-1	1-3	1	2	3	0	1	1	0	0	13	11
30	FERRAND, JORDAN	F	0	0-1	0-0	0-0	0	0	0	0	0	0	0	0	2	-3
33	BURCKHARD, PAITON	F	8	4-7	0-0	0-0	1	1	2	2	0	1	0	0	9	-2
35	STAPLETON, SYDNEY	G	2	0-1	0-1	2-2	0	0	0	0	2	1	0	0	9	-14
50	BULTSMA, MEGAN	C	6	3-5	0-0	0-0	1	2	3	1	0	0	0	0	8	-16
52	HIRSCHMAN, ADDISON	C	0	0-2	0-0	0-0	0	1	1	0	0	0	0	0	4	-9
	TEAM		0	0-0	0-0	0-0	0	2	2	0	0	0	0	0	0	0
	TOTALS		33	14-31	1-6	4-9	5	13	18	5	10	5	0	4	99	

Shooting By Period

Period	FG	FG%	3FG	3FG%	FT	FT%
3rd Qtr	8-16	50%	0-3	00%	3-7	43%
4th Qtr	6-15	40%	1-3	33%	1-2	50%
2nd Half	14-31	45%	1-6	17%	4-9	44%
Game	28-65	43.1%	5-15	33.3%	8-17	47.1%

Deadball Rebounds: 5,0
Last FG Half: SDS 4th-02:34

Game Notes:

Officials: **Zac Brost,Erika Herriman-Camarota,Marlin**

Schoonhoven

Attendance: **2929**

Start Time: **03:05 PM ET**

End Time: **04:43 PM ET**

Game Duration: **1:37**

Conference Game;

Score	1st	2nd	3rd	4th	TOT
UNO	12	6	16	25	59
SDS	15	21	19	14	69

Points from (This Period)	UNO	SDS
In the Paint	6	24
Off Turns	13	8
2nd Chance	0	5
Fast Break	3	4
Bench	21	10

Official Box Score
Omaha vs South Dakota St.
Third Quarter Statistics Only
February 08, 2020 at Frost Arena - Brookings, S.D.



Omaha 41

No.	Player	S	Pts	FG	3FG	FT	OR	DR	TR	PF	A	TO	Blk	Stl	Min	+/-
02	CARTER, RAYANNA	G	3	1-3	0-0	1-2	0	1	1	0	2	1	0	0	10	-3
10	OGIER, ELLA	G	0	0-0	0-0	0-0	0	0	0	2	0	1	0	0	3	-4
11	KILLIAN, CLAIRE	G	1	0-0	0-0	1-2	0	0	0	0	0	0	0	0	3	-4
25	FILER, JOSIE	F	0	0-1	0-1	0-0	0	2	2	1	1	0	0	0	8	0
33	MURDIE, MARIAH	C	7	3-5	1-1	0-2	0	2	2	1	0	0	0	0	7	-3
01	SCHMITT, SARAH	G	0	0-0	0-0	0-0	0	0	0	0	0	0	0	0	0	0
03	FELICI, AKILI	G	3	1-2	1-2	0-0	0	1	1	0	0	0	0	1	7	1
05	PILAKOUTA, ELENA	C	2	1-1	0-0	0-0	0	1	1	1	1	0	0	0	3	0
12	EKDAHL, MIKAELA	G	0	0-0	0-0	0-0	0	0	0	1	1	0	0	0	5	0
21	JOHNSON, ABBY	F	0	0-0	0-0	0-0	0	0	0	0	0	0	0	0	0	0
22	WILSON, KIA	F	0	0-1	0-0	0-0	0	1	1	0	0	0	0	0	2	-3
42	JOHNSTON, SOPHIE	G	0	0-0	0-0	0-0	0	0	0	0	0	0	0	0	1	1
	TEAM						0	0	0	0		1				
TOTALS			16	6-13	2-4	2-6	0	8	8	6	5	3	0	1	50	

Shooting By Period

Period	FG	FG%	3FG	3FG%	FT	FT%
2nd Half	0-0	0%	0-0	0%	0-0	0%
Game	23-55	41.8%	9-21	42.9%	4-8	50.0%

Deadball Rebounds: 1,0

South Dakota St. 33

No.	Player	S	Pts	FG	3FG	FT	OR	DR	TR	PF	A	TO	Blk	Stl	Min	+/-
02	CASCIO JENSEN, RYLIE	G	0	0-2	0-2	0-0	0	2	2	1	4	1	0	1	10	3
20	NELSON, TORI	F	3	1-1	0-0	1-2	0	1	1	0	0	0	0	0	8	0
21	IRWIN, TYLEE	G	0	0-0	0-0	0-2	0	1	1	1	0	0	0	1	6	9
24	LARSON, TAGYN	F	6	3-5	0-0	0-1	1	2	3	0	1	0	0	0	8	8
33	BURCKHARD, PAITON	F	4	2-4	0-0	0-0	0	0	0	1	0	0	0	0	6	1
03	THEUNINCK, LINDSEY	G	0	0-1	0-1	0-0	0	0	0	0	0	0	0	0	6	-3
10	RONGISCH, LAUREN	G	0	0-0	0-0	0-0	0	0	0	0	0	0	0	0	0	0
30	FERRAND, JORDAN	F	0	0-0	0-0	0-0	0	0	0	0	0	0	0	0	0	0
35	STAPLETON, SYDNEY	G	2	0-0	0-0	2-2	0	0	0	0	1	0	0	0	2	-1
50	BULTSMA, MEGAN	C	4	2-3	0-0	0-0	1	2	3	1	0	0	0	0	4	-2
52	HIRSCHMAN, ADDISON	C	0	0-0	0-0	0-0	0	0	0	0	0	0	0	0	0	0
	TEAM						0	2	2	0		0				
TOTALS			19	8-16	0-3	3-7	2	10	12	4	6	1	0	2	50	

Shooting By Period

Period	FG	FG%	3FG	3FG%	FT	FT%
2nd Half	0-0	0%	0-0	0%	0-0	0%
Game	28-65	43.1%	5-15	33.3%	8-17	47.1%

Deadball Rebounds: 5,0

Game Notes:

Officials: **Zac Brost, Erika Herriman-Camarota, Marlin Schoonhoven**
 Attendance: **2929**

Start Time: **03:05 PM ET**
 End Time: **04:43 PM ET**
 Game Duration: **1:37**
 Conference Game;

Score	1st	2nd	3rd	4th	TOT
UNO	12	6	16	25	59
SDS	15	21	19	14	69

Points from (This Period)	UNO	SDS
In the Paint	6	16
Off Turns	2	1
2nd Chance	0	3
Fast Break	0	2
Bench	5	6

Official Play-By-Play
Omaha vs South Dakota St.
Third Quarter
February 08, 2020 at Frost Arena - Brookings, S.D.



Period 3

Starters:

Omaha: 2 CARTER, RAYANNA (G); 10 OGIER, ELLA (G); 11 KILLIAN, CLAIRE (G); 25 FILER, JOSIE (F); 33 MURDIE, MARIAH (C);

South Dakota St.: 2 CASCIO JENSEN, RYLIE (G); 20 NELSON, TORI (F); 21 IRWIN, TYLEE (G); 24 LARSON, TAGYN (F); 33 BURCKHARD, PAITON (F);

Time	VISITORS: Omaha	Score	Margin	HOME: South Dakota St.
10:00				SUB OUT: THEUNINCK, LINDSEY
10:00				SUB OUT: STAPLETON, SYDNEY
10:00				SUB IN: NELSON, TORI
10:00				SUB IN: IRWIN, TYLEE
10:00	SUB OUT: JOHNSTON, SOPHIE			
10:00	SUB IN: FILER, JOSIE			
09:39				FOUL (PERSONAL) by BURCKHARD, PAITON
09:39	GOOD! FT by KILLIAN, CLAIRE	36-19	H 17	
09:39	MISSED FT by KILLIAN, CLAIRE			
09:38				REBOUND (DEF) by LARSON, TAGYN
09:20		38-19	H 19	GOOD! LAYUP by BURCKHARD, PAITON
09:20				ASSIST by CASCIO JENSEN, RYLIE
08:47	TURNOVER (SHOTCLOCK) by TEAM			
08:31				MISSED 3PTR by CASCIO JENSEN, RYLIE
08:26				REBOUND (OFF) by LARSON, TAGYN
08:11	FOUL (PERSONAL) by OGIER, ELLA			
08:08	FOUL (PERSONAL) by PILAKOUTA, ELENA			
08:08	SUB OUT: PILAKOUTA, ELENA			
08:08	SUB IN: MURDIE, MARIAH			
08:08				MISSED FT by NELSON, TORI
08:08				REBOUND (OFF) by TEAM
08:08		39-19	H 20	GOOD! FT by NELSON, TORI
07:59	GOOD! JUMPER by CARTER, RAYANNA	39-21	H 18	
07:32		41-21	H 20	GOOD! LAYUP by BURCKHARD, PAITON
07:32				ASSIST by LARSON, TAGYN
07:13	TURNOVER (BADPASS) by OGIER, ELLA			
07:13				STEAL by IRWIN, TYLEE
07:09	FOUL (PERSONAL) by OGIER, ELLA			
07:09				MISSED FT by IRWIN, TYLEE
07:09				REBOUND (OFF) by TEAM
07:09				MISSED FT by IRWIN, TYLEE
07:08	REBOUND (DEF) by MURDIE, MARIAH			
06:57	MISSED JUMPER by CARTER, RAYANNA			
06:54				REBOUND (DEF) by CASCIO JENSEN, RYLIE
06:47		43-21	H 22	GOOD! LAYUP by LARSON, TAGYN
06:47				ASSIST by CASCIO JENSEN, RYLIE
06:34	MISSED LAYUP by MURDIE, MARIAH			
06:32				REBOUND (DEF) by TEAM
06:32	SUB OUT: OGIER, ELLA			
06:32	SUB OUT: KILLIAN, CLAIRE			
06:32	SUB IN: FELICI, AKILI			
06:32	SUB IN: EKDAHL, MIKAELA			
06:11				MISSED LAYUP by LARSON, TAGYN
06:07	REBOUND (DEF) by MURDIE, MARIAH			
06:03	MISSED 3PTR by FELICI, AKILI			
05:58				REBOUND (DEF) by CASCIO JENSEN, RYLIE
05:54		45-21	H 24	GOOD! LAYUP by NELSON, TORI [FB]
05:54				ASSIST by CASCIO JENSEN, RYLIE
05:50	TIMEOUT 30SEC			
05:50				SUB OUT: IRWIN, TYLEE
05:50				SUB OUT: LARSON, TAGYN
05:50				SUB IN: THEUNINCK, LINDSEY
05:50				SUB IN: BULTSMA, MEGAN
05:33				FOUL (PERSONAL) by BULTSMA, MEGAN
05:33	MISSED FT by MURDIE, MARIAH			
05:33	REBOUND (OFF) by TEAM			
05:33	MISSED FT by MURDIE, MARIAH			
05:31				REBOUND (DEF) by BULTSMA, MEGAN
05:17				MISSED LAYUP by BURCKHARD, PAITON
05:14	REBOUND (DEF) by FILER, JOSIE			
05:03	GOOD! LAYUP by MURDIE, MARIAH	45-23	H 22	
05:03	ASSIST by CARTER, RAYANNA			
04:54				MISSED 3PTR by THEUNINCK, LINDSEY
04:49	REBOUND (DEF) by FELICI, AKILI			
04:43	GOOD! 3PTR by MURDIE, MARIAH	45-26	H 19	
04:43	ASSIST by EKDAHL, MIKAELA			
04:29				MISSED JUMPER by BULTSMA, MEGAN
04:25	REBOUND (DEF) by CARTER, RAYANNA			
04:22	MISSED JUMPER by MURDIE, MARIAH			

Time	VISITORS: Omaha	Score	Margin	HOME: South Dakota St.
04:18				REBOUND (DEF) by NELSON, TORI
04:10				MISSED LAYUP by BURCKHARD, PAITON
04:05	REBOUND (DEF) by FILER, JOSIE			
03:52	MISSED 3PTR by FILER, JOSIE			
03:48				REBOUND (DEF) by TEAM
03:48				
03:48				SUB OUT: NELSON, TORI
03:48				SUB OUT: BURCKHARD, PAITON
03:48				SUB IN: IRWIN, TYLEE
03:48				SUB IN: LARSON, TAGYN
03:48	SUB OUT: FILER, JOSIE			
03:48	SUB IN: WILSON, KIA			
03:34				MISSED JUMPER by LARSON, TAGYN
03:29	REBOUND (DEF) by WILSON, KIA			
03:21				FOUL (PERSONAL) by IRWIN, TYLEE
03:21	GOOD! FT by CARTER, RAYANNA	45-27	H 18	
03:21	MISSED FT by CARTER, RAYANNA			
03:20				REBOUND (DEF) by LARSON, TAGYN
03:16	FOUL (PERSONAL) by EKDAHL, MIKAELA			
03:11		47-27	H 20	GOOD! LAYUP by BULTSMA, MEGAN [PNT]
03:11				ASSIST by CASCIO JENSEN, RYLIE
02:49	MISSED JUMPER by WILSON, KIA			
02:46				REBOUND (DEF) by IRWIN, TYLEE
02:31				MISSED 3PTR by CASCIO JENSEN, RYLIE
02:27				REBOUND (OFF) by BULTSMA, MEGAN
02:26		49-27	H 22	GOOD! LAYUP by BULTSMA, MEGAN
02:13	MISSED JUMPER by CARTER, RAYANNA			
02:08				REBOUND (DEF) by BULTSMA, MEGAN
02:03				TURNOVER (BADPASS) by CASCIO JENSEN, RYLIE
02:03	STEAL by FELICI, AKILI			
01:58				SUB OUT: BULTSMA, MEGAN
01:58				SUB IN: NELSON, TORI
01:58	SUB OUT: WILSON, KIA			
01:58	SUB IN: FILER, JOSIE			
01:46				FOUL (PERSONAL) by CASCIO JENSEN, RYLIE
01:46				SUB OUT: IRWIN, TYLEE
01:46				SUB IN: STAPLETON, SYDNEY
01:34	GOOD! LAYUP by MURDIE, MARIAH	49-29	H 20	
01:34	ASSIST by CARTER, RAYANNA			
01:22	FOUL (PERSONAL) by MURDIE, MARIAH			
01:22		50-29	H 21	GOOD! FT by STAPLETON, SYDNEY
01:22		51-29	H 22	GOOD! FT by STAPLETON, SYDNEY
01:22	SUB OUT: EKDAHL, MIKAELA			
01:22	SUB OUT: MURDIE, MARIAH			
01:22	SUB IN: PILAKOUTA, ELENA			
01:22	SUB IN: JOHNSTON, SOPHIE			
01:08	GOOD! 3PTR by FELICI, AKILI	51-32	H 19	
01:08	ASSIST by PILAKOUTA, ELENA			
00:50		53-32	H 21	GOOD! LAYUP by LARSON, TAGYN
00:50				ASSIST by STAPLETON, SYDNEY
00:50	FOUL (PERSONAL) by FILER, JOSIE			
00:50				MISSED FT by LARSON, TAGYN
00:49	REBOUND (DEF) by PILAKOUTA, ELENA			
00:34	GOOD! LAYUP by PILAKOUTA, ELENA [PNT]	53-34	H 19	
00:34	ASSIST by FILER, JOSIE			
00:23		55-34	H 21	GOOD! LAYUP by LARSON, TAGYN
00:02	TURNOVER (LOSTBALL) by CARTER, RAYANNA			
00:02				STEAL by CASCIO JENSEN, RYLIE

Omaha 34, South Dakota St. 55

Points from (This Period)	UNO	SDS
In the Paint	6	16
Off Turns	2	1
2nd Chance	0	3
Fast Break	0	2
Bench	5	6

Official Box Score
Omaha vs South Dakota St.
Fourth Quarter Statistics Only
February 08, 2020 at Frost Arena - Brookings, S.D.



Omaha 25

No.	Player	S	Pts	FG	3FG	FT	OR	DR	TR	PF	A	TO	Blk	Stl	Min	+/-
02	CARTER, RAYANNA	G	0	0-1	0-0	0-0	0	1	1	0	2	2	0	0	5	-1
10	OGIER, ELLA	G	0	0-0	0-0	0-0	0	0	0	0	0	0	0	0	0	0
11	KILLIAN, CLAIRE	G	0	0-0	0-0	0-0	0	0	0	0	0	0	0	0	0	0
25	FILER, JOSIE	F	9	3-3	3-3	0-0	0	0	0	0	0	1	0	1	8	8
33	MURDIE, MARIAH	C	0	0-0	0-0	0-0	0	0	0	1	0	2	0	0	1	-2
01	SCHMITT, SARAH	G	0	0-0	0-0	0-0	0	2	2	0	1	0	0	0	4	12
03	FELICI, AKILI	G	12	4-5	4-5	0-0	0	1	1	1	1	0	0	1	10	11
05	PILAKOUTA, ELENA	C	2	1-3	0-0	0-0	1	0	1	0	0	0	0	0	4	12
12	EKDAHL, MIKAELA	G	0	0-0	0-0	0-0	0	0	0	1	2	0	0	0	4	12
21	JOHNSON, ABBY	F	0	0-0	0-0	0-0	0	0	0	0	0	0	0	0	1	3
22	WILSON, KIA	F	2	0-0	0-0	2-2	0	0	0	1	0	0	0	0	5	1
42	JOHNSTON, SOPHIE	G	0	0-0	0-0	0-0	0	0	0	0	1	0	0	0	6	-1
	TEAM						0	2	2	0		0				
TOTALS			25	8-12	7-8	2-2	1	6	7	4	7	5	0	2	49	

Shooting By Period

Period	FG	FG%	3FG	3FG%	FT	FT%	Deadball Rebounds: 1,0
Game	23-55	41.8%	9-21	42.9%	4-8	50.0%	

South Dakota St. 14

No.	Player	S	Pts	FG	3FG	FT	OR	DR	TR	PF	A	TO	Blk	Stl	Min	+/-
02	CASCIO JENSEN, RYLIE	G	0	0-0	0-0	0-0	0	0	0	0	0	1	0	0	3	-3
20	NELSON, TORI	F	0	0-1	0-0	0-0	1	1	2	0	2	0	0	1	5	3
21	IRWIN, TYLEE	G	3	1-2	1-1	0-0	1	0	1	0	0	0	0	0	4	-1
24	LARSON, TAGYN	F	3	1-2	0-1	1-2	0	0	0	0	0	1	0	0	5	3
33	BURCKHARD, PAITON	F	4	2-3	0-0	0-0	1	1	2	1	0	1	0	0	3	-3
03	THEUNINCK, LINDSEY	G	2	1-1	0-0	0-0	0	0	0	0	1	0	0	1	7	-6
10	RONGISCH, LAUREN	G	0	0-0	0-0	0-0	0	0	0	0	0	0	0	0	4	-9
30	FERRAND, JORDAN	F	0	0-1	0-0	0-0	0	0	0	0	0	0	0	0	2	-3
35	STAPLETON, SYDNEY	G	0	0-1	0-1	0-0	0	0	0	0	1	1	0	0	7	-13
50	BULTSMA, MEGAN	C	2	1-2	0-0	0-0	0	0	0	0	0	0	0	0	4	-14
52	HIRSCHMAN, ADDISON	C	0	0-2	0-0	0-0	0	1	1	0	0	0	0	0	4	-9
	TEAM						0	0	0	0		0				
TOTALS			14	6-15	1-3	1-2	3	3	6	1	4	4	0	2	49	

Shooting By Period

Period	FG	FG%	3FG	3FG%	FT	FT%	Deadball Rebounds: 5,0
Game	28-65	43.1%	5-15	33.3%	8-17	47.1%	

Game Notes:

Officials: **Zac Brost, Erika Herriman-Camarota, Marlin**

Schoonhoven

Attendance: **2929**

Start Time: **03:05 PM ET**

End Time: **04:43 PM ET**

Game Duration: **1:37**

Conference Game;

Score	1st	2nd	3rd	4th	TOT
UNO	12	6	16	25	59
SDS	15	21	19	14	69

Points from (This Period)	UNO	SDS
In the Paint	0	8
Off Turns	11	7
2nd Chance	0	2
Fast Break	3	2
Bench	16	4

Official Play-By-Play
Omaha vs South Dakota St.
Fourth Quarter
February 08, 2020 at Frost Arena - Brookings, S.D.



Period 4

Starters:

Omaha: 2 CARTER, RAYANNA (G); 10 OGIER, ELLA (G); 11 KILLIAN, CLAIRE (G); 25 FILER, JOSIE (F); 33 MURDIE, MARIAH (C);

South Dakota St.: 2 CASCIO JENSEN, RYLIE (G); 20 NELSON, TORI (F); 21 IRWIN, TYLEE (G); 24 LARSON, TAGYN (F); 33 BURCKHARD, PAITON (F);

Time	VISITORS: Omaha	Score	Margin	HOME: South Dakota St.
10:00				SUB OUT: CASCIO JENSEN, RYLIE
10:00				SUB IN: IRWIN, TYLEE
10:00	SUB OUT: PILAKOUTA, ELENA			
10:00	SUB IN: WILSON, KIA			
09:47				TURNOVER (BADPASS) by LARSON, TAGYN
09:47	STEAL by FELICI, AKILI			
09:38	GOOD! 3PTR by FILER, JOSIE	55-37	H 18	
09:38	ASSIST by CARTER, RAYANNA			
09:14				MISSED 3PTR by STAPLETON, SYDNEY
09:11				REBOUND (OFF) by IRWIN, TYLEE
09:03		57-37	H 20	GOOD! LAYUP by LARSON, TAGYN
08:44	MISSED 3PTR by FELICI, AKILI			
08:40				REBOUND (DEF) by NELSON, TORI
08:38				MISSED LAYUP by NELSON, TORI
08:35				REBOUND (OFF) by NELSON, TORI
08:27				MISSED 3PTR by LARSON, TAGYN
08:23	REBOUND (DEF) by TEAM			
08:04				TIMEOUT 30SEC
08:04				
08:04	SUB OUT: WILSON, KIA			
08:04	SUB IN: MURDIE, MARIAH			
07:47	TURNOVER (BADPASS) by MURDIE, MARIAH			
07:47				STEAL by THEUNINCK, LINDSEY
07:43		59-37	H 22	GOOD! LAYUP by THEUNINCK, LINDSEY [FB]
07:28	FOUL (OFF) by MURDIE, MARIAH			
07:28	TURNOVER (OFFENSIVE) by MURDIE, MARIAH			
07:28	SUB OUT: MURDIE, MARIAH			
07:28	SUB IN: WILSON, KIA			
07:09	FOUL (PERSONAL) by WILSON, KIA			
07:09				SUB OUT: THEUNINCK, LINDSEY
07:09				SUB OUT: STAPLETON, SYDNEY
07:09				SUB IN: CASCIO JENSEN, RYLIE
07:09				SUB IN: BURCKHARD, PAITON
07:09				MISSED FT by LARSON, TAGYN
07:09				REBOUND (OFF) by TEAM
07:09		60-37	H 23	GOOD! FT by LARSON, TAGYN
06:54	MISSED JUMPER by CARTER, RAYANNA			
06:49				REBOUND (DEF) by BURCKHARD, PAITON
06:40				MISSED LAYUP by IRWIN, TYLEE
06:36	REBOUND (DEF) by CARTER, RAYANNA			
06:33	GOOD! 3PTR by FELICI, AKILI [FB]	60-40	H 20	
06:33	ASSIST by CARTER, RAYANNA			
06:23				TURNOVER (BADPASS) by CASCIO JENSEN, RYLIE
06:11	GOOD! 3PTR by FELICI, AKILI	60-43	H 17	
06:11	ASSIST by JOHNSTON, SOPHIE			
06:01		63-43	H 20	GOOD! 3PTR by IRWIN, TYLEE
06:01				ASSIST by NELSON, TORI
05:50	TIMEOUT 30SEC			
05:45				SUB OUT: IRWIN, TYLEE
05:45				SUB IN: THEUNINCK, LINDSEY
05:41	TURNOVER (BADPASS) by CARTER, RAYANNA			
05:26		65-43	H 22	GOOD! LAYUP by BURCKHARD, PAITON [PNT]
05:26				ASSIST by NELSON, TORI
05:07	TURNOVER (LOSTBALL) by CARTER, RAYANNA			
05:07				STEAL by NELSON, TORI
04:55		67-43	H 24	GOOD! LAYUP by BURCKHARD, PAITON
04:55				ASSIST by THEUNINCK, LINDSEY
04:35				FOUL (PERSONAL) by BURCKHARD, PAITON
04:35				SUB OUT: NELSON, TORI
04:35				SUB OUT: LARSON, TAGYN
04:35				SUB IN: STAPLETON, SYDNEY
04:35				SUB IN: BULTSMA, MEGAN
04:35	GOOD! FT by WILSON, KIA	67-44	H 23	
04:35	GOOD! FT by WILSON, KIA	67-45	H 22	
04:35	SUB OUT: CARTER, RAYANNA			
04:35	SUB OUT: WILSON, KIA			
04:35	SUB IN: PILAKOUTA, ELENA			
04:35	SUB IN: EKDAHL, MIKAELA			
04:24				MISSED LAYUP by BURCKHARD, PAITON
04:20				REBOUND (OFF) by BURCKHARD, PAITON

Time	VISITORS: Omaha	Score	Margin	HOME: South Dakota St.
04:20				TURNOVER (LOSTBALL) by BURCKHARD, PAITON
04:20	STEAL by FILER, JOSIE			
04:20	SUB OUT: JOHNSTON, SOPHIE			
04:20	SUB IN: SCHMITT, SARAH			
04:04	GOOD! 3PTR by FILER, JOSIE	67-48	H 19	
03:51				TURNOVER (BADPASS) by STAPLETON, SYDNEY
03:51				SUB OUT: CASCIO JENSEN, RYLIE
03:51				SUB OUT: BURCKHARD, PAITON
03:51				SUB IN: RONGISCH, LAUREN
03:51				SUB IN: HIRSCHMAN, ADDISON
03:34	GOOD! JUMPER by PILAKOUTA, ELENA	67-50	H 17	
03:34	ASSIST by SCHMITT, SARAH			
03:16				MISSED LAYUP by HIRSCHMAN, ADDISON
03:12	REBOUND (DEF) by FELICI, AKILI			
02:48	GOOD! 3PTR by FELICI, AKILI	67-53	H 14	
02:48	ASSIST by EKDAHL, MIKAELA			
02:34		69-53	H 16	GOOD! JUMPER by BULTSMA, MEGAN
02:34				ASSIST by STAPLETON, SYDNEY
02:22	GOOD! 3PTR by FILER, JOSIE	69-56	H 13	
02:22	ASSIST by FELICI, AKILI			
02:04	FOUL (PERSONAL) by FELICI, AKILI			
02:04				SUB OUT: THEUNINCK, LINDSEY
02:04				SUB IN: FERRAND, JORDAN
01:58				MISSED JUMPER by HIRSCHMAN, ADDISON
01:55	REBOUND (DEF) by TEAM			
01:42	MISSED JUMPER by PILAKOUTA, ELENA			
01:39	REBOUND (OFF) by PILAKOUTA, ELENA			
01:32	TURNOVER (LOSTBALL) by FILER, JOSIE			
01:32	SUB OUT: FILER, JOSIE			
01:32	SUB IN: JOHNSON, ABBY			
01:18				MISSED JUMPER by BULTSMA, MEGAN
01:15	REBOUND (DEF) by SCHMITT, SARAH			
01:08	TIMEOUT TEAM			
01:04	GOOD! 3PTR by FELICI, AKILI	69-59	H 10	
01:04	ASSIST by EKDAHL, MIKAELA			
00:40				MISSED LAYUP by FERRAND, JORDAN
00:37	REBOUND (DEF) by SCHMITT, SARAH			
00:22	MISSED LAYUP by PILAKOUTA, ELENA			
00:19				REBOUND (DEF) by HIRSCHMAN, ADDISON
00:17	FOUL (PERSONAL) by EKDAHL, MIKAELA			

Omaha 59, South Dakota St. 69

Points from (This Period)	UNO	SDS
In the Paint	0	8
Off Turns	11	7
2nd Chance	0	2
Fast Break	3	2
Bench	16	4

Official Scoring/Possession Reference Chart
Omaha vs South Dakota St.
Period 1
February 08, 2020 at Frost Arena - Brookings, S.D.



Period 1

Starters:

Omaha: 2 CARTER, RAYANNA (G); 10 OGIER, ELLA (G); 11 KILLIAN, CLAIRE (G); 25 FILER, JOSIE (F); 33 MURDIE, MARIAH (C);

South Dakota St.: 2 CASCIO JENSEN, RYLIE (G); 20 NELSON, TORI (F); 21 IRWIN, TYLEE (G); 24 LARSON, TAGYN (F); 33 BURCKHARD, PAITON (F);

Time	VISITORS: Omaha	Score	Margin	HOME: South Dakota St.
08:16		2-0	H 2	GOOD! LAYUP by LARSON, TAGYN
06:54	GOOD! JUMPER by MURDIE, MARIAH [PNT]	2-2	T	
06:31	GOOD! LAYUP by MURDIE, MARIAH [FB]	2-4	V 2	
05:18		3-4	V 1	GOOD! FT by NELSON, TORI
05:18		4-4	T	GOOD! FT by NELSON, TORI
04:45		6-4	H 2	GOOD! JUMPER by BULTSMA, MEGAN
04:20	GOOD! JUMPER by MURDIE, MARIAH [PNT]	6-6	T	
04:06		8-6	H 2	GOOD! JUMPER by BULTSMA, MEGAN [PNT]
03:44	GOOD! JUMPER by MURDIE, MARIAH [PNT]	8-8	T	
02:15		10-8	H 2	GOOD! LAYUP by LARSON, TAGYN
02:15		11-8	H 3	GOOD! FT by LARSON, TAGYN
01:49	GOOD! JUMPER by CARTER, RAYANNA	11-10	H 1	
01:24		13-10	H 3	GOOD! LAYUP by THEUNINCK, LINDSEY
00:31		15-10	H 5	GOOD! LAYUP by IRWIN, TYLEE
00:03	GOOD! LAYUP by JOHNSTON, SOPHIE	15-12	H 3	

Omaha 12, South Dakota St. 15

Official Scoring/Possession Reference Chart
Omaha vs South Dakota St.
Period 2
February 08, 2020 at Frost Arena - Brookings, S.D.



Period 2

Starters:

Omaha: 2 CARTER, RAYANNA (G); 10 OGIER, ELLA (G); 11 KILLIAN, CLAIRE (G); 25 FILER, JOSIE (F); 33 MURDIE, MARIAH (C);

South Dakota St.: 2 CASCIO JENSEN, RYLIE (G); 20 NELSON, TORI (F); 21 IRWIN, TYLEE (G); 24 LARSON, TAGYN (F); 33 BURCKHARD, PAITON (F);

Time	VISITORS: Omaha	Score	Margin	HOME: South Dakota St.
09:32	GOOD! LAYUP by WILSON, KIA	15-14	H 1	
08:41		18-14	H 4	GOOD! 3PTR by THEUNINCK, LINDSEY
07:45		20-14	H 6	GOOD! LAYUP by BURCKHARD, PAITON
07:12		22-14	H 8	GOOD! LAYUP by LARSON, TAGYN
06:25		25-14	H 11	GOOD! 3PTR by CASCIO JENSEN, RYLIE
05:56		27-14	H 13	GOOD! LAYUP by IRWIN, TYLEE
04:15		30-14	H 16	GOOD! 3PTR by IRWIN, TYLEE
03:43		33-14	H 19	GOOD! 3PTR by IRWIN, TYLEE
02:49	GOOD! LAYUP by KILLIAN, CLAIRE [PNT]	33-16	H 17	
02:14	GOOD! JUMPER by CARTER, RAYANNA	33-18	H 15	
00:05		35-18	H 17	GOOD! LAYUP by NELSON, TORI [PNT]
00:05		36-18	H 18	GOOD! FT by NELSON, TORI

Omaha 18, South Dakota St. 36

Official Scoring/Possession Reference Chart
Omaha vs South Dakota St.
Period 3
February 08, 2020 at Frost Arena - Brookings, S.D.



Period 3

Starters:

Omaha: 2 CARTER,RAYANNA (G); 10 OGIER,ELLA (G); 11 KILLIAN,CLAIRE (G); 25 FILER,JOSIE (F); 33 MURDIE,MARIAH (C);

South Dakota St.: 2 CASCIO JENSEN,RYLIE (G); 20 NELSON,TORI (F); 21 IRWIN,TYLEE (G); 24 LARSON,TAGYN (F); 33 BURCKHARD,PAITON (F);

Time	VISITORS: Omaha	Score	Margin	HOME: South Dakota St.
09:39	GOOD! FT by KILLIAN, CLAIRE	36-19	H 17	
09:20		38-19	H 19	GOOD! LAYUP by BURCKHARD, PAITON
08:08		39-19	H 20	GOOD! FT by NELSON, TORI
07:59	GOOD! JUMPER by CARTER, RAYANNA	39-21	H 18	
07:32		41-21	H 20	GOOD! LAYUP by BURCKHARD, PAITON
06:47		43-21	H 22	GOOD! LAYUP by LARSON, TAGYN
05:54		45-21	H 24	GOOD! LAYUP by NELSON, TORI [FB]
05:03	GOOD! LAYUP by MURDIE, MARIAH	45-23	H 22	
04:43	GOOD! 3PTR by MURDIE, MARIAH	45-26	H 19	
03:21	GOOD! FT by CARTER, RAYANNA	45-27	H 18	
03:11		47-27	H 20	GOOD! LAYUP by BULTSMA, MEGAN [PNT]
02:26		49-27	H 22	GOOD! LAYUP by BULTSMA, MEGAN
01:34	GOOD! LAYUP by MURDIE, MARIAH	49-29	H 20	
01:22		50-29	H 21	GOOD! FT by STAPLETON, SYDNEY
01:22		51-29	H 22	GOOD! FT by STAPLETON, SYDNEY
01:08	GOOD! 3PTR by FELICI, AKILI	51-32	H 19	
00:50		53-32	H 21	GOOD! LAYUP by LARSON, TAGYN
00:34	GOOD! LAYUP by PILAKOUTA, ELENA [PNT]	53-34	H 19	
00:23		55-34	H 21	GOOD! LAYUP by LARSON, TAGYN

Omaha 34, South Dakota St. 55

**Official Scoring/Possession Reference Chart
Omaha vs South Dakota St.
Period 4
February 08, 2020 at Frost Arena - Brookings, S.D.**



Period 4

Starters:

Omaha: 2 CARTER,RAYANNA (G); 10 OGIER,ELLA (G); 11 KILLIAN,CLAIRE (G); 25 FILER,JOSIE (F); 33 MURDIE,MARIAH (C);

South Dakota St.: 2 CASCIO JENSEN,RYLIE (G); 20 NELSON,TORI (F); 21 IRWIN,TYLEE (G); 24 LARSON,TAGYN (F); 33 BURCKHARD,PAITON (F);

Time	VISITORS: Omaha	Score	Margin	HOME: South Dakota St.
09:38	GOOD! 3PTR by FILER, JOSIE	55-37	H 18	
09:03		57-37	H 20	GOOD! LAYUP by LARSON, TAGYN
07:43		59-37	H 22	GOOD! LAYUP by THEUNINCK, LINDSEY [FB]
07:09		60-37	H 23	GOOD! FT by LARSON, TAGYN
06:33	GOOD! 3PTR by FELICI, AKILI [FB]	60-40	H 20	
06:11	GOOD! 3PTR by FELICI, AKILI	60-43	H 17	
06:01		63-43	H 20	GOOD! 3PTR by IRWIN, TYLEE
05:26		65-43	H 22	GOOD! LAYUP by BURCKHARD, PAITON [PNT]
04:55		67-43	H 24	GOOD! LAYUP by BURCKHARD, PAITON
04:35	GOOD! FT by WILSON, KIA	67-44	H 23	
04:35	GOOD! FT by WILSON, KIA	67-45	H 22	
04:04	GOOD! 3PTR by FILER, JOSIE	67-48	H 19	
03:34	GOOD! JUMPER by PILAKOUTA, ELENA	67-50	H 17	
02:48	GOOD! 3PTR by FELICI, AKILI	67-53	H 14	
02:34		69-53	H 16	GOOD! JUMPER by BULTSMA, MEGAN
02:22	GOOD! 3PTR by FILER, JOSIE	69-56	H 13	
01:04	GOOD! 3PTR by FELICI, AKILI	69-59	H 10	

Omaha 59, South Dakota St. 69

Official Substitutions Log
Omaha vs South Dakota St.
Period 1
February 08, 2020 at Frost Arena - Brookings, S.D.



VISITORS: Omaha	Time	Score	HOME: South Dakota St.
2 CARTER,RAYANNA			2 CASCIO JENSEN,RYLIE
10 OGIER,ELLA			20 NELSON,TORI
11 KILLIAN,CLAIRE			21 IRWIN,TYLEE
25 FILER,JOSIE			24 LARSON,TAGYN
33 MURDIE,MARIAH			33 BURCKHARD,PAITON
	05:18	4-2	SUB OUT: IRWIN,TYLEE
	05:18		SUB OUT: BURCKHARD,PAITON
	05:18		SUB IN: THEUNINCK,LINDSEY
	05:18		SUB IN: BULTSMA,MEGAN
	05:18		SUB OUT: NELSON,TORI
	05:18		SUB IN: STAPLETON,SYDNEY
SUB OUT: 11 KILLIAN,CLAIRE	03:46	6-8	
SUB IN: 42 JOHNSTON,SOPHIE	03:46		
SUB OUT: 25 FILER,JOSIE	02:28	8-8	
SUB IN: 22 WILSON,KIA	02:28		
SUB OUT: 10 OGIER,ELLA	02:15	8-10	
SUB IN: 12 EKDAHL,MIKAELA	02:15		
	02:15		SUB OUT: LARSON,TAGYN
	02:15		SUB IN: NELSON,TORI
SUB OUT: 33 MURDIE,MARIAH	01:28	10-11	
SUB IN: 25 FILER,JOSIE	01:28		
	01:07	10-13	SUB OUT: CASCIO JENSEN,RYLIE
	01:07		SUB IN: IRWIN,TYLEE

Omaha 12, South Dakota St. 15

Official Substitutions Log
Omaha vs South Dakota St.
Period 2
February 08, 2020 at Frost Arena - Brookings, S.D.



VISITORS: Omaha	Time	Score	HOME: South Dakota St.
2 CARTER, RAYANNA			2 CASCIO JENSEN, RYLIE
10 OGIER, ELLA			20 NELSON, TORI
11 KILLIAN, CLAIRE			21 IRWIN, TYLEE
25 FILER, JOSIE			24 LARSON, TAGYN
33 MURDIE, MARIAH			33 BURCKHARD, PAITON
	10:00	-	SUB OUT: STAPLETON, SYDNEY
	10:00		SUB IN: CASCIO JENSEN, RYLIE
	08:15	14-18	SUB OUT: NELSON, TORI
	08:15		SUB OUT: BULTSMA, MEGAN
	08:15		SUB IN: LARSON, TAGYN
	08:15		SUB IN: BURCKHARD, PAITON
SUB OUT: 2 CARTER, RAYANNA	08:15		
SUB OUT: 25 FILER, JOSIE	08:15		
SUB IN: 11 KILLIAN, CLAIRE	08:15		
SUB IN: 33 MURDIE, MARIAH	08:15		
SUB OUT: 33 MURDIE, MARIAH	07:52	14-18	
SUB OUT: 42 JOHNSTON, SOPHIE	07:52		
SUB IN: 10 OGIER, ELLA	07:52		
SUB IN: 25 FILER, JOSIE	07:52		
SUB OUT: 11 KILLIAN, CLAIRE	06:22	14-25	
SUB IN: 42 JOHNSTON, SOPHIE	06:22		
SUB OUT: 12 EKDAHL, MIKAELA	06:09	14-25	
SUB IN: 2 CARTER, RAYANNA	06:09		
	05:11	14-27	SUB OUT: THEUNINCK, LINDSEY
	05:11		SUB IN: NELSON, TORI
SUB OUT: 22 WILSON, KIA	04:37	14-27	
SUB OUT: 25 FILER, JOSIE	04:37		
SUB IN: 11 KILLIAN, CLAIRE	04:37		
SUB IN: 33 MURDIE, MARIAH	04:37		
	02:52	14-33	SUB OUT: CASCIO JENSEN, RYLIE
	02:52		SUB OUT: IRWIN, TYLEE
	02:52		SUB IN: THEUNINCK, LINDSEY
	02:52		SUB IN: STAPLETON, SYDNEY
	02:17	16-33	SUB OUT: BURCKHARD, PAITON
	02:17		SUB IN: BULTSMA, MEGAN
SUB OUT: 33 MURDIE, MARIAH	02:02	18-33	
SUB IN: 5 PILAKOUTA, ELENA	02:02		
	00:14	18-33	SUB OUT: THEUNINCK, LINDSEY
	00:14		SUB IN: CASCIO JENSEN, RYLIE
	00:05	18-35	SUB OUT: BULTSMA, MEGAN
	00:05		SUB IN: BURCKHARD, PAITON
	00:05		SUB OUT: NELSON, TORI
	00:05		SUB IN: THEUNINCK, LINDSEY

Omaha 18, South Dakota St. 36

Official Substitutions Log
Omaha vs South Dakota St.
Period 3
February 08, 2020 at Frost Arena - Brookings, S.D.



VISITORS: Omaha	Time	Score	HOME: South Dakota St.
2 CARTER, RAYANNA			2 CASCIO JENSEN, RYLIE
10 OGIER, ELLA			20 NELSON, TORI
11 KILLIAN, CLAIRE			21 IRWIN, TYLEE
25 FILER, JOSIE			24 LARSON, TAGYN
33 MURDIE, MARIAH			33 BURCKHARD, PAITON
	10:00	-	SUB OUT: THEUNINCK, LINDSEY
	10:00		SUB OUT: STAPLETON, SYDNEY
	10:00		SUB IN: NELSON, TORI
	10:00		SUB IN: IRWIN, TYLEE
SUB OUT: 42 JOHNSTON, SOPHIE	10:00		
SUB IN: 25 FILER, JOSIE	10:00		
SUB OUT: 5 PILAKOUTA, ELENA	08:08	19-38	
SUB IN: 33 MURDIE, MARIAH	08:08		
SUB OUT: 10 OGIER, ELLA	06:32	21-43	
SUB OUT: 11 KILLIAN, CLAIRE	06:32		
SUB IN: 3 FELICI, AKILI	06:32		
SUB IN: 12 EKDAHL, MIKAELA	06:32		
	05:50	21-45	SUB OUT: IRWIN, TYLEE
	05:50		SUB OUT: LARSON, TAGYN
	05:50		SUB IN: THEUNINCK, LINDSEY
	05:50		SUB IN: BULTSMA, MEGAN
	03:48	26-45	SUB OUT: NELSON, TORI
	03:48		SUB OUT: BURCKHARD, PAITON
	03:48		SUB IN: IRWIN, TYLEE
	03:48		SUB IN: LARSON, TAGYN
SUB OUT: 25 FILER, JOSIE	03:48		
SUB IN: 22 WILSON, KIA	03:48		
	01:58	27-49	SUB OUT: BULTSMA, MEGAN
	01:58		SUB IN: NELSON, TORI
SUB OUT: 22 WILSON, KIA	01:58		
SUB IN: 25 FILER, JOSIE	01:58		
	01:46	27-49	SUB OUT: IRWIN, TYLEE
	01:46		SUB IN: STAPLETON, SYDNEY
SUB OUT: 12 EKDAHL, MIKAELA	01:22	29-51	
SUB OUT: 33 MURDIE, MARIAH	01:22		
SUB IN: 5 PILAKOUTA, ELENA	01:22		
SUB IN: 42 JOHNSTON, SOPHIE	01:22		

Omaha 34, South Dakota St. 55

Official Substitutions Log
Omaha vs South Dakota St.
Period 4
February 08, 2020 at Frost Arena - Brookings, S.D.



VISITORS: Omaha	Time	Score	HOME: South Dakota St.
2 CARTER, RAYANNA			2 CASCIO JENSEN, RYLIE
10 OGIER, ELLA			20 NELSON, TORI
11 KILLIAN, CLAIRE			21 IRWIN, TYLEE
25 FILER, JOSIE			24 LARSON, TAGYN
33 MURDIE, MARIAH			33 BURCKHARD, PAITON
	10:00	-	SUB OUT: CASCIO JENSEN, RYLIE
	10:00		SUB IN: IRWIN, TYLEE
SUB OUT: 5 PILAKOUTA, ELENA	10:00		
SUB IN: 22 WILSON, KIA	10:00		
SUB OUT: 22 WILSON, KIA	08:04	37-57	
SUB IN: 33 MURDIE, MARIAH	08:04		
SUB OUT: 33 MURDIE, MARIAH	07:28	37-59	
SUB IN: 22 WILSON, KIA	07:28		
	07:09	37-59	SUB OUT: THEUNINCK, LINDSEY
	07:09		SUB OUT: STAPLETON, SYDNEY
	07:09		SUB IN: CASCIO JENSEN, RYLIE
	07:09		SUB IN: BURCKHARD, PAITON
	05:45	43-63	SUB OUT: IRWIN, TYLEE
	05:45		SUB IN: THEUNINCK, LINDSEY
	04:35	43-67	SUB OUT: NELSON, TORI
	04:35		SUB OUT: LARSON, TAGYN
	04:35		SUB IN: STAPLETON, SYDNEY
	04:35		SUB IN: BULTSMA, MEGAN
SUB OUT: 2 CARTER, RAYANNA	04:35		
SUB OUT: 22 WILSON, KIA	04:35		
SUB IN: 5 PILAKOUTA, ELENA	04:35		
SUB IN: 12 EKDAHL, MIKAELA	04:35		
SUB OUT: 42 JOHNSTON, SOPHIE	04:20	45-67	
SUB IN: 1 SCHMITT, SARAH	04:20		
	03:51	48-67	SUB OUT: CASCIO JENSEN, RYLIE
	03:51		SUB OUT: BURCKHARD, PAITON
	03:51		SUB IN: RONGISCH, LAUREN
	03:51		SUB IN: HIRSCHMAN, ADDISON
	02:04	56-69	SUB OUT: THEUNINCK, LINDSEY
	02:04		SUB IN: FERRAND, JORDAN
SUB OUT: 25 FILER, JOSIE	01:32	56-69	
SUB IN: 21 JOHNSON, ABBY	01:32		

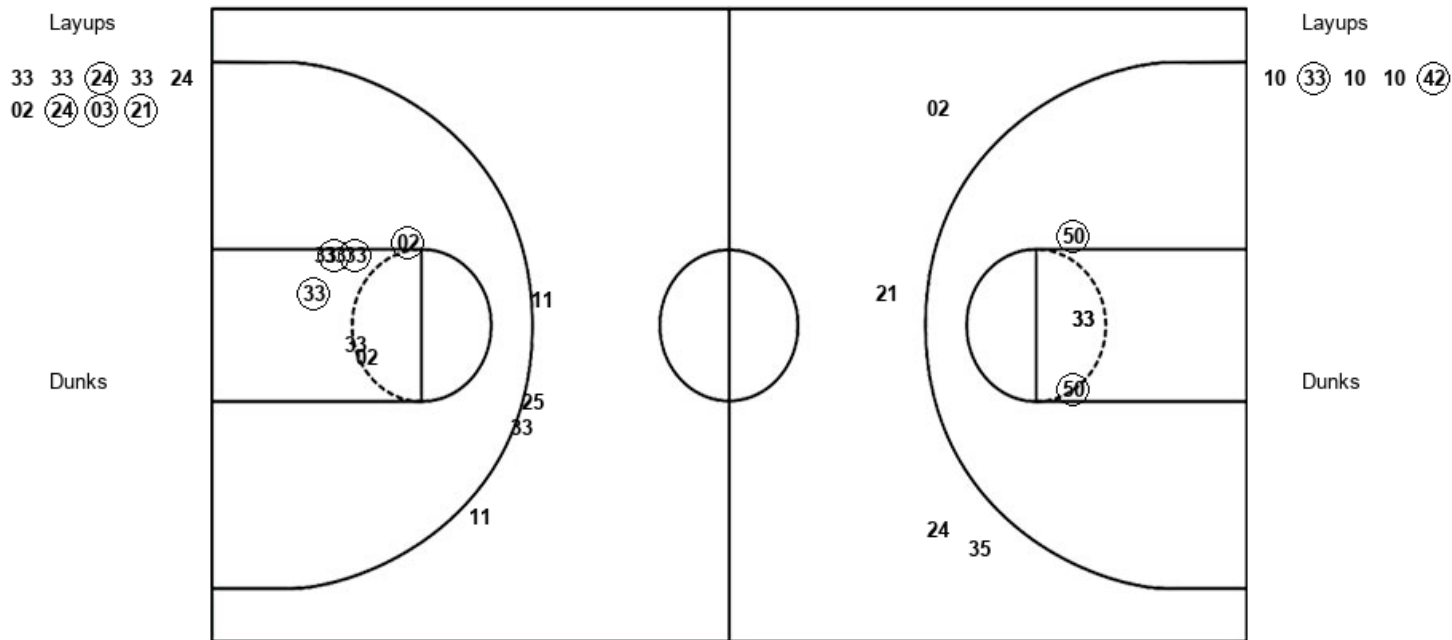
Omaha 59, South Dakota St. 69

Official Shot Chart
Omaha vs South Dakota St.
PERIOD 1 Shots
 February 08, 2020 at Frost Arena - Brookings, S.D.



South Dakota St.

Omaha



SDS : Period 1	Made	Att	Pct
Layups	4	9	44.4
Dunks	0	0	0
2PT Field Goals	6	13	46.2
3PT Field Goals	0	4	00.0
Total Field Goals	6	17	35.3

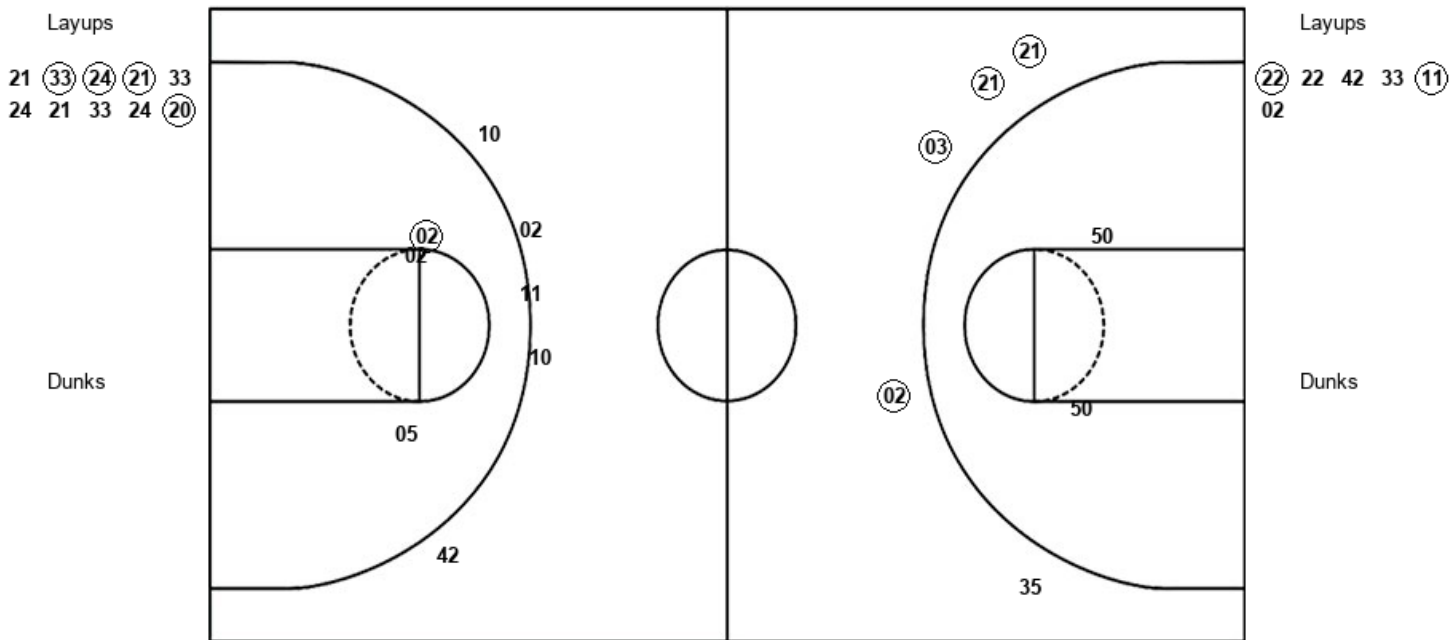
UNO : Period 1	Made	Att	Pct
Layups	2	5	40.0
Dunks	0	0	0
2PT Field Goals	6	12	50.0
3PT Field Goals	0	4	00.0
Total Field Goals	6	16	37.5

Official Shot Chart
Omaha vs South Dakota St.
PERIOD 2 Shots
 February 08, 2020 at Frost Arena - Brookings, S.D.



South Dakota St.

Omaha



SDS : Period 2	Made	Att	Pct
Layups	4	10	40.0
Dunks	0	0	0
2PT Field Goals	4	12	33.3
3PT Field Goals	4	5	80.0
Total Field Goals	8	17	47.1

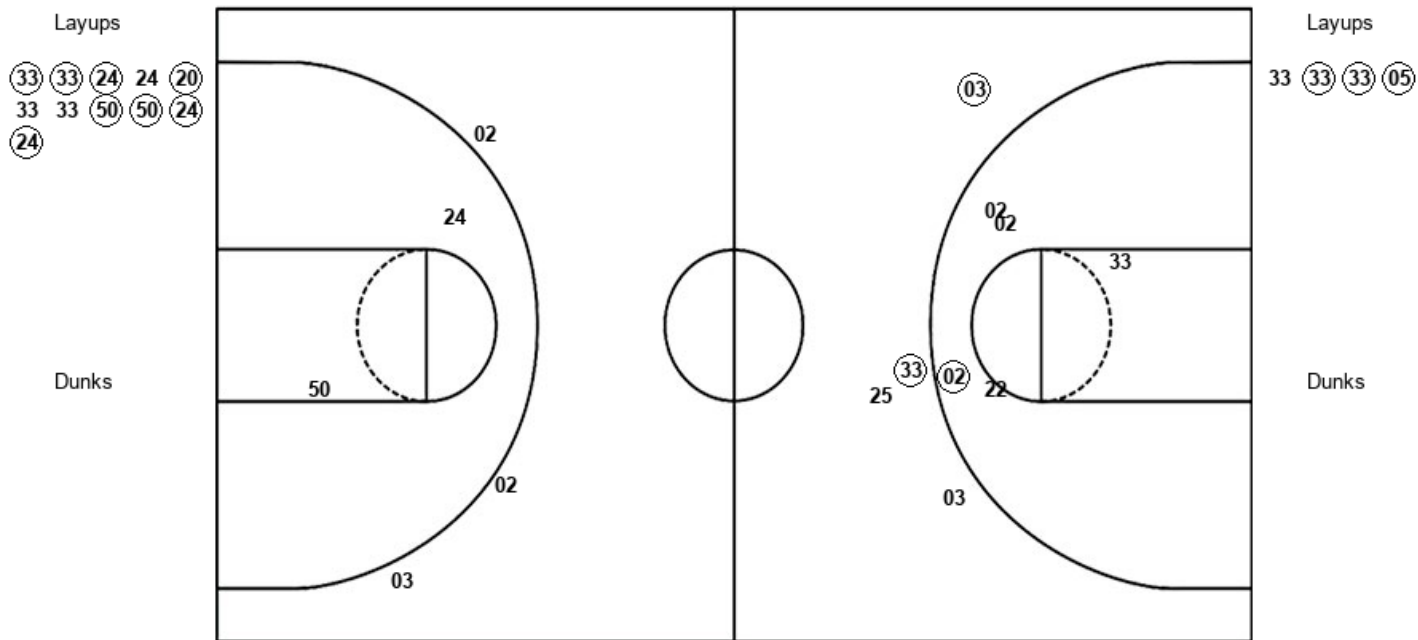
UNO : Period 2	Made	Att	Pct
Layups	2	6	33.3
Dunks	0	0	0
2PT Field Goals	3	9	33.3
3PT Field Goals	0	5	00.0
Total Field Goals	3	14	21.4

Official Shot Chart
Omaha vs South Dakota St.
PERIOD 3 Shots
February 08, 2020 at Frost Arena - Brookings, S.D.



South Dakota St.

Omaha



SDS : Period 3	Made	Att	Pct
Layups	8	11	72.7
Dunks	0	0	0
2PT Field Goals	8	13	61.5
3PT Field Goals	0	3	00.0
Total Field Goals	8	16	50.0

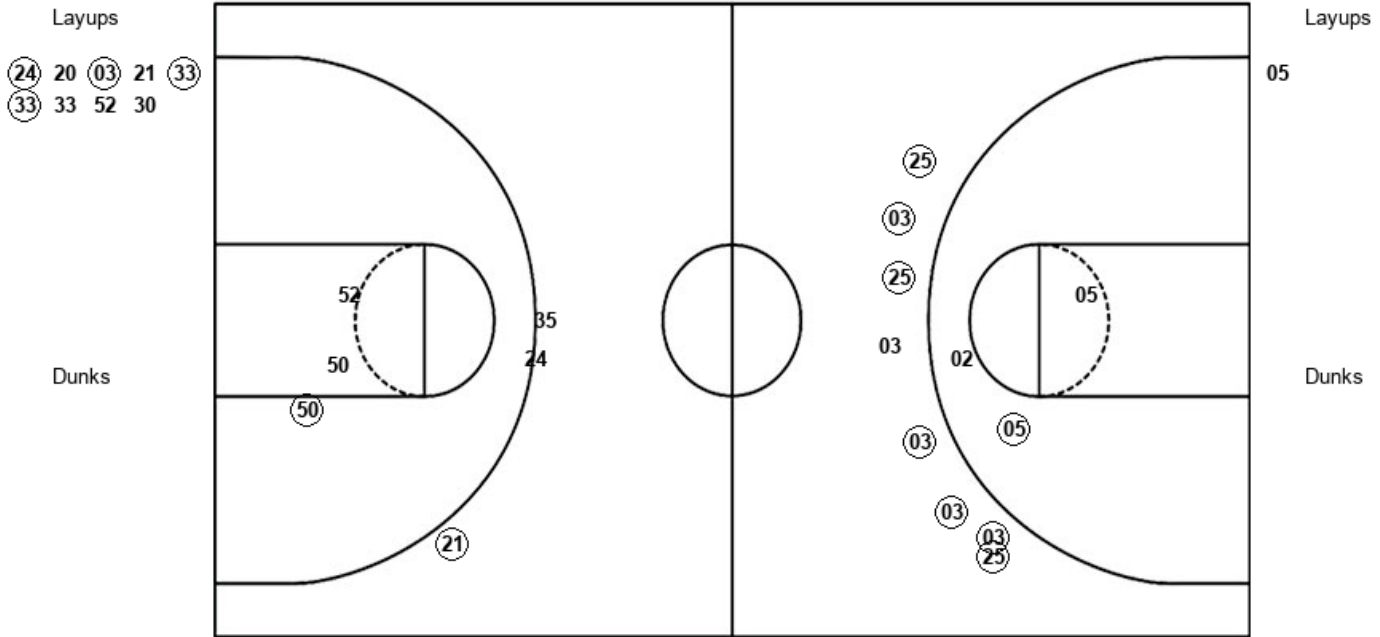
UNO : Period 3	Made	Att	Pct
Layups	3	4	75.0
Dunks	0	0	0
2PT Field Goals	4	9	44.4
3PT Field Goals	2	4	50.0
Total Field Goals	6	13	46.2

Official Shot Chart
Omaha vs South Dakota St.
PERIOD 4 Shots
 February 08, 2020 at Frost Arena - Brookings, S.D.



South Dakota St.

Omaha



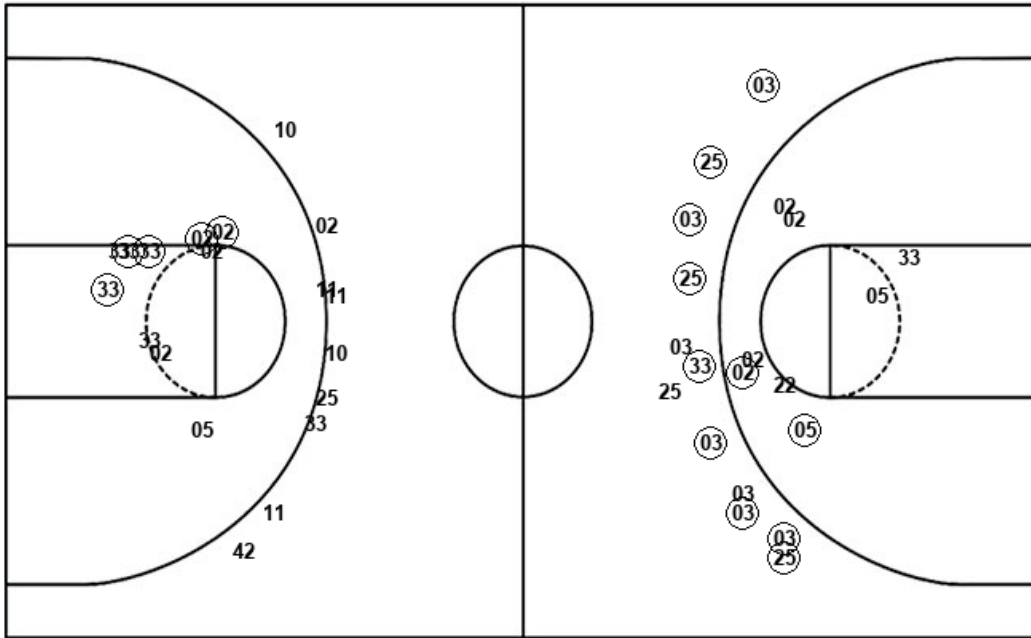
SDS : Period 4	Made	Att	Pct
Layups	4	9	44.4
Dunks	0	0	0
2PT Field Goals	5	12	41.7
3PT Field Goals	1	3	33.3
Total Field Goals	6	15	40.0

UNO : Period 4	Made	Att	Pct
Layups	0	1	00.0
Dunks	0	0	0
2PT Field Goals	1	4	25.0
3PT Field Goals	7	8	87.5
Total Field Goals	8	12	66.7

Official Shot Chart
Omaha vs South Dakota St.
Omaha Team Shots
February 08, 2020 at Frost Arena - Brookings, S.D.



Layups



Layups

10 (33) 10 10 (42)
 (22) 22 42 33 (11)
 02 33 (33) (33) (05)
 05

Dunks

Dunks

UNO : Period 1	Made	Att	Pct
Layups	2	5	40.0
Dunks	0	0	0
2PT Field Goals	6	12	50.0
3PT Field Goals	0	4	00.0
Total Field Goals	6	16	37.5

UNO : Period 2	Made	Att	Pct
Layups	2	6	33.3
Dunks	0	0	0
2PT Field Goals	3	9	33.3
3PT Field Goals	0	5	00.0
Total Field Goals	3	14	21.4

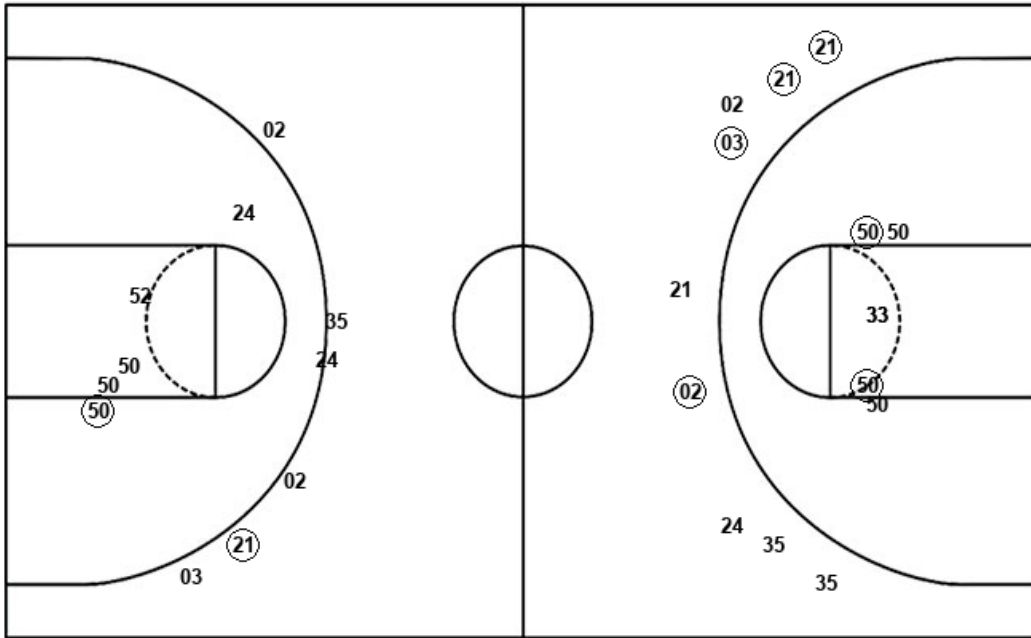
UNO : Period 3	Made	Att	Pct
Layups	3	4	75.0
Dunks	0	0	0
2PT Field Goals	4	9	44.4
3PT Field Goals	2	4	50.0
Total Field Goals	6	13	46.2

UNO : Period 4	Made	Att	Pct
Layups	0	1	00.0
Dunks	0	0	0
2PT Field Goals	1	4	25.0
3PT Field Goals	7	8	87.5
Total Field Goals	8	12	66.7

Official Shot Chart
Omaha vs South Dakota St.
South Dakota St. Team Shots
February 08, 2020 at Frost Arena - Brookings, S.D.



Layups



Layups

33 33 (24) 33 24
 02 (24) (03) (21) 21
 (33) (24) (21) 33 24
 21 33 24 (20) (33)
 (33) (24) 24 (20) 33
 33 (50) (50) (24) (24)
 (24) 20 (03) 21 (33)
 (33) 33 52 30

Dunks

Dunks

SDS : Period 1	Made	Att	Pct
Layups	4	9	44.4
Dunks	0	0	0
2PT Field Goals	6	13	46.2
3PT Field Goals	0	4	00.0
Total Field Goals	6	17	35.3

SDS : Period 2	Made	Att	Pct
Layups	4	10	40.0
Dunks	0	0	0
2PT Field Goals	4	12	33.3
3PT Field Goals	4	5	80.0
Total Field Goals	8	17	47.1

SDS : Period 3	Made	Att	Pct
Layups	8	11	72.7
Dunks	0	0	0
2PT Field Goals	8	13	61.5
3PT Field Goals	0	3	00.0
Total Field Goals	8	16	50.0

SDS : Period 4	Made	Att	Pct
Layups	4	9	44.4
Dunks	0	0	0
2PT Field Goals	5	12	41.7
3PT Field Goals	1	3	33.3
Total Field Goals	6	15	40.0